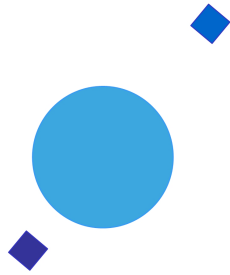


INAF



ISTITUTO NAZIONALE DI ASTROFISICA
NATIONAL INSTITUTE FOR ASTROPHYSICS

SVIRCO Prompt Report: December 2021

Francesco Re and Nello Vertoli

INAF/IAPS-2021-12

April 2022

ISTITUTO DI ASTROFISICA E PLANETOLOGIA SPAZIALI

AREA DI RICERCA ROMA - TOR VERGATA

Via del Fosso del Cavaliere, 100 - 00133 Roma (ITALIA)

SVIRCO Prompt Report: December 2021

Francesco Re and Nello Vertoli

*IAPS - INAF, Area di Ricerca Roma - Tor Vergata
Via del Fosso del Cavaliere, 100 - 00133 Roma, Italy,*

Abstract

The pressure corrected intensity of the nucleonic component, produced by primary cosmic rays and recorded in December 2021 by the Neutron Monitor of SVIRCO-Rome (present geographic position: 41.86° N - 12.47° E; altitude about s.l.), is reported in prompt form together with the barometric pressure data.

SVIRCO OBSERVATORY

During the 1st International Geophysics Year (1957) an international network of “ground-based detectors” for continuous cosmic ray measurements was world-wide established.

The cosmic ray station of Rome joined this network with the purpose to study the time variations of primary cosmic rays (**Studio Variazioni Intensità Raggi Cosmici: S.V.I.R.CO**) and their modulation in the heliosphere.

From July 1957 to April 1997, the SVIRCO Station (now Observatory) performed uninterrupted measurements at the Physics Department “G. Marconi” of “La Sapienza” University of Rome (41.90° N, 12.52° E, altitude about 60 m a.s.l.)

In May 1997 the neutron monitor was moved to the Physics Department “E. Amaldi” of “Roma Tre” University. Since then it has been continuously running at the new location (41.86° N, 12.47° E, altitude about 0 m a.s.l.).

The SVIRCO Observatory (INAF/IAPS-UNIRomaTre collaboration) is housed in a reserved building provided with a double air-conditioning system. The inner temperature is permanently restrained in a range of 23°-26° C, meanwhile the relative humidity is kept below 57%. Either the environmental parameters are continuously checked and recorded by digital sensors.

On January 1, 2005 three counters were added to the detector. This upgrade, from 17 to 20 NM-64, made the SVIRCO neutron monitor still consist of 5 sections but modified its geometry. Actually the new arrangement has been composed of three 3-counter, one 5-counter and one 6-counter units. The enhancement improved not only the overall counting rate of 15.6 % (January 2005) but, as a result, also the statistical quality of the recorded data.

On July 3, 2017 six counters experienced failure and were removed from the detector until 24 July. On 25 July 2017 a number of 2 counters was added to the detector up to a total of 16 counters. The new arrangement has been composed of three 3-counter, one 5-counter and one 2-counter units. The overall counting rate has decreased of about 20% (July 2017) with a lower statistical quality of the recorded data.

Each of the 16 BF₃ proportional counters (BP-28 type) is equipped with a smart amplifier/discriminator circuit complete with a spectrum stabilizer. This new electronic unit, developed in our laboratory, holds firmly the pulse height spectrum of the amplifier output (within a range of more than 150 volts around the operating voltage), providing the counter with a great immunity against high voltage variations.

Anyway, systematic and exhaustive tests of the counters are regularly performed. The output pulses of the amplifiers, discriminated by the threshold gates, are collected and stored into a multi-channel analyzer. The analysis of the height distribution (spectrum) of the amplifier pulses coinciding with the discriminator ones, is essential to verify the long term efficiency of each counter together with the amplifier gain and the discriminator threshold level.

As well as the amplifier/discriminator circuits, a large part of the electronic instrumentation operating in the Observatory was designed and realized in our laboratory together with the software for data acquisition and pre-elaboration.

In order to improve the reliability of the recorded data and to prevent measurement breakdowns, two independent systems perform contemporary the data acquisition. Each system is remotely controlled by a dedicated computer and is timed by a high stability quartz clock and/or a GPS receiver. One equipment runs according to a timing of 1 minute and fulfils the acquisition of the 16 counters separately. The other one records the individual 5-minute counting rate of each detector section in addition to the rates of the overall multiplicity, sorted into separated counting channels (from 1 to greater than 8).

A special care is devoted to the atmospheric pressure measurements; thus they are carried out by means of not less than three barometers at the same time. These instruments (achieving a resolution up to 0.01 hPa), are constantly checked out each other for the best measuring accuracy and reliability. Furthermore, the devices in use are equipped with different types of transducer such as vibrating cylinder, force balance and quartz, therefore, throughout their different behaviours, it is possible to point out the occurrence of any long-term drift and eventually to re-calibrate the instruments themselves.

DATA PRESENTATION

In a preliminary step, the intensity data, of the secondary nucleonic component of cosmic rays, detected at SVIRCO Observatory, were corrected for pressure variations at a reference level of 1009.25 hPa with an attenuation coefficient of 0.70% / hPa.

The five-minutes counting rates, of the examined month, are reported in tabular form together with the hourly normalized data, which provide a continuous data set for long-term analysis.

The normalization was evaluated as percentage of the counting rate average of January-February 1997, when the Monitor operated at the previous location of "La Sapienza" University. The reference counting rate level (100%), computed for such period, is equal to 554946 counts/hour.

The atmospheric pressure data (in hectoPascal) are also collected in a monthly table which presents the five-minutes averages and the hourly ones.

The hourly averages of the normalized intensity and pressure, plotted in monthly graphs, are reported too.

CONDITIONS FOR SVIRCO DATA USE

You are welcome to use neutron monitor data of SVIRCO, IAPS/INAF-UNIRomaTre collaboration, under the following conditions:

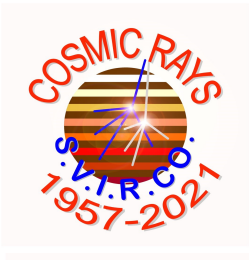
-You agree to acknowledge our financial supports in any published use of the data.

Example: "SVIRCO NM is supported by the INAF - UNIRomaTre collaboration"

-You are kindly requested to send a copy of any published work derived from our data to:

Dr. Monica Laurenza
Head of SVIRCO Observatory & TPL
Istituto di Astrofisica e Planetologia Spaziali - Area di Ricerca Tor Vergata
Via del Fosso del Cavaliere, 100 00133 Roma - Italy,

monica.laurenza@iaps.inaf.it



S.V.I.R.CO. Observatory

Rome

Italy



INAF/UNIRomaTre				S.V.I.R.CO. Observatory - Pressure Corrected Data – December 2021										16 NM-64	
day	hh	00_05	05_10	10_15	15_20	20_25	25_30	30_35	35_40	40_45	45_50	50_55	55_60	h-norm	
1	0	38628	38542	38294	38999	38558	38547	38388	38624	38709	38743	39261	38432	102.016	
	1	38753	39098	38712	37925	38841	38863	38345	39035	38981	38399	38055	38414	101.953	
	2	37923	38459	38666	38801	38846	38244	39375	39056	38491	38538	39086	38732	102.128	
	3	38598	38720	38408	39278	38813	39037	38843	39505	38747	38234	38718	38666	102.425	
	4	38425	38527	38623	38058	38101	38848	38848	39049	38235	38325	38951	38483	101.744	
	5	38588	38568	38429	38598	38473	38742	38611	38290	38571	38246	37831	39025	101.634	
	6	38486	38666	38400	38381	38455	38931	38666	39059	38202	38073	38330	39034	101.790	
	7	38696	38294	38580	39087	38927	38588	38388	38324	39122	38958	38171	39046	102.120	
	8	38432	38326	38781	38504	38545	38493	39149	38768	38355	38662	38291	38630	101.846	
	9	38939	38600	39191	39002	38240	38725	38493	38027	38101	38600	38083	38033	101.647	
	10	38447	38574	38954	38947	38887	38274	39128	38772	38756	38998	38645	38421	102.257	
	11	39455	38802	38285	39075	38932	38874	38478	38562	38446	39027	38266	38298	102.189	
	12	38947	38970	39014	38732	38652	38882	38814	39211	39110	38712	38859	38951	102.708	
	13	38792	38568	38978	38883	38751	38940	39097	38708	38886	38545	39072	38721	102.508	
	14	38355	38767	38615	39332	38984	38708	38422	38638	38651	39054	38929	38498	102.290	
	15	38653	38448	38965	38802	39007	38321	39166	38877	38487	38867	38405	39041	102.308	
	16	38230	38362	37972	38614	38350	38893	38514	38551	38103	38876	38665	38309	101.517	
	17	38891	38257	38994	38882	38543	39085	38064	39261	39056	38435	38869	38484	102.260	
	18	38015	38963	39493	38476	38316	38398	38307	38185	39070	38022	38571	38307	101.667	
	19	39001	38972	38514	38074	38247	38538	38608	38682	38726	38707	38454	38730	101.916	
	20	38680	38000	38244	38720	38458	38393	38376	38619	38887	38528	38708	38211	101.602	
	21	38162	38434	38757	38000	38182	38535	38762	38170	38591	38360	38542	38822	101.490	
	22	38742	38091	38537	38728	38487	38880	38330	38461	38350	38721	38822	37861	101.642	
	23	38815	38436	37967	38709	38992	38004	38791	38951	38603	38754	38944	39202	102.118	
2	0	38389	38449	38957	38551	38185	38385	38477	38280	38508	38736	38437	38837	101.671	
	1	39250	38735	38288	38617	38184	38294	38907	38434	38030	38542	38660	39144	101.879	
	2	38423	38393	38330	38470	38715	38648	38601	38082	38552	38953	38689	38473	101.713	
	3	38513	38788	37958	38280	38192	38653	38339	38467	38783	38775	38735	38375	101.609	
	4	38356	38667	38357	38651	38768	37731	38071	38691	38605	38319	38878	38342	101.516	
	5	38092	38789	38325	38509	37834	38035	38578	38182	39081	38503	39218	38494	101.560	
	6	39267	39227	38870	38639	36869	37634	38929	38702	38282	38715	38282	38821	101.682	
	7	38647	38579	38581	39066	37874	38668	38341	38218	39190	38815	38565	38458	101.861	
	8	38919	39361	38775	38631	38469	38536	38584	38897	39164	39044	39322	38545	102.574	
	9	38908	38393	39035	38481	38242	38959	38481	38479	38908	38261	38974	38513	101.999	
	10	38431	38388	39202	38804	38724	38933	38258	38788	38675	38718	38300	38757	102.075	
	11	38833	38776	38735	38384	38848	38344	38916	38847	38671	38351	38728	38963	102.167	
	12	38886	37771	38118	38482	38811	38981	38810	38481	38343	38296	38924	38335	101.692	
	13	38869	38213	38673	38290	38738	38402	39130	38744	38669	38328	38533	38662	101.915	
	14	38102	38673	38678	38605	38479	38687	38752	38168	38965	38917	38454	38186	101.787	
	15	38722	38916	37887	38203	38001	38816	38343	38323	38908	38324	38202	38537	101.460	
	16	38497	38972	38951	39171	38854	38409	38399	38891	38883	38671	38281	38215	102.123	
	17	38642	38449	38568	38874	38447	38680	39202	38652	38494	38503	38950	38475	102.066	
	18	38412	38662	38195	38355	38839	38588	38746	38616	38656	38920	38547	38753	101.923	
	19	38559	38941	38551	38448	38716	38819	39064	38915	38492	38696	38360	38585	102.112	
	20	38717	38551	38036	38212	38213	38288	38784	38317	38896	38627	39023	38607	101.700	
	21	38103	38652	38530	38063	38699	38579	38392	38458	38318	38682	38391	39643	101.752	
	22	38804	38626	38670	38332	38251	38372	38859	38809	38409	38966	38880	38403	101.944	
	23	38761	38489	38293	38567	38539	38303	38799	39203	38229	37919	38505	38418	101.645	

INAF/UNIromaTre		S.V.I.R.CO. Observatory - Pressure Corrected Data – December 2021											16 NM-64	
day	hh	00_05	05_10	10_15	15_20	20_25	25_30	30_35	35_40	40_45	45_50	50_55	55_60	h-norm
3	0	38212	38174	38213	38758	38157	38279	38861	37642	38496	38468	38449	38532	101.253
	1	38512	38615	39038	38776	38288	38288	38111	38157	38392	38609	38157	38692	101.560
	2	38700	38316	38223	38533	38646	38523	38278	38326	38994	39568	38590	38562	101.917
	3	38552	38044	38505	38758	38156	38395	38545	38213	38411	38646	38712	38552	101.528
	4	38127	38352	38843	38051	38571	38192	38476	38334	39053	38173	38485	38525	101.460
	5	38261	38358	39066	38344	38393	38703	38715	38743	38708	38479	38493	38559	101.821
	6	38643	37683	38959	37996	38540	38683	38741	38683	38291	38439	37965	38310	101.405
	7	38384	39102	38824	38662	39169	38966	38409	39217	38841	38641	38175	38671	102.313
	8	38304	39085	38233	38637	38134	38762	38635	39023	38791	38444	38513	38501	101.873
	9	38847	38372	38671	38670	38310	38348	38405	38055	39183	38057	38620	38552	101.660
	10	38941	39242	38931	38669	38423	38537	38374	38356	38541	38706	38365	38511	101.991
	11	38764	38354	38256	38909	38579	38511	38832	38541	38686	38813	38656	38450	101.938
	12	38724	38998	39173	38578	38460	38510	38229	38685	38431	38577	38384	38306	101.872
	13	38696	38689	37687	38632	38285	38714	38607	38441	38445	38352	38451	38297	101.485
	14	38296	38428	38407	38670	38591	38904	38876	38601	38787	38464	38717	38755	101.969
	15	38619	38297	38354	39146	39156	38764	38588	39058	38332	38488	38636	38987	102.173
	16	38640	38603	38446	38475	38442	38569	38510	38539	38350	38604	38552	38788	101.754
	17	38152	38549	38339	38136	37953	37460	37716	37708	38685	38281	38558	38915	100.856
	18	38846	38387	37629	39166	38445	37962	38052	37982	38223	38358	38709	38499	101.257
	19	39045	38891	38351	38548	38586	38487	38559	38407	38920	38607	38463	38843	102.016
	20	38576	38365	38125	38706	37958	38659	39000	38617	38530	38580	38200	38380	101.573
	21	38003	39187	38781	38356	38104	38479	38516	38341	38294	38739	38521	38215	101.538
	22	37706	37913	38768	38555	37891	38781	38313	38028	38128	37985	38774	38901	101.143
	23	38423	38691	38608	38220	38305	38576	38626	38133	38398	37901	38379	39357	101.556
4	0	38400	37994	38418	38291	38321	38812	38263	38996	38303	37903	38043	37920	101.131
	1	38320	39339	38488	38509	38488	38326	38306	38122	38469	38376	38242	38151	101.450
	2	37672	38776	38652	38222	38253	38785	38234	38130	38161	38367	38211	37993	101.080
	3	38290	38802	38474	38280	39038	38218	37901	38454	38126	38874	38836	39028	101.710
	4	38487	38836	38213	38592	38623	38099	38220	38616	38228	38550	38855	38844	101.676
	5	38936	38320	38443	38464	38813	38063	38400	38726	38735	38624	38022	38482	101.647
	6	39210	38509	38384	38649	38365	38032	38682	38352	38218	38781	38438	38150	101.590
	7	38188	38175	38677	38735	38292	38117	38572	38572	37910	38697	38956	38531	101.513
	8	38210	38481	38440	38034	38459	38355	38590	38931	38293	38780	38749	38367	101.572
	9	38377	38419	38741	38730	38377	39072	39369	38934	38987	38708	38427	38502	102.222
	10	38372	38282	38463	38497	39188	38495	38999	39069	38084	38739	38399	38976	101.984
	11	38842	38770	38234	38114	38664	38389	38667	38749	38348	38328	38554	38648	101.708
	12	38465	38746	38431	38205	38936	38836	38313	38993	38803	39097	38318	38607	102.025
	13	38140	38629	39027	38660	39057	38658	38659	38704	38165	38837	38339	38420	101.925
	14	38532	38349	38551	38449	38695	38308	38308	38494	38028	37916	38862	38679	101.458
	15	38688	38162	38858	38179	38208	38473	38322	38858	38541	37910	38218	38156	101.326
	16	38562	37722	38722	38214	38712	38184	38306	38276	38631	38256	38712	38570	101.391
	17	38418	38690	38112	38874	39402	38411	38593	38644	38570	38127	38760	38486	101.879
	18	38910	38598	38972	38619	38504	38486	38607	38306	37881	38777	38184	38714	101.762
	19	38073	38508	38347	38581	38754	38365	38426	38406	38319	38621	37681	38151	101.250
	20	38469	38169	38920	38008	38421	37657	38417	38506	38784	38626	38658	38169	101.377
	21	37979	38210	38658	38196	38777	37904	38581	38072	38291	38181	38659	38103	101.114
	22	38559	38758	38472	38414	38314	38973	38492	37995	38798	38670	38973	37905	101.710
	23	38900	38535	38007	38277	38513	38640	38363	37765	38497	38573	38220	38327	101.335

INAF/UNIRomaTre				S.V.I.R.CO. Observatory - Pressure Corrected Data – December 2021										16 NM-64	
day	hh	00_05	05_10	10_15	15_20	20_25	25_30	30_35	35_40	40_45	45_50	50_55	55_60	h-norm	
5	0	38582	38268	38389	38428	38616	38570	38265	38999	38536	38451	38619	37954	101.557	
	1	38484	38855	38736	38589	38344	38393	38363	39050	38110	38670	38523	38209	101.712	
	2	38779	37860	37772	38504	38230	38067	38664	38488	38379	38527	38617	37862	101.145	
	3	39111	38611	38222	38417	38504	38689	38283	38213	38399	38363	38576	38964	101.718	
	4	39042	38751	38259	38337	38663	38372	38352	38331	38094	38491	38237	38331	101.477	
	5	39034	38686	38463	38502	38264	38486	38827	37858	37866	38589	38378	38368	101.490	
	6	38851	38505	38680	38458	38380	38386	38791	38668	38445	38610	38899	38088	101.808	
	7	38505	38398	38582	38379	38964	37910	38706	38464	38531	38329	38726	38125	101.556	
	8	38434	38695	38715	38329	38300	38270	38382	38983	38425	38211	39188	38764	101.793	
	9	38386	38587	38239	38781	38713	38647	38503	39296	39023	38955	39322	39109	102.423	
	10	39168	38878	38357	38543	38823	38938	38754	38360	38139	38362	38826	38516	102.006	
	11	38017	38617	38656	38432	39084	38345	39448	38713	38148	39286	38339	38406	101.968	
	12	39143	38598	38169	38647	38640	38744	38228	38400	38238	38363	38173	38059	101.508	
	13	38656	39131	38810	38733	39359	38306	38457	38753	38829	38259	39082	38861	102.352	
	14	38340	38219	38449	38757	38987	38648	38551	38555	39005	38388	38255	38628	101.812	
	15	38810	38327	38175	38392	38304	38578	38931	38705	38963	38298	38347	38500	101.713	
	16	38340	38295	39104	39304	38526	38298	38808	38921	38558	38658	38993	38447	102.136	
	17	38833	38484	38773	38714	38905	38562	39096	38753	38418	39105	39305	38733	102.450	
	18	39275	39111	39302	38244	38721	38851	38785	38551	38598	38732	38600	38190	102.291	
	19	38797	38728	39362	38918	38631	38935	38468	38895	38603	38645	38951	38355	102.363	
	20	39225	39508	39452	38615	38675	38113	38577	38872	38755	39047	39038	38886	102.688	
	21	38838	39285	38324	38191	38287	38477	38469	38554	38971	38686	38530	38544	101.894	
	22	38818	38542	38504	38456	38150	38502	38853	38986	39024	38483	38616	38826	102.027	
	23	38674	38842	38624	38986	38901	38426	38529	39097	38830	38582	38535	39106	102.329	
6	0	38800	38696	38564	39127	38324	38309	38488	39499	38583	38942	38432	38961	102.236	
	1	38744	38385	38791	38648	38864	38996	38799	38564	38432	38611	38706	38413	102.069	
	2	38866	39338	38960	39063	38412	38706	38854	39278	38611	38188	38753	38237	102.358	
	3	38636	38515	39057	38677	38846	38846	38845	38873	38498	38217	38724	38761	102.189	
	4	38959	39015	39034	38686	38348	38517	38320	39053	38489	38790	38773	38355	102.155	
	5	38896	38567	38839	38697	38641	39141	38486	38291	39017	39026	39253	38528	102.384	
	6	38764	38951	38668	38491	39011	38734	38611	38944	38053	38800	38914	38857	102.256	
	7	38131	38482	38952	38421	39428	38651	38811	38800	38830	39001	38859	38070	102.176	
	8	38583	38841	39096	38344	39012	38688	38649	38229	38888	38333	38209	38858	102.021	
	9	39521	38722	39101	38870	38494	38627	38743	38188	38762	38543	38867	38294	102.241	
	10	38341	39172	38243	38455	38858	38772	38916	38962	38932	38886	38705	38983	102.350	
	11	38677	39127	38868	38875	38931	38454	38639	38335	38509	39431	38399	38017	102.138	
	12	38771	38835	38663	38950	38942	38915	38905	38326	38436	38886	39049	39087	102.468	
	13	38666	38369	38655	38695	38347	38414	38627	38549	38780	39326	39287	38933	102.222	
	14	38606	38586	38462	38779	38710	38421	38942	38780	38387	38347	37727	37840	101.546	
	15	38072	38534	38650	38387	38041	38738	39047	38368	38445	38108	38677	38686	101.586	
	16	38086	38919	39190	39053	38894	39050	38477	38631	38535	38827	38748	38993	102.389	
	17	39324	38726	37568	38210	38646	38801	38611	38717	38439	38585	38791	38483	101.838	
	18	38100	38888	38353	38537	38748	38592	38651	38316	38186	38891	38500	38710	101.744	
	19	39302	38357	38336	39005	39172	38403	38627	38359	38223	38223	38695	38605	101.927	
	20	38407	38366	38295	38749	38947	38690	38333	38523	38522	38418	38286	38373	101.620	
	21	38350	38605	38031	38280	38827	38420	38618	38510	39225	38598	38636	38292	101.727	
	22	38781	38619	38895	38685	38793	38337	39054	38677	38762	38682	38851	38800	102.286	
	23	38654	38643	38508	38848	37976	37888	38737	38246	38690	38800	38620	38231	101.605	

INAF/UNIromaTre		S.V.I.R.CO. Observatory - Pressure Corrected Data – December 2021											16 NM-64	
day	hh	00_05	05_10	10_15	15_20	20_25	25_30	30_35	35_40	40_45	45_50	50_55	55_60	h-norm
7	0	38510	38860	39131	38531	38280	38480	38698	38309	38567	39112	38169	37989	101.787
	1	38561	38449	38319	38765	38475	38731	39236	38773	38713	38130	38241	38835	101.911
	2	38618	39081	38738	39108	38437	38620	37979	38440	38311	38693	38467	38381	101.831
	3	38612	38624	38407	38338	38818	38838	38519	39029	38747	38586	38827	38685	102.086
	4	38794	38422	38765	38647	38714	38438	39020	38253	39129	38643	38506	38453	102.032
	5	38649	38474	38617	38082	38826	39180	38927	38692	38842	38617	38391	38716	102.083
	6	38209	38252	38549	38386	38258	38933	38701	38600	38266	39069	38608	38972	101.816
	7	38484	39105	38839	38881	38427	38773	38241	38596	38759	38220	38994	39076	102.167
	8	38815	38869	38986	38470	38878	38961	39490	38866	38664	38259	38759	38789	102.477
	9	38801	38028	39277	39009	38689	38749	38721	38463	39791	38489	38490	38669	102.338
	10	39213	38767	38632	38542	38749	38925	38820	38455	38015	38545	38535	39135	102.153
	11	38626	38738	37934	39034	38698	38873	38560	38031	38621	38854	38448	38631	101.870
	12	38743	38538	38965	38802	38772	38548	38293	38487	38352	38865	38205	38315	101.835
	13	38229	38209	38544	38595	38523	38856	38712	38323	38311	38270	38647	38860	101.657
	14	38362	38616	38321	38860	38604	38836	38376	38610	38698	38696	38341	38862	101.900
	15	38809	38817	39237	38468	37890	38526	38513	38357	38572	38674	38377	38685	101.844
	16	38859	38787	38613	38663	38796	38080	38295	38223	38910	38272	38555	38473	101.756
	17	38616	38786	38447	38621	38174	38617	39111	38227	38231	38509	38343	38313	101.639
	18	39163	38208	38651	38858	39189	38489	38343	39103	38193	38483	38658	38420	102.027
	19	38390	38461	38396	38462	38850	38479	38606	38126	38881	38159	38568	38506	101.615
	20	38474	38165	38886	38431	38325	38241	38890	38642	38900	38292	38417	38386	101.651
	21	38737	38561	38716	38241	38303	38377	38449	38602	38891	38406	38747	38611	101.781
	22	38581	38602	38325	38707	39314	38112	38496	38319	38381	39174	38258	38216	101.747
	23	38216	38803	38682	39343	38799	38851	38829	38973	39057	38810	38376	39004	102.464
8	0	38592	38695	38407	39035	38613	38767	38582	38709	38893	38654	38645	38932	102.195
	1	38829	38492	38988	38881	39080	38781	38885	38404	38413	38495	38311	39376	102.285
	2	39273	38792	38812	38926	38890	38718	39281	38891	39094	38624	39012	38821	102.770
	3	39160	38597	38753	38662	39058	38632	38545	38203	38764	38623	38796	38593	102.164
	4	39050	38725	38703	38383	37891	39097	38531	38225	39299	39200	38756	38695	102.202
	5	39001	38493	38340	38837	38727	38484	38756	38699	38150	38829	39000	38442	102.027
	6	38785	38248	38400	38511	38582	38519	38528	38630	38713	38473	39028	38190	101.773
	7	38685	38394	38648	38920	38588	38648	38781	39083	38391	38264	38254	39269	102.063
	8	38469	38712	38709	38760	38549	38509	38499	37967	38639	38669	38418	38529	101.734
	9	38509	38181	38734	38764	38253	38675	38619	38962	38814	38756	38620	37760	101.782
	10	38816	38399	38214	38372	39049	39107	38514	38826	38335	37996	38715	38463	101.817
	11	38622	38678	38887	38308	38869	38724	38420	38388	38779	38451	39214	38473	102.039
	12	38639	38933	38926	38769	38806	39158	38602	38505	38934	38731	38976	38909	102.496
	13	38540	38677	38894	38556	38456	38505	38157	38478	38691	38425	37924	38038	101.494
	14	37812	38481	38829	38483	38655	38560	38339	38845	38557	38261	38694	38081	101.550
	15	39078	38470	38853	39136	38896	39421	38457	38343	37897	38958	38501	38536	102.199
	16	38345	38786	38636	38878	38650	38754	38259	38601	38404	38500	38887	38381	101.878
	17	38430	38896	38952	38413	38638	38494	37861	38798	38762	38235	38046	38643	101.678
	18	38700	38623	38547	38991	38422	38687	37808	38083	38535	38289	38575	38500	101.587
	19	38302	38633	38641	38717	38867	38610	38886	38488	38791	38676	39063	38440	102.104
	20	38441	38508	38017	38546	38293	38846	38127	38794	39040	38424	38492	38674	101.684
	21	38895	38933	39160	38961	38971	39077	38670	38832	38481	38670	38737	38642	102.527
	22	38691	39182	39085	38696	38852	38922	37984	38737	38560	38373	38716	38756	102.202
	23	38669	39097	38842	38262	38712	38930	38650	38092	38849	38867	39009	39170	102.333

INAF/UNIRomaTre				S.V.I.R.CO. Observatory - Pressure Corrected Data – December 2021										16 NM-64	
day	hh	00_05	05_10	10_15	15_20	20_25	25_30	30_35	35_40	40_45	45_50	50_55	55_60	h-norm	
9	0	38725	38999	38526	38448	39028	38896	38526	38753	38764	38575	39032	38989	102.352	
	1	39109	38803	38470	38517	38832	39219	39038	38098	38601	38306	38601	38833	102.174	
	2	38920	38907	39363	38756	38897	38715	39231	39013	39284	38943	38365	39102	102.849	
	3	38551	38416	38630	38761	39137	38727	39200	38556	38715	38827	38260	38745	102.196	
	4	38765	38509	38319	38668	38347	38528	38372	38624	38997	38638	38456	39245	101.963	
	5	38344	38344	38980	39001	38281	38641	38887	38853	38878	38611	38353	38620	102.034	
	6	39089	38855	38741	38997	38939	39252	39149	39490	37916	38807	39224	39017	102.844	
	7	38668	38933	38963	38651	39221	38727	39050	39314	38991	39192	39344	38394	102.838	
	8	38859	38196	39040	39297	39001	38859	39411	38964	38857	38258	39079	39012	102.703	
	9	38470	38964	38736	38964	39041	38621	39114	39087	39230	38827	39100	39217	102.822	
	10	39704	38485	39101	38334	39095	38696	38993	38979	38379	38652	38500	39349	102.579	
	11	38280	38848	38715	38761	38656	38976	39015	39093	39045	38495	39166	38552	102.433	
	12	38969	39110	38619	38574	39374	38816	39326	38222	38684	39355	38959	38486	102.629	
	13	39268	38727	39137	38797	38637	39088	39010	38954	38933	39062	38932	38856	102.828	
	14	38365	38317	38948	38439	38695	38742	39063	38667	38580	38552	39026	38875	102.139	
	15	38761	39303	39287	39058	39110	38836	38990	38810	38856	39503	38438	38886	102.924	
	16	38676	39162	39122	38845	38749	38836	38827	39065	38894	38425	38443	38883	102.505	
	17	38832	38716	38553	38648	38565	39280	38753	38540	38837	38646	38742	38399	102.192	
	18	38619	38873	38693	38528	38967	38947	38375	38673	38722	39004	38694	38520	102.216	
	19	38665	38800	38645	39246	38994	38733	38510	39013	38615	38780	38762	38189	102.290	
	20	38867	38935	38848	38799	38333	39187	38751	39168	38721	39003	38886	38721	102.568	
	21	37878	38333	38818	39323	38289	38705	38691	38127	38963	38079	38603	38681	101.748	
	22	38574	38545	38448	38545	38564	38641	38564	38381	38856	38562	38824	38484	101.857	
	23	38745	38850	38793	38549	38354	38529	38773	38725	38266	39008	38734	38500	102.042	
10	0	38520	38499	38694	39243	39252	38997	38783	38900	38301	38654	38381	39037	102.363	
	1	38655	38625	38300	38535	38241	38671	38670	38258	38670	38415	38729	38621	101.726	
	2	38710	39004	38602	38611	38494	38337	39318	39318	38474	38642	39604	38996	102.544	
	3	38614	38996	39162	38565	38437	38370	38625	38692	38457	38427	38623	39006	102.074	
	4	38793	38802	38572	39014	38808	38680	38572	38857	38415	38739	39298	39122	102.448	
	5	39151	38994	39013	38806	39022	38245	39002	38845	39130	39435	38707	38530	102.714	
	6	38490	38479	38800	38277	38772	38673	38949	38722	38484	38690	38947	38364	102.002	
	7	38749	38202	38523	39127	39197	39439	38772	38811	39037	39460	38811	38893	102.745	
	8	39239	39071	38841	39394	39337	38866	39130	38973	39228	39405	39150	39395	103.406	
	9	38983	39759	38796	38846	38473	39199	39091	38828	39368	39398	39564	39564	103.372	
	10	39602	38723	38883	39051	38770	39265	38827	38839	38784	38775	38911	39336	102.909	
	11	39346	38968	40010	39104	38392	39337	38876	39164	38857	38942	38807	38908	103.116	
	12	39100	39277	39097	39508	39783	38562	38982	39249	39476	39553	39212	38671	103.503	
	13	38898	39172	39333	39161	39219	38921	38853	38761	39131	38838	39265	39123	103.108	
	14	39378	38780	39281	38781	39281	38998	39256	38539	38855	39295	38704	38892	102.969	
	15	38624	38804	38565	38684	38935	39449	38984	38860	39250	38570	39082	39247	102.753	
	16	38474	39013	38550	38956	38733	39110	39068	39118	38772	39020	38699	39130	102.664	
	17	38901	38699	39227	39544	38968	38792	38773	39119	38600	38518	38612	38872	102.657	
	18	38726	39203	38903	38930	38567	38883	38260	38485	38484	38661	39163	39010	102.360	
	19	38970	38824	38475	38873	39000	38839	38756	38886	38483	38514	38783	38866	102.359	
	20	38981	38606	38633	38699	38268	38812	38751	38602	38861	38852	38415	39143	102.217	
	21	38710	38702	38893	37985	38722	38844	39076	38575	38934	38495	39344	38688	102.293	
	22	37989	38232	38671	38697	39090	38561	38442	38977	38458	39018	38805	38990	102.065	
	23	38655	39000	38392	38971	38282	39099	38665	39038	38745	38192	38841	38674	102.202	

INAF/UNIromaTre		S.V.I.R.CO. Observatory - Pressure Corrected Data – December 2021											16 NM-64	
day	hh	00_05	05_10	10_15	15_20	20_25	25_30	30_35	35_40	40_45	45_50	50_55	55_60	h-norm
11	0	38253	39197	39033	38969	37958	38419	38987	39038	38923	38436	38995	39465	102.441
	1	39173	38392	38374	38907	38969	39022	38559	38806	39145	38223	38853	38850	102.360
	2	38784	38992	39149	38930	38685	38359	39438	39292	38342	38555	38802	38925	102.576
	3	38251	39084	39550	38460	38764	38721	38303	39087	38695	38828	39363	38971	102.537
	4	38543	38561	38989	38766	38554	38903	38986	38211	39274	39065	39602	39178	102.658
	5	38928	39306	39343	39166	39320	38934	38837	39189	39056	38914	39382	39094	103.284
	6	39257	38831	38870	39001	39035	39207	38468	39490	39112	38679	38700	39397	102.970
	7	39163	38785	38694	39024	39026	38682	38665	38619	38638	38786	38797	38597	102.406
	8	38960	38888	39009	38926	39094	38982	39020	38932	39377	39148	39607	39159	103.202
	9	39070	39144	39217	38608	39092	38998	38542	38737	38719	39110	39361	38710	102.808
	10	39035	38626	38906	38925	38739	38936	38341	39058	38900	39336	38982	39103	102.715
	11	39074	38239	38928	38870	39355	38114	38364	38618	38890	38951	38705	39014	102.327
	12	39128	38681	38786	38702	38638	39463	39024	39146	38798	38330	38348	38898	102.508
	13	38746	38708	38509	39217	38845	39194	39514	38770	38509	38754	38262	38587	102.436
	14	38672	39096	38891	38008	38543	38951	38620	38598	38747	38799	38989	38845	102.247
	15	39428	38391	38428	39210	38428	38158	38055	38431	39251	39069	38828	37771	101.960
	16	38905	38721	38421	38872	38563	38805	38409	38293	38543	38751	38576	38377	101.913
	17	38444	38955	38508	38373	39092	39119	37922	38675	38917	38369	38700	38592	102.006
	18	38618	38557	38575	38339	38369	39371	38283	38102	38830	38377	38108	37824	101.499
	19	38365	38334	38214	38544	38294	38465	38822	38279	38396	38572	38481	38628	101.506
	20	38427	39153	38194	38248	38604	38314	39105	38479	38242	38479	38023	38593	101.610
	21	38709	38564	37892	37892	38195	38639	38697	38082	38748	38317	38428	38718	101.394
	22	38391	38489	38892	38560	38401	38491	38309	38810	38820	38580	38215	38271	101.691
	23	38456	38550	37940	38082	39065	38414	38466	38515	38527	38668	38198	38327	101.466
12	0	38646	38735	38285	38749	38525	38813	38359	38771	38685	38157	38043	38545	101.719
	1	38346	38851	38686	38481	38437	38657	38513	38579	38137	38993	38853	38335	101.832
	2	38579	38625	38244	38360	38255	37974	38556	38332	38527	38444	38546	38373	101.379
	3	38679	38276	38018	38527	38536	38515	38458	38384	38232	38374	39504	38637	101.671
	4	38450	38468	38269	38845	38667	38201	38787	38682	38287	38996	38955	38197	101.817
	5	39062	38439	38458	38591	37819	38699	38836	37638	38118	38689	38494	38396	101.473
	6	38412	39141	38442	39132	38798	38407	38477	38080	38017	38498	39073	38704	101.900
	7	38764	39048	38071	38380	38692	38257	38169	38062	38535	38555	38194	38764	101.529
	8	38466	38221	38786	38301	39302	38729	38982	38368	39446	38532	38275	38785	102.122
	9	38413	38985	38771	38218	38047	38660	38906	38842	38682	38395	38915	38735	101.985
	10	38237	38301	39256	38100	38332	38586	38299	38904	38292	38536	38800	38621	101.698
	11	38165	38421	38410	38430	38621	38483	38897	38709	38024	38961	38058	37910	101.440
	12	38825	38442	38791	37878	38961	38546	38833	38579	38676	38513	38207	38250	101.750
	13	39061	39091	39067	38440	38411	38753	38870	37801	37776	38623	38102	38818	101.820
	14	38439	38648	38259	38548	38138	38069	38589	38672	38122	38408	38621	38385	101.398
	15	38444	38632	38710	38750	38339	38827	38426	38410	38417	39016	38786	38458	101.908
	16	38955	37605	38763	38608	38170	38430	38118	38470	38668	38457	38121	38653	101.424
	17	39007	38324	38591	38196	38749	38326	37935	38554	38210	38518	38446	38575	101.515
	18	38365	38349	38272	38251	38404	38649	38244	38637	38225	38335	38237	38570	101.318
	19	38170	38269	38158	38506	38366	38520	38465	38083	38056	38144	38325	38610	101.128
	20	38522	38390	38401	38098	37862	38601	38403	38797	38621	38555	36817	36349	100.615
	21	38117	38261	37931	38172	37666	38128	38227	37732	38040	37853	38029	37919	100.336
	22	38282	37695	38174	38635	37930	38438	37965	38373	38355	39328	38570	39094	101.385
	23	38240	38162	37849	38193	38774	38439	37928	38763	37882	37769	38096	38107	100.805

INAF/UNIRomaTre				S.V.I.R.CO. Observatory - Pressure Corrected Data – December 2021										16 NM-64	
day	hh	00_05	05_10	10_15	15_20	20_25	25_30	30_35	35_40	40_45	45_50	50_55	55_60	h-norm	
13	0	38425	38249	37556	37942	38437	38404	38451	38638	38107	37820	38284	38279	100.890	
	1	38152	38495	38340	38118	38095	38251	38285	38351	37920	38903	38561	38361	101.163	
	2	38339	38340	37887	38086	38461	37997	38218	38351	38837	38826	38264	38485	101.220	
	3	37887	38716	38428	38296	38245	38416	37826	38585	38616	38540	38949	37997	101.310	
	4	38095	38648	37975	38253	38629	38174	38709	38770	38923	38470	39144	38656	101.738	
	5	38710	39023	39248	38728	38651	38617	38540	38418	39580	39016	38462	38617	102.434	
	6	38751	38436	38630	38194	38632	38731	38598	38708	39030	38564	38453	38600	101.932	
	7	38828	38175	38430	38642	38664	38424	38395	38748	38435	38849	38770	39361	102.018	
	8	38797	39299	38698	38876	38421	38633	39379	39011	38844	38509	38932	38221	102.437	
	9	38682	38696	38625	38774	38822	38553	38873	38319	38487	38321	38332	38037	101.754	
	10	38553	38487	38170	38929	39278	37953	38683	38872	38883	38938	38706	38651	102.103	
	11	39082	38507	38175	38114	38539	39162	38758	38498	39038	38492	38224	38459	101.871	
	12	38331	38739	38734	38514	38569	39084	38160	38577	38692	38731	38304	38589	101.865	
	13	38787	38633	38940	38654	38828	38751	39234	38168	39254	38619	38663	38740	102.360	
	14	38049	38268	38905	38356	38400	38279	38755	38734	38368	38714	38491	38790	101.664	
	15	38495	38594	38494	38659	38670	38634	38435	38270	37928	37906	38358	38358	101.376	
	16	38467	38774	38172	38272	38284	38268	38546	37523	38764	37685	38298	38338	101.067	
	17	37743	38436	38302	38038	37817	38334	38441	38350	38184	38469	38222	39156	101.088	
	18	38171	38364	38049	38524	38833	38535	38817	38956	38216	37884	38735	38481	101.544	
	19	38160	37730	38403	39055	37906	38392	37973	38072	38571	38305	38801	37951	101.050	
	20	38438	38482	38206	38439	38405	37641	38183	38448	37952	37964	38682	38351	101.022	
	21	38140	38459	38437	38405	38948	38725	38602	38017	38558	38681	38504	38780	101.696	
	22	38970	38229	38240	37997	38316	38747	38162	37630	38283	38528	37975	38693	101.150	
	23	38594	38692	38571	38731	38096	37931	38670	38226	38078	38030	38635	38105	101.279	
14	0	38679	38281	37092	39065	38389	38790	38348	38788	38390	38313	38247	38203	101.326	
	1	38062	38590	38271	37853	38368	38247	38167	37698	38291	38038	37951	38580	100.786	
	2	38226	38257	37772	37365	37895	38040	38315	38143	38359	38106	38744	38260	100.646	
	3	38590	38370	38161	38408	38599	38259	38423	38369	38347	38698	38522	38566	101.489	
	4	38697	38572	38130	38171	38093	38949	38203	38466	38751	39003	38652	37742	101.514	
	5	38192	38345	39442	38861	37726	38369	38412	38325	38830	38522	39280	37786	101.660	
	6	38632	38006	38006	38039	38369	38830	38467	37687	38632	38366	38322	38737	101.221	
	7	38469	38832	38491	38766	38469	38326	37958	38856	38834	38569	38327	38431	101.712	
	8	38889	38536	39220	38009	38633	38658	38405	38108	38173	38669	38680	38304	101.702	
	9	38482	38132	38399	38423	38155	38008	38693	38086	38400	38415	39329	38155	101.349	
	10	38717	38302	38709	38755	38485	38127	39028	38609	38567	38127	38525	38729	101.790	
	11	38905	38197	38607	38180	39083	37940	38573	38627	38817	38723	38690	38396	101.802	
	12	38064	38309	37936	38520	38023	38610	38350	38121	38971	38720	39209	38687	101.535	
	13	38136	38597	38510	38227	38912	38597	38608	38564	38476	38801	38158	38625	101.686	
	14	38556	38616	38562	38280	38340	38497	38640	38609	38576	38949	38280	38196	101.662	
	15	38297	38554	38725	38301	38301	38432	37911	38041	38747	38942	38312	38857	101.512	
	16	38705	39778	38160	37368	38230	38672	38075	38347	39206	38945	38260	38118	101.610	
	17	38400	38443	38466	38738	38619	37889	38574	38534	38487	38125	38444	38193	101.401	
	18	39063	38221	39044	38881	38489	38336	38467	38870	38476	38528	38405	39048	102.042	
	19	38774	38491	38894	38643	37925	38612	38870	38417	39142	38724	38920	38683	102.101	
	20	38901	38518	38511	38450	38220	39573	38407	37864	39089	38226	38354	38133	101.694	
	21	38803	38340	37796	38671	38463	38486	37988	38562	37982	37872	38945	38826	101.361	
	22	38223	38289	38651	38322	38749	38530	37784	38352	38540	38552	38541	38738	101.480	
	23	38660	38846	38694	38475	38223	38979	38256	38397	38584	38541	38344	38519	101.754	

INAF/UNIromaTre		S.V.I.R.CO. Observatory - Pressure Corrected Data – December 2021											16 NM-64	
day	hh	00_05	05_10	10_15	15_20	20_25	25_30	30_35	35_40	40_45	45_50	50_55	55_60	h-norm
15	0	38605	38178	38681	38550	38594	38671	38549	38657	38964	38452	38714	38523	101.888
	1	38168	38519	38500	38555	38039	38303	38678	38716	38541	38386	38200	38101	101.355
	2	38761	38433	38981	39386	38178	38892	38872	38377	38441	38596	38685	38007	101.994
	3	38380	38816	38465	38203	38565	38170	38300	38419	39024	38598	38203	39092	101.691
	4	38567	38198	38590	38444	38463	38434	38325	38896	38686	38753	38651	38392	101.728
	5	38621	38675	38555	38154	38411	38536	38554	38575	38572	38085	38787	38709	101.692
	6	38339	38948	38782	38018	39103	38272	38925	38281	38988	38639	38727	38139	101.895
	7	38646	38203	38813	38250	38518	38596	38735	38251	38617	38473	38169	38767	101.648
	8	38781	38258	38814	38409	38986	38263	38542	38241	38228	38746	38707	38886	101.829
	9	38340	38978	38653	38607	38205	38897	39176	39076	38485	38774	39318	38515	102.305
	10	39423	38809	38632	38988	38857	38507	38819	37737	38830	38854	39032	38524	102.302
	11	38595	38093	39084	39398	38618	38852	38585	38263	39359	38695	38553	38954	102.310
	12	38972	38607	39139	39661	38618	38600	38736	38005	38584	38782	38559	38372	102.219
	13	39071	38503	38115	38204	38725	38671	39216	38150	38592	38404	38392	39448	101.968
	14	38860	38281	38492	37993	39125	38749	37956	38138	38549	38460	38693	38471	101.589
	15	38993	38860	38394	38829	38450	38249	38304	38782	38218	38363	37995	38285	101.579
	16	38078	38683	38470	38762	38058	38639	38426	39119	38015	38048	38180	37897	101.283
	17	38092	37880	38596	39131	38204	38739	38148	38304	37993	38038	38272	38551	101.189
	18	38272	37893	38250	38194	38349	38068	38639	38652	38739	38271	38449	38281	101.212
	19	38392	38972	38777	38682	38024	39020	38406	38539	38080	38117	38694	38071	101.591
	20	37958	37900	38650	38068	38640	38405	38359	38170	38215	38070	38540	38404	101.064
	21	38348	38617	38337	38282	38327	38864	38391	38027	38665	38282	38854	38924	101.622
	22	38323	38728	38166	38547	38040	39063	38217	38364	38754	38426	38032	38185	101.386
	23	38474	38408	38834	38418	38575	38732	38788	38261	38452	38059	38385	39270	101.785
16	0	37633	37746	38172	38407	38251	37928	39115	38216	38272	38261	38710	38239	100.969
	1	38446	38463	39215	38869	38633	37812	38733	38115	38710	38216	37902	37644	101.367
	2	38946	38482	38083	38083	38667	38443	38737	38295	38577	38485	38789	38274	101.609
	3	38296	39236	38598	38723	38632	38430	38040	39316	38566	38835	38432	38301	101.949
	4	38581	38823	39150	39205	37720	38543	38296	38566	38845	38677	38152	38575	101.889
	5	38339	38026	38786	38149	39289	38647	38731	38396	37937	38373	38334	38666	101.569
	6	38251	38250	38385	38429	38698	38239	38497	37898	38464	38643	38531	38082	101.281
	7	38602	38339	38981	38542	38431	38712	39385	38643	38149	38655	38542	38457	101.956
	8	38047	38835	37946	38385	38238	38755	38540	38683	38219	38757	38610	38722	101.582
	9	38115	38936	38418	38791	38831	38704	38073	38216	38847	38812	38742	38979	101.962
	10	38927	38318	38582	38868	38306	38631	38788	38632	39003	38811	38248	38711	102.042
	11	38720	38807	39051	38710	38946	38952	38105	39080	38867	38849	38720	38966	102.470
	12	38752	38562	38451	38765	38879	38549	38653	38809	38529	38362	38976	37913	101.904
	13	38635	38530	37714	38428	38293	38778	38673	38617	38573	38550	38082	38980	101.608
	14	38674	38093	38629	38293	38818	38328	38462	38967	38196	38039	38422	39028	101.629
	15	38404	38046	37969	38160	38339	38049	38749	38444	39091	37869	37970	38922	101.203
	16	38239	37997	38507	38932	37821	38580	38484	38653	38581	38586	38765	38194	101.494
	17	38385	38520	38251	38812	38827	38225	38517	38281	38539	38461	38360	38281	101.521
	18	37708	38315	38225	38433	38318	38329	38034	37676	38367	38381	38243	38162	100.802
	19	38280	38355	38145	37683	37942	39013	37913	38234	37648	38574	37749	38427	100.752
	20	38506	39133	38575	37964	38800	38324	38782	37894	38562	38268	38404	38642	101.608
	21	37973	38732	37996	38845	38313	38789	38341	38199	38138	38075	38369	38607	101.284
	22	38119	38539	38505	38721	38766	38028	38789	38005	38573	38029	38359	38766	101.464
	23	38563	38007	38675	38620	38336	38585	38620	38667	37927	38245	37826	38018	101.220

INAF/UNIRomaTre				S.V.I.R.CO. Observatory - Pressure Corrected Data – December 2021										16 NM-64	
day	hh	00_05	05_10	10_15	15_20	20_25	25_30	30_35	35_40	40_45	45_50	50_55	55_60	h-norm	
17	0	37937	37848	38154	38768	38734	38011	37858	37871	38088	38507	38189	37782	100.702	
	1	38121	38768	38587	38622	38259	38406	38395	38406	38712	38565	38531	38474	101.606	
	2	37986	38270	38712	38020	38936	38761	38418	38848	38350	38520	38575	38630	101.646	
	3	38053	38031	38598	38496	38814	38973	38984	38804	38555	38780	38995	38837	102.062	
	4	38791	38214	38508	38735	38123	38667	38769	38406	38884	38731	38574	38545	101.848	
	5	38837	38633	38985	39414	39398	39144	38267	38438	38790	38677	39122	37836	102.419	
	6	38689	38449	38040	38507	38392	38392	38416	38543	37872	38922	38904	38820	101.628	
	7	38471	38823	38618	38317	39374	38447	38411	38537	38302	38937	38685	38840	102.028	
	8	38223	38317	38278	38830	38325	38244	38954	38994	38971	38516	38635	38828	101.885	
	9	38616	38398	38500	38248	38547	39179	38491	39334	38853	38983	39413	39166	102.459	
	10	38179	38683	38843	38684	38535	38240	38732	38761	38946	38225	39057	38567	101.959	
	11	38656	38579	37807	38967	38960	39259	38649	39200	39168	38642	38937	39165	102.518	
	12	38869	38127	38172	37955	38386	38999	38319	38732	38830	39052	38446	38805	101.793	
	13	38729	38689	39142	38339	39074	38859	37920	39061	38472	38495	38359	38371	101.972	
	14	38554	38417	38618	37925	38552	38879	38903	37739	38248	38711	39004	38349	101.617	
	15	38664	38743	38099	38117	38010	38732	38528	38312	38095	37833	38395	38810	101.274	
	16	38540	38073	38698	38259	38106	38010	38226	38069	39128	38065	38335	38632	101.231	
	17	38160	38532	38205	38340	38160	38333	38292	38017	38327	38513	38204	38982	101.214	
	18	38451	38110	38694	37892	38365	38343	37789	38711	38193	38137	38092	37720	100.869	
	19	38464	38271	38338	38835	38385	38092	38755	37967	38181	38371	38282	38407	101.276	
	20	38777	38123	38517	37988	38731	38188	38747	37957	38528	38268	38398	38452	101.348	
	21	38227	38180	38731	37832	38169	38457	38170	39047	38305	38472	38024	38204	101.160	
	22	38709	38092	38194	38527	38710	38449	38350	38660	38379	38261	38132	38025	101.308	
	23	38688	38441	38688	38261	38576	38463	38070	38306	37991	38199	38318	38214	101.248	
18	0	37890	39061	38611	38700	37869	39156	38709	38809	38483	38931	38313	38560	101.876	
	1	37944	37971	38611	38733	37913	38329	38778	38564	38385	38396	38564	38407	101.331	
	2	38531	38632	38766	39043	38340	38916	38025	39115	38475	38157	38162	38399	101.764	
	3	39043	38743	38463	38205	38552	39056	38901	38990	38552	38317	39280	38957	102.313	
	4	38542	38955	38083	38155	38988	38316	38708	38071	38822	38408	38487	38150	101.571	
	5	38298	38100	38519	38431	38667	38811	38510	39016	38982	38863	38836	38937	102.073	
	6	39137	38631	38499	38838	39188	38521	38904	38275	38705	39351	38871	38702	102.437	
	7	38926	38826	38837	38457	38588	38305	38486	39211	38897	38922	39273	38911	102.440	
	8	38990	38460	38803	39467	38839	38454	39442	38854	38472	37885	38244	38828	102.242	
	9	38860	39224	38991	39358	38154	38746	39098	39008	38973	39269	38525	38769	102.735	
	10	38587	39347	39018	39265	38775	38989	38408	39278	38841	38965	38439	38893	102.697	
	11	39184	38590	38462	38858	39565	38825	38746	38904	38859	38645	39165	39385	102.781	
	12	39085	39817	38730	38839	38341	38385	38959	38700	38114	38805	39154	38718	102.442	
	13	38542	38829	39284	38879	39395	38733	38743	38395	38407	38406	38159	39144	102.281	
	14	38643	38475	38868	39028	38636	37659	38271	38181	38395	38452	38069	38801	101.526	
	15	37844	38790	38531	38743	38549	38455	38734	38243	38870	38801	38156	38214	101.625	
	16	38000	38023	38633	38893	38631	38835	38486	38791	38445	38314	37420	37998	101.304	
	17	38292	37918	38462	38559	38372	38639	38518	38189	38728	38665	38655	38576	101.546	
	18	37741	38405	38518	38303	38711	38712	38303	37985	38293	38405	38500	38598	101.304	
	19	38405	38213	37908	38248	38429	37692	38247	38350	37817	38135	38259	37992	100.693	
	20	38249	38703	38627	38281	38212	38576	38792	38498	38907	38144	38428	38474	101.616	
	21	38042	38701	38019	38258	38508	38383	38519	37997	37894	38335	38181	37986	100.941	
	22	38936	38290	38131	38767	38413	38410	38329	38037	38575	38369	37677	38664	101.332	
	23	37756	38109	38496	38115	38241	38758	38396	38612	38769	38622	38361	38338	101.327	

INAF/UNIromaTre		S.V.I.R.CO. Observatory - Pressure Corrected Data – December 2021											16 NM-64	
day	hh	00_05	05_10	10_15	15_20	20_25	25_30	30_35	35_40	40_45	45_50	50_55	55_60	h-norm
19	0	38451	38519	38447	38794	38758	38322	38237	38373	38441	38101	38034	37956	101.287
	1	38306	38916	38113	38418	37956	38080	38329	38047	38353	38725	39075	38703	101.425
	2	38510	38531	37966	38610	38814	38518	39069	38796	38465	38290	38354	38579	101.751
	3	38127	38262	38902	38457	39042	38264	38499	38701	38207	38562	38140	38678	101.605
	4	38645	38586	39290	38784	38334	38784	38424	38727	38871	38511	38655	38891	102.190
	5	38713	38971	38848	39308	38421	39061	39196	38601	39521	38466	38498	39015	102.656
	6	38443	39430	38261	38609	38935	38844	39202	38746	38763	38394	38977	38641	102.354
	7	38752	38370	39090	38730	39111	38501	38785	38847	39228	38073	38869	38981	102.374
	8	39148	38996	38454	38866	39053	38631	38507	39411	38305	38664	38696	39154	102.495
	9	38782	38846	38566	38778	38655	39359	38957	39174	39436	38833	38622	38997	102.741
	10	39258	38952	38409	38405	38110	38664	38487	38850	38356	39176	38985	38752	102.169
	11	38980	38807	39033	38695	39458	38883	38494	38300	38914	39085	39067	38994	102.677
	12	38464	38755	38638	38039	38698	39021	38751	38624	38278	38618	38738	38970	101.991
	13	38606	38624	38577	39137	39238	37709	38232	38848	38680	38767	38669	38541	101.998
	14	38557	38656	38493	38504	38154	38633	38600	38871	38285	38819	38504	38460	101.758
	15	38329	38079	38242	38493	38798	38264	37948	38525	37752	38275	38281	38068	100.992
	16	38522	38294	38458	38469	38132	38741	38687	38033	38326	38252	38305	38087	101.267
	17	38339	37974	38293	38447	38490	38196	38261	38011	38565	38956	38369	38631	101.317
	18	38718	38282	38261	38639	38671	38421	38725	38247	38421	38485	38403	38711	101.637
	19	38745	38880	38586	38606	38254	39018	38420	38701	38950	38452	38468	38712	102.034
	20	38885	38171	38008	38106	38342	38461	38257	38572	38020	38158	37963	37954	100.957
	21	37620	38019	37509	38731	38233	38429	38429	38765	38442	38644	38669	38341	101.163
	22	38213	38698	38066	38017	38652	38092	38534	38146	38211	37524	38130	37880	100.795
	23	37457	37813	37977	38584	37907	38155	38122	38671	38616	38087	37808	38401	100.672
20	0	38246	38046	38363	37709	37655	38237	38572	37502	38204	37871	38461	37453	100.383
	1	38182	38074	37902	37807	38825	38417	37698	37622	37912	38030	38030	38071	100.445
	2	37916	38362	38093	38368	38212	38007	38499	38948	38424	37889	38659	38337	101.137
	3	38277	37972	38453	38304	38688	38617	38227	38409	37959	38301	38317	38537	101.213
	4	38567	38353	38427	38042	38682	38682	38160	38213	38809	38277	38032	38607	101.387
	5	38309	38148	37860	38351	38128	38021	38426	38735	38351	38479	38916	38255	101.195
	6	38788	38405	38534	37724	37978	38255	38490	38353	38257	38586	39022	38171	101.324
	7	38949	38406	38299	38511	38447	38126	39054	37999	38379	38439	38290	38930	101.603
	8	38632	38856	38525	39016	38461	38578	38724	38421	38389	38592	38154	38246	101.771
	9	38285	38467	38681	39269	38884	38402	39077	39141	38959	38933	38968	38270	102.374
	10	38891	38484	38673	38942	38574	38139	38975	38895	38713	39331	38133	38799	102.201
	11	38456	38763	38911	38567	38341	38583	38591	38972	38232	38459	38894	38289	101.873
	12	38332	38300	38077	38780	38911	38256	39304	38678	38710	38561	38604	38318	101.823
	13	38286	38117	38482	38464	38124	38865	38579	38464	38876	38513	38757	37911	101.517
	14	38526	38454	38254	38720	38717	38238	38630	38563	38475	38445	38583	38741	101.716
	15	38561	38772	38475	37905	39049	38168	38019	38283	37923	38624	38253	38242	101.260
	16	38551	38794	38528	38421	38538	38085	38725	38305	38446	38265	38923	38626	101.685
	17	38139	37579	38595	38573	38422	38196	38283	38465	38666	38483	38491	38215	101.224
	18	38332	37939	38360	38495	38324	38005	38416	38530	38802	38281	38389	38501	101.282
	19	38277	38341	38575	38586	38522	38415	38469	38226	37763	38173	38557	38585	101.308
	20	38592	38392	38241	38495	38496	38875	38582	39013	38563	38499	38617	38392	101.806
	21	38788	38735	38681	38227	38781	37761	38533	39370	38479	38907	38647	38267	101.899
	22	38632	38257	38383	38362	38296	38572	38023	38647	38130	38130	37970	38566	101.193
	23	38107	38173	38692	38294	38068	38122	38122	38262	38132	38229	38068	38768	100.988

INAF/UNIRomaTre				S.V.I.R.CO. Observatory - Pressure Corrected Data – December 2021										16 NM-64	
day	hh	00_05	05_10	10_15	15_20	20_25	25_30	30_35	35_40	40_45	45_50	50_55	55_60	h-norm	
21	0	38154	39007	38425	38887	38876	38219	38154	38768	37777	38909	38063	38188	101.515	
	1	37681	38566	38252	37928	38176	38165	38490	38573	38556	38025	38189	38244	100.946	
	2	38288	38493	38655	38817	37962	38892	38417	38062	38505	38158	38028	38579	101.388	
	3	38569	38742	38709	38071	38666	38277	38125	38136	38471	38602	38129	38293	101.374	
	4	38827	37823	38407	38290	38431	38900	38304	38186	38573	38121	38474	38030	101.281	
	5	38216	38117	38377	38096	37532	38649	38133	38323	38595	38609	38355	37913	100.961	
	6	38109	37944	37804	37866	37838	38359	38730	38251	38274	38408	38141	38111	100.724	
	7	38078	38684	38384	38274	38625	38439	38745	38559	38603	37959	38494	38954	101.595	
	8	38475	38441	38363	38879	38984	38747	38233	38627	38746	38077	38789	38430	101.814	
	9	38637	38677	38771	38694	38607	38946	38212	38892	38705	38694	38815	38299	102.069	
	10	38671	39056	38388	38551	38795	38155	37818	38955	38396	38712	39062	38751	101.928	
	11	39006	39461	38926	38613	38566	38811	38928	39157	38983	38743	38724	39186	102.763	
	12	39120	38569	38847	38184	38977	38706	38988	38632	38702	38627	38964	38692	102.302	
	13	38416	38867	38558	38336	38597	39185	38686	38695	38511	38717	39088	38539	102.123	
	14	38311	37984	38397	38744	37908	38397	38580	38927	38886	38280	38648	38451	101.533	
	15	38338	38365	38007	38595	37867	38323	37748	38334	38215	38812	38072	38700	101.063	
	16	38474	38789	38713	38257	38637	38083	38604	38247	37768	38462	38778	38463	101.480	
	17	38331	38679	38430	38399	38312	38072	38420	38171	38094	37984	38445	37843	101.020	
	18	38378	38589	38684	38014	38712	38829	37758	38128	38204	38368	38444	38738	101.386	
	19	38379	38226	38498	39014	38343	38071	37996	38279	38856	38279	38442	38106	101.308	
	20	38388	38836	38293	38511	38304	38151	38129	38348	38129	37955	38348	38031	101.073	
	21	38304	38796	39190	37947	38394	38863	38459	38305	38577	37924	37727	38358	101.386	
	22	37971	38512	37602	38563	38205	38882	38161	38085	38077	38067	38413	38385	100.963	
	23	38490	38403	38098	38555	38447	38185	37924	38403	38436	38860	38196	38174	101.238	
22	0	38251	38403	38272	38261	38338	38958	38849	38546	38655	38305	38807	38351	101.639	
	1	37927	38753	38436	38359	38490	38436	38468	38860	38000	37837	38240	38283	101.219	
	2	38436	38632	38076	38457	38283	37744	38359	38053	38370	38511	38466	38423	101.158	
	3	38345	38953	38856	38356	38192	38465	38161	38746	38170	38866	38317	38182	101.554	
	4	38747	38768	38540	38064	38531	38292	38482	37737	38782	38303	38142	38196	101.328	
	5	38575	38466	38712	38534	38316	38131	38436	38076	38153	38055	38632	38142	101.250	
	6	38457	38545	38478	37933	38163	38643	38370	38839	38343	38283	37695	37969	101.138	
	7	38677	38012	38284	38018	38494	38734	38472	38658	38424	38562	38292	38798	101.513	
	8	38822	38481	38752	38845	38343	38618	38890	38604	38762	38791	38178	38513	101.992	
	9	38091	38498	38020	38026	38296	38875	38557	38469	38732	38478	38423	38776	101.473	
	10	38567	38633	38604	38257	39119	38036	38908	38507	38161	38970	38290	38546	101.772	
	11	38597	38463	38550	38874	38693	38579	38656	38581	38165	38754	38436	38683	101.867	
	12	38767	38847	38054	38761	38865	38403	38380	37869	38207	38326	38774	38023	101.481	
	13	38601	39266	38360	38654	38830	38621	38882	38393	38786	38534	38632	37936	101.969	
	14	38360	38893	38184	39308	38752	38185	38360	38577	37970	38209	38816	38393	101.642	
	15	38139	38645	38338	38251	38578	38371	38939	38578	38611	39026	38262	38399	101.671	
	16	38602	38362	38460	38534	38399	38474	37805	38845	38286	37892	38998	38446	101.443	
	17	38255	38759	38270	38880	38388	37751	38300	38783	37832	38465	38289	38837	101.378	
	18	38471	38389	38762	38707	38180	38379	38356	39214	38134	38321	38643	38467	101.645	
	19	38082	38407	38102	38488	38896	38313	38264	37882	37828	38579	38546	38050	101.076	
	20	38247	38413	38214	37772	38667	38181	38270	38500	38590	38513	39076	38050	101.309	
	21	38050	38347	38225	38269	38429	38868	38304	38369	38359	38659	38270	38337	101.307	
	22	38536	37961	38412	38500	38008	38491	38549	38350	38128	38271	38847	38804	101.389	
	23	38858	38448	37995	38239	38328	37918	37873	37851	37961	38038	38982	38649	101.011	

INAF/UNIromaTre		S.V.I.R.CO. Observatory - Pressure Corrected Data – December 2021											16 NM-64	
day	hh	00_05	05_10	10_15	15_20	20_25	25_30	30_35	35_40	40_45	45_50	50_55	55_60	h-norm
23	0	38594	39259	38560	38705	38483	38560	38483	38117	38333	38139	37995	38150	101.501
	1	38239	38438	38339	37736	38431	37910	38206	38029	38394	38860	38350	37840	100.930
	2	38583	38516	38483	37628	38444	37778	38485	38792	38239	38028	38078	38392	101.078
	3	38294	37787	38394	38514	38249	38099	38778	38073	38496	37617	38533	38579	101.071
	4	38743	38335	37895	38214	38467	38302	38489	38214	37878	38270	38568	38349	101.139
	5	38525	38623	38623	38033	38216	38094	38647	39311	38793	37731	38613	38039	101.475
	6	38613	38758	37919	38403	38260	38194	38382	38554	38371	38360	38420	38372	101.334
	7	38739	38272	37849	38249	38101	38562	38795	39272	38317	38107	38173	38495	101.405
	8	39037	38549	38029	38528	38484	38839	38340	38782	38483	38828	38728	38197	101.821
	9	38452	38127	38338	38029	38806	38195	38425	38175	38279	38319	38283	38707	101.230
	10	38823	38171	38171	38348	38326	39011	38669	37995	38426	38801	37851	37868	101.301
	11	38160	38899	38590	38154	38269	38626	38041	38639	38036	38278	39025	37795	101.312
	12	38794	38794	37663	37927	38778	38739	37860	38726	39121	37697	38444	38472	101.423
	13	38826	37947	38363	38308	38440	38749	38881	38199	38505	38272	38371	38669	101.536
	14	38001	38799	38384	38046	38448	38639	38394	38591	38252	38066	37837	38646	101.223
	15	38110	37880	38602	38774	38008	38239	38053	38554	38192	38519	38135	38231	101.046
	16	37945	38589	38371	38284	38404	38578	39081	38426	38415	38502	38862	38088	101.540
	17	38394	38502	38024	38391	38405	38548	37893	38088	38524	38121	38055	38832	101.151
	18	38449	38165	37913	38154	38318	38307	38405	38143	38415	37957	38057	37640	100.743
	19	38471	38565	37794	38655	38218	37869	38819	38371	38065	37956	38535	38022	101.055
	20	38655	38153	37956	37825	38327	38109	37825	37749	37870	37892	38948	37846	100.574
	21	38404	37770	38262	38054	37914	37706	37541	38097	38490	38207	37814	38207	100.423
	22	38316	38164	38469	37705	37918	38548	38143	38341	37729	38241	37979	37901	100.640
	23	37743	38209	37946	37864	37999	38240	38229	38566	38331	38336	38445	38675	100.889
24	0	38653	38272	38142	38479	38788	38629	38563	38214	37856	38356	38432	38021	101.285
	1	37858	38412	38662	37760	37868	38738	38336	38347	38063	38491	37943	37991	100.863
	2	38506	38420	37927	38429	37995	38824	38547	38243	37812	38340	38589	38309	101.187
	3	38223	38298	37974	37758	38438	38462	38349	38296	37658	38294	37970	38554	100.820
	4	38447	38608	38468	37852	37712	38091	38532	37993	38273	38693	38013	37906	100.890
	5	38155	38462	38348	38076	38541	38283	38402	38584	37872	38260	38476	37506	100.972
	6	38400	38291	38021	38354	38581	38625	38543	38166	38345	38022	38022	38194	101.104
	7	38496	38539	38615	37860	38378	38500	38806	37934	38225	37783	38235	38139	101.092
	8	38429	38095	38192	38666	38235	37848	38816	37717	38363	38687	37826	38020	100.957
	9	38816	37999	38364	38139	38526	38278	38246	38315	38169	37868	38513	37982	101.027
	10	38299	38008	37677	38023	38259	38005	38059	38039	38206	37886	38381	37849	100.472
	11	38127	38165	38659	38606	37913	38303	38382	38623	38239	37935	38120	38106	101.019
	12	37988	38391	37886	38414	39115	38320	38430	38284	38137	38166	38278	38413	101.161
	13	38495	38921	38427	38682	38638	38627	38796	38151	38531	39261	38415	37865	101.818
	14	37929	38638	38238	38194	37327	38555	38513	38815	38844	37925	38337	38570	101.175
	15	38873	38433	38168	38244	37969	38076	38340	38160	37716	39185	38054	38487	101.135
	16	38277	37384	38485	38042	38052	38717	38548	37820	38611	37936	38337	38411	100.896
	17	38052	38442	38442	38516	38253	38485	38347	38390	38253	38400	38031	38579	101.242
	18	38200	38727	37750	38458	38069	38186	38153	39048	38523	38884	38404	38782	101.461
	19	38151	38004	38309	38340	38120	37762	38329	38164	38802	38501	38721	38532	101.143
	20	38333	38637	38574	38123	38658	38249	38134	38019	38228	38197	38522	38155	101.162
	21	38144	38773	38406	37966	38417	38478	38321	38540	38548	38688	38515	37814	101.335
	22	38815	38262	38236	38486	38005	38424	38581	38246	38654	38726	38478	38403	101.489
	23	37948	37571	38502	38194	38139	38566	38488	38667	38545	37675	38458	38302	100.993

INAF/UNIRomaTre				S.V.I.R.CO. Observatory - Pressure Corrected Data – December 2021										16 NM-64	
day	hh	00_05	05_10	10_15	15_20	20_25	25_30	30_35	35_40	40_45	45_50	50_55	55_60	h-norm	
25	0	37720	38020	38562	38503	38244	38867	38399	37947	38520	38229	38179	38677	101.164	
	1	38956	38666	38162	38452	38658	37772	38310	38270	38540	38528	37882	38083	101.261	
	2	38619	38837	38679	38284	38357	38636	38305	38327	37864	38121	38264	38775	101.435	
	3	38403	37000	37382	37688	38413	38156	38413	38410	38088	37872	38603	37655	100.335	
	4	38431	38365	38447	38182	38100	38346	38705	38195	38618	38443	38200	38919	101.410	
	5	38571	38499	38486	38167	38618	38884	38503	38605	38372	38597	38034	38454	101.594	
	6	38403	38290	38741	38158	37943	37880	38536	38024	38190	38050	38009	38469	100.913	
	7	38623	38674	38141	38355	38009	38091	38418	38633	38439	38502	38330	38942	101.454	
	8	38450	37686	38015	38413	38260	38801	38668	38495	38474	38292	38170	38105	101.162	
	9	38459	38474	38541	38299	38506	38246	38701	38092	38960	38387	37926	38258	101.387	
	10	38122	39193	38316	38345	38001	38586	38484	38181	38478	38383	38659	38381	101.449	
	11	38183	38095	38377	38001	38307	38330	38117	38391	38728	38286	38218	38220	101.036	
	12	38554	38625	38101	37963	38025	38217	38378	38951	38559	38186	38396	38799	101.366	
	13	38611	38525	38354	37749	38795	38725	38643	37982	38867	38192	38792	38272	101.531	
	14	38056	38339	38269	38559	38198	38279	37889	38520	37605	38902	39085	38894	101.331	
	15	38579	38251	38672	38225	38703	38313	38043	38003	38804	38313	38453	38463	101.381	
	16	38433	38395	38205	38463	38605	38365	38383	38313	38573	38655	38467	38927	101.593	
	17	38527	38727	38787	38647	37878	38758	38566	38143	38413	38127	37665	38294	101.317	
	18	38593	38650	38275	38563	38134	38587	38249	38948	38817	38527	38737	38357	101.736	
	19	38227	37759	38818	38151	38592	38562	38437	38145	38440	37737	38076	38272	101.027	
	20	38032	38663	38096	38325	38123	38350	38847	37941	38279	38738	38403	38663	101.301	
	21	38823	38275	37837	38852	38325	37876	38187	38109	38625	38256	38655	38467	101.263	
	22	38030	38179	37831	37990	38109	38560	38341	38278	38428	38139	38388	38359	100.899	
	23	37952	38676	37753	38341	38111	38030	38676	38408	38477	38199	37950	38547	101.006	
26	0	37861	38607	38698	38290	38368	38587	38320	38470	39215	39611	38457	38210	101.792	
	1	38399	38746	38278	37940	38497	38209	37862	38617	38534	38325	38424	38185	101.204	
	2	38594	38444	38325	38599	38370	38791	39100	38403	38632	38777	38257	38457	101.805	
	3	38852	38395	38648	38489	38111	38907	38400	38760	38034	37950	38755	38154	101.520	
	4	38952	38464	38086	37746	38452	38032	38321	38301	38690	38560	38471	38740	101.379	
	5	38411	38362	38500	38407	38557	38497	38067	38237	38257	38038	38638	38249	101.249	
	6	38707	37848	38717	38687	38339	39048	38477	38717	38147	38527	38637	38107	101.630	
	7	38457	38408	38448	38761	38334	38233	38496	38106	38343	38105	38916	38365	101.414	
	8	38573	38020	38628	38638	38216	38313	38453	38433	39024	38785	38715	38553	101.717	
	9	38895	38626	38257	38910	38446	38700	38760	38769	38307	38843	38576	38143	101.911	
	10	38467	38741	38334	38901	38847	38948	38580	38651	38593	38833	39093	38446	102.175	
	11	39250	38736	38946	38550	38542	38386	38626	37813	38693	38292	38749	38788	101.941	
	12	38189	38588	38454	39193	38046	38551	38190	38752	38603	38771	38771	38603	101.797	
	13	38189	38767	38171	38992	38330	38756	38695	38853	38634	38860	38128	38117	101.748	
	14	38779	38605	38401	38213	38035	37897	38549	38342	38272	38312	38094	38450	101.189	
	15	38115	38689	38452	38345	38307	38981	38594	38955	38173	38075	38303	38799	101.594	
	16	38680	39007	38839	38976	38460	38678	38428	38684	39048	38363	38578	38170	102.060	
	17	38951	37813	38453	38996	38883	38064	37702	38302	38867	38107	38481	38657	101.481	
	18	38675	38097	38562	38600	38833	38565	37718	38878	38372	38859	38652	37978	101.593	
	19	38246	37917	38056	38474	38355	38444	38781	37886	38600	39017	38540	38459	101.370	
	20	37970	38577	38418	38458	37781	38176	38329	38379	38539	38757	38469	38371	101.249	
	21	38282	38361	38669	38630	38252	37885	38590	38769	38570	38659	38163	38242	101.436	
	22	38400	38651	38653	38432	38213	38163	38828	37994	38699	38679	38352	38044	101.444	
	23	38123	38908	38514	37819	38105	38424	38211	38776	38796	37980	38330	38877	101.390	

INAF/UNIRomaTre		S.V.I.R.CO. Observatory - Pressure Corrected Data – December 2021											16 NM-64	
day	hh	00_05	05_10	10_15	15_20	20_25	25_30	30_35	35_40	40_45	45_50	50_55	55_60	h-norm
27	0	38600	38699	38363	39178	39079	38332	38487	38829	38518	38404	38383	38514	101.939
	1	38841	38989	37666	38401	38736	38437	38923	38753	38359	38095	38214	38287	101.574
	2	37836	37731	37871	37925	38824	38391	38208	38477	38392	37556	38236	38494	100.745
	3	38544	38255	39281	38823	38613	38824	38645	38195	39241	38524	38434	38524	102.058
	4	38484	38594	38086	38096	38734	38535	38763	38544	38813	38675	38884	38914	101.886
	5	38915	38626	39023	38643	38615	38118	38475	38155	38036	38272	37991	38704	101.546
	6	38189	39032	37996	38533	38721	38063	37713	38291	38390	38428	38220	38601	101.239
	7	38437	37956	38255	38919	38216	38850	38587	38262	38726	38926	38875	38556	101.764
	8	39106	38410	38149	37905	38406	37812	38326	39030	38415	38425	39453	38890	101.712
	9	37949	38391	38331	38543	38866	38624	38380	38784	38856	38451	38522	38829	101.756
	10	38600	39174	37851	38163	38809	38425	38262	38756	38435	38637	38131	38333	101.547
	11	38396	38902	38632	38845	38192	39155	38633	39036	38536	38287	38929	38588	102.109
	12	38921	38341	38543	38691	39041	38620	38289	38941	38661	38735	38817	38865	102.182
	13	38265	38747	38657	38797	38847	38468	38678	38958	38828	38517	38537	38367	102.007
	14	38127	38547	38267	39066	37968	38437	38557	38537	38008	38687	38159	38199	101.323
	15	38956	38607	38357	38557	38217	38619	38880	38411	38181	37892	38750	38501	101.624
	16	38710	38472	38235	38774	38736	37851	38617	38486	38673	38514	38355	38831	101.696
	17	38177	38785	38622	38416	38378	38952	38584	38636	39013	38369	38978	38049	101.851
	18	38734	38488	38934	38709	38367	38730	38083	38461	38184	38725	38626	38170	101.686
	19	38418	38368	38200	38130	38399	38657	38150	38130	38439	38211	38467	38680	101.255
	20	38625	38823	38308	38394	38058	38657	38837	38310	38456	38773	38781	38201	101.689
	21	38165	38293	38097	38078	38087	38631	38405	38845	38629	38728	38769	38346	101.437
	22	38101	38209	38160	38622	38217	38324	37923	38220	38670	38681	38595	37898	101.117
	23	38536	38479	38538	38536	38457	38684	38491	38442	38638	38509	38704	38511	101.756
28	0	38237	38383	38042	37749	38617	38531	38297	38132	37984	37922	38312	39107	101.051
	1	38314	38988	38391	38410	38909	38127	38166	38194	38437	38192	38898	38280	101.487
	2	38114	38153	37958	38488	37800	38800	38271	38133	38065	38202	38348	38463	100.935
	3	37872	38294	38029	38127	37842	38247	38030	37990	38313	38441	38313	38212	100.696
	4	38497	38005	38536	38220	38356	38631	38297	38440	38684	38164	39053	38232	101.445
	5	38427	38920	38750	39235	38011	38824	38784	38257	38227	38432	38231	39199	101.925
	6	39399	37437	38355	38805	38815	38635	38563	38965	38826	38456	38866	38998	102.106
	7	38569	39356	38663	38293	38845	38930	38387	38750	39102	38376	38674	38589	102.198
	8	38800	38648	38546	39038	39160	38879	39170	38628	38802	38333	38181	38630	102.258
	9	38436	38333	38633	38525	38615	39228	38504	38512	39076	38785	38341	38584	101.986
	10	38946	38383	38696	38525	38997	38766	38826	38575	38495	39108	38907	38203	102.174
	11	38786	38736	38806	38725	38504	38656	39098	38374	38996	38554	38183	38324	102.023
	12	38625	38221	38123	38158	38268	38976	38708	39165	38492	38633	39144	38162	101.789
	13	38037	38803	38793	38540	38498	38560	38878	39146	38918	38541	38373	38333	101.952
	14	38394	37793	38316	38247	38867	38333	38115	38236	38355	38405	38915	38493	101.303
	15	38363	38075	38485	38782	38791	38118	38467	37946	38400	38514	38406	38337	101.350
	16	38808	38711	38576	37824	38588	38176	38263	38301	39024	38573	38402	38261	101.532
	17	38502	38504	38122	38604	38615	38284	38083	38735	38504	38051	38433	37984	101.292
	18	38206	38964	38288	38392	38282	38364	38455	38615	37924	37996	39079	38358	101.403
	19	38417	37974	38377	38016	38125	38277	37755	38558	38618	38125	38245	38558	100.989
	20	38337	38068	38832	38380	38289	37780	38040	38650	38281	38528	38523	38037	101.144
	21	37833	37811	38441	38080	37768	38269	37848	38238	38298	38268	37897	38358	100.564
	22	38469	38435	38151	37770	38133	38033	38465	37882	38376	38328	38017	38543	100.892
	23	38111	37669	38232	38012	38146	38370	38099	37748	37750	38121	38193	38336	100.494

INAF/UNIRomaTre				S.V.I.R.CO. Observatory - Pressure Corrected Data – December 2021										16 NM-64	
day	hh	00_05	05_10	10_15	15_20	20_25	25_30	30_35	35_40	40_45	45_50	50_55	55_60	h-norm	
29	0	37847	37737	38125	38872	38454	38584	37737	38325	38235	37586	38315	37672	100.647	
	1	38368	38030	38199	38557	37952	37901	37879	38507	38418	38863	38546	38490	101.136	
	2	37871	38357	38240	38160	38119	37821	38477	38149	38169	37851	38457	38121	100.714	
	3	38877	38239	38210	38459	38179	38875	38090	38259	38436	38124	38424	38835	101.421	
	4	38080	38867	38411	38322	38181	38835	38538	38686	38326	38209	38342	38115	101.400	
	5	38095	38352	38747	38315	38350	38871	38246	38056	38613	38285	38625	38485	101.429	
	6	38504	38303	38032	38211	38517	38354	38416	38197	38697	38627	38458	38899	101.467	
	7	38648	39036	38387	38605	37861	39009	38628	38719	38688	37854	38506	38717	101.785	
	8	38562	38813	38451	38070	38574	38231	38854	38452	38765	38604	38413	38453	101.693	
	9	38308	38596	38213	39001	38366	38638	38627	38919	38396	38598	39001	38769	101.955	
	10	38819	38144	38586	38566	38092	38405	38687	38707	38043	38618	38336	39165	101.677	
	11	38262	38261	39085	38233	39020	38595	38555	38433	38055	38743	37888	38551	101.570	
	12	38522	38140	38530	38992	38603	38371	38079	38080	38992	38782	38651	38371	101.665	
	13	38020	38911	38281	38733	37871	38563	39030	38401	38456	39146	37946	38116	101.524	
	14	37761	38516	38141	38027	38489	38253	38506	38207	38217	39067	38827	38349	101.279	
	15	38359	38357	38308	38331	38543	38519	38102	38161	38221	38776	37884	38366	101.184	
	16	38838	38542	38481	38431	38794	38414	38173	38193	38676	38494	38645	38170	101.607	
	17	38287	38353	38119	38572	38226	37983	38458	38094	38418	38630	38256	38105	101.090	
	18	38287	38041	37966	39028	38391	39030	37725	38139	37985	38206	38419	38308	101.095	
	19	38176	37799	38225	38334	38300	37814	37515	38028	38526	38078	37832	38319	100.528	
	20	37737	38675	38093	38684	37899	37869	37767	37775	38353	38321	38773	38087	100.767	
	21	37749	37698	38637	38349	38624	38346	38808	38154	38266	37848	38687	38206	101.061	
	22	37819	38114	38409	38215	37937	37661	38389	38378	38665	38124	38441	38472	100.897	
	23	37848	38031	38205	37664	38603	37941	38160	38922	38053	38244	37987	37810	100.643	
30	0	37727	38159	37743	38347	38194	37659	38400	38213	38623	38027	37637	37740	100.428	
	1	37963	37920	37673	38631	38334	38191	38644	37869	38216	38249	38652	37529	100.732	
	2	37927	38203	37986	37944	38241	37971	38123	38008	37731	38011	38796	38383	100.611	
	3	38166	37658	38008	38824	38659	38247	38579	38176	37897	38420	38219	37682	100.878	
	4	38583	38116	38333	38396	38204	37981	38772	38049	38629	38028	38479	38401	101.194	
	5	37411	38690	37880	38260	38069	37860	38315	38021	37531	38479	38176	38595	100.603	
	6	37925	37653	37797	37770	38133	38718	38508	38781	38504	38174	38049	38288	100.824	
	7	39035	38443	38011	38847	38542	38283	38532	37702	38038	38199	38672	38556	101.390	
	8	38379	38386	37907	38120	38268	37793	38801	37963	38638	38626	38181	38109	101.018	
	9	38543	38806	38431	38604	38233	38204	38517	38677	38481	38876	38274	37995	101.561	
	10	38519	38192	38765	38118	38064	38233	38583	39017	38224	38372	38362	38414	101.390	
	11	38636	38604	38074	38201	38849	38870	38593	38826	38433	38168	38508	38275	101.648	
	12	38456	38244	37894	38413	38826	38401	38189	38339	38267	38281	38952	38240	101.310	
	13	38037	38442	38367	38037	38452	38340	38194	37929	38289	38395	37674	38480	100.900	
	14	38692	38841	38671	38395	38692	38098	38301	38692	39175	38235	38538	37953	101.703	
	15	38792	38032	38361	38403	38191	38543	38145	37842	37906	38317	38334	38677	101.100	
	16	38774	38460	37697	38496	38094	38019	38017	38301	38614	37755	37887	38538	100.904	
	17	38401	38226	38164	37964	38681	38586	38243	38267	37894	38188	37569	38117	100.827	
	18	38321	38328	37836	38160	37808	38085	37327	38049	38098	38574	38205	38652	100.638	
	19	38065	37837	38272	37633	37886	37974	37743	38588	37738	37924	38056	38230	100.308	
	20	38079	38535	37816	37796	38210	37622	38319	38115	37708	38450	38330	38450	100.634	
	21	38067	37625	37937	37948	37813	38131	38015	38164	38499	38137	38469	38217	100.544	
	22	38016	38060	37882	37647	38359	38380	37940	38775	37885	38171	38204	38281	100.672	
	23	38401	38336	38281	37929	38116	37808	37995	38138	37973	38182	38566	38885	100.894	

INAF/UNIRomaTre				S.V.I.R.CO. Observatory - Pressure Corrected Data – December 2021									16 NM-64	
day	hh	00_05	05_10	10_15	15_20	20_25	25_30	30_35	35_40	40_45	45_50	50_55	55_60	h-norm
31	0	37693	37921	37786	38519	38108	37642	37652	37404	37818	37636	37699	38675	100.003
	1	38079	38357	37848	37736	37907	38054	37651	38165	38038	38228	38362	37465	100.296
	2	38457	37654	38158	38156	38488	37357	37538	37730	38232	38173	37631	38028	100.232
	3	37813	38263	37941	38637	38621	37911	38178	38801	38437	38132	38580	38562	101.173
	4	38056	38547	38473	37877	38023	38047	37786	38111	38174	37888	38138	38316	100.636
	5	37727	38348	38367	38552	37929	38714	38701	38544	38777	38568	37915	38387	101.316
	6	38653	38545	38591	38493	38406	38497	38081	38454	38115	38917	37923	38380	101.432
	7	38494	37982	38685	38211	38559	38227	38459	38431	38060	38901	38391	38284	101.351
	8	38542	38442	38304	38717	37816	38552	38119	38403	38629	38175	38571	37667	101.186
	9	38294	38307	38266	38484	37959	38463	38394	38071	38384	37971	38077	38361	100.987
	10	38395	38504	38676	38323	38277	38692	38055	38433	38702	37971	38847	38193	101.435
	11	38415	38902	38111	38171	38243	38530	38542	38105	37939	38083	37988	37977	100.981
	12	38425	38111	37892	37931	37795	38543	37748	38831	38589	38008	37813	38196	100.734
	13	38367	38152	37969	37879	38072	38247	38335	38331	38227	38192	37671	37683	100.568
	14	38481	38157	38053	38227	38078	38172	37654	38241	37749	38344	38137	37749	100.549
	15	38362	38216	38294	37351	38418	37997	37933	37920	37919	38134	37921	37606	100.336
	16	37853	38864	37640	37548	37801	38070	38107	38142	38449	38058	38211	38248	100.538
	17	38296	37784	38034	37775	37837	37463	38141	38006	37627	37652	38223	37735	100.006
	18	37625	38317	37987	37895	37282	38102	38301	38088	37575	38005	37881	37402	99.981
	19	37800	37986	37913	38144	37787	38332	37673	38109	38008	37808	37820	38032	100.191
	20	38308	38043	38228	38051	37885	37652	38265	37086	37784	37970	38533	37752	100.222
	21	38469	37723	37821	37999	38159	37811	37967	38023	38016	38318	37688	38003	100.319
	22	38068	38113	37492	38037	38648	37734	38506	37974	38264	37614	37650	38246	100.396
	23	37788	37959	38313	38426	37680	38149	37446	37521	37971	37835	37534	37703	99.952

S.V.I.R.CO. Observatory - Pressure in hectoPascal – December 2021

day	hh	00_05	05_10	10_15	15_20	20_25	25_30	30_35	35_40	40_45	45_50	50_55	55_60	average
1	0	1020.19	1020.19	1020.19	1020.17	1020.13	1020.05	1019.98	1019.98	1019.97	1019.98	1019.98	1019.98	1020.06
	1	1019.98	1019.98	1019.98	1019.98	1019.98	1019.98	1019.98	1019.98	1019.98	1019.90	1019.82	1019.80	1019.94
	2	1019.77	1019.72	1019.65	1019.60	1019.56	1019.56	1019.53	1019.43	1019.32	1019.22	1019.14	1019.14	1019.47
	3	1019.08	1018.98	1018.93	1018.91	1018.81	1018.73	1018.72	1018.72	1018.72	1018.72	1018.62	1018.50	1018.78
	4	1018.48	1018.46	1018.46	1018.46	1018.38	1018.31	1018.31	1018.30	1018.29	1018.26	1018.18	1018.10	1018.33
	5	1018.09	1018.10	1018.10	1018.09	1018.06	1018.03	1018.02	1017.97	1017.91	1017.89	1017.89	1017.86	1018.00
	6	1017.75	1017.67	1017.67	1017.68	1017.68	1017.67	1017.67	1017.68	1017.68	1017.68	1017.57	1017.47	1017.65
	7	1017.47	1017.47	1017.47	1017.47	1017.46	1017.46	1017.47	1017.47	1017.52	1017.54	1017.49	1017.47	1017.48
	8	1017.47	1017.47	1017.47	1017.47	1017.46	1017.46	1017.46	1017.46	1017.46	1017.46	1017.46	1017.46	1017.46
	9	1017.47	1017.47	1017.46	1017.47	1017.47	1017.46	1017.46	1017.46	1017.46	1017.47	1017.40	1017.29	1017.44
	10	1017.25	1017.25	1017.25	1017.15	1017.04	1017.04	1017.04	1016.93	1016.83	1016.83	1016.73	1016.53	1016.99
	11	1016.42	1016.42	1016.41	1016.38	1016.28	1016.10	1016.00	1016.00	1015.99	1015.97	1015.87	1015.75	1016.13
	12	1015.72	1015.65	1015.58	1015.50	1015.40	1015.36	1015.26	1015.08	1014.97	1014.85	1014.74	1014.73	1015.23
	13	1014.72	1014.62	1014.53	1014.52	1014.42	1014.31	1014.32	1014.22	1014.11	1014.11	1014.11	1014.11	1014.34
	14	1014.10	1014.09	1014.10	1014.00	1013.90	1013.80	1013.69	1013.69	1013.59	1013.48	1013.47	1013.48	1013.78
	15	1013.48	1013.37	1013.26	1013.27	1013.27	1013.16	1013.06	1013.05	1013.05	1013.05	1013.05	1013.05	1013.17
	16	1013.05	1013.05	1013.05	1012.95	1012.85	1012.85	1012.85	1012.76	1012.69	1012.67	1012.53	1012.43	1012.81
	17	1012.42	1012.42	1012.43	1012.43	1012.42	1012.42	1012.43	1012.43	1012.39	1012.29	1012.19	1012.09	1012.36
	18	1012.01	1012.01	1012.01	1011.91	1011.80	1011.81	1011.81	1011.81	1011.81	1011.81	1011.81	1011.81	1011.86
	19	1011.78	1011.75	1011.78	1011.81	1011.81	1011.91	1012.02	1011.92	1011.70	1011.59	1011.60	1011.49	1011.76
	20	1011.38	1011.38	1011.38	1011.38	1011.27	1011.07	1010.97	1010.97	1010.95	1010.89	1010.81	1010.65	1011.09
	21	1010.54	1010.54	1010.54	1010.54	1010.54	1010.54	1010.52	1010.42	1010.34	1010.23	1010.12	1010.11	1010.41
	22	1010.11	1010.01	1009.91	1009.91	1009.91	1009.81	1009.70	1009.70	1009.70	1009.70	1009.70	1009.60	1009.81
	23	1009.49	1009.50	1009.39	1009.29	1009.19	1009.08	1009.07	1009.07	1008.97	1008.86	1008.86	1008.75	1009.12
2	0	1008.65	1008.65	1008.65	1008.55	1008.45	1008.30	1008.09	1008.02	1008.02	1008.02	1008.02	1007.92	1008.26
	1	1007.76	1007.65	1007.50	1007.40	1007.40	1007.30	1007.19	1007.19	1007.19	1007.19	1007.19	1007.09	1007.34
	2	1006.97	1006.86	1006.77	1006.67	1006.56	1006.45	1006.35	1006.35	1006.24	1006.13	1006.13	1006.13	1006.47
	3	1006.13	1006.03	1005.92	1005.92	1005.92	1005.82	1005.70	1005.60	1005.51	1005.40	1005.29	1005.29	1005.71
	4	1005.29	1005.29	1005.19	1005.09	1004.98	1004.77	1004.66	1004.66	1004.67	1004.54	1004.42	1004.44	1004.83
	5	1004.45	1004.45	1004.45	1004.45	1002.89	1002.79	1004.24	1004.24	1004.25	1004.25	1004.25	1004.15	1004.07
	6	1004.04	1004.04	1004.04	1000.33	997.14	1000.62	1003.58	1003.70	1003.82	1003.82	1003.82	1003.82	1002.73
	7	1003.82	1003.82	1003.82	1003.80	1003.70	1003.61	1003.61	1003.62	1003.62	1003.62	1003.62	1003.62	1003.69
	8	1003.51	1003.40	1003.40	1003.40	1003.41	1003.41	1003.41	1003.39	1003.39	1003.30	1003.19	1003.08	1003.36
	9	1002.94	1002.84	1002.77	1002.77	1002.77	1002.77	1002.77	1002.77	1002.76	1002.56	1002.23	1002.08	1002.67
	10	1001.98	1001.93	1001.88	1001.71	1001.73	1001.77	1001.66	1001.58	1001.51	1001.50	1001.39	1001.19	1001.65
	11	1000.98	1000.87	1000.79	1000.71	1000.62	1000.60	1000.73	1000.72	1000.55	1000.41	1000.35	1000.28	1000.63
	12	1000.13	1000.03	1000.03	1000.13	1000.24	1000.24	1000.23	1000.13	999.93	999.82	999.82	999.93	1000.05
	13	1000.04	999.93	999.83	999.73	999.52	999.41	999.41	999.30	999.16	999.14	999.14	999.17	999.48
	14	999.30	999.35	999.23	999.16	998.97	998.78	998.78	998.68	998.57	998.53	998.43	998.36	998.84
	15	998.36	998.35	998.35	998.25	998.15	998.36	998.57	998.46	998.36	998.36	998.35	998.36	998.35
	16	998.35	998.32	998.31	998.34	998.36	998.36	998.36	998.47	998.57	998.61	998.72	998.78	998.46
	17	998.85	998.93	998.96	998.99	998.99	998.99	998.99	998.99	998.99	998.99	998.99	998.99	998.97
	18	999.00	999.06	999.16	999.20	999.20	999.20	999.20	999.20	999.25	999.29	999.29	999.30	999.19
	19	999.30	999.30	999.31	999.31	999.30	999.30	999.31	999.31	999.30	999.29	999.29	999.30	999.30
	20	999.30	999.31	999.30	999.30	999.30	999.30	999.31	999.31	999.31	999.31	999.36	999.41	999.32
	21	999.41	999.41	999.40	999.40	999.41	999.41	999.41	999.41	999.52	999.62	999.62	999.61	999.47
	22	999.66	999.76	999.92	1000.03	1000.04	1000.04	1000.03	1000.06	1000.10	1000.12	1000.11	1000.12	1000.00
	23	1000.12	1000.12	1000.13	1000.13	1000.13	1000.13	1000.12	1000.13	1000.13	1000.13	1000.11	1000.07	1000.12

S.V.I.R.CO. Observatory - Pressure in hectoPascal – December 2021

day	hh	00_05	05_10	10_15	15_20	20_25	25_30	30_35	35_40	40_45	45_50	50_55	55_60	average
3	0	1000.03	1000.03	1000.04	1000.04	1000.04	1000.04	1000.04	1000.04	1000.04	1000.04	1000.04	1000.04	1000.04
	1	1000.03	1000.14	1000.24	1000.25	1000.25	1000.25	1000.25	1000.36	1000.46	1000.46	1000.46	1000.46	1000.30
	2	1000.45	1000.46	1000.46	1000.43	1000.39	1000.39	1000.42	1000.46	1000.46	1000.46	1000.46	1000.46	1000.44
	3	1000.46	1000.46	1000.46	1000.46	1000.46	1000.51	1000.61	1000.67	1000.67	1000.78	1000.88	1000.88	1000.61
	4	1000.95	1001.05	1001.09	1001.09	1001.20	1001.30	1001.30	1001.30	1001.30	1001.30	1001.30	1001.31	1001.21
	5	1001.31	1001.36	1001.45	1001.55	1001.66	1001.72	1001.77	1001.87	1001.95	1002.06	1002.14	1002.14	1001.75
	6	1001.89	1001.99	1002.35	1002.35	1002.35	1002.35	1002.46	1002.57	1002.56	1002.23	1002.41	1002.96	1002.37
	7	1002.98	1002.98	1002.98	1002.98	1002.98	1003.08	1003.29	1003.40	1003.43	1003.08	1002.70	1003.37	1003.10
	8	1004.01	1004.12	1004.25	1004.25	1004.35	1004.46	1004.45	1004.46	1004.46	1003.92	1004.04	1004.68	1004.28
	9	1004.67	1004.66	1004.77	1004.87	1004.87	1004.86	1004.97	1005.08	1005.08	1005.08	1005.08	1005.08	1004.92
	10	1005.08	1005.08	1005.08	1005.08	1005.07	1005.17	1005.29	1005.29	1005.29	1005.29	1005.29	1005.29	1005.19
	11	1005.29	1005.29	1005.28	1005.29	1005.29	1005.29	1005.29	1005.29	1005.29	1005.29	1005.29	1005.28	1005.29
	12	1005.29	1005.29	1005.29	1005.29	1005.28	1005.29	1005.29	1005.29	1005.28	1005.28	1005.29	1005.29	1005.29
	13	1005.29	1005.30	1005.30	1005.31	1005.32	1005.32	1005.32	1005.36	1005.44	1005.50	1005.50	1005.55	1005.37
	14	1005.65	1005.71	1005.70	1005.70	1005.81	1005.92	1006.03	1006.13	1006.13	1006.13	1006.13	1006.23	1005.94
	15	1006.35	1006.35	1006.45	1006.55	1006.55	1006.56	1006.56	1006.63	1006.74	1006.77	1006.77	1006.80	1006.59
	16	1006.90	1006.98	1006.98	1007.09	1007.19	1007.29	1007.40	1007.40	1007.51	1007.61	1007.71	1007.81	1007.32
	17	1007.91	1007.95	1008.06	1008.23	1006.09	1006.15	1007.24	1006.12	1007.39	1008.66	1008.65	1008.76	1007.60
	18	1008.87	1008.87	1008.87	1008.87	1008.97	1009.07	1009.07	1009.07	1009.08	1008.87	1008.95	1009.25	1008.98
	19	1009.27	1009.29	1009.29	1009.39	1009.50	1009.50	1009.55	1009.65	1009.73	1009.84	1009.94	1010.04	1009.58
	20	1010.13	1010.13	1010.14	1010.24	1010.34	1010.40	1010.51	1010.55	1010.60	1010.71	1010.76	1010.87	1010.45
	21	1010.97	1010.97	1010.97	1010.97	1010.97	1010.97	1011.07	1011.18	1011.27	1011.37	1011.39	1011.46	1011.13
	22	1011.54	1011.55	1011.56	1011.56	1011.58	1011.60	1011.60	1011.60	1011.63	1011.71	1011.77	1011.78	1011.62
	23	1011.79	1011.80	1011.79	1011.79	1011.76	1011.75	1011.75	1011.77	1011.81	1011.81	1011.81	1011.81	1011.78
4	0	1011.81	1011.82	1011.84	1011.86	1011.86	1011.87	1011.95	1012.02	1012.02	1012.13	1012.23	1012.23	1011.98
	1	1012.24	1012.34	1012.45	1012.45	1012.45	1012.45	1012.45	1012.45	1012.45	1012.45	1012.44	1012.45	1012.42
	2	1012.45	1012.45	1012.45	1012.45	1012.45	1012.45	1012.45	1012.45	1012.45	1012.45	1012.56	1012.66	1012.47
	3	1012.66	1012.66	1012.66	1012.66	1012.66	1012.66	1012.66	1012.66	1012.66	1012.66	1012.67	1012.78	1012.67
	4	1012.86	1012.86	1012.87	1012.87	1012.87	1012.87	1012.86	1012.85	1012.85	1012.87	1012.86	1012.97	1012.87
	5	1013.08	1013.08	1013.08	1013.08	1013.08	1013.08	1013.19	1013.29	1013.29	1013.18	1013.08	1013.19	1013.14
	6	1013.29	1013.29	1013.28	1013.39	1013.60	1013.70	1013.70	1013.70	1013.70	1013.76	1013.87	1013.91	1013.60
	7	1014.02	1014.12	1014.18	1014.24	1014.29	1014.33	1014.33	1014.33	1014.33	1014.33	1014.33	1014.33	1014.26
	8	1014.33	1014.34	1014.34	1014.33	1014.33	1014.33	1014.32	1014.32	1014.33	1014.33	1014.33	1014.34	1014.33
	9	1014.34	1014.34	1014.34	1014.34	1014.34	1014.34	1014.33	1014.33	1014.33	1014.33	1014.25	1014.15	1014.31
	10	1014.12	1014.02	1013.81	1013.70	1013.70	1013.70	1013.69	1013.61	1013.51	1013.49	1013.49	1013.49	1013.69
	11	1013.49	1013.49	1013.49	1013.39	1013.18	1013.07	1013.07	1013.07	1013.07	1013.07	1013.07	1013.08	1013.21
	12	1012.97	1012.76	1012.65	1012.65	1012.55	1012.45	1012.44	1012.42	1012.40	1012.32	1012.23	1012.13	1012.50
	13	1012.02	1012.02	1012.02	1012.02	1012.02	1011.98	1011.87	1011.81	1011.81	1011.81	1011.81	1011.81	1011.92
	14	1011.81	1011.81	1011.81	1011.81	1011.81	1011.81	1011.81	1011.71	1011.60	1011.60	1011.60	1011.60	1011.73
	15	1011.60	1011.49	1011.29	1011.18	1011.17	1011.18	1011.18	1011.18	1011.17	1011.12	1011.06	1011.05	1011.22
	16	1011.06	1011.06	1011.05	1011.00	1010.97	1010.97	1010.97	1010.97	1010.97	1010.97	1010.97	1010.97	1010.99
	17	1010.97	1010.97	1010.96	1010.94	1010.83	1010.76	1010.76	1010.72	1010.63	1010.56	1010.55	1010.55	1010.76
	18	1010.55	1010.55	1010.55	1010.55	1010.50	1010.40	1010.32	1010.21	1010.13	1010.13	1010.13	1010.12	1010.34
	19	1010.02	1009.92	1009.88	1009.78	1009.71	1009.61	1009.50	1009.50	1009.40	1009.29	1009.29	1009.29	1009.60
	20	1009.29	1009.29	1009.29	1009.28	1009.18	1009.09	1009.09	1009.09	1009.08	1009.05	1008.95	1008.87	1009.13
	21	1008.83	1008.80	1008.84	1008.68	1008.58	1008.66	1008.66	1008.66	1008.66	1008.66	1008.66	1008.66	1008.69
	22	1008.54	1008.43	1008.44	1008.34	1008.22	1008.16	1008.07	1008.03	1008.03	1008.03	1007.91	1007.80	1008.17
	23	1007.82	1007.72	1007.55	1007.49	1007.49	1007.45	1007.41	1007.31	1007.21	1007.20	1007.20	1007.20	1007.42

S.V.I.R.CO. Observatory - Pressure in hectoPascal – December 2021

day	hh	00_05	05_10	10_15	15_20	20_25	25_30	30_35	35_40	40_45	45_50	50_55	55_60	average
5	0	1007.19	1007.09	1006.99	1006.99	1006.88	1006.78	1006.78	1006.70	1006.62	1006.63	1006.60	1006.57	1006.80
	1	1006.57	1006.57	1006.56	1006.56	1006.56	1006.56	1006.56	1006.56	1006.46	1006.35	1006.35	1006.35	1006.50
	2	1006.25	1006.14	1006.14	1006.14	1006.14	1006.04	1005.82	1005.71	1005.67	1005.57	1005.50	1005.49	1005.88
	3	1005.39	1005.30	1005.30	1005.30	1005.19	1005.09	1005.09	1005.09	1004.98	1004.88	1004.88	1004.88	1005.11
	4	1004.88	1004.78	1004.68	1004.68	1004.67	1004.66	1004.66	1003.39	1002.22	1002.31	1003.33	1004.40	1004.05
	5	1004.46	1004.46	1004.46	1004.46	1004.30	1003.61	1003.38	1003.86	1004.03	1004.10	1004.22	1004.25	1004.13
	6	1004.25	1004.04	1003.94	1004.05	1004.04	1004.03	1004.03	1004.15	1004.25	1004.25	1004.25	1004.25	1004.13
	7	1004.26	1004.26	1004.26	1004.26	1004.24	1004.35	1004.47	1004.47	1004.46	1004.47	1004.47	1004.46	1004.37
	8	1004.46	1004.46	1004.46	1004.47	1004.47	1004.46	1004.59	1004.70	1004.68	1004.68	1004.67	1004.57	1004.55
	9	1004.57	1004.67	1004.67	1004.67	1004.67	1004.68	1004.68	1004.68	1004.67	1004.67	1004.67	1004.67	1004.66
	10	1004.67	1004.57	1004.46	1004.36	1004.26	1004.25	1004.25	1004.11	1003.97	1003.80	1003.63	1003.58	1004.16
	11	1003.48	1003.42	1003.42	1003.41	1003.41	1003.30	1003.20	1003.21	1003.10	1002.99	1002.99	1002.89	1003.23
	12	1002.78	1002.78	1002.68	1002.47	1002.05	1002.05	1002.26	1002.15	1002.15	1002.05	1001.94	1001.94	1002.27
	13	1001.94	1001.90	1001.80	1001.73	1001.73	1001.73	1001.73	1001.73	1001.73	1001.73	1001.79	1001.85	1001.78
	14	1001.86	1001.90	1001.94	1001.89	1001.83	1001.80	1001.79	1001.81	1001.82	1001.82	1001.82	1001.83	1001.84
	15	1001.84	1001.84	1001.84	1001.84	1001.83	1001.82	1001.83	1001.84	1001.84	1001.84	1001.85	1001.85	1001.84
	16	1001.86	1001.90	1001.94	1001.94	1001.98	1002.02	1002.01	1002.00	1002.00	1001.98	1001.99	1002.01	1001.97
	17	1001.99	1002.00	1002.09	1002.15	1002.15	1002.15	1002.26	1002.37	1002.36	1002.36	1002.36	1002.36	1002.22
	18	1002.36	1002.35	1002.35	1002.35	1002.35	1002.34	1002.34	1002.36	1002.36	1002.36	1002.36	1002.26	1002.34
	19	1002.11	1002.03	1001.98	1001.96	1001.95	1001.95	1001.94	1001.98	1002.02	1002.04	1002.04	1002.02	1002.00
	20	1002.00	1002.03	1002.03	1002.03	1002.04	1002.04	1002.03	1002.03	1001.99	1001.94	1001.94	1001.94	1002.00
	21	1001.94	1001.94	1001.94	1001.94	1001.94	1001.94	1001.95	1001.95	1001.94	1001.94	1001.93	1001.91	1001.94
	22	1001.90	1001.90	1001.90	1001.90	1001.89	1001.89	1001.89	1001.89	1001.89	1001.89	1001.89	1001.90	1001.89
	23	1001.90	1001.89	1001.89	1001.89	1001.89	1001.89	1001.89	1001.88	1001.77	1001.59	1001.52	1001.50	1001.79
6	0	1001.31	1001.31	1001.31	1001.30	1001.19	1001.10	1001.10	1001.10	1001.10	1001.10	1001.10	1001.10	1001.17
	1	1001.10	1001.10	1001.10	1001.10	1001.09	1001.09	1001.10	1001.10	1001.10	1001.10	1001.10	1001.10	1001.10
	2	1001.00	1000.89	1000.89	1000.89	1000.89	1000.89	1000.85	1000.74	1000.68	1000.68	1000.68	1000.66	1000.81
	3	1000.63	1000.50	1000.31	1000.26	1000.26	1000.26	1000.26	1000.26	1000.26	1000.26	1000.26	1000.26	1000.31
	4	1000.26	1000.26	1000.26	1000.37	1000.47	1000.47	1000.47	1000.47	1000.47	1000.47	1000.51	1000.57	1000.42
	5	1000.59	1000.59	1000.58	1000.58	1000.58	1000.59	1000.64	1000.72	1000.82	1000.89	1001.00	1001.11	1000.72
	6	1001.11	1001.10	1001.10	1001.18	1001.29	1001.31	1001.31	1001.42	1001.53	1001.52	1001.52	1001.52	1001.32
	7	1001.57	1001.68	1001.73	1001.73	1001.74	1001.74	1001.74	1001.73	1001.84	1001.95	1001.95	1001.95	1001.78
	8	1002.05	1002.16	1002.16	1002.26	1002.37	1002.48	1002.58	1002.58	1002.58	1002.58	1002.58	1002.58	1002.41
	9	1002.56	1002.50	1002.45	1002.62	1002.79	1002.78	1002.79	1002.79	1002.79	1002.79	1002.79	1002.79	1002.70
	10	1002.89	1002.99	1002.99	1003.00	1003.00	1003.00	1003.00	1003.00	1002.99	1003.00	1003.00	1002.93	1002.98
	11	1002.86	1002.86	1002.86	1002.85	1002.85	1002.85	1002.86	1002.87	1002.88	1002.89	1002.90	1002.90	1002.87
	12	1002.89	1002.88	1002.88	1002.88	1002.89	1002.89	1002.89	1002.84	1002.78	1002.79	1002.79	1002.79	1002.85
	13	1002.79	1002.78	1002.78	1002.82	1002.92	1002.95	1002.96	1002.99	1003.10	1003.21	1003.20	1003.31	1002.98
	14	1003.42	1003.41	1003.42	1003.42	1003.52	1003.62	1003.63	1003.63	1002.60	1002.70	1000.54	1000.65	1002.88
	15	1004.05	1004.15	1004.26	1004.25	1004.26	1004.26	1004.37	1004.47	1004.47	1004.47	1004.47	1004.46	1004.33
	16	1004.57	1004.68	1004.79	1004.89	1004.98	1005.09	1005.20	1005.30	1005.31	1005.31	1005.30	1005.35	1005.06
	17	1005.45	1005.51	1005.52	1005.62	1005.83	1005.93	1005.99	1006.06	1006.11	1006.15	1006.15	1006.24	1005.88
	18	1006.35	1006.36	1006.41	1006.44	1006.50	1006.57	1006.57	1006.64	1006.74	1006.77	1006.85	1006.94	1006.59
	19	1006.94	1006.94	1006.94	1006.94	1006.94	1006.93	1006.96	1006.99	1006.99	1006.99	1007.03	1007.13	1006.97
	20	1007.20	1007.31	1007.41	1007.41	1007.41	1007.52	1007.63	1007.67	1007.78	1007.83	1007.93	1008.04	1007.59
	21	1008.06	1008.16	1008.24	1008.21	1008.21	1008.25	1008.25	1008.25	1008.25	1008.21	1008.20	1008.25	1008.21
	22	1008.26	1008.36	1008.46	1008.46	1008.45	1008.46	1007.73	1007.80	1008.63	1008.67	1008.67	1008.66	1008.38
	23	1008.64	1008.60	1008.61	1008.66	1008.67	1008.68	1008.69	1008.79	1008.88	1008.88	1008.88	1008.88	1008.74

S.V.I.R.CO. Observatory - Pressure in hectoPascal – December 2021

day	hh	00_05	05_10	10_15	15_20	20_25	25_30	30_35	35_40	40_45	45_50	50_55	55_60	average
7	0	1008.88	1008.88	1008.85	1008.85	1008.88	1008.92	1009.02	1009.14	1009.24	1009.41	1009.51	1009.51	1009.10
	1	1009.59	1009.70	1009.74	1009.75	1009.76	1009.81	1009.90	1009.93	1009.93	1009.93	1009.93	1009.83	1009.81
	2	1009.73	1009.73	1009.73	1009.72	1009.73	1009.62	1009.51	1009.51	1009.52	1009.52	1009.43	1009.33	1009.59
	3	1009.33	1009.34	1009.35	1009.43	1009.54	1009.58	1009.58	1009.65	1009.72	1009.72	1009.72	1009.83	1009.57
	4	1009.93	1009.93	1009.94	1009.95	1010.05	1010.14	1010.17	1010.28	1010.35	1010.46	1010.58	1010.69	1010.20
	5	1010.78	1010.80	1010.81	1010.81	1010.83	1010.91	1010.98	1011.09	1011.19	1011.30	1011.40	1011.40	1011.02
	6	1011.40	1011.49	1011.57	1011.57	1011.59	1011.60	1011.61	1011.61	1011.62	1011.62	1011.72	1011.82	1011.60
	7	1011.82	1011.82	1011.74	1011.67	1011.69	1011.69	1011.68	1011.75	1011.82	1011.83	1011.83	1011.83	1011.76
	8	1011.84	1011.85	1011.95	1012.04	1012.04	1012.04	1012.04	1012.03	1012.04	1011.93	1011.82	1011.82	1011.95
	9	1011.83	1011.83	1011.93	1012.03	1012.09	1012.16	1012.17	1012.16	1012.09	1012.03	1011.92	1011.79	1012.00
	10	1011.77	1011.78	1011.77	1011.77	1011.79	1011.80	1011.82	1011.83	1011.82	1011.82	1011.82	1011.82	1011.80
	11	1011.82	1011.82	1011.82	1011.82	1011.82	1011.72	1011.61	1011.61	1011.61	1011.61	1011.61	1011.61	1011.71
	12	1011.61	1011.61	1011.61	1011.61	1011.61	1011.61	1011.60	1011.61	1011.60	1011.58	1011.54	1011.46	1011.58
	13	1011.40	1011.40	1011.40	1011.40	1011.40	1011.51	1011.61	1011.72	1011.82	1011.82	1011.82	1011.82	1011.59
	14	1011.82	1011.82	1011.82	1011.82	1011.85	1011.96	1012.03	1012.03	1012.13	1012.23	1012.24	1012.24	1012.00
	15	1012.35	1012.45	1012.46	1012.52	1012.62	1012.66	1012.69	1012.80	1012.87	1012.87	1012.87	1012.87	1012.67
	16	1012.87	1012.87	1012.87	1012.87	1012.87	1012.87	1012.87	1012.87	1012.87	1012.98	1013.08	1013.08	1012.91
	17	1013.19	1013.29	1013.29	1013.40	1013.50	1013.50	1013.50	1013.50	1013.52	1013.52	1013.51	1013.52	1013.43
	18	1013.61	1013.70	1013.70	1013.70	1013.71	1013.71	1013.78	1013.88	1013.92	1013.92	1013.92	1013.92	1013.79
	19	1013.92	1013.92	1013.83	1013.73	1013.71	1013.71	1013.61	1013.51	1013.52	1013.52	1013.51	1013.51	1013.66
	20	1013.50	1013.50	1013.50	1013.50	1013.60	1013.71	1013.71	1013.71	1013.71	1013.71	1013.71	1013.71	1013.63
	21	1013.71	1013.71	1013.71	1013.71	1013.71	1013.72	1013.72	1013.71	1013.71	1013.71	1013.71	1013.71	1013.71
	22	1013.71	1013.71	1013.72	1013.72	1013.71	1013.61	1013.51	1013.50	1013.50	1013.50	1013.50	1013.50	1013.60
	23	1013.50	1013.50	1013.40	1013.29	1013.30	1013.30	1013.29	1013.29	1013.30	1013.30	1013.29	1013.29	1013.34
8	0	1013.29	1013.29	1013.29	1013.29	1013.29	1013.29	1013.29	1013.27	1013.26	1013.29	1013.30	1013.29	1013.29
	1	1013.29	1013.26	1013.16	1012.99	1012.89	1012.77	1012.67	1012.67	1012.66	1012.59	1012.59	1012.66	1012.85
	2	1012.66	1012.66	1012.66	1012.67	1012.65	1012.62	1012.54	1012.46	1012.46	1012.46	1012.42	1012.32	1012.55
	3	1012.25	1012.24	1012.22	1012.18	1012.17	1012.11	1011.94	1011.72	1011.62	1011.62	1011.62	1011.62	1011.94
	4	1011.62	1011.62	1011.47	1011.26	1011.20	1011.20	1011.20	1011.20	1011.16	1011.06	1010.99	1010.99	1011.24
	5	1010.99	1010.99	1010.98	1010.99	1010.99	1010.99	1010.99	1010.96	1010.95	1010.96	1010.95	1010.95	1010.97
	6	1010.94	1010.94	1010.94	1010.94	1010.94	1010.93	1010.85	1010.78	1010.68	1010.57	1010.57	1010.57	1010.80
	7	1010.57	1010.47	1010.36	1010.36	1010.36	1010.36	1010.26	1010.15	1010.04	1009.94	1009.94	1009.94	1010.23
	8	1009.92	1009.82	1009.73	1009.73	1009.73	1009.73	1009.73	1009.73	1009.73	1009.73	1009.73	1009.73	1009.75
	9	1009.73	1009.52	1009.30	1009.30	1009.30	1009.20	1008.99	1008.78	1008.68	1008.46	1007.41	1007.40	1008.84
	10	1008.13	1008.02	1007.85	1007.59	1007.50	1007.46	1007.42	1007.40	1007.38	1007.29	1007.21	1007.12	1007.53
	11	1007.01	1007.00	1006.94	1006.83	1006.58	1006.37	1006.26	1006.14	1006.03	1005.94	1005.94	1005.84	1006.41
	12	1005.73	1005.77	1005.82	1005.78	1005.63	1005.52	1005.52	1005.52	1005.42	1005.31	1005.21	1005.11	1005.53
	13	1004.89	1004.68	1004.52	1004.41	1004.47	1004.37	1004.37	1004.09	1003.98	1004.10	1004.00	1001.90	1004.15
	14	1001.80	1003.85	1003.74	1003.64	1003.53	1003.42	1003.42	1003.31	1003.09	1003.10	1003.21	1003.21	1003.27
	15	1003.21	1003.09	1002.88	1002.79	1002.79	1002.68	1002.58	1002.47	1002.37	1002.35	1002.24	1002.16	1002.63
	16	1002.12	1002.07	1002.00	1001.95	1001.91	1001.81	1001.73	1001.63	1001.42	1001.32	1001.32	1001.27	1001.71
	17	1001.17	1001.00	1000.90	1000.82	1000.75	1000.77	1000.77	1000.71	1000.68	1000.58	1001.11	1001.71	1000.91
	18	1001.61	1001.53	1001.53	1001.42	1001.31	1001.31	1001.32	1001.32	1001.31	1001.31	1001.32	1001.32	1001.38
	19	1001.32	1001.32	1001.32	1001.32	1001.31	1001.31	1001.31	1001.31	1001.31	1001.31	1001.30	1001.31	1001.31
	20	1001.31	1001.39	1001.46	1001.49	1001.57	1001.62	1001.63	1001.64	1001.64	1001.64	1001.64	1001.62	1001.55
	21	1001.56	1001.52	1001.52	1001.52	1001.52	1001.53	1001.53	1001.53	1001.53	1001.57	1001.60	1001.60	1001.54
	22	1001.61	1001.67	1001.73	1001.73	1001.78	1001.83	1001.84	1001.81	1001.79	1001.80	1001.81	1001.78	1001.76
	23	1001.74	1001.67	1001.57	1001.53	1001.51	1001.41	1001.42	1001.53	1001.53	1001.52	1001.52	1001.52	1001.54

S.V.I.R.CO. Observatory - Pressure in hectoPascal – December 2021

day	hh	00_05	05_10	10_15	15_20	20_25	25_30	30_35	35_40	40_45	45_50	50_55	55_60	average
9	0	1001.52	1001.52	1001.52	1001.52	1001.42	1001.21	1001.10	1001.10	1001.11	1001.21	1001.43	1001.55	1001.34
	1	1001.61	1001.71	1001.74	1001.74	1001.74	1001.74	1001.73	1001.73	1001.84	1001.91	1001.87	1001.89	1001.77
	2	1001.93	1001.95	1001.85	1001.74	1001.74	1001.73	1001.71	1001.61	1001.52	1001.52	1001.52	1001.52	1001.69
	3	1001.51	1001.50	1001.49	1001.48	1001.40	1001.22	1001.11	1001.11	1001.10	1001.17	1001.27	1001.42	1001.31
	4	1001.53	1001.53	1001.53	1001.52	1001.63	1001.74	1001.69	1001.64	1001.65	1001.66	1001.65	1001.66	1001.62
	5	1001.66	1001.59	1001.52	1001.53	1001.53	1001.53	1001.53	1001.58	1001.63	1001.63	1001.62	1001.63	1001.58
	6	1001.64	1001.65	1001.65	1001.65	1001.65	1001.65	1001.65	1001.65	1001.65	1001.65	1001.65	1001.66	1001.65
	7	1001.66	1001.66	1001.67	1001.71	1001.74	1001.74	1001.74	1001.74	1001.74	1001.74	1001.74	1001.74	1001.72
	8	1001.74	1001.74	1001.74	1001.74	1001.84	1001.95	1001.95	1001.95	1001.98	1002.08	1002.16	1002.16	1001.92
	9	1002.16	1002.16	1002.16	1002.16	1002.16	1002.16	1002.15	1002.16	1002.16	1002.08	1002.00	1001.97	1002.12
	10	1001.95	1001.90	1001.86	1001.83	1001.77	1001.73	1001.71	1001.62	1001.54	1001.50	1001.39	1001.31	1001.67
	11	1001.31	1001.31	1001.31	1001.27	1001.23	1001.23	1001.16	1001.10	1001.10	1001.09	1001.09	1001.09	1001.19
	12	1000.99	1000.89	1000.89	1000.89	1000.89	1000.88	1000.88	1000.88	1000.88	1000.89	1000.78	1000.67	1000.87
	13	1000.67	1000.66	1000.64	1000.64	1000.64	1000.63	1000.62	1000.63	1000.65	1000.68	1000.68	1000.68	1000.65
	14	1000.68	1000.67	1000.67	1000.67	1000.68	1000.78	1000.89	1000.89	1000.99	1001.20	1001.38	1001.59	1000.92
	15	1001.73	1001.73	1001.78	1001.88	1001.86	1001.79	1001.80	1001.98	1002.15	1002.15	1002.15	1002.15	1001.93
	16	1002.26	1002.36	1002.36	1002.35	1002.35	1002.36	1002.46	1002.67	1002.89	1002.99	1003.10	1003.20	1002.61
	17	1003.19	1003.18	1003.18	1003.18	1003.19	1003.14	1003.07	1003.03	1002.99	1003.00	1003.10	1003.18	1003.12
	18	1003.29	1003.52	1003.42	1003.63	1004.15	1004.36	1004.46	1004.45	1004.56	1004.67	1004.67	1004.67	1004.15
	19	1004.67	1004.67	1004.67	1004.67	1004.67	1004.67	1004.67	1004.67	1004.67	1004.67	1004.67	1004.78	1004.68
	20	1004.88	1004.88	1004.88	1004.88	1004.88	1004.88	1004.88	1004.88	1004.88	1004.88	1004.88	1004.88	1004.88
	21	1004.88	1004.88	1004.88	1004.88	1004.93	1005.04	1005.09	1005.09	1005.09	1005.09	1005.09	1005.09	1005.00
	22	1005.09	1005.09	1005.09	1005.09	1005.20	1005.30	1005.31	1005.31	1005.31	1005.41	1005.51	1005.52	1005.27
	23	1005.62	1005.72	1005.72	1005.72	1005.72	1005.72	1005.72	1005.72	1005.72	1005.72	1005.72	1005.72	1005.71
10	0	1005.72	1005.72	1005.72	1005.73	1005.80	1005.90	1005.94	1005.94	1006.04	1006.15	1006.15	1006.15	1005.92
	1	1006.15	1006.26	1006.36	1006.36	1006.36	1006.47	1006.57	1006.57	1006.57	1006.57	1006.57	1006.57	1006.45
	2	1006.57	1006.57	1006.57	1006.57	1006.57	1006.57	1006.57	1006.57	1006.46	1006.36	1006.36	1006.36	1006.51
	3	1006.36	1006.36	1006.36	1006.36	1006.36	1006.37	1006.37	1006.36	1006.36	1006.36	1006.36	1006.36	1006.36
	4	1006.37	1006.48	1006.57	1006.57	1006.57	1006.57	1006.57	1006.57	1006.57	1006.57	1006.57	1006.57	1006.55
	5	1006.57	1006.57	1006.68	1006.78	1006.78	1006.78	1006.78	1006.78	1006.78	1006.78	1006.78	1006.78	1006.74
	6	1006.89	1006.99	1007.02	1007.12	1007.20	1007.20	1007.20	1007.20	1007.31	1007.41	1007.41	1007.41	1007.20
	7	1007.41	1007.43	1007.45	1007.46	1007.46	1007.44	1007.42	1007.42	1007.42	1007.41	1007.31	1007.21	1007.40
	8	1007.18	1007.14	1007.13	1007.06	1006.89	1006.79	1006.78	1006.78	1006.78	1006.78	1006.78	1006.78	1006.91
	9	1006.78	1006.78	1006.78	1006.79	1006.79	1006.78	1006.68	1006.47	1006.36	1006.36	1006.15	1005.94	1006.55
	10	1005.86	1005.75	1005.62	1005.42	1005.21	1005.10	1005.09	1004.89	1004.68	1004.58	1004.47	1004.37	1005.08
	11	1004.26	1004.26	1004.25	1004.15	1004.05	1003.84	1003.63	1003.53	1003.42	1003.42	1002.95	1002.83	1003.71
	12	1003.08	1002.89	1002.68	1002.48	1002.37	1002.29	1002.23	1002.19	1002.15	1002.16	1002.16	1002.13	1002.40
	13	1002.02	1001.81	1001.67	1001.66	1001.67	1001.62	1001.54	1001.52	1001.52	1001.52	1001.52	1001.52	1001.63
	14	1001.42	1001.31	1001.20	1001.00	1000.89	1000.89	1000.77	1000.55	1000.47	1000.46	1000.33	1000.12	1000.78
	15	999.93	999.73	999.53	999.42	999.38	999.32	999.25	999.11	998.90	998.79	998.79	998.65	999.23
	16	998.50	998.44	998.27	998.06	997.85	997.61	997.38	997.20	996.90	996.70	996.70	996.70	997.52
	17	996.70	996.70	996.49	996.21	996.11	996.06	996.06	995.96	995.83	995.72	995.43	995.12	996.03
	18	995.01	994.90	994.80	994.70	994.59	994.59	994.59	994.59	994.48	994.34	994.23	994.16	994.58
	19	993.85	993.54	993.65	993.86	993.96	993.96	993.96	993.94	993.94	993.96	993.96	993.96	993.88
	20	993.92	993.87	993.83	993.78	993.74	993.73	993.74	993.75	993.75	993.75	993.86	993.96	993.80
	21	993.95	993.96	993.96	993.96	993.96	993.88	993.78	993.75	993.75	993.75	993.74	993.74	993.85
	22	993.74	993.74	993.74	993.74	993.73	993.73	993.72	993.71	993.72	993.63	993.51	993.30	993.67
	23	993.02	992.81	992.70	992.70	992.59	992.49	992.49	992.49	992.49	992.49	992.49	992.49	992.60

S.V.I.R.CO. Observatory - Pressure in hectoPascal – December 2021

day	hh	00_05	05_10	10_15	15_20	20_25	25_30	30_35	35_40	40_45	45_50	50_55	55_60	average
11	0	992.48	992.49	992.47	992.37	992.28	992.27	992.17	992.07	992.07	992.07	992.07	992.07	992.23
	1	992.07	992.07	992.07	992.07	992.07	992.07	992.07	992.06	992.07	992.07	992.07	992.09	992.07
	2	992.14	992.16	992.15	992.16	992.17	992.18	992.23	992.28	992.28	992.28	992.28	992.27	992.21
	3	992.31	992.37	992.44	992.49	992.50	992.60	992.70	992.70	992.70	992.70	992.70	992.70	992.57
	4	992.70	992.70	992.70	992.70	992.81	992.91	992.92	993.03	993.13	993.18	993.28	993.33	992.95
	5	993.43	993.54	993.54	993.65	993.75	993.75	993.86	993.96	994.00	994.04	994.11	994.21	993.82
	6	994.34	994.47	994.54	994.59	994.59	994.59	994.59	994.70	994.80	994.91	995.12	995.25	994.70
	7	995.35	995.43	995.43	995.54	995.65	995.76	995.86	995.96	996.10	996.21	996.39	996.49	995.85
	8	996.58	996.69	996.80	996.90	996.91	997.00	997.11	997.12	997.24	997.44	997.64	997.85	997.10
	9	997.97	998.07	998.27	998.48	998.59	998.59	998.58	998.69	998.79	998.79	998.79	998.79	998.53
	10	998.79	998.83	998.86	998.93	999.00	999.01	999.01	999.01	999.01	999.01	999.01	999.01	998.95
	11	999.00	999.05	999.15	999.21	999.21	999.28	999.38	999.42	999.42	999.48	999.53	999.54	999.30
	12	999.54	999.55	999.59	999.66	999.70	999.74	999.81	999.85	999.95	1000.05	1000.16	1000.32	999.82
	13	1000.38	1000.38	1000.37	1000.42	1000.47	1000.47	1000.57	1000.68	1000.76	1000.86	1000.89	1000.98	1000.60
	14	1001.19	1001.29	1001.26	1001.29	1001.38	1001.48	1001.63	1001.76	1001.78	1001.87	1002.01	1002.07	1001.58
	15	1002.12	1002.15	1002.26	1002.47	1002.43	1002.64	1003.04	1003.16	1003.21	1003.32	1003.42	1003.53	1002.81
	16	1003.63	1003.74	1003.84	1003.83	1003.94	1004.15	1004.26	1004.37	1004.47	1004.42	1004.52	1004.68	1004.15
	17	1004.79	1004.99	1005.10	1005.10	1005.10	1005.20	1005.31	1005.39	1005.50	1005.52	1005.52	1005.63	1005.26
	18	1005.83	1006.04	1006.15	1006.25	1006.36	1006.37	1006.48	1006.58	1006.62	1006.72	1006.78	1006.79	1006.41
	19	1006.79	1006.89	1007.00	1007.05	1007.11	1007.16	1007.21	1007.20	1007.31	1007.41	1007.52	1007.62	1007.19
	20	1007.68	1007.73	1007.77	1007.83	1007.94	1008.04	1008.14	1008.25	1008.25	1008.25	1008.25	1008.34	1008.04
	21	1008.44	1008.45	1004.50	1004.61	1008.67	1008.77	1008.87	1008.88	1008.99	1009.09	1009.10	1009.10	1008.12
	22	1009.11	1009.21	1009.41	1009.51	1009.52	1009.52	1009.51	1009.51	1009.51	1009.51	1009.57	1009.63	1009.46
	23	1009.57	1009.44	1009.37	1009.37	1009.38	1009.45	1009.57	1009.68	1009.73	1009.73	1009.73	1009.73	1009.56
12	0	1009.94	1009.94	1010.02	1010.10	1010.09	1010.12	1010.15	1010.26	1010.46	1010.56	1010.59	1010.69	1010.25
	1	1010.78	1010.78	1010.88	1011.09	1011.31	1011.41	1011.40	1011.50	1011.59	1011.71	1011.83	1011.84	1011.34
	2	1011.87	1011.97	1012.03	1012.08	1012.15	1012.17	1012.17	1012.17	1012.17	1012.21	1012.24	1012.25	1012.12
	3	1012.36	1012.46	1012.49	1012.59	1012.66	1012.66	1012.72	1012.82	1012.98	1013.09	1013.09	1013.19	1012.76
	4	1013.30	1013.40	1013.51	1013.62	1013.72	1013.72	1013.82	1013.93	1014.04	1014.14	1014.14	1014.24	1013.80
	5	1014.38	1014.41	1014.48	1014.55	1014.66	1014.76	1014.77	1014.80	1014.88	1014.96	1015.08	1015.18	1014.74
	6	1015.24	1015.35	1015.39	1015.40	1015.40	1015.50	1015.60	1015.60	1015.60	1015.60	1015.60	1015.71	1015.50
	7	1015.81	1015.82	1015.92	1016.02	1016.13	1016.27	1016.37	1016.44	1016.44	1016.44	1016.54	1016.71	1016.24
	8	1016.81	1016.92	1017.02	1017.06	1017.09	1017.20	1017.28	1017.27	1017.27	1017.29	1017.40	1017.49	1017.17
	9	1017.48	1017.48	1017.59	1017.70	1017.70	1017.69	1017.70	1017.70	1017.69	1017.69	1017.69	1017.69	1017.65
	10	1017.70	1017.70	1017.70	1017.70	1017.69	1017.69	1017.77	1017.85	1017.86	1017.86	1017.86	1017.86	1017.77
	11	1017.86	1017.87	1017.87	1017.86	1017.86	1017.86	1017.86	1017.87	1017.89	1017.90	1017.90	1017.90	1017.87
	12	1017.91	1017.91	1017.90	1017.90	1017.90	1017.90	1017.90	1017.90	1017.91	1017.93	1017.98	1018.06	1017.92
	13	1018.11	1018.18	1018.25	1018.26	1018.27	1018.27	1018.27	1018.30	1018.32	1018.34	1018.43	1018.51	1018.29
	14	1018.53	1018.63	1018.74	1018.78	1018.88	1018.95	1019.05	1019.16	1019.27	1019.37	1019.37	1019.37	1019.01
	15	1019.47	1019.57	1019.58	1019.61	1019.68	1019.73	1019.76	1019.78	1019.89	1020.07	1020.18	1020.20	1019.79
	16	1020.20	1020.20	1020.29	1020.40	1020.50	1020.58	1020.59	1020.61	1020.62	1020.68	1020.76	1020.81	1020.52
	17	1020.83	1020.83	1020.86	1020.96	1021.04	1021.04	1021.04	1021.04	1021.14	1021.23	1021.25	1021.36	1021.05
	18	1021.47	1021.58	1021.70	1021.78	1021.86	1021.88	1021.88	1021.88	1021.93	1021.97	1021.97	1022.03	1021.83
	19	1022.09	1022.09	1022.09	1022.08	1022.09	1022.09	1022.09	1022.09	1022.20	1022.41	1022.51	1022.51	1022.19
	20	1022.51	1022.51	1022.51	1022.60	1022.71	1022.72	1022.72	1022.71	1022.71	1022.71	1016.55	1016.65	1021.63
	21	1022.92	1022.93	1022.93	1022.92	1022.92	1022.92	1022.92	1022.92	1022.92	1022.92	1022.92	1022.92	1022.92
	22	1022.92	1022.99	1023.10	1023.13	1023.13	1023.14	1023.14	1022.73	1022.66	1023.01	1022.93	1022.96	1022.98
	23	1022.40	1022.10	1022.78	1023.04	1022.99	1023.06	1023.12	1023.12	1023.12	1023.23	1023.34	1023.34	1022.97

S.V.I.R.CO. Observatory - Pressure in hectoPascal – December 2021

day	hh	00_05	05_10	10_15	15_20	20_25	25_30	30_35	35_40	40_45	45_50	50_55	55_60	average
13	0	1023.33	1023.34	1023.34	1023.34	1023.34	1023.34	1023.35	1023.35	1023.34	1023.34	1023.34	1023.45	1023.35
	1	1023.55	1023.55	1023.55	1023.55	1023.55	1023.55	1023.55	1023.55	1023.55	1023.55	1023.55	1023.55	1023.55
	2	1023.55	1023.55	1023.55	1023.55	1023.55	1023.55	1023.55	1023.55	1023.55	1023.55	1023.56	1023.56	1023.55
	3	1023.55	1023.55	1023.55	1023.55	1023.65	1023.75	1023.74	1023.64	1023.55	1023.56	1023.56	1023.55	1023.60
	4	1023.55	1023.55	1023.55	1023.56	1023.56	1023.55	1023.65	1023.75	1023.75	1023.75	1023.75	1023.74	1023.64
	5	1023.74	1023.75	1023.76	1023.76	1023.76	1023.76	1023.76	1023.76	1023.76	1023.76	1023.76	1023.76	1023.76
	6	1023.81	1023.91	1023.97	1024.04	1024.15	1024.18	1024.18	1024.18	1024.18	1024.18	1024.18	1024.23	1024.10
	7	1024.34	1024.39	1024.39	1024.39	1024.39	1024.45	1024.50	1024.49	1024.49	1024.50	1024.49	1024.54	1024.44
	8	1024.59	1024.60	1024.60	1024.60	1024.60	1024.60	1024.60	1024.60	1024.60	1024.60	1024.60	1024.60	1024.60
	9	1024.50	1024.42	1024.49	1024.55	1024.56	1024.55	1024.54	1024.47	1024.39	1024.39	1024.39	1024.29	1024.46
	10	1024.18	1024.18	1024.08	1023.97	1023.95	1023.93	1023.84	1023.76	1023.76	1023.76	1023.76	1023.76	1023.91
	11	1023.76	1023.76	1023.76	1023.66	1023.55	1023.45	1023.34	1023.24	1023.03	1022.93	1022.91	1022.89	1023.35
	12	1022.82	1022.74	1022.72	1022.72	1022.72	1022.72	1022.71	1022.71	1022.61	1022.51	1022.51	1022.51	1022.67
	13	1022.51	1022.51	1022.51	1022.51	1022.50	1022.50	1022.50	1022.50	1022.50	1022.50	1022.50	1022.50	1022.50
	14	1022.50	1022.50	1022.50	1022.50	1022.50	1022.50	1022.60	1022.68	1022.63	1022.61	1022.64	1022.65	1022.57
	15	1022.65	1022.65	1022.65	1022.65	1022.65	1022.64	1022.63	1022.63	1022.67	1022.71	1022.71	1022.71	1022.66
	16	1022.71	1022.71	1022.72	1022.72	1022.81	1022.91	1022.92	1022.92	1022.92	1023.00	1023.11	1023.13	1022.88
	17	1023.13	1023.13	1023.12	1023.12	1023.12	1023.12	1023.02	1022.77	1022.97	1023.33	1023.44	1023.55	1023.15
	18	1023.54	1023.44	1023.33	1023.33	1023.33	1023.33	1023.44	1023.54	1023.54	1023.54	1023.54	1023.54	1023.45
	19	1023.54	1023.54	1023.54	1023.54	1023.54	1023.54	1023.54	1023.54	1023.55	1023.55	1023.54	1023.54	1023.54
	20	1023.55	1023.55	1023.55	1023.55	1023.55	1023.54	1023.54	1023.54	1023.55	1023.55	1023.55	1023.55	1023.55
	21	1023.55	1023.54	1023.54	1023.55	1023.55	1023.55	1023.54	1023.54	1023.54	1023.55	1023.55	1023.55	1023.54
	22	1023.55	1023.55	1023.55	1023.55	1023.55	1023.55	1023.55	1023.54	1023.55	1023.55	1023.55	1023.55	1023.55
	23	1023.55	1023.55	1023.55	1023.45	1023.34	1023.34	1023.34	1023.29	1023.23	1023.18	1023.13	1023.13	1023.34
14	0	1023.13	1023.13	1023.13	1023.13	1023.12	1023.01	1022.92	1022.92	1022.92	1022.92	1022.92	1022.92	1023.01
	1	1022.92	1022.92	1022.92	1022.92	1022.92	1022.92	1023.03	1023.13	1023.12	1023.12	1023.13	1023.13	1023.01
	2	1023.13	1023.12	1023.12	1023.12	1023.12	1023.13	1023.13	1023.02	1022.92	1022.92	1022.92	1022.92	1023.05
	3	1022.92	1022.92	1022.92	1022.82	1022.71	1022.71	1022.71	1022.71	1022.71	1022.71	1022.71	1022.71	1022.77
	4	1022.67	1022.57	1022.52	1022.51	1022.50	1022.50	1022.50	1022.50	1022.50	1022.50	1022.50	1022.50	1022.52
	5	1022.50	1022.50	1022.50	1022.50	1022.61	1022.71	1022.71	1022.71	1022.71	1022.71	1022.71	1022.71	1022.63
	6	1022.71	1022.71	1022.71	1022.71	1022.71	1022.71	1022.71	1022.71	1022.71	1022.70	1022.70	1022.82	1022.72
	7	1022.92	1022.92	1022.92	1022.92	1022.92	1022.92	1023.03	1023.13	1023.13	1023.13	1023.13	1023.23	1023.02
	8	1023.34	1023.34	1023.42	1023.51	1023.53	1023.54	1023.55	1023.55	1023.55	1023.54	1023.54	1023.54	1023.49
	9	1023.55	1023.64	1023.73	1023.74	1023.65	1023.55	1023.55	1023.55	1023.45	1023.34	1023.33	1023.23	1023.52
	10	1023.03	1022.92	1022.92	1022.92	1022.82	1022.71	1022.67	1022.59	1022.55	1022.55	1022.52	1022.50	1022.72
	11	1022.50	1022.40	1022.29	1022.29	1022.23	1022.13	1022.09	1022.08	1022.06	1021.95	1021.87	1021.87	1022.15
	12	1021.86	1021.75	1021.66	1021.56	1021.46	1021.45	1021.46	1021.46	1021.46	1021.46	1021.45	1021.46	1021.54
	13	1021.43	1021.32	1021.24	1021.24	1021.24	1021.24	1021.24	1021.24	1021.24	1021.23	1021.23	1021.23	1021.26
	14	1021.13	1021.03	1021.03	1021.03	1020.93	1020.83	1020.84	1020.84	1020.84	1020.86	1020.87	1020.88	1020.93
	15	1020.89	1020.96	1021.03	1021.03	1021.03	1021.03	1021.03	1021.03	1021.03	1021.03	1021.03	1021.04	1021.01
	16	1021.04	1021.03	1021.03	1021.03	1021.13	1021.24	1021.24	1021.24	1021.24	1021.24	1021.24	1021.24	1021.16
	17	1021.24	1021.24	1021.24	1021.24	1021.24	1021.24	1021.24	1021.25	1021.28	1021.31	1021.32	1021.32	1021.26
	18	1021.36	1021.42	1021.45	1021.45	1021.45	1021.45	1021.45	1021.45	1021.52	1021.63	1021.66	1021.66	1021.49
	19	1021.66	1021.66	1021.66	1021.66	1021.66	1021.66	1021.69	1021.71	1021.69	1021.67	1021.67	1021.68	1021.67
	20	1021.68	1021.68	1021.69	1021.71	1021.71	1021.71	1021.71	1021.72	1021.73	1021.73	1021.80	1021.87	1021.73
	21	1021.97	1022.07	1022.08	1022.08	1022.08	1022.09	1022.11	1022.21	1022.29	1022.29	1022.29	1022.29	1022.15
	22	1022.29	1022.29	1022.29	1022.29	1022.29	1022.29	1022.29	1022.28	1022.29	1022.29	1022.29	1022.29	1022.29
	23	1022.29	1022.29	1022.29	1022.29	1022.29	1022.29	1022.29	1022.29	1022.29	1022.29	1022.29	1022.29	1022.29

S.V.I.R.CO. Observatory - Pressure in hectoPascal – December 2021

day	hh	00_05	05_10	10_15	15_20	20_25	25_30	30_35	35_40	40_45	45_50	50_55	55_60	average
15	0	1022.16	1022.12	1022.08	1022.08	1022.08	1022.08	1022.08	1022.07	1022.08	1022.08	1022.08	1022.10	1022.09
	1	1022.21	1022.29	1022.30	1022.30	1022.30	1022.30	1022.35	1022.45	1022.50	1022.49	1022.49	1022.49	1022.37
	2	1022.50	1022.50	1022.50	1022.50	1022.49	1022.50	1022.50	1022.50	1022.49	1022.50	1022.50	1022.51	1022.50
	3	1022.51	1022.50	1022.50	1022.50	1022.50	1022.50	1022.50	1022.49	1022.50	1022.50	1022.50	1022.51	1022.50
	4	1022.51	1022.57	1022.64	1022.67	1022.70	1022.71	1022.71	1022.71	1022.71	1022.71	1022.82	1022.92	1022.70
	5	1022.92	1022.91	1022.92	1023.02	1023.12	1023.21	1023.32	1023.44	1023.55	1023.59	1023.69	1023.86	1023.29
	6	1023.96	1023.96	1023.96	1023.96	1023.96	1023.96	1023.96	1024.04	1024.15	1024.17	1024.17	1024.17	1024.03
	7	1024.24	1024.33	1024.36	1024.38	1024.38	1024.38	1024.40	1024.42	1024.50	1024.59	1024.66	1024.73	1024.45
	8	1024.74	1024.74	1024.74	1024.76	1024.80	1024.80	1024.80	1024.80	1024.80	1024.90	1025.00	1025.00	1024.82
	9	1025.01	1025.01	1025.01	1025.00	1025.00	1025.00	1025.00	1025.09	1025.17	1025.17	1025.15	1025.12	1025.06
	10	1025.05	1025.01	1025.01	1025.01	1024.90	1024.80	1024.80	1024.79	1024.80	1024.80	1024.80	1024.78	1024.88
	11	1024.75	1024.75	1024.75	1024.75	1024.75	1024.75	1024.67	1024.59	1024.57	1024.54	1024.51	1024.43	1024.65
	12	1024.38	1024.38	1024.38	1024.38	1024.38	1024.27	1024.16	1024.17	1024.17	1024.17	1024.16	1024.17	1024.26
	13	1024.17	1024.16	1024.16	1024.16	1024.16	1024.17	1024.17	1024.17	1024.16	1024.16	1024.16	1024.17	1024.16
	14	1024.17	1024.16	1024.16	1024.16	1024.16	1024.17	1024.23	1024.29	1024.33	1024.37	1024.37	1024.37	1024.24
	15	1024.37	1024.37	1024.38	1024.38	1024.38	1024.37	1024.37	1024.37	1024.38	1024.43	1024.46	1024.51	1024.40
	16	1024.57	1024.58	1024.58	1024.59	1024.62	1024.71	1024.79	1024.79	1024.79	1024.79	1024.78	1024.89	1024.70
	17	1025.00	1025.00	1025.00	1025.00	1025.00	1025.00	1025.00	1025.00	1025.00	1025.00	1025.00	1025.00	1025.00
	18	1025.00	1025.00	1025.00	1025.00	1025.00	1024.99	1025.00	1025.00	1025.00	1025.00	1025.00	1024.99	1025.00
	19	1024.99	1024.99	1025.05	1025.16	1025.20	1025.21	1025.21	1025.21	1025.20	1025.22	1025.33	1025.42	1025.18
	20	1025.42	1025.41	1025.41	1025.41	1025.42	1025.42	1025.41	1025.42	1025.42	1025.42	1025.42	1025.41	1025.41
	21	1025.41	1025.41	1025.41	1025.42	1025.42	1025.42	1025.45	1025.55	1025.63	1025.63	1025.63	1025.64	1025.50
	22	1025.65	1025.66	1025.65	1025.65	1025.64	1025.65	1025.68	1025.68	1025.67	1025.66	1025.66	1025.64	1025.66
	23	1025.63	1025.64	1025.64	1025.63	1025.63	1025.63	1025.63	1025.63	1025.63	1025.63	1025.63	1025.63	1025.63
16	0	1025.63	1025.63	1025.63	1025.63	1025.64	1025.64	1025.64	1025.63	1025.63	1025.63	1025.63	1025.63	1025.63
	1	1025.74	1025.84	1025.84	1025.85	1025.85	1025.84	1025.84	1025.84	1025.84	1025.84	1025.84	1025.84	1025.83
	2	1025.80	1025.70	1025.64	1025.64	1025.64	1025.64	1025.61	1025.55	1025.47	1025.42	1025.43	1025.43	1025.58
	3	1025.43	1025.43	1025.43	1025.43	1025.43	1025.43	1025.43	1025.43	1025.43	1025.43	1025.43	1025.40	1025.43
	4	1025.36	1025.35	1025.36	1025.35	1025.32	1025.26	1025.22	1025.22	1025.22	1025.22	1025.22	1025.22	1025.28
	5	1025.21	1025.21	1025.21	1025.21	1025.21	1025.32	1025.42	1025.42	1025.42	1025.42	1025.53	1025.64	1025.35
	6	1025.64	1025.63	1025.63	1025.63	1025.63	1025.63	1025.63	1025.66	1025.76	1025.84	1025.84	1025.84	1025.70
	7	1025.86	1025.92	1026.01	1026.05	1026.06	1026.06	1026.05	1026.05	1026.05	1026.05	1026.09	1026.20	1026.04
	8	1026.26	1026.26	1026.26	1026.26	1026.26	1026.26	1026.25	1026.16	1026.06	1026.06	1026.05	1026.05	1026.18
	9	1026.05	1026.05	1026.05	1026.06	1026.16	1026.28	1026.36	1026.43	1026.43	1026.43	1026.42	1026.34	1026.25
	10	1026.27	1026.27	1026.16	1026.05	1026.05	1026.05	1026.05	1026.05	1026.05	1026.05	1026.05	1026.01	1026.09
	11	1025.96	1025.95	1025.90	1025.84	1025.84	1025.82	1025.80	1025.72	1025.63	1025.57	1025.46	1025.42	1025.74
	12	1025.42	1025.42	1025.42	1025.42	1025.39	1025.33	1025.26	1025.21	1025.21	1025.21	1025.21	1025.21	1025.31
	13	1025.11	1025.01	1025.00	1025.00	1025.00	1024.89	1024.79	1024.79	1024.79	1024.79	1024.79	1024.90	1024.90
	14	1025.00	1025.00	1025.00	1025.00	1025.00	1025.00	1025.09	1025.18	1025.18	1025.18	1025.19	1025.20	1025.08
	15	1025.20	1025.20	1025.21	1025.21	1025.21	1025.21	1025.28	1025.35	1025.39	1025.42	1025.42	1025.42	1025.29
	16	1025.42	1025.52	1025.63	1025.63	1025.62	1025.73	1025.84	1025.84	1025.82	1025.80	1025.80	1025.80	1025.70
	17	1025.80	1025.80	1025.80	1025.80	1025.82	1025.83	1025.83	1025.83	1025.83	1025.83	1025.83	1025.83	1025.82
	18	1025.83	1025.83	1025.83	1025.90	1025.97	1026.01	1026.04	1026.05	1026.15	1026.25	1026.32	1026.40	1026.05
	19	1026.42	1026.45	1026.46	1026.46	1026.46	1026.46	1026.52	1026.63	1026.67	1026.67	1026.67	1026.67	1026.54
	20	1026.67	1026.78	1026.89	1026.89	1026.88	1026.96	1027.07	1027.09	1027.09	1027.09	1027.09	1027.09	1026.96
	21	1027.09	1027.09	1027.09	1027.09	1027.09	1027.09	1027.20	1027.30	1027.37	1027.48	1027.51	1027.51	1027.24
	22	1027.51	1027.51	1027.51	1027.51	1027.51	1027.51	1027.51	1027.51	1027.51	1027.52	1027.52	1027.51	1027.51
	23	1027.52	1027.52	1027.51	1027.52	1027.52	1027.51	1027.52	1027.52	1027.52	1027.52	1027.52	1027.52	1027.52

S.V.I.R.CO. Observatory - Pressure in hectoPascal – December 2021

day	hh	00_05	05_10	10_15	15_20	20_25	25_30	30_35	35_40	40_45	45_50	50_55	55_60	average
17	0	1027.51	1027.52	1027.52	1027.52	1027.52	1027.49	1027.47	1027.39	1027.31	1027.31	1027.31	1027.31	1027.43
	1	1027.31	1027.31	1027.31	1027.31	1027.31	1027.31	1027.31	1027.31	1027.31	1027.31	1027.31	1027.31	1027.31
	2	1027.31	1027.31	1027.31	1027.31	1027.30	1027.20	1027.10	1027.10	1027.10	1027.10	1027.10	1027.09	1027.19
	3	1027.09	1027.10	1027.10	1027.10	1027.10	1027.10	1027.10	1027.11	1027.11	1027.10	1027.10	1027.10	1027.10
	4	1027.10	1027.10	1027.10	1027.10	1027.10	1027.10	1027.10	1027.10	1027.19	1027.30	1027.39	1027.49	1027.18
	5	1027.52	1027.52	1027.52	1027.60	1027.70	1027.73	1027.73	1027.73	1027.73	1027.73	1027.73	1027.73	1027.66
	6	1027.73	1027.73	1027.73	1027.73	1027.73	1027.73	1027.73	1027.78	1027.87	1027.92	1027.94	1028.05	1027.80
	7	1028.15	1028.14	1028.14	1028.21	1028.32	1028.36	1028.35	1028.35	1028.46	1028.56	1028.56	1028.46	1028.34
	8	1028.25	1028.04	1027.94	1027.83	1027.73	1027.73	1027.83	1028.14	1028.35	1028.36	1028.46	1028.67	1028.11
	9	1028.77	1028.77	1028.77	1028.77	1028.77	1028.78	1028.78	1028.84	1028.93	1028.94	1028.96	1028.98	1028.84
	10	1028.98	1028.98	1028.98	1028.98	1028.98	1029.00	1029.03	1029.01	1028.98	1028.98	1028.88	1028.76	1028.96
	11	1028.62	1028.42	1028.36	1028.25	1028.14	1028.07	1027.96	1027.94	1027.94	1027.94	1027.93	1027.93	1028.12
	12	1027.93	1027.93	1027.88	1027.84	1027.83	1027.78	1027.62	1027.51	1027.50	1027.39	1027.29	1027.19	1027.64
	13	1027.00	1026.89	1026.89	1026.89	1026.89	1026.89	1026.89	1026.89	1026.88	1026.88	1026.88	1026.89	1026.90
	14	1026.89	1026.89	1026.84	1026.74	1026.68	1026.67	1026.68	1026.68	1026.68	1026.68	1026.68	1026.68	1026.73
	15	1026.67	1026.67	1026.67	1026.65	1026.63	1026.63	1026.63	1026.62	1026.44	1026.26	1026.26	1026.25	1026.53
	16	1026.25	1026.23	1026.21	1026.21	1026.23	1026.25	1026.26	1026.26	1026.26	1026.33	1026.41	1026.43	1026.28
	17	1026.43	1026.43	1026.43	1026.43	1026.43	1026.45	1026.46	1026.45	1026.43	1026.45	1026.47	1026.47	1026.44
	18	1026.47	1026.46	1026.45	1026.44	1026.44	1026.44	1026.35	1026.26	1026.26	1026.26	1026.26	1026.26	1026.36
	19	1026.26	1026.26	1026.26	1026.26	1026.26	1026.26	1026.26	1026.26	1026.26	1026.25	1026.26	1026.26	1026.26
	20	1026.26	1026.25	1026.25	1026.25	1026.25	1026.16	1026.06	1026.05	1026.04	1025.99	1025.93	1025.93	1026.12
	21	1025.97	1026.00	1026.00	1026.00	1026.00	1026.03	1026.05	1026.05	1026.05	1026.04	1026.05	1026.05	1026.02
	22	1026.05	1026.05	1026.05	1026.04	1026.01	1026.00	1026.01	1026.03	1026.16	1026.26	1026.24	1026.14	1026.08
	23	1026.05	1026.05	1026.05	1026.05	1026.05	1026.05	1026.05	1026.05	1026.05	1026.16	1026.27	1026.21	1026.09
18	0	1026.05	1026.06	1026.06	1026.05	1026.06	1025.95	1025.84	1025.83	1025.83	1025.83	1025.83	1025.83	1025.93
	1	1025.83	1025.85	1025.85	1025.84	1025.84	1025.84	1025.84	1025.84	1025.84	1025.84	1025.84	1025.84	1025.84
	2	1025.84	1025.84	1025.84	1025.83	1025.80	1025.77	1025.76	1025.76	1025.76	1025.75	1025.68	1025.60	1025.77
	3	1025.50	1025.42	1025.42	1025.42	1025.42	1025.42	1025.43	1025.43	1025.42	1025.42	1025.42	1025.43	1025.43
	4	1025.43	1025.42	1025.43	1025.44	1025.54	1025.63	1025.63	1025.63	1025.63	1025.64	1025.64	1025.64	1025.56
	5	1025.64	1025.74	1025.84	1025.85	1025.85	1025.84	1025.85	1025.89	1025.93	1025.99	1026.06	1026.06	1025.88
	6	1026.05	1026.05	1026.27	1026.48	1026.48	1026.48	1026.56	1026.65	1026.66	1026.67	1026.69	1026.69	1026.47
	7	1026.68	1026.69	1026.77	1026.87	1026.89	1026.89	1026.98	1027.06	1027.07	1027.08	1027.08	1027.08	1026.93
	8	1027.08	1027.09	1027.10	1027.09	1027.07	1027.07	1027.08	1027.08	1027.09	1027.10	1027.17	1027.28	1027.11
	9	1027.40	1027.48	1027.50	1027.52	1027.52	1027.52	1027.52	1027.52	1027.52	1027.52	1027.42	1027.31	1027.48
	10	1027.31	1027.31	1027.31	1027.30	1027.29	1027.29	1027.28	1027.18	1027.08	1026.99	1026.93	1026.98	1027.19
	11	1027.05	1027.07	1026.97	1026.89	1026.79	1026.68	1026.68	1026.68	1026.68	1026.69	1026.69	1026.58	1026.79
	12	1026.48	1026.47	1026.46	1026.44	1026.35	1026.26	1026.26	1026.26	1026.26	1026.19	1026.11	1026.08	1026.30
	13	1026.05	1026.03	1025.93	1025.84	1025.84	1025.84	1025.84	1025.84	1025.84	1025.84	1025.92	1026.03	1025.90
	14	1026.05	1026.05	1026.05	1026.06	1026.07	1026.16	1026.26	1026.26	1026.26	1026.26	1026.26	1026.26	1026.16
	15	1026.26	1026.26	1026.26	1026.34	1026.41	1026.44	1026.47	1026.58	1026.68	1026.68	1026.67	1026.68	1026.48
	16	1026.68	1026.68	1026.68	1026.68	1026.68	1026.68	1026.68	1026.68	1026.78	1026.88	1026.88	1026.89	1026.74
	17	1026.89	1026.88	1026.89	1027.00	1027.10	1027.21	1027.31	1027.39	1027.50	1027.52	1027.52	1027.52	1027.22
	18	1027.50	1027.39	1027.31	1027.31	1027.31	1027.31	1027.31	1027.31	1027.31	1027.31	1027.28	1027.18	1027.32
	19	1027.10	1027.10	1027.10	1027.10	1027.10	1027.10	1027.10	1027.10	1027.10	1027.10	1027.19	1027.29	1027.12
	20	1027.32	1027.40	1027.50	1027.52	1027.52	1027.52	1027.52	1027.53	1027.53	1027.52	1027.52	1027.52	1027.49
	21	1027.52	1027.52	1027.52	1027.52	1027.52	1027.52	1027.52	1027.52	1027.52	1027.60	1027.70	1027.78	1027.56
	22	1027.89	1027.94	1027.94	1027.94	1027.93	1027.92	1027.92	1027.93	1027.94	1027.94	1027.91	1027.81	1027.92
	23	1027.73	1027.73	1027.73	1027.63	1027.50	1027.40	1027.32	1027.32	1027.31	1027.31	1027.31	1027.31	1027.47

S.V.I.R.CO. Observatory - Pressure in hectoPascal – December 2021

day	hh	00_05	05_10	10_15	15_20	20_25	25_30	30_35	35_40	40_45	45_50	50_55	55_60	average
19	0	1027.31	1027.31	1027.30	1027.28	1027.19	1027.00	1026.89	1026.89	1026.89	1026.89	1026.89	1026.90	1027.05
	1	1026.90	1026.89	1026.89	1026.89	1026.90	1026.90	1026.90	1026.90	1026.90	1026.90	1026.90	1026.90	1026.90
	2	1026.90	1026.89	1026.89	1026.89	1026.85	1026.80	1026.79	1026.74	1026.69	1026.67	1026.57	1026.48	1026.76
	3	1026.48	1026.48	1026.47	1026.45	1026.44	1026.44	1026.35	1026.27	1026.27	1026.17	1026.06	1026.06	1026.33
	4	1026.06	1026.05	1026.03	1026.03	1026.03	1026.03	1026.03	1026.03	1025.94	1025.85	1025.85	1025.85	1025.98
	5	1025.85	1025.85	1025.85	1025.85	1025.85	1025.85	1025.85	1025.85	1025.85	1025.85	1025.85	1025.85	1025.85
	6	1025.85	1025.85	1025.84	1025.84	1025.84	1025.84	1025.83	1025.81	1025.79	1025.79	1025.79	1025.79	1025.82
	7	1025.79	1025.79	1025.79	1025.79	1025.79	1025.73	1025.66	1025.64	1025.64	1025.64	1025.64	1025.64	1025.71
	8	1025.64	1025.53	1025.43	1025.42	1025.41	1025.42	1025.42	1025.41	1025.42	1025.42	1025.42	1025.41	1025.44
	9	1025.40	1025.31	1025.22	1025.22	1025.22	1025.22	1025.22	1025.12	1025.01	1025.01	1025.02	1024.92	1025.16
	10	1024.81	1024.79	1024.68	1024.58	1024.48	1024.39	1024.39	1024.38	1024.36	1024.27	1024.18	1024.18	1024.45
	11	1024.08	1023.97	1023.87	1023.76	1023.76	1023.76	1023.76	1023.65	1023.55	1023.45	1023.34	1023.24	1023.68
	12	1023.03	1022.92	1022.82	1022.71	1022.71	1022.61	1022.50	1022.40	1022.29	1022.29	1022.29	1022.30	1022.57
	13	1022.21	1022.11	1022.10	1021.99	1021.88	1021.88	1021.83	1021.73	1021.67	1021.67	1021.67	1021.60	1021.86
	14	1021.50	1021.46	1021.46	1021.46	1021.46	1021.46	1021.46	1021.45	1021.46	1021.46	1021.46	1021.46	1021.46
	15	1021.46	1021.46	1021.46	1021.46	1021.46	1021.46	1021.46	1021.46	1021.46	1021.46	1021.44	1021.34	1021.45
	16	1021.25	1021.25	1021.25	1021.25	1021.25	1021.25	1021.25	1021.25	1021.25	1021.25	1021.25	1021.25	1021.25
	17	1021.25	1021.15	1021.04	1021.05	1021.05	1021.04	1021.04	1021.04	1021.04	1021.04	1021.04	1021.05	1021.07
	18	1021.05	1021.04	1021.04	1021.04	1021.03	1021.03	1021.03	1021.03	1021.03	1021.03	1021.01	1020.94	1021.02
	19	1020.87	1020.84	1020.84	1020.83	1020.81	1020.79	1020.79	1020.70	1020.62	1020.62	1020.60	1020.58	1020.74
	20	1020.58	1020.58	1020.58	1020.58	1020.58	1020.58	1020.58	1020.55	1020.46	1020.41	1020.41	1020.42	1020.52
	21	1020.42	1020.42	1020.41	1020.41	1020.41	1020.42	1020.42	1020.42	1020.42	1020.41	1020.30	1020.21	1020.39
	22	1020.21	1020.21	1020.11	1020.00	1020.00	1020.00	1020.00	1020.00	1020.00	1019.97	1019.90	1019.85	1020.02
	23	1019.84	1019.84	1019.81	1019.79	1019.79	1019.79	1019.79	1019.79	1019.79	1019.78	1019.78	1019.79	1019.80
20	0	1019.77	1019.71	1019.61	1019.57	1019.57	1019.58	1019.58	1019.48	1019.37	1019.37	1019.37	1019.37	1019.52
	1	1019.37	1019.37	1019.37	1019.37	1019.37	1019.37	1019.37	1019.36	1019.36	1019.36	1019.36	1019.32	1019.36
	2	1019.22	1019.16	1019.16	1019.14	1019.04	1018.95	1018.95	1018.95	1018.95	1018.95	1018.95	1018.91	1019.03
	3	1018.80	1018.74	1018.74	1018.74	1018.74	1018.72	1018.62	1018.54	1018.53	1018.53	1018.51	1018.50	1018.64
	4	1018.41	1018.33	1018.33	1018.32	1018.32	1018.32	1018.32	1018.32	1018.32	1018.32	1018.32	1018.32	1018.33
	5	1018.32	1018.32	1018.32	1018.32	1018.32	1018.32	1018.32	1018.32	1018.32	1018.32	1018.32	1018.32	1018.32
	6	1018.32	1018.32	1018.33	1018.33	1018.32	1018.32	1018.32	1018.33	1018.33	1018.32	1018.32	1018.33	1018.32
	7	1018.33	1018.33	1018.33	1018.32	1018.32	1018.40	1018.48	1018.48	1018.51	1018.53	1018.53	1018.53	1018.42
	8	1018.53	1018.53	1018.53	1018.53	1018.53	1018.61	1018.72	1018.74	1018.74	1018.74	1018.74	1018.85	1018.65
	9	1018.95	1018.95	1018.95	1018.95	1018.95	1018.95	1018.95	1018.95	1018.95	1018.94	1018.83	1018.74	1018.92
	10	1018.74	1018.74	1018.73	1018.69	1018.60	1018.53	1018.50	1018.40	1018.32	1018.32	1018.30	1018.28	1018.51
	11	1018.20	1018.11	1018.11	1018.02	1017.93	1017.92	1017.91	1017.90	1017.80	1017.69	1017.69	1017.69	1017.91
	12	1017.69	1017.69	1017.69	1017.59	1017.48	1017.49	1017.49	1017.48	1017.48	1017.48	1017.48	1017.48	1017.54
	13	1017.48	1017.48	1017.46	1017.40	1017.35	1017.35	1017.35	1017.36	1017.35	1017.34	1017.34	1017.35	1017.38
	14	1017.35	1017.36	1017.36	1017.36	1017.35	1017.38	1017.42	1017.45	1017.48	1017.48	1017.48	1017.48	1017.41
	15	1017.48	1017.48	1017.48	1017.48	1017.48	1017.48	1017.47	1017.47	1017.47	1017.48	1017.48	1017.48	1017.48
	16	1017.48	1017.48	1017.48	1017.47	1017.47	1017.52	1017.58	1017.63	1017.68	1017.68	1017.68	1017.68	1017.57
	17	1017.69	1017.69	1017.69	1017.68	1017.71	1017.78	1017.83	1017.83	1017.83	1017.86	1017.89	1017.89	1017.78
	18	1017.89	1017.89	1018.00	1018.10	1018.10	1018.18	1018.29	1018.31	1018.37	1018.46	1018.50	1018.52	1018.22
	19	1018.52	1018.52	1018.52	1018.52	1018.52	1018.52	1018.52	1018.57	1018.68	1018.73	1018.73	1018.76	1018.59
	20	1018.78	1018.83	1018.91	1018.94	1018.98	1019.08	1019.14	1019.15	1019.15	1019.15	1019.15	1019.15	1019.03
	21	1019.15	1019.15	1019.15	1019.26	1019.36	1019.36	1019.36	1019.36	1019.36	1019.35	1019.46	1019.57	1019.32
	22	1019.57	1019.57	1019.64	1019.72	1019.76	1019.78	1019.78	1019.78	1019.78	1019.82	1019.87	1019.88	1019.74
	23	1019.90	1019.94	1019.99	1019.99	1019.99	1019.99	1019.99	1019.99	1019.99	1019.99	1019.99	1019.99	1019.98

S.V.I.R.CO. Observatory - Pressure in hectoPascal – December 2021

day	hh	00_05	05_10	10_15	15_20	20_25	25_30	30_35	35_40	40_45	45_50	50_55	55_60	average
21	0	1019.99	1020.00	1020.00	1019.99	1019.99	1019.99	1019.99	1019.99	1019.99	1020.07	1020.18	1020.20	1020.03
	1	1020.20	1020.20	1020.20	1020.20	1020.20	1020.20	1020.28	1020.39	1020.41	1020.40	1020.41	1020.41	1020.29
	2	1020.41	1020.41	1020.41	1020.41	1020.41	1020.41	1020.41	1020.42	1020.42	1020.41	1020.41	1020.41	1020.41
	3	1020.41	1020.41	1020.41	1020.41	1020.41	1020.41	1020.41	1020.41	1020.41	1020.46	1020.51	1020.51	1020.43
	4	1020.53	1020.58	1020.62	1020.62	1020.67	1020.72	1020.72	1020.72	1020.75	1020.80	1020.83	1020.83	1020.70
	5	1020.83	1020.83	1020.83	1020.83	1020.91	1020.99	1021.01	1021.03	1021.03	1021.13	1021.23	1021.25	1020.99
	6	1021.25	1021.24	1021.29	1021.40	1021.46	1021.45	1021.45	1021.45	1021.46	1021.47	1021.49	1021.58	1021.41
	7	1021.66	1021.69	1021.75	1021.83	1021.87	1021.87	1021.87	1021.87	1021.87	1021.87	1021.87	1021.88	1021.82
	8	1021.88	1021.88	1021.87	1021.88	1021.99	1022.08	1022.08	1022.08	1022.08	1022.07	1022.08	1022.08	1022.00
	9	1022.16	1022.27	1022.29	1022.29	1022.29	1022.29	1022.29	1022.29	1022.29	1022.29	1022.29	1022.29	1022.28
	10	1022.29	1022.29	1022.29	1022.29	1022.18	1022.08	1022.08	1022.08	1022.08	1022.07	1022.07	1022.06	1022.15
	11	1022.03	1022.01	1021.94	1021.87	1021.86	1021.75	1021.66	1021.66	1021.66	1021.58	1021.47	1021.45	1021.74
	12	1021.45	1021.34	1021.24	1021.24	1021.24	1021.24	1021.24	1021.21	1021.11	1021.03	1021.03	1021.03	1021.20
	13	1021.01	1021.00	1020.98	1020.96	1020.96	1020.97	1020.97	1020.96	1020.96	1020.96	1020.97	1020.99	1020.97
	14	1020.99	1020.98	1020.98	1020.98	1020.98	1020.98	1020.98	1020.98	1020.99	1020.99	1020.99	1020.98	1020.98
	15	1021.01	1021.03	1021.03	1021.03	1021.03	1021.03	1021.03	1021.03	1021.03	1021.03	1021.03	1021.02	1021.03
	16	1021.03	1021.03	1021.03	1021.03	1021.03	1021.03	1021.03	1021.03	1021.03	1021.02	1021.03	1021.03	1021.03
	17	1021.02	1021.02	1021.03	1021.03	1021.03	1021.03	1021.03	1021.03	1021.03	1021.02	1021.12	1021.23	1021.05
	18	1021.24	1021.29	1021.36	1021.38	1021.39	1021.42	1021.44	1021.44	1021.44	1021.44	1021.44	1021.44	1021.39
	19	1021.44	1021.44	1021.44	1021.46	1021.47	1021.47	1021.48	1021.48	1021.48	1021.48	1021.48	1021.48	1021.46
	20	1021.48	1021.56	1021.65	1021.65	1021.65	1021.65	1021.65	1021.65	1021.65	1021.65	1021.65	1021.65	1021.63
	21	1021.65	1021.66	1021.66	1021.66	1021.66	1021.66	1021.66	1021.66	1021.65	1021.66	1021.66	1021.65	1021.66
	22	1021.59	1021.53	1021.55	1021.56	1021.57	1021.57	1021.57	1021.57	1021.58	1021.58	1021.57	1021.51	1021.56
	23	1021.45	1021.45	1021.45	1021.45	1021.45	1021.45	1021.45	1021.45	1021.45	1021.45	1021.45	1021.45	1021.45
22	0	1021.45	1021.45	1021.45	1021.45	1021.45	1021.45	1021.45	1021.46	1021.46	1021.45	1021.46	1021.46	1021.45
	1	1021.46	1021.46	1021.45	1021.45	1021.45	1021.45	1021.45	1021.45	1021.45	1021.45	1021.45	1021.45	1021.45
	2	1021.45	1021.45	1021.45	1021.45	1021.45	1021.43	1021.33	1021.24	1021.25	1021.25	1021.24	1021.24	1021.35
	3	1021.24	1021.23	1021.24	1021.24	1021.23	1021.24	1021.24	1021.23	1021.23	1021.23	1021.13	1021.03	1021.21
	4	1021.03	1021.03	1021.03	1021.04	1021.04	1021.04	1021.14	1021.24	1021.24	1021.24	1021.25	1021.25	1021.13
	5	1021.24	1021.24	1021.35	1021.45	1021.45	1021.45	1021.45	1021.45	1021.45	1021.45	1021.45	1021.45	1021.41
	6	1021.45	1021.45	1021.45	1021.45	1021.45	1021.45	1021.45	1021.45	1021.47	1021.57	1021.66	1021.66	1021.50
	7	1021.66	1021.74	1021.82	1021.85	1021.87	1021.87	1021.87	1021.87	1021.87	1021.94	1022.00	1022.02	1021.88
	8	1022.04	1022.07	1022.18	1022.28	1022.29	1022.29	1022.29	1022.36	1022.46	1022.49	1022.53	1022.64	1022.32
	9	1022.70	1022.70	1022.81	1022.91	1023.02	1023.12	1023.13	1023.13	1023.12	1023.12	1023.12	1023.12	1023.00
	10	1023.12	1023.12	1023.02	1022.91	1022.81	1022.70	1022.60	1022.49	1022.39	1022.26	1022.17	1022.11	1022.64
	11	1022.09	1022.08	1022.08	1022.07	1022.04	1022.03	1022.03	1022.03	1022.03	1022.03	1022.02	1021.97	1022.04
	12	1021.91	1021.89	1021.86	1021.85	1021.75	1021.66	1021.65	1021.66	1021.66	1021.65	1021.66	1021.66	1021.74
	13	1021.66	1021.66	1021.66	1021.66	1021.66	1021.66	1021.65	1021.66	1021.66	1021.66	1021.66	1021.66	1021.66
	14	1021.66	1021.65	1021.65	1021.66	1021.66	1021.66	1021.66	1021.65	1021.71	1021.79	1021.81	1021.82	1021.70
	15	1021.85	1021.87	1021.86	1021.86	1021.86	1021.86	1021.86	1021.86	1021.86	1021.86	1021.86	1021.97	1021.87
	16	1022.07	1022.07	1022.07	1022.14	1022.21	1022.21	1022.24	1022.28	1022.28	1022.28	1022.28	1022.39	1022.21
	17	1022.49	1022.49	1022.51	1022.61	1022.70	1022.70	1022.70	1022.70	1022.80	1022.91	1022.91	1022.90	1022.70
	18	1023.01	1023.12	1023.11	1023.11	1023.12	1023.12	1023.12	1023.11	1023.11	1023.15	1023.20	1023.16	1023.12
	19	1023.12	1023.23	1023.32	1023.32	1023.32	1023.33	1023.43	1023.53	1023.54	1023.54	1023.54	1023.54	1023.39
	20	1023.54	1023.54	1023.54	1023.54	1023.54	1023.54	1023.54	1023.53	1023.54	1023.54	1023.54	1023.54	1023.54
	21	1023.54	1023.54	1023.54	1023.58	1023.68	1023.75	1023.75	1023.74	1023.75	1023.75	1023.75	1023.75	1023.67
	22	1023.75	1023.75	1023.82	1023.90	1023.93	1023.95	1023.96	1023.96	1023.96	1023.96	1023.96	1023.96	1023.90
	23	1023.96	1023.96	1023.96	1023.96	1023.96	1023.96	1023.96	1023.96	1023.96	1023.96	1023.96	1023.96	1023.96

S.V.I.R.CO. Observatory - Pressure in hectoPascal – December 2021

day	hh	00_05	05_10	10_15	15_20	20_25	25_30	30_35	35_40	40_45	45_50	50_55	55_60	average
23	0	1023.96	1023.96	1023.96	1023.96	1023.96	1023.96	1023.96	1023.96	1023.86	1023.75	1023.75	1023.75	1023.90
	1	1023.75	1023.75	1023.80	1023.86	1023.89	1023.93	1023.96	1023.96	1023.96	1023.96	1023.96	1023.96	1023.89
	2	1023.96	1023.96	1023.96	1023.96	1023.94	1023.94	1023.85	1023.75	1023.75	1023.75	1023.65	1023.54	1023.83
	3	1023.55	1023.55	1023.55	1023.54	1023.54	1023.44	1023.33	1023.34	1023.23	1023.11	1023.12	1023.13	1023.37
	4	1023.12	1023.12	1023.12	1023.12	1023.12	1023.12	1023.12	1023.12	1023.23	1023.33	1023.33	1023.34	1023.18
	5	1023.34	1023.33	1023.33	1023.44	1023.54	1023.54	1023.54	1023.55	1023.55	1023.55	1023.54	1023.54	1023.48
	6	1023.54	1023.55	1023.55	1023.54	1023.54	1023.54	1023.63	1023.73	1023.75	1023.75	1023.85	1023.96	1023.66
	7	1023.97	1023.96	1024.04	1024.12	1024.15	1024.17	1024.17	1024.17	1024.17	1024.17	1024.17	1024.17	1024.12
	8	1024.17	1024.17	1024.17	1024.17	1024.17	1024.17	1024.17	1024.17	1024.17	1024.17	1024.17	1024.18	1024.17
	9	1024.18	1024.17	1024.17	1024.17	1024.17	1024.17	1024.12	1024.01	1023.95	1023.85	1023.75	1023.64	1024.03
	10	1023.54	1023.54	1023.54	1023.54	1023.54	1023.54	1023.54	1023.54	1023.54	1023.54	1023.54	1023.44	1023.53
	11	1023.33	1023.33	1023.33	1023.23	1023.12	1023.02	1022.84	1022.74	1022.70	1022.70	1022.70	1022.70	1022.98
	12	1022.70	1022.70	1022.70	1022.70	1022.60	1022.50	1022.49	1022.49	1022.49	1022.50	1022.50	1022.44	1022.57
	13	1022.33	1022.28	1022.28	1022.28	1022.28	1022.25	1022.21	1022.20	1022.20	1022.19	1022.19	1022.20	1022.24
	14	1022.20	1022.19	1022.20	1022.20	1022.19	1022.13	1022.07	1022.07	1022.07	1022.07	1022.07	1022.07	1022.13
	15	1022.07	1022.07	1022.07	1022.06	1022.06	1022.06	1022.06	1022.06	1022.05	1022.05	1022.04	1021.99	1022.05
	16	1021.90	1021.86	1021.86	1021.86	1021.86	1021.86	1021.86	1021.86	1021.86	1021.86	1021.86	1021.87	1021.86
	17	1021.87	1021.86	1021.87	1021.98	1022.07	1022.07	1022.08	1022.07	1022.07	1022.07	1022.07	1022.07	1022.01
	18	1022.07	1022.07	1022.07	1022.07	1022.07	1022.07	1022.07	1022.07	1022.07	1022.07	1022.07	1022.07	1022.07
	19	1022.07	1022.06	1021.95	1021.86	1021.86	1021.86	1021.86	1021.86	1021.86	1021.86	1021.86	1021.86	1021.90
	20	1021.86	1021.86	1021.86	1021.86	1021.86	1021.86	1021.86	1021.86	1021.87	1021.87	1021.86	1021.86	1021.86
	21	1021.86	1021.86	1021.86	1021.86	1021.87	1021.87	1021.86	1021.86	1021.86	1021.86	1021.86	1021.86	1021.86
	22	1021.86	1021.86	1021.86	1021.86	1021.97	1022.07	1022.07	1022.08	1022.08	1022.07	1022.07	1022.07	1021.99
	23	1021.97	1021.87	1021.87	1021.76	1021.65	1021.66	1021.66	1021.65	1021.63	1021.57	1021.49	1021.45	1021.68
24	0	1021.45	1021.45	1021.45	1021.45	1021.35	1021.24	1021.24	1021.23	1021.24	1021.24	1021.24	1021.24	1021.31
	1	1021.24	1021.24	1021.24	1021.24	1021.24	1021.24	1021.24	1021.24	1021.24	1021.13	1021.03	1020.93	1021.19
	2	1020.82	1020.83	1020.81	1020.70	1020.61	1020.60	1020.49	1020.41	1020.41	1020.41	1020.41	1020.41	1020.57
	3	1020.41	1020.41	1020.41	1020.41	1020.41	1020.30	1020.20	1020.20	1020.20	1020.19	1020.19	1020.20	1020.29
	4	1020.20	1020.20	1020.20	1020.20	1020.20	1020.20	1020.20	1020.20	1020.20	1020.19	1020.19	1020.20	1020.20
	5	1020.20	1020.14	1020.03	1020.02	1020.11	1020.15	1020.15	1020.15	1020.15	1020.15	1020.15	1020.15	1020.13
	6	1020.15	1020.14	1020.14	1020.14	1020.14	1020.14	1020.12	1020.04	1019.98	1019.98	1019.98	1019.98	1020.08
	7	1019.98	1019.98	1019.98	1019.98	1019.98	1019.96	1019.93	1019.85	1019.77	1019.77	1019.77	1019.77	1019.89
	8	1019.77	1019.77	1019.77	1019.77	1019.77	1019.77	1019.77	1019.77	1019.77	1019.77	1019.77	1019.77	1019.77
	9	1019.77	1019.77	1019.77	1019.77	1019.77	1019.77	1019.77	1019.67	1019.56	1019.56	1019.56	1019.55	1019.69
	10	1019.45	1019.36	1019.33	1019.22	1019.14	1019.11	1019.03	1018.95	1018.94	1018.94	1018.91	1018.80	1019.10
	11	1018.72	1018.62	1018.52	1018.52	1018.52	1018.50	1018.40	1018.30	1018.30	1018.20	1018.09	1018.08	1018.40
	12	1018.04	1017.99	1017.97	1017.92	1017.88	1017.89	1017.78	1017.67	1017.68	1017.67	1017.65	1017.56	1017.81
	13	1017.47	1017.40	1017.30	1017.26	1017.26	1017.25	1017.25	1017.25	1017.25	1017.25	1017.25	1017.25	1017.29
	14	1017.25	1017.26	1017.26	1017.26	1017.26	1017.26	1017.26	1017.25	1017.24	1017.24	1017.24	1017.24	1017.25
	15	1017.23	1017.20	1017.12	1017.05	1017.05	1017.05	1017.05	1017.05	1017.05	1017.05	1017.05	1017.05	1017.08
	16	1017.05	1016.95	1016.84	1016.84	1016.84	1016.84	1016.84	1016.84	1016.84	1016.84	1016.84	1016.84	1016.87
	17	1016.84	1016.84	1016.84	1016.84	1016.84	1016.84	1016.84	1016.84	1016.84	1016.84	1016.84	1016.84	1016.84
	18	1016.84	1016.84	1016.74	1016.63	1016.63	1016.63	1016.63	1016.63	1016.63	1016.53	1016.42	1016.42	1016.63
	19	1016.42	1016.42	1016.42	1016.42	1016.42	1016.42	1016.42	1016.31	1016.19	1016.08	1016.00	1016.00	1016.29
	20	1016.00	1016.00	1016.00	1016.00	1016.00	1016.00	1016.00	1016.00	1016.00	1016.00	1016.00	1016.00	1016.00
	21	1016.00	1016.00	1016.00	1016.00	1016.00	1016.00	1016.00	1015.99	1015.98	1015.96	1015.94	1015.94	1015.98
	22	1015.92	1015.85	1015.80	1015.79	1015.79	1015.79	1015.79	1015.79	1015.79	1015.79	1015.68	1015.48	1015.77
	23	1015.38	1015.38	1015.27	1015.17	1015.12	1015.00	1014.94	1014.95	1014.96	1014.86	1014.75	1014.75	1015.04

S.V.I.R.CO. Observatory - Pressure in hectoPascal – December 2021

day	hh	00_05	05_10	10_15	15_20	20_25	25_30	30_35	35_40	40_45	45_50	50_55	55_60	average
25	0	1014.75	1014.75	1014.68	1014.57	1014.54	1014.54	1014.53	1014.51	1014.48	1014.40	1014.33	1014.33	1014.52
	1	1014.33	1014.33	1014.31	1014.27	1014.19	1014.12	1014.12	1014.13	1014.13	1014.13	1014.03	1013.93	1014.17
	2	1013.93	1013.97	1013.96	1013.91	1013.91	1013.91	1013.91	1013.92	1013.92	1013.92	1013.91	1013.70	1013.90
	3	1013.39	1007.94	1006.15	1011.39	1013.08	1013.08	1013.08	1013.19	1013.29	1013.29	1013.29	1013.09	1012.02
	4	1012.88	1012.87	1012.87	1012.87	1012.87	1012.87	1012.87	1012.77	1012.66	1012.58	1012.48	1012.45	1012.75
	5	1012.45	1012.45	1012.55	1012.66	1012.66	1012.66	1012.77	1012.77	1012.66	1012.66	1012.66	1012.66	1012.63
	6	1012.66	1012.66	1012.66	1012.67	1012.67	1012.66	1012.66	1012.66	1012.56	1012.45	1012.45	1012.45	1012.60
	7	1012.45	1012.45	1012.45	1012.45	1012.45	1012.45	1012.45	1012.45	1012.45	1012.42	1012.39	1012.39	1012.44
	8	1012.38	1012.31	1012.24	1012.24	1012.24	1012.24	1012.24	1012.24	1012.24	1012.25	1012.25	1012.35	1012.27
	9	1012.45	1012.51	1012.57	1012.58	1012.63	1012.65	1012.55	1012.46	1012.45	1012.45	1012.41	1012.20	1012.49
	10	1012.03	1012.03	1012.03	1012.03	1011.92	1011.82	1011.82	1011.72	1011.61	1011.60	1011.49	1011.40	1011.79
	11	1011.34	1011.24	1011.20	1011.19	1011.09	1010.98	1010.98	1010.98	1010.88	1010.78	1010.68	1010.57	1010.99
	12	1010.46	1010.35	1010.35	1010.25	1010.14	1010.14	1010.14	1010.14	1010.14	1010.14	1010.14	1010.14	1010.21
	13	1009.93	1009.72	1009.83	1009.93	1009.94	1009.94	1009.93	1009.83	1009.72	1009.71	1009.70	1009.67	1009.82
	14	1009.58	1009.51	1009.51	1009.51	1009.51	1009.51	1009.51	1009.51	1009.42	1009.33	1009.34	1009.34	1009.46
	15	1009.32	1009.33	1009.33	1009.31	1009.30	1009.30	1009.30	1009.30	1009.30	1009.30	1009.30	1009.30	1009.31
	16	1009.30	1009.31	1009.31	1009.30	1009.31	1009.31	1009.30	1009.30	1009.30	1009.20	1009.09	1009.09	1009.26
	17	1009.09	1009.09	1009.09	1009.09	1009.09	1009.13	1009.24	1009.30	1009.30	1009.32	1009.42	1009.49	1009.22
	18	1009.41	1009.33	1009.31	1009.30	1009.19	1009.09	1009.10	1009.10	1009.09	1009.09	1009.09	1009.09	1009.18
	19	1009.09	1008.98	1008.88	1008.88	1008.89	1008.89	1008.87	1008.86	1008.77	1008.67	1008.67	1008.77	1008.85
	20	1008.77	1008.67	1008.67	1008.67	1008.78	1008.88	1008.87	1008.88	1008.84	1008.84	1008.78	1008.67	1008.77
	21	1008.67	1008.67	1008.67	1008.67	1008.67	1008.67	1008.57	1008.46	1008.46	1008.45	1008.46	1008.46	1008.57
	22	1008.46	1008.46	1008.46	1008.46	1008.46	1008.47	1008.47	1008.46	1008.46	1008.46	1008.46	1008.46	1008.46
	23	1008.47	1008.46	1008.47	1008.47	1008.47	1008.46	1008.46	1008.46	1008.46	1008.46	1008.46	1008.46	1008.46
26	0	1008.46	1008.46	1008.47	1008.47	1008.46	1008.46	1008.47	1008.47	1008.47	1008.46	1008.46	1008.47	1008.46
	1	1008.47	1008.46	1008.46	1008.46	1008.46	1008.46	1008.54	1008.65	1008.67	1008.67	1008.67	1008.67	1008.55
	2	1008.67	1008.67	1008.67	1008.66	1008.62	1008.63	1008.67	1008.67	1008.59	1008.58	1008.64	1008.65	1008.64
	3	1008.63	1008.64	1008.65	1008.65	1008.66	1008.62	1008.62	1008.66	1008.67	1008.65	1008.64	1008.67	1008.64
	4	1008.67	1008.67	1008.67	1008.78	1008.89	1008.88	1008.88	1008.88	1008.88	1008.88	1008.88	1008.88	1008.82
	5	1008.88	1008.89	1008.92	1009.02	1009.09	1009.09	1009.09	1009.09	1009.09	1009.09	1009.10	1009.10	1009.04
	6	1009.09	1009.09	1009.09	1009.09	1009.10	1009.10	1009.09	1009.09	1009.09	1009.09	1009.09	1009.09	1009.09
	7	1009.09	1009.10	1009.10	1009.11	1009.12	1009.11	1009.13	1009.16	1009.19	1009.20	1009.20	1009.20	1009.14
	8	1009.19	1009.18	1009.17	1009.17	1009.24	1009.30	1009.30	1009.30	1009.30	1009.31	1009.31	1009.30	1009.25
	9	1009.31	1009.31	1009.32	1009.33	1009.42	1009.51	1009.51	1009.51	1009.43	1009.34	1009.31	1009.30	1009.38
	10	1009.20	1009.11	1009.12	1009.11	1009.09	1009.10	1008.99	1008.89	1008.78	1008.67	1008.64	1008.38	1008.92
	11	1008.31	1008.46	1008.36	1008.25	1008.15	1008.05	1008.09	1008.13	1008.19	1008.25	1008.25	1008.21	1008.22
	12	1008.13	1008.10	1008.12	1008.10	1008.07	1008.07	1008.06	1008.04	1008.04	1008.04	1008.04	1008.04	1008.07
	13	1007.94	1007.84	1007.84	1007.83	1007.84	1007.84	1007.83	1007.83	1007.83	1007.82	1007.82	1007.82	1007.84
	14	1007.78	1007.68	1007.62	1007.62	1007.62	1007.62	1007.62	1007.62	1007.62	1007.62	1007.62	1007.62	1007.64
	15	1007.63	1007.63	1007.63	1007.56	1007.49	1007.50	1007.53	1007.59	1007.62	1007.62	1007.63	1007.63	1007.59
	16	1007.63	1007.63	1007.63	1007.63	1007.62	1007.62	1007.61	1007.61	1007.60	1007.59	1007.58	1007.57	1007.61
	17	1007.57	1007.57	1007.56	1007.56	1007.58	1007.58	1007.60	1007.62	1007.63	1007.63	1007.63	1007.66	1007.60
	18	1007.87	1008.04	1008.04	1008.03	1008.01	1008.01	1008.03	1008.03	1008.03	1008.04	1008.04	1008.04	1008.02
	19	1008.04	1008.04	1008.04	1008.04	1008.04	1008.04	1008.15	1008.26	1008.25	1008.25	1008.25	1008.36	1008.15
	20	1008.46	1008.46	1008.46	1008.06	1007.93	1008.23	1008.24	1008.24	1008.25	1008.25	1008.25	1008.25	1008.25
	21	1008.25	1008.25	1008.25	1008.25	1008.25	1008.25	1008.25	1008.25	1008.25	1008.25	1008.25	1008.25	1008.25
	22	1008.25	1008.26	1008.27	1008.26	1008.25	1008.25	1008.25	1008.25	1008.25	1008.25	1008.25	1008.25	1008.25
	23	1008.25	1008.25	1008.27	1008.27	1008.26	1008.26	1008.25	1008.24	1008.24	1008.24	1008.21	1008.21	1008.24

S.V.I.R.CO. Observatory - Pressure in hectoPascal – December 2021

day	hh	00_05	05_10	10_15	15_20	20_25	25_30	30_35	35_40	40_45	45_50	50_55	55_60	average
27	0	1008.25	1008.14	1008.04	1008.04	1008.04	1008.03	1008.02	1007.93	1007.95	1008.04	1008.04	1008.04	1008.04
	1	1008.12	1008.22	1008.25	1008.25	1008.24	1008.24	1008.24	1008.23	1008.24	1008.26	1008.26	1007.05	1008.13
	2	1005.57	1004.95	1006.22	1007.95	1008.02	1008.10	1008.35	1008.46	1006.74	1006.85	1008.68	1008.67	1007.38
	3	1008.67	1008.67	1008.67	1008.67	1008.67	1008.68	1008.68	1008.67	1008.67	1008.67	1008.67	1008.67	1008.67
	4	1008.67	1008.67	1008.67	1008.67	1008.68	1008.68	1008.67	1008.67	1008.67	1008.68	1008.68	1008.68	1008.67
	5	1008.68	1008.68	1008.68	1008.67	1008.68	1008.68	1008.68	1008.67	1008.67	1008.77	1008.92	1008.93	1008.72
	6	1008.91	1009.00	1009.09	1009.19	1009.29	1009.30	1009.30	1009.41	1009.51	1009.58	1009.67	1009.70	1009.33
	7	1009.73	1009.73	1009.72	1009.73	1009.73	1009.73	1009.84	1009.94	1009.94	1009.94	1009.94	1009.98	1009.83
	8	1010.05	1010.11	1010.15	1010.26	1010.36	1010.36	1010.36	1010.36	1010.36	1010.36	1010.36	1010.36	1010.29
	9	1010.46	1010.57	1010.57	1010.57	1010.57	1010.57	1010.57	1010.57	1010.57	1010.57	1010.57	1010.55	1010.56
	10	1010.52	1010.44	1010.36	1010.36	1010.36	1010.36	1010.35	1010.35	1010.36	1010.36	1010.35	1010.35	1010.37
	11	1010.25	1010.15	1010.04	1009.94	1009.94	1009.93	1009.93	1009.83	1009.72	1009.73	1009.73	1009.62	1009.90
	12	1009.51	1009.52	1009.52	1009.52	1009.51	1009.51	1009.51	1009.51	1009.52	1009.49	1009.39	1009.31	1009.48
	13	1009.20	1009.09	1009.09	1009.09	1009.09	1009.10	1009.10	1009.10	1009.10	1009.09	1009.09	1009.09	1009.10
	14	1009.09	1009.09	1009.09	1009.09	1009.09	1009.09	1009.09	1009.09	1009.09	1009.09	1009.10	1009.10	1009.09
	15	1009.09	1009.09	1009.09	1009.09	1009.09	1008.99	1008.88	1008.88	1008.88	1008.88	1008.88	1008.88	1008.98
	16	1008.88	1008.78	1008.67	1008.57	1008.46	1008.46	1008.46	1008.57	1008.67	1008.67	1008.67	1008.67	1008.63
	17	1008.64	1008.64	1008.67	1008.68	1008.57	1008.45	1008.45	1008.46	1008.35	1008.24	1008.15	1007.94	1008.43
	18	1007.83	1007.84	1007.84	1007.81	1007.79	1007.71	1007.62	1007.66	1007.77	1007.83	1007.83	1007.83	1007.78
	19	1007.83	1007.83	1007.83	1007.83	1007.84	1007.84	1007.83	1007.83	1007.84	1007.84	1007.83	1007.81	1007.83
	20	1007.79	1007.61	1007.42	1007.41	1007.41	1007.40	1007.30	1007.21	1007.20	1007.21	1007.13	1007.02	1007.34
	21	1007.00	1007.00	1007.00	1007.00	1007.00	1006.94	1006.83	1006.78	1006.78	1006.79	1006.79	1006.79	1006.89
	22	1006.79	1006.79	1006.79	1006.79	1006.79	1006.75	1006.64	1006.58	1006.57	1006.47	1006.37	1006.36	1006.64
	23	1006.26	1006.15	1006.15	1006.15	1006.14	1006.04	1005.94	1005.94	1005.94	1005.94	1005.83	1005.73	1006.02
28	0	1005.72	1005.72	1005.72	1005.72	1005.72	1005.73	1005.73	1005.77	1005.87	1005.93	1006.04	1006.16	1005.82
	1	1006.16	1006.15	1006.15	1006.15	1006.15	1006.15	1006.15	1006.26	1006.36	1006.36	1006.36	1006.36	1006.23
	2	1006.36	1006.36	1006.37	1006.37	1006.36	1006.36	1006.36	1006.36	1006.36	1006.47	1006.58	1006.68	1006.41
	3	1006.78	1006.78	1006.78	1006.78	1006.78	1006.79	1006.79	1006.78	1006.89	1007.00	1007.04	1007.14	1006.86
	4	1007.21	1007.21	1007.21	1007.20	1007.31	1007.41	1007.42	1007.44	1007.54	1007.62	1007.62	1007.73	1007.41
	5	1007.94	1008.04	1008.15	1008.25	1008.24	1008.27	1008.38	1006.94	1007.05	1008.78	1008.99	1009.10	1008.18
	6	1009.10	1009.20	1009.31	1009.31	1009.31	1009.31	1009.30	1009.31	1009.31	1009.31	1009.31	1009.32	1009.28
	7	1009.32	1009.31	1009.30	1009.30	1009.31	1009.33	1009.43	1009.51	1009.52	1009.57	1009.68	1009.73	1009.44
	8	1009.73	1009.73	1009.72	1009.72	1009.73	1009.73	1009.73	1009.73	1009.67	1009.56	1009.52	1009.62	1009.68
	9	1009.72	1009.79	1009.90	1009.94	1009.94	1009.94	1009.94	1009.93	1009.94	1009.94	1009.93	1009.94	1009.90
	10	1009.94	1009.94	1009.94	1009.94	1009.94	1009.94	1009.94	1009.94	1009.94	1009.94	1009.94	1009.94	1009.94
	11	1009.94	1009.94	1009.94	1009.94	1009.94	1009.94	1009.94	1009.94	1009.94	1009.94	1009.94	1009.94	1009.94
	12	1009.94	1009.93	1009.83	1009.73	1009.73	1009.72	1009.65	1009.56	1009.52	1009.52	1009.52	1009.45	1009.67
	13	1009.39	1009.41	1009.41	1009.36	1009.21	1009.10	1009.10	1009.09	1009.10	1009.11	1009.11	1009.11	1009.21
	14	1009.12	1009.11	1009.16	1009.20	1009.24	1009.30	1009.31	1009.31	1009.31	1009.31	1009.31	1009.30	1009.25
	15	1009.30	1009.31	1009.31	1009.41	1009.59	1009.66	1009.65	1009.65	1009.66	1009.68	1009.69	1009.69	1009.55
	16	1009.69	1009.70	1009.72	1009.72	1009.73	1009.73	1009.75	1009.78	1009.86	1009.93	1009.93	1009.93	1009.79
	17	1009.93	1009.94	1009.94	1009.94	1009.94	1009.94	1009.94	1009.94	1009.94	1009.94	1009.94	1009.95	1009.94
	18	1009.95	1009.97	1009.96	1009.93	1009.94	1009.94	1009.94	1009.94	1009.84	1009.73	1009.73	1009.73	1009.88
	19	1009.73	1009.72	1009.73	1009.73	1009.72	1009.73	1009.73	1009.73	1009.73	1009.72	1009.72	1009.73	1009.72
	20	1009.73	1009.62	1009.52	1009.51	1009.51	1009.52	1009.52	1009.51	1009.44	1009.36	1009.34	1009.35	1009.49
	21	1009.38	1009.45	1009.52	1009.52	1009.51	1009.51	1009.62	1009.73	1009.73	1009.73	1009.73	1009.73	1009.60
	22	1009.73	1009.83	1009.93	1009.94	1009.94	1009.94	1009.94	1009.94	1009.84	1009.73	1009.73	1009.60	1009.84
	23	1009.41	1009.36	1009.37	1009.37	1009.24	1009.10	1009.10	1009.09	1008.99	1008.88	1008.78	1008.68	1009.11

S.V.I.R.CO. Observatory - Pressure in hectoPascal – December 2021

day	hh	00_05	05_10	10_15	15_20	20_25	25_30	30_35	35_40	40_45	45_50	50_55	55_60	average
29	0	1008.67	1008.67	1008.67	1008.67	1008.67	1008.67	1008.67	1008.67	1008.67	1008.67	1008.56	1008.46	1008.64
	1	1008.46	1008.46	1008.46	1008.46	1008.47	1008.46	1008.46	1008.46	1008.46	1008.46	1008.45	1008.46	1008.46
	2	1008.46	1008.46	1008.47	1008.47	1008.46	1008.46	1008.46	1008.46	1008.46	1008.46	1008.46	1008.46	1008.46
	3	1008.47	1008.46	1008.47	1008.47	1008.46	1008.46	1008.46	1008.46	1008.31	1008.29	1008.45	1008.46	1008.43
	4	1008.46	1008.36	1008.25	1008.25	1008.25	1008.24	1008.24	1008.24	1008.23	1008.24	1008.25	1008.26	1008.27
	5	1008.26	1008.25	1008.25	1008.34	1008.43	1008.56	1008.68	1008.67	1008.67	1008.67	1008.68	1008.68	1008.51
	6	1008.67	1008.78	1008.88	1008.88	1008.98	1009.08	1009.09	1009.09	1009.09	1009.09	1009.10	1009.10	1008.98
	7	1009.10	1009.09	1009.09	1009.20	1009.41	1009.62	1009.73	1009.73	1009.73	1009.72	1009.72	1009.72	1009.49
	8	1009.78	1009.82	1009.82	1009.89	1009.94	1009.93	1009.93	1009.93	1009.94	1009.94	1009.94	1010.05	1009.91
	9	1010.26	1010.36	1010.36	1010.36	1010.36	1010.36	1010.36	1010.36	1010.36	1010.36	1010.36	1010.36	1010.35
	10	1010.36	1010.36	1010.36	1010.36	1010.36	1010.36	1010.36	1010.36	1010.36	1010.36	1010.36	1010.34	1010.36
	11	1010.24	1010.16	1010.15	1010.09	1009.99	1009.94	1009.94	1009.94	1009.91	1009.89	1009.81	1009.63	1009.97
	12	1009.52	1009.52	1009.51	1009.52	1009.52	1009.52	1009.51	1009.52	1009.52	1009.52	1009.52	1009.52	1009.52
	13	1009.52	1009.51	1009.52	1009.52	1009.52	1009.52	1009.44	1009.33	1009.31	1009.31	1009.31	1009.31	1009.43
	14	1009.33	1009.35	1009.33	1009.32	1009.32	1009.34	1009.35	1009.35	1009.35	1009.35	1009.35	1009.36	1009.34
	15	1009.36	1009.35	1009.36	1009.44	1009.52	1009.58	1009.64	1009.63	1009.63	1009.68	1009.84	1009.95	1009.58
	16	1009.95	1009.93	1009.93	1009.93	1009.93	1009.94	1009.94	1009.94	1009.94	1010.05	1010.16	1010.16	1009.98
	17	1010.29	1010.50	1010.57	1010.68	1010.78	1010.78	1010.78	1010.78	1010.78	1010.78	1010.78	1010.78	1010.69
	18	1010.82	1010.89	1010.95	1010.98	1010.98	1010.99	1010.99	1010.99	1011.02	1011.13	1011.20	1011.20	1011.01
	19	1011.20	1011.20	1011.20	1011.30	1011.40	1011.41	1011.62	1011.83	1011.83	1011.83	1011.94	1012.04	1011.56
	20	1012.04	1012.04	1012.04	1012.04	1012.04	1012.04	1012.04	1012.03	1012.06	1012.17	1012.25	1012.25	1012.08
	21	1012.24	1012.24	1012.35	1012.46	1012.46	1012.45	1012.46	1012.46	1012.46	1012.46	1012.46	1012.46	1012.41
	22	1012.47	1012.46	1012.46	1012.46	1012.45	1012.45	1012.46	1012.46	1012.46	1012.46	1012.46	1012.46	1012.46
	23	1012.46	1012.46	1012.46	1012.46	1012.46	1012.47	1012.48	1012.58	1012.77	1012.87	1012.87	1012.86	1012.60
30	0	1013.09	1013.09	1013.19	1013.30	1013.30	1013.30	1013.30	1013.30	1013.29	1013.29	1013.30	1013.30	1013.26
	1	1013.40	1013.51	1013.51	1013.51	1013.40	1013.29	1013.29	1013.40	1013.50	1013.51	1013.51	1013.51	1013.44
	2	1013.62	1013.72	1013.72	1013.72	1013.71	1013.82	1013.93	1013.92	1013.93	1013.93	1013.93	1013.93	1013.82
	3	1013.93	1013.93	1013.92	1013.92	1013.92	1013.93	1013.93	1013.93	1013.93	1014.03	1014.13	1014.14	1013.97
	4	1014.14	1014.13	1014.13	1014.14	1014.23	1014.33	1014.34	1014.35	1014.35	1014.35	1014.45	1014.66	1014.30
	5	1014.76	1014.77	1014.77	1014.87	1014.97	1015.09	1015.19	1015.18	1015.18	1015.18	1015.18	1014.92	1015.00
	6	1014.70	1013.63	1013.94	1015.38	1015.41	1015.41	1015.41	1015.41	1015.51	1015.68	1015.76	1015.87	1015.17
	7	1016.00	1016.02	1016.09	1016.20	1016.23	1016.29	1016.35	1016.39	1016.43	1016.44	1016.44	1016.44	1016.28
	8	1016.53	1016.63	1016.65	1016.70	1016.78	1016.82	1016.84	1016.86	1016.86	1016.86	1016.85	1016.86	1016.77
	9	1016.86	1016.86	1016.92	1016.97	1016.97	1017.02	1017.08	1017.13	1017.22	1017.28	1017.28	1017.34	1017.08
	10	1017.44	1017.49	1017.49	1017.49	1017.48	1017.48	1017.48	1017.48	1017.49	1017.49	1017.49	1017.49	1017.48
	11	1017.48	1017.48	1017.48	1017.48	1017.49	1017.49	1017.48	1017.48	1017.48	1017.48	1017.48	1017.48	1017.48
	12	1017.48	1017.48	1017.48	1017.48	1017.48	1017.48	1017.48	1017.56	1017.65	1017.66	1017.67	1017.67	1017.55
	13	1017.66	1017.67	1017.67	1017.66	1017.67	1017.68	1017.69	1017.69	1017.69	1017.69	1017.69	1017.69	1017.68
	14	1017.69	1017.69	1017.69	1017.69	1017.69	1017.69	1017.78	1017.89	1017.91	1018.01	1018.11	1018.19	1017.83
	15	1018.30	1018.32	1018.32	1018.32	1018.40	1018.48	1018.51	1018.53	1018.53	1018.63	1018.74	1018.74	1018.48
	16	1018.74	1018.85	1019.00	1019.10	1019.16	1019.16	1019.23	1019.33	1019.42	1019.50	1019.55	1019.58	1019.22
	17	1019.59	1019.70	1019.79	1019.80	1019.91	1020.00	1020.00	1020.05	1020.15	1020.24	1020.35	1020.42	1020.00
	18	1020.46	1020.52	1020.59	1020.62	1020.73	1020.83	1020.88	1020.98	1021.04	1021.04	1021.04	1021.04	1020.81
	19	1021.04	1021.04	1021.04	1021.13	1021.23	1021.23	1021.30	1021.37	1021.37	1021.41	1021.46	1021.46	1021.26
	20	1021.46	1021.46	1021.46	1021.46	1021.46	1021.46	1021.46	1021.52	1021.58	1021.63	1021.67	1021.67	1021.52
	21	1021.66	1021.77	1021.87	1021.87	1021.98	1022.19	1022.29	1022.40	1022.50	1022.50	1022.51	1022.60	1022.18
	22	1022.67	1022.67	1022.66	1022.64	1022.68	1022.71	1022.71	1022.71	1022.71	1022.71	1022.71	1022.71	1022.69
	23	1022.71	1022.71	1022.71	1022.71	1022.71	1022.71	1022.71	1022.71	1022.71	1022.71	1022.71	1022.71	1022.71

S.V.I.R.CO. Observatory - Pressure in hectoPascal – December 2021

day	hh	00_05	05_10	10_15	15_20	20_25	25_30	30_35	35_40	40_45	45_50	50_55	55_60	average
31	0	1021.98	1021.98	1021.96	1021.97	1021.94	1021.91	1021.95	1022.01	1022.08	1022.14	1022.21	1022.30	1022.04
	1	1022.37	1022.42	1022.49	1022.56	1022.59	1022.60	1022.66	1022.69	1022.67	1022.64	1022.61	1022.58	1022.57
	2	1022.59	1022.63	1022.62	1022.66	1022.71	1022.71	1022.73	1022.71	1022.65	1022.64	1022.62	1022.59	1022.65
	3	1022.56	1022.56	1022.59	1022.65	1022.71	1022.77	1022.78	1022.77	1022.80	1022.86	1022.89	1022.90	1022.73
	4	1022.90	1022.89	1022.86	1022.85	1022.86	1022.87	1022.88	1022.90	1022.97	1023.06	1023.13	1023.17	1022.94
	5	1023.20	1023.25	1023.28	1023.27	1023.29	1023.34	1023.42	1023.45	1023.45	1023.50	1023.53	1023.56	1023.38
	6	1023.57	1023.58	1023.58	1023.55	1023.55	1023.60	1023.62	1023.61	1023.62	1023.64	1023.69	1023.74	1023.61
	7	1023.76	1023.79	1023.85	1023.90	1023.92	1023.92	1023.96	1024.02	1024.08	1024.16	1024.20	1024.21	1023.98
	8	1024.22	1024.22	1024.25	1024.30	1024.33	1024.34	1024.39	1024.45	1024.46	1024.47	1024.50	1024.53	1024.37
	9	1024.58	1024.63	1024.65	1024.63	1024.62	1024.63	1024.67	1024.71	1024.71	1024.71	1024.73	1024.75	1024.67
	10	1024.71	1024.66	1024.64	1024.61	1024.56	1024.53	1024.52	1024.52	1024.53	1024.50	1024.45	1024.41	1024.55
	11	1024.37	1024.32	1024.27	1024.21	1024.14	1024.10	1024.06	1024.04	1024.04	1024.04	1024.02	1023.98	1024.13
	12	1023.91	1023.81	1023.74	1023.72	1023.71	1023.69	1023.70	1023.69	1023.66	1023.59	1023.52	1023.47	1023.68
	13	1023.41	1023.39	1023.40	1023.40	1023.38	1023.33	1023.29	1023.27	1023.25	1023.25	1023.28	1023.32	1023.33
	14	1023.34	1023.36	1023.39	1023.38	1023.36	1023.34	1023.34	1023.35	1023.32	1023.28	1023.29	1023.32	1023.34
	15	1023.35	1023.38	1023.42	1023.45	1023.47	1023.55	1023.64	1023.68	1023.72	1023.73	1023.72	1023.79	1023.57
	16	1023.84	1023.90	1024.00	1024.12	1024.19	1024.24	1024.26	1024.26	1024.29	1024.32	1024.36	1024.41	1024.18
	17	1024.47	1024.51	1024.53	1024.56	1024.62	1024.68	1024.76	1024.84	1024.93	1024.98	1024.94	1024.91	1024.73
	18	1024.96	1025.00	1025.02	1025.05	1025.06	1025.08	1025.07	1025.02	1024.98	1024.96	1024.92	1024.88	1025.00
	19	1024.86	1024.89	1024.95	1024.94	1024.90	1024.89	1024.89	1024.89	1024.93	1024.94	1024.94	1024.98	1024.92
	20	1025.05	1025.11	1025.17	1025.18	1025.14	1025.15	1025.10	1025.08	1025.14	1025.21	1025.27	1025.27	1025.15
	21	1025.32	1025.42	1025.49	1025.53	1025.42	1025.29	1025.28	1025.37	1025.38	1025.34	1025.37	1025.38	1025.38
	22	1025.33	1025.29	1025.22	1025.13	1025.03	1024.95	1024.92	1024.89	1024.85	1024.83	1024.84	1024.82	1025.01
	23	1024.73	1024.62	1024.57	1024.54	1024.53	1024.58	1024.62	1024.61	1024.58	1024.66	1024.78	1024.83	1024.64

