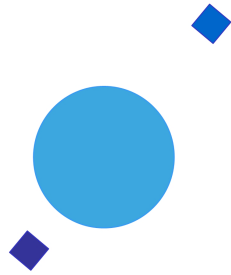


**INAF**



**ISTITUTO NAZIONALE DI ASTROFISICA**  
NATIONAL INSTITUTE FOR ASTROPHYSICS

***SVIRCO Prompt Report: November 2021***

Francesco Re and Nello Vertoli

INAF/IAPS-2021-11

April 2022

**ISTITUTO DI ASTROFISICA E PLANETOLOGIA SPAZIALI**

**AREA DI RICERCA ROMA - TOR VERGATA**

**Via del Fosso del Cavaliere, 100 - 00133 Roma (ITALIA)**



## **SVIRCO Prompt Report: November 2021**

**Francesco Re and Nello Vertoli**

*IAPS - INAF, Area di Ricerca Roma - Tor Vergata  
Via del Fosso del Cavaliere, 100 - 00133 Roma, Italy,*

### **Abstract**

*The pressure corrected intensity of the nucleonic component, produced by primary cosmic rays and recorded in November 2021 by the Neutron Monitor of SVIRCO-Rome (present geographic position:  $41.86^\circ$  N -  $12.47^\circ$  E; altitude about s.l. ), is reported in prompt form together with the barometric pressure data.*



## SVIRCO OBSERVATORY

During the 1<sup>st</sup> International Geophysics Year (1957) an international network of “ground-based detectors” for continuous cosmic ray measurements was world-wide established.

The cosmic ray station of Rome joined this network with the purpose to study the time variations of primary cosmic rays (**Studio Variazioni Intensità Raggi Cosmici: S.V.I.R.CO**) and their modulation in the heliosphere.

From July 1957 to April 1997, the SVIRCO Station (now Observatory) performed uninterrupted measurements at the Physics Department “G. Marconi” of “La Sapienza” University of Rome (41.90° N, 12.52° E, altitude about 60 m a.s.l.)

In May 1997 the neutron monitor was moved to the Physics Department “E. Amaldi” of “Roma Tre” University. Since then it has been continuously running at the new location (41.86° N, 12.47° E, altitude about 0 m a.s.l.).

The SVIRCO Observatory (INAF/IAPS-UNIRomaTre collaboration) is housed in a reserved building provided with a double air-conditioning system. The inner temperature is permanently restrained in a range of 23°-26° C, meanwhile the relative humidity is kept below 57%. Either the environmental parameters are continuously checked and recorded by digital sensors.

On January 1, 2005 three counters were added to the detector. This upgrade, from 17 to 20 NM-64, made the SVIRCO neutron monitor still consist of 5 sections but modified its geometry. Actually the new arrangement has been composed of three 3-counter, one 5-counter and one 6-counter units. The enhancement improved not only the overall counting rate of 15.6 % (January 2005) but, as a result, also the statistical quality of the recorded data.

On July 3, 2017 six counters experienced failure and were removed from the detector until 24 July. On 25 July 2017 a number of 2 counters was added to the detector up to a total of 16 counters. The new arrangement has been composed of three 3-counter, one 5-counter and one 2-counter units. The overall counting rate has decreased of about 20% (July 2017) with a lower statistical quality of the recorded data.

Each of the 16 BF<sub>3</sub> proportional counters (BP-28 type) is equipped with a smart amplifier/discriminator circuit complete with a spectrum stabilizer. This new electronic unit, developed in our laboratory, holds firmly the pulse height spectrum of the amplifier output (within a range of more than 150 volts around the operating voltage), providing the counter with a great immunity against high voltage variations.

Anyway, systematic and exhaustive tests of the counters are regularly performed. The output pulses of the amplifiers, discriminated by the threshold gates, are collected and stored into a multi-channel analyzer. The analysis of the height distribution (spectrum) of the amplifier pulses coinciding with the discriminator ones, is essential to verify the long term efficiency of each counter together with the amplifier gain and the discriminator threshold level.

As well as the amplifier/discriminator circuits, a large part of the electronic instrumentation operating in the Observatory was designed and realized in our laboratory together with the software for data acquisition and pre-elaboration.

In order to improve the reliability of the recorded data and to prevent measurement breakdowns, two independent systems perform contemporary the data acquisition. Each system is remotely controlled by a dedicated computer and is timed by a high stability quartz clock and/or a GPS receiver. One equipment runs according to a timing of 1 minute and fulfils the acquisition of the 16 counters separately. The other one records the individual 5-minute counting rate of each detector section in addition to the rates of the overall multiplicity, sorted into separated counting channels (from 1 to greater than 8).

A special care is devoted to the atmospheric pressure measurements; thus they are carried out by means of not less than three barometers at the same time. These instruments (achieving a resolution up to 0.01 hPa), are constantly checked out each other for the best measuring accuracy and reliability. Furthermore, the devices in use are equipped with different types of transducer such as vibrating cylinder, force balance and quartz, therefore, throughout their different behaviours, it is possible to point out the occurrence of any long-term drift and eventually to re-calibrate the instruments themselves.

## DATA PRESENTATION

In a preliminary step, the intensity data, of the secondary nucleonic component of cosmic rays, detected at SVIRCO Observatory, were corrected for pressure variations at a reference level of 1009.25 hPa with an attenuation coefficient of 0.70% / hPa.

The five-minutes counting rates, of the examined month, are reported in tabular form together with the hourly normalized data, which provide a continuous data set for long-term analysis.

The normalization was evaluated as percentage of the counting rate average of January-February 1997, when the Monitor operated at the previous location of "La Sapienza" University. The reference counting rate level (100%), computed for such period, is equal to 554946 counts/hour.

The atmospheric pressure data (in hectoPascal) are also collected in a monthly table which presents the five-minutes averages and the hourly ones.

The hourly averages of the normalized intensity and pressure, plotted in monthly graphs, are reported too.

## CONDITIONS FOR SVIRCO DATA USE

You are welcome to use neutron monitor data of SVIRCO, IAPS/INAF-UNIRomaTre collaboration, under the following conditions:

*-You agree to acknowledge our financial supports in any published use of the data.*

*Example: "SVIRCO NM is supported by the INAF - UNIRomaTre collaboration"*

*-You are kindly requested to send a copy of any published work derived from our data to:*

Dr. Monica Laurenza  
Head of SVIRCO Observatory & TPL  
Istituto di Astrofisica e Planetologia Spaziali - Area di Ricerca Tor Vergata  
Via del Fosso del Cavaliere, 100 00133 Roma - Italy,

[monica.laurenza@iaps.inaf.it](mailto:monica.laurenza@iaps.inaf.it)



# S.V.I.R.CO. Observatory

Rome

Italy







INAF/UNIRomaTre				S.V.I.R.CO. Observatory - Pressure Corrected Data – November 2021										16 NM-64	
day	hh	00_05	05_10	10_15	15_20	20_25	25_30	30_35	35_40	40_45	45_50	50_55	55_60	h-norm	
1	0	38453	38707	38412	38455	38406	38630	38501	38321	38766	38016	38460	38522	101.555	
	1	38445	38677	38669	39269	38724	39503	38709	38398	38449	38821	38870	38850	102.384	
	2	38244	38769	39085	38815	38695	38384	38717	39001	38820	38500	37961	38683	102.008	
	3	38735	38995	38525	39065	38867	38733	38804	38621	38490	38063	38956	38819	102.228	
	4	39055	38734	38528	38729	38875	38143	37897	38890	38705	39097	38407	38946	102.082	
	5	38530	38334	38893	38203	38863	38492	38870	38522	38652	39021	38953	37145	101.739	
	6	37146	38617	38874	38715	38237	38159	38430	38083	37989	39200	38104	38354	101.175	
	7	38230	38648	38367	37980	38655	38457	38756	38439	38593	38733	38487	38238	101.549	
	8	38480	39222	38857	38512	38735	38498	38902	38159	38587	39119	38683	38389	102.112	
	9	38005	38432	39006	38947	39143	38291	38716	38171	38708	38316	38287	38348	101.721	
	10	39198	38129	38417	38324	38602	38889	38615	38526	38507	38655	38931	38520	101.929	
	11	38246	37942	38657	39235	38502	38239	38541	38004	38241	38340	38813	38726	101.528	
	12	38519	38335	38760	39354	39014	38382	38722	38637	38349	38668	38852	38504	102.101	
	13	38701	38114	38599	38635	38612	38616	38588	38293	38958	37719	37296	38716	101.382	
	14	38054	38537	38887	38634	38182	39366	37847	38616	38615	38182	38617	38656	101.683	
	15	38135	38990	38532	38225	38931	38797	38925	38281	38481	38529	38580	38312	101.798	
	16	38179	38094	38823	38784	38638	38141	38133	37842	38700	38438	38506	38516	101.375	
	17	38400	38295	38844	38358	38352	38600	38005	38137	38756	38840	38013	38399	101.420	
	18	38530	38519	38649	39020	38312	38937	38712	38365	38253	39137	38018	37986	101.737	
	19	38041	38206	37883	37817	38945	38432	38090	38234	38699	38624	38539	38235	101.145	
	20	38425	38481	38067	38104	38074	38934	38576	38341	38557	38783	38329	38093	101.368	
	21	38215	38071	38270	38574	38602	38429	38022	37978	38699	38519	38148	38442	101.193	
	22	38101	37884	38235	38662	38768	38131	37903	38101	37881	38495	38544	38166	100.952	
	23	37823	38469	37975	38746	38306	37925	38347	38062	38073	38538	39143	38457	101.170	
2	0	38830	37801	37696	38221	38282	38156	38505	37917	38213	38343	38457	37924	100.839	
	1	38326	37847	38588	38350	38227	38010	37951	37853	38217	38438	38299	37973	100.777	
	2	38331	38215	38407	38206	38446	38263	37907	38224	38177	38340	38174	37696	100.845	
	3	38422	36850	35765	37153	38508	38199	38257	37880	38591	38281	37984	39077	100.069	
	4	38816	38419	38227	38139	37937	37679	38514	38408	38553	38774	38386	37979	101.161	
	5	37950	38101	38728	38382	38722	38625	38859	38528	38499	38410	37912	37786	101.311	
	6	38244	37572	38564	38640	38357	38739	38573	38591	38258	38688	38532	38521	101.481	
	7	37776	37836	38814	38764	38442	38334	38568	37801	38134	38260	39095	37975	101.155	
	8	38152	38209	38393	38954	38503	37727	37914	38891	38176	38689	38522	38355	101.306	
	9	38278	38237	38000	38090	38340	38421	38697	38648	38490	38668	38242	38321	101.295	
	10	38272	38241	38379	37976	38489	39000	38863	38145	38725	38607	38193	38706	101.551	
	11	38480	38362	38224	38774	38200	38972	38778	37971	38473	38139	38690	38049	101.445	
	12	38590	38511	38372	38482	38641	38365	38532	38373	38639	38237	38542	39379	101.786	
	13	37980	38895	38503	39024	38631	38424	38463	38916	37960	38459	38817	38539	101.775	
	14	38692	38208	38220	38595	38631	38594	38983	38762	38848	38343	38374	39215	101.962	
	15	38660	38709	38052	38241	38457	38757	38629	38427	38293	38362	38510	38014	101.444	
	16	38459	38464	38568	38898	38652	38956	38690	38623	38534	38188	38545	39067	102.002	
	17	38668	38439	38160	37907	38876	38521	38486	38546	38485	38782	38752	39351	101.854	
	18	38504	38661	38441	38990	38549	37841	38858	38645	38735	38535	38815	38735	101.928	
	19	38985	38615	38494	38524	38912	38358	38277	38408	39240	38526	38281	38571	101.903	
	20	38369	38480	38883	38470	37685	38671	38551	38802	38321	38173	38402	38490	101.485	
	21	38400	38209	38249	39054	38631	37897	38349	38812	38158	38641	38380	39005	101.592	
	22	38153	38625	38454	38293	38064	38307	39010	38317	38137	38177	38237	38187	101.191	
	23	38317	38557	38549	38141	38261	38091	38103	38758	38668	38145	38405	38204	101.244	

INAF/UNIromaTre		S.V.I.R.CO. Observatory - Pressure Corrected Data – November 2021											16 NM-64	
day	hh	00_05	05_10	10_15	15_20	20_25	25_30	30_35	35_40	40_45	45_50	50_55	55_60	h-norm
3	0	38045	38545	38524	38804	38567	37860	38329	38179	38199	38469	38249	38189	101.187
	1	38369	38209	38322	38750	38430	38514	38217	38237	38336	37949	38386	38522	101.253
	2	38309	38499	38411	38225	38274	38819	38514	38840	37883	38840	39018	38238	101.612
	3	38406	38151	39039	38300	38834	38272	38246	38477	38711	38976	38111	38317	101.605
	4	38525	38347	38189	38234	36693	37414	38616	37980	38233	38731	38192	38518	100.680
	5	38431	37959	38264	38304	38062	38724	38019	38658	38112	38687	38200	38787	101.246
	6	38330	38574	38807	38718	39108	38660	38670	38574	38564	38534	38778	38011	101.932
	7	38663	38127	38430	38527	38808	38261	38356	38315	38930	39038	38999	38510	101.851
	8	38117	38390	38087	38284	38237	38728	38134	39059	38541	38669	38875	38572	101.573
	9	38563	38468	38652	38088	38682	38150	38393	38683	38722	38147	38441	38475	101.522
	10	38513	38445	38711	38571	38364	38386	38406	38300	38889	38755	38872	38497	101.796
	11	38517	37965	38002	38472	38861	38385	38571	38496	38021	38461	38309	38462	101.315
	12	38732	38733	38272	38329	38656	38206	39117	38810	38054	38131	38668	38274	101.636
	13	38110	38609	38638	38455	38695	38417	38388	38295	38391	38821	39091	38302	101.687
	14	38274	38634	37863	38119	38570	38099	38671	38040	38381	38544	38571	38543	101.268
	15	38550	38853	38426	38896	38764	38594	38660	38555	38974	38725	38374	39125	102.190
	16	38368	38355	38907	39155	38588	38267	38763	38135	38510	38092	38317	39106	101.764
	17	38359	38335	38692	38193	38370	37845	38522	38330	38456	38229	37951	38444	101.139
	18	38433	38513	38688	38407	38590	38283	38091	38587	38482	38537	38385	38113	101.444
	19	38152	38392	38190	37862	38118	38475	38907	38296	38117	38089	38210	38306	101.005
	20	38430	38764	38412	37636	38541	37961	37789	38201	37518	37754	37141	36875	100.109
	21	37956	37782	37790	37456	37686	37630	38005	37326	37679	36937	38047	38066	99.519
	22	37597	37700	37191	37353	37366	37346	37442	37500	37963	36896	36941	37671	98.773
	23	37785	37430	37547	37450	36976	37480	37557	37607	37647	37342	37379	37639	98.965
4	0	37648	37791	37606	37207	37421	37860	37667	37142	37781	37598	37426	37759	99.209
	1	37399	37559	37598	37214	37758	37173	37720	37033	37780	37467	37761	37438	98.978
	2	37566	37848	37323	37761	37442	37462	37653	37252	37145	37733	37307	37442	98.986
	3	37175	37391	37016	37608	37964	37594	37636	37404	37556	37253	37715	37279	98.909
	4	37110	37400	36992	36635	37145	37423	37903	37258	37331	37176	37571	37532	98.444
	5	37204	36995	37335	37550	37178	37242	37016	37794	37553	37338	37086	38345	98.700
	6	37363	37158	37478	37472	37782	37893	37318	37209	37899	37987	38292	37311	99.255
	7	37537	37704	38263	37589	37861	37476	37564	38044	37811	37828	37782	37954	99.751
	8	37893	38552	37903	37878	37294	38193	38120	38333	37837	38042	38190	38225	100.421
	9	37968	38059	37728	38123	37826	37978	37387	38390	38043	38267	38029	37954	100.265
	10	38238	37673	37817	37706	38007	37994	37434	37859	37342	37485	37691	37609	99.628
	11	37589	37587	37752	38478	37259	37500	37184	37935	37553	37397	37668	37591	99.328
	12	38169	37703	37484	37613	37582	37777	37726	37553	37657	37279	37645	37736	99.424
	13	37532	37452	37942	37149	37290	37383	37129	37563	37729	37398	36996	37266	98.743
	14	37225	37606	37648	37604	36855	37080	36943	37213	37192	37208	36877	37289	98.282
	15	37475	36639	37376	37035	37621	37195	36808	37031	36599	36899	36529	36926	97.709
	16	36960	36772	37064	36964	36010	37465	36501	36835	36836	36619	36303	36731	97.034
	17	36250	36523	36003	35761	36064	36617	36304	36476	35847	36062	36206	35557	95.408
	18	35473	35111	35205	35297	35593	35483	35428	35667	35536	35323	34797	34762	93.209
	19	35001	34784	34835	34171	34601	34733	34684	35160	35101	34628	34601	34949	91.794
	20	35374	35232	35254	34973	35265	35562	35345	35798	35776	35315	35575	35553	93.505
	21	35385	34841	35184	35577	35680	35168	35838	35789	36052	35972	35606	35670	93.887
	22	36078	35378	36262	35942	35802	36040	36405	35555	35859	35942	36073	35477	94.779
	23	36022	36349	35805	35928	36200	36504	36144	35678	36185	35990	36725	36861	95.566

INAF/UNIRomaTre				S.V.I.R.CO. Observatory - Pressure Corrected Data – November 2021										16 NM-64	
day	hh	00_05	05_10	10_15	15_20	20_25	25_30	30_35	35_40	40_45	45_50	50_55	55_60	h-norm	
5	0	36296	36297	36950	36989	36856	36863	36220	37192	37179	36610	36888	36941	97.085	
	1	36577	37125	37007	37408	37241	36965	37552	37117	37214	36763	37414	37212	98.031	
	2	37382	37748	37131	37293	37243	37809	37392	36931	37716	37751	38115	37429	98.987	
	3	37350	37852	37678	37182	37823	37906	37429	37843	38173	37662	37371	37493	99.388	
	4	37793	37833	38129	37749	37941	37850	37639	37593	37342	37557	37307	37829	99.564	
	5	37573	37741	37623	37394	37778	36969	37679	37075	37594	37576	38049	37737	99.173	
	6	37908	37012	37428	37845	37581	37297	37708	38246	37802	37581	37553	38117	99.457	
	7	37204	37028	38083	37397	37821	37290	37411	37911	37966	37704	37811	37151	99.171	
	8	37383	37264	38115	37547	37302	37314	37507	37928	37760	37638	38121	37210	99.239	
	9	37407	38198	37598	37180	38503	37840	38310	37370	37542	37851	37561	37620	99.656	
	10	37076	37430	37563	38010	37321	37522	37520	38101	37469	37003	37426	36937	98.863	
	11	37583	37867	38041	38068	37766	37594	37997	37793	37454	37681	37310	37686	99.625	
	12	37518	38238	37683	38041	38009	38068	37083	38006	37496	37935	38171	37223	99.763	
	13	37455	36882	37829	37783	37458	37455	37485	37245	37474	37950	36680	37166	98.750	
	14	36888	37727	37942	37585	37606	37415	37855	37155	37158	37612	37875	37077	98.977	
	15	37457	37761	37784	37342	37864	36987	37710	37616	37464	37845	37454	37160	99.098	
	16	37355	37492	37412	37143	37079	36660	37688	37641	36392	36445	37260	37654	98.169	
	17	37250	37554	37068	38160	38122	37482	37684	37840	37043	37312	37462	37569	99.120	
	18	37471	37352	37590	37253	36850	37650	36462	37436	37300	36904	37568	37102	98.326	
	19	37096	37887	37515	37888	37567	37412	38135	37733	37590	37403	37569	37716	99.332	
	20	37562	37307	37696	37507	37776	37978	37275	37559	37950	37637	37622	36940	99.178	
	21	36864	37479	37718	37728	37819	37649	37517	37220	37079	37639	37299	37951	98.992	
	22	37881	37431	37860	37432	37435	37510	37903	37676	37617	37759	37187	37272	99.212	
	23	38274	37787	37276	37622	37409	38027	37455	37258	37584	37732	37776	37377	99.348	
6	0	38409	37831	38072	38283	37337	38283	38114	37831	37369	37390	37631	38167	100.037	
	1	37820	37820	38177	37915	37810	37338	37853	37757	37463	37978	37410	37873	99.707	
	2	38116	38306	38011	37652	37894	38283	38629	38156	37790	38368	37442	38599	100.594	
	3	37644	37707	38515	38020	38242	37991	37917	38306	38662	38266	37914	38495	100.689	
	4	37697	37822	37907	38161	38370	37898	38077	37761	37657	37699	37657	38036	100.043	
	5	37689	37920	38036	38636	37625	37436	37815	37204	37877	37790	38324	38027	99.963	
	6	37744	37997	38292	37911	37960	38167	37929	37816	37939	38034	37686	37971	100.199	
	7	37886	37378	38140	38423	38007	38369	37881	37881	38316	37837	38324	38048	100.427	
	8	37837	38028	38536	37677	37899	38292	37942	38663	38324	38153	38577	38759	100.911	
	9	37931	37952	37921	38504	38631	37730	37868	37846	38057	38704	38256	38592	100.758	
	10	38369	37731	38208	38518	38432	37686	38317	38599	37797	37473	37425	37992	100.440	
	11	38197	37427	37258	38377	38410	37502	37353	37976	38029	38314	37828	38293	100.092	
	12	38208	38113	37806	38640	37878	38283	38089	38061	37623	37958	38110	37683	100.419	
	13	38503	37421	38343	37849	38009	37703	37754	37618	37606	38099	38235	37435	100.006	
	14	38076	37740	38347	37850	38112	37849	37786	38195	38101	37996	38310	37910	100.380	
	15	37665	37464	37521	37506	37919	37909	38087	37835	37762	38129	38370	38150	99.950	
	16	38671	37987	38414	37475	38142	37788	38114	38367	37641	38374	37076	37645	100.255	
	17	37760	38114	38503	38023	38065	37863	38421	37959	37872	37461	37338	37372	100.044	
	18	38218	38424	37516	37520	37372	37707	38048	37461	37516	38044	37728	37206	99.610	
	19	37918	38149	38272	37888	37373	37493	37013	37838	38226	37791	37914	37891	99.829	
	20	37987	37661	37734	37445	37672	38171	37702	37474	38277	37804	37264	37567	99.615	
	21	37905	37884	37480	37733	37953	38127	37773	37429	37487	37838	38203	37972	99.833	
	22	37796	37411	37676	37952	38223	38412	38064	37402	38037	38555	37530	38202	100.157	
	23	38357	37981	38074	38119	37905	37552	38122	38267	38112	38081	38682	38022	100.600	

INAF/UNIromaTre		S.V.I.R.CO. Observatory - Pressure Corrected Data – November 2021											16 NM-64	
day	hh	00_05	05_10	10_15	15_20	20_25	25_30	30_35	35_40	40_45	45_50	50_55	55_60	h-norm
7	0	37632	38170	37725	38242	37828	38252	37580	37477	38087	37880	37870	37892	100.020
	1	37885	38320	37835	37649	38238	38416	37916	37694	37632	37963	38035	38377	100.311
	2	38532	37985	37916	38456	38342	38269	39265	38664	37823	37776	38064	37721	100.939
	3	37547	37807	38581	37371	37805	38034	38229	38518	38342	38011	38207	38353	100.497
	4	38168	38136	38508	38395	38561	38601	38115	38468	38395	38313	38158	38313	101.229
	5	38148	38210	38284	37821	38133	37824	38391	38185	38391	38205	37958	38257	100.717
	6	38185	38411	38534	38665	38168	38209	38747	38024	38623	38271	38344	38055	101.252
	7	38747	38283	38289	38388	38638	38483	38617	38234	38731	38534	38710	37966	101.557
	8	38119	37932	38378	37986	38372	38074	37847	38457	37972	38757	38704	38621	101.028
	9	38683	38537	38155	37730	38433	38425	37590	38273	38882	38292	38302	38654	101.191
	10	38375	38543	38628	37911	38571	37894	38176	38261	38859	38861	38546	38587	101.467
	11	38200	37884	38171	38768	38238	38404	38188	38680	38656	38319	38058	37888	101.080
	12	38539	38489	38529	38539	38410	38763	38661	38713	38224	37902	38207	38278	101.476
	13	37933	37647	38202	37871	38162	38224	38538	37959	38414	38302	38436	38339	100.766
	14	38097	38401	38862	37873	38248	37978	38176	38208	38288	37729	38489	37700	100.771
	15	38379	38164	38396	38192	38059	37998	38395	38019	37917	38527	38425	37289	100.707
	16	37948	37827	37835	38655	37891	38034	37669	38260	37768	38262	38189	38462	100.496
	17	38107	38282	38333	37936	38014	37877	38317	37951	37918	37927	37518	38670	100.507
	18	38231	38090	38427	38180	37925	37894	38354	37925	38476	38180	37649	38641	100.754
	19	37273	37772	37894	38303	37751	37986	37212	38018	38004	38430	38245	37466	99.958
	20	37557	37971	37917	37748	38009	38543	38004	37654	38314	38090	37905	37985	100.253
	21	37393	37722	38083	37991	38384	38195	37549	37817	38134	37908	38195	38524	100.296
	22	37837	37858	38136	38103	38007	37984	37851	37923	38497	37677	38876	38545	100.604
	23	38155	37732	38050	38835	38572	38878	38466	38353	37906	38515	38222	38993	101.350
8	0	38257	38022	37786	38461	38328	37950	38032	37864	38186	38524	38311	38180	100.740
	1	37990	38138	37878	38508	38239	37946	37875	38692	38640	38569	38477	37608	100.883
	2	38795	38346	38349	38432	38566	38700	38488	38355	38629	38364	37967	38029	101.424
	3	38086	37917	38630	38243	38313	38321	38573	38370	37944	38279	38647	38588	101.180
	4	38048	38048	38079	37804	38445	38231	38275	38116	38669	37500	38341	38737	100.825
	5	38097	38798	38839	38075	38290	38578	38217	38543	37933	38436	38404	38515	101.360
	6	38390	38355	39046	38217	38485	38243	37837	38821	38120	38353	38394	38665	101.404
	7	38224	38713	38304	38721	38304	38105	38102	38403	38436	38670	38499	37805	101.263
	8	38069	38343	38197	38696	38242	38201	38282	38313	37764	38443	38131	38118	100.936
	9	38282	37995	38004	38177	38206	37858	38406	37907	38608	38069	38435	38650	100.891
	10	38202	38791	37973	38304	38280	38817	38270	37947	37989	38070	38003	38077	100.919
	11	38132	38346	38089	38598	37965	38481	38786	38039	37992	38639	38121	38409	101.112
	12	37749	38419	37985	38594	37684	38139	38120	38474	38323	37927	38048	38706	100.797
	13	37927	38086	38326	38406	38709	38487	37580	38468	38155	38498	38843	38159	101.122
	14	38603	38579	38416	38841	38104	38134	37921	37880	38064	38619	38296	38528	101.197
	15	38316	38326	38781	37973	38326	38266	37942	38478	38195	37963	38235	37858	100.905
	16	38382	38074	38642	38351	38041	38032	38292	38000	37836	38175	38448	38030	100.827
	17	38290	38038	38655	38151	38633	37944	38109	38591	38449	37973	38702	38297	101.163
	18	37962	37881	37942	38094	38378	38256	37618	38489	38297	38246	38073	37666	100.519
	19	38416	37840	38216	37639	38055	38274	38281	37947	38180	38688	38150	37879	100.664
	20	37894	38324	38053	37690	38119	38020	38140	38338	38264	38175	38114	37749	100.514
	21	38210	38015	38130	38499	38004	38558	38010	37774	37868	37891	38157	37659	100.490
	22	38164	38507	37915	37813	38354	37877	38317	38056	37958	38406	38539	37814	100.698
	23	37908	38032	38267	38574	38533	37811	38453	37780	38088	38405	38753	37760	100.840

INAF/UNIRomaTre				S.V.I.R.CO. Observatory - Pressure Corrected Data – November 2021										16 NM-64	
day	hh	00_05	05_10	10_15	15_20	20_25	25_30	30_35	35_40	40_45	45_50	50_55	55_60	h-norm	
9	0	38067	37709	38445	37912	37791	38538	38538	37801	38589	38117	38172	38365	100.770	
	1	37959	38820	38287	38154	38543	38307	38154	38329	38167	38338	37833	38912	101.157	
	2	38155	38420	39722	38369	38183	38406	38281	37768	38867	38456	38220	38945	101.594	
	3	38233	38656	38790	38173	38163	38235	37956	38520	38539	38970	38177	38651	101.434	
	4	38301	38641	38548	37782	38161	38255	38770	38264	38202	38499	38413	38095	101.185	
	5	38095	38227	38341	38752	38459	38105	38491	38333	38427	39026	38369	38244	101.391	
	6	38639	38265	38578	38398	37834	38442	39015	38551	37883	38339	38637	37842	101.294	
	7	38472	38275	38285	38385	37992	38504	37904	38642	38242	39105	38419	38005	101.251	
	8	38736	38536	38673	38147	37699	38577	37852	38262	38438	38238	38139	38470	101.148	
	9	37878	39252	38278	38525	37948	37973	38367	37831	37810	37979	38539	38285	100.907	
	10	38349	38147	38495	38601	37775	38548	38355	37876	38109	37876	37907	38181	100.808	
	11	38065	38331	38206	38991	38537	38505	38390	38708	37979	37819	37946	38201	101.129	
	12	38153	38447	37923	38625	38312	38307	38360	38635	38678	38392	38445	38498	101.371	
	13	38741	38086	38416	37980	38127	38339	37917	38299	38151	38128	38474	38652	101.048	
	14	38631	38440	38377	38072	37936	38435	38491	38697	38656	38454	38879	38911	101.635	
	15	38497	38452	38163	37852	38643	38245	38417	38265	38271	37877	38643	37989	101.049	
	16	38476	38282	38154	38838	38406	37886	38269	38033	37923	38218	37979	38386	100.947	
	17	37931	38142	38636	38160	38134	37977	38771	37963	38082	37851	38105	38125	100.733	
	18	38028	37511	38094	38239	38644	38374	38374	38061	38072	37650	38559	38388	100.758	
	19	38057	38681	38411	38009	38084	37771	37968	39037	37804	38290	38427	38495	100.987	
	20	38056	38174	38407	37891	38506	38687	38817	38081	38039	38670	37906	38321	101.102	
	21	38180	38201	38147	38126	37801	38235	38520	38109	38877	38299	38292	38000	100.933	
	22	38514	38679	38440	37653	38615	38386	38246	37954	38536	38257	38538	38667	101.307	
	23	38323	38127	38731	38677	38800	38825	38290	38545	38044	38337	38410	38200	101.487	
10	0	38585	38876	38402	38326	38759	38026	38574	38208	38380	38617	38316	38576	101.562	
	1	38533	38251	38262	38488	38154	38240	37799	38251	38165	38833	38725	38784	101.307	
	2	38191	38656	38439	38305	38256	38728	38022	39255	38440	38022	38258	38494	101.434	
	3	38765	39015	38082	38039	38805	37630	38593	38095	38590	38656	39077	38352	101.574	
	4	38370	38542	38725	38562	38820	38391	38155	38525	38829	38709	37694	38106	101.514	
	5	37953	38076	38315	38930	38519	38939	38254	38374	38604	38518	38270	37745	101.309	
	6	37796	38130	37874	38553	38531	38123	38512	37559	38353	38116	37770	38546	100.730	
	7	38045	38539	38094	38979	37704	38624	38321	38937	38280	38214	38209	38246	101.243	
	8	38073	37987	38227	38180	38725	38433	38584	37869	38531	38293	38412	37697	100.982	
	9	38129	38725	38367	38346	38357	38671	38270	38595	38422	38172	38243	37944	101.253	
	10	38214	38500	38342	39120	38606	38200	38375	39208	37991	37885	38542	38844	101.602	
	11	38995	38445	38564	38898	38191	38443	38195	38529	37517	38367	38087	38378	101.333	
	12	38312	38323	38367	37722	38679	38543	38382	37871	37856	38402	38703	38209	101.061	
	13	37911	38847	38060	38884	38402	38480	38126	38984	38330	38141	38104	38457	101.360	
	14	38346	37991	38616	38339	37974	38535	38569	38806	38364	38413	38415	37669	101.208	
	15	38419	38054	38413	38394	38206	37952	38921	37768	38494	38008	38502	38100	101.033	
	16	37947	38524	38140	38359	38590	38391	38468	38204	38227	38218	38404	38182	101.124	
	17	38783	38373	37558	38072	38493	38554	38479	38358	38515	38680	38319	38335	101.314	
	18	38049	38117	38215	37864	38242	37994	38190	38347	38048	38199	38643	38828	100.924	
	19	37958	38688	38036	38401	38451	38357	38315	38781	38366	38704	38366	38224	101.342	
	20	38650	38185	38302	38348	38098	38265	38422	38465	37944	38437	38492	38869	101.304	
	21	38413	38082	38209	38191	38693	38106	38463	38039	38084	38316	38496	38695	101.153	
	22	37984	38926	38823	38251	38121	38740	38500	38045	38588	39032	38129	38163	101.486	
	23	38295	38554	38283	39013	38551	38869	38544	38317	38317	38350	38491	38566	101.673	

INAF/UNIromaTre		S.V.I.R.CO. Observatory - Pressure Corrected Data – November 2021											16 NM-64	
day	hh	00_05	05_10	10_15	15_20	20_25	25_30	30_35	35_40	40_45	45_50	50_55	55_60	h-norm
11	0	39021	39000	38078	38886	38348	38293	38287	38584	38237	38563	38617	38758	101.780
	1	37792	38605	37849	37968	38862	38609	38886	38518	38820	38081	38192	38175	101.279
	2	38539	38151	38100	38413	37543	38156	39018	38850	38502	38159	38212	37855	101.089
	3	37954	38261	38404	38798	37910	38388	38338	38582	37847	38424	38034	37670	100.895
	4	38011	38608	39401	38869	38532	38055	38365	37904	37860	38643	38524	38241	101.423
	5	38437	38687	38013	38278	38109	38836	38532	38294	38491	38044	38316	38272	101.268
	6	38683	38592	38719	38697	38817	38740	38272	38859	37995	38123	38765	38580	101.825
	7	37753	38467	37823	39017	38396	38444	38535	38979	38379	38227	38611	38496	101.448
	8	38745	38617	39050	38897	38604	38766	38490	38689	38234	38354	38656	38461	101.983
	9	38590	38425	38390	38408	38922	38014	38596	38373	38864	38360	38489	38387	101.600
	10	38389	38731	38243	38522	38596	38939	38794	38453	38841	38884	38787	38877	102.092
	11	37838	38719	38815	38538	38671	37942	38374	38256	38416	38384	38673	39061	101.571
	12	38850	38595	38265	38124	38908	38251	38636	38495	38083	38646	38999	38783	101.780
	13	38728	38621	38354	37927	39006	38173	38803	38995	39102	38999	38245	38458	101.950
	14	39087	38607	38923	38838	38259	38434	38721	38301	38431	38205	38716	38460	101.856
	15	38600	38569	39006	37683	38664	38536	38876	38228	38048	38727	37602	38251	101.374
	16	38601	38080	38377	38165	38313	38064	37827	38553	38222	38104	37803	38442	100.881
	17	38121	38426	38341	38041	37976	38625	38505	38254	38035	38034	38066	38098	100.875
	18	38836	38368	37950	38568	38354	38525	38804	38783	38183	37938	38199	38376	101.394
	19	38701	38422	38741	38469	38475	38607	38199	38370	37690	38382	38540	38157	101.365
	20	38636	38464	38335	38251	38405	38324	38479	38114	38973	38165	37877	38236	101.257
	21	38130	38204	38135	38340	38381	38297	38762	38275	38563	38236	38266	38529	101.226
	22	38880	38606	38652	38596	38533	38645	38106	38686	38665	38518	39183	38029	101.882
	23	38707	38426	38039	39031	38296	38226	38679	38363	38320	38362	38841	38865	101.675
12	0	38410	38020	38241	38169	38286	38548	38800	38522	38763	37944	37604	38372	101.132
	1	37886	38544	38939	38454	38273	38410	38954	38247	38630	38333	38575	38135	101.504
	2	38647	38393	38630	38896	38611	38794	37921	37954	38439	38302	38014	38243	101.385
	3	38369	38741	38306	37910	38595	38699	37917	38432	38665	38733	38434	38471	101.479
	4	38460	39110	38610	38806	38564	38827	38658	39068	39195	38500	38256	38796	102.267
	5	38937	38939	38591	37981	38928	38812	38781	38297	38823	38865	38769	38811	102.197
	6	38644	38353	38629	38880	38974	38419	39175	38970	38791	38886	39286	38307	102.369
	7	38928	39170	39297	38118	38622	39632	38443	38439	38806	38437	39469	38880	102.573
	8	39250	38838	39089	38604	38553	38954	38457	38675	38873	38702	39437	38759	102.562
	9	38592	38702	38740	38617	38563	38894	38815	38819	38695	38833	39064	38459	102.254
	10	38883	39074	38491	38809	38544	38744	38961	38372	38604	38381	38935	38982	102.251
	11	38548	38494	38462	38392	38871	38765	38660	38227	38689	38419	38339	38550	101.732
	12	38614	38603	38930	38234	38487	38656	38793	38374	38649	38774	38722	38375	101.906
	13	38459	38807	38987	38452	38515	38211	38358	38368	38504	38546	38695	38939	101.825
	14	38748	38874	38654	38539	38539	39128	38118	37843	38716	38591	38181	38528	101.741
	15	38728	38560	38191	37907	38916	38285	38581	39033	38531	38179	38888	37982	101.592
	16	38184	38511	38363	38084	39050	38491	38450	38536	38120	38994	38233	38115	101.448
	17	38312	38289	38520	38150	38308	38552	38570	38893	38810	38430	38080	38587	101.530
	18	38545	38587	38884	38269	38289	37622	37866	38007	37809	38700	38212	38394	101.021
	19	38571	38788	38535	37966	38479	38555	38418	38494	38239	38319	38145	38487	101.419
	20	38104	38954	38284	38092	38219	38636	38297	38403	38625	38876	37966	38884	101.495
	21	38170	38149	38436	37947	38383	38554	38373	38404	38394	38394	39024	38459	101.351
	22	38862	37989	38586	38532	38319	38309	38500	39235	38426	38234	38223	37978	101.463
	23	39460	38322	38768	38053	38382	38233	38532	38532	38595	38275	38309	38458	101.622

INAF/UNIRomaTre				S.V.I.R.CO. Observatory - Pressure Corrected Data – November 2021										16 NM-64	
day	hh	00_05	05_10	10_15	15_20	20_25	25_30	30_35	35_40	40_45	45_50	50_55	55_60	h-norm	
13	0	37965	39021	38733	37871	38223	38713	38160	38117	38511	38500	37936	38458	101.246	
	1	38799	38277	38341	38302	38508	37995	38399	38327	38444	38231	38050	37838	101.092	
	2	38625	38263	38603	38231	38283	38794	38072	38421	38558	38825	38635	38423	101.582	
	3	38837	38326	38283	38596	39099	38897	38388	38919	38303	38409	39269	38058	101.945	
	4	38462	38632	38536	38409	38781	38324	38993	39193	39207	38544	39000	38448	102.196	
	5	39190	38630	38354	38787	39201	38426	38818	39169	38310	38619	38821	38883	102.346	
	6	39000	38565	39084	38787	38681	38736	38361	38366	38643	38134	38189	38307	101.828	
	7	38874	38090	39197	39144	38729	38572	38583	38796	38615	38955	38781	38713	102.311	
	8	38128	38948	38543	38511	38724	38958	39225	38511	38926	38543	38330	38564	102.060	
	9	38362	38660	38660	38649	39278	38543	38809	38777	38948	38543	38117	38926	102.140	
	10	38458	38313	38667	38432	38617	38620	37995	38504	38434	39266	38280	38559	101.672	
	11	38829	38192	39170	38263	38484	38917	38316	38770	38759	38536	38381	38365	101.856	
	12	38666	38353	38552	38061	38421	38942	38124	38605	38682	38692	38675	38888	101.786	
	13	38132	38693	39021	37971	38778	38611	38419	38385	38719	38045	38491	38909	101.679	
	14	38178	38419	38041	38221	38556	38868	39119	38430	38179	38578	38560	38227	101.503	
	15	38238	38498	38342	38498	38573	38421	38076	38306	38327	38410	38567	38713	101.413	
	16	38274	38640	38522	39240	38456	38613	38256	38235	38714	38962	38345	39057	101.929	
	17	38094	38470	38575	38157	37937	38502	38418	37782	38233	38451	38132	38317	100.995	
	18	38202	38443	38275	38191	38536	38346	38599	38925	37971	38412	38569	38223	101.352	
	19	38013	38527	38537	38212	38380	38716	38558	38558	38401	38810	38894	38328	101.626	
	20	38307	38370	38265	38558	39124	39040	38169	37974	38324	38460	38052	38764	101.509	
	21	38648	38711	38502	37937	38188	38544	37989	38949	38670	38655	37944	38508	101.474	
	22	38092	38405	38195	38581	38247	38644	38742	38109	38204	37985	38965	38462	101.339	
	23	38946	39251	38323	38271	38595	38132	38103	38350	39546	38299	38362	38070	101.694	
14	0	39322	38077	38525	38795	38743	38753	38764	38752	38585	38023	38389	39150	102.052	
	1	38435	38332	38104	37970	38626	38761	38503	39044	38516	38754	39189	38799	101.868	
	2	38057	38480	38542	38190	38656	38304	38378	38226	38878	38868	39147	38610	101.714	
	3	38403	38064	38495	39245	37860	38449	38031	37646	38429	38605	38759	38254	101.253	
	4	37791	38513	38039	38544	37965	38780	38337	37924	38800	38138	38584	38632	101.211	
	5	38561	38694	38507	38848	38386	38571	38376	38901	38777	38447	38859	38910	102.044	
	6	38718	37976	38479	38515	39091	38102	38370	38853	38719	38515	39214	38392	101.848	
	7	39112	38689	39090	39132	38731	38237	39225	38597	39091	38546	38875	38577	102.498	
	8	38515	38906	38813	38608	38546	38546	38227	39050	38926	39153	39091	38464	102.266	
	9	39132	39070	38444	38578	37949	38196	38515	38637	38709	38527	38416	38551	101.800	
	10	39126	38346	38407	38715	38357	37929	38125	38942	38442	38213	38397	38377	101.503	
	11	38715	38182	38724	39154	38127	38727	38639	38717	38448	38614	38469	38815	101.933	
	12	38568	38029	38418	38167	38155	38200	38496	38285	38394	38299	38536	38598	101.232	
	13	38299	38861	38522	38476	38575	38179	38176	38254	38541	38588	39369	37946	101.593	
	14	38388	37919	38304	38391	38442	38454	38681	38549	38793	38578	38313	38182	101.419	
	15	37356	38489	38404	38415	38082	38459	38792	38402	38320	38381	38445	38476	101.205	
	16	38587	38503	38320	38316	38416	38491	37985	38139	38171	38609	38389	38008	101.186	
	17	38631	38371	38215	38194	38483	38730	38180	38557	38370	38246	38431	38627	101.428	
	18	38731	38391	38059	38193	38669	38307	37873	38171	38832	38442	38690	38718	101.437	
	19	38095	37909	39098	38218	38455	38962	38261	38611	38762	38964	37971	38731	101.648	
	20	38638	37893	38802	37809	38277	38342	38060	38085	38468	38036	38271	38241	100.963	
	21	38077	38828	38426	38860	39148	38304	38055	38992	38511	38267	38309	38186	101.632	
	22	38628	38422	38475	38331	38628	38527	38190	38623	38695	38993	38993	38479	101.857	
	23	38315	38175	38609	38689	38238	38930	38185	38470	38409	38838	39196	39074	101.889	

INAF/UNIromaTre		S.V.I.R.CO. Observatory - Pressure Corrected Data – November 2021											16 NM-64	
day	hh	00_05	05_10	10_15	15_20	20_25	25_30	30_35	35_40	40_45	45_50	50_55	55_60	h-norm
15	0	38390	39013	38054	38490	38452	38356	39090	38243	37886	37996	38498	38438	101.395
	1	38683	38857	38244	38171	38355	38510	38499	38600	38743	38203	38704	38777	101.716
	2	38779	38689	38886	38916	38173	37807	38682	37990	38132	39018	38640	38089	101.596
	3	38060	38903	38415	38417	38641	38204	38265	38639	39085	38639	39300	39006	101.986
	4	38458	38468	38824	38320	38443	38250	38739	38206	38290	38603	38489	38501	101.550
	5	38399	38492	38523	38574	38707	38401	38668	39004	38710	38353	38668	38524	101.865
	6	38044	38261	38353	39060	38608	38628	38389	38633	38447	38383	39399	38052	101.696
	7	38062	38641	38052	39064	38307	39174	38183	38471	37939	38319	38164	38858	101.471
	8	38972	38236	38827	38671	38381	38215	38661	38464	38578	38640	38464	37853	101.631
	9	38578	38350	37915	38909	38485	38547	38568	38029	38723	38415	37839	38035	101.286
	10	38728	38727	38024	37859	38325	38480	38302	38460	37845	38124	38155	38953	101.196
	11	38512	38161	38524	37863	38213	38533	38863	38326	38868	38489	38569	38414	101.494
	12	38414	38517	38425	38661	38354	38519	38579	38579	38208	37683	38600	38548	101.439
	13	38672	38672	38167	39166	38229	38660	38251	37813	38523	38543	39006	38728	101.735
	14	38161	38314	37781	38595	38235	38636	38562	39003	38213	38451	38796	38454	101.464
	15	38600	38195	38409	38759	37871	38293	38438	38842	38316	38480	38583	38665	101.519
	16	38861	38471	38974	38073	38558	38465	38278	38267	38699	38395	38457	38158	101.564
	17	38624	38251	38377	38613	38365	38334	38322	38324	38665	39223	38397	38457	101.629
	18	38856	38349	38297	38359	38640	38597	38648	38400	38288	38516	38495	37894	101.495
	19	38878	38764	38079	38523	38255	38442	38430	38099	38328	38609	38970	38421	101.596
	20	38565	38946	39132	38312	38497	38175	38175	38331	38487	38466	38549	38436	101.655
	21	38852	38851	38165	38374	38694	38754	38765	38300	38734	38599	38234	38429	101.805
	22	38680	38561	38787	38624	38823	38736	37769	38245	38213	38534	38245	38754	101.633
	23	38372	38551	38408	38646	38173	38486	38527	39281	38469	38397	37633	38832	101.590
16	0	38099	39028	37924	38533	38924	38285	38244	38584	38832	38563	38966	38574	101.762
	1	38104	38653	38661	37992	39166	38311	38353	38301	38631	38745	37963	38519	101.508
	2	38828	38970	38074	38847	38589	38311	38507	38265	39020	38339	38348	37690	101.593
	3	37958	37980	38102	38277	37938	38307	38523	38080	38359	38514	38792	38570	101.068
	4	38457	38620	39226	38682	38497	38837	39012	38549	38527	38329	38862	38822	102.173
	5	38503	38224	38710	38199	38754	39125	38464	38859	39209	37999	38536	38689	101.920
	6	38266	38348	38708	38410	38327	38533	38543	38668	38195	39633	38687	39306	101.997
	7	38772	38248	38143	38708	38985	38728	38586	38735	38138	38098	37863	39187	101.680
	8	38517	38353	38703	38306	37839	38873	38574	38829	38197	38641	39054	38419	101.706
	9	38301	38437	39049	38335	37766	38924	38013	38790	38821	38767	38742	38668	101.775
	10	38626	38235	38703	37759	38475	38552	39183	38406	38644	38656	38625	38077	101.627
	11	38584	38604	38552	37880	38651	38790	38440	38922	38464	38599	38598	38756	101.825
	12	37986	38543	38161	38770	38235	38526	38085	38670	38856	38445	38631	38548	101.520
	13	37930	38631	38874	37801	38763	38405	38014	38766	38374	38785	38743	38247	101.493
	14	38762	38506	38445	38517	38322	38494	39069	38120	37861	38561	38318	38730	101.575
	15	37916	38876	38834	38814	38546	39198	37949	38515	37894	38256	38948	38287	101.647
	16	38214	38566	38329	38629	38740	38172	38669	38153	38400	38555	38390	38453	101.480
	17	38123	38369	38814	38266	38431	38605	37910	38011	38930	38620	38135	38183	101.288
	18	38493	38244	38454	38460	38462	38524	37971	38084	38417	38325	39039	38464	101.406
	19	38611	38568	38754	37721	38539	38170	38378	38749	37707	38347	38057	38736	101.274
	20	38592	38150	38788	38134	38690	38744	38084	38969	38494	38524	38024	38583	101.590
	21	37818	39192	38179	38315	38324	38717	38325	38820	38250	38293	38542	38159	101.405
	22	38034	38520	38830	37443	38726	38520	38396	38965	38449	38925	38480	38697	101.637
	23	38118	38346	38221	38501	38511	38325	38066	38666	39039	38366	38470	38284	101.401



INAF/UNIRomaTre				S.V.I.R.CO. Observatory - Pressure Corrected Data – November 2021										16 NM-64	
day	hh	00_05	05_10	10_15	15_20	20_25	25_30	30_35	35_40	40_45	45_50	50_55	55_60	h-norm	
17	0	38780	38428	38532	38387	38208	38646	38444	38599	38651	38248	38376	38223	101.531	
	1	38346	38412	38221	37898	38533	38099	38986	38089	38491	37872	38429	38285	101.125	
	2	38388	38110	38522	38089	38172	38543	38409	38636	38616	38039	38656	38090	101.259	
	3	38224	38440	38432	38013	38147	38395	39003	38797	38786	38528	38096	37963	101.381	
	4	38591	38263	38407	38304	38695	38591	38086	38423	38565	38235	38634	38859	101.563	
	5	38326	38527	38674	38648	38639	38843	38243	38192	38190	37942	38656	38149	101.427	
	6	38749	38677	38635	38347	38523	38767	38588	38015	38728	38439	38326	37878	101.568	
	7	38533	38308	38382	38892	38824	38677	39001	38616	38873	38893	38744	38478	102.129	
	8	39077	38557	38741	38824	38675	39189	38972	38557	38461	38354	37830	38418	102.005	
	9	38279	38747	38402	39170	38627	38592	38999	38605	38859	38787	38498	38920	102.187	
	10	38750	38871	38348	38720	38662	39165	38494	38569	38707	38717	38633	38622	102.137	
	11	38944	37896	38260	38385	38302	38852	38547	38691	38251	38384	38763	38599	101.612	
	12	38826	38889	37929	38656	38711	38512	38264	38222	38184	38305	38553	38737	101.593	
	13	38282	39092	38674	38790	38354	38098	38251	39169	38306	38709	38491	38148	101.720	
	14	38491	38501	38077	38421	38118	38337	38431	38742	39364	38378	37485	38098	101.297	
	15	38577	37994	38159	38408	38782	38294	38626	38335	38065	38377	37904	38277	101.155	
	16	38290	38443	38485	38225	38350	38130	37984	37840	37993	38677	38239	38406	100.994	
	17	37833	38166	37864	38427	37625	37948	38434	38365	38028	38289	37986	38007	100.533	
	18	37380	38257	37850	38406	38381	37798	38057	38748	38130	37986	38789	38038	100.720	
	19	38164	37865	38143	38597	37668	38211	38223	38060	38290	38408	38100	38817	100.879	
	20	37967	37814	38364	37975	38367	38609	38096	38387	38272	38061	37532	38346	100.714	
	21	37808	37952	38498	38487	38360	38144	37770	38259	38163	38210	38170	38214	100.768	
	22	38175	37772	38303	38228	39280	37751	38239	38409	38483	38112	38324	38313	101.065	
	23	38260	38292	38409	38526	37825	38272	37773	38527	38060	38218	38696	38303	101.015	
18	0	38759	38228	37389	37991	38646	38327	37944	38178	38408	38596	38138	38937	101.106	
	1	38735	38426	37936	37915	37765	38277	38149	38085	38458	38512	38434	38183	100.952	
	2	38493	37959	38429	38141	38695	37544	38098	37831	38098	38002	38290	38313	100.737	
	3	39177	38185	38355	38429	37929	38445	38149	37754	38150	38163	38205	38312	101.036	
	4	37908	38014	38259	38763	38902	38442	37895	38214	38687	38380	38429	38552	101.298	
	5	37927	38684	38606	38195	38247	37271	37850	38515	38612	38441	38126	38389	100.950	
	6	38326	38257	38607	38172	38534	38534	37650	38364	38651	38472	38311	38307	101.241	
	7	38820	38705	38406	38171	37968	39061	39104	38269	37868	38774	38087	38185	101.512	
	8	38206	39003	38284	39055	38858	38827	38957	38903	38501	38847	38771	38869	102.317	
	9	39245	38100	38067	38393	38394	38477	39266	38885	38602	38874	38482	39386	102.117	
	10	38754	38656	38504	38700	38438	39015	39418	38536	38908	38354	38556	38462	102.147	
	11	38307	39067	38774	38875	38283	38816	39078	38751	38793	38511	38619	38653	102.196	
	12	38306	38513	38995	39063	38565	38596	38813	39010	38828	38398	37945	38767	102.036	
	13	38095	39134	38701	38225	38035	38472	38785	38286	38544	38490	38295	38286	101.497	
	14	39151	38510	38433	38433	38220	38406	38337	38593	38528	38434	38450	38756	101.695	
	15	38563	38357	38779	38140	38107	38363	38412	38464	38486	38298	38404	38370	101.364	
	16	38585	38669	38232	38243	38788	37814	38766	38198	38006	38000	38683	37887	101.172	
	17	37992	38341	38063	38246	38082	38460	39002	38837	38322	37545	38339	38631	101.169	
	18	38001	38523	38676	38270	38479	38398	37701	37811	38095	38133	38425	37924	100.856	
	19	38234	37755	37838	38013	38332	37433	38019	37853	38580	37965	38303	38708	100.547	
	20	38255	37676	38063	38297	38132	38042	38174	37760	38942	38307	38309	37677	100.679	
	21	39010	38098	38664	38499	38631	38563	38485	38386	38253	38663	38064	37866	101.460	
	22	38781	38287	38055	38640	38200	38220	37974	38308	38001	37851	38777	38286	101.064	
	23	38454	38387	37852	38847	38076	38219	38437	38421	37184	38627	38701	38778	101.197	

INAF/UNIromaTre		S.V.I.R.CO. Observatory - Pressure Corrected Data – November 2021											16 NM-64	
day	hh	00_05	05_10	10_15	15_20	20_25	25_30	30_35	35_40	40_45	45_50	50_55	55_60	h-norm
19	0	38022	37665	37976	38131	38288	38171	38253	38498	38276	38098	37996	38098	100.644
	1	38131	38771	38042	38701	38388	37986	38197	38722	37763	37663	38744	38097	101.025
	2	38431	38398	38660	38676	38987	38407	38265	38010	38222	38031	37874	38310	101.259
	3	39202	38321	38331	38354	38365	38265	38612	38388	38030	38643	38104	38189	101.377
	4	38143	38433	38200	37742	38647	38783	38580	38671	37739	38714	38826	38200	101.349
	5	38367	37675	38476	37900	38411	38667	38512	38312	38670	38580	38687	38435	101.352
	6	38546	38175	38657	38646	38462	38536	38039	38526	38568	38187	38061	38448	101.388
	7	39311	38491	38350	38455	37904	38312	38616	38199	38491	37983	38853	38085	101.431
	8	38897	38244	38741	38488	38575	38146	38688	38583	38094	38252	37992	38748	101.519
	9	38381	38246	38300	38470	38718	38136	38332	38341	38335	38512	38444	39031	101.474
	10	38230	38580	38281	38264	38979	38073	38714	38721	38738	38309	38590	38560	101.649
	11	37612	38302	38391	38244	38535	37857	38546	38998	38220	38555	38456	38684	101.289
	12	38476	38432	38220	38862	38710	38666	38844	38197	38637	38988	38566	38144	101.803
	13	38512	38835	38623	38021	38421	37851	38616	38044	38354	38007	38604	38743	101.339
	14	37841	38297	38820	38440	38752	38809	38275	38232	38577	38414	38030	38430	101.402
	15	38775	38230	38898	38225	38098	38098	38197	38074	37956	37992	38616	38038	101.024
	16	38867	38420	38152	38275	38208	38197	38175	38152	38231	38431	38342	37917	101.061
	17	37982	38318	38307	37830	38361	38262	37469	37549	38162	37792	38922	38421	100.623
	18	37773	37951	38544	38052	38264	37794	38295	37882	38083	38003	37823	38417	100.514
	19	38295	38776	38531	38085	37447	37725	38271	37756	38217	38254	38646	38521	100.876
	20	38275	38443	37954	38310	38393	37750	37666	38234	37999	38333	38075	38101	100.658
	21	37567	38472	38385	38075	38187	38110	38461	38138	37697	38029	38164	38354	100.680
	22	37817	37850	38287	37660	37828	37604	37960	38212	37558	38231	37446	37816	99.939
	23	37939	37973	37867	38130	38421	38499	38299	38131	38108	38063	38207	38347	100.757
20	0	38164	38331	38354	38231	38532	37963	37951	37956	38017	38154	38434	38288	100.840
	1	38187	38444	38409	37773	38355	38076	37663	38053	39023	37947	37798	38010	100.702
	2	38551	37811	38277	37799	37888	38158	38383	38294	38239	38460	38049	38209	100.786
	3	38321	38318	38693	38316	38114	38402	38359	38525	38403	38049	38170	38012	101.130
	4	38920	38287	38498	38287	37967	38455	39209	37590	38531	38454	38298	38333	101.382
	5	38610	38376	38343	38632	38088	38315	38350	38086	38971	38093	38781	38404	101.431
	6	38115	38371	38282	38713	38048	37903	38501	37985	38257	37802	38057	38667	100.914
	7	38578	38567	37612	38655	38001	38456	37984	38493	38574	38540	38050	38050	101.103
	8	38305	37794	38294	38380	38206	38356	38022	38433	38834	38553	37994	38776	101.189
	9	38420	38968	38324	38377	38297	37849	38234	38732	37911	38649	38331	38620	101.357
	10	38432	38426	38454	38126	38662	38619	38562	37966	38578	38516	38304	38276	101.403
	11	38305	37925	38414	38485	38654	38480	38474	38610	38665	38449	38313	38128	101.399
	12	38255	38217	38339	38169	38486	38453	37923	38451	38145	38335	38428	38449	101.123
	13	37862	38819	38634	38563	38393	38110	38284	38050	38152	38870	37980	38261	101.195
	14	38413	38562	38274	38140	37923	38862	38564	38137	38658	38628	38432	38302	101.397
	15	38085	38365	38073	38048	38315	37570	38651	38433	37816	38390	38172	38064	100.756
	16	37826	38280	37935	38182	38375	38192	38149	38301	37931	38224	38150	37577	100.567
	17	38042	38359	38093	38361	38298	38396	38190	38496	38405	37974	38243	38456	101.049
	18	38352	37896	38058	38058	38272	38418	38414	38070	38242	38112	38133	38091	100.786
	19	39013	38077	37944	37759	38040	37879	38500	38402	38166	38382	37803	38221	100.801
	20	38209	37790	38273	38466	38547	38169	38180	37890	38577	38279	38303	38089	100.930
	21	37896	38003	38207	37402	38260	38185	38260	37926	38730	37929	38460	38451	100.696
	22	37947	38108	37990	38408	38390	38277	37485	38063	37688	38501	37806	37164	100.282
	23	38285	37586	38086	38156	38112	38189	38360	37964	37827	38322	38431	37966	100.603

INAF/UNIRomaTre		S.V.I.R.CO. Observatory - Pressure Corrected Data – November 2021											16 NM-64	
day	hh	00_05	05_10	10_15	15_20	20_25	25_30	30_35	35_40	40_45	45_50	50_55	55_60	h-norm
21	0	37936	38353	38333	38152	38482	38002	37481	38386	37981	38199	38310	37948	100.659
	1	38439	37757	38032	38133	38064	38519	38041	37691	38337	38135	37918	37966	100.547
	2	37800	37857	38175	38179	37833	37685	38429	38517	38243	38317	37613	38166	100.500
	3	38419	38728	38122	38090	37931	38101	38291	38576	38343	38237	38574	37529	100.967
	4	38228	38661	38223	38209	37904	38177	38189	38358	37860	38398	37911	38395	100.873
	5	38342	38195	38438	38679	38962	38689	38218	38427	38532	37620	38291	38237	101.339
	6	38212	38514	38577	38638	37998	38722	38367	38377	38273	38294	37821	38438	101.250
	7	38418	38294	38157	38776	38157	38732	38324	38786	38231	38229	38533	38409	101.430
	8	38219	38280	38167	38063	38271	39004	38544	38461	38334	37819	38595	38647	101.289
	9	38605	38218	38406	38321	38298	38486	38581	38110	38666	38324	38064	39415	101.529
	10	38447	38332	38700	38497	38438	39073	38869	38572	38778	38341	38612	38621	101.922
	11	38799	38834	38845	38650	38819	38842	39125	38763	39169	38522	38417	38121	102.279
	12	38001	38339	38641	38162	38453	38765	38621	38405	38261	38815	39298	38816	101.767
	13	38549	38631	38527	38600	38705	38563	38645	38192	38722	38838	39041	38486	101.970
	14	38458	38577	38323	38667	38050	38531	38101	38538	38309	38680	38308	38067	101.334
	15	38645	38307	38220	38519	38320	38562	38215	37725	38132	38603	38200	38200	101.123
	16	38239	37885	38346	37898	38010	38224	38765	38694	38571	38429	38010	37990	100.993
	17	38163	37828	38418	37696	38289	38097	38148	37924	38066	38483	37904	37833	100.507
	18	37773	37906	38657	38554	38137	38249	37721	37721	38209	38483	37721	38057	100.581
	19	38434	38647	38211	38381	38179	38244	38021	38752	38670	37961	38064	38318	101.174
	20	38064	37738	38237	38129	38210	38624	38229	38230	37814	38259	38421	37895	100.727
	21	37887	37937	38325	37719	38405	37940	38335	37890	37631	38018	37502	38179	100.269
	22	38475	38496	38577	38689	37853	37954	38166	38186	37811	37549	38114	38175	100.770
	23	38598	37993	37983	38115	38096	37664	38473	38465	38294	38260	38634	38317	100.957
22	0													
	1													
	2													
	3													
	4													
	5													
	6													
	7													
	8													
	9													
	10													
	11													
	12													
	13													
	14													
	15													
	16													
	17													
	18													
	19													
	20													
	21													
	22													
	23													

INAF/UNIromaTre		S.V.I.R.CO. Observatory - Pressure Corrected Data – November 2021											16 NM-64	
day	hh	00_05	05_10	10_15	15_20	20_25	25_30	30_35	35_40	40_45	45_50	50_55	55_60	h-norm
23	0	38349	38138	37851	37860	37848	37697	37963	38526	37965	37701	38367	38568	100.501
	1	39167	38277	37999	38217	37622	38082	38344	37905	38240	38221	38676	38484	101.032
	2	37915	38898	38842	38501	38479	38278	38214	38084	38396	38006	37966	38192	101.150
	3	37726	38113	38364	38148	38662	38602	38132	38411	38130	38504	38284	38126	101.024
	4	38251	37932	38366	37857	38075	38640	38004	37775	38055	37786	38990	38697	100.854
	5	37751	37922	37802	37708	37919	38507	38161	38133	37999	38486	38305	38710	100.628
	6	38419	38439	38280	38059	38458	37790	38161	38100	38091	38572	38857	38489	101.137
	7	38646	38288	38002	37917	38141	38270	38167	37782	38211	38852	38249	38804	101.052
	8	38332	38226	38222	38554	38019	38119	38893	38559	38613	38343	38448	38333	101.345
	9	38419	38579	38165	38127	38363	38608	38205	38271	38425	38250	38131	38485	101.206
	10	38087	38550	38150	38902	38108	38716	38773	38830	38616	38647	38378	38542	101.706
	11	38332	38431	38353	39179	38881	38393	38081	39093	38323	38158	38779	38759	101.808
	12	38685	38196	38127	38333	38354	38907	38205	38336	38624	38646	38574	38797	101.592
	13	38351	38420	38545	38691	38835	38617	38340	38416	38742	37863	38500	38030	101.497
	14	38609	38485	38377	38206	38275	38081	38153	38027	37952	38529	37921	38801	101.072
	15	38516	37884	38064	37787	38002	38257	38166	38548	38231	38330	38034	38289	100.784
	16	38884	38065	37931	37946	38615	38007	38129	38404	38181	38359	38357	37797	100.909
	17	38463	38184	37768	38289	39015	38145	38504	38317	38008	38087	38548	37947	101.040
	18	38070	38455	37902	37834	38453	37610	37828	38080	37710	37725	38481	37692	100.285
	19	38022	38075	38391	37849	37979	37836	38429	38397	38290	37756	38531	38299	100.728
	20	38234	38284	38781	38475	38595	38343	37873	38311	38485	38262	38040	38236	101.182
	21	38474	38112	37839	38112	38272	37979	37439	38175	38120	38380	38363	37914	100.580
	22	37942	37879	38674	37783	38473	37598	37961	38272	38329	37790	38112	38342	100.574
	23	37517	38505	38691	38712	38235	38487	38014	37827	38238	38556	38271	37901	100.970
24	0	37684	37733	38245	37673	37979	38534	38124	38048	38142	37998	37833	38141	100.350
	1	38290	38873	38260	38241	38490	37978	38165	37840	38842	38151	37562	38545	101.032
	2	37556	37843	38095	37955	37838	38456	38551	38305	37377	38448	38181	37812	100.412
	3	37892	38194	38382	38114	38250	37706	38521	37970	38576	37927	38297	38360	100.802
	4	37632	38562	38077	38341	38125	38384	37560	38317	38546	38592	38454	38744	101.054
	5	38082	37926	38222	38238	38659	38299	38550	38078	38179	38610	38117	38017	100.975
	6	38957	38333	38261	38579	38355	38696	38222	38448	38881	38906	38522	38171	101.713
	7	38216	38362	38334	38573	38613	38614	38899	38562	38833	38511	38974	38648	101.890
	8	38501	38827	39155	38847	38947	38351	39178	38471	38231	38193	38648	38332	102.010
	9	37712	38738	39082	38489	38345	38448	38725	38741	38373	38212	39123	38473	101.742
	10	38837	38402	38337	38725	38466	38566	38798	38273	38626	38603	38831	38494	101.851
	11	38338	38622	38611	38506	38437	38469	37708	38561	38522	39482	39227	38615	101.882
	12	38696	38672	38285	38506	38866	38499	38402	38648	38659	38535	37855	38226	101.607
	13	38351	38665	38050	38430	38805	38671	38066	39063	38042	38910	38579	38076	101.576
	14	38270	38392	38802	38227	38382	38142	38117	38379	38253	38036	38764	38551	101.269
	15	38115	38110	38056	38424	38309	38502	38321	38759	38315	38390	38243	38780	101.272
	16	38108	38746	38093	38870	38512	38701	38257	38201	39121	38245	37501	38733	101.439
	17	37767	38254	38570	37960	38308	37951	38355	38207	38645	38602	39172	38457	101.254
	18	38683	38626	38867	38566	38531	38819	37897	38212	38654	38179	37993	39082	101.664
	19	38368	38113	38560	37899	38216	38061	38065	38703	38422	39034	38176	38444	101.214
	20	38624	37809	38002	38121	38442	38500	38323	38554	38049	38284	38215	38675	101.112
	21	37966	38404	38341	38015	38103	38580	38616	38471	38416	38122	38542	38623	101.244
	22	38406	38699	38673	38308	37688	38397	38437	38566	38408	38121	37699	38254	101.124
	23	39036	38211	38663	38227	38664	38160	38403	38588	38622	37978	38060	38375	101.417

INAF/UNIRomaTre				S.V.I.R.CO. Observatory - Pressure Corrected Data – November 2021										16 NM-64	
day	hh	00_05	05_10	10_15	15_20	20_25	25_30	30_35	35_40	40_45	45_50	50_55	55_60	h-norm	
25	0	38576	38227	39165	38432	38345	38265	38818	38819	38769	38487	38335	38976	101.898	
	1	38346	38967	38356	38417	38590	38916	38845	38682	38662	38267	38747	39042	102.044	
	2	38488	38846	38143	38802	38691	38559	38173	38741	38193	38126	38564	38778	101.663	
	3	38232	38374	38878	38879	38854	38652	38753	38328	38785	38818	38545	38232	101.933	
	4	38767	38838	38390	38392	39124	39053	38539	39033	38580	38318	38398	37985	101.952	
	5	38438	38620	38367	38588	38559	38761	38500	38238	38430	38262	38605	38531	101.618	
	6	38265	38202	38525	38594	38854	38743	38533	38960	38706	38645	38848	38622	101.969	
	7	38648	38932	38448	39005	38560	38981	38393	38496	39255	39053	38805	39029	102.433	
	8	38329	39087	38470	39006	39078	38939	38838	38808	39079	39599	39235	39232	102.895	
	9	39097	39035	39327	38993	39216	39482	38820	39722	38648	39130	38751	39094	103.249	
	10	38333	39115	38945	39177	38958	39449	39201	38911	39021	39112	38597	38663	102.846	
	11	38325	38683	39028	39406	38851	38818	39307	38770	38663	39100	39042	39400	102.826	
	12	39170	39163	39127	39115	39235	38445	38850	39235	38623	39008	39195	39177	103.035	
	13	38734	38086	38826	39218	38864	39121	38337	38664	38938	38486	39388	39566	102.571	
	14	39119	39197	38684	38968	38890	38998	38685	38911	39026	38879	38783	38969	102.764	
	15	39254	38685	38948	38299	38605	39046	38750	38457	39154	38627	38618	38696	102.331	
	16	38715	39724	38852	38821	39018	38794	38950	38596	38695	39107	39401	39422	102.981	
	17	38725	38459	39184	38721	38997	39174	38859	38722	38437	39047	38783	38753	102.489	
	18	39116	38372	38461	39234	38655	39154	39057	38755	38931	38549	39029	38776	102.540	
	19	38708	38669	38962	38655	38646	38875	39529	38758	38944	38486	38224	39004	102.401	
	20	38869	38295	38839	38722	38887	38364	39200	38909	38520	38734	38829	38626	102.254	
	21	38784	38842	39463	39125	38787	38882	38700	39088	38554	38371	39087	38797	102.625	
	22	39405	38838	38548	38283	39535	38907	38849	39059	38665	39464	39104	38487	102.770	
	23	39210	38857	38610	39025	38921	39025	38995	39234	39244	38572	39243	38264	102.784	
26	0	38956	38516	38696	39423	38646	38611	38482	39252	38527	38374	38966	38460	102.273	
	1	38441	38622	38872	38777	39101	38431	39090	38880	38746	39128	38642	38777	102.411	
	2	39101	38937	39260	38443	38947	39088	38792	38936	38454	38585	38922	38469	102.505	
	3	38049	38968	38900	38784	38935	39361	38493	39183	39117	38681	39030	38928	102.615	
	4	38570	38814	39144	39323	39161	38956	38863	39143	38668	39070	39233	39227	102.998	
	5	38568	38879	38832	38484	38578	39602	39152	38964	38870	38824	39097	38541	102.606	
	6	39093	39149	38887	39243	39543	38962	39074	38212	39299	39374	38783	39041	103.105	
	7	38675	38726	39128	38847	38998	38886	38691	39017	38855	38847	38746	39017	102.615	
	8	39101	39784	39298	38876	38978	39100	38932	38932	38941	39269	39138	38932	103.242	
	9	39043	38818	38698	38903	38800	39005	39182	38677	38910	39362	39381	38602	102.824	
	10	38217	38659	38070	38997	38708	38987	39201	38650	38407	38509	39112	39605	102.329	
	11	38938	39030	39270	39233	38518	39492	39129	38822	38803	38486	39048	38849	102.875	
	12	39060	38937	38863	39121	39028	38723	39246	39577	39485	39478	39058	38690	103.238	
	13	38438	38970	38429	38346	39202	38162	38678	38668	38981	38365	38576	39092	102.060	
	14	38865	38838	39365	39106	38665	38727	39133	39595	38493	38372	38765	38711	102.660	
	15	38876	39224	39096	38380	38563	38702	39051	38648	38317	39168	39131	39058	102.567	
	16	39087	38511	38896	38798	38753	38898	38687	39137	38576	38927	39111	39184	102.644	
	17	38282	39253	38545	38598	38622	38169	38838	38913	38637	38915	38990	39492	102.355	
	18	38732	38695	39330	39296	38541	39212	38774	38572	38862	38957	39107	39145	102.789	
	19	38904	38681	38953	38310	38994	38445	38287	39115	39106	38780	38780	38733	102.319	
	20	38761	38287	38875	38642	39062	39202	38791	38978	38575	38939	38328	38973	102.391	
	21	38165	38734	39192	38893	38817	39381	39032	38519	38651	37868	38420	38982	102.224	
	22	38272	38683	38694	38451	38882	38448	39009	38371	38175	38427	38577	38876	101.831	
	23	38483	38474	38623	38596	38848	38969	38835	39170	38582	38212	38466	38605	102.050	

INAF/UNIromaTre		S.V.I.R.CO. Observatory - Pressure Corrected Data – November 2021											16 NM-64	
day	hh	00_05	05_10	10_15	15_20	20_25	25_30	30_35	35_40	40_45	45_50	50_55	55_60	h-norm
27	0	38793	38831	38549	38324	38549	38390	38821	38859	38596	39245	38963	39074	102.299
	1	38981	38847	38903	38831	38080	38831	39103	38846	38484	39136	39282	38653	102.515
	2	39047	38653	39132	38747	38821	38924	38502	38990	38615	38587	38896	38887	102.476
	3	39112	38859	38391	39000	38811	38539	39120	38822	38615	38746	39306	39217	102.639
	4	38724	38886	38811	38839	38784	38943	38803	38671	38820	38550	38783	39229	102.486
	5	39091	38821	38976	38976	38996	38772	38772	39311	38977	38633	39284	38727	102.814
	6	39034	38373	38884	38205	37945	39377	39070	39042	38941	38736	38922	39155	102.450
	7	39590	38690	39110	38578	39191	39079	38651	38084	39033	38545	39035	39128	102.677
	8	38830	37993	38932	38388	38764	38364	38466	38922	39200	38818	38846	38958	102.186
	9	38316	38975	38808	39256	38158	38763	39330	39070	38792	38511	38808	38352	102.330
	10	38705	39171	39013	38663	38619	39258	39145	38252	39238	39015	38624	38920	102.657
	11	38974	39560	39273	38706	39038	39316	39177	38796	39056	39101	39027	39092	103.205
	12	38962	39398	39212	39120	38851	38804	38741	38945	39269	38945	38906	39231	103.044
	13	39286	39517	39146	39146	39081	38933	39127	39035	39053	39118	38766	38515	103.119
	14	38853	38929	39455	38871	38897	38389	39177	38777	39010	38676	39225	39170	102.834
	15	39410	38830	39133	39208	38892	39431	38593	38641	39136	38914	38805	38387	102.824
	16	39267	38513	38541	39220	38986	38432	38780	39226	39209	38642	38614	38687	102.546
	17	39096	39068	38519	38362	38446	39374	38446	38706	38790	39637	38912	38614	102.513
	18	38986	38642	38568	38888	39075	38373	38828	39330	38874	38594	38438	38654	102.355
	19	39138	39239	39499	38791	38990	39256	38878	38227	38806	38538	39102	38693	102.774
	20	39148	38402	39127	38709	38728	38309	39210	38567	38957	39477	38864	39115	102.655
	21	38771	38669	38381	38772	38698	38355	38634	38819	38893	38763	38261	38661	102.009
	22	38475	38717	38707	38791	38439	38670	38131	38066	38692	38632	38877	38095	101.704
	23	38807	38352	38195	38259	38056	38407	38303	38340	38737	38488	38459	38504	101.400
28	0	38851	38159	38618	38245	38147	38230	38424	38461	38249	38295	38654	39172	101.532
	1	38251	38158	38304	38129	38415	38960	38379	38894	38877	38471	38656	38941	101.735
	2	38820	38415	37938	38442	38559	38311	38037	38230	38726	38663	38985	38755	101.614
	3	38709	38579	38743	38706	38586	38944	38642	38926	38899	38688	39393	38724	102.419
	4	38321	39030	38450	39077	38841	38613	38466	38155	38567	38328	38772	38881	101.970
	5	38342	38846	39004	38738	38717	38235	38411	38979	38530	38402	38860	38968	102.087
	6	38428	38155	38531	38568	38897	38392	38814	38880	39419	38721	39097	38813	102.237
	7	38456	38750	38585	38541	38745	38414	38651	37998	38705	38651	38919	39041	101.960
	8	38941	39202	38859	38790	38592	38996	38913	38463	38781	39100	38993	38856	102.627
	9	38718	38654	38598	39340	38798	38899	38357	38679	38434	38636	38882	39046	102.309
	10	38768	38823	39203	38994	38947	38511	38637	38839	38664	38775	38919	39193	102.580
	11	38602	39082	38833	39145	38814	39181	39135	38877	38741	39381	38829	39425	102.971
	12	39015	38722	39160	39150	39416	38649	39555	39125	39280	38914	39617	39323	103.384
	13	38822	39398	38866	38773	39391	39200	38975	38993	38900	39633	38593	38912	103.060
	14	38948	39540	38966	39168	38620	39250	39579	39470	39022	39296	39496	39057	103.490
	15	38593	39177	39442	38477	39055	38895	38299	39253	39188	38939	38958	39069	102.816
	16	39134	38713	38822	38785	39218	39071	38722	38311	38951	38191	39073	38504	102.410
	17	38845	38890	39055	38524	39157	39570	38533	39148	38981	38486	38799	38790	102.691
	18	39276	38899	38787	38762	39169	39189	38891	39024	38389	38885	38943	38625	102.705
	19	38983	39186	38791	38890	38835	39157	38515	38855	38743	38956	39075	38587	102.646
	20	38835	38890	38607	38783	39233	38920	38956	38779	39209	38594	39145	38786	102.682
	21	39007	38537	39107	38572	39223	38958	39280	38748	39009	38671	38588	38396	102.541
	22	39552	38405	38983	38896	38938	38819	39241	39097	38889	38981	38944	38871	102.875
	23	38578	39373	39263	39254	39280	39223	38617	39306	38909	39163	39012	38737	103.117

INAF/UNIRomaTre				S.V.I.R.CO. Observatory - Pressure Corrected Data – November 2021										16 NM-64	
day	hh	00_05	05_10	10_15	15_20	20_25	25_30	30_35	35_40	40_45	45_50	50_55	55_60	h-norm	
29	0	39065	38763	38426	39410	38734	38772	38901	39392	38999	38225	39047	38580	102.584	
	1	38616	38479	38278	38818	38627	39001	38636	38910	38755	38755	38380	38836	102.100	
	2	39184	39138	39065	38718	38852	39250	38331	38778	39042	38214	39178	38960	102.676	
	3	38896	39478	38996	38655	38863	39384	38976	39094	39003	38807	39094	39233	103.066	
	4	38919	39145	39147	38957	39429	38631	39154	39309	38633	38669	38687	38824	102.851	
	5	38724	38841	38805	38207	38905	39367	38957	38973	38874	39227	39126	38989	102.739	
	6	39099	39598	38449	38522	39192	38857	38702	38706	38975	39034	38878	38737	102.685	
	7	38732	38841	39112	39239	39013	39420	38868	38895	38575	39242	38982	38507	102.834	
	8	38707	39115	38771	38664	38585	38579	38527	39100	39130	39230	38587	38460	102.401	
	9	39268	38911	38896	39492	38628	38496	38937	39161	39048	39243	38679	38568	102.812	
	10	38478	39139	38666	38895	39213	38984	38964	38964	38493	39383	38781	38633	102.650	
	11	38752	38833	39470	39021	38812	39077	38757	39429	39140	38504	39061	39201	102.972	
	12	39155	39026	39091	38745	39567	38784	38593	38840	38896	38410	38806	39029	102.728	
	13	39028	38749	39192	39053	39076	38906	38930	38717	38847	38803	39081	38738	102.767	
	14	39176	38772	38882	39078	38734	38865	38537	39003	38773	38686	38356	38801	102.447	
	15	38768	38757	38700	38708	38607	38710	38155	38591	38929	39030	38872	39245	102.315	
	16	38915	38747	38766	38465	38671	39141	38320	38378	38730	38390	38840	39493	102.268	
	17	38413	38120	39082	38994	38652	38712	38664	39435	38650	38488	38749	38681	102.220	
	18	38701	38882	38586	38988	38679	38593	38659	39293	38880	38715	39014	38331	102.371	
	19	38517	38380	39293	38232	39048	39201	39215	39195	39486	39051	38286	38369	102.579	
	20	38397	38329	38919	38648	38532	39056	38355	39289	38831	38985	39257	38399	102.299	
	21	39218	38348	38591	38679	38621	39610	39139	38843	38511	38825	38538	38714	102.440	
	22	38762	39017	38979	38790	38931	38225	38845	38274	38641	38676	37941	38836	102.063	
	23	38367	38844	39122	38269	38419	38339	39147	38774	38745	39265	38676	38754	102.238	
30	0	39086	38713	38717	38644	38748	39039	38687	38499	38830	38902	39059	38347	102.373	
	1	39351	38541	38865	38708	38601	38123	38453	39006	39259	39032	38584	38839	102.380	
	2	38580	38670	38957	38830	38142	38453	37693	38540	38907	38594	38312	38374	101.652	
	3	38793	38624	38600	38876	39112	38800	38696	39152	38192	38385	38784	38329	102.156	
	4	38165	38589	38813	38798	39119	38526	38897	38234	38578	38711	38345	38422	101.903	
	5	38157	38614	38565	38623	38308	38681	38730	38497	38954	39161	38564	39276	102.107	
	6	37889	38358	38662	38992	38516	38211	38597	38804	37950	38632	38752	38791	101.674	
	7	38603	38553	38464	38529	38823	38409	38384	38318	38627	39042	38992	38955	102.013	
	8	38673	38556	38959	38354	39178	38904	38826	38121	38707	38757	38349	38767	102.114	
	9	38149	39272	38588	38974	38233	37958	38827	39015	38896	38615	38949	38391	102.051	
	10	38647	38229	38566	39115	39072	38792	38503	38847	38878	39100	38938	38416	102.323	
	11	38480	38855	39081	38748	38361	38221	38984	38480	38577	38514	39020	38797	102.106	
	12	39089	38606	38885	38687	38701	38421	38614	38700	38561	38978	38486	38561	102.143	
	13	38786	38775	38174	38548	38936	39064	38871	38538	38484	38711	39139	38893	102.282	
	14	38753	39343	38193	38726	38510	39023	38606	38374	38829	38617	37764	38363	101.883	
	15	38213	38308	38788	38472	38289	38666	38784	38935	38159	38743	38507	38506	101.721	
	16	38376	38581	39055	38700	38752	38871	38904	38902	38443	38628	38754	38498	102.182	
	17	38163	38887	38521	38479	38652	38425	38241	38605	38309	38751	38349	38609	101.638	
	18	38641	38273	38944	38598	38133	38481	38871	39159	38556	38642	38286	38210	101.815	
	19	38546	38210	38016	38576	38027	38928	38071	38266	38255	39026	38407	38679	101.422	
	20	38483	38852	38582	39026	39343	38318	38692	38757	38638	38018	38060	38375	101.892	
	21	38812	38322	38381	39634	38657	38722	39136	38236	38519	37846	38920	38866	102.091	
	22	38821	38181	38713	38789	38593	38798	38397	38348	38679	38636	38668	38255	101.833	
	23	38331	38332	38605	38381	39162	38621	39131	38280	38531	39039	39063	38879	102.159	

S.V.I.R.CO. Observatory - Pressure in hectoPascal – November 2021

day	hh	00_05	05_10	10_15	15_20	20_25	25_30	30_35	35_40	40_45	45_50	50_55	55_60	average	
1	0	1011.59	1011.59	1011.59	1011.49	1011.38	1011.38	1011.36	1011.25	1011.17	1011.17	1011.17	1011.06	1011.34	
	1	1010.96	1010.96	1010.85	1010.75	1010.64	1010.54	1010.44	1010.33	1010.33	1010.33	1010.33	1010.33	1010.56	
	2	1010.32	1010.21	1010.12	1010.09	1009.98	1009.90	1009.80	1009.70	1009.70	1009.59	1009.48	1009.49	1009.86	
	3	1009.49	1009.49	1009.38	1009.27	1009.28	1009.26	1009.16	1009.07	1009.07	1009.04	1008.91	1008.51	1009.16	
	4	1008.36	1008.68	1008.84	1008.88	1008.98	1009.00	1008.90	1008.81	1008.83	1008.84	1008.83	1008.83	1008.81	
	5	1008.84	1008.86	1008.86	1008.85	1008.86	1008.85	1008.85	1008.85	1008.85	1008.85	1008.86	1003.82	1008.43	
	6	1003.71	1008.65	1008.64	1008.64	1008.64	1008.57	1008.51	1008.51	1008.61	1008.78	1008.85	1008.86	1008.25	
	7	1008.69	1008.58	1008.53	1008.54	1008.64	1008.65	1008.65	1008.54	1008.30	1008.08	1008.09	1008.16	1008.45	
	8	1008.10	1008.02	1008.10	1008.22	1008.20	1008.21	1008.23	1008.13	1008.02	1007.97	1007.97	1007.91	1008.09	
	9	1007.81	1007.81	1007.81	1007.81	1007.81	1007.80	1007.80	1007.80	1007.70	1007.60	1007.60	1007.50	1007.74	
	10	1007.39	1007.38	1007.28	1007.08	1006.87	1006.76	1006.66	1006.55	1006.55	1006.55	1006.45	1006.34	1006.82	
	11	1006.23	1006.12	1006.12	1006.02	1005.91	1005.91	1005.91	1005.91	1005.81	1005.71	1005.44	1005.33	1005.87	
	12	1005.36	1005.25	1005.28	1005.17	1005.07	1005.06	1005.06	1004.82	1004.72	1004.86	1004.76	1004.65	1005.00	
	13	1004.63	1004.53	1004.46	1004.45	1004.44	1004.28	1004.17	1003.79	1003.69	1000.33	999.40	1002.69	1003.40	
	14	1003.51	1003.70	1003.60	1003.59	1003.59	1003.60	1003.60	1003.60	1003.59	1003.59	1003.49	1003.39	1003.57	
	15	1003.38	1003.38	1003.39	1003.39	1003.38	1003.38	1003.39	1003.39	1003.27	1003.17	1003.07	1002.96	1003.29	
	16	1002.97	1002.97	1002.87	1002.76	1002.75	1002.75	1002.65	1002.53	1002.52	1002.54	1002.55	1002.55	1002.70	
	17	1002.54	1002.54	1002.49	1002.49	1002.54	1002.54	1002.64	1002.70	1002.59	1002.51	1002.52	1002.43	1002.54	
	18	1002.28	1002.17	1002.12	1002.12	1002.04	1001.85	1001.93	1002.13	1002.03	1001.92	1001.93	1002.03	1002.04	
	19	1002.02	1001.92	1001.92	1001.82	1001.71	1001.70	1001.70	1001.71	1001.67	1001.57	1001.40	1001.29	1001.70	
	20	1001.29	1001.29	1001.29	1001.18	1001.07	1001.18	1001.29	1001.29	1001.29	1001.39	1001.50	1001.61	1001.30	
	21	1001.71	1001.70	1001.70	1001.70	1001.70	1001.66	1001.55	1001.49	1001.50	1001.50	1001.49	1001.49	1001.60	
	22	1001.49	1001.50	1001.50	1001.57	1001.68	1001.71	1001.71	1001.71	1001.70	1001.76	1001.87	1001.92	1001.68	
	23	1001.91	1001.91	1001.91	1001.92	1002.01	1002.12	1002.13	1002.13	1002.03	1002.13	1002.33	1002.33	1002.07	
2	0	1002.33	1002.33	1002.33	1002.34	1002.35	1002.45	1002.54	1002.52	1002.52	1002.54	1002.54	1002.55	1002.45	
	1	1002.23	1002.33	1002.85	1002.96	1002.97	1002.94	1002.90	1002.89	1003.04	1003.18	1003.17	1003.17	1002.88	
	2	1003.29	1003.39	1003.39	1003.39	1003.39	1003.39	1003.39	1003.50	1003.57	1003.68	1003.81	1003.75	1003.49	
	3	1003.55	998.83	994.25	999.24	1004.23	1004.23	1004.23	1004.23	1004.33	1004.40	1004.41	1004.44	1002.53	
	4	1004.44	1004.44	1004.45	1004.44	1002.78	1002.89	1004.65	1004.65	1004.65	1004.65	1004.64	1004.75	1004.28	
	5	1004.86	1004.59	1004.69	1005.06	1005.06	1005.17	1005.28	1005.28	1005.28	1005.39	1005.49	1005.49	1005.14	
	6	1005.49	1005.49	1005.60	1005.70	1005.70	1005.70	1005.70	1005.70	1005.80	1005.91	1005.91	1006.02	1005.72	
	7	1006.12	1006.20	1006.31	1006.34	1006.34	1006.34	1006.45	1006.55	1006.55	1006.65	1006.76	1006.76	1006.45	
	8	1006.76	1006.87	1006.97	1006.97	1006.97	1006.98	1006.98	1006.99	1007.00	1007.01	1007.04	1007.08	1006.97	
	9	1007.09	1007.08	1007.08	1007.12	1007.17	1007.18	1007.18	1007.18	1007.18	1007.18	1007.18	1007.18	1007.15	
	10	1007.18	1007.17	1007.17	1007.18	1007.18	1007.17	1007.18	1007.18	1007.18	1007.18	1007.18	1007.18	1007.17	
	11	1007.18	1007.18	1007.18	1007.14	1007.09	1007.03	1006.97	1006.97	1006.97	1006.97	1006.97	1006.97	1007.05	
	12	1006.97	1006.97	1006.96	1006.97	1006.97	1006.97	1006.97	1006.97	1006.97	1006.97	1006.97	1006.97	1006.97	
	13	1006.97	1006.97	1006.97	1006.97	1006.97	1006.97	1006.97	1006.97	1007.08	1007.18	1007.19	1007.29	1007.04	
	14	1007.38	1007.38	1007.39	1007.39	1007.41	1007.46	1007.47	1007.53	1007.59	1007.59	1007.60	1007.60	1007.48	
	15	1007.59	1007.59	1007.61	1007.65	1007.68	1007.70	1007.70	1007.68	1007.66	1007.70	1007.77	1007.80	1007.68	
	16	1007.80	1007.75	1007.69	1007.85	1008.00	1007.99	1008.00	1008.01	1008.12	1008.20	1008.20	1008.25	1007.99	
	17	1008.36	1008.43	1008.43	1008.41	1008.39	1008.51	1008.64	1008.61	1008.60	1008.63	1008.63	1008.64	1008.52	
	18	1008.75	1008.85	1008.85	1008.85	1008.95	1009.07	1009.17	1009.27	1009.27	1009.27	1009.27	1009.27	1009.07	
	19	1009.27	1009.27	1009.27	1009.27	1009.48	1009.69	1009.69	1009.69	1009.69	1009.69	1009.80	1010.01	1010.11	1009.60
	20	1010.11	1010.11	1010.11	1010.11	1010.11	1010.11	1010.11	1010.11	1010.11	1010.01	1009.90	1010.01	1010.11	1010.08
	21	1010.11	1010.11	1010.11	1010.11	1010.11	1010.11	1010.11	1010.11	1010.11	1010.11	1010.11	1010.01	1010.10	
	22	1009.90	1009.90	1009.90	1009.90	1009.91	1009.80	1009.69	1009.69	1009.69	1009.69	1009.69	1009.69	1009.79	
	23	1009.69	1009.61	1009.51	1009.48	1009.48	1009.48	1009.38	1009.28	1009.28	1009.27	1009.27	1009.27	1009.42	



S.V.I.R.CO. Observatory - Pressure in hectoPascal – November 2021

day	hh	00_05	05_10	10_15	15_20	20_25	25_30	30_35	35_40	40_45	45_50	50_55	55_60	average
3	0	1009.27	1009.27	1009.27	1009.27	1009.17	1009.06	1009.06	1009.06	1009.06	1009.06	1009.06	1009.06	1009.13
	1	1009.06	1009.06	1008.96	1008.85	1008.84	1008.60	1008.34	1008.34	1007.60	1007.52	1008.20	1008.11	1008.46
	2	1007.80	1007.69	1007.70	1007.59	1007.59	1007.49	1007.38	1007.38	1007.38	1007.38	1007.38	1007.38	1007.51
	3	1007.38	1007.28	1007.17	1007.17	1007.07	1006.92	1006.71	1006.55	1006.54	1006.54	1006.54	1006.54	1006.87
	4	1006.54	1006.54	1006.53	1003.46	1000.40	1003.37	1006.23	1006.12	1006.11	1006.11	1006.10	1006.01	1005.29
	5	1005.83	1005.74	1005.75	1005.79	1005.84	1005.83	1005.75	1005.69	1005.69	1005.69	1005.69	1005.59	1005.74
	6	1005.49	1005.49	1005.49	1005.48	1005.48	1005.48	1005.48	1005.49	1005.49	1005.38	1005.27	1005.28	1005.44
	7	1005.28	1005.27	1005.28	1005.28	1005.38	1005.59	1005.69	1005.80	1006.01	1006.12	1006.12	1006.12	1005.66
	8	1006.12	1006.11	1006.11	1006.01	1005.91	1005.81	1005.70	1005.70	1005.69	1005.70	1005.70	1005.70	1005.85
	9	1005.59	1005.49	1005.38	1005.27	1005.28	1005.14	1005.03	1005.06	1005.06	1004.95	1004.74	1004.65	1005.14
	10	1004.65	1004.65	1004.63	1004.58	1004.60	1004.64	1004.65	1004.65	1004.64	1004.65	1004.65	1004.55	1004.63
	11	1004.45	1004.44	1004.22	1003.99	1004.11	1003.52	1003.39	1003.76	1003.78	1003.81	1003.60	1003.60	1003.89
	12	1003.60	1003.60	1003.50	1003.39	1003.39	1003.39	1003.07	1002.75	1002.86	1003.00	1003.04	1003.04	1003.22
	13	1003.03	1003.21	1003.39	1003.39	1003.39	1003.39	1003.39	1003.01	1002.90	1003.18	1003.15	1003.11	1003.21
	14	1003.11	1003.09	1003.08	1003.14	1003.18	1003.17	1003.12	1003.02	1002.97	1002.97	1002.97	1002.97	1003.06
	15	1002.96	1002.88	1002.78	1002.65	1002.55	1002.45	1002.20	1002.09	1002.13	1002.05	1001.98	1001.98	1002.39
	16	1002.00	1002.02	1002.02	1002.06	1002.21	1002.44	1002.54	1002.48	1002.35	1002.50	1002.73	1002.75	1002.34
	17	1002.85	1002.94	1002.95	1002.70	1002.57	1002.72	1002.71	1002.92	1003.07	1003.08	1003.12	1003.03	1002.89
	18	1002.81	1002.64	1002.55	1002.71	1002.97	1002.96	1002.96	1002.92	1002.81	1002.77	1002.77	1002.76	1002.80
	19	1002.76	1002.76	1002.76	1001.74	1001.63	1002.54	1002.55	1002.55	1002.38	1002.09	1001.83	1001.91	1002.29
	20	1002.12	1001.95	1001.95	1002.18	1002.07	1001.97	1002.07	1002.33	1002.86	1003.17	1003.06	1002.96	1002.39
	21	1003.10	1003.31	1003.38	1003.28	1003.28	1003.17	1002.85	1002.74	1002.96	1003.35	1003.66	1003.81	1003.24
	22	1003.74	1003.95	1004.22	1004.21	1004.22	1003.59	1002.86	1003.04	1003.31	1003.23	1003.18	1003.07	1003.55
	23	1002.96	1003.07	1003.22	1003.33	1003.39	1003.44	1003.52	1003.60	1003.71	1003.76	1003.61	1003.46	1003.42
4	0	1003.71	1003.78	1003.92	1003.97	1003.98	1004.03	1004.09	1004.19	1004.27	1004.24	1004.13	1004.08	1004.05
	1	1004.14	1004.22	1004.20	1004.30	1004.45	1004.46	1004.45	1004.45	1004.53	1004.56	1004.51	1004.54	1004.40
	2	1004.54	1004.51	1004.54	1004.63	1004.76	1004.89	1004.94	1004.90	1004.91	1005.01	1005.11	1005.22	1004.83
	3	1005.29	1005.33	1005.45	1005.54	1005.55	1005.58	1005.69	1005.84	1005.92	1005.95	1005.99	1006.01	1005.68
	4	1006.06	1006.11	1006.16	1006.25	1006.29	1006.30	1006.32	1006.38	1006.42	1006.36	1006.37	1006.48	1006.29
	5	1006.53	1006.55	1006.59	1006.62	1006.66	1006.69	1006.71	1006.75	1006.78	1006.81	1006.80	1006.84	1006.70
	6	1007.00	1007.11	1007.19	1007.31	1007.42	1007.47	1007.55	1007.70	1007.80	1007.83	1007.86	1007.96	1007.52
	7	1008.11	1008.26	1008.33	1008.35	1008.38	1008.51	1008.68	1008.81	1008.88	1008.93	1009.11	1009.27	1008.63
	8	1009.32	1009.37	1009.43	1009.49	1009.55	1009.55	1009.49	1009.50	1009.52	1009.50	1009.51	1009.55	1009.48
	9	1009.65	1009.76	1009.78	1009.74	1009.76	1009.80	1009.82	1009.82	1009.84	1009.87	1009.91	1009.93	1009.81
	10	1009.98	1010.01	1009.96	1009.95	1009.98	1010.00	1010.01	1010.03	1010.06	1010.09	1010.13	1010.13	1010.03
	11	1010.07	1009.99	1009.92	1009.84	1009.76	1009.72	1009.75	1009.82	1009.85	1009.82	1009.84	1009.87	1009.85
	12	1009.82	1009.77	1009.73	1009.72	1009.84	1009.95	1009.97	1009.99	1010.01	1010.04	1010.12	1010.16	1009.93
	13	1010.20	1010.24	1010.21	1010.17	1010.13	1010.10	1010.12	1010.19	1010.25	1010.27	1010.27	1010.28	1010.20
	14	1010.34	1010.41	1010.46	1010.47	1010.43	1010.34	1010.29	1010.26	1010.24	1010.27	1010.29	1010.26	1010.34
	15	1010.21	1010.17	1010.11	1010.06	1010.07	1010.15	1010.19	1010.22	1010.24	1010.23	1010.18	1010.17	1010.17
	16	1010.21	1010.28	1010.37	1010.48	1010.56	1010.62	1010.66	1010.66	1010.68	1010.75	1010.81	1010.87	1010.58
	17	1010.94	1011.04	1011.18	1011.30	1011.34	1011.35	1011.40	1011.49	1011.56	1011.56	1011.57	1011.63	1011.36
	18	1011.73	1011.82	1011.86	1011.85	1011.87	1011.95	1012.00	1011.99	1011.98	1011.97	1011.94	1011.94	1011.91
	19	1011.94	1011.95	1011.97	1011.98	1011.96	1011.95	1011.98	1012.05	1012.09	1012.08	1012.07	1012.06	1012.01
	20	1012.07	1012.11	1012.15	1012.17	1012.17	1012.19	1012.22	1012.22	1012.21	1012.22	1012.27	1012.34	1012.19
	21	1012.36	1012.35	1012.37	1012.38	1012.37	1012.39	1012.44	1012.47	1012.51	1012.55	1012.54	1012.51	1012.44
	22	1012.52	1012.55	1012.57	1012.56	1012.54	1012.53	1012.53	1012.57	1012.61	1012.62	1012.63	1012.61	1012.57
	23	1012.54	1012.51	1012.49	1012.45	1012.52	1012.64	1012.62	1012.50	1012.41	1012.36	1012.30	1012.33	1012.47

S.V.I.R.CO. Observatory - Pressure in hectoPascal – November 2021

day	hh	00_05	05_10	10_15	15_20	20_25	25_30	30_35	35_40	40_45	45_50	50_55	55_60	average
5	0	1012.36	1012.40	1012.43	1012.41	1012.41	1012.45	1012.48	1012.51	1012.55	1012.57	1012.53	1012.52	1012.47
	1	1012.60	1012.70	1012.75	1012.72	1012.68	1012.66	1012.66	1012.64	1012.63	1012.63	1012.62	1012.58	1012.66
	2	1012.52	1012.46	1012.42	1012.41	1012.39	1012.40	1012.47	1012.51	1012.49	1012.44	1012.41	1012.48	1012.45
	3	1012.58	1012.57	1012.56	1012.56	1012.53	1012.51	1012.52	1012.57	1012.72	1012.78	1012.77	1012.79	1012.62
	4	1012.78	1012.86	1012.92	1012.86	1012.74	1012.61	1012.62	1012.65	1012.65	1012.75	1012.80	1012.77	1012.75
	5	1012.64	1012.51	1012.51	1012.55	1012.52	1012.54	1012.70	1012.91	1013.01	1013.01	1013.00	1013.02	1012.74
	6	1013.02	1013.05	1013.11	1013.12	1013.10	1013.11	1013.13	1013.15	1013.22	1013.30	1013.39	1013.49	1013.18
	7	1013.57	1013.61	1013.55	1013.51	1013.52	1013.53	1013.61	1013.73	1013.83	1013.96	1014.04	1014.10	1013.71
	8	1014.13	1014.18	1014.20	1014.18	1014.16	1014.18	1014.31	1014.35	1014.29	1014.23	1014.20	1014.23	1014.22
	9	1014.34	1014.38	1014.36	1014.30	1014.30	1014.39	1014.44	1014.42	1014.50	1014.67	1014.76	1014.74	1014.47
	10	1014.68	1014.64	1014.64	1014.65	1014.68	1014.71	1014.71	1014.68	1014.68	1014.70	1014.71	1014.70	1014.68
	11	1014.67	1014.65	1014.62	1014.57	1014.57	1014.60	1014.55	1014.47	1014.43	1014.45	1014.47	1014.54	1014.55
	12	1014.67	1014.70	1014.62	1014.53	1014.47	1014.43	1014.43	1014.45	1014.43	1014.41	1014.41	1014.46	1014.50
	13	1014.50	1014.47	1014.40	1014.28	1014.19	1014.20	1014.17	1014.11	1014.15	1014.18	1014.13	1014.06	1014.24
	14	1013.99	1013.94	1013.92	1013.86	1013.81	1013.80	1013.79	1013.79	1013.83	1013.85	1013.81	1013.80	1013.85
	15	1013.85	1013.86	1013.89	1013.96	1014.00	1014.02	1014.08	1014.15	1014.15	1014.13	1014.11	1014.11	1014.03
	16	1014.13	1014.15	1014.18	1014.23	1014.28	1014.30	1014.35	1014.40	1014.43	1014.45	1014.51	1014.60	1014.33
	17	1014.70	1014.78	1014.84	1014.89	1014.91	1014.91	1014.86	1014.76	1014.70	1014.72	1014.78	1014.82	1014.80
	18	1014.81	1014.82	1014.87	1014.88	1014.90	1014.93	1014.91	1014.91	1014.93	1014.95	1014.94	1014.91	1014.90
	19	1014.89	1014.89	1014.87	1014.85	1014.85	1014.85	1014.83	1014.83	1014.89	1014.91	1014.88	1014.83	1014.86
	20	1014.82	1014.90	1015.08	1015.20	1015.26	1015.21	1015.07	1015.00	1015.12	1015.24	1015.35	1015.49	1015.14
	21	1015.62	1015.66	1015.53	1015.38	1015.30	1015.22	1015.15	1015.10	1015.18	1015.37	1015.49	1015.56	1015.38
	22	1015.67	1015.78	1015.77	1015.75	1015.73	1015.74	1015.79	1015.75	1015.71	1015.68	1015.65	1015.69	1015.73
	23	1015.68	1015.64	1015.67	1015.73	1015.82	1015.85	1015.84	1015.92	1015.98	1015.96	1015.98	1015.99	1015.84
6	0	1016.40	1016.40	1016.40	1016.40	1016.40	1016.40	1016.40	1016.40	1016.41	1016.41	1016.40	1016.40	1016.40
	1	1016.40	1016.40	1016.40	1016.40	1016.40	1016.41	1016.41	1016.40	1016.40	1016.40	1016.40	1016.40	1016.40
	2	1016.41	1016.41	1016.41	1016.40	1016.40	1016.40	1016.40	1016.40	1016.41	1016.41	1016.40	1016.41	1016.40
	3	1016.41	1016.41	1016.41	1016.40	1016.41	1016.41	1016.41	1016.41	1016.41	1016.50	1016.60	1016.61	1016.45
	4	1016.61	1016.61	1016.61	1016.62	1016.61	1016.62	1016.62	1016.62	1016.62	1016.62	1016.62	1016.62	1016.61
	5	1016.62	1016.62	1016.62	1016.62	1016.62	1016.62	1016.62	1016.62	1016.62	1016.69	1016.79	1016.83	1016.66
	6	1016.83	1016.83	1016.83	1016.83	1016.93	1017.04	1017.05	1017.19	1017.33	1017.41	1017.46	1017.45	1017.10
	7	1017.45	1017.45	1017.45	1017.56	1017.67	1017.67	1017.67	1017.67	1017.67	1017.67	1017.66	1017.66	1017.60
	8	1017.67	1017.67	1017.66	1017.66	1017.66	1017.66	1017.66	1017.66	1017.66	1017.70	1017.74	1017.74	1017.68
	9	1017.70	1017.66	1017.66	1017.66	1017.66	1017.66	1017.66	1017.66	1017.66	1017.66	1017.77	1017.87	1017.69
	10	1017.87	1017.87	1017.87	1017.87	1017.87	1017.86	1017.76	1017.66	1017.56	1017.45	1017.35	1017.17	1017.68
	11	1017.07	1017.03	1017.03	1017.03	1017.04	1017.04	1017.03	1017.03	1017.03	1017.03	1017.03	1017.03	1017.03
	12	1017.03	1017.03	1017.03	1017.03	1017.02	1016.92	1016.82	1016.72	1016.61	1016.61	1016.58	1016.48	1016.82
	13	1016.40	1016.40	1016.39	1016.35	1016.36	1016.40	1016.39	1016.39	1016.39	1016.38	1016.38	1016.38	1016.38
	14	1016.38	1016.38	1016.37	1016.36	1016.35	1016.27	1016.19	1016.19	1016.19	1016.19	1016.19	1016.19	1016.27
	15	1016.17	1016.17	1016.18	1016.09	1015.98	1015.98	1015.98	1015.98	1015.98	1015.98	1015.98	1015.98	1016.04
	16	1015.78	1015.57	1015.56	1015.93	1016.35	1016.40	1016.40	1016.40	1016.40	1016.51	1016.70	1016.70	1016.22
	17	1016.61	1016.40	1016.17	1016.14	1016.06	1015.77	1015.67	1015.94	1016.04	1015.67	1015.36	1015.25	1015.92
	18	1015.14	1015.13	1015.13	1015.14	1015.25	1015.46	1015.88	1016.28	1016.49	1016.61	1016.61	1016.51	1015.80
	19	1016.30	1016.30	1016.72	1016.90	1016.58	1015.88	1015.36	1015.36	1015.25	1015.14	1015.25	1015.36	1015.86
	20	1015.57	1015.88	1015.88	1015.77	1015.56	1015.04	1014.53	1014.21	1014.31	1016.18	1018.48	1018.26	1015.80
	21	1017.00	1016.29	1015.87	1015.67	1015.52	1015.31	1015.15	1015.15	1015.25	1015.36	1015.36	1015.35	1015.60
	22	1015.36	1015.36	1015.26	1015.24	1015.24	1015.05	1014.91	1014.81	1014.73	1014.73	1014.62	1014.42	1014.97
	23	1014.42	1014.52	1014.52	1014.42	1014.31	1014.31	1014.31	1014.31	1014.31	1014.31	1014.31	1014.21	1014.35

S.V.I.R.CO. Observatory - Pressure in hectoPascal – November 2021

day	hh	00_05	05_10	10_15	15_20	20_25	25_30	30_35	35_40	40_45	45_50	50_55	55_60	average
7	0	1014.10	1014.10	1014.10	1014.10	1014.10	1014.10	1014.10	1014.10	1014.10	1014.10	1014.10	1014.11	1014.10
	1	1014.00	1013.89	1013.89	1013.89	1013.89	1013.98	1014.08	1014.10	1014.10	1014.10	1014.10	1014.10	1014.01
	2	1014.10	1014.11	1014.00	1013.90	1013.90	1013.89	1013.87	1013.86	1013.89	1013.90	1013.90	1013.89	1013.93
	3	1013.90	1013.90	1013.90	1013.90	1013.90	1013.90	1013.90	1013.90	1013.90	1013.89	1013.89	1013.90	1013.90
	4	1013.90	1013.90	1013.90	1013.90	1013.90	1013.90	1013.90	1013.90	1013.90	1013.90	1013.90	1013.90	1013.90
	5	1013.90	1013.87	1013.83	1013.76	1013.69	1013.69	1013.69	1013.69	1013.69	1013.69	1013.69	1013.69	1013.74
	6	1013.69	1013.69	1013.69	1013.79	1013.90	1013.90	1013.90	1013.90	1013.90	1013.90	1013.90	1013.90	1013.84
	7	1013.90	1013.91	1014.01	1014.11	1014.11	1014.11	1014.11	1014.11	1014.11	1014.11	1014.11	1014.11	1014.07
	8	1014.11	1014.10	1014.11	1014.11	1014.01	1013.90	1013.90	1013.90	1013.90	1013.90	1013.90	1013.90	1013.98
	9	1013.90	1013.89	1013.89	1013.89	1013.89	1013.90	1013.90	1013.91	1013.91	1013.90	1013.90	1013.90	1013.90
	10	1013.90	1013.80	1013.69	1013.59	1013.48	1013.37	1013.27	1013.17	1013.06	1012.96	1012.85	1012.85	1013.33
	11	1012.75	1012.64	1012.64	1012.54	1012.43	1012.32	1012.20	1012.10	1012.01	1012.01	1011.91	1011.80	1012.28
	12	1011.80	1011.80	1011.80	1011.80	1011.74	1011.69	1011.69	1011.65	1011.61	1011.59	1011.59	1011.59	1011.69
	13	1011.59	1011.58	1011.57	1011.47	1011.38	1011.38	1011.38	1011.38	1011.37	1011.33	1011.23	1011.17	1011.40
	14	1011.17	1011.17	1011.19	1011.21	1011.21	1011.22	1011.20	1011.17	1011.17	1011.16	1011.16	1011.17	1011.18
	15	1011.17	1011.20	1011.31	1011.38	1011.37	1011.37	1011.38	1011.38	1011.37	1011.38	1011.38	1011.38	1011.34
	16	1011.38	1011.38	1011.49	1011.59	1011.58	1011.66	1011.74	1011.75	1011.77	1011.79	1011.79	1011.78	1011.64
	17	1011.78	1011.79	1011.79	1011.79	1011.89	1011.99	1012.00	1012.00	1012.03	1012.14	1012.22	1012.21	1011.97
	18	1012.21	1012.22	1012.22	1012.21	1012.21	1012.21	1012.21	1012.21	1012.21	1012.21	1012.21	1012.22	1012.21
	19	1012.22	1012.21	1012.21	1012.21	1012.21	1012.21	1012.22	1012.22	1012.32	1012.42	1012.38	1012.33	1012.26
	20	1012.33	1012.31	1012.30	1012.35	1012.41	1012.42	1012.51	1012.62	1012.64	1012.64	1012.64	1012.63	1012.48
	21	1012.64	1012.64	1012.65	1012.73	1012.82	1012.84	1012.84	1012.85	1012.85	1012.84	1012.84	1012.85	1012.78
	22	1012.85	1012.85	1012.85	1012.96	1013.06	1013.05	1013.06	1013.06	1013.05	1013.06	1013.16	1013.27	1013.02
	23	1013.27	1013.27	1013.26	1013.16	1013.06	1013.06	1013.05	1013.05	1012.95	1012.85	1012.79	1012.69	1013.04
8	0	1012.42	1012.42	1012.42	1012.42	1012.42	1012.42	1012.42	1012.52	1012.62	1012.62	1012.63	1012.63	1012.50
	1	1012.65	1012.71	1012.73	1012.71	1012.70	1012.68	1012.64	1012.63	1012.63	1012.63	1012.63	1012.64	1012.66
	2	1012.64	1012.53	1012.42	1012.43	1012.43	1012.32	1012.22	1012.22	1012.21	1012.21	1012.22	1012.18	1012.33
	3	1011.97	1011.80	1011.80	1011.80	1011.79	1011.90	1012.00	1012.01	1012.01	1012.01	1011.90	1011.79	1011.90
	4	1011.79	1011.79	1011.79	1011.79	1011.79	1011.75	1011.69	1011.70	1011.72	1011.68	1011.63	1011.59	1011.73
	5	1011.59	1011.59	1011.59	1011.59	1011.48	1011.27	1011.17	1011.17	1011.17	1011.27	1011.37	1011.37	1011.38
	6	1011.36	1011.34	1011.35	1011.36	1011.37	1011.38	1011.38	1011.38	1011.37	1011.37	1011.49	1011.70	1011.40
	7	1011.80	1011.80	1011.80	1011.80	1011.80	1011.85	1011.92	1011.86	1011.80	1011.80	1011.80	1011.80	1011.82
	8	1011.79	1011.79	1011.82	1011.82	1011.79	1011.79	1011.79	1011.79	1011.72	1011.63	1011.61	1011.60	1011.74
	9	1011.60	1011.59	1011.59	1011.59	1011.58	1011.69	1011.80	1011.80	1011.79	1011.79	1011.79	1011.80	1011.70
	10	1011.80	1011.79	1011.74	1011.68	1011.63	1011.59	1011.59	1011.49	1011.38	1011.38	1011.28	1011.17	1011.54
	11	1011.15	1011.04	1010.91	1010.85	1010.83	1010.72	1010.61	1010.57	1010.55	1010.55	1010.54	1010.56	1010.74
	12	1010.66	1010.75	1010.75	1010.80	1010.84	1010.84	1010.84	1010.84	1010.84	1010.84	1010.84	1010.84	1010.80
	13	1010.80	1010.75	1010.70	1010.66	1010.66	1010.63	1010.59	1010.59	1010.59	1010.59	1010.60	1010.61	1010.65
	14	1010.61	1010.59	1010.59	1010.67	1010.74	1010.74	1010.74	1010.74	1010.74	1010.74	1010.74	1010.74	1010.70
	15	1010.74	1010.74	1010.74	1010.74	1010.74	1010.74	1010.74	1010.74	1010.74	1010.74	1010.74	1010.69	1010.74
	16	1010.61	1010.55	1010.53	1010.53	1010.54	1010.55	1010.54	1010.54	1010.65	1010.74	1010.74	1010.77	1010.61
	17	1010.87	1010.95	1010.99	1011.07	1011.13	1011.13	1011.14	1011.16	1011.16	1011.16	1011.16	1011.16	1011.09
	18	1011.16	1011.16	1011.16	1011.16	1011.16	1011.16	1011.16	1011.16	1011.16	1011.16	1011.16	1011.15	1011.16
	19	1011.15	1011.16	1011.16	1011.17	1011.17	1011.23	1011.33	1011.37	1011.37	1011.37	1011.37	1011.38	1011.27
	20	1011.44	1011.49	1011.50	1011.51	1011.52	1011.53	1011.53	1011.54	1011.57	1011.58	1011.58	1011.58	1011.53
	21	1011.64	1011.74	1011.79	1011.80	1011.82	1011.91	1011.99	1012.03	1012.07	1012.08	1012.09	1012.09	1011.92
	22	1012.15	1012.21	1012.21	1012.21	1012.21	1012.22	1012.27	1012.32	1012.34	1012.37	1012.41	1012.41	1012.28
	23	1012.42	1012.42	1012.42	1012.42	1012.42	1012.52	1012.62	1012.63	1012.63	1012.63	1012.63	1012.63	1012.53

S.V.I.R.CO. Observatory - Pressure in hectoPascal – November 2021

day	hh	00_05	05_10	10_15	15_20	20_25	25_30	30_35	35_40	40_45	45_50	50_55	55_60	average
9	0	1012.63	1012.63	1012.63	1012.63	1012.63	1012.63	1012.63	1012.63	1012.63	1012.63	1012.64	1012.75	1012.64
	1	1012.84	1012.84	1012.84	1012.84	1012.84	1012.84	1012.84	1012.85	1012.85	1012.84	1012.83	1012.84	1012.84
	2	1012.85	1012.84	1012.84	1012.84	1012.95	1013.06	1013.05	1013.05	1013.05	1013.05	1013.05	1013.11	1012.98
	3	1013.22	1013.26	1013.26	1013.26	1013.26	1013.26	1013.26	1013.37	1013.48	1013.47	1013.47	1013.47	1013.34
	4	1013.47	1013.47	1013.47	1013.57	1013.68	1013.69	1013.68	1013.68	1013.68	1013.79	1013.89	1013.90	1013.66
	5	1013.90	1013.89	1013.89	1014.00	1014.10	1014.21	1014.30	1014.40	1014.52	1014.63	1014.73	1014.73	1014.27
	6	1014.73	1014.73	1014.74	1014.84	1015.03	1015.24	1015.47	1015.57	1015.57	1015.59	1015.61	1015.69	1015.23
	7	1015.78	1015.82	1015.90	1015.96	1015.98	1016.05	1016.12	1016.14	1016.17	1016.30	1016.36	1016.31	1016.07
	8	1016.29	1016.33	1016.37	1016.37	1016.38	1016.40	1016.40	1016.40	1016.51	1016.67	1016.73	1016.79	1016.47
	9	1016.82	1016.91	1017.02	1017.03	1017.05	1017.10	1017.19	1017.24	1017.24	1017.24	1017.24	1017.24	1017.11
	10	1017.24	1017.24	1017.31	1017.39	1017.39	1017.39	1017.42	1017.45	1017.45	1017.45	1017.45	1017.45	1017.39
	11	1017.45	1017.45	1017.34	1017.23	1017.23	1017.23	1017.24	1017.24	1017.24	1017.24	1017.24	1017.24	1017.28
	12	1017.30	1017.37	1017.39	1017.40	1017.42	1017.44	1017.44	1017.44	1017.44	1017.44	1017.44	1017.44	1017.41
	13	1017.44	1017.45	1017.45	1017.45	1017.44	1017.44	1017.45	1017.45	1017.45	1017.45	1017.55	1017.66	1017.47
	14	1017.66	1017.66	1017.74	1017.83	1017.84	1017.84	1017.85	1017.87	1017.87	1017.87	1017.87	1017.87	1017.81
	15	1017.87	1017.90	1017.94	1018.05	1018.30	1018.44	1018.45	1018.48	1018.50	1018.50	1018.50	1018.56	1018.29
	16	1018.67	1018.70	1018.78	1018.86	1018.89	1019.02	1019.13	1019.13	1019.16	1019.26	1019.33	1019.33	1019.02
	17	1019.44	1019.54	1019.82	1020.14	1020.16	1020.06	1019.96	1019.96	1020.05	1020.15	1020.17	1020.17	1019.97
	18	1020.17	1020.17	1020.17	1020.27	1020.37	1020.37	1020.37	1020.37	1020.37	1020.37	1020.38	1020.38	1020.31
	19	1020.48	1020.59	1020.59	1020.63	1020.66	1020.83	1021.00	1020.98	1020.96	1020.95	1020.93	1020.90	1020.79
	20	1020.84	1020.80	1020.78	1020.75	1020.74	1020.73	1020.69	1020.65	1020.62	1020.59	1020.56	1020.46	1020.68
	21	1020.37	1020.37	1020.37	1020.37	1020.37	1020.38	1020.39	1020.47	1020.55	1020.58	1020.59	1020.59	1020.45
	22	1020.57	1020.46	1020.38	1020.38	1020.38	1020.38	1020.38	1020.38	1020.37	1020.38	1020.38	1020.38	1020.40
	23	1020.38	1020.38	1020.37	1020.37	1020.27	1020.16	1020.06	1019.96	1019.98	1019.99	1019.98	1019.96	1020.15
10	0	1019.95	1019.95	1019.95	1019.95	1019.96	1019.96	1019.95	1019.95	1019.95	1019.95	1019.95	1019.96	1019.95
	1	1019.96	1019.95	1019.95	1019.95	1019.95	1019.95	1019.95	1019.95	1019.95	1019.95	1019.95	1019.85	1019.94
	2	1019.65	1019.54	1019.49	1019.39	1019.33	1019.33	1019.33	1019.33	1019.33	1019.33	1019.33	1019.33	1019.39
	3	1019.34	1019.36	1019.36	1019.36	1019.37	1019.39	1019.46	1019.53	1019.53	1019.54	1019.62	1019.73	1019.46
	4	1019.75	1019.75	1019.75	1019.75	1019.75	1019.75	1019.75	1019.77	1019.82	1019.85	1019.84	1019.81	1019.78
	5	1019.80	1019.82	1019.83	1019.83	1019.83	1019.83	1019.84	1019.85	1019.86	1019.86	1019.86	1019.87	1019.84
	6	1019.86	1019.86	1019.87	1019.87	1019.87	1019.92	1019.96	1020.07	1020.17	1020.17	1020.17	1020.17	1020.00
	7	1020.27	1020.38	1020.38	1020.37	1020.37	1020.38	1020.38	1020.38	1020.38	1020.46	1020.56	1020.58	1020.41
	8	1020.58	1020.58	1020.63	1020.70	1020.75	1020.79	1020.79	1020.79	1020.80	1020.80	1020.80	1020.80	1020.73
	9	1020.79	1020.79	1020.79	1020.79	1020.79	1020.79	1020.79	1020.79	1020.79	1020.79	1020.73	1020.63	1020.77
	10	1020.58	1020.48	1020.37	1020.37	1020.35	1020.25	1020.13	1020.10	1020.03	1019.95	1019.95	1019.95	1020.21
	11	1019.95	1019.95	1019.95	1019.95	1019.85	1019.74	1019.74	1019.74	1019.74	1019.74	1019.74	1019.74	1019.82
	12	1019.74	1019.74	1019.74	1019.74	1019.74	1019.64	1019.52	1019.49	1019.48	1019.47	1019.47	1019.47	1019.60
	13	1019.48	1019.49	1019.48	1019.47	1019.39	1019.32	1019.32	1019.32	1019.32	1019.34	1019.44	1019.64	1019.42
	14	1019.74	1019.74	1019.79	1019.84	1019.84	1019.85	1019.85	1019.85	1019.85	1019.87	1019.92	1019.95	1019.84
	15	1020.06	1020.27	1020.56	1021.05	1021.33	1021.35	1021.52	1021.65	1021.83	1022.02	1022.15	1022.36	1021.34
	16	1022.57	1022.68	1022.68	1022.68	1022.68	1022.67	1022.67	1022.67	1022.67	1022.68	1022.68	1022.47	1022.65
	17	1022.26	1022.16	1022.05	1022.05	1022.07	1022.18	1022.06	1021.94	1022.07	1022.20	1022.36	1022.46	1022.15
	18	1022.46	1022.47	1022.47	1022.47	1022.16	1021.84	1021.63	1021.53	1021.63	1021.42	1021.21	1021.21	1021.87
	19	1021.21	1021.22	1021.22	1021.28	1021.39	1021.65	1021.86	1021.84	1021.84	1021.84	1021.84	1021.84	1021.58
	20	1021.84	1021.74	1021.32	1021.00	1020.80	1020.69	1020.79	1020.79	1020.95	1021.13	1021.26	1021.36	1021.14
	21	1021.29	1021.27	1021.34	1021.35	1021.36	1021.36	1021.35	1021.35	1021.36	1021.33	1021.31	1021.32	1021.33
	22	1021.27	1021.21	1021.11	1021.01	1021.01	1021.01	1021.00	1021.01	1021.01	1021.00	1021.00	1021.00	1021.05
	23	1021.01	1021.00	1021.00	1021.01	1021.11	1021.20	1021.21	1021.21	1021.21	1021.21	1021.21	1021.21	1021.13

S.V.I.R.CO. Observatory - Pressure in hectoPascal – November 2021

day	hh	00_05	05_10	10_15	15_20	20_25	25_30	30_35	35_40	40_45	45_50	50_55	55_60	average
11	0	1021.20	1021.21	1021.21	1021.11	1021.00	1021.00	1020.90	1020.79	1020.79	1020.79	1020.79	1020.79	1020.95
	1	1020.79	1020.79	1020.80	1020.80	1020.90	1021.09	1021.19	1021.27	1021.38	1021.51	1021.60	1021.74	1021.15
	2	1021.76	1021.53	1021.21	1021.00	1021.00	1020.89	1020.79	1020.77	1020.65	1020.54	1020.45	1020.37	1020.91
	3	1020.38	1020.27	1020.16	1020.46	1021.19	1021.52	1021.41	1021.31	1021.20	1021.21	1021.21	1021.11	1020.95
	4	1021.00	1021.00	1021.00	1021.00	1021.00	1021.00	1021.11	1021.21	1021.21	1021.21	1021.21	1021.21	1021.10
	5	1021.21	1021.21	1021.21	1021.11	1021.00	1021.00	1021.00	1021.09	1021.17	1021.17	1021.17	1021.17	1021.12
	6	1021.16	1021.18	1021.21	1021.21	1021.21	1021.21	1021.21	1021.29	1021.39	1021.42	1021.42	1021.42	1021.28
	7	1021.42	1021.53	1021.65	1021.75	1021.83	1021.73	1021.50	1021.17	1020.88	1020.79	1020.77	1020.75	1021.31
	8	1020.75	1020.75	1020.75	1020.67	1020.58	1020.58	1020.56	1020.46	1020.37	1020.38	1020.38	1020.37	1020.55
	9	1020.37	1020.36	1020.35	1020.34	1020.32	1020.32	1020.31	1020.21	1020.03	1019.96	1019.96	1020.06	1020.21
	10	1020.15	1020.13	1020.04	1019.96	1019.95	1019.95	1019.85	1019.74	1019.74	1019.74	1019.74	1019.64	1019.88
	11	1019.53	1019.53	1019.53	1019.50	1019.43	1019.40	1019.41	1019.37	1019.32	1019.32	1019.32	1019.29	1019.41
	12	1019.18	1019.11	1019.12	1019.11	1019.00	1018.91	1018.91	1018.90	1018.88	1018.86	1018.86	1018.78	1018.97
	13	1018.69	1018.69	1018.69	1018.69	1018.69	1018.69	1018.69	1018.69	1018.69	1018.67	1018.56	1018.48	1018.66
	14	1018.48	1018.48	1018.47	1018.43	1018.34	1018.27	1018.23	1018.17	1018.18	1018.21	1018.21	1018.21	1018.31
	15	1018.14	1018.06	1018.07	1017.97	1017.86	1017.86	1017.86	1017.86	1017.86	1017.86	1017.86	1017.87	1017.93
	16	1017.87	1017.86	1017.86	1017.86	1017.86	1017.92	1017.99	1018.00	1018.04	1018.07	1018.14	1018.22	1017.97
	17	1018.26	1018.28	1018.28	1018.36	1018.43	1018.43	1018.46	1018.60	1018.70	1018.69	1018.69	1018.69	1018.49
	18	1018.70	1018.70	1018.70	1018.69	1018.69	1018.69	1018.70	1018.70	1018.69	1018.69	1018.67	1018.65	1018.69
	19	1018.63	1018.55	1018.46	1018.36	1018.27	1018.24	1018.23	1018.23	1018.24	1018.24	1018.23	1018.23	1018.32
	20	1018.15	1018.07	1018.06	1018.03	1017.93	1017.86	1017.85	1017.83	1017.83	1017.74	1017.66	1017.65	1017.89
	21	1017.65	1017.65	1017.55	1017.45	1017.44	1017.44	1017.44	1017.44	1017.45	1017.45	1017.45	1017.44	1017.49
	22	1017.45	1017.45	1017.39	1017.30	1017.26	1017.24	1017.24	1017.24	1017.24	1017.24	1017.24	1017.23	1017.29
	23	1017.24	1017.14	1017.03	1016.99	1016.89	1016.82	1016.82	1016.82	1016.82	1016.82	1016.72	1016.61	1016.89
12	0	1016.60	1016.60	1016.60	1016.61	1016.61	1016.61	1016.61	1016.67	1016.74	1016.79	1016.82	1016.82	1016.67
	1	1016.81	1016.91	1017.00	1017.00	1017.00	1017.00	1017.33	1017.65	1017.66	1017.66	1017.65	1017.55	1017.27
	2	1017.45	1017.45	1017.34	1017.23	1017.23	1017.13	1017.02	1017.03	1017.03	1017.03	1017.06	1017.16	1017.18
	3	1017.24	1017.13	1016.92	1016.82	1016.82	1016.82	1016.85	1016.92	1016.96	1016.94	1016.93	1016.95	1016.94
	4	1016.95	1016.93	1016.88	1016.82	1016.82	1016.82	1016.82	1016.82	1016.82	1016.82	1016.82	1016.71	1016.83
	5	1016.61	1016.61	1016.61	1016.61	1016.61	1016.61	1016.61	1016.61	1016.61	1016.61	1016.61	1016.61	1016.61
	6	1016.61	1016.59	1016.56	1016.55	1016.55	1016.56	1016.59	1016.61	1016.61	1016.61	1016.61	1016.61	1016.59
	7	1016.61	1016.61	1016.61	1016.61	1016.61	1016.61	1016.61	1016.71	1016.82	1016.82	1016.82	1016.82	1016.69
	8	1016.83	1016.82	1016.82	1016.82	1016.82	1016.82	1016.82	1016.92	1017.03	1017.06	1017.16	1017.23	1016.93
	9	1017.24	1017.30	1017.40	1017.45	1017.45	1017.54	1017.64	1017.65	1017.66	1017.66	1017.66	1017.65	1017.52
	10	1017.65	1017.65	1017.65	1017.65	1017.65	1017.65	1017.63	1017.53	1017.44	1017.44	1017.34	1017.24	1017.54
	11	1017.24	1017.23	1017.15	1017.05	1017.02	1017.02	1017.02	1017.02	1016.94	1016.83	1016.81	1016.81	1017.01
	12	1016.81	1016.81	1016.81	1016.81	1016.81	1016.81	1016.81	1016.78	1016.75	1016.74	1016.75	1016.75	1016.79
	13	1016.75	1016.75	1016.67	1016.60	1016.60	1016.61	1016.61	1016.60	1016.60	1016.60	1016.61	1016.61	1016.63
	14	1016.61	1016.61	1016.61	1016.61	1016.61	1016.61	1016.61	1016.61	1016.61	1016.61	1016.61	1016.61	1016.61
	15	1016.61	1016.61	1016.61	1016.61	1016.61	1016.61	1016.61	1016.61	1016.66	1016.76	1016.81	1016.82	1016.66
	16	1016.82	1016.82	1016.82	1016.92	1017.02	1017.02	1017.03	1017.03	1017.10	1017.20	1017.24	1017.24	1017.02
	17	1017.34	1017.45	1017.45	1017.45	1017.45	1017.45	1017.55	1017.65	1017.66	1017.66	1017.66	1017.66	1017.53
	18	1017.66	1017.66	1017.66	1017.66	1017.65	1017.66	1017.66	1017.71	1017.76	1017.76	1017.76	1017.77	1017.69
	19	1017.79	1017.81	1017.82	1017.83	1017.85	1017.85	1017.86	1017.86	1017.86	1017.96	1018.07	1018.07	1017.88
	20	1018.07	1018.07	1018.07	1018.15	1018.23	1018.23	1018.24	1018.24	1018.23	1018.25	1018.28	1018.28	1018.19
	21	1018.28	1018.28	1018.28	1018.28	1018.28	1018.28	1018.28	1018.28	1018.28	1018.28	1018.29	1018.29	1018.28
	22	1018.28	1018.28	1018.28	1018.28	1018.28	1018.28	1018.28	1018.28	1018.28	1018.28	1018.28	1018.28	1018.28
	23	1018.29	1018.29	1018.29	1018.28	1018.28	1018.28	1018.28	1018.28	1018.28	1018.28	1018.28	1018.28	1018.28

S.V.I.R.CO. Observatory - Pressure in hectoPascal – November 2021

day	hh	00_05	05_10	10_15	15_20	20_25	25_30	30_35	35_40	40_45	45_50	50_55	55_60	average
13	0	1018.27	1018.28	1018.28	1018.28	1018.28	1018.28	1018.28	1018.28	1018.28	1018.28	1018.28	1018.28	1018.28
	1	1018.28	1018.28	1018.28	1018.26	1018.23	1018.22	1018.14	1018.07	1018.07	1018.07	1018.07	1018.07	1018.17
	2	1018.07	1018.07	1018.07	1018.07	1018.07	1018.07	1018.07	1018.07	1018.06	1018.07	1018.07	1018.07	1018.07
	3	1018.07	1018.07	1018.03	1017.93	1017.86	1017.86	1017.86	1017.86	1017.86	1017.86	1017.86	1017.86	1017.91
	4	1017.86	1017.86	1017.86	1017.86	1017.86	1017.86	1017.86	1017.86	1017.75	1017.65	1017.65	1017.65	1017.80
	5	1017.65	1017.66	1017.66	1017.65	1017.65	1017.65	1017.65	1017.65	1017.65	1017.66	1017.66	1017.65	1017.65
	6	1017.65	1017.65	1017.65	1017.65	1017.65	1017.74	1017.84	1017.86	1017.86	1017.91	1017.95	1017.96	1017.78
	7	1017.97	1017.98	1018.03	1018.14	1018.22	1018.23	1018.23	1018.23	1018.23	1018.23	1018.26	1018.28	1018.17
	8	1018.28	1018.28	1018.28	1018.28	1018.28	1018.28	1018.28	1018.28	1018.28	1018.28	1018.28	1018.28	1018.28
	9	1018.28	1018.28	1018.28	1018.28	1018.28	1018.28	1018.28	1018.28	1018.28	1018.28	1018.28	1018.28	1018.28
	10	1018.28	1018.26	1018.23	1018.15	1018.00	1017.90	1017.86	1017.86	1017.76	1017.66	1017.66	1017.55	1017.93
	11	1017.45	1017.45	1017.38	1017.28	1017.23	1017.23	1017.24	1017.24	1017.23	1017.19	1017.09	1017.03	1017.25
	12	1016.93	1016.82	1016.82	1016.80	1016.76	1016.74	1016.68	1016.51	1016.40	1016.40	1016.30	1016.19	1016.61
	13	1016.19	1016.09	1015.99	1015.98	1015.98	1015.98	1015.97	1015.96	1015.96	1015.94	1015.93	1015.92	1015.99
	14	1015.85	1015.78	1015.77	1015.78	1015.78	1015.77	1015.77	1015.78	1015.78	1015.67	1015.56	1015.57	1015.74
	15	1015.57	1015.56	1015.49	1015.41	1015.38	1015.35	1015.35	1015.35	1015.35	1015.35	1015.35	1015.35	1015.40
	16	1015.35	1015.35	1015.46	1015.56	1015.56	1015.56	1015.56	1015.56	1015.63	1015.73	1015.77	1015.77	1015.57
	17	1015.77	1015.77	1015.77	1015.77	1015.77	1015.77	1015.77	1015.82	1015.90	1015.93	1015.96	1015.98	1015.83
	18	1015.98	1015.98	1015.98	1015.98	1015.98	1015.97	1015.98	1015.98	1015.98	1015.98	1015.98	1015.98	1015.98
	19	1015.98	1015.98	1015.98	1015.98	1015.98	1015.98	1015.98	1015.98	1015.98	1015.98	1015.98	1015.98	1015.98
	20	1015.98	1015.98	1015.98	1015.98	1015.98	1015.98	1015.94	1015.83	1015.77	1015.77	1015.77	1015.77	1015.89
	21	1015.77	1015.77	1015.77	1015.77	1015.77	1015.77	1015.77	1015.76	1015.66	1015.56	1015.56	1015.56	1015.71
	22	1015.57	1015.57	1015.56	1015.56	1015.56	1015.56	1015.54	1015.44	1015.36	1015.36	1015.36	1015.35	1015.48
	23	1015.25	1015.15	1015.14	1015.14	1015.15	1015.13	1015.02	1014.93	1014.93	1014.94	1014.94	1014.86	1015.05
14	0	1014.72	1014.73	1014.73	1014.73	1014.73	1014.73	1014.73	1014.69	1014.65	1014.68	1014.61	1014.51	1014.68
	1	1014.51	1014.52	1014.52	1014.48	1014.45	1014.45	1014.38	1014.31	1014.31	1014.31	1014.31	1014.21	1014.40
	2	1014.11	1014.10	1014.10	1014.10	1014.10	1014.10	1013.99	1013.89	1013.89	1013.89	1013.89	1013.89	1014.00
	3	1013.89	1013.90	1013.89	1013.87	1013.83	1013.79	1013.74	1013.68	1013.68	1013.68	1013.68	1013.68	1013.77
	4	1013.69	1013.69	1013.69	1013.69	1013.68	1013.68	1013.68	1013.68	1013.60	1013.52	1013.49	1013.48	1013.63
	5	1013.48	1013.48	1013.47	1013.48	1013.48	1013.48	1013.48	1013.48	1013.48	1013.48	1013.48	1013.48	1013.48
	6	1013.45	1013.37	1013.29	1013.27	1013.27	1013.27	1013.27	1013.27	1013.27	1013.27	1013.27	1013.27	1013.29
	7	1013.27	1013.27	1013.27	1013.27	1013.27	1013.27	1013.27	1013.27	1013.27	1013.27	1013.27	1013.27	1013.27
	8	1013.27	1013.27	1013.27	1013.27	1013.27	1013.27	1013.27	1013.27	1013.27	1013.27	1013.27	1013.27	1013.27
	9	1013.27	1013.27	1013.28	1013.28	1013.27	1013.27	1013.27	1013.27	1013.27	1013.16	1013.06	1013.06	1013.23
	10	1013.06	1013.06	1013.06	1013.06	1012.95	1012.85	1012.85	1012.76	1012.66	1012.64	1012.64	1012.64	1012.85
	11	1012.64	1012.64	1012.64	1012.64	1012.59	1012.54	1012.51	1012.50	1012.49	1012.50	1012.53	1012.52	1012.56
	12	1012.48	1012.45	1012.45	1012.43	1012.46	1012.48	1012.55	1012.64	1012.67	1012.70	1012.70	1012.70	1012.56
	13	1012.70	1012.69	1012.69	1012.67	1012.66	1012.67	1012.66	1012.64	1012.64	1012.63	1012.56	1012.52	1012.64
	14	1012.53	1012.50	1012.45	1012.43	1012.43	1012.43	1012.33	1012.22	1012.21	1012.21	1012.21	1012.22	1012.34
	15	1012.22	1012.22	1012.25	1012.29	1012.30	1012.26	1012.25	1012.28	1012.28	1012.28	1012.29	1012.29	1012.26
	16	1012.28	1012.27	1012.28	1012.34	1012.41	1012.53	1012.63	1012.63	1012.64	1012.74	1012.84	1012.95	1012.54
	17	1013.17	1013.27	1013.27	1013.26	1013.27	1013.27	1013.37	1013.58	1013.69	1013.69	1013.69	1013.69	1013.43
	18	1013.69	1013.69	1013.69	1013.69	1013.69	1013.69	1013.72	1013.76	1013.72	1013.69	1013.69	1013.80	1013.71
	19	1013.90	1013.90	1013.90	1013.90	1013.89	1013.90	1013.90	1013.90	1014.00	1014.21	1014.21	1014.11	1013.97
	20	1014.11	1014.11	1014.11	1014.03	1013.92	1013.90	1013.88	1013.86	1013.67	1013.48	1013.48	1013.48	1013.83
	21	1013.48	1013.48	1013.48	1013.48	1013.48	1013.48	1013.48	1013.48	1013.37	1013.27	1013.27	1013.27	1013.42
	22	1013.27	1013.27	1013.28	1013.28	1013.27	1013.16	1013.06	1013.06	1013.06	1013.06	1013.06	1013.06	1013.16
	23	1013.06	1012.85	1012.74	1012.85	1012.85	1012.76	1012.65	1012.65	1012.65	1012.64	1012.64	1012.61	1012.74

S.V.I.R.CO. Observatory - Pressure in hectoPascal – November 2021

day	hh	00_05	05_10	10_15	15_20	20_25	25_30	30_35	35_40	40_45	45_50	50_55	55_60	average
15	0	1012.42	1012.42	1012.43	1012.38	1012.27	1012.22	1012.22	1012.22	1012.22	1012.21	1012.22	1012.22	1012.28
	1	1012.22	1012.22	1012.22	1012.22	1012.22	1012.22	1012.22	1012.22	1012.22	1012.22	1012.22	1012.12	1012.21
	2	1011.97	1011.87	1011.80	1011.80	1011.80	1011.80	1011.80	1011.80	1011.80	1011.80	1011.80	1011.79	1011.82
	3	1011.80	1011.79	1011.79	1011.80	1011.80	1011.80	1011.80	1011.79	1011.79	1011.79	1011.79	1011.80	1011.79
	4	1011.80	1011.80	1011.80	1011.82	1011.97	1012.17	1012.32	1012.42	1012.43	1012.49	1012.60	1012.65	1012.19
	5	1012.65	1012.65	1012.65	1012.65	1012.65	1012.66	1012.66	1012.65	1012.66	1012.67	1012.66	1012.66	1012.65
	6	1012.39	1012.59	1013.17	1013.27	1013.27	1013.27	1013.38	1013.48	1013.48	1013.47	1013.68	1013.89	1013.28
	7	1013.89	1013.89	1013.89	1013.89	1014.00	1014.11	1014.11	1014.11	1014.21	1014.31	1014.31	1014.31	1014.08
	8	1014.31	1014.31	1014.31	1014.31	1014.31	1014.31	1014.31	1014.31	1014.31	1014.31	1014.31	1014.31	1014.31
	9	1014.31	1014.31	1014.31	1014.31	1014.31	1014.31	1014.31	1014.31	1014.31	1014.21	1014.10	1014.10	1014.27
	10	1014.10	1014.10	1014.10	1014.10	1014.10	1014.10	1014.09	1013.99	1013.89	1013.89	1013.89	1013.79	1014.01
	11	1013.68	1013.68	1013.69	1013.69	1013.68	1013.68	1013.68	1013.68	1013.59	1013.48	1013.47	1013.47	1013.62
	12	1013.47	1013.47	1013.47	1013.47	1013.48	1013.48	1013.47	1013.47	1013.47	1013.47	1013.47	1013.47	1013.47
	13	1013.47	1013.47	1013.47	1013.47	1013.47	1013.47	1013.36	1013.26	1013.26	1013.26	1013.26	1013.26	1013.37
	14	1013.26	1013.25	1013.26	1013.26	1013.26	1013.26	1013.26	1013.25	1013.26	1013.26	1013.36	1013.47	1013.28
	15	1013.47	1013.58	1013.68	1013.68	1013.68	1013.67	1013.68	1013.68	1013.68	1013.68	1013.68	1013.68	1013.65
	16	1013.68	1013.68	1013.79	1013.89	1013.89	1013.89	1013.89	1013.89	1013.99	1014.09	1014.09	1014.10	1013.90
	17	1014.10	1014.10	1014.10	1014.10	1014.10	1014.10	1014.09	1014.10	1014.10	1014.10	1014.10	1014.21	1014.10
	18	1014.31	1014.31	1014.31	1014.31	1014.31	1014.31	1014.30	1014.31	1014.31	1014.31	1014.31	1014.31	1014.31
	19	1014.31	1014.31	1014.31	1014.30	1014.31	1014.31	1014.30	1014.30	1014.31	1014.31	1014.31	1014.31	1014.31
	20	1014.42	1014.52	1014.52	1014.52	1014.51	1014.51	1014.51	1014.51	1014.51	1014.51	1014.51	1014.52	1014.50
	21	1014.52	1014.52	1014.51	1014.52	1014.51	1014.50	1014.51	1014.51	1014.51	1014.51	1014.50	1014.49	1014.51
	22	1014.50	1014.48	1014.47	1014.48	1014.49	1014.44	1014.35	1014.31	1014.30	1014.30	1014.31	1014.27	1014.39
	23	1014.16	1014.10	1014.10	1014.10	1014.00	1013.89	1013.89	1013.89	1013.87	1013.79	1013.71	1013.68	1013.93
16	0	1013.68	1013.68	1013.68	1013.68	1013.68	1013.68	1013.68	1013.68	1013.68	1013.68	1013.68	1013.68	1013.68
	1	1013.58	1013.48	1013.47	1013.47	1013.47	1013.47	1013.47	1013.47	1013.47	1013.48	1013.48	1013.48	1013.48
	2	1013.48	1013.47	1013.47	1013.47	1013.47	1013.47	1013.47	1013.38	1013.28	1013.27	1013.26	1013.26	1013.39
	3	1013.27	1013.27	1013.27	1013.27	1013.27	1013.26	1013.26	1013.26	1013.27	1013.27	1013.23	1013.13	1013.25
	4	1013.06	1013.05	1013.05	1013.05	1013.05	1013.06	1013.06	1013.09	1013.20	1013.27	1013.26	1013.27	1013.12
	5	1013.27	1013.26	1013.16	1013.05	1013.09	1013.10	1013.12	1013.14	1013.18	1013.27	1013.27	1013.27	1013.18
	6	1013.26	1013.26	1013.26	1013.26	1013.26	1013.26	1013.26	1013.27	1013.27	1013.26	1013.26	1013.27	1013.26
	7	1013.27	1013.27	1013.27	1013.26	1013.26	1013.26	1013.27	1012.26	1011.25	1011.25	1012.36	1013.47	1012.79
	8	1013.47	1013.47	1013.47	1013.57	1013.67	1013.68	1013.68	1013.79	1013.89	1013.89	1013.89	1013.91	1013.70
	9	1014.01	1014.10	1014.10	1014.10	1014.10	1014.10	1014.10	1014.10	1014.10	1014.21	1014.31	1014.30	1014.13
	10	1014.22	1014.15	1014.16	1014.15	1014.12	1014.10	1014.10	1014.10	1014.10	1014.10	1014.10	1014.10	1014.12
	11	1014.10	1014.10	1014.10	1014.10	1014.08	1014.06	1014.07	1013.98	1013.89	1013.89	1013.89	1013.78	1014.00
	12	1013.68	1013.68	1013.68	1013.68	1013.57	1013.47	1013.47	1013.47	1013.47	1013.47	1013.47	1013.47	1013.55
	13	1013.47	1013.47	1013.46	1013.45	1013.47	1013.48	1013.48	1013.48	1013.48	1013.47	1013.47	1013.46	1013.47
	14	1013.46	1013.47	1013.47	1013.47	1013.47	1013.58	1013.68	1013.68	1013.68	1013.67	1013.77	1013.88	1013.60
	15	1013.89	1013.88	1013.88	1013.88	1013.89	1013.89	1013.89	1013.89	1013.88	1013.88	1013.88	1013.88	1013.88
	16	1013.88	1013.88	1013.89	1013.89	1013.88	1013.88	1013.88	1013.88	1013.88	1013.88	1013.88	1013.89	1013.88
	17	1013.89	1013.88	1013.88	1013.88	1013.88	1013.91	1013.94	1013.93	1013.93	1013.93	1013.93	1013.96	1013.91
	18	1013.96	1013.99	1014.04	1014.07	1014.11	1014.11	1014.09	1014.09	1014.10	1014.10	1014.10	1014.00	1014.06
	19	1013.90	1013.89	1013.89	1013.89	1013.78	1013.68	1013.68	1013.68	1013.68	1013.68	1013.68	1013.67	1013.76
	20	1013.67	1013.68	1013.71	1013.81	1013.88	1013.89	1013.90	1013.92	1013.96	1013.96	1013.94	1014.02	1013.86
	21	1014.10	1014.10	1014.10	1014.10	1014.10	1014.10	1014.10	1014.10	1014.09	1014.10	1014.10	1014.10	1014.10
	22	1014.10	1014.10	1014.10	1014.09	1014.09	1014.10	1014.10	1014.10	1014.10	1014.10	1014.10	1014.10	1014.10
	23	1014.10	1014.10	1014.10	1014.10	1014.10	1014.10	1014.10	1014.10	1014.10	1014.10	1014.10	1014.10	1014.10

S.V.I.R.CO. Observatory - Pressure in hectoPascal – November 2021

day	hh	00_05	05_10	10_15	15_20	20_25	25_30	30_35	35_40	40_45	45_50	50_55	55_60	average
17	0	1014.10	1014.10	1014.10	1014.10	1014.09	1013.99	1013.89	1013.89	1013.89	1013.89	1013.87	1013.84	1013.97
	1	1013.83	1013.85	1013.87	1013.78	1013.68	1013.68	1013.68	1013.68	1013.68	1013.68	1013.68	1013.68	1013.73
	2	1013.68	1013.68	1013.68	1013.68	1013.68	1013.68	1013.68	1013.68	1013.69	1013.69	1013.68	1013.69	1013.68
	3	1013.69	1013.68	1013.58	1013.47	1013.47	1013.48	1013.48	1013.48	1013.48	1013.47	1013.48	1013.48	1013.52
	4	1013.48	1013.48	1013.48	1013.48	1013.48	1013.48	1013.48	1013.58	1013.69	1013.69	1013.79	1013.90	1013.58
	5	1013.91	1013.93	1014.02	1014.11	1014.12	1014.11	1014.11	1014.11	1014.10	1014.10	1014.10	1014.10	1014.07
	6	1014.10	1014.10	1014.10	1014.11	1014.11	1014.21	1014.31	1014.42	1014.52	1014.53	1014.53	1014.64	1014.30
	7	1014.80	1014.85	1014.90	1014.94	1015.03	1015.14	1015.15	1015.15	1015.25	1015.36	1015.47	1015.57	1015.13
	8	1015.62	1015.67	1015.73	1015.80	1015.83	1015.84	1015.85	1015.86	1015.89	1015.92	1015.92	1015.93	1015.82
	9	1015.96	1015.98	1015.99	1016.00	1016.00	1015.99	1015.98	1015.88	1015.78	1015.67	1015.56	1015.46	1015.85
	10	1015.26	1015.13	1015.00	1014.92	1014.93	1014.83	1014.73	1014.63	1014.52	1014.52	1014.52	1014.55	1014.79
	11	1014.59	1014.59	1014.60	1014.60	1014.60	1014.60	1014.58	1014.58	1014.60	1014.63	1014.65	1014.70	1014.61
	12	1014.73	1014.73	1014.72	1014.72	1014.73	1014.72	1014.73	1014.73	1014.70	1014.65	1014.64	1014.63	1014.70
	13	1014.60	1014.60	1014.59	1014.60	1014.64	1014.65	1014.64	1014.66	1014.65	1014.68	1014.72	1014.72	1014.64
	14	1014.72	1014.72	1014.73	1014.73	1014.73	1014.73	1014.73	1014.73	1014.72	1014.73	1014.73	1014.73	1014.72
	15	1014.73	1014.73	1014.72	1014.72	1014.72	1014.72	1014.72	1014.72	1014.72	1014.72	1014.74	1014.82	1014.73
	16	1014.90	1014.93	1014.93	1014.93	1014.93	1014.93	1014.93	1015.01	1015.12	1015.14	1015.14	1015.14	1015.00
	17	1015.14	1015.14	1015.14	1015.14	1015.14	1015.14	1015.25	1015.46	1015.56	1015.56	1015.56	1015.56	1015.32
	18	1015.56	1015.56	1015.56	1015.65	1015.75	1015.80	1015.87	1015.95	1015.99	1016.00	1016.10	1016.19	1015.83
	19	1016.19	1016.29	1016.39	1016.40	1016.42	1016.53	1016.61	1016.67	1016.75	1016.79	1016.82	1016.82	1016.56
	20	1016.92	1017.02	1017.02	1017.03	1017.03	1017.03	1017.05	1017.15	1017.23	1017.23	1017.23	1017.23	1017.10
	21	1017.28	1017.38	1017.44	1017.44	1017.44	1017.55	1017.65	1017.66	1017.66	1017.67	1017.76	1017.85	1017.56
	22	1017.86	1017.86	1017.86	1017.86	1017.86	1017.86	1017.86	1017.86	1017.86	1017.86	1017.86	1017.86	1017.86
	23	1017.86	1017.86	1017.86	1017.86	1017.86	1017.87	1017.87	1017.87	1017.87	1017.86	1017.86	1017.86	1017.86
18	0	1017.86	1017.86	1017.90	1018.01	1018.07	1018.07	1018.07	1018.15	1018.26	1018.28	1018.28	1018.28	1018.10
	1	1018.28	1018.28	1018.28	1018.28	1018.28	1018.28	1018.28	1018.28	1018.28	1018.37	1018.47	1018.49	1018.32
	2	1018.49	1018.49	1018.49	1018.49	1018.49	1018.49	1018.49	1018.49	1018.49	1018.49	1018.49	1018.50	1018.49
	3	1018.50	1018.50	1018.50	1018.49	1018.50	1018.55	1018.60	1018.64	1018.69	1018.70	1018.69	1018.69	1018.59
	4	1018.70	1018.70	1018.70	1018.70	1018.70	1018.70	1018.73	1018.81	1018.86	1018.87	1018.89	1018.91	1018.77
	5	1019.02	1019.12	1019.19	1019.30	1019.33	1019.33	1019.33	1019.33	1019.33	1019.34	1019.44	1019.54	1019.30
	6	1019.59	1019.69	1019.75	1019.86	1019.96	1019.96	1019.96	1020.05	1020.16	1020.17	1020.18	1020.28	1019.97
	7	1020.38	1020.40	1020.41	1020.46	1020.55	1020.59	1020.59	1020.59	1020.58	1020.65	1020.76	1020.80	1020.56
	8	1020.80	1020.90	1021.01	1021.01	1021.00	1021.01	1021.01	1021.01	1021.01	1021.00	1021.00	1021.00	1020.98
	9	1021.11	1021.21	1021.21	1021.21	1021.30	1021.40	1021.42	1021.42	1021.42	1021.42	1021.42	1021.42	1021.33
	10	1021.42	1021.42	1021.42	1021.42	1021.42	1021.42	1021.42	1021.42	1021.43	1021.43	1021.33	1021.23	1021.40
	11	1021.22	1021.21	1021.21	1021.11	1021.00	1021.01	1021.01	1021.01	1021.00	1021.00	1021.00	1021.01	1021.06
	12	1021.01	1020.97	1020.91	1020.84	1020.80	1020.80	1020.80	1020.80	1020.69	1020.58	1020.59	1020.59	1020.78
	13	1020.58	1020.58	1020.58	1020.58	1020.56	1020.54	1020.53	1020.53	1020.52	1020.52	1020.52	1020.53	1020.55
	14	1020.53	1020.52	1020.51	1020.51	1020.52	1020.53	1020.56	1020.58	1020.58	1020.64	1020.70	1020.71	1020.57
	15	1020.75	1020.79	1020.79	1020.79	1020.79	1020.90	1021.00	1020.99	1021.07	1021.18	1021.21	1021.21	1020.95
	16	1021.28	1021.39	1021.42	1021.42	1021.43	1021.53	1021.63	1021.62	1021.64	1021.66	1021.68	1021.77	1021.54
	17	1021.83	1021.83	1021.94	1022.05	1022.05	1022.15	1022.26	1022.25	1022.25	1022.25	1022.36	1022.46	1022.14
	18	1022.57	1022.67	1022.67	1022.67	1022.76	1022.86	1022.89	1022.89	1022.88	1022.98	1023.09	1023.19	1022.84
	19	1023.40	1023.51	1023.58	1023.65	1023.69	1023.72	1023.72	1023.80	1023.91	1023.93	1023.99	1024.06	1023.74
	20	1024.06	1024.10	1024.13	1024.14	1024.14	1024.14	1024.18	1024.29	1024.35	1024.34	1024.35	1024.35	1024.21
	21	1024.35	1024.35	1024.35	1024.35	1024.35	1024.34	1024.34	1024.35	1024.35	1024.34	1024.35	1024.35	1024.35
	22	1024.45	1024.56	1024.56	1024.63	1024.73	1024.77	1024.76	1024.80	1024.91	1024.97	1024.97	1024.97	1024.76
	23	1024.97	1024.97	1024.98	1024.98	1024.98	1024.97	1024.87	1024.77	1024.77	1024.75	1024.73	1024.73	1024.87



S.V.I.R.CO. Observatory - Pressure in hectoPascal – November 2021

day	hh	00_05	05_10	10_15	15_20	20_25	25_30	30_35	35_40	40_45	45_50	50_55	55_60	average
19	0	1024.73	1024.73	1024.73	1024.72	1024.73	1024.75	1024.76	1024.76	1024.77	1024.77	1024.76	1024.77	1024.75
	1	1024.77	1024.87	1024.98	1024.98	1024.98	1024.98	1024.97	1024.97	1024.98	1024.98	1024.97	1024.97	1024.95
	2	1024.97	1024.97	1024.87	1024.76	1024.76	1024.76	1024.77	1024.77	1024.77	1024.77	1024.76	1024.77	1024.81
	3	1024.77	1024.77	1024.76	1024.77	1024.77	1024.77	1024.77	1024.77	1024.76	1024.76	1024.87	1024.98	1024.79
	4	1024.98	1024.98	1024.98	1024.98	1025.07	1025.16	1025.15	1025.16	1025.18	1025.19	1025.19	1025.19	1025.10
	5	1025.19	1025.19	1025.22	1025.33	1025.40	1025.39	1025.40	1025.40	1025.40	1025.40	1025.51	1025.61	1025.37
	6	1025.61	1025.60	1025.60	1025.65	1025.71	1025.78	1025.85	1025.95	1026.02	1026.03	1026.06	1026.16	1025.83
	7	1026.23	1026.32	1026.43	1026.44	1026.45	1026.45	1026.45	1026.45	1026.45	1026.45	1026.45	1026.45	1026.42
	8	1026.53	1026.62	1026.62	1026.61	1026.59	1026.59	1026.59	1026.62	1026.65	1026.65	1026.65	1026.69	1026.62
	9	1026.75	1026.76	1026.75	1026.75	1026.75	1026.77	1026.78	1026.77	1026.71	1026.65	1026.65	1026.65	1026.73
	10	1026.65	1026.65	1026.55	1026.44	1026.34	1026.23	1026.23	1026.13	1026.03	1026.02	1026.02	1025.99	1026.27
	11	1025.94	1025.87	1025.78	1025.74	1025.73	1025.67	1025.61	1025.50	1025.39	1025.39	1025.40	1025.37	1025.61
	12	1025.26	1025.18	1025.18	1025.08	1024.97	1024.97	1024.97	1024.97	1024.87	1024.76	1024.77	1024.77	1024.98
	13	1024.77	1024.77	1024.77	1024.77	1024.77	1024.76	1024.75	1024.65	1024.56	1024.55	1024.54	1024.52	1024.68
	14	1024.51	1024.51	1024.51	1024.51	1024.51	1024.51	1024.51	1024.52	1024.52	1024.53	1024.55	1024.55	1024.52
	15	1024.55	1024.55	1024.55	1024.66	1024.77	1024.77	1024.76	1024.76	1024.86	1024.96	1024.95	1024.96	1024.76
	16	1024.97	1024.97	1024.97	1024.97	1024.97	1024.97	1024.97	1024.97	1024.97	1024.97	1024.97	1024.97	1024.97
	17	1024.96	1024.97	1024.97	1025.06	1025.17	1025.17	1025.18	1025.18	1025.18	1025.17	1025.18	1025.18	1025.11
	18	1025.18	1025.18	1025.18	1025.18	1025.18	1025.18	1025.17	1025.17	1025.17	1025.17	1025.16	1025.17	1025.17
	19	1025.17	1025.17	1025.18	1025.18	1025.18	1025.17	1025.17	1025.16	1025.17	1025.19	1025.19	1025.18	1025.17
	20	1025.18	1025.18	1025.19	1025.23	1025.29	1025.35	1025.37	1025.36	1025.36	1025.36	1025.35	1025.37	1025.30
	21	1025.38	1025.37	1025.34	1025.31	1025.31	1025.32	1025.33	1025.34	1025.36	1025.39	1025.39	1025.39	1025.35
	22	1025.39	1025.39	1025.39	1025.39	1025.39	1025.39	1025.47	1025.57	1025.60	1025.60	1025.60	1025.60	1025.48
	23	1025.60	1025.60	1025.50	1025.39	1025.39	1025.39	1025.40	1025.40	1025.39	1025.39	1025.39	1025.28	1025.43
20	0	1025.18	1025.18	1025.18	1025.18	1025.18	1025.18	1025.18	1025.16	1025.05	1024.98	1024.98	1024.98	1025.11
	1	1024.98	1024.98	1024.97	1024.97	1024.98	1024.98	1024.98	1024.98	1024.97	1024.87	1024.77	1024.77	1024.93
	2	1024.71	1024.61	1024.56	1024.56	1024.56	1024.53	1024.50	1024.50	1024.50	1024.50	1024.42	1024.35	1024.52
	3	1024.35	1024.34	1024.33	1024.33	1024.33	1024.32	1024.33	1024.33	1024.33	1024.33	1024.33	1024.23	1024.32
	4	1024.14	1024.14	1024.14	1024.14	1024.15	1024.15	1024.15	1024.15	1024.14	1024.14	1024.14	1024.15	1024.14
	5	1024.15	1024.14	1024.14	1024.15	1024.14	1024.12	1024.13	1024.14	1024.13	1024.12	1024.12	1024.12	1024.13
	6	1024.12	1024.12	1024.12	1024.12	1024.12	1024.12	1024.11	1024.13	1024.15	1024.15	1024.15	1024.15	1024.13
	7	1024.15	1024.15	1024.15	1024.15	1024.15	1024.15	1024.21	1024.29	1024.30	1024.30	1024.29	1024.29	1024.21
	8	1024.29	1024.29	1024.29	1024.28	1024.21	1024.15	1024.15	1024.15	1024.15	1024.18	1024.21	1024.19	1024.21
	9	1024.18	1024.20	1024.20	1024.19	1024.18	1024.16	1024.15	1024.15	1024.15	1024.13	1024.02	1023.94	1024.13
	10	1023.94	1023.83	1023.73	1023.66	1023.56	1023.52	1023.52	1023.52	1023.41	1023.30	1023.25	1023.15	1023.53
	11	1023.09	1022.99	1022.88	1022.78	1022.67	1022.68	1022.57	1022.47	1022.47	1022.36	1022.26	1022.26	1022.62
	12	1022.21	1022.10	1022.03	1021.92	1021.84	1021.80	1021.70	1021.63	1021.63	1021.52	1021.42	1021.42	1021.77
	13	1021.42	1021.42	1021.42	1021.32	1021.21	1021.21	1021.21	1021.11	1021.00	1021.01	1021.01	1021.00	1021.19
	14	1021.00	1020.95	1020.85	1020.79	1020.79	1020.78	1020.76	1020.74	1020.66	1020.59	1020.59	1020.59	1020.76
	15	1020.59	1020.58	1020.58	1020.57	1020.56	1020.56	1020.56	1020.55	1020.55	1020.55	1020.55	1020.55	1020.56
	16	1020.55	1020.55	1020.55	1020.54	1020.54	1020.54	1020.54	1020.54	1020.54	1020.46	1020.38	1020.38	1020.51
	17	1020.38	1020.28	1020.17	1020.16	1020.17	1020.17	1020.13	1020.02	1019.96	1019.96	1019.96	1019.95	1020.11
	18	1019.85	1019.75	1019.75	1019.75	1019.75	1019.73	1019.72	1019.72	1019.72	1019.71	1019.71	1019.63	1019.73
	19	1019.55	1019.54	1019.53	1019.52	1019.52	1019.52	1019.52	1019.51	1019.51	1019.52	1019.52	1019.52	1019.52
	20	1019.51	1019.51	1019.51	1019.51	1019.49	1019.48	1019.48	1019.48	1019.48	1019.41	1019.34	1019.34	1019.46
	21	1019.34	1019.34	1019.34	1019.34	1019.34	1019.34	1019.34	1019.34	1019.33	1019.31	1019.21	1019.13	1019.31
	22	1019.13	1019.13	1019.13	1019.13	1019.11	1019.00	1018.92	1018.92	1018.92	1018.92	1018.92	1018.92	1019.01
	23	1018.91	1018.90	1018.89	1018.87	1018.79	1018.71	1018.71	1018.71	1018.68	1018.57	1018.50	1018.48	1018.72

**S.V.I.R.CO. Observatory - Pressure in hectoPascal – November 2021**

day	hh	00_05	05_10	10_15	15_20	20_25	25_30	30_35	35_40	40_45	45_50	50_55	55_60	average
21	0	1018.44	1018.37	1018.29	1018.29	1018.29	1018.29	1018.29	1018.29	1018.29	1018.27	1018.25	1018.17	1018.29
	1	1018.09	1018.09	1018.00	1017.90	1017.88	1017.88	1017.88	1017.88	1017.87	1017.87	1017.77	1017.67	1017.90
	2	1017.57	1017.46	1017.46	1017.40	1017.29	1017.25	1017.19	1017.08	1017.04	1017.04	1016.94	1016.83	1017.21
	3	1016.83	1016.73	1016.63	1016.63	1016.62	1016.63	1016.63	1016.63	1016.63	1016.63	1016.63	1016.62	1016.65
	4	1016.51	1016.40	1016.38	1016.36	1016.36	1016.36	1016.29	1016.21	1016.20	1016.17	1016.07	1016.00	1016.27
	5	1016.00	1016.00	1016.00	1016.00	1016.00	1016.00	1016.00	1016.00	1016.00	1016.00	1016.00	1016.00	1016.00
	6	1015.98	1015.97	1015.97	1015.97	1015.96	1015.97	1015.97	1015.97	1015.97	1015.97	1015.97	1015.96	1015.97
	7	1015.97	1015.97	1015.97	1015.97	1015.97	1015.97	1015.97	1015.97	1015.97	1015.97	1015.97	1015.97	1015.97
	8	1015.97	1015.96	1015.97	1015.97	1015.97	1015.96	1015.97	1015.97	1015.97	1015.96	1015.96	1015.96	1015.96
	9	1015.96	1015.96	1015.96	1015.88	1015.79	1015.79	1015.79	1015.79	1015.68	1015.58	1015.58	1015.48	1015.77
	10	1015.37	1015.37	1015.27	1015.13	1015.03	1014.95	1014.85	1014.75	1014.75	1014.74	1014.75	1014.74	1014.97
	11	1014.63	1014.53	1014.53	1014.43	1014.32	1014.22	1014.12	1014.00	1013.90	1013.91	1013.91	1013.80	1014.19
	12	1013.70	1013.65	1013.55	1013.49	1013.39	1013.28	1013.28	1013.28	1013.28	1013.28	1013.28	1013.28	1013.39
	13	1013.28	1013.28	1013.28	1013.17	1013.06	1013.07	1013.07	1013.06	1012.97	1012.87	1012.86	1012.78	1013.06
	14	1012.68	1012.55	1012.44	1012.43	1012.41	1012.42	1012.41	1012.40	1012.39	1012.36	1012.35	1012.29	1012.42
	15	1012.23	1012.23	1012.21	1012.18	1012.16	1012.15	1012.15	1012.15	1012.15	1012.08	1012.02	1012.02	1012.14
	16	1012.01	1011.91	1011.80	1011.80	1011.80	1011.80	1011.81	1011.81	1011.81	1011.81	1011.80	1011.80	1011.83
	17	1011.80	1011.69	1011.58	1011.58	1011.59	1011.59	1011.59	1011.59	1011.59	1011.59	1011.59	1011.59	1011.61
	18	1011.60	1011.60	1011.60	1011.59	1011.59	1011.59	1011.59	1011.59	1011.59	1011.59	1011.59	1011.60	1011.59
	19	1011.60	1011.60	1011.60	1011.59	1011.48	1011.38	1011.38	1011.38	1011.38	1011.39	1011.39	1011.39	1011.46
	20	1011.39	1011.39	1011.32	1011.22	1011.18	1011.17	1011.17	1011.18	1011.18	1011.17	1011.17	1011.18	1011.22
	21	1011.18	1011.18	1011.08	1010.97	1010.96	1010.96	1010.96	1010.93	1010.83	1010.76	1010.76	1010.76	1010.94
	22	1010.66	1010.55	1010.55	1010.55	1010.56	1010.56	1010.56	1010.56	1010.55	1010.55	1010.55	1010.55	1010.56
	23	1010.55	1010.55	1010.55	1010.44	1010.33	1010.34	1010.24	1010.13	1010.13	1010.12	1010.09	1009.99	1010.29
22	0													
	1													
	2													
	3													
	4													
	5													
	6													
	7													
	8													
	9													
	10													
	11													
	12													
	13													
	14													
	15													
	16													
	17													
	18													
	19													
	20													
	21													
	22													
	23													

S.V.I.R.CO. Observatory - Pressure in hectoPascal – November 2021

day	hh	00_05	05_10	10_15	15_20	20_25	25_30	30_35	35_40	40_45	45_50	50_55	55_60	average
23	0	1011.36	1011.33	1011.28	1011.27	1011.28	1011.30	1011.31	1011.29	1011.28	1011.29	1011.32	1011.32	1011.30
	1	1011.33	1011.37	1011.43	1011.47	1011.50	1011.53	1011.53	1011.52	1011.50	1011.47	1011.45	1011.45	1011.46
	2	1011.45	1011.41	1011.36	1011.34	1011.33	1011.35	1011.38	1011.42	1011.45	1011.46	1011.43	1011.38	1011.40
	3	1011.37	1011.38	1011.39	1011.39	1011.40	1011.42	1011.44	1011.49	1011.54	1011.59	1011.62	1011.64	1011.47
	4	1011.66	1011.69	1011.75	1011.80	1011.80	1011.79	1011.80	1011.79	1011.78	1011.78	1011.77	1011.75	1011.76
	5	1011.75	1011.78	1011.85	1011.91	1011.93	1011.95	1011.95	1011.97	1012.05	1012.10	1012.13	1012.19	1011.96
	6	1012.26	1012.33	1012.39	1012.44	1012.49	1012.54	1012.58	1012.61	1012.63	1012.69	1012.76	1012.83	1012.55
	7	1012.92	1013.00	1013.08	1013.16	1013.22	1013.30	1013.39	1013.48	1013.55	1013.61	1013.65	1013.68	1013.34
	8	1013.71	1013.73	1013.73	1013.75	1013.78	1013.81	1013.84	1013.87	1013.92	1013.98	1014.07	1014.15	1013.86
	9	1014.21	1014.23	1014.26	1014.29	1014.31	1014.33	1014.34	1014.32	1014.33	1014.37	1014.38	1014.37	1014.31
	10	1014.35	1014.36	1014.39	1014.39	1014.37	1014.35	1014.33	1014.30	1014.26	1014.21	1014.20	1014.20	1014.31
	11	1014.18	1014.14	1014.10	1014.07	1014.04	1014.03	1014.03	1014.00	1013.96	1013.96	1013.95	1013.93	1014.03
	12	1013.91	1013.91	1013.92	1013.90	1013.88	1013.85	1013.82	1013.81	1013.82	1013.83	1013.85	1013.88	1013.87
	13	1013.94	1013.95	1013.93	1013.94	1013.95	1013.96	1014.00	1014.02	1014.01	1014.02	1014.04	1014.06	1013.99
	14	1014.08	1014.09	1014.11	1014.15	1014.15	1014.16	1014.20	1014.23	1014.24	1014.23	1014.24	1014.27	1014.18
	15	1014.30	1014.34	1014.36	1014.38	1014.42	1014.46	1014.48	1014.50	1014.51	1014.54	1014.55	1014.58	1014.45
	16	1014.61	1014.64	1014.68	1014.73	1014.81	1014.89	1014.96	1015.00	1015.06	1015.12	1015.18	1015.22	1014.91
	17	1015.24	1015.27	1015.33	1015.36	1015.38	1015.41	1015.47	1015.55	1015.58	1015.58	1015.60	1015.65	1015.45
	18	1015.70	1015.74	1015.75	1015.77	1015.78	1015.79	1015.81	1015.85	1015.88	1015.90	1015.92	1015.96	1015.82
	19	1016.00	1016.03	1016.07	1016.13	1016.20	1016.24	1016.27	1016.29	1016.34	1016.38	1016.40	1016.45	1016.23
	20	1016.50	1016.50	1016.49	1016.53	1016.61	1016.70	1016.73	1016.74	1016.75	1016.78	1016.83	1016.91	1016.67
	21	1016.97	1016.98	1017.00	1017.03	1017.08	1017.09	1017.12	1017.18	1017.21	1017.23	1017.22	1017.23	1017.11
	22	1017.26	1017.29	1017.29	1017.28	1017.27	1017.29	1017.33	1017.35	1017.35	1017.36	1017.37	1017.37	1017.32
	23	1017.38	1017.37	1017.33	1017.30	1017.31	1017.32	1017.31	1017.32	1017.32	1017.30	1017.31	1017.31	1017.32
24	0	1017.23	1017.22	1017.22	1017.23	1017.25	1017.26	1017.25	1017.26	1017.26	1017.25	1017.25	1017.24	1017.24
	1	1017.22	1017.20	1017.19	1017.18	1017.20	1017.21	1017.20	1017.20	1017.19	1017.15	1017.14	1017.11	1017.18
	2	1017.08	1017.06	1017.07	1017.10	1017.11	1017.07	1017.05	1017.04	1017.04	1017.03	1017.00	1016.97	1017.05
	3	1016.97	1016.98	1016.97	1016.94	1016.93	1016.93	1016.92	1016.92	1016.93	1016.93	1016.93	1016.95	1016.94
	4	1016.96	1016.96	1016.95	1016.95	1016.94	1016.91	1016.91	1016.94	1016.95	1016.96	1016.95	1016.97	1016.95
	5	1017.03	1017.07	1017.07	1017.04	1017.03	1017.04	1017.06	1017.06	1017.08	1017.13	1017.14	1017.13	1017.07
	6	1017.11	1017.11	1017.15	1017.20	1017.24	1017.27	1017.32	1017.37	1017.43	1017.47	1017.49	1017.52	1017.31
	7	1017.55	1017.57	1017.58	1017.59	1017.61	1017.62	1017.63	1017.64	1017.64	1017.63	1017.64	1017.68	1017.61
	8	1017.73	1017.76	1017.77	1017.78	1017.81	1017.84	1017.89	1017.91	1017.91	1017.91	1017.91	1017.94	1017.85
	9	1018.00	1018.02	1018.01	1017.99	1017.98	1017.97	1017.93	1017.85	1017.79	1017.76	1017.72	1017.70	1017.89
	10	1017.69	1017.67	1017.61	1017.55	1017.48	1017.42	1017.39	1017.36	1017.30	1017.24	1017.19	1017.15	1017.42
	11	1017.12	1017.06	1016.98	1016.91	1016.84	1016.76	1016.67	1016.57	1016.47	1016.38	1016.31	1016.26	1016.69
	12	1016.22	1016.19	1016.15	1016.10	1016.05	1015.99	1015.92	1015.85	1015.78	1015.69	1015.61	1015.55	1015.93
	13	1015.50	1015.44	1015.41	1015.40	1015.36	1015.29	1015.23	1015.21	1015.21	1015.21	1015.20	1015.17	1015.30
	14	1015.13	1015.08	1015.03	1015.00	1015.00	1015.00	1014.99	1014.95	1014.90	1014.86	1014.84	1014.79	1014.96
	15	1014.73	1014.66	1014.64	1014.63	1014.58	1014.54	1014.51	1014.48	1014.47	1014.47	1014.47	1014.47	1014.55
	16	1014.46	1014.45	1014.45	1014.48	1014.51	1014.53	1014.52	1014.48	1014.44	1014.44	1014.45	1014.44	1014.47
	17	1014.45	1014.46	1014.44	1014.40	1014.41	1014.46	1014.47	1014.47	1014.49	1014.51	1014.49	1014.43	1014.46
	18	1014.39	1014.34	1014.31	1014.28	1014.25	1014.24	1014.25	1014.24	1014.24	1014.23	1014.21	1014.17	1014.26
	19	1014.15	1014.14	1014.11	1014.08	1014.06	1014.05	1014.04	1014.01	1013.96	1013.89	1013.84	1013.76	1014.01
	20	1013.69	1013.65	1013.60	1013.56	1013.53	1013.50	1013.49	1013.48	1013.45	1013.43	1013.41	1013.39	1013.52
	21	1013.37	1013.32	1013.28	1013.24	1013.18	1013.16	1013.14	1013.09	1013.05	1013.00	1012.94	1012.91	1013.14
	22	1012.87	1012.80	1012.73	1012.70	1012.69	1012.65	1012.60	1012.55	1012.46	1012.37	1012.32	1012.27	1012.58
	23	1012.24	1012.23	1012.21	1012.16	1012.05	1011.90	1011.77	1011.78	1011.85	1011.82	1011.82	1011.82	1011.97

S.V.I.R.CO. Observatory - Pressure in hectoPascal – November 2021

day	hh	00_05	05_10	10_15	15_20	20_25	25_30	30_35	35_40	40_45	45_50	50_55	55_60	average
25	0	1012.43	1012.43	1012.42	1012.31	1012.22	1012.22	1012.19	1012.08	1011.97	1011.87	1011.80	1011.80	1012.13
	1	1011.80	1011.80	1011.80	1011.80	1011.80	1011.80	1011.80	1011.80	1011.80	1011.70	1011.59	1011.59	1011.76
	2	1011.57	1011.47	1011.38	1011.38	1011.38	1011.38	1011.38	1011.38	1011.38	1011.36	1011.25	1011.07	1011.36
	3	1010.96	1010.96	1010.91	1010.81	1010.75	1010.75	1010.75	1010.71	1010.61	1010.54	1010.54	1010.54	1010.73
	4	1010.54	1010.54	1010.53	1010.42	1010.33	1010.33	1010.33	1010.33	1010.33	1010.33	1010.33	1010.33	1010.39
	5	1010.33	1010.33	1010.33	1010.33	1010.33	1010.33	1010.34	1010.34	1010.34	1010.24	1010.13	1010.23	1010.30
	6	1010.44	1010.54	1010.54	1010.65	1010.75	1010.75	1010.80	1010.84	1010.84	1010.84	1010.84	1010.90	1010.73
	7	1010.96	1010.96	1010.86	1010.75	1010.75	1010.77	1010.88	1010.96	1010.96	1010.96	1010.94	1010.84	1010.88
	8	1010.75	1010.75	1010.75	1010.75	1010.65	1010.54	1010.54	1010.54	1010.54	1010.52	1010.41	1010.21	1010.58
	9	1010.12	1010.12	1010.12	1010.11	1010.01	1009.84	1009.73	1009.69	1009.69	1009.69	1009.63	1009.56	1009.86
	10	1009.53	1009.38	1009.27	1009.17	1009.06	1009.07	1009.07	1009.07	1008.96	1008.75	1008.54	1008.30	1009.01
	11	1008.15	1008.12	1008.26	1008.40	1008.37	1008.29	1008.22	1008.22	1008.12	1008.01	1007.91	1007.77	1008.15
	12	1007.72	1007.70	1007.64	1007.49	1007.38	1007.38	1007.38	1007.38	1007.38	1007.38	1007.38	1007.28	1007.46
	13	1007.17	1007.07	1006.97	1006.96	1006.96	1006.86	1006.76	1006.66	1006.55	1006.54	1006.54	1006.55	1006.80
	14	1006.35	1006.24	1006.33	1006.33	1006.33	1006.33	1006.34	1006.34	1006.44	1006.55	1006.55	1006.55	1006.39
	15	1006.55	1006.55	1006.55	1006.54	1006.55	1006.55	1006.54	1006.44	1006.33	1006.34	1006.34	1006.34	1006.47
	16	1006.34	1006.30	1006.16	1006.19	1006.34	1006.34	1006.34	1006.33	1006.34	1006.34	1006.34	1006.34	1006.31
	17	1006.45	1006.55	1006.55	1006.54	1006.55	1006.55	1006.65	1006.76	1006.76	1006.66	1006.55	1006.55	1006.59
	18	1006.55	1006.45	1006.34	1006.34	1006.33	1006.33	1006.23	1006.12	1006.12	1006.12	1006.02	1005.91	1006.24
	19	1005.91	1005.91	1005.91	1005.90	1005.79	1005.70	1005.70	1005.70	1005.70	1005.60	1005.49	1005.39	1005.72
	20	1005.28	1005.28	1005.17	1005.06	1005.06	1005.07	1005.07	1005.07	1005.07	1005.07	1004.92	1004.82	1005.08
	21	1004.86	1004.86	1004.86	1004.76	1004.66	1004.65	1004.55	1004.45	1004.44	1004.44	1004.34	1003.95	1004.57
	22	1003.84	1004.03	1002.77	1002.64	1003.79	1003.82	1003.82	1003.81	1003.78	1003.74	1003.73	1003.65	1003.62
	23	1003.59	1003.60	1003.50	1003.37	1003.27	1003.19	1003.19	1003.19	1003.19	1003.08	1002.97	1002.96	1003.26
26	0	1002.76	1002.76	1002.76	1002.76	1002.61	1001.95	1002.00	1002.55	1002.55	1002.55	1002.55	1002.55	1002.52
	1	1002.55	1002.55	1002.56	1002.56	1002.56	1002.55	1002.55	1002.55	1002.55	1002.45	1002.34	1002.35	1002.51
	2	1002.24	1002.03	1001.92	1001.92	1001.92	1001.81	1001.70	1001.71	1001.61	1001.50	1001.48	1001.38	1001.77
	3	1001.30	1001.30	1001.19	1001.08	1001.08	1000.98	1000.87	1000.88	1000.88	1000.87	1000.87	1000.88	1001.01
	4	1000.88	1000.87	1000.87	1000.87	1000.87	1000.84	1000.74	1000.66	1000.65	1000.57	1000.48	1000.45	1000.73
	5	1000.45	1000.45	1000.45	1000.45	1000.45	1000.35	1000.25	1000.25	1000.25	1000.25	1000.25	1000.25	1000.34
	6	1000.24	1000.13	1000.03	1000.03	1000.03	1000.03	1000.03	1000.03	1000.03	1000.03	999.93	999.81	1000.03
	7	999.80	999.82	999.82	999.82	999.82	999.82	999.83	999.82	999.81	999.82	999.82	999.82	999.82
	8	999.72	999.58	999.55	999.54	999.54	999.54	999.58	999.61	999.61	999.61	999.61	999.61	999.59
	9	999.61	999.61	999.61	999.51	999.40	999.33	999.26	999.26	999.22	999.20	999.31	999.43	999.39
	10	999.74	999.88	999.68	999.61	999.61	999.40	999.06	998.85	998.77	998.67	998.56	998.57	999.20
	11	998.57	998.57	998.56	998.56	998.56	998.53	998.42	998.25	998.04	997.82	997.72	997.70	998.27
	12	997.59	997.51	997.48	997.44	997.34	997.16	997.09	997.09	997.19	997.40	997.45	997.38	997.34
	13	997.37	997.33	997.30	997.30	997.30	997.30	997.30	997.30	997.30	997.30	997.30	997.30	997.31
	14	997.28	997.18	996.99	996.88	996.88	996.87	996.85	996.83	996.82	996.75	996.67	996.68	996.89
	15	996.68	996.68	996.68	996.67	996.67	996.68	996.68	996.68	996.68	996.67	996.67	996.67	996.67
	16	996.68	996.68	996.89	997.20	997.31	997.20	997.10	997.10	997.10	997.10	997.10	997.20	997.05
	17	997.30	997.35	997.46	997.55	997.64	997.71	997.83	997.93	997.94	998.04	998.15	998.26	997.76
	18	998.36	998.39	998.48	998.52	998.65	998.79	998.82	998.83	998.84	998.85	998.85	998.85	998.68
	19	998.86	998.86	998.87	998.93	998.98	998.98	998.98	998.98	998.98	998.98	998.98	999.12	998.96
	20	999.33	999.40	999.40	999.40	999.40	999.40	999.40	999.40	999.40	999.40	999.42	999.52	999.40
	21	999.61	999.61	999.57	999.54	999.53	999.51	999.50	999.50	999.51	999.51	999.52	999.52	999.53
	22	999.52	999.52	999.53	999.53	999.53	999.55	999.59	999.61	999.61	999.61	999.61	999.61	999.57
	23	999.61	999.61	999.61	999.68	999.75	999.75	999.74	999.73	999.74	999.75	999.79	999.93	999.72

S.V.I.R.CO. Observatory - Pressure in hectoPascal – November 2021

day	hh	00_05	05_10	10_15	15_20	20_25	25_30	30_35	35_40	40_45	45_50	50_55	55_60	average
27	0	1000.03	1000.03	1000.03	1000.03	1000.03	1000.03	1000.03	1000.03	1000.03	1000.04	1000.04	1000.03	1000.03
	1	1000.03	1000.06	1000.16	1000.24	1000.24	1000.24	1000.24	1000.30	1000.35	1000.29	1000.24	1000.24	1000.22
	2	1000.24	1000.24	1000.24	1000.24	1000.14	1000.03	1000.03	1000.03	1000.03	1000.03	1000.03	1000.03	1000.11
	3	1000.03	1000.03	999.93	999.83	999.72	999.61	999.62	999.59	999.48	999.41	999.41	999.36	999.67
	4	999.26	999.20	999.20	999.20	999.20	999.17	999.07	998.99	998.99	998.99	998.99	998.99	999.10
	5	998.96	998.93	998.92	998.92	998.85	998.78	998.78	998.78	998.78	998.78	998.78	998.79	998.84
	6	998.79	998.78	998.78	998.78	998.78	998.78	998.78	998.78	998.79	998.79	998.79	998.79	998.78
	7	998.78	998.79	998.79	998.79	998.78	998.78	998.78	998.78	998.78	998.84	998.89	998.89	998.80
	8	998.89	998.89	998.89	998.94	998.99	998.99	998.99	998.99	998.99	998.99	998.99	998.99	998.96
	9	998.99	998.98	998.98	998.99	998.99	998.99	998.99	998.99	998.99	998.99	998.98	998.98	998.98
	10	998.98	998.98	998.98	998.96	998.94	998.93	998.92	998.92	998.92	998.92	998.92	998.85	998.93
	11	998.77	998.77	998.78	998.78	998.67	998.56	998.56	998.56	998.46	998.35	998.35	998.35	998.58
	12	998.35	998.35	998.35	998.35	998.35	998.35	998.36	998.36	998.36	998.36	998.35	998.35	998.35
	13	998.35	998.25	998.14	998.14	998.14	998.14	998.14	998.14	998.14	998.14	998.14	998.17	998.17
	14	998.26	998.33	998.36	998.36	998.35	998.36	998.36	998.46	998.56	998.56	998.57	998.57	998.42
	15	998.57	998.65	998.74	998.74	998.74	998.74	998.74	998.74	998.75	998.76	998.77	998.77	998.72
	16	998.76	998.75	998.75	998.75	998.75	998.76	998.78	998.78	998.78	998.78	998.78	998.78	998.76
	17	998.78	998.78	998.77	998.78	998.78	998.77	998.78	998.78	998.78	998.78	998.78	998.78	998.78
	18	998.78	998.78	998.78	998.87	998.97	998.99	998.99	998.99	998.99	998.98	998.99	999.10	998.93
	19	999.20	999.20	999.19	999.20	999.17	999.12	999.10	999.11	999.11	999.05	998.97	998.94	999.11
	20	998.93	998.93	998.92	998.93	998.86	998.79	998.68	998.57	998.57	998.57	998.57	998.57	998.74
	21	998.57	998.57	998.57	998.68	998.78	998.79	998.79	998.78	998.78	998.78	998.78	998.78	998.72
	22	998.78	998.78	998.78	998.78	998.68	998.58	998.47	998.36	998.35	998.33	998.24	998.16	998.52
	23	998.05	997.94	997.94	997.94	997.94	997.84	997.73	997.73	997.73	997.62	997.52	997.51	997.79
28	0	997.50	997.50	997.49	997.51	997.52	997.52	997.52	997.52	997.52	997.52	997.52	997.53	997.51
	1	997.53	997.53	997.52	997.52	997.52	997.53	997.53	997.52	997.53	997.53	997.53	997.53	997.52
	2	997.52	997.42	997.29	997.18	997.10	997.10	997.11	997.11	997.11	997.11	997.11	997.11	997.19
	3	997.11	997.11	997.10	997.10	997.00	996.79	996.69	996.76	996.76	996.69	996.69	996.69	996.87
	4	996.69	996.67	996.63	996.61	996.55	996.48	996.48	996.48	996.38	996.31	996.36	996.39	996.50
	5	996.39	996.40	996.41	996.44	996.46	996.47	996.48	996.48	996.48	996.48	996.48	996.48	996.45
	6	996.48	996.48	996.59	996.69	996.69	996.68	996.69	996.69	996.69	996.68	996.68	996.68	996.64
	7	996.68	996.69	996.69	996.69	996.80	996.90	996.90	996.89	996.89	996.90	996.94	996.98	996.83
	8	997.02	997.03	997.02	997.04	997.05	997.05	997.05	997.05	997.07	997.10	997.11	997.11	997.06
	9	997.11	997.11	997.11	997.10	997.10	997.10	997.10	997.10	997.11	997.18	997.24	997.24	997.13
	10	997.23	997.23	997.17	997.11	997.11	997.09	997.08	997.08	997.08	997.08	997.07	997.07	997.12
	11	996.99	996.90	996.89	996.79	996.69	996.69	996.69	996.68	996.69	996.68	996.57	996.48	996.73
	12	996.48	996.48	996.48	996.47	996.48	996.48	996.48	996.48	996.48	996.48	996.48	996.47	996.48
	13	996.48	996.48	996.47	996.47	996.45	996.42	996.40	996.33	996.26	996.27	996.27	996.27	996.38
	14	996.27	996.26	996.27	996.27	996.27	996.27	996.27	996.27	996.27	996.27	996.27	996.27	996.27
	15	996.27	996.27	996.27	996.28	996.33	996.38	996.44	996.48	996.48	996.47	996.47	996.48	996.38
	16	996.48	996.48	996.48	996.48	996.49	996.49	996.48	996.59	996.75	996.86	996.90	996.90	996.61
	17	996.90	996.90	996.90	996.90	996.90	996.90	996.90	996.90	996.90	996.90	996.90	996.90	996.90
	18	996.90	996.90	996.89	996.97	997.05	997.05	997.07	997.09	997.08	997.08	997.09	997.11	997.02
	19	997.11	997.11	997.11	997.10	997.10	997.10	997.11	997.11	997.10	997.11	997.11	997.10	997.10
	20	997.10	997.10	997.11	997.11	997.11	997.11	997.11	997.10	997.09	997.09	997.09	997.09	997.10
	21	997.09	997.09	997.09	997.08	997.08	997.08	997.08	997.09	997.00	996.90	996.90	996.90	997.03
	22	996.90	996.90	996.90	996.89	996.87	996.87	996.87	996.78	996.69	996.69	996.69	996.69	996.81
	23	996.69	996.69	996.69	996.69	996.68	996.67	996.57	996.48	996.46	996.42	996.40	996.40	996.57

S.V.I.R.CO. Observatory - Pressure in hectoPascal – November 2021

day	hh	00_05	05_10	10_15	15_20	20_25	25_30	30_35	35_40	40_45	45_50	50_55	55_60	average
29	0	996.26	996.26	996.16	996.06	996.05	996.06	996.06	996.06	996.05	996.06	996.06	996.06	996.09
	1	996.05	996.05	996.05	996.06	996.06	996.06	996.06	996.06	996.06	996.06	996.06	996.06	996.06
	2	996.06	996.06	996.06	995.96	995.85	995.84	995.74	995.64	995.64	995.64	995.64	995.64	995.81
	3	995.64	995.64	995.64	995.59	995.49	995.43	995.43	995.43	995.43	995.41	995.30	995.21	995.47
	4	995.19	995.09	995.00	995.00	995.00	995.10	995.19	995.09	995.00	995.00	995.00	995.01	995.05
	5	995.01	995.00	995.00	995.00	995.01	995.01	994.96	994.86	994.79	994.79	994.69	994.58	994.89
	6	994.69	994.79	994.79	994.79	994.80	994.83	994.86	994.87	994.90	994.91	994.91	994.95	994.84
	7	995.00	995.00	995.00	995.00	995.00	995.00	995.00	995.00	994.96	994.91	994.96	995.11	994.99
	8	995.21	995.21	995.21	995.32	995.43	995.17	994.91	994.96	995.00	995.00	995.00	995.00	995.12
	9	995.11	995.26	995.37	995.43	995.42	995.51	995.59	995.61	995.63	995.55	995.48	995.50	995.45
	10	995.51	995.50	995.50	995.50	995.50	995.46	995.42	995.42	995.43	995.43	995.32	995.21	995.43
	11	995.31	995.44	995.55	995.63	995.63	995.64	995.70	995.79	995.84	995.84	995.95	996.06	995.70
	12	996.06	996.05	996.16	996.26	996.26	996.34	996.44	996.58	996.68	996.68	996.76	996.84	996.42
	13	996.87	996.99	997.10	997.13	997.14	997.23	997.42	997.52	997.62	997.73	997.84	998.04	997.38
	14	998.19	998.30	998.47	998.57	998.57	998.68	998.84	998.95	998.99	999.05	999.10	999.20	998.74
	15	999.35	999.52	999.62	999.72	999.83	999.93	1000.03	1000.08	1000.19	1000.25	1000.36	1000.45	999.94
	16	1000.45	1000.56	1000.66	1000.77	1000.87	1000.86	1000.93	1001.04	1001.09	1001.19	1001.35	1001.46	1000.93
	17	1001.56	1001.67	1001.83	1001.99	1002.10	1002.14	1002.14	1002.25	1001.91	1002.02	1002.67	1002.77	1002.09
	18	1002.77	1002.88	1003.09	1003.23	1003.33	1003.40	1003.51	1003.61	1003.72	1003.82	1003.82	1003.93	1003.42
	19	1004.02	1004.12	1004.24	1004.25	1004.23	1004.33	1004.45	1004.45	1004.45	1004.56	1004.67	1002.96	1004.23
	20	1003.07	1004.87	1004.97	1005.08	1005.19	1005.29	1005.40	1005.50	1005.50	1005.60	1005.71	1005.82	1005.16
	21	1005.92	1006.03	1006.13	1006.13	1006.24	1006.46	1006.56	1006.67	1006.86	1006.96	1006.99	1007.10	1006.50
	22	1007.20	1007.31	1007.49	1007.60	1007.72	1007.85	1007.69	1007.15	1006.79	1007.73	1008.65	1008.76	1007.66
	23	1008.87	1008.97	1009.11	1009.21	1009.29	1009.40	1009.61	1009.71	1009.75	1009.86	1010.02	1010.12	1009.49
30	0	1010.34	1010.34	1010.39	1010.50	1010.66	1010.76	1010.77	1010.82	1010.92	1011.08	1011.21	1011.31	1010.77
	1	1011.50	1011.66	1011.76	1011.86	1011.92	1011.92	1011.97	1012.02	1012.09	1012.19	1012.23	1012.23	1011.94
	2	1012.33	1012.44	1012.44	1012.46	1012.57	1012.66	1012.77	1012.87	1012.97	1013.18	1013.28	1013.28	1012.77
	3	1013.39	1013.49	1013.59	1013.69	1013.80	1013.91	1013.91	1013.91	1013.91	1014.02	1014.12	1014.12	1013.82
	4	1014.12	1014.12	1014.22	1014.32	1014.32	1014.43	1014.53	1014.54	1014.54	1014.54	1014.64	1014.85	1014.43
	5	1014.95	1015.06	1015.27	1015.37	1015.48	1015.58	1015.69	1015.79	1015.90	1016.00	1016.00	1016.00	1015.59
	6	1016.11	1016.21	1016.21	1016.31	1016.41	1016.53	1016.63	1016.74	1016.93	1017.04	1017.05	1017.16	1016.61
	7	1017.36	1017.57	1017.67	1017.76	1017.86	1017.90	1018.01	1018.16	1018.24	1018.28	1018.41	1018.58	1017.98
	8	1018.69	1018.77	1018.87	1018.93	1018.93	1019.03	1019.13	1019.14	1019.25	1019.35	1019.35	1019.35	1019.06
	9	1019.37	1019.39	1019.40	1019.48	1019.56	1019.62	1019.69	1019.71	1019.71	1019.70	1019.71	1019.71	1019.59
	10	1019.70	1019.71	1019.72	1019.72	1019.72	1019.72	1019.73	1019.73	1019.72	1019.71	1019.63	1019.56	1019.70
	11	1019.56	1019.56	1019.56	1019.56	1019.56	1019.56	1019.56	1019.56	1019.56	1019.53	1019.49	1019.42	1019.54
	12	1019.35	1019.35	1019.35	1019.25	1019.15	1019.14	1019.14	1019.14	1019.14	1019.14	1019.14	1019.14	1019.20
	13	1019.14	1019.14	1019.14	1019.14	1019.14	1019.14	1019.14	1019.14	1019.14	1019.14	1019.14	1019.14	1019.14
	14	1019.14	1019.14	1019.21	1019.32	1019.35	1019.35	1019.39	1019.49	1019.54	1019.55	1019.66	1019.77	1019.41
	15	1019.77	1019.76	1019.87	1019.97	1019.97	1019.97	1019.97	1019.97	1019.97	1019.98	1019.98	1019.98	1019.93
	16	1019.98	1019.98	1019.98	1019.98	1019.97	1019.97	1019.98	1020.09	1020.19	1020.27	1020.38	1020.39	1020.09
	17	1020.39	1020.39	1020.48	1020.56	1020.56	1020.56	1020.56	1020.59	1020.61	1020.61	1020.60	1020.60	1020.54
	18	1020.60	1020.60	1020.60	1020.68	1020.77	1020.77	1020.77	1020.79	1020.81	1020.81	1020.81	1020.81	1020.73
	19	1020.81	1020.81	1020.82	1020.92	1021.02	1021.02	1021.02	1021.02	1021.02	1021.02	1021.02	1021.02	1020.96
	20	1021.02	1021.02	1021.03	1021.10	1021.19	1021.22	1021.23	1021.23	1021.23	1021.23	1021.23	1021.23	1021.16
	21	1021.23	1021.23	1021.17	1021.10	1021.06	1021.02	1021.03	1021.03	1021.03	1021.03	1021.03	1021.03	1021.08
	22	1021.03	1021.03	1021.03	1021.03	1021.03	1021.02	1021.02	1020.92	1020.82	1020.82	1020.82	1020.82	1020.95
	23	1020.82	1020.82	1020.79	1020.68	1020.61	1020.61	1020.61	1020.59	1020.55	1020.47	1020.40	1020.40	1020.61

