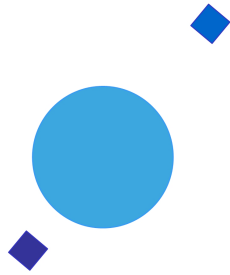


INAF



ISTITUTO NAZIONALE DI ASTROFISICA
NATIONAL INSTITUTE FOR ASTROPHYSICS

SVIRCO Prompt Report: April 2021

Francesco Re and Nello Vertoli

INAF/IAPS-2021-04

March 2022

ISTITUTO DI ASTROFISICA E PLANETOLOGIA SPAZIALI

AREA DI RICERCA ROMA - TOR VERGATA

Via del Fosso del Cavaliere, 100 - 00133 Roma (ITALIA)

SVIRCO Prompt Report: April 2021

Francesco Re and Nello Vertoli

*IAPS - INAF, Area di Ricerca Roma - Tor Vergata
Via del Fosso del Cavaliere, 100 - 00133 Roma, Italy,*

Abstract

The pressure corrected intensity of the nucleonic component, produced by primary cosmic rays and recorded in April 2021 by the Neutron Monitor of SVIRCO-Rome (present geographic position: 41.86° N - 12.47° E; altitude about s.l.), is reported in prompt form together with the barometric pressure data.

SVIRCO OBSERVATORY

During the 1st International Geophysics Year (1957) an international network of “ground-based detectors” for continuous cosmic ray measurements was world-wide established.

The cosmic ray station of Rome joined this network with the purpose to study the time variations of primary cosmic rays (**Studio Variazioni Intensità Raggi Cosmici: S.V.I.R.CO**) and their modulation in the heliosphere.

From July 1957 to April 1997, the SVIRCO Station (now Observatory) performed uninterrupted measurements at the Physics Department “G. Marconi” of “La Sapienza” University of Rome (41.90° N, 12.52° E, altitude about 60 m a.s.l.)

In May 1997 the neutron monitor was moved to the Physics Department “E. Amaldi” of “Roma Tre” University. Since then it has been continuously running at the new location (41.86° N, 12.47° E, altitude about 0 m a.s.l.).

The SVIRCO Observatory (INAF/IAPS-UNIRomaTre collaboration) is housed in a reserved building provided with a double air-conditioning system. The inner temperature is permanently restrained in a range of 23°-26° C, meanwhile the relative humidity is kept below 57%. Either the environmental parameters are continuously checked and recorded by digital sensors.

On January 1, 2005 three counters were added to the detector. This upgrade, from 17 to 20 NM-64, made the SVIRCO neutron monitor still consist of 5 sections but modified its geometry. Actually the new arrangement has been composed of three 3-counter, one 5-counter and one 6-counter units. The enhancement improved not only the overall counting rate of 15.6 % (January 2005) but, as a result, also the statistical quality of the recorded data.

On July 3, 2017 six counters experienced failure and were removed from the detector until 24 July. On 25 July 2017 a number of 2 counters was added to the detector up to a total of 16 counters. The new arrangement has been composed of three 3-counter, one 5-counter and one 2-counter units. The overall counting rate has decreased of about 20% (July 2017) with a lower statistical quality of the recorded data.

Each of the 16 BF₃ proportional counters (BP-28 type) is equipped with a smart amplifier/discriminator circuit complete with a spectrum stabilizer. This new electronic unit, developed in our laboratory, holds firmly the pulse height spectrum of the amplifier output (within a range of more than 150 volts around the operating voltage), providing the counter with a great immunity against high voltage variations.

Anyway, systematic and exhaustive tests of the counters are regularly performed. The output pulses of the amplifiers, discriminated by the threshold gates, are collected and stored into a multi-channel analyzer. The analysis of the height distribution (spectrum) of the amplifier pulses coinciding with the discriminator ones, is essential to verify the long term efficiency of each counter together with the amplifier gain and the discriminator threshold level.

As well as the amplifier/discriminator circuits, a large part of the electronic instrumentation operating in the Observatory was designed and realized in our laboratory together with the software for data acquisition and pre-elaboration.

In order to improve the reliability of the recorded data and to prevent measurement breakdowns, two independent systems perform contemporary the data acquisition. Each system is remotely controlled by a dedicated computer and is timed by a high stability quartz clock and/or a GPS receiver. One equipment runs according to a timing of 1 minute and fulfils the acquisition of the 16 counters separately. The other one records the individual 5-minute counting rate of each detector section in addition to the rates of the overall multiplicity, sorted into separated counting channels (from 1 to greater than 8).

A special care is devoted to the atmospheric pressure measurements; thus they are carried out by means of not less than three barometers at the same time. These instruments (achieving a resolution up to 0.01 hPa), are constantly checked out each other for the best measuring accuracy and reliability. Furthermore, the devices in use are equipped with different types of transducer such as vibrating cylinder, force balance and quartz, therefore, throughout their different behaviours, it is possible to point out the occurrence of any long-term drift and eventually to re-calibrate the instruments themselves.

DATA PRESENTATION

In a preliminary step, the intensity data, of the secondary nucleonic component of cosmic rays, detected at SVIRCO Observatory, were corrected for pressure variations at a reference level of 1009.25 hPa with an attenuation coefficient of 0.70% / hPa.

The five-minutes counting rates, of the examined month, are reported in tabular form together with the hourly normalized data, which provide a continuous data set for long-term analysis.

The normalization was evaluated as percentage of the counting rate average of January-February 1997, when the Monitor operated at the previous location of "La Sapienza" University. The reference counting rate level (100%), computed for such period, is equal to 554946 counts/hour.

The atmospheric pressure data (in hectoPascal) are also collected in a monthly table which presents the five-minutes averages and the hourly ones.

The hourly averages of the normalized intensity and pressure, plotted in monthly graphs, are reported too.

CONDITIONS FOR SVIRCO DATA USE

You are welcome to use neutron monitor data of SVIRCO, IAPS/INAF-UNIRomaTre collaboration, under the following conditions:

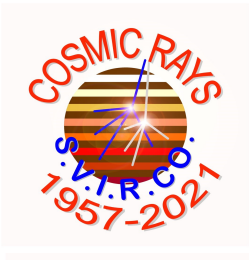
-You agree to acknowledge our financial supports in any published use of the data.

Example: "SVIRCO NM is supported by the INAF - UNIRomaTre collaboration"

-You are kindly requested to send a copy of any published work derived from our data to:

Dr. Monica Laurenza
Head of SVIRCO Observatory & TPL
Istituto di Astrofisica e Planetologia Spaziali - Area di Ricerca Tor Vergata
Via del Fosso del Cavaliere, 100 00133 Roma - Italy,

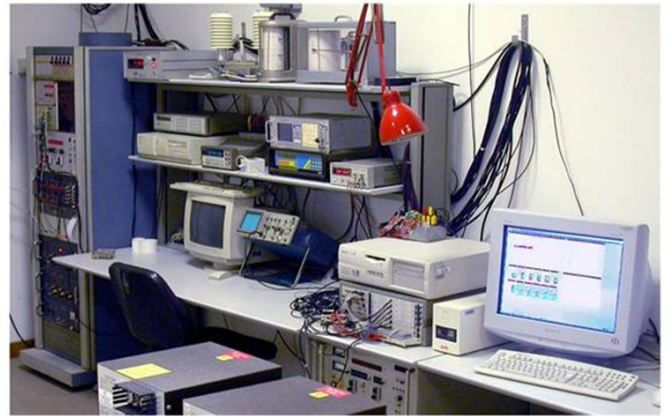
monica.laurenza@iaps.inaf.it



S.V.I.R.CO. Observatory

Rome

Italy



INAF/UNIRomaTre		S.V.I.R.CO. Observatory - Pressure Corrected Data – April 2021											16 NM-64	
day	hh	00_05	05_10	10_15	15_20	20_25	25_30	30_35	35_40	40_45	45_50	50_55	55_60	h-norm
1	0	39105	38643	38539	39059	39028	38877	39436	38528	39297	38819	38327	38907	102.636
	1	38794	39141	38448	39227	39023	39240	39131	38809	39235	38631	39096	38577	102.817
	2	39236	38263	39280	39242	38735	38917	38250	38974	38477	39362	38412	38984	102.549
	3	39276	38866	38887	39038	38632	39068	39035	38798	38798	38604	39229	38917	102.773
	4	38927	39100	39003	38573	38573	38582	38745	39231	38496	38895	38884	38183	102.343
	5	39208	38669	39186	38550	39088	39453	38955	38150	38659	38552	38610	39130	102.567
	6	39012	39012	38870	39313	38936	39139	38755	39058	38249	38378	39197	38851	102.690
	7	38885	38412	38881	38491	38447	38620	38890	38902	38946	39043	38395	38504	102.171
	8	38709	39239	38827	39367	38902	39043	38448	38989	38954	38816	38835	39040	102.777
	9	39148	38694	39017	39287	39054	38574	38745	38663	39043	38644	38679	38561	102.544
	10	38909	38773	38988	38386	38621	38718	39102	38686	39208	38918	39542	39296	102.773
	11	38741	39054	39386	38894	39099	38724	38949	38711	38168	38966	39437	39042	102.778
	12	38564	38782	39092	38408	38695	38891	38707	38545	38754	38424	39042	38705	102.214
	13	38529	38592	38843	38708	39036	39132	39056	38352	38951	38829	38563	38967	102.423
	14	39073	38545	38742	38255	38783	38443	39112	38596	38494	39077	38556	38419	102.101
	15	39045	39059	39029	38828	38754	38458	39251	38542	38733	38817	38881	38817	102.567
	16	39348	38977	38288	38743	38734	38820	38734	38743	38669	38151	38713	39221	102.331
	17	38692	38544	38595	38246	38743	38987	39504	38451	38968	38760	39110	39012	102.434
	18	38853	38419	38429	38918	38273	39036	39046	38611	38598	38679	38773	38604	102.133
	19	38486	39387	38521	38600	38879	38786	38616	38468	38546	38542	38649	38880	102.160
	20	38540	38370	38879	38984	38794	38243	38787	38830	39276	39159	39554	38949	102.600
	21	39025	38664	39141	38928	38779	38811	38545	38460	38769	39524	39035	39045	102.680
	22	38865	38428	38524	38939	39132	38728	38770	39185	39556	38896	38898	38590	102.632
	23	38396	39105	38580	38809	38978	38949	39430	39366	38809	38052	38702	38764	102.507
2	0	39223	38383	38881	38562	39201	38861	38773	38840	38295	38974	39028	39093	102.541
	1	38763	38946	38632	38432	38061	38898	39015	38888	39215	39045	38368	38443	102.235
	2	39596	39012	38737	38717	39192	38638	38437	38246	38533	38701	39247	38524	102.427
	3	39549	38395	39327	38671	38819	38713	38620	38907	39012	38809	38833	39044	102.674
	4	39043	39233	38765	38731	38382	38797	39093	39207	39412	38922	39239	38647	102.844
	5	39207	38647	38795	38732	38668	39309	39497	39053	38873	39497	38847	38992	102.986
	6	39068	38665	38962	39127	38612	38968	39042	39116	38418	38884	38682	38735	102.581
	7	38610	39382	39243	39540	39222	39054	39374	39185	38732	38750	38933	38992	103.184
	8	39080	38539	38726	38879	38500	39368	38723	39109	39067	39434	38926	39065	102.831
	9	38962	38765	38808	39717	38955	39395	38944	39002	39193	38656	38886	38868	102.993
	10	39179	39032	39453	38779	39294	38851	38347	39695	39084	38698	38890	39146	103.059
	11	39884	39191	38391	39077	38986	38756	39028	38986	39123	38811	38888	38772	102.936
	12	39322	38921	38950	39029	38601	39008	38831	38655	38313	39764	38500	38937	102.702
	13	39037	38603	38547	39225	39121	39086	38661	39386	38693	38843	38758	38495	102.620
	14	38749	38848	39139	38558	39584	38816	38782	38513	38882	39289	38833	38263	102.576
	15	39031	38698	39131	39017	38478	38312	38747	38417	38769	38479	39267	39162	102.412
	16	38623	39183	38291	38927	38568	39167	39363	39363	38742	38816	38735	39065	102.706
	17	39312	39115	38454	39375	38877	39146	38949	38784	38918	38495	39294	39263	102.956
	18	38952	38838	39118	39501	39407	39317	39272	39485	39091	38841	39329	39102	103.456
	19	39008	38623	39308	39495	38986	39079	38904	38563	38780	38842	38916	38738	102.793
	20	38353	38830	38728	38201	38842	38778	39017	38561	39110	38923	38353	38863	102.203
	21	38469	38664	38759	39144	38686	39172	38510	38614	38623	39236	38283	38854	102.303
	22	38907	39094	39270	38568	38962	38777	38790	38666	38925	38935	38325	38616	102.484
	23	38852	38845	38983	38931	38890	38961	38506	38549	39055	38742	38724	38575	102.435

		S.V.I.R.CO. Observatory - Pressure Corrected Data – April 2021											16 NM-64		
		INAF/UNIRomaTre													
day	hh	00_05	05_10	10_15	15_20	20_25	25_30	30_35	35_40	40_45	45_50	50_55	55_60	h-norm	
3	0	38080	38392	38611	39270	38754	39205	38754	38820	38565	39130	38738	38728	102.303	
	1	39325	38485	38786	38624	38834	38716	38724	39273	38678	39231	39028	38161	102.490	
	2	38938	38560	38802	38257	39121	38953	38718	38687	38769	39382	39085	38932	102.565	
	3	38863	38804	39166	39198	38991	39328	38969	38453	38650	38865	38867	38808	102.732	
	4	38861	38121	39135	38558	38649	38567	39104	39044	38334	39267	38628	39155	102.393	
	5	38263	38699	38491	39220	39201	38387	38582	38439	38622	38458	39397	39010	102.249	
	6	38723	38831	38962	39474	39354	39543	39574	38733	39027	39321	38380	39028	103.169	
	7	39047	39067	39473	39341	39392	39241	39445	38899	38343	39081	39032	39004	103.260	
	8	39034	39498	39389	38604	38958	39010	39041	38901	39003	38689	39154	39238	103.074	
	9	39064	38840	39008	38982	39167	38611	39064	38611	39285	39345	38752	39265	102.959	
	10	38883	38441	39456	38420	38601	38763	38906	39288	38906	38856	38854	38571	102.508	
	11	38712	39456	38953	39446	39166	38703	38672	38784	38834	38662	38993	38611	102.738	
	12	38853	38752	38512	39153	39234	39207	39057	39057	39318	39167	38806	39149	103.019	
	13	39470	39278	39197	39117	39007	38928	38930	39030	38588	38710	38462	38645	102.819	
	14	38657	39195	39404	39062	38704	38527	38879	39406	38927	39048	39167	38768	102.903	
	15	38721	38971	38702	38466	37476	38797	38284	38425	38444	39016	39132	38761	101.899	
	16	38313	38604	38413	38637	38749	38828	38887	38708	38278	38638	39006	38548	101.994	
	17	38509	38659	38398	38737	38867	38897	38418	38777	38509	38899	38380	38709	102.027	
	18	38089	38179	39486	38594	38135	38626	38673	38700	38799	39120	37918	38698	101.863	
	19	38495	38796	38515	38133	38635	39256	38383	39177	38605	38111	38843	38481	101.955	
	20	39004	38260	38762	38853	38742	39134	38772	38933	38923	38713	38661	38426	102.341	
	21	38759	39252	37904	39327	38296	38906	37938	39108	38222	38353	38785	38463	101.929	
	22	38582	39014	39408	38833	39047	39136	38802	38287	38771	38792	39145	38075	102.496	
	23	38206	38882	38741	38955	38843	39115	38650	38721	38721	38378	38812	38701	102.239	
4	0	38923	38590	38418	38903	39145	38539	39095	38630	38570	38489	39024	38944	102.359	
	1	38924	38640	38580	38670	39317	38438	38670	38983	38953	39185	38458	38549	102.381	
	2	39145	39145	38642	39099	38658	39575	39473	39090	38739	38355	39009	39111	102.969	
	3	39272	38940	39051	39121	38749	38990	38849	39141	39212	39715	39312	38539	103.156	
	4	38251	39134	38715	39269	38886	39178	39227	39438	39206	38559	39044	39175	102.978	
	5	38428	38618	39253	39152	39356	39132	38814	38824	39310	38835	39027	38966	102.897	
	6	39518	39015	39263	40105	38630	38835	38938	38563	39131	38947	39242	39101	103.244	
	7	38630	39502	39453	38955	38609	39148	38517	39022	38195	38594	39237	39110	102.734	
	8	38890	38836	39090	39198	39436	39183	38902	39106	38648	38489	39150	39081	102.963	
	9	38400	39278	39134	39080	38878	39186	39275	39007	39016	38893	38876	38599	102.877	
	10	38763	39096	38985	38875	38775	38888	39539	38960	39542	38960	39539	39347	103.240	
	11	39094	39421	38860	39069	39255	39628	39069	38907	38756	38634	39141	38636	103.063	
	12	39115	39023	38780	38692	39363	39047	40090	38986	38976	38297	38904	38673	102.948	
	13	38482	38454	39122	38232	39000	38707	39010	39356	39650	38570	39236	39155	102.735	
	14	39731	38610	38842	38933	38802	38983	39084	39408	39589	38388	39226	38973	103.085	
	15	38701	39135	38570	38257	38721	39074	38751	39463	38857	38672	39431	38966	102.651	
	16	38471	38372	38895	38547	38662	39164	38699	38754	38768	39124	39052	38592	102.322	
	17	38804	39315	39090	38657	38554	39487	38699	38714	39003	38953	38439	38926	102.661	
	18	38765	38625	38879	38313	38829	38450	38585	38750	39354	38420	38768	38395	102.110	
	19	38857	38897	39287	38978	38844	39019	38709	38502	39254	38243	37870	38243	102.236	
	20	38899	38745	39074	38611	38426	38705	38974	39463	38986	38719	39007	38643	102.576	
	21	38528	38663	38487	38786	38962	38931	38486	38153	38522	38945	38263	38904	101.999	
	22	39029	38647	38737	38899	38868	38733	38969	38718	38168	38790	38841	38479	102.273	
	23	38574	38398	38895	38501	38988	38854	38657	38937	38676	38842	38802	38894	102.304	

		INAF/UNIRomaTre		S.V.I.R.CO. Observatory - Pressure Corrected Data – April 2021										16 NM-64	
day	hh	00_05	05_10	10_15	15_20	20_25	25_30	30_35	35_40	40_45	45_50	50_55	55_60	h-norm	
5	0	38353	39224	38583	38823	38583	38956	39206	39196	38956	38313	39175	38719	102.539	
	1	38398	38346	39175	38978	38214	38412	39137	39283	39045	39223	38637	39360	102.566	
	2	39701	38967	38606	39102	38967	39040	38451	39391	38761	38637	39629	38926	102.999	
	3	38606	39122	38978	38823	38873	39142	38492	38897	39271	38456	38704	38580	102.508	
	4	39117	38766	39044	39127	39096	39158	38797	39344	39282	38994	39118	38786	103.098	
	5	39121	39015	38895	38358	39081	38967	38978	39143	39276	38249	38775	39499	102.818	
	6	38609	39063	38664	39111	39336	39459	38597	39673	38615	38905	39279	38408	102.898	
	7	38811	39298	39082	38885	39070	39402	39683	38252	38905	38926	39082	38667	102.974	
	8	38633	39274	38837	39282	39179	38981	38397	38843	39476	38659	39025	38713	102.805	
	9	39284	39118	38879	39204	39196	38968	38802	38541	39214	39429	38894	38352	102.934	
	10	38650	38920	38648	39023	38657	39236	38739	39317	38681	39137	39168	38775	102.730	
	11	38630	39247	38599	39451	39453	39270	38817	39023	39054	39198	38989	39393	103.208	
	12	38359	38752	38919	38878	38856	38868	38995	39432	39086	38836	39439	38650	102.756	
	13	38908	39821	39749	39351	39302	39712	38998	39285	38523	38767	39024	39046	103.506	
	14	38823	38427	39398	39074	38786	38979	38816	39406	39103	38993	39216	39246	103.019	
	15	39277	39307	38862	39400	38805	39094	38678	39325	38887	38713	38916	38764	102.966	
	16	38905	38893	39208	38697	39738	39546	38302	38919	39071	38434	38838	38363	102.721	
	17	39273	39000	38727	39566	38909	39324	39405	39324	38818	39152	39142	39162	103.356	
	18	39224	38640	38610	39064	38923	38681	38670	39286	38473	38613	38663	39217	102.534	
	19	39023	38635	38582	39187	38918	38785	38980	38586	38455	38688	38646	39163	102.442	
	20	39194	38687	38879	38780	38793	38904	39488	38761	39165	39236	38893	38876	102.884	
	21	39019	38342	38503	38382	38473	38533	38765	38994	38662	38371	38670	38820	101.977	
	22	39154	38883	39144	38830	39171	38829	39084	38435	38678	38992	39215	38432	102.706	
	23	38471	39002	39748	39117	38816	38726	38685	39071	38973	39161	38572	38861	102.785	
6	0	39595	38856	38926	38836	39316	38699	38978	38912	39421	38834	38287	38920	102.850	
	1	38777	38700	39388	39485	38911	38525	38923	39181	38530	38789	39274	38989	102.844	
	2	38488	38340	38793	39070	39445	38710	39044	38660	39103	39040	39098	38948	102.683	
	3	38830	39016	38987	38919	39467	38715	39272	39087	38959	39087	38911	38971	103.009	
	4	38708	38855	38865	39273	38766	39031	39120	38595	39140	38790	38985	39597	102.900	
	5	39199	39287	38743	38762	39382	39179	38606	38812	38765	39239	38649	39094	102.898	
	6	39056	38310	38805	38796	39307	39288	38505	38979	39106	39058	39047	38135	102.605	
	7	38268	38972	38510	38828	39316	38662	38484	38954	39087	38530	39013	38840	102.401	
	8	38849	39282	38664	38932	38843	38956	38937	38845	38522	39126	38642	39151	102.685	
	9	38983	38838	38893	38918	38788	38953	39639	39030	39326	38907	39164	38793	103.012	
	10	38746	38907	38746	39378	38894	38956	38811	38999	38945	38879	39038	39265	102.865	
	11	39143	38935	38614	39181	38981	38953	39255	38614	38925	39716	39094	38680	102.980	
	12	38915	38915	38861	38757	38698	39081	38835	38833	38465	38871	39072	38866	102.557	
	13	38913	38510	38892	39105	38556	39108	39164	39128	39137	38641	38781	38969	102.719	
	14	39259	38585	39408	38969	38959	38819	38883	38510	38963	38886	38976	39015	102.791	
	15	38755	39046	38744	39073	38481	39194	38865	39242	39376	38576	39047	38848	102.794	
	16	38960	39167	38376	39261	38387	38481	39668	38924	38952	38905	39167	38820	102.755	
	17	38473	38302	39243	38357	38792	38582	39346	38916	38992	39050	38491	38613	102.334	
	18	39049	38906	38763	39359	38999	39075	39028	38829	38621	38990	39320	38895	102.923	
	19	38708	38623	39192	38763	38747	38400	38892	38745	38783	38948	38857	39172	102.483	
	20	38795	38789	38535	38657	39061	39012	38792	38984	38755	38549	39237	39122	102.583	
	21	39222	39270	38800	38758	38823	38651	39056	38385	38655	38758	39015	38988	102.604	
	22	39105	38959	38922	38808	38465	38944	39400	38776	38804	38746	38757	38718	102.610	
	23	39076	38380	38622	38532	38477	38550	38787	38474	39083	38494	38445	38319	101.912	

		S.V.I.R.CO. Observatory - Pressure Corrected Data – April 2021											16 NM-64	
		INAF/UNIRomaTre												
day	hh	00_05	05_10	10_15	15_20	20_25	25_30	30_35	35_40	40_45	45_50	50_55	55_60	h-norm
7	0	38804	38483	38559	39277	38668	38445	39266	39451	39017	39046	38899	38696	102.654
	1	38957	38832	38407	39075	38949	38678	39375	38910	39085	38047	37682	38582	102.203
	2	38604	38769	38653	38604	38904	38884	38981	39000	39049	38455	38787	39614	102.587
	3	38502	39369	38463	39010	38166	38663	38363	38881	38880	39056	38938	38918	102.346
	4	38408	39006	39182	39173	38779	39021	38438	39187	39334	39168	38637	38988	102.811
	5	38948	38533	39190	38822	39002	39410	39124	39222	38915	38915	38687	39123	102.935
	6	38685	38657	39152	39119	38743	38722	38400	38430	38891	38936	38862	38901	102.409
	7	39540	38894	39112	38990	38621	38642	38851	39141	38682	39070	38179	39347	102.755
	8	38586	39364	39745	38665	39394	38651	38782	39063	39294	39334	38839	38768	103.067
	9	39431	39406	39053	39725	39233	39147	39136	39245	39236	39509	38944	39184	103.675
	10	38812	38783	39165	39235	39114	38582	39256	39134	39355	39380	39714	39510	103.409
	11	39308	38443	39167	38544	39410	38987	38966	38213	39229	39067	38604	39127	102.754
	12	38873	38861	39275	38993	39256	39066	39507	38848	39383	39361	39058	39413	103.376
	13	39127	39114	38750	38335	39152	38592	38733	39140	38483	38695	38614	38384	102.327
	14	38659	38962	38284	38782	39403	38735	39044	38885	39046	39217	38921	38973	102.720
	15	38714	38924	38754	39130	38314	38953	39644	38354	39273	38600	38983	38940	102.648
	16	38971	38713	39073	39298	39559	38563	39618	38863	39233	38977	38927	38657	103.060
	17	38770	38147	38590	38885	38820	39087	38854	38615	39228	38717	39146	38975	102.482
	18	39032	39184	39245	38749	38900	38613	38757	38582	38712	38794	39086	38414	102.537
	19	38578	38361	38517	38612	38275	38190	38314	39034	39095	38814	38175	38629	101.771
	20	38193	38686	39003	38741	38923	39172	38878	38604	38723	38441	38981	38611	102.290
	21	38746	38506	38954	39651	38341	38764	38997	38658	38731	38850	39084	38267	102.421
	22	38462	38662	38484	38623	38727	39210	38226	38881	38652	38848	38592	38534	102.058
	23	38513	38062	39116	38400	38305	39261	38470	38406	38401	38715	38370	38834	101.828
8	0	38406	38472	38516	38297	38801	38297	39021	38982	38648	38069	38178	38317	101.645
	1	38868	39448	38853	38147	38966	39269	38555	38769	38576	38687	38965	38193	102.366
	2	38867	39152	38512	38912	38464	38831	38431	38338	38800	38567	38600	38740	102.128
	3	38131	38330	39078	39244	38579	39007	38281	38958	38837	38779	38910	39663	102.475
	4	38604	38406	38935	38392	39125	38958	38680	38850	38377	38447	39379	38571	102.239
	5	39096	38335	38733	39790	39130	38817	38403	38319	39029	39151	38575	38716	102.541
	6	38761	38852	38632	38531	38405	38909	38783	38738	39054	39390	38483	38752	102.364
	7	39026	39190	38875	38830	38414	38931	39224	38810	38574	38732	38936	38534	102.536
	8	38200	38898	39168	38685	38701	38818	38301	38482	38730	39057	38629	39113	102.252
	9	39226	38999	38729	39181	38482	38888	39519	38708	39281	38458	39033	39055	102.863
	10	39163	38752	38190	38741	39607	38537	39402	38582	37965	38628	38853	38291	102.237
	11	38932	38943	38493	39348	38425	38772	39178	39291	39043	38526	38527	38570	102.531
	12	39394	38819	38537	38992	38413	38515	38544	39063	38626	38899	38987	38785	102.427
	13	38555	38470	38187	39098	38277	39301	38300	38839	38796	38785	38615	38896	102.106
	14	38468	38973	39099	38856	39031	38392	38412	38513	39041	38693	39142	39364	102.517
	15	39146	38898	39290	38615	38603	38772	39210	38704	38811	38536	38850	38996	102.615
	16	38872	38559	38531	38243	38311	38515	39168	38458	38558	39055	38571	38762	101.993
	17	38763	39241	38515	38988	38716	38829	38542	38841	38739	38626	38976	38999	102.470
	18	38265	38987	38965	39100	38576	38909	38937	38796	39203	38910	39120	38400	102.557
	19	38728	38626	38410	38955	38961	39001	38989	38456	38797	38988	38647	39344	102.498
	20	39258	38829	38922	38738	38636	38977	38341	38704	38568	38512	39228	38831	102.420
	21	38182	38841	38524	39206	38751	38751	38933	38853	38944	38751	38547	38285	102.205
	22	39160	39035	38509	39049	39536	38865	39092	39184	38774	39855	38990	38171	103.008
	23	38216	38482	39193	39184	39403	38982	37982	38692	38444	38359	38615	38985	102.198

INAF/UNIRomaTre		S.V.I.R.CO. Observatory - Pressure Corrected Data – April 2021											16 NM-64	
day	hh	00_05	05_10	10_15	15_20	20_25	25_30	30_35	35_40	40_45	45_50	50_55	55_60	h-norm
9	0	38703	39125	38774	38908	38871	38996	38529	38438	38635	38865	38888	38660	102.386
	1	38852	38955	38706	38797	38842	38819	38987	38594	38725	38849	38404	38982	102.412
	2	38608	38962	38962	38746	38121	39541	38529	38769	38313	38402	38526	38368	102.046
	3	38610	39154	39018	38758	38962	39156	38712	38826	38849	38315	38430	39045	102.484
	4	39350	38679	38598	38768	38586	39302	38564	38733	37889	39281	38230	38629	102.214
	5	38546	38489	38537	38953	38705	38579	38739	39043	38180	38625	38945	38876	102.127
	6	38577	38817	38327	38106	39200	39372	39417	38454	38979	38050	38817	38942	102.313
	7	38608	38540	38448	39009	38746	38564	39194	38128	39074	38563	38919	38886	102.229
	8	39013	39103	39274	38347	39162	38805	39033	38712	38781	39136	38999	38966	102.813
	9	38954	38735	38883	38419	39056	38726	38876	38464	38233	39045	39162	38763	102.369
	10	38835	39047	39355	38096	38444	38589	38843	38441	38510	39363	38938	38559	102.304
	11	38945	38945	38546	38796	38772	38875	38648	38933	38739	38461	39172	38659	102.408
	12	38614	38842	38595	38157	38547	38512	39078	38234	38300	39216	38411	38779	101.923
	13	38707	39101	39161	38207	38445	38673	38933	38559	38853	38620	38671	38050	102.075
	14	38391	38616	38779	39439	38210	38357	39329	38386	38749	38480	38491	38796	102.085
	15	38841	38819	39022	39112	38289	38581	38607	39072	39197	38892	38774	39155	102.600
	16	38753	38645	38569	38616	38447	38288	38987	38561	38380	39672	38727	38335	102.075
	17	38785	38963	38256	38627	38571	38155	38481	38032	39168	38460	38245	38221	101.632
	18	38592	37670	38480	39301	38491	38603	38333	38510	38721	39038	38396	39104	101.912
	19	38357	38772	38604	38491	38718	38909	38694	38897	38649	39185	38942	38874	102.320
	20	38694	38367	39021	39439	38750	39032	38646	39621	39026	38592	38794	38451	102.615
	21	38707	38622	39211	38266	38704	38929	39392	39032	38794	38986	38229	38632	102.411
	22	38558	38435	38796	38512	38718	38820	39279	38561	38691	37727	38605	38391	101.881
	23	38907	38615	39143	39154	38997	38941	38188	38650	38457	39469	39227	38390	102.550
10	0	38269	38749	39430	38230	39163	39037	38963	39050	39018	38962	39268	38581	102.671
	1	38508	38980	38947	39020	38690	38500	38801	39280	38589	38728	39111	38772	102.504
	2	38479	38556	38622	38360	38589	38389	38944	38622	38862	38889	39053	38532	102.058
	3	38670	38123	38841	38955	38884	38178	38576	38630	38309	38375	39027	38199	101.809
	4	38795	38453	38519	38697	38421	38854	38363	39063	38654	38665	38509	38432	101.954
	5	38409	38964	38955	38773	38403	38907	38404	38560	39026	38563	38710	39308	102.296
	6	38687	38588	38532	39087	38966	38500	39142	38998	39087	38356	38667	38876	102.407
	7	38543	39441	39264	39232	38829	38744	38887	38632	38590	38336	38156	38578	102.351
	8	38877	39088	39521	38267	38795	38190	39101	39046	38623	39012	38334	38968	102.481
	9	39057	39112	38701	38645	38757	39012	39079	38623	38523	38990	38201	38765	102.402
	10	38518	39139	38903	39057	38045	38567	38671	38110	39053	38599	38327	39400	102.166
	11	38807	38840	38950	38552	38707	39812	38663	39215	38751	39050	39026	38556	102.724
	12	38794	38341	38761	38551	38385	38805	39014	38529	38226	38838	38561	38572	101.943
	13	38587	38724	38570	38290	38999	38525	38437	38398	38669	38704	38648	38439	101.858
	14	38397	39092	38619	39283	38448	38589	38228	38962	38991	38870	38502	39004	102.297
	15	38574	39135	39332	38643	39212	38818	38746	39111	38790	38772	38486	38898	102.634
	16	38935	38680	38474	38103	38371	38770	38934	38781	39304	38584	38824	39174	102.285
	17	38814	38912	38890	38104	39141	38419	39013	39079	38426	38267	39432	38648	102.332
	18	39062	38539	38539	38408	39058	38464	38486	38443	38235	38999	38464	39184	102.054
	19	38955	38762	38420	38447	38839	38750	38782	38520	38485	38409	38051	39373	102.035
	20	38696	38378	38398	38877	38604	38341	39082	38691	38626	38508	38736	38267	101.905
	21	38724	39066	38875	39303	38438	38536	38556	38774	38759	38243	38265	38113	102.004
	22	38689	38798	38613	38852	39289	38750	38592	38581	39081	38486	38964	38752	102.398
	23	39020	39192	38293	38219	39096	39241	38701	38701	38606	38639	39052	38527	102.363

		S.V.I.R.CO. Observatory - Pressure Corrected Data – April 2021											16 NM-64	
		INAF/UNIRomaTre												
day	hh	00_05	05_10	10_15	15_20	20_25	25_30	30_35	35_40	40_45	45_50	50_55	55_60	h-norm
11	0	38895	38192	38459	38562	38763	38836	38603	38534	38351	38599	39022	39080	102.049
	1	38553	39176	38005	38402	38650	38596	39338	38447	38361	38252	38671	39209	102.005
	2	39391	38822	38918	39069	38660	38847	39022	38804	38855	38310	38386	38942	102.526
	3	38585	39331	38097	38344	39031	38764	38679	39105	39263	38785	39298	38621	102.499
	4	39053	38293	38571	38812	38769	38502	38610	38354	38344	38354	38943	38547	101.894
	5	38611	38587	38464	38740	38901	38997	38654	38881	39074	38118	38570	39032	102.219
	6	38748	39012	39044	38604	38519	39272	38425	38715	38723	38464	38217	38798	102.199
	7	39014	39315	38981	39291	38346	38056	39418	38210	37892	38441	39396	38787	102.333
	8	38985	38308	38848	38768	38697	38685	38577	38167	38409	38620	38266	38589	101.842
	9	39032	38766	38457	38806	38925	38407	38644	38558	38926	38840	38871	38752	102.297
	10	38407	38116	39000	38795	38687	38838	38698	38429	38710	38570	39162	38364	102.031
	11	38720	38386	39248	38355	38473	38590	38855	38272	38795	39077	38631	38377	102.031
	12	38571	38895	38917	38939	38604	38787	38189	38423	38109	39244	39021	38917	102.216
	13	38625	38571	38442	38593	38940	38314	38755	38928	39263	38474	38744	38129	102.031
	14	38539	38755	39279	38797	38413	38173	38759	39234	38421	38932	38760	39115	102.339
	15	38512	38760	38512	38523	38674	38566	37909	38706	39171	38603	38273	38782	101.858
	16	38934	39453	38925	38515	38644	38396	38504	38620	38527	38502	38932	39072	102.306
	17	38094	38406	39062	38760	38222	38856	38597	38642	38400	38871	38364	38386	101.785
	18	38429	38882	39496	38709	38138	38731	39022	38278	39288	38658	38658	39054	102.375
	19	38758	38705	38959	38801	38651	38284	38188	38769	38104	38549	38993	38686	101.958
	20	39419	38834	38977	39273	38655	39229	38611	38980	38394	38318	39110	38926	102.680
	21	38501	38523	38796	38481	38524	38069	38286	39132	39141	38679	38495	38771	101.948
	22	38863	39106	38909	38910	39065	38483	39302	38569	39033	38310	39227	38498	102.580
	23	38566	38717	38503	38627	38369	38504	38503	38076	38736	38553	38576	38737	101.742
12	0	39065	38636	38131	38743	39001	38657	39065	39012	38453	39055	38861	38495	102.339
	1	39255	39063	39291	38314	39024	38433	38808	38056	38711	38378	38690	39271	102.364
	2	38639	38916	38498	38938	38586	39022	38618	38833	38793	38979	38743	38594	102.335
	3	38682	38832	38251	38722	39135	39087	38278	38614	38094	39031	39351	38377	102.180
	4	38861	38743	38795	38820	38857	38590	38643	38322	38857	38344	38997	38653	102.186
	5	38341	38671	37876	38475	39225	38539	38445	38403	38720	38933	38445	37917	101.638
	6	38520	39453	38191	38758	38341	38450	38988	38281	38448	38924	38937	39327	102.217
	7	38956	38704	39257	39287	38964	38535	38583	38766	38811	38261	38431	38122	102.230
	8	39071	38836	38833	38883	38840	38781	38725	38298	38607	39217	38575	39151	102.480
	9	39163	38191	38800	39163	39356	38405	38373	39269	39098	38441	38552	39075	102.495
	10	39107	38604	38187	38509	38668	38806	38710	38677	38858	38454	38552	38609	102.023
	11	38549	38772	38144	39454	39135	39005	38494	38559	39209	39276	39343	38684	102.658
	12	38471	38982	38279	38833	38769	38792	38541	37977	38975	38434	38213	38829	101.881
	13	38670	38414	38393	38506	38796	38242	38330	38981	39054	38708	38288	38546	101.845
	14	38792	38641	38444	38683	38788	38883	38972	38618	38155	38712	37927	38944	101.983
	15	38095	38770	38344	38225	38466	38693	38190	39163	38346	39300	38930	38275	101.814
	16	38549	38412	38602	38582	38319	39034	38874	38499	38194	38457	38297	39255	101.876
	17	39151	38677	38414	38572	38709	38257	38741	38087	38900	38747	39177	38936	102.161
	18	38505	38210	39028	38546	38642	38304	38818	38923	38923	38661	38085	38819	101.962
	19	38168	38777	38114	38524	38503	38646	38391	38433	38527	38464	37970	38527	101.430
	20	38524	38644	38134	38577	38936	38623	38670	38656	38514	38957	38461	38809	101.971
	21	38671	38577	38453	39401	38187	38377	38473	39085	38229	37775	38271	39379	101.833
	22	39041	38788	38873	38356	38757	38725	38830	38946	38482	38598	38915	38461	102.250
	23	38631	38795	39122	38722	38789	38208	38326	37685	38450	38594	38851	38802	101.855

INAF/UNIRomaTre		S.V.I.R.CO. Observatory - Pressure Corrected Data – April 2021											16 NM-64	
day	hh	00_05	05_10	10_15	15_20	20_25	25_30	30_35	35_40	40_45	45_50	50_55	55_60	h-norm
13	0	38548	38612	38412	38560	38343	38377	38873	38921	38203	39020	38934	38501	101.918
	1	38579	38408	38166	38574	38492	38786	38631	38509	38468	38677	38106	38996	101.727
	2	39444	38894	39189	37970	38942	38591	38683	38630	38827	38869	37886	38295	102.128
	3	38378	38430	38453	38062	38778	38571	38094	38738	37958	39161	38861	38314	101.596
	4	38851	38768	38417	38838	38608	39229	38266	39032	38918	38824	38606	38319	102.229
	5	38362	38779	38886	38931	38540	38759	38635	38433	38140	38908	37981	38279	101.780
	6	38683	38487	38319	38866	37939	38595	38855	38519	39224	38212	38701	38656	101.873
	7	38907	39345	38218	39353	39142	38847	38719	38831	39081	38599	39080	39005	102.768
	8	38187	38952	38930	38729	38548	38944	39151	39211	38981	38499	38877	38098	102.323
	9	38622	38307	39085	38613	39342	38763	38951	39162	38846	38972	38257	38931	102.487
	10	38636	38281	38188	38817	38320	38836	39268	38477	39034	38372	38530	38591	101.937
	11	38843	38622	38623	38823	39177	38419	38955	39184	37690	38977	38449	38904	102.227
	12	38592	38622	38496	38643	38675	38655	38971	38592	39013	38454	38907	38509	102.108
	13	38614	38909	38644	38875	38804	38461	38734	38702	38891	38483	38525	38933	102.206
	14	38639	38744	38472	39059	38906	38854	38855	38875	38875	38832	38117	38087	102.149
	15	38823	38328	39055	38583	38297	38727	38347	39452	38757	38621	38412	38840	102.133
	16	38676	38822	38182	38774	38683	38554	38594	38383	38625	37822	38135	38927	101.679
	17	38248	38772	38775	38936	38385	38637	38809	38524	38215	38687	38053	38718	101.808
	18	39067	38412	38873	38585	38214	37839	38650	38260	38164	39137	38772	38548	101.755
	19	38774	38927	39090	38776	38531	38526	38662	38343	38386	37980	39242	38614	102.048
	20	38815	38919	38375	38925	38388	38592	38358	38772	38512	38416	38767	38605	101.958
	21	38588	38699	38305	38629	38515	38496	38443	38443	38875	38762	38687	38612	101.872
	22	38559	38677	39308	39148	38569	38354	38880	38729	38311	39072	39255	38558	102.393
	23	38344	39019	39501	38752	38373	38594	38563	38648	38904	38926	38820	38641	102.319
14	0	38740	38729	38633	38794	38269	38549	39824	38665	39031	38945	38901	39233	102.589
	1	38676	39115	38826	39008	38622	38547	38356	38366	39288	38668	38670	38856	102.300
	2	38696	38641	38881	38833	38597	38544	39335	38320	38630	38833	38767	38040	102.105
	3	38576	38170	38970	38894	38393	37935	38095	38747	38703	38895	38992	38521	101.836
	4	39260	38746	38640	38835	38987	38777	39274	38269	39072	38858	38510	39213	102.617
	5	38732	38743	39011	38143	38829	38657	38807	39064	38492	38916	38766	39068	102.350
	6	39014	38714	38542	38649	38927	38958	38476	38822	39160	38339	38878	39502	102.516
	7	38534	38373	38975	38941	38639	38252	39488	38521	38991	38888	38905	39057	102.424
	8	39380	38390	39351	39224	38537	38568	39343	38677	39226	39032	38666	38860	102.796
	9	38224	38955	39115	38643	38791	38956	38674	38619	38920	39178	39037	38854	102.513
	10	38844	38409	39035	38412	39111	39048	39007	38849	39322	39313	39488	38686	102.856
	11	38922	38856	38952	39179	38804	38547	38547	38997	38804	39050	38781	39081	102.634
	12	38257	39113	38986	39188	38799	39169	38964	38923	38580	38194	38469	38723	102.380
	13	38457	38480	38608	39066	38894	38978	38972	39096	38317	38893	38071	38050	102.054
	14	39224	38741	38705	38736	38393	38690	38900	38853	38833	38748	38777	38349	102.288
	15	38702	39108	38667	38794	38471	38338	38623	38526	38643	38387	38844	38664	102.029
	16	38847	38910	38158	38267	39085	38926	38544	38182	39032	38617	38980	38950	102.190
	17	38552	38762	37866	38701	39064	38517	38672	38517	38476	38358	38656	38721	101.829
	18	38710	38198	38070	38122	38518	38394	38528	38541	38277	38684	38501	38223	101.369
	19	38552	38033	38341	38321	38285	38204	38804	38354	38065	38987	37775	38922	101.342
	20	38719	38397	38183	38847	38708	39107	38776	38298	38852	38627	39076	38700	102.144
	21	38711	38915	38260	38614	38561	38410	38453	38400	38282	38829	38561	38593	101.770
	22	38003	38840	38131	39248	39484	38400	38303	39076	38872	38738	38368	38475	102.066
	23	38461	38673	39402	38887	39317	38480	38566	39414	38867	38640	37995	38767	102.403

		S.V.I.R.CO. Observatory - Pressure Corrected Data – April 2021											16 NM-64	
		INAF/UNIRomaTre												
day	hh	00_05	05_10	10_15	15_20	20_25	25_30	30_35	35_40	40_45	45_50	50_55	55_60	h-norm
15	0	38692	38895	38657	38120	38864	38365	38365	38729	38633	39030	38964	38589	102.056
	1	39144	38990	39001	39313	38745	38677	38887	38287	39390	38867	38686	38898	102.715
	2	38496	38822	38766	38413	38842	39237	38894	38915	39012	39062	39423	38835	102.678
	3	38525	39423	38441	38914	38935	38142	38845	39377	38692	38935	38603	38484	102.370
	4	38703	38801	38700	38709	39221	38560	37910	38988	38721	38283	38166	39009	102.030
	5	38078	38772	39010	38712	38830	38755	38915	39002	38742	38587	38501	38448	102.157
	6	39048	38916	38772	38417	39177	38622	38729	38461	39082	39093	38376	38975	102.447
	7	38001	38975	39671	39125	38697	39061	38386	38857	39145	38835	39125	39018	102.717
	8	38985	38824	39050	38322	39082	38943	38761	38504	38643	38493	38900	39146	102.444
	9	38900	38890	37969	38526	38536	38932	38579	38215	38943	39200	38194	38055	101.847
	10	39200	39339	38997	38999	38393	38671	38735	38915	38473	38621	38460	38555	102.378
	11	38436	38680	38808	38870	38533	38719	39103	38335	38524	38251	38439	38021	101.798
	12	38650	38592	38666	38221	38627	38732	38944	38414	39073	38329	39047	38328	101.997
	13	38353	38523	38517	38857	38263	38300	38855	38768	38631	38239	39256	38558	101.886
	14	39098	38684	38885	39001	38514	38473	39395	38823	38876	38503	38556	38367	102.338
	15	38748	39268	38473	39362	39245	38429	39509	38649	38269	38959	38915	39095	102.723
	16	38366	39064	38469	38596	38797	38797	38015	37984	38620	38122	38673	39031	101.757
	17	38659	38479	37990	38594	39083	38427	38511	38782	38505	38664	38919	38738	101.937
	18	39013	38399	38708	38930	38495	38283	38813	38840	38215	38530	38831	39093	102.113
	19	38446	38434	38434	38786	38921	38450	38609	38716	38886	38556	38418	37736	101.726
	20	38662	38983	38525	37747	38213	38853	39454	38699	38381	38500	38593	38009	101.776
	21	38577	38210	38486	39037	38358	37966	38248	38096	38135	39088	38537	38780	101.534
	22	38547	38927	38217	38270	38759	37901	38419	38356	38074	38436	39092	38575	101.547
	23	37962	38654	39198	37917	38528	38792	38634	38613	38106	38476	38406	38725	101.642
16	0	39062	38195	38926	38080	39040	38492	39068	38828	38424	38383	38478	38888	102.042
	1	37992	38212	38024	37975	38577	38514	38598	38766	38707	38513	38471	38984	101.494
	2	38563	38669	39035	38708	39077	38657	38710	38208	38795	38179	38465	38758	102.041
	3	38465	38035	38234	38717	38738	38728	38539	38571	39141	38591	38746	38537	101.869
	4	38606	38643	39086	38274	38797	38630	38264	38941	38320	38780	39136	38906	102.164
	5	38382	38791	38707	38885	38696	38442	38459	39225	38942	38826	39194	38774	102.371
	6	38596	39225	38361	38827	38979	38872	38894	38685	38696	38487	38518	38424	102.204
	7	38124	38222	38815	38905	38706	38455	38467	38749	38554	38359	38681	38964	101.860
	8	38472	38242	38943	38462	38671	38629	38995	38221	38608	38953	38451	38873	101.975
	9	38969	39199	39408	39575	39159	38710	38740	38737	38786	38750	38830	38602	102.842
	10	39049	38703	38633	38585	39272	39035	38591	38404	38409	38661	38496	38645	102.186
	11	38645	39027	38032	39144	38877	39240	38889	39332	38949	38723	38889	38695	102.617
	12	38833	38666	38501	38926	38400	38763	38732	38704	38852	39316	38604	39594	102.497
	13	38497	39507	38944	38955	38842	38627	39182	38934	38718	38873	39149	38895	102.767
	14	39401	39083	39360	38569	38784	38856	38793	38844	39009	39090	38997	38976	102.908
	15	38779	38564	38503	38841	38964	38903	39077	38832	38493	38370	39036	38120	102.186
	16	38860	38983	38858	39022	38919	38714	38930	38877	38948	39052	38292	38477	102.505
	17	38622	38910	38776	38601	38596	39066	37923	38171	38636	38460	39116	39042	102.062
	18	38319	38715	38764	38541	38655	39112	38623	38825	38755	39024	38885	38892	102.324
	19	38613	38955	39224	38219	38623	38861	39091	38842	38457	38820	38747	38500	102.289
	20	38842	39494	38519	38425	39586	38602	39131	38898	39301	38493	39854	39245	103.046
	21	38799	39100	39214	39247	39115	38929	39002	38755	39201	38036	38584	38303	102.582
	22	38737	38582	38365	38443	38663	38371	38434	38694	38672	38773	39197	38784	102.018
	23	38693	39314	39150	38740	38825	38756	38586	38483	38822	38442	38351	38661	102.260

INAF/UNIRomaTre		S.V.I.R.CO. Observatory - Pressure Corrected Data – April 2021											16 NM-64	
day	hh	00_05	05_10	10_15	15_20	20_25	25_30	30_35	35_40	40_45	45_50	50_55	55_60	h-norm
17	0	39306	38453	39081	39013	39003	38934	38070	38972	38419	38969	38787	38904	102.487
	1	38688	39301	38571	39062	38953	38354	38363	38994	38609	38587	38738	38871	102.320
	2	38616	38696	38616	38986	38827	38817	38166	39121	38481	38937	39240	38590	102.321
	3	38479	38753	38956	38702	38184	38722	38936	38833	38902	39197	38303	38984	102.289
	4	38593	39012	39215	38810	38526	38912	38780	39065	38578	39054	38648	39044	102.572
	5	38932	38922	38812	38933	38668	38496	38283	39338	39145	39323	38789	39133	102.690
	6	39489	39043	38557	38647	38524	38634	39141	38766	38768	38798	38594	38909	102.491
	7	39467	38704	38829	38984	38567	38932	38829	38839	38788	39113	38963	38917	102.725
	8	38786	39202	39477	39223	39153	38829	39034	39391	38617	39305	38909	39357	103.243
	9	38972	39307	39410	39093	39172	38684	39091	39162	38999	38583	38847	38776	102.981
	10	38857	38776	38544	38851	39420	38649	39041	38717	38661	38772	39410	38745	102.618
	11	39111	39273	38729	38890	39546	39263	39255	38911	38922	38660	39508	38923	103.178
	12	39226	39195	38903	39397	39275	38296	38862	38933	39317	39044	38792	39245	103.067
	13	39285	39266	38812	38782	38982	38506	39305	39488	38451	38493	39521	38654	102.860
	14	39169	38917	38677	38950	39071	39061	38739	38767	38969	38386	38234	39360	102.586
	15	39392	38477	38979	39159	38858	38677	39120	38940	38447	38688	38517	39009	102.577
	16	38345	38759	38365	38475	38679	38184	38421	38633	38695	38352	38684	38453	101.650
	17	39269	38916	39410	38896	38663	39215	38760	38730	39214	39128	38823	39009	102.967
	18	38476	38829	38841	38596	39509	39134	38390	38976	38705	38936	38965	38294	102.443
	19	38626	38659	38209	38590	38722	38356	38190	39085	39084	38576	38887	38850	102.043
	20	38914	38137	39169	38719	38374	38447	38171	38457	38745	39137	38596	38545	101.950
	21	38457	38635	38943	38420	39086	38544	38555	38288	38051	38123	38944	38749	101.815
	22	38883	38636	38850	38736	38560	38816	38989	38712	38457	38745	38539	38796	102.238
	23	38560	38950	37985	39247	38385	39063	38774	38979	38878	38806	38006	38509	102.111
18	0	38303	38775	38529	38234	38995	38842	38195	38553	39131	38160	38742	38384	101.820
	1	38794	38549	38109	38856	39296	38519	38447	38529	38620	38547	38088	38519	101.832
	2	38856	38867	38641	38365	38805	38479	39410	39133	38611	38109	39225	38590	102.320
	3	38735	38951	38858	38396	38498	38601	38867	38611	39030	38447	38294	38682	102.073
	4	38764	38621	39214	37884	38846	38662	38836	38590	38795	39286	38171	38989	102.225
	5	38561	38406	38239	38258	39036	38410	38675	38203	39106	38766	39102	38411	101.898
	6	38688	38339	38515	39049	38246	39551	38515	38751	38945	38873	38710	39174	102.379
	7	39019	38544	39192	38832	39038	38781	39140	38945	38729	38678	39572	39654	102.987
	8	38555	38668	38904	38925	38329	39120	39069	37991	39388	38873	38709	39069	102.432
	9	38493	38329	38782	39181	38941	38910	39435	39290	39166	38589	39126	38827	102.755
	10	38930	39126	38292	39249	38570	38799	39151	38719	38339	38945	38298	38380	102.256
	11	38586	39284	38586	39408	38627	39058	38257	39120	38709	39706	37805	38421	102.424
	12	38914	38349	38514	38699	38699	39232	39282	38326	38995	39038	38195	39190	102.395
	13	38994	38624	38934	38688	38709	38884	39325	38945	38401	38997	38562	38783	102.486
	14	38560	38381	38986	38441	39101	39418	39415	39011	37741	37937	38247	39050	102.143
	15	38665	38892	38479	38553	38472	39090	38485	38358	38438	38749	38936	38475	101.990
	16	37953	38744	38118	38539	38060	38352	38748	38795	39112	38655	38506	38393	101.635
	17	38826	38060	38093	38094	38239	38063	38417	38384	38094	38656	37907	38541	101.062
	18	37668	38063	38631	38803	38470	38257	38313	38292	38575	38512	38642	38413	101.340
	19	38776	38360	38412	38652	38586	38280	38239	38573	37937	37938	38826	38429	101.422
	20	38356	37732	38579	38243	38919	38291	38688	38550	38642	38990	38464	38370	101.601
	21	38194	39039	38291	38275	38171	38442	38962	38764	38381	38132	38549	38458	101.565
	22	38042	38406	38931	38530	38641	38856	37985	39367	38589	38608	38560	38159	101.788
	23	39320	39040	38387	38854	38242	38456	39069	38342	38415	38145	38414	38569	101.915

		S.V.I.R.CO. Observatory - Pressure Corrected Data – April 2021											16 NM-64	
		INAF/UNIRomaTre												
day	hh	00_05	05_10	10_15	15_20	20_25	25_30	30_35	35_40	40_45	45_50	50_55	55_60	h-norm
19	0	38492	38637	38920	38766	38414	38673	38456	39003	37569	38859	38189	38798	101.805
	1	38580	38261	39089	38489	38261	38571	38621	37889	37858	38777	38592	38499	101.527
	2	38427	38891	38334	38344	39407	38797	38859	38674	38593	38779	38674	38561	102.155
	3	38034	38470	38266	38884	38524	38482	38275	37824	39251	38073	39191	38953	101.690
	4	38447	38579	38309	38202	38447	38561	38827	39146	38406	38477	38130	38531	101.654
	5	38730	38528	37958	38403	38641	38661	38576	38687	37892	38575	38492	38430	101.546
	6	38108	38067	38223	38852	38303	38355	38625	38316	38522	37828	38821	37675	101.133
	7	38666	38189	38593	38293	38376	38263	38046	37859	38820	38789	38861	38377	101.449
	8	38494	39425	38148	38561	38521	38856	38605	38330	38742	38442	38597	38980	102.014
	9	38732	38225	38525	38432	38785	37833	39386	38758	38458	38975	38686	38954	102.025
	10	38520	38882	38789	39370	38154	38804	38742	38474	38414	38610	38216	38144	101.886
	11	39374	38809	38325	38428	38521	38493	39207	38661	38228	38588	39059	38912	102.213
	12	38232	38397	39016	37872	38119	38737	38766	38990	39073	38670	38409	38548	101.822
	13	39123	39131	38281	38654	38789	38198	38342	38601	38457	37856	38105	38457	101.638
	14	38274	39197	38771	38420	38180	38317	38933	38455	38153	38662	38010	38444	101.599
	15	38436	38783	39188	38057	38378	38327	38212	38555	38410	38368	38804	38472	101.638
	16	38267	38507	38567	38583	38497	38435	38350	38527	38830	38684	38206	38632	101.659
	17	38310	38518	38767	38258	38175	38310	38715	39006	38206	38528	38476	38478	101.585
	18	38798	38033	38335	38762	38116	38978	38632	38330	38517	38690	38603	38635	101.734
	19	38813	38520	39011	38437	38343	38251	38530	38326	38522	38262	38472	38462	101.629
	20	38306	38476	38427	38238	38458	38449	38439	37757	38329	38589	39166	38779	101.511
	21	38537	38715	38927	38290	38082	38052	38344	38877	38017	38636	37878	38759	101.445
	22	38434	38571	38527	37595	38037	38801	38737	38882	38527	38475	38287	38539	101.511
	23	38225	38277	38005	38684	39281	38475	37983	38204	38046	38671	38742	37954	101.320
20	0	38779	38298	38086	38408	38889	38502	37981	38431	38189	38292	38732	38671	101.474
	1	38272	38189	38291	38513	38249	37915	38270	38321	38832	38207	38458	38332	101.167
	2	38510	38155	38343	38646	38416	38207	38510	38207	38530	38467	38761	38614	101.500
	3	38520	38218	38635	38259	38750	38259	38343	38383	38613	38406	38792	38656	101.604
	4	38708	38092	38280	38155	37800	38990	38604	38468	38573	38113	38864	38411	101.433
	5	38974	39027	38230	38511	38248	38822	38047	38686	38283	38521	38302	38396	101.651
	6	38407	38226	38673	38657	38373	38974	37967	39164	38420	38369	38453	38327	101.642
	7	38043	38568	37832	38440	38756	38672	38208	38608	38357	38747	38292	38246	101.369
	8	38236	38487	38180	38538	38927	38664	38066	38215	38518	38771	38667	38435	101.575
	9	38992	39318	38539	38748	39201	38875	38538	38485	38886	38351	38066	38529	102.196
	10	38435	39013	39288	38271	38819	38375	38455	38421	38299	37940	38465	38297	101.656
	11	38804	39103	38403	38455	38745	38271	38239	37997	38679	38557	38915	38643	101.818
	12	39115	38262	38238	38615	38299	38988	38704	38372	38708	38761	39296	38320	102.009
	13	38836	38964	38630	38317	38390	39292	39103	38767	38894	38496	38344	38055	102.099
	14	39100	38556	38816	38532	38386	39055	38743	38420	38942	38281	38283	38732	102.046
	15	38346	38168	38480	39024	38314	38519	38869	38264	38245	38432	38620	38034	101.489
	16	38516	38955	38821	38109	39353	38955	38914	38495	38306	38840	38254	38512	102.087
	17	38037	38758	38476	38590	39049	38482	38429	38224	38608	38463	37959	37702	101.371
	18	38761	38531	38415	38676	38694	38862	38968	38530	38305	38257	38178	38128	101.708
	19	38389	38566	38652	38588	38164	38302	38407	38359	38180	39125	38854	38792	101.723
	20	38304	38525	38325	38517	38613	38857	38178	38740	38207	38487	38823	38389	101.633
	21	38061	38498	38521	38783	38702	38383	38246	38853	38301	38533	38672	38410	101.631
	22	38140	38100	39611	38770	38940	38409	38485	38495	38931	38205	38716	38269	101.875
	23	38599	38524	37757	38301	38237	38706	38365	38632	38611	38505	38234	38329	101.376

INAF/UNIRomaTre		S.V.I.R.CO. Observatory - Pressure Corrected Data – April 2021											16 NM-64	
day	hh	00_05	05_10	10_15	15_20	20_25	25_30	30_35	35_40	40_45	45_50	50_55	55_60	h-norm
21	0	38453	38239	38700	38666	38985	38358	38456	38561	37897	38961	38482	38334	101.659
	1	38174	39155	38803	38663	39111	38855	38173	38322	38343	38410	38402	38498	101.840
	2	38712	39150	38383	38500	38554	38021	38724	38586	38595	38211	38371	38210	101.644
	3	38903	38381	38636	38638	38287	38499	38572	38242	38807	38519	38787	38403	101.788
	4	38753	38616	38872	38819	38841	38117	38570	38620	39636	38549	39014	38385	102.254
	5	39014	38550	38584	38612	38189	38756	38747	38987	38318	38738	38708	38772	102.075
	6	38760	38257	38215	38718	38645	38269	38641	38812	38695	38523	38952	39102	101.989
	7	38508	38526	38515	38634	38516	38645	38538	38441	39202	38451	38677	38571	101.910
	8	39783	38464	38388	38847	38827	38956	39019	38612	38955	38537	38806	38861	102.532
	9	39010	38440	38676	38654	38656	38314	38388	38334	38238	39008	38483	38397	101.771
	10	38172	39212	38472	38976	38654	38526	39026	38302	39029	38344	39040	38739	102.188
	11	38630	38469	38869	38467	38787	38613	38446	38496	38773	38922	38592	38538	101.993
	12	39069	38949	38335	38147	38123	38595	38844	38397	38652	38880	38383	38440	101.819
	13	38391	38911	39004	38731	39003	38565	38436	38370	38707	39238	38640	38794	102.254
	14	38456	38411	38907	38406	38731	38638	38307	38671	38785	38372	38298	38684	101.786
	15	38342	38710	38340	38593	38763	38246	39088	38500	38278	38835	38509	38363	101.765
	16	38721	38668	38264	38366	38851	38071	38556	38946	39231	38546	38176	38672	101.875
	17	38320	37946	38654	38063	38370	38988	38444	38379	38820	38440	38917	37624	101.412
	18	38396	38035	39027	38801	38600	38479	38880	38808	38048	38156	37928	38311	101.524
	19	38599	38301	38279	38834	38672	38489	38848	38548	38369	38322	38563	38413	101.692
	20	38468	38627	38207	38572	38488	39120	39207	38190	38627	38135	38342	38763	101.804
	21	38795	38517	38464	38350	38661	38925	38637	38665	38511	38787	38223	37915	101.739
	22	38760	38286	38477	38318	38391	37976	38178	38784	38328	38574	38197	38489	101.366
	23	39117	39064	38351	39393	38831	38859	38149	38489	38456	38930	38988	38653	102.361
22	0	38714	38353	38475	38252	38280	38234	38769	38308	38255	38682	38522	38836	101.568
	1	38747	38853	38505	38715	38646	38719	38538	39016	38847	39406	38371	38911	102.361
	2	38627	38694	39047	39420	38521	38503	38972	37930	38630	38408	38971	38405	102.108
	3	38510	37785	38512	38689	38436	38552	38500	38783	38476	38562	38637	38784	101.689
	4	38415	38163	38742	38142	39153	38752	38774	38617	38501	38047	38805	38396	101.751
	5	38522	38373	38626	37804	37868	38363	38194	38932	38468	38152	38479	38352	101.229
	6	38679	38573	38342	39142	38552	38637	38573	38858	38489	38731	38910	38373	102.049
	7	38426	38521	38255	38747	38589	38725	38492	38439	37870	38690	38320	38553	101.558
	8	38301	38975	38448	38627	38218	39250	38353	39052	39100	38247	38837	38883	102.144
	9	38950	38895	38262	38957	38715	38191	38612	38812	38843	38101	38774	38901	102.083
	10	38532	38648	38247	38763	38057	39079	38752	38837	38226	38415	38868	38722	101.892
	11	38769	39037	38426	38499	39277	38486	38854	38581	38613	38601	38601	38664	102.170
	12	38506	38412	38422	38664	39064	39013	38972	39149	38980	38242	38968	38443	102.264
	13	38666	39265	39190	38751	38671	38282	38391	38415	38624	38454	39294	38880	102.274
	14	38694	38725	39060	38777	38421	38588	38430	38379	38610	38400	38724	38575	101.945
	15	39211	38759	38576	38167	38689	38109	38584	37710	38926	38401	38665	39262	101.873
	16	38945	38599	38751	38463	38400	38201	38683	38861	38924	38002	38641	38716	101.901
	17	38881	38834	38278	38289	38584	38332	38782	38058	38132	38766	38793	38501	101.690
	18	38030	38734	38303	39286	38621	38964	38476	38340	38458	38450	38846	39051	101.982
	19	38563	38220	38263	38536	39094	38596	38415	38405	38477	38879	38489	38458	101.727
	20	38731	38173	38404	38799	38299	38162	38946	38755	38988	38850	38374	38407	101.835
	21	38735	38342	38523	38820	38585	38585	38619	38270	38195	38480	38746	38555	101.740
	22	38448	38354	38619	38498	38477	38781	38585	38524	38525	38822	38801	38166	101.772
	23	38028	38336	38135	38495	38196	38292	38314	38781	38356	38515	38032	38556	101.208

		S.V.I.R.CO. Observatory - Pressure Corrected Data – April 2021											16 NM-64	
day	hh	00_05	05_10	10_15	15_20	20_25	25_30	30_35	35_40	40_45	45_50	50_55	55_60	h-norm
23	0	38535	38396	38448	38304	38657	38815	38160	38796	38636	38730	38911	38320	101.791
	1	38098	38415	38594	38899	38719	38160	38553	38130	38784	38677	38551	38521	101.663
	2	38511	38415	38542	38489	38362	38594	38487	37917	37865	38553	38563	37601	101.178
	3	38403	38350	39166	38479	38860	38627	38140	38045	38733	38690	38690	38606	101.814
	4	38923	38458	38553	38585	38458	38786	38320	38532	38902	38563	39034	38702	102.039
	5	38186	38543	38680	38842	38599	39480	38308	38505	38718	38187	38836	39122	102.081
	6	38581	38898	38483	38755	38656	39102	38594	39116	39041	38424	38295	38847	102.254
	7	38557	38416	38415	38755	38947	38894	38819	38436	38883	38851	38787	38511	102.140
	8	38596	38851	38426	38819	38649	39256	37979	39032	38553	38543	38874	38616	102.122
	9	38783	38996	38954	38764	39009	38367	38812	38684	39100	38514	38514	38851	102.377
	10	39034	38648	38883	39408	38788	38501	39219	39166	39209	38957	38356	39243	102.831
	11	38727	38936	38681	39020	38828	38731	38556	38783	38677	38954	38754	38923	102.425
	12	38911	38107	39493	38715	38987	38352	38596	38943	38728	38904	38730	38868	102.374
	13	39005	38963	38624	38698	38963	38381	39090	38614	38655	38877	39361	38996	102.569
	14	39297	38077	38313	38251	38801	38634	38642	38631	38917	38395	38741	39245	102.067
	15	38649	38554	38963	38924	38635	38177	37985	38283	38432	38104	38433	38348	101.527
	16	38840	39059	38872	38713	38564	38960	38588	38881	38234	38817	38270	38710	102.191
	17	38603	38768	38381	38942	38843	39008	38569	38470	38614	38602	38360	38741	102.059
	18	38620	38861	38511	39032	38950	38510	38960	38565	38573	38654	38462	38740	102.177
	19	38191	38253	38790	38679	38885	38907	38930	38587	38619	38736	38480	38365	101.953
	20	38253	38365	38685	38460	38846	38727	38299	38547	38247	38504	38386	38204	101.535
	21	38900	38642	38322	38889	39071	38933	38804	38235	38385	38440	38601	38419	102.001
	22	38815	38043	38687	38483	38782	38642	38634	38817	38440	38633	38494	37786	101.696
	23	38751	38002	38838	38386	38591	39063	38164	39064	38547	38772	38504	38397	101.878
24	0	38762	38912	38504	38890	39097	38673	39283	38362	39174	38552	38136	38532	102.269
	1	38702	39285	38424	39204	38819	38552	38670	38638	38830	38926	38605	39172	102.482
	2	38851	38894	38456	38114	38531	38841	38520	38712	39172	38712	38328	38937	102.095
	3	38958	38413	38776	38894	38969	38969	38980	38862	38873	39279	38563	38296	102.483
	4	38819	38584	38595	38211	39111	38457	38628	38384	38472	38861	38648	38616	101.945
	5	38320	38891	39210	38416	39272	38801	38480	38662	38937	39255	38633	38269	102.332
	6	38697	39330	39308	38880	38269	38612	38697	38622	38708	38612	39115	39083	102.505
	7	39212	39169	38386	38740	37956	38609	38491	38791	39113	38855	38448	39142	102.281
	8	38934	39328	38802	38812	38898	38554	39206	38542	39056	39453	38799	39120	102.851
	9	38915	38882	38563	38287	38907	38841	38543	38580	38509	39161	38830	39070	102.320
	10	38894	39082	39292	38760	39232	38720	39348	38742	38790	39196	39516	38907	103.065
	11	39155	38500	38585	38136	39084	38154	38368	38550	38867	38887	38628	38527	101.957
	12	38810	38787	38212	38772	38820	38862	39000	38395	38840	38925	38966	39177	102.425
	13	38727	38804	38751	39143	38730	39182	38509	38663	38738	38717	39088	38523	102.426
	14	38650	38828	39060	38694	38990	38542	38426	38956	39179	38571	38741	38972	102.434
	15	39150	39245	38518	39508	38845	38950	38875	38580	38939	38718	39257	38414	102.740
	16	38813	38771	38771	38497	38950	38897	38950	38852	38713	39051	38796	38480	102.419
	17	39039	38817	38279	38237	38086	38536	38720	38449	38523	39294	38821	38688	101.967
	18	38960	39392	38239	38629	39009	38476	38424	38403	38528	38277	38778	38972	102.099
	19	38199	38911	39485	37943	39084	39146	38681	38511	38585	38638	38640	38799	102.217
	20	38862	38297	38815	38706	38279	39197	38899	38748	38514	39080	38718	39228	102.375
	21	39016	39497	38835	38792	38775	38333	38378	38549	39093	38869	38538	38965	102.441
	22	38730	39008	38688	38933	38912	38506	38752	38999	38285	38892	38421	39445	102.426
	23	38634	38880	38688	38273	38716	38442	38250	38890	38594	38230	38785	38896	101.921

		INAF/UNIRomaTre			S.V.I.R.CO. Observatory - Pressure Corrected Data – April 2021								16 NM-64		
day	hh	00_05	05_10	10_15	15_20	20_25	25_30	30_35	35_40	40_45	45_50	50_55	55_60	h-norm	
25	0	38535	38613	38711	38073	38828	38732	38928	38559	38304	38528	38517	38135	101.734	
	1	38634	38783	38496	38421	38663	38845	38590	38548	38486	38633	38780	38919	102.035	
	2	38862	39630	38919	38675	38769	38662	38684	39171	38684	39542	38705	38874	102.779	
	3	38313	39086	38609	38864	39275	38903	38988	39564	38754	38405	39082	38849	102.672	
	4	39082	38574	39156	38764	38639	38575	38616	38888	39563	39446	38906	39224	102.835	
	5	38733	38359	38988	39042	38763	38803	38401	38379	38379	39503	38930	39228	102.412	
	6	38952	39271	38570	38486	38454	39133	39186	38899	38868	39016	39059	38868	102.687	
	7	39108	38690	38716	38465	39165	39156	38911	39175	38453	39006	38593	38444	102.494	
	8	39335	38538	38719	39196	38750	38773	38635	38932	39018	38626	39252	38996	102.689	
	9	38740	38690	38906	39213	39065	38725	38612	38415	38965	39082	38923	38447	102.472	
	10	39611	38627	39230	39029	38870	38426	39209	38870	39008	39578	39270	38827	103.082	
	11	39378	38775	39865	39071	39484	38858	38266	38817	39420	38807	38965	38574	103.022	
	12	39272	39061	39059	38943	38563	39209	38891	39378	38753	39322	38975	38743	102.997	
	13	38393	39349	38887	38937	39108	38543	39020	38734	38978	38757	38971	38605	102.581	
	14	38751	38980	39214	38935	38663	39304	39051	39041	38969	38485	38811	38780	102.737	
	15	38565	38804	38731	39068	38923	38822	38890	39207	38758	38782	38750	38685	102.517	
	16	38792	39382	38855	38812	38506	39341	38737	38807	38881	38725	38955	39008	102.696	
	17	38809	38777	38777	39175	39123	38662	38872	39489	39008	39015	38866	37859	102.616	
	18	38625	38258	38464	38533	38533	38482	38566	38478	38694	38673	39474	38124	101.839	
	19	38467	39095	38444	38378	39275	38821	38599	39360	38652	38875	38506	38610	102.318	
	20	39044	38606	38038	38494	39302	38672	38610	38750	38854	38595	39018	39082	102.314	
	21	38817	38701	38542	38733	38710	38805	38774	39037	38846	39377	37996	38479	102.260	
	22	38809	38556	39283	38861	39178	38662	38292	37892	38862	38651	39259	38781	102.319	
	23	39351	38473	39148	38696	38950	38445	38557	38839	38782	38926	38358	38677	102.344	
26	0	38633	38755	38846	38290	38278	39537	38953	38786	38308	38543	38030	38877	102.044	
	1	38637	38501	38396	39003	37915	38722	38420	38011	38659	39037	38702	38880	101.835	
	2	38074	38857	38540	38763	38458	38713	38183	38807	38223	38838	38984	38604	101.870	
	3	37836	37976	38772	38782	38655	38531	38866	39001	38814	38264	38794	38538	101.823	
	4	38551	38789	39069	38457	38747	39089	38913	38934	38716	38364	38869	38576	102.316	
	5	38316	38794	38700	38638	39375	38323	38882	38487	39225	38497	38684	39069	102.298	
	6	39059	39113	38802	39178	38361	39543	38476	39453	39142	38850	38975	38276	102.790	
	7	38808	38515	38984	38441	38574	39240	39040	39180	38938	38472	38742	38512	102.398	
	8	38673	39114	38937	39344	38707	38743	38756	38965	39194	38662	38829	38207	102.548	
	9	38810	38908	38817	38728	38875	38585	38729	38363	38634	38946	38804	38396	102.211	
	10	38794	38423	38476	38790	38683	38944	39099	38895	38790	38795	38804	38272	102.249	
	11	38737	39199	38568	38458	38783	39286	39050	38385	38872	38764	39367	38348	102.480	
	12	38883	38985	39354	39009	38901	39210	38245	38915	38887	38281	39003	38569	102.573	
	13	39522	38590	38657	38986	38314	38616	38858	38789	39003	39195	38338	38551	102.391	
	14	39042	38929	38946	38693	38322	38979	37922	38635	38447	39500	38353	38434	102.125	
	15	38605	38952	38617	38885	38641	38523	38383	38944	38533	38510	38994	39051	102.221	
	16	38532	39311	39077	38410	38968	39236	38610	38263	38227	38251	38442	38619	102.068	
	17	38757	38886	38645	38482	38812	38433	38693	39051	38742	38973	38763	39063	102.366	
	18	38303	38542	38640	38802	38683	38484	39333	37898	38756	38327	38746	38626	101.891	
	19	38387	38497	38686	38457	38656	38207	38406	39204	38467	38137	38856	38666	101.778	
	20	38705	38524	38515	38177	38258	38499	38560	38401	38230	38645	38397	38979	101.616	
	21	39084	38507	38054	39003	38594	38518	37999	38049	38869	38808	38677	38664	101.821	
	22	38517	38471	39066	39247	38486	39640	38923	39023	38649	38738	38877	38531	102.557	
	23	39017	38869	38793	39097	38929	38811	38595	38808	39143	38364	38522	38189	102.329	

		S.V.I.R.CO. Observatory - Pressure Corrected Data – April 2021											16 NM-64	
day	hh	00_05	05_10	10_15	15_20	20_25	25_30	30_35	35_40	40_45	45_50	50_55	55_60	h-norm
27	0	38544	39086	39322	38800	38830	39036	38652	38724	38410	38989	39117	38655	102.554
	1	38891	38842	38802	38606	39265	38961	38736	38844	38275	38904	38679	38718	102.414
	2	39317	38495	38682	39268	39110	38671	39385	38887	38585	39034	38840	39114	102.825
	3	39058	38687	38590	38698	38474	38561	38910	38404	38832	38687	38444	38882	102.130
	4	38755	38609	39184	39106	39487	38736	38559	38249	38960	38384	39143	39260	102.615
	5	38510	38947	38918	38860	38830	38626	38450	38411	38538	38557	38958	38988	102.210
	6	38928	38879	39045	39464	38813	39089	39392	38766	38657	39231	38773	39241	103.021
	7	39172	39347	38751	38721	38721	38820	38830	38477	38702	39004	38692	38389	102.439
	8	38643	37979	38663	38633	38819	38760	38702	38487	39043	38470	38861	39493	102.202
	9	38743	38996	39074	38947	38869	38411	38723	39132	38772	38548	38772	38694	102.450
	10	38158	38513	38781	38767	39043	39161	38848	38575	38887	39043	39336	38957	102.535
	11	38967	38565	38926	38653	38848	38790	39473	39326	39434	38790	38712	38951	102.836
	12	39342	38811	39259	38489	38821	38782	38861	38374	38686	38910	38773	38832	102.507
	13	38559	38472	39484	38889	39152	38735	39250	39200	38956	38278	38794	38454	102.569
	14	39465	38220	38811	39158	38486	39570	38598	38657	38988	38617	39015	39357	102.727
	15	39337	38411	38577	38333	38548	38460	38752	38957	39131	39103	38793	38551	102.290
	16	38697	38921	38740	38641	38954	38393	38754	38754	38347	39067	38892	38842	102.301
	17	38706	38579	38336	38667	38666	38782	38557	38585	38076	38896	38788	38700	101.935
	18	39110	38612	38701	38768	38904	38884	38580	38891	38351	38825	38483	38542	102.224
	19	38643	38436	38844	38480	38205	38706	38628	39266	38302	38842	38226	38659	101.912
	20	38376	38828	39032	38933	38972	39091	38368	38366	38766	38706	38905	39475	102.480
	21	38872	38791	39103	39142	38523	38770	39204	38445	39273	38644	38791	38700	102.577
	22	38857	38748	38786	38915	39270	38994	37969	39121	38952	38952	38635	39030	102.570
	23	38903	39041	38982	38657	38695	38901	38378	39155	38831	39074	39094	39212	102.723
28	0	39094	39113	38395	38977	38870	38596	39058	39568	38742	38979	38940	38488	102.691
	1	38851	38438	39078	39176	38704	38419	38409	39078	38804	38632	39054	38480	102.327
	2	38294	39158	38893	38991	39452	39129	38591	38619	38823	39242	39280	39130	102.872
	3	39199	38821	39105	38540	39237	38745	39521	39091	39218	39208	38718	38718	102.987
	4	38718	38316	38847	38973	39138	38755	39500	39017	38459	38648	38419	38663	102.400
	5	38881	39235	38929	39381	39097	38704	38812	39048	38606	38665	38773	38901	102.747
	6	38754	39285	39059	39157	38682	38958	38357	38581	39092	39291	38855	38855	102.724
	7	38955	38522	39409	38944	38609	39182	39380	38975	39498	38709	38916	38786	102.935
	8	38697	38815	38764	39019	38929	39029	38930	38572	38513	38612	38949	38969	102.475
	9	38543	38661	39078	39256	38978	38645	38394	39211	39018	38915	38764	38984	102.618
	10	38578	39203	38626	38976	39048	38940	38900	38850	38781	39068	39177	38907	102.752
	11	38657	39408	38979	38790	38999	39266	38892	38698	38818	38727	38708	39247	102.782
	12	39526	38608	38568	38899	39108	38298	39098	38892	38579	38771	38680	38684	102.457
	13	39063	38805	38064	38991	38284	39104	39195	39034	38923	38863	38674	38835	102.484
	14	39134	38815	38926	38646	38795	38694	38354	38943	38424	38304	38515	39026	102.207
	15	39285	38725	38484	38943	39483	39055	39124	38783	38993	38545	38575	38883	102.713
	16	39153	38713	38645	38505	38773	38783	38344	38843	38624	38933	38604	38993	102.281
	17	39143	38923	38494	38444	38773	38972	38540	39150	39370	38990	39230	38569	102.651
	18	39037	38697	39297	39011	38368	38343	38264	38335	38354	38572	38252	38401	101.846
	19	38599	38257	38498	38477	38374	38825	38513	38857	38825	38663	39206	38615	102.016
	20	38695	38964	38853	39291	38714	38730	39223	39128	38426	38466	38852	38898	102.573
	21	39219	39015	38627	38599	38661	38934	39268	38783	39039	39391	38415	38122	102.536
	22	38783	39017	39301	38691	38518	38733	39291	38631	38692	38144	38084	39263	102.332
	23	39204	38870	38393	38546	39279	38753	38794	38671	38443	38783	38733	38895	102.380

INAF/UNIRomaTre		S.V.I.R.CO. Observatory - Pressure Corrected Data – April 2021											16 NM-64	
day	hh	00_05	05_10	10_15	15_20	20_25	25_30	30_35	35_40	40_45	45_50	50_55	55_60	h-norm
29	0	38984	38608	39026	38682	39200	38824	38529	39250	39037	38986	38793	38814	102.682
	1	39027	38986	38430	38625	38514	38727	39213	38321	38554	38564	38493	39142	102.211
	2	38828	38838	38891	38851	38375	38984	38801	38699	38962	38224	38882	39121	102.400
	3	38427	38706	38690	39237	38579	39198	39614	38960	38958	39115	38595	38289	102.602
	4	38674	39064	38221	39030	38703	38769	39389	39289	38380	38855	39171	39501	102.750
	5	38933	39030	38689	38536	38718	38907	38766	39077	38587	38658	38414	38281	102.211
	6	38781	39066	38465	39046	38893	38923	38840	38981	39154	38797	39019	38851	102.699
	7	39177	39095	39179	39375	39027	39672	38944	38943	38823	38804	38988	38517	103.080
	8	39139	39104	38905	39140	39204	38742	38361	39147	38777	38542	39034	38717	102.698
	9	38337	38775	38264	38214	38824	39123	39170	38129	39250	38591	38606	38354	102.000
	10	38408	38621	39167	39033	38506	38494	38910	38207	38865	38460	39203	39181	102.312
	11	38001	38959	38692	38784	39009	38887	39233	38570	38966	38875	38590	38619	102.341
	12	38875	38570	38553	38531	38647	39053	38535	38433	38327	38955	38485	38846	102.038
	13	38398	38613	38765	38775	38441	38760	39110	38601	38969	38830	38735	39270	102.360
	14	38791	39308	38957	38169	38951	38269	38769	38524	38310	38371	38989	38771	102.120
	15	38794	38555	38493	38696	38840	38850	38179	38962	38694	38082	38351	38972	101.963
	16	38366	38824	39064	38566	38571	38929	38463	38397	38289	38553	38951	38415	101.945
	17	38763	38601	38408	38467	38670	39230	38306	38753	39159	38204	38225	38976	102.028
	18	38489	38215	38875	38763	38276	39191	38793	38673	38732	38948	38529	38812	102.145
	19	38638	38669	38689	38628	38414	38782	38336	38343	38000	38133	38051	38643	101.492
	20	38480	38306	38334	38884	37974	38526	38782	38219	38332	38547	38629	38925	101.626
	21	38424	38894	38671	38515	38726	38552	39115	38447	38447	39392	38398	38654	102.132
	22	38603	38508	38126	39470	38927	38927	39173	38147	38157	39224	38752	38230	102.134
	23	38629	38443	38178	38311	38752	38085	38434	38711	38537	38537	38465	39080	101.676
30	0	38352	38588	38608	38964	38730	39413	38713	38799	39172	38914	38700	38846	102.469
	1	38409	38807	38960	38938	38994	38794	38934	38760	39097	38923	38894	38856	102.601
	2	38468	38581	38493	38453	38659	38519	38661	38783	38804	38621	38613	38321	101.855
	3	38818	38321	38808	38677	38081	38852	38496	38760	38569	38731	38690	38589	101.946
	4	38741	38346	38305	39014	38945	39026	38344	38370	39319	38537	38590	38885	102.173
	5	38733	38743	38601	39027	38672	39281	38814	38276	38853	38528	38631	38408	102.204
	6	38997	39159	38692	38733	39139	38966	38621	38343	38440	38201	38462	38454	102.125
	7	38462	38647	38388	38865	38527	38477	38925	39069	38408	38306	38468	38824	101.940
	8	38958	39233	38506	38336	38822	38365	39097	38437	38600	38863	39199	39008	102.394
	9	38401	38989	38722	39040	38930	38492	38846	38517	38423	38810	38576	38910	102.224
	10	38076	38259	38268	38577	38570	38540	38894	38892	38844	39048	38876	38806	102.004
	11	38879	38512	38539	38814	39448	38874	38359	38683	38586	38838	38776	38727	102.308
	12	39032	38709	38771	38271	38559	38586	38871	38971	38574	38574	38683	38180	102.031
	13	39136	38914	38380	38147	38195	38686	38583	38800	38992	38481	39172	38770	102.136
	14	38509	38267	38531	38855	38874	39125	38563	38954	38454	38865	38789	38604	102.167
	15	38416	38701	38380	38782	38826	38557	38759	38626	38904	38684	38914	38323	102.052
	16	38192	38725	38565	38319	38714	39216	38530	38702	38785	38937	38709	38590	102.077
	17	38750	38840	38389	38837	38547	38547	39127	38207	38797	38498	38263	38851	102.004
	18	38632	38903	39155	38834	38555	39036	38736	38727	38907	38697	38697	38487	102.380
	19	38357	38521	38199	39054	38523	38333	38244	38625	39061	38355	38919	38782	101.854
	20	38831	38509	38469	38770	38800	38710	38178	38459	39363	38349	38531	38520	101.968
	21	38851	38609	38375	38987	38327	38608	38376	38798	38105	38246	38111	38141	101.538
	22	38157	38394	38375	37963	38850	38528	38548	37681	38346	38457	38328	38479	101.224
	23	38306	38642	38655	38414	38655	39038	38807	38226	38399	38861	38570	38441	101.863

S.V.I.R.CO. Observatory - Pressure in hectoPascal – April 2021

day	hh	00_05	05_10	10_15	15_20	20_25	25_30	30_35	35_40	40_45	45_50	50_55	55_60	average
1	0	1021.31	1021.29	1021.19	1021.10	1021.11	1021.11	1021.09	1020.99	1020.90	1020.90	1020.88	1020.78	1021.04
	1	1020.69	1020.69	1020.69	1020.69	1020.69	1020.69	1020.69	1020.66	1020.56	1020.48	1020.48	1020.48	1020.62
	2	1020.48	1020.48	1020.48	1020.46	1020.39	1020.30	1020.27	1020.27	1020.27	1020.27	1020.27	1020.27	1020.35
	3	1020.27	1020.27	1020.27	1020.27	1020.17	1020.06	1020.06	1020.06	1020.06	1020.06	1020.06	1020.06	1020.14
	4	1020.06	1020.06	1020.06	1020.07	1020.07	1020.06	1020.07	1020.07	1020.06	1020.06	1020.06	1020.06	1020.06
	5	1020.06	1020.06	1020.06	1020.06	1020.14	1020.25	1020.28	1020.34	1020.43	1020.47	1020.49	1020.49	1020.26
	6	1020.49	1020.49	1020.49	1020.49	1020.49	1020.52	1020.54	1020.54	1020.55	1020.55	1020.54	1020.54	1020.52
	7	1020.54	1020.51	1020.49	1020.49	1020.48	1020.48	1020.48	1020.49	1020.49	1020.49	1020.49	1020.49	1020.49
	8	1020.49	1020.49	1020.49	1020.49	1020.49	1020.49	1020.49	1020.49	1020.48	1020.45	1020.36	1020.28	1020.45
	9	1020.28	1020.28	1020.27	1020.27	1020.17	1020.07	1020.07	1020.00	1019.93	1019.89	1019.86	1019.86	1020.08
	10	1019.84	1019.73	1019.65	1019.65	1019.65	1019.61	1019.52	1019.45	1019.43	1019.43	1019.44	1019.44	1019.57
	11	1019.37	1019.30	1019.26	1019.23	1019.23	1019.23	1019.23	1019.22	1019.12	1019.02	1019.02	1019.02	1019.19
	12	1018.96	1018.85	1018.81	1018.81	1018.81	1018.78	1018.69	1018.61	1018.59	1018.59	1018.55	1018.45	1018.71
	13	1018.39	1018.39	1018.33	1018.22	1018.18	1018.18	1018.17	1018.13	1018.02	1017.96	1017.96	1017.96	1018.16
	14	1017.96	1017.93	1017.84	1017.76	1017.75	1017.75	1017.75	1017.73	1017.63	1017.55	1017.54	1017.54	1017.73
	15	1017.55	1017.44	1017.33	1017.33	1017.33	1017.33	1017.33	1017.33	1017.33	1017.33	1017.33	1017.33	1017.36
	16	1017.34	1017.34	1017.33	1017.33	1017.34	1017.34	1017.34	1017.33	1017.33	1017.33	1017.34	1017.34	1017.33
	17	1017.34	1017.34	1017.33	1017.33	1017.33	1017.33	1017.37	1017.43	1017.46	1017.47	1017.51	1017.54	1017.40
	18	1017.54	1017.54	1017.54	1017.55	1017.55	1017.55	1017.55	1017.55	1017.62	1017.72	1017.76	1017.76	1017.60
	19	1017.75	1017.75	1017.77	1017.82	1017.91	1017.96	1017.96	1017.96	1017.98	1018.04	1018.08	1018.07	1017.92
	20	1018.07	1018.07	1018.07	1018.06	1018.07	1018.08	1018.08	1018.08	1018.08	1018.08	1018.09	1018.09	1018.08
	21	1018.10	1018.14	1018.17	1018.17	1018.17	1018.17	1018.17	1018.17	1018.17	1018.17	1018.17	1018.17	1018.16
	22	1018.17	1018.17	1018.17	1018.17	1018.18	1018.18	1018.18	1018.18	1018.17	1018.17	1018.14	1018.10	1018.16
	23	1018.09	1018.08	1018.06	1018.05	1018.04	1018.05	1018.06	1018.06	1018.05	1018.04	1018.04	1018.04	1018.05
2	0	1018.04	1018.04	1018.04	1018.00	1017.96	1017.96	1017.95	1017.85	1017.75	1017.75	1017.76	1017.76	1017.90
	1	1017.76	1017.73	1017.63	1017.55	1017.55	1017.55	1017.55	1017.55	1017.55	1017.55	1017.55	1017.55	1017.59
	2	1017.55	1017.54	1017.54	1017.55	1017.54	1017.53	1017.53	1017.53	1017.53	1017.53	1017.43	1017.34	1017.51
	3	1017.34	1017.34	1017.34	1017.34	1017.34	1017.34	1017.35	1017.35	1017.35	1017.34	1017.31	1017.27	1017.33
	4	1017.27	1017.27	1017.26	1017.25	1017.25	1017.26	1017.26	1017.25	1017.19	1017.13	1017.13	1017.13	1017.22
	5	1017.13	1017.13	1017.13	1017.13	1017.13	1017.20	1017.30	1017.34	1017.34	1017.34	1017.44	1017.55	1017.26
	6	1017.55	1017.55	1017.55	1017.54	1017.43	1017.34	1017.34	1017.34	1017.34	1017.34	1017.34	1017.34	1017.42
	7	1017.35	1017.35	1017.34	1017.34	1017.34	1017.35	1017.36	1017.36	1017.37	1017.40	1017.41	1017.39	1017.36
	8	1017.40	1017.40	1017.39	1017.40	1017.41	1017.41	1017.41	1017.39	1017.36	1017.34	1017.34	1017.35	1017.38
	9	1017.24	1017.14	1017.14	1017.14	1017.14	1017.05	1016.94	1016.92	1016.93	1016.93	1016.92	1016.82	1017.02
	10	1016.72	1016.72	1016.72	1016.72	1016.72	1016.72	1016.72	1016.68	1016.64	1016.58	1016.51	1016.41	1016.65
	11	1016.30	1016.30	1016.30	1016.19	1016.09	1016.09	1016.09	1016.09	1016.09	1015.99	1015.88	1015.88	1016.11
	12	1015.86	1015.81	1015.73	1015.67	1015.67	1015.67	1015.67	1015.56	1015.46	1015.46	1015.45	1015.45	1015.62
	13	1015.43	1015.33	1015.24	1015.24	1015.24	1015.23	1015.12	1015.03	1014.93	1014.83	1014.83	1014.74	1015.10
	14	1014.64	1014.62	1014.62	1014.62	1014.62	1014.62	1014.61	1014.53	1014.44	1014.41	1014.41	1014.41	1014.54
	15	1014.42	1014.41	1014.40	1014.40	1014.40	1014.40	1014.40	1014.41	1014.41	1014.41	1014.41	1014.40	1014.40
	16	1014.40	1014.40	1014.40	1014.30	1014.20	1014.19	1014.19	1014.19	1014.19	1014.20	1014.20	1014.20	1014.25
	17	1014.19	1014.19	1014.20	1014.20	1014.19	1014.19	1014.19	1014.19	1014.19	1014.20	1014.20	1014.20	1014.19
	18	1014.20	1014.20	1014.20	1014.20	1014.20	1014.21	1014.31	1014.41	1014.41	1014.40	1014.41	1014.41	1014.30
	19	1014.41	1014.40	1014.41	1014.41	1014.40	1014.40	1014.41	1014.41	1014.41	1014.41	1014.41	1014.41	1014.40
	20	1014.40	1014.40	1014.41	1014.41	1014.41	1014.40	1014.40	1014.40	1014.40	1014.40	1014.40	1014.41	1014.40
	21	1014.41	1014.40	1014.41	1014.41	1014.41	1014.40	1014.41	1014.41	1014.40	1014.41	1014.41	1014.41	1014.41
	22	1014.30	1014.19	1014.19	1014.20	1014.20	1014.09	1013.99	1013.99	1013.99	1013.99	1013.99	1013.99	1014.09
	23	1013.99	1013.88	1013.78	1013.78	1013.78	1013.78	1013.78	1013.78	1013.78	1013.77	1013.67	1013.57	1013.78

S.V.I.R.CO. Observatory - Pressure in hectoPascal – April 2021

day	hh	00_05	05_10	10_15	15_20	20_25	25_30	30_35	35_40	40_45	45_50	50_55	55_60	average
3	0	1013.57	1013.47	1013.36	1013.36	1013.36	1013.35	1013.36	1013.26	1013.15	1013.15	1013.15	1013.15	1013.29
	1	1013.15	1013.05	1012.94	1012.91	1012.86	1012.80	1012.75	1012.74	1012.73	1012.73	1012.63	1012.52	1012.82
	2	1012.52	1012.52	1012.47	1012.42	1012.37	1012.31	1012.31	1012.31	1012.31	1012.31	1012.31	1012.31	1012.37
	3	1012.21	1012.10	1012.08	1011.98	1011.89	1011.89	1011.85	1011.78	1011.72	1011.58	1011.47	1011.37	1011.82
	4	1011.26	1011.26	1011.26	1011.27	1011.27	1011.26	1011.26	1011.26	1011.26	1011.26	1011.26	1011.26	1011.26
	5	1011.26	1011.26	1011.36	1011.46	1011.47	1011.46	1011.47	1011.47	1011.47	1011.46	1011.44	1011.44	1011.42
	6	1011.35	1011.26	1011.26	1011.24	1011.14	1011.05	1011.05	1011.05	1011.05	1011.05	1011.06	1011.06	1011.13
	7	1011.05	1011.05	1011.05	1011.05	1011.05	1010.95	1010.84	1010.84	1010.84	1010.84	1010.74	1010.63	1010.91
	8	1010.63	1010.63	1010.53	1010.42	1010.32	1010.21	1010.21	1010.22	1010.22	1010.18	1010.11	1010.09	1010.31
	9	1010.08	1010.07	1010.06	1010.07	1010.05	1010.00	1010.00	1010.00	1010.00	1010.00	1010.00	1010.00	1010.03
	10	1010.00	1010.00	1010.00	1010.00	1009.96	1009.86	1009.79	1009.79	1009.79	1009.79	1009.90	1010.00	1009.91
	11	1010.00	1010.00	1010.00	1010.00	1010.01	1010.01	1010.00	1010.01	1010.01	1010.00	1010.00	1010.00	1010.00
	12	1010.00	1010.00	1010.01	1009.96	1009.85	1009.79	1009.79	1009.79	1009.79	1009.79	1009.79	1009.80	1009.86
	13	1009.80	1009.79	1009.79	1009.79	1009.79	1009.69	1009.58	1009.58	1009.54	1009.44	1009.37	1009.27	1009.62
	14	1009.17	1009.16	1009.16	1009.08	1008.93	1008.91	1008.95	1008.95	1008.95	1008.95	1008.95	1008.84	1009.00
	15	1008.74	1008.74	1008.74	1005.41	1005.24	1008.25	1007.41	1007.31	1008.08	1008.29	1008.35	1008.15	1007.72
	16	1008.07	1008.34	1008.48	1008.61	1008.73	1008.73	1008.73	1008.84	1008.95	1008.95	1008.94	1008.95	1008.69
	17	1008.95	1008.95	1008.95	1008.95	1008.95	1008.95	1008.95	1008.95	1008.95	1008.95	1008.95	1008.95	1008.95
	18	1008.95	1008.95	1009.06	1009.16	1009.16	1009.16	1009.26	1009.36	1009.47	1009.58	1009.62	1009.73	1009.29
	19	1009.79	1009.79	1009.79	1009.79	1009.79	1009.79	1009.79	1009.79	1009.79	1009.90	1010.00	1010.00	1009.83
	20	1010.00	1010.00	1010.00	1010.00	1010.00	1010.00	1010.00	1010.00	1010.00	1010.01	1010.11	1010.21	1010.03
	21	1010.21	1010.21	1010.22	1010.23	1010.33	1010.42	1010.42	1010.42	1010.43	1010.43	1010.42	1010.42	1010.34
	22	1010.53	1010.63	1010.63	1010.64	1010.64	1010.64	1010.63	1010.63	1010.63	1010.63	1010.63	1010.63	1010.62
	23	1010.63	1010.63	1010.63	1010.64	1010.64	1010.63	1010.63	1010.63	1010.63	1010.63	1010.63	1010.63	1010.63
4	0	1010.63	1010.63	1010.63	1010.63	1010.63	1010.63	1010.63	1010.63	1010.63	1010.63	1010.63	1010.64	1010.63
	1	1010.64	1010.63	1010.63	1010.63	1010.63	1010.63	1010.63	1010.63	1010.63	1010.63	1010.63	1010.63	1010.63
	2	1010.63	1010.63	1010.53	1010.43	1010.36	1010.29	1010.28	1010.25	1010.21	1010.21	1010.21	1010.21	1010.35
	3	1010.21	1010.21	1010.21	1010.21	1010.21	1010.21	1010.21	1010.21	1010.21	1010.21	1010.21	1010.22	1010.21
	4	1010.23	1010.33	1010.42	1010.42	1010.42	1010.53	1010.64	1010.63	1010.63	1010.63	1010.63	1010.63	1010.51
	5	1010.63	1010.74	1010.84	1010.84	1010.92	1011.03	1011.05	1011.05	1011.05	1011.05	1011.05	1011.05	1010.94
	6	1011.14	1011.23	1011.25	1011.32	1011.42	1011.47	1011.47	1011.47	1011.47	1011.47	1011.47	1011.47	1011.39
	7	1011.50	1011.60	1011.68	1011.68	1011.68	1011.68	1011.68	1011.74	1011.85	1011.89	1011.90	1011.92	1011.73
	8	1012.01	1012.07	1012.07	1012.09	1012.10	1012.15	1012.20	1012.24	1012.28	1012.30	1012.29	1012.30	1012.17
	9	1012.31	1012.31	1012.30	1012.29	1012.30	1012.31	1012.30	1012.29	1012.28	1012.28	1012.29	1012.29	1012.29
	10	1012.22	1012.16	1012.13	1012.10	1012.00	1011.89	1011.88	1011.89	1011.89	1011.89	1011.85	1011.78	1011.97
	11	1011.71	1011.68	1011.67	1011.65	1011.55	1011.47	1011.47	1011.47	1011.47	1011.47	1011.47	1011.37	1011.54
	12	1011.26	1011.26	1011.26	1011.24	1011.13	1011.05	1011.05	1011.05	1011.05	1011.05	1011.05	1011.05	1011.12
	13	1010.95	1010.84	1010.84	1010.84	1010.84	1010.84	1010.84	1010.74	1010.63	1010.63	1010.63	1010.63	1010.77
	14	1010.63	1010.63	1010.63	1010.63	1010.63	1010.63	1010.63	1010.63	1010.63	1010.63	1010.63	1010.63	1010.63
	15	1010.63	1010.63	1010.63	1010.63	1010.63	1010.63	1010.63	1010.58	1010.54	1010.56	1010.57	1010.57	1010.60
	16	1010.57	1010.57	1010.57	1010.55	1010.53	1010.52	1010.51	1010.57	1010.73	1010.93	1011.03	1011.05	1010.67
	17	1011.05	1011.14	1011.25	1011.26	1011.25	1011.36	1011.49	1011.51	1011.60	1011.68	1011.73	1011.84	1011.43
	18	1011.88	1011.93	1012.04	1012.10	1012.16	1012.27	1012.31	1012.32	1012.32	1012.42	1012.54	1012.63	1012.24
	19	1012.83	1012.94	1012.94	1013.05	1013.16	1013.16	1013.15	1013.15	1013.19	1013.29	1013.36	1013.37	1013.13
	20	1013.36	1013.36	1013.36	1013.36	1013.36	1013.37	1013.37	1013.47	1013.57	1013.57	1013.57	1013.67	1013.45
	21	1013.78	1013.78	1013.78	1013.78	1013.78	1013.78	1013.78	1013.88	1013.99	1013.99	1013.99	1013.99	1013.86
	22	1013.99	1013.99	1014.10	1014.20	1014.20	1014.20	1014.30	1014.41	1014.41	1014.41	1014.40	1014.41	1014.25
	23	1014.41	1014.41	1014.41	1014.41	1014.41	1014.41	1014.41	1014.41	1014.41	1014.41	1014.41	1014.41	1014.41

S.V.I.R.CO. Observatory - Pressure in hectoPascal – April 2021

day	hh	00_05	05_10	10_15	15_20	20_25	25_30	30_35	35_40	40_45	45_50	50_55	55_60	average
5	0	1014.40	1014.40	1014.41	1014.41	1014.41	1014.41	1014.41	1014.41	1014.41	1014.41	1014.41	1014.41	1014.41
	1	1014.41	1014.41	1014.41	1014.41	1014.31	1014.20	1014.20	1014.20	1014.20	1014.10	1013.99	1013.99	1014.23
	2	1013.99	1013.99	1013.99	1013.99	1013.99	1013.99	1013.99	1013.99	1013.99	1013.99	1013.99	1013.99	1013.99
	3	1013.99	1013.99	1013.99	1013.99	1013.99	1013.99	1013.99	1013.77	1013.67	1013.78	1013.78	1013.78	1013.89
	4	1013.78	1013.78	1013.78	1013.78	1013.78	1013.78	1013.78	1013.78	1013.78	1013.79	1013.79	1013.78	1013.78
	5	1013.87	1013.98	1013.99	1013.99	1013.99	1013.99	1013.99	1013.99	1014.06	1014.17	1014.20	1014.20	1014.03
	6	1014.20	1014.19	1014.21	1014.22	1014.21	1014.20	1014.31	1014.41	1014.41	1014.41	1014.41	1014.41	1014.30
	7	1014.41	1014.41	1014.41	1014.41	1014.41	1014.41	1014.41	1014.41	1014.41	1014.41	1014.41	1014.41	1014.41
	8	1014.52	1014.62	1014.62	1014.61	1014.62	1014.61	1014.60	1014.60	1014.60	1014.61	1014.62	1014.62	1014.60
	9	1014.62	1014.62	1014.62	1014.52	1014.41	1014.41	1014.41	1014.41	1014.40	1014.36	1014.26	1014.20	1014.44
	10	1014.20	1014.20	1014.19	1014.08	1013.99	1013.99	1013.99	1013.99	1013.89	1013.78	1013.78	1013.78	1013.99
	11	1013.78	1013.77	1013.66	1013.57	1013.47	1013.36	1013.36	1013.36	1013.36	1013.36	1013.35	1013.25	1013.47
	12	1013.15	1013.05	1012.94	1012.94	1012.82	1012.72	1012.73	1012.68	1012.58	1012.52	1012.52	1012.48	1012.76
	13	1012.37	1012.31	1012.31	1012.31	1012.21	1012.10	1012.10	1012.00	1011.89	1011.89	1011.79	1011.68	1012.08
	14	1011.68	1011.65	1011.59	1011.52	1011.47	1011.47	1011.47	1011.47	1011.37	1011.26	1011.26	1011.26	1011.46
	15	1011.26	1011.26	1011.27	1011.27	1011.24	1011.22	1011.22	1011.14	1011.06	1011.05	1011.05	1011.05	1011.17
	16	1011.05	1011.04	1010.94	1010.84	1010.84	1010.84	1010.84	1010.84	1010.84	1010.84	1010.84	1010.84	1010.88
	17	1010.84	1010.84	1010.84	1010.84	1010.84	1010.84	1010.84	1010.84	1010.84	1010.84	1010.84	1010.84	1010.84
	18	1010.74	1010.63	1010.63	1010.63	1010.63	1010.63	1010.63	1010.63	1010.69	1010.79	1010.94	1011.04	1010.72
	19	1011.04	1011.03	1011.02	1011.01	1011.02	1010.94	1010.84	1010.84	1010.85	1010.85	1010.84	1010.85	1010.92
	20	1010.85	1010.84	1010.84	1010.74	1010.64	1010.64	1010.63	1010.63	1010.63	1010.63	1010.63	1010.57	1010.69
	21	1010.47	1010.42	1010.42	1010.42	1010.42	1010.42	1010.42	1010.41	1010.41	1010.42	1010.41	1010.40	1010.42
	22	1010.41	1010.37	1010.33	1010.33	1010.32	1010.32	1010.26	1010.21	1010.21	1010.11	1010.00	1010.01	1010.24
	23	1010.00	1009.92	1009.82	1009.79	1009.79	1009.79	1009.79	1009.77	1009.67	1009.48	1009.37	1009.37	1009.71
6	0	1009.16	1009.16	1009.16	1009.16	1009.06	1008.95	1008.95	1008.82	1008.71	1007.07	1006.94	1008.37	1008.60
	1	1008.28	1008.22	1008.12	1008.11	1008.01	1007.90	1007.80	1007.69	1007.59	1007.38	1007.27	1007.17	1007.79
	2	1007.06	1007.06	1007.06	1006.96	1006.86	1006.79	1006.68	1006.64	1006.65	1006.63	1006.52	1006.44	1006.78
	3	1006.44	1006.33	1006.22	1006.22	1006.12	1006.01	1006.01	1006.01	1006.01	1006.01	1005.91	1005.80	1006.09
	4	1005.70	1005.59	1005.59	1005.48	1005.37	1005.38	1005.38	1005.28	1005.17	1005.17	1005.17	1005.17	1005.37
	5	1005.07	1004.96	1004.96	1004.60	1004.50	1004.75	1004.74	1004.64	1004.54	1004.54	1004.54	1004.54	1004.70
	6	1004.54	1004.54	1004.55	1004.55	1004.54	1004.54	1004.55	1004.55	1004.44	1004.34	1004.33	1002.01	1004.29
	7	1001.91	1004.02	1003.92	1003.92	1003.87	1003.77	1003.71	1003.71	1003.70	1003.71	1003.71	1003.71	1003.64
	8	1003.71	1003.71	1003.70	1003.70	1003.69	1003.57	1003.47	1003.48	1003.50	1003.39	1003.19	1003.09	1003.51
	9	1003.07	1003.07	1002.95	1002.83	1002.85	1002.75	1002.64	1002.44	1002.23	1002.13	1002.02	1002.02	1002.58
	10	1001.92	1001.81	1001.81	1001.76	1001.66	1001.61	1001.56	1001.45	1001.39	1001.39	1001.39	1001.28	1001.58
	11	1001.18	1001.18	1001.18	1001.18	1001.07	1000.97	1000.87	1000.76	1000.76	1000.66	1000.55	1000.55	1000.91
	12	1000.45	1000.34	1000.32	1000.21	1000.13	1000.13	1000.12	1000.11	1000.10	1000.01	999.92	999.92	1000.14
	13	999.92	999.92	999.91	999.80	999.71	999.71	999.71	999.71	999.71	999.71	999.71	999.71	999.77
	14	999.71	999.71	999.71	999.71	999.71	999.71	999.71	999.71	999.73	999.82	999.91	999.92	999.75
	15	999.93	1000.03	1000.13	1000.23	1000.34	1000.33	1000.33	1000.37	1000.41	1000.48	1000.55	1000.55	1000.31
	16	1000.54	1000.54	1000.54	1000.54	1000.65	1000.76	1000.76	1000.76	1000.76	1000.76	1000.75	1000.76	1000.67
	17	1000.76	1000.76	1000.75	1000.75	1000.83	1000.92	1000.96	1000.97	1000.97	1001.05	1001.15	1001.28	1000.93
	18	1001.39	1001.39	1001.38	1001.38	1001.38	1001.38	1001.38	1001.38	1001.38	1001.38	1001.41	1001.52	1001.40
	19	1001.60	1001.71	1001.92	1002.02	1002.10	1002.19	1002.21	1002.23	1002.34	1001.65	1001.73	1002.57	1002.02
	20	1002.70	1002.85	1002.83	1002.82	1002.90	1002.97	1002.93	1002.90	1002.90	1002.99	1003.09	1003.20	1002.92
	21	1003.28	1003.28	1003.39	1003.48	1003.47	1003.48	1003.48	1003.49	1003.49	1003.48	1003.47	1003.59	1003.45
	22	1003.70	1003.69	1003.70	1003.81	1003.89	1003.81	1003.83	1004.01	1004.22	1004.33	1004.33	1004.33	1003.97
	23	1004.33	1004.33	1004.33	1004.36	1004.41	1004.46	1004.52	1004.54	1004.54	1004.54	1004.54	1004.54	1004.45

S.V.I.R.CO. Observatory - Pressure in hectoPascal – April 2021

day	hh	00_05	05_10	10_15	15_20	20_25	25_30	30_35	35_40	40_45	45_50	50_55	55_60	average
7	0	1004.54	1004.54	1004.53	1004.54	1004.54	1004.54	1004.53	1004.54	1004.54	1004.54	1004.54	1004.54	1004.54
	1	1004.54	1004.54	1004.54	1004.54	1004.54	1004.54	1004.54	1004.54	1004.54	1004.54	1001.65	1001.74	1004.94
	2	1005.17	1005.17	1005.17	1005.17	1005.16	1005.27	1005.37	1005.37	1005.37	1005.37	1005.37	1005.38	1005.48
	3	1005.58	1005.58	1005.69	1005.80	1005.90	1006.00	1006.01	1006.01	1006.12	1006.22	1006.22	1006.33	1005.95
	4	1006.44	1006.44	1006.54	1006.65	1006.76	1006.89	1006.99	1007.06	1007.06	1007.07	1007.18	1007.38	1006.87
	5	1007.49	1007.49	1007.54	1007.64	1007.69	1007.70	1007.81	1007.91	1007.91	1007.91	1007.91	1007.91	1007.74
	6	1007.94	1007.99	1008.06	1008.12	1008.12	1008.23	1006.33	1006.41	1008.48	1008.61	1008.74	1008.74	1007.98
	7	1008.75	1008.75	1008.71	1008.70	1008.85	1008.96	1008.96	1008.96	1008.96	1009.07	1009.17	1009.17	1008.92
	8	1009.16	1009.27	1009.38	1009.38	1009.41	1009.52	1009.59	1009.59	1009.60	1009.67	1009.77	1009.80	1009.51
	9	1009.80	1009.82	1009.85	1009.85	1009.92	1010.01	1010.01	1010.00	1010.01	1010.12	1010.23	1010.22	1009.99
	10	1010.22	1010.23	1010.23	1010.22	1010.22	1010.23	1010.23	1010.22	1010.22	1010.13	1010.03	1010.02	1010.18
	11	1010.01	1010.01	1010.01	1010.01	1010.02	1010.02	1010.01	1010.02	1010.02	1010.01	1010.01	1010.01	1010.01
	12	1009.56	1009.66	1010.22	1010.22	1010.23	1010.23	1010.33	1010.43	1010.43	1010.54	1010.65	1010.65	1010.26
	13	1010.75	1010.85	1010.85	1010.85	1010.95	1011.05	1011.05	1011.06	1011.06	1011.06	1011.06	1011.07	1010.97
	14	1011.15	1011.22	1011.23	1011.23	1011.24	1011.25	1011.26	1011.28	1011.27	1011.38	1011.48	1011.49	1011.29
	15	1011.54	1011.64	1011.69	1011.69	1011.80	1011.90	1011.97	1012.06	1012.10	1012.22	1012.35	1012.45	1011.95
	16	1012.57	1012.67	1012.64	1012.75	1012.96	1012.95	1013.06	1013.27	1013.38	1013.38	1013.43	1013.53	1013.05
	17	1013.68	1013.78	1013.90	1014.11	1014.21	1014.32	1014.53	1014.64	1014.83	1015.14	1015.26	1015.36	1014.48
	18	1015.57	1015.74	1015.81	1015.95	1016.20	1016.30	1016.41	1016.62	1016.83	1016.93	1017.04	1017.25	1016.38
	19	1017.35	1017.45	1017.63	1017.75	1017.88	1018.08	1018.18	1018.29	1018.39	1018.50	1018.62	1018.64	1018.06
	20	1018.73	1018.81	1018.92	1019.02	1019.02	1019.03	1019.13	1019.22	1019.23	1019.34	1019.51	1019.61	1019.13
	21	1019.75	1019.86	1019.92	1020.03	1020.17	1020.38	1020.56	1020.66	1020.69	1020.77	1020.88	1020.90	1020.38
	22	1020.98	1021.08	1021.11	1021.22	1021.32	1021.38	1021.48	1021.53	1021.53	1021.53	1021.59	1021.70	1021.37
	23	1021.74	1021.77	1021.79	1021.81	1021.86	1021.92	1021.95	1021.95	1022.06	1022.25	1022.35	1022.36	1021.98
8	0	1022.36	1022.36	1022.36	1022.36	1022.36	1022.36	1022.41	1022.46	1022.53	1022.58	1022.66	1022.77	1022.47
	1	1022.89	1022.96	1023.00	1023.12	1023.17	1023.19	1023.20	1023.30	1023.40	1023.41	1023.41	1023.42	1023.20
	2	1023.42	1023.41	1023.41	1023.46	1023.56	1023.61	1023.69	1023.79	1023.82	1023.82	1023.82	1023.89	1023.64
	3	1023.97	1024.01	1024.03	1024.03	1024.07	1024.18	1024.24	1024.24	1024.29	1024.36	1024.39	1024.42	1024.19
	4	1024.45	1024.46	1024.57	1024.66	1024.65	1024.65	1024.65	1024.75	1024.85	1024.86	1024.97	1025.08	1024.71
	5	1025.08	1025.07	1025.10	1025.20	1025.28	1025.28	1025.28	1025.39	1025.49	1025.48	1025.51	1025.53	1025.31
	6	1025.53	1025.54	1025.55	1025.55	1025.54	1025.62	1025.70	1025.70	1025.70	1025.70	1025.71	1025.79	1025.63
	7	1025.89	1025.91	1025.91	1025.95	1025.99	1025.99	1026.00	1026.00	1026.00	1026.01	1026.01	1026.06	1025.98
	8	1026.12	1026.12	1026.12	1026.12	1026.18	1026.28	1026.33	1026.33	1026.33	1026.33	1026.33	1026.33	1026.24
	9	1026.33	1026.33	1026.33	1026.33	1026.33	1026.33	1026.33	1026.33	1026.33	1026.33	1026.33	1026.33	1026.33
	10	1026.23	1026.12	1026.12	1026.12	1026.12	1026.12	1026.11	1026.12	1026.12	1026.12	1026.12	1026.12	1026.13
	11	1026.12	1026.12	1026.12	1026.12	1026.12	1026.11	1026.12	1026.12	1026.12	1026.12	1026.04	1025.99	1026.10
	12	1025.96	1025.91	1025.91	1026.01	1026.12	1026.16	1026.23	1026.23	1026.24	1026.25	1026.24	1026.24	1026.12
	13	1026.18	1026.12	1026.11	1026.11	1026.11	1026.11	1026.11	1026.11	1026.12	1026.12	1026.11	1026.11	1026.12
	14	1026.11	1026.07	1026.03	1026.01	1025.95	1025.91	1025.90	1025.90	1025.90	1025.90	1025.90	1025.89	1025.95
	15	1025.88	1025.87	1025.87	1025.86	1025.86	1025.86	1025.86	1025.86	1025.88	1025.90	1025.90	1025.90	1025.87
	16	1025.90	1025.91	1025.93	1026.03	1026.11	1026.12	1026.12	1026.12	1026.11	1026.12	1026.12	1026.12	1026.06
	17	1026.12	1026.22	1026.33	1026.33	1026.32	1026.32	1026.43	1026.53	1026.53	1026.53	1026.53	1026.53	1026.39
	18	1026.53	1026.53	1026.53	1026.53	1026.64	1026.74	1026.85	1026.95	1026.95	1027.04	1027.14	1027.16	1026.80
	19	1027.16	1027.16	1027.24	1027.33	1027.35	1027.37	1027.37	1027.37	1027.37	1027.37	1027.45	1027.55	1027.34
	20	1027.57	1027.58	1027.58	1027.58	1027.58	1027.58	1027.58	1027.58	1027.58	1027.58	1027.58	1027.58	1027.58
	21	1027.58	1027.58	1027.58	1027.58	1027.58	1027.58	1027.58	1027.58	1027.58	1027.58	1027.58	1027.58	1027.58
	22	1027.58	1027.58	1027.65	1027.76	1027.79	1027.79	1027.79	1027.79	1027.79	1027.79	1027.79	1027.79	1027.74
	23	1027.79	1027.81	1027.83	1027.84	1027.85	1027.85	1027.85	1027.87	1027.88	1027.86	1027.84	1027.82	1027.84

S.V.I.R.CO. Observatory - Pressure in hectoPascal – April 2021

day	hh	00_05	05_10	10_15	15_20	20_25	25_30	30_35	35_40	40_45	45_50	50_55	55_60	average
9	0	1027.78	1027.79	1027.79	1027.78	1027.77	1027.77	1027.77	1027.77	1027.78	1027.79	1027.79	1027.79	1027.78
	1	1027.79	1027.79	1027.79	1027.79	1027.79	1027.79	1027.78	1027.76	1027.74	1027.73	1027.73	1027.72	1027.76
	2	1027.73	1027.73	1027.73	1027.73	1027.73	1027.73	1027.73	1027.73	1027.73	1027.72	1027.72	1027.72	1027.73
	3	1027.73	1027.73	1027.73	1027.73	1027.73	1027.73	1027.73	1027.73	1027.73	1027.74	1027.74	1027.74	1027.73
	4	1027.74	1027.74	1027.73	1027.73	1027.73	1027.73	1027.73	1027.77	1027.80	1027.82	1027.89	1027.97	1027.78
	5	1028.00	1028.00	1028.10	1028.20	1028.21	1028.21	1028.21	1028.24	1028.34	1028.42	1028.42	1028.42	1028.23
	6	1028.42	1028.42	1028.42	1028.49	1028.56	1028.56	1028.56	1028.60	1028.63	1028.63	1028.63	1028.71	1028.55
	7	1028.79	1028.79	1028.79	1028.79	1028.79	1028.79	1028.79	1028.79	1028.81	1028.83	1028.83	1028.84	1028.80
	8	1028.84	1028.84	1028.83	1028.84	1028.84	1028.84	1028.83	1028.83	1028.83	1028.83	1028.83	1028.84	1028.83
	9	1028.84	1028.83	1028.74	1028.64	1028.62	1028.63	1028.63	1028.63	1028.63	1028.62	1028.59	1028.55	1028.66
	10	1028.48	1028.42	1028.42	1028.41	1028.39	1028.33	1028.26	1028.21	1028.21	1028.16	1028.10	1028.05	1028.28
	11	1028.00	1028.00	1028.00	1028.00	1028.00	1028.00	1028.00	1028.00	1028.00	1027.98	1027.96	1027.87	1027.98
	12	1027.79	1027.79	1027.76	1027.66	1027.58	1027.58	1027.57	1027.56	1027.47	1027.37	1027.37	1027.27	1027.56
	13	1027.17	1027.16	1027.13	1027.03	1026.95	1026.96	1026.96	1026.95	1026.95	1026.93	1026.82	1026.74	1026.98
	14	1026.75	1026.75	1026.64	1026.53	1026.54	1026.54	1026.50	1026.48	1026.40	1026.32	1026.32	1026.33	1026.51
	15	1026.33	1026.33	1026.33	1026.33	1026.33	1026.32	1026.29	1026.26	1026.19	1026.02	1025.91	1025.91	1026.21
	16	1025.92	1025.93	1026.03	1026.12	1026.12	1026.11	1026.12	1026.12	1026.12	1026.11	1026.11	1026.12	1026.07
	17	1026.12	1026.11	1026.12	1026.12	1026.12	1026.12	1026.12	1026.12	1026.12	1026.12	1026.12	1026.11	1026.12
	18	1026.11	1026.11	1026.11	1026.11	1026.11	1026.11	1026.11	1026.18	1026.26	1026.26	1026.26	1026.30	1026.17
	19	1026.33	1026.32	1026.32	1026.32	1026.33	1026.33	1026.32	1026.41	1026.49	1026.51	1026.53	1026.53	1026.39
	20	1026.53	1026.53	1026.53	1026.53	1026.53	1026.53	1026.52	1026.50	1026.47	1026.45	1026.44	1026.38	1026.49
	21	1026.29	1026.18	1026.11	1026.11	1026.11	1026.11	1026.12	1026.12	1026.11	1026.11	1026.10	1026.05	1026.13
	22	1025.99	1025.95	1025.95	1025.98	1026.00	1026.00	1025.99	1026.00	1026.06	1026.12	1026.12	1026.12	1026.02
	23	1026.11	1026.11	1026.11	1026.11	1026.11	1026.11	1026.12	1026.12	1026.11	1026.11	1026.01	1025.90	1026.08
10	0	1025.87	1025.86	1025.85	1025.77	1025.69	1025.68	1025.62	1025.52	1025.49	1025.49	1025.38	1025.24	1025.61
	1	1025.13	1025.06	1025.06	1024.96	1024.86	1024.85	1024.85	1024.85	1024.85	1024.75	1024.64	1024.54	1024.87
	2	1024.44	1024.44	1024.44	1024.33	1024.23	1024.23	1024.23	1024.23	1024.22	1024.11	1024.02	1024.02	1024.24
	3	1023.92	1023.82	1023.81	1023.70	1023.60	1023.61	1023.61	1023.60	1023.60	1023.60	1023.60	1023.60	1023.67
	4	1023.60	1023.60	1023.60	1023.61	1023.61	1023.66	1023.76	1023.81	1023.82	1023.82	1023.81	1023.81	1023.71
	5	1023.81	1023.82	1023.82	1023.89	1023.95	1023.97	1024.00	1024.00	1024.00	1024.01	1024.02	1024.02	1023.94
	6	1024.02	1024.02	1024.02	1024.02	1024.03	1024.03	1024.02	1024.02	1024.02	1024.03	1024.03	1024.02	1024.02
	7	1024.02	1024.02	1024.02	1024.03	1024.05	1024.07	1024.06	1024.06	1024.07	1024.16	1024.23	1024.23	1024.08
	8	1024.23	1024.23	1024.23	1024.23	1024.34	1024.44	1024.44	1024.44	1024.44	1024.44	1024.44	1024.44	1024.36
	9	1024.44	1024.44	1024.44	1024.44	1024.44	1024.44	1024.44	1024.44	1024.44	1024.44	1024.44	1024.43	1024.44
	10	1024.42	1024.42	1024.41	1024.40	1024.40	1024.32	1024.21	1024.10	1024.02	1024.02	1023.92	1023.79	1024.20
	11	1023.69	1023.60	1023.60	1023.60	1023.60	1023.60	1023.60	1023.60	1023.60	1023.60	1023.60	1023.49	1023.60
	12	1023.39	1023.39	1023.39	1023.39	1023.39	1023.39	1023.39	1023.39	1023.29	1023.19	1023.18	1023.18	1023.33
	13	1023.08	1022.97	1022.97	1022.87	1022.77	1022.76	1022.76	1022.66	1022.56	1022.57	1022.57	1022.57	1022.76
	14	1022.57	1022.59	1022.58	1022.56	1022.56	1022.55	1022.56	1022.55	1022.54	1022.54	1022.51	1022.42	1022.54
	15	1022.25	1022.14	1022.14	1022.14	1022.14	1022.14	1022.08	1021.97	1021.92	1021.81	1021.72	1021.71	1022.01
	16	1021.61	1021.51	1021.51	1021.51	1021.54	1021.64	1021.72	1021.72	1021.72	1021.72	1021.72	1021.72	1021.64
	17	1021.72	1021.72	1021.72	1021.72	1021.72	1021.72	1021.69	1021.66	1021.58	1021.51	1021.51	1021.51	1021.65
	18	1021.51	1021.51	1021.51	1021.55	1021.66	1021.72	1021.72	1021.72	1021.72	1021.72	1021.72	1021.72	1021.65
	19	1021.72	1021.81	1021.92	1021.94	1021.94	1021.93	1021.93	1021.93	1021.92	1021.92	1021.93	1021.93	1021.90
	20	1021.93	1021.85	1021.64	1021.51	1021.51	1021.51	1021.51	1021.51	1021.51	1021.52	1021.52	1021.51	1021.58
	21	1021.51	1021.41	1021.31	1021.20	1021.10	1021.10	1021.09	1021.09	1021.20	1021.30	1021.30	1021.30	1021.24
	22	1021.30	1021.30	1021.30	1021.30	1021.31	1021.29	1021.18	1021.10	1021.10	1020.99	1020.87	1020.77	1021.15
	23	1020.68	1020.68	1020.68	1020.68	1020.68	1020.66	1020.62	1020.54	1020.47	1020.47	1020.44	1020.34	1020.58

S.V.I.R.CO. Observatory - Pressure in hectoPascal – April 2021

day	hh	00_05	05_10	10_15	15_20	20_25	25_30	30_35	35_40	40_45	45_50	50_55	55_60	average
11	0	1020.26	1020.26	1020.25	1020.15	1020.05	1020.04	1019.94	1019.84	1019.84	1019.84	1019.74	1019.63	1019.97
	1	1019.63	1019.63	1019.63	1019.63	1019.63	1019.63	1019.63	1019.63	1019.64	1019.64	1019.63	1019.63	1019.63
	2	1019.63	1019.63	1019.63	1019.63	1019.63	1019.61	1019.58	1019.57	1019.56	1019.49	1019.41	1019.40	1019.56
	3	1019.31	1019.22	1019.21	1019.21	1019.22	1019.22	1019.22	1019.21	1019.20	1019.10	1018.86	1018.61	1019.13
	4	1018.47	1018.62	1018.90	1019.00	1019.00	1019.00	1019.01	1019.01	1019.01	1019.01	1019.01	1019.01	1018.92
	5	1019.01	1019.04	1019.14	1019.21	1019.21	1019.21	1019.21	1019.22	1019.22	1019.21	1019.22	1019.22	1019.18
	6	1019.32	1019.42	1019.42	1019.42	1019.43	1019.43	1019.44	1019.44	1019.43	1019.42	1019.42	1019.43	1019.42
	7	1019.43	1019.43	1019.43	1019.42	1019.42	1019.42	1019.53	1019.64	1019.65	1019.70	1019.73	1019.74	1019.54
	8	1019.80	1019.84	1019.85	1019.83	1019.73	1019.64	1019.64	1019.64	1019.70	1019.80	1019.85	1019.85	1019.76
	9	1019.89	1019.94	1020.00	1020.05	1020.05	1020.05	1020.05	1020.05	1020.06	1020.06	1020.05	1020.05	1020.02
	10	1020.05	1020.05	1020.05	1020.05	1020.05	1020.05	1020.05	1020.05	1020.06	1020.06	1020.05	1020.05	1020.05
	11	1020.05	1020.05	1020.05	1020.06	1020.06	1020.05	1020.11	1020.19	1020.21	1020.22	1020.24	1020.26	1020.13
	12	1020.26	1020.26	1020.26	1020.30	1020.38	1020.42	1020.45	1020.47	1020.47	1020.47	1020.37	1020.26	1020.36
	13	1020.26	1020.26	1020.26	1020.26	1020.27	1020.27	1020.26	1020.26	1020.26	1020.26	1020.26	1020.26	1020.26
	14	1020.26	1020.26	1020.24	1020.14	1020.03	1019.98	1019.96	1019.96	1019.90	1019.84	1019.84	1019.84	1020.02
	15	1019.84	1019.84	1019.84	1019.84	1019.84	1019.84	1019.84	1019.84	1019.89	1019.94	1019.95	1019.96	1019.87
	16	1020.01	1020.05	1020.05	1020.05	1020.05	1020.05	1020.05	1020.04	1020.02	1019.92	1019.84	1019.84	1020.00
	17	1019.85	1019.85	1019.84	1019.84	1019.92	1020.00	1020.00	1020.00	1020.03	1020.05	1020.05	1020.05	1019.95
	18	1020.05	1020.05	1020.05	1020.05	1020.05	1020.05	1020.05	1020.13	1020.24	1020.26	1020.34	1020.45	1020.15
	19	1020.47	1020.52	1020.58	1020.59	1020.64	1020.68	1020.69	1020.71	1020.74	1020.74	1020.74	1020.77	1020.65
	20	1020.79	1020.79	1020.84	1020.89	1020.89	1020.89	1020.89	1020.89	1020.89	1020.89	1020.89	1020.89	1020.87
	21	1020.89	1020.89	1020.89	1020.89	1020.89	1020.89	1020.89	1020.89	1020.89	1020.78	1020.66	1020.64	1020.84
	22	1020.54	1020.44	1020.35	1020.16	1020.05	1020.05	1020.05	1020.05	1020.05	1020.05	1020.05	1019.95	1020.15
	23	1019.84	1019.84	1019.85	1019.83	1019.79	1019.77	1019.77	1019.70	1019.63	1019.63	1019.64	1019.64	1019.74
12	0	1019.42	1019.42	1019.42	1019.42	1019.42	1019.42	1019.42	1019.42	1019.42	1019.42	1019.42	1019.46	1019.42
	1	1019.49	1019.45	1019.42	1019.42	1019.43	1019.43	1019.42	1019.42	1019.42	1019.42	1019.42	1019.43	1019.43
	2	1019.43	1019.43	1019.43	1019.43	1019.40	1019.38	1019.40	1019.40	1019.41	1019.42	1019.42	1019.43	1019.41
	3	1019.43	1019.43	1019.43	1019.42	1019.36	1019.27	1019.25	1019.26	1019.24	1019.22	1019.21	1019.22	1019.31
	4	1019.22	1019.22	1019.18	1019.07	1019.01	1019.01	1019.01	1019.01	1019.01	1019.01	1019.01	1019.01	1019.06
	5	1019.00	1019.00	1019.11	1019.22	1019.22	1019.22	1019.19	1019.15	1019.14	1019.13	1019.07	1018.98	1019.12
	6	1018.87	1018.80	1018.80	1018.80	1018.80	1018.69	1018.59	1018.46	1018.25	1018.12	1018.05	1018.00	1018.52
	7	1017.96	1017.97	1018.01	1018.04	1018.11	1018.17	1018.19	1018.24	1018.33	1018.38	1018.38	1018.38	1018.18
	8	1018.38	1018.38	1018.49	1018.59	1018.63	1018.69	1018.72	1018.72	1018.72	1018.72	1018.72	1018.72	1018.62
	9	1018.72	1018.72	1018.72	1018.72	1018.72	1018.72	1018.72	1018.72	1018.72	1018.66	1018.59	1018.59	1018.69
	10	1018.59	1018.59	1018.59	1018.59	1018.59	1018.59	1018.59	1018.58	1018.58	1018.59	1018.59	1018.49	1018.58
	11	1018.38	1018.38	1018.38	1018.38	1018.38	1018.38	1018.38	1018.38	1018.38	1018.28	1018.17	1018.17	1018.34
	12	1018.17	1018.17	1018.17	1018.17	1018.13	1018.06	1018.04	1018.04	1018.03	1018.00	1017.96	1017.96	1018.07
	13	1017.96	1017.96	1017.96	1017.87	1017.76	1017.75	1017.73	1017.62	1017.54	1017.44	1017.33	1017.23	1017.68
	14	1017.12	1017.03	1016.93	1016.91	1016.91	1016.91	1016.81	1016.71	1016.71	1016.71	1016.69	1016.67	1016.84
	15	1016.65	1016.61	1016.55	1016.50	1016.50	1016.60	1016.96	1017.28	1017.31	1017.20	1017.12	1017.12	1016.87
	16	1017.12	1017.12	1017.12	1017.13	1017.13	1016.92	1016.61	1016.50	1016.50	1016.50	1016.50	1016.50	1016.80
	17	1016.50	1016.50	1016.50	1016.50	1016.50	1016.50	1016.50	1016.50	1016.39	1016.29	1016.29	1016.29	1016.44
	18	1016.29	1016.29	1016.28	1016.29	1016.29	1016.29	1016.28	1016.28	1016.28	1016.29	1016.29	1016.29	1016.28
	19	1016.29	1016.29	1016.28	1016.28	1016.28	1016.39	1016.49	1016.49	1016.49	1016.49	1016.49	1016.49	1016.39
	20	1016.60	1016.81	1016.91	1016.91	1016.91	1016.81	1016.71	1016.81	1016.91	1016.91	1016.91	1016.91	1016.84
	21	1016.91	1016.91	1016.92	1016.92	1016.91	1016.91	1016.92	1016.92	1016.91	1016.91	1016.91	1016.91	1016.91
	22	1016.91	1016.91	1016.91	1016.91	1016.91	1016.91	1016.91	1016.91	1016.91	1016.91	1016.91	1016.91	1016.91
	23	1016.88	1016.82	1016.82	1016.86	1016.88	1016.87	1016.84	1016.81	1016.75	1016.70	1016.68	1016.57	1016.79

S.V.I.R.CO. Observatory - Pressure in hectoPascal – April 2021

day	hh	00_05	05_10	10_15	15_20	20_25	25_30	30_35	35_40	40_45	45_50	50_55	55_60	average
13	0	1016.49	1016.49	1016.49	1016.50	1016.39	1016.28	1016.18	1016.01	1015.91	1015.87	1015.86	1015.85	1016.18
	1	1015.75	1015.66	1015.65	1015.65	1015.66	1015.66	1015.55	1015.45	1015.45	1015.45	1015.35	1015.24	1015.54
	2	1015.24	1015.14	1015.03	1015.03	1015.01	1014.90	1014.82	1014.81	1014.81	1014.81	1014.71	1014.61	1014.91
	3	1014.61	1014.61	1014.50	1014.40	1014.40	1014.40	1014.40	1014.29	1014.08	1013.98	1013.98	1013.98	1014.30
	4	1013.98	1013.98	1013.98	1014.09	1014.19	1014.19	1014.19	1014.19	1014.19	1014.19	1014.19	1014.20	1014.13
	5	1014.20	1014.25	1014.30	1014.35	1014.40	1014.41	1014.41	1014.51	1014.61	1014.61	1014.72	1014.82	1014.46
	6	1014.82	1014.90	1015.01	1015.03	1015.03	1015.03	1015.03	1015.14	1015.24	1015.24	1015.35	1015.45	1015.10
	7	1015.45	1015.45	1015.45	1015.56	1015.66	1015.66	1015.72	1015.83	1015.86	1015.86	1015.97	1016.08	1015.71
	8	1016.08	1016.08	1016.08	1016.07	1016.18	1016.28	1016.39	1016.49	1016.50	1016.50	1016.50	1016.50	1016.30
	9	1016.49	1016.49	1016.49	1016.58	1016.66	1016.66	1016.66	1016.66	1016.66	1016.66	1016.66	1016.66	1016.61
	10	1016.66	1016.67	1016.68	1016.67	1016.66	1016.66	1016.66	1016.66	1016.65	1016.66	1016.66	1016.57	1016.65
	11	1016.49	1016.49	1016.50	1016.50	1016.52	1016.56	1016.56	1016.59	1016.63	1016.64	1016.63	1016.56	1016.55
	12	1016.50	1016.49	1016.49	1016.49	1016.49	1016.50	1016.50	1016.50	1016.50	1016.49	1016.50	1016.50	1016.49
	13	1016.50	1016.50	1016.50	1016.49	1016.39	1016.28	1016.28	1016.28	1016.28	1016.29	1016.29	1016.28	1016.36
	14	1016.28	1016.28	1016.29	1016.36	1016.45	1016.49	1016.50	1016.49	1016.49	1016.49	1016.49	1016.50	1016.42
	15	1016.50	1016.49	1016.50	1016.50	1016.50	1016.49	1016.49	1016.49	1016.49	1016.49	1016.49	1016.48	1016.49
	16	1016.46	1016.45	1016.46	1016.47	1016.60	1016.71	1016.70	1016.74	1016.78	1016.77	1016.76	1016.76	1016.64
	17	1016.75	1016.74	1016.75	1016.76	1016.75	1016.82	1016.91	1016.91	1017.02	1017.12	1017.12	1017.12	1016.90
	18	1017.12	1017.12	1017.23	1017.33	1017.33	1017.43	1017.54	1017.54	1017.62	1017.73	1017.75	1017.79	1017.46
	19	1017.84	1017.85	1017.91	1017.96	1017.96	1018.06	1018.17	1018.25	1018.33	1018.33	1018.31	1018.31	1018.10
	20	1018.34	1018.37	1018.37	1018.47	1018.58	1018.58	1018.59	1018.66	1018.72	1018.72	1018.76	1018.79	1018.58
	21	1018.85	1018.90	1018.95	1019.08	1019.17	1019.18	1019.18	1019.18	1019.20	1019.21	1019.21	1019.21	1019.11
	22	1019.22	1019.22	1019.21	1019.21	1019.21	1019.21	1019.21	1019.21	1019.21	1019.21	1019.21	1019.21	1019.21
	23	1019.21	1019.21	1019.21	1019.26	1019.36	1019.43	1019.43	1019.43	1019.42	1019.42	1019.39	1019.28	1019.34
14	0	1019.21	1019.21	1019.21	1019.21	1019.21	1019.22	1019.22	1019.21	1019.22	1019.22	1019.21	1019.21	1019.21
	1	1019.21	1019.21	1019.21	1019.21	1019.21	1019.21	1019.22	1019.22	1019.22	1019.22	1019.11	1019.01	1019.19
	2	1019.01	1019.00	1018.90	1018.80	1018.80	1018.80	1018.80	1018.80	1018.80	1018.80	1018.80	1018.80	1018.84
	3	1018.80	1018.80	1018.80	1018.79	1018.80	1018.80	1018.80	1018.80	1018.80	1018.80	1018.80	1018.80	1018.80
	4	1018.80	1018.80	1018.80	1018.85	1018.90	1018.95	1019.01	1019.01	1019.01	1019.05	1019.15	1019.22	1018.96
	5	1019.22	1019.22	1019.22	1019.22	1019.22	1019.22	1019.22	1019.22	1019.33	1019.43	1019.43	1019.43	1019.28
	6	1019.43	1019.43	1019.43	1019.43	1019.47	1019.54	1019.59	1019.59	1019.61	1019.64	1019.64	1019.64	1019.54
	7	1019.64	1019.64	1019.64	1019.64	1019.63	1019.63	1019.63	1019.63	1019.66	1019.72	1019.78	1019.83	1019.67
	8	1019.83	1019.83	1019.84	1019.85	1019.85	1019.85	1019.85	1019.85	1019.85	1019.85	1019.85	1019.85	1019.84
	9	1019.85	1019.85	1019.84	1019.85	1019.80	1019.73	1019.68	1019.64	1019.64	1019.64	1019.63	1019.63	1019.73
	10	1019.64	1019.54	1019.43	1019.43	1019.43	1019.40	1019.29	1019.22	1019.22	1019.11	1019.01	1019.01	1019.31
	11	1019.01	1019.01	1019.01	1019.01	1019.01	1019.01	1019.01	1019.01	1019.01	1019.01	1019.01	1019.01	1019.01
	12	1019.01	1019.01	1019.01	1019.01	1018.99	1018.98	1018.97	1018.98	1018.98	1018.97	1018.96	1018.95	1018.98
	13	1018.88	1018.80	1018.80	1018.80	1018.79	1018.79	1018.69	1018.59	1018.59	1018.59	1018.59	1018.59	1018.71
	14	1018.59	1018.58	1018.57	1018.56	1018.56	1018.55	1018.54	1018.52	1018.53	1018.53	1018.52	1018.51	1018.54
	15	1018.52	1018.52	1018.51	1018.50	1018.49	1018.43	1018.38	1018.38	1018.38	1018.38	1018.37	1018.38	1018.43
	16	1018.38	1018.30	1018.20	1018.17	1018.16	1018.16	1018.17	1018.17	1018.16	1018.16	1018.17	1018.17	1018.20
	17	1018.28	1018.38	1018.38	1018.43	1018.51	1018.54	1018.56	1018.58	1018.59	1018.59	1018.58	1018.59	1018.50
	18	1018.59	1018.59	1018.59	1018.58	1018.59	1018.64	1018.74	1018.79	1018.80	1018.81	1018.80	1018.80	1018.69
	19	1018.83	1018.93	1019.00	1019.01	1019.11	1019.21	1019.21	1019.21	1019.21	1019.21	1019.21	1019.21	1019.11
	20	1019.21	1019.21	1019.21	1019.21	1019.21	1019.22	1019.23	1019.32	1019.43	1019.43	1019.42	1019.42	1019.29
	21	1019.42	1019.42	1019.42	1019.42	1019.42	1019.42	1019.42	1019.42	1019.42	1019.42	1019.42	1019.42	1019.42
	22	1019.42	1019.42	1019.42	1019.42	1019.42	1019.42	1019.42	1019.42	1019.42	1019.40	1019.38	1019.38	1019.41
	23	1019.37	1019.36	1019.36	1019.36	1019.36	1019.36	1019.36	1019.36	1019.36	1019.36	1019.35	1019.35	1019.36

S.V.I.R.CO. Observatory - Pressure in hectoPascal – April 2021

day	hh	00_05	05_10	10_15	15_20	20_25	25_30	30_35	35_40	40_45	45_50	50_55	55_60	average
15	0	1019.35	1019.35	1019.34	1019.34	1019.27	1019.21	1019.21	1019.21	1019.21	1019.21	1019.21	1019.17	1019.25
	1	1019.12	1019.11	1019.11	1019.11	1019.11	1019.06	1019.00	1019.00	1019.00	1019.01	1019.01	1019.00	1019.05
	2	1018.98	1018.88	1018.79	1018.79	1018.80	1018.80	1018.79	1018.79	1018.79	1018.78	1018.77	1018.77	1018.81
	3	1018.77	1018.77	1018.78	1018.79	1018.79	1018.78	1018.77	1018.76	1018.76	1018.75	1018.74	1018.74	1018.76
	4	1018.72	1018.65	1018.59	1018.58	1018.58	1018.58	1018.59	1018.59	1018.59	1018.59	1018.59	1018.59	1018.60
	5	1018.62	1018.66	1018.71	1018.75	1018.75	1018.75	1018.75	1018.76	1018.78	1018.80	1018.80	1018.80	1018.74
	6	1018.89	1018.99	1019.01	1019.01	1019.01	1019.01	1019.01	1019.01	1019.01	1019.01	1019.01	1019.01	1019.00
	7	1019.01	1019.01	1019.01	1019.01	1019.01	1019.01	1019.01	1019.01	1019.01	1019.01	1019.01	1019.01	1019.01
	8	1019.01	1019.01	1019.01	1019.01	1019.01	1019.01	1019.01	1019.01	1019.01	1019.01	1019.01	1019.01	1019.01
	9	1019.01	1019.01	1019.01	1019.01	1019.01	1019.01	1019.01	1019.01	1019.01	1019.01	1019.01	1019.01	1019.01
	10	1019.01	1019.01	1019.01	1018.98	1018.88	1018.80	1018.80	1018.79	1018.78	1018.77	1018.77	1018.76	1018.86
	11	1018.68	1018.59	1018.59	1018.55	1018.44	1018.38	1018.38	1018.34	1018.29	1018.23	1018.17	1018.12	1018.40
	12	1018.09	1018.11	1018.11	1018.03	1017.96	1017.96	1017.96	1017.96	1017.96	1017.96	1017.94	1017.92	1017.99
	13	1017.89	1017.81	1017.75	1017.75	1017.75	1017.73	1017.63	1017.54	1017.54	1017.54	1017.54	1017.55	1017.67
	14	1017.55	1017.54	1017.54	1017.54	1017.54	1017.55	1017.55	1017.55	1017.55	1017.54	1017.54	1017.55	1017.54
	15	1017.55	1017.55	1017.55	1017.54	1017.54	1017.54	1017.54	1017.53	1017.54	1017.54	1017.54	1017.54	1017.54
	16	1017.54	1017.54	1017.53	1017.53	1017.53	1017.53	1017.54	1017.54	1017.54	1017.54	1017.54	1017.61	1017.54
	17	1017.69	1017.69	1017.68	1017.68	1017.69	1017.69	1017.69	1017.67	1017.67	1017.67	1017.67	1017.67	1017.68
	18	1017.66	1017.67	1017.71	1017.75	1017.75	1017.75	1017.75	1017.77	1017.77	1017.84	1017.93	1017.96	1017.77
	19	1017.96	1017.96	1017.96	1017.96	1018.07	1018.17	1018.17	1018.17	1018.17	1018.17	1018.17	1018.17	1018.09
	20	1018.17	1018.14	1018.10	1018.09	1018.08	1018.01	1017.96	1017.91	1017.84	1017.81	1017.80	1017.80	1017.97
	21	1017.78	1017.75	1017.75	1017.75	1017.75	1017.75	1017.74	1017.72	1017.63	1017.55	1017.55	1017.55	1017.69
	22	1017.55	1017.54	1017.54	1017.54	1017.55	1017.55	1017.54	1017.55	1017.44	1017.33	1017.33	1017.34	1017.48
	23	1017.34	1017.28	1017.18	1017.13	1017.12	1017.12	1017.12	1017.12	1017.12	1017.09	1016.98	1016.91	1017.12
16	0	1016.91	1016.90	1016.80	1016.71	1016.71	1016.71	1016.70	1016.59	1016.50	1016.50	1016.50	1016.50	1016.66
	1	1016.50	1016.49	1016.50	1016.39	1016.29	1016.29	1016.29	1016.29	1016.26	1016.24	1016.24	1016.20	1016.33
	2	1016.12	1016.08	1016.08	1016.07	1016.08	1016.08	1016.08	1016.08	1016.08	1016.05	1015.95	1015.87	1016.05
	3	1015.87	1015.87	1015.87	1015.87	1015.87	1015.87	1015.87	1015.87	1015.81	1015.75	1015.75	1015.75	1015.83
	4	1015.73	1015.71	1015.73	1015.74	1015.74	1015.74	1015.74	1015.73	1015.80	1015.87	1015.87	1015.87	1015.77
	5	1015.87	1015.87	1015.87	1015.87	1015.87	1015.98	1016.08	1016.08	1016.08	1016.08	1016.08	1016.08	1015.98
	6	1016.08	1016.08	1016.03	1015.97	1015.99	1016.02	1016.02	1015.95	1015.87	1015.87	1015.87	1015.87	1015.97
	7	1015.85	1015.82	1015.81	1015.79	1015.79	1015.79	1015.80	1015.80	1015.77	1015.71	1015.66	1015.66	1015.77
	8	1015.66	1015.66	1015.66	1015.66	1015.66	1015.66	1015.66	1015.66	1015.66	1015.66	1015.66	1015.56	1015.65
	9	1015.45	1015.45	1015.45	1015.45	1015.46	1015.46	1015.45	1015.44	1015.39	1015.30	1015.25	1015.25	1015.40
	10	1015.25	1015.24	1015.13	1015.03	1015.03	1014.93	1014.82	1014.82	1014.73	1014.62	1014.51	1014.41	1014.87
	11	1014.41	1014.40	1014.40	1014.30	1014.19	1014.20	1014.20	1014.19	1014.19	1014.20	1014.20	1014.09	1014.25
	12	1013.99	1013.99	1013.99	1013.99	1013.88	1013.77	1013.77	1013.67	1013.57	1013.57	1013.49	1013.38	1013.75
	13	1013.36	1013.25	1013.15	1013.15	1013.15	1013.15	1013.15	1013.15	1013.15	1013.15	1013.15	1013.04	1013.16
	14	1012.94	1012.94	1012.94	1012.94	1012.94	1012.94	1012.93	1012.93	1012.93	1013.04	1013.15	1013.15	1012.98
	15	1013.15	1013.15	1013.15	1013.15	1013.15	1013.15	1013.15	1013.15	1013.15	1013.15	1013.15	1013.14	1013.15
	16	1013.14	1013.25	1013.36	1013.36	1013.36	1013.36	1013.36	1013.36	1013.35	1013.36	1013.36	1013.36	1013.33
	17	1013.36	1013.36	1013.36	1013.36	1013.38	1013.48	1013.56	1013.56	1013.57	1013.57	1013.67	1013.77	1013.50
	18	1013.77	1013.82	1013.93	1013.98	1013.98	1014.07	1014.17	1014.19	1014.20	1014.20	1014.30	1014.40	1014.08
	19	1014.40	1014.40	1014.40	1014.40	1014.40	1014.40	1014.41	1014.41	1014.40	1014.40	1014.40	1014.41	1014.40
	20	1014.41	1014.40	1014.40	1014.40	1014.40	1014.40	1014.48	1014.58	1014.61	1014.61	1014.51	1014.40	1014.46
	21	1014.40	1014.40	1014.40	1014.30	1014.19	1014.19	1014.20	1014.16	1014.05	1013.99	1013.99	1013.98	1014.19
	22	1013.98	1013.98	1013.98	1013.93	1013.82	1013.77	1013.78	1013.78	1013.78	1013.77	1013.77	1013.77	1013.84
	23	1013.67	1013.56	1013.56	1013.46	1013.35	1013.25	1013.15	1013.15	1013.15	1013.15	1013.04	1012.94	1013.28

S.V.I.R.CO. Observatory - Pressure in hectoPascal – April 2021

day	hh	00_05	05_10	10_15	15_20	20_25	25_30	30_35	35_40	40_45	45_50	50_55	55_60	average
17	0	1012.93	1012.81	1012.71	1012.72	1012.69	1012.58	1012.41	1012.31	1012.30	1012.30	1012.19	1012.10	1012.48
	1	1012.05	1011.94	1011.88	1011.85	1011.79	1011.72	1011.68	1011.68	1011.68	1011.68	1011.67	1011.67	1011.77
	2	1011.67	1011.67	1011.63	1011.57	1011.55	1011.51	1011.47	1011.47	1011.47	1011.47	1011.46	1011.46	1011.53
	3	1011.46	1011.46	1011.46	1011.46	1011.46	1011.46	1011.46	1011.46	1011.45	1011.45	1011.45	1011.45	1011.46
	4	1011.36	1011.26	1011.26	1011.26	1011.26	1011.26	1011.26	1011.27	1011.27	1011.26	1011.26	1011.26	1011.27
	5	1011.26	1011.26	1011.27	1011.27	1011.26	1011.26	1011.26	1011.26	1011.26	1011.36	1011.45	1011.44	1011.30
	6	1011.44	1011.45	1011.45	1011.45	1011.44	1011.44	1011.43	1011.44	1011.44	1011.44	1011.44	1011.44	1011.44
	7	1011.44	1011.43	1011.44	1011.45	1011.45	1011.45	1011.44	1011.44	1011.44	1011.44	1011.45	1011.47	1011.44
	8	1011.47	1011.47	1011.47	1011.47	1011.48	1011.48	1011.49	1011.49	1011.49	1011.48	1011.48	1011.48	1011.48
	9	1011.48	1011.48	1011.49	1011.48	1011.47	1011.47	1011.47	1011.47	1011.47	1011.47	1011.47	1011.47	1011.47
	10	1011.47	1011.47	1011.37	1011.26	1011.27	1011.27	1011.25	1011.14	1011.05	1011.05	1011.01	1010.91	1011.21
	11	1010.84	1010.84	1010.85	1010.85	1010.84	1010.84	1010.74	1010.63	1010.63	1010.63	1010.63	1010.63	1010.74
	12	1010.63	1010.63	1010.63	1010.63	1010.63	1010.63	1010.63	1010.63	1010.63	1010.63	1010.63	1010.63	1010.63
	13	1010.63	1010.63	1010.63	1010.63	1010.63	1010.62	1010.52	1010.41	1010.42	1010.42	1010.42	1010.42	1010.53
	14	1010.39	1010.35	1010.28	1010.21	1010.21	1010.21	1010.21	1010.21	1010.21	1010.21	1010.21	1010.20	1010.24
	15	1010.21	1010.21	1010.21	1010.20	1010.21	1010.21	1010.21	1010.21	1010.21	1010.21	1010.21	1010.21	1010.21
	16	1010.21	1010.21	1010.21	1010.21	1010.22	1010.32	1010.42	1010.42	1010.42	1010.42	1010.42	1010.42	1010.32
	17	1010.42	1010.42	1010.42	1010.42	1010.42	1010.52	1010.63	1010.63	1010.63	1010.64	1010.75	1010.84	1010.56
	18	1010.92	1011.03	1011.15	1011.26	1011.26	1011.26	1011.36	1011.46	1011.47	1011.58	1011.68	1011.72	1011.34
	19	1011.82	1011.94	1012.05	1012.10	1012.10	1012.11	1012.21	1012.31	1012.31	1012.32	1012.33	1012.35	1012.16
	20	1012.36	1012.36	1012.43	1012.51	1012.52	1012.52	1012.52	1012.52	1012.53	1012.54	1012.54	1012.58	1012.49
	21	1012.64	1012.69	1012.73	1012.73	1012.73	1012.73	1012.73	1012.73	1012.73	1012.73	1012.73	1012.73	1012.72
	22	1012.73	1012.84	1012.95	1012.95	1012.94	1012.94	1012.94	1012.94	1012.94	1012.94	1012.94	1012.94	1012.91
	23	1012.94	1012.94	1012.94	1012.94	1012.94	1012.94	1012.94	1012.94	1012.94	1012.94	1012.94	1012.94	1012.94
18	0	1012.94	1012.94	1012.94	1012.84	1012.73	1012.73	1012.73	1012.73	1012.67	1012.56	1012.52	1012.52	1012.73
	1	1012.52	1012.52	1012.52	1012.52	1012.52	1012.52	1012.52	1012.52	1012.52	1012.51	1012.52	1012.52	1012.52
	2	1012.52	1012.52	1012.52	1012.52	1012.52	1012.53	1012.53	1012.52	1012.52	1012.52	1012.52	1012.52	1012.52
	3	1012.53	1012.53	1012.53	1012.52	1012.52	1012.52	1012.52	1012.52	1012.52	1012.52	1012.52	1012.52	1012.52
	4	1012.52	1012.52	1012.52	1012.52	1012.52	1012.52	1012.52	1012.52	1012.52	1012.52	1012.52	1012.52	1012.52
	5	1012.57	1012.64	1012.66	1012.70	1012.73	1012.84	1012.95	1012.95	1012.95	1012.95	1013.05	1013.15	1012.84
	6	1013.15	1013.15	1013.16	1013.16	1013.15	1013.15	1013.16	1013.16	1013.15	1013.15	1013.16	1013.16	1013.15
	7	1013.16	1013.15	1013.15	1013.15	1013.15	1013.15	1013.15	1013.15	1013.15	1013.15	1013.15	1013.15	1013.15
	8	1013.15	1013.15	1013.15	1013.15	1013.15	1013.15	1013.15	1013.16	1013.16	1013.15	1013.15	1013.15	1013.15
	9	1013.15	1013.15	1013.16	1013.26	1013.36	1013.36	1013.36	1013.36	1013.36	1013.36	1013.36	1013.36	1013.30
	10	1013.36	1013.36	1013.36	1013.36	1013.36	1013.26	1013.15	1013.15	1013.15	1013.15	1013.15	1013.15	1013.25
	11	1013.15	1013.15	1013.15	1013.15	1013.15	1013.15	1013.15	1013.15	1013.15	1013.15	1013.15	1013.15	1013.15
	12	1013.15	1013.15	1013.15	1013.15	1013.15	1013.15	1013.14	1013.14	1013.15	1013.15	1013.15	1013.15	1013.15
	13	1013.14	1013.14	1013.15	1013.15	1013.15	1013.15	1013.15	1013.15	1013.15	1012.78	1012.87	1013.35	1013.11
	14	1013.36	1013.46	1013.57	1013.57	1013.57	1013.68	1013.78	1013.77	1013.77	1013.77	1013.77	1013.88	1013.66
	15	1013.98	1013.98	1013.98	1014.03	1014.07	1014.14	1014.20	1014.30	1014.41	1014.41	1014.45	1014.55	1014.21
	16	1014.61	1014.62	1014.73	1014.82	1014.82	1014.82	1014.83	1014.85	1014.87	1014.87	1014.86	1014.86	1014.79
	17	1014.85	1014.82	1014.83	1014.83	1014.83	1014.83	1014.83	1014.83	1014.83	1014.83	1014.83	1014.83	1014.83
	18	1014.83	1014.83	1014.93	1015.03	1015.03	1015.05	1015.07	1015.07	1015.07	1015.07	1015.13	1015.21	1015.03
	19	1015.24	1015.24	1015.24	1015.24	1015.35	1015.45	1015.45	1015.45	1015.46	1015.46	1015.46	1015.46	1015.37
	20	1015.46	1015.47	1015.48	1015.47	1015.46	1015.45	1015.45	1015.45	1015.44	1015.34	1015.24	1015.24	1015.41
	21	1015.25	1015.25	1015.14	1015.04	1015.04	1015.04	1015.04	1015.00	1014.89	1014.82	1014.82	1014.83	1015.01
	22	1014.83	1014.83	1014.77	1014.71	1014.66	1014.61	1014.62	1014.62	1014.62	1014.62	1014.55	1014.45	1014.66
	23	1014.41	1014.41	1014.41	1014.41	1014.41	1014.40	1014.33	1014.24	1014.21	1014.20	1014.20	1014.20	1014.32

S.V.I.R.CO. Observatory - Pressure in hectoPascal – April 2021

day	hh	00_05	05_10	10_15	15_20	20_25	25_30	30_35	35_40	40_45	45_50	50_55	55_60	average
19	0	1013.99	1013.99	1013.89	1013.78	1013.78	1013.78	1013.78	1013.78	1013.78	1013.78	1013.79	1013.79	1013.82
	1	1013.78	1013.79	1013.79	1013.79	1013.79	1013.79	1013.78	1013.78	1013.78	1013.79	1013.79	1013.79	1013.78
	2	1013.79	1013.79	1013.79	1013.79	1013.79	1013.78	1013.78	1013.79	1013.79	1013.79	1013.79	1013.79	1013.79
	3	1013.79	1013.72	1013.61	1013.57	1013.57	1013.57	1013.57	1013.54	1013.52	1013.51	1013.49	1013.48	1013.58
	4	1013.48	1013.47	1013.46	1013.45	1013.44	1013.44	1013.44	1013.44	1013.44	1013.44	1013.45	1013.45	1013.45
	5	1013.50	1013.63	1013.69	1013.74	1013.78	1013.78	1013.88	1013.99	1013.99	1013.99	1013.99	1013.99	1013.83
	6	1013.99	1013.99	1013.99	1013.99	1013.98	1013.98	1013.99	1013.99	1013.99	1013.98	1013.99	1013.99	1013.99
	7	1013.99	1013.98	1013.98	1013.98	1013.98	1013.99	1013.99	1013.98	1013.98	1013.98	1013.98	1013.99	1013.98
	8	1014.08	1014.15	1014.14	1014.13	1014.14	1014.15	1014.18	1014.20	1014.19	1014.19	1014.19	1014.19	1014.16
	9	1014.19	1014.19	1014.19	1014.19	1014.20	1014.20	1014.09	1013.98	1013.98	1013.98	1013.98	1013.98	1014.09
	10	1013.98	1013.98	1013.98	1013.88	1013.77	1013.77	1013.77	1013.77	1013.78	1013.78	1013.77	1013.77	1013.83
	11	1013.67	1013.56	1013.56	1013.56	1013.56	1013.46	1013.36	1013.36	1013.35	1013.35	1013.46	1013.56	1013.48
	12	1013.56	1013.56	1013.56	1013.56	1013.56	1013.56	1013.67	1013.77	1013.77	1013.77	1013.88	1014.09	1013.69
	13	1014.30	1014.40	1014.40	1014.40	1014.40	1014.40	1014.40	1014.40	1014.40	1014.40	1014.40	1014.40	1014.39
	14	1014.42	1014.42	1014.41	1014.42	1014.41	1014.42	1014.44	1014.43	1014.43	1014.43	1014.44	1014.43	1014.42
	15	1014.52	1014.61	1014.61	1014.61	1014.61	1014.61	1014.61	1014.61	1014.61	1014.61	1014.61	1014.61	1014.60
	16	1014.62	1014.63	1014.62	1014.72	1014.82	1014.82	1014.82	1014.82	1014.82	1014.82	1014.82	1014.82	1014.76
	17	1014.82	1014.82	1014.82	1014.82	1014.82	1014.82	1014.82	1014.82	1014.82	1014.82	1014.82	1014.91	1014.83
	18	1015.01	1015.03	1015.03	1015.03	1015.03	1015.14	1015.25	1015.25	1015.32	1015.42	1015.45	1015.45	1015.20
	19	1015.45	1015.45	1015.45	1015.45	1015.49	1015.54	1015.57	1015.62	1015.65	1015.66	1015.66	1015.66	1015.55
	20	1015.67	1015.68	1015.69	1015.69	1015.69	1015.69	1015.69	1015.69	1015.71	1015.75	1015.75	1015.75	1015.70
	21	1015.75	1015.75	1015.76	1015.76	1015.77	1015.77	1015.77	1015.77	1015.80	1015.84	1015.87	1015.87	1015.79
	22	1015.87	1015.87	1015.87	1015.87	1015.87	1015.87	1015.87	1015.86	1015.87	1015.87	1015.87	1015.87	1015.87
	23	1015.87	1015.87	1015.87	1015.87	1015.87	1015.87	1015.87	1015.87	1015.87	1015.86	1015.81	1015.76	1015.85
20	0	1015.75	1015.75	1015.70	1015.66	1015.66	1015.66	1015.66	1015.66	1015.66	1015.65	1015.66	1015.66	1015.67
	1	1015.66	1015.66	1015.65	1015.54	1015.45	1015.45	1015.45	1015.45	1015.45	1015.45	1015.45	1015.45	1015.51
	2	1015.45	1015.45	1015.45	1015.45	1015.45	1015.45	1015.45	1015.45	1015.45	1015.45	1015.45	1015.45	1015.45
	3	1015.45	1015.45	1015.45	1015.45	1015.45	1015.45	1015.45	1015.45	1015.45	1015.45	1015.45	1015.45	1015.45
	4	1015.45	1015.45	1015.45	1015.45	1015.45	1015.45	1015.45	1015.45	1015.45	1015.45	1015.56	1015.67	1015.48
	5	1015.66	1015.66	1015.66	1015.65	1015.76	1015.87	1015.87	1015.87	1015.93	1016.04	1016.08	1016.08	1015.84
	6	1016.08	1016.11	1016.21	1016.27	1016.27	1016.28	1016.28	1016.28	1016.29	1016.29	1016.29	1016.29	1016.24
	7	1016.29	1016.29	1016.29	1016.28	1016.29	1016.29	1016.28	1016.28	1016.29	1016.29	1016.40	1016.50	1016.31
	8	1016.50	1016.50	1016.49	1016.49	1016.49	1016.49	1016.50	1016.50	1016.50	1016.50	1016.50	1016.50	1016.50
	9	1016.50	1016.50	1016.50	1016.49	1016.49	1016.49	1016.49	1016.49	1016.50	1016.50	1016.50	1016.50	1016.49
	10	1016.50	1016.50	1016.39	1016.28	1016.29	1016.28	1016.26	1016.17	1016.03	1015.94	1015.91	1015.91	1016.20
	11	1015.88	1015.87	1015.87	1015.87	1015.86	1015.85	1015.85	1015.84	1015.85	1015.86	1015.87	1015.87	1015.86
	12	1015.87	1015.97	1016.08	1016.08	1016.07	1016.10	1016.13	1016.11	1016.07	1016.07	1016.07	1016.07	1016.06
	13	1016.08	1016.05	1015.94	1015.86	1015.86	1015.87	1015.87	1015.86	1015.87	1015.87	1015.77	1015.67	1015.88
	14	1015.66	1015.66	1015.66	1015.65	1015.65	1015.65	1015.66	1015.66	1015.66	1015.65	1015.66	1015.66	1015.65
	15	1015.66	1015.66	1015.65	1015.65	1015.66	1015.76	1015.85	1015.86	1015.87	1015.86	1015.86	1015.86	1015.76
	16	1015.86	1015.86	1015.87	1015.87	1015.86	1015.86	1015.86	1015.86	1015.86	1015.86	1015.86	1015.97	1015.87
	17	1016.07	1016.10	1016.18	1016.26	1016.28	1016.28	1016.28	1016.30	1016.32	1016.41	1016.49	1016.55	1016.29
	18	1016.66	1016.70	1016.70	1016.73	1016.84	1016.91	1016.91	1016.93	1017.04	1017.14	1017.24	1017.33	1016.93
	19	1017.43	1017.54	1017.54	1017.54	1017.54	1017.54	1017.54	1017.56	1017.64	1017.72	1017.74	1017.75	1017.59
	20	1017.75	1017.74	1017.75	1017.75	1017.75	1017.75	1017.75	1017.75	1017.78	1017.84	1017.86	1017.91	1017.78
	21	1017.95	1017.96	1017.96	1017.99	1018.00	1018.08	1018.17	1018.17	1018.17	1018.17	1018.17	1018.22	1018.08
	22	1018.33	1018.38	1018.37	1018.37	1018.37	1018.38	1018.38	1018.38	1018.38	1018.37	1018.37	1018.37	1018.37
	23	1018.37	1018.37	1018.37	1018.37	1018.37	1018.37	1018.37	1018.38	1018.38	1018.38	1018.40	1018.48	1018.38

S.V.I.R.CO. Observatory - Pressure in hectoPascal – April 2021

day	hh	00_05	05_10	10_15	15_20	20_25	25_30	30_35	35_40	40_45	45_50	50_55	55_60	average
21	0	1018.54	1018.54	1018.55	1018.54	1018.54	1018.55	1018.55	1018.55	1018.46	1018.37	1018.37	1018.38	1018.49
	1	1018.38	1018.38	1018.38	1018.37	1018.37	1018.37	1018.37	1018.37	1018.37	1018.34	1018.31	1018.31	1018.36
	2	1018.32	1018.32	1018.32	1018.32	1018.32	1018.32	1018.32	1018.32	1018.32	1018.32	1018.32	1018.31	1018.32
	3	1018.31	1018.31	1018.31	1018.32	1018.32	1018.32	1018.31	1018.31	1018.31	1018.31	1018.32	1018.32	1018.31
	4	1018.31	1018.32	1018.32	1018.32	1018.32	1018.32	1018.34	1018.37	1018.38	1018.38	1018.45	1018.53	1018.36
	5	1018.57	1018.59	1018.59	1018.66	1018.71	1018.76	1018.80	1018.86	1018.96	1019.01	1019.01	1019.01	1018.79
	6	1019.01	1019.05	1019.09	1019.09	1019.10	1019.13	1019.16	1019.16	1019.16	1019.16	1019.16	1019.16	1019.12
	7	1019.19	1019.21	1019.21	1019.22	1019.22	1019.22	1019.22	1019.22	1019.22	1019.21	1019.22	1019.22	1019.21
	8	1019.22	1019.22	1019.22	1019.21	1019.22	1019.22	1019.21	1019.21	1019.21	1019.21	1019.22	1019.22	1019.21
	9	1019.22	1019.21	1019.21	1019.21	1019.22	1019.22	1019.22	1019.22	1019.22	1019.21	1019.21	1019.21	1019.21
	10	1019.21	1019.21	1019.21	1019.21	1019.21	1019.21	1019.20	1019.18	1019.17	1019.17	1019.17	1019.09	1019.19
	11	1019.00	1019.00	1018.90	1018.79	1018.79	1018.78	1018.76	1018.70	1018.62	1018.58	1018.58	1018.58	1018.76
	12	1018.57	1018.56	1018.54	1018.52	1018.51	1018.44	1018.37	1018.37	1018.37	1018.27	1018.16	1018.06	1018.39
	13	1017.95	1017.95	1017.86	1017.76	1017.74	1017.73	1017.69	1017.60	1017.43	1017.32	1017.30	1017.25	1017.63
	14	1017.17	1017.12	1017.12	1017.06	1016.97	1016.94	1016.93	1016.87	1016.78	1016.74	1016.74	1016.72	1016.93
	15	1016.70	1016.70	1016.70	1016.70	1016.70	1016.70	1016.70	1016.70	1016.70	1016.70	1016.70	1016.70	1016.70
	16	1016.70	1016.70	1016.73	1016.75	1016.83	1016.91	1016.91	1016.91	1016.91	1016.91	1016.91	1016.91	1016.84
	17	1017.02	1017.12	1017.12	1017.12	1017.20	1017.30	1017.32	1017.43	1017.54	1017.54	1017.54	1017.54	1017.31
	18	1017.54	1017.53	1017.64	1017.74	1017.74	1017.81	1017.92	1017.96	1018.06	1018.23	1018.33	1018.37	1017.90
	19	1018.37	1018.37	1018.37	1018.37	1018.41	1018.52	1018.62	1018.70	1018.75	1018.77	1018.79	1018.79	1018.57
	20	1018.80	1018.83	1018.86	1018.87	1018.87	1018.88	1018.88	1018.84	1018.79	1018.79	1018.77	1018.74	1018.82
	21	1018.74	1018.74	1018.74	1018.56	1018.29	1018.20	1018.20	1018.18	1018.16	1018.16	1018.16	1018.16	1018.36
	22	1018.06	1017.96	1017.96	1017.96	1017.95	1017.95	1017.95	1017.95	1017.96	1017.96	1018.02	1018.12	1017.98
	23	1018.16	1018.16	1018.16	1018.16	1018.13	1018.03	1017.96	1017.96	1017.96	1017.94	1017.92	1017.90	1018.04
22	0	1017.89	1017.85	1017.79	1017.79	1017.82	1017.84	1017.86	1017.84	1017.84	1017.85	1017.85	1017.83	1017.83
	1	1017.82	1017.78	1017.75	1017.74	1017.72	1017.71	1017.71	1017.71	1017.72	1017.70	1017.68	1017.68	1017.72
	2	1017.61	1017.54	1017.44	1017.33	1017.33	1017.23	1017.12	1017.02	1016.91	1016.91	1016.81	1016.70	1017.16
	3	1016.70	1016.71	1016.71	1016.70	1016.70	1016.70	1016.70	1016.70	1016.69	1016.70	1016.70	1016.70	1016.70
	4	1016.70	1016.70	1016.70	1016.70	1016.70	1016.70	1016.70	1016.71	1016.71	1016.70	1016.70	1016.71	1016.70
	5	1016.71	1016.70	1016.70	1016.70	1016.70	1016.70	1016.70	1016.70	1016.70	1016.70	1016.70	1016.70	1016.70
	6	1016.70	1016.70	1016.70	1016.70	1016.70	1016.70	1016.70	1016.70	1016.70	1016.70	1016.70	1016.70	1016.70
	7	1016.70	1016.70	1016.69	1016.68	1016.68	1016.68	1016.67	1016.67	1016.67	1016.67	1016.66	1016.67	1016.68
	8	1016.67	1016.67	1016.67	1016.67	1016.67	1016.67	1016.67	1016.68	1016.70	1016.70	1016.70	1016.72	1016.68
	9	1016.73	1016.76	1016.80	1016.80	1016.80	1016.81	1016.81	1016.81	1016.80	1016.79	1016.78	1016.78	1016.79
	10	1016.78	1016.78	1016.74	1016.70	1016.70	1016.70	1016.70	1016.70	1016.70	1016.70	1016.70	1016.71	1016.72
	11	1016.69	1016.66	1016.66	1016.66	1016.66	1016.57	1016.49	1016.50	1016.50	1016.49	1016.49	1016.49	1016.57
	12	1016.49	1016.49	1016.49	1016.49	1016.49	1016.50	1016.50	1016.50	1016.49	1016.49	1016.49	1016.49	1016.49
	13	1016.50	1016.50	1016.49	1016.39	1016.28	1016.28	1016.26	1016.15	1016.07	1016.06	1016.03	1015.93	1016.24
	14	1015.86	1015.86	1015.86	1015.86	1015.86	1015.86	1015.86	1015.86	1015.86	1015.82	1015.78	1015.77	1015.84
	15	1015.76	1015.76	1015.74	1015.73	1015.73	1015.71	1015.73	1015.75	1015.75	1015.75	1015.76	1015.80	1015.74
	16	1015.82	1015.82	1015.84	1015.86	1015.86	1015.86	1015.86	1015.86	1015.86	1015.86	1015.86	1015.87	1015.85
	17	1015.97	1016.07	1016.07	1016.07	1016.08	1016.08	1016.07	1016.07	1016.07	1016.09	1016.11	1016.20	1016.08
	18	1016.28	1016.28	1016.28	1016.38	1016.49	1016.55	1016.65	1016.70	1016.70	1016.75	1016.85	1016.91	1016.57
	19	1017.02	1017.12	1017.12	1017.15	1017.22	1017.30	1017.33	1017.33	1017.33	1017.33	1017.33	1017.33	1017.24
	20	1017.33	1017.42	1017.53	1017.54	1017.53	1017.53	1017.53	1017.53	1017.53	1017.53	1017.53	1017.54	1017.50
	21	1017.54	1017.53	1017.54	1017.54	1017.53	1017.53	1017.54	1017.54	1017.54	1017.53	1017.54	1017.54	1017.53
	22	1017.53	1017.54	1017.54	1017.60	1017.68	1017.71	1017.73	1017.74	1017.74	1017.74	1017.74	1017.75	1017.67
	23	1017.75	1017.75	1017.75	1017.75	1017.74	1017.74	1017.75	1017.75	1017.74	1017.74	1017.64	1017.54	1017.72

S.V.I.R.CO. Observatory - Pressure in hectoPascal – April 2021

day	hh	00_05	05_10	10_15	15_20	20_25	25_30	30_35	35_40	40_45	45_50	50_55	55_60	average
23	0	1017.54	1017.54	1017.53	1017.43	1017.33	1017.32	1017.33	1017.33	1017.33	1017.32	1017.33	1017.33	1017.38
	1	1017.33	1017.33	1017.33	1017.32	1017.32	1017.33	1017.33	1017.33	1017.33	1017.32	1017.33	1017.33	1017.33
	2	1017.33	1017.33	1017.33	1017.33	1017.33	1017.33	1017.32	1017.33	1017.33	1017.33	1017.33	1017.33	1017.33
	3	1017.33	1017.33	1017.33	1017.33	1017.33	1017.33	1017.33	1017.33	1017.33	1017.33	1017.33	1017.33	1017.33
	4	1017.33	1017.33	1017.33	1017.33	1017.33	1017.33	1017.33	1017.33	1017.33	1017.33	1017.43	1017.53	1017.35
	5	1017.54	1017.61	1017.69	1017.70	1017.70	1017.70	1017.72	1017.75	1017.75	1017.75	1017.75	1017.75	1017.70
	6	1017.75	1017.75	1017.74	1017.81	1017.87	1017.91	1017.96	1017.96	1017.96	1017.96	1017.95	1018.03	1017.89
	7	1018.10	1018.13	1018.16	1018.16	1018.16	1018.16	1018.16	1018.16	1018.16	1018.16	1018.16	1018.16	1018.15
	8	1018.16	1018.16	1018.16	1018.16	1018.16	1018.16	1018.16	1018.16	1018.16	1018.16	1018.17	1018.24	1018.17
	9	1018.30	1018.30	1018.31	1018.31	1018.31	1018.34	1018.37	1018.37	1018.37	1018.37	1018.37	1018.36	1018.34
	10	1018.25	1018.16	1018.16	1018.14	1018.09	1018.01	1017.95	1017.95	1017.95	1017.85	1017.74	1017.73	1018.00
	11	1017.70	1017.61	1017.53	1017.53	1017.53	1017.52	1017.42	1017.32	1017.32	1017.33	1017.33	1017.33	1017.46
	12	1017.33	1017.33	1017.33	1017.42	1017.53	1017.53	1017.53	1017.52	1017.51	1017.42	1017.32	1017.32	1017.42
	13	1017.32	1017.32	1017.32	1017.32	1017.32	1017.32	1017.32	1017.32	1017.32	1017.32	1017.31	1017.29	1017.32
	14	1017.27	1017.25	1017.19	1017.11	1017.08	1017.08	1017.11	1017.11	1017.15	1017.26	1017.32	1017.43	1017.19
	15	1017.53	1017.61	1017.71	1017.84	1017.95	1017.95	1017.95	1017.95	1017.95	1017.95	1017.95	1017.95	1017.86
	16	1017.85	1017.64	1017.53	1017.53	1017.53	1017.43	1017.31	1017.29	1017.29	1017.29	1017.30	1017.29	1017.44
	17	1017.28	1017.31	1017.32	1017.32	1017.43	1017.61	1017.71	1017.73	1017.76	1017.79	1017.88	1017.95	1017.59
	18	1017.98	1018.08	1018.16	1018.16	1018.21	1018.32	1018.37	1018.40	1018.51	1018.58	1018.58	1018.66	1018.33
	19	1018.76	1018.79	1018.84	1018.95	1019.00	1019.00	1019.00	1019.00	1019.00	1019.00	1019.04	1019.09	1018.95
	20	1019.15	1019.21	1019.21	1019.21	1019.21	1019.20	1019.21	1019.21	1019.21	1019.21	1019.21	1019.21	1019.20
	21	1019.21	1019.21	1019.21	1019.21	1019.21	1019.21	1019.21	1019.21	1019.21	1019.21	1019.21	1019.21	1019.21
	22	1019.21	1019.21	1019.21	1019.21	1019.21	1019.21	1019.22	1019.22	1019.21	1019.21	1019.21	1019.21	1019.21
	23	1019.21	1019.22	1019.22	1019.21	1019.22	1019.22	1019.22	1019.22	1019.21	1019.21	1019.21	1019.21	1019.21
24	0	1019.21	1019.21	1019.21	1019.21	1019.11	1019.00	1019.00	1019.00	1019.00	1018.99	1019.00	1019.00	1019.07
	1	1018.99	1018.89	1018.79	1018.79	1018.79	1018.79	1018.79	1018.79	1018.79	1018.79	1018.79	1018.79	1018.82
	2	1018.79	1018.79	1018.79	1018.79	1018.79	1018.79	1018.79	1018.79	1018.79	1018.79	1018.79	1018.79	1018.79
	3	1018.79	1018.79	1018.79	1018.79	1018.79	1018.79	1018.79	1018.79	1018.79	1018.79	1018.79	1018.79	1018.79
	4	1018.79	1018.79	1018.79	1018.80	1018.80	1018.80	1018.80	1018.80	1018.85	1018.91	1018.91	1018.91	1018.83
	5	1018.92	1018.94	1018.97	1019.00	1019.00	1019.00	1019.00	1019.00	1019.11	1019.21	1019.21	1019.21	1019.05
	6	1019.21	1019.21	1019.21	1019.21	1019.21	1019.21	1019.21	1019.21	1019.21	1019.21	1019.21	1019.21	1019.21
	7	1019.21	1019.21	1019.21	1019.21	1019.21	1019.20	1019.20	1019.20	1019.20	1019.20	1019.20	1019.19	1019.20
	8	1019.18	1019.17	1019.16	1019.16	1019.16	1019.16	1019.15	1019.15	1019.15	1019.15	1019.15	1019.15	1019.16
	9	1019.15	1019.14	1019.07	1019.00	1019.00	1018.99	1019.00	1018.94	1018.83	1018.79	1018.79	1018.77	1018.95
	10	1018.75	1018.74	1018.72	1018.65	1018.58	1018.58	1018.54	1018.47	1018.41	1018.37	1018.37	1018.37	1018.54
	11	1018.26	1018.16	1018.16	1018.11	1018.04	1018.02	1017.99	1017.95	1017.95	1017.90	1017.81	1017.75	1018.01
	12	1017.74	1017.73	1017.72	1017.71	1017.62	1017.54	1017.54	1017.53	1017.53	1017.53	1017.53	1017.53	1017.60
	13	1017.43	1017.32	1017.32	1017.32	1017.32	1017.31	1017.21	1017.11	1017.12	1017.12	1017.01	1016.91	1017.21
	14	1016.91	1016.90	1016.90	1016.84	1016.76	1016.74	1016.74	1016.75	1016.72	1016.69	1016.70	1016.70	1016.78
	15	1016.69	1016.69	1016.69	1016.69	1016.69	1016.69	1016.69	1016.69	1016.69	1016.69	1016.70	1016.70	1016.69
	16	1016.69	1016.69	1016.69	1016.69	1016.69	1016.69	1016.69	1016.80	1016.91	1016.91	1016.90	1016.90	1016.77
	17	1016.90	1016.90	1016.90	1016.90	1017.01	1017.11	1017.17	1017.22	1017.22	1017.22	1017.27	1017.32	1017.09
	18	1017.43	1017.54	1017.54	1017.54	1017.53	1017.60	1017.68	1017.72	1017.75	1017.81	1017.85	1017.90	1017.66
	19	1017.95	1017.95	1017.95	1017.99	1018.04	1018.11	1018.16	1018.16	1018.16	1018.16	1018.17	1018.17	1018.08
	20	1018.16	1018.24	1018.34	1018.37	1018.37	1018.38	1018.38	1018.37	1018.37	1018.38	1018.38	1018.37	1018.34
	21	1018.38	1018.38	1018.38	1018.38	1018.47	1018.57	1018.58	1018.58	1018.58	1018.58	1018.58	1018.58	1018.50
	22	1018.58	1018.58	1018.58	1018.58	1018.58	1018.58	1018.58	1018.59	1018.59	1018.59	1018.58	1018.58	1018.58
	23	1018.58	1018.58	1018.58	1018.59	1018.53	1018.42	1018.38	1018.38	1018.35	1018.31	1018.23	1018.17	1018.42

S.V.I.R.CO. Observatory - Pressure in hectoPascal – April 2021

day	hh	00_05	05_10	10_15	15_20	20_25	25_30	30_35	35_40	40_45	45_50	50_55	55_60	average
25	0	1018.17	1018.15	1018.04	1017.96	1017.96	1017.96	1017.90	1017.79	1017.75	1017.75	1017.75	1017.75	1017.90
	1	1017.75	1017.75	1017.75	1017.75	1017.74	1017.75	1017.75	1017.75	1017.75	1017.75	1017.74	1017.75	1017.75
	2	1017.73	1017.71	1017.71	1017.71	1017.62	1017.54	1017.54	1017.54	1017.54	1017.54	1017.54	1017.54	1017.60
	3	1017.54	1017.54	1017.54	1017.54	1017.54	1017.53	1017.53	1017.43	1017.33	1017.33	1017.33	1017.33	1017.46
	4	1017.33	1017.33	1017.33	1017.33	1017.34	1017.34	1017.33	1017.44	1017.54	1017.54	1017.54	1017.54	1017.41
	5	1017.61	1017.68	1017.69	1017.69	1017.72	1017.75	1017.75	1017.75	1017.75	1017.75	1017.75	1017.75	1017.72
	6	1017.75	1017.75	1017.75	1017.75	1017.75	1017.75	1017.75	1017.75	1017.75	1017.75	1017.75	1017.75	1017.75
	7	1017.74	1017.72	1017.70	1017.68	1017.68	1017.68	1017.68	1017.67	1017.67	1017.68	1017.68	1017.68	1017.69
	8	1017.68	1017.67	1017.67	1017.67	1017.67	1017.68	1017.68	1017.68	1017.68	1017.68	1017.68	1017.68	1017.67
	9	1017.67	1017.61	1017.54	1017.54	1017.54	1017.54	1017.43	1017.33	1017.33	1017.33	1017.33	1017.33	1017.46
	10	1017.33	1017.33	1017.33	1017.33	1017.33	1017.33	1017.33	1017.33	1017.33	1017.33	1017.32	1017.33	1017.33
	11	1017.33	1017.33	1017.33	1017.33	1017.33	1017.33	1017.33	1017.33	1017.33	1017.33	1017.33	1017.33	1017.33
	12	1017.33	1017.33	1017.33	1017.33	1017.33	1017.33	1017.33	1017.33	1017.33	1017.32	1017.33	1017.33	1017.33
	13	1017.33	1017.30	1017.20	1017.11	1017.12	1017.10	1016.99	1016.91	1016.91	1016.91	1016.81	1016.70	1017.03
	14	1016.70	1016.69	1016.66	1016.64	1016.57	1016.49	1016.48	1016.49	1016.49	1016.49	1016.49	1016.49	1016.55
	15	1016.59	1016.70	1016.70	1016.70	1016.59	1016.38	1016.28	1016.21	1016.10	1016.07	1016.07	1016.14	1016.38
	16	1016.23	1016.16	1016.07	1016.07	1016.06	1016.01	1015.91	1015.86	1015.86	1015.86	1015.86	1015.86	1015.98
	17	1015.86	1015.86	1015.86	1015.86	1015.86	1015.86	1015.86	1015.86	1015.86	1015.97	1016.07	1016.07	1015.90
	18	1016.15	1016.23	1016.26	1016.28	1016.28	1016.28	1016.28	1016.39	1016.49	1016.49	1016.49	1016.60	1016.35
	19	1016.74	1016.84	1017.01	1017.11	1017.11	1017.11	1017.11	1017.11	1017.11	1017.12	1017.12	1017.11	1017.05
	20	1017.12	1017.10	1017.07	1017.07	1017.09	1017.11	1017.11	1017.16	1017.27	1017.33	1017.33	1017.33	1017.17
	21	1017.33	1017.33	1017.33	1017.33	1017.33	1017.33	1017.33	1017.32	1017.32	1017.33	1017.23	1017.02	1017.29
	22	1016.91	1016.91	1016.91	1016.91	1016.91	1016.91	1016.91	1016.91	1016.91	1016.91	1016.90	1016.89	1016.91
	23	1016.89	1016.88	1016.88	1016.88	1016.89	1016.89	1016.80	1016.59	1016.38	1016.18	1016.02	1015.96	1016.60
26	0	1015.87	1015.90	1015.92	1016.00	1016.07	1016.07	1015.97	1015.86	1015.75	1015.65	1015.65	1015.65	1015.86
	1	1015.65	1015.65	1015.65	1015.65	1015.65	1015.66	1015.66	1015.66	1015.66	1015.66	1015.66	1015.66	1015.65
	2	1015.66	1015.65	1015.64	1015.54	1015.34	1015.24	1015.24	1015.24	1015.24	1015.24	1015.24	1015.34	1015.38
	3	1015.23	1015.01	1014.99	1014.99	1014.91	1014.72	1014.61	1014.61	1014.61	1014.61	1014.61	1014.59	1014.79
	4	1014.48	1014.40	1014.40	1014.40	1014.40	1014.40	1014.40	1014.40	1014.40	1014.40	1014.51	1014.61	1014.43
	5	1014.61	1014.61	1014.61	1014.61	1014.61	1014.72	1014.82	1014.82	1014.82	1014.82	1014.82	1014.90	1014.73
	6	1014.98	1014.98	1014.99	1014.99	1015.01	1015.03	1015.13	1015.24	1015.24	1015.24	1015.24	1015.24	1015.11
	7	1015.24	1015.24	1015.24	1015.27	1015.34	1015.37	1015.37	1015.38	1015.41	1015.43	1015.42	1015.42	1015.34
	8	1015.44	1015.45	1015.45	1015.45	1015.45	1015.35	1015.24	1015.24	1015.24	1015.24	1015.24	1015.14	1015.32
	9	1015.02	1015.00	1015.01	1015.02	1015.03	1015.03	1015.03	1015.02	1015.02	1015.02	1014.88	1014.68	1014.98
	10	1014.61	1014.51	1014.40	1014.29	1014.09	1013.98	1013.98	1013.88	1013.76	1013.55	1013.35	1013.25	1013.97
	11	1013.14	1013.14	1012.97	1012.87	1012.93	1012.93	1012.93	1012.83	1012.62	1012.41	1012.30	1012.19	1012.77
	12	1012.09	1011.98	1011.88	1011.88	1011.67	1011.46	1011.46	1011.46	1011.36	1011.14	1011.04	1011.04	1011.54
	13	1010.94	1010.78	1010.73	1010.68	1010.62	1010.62	1010.62	1010.62	1010.52	1010.41	1010.41	1010.41	1010.61
	14	1010.51	1010.62	1010.61	1010.60	1010.61	1010.62	1010.51	1010.35	1010.25	1010.13	1010.13	1010.20	1010.43
	15	1010.20	1010.07	1009.95	1009.94	1009.85	1009.75	1009.64	1009.56	1009.56	1009.48	1009.38	1009.26	1009.72
	16	1009.15	1009.04	1008.95	1008.95	1008.95	1008.98	1008.99	1008.96	1008.94	1008.96	1008.96	1008.95	1008.98
	17	1008.95	1008.94	1008.94	1009.04	1009.15	1009.15	1009.15	1009.15	1009.15	1009.15	1009.15	1009.15	1009.09
	18	1009.15	1009.15	1009.14	1009.15	1009.04	1008.93	1008.94	1008.94	1008.94	1008.94	1008.94	1008.94	1009.02
	19	1008.94	1008.94	1008.94	1008.94	1008.94	1008.94	1008.94	1008.94	1008.94	1008.94	1008.94	1008.94	1008.94
	20	1008.94	1008.93	1008.94	1008.94	1008.83	1008.73	1008.73	1007.99	1007.87	1008.49	1008.50	1008.44	1008.61
	21	1008.43	1008.50	1008.52	1008.35	1008.23	1008.21	1008.01	1008.20	1008.51	1008.51	1008.50	1008.49	1008.37
	22	1008.50	1008.51	1008.51	1008.51	1008.38	1008.24	1008.16	1008.09	1008.10	1008.10	1007.99	1007.89	1008.25
	23	1007.89	1007.78	1007.68	1007.67	1007.60	1007.49	1007.35	1007.26	1007.26	1007.26	1007.26	1007.16	1007.47

S.V.I.R.CO. Observatory - Pressure in hectoPascal – April 2021

day	hh	00_05	05_10	10_15	15_20	20_25	25_30	30_35	35_40	40_45	45_50	50_55	55_60	average
27	0	1007.05	1007.05	1007.05	1007.05	1007.05	1007.05	1007.05	1007.03	1006.96	1006.88	1006.84	1006.84	1006.99
	1	1006.84	1006.84	1006.84	1006.84	1006.81	1006.70	1006.63	1006.63	1006.53	1006.42	1006.42	1006.42	1006.66
	2	1006.32	1006.10	1006.00	1006.00	1005.99	1005.99	1005.89	1005.78	1005.78	1005.68	1005.57	1005.58	1005.89
	3	1005.48	1005.37	1005.37	1005.37	1005.37	1005.37	1005.36	1005.36	1005.36	1005.37	1005.37	1005.37	1005.37
	4	1005.37	1005.37	1005.37	1005.37	1005.37	1005.37	1005.36	1005.37	1005.37	1005.36	1005.36	1005.36	1005.36
	5	1005.47	1005.57	1005.57	1005.57	1005.57	1005.57	1005.57	1005.57	1005.57	1005.57	1005.58	1005.58	1005.56
	6	1005.57	1005.57	1005.57	1005.57	1005.47	1005.38	1005.38	1005.37	1005.36	1005.36	1005.36	1005.36	1005.44
	7	1005.36	1005.47	1005.68	1005.78	1005.78	1005.79	1005.79	1005.78	1005.78	1005.78	1005.78	1005.78	1005.71
	8	1005.78	1005.78	1005.78	1005.78	1005.78	1005.78	1005.78	1005.78	1005.78	1005.72	1005.61	1005.57	1005.74
	9	1005.57	1005.57	1005.57	1005.57	1005.57	1005.57	1005.57	1005.57	1005.57	1005.57	1005.57	1005.57	1005.57
	10	1005.57	1005.59	1005.61	1005.70	1005.78	1005.78	1005.78	1005.78	1005.78	1005.78	1005.78	1005.79	1005.73
	11	1005.79	1005.78	1005.78	1005.78	1005.78	1005.78	1005.78	1005.78	1005.78	1005.78	1005.78	1005.77	1005.78
	12	1005.70	1005.61	1005.57	1005.57	1005.57	1005.47	1005.36	1005.36	1005.36	1005.36	1005.36	1005.36	1005.47
	13	1005.36	1005.36	1005.36	1005.36	1005.36	1005.36	1005.36	1005.36	1005.25	1005.15	1005.15	1005.15	1005.30
	14	1005.15	1005.15	1005.14	1005.24	1005.34	1005.36	1005.36	1005.36	1005.36	1005.47	1005.57	1005.57	1005.34
	15	1005.57	1005.57	1005.57	1005.57	1005.57	1005.57	1005.57	1005.57	1005.53	1005.43	1005.36	1005.26	1005.51
	16	1005.15	1005.15	1005.13	1005.12	1005.13	1005.14	1005.15	1005.15	1005.15	1005.15	1005.15	1005.15	1005.14
	17	1005.15	1005.15	1005.15	1005.26	1005.36	1005.47	1005.57	1005.64	1005.74	1005.89	1005.99	1005.99	1005.53
	18	1005.99	1005.99	1006.00	1005.99	1005.99	1006.02	1006.13	1006.30	1006.41	1006.42	1006.42	1006.42	1006.17
	19	1006.47	1006.58	1006.63	1006.63	1006.63	1006.63	1006.63	1006.63	1006.63	1006.63	1006.53	1006.42	1006.59
	20	1006.32	1006.21	1006.21	1006.20	1006.20	1006.21	1006.21	1006.32	1006.42	1006.41	1006.50	1006.61	1006.32
	21	1006.74	1006.84	1006.94	1007.04	1007.05	1007.05	1007.05	1007.05	1007.05	1007.06	1007.06	1007.16	1007.00
	22	1007.26	1007.26	1007.26	1007.26	1007.26	1007.26	1007.26	1007.36	1007.47	1007.47	1007.46	1007.46	1007.33
	23	1007.47	1007.47	1007.47	1007.47	1007.47	1007.46	1007.46	1007.38	1007.28	1007.26	1007.26	1007.26	1007.39
28	0	1007.26	1007.26	1007.16	1007.05	1006.95	1006.84	1006.84	1006.84	1006.84	1006.84	1006.84	1006.84	1006.95
	1	1006.84	1006.84	1006.84	1006.84	1006.84	1006.84	1006.84	1006.84	1006.81	1006.72	1006.65	1006.63	1006.79
	2	1006.63	1006.63	1006.63	1006.63	1006.63	1006.53	1006.42	1006.42	1006.41	1006.40	1006.40	1006.39	1006.51
	3	1006.28	1006.30	1006.40	1006.31	1006.24	1006.34	1006.42	1006.42	1006.42	1006.42	1006.42	1006.42	1006.36
	4	1006.42	1006.42	1006.43	1006.53	1006.63	1006.63	1006.73	1006.84	1006.85	1006.85	1006.84	1006.84	1006.67
	5	1006.84	1006.84	1006.84	1006.84	1006.84	1006.84	1006.84	1006.84	1006.84	1006.84	1006.84	1006.84	1006.84
	6	1006.85	1006.85	1006.85	1006.95	1007.05	1007.05	1007.05	1007.12	1007.22	1007.26	1007.26	1007.26	1007.06
	7	1007.26	1007.26	1007.26	1007.26	1007.26	1007.26	1007.26	1007.26	1007.26	1007.26	1007.30	1007.40	1007.27
	8	1007.47	1007.47	1007.58	1007.68	1007.67	1007.68	1007.68	1007.78	1007.89	1007.89	1007.89	1007.89	1007.71
	9	1007.89	1007.89	1007.89	1007.89	1007.89	1007.98	1008.08	1008.09	1008.11	1008.13	1008.16	1008.06	1008.00
	10	1008.06	1008.35	1008.50	1008.50	1008.51	1008.52	1008.52	1008.52	1008.41	1008.40	1008.51	1008.51	1008.44
	11	1007.99	1007.94	1008.44	1008.44	1008.44	1008.47	1008.60	1008.73	1008.73	1008.72	1008.73	1008.73	1008.49
	12	1008.73	1008.73	1008.73	1008.73	1008.73	1008.72	1008.70	1008.67	1008.69	1008.81	1008.92	1008.93	1008.76
	13	1008.93	1008.94	1009.04	1009.04	1008.93	1008.94	1008.94	1008.94	1008.93	1008.93	1008.93	1008.94	1008.95
	14	1008.94	1008.94	1008.94	1008.94	1008.94	1008.93	1008.93	1008.93	1008.93	1008.93	1008.94	1008.94	1008.93
	15	1008.94	1008.94	1008.93	1008.93	1008.94	1008.94	1008.94	1008.93	1008.93	1008.94	1008.94	1008.93	1008.93
	16	1008.93	1008.93	1008.94	1008.94	1008.93	1008.93	1008.93	1008.93	1008.93	1008.93	1008.93	1008.93	1008.93
	17	1008.93	1008.93	1008.93	1008.93	1008.93	1009.04	1009.14	1009.14	1009.14	1009.14	1009.14	1009.25	1009.05
	18	1009.35	1009.35	1009.35	1009.40	1009.51	1009.56	1009.57	1009.57	1009.68	1009.78	1009.79	1009.82	1009.56
	19	1009.92	1009.99	1009.99	1009.99	1010.09	1010.20	1010.20	1010.20	1010.20	1010.19	1010.19	1010.20	1010.11
	20	1010.31	1010.41	1010.41	1010.50	1010.61	1010.70	1010.81	1010.83	1010.93	1011.04	1011.04	1011.14	1010.73
	21	1011.24	1011.34	1011.45	1011.46	1011.46	1011.46	1011.45	1011.46	1011.47	1011.46	1011.45	1011.46	1011.43
	22	1011.46	1011.46	1011.46	1011.46	1011.46	1011.46	1011.46	1011.46	1011.46	1011.46	1011.47	1011.47	1011.46
	23	1011.48	1011.48	1011.48	1011.49	1011.49	1011.50	1011.50	1011.50	1011.48	1011.46	1011.46	1011.46	1011.48

S.V.I.R.CO. Observatory - Pressure in hectoPascal – April 2021

day	hh	00_05	05_10	10_15	15_20	20_25	25_30	30_35	35_40	40_45	45_50	50_55	55_60	average
29	0	1011.45	1011.45	1011.46	1011.46	1011.46	1011.46	1011.46	1011.46	1011.46	1011.46	1011.46	1011.46	1011.46
	1	1011.46	1011.46	1011.36	1011.25	1011.25	1011.25	1011.25	1011.25	1011.25	1011.25	1011.25	1011.25	1011.29
	2	1011.25	1011.25	1011.15	1011.04	1011.04	1011.04	1011.04	1011.04	1011.04	1011.04	1011.04	1011.14	1011.09
	3	1011.23	1011.14	1011.04	1011.04	1011.04	1010.94	1010.83	1010.84	1010.95	1011.04	1011.14	1011.25	1011.04
	4	1011.25	1011.34	1011.45	1011.47	1011.58	1011.67	1011.67	1011.68	1011.78	1011.88	1011.92	1012.00	1011.64
	5	1012.05	1012.07	1012.09	1012.09	1012.09	1012.11	1012.11	1012.09	1012.09	1012.09	1012.09	1012.09	1012.09
	6	1012.09	1012.09	1012.09	1012.09	1012.09	1012.17	1012.27	1012.30	1012.30	1012.30	1012.41	1012.62	1012.23
	7	1012.72	1012.72	1012.62	1012.51	1012.51	1012.51	1012.54	1012.58	1012.59	1012.59	1012.59	1012.59	1012.59
	8	1012.66	1012.72	1012.70	1012.81	1012.93	1012.93	1012.81	1012.61	1012.42	1012.19	1012.16	1012.27	1012.60
	9	1012.30	1012.30	1012.30	1012.30	1012.25	1012.15	1012.10	1012.06	1012.02	1011.92	1011.75	1011.64	1012.09
	10	1011.62	1011.58	1011.60	1011.67	1011.68	1011.67	1011.67	1011.78	1011.88	1011.77	1011.77	1011.88	1011.71
	11	1011.92	1011.92	1011.88	1011.88	1011.88	1011.88	1011.88	1011.88	1011.87	1011.88	1011.88	1011.87	1011.88
	12	1011.88	1011.92	1011.97	1012.04	1012.09	1012.08	1012.09	1012.13	1012.19	1012.21	1012.21	1012.26	1012.08
	13	1012.30	1012.30	1012.22	1012.15	1012.12	1011.98	1011.80	1011.73	1011.70	1011.67	1011.62	1011.57	1011.93
	14	1011.57	1011.56	1011.62	1011.67	1011.67	1011.67	1011.67	1011.67	1011.67	1011.67	1011.66	1011.64	1011.64
	15	1011.65	1011.67	1011.67	1011.67	1011.82	1011.82	1011.67	1011.67	1011.66	1011.65	1011.67	1011.67	1011.69
	16	1011.69	1011.69	1011.67	1011.56	1011.35	1011.25	1011.25	1011.35	1011.44	1011.44	1011.44	1011.45	1011.46
	17	1011.46	1011.46	1011.46	1011.46	1011.46	1011.46	1011.46	1011.46	1011.46	1011.46	1011.46	1011.46	1011.46
	18	1011.46	1011.46	1011.46	1011.46	1011.46	1011.47	1011.57	1011.73	1011.84	1011.88	1011.88	1011.98	1011.64
	19	1012.09	1012.09	1012.09	1012.09	1012.09	1012.10	1012.15	1012.25	1012.30	1012.30	1012.30	1012.30	1012.18
	20	1012.30	1012.30	1012.41	1012.51	1012.51	1012.51	1012.51	1012.51	1012.51	1012.51	1012.51	1012.51	1012.47
	21	1012.51	1012.51	1012.52	1012.62	1012.72	1012.72	1012.72	1012.71	1012.71	1012.72	1012.72	1012.72	1012.66
	22	1012.72	1012.83	1012.93	1012.93	1012.93	1012.93	1012.93	1012.93	1012.93	1012.93	1012.93	1012.94	1012.90
	23	1012.93	1012.93	1012.93	1012.93	1012.93	1012.93	1012.93	1012.93	1012.93	1012.93	1012.93	1012.93	1012.93
30	0	1012.93	1012.93	1012.93	1012.84	1012.74	1012.72	1012.71	1012.65	1012.59	1012.55	1012.51	1012.41	1012.70
	1	1012.30	1012.30	1012.30	1012.30	1012.28	1012.18	1012.09	1012.09	1012.09	1012.05	1011.95	1011.88	1012.15
	2	1011.88	1011.77	1011.67	1011.63	1011.53	1011.46	1011.46	1011.46	1011.46	1011.46	1011.36	1011.25	1011.53
	3	1011.25	1011.25	1011.25	1011.14	1011.04	1011.04	1011.04	1011.04	1011.04	1011.04	1011.04	1011.04	1011.10
	4	1011.04	1011.04	1011.04	1011.04	1011.05	1011.05	1011.15	1011.25	1011.34	1011.45	1011.46	1011.46	1011.20
	5	1011.46	1011.46	1011.46	1011.46	1011.46	1011.46	1011.46	1011.46	1011.46	1011.46	1011.46	1011.46	1011.46
	6	1011.46	1011.46	1011.46	1011.46	1011.46	1011.46	1011.46	1011.49	1011.51	1011.49	1011.48	1011.48	1011.47
	7	1011.48	1011.48	1011.58	1011.69	1011.79	1011.87	1011.87	1011.88	1011.88	1011.88	1011.88	1011.88	1011.76
	8	1011.88	1011.88	1011.79	1011.73	1011.76	1011.76	1011.76	1011.76	1011.76	1011.76	1011.76	1011.77	1011.78
	9	1011.74	1011.73	1011.76	1011.77	1011.78	1011.78	1011.73	1011.68	1011.67	1011.67	1011.67	1011.67	1011.72
	10	1011.67	1011.67	1011.66	1011.56	1011.46	1011.46	1011.46	1011.45	1011.35	1011.24	1011.24	1011.25	1011.45
	11	1011.25	1011.25	1011.23	1011.13	1011.04	1010.94	1010.83	1010.72	1010.62	1010.62	1010.61	1010.62	1010.90
	12	1010.51	1010.40	1010.44	1010.57	1010.74	1010.81	1010.70	1010.51	1010.35	1010.24	1010.19	1010.19	1010.47
	13	1010.19	1010.12	1010.04	1010.03	1010.02	1010.02	1010.01	1009.99	1009.89	1009.78	1009.77	1009.77	1009.97
	14	1009.77	1009.77	1009.67	1009.57	1009.56	1009.56	1009.56	1009.56	1009.57	1009.57	1009.47	1009.42	1009.59
	15	1009.46	1009.48	1009.48	1009.52	1009.61	1009.65	1009.62	1009.57	1009.56	1009.56	1009.56	1009.56	1009.55
	16	1009.56	1009.57	1009.57	1009.51	1009.45	1009.42	1009.40	1009.41	1009.38	1009.35	1009.25	1009.14	1009.42
	17	1009.14	1009.14	1009.25	1009.35	1009.35	1009.35	1009.35	1009.35	1009.35	1009.36	1009.38	1009.40	1009.31
	18	1009.48	1009.56	1009.56	1009.56	1009.46	1009.35	1009.35	1009.35	1009.35	1009.35	1009.35	1009.35	1009.42
	19	1009.35	1009.37	1009.47	1009.56	1009.56	1009.56	1009.57	1009.57	1009.51	1009.46	1009.51	1009.67	1009.51
	20	1009.77	1009.77	1009.77	1009.77	1009.77	1009.77	1009.77	1009.77	1009.77	1009.77	1009.78	1009.81	1009.77
	21	1009.81	1009.81	1009.83	1009.83	1009.88	1009.95	1009.99	1009.99	1009.99	1009.99	1010.09	1010.20	1009.94
	22	1010.22	1010.24	1010.32	1010.40	1010.40	1010.40	1010.40	1010.40	1010.40	1010.40	1010.41	1010.41	1010.37
	23	1010.33	1010.23	1010.20	1010.20	1010.20	1010.09	1009.98	1009.88	1009.77	1009.77	1009.77	1009.67	1010.01

