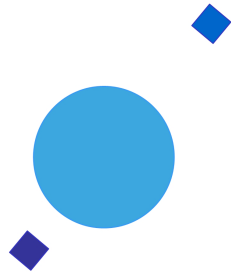


**INAF**



**ISTITUTO NAZIONALE DI ASTROFISICA**  
NATIONAL INSTITUTE FOR ASTROPHYSICS

***SVIRCO Prompt Report: February 2021***

Francesco Re and Nello Vertoli

INAF/IAPS-2021-02

February 2022

**ISTITUTO DI ASTROFISICA E PLANETOLOGIA SPAZIALI**

**AREA DI RICERCA ROMA - TOR VERGATA**

**Via del Fosso del Cavaliere, 100 - 00133 Roma (ITALIA)**



## **SVIRCO Prompt Report: February 2021**

**Francesco Re and Nello Vertoli**

*IAPS - INAF, Area di Ricerca Roma - Tor Vergata  
Via del Fosso del Cavaliere, 100 - 00133 Roma, Italy,*

### **Abstract**

*The pressure corrected intensity of the nucleonic component, produced by primary cosmic rays and recorded in February 2021 by the Neutron Monitor of SVIRCO-Rome (present geographic position:  $41.86^\circ$  N -  $12.47^\circ$  E; altitude about s.l. ), is reported in prompt form together with the barometric pressure data.*



## SVIRCO OBSERVATORY

During the 1<sup>st</sup> International Geophysics Year (1957) an international network of “ground-based detectors” for continuous cosmic ray measurements was world-wide established.

The cosmic ray station of Rome joined this network with the purpose to study the time variations of primary cosmic rays (**Studio Variazioni Intensità Raggi Cosmici: S.V.I.R.CO**) and their modulation in the heliosphere.

From July 1957 to April 1997, the SVIRCO Station (now Observatory) performed uninterrupted measurements at the Physics Department “G. Marconi” of “La Sapienza” University of Rome (41.90° N, 12.52° E, altitude about 60 m a.s.l.)

In May 1997 the neutron monitor was moved to the Physics Department “E. Amaldi” of “Roma Tre” University. Since then it has been continuously running at the new location (41.86° N, 12.47° E, altitude about 0 m a.s.l.).

The SVIRCO Observatory (INAF/IAPS-UNIRomaTre collaboration) is housed in a reserved building provided with a double air-conditioning system. The inner temperature is permanently restrained in a range of 23°-26° C, meanwhile the relative humidity is kept below 57%. Either the environmental parameters are continuously checked and recorded by digital sensors.

On January 1, 2005 three counters were added to the detector. This upgrade, from 17 to 20 NM-64, made the SVIRCO neutron monitor still consist of 5 sections but modified its geometry. Actually the new arrangement has been composed of three 3-counter, one 5-counter and one 6-counter units. The enhancement improved not only the overall counting rate of 15.6 % (January 2005) but, as a result, also the statistical quality of the recorded data.

On July 3, 2017 six counters experienced failure and were removed from the detector until 24 July. On 25 July 2017 a number of 2 counters was added to the detector up to a total of 16 counters. The new arrangement has been composed of three 3-counter, one 5-counter and one 2-counter units. The overall counting rate has decreased of about 20% (July 2017) with a lower statistical quality of the recorded data.

Each of the 16 BF<sub>3</sub> proportional counters (BP-28 type) is equipped with a smart amplifier/discriminator circuit complete with a spectrum stabilizer. This new electronic unit, developed in our laboratory, holds firmly the pulse height spectrum of the amplifier output (within a range of more than 150 volts around the operating voltage), providing the counter with a great immunity against high voltage variations.

Anyway, systematic and exhaustive tests of the counters are regularly performed. The output pulses of the amplifiers, discriminated by the threshold gates, are collected and stored into a multi-channel analyzer. The analysis of the height distribution (spectrum) of the amplifier pulses coinciding with the discriminator ones, is essential to verify the long term efficiency of each counter together with the amplifier gain and the discriminator threshold level.

As well as the amplifier/discriminator circuits, a large part of the electronic instrumentation operating in the Observatory was designed and realized in our laboratory together with the software for data acquisition and pre-elaboration.

In order to improve the reliability of the recorded data and to prevent measurement breakdowns, two independent systems perform contemporary the data acquisition. Each system is remotely controlled by a dedicated computer and is timed by a high stability quartz clock and/or a GPS receiver. One equipment runs according to a timing of 1 minute and fulfils the acquisition of the 16 counters separately. The other one records the individual 5-minute counting rate of each detector section in addition to the rates of the overall multiplicity, sorted into separated counting channels (from 1 to greater than 8).

A special care is devoted to the atmospheric pressure measurements; thus they are carried out by means of not less than three barometers at the same time. These instruments (achieving a resolution up to 0.01 hPa), are constantly checked out each other for the best measuring accuracy and reliability. Furthermore, the devices in use are equipped with different types of transducer such as vibrating cylinder, force balance and quartz, therefore, throughout their different behaviours, it is possible to point out the occurrence of any long-term drift and eventually to re-calibrate the instruments themselves.

## DATA PRESENTATION

In a preliminary step, the intensity data, of the secondary nucleonic component of cosmic rays, detected at SVIRCO Observatory, were corrected for pressure variations at a reference level of 1009.25 hPa with an attenuation coefficient of 0.70% / hPa.

The five-minutes counting rates, of the examined month, are reported in tabular form together with the hourly normalized data, which provide a continuous data set for long-term analysis.

The normalization was evaluated as percentage of the counting rate average of January-February 1997, when the Monitor operated at the previous location of "La Sapienza" University. The reference counting rate level (100%), computed for such period, is equal to 554946 counts/hour.

The atmospheric pressure data (in hectoPascal) are also collected in a monthly table which presents the five-minutes averages and the hourly ones.

The hourly averages of the normalized intensity and pressure, plotted in monthly graphs, are reported too.

## CONDITIONS FOR SVIRCO DATA USE

You are welcome to use neutron monitor data of SVIRCO, IAPS/INAF-UNIRomaTre collaboration, under the following conditions:

*-You agree to acknowledge our financial supports in any published use of the data.*

*Example: "SVIRCO NM is supported by the INAF - UNIRomaTre collaboration"*

*-You are kindly requested to send a copy of any published work derived from our data to:*

Dr. Monica Laurenza  
Head of SVIRCO Observatory & TPL  
Istituto di Astrofisica e Planetologia Spaziali - Area di Ricerca Tor Vergata  
Via del Fosso del Cavaliere, 100 00133 Roma - Italy,

[monica.laurenza@iaps.inaf.it](mailto:monica.laurenza@iaps.inaf.it)



# S.V.I.R.CO. Observatory

Rome

Italy







S.V.I.R.CO. Observatory - Pressure Corrected Data – February 2021

day	hh	00_05	05_10	10_15	15_20	20_25	25_30	30_35	35_40	40_45	45_50	50_55	55_60	h-norm
1	0	38494	38876	38055	38583	39293	39199	39279	38489	38563	38812	39099	38479	102.348
	1	38563	38588	38534	38861	38489	39027	38675	38943	38860	38860	38693	39286	102.384
	2	38682	38939	38896	38342	38278	38603	39038	38295	38909	39040	38793	39172	102.297
	3	38767	38730	38593	38585	38759	38934	38843	38047	38585	39040	39002	39150	102.308
	4	38948	39033	39023	38604	39254	38623	39477	38699	39135	38847	38743	38586	102.734
	5	38995	38754	38836	39468	38873	38560	38733	39232	39116	38921	38930	38541	102.731
	6	39295	39108	39068	38825	38744	39666	39200	39083	39215	38707	38503	38756	102.998
	7	38112	38596	39259	38876	39946	39172	39033	38745	38989	38820	39082	39446	102.977
	8	38642	39158	38841	39138	39092	38933	39186	39261	38933	38530	38968	39119	102.916
	9	39411	38736	38502	38802	38952	38623	38960	38707	38501	38924	38990	38446	102.422
	10	39196	39084	38896	38993	38853	39235	39055	38982	39211	38782	39428	39173	103.155
	11	39828	38794	39064	38886	39354	39148	39204	39242	38858	38933	38792	39167	103.240
	12	39017	38829	38950	39130	38775	38712	39131	38924	38944	38877	38407	39439	102.769
	13	39253	38827	38604	39098	38622	38790	38660	38518	38612	39135	39722	39535	102.823
	14	38929	38650	38576	38818	39005	38930	38846	39573	38836	39452	38576	38556	102.684
	15	39021	38973	38805	39087	38209	38876	38993	38608	38764	38932	38724	38388	102.384
	16	38782	38754	38652	38407	39306	38715	38794	39217	38631	39121	38390	38935	102.455
	17	39216	38725	38844	38458	38914	38980	38582	38808	38490	38924	39213	38259	102.391
	18	38679	38641	39094	39151	39113	38943	38943	38858	38641	38546	38376	38546	102.418
	19	38527	38735	38963	38500	38867	38922	38811	38830	38390	38389	39011	38678	102.217
	20	38709	38309	38559	38822	38978	38221	38878	38649	38022	37981	38895	38677	101.792
	21	39122	38627	38716	39193	38886	38656	38807	38653	38953	38830	38945	38897	102.583
	22	38906	38465	38503	38545	38440	38837	38837	38183	38069	38912	38950	38741	101.945
	23	38807	38585	37321	37860	38397	38546	39027	38663	38532	38550	38517	38421	101.465
2	0	39106	38643	38372	38788	38710	38961	38941	38108	38072	38008	37865	38758	101.686
	1	38688	39027	38891	38529	38275	38919	38716	38870	38286	38526	38415	38201	101.937
	2	38504	38816	38856	38827	38592	38700	38653	38475	38747	38778	38261	38729	102.066
	3	38424	38482	38727	39372	38726	38882	38959	38440	39175	38861	38626	38272	102.289
	4	39041	38589	38508	38801	38702	38484	39142	38611	39037	39075	38786	38380	102.335
	5	38566	38880	38530	38746	38636	38932	38824	38725	38803	38684	38705	38705	102.242
	6	38804	38811	38147	38825	38713	37855	38537	38653	39060	38644	38672	38418	101.890
	7	38799	38052	38751	38110	38788	38928	38987	38667	38626	38825	38755	38478	102.028
	8	38887	39011	38216	38948	38221	38642	38842	38051	39077	38374	38374	38826	101.964
	9	39048	38555	38653	38322	38827	38796	38825	38985	38579	38536	39215	38585	102.284
	10	38981	38402	38707	38766	38258	38300	39042	38221	38772	38599	38877	38896	102.041
	11	38483	38636	38991	38442	38442	38747	39195	38890	38431	38511	38411	39062	102.133
	12	38778	39439	38604	38665	38339	39253	38328	38734	38552	38704	38724	38832	102.289
	13	39125	38518	38508	39280	38649	39036	38883	38883	39392	38762	39159	38732	102.723
	14	39373	39149	38447	39270	38995	39200	39017	38649	38720	38404	38974	38748	102.728
	15	38736	38272	39330	38732	39262	38684	39019	38594	38441	38921	38648	38312	102.289
	16	38102	38886	39357	38740	38756	38569	39165	38826	38947	38831	39426	38859	102.622
	17	39096	38660	39059	38938	38670	38525	38928	38681	38251	39033	38910	38608	102.380
	18	39145	39612	38794	38354	39139	38803	38616	38300	38930	38718	38466	38227	102.324
	19	38733	38657	37937	38558	39096	38291	38873	38048	38558	38604	38668	38324	101.717
	20	38710	38257	38537	38464	38243	38003	38671	38598	39058	38495	39069	38622	101.800
	21	37946	38261	37941	38709	39148	38480	38647	38539	39110	38732	37937	38919	101.721
	22	38117	39235	38678	38849	38724	38778	38873	38018	38885	38619	38598	38544	102.062
	23	38384	38224	38386	37991	38602	38875	38212	38291	39287	38593	38812	38876	101.757

S.V.I.R.CO. Observatory - Pressure Corrected Data – February 2021

day	hh	00_05	05_10	10_15	15_20	20_25	25_30	30_35	35_40	40_45	45_50	50_55	55_60	h-norm
3	0	37967	38998	38742	38227	38627	38160	38846	38562	38644	38455	38698	38793	101.803
	1	38003	38688	38665	39182	38848	38284	38307	38822	38485	39011	38548	38159	101.861
	2	38601	38541	38166	38419	37997	38882	39170	38299	38178	38412	38495	38595	101.586
	3	38162	38481	38598	38777	38626	38324	38692	39017	38755	38513	38576	38555	101.876
	4	38040	38166	38513	38271	39017	38513	38335	38492	38246	38263	38243	38738	101.384
	5	38689	38693	38904	38999	38651	38503	38186	38470	38995	38547	38430	38379	101.958
	6	38593	38472	38635	39093	39257	38591	38037	38077	38405	39135	39176	38054	101.976
	7	38488	38303	38956	38458	38405	38458	38702	39106	38481	38339	38951	38568	101.908
	8	38437	38594	38976	38932	39156	38539	38401	38969	38590	38483	38950	38578	102.213
	9	38833	38494	38589	38950	38175	38494	38755	38284	38582	38741	38114	38855	101.831
	10	39139	38457	38404	38967	38392	38479	38978	38758	38667	38146	38199	38348	101.845
	11	38996	38485	38283	38507	38359	38879	39028	38437	38249	38419	38259	38439	101.715
	12	38451	38462	38589	38910	37992	38872	38469	38954	38951	38491	38846	38126	101.885
	13	38660	38622	38494	38616	38804	38481	38554	38393	38058	38083	38345	38145	101.476
	14	38391	38269	38165	38476	38578	39274	38280	38820	38925	38218	38261	38503	101.675
	15	38734	39021	38598	39042	38313	38651	38430	38313	38660	38438	38723	38227	101.893
	16	38387	38387	38640	38430	38028	38818	38840	38632	38807	38576	38574	38564	101.790
	17	38400	38830	38302	38597	38522	38914	38342	38490	37976	38450	38514	38409	101.584
	18	38663	38969	38482	38396	39125	38767	38273	37951	39112	38777	38148	38866	101.976
	19	38243	38952	38348	38650	38392	38129	39126	39083	38404	39155	38955	38398	102.044
	20	38793	38804	38824	38916	38891	38686	38610	38874	38969	38916	37980	38166	102.175
	21	38497	38222	38836	38064	38846	38865	38015	38840	38480	39560	38909	38004	101.890
	22	38017	38787	38527	38539	38986	37955	38794	38316	38741	38612	38910	37891	101.657
	23	38240	38266	38271	37707	38342	38215	38442	38029	38547	37951	38257	38248	100.873
4	0	38451	38165	38056	38264	38325	38195	38151	38734	38363	38015	38560	38808	101.217
	1	37927	38240	38268	38363	37832	37874	38289	38066	38499	38048	38529	38497	100.855
	2	38556	38881	38321	38139	37970	38437	38213	38203	38176	38497	38308	38766	101.303
	3	38335	38124	38599	38826	38477	38462	39075	38916	38515	38135	38166	38727	101.719
	4	39076	38409	38335	38568	39117	38399	38441	38727	38854	38568	38634	38049	101.899
	5	38332	38057	38741	38561	38402	38603	38413	38667	38689	38128	38515	38437	101.540
	6	38501	38437	37939	38013	38292	38316	38977	38769	38812	38324	38833	38475	101.571
	7	38447	38324	38324	38246	38351	37837	39197	38482	38512	38422	38167	38358	101.347
	8	38517	38726	38512	38491	39088	38928	38333	38255	39199	38772	38368	38406	101.991
	9	38454	38966	38316	39267	38614	38622	38512	38939	38500	38630	38639	38060	101.974
	10	38115	38705	38586	38317	38610	38175	37861	38531	38572	38516	39070	38536	101.551
	11	38536	38932	38882	38532	37776	39034	38120	38910	38529	38412	38741	38287	101.792
	12	38379	38485	38688	38392	38498	38829	38894	38210	39063	38469	38182	38913	101.860
	13	38891	39017	38064	38445	38436	38744	38875	38210	37992	38391	38689	38679	101.735
	14	38469	38881	38966	38045	38638	37983	38302	38641	38249	38248	38183	37950	101.322
	15	38374	37982	38221	38269	38701	38574	37706	38025	38524	38640	38057	38618	101.132
	16	38682	38237	38152	37984	37984	37984	37963	38291	38270	38477	38334	38344	100.915
	17	38567	37889	38388	38527	38380	38722	38159	38366	38488	38287	38934	38255	101.412
	18	38361	38181	38318	37947	38446	37915	38096	38064	39061	38572	38875	38362	101.244
	19	38497	38317	37988	38591	37892	38476	38836	38337	38941	39163	38072	37839	101.408
	20	37740	38947	38426	38785	38127	38223	38216	37615	37913	38142	37947	37906	100.757
	21	38300	38352	38096	38340	38106	38584	37734	38381	38138	37979	38732	38309	100.991
	22	38267	38700	37830	37735	38277	38500	38108	38320	38202	38743	38191	37926	100.936
	23	38478	38403	38308	38722	38000	37979	38637	37629	37788	38372	38361	38021	100.913

S.V.I.R.CO. Observatory - Pressure Corrected Data – February 2021

day	hh	00_05	05_10	10_15	15_20	20_25	25_30	30_35	35_40	40_45	45_50	50_55	55_60	h-norm
5	0	38127	38393	38456	38127	38382	38945	38563	38011	38108	37683	38860	38127	101.152
	1	38138	38074	38499	38764	38547	39218	38008	38072	38252	38390	38019	37881	101.169
	2	38393	38768	38251	38895	38843	38169	38733	37898	38162	37963	38407	38733	101.467
	3	38279	38724	37931	38470	39041	38522	38384	38238	38289	38430	38399	38537	101.473
	4	38403	38108	37717	38827	38858	38583	38625	38815	38614	38619	38866	38841	101.833
	5	38658	38257	37943	38329	39093	38387	38533	38743	38102	38407	38417	38566	101.516
	6	38167	37936	38471	37503	37936	38102	37887	38738	38561	38854	38902	38756	101.158
	7	38306	38920	38467	38678	38142	38533	38878	38662	38495	39146	38132	37971	101.713
	8	38317	38001	38201	38114	38030	38242	38844	38844	38209	38147	38708	38664	101.271
	9	38336	37999	39165	37819	38186	38802	38738	38728	38304	38469	38506	38812	101.610
	10	37889	39023	38547	39104	38522	38864	38429	38803	38879	38435	37761	38478	101.801
	11	38703	38791	38247	38777	38977	39096	38658	38142	38877	38178	38874	37814	101.889
	12	38600	39089	39012	38820	38880	38607	38765	38429	38084	39016	38533	38590	102.173
	13	38114	37967	38532	38638	38374	39418	38184	38778	38361	39231	38300	38591	101.748
	14	38466	38570	38058	38100	38548	38923	38296	38841	37910	38636	38505	38672	101.536
	15	38150	38411	38633	38187	38353	38958	38416	38699	38407	38751	38073	38261	101.486
	16	39064	39022	38520	38645	38313	38643	38451	38777	38455	38850	38403	38853	102.079
	17	38778	38392	38948	38219	38376	39001	38656	38604	39042	38082	38355	38104	101.763
	18	38542	38155	39094	38334	38636	38449	38396	38625	38468	37792	38438	38855	101.593
	19	38072	38353	38833	38508	37988	38239	38665	38279	37831	38864	38948	38717	101.485
	20	38811	38593	38228	38540	37647	39069	38760	38957	38583	38333	38439	38296	101.697
	21	38402	38610	38590	38114	38477	39431	38267	38289	38164	38416	38296	38303	101.499
	22	38404	38926	38583	38958	38957	38717	38374	38615	38666	38458	38854	38394	102.059
	23	38102	38550	38091	38592	38833	38103	38498	38665	38480	38505	38611	38172	101.465
6	0	38129	38129	38151	38175	38655	38657	38367	38773	38443	38621	38308	38483	101.391
	1	38530	38400	38912	38890	38119	38901	38252	38736	38164	38568	38603	38887	101.852
	2	38379	38805	38711	38268	38326	38174	38878	38370	38812	38681	38288	38634	101.712
	3	38602	38761	38452	38781	38455	38745	38723	38473	38693	38283	38532	38790	101.924
	4	38327	38598	38598	38458	38151	37913	38572	38129	38253	38769	38256	38238	101.258
	5	38218	38351	38156	38722	38639	38557	38473	38945	38453	38567	37974	38675	101.581
	6	38347	38850	38881	38809	38100	38614	38932	38829	38234	39045	38511	38439	101.990
	7	38614	39043	38650	38732	38506	38372	37950	38982	37980	38980	38577	38773	101.894
	8	38691	38897	38825	39279	39062	38598	39207	38650	38877	38092	38763	39189	102.549
	9	38428	38717	38871	39026	38500	38964	38503	38876	39524	38423	38557	38385	102.250
	10	38357	38850	38984	39006	38356	38401	38968	38570	38811	38558	39214	38765	102.265
	11	38513	39425	38989	38938	38250	38965	39005	38630	38680	38955	38843	38701	102.497
	12	38335	39320	39282	38914	38371	38569	38790	38758	38782	38785	38652	39146	102.455
	13	39239	38453	38838	38688	38660	38551	39337	38868	38655	38800	39133	38698	102.502
	14	38535	38643	38078	38593	38604	38077	39098	38331	39128	38535	38416	37865	101.618
	15	38306	38909	38170	39113	38683	38615	38573	38054	38755	38493	38192	38313	101.679
	16	38112	38082	38724	38605	38120	38805	38448	38754	38804	38543	38677	38828	101.750
	17	38487	38797	38717	38377	38527	38397	38797	38547	39156	39109	38783	38456	102.113
	18	38369	38644	38271	38740	38620	38900	38971	38422	38401	38820	38440	38351	101.849
	19	38660	38800	38990	38830	39030	39230	38960	38700	38664	38843	38480	38500	102.452
	20	38970	38121	38840	38331	38950	39021	39003	38644	38895	38426	38646	38165	102.082
	21	38593	38567	38966	39114	38538	38809	38671	38287	37803	38379	38919	38916	101.981
	22	38579	37974	38255	39241	38486	38447	38568	38827	37796	38569	38335	38385	101.521
	23	38414	38869	38187	38513	38951	38519	38254	38543	38672	38593	38524	37974	101.643

S.V.I.R.CO. Observatory - Pressure Corrected Data – February 2021

day	hh	00_05	05_10	10_15	15_20	20_25	25_30	30_35	35_40	40_45	45_50	50_55	55_60	h-norm
7	0	38110	38777	38563	38510	38717	38512	38319	38881	38364	38507	38487	38068	101.587
	1	38183	38656	38609	38695	37688	38893	38647	38163	38871	37856	38687	37659	101.333
	2	37809	38344	38480	37989	38821	38218	38841	38502	38491	38177	38081	38254	101.202
	3	38953	38168	39062	38714	38391	38791	38616	38532	38668	38322	38598	38394	101.906
	4	38885	38329	37905	38467	38161	38378	38156	38481	38571	38803	38950	38475	101.543
	5	38910	38358	38782	38579	38908	38442	38405	38178	38535	38737	38973	38448	101.917
	6	38283	38715	38839	38423	38538	38593	38057	38166	38431	38309	38135	38754	101.474
	7	38131	38940	38699	38664	37797	38834	38491	38564	38503	38343	38125	38189	101.482
	8	38920	38672	38045	37963	38280	38614	38737	38326	39036	38695	38622	38599	101.751
	9	38795	38603	38346	38291	38774	38623	38595	39136	38599	38512	38765	38083	101.886
	10	38283	38717	38654	38504	38346	38628	38170	38305	38851	38460	38688	39073	101.789
	11	38706	38231	38982	38537	38845	38410	38537	38801	38577	38328	38797	38630	101.944
	12	38728	38652	38919	38690	38517	38200	38584	37747	38578	38489	38207	38933	101.693
	13	38377	38410	38626	38386	38524	38603	38175	39002	38924	38238	38551	38105	101.622
	14	38590	38809	37995	38540	38354	38758	38541	38741	38456	38702	38587	38093	101.677
	15	38683	38826	38147	38365	38410	38575	38586	38652	38733	39217	38410	38646	101.916
	16	38404	38657	38468	38402	38936	38388	38079	38628	38401	38172	37756	38431	101.360
	17	38394	38163	38952	38645	38840	38300	38856	37930	38886	38314	38709	38581	101.765
	18	38114	38193	38372	38552	38507	38892	38793	38299	38327	38480	37997	38515	101.429
	19	38417	38353	38074	38459	38875	38631	38588	38368	38219	38453	38567	38289	101.484
	20	38735	38459	38706	38481	38608	38678	37993	37866	37988	38326	38997	38505	101.495
	21	38802	38718	38695	38652	39327	38579	38359	38102	38797	38187	38492	39013	102.019
	22	38678	38901	38163	38627	38598	38611	38125	38019	38571	38284	38698	38452	101.580
	23	39020	38039	38597	38672	38810	38679	38204	38620	39023	38125	38270	38768	101.822
8	0	38421	38435	38658	38325	38611	38624	38858	38465	38960	38511	38137	37945	101.632
	1	37929	38793	37987	38975	39059	38310	38841	39245	38938	38488	38513	38713	102.034
	2	38727	37951	39011	38429	39089	38853	38336	38476	38845	38848	38707	38555	102.042
	3	38559	38529	38511	38726	38498	38434	38792	38455	38537	38281	38943	38576	101.825
	4	38368	38557	38925	38319	38652	38416	38848	38879	39098	39055	38531	38578	102.130
	5	38892	38791	38984	38621	37926	38550	38270	38508	38224	38442	38483	38658	101.717
	6	39037	38468	38322	38362	38455	38479	38909	38574	38558	38692	38642	38227	101.799
	7	38183	38821	38736	38535	38294	38364	38218	38446	38459	38438	38628	38547	101.567
	8	38735	38310	38211	38450	38648	38425	38727	38533	38508	38513	38431	38398	101.616
	9	38071	38590	38563	38113	38671	38985	38949	38777	38695	38574	38761	38371	101.886
	10	38795	38250	38480	38617	38783	38810	38480	38547	38345	38906	38876	38807	102.013
	11	39376	38397	38238	38751	38352	38590	38903	38623	38311	38274	38602	38075	101.748
	12	38724	38742	38555	38615	38916	38365	38691	38665	39152	38913	38827	39101	102.358
	13	38900	38378	38306	38525	38529	38613	38337	38251	38680	39182	38112	38392	101.685
	14	39133	38346	39287	38658	38128	38018	38099	38508	38554	38255	38204	38767	101.631
	15	38883	38430	38669	38525	37988	38509	38295	37997	38711	38553	38372	39056	101.637
	16	37965	38140	38928	38430	38441	38259	38797	38269	38417	38067	38254	38715	101.350
	17	38830	38653	39034	39084	38498	38204	38628	38923	38342	38303	38513	38886	102.058
	18	38511	38763	38819	38269	38455	39146	38116	38193	38510	38491	38709	38622	101.773
	19	38461	38608	38566	38581	38579	38759	38199	38456	38495	38668	38526	38116	101.643
	20	37873	38625	38129	38149	38225	38663	38676	38910	39086	38056	38323	38707	101.513
	21	38329	38476	38512	39037	38846	38926	38713	38430	38819	38726	39114	38434	102.160
	22	38545	38364	38676	38472	38729	38509	39114	38773	38954	38719	38368	38470	102.012
	23	38628	37933	38337	38766	38872	38676	38447	38205	38722	38678	38321	38690	101.700

S.V.I.R.CO. Observatory - Pressure Corrected Data – February 2021

day	hh	00_05	05_10	10_15	15_20	20_25	25_30	30_35	35_40	40_45	45_50	50_55	55_60	h-norm
9	0	38756	38304	38480	38151	37934	38343	38224	38685	37615	38619	38638	38582	101.263
	1	38098	38823	38423	38023	38026	38854	38629	37978	38466	38769	38890	37515	101.309
	2	38096	38051	38489	38876	38668	38384	38250	38818	38542	37972	38786	38138	101.435
	3	37954	38548	38818	38387	38773	38385	38922	38113	38370	38614	38360	38309	101.542
	4	38298	38720	38237	38356	38331	38221	38413	38546	38000	38595	38065	38493	101.261
	5	38513	38662	38347	38353	38410	38603	38135	38846	38469	38398	38066	38305	101.443
	6	38185	38350	38838	38979	38749	38930	38822	38527	38859	38559	38765	38755	102.150
	7	38976	38747	38579	37927	38484	38578	38484	38362	38207	38541	38690	38917	101.749
	8	38743	39048	38522	38450	38455	38507	38753	38106	37844	38360	38825	38648	101.698
	9	38666	38652	38364	38410	38594	39151	38348	38641	38661	39052	38314	38822	102.008
	10	38416	38396	38504	38672	38349	38863	38284	38200	38597	38108	38438	38489	101.490
	11	38776	38463	38795	38086	38102	38980	38133	38734	38641	38774	38244	38201	101.625
	12	38675	38598	38145	38817	38037	38301	37997	38600	38203	38289	38735	38200	101.331
	13	38209	38423	38342	38206	39055	38505	38199	38535	38503	38717	38469	38136	101.486
	14	38817	38385	38043	37931	38320	39141	38668	38430	38363	38708	38822	38666	101.704
	15	38170	38072	38541	38205	38207	38049	38160	38366	37649	38551	38681	38196	100.946
	16	38434	38381	38720	38727	37971	38189	38065	37635	38620	38159	38801	38647	101.277
	17	38829	38226	38270	37954	38189	38297	38309	38200	38399	38544	38049	38384	101.123
	18	38260	38230	38188	38503	38161	37835	37956	38610	37808	38182	38163	38661	100.883
	19	38159	38528	38514	38473	38429	38390	37527	38388	38772	37861	38062	38126	101.031
	20	38276	38358	38101	38744	38077	38145	38431	37985	38274	37967	38486	38412	101.037
	21	38187	37711	37608	38989	38135	38636	38242	38212	38017	38549	38613	38464	101.060
	22	38163	38634	38725	38221	38331	38199	38367	38481	38404	38356	38439	37448	101.149
	23	37727	38962	38122	38244	38333	38032	38281	38707	38377	38163	37752	38135	100.943
10	0	38516	38590	38519	38119	38458	38044	38787	38323	38390	38529	38558	38235	101.431
	1	38651	38285	38571	38512	38541	38957	38730	38602	38229	38928	37875	37505	101.504
	2	38628	38236	38188	38208	38755	38244	38149	38023	38112	38572	37908	38603	101.118
	3	38702	38556	38585	39025	38429	38488	38861	38265	38041	38470	38236	38066	101.579
	4	38537	38259	38414	38531	38305	37975	37890	38416	38641	37796	38467	38544	101.151
	5	38175	38243	38204	38671	38332	38324	38310	38766	38264	38011	38079	38494	101.172
	6	38621	38148	38694	38560	38288	38296	37969	38785	38494	37999	37766	38085	101.135
	7	38859	38414	38356	38174	38057	38356	38482	37853	38434	38541	38339	37951	101.160
	8	38404	37987	37669	38107	37903	38579	38662	38490	38535	38380	38042	38177	100.966
	9	38940	38466	38495	38776	38757	38544	37819	38689	38303	38245	38098	38633	101.588
	10	38407	38150	38111	38496	38369	38573	38351	38497	38099	37694	38595	38286	101.118
	11	38074	38557	38271	38009	38024	38019	37851	37986	38636	38244	38025	38500	100.803
	12	38394	38626	38757	38558	38591	38276	38513	38151	38371	38686	39072	38456	101.740
	13	38533	39070	38636	38497	38613	38035	37866	38144	38529	37860	38323	38009	101.226
	14	38609	38534	38184	38507	38260	38232	38630	38761	38608	38514	38231	38284	101.498
	15	38019	38460	38364	38561	38780	38848	38715	38696	38328	38696	38232	37883	101.548
	16	38715	38402	38619	38706	38149	37988	38328	37885	38931	38667	38659	38101	101.453
	17	38999	38829	38572	38213	38630	38791	38165	38534	38781	38137	38601	38535	101.813
	18	38534	38380	38898	38880	39104	38762	38960	38239	39209	38772	38810	38886	102.395
	19	39378	38799	38924	38648	39133	38591	38468	38619	38287	38415	38491	39019	102.250
	20	38759	38509	38805	38415	38693	38519	38587	38075	38380	38704	39000	38674	101.887
	21	38787	38159	38323	38417	38776	38736	38613	38516	38666	38078	38452	38861	101.725
	22	38409	38163	38501	38778	38329	38435	39006	38639	38687	38575	38155	38059	101.582
	23	38538	38727	39214	38478	38586	38814	38390	38515	38602	38457	38466	38551	101.935

S.V.I.R.CO. Observatory - Pressure Corrected Data – February 2021

day	hh	00_05	05_10	10_15	15_20	20_25	25_30	30_35	35_40	40_45	45_50	50_55	55_60	h-norm
11	0	38947	38754	38358	39247	38657	36730	36619	38985	37979	38201	38830	38152	101.031
	1	38200	38872	37812	38758	38853	38736	37871	38533	38291	38163	38940	38530	101.543
	2	38776	38366	37990	38791	38663	38936	37839	39005	38859	38534	38681	38446	101.835
	3	38732	38213	37976	38875	38531	38776	38873	38933	38066	38103	38015	37795	101.396
	4	38483	38475	38495	38001	38138	38946	38386	38276	37945	38281	38251	38864	101.319
	5	38981	37643	38238	38197	38540	38393	38650	38418	38504	38462	38127	38451	101.333
	6	38429	38422	38620	38250	38310	38170	38074	37970	38025	38364	38221	38075	100.965
	7	38273	38366	38194	38404	38767	38413	38873	38038	38833	38380	38169	38571	101.482
	8	38042	38398	38579	38675	38297	37702	37953	38477	38396	38323	38039	38019	100.958
	9	39086	38176	38399	37975	39074	38014	38679	38071	38596	38353	38302	38189	101.402
	10	38085	38267	38127	38391	38802	38616	38038	38351	38819	38860	38159	38372	101.395
	11	38664	38379	38369	37984	38023	38214	38699	38343	38820	38313	38333	38617	101.367
	12	38151	38587	38749	38516	38007	37825	38232	38556	38505	37736	38659	38089	101.114
	13	37907	38484	37932	37569	38105	37952	38639	38367	37954	38045	38237	38045	100.592
	14	37812	38409	38288	38267	38269	38665	38249	38483	38326	38169	37801	38289	100.986
	15	38170	38013	38648	38608	37422	38833	38348	38613	38145	38939	38926	38800	101.522
	16	38830	37796	38303	38670	38676	38541	38727	38654	38656	38329	38451	38123	101.586
	17	38634	38344	38796	38232	38251	38620	38629	38082	38267	38503	38061	38338	101.367
	18	38067	38004	38195	38219	37355	38986	38511	38450	38575	38211	38621	38766	101.191
	19	38414	37925	38232	38511	38581	39050	38167	38115	38776	38181	38420	37652	101.206
	20	38679	38160	38396	38653	37973	38691	38934	38724	38329	38348	38511	38033	101.515
	21	38957	37630	38276	38047	38308	37828	38558	38631	38651	37899	38784	38510	101.217
	22	38447	38113	38229	37996	39035	39255	38493	38830	38806	38256	38047	38225	101.581
	23	38330	38281	38473	38494	38399	37907	38696	38288	38269	38061	38480	38491	101.237
12	0	38208	38101	38423	38682	38199	38505	38306	38747	38777	38682	38169	38243	101.434
	1	38316	38064	39072	38169	38010	38357	39072	38337	37907	38201	38295	38178	101.195
	2	38577	39261	38169	37875	37760	38190	38306	38033	37947	38168	37896	38033	100.807
	3	38145	38025	38447	38237	37727	38130	38253	37608	38406	38087	38117	38301	100.646
	4	37970	37625	37698	37441	38186	37749	38193	37992	38330	38024	38255	38507	100.313
	5	38233	38074	38054	37729	38056	37985	38838	38798	37888	37898	38407	38481	100.857
	6	38448	38263	37751	37839	37909	38338	38074	37162	37980	38230	37672	37971	100.241
	7	38396	38130	38098	38194	38438	38161	38267	38469	38393	37863	38533	38061	100.981
	8	38137	38097	38031	37898	38499	37932	38193	38066	38068	38365	37780	38404	100.643
	9	37927	38513	38109	38468	38121	38361	38414	38178	37996	37903	38711	38287	100.977
	10	38582	38422	38158	38028	38460	37865	38407	38438	38384	37661	37938	38659	100.980
	11	37943	38159	38051	38051	38240	38345	38715	37561	38307	38402	38372	38234	100.843
	12	38329	38547	38297	38274	38072	38420	38314	38245	37971	38529	38144	38045	101.021
	13	37940	38208	38052	38052	37905	38042	38327	38095	38327	37905	38833	38126	100.719
	14	37766	37914	38316	38422	38903	38100	37733	37928	37428	38265	37903	38411	100.560
	15	37894	37989	38041	38146	38327	38474	38348	38443	38774	38370	38560	38188	101.102
	16	38552	38474	37777	38711	37852	38828	38239	38724	38724	38397	38818	37933	101.426
	17	38386	38634	37827	38339	38467	38663	38358	38453	38179	38517	38390	38000	101.247
	18	38580	37638	38949	37933	37902	38228	38197	38618	38239	37818	38681	37965	100.925
	19	38024	38567	38471	38260	38829	38972	38465	38614	38161	38813	39003	38287	101.742
	20	37686	38308	38278	38414	38150	38844	38099	38341	38681	38567	38318	38428	101.225
	21	38577	38695	38557	38189	38158	38828	38818	37987	38611	38774	38361	38770	101.712
	22	38016	38738	38433	38387	38340	38210	39245	38743	37979	38315	38681	38408	101.529
	23	38408	38230	38083	38471	38269	38615	38525	37888	38076	38182	38572	37873	101.022

S.V.I.R.CO. Observatory - Pressure Corrected Data – February 2021

day	hh	00_05	05_10	10_15	15_20	20_25	25_30	30_35	35_40	40_45	45_50	50_55	55_60	h-norm
13	0	38155	38614	38211	38057	38714	37786	38245	38600	38308	38318	38099	38425	101.092
	1	38023	38241	38474	38366	38387	38046	39221	38607	38389	37693	38372	38125	101.188
	2	38117	38319	38755	38124	37910	38016	38387	38232	38626	38418	38056	38380	101.055
	3	38632	38291	37981	37682	38517	38086	38348	37885	38351	38477	38476	38476	101.025
	4	38413	38245	38153	37864	37874	38142	38472	38434	38580	38354	37985	38201	100.918
	5	38229	38278	38256	38039	38235	38163	38338	38813	38650	38051	38016	38517	101.108
	6	38037	38166	38361	38875	38060	38587	38877	38286	38695	38260	38090	38673	101.413
	7	38453	38396	38092	37512	38081	38710	38603	38838	38545	38469	38914	37869	101.306
	8	37807	38128	38532	38449	38729	38335	38512	38740	37796	38532	37972	38304	101.164
	9	38252	37703	38987	38343	38821	38159	38245	38241	37913	38454	38236	38898	101.255
	10	38268	38462	38305	38272	38263	38275	38541	38434	38561	38164	38039	38969	101.322
	11	38593	38300	38237	38529	38499	38322	38373	38644	37706	38967	39009	38613	101.594
	12	38613	37914	38769	38153	38090	38832	38265	38544	38544	38767	38691	38036	101.468
	13	38820	38454	38987	38109	38276	38716	38454	38193	38214	38493	38425	38330	101.524
	14	38519	37489	38168	38400	38008	38729	38086	38348	38586	39214	38478	38637	101.345
	15	37869	38270	38036	38838	38179	38970	38317	37886	38161	38471	38086	38141	101.029
	16	38190	38534	38319	37892	38103	38253	37760	38133	38242	37971	38164	38447	100.762
	17	38070	38590	37799	38490	37705	37642	38495	38330	38049	38184	37838	37868	100.554
	18	37727	38303	37902	38436	38146	38453	38030	38254	38016	38066	37841	38558	100.701
	19	38745	38303	37898	37932	38231	37972	38233	38315	37876	38347	38072	38928	100.948
	20	38584	38092	38357	38681	38003	38423	38253	38749	38621	38457	38675	39165	101.653
	21	38021	38245	38470	38044	38612	38672	38303	38992	37958	37838	38319	38548	101.205
	22	38849	38101	38315	38924	38771	38300	38097	37904	38343	38826	38815	38301	101.541
	23	38367	38503	38387	38158	37729	38224	38654	38215	38286	38529	38474	38066	101.110
14	0	38756	38226	38104	37748	37917	38977	38318	38290	39142	38667	38237	38636	101.431
	1	38714	38156	38393	38246	38070	38847	38514	38481	38083	37872	38404	38160	101.187
	2	38305	38296	38029	38238	38038	38371	38206	37919	38462	38263	38329	38340	100.935
	3	38870	38264	38620	38313	38411	38051	38178	38384	38408	38328	38410	38371	101.334
	4	38753	38196	38000	38128	38552	38251	38018	38492	37909	38172	37882	38598	100.970
	5	38767	38667	37882	38598	38632	38414	39002	38515	39306	38184	38145	38652	101.808
	6	38703	38149	38154	37709	38731	38139	38200	38634	37731	38483	38424	37998	100.992
	7	38243	38634	37953	38294	38169	38373	37741	38872	38162	38725	38440	39043	101.342
	8	38889	38814	38370	38455	38666	38694	38149	38904	38173	38275	37858	38953	101.684
	9	38407	37929	38327	38407	37883	38571	38847	38348	38444	38926	38323	38221	101.339
	10	38537	38580	37981	37978	38544	38158	38693	38141	38324	38518	37861	38265	101.107
	11	37573	37999	38151	38393	38219	38403	38164	38436	38312	39275	38658	38475	101.213
	12	38647	37516	38520	38284	38025	38115	37826	38236	38240	38129	38148	37904	100.670
	13	38132	38607	38379	38309	38444	38613	38290	38271	38540	38126	38357	38898	101.412
	14	38314	38365	37880	38585	38561	38514	38497	38486	38564	38302	38873	38236	101.459
	15	37947	38433	38768	38662	37794	38479	38818	37846	38034	38581	38151	37704	101.028
	16	38252	38118	38252	37790	38157	38188	37825	38404	38071	38765	37777	38174	100.710
	17	38494	39072	38242	38130	38011	37956	38483	38002	38320	38443	38587	37956	101.134
	18	38407	37654	38678	38341	38675	38969	38044	38532	38473	38283	38495	37840	101.286
	19	38398	38185	37950	38351	38623	38782	37982	38268	37644	38141	38189	38195	100.916
	20	38710	37925	38661	37977	38233	37886	39052	38144	38111	38217	37906	38392	101.027
	21	38343	37853	38365	37508	37784	38238	38250	38000	38369	38500	37954	37919	100.559
	22	38228	38406	38241	38668	38466	37598	37954	38457	38701	37665	38237	38476	101.001
	23	38117	37781	37878	38344	38179	37753	37734	38874	37844	38149	38130	38029	100.499

S.V.I.R.CO. Observatory - Pressure Corrected Data – February 2021

day	hh	00_05	05_10	10_15	15_20	20_25	25_30	30_35	35_40	40_45	45_50	50_55	55_60	h-norm
15	0	37724	38012	38084	38407	38537	37997	38847	38656	39123	38225	37901	38584	101.221
	1	38609	38179	38084	37437	38730	38599	38060	37915	37925	38442	37724	38684	100.845
	2	38242	38194	38065	38020	38403	38081	38262	38082	38657	38249	38595	38282	101.009
	3	38580	39118	38291	38125	38447	38785	38800	38237	37712	37966	38903	38641	101.553
	4	37958	38858	38041	38555	37920	38591	38507	38626	38290	38255	38507	38243	101.278
	5	37836	38507	38543	37980	38591	38629	38917	39059	38255	38665	38381	38201	101.544
	6	38225	38191	38480	38816	37951	38861	38047	38127	38788	38515	38797	38464	101.477
	7	38227	38287	38718	38801	38290	38233	38113	38759	38652	38834	38543	38277	101.581
	8	37660	38036	38605	38582	38829	38335	38516	38030	38261	38406	38430	39122	101.379
	9	38261	38564	38321	38612	38662	37376	38810	38731	39435	38476	38620	37783	101.562
	10	38500	38278	38431	38650	37958	38407	37993	37881	38562	38309	38320	38399	101.132
	11	38373	38921	38315	38058	38457	37816	37743	38648	38584	38498	38349	38755	101.314
	12	38441	38164	38959	37943	38206	38192	37839	38111	39044	38368	38413	38577	101.257
	13	38001	38685	38567	38370	38710	38209	38856	38734	38160	38424	38661	38214	101.550
	14	38344	37709	38068	37661	38533	37779	38449	38186	38138	37374	38092	38008	100.395
	15	38016	38500	38300	38161	38269	38699	38727	38384	38122	38201	38031	37780	101.022
	16	38102	38483	38400	38563	39058	37796	37678	37452	38773	38358	38786	38263	101.136
	17	38214	38439	38225	38213	38165	38606	38333	38476	37798	38416	38476	37967	101.052
	18	38852	38197	39090	37447	38292	37947	38746	37521	37724	38663	38032	38175	100.911
	19	38126	37948	37841	38245	38304	38519	38066	38066	38107	37897	37837	37897	100.508
	20	38040	38172	38243	38147	38673	38125	38196	38442	38446	38572	38358	38108	101.095
	21	38334	38287	38630	38868	38750	37704	38417	38073	37728	38322	38906	37646	101.126
	22	37371	38094	38161	37874	38480	37779	37827	38231	38302	38242	37934	37994	100.384
	23	38529	38670	37708	38762	38189	38047	38154	38330	38140	37679	37815	38026	100.771
16	0	37893	38961	38224	38125	37996	38094	37915	37914	38092	38623	37353	37624	100.495
	1	38203	38034	38599	37984	37547	38085	38399	37833	38457	37993	38367	37788	100.603
	2	37798	38101	37876	38054	38172	37893	37981	38310	38850	37736	38010	37987	100.489
	3	37693	38006	38553	37908	38307	38327	38041	38227	37975	38488	38151	37972	100.683
	4	38322	38485	38553	38257	38197	38887	38617	38693	38583	38237	38673	38561	101.655
	5	38453	38600	38460	38530	38251	38379	38693	38936	38271	38308	38111	38251	101.473
	6	38251	38658	38390	39368	38460	38844	39003	38662	39255	38127	38127	38197	101.935
	7	38659	38936	38554	38921	38765	38255	39214	39552	37912	37544	38555	38299	101.897
	8	38927	38590	38341	38196	37939	38672	38882	38174	38837	39000	38315	38291	101.676
	9	38394	38754	38730	37964	38868	38788	38121	38302	38664	38086	37645	38162	101.305
	10	37868	37878	38133	38410	38490	38883	38355	38477	38180	38256	38389	38101	101.073
	11	38165	37954	37734	38765	38107	38371	38151	38962	38302	38624	38658	38921	101.358
	12	38560	38314	38577	38228	37732	38370	38193	38330	38444	38696	38713	37974	101.229
	13	38870	38081	38195	37986	37924	37942	38592	38196	37832	38116	38720	38515	100.973
	14	38242	38025	38651	38542	39107	38267	38458	38413	38413	38818	38192	38418	101.540
	15	38447	37913	38170	38224	37715	37873	39010	38475	38108	38652	38608	38455	101.123
	16	38539	37622	38256	38561	38311	39109	38403	38403	38201	38235	37861	37929	101.074
	17	38042	38448	38222	38505	38211	38539	38426	38776	38607	37838	38335	38686	101.340
	18	38313	38369	38482	38301	38155	37963	38526	38058	38550	38291	38460	38240	101.136
	19	37919	38020	38009	38572	38044	38416	38596	38260	38405	38574	38091	38158	100.994
	20	38619	38246	38471	38291	38134	38427	38168	38203	37909	38099	37863	38325	100.926
	21	38437	38775	38212	38223	38471	38122	38364	37830	38607	37877	38597	39017	101.318
	22	38280	38731	38388	38285	38509	38078	38762	38179	37674	38538	38528	38467	101.292
	23	38290	38481	38089	38717	38369	38516	37676	38000	37765	38509	38682	38571	101.127



S.V.I.R.CO. Observatory - Pressure Corrected Data – February 2021

day	hh	00_05	05_10	10_15	15_20	20_25	25_30	30_35	35_40	40_45	45_50	50_55	55_60	h-norm
17	0	37654	38294	38312	38102	38447	38069	38326	38000	38012	38191	38354	37992	100.699
	1	37678	38827	38102	38709	38660	38827	38592	38347	38348	38215	37870	38092	101.259
	2	38437	38627	38404	38304	38215	38337	38044	38138	38059	38601	38409	38242	101.160
	3	38406	38780	38825	38292	38358	38158	38392	38925	38170	38236	38308	38359	101.466
	4	38037	38086	38977	38081	38402	38270	38260	38479	37790	38551	38526	38559	101.204
	5	38811	38512	38038	38138	38110	38424	38180	38123	38809	38137	38721	38445	101.298
	6	38367	37661	38765	38522	38049	38389	38487	38412	38545	38672	38356	38834	101.433
	7	38528	38632	38723	38988	38689	38324	38313	38313	38313	38412	38390	38169	101.594
	8	38523	38611	38988	38490	39032	37914	38634	38456	37936	38358	38679	38181	101.596
	9	38685	37893	39182	38112	38545	38081	38801	38236	38578	38600	38401	38091	101.465
	10	38445	38732	38555	37979	38689	37980	38240	38743	38500	38787	38566	38721	101.627
	11	38400	38577	38931	38279	38665	37903	38460	38267	38235	37981	38289	38951	101.406
	12	38360	37869	38850	38874	37965	38541	38333	38602	38124	38200	37975	38121	101.159
	13	38471	38418	38585	38419	38427	38987	37967	38148	38111	38352	38406	38363	101.343
	14	38297	38450	38460	38649	38375	38551	38885	37902	38863	38272	38208	38930	101.606
	15	38274	38350	38241	38218	38404	38678	37880	38492	38247	38733	38371	38394	101.262
	16	38832	37596	38165	38439	38724	37979	38048	37939	38173	38430	38463	37793	100.888
	17	38386	38243	38649	38616	38693	38199	38902	37749	38090	38221	38957	38166	101.392
	18	38891	38096	37475	38651	38243	38452	38683	37901	38364	38706	37816	38266	101.100
	19	38376	37992	38442	38288	39023	38243	38684	38314	38834	38167	38671	38588	101.557
	20	38169	39149	38244	37936	38114	38456	38346	37738	37650	38379	38599	39238	101.204
	21	38566	38533	38566	38290	38996	38252	38468	38634	38732	38543	38697	38312	101.770
	22	38426	38554	38049	38147	38135	38710	39009	38580	39022	38501	38787	38523	101.737
	23	38302	39087	38534	38357	38501	38446	38602	37751	37961	38093	38348	38314	101.265
18	0	38719	38434	37992	37980	38256	38852	38555	38876	38612	38325	37927	38899	101.514
	1	38435	38047	38257	38434	37959	38689	38528	38423	38522	38092	38555	38665	101.333
	2	38357	38103	38809	38480	38002	38193	38668	37966	38240	37981	38155	38464	101.071
	3	38573	38298	38146	38576	38884	38344	38389	38532	38477	38201	39038	38664	101.667
	4	38016	38379	38190	38333	38444	37783	38287	38093	38499	38289	38025	38092	100.855
	5	38465	38200	38256	38478	38390	38538	38434	39031	38479	38910	38269	38435	101.614
	6	38217	38508	39041	38204	38161	38587	38379	38877	38834	37981	38225	38131	101.452
	7	38514	38482	39059	38899	38515	38614	37959	38425	38225	38947	38858	38958	101.960
	8	38680	38547	38609	38328	38344	38320	38483	38449	38572	38749	38259	38559	101.618
	9	38559	38681	38937	39115	38048	38859	39004	39371	39001	38508	38017	38507	102.214
	10	38951	38351	38573	38796	38640	38429	38451	38962	38762	38851	38985	38388	102.110
	11	38470	38337	38258	38269	38995	38846	37994	38293	38537	38333	39252	38529	101.665
	12	38315	38511	38424	38969	38423	38322	38146	38059	39122	38631	38344	38367	101.559
	13	38190	39280	38579	38430	38618	37849	38266	38486	38113	38585	38310	38508	101.467
	14	38849	38618	38893	38893	38178	39409	38036	38552	37908	38453	38102	38488	101.724
	15	38598	37937	38477	38625	38477	38445	38071	38544	38409	38729	38234	38577	101.447
	16	38019	38773	38200	38732	38896	38511	38069	38014	38312	38698	38941	38189	101.498
	17	38416	39307	38444	38302	38956	38645	38864	38030	38701	38545	38244	38545	101.860
	18	38487	37825	38280	38990	38890	38524	38668	37959	38712	38917	38016	38256	101.535
	19	37894	38553	38847	38861	38375	38333	38314	38615	39550	38644	38520	38559	101.874
	20	38515	38214	38626	38192	38882	37914	38430	38580	38638	38443	38643	38103	101.459
	21	38382	38848	39077	39051	38159	38269	38715	38483	38962	38460	37758	38282	101.738
	22	38840	38137	38795	38784	39072	38537	38449	38148	38360	37790	38045	38381	101.494
	23	38939	38437	38348	38526	37925	38706	38604	38950	38371	38092	38338	38706	101.627

S.V.I.R.CO. Observatory - Pressure Corrected Data – February 2021

day	hh	00_05	05_10	10_15	15_20	20_25	25_30	30_35	35_40	40_45	45_50	50_55	55_60	h-norm
19	0	38279	38437	38248	38739	38706	38800	38393	38035	38379	38726	38883	38738	101.717
	1	38861	38616	38348	38177	38966	37942	38644	38489	38389	38366	38734	39024	101.762
	2	38578	38489	38656	38133	38610	38527	38472	38806	37903	38282	38494	38315	101.478
	3	38126	38584	38885	39085	38583	38750	38115	38204	38126	38405	39096	38037	101.639
	4	38059	38784	38572	37970	38683	38572	38382	38594	38092	38650	38584	38127	101.435
	5	38462	38753	38261	38349	38283	38718	38427	38476	37901	38416	38076	38709	101.383
	6	37920	38193	38697	39179	38439	38131	38013	38126	38182	38008	38373	38436	101.133
	7	38644	38735	38256	38722	38419	38250	38631	38384	38305	38417	38543	38824	101.668
	8	37899	38103	39095	38508	39089	38589	38634	39033	38722	38948	38180	37863	101.785
	9	38146	38243	39014	38800	38451	38045	38575	38417	39004	39117	38801	38699	101.929
	10	38564	38440	38823	38530	38474	38924	38484	38214	37673	38756	38993	38383	101.697
	11	38911	38432	38247	38056	37662	38515	38346	38586	38665	38883	38180	37810	101.265
	12	39022	39015	38047	38440	38305	38766	38680	39088	38304	38518	39285	38823	102.144
	13	38387	38180	38763	38831	38529	38770	38886	39120	38397	38448	38940	38493	102.024
	14	39061	38837	38166	38915	38345	39103	39136	38610	38990	38387	38374	38954	102.273
	15	39032	39166	38849	38313	38921	38914	38751	38214	38994	38795	38601	38203	102.246
	16	38840	38784	38896	38807	38694	38717	38473	38706	38851	38618	38494	39109	102.297
	17	38818	38371	38674	38383	38405	38383	39401	38965	38775	39423	38786	38238	102.217
	18	38707	38696	38640	38562	38968	38672	38628	38595	37766	38448	38358	38145	101.681
	19	39086	38067	38425	38717	38583	38808	38488	39345	38975	39273	38639	39134	102.419
	20	38450	38146	38920	38482	38965	38527	37977	38437	39076	38267	38448	38483	101.679
	21	38843	38573	38493	38647	39409	38529	38461	38474	39091	38381	39451	39104	102.400
	22	39374	38405	38628	38551	38900	39080	38967	38967	38776	39004	38627	38584	102.490
	23	38921	38662	39023	38833	38721	38719	38225	39058	39045	39021	38875	39313	102.612
20	0	38156	39324	38931	38527	38111	38493	38652	38900	39080	38573	38000	38305	101.872
	1	38485	38584	38562	38641	38516	37978	38775	38808	39044	37753	38406	38837	101.726
	2	38594	38416	38787	38810	39012	38187	38593	38347	38593	38974	38640	38757	102.016
	3	39172	38296	38847	38555	38496	38106	38799	38755	38493	38305	38281	38102	101.685
	4	38482	38974	38238	38450	38751	38090	38235	38638	38638	38404	38171	37947	101.424
	5	38573	38561	38348	38196	38441	38644	37964	38502	37867	38493	38259	38675	101.315
	6	38943	38843	38763	37956	38327	39307	38383	38304	37945	38349	38201	38192	101.533
	7	38484	38463	38974	38674	38809	38305	38093	38532	37614	38045	38462	38507	101.412
	8	39344	38427	38769	38455	38487	38339	38213	38326	38530	39293	38662	38983	102.042
	9	39034	38598	38495	38529	38653	38257	39080	38505	37749	38876	38849	37685	101.708
	10	38452	37955	38452	38404	38405	38182	38879	38348	38405	38778	38891	38744	101.617
	11	38957	38853	38311	38927	39025	38811	38417	38225	38626	38735	38563	38555	102.081
	12	38806	38056	38751	38151	38437	38783	38307	38617	38389	38594	38046	38649	101.549
	13	38615	38291	38245	38747	38983	38989	38559	38749	38660	38748	38591	38491	102.007
	14	38792	38502	38212	38681	38067	39116	38424	38469	38714	38904	38435	38357	101.788
	15	38481	38392	38458	39372	38310	38961	38735	38791	38179	38368	38659	38916	101.997
	16	38637	38357	38702	39003	38223	38925	38869	38624	38435	37422	38635	38914	101.804
	17	38247	38659	38513	38279	38680	38535	38001	38346	38721	38696	37894	37973	101.320
	18	38766	38203	38254	38346	38971	38246	38224	38201	38625	38168	38614	38413	101.427
	19	38848	38402	38246	38290	38870	38447	38647	38357	38357	38870	38489	39609	101.955
	20	38623	38749	38929	38996	38235	38649	38214	38278	38636	38181	38227	38337	101.652
	21	38237	38836	38364	38298	38879	38354	38255	38245	38491	38480	39038	38570	101.650
	22	38427	38728	38940	38886	38140	38943	38506	38461	38404	38537	39073	37924	101.853
	23	38193	38308	38357	38371	38203	38481	38337	38573	38650	38179	38460	38270	101.284

S.V.I.R.CO. Observatory - Pressure Corrected Data – February 2021

day	hh	00_05	05_10	10_15	15_20	20_25	25_30	30_35	35_40	40_45	45_50	50_55	55_60	h-norm
21	0	39141	38134	38192	38551	38439	38326	38917	38738	38997	38628	38448	37957	101.743
	1	38337	38682	38526	38369	38828	38313	38348	38315	38509	38641	38979	38317	101.676
	2	37857	37824	38281	38582	38469	38535	38570	38030	38505	38405	38003	38962	101.205
	3	38438	38115	38660	38738	38605	38561	38460	38527	37936	38728	38393	37971	101.449
	4	37815	37858	38763	38463	38127	38126	38862	37624	38338	38573	38640	38048	101.032
	5	37982	37726	38851	38182	38260	38092	38672	38304	38226	38672	38639	38538	101.232
	6	38683	38271	38382	38092	38728	38952	38348	38742	38726	38615	38380	38627	101.760
	7	38662	37936	38182	38271	38573	38718	39008	38582	38220	38886	38394	38618	101.651
	8	38169	38537	38732	37788	38662	38516	38731	38921	38820	38449	38605	38672	101.772
	9	38672	38729	38684	38739	38537	38392	38817	38761	38526	38761	38560	38416	101.991
	10	39055	38427	38683	38437	38504	38347	38459	38526	38941	39243	37877	39165	102.006
	11	38481	38941	39281	38471	38435	38710	38573	38203	38736	38685	39106	39111	102.242
	12	38180	38787	38426	38726	38659	38403	38488	38605	38892	38746	38497	39098	101.972
	13	38202	38701	39478	38988	38124	38868	39255	38857	38568	38778	39001	38847	102.446
	14	38980	38335	38533	38823	38157	38368	38258	38714	38736	39145	38389	38579	101.864
	15	37902	38922	39011	38401	38781	38459	38625	39161	38941	38096	39152	38496	102.068
	16	38686	38560	38518	38491	38067	37989	38456	38901	38243	37832	38685	38791	101.469
	17	38214	38696	38521	38512	38389	39122	37923	38804	38860	38514	38837	38564	101.850
	18	38359	38571	38541	38558	38402	38805	38941	38391	38255	38458	38536	38692	101.751
	19	38703	38435	38318	38103	37992	38527	37809	38527	38075	37720	38243	38368	100.940
	20	38460	38639	37628	38481	37885	38314	38739	38649	38528	38841	37967	38589	101.358
	21	38252	38442	38401	38426	38437	37965	38134	38476	38087	38729	38572	38403	101.271
	22	38522	38058	38861	37869	38692	37812	38555	38588	38982	38768	38464	38826	101.639
	23	38387	38150	39210	38579	38274	37673	37726	38064	38648	38072	37938	37870	100.891
22	0	38513	38413	38741	38067	38344	38515	37385	38526	37977	38663	38822	38233	101.251
	1	37823	38796	38161	38479	38255	38403	38393	38529	38771	38038	38321	38425	101.287
	2	38425	38300	38799	38684	38185	38446	38422	38798	38423	38616	38866	38354	101.710
	3	38638	38626	38467	38469	38266	37846	38186	38459	38930	38663	38519	39091	101.675
	4	38957	38541	38471	38569	38957	37752	38210	38566	38376	38305	38639	38707	101.651
	5	38297	38538	38873	38476	38635	38643	38569	38552	38615	38387	38798	38420	101.817
	6	38135	38272	38205	38390	38420	38422	38568	38579	38825	39185	38409	38369	101.591
	7	38682	37964	38192	38488	38501	38906	38419	38590	38802	38555	39059	38840	101.859
	8	38518	38616	38612	38501	38568	39201	38648	38647	38747	38780	39172	38496	102.192
	9	38323	39452	38688	39172	38471	38275	38045	38803	39230	39047	38828	38254	102.209
	10	38564	37874	38609	38827	39024	38794	38633	37965	38538	38596	38436	38541	101.728
	11	38595	37888	38070	38678	39148	38816	38965	38956	38692	38741	38724	38334	101.994
	12	38422	38990	38727	38498	37869	38196	38419	38705	38304	38339	38665	37780	101.401
	13	38786	38752	38648	38055	38763	39573	38341	38646	38333	38499	38097	38565	101.873
	14	38322	37774	38679	39079	38684	38919	37885	38287	38547	38134	38340	38351	101.420
	15	38191	38751	38888	38054	38271	38542	38284	38292	38791	38569	38822	37996	101.519
	16	38061	38787	38620	38334	38501	37829	38608	38326	38573	38494	38429	38605	101.457
	17	38180	38262	38417	38571	38540	38106	38235	38431	38130	38910	38707	38500	101.417
	18	38927	38363	38079	38797	38219	38363	38565	38796	38552	38917	37842	38541	101.632
	19	37739	37935	38538	38319	38760	37932	38088	38373	38466	38445	38190	38003	100.933
	20	38118	39095	38898	38396	38202	37703	38378	38709	38313	37999	38569	38849	101.471
	21	37972	38058	38474	38019	38451	38229	38113	38614	38241	37483	38242	38339	100.812
	22	38391	38414	38145	38367	38232	37742	38360	37862	38309	38214	38049	37897	100.756
	23	37664	37531	37346	37882	37624	37928	38179	38489	37949	38620	38185	38008	100.189

S.V.I.R.CO. Observatory - Pressure Corrected Data – February 2021

day	hh	00_05	05_10	10_15	15_20	20_25	25_30	30_35	35_40	40_45	45_50	50_55	55_60	h-norm
23	0	38161	38020	38607	37985	38055	37973	37903	38149	37680	38208	38125	38466	100.613
	1	38429	37784	37941	37777	37600	37942	38142	37296	37720	38166	37884	37658	99.955
	2	37748	38794	37985	37680	38149	38724	37633	37633	37856	38301	37996	37960	100.421
	3	38241	37854	37636	37817	38463	37817	37523	37920	38098	37965	38593	38464	100.406
	4	38060	38386	38180	38034	37987	38682	38435	38778	38000	38398	38168	38318	101.074
	5	38673	38010	38220	38668	38255	38066	38519	38311	38607	38654	38418	39080	101.525
	6	38382	38408	38070	38545	38366	38430	38376	38695	38553	38554	38530	38808	101.577
	7	38575	39155	38767	38688	38760	38333	38738	38131	38843	38902	38676	38594	102.116
	8	39202	38606	39152	38571	38370	38976	38584	38275	39321	38667	38441	38036	102.124
	9	39104	38677	38833	38609	38680	38655	39107	38966	38597	39335	39085	38680	102.592
	10	38168	38954	38585	38728	38787	38870	38251	38991	38122	38811	38418	38097	101.812
	11	38715	38429	38773	38462	38874	39154	38882	38585	38638	39176	38405	38917	102.303
	12	38404	38616	38403	39047	38295	38296	38734	38356	39196	38802	38654	38524	101.932
	13	38406	38605	38416	37918	38996	38574	37900	37863	38631	38242	38359	38301	101.246
	14	38066	38562	38513	38006	37960	38136	37994	38291	37888	37662	37994	38006	100.557
	15	37922	38478	38609	38388	38215	38370	38003	38664	37802	38687	38297	38558	101.198
	16	37376	38001	38735	37955	38226	37825	38050	37457	38108	37789	38049	38510	100.338
	17	38368	38191	38739	38163	37737	38152	38284	38265	37964	38663	38089	38102	100.918
	18	38126	38053	38397	37687	38269	38493	38065	37794	37877	37864	38338	37998	100.532
	19	38595	38169	38157	38715	38217	38170	38738	38252	37733	38248	38616	37425	100.988
	20	38081	38211	38425	38046	38248	38688	37999	37956	38263	38614	38579	38716	101.162
	21	38291	38013	38363	38276	38109	38633	37680	38013	37574	37942	37882	38349	100.567
	22	38134	38182	38086	37991	38420	38182	37836	39004	38337	38790	38511	37816	101.043
	23	38114	37864	38769	38042	38090	38053	38421	38715	38114	38091	38489	38288	100.991
24	0	38530	38448	38374	38028	38793	38281	38745	38126	37792	38304	37554	38054	100.989
	1	37959	38312	38486	38676	37686	38430	38621	38770	38433	38267	38468	38742	101.388
	2	38744	37754	38293	38245	38743	37986	38234	38246	38521	38464	38251	38546	101.206
	3	38487	38760	38481	38364	38194	38564	38344	38559	38370	38406	38345	38026	101.398
	4	38429	38997	38098	38039	38225	38081	38422	38010	38293	38844	38537	38350	101.272
	5	38715	38550	38137	38397	38065	38214	38847	38623	38482	38388	38447	38623	101.528
	6	38564	38494	37947	38126	38584	38680	38172	38692	38125	38291	38633	38385	101.353
	7	38363	38162	38543	38985	38335	38288	38772	38595	38536	38276	38051	38347	101.475
	8	38429	38252	38263	38569	38712	38831	38458	38592	38351	39168	38731	39087	101.957
	9	39207	38686	38859	38607	38358	38867	39103	38749	38808	38760	38512	38895	102.390
	10	38926	39022	39009	38666	38749	39111	39118	38494	38423	38514	38662	38039	102.241
	11	38129	39123	38898	38569	38259	38677	38944	38458	38081	38386	39236	38669	101.955
	12	38715	38359	38648	38589	38771	38451	38136	37857	38238	38802	38500	38221	101.483
	13	37706	38634	37947	38401	38295	38537	37875	37898	37827	38059	38327	38614	100.786
	14	37958	37853	38166	38735	38142	37720	37610	38236	37867	37820	37960	38656	100.479
	15	37679	37385	37939	37638	37858	38460	38217	38136	37627	37766	37846	37985	99.998
	16	37950	38056	38347	37732	38069	37660	37586	37984	37770	38087	37832	38181	100.156
	17	38299	37671	37589	37589	37642	37714	37956	37657	38459	38202	38261	37959	100.099
	18	38050	37980	38596	37668	39063	38249	38353	38568	39254	38075	37621	38296	101.150
	19	37761	39115	37992	38177	38118	38840	38456	38152	38688	37803	38282	37956	101.055
	20	37885	38071	38525	38221	37801	38233	37699	37896	38215	37766	37917	38243	100.423
	21	38179	38177	38246	37996	37564	38603	38533	38124	37926	38148	37844	38299	100.681
	22	38556	38439	38603	38474	38509	37961	38627	37962	38626	38905	38508	37926	101.441
	23	38299	38311	37798	38579	38393	38192	38408	38136	38449	38171	38733	38814	101.263

S.V.I.R.CO. Observatory - Pressure Corrected Data – February 2021

day	hh	00_05	05_10	10_15	15_20	20_25	25_30	30_35	35_40	40_45	45_50	50_55	55_60	h-norm
25	0	38383	37940	38278	38884	38744	38338	38252	38771	37828	38457	38305	38560	101.363
	1	37849	37920	38722	38083	37921	38270	38606	38200	38348	38063	39017	38703	101.134
	2	38133	38423	38294	37946	38131	38329	37924	37007	38261	37911	37806	38619	100.492
	3	38035	38867	37880	38912	37880	37648	37915	38854	38345	38380	38589	38217	101.094
	4	37858	39139	38388	38377	37922	38465	38130	38382	38330	38050	37829	37480	100.838
	5	38306	38062	38725	38516	38308	38308	38725	37434	38807	38481	37818	38399	101.175
	6	38143	38393	38673	38105	38336	38279	38279	38139	38877	38427	38404	38041	101.221
	7	38334	38708	38357	38894	38448	37899	37725	38334	38157	38215	38474	37912	101.081
	8	37947	37819	38192	37467	38367	38368	38522	38113	38627	37825	38567	38360	100.799
	9	38347	38184	38454	38500	38706	39249	38188	38233	38093	38293	38338	38047	101.339
	10	38526	37920	38211	38409	38607	38462	38992	38632	38258	38410	38278	37879	101.328
	11	38215	38308	38372	37729	37719	38307	38638	38438	38364	38083	38140	37583	100.737
	12	38299	38579	38701	38350	38526	37952	38129	38261	38285	38799	37906	38342	101.228
	13	37798	38406	38766	37997	38733	37767	39103	38269	37873	37952	38354	38607	101.118
	14	38596	38665	38803	37607	38607	38126	38091	38343	37791	38561	38124	38239	101.102
	15	38872	37883	38100	38353	38629	38432	38478	38984	37926	38339	38132	39317	101.518
	16	38444	38340	38421	38273	37847	38686	38170	38504	38367	38264	38791	38366	101.304
	17	38354	38090	37710	38608	39017	38490	38513	38641	38445	38284	38249	38723	101.447
	18	38829	38476	38040	38674	38317	38375	37925	38040	38686	38098	38882	38409	101.365
	19	38340	38894	38329	38121	38236	38432	38375	38836	38824	38709	38444	38188	101.580
	20	38193	38119	38395	38394	38083	38881	38441	38578	38187	37484	39262	38131	101.233
	21	38142	38279	39017	38578	38314	38489	38216	38032	37823	38910	37988	39282	101.436
	22	38142	38709	38213	38086	38271	37913	38213	38006	38421	38660	38297	38306	101.033
	23	38415	38288	38319	38042	38330	38722	38168	38386	38539	38385	38377	37986	101.191
26	0	38780	39079	37619	38411	37934	38390	38310	38516	38459	38103	38367	38264	101.247
	1	38367	38666	38575	38565	38724	38127	38678	37529	38368	38506	38364	38382	101.388
	2	37728	37887	38312	38186	38312	37736	38621	38348	38351	38142	38303	38846	100.930
	3	37891	38119	38360	38497	38520	38567	38636	38759	38296	38362	38327	39114	101.519
	4	38258	38477	38773	38442	38671	38625	37976	38204	38579	38168	38341	38240	101.366
	5	38387	38783	38154	38314	38497	38541	38163	37979	38333	38062	38440	38612	101.258
	6	38056	38825	38184	38495	38922	38464	38740	38376	38763	37882	38489	38373	101.545
	7	39064	38200	37865	38130	38608	38886	38198	38749	38612	38749	38440	38589	101.659
	8	38325	38199	38784	38360	38646	38757	38409	38444	38563	38034	38983	38637	101.671
	9	38273	38520	38417	38956	38632	38066	38303	38601	38509	38817	38229	38750	101.656
	10	38007	38807	38270	38030	38796	38316	38513	38486	38786	38499	39086	38340	101.627
	11	39071	38312	38365	38617	38474	37978	38611	38493	38311	38397	39252	37967	101.607
	12	37793	37972	38858	38742	38601	38470	38313	38872	38494	38619	38460	38408	101.553
	13	38573	38540	38533	37920	39044	38416	38558	37744	38383	38224	38201	37955	101.219
	14	38594	38484	38478	38549	38425	37933	38011	38817	38336	38123	38145	38011	101.179
	15	38183	38222	38995	38783	38380	38649	37923	38249	38112	38701	38207	38490	101.397
	16	38035	38281	38337	38840	38492	37614	38090	38602	37977	38670	38492	38514	101.187
	17	38447	38201	38313	38514	38699	38338	38337	38280	38738	38103	38656	38200	101.382
	18	37884	38250	38027	37994	38635	38626	39068	38401	38537	38571	38660	38291	101.408
	19	38403	38727	38749	38748	38188	38312	38490	38621	38901	38386	38115	38314	101.630
	20	38695	38431	38499	38632	38003	38514	38032	38556	38075	38019	38633	38542	101.339
	21	38874	38242	38804	38009	38904	38313	38436	39139	38704	39072	38312	37774	101.769
	22	38211	37788	38144	38020	37975	38209	37824	38454	38443	39004	38235	38179	100.867
	23	38391	38083	38600	38311	37984	38936	38379	38801	38212	38156	38490	38734	101.437

S.V.I.R.CO. Observatory - Pressure Corrected Data – February 2021

day	hh	00_05	05_10	10_15	15_20	20_25	25_30	30_35	35_40	40_45	45_50	50_55	55_60	h-norm
27	0	38365	38788	38411	38755	38822	38078	38533	38034	38435	38190	38314	38641	101.496
	1	38532	38378	38412	38765	38333	38585	38069	38223	38798	38901	38397	38609	101.641
	2	38711	38659	38707	38476	38596	38883	38278	37857	38414	38562	38749	38145	101.648
	3	38207	38777	38237	38243	38581	38495	38518	38675	38723	38746	38549	38923	101.789
	4	38405	38317	38407	38934	39011	39110	38319	38956	38637	38956	38187	38451	102.012
	5	37912	38505	38824	38374	38176	38473	38538	38516	38736	38813	38363	37868	101.442
	6	38133	38172	38911	38697	38370	38641	38057	38707	38543	38572	38544	38986	101.713
	7	38500	38710	38484	38567	38390	38785	38306	38416	38547	38624	38757	38524	101.774
	8	37968	38534	38513	38801	39001	38690	38402	38424	38446	38502	38668	38845	101.815
	9	38391	38511	38201	38779	38302	38358	38978	39244	38247	38335	38712	38092	101.673
	10	37947	38812	38424	38568	38247	38546	38613	38182	38847	38236	38457	38679	101.543
	11	38213	38247	38480	38456	38543	38184	39003	38280	38960	38721	38785	38610	101.747
	12	38544	38443	38576	38645	38627	38798	37870	38315	38143	38225	38408	38528	101.447
	13	38328	37933	38599	38954	38743	38371	38393	39006	38310	38194	38880	38977	101.792
	14	38309	38380	38442	38939	38641	38958	38237	38935	38824	38439	38843	38475	101.953
	15	39228	38182	38576	38653	38357	38606	38781	38104	38890	38715	38444	38346	101.834
	16	38595	38541	38121	37942	37887	38466	38720	38531	38283	38413	38008	38677	101.241
	17	38633	38720	39376	38297	38718	38554	38622	37889	38185	38394	37987	38990	101.720
	18	38250	38898	38943	38420	38668	38251	38328	38604	38363	38383	38361	38352	101.601
	19	38703	38451	38647	38799	38559	38187	38361	38679	38740	39155	38484	38624	101.945
	20	38956	39218	38200	38255	38332	38409	38431	38911	38565	38907	38554	38675	101.951
	21	38366	38596	38585	38598	38543	38835	38983	38331	38697	38665	38800	38197	101.903
	22	38931	38444	38831	38246	38423	38567	38201	38854	38789	38744	38236	38924	101.902
	23	38173	38705	38459	38596	38002	38423	39031	38290	38735	38833	38421	37957	101.557
28	0	38333	38466	38168	38002	38732	38833	38899	38776	38944	38225	38823	38446	101.782
	1	38679	38657	38834	39012	38912	38092	38519	38213	38910	38534	38744	38667	102.030
	2	38654	38100	39141	38556	38700	39076	38046	38643	38135	38479	38313	38700	101.759
	3	38656	38777	38755	38645	38423	38834	38890	38556	39129	38439	38068	38553	102.020
	4	37803	38801	38714	38888	38226	38446	38480	38181	38325	38458	38191	38804	101.490
	5	38344	38659	39226	38998	39592	39149	38965	38844	38989	38210	38668	38477	102.547
	6	38929	38738	38525	38606	38792	38348	38086	38225	38054	39034	38439	38364	101.672
	7	38627	38427	38056	38020	37870	38451	39012	38776	38672	38273	38238	38429	101.387
	8	38281	38641	38474	38697	38607	38691	38335	38461	38204	38564	38157	39324	101.736
	9	38558	39223	38559	38608	38871	38635	38547	38629	38833	39093	38474	38857	102.275
	10	38496	38790	38939	38344	38413	38572	38696	38412	39077	39033	38954	38164	102.056
	11	38726	38587	38539	38460	38674	38741	38522	38628	38460	38405	38522	38965	101.910
	12	38901	38435	38291	37998	38360	38563	38542	38291	38717	38365	38876	38516	101.608
	13	39018	37877	38779	38227	38337	38793	38591	38518	38703	38235	39149	39015	101.914
	14	38640	38289	38656	39203	38392	38368	38502	38273	38646	38604	38235	38258	101.654
	15	38880	38223	38278	38069	38802	39080	38369	38713	38615	39280	38623	38779	102.017
	16	38190	38212	39157	38256	38490	38636	38670	38492	38469	38201	38246	38117	101.450
	17	38909	38711	38703	38382	38397	39093	38380	38499	38414	38245	38726	39028	101.967
	18	38905	39084	38825	38658	38759	38596	38625	38436	38638	38940	38671	38749	102.275
	19	38772	38414	38924	38874	38616	38671	38362	38268	38436	37428	38201	38872	101.605
	20	39037	38236	38729	38643	38121	38662	39176	38608	38437	38740	38772	38523	102.011
	21	38671	38401	37472	38798	38629	37568	39013	38642	38484	38787	38787	38155	101.509
	22	38945	38257	38111	39059	38721	38484	38685	38482	38527	39080	38100	38485	101.846
	23	38202	38764	38008	38444	38009	38743	38540	38539	38597	38450	39036	38403	101.582

S.V.I.R.CO. Observatory - Pressure in hectoPascal – February 2021

day	hh	00_05	05_10	10_15	15_20	20_25	25_30	30_35	35_40	40_45	45_50	50_55	55_60	average
1	0	998.16	998.17	998.18	998.18	998.17	998.17	998.16	998.14	998.14	998.14	998.14	998.14	998.16
	1	998.14	998.20	998.31	998.36	998.35	998.35	998.35	998.35	998.35	998.35	998.35	998.35	998.32
	2	998.41	998.47	998.52	998.56	998.57	998.57	998.56	998.56	998.57	998.57	998.52	998.41	998.52
	3	998.35	998.35	998.36	998.36	998.36	998.35	998.36	998.36	998.36	998.47	998.57	998.57	998.40
	4	998.57	998.58	998.58	998.57	998.57	998.54	998.51	998.51	998.51	998.54	998.57	998.57	998.55
	5	998.68	998.78	998.78	998.78	998.78	998.82	998.88	998.93	998.99	998.99	998.99	998.99	998.86
	6	998.99	998.99	999.05	999.15	999.19	999.19	999.19	999.24	999.35	999.40	999.41	999.41	999.21
	7	999.41	999.41	999.34	999.23	999.19	999.19	999.19	999.20	999.20	999.30	999.41	999.41	999.29
	8	999.40	999.41	999.52	999.68	999.79	999.82	999.82	999.82	999.82	999.93	1000.02	1000.02	999.75
	9	999.93	999.82	999.82	999.82	999.93	1000.03	1000.03	1000.03	1000.03	1000.03	1000.03	1000.03	999.96
	10	1000.03	1000.03	1000.03	1000.01	999.98	999.97	999.96	999.97	999.98	999.99	999.99	999.98	999.99
	11	999.98	999.90	999.82	999.82	999.82	999.82	999.82	999.82	999.82	999.82	999.82	999.82	999.84
	12	999.82	999.82	999.82	999.82	999.79	999.73	999.66	999.58	999.55	999.48	999.40	999.35	999.65
	13	999.25	999.19	999.19	999.19	999.19	999.19	999.19	999.19	999.19	999.19	999.19	999.19	999.19
	14	999.19	999.19	999.19	999.19	999.19	999.19	999.19	999.19	999.26	999.36	999.40	999.47	999.25
	15	999.53	999.52	999.52	999.56	999.60	999.65	999.70	999.73	999.79	999.82	999.81	999.82	999.67
	16	999.82	999.82	999.93	1000.03	1000.02	1000.02	1000.04	1000.14	1000.23	1000.24	1000.24	1000.35	1000.07
	17	1000.45	1000.44	1000.50	1000.60	1000.65	1000.65	1000.75	1000.85	1000.86	1000.86	1000.92	1001.02	1000.71
	18	1001.07	1001.07	1001.07	1001.07	1001.07	1001.07	1001.07	1001.07	1001.18	1001.28	1001.39	1001.49	1001.16
	19	1001.49	1001.49	1001.49	1001.53	1001.59	1001.66	1001.70	1001.70	1001.76	1001.86	1002.02	1002.12	1001.70
	20	1002.17	1002.27	1002.21	1002.16	1002.28	1002.44	1002.55	1002.55	1000.34	999.59	1001.87	1002.72	1001.93
	21	1002.85	1002.96	1002.97	1002.97	1002.96	1002.96	1002.95	1002.95	1002.96	1002.97	1002.97	1002.97	1002.95
	22	1002.97	1002.96	1002.96	1002.94	1003.05	1003.17	1003.17	1002.91	1003.02	1003.48	1003.59	1003.60	1003.15
	23	1003.59	1003.59	1000.25	1000.30	1003.75	1003.80	1003.91	1004.02	1003.96	1004.07	1004.23	1004.23	1003.31
2	0	1004.23	1004.23	1004.23	1004.23	1004.23	1004.23	1004.23	1001.91	1002.03	1001.82	1001.93	1004.66	1003.46
	1	1004.65	1004.65	1004.76	1004.85	1004.95	1005.04	1005.04	1005.07	1005.18	1005.38	1005.48	1005.48	1005.04
	2	1005.48	1005.48	1005.49	1005.49	1005.48	1005.49	1005.49	1005.59	1005.70	1005.70	1005.70	1005.70	1005.56
	3	1005.80	1005.91	1005.91	1005.91	1006.02	1006.12	1006.23	1006.34	1006.34	1005.97	1006.08	1006.55	1006.10
	4	1006.53	1006.53	1006.55	1006.55	1006.65	1006.87	1006.97	1006.97	1006.98	1007.09	1007.18	1007.29	1006.84
	5	1007.39	1007.49	1007.70	1007.80	1007.91	1008.01	1008.02	1008.02	1008.01	1008.01	1008.02	1008.02	1007.86
	6	1008.02	1007.97	1008.04	1008.17	1008.19	1006.46	1006.44	1008.19	1008.41	1008.75	1008.93	1009.02	1008.05
	7	1009.06	1009.07	1009.07	1009.18	1009.28	1009.28	1009.28	1009.28	1009.39	1009.49	1009.49	1009.54	1009.28
	8	1009.65	1009.81	1009.95	1010.06	1010.12	1010.23	1010.33	1010.35	1010.46	1010.54	1010.54	1010.65	1010.22
	9	1010.76	1010.77	1010.87	1011.07	1011.17	1011.17	1011.28	1011.38	1011.38	1011.49	1011.59	1011.59	1011.21
	10	1011.59	1011.59	1011.59	1011.59	1011.59	1011.59	1011.59	1011.49	1011.38	1011.38	1011.47	1011.58	1011.53
	11	1011.59	1011.59	1011.59	1011.59	1011.59	1011.59	1011.59	1011.59	1011.59	1011.58	1011.59	1011.59	1011.59
	12	1011.59	1011.59	1011.59	1011.59	1011.59	1011.58	1011.58	1011.58	1011.58	1011.58	1011.58	1011.64	1011.59
	13	1011.75	1011.80	1011.80	1011.79	1011.79	1011.79	1011.79	1011.79	1011.79	1011.80	1011.80	1011.80	1011.79
	14	1011.80	1011.80	1011.80	1011.79	1011.79	1011.80	1011.80	1011.79	1011.79	1011.79	1011.83	1011.93	1011.81
	15	1012.00	1012.06	1012.16	1012.21	1012.21	1012.30	1012.41	1012.42	1012.42	1012.42	1012.43	1012.44	1012.29
	16	1012.53	1012.63	1012.63	1012.74	1012.95	1013.05	1013.05	1013.05	1013.16	1013.26	1013.26	1013.25	1012.96
	17	1013.37	1013.47	1013.46	1013.47	1013.47	1013.46	1013.47	1013.47	1013.52	1013.63	1013.78	1013.89	1013.53
	18	1013.89	1013.89	1014.00	1014.13	1014.17	1014.19	1014.22	1014.24	1014.27	1014.41	1014.51	1014.51	1014.20
	19	1014.62	1014.72	1014.83	1014.93	1015.04	1015.14	1015.14	1015.13	1015.13	1015.14	1015.15	1015.15	1015.01
	20	1015.23	1015.33	1015.36	1015.36	1015.35	1015.35	1015.35	1015.35	1015.36	1015.36	1015.36	1015.40	1015.34
	21	1015.45	1015.46	1015.51	1015.57	1015.57	1015.57	1015.61	1015.72	1015.78	1015.77	1015.81	1015.92	1015.64
	22	1016.10	1016.20	1016.19	1016.24	1016.29	1016.29	1016.29	1016.32	1016.38	1016.40	1016.40	1016.48	1016.30
	23	1016.55	1016.54	1016.55	1016.57	1016.57	1016.57	1016.57	1016.59	1016.62	1016.62	1016.61	1016.61	1016.58





S.V.I.R.CO. Observatory - Pressure in hectoPascal – February 2021

day	hh	00_05	05_10	10_15	15_20	20_25	25_30	30_35	35_40	40_45	45_50	50_55	55_60	average
5	0	1017.76	1017.76	1017.76	1017.76	1017.76	1017.76	1017.76	1017.76	1017.77	1017.77	1017.76	1017.76	1017.76
	1	1017.76	1017.76	1017.76	1017.76	1017.74	1017.64	1017.55	1017.55	1017.55	1017.55	1017.55	1017.55	1017.64
	2	1017.45	1017.35	1017.35	1017.35	1017.35	1017.24	1017.14	1017.14	1017.14	1017.14	1017.14	1017.14	1017.24
	3	1017.14	1017.14	1017.14	1017.14	1017.14	1017.14	1017.14	1017.14	1017.14	1017.03	1016.96	1016.96	1017.10
	4	1016.93	1016.93	1016.93	1016.94	1016.94	1016.93	1016.93	1016.93	1016.93	1016.83	1016.73	1016.72	1016.89
	5	1016.70	1016.70	1016.71	1016.62	1016.52	1016.52	1016.51	1016.51	1016.51	1016.51	1016.51	1016.52	1016.57
	6	1016.52	1016.52	1016.52	1016.52	1016.52	1016.59	1016.70	1016.73	1016.77	1016.88	1016.94	1016.99	1016.68
	7	1017.00	1016.97	1016.97	1016.97	1016.98	1016.98	1016.97	1017.03	1017.12	1017.14	1017.14	1017.17	1017.04
	8	1017.20	1017.21	1017.28	1017.35	1017.36	1017.36	1017.35	1017.35	1017.35	1017.36	1017.36	1017.35	1017.32
	9	1017.35	1017.32	1017.29	1017.28	1017.31	1017.35	1017.35	1017.35	1017.35	1017.45	1017.55	1017.55	1017.37
	10	1017.54	1017.54	1017.55	1017.45	1017.30	1017.19	1017.15	1017.12	1017.01	1016.93	1016.90	1016.86	1017.21
	11	1016.79	1016.73	1016.62	1016.52	1016.52	1016.42	1016.31	1016.31	1016.31	1016.21	1016.10	1016.10	1016.41
	12	1016.10	1016.08	1016.03	1015.94	1015.89	1015.89	1015.89	1015.89	1015.89	1015.89	1015.89	1015.87	1015.94
	13	1015.85	1015.85	1015.85	1015.77	1015.69	1015.68	1015.68	1015.67	1015.68	1015.68	1015.68	1015.68	1015.73
	14	1015.68	1015.68	1015.68	1015.68	1015.67	1015.67	1015.67	1015.67	1015.67	1015.57	1015.47	1015.47	1015.63
	15	1015.47	1015.47	1015.37	1015.26	1015.26	1015.26	1015.26	1015.26	1015.26	1015.26	1015.26	1015.26	1015.30
	16	1015.26	1015.26	1015.26	1015.26	1015.26	1015.25	1015.23	1015.24	1015.25	1015.24	1015.25	1015.25	1015.25
	17	1015.25	1015.25	1015.26	1015.26	1015.26	1015.26	1015.26	1015.26	1015.26	1015.26	1015.26	1015.26	1015.26
	18	1015.26	1015.26	1015.26	1015.26	1015.26	1015.26	1015.26	1015.26	1015.26	1015.26	1015.26	1015.26	1015.26
	19	1015.26	1015.26	1015.26	1015.25	1015.26	1015.26	1015.25	1015.25	1015.25	1015.26	1015.26	1015.25	1015.25
	20	1015.25	1015.26	1015.26	1015.25	1015.15	1014.94	1014.83	1014.83	1014.83	1014.83	1014.84	1014.73	1015.00
	21	1014.62	1014.62	1014.63	1014.63	1014.63	1014.63	1014.62	1014.63	1014.63	1014.64	1014.85	1015.15	1014.69
	22	1015.25	1015.25	1015.26	1015.26	1015.25	1015.25	1015.26	1015.26	1015.26	1015.26	1015.26	1015.25	1015.25
	23	1015.25	1015.25	1015.25	1015.25	1015.26	1015.26	1015.25	1015.25	1015.15	1015.05	1015.05	1015.05	1015.19
6	0	1015.04	1015.04	1015.05	1015.02	1014.91	1014.84	1014.80	1014.73	1014.70	1014.70	1014.70	1014.69	1014.84
	1	1014.71	1014.73	1014.74	1014.74	1014.69	1014.66	1014.68	1014.67	1014.63	1014.62	1014.52	1014.42	1014.65
	2	1014.42	1014.42	1014.42	1014.32	1014.11	1014.00	1013.89	1013.77	1013.76	1013.77	1013.77	1013.79	1014.04
	3	1013.90	1013.99	1014.04	1014.14	1014.20	1014.20	1014.20	1014.19	1014.09	1013.98	1013.99	1013.99	1014.07
	4	1013.88	1013.77	1013.77	1013.67	1013.57	1013.56	1013.56	1013.56	1013.56	1013.49	1013.38	1013.35	1013.59
	5	1013.35	1013.35	1013.35	1013.35	1013.35	1013.35	1013.35	1013.34	1013.35	1013.35	1013.25	1013.14	1013.32
	6	1013.14	1013.14	1013.14	1013.14	1013.14	1013.14	1013.14	1013.14	1013.14	1013.14	1013.14	1013.14	1013.14
	7	1013.14	1013.25	1013.35	1013.35	1013.35	1012.20	1012.31	1013.59	1013.70	1013.77	1013.77	1013.77	1013.29
	8	1013.77	1013.77	1013.77	1013.77	1013.77	1013.77	1013.77	1013.77	1013.77	1013.77	1013.77	1013.67	1013.76
	9	1013.56	1013.56	1013.56	1013.56	1013.56	1013.56	1013.46	1013.35	1013.35	1013.35	1013.35	1013.25	1013.46
	10	1013.14	1013.14	1013.14	1013.04	1012.83	1012.73	1012.71	1012.60	1012.43	1012.33	1012.30	1012.22	1012.72
	11	1012.12	1012.06	1011.96	1011.77	1011.56	1011.46	1011.46	1011.46	1011.46	1011.46	1011.46	1011.46	1011.64
	12	1011.46	1011.35	1011.24	1011.20	1011.10	1011.04	1011.04	1011.03	1010.93	1010.83	1010.83	1010.82	1011.07
	13	1010.72	1010.61	1010.62	1010.62	1010.52	1010.41	1010.41	1010.39	1010.39	1010.40	1010.40	1010.40	1010.49
	14	1010.39	1010.38	1010.38	1010.38	1010.35	1010.26	1010.20	1010.19	1010.16	1010.09	1010.02	1009.99	1010.23
	15	1009.99	1009.88	1009.78	1009.78	1009.67	1009.57	1009.56	1009.57	1009.57	1009.56	1009.56	1009.56	1009.67
	16	1009.56	1009.56	1009.56	1009.57	1009.63	1009.68	1009.69	1009.64	1009.56	1009.56	1009.46	1009.36	1009.57
	17	1009.35	1009.35	1009.35	1009.35	1009.35	1009.35	1009.35	1009.35	1009.35	1009.25	1009.15	1009.16	1009.31
	18	1009.17	1009.16	1009.14	1009.14	1009.14	1009.14	1009.15	1009.15	1009.14	1009.14	1009.14	1009.14	1009.14
	19	1009.14	1009.14	1009.14	1009.14	1009.14	1009.14	1009.14	1009.14	1009.12	1009.12	1009.14	1009.14	1009.14
	20	1009.14	1009.14	1009.14	1009.14	1009.14	1009.04	1008.93	1008.93	1008.83	1008.72	1008.72	1008.71	1008.96
	21	1008.63	1008.65	1008.72	1008.61	1007.91	1007.78	1008.26	1008.01	1005.85	1005.60	1007.75	1008.28	1007.84
	22	1007.92	1007.54	1007.82	1008.09	1008.05	1007.98	1007.91	1007.88	1007.65	1007.55	1007.67	1007.67	1007.81
	23	1007.67	1007.67	1007.67	1007.67	1007.57	1007.36	1007.26	1007.16	1007.05	1007.05	1007.05	1006.95	1007.34

S.V.I.R.CO. Observatory - Pressure in hectoPascal – February 2021

day	hh	00_05	05_10	10_15	15_20	20_25	25_30	30_35	35_40	40_45	45_50	50_55	55_60	average
7	0	1005.94	1005.92	1005.80	1005.59	1005.47	1005.35	1005.30	1005.46	1005.54	1005.42	1005.31	1005.25	1005.51
	1	1005.18	1005.08	1005.01	1004.97	1004.88	1004.84	1004.78	1004.66	1004.67	1004.69	1004.55	1004.41	1004.81
	2	1004.34	1004.26	1004.03	1003.78	1003.88	1004.16	1004.27	1004.25	1004.24	1004.26	1004.26	1004.25	1004.16
	3	1004.15	1004.05	1003.98	1003.77	1003.44	1003.23	1003.22	1003.23	1003.23	1003.17	1003.10	1003.13	1003.47
	4	1003.18	1003.24	1003.44	1003.68	1003.77	1003.77	1003.81	1003.89	1004.02	1004.17	1004.22	1004.11	1003.78
	5	1004.00	1003.96	1003.85	1003.70	1003.60	1003.47	1003.26	1003.07	1002.88	1002.61	1002.27	1002.04	1003.23
	6	1001.92	1001.79	1001.68	1001.64	1001.62	1001.59	1001.67	1001.85	1001.84	1001.66	1001.42	1001.14	1001.65
	7	1001.01	1001.16	1001.37	1001.51	1001.67	1001.70	1001.54	1001.35	1001.34	1001.42	1001.37	1001.19	1001.38
	8	1001.00	1000.88	1000.85	1000.88	1000.98	1001.14	1001.44	1001.70	1001.58	1001.60	1001.67	1001.35	1001.26
	9	1001.01	1000.93	1000.90	1000.90	1001.01	1001.07	1001.27	1001.29	1000.93	1000.65	1000.49	1000.41	1000.90
	10	1000.42	1000.31	1000.09	999.90	999.79	999.69	999.63	999.67	999.72	999.85	1000.03	1000.25	999.95
	11	1000.46	1000.43	1000.30	1000.31	1000.38	1000.44	1000.39	1000.27	1000.20	1000.09	999.87	999.75	1000.24
	12	999.83	999.90	999.83	999.77	999.73	999.63	999.52	999.47	999.35	999.14	998.99	998.95	999.51
	13	999.00	998.98	998.85	998.78	998.82	998.91	999.12	999.19	999.18	999.12	998.99	998.97	998.99
	14	998.97	998.90	998.75	998.64	998.54	998.45	998.40	998.33	998.20	998.17	998.31	998.54	998.52
	15	998.69	998.69	998.62	998.51	998.35	998.20	998.01	997.84	997.81	997.89	998.00	998.16	998.23
	16	998.14	997.72	997.50	997.82	998.04	998.03	998.07	998.10	998.23	998.44	998.47	998.37	998.08
	17	998.32	998.43	998.62	998.60	998.28	997.96	998.01	998.24	998.60	998.88	998.90	998.88	998.48
	18	998.87	998.95	999.10	999.10	999.02	998.90	998.70	998.55	998.33	998.09	997.99	998.10	998.64
	19	998.36	998.67	998.84	998.76	998.57	998.47	998.46	998.38	998.20	998.07	998.03	997.98	998.40
	20	997.98	998.04	998.03	997.96	997.87	997.80	997.73	997.68	997.67	997.69	997.75	997.74	997.83
	21	997.68	997.66	997.58	997.46	997.40	997.44	997.52	997.57	997.52	997.45	997.46	997.42	997.51
	22	997.28	997.21	997.26	997.38	997.50	997.58	997.61	997.65	997.66	997.61	997.54	997.44	997.48
	23	997.39	997.45	997.51	997.52	997.53	997.51	997.49	997.49	997.47	997.46	997.45	997.39	997.47
8	0	997.24	997.25	997.28	997.28	997.28	997.33	997.36	997.36	997.42	997.47	997.45	997.43	997.35
	1	997.43	997.41	997.40	997.40	997.40	997.38	997.34	997.27	997.20	997.13	997.08	997.02	997.29
	2	996.97	996.94	996.94	996.93	996.90	996.86	996.85	996.86	996.83	996.78	996.78	996.77	996.87
	3	996.78	996.79	996.78	996.73	996.68	996.65	996.64	996.63	996.60	996.57	996.58	996.62	996.67
	4	996.65	996.65	996.63	996.63	996.65	996.68	996.74	996.77	996.76	996.73	996.71	996.72	996.69
	5	996.71	996.69	996.67	996.68	996.72	996.77	996.81	996.83	996.85	996.86	996.90	996.94	996.78
	6	996.97	997.00	997.04	997.09	997.16	997.22	997.28	997.36	997.45	997.54	997.65	997.73	997.29
	7	997.78	997.84	997.91	997.99	998.08	998.15	998.21	998.31	998.39	998.41	998.45	998.50	998.17
	8	998.54	998.58	998.62	998.63	998.60	998.55	998.58	998.65	998.71	998.77	998.82	998.85	998.66
	9	998.88	998.90	998.90	998.90	998.92	998.93	998.97	999.02	999.08	999.15	999.20	999.24	999.01
	10	999.28	999.28	999.28	999.30	999.32	999.35	999.40	999.44	999.45	999.45	999.47	999.52	999.38
	11	999.56	999.54	999.52	999.56	999.65	999.80	999.87	999.79	999.74	999.75	999.78	999.79	999.69
	12	999.82	999.85	999.86	999.90	999.94	999.97	1000.02	1000.05	1000.09	1000.12	1000.18	1000.23	1000.00
	13	1000.24	1000.23	1000.25	1000.29	1000.33	1000.35	1000.35	1000.38	1000.44	1000.48	1000.52	1000.57	1000.37
	14	1000.62	1000.66	1000.73	1000.82	1000.87	1000.88	1000.89	1000.92	1000.94	1000.97	1001.01	1001.08	1000.87
	15	1001.14	1001.17	1001.20	1001.20	1001.22	1001.29	1001.37	1001.40	1001.40	1001.41	1001.44	1001.48	1001.31
	16	1001.56	1001.64	1001.69	1001.72	1001.74	1001.78	1001.80	1001.82	1001.86	1001.91	1001.96	1002.04	1001.79
	17	1002.10	1002.14	1002.16	1002.17	1002.18	1002.17	1002.19	1002.26	1002.29	1002.34	1002.34	1002.32	1002.22
	18	1002.32	1002.32	1002.34	1002.40	1002.48	1002.53	1002.56	1002.61	1002.66	1002.69	1002.73	1002.71	1002.53
	19	1002.67	1002.67	1002.70	1002.68	1002.64	1002.64	1002.69	1002.74	1002.78	1002.82	1002.82	1002.81	1002.72
	20	1002.76	1002.69	1002.70	1002.76	1002.77	1002.75	1002.74	1002.73	1002.72	1002.69	1002.63	1002.62	1002.71
	21	1002.66	1002.71	1002.70	1002.65	1002.61	1002.58	1002.52	1002.43	1002.32	1002.25	1002.23	1002.22	1002.49
	22	1002.12	1002.08	1002.15	1002.17	1002.18	1002.21	1002.19	1002.09	1001.96	1001.83	1001.77	1001.72	1002.04
	23	1001.68	1001.69	1001.71	1001.71	1001.68	1001.60	1001.56	1001.57	1001.58	1001.58	1001.56	1001.51	1001.62

S.V.I.R.CO. Observatory - Pressure in hectoPascal – February 2021

day	hh	00_05	05_10	10_15	15_20	20_25	25_30	30_35	35_40	40_45	45_50	50_55	55_60	average
9	0	1001.28	1001.21	1001.07	1000.98	1000.92	1000.86	1000.82	1000.88	1000.96	1000.87	1000.77	1000.74	1000.93
	1	1000.69	1000.59	1000.46	1000.33	1000.20	1000.09	999.98	999.87	999.77	999.75	999.78	999.83	1000.11
	2	999.98	1000.04	999.93	999.89	999.89	999.80	999.72	999.71	999.68	999.63	999.60	999.61	999.79
	3	999.58	999.51	999.46	999.43	999.40	999.37	999.31	999.31	999.43	999.55	999.62	999.66	999.47
	4	999.66	999.69	999.74	999.75	999.79	999.88	999.93	999.96	1000.04	1000.14	1000.18	1000.16	999.91
	5	1000.13	1000.16	1000.25	1000.28	1000.24	1000.19	1000.20	1000.29	1000.39	1000.43	1000.43	1000.43	1000.28
	6	1000.45	1000.48	1000.51	1000.52	1000.58	1000.71	1000.83	1000.89	1000.93	1000.98	1001.04	1001.09	1000.75
	7	1001.10	1001.12	1001.16	1001.19	1001.21	1001.24	1001.30	1001.32	1001.32	1001.35	1001.38	1001.40	1001.26
	8	1001.47	1001.58	1001.67	1001.77	1001.85	1001.89	1001.92	1001.95	1002.00	1002.07	1002.16	1002.24	1001.88
	9	1002.29	1002.31	1002.31	1002.33	1002.44	1002.55	1002.62	1002.65	1002.66	1002.74	1002.84	1002.93	1002.55
	10	1002.99	1002.97	1002.94	1002.97	1002.96	1002.91	1002.91	1002.98	1003.04	1003.04	1003.04	1003.05	1002.98
	11	1003.04	1003.08	1003.13	1003.13	1003.11	1003.10	1003.17	1003.25	1003.29	1003.26	1003.23	1003.25	1003.17
	12	1003.27	1003.32	1003.36	1003.35	1003.33	1003.34	1003.37	1003.44	1003.55	1003.68	1003.82	1003.95	1003.48
	13	1004.07	1004.15	1004.22	1004.26	1004.23	1004.16	1004.10	1004.17	1004.35	1004.55	1004.67	1004.70	1004.30
	14	1004.72	1004.75	1004.79	1004.81	1004.83	1004.85	1004.92	1005.01	1005.05	1005.11	1005.18	1005.21	1004.94
	15	1005.20	1005.19	1005.20	1005.20	1005.21	1005.23	1005.26	1005.29	1005.29	1005.33	1005.45	1005.59	1005.29
	16	1005.67	1005.70	1005.72	1005.79	1005.91	1006.04	1006.12	1006.18	1006.26	1006.30	1006.31	1006.39	1006.03
	17	1006.50	1006.59	1006.69	1006.77	1006.85	1006.93	1007.02	1007.11	1007.17	1007.17	1007.14	1007.14	1006.92
	18	1007.17	1007.23	1007.25	1007.18	1007.17	1007.27	1007.34	1007.36	1007.33	1007.29	1007.29	1007.28	1007.26
	19	1007.26	1007.30	1007.42	1007.57	1007.58	1007.57	1007.65	1007.73	1007.76	1007.82	1007.88	1007.93	1007.62
	20	1007.90	1007.81	1007.75	1007.70	1007.71	1007.78	1007.84	1007.94	1008.02	1008.05	1008.09	1008.12	1007.89
	21	1008.13	1008.13	1008.14	1008.13	1008.12	1008.07	1008.02	1008.05	1008.09	1008.08	1008.05	1008.00	1008.08
	22	1007.90	1007.85	1007.85	1007.89	1007.92	1007.94	1007.95	1007.92	1007.90	1007.81	1007.69	1007.68	1007.86
	23	1007.68	1007.61	1007.57	1007.53	1007.45	1007.35	1007.26	1007.23	1007.25	1007.18	1007.04	1006.96	1007.34
10	0	1007.68	1007.66	1007.66	1007.68	1007.69	1007.58	1007.48	1007.48	1007.47	1007.47	1007.47	1007.37	1007.55
	1	1007.27	1007.26	1007.26	1007.26	1007.26	1007.27	1007.27	1007.16	1007.05	1007.05	1006.98	1006.88	1007.16
	2	1006.85	1006.75	1006.64	1006.64	1006.56	1006.45	1006.42	1006.43	1006.43	1006.32	1006.21	1006.21	1006.49
	3	1006.22	1006.11	1006.00	1006.00	1005.89	1005.79	1005.79	1005.79	1005.79	1005.79	1005.79	1005.78	1005.89
	4	1005.68	1005.59	1005.58	1005.58	1005.58	1005.47	1005.37	1005.37	1005.27	1005.16	1005.16	1005.16	1005.41
	5	1005.16	1005.16	1005.16	1005.16	1005.13	1005.03	1004.90	1004.90	1004.95	1004.95	1004.95	1004.94	1005.03
	6	1004.94	1004.95	1004.85	1004.75	1004.75	1004.74	1004.64	1004.54	1004.54	1004.54	1004.53	1004.53	1004.69
	7	1004.53	1004.53	1004.53	1004.54	1004.54	1004.53	1004.53	1004.53	1004.53	1004.54	1004.54	1004.54	1004.53
	8	1004.53	1004.42	1004.42	1004.54	1004.54	1004.53	1004.34	1004.24	1004.33	1004.33	1004.33	1004.33	1004.41
	9	1004.33	1004.33	1004.33	1004.33	1004.33	1004.22	1004.11	1004.12	1004.12	1004.12	1003.93	1003.73	1004.16
	10	1003.93	1004.12	1004.12	1004.12	1004.11	1004.12	1004.12	1003.80	1003.53	1003.64	1003.66	1003.55	1003.90
	11	1003.47	1003.38	1003.28	1003.16	1002.96	1002.98	1002.96	1002.85	1002.85	1002.85	1002.75	1002.63	1003.01
	12	1002.63	1002.64	1002.52	1002.42	1002.33	1002.22	1002.22	1002.22	1002.22	1002.12	1001.96	1001.86	1002.28
	13	1001.76	1001.71	1001.65	1001.59	1001.71	1001.82	1001.82	1001.83	1001.82	1001.80	1001.83	1001.83	1001.76
	14	1001.69	1001.59	1001.59	1001.59	1001.59	1001.59	1001.59	1001.55	1001.44	1001.37	1001.41	1001.43	1001.54
	15	1001.40	1001.38	1001.38	1001.27	1001.17	1001.17	1001.17	1001.17	1001.17	1001.17	1001.17	1001.06	1001.22
	16	1000.96	1000.96	1000.96	1000.96	1000.96	1000.96	1000.96	1000.96	1001.06	1001.17	1001.17	1001.17	1001.02
	17	1001.17	1001.17	1001.17	1001.27	1001.38	1001.38	1001.38	1001.38	1001.38	1001.49	1001.59	1001.59	1001.36
	18	1001.62	1001.65	1001.67	1001.75	1001.80	1001.80	1001.80	1001.80	1001.80	1001.80	1001.80	1001.80	1001.76
	19	1001.80	1001.80	1001.80	1001.80	1001.80	1001.80	1001.91	1002.01	1002.01	1002.10	1002.31	1002.43	1001.96
	20	1002.42	1002.42	1002.42	1002.42	1002.43	1002.42	1002.42	1002.43	1002.43	1002.43	1002.43	1002.43	1002.42
	21	1002.42	1002.43	1002.43	1002.43	1002.42	1002.41	1002.41	1002.41	1002.40	1002.41	1002.42	1002.41	1002.41
	22	1002.43	1002.55	1002.74	1002.81	1002.81	1002.96	1003.05	1003.04	1003.04	1003.16	1003.27	1003.27	1002.93
	23	1003.27	1003.37	1003.46	1003.51	1003.63	1003.69	1003.79	1003.90	1003.90	1004.01	1004.11	1004.11	1003.73

S.V.I.R.CO. Observatory - Pressure in hectoPascal – February 2021

day	hh	00_05	05_10	10_15	15_20	20_25	25_30	30_35	35_40	40_45	45_50	50_55	55_60	average
11	0	1004.32	1004.32	1004.32	1004.32	1004.32	997.49	997.60	1004.53	1004.53	1004.53	1004.53	1004.64	1003.24
	1	1004.71	1004.79	1005.04	1005.16	1005.26	1005.37	1005.37	1005.37	1005.38	1005.48	1005.58	1005.65	1005.26
	2	1005.73	1005.77	1005.90	1006.00	1006.00	1006.00	1006.10	1006.22	1006.22	1006.21	1006.21	1006.21	1006.05
	3	1006.29	1006.40	1006.43	1006.53	1006.64	1006.64	1006.74	1006.85	1006.96	1007.06	1007.06	1007.09	1006.72
	4	1007.19	1007.27	1007.27	1007.27	1007.38	1007.48	1007.57	1007.67	1007.69	1007.69	1007.69	1007.80	1007.50
	5	1007.90	1007.90	1007.98	1008.08	1008.10	1008.11	1008.22	1008.28	1008.38	1008.52	1008.53	1008.51	1008.21
	6	1008.62	1008.78	1008.88	1008.95	1008.95	1008.95	1008.97	1009.06	1009.16	1009.27	1009.37	1009.38	1009.03
	7	1009.49	1009.69	1009.79	1009.79	1009.83	1009.94	1010.00	1010.00	1010.00	1010.00	1010.00	1010.00	1009.88
	8	1010.02	1010.03	1010.03	1010.05	1010.14	1010.21	1010.21	1010.21	1010.32	1010.43	1010.42	1010.42	1010.21
	9	1010.53	1010.63	1010.64	1010.64	1010.63	1010.63	1010.66	1010.73	1010.81	1010.84	1010.84	1010.95	1010.71
	10	1011.05	1011.05	1011.13	1011.21	1011.23	1011.26	1011.26	1011.25	1011.26	1011.26	1011.25	1011.25	1011.20
	11	1011.25	1011.24	1011.24	1011.24	1011.24	1011.23	1011.23	1011.22	1011.22	1011.22	1011.22	1011.22	1011.23
	12	1011.22	1011.22	1011.22	1011.22	1011.22	1011.22	1011.22	1011.22	1011.03	1010.84	1010.85	1010.88	1011.11
	13	1010.88	1010.95	1011.05	1011.05	1011.05	1011.05	1011.04	1011.05	1011.05	1011.05	1011.05	1011.05	1011.03
	14	1011.05	1011.05	1011.05	1011.05	1011.13	1011.21	1011.21	1011.21	1011.23	1011.25	1011.36	1011.51	1011.19
	15	1011.56	1011.62	1011.68	1011.68	1011.69	1011.80	1011.89	1011.89	1011.89	1011.89	1011.99	1012.09	1011.80
	16	1012.20	1012.30	1012.37	1012.48	1012.54	1012.57	1012.57	1012.57	1012.65	1012.73	1012.73	1012.73	1012.53
	17	1012.84	1012.94	1012.94	1012.94	1012.94	1012.94	1013.05	1013.15	1013.15	1013.15	1013.15	1013.26	1013.04
	18	1013.37	1013.36	1013.46	1013.55	1013.56	1013.57	1013.56	1013.57	1013.57	1013.68	1013.78	1013.78	1013.57
	19	1013.78	1013.88	1013.99	1013.99	1014.09	1014.30	1014.40	1014.40	1014.51	1014.61	1014.61	1014.61	1014.26
	20	1014.61	1014.61	1014.72	1014.82	1014.81	1014.81	1014.82	1014.82	1014.82	1014.85	1014.95	1015.03	1014.80
	21	1015.14	1015.24	1015.24	1015.24	1015.24	1015.24	1015.24	1015.24	1015.32	1015.39	1015.42	1015.45	1015.28
	22	1015.45	1015.45	1015.46	1015.48	1015.58	1015.66	1015.66	1015.75	1015.85	1015.87	1015.87	1015.87	1015.66
	23	1015.87	1015.89	1015.90	1015.90	1015.90	1015.90	1015.95	1015.99	1016.00	1016.00	1016.00	1016.04	1015.94
12	0	1016.08	1016.08	1016.18	1016.29	1016.29	1016.29	1016.29	1016.29	1016.29	1016.29	1016.29	1016.29	1016.25
	1	1016.29	1016.29	1016.29	1016.29	1016.29	1016.29	1016.29	1016.29	1016.29	1016.29	1016.29	1016.29	1016.29
	2	1016.29	1016.29	1016.29	1016.29	1016.29	1016.29	1016.29	1016.29	1016.29	1016.29	1016.29	1016.29	1016.29
	3	1016.40	1016.50	1016.51	1016.51	1016.61	1016.82	1016.92	1016.92	1017.02	1017.13	1016.93	1016.71	1016.75
	4	1016.69	1016.70	1016.82	1016.92	1017.03	1017.13	1017.13	1017.13	1017.13	1017.13	1017.17	1017.20	1017.01
	5	1017.20	1017.20	1017.21	1017.22	1017.25	1017.31	1017.33	1017.34	1017.34	1017.34	1017.34	1017.34	1017.28
	6	1017.34	1017.44	1017.54	1017.59	1017.70	1017.76	1017.76	1017.76	1017.77	1017.87	1017.97	1017.97	1017.70
	7	1017.97	1017.97	1017.97	1017.89	1017.81	1017.89	1017.97	1017.97	1017.96	1017.97	1017.97	1017.95	1017.94
	8	1017.92	1017.89	1017.88	1017.86	1017.84	1017.83	1017.81	1017.81	1017.86	1017.90	1017.89	1017.92	1017.86
	9	1017.97	1017.97	1017.97	1017.96	1017.86	1017.76	1017.76	1017.83	1017.87	1017.80	1017.76	1017.76	1017.85
	10	1017.76	1017.75	1017.76	1017.87	1017.97	1017.97	1017.97	1017.97	1017.97	1017.97	1017.97	1017.96	1017.91
	11	1017.91	1017.84	1017.83	1017.83	1017.83	1017.82	1017.82	1017.79	1017.76	1017.76	1017.76	1017.76	1017.81
	12	1017.76	1017.74	1017.68	1017.60	1017.55	1017.55	1017.55	1017.45	1017.29	1017.24	1017.19	1017.13	1017.48
	13	1017.14	1017.03	1016.92	1016.92	1016.92	1016.92	1016.92	1016.92	1016.92	1016.92	1016.92	1016.92	1016.95
	14	1016.92	1016.92	1016.92	1016.92	1016.91	1016.90	1016.91	1016.81	1016.71	1016.73	1016.84	1016.92	1016.87
	15	1016.92	1016.92	1016.92	1016.92	1016.92	1016.92	1016.92	1016.92	1016.90	1016.89	1016.89	1016.88	1016.91
	16	1016.82	1016.76	1016.80	1016.82	1016.76	1016.71	1016.71	1016.71	1016.71	1016.71	1016.71	1016.71	1016.74
	17	1016.71	1016.73	1016.75	1016.73	1016.82	1016.92	1016.92	1016.92	1016.92	1016.92	1016.92	1016.92	1016.85
	18	1016.92	1016.87	1016.77	1016.71	1016.71	1016.71	1016.71	1016.71	1016.71	1016.71	1016.71	1016.71	1016.75
	19	1016.70	1016.68	1016.67	1016.67	1016.67	1016.66	1016.57	1016.50	1016.50	1016.50	1016.50	1016.50	1016.59
	20	1016.49	1016.50	1016.50	1016.50	1016.50	1016.50	1016.50	1016.50	1016.40	1016.25	1016.14	1016.08	1016.40
	21	1016.05	1016.02	1016.02	1016.01	1016.01	1016.01	1016.01	1015.96	1015.91	1015.89	1015.87	1015.87	1015.97
	22	1015.87	1015.87	1015.87	1015.85	1015.83	1015.82	1015.81	1015.81	1015.81	1015.82	1015.82	1015.81	1015.83
	23	1015.81	1015.81	1015.81	1015.81	1015.80	1015.73	1015.66	1015.67	1015.67	1015.59	1015.49	1015.45	1015.69

S.V.I.R.CO. Observatory - Pressure in hectoPascal – February 2021

day	hh	00_05	05_10	10_15	15_20	20_25	25_30	30_35	35_40	40_45	45_50	50_55	55_60	average
13	0	1015.45	1015.45	1015.35	1015.24	1015.24	1015.24	1015.24	1015.24	1015.24	1015.24	1015.24	1015.14	1015.27
	1	1015.03	1015.03	1015.01	1014.95	1014.88	1014.73	1014.62	1014.61	1014.61	1014.61	1014.51	1014.40	1014.75
	2	1014.29	1014.20	1014.20	1014.20	1014.10	1013.99	1013.99	1013.99	1013.99	1013.99	1013.91	1013.81	1014.05
	3	1013.78	1013.78	1013.78	1013.78	1013.78	1013.67	1013.57	1013.57	1013.47	1013.36	1013.36	1013.36	1013.60
	4	1013.47	1013.57	1013.57	1013.57	1013.57	1013.57	1013.57	1013.47	1013.36	1013.36	1013.37	1013.37	1013.48
	5	1013.47	1013.58	1013.57	1013.57	1013.57	1013.57	1013.57	1013.58	1013.58	1013.58	1013.52	1013.43	1013.55
	6	1013.49	1013.58	1013.58	1013.58	1013.57	1013.58	1013.58	1013.69	1013.79	1013.78	1013.80	1013.82	1013.65
	7	1013.89	1013.94	1013.93	1013.92	1013.96	1014.00	1014.10	1014.20	1014.31	1014.41	1014.41	1014.41	1014.12
	8	1014.41	1014.41	1014.41	1014.41	1014.41	1014.41	1014.41	1014.41	1014.41	1014.41	1014.41	1014.41	1014.41
	9	1014.41	1014.41	1014.41	1014.40	1014.41	1014.41	1014.46	1014.56	1014.62	1014.62	1014.62	1014.73	1014.50
	10	1014.94	1015.04	1015.04	1015.03	1015.04	1015.04	1015.14	1015.25	1015.25	1015.25	1015.25	1015.26	1015.13
	11	1015.26	1015.25	1015.25	1015.25	1015.26	1015.26	1015.25	1015.25	1015.25	1015.25	1015.25	1015.25	1015.25
	12	1015.25	1015.25	1015.25	1015.25	1015.25	1015.25	1015.36	1015.46	1015.46	1015.55	1015.66	1015.67	1015.39
	13	1015.67	1015.67	1015.67	1015.67	1015.67	1015.67	1015.67	1015.67	1015.67	1015.78	1015.88	1015.87	1015.71
	14	1015.91	1016.02	1016.09	1016.17	1016.28	1016.30	1016.30	1016.29	1016.40	1016.50	1016.50	1016.51	1016.27
	15	1016.51	1016.59	1016.70	1016.82	1016.92	1016.92	1016.93	1016.93	1016.93	1016.95	1017.05	1017.18	1016.87
	16	1017.28	1017.34	1017.45	1017.55	1017.55	1017.64	1017.78	1017.90	1018.07	1018.17	1018.18	1018.20	1017.76
	17	1018.31	1018.50	1018.65	1018.72	1018.74	1018.75	1018.78	1018.80	1018.91	1019.02	1019.08	1019.16	1018.78
	18	1019.19	1019.22	1019.33	1019.48	1019.56	1019.62	1019.65	1019.64	1019.68	1019.78	1019.91	1020.01	1019.59
	19	1020.07	1020.07	1020.17	1020.38	1020.48	1020.49	1020.49	1020.60	1020.70	1020.76	1020.86	1020.90	1020.49
	20	1020.99	1021.10	1021.12	1021.11	1021.22	1021.32	1021.34	1021.44	1021.53	1021.53	1021.53	1021.53	1021.31
	21	1021.53	1021.64	1021.74	1021.74	1021.74	1021.76	1021.81	1021.90	1021.95	1021.95	1021.95	1022.03	1021.81
	22	1022.14	1022.16	1022.27	1022.37	1022.37	1022.37	1022.48	1022.58	1022.58	1022.58	1022.58	1022.58	1022.42
	23	1022.58	1022.68	1022.78	1022.79	1022.79	1022.79	1022.79	1022.80	1022.90	1022.98	1022.94	1023.06	1022.82
14	0	1023.21	1023.21	1023.21	1023.32	1023.42	1023.42	1023.51	1023.61	1023.62	1023.62	1023.62	1023.63	1023.46
	1	1023.63	1023.69	1023.79	1023.82	1023.83	1023.83	1023.83	1023.83	1023.83	1023.83	1023.83	1023.83	1023.80
	2	1023.84	1023.84	1023.84	1023.83	1023.83	1023.83	1023.84	1023.84	1023.84	1023.84	1023.84	1023.84	1023.84
	3	1023.84	1023.85	1023.94	1024.03	1024.07	1024.17	1024.27	1024.34	1024.43	1024.46	1024.52	1024.62	1024.21
	4	1024.68	1024.68	1024.78	1024.88	1024.88	1024.88	1024.93	1025.03	1025.11	1025.21	1025.30	1025.30	1024.97
	5	1025.31	1025.31	1025.30	1025.30	1025.30	1025.41	1025.51	1025.62	1025.72	1025.72	1025.83	1026.04	1025.53
	6	1026.15	1026.22	1026.33	1026.43	1026.54	1026.57	1026.67	1026.77	1026.77	1026.88	1027.04	1027.14	1026.62
	7	1027.25	1027.36	1027.40	1027.40	1027.40	1027.40	1027.50	1027.61	1027.72	1027.82	1027.82	1027.86	1027.54
	8	1027.92	1027.98	1028.03	1028.13	1028.24	1028.30	1028.40	1028.44	1028.44	1028.48	1028.59	1028.66	1028.30
	9	1028.76	1028.86	1028.76	1028.76	1028.86	1028.86	1028.91	1029.01	1029.07	1029.07	1029.18	1029.31	1028.95
	10	1029.42	1029.49	1029.49	1029.57	1029.66	1029.68	1029.70	1029.70	1029.70	1029.69	1029.69	1029.69	1029.62
	11	1029.69	1029.69	1029.70	1029.70	1029.69	1029.69	1029.79	1029.90	1029.91	1029.89	1029.78	1029.70	1029.76
	12	1029.70	1029.70	1029.70	1029.68	1029.57	1029.56	1029.65	1029.67	1029.77	1029.88	1029.90	1029.90	1029.72
	13	1029.89	1029.89	1029.90	1029.90	1029.89	1029.87	1029.87	1029.89	1029.90	1029.91	1029.91	1029.90	1029.89
	14	1030.01	1030.11	1030.11	1030.11	1030.11	1030.11	1030.13	1030.22	1030.29	1030.31	1030.32	1030.32	1030.18
	15	1030.32	1030.32	1030.32	1030.31	1030.31	1030.36	1030.42	1030.42	1030.48	1030.61	1030.70	1030.72	1030.44
	16	1030.82	1030.92	1030.95	1031.05	1031.16	1031.23	1031.31	1031.34	1031.36	1031.47	1031.57	1031.57	1031.23
	17	1031.63	1031.74	1031.78	1031.89	1032.02	1032.12	1032.20	1032.20	1032.30	1032.40	1032.46	1032.56	1032.11
	18	1032.62	1032.62	1032.71	1032.81	1032.83	1032.83	1032.94	1033.04	1033.04	1033.04	1033.04	1033.15	1032.89
	19	1033.25	1033.25	1033.25	1033.25	1033.25	1033.36	1033.46	1033.34	1033.21	1033.44	1033.66	1033.77	1033.37
	20	1033.88	1033.87	1033.87	1033.98	1034.09	1034.09	1034.09	1034.16	1034.22	1034.21	1034.25	1034.29	1034.08
	21	1034.28	1034.28	1034.28	1034.28	1034.29	1034.29	1034.29	1034.29	1034.29	1034.29	1034.30	1034.30	1034.29
	22	1034.30	1034.30	1034.30	1034.30	1034.30	1034.30	1034.30	1034.40	1034.51	1034.51	1034.51	1034.51	1034.38
	23	1034.51	1034.50	1034.60	1034.69	1034.70	1034.71	1034.82	1034.93	1034.92	1034.99	1035.05	1035.08	1034.79

S.V.I.R.CO. Observatory - Pressure in hectoPascal – February 2021

day	hh	00_05	05_10	10_15	15_20	20_25	25_30	30_35	35_40	40_45	45_50	50_55	55_60	average
15	0	1035.10	1035.10	1035.10	1035.10	1035.10	1035.09	1035.09	1035.09	1035.09	1035.09	1035.09	1035.09	1035.09
	1	1035.10	1035.10	1035.10	1035.10	1035.10	1035.10	1035.10	1035.10	1035.09	1035.10	1035.10	1035.11	1035.10
	2	1035.11	1035.11	1035.12	1035.13	1035.13	1035.14	1035.14	1035.14	1035.14	1035.14	1035.13	1035.13	1035.13
	3	1035.12	1035.12	1035.12	1035.12	1035.12	1035.13	1035.14	1035.23	1035.33	1035.34	1035.34	1035.35	1035.20
	4	1035.35	1035.35	1035.35	1035.34	1035.34	1035.34	1035.34	1035.34	1035.34	1035.34	1035.34	1035.34	1035.34
	5	1035.34	1035.34	1035.34	1035.34	1035.34	1035.35	1035.35	1035.34	1035.34	1035.35	1035.41	1035.50	1035.36
	6	1035.54	1035.55	1035.55	1035.55	1035.60	1035.67	1035.73	1035.76	1035.85	1035.95	1035.97	1036.08	1035.73
	7	1036.18	1036.18	1036.26	1036.34	1036.37	1036.39	1036.48	1036.59	1036.60	1036.60	1036.60	1036.60	1036.43
	8	1036.60	1036.60	1036.60	1036.70	1036.80	1036.81	1036.81	1036.81	1036.81	1036.81	1036.81	1036.81	1036.75
	9	1036.81	1036.81	1036.81	1036.81	1036.81	1036.81	1036.91	1037.02	1037.02	1037.02	1037.02	1037.02	1036.90
	10	1037.02	1037.01	1036.99	1036.99	1036.99	1036.99	1036.99	1036.98	1036.89	1036.81	1036.80	1036.74	1036.93
	11	1036.68	1036.70	1036.69	1036.64	1036.59	1036.59	1036.59	1036.58	1036.48	1036.38	1036.37	1036.35	1036.55
	12	1036.35	1036.26	1036.17	1036.16	1036.06	1035.96	1035.86	1035.75	1035.73	1035.63	1035.44	1035.33	1035.89
	13	1035.33	1035.33	1035.25	1035.14	1035.12	1035.12	1035.12	1035.12	1035.12	1035.12	1035.11	1035.01	1035.16
	14	1034.91	1034.91	1034.91	1034.91	1034.90	1034.90	1034.90	1034.90	1034.90	1034.91	1034.91	1034.91	1034.90
	15	1034.80	1034.69	1034.66	1034.63	1034.63	1034.63	1034.56	1034.48	1034.48	1034.38	1034.27	1034.27	1034.54
	16	1034.27	1034.27	1034.27	1034.17	1034.07	1034.06	1034.06	1034.06	1034.07	1034.07	1034.07	1034.07	1034.13
	17	1034.07	1034.06	1034.06	1034.06	1034.06	1034.07	1034.07	1034.07	1034.07	1034.07	1034.07	1034.17	1034.07
	18	1034.27	1034.27	1034.27	1034.27	1034.27	1034.27	1034.28	1034.28	1034.28	1034.28	1034.28	1034.28	1034.27
	19	1034.27	1034.28	1034.28	1034.27	1034.27	1034.27	1034.27	1034.27	1034.38	1034.49	1034.49	1034.49	1034.33
	20	1034.49	1034.49	1034.49	1034.49	1034.49	1034.49	1034.49	1034.39	1034.18	1034.07	1034.07	1034.07	1034.35
	21	1034.07	1034.07	1034.07	1034.07	1034.07	1034.07	1034.07	1034.07	1034.07	1034.07	1034.08	1034.08	1034.07
	22	1034.07	1033.97	1033.87	1033.86	1033.86	1033.86	1033.86	1033.86	1033.86	1033.86	1033.86	1033.87	1033.89
	23	1033.87	1033.86	1033.86	1033.85	1033.75	1033.66	1033.66	1033.66	1033.66	1033.66	1033.68	1033.72	1033.74
16	0	1033.75	1033.75	1033.75	1033.73	1033.69	1033.66	1033.66	1033.65	1033.65	1033.56	1033.46	1033.45	1033.64
	1	1033.36	1033.26	1033.25	1033.25	1033.25	1033.14	1033.03	1033.03	1033.03	1032.92	1032.82	1032.73	1033.09
	2	1032.63	1032.62	1032.62	1032.62	1032.62	1032.59	1032.57	1032.57	1032.52	1032.44	1032.41	1032.41	1032.55
	3	1032.41	1032.31	1032.20	1032.20	1032.20	1032.10	1032.00	1031.99	1031.97	1031.92	1031.84	1031.78	1032.07
	4	1031.78	1031.77	1031.77	1031.75	1031.70	1031.62	1031.53	1031.42	1031.36	1031.28	1031.17	1031.14	1031.52
	5	1031.13	1031.12	1031.03	1030.94	1030.94	1030.94	1030.94	1030.94	1030.93	1030.94	1030.94	1030.94	1030.98
	6	1030.94	1030.94	1030.94	1030.94	1030.94	1030.94	1030.93	1030.91	1030.91	1030.91	1030.91	1030.83	1030.92
	7	1030.73	1030.72	1030.73	1030.63	1030.52	1030.52	1030.59	1030.68	1030.72	1030.73	1030.73	1030.73	1030.67
	8	1030.73	1030.73	1030.63	1030.52	1030.51	1030.61	1030.70	1030.70	1030.70	1030.70	1030.70	1030.61	1030.65
	9	1030.52	1030.52	1030.52	1030.52	1030.52	1030.52	1030.41	1030.31	1030.28	1030.24	1030.23	1030.26	1030.40
	10	1030.29	1030.28	1030.28	1030.19	1030.10	1030.10	1030.07	1029.97	1029.89	1029.83	1029.73	1029.68	1030.03
	11	1029.58	1029.48	1029.47	1029.37	1029.27	1029.27	1029.27	1029.16	1029.06	1029.06	1029.06	1029.05	1029.26
	12	1028.95	1028.84	1028.84	1028.74	1028.64	1028.54	1028.43	1028.43	1028.43	1028.43	1028.33	1028.21	1028.57
	13	1028.11	1028.01	1028.01	1028.00	1027.98	1027.96	1027.88	1027.80	1027.80	1027.80	1027.80	1027.80	1027.91
	14	1027.80	1027.80	1027.80	1027.78	1027.72	1027.64	1027.59	1027.59	1027.59	1027.58	1027.53	1027.44	1027.65
	15	1027.38	1027.38	1027.36	1027.35	1027.36	1027.36	1027.32	1027.23	1027.17	1027.17	1027.09	1026.99	1027.26
	16	1026.96	1026.96	1026.96	1026.96	1026.96	1026.94	1026.92	1026.84	1026.76	1026.76	1026.75	1026.75	1026.87
	17	1026.75	1026.75	1026.75	1026.75	1026.75	1026.75	1026.75	1026.75	1026.75	1026.75	1026.75	1026.75	1026.75
	18	1026.75	1026.75	1026.75	1026.75	1026.75	1026.75	1026.66	1026.56	1026.54	1026.54	1026.54	1026.52	1026.65
	19	1026.42	1026.33	1026.33	1026.33	1026.34	1026.34	1026.34	1026.34	1026.34	1026.34	1026.34	1026.34	1026.34
	20	1026.34	1026.33	1026.33	1026.33	1026.34	1026.34	1026.34	1026.34	1026.34	1026.33	1026.33	1026.33	1026.33
	21	1026.33	1026.33	1026.33	1026.33	1026.33	1026.33	1026.31	1026.21	1026.13	1026.13	1026.05	1025.94	1026.23
	22	1025.91	1025.92	1025.90	1025.85	1025.76	1025.70	1025.70	1025.70	1025.70	1025.70	1025.71	1025.69	1025.77
	23	1025.66	1025.57	1025.49	1025.49	1025.49	1025.50	1025.50	1025.49	1025.49	1025.39	1025.28	1025.28	1025.47

S.V.I.R.CO. Observatory - Pressure in hectoPascal – February 2021

day	hh	00_05	05_10	10_15	15_20	20_25	25_30	30_35	35_40	40_45	45_50	50_55	55_60	average
17	0	1025.28	1025.25	1025.15	1025.08	1025.07	1025.08	1025.08	1025.07	1025.07	1025.03	1024.93	1024.87	1025.07
	1	1024.87	1024.87	1024.87	1024.76	1024.66	1024.66	1024.66	1024.66	1024.66	1024.66	1024.66	1024.66	1024.72
	2	1024.66	1024.66	1024.66	1024.66	1024.66	1024.66	1024.65	1024.54	1024.45	1024.44	1024.43	1024.43	1024.57
	3	1024.34	1024.24	1024.24	1024.24	1024.24	1024.24	1024.24	1024.24	1024.24	1024.24	1024.14	1024.04	1024.22
	4	1024.04	1023.93	1023.82	1023.83	1023.83	1023.83	1023.83	1023.82	1023.81	1023.80	1023.79	1023.79	1023.84
	5	1023.70	1023.62	1023.62	1023.62	1023.52	1023.41	1023.41	1023.40	1023.41	1023.41	1023.41	1023.41	1023.49
	6	1023.41	1023.41	1023.41	1023.41	1023.41	1023.41	1023.40	1023.41	1023.41	1023.51	1023.61	1023.66	1023.45
	7	1023.76	1023.82	1023.83	1023.82	1023.82	1023.82	1023.82	1023.82	1023.82	1023.82	1023.82	1023.82	1023.81
	8	1023.82	1023.82	1023.82	1023.82	1023.82	1023.82	1023.82	1023.82	1023.82	1023.83	1023.83	1023.87	1023.82
	9	1023.93	1023.95	1023.97	1023.98	1023.99	1023.99	1023.99	1023.99	1023.99	1023.99	1023.99	1023.99	1023.98
	10	1023.99	1023.98	1023.98	1023.90	1023.82	1023.82	1023.72	1023.61	1023.61	1023.61	1023.61	1023.61	1023.77
	11	1023.61	1023.61	1023.61	1023.61	1023.61	1023.61	1023.51	1023.40	1023.41	1023.41	1023.40	1023.40	1023.51
	12	1023.30	1023.19	1023.15	1023.04	1022.97	1022.99	1022.99	1022.89	1022.78	1022.78	1022.68	1022.57	1022.94
	13	1022.56	1022.57	1022.58	1022.57	1022.56	1022.56	1022.52	1022.42	1022.36	1022.36	1022.36	1022.36	1022.48
	14	1022.36	1022.36	1022.36	1022.33	1022.29	1022.21	1022.15	1022.15	1022.15	1022.15	1022.15	1022.15	1022.23
	15	1022.15	1022.15	1022.15	1022.15	1022.15	1022.15	1022.15	1022.15	1022.22	1022.31	1022.35	1022.36	1022.20
	16	1022.36	1022.36	1022.36	1022.36	1022.36	1022.36	1022.37	1022.38	1022.47	1022.57	1022.57	1022.57	1022.42
	17	1022.57	1022.57	1022.57	1022.57	1022.57	1022.57	1022.57	1022.57	1022.57	1022.57	1022.57	1022.57	1022.57
	18	1022.57	1022.68	1022.78	1022.78	1022.78	1022.78	1022.78	1022.77	1022.78	1022.78	1022.78	1022.78	1022.75
	19	1022.78	1022.78	1022.78	1022.78	1022.78	1022.78	1022.78	1022.88	1022.97	1022.99	1023.10	1023.20	1022.88
	20	1023.20	1023.20	1023.19	1023.20	1023.20	1023.20	1023.20	1023.20	1023.20	1023.20	1023.20	1023.20	1023.20
	21	1023.20	1023.20	1023.20	1023.20	1023.20	1023.31	1023.41	1023.41	1023.41	1023.40	1023.40	1023.45	1023.31
	22	1023.54	1023.61	1023.62	1023.62	1023.61	1023.61	1023.62	1023.62	1023.62	1023.62	1023.61	1023.62	1023.61
	23	1023.62	1023.62	1023.62	1023.62	1023.62	1023.62	1023.62	1023.62	1023.62	1023.62	1023.62	1023.62	1023.62
18	0	1023.40	1023.41	1023.41	1023.40	1023.40	1023.40	1023.41	1023.41	1023.41	1023.41	1023.41	1023.41	1023.41
	1	1023.41	1023.41	1023.41	1023.41	1023.41	1023.41	1023.31	1023.20	1023.20	1023.20	1023.20	1023.20	1023.31
	2	1023.20	1023.20	1023.20	1023.13	1023.03	1023.00	1023.01	1023.02	1023.01	1022.99	1022.98	1022.99	1023.06
	3	1022.98	1022.98	1022.99	1022.99	1022.99	1022.99	1022.99	1022.99	1022.99	1022.99	1022.99	1022.99	1022.99
	4	1023.00	1023.00	1022.99	1022.99	1022.99	1022.99	1022.98	1023.08	1023.20	1023.20	1023.20	1023.20	1023.07
	5	1023.20	1023.19	1023.20	1023.20	1023.20	1023.30	1023.41	1023.41	1023.41	1023.41	1023.41	1023.41	1023.31
	6	1023.51	1023.60	1023.61	1023.62	1023.71	1023.81	1023.82	1023.82	1023.91	1023.99	1023.99	1024.01	1023.78
	7	1024.04	1024.04	1024.04	1024.11	1024.21	1024.24	1024.24	1024.24	1024.24	1024.24	1024.24	1024.24	1024.18
	8	1024.24	1024.24	1024.31	1024.38	1024.40	1024.43	1024.46	1024.46	1024.46	1024.46	1024.45	1024.45	1024.39
	9	1024.45	1024.45	1024.45	1024.45	1024.45	1024.45	1024.45	1024.45	1024.44	1024.43	1024.42	1024.42	1024.44
	10	1024.42	1024.42	1024.42	1024.42	1024.42	1024.42	1024.42	1024.42	1024.42	1024.42	1024.42	1024.23	1024.40
	11	1024.04	1024.04	1024.03	1024.03	1023.97	1023.87	1023.83	1023.83	1023.83	1023.82	1023.70	1023.60	1023.88
	12	1023.50	1023.41	1023.41	1023.31	1023.20	1023.20	1023.20	1023.20	1023.10	1022.99	1022.99	1022.99	1023.21
	13	1022.99	1022.99	1022.88	1022.78	1022.78	1022.78	1022.78	1022.78	1022.78	1022.78	1022.78	1022.78	1022.82
	14	1022.78	1022.78	1022.78	1022.78	1022.78	1022.78	1022.78	1022.78	1022.88	1022.99	1022.99	1022.99	1022.84
	15	1022.99	1022.99	1022.99	1023.05	1023.08	1023.04	1023.08	1023.16	1023.19	1023.19	1023.20	1023.20	1023.10
	16	1023.30	1023.40	1023.40	1023.41	1023.40	1023.41	1023.41	1023.41	1023.41	1023.41	1023.41	1023.40	1023.39
	17	1023.51	1023.61	1023.61	1023.62	1023.62	1023.62	1023.69	1023.80	1023.83	1023.82	1023.90	1023.99	1023.72
	18	1024.02	1024.03	1024.03	1024.03	1024.03	1024.03	1024.03	1024.03	1024.03	1024.05	1024.08	1024.11	1024.04
	19	1024.12	1024.18	1024.24	1024.25	1024.26	1024.27	1024.28	1024.29	1024.34	1024.40	1024.43	1024.45	1024.29
	20	1024.45	1024.45	1024.45	1024.45	1024.45	1024.45	1024.47	1024.49	1024.50	1024.52	1024.60	1024.66	1024.49
	21	1024.66	1024.74	1024.84	1024.87	1024.87	1024.87	1024.87	1024.87	1024.87	1024.87	1024.87	1024.87	1024.84
	22	1024.87	1024.87	1024.87	1024.87	1024.87	1024.87	1024.87	1024.87	1024.87	1024.87	1024.86	1024.87	1024.87
	23	1024.87	1024.87	1024.87	1024.87	1024.87	1024.87	1024.87	1024.87	1024.87	1024.87	1024.87	1024.87	1024.87

S.V.I.R.CO. Observatory - Pressure in hectoPascal – February 2021

day	hh	00_05	05_10	10_15	15_20	20_25	25_30	30_35	35_40	40_45	45_50	50_55	55_60	average
19	0	1024.86	1024.87	1024.87	1024.87	1024.87	1024.77	1024.66	1024.66	1024.65	1024.66	1024.66	1024.66	1024.75
	1	1024.66	1024.66	1024.66	1024.69	1024.72	1024.77	1024.81	1024.81	1024.81	1024.81	1024.81	1024.81	1024.75
	2	1024.81	1024.81	1024.81	1024.82	1024.85	1024.87	1024.87	1024.87	1024.87	1024.87	1024.87	1024.87	1024.85
	3	1024.87	1024.88	1024.88	1024.87	1024.87	1024.87	1024.87	1024.87	1024.87	1024.87	1024.87	1024.87	1024.87
	4	1024.87	1024.87	1024.87	1024.87	1024.87	1024.87	1024.87	1024.87	1024.87	1024.87	1024.87	1024.88	1024.87
	5	1024.88	1024.88	1024.88	1024.87	1024.88	1024.88	1024.87	1024.97	1025.08	1025.08	1025.19	1025.30	1024.98
	6	1025.40	1025.50	1025.50	1025.50	1025.50	1025.61	1025.71	1025.71	1025.71	1025.78	1025.88	1026.03	1025.65
	7	1026.22	1026.31	1026.33	1026.34	1026.35	1026.35	1026.34	1026.34	1026.34	1026.34	1026.35	1026.35	1026.33
	8	1026.34	1026.35	1026.35	1026.34	1026.41	1026.48	1026.48	1026.49	1026.51	1026.51	1026.51	1026.50	1026.44
	9	1026.51	1026.53	1026.55	1026.55	1026.55	1026.55	1026.55	1026.55	1026.55	1026.55	1026.55	1026.55	1026.54
	10	1026.55	1026.55	1026.55	1026.55	1026.55	1026.55	1026.55	1026.55	1026.55	1026.55	1026.55	1026.55	1026.55
	11	1026.54	1026.52	1026.51	1026.51	1026.51	1026.50	1026.41	1026.34	1026.34	1026.23	1026.13	1026.13	1026.39
	12	1026.04	1025.93	1025.92	1025.92	1025.92	1025.92	1025.90	1025.79	1025.71	1025.71	1025.69	1025.64	1025.84
	13	1025.56	1025.50	1025.50	1025.42	1025.34	1025.32	1025.29	1025.29	1025.26	1025.24	1025.24	1025.24	1025.35
	14	1025.24	1025.23	1025.23	1025.23	1025.23	1025.23	1025.22	1025.22	1025.22	1025.22	1025.22	1025.21	1025.22
	15	1025.21	1025.21	1025.20	1025.16	1025.13	1025.11	1025.08	1025.08	1025.07	1025.16	1025.27	1025.29	1025.16
	16	1025.29	1025.29	1025.29	1025.29	1025.28	1025.29	1025.29	1025.29	1025.29	1025.29	1025.29	1025.29	1025.29
	17	1025.29	1025.29	1025.29	1025.29	1025.29	1025.29	1025.29	1025.29	1025.29	1025.29	1025.29	1025.29	1025.29
	18	1025.29	1025.29	1025.29	1025.29	1025.39	1025.49	1025.50	1025.50	1025.50	1025.49	1025.49	1025.49	1025.42
	19	1025.49	1025.49	1025.49	1025.49	1025.54	1025.58	1025.64	1025.70	1025.70	1025.81	1025.91	1025.91	1025.65
	20	1025.92	1025.92	1025.91	1025.91	1025.91	1025.91	1025.91	1025.91	1025.91	1025.91	1025.91	1025.92	1025.91
	21	1025.92	1025.92	1025.95	1025.98	1026.06	1026.13	1026.13	1026.13	1026.13	1026.12	1026.13	1026.13	1026.06
	22	1026.13	1026.13	1026.12	1026.13	1026.13	1026.13	1026.13	1026.13	1026.13	1026.10	1025.99	1025.92	1026.09
	23	1025.92	1025.91	1025.92	1025.92	1025.92	1025.92	1025.92	1025.92	1025.92	1025.91	1025.91	1025.91	1025.91
20	0	1025.91	1025.91	1025.91	1025.91	1025.91	1025.91	1025.92	1025.92	1025.92	1025.92	1025.92	1025.92	1025.91
	1	1025.92	1025.92	1025.92	1025.92	1025.91	1025.92	1025.92	1025.91	1025.91	1025.92	1025.92	1025.81	1025.91
	2	1025.70	1025.71	1025.71	1025.71	1025.67	1025.56	1025.49	1025.49	1025.49	1025.49	1025.49	1025.48	1025.58
	3	1025.44	1025.43	1025.44	1025.43	1025.42	1025.43	1025.42	1025.43	1025.37	1025.29	1025.29	1025.29	1025.39
	4	1025.29	1025.29	1025.29	1025.29	1025.29	1025.28	1025.28	1025.28	1025.28	1025.29	1025.29	1025.29	1025.29
	5	1025.29	1025.29	1025.29	1025.30	1025.34	1025.39	1025.40	1025.40	1025.41	1025.45	1025.50	1025.50	1025.38
	6	1025.50	1025.50	1025.50	1025.50	1025.50	1025.52	1025.54	1025.58	1025.67	1025.71	1025.70	1025.71	1025.58
	7	1025.71	1025.76	1025.86	1025.92	1025.92	1025.92	1025.93	1025.93	1026.03	1026.13	1026.13	1026.13	1025.95
	8	1026.19	1026.25	1026.27	1026.27	1026.31	1026.34	1026.34	1026.34	1026.34	1026.37	1026.46	1026.52	1026.33
	9	1026.54	1026.55	1026.55	1026.55	1026.55	1026.54	1026.54	1026.54	1026.54	1026.54	1026.52	1026.51	1026.54
	10	1026.51	1026.51	1026.51	1026.50	1026.42	1026.35	1026.34	1026.34	1026.34	1026.34	1026.34	1026.34	1026.40
	11	1026.34	1026.33	1026.28	1026.19	1026.13	1026.13	1026.13	1026.04	1025.95	1025.93	1025.92	1025.89	1026.10
	12	1025.78	1025.70	1025.70	1025.60	1025.49	1025.45	1025.34	1025.29	1025.27	1025.16	1025.08	1025.08	1025.41
	13	1025.07	1025.07	1025.07	1025.07	1025.07	1024.97	1024.87	1024.87	1024.87	1024.86	1024.86	1024.86	1024.96
	14	1024.86	1024.86	1024.86	1024.86	1024.86	1024.86	1024.86	1024.86	1024.86	1024.86	1024.86	1024.86	1024.86
	15	1024.87	1024.87	1024.86	1024.86	1024.85	1024.83	1024.73	1024.65	1024.65	1024.65	1024.66	1024.66	1024.76
	16	1024.66	1024.65	1024.65	1024.65	1024.65	1024.65	1024.65	1024.65	1024.65	1024.65	1024.65	1024.65	1024.65
	17	1024.66	1024.66	1024.65	1024.65	1024.65	1024.65	1024.65	1024.65	1024.68	1024.75	1024.80	1024.80	1024.69
	18	1024.81	1024.83	1024.85	1024.86	1024.86	1024.86	1024.86	1024.86	1024.86	1024.86	1024.86	1024.86	1024.85
	19	1024.86	1024.86	1024.86	1024.86	1024.86	1024.86	1024.86	1024.86	1024.86	1024.86	1024.94	1025.03	1024.88
	20	1025.06	1025.07	1025.08	1025.08	1025.07	1025.08	1025.08	1025.07	1025.07	1025.12	1025.17	1025.16	1025.09
	21	1025.16	1025.15	1025.14	1025.14	1025.14	1025.14	1025.15	1025.15	1025.15	1025.15	1025.15	1025.16	1025.15
	22	1025.16	1025.16	1025.16	1025.17	1025.18	1025.17	1025.17	1025.17	1025.16	1025.16	1025.16	1025.16	1025.16
	23	1025.17	1025.22	1025.28	1025.29	1025.29	1025.28	1025.29	1025.29	1025.29	1025.28	1025.29	1025.29	1025.27



S.V.I.R.CO. Observatory - Pressure in hectoPascal – February 2021

day	hh	00_05	05_10	10_15	15_20	20_25	25_30	30_35	35_40	40_45	45_50	50_55	55_60	average
21	0	1025.28	1025.28	1025.29	1025.29	1025.29	1025.29	1025.28	1025.28	1025.29	1025.29	1025.28	1025.29	1025.28
	1	1025.29	1025.28	1025.28	1025.28	1025.28	1025.28	1025.29	1025.29	1025.26	1025.21	1025.18	1025.13	1025.25
	2	1025.08	1025.08	1025.08	1025.08	1025.07	1025.07	1025.07	1024.97	1024.87	1024.87	1024.87	1024.87	1025.00
	3	1024.87	1024.87	1024.87	1024.87	1024.87	1024.87	1024.87	1024.87	1024.87	1024.87	1024.87	1024.88	1024.87
	4	1024.88	1024.87	1024.88	1024.88	1024.88	1024.87	1024.87	1024.87	1024.87	1024.88	1024.88	1024.87	1024.87
	5	1024.88	1024.88	1024.87	1024.87	1024.87	1024.87	1024.87	1024.87	1024.87	1024.87	1024.87	1024.87	1024.87
	6	1024.87	1024.87	1024.87	1024.87	1024.87	1024.88	1024.95	1025.05	1025.07	1025.07	1025.07	1025.08	1024.96
	7	1025.08	1025.08	1025.08	1025.08	1025.08	1025.17	1025.25	1025.24	1025.27	1025.29	1025.29	1025.29	1025.18
	8	1025.29	1025.28	1025.34	1025.45	1025.50	1025.50	1025.50	1025.50	1025.50	1025.50	1025.49	1025.49	1025.44
	9	1025.49	1025.50	1025.50	1025.49	1025.49	1025.49	1025.49	1025.49	1025.49	1025.49	1025.49	1025.50	1025.49
	10	1025.50	1025.50	1025.49	1025.49	1025.49	1025.49	1025.49	1025.49	1025.49	1025.49	1025.49	1025.49	1025.49
	11	1025.49	1025.49	1025.39	1025.29	1025.28	1025.26	1025.17	1025.08	1025.07	1024.96	1024.87	1024.76	1025.17
	12	1024.66	1024.64	1024.54	1024.45	1024.45	1024.45	1024.44	1024.42	1024.41	1024.40	1024.39	1024.31	1024.46
	13	1024.24	1024.24	1024.24	1024.23	1024.24	1024.24	1024.23	1024.24	1024.24	1024.23	1024.24	1024.24	1024.23
	14	1024.24	1024.24	1024.23	1024.24	1024.24	1024.24	1024.24	1024.24	1024.24	1024.24	1024.23	1024.24	1024.24
	15	1024.24	1024.23	1024.23	1024.28	1024.33	1024.33	1024.33	1024.34	1024.34	1024.34	1024.34	1024.34	1024.30
	16	1024.35	1024.37	1024.42	1024.45	1024.44	1024.44	1024.44	1024.44	1024.48	1024.56	1024.63	1024.65	1024.47
	17	1024.70	1024.75	1024.81	1024.86	1024.86	1024.89	1024.99	1025.07	1025.07	1025.07	1025.07	1025.13	1024.94
	18	1025.24	1025.28	1025.30	1025.36	1025.45	1025.49	1025.49	1025.49	1025.48	1025.49	1025.49	1025.48	1025.42
	19	1025.48	1025.49	1025.55	1025.63	1025.67	1025.70	1025.70	1025.70	1025.73	1025.79	1025.82	1025.86	1025.68
	20	1025.91	1025.91	1025.91	1025.91	1025.91	1025.91	1025.91	1025.91	1025.92	1025.91	1025.92	1025.93	1025.91
	21	1025.93	1025.93	1026.03	1026.12	1026.12	1026.12	1026.12	1026.14	1026.24	1026.33	1026.33	1026.33	1026.14
	22	1026.40	1026.47	1026.48	1026.48	1026.48	1026.48	1026.48	1026.47	1026.47	1026.47	1026.47	1026.48	1026.47
	23	1026.48	1026.48	1026.48	1026.48	1026.48	1026.51	1026.54	1026.54	1026.61	1026.70	1026.70	1026.70	1026.56
22	0	1026.74	1026.75	1026.83	1026.93	1026.95	1026.96	1026.96	1027.04	1027.15	1027.17	1027.17	1027.17	1026.99
	1	1027.17	1027.16	1027.24	1027.33	1027.34	1027.34	1027.35	1027.35	1027.36	1027.38	1027.38	1027.38	1027.31
	2	1027.38	1027.38	1027.38	1027.38	1027.38	1027.38	1027.37	1027.38	1027.38	1027.38	1027.38	1027.37	1027.38
	3	1027.37	1027.37	1027.37	1027.38	1027.38	1027.38	1027.38	1027.38	1027.49	1027.59	1027.65	1027.70	1027.45
	4	1027.71	1027.73	1027.77	1027.79	1027.80	1027.80	1027.81	1027.82	1027.84	1027.83	1027.80	1027.80	1027.79
	5	1027.80	1027.76	1027.74	1027.74	1027.74	1027.77	1027.88	1027.98	1028.01	1028.01	1028.01	1028.00	1027.87
	6	1028.00	1028.00	1028.01	1028.02	1028.04	1028.14	1028.21	1028.21	1028.32	1028.42	1028.43	1028.41	1028.18
	7	1028.38	1028.39	1028.39	1028.38	1028.39	1028.41	1028.42	1028.42	1028.53	1028.63	1028.63	1028.71	1028.47
	8	1028.79	1028.82	1028.84	1028.86	1028.89	1028.90	1028.89	1028.97	1029.05	1029.04	1029.05	1029.05	1028.93
	9	1029.05	1029.15	1029.25	1029.26	1029.26	1029.26	1029.26	1029.25	1029.26	1029.26	1029.26	1029.26	1029.23
	10	1029.26	1029.26	1029.26	1029.26	1029.26	1029.26	1029.26	1029.26	1029.25	1029.25	1029.26	1029.26	1029.26
	11	1029.21	1029.10	1029.05	1029.05	1029.04	1029.05	1029.05	1029.01	1028.93	1028.85	1028.83	1028.83	1029.00
	12	1028.73	1028.63	1028.63	1028.63	1028.59	1028.49	1028.42	1028.42	1028.42	1028.42	1028.32	1028.21	1028.49
	13	1028.22	1028.22	1028.21	1028.17	1028.13	1028.13	1028.13	1028.12	1028.10	1028.08	1028.07	1028.07	1028.14
	14	1028.06	1028.06	1028.07	1028.08	1028.09	1028.12	1028.13	1028.14	1028.18	1028.21	1028.21	1028.21	1028.13
	15	1028.21	1028.21	1028.21	1028.21	1028.21	1028.29	1028.39	1028.42	1028.49	1028.56	1028.56	1028.60	1028.36
	16	1028.71	1028.81	1028.83	1028.83	1028.94	1029.05	1029.13	1029.23	1029.25	1029.30	1029.40	1029.46	1029.08
	17	1029.46	1029.55	1029.66	1029.67	1029.77	1029.88	1029.88	1029.88	1029.97	1030.07	1030.09	1030.10	1029.83
	18	1030.18	1030.28	1030.30	1030.30	1030.30	1030.36	1030.47	1030.51	1030.51	1030.61	1030.72	1030.72	1030.44
	19	1030.72	1030.72	1030.71	1030.72	1030.72	1030.79	1030.90	1030.92	1030.92	1030.93	1030.93	1030.93	1030.82
	20	1030.92	1030.92	1030.93	1030.96	1031.02	1031.07	1031.11	1031.13	1031.13	1031.13	1031.13	1031.13	1031.05
	21	1031.21	1031.31	1031.34	1031.34	1031.34	1031.34	1031.34	1031.34	1031.34	1031.39	1031.43	1031.49	1031.35
	22	1031.55	1031.55	1031.55	1031.55	1031.57	1031.66	1031.74	1031.76	1031.77	1031.77	1031.76	1031.76	1031.67
	23	1031.81	1031.88	1031.94	1031.97	1031.97	1032.06	1032.16	1032.18	1032.18	1032.19	1032.19	1032.18	1032.06

S.V.I.R.CO. Observatory - Pressure in hectoPascal – February 2021

day	hh	00_05	05_10	10_15	15_20	20_25	25_30	30_35	35_40	40_45	45_50	50_55	55_60	average
23	0	1032.18	1032.18	1032.18	1032.18	1032.18	1032.18	1032.18	1032.18	1032.18	1032.18	1032.18	1032.18	1032.18
	1	1032.26	1032.36	1032.37	1032.37	1032.37	1032.38	1032.38	1032.38	1032.38	1032.38	1032.38	1032.37	1032.36
	2	1032.35	1032.27	1032.18	1032.18	1032.18	1032.18	1032.18	1032.18	1032.18	1032.18	1032.18	1032.27	1032.21
	3	1032.35	1032.35	1032.37	1032.39	1032.39	1032.39	1032.39	1032.43	1032.52	1032.60	1032.61	1032.61	1032.45
	4	1032.64	1032.67	1032.74	1032.81	1032.81	1032.81	1032.81	1032.82	1032.82	1032.81	1032.87	1032.95	1032.80
	5	1032.95	1032.99	1033.02	1033.02	1033.02	1033.02	1033.13	1033.23	1033.23	1033.23	1033.23	1033.23	1033.11
	6	1033.23	1033.24	1033.35	1033.44	1033.44	1033.54	1033.65	1033.65	1033.65	1033.65	1033.65	1033.76	1033.52
	7	1033.86	1033.86	1033.96	1034.06	1034.06	1034.07	1034.07	1034.07	1034.06	1034.06	1034.06	1034.07	1034.02
	8	1034.07	1034.07	1034.06	1034.07	1034.07	1034.07	1034.07	1034.07	1034.07	1034.07	1034.07	1034.07	1034.07
	9	1034.06	1034.15	1034.25	1034.25	1034.25	1034.25	1034.25	1034.25	1034.25	1034.25	1034.25	1034.25	1034.22
	10	1034.25	1034.25	1034.25	1034.25	1034.25	1034.25	1034.25	1034.26	1034.26	1034.25	1034.25	1034.16	1034.24
	11	1034.07	1034.07	1034.07	1034.06	1033.96	1033.85	1033.86	1033.86	1033.83	1033.80	1033.72	1033.55	1033.89
	12	1033.45	1033.44	1033.44	1033.42	1033.39	1033.31	1033.22	1033.22	1033.23	1033.21	1033.19	1033.19	1033.31
	13	1033.19	1033.18	1033.18	1033.18	1033.10	1033.02	1033.02	1033.01	1033.02	1033.02	1033.01	1033.02	1033.08
	14	1033.02	1033.02	1033.02	1033.02	1033.02	1033.02	1033.02	1033.02	1033.02	1033.01	1033.02	1033.02	1033.02
	15	1033.01	1033.02	1033.02	1033.12	1033.23	1033.23	1033.23	1033.23	1033.23	1033.22	1033.22	1033.23	1033.16
	16	1033.23	1033.22	1033.23	1033.23	1033.22	1033.23	1033.23	1033.31	1033.40	1033.40	1033.40	1033.40	1033.29
	17	1033.40	1033.40	1033.42	1033.43	1033.43	1033.43	1033.44	1033.46	1033.48	1033.57	1033.64	1033.65	1033.48
	18	1033.65	1033.64	1033.64	1033.65	1033.65	1033.65	1033.64	1033.65	1033.65	1033.64	1033.64	1033.66	1033.64
	19	1033.76	1033.85	1033.85	1033.85	1033.86	1033.86	1033.85	1033.85	1033.96	1034.06	1034.06	1034.05	1033.90
	20	1034.06	1034.06	1034.06	1034.06	1034.06	1034.06	1034.06	1034.08	1034.16	1034.23	1034.23	1034.25	1034.11
	21	1034.27	1034.30	1034.40	1034.48	1034.48	1034.48	1034.48	1034.48	1034.48	1034.48	1034.48	1034.48	1034.44
	22	1034.48	1034.48	1034.48	1034.48	1034.48	1034.48	1034.48	1034.48	1034.48	1034.48	1034.38	1034.27	1034.45
	23	1034.27	1034.27	1034.27	1034.27	1034.27	1034.27	1034.22	1034.16	1034.14	1034.14	1034.16	1034.17	1034.22
24	0	1034.18	1034.19	1034.22	1034.26	1034.27	1034.27	1034.27	1034.27	1034.27	1034.27	1034.27	1034.27	1034.25
	1	1034.27	1034.17	1034.06	1034.06	1033.96	1033.85	1033.81	1033.71	1033.64	1033.64	1033.64	1033.65	1033.87
	2	1033.65	1033.63	1033.52	1033.43	1033.43	1033.43	1033.43	1033.43	1033.40	1033.36	1033.36	1033.36	1033.45
	3	1033.36	1033.36	1033.34	1033.30	1033.28	1033.29	1033.27	1033.23	1033.23	1033.23	1033.23	1033.23	1033.28
	4	1033.23	1033.23	1033.23	1033.19	1033.13	1033.12	1033.12	1033.08	1033.03	1033.02	1033.02	1033.02	1033.12
	5	1033.02	1033.02	1033.02	1033.02	1032.97	1032.87	1032.81	1032.81	1032.81	1032.81	1032.81	1032.81	1032.90
	6	1032.81	1032.81	1032.88	1032.98	1033.02	1033.02	1033.02	1033.02	1033.02	1033.02	1033.02	1033.02	1032.97
	7	1033.03	1033.07	1033.17	1033.23	1033.23	1033.23	1033.23	1033.23	1033.23	1033.23	1033.23	1033.23	1033.19
	8	1033.23	1033.23	1033.23	1033.22	1033.23	1033.23	1033.34	1033.44	1033.43	1033.38	1033.34	1033.30	1033.30
	9	1033.27	1033.26	1033.25	1033.23	1033.23	1033.23	1033.23	1033.23	1033.23	1033.23	1033.23	1033.21	1033.23
	10	1033.10	1033.02	1033.02	1033.01	1032.97	1032.87	1032.81	1032.81	1032.81	1032.71	1032.61	1032.61	1032.86
	11	1032.59	1032.48	1032.39	1032.39	1032.29	1032.18	1032.17	1032.07	1031.97	1031.97	1031.87	1031.76	1032.18
	12	1031.76	1031.65	1031.55	1031.55	1031.45	1031.34	1031.34	1031.35	1031.24	1031.13	1031.13	1031.14	1031.38
	13	1031.13	1031.11	1031.11	1031.11	1031.11	1031.01	1030.93	1030.93	1030.92	1030.92	1030.92	1030.91	1031.01
	14	1030.80	1030.71	1030.71	1030.71	1030.71	1030.69	1030.67	1030.58	1030.50	1030.50	1030.50	1030.50	1030.63
	15	1030.49	1030.39	1030.29	1030.29	1030.29	1030.29	1030.29	1030.29	1030.30	1030.30	1030.29	1030.29	1030.32
	16	1030.29	1030.30	1030.30	1030.30	1030.35	1030.42	1030.45	1030.46	1030.49	1030.50	1030.50	1030.51	1030.40
	17	1030.51	1030.51	1030.50	1030.55	1030.62	1030.67	1030.71	1030.72	1030.72	1030.72	1030.72	1030.72	1030.64
	18	1030.71	1030.71	1030.71	1030.72	1030.72	1030.72	1030.72	1030.78	1030.87	1030.89	1030.89	1030.89	1030.78
	19	1030.89	1030.91	1030.93	1030.93	1030.92	1030.93	1030.93	1030.92	1030.92	1030.92	1030.93	1030.93	1030.92
	20	1030.92	1030.92	1030.92	1030.92	1030.91	1030.92	1030.92	1031.01	1031.11	1031.13	1031.13	1031.13	1030.99
	21	1031.20	1031.28	1031.32	1031.34	1031.34	1031.34	1031.34	1031.34	1031.34	1031.34	1031.34	1031.34	1031.32
	22	1031.34	1031.34	1031.34	1031.34	1031.34	1031.34	1031.35	1031.35	1031.34	1031.34	1031.34	1031.34	1031.34
	23	1031.34	1031.34	1031.34	1031.34	1031.34	1031.33	1031.31	1031.30	1031.29	1031.21	1031.13	1031.13	1031.28

S.V.I.R.CO. Observatory - Pressure in hectoPascal – February 2021

day	hh	00_05	05_10	10_15	15_20	20_25	25_30	30_35	35_40	40_45	45_50	50_55	55_60	average
25	0	1031.13	1031.13	1031.13	1031.13	1031.13	1031.14	1031.12	1031.10	1031.10	1031.10	1031.10	1031.10	1031.12
	1	1031.01	1030.92	1030.92	1030.92	1030.93	1030.93	1030.92	1030.93	1030.91	1030.89	1030.89	1030.89	1030.92
	2	1030.89	1030.80	1030.71	1030.71	1030.71	1030.71	1030.72	1030.72	1030.72	1030.71	1030.71	1030.71	1030.73
	3	1030.70	1030.60	1030.51	1030.51	1030.51	1030.51	1030.51	1030.51	1030.51	1030.51	1030.51	1030.51	1030.53
	4	1030.51	1030.62	1030.72	1030.72	1030.80	1030.87	1030.88	1030.91	1030.93	1030.93	1030.93	1030.93	1030.81
	5	1030.93	1030.93	1030.93	1030.93	1030.94	1030.94	1030.93	1030.93	1030.93	1030.93	1030.93	1030.93	1030.93
	6	1030.93	1031.04	1031.21	1031.31	1031.35	1031.35	1031.35	1031.35	1031.45	1031.56	1031.56	1031.56	1031.33
	7	1031.65	1031.73	1031.73	1031.73	1031.72	1031.73	1031.73	1031.73	1031.73	1031.73	1031.73	1031.73	1031.72
	8	1031.73	1031.73	1031.73	1031.73	1031.73	1031.64	1031.56	1031.56	1031.56	1031.53	1031.43	1031.35	1031.61
	9	1031.35	1031.35	1031.35	1031.35	1031.34	1031.23	1031.14	1031.14	1031.14	1031.14	1031.14	1031.14	1031.23
	10	1031.14	1031.14	1031.14	1031.14	1031.14	1031.12	1031.02	1030.93	1030.93	1030.93	1030.83	1030.72	1031.01
	11	1030.72	1030.72	1030.61	1030.51	1030.51	1030.41	1030.31	1030.30	1030.19	1030.09	1030.09	1030.08	1030.38
	12	1030.04	1030.00	1029.94	1029.88	1029.81	1029.73	1029.70	1029.68	1029.68	1029.66	1029.64	1029.64	1029.78
	13	1029.63	1029.62	1029.54	1029.47	1029.46	1029.47	1029.47	1029.36	1029.26	1029.25	1029.25	1029.25	1029.42
	14	1029.25	1029.25	1029.25	1029.25	1029.25	1029.26	1029.26	1029.25	1029.25	1029.25	1029.25	1029.25	1029.25
	15	1029.25	1029.25	1029.25	1029.25	1029.25	1029.24	1029.24	1029.24	1029.24	1029.24	1029.24	1029.24	1029.24
	16	1029.24	1029.24	1029.24	1029.25	1029.25	1029.25	1029.25	1029.25	1029.26	1029.26	1029.25	1029.25	1029.25
	17	1029.25	1029.25	1029.29	1029.38	1029.45	1029.46	1029.46	1029.46	1029.46	1029.46	1029.46	1029.55	1029.41
	18	1029.65	1029.66	1029.67	1029.67	1029.67	1029.67	1029.67	1029.67	1029.67	1029.67	1029.67	1029.67	1029.67
	19	1029.67	1029.67	1029.67	1029.67	1029.67	1029.67	1029.67	1029.67	1029.67	1029.67	1029.67	1029.75	1029.68
	20	1029.86	1029.88	1029.88	1029.87	1029.88	1029.88	1029.88	1029.87	1029.88	1029.88	1029.88	1029.88	1029.87
	21	1029.88	1029.88	1029.87	1029.87	1029.88	1029.88	1029.86	1029.77	1029.72	1029.73	1029.74	1029.74	1029.82
	22	1029.71	1029.67	1029.67	1029.67	1029.67	1029.67	1029.67	1029.67	1029.67	1029.66	1029.64	1029.63	1029.67
	23	1029.61	1029.52	1029.46	1029.46	1029.46	1029.46	1029.46	1029.46	1029.43	1029.32	1029.25	1029.25	1029.43
26	0	1029.25	1029.25	1029.25	1029.25	1029.14	1029.04	1029.04	1029.04	1029.04	1029.04	1029.04	1029.04	1029.11
	1	1029.04	1029.04	1029.05	1029.05	1029.05	1029.05	1029.05	1029.04	1029.05	1028.96	1028.86	1028.84	1029.00
	2	1028.84	1028.83	1028.84	1028.84	1028.84	1028.83	1028.79	1028.76	1028.68	1028.63	1028.59	1028.52	1028.75
	3	1028.50	1028.50	1028.46	1028.42	1028.42	1028.42	1028.42	1028.41	1028.39	1028.38	1028.38	1028.37	1028.42
	4	1028.29	1028.21	1028.21	1028.21	1028.21	1028.21	1028.22	1028.22	1028.21	1028.21	1028.22	1028.22	1028.22
	5	1028.22	1028.21	1028.20	1028.20	1028.20	1028.20	1028.19	1028.19	1028.19	1028.20	1028.20	1028.21	1028.20
	6	1028.26	1028.32	1028.31	1028.32	1028.38	1028.42	1028.43	1028.43	1028.43	1028.42	1028.43	1028.51	1028.39
	7	1028.61	1028.63	1028.66	1028.71	1028.79	1028.84	1028.84	1028.84	1028.84	1028.84	1028.84	1028.84	1028.77
	8	1028.84	1028.84	1028.84	1028.84	1028.84	1028.87	1028.90	1028.90	1028.92	1028.91	1028.90	1028.89	1028.87
	9	1028.86	1028.84	1028.84	1028.84	1028.75	1028.64	1028.63	1028.63	1028.59	1028.54	1028.48	1028.42	1028.67
	10	1028.42	1028.42	1028.42	1028.42	1028.42	1028.42	1028.35	1028.25	1028.22	1028.21	1028.19	1028.09	1028.32
	11	1028.01	1027.90	1027.80	1027.80	1027.69	1027.58	1027.48	1027.38	1027.38	1027.28	1027.17	1027.07	1027.54
	12	1026.97	1026.96	1026.85	1026.75	1026.73	1026.62	1026.54	1026.48	1026.38	1026.34	1026.33	1026.31	1026.60
	13	1026.21	1026.13	1026.02	1025.91	1025.91	1025.92	1025.90	1025.88	1025.79	1025.70	1025.70	1025.70	1025.90
	14	1025.70	1025.67	1025.56	1025.49	1025.49	1025.49	1025.49	1025.49	1025.49	1025.49	1025.49	1025.49	1025.53
	15	1025.42	1025.32	1025.28	1025.28	1025.28	1025.28	1025.29	1025.29	1025.28	1025.27	1025.26	1025.23	1025.29
	16	1025.20	1025.20	1025.20	1025.20	1025.20	1025.13	1025.07	1025.07	1025.07	1025.07	1025.07	1025.07	1025.13
	17	1025.07	1025.07	1025.07	1025.07	1025.10	1025.12	1025.20	1025.28	1025.28	1025.29	1025.31	1025.32	1025.18
	18	1025.31	1025.30	1025.30	1025.30	1025.31	1025.32	1025.30	1025.28	1025.28	1025.28	1025.28	1025.28	1025.29
	19	1025.28	1025.28	1025.28	1025.28	1025.27	1025.28	1025.27	1025.26	1025.26	1025.26	1025.25	1025.24	1025.27
	20	1025.25	1025.26	1025.27	1025.26	1025.25	1025.24	1025.23	1025.23	1025.23	1025.23	1025.22	1025.22	1025.24
	21	1025.21	1025.14	1025.07	1025.06	1025.07	1025.07	1025.07	1025.07	1025.07	1025.07	1025.07	1025.06	1025.08
	22	1025.07	1025.07	1025.07	1025.06	1025.06	1025.06	1025.04	1024.97	1024.89	1024.86	1024.86	1024.86	1024.99
	23	1024.86	1024.84	1024.81	1024.73	1024.63	1024.61	1024.53	1024.44	1024.44	1024.44	1024.44	1024.44	1024.60

S.V.I.R.CO. Observatory - Pressure in hectoPascal – February 2021

day	hh	00_05	05_10	10_15	15_20	20_25	25_30	30_35	35_40	40_45	45_50	50_55	55_60	average
27	0	1024.39	1024.31	1024.23	1024.23	1024.23	1024.23	1024.23	1024.23	1024.24	1024.24	1024.20	1024.10	1024.23
	1	1024.02	1024.03	1024.03	1024.02	1024.02	1024.01	1023.91	1023.82	1023.82	1023.71	1023.60	1023.61	1023.88
	2	1023.58	1023.47	1023.40	1023.40	1023.40	1023.40	1023.40	1023.40	1023.29	1023.19	1023.19	1023.19	1023.36
	3	1023.18	1023.17	1023.17	1023.15	1023.05	1022.98	1022.98	1022.87	1022.76	1022.77	1022.77	1022.77	1022.97
	4	1022.77	1022.77	1022.77	1022.77	1022.77	1022.77	1022.77	1022.77	1022.77	1022.77	1022.77	1022.77	1022.77
	5	1022.77	1022.77	1022.77	1022.77	1022.77	1022.77	1022.77	1022.77	1022.77	1022.77	1022.77	1022.77	1022.77
	6	1022.78	1022.88	1022.77	1022.87	1023.29	1023.40	1023.40	1023.40	1023.40	1023.51	1023.61	1023.61	1023.24
	7	1023.61	1023.70	1023.80	1023.82	1023.82	1023.89	1023.96	1024.00	1024.04	1024.03	1024.03	1024.03	1023.89
	8	1024.03	1024.03	1024.03	1024.03	1024.03	1024.03	1024.03	1024.03	1024.03	1024.03	1024.03	1024.03	1024.03
	9	1024.03	1024.03	1024.03	1024.03	1024.03	1024.03	1024.03	1024.03	1024.03	1024.03	1024.03	1024.03	1024.03
	10	1024.03	1024.03	1024.03	1024.03	1024.03	1024.03	1024.03	1024.04	1024.04	1024.03	1024.03	1024.03	1024.03
	11	1024.03	1024.03	1024.03	1024.03	1024.02	1023.92	1023.72	1023.62	1023.52	1023.41	1023.40	1023.41	1023.76
	12	1023.41	1023.40	1023.40	1023.29	1023.18	1023.08	1022.99	1022.88	1022.77	1022.75	1022.74	1022.65	1023.04
	13	1022.56	1022.56	1022.55	1022.44	1022.35	1022.35	1022.35	1022.35	1022.25	1022.14	1022.13	1022.08	1022.34
	14	1022.00	1021.94	1021.92	1021.90	1021.89	1021.89	1021.89	1021.89	1021.88	1021.87	1021.79	1021.72	1021.88
	15	1021.72	1021.73	1021.73	1021.73	1021.73	1021.72	1021.72	1021.72	1021.72	1021.72	1021.73	1021.73	1021.72
	16	1021.72	1021.72	1021.83	1021.93	1021.93	1021.93	1021.94	1022.05	1022.15	1022.14	1022.14	1022.15	1021.97
	17	1022.15	1022.14	1022.14	1022.16	1022.26	1022.34	1022.35	1022.35	1022.35	1022.36	1022.43	1022.53	1022.29
	18	1022.56	1022.56	1022.56	1022.58	1022.68	1022.77	1022.77	1022.77	1022.77	1022.77	1022.77	1022.77	1022.69
	19	1022.77	1022.77	1022.77	1022.76	1022.77	1022.77	1022.77	1022.76	1022.87	1022.98	1022.98	1022.97	1022.83
	20	1022.93	1023.05	1023.19	1023.19	1023.19	1023.19	1023.19	1023.30	1023.40	1023.40	1023.40	1023.40	1023.24
	21	1023.40	1023.40	1023.40	1023.40	1023.40	1023.46	1023.56	1023.60	1023.61	1023.61	1023.70	1023.80	1023.53
	22	1023.82	1023.82	1023.82	1023.82	1023.82	1023.82	1023.82	1023.82	1023.82	1023.86	1023.91	1023.91	1023.84
	23	1023.92	1023.96	1024.00	1024.01	1024.03	1024.03	1024.02	1024.03	1024.03	1024.03	1024.02	1024.03	1024.01
28	0	1024.02	1024.02	1024.03	1024.03	1024.02	1024.03	1024.03	1024.02	1024.03	1024.03	1024.03	1024.03	1024.02
	1	1024.03	1024.03	1024.03	1024.03	1024.03	1024.03	1024.01	1023.99	1023.90	1023.82	1023.82	1023.82	1023.96
	2	1023.82	1023.81	1023.82	1023.82	1023.82	1023.82	1023.82	1023.82	1023.82	1023.82	1023.82	1023.82	1023.82
	3	1023.82	1023.82	1023.82	1023.82	1023.82	1023.83	1023.83	1023.82	1023.85	1023.88	1023.94	1024.02	1023.85
	4	1024.03	1024.03	1024.04	1024.11	1024.20	1024.24	1024.24	1024.24	1024.24	1024.24	1024.32	1024.41	1024.19
	5	1024.44	1024.45	1024.45	1024.51	1024.57	1024.58	1024.60	1024.60	1024.60	1024.60	1024.61	1024.64	1024.55
	6	1024.67	1024.66	1024.66	1024.75	1024.86	1024.91	1025.02	1025.08	1025.11	1025.22	1025.29	1025.39	1024.97
	7	1025.49	1025.50	1025.49	1025.57	1025.68	1025.71	1025.71	1025.71	1025.78	1025.89	1025.92	1025.92	1025.70
	8	1025.92	1025.92	1025.92	1025.92	1025.92	1025.94	1025.95	1026.04	1026.13	1026.13	1026.13	1026.20	1026.01
	9	1026.28	1026.28	1026.28	1026.30	1026.31	1026.31	1026.32	1026.33	1026.34	1026.34	1026.34	1026.34	1026.31
	10	1026.34	1026.39	1026.44	1026.45	1026.45	1026.46	1026.46	1026.45	1026.45	1026.45	1026.45	1026.45	1026.43
	11	1026.44	1026.39	1026.33	1026.33	1026.33	1026.33	1026.23	1026.12	1026.12	1026.04	1025.94	1025.91	1026.21
	12	1025.88	1025.78	1025.70	1025.70	1025.67	1025.63	1025.55	1025.49	1025.49	1025.48	1025.38	1025.29	1025.58
	13	1025.28	1025.28	1025.27	1025.25	1025.16	1025.07	1025.07	1024.96	1024.86	1024.86	1024.86	1024.86	1025.06
	14	1024.84	1024.73	1024.65	1024.65	1024.66	1024.65	1024.61	1024.55	1024.49	1024.45	1024.45	1024.45	1024.60
	15	1024.45	1024.44	1024.44	1024.45	1024.45	1024.45	1024.45	1024.45	1024.45	1024.45	1024.44	1024.44	1024.44
	16	1024.44	1024.44	1024.44	1024.44	1024.44	1024.45	1024.45	1024.45	1024.45	1024.44	1024.45	1024.46	1024.44
	17	1024.47	1024.56	1024.66	1024.66	1024.76	1024.86	1024.86	1024.93	1025.03	1025.07	1025.07	1025.07	1024.83
	18	1025.07	1025.07	1025.07	1025.07	1025.11	1025.21	1025.28	1025.28	1025.28	1025.28	1025.28	1025.28	1025.19
	19	1025.28	1025.28	1025.31	1025.41	1025.49	1025.49	1025.51	1025.57	1025.66	1025.70	1025.70	1025.78	1025.51
	20	1025.89	1025.92	1025.91	1025.93	1026.03	1026.12	1026.19	1026.30	1026.33	1026.37	1026.40	1026.44	1026.15
	21	1026.49	1026.49	1026.52	1026.54	1026.54	1026.54	1026.54	1026.55	1026.55	1026.54	1026.54	1026.54	1026.53
	22	1026.54	1026.54	1026.55	1026.55	1026.55	1026.55	1026.54	1026.54	1026.54	1026.54	1026.55	1026.55	1026.54
	23	1026.55	1026.54	1026.63	1026.74	1026.76	1026.76	1026.76	1026.75	1026.76	1026.76	1026.75	1026.75	1026.71



