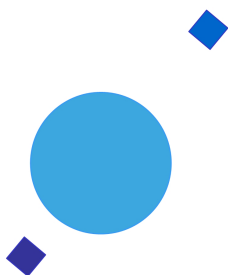


INAF



ISTITUTO NAZIONALE DI ASTROFISICA
NATIONAL INSTITUTE FOR ASTROPHYSICS

SVIRCO Prompt Report: February 2019

Francesco Re and Nello Vertoli

INAF/IAPS-2019-03

March 2019

ISTITUTO DI ASTROFISICA E PLANETOLOGIA SPAZIALI

AREA DI RICERCA ROMA - TOR VERGATA

Via del Fosso del Cavaliere, 100 - 00133 Roma (ITALIA)

SVIRCO Prompt Report: February 2019

Francesco Re and Nello Vertoli

*IAPS - INAF, Area di Ricerca Roma - Tor Vergata
Via del Fosso del Cavaliere, 100 - 00133 Roma, Italy,*

Abstract

The pressure corrected intensity of the nucleonic component, produced by primary cosmic rays and recorded in February 2019 by the Neutron Monitor of SVIRCO-Rome (present geographic position: 41.86° N - 12.47° E; altitude about s.l.), is reported in prompt form together with the barometric pressure data.

SVIRCO OBSERVATORY

During the 1st International Geophysics Year (1957) an international network of “ground-based detectors” for continuous cosmic ray measurements was world-wide established.

The cosmic ray station of Rome joined this network with the purpose to study the time variations of primary cosmic rays (**Studio Variazioni Intensità Raggi Cosmici: S.V.I.R.CO**) and their modulation in the heliosphere.

From July 1957 to April 1997, the SVIRCO Station (now Observatory) performed uninterrupted measurements at the Physics Department “G. Marconi” of “La Sapienza” University of Rome (41.90° N, 12.52° E, altitude about 60 m a.s.l.)

In May 1997 the neutron monitor was moved to the Physics Department “E. Amaldi” of “Roma Tre” University. Since then it has been continuously running at the new location (41.86° N, 12.47° E, altitude about 0 m a.s.l.).

The SVIRCO Observatory (INAF/IAPS-UNIRomaTre collaboration) is housed in a reserved building provided with a double air-conditioning system. The inner temperature is permanently restrained in a range of 23°-26° C, meanwhile the relative humidity is kept below 57%. Either the environmental parameters are continuously checked and recorded by digital sensors.

On January 1, 2005 three counters were added to the detector. This upgrade, from 17 to 20 NM-64, made the SVIRCO neutron monitor still consist of 5 sections but modified its geometry. Actually the new arrangement has been composed of three 3-counter, one 5-counter and one 6-counter units. The enhancement improved not only the overall counting rate of 15.6 % (January 2005) but, as a result, also the statistical quality of the recorded data.

On July 3, 2017 six counters experienced failure and were removed from the detector until 24 July. On 25 July 2017 a number of 2 counters was added to the detector up to a total of 16 counters. The new arrangement has been composed of three 3-counter, one 5-counter and one 2-counter units. The overall counting rate has decreased of about 20% (July 2017) with a lower statistical quality of the recorded data.

Each of the 16 BF₃ proportional counters (BP-28 type) is equipped with a smart amplifier/discriminator circuit complete with a spectrum stabilizer. This new electronic unit, developed in our laboratory, holds firmly the pulse height spectrum of the amplifier output (within a range of more than 150 volts around the operating voltage), providing the counter with a great immunity against high voltage variations.

Anyway, systematic and exhaustive tests of the counters are regularly performed. The output pulses of the amplifiers, discriminated by the threshold gates, are collected and stored into a multi-channel analyzer. The analysis of the height distribution (spectrum) of the amplifier pulses coinciding with the discriminator ones, is essential to verify the long term efficiency of each counter together with the amplifier gain and the discriminator threshold level.

As well as the amplifier/discriminator circuits, a large part of the electronic instrumentation operating in the Observatory was designed and realized in our laboratory together with the software for data acquisition and pre-elaboration.

In order to improve the reliability of the recorded data and to prevent measurement breakdowns, two independent systems perform contemporary the data acquisition. Each system is remotely controlled by a dedicated computer and is timed by a high stability quartz clock and/or a GPS receiver. One equipment runs according to a timing of 1 minute and fulfils the acquisition of the 16 counters separately. The other one records the individual 5-minute counting rate of each detector section in addition to the rates of the overall multiplicity, sorted into separated counting channels (from 1 to greater than 8).

A special care is devoted to the atmospheric pressure measurements; thus they are carried out by means of not less than three barometers at the same time. These instruments (achieving a resolution up to 0.01 hPa), are constantly checked out each other for the best measuring accuracy and reliability. Furthermore, the devices in use are equipped with different types of transducer such as vibrating cylinder, force balance and quartz, therefore, throughout their different behaviours, it is possible to point out the occurrence of any long-term drift and eventually to re-calibrate the instruments themselves.

DATA PRESENTATION

In a preliminary step, the intensity data, of the secondary nucleonic component of cosmic rays, detected at SVIRCO Observatory, were corrected for pressure variations at a reference level of 1009.25 hPa with an attenuation coefficient of 0.70% / hPa.

The five-minutes counting rates, of the examined month, are reported in tabular form together with the hourly normalized data, which provide a continuous data set for long-term analysis.

The normalization was evaluated as percentage of the counting rate average of January-February 1997, when the Monitor operated at the previous location of "La Sapienza" University. The reference counting rate level (100%), computed for such period, is equal to 554946 counts/hour.

The atmospheric pressure data (in hectoPascal) are also collected in a monthly table which presents the five-minutes averages and the hourly ones.

The hourly averages of the normalized intensity and pressure, plotted in monthly graphs, are reported too.

CONDITIONS FOR SVIRCO DATA USE

You are welcome to use neutron monitor data of SVIRCO, IAPS/INAF-UNIRomaTre collaboration, under the following conditions:

-You agree to acknowledge our financial supports in any published use of the data.

Example: "SVIRCO NM is supported by the INAF - UNIRomaTre collaboration"

-You are kindly requested to send a copy of any published work derived from our data to:

Dr. Monica Laurenza
Head of SVIRCO Observatory & TPL
Istituto di Astrofisica e Planetologia Spaziali - Area di Ricerca Tor Vergata
Via del Fosso del Cavaliere, 100 00133 Roma - Italy,

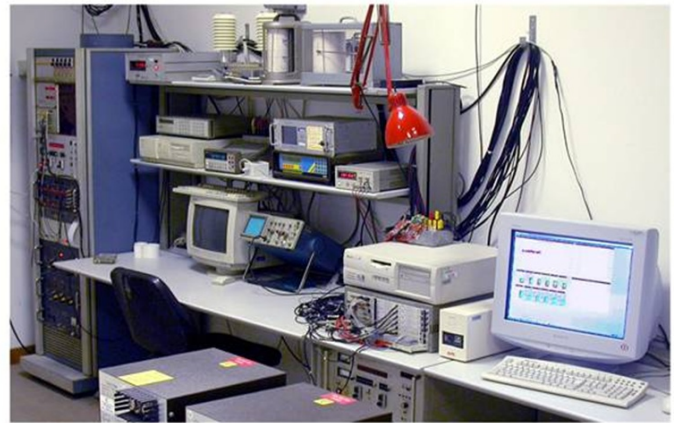
monica.laurenza@iaps.inaf.it



S.V.I.R.CO. Observatory

Rome

Italy



INAF/UNIRomaTre		S.V.I.R.CO. Observatory - Pressure Corrected Data – February 2019											16 NM-64	
day	hh	00_05	05_10	10_15	15_20	20_25	25_30	30_35	35_40	40_45	45_50	50_55	55_60	h-norm
1	0	38187	38117	38632	38282	38207	38131	38802	37891	38687	38176	38091	38370	101.100
	1	37931	38584	37907	38458	37919	38368	38479	38214	38932	38116	38243	38004	101.015
	2	38450	37924	38469	38077	38851	38001	38541	38152	38725	38107	37729	38149	101.019
	3	37894	38285	38600	38449	38669	38286	38145	37998	38281	38481	37982	37812	100.955
	4	38097	38390	37945	39020	38154	37882	38666	38131	38154	38343	38205	38245	101.031
	5	38272	38621	38372	38294	38521	38238	38663	38524	38468	38303	38294	38259	101.382
	6	38874	38301	38452	38093	38004	37927	38551	38475	38714	38341	38142	38720	101.331
	7	38957	38892	38476	38328	38433	38352	38312	38748	38567	38453	38247	38559	101.712
	8	38873	37985	38517	38510	38017	38288	38381	38270	38105	38353	38172	38473	101.188
	9	38102	38645	38628	38677	38282	38837	38489	38122	37877	38297	38339	38186	101.306
	10	38763	38625	38540	38623	38351	38232	38453	38342	38356	38305	38366	38411	101.501
	11	38182	38883	38325	38467	38378	38014	38644	38187	38209	38391	38047	38519	101.253
	12	38511	38470	38404	38501	38199	38292	38402	38056	37975	37639	38504	38459	101.070
	13	37948	38681	38516	38471	38319	38414	38851	38459	38997	38527	38186	38235	101.553
	14	38689	38098	38376	38677	38918	38275	38217	38528	38373	38772	38109	37778	101.378
	15	38770	38111	38251	38676	38258	38216	38959	38239	37844	39183	38323	37987	101.380
	16	38440	39054	37839	38337	37974	38019	38220	37924	38134	38578	38018	38292	100.942
	17	38164	38098	38548	37974	37887	38354	38409	38420	38285	37845	37950	37658	100.670
	18	38245	37928	38475	37795	38071	38012	38047	38241	37992	38153	37577	38045	100.448
	19	37843	37917	38014	38060	38097	37946	38361	37672	37989	37597	38644	38574	100.478
	20	38077	38151	38202	37588	38758	38283	37885	37658	38108	37785	37935	38147	100.447
	21	38118	38292	37947	38142	37950	38435	38142	37726	38293	37737	38175	38647	100.673
	22	39006	38222	37974	38120	38185	37991	38143	38204	38473	37754	38110	37647	100.722
	23	38210	37711	37678	37724	38015	38210	37865	38273	38234	38218	38090	38119	100.397
2	0	37609	38041	38226	37990	38557	37500	37810	38791	37908	38361	37822	38252	100.505
	1	38687	38144	38427	38167	37609	38056	38653	38640	38315	38128	38071	38342	101.032
	2	38280	38528	38237	38335	38689	37833	37370	38439	38013	38104	38643	38059	100.877
	3	38022	38481	38528	37716	38606	38580	38259	38614	38005	38453	38149	38668	101.218
	4	38793	38431	38647	37943	38349	38334	38931	38574	38454	38155	38874	37580	101.434
	5	38062	38440	38128	38578	38258	38031	38255	38266	38307	37927	38629	38071	100.969
	6	38350	38581	38328	38361	38651	38480	38004	38007	38522	38086	38167	37691	101.031
	7	38583	38681	38552	38468	37929	38897	38691	38761	38563	38865	38549	38692	101.911
	8	37926	38244	38855	38064	38462	38900	38228	38698	38375	38451	38078	38280	101.323
	9	38853	38251	38558	39198	38166	38268	38506	38673	38946	38457	38638	38444	101.851
	10	38488	38615	38785	38663	37913	37958	38672	38219	38381	38348	38270	38448	101.367
	11	38843	38610	38583	38562	38572	38083	38414	38361	38262	37925	38904	38460	101.547
	12	37801	38686	39184	38447	38905	38229	38812	38376	38296	38282	38724	38140	101.615
	13	38733	38570	38495	38102	38335	38289	38119	38342	38287	37930	38352	38217	101.149
	14	38431	38229	38299	38414	38365	38517	38451	38387	38444	38919	38305	38120	101.394
	15	39226	38640	38349	37668	38059	38103	38409	39050	38571	38281	38347	37746	101.298
	16	38603	38102	38298	37858	38448	38263	38657	37734	38309	37898	38050	38455	100.908
	17	38374	38397	38058	38214	38228	38527	38237	37861	38113	37947	38230	38244	100.855
	18	38753	38190	37917	38438	37845	38255	37901	38489	38450	38516	38202	37783	100.923
	19	37739	38184	38248	38437	38075	38275	38093	38405	38549	38219	38156	38433	100.939
	20	38730	38404	38896	38554	38372	38201	38109	38627	38263	38296	38087	38175	101.358
	21	38129	38807	38054	38526	38580	38891	38293	37988	37987	38441	38185	38368	101.255
	22	38370	38300	37855	38328	38361	38027	38341	38201	37940	38628	38561	38093	100.981
	23	37925	38204	38849	38309	38373	38202	38242	38665	38322	38105	38055	38526	101.151

INAF/UNIRomaTre		S.V.I.R.CO. Observatory - Pressure Corrected Data – February 2019											16 NM-64	
day	hh	00_05	05_10	10_15	15_20	20_25	25_30	30_35	35_40	40_45	45_50	50_55	55_60	h-norm
3	0	38449	38210	37850	38294	38303	37879	38042	38001	37935	38646	38603	38410	100.903
	1	38353	38521	38733	38865	38357	38230	38123	38081	38149	38085	37985	38599	101.218
	2	38595	38274	38477	38329	38878	38041	38578	38865	38221	38346	38182	38199	101.417
	3	38713	38235	38074	38588	38252	38280	38219	38049	39112	38396	37873	38716	101.312
	4	38073	38305	38391	38602	38570	38418	38629	38378	38764	38291	38594	38417	101.515
	5	38446	38200	38388	37709	38401	38447	38555	37837	39101	38641	38625	38834	101.460
	6	38452	38955	38182	38429	38240	38662	38748	38582	38067	38400	38764	38105	101.549
	7	38662	38239	38442	38802	38113	38782	38135	38454	38682	38927	38818	37986	101.649
	8	38507	39075	38632	38437	38603	38625	38474	38372	39007	38359	38599	38978	102.007
	9	38536	38850	38156	38812	37888	39406	38537	38436	38283	38766	38945	38429	101.870
	10	38268	38316	37921	38729	38534	38965	38836	38578	38550	38836	38550	38614	101.794
	11	38130	38657	38710	38347	38247	38689	37935	38066	38374	38439	38223	39006	101.381
	12	38331	38320	38469	38301	38896	38618	38678	38238	39037	38500	38584	38173	101.672
	13	38507	37676	37693	38418	38619	38201	38880	38531	38044	38612	38273	38752	101.245
	14	38708	38331	39025	38079	38514	38353	38143	38599	38914	39088	38879	38596	101.910
	15	38783	38264	38589	38476	39078	38383	37920	38735	38904	38713	38958	38895	102.013
	16	38093	38003	38857	38620	38626	38603	38912	38666	39044	38414	37848	38599	101.703
	17	38187	38315	38756	38445	38303	38759	39016	38512	38531	38251	38439	38791	101.707
	18	38601	38673	38328	38485	38404	38384	38262	39009	38519	38351	38513	38308	101.605
	19	38482	38473	38854	38447	38183	38488	38526	38529	38816	38485	38778	38867	101.843
	20	38142	38707	38366	38153	37818	37995	38312	38263	38323	38655	37712	38373	100.940
	21	38219	38676	38798	38513	38311	38332	39097	38369	38270	38474	38683	38728	101.744
	22	38179	37995	38477	37698	38444	38390	38806	38537	38742	38159	38595	38921	101.407
	23	37969	38304	37925	38284	38864	38004	38548	38496	37834	38192	38414	38768	101.113
4	0	38427	38311	38726	38595	38192	37932	38097	38661	38526	38357	38273	38605	101.361
	1	38702	38547	38341	37858	38579	37999	37780	38384	38771	38773	38830	38292	101.388
	2	38212	38656	38488	38404	38995	38527	38139	38691	38628	38640	38028	38110	101.534
	3	38049	38626	38547	38200	39056	38196	38084	38212	37802	38110	37844	39059	101.153
	4	38401	39177	38706	37823	37787	38138	38352	38084	37997	38423	38342	38188	101.072
	5	38634	38176	38441	38345	38371	38902	38688	38233	38363	38461	38109	38017	101.364
	6	38316	38910	38142	38557	38155	38379	38168	38572	38704	38669	38469	38198	101.473
	7	38192	38513	38649	38794	38521	38366	38399	38434	38236	38857	38915	38599	101.744
	8	38319	38077	38580	38718	38746	38609	38937	38286	38698	38797	38706	38630	101.883
	9	38409	38446	38891	38664	38286	38769	38878	38829	38274	38251	38310	38688	101.793
	10	37716	38927	38485	38659	38710	38597	38761	38662	37683	38228	38256	38665	101.497
	11	38750	38693	38413	38051	38703	39092	38660	38413	38636	38746	38464	37967	101.769
	12	38156	38705	39049	38560	38881	38374	38330	38764	38608	38623	38338	38261	101.782
	13	37953	38374	38038	38357	38856	38572	37865	38598	38323	39049	38203	38958	101.452
	14	38502	38147	38456	38399	38381	38718	38091	38020	38430	37876	38194	38452	101.126
	15	37930	38617	38011	38757	38828	38363	38656	38412	38366	38550	38589	38760	101.604
	16	38716	38248	38103	38116	39041	38965	38602	38571	38391	37938	38290	38215	101.463
	17	38045	38710	38356	38366	38240	38413	38198	38857	38408	38445	38503	38464	101.421
	18	38597	38644	38136	38554	38458	38177	38760	38022	38664	38447	38416	38689	101.544
	19	38810	38257	38261	38691	38870	38866	38172	37915	38121	38284	37893	38971	101.445
	20	39296	38835	38637	38219	37892	38496	38934	38759	38566	38590	38180	38646	101.871
	21	38394	38514	38323	38451	38716	38450	38066	37918	39145	38881	38283	38085	101.470
	22	38713	38669	38321	38577	39009	38797	38277	38360	39105	38367	38251	38775	101.909
	23	38194	38607	38231	38169	38149	38360	38372	38511	39088	38609	38875	38758	101.623

INAF/UNIRomaTre		S.V.I.R.CO. Observatory - Pressure Corrected Data – February 2019											16 NM-64	
day	hh	00_05	05_10	10_15	15_20	20_25	25_30	30_35	35_40	40_45	45_50	50_55	55_60	h-norm
5	0	38173	38558	38708	38352	37759	38843	38204	37995	38837	38110	38277	38546	101.279
	1	38497	39138	38811	38439	38474	38312	38657	38808	38294	38833	38071	37694	101.646
	2	38083	38957	38588	38733	38921	39020	38669	38420	38374	38164	38276	38333	101.758
	3	38265	38382	38589	37851	38226	38405	38567	39057	38579	38380	39758	38628	101.791
	4	38507	38401	38110	38361	38411	38878	39122	38056	38746	38847	38312	39283	101.868
	5	38500	38567	38833	38767	38400	38871	38182	38646	38764	38978	38911	38453	102.052
	6	37965	38687	39002	38301	38381	38565	38474	38547	38292	38180	38554	38385	101.493
	7	38467	38573	38704	38074	38902	39028	38387	38874	38362	38209	38679	38621	101.833
	8	38348	38583	38456	39166	38729	38639	38492	38525	38083	38587	38559	38480	101.782
	9	38403	38400	38242	38211	38054	38594	38948	38414	38791	38835	38540	38312	101.584
	10	38746	38559	38611	38546	38181	38523	38649	39204	38387	38671	38939	38287	101.927
	11	38349	38457	38478	38564	38738	38790	38414	38476	38791	38894	38934	39032	102.062
	12	38012	38510	39129	38599	38091	38764	38986	38635	38475	38711	38394	38065	101.722
	13	37980	38448	39340	39421	38747	37904	38548	38638	38298	38190	39213	38766	101.969
	14	38458	38491	38455	38841	38449	38783	38253	38039	38930	38332	38572	39515	101.886
	15	38764	38038	38609	38632	38920	38676	38663	38136	38130	38531	38434	38208	101.583
	16	38214	38270	38319	38167	38418	38101	38490	37872	38543	38860	38855	38190	101.265
	17	37918	38231	38397	38479	38784	38196	38888	38032	38282	38593	38326	38023	101.232
	18	38176	38873	38291	38589	38960	38148	38709	38258	39067	38280	38584	38864	101.816
	19	38155	37946	38847	38055	38889	38732	38302	38452	38545	38753	38114	38839	101.558
	20	38104	38608	38417	38299	38846	38117	38715	38604	39194	38057	38578	38887	101.734
	21	37980	38032	38389	38401	38510	38066	38504	38709	38455	38651	38943	39074	101.578
	22	38396	38407	39088	38651	38846	38274	38617	37761	38895	39192	38119	38175	101.732
	23	38275	39169	38476	38396	38333	38596	39444	38159	38265	37765	38741	38661	101.702
6	0	38645	38257	38019	39031	38728	38804	38242	38421	38139	38213	38488	38243	101.468
	1	38531	38561	38501	38491	38787	38375	37842	38240	38366	38484	38624	38009	101.378
	2	38684	38427	38308	38298	39172	38094	38435	38221	37356	38703	38617	38587	101.399
	3	38676	38205	38416	38710	38351	38555	37745	37931	38520	38249	38903	38617	101.393
	4	38235	38625	38696	38837	38642	38907	38329	38688	38897	38815	38080	38615	101.941
	5	39002	38514	38831	38393	38443	38570	38334	38229	39014	38891	38294	38176	101.792
	6	38722	38568	38184	38105	39103	38444	39098	38834	38380	38088	39423	38467	101.952
	7	38561	38563	38857	37944	38441	38981	38130	38510	38718	38639	37967	38850	101.676
	8	38070	38927	38447	38848	38522	38474	38236	38541	38372	38917	38341	39442	101.891
	9	38167	38627	38709	38008	38721	38983	38587	38772	38049	38624	38639	38010	101.617
	10	38190	38144	38453	38824	38911	38583	38435	38822	38264	38606	38577	38694	101.750
	11	37978	38413	38710	38063	38879	38414	38788	38267	38907	38416	38432	38464	101.580
	12	38841	38258	38184	38514	38590	38864	38940	38567	38099	38119	38680	38324	101.636
	13	38361	38671	38277	38407	38615	38945	38825	38389	38656	38708	37900	38654	101.730
	14	38682	38534	38342	37985	38334	38320	38623	37926	38184	38367	38344	38422	101.214
	15	38261	37846	38250	38570	38562	38093	38382	38619	38029	38701	38816	38553	101.350
	16	38268	38726	38223	38474	38224	38460	38171	38519	38338	37873	38197	39070	101.319
	17	38103	39153	38217	38770	38370	38026	38273	38069	38578	38128	38432	38618	101.362
	18	38220	38802	38702	38610	38295	38579	39027	38018	37833	38590	38718	38033	101.514
	19	38248	38392	38610	38248	38043	38325	38756	38270	38689	39198	38389	38226	101.507
	20	38178	38510	38003	38591	38602	38358	38457	38380	38413	38448	38758	38550	101.475
	21	38328	38759	38103	38169	38270	38055	38664	38650	38058	38708	38345	38247	101.279
	22	38512	38431	38108	38491	38453	38829	38884	38973	38181	38539	38792	38762	101.850
	23	38460	38878	38563	38107	38261	38921	38957	38516	38639	38430	38889	38651	101.920

INAF/UNIRomaTre		S.V.I.R.CO. Observatory - Pressure Corrected Data – February 2019											16 NM-64	
day	hh	00_05	05_10	10_15	15_20	20_25	25_30	30_35	35_40	40_45	45_50	50_55	55_60	h-norm
7	0	38725	38419	39094	37890	38669	38674	38807	38499	38769	38331	39042	38533	101.964
	1	38427	39025	38653	38719	38200	38793	38735	38148	38471	38418	38287	38453	101.712
	2	38552	38084	38929	37900	38225	38364	38926	38119	38561	38736	39056	38607	101.653
	3	38683	37876	38813	38707	38453	38525	38504	38251	38653	38584	38260	37963	101.480
	4	38446	38800	38147	38294	38731	38515	38827	38661	38904	38473	38363	38551	101.797
	5	38651	38464	38363	38383	38025	38198	38553	38582	38515	38944	38098	38581	101.499
	6	38343	38354	38733	38723	38428	38412	38170	38609	38892	38657	38392	38798	101.753
	7	38268	38388	37674	38448	38870	38662	39077	38697	38524	38158	38368	38007	101.451
	8	38550	38568	38730	38205	38790	38599	38949	38677	38568	39060	38978	38559	102.131
	9	38597	38374	38460	38171	38955	38327	38490	38648	38383	38511	38503	38406	101.601
	10	38421	38806	37977	38141	38464	38545	38597	38482	39039	38632	38291	38594	101.638
	11	38325	38597	38540	38374	38564	38305	38871	39181	38505	38735	38262	38102	101.720
	12	38852	38886	38755	38610	38529	38753	38781	38654	38484	38334	38355	38013	101.860
	13	38071	38325	38739	38504	38525	38719	38745	37567	39085	38880	38800	38296	101.697
	14	38450	37831	38790	38880	38645	38590	38739	38121	38462	38686	38392	38470	101.653
	15	38055	37829	38099	38782	38411	38227	38099	38674	38277	38297	38191	38493	101.075
	16	38343	38144	38082	38179	38333	38213	38802	38647	38153	38475	38727	38393	101.308
	17	38598	38627	38369	38799	37755	38050	38160	38451	38518	38252	38423	38274	101.261
	18	38259	38165	38309	38193	38327	38202	38323	38267	38315	39294	37991	38430	101.216
	19	38710	38460	38729	38522	39071	38385	38324	38496	37968	38510	38295	38518	101.637
	20	38372	38391	38852	38715	38685	38881	38630	38141	38798	38710	38629	38442	101.914
	21	38799	37934	37889	38235	38400	38689	38794	37793	38539	39234	38596	38281	101.460
	22	38335	38727	38303	38785	38773	38992	38464	38635	38707	38859	38950	38571	102.102
	23	38716	38060	38230	38241	38181	38158	39031	38688	38991	38229	38170	38460	101.454
8	0	38094	38637	38384	38386	38629	38320	38348	38966	38723	38459	38594	38541	101.653
	1	38718	38509	38401	38668	38194	38341	38452	37944	38488	38279	38600	38546	101.451
	2	38715	38165	38795	38473	39128	38974	38729	38825	37994	38154	38741	38962	102.004
	3	38413	38645	38554	38148	38834	38882	38727	38263	38365	38373	38636	38275	101.665
	4	38272	38418	38776	38945	38740	38665	38490	39262	38732	38439	38554	38940	102.131
	5	38309	38826	39053	38168	38681	38665	38709	38435	38375	38324	38355	38619	101.754
	6	38725	38120	38659	38435	38465	38333	38409	38757	38847	38585	38307	38072	101.577
	7	38252	38577	38375	38194	38692	38690	38591	38304	38655	38163	38271	38829	101.551
	8	38641	38185	39046	38428	38636	37852	37912	38755	38421	39319	38403	38102	101.574
	9	38037	38245	38285	38474	38642	38343	38749	38302	38833	38862	38347	38644	101.587
	10	38720	37865	38530	38257	38455	38588	38352	38556	37997	38485	38159	37895	101.169
	11	38333	38592	38802	38198	38166	38779	38571	38347	38927	38269	37822	38715	101.534
	12	38719	37908	38516	38185	38371	38024	38444	38706	38754	38832	38141	38218	101.380
	13	38177	37777	38317	38462	38016	38352	38272	38198	38766	38654	38626	38286	101.179
	14	38353	39005	38001	37770	38354	37992	38943	38509	38217	38690	38858	38338	101.427
	15	38311	38136	38175	38047	38308	38424	38362	38847	38263	38425	38397	38587	101.262
	16	38073	38444	38541	38061	38225	39651	38168	38779	39182	38101	37849	38925	101.640
	17	38890	38056	37897	38385	37514	38384	38431	38282	38522	37588	37945	38241	100.790
	18	38415	39002	38390	38930	38482	38273	38178	37869	38293	38478	38131	38565	101.421
	19	38053	37827	38334	38043	38525	38974	37875	38483	38677	38281	38455	38506	101.207
	20	38696	38746	37956	37919	38482	38543	37805	38577	38237	38564	38316	38721	101.324
	21	38665	37978	38232	39048	38518	38276	38011	38402	38347	38428	38100	39122	101.448
	22	38738	39364	38643	39005	38063	38218	38880	38145	38678	38384	38724	38082	101.844
	23	37978	38045	38829	38499	38587	38713	38565	38463	38203	39097	38412	38352	101.583

INAF/UNIRomaTre		S.V.I.R.CO. Observatory - Pressure Corrected Data – February 2019											16 NM-64	
day	hh	00_05	05_10	10_15	15_20	20_25	25_30	30_35	35_40	40_45	45_50	50_55	55_60	h-norm
9	0	38525	38211	38398	38595	38901	38628	38350	38468	39109	38235	38190	38746	101.719
	1	38593	38784	38697	38128	38555	38722	38067	38411	38037	38653	38712	38392	101.585
	2	38269	38371	39199	38304	37604	38308	38170	38420	38607	38808	38374	38205	101.341
	3	38889	38389	38351	38331	38428	38273	38587	38302	38193	38540	38191	38355	101.383
	4	37855	38510	38429	38607	38132	38598	37925	37996	38183	37886	38420	38380	100.963
	5	38335	38242	38025	38522	38654	38466	38388	38949	38592	38059	38450	38643	101.492
	6	38555	38977	38432	37957	38158	38277	38805	38692	38335	38069	38798	38767	101.601
	7	38889	38795	38909	38786	38523	38421	38534	38362	37973	38522	38558	38857	101.889
	8	37757	38176	38398	38504	38258	38198	38356	38576	38067	37858	37822	38894	100.950
	9	38351	38274	38474	38582	39039	38721	38662	38340	38654	38736	37902	38498	101.692
	10	38340	38053	38431	38337	38654	38163	38133	38597	38623	38136	38355	38347	101.237
	11	38262	38044	38430	37989	38254	39011	38643	38395	38425	39063	38374	38554	101.518
	12	38371	38849	38366	38212	38957	37831	38039	38158	38608	38225	38945	39003	101.544
	13	38689	37886	38678	38246	37765	38228	37728	38577	38156	38702	38606	38333	101.111
	14	38104	38047	38293	38388	37991	38174	37879	38379	37944	38213	38625	38243	100.822
	15	38126	38481	38202	38203	38342	38445	38393	38439	37845	38009	38095	38215	100.935
	16	38132	38518	38892	38305	38531	38114	38507	38498	38754	38538	38228	38468	101.527
	17	38076	38397	38451	37973	38633	37866	38014	38032	38135	38501	38383	37570	100.767
	18	38501	38517	38637	38687	38370	38073	39004	38572	38164	38710	37888	38156	101.481
	19	38233	37338	38460	38853	38554	38232	38405	38090	38217	37994	38271	38085	100.921
	20	38520	38078	38054	38194	37940	38252	38217	38356	38389	37493	38541	38105	100.791
	21	38261	38175	38616	38529	38044	38004	38110	38365	37976	38603	37580	37779	100.769
	22	38342	37747	38249	38226	37981	38113	38129	37729	38590	37560	37949	38360	100.535
	23	38540	38104	38575	38050	37685	38574	38309	37967	38379	37894	38619	37996	100.913
10	0	38185	37925	38453	38605	38289	38296	38111	37790	38412	38563	38601	37782	100.982
	1	37677	38127	38718	37907	38935	37896	38372	38507	38349	38817	37974	38454	101.141
	2	38327	38186	38363	37884	38623	37990	38358	38527	38158	38498	38648	37524	100.999
	3	38827	38115	37888	38437	37674	38951	38674	38565	38382	38459	38403	38688	101.434
	4	38079	38311	38267	38568	38598	38239	38092	37957	38318	38186	38542	38373	101.097
	5	38756	38025	38124	38113	38535	38163	38532	37977	38246	38036	38542	38579	101.118
	6	38766	38575	38092	37861	38213	38309	38999	38383	38129	38985	38490	38209	101.422
	7	38559	38806	38698	38016	38684	38753	38477	37969	38616	38194	38284	38149	101.465
	8	38000	38554	38436	38103	37721	38246	38281	38165	37988	37571	38585	38520	100.797
	9	38521	38656	37584	38310	38192	37973	38359	37742	38800	38084	38395	38218	100.944
	10	38069	37972	38088	38348	37984	37376	38262	38312	39125	38000	38579	38148	100.818
	11	38598	37690	37910	37872	37977	38582	38086	38615	38453	37725	38406	38431	100.837
	12	39021	38640	38213	37996	38174	37523	38123	38267	38358	38646	38257	38151	101.061
	13	38520	38147	38463	38316	38538	37618	37991	38336	38137	38192	38912	38594	101.149
	14	37966	37975	37862	38212	38376	38105	37879	37996	37977	37961	38340	38360	100.542
	15	37989	39067	38085	37832	38563	38019	38188	38662	38317	38366	38194	38658	101.187
	16	38433	37858	38385	37879	38170	38319	38727	38396	38257	38653	38172	38626	101.173
	17	37792	38396	37480	38503	38572	38438	38024	38295	38042	38668	38797	37900	100.960
	18	38270	38150	38599	38133	38153	38089	38050	38079	38269	37660	37734	38143	100.612
	19	38722	38228	38204	38051	38203	38544	38285	38391	38618	38709	38374	37792	101.227
	20	38061	38266	38136	37702	38743	37693	37829	38966	38384	38562	38923	38113	101.064
	21	37691	38127	38148	38172	38521	38818	38261	38104	38179	38104	37982	38081	100.802
	22	37775	39100	38131	38369	38071	38579	37570	38225	38518	38200	38252	38003	100.934
	23	37742	38443	38512	37904	37885	38319	37854	37833	38591	38013	37624	38460	100.580

INAF/UNIRomaTre		S.V.I.R.CO. Observatory - Pressure Corrected Data – February 2019											16 NM-64	
day	hh	00_05	05_10	10_15	15_20	20_25	25_30	30_35	35_40	40_45	45_50	50_55	55_60	h-norm
11	0	38556	38681	38253	38492	38358	38179	38416	38329	38075	38496	38693	38244	101.360
	1	37911	38555	38043	37826	38257	38362	38645	38332	37613	38028	37998	38209	100.711
	2	38325	38081	38297	38652	38841	38143	38000	37918	38076	38383	38570	38147	101.075
	3	38015	38408	38572	38429	38519	38058	38248	39099	38297	38391	38529	37893	101.301
	4	38023	38556	38120	38374	38712	38253	38303	38420	38193	38333	38577	38368	101.252
	5	38488	38704	38029	38667	38198	38311	38490	38421	38885	38723	38767	38690	101.723
	6	38827	38663	38832	38512	38282	38231	38397	38120	38309	38575	37930	38029	101.357
	7	38682	38479	38434	38780	38816	38729	38580	38054	38181	38308	39177	38361	101.768
	8	38454	38629	38335	38729	38941	37934	38321	38396	38114	38140	38602	38597	101.462
	9	38477	38620	38698	38298	39122	38443	38208	38368	38287	37885	38558	38448	101.510
	10	38521	38273	38465	38435	38400	38205	38323	38308	38778	38474	38506	38979	101.567
	11	38865	38582	39223	38685	38553	38703	38191	38362	38986	38637	38393	38097	101.921
	12	38368	38966	38154	38659	38136	38108	38376	38184	38440	38437	38725	38463	101.424
	13	38763	38094	38245	38391	38634	38258	38364	39220	38186	38544	38314	38588	101.552
	14	38037	38267	38549	38115	38977	38790	38627	38101	38341	38399	39049	39062	101.708
	15	38187	38287	38026	38554	39097	38810	38959	38629	38458	37837	38685	38839	101.721
	16	38454	38602	38815	38461	38180	38746	38367	38899	38765	38310	39001	38523	101.887
	17	38318	38768	38568	38243	38221	38563	38900	38406	38067	38391	38513	38565	101.535
	18	39035	38335	39120	37858	38652	37811	38551	38953	39177	38508	38758	38246	101.861
	19	38130	38875	38312	39231	38200	38706	38143	39455	39078	38303	38619	38580	101.999
	20	38300	39082	38580	38284	38414	39046	38333	39125	38219	38435	39011	38309	101.890
	21	38495	38649	38324	38688	38328	38237	38978	38053	38143	38548	38783	38225	101.519
	22	38484	38692	38167	38285	38525	38593	38457	38524	38764	38528	37943	38380	101.496
	23	38000	38586	38781	37945	38231	39486	38327	38621	38476	38739	39116	39164	101.963
12	0	38582	38667	38562	38665	38795	38480	38149	38573	38013	38668	38189	38605	101.637
	1	38783	38755	38489	38618	38445	38299	38507	38501	38704	38835	39192	38718	102.046
	2	38183	38363	38585	38647	38782	38193	38545	39129	38122	38517	38259	38637	101.632
	3	38748	38118	38361	38602	38470	38365	38645	39198	38245	38794	38868	38805	101.908
	4	38686	38748	38711	38211	38340	38165	38464	38186	38498	38086	38192	38040	101.272
	5	39170	38508	38303	39045	38903	38627	38648	38834	39396	38427	38787	38651	102.366
	6	38236	37773	38806	38046	38226	39052	38463	38248	38368	38352	38966	39037	101.545
	7	39122	38200	38466	37968	38870	38692	38277	38666	38720	38619	38777	38838	101.907
	8	38726	39616	38778	38683	39023	38588	38824	38937	38316	38073	38555	38437	102.203
	9	38675	38461	38601	38830	37884	37884	38427	38175	38340	37896	38565	37889	101.118
	10	38038	38527	38558	38380	38810	38417	38301	38186	38778	38998	38745	38703	101.737
	11	38243	38113	38344	38053	39000	38513	39184	37881	38663	38360	38712	38658	101.580
	12	38697	38142	38472	39116	38866	38096	39034	38071	38425	38584	38171	38507	101.680
	13	39158	38281	38182	38488	38370	38629	38856	38660	38356	38545	38233	38082	101.605
	14	38339	38113	38194	38496	38664	38307	38659	38502	38068	38847	38906	38724	101.600
	15	38675	38691	38017	38490	38451	38402	38911	38504	38290	38083	38243	38127	101.394
	16	38412	38191	38362	38052	38170	38067	38634	38586	39184	39008	38290	38711	101.566
	17	38114	38699	38398	38331	39046	38396	38465	38162	38481	39020	38684	37983	101.592
	18	38272	38466	38263	38274	38261	38544	38760	38446	37543	38872	38713	38908	101.490
	19	38649	38610	38430	38233	38839	38826	38299	38638	38092	38537	38822	38492	101.743
	20	38316	38842	38073	38472	38766	38602	38875	38817	38569	39051	38183	37801	101.721
	21	37554	38519	38666	38612	38162	38964	38311	38602	38361	38589	38138	38846	101.491
	22	38605	38384	38459	38374	38647	38637	38524	38065	37848	38763	38915	38127	101.497
	23	38507	38414	38553	38117	37968	38427	38414	38718	38739	38814	38557	38472	101.574

INAF/UNIRomaTre		S.V.I.R.CO. Observatory - Pressure Corrected Data – February 2019											16 NM-64	
day	hh	00_05	05_10	10_15	15_20	20_25	25_30	30_35	35_40	40_45	45_50	50_55	55_60	h-norm
13	0	38003	38232	38321	38403	38093	38269	38607	38468	38520	38531	38009	38446	101.186
	1	38409	38534	38330	38393	38451	38666	38504	38954	38704	38158	38406	38871	101.724
	2	38288	38688	38565	38236	38172	37803	37899	38692	38449	38187	37533	38599	101.004
	3	38697	38104	38720	38666	38729	39353	38201	38000	38878	38103	38693	38138	101.702
	4	38369	38728	38680	39233	38812	38599	38547	38426	38792	38375	38654	39152	102.161
	5	38577	38516	38315	38750	38538	37950	38721	38711	38299	39117	39088	38844	101.953
	6	39188	38847	39052	38104	38832	38761	38612	38931	38828	39256	38841	39057	102.588
	7	38891	37843	38814	38630	38556	39003	38198	39227	38585	38674	37592	38921	101.846
	8	39067	39010	38572	38518	38761	38891	38625	37624	38051	39057	38284	38918	101.943
	9	38547	38369	38621	38326	38668	38941	38976	39043	38715	38515	38659	38485	102.050
	10	38771	38903	37641	38493	38494	38767	38738	38818					
	11		38556	38771	38474	38314	38955	38895	38728	38894	38935	38560	39386	
	12						39033	38525						
	13							39189	38883	38082	38563	38410	38680	38350
	14	38699	38872	38429	38944	38529	38920	38885	38312	38612	38489	38325	38972	102.077
	15	38646	38524	38274	38297	38913	38848	38537	38558					
	16		38889	38557	38881	38643	38728	38293	38049	38458	38661	38155	39055	101.841
	17	38331	38466	38130	39180	38268								
	18					38620	38378	38768	38645	38685			38739	
	19	38058	38625	38814	38804	38564	38372	38301	37754	38611	38498	39080	38747	101.690
	20	38509							38259	38581	38827	38952	38686	
	21	38691	38310	38100	38568	38416	38555	38550	38155	38577	38509	38366	38775	101.546
	22	38714	39044	38746	38405	38822	38217	38835	38424	38438	38275	38231	38092	101.694
	23	37721	38552	38666	38384	38368	38428	38241	38575	38476	38140	38476	38199	101.250
14	0	38175	38822	38283	38425	38445	38886	38405	38478	38233	38721	38280	39337	101.744
	1	38128	38258	39183	38864	38690	39218	38054	38641	38295	37931	38567	38035	101.610
	2	38675	38668	37728	38583	38102	38270	38021	38338	38305	38492	37994	38744	101.183
	3	38364	38425	38258	38355	38321	38302	38154	38853	37774	38287	38225	38293	101.114
	4	38109	38754	38073	38352	38396	38600	39125	38464	38604	38614	37796	39216	101.663
	5	39011	38968	38653	37990	38498	38756	38237	38224	38581	38383	37869	38422	101.551
	6	38656	38669	38965	38414	38718	37978	38355	39015	38542	38054	38612	38630	101.773
	7	38184	38689	38357	38549	38268	38914	38329	38591	39036	38828	38278	39158	101.900
	8	38310	38374	38566	38665	38629	37926	38391	38720	38640	38600	38276		
	9													
	10							38656	38807	38075	38398	38697	35007	
	11	37899	38965	37830	38338	38445	37994	38153	38297	38506	38401	38009	39087	101.184
	12	38580	38117	38758	38400	38556	38618	38719	38731	38161	37930	38129	38543	101.473
	13	38137	38531	39308	37739	38143	37597	38612	38412	37789	38175	38748	38193	101.064
	14	38443	38841	38579	38689	38171	38577	38452	39349	38449	38896	38073	38765	101.922
	15	37758	38098	38205	38429	38344	38562	39019	38185	38950	38557	38454	38064	101.338
	16	38266	38678	38237	39125	39014	38353	37840	38861	38304	38553	38650	37945	101.602
	17	38154	38565	38467	37644	38892	38832	38265	39051	38124	38514	38897	39219	101.776
	18	38277	38527	38211	37993	38294	37939	38265	37464	38627	38410	38625	38824	101.081
	19	38116	38511	38184	38657	37817	37748	38737	38141	38576	38427	39059	38458	101.295
	20	38444	38145	38032	38500	38081	38066	38438	38131	38624	37983	38629	38515	101.110
	21	38573	38395	38461	38644	38834	38176	38598	38590	37985	38891	38563	38232	101.627
	22	38024	37852	39044	38440	37788	39055	38240	38568	38867	38379	38432	38616	101.487
	23	38031	38602	38003	38576	38533	38476	39078	38287	38292	38792	38415	38452	101.538

INAF/UNIRomaTre		S.V.I.R.CO. Observatory - Pressure Corrected Data – February 2019											16 NM-64	
day	hh	00_05	05_10	10_15	15_20	20_25	25_30	30_35	35_40	40_45	45_50	50_55	55_60	h-norm
15	0	38316	38854	37661	38816	38405	38549	38474	38738	39567	38280	38211	38711	101.767
	1	39108	38191	38437	38555	38595	38482	38756	38821	38856	38607	38874	39452	102.242
	2	38560	39582	38741	38527	38661	38493	38331	38719	38946	38636	39271	38566	102.307
	3	38554	38456	38871	38102	38512	38926	39039	38252	38575	38387	38816	38952	101.957
	4	38780	39035	38710	38786	38215	38828	38848	38825	38737	38320	38683	39442	102.346
	5	38608	38790	38105	39399	38250	38165	38872	38493	38743	38539	38401	38721	101.879
	6	38097	38760	37698	38994	38789	38455	38995	38524	38996	38439	38397	38776	101.842
	7	38311	38324	38535	38567	38541	38730	38754	39068	38602	38230	37940	39140	101.803
	8	38303	39392	38591	38787	38143	38555	39090	38558	38354	38787	38787	39042	102.166
	9	38382	38362	38021	38602	38201	38220	38800	38689	39002	38559	38812	38343	101.639
	10	38364	38518	38266	38329	38694	38381	38519	38770	39447	38618	38527	38594	101.866
	11	38689	38007	38586	37981	38220	38203	38639	38547	38911	38814	38526	38538	101.566
	12	38531	39012	38038	38414	38785	38405	39160	38618	38180	38937	38483	37951	101.753
	13	38880	38510	39288	38817	38278	38642	38751	38584	39086	38250	38370	38946	102.169
	14	39023	38508	38779	38433	38122	38718	38452	38532	38626	39263	38102	38150	101.796
	15	38814	38621	38126	38658	37998	38889	38202	38249	38951	38687	38494	38639	101.712
	16	38932	39056	38600	38974	38379	38460	38456	38711	38867	38197	38268	38038	101.848
	17	38398	38634	38718	38762	38104	38445	38482	38180	38288	38070	38985	37925	101.419
	18	38424	38847	37708	38649	38422	38095	38347	38775	39036	38717	38986	38392	101.728
	19	38486	38118	38617	38700	38430	38884	38642	38369	38480	38460	38135	38639	101.631
	20	38381	38532	38752	38030	38145	38818	38952	38804	38620	38515	38894	38366	101.818
	21	38305	38895	38276	38707	38297	38185	38535	38743	38310	37801	38654	38591	101.486
	22	38464	38574	38742	38435	38594	38679	38406	38031	38458	38807	38649	37935	101.590
	23	38373	38129	38924	38859	38863	38215	39159	38886	38219	38945	38390	39061	102.085
16	0	39196	38386	39070	38695	38680	39077	38738	38659	38422	38506	38427	38596	102.184
	1	38495	39168	38324	39143	38905	38540	38277	38580	38335	38386	38494	38495	101.891
	2	38779	38740	38830	38753	39114	38946	38884	38408	38381	38752	38455	37832	102.053
	3	38768	38851	38750	39431	38870	38627	38903	38526	38622	38360	38540	38672	102.283
	4	38459	38758	38650	38727	38312	38594	38907	39087	39132	39400	38717	38388	102.329
	5	39013	38931	38946	38767	39333	38936	39222	38377	39365	38576	38385	38896	102.685
	6	38383	39016	39210	38353	39079	38027	38806	38629	38977	39153	39096	38675	102.388
	7	38028	38776	38586	38837	38791	39260	38635	39200	38574	38690	38528	39136	102.309
	8	38730	39386	38728	38951	38829	39157	38915	38937	38684	38644	39178	38756	102.717
	9	38785	38884	39366	39052	38639	38523	38956	38545	38552	38506	38409	38301	102.194
	10	38707	39199	38665	38736	38478	38893	38282	38715	38112	39086	38286	37853	101.862
	11	38523	38387	38642	38733	39031	38424	38903	38162	38766	38012	39199	38425	101.906
	12	38787	38331	38952	38714	39250	37909	38749	38427	39042	38813	38819	38493	102.143
	13	38926	38941	39057	38914	38653	39060	38866	39066	38520	38408	38573	38813	102.475
	14	38341	37779	38746	38243	38818	38999	38617	38331	38386	38637	38144	37858	101.398
	15	38328	38108	38350	38937	37728	38362	38118	38518	38449	38555	38008	38173	101.119
	16	38611	38787	38660	37846	38825	38112	38870	38436	38632	38320	38399	38352	101.607
	17	38516	37741	38824	38671	38462	38377	38999	38512	38196	38560	38917	38483	101.697
	18	38733	38375	38908	39099	38595	38757	38544	38012	38284	38501	38274	38923	101.861
	19	38346	38642	38551	38769	38751	38748	38320	38781	38476	38468	38424	38343	101.776
	20	38607	38471	38625	38355	38664	38503	38266	38636	38500	38702	39150	38402	101.833
	21	38453	38626	38348	39028	38462	39066	38783	38854	39016	38964	38361	38315	102.141
	22	38263	38899	38766	39174	38030	38280	38378	38527	38674	37814	38281	38539	101.558
	23	38409	38548	38106	38572	38839	38314	38334	38670	39313	38470	38743	38317	101.780

INAF/UNIRomaTre		S.V.I.R.CO. Observatory - Pressure Corrected Data – February 2019											16 NM-64	
day	hh	00_05	05_10	10_15	15_20	20_25	25_30	30_35	35_40	40_45	45_50	50_55	55_60	h-norm
17	0	38708	38481	38552	38566	38519	38454	38596	38401	39114	39087	38639	38817	102.060
	1	38915	38152	38097	38186	38231	37933	38490	38316	38938	38716	38924	39134	101.647
	2	38705	38290	38845	38397	38669	38940	38472	38601	38196	38622	38381	38433	101.761
	3	38481	39185	38245	38085	38635	38569	38589	39433	38366	38735	38975	37946	101.914
	4	38952	38619	39150	38087	38369	38412	38680	38612	38880	38152	39116	38940	102.073
	5	38847	38198	38726	38792	38667	38337	38859	38375	38814	39226	38189	38237	101.919
	6	38509	37935	39094	38197	38765	39113	39107	39072	39180	38812	38740	38894	102.391
	7	38213	38820	38408	38452	38898	38438	38666	38774	37880	39327	38511	38787	101.898
	8	38215	39109	38960	38864	38788	38532	38550	38420	38750	38751	38947	39254	102.331
	9	38573	38806	38882	39008	38995	38493	38879	38464	38489	38335	38891	38685	102.190
	10	38802	38854	38404	38519	38502	38128	38131	38598	38265	39032	38207	39194	101.780
	11	38476	39289	38537	38186	39354	38757	38613	38381	38061	38561	38341	38831	101.945
	12	38653	38898	38729	38042	38862	38704	38454	38545	38462	38363	38540	38995	101.915
	13	38701	39257	38803	38838	39515	38813	38841	38593	38688	38280	38072	38747	102.333
	14	38352	38790	38492	38767	38107	38179	39000	38669	38526	38225	38251	38327	101.571
	15	38710	38650	38400	38509	38669	38976	38911	38582	38831	38215	38199	37916	101.765
	16	37929	38730	38190	38565	38377	38355	38066	38058	39038	38247	38554	38513	101.337
	17	38609	38694	38175	38850	38324	38735	38183	38390	39121	38995	38298	38926	101.926
	18	38711	38587	38549	38449	38854	38711	38700	38290	37995	38516	37992	38622	101.635
	19	38493	39009	38973	39015	38565	37862	38301	38723	38333	38506	38206	38639	101.778
	20	38186	37959	38088	38416	38713	38772	38567	38449	38374	38241	38579	38462	101.377
	21	38338	38963	38438	38428	38506	38700	38825	38572	38419	38560	38392	38178	101.710
	22	38606	38547	38780	38835	37423	38630	38571	38344	38451	38022	38962	38551	101.578
	23	38687	38711	38561	38324	38344	38029	38665	38471	38132	39058	38302	38178	101.522
18	0	38040	38235	38820	38451	38628	38477	38492	38062	38511	38754	38250	38556	101.479
	1	38563	38718	38133	38528	39295	38222	38423	38313	38233	38602	38282	38179	101.528
	2	37955	38230	37671	38979	39181	37620	38579	38774	38338	38897	38196	38235	101.344
	3	39079	37938	38079	38047	38493	38610	38022	38429	38454	38951	38429	39046	101.547
	4	38473	38823	38490	38380	38685	38714	38123	38559	38979	38879	38501	38228	101.823
	5	38898	38679	38942	38591	38349	39052	38815	38857	38913	38126	39446	38783	102.399
	6	38355	38605	38409	38622	38388	38460	38604	38818	38755	38760	38141	38792	101.796
	7	38790	37600	38866	38333	38652	38873	38484	38446	38322	39072	38531	38381	101.717
	8	38971	38496	38701	39061	38939	38186	38181	38358	38671	38314	38668	38381	101.844
	9	38193	38770	38195	38415	38593	38749	38615	39365	39164	39066	38282	39319	102.239
	10	38683	38105	38145	38586	38482	38318	38378	38630	38617	38750	38870	38929	101.749
	11	38367	38682	38348	38705	38456	38555	38631	38608	38983	38723	38503	38529	101.880
	12	38599	38987	38816	38429	38796	38518	38304	38911	38758	38787	38602	39696	102.345
	13	38505	38591	38423	38641	38565	38525	38421	38517	39048	38690	38674	38362	101.852
	14	38077	38890	38832	38022	38960	38521	38659	38660	39503	38893	38631	38980	102.219
	15	38546	38290	39091	38205	38557	38509	38013	38754	38331	38233	38997	38796	101.711
	16	38871	38565	37964	38524	38439	38996	38730	38728	38265	38347	38540	38850	101.820
	17	38347	38754	37993	39013	38640	38858	39129	38628	37973	38795	38491	38274	101.837
	18	38074	38638	39132	39164	38313	38577	38293	38361	38357	38858	37994	38739	101.750
	19	38979	38239	38837	38384	38504	38843	38421	38106	38556	38557	38492	38799	101.798
	20	39132	38599	38448	38736	38783	38303	38684	38865	38454	38468	38516	38596	101.988
	21	38083	38840	38680	38590	38996	38483	38730	38377	38820	38280	38828	38747	101.960
	22	38714	38524	38479	39076	38720	39427	38438	39038	38547	39059	38838	38547	102.390
	23	39009	38698	38295	38546	38486	38660	38593	38265	38789	38377	38370	38672	101.807

INAF/UNIRomaTre		S.V.I.R.CO. Observatory - Pressure Corrected Data – February 2019											16 NM-64	
day	hh	00_05	05_10	10_15	15_20	20_25	25_30	30_35	35_40	40_45	45_50	50_55	55_60	h-norm
19	0	38844	38486	38376	38964	38285	38317	38445	38941	38933	38120	39173	38335	101.907
	1	39009	39136	38818	38699	38893	38802	38934	38798	38540	38081	38708	38552	102.293
	2	38685	38619	38929	38071	38462	38396	38820	38546	38995	38762	38474	39260	102.084
	3	38837	38595	38555	38927	38614	38753	38597	38696	38200	38188	38834	38419	101.907
	4	38777	38131	38971	38374	38854	38570	38899	38078	38721	38508	38521	38778	101.900
	5	39261	38773	38551	38451	38510	38932	38711	39118	38821	38865	38435	38342	102.249
	6	38885	38904	38299	38332	39460	38515	39050	38691	39144	39164	39392	38557	102.606
	7	39249	38432	39042	38270	38672	38870	38500	38703	39108	38683	38326	38887	102.243
	8	38307	38813	39041	38932	39103	38946	38582	38428	38876	38523	39038	38997	102.429
	9	38922	39565	38540	39029	38814	38807	38253	39184	38951	38978	38246	38152	102.397
	10	38949	38919	38926	39297	38903	38432	38657	38616	38795	39007	38694	38820	102.523
	11	39096	38644	39083	38017	38776	38335	38224	38612	39062	38863	38571	39049	102.153
	12	38765	38887	38846	38090	38956	39298	38672	39510	38729	38561	38939	38656	102.500
	13	38368	39270	38182	38999	38623	38797	38774	39128	38439	38129	38957	39261	102.284
	14	38977	38956	38882	38833	38134	38491	38355	38724	38582	38685	39140	38843	102.212
	15	38439	39147	39149	39163	38775	38997	39121	38551	38916	38767	38411	38921	102.599
	16	38502	39098	38936	39087	39053	38679	38826	38574	38493	38101	38647	39376	102.382
	17	39102	38451	39024	38580	38572	39084	38644	38991	38808	39143	38423	38118	102.287
	18	38849	38712	38686	38833	38825	38528	38504	38780	38517	38792	39253	38720	102.300
	19	38984	38527	37926	38525	38367	38686	38393	38903	38632	38975	38003	38157	101.657
	20	38778	38587	37925	39051	38593	38516	38424	38778	38354	38739	39286	38540	101.985
	21	39394	38879	38989	38482	38310	38985	38713	38833	38867	38675	38660	38759	102.420
	22	38818	38336	38591	38225	39500	38582	38830	38234	38978	38655	38815	39657	102.349
	23	38265	38479	38786	38695	39008	38174	38951	39048	38434	38360	38317	39167	102.010
20	0	38812	39188	38531	38892	38690	38852	37892	38585	38270	38783	38723	38818	102.087
	1	38648	38884	38684	39006	39048	38962	38565	38735	38503	38877	38699	39190	102.476
	2	38465	38439	38523	39038	38623	38355	38791	38241	39182	38840	38602	38350	101.959
	3	39202	38840	38885	39160	39170	38540	38948	39049	38801	39088	39149	38662	102.849
	4	38087	38248	38908	39066	39102	38903	39200	38924	38577	38695	38841	39054	102.433
	5	38732	38865	38500	38662	38657	38739	38315	38615	38392	38859	38778	39553	102.226
	6	38872	39359	38731	38945	38875	38736	38907	39295	39089	38778	38696	38788	102.756
	7	38894	38567	38606	39471	38757	38829	38924	38911	39601	38962	39167	39138	102.922
	8	38714	39518	38721	39021	39202	38382	39065	38398	38997	39338	39315	38833	102.851
	9	38996	39089	38847	39482	38904	39773	39064	38207	38623	38923	38542	38006	102.620
	10	38986	38655	38766	38017	38805	38429	39349	39339	38934	38485	39024	38317	102.323
	11	39029	38611	38852	38803	39136	39143	38891	38946	38383	38370	38930	39055	102.552
	12	38456	38520	39356	38797	38616	38664	38640	38770	38513	38993	38827	39076	102.350
	13	38499	38303	38539	39078	38781	38466	38340	38817	39298	38703	38784	38833	102.177
	14	39096	38885	38652	38507	38548	38408	39244	38799	38562	39032	38493	38753	102.296
	15	38533	38456	38826	39096	38653	38594	38364	38886	38511	38892	38918	38796	102.195
	16	38529	38603	38701	39139	38429	38777	38461	38695	38189	38865	38598	39040	102.086
	17	39088	38727	38598	38285	38719	38759	38830	38866	38445	38404	38524	39109	102.158
	18	39820	38766	38961	38960	39119	38748	38452	38866	39105	38830	39018	38478	102.767
	19	39045	38273	38594	39031	38805	39034	38142	38543	38011	38612	38579	38658	101.932
	20	38971	38318	38584	38917	38624	39526	38202	39449	38306	38726	38695	38917	102.352
	21	38785	38246	38380	38867	38135	38495	39303	38881	38823	38525	39112	39439	102.298
	22	38945	37831	39224	38845	38211	38927	38575	38643	38980	38814	38306	38391	102.013
	23	37937	38660	39076	38369	38514	38881	38284	38603	38769	38591	38695	38223	101.772

INAF/UNIRomaTre		S.V.I.R.CO. Observatory - Pressure Corrected Data – February 2019											16 NM-64	
day	hh	00_05	05_10	10_15	15_20	20_25	25_30	30_35	35_40	40_45	45_50	50_55	55_60	h-norm
21	0	38990	38385	38556	38533	39137	38666	38310	38604	38199	38528	38667	38712	101.927
	1	39268	38923	38484	38754	39024	39070	39040	38915	39010	38804	38585	39068	102.728
	2	38452	38212	38630	38254	39216	39173	39259	38730	39300	38924	38647	38703	102.410
	3	39047	38870	38603	38504	38672	38151	38810	39388	38501	38417	37874	38348	101.901
	4	38283	39120	39212	38592	38469	38758	38587	38114	38812	38880	38414	38128	101.941
	5	39119	38663	38738	39071	38968	38742	38806	38877	39032	39419	38562	38337	102.593
	6	38133	37668	37948	38346	38629	38170	38123	38667	37875	38319	39183	38784	101.165
	7	38208	38867	39311	38315	38731	38535	38938	38749	38931	38763	38535	38548	102.174
	8	38637	38431	38197	38316	38204	38216	38490	38001	38619	39163	38626	38299	101.464
	9	37974	38660	38586	38356	38572	38827	38511	38395	39043	38811	38668	39138	101.979
	10	38294	38634	38473	38984	38060	37853	39213	39177	38984	38760	38540	38685	102.005
	11	39355	38374	38306	38484	38555	38426	38382	38570	38742	38900	38695	38702	101.968
	12	38302	39245	38921	38806	38616	38710	39584	38828	39366	38808	38387	38465	102.528
	13	38280	38551	38749	39074	39217	39081	38308	38679	38119	38748	38972	37826	101.992
	14	38621	38936	37916	38779	38157	39453	38777	38834	38852	38308	38835	39331	102.256
	15	38308	39027	38688	38747	38538	37917	38666	38906	38654	38253	39009	38483	101.903
	16	38572	38837	38594	38909	38767	39237	38889	38768	39190	38890	38626	38663	102.507
	17	39322	38945	38655	38812	38537	38163	39091	38420	38869	38347	38444	38785	102.165
	18	38447	39016	38653	38498	38912	38868	38846	38197	38656	39062	38194	38797	102.112
	19	38755	38547	38303	38436	39224	39424	38342	38653	39226	39010	38479	38624	102.305
	20	38016	38561	38501	38571	38758	38865	38629	38853	38549	38947	38598	39065	102.061
	21	38521	38485	39039	38258	38640	39248	38812	38703	38884	38511	38673	38891	102.226
	22	38165	38689	38838	38566	38973	38473	39080	38391	38481	38432	38422	38583	101.880
	23	38840	38649	38297	38891	38595	39089	38394	38247	38991	38676	38407	38773	102.046
22	0	39070	38888	38181	38622	39396	38418	38451	38702	38613	38467	38143	38052	101.858
	1	38676	38017	38681	38634	38927	38913	38515	38412	38511	38940	38159	38600	101.857
	2	38358	38133	38880	38730	38829	38309	38423	39065	38308	38116	37986	39028	101.676
	3	38364	39240	38708	38793	37999	38652	38404	38594	38379	38593	38587	37960	101.700
	4	39228	38532	38841	38863	38837	39058	38827	38700	38372	39163	38634	38994	102.531
	5	38232	38688	38271	39274	38968	38613	38546	38377	38347	38817	39529	38861	102.195
	6	39081	38978	39070	38233	39416	38825	38463	38650	38654	39083	38618	39157	102.571
	7	39115	38642	39194	38906	38896	38460	38578	38970	38584	39105	38511	38720	102.450
	8	38233	39100	38616	38532	38893	39091	38425	38738	38807	38436	38945	38775	102.210
	9	38576	38175	38510	38320	38405	38016	39185	38877	38675	38895	38914	38920	101.964
	10	38734	38663	39184	38737	38773	39366	38618	39087	38324	39048	38557	38816	102.499
	11	38350	37958	38623	38936	38142	38839	39128	38712	38798	38722	38917	38553	102.009
	12	38600	38999	38662	38986	38837	38596	38775	38663	38463	38653	38667	38824	102.239
	13	38868	39031	38933	38008	38167	38989	38471	38399	39340	38952	38947	38587	102.233
	14	38744	38735	38771	39289	39021	38613	38934	38784	38658	38741	39018	38762	102.535
	15	38697	38802	38560	39183	38345	37957	38569	38707	38622	38230	38580	38627	101.834
	16	38517	38370	38066	38674	38601	38769	38662	38659	38744	38463	38528	38362	101.731
	17	38840	39005	38326	38571	38688	38839	38726	38587	38940	38485	38814	38733	102.202
	18	38875	38859	38947	39048	39054	38222	38643	39375	39361	38695	38951	38767	102.696
	19	39048	38840	38873	38676	38947	39166	38496	38540	38489	39012	38717	38715	102.414
	20	38696	38210	38332	38839	38510	38424	38478	38855	38375	38186	38814	38797	101.754
	21	38765	37812	38483	39687	38623	38487	38431	38873	38455	38011	38147	38580	101.718
	22	38486	38756	39251	39341	38330	38594	38328	38427	38424	39036	38877	38638	102.188
	23	38539	39097	37990	38266	37898	38640	39179	38773	38981	38743	38731	39022	102.048

INAF/UNIRomaTre		S.V.I.R.CO. Observatory - Pressure Corrected Data – February 2019											16 NM-64	
day	hh	00_05	05_10	10_15	15_20	20_25	25_30	30_35	35_40	40_45	45_50	50_55	55_60	h-norm
23	0	38693	38659	38185	38414	38770	38345	39060	38344	38889	38458	38910	38641	101.937
	1	38980	38992	38787	38179	38560	39168	38556	38675	38270	39151	38530	38829	102.229
	2	38907	38205	38663	38793	38684	38882	38438	39063	38543	39093	38124	38829	102.129
	3	38605	38563	39075	39336	37929	38605	38744	38840	38893	39290	38783	38388	102.312
	4	38957	38615	38935	38673	38518	38474	38571	38644	38307	38908	38644	38775	102.085
	5	39116	38879	39115	38592	38438	38307	38906	39413	39506	39537	39043	38774	102.878
	6	38683	39148	38752	38899	38614	39139	38702	38770	39387	39310	38116	38378	102.498
	7	39112	38698	38802	39291	39279	39074	38803	38903	39093	39518	39367	38737	103.109
	8	39585	38712	39049	39046	39504	39340	39157	39577	38858	39381	39346	39362	103.603
	9	39075	39094	39436	39301	39568	39923	39388	39930	39447	39763	40407	39754	104.519
	10	39793	39485	39771	39435	39881	39669	39124	39277	39188	39240	39520	38657	104.069
	11	39220	39959	39866	39734	39767	40108	39600	39519	39557	39575	40259	39922	104.960
	12	40246	40085	39256	39539	39445	39680	39542	39123	39210	38605	39318	39198	104.115
	13	39571	38562	39081	38713	39333	39520	38679	38951	38536	38343	38530	39205	102.746
	14	38920	39298	39573	39106	38915	39430	39032	39244	39315	38693	38839	38811	103.219
	15	38939	39213	39484	38674	39101	39686	40147	38972	38700	38842	38720	39467	103.392
	16	38878	39033	38938	38809	38725	39104	38541	38811	38435	38463	38844	38425	102.303
	17	38414	38347	38738	38581	39105	38432	38973	38183	38618	38633	39154	39009	102.121
	18	38489	39106	38895	39253	38478	39279	38781	38492	38172	38886	38383	38961	102.338
	19	38816	38637	38452	38598	39063	38219	38448	38720	38886	38956	38803	39247	102.266
	20	38736	38518	38351	38249	39023	38428	39387	38791	38891	38904	38487	38675	102.176
	21	39400	39107	38760	38532	38413	38646	39042	38510	38348	38458	38168	38481	102.050
	22	38355	38970	38267	38285	39065	38589	38796	38585	39158	38552	38668	38676	102.073
	23	38910	38593	38381	38529	38344	38805	38584	38600	38694	38442	38372	38750	101.861
24	0	38599	39022	39552	38729	38745	38615	39277	38895	38796	38993	39078	38720	102.746
	1	38682	38676	39372	38868	38432	39120	38737	37718	39138	39046	38370	38582	102.243
	2	38197	38969	38992	38731	38540	39105	38959	38254	38979	38570	39263	39122	102.450
	3	39528	38874	39276	38931	38651	38776	38617	38876	38537	39085	39218	38250	102.656
	4	38797	38632	38504	38854	38726	39312	39091	38609	38527	38473	38642	38948	102.325
	5	38116	39274	38752	38724	39063	38771	38865	39273	39087	38922	38911	38981	102.683
	6	39178	38972	38570	39236	39080	38670	38979	38816	38176	38879	39219	38929	102.676
	7	39252	38409	38511	38410	38939	38687	39066	38965	38386	38773	39094	38567	102.313
	8	39117	39173	38123	38866	38454	38944	39019	38818	38942	38989	38515	38800	102.467
	9	38702	38322	39219	39006	38422	38869	38586	38909	39199	38676	38697	38659	102.358
	10	38540	38835	38879	38500	38360	37971	38312	38376	39247	38033	38657	39324	101.868
	11	37921	39059	39076	38662	38780	38809	38751	38629	39079	38952	38414	38711	102.266
	12	39098	38591	38979	38630	38404	38705	38835	38540	38596	38957	38392	38544	102.140
	13	39292	38589	39203	38814	38985	39286	38583	38164	38784	38821	38600	38567	102.451
	14	38323	38204	39076	38411	38233	38331	39167	38120	38095	38961	38526	38789	101.692
	15	38212	38938	38434	39105	38599	38969	39059	38706	38633	38685	38924	38716	102.296
	16	38921	38727	39001	38624	38783	38380	38658	38898	38628	38672	38968	38785	102.310
	17	38623	38457	38907	37995	38490	38895	38643	38192	38214	38389	38625	38730	101.675
	18	38741	38798	39320	38646	39052	38995	38706	38232	39013	39063	38610	38474	102.444
	19	38888	39365	38687	38744	39349	38868	38415	38440	38891	38448	38843	38204	102.332
	20	38474	39006	38499	38780	38694	38001	38710	39180	39052	38467	39218	39314	102.386
	21	39068	39054	38803	38244	38863	39285	38795	38696	38691	38624	38651	39015	102.474
	22	38776	39081	38944	38259	39350	38910	38692	38808	38386	39152	39545	38947	102.707
	23	38878	38794	38516	38730	38423	38656	38768	38753	38384	39362	38757	39593	102.435

INAF/UNIRomaTre		S.V.I.R.CO. Observatory - Pressure Corrected Data – February 2019											16 NM-64	
day	hh	00_05	05_10	10_15	15_20	20_25	25_30	30_35	35_40	40_45	45_50	50_55	55_60	h-norm
25	0	38478	38656	38617	38829	38392	38787	38740	38997	38078	39013	38554	38685	102.048
	1	38407	38921	38672	38610	38703	39501	38756	38465	39004	39301	38809	39320	102.623
	2	39089	38886	38749	38215	38792	38998	39068	39268	38679	38648	38554	38936	102.494
	3	38614	38311	38811	38945	38780	39157	38342	38827	38969	38401	38860	39285	102.367
	4	39050	38527	38941	39069	38910	38678	38266	38809	38804	38332	38515	38827	102.240
	5	38681	38991	38691	38947	39118	38612	38909	38930	39693	38784	38508	38582	102.618
	6	38647	38284	38459	38327	38671	39017	38472	38442	39130	39036	39129	38712	102.152
	7	38856	38759	38695	38685	38946	39439	38692	38908	39137	38476	38656	39236	102.627
	8	38756	38744	38589	39118	39386	39076	38896	38994	38921	39259	38819	38489	102.750
	9	38980	38768	39163	38899	39034	38794	38935	38832	38986	38720	38310	38617	102.528
	10	39380	38556	38627	38372	38598	38428	38452	39124	39356	39068	38894	38656	102.413
	11	38952	38560	39576	38794	39117	38730	38618	39119	39034	38348	38755	38070	102.447
	12	38928	38882	38320	38508	38639	39093	39499	38817	38322	39130	38755	38943	102.485
	13	38693	38695	38808	38809	38649	38329	39225	39388	39433	38584	39120	38900	102.661
	14	38414	38607	39103	38856	38759	38728	38649	38787	38366	38215	38893	38452	102.042
	15	39206	39303	38476	38525	38113	39153	38937	38736	39656	39000	38572	38936	102.655
	16	38782	37960	38514	38523	38260	37931	38105	38415	38738	39043	38040	38679	101.418
	17	38889	38777	37700	38794	38336	38883	38738	38694	39334	39158	38857	38941	102.321
	18	38933	39284	38362	38783	39088	37954	38906	38745	38995	38005	38941	38483	102.186
	19	38496	38571	38750	38514	39019	38811	39292	39247	39238	38954	38079	38480	102.399
	20	38906	38767	39221	39251	38679	39269	38772	38257	38581	38960	38359	38305	102.373
	21	38879	38806	38332	38189	39126	39114	38666	38373	38693	38977	38412	38905	102.184
	22	39248	38693	38771	38149	38645	38714	38683	39330	38258	38650	38266	38899	102.148
	23	38381	38509	38349	38938	38725	38480	39520	39218	38485	38845	39499	38679	102.438
26	0	38277	38902	39107	38944	38388	38783	38999	38559	38319	38463	38932	39006	102.235
	1	38786	39506	38515	39192	39042	39404	39313	38534	39150	38255	38585	39076	102.818
	2	38652	38928	38455	39017	38553	38344	38543	38443	38938	38595	39338	38235	102.089
	3	39057	38424	38876	38912	39065	38309	38742	38629	39292	38393	38778	38806	102.362
	4	38838	39224	38664	38929	38365	38556	38953	39025	39056	38326	38395	39347	102.449
	5	38852	38578	38130	38103	38632	38703	38968	38970	38305	38685	38790	38198	101.841
	6	39511	38989	38438	39196	38700	38759	38945	38594	38573	38603	38143	39015	102.403
	7	38736	38321	38689	38347	38698	38083	38874	38862	38516	38903	39036	39148	102.127
	8	38764	38701	38563	38611	38623	38531	38403	38574	39049	38889	38133	38905	102.024
	9	38779	38644	38907	38566	38817	38569	38475	38896	38970	38781	38635	39024	102.314
	10	38908	38624	38442	38641	38751	39342	38200	38915	38833	38324	38755	38689	102.173
	11	39069	38677	38542	38521	38944	39062	38572	38668	38380	38727	38805	38406	102.162
	12	38092	39126	38548	38475	38975	38984	38694	38111	38963	39285	38721	39193	102.338
	13	39446	38722	38682	39026	38967	38416	38916	38497	38465	38644	38894	38811	102.407
	14	38561	38503	38512	38499	38361	38478	38220	38561	39007	38634	38826	38675	101.824
	15	38700	38788	38462	38328	38451	39025	38787	38809	38603	38911	39102	38130	102.101
	16	38430	38792	38288	38867	38165	38871	38031	38012	38874	37989	38259	38700	101.481
	17	39125	38479	38988	38659	38209	39300	39136	38707	38571	38957	38686	38452	102.360
	18	38943	38569	38688	38375	38462	38759	38633	38588	38197	38998	38816	38462	101.968
	19	38582	38567	38470	38580	39075	38354	38907	38771	38740	38524	38424	38050	101.869
	20	38473	39099	39237	38525	38567	38651	38917	37900	38356	39084	38850	38805	102.182
	21	38486	38678	38875	38943	38649	38467	38664	38651	38698	38622	39244	38234	102.127
	22	38584	38994	38782	38594	38795	38561	38810	38290	38448	38527	39263	39072	102.239
	23	38730	38219	39166	39402	39263	39156	39046	38637	38655	38855	38983	38320	102.615

INAF/UNIRomaTre		S.V.I.R.CO. Observatory - Pressure Corrected Data – February 2019											16 NM-64	
day	hh	00_05	05_10	10_15	15_20	20_25	25_30	30_35	35_40	40_45	45_50	50_55	55_60	h-norm
27	0	38610	38869	38755	38585	39107	38867	38607	38787	38493	38465	39003	39348	102.400
	1	38473	38506	39212	39373	38859	38722	38657	38748	39180	39070	38865	39196	102.710
	2	38529	38565	38224	38434	38597	38538	38565	38552	38471	38935	38960	38297	101.787
	3	38159	38384	38649	38717	38886	38901	38719	38749	38570	38911	38884	38355	102.055
	4	37849	38672	39138	38522	39110	38810	38195	38338	38376	38089	38611	38994	101.795
	5	38152	38858	37699	38288	38593	38549	39157	39058	38822	38920	38763	38635	101.969
	6	38593	38996	39179	38020	38708	38979	38788	38391	38690	38557	39204	38726	102.263
	7	38560	38630	38640	38340	38770	38883	38493	38902	38509	38779	39301	38855	102.226
	8	38458	39252	39088	38499	38299	38828	38354	37913	38264	38797	38026	38648	101.733
	9	38346	38304	38407	38385	38660	38483	38005	37949	38316	38522	38803	38849	101.426
	10	38354	38296	38076	38498	38787	38352	38426	38460	38388	38463	38190	38316	101.333
	11	37870	38201	38481	38400	38217	37792	39033	38369	38317	38082	38482	38283	101.096
	12	38325	38174	37840	38037	37809	37985	38343	38520	38380	38976	38274	38774	101.077
	13	38341	38060	38122	38000	38233	38900	38839	38064	38459	38749	38794	38129	101.352
	14	38224	37959	38512	38306	39359	38344	38718	38958	39129	38434	38830	38641	101.951
	15	39495	38987	39050	38321	38815	39002	38838	38845	38823	38578	38688	38910	102.598
	16	38541	39098	38946	38812	38926	39356	38156	38391	38027	38775	39179	37997	102.126
	17	38174	38746	38856	38164	38576	38516	38647	39525	38942	38534	38290	38595	101.984
	18	39181	38551	38336	38416	39084	38095	39218	39019	38658	38705	38192	39089	102.200
	19	39043	38705	38856	38698	39043	38914	38500	39346	38732	38798	38511	38898	102.530
	20	38580	39281	38168	38856	38667	38534	38928	38338	38669	38827	38575	38769	102.122
	21	39227	38511	39175	39216	38690	38316	38491	38624	38874	38197	39053	38517	102.276
	22	38838	38857	38387	38865	38551	38580	39373	39042	38745	38747	38525	39050	102.423
	23	38831	39025	38807	38438	38480	39142	39035	38804	38270	39072	38270	38776	102.289
28	0	38375	39257	38901	38871	38409	39134	38612	38868	38367	38808	39183	38564	102.379
	1	38696	38415	38361	38653	38821	39154	38526	38866	38245	38664	38748	38715	102.050
	2	38571	39029	38893	38584	38398	38823	38723	38826	38199	38608	38956	38705	102.149
	3	38506	38929	39003	38508	38576	38780	38903	38598	38912	38910	39128	39191	102.507
	4	39038	38428	38200	38595	39280	38668	38338	38979	38704	39396	38716	38735	102.317
	5	38886	37878	39396	38902	38684	38493	38900	38714	38957	38931	39060	38537	102.374
	6	38914	38682	39336	38713	38445	38776	39003	38689	38494	39114	38992	38808	102.513
	7	38812	38451	38806	38889	38252	39383	38648	38677	39112	38402	39006	38349	102.253
	8	38483	38065	38581	38516	38616	39002	38599	39437	38160	38890	38799	39082	102.131
	9	39282	38781	39032	39113	39239	38872	38978	38289	38687	39343	38528	39016	102.776
	10	38733	38896	38495	38623	38383	39078	38739	38656	38762	38858	38836	38362	102.172
	11	38057	38647	38366	38208	38627	38782	38370	38826	38275	38892	38723	39141	101.842
	12	38291	38355	38318	38910	38835	39051	38673	38890	38944	38512	38871	38600	102.136
	13	38331	38569	38631	39107	39142	39047	39407	38811	38632	38773	38794	38267	102.413
	14	39007	39095	37988	39323	38558	38779	38994	38826	38095	38004	38555	38662	102.055
	15	39164	38823	38556	39015	38807	38603	38570	38317	38845	38771	38698	38653	102.261
	16	38601	38609	38364	38623	38733	39075	38164	38900	37755	38966	38356	38541	101.791
	17	38169	38162	38633	38487	38748	38592	38733	38319	39096	38484	39125	38303	101.827
	18	38461	38715	38409	38576	38969	38578	38778	38794	38500	38697	38822	38584	102.054
	19	39183	38875	38913	39000	38644	38640	38534	38598	38614	38447	38748	38516	102.237
	20	39090	38627	38392	38657	38518	38212	38621	38586	38516	38300	38149	38758	101.734
	21	38377	38729	38493	38333	38715	38159	38846	38493	39055	38388	38623	38741	101.849
	22	39129	38992	38582	39180	38984	38996	38767	38092	38446	38024	38857	38627	102.228
	23	38780	37962	38919	39152	38312	38893	38450	38413	39187	38455	38921	38649	102.101

S.V.I.R.CO. Observatory - Pressure in hectoPascal – February 2019

day	hh	00_05	05_10	10_15	15_20	20_25	25_30	30_35	35_40	40_45	45_50	50_55	55_60	average
1	0	1003.39	1003.35	1003.23	1003.10	1003.07	1003.11	1003.15	1003.18	1003.22	1003.24	1003.25	1003.18	1003.20
	1	1003.15	1003.16	1003.10	1003.12	1003.18	1003.17	1003.09	1002.99	1002.96	1002.95	1002.96	1002.92	1003.06
	2	1002.87	1002.91	1003.01	1003.09	1003.08	1003.09	1003.10	1003.08	1003.08	1003.06	1003.00	1002.93	1003.02
	3	1002.90	1002.90	1002.86	1002.80	1002.80	1002.87	1002.91	1002.97	1002.99	1002.95	1002.98	1003.03	1002.91
	4	1003.02	1003.04	1003.10	1003.10	1003.05	1003.00	1002.93	1002.86	1002.80	1002.76	1002.74	1002.71	1002.92
	5	1002.67	1002.62	1002.62	1002.68	1002.71	1002.65	1002.60	1002.61	1002.62	1002.61	1002.65	1002.69	1002.64
	6	1002.71	1002.71	1002.74	1002.79	1002.81	1002.85	1002.89	1002.89	1002.89	1002.93	1002.97	1002.99	1002.84
	7	1003.01	1003.09	1003.18	1003.24	1003.24	1003.26	1003.29	1003.30	1003.31	1003.28	1003.26	1003.24	1003.22
	8	1003.30	1003.43	1003.44	1003.42	1003.40	1003.38	1003.40	1003.45	1003.48	1003.51	1003.55	1003.60	1003.45
	9	1003.65	1003.67	1003.64	1003.61	1003.61	1003.67	1003.73	1003.76	1003.78	1003.81	1003.82	1003.79	1003.71
	10	1003.75	1003.70	1003.67	1003.66	1003.61	1003.56	1003.53	1003.51	1003.45	1003.33	1003.24	1003.19	1003.51
	11	1003.16	1003.13	1003.08	1003.08	1003.14	1003.10	1003.02	1003.00	1002.97	1002.94	1002.90	1002.84	1003.03
	12	1002.74	1002.66	1002.59	1002.49	1002.43	1002.39	1002.30	1002.22	1002.16	1002.15	1002.11	1002.05	1002.36
	13	1001.95	1001.82	1001.77	1001.74	1001.74	1001.71	1001.71	1001.73	1001.69	1001.70	1001.74	1001.82	1001.76
	14	1001.88	1001.98	1001.99	1001.98	1002.03	1001.97	1001.89	1001.85	1001.91	1002.05	1002.06	1001.92	1001.96
	15	1001.83	1001.78	1001.77	1001.80	1001.73	1001.68	1001.65	1001.55	1001.42	1001.33	1001.33	1001.35	1001.60
	16	1001.31	1001.24	1001.22	1001.21	1001.12	1001.08	1001.12	1001.08	1000.94	1000.91	1000.93	1000.90	1001.09
	17	1000.91	1000.98	1001.01	1000.98	1000.97	1000.99	1000.95	1000.95	1000.98	1000.99	1001.03	1001.11	1000.99
	18	1001.18	1001.20	1001.12	1001.09	1001.13	1001.16	1001.15	1001.13	1001.15	1001.19	1001.19	1001.18	1001.15
	19	1001.16	1001.12	1001.17	1001.16	1001.09	1001.02	1000.87	1000.76	1000.64	1000.48	1000.45	1000.54	1000.87
	20	1000.59	1000.65	1000.77	1000.84	1000.88	1000.86	1000.86	1000.85	1000.77	1000.76	1000.80	1000.81	1000.78
	21	1000.81	1000.76	1000.70	1000.69	1000.64	1000.55	1000.48	1000.43	1000.30	1000.19	1000.18	1000.22	1000.49
	22	1000.30	1000.28	1000.23	1000.15	1000.18	1000.33	1000.41	1000.39	1000.34	1000.22	1000.14	1000.20	1000.26
	23	1000.24	1000.30	1000.36	1000.32	1000.25	1000.24	1000.25	1000.23	1000.22	1000.16	1000.07	1000.04	1000.22
2	0	1000.13	1000.11	1000.05	999.98	999.87	999.78	999.74	999.79	999.96	999.97	999.86	999.78	999.91
	1	999.75	999.70	999.62	999.61	999.63	999.63	999.63	999.61	999.57	999.49	999.37	999.34	999.58
	2	999.39	999.39	999.38	999.42	999.41	999.40	999.42	999.47	999.48	999.43	999.30	999.12	999.38
	3	999.09	999.18	999.16	998.99	998.88	998.88	998.95	998.98	998.93	998.84	998.68	998.53	998.92
	4	998.49	998.56	998.66	998.75	998.80	998.74	998.69	998.64	998.58	998.57	998.60	998.61	998.64
	5	998.60	998.60	998.62	998.66	998.70	998.75	998.78	998.79	998.81	998.81	998.83	998.87	998.74
	6	998.82	998.73	998.72	998.80	998.86	998.90	998.97	999.02	999.10	999.24	999.38	999.50	999.00
	7	999.58	999.59	999.60	999.66	999.70	999.73	999.76	999.79	999.82	999.81	999.79	999.77	999.72
	8	999.75	999.77	999.80	999.84	999.90	999.98	1000.01	999.95	999.89	999.81	999.74	999.74	999.85
	9	999.73	999.73	999.68	999.53	999.48	999.54	999.55	999.51	999.54	999.56	999.56	999.57	999.58
	10	999.60	999.58	999.54	999.53	999.46	999.36	999.26	999.14	998.99	998.91	998.93	999.03	999.28
	11	999.17	999.22	999.17	999.06	998.93	998.86	998.79	998.59	998.45	998.38	998.54	998.71	998.82
	12	998.60	998.47	998.41	998.28	998.13	998.09	998.07	998.11	998.28	998.35	998.22	998.06	998.25
	13	998.10	998.29	998.26	997.95	997.70	997.55	997.39	997.45	997.71	997.91	998.03	998.09	997.87
	14	998.10	998.15	998.15	998.06	998.05	998.07	998.03	998.03	998.05	998.06	998.09	998.06	998.07
	15	997.94	997.82	997.76	997.75	997.73	997.71	997.68	997.65	997.63	997.65	997.64	997.60	997.71
	16	997.57	997.54	997.52	997.49	997.46	997.45	997.41	997.33	997.26	997.22	997.21	997.19	997.39
	17	997.11	997.08	997.14	997.18	997.16	997.05	996.99	997.06	997.16	997.17	997.11	997.08	997.11
	18	997.12	997.14	997.07	997.00	996.93	996.90	997.01	997.24	997.40	997.45	997.47	997.46	997.18
	19	997.43	997.41	997.37	997.31	997.26	997.27	997.30	997.33	997.37	997.41	997.47	997.52	997.37
	20	997.54	997.58	997.64	997.72	997.81	997.90	997.97	998.06	998.13	998.20	998.27	998.34	997.93
	21	998.40	998.45	998.49	998.54	998.59	998.64	998.65	998.65	998.65	998.64	998.60	998.58	998.57
	22	998.58	998.56	998.54	998.54	998.57	998.67	998.79	998.86	998.91	998.94	998.99	999.04	998.75
	23	999.07	999.06	999.02	998.94	998.86	998.85	998.83	998.76	998.70	998.68	998.73	998.81	998.86

S.V.I.R.CO. Observatory - Pressure in hectoPascal – February 2019

day	hh	00_05	05_10	10_15	15_20	20_25	25_30	30_35	35_40	40_45	45_50	50_55	55_60	average
3	0	998.94	998.98	999.02	999.06	999.08	999.10	999.16	999.22	999.30	999.35	999.31	999.24	999.16
	1	999.15	999.11	999.14	999.15	999.15	999.16	999.19	999.21	999.18	999.12	999.06	999.00	999.13
	2	998.97	998.98	999.04	999.11	999.18	999.24	999.28	999.29	999.26	999.25	999.27	999.29	999.18
	3	999.29	999.26	999.22	999.17	999.16	999.18	999.20	999.24	999.29	999.32	999.37	999.46	999.26
	4	999.52	999.53	999.51	999.51	999.51	999.48	999.42	999.40	999.44	999.50	999.57	999.62	999.50
	5	999.65	999.74	999.86	999.94	1000.02	1000.15	1000.22	1000.20	1000.18	1000.17	1000.19	1000.32	1000.05
	6	1000.36	1000.30	1000.29	1000.29	1000.27	1000.29	1000.32	1000.32	1000.31	1000.34	1000.44	1000.56	1000.34
	7	1000.64	1000.72	1000.77	1000.83	1000.93	1001.01	1001.05	1001.10	1001.15	1001.21	1001.25	1001.28	1000.99
	8	1001.29	1001.28	1001.30	1001.34	1001.38	1001.42	1001.49	1001.55	1001.56	1001.58	1001.59	1001.63	1001.45
	9	1001.74	1001.86	1001.98	1002.08	1002.18	1002.30	1002.41	1002.59	1002.75	1002.84	1002.89	1002.89	1002.38
	10	1002.86	1002.85	1002.86	1002.87	1002.84	1002.74	1002.67	1002.68	1002.71	1002.73	1002.74	1002.75	1002.77
	11	1002.75	1002.74	1002.70	1002.65	1002.62	1002.62	1002.69	1002.79	1002.85	1002.88	1002.91	1002.94	1002.76
	12	1002.97	1003.00	1003.02	1003.04	1003.01	1003.00	1003.03	1003.07	1003.13	1003.19	1003.23	1003.27	1003.08
	13	1003.37	1003.54	1003.64	1003.65	1003.67	1003.70	1003.73	1003.77	1003.81	1003.85	1003.92	1004.04	1003.72
	14	1004.13	1004.19	1004.27	1004.35	1004.41	1004.49	1004.56	1004.62	1004.68	1004.75	1004.83	1004.91	1004.52
	15	1004.98	1005.03	1005.06	1005.10	1005.15	1005.24	1005.36	1005.48	1005.61	1005.75	1005.84	1005.91	1005.38
	16	1005.96	1005.97	1006.00	1006.06	1006.13	1006.21	1006.29	1006.35	1006.39	1006.46	1006.57	1006.68	1006.25
	17	1006.77	1006.86	1006.94	1006.99	1007.05	1007.12	1007.21	1007.30	1007.39	1007.47	1007.53	1007.59	1007.18
	18	1007.67	1007.73	1007.80	1007.83	1007.86	1007.93	1008.02	1008.09	1008.14	1008.17	1008.19	1008.24	1007.97
	19	1008.29	1008.30	1008.36	1008.46	1008.54	1008.63	1008.70	1008.71	1008.71	1008.74	1008.82	1008.92	1008.60
	20	1009.01	1009.05	1009.07	1009.10	1009.16	1009.24	1009.34	1009.40	1009.46	1009.57	1009.68	1009.77	1009.32
	21	1009.87	1010.00	1010.09	1010.13	1010.17	1010.21	1010.26	1010.31	1010.37	1010.40	1010.42	1010.43	1010.22
	22	1010.46	1010.52	1010.61	1010.71	1010.79	1010.87	1010.92	1010.96	1011.00	1011.05	1011.11	1011.20	1010.85
	23	1011.26	1011.28	1011.30	1011.34	1011.35	1011.34	1011.36	1011.39	1011.43	1011.48	1011.53	1011.56	1011.39
4	0	1011.63	1011.65	1011.70	1011.74	1011.76	1011.78	1011.84	1011.90	1011.91	1011.94	1011.97	1012.01	1011.83
	1	1012.05	1012.06	1012.07	1012.08	1012.08	1012.09	1012.10	1012.14	1012.23	1012.31	1012.43	1012.57	1012.19
	2	1012.64	1012.67	1012.73	1012.81	1012.89	1012.97	1013.03	1013.05	1013.06	1013.07	1013.09	1013.12	1012.93
	3	1013.17	1013.23	1013.28	1013.35	1013.40	1013.44	1013.47	1013.50	1013.53	1013.56	1013.57	1013.58	1013.42
	4	1013.61	1013.66	1013.70	1013.72	1013.72	1013.69	1013.69	1013.72	1013.74	1013.74	1013.75	1013.81	1013.71
	5	1013.87	1013.89	1013.93	1013.99	1014.05	1014.13	1014.20	1014.22	1014.23	1014.29	1014.34	1014.40	1014.13
	6	1014.51	1014.62	1014.71	1014.80	1014.92	1015.02	1015.09	1015.16	1015.21	1015.24	1015.28	1015.35	1014.99
	7	1015.41	1015.47	1015.55	1015.62	1015.63	1015.63	1015.65	1015.67	1015.70	1015.77	1015.85	1015.91	1015.65
	8	1015.95	1015.95	1015.96	1015.95	1015.92	1015.92	1015.88	1015.83	1015.75	1015.70	1015.66	1015.62	1015.84
	9	1015.59	1015.59	1015.61	1015.65	1015.66	1015.68	1015.70	1015.72	1015.72	1015.68	1015.64	1015.61	1015.65
	10	1015.67	1015.74	1015.78	1015.78	1015.75	1015.73	1015.67	1015.57	1015.51	1015.51	1015.49	1015.44	1015.64
	11	1015.38	1015.33	1015.27	1015.20	1015.13	1015.08	1015.05	1015.02	1014.98	1014.94	1014.90	1014.84	1015.09
	12	1014.78	1014.74	1014.72	1014.69	1014.63	1014.59	1014.56	1014.51	1014.47	1014.43	1014.39	1014.37	1014.57
	13	1014.33	1014.25	1014.18	1014.16	1014.11	1014.04	1014.00	1014.00	1014.00	1014.02	1014.01	1013.97	1014.09
	14	1013.94	1013.92	1013.91	1013.96	1013.98	1013.98	1014.01	1014.04	1014.07	1014.12	1014.16	1014.13	1014.02
	15	1014.10	1014.12	1014.16	1014.13	1014.10	1014.13	1014.15	1014.16	1014.19	1014.21	1014.24	1014.31	1014.17
	16	1014.38	1014.47	1014.56	1014.60	1014.64	1014.67	1014.70	1014.73	1014.78	1014.83	1014.87	1014.90	1014.68
	17	1014.96	1015.06	1015.16	1015.24	1015.32	1015.40	1015.42	1015.40	1015.39	1015.41	1015.46	1015.48	1015.31
	18	1015.48	1015.45	1015.42	1015.45	1015.51	1015.55	1015.59	1015.60	1015.63	1015.68	1015.75	1015.78	1015.57
	19	1015.83	1015.94	1016.03	1016.09	1016.13	1016.16	1016.19	1016.22	1016.27	1016.34	1016.40	1016.45	1016.17
	20	1016.51	1016.56	1016.61	1016.63	1016.67	1016.75	1016.80	1016.83	1016.86	1016.89	1016.92	1016.99	1016.75
	21	1017.05	1017.07	1017.10	1017.13	1017.13	1017.12	1017.14	1017.14	1017.10	1017.08	1017.11	1017.13	1017.11
	22	1017.10	1017.05	1017.06	1017.07	1017.01	1016.96	1016.98	1016.99	1016.96	1016.93	1016.91	1016.88	1016.99
	23	1016.82	1016.77	1016.73	1016.72	1016.72	1016.75	1016.77	1016.74	1016.69	1016.63	1016.58	1016.55	1016.70

S.V.I.R.CO. Observatory - Pressure in hectoPascal – February 2019

day	hh	00_05	05_10	10_15	15_20	20_25	25_30	30_35	35_40	40_45	45_50	50_55	55_60	average
5	0	1016.61	1016.63	1016.66	1016.65	1016.61	1016.54	1016.51	1016.53	1016.54	1016.55	1016.58	1016.60	1016.58
	1	1016.62	1016.62	1016.62	1016.63	1016.62	1016.61	1016.59	1016.56	1016.55	1016.59	1016.62	1016.65	1016.60
	2	1016.67	1016.71	1016.72	1016.69	1016.64	1016.58	1016.54	1016.49	1016.44	1016.43	1016.42	1016.41	1016.56
	3	1016.40	1016.37	1016.32	1016.28	1016.28	1016.28	1016.28	1016.29	1016.27	1016.25	1016.25	1016.24	1016.29
	4	1016.20	1016.18	1016.14	1016.15	1016.16	1016.12	1016.07	1016.04	1016.04	1016.04	1015.98	1015.93	1016.09
	5	1015.92	1015.93	1015.95	1015.97	1015.98	1015.96	1015.93	1015.90	1015.89	1015.86	1015.85	1015.89	1015.92
	6	1015.95	1016.02	1016.09	1016.15	1016.19	1016.21	1016.25	1016.29	1016.32	1016.35	1016.39	1016.41	1016.22
	7	1016.41	1016.42	1016.47	1016.55	1016.62	1016.60	1016.54	1016.50	1016.53	1016.60	1016.65	1016.70	1016.55
	8	1016.73	1016.76	1016.80	1016.82	1016.85	1016.88	1016.90	1016.91	1016.92	1016.92	1016.94	1016.96	1016.86
	9	1016.97	1017.01	1017.03	1017.06	1017.09	1017.13	1017.20	1017.22	1017.21	1017.22	1017.24	1017.26	1017.14
	10	1017.33	1017.44	1017.47	1017.43	1017.41	1017.44	1017.42	1017.31	1017.20	1017.13	1017.11	1017.09	1017.31
	11	1017.07	1017.01	1016.96	1016.91	1016.83	1016.77	1016.73	1016.68	1016.66	1016.62	1016.55	1016.49	1016.77
	12	1016.46	1016.43	1016.38	1016.30	1016.19	1016.12	1016.07	1016.04	1015.98	1015.88	1015.84	1015.86	1016.13
	13	1015.83	1015.74	1015.71	1015.75	1015.75	1015.67	1015.59	1015.53	1015.51	1015.50	1015.47	1015.43	1015.62
	14	1015.40	1015.40	1015.41	1015.44	1015.46	1015.47	1015.48	1015.48	1015.46	1015.46	1015.47	1015.43	1015.45
	15	1015.41	1015.40	1015.38	1015.38	1015.38	1015.37	1015.38	1015.39	1015.39	1015.40	1015.39	1015.38	1015.39
	16	1015.36	1015.33	1015.32	1015.31	1015.31	1015.33	1015.35	1015.38	1015.38	1015.40	1015.45	1015.47	1015.37
	17	1015.48	1015.49	1015.50	1015.51	1015.55	1015.58	1015.56	1015.57	1015.60	1015.62	1015.61	1015.60	1015.56
	18	1015.60	1015.60	1015.60	1015.61	1015.62	1015.62	1015.63	1015.66	1015.69	1015.73	1015.78	1015.79	1015.66
	19	1015.80	1015.83	1015.86	1015.88	1015.91	1015.96	1016.00	1016.00	1015.99	1015.97	1015.96	1015.97	1015.93
	20	1015.97	1016.00	1016.03	1016.05	1016.05	1016.05	1016.04	1016.03	1016.05	1016.07	1016.06	1016.07	1016.04
	21	1016.06	1016.04	1016.02	1015.97	1015.94	1015.94	1015.91	1015.90	1015.91	1015.92	1015.90	1015.87	1015.95
	22	1015.83	1015.83	1015.83	1015.85	1015.86	1015.87	1015.90	1015.91	1015.92	1015.93	1015.91	1015.87	1015.88
	23	1015.80	1015.75	1015.71	1015.68	1015.68	1015.70	1015.71	1015.69	1015.66	1015.62	1015.57	1015.53	1015.68
6	0	1015.42	1015.40	1015.36	1015.33	1015.33	1015.34	1015.36	1015.36	1015.33	1015.29	1015.24	1015.20	1015.33
	1	1015.19	1015.17	1015.14	1015.11	1015.09	1015.07	1015.07	1015.06	1015.03	1015.02	1015.01	1014.99	1015.08
	2	1014.98	1014.99	1014.97	1014.91	1014.85	1014.80	1014.76	1014.73	1014.72	1014.67	1014.59	1014.55	1014.79
	3	1014.54	1014.56	1014.60	1014.62	1014.62	1014.61	1014.59	1014.54	1014.50	1014.48	1014.47	1014.48	1014.55
	4	1014.51	1014.54	1014.51	1014.46	1014.41	1014.38	1014.39	1014.44	1014.50	1014.50	1014.45	1014.42	1014.46
	5	1014.40	1014.43	1014.47	1014.45	1014.41	1014.44	1014.50	1014.54	1014.58	1014.62	1014.63	1014.58	1014.50
	6	1014.55	1014.56	1014.58	1014.59	1014.59	1014.58	1014.57	1014.56	1014.53	1014.51	1014.53	1014.56	1014.56
	7	1014.54	1014.48	1014.48	1014.57	1014.63	1014.65	1014.71	1014.75	1014.73	1014.72	1014.70	1014.62	1014.63
	8	1014.57	1014.61	1014.63	1014.67	1014.76	1014.84	1014.84	1014.85	1014.84	1014.78	1014.73	1014.77	1014.74
	9	1014.87	1014.96	1015.00	1015.03	1015.18	1015.30	1015.26	1015.24	1015.30	1015.34	1015.34	1015.36	1015.18
	10	1015.43	1015.50	1015.51	1015.49	1015.48	1015.48	1015.50	1015.51	1015.56	1015.60	1015.64	1015.66	1015.53
	11	1015.65	1015.65	1015.66	1015.64	1015.62	1015.61	1015.60	1015.60	1015.62	1015.62	1015.56	1015.49	1015.61
	12	1015.41	1015.37	1015.38	1015.36	1015.31	1015.27	1015.24	1015.21	1015.20	1015.17	1015.16	1015.18	1015.27
	13	1015.17	1015.14	1015.13	1015.14	1015.15	1015.11	1015.10	1015.13	1015.10	1015.01	1014.98	1014.98	1015.09
	14	1014.94	1014.92	1014.92	1014.91	1014.92	1014.94	1014.98	1015.02	1015.07	1015.16	1015.21	1015.21	1015.02
	15	1015.23	1015.27	1015.31	1015.34	1015.33	1015.36	1015.40	1015.43	1015.48	1015.54	1015.59	1015.63	1015.41
	16	1015.68	1015.73	1015.75	1015.77	1015.79	1015.77	1015.76	1015.82	1015.86	1015.89	1015.93	1015.99	1015.81
	17	1016.08	1016.15	1016.21	1016.25	1016.28	1016.30	1016.33	1016.38	1016.41	1016.41	1016.42	1016.45	1016.30
	18	1016.49	1016.52	1016.56	1016.68	1016.79	1016.84	1016.89	1016.93	1016.95	1016.94	1016.89	1016.88	1016.78
	19	1016.98	1017.15	1017.29	1017.36	1017.39	1017.41	1017.44	1017.48	1017.53	1017.57	1017.59	1017.59	1017.40
	20	1017.64	1017.71	1017.74	1017.78	1017.82	1017.83	1017.85	1017.88	1017.89	1017.92	1017.94	1017.93	1017.83
	21	1017.91	1017.93	1017.97	1018.01	1018.02	1018.01	1017.99	1017.98	1017.98	1018.01	1018.05	1018.09	1017.99
	22	1018.10	1018.15	1018.23	1018.25	1018.24	1018.27	1018.30	1018.33	1018.38	1018.39	1018.39	1018.41	1018.29
	23	1018.40	1018.34	1018.32	1018.36	1018.35	1018.29	1018.29	1018.33	1018.34	1018.36	1018.40	1018.40	1018.35

S.V.I.R.CO. Observatory - Pressure in hectoPascal – February 2019

day	hh	00_05	05_10	10_15	15_20	20_25	25_30	30_35	35_40	40_45	45_50	50_55	55_60	average
7	0	1018.44	1018.43	1018.43	1018.48	1018.55	1018.57	1018.60	1018.63	1018.65	1018.68	1018.69	1018.68	1018.57
	1	1018.68	1018.66	1018.64	1018.64	1018.65	1018.67	1018.68	1018.71	1018.77	1018.80	1018.83	1018.83	1018.71
	2	1018.77	1018.75	1018.73	1018.70	1018.67	1018.66	1018.65	1018.60	1018.53	1018.47	1018.44	1018.42	1018.62
	3	1018.43	1018.45	1018.48	1018.49	1018.47	1018.43	1018.40	1018.39	1018.41	1018.43	1018.41	1018.39	1018.43
	4	1018.40	1018.43	1018.42	1018.40	1018.39	1018.37	1018.35	1018.32	1018.27	1018.22	1018.24	1018.28	1018.34
	5	1018.30	1018.30	1018.30	1018.29	1018.26	1018.23	1018.22	1018.25	1018.26	1018.25	1018.27	1018.28	1018.27
	6	1018.30	1018.30	1018.29	1018.32	1018.34	1018.37	1018.42	1018.45	1018.51	1018.58	1018.60	1018.61	1018.43
	7	1018.60	1018.61	1018.62	1018.65	1018.64	1018.64	1018.68	1018.74	1018.79	1018.82	1018.87	1018.88	1018.71
	8	1018.91	1018.96	1018.98	1018.97	1018.97	1018.98	1018.96	1018.96	1018.97	1018.99	1019.03	1019.06	1018.98
	9	1019.08	1019.11	1019.10	1019.07	1019.05	1019.03	1019.05	1019.06	1019.03	1019.04	1019.05	1019.02	1019.06
	10	1018.99	1018.97	1018.95	1018.94	1018.94	1018.91	1018.87	1018.82	1018.78	1018.73	1018.67	1018.60	1018.85
	11	1018.52	1018.43	1018.36	1018.31	1018.28	1018.20	1018.10	1018.00	1017.92	1017.87	1017.80	1017.72	1018.13
	12	1017.64	1017.55	1017.49	1017.43	1017.34	1017.27	1017.18	1017.09	1017.02	1016.97	1016.91	1016.85	1017.23
	13	1016.80	1016.76	1016.72	1016.68	1016.64	1016.58	1016.53	1016.48	1016.44	1016.41	1016.39	1016.38	1016.57
	14	1016.33	1016.28	1016.28	1016.28	1016.27	1016.24	1016.22	1016.19	1016.17	1016.15	1016.13	1016.12	1016.22
	15	1016.13	1016.15	1016.16	1016.18	1016.19	1016.16	1016.13	1016.11	1016.10	1016.09	1016.10	1016.10	1016.13
	16	1016.07	1016.06	1016.06	1016.07	1016.09	1016.12	1016.12	1016.13	1016.15	1016.18	1016.22	1016.28	1016.13
	17	1016.32	1016.36	1016.40	1016.44	1016.48	1016.51	1016.56	1016.60	1016.66	1016.71	1016.77	1016.83	1016.55
	18	1016.88	1016.91	1016.92	1016.93	1016.95	1017.01	1017.06	1017.08	1017.10	1017.13	1017.16	1017.17	1017.02
	19	1017.19	1017.23	1017.26	1017.27	1017.27	1017.26	1017.30	1017.34	1017.35	1017.33	1017.32	1017.32	1017.28
	20	1017.32	1017.34	1017.37	1017.41	1017.42	1017.39	1017.38	1017.45	1017.50	1017.48	1017.46	1017.43	1017.41
	21	1017.41	1017.40	1017.38	1017.37	1017.40	1017.40	1017.38	1017.35	1017.35	1017.36	1017.37	1017.38	1017.38
	22	1017.36	1017.37	1017.41	1017.42	1017.41	1017.42	1017.42	1017.39	1017.37	1017.36	1017.34	1017.30	1017.38
	23	1017.24	1017.24	1017.24	1017.21	1017.21	1017.22	1017.21	1017.19	1017.17	1017.18	1017.21	1017.23	1017.21
8	0	1017.22	1017.17	1017.10	1017.04	1017.00	1017.00	1017.02	1017.02	1017.03	1017.04	1017.03	1017.04	1017.05
	1	1017.06	1017.04	1017.01	1017.01	1017.06	1017.10	1017.12	1017.13	1017.11	1017.08	1017.04	1017.03	1017.07
	2	1017.01	1016.94	1016.91	1016.95	1016.97	1016.97	1016.94	1016.86	1016.76	1016.67	1016.59	1016.52	1016.84
	3	1016.49	1016.47	1016.47	1016.47	1016.43	1016.37	1016.33	1016.34	1016.35	1016.32	1016.27	1016.18	1016.37
	4	1016.14	1016.21	1016.30	1016.38	1016.43	1016.46	1016.52	1016.58	1016.61	1016.62	1016.66	1016.70	1016.47
	5	1016.71	1016.72	1016.71	1016.68	1016.69	1016.71	1016.68	1016.67	1016.70	1016.71	1016.73	1016.76	1016.71
	6	1016.78	1016.78	1016.74	1016.69	1016.66	1016.65	1016.70	1016.78	1016.83	1016.87	1016.89	1016.88	1016.77
	7	1016.87	1016.91	1017.03	1017.18	1017.28	1017.34	1017.38	1017.38	1017.36	1017.35	1017.35	1017.36	1017.23
	8	1017.40	1017.45	1017.48	1017.52	1017.56	1017.63	1017.72	1017.79	1017.82	1017.86	1017.88	1017.89	1017.67
	9	1017.90	1017.88	1017.87	1017.90	1017.95	1018.00	1018.02	1018.02	1018.01	1018.02	1018.03	1018.02	1017.97
	10	1018.02	1018.00	1017.97	1017.93	1017.90	1017.89	1017.87	1017.81	1017.75	1017.71	1017.67	1017.64	1017.85
	11	1017.62	1017.59	1017.55	1017.53	1017.51	1017.45	1017.38	1017.32	1017.27	1017.22	1017.15	1017.10	1017.39
	12	1017.07	1017.04	1017.00	1016.96	1016.90	1016.86	1016.84	1016.83	1016.80	1016.76	1016.72	1016.67	1016.87
	13	1016.64	1016.64	1016.64	1016.63	1016.60	1016.58	1016.57	1016.56	1016.54	1016.51	1016.47	1016.45	1016.57
	14	1016.45	1016.47	1016.47	1016.44	1016.42	1016.44	1016.44	1016.43	1016.45	1016.49	1016.50	1016.49	1016.46
	15	1016.52	1016.58	1016.62	1016.65	1016.67	1016.66	1016.66	1016.70	1016.77	1016.87	1016.95	1017.02	1016.72
	16	1017.10	1017.15	1017.18	1017.23	1017.27	1017.29	1017.31	1017.33	1017.33	1017.35	1017.40	1017.44	1017.28
	17	1017.51	1017.61	1017.69	1017.76	1017.82	1017.87	1017.91	1017.95	1017.98	1018.03	1018.08	1018.10	1017.86
	18	1018.13	1018.17	1018.20	1018.20	1018.23	1018.27	1018.30	1018.33	1018.36	1018.40	1018.43	1018.43	1018.29
	19	1018.41	1018.40	1018.40	1018.41	1018.41	1018.42	1018.47	1018.52	1018.57	1018.58	1018.61	1018.64	1018.49
	20	1018.64	1018.64	1018.66	1018.69	1018.73	1018.78	1018.78	1018.76	1018.75	1018.75	1018.76	1018.78	1018.73
	21	1018.84	1018.90	1018.96	1019.01	1019.06	1019.12	1019.14	1019.16	1019.19	1019.26	1019.32	1019.33	1019.11
	22	1019.30	1019.25	1019.23	1019.28	1019.32	1019.34	1019.38	1019.43	1019.47	1019.51	1019.53	1019.57	1019.38
	23	1019.60	1019.60	1019.62	1019.66	1019.71	1019.73	1019.76	1019.81	1019.83	1019.85	1019.84	1019.83	1019.74

S.V.I.R.CO. Observatory - Pressure in hectoPascal – February 2019

day	hh	00_05	05_10	10_15	15_20	20_25	25_30	30_35	35_40	40_45	45_50	50_55	55_60	average
9	0	1019.87	1019.85	1019.83	1019.84	1019.87	1019.89	1019.90	1019.91	1019.93	1019.96	1020.00	1020.03	1019.91
	1	1020.05	1020.05	1020.05	1020.04	1020.03	1020.03	1020.03	1020.02	1020.00	1019.98	1019.97	1019.93	1020.01
	2	1019.87	1019.85	1019.86	1019.87	1019.91	1019.95	1019.94	1019.96	1019.99	1019.98	1019.94	1019.90	1019.92
	3	1019.88	1019.91	1019.94	1019.95	1019.94	1019.93	1019.92	1019.92	1019.95	1019.97	1019.99	1019.99	1019.94
	4	1019.98	1019.98	1019.95	1019.90	1019.88	1019.88	1019.88	1019.89	1019.91	1019.92	1019.94	1019.96	1019.92
	5	1019.97	1019.99	1020.03	1020.05	1020.03	1020.00	1019.99	1020.01	1020.06	1020.11	1020.21	1020.34	1020.06
	6	1020.40	1020.37	1020.38	1020.47	1020.57	1020.69	1020.75	1020.77	1020.84	1020.97	1021.05	1021.07	1020.69
	7	1021.10	1021.13	1021.18	1021.29	1021.40	1021.47	1021.54	1021.60	1021.66	1021.70	1021.75	1021.75	1021.46
	8	1021.72	1021.70	1021.67	1021.67	1021.71	1021.78	1021.81	1021.73	1021.69	1021.70	1021.73	1021.77	1021.72
	9	1021.80	1021.84	1021.85	1021.81	1021.79	1021.77	1021.78	1021.80	1021.80	1021.80	1021.82	1021.82	1021.81
	10	1021.79	1021.79	1021.83	1021.88	1021.91	1021.90	1021.86	1021.81	1021.79	1021.77	1021.74	1021.71	1021.81
	11	1021.67	1021.65	1021.61	1021.55	1021.51	1021.50	1021.52	1021.52	1021.46	1021.40	1021.37	1021.35	1021.51
	12	1021.35	1021.33	1021.30	1021.29	1021.29	1021.25	1021.22	1021.22	1021.18	1021.10	1021.03	1021.01	1021.21
	13	1021.00	1020.99	1021.01	1021.04	1021.10	1021.17	1021.20	1021.16	1021.10	1021.07	1021.09	1021.13	1021.09
	14	1021.17	1021.18	1021.19	1021.21	1021.20	1021.18	1021.16	1021.15	1021.13	1021.10	1021.09	1021.12	1021.16
	15	1021.13	1021.16	1021.20	1021.28	1021.35	1021.40	1021.42	1021.42	1021.42	1021.42	1021.44	1021.46	1021.34
	16	1021.47	1021.45	1021.44	1021.46	1021.50	1021.51	1021.50	1021.48	1021.48	1021.51	1021.52	1021.56	1021.49
	17	1021.64	1021.71	1021.71	1021.70	1021.69	1021.71	1021.79	1021.88	1021.92	1021.95	1021.99	1022.00	1021.81
	18	1022.02	1022.06	1022.06	1022.06	1022.08	1022.09	1022.11	1022.15	1022.13	1022.09	1022.07	1022.06	1022.08
	19	1022.06	1022.09	1022.10	1022.14	1022.20	1022.25	1022.28	1022.31	1022.33	1022.27	1022.19	1022.18	1022.20
	20	1022.24	1022.33	1022.37	1022.35	1022.30	1022.24	1022.19	1022.16	1022.15	1022.18	1022.20	1022.18	1022.24
	21	1022.16	1022.16	1022.19	1022.23	1022.26	1022.26	1022.28	1022.33	1022.40	1022.42	1022.41	1022.39	1022.29
	22	1022.34	1022.29	1022.24	1022.18	1022.16	1022.15	1022.14	1022.13	1022.10	1022.08	1022.11	1022.15	1022.17
	23	1022.17	1022.19	1022.21	1022.29	1022.37	1022.38	1022.35	1022.36	1022.34	1022.31	1022.30	1022.27	1022.29
10	0	1022.17	1022.16	1022.14	1022.11	1022.10	1022.12	1022.13	1022.14	1022.15	1022.14	1022.15	1022.16	1022.14
	1	1022.18	1022.18	1022.19	1022.19	1022.21	1022.21	1022.22	1022.22	1022.20	1022.17	1022.15	1022.16	1022.19
	2	1022.18	1022.17	1022.12	1022.06	1022.03	1022.01	1021.97	1021.91	1021.86	1021.81	1021.76	1021.73	1021.97
	3	1021.71	1021.67	1021.62	1021.60	1021.59	1021.55	1021.51	1021.49	1021.47	1021.45	1021.45	1021.45	1021.55
	4	1021.47	1021.51	1021.54	1021.55	1021.53	1021.51	1021.48	1021.47	1021.50	1021.55	1021.55	1021.52	1021.51
	5	1021.50	1021.49	1021.49	1021.46	1021.44	1021.45	1021.45	1021.46	1021.47	1021.46	1021.43	1021.38	1021.45
	6	1021.32	1021.29	1021.33	1021.36	1021.36	1021.40	1021.47	1021.53	1021.57	1021.60	1021.62	1021.66	1021.46
	7	1021.74	1021.85	1021.94	1021.99	1021.98	1021.93	1021.89	1021.88	1021.83	1021.73	1021.69	1021.69	1021.84
	8	1021.70	1021.72	1021.76	1021.82	1021.86	1021.90	1021.92	1021.88	1021.75	1021.59	1021.52	1021.47	1021.74
	9	1021.44	1021.45	1021.49	1021.50	1021.47	1021.44	1021.42	1021.37	1021.30	1021.24	1021.18	1021.16	1021.37
	10	1021.16	1021.12	1021.11	1021.10	1021.07	1021.06	1021.05	1021.04	1021.02	1021.02	1020.99	1020.89	1021.05
	11	1020.77	1020.65	1020.58	1020.52	1020.47	1020.41	1020.33	1020.22	1020.10	1020.03	1020.01	1019.96	1020.34
	12	1019.86	1019.77	1019.68	1019.58	1019.46	1019.31	1019.20	1019.12	1019.07	1019.05	1019.02	1018.98	1019.34
	13	1018.93	1018.90	1018.85	1018.76	1018.72	1018.67	1018.57	1018.49	1018.45	1018.40	1018.29	1018.15	1018.60
	14	1018.10	1018.05	1018.00	1018.05	1018.12	1018.12	1018.02	1017.95	1017.89	1017.83	1017.78	1017.68	1017.96
	15	1017.62	1017.58	1017.56	1017.53	1017.48	1017.41	1017.34	1017.28	1017.25	1017.25	1017.23	1017.19	1017.39
	16	1017.14	1017.07	1016.95	1016.87	1016.87	1016.81	1016.70	1016.65	1016.66	1016.65	1016.62	1016.62	1016.80
	17	1016.62	1016.59	1016.54	1016.49	1016.43	1016.36	1016.33	1016.29	1016.11	1015.90	1015.75	1015.66	1016.26
	18	1015.60	1015.54	1015.58	1015.62	1015.62	1015.55	1015.35	1015.11	1015.00	1015.01	1015.03	1015.06	1015.34
	19	1015.07	1015.10	1015.12	1015.13	1015.08	1015.03	1014.99	1014.93	1014.86	1014.75	1014.65	1014.60	1014.94
	20	1014.52	1014.40	1014.37	1014.39	1014.37	1014.31	1014.26	1014.20	1014.11	1014.05	1014.02	1014.04	1014.25
	21	1014.05	1014.03	1013.94	1013.80	1013.70	1013.70	1013.76	1013.85	1013.80	1013.66	1013.57	1013.53	1013.78
	22	1013.45	1013.31	1013.07	1012.91	1012.91	1012.88	1012.80	1012.82	1012.82	1012.70	1012.62	1012.60	1012.91
	23	1012.59	1012.56	1012.47	1012.43	1012.47	1012.42	1012.36	1012.35	1012.33	1012.28	1012.15	1011.95	1012.36

S.V.I.R.CO. Observatory - Pressure in hectoPascal – February 2019

day	hh	00_05	05_10	10_15	15_20	20_25	25_30	30_35	35_40	40_45	45_50	50_55	55_60	average
11	0	1011.79	1011.78	1011.72	1011.61	1011.50	1011.45	1011.45	1011.43	1011.33	1011.22	1011.20	1011.22	1011.46
	1	1011.22	1011.16	1011.09	1010.98	1010.84	1010.75	1010.66	1010.48	1010.35	1010.34	1010.28	1010.17	1010.69
	2	1010.06	1009.98	1009.93	1009.85	1009.76	1009.70	1009.64	1009.57	1009.48	1009.40	1009.32	1009.27	1009.66
	3	1009.22	1009.18	1009.15	1009.10	1009.03	1009.02	1009.06	1009.08	1009.02	1008.89	1008.78	1008.71	1009.02
	4	1008.72	1008.77	1008.78	1008.74	1008.66	1008.55	1008.44	1008.39	1008.32	1008.23	1008.23	1008.22	1008.50
	5	1008.16	1008.18	1008.16	1008.03	1007.98	1007.98	1007.89	1007.78	1007.70	1007.71	1007.80	1007.91	1007.94
	6	1007.95	1007.92	1007.96	1008.04	1008.05	1008.08	1008.16	1008.23	1008.31	1008.49	1008.64	1008.71	1008.21
	7	1008.80	1008.90	1008.94	1008.99	1009.09	1009.13	1009.10	1009.12	1009.22	1009.39	1009.52	1009.60	1009.15
	8	1009.66	1009.63	1009.53	1009.53	1009.55	1009.54	1009.54	1009.50	1009.47	1009.54	1009.62	1009.59	1009.56
	9	1009.58	1009.60	1009.55	1009.52	1009.52	1009.48	1009.41	1009.35	1009.32	1009.31	1009.30	1009.31	1009.44
	10	1009.31	1009.27	1009.24	1009.20	1009.18	1009.17	1009.11	1009.01	1008.89	1008.77	1008.67	1008.58	1009.03
	11	1008.50	1008.48	1008.47	1008.36	1008.26	1008.23	1008.28	1008.41	1008.43	1008.30	1008.21	1008.19	1008.34
	12	1008.20	1008.23	1008.26	1008.28	1008.27	1008.23	1008.28	1008.36	1008.38	1008.32	1008.25	1008.24	1008.27
	13	1008.21	1008.17	1008.14	1008.11	1008.10	1008.16	1008.21	1008.21	1008.28	1008.38	1008.42	1008.36	1008.23
	14	1008.41	1008.58	1008.73	1008.86	1008.98	1009.08	1009.13	1009.15	1009.22	1009.30	1009.37	1009.43	1009.02
	15	1009.48	1009.53	1009.60	1009.69	1009.78	1009.83	1009.87	1009.95	1010.06	1010.11	1010.10	1010.13	1009.84
	16	1010.23	1010.37	1010.52	1010.60	1010.65	1010.72	1010.79	1010.86	1011.07	1011.47	1011.85	1012.11	1010.94
	17	1012.27	1012.39	1012.56	1012.67	1012.63	1012.59	1012.62	1012.65	1012.73	1012.87	1013.02	1013.13	1012.68
	18	1013.19	1013.22	1013.22	1013.21	1013.23	1013.27	1013.32	1013.37	1013.42	1013.47	1013.55	1013.65	1013.34
	19	1013.73	1013.80	1013.84	1013.89	1013.96	1014.05	1014.14	1014.21	1014.25	1014.31	1014.38	1014.44	1014.08
	20	1014.49	1014.54	1014.57	1014.59	1014.62	1014.67	1014.74	1014.85	1014.98	1015.11	1015.23	1015.32	1014.81
	21	1015.34	1015.33	1015.34	1015.34	1015.36	1015.40	1015.44	1015.48	1015.50	1015.50	1015.52	1015.57	1015.43
	22	1015.61	1015.64	1015.70	1015.75	1015.78	1015.85	1015.95	1016.05	1016.13	1016.24	1016.42	1016.56	1015.97
	23	1016.65	1016.71	1016.76	1016.82	1016.89	1016.98	1017.02	1017.07	1017.13	1017.23	1017.34	1017.42	1017.00
12	0	1017.44	1017.48	1017.56	1017.55	1017.56	1017.69	1017.72	1017.72	1017.81	1017.92	1017.99	1018.00	1017.71
	1	1017.99	1018.00	1018.04	1018.09	1018.12	1018.13	1018.15	1018.21	1018.29	1018.34	1018.36	1018.38	1018.17
	2	1018.37	1018.41	1018.48	1018.51	1018.54	1018.57	1018.57	1018.52	1018.46	1018.46	1018.50	1018.55	1018.49
	3	1018.61	1018.61	1018.56	1018.54	1018.61	1018.65	1018.66	1018.69	1018.76	1018.86	1018.93	1018.98	1018.70
	4	1019.01	1019.08	1019.18	1019.24	1019.24	1019.27	1019.34	1019.43	1019.47	1019.49	1019.53	1019.56	1019.32
	5	1019.61	1019.63	1019.66	1019.74	1019.85	1019.91	1019.95	1020.00	1020.00	1020.01	1020.02	1020.04	1019.87
	6	1020.06	1020.14	1020.21	1020.24	1020.30	1020.36	1020.42	1020.51	1020.59	1020.65	1020.68	1020.74	1020.41
	7	1020.86	1020.98	1021.04	1021.13	1021.29	1021.39	1021.43	1021.46	1021.54	1021.65	1021.75	1021.81	1021.36
	8	1021.88	1021.94	1021.95	1021.97	1021.97	1021.94	1021.92	1021.94	1021.98	1022.06	1022.14	1022.23	1021.99
	9	1022.30	1022.36	1022.39	1022.39	1022.38	1022.33	1022.28	1022.23	1022.20	1022.17	1022.14	1022.15	1022.27
	10	1022.17	1022.16	1022.15	1022.14	1022.11	1022.12	1022.09	1022.03	1021.95	1021.88	1021.87	1021.88	1022.04
	11	1021.83	1021.80	1021.72	1021.61	1021.53	1021.54	1021.60	1021.58	1021.49	1021.41	1021.31	1021.23	1021.55
	12	1021.25	1021.25	1021.22	1021.23	1021.27	1021.32	1021.37	1021.39	1021.41	1021.44	1021.40	1021.35	1021.32
	13	1021.35	1021.32	1021.32	1021.28	1021.25	1021.28	1021.32	1021.36	1021.36	1021.37	1021.39	1021.39	1021.33
	14	1021.42	1021.51	1021.65	1021.68	1021.69	1021.79	1021.84	1021.86	1021.91	1021.97	1022.02	1022.04	1021.78
	15	1022.06	1022.12	1022.13	1022.14	1022.20	1022.26	1022.32	1022.36	1022.38	1022.42	1022.49	1022.55	1022.28
	16	1022.59	1022.62	1022.65	1022.64	1022.63	1022.65	1022.68	1022.70	1022.76	1022.84	1022.95	1023.09	1022.73
	17	1023.20	1023.29	1023.36	1023.44	1023.51	1023.56	1023.61	1023.67	1023.75	1023.82	1023.89	1023.96	1023.58
	18	1024.00	1024.02	1024.05	1024.09	1024.13	1024.15	1024.17	1024.20	1024.22	1024.25	1024.28	1024.30	1024.15
	19	1024.33	1024.39	1024.47	1024.52	1024.58	1024.66	1024.73	1024.79	1024.87	1024.99	1025.10	1025.16	1024.71
	20	1025.21	1025.29	1025.39	1025.50	1025.63	1025.73	1025.79	1025.86	1025.94	1026.02	1026.10	1026.14	1025.71
	21	1026.19	1026.22	1026.26	1026.31	1026.31	1026.28	1026.28	1026.32	1026.34	1026.39	1026.48	1026.51	1026.32
	22	1026.54	1026.60	1026.67	1026.73	1026.78	1026.82	1026.87	1026.93	1026.96	1027.00	1027.06	1027.12	1026.84
	23	1027.18	1027.26	1027.31	1027.38	1027.46	1027.52	1027.55	1027.54	1027.54	1027.56	1027.62	1027.69	1027.47

S.V.I.R.CO. Observatory - Pressure in hectoPascal – February 2019

day	hh	00_05	05_10	10_15	15_20	20_25	25_30	30_35	35_40	40_45	45_50	50_55	55_60	average
13	0	1027.76	1027.81	1027.89	1027.94	1027.97	1028.03	1028.06	1028.05	1028.08	1028.12	1028.13	1028.14	1028.01
	1	1028.17	1028.21	1028.26	1028.28	1028.29	1028.24	1028.14	1028.12	1028.17	1028.17	1028.16	1028.19	1028.20
	2	1028.23	1028.23	1028.20	1028.21	1028.27	1028.34	1028.36	1028.38	1028.41	1028.45	1028.49	1028.50	1028.34
	3	1028.52	1028.57	1028.65	1028.70	1028.77	1028.79	1028.76	1028.78	1028.85	1028.91	1028.93	1028.96	1028.76
	4	1029.01	1029.02	1029.01	1029.02	1029.03	1029.05	1029.07	1029.13	1029.21	1029.29	1029.30	1029.27	1029.12
	5	1029.31	1029.38	1029.45	1029.48	1029.51	1029.59	1029.72	1029.81	1029.82	1029.86	1029.88	1029.87	1029.64
	6	1029.91	1029.97	1030.04	1030.09	1030.13	1030.21	1030.30	1030.36	1030.41	1030.49	1030.63	1030.74	1030.27
	7	1030.77	1030.81	1030.83	1030.88	1031.00	1031.10	1031.14	1031.15	1031.15	1031.13	1031.14	1031.10	1031.01
	8	1031.08	1031.08	1031.10	1031.11	1031.11	1031.16	1031.21	1031.21	1031.20	1031.17	1031.15	1031.17	1031.14
	9	1031.18	1031.17	1031.15	1031.14	1031.15	1031.21	1031.26	1031.25	1031.20	1031.15	1031.12	1031.12	1031.17
	10	1031.10	1031.07	1031.10	1031.11	1031.11	1031.17	1031.15	1031.06					
	11		1030.91	1030.84	1030.78	1030.74	1030.67	1030.62	1030.56	1030.48	1030.38	1030.28	1030.21	1030.60
	12						1030.23	1030.23						
	13						1029.66	1029.63	1029.61	1029.60	1029.55	1029.48	1029.45	1029.57
	14	1029.42	1029.42	1029.40	1029.35	1029.30	1029.26	1029.13	1029.01	1029.01	1028.98	1028.97	1029.07	1029.19
	15	1029.18	1029.20	1029.17	1029.12	1029.11	1029.12	1029.12	1029.11					
	16		1029.36	1029.41	1029.46	1029.51	1029.53	1029.50	1029.49	1029.47	1029.49	1029.58	1029.67	1029.49
	17	1029.77	1029.84	1029.92	1030.00	1030.01								
	18					1030.16	1030.12	1030.15	1030.16	1030.18	515.20	515.27	1030.38	
	19	1030.39	1030.39	1030.40	1030.45	1030.51	1030.48	1030.48	1030.51	1030.55	1030.61	1030.66	1030.71	1030.51
	20	1030.82							1031.32	1031.39	1031.44	1031.38	1031.35	
	21	1031.37	1031.38	1031.38	1031.34	1031.30	1031.25	1031.23	1031.24	1031.20	1031.12	1031.07	1031.03	1031.24
	22	1030.98	1030.91	1030.88	1030.87	1030.82	1030.82	1030.87	1030.85	1030.82	1030.86	1030.91	1030.96	1030.88
	23	1031.05	1031.11	1031.19	1031.27	1031.29	1031.34	1031.39	1031.46	1031.48	1031.49	1031.52	1031.49	1031.34
14	0	1031.40	1031.33	1031.28	1031.29	1031.23	1031.23	1031.26	1031.27	1031.31	1031.35	1031.31	1031.30	1031.29
	1	1031.27	1031.23	1031.25	1031.19	1031.06	1031.03	1031.08	1031.05	1030.98	1030.92	1030.86	1030.79	1031.06
	2	1030.75	1030.72	1030.77	1030.84	1030.91	1031.01	1031.00	1030.96	1030.97	1031.02	1031.07	1031.09	1030.92
	3	1031.15	1031.16	1031.14	1031.16	1031.16	1031.13	1031.10	1031.15	1031.21	1031.25	1031.24	1031.19	1031.17
	4	1031.20	1031.21	1031.24	1031.28	1031.31	1031.38	1031.42	1031.39	1031.35	1031.30	1031.29	1031.32	1031.30
	5	1031.34	1031.36	1031.36	1031.36	1031.39	1031.39	1031.37	1031.32	1031.26	1031.26	1031.30	1031.32	1031.33
	6	1031.32	1031.37	1031.47	1031.55	1031.55	1031.54	1031.59	1031.66	1031.68	1031.69	1031.72	1031.75	1031.57
	7	1031.74	1031.75	1031.78	1031.79	1031.79	1031.80	1031.80	1031.78	1031.78	1031.79	1031.79	1031.80	1031.78
	8	1031.78	1031.75	1031.81	1031.92	1031.92	1031.83	1031.77	1031.73	1031.70	1031.64	1031.56		1031.75
	9													
	10							1031.19	1031.19	1031.16	1031.10	1031.00	1030.90	
	11	1030.89	1030.83	1030.76	1030.70	1030.63	1030.59	1030.53	1030.46	1030.38	1030.29	1030.25	1030.26	1030.54
	12	1030.22	1030.18	1030.15	1030.11	1030.05	1029.98	1029.92	1029.84	1029.69	1029.56	1029.49	1029.40	1029.88
	13	1029.34	1029.27	1029.17	1029.14	1029.15	1029.13	1029.10	1029.12	1029.11	1029.05	1029.01	1028.99	1029.13
	14	1029.03	1029.05	1029.02	1028.96	1028.95	1028.97	1028.93	1028.94	1028.96	1028.92	1028.84	1028.77	1028.94
	15	1028.78	1028.81	1028.78	1028.72	1028.66	1028.66	1028.70	1028.70	1028.65	1028.60	1028.55	1028.51	1028.67
	16	1028.49	1028.49	1028.43	1028.41	1028.47	1028.48	1028.48	1028.49	1028.51	1028.54	1028.60	1028.66	1028.50
	17	1028.67	1028.67	1028.69	1028.74	1028.82	1028.89	1028.96	1028.98	1028.99	1029.03	1029.05	1029.01	1028.87
	18	1028.96	1029.00	1029.02	1029.02	1029.03	1028.99	1028.92	1028.84	1028.77	1028.73	1028.72	1028.74	1028.89
	19	1028.70	1028.64	1028.61	1028.63	1028.61	1028.57	1028.54	1028.54	1028.50	1028.50	1028.55	1028.57	1028.58
	20	1028.56	1028.51	1028.47	1028.43	1028.44	1028.43	1028.37	1028.33	1028.25	1028.20	1028.14	1028.14	1028.35
	21	1028.15	1028.08	1028.07	1028.11	1028.10	1028.03	1027.94	1027.83	1027.74	1027.72	1027.73	1027.68	1027.93
	22	1027.71	1027.84	1027.91	1027.86	1027.85	1027.91	1027.97	1028.04	1028.05	1028.02	1028.09	1028.09	1027.94
	23	1028.04	1028.04	1027.98	1027.99	1028.17	1028.25	1028.16	1028.06	1027.99	1028.03	1028.15	1028.16	1028.08

S.V.I.R.CO. Observatory - Pressure in hectoPascal – February 2019

day	hh	00_05	05_10	10_15	15_20	20_25	25_30	30_35	35_40	40_45	45_50	50_55	55_60	average
15	0	1028.14	1028.13	1028.15	1028.17	1028.12	1028.05	1028.06	1028.10	1028.09	1028.11	1028.18	1028.14	1028.12
	1	1028.04	1028.05	1028.09	1028.07	1028.07	1028.05	1027.98	1027.91	1027.85	1027.78	1027.70	1027.66	1027.94
	2	1027.64	1027.65	1027.63	1027.52	1027.41	1027.39	1027.39	1027.41	1027.44	1027.46	1027.47	1027.41	1027.49
	3	1027.34	1027.32	1027.34	1027.39	1027.41	1027.34	1027.25	1027.22	1027.24	1027.23	1027.20	1027.20	1027.29
	4	1027.24	1027.29	1027.30	1027.29	1027.29	1027.28	1027.28	1027.29	1027.31	1027.34	1027.34	1027.35	1027.30
	5	1027.34	1027.31	1027.26	1027.25	1027.27	1027.28	1027.25	1027.21	1027.19	1027.20	1027.21	1027.24	1027.25
	6	1027.27	1027.32	1027.36	1027.39	1027.45	1027.51	1027.52	1027.55	1027.56	1027.56	1027.58	1027.60	1027.47
	7	1027.60	1027.59	1027.59	1027.56	1027.52	1027.48	1027.45	1027.41	1027.38	1027.32	1027.21	1027.14	1027.44
	8	1027.09	1027.02	1026.97	1026.95	1026.95	1026.98	1027.00	1027.06	1027.11	1027.13	1027.11	1027.08	1027.04
	9	1027.04	1026.96	1026.86	1026.77	1026.68	1026.60	1026.50	1026.42	1026.40	1026.40	1026.39	1026.40	1026.62
	10	1026.42	1026.41	1026.36	1026.32	1026.29	1026.25	1026.21	1026.15	1026.08	1025.99	1025.85	1025.70	1026.17
	11	1025.56	1025.44	1025.36	1025.28	1025.17	1025.07	1025.01	1024.96	1024.93	1024.87	1024.80	1024.74	1025.10
	12	1024.68	1024.61	1024.53	1024.45	1024.37	1024.32	1024.30	1024.25	1024.18	1024.14	1024.09	1024.01	1024.33
	13	1023.93	1023.85	1023.76	1023.67	1023.63	1023.58	1023.53	1023.47	1023.40	1023.34	1023.28	1023.18	1023.55
	14	1023.07	1022.96	1022.90	1022.89	1022.92	1022.93	1022.94	1022.93	1022.90	1022.88	1022.91	1022.90	1022.93
	15	1022.85	1022.81	1022.81	1022.80	1022.78	1022.77	1022.78	1022.82	1022.90	1022.96	1022.97	1022.99	1022.85
	16	1023.09	1023.19	1023.25	1023.31	1023.44	1023.58	1023.66	1023.77	1023.92	1024.00	1024.07	1024.21	1023.62
	17	1024.31	1024.33	1024.40	1024.58	1024.62	1024.64	1024.85	1025.10	1025.23	1025.19	1025.13	1025.22	1024.80
	18	1025.38	1025.45	1025.53	1025.52	1025.43	1025.41	1025.27	1025.14	1025.21	1025.41	1025.49	1025.59	1025.40
	19	1025.84	1025.84	1025.71	1025.88	1026.03	1025.98	1026.03	1026.07	1026.04	1026.07	1026.16	1026.15	1025.98
	20	1026.14	1026.23	1026.27	1026.31	1026.41	1026.49	1026.49	1026.48	1026.54	1026.65	1026.66	1026.67	1026.44
	21	1026.74	1026.77	1026.85	1026.95	1026.98	1026.97	1027.02	1027.07	1027.04	1027.03	1027.08	1027.12	1026.97
	22	1027.08	1027.03	1027.06	1027.08	1027.05	1027.08	1027.13	1027.15	1027.19	1027.24	1027.28	1027.32	1027.14
	23	1027.35	1027.36	1027.35	1027.33	1027.32	1027.28	1027.27	1027.34	1027.41	1027.44	1027.43	1027.42	1027.36
16	0	1027.38	1027.40	1027.44	1027.45	1027.46	1027.50	1027.55	1027.62	1027.63	1027.62	1027.64	1027.65	1027.53
	1	1027.65	1027.63	1027.61	1027.61	1027.63	1027.59	1027.51	1027.51	1027.58	1027.60	1027.62	1027.66	1027.60
	2	1027.71	1027.74	1027.75	1027.77	1027.78	1027.79	1027.79	1027.81	1027.86	1027.88	1027.88	1027.91	1027.80
	3	1027.93	1027.90	1027.86	1027.87	1027.92	1027.96	1027.95	1027.93	1027.96	1028.01	1028.05	1028.09	1027.95
	4	1028.11	1028.05	1027.97	1027.98	1028.02	1028.03	1028.05	1028.09	1028.14	1028.20	1028.26	1028.28	1028.10
	5	1028.27	1028.31	1028.36	1028.41	1028.44	1028.44	1028.45	1028.48	1028.52	1028.60	1028.67	1028.69	1028.47
	6	1028.70	1028.74	1028.79	1028.84	1028.90	1028.96	1029.00	1029.05	1029.11	1029.16	1029.22	1029.28	1028.98
	7	1029.32	1029.38	1029.46	1029.54	1029.61	1029.63	1029.65	1029.71	1029.77	1029.81	1029.84	1029.86	1029.63
	8	1029.89	1029.90	1029.88	1029.86	1029.88	1029.87	1029.84	1029.84	1029.86	1029.87	1029.85	1029.83	1029.86
	9	1029.83	1029.83	1029.85	1029.88	1029.90	1029.91	1029.91	1029.92	1029.94	1029.92	1029.92	1029.93	1029.90
	10	1029.93	1029.92	1029.90	1029.90	1029.88	1029.86	1029.83	1029.80	1029.75	1029.68	1029.62	1029.57	1029.80
	11	1029.51	1029.46	1029.40	1029.32	1029.28	1029.26	1029.22	1029.17	1029.13	1029.10	1029.05	1029.00	1029.24
	12	1028.93	1028.86	1028.79	1028.75	1028.72	1028.70	1028.65	1028.59	1028.52	1028.44	1028.37	1028.33	1028.64
	13	1028.30	1028.28	1028.23	1028.19	1028.15	1028.10	1028.01	1027.95	1027.92	1027.90	1027.90	1027.90	1028.07
	14	1027.88	1027.88	1027.88	1027.84	1027.81	1027.82	1027.81	1027.78	1027.76	1027.72	1027.68	1027.66	1027.79
	15	1027.65	1027.62	1027.60	1027.60	1027.58	1027.58	1027.59	1027.62	1027.68	1027.72	1027.75	1027.79	1027.65
	16	1027.82	1027.83	1027.85	1027.87	1027.90	1027.92	1027.92	1027.94	1027.97	1028.01	1028.02	1028.00	1027.92
	17	1027.98	1027.99	1028.02	1028.08	1028.14	1028.18	1028.20	1028.22	1028.24	1028.27	1028.29	1028.28	1028.16
	18	1028.28	1028.31	1028.31	1028.32	1028.34	1028.38	1028.42	1028.45	1028.46	1028.46	1028.48	1028.51	1028.39
	19	1028.52	1028.51	1028.53	1028.54	1028.54	1028.53	1028.57	1028.65	1028.71	1028.75	1028.80	1028.82	1028.62
	20	1028.82	1028.84	1028.89	1028.96	1029.05	1029.12	1029.14	1029.16	1029.19	1029.19	1029.15	1029.12	1029.05
	21	1029.13	1029.13	1029.13	1029.10	1029.11	1029.16	1029.18	1029.17	1029.17	1029.17	1029.13	1029.10	1029.14
	22	1029.11	1029.11	1029.10	1029.13	1029.13	1029.12	1029.13	1029.12	1029.12	1029.14	1029.15	1029.13	1029.12
	23	1029.12	1029.16	1029.22	1029.23	1029.22	1029.25	1029.29	1029.29	1029.29	1029.26	1029.22	1029.22	1029.23

S.V.I.R.CO. Observatory - Pressure in hectoPascal – February 2019

day	hh	00_05	05_10	10_15	15_20	20_25	25_30	30_35	35_40	40_45	45_50	50_55	55_60	average
17	0	1029.20	1029.16	1029.12	1029.09	1029.02	1028.95	1028.97	1028.98	1028.97	1028.98	1028.93	1028.88	1029.01
	1	1028.85	1028.82	1028.83	1028.83	1028.81	1028.80	1028.78	1028.77	1028.74	1028.73	1028.71	1028.70	1028.78
	2	1028.69	1028.67	1028.66	1028.64	1028.61	1028.58	1028.52	1028.51	1028.51	1028.51	1028.50	1028.46	1028.57
	3	1028.41	1028.36	1028.35	1028.35	1028.35	1028.31	1028.31	1028.34	1028.39	1028.42	1028.43	1028.47	1028.37
	4	1028.49	1028.48	1028.46	1028.46	1028.48	1028.49	1028.49	1028.49	1028.52	1028.54	1028.54	1028.54	1028.50
	5	1028.57	1028.58	1028.58	1028.61	1028.64	1028.64	1028.65	1028.67	1028.65	1028.64	1028.66	1028.70	1028.63
	6	1028.75	1028.81	1028.88	1028.95	1029.02	1029.06	1029.09	1029.11	1029.11	1029.10	1029.13	1029.17	1029.02
	7	1029.20	1029.25	1029.28	1029.30	1029.32	1029.34	1029.32	1029.31	1029.31	1029.32	1029.33	1029.32	1029.30
	8	1029.30	1029.28	1029.24	1029.20	1029.18	1029.20	1029.25	1029.28	1029.30	1029.29	1029.28	1029.29	1029.26
	9	1029.28	1029.28	1029.27	1029.27	1029.26	1029.25	1029.25	1029.24	1029.25	1029.25	1029.22	1029.18	1029.25
	10	1029.16	1029.12	1029.09	1029.07	1029.06	1029.03	1029.00	1028.95	1028.89	1028.82	1028.76	1028.70	1028.97
	11	1028.61	1028.53	1028.44	1028.35	1028.28	1028.23	1028.17	1028.09	1027.99	1027.88	1027.76	1027.66	1028.17
	12	1027.58	1027.47	1027.38	1027.30	1027.23	1027.19	1027.16	1027.11	1027.02	1026.95	1026.89	1026.83	1027.17
	13	1026.78	1026.73	1026.69	1026.66	1026.64	1026.63	1026.61	1026.61	1026.61	1026.58	1026.56	1026.55	1026.64
	14	1026.52	1026.51	1026.52	1026.52	1026.53	1026.54	1026.51	1026.47	1026.43	1026.39	1026.37	1026.36	1026.47
	15	1026.33	1026.33	1026.33	1026.32	1026.29	1026.26	1026.23	1026.20	1026.20	1026.19	1026.18	1026.15	1026.25
	16	1026.11	1026.10	1026.11	1026.11	1026.11	1026.14	1026.18	1026.22	1026.26	1026.30	1026.33	1026.34	1026.19
	17	1026.36	1026.38	1026.40	1026.43	1026.48	1026.51	1026.55	1026.58	1026.62	1026.66	1026.68	1026.70	1026.53
	18	1026.70	1026.68	1026.67	1026.67	1026.69	1026.71	1026.73	1026.74	1026.73	1026.75	1026.75	1026.74	1026.71
	19	1026.73	1026.72	1026.72	1026.74	1026.74	1026.74	1026.75	1026.77	1026.80	1026.83	1026.86	1026.88	1026.77
	20	1026.91	1026.94	1026.97	1026.98	1026.99	1027.01	1027.02	1027.02	1027.05	1027.07	1027.07	1027.06	1027.01
	21	1027.07	1027.09	1027.09	1027.10	1027.08	1027.06	1027.07	1027.07	1027.06	1027.05	1027.04	1027.04	1027.07
	22	1027.05	1027.05	1027.04	1027.04	1027.02	1027.00	1026.98	1026.96	1026.92	1026.88	1026.85	1026.85	1026.97
	23	1026.86	1026.88	1026.89	1026.88	1026.85	1026.83	1026.83	1026.82	1026.82	1026.82	1026.82	1026.81	1026.84
18	0	1026.76	1026.75	1026.74	1026.74	1026.72	1026.69	1026.67	1026.65	1026.64	1026.62	1026.63	1026.65	1026.69
	1	1026.65	1026.63	1026.60	1026.56	1026.52	1026.48	1026.46	1026.43	1026.39	1026.36	1026.33	1026.30	1026.48
	2	1026.27	1026.24	1026.18	1026.14	1026.14	1026.13	1026.12	1026.08	1026.05	1026.03	1026.01	1026.01	1026.12
	3	1026.00	1025.99	1025.97	1025.95	1025.95	1025.96	1025.96	1025.96	1025.95	1025.94	1025.94	1025.95	1025.96
	4	1025.95	1025.94	1025.95	1025.98	1026.01	1026.03	1026.02	1026.00	1025.99	1025.95	1025.92	1025.87	1025.97
	5	1025.85	1025.83	1025.80	1025.75	1025.71	1025.71	1025.71	1025.73	1025.75	1025.76	1025.76	1025.76	1025.76
	6	1025.78	1025.82	1025.86	1025.89	1025.92	1025.93	1025.94	1025.96	1026.00	1026.04	1026.07	1026.10	1025.94
	7	1026.11	1026.13	1026.15	1026.14	1026.13	1026.12	1026.11	1026.12	1026.14	1026.12	1026.11	1026.10	1026.12
	8	1026.10	1026.11	1026.11	1026.13	1026.13	1026.13	1026.14	1026.16	1026.20	1026.23	1026.27	1026.29	1026.17
	9	1026.32	1026.33	1026.32	1026.32	1026.33	1026.36	1026.40	1026.40	1026.37	1026.35	1026.33	1026.32	1026.35
	10	1026.34	1026.36	1026.37	1026.32	1026.27	1026.26	1026.27	1026.24	1026.18	1026.13	1026.08	1026.04	1026.24
	11	1025.98	1025.93	1025.87	1025.81	1025.74	1025.68	1025.62	1025.57	1025.51	1025.43	1025.36	1025.28	1025.65
	12	1025.20	1025.14	1025.10	1025.06	1025.01	1024.95	1024.90	1024.87	1024.83	1024.79	1024.75	1024.71	1024.94
	13	1024.68	1024.64	1024.59	1024.54	1024.52	1024.49	1024.44	1024.41	1024.39	1024.39	1024.37	1024.35	1024.48
	14	1024.32	1024.27	1024.22	1024.19	1024.15	1024.11	1024.09	1024.06	1024.03	1024.02	1024.00	1024.00	1024.12
	15	1023.99	1023.95	1023.89	1023.84	1023.80	1023.76	1023.73	1023.71	1023.67	1023.62	1023.55	1023.51	1023.75
	16	1023.48	1023.46	1023.46	1023.45	1023.43	1023.42	1023.41	1023.41	1023.42	1023.44	1023.44	1023.44	1023.44
	17	1023.45	1023.46	1023.49	1023.50	1023.51	1023.55	1023.60	1023.63	1023.67	1023.72	1023.76	1023.79	1023.59
	18	1023.82	1023.83	1023.84	1023.86	1023.86	1023.85	1023.85	1023.86	1023.88	1023.90	1023.94	1023.97	1023.87
	19	1023.98	1023.98	1023.99	1024.00	1024.01	1024.00	1024.02	1024.05	1024.08	1024.11	1024.11	1024.10	1024.04
	20	1024.10	1024.10	1024.11	1024.12	1024.14	1024.16	1024.17	1024.18	1024.17	1024.16	1024.14	1024.12	1024.14
	21	1024.08	1024.07	1024.08	1024.08	1024.09	1024.09	1024.08	1024.06	1024.04	1024.02	1024.03	1024.04	1024.06
	22	1024.04	1024.03	1024.01	1023.99	1023.97	1023.94	1023.90	1023.88	1023.87	1023.88	1023.89	1023.91	1023.94
	23	1023.92	1023.91	1023.89	1023.86	1023.86	1023.87	1023.89	1023.90	1023.90	1023.91	1023.91	1023.90	1023.89

S.V.I.R.CO. Observatory - Pressure in hectoPascal – February 2019

day	hh	00_05	05_10	10_15	15_20	20_25	25_30	30_35	35_40	40_45	45_50	50_55	55_60	average
19	0	1023.87	1023.88	1023.90	1023.91	1023.89	1023.87	1023.83	1023.80	1023.80	1023.79	1023.77	1023.75	1023.84
	1	1023.73	1023.68	1023.62	1023.59	1023.59	1023.57	1023.52	1023.49	1023.48	1023.45	1023.40	1023.35	1023.54
	2	1023.31	1023.24	1023.16	1023.09	1023.03	1022.99	1022.96	1022.93	1022.91	1022.88	1022.87	1022.85	1023.02
	3	1022.84	1022.83	1022.80	1022.76	1022.74	1022.73	1022.70	1022.70	1022.70	1022.68	1022.66	1022.68	1022.73
	4	1022.70	1022.71	1022.73	1022.75	1022.78	1022.80	1022.82	1022.84	1022.84	1022.84	1022.85	1022.86	1022.79
	5	1022.86	1022.84	1022.85	1022.87	1022.85	1022.81	1022.77	1022.74	1022.73	1022.73	1022.75	1022.79	1022.80
	6	1022.82	1022.87	1022.93	1022.97	1023.02	1023.08	1023.13	1023.16	1023.20	1023.25	1023.29	1023.30	1023.09
	7	1023.31	1023.33	1023.37	1023.41	1023.44	1023.46	1023.49	1023.52	1023.55	1023.58	1023.61	1023.64	1023.48
	8	1023.67	1023.68	1023.69	1023.72	1023.75	1023.78	1023.82	1023.86	1023.87	1023.88	1023.91	1023.95	1023.80
	9	1023.97	1023.99	1024.04	1024.10	1024.16	1024.20	1024.21	1024.24	1024.27	1024.31	1024.34	1024.36	1024.18
	10	1024.38	1024.40	1024.41	1024.42	1024.42	1024.40	1024.38	1024.36	1024.33	1024.26	1024.19	1024.12	1024.34
	11	1024.07	1024.01	1023.94	1023.87	1023.81	1023.75	1023.68	1023.62	1023.58	1023.54	1023.48	1023.42	1023.73
	12	1023.37	1023.31	1023.25	1023.21	1023.19	1023.19	1023.18	1023.14	1023.10	1023.09	1023.08	1023.03	1023.18
	13	1022.96	1022.92	1022.88	1022.84	1022.80	1022.78	1022.78	1022.78	1022.77	1022.77	1022.78	1022.74	1022.82
	14	1022.70	1022.66	1022.63	1022.59	1022.56	1022.53	1022.51	1022.49	1022.49	1022.49	1022.50	1022.48	1022.55
	15	1022.45	1022.45	1022.43	1022.41	1022.38	1022.35	1022.32	1022.31	1022.30	1022.27	1022.22	1022.16	1022.34
	16	1022.09	1022.06	1022.06	1022.04	1022.03	1022.04	1022.06	1022.07	1022.07	1022.07	1022.09	1022.10	1022.06
	17	1022.09	1022.09	1022.11	1022.12	1022.12	1022.15	1022.20	1022.24	1022.26	1022.27	1022.27	1022.28	1022.18
	18	1022.28	1022.28	1022.30	1022.33	1022.35	1022.39	1022.43	1022.49	1022.53	1022.55	1022.55	1022.54	1022.42
	19	1022.54	1022.56	1022.59	1022.60	1022.62	1022.64	1022.66	1022.69	1022.73	1022.76	1022.79	1022.82	1022.67
	20	1022.83	1022.85	1022.88	1022.93	1022.96	1022.99	1023.00	1023.04	1023.04	1023.03	1023.04	1023.06	1022.97
	21	1023.08	1023.09	1023.09	1023.09	1023.07	1023.06	1023.06	1023.06	1023.05	1023.04	1023.03	1023.04	1023.06
	22	1023.05	1023.04	1023.02	1023.02	1023.01	1023.00	1023.00	1023.00	1023.03	1023.05	1023.07	1023.09	1023.03
	23	1023.14	1023.21	1023.23	1023.22	1023.23	1023.27	1023.28	1023.26	1023.26	1023.27	1023.30	1023.33	1023.25
20	0	1023.34	1023.34	1023.34	1023.32	1023.32	1023.30	1023.27	1023.29	1023.31	1023.31	1023.29	1023.27	1023.31
	1	1023.28	1023.30	1023.33	1023.35	1023.37	1023.38	1023.35	1023.32	1023.27	1023.22	1023.20	1023.20	1023.30
	2	1023.20	1023.18	1023.18	1023.19	1023.18	1023.15	1023.10	1023.07	1023.04	1023.02	1023.01	1023.01	1023.11
	3	1023.00	1022.97	1022.96	1022.95	1022.94	1022.96	1022.98	1022.98	1022.98	1022.98	1022.97	1022.97	1022.97
	4	1022.99	1023.01	1023.03	1023.02	1023.00	1023.00	1023.00	1022.99	1022.98	1022.95	1022.92	1022.90	1022.98
	5	1022.90	1022.92	1022.93	1022.93	1022.92	1022.91	1022.91	1022.93	1022.96	1023.01	1023.06	1023.09	1022.95
	6	1023.10	1023.13	1023.18	1023.25	1023.33	1023.40	1023.48	1023.54	1023.60	1023.67	1023.75	1023.83	1023.44
	7	1023.91	1023.97	1024.01	1024.02	1024.04	1024.05	1024.09	1024.13	1024.17	1024.20	1024.23	1024.25	1024.09
	8	1024.28	1024.30	1024.32	1024.35	1024.38	1024.40	1024.40	1024.39	1024.40	1024.42	1024.43	1024.47	1024.38
	9	1024.51	1024.52	1024.53	1024.55	1024.58	1024.59	1024.59	1024.59	1024.63	1024.67	1024.66	1024.63	1024.59
	10	1024.60	1024.57	1024.56	1024.56	1024.55	1024.54	1024.53	1024.50	1024.45	1024.40	1024.36	1024.28	1024.49
	11	1024.19	1024.16	1024.15	1024.10	1024.06	1024.01	1023.96	1023.91	1023.86	1023.81	1023.76	1023.71	1023.97
	12	1023.67	1023.62	1023.56	1023.50	1023.46	1023.41	1023.38	1023.32	1023.24	1023.19	1023.15	1023.11	1023.38
	13	1023.10	1023.09	1023.06	1023.05	1023.05	1023.04	1023.01	1022.98	1022.97	1022.97	1022.97	1022.99	1023.02
	14	1023.00	1023.00	1022.98	1022.98	1022.97	1022.96	1022.96	1022.96	1022.96	1022.96	1022.95	1022.94	1022.97
	15	1022.94	1022.93	1022.95	1022.94	1022.90	1022.87	1022.86	1022.85	1022.86	1022.88	1022.90	1022.93	1022.90
	16	1022.96	1022.98	1022.98	1023.00	1023.03	1023.07	1023.10	1023.13	1023.13	1023.13	1023.15	1023.19	1023.07
	17	1023.24	1023.30	1023.33	1023.37	1023.45	1023.52	1023.58	1023.64	1023.70	1023.76	1023.81	1023.84	1023.54
	18	1023.87	1023.91	1023.91	1023.91	1023.92	1023.96	1023.98	1023.97	1023.95	1023.94	1023.93	1023.95	1023.93
	19	1023.97	1023.98	1024.04	1024.11	1024.16	1024.17	1024.20	1024.28	1024.35	1024.39	1024.43	1024.50	1024.21
	20	1024.58	1024.63	1024.65	1024.68	1024.71	1024.74	1024.75	1024.75	1024.75	1024.78	1024.80	1024.81	1024.72
	21	1024.82	1024.83	1024.85	1024.86	1024.87	1024.86	1024.84	1024.85	1024.87	1024.85	1024.83	1024.85	1024.85
	22	1024.86	1024.86	1024.88	1024.90	1024.92	1024.93	1024.95	1024.99	1025.04	1025.11	1025.16	1025.21	1024.98
	23	1025.25	1025.28	1025.29	1025.29	1025.27	1025.28	1025.30	1025.31	1025.30	1025.31	1025.32	1025.31	1025.29

S.V.I.R.CO. Observatory - Pressure in hectoPascal – February 2019

day	hh	00_05	05_10	10_15	15_20	20_25	25_30	30_35	35_40	40_45	45_50	50_55	55_60	average
21	0	1025.32	1025.33	1025.35	1025.38	1025.40	1025.42	1025.45	1025.50	1025.53	1025.55	1025.56	1025.57	1025.45
	1	1025.59	1025.61	1025.62	1025.64	1025.62	1025.58	1025.58	1025.59	1025.57	1025.56	1025.57	1025.59	1025.59
	2	1025.57	1025.53	1025.50	1025.48	1025.47	1025.44	1025.42	1025.40	1025.42	1025.46	1025.50	1025.52	1025.48
	3	1025.53	1025.55	1025.58	1025.60	1025.60	1025.61	1025.63	1025.65	1025.65	1025.64	1025.64	1025.67	1025.61
	4	1025.72	1025.78	1025.79	1025.78	1025.77	1025.78	1025.79	1025.81	1025.79	1025.79	1025.81	1025.81	1025.79
	5	1025.79	1025.80	1025.83	1025.87	1025.91	1025.92	1025.91	1025.93	1025.97	1026.00	1026.04	1026.10	1025.92
	6	1026.15	1026.16	1026.17	1026.20	1026.26	1026.33	1026.40	1026.46	1026.51	1026.58	1026.67	1026.74	1026.39
	7	1026.81	1026.87	1026.92	1026.96	1027.02	1027.08	1027.12	1027.17	1027.19	1027.18	1027.16	1027.16	1027.05
	8	1027.17	1027.20	1027.22	1027.22	1027.21	1027.21	1027.22	1027.21	1027.19	1027.19	1027.22	1027.24	1027.21
	9	1027.25	1027.26	1027.26	1027.27	1027.29	1027.30	1027.29	1027.28	1027.29	1027.29	1027.28	1027.28	1027.28
	10	1027.29	1027.31	1027.31	1027.31	1027.31	1027.29	1027.29	1027.28	1027.23	1027.18	1027.12	1027.06	1027.25
	11	1026.99	1026.91	1026.85	1026.80	1026.74	1026.66	1026.61	1026.56	1026.50	1026.42	1026.36	1026.33	1026.64
	12	1026.30	1026.27	1026.23	1026.20	1026.19	1026.16	1026.11	1026.09	1026.07	1026.05	1026.02	1026.01	1026.14
	13	1026.01	1026.02	1026.05	1026.06	1026.05	1026.05	1026.06	1026.08	1026.08	1026.06	1026.03	1025.99	1026.04
	14	1025.98	1025.99	1025.98	1025.97	1025.96	1025.96	1025.95	1025.93	1025.91	1025.90	1025.90	1025.90	1025.94
	15	1025.89	1025.88	1025.89	1025.87	1025.84	1025.80	1025.79	1025.80	1025.82	1025.82	1025.80	1025.80	1025.83
	16	1025.82	1025.82	1025.81	1025.83	1025.85	1025.86	1025.89	1025.93	1025.97	1025.97	1025.94	1025.95	1025.88
	17	1025.97	1025.99	1026.00	1025.99	1025.99	1026.01	1026.00	1025.98	1025.95	1025.94	1025.97	1026.01	1025.98
	18	1026.01	1026.00	1025.98	1025.95	1025.90	1025.84	1025.78	1025.76	1025.76	1025.76	1025.77	1025.78	1025.86
	19	1025.79	1025.83	1025.86	1025.90	1025.95	1025.99	1026.03	1026.04	1026.07	1026.09	1026.09	1026.10	1025.98
	20	1026.11	1026.10	1026.11	1026.12	1026.11	1026.11	1026.12	1026.13	1026.13	1026.12	1026.13	1026.14	1026.12
	21	1026.12	1026.11	1026.12	1026.13	1026.13	1026.08	1026.03	1026.02	1026.01	1026.01	1026.01	1026.02	1026.07
	22	1026.00	1025.95	1025.91	1025.91	1025.90	1025.88	1025.86	1025.84	1025.80	1025.77	1025.77	1025.78	1025.86
	23	1025.79	1025.78	1025.75	1025.75	1025.78	1025.79	1025.79	1025.79	1025.79	1025.77	1025.76	1025.75	1025.77
22	0	1025.71	1025.71	1025.72	1025.70	1025.66	1025.60	1025.55	1025.54	1025.57	1025.61	1025.62	1025.57	1025.63
	1	1025.52	1025.53	1025.54	1025.49	1025.47	1025.49	1025.48	1025.45	1025.39	1025.32	1025.29	1025.23	1025.43
	2	1025.16	1025.12	1025.09	1025.07	1025.01	1024.92	1024.82	1024.71	1024.64	1024.59	1024.52	1024.44	1024.84
	3	1024.37	1024.33	1024.35	1024.34	1024.27	1024.22	1024.23	1024.28	1024.33	1024.32	1024.26	1024.23	1024.29
	4	1024.20	1024.13	1024.06	1024.01	1024.02	1024.03	1024.00	1023.91	1023.86	1023.89	1023.90	1023.89	1023.99
	5	1023.90	1023.88	1023.82	1023.72	1023.66	1023.69	1023.72	1023.66	1023.64	1023.65	1023.68	1023.71	1023.73
	6	1023.72	1023.74	1023.77	1023.81	1023.89	1023.99	1024.06	1024.09	1024.11	1024.12	1024.10	1024.09	1023.96
	7	1024.10	1024.13	1024.13	1024.08	1024.03	1024.03	1024.02	1024.03	1024.00	1023.89	1023.79	1023.71	1023.99
	8	1023.65	1023.61	1023.59	1023.60	1023.67	1023.73	1023.76	1023.82	1023.93	1024.00	1023.92	1023.77	1023.75
	9	1023.70	1023.60	1023.46	1023.38	1023.37	1023.35	1023.31	1023.21	1023.10	1022.95	1022.81	1022.73	1023.25
	10	1022.69	1022.66	1022.65	1022.64	1022.58	1022.46	1022.34	1022.26	1022.25	1022.21	1022.10	1022.01	1022.40
	11	1022.01	1022.01	1021.98	1021.99	1021.96	1021.89	1021.84	1021.80	1021.76	1021.69	1021.55	1021.37	1021.82
	12	1021.23	1021.25	1021.27	1021.14	1020.98	1020.91	1020.88	1020.83	1020.78	1020.69	1020.58	1020.51	1020.92
	13	1020.46	1020.41	1020.38	1020.35	1020.29	1020.20	1020.11	1020.04	1020.01	1019.95	1019.94	1019.97	1020.18
	14	1019.95	1019.91	1019.86	1019.79	1019.74	1019.73	1019.73	1019.71	1019.66	1019.62	1019.62	1019.61	1019.74
	15	1019.60	1019.62	1019.63	1019.61	1019.61	1019.65	1019.72	1019.76	1019.75	1019.71	1019.66	1019.62	1019.66
	16	1019.59	1019.56	1019.55	1019.58	1019.66	1019.71	1019.74	1019.80	1019.89	1019.98	1020.05	1020.10	1019.77
	17	1020.10	1020.06	1020.04	1020.06	1020.09	1020.08	1020.09	1020.13	1020.19	1020.24	1020.26	1020.27	1020.13
	18	1020.27	1020.24	1020.19	1020.14	1020.14	1020.20	1020.25	1020.30	1020.37	1020.40	1020.40	1020.40	1020.27
	19	1020.42	1020.45	1020.47	1020.48	1020.49	1020.52	1020.54	1020.54	1020.57	1020.65	1020.75	1020.81	1020.56
	20	1020.86	1020.90	1020.90	1020.88	1020.88	1020.92	1021.01	1021.07	1021.10	1021.16	1021.20	1021.18	1021.00
	21	1021.17	1021.21	1021.27	1021.30	1021.29	1021.31	1021.36	1021.37	1021.38	1021.40	1021.39	1021.34	1021.32
	22	1021.27	1021.19	1021.12	1021.11	1021.17	1021.27	1021.32	1021.28	1021.24	1021.28	1021.35	1021.45	1021.25
	23	1021.55	1021.64	1021.74	1021.81	1021.92	1022.04	1022.12	1022.15	1022.14	1022.11	1022.04	1021.95	1021.93

S.V.I.R.CO. Observatory - Pressure in hectoPascal – February 2019

day	hh	00_05	05_10	10_15	15_20	20_25	25_30	30_35	35_40	40_45	45_50	50_55	55_60	average
23	0	1021.80	1021.76	1021.70	1021.70	1021.68	1021.64	1021.63	1021.64	1021.60	1021.58	1021.64	1021.61	1021.66
	1	1021.49	1021.42	1021.46	1021.43	1021.27	1021.22	1021.33	1021.37	1021.32	1021.32	1021.32	1021.26	1021.35
	2	1021.22	1021.24	1021.21	1021.16	1021.16	1021.17	1021.18	1021.16	1021.16	1021.19	1021.18	1021.10	1021.18
	3	1021.07	1021.08	1021.04	1021.08	1021.06	1021.03	1021.10	1021.18	1021.21	1021.27	1021.37	1021.44	1021.16
	4	1021.49	1021.55	1021.57	1021.61	1021.68	1021.72	1021.79	1021.90	1022.03	1022.07	1022.11	1022.19	1021.81
	5	1022.15	1022.21	1022.27	1022.24	1022.28	1022.36	1022.39	1022.28	1022.26	1022.45	1022.57	1022.63	1022.34
	6	1022.70	1022.67	1022.71	1022.64	1022.52	1022.60	1022.69	1022.69	1022.78	1022.86	1022.84	1022.91	1022.72
	7	1022.94	1022.92	1022.89	1022.79	1022.83	1022.88	1022.90	1022.94	1022.83	1022.58	1022.39	1022.29	1022.76
	8	1022.23	1022.24	1022.31	1022.26	1022.01	1021.81	1021.62	1021.41	1021.36	1021.41	1021.36	1021.38	1021.78
	9	1021.44	1021.43	1021.41	1021.39	1021.53	1021.59	1021.43	1021.38	1021.37	1021.29	1021.22	1021.14	1021.38
	10	1021.05	1021.15	1021.24	1021.21	1021.25	1021.31	1021.38	1021.34	1021.30	1021.21	1021.12	1021.10	1021.22
	11	1020.94	1020.75	1020.69	1020.68	1020.60	1020.51	1020.47	1020.57	1020.55	1020.18	1020.08	1020.15	1020.51
	12	1020.07	1020.08	1020.08	1020.01	1020.10	1020.37	1020.34	1020.07	1020.03	1020.11	1020.23	1020.42	1020.16
	13	1020.36	1020.23	1020.15	1020.07	1020.09	1020.18	1020.30	1020.51	1020.73	1020.82	1020.75	1020.72	1020.41
	14	1020.87	1021.02	1021.04	1021.12	1021.17	1021.23	1021.48	1021.58	1021.48	1021.36	1021.29	1021.35	1021.25
	15	1021.38	1021.47	1021.58	1021.45	1021.02	1020.23	1019.87	1020.78	1021.71	1021.67	1021.42	1021.48	1021.17
	16	1021.36	1020.97	1020.90	1021.10	1021.11	1021.11	1021.32	1021.67	1021.94	1022.04	1022.16	1022.02	1021.47
	17	1021.78	1021.73	1021.81	1021.99	1022.23	1022.42	1022.55	1022.59	1022.58	1022.55	1022.53	1022.44	1022.27
	18	1022.34	1022.32	1022.35	1022.37	1022.38	1022.39	1022.33	1022.31	1022.39	1022.39	1022.40	1022.51	1022.37
	19	1022.70	1022.85	1022.82	1022.75	1022.72	1022.81	1022.93	1023.00	1023.08	1023.10	1023.14	1023.23	1022.93
	20	1023.34	1023.43	1023.43	1023.34	1023.38	1023.59	1023.66	1023.63	1023.63	1023.68	1023.77	1023.81	1023.56
	21	1023.79	1023.81	1023.80	1023.77	1023.78	1023.79	1023.86	1023.98	1024.00	1023.95	1024.03	1024.08	1023.88
	22	1024.11	1024.12	1024.07	1024.05	1023.98	1024.03	1024.22	1024.22	1024.08	1024.18	1024.40	1024.39	1024.15
	23	1024.27	1024.25	1024.24	1024.22	1024.19	1024.13	1024.17	1024.27	1024.21	1024.18	1024.25	1024.21	1024.21
24	0	1024.17	1024.19	1024.21	1024.19	1024.11	1024.13	1024.30	1024.36	1024.25	1024.20	1024.27	1024.20	1024.22
	1	1024.04	1024.02	1024.07	1024.11	1024.12	1024.12	1024.16	1024.15	1024.04	1023.94	1023.93	1023.92	1024.05
	2	1023.87	1023.82	1023.82	1023.85	1023.86	1023.84	1023.84	1023.85	1023.85	1023.86	1023.90	1023.91	1023.85
	3	1023.85	1023.85	1023.93	1023.96	1023.87	1023.79	1023.81	1023.86	1023.89	1023.95	1023.98	1023.96	1023.89
	4	1023.95	1024.01	1024.11	1024.19	1024.32	1024.41	1024.43	1024.47	1024.47	1024.41	1024.38	1024.40	1024.30
	5	1024.50	1024.60	1024.61	1024.53	1024.48	1024.54	1024.64	1024.72	1024.75	1024.74	1024.83	1024.99	1024.66
	6	1025.11	1025.24	1025.36	1025.41	1025.46	1025.54	1025.61	1025.68	1025.72	1025.72	1025.72	1025.77	1025.53
	7	1025.89	1026.01	1026.06	1026.11	1026.19	1026.27	1026.31	1026.32	1026.29	1026.30	1026.41	1026.47	1026.22
	8	1026.47	1026.46	1026.46	1026.50	1026.55	1026.59	1026.63	1026.64	1026.68	1026.67	1026.60	1026.58	1026.57
	9	1026.57	1026.57	1026.67	1026.75	1026.74	1026.72	1026.72	1026.70	1026.63	1026.62	1026.64	1026.66	1026.67
	10	1026.67	1026.64	1026.60	1026.55	1026.53	1026.55	1026.57	1026.59	1026.59	1026.57	1026.56	1026.55	1026.58
	11	1026.53	1026.51	1026.46	1026.37	1026.31	1026.28	1026.25	1026.27	1026.26	1026.19	1026.10	1026.06	1026.30
	12	1025.97	1025.89	1025.86	1025.84	1025.85	1025.83	1025.81	1025.78	1025.79	1025.82	1025.80	1025.79	1025.84
	13	1025.80	1025.80	1025.71	1025.61	1025.57	1025.55	1025.51	1025.48	1025.47	1025.48	1025.47	1025.43	1025.57
	14	1025.35	1025.31	1025.34	1025.38	1025.41	1025.44	1025.42	1025.35	1025.27	1025.21	1025.21	1025.25	1025.33
	15	1025.23	1025.19	1025.18	1025.18	1025.16	1025.18	1025.15	1025.08	1025.06	1025.10	1025.16	1025.18	1025.15
	16	1025.19	1025.22	1025.26	1025.28	1025.30	1025.35	1025.39	1025.41	1025.42	1025.43	1025.44	1025.45	1025.34
	17	1025.52	1025.61	1025.69	1025.73	1025.77	1025.85	1025.98	1026.06	1026.14	1026.20	1026.20	1026.27	1025.92
	18	1026.37	1026.39	1026.45	1026.58	1026.68	1026.78	1026.90	1027.00	1027.06	1027.10	1027.15	1027.15	1026.80
	19	1027.15	1027.16	1027.19	1027.26	1027.33	1027.40	1027.44	1027.48	1027.57	1027.62	1027.61	1027.60	1027.40
	20	1027.65	1027.67	1027.64	1027.59	1027.61	1027.71	1027.87	1028.04	1028.13	1028.12	1028.15	1028.20	1027.87
	21	1028.17	1028.11	1028.09	1028.05	1028.06	1028.16	1028.24	1028.20	1028.17	1028.25	1028.32	1028.36	1028.18
	22	1028.35	1028.28	1028.22	1028.19	1028.22	1028.28	1028.31	1028.30	1028.31	1028.24	1028.12	1028.03	1028.24
	23	1027.96	1027.92	1027.92	1027.88	1027.79	1027.71	1027.62	1027.61	1027.72	1027.84	1028.01	1028.14	1027.84

S.V.I.R.CO. Observatory - Pressure in hectoPascal – February 2019

day	hh	00_05	05_10	10_15	15_20	20_25	25_30	30_35	35_40	40_45	45_50	50_55	55_60	average
25	0	1028.12	1028.20	1028.32	1028.31	1028.28	1028.31	1028.35	1028.37	1028.40	1028.42	1028.40	1028.37	1028.33
	1	1028.37	1028.45	1028.41	1028.21	1028.19	1028.38	1028.42	1028.31	1028.22	1028.14	1028.14	1028.20	1028.28
	2	1028.24	1028.17	1028.06	1028.00	1027.94	1027.90	1027.86	1027.83	1027.78	1027.76	1027.75	1027.78	1027.92
	3	1027.83	1027.88	1027.92	1027.92	1027.89	1027.87	1027.87	1027.86	1027.85	1027.86	1027.84	1027.81	1027.87
	4	1027.77	1027.75	1027.78	1027.82	1027.84	1027.83	1027.81	1027.78	1027.76	1027.73	1027.68	1027.61	1027.76
	5	1027.55	1027.52	1027.49	1027.47	1027.47	1027.49	1027.50	1027.51	1027.54	1027.56	1027.54	1027.52	1027.51
	6	1027.49	1027.48	1027.49	1027.47	1027.46	1027.47	1027.49	1027.51	1027.49	1027.43	1027.38	1027.40	1027.46
	7	1027.45	1027.48	1027.50	1027.53	1027.48	1027.38	1027.36	1027.39	1027.41	1027.46	1027.51	1027.55	1027.46
	8	1027.57	1027.57	1027.57	1027.52	1027.42	1027.33	1027.28	1027.24	1027.21	1027.18	1027.20	1027.26	1027.36
	9	1027.26	1027.21	1027.17	1027.15	1027.15	1027.15	1027.16	1027.12	1027.02	1026.92	1026.83	1026.76	1027.07
	10	1026.72	1026.68	1026.61	1026.55	1026.48	1026.40	1026.32	1026.23	1026.12	1026.02	1025.91	1025.78	1026.32
	11	1025.67	1025.54	1025.41	1025.24	1025.03	1024.86	1024.75	1024.59	1024.38	1024.24	1024.14	1024.02	1024.82
	12	1023.94	1023.90	1023.93	1023.92	1023.82	1023.67	1023.60	1023.61	1023.64	1023.64	1023.54	1023.36	1023.71
	13	1023.22	1023.08	1022.89	1022.67	1022.44	1022.25	1022.16	1022.09	1021.97	1021.83	1021.73	1021.68	1022.33
	14	1021.58	1021.42	1021.33	1021.27	1021.15	1021.01	1020.95	1020.92	1020.72	1020.53	1020.43	1020.37	1020.97
	15	1020.38	1020.46	1020.47	1020.39	1020.33	1020.27	1020.19	1020.20	1020.27	1020.26	1020.39	1020.65	1020.35
	16	1020.86	1021.06	1021.22	1021.34	1021.46	1021.56	1021.67	1021.79	1021.86	1021.94	1022.04	1022.16	1021.58
	17	1022.20	1022.19	1022.16	1022.16	1022.33	1022.59	1022.78	1022.91	1022.97	1022.99	1023.01	1023.03	1022.61
	18	1023.05	1023.07	1023.09	1023.09	1023.15	1023.29	1023.44	1023.56	1023.67	1023.77	1023.83	1023.89	1023.41
	19	1023.89	1023.88	1023.92	1023.97	1024.00	1024.04	1024.08	1024.10	1024.12	1024.15	1024.21	1024.29	1024.05
	20	1024.35	1024.39	1024.44	1024.47	1024.46	1024.44	1024.46	1024.50	1024.63	1024.84	1025.00	1025.13	1024.59
	21	1025.28	1025.43	1025.56	1025.60	1025.56	1025.58	1025.72	1025.85	1025.94	1026.05	1026.14	1026.18	1025.74
	22	1026.21	1026.23	1026.20	1026.22	1026.34	1026.45	1026.48	1026.45	1026.39	1026.38	1026.44	1026.51	1026.36
	23	1026.58	1026.64	1026.69	1026.71	1026.69	1026.67	1026.68	1026.77	1026.93	1026.99	1026.95	1026.89	1026.77
26	0	1026.90	1026.90	1026.95	1027.05	1027.09	1027.04	1027.01	1027.10	1027.19	1027.18	1027.13	1027.12	1027.06
	1	1027.15	1027.20	1027.23	1027.25	1027.27	1027.23	1027.14	1027.10	1027.05	1027.02	1027.03	1026.99	1027.14
	2	1026.95	1026.94	1026.97	1027.00	1027.01	1026.99	1026.93	1026.85	1026.85	1026.86	1026.77	1026.73	1026.90
	3	1026.77	1026.76	1026.73	1026.73	1026.75	1026.75	1026.70	1026.65	1026.66	1026.65	1026.67	1026.71	1026.71
	4	1026.71	1026.68	1026.64	1026.66	1026.67	1026.61	1026.52	1026.47	1026.46	1026.47	1026.49	1026.46	1026.57
	5	1026.44	1026.50	1026.57	1026.56	1026.57	1026.63	1026.67	1026.63	1026.53	1026.51	1026.61	1026.65	1026.57
	6	1026.59	1026.60	1026.75	1026.93	1027.04	1027.13	1027.18	1027.21	1027.29	1027.33	1027.32	1027.33	1027.06
	7	1027.27	1027.16	1027.03	1026.92	1026.91	1026.92	1026.96	1027.03	1027.07	1027.00	1026.92	1026.89	1027.01
	8	1026.87	1026.87	1026.90	1026.91	1026.90	1026.88	1026.85	1026.81	1026.76	1026.68	1026.60	1026.58	1026.80
	9	1026.60	1026.68	1026.81	1026.87	1026.83	1026.77	1026.75	1026.71	1026.65	1026.59	1026.60	1026.65	1026.71
	10	1026.65	1026.68	1026.69	1026.66	1026.69	1026.70	1026.71	1026.75	1026.80	1026.81	1026.76	1026.76	1026.72
	11	1026.81	1026.82	1026.76	1026.68	1026.56	1026.41	1026.21	1026.02	1025.95	1025.93	1025.86	1025.82	1026.32
	12	1025.77	1025.66	1025.55	1025.48	1025.41	1025.31	1025.16	1025.01	1024.90	1024.82	1024.71	1024.62	1025.20
	13	1024.55	1024.53	1024.52	1024.50	1024.53	1024.55	1024.53	1024.52	1024.48	1024.39	1024.34	1024.37	1024.48
	14	1024.42	1024.43	1024.43	1024.47	1024.51	1024.50	1024.46	1024.41	1024.34	1024.31	1024.30	1024.26	1024.40
	15	1024.24	1024.20	1024.13	1024.04	1023.97	1023.96	1023.99	1023.99	1023.99	1023.97	1023.95	1023.93	1024.03
	16	1023.89	1023.89	1023.92	1023.93	1023.92	1023.92	1023.97	1023.99	1024.03	1024.05	1024.01	1023.95	1023.96
	17	1023.91	1023.92	1023.98	1024.06	1024.10	1024.09	1024.04	1024.01	1024.04	1024.08	1024.09	1024.09	1024.03
	18	1024.03	1023.98	1024.00	1024.00	1023.94	1023.88	1023.81	1023.72	1023.68	1023.68	1023.65	1023.62	1023.83
	19	1023.59	1023.54	1023.55	1023.58	1023.51	1023.41	1023.35	1023.35	1023.35	1023.28	1023.21	1023.16	1023.41
	20	1023.12	1023.10	1023.13	1023.16	1023.13	1023.09	1023.06	1023.04	1023.03	1023.00	1023.03	1023.08	1023.08
	21	1023.05	1023.02	1023.02	1022.98	1022.98	1022.97	1022.90	1022.84	1022.82	1022.78	1022.74	1022.71	1022.90
	22	1022.75	1022.80	1022.82	1022.83	1022.74	1022.57	1022.46	1022.49	1022.53	1022.48	1022.41	1022.36	1022.60
	23	1022.36	1022.46	1022.59	1022.64	1022.63	1022.61	1022.61	1022.60	1022.58	1022.57	1022.59	1022.69	1022.58

S.V.I.R.CO. Observatory - Pressure in hectoPascal – February 2019

day	hh	00_05	05_10	10_15	15_20	20_25	25_30	30_35	35_40	40_45	45_50	50_55	55_60	average
27	0	1022.86	1022.82	1022.77	1022.72	1022.64	1022.55	1022.45	1022.40	1022.39	1022.38	1022.36	1022.34	1022.54
	1	1022.34	1022.31	1022.21	1022.12	1022.10	1022.07	1022.06	1022.09	1022.07	1021.98	1021.92	1021.90	1022.10
	2	1021.84	1021.75	1021.67	1021.60	1021.58	1021.57	1021.53	1021.51	1021.51	1021.43	1021.31	1021.24	1021.54
	3	1021.23	1021.22	1021.20	1021.18	1021.19	1021.19	1021.17	1021.19	1021.19	1021.17	1021.13	1021.10	1021.18
	4	1021.11	1021.12	1021.10	1021.10	1021.12	1021.13	1021.12	1021.11	1021.10	1021.08	1021.06	1021.08	1021.10
	5	1021.12	1021.13	1021.11	1021.10	1021.09	1021.08	1021.09	1021.11	1021.12	1021.09	1021.12	1021.15	1021.11
	6	1021.16	1021.16	1021.20	1021.31	1021.42	1021.48	1021.53	1021.55	1021.53	1021.57	1021.63	1021.61	1021.43
	7	1021.55	1021.51	1021.47	1021.40	1021.36	1021.36	1021.38	1021.36	1021.34	1021.32	1021.28	1021.27	1021.38
	8	1021.27	1021.25	1021.22	1021.19	1021.19	1021.14	1021.06	1020.99	1020.93	1020.87	1020.81	1020.75	1021.06
	9	1020.69	1020.62	1020.55	1020.51	1020.52	1020.51	1020.50	1020.52	1020.54	1020.50	1020.45	1020.41	1020.53
	10	1020.39	1020.37	1020.38	1020.40	1020.42	1020.42	1020.39	1020.35	1020.29	1020.25	1020.21	1020.16	1020.34
	11	1020.12	1020.09	1020.06	1020.04	1020.00	1019.95	1019.87	1019.80	1019.75	1019.71	1019.71	1019.73	1019.90
	12	1019.71	1019.64	1019.59	1019.58	1019.57	1019.52	1019.43	1019.33	1019.24	1019.16	1019.09	1019.06	1019.41
	13	1018.98	1018.86	1018.75	1018.67	1018.63	1018.61	1018.61	1018.63	1018.59	1018.53	1018.52	1018.49	1018.65
	14	1018.47	1018.45	1018.38	1018.34	1018.34	1018.33	1018.30	1018.25	1018.22	1018.21	1018.21	1018.25	1018.31
	15	1018.35	1018.42	1018.45	1018.49	1018.55	1018.61	1018.69	1018.75	1018.78	1018.83	1018.90	1018.97	1018.65
	16	1018.98	1018.94	1018.93	1018.96	1019.01	1019.06	1019.15	1019.26	1019.40	1019.54	1019.65	1019.77	1019.22
	17	1019.92	1020.06	1020.13	1020.19	1020.31	1020.49	1020.63	1020.73	1020.84	1020.94	1021.03	1021.11	1020.53
	18	1021.17	1021.24	1021.31	1021.34	1021.28	1021.19	1021.18	1021.33	1021.53	1021.59	1021.60	1021.61	1021.36
	19	1021.63	1021.68	1021.72	1021.74	1021.75	1021.75	1021.80	1021.84	1021.85	1021.88	1021.94	1021.98	1021.80
	20	1022.02	1022.08	1022.15	1022.21	1022.25	1022.27	1022.24	1022.16	1022.12	1022.15	1022.20	1022.21	1022.17
	21	1022.22	1022.28	1022.34	1022.35	1022.35	1022.38	1022.40	1022.39	1022.38	1022.35	1022.36	1022.39	1022.35
	22	1022.39	1022.35	1022.32	1022.32	1022.37	1022.41	1022.42	1022.45	1022.48	1022.50	1022.54	1022.57	1022.43
	23	1022.57	1022.59	1022.64	1022.68	1022.69	1022.73	1022.78	1022.81	1022.82	1022.84	1022.88	1022.89	1022.74
28	0	1022.83	1022.83	1022.82	1022.80	1022.83	1022.90	1022.92	1022.92	1022.95	1022.97	1022.98	1023.01	1022.90
	1	1023.07	1023.12	1023.16	1023.17	1023.16	1023.13	1023.08	1023.05	1023.04	1023.02	1023.00	1022.94	1023.08
	2	1022.89	1022.91	1022.92	1022.91	1022.94	1022.95	1022.97	1023.01	1023.05	1023.06	1023.05	1023.03	1022.98
	3	1023.06	1023.11	1023.14	1023.17	1023.19	1023.21	1023.24	1023.27	1023.29	1023.28	1023.23	1023.21	1023.20
	4	1023.19	1023.17	1023.19	1023.21	1023.22	1023.23	1023.23	1023.21	1023.17	1023.16	1023.15	1023.12	1023.19
	5	1023.09	1023.06	1023.03	1023.04	1023.03	1023.04	1023.05	1023.05	1023.06	1023.09	1023.10	1023.11	1023.06
	6	1023.12	1023.16	1023.22	1023.28	1023.32	1023.36	1023.40	1023.40	1023.41	1023.44	1023.47	1023.50	1023.34
	7	1023.57	1023.61	1023.64	1023.69	1023.69	1023.67	1023.67	1023.67	1023.69	1023.69	1023.66	1023.66	1023.66
	8	1023.65	1023.67	1023.70	1023.72	1023.70	1023.64	1023.55	1023.46	1023.45	1023.47	1023.41	1023.29	1023.56
	9	1023.21	1023.16	1023.10	1023.04	1023.01	1023.05	1023.07	1023.07	1023.06	1023.07	1023.10	1023.13	1023.09
	10	1023.12	1023.07	1023.01	1022.97	1022.94	1022.93	1022.94	1022.93	1022.86	1022.79	1022.73	1022.70	1022.91
	11	1022.66	1022.59	1022.50	1022.44	1022.43	1022.40	1022.36	1022.32	1022.26	1022.17	1022.03	1021.88	1022.34
	12	1021.79	1021.74	1021.66	1021.61	1021.59	1021.57	1021.50	1021.41	1021.34	1021.29	1021.25	1021.14	1021.49
	13	1021.07	1021.05	1020.98	1020.90	1020.82	1020.76	1020.71	1020.67	1020.61	1020.57	1020.54	1020.52	1020.76
	14	1020.50	1020.46	1020.38	1020.35	1020.39	1020.42	1020.42	1020.45	1020.45	1020.38	1020.35	1020.36	1020.41
	15	1020.37	1020.35	1020.33	1020.31	1020.27	1020.25	1020.21	1020.13	1020.05	1020.01	1019.96	1019.90	1020.18
	16	1019.83	1019.77	1019.67	1019.60	1019.56	1019.54	1019.53	1019.53	1019.54	1019.60	1019.66	1019.66	1019.62
	17	1019.64	1019.64	1019.66	1019.65	1019.61	1019.52	1019.44	1019.43	1019.52	1019.64	1019.69	1019.68	1019.59
	18	1019.67	1019.66	1019.62	1019.60	1019.63	1019.69	1019.71	1019.68	1019.66	1019.64	1019.62	1019.57	1019.65
	19	1019.56	1019.60	1019.67	1019.71	1019.68	1019.65	1019.65	1019.68	1019.69	1019.67	1019.67	1019.71	1019.66
	20	1019.72	1019.73	1019.75	1019.71	1019.62	1019.55	1019.50	1019.47	1019.46	1019.43	1019.41	1019.40	1019.56
	21	1019.38	1019.36	1019.39	1019.43	1019.43	1019.41	1019.41	1019.40	1019.33	1019.27	1019.20	1019.17	1019.35
	22	1019.13	1019.04	1018.97	1018.87	1018.76	1018.70	1018.71	1018.71	1018.70	1018.67	1018.62	1018.60	1018.79
	23	1018.57	1018.51	1018.49	1018.46	1018.41	1018.35	1018.30	1018.27	1018.26	1018.25	1018.24	1018.23	1018.36

