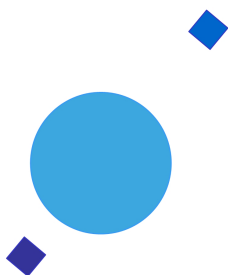


INAF



ISTITUTO NAZIONALE DI ASTROFISICA
NATIONAL INSTITUTE FOR ASTROPHYSICS

SVIRCO Prompt Report: February 2018

Francesco Re

INAF/IAPS-2018-03

March 2018

ISTITUTO DI ASTROFISICA E PLANETOLOGIA SPAZIALI

AREA DI RICERCA ROMA - TOR VERGATA

Via del Fosso del Cavaliere, 100 - 00133 Roma (ITALIA)

SVIRCO Prompt Report: February 2018

Francesco Re

*IAPS - INAF, Area di Ricerca Roma - Tor Vergata
Via del Fosso del Cavaliere, 100 - 00133 Roma, Italy,*

Abstract

The pressure corrected intensity of the nucleonic component, produced by primary cosmic rays and recorded in February 2018 by the Neutron Monitor of SVIRCO-Rome (present geographic position: 41.86° N - 12.47° E; altitude about s.l.), is reported in prompt form together with the barometric pressure data.

SVIRCO OBSERVATORY

During the 1st International Geophysics Year (1957) an international network of “ground-based detectors” for continuous cosmic ray measurements was world-wide established.

The cosmic ray station of Rome joined this network with the purpose to study the time variations of primary cosmic rays (**Studio Variazioni Intensità Raggi Cosmici: S.V.I.R.CO**) and their modulation in the heliosphere.

From July 1957 to April 1997, the SVIRCO Station (now Observatory) performed uninterrupted measurements at the Physics Department “G. Marconi” of “La Sapienza” University of Rome (41.90° N, 12.52° E, altitude about 60 m a.s.l.)

In May 1997 the neutron monitor was moved to the Physics Department “E. Amaldi” of “Roma Tre” University. Since then it has been continuously running at the new location (41.86° N, 12.47° E, altitude about 0 m a.s.l.).

The SVIRCO Observatory (INAF/IAPS-UNIRomaTre collaboration) is housed in a reserved building provided with a double air-conditioning system. The inner temperature is permanently restrained in a range of 23°-26° C, meanwhile the relative humidity is kept below 57%. Either the environmental parameters are continuously checked and recorded by digital sensors.

On January 1, 2005 three counters were added to the detector. This upgrade, from 17 to 20 NM-64, made the SVIRCO neutron monitor still consist of 5 sections but modified its geometry. Actually the new arrangement has been composed of three 3-counter, one 5-counter and one 6-counter units. The enhancement improved not only the overall counting rate of 15.6 % (January 2005) but, as a result, also the statistical quality of the recorded data.

On July 3, 2017 six counters experienced failure and were removed from the detector until 24 July. On 25 July 2017 a number of 2 counters was added to the detector up to a total of 16 counters. The new arrangement has been composed of three 3-counter, one 5-counter and one 2-counter units. The overall counting rate has decreased of about 20% (July 2017) with a lower statistical quality of the recorded data.

Each of the 16 BF₃ proportional counters (BP-28 type) is equipped with a smart amplifier/discriminator circuit complete with a spectrum stabilizer. This new electronic unit, developed in our laboratory, holds firmly the pulse height spectrum of the amplifier output (within a range of more than 150 volts around the operating voltage), providing the counter with a great immunity against high voltage variations.

Anyway, systematic and exhaustive tests of the counters are regularly performed. The output pulses of the amplifiers, discriminated by the threshold gates, are collected and stored into a multi-channel analyzer. The analysis of the height distribution (spectrum) of the amplifier pulses coinciding with the discriminator ones, is essential to verify the long term efficiency of each counter together with the amplifier gain and the discriminator threshold level.

As well as the amplifier/discriminator circuits, a large part of the electronic instrumentation operating in the Observatory was designed and realized in our laboratory together with the software for data acquisition and pre-elaboration.

In order to improve the reliability of the recorded data and to prevent measurement breakdowns, two independent systems perform contemporary the data acquisition. Each system is remotely controlled by a dedicated computer and is timed by a high stability quartz clock and/or a GPS receiver. One equipment runs according to a timing of 1 minute and fulfils the acquisition of the 16 counters separately. The other one records the individual 5-minute counting rate of each detector section in addition to the rates of the overall multiplicity, sorted into separated counting channels (from 1 to greater than 8).

A special care is devoted to the atmospheric pressure measurements; thus they are carried out by means of not less than three barometers at the same time. These instruments (achieving a resolution up to 0.01 hPa), are constantly checked out each other for the best measuring accuracy and reliability. Furthermore, the devices in use are equipped with different types of transducer such as vibrating cylinder, force balance and quartz, therefore, throughout their different behaviours, it is possible to point out the occurrence of any long-term drift and eventually to re-calibrate the instruments themselves.

DATA PRESENTATION

In a preliminary step, the intensity data, of the secondary nucleonic component of cosmic rays, detected at SVIRCO Observatory, were corrected for pressure variations at a reference level of 1009.25 hPa with an attenuation coefficient of 0.70% / hPa.

The five-minutes counting rates, of the examined month, are reported in tabular form together with the hourly normalized data, which provide a continuous data set for long-term analysis.

The normalization was evaluated as percentage of the counting rate average of January-February 1997, when the Monitor operated at the previous location of "La Sapienza" University. The reference counting rate level (100%), computed for such period, is equal to 554946 counts/hour.

The atmospheric pressure data (in hectoPascal) are also collected in a monthly table which presents the five-minutes averages and the hourly ones.

The hourly averages of the normalized intensity and pressure, plotted in monthly graphs, are reported too.

CONDITIONS FOR SVIRCO DATA USE

You are welcome to use neutron monitor data of SVIRCO, IAPS/INAF-UNIRomaTre collaboration, under the following conditions:

-You agree to acknowledge our financial supports in any published use of the data.

Example: "SVIRCO NM is supported by the INAF - UNIRomaTre collaboration"

-You are kindly requested to send a copy of any published work derived from our data to:

Dr. Monica Laurenza
Head of SVIRCO Observatory & TPL
Istituto di Astrofisica e Planetologia Spaziali - Area di Ricerca Tor Vergata
Via del Fosso del Cavaliere, 100 00133 Roma - Italy,

monica.laurenza@iaps.inaf.it



S.V.I.R.CO. Observatory

Rome

Italy



INAF/UNIRomaTre		S.V.I.R.CO. Observatory - Pressure Corrected Data – February 2018											20 NM-64	
day	hh	00_05	05_10	10_15	15_20	20_25	25_30	30_35	35_40	40_45	45_50	50_55	55_60	h-norm
1	0	38410	38217	37871	38302	37936	37967	38391	38140	38005	37907	38455	38162	100.703
	1	38149	39267	37707	38028	38547	38366	38411	38369	37765	38604	38565	38087	101.170
	2	37918	38258	38232	38141	38415	38069	38398	38306	38564	38130	37734	38433	100.892
	3	37487	38262	38348	38741	38380	38069	38214	38654	38097	38489	38169	38170	100.998
	4	38488	38475	37900	37599	38323	38340	37973	38350	38129	38325	37648	37640	100.582
	5	38017	38510	38538	38037	38345	38010	38058	38424	38438	38214	38270	38141	100.981
	6	38103	38748	38358	37855	38546	38745	37807	38561	38239	38247	38710	38624	101.320
	7	38652	37739	38638	38030	38234	38769	38468	38491	38148	38296	37795	38017	101.041
	8	38776	38073	38813	38479	37975	38295	37579	37958	37739	38076	38391	38368	100.875
	9	38615	37996	38271	38447	37840	37611	38172	38180	37842	38202	37896	38549	100.677
	10	38285	37922	38038	38800	37728	37602	37692	38167	38487	38165	38357	38582	100.722
	11	37987	38184	38664	38266	38608	37706	38802	38195	37956	37987	38252	38072	100.909
	12	38497	37823	38344	37711	38818	38135	38038	37943	38460	38665	38454	37834	100.919
	13	38386	38234	37957	38182	38357	38508	37934	38315	38402	38053	38156	38335	100.940
	14	38361	37962	38174	37789	38353	38093	38569	38150	38071	37786	38196	37716	100.588
	15	37872	38271	38025	38388	38543	37815	38600	38300	38690	38317	38151	38486	101.082
	16	38260	37830	38247	38290	38115	38312	37959	38190	38176	38108	38085	38162	100.701
	17	37884	38699	37883	38019	38096	38527	38938	38121	37762	38111	38225	38416	100.910
	18	38115	38903	38028	37647	38040	38892	38003	37878	38060	37990	38435	38238	100.810
	19	38351	38059	38513	38696	38268	38600	38407	37763	37951	38191	37614	38081	100.869
	20	38338	38267	38012	37783	38017	38808	38402	38465	38130	38270	38271	38360	101.007
	21	38113	38574	38189	38343	38260	38095	38587	38537	38992	38437	37835	37939	101.178
	22	38582	37990	38289	38029	37766	37698	37891	38666	38248	38308	37819	38123	100.630
	23	38114	37982	38605	38937	38253	38661	38559	38085	38248	38047	38366	38727	101.329
2	0	38393	38667	38143	38248	37997	37968	37633	38233	38655	38177	38490	38208	100.930
	1	38868	38652	38021	38553	38150	38329	38495	37994	38271	38331	38271	37943	101.173
	2	38274	38138	38183	38348	38503	37889	38517	38323	37983	38616	38670	38169	101.116
	3	37950	38099	38060	38302	38430	38069	38391	38530	38303	38268	38844	38287	101.098
	4	38522	38525	38176	38500	38047	37974	38497	37803	38112	38240	37716	39014	101.008
	5	38291	38436	38283	38256	37888	37774	38412	38268	38455	38441	38176	38310	100.978
	6	38235	38092	38426	39100	38083	37965	38581	38604	38026	38907	37864	38562	101.298
	7	38750	38116	38605	38315	38212	38432	38513	38201	38324	38048	38253	38239	101.202
	8	38593	37819	37904	37849	38489	38394	38423	37958	38535	38238	37814	38200	100.808
	9	37908	38060	38104	38379	38049	37664	38121	38031	38717	38467	37783	38301	100.668
	10	37846	38410	37872	38053	38179	38271	38230	38291	38340	38238	38191	37717	100.681
	11	37864	37832	38033	38762	38381	38069	38517	38169	37854	37994	37663	38039	100.579
	12	37944	37820	38487	37984	38323	38625	38077	38000	38332	37838	38416	38553	100.848
	13	38097	38275	38593	38232	38112	37857	38223	38034	38219	37695	38330	37600	100.599
	14	38691	37664	37852	38134	37975	38284	38538	38232	37502	38515	38600	38681	100.907
	15	37758	38044	37560	38367	38150	38007	37968	38159	38092	37613	38043	38068	100.282
	16	38019	38481	38194	37818	38459	38110	38137	37240	37877	38096	38469	38437	100.614
	17	38599	37951	38070	37956	38320	38433	38013	38302	38068	38433	38318	38062	100.875
	18	38029	37964	37766	38171	38458	38420	38295	37882	38080	38118	37915	38250	100.617
	19	38358	38292	38435	38762	38147	38098	38640	37488	38116	38350	37786	38289	100.927
	20	38242	38485	37824	38326	38346	38595	37799	38488	38600	38253	37895	38466	101.051
	21	37976	38549	38111	38207	38066	38682	37476	38088	38024	38437	38108	38076	100.716
	22	37774	38295	37600	38260	38501	38398	38391	38440	38470	37287	38217	38639	100.820
	23	38371	37973	37944	37892	38374	38041	37780	37813	38009	37972	42872	40768	102.056

INAF/UNIRomaTre		S.V.I.R.CO. Observatory - Pressure Corrected Data – February 2018											20 NM-64	
day	hh	00_05	05_10	10_15	15_20	20_25	25_30	30_35	35_40	40_45	45_50	50_55	55_60	h-norm
3	0	38233	38357	38205	37887	38641	38392	37702	38310	37908	38653	38445	38115	100.926
	1	38080	38077	38844	38557	38127	38293	38202	38122	38374	37961	38368	38162	101.017
	2	37938	38209	38166	38105	38233	38076	37857	38218	38319	38632	38194	38043	100.759
	3	38143	38370	38459	38517	38437	38195	38503	38378	37809	38130	38519	38603	101.214
	4	38288	38295	38421	38249	38371	38019	38371	38054	38262	38664	38194	38681	101.171
	5	38539	38050	38293	38512	38403	37986	38206	38082	38723	37972	38263	37993	100.985
	6	38594	37915	38363	38264	38379	38123	38363	38149	38079	38131	38352	38792	101.091
	7	37713	38112	38153	38262	38396	38375	38328	38766	38465	38240	37844	38722	101.063
	8	38489	37946	38269	38130	37980	38053	37994	38430	38421	38384	38460	38683	101.033
	9	38319	37794	38512	38815	38586	38121	38064	38248	39061	38181	38530	38014	101.255
	10	38088	38718	38197	38218	38715	38826	38212	37887	37512	38818	38445	38222	101.169
	11	38357	38212	38296	38332	38267	38198	38188	38379	38568	38724	38491	38064	101.217
	12	38503	38292	38079	38109	38870	38580	38398	38841	38392	38170	38449	37942	101.337
	13	38723	38175	37963	37819	38154	37828	38123	38346	38009	38268	38579	38331	100.830
	14	38288	37992	37856	38265	38038	38874	38345	38570	38517	37871	38143	38520	101.041
	15	37934	38091	38306	37749	37836	38042	37969	37947	38354	37724	38605	38128	100.470
	16	38383	38533	37760	38117	38260	37912	38263	38392	38003	38223	38527	38410	100.932
	17	38285	38308	38386	38165	38869	38681	38590	38885	38009	38344	38177	38419	101.446
	18	38188	38007	38021	38570	37699	38004	38418	38077	38097	38351	38253	37828	100.653
	19	38039	38641	38471	38112	38234	37975	38348	38089	37463	38198	38010	38707	100.823
	20	38658	37873	38383	38239	38288	38234	38482	38840	38261	38100	38296	38211	101.170
	21	38711	38336	38502	38694	38156	37959	38288	38740	38405	38001	38345	38454	101.330
	22	38336	37983	38167	37800	38190	38300	38128	38367	37719	38253	37922	38251	100.632
	23	38726	38192	38629	38633	38948	39031	38277	38325	38230	38539	37865	38020	101.512
4	0	38509	38197	38110	37943	38691	38542	38220	38762	38082	37727	37974	38326	100.999
	1	38414	38205	38044	38827	38121	38515	37842	38147	37989	38563	38679	38616	101.191
	2	38327	37798	38738	38636	38240	38177	38497	37895	38196	38289	38402	38424	101.116
	3	38461	38649	37924	37884	38787	37983	37919	38133	38256	37751	38233	38619	100.892
	4	38027	38268	38752	38085	38295	38054	38442	38044	38565	37815	38323	37463	100.790
	5	38335	37580	38670	37996	38231	38239	38258	38550	37919	37930	38169	38411	100.823
	6	38005	38724	38204	37990	38281	38823	38144	38147	38059	38225	38546	38540	101.131
	7	38199	38207	38695	37778	37897	38282	38309	37987	38452	37890	38355	38466	100.874
	8	38078	38098	38509	38282	38868	38272	37969	38228	38964	38277	37918	38142	101.113
	9	38278	38275	38236	38533	38513	37614	38274	39034	38746	38578	38280	38751	101.444
	10	38435	37970	37936	37695	37761	38675	38114	38485	38179	38024	38380	38492	100.792
	11	38031	38086	38287	38309	38386	38349	38192	38320	38333	37886	38124	38261	100.884
	12	38111	38494	37962	37612	38017	38150	38204	38548	38039	37652	38164	38271	100.589
	13	38015	38195	38292	37970	38008	38016	38150	38064	38561	38176	37794	38450	100.692
	14	38571	38198	38378	38541	38227	37837	38468	38357	38265	38517	38198	38233	101.154
	15	38272	38221	37952	38491	38153	37832	37525	37938	38123	38500	38201	37981	100.582
	16	37675	38099	37983	38828	38228	37965	37997	38293	37722	38106	38300	37852	100.550
	17	38172	38011	38268	38377	37685	37874	38346	37883	38203	38104	37726	37973	100.457
	18	37965	37919	38260	37641	37965	38343	38299	38207	38227	37594	37963	37985	100.401
	19	37728	37996	38746	38056	38278	37874	37883	37778	38036	38338	37728	38212	100.464
	20	38564	37978	37594	38228	37595	38252	38213	37956	38274	38055	38575	37971	100.596
	21	37599	38017	38043	37795	37521	38804	38474	37822	37516	38060	37552	37993	100.143
	22	37733	37803	37708	38028	38146	38442	37673	38007	37801	37582	38336	38147	100.189
	23	38062	38230	38056	37672	38230	37955	38523	37857	37911	37703	38385	38055	100.460

INAF/UNIRomaTre		S.V.I.R.CO. Observatory - Pressure Corrected Data – February 2018											20 NM-64	
day	hh	00_05	05_10	10_15	15_20	20_25	25_30	30_35	35_40	40_45	45_50	50_55	55_60	h-norm
5	0	37530	38017	38268	38112	38191	37803	38393	37945	38283	37818	38868	38231	100.646
	1	38158	37580	38060	38675	37769	38049	38464	38762	37443	38013	38344	37976	100.604
	2	38227	38335	38245	37927	37569	38235	38121	38310	38323	38106	38399	38152	100.749
	3	38161	38258	38197	37952	37900	38378	37778	38624	38018	37864	38756	38076	100.751
	4	38370	38133	38166	38145	38524	37686	38262	37804	38187	38349	38648	38245	100.874
	5	38335	37956	38012	38875	38405	38254	37873	38792	37789	37753	38160	37867	100.775
	6	38313	37885	38246	38319	38476	38476	38215	38474	38569	38060	38608	38476	101.226
	7	38239	38166	38554	38565	38406	37800	38433	37836	38125	38122	37989	38133	100.841
	8	38130	38207	37886	38549	38462	38437	38520	38800	38213	38556	38382	38502	101.342
	9	38464	38573	38306	38241	38293	38396	38197	38048	38744	38138	38095	38365	101.169
	10	38258	37907	38935	37276	38305	38265	38402	37823	38257	38198	38012	38253	100.736
	11	38039	38408	38153	38303	38780	38487	38068	38094	38032	38135	38114	37715	100.832
	12	38515	38603	38153	38352	37959	37974	38229	38139	38328	38500	38844	38511	101.224
	13	38919	38207	38349	38730	38154	38096	38534	38524	38385	38409	37833	38630	101.369
	14	39039	38545	38370	38799	38585	37952	38665	37980	38186	38335	38930	38501	101.615
	15	38491	38296	38119	38103	38799	38569	38436	38003	37922	38200	38244	38378	101.104
	16	38214	38503	38036	37778	37552	38298	37754	38368	38296	37764	38288	38099	100.529
	17	38138	38389	38471	38102	38107	37660	37742	38580	37502	37678	37610	38373	100.398
	18	38364	38003	37931	38523	38146	38387	38052	37991	37875	38003	38346	38684	100.827
	19	38223	37975	38092	38072	38466	37905	38191	38373	37525	38112	37811	37738	100.426
	20	37580	38140	37878	38016	37840	37893	38157	38274	38561	37645	37889	37993	100.290
	21	38007	37886	38041	37705	37235	37967	38378	38592	37977	38450	38410	37820	100.423
	22	37919	38134	38228	37706	38126	37953	38018	37481	38120	37973	37546	38083	100.163
	23	37159	37989	37713	38701	37843	37994	38183	37836	37715	38185	38427	37935	100.250
6	0	37443	37587	38292	37778	37612	37963	36942	38025	38367	38045	37399	38391	99.834
	1	38384	37967	38346	38130	38190	38167	38275	38095	37812	37526	38239	38488	100.676
	2	37697	37594	37853	38199	38191	38326	37906	37858	38206	37822	38567	38125	100.396
	3	38607	37734	38310	38378	38423	38156	38072	38038	37927	37762	38075	38706	100.802
	4	38620	38188	38377	38720	38010	38010	38276	38940	37795	38206	37631	38004	100.930
	5	38755	38159	38234	38283	38035	38411	38586	37914	38333	38957	38875	38744	101.483
	6	38499	38239	38514	38730	37720	38296	38347	38498	38469	38421	38042	38581	101.278
	7	38396	38147	38490	38525	38536	38541	38384	38984	38204	38394	37881	38386	101.391
	8	38243	37570	38225	38138	38650	38183	38446	38328	38653	38511	38141	38324	101.072
	9	38418	38870	38596	38252	38378	38029	38044	38260	38178	38348	37891	38231	101.088
	10	38479	38844	38341	38509	37997	37782	37511	38273	38267	38426	38049	37600	100.777
	11	38283	38604	38590	37957	38159	37915	38732	38344	38304	38658	37934	38615	101.221
	12	38070	38379	37890	38326	37941	37899	38086	38586	37969	37941	38389	37539	100.543
	13	38268	38182	38224	38309	38528	37987	38375	37877	38360	38465	38649	37806	100.987
	14	38058	38493	38451	38198	37966	37900	38210	37906	38216	37515	38561	38140	100.675
	15	38005	38677	38367	38576	38581	38092	38042	37890	37674	38229	37819	38145	100.781
	16	37910	37547	38240	38522	38180	38325	38423	37939	38138	39011	38220	38322	100.931
	17	38153	38099	37751	37861	38304	37292	37972	38723	38193	37836	38043	37794	100.325
	18	38128	37774	38418	38362	38073	38137	38514	37625	37566	38038	38217	37857	100.476
	19	37941	37639	38422	38139	37769	38497	37601	37722	38677	38137	38266	38358	100.577
	20	38042	38430	38367	38224	38168	38334	38035	38498	37948	37782	38122	37796	100.704
	21	38620	37581	38534	38447	38585	38046	38157	37628	38459	38003	37844	38695	100.892
	22	37975	38422	38330	38486	38074	37982	37791	38854	38193	38079	38288	37938	100.851
	23	38048	38496	38183	38397	38348	38137	37936	37978	38253	38332	37999	37538	100.681

INAF/UNIRomaTre		S.V.I.R.CO. Observatory - Pressure Corrected Data – February 2018											20 NM-64	
day	hh	00_05	05_10	10_15	15_20	20_25	25_30	30_35	35_40	40_45	45_50	50_55	55_60	h-norm
7	0	38078	38365	38145	38433	38349	38093	37829	37836	37747	37798	37691	38179	100.433
	1	38008	37866	38000	37912	37936	37655	37796	37960	38326	38539	38268	37912	100.360
	2	38076	38437	38045	37854	38004	38264	38429	38511	38222	38375	38162	38296	100.910
	3	39082	38596	38135	38195	38364	38360	38105	38067	38405	38256	38861	38313	101.362
	4	38803	38657	38580	38239	38485	39121	38239	38659	38661	38648	38268	38253	101.775
	5	38188	38033	38813	38222	38133	37800	38385	38145	38659	38263	38718	38436	101.155
	6	38880	38550	38716	38459	39127	38407	38381	38558	38047	38437	39210	38361	101.889
	7	37991	38086	38732	38357	38233	38624	38591	38220	38364	38222	38243	38380	101.210
	8	38449	38495	38061	38849	38660	38496	38678	38681	38378	38850	38067	38834	101.750
	9	38148	38518	37823	38383	38842	38470	38512	38012	38710	38448	38446	38781	101.440
	10	38276	38262	38749	38645	38600	38444	38083	38949	38813	38436	38116	37969	101.495
	11	38747	38546	37981	38349	38506	38884	38452	38564	38839	38371	38240	38511	101.638
	12	38612	38148	38488	38636	38567	39095	38301	38172	38788	38150	38312	38115	101.504
	13	38557	38281	38365	37901	37992	38474	38562	38048	38314	37927	37958	38613	100.978
	14	38244	38316	37763	38174	37821	38758	38536	38475	38317	38923	38156	38395	101.173
	15	38285	38101	38211	38613	38460	37795	38581	38244	38415	38258	38336	38206	101.091
	16	37965	38215	38092	37924	38273	38365	37956	38121	38251	38326	38582	37635	100.695
	17	38019	37716	37434	37774	38234	38580	38241	37961	38261	38414	38474	38147	100.595
	18	38189	38115	38219	37724	37736	38483	38000	38035	38058	38444	38350	38797	100.793
	19	38393	38468	38466	38152	38209	38026	37901	38266	38356	37830	38351	38011	100.855
	20	38239	37729	37788	38158	38157	37812	38181	37936	37836	38012	38268	37861	100.315
	21	38004	37963	37572	37848	38060	38407	38158	38277	38118	38273	38116	37326	100.346
	22	38280	37957	38536	37927	38319	38113	37489	37694	38570	38148	38424	38252	100.696
	23	38688	37952	38235	38103	37907	38356	37591	38677	38207	38278	39076	38405	101.084
8	0	38628	38344	38089	38546	38185	38118	38307	38086	38522	38036	38854	38203	101.195
	1	37921	38055	38527	38333	37815	38426	37828	38003	38108	37970	38459	38420	100.730
	2	38012	38285	38328	38247	38015	37832	38412	38268	38134	38451	37736	37939	100.685
	3	38331	38274	38766	38487	38304	38208	37881	38580	38493	37818	38254	37951	101.056
	4	38023	38313	38035	38104	37995	38138	38506	38400	38202	37977	38617	38180	100.868
	5	38063	37567	37925	38176	38027	38138	38609	38468	38721	37915	38682	38373	100.906
	6	37983	38538	38057	38673	38533	38365	38562	38590	38431	38424	37928	38193	101.261
	7	38713	38458	38588	38720	38810	38670	37981	38197	38131	38299	37741	38484	101.375
	8	38176	38351	37896	38596	38677	37756	38372	38524	38523	38382	38039	38133	101.074
	9	38192	38168	38634	38169	38723	38113	38201	38305	37458	38677	38377	38833	101.167
	10	38365	37677	38607	38365	38030	38191	38282	38451	38186	37922	37816	38621	100.873
	11	38586	37605	38535	38308	38015	38078	37783	38384	38660	38269	38541	38379	101.012
	12	38407	38407	38322	38180	38315	38445	38328	37886	37974	38071	38128	37786	100.815
	13	37813	37912	37554	38356	39002	38271	38470	37797	37974	38044	38297	38093	100.668
	14	38758	38209	38624	38518	38641	38606	37891	38110	38059	38008	38257	38575	101.256
	15	37713	38518	38660	38141	38274	38102	38612	38045	38172	38092	38365	38032	100.920
	16	38544	38079	38507	38248	38234	38092	38243	38746	38402	38214	38599	38329	101.252
	17	38254	38298	37727	38337	38003	38598	38046	37740	37485	38100	38489	38261	100.614
	18	38352	38097	38142	38424	38011	38445	38378	38130	38519	38326	38785	38354	101.192
	19	38095	38632	38136	38112	38057	38611	39286	38262	38186	38309	38131	37844	101.126
	20	38693	37622	38062	38181	38316	37991	38615	38378	38553	38884	38461	38199	101.190
	21	38668	38488	38666	38099	37715	38897	38132	37857	37693	38361	38058	38054	100.911
	22	38000	38780	38245	38895	38472	38341	37871	38112	38108	38413	38527	38192	101.190
	23	38010	38191	38145	37535	38110	37991	38007	37994	37768	38215	37777	37818	100.223

INAF/UNIRomaTre				S.V.I.R.CO. Observatory - Pressure Corrected Data – February 2018										20 NM-64	
day	hh	00_05	05_10	10_15	15_20	20_25	25_30	30_35	35_40	40_45	45_50	50_55	55_60	h-norm	
9	0	38282	38198	38427	37721	38003	38224	38261	38171	38140	38186	38285	38241	100.789	
	1	38262	38407	38395	38407	37847	38077	38457	38480	37664	37944	38599	38520	100.993	
	2	38511	38633	38252	38444	37702	37968	38137	38348	38180	38490	37964	38621	101.035	
	3	37926	37938	38609	38165	38065	38376	38329	37961	37822	38266	38498	38491	100.858	
	4	38515	38090	38505	38074	38659	38644	38159	38108	38815	38525	38237	38462	101.375	
	5	38305	38787	38040	38134	38320	38434	38255	38690	38315	37958	38189	38623	101.211	
	6	38109	38324	38074	38756	38359	38590	37874	38415	38105	38814	38155	38551	101.228	
	7	38788	38016	38386	38227	38636	38141	38182	38572	38179	38605	38120	38050	101.179	
	8	38646	37837	38445	38785	38393	38429	38459	38480	38741	38314	38324	38363	101.467	
	9	37989	38820	38267	39052	38619	38072	37872	38317	38548	38116	38055	38344	101.216	
	10	38972	38065	38554	38358	38214	38247	38346	38392	38924	37815	38191	38340	101.292	
	11	38786	38192	37855	38589	38314	37841	38844	38841	38483	38172	37914	38424	101.256	
	12	38586	38515	38375	38336	38547	38921	39278	38270	38412	37891	38520	38101	101.585	
	13	38375	38372	38171	37987	37946	38540	38592	37910	38651	38734	38617	38047	101.188	
	14	38167	38432	38438	38475	38399	38193	38311	38464	38343	38332	38667	38306	101.316	
	15	38177	38506	39170	37616	37791	38160	38647	37750	38360	37973	38549	38291	100.978	
	16	37872	38338	38662	37787	37776	38609	38041	37602	38052	38311	38339	38703	100.780	
	17	38571	38564	38782	38971	38274	38767	38983	38311	38429	38318	38454	38726	101.893	
	18	38036	38740	38033	38711	38622	37952	38401	37994	38633	38410	38238	38575	101.276	
	19	38345	38407	38368	38072	38399	38242	38669	38261	38529	38332	38019	38846	101.308	
	20	38303	38570	38018	38287	38142	38282	38448	38092	38394	38102	37941	38550	101.008	
	21	38147	38901	38510	38405	38312	38366	38373	38664	38481	38303	38589	38565	101.556	
	22	38178	38597	38450	38063	38058	38319	38677	37984	37814	38514	38850	38421	101.184	
	23	38758	38332	38308	38428	38460	37918	38167	37945	37985	38839	38269	38214	101.117	
10	0	38224	38668	38560	38313	38730	37801	38422	37730	38123	37991	38311	38090	100.965	
	1	38145	38496	38250	38592	38045	38485	38120	38938	38426	38201	38153	38116	101.193	
	2	38320	38621	38199	38038	38443	38171	38347	38310	38105	38233	38871	38415	101.217	
	3	38405	38702	38242	38242	38151	38519	38055	38197	38272	38413	38374	38496	101.215	
	4	38265	38257	38826	38796	38288	38199	38595	38967	38026	38700	38215	37863	101.419	
	5	38663	37955	38194	38231	38640	37939	38654	38258	38592	38282	38100	38226	101.141	
	6	38227	38492	38647	38399	38171	38460	38487	38415	38718	38670	38119	38306	101.444	
	7	38293	38989	37736	38581	38551	38652	39032	38865	38752	38454	38751	38545	101.904	
	8	38504	38214	38403	38269	38663	38577	38045	38739	38735	38473	38134	38727	101.526	
	9	38284	37902	38710	38681	38126	37946	38632	37919	38621	38615	38280	38603	101.270	
	10	38115	38989	38423	38503	38517	38878	38887	38600	38217	38939	38451	38258	101.811	
	11	38274	38380	38376	38414	38356	38313	38637	38950	38259	38633	38451	38965	101.642	
	12	38341	38670	37889	38322	38887	38893	38561	38204	38160	39167	38320	38916	101.713	
	13	38515	38459	38669	38767	38686	38906	38646	38172	38346	38372	38253	38297	101.659	
	14	38489	38529	38368	38254	38804	38666	38103	38456	38092	38566	38565	38362	101.476	
	15	38544	38565	38841	38695	38307	38497	38631	38394	38540	38516	38952	38366	101.827	
	16	38320	38693	38651	38383	38280	38349	38196	37926	38088	38445	38191	38644	101.237	
	17	38331	38044	38244	38403	38268	38108	38430	38421	38718	38907	38624	38372	101.391	
	18	37921	38202	38393	38826	38243	38327	38317	38628	38850	38274	37967	38249	101.243	
	19	38613	38815	37973	38548	38280	38525	38401	38071	38210	38705	39045	38516	101.574	
	20	38310	38381	38593	38615	38695	38514	38542	38244	38608	38256	38732	38801	101.704	
	21	39123	38614	37710	38350	38885	38866	38566	38822	39155	37904	38093	38483	101.765	
	22	38488	38840	38470	37787	38120	38781	38266	38162	37972	38491	38261	38837	101.305	
	23	38502	38866	39023	38702	38277	38153	38353	38494	38508	38612	38321	38002	101.599	

INAF/UNIRomaTre		S.V.I.R.CO. Observatory - Pressure Corrected Data – February 2018											20 NM-64	
day	hh	00_05	05_10	10_15	15_20	20_25	25_30	30_35	35_40	40_45	45_50	50_55	55_60	h-norm
11	0	38706	38280	38694	39061	38450	38325	38561	38650	38735	38564	38334	38635	101.860
	1	38793	38292	38502	38473	38263	38590	38800	38363	38961	38120	38873	38956	101.857
	2	38251	38577	38793	39252	38601	38622	38460	38436	38208	37944	38667	38936	101.804
	3	38881	38230	38272	38653	39266	38661	38319	38844	38705	38905	38574	38485	102.035
	4	38665	38325	38193	38325	37994	38307	38256	38961	38452	38605	38074	38199	101.279
	5	38966	38746	38949	38337	38624	38926	38467	38858	38055	38656	38341	38825	102.025
	6	38731	38307	38203	38734	38291	38497	38484	38862	38021	38477	38815	38642	101.654
	7	38582	38377	38461	38256	38967	38478	38781	38817	38494	38742	38558	38546	101.873
	8	38354	38552	38982	38388	38325	38531	38288	38272	38538	38687	38870	38608	101.727
	9	39680	38368	38997	38116	39026	39726	38431	38358	38285	38856	38495	38905	102.354
	10	38322	38358	38543	38546	38095	38634	38606	38210	38131	37988	38694	38619	101.364
	11	38376	38805	38273	38631	39210	38566	38756	38200	39011	38576	39185	38409	102.080
	12	38898	38675	38242	38541	38935	38072	38639	38463	38068	38324	38404	38830	101.660
	13	38457	38837	37818	38824	38636	39177	38467	38294	38821	38435	38343	38331	101.737
	14	38971	38238	38825	38340	38442	38543	38595	38247	38601	38685	38156	38623	101.699
	15	38143	38697	38536	38353	38301	38312	38459	38553	38001	38881	38869	38332	101.516
	16	39032	38494	38324	38974	38704	39150	38528	38771	38630	38234	38284	38421	101.980
	17	38371	38428	38590	38557	38650	38470	38620	38426	38728	38559	38610	38208	101.687
	18	38448	38858	38481	37994	38939	38581	38530	38778	38333	38339	38574	38433	101.703
	19	38188	38441	38439	38357	38245	38072	38130	38720	38674	38787	38399	38439	101.396
	20	38379	38673	38601	38738	38668	38286	38463	38635	38908	38296	38868	38520	101.868
	21	38701	38262	38348	38712	38285	38048	39025	38440	38822	38986	38970	38449	101.870
	22	38027	39108	38378	38476	38601	38514	38805	38144	38790	38516	38503	38927	101.814
	23	38646	38477	38688	38522	38194	37952	38244	38365	38174	37726	39018	38088	101.220
12	0	38528	38481	38632	38181	38478	38489	38534	38459	38365	38637	38470	38112	101.499
	1	38335	38664	38253	38879	37980	38211	38383	38495	38050	38639	38471	38208	101.325
	2	38601	38669	38138	38316	38541	38455	37826	38543	38509	38558	38959	38484	101.552
	3	38230	39049	38224	38615	38352	38193	38423	38150	38388	37849	37575	38442	101.087
	4	38716	38322	38431	38476	38861	37897	38858	38439	38320	38199	38737	38623	101.613
	5	38921	38745	38028	38891	38226	38293	39039	38892	37748	38624	38912	38551	101.831
	6	38543	38262	38637	38801	38729	38588	37995	39002	38683	38717	38833	38747	101.978
	7	38534	38919	38626	38494	38672	38471	38233	38505	38320	38847	38634	38494	101.805
	8	38951	38624	38748	38207	38682	38912	38699	38347	38636	38774	38135	38534	101.915
	9	37804	38458	38858	38585	37953	38135	38195	38450	38244	38735	38786	37855	101.213
	10	38449	38706	38052	38101	39079	38291	38856	38635	38570	38535	38577	39061	101.841
	11	38429	38130	38590	38485	37863	39057	38264	38337	38129	38597	38026	38319	101.250
	12	38406	37771	38535	38397	38967	38878	38078	38290	38407	37770	38426	38687	101.335
	13	37950	38764	38122	38763	38640	38214	38557	38660	38509	38740	38491	38379	101.594
	14	38619	38509	38599	38423	38352	38285	38936	38366	38342	37842	38593	38445	101.489
	15	38530	38767	38204	38187	38267	38110	37963	38324	38938	39210	38165	38862	101.536
	16	38180	38574	38414	38155	38283	38098	38700	38547	38041	38302	38192	38765	101.255
	17	38009	38247	38308	38388	38560	38031	38147	38487	38904	38323	37988	38322	101.137
	18	38590	38618	38352	38153	38634	37882	38348	38107	37820	38587	37526	38666	101.042
	19	38161	38365	38678	38061	38902	38019	37738	38316	38017	38046	38777	38838	101.182
	20	38460	38636	38159	38102	38826	38259	37987	38558	38434	38693	38387	38578	101.437
	21	38372	38212	38773	38433	38105	38555	38684	38244	38235	38386	38606	38895	101.530
	22	38591	39133	38170	38684	38536	38942	38397	38359	38535	38516	38593	38695	101.893
	23	37543	38066	38653	38356	38136	38897	38503	38435	38483	38784	38499	39125	101.525

INAF/UNIRomaTre		S.V.I.R.CO. Observatory - Pressure Corrected Data – February 2018											20 NM-64	
day	hh	00_05	05_10	10_15	15_20	20_25	25_30	30_35	35_40	40_45	45_50	50_55	55_60	h-norm
13	0	38505	38060	38281	38303	38716	38411	38065	38661	38511	38504	38726	37998	101.367
	1	38476	38843	38277	38480	38460	38665	38747	38710	38695	38666	38301	37958	101.701
	2	38676	38528	38735	38423	38383	38210	38183	38424	39079	38746	38661	38378	101.734
	3	38124	38580	38342	38208	38337	38535	38294	38405	38195	38403	38227	38997	101.343
	4	38710	38338	38938	38538	39090	38715	38082	38628	38476	38711	38708	38622	101.982
	5	38878	38996	38732	38831	38806	38856	38884	38051	38227	38144	38719	38909	102.088
	6	39312	38883	38565	38568	38190	39043	38035	38702	38930	38861	38177	38473	102.023
	7	38520	38839	38546	38678	38967	38324	38951	38401	38697	38795	38691	38653	102.094
	8	38109	39303	39255	38691	38434	39035	38588	38346	38638	38370	38477	38237	101.966
	9	38694	38870	39186	38378	38896	38823	38832	38884	38261	38871	39368	39248	102.588
	10	38917	38628	38726	38971	38939	38511	38706	38107	39003	38093	38956	38061	101.996
	11	38369	38837	38773	38698	38774	38096	38903	38513	38602	38414	38791	39035	102.037
	12	38163	38477	38529	39143	38585	38546	38808	39004	38276	38636	38824	38590	101.988
	13	38664	38560	38767	39270	38837	38336	39355	38963	38822	38263	38647	38788	102.360
	14	38766	38234	38110	39225	38773	38249	38902	38957	38413	39330	38727	38169	102.048
	15	38905	38779	38051	38815	38505	38574	38706	38815	38965	39371	38900	38053	102.176
	16	38011	38803	38726	38893	38682	38332	39222	38333	38639	39094	38422	38129	101.923
	17	38621	38775	38882	38253	38813	38938	38114	38852	38301	38879	38358	38416	101.905
	18	38930	38427	37972	38482	38034	38275	38497	39329	38954	38376	37931	38909	101.666
	19	38610	38851	38039	38812	38693	38457	38644	38757	38796	38722	38266	38674	101.930
	20	37911	38785	38196	38440	38782	38627	38367	38602	38378	38577	38163	38670	101.530
	21	38919	39173	38518	38524	38585	38631	38452	38478	39133	38394	38757	38769	102.153
	22	38467	38370	38355	38162	38936	38498	37974	39117	38028	38571	38298	38449	101.470
	23	38312	38993	39057	38824	38840	38421	38825	38737	38605	38152	38716	39056	102.198
14	0	38561	38675	39150	38914	38803	38203	39474	38366	38785	38140	39127	38921	102.321
	1	38775	38757	38498	38720	38730	38518	39002	38401	38542	38058	38407	38210	101.776
	2	38429	38176	38821	38816	38616	38266	38686	38718	38511	38656	38535	38331	101.764
	3	39123	38550	38362	38506	38623	38332	38751	38390	39036	38656	38566	38865	102.027
	4	38868	38709	38551	38416	38622	39280	39092	38850	38907	38819	38570	39061	102.464
	5	38997	39519	39232	38729	39014	39013	38455	38406	39118	38933	39298	38707	102.833
	6	39099	38905	39508	38264									
	7													
	8													
	9		38722	39107	37724	38881	38727	39029	38611	38187	38914	38643	38994	
	10	38590	38560	38598	39112	38881	38493	38807	39082	39274	39070	39182	38221	102.492
	11	38940	38454	38181	38859	38775	39146	38779	39236	38650	38811	38005	38681	102.194
	12	38487	38536	39314	39169	38802	38407	38744	38561	39180	38977	39235	39165	102.647
	13	38724	38653	38384	38872	38781	38606	38535	39315	38568	39011	38698	38775	102.283
	14	39123	39265	38919	38420	38493	39032	38813	38588	38918	38956	38400	38211	102.331
	15	38956	38526	39023	38638	38945	38511	38038	38746	38482	38900	38475	38978	102.128
	16	39062	38659	38825	38989	38417	38961	38958	38890	38815	38907	38308	38314	102.324
	17	38573	38364	38044	38471	38792	38493	39025	38972	38563	38463	38365	38237	101.720
	18	38538	38537	38593	38876	39033	38541	38547	38798	39463	39450	38446	38429	102.355
	19	38802	38723	38580	39087	38379	38416	38853	39109	39165	39093	38747	38667	102.437
	20	38652	38084	38580	38534	38347	38300	38512	38278	38667	38715	37986	38320	101.415
	21	38851	38688	38031	38514	38399	38549	38125	38170	38462	38430	38291	38428	101.406
	22	38196	38524	38627	38401	38024	37996	38163	38419	38630	38471	38594	38784	101.382
	23	38023	38362	38176	38410	38466	38167	38909	38583	38496	38818	38321	38532	101.478

INAF/UNIRomaTre		S.V.I.R.CO. Observatory - Pressure Corrected Data – February 2018											20 NM-64	
day	hh	00_05	05_10	10_15	15_20	20_25	25_30	30_35	35_40	40_45	45_50	50_55	55_60	h-norm
15	0	39036	38436	38378	38246	38413	38693	38232	38778	38389	38825	38543	38652	101.777
	1	38600	37757	38236	38854	39049	38913	38786	38697	38041	38326	38364	38593	101.688
	2	38431	38675	38519	38694	38223	37803	38239	38423	38621	38595	38278	38651	101.453
	3	38590	38541	38559	38493	38680	38717	38829	38405	38130	38283	38504	38490	101.689
	4	38957	38299	38621	38716	38362	38494	38687	38975	38656	38766	39427	38874	102.263
	5	38932	38566	38979	38704	39378	38589	38413	39514	38809	39007	38488	38627	102.521
	6	38937	39027	38827	38936	38464	38534	38741	38800	38506	38737	38930	38651	102.320
	7	38675	38952	38834	38805	38753	39052	38620	38352	38756	39220	38409	38933	102.380
	8	38863	38320	38871	38855	38631	39494	38485	38515	38998	38725	38839	38562	102.335
	9	38251	38748	38501	38582	38281	39293	39553	38543	38848	38348	38901	38452	102.146
	10	38493	38503	38711	38924	38978	39458	38876	38510	38693	38761	38048	38848	102.257
	11	39218	38937	38983	39351	39168	39283	38902	38427	38723	38979	38502	38504	102.734
	12	38952	39288	38751	38719	38481	38887	38809	39226	38534	38665	38738	38433	102.406
	13	38702	38492	38796	38653	38770	38733	38678	38661	38503	39394	38575	38385	102.155
	14	38838	38699	38301	38689	38688	38759	39170	38828	38617	38728	38694	38815	102.262
	15	38746	38877	38802	38934	38392	38605	39065	38884	38804	38216	38439	39294	102.313
	16	38343	38702	38582	39311	39427	38622	38828	39093	38938	39089	38889	39041	102.710
	17	38901	38661	39059	39007	38292	38596	38714	39035	38460	38469	38753	39192	102.331
	18	39172	38652	38577	39152	38382	38959	38534	38615	38864	39166	39203	39244	102.634
	19	37918	38573	38422	38119	38242	39203	38931	38725	38740	38019	38339	38990	101.688
	20	38646	37970	39025	38640	38287	38206	38200	38712	37969	38488	38572	38465	101.460
	21	38656	37808	38199	38628	38257	38812	38404	38520	38187	38166	38871	38639	101.452
	22	38449	38794	38652	38503	38586	39296	38819	38655	38424	38829	38294	38405	102.015
	23	38603	38219	38688	38132	38826	38478	38210	38711	38436	38645	38054	38832	101.603
16	0	38671	38664	38851	38951	38453	38606	38494	38774	39036	37952	38131	38036	101.787
	1	38706	38582	39342	38819	38242	38439	38533	39820	39229	39380	38561	39149	102.697
	2	38777	38861	38883	38598	38816	38450	39298	38800	38603	38459	38779	38788	102.324
	3	38921	38422	38553	38254	38551	38399	37994	38200	38840	38938	38194	38016	101.482
	4	39329	39091	38665	39869	38800	38538	38397	38570	38822	39033	38289	38836	102.573
	5	38373	38522	38484	39203	38791	39220	39124	38645	38229	38678	38579	38978	102.262
	6	38326	39031	39083	39161	39144	38695	39231	38549	38591	38480	38339	38683	102.369
	7	38332	38263	39073	38479	38763	38343	38805	38914	39303	38664	38781	39081	102.256
	8	38538	38742	39043	38945	38892	38498	38471	38499	38537	38242	38886	38902	102.123
	9	39191	38916	39128	38430	39247	39085	38698	39036	39388	38796	38731	39098	102.904
	10	38546	39006	38617	38852	38764	39193	38681	39239	38594	39059	38554	38540	102.442
	11	38716	39134	38829	38800	38553	39276	38575	38792	38312	38560	38527	38632	102.235
	12	38729	38288	38801	38696	38404	38582	39021	38186	38302	38396	38505	39074	101.856
	13	38358	38400	38883	38424	38468	39164	38551	38125	38590	38967	38858	38556	101.936
	14	38619	38575	38516	38575	38567	38733	38630	38593	38205	37753	37888	38908	101.544
	15	38079	38590	38393	39017	38574	38688	38597	38421	38020	38354	38020	37829	101.328
	16	38883	38495	38344	37910	38467	38775	38146	38816	38222	38528	38289	38586	101.521
	17	38170	38482	38648	38350	38226	39054	38186	38079	38095	38407	38295	37927	101.182
	18	38212	38059	38195	38773	38008	37560	38147	38817	38602	37968	38441	38244	100.986
	19	38403	38157	37641	38404	37413	38034	38555	38249	37908	38050	38190	37694	100.473
	20	37679	38171	37988	38735	37793	38434	38492	38002	38377	38179	38212	37694	100.706
	21	37558	37643	37837	38127	37834	37903	38924	38030	38605	38609	37674	37139	100.294
	22	38205	38339	37785	38857	37588	38433	38216	37989	38430	37825	37995	38684	100.836
	23	38474	38508	38248	37965	38369	37972	38221	38142	37893	38350	38462	38027	100.898

INAF/UNIRomaTre		S.V.I.R.CO. Observatory - Pressure Corrected Data – February 2018											20 NM-64	
day	hh	00_05	05_10	10_15	15_20	20_25	25_30	30_35	35_40	40_45	45_50	50_55	55_60	h-norm
17	0	38347	37927	38777	38455	38538	37890	38539	37744	38049	38147	37918	38467	100.936
	1	37777	37781	38540	38264	38462	37912	37918	37826	37883	37875	38912	38467	100.676
	2	37943	37844	38139	37200	38279	38558	37993	38294	38243	38420	38222	38074	100.586
	3	38009	37976	38904	38158	38028	38007	38050	38327	38628	38212	38181	38226	100.916
	4	37817	38476	38246	38687	38170	38744	38092	38161	38128	38581	38366	38899	101.281
	5	38134	37877	38295	38264	38520	38240	38739	38568	37936	38305	38595	38285	101.147
	6	37858	38426	38483	38131	37774	38750	37987	38334	38189	38577	38136	38503	101.013
	7	38168	38451	38257	39044	38571	37427	38057	39224	39114	38453	38233	37772	101.370
	8	38352	38495	38455	38572	38059	37992	38413	38246	38752	38713	38555	38272	101.393
	9	38876	38244	39005	38605	38262	38714	38423	38831	37640	38296	38714	38236	101.606
	10	39284	38454	38516	38525	38728	39098	38194	38706	38357	38424	38873	38774	102.065
	11	38310	38797	38476	38476	38943	38498	38360	38686	38545	38221	38574	38582	101.743
	12	38557	38511	38965	39400	38754	38881	38319	38632	38578	38328	38713	38134	102.029
	13	38503	38868	38493	38405	38123	39331	38652	38721	38214	38779	38491	38984	101.984
	14	38612	37872	38808	39263	38530	38398	38428	38355	38431	38953	38720	38682	101.872
	15	38559	38521	38716	38742	37970	38460	38859	38415	38196	38717	38649	38776	101.768
	16	37864	38352	38476	38520	38929	38653	38754	38494	38181	38412	38030	38797	101.521
	17	38087	38463	38215	38386	38695	38722	39082	38538	38495	38295	38496	38268	101.583
	18	38090	38419	38345	38550	38553	38888	38855	37922	38061	38226	37686	38111	101.135
	19	38420	38802	38515	38761	37997	38552	38269	38500	37722	38146	38169	37408	101.037
	20	38174	38432	38207	37818	37944	37804	38061	38039	38158	38029	38193	38401	100.597
	21	37958	38197	38797	38117	39073	38026	37737	37826	38605	38242	38347	38263	101.021
	22	38089	38214	37772	38078	38527	38234	38462	38347	38852	38597	38538	38231	101.187
	23	37875	38677	39066	38270	38434	37594	38239	38494	38818	38810	38624	37675	101.327
18	0	38329	37814	38080	38430	37669	38296	38538	38444	38308	38994	37955	38477	101.048
	1	38240	37736	37804	38387	38511	38079	38099	37824	38052	38221	38330	38243	100.656
	2	38392	38596	38381	37950	37649	38097	38239	38294	38389	38248	38772	38367	101.062
	3	38412	38820	39020	38161	38532	38376	37977	38323	38114	38105	38033	38248	101.226
	4	38236	38270	38239	38769	38375	38202	38607	38388	38829	38178	38499	38641	101.471
	5	37999	39093	38471	38355	38575	38602	38304	38086	38378	38643	38337	38501	101.496
	6	38413	38549	38426	38549	38348	38211	37920	38784	38699	38663	38017	38318	101.397
	7	38090	38101	37829	38301	38094	38443	38171	38568	38671	38594	38156	38692	101.137
	8	38653	38567	37841	38810	38118	38305	38334	38409	38427	38938	38523	38428	101.498
	9	38592	38402	38464	38550	39016	38607	38529	38287	38859	38339	39043	38889	101.987
	10	38658	38251	39340	38329	38383	38670	38759	37930	38890	38740	39175	37988	101.885
	11	38774	38143	38199	38735	38952	38668	38224	38174	38594	38987	38579	38684	101.797
	12	38708	39107	38291	38880	38587	38179	38597	38479	38762	38592	39043	38335	101.983
	13	38112	38762	38355	37757	38155	38155	38558	38423	38699	38565	38752	38543	101.384
	14	38500	38412	38106	38507	38258	38483	38793	38511	38510	38529	38879	38504	101.638
	15	38686	38568	38990	38343	38495	38378	38930	38424	38634	38632	38495	38905	101.966
	16	38788	38449	38598	38726	38865	38759	38293	38387	38576	39208	38967	38630	102.134
	17	38529	38399	38981	38903	38377	38375	37991	38127	39104	38521	38364	38376	101.650
	18	38373	37982	38172	38829	39072	38262	38447	38898	38110	38347	38711	38779	101.636
	19	38372	38216	38266	38334	38520	37963	38288	38619	38454	38526	38599	38478	101.340
	20	38068	38455	38699	38542	38174	38278	38701	38146	38430	38240	38328	38325	101.285
	21	38610	38304	38786	38267	38516	38372	38112	37652	38773	38942	39006	38624	101.632
	22	38499	38536	38505	38323	38436	38262	38907	38519	38772	38779	38790	38459	101.813
	23	38446	38892	38645	38573	38415	38500	38647	38828	38309	38125	38690	38792	101.830

INAF/UNIRomaTre		S.V.I.R.CO. Observatory - Pressure Corrected Data – February 2018											20 NM-64	
day	hh	00_05	05_10	10_15	15_20	20_25	25_30	30_35	35_40	40_45	45_50	50_55	55_60	h-norm
19	0	38548	38890	38158	38351	39011	38682	38110	38020	38321	39042	39064	38823	101.862
	1	38074	38662	38350	38208	38487	38604	38905	38901	38514	38218	38672	38837	101.736
	2	38804	38485	38547	38521	38669	38426	38678	38812	38866	38513	38602	38434	101.938
	3	38174	38552	38196	38652	39155	38494	38227	38722	38469	38031	39059	38385	101.665
	4	38661	38724	38340	39129	39137	38673	38894	39042	38822	39064	38803	38287	102.427
	5	38687	38439	38814	38295	38463	39222	38695	38249	39182	38614	38737	38393	102.033
	6	38815	38685	38937	38559	38404	38788	38718	38609	38541	38743	38659	38369	102.042
	7	38749	38231	38524	38363	38314	38449	39012	38985	39373	38732	38791	39151	102.228
	8	38598	38998	38911	38165	38350	38581	38341	38534	38525	38578	38410	39074	101.875
	9	38781	38299	38434	39011	38513	38914	38344	38750	38390	38376	39403	38526	102.023
	10	38533	38499	38692	38480	39068	38803	38923	39325	38512	38601	38545	39224	102.346
	11	38532	39258	38621	38694	38345	38304	38757	38876	38526	38605	38718	38223	101.961
	12	38626	38452	38430	38359	38503	38518	38347	38457	37939	38667	38635	38983	101.621
	13	38485	38402	38472	38685	38155	38542	38271	38800	38279	38071	37910	38807	101.393
	14	38703	38180	38487	38577	38156	37960	38781	38551	38734	38462	38700	38361	101.563
	15	38184	38636	38807	37805	38514	38707	38793	38693	38442	38482	38050	38254	101.500
	16	38471	39244	38626	38274	38711	38572	38697	38766	38377	38726	37758	39286	101.971
	17	38901	39040	38428	38621	38643	38412	38863	38270	38321	38657	38041	38872	101.876
	18	38658	38685	38656	38785	38743	38469	39045	38752	38523	38543	38542	39406	102.257
	19	38609	38161	38841	38329	38624	38809	38295	38101	38145	38346	38680	38562	101.530
	20	38264	38828	38331	38696	39066	38393	38524	38568	39147	38000	39082	38369	101.919
	21	39193	38473	38891	38616	38467	38694	38540	38631	38641	38955	38312	38563	102.074
	22	39085	38727	38230	38483	38780	38649	37804	38392	39362	38386	38733	38720	101.937
	23	39207	38695	38563	38088	39147	38170	37994	38823	38575	38725	38770	38449	101.905
20	0	39060	39092	38545	38404	38747	38681	38589	38568	38439	38907	38789	38860	102.225
	1	38208	38754	39137	38210	38509	38578	38595	38386	38576	38685	38848	38845	101.933
	2	38398	38539	38585	38960	38206	38539	39167	38609	38619	38135	38513	38881	101.893
	3	39109	38527	38609	38858	38646	38496	38484	38471	38766	38328	38386	38404	101.878
	4	37943	38631	38819	38735	38689	38412	39348	38743	38854	38683	38769	38520	102.112
	5	38646	38304	38596	38301	38349	38728	38309	38441	38565	38288	38107	38573	101.466
	6	38393	38908	38750	38613	38748	39537	38912	38735	39008	38432	38951	38858	102.486
	7	39091	38404	38922	38245	39005	38926	38315	38011	38500	38571	38695	38412	101.881
	8	38992	39093	38958	38036	38984	38885	38803	38685	38836	38857	38554	39138	102.481
	9	39603	38733	38534	39107	38809	38840	38810	38948	38259	38687	39227	38775	102.593
	10	38444	38996	39156	38870	39069	38449	38275	39177	38742	39245	38588	38508	102.414
	11	38592	39136	38569	38781	38766	38894	38780	38706	38615	38318	39086	39050	102.365
	12	38190	38655	38912	38872	38629	38612	38556	38807	38817	38996	38165	38921	102.109
	13	38801	38982	38514	38739	38630	38992	37929	38839	38756	38969	38846	38825	102.261
	14	38481	38948	38811	38867	38494	38252	38357	38251	39330	38468	38268	39281	102.038
	15	39065	38618	38943	38885	38776	38414	38541	38680	38653	39098	38850	38470	102.299
	16	38885	38926	38932	38364	38842	38759	39282	38854	38729	38722	38780	38603	102.449
	17	39313	38668	38723	38430	38191	39035	38564	38673	39098	38875	39084	38549	102.345
	18	38752	38401	38960	38815	38703	38295	38770	38954	39366	39031	38316	39018	102.384
	19	38661	38758	39015	38495	39084	39073	38690	38763	38042	38799	38017	38257	102.004
	20	39056	38971	38586	39565	38546	38447	39437	38520	38526	38829	38981	38785	102.575
	21	39074	38865	38749	39438	39072	38464	39191	38655	39240	38456	38922	38910	102.748
	22	38585	39050	38830	38834	38932	38329	38515	38994	38790	38882	39136	38760	102.440
	23	39067	38872	38905	38722	38643	38398	38903	38932	39212	39196	38945	38683	102.625

INAF/UNIRomaTre			S.V.I.R.CO. Observatory - Pressure Corrected Data – February 2018										20 NM-64	
day	hh	00_05	05_10	10_15	15_20	20_25	25_30	30_35	35_40	40_45	45_50	50_55	55_60	h-norm
21	0	38664	38914	38512	38285	38880	38737	39292	38987	38771	38588	38371	37809	102.032
	1	38421	38745	38917	38962	39043	38675	39032	38751	38551	38341	39234	38634	102.367
	2	38903	38531	39236	39272	38699	38901	38525	39229	38695	38779	39017	38831	102.656
	3	39092	38836	39228	38950	38543	39269	38628	39103	38765	38153	39187	38658	102.610
	4	38544	39016	38310	38435	39259	38615	38588	38461	38557	38805	38607	38877	102.096
	5	38407	38382	38605	38550	38736	38912	38635	38695	38744	38422	38640	38257	101.857
	6	38873	39251	38747	38252	38714	38934	38737	38228	38780	38757	38855	38712	102.265
	7	38755	39030	38741	38798	38544	38716	39245	38655	38786	38422	39481	39122	102.585
	8	38485	38867	38642	38769	38899	38235	38949	38305	38815	39042	39109	38951	102.314
	9	38844	38669	39035	38544	38757	38816	38929	38649	38710	39027	38816	39096	102.496
	10	38739	38676	38915	38976	38716	39126	38900	38669	38235	38715	38791	38512	102.293
	11	38666	38509	38283	38807	38445	38892	38658	38805	38853	39251	38513	38579	102.138
	12	39079	38766	39017	38992	38424	38288	38380	38939	39004	38739	38884	38688	102.344
	13	38297	38995	38556	39001	38671	38658	38642	38740	38652	38555	38745	39101	102.215
	14	38725	38597	38387	39091	38350	38946	38595	38983	39014	38715	39032	38993	102.394
	15	39022	39241	38699	38586	38733	38744	38826	38261	38951	38395	38752	39010	102.348
	16	38627	38584	38557	39078	38843	38938	38237	38007	38796	38461	38866	38610	101.993
	17	38739	38739	38457	38883	39069	38220	38896	38713	38773	37981	39092	38479	102.089
	18	38348	39120	38764	38952	38348	38722	39171	38563	38534	39122	38713	39013	102.381
	19	38914	38598	38754	39084	38547	38575	38748	38846	38299	38049	39252	38959	102.217
	20	38493	39303	38421	38527	38950	38849	38907	38390	39137	38753	39242	38626	102.431
	21	39107	38601	38426	39152	39053	38494	39053	38513	39682	39279	38664	38438	102.622
	22	38617	39295	38764	38443	39207	39397	38969	38891	38477	39095	38579	38372	102.543
	23	38867	39002	38766	39059	39198	39052	38893	38631	39218	38402	38441	38951	102.625
22	0	39160	38929	39356	38345	39074	39039	39115	38978	39064	38844	38800	39476	103.002
	1	39116	38957	38550	38324	38523	38781	38924	38587	39207	38692	38891	38971	102.415
	2	38847	38441	38485	38906	38476	38603	39011	39047	39096	38561	38882	38586	102.287
	3	38705	38852	38820	39137	38526	38360	38490	38852	38936	39664	38948	38693	102.517
	4	38612	39073	38816	38834	38694	38727	39053	38821	38766	39202	38650	38649	102.497
	5	38980	39024	38743	38502	39065	38892	38423	38935	38807	39138	38705	38830	102.530
	6	38680	39383	39035	39381	38149	38660	38449	38500	38809	38762	38524	38697	102.306
	7	39295	38622	38467	39151	39172	38908	39164	38925	38627	38931	38337	39001	102.652
	8	38691	38791	38571	38825	38548	39253	38700	39098	39084	38986	38824	38762	102.550
	9	38816	38672	38646	38613	39049	39020	38996	38824	38081	38711	38914	38831	102.338
	10	38661	38477	38556	38311	38952	38675	38773	38584	38480	38497	38608	38799	101.942
	11	38896	38594	38564	38591	39143	39134	39083	38502	37726	38680	38492	38112	101.974
	12	38541	38552	38371	38309	38574	38350	38304	38649	38622	38698	38786	38657	101.731
	13	38228	38369	38902	38516	38921	38975	38489	38446	37897	38034	38482	38562	101.600
	14	38731	38228	37933	38872	38329	38604	38858	38085	38300	38580	38600	38490	101.555
	15	38641	38434	39178	38886	38546	38499	38436	38615	38155	38391	38408	38443	101.778
	16	38195	38582	38550	38651	38637	38438	38671	38468	38026	38175	38606	38056	101.432
	17	38921	38875	38695	38147	38768	38287	38847	38336	38588	38349	38037	38829	101.790
	18	38557	38884	37965	38521	38404	38627	38334	38750	38621	38442	39023	38537	101.786
	19	38708	38356	38577	38096	39061	37749	38219	38616	38480	38544	38497	38653	101.543
	20	38295	38597	38601	38266	38729	37910	38727	38558	38228	38681	38368	38422	101.504
	21	39224	39214	38774	38584	38055	38288	38449	37948	38273	38048	38505	38378	101.583
	22	38468	38646	38540	38451	38218	38219	38584	37969	38427	38571	38182	38252	101.316
	23	38496	38706	38198	38776	38144	37846	38362	38486	39014	38219	38402	38148	101.376

INAF/UNIRomaTre		S.V.I.R.CO. Observatory - Pressure Corrected Data – February 2018											20 NM-64	
day	hh	00_05	05_10	10_15	15_20	20_25	25_30	30_35	35_40	40_45	45_50	50_55	55_60	h-norm
23	0	38570	37955	38124	38890	38592	38022	38453	38096	38490	38308	38619	38498	101.337
	1	38261	38791	38355	38464	38755	38455	38496	38547	38963	39230	38573	38031	101.843
	2	38399	38616	38403	38378	38182	38304	38479	38704	38137	38744	38340	38291	101.415
	3	38109	38664	38568	38069	38387	38747	38628	38590	38903	39160	38165	38679	101.788
	4	38559	38940	38241	39003	38502	38838	38052	37929	38052	38692	38535	38251	101.551
	5	38420	38299	38475	37922	38320	38479	38793	38533	38026	38159	38471	38591	101.308
	6	38179	38657	38398	38351	38256	38221	38866	38076	38170	38722	38683	38895	101.524
	7	38627	38654	38014	38415	37786	38465	38554	38571	38186	38443	37935	38605	101.256
	8	38648	37971	38623	38375	38066	37917	38652	37824	38005	38402	38512	38033	100.986
	9	38472	38084	38241	38380	38670	38011	38506	38632	38295	38628	38710	37986	101.336
	10	38512	38661	38441	38315	38508	38327	37836	38162	38276	38026	38554	38633	101.255
	11	38252	38248	37996	37893	38428	38420	38265	37980	38064	37996	38140	38302	100.757
	12	38038	38583	38660	38533	38222	38017	38013	38084	38177	38409	38319	38549	101.112
	13	37874	38430	38082	38392	38284	38419	38320	38207	38227	38232	38325	37872	100.906
	14	38482	37824	37933	37735	38358	38018	38315	38132	38166	38575	38696	38046	100.822
	15	38380	37569	38677	38418	38184	38018	38278	38565	38679	38194	38469	38772	101.245
	16	38522	38476	38199	38104	38257	37965	37742	37806	38026	37941	38012	38389	100.637
	17	38769	38090	38774	38179	38498	37929	38273	38085	37975	38348	38076	38590	101.109
	18	38205	37973	38629	37835	38811	38421	38318	38234	38437	38220	38195	38597	101.173
	19	38582	38619	38205	38208	38348	37874	37718	38066	38094	37934	38185	37596	100.634
	20	37783	38148	38395	38096	37916	37996	38497	38055	37950	38388	37761	38266	100.596
	21	38118	38168	38372	38249	37923	38571	38772	38265	38076	38662	38186	37826	101.022
	22	38598	37818	38328	38421	38237	38177	38225	38201	38280	38073	38269	38541	101.017
	23	38000	38183	38285	38505	38372	37941	37571	38547	38033	38308	37958	38379	100.778
24	0	38166	37908	38255	38627	37987	38178	38072	38354	38212	38211	38412	38675	100.987
	1	38297	38283	37684	38526	38223	37997	38277	38210	37994	37884	38040	38372	100.713
	2	38500	38574	38315	38250	38431	38503	38636	38110	37742	38189	38233	38046	101.097
	3	38581	38109	38285	38170	38348	37668	38817	38126	38442	37650	37899	38486	100.888
	4	38364	38026	38096	38409	38140	37870	37935	38288	38573	38639	37557	38186	100.778
	5	38750	38020	38140	38424	38807	38382	38048	38147	37994	38442	37939	38560	101.124
	6	37713	37894	38138	38185	38158	38733	37983	38053	38743	37913	38207	38343	100.774
	7	37730	37780	38137	38189	38636	37940	38635	37712	38286	37927	38857	38505	100.833
	8	38016	37830	38045	37535	38122	38403	38081	37931	38500	38567	38086	38112	100.589
	9	37894	38662	38238	38196	37957	37854	38423	38593	38458	38446	38293	38711	101.139
	10	37665	37863	37731	38259	38374	38430	38193	38243	37824	37901	38091	38379	100.529
	11	38086	38616	37516	38616	38124	38170	38005	38086	38251	38135	38154	38505	100.818
	12	37845	37497	38075	38360	38038	38366	38003	38490	37826	37932	37943	38067	100.417
	13	38321	38145	37866	38263	37602	38129	38518	38096	38373	37999	37889	38226	100.634
	14	38519	38284	38104	38170	37787	38697	38750	37931	37977	37899	38170	38167	100.860
	15	37885	38006	37792	38067	38264	37886	38224	38331	38069	37679	38217	38096	100.433
	16	38506	37552	37614	38127	37678	38594	37511	38495	37880	37979	38032	37603	100.226
	17	37997	38119	37847	38605	38228	38327	37745	37892	38158	38435	37855	38274	100.646
	18	37753	37537	38014	38323	38036	37362	38378	37882	37629	38768	38326	38395	100.408
	19	38051	37794	38192	37775	38035	37634	37860	37503	38057	38674	38490	38260	100.391
	20	38140	37890	38088	38227	37724	37668	37917	38259	37815	37447	38273	38435	100.294
	21	37978	37732	37845	37765	37678	38079	38012	37256	37856	37825	37784	37594	99.749
	22	38222	37919	37856	37716	38136	37732	37845	38285	37836	37533	37784	38218	100.118
	23	37881	37799	37801	38324	38227	38169	37867	38009	38746	38741	37969	38263	100.715

INAF/UNIRomaTre		S.V.I.R.CO. Observatory - Pressure Corrected Data – February 2018											20 NM-64	
day	hh	00_05	05_10	10_15	15_20	20_25	25_30	30_35	35_40	40_45	45_50	50_55	55_60	h-norm
25	0	38033	38215	37917	37897	38018	38140	38244	38268	37555	37713	38278	38333	100.452
	1	38321	38265	37786	38130	38228	38025	38018	38195	38238	38216	38440	37793	100.684
	2	38486	37462	38039	38557	38051	37985	38149	38475	37723	38039	37994	38303	100.598
	3	37898	38324	38788	37821	37692	37540	38092	38093	38041	38190	38021	38152	100.463
	4	38329	38102	37945	38532	38413	37706	38522	37972	38050	37812	38367	38584	100.834
	5	37810	38143	38144	38079	37865	38197	38028	38217	37757	37915	38381	37692	100.370
	6	37928	38457	38339	37713	37870	37669	37804	37819	38196	38336	38690	37795	100.455
	7	38441	37677	37998	37358	38438	38253	38061	38148	37933	37910	37885	38472	100.446
	8	37874	37890	37729	38413	38195	37991	38300	38273	37820	37621	37820	37829	100.266
	9	37851	38109	38365	37633	37940	37961	38410	38302	38179	38363	38728	38734	100.887
	10	38545	38213	38384	38043	38368	37854	38072	37874	38143	38148	38085	38477	100.805
	11	38243	38018	38152	38328	38219	38034	37857	38138	37808	38487	37871	38166	100.611
	12	38008	38197	38387	38204	38176	38340	37998	37903	37447	37995	37933	38335	100.523
	13	38690	37696	37845	37699	38185	38261	38648	38545	38186	37710	38033	37643	100.571
	14	37767	37839	38125	37650	38411	38175	38390	37738	38033	37989	38208	37587	100.301
	15	38048	38332	38327	38076	38113	38502	38218	38203	38095	38445	38146	37992	100.869
	16	38073	38042	38126	37902	38048	38280	38071	37957	38140	38130	37725	38067	100.443
	17	37635	37859	37782	38231	38253	37997	38262	38015	37931	37906	38307	38189	100.401
	18	37581	38109	37789	38075	38173	37979	38050	37554	37785	38022	38166	38157	100.197
	19	38347	37873	38116	37535	38154	37769	37907	38149	37684	38411	38350	38015	100.388
	20	38129	38433	38389	37948	38004	38160	37849	38411	38558	38104	38256	38178	100.852
	21	38090	37720	38067	38186	37577	38317	37966	38128	38516	38354	37871	37782	100.447
	22	38401	38175	38268	37845	38602	38331	38078	37798	38153	38563	37549	37662	100.633
	23	37683	38087	38037	37864	37810	37732	38062	38165	37968	37747	37653	37942	100.046
26	0	38195	37892	38598	38152	38369	37753	37489	37551	37978	37616	37836	37956	100.176
	1	38791	38038	38236	38232	37672	38247	38154	37998	37754	37798	38052	38409	100.624
	2	37934	37806	37808	38252	37907	38508	37955	38148	38375	38016	37949	38086	100.484
	3	38468	38043	38313	38223	38341	37630	37946	37527	37703	37866	37604	37703	100.181
	4	38078	37697	37802	37546	37643	38034	38216	38155	38225	37630	37619	38019	100.026
	5	37541	37904	38211	37601	37791	37929	37828	37983	37738	37840	37707	38321	99.966
	6	37803	38304	37567	37558	38188	38249	37793	38055	37731	37828	37798	38206	100.118
	7	37970	37836	37311	37589	38029	38076	37852	37781	38191	37607	37637	37891	99.829
	8	37808	37983	37568	37924	37722	38032	37857	37672	37700	37818	38040	37789	99.861
	9	37798	37741	38538	37873	37918	38190	38032	38222	38169	37811	37831	37752	100.293
	10	37662	37871	37590	38202	38037	38380	38063	38240	37759	38119	37862	37959	100.264
	11	38350	38285	37802	38006	37489	37792	37715	37571	37645	37749	38543	38098	100.110
	12	37990	38274	38048	38165	38235	38200	37545	37856	38392	38050	38009	37755	100.434
	13	38165	37870	37552	38422	38182	38072	37728	38218	38168	38109	37320	38319	100.348
	14	38356	38244	38249	38042	37688	37812	38070	38157	37701	37715	38228	38052	100.390
	15	38088	38502	38060	38101	38529	38195	38255	38460	37998	37949	38200	37976	100.829
	16	38164	37979	37908	38221	38250	38051	37634	38599	38632	38560	37833	37693	100.655
	17	37923	38007	37694	38133	38045	37913	37967	38016	37896	37751	37898	38006	100.155
	18	38296	37831	37822	38294	37577	38541	37838	38301	38115	38078	37493	37403	100.230
	19	37725	37960	37680	38270	38328	38159	38181	37818	38363	38050	38039	37494	100.335
	20	37621	37483	38116	37761	37915	37579	37633	37882	37897	37883	37926	38316	99.882
	21	37435	38295	38111	37640	37966	37596	38215	38006	38367	38169	38263	38268	100.393
	22	37637	37906	37915	38060	37972	38485	38209	37798	37913	38145	37860	38420	100.391
	23	37942	38134	37846	38065	38115	38014	38175	38133	37722	38394	38066	37793	100.408

INAF/UNIRomaTre		S.V.I.R.CO. Observatory - Pressure Corrected Data – February 2018											20 NM-64	
day	hh	00_05	05_10	10_15	15_20	20_25	25_30	30_35	35_40	40_45	45_50	50_55	55_60	h-norm
27	0	38293	38330	38561	38609	38236	37791	37630	37811	37958	38601	38124	37834	100.709
	1	37736	38532	38571	38446	38451	37900	38039	37658	38411	38168	38239	38692	100.946
	2	37864	38019	38104	38699	38074	38124	38252	38334	38203	38074	38316	38001	100.774
	3	37642	38298	38356	38029	38230	37907	38240	37844	38262	38579	38469	38262	100.786
	4	38171	38076	38533	38391	38542	38613	37956	38005	38576	38458	38126	37427	100.952
	5	38025	38493	38298	38231	38197	37636	38589	38109	38347	38274	38303	37955	100.861
	6	37901	37804	38327	37747	38470	37734	38010	38284	38786	38076	37952	37886	100.535
	7	38058	38458	38098	38522	38332	38129	38492	37865	38225	38039	38490	37853	100.884
	8	38281	37855	38202	38604	38283	38048	37985	38321	38218	37487	38017	38588	100.736
	9	38635	38400	38179	38407	38321	38588	38200	38001	38948	38239	37992	38447	101.278
	10	38689	37803	38111	37529	38206	38212	39035	38066	38391	38494	38538	37864	100.966
	11	38106	37962	37759	38007	38561	38444	37780	38457	37896	38260	37933	38025	100.582
	12	38146	37838	38403	38845	38307	38214	38032	38442	38351	38976	38146	37898	101.112
	13	37953	38641	37967	38183	38581	38402	38775	38989	38450	38674	38565	38997	101.679
	14	38834	38285	37747	37998	37982	38377	38222	38488	38240	38377	38204	38191	100.968
	15	38979	38287	37946	38268	38372	38422	38312	38267	37927	39035	38013	38197	101.206
	16	38076	38723	38411	38228	38253	38229	38368	37943	38646	38320	38480	38200	101.173
	17	38347	38473	38102	38128	38014	38256	38134	37615	37584	38469	38324	38029	100.645
	18	38567	37969	38168	38645	38476	38027	38063	38184	37880	37738	38177	37859	100.706
	19	38439	38444	37711	38516	38677	37926	38310	37880	37914	38609	37978	38265	100.908
	20	37697	38484	38165	38017	37807	37928	38257	38150	38258	37490	38408	38156	100.500
	21	39117	38085	37909	38180	38087	38228	38141	38358	38386	38093	37544	37794	100.744
	22	38275	38272	37965	37658	38182	38090	38212	38144	37943	38268	38147	38102	100.597
	23	38270	37966	37841	38250	38196	37855	37814	38019	37898	37858	38443	38208	100.456
28	0	37866	37788	37524	38374	38519	37858	38153	38371	38394	38031	38411	37830	100.571
	1	38052	37473	38519	38031	37443	37827	38077	38758	38354	38134	37498	37905	100.336
	2	38373	38149	37972	37826	38318	37900	38272	38562	38252	37961	37890	37914	100.626
	3	38111	37796	37893	38258	37890	38299	37969	38681	37947	38496	38128	38400	100.731
	4	38536	38498	38048	38140	38272	38045	37617	37866	38352	37524	38193	37824	100.522
	5	37969	38119	38127	38043	38386	38768	38162	38300	38376	37867	38162	38193	100.863
	6	37691	37955	38550	38562	38229	38437	38380	38662	38395	38286	38165	37964	101.040
	7	38358	38640	38142	37761	37872	38487	37811	38321	37980	37946	38881	38877	100.996
	8	38452	38352	38281	37917	38514	38080	37850	38386	38149	38216	38150	38592	100.967
	9	37928	38334	38832	37917	38469	38339	38163	38597	38692	39016	38434	38596	101.490
	10	38287	37894	38213	38347	38461	37546	38175	38440	38243	38325	38166	38451	100.881
	11	38280	38451	38084	38485	38678	38389	38548	37486	38445	38465	38676	37936	101.183
	12	37923	38329	37781	38189	38569	38053	38268	38288	37582	38226	38438	38247	100.736
	13	38430	38387	38208	39014	38827	38061	38052	38228	38232	38601	38291	38296	101.338
	14	38582	38221	38115	38249	38156	38033	38550	38064	38103	37937	37816	38073	100.738
	15	38230	38578	38099	38717	37927	38420	38431	38211	38770	38246	37885	37852	101.060
	16	38153	38123	38112	38420	38182	37804	38432	37914	38328	38104	38186	38192	100.749
	17	37854	37465	37822	38468	37632	37921	37775	38358	38498	37949	38393	38372	100.431
	18	38258	37433	38016	38814	37832	38154	37611	37763	38625	38006	37972	38206	100.472
	19	38205	37955	37345	37671	37350	38275	38208	38046	38181	38185	38283	37664	100.181
	20	37815	38276	37911	38058	38086	38467	38570	37941	37843	38060	37866	38044	100.526
	21	37737	38416	38390	37898	38102	37544	38064	37912	38276	38017	37735	38078	100.357
	22	37800	38176	37490	37970	37863	37658	38276	37990	37593	38079	38029	38009	100.085
	23	38469	37703	38238	38393	38116	37808	38294	38262	38069	37949	38117	38293	100.697

S.V.I.R.CO. Observatory - Pressure in hectoPascal – February 2018

day	hh	00_05	05_10	10_15	15_20	20_25	25_30	30_35	35_40	40_45	45_50	50_55	55_60	average
1	0	1018.34	1018.34	1018.28	1018.22	1018.20	1018.20	1018.19	1018.13	1018.10	1018.13	1018.11	1018.05	1018.18
	1	1018.00	1017.97	1017.90	1017.83	1017.78	1017.66	1017.55	1017.48	1017.39	1017.29	1017.18	1017.05	1017.59
	2	1016.89	1016.74	1016.57	1016.46	1016.43	1016.31	1016.17	1016.10	1016.08	1016.07	1016.00	1015.91	1016.31
	3	1015.81	1015.74	1015.71	1015.69	1015.59	1015.48	1015.44	1015.41	1015.35	1015.26	1015.19	1015.16	1015.48
	4	1015.14	1015.09	1015.00	1014.93	1014.87	1014.86	1014.85	1014.82	1014.77	1014.72	1014.68	1014.61	1014.86
	5	1014.54	1014.56	1014.63	1014.66	1014.64	1014.63	1014.62	1014.47	1014.29	1014.31	1014.40	1014.42	1014.51
	6	1014.40	1014.37	1014.34	1014.24	1014.12	1014.01	1013.90	1013.83	1013.74	1013.66	1013.61	1013.56	1013.98
	7	1013.51	1013.49	1013.46	1013.42	1013.38	1013.34	1013.29	1013.22	1013.17	1013.11	1013.08	1012.95	1013.28
	8	1012.79	1012.77	1012.82	1012.83	1012.79	1012.80	1012.84	1012.88	1012.90	1012.90	1012.89	1012.92	1012.84
	9	1012.96	1012.94	1012.94	1012.98	1013.01	1013.04	1013.07	1013.06	1013.02	1012.95	1012.84	1012.71	1012.96
	10	1012.57	1012.39	1012.25	1012.13	1012.01	1011.95	1011.95	1011.93	1011.80	1011.66	1011.54	1011.36	1011.96
	11	1011.18	1011.08	1010.98	1010.86	1010.74	1010.61	1010.52	1010.48	1010.49	1010.45	1010.39	1010.36	1010.68
	12	1010.29	1010.18	1010.17	1010.25	1010.21	1010.10	1010.11	1010.10	1010.04	1009.90	1009.64	1009.42	1010.03
	13	1009.39	1009.42	1009.32	1009.22	1009.17	1009.13	1009.08	1008.90	1008.66	1008.51	1008.45	1008.41	1008.97
	14	1008.40	1008.39	1008.37	1008.34	1008.33	1008.29	1008.21	1008.17	1008.17	1008.14	1008.08	1008.03	1008.24
	15	1007.98	1007.91	1007.85	1007.80	1007.64	1007.46	1007.37	1007.36	1007.45	1007.49	1007.50	1007.50	1007.61
	16	1007.43	1007.41	1007.42	1007.36	1007.33	1007.36	1007.37	1007.31	1007.22	1007.15	1007.14	1007.21	1007.31
	17	1007.28	1007.30	1007.27	1007.30	1007.33	1007.28	1007.27	1007.28	1007.26	1007.31	1007.41	1007.46	1007.31
	18	1007.48	1007.47	1007.48	1007.54	1007.57	1007.57	1007.58	1007.63	1007.68	1007.68	1007.68	1007.68	1007.58
	19	1007.66	1007.64	1007.60	1007.51	1007.46	1007.48	1007.46	1007.45	1007.49	1007.58	1007.64	1007.65	1007.55
	20	1007.65	1007.60	1007.57	1007.57	1007.59	1007.63	1007.66	1007.71	1007.76	1007.80	1007.80	1007.80	1007.68
	21	1007.80	1007.75	1007.72	1007.74	1007.69	1007.59	1007.58	1007.65	1007.69	1007.68	1007.65	1007.63	1007.68
	22	1007.63	1007.60	1007.57	1007.56	1007.58	1007.58	1007.60	1007.62	1007.64	1007.68	1007.70	1007.69	1007.62
	23	1007.62	1007.53	1007.43	1007.38	1007.40	1007.34	1007.22	1007.10	1007.01	1006.89	1006.79	1006.78	1007.21
2	0	1006.78	1006.78	1006.77	1006.72	1006.66	1006.66	1006.62	1006.48	1006.30	1006.16	1006.05	1005.98	1006.48
	1	1006.04	1006.14	1006.20	1006.25	1006.35	1006.54	1006.61	1006.54	1006.47	1006.00	1005.56	1005.42	1006.17
	2	1005.24	1005.17	1005.08	1004.94	1004.86	1004.85	1004.81	1004.77	1004.73	1004.67	1004.66	1004.70	1004.87
	3	1004.75	1004.77	1004.73	1004.66	1004.59	1004.51	1004.48	1004.53	1004.59	1004.60	1004.58	1004.56	1004.61
	4	1004.57	1004.55	1004.47	1004.46	1004.46	1004.44	1004.41	1004.31	1004.20	1004.13	1004.09	1004.11	1004.35
	5	1004.14	1004.18	1004.22	1004.27	1004.34	1004.31	1004.24	1004.20	1004.14	1004.09	1004.11	1004.18	1004.20
	6	1004.22	1004.23	1004.29	1004.35	1004.38	1004.41	1004.43	1004.45	1004.42	1004.35	1004.32	1004.33	1004.35
	7	1004.38	1004.39	1004.38	1004.34	1004.32	1004.35	1004.40	1004.42	1004.41	1004.43	1004.51	1004.64	1004.41
	8	1004.66	1004.59	1004.54	1004.48	1004.38	1004.28	1004.17	1004.05	1004.01	1004.02	1003.98	1003.95	1004.26
	9	1003.97	1004.04	1004.09	1004.11	1004.14	1004.18	1004.23	1004.29	1004.36	1004.44	1004.49	1004.51	1004.24
	10	1004.51	1004.48	1004.46	1004.41	1004.38	1004.32	1004.24	1004.22	1004.22	1004.20	1004.13	1004.02	1004.30
	11	1003.92	1003.76	1003.57	1003.46	1003.40	1003.35	1003.26	1003.18	1003.15	1003.14	1003.12	1003.05	1003.36
	12	1002.98	1002.95	1002.87	1002.85	1002.86	1002.81	1002.73	1002.65	1002.68	1002.69	1002.60	1002.54	1002.77
	13	1002.52	1002.54	1002.59	1002.56	1002.54	1002.58	1002.56	1002.49	1002.44	1002.40	1002.32	1002.22	1002.48
	14	1002.21	1002.21	1002.20	1002.15	1002.13	1002.07	1001.96	1001.91	1001.88	1001.84	1001.80	1001.78	1002.01
	15	1001.77	1001.71	1001.63	1001.64	1001.64	1001.57	1001.49	1001.39	1001.32	1001.37	1001.38	1001.33	1001.52
	16	1001.33	1001.29	1001.24	1001.25	1001.24	1001.17	1001.13	1001.13	1001.18	1001.26	1001.28	1001.26	1001.23
	17	1001.27	1001.25	1001.20	1001.16	1001.14	1001.14	1001.16	1001.22	1001.30	1001.32	1001.35	1001.38	1001.24
	18	1001.29	1001.19	1001.16	1001.12	1001.02	1000.92	1000.91	1000.95	1000.95	1000.92	1000.90	1000.88	1001.02
	19	1000.83	1000.83	1000.87	1000.86	1000.85	1000.84	1000.82	1000.78	1000.80	1000.83	1000.84	1000.85	1000.83
	20	1000.82	1000.74	1000.63	1000.57	1000.57	1000.45	1000.28	1000.19	1000.08	1000.12	1000.25	1000.14	1000.40
	21	999.85	999.68	999.65	999.63	999.63	999.59	999.44	999.36	999.22	999.02	998.91	998.86	999.40
	22	998.77	998.63	998.53	998.43	998.36	998.43	998.57	998.51	998.45	998.58	998.55	998.60	998.53
	23	998.78	998.85	998.78	998.55	998.27	997.92	997.63	997.37	997.00	996.65	996.35	996.18	997.69

S.V.I.R.CO. Observatory - Pressure in hectoPascal – February 2018

day	hh	00_05	05_10	10_15	15_20	20_25	25_30	30_35	35_40	40_45	45_50	50_55	55_60	average
3	0	996.12	996.11	995.88	995.37	995.07	995.15	994.94	994.51	994.52	995.08	995.96	996.61	995.41
	1	996.65	996.33	996.05	995.90	996.03	996.35	996.52	996.63	996.58	996.61	996.83	996.75	996.43
	2	996.32	996.00	995.63	995.40	995.37	995.19	995.15	995.21	995.15	995.10	995.12	995.10	995.39
	3	995.03	994.97	994.96	994.98	994.98	994.99	995.03	995.03	995.04	995.05	995.05	995.03	995.01
	4	995.00	995.06	995.09	995.02	994.97	994.98	994.97	995.01	995.11	995.15	995.12	995.08	995.05
	5	995.09	995.16	995.26	995.36	995.43	995.47	995.44	995.42	995.47	995.55	995.59	995.63	995.40
	6	995.70	995.78	995.89	995.97	996.02	996.09	996.27	996.36	996.30	996.32	996.33	996.27	996.11
	7	996.26	996.29	996.27	996.23	996.32	996.45	996.51	996.64	996.82	997.04	997.25	997.43	996.62
	8	997.70	997.91	998.08	998.26	998.42	998.66	998.86	999.07	999.28	999.38	999.46	999.56	998.72
	9	999.73	999.87	1000.00	1000.15	1000.24	1000.40	1000.54	1000.63	1000.81	1000.94	1001.08	1001.24	1000.47
	10	1001.34	1001.43	1001.46	1001.54	1001.63	1001.65	1001.66	1001.72	1001.78	1001.83	1001.89	1001.95	1001.65
	11	1002.31	1002.55	1002.51	1002.54	1002.51	1002.54	1002.57	1002.54	1002.56	1002.61	1002.60	1002.61	1002.54
	12	1002.71	1002.78	1002.81	1002.85	1002.87	1002.93	1003.00	1003.01	1003.05	1003.08	1003.05	1003.05	1002.93
	13	1003.00	1002.95	1002.95	1002.87	1002.87	1002.91	1002.90	1002.98	1003.05	1003.09	1003.10	1003.11	1002.98
	14	1003.16	1003.20	1003.30	1003.36	1003.34	1003.38	1003.45	1003.43	1003.41	1003.47	1003.52	1003.56	1003.38
	15	1003.60	1003.57	1003.59	1003.66	1003.66	1003.57	1003.55	1003.61	1003.66	1003.68	1003.70	1003.71	1003.63
	16	1003.73	1003.75	1003.78	1003.85	1003.88	1003.95	1004.00	1003.98	1003.97	1003.96	1004.02	1004.08	1003.91
	17	1004.12	1004.17	1004.25	1004.29	1004.32	1004.34	1004.36	1004.41	1004.46	1004.52	1004.59	1004.62	1004.37
	18	1004.66	1004.68	1004.73	1004.82	1004.90	1004.96	1005.02	1005.05	1005.05	1005.06	1005.05	1005.06	1004.92
	19	1005.05	1005.09	1005.11	1005.11	1005.13	1005.10	1005.12	1005.13	1005.15	1005.25	1005.31	1005.30	1005.15
	20	1005.26	1005.20	1005.18	1005.26	1005.37	1005.49	1005.58	1005.64	1005.70	1005.76	1005.80	1005.77	1005.50
	21	1005.74	1005.73	1005.69	1005.68	1005.71	1005.74	1005.77	1005.74	1005.73	1005.75	1005.73	1005.73	1005.73
	22	1005.73	1005.76	1005.97	1006.29	1006.50	1006.58	1006.64	1006.58	1006.54	1006.63	1006.64	1006.69	1006.38
	23	1006.85	1006.99	1007.08	1007.13	1007.20	1007.29	1007.38	1007.49	1007.50	1007.40	1007.32	1007.23	1007.24
4	0	1007.03	1006.93	1006.72	1006.72	1006.90	1007.01	1007.06	1007.09	1007.17	1007.28	1007.39	1007.53	1007.07
	1	1007.60	1007.59	1007.66	1007.77	1007.83	1007.83	1007.83	1007.86	1007.86	1007.86	1007.88	1007.91	1007.79
	2	1007.94	1007.96	1008.03	1008.13	1008.13	1008.08	1008.09	1008.14	1008.23	1008.32	1008.40	1008.52	1008.16
	3	1008.70	1008.88	1009.00	1009.08	1009.09	1009.11	1009.25	1009.34	1009.31	1009.33	1009.30	1009.25	1009.13
	4	1009.32	1009.43	1009.48	1009.50	1009.57	1009.68	1009.78	1009.87	1009.94	1009.99	1009.98	1009.92	1009.70
	5	1009.87	1009.86	1009.92	1009.99	1010.05	1010.11	1010.15	1010.15	1010.20	1010.35	1010.49	1010.57	1010.14
	6	1010.64	1010.72	1010.78	1010.85	1010.99	1011.12	1011.20	1011.25	1011.22	1011.20	1011.30	1011.39	1011.05
	7	1011.40	1011.43	1011.55	1011.66	1011.72	1011.79	1011.85	1011.95	1012.08	1012.16	1012.22	1012.33	1011.84
	8	1012.40	1012.44	1012.49	1012.56	1012.60	1012.63	1012.69	1012.74	1012.77	1012.77	1012.77	1012.80	1012.64
	9	1012.85	1012.91	1012.96	1012.96	1012.96	1013.01	1013.10	1013.18	1013.25	1013.35	1013.43	1013.50	1013.12
	10	1013.59	1013.66	1013.73	1013.75	1013.73	1013.71	1013.70	1013.66	1013.63	1013.63	1013.61	1013.61	1013.67
	11	1013.62	1013.59	1013.54	1013.50	1013.48	1013.42	1013.37	1013.39	1013.44	1013.46	1013.43	1013.36	1013.46
	12	1013.34	1013.35	1013.36	1013.32	1013.26	1013.25	1013.26	1013.24	1013.22	1013.24	1013.31	1013.40	1013.29
	13	1013.44	1013.46	1013.48	1013.51	1013.53	1013.56	1013.60	1013.63	1013.67	1013.70	1013.70	1013.72	1013.58
	14	1013.79	1013.86	1013.88	1013.91	1013.97	1014.02	1014.06	1014.07	1014.07	1014.09	1014.09	1014.11	1013.99
	15	1014.14	1014.18	1014.22	1014.26	1014.27	1014.27	1014.29	1014.28	1014.28	1014.29	1014.30	1014.33	1014.26
	16	1014.35	1014.34	1014.37	1014.43	1014.48	1014.50	1014.54	1014.60	1014.68	1014.76	1014.82	1014.90	1014.56
	17	1014.97	1015.03	1015.09	1015.15	1015.21	1015.26	1015.31	1015.37	1015.44	1015.50	1015.53	1015.55	1015.28
	18	1015.60	1015.67	1015.73	1015.80	1015.88	1015.92	1015.95	1016.00	1016.04	1016.06	1016.11	1016.15	1015.91
	19	1016.21	1016.27	1016.33	1016.38	1016.46	1016.57	1016.64	1016.64	1016.58	1016.53	1016.53	1016.57	1016.48
	20	1016.63	1016.68	1016.70	1016.71	1016.75	1016.76	1016.77	1016.80	1016.80	1016.77	1016.79	1016.85	1016.75
	21	1016.92	1016.99	1017.01	1017.03	1017.07	1017.13	1017.20	1017.25	1017.29	1017.31	1017.35	1017.42	1017.16
	22	1017.43	1017.46	1017.50	1017.51	1017.51	1017.51	1017.53	1017.59	1017.65	1017.71	1017.75	1017.76	1017.57
	23	1017.80	1017.87	1017.93	1017.97	1017.99	1017.99	1017.97	1017.94	1017.95	1017.96	1017.93	1017.89	1017.93

S.V.I.R.CO. Observatory - Pressure in hectoPascal – February 2018

day	hh	00_05	05_10	10_15	15_20	20_25	25_30	30_35	35_40	40_45	45_50	50_55	55_60	average
5	0	1017.87	1017.91	1017.97	1017.98	1018.00	1018.06	1018.08	1018.08	1018.07	1018.08	1018.11	1018.11	1018.03
	1	1018.08	1018.02	1017.99	1017.98	1018.01	1018.07	1018.11	1018.11	1018.11	1018.09	1018.06	1018.03	1018.05
	2	1018.02	1018.02	1018.04	1018.05	1018.02	1018.01	1018.02	1018.05	1018.06	1018.04	1018.06	1018.09	1018.04
	3	1018.09	1018.09	1018.10	1018.10	1018.11	1018.14	1018.17	1018.19	1018.23	1018.29	1018.36	1018.41	1018.19
	4	1018.39	1018.38	1018.39	1018.35	1018.29	1018.26	1018.27	1018.27	1018.27	1018.27	1018.28	1018.28	1018.31
	5	1018.30	1018.32	1018.33	1018.33	1018.32	1018.36	1018.37	1018.34	1018.33	1018.36	1018.36	1018.34	1018.34
	6	1018.34	1018.33	1018.29	1018.24	1018.23	1018.23	1018.25	1018.26	1018.26	1018.27	1018.25	1018.27	1018.27
	7	1018.34	1018.39	1018.40	1018.40	1018.41	1018.41	1018.43	1018.47	1018.51	1018.54	1018.56	1018.58	1018.45
	8	1018.61	1018.66	1018.70	1018.70	1018.70	1018.64	1018.59	1018.60	1018.64	1018.69	1018.68	1018.65	1018.65
	9	1018.66	1018.67	1018.67	1018.67	1018.66	1018.69	1018.70	1018.71	1018.71	1018.68	1018.64	1018.61	1018.67
	10	1018.57	1018.54	1018.51	1018.49	1018.47	1018.44	1018.39	1018.34	1018.29	1018.23	1018.17	1018.11	1018.38
	11	1018.03	1017.98	1017.94	1017.86	1017.82	1017.84	1017.82	1017.76	1017.72	1017.67	1017.59	1017.53	1017.79
	12	1017.47	1017.40	1017.34	1017.29	1017.29	1017.30	1017.27	1017.21	1017.16	1017.10	1017.00	1016.94	1017.23
	13	1016.93	1016.91	1016.89	1016.89	1016.91	1016.93	1016.91	1016.83	1016.75	1016.68	1016.65	1016.64	1016.82
	14	1016.63	1016.64	1016.61	1016.56	1016.51	1016.46	1016.42	1016.37	1016.32	1016.28	1016.27	1016.28	1016.44
	15	1016.28	1016.26	1016.26	1016.28	1016.25	1016.18	1016.15	1016.18	1016.19	1016.17	1016.10	1016.05	1016.19
	16	1016.03	1016.01	1016.03	1016.04	1016.02	1015.99	1015.99	1015.98	1015.94	1015.95	1015.99	1016.03	1016.00
	17	1016.06	1016.09	1016.13	1016.16	1016.18	1016.19	1016.23	1016.26	1016.23	1016.18	1016.16	1016.15	1016.17
	18	1016.16	1016.18	1016.19	1016.16	1016.13	1016.09	1016.05	1016.02	1016.01	1016.02	1016.01	1015.98	1016.08
	19	1015.94	1015.92	1015.88	1015.85	1015.83	1015.81	1015.82	1015.84	1015.84	1015.84	1015.81	1015.77	1015.84
	20	1015.77	1015.79	1015.79	1015.68	1015.60	1015.61	1015.62	1015.66	1015.68	1015.70	1015.71	1015.71	1015.69
	21	1015.68	1015.70	1015.73	1015.69	1015.61	1015.57	1015.58	1015.60	1015.61	1015.58	1015.55	1015.53	1015.62
	22	1015.47	1015.41	1015.37	1015.33	1015.30	1015.24	1015.17	1015.11	1015.01	1014.92	1014.92	1014.91	1015.18
	23	1014.87	1014.83	1014.77	1014.73	1014.75	1014.73	1014.66	1014.60	1014.54	1014.43	1014.33	1014.27	1014.62
6	0	1014.25	1014.21	1014.13	1014.07	1013.99	1013.91	1013.83	1013.75	1013.68	1013.59	1013.49	1013.42	1013.84
	1	1013.32	1013.26	1013.26	1013.22	1013.17	1013.12	1013.07	1013.01	1012.99	1012.95	1012.89	1012.83	1013.09
	2	1012.74	1012.66	1012.60	1012.55	1012.48	1012.41	1012.37	1012.31	1012.19	1012.09	1012.02	1011.93	1012.36
	3	1011.86	1011.80	1011.74	1011.66	1011.60	1011.59	1011.58	1011.56	1011.53	1011.52	1011.47	1011.40	1011.61
	4	1011.38	1011.40	1011.39	1011.30	1011.19	1011.07	1010.97	1010.88	1010.80	1010.78	1010.83	1010.82	1011.07
	5	1010.76	1010.72	1010.66	1010.54	1010.48	1010.42	1010.36	1010.37	1010.35	1010.31	1010.23	1010.12	1010.44
	6	1010.03	1010.04	1010.09	1010.07	1010.05	1010.06	1010.07	1010.07	1010.07	1010.12	1010.17	1010.15	1010.08
	7	1010.14	1010.11	1010.04	1009.94	1009.83	1009.78	1009.79	1009.78	1009.72	1009.64	1009.56	1009.50	1009.82
	8	1009.45	1009.37	1009.27	1009.21	1009.14	1009.11	1009.05	1008.98	1008.97	1008.92	1008.88	1008.86	1009.10
	9	1008.80	1008.77	1008.76	1008.74	1008.72	1008.72	1008.70	1008.65	1008.61	1008.57	1008.54	1008.47	1008.67
	10	1008.43	1008.46	1008.44	1008.32	1008.26	1008.20	1008.15	1008.11	1007.97	1007.86	1007.79	1007.70	1008.14
	11	1007.59	1007.50	1007.41	1007.33	1007.31	1007.28	1007.24	1007.19	1007.11	1007.00	1006.91	1006.84	1007.22
	12	1006.75	1006.66	1006.63	1006.61	1006.67	1006.66	1006.55	1006.55	1006.52	1006.41	1006.29	1006.19	1006.54
	13	1006.10	1005.99	1005.89	1005.88	1005.90	1005.81	1005.80	1005.84	1005.82	1005.88	1005.88	1005.83	1005.88
	14	1005.82	1005.77	1005.72	1005.69	1005.66	1005.67	1005.66	1005.65	1005.68	1005.72	1005.77	1005.80	1005.71
	15	1005.77	1005.69	1005.66	1005.64	1005.59	1005.51	1005.47	1005.44	1005.44	1005.44	1005.40	1005.38	1005.53
	16	1005.34	1005.29	1005.22	1005.15	1005.11	1005.07	1005.04	1004.97	1004.91	1004.91	1004.89	1004.91	1005.07
	17	1004.93	1004.88	1004.84	1004.89	1004.88	1004.83	1004.84	1004.82	1004.79	1004.80	1004.81	1004.82	1004.84
	18	1004.84	1004.86	1004.84	1004.77	1004.74	1004.73	1004.65	1004.59	1004.58	1004.57	1004.59	1004.62	1004.70
	19	1004.61	1004.60	1004.60	1004.55	1004.47	1004.41	1004.38	1004.37	1004.36	1004.36	1004.38	1004.36	1004.45
	20	1004.30	1004.23	1004.21	1004.22	1004.23	1004.23	1004.23	1004.23	1004.23	1004.26	1004.27	1004.24	1004.24
	21	1004.22	1004.23	1004.26	1004.26	1004.27	1004.28	1004.26	1004.23	1004.23	1004.30	1004.35	1004.32	1004.26
	22	1004.26	1004.24	1004.22	1004.19	1004.13	1004.07	1004.08	1004.12	1004.10	1004.04	1003.99	1003.98	1004.12
	23	1003.99	1003.97	1003.96	1003.93	1003.85	1003.78	1003.75	1003.73	1003.68	1003.61	1003.55	1003.52	1003.77

S.V.I.R.CO. Observatory - Pressure in hectoPascal – February 2018

day	hh	00_05	05_10	10_15	15_20	20_25	25_30	30_35	35_40	40_45	45_50	50_55	55_60	average
7	0	1003.38	1003.38	1003.34	1003.31	1003.28	1003.26	1003.20	1003.12	1003.07	1003.01	1002.97	1002.97	1003.18
	1	1002.97	1002.98	1002.94	1002.86	1002.77	1002.69	1002.64	1002.61	1002.55	1002.49	1002.48	1002.50	1002.71
	2	1002.47	1002.43	1002.36	1002.25	1002.20	1002.14	1002.01	1001.82	1001.66	1001.63	1001.65	1001.66	1002.02
	3	1001.62	1001.50	1001.37	1001.28	1001.20	1001.19	1001.19	1001.22	1001.25	1001.15	1001.08	1001.15	1001.26
	4	1001.74	1002.22	1002.18	1002.23	1002.33	1002.42	1002.51	1002.44	1002.27	1001.94	1001.23	1000.82	1002.03
	5	1000.97	1001.20	1001.43	1001.70	1001.90	1001.90	1001.85	1001.80	1001.77	1001.75	1001.71	1001.65	1001.63
	6	1001.57	1001.54	1001.60	1001.70	1001.75	1001.75	1001.73	1001.71	1001.75	1001.79	1001.81	1001.86	1001.71
	7	1001.94	1001.97	1002.01	1001.99	1001.88	1001.82	1001.80	1001.76	1001.73	1001.70	1001.74	1001.86	1001.85
	8	1001.91	1001.94	1001.99	1001.98	1001.95	1001.94	1001.98	1002.03	1002.03	1002.09	1002.19	1002.17	1002.01
	9	1002.10	1002.02	1001.95	1001.95	1001.99	1002.09	1002.18	1002.23	1002.35	1002.51	1002.61	1002.65	1002.22
	10	1002.72	1002.78	1002.85	1002.96	1002.97	1002.81	1002.68	1002.63	1002.66	1002.75	1002.84	1002.93	1002.80
	11	1003.09	1003.19	1003.23	1003.14	1003.01	1003.03	1003.06	1003.12	1003.14	1003.15	1003.23	1003.24	1003.13
	12	1003.15	1003.10	1003.16	1003.28	1003.38	1003.41	1003.39	1003.34	1003.27	1003.22	1003.18	1003.16	1003.25
	13	1003.16	1003.17	1003.16	1003.15	1003.13	1003.10	1003.11	1003.12	1003.08	1002.99	1002.93	1002.91	1003.08
	14	1002.89	1002.87	1002.88	1002.95	1003.10	1003.27	1003.41	1003.57	1003.70	1003.74	1003.75	1003.78	1003.32
	15	1003.83	1003.83	1003.77	1003.69	1003.70	1003.76	1003.75	1003.75	1003.78	1003.77	1003.74	1003.72	1003.76
	16	1003.75	1003.82	1003.90	1004.00	1004.08	1004.13	1004.19	1004.23	1004.25	1004.31	1004.40	1004.48	1004.13
	17	1004.54	1004.56	1004.60	1004.67	1004.73	1004.75	1004.75	1004.76	1004.79	1004.82	1004.83	1004.84	1004.72
	18	1004.89	1004.94	1005.00	1005.07	1005.12	1005.15	1005.16	1005.18	1005.23	1005.26	1005.31	1005.38	1005.14
	19	1005.43	1005.49	1005.56	1005.62	1005.69	1005.74	1005.78	1005.83	1005.88	1005.92	1005.97	1006.05	1005.74
	20	1006.10	1006.17	1006.28	1006.38	1006.49	1006.59	1006.65	1006.65	1006.65	1006.68	1006.65	1006.59	1006.49
	21	1006.61	1006.64	1006.69	1006.80	1006.97	1007.09	1007.19	1007.31	1007.38	1007.40	1007.44	1007.52	1007.09
	22	1007.58	1007.63	1007.68	1007.74	1007.83	1007.92	1007.99	1008.09	1008.18	1008.23	1008.26	1008.33	1007.95
	23	1008.43	1008.51	1008.52	1008.55	1008.64	1008.75	1008.84	1008.87	1008.94	1009.06	1009.20	1009.35	1008.80
8	0	1009.54	1009.57	1009.66	1009.83	1009.95	1009.96	1009.99	1010.07	1010.16	1010.26	1010.34	1010.39	1009.99
	1	1010.43	1010.44	1010.44	1010.43	1010.41	1010.44	1010.50	1010.55	1010.57	1010.54	1010.52	1010.53	1010.48
	2	1010.55	1010.63	1010.67	1010.67	1010.71	1010.67	1010.57	1010.64	1010.74	1010.79	1010.84	1010.88	1010.70
	3	1010.95	1011.04	1011.10	1011.12	1011.15	1011.21	1011.24	1011.27	1011.33	1011.38	1011.38	1011.39	1011.21
	4	1011.43	1011.41	1011.40	1011.47	1011.59	1011.67	1011.68	1011.66	1011.68	1011.72	1011.71	1011.71	1011.59
	5	1011.73	1011.74	1011.79	1011.81	1011.79	1011.79	1011.83	1011.88	1011.87	1011.87	1011.88	1011.90	1011.82
	6	1011.93	1011.95	1011.98	1012.03	1012.08	1012.10	1012.11	1012.14	1012.20	1012.25	1012.30	1012.34	1012.12
	7	1012.37	1012.45	1012.51	1012.59	1012.69	1012.74	1012.77	1012.85	1012.91	1012.93	1012.91	1012.89	1012.72
	8	1012.89	1012.93	1012.95	1012.96	1013.00	1013.05	1013.08	1013.08	1013.07	1013.08	1013.11	1013.15	1013.03
	9	1013.22	1013.28	1013.33	1013.36	1013.36	1013.35	1013.41	1013.49	1013.52	1013.57	1013.64	1013.73	1013.44
	10	1013.83	1013.88	1013.92	1013.94	1013.97	1014.03	1014.02	1013.99	1014.01	1013.99	1013.98	1013.97	1013.96
	11	1013.96	1013.96	1013.92	1013.85	1013.79	1013.80	1013.81	1013.82	1013.81	1013.74	1013.68	1013.65	1013.81
	12	1013.68	1013.75	1013.82	1013.87	1013.87	1013.86	1013.84	1013.85	1013.87	1013.89	1013.91	1013.94	1013.84
	13	1013.97	1013.99	1013.96	1013.95	1013.97	1013.98	1013.99	1013.98	1013.99	1014.02	1014.04	1014.05	1013.99
	14	1014.06	1014.06	1014.10	1014.13	1014.12	1014.15	1014.18	1014.19	1014.15	1014.12	1014.12	1014.11	1014.12
	15	1014.10	1014.13	1014.16	1014.19	1014.22	1014.24	1014.25	1014.26	1014.27	1014.28	1014.29	1014.32	1014.22
	16	1014.38	1014.42	1014.47	1014.55	1014.62	1014.67	1014.73	1014.78	1014.82	1014.85	1014.89	1014.93	1014.67
	17	1014.96	1014.97	1014.98	1015.00	1015.04	1015.04	1015.04	1015.07	1015.13	1015.21	1015.26	1015.30	1015.08
	18	1015.37	1015.43	1015.48	1015.52	1015.58	1015.64	1015.70	1015.75	1015.76	1015.74	1015.74	1015.77	1015.62
	19	1015.82	1015.83	1015.81	1015.80	1015.79	1015.83	1015.88	1015.93	1015.96	1015.99	1016.03	1016.06	1015.89
	20	1016.09	1016.13	1016.17	1016.22	1016.25	1016.29	1016.35	1016.37	1016.35	1016.33	1016.32	1016.33	1016.26
	21	1016.31	1016.27	1016.23	1016.19	1016.16	1016.19	1016.23	1016.26	1016.28	1016.30	1016.31	1016.29	1016.25
	22	1016.29	1016.30	1016.34	1016.37	1016.36	1016.35	1016.36	1016.39	1016.46	1016.54	1016.57	1016.58	1016.41
	23	1016.60	1016.61	1016.64	1016.68	1016.70	1016.73	1016.79	1016.94	1017.00	1016.94	1016.84	1016.75	1016.77

S.V.I.R.CO. Observatory - Pressure in hectoPascal – February 2018

day	hh	00_05	05_10	10_15	15_20	20_25	25_30	30_35	35_40	40_45	45_50	50_55	55_60	average
9	0	1016.83	1016.80	1016.75	1016.75	1016.74	1016.70	1016.72	1016.77	1016.78	1016.75	1016.77	1016.80	1016.76
	1	1016.80	1016.83	1016.86	1016.83	1016.78	1016.78	1016.78	1016.75	1016.69	1016.63	1016.60	1016.58	1016.74
	2	1016.55	1016.49	1016.45	1016.42	1016.39	1016.37	1016.37	1016.37	1016.33	1016.31	1016.31	1016.29	1016.39
	3	1016.29	1016.29	1016.29	1016.24	1016.18	1016.16	1016.14	1016.10	1016.05	1015.99	1015.95	1015.93	1016.13
	4	1015.90	1015.88	1015.86	1015.86	1015.85	1015.83	1015.78	1015.71	1015.65	1015.66	1015.68	1015.70	1015.78
	5	1015.74	1015.78	1015.81	1015.81	1015.80	1015.79	1015.79	1015.77	1015.78	1015.77	1015.74	1015.72	1015.77
	6	1015.75	1015.81	1015.82	1015.82	1015.86	1015.87	1015.89	1015.96	1015.97	1015.96	1015.96	1015.99	1015.89
	7	1016.02	1016.03	1016.04	1016.04	1016.04	1016.07	1016.10	1016.11	1016.13	1016.16	1016.15	1016.12	1016.08
	8	1016.11	1016.11	1016.07	1016.01	1015.99	1016.01	1016.04	1016.08	1016.08	1016.05	1016.01	1015.96	1016.04
	9	1015.89	1015.83	1015.79	1015.76	1015.70	1015.65	1015.61	1015.55	1015.52	1015.50	1015.47	1015.46	1015.64
	10	1015.46	1015.43	1015.38	1015.35	1015.32	1015.29	1015.27	1015.25	1015.21	1015.15	1015.08	1015.01	1015.26
	11	1014.97	1014.89	1014.79	1014.74	1014.68	1014.62	1014.57	1014.52	1014.46	1014.38	1014.31	1014.24	1014.60
	12	1014.19	1014.12	1014.02	1013.91	1013.81	1013.71	1013.62	1013.55	1013.46	1013.36	1013.25	1013.15	1013.68
	13	1013.06	1012.97	1012.91	1012.83	1012.72	1012.60	1012.49	1012.43	1012.41	1012.37	1012.32	1012.29	1012.61
	14	1012.28	1012.28	1012.30	1012.28	1012.23	1012.18	1012.17	1012.17	1012.13	1012.09	1012.09	1012.07	1012.19
	15	1012.05	1012.02	1011.99	1011.97	1011.94	1011.91	1011.90	1011.90	1011.89	1011.89	1011.88	1011.86	1011.93
	16	1011.86	1011.85	1011.84	1011.84	1011.84	1011.83	1011.84	1011.88	1011.88	1011.86	1011.85	1011.84	1011.85
	17	1011.84	1011.86	1011.87	1011.89	1011.91	1011.93	1011.94	1011.94	1011.92	1011.89	1011.86	1011.85	1011.89
	18	1011.82	1011.79	1011.77	1011.76	1011.73	1011.70	1011.67	1011.63	1011.58	1011.55	1011.51	1011.48	1011.66
	19	1011.46	1011.42	1011.43	1011.46	1011.47	1011.45	1011.45	1011.45	1011.42	1011.41	1011.41	1011.43	1011.44
	20	1011.45	1011.46	1011.45	1011.39	1011.30	1011.22	1011.16	1011.12	1011.11	1011.08	1011.04	1011.05	1011.23
	21	1011.06	1011.04	1011.01	1011.00	1010.95	1010.89	1010.88	1010.87	1010.87	1010.88	1010.89	1010.88	1010.93
	22	1010.83	1010.77	1010.71	1010.63	1010.53	1010.49	1010.51	1010.56	1010.60	1010.61	1010.59	1010.57	1010.61
	23	1010.58	1010.61	1010.64	1010.63	1010.56	1010.54	1010.56	1010.52	1010.41	1010.29	1010.23	1010.17	1010.48
10	0	1009.98	1009.95	1009.92	1009.90	1009.85	1009.79	1009.75	1009.71	1009.68	1009.63	1009.59	1009.59	1009.77
	1	1009.57	1009.57	1009.55	1009.48	1009.42	1009.35	1009.25	1009.17	1009.09	1008.99	1008.93	1008.86	1009.27
	2	1008.77	1008.66	1008.54	1008.46	1008.41	1008.36	1008.35	1008.25	1008.15	1008.14	1008.08	1007.97	1008.34
	3	1007.90	1007.82	1007.77	1007.77	1007.72	1007.66	1007.62	1007.56	1007.47	1007.37	1007.30	1007.24	1007.60
	4	1007.19	1007.16	1007.11	1007.07	1007.02	1006.94	1006.88	1006.83	1006.81	1006.79	1006.78	1006.75	1006.94
	5	1006.69	1006.61	1006.52	1006.43	1006.42	1006.44	1006.40	1006.28	1006.17	1006.15	1006.13	1006.05	1006.36
	6	1005.98	1005.98	1005.98	1005.96	1005.95	1005.94	1005.93	1005.95	1006.02	1006.06	1006.09	1006.13	1006.00
	7	1006.15	1006.16	1006.16	1006.17	1006.17	1006.18	1006.21	1006.24	1006.26	1006.24	1006.22	1006.22	1006.19
	8	1006.25	1006.30	1006.31	1006.28	1006.29	1006.30	1006.21	1006.14	1006.12	1006.09	1006.11	1006.13	1006.21
	9	1006.12	1006.12	1006.10	1006.03	1005.97	1005.91	1005.89	1005.92	1005.92	1005.86	1005.81	1005.78	1005.95
	10	1005.74	1005.73	1005.69	1005.62	1005.53	1005.46	1005.42	1005.33	1005.25	1005.18	1005.10	1005.04	1005.42
	11	1004.99	1004.91	1004.82	1004.75	1004.68	1004.59	1004.50	1004.44	1004.39	1004.34	1004.24	1004.14	1004.56
	12	1004.08	1004.01	1003.94	1003.86	1003.82	1003.77	1003.71	1003.67	1003.62	1003.54	1003.42	1003.36	1003.73
	13	1003.33	1003.26	1003.26	1003.27	1003.25	1003.18	1003.07	1003.01	1002.95	1002.87	1002.78	1002.69	1003.07
	14	1002.66	1002.63	1002.57	1002.50	1002.45	1002.47	1002.47	1002.47	1002.50	1002.52	1002.52	1002.51	1002.52
	15	1002.55	1002.59	1002.62	1002.65	1002.66	1002.69	1002.73	1002.73	1002.74	1002.76	1002.82	1002.84	1002.70
	16	1002.85	1002.89	1002.91	1002.94	1002.99	1003.03	1003.07	1003.10	1003.17	1003.28	1003.41	1003.52	1003.09
	17	1003.61	1003.69	1003.75	1003.81	1003.88	1003.96	1004.05	1004.09	1004.12	1004.17	1004.23	1004.30	1003.97
	18	1004.39	1004.46	1004.53	1004.55	1004.54	1004.57	1004.60	1004.64	1004.71	1004.77	1004.82	1004.89	1004.62
	19	1004.95	1004.98	1005.02	1005.07	1005.12	1005.16	1005.21	1005.25	1005.26	1005.29	1005.32	1005.35	1005.16
	20	1005.38	1005.39	1005.38	1005.39	1005.40	1005.41	1005.44	1005.46	1005.47	1005.50	1005.53	1005.57	1005.44
	21	1005.61	1005.64	1005.65	1005.67	1005.70	1005.70	1005.71	1005.72	1005.73	1005.72	1005.73	1005.77	1005.69
	22	1005.79	1005.79	1005.79	1005.79	1005.80	1005.82	1005.83	1005.81	1005.79	1005.80	1005.78	1005.78	1005.79
	23	1005.80	1005.78	1005.74	1005.75	1005.73	1005.70	1005.68	1005.66	1005.68	1005.67	1005.64	1005.65	1005.70

S.V.I.R.CO. Observatory - Pressure in hectoPascal – February 2018

day	hh	00_05	05_10	10_15	15_20	20_25	25_30	30_35	35_40	40_45	45_50	50_55	55_60	average
11	0	1005.65	1005.63	1005.61	1005.60	1005.57	1005.58	1005.59	1005.63	1005.69	1005.74	1005.83	1005.90	1005.67
	1	1005.94	1006.00	1006.06	1006.09	1006.11	1006.09	1006.04	1005.98	1005.95	1005.98	1006.05	1006.11	1006.03
	2	1006.14	1006.15	1006.16	1006.19	1006.21	1006.21	1006.23	1006.21	1006.20	1006.24	1006.31	1006.36	1006.21
	3	1006.37	1006.39	1006.40	1006.40	1006.38	1006.39	1006.43	1006.45	1006.45	1006.39	1006.36	1006.39	1006.40
	4	1006.41	1006.46	1006.51	1006.53	1006.54	1006.57	1006.60	1006.63	1006.67	1006.73	1006.80	1006.87	1006.61
	5	1006.90	1006.89	1006.91	1006.94	1006.95	1006.97	1006.99	1006.98	1006.99	1007.07	1007.14	1007.22	1006.99
	6	1007.31	1007.38	1007.44	1007.50	1007.62	1007.72	1007.75	1007.79	1007.87	1007.91	1007.95	1007.97	1007.68
	7	1008.00	1008.09	1008.14	1008.19	1008.25	1008.32	1008.37	1008.43	1008.49	1008.52	1008.58	1008.61	1008.33
	8	1008.60	1008.59	1008.64	1008.72	1008.79	1008.85	1008.91	1008.96	1009.02	1009.06	1009.07	1009.10	1008.86
	9	1009.11	1009.10	1009.13	1009.16	1009.20	1009.24	1009.26	1009.28	1009.31	1009.35	1009.38	1009.42	1009.24
	10	1009.45	1009.43	1009.41	1009.42	1009.42	1009.38	1009.35	1009.33	1009.29	1009.28	1009.27	1009.21	1009.35
	11	1009.16	1009.12	1009.08	1009.00	1008.92	1008.87	1008.83	1008.80	1008.71	1008.64	1008.61	1008.58	1008.86
	12	1008.55	1008.53	1008.51	1008.48	1008.43	1008.36	1008.29	1008.26	1008.27	1008.26	1008.26	1008.26	1008.37
	13	1008.24	1008.21	1008.19	1008.13	1008.09	1008.11	1008.13	1008.15	1008.15	1008.16	1008.15	1008.14	1008.15
	14	1008.16	1008.16	1008.17	1008.17	1008.18	1008.19	1008.20	1008.23	1008.26	1008.27	1008.30	1008.30	1008.21
	15	1008.33	1008.39	1008.42	1008.44	1008.47	1008.51	1008.54	1008.56	1008.58	1008.63	1008.70	1008.74	1008.52
	16	1008.78	1008.86	1008.93	1008.97	1009.01	1009.03	1009.06	1009.11	1009.14	1009.19	1009.27	1009.33	1009.05
	17	1009.41	1009.47	1009.51	1009.58	1009.62	1009.66	1009.70	1009.72	1009.76	1009.81	1009.85	1009.88	1009.66
	18	1009.92	1009.95	1009.97	1009.99	1010.02	1010.04	1010.04	1010.06	1010.09	1010.11	1010.16	1010.20	1010.04
	19	1010.22	1010.27	1010.30	1010.33	1010.36	1010.39	1010.42	1010.44	1010.46	1010.47	1010.49	1010.52	1010.39
	20	1010.56	1010.57	1010.56	1010.58	1010.62	1010.67	1010.69	1010.69	1010.69	1010.67	1010.62	1010.60	1010.62
	21	1010.63	1010.65	1010.67	1010.71	1010.70	1010.68	1010.67	1010.68	1010.71	1010.75	1010.77	1010.75	1010.70
	22	1010.76	1010.79	1010.82	1010.81	1010.79	1010.76	1010.76	1010.78	1010.78	1010.77	1010.80	1010.83	1010.79
	23	1010.84	1010.85	1010.85	1010.79	1010.74	1010.70	1010.66	1010.66	1010.70	1010.69	1010.65	1010.64	1010.73
12	0	1010.59	1010.57	1010.53	1010.50	1010.52	1010.56	1010.54	1010.48	1010.47	1010.47	1010.49	1010.51	1010.51
	1	1010.47	1010.46	1010.47	1010.43	1010.39	1010.35	1010.31	1010.32	1010.31	1010.25	1010.19	1010.19	1010.34
	2	1010.19	1010.18	1010.19	1010.18	1010.15	1010.13	1010.11	1010.05	1009.96	1009.92	1009.91	1009.90	1010.07
	3	1009.85	1009.76	1009.72	1009.72	1009.71	1009.68	1009.64	1009.59	1009.54	1009.44	1009.23	1009.07	1009.58
	4	1009.05	1009.04	1009.03	1009.05	1009.00	1008.94	1008.91	1008.91	1008.88	1008.87	1008.91	1008.89	1008.95
	5	1008.89	1008.90	1008.94	1008.96	1008.94	1008.93	1008.92	1008.93	1008.94	1008.97	1009.04	1009.11	1008.95
	6	1009.19	1009.22	1009.24	1009.26	1009.25	1009.28	1009.35	1009.33	1009.26	1009.17	1009.12	1009.06	1009.22
	7	1008.93	1008.88	1008.90	1008.93	1008.96	1008.96	1008.93	1008.94	1008.92	1008.84	1008.82	1008.82	1008.90
	8	1008.78	1008.75	1008.69	1008.64	1008.63	1008.67	1008.69	1008.68	1008.68	1008.68	1008.71	1008.67	1008.69
	9	1008.59	1008.54	1008.51	1008.49	1008.55	1008.67	1008.71	1008.69	1008.67	1008.61	1008.61	1008.63	1008.60
	10	1008.58	1008.54	1008.47	1008.36	1008.30	1008.32	1008.32	1008.24	1008.14	1008.05	1007.98	1007.94	1008.27
	11	1007.91	1007.87	1007.81	1007.79	1007.76	1007.71	1007.59	1007.53	1007.60	1007.62	1007.55	1007.46	1007.68
	12	1007.35	1007.26	1007.20	1007.13	1007.09	1007.09	1007.08	1007.02	1006.91	1006.81	1006.72	1006.71	1007.03
	13	1006.74	1006.77	1006.76	1006.66	1006.61	1006.59	1006.52	1006.46	1006.45	1006.36	1006.31	1006.29	1006.54
	14	1006.27	1006.34	1006.38	1006.42	1006.48	1006.53	1006.47	1006.32	1006.26	1006.26	1006.21	1006.17	1006.34
	15	1006.16	1006.17	1006.22	1006.31	1006.31	1006.27	1006.24	1006.23	1006.29	1006.39	1006.44	1006.41	1006.29
	16	1006.35	1006.36	1006.42	1006.44	1006.48	1006.49	1006.43	1006.41	1006.46	1006.52	1006.58	1006.60	1006.46
	17	1006.56	1006.57	1006.58	1006.62	1006.75	1006.83	1006.86	1006.88	1006.82	1006.74	1006.78	1006.85	1006.73
	18	1006.86	1006.85	1006.81	1006.73	1006.69	1006.67	1006.69	1006.71	1006.70	1006.74	1006.81	1006.85	1006.76
	19	1006.87	1006.90	1006.86	1006.83	1006.85	1006.86	1006.83	1006.83	1006.85	1006.85	1006.86	1006.90	1006.85
	20	1006.92	1006.92	1006.90	1006.91	1006.97	1006.98	1006.96	1006.96	1006.97	1006.95	1006.87	1006.81	1006.92
	21	1006.78	1006.77	1006.77	1006.79	1006.77	1006.73	1006.73	1006.78	1006.82	1006.87	1006.92	1006.97	1006.80
	22	1006.97	1006.90	1006.87	1006.88	1006.91	1006.96	1007.02	1007.10	1007.13	1007.06	1006.98	1006.99	1006.98
	23	1007.03	1007.00	1006.95	1006.94	1006.93	1006.94	1006.97	1007.01	1007.08	1007.14	1007.18	1007.16	1007.02

S.V.I.R.CO. Observatory - Pressure in hectoPascal – February 2018

day	hh	00_05	05_10	10_15	15_20	20_25	25_30	30_35	35_40	40_45	45_50	50_55	55_60	average
13	0	1007.16	1007.20	1007.25	1007.29	1007.36	1007.40	1007.36	1007.30	1007.30	1007.34	1007.40	1007.41	1007.32
	1	1007.42	1007.50	1007.57	1007.55	1007.51	1007.50	1007.48	1007.38	1007.25	1007.18	1007.10	1007.03	1007.37
	2	1007.03	1007.07	1007.03	1006.93	1006.86	1006.83	1006.84	1006.83	1006.81	1006.93	1007.05	1007.06	1006.94
	3	1007.03	1006.97	1006.92	1006.90	1006.83	1006.76	1006.78	1006.79	1006.78	1006.82	1006.90	1006.91	1006.86
	4	1006.94	1007.02	1007.05	1007.07	1007.03	1006.99	1006.98	1007.00	1007.06	1007.16	1007.19	1007.12	1007.05
	5	1007.12	1007.12	1007.13	1007.13	1007.15	1007.19	1007.18	1007.16	1007.16	1007.18	1007.15	1007.13	1007.15
	6	1007.20	1007.29	1007.39	1007.47	1007.50	1007.55	1007.62	1007.64	1007.64	1007.64	1007.67	1007.74	1007.53
	7	1007.77	1007.74	1007.76	1007.84	1007.89	1007.96	1008.05	1008.07	1008.10	1008.20	1008.30	1008.30	1008.00
	8	1008.27	1008.28	1008.32	1008.33	1008.30	1008.28	1008.28	1008.27	1008.25	1008.25	1008.28	1008.31	1008.28
	9	1008.34	1008.41	1008.51	1008.61	1008.65	1008.64	1008.63	1008.64	1008.66	1008.70	1008.74	1008.70	1008.60
	10	1008.65	1008.65	1008.65	1008.63	1008.62	1008.59	1008.54	1008.49	1008.46	1008.40	1008.32	1008.24	1008.52
	11	1008.17	1008.10	1008.05	1007.99	1007.94	1007.89	1007.80	1007.71	1007.67	1007.67	1007.64	1007.59	1007.85
	12	1007.55	1007.50	1007.47	1007.41	1007.39	1007.35	1007.34	1007.37	1007.30	1007.25	1007.21	1007.19	1007.36
	13	1007.21	1007.22	1007.22	1007.19	1007.19	1007.23	1007.21	1007.25	1007.32	1007.33	1007.36	1007.37	1007.26
	14	1007.36	1007.37	1007.38	1007.42	1007.46	1007.50	1007.50	1007.52	1007.59	1007.62	1007.66	1007.72	1007.51
	15	1007.77	1007.81	1007.83	1007.87	1007.94	1008.01	1008.06	1008.09	1008.17	1008.31	1008.44	1008.51	1008.07
	16	1008.58	1008.64	1008.68	1008.71	1008.78	1008.89	1008.97	1009.00	1009.03	1009.05	1009.07	1009.14	1008.88
	17	1009.22	1009.27	1009.33	1009.41	1009.52	1009.65	1009.76	1009.85	1009.93	1009.99	1010.03	1010.10	1009.67
	18	1010.18	1010.25	1010.32	1010.38	1010.44	1010.51	1010.59	1010.64	1010.67	1010.70	1010.78	1010.84	1010.52
	19	1010.86	1010.89	1010.99	1011.12	1011.20	1011.27	1011.32	1011.40	1011.47	1011.50	1011.50	1011.51	1011.25
	20	1011.54	1011.58	1011.58	1011.58	1011.61	1011.64	1011.65	1011.66	1011.66	1011.68	1011.73	1011.76	1011.64
	21	1011.74	1011.74	1011.80	1011.86	1011.86	1011.80	1011.82	1011.88	1011.89	1011.87	1011.85	1011.86	1011.83
	22	1011.91	1011.97	1011.99	1011.99	1011.99	1012.03	1012.13	1012.20	1012.18	1012.07	1011.97	1011.92	1012.03
	23	1011.94	1011.97	1012.02	1012.10	1012.12	1012.04	1011.92	1011.82	1011.86	1011.99	1012.04	1012.02	1011.99
14	0	1012.10	1012.08	1012.04	1012.00	1012.00	1012.00	1011.99	1011.93	1011.83	1011.75	1011.69	1011.60	1011.91
	1	1011.55	1011.57	1011.62	1011.63	1011.59	1011.58	1011.59	1011.59	1011.60	1011.58	1011.57	1011.55	1011.58
	2	1011.48	1011.38	1011.28	1011.18	1011.10	1011.06	1011.05	1011.04	1010.99	1010.96	1010.95	1010.92	1011.12
	3	1010.85	1010.71	1010.58	1010.50	1010.46	1010.44	1010.39	1010.34	1010.38	1010.44	1010.43	1010.38	1010.49
	4	1010.29	1010.19	1010.11	1010.07	1010.06	1010.06	1010.07	1010.09	1010.09	1010.08	1010.05	1010.06	1010.10
	5	1010.10	1010.11	1010.10	1010.14	1010.20	1010.27	1010.34	1010.38	1010.37	1010.33	1010.28	1010.23	1010.24
	6	1010.20	1010.20	1010.18	1010.15	1010.17								
	7													
	8													
	9		1010.14	1010.16	1010.21	1010.25	1010.25	1010.23	1010.24	1010.27	1010.30	1010.32	1010.34	
	10	1010.36	1010.41	1010.45	1010.49	1010.52	1010.52	1010.50	1010.50	1010.50	1010.51	1010.53	1010.55	1010.49
	11	1010.54	1010.51	1010.47	1010.41	1010.36	1010.31	1010.28	1010.29	1010.27	1010.22	1010.16	1010.13	1010.33
	12	1010.15	1010.19	1010.18	1010.14	1010.11	1010.07	1010.03	1010.02	1010.00	1009.96	1009.96	1010.01	1010.07
	13	1010.05	1010.10	1010.19	1010.27	1010.30	1010.29	1010.30	1010.34	1010.38	1010.40	1010.40	1010.44	1010.29
	14	1010.48	1010.50	1010.49	1010.51	1010.54	1010.58	1010.64	1010.67	1010.69	1010.70	1010.72	1010.79	1010.61
	15	1010.87	1010.96	1011.03	1011.07	1011.16	1011.24	1011.25	1011.22	1011.21	1011.23	1011.26	1011.32	1011.15
	16	1011.36	1011.40	1011.47	1011.51	1011.56	1011.65	1011.78	1011.89	1011.99	1012.08	1012.13	1012.15	1011.75
	17	1012.20	1012.25	1012.34	1012.43	1012.47	1012.53	1012.63	1012.70	1012.77	1012.83	1012.86	1012.89	1012.58
	18	1012.91	1012.93	1012.95	1013.01	1013.09	1013.12	1013.17	1013.27	1013.38	1013.49	1013.58	1013.66	1013.21
	19	1013.74	1013.81	1013.88	1013.95	1014.00	1014.04	1014.08	1014.11	1014.12	1014.14	1014.17	1014.18	1014.02
	20	1014.19	1014.22	1014.28	1014.35	1014.42	1014.45	1014.50	1014.58	1014.67	1014.73	1014.76	1014.79	1014.49
	21	1014.82	1014.84	1014.86	1014.88	1014.89	1014.88	1014.90	1014.92	1014.92	1014.96	1015.07	1015.18	1014.93
	22	1015.26	1015.30	1015.32	1015.35	1015.37	1015.37	1015.35	1015.33	1015.30	1015.29	1015.33	1015.39	1015.33
	23	1015.44	1015.45	1015.48	1015.52	1015.55	1015.58	1015.59	1015.59	1015.61	1015.63	1015.65	1015.66	1015.56

S.V.I.R.CO. Observatory - Pressure in hectoPascal – February 2018

day	hh	00_05	05_10	10_15	15_20	20_25	25_30	30_35	35_40	40_45	45_50	50_55	55_60	average
15	0	1015.66	1015.67	1015.68	1015.66	1015.65	1015.66	1015.66	1015.66	1015.66	1015.64	1015.64	1015.68	1015.66
	1	1015.73	1015.76	1015.75	1015.76	1015.82	1015.90	1015.96	1016.01	1016.05	1016.08	1016.08	1016.09	1015.92
	2	1016.15	1016.22	1016.21	1016.18	1016.18	1016.17	1016.12	1016.10	1016.11	1016.15	1016.20	1016.23	1016.17
	3	1016.23	1016.26	1016.32	1016.38	1016.45	1016.49	1016.50	1016.52	1016.53	1016.56	1016.65	1016.80	1016.47
	4	1016.91	1016.96	1017.04	1017.11	1017.14	1017.15	1017.19	1017.29	1017.38	1017.45	1017.53	1017.62	1017.23
	5	1017.68	1017.70	1017.71	1017.71	1017.72	1017.76	1017.80	1017.85	1017.89	1017.91	1017.95	1017.99	1017.81
	6	1018.03	1018.10	1018.18	1018.26	1018.30	1018.31	1018.34	1018.39	1018.47	1018.57	1018.64	1018.69	1018.36
	7	1018.71	1018.70	1018.72	1018.83	1018.93	1019.02	1019.12	1019.20	1019.25	1019.28	1019.32	1019.38	1019.04
	8	1019.46	1019.54	1019.60	1019.64	1019.65	1019.68	1019.74	1019.83	1019.90	1019.91	1019.92	1019.94	1019.73
	9	1019.97	1019.99	1020.00	1020.03	1020.08	1020.10	1020.10	1020.11	1020.16	1020.21	1020.23	1020.22	1020.10
	10	1020.21	1020.23	1020.27	1020.31	1020.33	1020.30	1020.24	1020.18	1020.17	1020.20	1020.21	1020.21	1020.24
	11	1020.20	1020.18	1020.12	1020.06	1020.02	1019.98	1019.95	1019.95	1019.96	1019.99	1019.98	1019.94	1020.03
	12	1019.93	1019.90	1019.86	1019.84	1019.83	1019.85	1019.88	1019.89	1019.86	1019.82	1019.79	1019.76	1019.85
	13	1019.70	1019.64	1019.59	1019.55	1019.54	1019.53	1019.53	1019.57	1019.65	1019.71	1019.75	1019.78	1019.63
	14	1019.79	1019.78	1019.76	1019.76	1019.74	1019.68	1019.63	1019.60	1019.59	1019.55	1019.55	1019.62	1019.67
	15	1019.72	1019.80	1019.82	1019.82	1019.88	1019.93	1019.97	1019.98	1019.97	1019.96	1019.93	1019.89	1019.89
	16	1019.91	1019.95	1019.96	1020.02	1020.12	1020.22	1020.30	1020.34	1020.41	1020.50	1020.57	1020.65	1020.25
	17	1020.74	1020.81	1020.87	1020.92	1020.95	1020.97	1020.99	1020.96	1020.92	1020.91	1020.90	1020.89	1020.90
	18	1020.88	1020.90	1020.93	1020.96	1020.97	1021.00	1021.08	1021.18	1021.23	1021.29	1021.35	1021.42	1021.10
	19	1021.48	1021.53	1021.52	1021.52	1021.54	1021.53	1021.50	1021.49	1021.52	1021.53	1021.57	1021.67	1021.53
	20	1021.78	1021.82	1021.83	1021.86	1021.89	1021.90	1021.93	1021.97	1022.04	1022.14	1022.21	1022.28	1021.97
	21	1022.33	1022.33	1022.40	1022.52	1022.56	1022.61	1022.68	1022.76	1022.86	1022.90	1022.88	1022.83	1022.64
	22	1022.79	1022.81	1022.86	1022.89	1022.91	1022.96	1022.97	1022.90	1022.90	1022.94	1022.95	1022.93	1022.90
	23	1022.93	1022.97	1023.00	1023.02	1023.01	1022.98	1022.91	1022.83	1022.84	1022.86	1022.83	1022.79	1022.91
16	0	1022.65	1022.67	1022.67	1022.71	1022.86	1022.98	1023.06	1023.12	1023.19	1023.26	1023.31	1023.28	1022.99
	1	1023.23	1023.26	1023.26	1023.24	1023.23	1023.18	1023.16	1023.15	1023.13	1023.12	1023.14	1023.16	1023.19
	2	1023.17	1023.19	1023.19	1023.20	1023.27	1023.30	1023.26	1023.25	1023.26	1023.17	1023.13	1023.13	1023.21
	3	1023.05	1022.99	1022.95	1022.94	1022.98	1023.03	1023.12	1023.19	1023.20	1023.19	1023.17	1023.12	1023.08
	4	1023.05	1023.03	1023.04	1023.01	1023.05	1023.10	1023.15	1023.22	1023.25	1023.26	1023.24	1023.22	1023.13
	5	1023.18	1023.12	1023.14	1023.19	1023.22	1023.30	1023.35	1023.37	1023.43	1023.45	1023.46	1023.54	1023.31
	6	1023.67	1023.74	1023.77	1023.81	1023.83	1023.80	1023.78	1023.84	1023.95	1024.03	1024.09	1024.13	1023.87
	7	1024.14	1024.18	1024.22	1024.28	1024.34	1024.35	1024.33	1024.33	1024.37	1024.39	1024.33	1024.33	1024.30
	8	1024.37	1024.39	1024.43	1024.48	1024.49	1024.47	1024.50	1024.52	1024.54	1024.56	1024.55	1024.53	1024.48
	9	1024.49	1024.46	1024.42	1024.39	1024.37	1024.34	1024.31	1024.24	1024.19	1024.18	1024.18	1024.19	1024.31
	10	1024.16	1024.13	1024.13	1024.14	1024.14	1024.17	1024.16	1024.13	1024.09	1024.04	1024.02	1023.97	1024.10
	11	1023.92	1023.87	1023.81	1023.74	1023.69	1023.66	1023.65	1023.63	1023.57	1023.51	1023.47	1023.45	1023.66
	12	1023.40	1023.32	1023.26	1023.19	1023.17	1023.14	1023.09	1023.06	1023.00	1022.94	1022.89	1022.88	1023.11
	13	1022.84	1022.79	1022.75	1022.67	1022.67	1022.69	1022.66	1022.62	1022.60	1022.61	1022.61	1022.59	1022.67
	14	1022.58	1022.58	1022.57	1022.54	1022.51	1022.48	1022.50	1022.53	1022.51	1022.50	1022.47	1022.43	1022.52
	15	1022.41	1022.43	1022.48	1022.51	1022.54	1022.55	1022.58	1022.62	1022.64	1022.66	1022.68	1022.71	1022.57
	16	1022.71	1022.69	1022.70	1022.72	1022.75	1022.75	1022.74	1022.78	1022.86	1022.90	1022.91	1022.95	1022.79
	17	1023.00	1023.05	1023.10	1023.14	1023.13	1023.09	1023.06	1023.03	1023.05	1023.10	1023.14	1023.16	1023.08
	18	1023.20	1023.24	1023.30	1023.32	1023.34	1023.36	1023.37	1023.40	1023.42	1023.44	1023.48	1023.48	1023.36
	19	1023.46	1023.45	1023.46	1023.50	1023.56	1023.61	1023.65	1023.67	1023.67	1023.71	1023.74	1023.74	1023.60
	20	1023.73	1023.71	1023.73	1023.75	1023.74	1023.74	1023.75	1023.78	1023.77	1023.74	1023.74	1023.74	1023.74
	21	1023.73	1023.72	1023.70	1023.71	1023.73	1023.74	1023.75	1023.76	1023.76	1023.77	1023.75	1023.74	1023.74
	22	1023.75	1023.76	1023.75	1023.75	1023.76	1023.78	1023.79	1023.81	1023.81	1023.78	1023.75	1023.72	1023.77
	23	1023.68	1023.64	1023.62	1023.60	1023.58	1023.58	1023.60	1023.64	1023.66	1023.67	1023.68	1023.66	1023.63

S.V.I.R.CO. Observatory - Pressure in hectoPascal – February 2018

day	hh	00_05	05_10	10_15	15_20	20_25	25_30	30_35	35_40	40_45	45_50	50_55	55_60	average
17	0	1023.70	1023.70	1023.70	1023.69	1023.71	1023.73	1023.72	1023.72	1023.75	1023.74	1023.75	1023.78	1023.72
	1	1023.81	1023.82	1023.80	1023.81	1023.80	1023.77	1023.75	1023.74	1023.75	1023.76	1023.75	1023.74	1023.77
	2	1023.72	1023.68	1023.63	1023.59	1023.57	1023.54	1023.49	1023.46	1023.44	1023.40	1023.36	1023.34	1023.52
	3	1023.35	1023.35	1023.35	1023.33	1023.29	1023.26	1023.25	1023.26	1023.23	1023.20	1023.16	1023.13	1023.26
	4	1023.08	1023.03	1023.04	1023.04	1023.00	1022.96	1022.91	1022.88	1022.92	1022.93	1022.91	1022.89	1022.96
	5	1022.82	1022.81	1022.81	1022.73	1022.66	1022.64	1022.66	1022.68	1022.70	1022.72	1022.74	1022.73	1022.72
	6	1022.69	1022.72	1022.77	1022.77	1022.79	1022.86	1022.93	1022.95	1022.95	1022.92	1022.91	1022.93	1022.85
	7	1022.91	1022.90	1022.87	1022.85	1022.85	1022.85	1022.86	1022.87	1022.83	1022.82	1022.82	1022.78	1022.85
	8	1022.73	1022.69	1022.67	1022.61	1022.58	1022.58	1022.59	1022.58	1022.55	1022.52	1022.51	1022.52	1022.59
	9	1022.52	1022.49	1022.47	1022.45	1022.44	1022.41	1022.34	1022.31	1022.32	1022.36	1022.41	1022.42	1022.41
	10	1022.41	1022.38	1022.32	1022.27	1022.21	1022.13	1022.06	1022.01	1021.97	1021.94	1021.90	1021.86	1022.12
	11	1021.80	1021.74	1021.68	1021.60	1021.52	1021.44	1021.37	1021.29	1021.21	1021.14	1021.08	1021.03	1021.41
	12	1020.97	1020.92	1020.88	1020.80	1020.74	1020.69	1020.61	1020.53	1020.45	1020.36	1020.27	1020.20	1020.62
	13	1020.17	1020.12	1020.05	1020.00	1020.00	1019.96	1019.92	1019.90	1019.85	1019.79	1019.72	1019.68	1019.93
	14	1019.65	1019.62	1019.58	1019.56	1019.55	1019.54	1019.49	1019.46	1019.46	1019.44	1019.42	1019.39	1019.51
	15	1019.38	1019.35	1019.32	1019.30	1019.26	1019.21	1019.18	1019.16	1019.14	1019.13	1019.11	1019.11	1019.22
	16	1019.10	1019.12	1019.15	1019.15	1019.16	1019.17	1019.18	1019.21	1019.25	1019.27	1019.28	1019.30	1019.19
	17	1019.34	1019.38	1019.41	1019.45	1019.48	1019.50	1019.52	1019.54	1019.54	1019.51	1019.46	1019.41	1019.46
	18	1019.39	1019.37	1019.34	1019.30	1019.27	1019.24	1019.20	1019.16	1019.16	1019.17	1019.16	1019.14	1019.24
	19	1019.14	1019.12	1019.09	1019.05	1019.00	1018.95	1018.93	1018.92	1018.89	1018.83	1018.80	1018.79	1018.96
	20	1018.78	1018.74	1018.70	1018.68	1018.68	1018.67	1018.67	1018.67	1018.68	1018.67	1018.65	1018.63	1018.68
	21	1018.61	1018.58	1018.55	1018.52	1018.51	1018.50	1018.50	1018.47	1018.43	1018.43	1018.43	1018.39	1018.49
	22	1018.38	1018.37	1018.35	1018.34	1018.34	1018.32	1018.30	1018.27	1018.24	1018.25	1018.26	1018.27	1018.30
	23	1018.25	1018.23	1018.21	1018.18	1018.15	1018.12	1018.06	1018.02	1018.00	1017.97	1017.95	1017.94	1018.09
18	0	1017.88	1017.86	1017.82	1017.78	1017.75	1017.72	1017.67	1017.64	1017.60	1017.55	1017.51	1017.48	1017.68
	1	1017.43	1017.36	1017.30	1017.23	1017.14	1017.06	1017.02	1016.98	1016.92	1016.88	1016.86	1016.81	1017.08
	2	1016.73	1016.67	1016.61	1016.54	1016.47	1016.42	1016.36	1016.33	1016.33	1016.31	1016.27	1016.25	1016.44
	3	1016.26	1016.25	1016.22	1016.18	1016.16	1016.12	1016.08	1016.04	1016.01	1015.97	1015.94	1015.92	1016.09
	4	1015.91	1015.88	1015.81	1015.75	1015.73	1015.67	1015.62	1015.62	1015.67	1015.70	1015.68	1015.67	1015.72
	5	1015.65	1015.64	1015.62	1015.58	1015.54	1015.52	1015.50	1015.47	1015.47	1015.48	1015.47	1015.42	1015.53
	6	1015.40	1015.40	1015.37	1015.40	1015.43	1015.43	1015.43	1015.42	1015.38	1015.32	1015.29	1015.24	1015.37
	7	1015.17	1015.09	1015.05	1015.02	1014.99	1014.93	1014.89	1014.85	1014.81	1014.76	1014.71	1014.70	1014.91
	8	1014.67	1014.62	1014.58	1014.56	1014.53	1014.53	1014.52	1014.49	1014.48	1014.46	1014.42	1014.37	1014.52
	9	1014.33	1014.31	1014.31	1014.29	1014.25	1014.23	1014.21	1014.19	1014.20	1014.23	1014.23	1014.20	1014.25
	10	1014.19	1014.21	1014.26	1014.27	1014.24	1014.23	1014.25	1014.25	1014.20	1014.11	1014.03	1014.00	1014.19
	11	1014.00	1014.04	1014.10	1014.13	1014.16	1014.19	1014.15	1014.12	1014.10	1014.10	1014.12	1014.09	1014.11
	12	1013.87	1013.63	1013.51	1013.44	1013.46	1013.48	1013.42	1013.37	1013.31	1013.25	1013.25	1013.25	1013.44
	13	1013.23	1013.20	1013.14	1013.09	1013.08	1013.08	1013.09	1013.08	1013.08	1013.08	1013.05	1012.99	1013.10
	14	1012.95	1012.93	1012.93	1012.94	1012.93	1012.92	1012.93	1012.91	1012.87	1012.87	1012.87	1012.85	1012.91
	15	1012.80	1012.78	1012.75	1012.71	1012.70	1012.72	1012.72	1012.70	1012.72	1012.75	1012.78	1012.78	1012.74
	16	1012.76	1012.76	1012.74	1012.72	1012.71	1012.69	1012.67	1012.64	1012.62	1012.61	1012.59	1012.59	1012.67
	17	1012.64	1012.69	1012.72	1012.73	1012.76	1012.79	1012.81	1012.86	1012.91	1012.91	1012.90	1012.91	1012.80
	18	1012.90	1012.89	1012.91	1012.91	1012.90	1012.90	1012.90	1012.94	1012.99	1012.99	1013.01	1012.99	1012.93
	19	1012.97	1012.96	1012.96	1012.94	1012.91	1012.86	1012.81	1012.78	1012.74	1012.70	1012.71	1012.71	1012.83
	20	1012.71	1012.67	1012.62	1012.61	1012.57	1012.54	1012.55	1012.58	1012.61	1012.63	1012.65	1012.68	1012.62
	21	1012.67	1012.68	1012.68	1012.65	1012.63	1012.62	1012.61	1012.61	1012.63	1012.61	1012.58	1012.57	1012.63
	22	1012.56	1012.55	1012.55	1012.56	1012.56	1012.56	1012.56	1012.52	1012.48	1012.46	1012.43	1012.38	1012.51
	23	1012.37	1012.35	1012.31	1012.27	1012.21	1012.15	1012.13	1012.12	1012.08	1012.04	1012.02	1012.02	1012.17

S.V.I.R.CO. Observatory - Pressure in hectoPascal – February 2018

day	hh	00_05	05_10	10_15	15_20	20_25	25_30	30_35	35_40	40_45	45_50	50_55	55_60	average
19	0	1012.02	1012.01	1011.98	1011.97	1012.00	1011.99	1011.95	1011.92	1011.90	1011.89	1011.90	1011.87	1011.94
	1	1011.81	1011.77	1011.74	1011.74	1011.72	1011.66	1011.57	1011.45	1011.37	1011.32	1011.28	1011.25	1011.55
	2	1011.24	1011.22	1011.19	1011.17	1011.15	1011.15	1011.15	1011.12	1011.09	1011.06	1011.02	1010.99	1011.13
	3	1011.01	1011.02	1011.01	1011.01	1011.00	1010.99	1010.98	1010.97	1010.97	1010.96	1010.95	1010.92	1010.98
	4	1010.90	1010.87	1010.83	1010.80	1010.79	1010.79	1010.79	1010.77	1010.78	1010.82	1010.86	1010.94	1010.83
	5	1010.99	1011.01	1011.01	1011.00	1010.99	1010.99	1011.02	1011.06	1011.10	1011.17	1011.25	1011.33	1011.08
	6	1011.39	1011.44	1011.47	1011.46	1011.45	1011.44	1011.45	1011.49	1011.54	1011.58	1011.60	1011.62	1011.49
	7	1011.64	1011.64	1011.63	1011.64	1011.68	1011.73	1011.74	1011.72	1011.69	1011.69	1011.68	1011.66	1011.68
	8	1011.64	1011.62	1011.60	1011.58	1011.55	1011.50	1011.44	1011.40	1011.41	1011.42	1011.40	1011.37	1011.49
	9	1011.38	1011.40	1011.37	1011.33	1011.29	1011.23	1011.19	1011.15	1011.13	1011.12	1011.09	1011.07	1011.23
	10	1011.06	1011.05	1011.01	1010.98	1010.94	1010.94	1010.93	1010.88	1010.83	1010.79	1010.73	1010.66	1010.90
	11	1010.61	1010.57	1010.52	1010.46	1010.40	1010.36	1010.32	1010.27	1010.21	1010.13	1010.06	1010.02	1010.32
	12	1010.02	1010.01	1009.96	1009.92	1009.90	1009.88	1009.84	1009.80	1009.78	1009.76	1009.75	1009.74	1009.86
	13	1009.72	1009.71	1009.71	1009.68	1009.65	1009.63	1009.63	1009.62	1009.59	1009.56	1009.52	1009.46	1009.62
	14	1009.41	1009.40	1009.43	1009.43	1009.39	1009.33	1009.29	1009.29	1009.27	1009.22	1009.18	1009.14	1009.31
	15	1009.12	1009.09	1009.06	1009.04	1009.04	1009.06	1009.08	1009.08	1009.07	1009.07	1009.06	1009.04	1009.07
	16	1009.03	1009.01	1008.98	1008.97	1009.00	1009.04	1009.06	1009.05	1009.02	1008.98	1008.98	1009.02	1009.01
	17	1009.07	1009.11	1009.10	1009.07	1009.08	1009.11	1009.15	1009.18	1009.18	1009.17	1009.14	1009.11	1009.12
	18	1009.10	1009.12	1009.16	1009.20	1009.23	1009.25	1009.23	1009.19	1009.19	1009.23	1009.22	1009.20	1009.19
	19	1009.21	1009.22	1009.18	1009.14	1009.12	1009.10	1009.05	1008.99	1009.01	1009.05	1009.07	1009.07	1009.10
	20	1009.12	1009.17	1009.18	1009.16	1009.09	1009.00	1009.01	1009.06	1009.06	1009.03	1009.00	1008.99	1009.07
	21	1008.97	1008.93	1008.89	1008.90	1008.91	1008.90	1008.88	1008.85	1008.81	1008.79	1008.77	1008.74	1008.86
	22	1008.72	1008.69	1008.69	1008.74	1008.77	1008.77	1008.74	1008.70	1008.68	1008.68	1008.67	1008.66	1008.71
	23	1008.66	1008.64	1008.63	1008.61	1008.55	1008.50	1008.48	1008.45	1008.42	1008.35	1008.29	1008.28	1008.49
20	0	1008.30	1008.27	1008.20	1008.15	1008.14	1008.11	1008.10	1008.10	1008.10	1008.10	1008.07	1008.00	1008.13
	1	1007.94	1007.87	1007.78	1007.72	1007.69	1007.69	1007.68	1007.64	1007.61	1007.58	1007.52	1007.47	1007.68
	2	1007.43	1007.36	1007.28	1007.21	1007.15	1007.11	1007.06	1007.04	1007.04	1007.03	1007.05	1007.06	1007.15
	3	1007.07	1007.06	1007.04	1007.01	1006.99	1006.98	1006.98	1006.96	1006.96	1006.98	1006.98	1006.97	1007.00
	4	1006.98	1006.94	1006.87	1006.85	1006.82	1006.74	1006.72	1006.73	1006.71	1006.66	1006.61	1006.60	1006.77
	5	1006.63	1006.67	1006.70	1006.70	1006.69	1006.68	1006.65	1006.63	1006.62	1006.61	1006.63	1006.65	1006.65
	6	1006.64	1006.65	1006.69	1006.72	1006.75	1006.76	1006.78	1006.78	1006.77	1006.82	1006.88	1006.90	1006.76
	7	1006.89	1006.90	1006.92	1006.93	1006.90	1006.86	1006.82	1006.79	1006.74	1006.71	1006.74	1006.74	1006.83
	8	1006.67	1006.65	1006.66	1006.62	1006.61	1006.60	1006.59	1006.55	1006.50	1006.43	1006.32	1006.24	1006.53
	9	1006.18	1006.15	1006.14	1006.12	1006.11	1006.08	1006.04	1006.01	1005.95	1005.87	1005.78	1005.69	1006.01
	10	1005.62	1005.57	1005.55	1005.50	1005.45	1005.42	1005.39	1005.34	1005.28	1005.20	1005.11	1005.03	1005.37
	11	1004.94	1004.84	1004.75	1004.67	1004.58	1004.48	1004.38	1004.29	1004.20	1004.14	1004.09	1004.03	1004.45
	12	1003.95	1003.88	1003.84	1003.80	1003.75	1003.69	1003.62	1003.56	1003.49	1003.44	1003.38	1003.34	1003.64
	13	1003.29	1003.21	1003.18	1003.16	1003.11	1003.07	1003.04	1003.00	1002.98	1002.92	1002.85	1002.81	1003.05
	14	1002.77	1002.73	1002.69	1002.65	1002.61	1002.60	1002.60	1002.56	1002.52	1002.51	1002.51	1002.52	1002.60
	15	1002.50	1002.47	1002.43	1002.40	1002.38	1002.38	1002.39	1002.38	1002.35	1002.34	1002.34	1002.34	1002.39
	16	1002.33	1002.30	1002.29	1002.30	1002.34	1002.39	1002.42	1002.42	1002.42	1002.43	1002.43	1002.41	1002.37
	17	1002.39	1002.40	1002.43	1002.44	1002.44	1002.42	1002.41	1002.39	1002.37	1002.36	1002.32	1002.28	1002.39
	18	1002.26	1002.23	1002.18	1002.17	1002.18	1002.19	1002.18	1002.19	1002.20	1002.20	1002.19	1002.18	1002.19
	19	1002.20	1002.21	1002.17	1002.15	1002.15	1002.14	1002.13	1002.12	1002.13	1002.11	1002.07	1002.04	1002.13
	20	1002.04	1002.05	1002.03	1001.99	1001.99	1002.01	1002.01	1002.00	1001.98	1001.98	1001.98	1001.96	1002.00
	21	1001.90	1001.87	1001.86	1001.84	1001.82	1001.79	1001.77	1001.79	1001.81	1001.83	1001.83	1001.79	1001.82
	22	1001.74	1001.74	1001.74	1001.72	1001.69	1001.67	1001.62	1001.57	1001.55	1001.51	1001.43	1001.41	1001.61
	23	1001.42	1001.44	1001.45	1001.48	1001.50	1001.51	1001.52	1001.52	1001.50	1001.48	1001.46	1001.47	1001.48

S.V.I.R.CO. Observatory - Pressure in hectoPascal – February 2018

day	hh	00_05	05_10	10_15	15_20	20_25	25_30	30_35	35_40	40_45	45_50	50_55	55_60	average
21	0	1001.47	1001.45	1001.40	1001.37	1001.33	1001.29	1001.28	1001.27	1001.24	1001.16	1001.05	1001.00	1001.26
	1	1000.96	1000.90	1000.87	1000.86	1000.85	1000.81	1000.77	1000.75	1000.70	1000.66	1000.62	1000.56	1000.77
	2	1000.51	1000.49	1000.49	1000.48	1000.45	1000.43	1000.43	1000.43	1000.43	1000.40	1000.34	1000.31	1000.43
	3	1000.27	1000.19	1000.18	1000.20	1000.18	1000.16	1000.15	1000.14	1000.10	1000.06	1000.00	999.95	1000.13
	4	999.94	999.96	999.94	999.89	999.85	999.86	999.86	999.88	999.89	999.87	999.83	999.79	999.88
	5	999.78	999.79	999.79	999.79	999.82	999.85	999.83	999.81	999.82	999.84	999.85	999.85	999.82
	6	999.88	999.92	999.97	999.97	999.98	1000.03	1000.07	1000.09	1000.12	1000.14	1000.16	1000.18	1000.04
	7	1000.24	1000.28	1000.29	1000.29	1000.29	1000.30	1000.31	1000.32	1000.35	1000.36	1000.35	1000.38	1000.31
	8	1000.42	1000.44	1000.45	1000.46	1000.49	1000.54	1000.57	1000.59	1000.63	1000.67	1000.71	1000.75	1000.56
	9	1000.78	1000.76	1000.72	1000.71	1000.73	1000.74	1000.71	1000.65	1000.63	1000.62	1000.60	1000.59	1000.68
	10	1000.56	1000.54	1000.52	1000.50	1000.48	1000.43	1000.39	1000.37	1000.37	1000.37	1000.34	1000.31	1000.43
	11	1000.29	1000.23	1000.16	1000.12	1000.10	1000.05	999.98	999.90	999.84	999.79	999.72	999.66	999.98
	12	999.60	999.55	999.51	999.52	999.50	999.44	999.44	999.43	999.40	999.35	999.30	999.26	999.44
	13	999.23	999.19	999.15	999.11	999.10	999.08	999.06	999.01	998.96	998.94	998.92	998.90	999.05
	14	998.88	998.86	998.80	998.76	998.73	998.70	998.68	998.67	998.65	998.64	998.64	998.64	998.72
	15	998.61	998.59	998.61	998.61	998.64	998.68	998.67	998.68	998.69	998.69	998.71	998.73	998.66
	16	998.76	998.81	998.85	998.88	998.91	998.91	998.94	998.98	999.01	999.04	999.13	999.22	998.95
	17	999.28	999.31	999.34	999.40	999.46	999.50	999.51	999.53	999.58	999.62	999.62	999.63	999.48
	18	999.70	999.75	999.79	999.82	999.84	999.87	999.91	999.94	999.98	1000.00	1000.01	1000.01	999.88
	19	1000.03	1000.07	1000.10	1000.10	1000.13	1000.16	1000.21	1000.23	1000.25	1000.34	1000.41	1000.44	1000.20
	20	1000.45	1000.46	1000.46	1000.47	1000.47	1000.48	1000.52	1000.56	1000.57	1000.58	1000.58	1000.56	1000.51
	21	1000.53	1000.50	1000.45	1000.39	1000.33	1000.35	1000.44	1000.49	1000.50	1000.47	1000.46	1000.46	1000.45
	22	1000.42	1000.36	1000.34	1000.37	1000.38	1000.39	1000.40	1000.43	1000.46	1000.49	1000.49	1000.49	1000.42
	23	1000.48	1000.46	1000.45	1000.46	1000.45	1000.43	1000.40	1000.37	1000.35	1000.36	1000.36	1000.34	1000.41
22	0	1000.31	1000.29	1000.27	1000.29	1000.31	1000.32	1000.35	1000.40	1000.44	1000.50	1000.54	1000.57	1000.38
	1	1000.60	1000.57	1000.52	1000.49	1000.46	1000.44	1000.41	1000.35	1000.28	1000.25	1000.22	1000.20	1000.40
	2	1000.16	1000.12	1000.11	1000.14	1000.21	1000.27	1000.25	1000.21	1000.18	1000.18	1000.19	1000.17	1000.18
	3	1000.12	1000.08	1000.06	1000.06	1000.05	1000.03	1000.02	1000.04	1000.04	1000.03	1000.02	1000.01	1000.04
	4	999.99	999.99	999.98	999.94	999.94	1000.00	1000.06	1000.07	1000.07	1000.09	1000.13	1000.16	1000.03
	5	1000.17	1000.19	1000.23	1000.24	1000.24	1000.26	1000.30	1000.35	1000.40	1000.44	1000.47	1000.48	1000.31
	6	1000.48	1000.51	1000.51	1000.50	1000.54	1000.58	1000.60	1000.62	1000.65	1000.65	1000.64	1000.65	1000.57
	7	1000.67	1000.69	1000.71	1000.69	1000.63	1000.56	1000.53	1000.52	1000.50	1000.47	1000.47	1000.52	1000.58
	8	1000.56	1000.55	1000.57	1000.64	1000.69	1000.72	1000.77	1000.81	1000.86	1000.95	1000.98	1000.96	1000.75
	9	1000.95	1000.91	1000.88	1000.90	1000.91	1000.90	1000.92	1000.98	1001.10	1001.19	1001.24	1001.29	1001.01
	10	1001.32	1001.34	1001.35	1001.36	1001.35	1001.37	1001.39	1001.39	1001.42	1001.38	1001.27	1001.20	1001.34
	11	1001.21	1001.25	1001.28	1001.27	1001.22	1001.22	1001.27	1001.29	1001.29	1001.25	1001.19	1001.18	1001.24
	12	1001.19	1001.13	1001.02	1000.93	1000.89	1000.90	1000.91	1000.89	1000.83	1000.79	1000.81	1000.78	1000.92
	13	1000.76	1000.76	1000.75	1000.71	1000.68	1000.67	1000.65	1000.63	1000.62	1000.60	1000.59	1000.57	1000.66
	14	1000.53	1000.48	1000.43	1000.39	1000.37	1000.31	1000.20	1000.16	1000.15	1000.11	1000.05	999.95	1000.26
	15	999.85	999.78	999.66	999.51	999.46	999.43	999.37	999.30	999.22	999.13	999.02	998.91	999.38
	16	998.81	998.77	998.75	998.78	998.83	998.82	998.79	998.76	998.70	998.63	998.48	998.40	998.71
	17	998.41	998.48	998.63	998.70	998.70	998.67	998.65	998.58	998.51	998.52	998.53	998.51	998.57
	18	998.47	998.44	998.51	998.61	998.62	998.66	998.74	998.77	998.81	998.90	998.99	999.05	998.71
	19	999.06	999.07	999.09	999.14	999.30	999.45	999.50	999.45	999.32	999.25	999.21	999.20	999.25
	20	999.22	999.24	999.32	999.46	999.59	999.60	999.55	999.58	999.67	999.72	999.74	999.77	999.54
	21	999.79	999.82	999.82	999.85	999.90	999.93	999.97	999.99	999.98	999.98	999.97	999.99	999.92
	22	1000.04	1000.08	1000.10	1000.16	1000.20	1000.24	1000.27	1000.25	1000.21	1000.18	1000.17	1000.15	1000.17
	23	1000.15	1000.16	1000.19	1000.21	1000.24	1000.28	1000.31	1000.29	1000.26	1000.24	1000.22	1000.22	1000.23

S.V.I.R.CO. Observatory - Pressure in hectoPascal – February 2018

day	hh	00_05	05_10	10_15	15_20	20_25	25_30	30_35	35_40	40_45	45_50	50_55	55_60	average
23	0	1000.21	1000.23	1000.23	1000.22	1000.23	1000.24	1000.23	1000.23	1000.23	1000.25	1000.29	1000.26	1000.24
	1	1000.18	1000.16	1000.18	1000.20	1000.24	1000.28	1000.25	1000.16	1000.11	1000.09	1000.09	1000.09	1000.17
	2	1000.07	1000.04	1000.01	1000.02	1000.03	999.96	999.88	999.81	999.79	999.78	999.78	999.84	999.91
	3	999.89	999.83	999.75	999.78	999.88	999.93	999.87	999.77	999.64	999.59	999.58	999.58	999.76
	4	999.62	999.64	999.62	999.63	999.72	999.75	999.71	999.67	999.64	999.62	999.60	999.55	999.65
	5	999.52	999.48	999.48	999.58	999.67	999.63	999.62	999.66	999.65	999.62	999.60	999.63	999.59
	6	999.70	999.70	999.71	999.78	999.85	999.89	999.92	999.98	1000.02	1000.05	1000.08	1000.06	999.89
	7	1000.01	999.93	999.92	999.88	999.84	999.89	999.91	999.90	999.94	999.95	999.91	999.86	999.91
	8	999.88	999.94	999.92	999.91	999.94	999.98	1000.03	1000.09	1000.17	1000.22	1000.21	1000.21	1000.04
	9	1000.23	1000.22	1000.21	1000.24	1000.27	1000.23	1000.19	1000.17	1000.10	1000.01	999.93	999.89	1000.14
	10	999.86	999.86	999.87	999.89	999.88	999.83	999.82	999.81	999.78	999.72	999.63	999.58	999.79
	11	999.55	999.54	999.54	999.50	999.48	999.41	999.36	999.30	999.27	999.26	999.06	998.90	999.35
	12	998.92	998.91	998.85	998.58	998.29	998.25	998.27	998.22	998.12	998.09	997.96	997.85	998.36
	13	997.85	997.75	997.69	997.71	997.69	997.61	997.55	997.57	997.65	997.49	997.26	997.18	997.58
	14	997.16	997.10	997.06	997.01	996.90	996.83	996.84	996.88	996.87	996.89	996.93	996.90	996.94
	15	996.91	996.90	996.82	996.85	996.87	996.79	996.74	996.75	996.73	996.70	996.70	996.67	996.78
	16	996.62	996.59	996.58	996.63	996.66	996.63	996.58	996.55	996.55	996.54	996.53	996.50	996.58
	17	996.45	996.44	996.44	996.47	996.50	996.49	996.51	996.49	996.49	996.52	996.56	996.60	996.50
	18	996.60	996.59	996.58	996.59	996.57	996.55	996.58	996.61	996.61	996.62	996.63	996.66	996.60
	19	996.71	996.74	996.77	996.78	996.76	996.77	996.80	996.80	996.77	996.72	996.70	996.76	996.75
	20	996.84	996.90	996.97	997.02	997.00	996.95	996.97	997.04	997.06	997.01	997.00	997.00	996.98
	21	996.96	996.91	996.81	996.77	996.78	996.80	996.80	996.83	996.94	997.01	997.01	997.04	996.89
	22	997.11	997.18	997.20	997.24	997.27	997.22	997.16	997.31	997.36	997.35	997.60	997.62	997.30
	23	997.59	997.62	997.62	997.65	997.60	997.61	997.57	997.50	997.51	997.47	997.43	997.49	997.55
24	0	997.52	997.49	997.44	997.42	997.37	997.26	997.20	997.26	997.32	997.31	997.31	997.33	997.34
	1	997.32	997.31	997.30	997.29	997.32	997.34	997.35	997.38	997.33	997.29	997.36	997.50	997.34
	2	997.57	997.57	997.60	997.60	997.55	997.61	997.73	997.80	997.87	997.99	998.09	998.15	997.76
	3	998.18	998.21	998.35	998.37	998.34	998.40	998.54	998.69	998.73	998.72	998.75	998.82	998.51
	4	998.89	998.88	998.90	998.95	998.99	999.03	999.03	999.02	999.04	999.08	999.11	999.13	999.00
	5	999.18	999.21	999.24	999.32	999.39	999.48	999.56	999.61	999.64	999.67	999.75	999.83	999.49
	6	999.92	1000.00	1000.07	1000.14	1000.22	1000.33	1000.44	1000.53	1000.61	1000.68	1000.76	1000.84	1000.38
	7	1000.88	1000.92	1001.02	1001.11	1001.16	1001.21	1001.30	1001.38	1001.41	1001.41	1001.49	1001.59	1001.24
	8	1001.67	1001.76	1001.82	1001.83	1001.86	1001.91	1001.95	1002.03	1002.10	1002.17	1002.26	1002.32	1001.97
	9	1002.40	1002.45	1002.47	1002.49	1002.53	1002.57	1002.63	1002.69	1002.76	1002.82	1002.89	1002.95	1002.64
	10	1002.98	1003.00	1003.05	1003.12	1003.20	1003.23	1003.24	1003.24	1003.36	1003.47	1003.50	1003.57	1003.24
	11	1003.59	1003.56	1003.54	1003.56	1003.66	1003.73	1003.72	1003.77	1003.81	1003.81	1003.85	1003.86	1003.70
	12	1003.88	1003.91	1003.91	1003.90	1003.88	1003.85	1003.79	1003.74	1003.70	1003.66	1003.67	1003.70	1003.80
	13	1003.72	1003.74	1003.78	1003.82	1003.87	1003.90	1003.88	1003.85	1003.87	1003.92	1003.97	1004.01	1003.86
	14	1004.02	1004.05	1004.06	1004.09	1004.14	1004.22	1004.31	1004.39	1004.42	1004.38	1004.34	1004.37	1004.23
	15	1004.43	1004.49	1004.56	1004.65	1004.73	1004.77	1004.76	1004.80	1004.87	1004.90	1004.92	1004.94	1004.73
	16	1004.95	1004.97	1004.99	1004.98	1005.01	1005.09	1005.19	1005.27	1005.33	1005.38	1005.43	1005.46	1005.17
	17	1005.48	1005.46	1005.39	1005.28	1005.29	1005.40	1005.45	1005.56	1005.65	1005.66	1005.72	1005.75	1005.51
	18	1005.81	1005.92	1005.99	1006.01	1006.03	1006.07	1006.07	1006.04	1006.08	1006.14	1006.17	1006.17	1006.04
	19	1006.13	1006.12	1006.10	1006.08	1006.10	1006.10	1006.11	1006.16	1006.22	1006.26	1006.27	1006.29	1006.16
	20	1006.31	1006.29	1006.30	1006.35	1006.37	1006.42	1006.43	1006.39	1006.38	1006.40	1006.41	1006.46	1006.37
	21	1006.52	1006.51	1006.53	1006.60	1006.64	1006.64	1006.64	1006.68	1006.72	1006.75	1006.75	1006.70	1006.64
	22	1006.66	1006.63	1006.61	1006.60	1006.59	1006.59	1006.57	1006.56	1006.57	1006.58	1006.60	1006.61	1006.59
	23	1006.59	1006.58	1006.59	1006.60	1006.57	1006.53	1006.54	1006.56	1006.56	1006.54	1006.52	1006.52	1006.56

S.V.I.R.CO. Observatory - Pressure in hectoPascal – February 2018

day	hh	00_05	05_10	10_15	15_20	20_25	25_30	30_35	35_40	40_45	45_50	50_55	55_60	average
25	0	1006.46	1006.45	1006.43	1006.43	1006.41	1006.39	1006.37	1006.35	1006.36	1006.37	1006.35	1006.34	1006.39
	1	1006.37	1006.38	1006.31	1006.24	1006.20	1006.14	1006.04	1005.93	1005.84	1005.79	1005.79	1005.78	1006.06
	2	1005.74	1005.71	1005.68	1005.64	1005.65	1005.66	1005.61	1005.56	1005.51	1005.49	1005.51	1005.53	1005.61
	3	1005.55	1005.54	1005.49	1005.44	1005.43	1005.41	1005.36	1005.33	1005.32	1005.33	1005.35	1005.37	1005.41
	4	1005.34	1005.33	1005.32	1005.26	1005.22	1005.19	1005.15	1005.13	1005.09	1005.04	1004.97	1004.95	1005.16
	5	1004.96	1004.97	1004.97	1004.98	1004.98	1004.99	1005.01	1005.03	1005.05	1005.10	1005.13	1005.14	1005.02
	6	1005.15	1005.16	1005.19	1005.22	1005.22	1005.23	1005.23	1005.21	1005.20	1005.22	1005.23	1005.23	1005.21
	7	1005.25	1005.26	1005.26	1005.27	1005.27	1005.24	1005.21	1005.21	1005.20	1005.19	1005.17	1005.15	1005.22
	8	1005.13	1005.11	1005.13	1005.14	1005.13	1005.09	1005.08	1005.09	1005.07	1005.01	1004.96	1004.92	1005.07
	9	1004.89	1004.84	1004.78	1004.76	1004.75	1004.72	1004.70	1004.69	1004.70	1004.70	1004.69	1004.68	1004.74
	10	1004.66	1004.65	1004.64	1004.63	1004.61	1004.57	1004.52	1004.47	1004.42	1004.37	1004.31	1004.26	1004.51
	11	1004.18	1004.10	1004.02	1003.96	1003.91	1003.87	1003.82	1003.75	1003.67	1003.58	1003.51	1003.42	1003.81
	12	1003.33	1003.25	1003.17	1003.10	1003.03	1002.96	1002.90	1002.83	1002.77	1002.71	1002.65	1002.62	1002.94
	13	1002.59	1002.55	1002.54	1002.53	1002.52	1002.52	1002.51	1002.51	1002.53	1002.53	1002.53	1002.53	1002.53
	14	1002.53	1002.51	1002.51	1002.52	1002.55	1002.59	1002.61	1002.60	1002.60	1002.61	1002.65	1002.75	1002.58
	15	1002.91	1003.04	1003.13	1003.16	1003.15	1003.14	1003.11	1003.09	1003.08	1003.10	1003.13	1003.13	1003.10
	16	1003.11	1003.10	1003.09	1003.08	1003.09	1003.13	1003.17	1003.14	1003.11	1003.11	1003.10	1003.09	1003.11
	17	1003.08	1003.10	1003.13	1003.16	1003.17	1003.18	1003.17	1003.14	1003.12	1003.09	1003.09	1003.11	1003.13
	18	1003.13	1003.14	1003.16	1003.19	1003.20	1003.15	1003.06	1002.99	1002.96	1002.92	1002.88	1002.85	1003.05
	19	1002.81	1002.79	1002.80	1002.81	1002.80	1002.79	1002.77	1002.78	1002.80	1002.80	1002.78	1002.78	1002.79
	20	1002.82	1002.84	1002.82	1002.78	1002.78	1002.75	1002.66	1002.55	1002.46	1002.40	1002.36	1002.35	1002.63
	21	1002.35	1002.35	1002.33	1002.28	1002.21	1002.16	1002.17	1002.17	1002.19	1002.23	1002.20	1002.15	1002.23
	22	1002.08	1002.02	1001.94	1001.85	1001.84	1001.89	1001.91	1001.85	1001.80	1001.77	1001.74	1001.66	1001.86
	23	1001.60	1001.55	1001.50	1001.46	1001.40	1001.35	1001.31	1001.27	1001.21	1001.12	1001.09	1001.07	1001.33
26	0	1000.99	1000.92	1000.84	1000.83	1000.80	1000.71	1000.68	1000.70	1000.67	1000.59	1000.46	1000.34	1000.70
	1	1000.27	1000.19	1000.09	1000.04	1000.01	999.92	999.78	999.65	999.58	999.50	999.36	999.27	999.80
	2	999.27	999.28	999.25	999.20	999.13	999.08	999.07	999.13	999.14	999.09	999.04	999.03	999.14
	3	999.10	999.19	999.26	999.23	999.15	999.18	999.24	999.25	999.21	999.19	999.18	999.17	999.19
	4	999.14	999.15	999.16	999.18	999.19	999.19	999.21	999.15	999.07	999.00	998.92	998.89	999.10
	5	998.91	998.91	998.91	998.92	998.90	998.90	998.94	998.93	998.91	998.91	998.90	998.90	998.91
	6	998.88	998.87	998.90	998.94	999.00	999.05	999.09	999.13	999.21	999.29	999.32	999.31	999.08
	7	999.33	999.36	999.35	999.38	999.42	999.45	999.52	999.57	999.57	999.55	999.52	999.42	999.45
	8	999.36	999.38	999.40	999.44	999.46	999.46	999.51	999.51	999.48	999.50	999.56	999.60	999.47
	9	999.64	999.74	999.89	999.96	999.99	1000.02	1000.10	1000.14	1000.12	1000.15	1000.15	1000.14	1000.00
	10	1000.19	1000.16	1000.13	1000.17	1000.19	1000.10	1000.04	1000.14	1000.24	1000.32	1000.34	1000.28	1000.19
	11	1000.23	1000.20	1000.22	1000.25	1000.28	1000.36	1000.46	1000.56	1000.55	1000.45	1000.46	1000.56	1000.38
	12	1000.58	1000.51	1000.51	1000.53	1000.51	1000.52	1000.53	1000.60	1000.71	1000.84	1000.93	1000.94	1000.64
	13	1000.92	1000.94	1001.03	1001.10	1001.16	1001.21	1001.23	1001.29	1001.39	1001.42	1001.48	1001.53	1001.22
	14	1001.53	1001.57	1001.62	1001.66	1001.72	1001.80	1001.84	1001.92	1002.03	1002.12	1002.15	1002.13	1001.84
	15	1002.12	1002.14	1002.16	1002.17	1002.17	1002.17	1002.18	1002.16	1002.14	1002.17	1002.19	1002.20	1002.16
	16	1002.27	1002.32	1002.38	1002.44	1002.48	1002.52	1002.57	1002.57	1002.59	1002.64	1002.67	1002.65	1002.51
	17	1002.65	1002.72	1002.80	1002.90	1003.00	1003.05	1003.07	1003.11	1003.13	1003.12	1003.14	1003.18	1002.99
	18	1003.19	1003.21	1003.28	1003.36	1003.45	1003.50	1003.53	1003.57	1003.59	1003.63	1003.68	1003.74	1003.47
	19	1003.79	1003.81	1003.84	1003.85	1003.81	1003.79	1003.77	1003.74	1003.73	1003.75	1003.78	1003.79	1003.78
	20	1003.87	1003.93	1003.99	1004.07	1004.07	1004.08	1004.17	1004.28	1004.33	1004.35	1004.41	1004.49	1004.17
	21	1004.49	1004.45	1004.45	1004.46	1004.45	1004.40	1004.40	1004.42	1004.39	1004.45	1004.55	1004.60	1004.46
	22	1004.63	1004.62	1004.58	1004.55	1004.51	1004.51	1004.56	1004.62	1004.58	1004.50	1004.52	1004.52	1004.56
	23	1004.47	1004.50	1004.62	1004.71	1004.68	1004.59	1004.51	1004.46	1004.44	1004.42	1004.42	1004.45	1004.52

S.V.I.R.CO. Observatory - Pressure in hectoPascal – February 2018

day	hh	00_05	05_10	10_15	15_20	20_25	25_30	30_35	35_40	40_45	45_50	50_55	55_60	average
27	0	1004.51	1004.51	1004.47	1004.32	1004.19	1004.26	1004.38	1004.45	1004.49	1004.54	1004.57	1004.53	1004.43
	1	1004.53	1004.50	1004.43	1004.36	1004.31	1004.27	1004.29	1004.34	1004.38	1004.37	1004.31	1004.24	1004.36
	2	1004.17	1004.10	1004.02	1004.01	1004.02	1003.99	1003.93	1003.91	1003.89	1003.87	1003.91	1003.89	1003.97
	3	1003.84	1003.92	1004.03	1004.10	1004.17	1004.19	1004.21	1004.17	1004.11	1004.07	1004.05	1004.07	1004.07
	4	1004.09	1004.13	1004.15	1004.12	1004.07	1003.98	1003.94	1003.98	1003.98	1003.90	1003.85	1003.87	1004.00
	5	1003.91	1003.96	1003.95	1003.96	1003.97	1003.89	1003.82	1003.86	1003.92	1003.94	1003.97	1004.04	1003.93
	6	1004.09	1004.16	1004.21	1004.28	1004.42	1004.41	1004.36	1004.41	1004.51	1004.61	1004.61	1004.58	1004.39
	7	1004.61	1004.62	1004.58	1004.65	1004.73	1004.70	1004.64	1004.65	1004.69	1004.69	1004.67	1004.68	1004.66
	8	1004.69	1004.69	1004.64	1004.63	1004.66	1004.68	1004.70	1004.73	1004.78	1004.80	1004.82	1004.89	1004.72
	9	1004.96	1005.02	1005.07	1005.05	1004.98	1004.96	1004.96	1004.98	1005.07	1005.15	1005.17	1005.20	1005.05
	10	1005.27	1005.30	1005.32	1005.37	1005.35	1005.34	1005.39	1005.45	1005.50	1005.55	1005.57	1005.57	1005.41
	11	1005.56	1005.57	1005.54	1005.48	1005.44	1005.37	1005.29	1005.27	1005.28	1005.26	1005.24	1005.22	1005.37
	12	1005.20	1005.17	1005.14	1005.12	1005.15	1005.16	1005.14	1005.14	1005.17	1005.18	1005.16	1005.14	1005.15
	13	1005.13	1005.09	1005.07	1005.12	1005.12	1005.10	1005.12	1005.15	1005.14	1005.14	1005.20	1005.22	1005.13
	14	1005.23	1005.25	1005.31	1005.37	1005.42	1005.48	1005.48	1005.46	1005.48	1005.52	1005.53	1005.55	1005.42
	15	1005.58	1005.62	1005.62	1005.58	1005.57	1005.58	1005.60	1005.65	1005.73	1005.82	1005.91	1005.98	1005.68
	16	1006.04	1006.08	1006.12	1006.17	1006.22	1006.32	1006.43	1006.53	1006.59	1006.62	1006.67	1006.72	1006.37
	17	1006.83	1006.97	1007.06	1007.12	1007.17	1007.23	1007.29	1007.34	1007.41	1007.51	1007.59	1007.71	1007.27
	18	1007.84	1007.93	1007.97	1007.98	1008.01	1008.08	1008.14	1008.18	1008.23	1008.26	1008.27	1008.27	1008.09
	19	1008.28	1008.30	1008.35	1008.38	1008.43	1008.52	1008.62	1008.69	1008.74	1008.80	1008.87	1008.90	1008.57
	20	1008.94	1009.01	1009.05	1009.05	1009.05	1009.06	1009.09	1009.18	1009.28	1009.37	1009.43	1009.46	1009.16
	21	1009.50	1009.57	1009.63	1009.67	1009.69	1009.73	1009.82	1009.88	1009.95	1010.06	1010.15	1010.22	1009.82
	22	1010.29	1010.31	1010.33	1010.39	1010.43	1010.46	1010.54	1010.63	1010.71	1010.79	1010.83	1010.85	1010.54
	23	1010.87	1010.91	1010.93	1010.95	1010.97	1011.02	1011.06	1011.11	1011.19	1011.19	1011.18	1011.17	1011.04
28	0	1011.14	1011.12	1011.11	1011.15	1011.12	1011.15	1011.27	1011.33	1011.41	1011.54	1011.63	1011.70	1011.31
	1	1011.77	1011.77	1011.73	1011.69	1011.62	1011.53	1011.44	1011.41	1011.45	1011.54	1011.56	1011.56	1011.59
	2	1011.56	1011.48	1011.43	1011.41	1011.43	1011.50	1011.60	1011.66	1011.68	1011.77	1011.89	1011.98	1011.61
	3	1012.03	1011.99	1012.01	1012.12	1012.20	1012.20	1012.19	1012.18	1012.22	1012.29	1012.32	1012.31	1012.17
	4	1012.28	1012.29	1012.29	1012.29	1012.33	1012.43	1012.48	1012.45	1012.51	1012.63	1012.72	1012.80	1012.46
	5	1012.80	1012.67	1012.59	1012.62	1012.68	1012.76	1012.87	1012.89	1012.87	1012.88	1012.91	1012.91	1012.79
	6	1012.84	1012.83	1012.91	1012.99	1013.09	1013.17	1013.23	1013.28	1013.32	1013.38	1013.50	1013.68	1013.18
	7	1013.76	1013.81	1013.84	1013.85	1013.88	1013.90	1013.92	1013.93	1013.93	1013.92	1013.98	1014.08	1013.90
	8	1014.15	1014.24	1014.29	1014.28	1014.31	1014.39	1014.46	1014.45	1014.49	1014.59	1014.61	1014.60	1014.40
	9	1014.68	1014.80	1014.87	1014.95	1015.03	1015.05	1015.05	1015.08	1015.12	1015.20	1015.29	1015.31	1015.03
	10	1015.32	1015.33	1015.28	1015.23	1015.19	1015.20	1015.25	1015.31	1015.31	1015.23	1015.10	1014.96	1015.22
	11	1014.83	1014.81	1014.83	1014.82	1014.76	1014.69	1014.70	1014.69	1014.63	1014.59	1014.48	1014.39	1014.68
	12	1014.42	1014.47	1014.47	1014.45	1014.43	1014.44	1014.39	1014.31	1014.31	1014.31	1014.29	1014.20	1014.37
	13	1014.03	1013.99	1014.01	1013.97	1013.82	1013.73	1013.85	1013.93	1013.95	1013.94	1013.94	1013.92	1013.92
	14	1013.83	1013.75	1013.74	1013.70	1013.70	1013.82	1013.90	1013.94	1013.93	1013.85	1013.74	1013.66	1013.80
	15	1013.63	1013.51	1013.33	1013.22	1013.15	1013.19	1013.23	1013.17	1013.11	1013.07	1013.07	1013.10	1013.23
	16	1013.15	1013.15	1013.07	1013.03	1013.14	1013.23	1013.35	1013.53	1013.61	1013.66	1013.70	1013.68	1013.36
	17	1013.69	1013.78	1013.84	1013.83	1013.87	1013.94	1013.98	1013.99	1014.05	1014.09	1014.05	1014.01	1013.92
	18	1014.01	1014.05	1014.07	1014.04	1014.04	1014.08	1014.10	1014.17	1014.22	1014.19	1014.14	1014.08	1014.10
	19	1014.04	1014.07	1014.15	1014.21	1014.29	1014.38	1014.40	1014.42	1014.38	1014.28	1014.18	1014.11	1014.24
	20	1014.09	1014.07	1014.06	1014.03	1013.98	1013.98	1014.01	1014.06	1014.12	1014.16	1014.21	1014.25	1014.08
	21	1014.27	1014.29	1014.31	1014.33	1014.35	1014.40	1014.41	1014.34	1014.23	1014.11	1014.06	1013.99	1014.25
	22	1013.88	1013.78	1013.72	1013.74	1013.76	1013.77	1013.73	1013.58	1013.44	1013.37	1013.38	1013.38	1013.62
	23	1013.33	1013.27	1013.24	1013.20	1013.09	1012.93	1012.79	1012.67	1012.56	1012.46	1012.36	1012.33	1012.85

