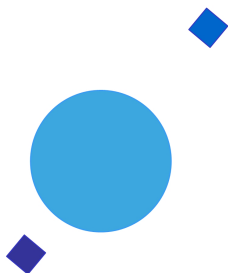


INAF



ISTITUTO NAZIONALE DI ASTROFISICA
NATIONAL INSTITUTE FOR ASTROPHYSICS

SVIRCO Prompt Report: November 2017

Francesco Re

INAF/IAPS-2017-15

December 2017

ISTITUTO DI ASTROFISICA E PLANETOLOGIA SPAZIALI

AREA DI RICERCA ROMA - TOR VERGATA

Via del Fosso del Cavaliere, 100 - 00133 Roma (ITALIA)

SVIRCO Prompt Report: November 2017

Francesco Re

*IAPS - INAF, Area di Ricerca Roma - Tor Vergata
Via del Fosso del Cavaliere, 100 - 00133 Roma, Italy,*

Abstract

The pressure corrected intensity of the nucleonic component, produced by primary cosmic rays and recorded in November 2017 by the Neutron Monitor of SVIRCO-Rome (present geographic position: 41.86° N - 12.47° E; altitude about s.l.), is reported in prompt form together with the barometric pressure data.

SVIRCO OBSERVATORY

During the 1st International Geophysics Year (1957) an international network of “ground-based detectors” for continuous cosmic ray measurements was world-wide established.

The cosmic ray station of Rome joined this network with the purpose to study the time variations of primary cosmic rays (**Studio Variazioni Intensità Raggi Cosmici: S.V.I.R.CO**) and their modulation in the heliosphere.

From July 1957 to April 1997, the SVIRCO Station (now Observatory) performed uninterrupted measurements at the Physics Department “G. Marconi” of “La Sapienza” University of Rome (41.90° N, 12.52° E, altitude about 60 m a.s.l.)

In May 1997 the neutron monitor was moved to the Physics Department “E. Amaldi” of “Roma Tre” University. Since then it has been continuously running at the new location (41.86° N, 12.47° E, altitude about 0 m a.s.l.).

The SVIRCO Observatory (INAF/IAPS-UNIRomaTre collaboration) is housed in a reserved building provided with a double air-conditioning system. The inner temperature is permanently restrained in a range of 23°-26° C, meanwhile the relative humidity is kept below 57%. Either the environmental parameters are continuously checked and recorded by digital sensors.

On January 1, 2005 three counters were added to the detector. This upgrade, from 17 to 20 NM-64, made the SVIRCO neutron monitor still consist of 5 sections but modified its geometry. Actually the new arrangement has been composed of three 3-counter, one 5-counter and one 6-counter units. The enhancement improved not only the overall counting rate of 15.6 % (January 2005) but, as a result, also the statistical quality of the recorded data.

On July 3, 2017 six counters experienced failure and were removed from the detector until 24 July. On 25 July 2017 a number of 2 counters was added to the detector up to a total of 16 counters. The new arrangement has been composed of three 3-counter, one 5-counter and one 2-counter units. The overall counting rate has decreased of about 20% (July 2017) with a lower statistical quality of the recorded data.

Each of the 16 BF₃ proportional counters (BP-28 type) is equipped with a smart amplifier/discriminator circuit complete with a spectrum stabilizer. This new electronic unit, developed in our laboratory, holds firmly the pulse height spectrum of the amplifier output (within a range of more than 150 volts around the operating voltage), providing the counter with a great immunity against high voltage variations.

Anyway, systematic and exhaustive tests of the counters are regularly performed. The output pulses of the amplifiers, discriminated by the threshold gates, are collected and stored into a multi-channel analyzer. The analysis of the height distribution (spectrum) of the amplifier pulses coinciding with the discriminator ones, is essential to verify the long term efficiency of each counter together with the amplifier gain and the discriminator threshold level.

As well as the amplifier/discriminator circuits, a large part of the electronic instrumentation operating in the Observatory was designed and realized in our laboratory together with the software for data acquisition and pre-elaboration.

In order to improve the reliability of the recorded data and to prevent measurement breakdowns, two independent systems perform contemporary the data acquisition. Each system is remotely controlled by a dedicated computer and is timed by a high stability quartz clock and/or a GPS receiver. One equipment runs according to a timing of 1 minute and fulfils the acquisition of the 16 counters separately. The other one records the individual 5-minute counting rate of each detector section in addition to the rates of the overall multiplicity, sorted into separated counting channels (from 1 to greater than 8).

A special care is devoted to the atmospheric pressure measurements; thus they are carried out by means of not less than three barometers at the same time. These instruments (achieving a resolution up to 0.01 hPa), are constantly checked out each other for the best measuring accuracy and reliability. Furthermore, the devices in use are equipped with different types of transducer such as vibrating cylinder, force balance and quartz, therefore, throughout their different behaviours, it is possible to point out the occurrence of any long-term drift and eventually to re-calibrate the instruments themselves.

DATA PRESENTATION

In a preliminary step, the intensity data, of the secondary nucleonic component of cosmic rays, detected at SVIRCO Observatory, were corrected for pressure variations at a reference level of 1009.25 hPa with an attenuation coefficient of 0.70% / hPa.

The five-minutes counting rates, of the examined month, are reported in tabular form together with the hourly normalized data, which provide a continuous data set for long-term analysis.

The normalization was evaluated as percentage of the counting rate average of January-February 1997, when the Monitor operated at the previous location of "La Sapienza" University. The reference counting rate level (100%), computed for such period, is equal to 554946 counts/hour.

The atmospheric pressure data (in hectoPascal) are also collected in a monthly table which presents the five-minutes averages and the hourly ones.

The hourly averages of the normalized intensity and pressure, plotted in monthly graphs, are reported too.

CONDITIONS FOR SVIRCO DATA USE

You are welcome to use neutron monitor data of SVIRCO, IAPS/INAF-UNIRomaTre collaboration, under the following conditions:

-You agree to acknowledge our financial supports in any published use of the data.

Example: "SVIRCO NM is supported by the INAF - UNIRomaTre collaboration"

-You are kindly requested to send a copy of any published work derived from our data to:

Dr. Monica Laurenza
Head of SVIRCO Observatory & TPL
Istituto di Astrofisica e Planetologia Spaziali - Area di Ricerca Tor Vergata
Via del Fosso del Cavaliere, 100 00133 Roma - Italy,

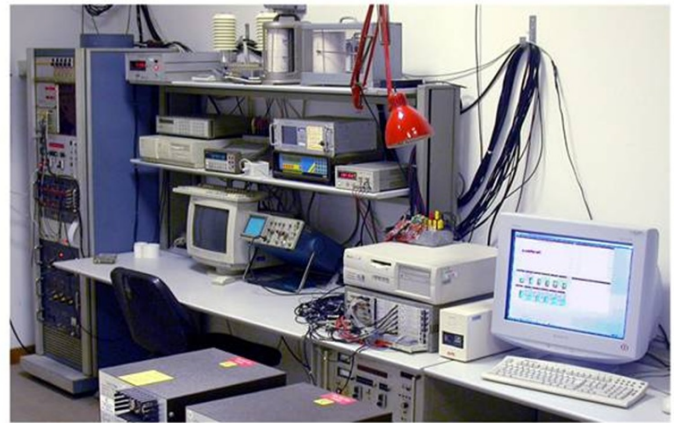
monica.laurenza@iaps.inaf.it



S.V.I.R.CO. Observatory

Rome

Italy



INAF/UNIRomaTre				S.V.I.R.CO. Observatory - Pressure Corrected Data – November 2017									20 NM-64	
day	hh	00_05	05_10	10_15	15_20	20_25	25_30	30_35	35_40	40_45	45_50	50_55	55_60	h-norm
1	0	38373	38426	38587	38752	38452	37947	38379	38675	38340	38464	38086	38022	101.312
	1	39034	38429	38294	37754	38999	38574	38175	38275	38109	38012	38405	38773	101.383
	2	38593	38400	38889	38433	38290	38415	38291	38679	38755	38926	38247	38510	101.734
	3	38526	38372	38415	38370	38333	38257	38743	38160	38568	38838	38774	38431	101.593
	4	38612	38318	38551	38656	38414	37901	38984	38102	39060	38650	38690	38431	101.721
	5	38117	38898	38897	37958	38659	38050	38434	38380	37965	38598	38818	38788	101.544
	6	38852	38339	38511	38823	38796	38486	38977	38663	39109	38891	38746	38462	102.224
	7	38318	38610	38724	38712	38572	39072	38653	37984	38414	38744	38228	38667	101.794
	8	38995	38572	38574	38734	39024	38866	38566	38373	38994	38673	39139	38722	102.351
	9	39289	38411	38891	38617	38266	38837	38520	37999	39087	38538	38547	38750	102.025
	10	38700	38712	38932	38938	38668	38733	38953	38620	38269	38633	38362	38089	101.993
	11	39165	38705	39042	38907	37965	38686	38878	38811	38772	38430	38585	39038	102.297
	12	38887	38658	38438	39007	38645	38780	38168	38318	38019	38027	38491	38807	101.693
	13	37990	38332	38150	38737	38135	38605	38790	38621	38798	38363	38845	39117	101.747
	14	38499	39264	38578	39022	38202	38667	38398	39270	38228	38801	39165	38227	102.151
	15	37755	38055	39134	38322	38107	38498	38457	38540	38285	38020	38473	38391	101.208
	16	38678	38096	38566	38123	38482	38151	38516	38502	37826	38340	38809	38174	101.258
	17	38558	38431	38102	38787	38813	39019	38239	37755	37742	38339	38752	38061	101.331
	18	38359	38473	38333	38853	37622	37967	38489	37845	37743	37797	38469	37851	100.716
	19	38579	38305	38410	38003	38604	38810	38737	38685	37834	38370	38127	37741	101.245
	20	38556	38377	37975	38017	38178	38369	38298	37793	38449	38196	38189	38121	100.874
	21	38305	38650	38615	38648	38514	38142	38228	38280	37980	37835	38241	38188	101.118
	22	38751	38508	38309	38527	38557	38461	38131	38264	38099	38535	38239	38210	101.330
	23	38085	38489	38132	37774	38155	38201	38260	37897	38548	38266	38104	37929	100.725
2	0	38045	38397	37570	38530	37884	38816	37869	38261	38229	38071	38291	38543	100.871
	1	38660	38437	38605	38359	38765	38342	38732	38095	37584	37635	39102	37993	101.268
	2	38571	38485	38456	37778	38031	38313	38154	38132	38700	38184	38138	38727	101.127
	3	38138	37615	37936	38150	38410	38455	38329	38114	38013	38282	38382	38619	100.858
	4	38184	38344	38247	38374	37999	38414	38137	37889	38142	38359	37794	38224	100.784
	5	38494	38837	38264	38279	39034	38418	37992	38047	38399	38006	37717	38151	101.121
	6	38173	38083	38377	38472	38201	38367	38223	38538	38050	38986	38429	38036	101.186
	7	38706	38371	38310	38231	37982	37920	37957	38518	38256	38311	38570	38387	101.095
	8	38134	38143	38916	37945	37867	38814	38715	38527	38094	38512	38614	39159	101.517
	9	38122	38434	38304	38222	38514	38125	38643	38580	38973	38081	38113	38393	101.311
	10	37889	38418	38525	38885	38543	38392	38743	38303	38132	38498	38582	38423	101.493
	11	37658	38574	38650	38773	37826	37733	38073	37969	38175	38718	38226	38180	100.882
	12	38348	38575	38804	38625	37527	38372	38254	37773	37750	38166	38962	37751	100.959
	13	37844	38651	38434	38164	37960	38354	38093	37679	38350	38570	37931	38674	100.915
	14	38726	37657	38070	38248	38461	37827	37886	37507	37894	38492	38181	37627	100.447
	15	38307	38052	38329	37636	38246	37976	37675	37656	38384	38323	38271	38334	100.582
	16	37902	38075	37739	38197	38101	38461	37921	38160	38107	38264	38308	37667	100.519
	17	37871	38163	37918	37725	37541	37869	38052	37423	37435	38312	37784	38166	99.937
	18	38217	37628	37554	37970	38059	37657	38198	37467	37820	37715	38189	38817	100.164
	19	37479	38078	37507	37898	38066	38339	38056	37795	37374	37722	37404	38688	99.969
	20	38092	37703	37289	37973	37274	38107	38358	37043	37859	38125	38161	37874	99.849
	21	37733	37588	37829	37773	37954	37977	37551	37857	37686	38330	37197	38245	99.818
	22	38226	37802	37711	37561	37659	38075	38047	37751	38229	37862	38334	38086	100.175
	23	37864	36911	37917	37517	37659	38063	37766	38031	38199	37570	38079	38446	99.886
3	0	38333	37938	37577	37884	38325	37468	37487	37836	38108	37803	38049	37670	99.984

INAF/UNIromaTre		S.V.I.R.CO. Observatory - Pressure Corrected Data – November 2017											20 NM-64	
day	hh	00_05	05_10	10_15	15_20	20_25	25_30	30_35	35_40	40_45	45_50	50_55	55_60	h-norm
	1	38114	38000	37816	37891	37543	38357	38092	38227	37861	37502	38287	38073	100.268
	2	38460	37820	37734	37960	38435	38258	38328	37811	38013	38360	38327	38576	100.778
	3	38176	38281	38277	38291	37468	37803	37779	37847	37959	37480	38393	38274	100.326
	4	38583	37645	38368	38038	37899	37815	37950	37690	38732	37832	38276	38306	100.570
	5	37913	37785	38795	38380	37595	38079	38238	38093	38063	37509	38223	38542	100.587
	6	38285	37654	37876	37799	37879	37439	37769	37771	38429	38117	37872	38048	100.086
	7	38230	37437	38439	38158	38590	37856	38160	38313	38418	38211	37715	38077	100.673
	8	37916	37773	38376	37832	38665	37614	37918	38097	37478	38486	38321	37682	100.355
	9	37412	38044	38091	38181	37679	38331	37601	38203	38180	37671	38232	38490	100.345
	10	38156	38131	37945	38320	38050	38529	38176	37601	38155	38478	37943	37917	100.628
	11	38106	38110	37947	38642	37985	38191	37892	37806	37454	38215	37894	37646	100.295
	12	38362	38149	38083	38351	37707	38073	38823	38377	37843	38637	37944	38374	100.919
	13	38441	37567	38164	37941	37960	37749	37869	37873	37762	38731	37978	38500	100.438
	14	37659	37601	38182	37866	37459	37819	38079	37231	37297	37691	38194	38077	99.694
	15	38059	38082	38195	37944	38469	38381	37664	37975	38290	37987	38283	38173	100.651
	16	37504	38364	37973	38179	37846	38075	37891	38303	37699	37790	37463	38047	100.130
	17	37688	37384	37893	38091	38270	37993	37925	37937	37821	37820	38035	37859	100.038
	18	37758	37518	37954	37555	37753	37741	38158	37620	37715	38282	37979	37919	99.869
	19	37944	37689	37814	37868	37945	37361	37703	37696	37943	37475	37698	38075	99.706
	20	38016	37779	38112	38145	38075	37848	37679	37823	38145	38976	37777	37299	100.248
	21	37946	37744	37873	38222	37368	38210	37572	37913	37840	37364	37958	37761	99.829
	22	37934	37537	38139	37819	37464	38037	38116	38125	37915	37910	37893	37984	100.072
	23	37614	38101	38160	38385	37653	37742	37960	38209	37371	37285	38172	37188	99.845
4	0	37797	37988	37739	37710	38243	38504	37347	37686	37953	37480	38078	37395	99.862
	1	37333	37848	37613	37315	37951	37731	38347	38249	37877	37753	38123	37892	99.887
	2	37512	37509	37714	38137	37735	37601	37845	38272	38139	37685	38032	37907	99.899
	3	37700	37255	37947	37868	38033	38367	37766	38282	37811	37720	37786	37696	99.931
	4	37973	37612	38033	37904	37829	37958	37972	37876	38082	37911	38492	37956	100.232
	5	37827	37830	38007	37464	38365	37521	37577	37980	37876	38087	38351	38795	100.249
	6	38329	38074	37942	37826	38414	38339	38138	38000	37722	37649	38615	38145	100.582
	7	38057	38811	38139	38926	38045	37766	38062	38233	38298	38409	38265	37900	100.961
	8	38086	38931	38299	38681	37997	38171	38443	37930	38344	38622	38460	38238	101.244
	9	37614	37591	38515	38101	37967	38644	39169	37556	38318	38124	38457	37547	100.672
	10	37809	38036	37967	37687	37591	37761	37890	38434	38332	38260	37990	37942	100.254
	11	38426	38056	38049	38277	38303	37964	37987	38178	38119	37806	38607	38026	100.715
	12	37975	38422	38300	37491	37939	38401	38325	38264	37822	38215	37900	38531	100.668
	13	37771	38059	37910	38214	37982	37518	37723	38405	37966	38293	37853	37372	100.114
	14	37849	38250	37792	37874	37502	38216	37473	38049	38074	38188	38455	37704	100.194
	15	37491	37720	36900	37607	37725	37775	37557	37599	37962	37483	38234	37691	99.384
	16	37961	38404	37949	37615	37632	38090	38360	38039	37756	38147	37876	37434	100.158
	17	37819	37944	37615	37567	37737	38154	37794	38141	37083	38328	38080	37720	99.876
	18	37559	38074	38402	37577	37868	37798	37814	38092	37763	37865	37355	37950	99.906
	19	37700	37372	37394	37720	37913	38071	37853	37508	37695	38087	36934	37906	99.474
	20	37585	37677	38323	37141	37470	37809	37739	37888	37966	37491	37620	37467	99.479
	21	38129	37453	38131	38155	37751	38057	37778	38275	38738	38119	38385	37606	100.447
	22	37872	37822	38114	38052	37811	37931	37915	37857	38069	38276	38024	38296	100.328
	23	36999	38067	37935	38002	36952	38054	37698	37544	37546	37802	37460	37625	99.370
5	0	38046	37301	37691	37907	38197	37386	37888	37481	38377	37662	37718	37729	99.742
	1	37559	37661	37874	37828	37403	37388	37931	37595	37975	37611	37898	37989	99.597

INAF/UNIRomaTre				S.V.I.R.CO. Observatory - Pressure Corrected Data – November 2017										20 NM-64	
day	hh	00_05	05_10	10_15	15_20	20_25	25_30	30_35	35_40	40_45	45_50	50_55	55_60	h-norm	
	2	37819	37610	37646	37854	37421	38226	37941	38687	37895	38027	38220	38286	100.239	
	3	37805	37491	37299	37832	38094	37762	37348	37981	38243	37945	37732	37803	99.734	
	4	37686	38034	38120	37975	38055	38428	38421	37596	37769	38255	37669	38239	100.374	
	5	38078	38210	37861	37997	38075	38037	38410	38173	37921	38005	38160	38593	100.655	
	6	38321	38308	38229	38324	37813	38098	38503	37593	38066	37944	38484	38383	100.775	
	7	38282	38192	38017	38373	38964	37695	38202	38075	38255	37935	37923	38468	100.843	
	8	38060	38394	38122	38134	38633	37884	37876	38012	37739	38450	37984	37975	100.598	
	9	38181	38568	38444	38099	38331	37950	38210	38533	38332	37535	38416	38326	100.963	
	10	37577	38240	38254	37858	38474	38156	38354	38890	37575	38240	37749	37981	100.618	
	11	38752	38078	37924	38151	38720	38047	38403	38302	38151	38331	38526	38045	101.075	
	12	37895	37577	38134	38738	38002	38241	37675	38042	37707	37974	38161	38481	100.459	
	13	38479	37710	38412	38167	38061	38300	38372	37546	37611	37628	37696	38434	100.414	
	14	37739	37756	38003	36950	37507	37822	38104	38047	37856	38491	37732	37863	99.851	
	15	37967	37791	37848	37185	38001	38260	37807	38077	38348	37978	37617	37815	100.034	
	16	37584	37886	37915	37892	38720	38099	37884	37900	37803	38309	37522	37247	100.048	
	17	38017	38119	37983	37545	37556	37446	38036	37913	37876	38195	37826	37928	99.977	
	18	37851	37999	37782	37539	37901	38236	37810	38011	37656	38131	37696	38242	100.068	
	19	38472	38016	38048	37219	37598	37830	37612	37634	37643	37831	37502	37812	99.708	
	20	37808	38122	38283	38461	37671	37860	37705	37989	38169	37620	37558	37396	100.021	
	21	37525	37868	37973	37895	37427	37813	38118	37617	37863	38154	38448	38273	100.094	
	22	38245	37785	37896	37629	37875	37991	37392	37809	37801	37901	37226	38245	99.835	
	23	38048	37110	37954	37669	38034	37919	38020	38084	37985	37364	37807	37896	99.856	
6	0	37551	38150	38009	38156	37553	38118	38234	37762	37925	38097	37538	38154	100.153	
	1	37318	38379	37749	38272	37903	38286	37746	37761	38152	37540	38163	37678	100.088	
	2	38034	37430	37864	37595	37892	37764	37983	38280	37895	37932	38071	38333	100.116	
	3	37660	38085	38115	38072	37601	38046	38168	37889	37990	38049	37819	37660	100.134	
	4	38064	38175	38070	37840	37397	37890	38437	37486	38190	37760	37848	37900	100.113	
	5	38388	37934	38043	38257	37812	37965	38436	38741	37741	38031	38142	37985	100.645	
	6	37877	38049	38444	38756	37827	37565	37921	38208	38385	38024	37908	38594	100.663	
	7	38257	38322	38764	38588	38062	38286	38311	38412	38163	38106	38794	37738	101.157	
	8	38342	38233	38215	38201	38131	38515	38558	37939	38047	38416	38809	38488	101.177	
	9	38036	38081	38055	38180	38623	37814	38303	37919	38281	38110	37902	37891	100.583	
	10	38630	38543	38523	38590	38227	38266	38609	37984	38598	38579	38506	38456	101.533	
	11	38198	38317	38513	38145	38388	38211	38356	37755	38564	37910	38128	38429	100.962	
	12	38059	38511	37999	37999	37623	38195	38018	38339	38016	38075	38541	38473	100.727	
	13	37683	37974	38043	38356	37969	38003	38360	38305	38169	38121	37830	38396	100.586	
	14	38149	38377	38185	38102	37926	38138	38211	38463	38310	38263	38243	37556	100.743	
	15	38105	38071	37597	38141	38189	37842	38535	37847	38124	38789	37567	37920	100.480	
	16	38315	37639	38255	38253	38034	37863	38199	38201	37376	38086	38544	38405	100.578	
	17	38262	38122	37787	38388	38324	38220	38088	38382	38352	38324	38029	38207	100.866	
	18	38145	38375	38569	37602	38266	37789	38358	38464	38292	37582	38169	38143	100.706	
	19	38306	37962	37858	38235	38045	37987	37966	38155	38355	38213	38517	37750	100.617	
	20	37731	37761	38524	38295	38031	38431	37783	37797	38084	38308	37765	38236	100.484	
	21	38745	37906	37802	38118	38184	37789	37871	38302	38280	38087	37879	37962	100.524	
	22	38281	37870	37887	37742	37970	38054	38360	38289	38358	37810	38581	38107	100.608	
	23	38339	38171	38199	38266	37952	38955	38997	38040	37761	38401	38593	37611	101.043	
7	0	37945	37690	38277	37878	37985	37852	37997	37764	37398	38392	38131	38245	100.217	
	1	38293	37871	38320	38422	38677	37861	37860	37773	37938	37741	38388	38542	100.691	
	2	37987	38442	38379	38014	38958	37571	37667	37812	37921	38322	37648	38075	100.494	

INAF/UNIromaTre		S.V.I.R.CO. Observatory - Pressure Corrected Data – November 2017										20 NM-64		
day	hh	00_05	05_10	10_15	15_20	20_25	25_30	30_35	35_40	40_45	45_50	50_55	55_60	h-norm
	3	38738	38095	37902	38174	38586	37943	37378	38292	37220	37760	37274	37729	100.120
	4	38059	37802	38243	37747	37893	38060	37891	37645	38152	37970	37853	37612	100.084
	5	38334	38462	37407	37780	37551	37313	37922	38082	38653	38275	37814	37689	100.162
	6	37866	38195	38574	38164	38083	38116	38474	38115	38340	37963	38196	38484	100.886
	7	38772	37748	38203	38298	38267	37989	38248	38332	38698	38076	38098	38258	100.977
	8	38280	38026	38121	38041	38762	37897	37950	38210	38043	38471	38272	38588	100.906
	9	37940	38869	38911	38262	38864	37938	37981	38299	38531	38541	38707	38018	101.389
	10	38933	38025	38660	38593	37997	38617	38421	38647	38692	38029	39166	38651	101.735
	11	38503	38162	38330	38415	38638	38961	38415	38936	38648	39003	38000	38592	101.774
	12	38494	38482	38237	38108	38333	38679	39004	38164	38290	38134	38753	38614	101.484
	13	38608	38285	38327	38328	38433	37660	38613	38548	37932	38351	38465	38173	101.140
	14	38347	38059	38540	38317	38305	38595	38582	38221	38301	37759	38098	38152	101.041
	15	38289	37746	38938	37818	38060	37921	37914	38140	38043	38221	38548	38239	100.733
	16	38113	38411	39110	38279	38058	38159	38442	38380	38141	38877	38153	38325	101.299
	17	38263	37956	37816	38155	38142	38163	38148	37868	37756	38506	38094	38145	100.543
	18	38283	38297	38003	38145	38588	38823	38169	37961	38223	37796	37972	37907	100.797
	19	37971	38009	38368	38206	38103	38097	38162	37929	37749	38622	38404	38422	100.769
	20	38097	38206	38409	38209	38049	38093	38367	37807	38672	37953	38018	37948	100.722
	21	38511	38330	38770	38091	38231	38796	38696	38370	38536	38183	38623	38057	101.463
	22	39149	38652	38716	38552	38706	37936	38184	38250	38284	38598	37924	37867	101.381
	23	37865	38052	38027	39327	38084	37373	38188	38264	37919	38286	37720	37943	100.551
8	0	38230	38569	37787	38326	38152	37396	38058	38095	38071	37529	37547	37254	100.110
	1	37965	38246	37842	38531	38523	38175	37570	38164	38083	38001	38437	38132	100.687
	2	38028	38069	38275	37916	38088	38059	38137	37873	38493	38031	38334	38112	100.631
	3	37929	38223	37991	38250	38239	38508	38349	37452	38176	38149	38232	37977	100.644
	4	38422	37952	38742	37934	37995	38025	38163	38069	37791	38474	38027	38191	100.713
	5	38335	38036	38470	39078	38162	38662	38065	38328	38388	38220	38645	38410	101.376
	6	38200	37928	38282	38276	37695	38451	38240	38650	38076	38699	38105	38589	101.021
	7	38185	38434	37997	38039	38430	37897	38181	38179	37956	37966	38246	38089	100.672
	8	39035	38075	38129	38553	38311	37505	38018	38184	38537	38478	37944	38918	101.131
	9	37826	38009	37986	38448	38373	38367	38620	38081	38100	38159	38494	38482	100.968
	10	38132	38143	38200	38805	38377	38890	38188	38911	37778	38494	38590	39097	101.553
	11	38487	38396	38533	39102	38488	38675	38532	38485	38462	38334	38545	37572	101.555
	12	38572	38949	38606	38079	38447	38615	39204	38587	38169	38333	38036	38811	101.729
	13	38224	38813	38641	39056	38762	38578	38069	38702	38401	38611	38524	38482	101.830
	14	37787	38309	38648	38601	38307	38862	38562	38331	38416	38214	38650	38077	101.368
	15	38669	38205	37906	38591	38507	38392	37907	38503	39005	37975	38355	38209	101.249
	16	38639	38392	38389	37909	37797	38325	38500	38350	38446	38609	38004	37801	101.016
	17	38373	37945	38102	38292	38214	38373	38075	38136	37721	38184	38296	38242	100.750
	18	38406	38519	37980	37833	38408	37947	38620	38120	38522	38101	38338	37998	100.934
	19	38191	37483	37940	38027	37900	38976	38076	37425	38011	38755	38071	37897	100.485
	20	37928	37678	38336	37958	38096	37540	37976	37791	37835	38201	38066	37516	100.083
	21	38033	37946	38062	37997	38311	38387	37680	37682	37989	37614	37516	37752	100.093
	22	37890	38552	37309	38521	37769	37770	38118	38085	37798	38499	38261	37967	100.438
	23	37927	37734	38068	37771	38045	38086	37754	37841	38370	37771	37986	38155	100.212
9	0	37656	38168	37983	38004	37980	38593	38152	38612	38082	38669	37668	37532	100.562
	1	37812	37703	37678	37617	37862	38040	38399	38323	37511	38425	38461	37934	100.269
	2	37918	37815	38588	37902	37861	38444	38424	37723	37968	37827	38472	37591	100.437
	3	37790	38211	38017	38252	38229	37772	38151	37991	37735	37890	37988	37857	100.294

INAF/UNIRomaTre				S.V.I.R.CO. Observatory - Pressure Corrected Data – November 2017									20 NM-64	
day	hh	00_05	05_10	10_15	15_20	20_25	25_30	30_35	35_40	40_45	45_50	50_55	55_60	h-norm
	4	37752	37736	37501	37699	37631	38417	38130	38118	37775	38000	37917	39660	100.394
	5	37481	38109	37935	37783	38539	38151	38134	38262	37960	37842	38197	37932	100.391
	6	37746	38556	37764	38061	38255	37189	38004	38090	37807	37770	38173	38138	100.222
	7	37406	37722	38845	37829	38198	38086	38145	38390	37544	37801	38043	38732	100.483
	8	37958	38065	38687	37848	37687	38693	38255	38243	38253	38806	38040	37921	100.860
	9	38247	38008	38429	38079	38374	37952	37917	37827	38804	38040	38413	38005	100.781
	10	37539	38457	38045	38093	38241	37704	37957	37436	37767	38302	37415	38199	100.134
	11	37984	38366	38442	38714	38231	38805	37642	38457	38913	37728	38230	38070	101.108
	12	38466	38150	38157	38268	37747	38350	38334	38436	38154	38168	37480	38011	100.698
	13	38527	38189	38528	37767	37841	37889	38084	38314	38344	38526	38383	38457	100.947
	14	37964	38490	38277	37914	38587	38174	38302	38288	38513	38814	37948	38007	101.041
	15	38337	38305	38672	38050	37772	38058	37870	37841	37815	38174	38265	37532	100.472
	16	38477	37755	37731	38187	37252	37911	37736	38141	38277	37739	37847	38029	100.118
	17	37734	37980	38307	37786	38246	38230	38052	37705	37995	38250	37740	37710	100.261
	18	37834	38215	38338	37984	38318	37924	38133	38106	37745	38125	37665	37525	100.301
	19	38038	38046	38241	37620	38108	38214	38034	37873	37751	37205	37983	38207	100.171
	20	37477	38125	37755	37998	37756	37778	37951	37844	38046	38056	38020	38141	100.089
	21	37911	38293	37719	37231	38032	37941	38084	38023	37845	38118	38047	37774	100.104
	22	37918	38167	37503	38210	37304	38454	37692	37660	38494	37485	37667	38230	100.052
	23	37045	37654	38059	37402	37421	37741	38270	37576	38554	37779	37757	37815	99.676
10	0	37913	37807	37806	37774	37663	37556	37299	38026	37873	37642	37632	38180	99.697
	1	36950	37677	37808	37839	38618	37972	38060	38167	37773	37839	38057	37799	100.003
	2	37921	37936	37845	37814	38152	37628	37453	38122	37537	37835	37306	37569	99.686
	3	38214	37930	37703	37283	37959	37800	38155	37039	37538	38088	37661	37535	99.639
	4	37432	37034	37802	37287	37835	38072	37687	37547	37484	37604	37189	37826	99.176
	5	38019	37780	37519	37710	37609	37787	37150	37776	38039	37316	37617	37737	99.453
	6	37705	38311	37907	38328	38140	37265	37716	37995	38588	37881	37788	38278	100.298
	7	38207	37828	38619	37574	37597	37724	37963	37924	37962	37778	38196	37512	100.075
	8	37816	38549	37833	37807	38082	37814	37940	37956	38036	37967	36961	38168	100.084
	9	37741	37723	37840	38036	37879	37299	38011	37217	37900	37944	38078	37765	99.756
	10	37551	37628	37807	37858	38517	37766	38071	38035	37894	38113	37697	37540	99.985
	11	38100	37683	38076	37559	37912	37949	38091	38017	37958	37689	37831	38257	100.126
	12	38148	38661	38607	38067	38016	38171	38052	38287	37751	38316	37812	37932	100.720
	13	38703	38115	38362	37339	37887	38118	38243	37756	38226	38175	37585	37587	100.341
	14	38251	37783	38016	37818	37831	38084	37852	38326	37700	38277	38096	37670	100.255
	15	37972	37940	37222	38190	38033	38055	37648	37871	38270	37021	37958	37545	99.819
	16	37819	37674	37786	38086	38400	37682	37979	37748	37800	37366	37866	38076	99.942
	17	37699	37786	38271	37415	37503	37579	37125	38117	37753	37526	37555	38218	99.560
	18	37973	38136	37760	37130	37637	37442	37680	37160	38096	37296	38296	37556	99.476
	19	37312	37330	37381	38290	37713	37264	37181	37485	37690	38210	37652	37901	99.309
	20	37510	37896	37459	37520	37478	37793	38015	37443	38117	37479	37575	37481	99.389
	21	37934	37596	37796	37961	38121	37752	37631	37586	37177	37272	37595	37801	99.488
	22	37501	37681	37953	37531	37012	37765	37426	37956	37913	37886	37565	37674	99.410
	23	37651	37343	37738	37543	37708	37897	38008	37715	37863	37498	37943	38391	99.726
11	0	38172	37314	37433	37361	37609	38342	37380	37533	37817	37431	37625	37924	99.419
	1	38147	38168	37255	37862	37970	37777	37946	37841	37899	37728	38260	37870	100.039
	2	37990	37849	37753	38048	37573	38236	37459	37779	38082	37656	38249	38119	100.054
	3	37714	37921	38263	37920	37583	38135	37841	37680	38380	37886	37687	38368	100.183
	4	37664	38791	37972	38120	38134	38052	37323	37836	37828	37875	38034	38232	100.289

INAF/UNIromaTre		S.V.I.R.CO. Observatory - Pressure Corrected Data – November 2017											20 NM-64	
day	hh	00_05	05_10	10_15	15_20	20_25	25_30	30_35	35_40	40_45	45_50	50_55	55_60	h-norm
	5	37858	37701	37637	37832	37741	38267	38052	38187	37959	38201	38147	37775	100.179
	6	38183	37430	37534	37657	38014	38683	37678	38173	38157	37882	38005	37277	100.028
	7	38401	37571	37825	37425	37974	37635	37797	37985	37690	37998	37905	38143	99.957
	8	38247	37791	37693	38447	38474	37942	37713	38353	38533	38291	38028	37528	100.549
	9	37794	38269	38183	38330	37881	37787	38154	38708	38123	37758	37966	37755	100.476
	10	38234	38024	37946	37799	38103	37898	37630	38129	38194	38099	37459	38159	100.248
	11	37580	37934	37723	37461	37513	37963	37858	38185	38149	37970	37955	38195	99.988
	12	38514	38019	38189	37530	38017	38029	38189	38049	38507	38194	38460	38147	100.726
	13	37716	38542	38020	38491	37635	38010	37973	37477	38073	38365	37559	38229	100.339
	14	38105	37983	37773	37812	37763	37783	37859	37961	38234	37599	37786	38046	100.035
	15	37796	38055	37935	38109	37792	38307	38169	37891	37926	38151	38053	38030	100.367
	16	37814	37536	37654	38123	38475	37806	37533	38211	37854	37861	38114	37744	100.039
	17	37063	37528	38419	38286	37922	37873	37719	37459	37747	37818	37731	37806	99.741
	18	37517	38218	37516	37302	37513	37290	38022	37692	37573	38290	37913	37856	99.594
	19	37873	37807	37384	37189	38404	38388	37921	37716	38303	37937	38183	38033	100.130
	20	38341	37769	37306	37477	37910	37430	38124	37762	37679	37893	37720	37198	99.574
	21	37531	38006	37981	37915	38053	37341	38022	38247	37479	38109	37792	38110	100.009
	22	37759	37818	37991	38457	38037	37763	37489	37909	37624	37529	37532	37729	99.800
	23	37852	37667	37475	38032	37526	38360	38018	38136	37413	38149	37509	37805	99.867
12	0	38050	38002	38040	38444	37798	37685	37812	37797	38162	37686	37341	38502	100.168
	1	37609	37587	38017	37319	37588	38348	37543	37679	37875	37773	37891	38503	99.821
	2	38346	37864	38371	37997	37933	37790	38037	37976	38142	38002	38325	37909	100.472
	3	38230	37132	37871	37618	37888	38121	37697	37935	37978	38386	38113	37512	99.986
	4	37985	37666	38179	37794	38042	37792	38189	37911	37670	37507	37853	38131	100.038
	5	38097	38534	37432	38435	38069	37779	37942	38090	38130	38265	37645	37854	100.380
	6	38072	38040	37919	37245	37936	37827	37851	37878	37668	37944	38166	38037	100.008
	7	38105	37898	37797	38230	38180	37371	37868	38001	38600	38113	37757	37991	100.300
	8	37761	37926	37889	38141	38121	38321	38343	38221	38017	38165	38091	38428	100.633
	9	37674	38165	37655	37833	37583	37969	37538	37736	38441	38176	38592	37990	100.178
	10	38262	37902	38584	38023	37748	38341	37843	38367	38034	38064	38191	38415	100.711
	11	37967	37979	37844	38080	38359	37936	38336	38106	38202	37679	38845	38561	100.737
	12	37912	37653	37792	38309	37991	38595	38278	38091	37730	37965	37588	38150	100.332
	13	37828	37848	37660	38067	38509	38084	37775	37930	37909	37758	37984	38740	100.341
	14	37719	37823	37612	37826	37378	38455	37511	38279	37848	38407	37351	38127	99.954
	15	37997	38275	37987	38044	37625	37662	38448	37869	37922	38162	38443	38084	100.434
	16	37986	38059	37958	38300	38353	38000	37939	37714	38081	37624	37900	37473	100.185
	17	37857	38404	37845	38212	38155	38295	37521	38164	37722	37794	38378	37294	100.241
	18	37808	38129	38039	37935	37535	38017	37916	38096	37687	37841	38100	37857	100.092
	19	37408	38068	37290	37714	38378	38198	37662	37632	37754	38053	37763	37612	99.778
	20	38284	37519	38206	37686	38100	37967	37790	37930	37963	38067	38161	37910	100.229
	21	37577	37894	37923	37357	37624	37696	37596	37916	37523	37782	37884	37971	99.604
	22	37319	37854	38132	37916	37814	37641	38369	37275	37719	38173	37763	37863	99.845
	23	37641	37813	37718	37815	38406	37828	37724	37786	38442	37916	38209	37570	100.072
13	0	37748	37538	37688	38120	37895	37835	38067	37814	38121	37899	38056	38032	100.044
	1	37644	37928	38066	37767	38205	38195	37504	37835	37915	37667	37993	37616	99.954
	2	38206	38236	37985	37686	37301	38126	38023	37877	38188	38081	37777	37858	100.176
	3	38010	38273	38189	38176	37875	37871	37947	38331	37839	37878	37904	38225	100.434
	4	38241	37629	37737	38314	38027	38249	38104	37869	37950	37615	38434	37998	100.357
	5	37921	38287	38383	38349	37953	38335	37790	38305	37965	37929	38177	38247	100.681

INAF/UNIRomaTre				S.V.I.R.CO. Observatory - Pressure Corrected Data – November 2017										20 NM-64	
day	hh	00_05	05_10	10_15	15_20	20_25	25_30	30_35	35_40	40_45	45_50	50_55	55_60	h-norm	
	6	37916	38035	38048	37983	38545	38648	38295	38388	37956	37834	38060	38246	100.750	
	7	37929	38112	38281	38161	38241	38126	37419	37649	38535	37951	37864	38085	100.398	
	8	38301	38473	38487	37506	38335	38238	38138	38052	37864	37967	38490	38328	100.800	
	9	37934	37917	38390	38063	37912	38054	38728	38133	38287	38347	37864	38249	100.733	
	10	38021	38271	37799	38412	37858	38039	38484	37764	38135	38023	38067	38469	100.616	
	11	38094	37881	38477	37641	37808	38217	37995	38148	38589	38391	37949	38192	100.624	
	12	38200	37958	38189	37951	38322	38097	37837	38485	37881	38183	38347	38199	100.683	
	13	38194	37992	38505	38523	38131	38116	38018	38089	38324	38598	38388	38251	101.008	
	14	38391	38418	38221	38257	38502	37970	38125	38301	38225	38325	37988	38243	100.973	
	15	38284	38020	38407	38210	38015	38146	38199	38332	38652	38468	38265	38553	101.101	
	16	37834	38209	37871	37874	38926	38377	37854	38342	38473	37989	37981	38460	100.801	
	17	38431	38182	38432	38157	38177	38166	38217	37896	38212	38079	38408	37871	100.811	
	18	37853	37646	38541	38310	38135	38422	37949	37697	38000	37476	38036	38054	100.347	
	19	38285	38317	38796	37969	38682	38211	37645	38054	38064	37632	38659	38228	100.880	
	20	38085	37949	38380	38295	38343	37521	38170	38627	38411	38233	38062	38141	100.808	
	21	38111	37839	38066	38296	37923	38082	38045	38376	37867	38412	38477	38192	100.691	
	22	38586	38167	37981	38143	38265	37336	37956	37995	38309	38473	38699	38300	100.805	
	23	37733	38579	38395	38267	38263	37997	38066	38125	38321	37957	38544	38965	101.027	
14	0	38722	38092	38305	37769	38051	38286	38095	38620	38142	38462	38229	38176	100.975	
	1	38600	38662	38393	37910	38399	37919	38138	38338	38039	37949	38195	37886	100.854	
	2	38228	37796	38635	38274	37785	37987	38473	38075	37950	37910	38215	38097	100.634	
	3	38569	38491	38124	38042	38332	38132	37955	38116	38052	38188	38719	37729	100.859	
	4	38980	38122	37802	37943	38172	38560	38381	37797	38350	37760	38696	38099	100.906	
	5	38615	38537	38486	38486	38257	37913	38077	37841	37663	38379	38479	38162	100.958	
	6	38441	37920	38332	37907	38179	38320	38443	38009	38525	38383	38699	38692	101.166	
	7	37975	38541	37840	37938	38575	38230	38700	38058	38071	38150	38249	39001	101.052	
	8	38319	38158	37712	38193	37714	37854	38431	38407	38584	38217	37449	37752	100.495	
	9	37929	38800	38191	37870	38358	37999	38191	38789	38619	38029	38381	37725	100.954	
	10	38227	37834	38310	37680	38113	38036	38179	38372	37985	37918	38113	37976	100.483	
	11	37553	37692	37785	37709	37774	38291	37760	37422	37897	38000	38023	38363	99.940	
	12	37989	38085	37417	37590	37663	37658	38120	37881	37663	38289	37963	38193	99.993	
	13	38058	37716	38030	37394	37652	38088	37524	37791	37876	38015	38215	37942	99.947	
	14	37961	38191	38217	37847	37781	38006	37502	38408	37837	37428	37572	38113	100.070	
	15	37994	38313	37459	38181	38242	37726	38143	38327	37810	37545	37988	38271	100.320	
	16	38156	38051	38323	38102	38104	38124	38317	37942	38300	37626	37837	37689	100.446	
	17	37893	38180	37956	37807	37915	37587	37938	38152	38164	37604	38266	37821	100.163	
	18	38095	38148	38050	38215	37930	37877	37988	38387	38047	37395	37903	37934	100.314	
	19	38715	37537	38131	37971	37914	37887	38430	38011	37845	37923	38456	37986	100.498	
	20	37477	38264	37792	38210	38558	38006	37896	38206	38216	37858	37753	38418	100.464	
	21	37708	38071	37719	38060	38011	37838	37440	37851	37690	37535	37920	38012	99.848	
	22	37940	37657	37990	37759	38013	37935	38428	38613	38393	38259	37805	37805	100.451	
	23	38340	37859	38129	38184	38432	38158	38516	37462	38144	38436	38222	38122	100.760	
15	0	37494	37967	37943	37961	37427	38135	38749	38049	37748	38000	38608	37854	100.309	
	1	38001	38148	38109	38427	38606	37930	38307	37975	38340	38790	38073	38268	100.974	
	2	38492	37646	38592	37727	38610	38103	38009	38338	38316	37828	38305	38037	100.761	
	3	38109	37910	38240	38156	37968	38085	38414	38516	38081	38587	38634	38012	100.917	
	4	37720	38436	38622	38270	38160	38154	38084	38085	38149	38574	38340	38608	101.024	
	5	38282	38609	38050	38208	38089	38436	38536	38475	38163	37863	38713	38440	101.170	
	6	37989	37752	38279	38442	37770	38359	38911	38742	38105	38335	37907	38083	100.909	

INAF/UNIromaTre		S.V.I.R.CO. Observatory - Pressure Corrected Data – November 2017											20 NM-64	
day	hh	00_05	05_10	10_15	15_20	20_25	25_30	30_35	35_40	40_45	45_50	50_55	55_60	h-norm
	7	38423	38725	37782	38098	38113	38345	38239	38508	38610	38584	38761	37522	101.136
	8	38178	38236	38757	37961	38450	37969	38439	38040	38304	37939	38189	37965	100.854
	9	38054	38252	37698	37622	38228	37896	38321	38388	38445	38343	37765	37926	100.527
	10	38564	38679	38360	38273	37515	37924	38285	37827	37665	37428	37933	37996	100.419
	11	38617	38176	37897	37991	38117	37912	38075	37978	38024	38632	37519	37369	100.388
	12	37983	37810	37856	37738	37651	38070	38318	38280	38044	37945	38099	38140	100.306
	13	37781	37396	38101	38557	37910	38356	37947	38690	37695	37907	38201	37788	100.392
	14	38296	37865	38273	37554	38033	37847	37636	38358	37955	37602	38169	37922	100.212
	15	37834	38162	38687	37296	38022	37949	37634	37896	37924	37801	37976	37596	100.051
	16	38361	38033	38116	37795	38469	37895	37556	37723	38460	38217	38253	38491	100.621
	17	38161	37799	38246	38753	37804	37799	38027	38362	38005	38539	38095	37789	100.623
	18	38345	38542	37777	38341	37815	38063	37717	38352	38076	38312	38013	38026	100.624
	19	37644	38509	38202	37661	38484	38563	38226	38036	38170	38001	38390	37818	100.695
	20	37754	38192	38254	37838	38056	37911	38068	37654	38243	37947	37789	38272	100.315
	21	38279	38152	37999	37523	38167	38401	38110	38089	37705	37907	38028	38525	100.515
	22	38620	37898	38132	37663	38710	38295	37516	38154	38493	37729	38217	37800	100.590
	23	37931	38310	37976	37930	38071	37939	37850	38619	38516	38515	37459	37997	100.566
16	0	37452	37631	38194	37545	38297	38558	38417	37558	37975	37781	38632	37661	100.254
	1	37777	38212	38518	38385	38046	37867	38116	37370	38090	38042	38121	38124	100.467
	2	37854	37950	38260	37878	38078	38541	37992	37735	38230	38431	37702	38175	100.502
	3	38030	37917	37909	38286	37823	37597	37974	37881	37609	37842	38398	38378	100.242
	4	38336	37913	38260	37404	37766	37644	38223	37629	37948	37803	37724	37852	99.990
	5	38014	37904	37454	38004	38191	37498	38202	37536	38461	38182	38307	37906	100.245
	6	37705	37157	37873	37911	38014	37949	37619	38190	37842	38204	37838	38225	99.996
	7	38003	38455	38039	37792	38323	38603	37995	38097	37721	38060	38206	38125	100.632
	8	37505	38171	38388	38314	38523	37977	37663	38334	37896	37999	38576	38530	100.732
	9	38168	37779	38441	38180	37994	38359	38207	38043	38685	37672	38330	38162	100.764
	10	38091	37836	37878	37944	37618	38354	38772	38320	37647	37894	38361	38192	100.520
	11	38310	38106	37958	37624	38792	38328	38654	38272	37833	38412	38033	38046	100.841
	12	37601	37770	37935	38107	38241	38427	38340	38200	38123	38381	37984	37731	100.505
	13	38366	37948	38366	37700	38193	38398	37817	37396	37893	37856	37804	38307	100.330
	14	37608	38552	38043	37415	37924	38411	37978	38357	38167	38370	37798	37659	100.382
	15	37895	38009	38012	37575	37395	38303	38070	37623	37888	38008	37385	38139	99.946
	16	37473	38389	37830	37649	37868	37823	37777	38207	38467	37985	38170	37816	100.200
	17	37650	37718	37895	38772	37750	37943	37851	38730	38245	38291	38123	37578	100.440
	18	38067	38417	37511	37675	37300	38135	38035	37667	38255	37900	37704	37721	99.965
	19	37847	38186	38292	38182	38368	38212	38126	37837	38385	37722	38170	37842	100.577
	20	38089	38065	37603	38039	38311	37297	38012	37816	38249	37856	37665	38018	100.104
	21	38309	38043	38347	38120	37862	37599	38278	37759	38178	37778	37872	37978	100.347
	22	38248	37864	37664	37800	37804	37273	38773	38169	38138	37864	37620	37995	100.146
	23	38311	38405	38179	37595	37910	38082	38057	38209	38696	38469	37990	38300	100.805
17	0	38400	37862	38171	38071	38513	37866	38212	37936	38233	38535	38389	38182	100.840
	1	38513	37599	38077	38032	38047	38327	37744	38188	38140	38014	38354	38307	100.615
	2	38441	37855	38700	37442	38380	38014	37712	38427	37928	37974	37929	37766	100.445
	3	38568	38288	37985	38034	38229	38285	38650	38412	38416	37906	38182	38121	100.997
	4	38292	37712	38038	37889	38134	37028	38352	37988	38346	38778	37743	38018	100.390
	5	38259	38457	37768	38296	37927	38263	37763	37830	38271	38614	37975	38158	100.668
	6	37861	37575	38357	38487	38323	38745	37850	38494	38530	38076	38085	38950	101.053
	7	38363	37955	38161	38216	38496	38811	38110	38320	38309	38125	38167	38322	101.058

INAF/UNIRomaTre				S.V.I.R.CO. Observatory - Pressure Corrected Data – November 2017									20 NM-64	
day	hh	00_05	05_10	10_15	15_20	20_25	25_30	30_35	35_40	40_45	45_50	50_55	55_60	h-norm
	8	38449	38018	38551	38099	37995	37819	38016	38351	38440	38533	38667	37558	100.869
	9	38407	38172	38168	38028	38525	38635	38716	37868	38495	38270	38277	37597	101.015
	10	38408	38308	38425	38229	38259	38507	38327	37762	38076	37991	38177	38171	100.900
	11	38409	38108	38284	38172	38351	38726	37440	38164	38174	37752	37890	38603	100.776
	12	38276	38160	37701	37851	38341	38778	37704	38339	38127	38033	38609	38118	100.768
	13	37924	37626	37713	38295	38384	38808	38517	38146	38057	37943	37830	37672	100.521
	14	38496	38460	38059	38269	38148	38090	38526	37710	38089	38286	38376	38182	100.912
	15	38344	37991	38270	38398	37997	37536	38251	38560	38252	37818	38366	38384	100.797
	16	37999	38515	38361	38159	37774	38401	37756	38408	38323	38162	38213	37653	100.699
	17	38354	38012	38008	38102	38787	38531	38052	37891	38115	38388	37818	38307	100.840
	18	38240	38020	38132	38242	38112	37773	38233	38416	38734	38420	37869	38430	100.896
	19	38641	38462	38389	38636	38647	38206	38061	38495	37997	38423	37869	38013	101.165
	20	37748	37640	38117	38344	37948	37895	37760	38333	37748	38490	38497	38077	100.451
	21	38104	37492	37652	38582	38529	37727	38463	38510	38520	38248	38181	38503	100.873
	22	38160	38152	38449	37593	38670	37806	38411	38235	37977	37999	37988	38244	100.691
	23	37984	38535	38058	38571	37938	38518	38862	38117	38769	38275	38349	38453	101.294
18	0	38683	38064	37974	37752	38208	38443	38076	38139	38351	37898	38302	38072	100.747
	1	38039	37601	38401	38239	38075	37806	37947	38611	37641	38150	37707	37973	100.361
	2	38318	38373	38505	38141	38241	38260	38444	38162	37809	38742	38803	38318	101.226
	3	38384	37696	38093	38124	38701	38200	38321	38363	38484	38053	38428	38453	101.046
	4	37788	38321	37859	37970	38523	37961	37813	38280	38536	38634	38002	38422	100.784
	5	38237	38635	38393	37762	38630	38609	37972	37625	38187	37790	37832	38188	100.729
	6	38295	37605	38232	38488	38691	38159	38533	38412	38026	38532	38591	38109	101.128
	7	37909	37614	38066	37896	37815	38398	37924	38507	38647	38366	38202	37991	100.614
	8	38393	38760	38328	38757	38045	38028	38198	38077	38417	38174	38650	38581	101.290
	9	37999	38353	38083	37941	38389	38504	38054	38101	38399	38364	37878	38170	100.812
	10	38430	38029	38348	38273	38685	38109	37762	38734	38350	38678	38443	38262	101.223
	11	38564	38358	38345	38208	38277	38412	38881	38213	38256	38139	38578	38623	101.388
	12	37533	38267	38669	38126	38149	38080	38455	37731	38191	38045	38456	38359	100.774
	13	38203	38440	38227	39098	38245	38498	38423	37953	37752	37931	39028	38433	101.251
	14	38491	38252	38110	38008	38335	38613	37678	37997	37753	38029	38857	38271	100.847
	15	38372	38093	37916	38054	38854	38408	38020	38424	37926	38515	38055	38125	100.927
	16	38282	38763	37836	38080	38595	38298	38035	38779	38049	38163	38349	37971	101.024
	17	37930	38514	38392	38304	37954	38114	38851	38812	38666	38515	38048	38446	101.320
	18	38269	38168	38779	38575	38402	38667	38074	38135	38279	38182	38791	38038	101.279
	19	38775	37599	38689	38461	37611	37775	38098	38424	38389	37669	38781	38313	100.888
	20	38334	38283	38422	38565	38370	38361	38205	38144	38401	38489	38317	38643	101.318
	21	37950	38419	38672	38221	38624	38154	37660	38573	38252	38061	37914	38646	101.012
	22	38313	38130	38324	38117	38166	37974	39247	38207	38104	37932	38649	38514	101.129
	23	38566	37993	38192	38239	38488	38200	37968	38168	38337	38203	38420	37903	100.909
19	0	38271	38069	38274	38144	38134	37875	37863	38272	38456	38447	38290	38302	100.849
	1	37956	38178	37940	38667	37900	38585	38176	38563	38325	38475	38392	37908	100.994
	2	38503	38768	37935	38544	38343	38357	38100	38398	38324	38057	38268	37676	101.040
	3	38136	38192	38654	38195	37778	38282	38598	37710	37937	38449	38276	37639	100.726
	4	38722	38053	37823	38719	38057	38347	38285	38725	38324	38168	38489	38416	101.228
	5	38122	38474	38450	38744	37988	37898	38969	37945	38476	38322	38352	38580	101.271
	6	38385	37941	37810	38854	38752	39017	38206	38184	38487	38406	37911	38550	101.311
	7	38645	38406	38165	38386	38494	37982	38382	38347	38142	38334	38211	38136	101.118
	8	38294	38062	38454	38588	38834	38846	38868	38030	38292	38602	38772	38444	101.659

INAF/UNIromaTre		S.V.I.R.CO. Observatory - Pressure Corrected Data – November 2017											20 NM-64	
day	hh	00_05	05_10	10_15	15_20	20_25	25_30	30_35	35_40	40_45	45_50	50_55	55_60	h-norm
	9	37835	38539	37859	39014	38202	38574	38236	38582	37862	38350	38399	38739	101.242
	10	38254	38362	37665	38208	38724	38210	38778	38676	38735	38282	38243	38229	101.281
	11	38551	38206	38360	38859	37989	38267	38485	37663	38028	37902	38370	38498	101.019
	12	38410	37922	38719	38551	38683	38068	38510	37942	37254	38414	37829	38099	100.848
	13	38407	38161	38637	38361	38442	38229	38371	38458	38706	37856	38065	37891	101.108
	14	38332	38446	38085	38415	38481	38030	38206	38202	38460	37411	38250	38077	100.847
	15	38223	38189	38280	38466	37899	38189	38020	37575	38256	38080	38315	38017	100.652
	16	38114	38017	38237	37768	37810	39015	38235	38362	38450	38671	38193	37779	100.903
	17	38319	38611	38064	38256	38573	37780	38193	38233	38421	38585	38054	38052	101.011
	18	37792	38446	38423	38407	38133	38008	38364	38055	38353	38367	38438	38244	100.987
	19	38350	38719	37851	38406	38277	38666	37819	38402	38029	38434	38461	38095	101.093
	20	38250	38894	38490	37744	38031	38092	38097	38176	37739	38512	38114	38819	100.971
	21	38459	38338	38618	39096	38434	38222	38411	37981	38502	38767	38226	38221	101.480
	22	38537	38119	38584	38209	38296	38939	38166	37946	38177	38276	38159	38546	101.190
	23	38428	38349	38262	37956	38013	38303	38458	38675	38713	38160	38478	38265	101.213
20	0	37594	38006	38290	38337	38205	38341	38399	38472	38179	38277	38091	38477	100.907
	1	38398	37996	38376	38143	38259	38547	38455	38303	37614	37907	38106	38205	100.828
	2	38494	38707	38180	38673	38497	38203	38457	38204	38233	38204	38383	38397	101.339
	3	38438	38028	37901	38491	38404	38594	38422	38113	38049	38702	37732	37832	100.915
	4	37607	38148	37827	38194	38542	38163	38484	38424	38510	38938	38170	39072	101.216
	5	38907	38503	38344	38255	38269	38271	39114	38487	38474	38829	38214	38498	101.676
	6	38069	38198	38576	38477	37838	38377	38348	38600	38401	38551	37957	38630	101.205
	7	38488	38342	38936	38310	38549	38060	38194	38152	37814	38556	39235	38361	101.420
	8	38464	38070	38087	38203	38631	37990	38987	38150	38377	38573	38085	38219	101.164
	9	38441	37582	38256	38422	38176	38392	38878	38454	37756	38813	38609	38409	101.241
	10	38474	38732	37890	38782	38291	38175	38004	38817	38799	38255	38395	38231	101.386
	11	38474	38044	38498	37698	37793	38527	38003	38338	38490	38480	38368	38424	101.010
	12	37718	38523	38946	38113	37938	38534	38026	38562	38547	37714	38686	38084	101.066
	13	38736	38092	38112	38596	38702	38544	38646	38262	38692	38105	38533	38348	101.501
	14	37657	38213	38373	38492	38218	38378	38281	38094	38362	38643	39052	38437	101.244
	15	38463	38561	38312	38242	38491	38831	38321	38279	38512	37993	38548	38306	101.389
	16	38058	38293	38034	38700	38058	38052	38235	38483	38390	38170	38305	38176	100.970
	17	38133	38848	38643	38641	38820	38526	37969	38206	38136	38062	38110	38429	101.316
	18	38508	38383	37934	38423	38334	38501	37995	38693	38793	38295	38468	38782	101.444
	19	38611	38171	38989	38835	38766	38885	38412	38794	38740	38288	38619	38505	101.995
	20	38759	38140	38149	38559	38765	37919	38950	37927	38473	38571	38577	37646	101.296
	21	38512	37972	38264	37958	38313	38343	38344	38346	38188	38258	38208	38189	100.957
	22	38858	37853	38294	38431	38454	38863	38324	38588	38708	38474	38314	38388	101.541
	23	38119	38212	38439	38702	38959	38349	38110	38123	39197	38271	39045	38911	101.737
21	0	38555	38341	38848	38654	37974	38554	38263	38643	38383	38391	38647	38356	101.552
	1	39005	38615	38397	38261	38457	38856	38356	39324	38884	38258	38483	38276	101.898
	2	38483	38346	38396	38369	38149	38417	38865	38592	38150	38679	38216	38373	101.428
	3	38240	38260	38527	38695	38590	38507	39238	38568	38238	38499	37759	38607	101.580
	4	38486	38229	37901	37638	38375	38627	38809	37954	38359	37961	38425	38522	101.043
	5	38372	38059	38357	38173	38352	38326	38417	38087	38357	37812	37987	38621	100.962
	6	38262	38115	38164	38420	38294	38644	37891	39026	38886	38543	38004	38230	101.305
	7	38386	38166	38498	38675	38752	38543	38432	38330	38456	38350	38371	37939	101.398
	8	37935	38701	38285	38203	38702	38300	37902	38174	38301	38019	38611	38473	101.113
	9	37719	38429	37579	38422	38482	38512	38650	38141	38348	38207	38470	38202	101.015

INAF/UNIRomaTre				S.V.I.R.CO. Observatory - Pressure Corrected Data – November 2017									20 NM-64	
day	hh	00_05	05_10	10_15	15_20	20_25	25_30	30_35	35_40	40_45	45_50	50_55	55_60	h-norm
	10	38464	38546	38369	38440	38890	38379	38722	38914	38015	38815	38679	38338	101.765
	11	38139	37990	38390	38835	37691	38408	38008	38173	38609	38331	38842	38092	101.092
	12	38055	38022	38197	38388	38182	37555	38083	37843	38833	38265	38182	38496	100.782
	13	38495	37934	37930	38541	38863	37742	38035	38249	38426	38517	38747	37989	101.083
	14	38671	38683	37975	38493	38370	38963	38732	38795	38606	38061	38570	38398	101.710
	15	38050	38226	38118	38745	38755	38325	38842	38614	38964	37849	38298	38037	101.381
	16	38283	38641	38693	38449	38083	38174	38481	37959	38468	38155	38530	38470	101.285
	17	38144	38354	38369	38350	38254	38380	38365	38679	37838	38550	38205	37809	101.045
	18	38527	38764	38267	38514	38284	38858	38640	38010	38500	38463	38371	38768	101.633
	19	38406	37844	38921	38971	38659	38673	38102	38169	38155	38527	38231	38316	101.415
	20	38577	37964	38435	38435	37942	38389	37751	38467	38139	38265	37657	38378	100.847
	21	37885	37876	38270	38110	38203	38099	38066	38444	38399	38004	38233	38356	100.747
	22	38764	38534	38217	38478	38253	37919	38073	38348	38542	38407	38057	38124	101.137
	23	38147	38501	37671	38425	38238	38351	38213	38694	38056	38374	38378	37597	100.902
22	0	38152	38378	38566	38456	38100	38114	38632	38124	38516	38714	37985	38144	101.175
	1	38020	38756	38198	39113	38565	38326	38147	38231	38008	38148	38198	37824	101.098
	2	38636	38692	38725	38052	38372	39020	38319	38542	38068	38527	38133	38032	101.446
	3	38493	38047	37996	38441	38310	39101	38600	38473	38120	38621	37780	38352	101.274
	4	38882	37990	38430	38526	38174	38392	38454	38141	38547	38389	38741	38090	101.366
	5	38380	38416	38797	38091	38639	38806	38122	38673	38466	38616	37835	38025	101.391
	6	38240	38335	38574	38155	37979	38675	38334	38487	38450	38528	38257	38910	101.404
	7	38152	38447	38153	38020	38503	38323	38353	37742	38949	37902	38282	38261	100.999
	8	38256	38210	38336	38704	38658	38365	38498	38443	38536	38336	38567	38096	101.421
	9	38739	38335	38752	37837	38291	38713	38211	37992	38576	38351	38623	38724	101.452
	10	39239	38658	37997	38929	38332	38802	38590	38648	38605	38173	37915	38127	101.643
	11	38255	37946	38822	39069	38394	38370	38479	38464	38409	38625	38368	39034	101.692
	12	38152	38472	38297	38109	38105	38692	38393	38724	38455	38620	38741	38396	101.454
	13	38413	38697	38505	38606	38222	38663	38631	37961	39178	38675	39135	38246	101.845
	14	38217	38595	38516	38382	38050	38918	38705	38405	38591	38962	38071	38724	101.670
	15	38352	38261	38354	38091	38895	38413	38437	38747	38117	38815	39072	38661	101.687
	16	38176	38487	38699	38586	38893	38203	38844	38421	38641	38907	38773	38620	101.915
	17	38772	38691	38455	38674	38942	38072	38374	38797	38823	38588	38741	38323	101.915
	18	38192	38671	38339	38534	38292	37685	38682	38492	38280	38244	38061	38887	101.279
	19	37823	39011	38666	38576	38366	37909	38183	38471	38209	38521	38865	38613	101.467
	20	38000	38227	38656	38620	39144	38348	38867	38418	38582	38208	38281	38665	101.643
	21	38477	38767	38254	38336	38619	38204	38147	38107	38988	38239	39153	38053	101.496
	22	38367	38309	38771	38355	38171	38417	38674	38541	38562	38100	38372	38232	101.392
	23	38162	38077	39104	38029	38686	39008	38916	38554	39496	38611	38437	38636	102.018
23	0	38677	38297	38865	38256	38722	38745	38669	38694	38519	39077	38566	39007	102.102
	1	39196	38601	39313	38071	38822	38380	38989	38344	38445	39009	38337	38872	102.164
	2	38285	38765	38406	38438	38052	39074	39077	38985	39271	38636	38280	39001	102.140
	3	38514	38890	38270	38738	38326	38994	38232	38041	38646	38702	38166	38798	101.709
	4	38687	38444	38182	38832	38355	38764	38629	38975	38600	38417	38468	38894	101.915
	5	38589	38094	38678	37912	38356	38564	38302	38581	38106	38003	38764	38900	101.387
	6	38832	38725	38926	38499	37938	38748	38924	38787	38409	38670	38693	38528	102.009
	7	38366	38420	38769	38806	38536	38447	39182	38242	38920	37951	38576	38249	101.742
	8	38972	38980	38885	38732	38046	38839	38687	38729	38049	38287	38291	38044	101.759
	9	38274	38742	38623	38579	38544	37978	38203	38922	38547	38661	38641	38813	101.756
	10	38340	38184	38789	38466	38572	38495	38265	38712	38616	38461	38654	38290	101.605

INAF/UNIromaTre		S.V.I.R.CO. Observatory - Pressure Corrected Data – November 2017											20 NM-64	
day	hh	00_05	05_10	10_15	15_20	20_25	25_30	30_35	35_40	40_45	45_50	50_55	55_60	h-norm
	11	38528	38154	38033	38286	38403	38673	38459	38785	38371	38164	38705	38692	101.476
	12	37990	38312	38193	38796	38853	38276	38806	38318	38519	38428	38508	38906	101.619
	13	37982	38365	37901	38659	38331	38941	38713	38496	38519	38126	38201	39000	101.471
	14	38738	38721	38866	38740	38105	39096	38136	38013	38319	38827	38347	38880	101.813
	15	39003	38232	38223	37836	38547	38316	37698	38456	38432	38581	38451	38377	101.233
	16	37915	38380	38670	38260	38085	38384	38588	38319	38400	38578	38454	38246	101.261
	17	38296	38037	38888	38261	39195	38439	38425	38800	37747	38716	38254	38365	101.513
	18	38259	38755	38834	38589	38619	38661	39102	38768	38390	38496	38816	38795	102.099
	19	38911	38335	38827	38835	39203	38949	38528	38378	38961	38514	38934	38464	102.264
	20	38837	37990	38302	38881	39187	38939	38658	38359	38671	38540	38954	39005	102.151
	21	38829	38201	39596	38071	38168	38484	38869	38488	38663	38750	38639	38519	101.921
	22	38328	38393	38443	38841	38848	39128	38380	38255	38713	38799	38471	39313	102.061
	23	38858	38758	38571	38704	38626	38628	38874	38651	39199	38690	38752	38638	102.289
24	0	38480	38637	38334	38766	39053	38505	38417	39108	39046	38711	38516	39074	102.220
	1	39052	39328	38600	38957	38364	38357	38703	38698	38715	38490	38576	38238	102.097
	2	38504	38381	39504	38690	38725	38981	38017	38379	38895	38751	37928	38667	101.952
	3	38532	38961	38675	38469	38597	38694	38204	39088	38466	38878	38743	38526	102.043
	4	38275	38640	38515	38896	38202	38892	37981	38128	39331	39179	38972	38819	102.042
	5	38831	39260	38819	39189	38767	38479	38318	38338	38798	38529	38726	38723	102.251
	6	38560	38655	39253	38234	38726	38916	38739	39098	38765	38960	38483	38936	102.372
	7	38726	38765	38793	38347	38564	38349	38445	38553	38279	38246	38453	38445	101.632
	8	38747	38150	38306	38095	39307	38537	38582	38491	38507	39021	39160	38110	101.863
	9	38334	38082	38398	38603	38718	38330	38442	38658	38898	38375	38581	38020	101.517
	10	38478	38206	38597	38418	38780	39026	38360	38587	38132	38216	38636	38763	101.684
	11	38874	38320	38972	38455	38820	38857	38587	38770	38563	38751	38126	38806	102.058
	12	38307	38908	38865	38444	38904	38407	38628	38556	38658	37866	38434	38656	101.779
	13	38794	38265	39022	39365	38681	38258	38697	38629	38443	38625	38446	38670	102.057
	14	38758	38365	38380	39157	38756	38639	38099	38112	38962	38482	38316	38254	101.702
	15	39105	38389	38836	38855	38720	39106	38728	38319	38446	38305	38648	39227	102.230
	16	38374	38123	38870	39537	38564	38186	38982	38375	38510	38578	38564	38234	101.837
	17	38544	38594	38274	38649	38760	38206	38539	38270	38697	38886	38728	38973	101.887
	18	38267	38687	38801	38457	38618	38701	38993	38824	38568	38622	38600	38488	101.998
	19	38175	38241	38191	38647	38613	38939	38584	38825	38252	38387	39181	38865	101.838
	20	39117	38888	38840	38998	39164	38631	38692	38751	38794	38652	38911	38813	102.575
	21	38541	38556	38447	38871	38642	38725	38851	38549	38475	38850	39080	39255	102.265
	22	38922	38911	38588	38802	38521	39371	39072	38958	38410	38220	38530	39409	102.457
	23	38560	38614	38444	38315	38568	38824	38297	38720	39139	38709	38014	38735	101.847
25	0	38755	38542	38662	38789	39138	38032	38587	38160	38502	38109	38097	38188	101.544
	1	38650	38536	38280	38175	37920	38523	37886	37901	38642	38005	39092	38710	101.271
	2	38386	38529	38154	38949	37979	38004	38479	38348	38731	37802	38436	38168	101.192
	3	38568	38404	38229	38630	38821	38704	38357	38635	38318	38520	38366	38322	101.612
	4	38438	38226	38632	38589	38708	37927	38572	38692	38692	38151	38158	38300	101.439
	5	38932	38769	38397	38622	38443	38757	38488	38808	38954	38597	38353	38051	101.898
	6	39089	38386	38933	38952	38626	38811	38213	38381	37930	38609	38692	38075	101.793
	7	38302	38418	38195	38246	38429	37862	38829	38385	38426	39037	38666	38654	101.520
	8	38620	37971	38480	38743	38646	38174	38915	38118	38460	38231	38477	38761	101.551
	9	38385	38593	38240	38288	38337	38727	38572	38793	38817	38775	38363	38588	101.745
	10	38744	39046	38507	38856	38213	38123	38573	38960	38494	38603	38187	38609	101.841
	11	38713	38763	38489	39380	38286	39059	38221	38452	38358	38395	38801	38743	102.005

INAF/UNIRomaTre				S.V.I.R.CO. Observatory - Pressure Corrected Data – November 2017									20 NM-64	
day	hh	00_05	05_10	10_15	15_20	20_25	25_30	30_35	35_40	40_45	45_50	50_55	55_60	h-norm
	12	38773	38711	38876	38125	38636	38463	38145	39131	38942	38407	38251	38530	101.857
	13	38279	38361	38452	38433	38281	38629	38834	38366	38675	38448	38653	38704	101.665
	14	38280	38973	38947	38632	37993	38480	38467	39107	39043	38998	38747	38850	102.194
	15	38356	38709	38394	38775	37953	38669	38844	38840	38250	38072	37976	38629	101.523
	16	37906	38777	38511	38913	38270	38383	38331	38693	38565	39050	37681	38663	101.584
	17	38701	38641	38188	38614	38716	38154	38090	38501	38654	39046	38070	38448	101.601
	18	38321	38971	38207	38752	38181	38326	38380	38165	39062	38214	38204	38499	101.482
	19	38018	38847	38690	38552	38628	38204	38769	38058	38494	37859	38482	39073	101.568
	20	38130	39161	38450	38345	38514	38440	38520	38288	38999	38876	38001	38292	101.644
	21	37973	38425	38168	38403	38450	37771	38348	38838	38100	38438	38641	38512	101.215
	22	38258	38697	38391	38497	38253	38501	38624	38526	38338	38281	38830	38596	101.595
	23	38824	38286	38009	38777	39098	38584	38132	38356	38767	38726	38052	38243	101.608
26	0	37937	38422	37982	38102	38496	38125	38864	38191	39094	38518	38617	38418	101.369
	1	38618	38571	38190	38447	38242	38401	37799	38602	38894	37987	38436	37566	101.145
	2	38381	37795	38513	38387	38172	38509	38402	38160	38489	38824	38286	38165	101.218
	3	38692	38869	38466	38299	38155	38345	38565	37987	38699	37670	38631	38437	101.379
	4	38449	37981	38288	38942	38307	38615	38334	38578	38175	38605	38057	39105	101.516
	5	38875	38855	38400	38680	38555	38513	38304	38999	38772	38639	38440	38718	102.025
	6	38965	38183	38332	39129	38217	38754	38774	37962	38661	38661	38666	38518	101.821
	7	38247	38437	38658	38315	38664	38756	38148	38872	38682	38726	38733	38718	101.850
	8	38849	38814	38543	38254	38509	38290	38811	38698	38942	38564	38777	38115	101.897
	9	38787	38462	38747	38684	38533	38100	38548	39040	38524	38769	39172	38147	101.973
	10	39074	38498	38489	39012	38862	38828	38173	39090	39055	38594	38396	38446	102.193
	11	38246	38682	38505	39260	38377	38439	38308	39086	38639	38603	38743	38906	102.035
	12	39155	38436	38681	38344	38780	38573	38717	38598	38671	38915	38688	38248	102.037
	13	38842	38356	38884	38618	38523	38465	38962	39127	38413	38415	38970	38748	102.151
	14	38667	38715	38107	38779	38868	38724	38397	39072	38588	38941	38862	38333	102.091
	15	37874	39216	38782	38973	38659	38598	38629	39019	38779	38147	38274	38534	101.967
	16	38655	39124	38709	38694	38699	38223	38783	38268	38672	38608	38133	38666	101.912
	17	38927	38487	38719	38796	38392	38280	38171	38810	38514	38682	38937	38139	101.829
	18	38203	38351	38970	39263	38282	38931	38455	38360	38656	38553	38869	38387	101.922
	19	38858	38300	39094	39005	38717	38712	38929	38142	37836	38856	39101	38569	102.106
	20	39104	38374	38660	38369	38294	38555	38406	38702	39552	38246	38311	39297	102.052
	21	38754	38208	38137	38439	38199	38660	38439	38041	38862	39359	38907	38526	101.757
	22	38171	37860	38132	38671	38409	39007	38737	38594	38787	38534	37893	38629	101.513
	23	38215	38771	38552	38250	38078	39338	38223	38077	38456	38248	38340	38376	101.403
27	0	38747	38507	38775	39356	38550	38569	38821	38527	38199	38441	38517	38847	102.057
	1	38204	38536	37976	38452	38183	39235	38445	38498	37873	38847	38149	38996	101.506
	2	38439	38315	38832	37956	38269	38359	38419	38260	38742	38331	38652	38516	101.440
	3	38267	38173	38403	38338	38005	38288	38481	38758	38562	38753	38900	39180	101.663
	4	38442	38421	38827	38644	38069	39336	38660	38946	37960	38288	38614	38318	101.756
	5	38293	38456	38369	38273	38915	38480	38505	38145	38494	38566	38661	38291	101.519
	6	38466	38718	38419	38611	39283	39327	38554	39402	38414	38605	38708	38048	102.203
	7	38674	38749	38390	38961	38688	38803	38866	38673	38302	38471	38452	37968	101.860
	8	38648	38394	37887	39056	37731	38390	38585	38433	38310	38814	38955	38607	101.598
	9	38617	38565	38374	38744	38741	38323	39068	38609	38816	38947	38788	38668	102.138
	10	38467	38965	38647	38441	38273	38463	37977	38803	38632	38597	38970	38492	101.800
	11	38774	38971	38412	38360	38728	38795	38490	38297	38677	38487	37849	38780	101.776
	12	39015	38570	39010	38890	38303	38614	38385	38833	38040	38421	39220	38638	102.067

INAF/UNIromaTre		S.V.I.R.CO. Observatory - Pressure Corrected Data – November 2017											20 NM-64	
day	hh	00_05	05_10	10_15	15_20	20_25	25_30	30_35	35_40	40_45	45_50	50_55	55_60	h-norm
	13	38792	38898	38493	38172	38583	39036	39185	38965	38408	38539	38725	38529	102.152
	14	38565	38677	38562	38718	38105	38781	38192	38662	38288	38469	38280	38545	101.606
	15	38608	38457	38566	38344	38222	38700	38988	38910	38114	38317	38106	38395	101.580
	16	38677	38466	38338	38917	38572	38747	38656	37967	38833	38025	39195	38338	101.801
	17	37985	38489	37975	38904	38652	38309	38575	38637	39153	38418	38674	38355	101.667
	18	38530	38607	38480	38679	38480	38620	38568	38711	38117	38295	38056	38125	101.479
	19	38322	38738	38492	38631	38457	38643	38954	38539	38635	38419	38056	38949	101.824
	20	38395	38214	38291	38583	38331	38558	38499	38583	38376	38423	38375	38956	101.548
	21	38878	38775	37743	37608	37922	38877	38202	38002	38228	38175	38134	38010	100.882
	22	37976	38158	37837	38284	38401	38231	38368	38344	38061	38364	38568	38064	100.904
	23	38648	38907	38435	37841	38449	38566	38831	38536	38752	38089	38862	38501	101.732
28	0	38073	38494	38342	38258	38098	38611	37503	38628	38392	38475	38106	38782	101.148
	1	38793	38168	38952	38253	37865	38094	38607	38551	38523	38874	37884	38682	101.474
	2	38473	38243	38383	37971	37751	38108	38138	38859	38755	38272	38717	38573	101.254
	3	37905	38363	38303	38342	38433	38141	38528	38295	37976	38476	37930	38492	101.021
	4	38651	38566	38360	38981	38421	38693	38779	38133	38343	38273	38480	38206	101.615
	5	38472	38718	38856	38309	38419	38060	38570	38239	38582	38582	38652	39070	101.757
	6	38310	38576	39090	38357	38530	38298	38779	37896	38984	38438	38708	38520	101.747
	7	38746	39198	38503	38670	38264	38189	38596	38063	38603	38476	38545	38689	101.759
	8	38511	38888	38322	38305	38200	38356	38885	38486	38406	38560	38406	39330	101.784
	9	38788	39202	37650	38550	38531	38255	38557	38351	38699	38554	38683	38837	101.785
	10	39044	38390	38473	38287	39320	38369	39063	38868	38490	38551	38883	38414	102.114
	11	38859	38728	38445	39159	38518	38346	38469	38556	38913	38799	38435	38655	102.054
	12	39126	38986	38314	38574	38607	38698	38696	38674	38648	38858	38461	38592	102.131
	13	38435	38037	38536	38239	38329	38430	38838	38797	38314	38885	38843	38949	101.780
	14	38553	37927	38301	38628	38682	38749	37997	38272	38715	38673	38403	38319	101.469
	15	38259	38382	38391	38423	38306	38415	38271	38375	38980	38707	38100	38123	101.361
	16	38497	38444	38235	38626	38001	38215	38597	37758	38384	38499	38195	38301	101.145
	17	38625	38527	37880	38381	38711	38824	38576	38751	38199	38069	38880	38407	101.603
	18	38737	38464	38371	38590	38309	38197	38466	38363	38094	38133	37815	38913	101.299
	19	37996	38389	38093	38482	38207	38719	38390	38316	38027	39038	38535	37834	101.206
	20	37723	38605	37860	38232	38424	38254	38321	38439	38857	38104	38647	38059	101.096
	21	38443	38287	38475	38297	38447	38917	38307	38138	38191	38013	38363	38542	101.292
	22	38522	38436	37855	38018	38836	38008	37731	38484	37592	37749	38717	38685	100.900
	23	38315	38038	38332	37915	37931	38206	38205	37738	38228	38016	38019	37668	100.454
29	0	38709	38184	38191	37972	37878	38124	38075	38450	38263	38175	38041	38367	100.844
	1	38119	38365	38077	38024	38300	38311	38295	38507	37929	37847	37893	37818	100.646
	2	38276	38153	38001	38424	37942	37945	38323	37904	38854	38147	37990	38127	100.779
	3	38107	38228	38258	37744	38106	37878	38212	38031	38278	38285	38317	37752	100.583
	4	38611	37882	38574	38658	37964	38234	38243	38111	38316	37783	38147	39091	101.115
	5	38193	38213	37762	38356	38417	38213	38467	38368	38372	38590	38657	38128	101.142
	6	38174	38297	38358	38230	38364	38608	38305	38891	38195	37993	38726	38323	101.302
	7	38714	38440	37729	38009	38379	37818	38099	38242	38341	38259	38301	38609	100.967
	8	38062	38593	38490	38469	38341	38139	38234	38012	38312	38463	38590	38388	101.220
	9	38663	38099	37992	38539	38430	38387	38339	38837	38301	38581	39197	38540	101.621
	10	38588	38172	38293	38334	38669	38491	38483	38842	38141	38519	38403	38035	101.413
	11	38538	38680	38227	38431	38493	37931	38012	38869	38399	38714	38901	37943	101.451
	12	38191	39025	38579	38346	38459	38789	38771	38490	38241	38234	38007	38172	101.486
	13	38110	37827	38463	38262	38763	38340	37995	38055	38237	38218	38393	38139	100.937

INAF/UNIRomaTre				S.V.I.R.CO. Observatory - Pressure Corrected Data – November 2017									20 NM-64	
day	hh	00_05	05_10	10_15	15_20	20_25	25_30	30_35	35_40	40_45	45_50	50_55	55_60	h-norm
	14	37971	38300	37996	38264	38010	38438	37882	38673	38228	37879	37894	38456	100.758
	15	38362	38581	38463	37917	37755	38256	38263	38243	38223	38566	38067	38305	100.980
	16	38191	38412	37827	37702	37903	37919	38182	38064	38195	37957	37693	38087	100.349
	17	37984	37841	38146	37594	37813	37753	37657	38097	37557	38071	37819	37487	99.840
	18	38255	37800	38263	37428	38137	38352	37790	38394	37489	38031	37979	37927	100.286
	19	37765	37758	38146	37806	38422	37679	37701	37508	37576	37817	37830	37922	99.865
	20	37794	38431	37858	37736	37516	37759	37668	37953	38024	37604	38088	37380	99.838
	21	37897	38017	38354	37799	36970	37277	37826	37810	38079	37772	38280	38108	99.921
	22	37581	37719	38035	37269	38233	38148	37716	37805	37642	37697	37602	37572	99.664
	23	37988	38055	38288	37766	37798	37410	37630	37819	38571	38254	37497	38247	100.171
30	0	37586	38236	37657	37504	37895	37756	37941	37344	37572	38011	37998	37997	99.773
	1	37677	38086	37858	37789	37778	37439	37822	38031	38340	37983	37778	38028	100.014
	2	37870	37943	38073	38123	37699	37852	38000	37619	37644	37453	37962	37555	99.834
	3	38084	38034	37467	37874	38496	37981	38301	38052	38161	37824	37925	37856	100.332
	4	37723	37683	37984	38459	38051	38027	38003	37614	37665	37760	38911	38134	100.323
	5	38524	38093	37617	38202	37990	38028	37811	37694	37683	38234	38388	38393	100.465
	6	38153	38404	37465	38429	37712	37157	37765	37913	37678	38110	38385	38207	100.183
	7	38070	38055	37703	37434	37876	37740	37866	37510	38280	38015	38192	38274	100.104
	8	37734	37698	38151	38325	37756	38590	38376	37765	37750	37612	37745	38264	100.269
	9	38260	38609	37763	37630	38091	37276	38552	37595	37933	38513	37685	37879	100.273
	10	38129	38343	38231	38322	38747	38146	37619	37181	37981	37811	38102	38252	100.510
	11	37898	37890	37716	37152	37986	38619	37586	37692	38199	38269	37530	38822	100.179
	12	37258	38207	37739	38611	38065	38484	38009	38403	37837	38091	38482	37827	100.543
	13	37886	37757	37859	38063	38341	37999	38156	37994	37694	37664	38330	38241	100.316
	14	38199	37633	37380	37808	37845	38234	38059	37213	37638	38131	37942	37822	99.859
	15	37857	37921	38847	37500	38151	37309	37518	38161	38513	37452	37767	37801	100.056
	16	38132	37494	38056	37676	37466	38148	38152	38142	37676	37956	37959	38082	100.086
	17	37846	37921	37555	37331	37642	37335	38230	37487	37238	37780	37672	38119	99.474
	18	37829	38001	38075	38553	38257	37977	37571	37982	37768	37795	37825	38199	100.283
	19	37695	37789	38376	37486	37368	38191	38119	37735	38214	37990	37875	37705	99.999
	20	38158	38336	37745	37948	37367	37881	37995	38182	38076	38138	37918	37876	100.236
	21	37882	37892	37904	37883	37554	37883	37511	37927	37646	37382	37965	37220	99.583
	22	37987	37995	38172	38202	37939	38259	37534	37860	37584	38002	38115	38602	100.375
	23	37798	37958	37880	37974	38161	37734	38554	37545	37967	38064	37821	37936	100.186

S.V.I.R.CO. Observatory - Pressure in hectoPascal – November 2017

day	hh	00_05	05_10	10_15	15_20	20_25	25_30	30_35	35_40	40_45	45_50	50_55	55_60	average
1	0	1021.38	1021.38	1021.37	1021.37	1021.39	1021.42	1021.44	1021.45	1021.46	1021.48	1021.49	1021.49	1021.43
	1	1021.49	1021.51	1021.53	1021.55	1021.56	1021.56	1021.54	1021.50	1021.49	1021.50	1021.50	1021.49	1021.52
	2	1021.47	1021.44	1021.44	1021.48	1021.52	1021.50	1021.48	1021.51	1021.55	1021.57	1021.56	1021.57	1021.51
	3	1021.59	1021.58	1021.58	1021.57	1021.56	1021.56	1021.58	1021.60	1021.62	1021.65	1021.66	1021.64	1021.60
	4	1021.62	1021.62	1021.64	1021.66	1021.66	1021.65	1021.67	1021.67	1021.67	1021.67	1021.64	1021.63	1021.65
	5	1021.65	1021.67	1021.71	1021.75	1021.80	1021.85	1021.89	1021.94	1021.98	1022.02	1022.06	1022.11	1021.87
	6	1022.19	1022.27	1022.34	1022.40	1022.47	1022.54	1022.61	1022.66	1022.73	1022.82	1022.85	1022.86	1022.56
	7	1022.89	1022.92	1022.97	1023.05	1023.10	1023.12	1023.12	1023.13	1023.13	1023.13	1023.13	1023.13	1023.07
	8	1023.12	1023.10	1023.07	1023.01	1022.98	1023.01	1023.04	1023.06	1023.07	1023.11	1023.16	1023.21	1023.08
	9	1023.23	1023.24	1023.26	1023.27	1023.28	1023.31	1023.32	1023.31	1023.29	1023.26	1023.21	1023.15	1023.26
	10	1023.09	1023.05	1023.01	1022.95	1022.89	1022.84	1022.80	1022.75	1022.67	1022.59	1022.52	1022.45	1022.80
	11	1022.37	1022.33	1022.32	1022.31	1022.27	1022.22	1022.20	1022.16	1022.09	1022.04	1022.01	1021.99	1022.19
	12	1021.95	1021.87	1021.79	1021.71	1021.66	1021.64	1021.59	1021.54	1021.52	1021.51	1021.50	1021.50	1021.65
	13	1021.50	1021.47	1021.44	1021.40	1021.35	1021.35	1021.35	1021.33	1021.34	1021.34	1021.32	1021.32	1021.37
	14	1021.32	1021.30	1021.29	1021.33	1021.35	1021.34	1021.31	1021.28	1021.25	1021.23	1021.25	1021.28	1021.29
	15	1021.31	1021.33	1021.34	1021.31	1021.28	1021.28	1021.29	1021.31	1021.34	1021.36	1021.39	1021.41	1021.33
	16	1021.46	1021.53	1021.57	1021.63	1021.71	1021.77	1021.83	1021.90	1021.95	1021.99	1022.03	1022.07	1021.78
	17	1022.11	1022.13	1022.12	1022.11	1022.12	1022.16	1022.19	1022.22	1022.25	1022.27	1022.26	1022.26	1022.18
	18	1022.27	1022.28	1022.29	1022.31	1022.34	1022.36	1022.38	1022.39	1022.38	1022.38	1022.39	1022.42	1022.35
	19	1022.43	1022.43	1022.46	1022.49	1022.49	1022.48	1022.49	1022.50	1022.52	1022.55	1022.59	1022.62	1022.50
	20	1022.63	1022.62	1022.64	1022.67	1022.70	1022.71	1022.74	1022.78	1022.81	1022.81	1022.82	1022.86	1022.73
	21	1022.89	1022.90	1022.89	1022.89	1022.89	1022.89	1022.93	1022.96	1022.99	1023.02	1023.06	1023.07	1022.95
	22	1023.07	1023.07	1023.07	1023.10	1023.09	1023.06	1023.06	1023.06	1023.06	1023.09	1023.13	1023.15	1023.08
	23	1023.13	1023.12	1023.10	1023.08	1023.07	1023.03	1023.01	1023.01	1023.01	1022.99	1022.96	1022.96	1023.04
2	0	1022.98	1022.98	1022.98	1022.99	1023.00	1022.99	1022.98	1022.97	1022.93	1022.92	1022.92	1022.91	1022.96
	1	1022.90	1022.89	1022.90	1022.88	1022.84	1022.82	1022.80	1022.76	1022.74	1022.72	1022.70	1022.66	1022.80
	2	1022.61	1022.57	1022.55	1022.51	1022.52	1022.55	1022.53	1022.48	1022.48	1022.47	1022.42	1022.37	1022.50
	3	1022.34	1022.31	1022.28	1022.26	1022.25	1022.26	1022.28	1022.33	1022.37	1022.35	1022.31	1022.26	1022.30
	4	1022.19	1022.13	1022.09	1022.04	1021.94	1021.90	1021.89	1021.86	1021.86	1021.86	1021.83	1021.80	1021.95
	5	1021.79	1021.77	1021.75	1021.76	1021.77	1021.79	1021.83	1021.88	1021.93	1021.97	1022.03	1022.14	1021.87
	6	1022.23	1022.26	1022.29	1022.36	1022.41	1022.46	1022.54	1022.61	1022.67	1022.72	1022.73	1022.74	1022.50
	7	1022.78	1022.80	1022.82	1022.86	1022.91	1022.97	1022.98	1022.98	1022.99	1022.99	1022.97	1022.95	1022.92
	8	1022.95	1022.94	1022.91	1022.90	1022.89	1022.90	1022.90	1022.89	1022.88	1022.84	1022.81	1022.79	1022.88
	9	1022.78	1022.75	1022.72	1022.70	1022.68	1022.62	1022.55	1022.52	1022.51	1022.50	1022.45	1022.39	1022.60
	10	1022.35	1022.32	1022.27	1022.23	1022.18	1022.10	1021.99	1021.89	1021.83	1021.77	1021.71	1021.65	1022.02
	11	1021.60	1021.56	1021.52	1021.45	1021.33	1021.22	1021.15	1021.09	1021.01	1020.93	1020.87	1020.82	1021.21
	12	1020.80	1020.76	1020.64	1020.50	1020.40	1020.32	1020.25	1020.18	1020.14	1020.08	1020.03	1020.02	1020.34
	13	1019.96	1019.88	1019.79	1019.75	1019.71	1019.69	1019.68	1019.62	1019.56	1019.54	1019.52	1019.48	1019.68
	14	1019.48	1019.46	1019.43	1019.42	1019.41	1019.41	1019.43	1019.42	1019.38	1019.37	1019.37	1019.38	1019.41
	15	1019.40	1019.41	1019.40	1019.38	1019.37	1019.36	1019.36	1019.33	1019.32	1019.38	1019.42	1019.46	1019.38
	16	1019.49	1019.49	1019.48	1019.47	1019.43	1019.37	1019.36	1019.37	1019.37	1019.40	1019.44	1019.49	1019.43
	17	1019.53	1019.54	1019.55	1019.55	1019.55	1019.57	1019.57	1019.55	1019.55	1019.58	1019.57	1019.55	1019.55
	18	1019.58	1019.59	1019.55	1019.54	1019.55	1019.54	1019.51	1019.51	1019.50	1019.47	1019.44	1019.42	1019.52
	19	1019.43	1019.46	1019.46	1019.43	1019.42	1019.40	1019.38	1019.41	1019.44	1019.46	1019.47	1019.50	1019.44
	20	1019.52	1019.51	1019.49	1019.47	1019.47	1019.45	1019.43	1019.45	1019.45	1019.44	1019.45	1019.42	1019.46
	21	1019.38	1019.36	1019.29	1019.20	1019.16	1019.16	1019.17	1019.16	1019.12	1019.04	1019.01	1019.00	1019.17
	22	1019.01	1019.03	1018.97	1018.93	1018.93	1018.97	1019.02	1019.00	1018.94	1018.89	1018.86	1018.85	1018.95
	23	1018.82	1018.81	1018.82	1018.80	1018.81	1018.76	1018.65	1018.60	1018.59	1018.55	1018.50	1018.48	1018.68

S.V.I.R.CO. Observatory - Pressure in hectoPascal – November 2017

day	hh	00_05	05_10	10_15	15_20	20_25	25_30	30_35	35_40	40_45	45_50	50_55	55_60	average
3	0	1018.41	1018.41	1018.42	1018.45	1018.46	1018.45	1018.40	1018.35	1018.33	1018.30	1018.31	1018.28	1018.38
	1	1018.23	1018.20	1018.15	1018.07	1017.96	1017.87	1017.83	1017.78	1017.72	1017.72	1017.72	1017.68	1017.91
	2	1017.66	1017.60	1017.44	1017.33	1017.37	1017.42	1017.40	1017.37	1017.37	1017.36	1017.32	1017.26	1017.41
	3	1017.23	1017.19	1017.17	1017.18	1017.15	1017.10	1017.05	1017.02	1017.01	1016.99	1016.97	1016.92	1017.08
	4	1016.86	1016.82	1016.76	1016.71	1016.70	1016.66	1016.62	1016.59	1016.55	1016.53	1016.46	1016.37	1016.63
	5	1016.36	1016.39	1016.43	1016.45	1016.47	1016.47	1016.43	1016.40	1016.37	1016.34	1016.34	1016.35	1016.40
	6	1016.37	1016.37	1016.38	1016.40	1016.43	1016.43	1016.41	1016.42	1016.48	1016.57	1016.60	1016.51	1016.44
	7	1016.52	1016.59	1016.59	1016.65	1016.69	1016.70	1016.69	1016.67	1016.67	1016.65	1016.56	1016.54	1016.62
	8	1016.61	1016.66	1016.71	1016.69	1016.61	1016.70	1016.77	1016.65	1016.58	1016.61	1016.59	1016.56	1016.64
	9	1016.53	1016.49	1016.43	1016.34	1016.35	1016.39	1016.41	1016.50	1016.69	1016.80	1016.69	1016.63	1016.52
	10	1016.68	1016.66	1016.60	1016.54	1016.48	1016.38	1016.28	1016.25	1016.28	1016.31	1016.31	1016.29	1016.42
	11	1016.25	1016.19	1016.17	1016.18	1016.15	1016.10	1016.04	1015.99	1015.97	1015.95	1015.89	1015.78	1016.05
	12	1015.72	1015.67	1015.61	1015.56	1015.50	1015.46	1015.45	1015.42	1015.38	1015.34	1015.29	1015.22	1015.47
	13	1015.16	1015.16	1015.17	1015.12	1015.07	1015.06	1015.08	1015.10	1015.07	1015.03	1015.02	1015.03	1015.09
	14	1015.04	1015.09	1015.16	1015.19	1015.23	1015.29	1015.32	1015.35	1015.37	1015.36	1015.36	1015.43	1015.26
	15	1015.52	1015.57	1015.60	1015.60	1015.53	1015.52	1015.57	1015.60	1015.61	1015.61	1015.62	1015.64	1015.58
	16	1015.64	1015.61	1015.59	1015.62	1015.67	1015.74	1015.80	1015.81	1015.86	1015.89	1015.92	1015.95	1015.76
	17	1015.94	1015.98	1016.08	1016.16	1016.20	1016.22	1016.24	1016.25	1016.25	1016.28	1016.34	1016.39	1016.19
	18	1016.41	1016.41	1016.43	1016.43	1016.43	1016.46	1016.53	1016.56	1016.56	1016.56	1016.57	1016.58	1016.49
	19	1016.55	1016.54	1016.58	1016.62	1016.68	1016.74	1016.76	1016.77	1016.83	1016.89	1016.94	1016.97	1016.74
	20	1017.02	1017.09	1017.15	1017.19	1017.21	1017.23	1017.27	1017.29	1017.31	1017.33	1017.32	1017.31	1017.22
	21	1017.32	1017.27	1017.20	1017.16	1017.17	1017.20	1017.22	1017.27	1017.32	1017.32	1017.28	1017.26	1017.25
	22	1017.23	1017.21	1017.21	1017.20	1017.17	1017.14	1017.12	1017.12	1017.12	1017.10	1017.08	1017.06	1017.15
	23	1017.06	1017.07	1017.05	1017.02	1017.01	1016.99	1016.97	1016.96	1016.94	1016.93	1016.90	1016.84	1016.98
4	0	1016.79	1016.80	1016.81	1016.82	1016.81	1016.80	1016.81	1016.81	1016.79	1016.75	1016.74	1016.75	1016.79
	1	1016.75	1016.75	1016.74	1016.72	1016.70	1016.66	1016.64	1016.63	1016.62	1016.59	1016.55	1016.52	1016.65
	2	1016.47	1016.46	1016.48	1016.49	1016.48	1016.49	1016.50	1016.48	1016.46	1016.45	1016.49	1016.53	1016.48
	3	1016.55	1016.57	1016.60	1016.62	1016.65	1016.68	1016.68	1016.68	1016.69	1016.70	1016.71	1016.69	1016.65
	4	1016.66	1016.65	1016.65	1016.64	1016.64	1016.65	1016.66	1016.69	1016.72	1016.71	1016.71	1016.76	1016.68
	5	1016.79	1016.80	1016.83	1016.89	1016.95	1016.99	1017.04	1017.09	1017.09	1017.09	1017.09	1017.09	1016.98
	6	1017.13	1017.16	1017.18	1017.22	1017.29	1017.36	1017.44	1017.52	1017.59	1017.64	1017.68	1017.75	1017.41
	7	1017.82	1017.86	1017.89	1017.93	1017.97	1018.04	1018.08	1018.08	1018.08	1018.10	1018.16	1018.19	1018.01
	8	1018.17	1018.14	1018.13	1018.12	1018.11	1018.09	1018.07	1018.06	1018.06	1018.06	1018.09	1018.14	1018.10
	9	1018.15	1018.19	1018.22	1018.22	1018.20	1018.14	1018.12	1018.09	1018.08	1018.07	1018.04	1018.02	1018.13
	10	1018.00	1017.98	1017.92	1017.86	1017.86	1017.86	1017.83	1017.80	1017.73	1017.66	1017.60	1017.54	1017.80
	11	1017.49	1017.45	1017.43	1017.37	1017.31	1017.27	1017.23	1017.20	1017.13	1017.07	1017.02	1016.98	1017.24
	12	1016.95	1016.92	1016.90	1016.87	1016.81	1016.77	1016.72	1016.65	1016.61	1016.58	1016.59	1016.58	1016.74
	13	1016.54	1016.51	1016.50	1016.46	1016.42	1016.41	1016.43	1016.43	1016.40	1016.40	1016.41	1016.42	1016.44
	14	1016.43	1016.44	1016.46	1016.49	1016.51	1016.47	1016.44	1016.47	1016.49	1016.48	1016.46	1016.44	1016.46
	15	1016.47	1016.50	1016.50	1016.51	1016.52	1016.51	1016.48	1016.48	1016.50	1016.52	1016.54	1016.55	1016.51
	16	1016.58	1016.58	1016.61	1016.62	1016.61	1016.63	1016.65	1016.67	1016.68	1016.68	1016.69	1016.70	1016.64
	17	1016.72	1016.71	1016.70	1016.72	1016.77	1016.83	1016.90	1016.98	1017.01	1017.01	1016.99	1016.98	1016.86
	18	1017.01	1017.04	1017.05	1017.04	1017.06	1017.12	1017.18	1017.23	1017.27	1017.29	1017.28	1017.25	1017.15
	19	1017.23	1017.19	1017.15	1017.10	1017.11	1017.15	1017.17	1017.18	1017.21	1017.21	1017.21	1017.25	1017.18
	20	1017.31	1017.38	1017.46	1017.52	1017.52	1017.52	1017.54	1017.54	1017.55	1017.56	1017.53	1017.51	1017.49
	21	1017.53	1017.54	1017.54	1017.55	1017.54	1017.50	1017.44	1017.40	1017.39	1017.37	1017.34	1017.31	1017.45
	22	1017.28	1017.25	1017.27	1017.28	1017.25	1017.22	1017.20	1017.22	1017.22	1017.21	1017.21	1017.20	1017.23
	23	1017.17	1017.14	1017.04	1016.93	1016.87	1016.81	1016.78	1016.75	1016.72	1016.69	1016.63	1016.58	1016.84

S.V.I.R.CO. Observatory - Pressure in hectoPascal – November 2017

day	hh	00_05	05_10	10_15	15_20	20_25	25_30	30_35	35_40	40_45	45_50	50_55	55_60	average
5	0	1016.46	1016.43	1016.39	1016.41	1016.40	1016.39	1016.42	1016.39	1016.36	1016.36	1016.33	1016.30	1016.38
	1	1016.29	1016.28	1016.25	1016.19	1016.13	1016.08	1016.03	1015.99	1016.00	1016.05	1016.06	1016.01	1016.11
	2	1015.92	1015.84	1015.78	1015.74	1015.72	1015.76	1015.75	1015.72	1015.73	1015.72	1015.70	1015.71	1015.76
	3	1015.75	1015.71	1015.61	1015.57	1015.54	1015.59	1015.68	1015.70	1015.63	1015.57	1015.55	1015.46	1015.61
	4	1015.34	1015.23	1015.16	1015.13	1015.04	1014.95	1014.89	1014.76	1014.66	1014.66	1014.60	1014.56	1014.91
	5	1014.58	1014.53	1014.50	1014.58	1014.64	1014.62	1014.65	1014.70	1014.69	1014.65	1014.57	1014.48	1014.60
	6	1014.44	1014.43	1014.44	1014.45	1014.44	1014.38	1014.34	1014.39	1014.41	1014.46	1014.50	1014.44	1014.42
	7	1014.33	1014.30	1014.31	1014.28	1014.21	1014.03	1013.87	1013.86	1013.96	1014.00	1013.99	1014.02	1014.09
	8	1014.08	1014.17	1014.27	1014.36	1014.40	1014.39	1014.32	1014.29	1014.27	1014.22	1014.10	1013.99	1014.24
	9	1013.95	1013.85	1013.70	1013.68	1013.74	1013.70	1013.63	1013.57	1013.51	1013.42	1013.25	1013.03	1013.58
	10	1012.79	1012.67	1012.64	1012.38	1011.98	1011.74	1011.60	1011.59	1011.50	1011.18	1010.66	1010.39	1011.76
	11	1010.52	1010.61	1010.52	1010.50	1010.55	1010.38	1010.24	1010.20	1010.16	1010.08	1009.95	1009.84	1010.29
	12	1009.80	1009.78	1009.61	1009.36	1009.22	1009.33	1009.35	1009.15	1009.09	1009.19	1009.07	1008.88	1009.32
	13	1009.06	1009.18	1009.07	1009.20	1009.67	1010.00	1009.86	1010.35	1010.87	1010.16	1009.66	1009.60	1009.72
	14	1009.59	1009.05	1008.40	1008.75	1009.20	1009.07	1008.97	1009.13	1009.39	1009.33	1008.69	1008.21	1008.98
	15	1008.26	1008.54	1008.72	1008.77	1008.62	1008.36	1008.18	1008.30	1008.35	1008.27	1008.22	1008.18	1008.39
	16	1008.20	1008.14	1008.03	1007.94	1007.89	1007.86	1007.91	1008.05	1008.21	1008.24	1008.19	1008.24	1008.07
	17	1008.30	1008.31	1008.40	1008.47	1008.51	1008.51	1008.45	1008.36	1008.29	1008.26	1008.22	1008.15	1008.35
	18	1008.09	1008.08	1008.05	1007.99	1007.94	1007.89	1007.86	1007.79	1007.72	1007.69	1007.65	1007.66	1007.87
	19	1007.67	1007.66	1007.67	1007.68	1007.73	1007.78	1007.86	1007.90	1007.90	1007.86	1007.85	1007.86	1007.78
	20	1007.85	1007.84	1007.85	1007.85	1007.82	1007.75	1007.72	1007.75	1007.79	1007.81	1007.73	1007.64	1007.78
	21	1007.56	1007.51	1007.54	1007.58	1007.60	1007.57	1007.49	1007.42	1007.38	1007.36	1007.36	1007.37	1007.48
	22	1007.37	1007.35	1007.32	1007.32	1007.32	1007.31	1007.24	1007.14	1007.07	1007.04	1007.02	1007.00	1007.21
	23	1007.00	1007.03	1007.06	1007.06	1007.02	1007.00	1007.01	1007.03	1006.99	1006.95	1006.98	1007.02	1007.01
6	0	1006.98	1006.98	1006.97	1006.96	1007.03	1007.01	1006.92	1006.96	1006.98	1006.96	1006.93	1006.88	1006.96
	1	1006.87	1006.88	1006.88	1006.88	1006.86	1006.79	1006.71	1006.69	1006.65	1006.60	1006.55	1006.46	1006.73
	2	1006.36	1006.27	1006.19	1006.14	1006.12	1006.08	1006.05	1005.99	1005.94	1005.97	1006.02	1005.99	1006.09
	3	1005.90	1005.85	1005.85	1005.84	1005.83	1005.89	1005.90	1005.88	1005.86	1005.82	1005.77	1005.68	1005.84
	4	1005.59	1005.49	1005.46	1005.44	1005.38	1005.37	1005.38	1005.39	1005.40	1005.43	1005.43	1005.37	1005.43
	5	1005.27	1005.21	1005.21	1005.18	1005.11	1005.07	1005.08	1005.10	1005.10	1005.13	1005.18	1005.25	1005.16
	6	1005.36	1005.49	1005.62	1005.69	1005.72	1005.80	1005.89	1005.91	1005.91	1005.91	1005.88	1005.82	1005.75
	7	1005.76	1005.82	1005.94	1005.98	1005.98	1006.05	1006.07	1006.05	1006.03	1006.00	1006.05	1006.13	1005.99
	8	1006.15	1006.22	1006.37	1006.51	1006.61	1006.65	1006.67	1006.70	1006.74	1006.76	1006.76	1006.81	1006.58
	9	1006.88	1006.92	1006.95	1007.00	1007.07	1007.20	1007.37	1007.48	1007.54	1007.61	1007.64	1007.68	1007.28
	10	1007.74	1007.75	1007.75	1007.77	1007.75	1007.64	1007.55	1007.54	1007.55	1007.51	1007.46	1007.39	1007.61
	11	1007.31	1007.27	1007.23	1007.22	1007.13	1007.02	1007.01	1007.01	1006.98	1006.93	1006.90	1006.88	1007.07
	12	1006.78	1006.75	1006.82	1006.82	1006.81	1006.85	1006.89	1006.84	1006.70	1006.62	1006.57	1006.57	1006.75
	13	1006.66	1006.80	1006.91	1006.79	1006.70	1006.76	1006.92	1007.15	1007.27	1007.28	1007.33	1007.38	1006.99
	14	1007.42	1007.53	1007.63	1007.65	1007.70	1007.71	1007.65	1007.63	1007.65	1007.70	1007.70	1007.72	1007.64
	15	1007.74	1007.68	1007.57	1007.46	1007.42	1007.38	1007.24	1007.17	1007.18	1007.12	1007.08	1007.08	1007.34
	16	1007.01	1006.98	1007.19	1007.40	1007.58	1007.76	1007.79	1007.76	1007.60	1007.37	1007.35	1007.42	1007.43
	17	1007.47	1007.50	1007.51	1007.53	1007.56	1007.54	1007.52	1007.63	1007.70	1007.67	1007.67	1007.64	1007.58
	18	1007.54	1007.45	1007.29	1007.10	1006.93	1006.92	1006.98	1006.94	1006.96	1007.10	1007.27	1007.32	1007.15
	19	1007.19	1007.16	1007.39	1007.67	1007.77	1007.81	1007.89	1007.96	1008.01	1007.99	1007.98	1007.97	1007.73
	20	1007.98	1008.01	1007.97	1007.97	1008.00	1007.94	1007.83	1007.81	1007.92	1008.05	1008.06	1008.01	1007.96
	21	1008.02	1008.03	1008.05	1008.08	1008.07	1008.11	1008.16	1008.18	1008.21	1008.19	1008.19	1008.24	1008.13
	22	1008.29	1008.35	1008.45	1008.50	1008.50	1008.55	1008.62	1008.61	1008.57	1008.57	1008.55	1008.49	1008.50
	23	1008.47	1008.43	1008.35	1008.30	1008.32	1008.35	1008.40	1008.43	1008.50	1008.59	1008.60	1008.57	1008.44

S.V.I.R.CO. Observatory - Pressure in hectoPascal – November 2017

day	hh	00_05	05_10	10_15	15_20	20_25	25_30	30_35	35_40	40_45	45_50	50_55	55_60	average
7	0	1008.59	1008.53	1008.46	1008.45	1008.44	1008.39	1008.34	1008.32	1008.33	1008.37	1008.43	1008.49	1008.42
	1	1008.52	1008.50	1008.47	1008.48	1008.50	1008.46	1008.35	1008.24	1008.19	1008.08	1008.02	1008.00	1008.32
	2	1007.89	1007.74	1007.65	1007.62	1007.56	1007.47	1007.39	1007.34	1007.30	1007.25	1007.20	1007.18	1007.46
	3	1007.15	1007.07	1006.97	1006.88	1006.81	1006.79	1006.81	1006.85	1006.88	1006.92	1006.90	1006.84	1006.90
	4	1006.78	1006.78	1006.77	1006.72	1006.71	1006.75	1006.78	1006.74	1006.65	1006.60	1006.56	1006.58	1006.70
	5	1006.64	1006.75	1006.85	1006.92	1007.06	1007.13	1007.08	1007.06	1007.09	1007.15	1007.20	1007.28	1007.01
	6	1007.39	1007.48	1007.57	1007.66	1007.80	1008.00	1008.23	1008.41	1008.54	1008.66	1008.79	1008.93	1008.12
	7	1009.04	1009.09	1009.11	1009.13	1009.20	1009.32	1009.36	1009.22	1009.10	1009.01	1008.91	1008.80	1009.11
	8	1008.69	1008.60	1008.54	1008.54	1008.45	1008.34	1008.27	1008.21	1008.14	1008.07	1007.99	1007.91	1008.31
	9	1007.86	1007.82	1007.83	1007.81	1007.73	1007.70	1007.75	1007.83	1007.89	1007.92	1007.95	1007.97	1007.84
	10	1008.02	1008.11	1008.14	1008.12	1008.08	1008.02	1007.92	1007.80	1007.75	1007.71	1007.71	1007.74	1007.92
	11	1007.78	1007.80	1007.80	1007.79	1007.73	1007.65	1007.53	1007.41	1007.37	1007.40	1007.42	1007.38	1007.59
	12	1007.34	1007.30	1007.27	1007.23	1007.15	1007.08	1007.04	1007.03	1007.02	1006.99	1006.99	1007.06	1007.12
	13	1007.07	1007.04	1007.09	1007.17	1007.23	1007.29	1007.38	1007.51	1007.57	1007.55	1007.57	1007.62	1007.34
	14	1007.64	1007.64	1007.66	1007.68	1007.67	1007.68	1007.67	1007.65	1007.66	1007.66	1007.64	1007.62	1007.65
	15	1007.65	1007.69	1007.71	1007.74	1007.79	1007.90	1008.06	1008.17	1008.21	1008.28	1008.39	1008.50	1008.01
	16	1008.55	1008.55	1008.52	1008.54	1008.57	1008.61	1008.70	1008.77	1008.84	1008.95	1009.04	1009.08	1008.72
	17	1009.08	1009.05	1008.97	1008.90	1008.85	1008.81	1008.83	1008.87	1008.90	1008.98	1009.04	1009.08	1008.94
	18	1009.15	1009.20	1009.19	1009.16	1009.17	1009.23	1009.29	1009.33	1009.38	1009.35	1009.30	1009.32	1009.25
	19	1009.41	1009.51	1009.58	1009.65	1009.72	1009.77	1009.79	1009.82	1009.90	1010.00	1010.09	1010.12	1009.78
	20	1010.15	1010.22	1010.30	1010.38	1010.42	1010.40	1010.37	1010.38	1010.38	1010.36	1010.34	1010.31	1010.33
	21	1010.30	1010.30	1010.33	1010.35	1010.35	1010.31	1010.24	1010.23	1010.28	1010.36	1010.42	1010.45	1010.32
	22	1010.50	1010.53	1010.58	1010.64	1010.65	1010.64	1010.66	1010.72	1010.81	1010.89	1010.94	1010.99	1010.71
	23	1011.02	1011.04	1011.06	1011.08	1011.09	1011.12	1011.17	1011.23	1011.27	1011.31	1011.36	1011.36	1011.17
8	0	1011.29	1011.31	1011.34	1011.42	1011.53	1011.63	1011.68	1011.62	1011.53	1011.51	1011.59	1011.71	1011.52
	1	1011.79	1011.81	1011.82	1011.85	1011.81	1011.72	1011.64	1011.62	1011.62	1011.54	1011.42	1011.34	1011.66
	2	1011.33	1011.41	1011.54	1011.60	1011.64	1011.72	1011.78	1011.78	1011.74	1011.73	1011.72	1011.69	1011.64
	3	1011.73	1011.76	1011.77	1011.82	1011.90	1011.95	1012.00	1012.04	1012.04	1012.02	1012.02	1012.06	1011.92
	4	1012.09	1012.08	1012.06	1012.05	1012.05	1012.13	1012.26	1012.33	1012.40	1012.51	1012.56	1012.60	1012.26
	5	1012.68	1012.75	1012.76	1012.77	1012.80	1012.83	1012.86	1012.91	1012.91	1012.90	1012.95	1013.03	1012.84
	6	1013.09	1013.16	1013.25	1013.30	1013.36	1013.49	1013.59	1013.62	1013.67	1013.76	1013.86	1013.97	1013.51
	7	1014.08	1014.16	1014.23	1014.28	1014.30	1014.36	1014.46	1014.49	1014.47	1014.47	1014.47	1014.46	1014.35
	8	1014.43	1014.41	1014.42	1014.41	1014.44	1014.53	1014.62	1014.66	1014.66	1014.67	1014.70	1014.73	1014.55
	9	1014.76	1014.75	1014.70	1014.72	1014.75	1014.76	1014.82	1014.86	1014.87	1014.84	1014.81	1014.77	1014.78
	10	1014.70	1014.66	1014.64	1014.62	1014.57	1014.51	1014.48	1014.47	1014.46	1014.46	1014.47	1014.45	1014.54
	11	1014.40	1014.37	1014.38	1014.41	1014.44	1014.44	1014.41	1014.39	1014.38	1014.37	1014.38	1014.39	1014.39
	12	1014.37	1014.34	1014.30	1014.27	1014.25	1014.26	1014.25	1014.19	1014.14	1014.09	1014.07	1014.10	1014.22
	13	1014.15	1014.19	1014.20	1014.24	1014.34	1014.43	1014.46	1014.50	1014.54	1014.55	1014.54	1014.53	1014.39
	14	1014.57	1014.59	1014.61	1014.71	1014.77	1014.79	1014.83	1014.90	1014.91	1014.89	1014.93	1014.96	1014.79
	15	1015.00	1015.05	1015.10	1015.13	1015.13	1015.13	1015.15	1015.19	1015.24	1015.25	1015.26	1015.30	1015.16
	16	1015.31	1015.32	1015.35	1015.39	1015.44	1015.46	1015.49	1015.56	1015.64	1015.74	1015.79	1015.81	1015.52
	17	1015.88	1015.92	1015.96	1016.01	1016.03	1016.03	1016.06	1016.09	1016.11	1016.15	1016.18	1016.17	1016.05
	18	1016.20	1016.23	1016.25	1016.29	1016.32	1016.35	1016.37	1016.38	1016.43	1016.47	1016.49	1016.52	1016.36
	19	1016.53	1016.52	1016.54	1016.59	1016.63	1016.67	1016.73	1016.78	1016.81	1016.83	1016.87	1016.93	1016.70
	20	1016.97	1016.98	1017.00	1017.04	1017.09	1017.10	1017.09	1017.09	1017.10	1017.12	1017.17	1017.17	1017.08
	21	1017.17	1017.20	1017.20	1017.19	1017.22	1017.23	1017.19	1017.20	1017.24	1017.26	1017.25	1017.22	1017.21
	22	1017.23	1017.25	1017.27	1017.25	1017.25	1017.25	1017.29	1017.36	1017.40	1017.41	1017.43	1017.44	1017.32
	23	1017.45	1017.48	1017.50	1017.50	1017.49	1017.49	1017.51	1017.56	1017.56	1017.54	1017.55	1017.55	1017.51

S.V.I.R.CO. Observatory - Pressure in hectoPascal – November 2017

day	hh	00_05	05_10	10_15	15_20	20_25	25_30	30_35	35_40	40_45	45_50	50_55	55_60	average
9	0	1017.50	1017.48	1017.46	1017.46	1017.45	1017.44	1017.46	1017.47	1017.47	1017.49	1017.55	1017.60	1017.48
	1	1017.61	1017.64	1017.63	1017.60	1017.60	1017.59	1017.59	1017.58	1017.56	1017.53	1017.50	1017.51	1017.58
	2	1017.53	1017.54	1017.54	1017.55	1017.56	1017.56	1017.60	1017.64	1017.64	1017.63	1017.62	1017.58	1017.58
	3	1017.53	1017.52	1017.51	1017.51	1017.51	1017.50	1017.53	1017.57	1017.56	1017.59	1017.64	1017.70	1017.55
	4	1017.79	1017.85	1017.88	1017.91	1017.89	1017.81	1017.77	1017.77	1017.71	1017.64	1017.61	1017.59	1017.77
	5	1017.60	1017.61	1017.64	1017.70	1017.75	1017.77	1017.79	1017.83	1017.89	1017.97	1018.02	1018.07	1017.80
	6	1018.09	1018.13	1018.16	1018.11	1018.08	1018.11	1018.18	1018.26	1018.36	1018.42	1018.49	1018.52	1018.24
	7	1018.54	1018.56	1018.57	1018.60	1018.63	1018.65	1018.67	1018.71	1018.74	1018.74	1018.73	1018.67	1018.65
	8	1018.65	1018.69	1018.70	1018.64	1018.59	1018.64	1018.68	1018.68	1018.67	1018.70	1018.76	1018.79	1018.68
	9	1018.81	1018.84	1018.81	1018.78	1018.81	1018.83	1018.82	1018.80	1018.78	1018.72	1018.63	1018.58	1018.76
	10	1018.56	1018.52	1018.45	1018.39	1018.35	1018.29	1018.24	1018.16	1018.05	1018.02	1018.00	1017.91	1018.24
	11	1017.86	1017.86	1017.83	1017.77	1017.71	1017.68	1017.73	1017.80	1017.84	1017.82	1017.79	1017.79	1017.79
	12	1017.72	1017.69	1017.67	1017.61	1017.57	1017.52	1017.50	1017.53	1017.54	1017.52	1017.48	1017.44	1017.56
	13	1017.43	1017.44	1017.44	1017.44	1017.44	1017.46	1017.52	1017.51	1017.46	1017.47	1017.49	1017.53	1017.47
	14	1017.59	1017.61	1017.61	1017.60	1017.62	1017.62	1017.58	1017.57	1017.58	1017.59	1017.57	1017.55	1017.59
	15	1017.55	1017.55	1017.54	1017.51	1017.54	1017.66	1017.71	1017.64	1017.62	1017.62	1017.60	1017.60	1017.59
	16	1017.52	1017.44	1017.43	1017.51	1017.58	1017.59	1017.61	1017.61	1017.65	1017.86	1018.11	1018.19	1017.67
	17	1018.20	1018.25	1018.24	1018.12	1018.05	1018.03	1018.04	1018.05	1018.02	1017.98	1017.86	1017.75	1018.05
	18	1017.78	1017.81	1017.72	1017.66	1017.72	1017.84	1017.98	1018.08	1018.12	1018.15	1018.18	1018.18	1017.93
	19	1018.19	1018.22	1018.23	1018.26	1018.29	1018.29	1018.29	1018.29	1018.27	1018.26	1018.22	1018.18	1018.25
	20	1018.24	1018.31	1018.36	1018.52	1018.65	1018.61	1018.50	1018.38	1018.26	1018.17	1018.16	1018.13	1018.36
	21	1018.11	1018.14	1018.15	1018.15	1018.12	1018.06	1018.00	1017.93	1017.90	1017.89	1017.86	1017.83	1018.01
	22	1017.81	1017.79	1017.81	1017.79	1017.70	1017.56	1017.48	1017.48	1017.51	1017.50	1017.42	1017.31	1017.59
	23	1017.23	1017.13	1016.95	1016.90	1016.93	1016.90	1016.87	1016.88	1016.98	1017.05	1017.08	1017.10	1017.00
10	0	1017.03	1017.03	1017.03	1017.03	1017.01	1017.00	1017.03	1017.02	1017.00	1016.97	1016.93	1016.89	1016.99
	1	1016.86	1016.86	1016.84	1016.87	1016.87	1016.82	1016.87	1016.96	1017.02	1017.11	1017.10	1017.00	1016.93
	2	1016.94	1016.92	1016.94	1016.90	1016.86	1016.79	1016.69	1016.63	1016.57	1016.50	1016.45	1016.41	1016.71
	3	1016.34	1016.30	1016.24	1016.16	1016.13	1016.09	1016.00	1015.94	1015.93	1015.91	1015.92	1015.96	1016.07
	4	1015.92	1015.88	1015.86	1015.81	1015.74	1015.69	1015.70	1015.68	1015.60	1015.50	1015.43	1015.39	1015.68
	5	1015.41	1015.46	1015.46	1015.43	1015.40	1015.40	1015.40	1015.40	1015.41	1015.48	1015.63	1015.77	1015.47
	6	1015.81	1015.80	1015.82	1015.83	1015.87	1015.93	1015.93	1015.91	1015.90	1015.84	1015.84	1015.91	1015.86
	7	1016.00	1016.11	1016.21	1016.27	1016.31	1016.40	1016.47	1016.48	1016.50	1016.52	1016.51	1016.55	1016.36
	8	1016.59	1016.57	1016.57	1016.59	1016.60	1016.54	1016.50	1016.56	1016.58	1016.56	1016.58	1016.64	1016.57
	9	1016.70	1016.75	1016.76	1016.70	1016.67	1016.66	1016.65	1016.63	1016.63	1016.59	1016.54	1016.47	1016.64
	10	1016.38	1016.27	1016.15	1016.03	1015.95	1015.92	1015.88	1015.83	1015.77	1015.73	1015.70	1015.66	1015.94
	11	1015.64	1015.60	1015.55	1015.49	1015.44	1015.42	1015.37	1015.29	1015.26	1015.27	1015.25	1015.21	1015.40
	12	1015.15	1015.12	1015.08	1015.04	1015.05	1015.04	1014.99	1014.93	1014.91	1014.88	1014.83	1014.77	1014.98
	13	1014.74	1014.75	1014.78	1014.77	1014.76	1014.80	1014.84	1014.85	1014.86	1014.82	1014.75	1014.68	1014.78
	14	1014.60	1014.56	1014.54	1014.53	1014.58	1014.64	1014.66	1014.69	1014.72	1014.74	1014.72	1014.68	1014.64
	15	1014.65	1014.60	1014.56	1014.53	1014.52	1014.53	1014.52	1014.50	1014.48	1014.46	1014.40	1014.32	1014.50
	16	1014.26	1014.22	1014.26	1014.33	1014.38	1014.41	1014.40	1014.35	1014.35	1014.35	1014.32	1014.33	1014.33
	17	1014.36	1014.37	1014.37	1014.30	1014.24	1014.26	1014.30	1014.29	1014.25	1014.25	1014.28	1014.28	1014.29
	18	1014.30	1014.33	1014.35	1014.36	1014.36	1014.37	1014.40	1014.44	1014.45	1014.40	1014.34	1014.33	1014.37
	19	1014.38	1014.49	1014.57	1014.63	1014.73	1014.80	1014.84	1014.89	1014.96	1014.99	1015.01	1015.01	1014.77
	20	1014.98	1014.99	1014.99	1014.98	1014.98	1014.95	1014.89	1014.81	1014.76	1014.75	1014.72	1014.67	1014.87
	21	1014.66	1014.72	1014.77	1014.72	1014.66	1014.64	1014.69	1014.72	1014.66	1014.59	1014.55	1014.59	1014.66
	22	1014.63	1014.68	1014.69	1014.67	1014.67	1014.69	1014.70	1014.74	1014.78	1014.79	1014.80	1014.78	1014.72
	23	1014.77	1014.74	1014.70	1014.67	1014.63	1014.60	1014.59	1014.58	1014.55	1014.46	1014.42	1014.43	1014.59

S.V.I.R.CO. Observatory - Pressure in hectoPascal – November 2017

day	hh	00_05	05_10	10_15	15_20	20_25	25_30	30_35	35_40	40_45	45_50	50_55	55_60	average
11	0	1014.38	1014.35	1014.29	1014.21	1014.13	1014.09	1014.05	1014.00	1013.98	1013.97	1013.92	1013.88	1014.09
	1	1013.86	1013.82	1013.77	1013.68	1013.58	1013.52	1013.45	1013.41	1013.39	1013.37	1013.36	1013.36	1013.55
	2	1013.35	1013.32	1013.31	1013.33	1013.37	1013.38	1013.36	1013.33	1013.31	1013.29	1013.28	1013.25	1013.32
	3	1013.24	1013.24	1013.25	1013.24	1013.21	1013.20	1013.21	1013.19	1013.11	1013.07	1013.06	1013.03	1013.17
	4	1013.01	1012.96	1012.93	1012.91	1012.85	1012.81	1012.76	1012.69	1012.66	1012.64	1012.62	1012.60	1012.78
	5	1012.58	1012.60	1012.63	1012.67	1012.68	1012.65	1012.69	1012.74	1012.74	1012.75	1012.78	1012.81	1012.69
	6	1012.84	1012.90	1012.98	1013.02	1013.05	1013.13	1013.22	1013.26	1013.32	1013.37	1013.37	1013.38	1013.15
	7	1013.42	1013.48	1013.54	1013.59	1013.60	1013.64	1013.71	1013.80	1013.89	1013.92	1013.92	1013.92	1013.70
	8	1013.89	1013.84	1013.82	1013.79	1013.73	1013.63	1013.51	1013.44	1013.49	1013.59	1013.61	1013.63	1013.66
	9	1013.66	1013.62	1013.57	1013.58	1013.64	1013.63	1013.54	1013.45	1013.46	1013.52	1013.49	1013.47	1013.55
	10	1013.49	1013.48	1013.45	1013.40	1013.35	1013.27	1013.23	1013.21	1013.19	1013.18	1013.17	1013.17	1013.30
	11	1013.16	1013.14	1013.12	1013.06	1012.98	1012.94	1012.89	1012.81	1012.75	1012.69	1012.60	1012.54	1012.89
	12	1012.54	1012.57	1012.55	1012.50	1012.48	1012.49	1012.44	1012.37	1012.33	1012.30	1012.30	1012.28	1012.43
	13	1012.23	1012.23	1012.22	1012.15	1012.12	1012.15	1012.16	1012.18	1012.19	1012.18	1012.18	1012.20	1012.18
	14	1012.24	1012.24	1012.18	1012.13	1012.10	1012.06	1012.08	1012.12	1012.11	1012.10	1012.11	1012.09	1012.13
	15	1012.03	1011.97	1011.94	1011.91	1011.86	1011.85	1011.83	1011.81	1011.79	1011.76	1011.73	1011.72	1011.85
	16	1011.75	1011.82	1011.84	1011.84	1011.87	1011.92	1012.00	1012.10	1012.14	1012.16	1012.19	1012.22	1011.99
	17	1012.27	1012.33	1012.42	1012.49	1012.55	1012.60	1012.63	1012.62	1012.58	1012.58	1012.56	1012.50	1012.51
	18	1012.45	1012.43	1012.44	1012.45	1012.47	1012.56	1012.69	1012.80	1012.82	1012.78	1012.79	1012.84	1012.62
	19	1012.87	1012.89	1012.92	1012.92	1012.90	1012.91	1012.93	1012.93	1012.94	1012.95	1012.95	1012.97	1012.92
	20	1013.01	1013.02	1013.01	1013.04	1013.05	1013.06	1013.08	1013.11	1013.14	1013.14	1013.10	1013.03	1013.06
	21	1012.93	1012.87	1012.85	1012.83	1012.89	1012.95	1012.93	1012.92	1012.93	1012.87	1012.83	1012.87	1012.89
	22	1012.86	1012.81	1012.81	1012.83	1012.87	1012.92	1012.93	1012.93	1012.93	1012.92	1012.94	1012.94	1012.89
	23	1012.94	1012.94	1012.91	1012.85	1012.76	1012.73	1012.76	1012.74	1012.68	1012.63	1012.61	1012.57	1012.76
12	0	1012.41	1012.39	1012.38	1012.40	1012.39	1012.35	1012.29	1012.27	1012.30	1012.31	1012.32	1012.35	1012.34
	1	1012.33	1012.29	1012.25	1012.24	1012.25	1012.27	1012.27	1012.25	1012.22	1012.22	1012.24	1012.27	1012.26
	2	1012.30	1012.33	1012.39	1012.41	1012.36	1012.36	1012.33	1012.29	1012.30	1012.27	1012.22	1012.11	1012.30
	3	1012.02	1011.99	1012.01	1012.05	1012.03	1012.03	1012.04	1012.06	1012.07	1012.07	1012.04	1011.96	1012.03
	4	1011.98	1012.00	1011.98	1011.95	1011.96	1011.98	1011.98	1011.97	1011.90	1011.86	1011.82	1011.80	1011.93
	5	1011.86	1011.90	1011.89	1011.87	1011.83	1011.85	1011.89	1011.87	1011.83	1011.80	1011.81	1011.83	1011.85
	6	1011.88	1011.95	1011.96	1011.91	1011.91	1011.92	1011.89	1011.92	1011.93	1011.90	1011.89	1011.90	1011.91
	7	1011.85	1011.76	1011.73	1011.75	1011.75	1011.73	1011.69	1011.65	1011.69	1011.77	1011.77	1011.69	1011.73
	8	1011.67	1011.68	1011.61	1011.57	1011.61	1011.63	1011.64	1011.64	1011.60	1011.54	1011.49	1011.46	1011.59
	9	1011.45	1011.39	1011.30	1011.25	1011.18	1011.11	1011.01	1010.92	1010.91	1010.86	1010.79	1010.73	1011.07
	10	1010.65	1010.55	1010.42	1010.32	1010.27	1010.19	1010.06	1009.95	1009.87	1009.80	1009.71	1009.61	1010.12
	11	1009.51	1009.44	1009.38	1009.33	1009.25	1009.12	1009.01	1008.94	1008.92	1008.91	1008.83	1008.77	1009.11
	12	1008.69	1008.54	1008.43	1008.32	1008.20	1008.12	1008.09	1008.06	1008.00	1007.96	1007.92	1007.83	1008.18
	13	1007.74	1007.66	1007.59	1007.56	1007.58	1007.58	1007.54	1007.41	1007.30	1007.25	1007.13	1007.05	1007.45
	14	1007.02	1007.01	1006.99	1006.94	1006.85	1006.72	1006.61	1006.54	1006.54	1006.54	1006.52	1006.41	1006.72
	15	1006.29	1006.23	1006.14	1006.06	1006.03	1006.02	1006.00	1005.92	1005.82	1005.77	1005.69	1005.66	1005.97
	16	1005.70	1005.68	1005.63	1005.56	1005.46	1005.38	1005.26	1005.11	1004.99	1004.95	1005.00	1005.04	1005.31
	17	1005.06	1005.04	1004.87	1004.72	1004.72	1004.67	1004.48	1004.36	1004.37	1004.42	1004.40	1004.28	1004.61
	18	1004.18	1004.12	1004.03	1003.97	1003.91	1003.77	1003.60	1003.52	1003.54	1003.65	1003.72	1003.67	1003.80
	19	1003.57	1003.45	1003.30	1003.24	1003.21	1003.15	1003.11	1003.07	1003.03	1002.96	1002.84	1002.70	1003.13
	20	1002.61	1002.57	1002.57	1002.59	1002.56	1002.42	1002.26	1002.14	1002.08	1002.01	1001.86	1001.70	1002.28
	21	1001.63	1001.61	1001.54	1001.47	1001.37	1001.29	1001.27	1001.22	1001.20	1001.18	1001.03	1000.90	1001.31
	22	1000.86	1000.85	1000.83	1000.80	1000.77	1000.68	1000.59	1000.51	1000.51	1000.49	1000.39	1000.35	1000.63
	23	1000.25	1000.16	1000.12	1000.02	999.88	999.79	999.71	999.63	999.56	999.48	999.39	999.30	999.77

S.V.I.R.CO. Observatory - Pressure in hectoPascal – November 2017

day	hh	00_05	05_10	10_15	15_20	20_25	25_30	30_35	35_40	40_45	45_50	50_55	55_60	average
13	0	999.09	999.04	998.90	998.78	998.70	998.65	998.61	998.53	998.40	998.26	998.08	997.92	998.56
	1	997.82	997.74	997.70	997.65	997.57	997.46	997.35	997.21	997.06	996.96	996.80	996.62	997.33
	2	996.50	996.41	996.32	996.23	996.08	995.96	995.92	995.88	995.78	995.59	995.43	995.36	995.95
	3	995.28	995.22	995.17	995.12	995.08	995.00	994.94	994.89	994.81	994.75	994.71	994.66	994.97
	4	994.62	994.70	994.73	994.73	994.77	994.75	994.55	994.27	994.17	994.03	993.83	993.91	994.42
	5	994.23	994.56	994.71	994.79	994.97	995.11	995.17	995.30	995.29	995.25	995.33	995.15	994.99
	6	995.03	994.97	994.61	994.40	994.54	994.62	994.62	994.63	994.53	994.45	994.48	994.78	994.64
	7	994.98	994.95	995.21	995.58	995.78	995.72	995.56	995.53	995.52	995.47	995.42	995.12	995.40
	8	994.81	994.54	993.99	994.06	994.53	994.68	994.78	994.90	994.94	994.95	994.94	994.85	994.66
	9	994.76	994.42	994.17	994.53	995.02	995.14	995.09	995.00	994.83	994.65	994.49	994.38	994.70
	10	994.37	994.53	994.73	994.75	994.78	994.85	994.89	994.87	994.83	994.82	994.78	994.73	994.74
	11	994.61	994.63	994.79	994.88	994.93	994.94	994.89	994.88	994.94	995.01	995.05	995.08	994.88
	12	995.15	995.16	995.17	995.20	995.20	995.20	995.21	995.26	995.31	995.32	995.32	995.35	995.24
	13	995.36	995.39	995.37	995.34	995.36	995.44	995.59	995.75	995.88	996.02	996.12	996.16	995.65
	14	996.20	996.27	996.35	996.45	996.55	996.61	996.64	996.65	996.68	996.71	996.78	996.85	996.56
	15	996.90	996.97	997.01	997.03	997.06	997.10	997.16	997.21	997.21	997.21	997.27	997.32	997.12
	16	997.35	997.41	997.49	997.60	997.71	997.76	997.81	997.87	997.95	998.04	998.15	998.24	997.78
	17	998.31	998.31	998.31	998.36	998.40	998.43	998.48	998.56	998.67	998.76	998.78	998.75	998.51
	18	998.75	998.78	998.82	998.90	998.94	998.97	999.04	999.11	999.17	999.23	999.27	999.26	999.02
	19	999.26	999.27	999.32	999.37	999.41	999.47	999.55	999.65	999.72	999.75	999.78	999.81	999.53
	20	999.87	999.96	1000.00	1000.06	1000.21	1000.22	1000.19	1000.25	1000.32	1000.39	1000.46	1000.51	1000.20
	21	1000.50	1000.40	1000.26	1000.24	1000.29	1000.32	1000.32	1000.40	1000.54	1000.57	1000.57	1000.52	1000.41
	22	1000.45	1000.43	1000.44	1000.41	1000.37	1000.38	1000.41	1000.45	1000.54	1000.66	1000.76	1000.89	1000.51
	23	1001.00	1001.05	1001.11	1001.16	1001.25	1001.32	1001.33	1001.30	1001.25	1001.27	1001.31	1001.29	1001.22
14	0	1001.30	1001.35	1001.44	1001.49	1001.52	1001.55	1001.61	1001.63	1001.58	1001.57	1001.58	1001.60	1001.53
	1	1001.62	1001.64	1001.66	1001.70	1001.76	1001.81	1001.81	1001.81	1001.80	1001.81	1001.88	1001.90	1001.77
	2	1001.83	1001.74	1001.72	1001.79	1001.88	1001.89	1001.89	1001.97	1002.07	1002.13	1002.14	1002.12	1001.93
	3	1002.14	1002.21	1002.22	1002.24	1002.32	1002.40	1002.41	1002.37	1002.38	1002.46	1002.56	1002.68	1002.36
	4	1002.75	1002.75	1002.77	1002.76	1002.76	1002.82	1002.86	1002.97	1003.14	1003.27	1003.32	1003.29	1002.95
	5	1003.23	1003.27	1003.40	1003.54	1003.58	1003.59	1003.67	1003.76	1003.81	1003.75	1003.77	1003.84	1003.60
	6	1003.95	1004.13	1004.30	1004.41	1004.45	1004.43	1004.39	1004.46	1004.62	1004.78	1004.94	1005.06	1004.49
	7	1005.10	1005.19	1005.40	1005.59	1005.67	1005.70	1005.63	1005.64	1005.72	1005.76	1005.77	1005.84	1005.58
	8	1005.99	1006.09	1006.25	1006.40	1006.41	1006.34	1006.34	1006.40	1006.47	1006.57	1006.63	1006.70	1006.38
	9	1006.78	1006.80	1006.76	1006.70	1006.65	1006.67	1006.76	1006.87	1006.89	1006.97	1007.03	1006.97	1006.82
	10	1006.82	1006.64	1006.47	1006.43	1006.62	1006.81	1006.90	1006.96	1006.91	1006.88	1006.91	1006.95	1006.77
	11	1006.99	1006.96	1006.90	1006.84	1006.78	1006.73	1006.66	1006.57	1006.47	1006.41	1006.35	1006.27	1006.66
	12	1006.19	1006.14	1006.17	1006.23	1006.29	1006.34	1006.31	1006.22	1006.14	1006.10	1006.13	1006.11	1006.20
	13	1006.04	1005.93	1005.86	1005.82	1005.76	1005.68	1005.65	1005.70	1005.69	1005.66	1005.64	1005.64	1005.75
	14	1005.64	1005.62	1005.61	1005.61	1005.62	1005.59	1005.60	1005.60	1005.58	1005.58	1005.57	1005.55	1005.59
	15	1005.47	1005.35	1005.32	1005.37	1005.30	1005.19	1005.41	1005.62	1005.55	1005.50	1005.48	1005.45	1005.42
	16	1005.46	1005.54	1005.61	1005.62	1005.66	1005.74	1005.69	1005.57	1005.52	1005.55	1005.69	1005.79	1005.62
	17	1005.79	1005.80	1005.84	1005.87	1005.87	1005.89	1005.96	1005.99	1005.93	1005.88	1005.87	1005.81	1005.87
	18	1005.67	1005.57	1005.50	1005.53	1005.74	1005.80	1005.85	1005.92	1005.96	1006.12	1006.05	1005.83	1005.79
	19	1005.76	1005.88	1006.06	1006.19	1006.27	1006.36	1006.52	1006.57	1006.61	1006.64	1006.69	1006.73	1006.35
	20	1006.70	1006.56	1006.33	1006.28	1006.37	1006.40	1006.39	1006.41	1006.45	1006.51	1006.52	1006.44	1006.44
	21	1006.35	1006.24	1006.13	1006.09	1006.09	1006.10	1006.07	1006.07	1006.09	1006.10	1006.11	1006.13	1006.13
	22	1006.11	1006.08	1006.12	1006.17	1006.17	1006.17	1006.11	1006.07	1006.05	1005.99	1006.01	1006.05	1006.09
	23	1005.96	1005.84	1005.79	1005.78	1005.76	1005.68	1005.56	1005.48	1005.48	1005.56	1005.67	1005.77	1005.69

S.V.I.R.CO. Observatory - Pressure in hectoPascal – November 2017

day	hh	00_05	05_10	10_15	15_20	20_25	25_30	30_35	35_40	40_45	45_50	50_55	55_60	average
15	0	1005.90	1005.96	1006.01	1006.01	1005.95	1005.93	1005.99	1006.01	1006.02	1006.12	1006.23	1006.23	1006.03
	1	1006.23	1006.31	1006.34	1006.32	1006.30	1006.30	1006.28	1006.17	1006.07	1006.07	1006.10	1006.10	1006.21
	2	1006.06	1006.04	1006.03	1005.94	1005.91	1005.92	1005.89	1005.88	1005.87	1005.91	1005.94	1005.96	1005.94
	3	1005.90	1005.85	1005.92	1005.97	1006.00	1006.03	1006.06	1006.07	1006.09	1006.08	1006.18	1006.31	1006.04
	4	1006.32	1006.32	1006.36	1006.40	1006.50	1006.62	1006.66	1006.73	1006.83	1006.87	1006.92	1006.96	1006.62
	5	1006.96	1007.00	1007.16	1007.31	1007.45	1007.64	1007.79	1007.90	1008.03	1008.13	1008.16	1008.14	1007.64
	6	1008.27	1008.35	1008.35	1008.52	1008.68	1008.80	1008.89	1009.00	1009.16	1009.31	1009.54	1009.75	1008.88
	7	1009.86	1009.90	1009.87	1009.85	1009.87	1009.91	1009.96	1010.07	1010.26	1010.35	1010.33	1010.37	1010.05
	8	1010.41	1010.44	1010.47	1010.55	1010.68	1010.73	1010.75	1010.77	1010.77	1010.81	1010.87	1010.94	1010.68
	9	1011.01	1011.03	1011.04	1011.10	1011.13	1011.10	1011.06	1011.09	1011.15	1011.22	1011.30	1011.29	1011.13
	10	1011.25	1011.23	1011.25	1011.26	1011.27	1011.32	1011.38	1011.42	1011.42	1011.41	1011.40	1011.40	1011.33
	11	1011.41	1011.43	1011.45	1011.46	1011.48	1011.51	1011.55	1011.57	1011.59	1011.62	1011.64	1011.61	1011.52
	12	1011.55	1011.51	1011.53	1011.58	1011.60	1011.57	1011.51	1011.48	1011.51	1011.52	1011.49	1011.49	1011.52
	13	1011.51	1011.52	1011.49	1011.45	1011.42	1011.42	1011.49	1011.57	1011.61	1011.64	1011.68	1011.73	1011.54
	14	1011.77	1011.75	1011.80	1011.89	1011.93	1011.92	1011.93	1011.92	1011.86	1011.84	1011.83	1011.82	1011.85
	15	1011.83	1011.88	1011.93	1011.99	1012.04	1012.07	1012.08	1012.06	1012.05	1012.01	1011.98	1012.01	1011.99
	16	1012.05	1012.08	1012.09	1012.07	1012.11	1012.18	1012.17	1012.18	1012.23	1012.20	1012.22	1012.27	1012.15
	17	1012.33	1012.39	1012.42	1012.48	1012.53	1012.55	1012.64	1012.70	1012.71	1012.71	1012.70	1012.70	1012.57
	18	1012.75	1012.84	1012.93	1013.01	1013.04	1013.00	1012.98	1013.01	1013.01	1013.05	1013.16	1013.21	1013.00
	19	1013.21	1013.21	1013.22	1013.23	1013.23	1013.18	1013.15	1013.21	1013.25	1013.27	1013.34	1013.44	1013.24
	20	1013.51	1013.53	1013.49	1013.40	1013.36	1013.36	1013.45	1013.56	1013.56	1013.54	1013.56	1013.63	1013.49
	21	1013.70	1013.76	1013.77	1013.73	1013.70	1013.69	1013.68	1013.64	1013.63	1013.70	1013.69	1013.73	1013.70
	22	1013.82	1013.78	1013.77	1013.79	1013.77	1013.68	1013.62	1013.62	1013.57	1013.57	1013.58	1013.56	1013.67
	23	1013.55	1013.51	1013.45	1013.47	1013.50	1013.47	1013.44	1013.39	1013.28	1013.20	1013.17	1013.14	1013.38
16	0	1013.10	1013.04	1012.96	1012.95	1012.96	1012.97	1013.02	1013.07	1013.14	1013.22	1013.25	1013.23	1013.07
	1	1013.20	1013.18	1013.17	1013.17	1013.17	1013.12	1013.05	1013.02	1012.99	1012.96	1012.95	1012.92	1013.07
	2	1012.87	1012.81	1012.74	1012.73	1012.71	1012.68	1012.70	1012.69	1012.67	1012.69	1012.76	1012.77	1012.73
	3	1012.69	1012.61	1012.58	1012.61	1012.64	1012.64	1012.67	1012.70	1012.68	1012.67	1012.72	1012.72	1012.66
	4	1012.64	1012.59	1012.59	1012.60	1012.62	1012.58	1012.53	1012.56	1012.61	1012.60	1012.61	1012.59	1012.59
	5	1012.59	1012.60	1012.56	1012.55	1012.64	1012.73	1012.79	1012.83	1012.84	1012.83	1012.80	1012.84	1012.71
	6	1012.89	1012.91	1012.91	1012.86	1012.82	1012.84	1012.88	1012.94	1013.02	1013.03	1013.01	1012.92	1012.92
	7	1012.82	1012.78	1012.84	1012.95	1013.09	1013.18	1013.17	1013.09	1012.95	1012.95	1013.00	1013.04	1012.99
	8	1013.11	1013.14	1013.14	1013.14	1013.15	1013.14	1013.08	1013.06	1013.03	1012.99	1013.00	1013.02	1013.08
	9	1013.05	1013.13	1013.19	1013.17	1013.17	1013.19	1013.16	1013.08	1013.03	1012.96	1012.89	1012.80	1013.07
	10	1012.72	1012.69	1012.65	1012.59	1012.52	1012.44	1012.36	1012.28	1012.20	1012.13	1012.05	1012.03	1012.39
	11	1012.05	1012.05	1012.07	1012.04	1011.95	1011.85	1011.77	1011.75	1011.75	1011.71	1011.66	1011.63	1011.85
	12	1011.52	1011.43	1011.40	1011.36	1011.33	1011.31	1011.29	1011.22	1011.16	1011.14	1011.09	1011.05	1011.27
	13	1011.04	1011.03	1011.04	1011.05	1011.04	1011.05	1011.07	1011.09	1011.09	1011.07	1011.06	1011.09	1011.06
	14	1011.09	1011.09	1011.08	1011.08	1011.09	1011.06	1011.07	1011.12	1011.13	1011.13	1011.15	1011.13	1011.10
	15	1011.10	1011.11	1011.08	1011.08	1011.12	1011.15	1011.15	1011.14	1011.15	1011.18	1011.20	1011.18	1011.13
	16	1011.15	1011.17	1011.24	1011.28	1011.34	1011.40	1011.38	1011.40	1011.46	1011.48	1011.52	1011.61	1011.37
	17	1011.63	1011.62	1011.64	1011.68	1011.70	1011.74	1011.78	1011.79	1011.84	1011.86	1011.88	1011.90	1011.75
	18	1011.90	1011.95	1012.00	1012.00	1012.01	1012.04	1012.09	1012.12	1012.15	1012.16	1012.15	1012.10	1012.05
	19	1012.07	1012.08	1012.10	1012.10	1012.11	1012.10	1012.05	1012.03	1012.02	1012.02	1012.06	1012.09	1012.07
	20	1012.14	1012.20	1012.27	1012.33	1012.40	1012.47	1012.62	1012.61	1012.51	1012.49	1012.54	1012.68	1012.44
	21	1012.66	1012.54	1012.57	1012.72	1012.79	1012.72	1012.73	1012.71	1012.63	1012.66	1012.75	1012.84	1012.69
	22	1012.89	1012.87	1012.85	1012.86	1012.92	1012.93	1012.93	1012.94	1012.82	1012.79	1012.84	1012.86	1012.87
	23	1012.89	1012.90	1012.86	1012.86	1012.89	1012.84	1012.83	1012.90	1012.95	1012.95	1012.92	1012.89	1012.89

S.V.I.R.CO. Observatory - Pressure in hectoPascal – November 2017

day	hh	00_05	05_10	10_15	15_20	20_25	25_30	30_35	35_40	40_45	45_50	50_55	55_60	average
17	0	1012.88	1012.86	1012.83	1012.80	1012.81	1012.84	1012.83	1012.83	1012.87	1012.89	1012.88	1012.83	1012.84
	1	1012.81	1012.84	1012.82	1012.73	1012.71	1012.72	1012.69	1012.66	1012.64	1012.66	1012.75	1012.76	1012.73
	2	1012.69	1012.64	1012.63	1012.63	1012.62	1012.59	1012.57	1012.56	1012.53	1012.51	1012.54	1012.58	1012.59
	3	1012.67	1012.73	1012.71	1012.70	1012.70	1012.64	1012.59	1012.58	1012.56	1012.53	1012.49	1012.41	1012.61
	4	1012.40	1012.53	1012.64	1012.66	1012.65	1012.65	1012.70	1012.76	1012.72	1012.69	1012.72	1012.76	1012.65
	5	1012.78	1012.83	1012.90	1012.88	1012.84	1012.87	1012.92	1012.98	1013.05	1013.07	1013.06	1013.05	1012.93
	6	1013.02	1013.02	1013.07	1013.09	1013.13	1013.17	1013.21	1013.23	1013.21	1013.21	1013.24	1013.28	1013.16
	7	1013.32	1013.33	1013.33	1013.35	1013.39	1013.42	1013.41	1013.43	1013.46	1013.47	1013.47	1013.47	1013.40
	8	1013.45	1013.45	1013.48	1013.49	1013.48	1013.52	1013.56	1013.58	1013.57	1013.57	1013.61	1013.62	1013.53
	9	1013.60	1013.57	1013.55	1013.57	1013.58	1013.60	1013.64	1013.67	1013.70	1013.70	1013.65	1013.54	1013.61
	10	1013.45	1013.38	1013.28	1013.20	1013.16	1013.13	1013.11	1013.07	1013.01	1012.96	1012.89	1012.83	1013.12
	11	1012.80	1012.75	1012.68	1012.64	1012.62	1012.61	1012.58	1012.57	1012.57	1012.56	1012.54	1012.49	1012.62
	12	1012.46	1012.44	1012.41	1012.36	1012.32	1012.31	1012.30	1012.27	1012.24	1012.20	1012.14	1012.09	1012.29
	13	1012.05	1012.01	1011.99	1011.99	1011.98	1011.97	1011.95	1011.89	1011.86	1011.86	1011.81	1011.79	1011.93
	14	1011.79	1011.77	1011.76	1011.74	1011.71	1011.68	1011.68	1011.67	1011.68	1011.69	1011.69	1011.68	1011.71
	15	1011.68	1011.69	1011.71	1011.69	1011.68	1011.70	1011.75	1011.80	1011.83	1011.85	1011.88	1011.91	1011.76
	16	1011.91	1011.90	1011.90	1011.90	1011.91	1011.93	1011.96	1012.00	1012.02	1012.03	1012.03	1012.03	1011.96
	17	1012.06	1012.12	1012.18	1012.19	1012.19	1012.23	1012.23	1012.24	1012.27	1012.30	1012.35	1012.38	1012.23
	18	1012.40	1012.42	1012.45	1012.52	1012.61	1012.64	1012.60	1012.56	1012.56	1012.61	1012.66	1012.69	1012.56
	19	1012.71	1012.73	1012.76	1012.77	1012.77	1012.81	1012.84	1012.85	1012.87	1012.89	1012.89	1012.89	1012.81
	20	1012.90	1012.92	1012.94	1012.94	1012.96	1012.99	1013.02	1013.05	1013.09	1013.14	1013.17	1013.17	1013.02
	21	1013.20	1013.25	1013.28	1013.25	1013.25	1013.29	1013.31	1013.29	1013.29	1013.31	1013.29	1013.27	1013.27
	22	1013.29	1013.34	1013.37	1013.40	1013.43	1013.43	1013.42	1013.42	1013.42	1013.42	1013.42	1013.41	1013.40
	23	1013.40	1013.35	1013.33	1013.33	1013.27	1013.21	1013.15	1013.13	1013.15	1013.18	1013.23	1013.27	1013.25
18	0	1013.32	1013.32	1013.29	1013.23	1013.16	1013.12	1013.09	1013.10	1013.12	1013.12	1013.09	1013.08	1013.16
	1	1013.03	1012.96	1012.92	1012.89	1012.89	1012.92	1012.95	1012.94	1012.92	1012.91	1012.90	1012.90	1012.93
	2	1012.88	1012.90	1012.89	1012.87	1012.86	1012.82	1012.78	1012.76	1012.74	1012.74	1012.74	1012.73	1012.81
	3	1012.71	1012.70	1012.69	1012.69	1012.74	1012.79	1012.78	1012.74	1012.70	1012.66	1012.64	1012.62	1012.70
	4	1012.62	1012.66	1012.70	1012.69	1012.69	1012.70	1012.68	1012.66	1012.66	1012.65	1012.66	1012.70	1012.67
	5	1012.69	1012.69	1012.70	1012.72	1012.75	1012.78	1012.78	1012.78	1012.85	1012.86	1012.83	1012.86	1012.77
	6	1012.87	1012.86	1012.91	1012.94	1012.97	1013.02	1013.07	1013.16	1013.21	1013.22	1013.25	1013.33	1013.07
	7	1013.43	1013.48	1013.52	1013.58	1013.62	1013.68	1013.72	1013.70	1013.69	1013.68	1013.68	1013.66	1013.62
	8	1013.62	1013.65	1013.69	1013.67	1013.67	1013.69	1013.67	1013.64	1013.64	1013.69	1013.74	1013.75	1013.67
	9	1013.77	1013.78	1013.78	1013.79	1013.80	1013.81	1013.78	1013.77	1013.76	1013.75	1013.74	1013.75	1013.77
	10	1013.76	1013.73	1013.69	1013.68	1013.64	1013.56	1013.50	1013.47	1013.46	1013.42	1013.35	1013.29	1013.54
	11	1013.26	1013.26	1013.25	1013.20	1013.15	1013.12	1013.07	1013.03	1013.00	1012.94	1012.86	1012.80	1013.08
	12	1012.74	1012.65	1012.59	1012.55	1012.52	1012.49	1012.44	1012.37	1012.29	1012.24	1012.21	1012.19	1012.44
	13	1012.18	1012.15	1012.08	1012.02	1012.00	1011.99	1011.98	1011.97	1011.98	1012.00	1012.03	1012.05	1012.03
	14	1012.08	1012.10	1012.10	1012.10	1012.10	1012.11	1012.13	1012.14	1012.14	1012.14	1012.15	1012.13	1012.12
	15	1012.13	1012.15	1012.18	1012.20	1012.21	1012.22	1012.22	1012.25	1012.29	1012.32	1012.36	1012.43	1012.24
	16	1012.48	1012.52	1012.57	1012.64	1012.69	1012.69	1012.67	1012.65	1012.64	1012.65	1012.69	1012.73	1012.63
	17	1012.73	1012.73	1012.74	1012.75	1012.79	1012.81	1012.84	1012.89	1012.92	1012.93	1012.95	1012.98	1012.84
	18	1013.01	1013.01	1012.99	1013.04	1013.08	1013.11	1013.16	1013.20	1013.24	1013.26	1013.23	1013.22	1013.13
	19	1013.28	1013.35	1013.38	1013.42	1013.47	1013.55	1013.64	1013.70	1013.76	1013.81	1013.84	1013.90	1013.59
	20	1013.94	1013.91	1013.85	1013.80	1013.81	1013.81	1013.81	1013.81	1013.81	1013.83	1013.84	1013.79	1013.83
	21	1013.74	1013.72	1013.70	1013.71	1013.72	1013.73	1013.74	1013.72	1013.71	1013.73	1013.76	1013.80	1013.73
	22	1013.79	1013.76	1013.75	1013.79	1013.82	1013.83	1013.88	1013.93	1013.97	1013.99	1013.96	1013.92	1013.86
	23	1013.92	1013.94	1013.95	1013.94	1013.86	1013.79	1013.73	1013.71	1013.68	1013.65	1013.61	1013.56	1013.78

S.V.I.R.CO. Observatory - Pressure in hectoPascal – November 2017

day	hh	00_05	05_10	10_15	15_20	20_25	25_30	30_35	35_40	40_45	45_50	50_55	55_60	average
19	0	1013.59	1013.61	1013.60	1013.62	1013.66	1013.65	1013.65	1013.63	1013.63	1013.67	1013.70	1013.67	1013.64
	1	1013.61	1013.55	1013.51	1013.49	1013.51	1013.53	1013.51	1013.53	1013.56	1013.51	1013.47	1013.47	1013.52
	2	1013.46	1013.45	1013.45	1013.46	1013.44	1013.45	1013.49	1013.49	1013.48	1013.48	1013.50	1013.56	1013.47
	3	1013.63	1013.68	1013.67	1013.62	1013.56	1013.52	1013.47	1013.46	1013.50	1013.45	1013.38	1013.34	1013.52
	4	1013.35	1013.35	1013.34	1013.34	1013.37	1013.41	1013.41	1013.40	1013.40	1013.44	1013.48	1013.48	1013.40
	5	1013.42	1013.43	1013.53	1013.59	1013.61	1013.62	1013.62	1013.61	1013.59	1013.55	1013.55	1013.59	1013.56
	6	1013.63	1013.59	1013.56	1013.54	1013.50	1013.57	1013.66	1013.65	1013.63	1013.71	1013.79	1013.79	1013.63
	7	1013.79	1013.79	1013.81	1013.87	1013.92	1014.02	1014.08	1014.07	1014.00	1013.94	1013.95	1013.98	1013.93
	8	1013.95	1013.85	1013.77	1013.77	1013.88	1013.96	1013.97	1013.97	1013.98	1014.06	1014.11	1014.08	1013.94
	9	1014.05	1014.01	1013.98	1013.97	1013.95	1013.91	1013.85	1013.83	1013.88	1013.89	1013.88	1013.84	1013.92
	10	1013.72	1013.66	1013.68	1013.74	1013.82	1013.83	1013.75	1013.64	1013.67	1013.75	1013.72	1013.67	1013.72
	11	1013.64	1013.62	1013.58	1013.48	1013.38	1013.27	1013.16	1013.12	1013.18	1013.29	1013.27	1013.17	1013.34
	12	1013.11	1013.09	1013.04	1012.95	1012.87	1012.75	1012.64	1012.62	1012.62	1012.55	1012.51	1012.48	1012.77
	13	1012.41	1012.29	1012.20	1012.16	1012.12	1012.09	1012.09	1012.07	1012.04	1012.03	1012.01	1012.01	1012.12
	14	1011.98	1011.95	1011.93	1011.91	1011.89	1011.88	1011.81	1011.76	1011.77	1011.85	1011.94	1011.90	1011.88
	15	1011.80	1011.79	1011.82	1011.83	1011.84	1011.86	1011.92	1011.97	1012.00	1012.07	1012.14	1012.17	1011.93
	16	1012.23	1012.33	1012.39	1012.39	1012.40	1012.43	1012.46	1012.47	1012.46	1012.44	1012.45	1012.51	1012.41
	17	1012.54	1012.52	1012.54	1012.50	1012.46	1012.59	1012.68	1012.68	1012.69	1012.73	1012.78	1012.81	1012.62
	18	1012.87	1012.94	1013.01	1013.06	1013.07	1013.11	1013.13	1013.13	1013.17	1013.22	1013.18	1013.18	1013.09
	19	1013.27	1013.34	1013.41	1013.52	1013.65	1013.76	1013.83	1013.89	1013.96	1014.05	1014.11	1014.13	1013.74
	20	1014.17	1014.26	1014.33	1014.37	1014.40	1014.43	1014.45	1014.40	1014.35	1014.34	1014.32	1014.32	1014.34
	21	1014.37	1014.42	1014.42	1014.43	1014.43	1014.45	1014.50	1014.56	1014.61	1014.63	1014.66	1014.72	1014.52
	22	1014.78	1014.81	1014.84	1014.87	1014.89	1014.92	1014.95	1014.98	1015.03	1015.05	1015.08	1015.12	1014.94
	23	1015.15	1015.20	1015.23	1015.25	1015.27	1015.26	1015.30	1015.33	1015.35	1015.35	1015.33	1015.36	1015.28
20	0	1015.38	1015.40	1015.41	1015.39	1015.37	1015.33	1015.31	1015.31	1015.31	1015.32	1015.37	1015.45	1015.36
	1	1015.50	1015.52	1015.58	1015.64	1015.65	1015.63	1015.64	1015.73	1015.82	1015.82	1015.78	1015.76	1015.67
	2	1015.82	1015.87	1015.86	1015.86	1015.87	1015.87	1015.88	1015.91	1015.94	1015.95	1015.95	1015.97	1015.89
	3	1016.04	1016.16	1016.23	1016.28	1016.35	1016.39	1016.37	1016.40	1016.43	1016.44	1016.47	1016.49	1016.33
	4	1016.51	1016.57	1016.63	1016.70	1016.78	1016.86	1016.92	1016.93	1016.94	1016.96	1017.01	1017.06	1016.82
	5	1017.12	1017.19	1017.26	1017.33	1017.34	1017.35	1017.37	1017.44	1017.55	1017.65	1017.73	1017.76	1017.42
	6	1017.78	1017.83	1017.85	1017.92	1018.03	1018.06	1018.07	1018.22	1018.35	1018.39	1018.48	1018.57	1018.13
	7	1018.59	1018.61	1018.63	1018.69	1018.78	1018.87	1018.93	1018.98	1019.03	1019.05	1019.06	1019.16	1018.86
	8	1019.26	1019.31	1019.34	1019.37	1019.40	1019.46	1019.53	1019.57	1019.62	1019.71	1019.81	1019.91	1019.52
	9	1019.98	1020.03	1020.09	1020.15	1020.24	1020.32	1020.32	1020.27	1020.24	1020.24	1020.24	1020.26	1020.20
	10	1020.26	1020.22	1020.14	1020.08	1020.06	1020.03	1020.00	1019.97	1019.95	1019.89	1019.81	1019.72	1020.01
	11	1019.62	1019.58	1019.55	1019.49	1019.44	1019.42	1019.38	1019.35	1019.36	1019.36	1019.34	1019.27	1019.43
	12	1019.20	1019.16	1019.14	1019.15	1019.18	1019.16	1019.15	1019.15	1019.13	1019.10	1019.05	1019.00	1019.13
	13	1018.96	1018.91	1018.91	1018.92	1018.87	1018.84	1018.82	1018.79	1018.76	1018.72	1018.68	1018.67	1018.82
	14	1018.68	1018.68	1018.68	1018.69	1018.70	1018.74	1018.78	1018.80	1018.80	1018.81	1018.82	1018.84	1018.75
	15	1018.86	1018.83	1018.77	1018.75	1018.80	1018.84	1018.85	1018.89	1018.96	1019.06	1019.14	1019.15	1018.91
	16	1019.15	1019.18	1019.22	1019.22	1019.27	1019.33	1019.37	1019.37	1019.35	1019.33	1019.35	1019.35	1019.29
	17	1019.35	1019.41	1019.41	1019.36	1019.35	1019.37	1019.46	1019.58	1019.68	1019.73	1019.79	1019.85	1019.53
	18	1019.95	1020.04	1020.10	1020.15	1020.14	1020.08	1020.08	1020.11	1020.12	1020.12	1020.16	1020.24	1020.11
	19	1020.33	1020.38	1020.41	1020.44	1020.46	1020.46	1020.39	1020.33	1020.29	1020.29	1020.36	1020.42	1020.38
	20	1020.44	1020.43	1020.46	1020.50	1020.54	1020.57	1020.54	1020.44	1020.38	1020.42	1020.48	1020.52	1020.47
	21	1020.52	1020.49	1020.45	1020.39	1020.39	1020.42	1020.42	1020.43	1020.40	1020.38	1020.36	1020.33	1020.41
	22	1020.32	1020.36	1020.40	1020.38	1020.35	1020.30	1020.27	1020.28	1020.33	1020.34	1020.31	1020.26	1020.32
	23	1020.27	1020.25	1020.21	1020.23	1020.22	1020.16	1020.11	1020.08	1020.10	1020.15	1020.10	1020.04	1020.16

S.V.I.R.CO. Observatory - Pressure in hectoPascal – November 2017

day	hh	00_05	05_10	10_15	15_20	20_25	25_30	30_35	35_40	40_45	45_50	50_55	55_60	average
21	0	1020.04	1020.05	1020.05	1020.01	1019.92	1019.84	1019.84	1019.93	1020.00	1020.03	1020.06	1020.02	1019.98
	1	1019.91	1019.86	1019.85	1019.83	1019.80	1019.80	1019.82	1019.86	1019.86	1019.86	1019.81	1019.72	1019.83
	2	1019.69	1019.62	1019.53	1019.47	1019.41	1019.37	1019.36	1019.34	1019.33	1019.30	1019.26	1019.28	1019.41
	3	1019.35	1019.42	1019.42	1019.36	1019.37	1019.46	1019.58	1019.65	1019.62	1019.59	1019.60	1019.59	1019.50
	4	1019.58	1019.59	1019.61	1019.59	1019.57	1019.63	1019.63	1019.60	1019.59	1019.55	1019.52	1019.52	1019.58
	5	1019.48	1019.43	1019.38	1019.34	1019.28	1019.23	1019.25	1019.30	1019.38	1019.43	1019.40	1019.37	1019.35
	6	1019.39	1019.44	1019.46	1019.46	1019.47	1019.45	1019.37	1019.28	1019.28	1019.32	1019.31	1019.27	1019.37
	7	1019.37	1019.47	1019.43	1019.45	1019.53	1019.60	1019.62	1019.68	1019.79	1019.88	1019.92	1019.91	1019.64
	8	1019.94	1019.98	1019.96	1019.93	1019.91	1019.89	1019.94	1019.95	1019.94	1019.93	1019.97	1020.02	1019.94
	9	1020.10	1020.17	1020.18	1020.19	1020.17	1020.16	1020.19	1020.19	1020.15	1020.19	1020.25	1020.25	1020.18
	10	1020.18	1020.09	1020.03	1020.01	1020.00	1019.99	1019.94	1019.89	1019.83	1019.77	1019.74	1019.71	1019.93
	11	1019.65	1019.58	1019.51	1019.48	1019.46	1019.41	1019.36	1019.34	1019.32	1019.29	1019.27	1019.27	1019.41
	12	1019.26	1019.25	1019.23	1019.18	1019.13	1019.11	1019.08	1019.02	1018.96	1018.92	1018.89	1018.82	1019.07
	13	1018.74	1018.68	1018.66	1018.67	1018.68	1018.68	1018.66	1018.62	1018.60	1018.62	1018.64	1018.64	1018.66
	14	1018.64	1018.64	1018.67	1018.69	1018.71	1018.73	1018.71	1018.66	1018.64	1018.63	1018.62	1018.62	1018.66
	15	1018.63	1018.69	1018.77	1018.83	1018.87	1018.90	1018.92	1018.86	1018.85	1018.88	1018.88	1018.91	1018.83
	16	1018.95	1018.96	1018.96	1018.97	1019.00	1019.02	1019.05	1019.06	1019.04	1019.07	1019.15	1019.20	1019.03
	17	1019.23	1019.25	1019.27	1019.28	1019.28	1019.27	1019.29	1019.34	1019.37	1019.38	1019.42	1019.46	1019.32
	18	1019.50	1019.54	1019.57	1019.57	1019.55	1019.53	1019.52	1019.53	1019.56	1019.62	1019.68	1019.67	1019.57
	19	1019.65	1019.68	1019.72	1019.71	1019.71	1019.76	1019.80	1019.81	1019.79	1019.78	1019.76	1019.75	1019.74
	20	1019.76	1019.72	1019.67	1019.67	1019.72	1019.78	1019.85	1019.91	1019.94	1019.96	1019.95	1019.90	1019.82
	21	1019.87	1019.88	1019.90	1019.91	1019.93	1019.99	1020.03	1020.07	1020.10	1020.12	1020.13	1020.14	1020.00
	22	1020.18	1020.20	1020.19	1020.16	1020.12	1020.08	1020.05	1020.03	1020.03	1020.05	1020.07	1020.08	1020.10
	23	1020.09	1020.08	1020.04	1020.00	1019.98	1020.00	1020.01	1020.00	1019.99	1019.97	1019.94	1019.88	1020.00
22	0	1019.78	1019.74	1019.68	1019.67	1019.71	1019.76	1019.81	1019.84	1019.86	1019.91	1020.01	1020.08	1019.82
	1	1020.10	1020.07	1020.04	1020.03	1020.04	1020.03	1020.05	1020.08	1020.09	1020.09	1020.08	1020.05	1020.06
	2	1020.02	1019.99	1019.95	1019.93	1019.88	1019.85	1019.80	1019.79	1019.83	1019.86	1019.87	1019.90	1019.89
	3	1019.97	1020.04	1020.05	1020.06	1020.05	1020.03	1020.05	1020.10	1020.11	1020.09	1020.09	1020.09	1020.06
	4	1020.09	1020.11	1020.14	1020.17	1020.19	1020.20	1020.23	1020.27	1020.25	1020.23	1020.21	1020.24	1020.19
	5	1020.27	1020.25	1020.26	1020.24	1020.19	1020.17	1020.16	1020.16	1020.15	1020.15	1020.17	1020.20	1020.20
	6	1020.19	1020.19	1020.19	1020.20	1020.19	1020.13	1020.06	1020.07	1020.13	1020.18	1020.18	1020.16	1020.15
	7	1020.15	1020.16	1020.19	1020.22	1020.25	1020.26	1020.29	1020.31	1020.30	1020.30	1020.31	1020.35	1020.26
	8	1020.42	1020.49	1020.51	1020.51	1020.54	1020.58	1020.59	1020.59	1020.61	1020.63	1020.65	1020.67	1020.56
	9	1020.68	1020.71	1020.73	1020.71	1020.67	1020.63	1020.61	1020.60	1020.56	1020.53	1020.49	1020.43	1020.61
	10	1020.37	1020.30	1020.21	1020.15	1020.09	1020.04	1019.97	1019.91	1019.87	1019.82	1019.74	1019.65	1020.01
	11	1019.56	1019.49	1019.44	1019.40	1019.36	1019.35	1019.36	1019.34	1019.34	1019.34	1019.34	1019.35	1019.39
	12	1019.34	1019.29	1019.24	1019.18	1019.12	1019.07	1019.04	1018.99	1018.95	1018.93	1018.94	1018.97	1019.09
	13	1018.95	1018.93	1018.94	1018.95	1018.96	1018.97	1018.97	1018.94	1018.93	1018.93	1018.93	1018.93	1018.94
	14	1018.94	1018.99	1019.06	1019.08	1019.08	1019.08	1019.04	1019.00	1018.98	1018.96	1018.99	1019.03	1019.02
	15	1019.04	1019.02	1019.01	1019.03	1019.03	1019.03	1019.04	1019.08	1019.13	1019.13	1019.09	1019.08	1019.06
	16	1019.11	1019.15	1019.18	1019.20	1019.22	1019.25	1019.28	1019.30	1019.32	1019.35	1019.37	1019.40	1019.26
	17	1019.45	1019.47	1019.47	1019.48	1019.52	1019.56	1019.61	1019.66	1019.68	1019.64	1019.61	1019.58	1019.56
	18	1019.53	1019.51	1019.52	1019.52	1019.54	1019.56	1019.55	1019.57	1019.62	1019.64	1019.64	1019.64	1019.57
	19	1019.64	1019.62	1019.57	1019.56	1019.58	1019.64	1019.70	1019.73	1019.75	1019.75	1019.71	1019.70	1019.66
	20	1019.74	1019.78	1019.82	1019.84	1019.87	1019.91	1019.96	1019.97	1019.94	1019.91	1019.90	1019.89	1019.88
	21	1019.87	1019.87	1019.88	1019.91	1019.92	1019.94	1019.97	1019.98	1019.97	1019.95	1019.94	1019.94	1019.92
	22	1019.94	1019.97	1020.00	1020.02	1020.02	1020.01	1020.00	1020.03	1020.03	1020.03	1020.04	1020.00	1020.01
	23	1019.98	1019.99	1020.00	1020.01	1019.97	1019.88	1019.82	1019.80	1019.78	1019.77	1019.76	1019.74	1019.87

S.V.I.R.CO. Observatory - Pressure in hectoPascal – November 2017

day	hh	00_05	05_10	10_15	15_20	20_25	25_30	30_35	35_40	40_45	45_50	50_55	55_60	average
23	0	1019.73	1019.72	1019.71	1019.73	1019.78	1019.83	1019.82	1019.80	1019.79	1019.78	1019.76	1019.76	1019.77
	1	1019.78	1019.81	1019.86	1019.88	1019.87	1019.87	1019.85	1019.82	1019.83	1019.85	1019.83	1019.82	1019.84
	2	1019.80	1019.78	1019.81	1019.85	1019.85	1019.81	1019.78	1019.80	1019.78	1019.74	1019.74	1019.74	1019.79
	3	1019.73	1019.73	1019.70	1019.68	1019.71	1019.71	1019.68	1019.65	1019.66	1019.71	1019.71	1019.70	1019.69
	4	1019.69	1019.67	1019.65	1019.63	1019.62	1019.62	1019.64	1019.64	1019.65	1019.65	1019.64	1019.66	1019.64
	5	1019.69	1019.73	1019.82	1019.89	1019.90	1019.91	1019.94	1019.94	1019.93	1019.95	1019.98	1020.00	1019.89
	6	1020.03	1020.07	1020.10	1020.11	1020.15	1020.20	1020.25	1020.26	1020.26	1020.31	1020.35	1020.38	1020.20
	7	1020.42	1020.46	1020.51	1020.53	1020.53	1020.56	1020.56	1020.57	1020.59	1020.61	1020.64	1020.67	1020.55
	8	1020.74	1020.81	1020.82	1020.82	1020.85	1020.89	1020.93	1020.97	1020.98	1020.98	1020.99	1021.04	1020.90
	9	1021.09	1021.14	1021.18	1021.22	1021.25	1021.25	1021.23	1021.20	1021.14	1021.08	1021.04	1021.04	1021.15
	10	1021.01	1020.96	1020.91	1020.88	1020.83	1020.74	1020.69	1020.66	1020.63	1020.62	1020.61	1020.54	1020.75
	11	1020.46	1020.44	1020.43	1020.41	1020.36	1020.28	1020.21	1020.17	1020.16	1020.15	1020.12	1020.03	1020.27
	12	1019.94	1019.90	1019.86	1019.82	1019.79	1019.76	1019.73	1019.68	1019.63	1019.61	1019.59	1019.59	1019.74
	13	1019.59	1019.57	1019.57	1019.55	1019.53	1019.56	1019.59	1019.58	1019.59	1019.60	1019.60	1019.58	1019.57
	14	1019.56	1019.58	1019.60	1019.61	1019.61	1019.61	1019.60	1019.58	1019.60	1019.65	1019.71	1019.73	1019.62
	15	1019.71	1019.68	1019.69	1019.73	1019.73	1019.71	1019.69	1019.71	1019.78	1019.82	1019.81	1019.82	1019.74
	16	1019.86	1019.95	1020.03	1020.07	1020.10	1020.13	1020.16	1020.21	1020.27	1020.33	1020.39	1020.42	1020.16
	17	1020.44	1020.49	1020.51	1020.52	1020.53	1020.57	1020.64	1020.71	1020.74	1020.76	1020.77	1020.78	1020.62
	18	1020.79	1020.82	1020.87	1020.93	1020.96	1020.96	1020.94	1020.95	1021.00	1021.03	1021.05	1021.09	1020.95
	19	1021.12	1021.12	1021.13	1021.16	1021.19	1021.18	1021.15	1021.16	1021.18	1021.18	1021.16	1021.19	1021.16
	20	1021.25	1021.29	1021.32	1021.33	1021.33	1021.34	1021.35	1021.33	1021.32	1021.31	1021.32	1021.34	1021.32
	21	1021.34	1021.35	1021.40	1021.43	1021.43	1021.39	1021.36	1021.36	1021.37	1021.37	1021.36	1021.40	1021.38
	22	1021.46	1021.46	1021.44	1021.42	1021.41	1021.40	1021.41	1021.39	1021.35	1021.35	1021.34	1021.36	1021.40
	23	1021.36	1021.36	1021.35	1021.36	1021.39	1021.40	1021.38	1021.36	1021.34	1021.31	1021.25	1021.19	1021.34
24	0	1021.13	1021.11	1021.11	1021.10	1021.08	1021.06	1021.02	1021.00	1021.02	1021.06	1021.10	1021.12	1021.07
	1	1021.12	1021.13	1021.13	1021.09	1021.06	1021.08	1021.07	1021.05	1021.04	1021.05	1021.04	1021.04	1021.07
	2	1021.06	1021.09	1021.06	1021.02	1021.03	1021.02	1021.02	1021.04	1021.02	1021.01	1021.02	1021.02	1021.03
	3	1021.00	1020.98	1020.97	1020.97	1020.96	1020.96	1020.95	1020.93	1020.92	1020.92	1020.94	1020.94	1020.95
	4	1020.89	1020.84	1020.82	1020.82	1020.82	1020.85	1020.85	1020.83	1020.83	1020.83	1020.82	1020.82	1020.83
	5	1020.82	1020.85	1020.90	1020.90	1020.91	1020.97	1021.01	1021.01	1021.02	1021.07	1021.12	1021.15	1020.97
	6	1021.19	1021.26	1021.30	1021.31	1021.32	1021.34	1021.37	1021.41	1021.46	1021.50	1021.55	1021.61	1021.38
	7	1021.64	1021.66	1021.69	1021.73	1021.77	1021.82	1021.89	1021.85	1021.80	1021.84	1021.84	1021.81	1021.78
	8	1021.80	1021.81	1021.82	1021.85	1021.89	1021.91	1021.92	1021.90	1021.88	1021.88	1021.91	1021.95	1021.88
	9	1021.97	1021.97	1021.92	1021.87	1021.85	1021.79	1021.76	1021.79	1021.83	1021.84	1021.79	1021.73	1021.84
	10	1021.69	1021.65	1021.61	1021.55	1021.48	1021.42	1021.37	1021.33	1021.29	1021.28	1021.27	1021.21	1021.43
	11	1021.14	1021.10	1021.06	1021.00	1020.94	1020.92	1020.88	1020.84	1020.79	1020.73	1020.66	1020.61	1020.89
	12	1020.61	1020.63	1020.63	1020.59	1020.57	1020.54	1020.47	1020.45	1020.42	1020.37	1020.31	1020.26	1020.49
	13	1020.21	1020.17	1020.17	1020.24	1020.35	1020.38	1020.37	1020.36	1020.35	1020.30	1020.24	1020.23	1020.28
	14	1020.23	1020.26	1020.31	1020.31	1020.31	1020.31	1020.31	1020.32	1020.35	1020.37	1020.36	1020.37	1020.32
	15	1020.40	1020.39	1020.40	1020.43	1020.41	1020.40	1020.40	1020.41	1020.44	1020.44	1020.43	1020.45	1020.41
	16	1020.45	1020.44	1020.49	1020.55	1020.56	1020.56	1020.58	1020.62	1020.64	1020.65	1020.68	1020.70	1020.57
	17	1020.68	1020.67	1020.69	1020.71	1020.76	1020.80	1020.83	1020.83	1020.77	1020.75	1020.76	1020.79	1020.75
	18	1020.82	1020.81	1020.79	1020.80	1020.80	1020.78	1020.78	1020.80	1020.85	1020.93	1020.97	1021.00	1020.84
	19	1021.05	1021.09	1021.11	1021.11	1021.10	1021.10	1021.11	1021.08	1021.09	1021.15	1021.15	1021.19	1021.11
	20	1021.24	1021.27	1021.30	1021.28	1021.25	1021.21	1021.15	1021.09	1021.01	1020.92	1020.88	1020.88	1021.12
	21	1020.87	1020.85	1020.85	1020.85	1020.81	1020.75	1020.74	1020.74	1020.75	1020.73	1020.74	1020.75	1020.78
	22	1020.72	1020.72	1020.73	1020.76	1020.76	1020.74	1020.75	1020.77	1020.75	1020.69	1020.63	1020.60	1020.71
	23	1020.58	1020.58	1020.59	1020.56	1020.53	1020.52	1020.49	1020.49	1020.48	1020.45	1020.44	1020.43	1020.51

S.V.I.R.CO. Observatory - Pressure in hectoPascal – November 2017

day	hh	00_05	05_10	10_15	15_20	20_25	25_30	30_35	35_40	40_45	45_50	50_55	55_60	average
25	0	1020.42	1020.43	1020.44	1020.43	1020.44	1020.47	1020.48	1020.46	1020.45	1020.43	1020.39	1020.36	1020.43
	1	1020.31	1020.25	1020.22	1020.15	1020.09	1020.04	1019.96	1019.89	1019.84	1019.76	1019.68	1019.62	1019.98
	2	1019.57	1019.54	1019.55	1019.55	1019.50	1019.43	1019.36	1019.31	1019.26	1019.15	1019.04	1018.96	1019.35
	3	1018.89	1018.88	1018.90	1018.88	1018.84	1018.80	1018.78	1018.74	1018.68	1018.63	1018.62	1018.65	1018.77
	4	1018.69	1018.73	1018.77	1018.77	1018.78	1018.77	1018.75	1018.72	1018.72	1018.73	1018.72	1018.69	1018.73
	5	1018.66	1018.61	1018.57	1018.54	1018.51	1018.52	1018.55	1018.55	1018.54	1018.56	1018.57	1018.56	1018.56
	6	1018.57	1018.57	1018.58	1018.61	1018.63	1018.64	1018.64	1018.63	1018.62	1018.61	1018.60	1018.61	1018.61
	7	1018.62	1018.61	1018.62	1018.65	1018.61	1018.53	1018.47	1018.41	1018.32	1018.26	1018.19	1018.14	1018.45
	8	1018.13	1018.13	1018.13	1018.08	1018.03	1017.98	1017.93	1017.93	1017.93	1017.91	1017.84	1017.75	1017.98
	9	1017.73	1017.76	1017.75	1017.73	1017.71	1017.70	1017.72	1017.71	1017.68	1017.65	1017.61	1017.54	1017.69
	10	1017.45	1017.43	1017.48	1017.44	1017.37	1017.39	1017.37	1017.31	1017.23	1017.05	1016.87	1016.76	1017.26
	11	1016.71	1016.66	1016.51	1016.34	1016.26	1016.17	1016.13	1016.21	1016.25	1016.27	1016.30	1016.28	1016.34
	12	1016.23	1016.20	1016.15	1016.09	1016.08	1016.02	1015.93	1015.85	1015.81	1015.81	1015.77	1015.72	1015.97
	13	1015.64	1015.56	1015.51	1015.44	1015.34	1015.31	1015.34	1015.34	1015.37	1015.42	1015.40	1015.36	1015.42
	14	1015.33	1015.27	1015.22	1015.17	1015.12	1015.11	1015.10	1015.08	1015.03	1015.02	1015.09	1015.13	1015.14
	15	1015.11	1015.11	1015.06	1014.97	1014.89	1014.84	1014.80	1014.71	1014.60	1014.55	1014.54	1014.54	1014.81
	16	1014.55	1014.51	1014.49	1014.52	1014.56	1014.55	1014.51	1014.51	1014.50	1014.45	1014.37	1014.28	1014.48
	17	1014.23	1014.24	1014.25	1014.25	1014.29	1014.28	1014.19	1014.10	1014.06	1014.05	1014.04	1014.02	1014.16
	18	1014.05	1014.04	1013.97	1013.85	1013.76	1013.76	1013.77	1013.77	1013.77	1013.73	1013.69	1013.67	1013.82
	19	1013.65	1013.66	1013.69	1013.72	1013.81	1013.84	1013.83	1013.80	1013.73	1013.75	1013.80	1013.85	1013.76
	20	1013.84	1013.79	1013.72	1013.60	1013.50	1013.49	1013.52	1013.62	1013.77	1013.85	1013.82	1013.75	1013.69
	21	1013.67	1013.59	1013.51	1013.51	1013.41	1013.38	1013.49	1013.52	1013.49	1013.48	1013.51	1013.49	1013.50
	22	1013.39	1013.26	1013.23	1013.24	1013.18	1013.07	1012.95	1012.82	1012.61	1012.51	1012.54	1012.54	1012.94
	23	1012.52	1012.46	1012.41	1012.46	1012.62	1012.69	1012.65	1012.60	1012.53	1012.42	1012.23	1012.14	1012.47
26	0	1012.14	1012.12	1012.08	1012.07	1012.10	1012.16	1012.17	1012.18	1012.23	1012.25	1012.24	1012.26	1012.17
	1	1012.28	1012.22	1012.13	1012.03	1011.95	1011.93	1011.93	1011.88	1011.91	1011.98	1011.95	1011.86	1012.00
	2	1011.78	1011.76	1011.74	1011.73	1011.72	1011.69	1011.63	1011.56	1011.54	1011.54	1011.50	1011.54	1011.64
	3	1011.58	1011.55	1011.53	1011.47	1011.43	1011.42	1011.48	1011.56	1011.60	1011.63	1011.61	1011.57	1011.53
	4	1011.54	1011.50	1011.47	1011.45	1011.50	1011.55	1011.49	1011.45	1011.43	1011.37	1011.37	1011.41	1011.46
	5	1011.39	1011.35	1011.40	1011.42	1011.37	1011.29	1011.19	1011.17	1011.20	1011.15	1011.09	1011.07	1011.25
	6	1011.05	1011.00	1010.99	1010.98	1010.94	1010.87	1010.83	1010.82	1010.82	1010.82	1010.77	1010.74	1010.88
	7	1010.75	1010.74	1010.77	1010.85	1010.95	1010.99	1010.95	1010.93	1010.94	1010.91	1010.90	1010.92	1010.88
	8	1010.96	1011.01	1011.10	1011.19	1011.20	1011.14	1011.15	1011.22	1011.26	1011.33	1011.40	1011.43	1011.20
	9	1011.40	1011.36	1011.37	1011.43	1011.51	1011.53	1011.53	1011.55	1011.56	1011.52	1011.47	1011.44	1011.47
	10	1011.34	1011.23	1011.16	1011.11	1011.08	1011.03	1011.00	1010.99	1010.93	1010.84	1010.74	1010.70	1011.01
	11	1010.67	1010.64	1010.69	1010.76	1010.74	1010.71	1010.71	1010.71	1010.70	1010.68	1010.60	1010.53	1010.68
	12	1010.52	1010.47	1010.45	1010.51	1010.55	1010.53	1010.51	1010.51	1010.52	1010.53	1010.55	1010.56	1010.52
	13	1010.56	1010.55	1010.56	1010.59	1010.57	1010.54	1010.52	1010.49	1010.50	1010.55	1010.58	1010.55	1010.54
	14	1010.51	1010.54	1010.56	1010.55	1010.58	1010.64	1010.67	1010.70	1010.70	1010.70	1010.74	1010.77	1010.64
	15	1010.75	1010.78	1010.86	1010.93	1011.00	1011.08	1011.12	1011.17	1011.26	1011.32	1011.42	1011.59	1011.10
	16	1011.78	1011.89	1012.02	1012.15	1012.24	1012.30	1012.33	1012.39	1012.52	1012.70	1012.80	1012.84	1012.33
	17	1012.90	1012.98	1013.04	1013.06	1013.16	1013.28	1013.37	1013.41	1013.42	1013.55	1013.69	1013.79	1013.30
	18	1013.84	1013.89	1013.93	1013.90	1013.94	1014.01	1014.01	1014.00	1014.03	1014.07	1014.16	1014.22	1014.00
	19	1014.20	1014.24	1014.38	1014.47	1014.48	1014.46	1014.50	1014.58	1014.56	1014.54	1014.60	1014.70	1014.47
	20	1014.80	1014.87	1014.89	1014.93	1015.00	1015.00	1015.03	1015.08	1015.14	1015.25	1015.29	1015.28	1015.04
	21	1015.31	1015.30	1015.23	1015.19	1015.15	1015.16	1015.23	1015.30	1015.33	1015.31	1015.34	1015.43	1015.27
	22	1015.51	1015.56	1015.60	1015.66	1015.70	1015.67	1015.60	1015.53	1015.51	1015.50	1015.57	1015.66	1015.59
	23	1015.68	1015.72	1015.84	1015.93	1015.99	1016.04	1016.06	1016.10	1016.11	1016.08	1016.11	1016.16	1015.98

S.V.I.R.CO. Observatory - Pressure in hectoPascal – November 2017

day	hh	00_05	05_10	10_15	15_20	20_25	25_30	30_35	35_40	40_45	45_50	50_55	55_60	average
27	0	1016.25	1016.30	1016.40	1016.48	1016.54	1016.57	1016.57	1016.57	1016.60	1016.64	1016.69	1016.78	1016.54
	1	1016.82	1016.84	1016.91	1016.96	1016.98	1017.00	1017.05	1017.09	1017.04	1017.01	1017.05	1017.06	1016.98
	2	1017.03	1017.00	1017.00	1017.00	1016.98	1017.00	1017.03	1017.03	1017.05	1017.10	1017.11	1017.12	1017.03
	3	1017.13	1017.14	1017.13	1017.12	1017.14	1017.17	1017.18	1017.19	1017.21	1017.21	1017.21	1017.23	1017.17
	4	1017.27	1017.31	1017.33	1017.32	1017.34	1017.37	1017.38	1017.42	1017.49	1017.57	1017.64	1017.68	1017.42
	5	1017.71	1017.72	1017.75	1017.83	1017.93	1018.01	1018.02	1018.03	1018.06	1018.13	1018.25	1018.30	1017.98
	6	1018.31	1018.38	1018.46	1018.50	1018.50	1018.50	1018.52	1018.54	1018.60	1018.67	1018.74	1018.79	1018.54
	7	1018.81	1018.85	1018.95	1019.04	1019.06	1019.13	1019.24	1019.28	1019.30	1019.33	1019.38	1019.41	1019.14
	8	1019.47	1019.52	1019.51	1019.51	1019.57	1019.63	1019.59	1019.59	1019.61	1019.64	1019.69	1019.75	1019.59
	9	1019.83	1019.84	1019.85	1019.86	1019.81	1019.78	1019.79	1019.76	1019.73	1019.74	1019.71	1019.66	1019.78
	10	1019.63	1019.57	1019.54	1019.54	1019.51	1019.50	1019.49	1019.52	1019.53	1019.48	1019.43	1019.37	1019.51
	11	1019.34	1019.35	1019.35	1019.31	1019.29	1019.30	1019.28	1019.24	1019.22	1019.19	1019.17	1019.12	1019.26
	12	1019.04	1018.98	1018.98	1019.05	1019.06	1019.02	1019.01	1018.96	1018.96	1018.98	1018.97	1018.95	1019.00
	13	1018.93	1018.89	1018.89	1018.93	1018.99	1019.04	1019.04	1019.05	1019.09	1019.14	1019.20	1019.26	1019.04
	14	1019.32	1019.34	1019.35	1019.37	1019.40	1019.44	1019.53	1019.56	1019.57	1019.64	1019.70	1019.72	1019.49
	15	1019.76	1019.80	1019.80	1019.82	1019.84	1019.86	1019.89	1019.92	1019.92	1019.92	1019.93	1019.97	1019.87
	16	1020.01	1020.07	1020.12	1020.14	1020.18	1020.23	1020.26	1020.26	1020.27	1020.32	1020.37	1020.40	1020.22
	17	1020.41	1020.44	1020.50	1020.53	1020.56	1020.61	1020.64	1020.67	1020.69	1020.74	1020.80	1020.87	1020.62
	18	1020.95	1021.04	1021.09	1021.14	1021.21	1021.25	1021.30	1021.34	1021.32	1021.25	1021.21	1021.23	1021.19
	19	1021.23	1021.24	1021.22	1021.17	1021.13	1021.09	1021.08	1021.07	1021.06	1021.07	1021.09	1021.14	1021.13
	20	1021.18	1021.23	1021.32	1021.35	1021.35	1021.34	1021.36	1021.39	1021.43	1021.45	1021.43	1021.44	1021.35
	21	1021.48	1021.46	1021.39	1021.33	1021.32	1021.35	1021.35	1021.34	1021.33	1021.33	1021.30	1021.24	1021.35
	22	1021.24	1021.27	1021.29	1021.29	1021.28	1021.30	1021.32	1021.31	1021.27	1021.23	1021.22	1021.24	1021.27
	23	1021.23	1021.18	1021.17	1021.14	1021.06	1021.05	1021.10	1021.14	1021.13	1021.09	1021.06	1021.05	1021.11
28	0	1021.07	1021.10	1021.10	1021.07	1021.08	1021.09	1021.09	1021.08	1021.05	1021.03	1021.07	1021.12	1021.08
	1	1021.12	1021.10	1021.07	1021.01	1020.98	1020.99	1020.96	1020.91	1020.89	1020.86	1020.81	1020.75	1020.95
	2	1020.74	1020.73	1020.69	1020.65	1020.63	1020.59	1020.54	1020.53	1020.54	1020.52	1020.44	1020.39	1020.58
	3	1020.36	1020.33	1020.31	1020.25	1020.19	1020.15	1020.10	1020.04	1020.01	1020.07	1020.12	1020.09	1020.17
	4	1020.04	1020.04	1020.04	1019.98	1019.94	1019.95	1019.95	1019.95	1019.97	1019.95	1019.88	1019.86	1019.96
	5	1019.89	1019.93	1020.00	1020.05	1020.02	1020.00	1020.06	1020.11	1020.10	1020.06	1020.04	1020.03	1020.02
	6	1020.01	1020.00	1020.03	1020.07	1020.11	1020.17	1020.19	1020.20	1020.19	1020.17	1020.17	1020.15	1020.12
	7	1020.15	1020.22	1020.33	1020.35	1020.32	1020.29	1020.23	1020.22	1020.18	1020.11	1020.04	1020.02	1020.20
	8	1020.04	1020.00	1019.94	1019.91	1019.92	1019.94	1019.91	1019.86	1019.81	1019.78	1019.81	1019.80	1019.89
	9	1019.71	1019.65	1019.63	1019.62	1019.63	1019.60	1019.53	1019.44	1019.38	1019.32	1019.28	1019.21	1019.50
	10	1019.11	1019.03	1018.94	1018.84	1018.79	1018.75	1018.67	1018.58	1018.48	1018.39	1018.32	1018.24	1018.67
	11	1018.15	1018.06	1017.96	1017.85	1017.79	1017.75	1017.65	1017.54	1017.45	1017.38	1017.37	1017.36	1017.69
	12	1017.26	1017.14	1016.99	1016.86	1016.83	1016.77	1016.69	1016.65	1016.63	1016.59	1016.52	1016.50	1016.78
	13	1016.50	1016.47	1016.41	1016.36	1016.30	1016.21	1016.16	1016.13	1016.05	1016.03	1016.07	1016.11	1016.23
	14	1016.04	1015.89	1015.84	1015.85	1015.78	1015.76	1015.80	1015.81	1015.79	1015.75	1015.72	1015.68	1015.81
	15	1015.65	1015.60	1015.48	1015.36	1015.31	1015.33	1015.38	1015.42	1015.45	1015.41	1015.32	1015.29	1015.41
	16	1015.29	1015.28	1015.28	1015.26	1015.23	1015.21	1015.23	1015.25	1015.22	1015.18	1015.17	1015.18	1015.23
	17	1015.22	1015.28	1015.28	1015.24	1015.19	1015.15	1015.08	1014.99	1014.95	1014.93	1014.89	1014.91	1015.09
	18	1014.94	1014.89	1014.86	1014.86	1014.86	1014.83	1014.78	1014.79	1014.79	1014.78	1014.76	1014.71	1014.82
	19	1014.66	1014.61	1014.55	1014.46	1014.36	1014.30	1014.27	1014.22	1014.15	1014.06	1014.00	1013.97	1014.30
	20	1013.94	1013.91	1013.91	1013.87	1013.82	1013.80	1013.78	1013.76	1013.74	1013.66	1013.57	1013.49	1013.77
	21	1013.43	1013.38	1013.35	1013.30	1013.29	1013.31	1013.30	1013.29	1013.25	1013.16	1013.09	1013.07	1013.27
	22	1013.03	1013.02	1012.99	1012.91	1012.86	1012.87	1012.87	1012.85	1012.81	1012.75	1012.69	1012.65	1012.86
	23	1012.60	1012.52	1012.44	1012.37	1012.31	1012.23	1012.15	1012.08	1012.01	1011.98	1011.95	1011.86	1012.21

S.V.I.R.CO. Observatory - Pressure in hectoPascal – November 2017

day	hh	00_05	05_10	10_15	15_20	20_25	25_30	30_35	35_40	40_45	45_50	50_55	55_60	average
29	0	1011.75	1011.69	1011.60	1011.54	1011.53	1011.50	1011.43	1011.36	1011.26	1011.16	1011.08	1011.05	1011.40
	1	1011.03	1011.08	1011.14	1011.13	1011.10	1011.03	1010.93	1010.85	1010.81	1010.76	1010.71	1010.65	1010.93
	2	1010.59	1010.51	1010.39	1010.28	1010.21	1010.14	1010.09	1009.99	1009.90	1009.88	1009.86	1009.84	1010.14
	3	1009.81	1009.70	1009.58	1009.50	1009.46	1009.43	1009.37	1009.33	1009.28	1009.23	1009.17	1009.11	1009.41
	4	1009.11	1009.15	1009.16	1009.17	1009.19	1009.19	1009.26	1009.29	1009.24	1009.19	1009.13	1009.07	1009.18
	5	1009.04	1008.96	1008.92	1008.90	1008.87	1008.81	1008.76	1008.72	1008.70	1008.70	1008.69	1008.68	1008.81
	6	1008.67	1008.64	1008.61	1008.58	1008.52	1008.54	1008.56	1008.48	1008.52	1008.62	1008.65	1008.70	1008.59
	7	1008.71	1008.66	1008.57	1008.46	1008.43	1008.38	1008.27	1008.18	1008.10	1008.09	1008.14	1008.21	1008.35
	8	1008.25	1008.23	1008.21	1008.10	1007.95	1007.94	1007.92	1007.91	1007.92	1007.93	1007.96	1007.94	1008.02
	9	1007.90	1007.86	1007.80	1007.73	1007.66	1007.57	1007.50	1007.37	1007.21	1007.12	1007.06	1007.00	1007.48
	10	1006.92	1006.84	1006.78	1006.75	1006.71	1006.71	1006.72	1006.70	1006.69	1006.56	1006.31	1006.14	1006.65
	11	1006.08	1006.06	1005.94	1005.83	1005.77	1005.67	1005.57	1005.39	1005.24	1005.14	1005.01	1004.87	1005.55
	12	1004.75	1004.64	1004.53	1004.39	1004.27	1004.17	1004.06	1003.99	1003.92	1003.86	1003.80	1003.73	1004.17
	13	1003.65	1003.56	1003.46	1003.39	1003.32	1003.28	1003.32	1003.37	1003.40	1003.47	1003.55	1003.65	1003.45
	14	1003.70	1003.67	1003.65	1003.65	1003.63	1003.61	1003.55	1003.45	1003.40	1003.28	1003.16	1003.14	1003.49
	15	1003.15	1003.15	1003.06	1002.92	1002.85	1002.75	1002.71	1002.74	1002.70	1002.66	1002.58	1002.47	1002.81
	16	1002.40	1002.37	1002.32	1002.21	1002.11	1002.10	1002.08	1002.00	1001.95	1001.95	1001.89	1001.83	1002.10
	17	1001.80	1001.73	1001.63	1001.51	1001.41	1001.29	1001.17	1001.09	1001.01	1000.92	1000.86	1000.81	1001.27
	18	1000.76	1000.71	1000.65	1000.59	1000.56	1000.52	1000.50	1000.47	1000.39	1000.31	1000.25	1000.20	1000.49
	19	1000.12	1000.02	999.93	999.88	999.87	999.86	999.77	999.67	999.65	999.60	999.55	999.51	999.78
	20	999.48	999.49	999.51	999.51	999.49	999.45	999.43	999.45	999.47	999.50	999.53	999.58	999.49
	21	999.62	999.62	999.62	999.64	999.65	999.65	999.64	999.61	999.57	999.54	999.55	999.61	999.61
	22	999.67	999.73	999.76	999.76	999.87	999.90	999.82	999.81	999.79	999.82	999.89	999.88	999.81
	23	999.86	999.83	999.83	999.84	999.74	999.76	999.92	1000.04	1000.08	1000.12	1000.06	999.95	999.92
30	0	999.86	999.84	999.85	999.84	999.83	999.87	999.93	1000.05	1000.17	1000.23	1000.22	1000.25	1000.00
	1	1000.32	1000.37	1000.40	1000.46	1000.56	1000.52	1000.51	1000.55	1000.48	1000.44	1000.56	1000.61	1000.48
	2	1000.62	1000.61	1000.46	1000.30	1000.29	1000.41	1000.44	1000.35	1000.23	1000.14	1000.08	1000.10	1000.33
	3	1000.19	1000.25	1000.34	1000.35	1000.29	1000.19	1000.05	1000.07	1000.16	1000.16	1000.12	1000.25	1000.20
	4	1000.42	1000.48	1000.48	1000.43	1000.42	1000.43	1000.48	1000.51	1000.52	1000.56	1000.61	1000.62	1000.50
	5	1000.60	1000.65	1000.73	1000.77	1000.83	1000.90	1000.86	1000.85	1000.88	1000.89	1000.94	1000.96	1000.82
	6	1000.98	1001.03	1001.05	1001.06	1001.10	1001.14	1001.19	1001.28	1001.36	1001.35	1001.35	1001.36	1001.19
	7	1001.38	1001.43	1001.49	1001.55	1001.57	1001.56	1001.54	1001.55	1001.56	1001.60	1001.66	1001.72	1001.55
	8	1001.83	1001.91	1001.93	1001.94	1001.98	1002.04	1002.10	1002.16	1002.18	1002.23	1002.34	1002.43	1002.09
	9	1002.52	1002.54	1002.55	1002.63	1002.64	1002.70	1002.79	1002.75	1002.76	1002.82	1002.84	1002.85	1002.70
	10	1002.85	1002.79	1002.73	1002.75	1002.80	1002.77	1002.69	1002.63	1002.58	1002.59	1002.61	1002.60	1002.70
	11	1002.63	1002.71	1002.77	1002.81	1002.85	1002.93	1002.97	1002.97	1002.97	1002.98	1002.94	1002.90	1002.87
	12	1002.92	1002.86	1002.79	1002.72	1002.68	1002.75	1002.80	1002.80	1002.80	1002.82	1002.88	1002.90	1002.81
	13	1002.87	1002.93	1003.06	1003.14	1003.14	1003.12	1003.24	1003.43	1003.45	1003.41	1003.35	1003.34	1003.21
	14	1003.44	1003.59	1003.72	1003.81	1003.92	1003.93	1003.89	1004.01	1004.19	1004.27	1004.25	1004.27	1003.94
	15	1004.33	1004.39	1004.42	1004.40	1004.45	1004.56	1004.62	1004.67	1004.76	1004.81	1004.87	1004.89	1004.60
	16	1004.89	1004.97	1005.12	1005.22	1005.24	1005.24	1005.26	1005.29	1005.33	1005.36	1005.41	1005.43	1005.23
	17	1005.39	1005.38	1005.47	1005.50	1005.50	1005.56	1005.59	1005.58	1005.56	1005.58	1005.65	1005.68	1005.53
	18	1005.69	1005.72	1005.74	1005.77	1005.76	1005.74	1005.75	1005.79	1005.83	1005.90	1005.97	1005.98	1005.80
	19	1005.93	1005.91	1005.99	1006.06	1006.06	1006.06	1006.12	1006.19	1006.19	1006.15	1006.16	1006.11	1006.08
	20	1006.09	1006.09	1006.08	1006.11	1006.13	1006.11	1006.14	1006.21	1006.26	1006.23	1006.18	1006.17	1006.15
	21	1006.15	1006.15	1006.20	1006.19	1006.17	1006.23	1006.34	1006.43	1006.52	1006.56	1006.54	1006.54	1006.33
	22	1006.59	1006.65	1006.73	1006.80	1006.81	1006.80	1006.81	1006.81	1006.77	1006.72	1006.70	1006.68	1006.74
	23	1006.73	1006.81	1006.85	1006.83	1006.76	1006.71	1006.72	1006.77	1006.77	1006.73	1006.70	1006.73	1006.76

