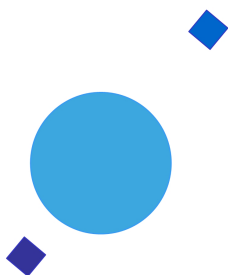


**INAF**



**ISTITUTO NAZIONALE DI ASTROFISICA**  
**NATIONAL INSTITUTE FOR ASTROPHYSICS**

***SVIRCO Prompt Report: October 2017***

Francesco Re

INAF/IAPS-2017-14

November 2017

**ISTITUTO DI ASTROFISICA E PLANETOLOGIA SPAZIALI**

**AREA DI RICERCA ROMA - TOR VERGATA**

**Via del Fosso del Cavaliere, 100 - 00133 Roma (ITALIA)**



## SVIRCO Prompt Report: October 2017

**Francesco Re**

*IAPS - INAF, Area di Ricerca Roma - Tor Vergata  
Via del Fosso del Cavaliere, 100 - 00133 Roma, Italy,*

### Abstract

*The pressure corrected intensity of the nucleonic component, produced by primary cosmic rays and recorded in October 2017 by the Neutron Monitor of SVIRCO-Rome (present geographic position:  $41.86^\circ$  N -  $12.47^\circ$  E; altitude about s.l. ), is reported in prompt form together with the barometric pressure data.*



## SVIRCO OBSERVATORY

During the 1<sup>st</sup> International Geophysics Year (1957) an international network of “ground-based detectors” for continuous cosmic ray measurements was world-wide established.

The cosmic ray station of Rome joined this network with the purpose to study the time variations of primary cosmic rays (**Studio Variazioni Intensità Raggi Cosmici: S.V.I.R.CO**) and their modulation in the heliosphere.

From July 1957 to April 1997, the SVIRCO Station (now Observatory) performed uninterrupted measurements at the Physics Department “G. Marconi” of “La Sapienza” University of Rome (41.90° N, 12.52° E, altitude about 60 m a.s.l.)

In May 1997 the neutron monitor was moved to the Physics Department “E. Amaldi” of “Roma Tre” University. Since then it has been continuously running at the new location (41.86° N, 12.47° E, altitude about 0 m a.s.l.).

The SVIRCO Observatory (INAF/IAPS-UNIRomaTre collaboration) is housed in a reserved building provided with a double air-conditioning system. The inner temperature is permanently restrained in a range of 23°-26° C, meanwhile the relative humidity is kept below 57%. Either the environmental parameters are continuously checked and recorded by digital sensors.

On January 1, 2005 three counters were added to the detector. This upgrade, from 17 to 20 NM-64, made the SVIRCO neutron monitor still consist of 5 sections but modified its geometry. Actually the new arrangement has been composed of three 3-counter, one 5-counter and one 6-counter units. The enhancement improved not only the overall counting rate of 15.6 % (January 2005) but, as a result, also the statistical quality of the recorded data.

On July 3, 2017 six counters experienced failure and were removed from the detector until 24 July. On 25 July 2017 a number of 2 counters was added to the detector up to a total of 16 counters. The new arrangement has been composed of three 3-counter, one 5-counter and one 2-counter units. The overall counting rate has decreased of about 20% (July 2017) with a lower statistical quality of the recorded data.

Each of the 16 BF<sub>3</sub> proportional counters (BP-28 type) is equipped with a smart amplifier/discriminator circuit complete with a spectrum stabilizer. This new electronic unit, developed in our laboratory, holds firmly the pulse height spectrum of the amplifier output (within a range of more than 150 volts around the operating voltage), providing the counter with a great immunity against high voltage variations.

Anyway, systematic and exhaustive tests of the counters are regularly performed. The output pulses of the amplifiers, discriminated by the threshold gates, are collected and stored into a multi-channel analyzer. The analysis of the height distribution (spectrum) of the amplifier pulses coinciding with the discriminator ones, is essential to verify the long term efficiency of each counter together with the amplifier gain and the discriminator threshold level.

As well as the amplifier/discriminator circuits, a large part of the electronic instrumentation operating in the Observatory was designed and realized in our laboratory together with the software for data acquisition and pre-elaboration.

In order to improve the reliability of the recorded data and to prevent measurement breakdowns, two independent systems perform contemporary the data acquisition. Each system is remotely controlled by a dedicated computer and is timed by a high stability quartz clock and/or a GPS receiver. One equipment runs according to a timing of 1 minute and fulfils the acquisition of the 16 counters separately. The other one records the individual 5-minute counting rate of each detector section in addition to the rates of the overall multiplicity, sorted into separated counting channels (from 1 to greater than 8).

A special care is devoted to the atmospheric pressure measurements; thus they are carried out by means of not less than three barometers at the same time. These instruments (achieving a resolution up to 0.01 hPa), are constantly checked out each other for the best measuring accuracy and reliability. Furthermore, the devices in use are equipped with different types of transducer such as vibrating cylinder, force balance and quartz, therefore, throughout their different behaviours, it is possible to point out the occurrence of any long-term drift and eventually to re-calibrate the instruments themselves.

## DATA PRESENTATION

In a preliminary step, the intensity data, of the secondary nucleonic component of cosmic rays, detected at SVIRCO Observatory, were corrected for pressure variations at a reference level of 1009.25 hPa with an attenuation coefficient of 0.70% / hPa.

The five-minutes counting rates, of the examined month, are reported in tabular form together with the hourly normalized data, which provide a continuous data set for long-term analysis.

The normalization was evaluated as percentage of the counting rate average of January-February 1997, when the Monitor operated at the previous location of "La Sapienza" University. The reference counting rate level (100%), computed for such period, is equal to 554946 counts/hour.

The atmospheric pressure data (in hectoPascal) are also collected in a monthly table which presents the five-minutes averages and the hourly ones.

The hourly averages of the normalized intensity and pressure, plotted in monthly graphs, are reported too.

## CONDITIONS FOR SVIRCO DATA USE

You are welcome to use neutron monitor data of SVIRCO, IAPS/INAF-UNIRomaTre collaboration, under the following conditions:

*-You agree to acknowledge our financial supports in any published use of the data.*

*Example: "SVIRCO NM is supported by the INAF - UNIRomaTre collaboration"*

*-You are kindly requested to send a copy of any published work derived from our data to:*

Dr. Monica Laurenza  
Head of SVIRCO Observatory & TPL  
Istituto di Astrofisica e Planetologia Spaziali - Area di Ricerca Tor Vergata  
Via del Fosso del Cavaliere, 100 00133 Roma - Italy,

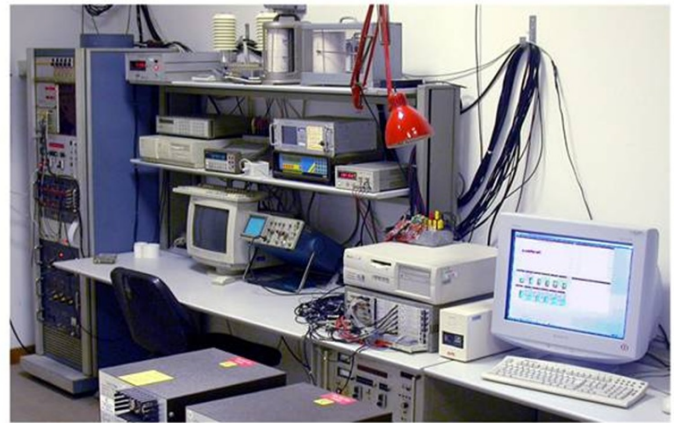
[monica.laurenza@iaps.inaf.it](mailto:monica.laurenza@iaps.inaf.it)



# S.V.I.R.CO. Observatory

Rome

Italy







INAF/UNIRomaTre		S.V.I.R.CO. Observatory - Pressure Corrected Data – October 2017											20 NM-64	
day	hh	00_05	05_10	10_15	15_20	20_25	25_30	30_35	35_40	40_45	45_50	50_55	55_60	h-norm
1	0	37355	38111	37964	37779	38274	37658	37527	38414	37991	37746	38263	37705	100.052
	1	37923	37504	37787	38511	38128	37671	37583	37895	37708	38179	37853	37754	99.990
	2	38166	38547	37947	38323	37646	37770	37806	37996	38079	37692	38108	37010	100.120
	3	38254	37966	37641	37287	37777	37487	37662	38298	37547	37870	37577	38321	99.811
	4	37963	37861	37890	37696	38015	37677	38072	38069	37696	37716	38142	37759	100.002
	5	38186	37902	38128	37751	37595	37724	38195	38098	37626	37668	37890	37346	99.904
	6	37974	38505	38004	37916	38051	37861	38428	37861	38466	38125	38102	37731	100.545
	7	38052	37462	38086	37780	37804	37730	37625	38009	38134	37480	38561	37984	100.035
	8	38103	37865	37891	38429	37651	37771	38074	37845	38337	37616	38073	37620	100.161
	9	37383	37667	37793	38004	38437	38301	37846	37869	38035	37601	38213	37359	99.992
	10	37953	38237	38167	38036	37622	37659	38054	37606	37622	38014	37598	37510	99.897
	11	37954	38134	37950	37731	37449	37692	38283	37851	38085	38018	37944	37638	100.041
	12	37521	37690	38041	37394	37935	38258	37575	38135	37964	38474	37609	37741	99.954
	13	37679	37745	38158	37678	37917	38346	37281	37783	38109	37709	37601	37694	99.814
	14	37808	37544	37963	37617	37588	37694	37840	38378	38015	38335	37945	37514	99.933
	15	37873	37395	37674	38015	37988	37745	38297	38011	37653	37655	38081	37534	99.862
	16	38125	37669	37759	37577	36859	37999	37774	38166	37916	38215	37983	37784	99.841
	17	37790	38061	37798	37458	38072	37913	38160	38294	38218	37838	38026	38223	100.287
	18	37771	37585	38283	38034	37694	38167	38136	38009	37917	37580	37950	37908	100.107
	19	37236	37986	38026	38590	38637	37788	38331	38173	38071	38208	37961	37378	100.405
	20	38122	37702	37876	38138	38152	37926	37796	38569	37753	38109	37230	37662	100.108
	21	37995	37985	37434	38122	37706	38348	37492	38611	37952	37868	37704	38727	100.307
	22	37886	38679	38329	38170	37948	37849	37978	38205	37991	37841	38134	37881	100.516
	23	38169	37564	37740	38065	37969	37805	37444	37659	37412	37742	37630	37549	99.605
2	0	38009	38498	38114	38826	38082	37735	37215	37706	37848	37679	37817	37622	100.131
	1	37719	37688	37740	37531	38124	38385	38362	38337	37798	37559	37237	37958	99.976
	2	37833	37877	37285	37398	37756	38074	38091	37675	37976	38045	37581	38286	99.853
	3	37823	38135	37655	38162	37710	38071	37893	37685	37933	37885	37884	37352	99.921
	4	38107	38209	38046	37714	37726	37613	37886	38116	38034	37828	37483	38149	100.080
	5	37813	38049	38177	37623	37454	38019	37559	37951	37726	38168	37535	38480	100.002
	6	37723	37593	37999	37949	38192	38081	37563	37843	37310	37350	38232	37853	99.812
	7	37569	38325	37844	37887	37724	38580	38119	37515	37989	37741	37741	38020	100.112
	8	38270	37999	37582	38286	37583	37729	37763	38133	38444	37523	37930	37319	100.004
	9	37654	38232	37857	38491	38110	38152	37933	38105	37680	37855	37414	37889	100.182
	10	38307	37670	37735	37873	37826	37838	37540	39118	38094	37776	37946	38175	100.298
	11	38036	37420	38435	37704	37619	36965	38121	38322	37969	38037	38112	37611	99.957
	12	37418	38081	37756	38004	38234	38007	37458	37448	37547	37557	37905	37752	99.697
	13	37990	37827	38047	37678	37276	38052	37576	38018	37754	37882	38007	37574	99.810
	14	37551	38122	37895	38009	37410	37603	37430	37730	38138	37544	37816	37749	99.660
	15	37587	36796	38189	38362	37905	37508	37521	38123	38111	37909	37844	37625	99.766
	16	37727	37820	37909	37859	38636	37864	38031	38494	38153	37954	37543	37209	100.145
	17	37651	37526	37718	37946	37527	38439	37488	37667	37932	38147	38189	38020	99.934
	18	37873	37400	37662	37890	38181	37697	37626	37911	37692	37926	37719	38027	99.793
	19	38117	37908	37978	37850	38082	37618	38003	37864	37852	37870	38105	38047	100.165
	20	38570	38506	37875	37776	38379	38120	38390	38266	38198	38217	37712	37901	100.740
	21	38045	38100	38434	38287	37904	37528	37505	37922	37672	37571	38030	37564	100.004
	22	38046	37652	37757	37950	37529	37809	38471	38233	37589	38536	37846	38304	100.259
	23	37887	38094	38621	38029	38212	37833	37870	37802	37769	38179	37850	37812	100.311

INAF/UNIRomaTre				S.V.I.R.CO. Observatory - Pressure Corrected Data – October 2017								20 NM-64		
day	hh	00_05	05_10	10_15	15_20	20_25	25_30	30_35	35_40	40_45	45_50	50_55	55_60	h-norm
3	0	38421	37878	38286	37889	37571	38353	37438	37799	37439	37696	37953	38243	100.091
	1	37866	37788	38202	37997	37850	38253	38528	38131	38222	38236	38420	37837	100.613
	2	38471	38098	38460	38523	38564	37884	37510	37862	38373	38490	37786	38083	100.783
	3	37623	38159	37669	37164	38151	37963	37924	37561	38490	38132	38354	38089	100.162
	4	37947	38154	37360	38092	37939	38335	38115	37713	37939	37959	38226	38035	100.279
	5	38169	37887	37736	38319	38283	38389	38360	38075	38060	38409	38717	38132	100.878
	6	38490	38205	38099	38959	38286	37643	37741	38375	38342	38290	37524	37410	100.620
	7	37904	38511	37422	38328	37989	37941	38623	38047	38516	38042	38327	37898	100.661
	8	38763	37949	38717	38134	38404	37415	37411	38286	38138	37830	38016	38213	100.600
	9	37856	37716	38202	38310	37999	37718	37679	37803	37215	37137	37655	38311	99.792
	10	37904	37997	37949	38193	38017	38084	38737	37964	38309	37993	38316	38666	100.789
	11	37983	37919	37615	37891	37894	38118	37781	37801	38279	37752	37858	38299	100.142
	12	38030	38123	38270	37557	37968	38483	38005	38049	38025	38384	37658	38056	100.453
	13	37228	38620	37881	37853	38507	37635	38120	37801	38069	37944	38258	38364	100.382
	14	38411	37727	37848	38695	38380	37957	38099	37851	38030	37640	37167	38134	100.306
	15	38009	38259	38161	37563	37544	37569	37763	38157	37658	38390	37524	37989	100.009
	16	37825	38250	38322	38115	37717	37573	37679	38376	37800	38108	37927	37833	100.215
	17	37849	37868	38034	37628	38584	38447	38058	37608	37883	38443	38220	37627	100.374
	18	37746	38159	38034	37607	38150	38252	38209	37815	38032	37357	38264	37930	100.222
	19	38278	38164	37786	38124	38185	38250	37932	37858	38182	38186	38184	38191	100.610
	20	38346	37606	37695	37986	38728	38146	37994	37982	38660	38465	37794	38031	100.635
	21	37944	38138	37979	37808	37501	38119	37957	37671	37802	38140	38068	38062	100.141
	22	38030	38107	38381	38045	38132	38023	37692	37863	38473	38195	38195	38039	100.578
	23	37665	37811	37808	38256	37971	38245	37570	37743	37515	37559	37793	38251	99.921
4	0	37655	38089	36809	38199	37676	37665	38215	37962	38073	37632	38561	38133	100.027
	1	38245	37648	37767	37448	38297	37538	37917	38142	37962	37950	37500	37945	99.959
	2	38230	38726	37811	37938	37507	38497	37605	37642	38190	38070	37740	37245	100.144
	3	38063	37715	38166	37950	37664	37996	37837	38079	37415	38738	38417	37961	100.320
	4	37669	38149	37874	38309	37987	37803	37990	37907	37556	38206	38512	37650	100.235
	5	38548	38099	37834	37510	38122	38139	37217	38429	37825	37981	38683	37785	100.358
	6	38368	37507	38011	38560	38619	37964	38514	38624	37294	38118	38387	38396	100.840
	7	38589	37927	38005	38743	38148	38310	38116	38044	38756	37871	38175	38044	100.920
	8	38054	37932	38051	37960	38709	38294	37831	37911	38527	38385	38254	37578	100.647
	9	38023	38035	38031	38871	38247	38218	38076	37758	37763	38501	38404	38311	100.812
	10	37705	37806	38321	37621	38115	38572	38334	38256	38173	38170	38285	38207	100.664
	11	38356	37883	38048	38244	37869	37911	38288	38281	37794	38758	38372	38186	100.758
	12	37779	38615	38700	37957	38132	37973	38615	38570	38144	38069	38457	38125	101.010
	13	37869	38343	38012	37656	38122	38342	38429	37621	38548	38049	37495	38818	100.607
	14	37960	37556	38795	38371	37980	38104	38222	38035	38294	37953	38165	38159	100.671
	15	38638	38235	38275	38077	38052	37704	38542	38912	37959	38112	37630	37628	100.708
	16	37750	38302	38729	37338	38816	38161	38376	37923	38399	37601	38149	37842	100.625
	17	38332	38235	38087	37987	37382	37907	38088	38134	37910	38290	38215	38291	100.508
	18	38050	37687	38239	37696	37975	37682	37803	37822	38023	37725	37969	37699	99.962
	19	38108	38334	37436	37454	37943	38170	37638	37670	37923	37779	38062	38012	99.996
	20	37591	38119	38523	38152	37607	38429	37445	38006	38116	38213	37858	38226	100.383
	21	37960	38389	38027	37785	38370	37646	37960	37440	38663	38036	38248	38015	100.439
	22	38314	38080	37652	38066	37911	38545	37386	38105	38388	37482	37557	38352	100.284
	23	37817	37997	38316	38127	37902	37995	37826	38261	37978	37608	37813	37916	100.222

INAF/UNIRomaTre		S.V.I.R.CO. Observatory - Pressure Corrected Data – October 2017											20 NM-64	
day	hh	00_05	05_10	10_15	15_20	20_25	25_30	30_35	35_40	40_45	45_50	50_55	55_60	h-norm
5	0	38308	37975	38013	37755	38025	38462	37676	37967	38347	37651	38406	38056	100.455
	1	37612	38357	37797	37831	38004	37786	37262	38144	38073	37956	37788	38039	100.023
	2	37674	37677	38088	38206	38128	37956	37542	39079	38072	38151	38357	38181	100.565
	3	38871	38090	37455	37874	38000	37916	37870	38257	37333	38134	37786	37632	100.148
	4	38352	38135	38382	37727	37968	37793	37963	38170	38129	38185	38031	37431	100.379
	5	37630	37269	38151	38291	38136	38380	38636	38224	38471	38084	37548	38078	100.518
	6	37978	38002	38121	38697	38071	37968	38398	37777	38232	38288	37866	38485	100.734
	7	37871	38679	38360	37908	38427	38261	38429	38198	38236	38257	38191	38504	101.051
	8	38391	38488	38043	37964	38207	38269	38163	37663	38021	37745	38183	37937	100.556
	9	38109	37569	38092	38301	38198	38086	38560	38179	37906	38365	38429	37462	100.597
	10	38498	38300	38461	38453	38223	38425	38028	38031	38561	38364	38062	38444	101.167
	11	37968	38425	38663	38578	38834	38266	38259	38552	38241	38210	37776	38053	101.161
	12	38513	37578	38315	38017	38551	38309	38061	37616	37279	38252	38503	37787	100.492
	13	38039	37775	38004	38502	37772	38542	38217	38395	38087	38612	38390	38238	100.887
	14	38233	38144	38103	38377	38588	37538	38463	38151	37872	37808	37553	37623	100.419
	15	38377	38268	38061	37985	37659	37603	38182	37803	38018	37882	38080	37885	100.277
	16	38215	38115	37818	37747	37605	38374	37107	37216	37377	38185	37962	36883	99.573
	17	37965	37884	37608	37502	37976	38092	37938	37503	37542	37960	37611	38264	99.847
	18	37639	37988	37421	38140	38064	37855	38027	37657	37977	37533	37749	37718	99.829
	19	37880	38190	38457	38084	37903	38004	37623	38420	38263	37805	37939	37118	100.251
	20	37531	37865	37304	37623	37794	37656	38154	37704	37551	37582	38290	37503	99.563
	21	37753	37887	38171	37736	37908	37491	37799	38281	37253	38154	37848	38012	99.944
	22	38359	38258	37783	37477	37623	37411	37781	37627	37810	38091	37728	37905	99.848
	23	37404	37928	37610	38143	37777	37958	37741	37851	37961	37260	38165	37789	99.789
6	0	37262	37758	38422	37404	37622	37549	37317	38315	37887	37832	37492	38135	99.645
	1	38093	37777	38161	37874	38031	38364	38106	38573	37725	38350	37643	37792	100.428
	2	37914	37543	38022	37996	37716	38178	38438	37668	37984	37924	37651	38120	100.134
	3	38534	38471	37988	37783	38255	37761	37954	38301	38108	38068	37485	37962	100.467
	4	37705	38039	37907	38357	37879	38563	38316	37878	38129	38078	37987	37843	100.470
	5	37712	37765	37510	37334	38351	38108	37816	37498	38886	37943	37179	37199	99.726
	6	37949	37701	37412	38210	37919	38155	38252	38183	38022	38697	38218	37704	100.413
	7	38259	38341	38128	38454	38045	37572	37481	38518	38161	37409	38720	37905	100.538
	8	38062	38115	37888	37658	37832	37931	38110	37737	38097	38272	37524	38441	100.247
	9	38198	37878	37754	37877	38099	37955	37948	38069	38199	37550	37740	37633	100.078
	10	37922	38042	37790	37557	38126	38439	38167	37736	38241	38330	37690	38052	100.340
	11	37276	38508	38230	37564	38127	37963	38056	37703	38093	38112	38212	37769	100.235
	12	37725	38464	37675	37915	37988	38059	38286	38344	37728	37931	37829	37992	100.306
	13	37808	38128	37270	37941	37989	37717	38531	37807	37993	37912	37910	38029	100.108
	14	37867	37782	38030	37702	37799	37798	38115	37692	38131	38447	37957	37828	100.133
	15	37896	38272	38505	37998	38445	38101	37933	38846	37312	37872	37973	37598	100.485
	16	38345	38618	37687	38160	38028	37822	38367	37866	38008	38170	37917	37992	100.536
	17	38072	37718	37744	37787	37443	37732	37869	38082	37938	38779	37794	37576	99.997
	18	37541	38016	38198	37983	37748	37893	37356	37864	37983	37668	37629	37912	99.834
	19	37376	38167	38037	37500	38033	37802	37384	38010	37824	38048	37462	37381	99.666
	20	37376	37895	38021	37730	37412	37552	37247	37574	37000	37757	37472	37438	99.106
	21	38048	37271	37944	38171	37932	38080	37936	37496	37222	37983	36972	38181	99.712
	22	37189	37918	37691	38231	37378	37813	36869	37658	37293	38002	38461	37491	99.439
	23	37277	37983	37563	37996	37714	37843	37373	37468	37992	37970	37558	37311	99.451

INAF/UNIRomaTre				S.V.I.R.CO. Observatory - Pressure Corrected Data – October 2017								20 NM-64		
day	hh	00_05	05_10	10_15	15_20	20_25	25_30	30_35	35_40	40_45	45_50	50_55	55_60	h-norm
7	0	37585	37787	38067	37566	37919	37909	37258	38023	37078	37358	37740	37475	99.400
	1	37830	38195	38022	37724	37739	38079	37984	38055	37231	37653	37467	37890	99.852
	2	37346	38219	38031	37716	37651	38001	37854	37230	38300	37992	38015	37853	99.925
	3	37804	37692	37495	38364	37589	37551	37991	37766	37964	37936	38380	37882	99.971
	4	37865	37503	38174	37271	37789	37858	38022	37597	38074	38272	37599	38074	99.901
	5	37180	37500	37859	37942	37780	38152	38753	37673	37415	37926	38561	37498	99.932
	6	37954	38127	37553	38177	37741	38360	38587	37952	37890	37869	38423	38086	100.478
	7	38515	37694	37968	38565	38210	37869	38066	38533	37671	38106	37314	38567	100.558
	8	37895	37929	38162	37602	38486	37270	37887	38011	37807	38316	37893	38081	100.175
	9	38310	37674	38303	38024	38310	37877	38598	38144	37844	37471	38047	38171	100.490
	10	37706	38004	37939	38025	37401	37909	37515	38403	38559	38381	38279	37937	100.332
	11	38207	37881	37963	38317	37822	38354	38483	38054	38654	37954	38568	38617	100.953
	12	37985	37741	38590	38112	38352	38688	37395	37894	38111	38383	37822	37898	100.533
	13	38318	38309	37973	37795	37778	38177	37812	38136	37994	37868	37948	37383	100.208
	14	37589	38236	37560	38068	37833	37868	37878	37719	37494	38305	38090	37370	99.882
	15	38130	38429	38163	38029	38275	37768	38076	38263	37880	37896	38464	37789	100.575
	16	37956	38412	38440	38076	38024	38078	38207	38498	37861	37954	38087	37738	100.613
	17	37723	37756	38347	37804	38146	38155	37614	38617	38020	37857	37383	37893	100.169
	18	38320	37587	37923	37390	37892	37683	37835	38028	37415	37683	37333	37167	99.497
	19	37976	37518	38234	38263	37997	38363	37498	38206	37379	37179	37803	38181	100.012
	20	38067	37378	37931	37800	38028	37811	37493	37432	37656	37236	38277	37685	99.614
	21	37718	37394	37897	37802	37660	37801	38007	37825	37388	38076	38206	38182	99.871
	22	37261	37445	37270	37522	37630	37518	37490	37829	37740	37663	37346	37359	99.016
	23	37161	37269	37551	37811	37522	37487	38270	37762	38018	38052	37815	37542	99.497
8	0	38055	37081	37478	38266	38110	37946	37706	37334	37206	38171	37036	37496	99.408
	1	37438	37793	37216	37651	37167	37859	37771	38070	37463	37958	37959	37497	99.406
	2	37563	37762	37475	37706	37809	37468	37915	37091	37376	38085	37765	38080	99.461
	3	37861	37456	37472	37504	37858	37898	38213	37311	37379	37241	37750	37513	99.320
	4	37670	37290	37160	37691	37466	37954	37689	36955	37131	37794	37032	37002	98.744
	5	37734	38182	37984	37614	38133	37754	37845	37870	37950	37849	37573	37752	99.933
	6	37615	37705	37780	37762	37822	38048	38146	37575	38287	37788	37663	37960	99.913
	7	38371	38310	37713	38152	37689	37862	37651	38001	37787	37934	37872	37665	100.101
	8	37873	38217	37797	37692	37573	37854	37696	38154	38080	38028	37959	37937	100.069
	9	37650	37931	37930	37816	37472	38025	37760	38769	37950	37972	38183	37622	100.118
	10	37933	38330	37640	38229	37321	38156	38346	38124	38172	37826	37835	38247	100.355
	11	37469	37509	37576	38352	37823	37928	37793	37608	37992	38098	38069	38488	100.036
	12	38085	38459	37668	37633	38061	38340	38212	37378	37619	37842	37626	37480	99.968
	13	37859	37937	37295	38212	38202	38130	37750	37973	37285	37428	37895	38162	99.908
	14	37987	37478	37608	37204	37861	37428	37745	37530	37910	37527	37675	36775	99.160
	15	37949	37657	38080	37775	38416	37244	37771	37649	37788	36502	37530	37808	99.477
	16	37619	37198	37778	37381	38116	37595	37563	37675	37827	37773	37946	38145	99.575
	17	37548	38012	38143	37463	37780	37814	37969	37226	37212	37577	37912	38179	99.624
	18	38238	38232	37141	38257	37442	38071	37530	37762	37614	38257	37872	37733	99.913
	19	37398	37619	37165	37948	37990	38457	38081	37742	37047	37886	37335	37347	99.444
	20	37616	37894	37904	37306	37909	37743	37573	37476	37863	37547	37929	37543	99.507
	21	37542	37657	38127	37454	38189	38055	37349	37964	36931	37343	37742	38019	99.522
	22	37409	37494	37588	37328	37188	37492	37835	37851	37408	37889	37527	37533	99.119
	23	37474	37398	37406	37392	37883	37509	37281	37492	37441	37548	37797	37188	98.958

INAF/UNIRomaTre			S.V.I.R.CO. Observatory - Pressure Corrected Data – October 2017										20 NM-64	
day	hh	00_05	05_10	10_15	15_20	20_25	25_30	30_35	35_40	40_45	45_50	50_55	55_60	h-norm
9	0	37581	37695	37653	37818	37757	38027	37363	37479	37223	37599	37791	37654	99.354
	1	37620	37185	38249	37651	37928	37619	37298	37888	37837	37670	37870	38109	99.644
	2	37455	37248	37768	38171	37859	37805	37546	37668	38097	37651	37313	37717	99.506
	3	37580	37806	37746	37869	37326	38312	38256	37492	38302	37376	38098	37922	99.899
	4	37209	38141	37675	37523	38042	37248	37659	37804	37539	37879	37695	37654	99.455
	5	37590	37525	37937	37287	37719	37269	38142	37951	37438	38141	38444	37534	99.655
	6	38167	37506	37941	38208	38237	37839	38354	37966	38150	37822	37727	38117	100.328
	7	38412	38118	38177	38165	37982	37844	37343	37839	38228	38315	37872	37852	100.353
	8	38004	38555	38122	37693	38668	37825	38386	38072	37938	38109	38189	38302	100.730
	9	38053	37704	37850	38021	38104	37844	38082	38164	37866	38030	38158	38172	100.330
	10	38199	37606	37908	38336	37887	38057	38052	38069	37871	37695	37703	37367	100.045
	11	37890	37872	37673	38196	38133	37368	37339	37806	38303	37845	37878	37842	99.912
	12	37616	38243	37910	37668	37852	38235	37602	37727	37926	38190	37444	37159	99.786
	13	37513	38108	38071	37904	38052	37935	37883	37646	37763	38073	37991	37801	100.042
	14	37544	37272	38081	38248	38112	37694	37507	38186	38283	37679	38209	37890	100.035
	15	37458	38194	37640	37597	37651	37930	37656	37699	37182	37836	37588	37586	99.444
	16	37403	37725	37792	37556	37836	37879	37329	37621	38099	38325	38278	37852	99.813
	17	37327	37849	37888	37543	38020	37971	37593	37960	37357	37738	38188	37752	99.701
	18	37233	37521	37889	37580	37833	37451	38348	37926	37844	38103	38259	38243	99.930
	19	37991	37922	37784	37367	37662	37770	37337	37797	37298	37060	37984	38301	99.500
	20	37677	38019	37493	37871	38333	37424	37827	37968	37487	37969	37498	37548	99.685
	21	37756	37485	37994	37932	37774	37835	38468	37292	37681	37648	37517	37590	99.654
	22	37898	37840	37915	37512	37208	38157	38114	37610	38093	37716	37693	37739	99.769
	23	37744	37562	38386	37756	37411	37302	38214	38077	38352	37969	37804	37441	99.884
10	0	37739	38286	37152	37638	37748	37715	37787	37078	37772	37470	37769	37715	99.406
	1	38075	38054	37773	37858	37907	37947	37719	37518	37582	37463	37972	37926	99.835
	2	37875	37813	37804	38093	37660	37758	37666	38216	37913	37966	38368	37790	100.083
	3	38215	38022	38043	37975	37691	38129	37561	38029	37640	38093	37436	37643	99.985
	4	37520	37654	37716	38309	37601	37461	37754	37352	38291	37656	37484	37565	99.520
	5	37863	37693	38112	38328	37360	37969	38331	37836	37558	37723	37950	38286	100.102
	6	38212	37687	38037	38415	37930	38000	38215	38059	37630	38161	38518	38247	100.565
	7	38490	37405	38195	38238	37990	37453	37572	38204	38011	37808	38206	38072	100.241
	8	37548	38310	38066	37215	37842	38053	38179	37959	37676	37696	37858	37498	99.859
	9	37532	37837	38642	38191	37804	37563	37695	37806	38169	38352	38289	37928	100.278
	10	38011	38112	37560	38117	37545	38178	38468	37581	38029	38085	37756	37870	100.169
	11	37787	38369	37790	38187	37792	37885	38020	38018	37282	37973	37775	38067	100.088
	12	37828	37609	38021	38165	38297	37965	37988	38000	38064	38046	38005	38051	100.328
	13	37911	37901	38248	37938	37976	38015	37679	37965	37411	37650	37687	38262	100.021
	14	38001	38061	37847	37818	37804	38541	37615	38127	37624	37794	37731	38641	100.233
	15	37815	38149	38027	37752	37703	37948	37856	37774	37951	38201	37282	38226	100.030
	16	37976	37825	37816	37786	38017	37665	38041	37376	37934	37618	37660	38003	99.818
	17	37732	37649	38430	37645	37649	37953	37438	37323	38484	37598	37884	38190	99.875
	18	37639	37496	38042	37832	38393	37683	37730	37157	38134	38131	37470	37940	99.802
	19	37243	37575	37560	37915	38313	37842	38457	38622	37652	37994	38101	37707	100.096
	20	38286	37933	37985	38054	37621	38148	37369	38087	37825	37670	37755	37915	100.023
	21	37827	37562	37844	37844	38112	37621	37675	37242	37664	38062	37889	38042	99.745
	22	37754	37698	37869	38124	37770	37328	37922	37822	38030	37884	37823	37991	99.883
	23	37970	37696	37784	38085	37675	38239	37815	37928	38437	37860	37493	38133	100.125

INAF/UNIRomaTre		S.V.I.R.CO. Observatory - Pressure Corrected Data – October 2017											20 NM-64	
day	hh	00_05	05_10	10_15	15_20	20_25	25_30	30_35	35_40	40_45	45_50	50_55	55_60	h-norm
11	0	37797	38201	38098	37426	37548	38070	37278	37941	38213	37889	37680	37998	99.911
	1	38388	37533	37471	37786	38468	38107	37693	37739	37994	37560	37650	37664	99.892
	2	37689	37353	38061	37870	37823	38515	37141	37801	37846	38031	37536	37845	99.772
	3	37591	37916	37893	37551	37573	37400	37400	37455	37681	37224	37582	37641	99.200
	4	38486	37788	37743	38193	37670	37750	38301	37865	37767	38203	38161	38223	100.353
	5	38283	38779	37802	37960	38174	37400	37874	37677	38149	37833	38013	37759	100.255
	6	37716	37792	37750	38410	37873	37865	38165	37952	37773	37833	37660	38005	100.055
	7	38255	37794	37981	38000	37857	37823	38323	37917	37942	38748	38465	38499	100.672
	8	37866	37210	38135	38082	38262	37449	37696	38126	37714	37924	38209	37884	100.003
	9	38174	38373	38230	38088	38025	37728	37830	37715	37737	37977	37606	38003	100.206
	10	38049	38279	37590	37924	37819	37985	37766	38281	38463	37792	37400	37732	100.118
	11	38412	37818	38570	38193	38170	38138	37246	37772	38491	38733	38184	38424	100.793
	12	38156	37493	38007	38130	37794	38405	37731	38410	37783	38080	38294	38299	100.448
	13	37996	38671	37956	38180	37414	37790	37974	37959	37994	37675	37810	37744	100.136
	14	37614	37846	37955	37817	38061	37749	37969	37841	37430	38035	38145	38400	100.069
	15	37877	37789	37729	38287	38321	37703	38004	37916	38004	37978	37898	37929	100.196
	16	38114	38684	37712	38508	38294	38018	38208	38324	37896	38136	37863	38104	100.729
	17	37779	37779	38142	37854	38408	37969	38148	37809	38209	37873	37718	38146	100.283
	18	37577	37742	37743	37641	37876	37597	38053	38227	38114	38251	37887	38403	100.124
	19	38153	37520	37736	37841	37855	38059	38310	38161	38015	37588	38102	37994	100.174
	20	37690	38067	38045	37772	37477	37793	37682	38387	37757	37903	37945	37796	99.949
	21	38029	37822	37636	37732	37758	37864	37545	37786	38384	37668	37717	37721	99.806
	22	37991	38294	37598	37994	37675	37470	37534	37833	37935	37731	38275	37634	99.872
	23	38383	37721	38097	37060	37884	37687	37613	37673	37931	37678	37672	37475	99.633
12	0	37943	37310	38322	37291	38089	38022	37480	37668	37536	37341	37621	37602	99.486
	1	37186	37864	37477	37408	37918	37999	36997	37515	37483	37690	38046	38136	99.379
	2	38046	37528	37810	37727	37470	38052	38130	38177	38082	38418	37667	37854	100.092
	3	38311	37657	37827	37567	37557	37487	37654	38187	37858	37743	38302	37860	99.882
	4	37620	38583	37973	38219	37771	37768	37812	38167	37734	37877	38149	38035	100.256
	5	37663	37406	37646	38362	37932	37700	37986	37881	37457	38069	37742	38177	99.884
	6	37932	38655	37931	38147	38139	37668	37878	37609	37913	38210	38151	38334	100.445
	7	36965	38003	38219	38054	37677	38165	38173	38560	37934	37771	37433	37875	100.063
	8	37952	37665	37994	37458	37927	38147	37999	37977	37425	38464	38311	37582	100.078
	9	37929	37882	37525	37644	38007	37587	37903	37743	38029	37832	38091	37583	99.826
	10	37742	38203	38057	37719	38437	38123	37196	37850	37633	38143	38039	38123	100.159
	11	38098	37894	37943	37979	37895	37927	37658	37628	37916	38444	38056	38327	100.268
	12	38441	37775	37686	37846	38019	37570	38086	37819	37579	37626	38066	38004	99.994
	13	37573	37589	37631	38088	37728	38359	38344	37824	37498	38265	37984	37952	100.064
	14	37897	38052	37791	38370	38241	37893	37489	37678	37609	37788	37882	38127	100.060
	15	37627	38129	37791	37600	37104	38247	37880	37261	37869	38253	38085	38483	99.953
	16	37623	37997	38341	38149	37462	38231	38669	37965	37924	37986	37883	37809	100.329
	17	37558	37624	37944	37644	38227	38087	37996	38251	38050	38211	37438	37633	100.026
	18	38401	37598	38043	38235	37830	37731	37604	38264	37616	38316	38388	37481	100.212
	19	38294	38168	37844	38464	38011	37787	37978	37753	37853	38154	37563	38266	100.350
	20	38026	38009	38453	37924	37696	37471	38050	37604	37638	37857	38242	37653	100.017
	21	37661	37478	37837	37846	37860	38299	37479	37423	37944	37609	37847	37688	99.654
	22	37479	37837	37503	37851	37775	38019	37770	37642	38250	38263	37420	38221	99.886
	23	37886	37427	37223	37822	37566	37551	37699	37238	37502	37588	37920	37315	99.162

INAF/UNIRomaTre		S.V.I.R.CO. Observatory - Pressure Corrected Data – October 2017											20 NM-64	
day	hh	00_05	05_10	10_15	15_20	20_25	25_30	30_35	35_40	40_45	45_50	50_55	55_60	h-norm
13	0	37655	38090	37900	37828	37465	37641	37976	37777	37215	37408	37454	37723	99.468
	1	37624	37898	37389	37524	37968	36880	38090	37738	37451	37560	37255	37641	99.224
	2	37246	38394	37767	37399	37595	37912	37890	37540	38075	37392	37737	37986	99.645
	3	37481	37661	37317	37440	38336	37567	38125	37781	37821	37831	38194	37618	99.698
	4	37963	38106	37617	38105	37597	37506	37781	37243	37720	37547	37477	37792	99.540
	5	37945	38025	37662	37638	38023	37157	37868	37341	37945	38114	37578	37414	99.596
	6	37483	37683	37545	37973	37745	37924	37653	37224	37512	38417	37786	37536	99.545
	7	38000	37553	36768	37261	37537	38124	38003	37802	37699	37870	37450	37794	99.409
	8	37947	37073	37702	37596	37565	37864	37965	37638	37879	38134	38027	37536	99.644
	9	38257	37690	37709	37989	37680	38137	37758	37204	37481	37840	38088	38290	99.907
	10	38038	38051	38257	37657	37632	37783	37748	37838	37867	37907	37191	37746	99.817
	11	38046	37734	38379	37730	38447	37968	37971	37510	37721	38387	37895	37835	100.236
	12	37514	37920	38540	37669	37098	37743	37766	37601	38067	37632	37846	37140	99.558
	13	37981	38029	37989	37849	38067	37942	38123	37648	38054	37925	38446	37751	100.277
	14	37372	37953	38491	37510	37526	37849	37853	37647	38375	38287	38426	38141	100.194
	15	38119	38307	38124	37770	38208	37457	37660	37916	38060	37275	37835	37856	100.009
	16	37729	37609	37435	37500	37093	38274	37861	38013	37704	37134	37411	37595	99.299
	17	37696	37647	38004	37804	37992	37496	37376	37519	37586	38659	37889	38021	99.811
	18	37801	38316	38173	38029	38005	38456	37571	37402	37224	37981	37454	37464	99.853
	19	37602	38081	37054	37714	37334	37800	37530	37184	37761	37049	37504	37338	98.989
	20	37880	37422	37758	37607	37809	37097	37974	37169	37762	38080	38025	37943	99.556
	21	38204	37908	37813	38135	38010	37685	37636	37511	37042	37340	37501	37451	99.492
	22	37526	37525	37259	37595	37939	37724	37715	37706	37479	37887	37552	37400	99.288
	23	37841	38005	37640	37576	37617	37697	38193	37665	37389	37308	37648	37855	99.536
14	0	37571	37627	37820	38531	37759	37897	37553	38137	37946	37868	37464	37499	99.807
	1	38367	37797	38290	37252	37789	38360	37958	37919	38680	37710	37636	37858	100.236
	2	37275	38388	36804	38124	37920	37474	38397	38119	37947	38143	37517	37562	99.807
	3	38007	38325	37998	37726	37833	37302	37898	38217	37645	38047	37335	37737	99.895
	4	37954	38083	37733	37210	37596	37904	38168	37669	37853	38364	37816	37687	99.888
	5	37644	38049	37439	38231	38407	38324	37836	37944	38289	37939	37769	38231	100.342
	6	38125	37643	37929	37913	37950	38111	37946	37773	38406	38460	37948	37397	100.232
	7	38482	37754	37527	37695	37870	38099	37406	38577	37934	37397	37755	37902	99.968
	8	37630	37975	37617	37381	37836	38131	37588	37706	38056	37399	37828	38030	99.699
	9	37802	37711	38115	37920	38104	37929	38048	37656	37400	38011	37782	37553	99.887
	10	37764	37486	38021	37778	38099	37538	37690	38150	37475	37708	38399	37922	99.887
	11	37663	37708	37467	38235	37307	36869	38105	37724	37997	37819	38156	37892	99.648
	12	37135	38036	38204	37865	37889	37585	37542	38403	37928	38202	38764	38017	100.226
	13	38149	37163	37570	37758	37300	37798	37759	38204	37318	37878	37743	37389	99.447
	14	38003	37872	38134	38014	37539	37046	37410	37669	38155	37804	37538	37638	99.621
	15	38369	37572	37392	38182	38046	37598	37490	37629	37757	38020	38229	38007	99.944
	16	38007	37807	37843	37050	37889	38339	37676	37819	38173	38000	38035	38129	100.049
	17	37896	37310	38162	38038	37223	37430	37362	38103	37697	37410	37011	37589	99.270
	18	37711	37816	37770	37700	37527	38041	38430	37645	37645	37825	37975	37955	99.888
	19	37814	37598	37630	38134	37889	37031	37628	38326	38006	38396	38050	38043	100.000
	20	37424	37909	37901	36893	37790	37940	37242	38099	38144	37804	37530	37991	99.587
	21	38232	37739	37480	37366	37120	37988	37798	37771	38071	37829	37039	37247	99.369
	22	38066	37288	37457	37672	37840	37677	37569	38260	37799	37510	37722	37840	99.594
	23	37363	38200	37597	37656	37765	37411	37579	37371	36977	37732	37066	37636	99.078

INAF/UNIRomaTre		S.V.I.R.CO. Observatory - Pressure Corrected Data – October 2017											20 NM-64	
day	hh	00_05	05_10	10_15	15_20	20_25	25_30	30_35	35_40	40_45	45_50	50_55	55_60	h-norm
15	0	37247	37487	36781	37201	37499	37466	37399	37852	37793	37924	37784	38198	99.140
	1	38503	37879	37450	37720	37862	37785	37513	37619	37793	37579	37614	37890	99.705
	2	38085	38072	37536	38121	38066	37711	37902	37430	37580	37466	38438	37355	99.828
	3	37946	37567	37319	37791	38288	37961	37905	37864	38082	37668	37594	38097	99.898
	4	37710	37614	38001	37523	37870	37669	37706	37524	38036	38517	37526	37420	99.686
	5	37803	38450	38451	38095	38715	37924	38501	37808	37988	38200	37509	37946	100.626
	6	37977	38125	38358	37461	37601	37626	38145	37905	38126	38239	37323	38670	100.222
	7	37815	37910	37334	37986	37662	37554	38432	38252	38188	37516	38263	38528	100.197
	8	37732	37967	37798	37634	37950	37640	38246	37996	38314	37882	38303	37963	100.193
	9	38101	37956	38007	38226	37759	38516	37678	37818	37654	38275	37225	38510	100.260
	10	37892	38098	37614	38150	37993	37812	38111	37813	38015	38160	38011	38302	100.314
	11	37816	37873	38531	37978	38243	38109	38331	38333	37722	37537	38310	37585	100.401
	12	38105	38097	38047	38410	37934	38071	37975	38158	37815	37864	38378	37624	100.425
	13	37721	37513	37919	38060	37813	38181	38234	38517	38013	38150	38078	37703	100.299
	14	38143	37505	38575	38071	37966	37900	37643	38123	38611	37809	37801	37818	100.312
	15	37902	37547	38342	38101	37678	38089	37739	37825	37765	37468	37623	37582	99.805
	16	38099	37235	38077	37784	38308	37423	38337	37920	37190	37517	37387	37436	99.597
	17	37833	37724	38331	38052	38167	37778	37390	37625	37924	37779	37973	39200	100.270
	18	38149	37782	38178	37809	37473	38018	37823	37266	38100	38100	37991	37952	100.021
	19	37926	37294	37916	37982	38453	37544	37856	37682	37805	37871	37365	38249	99.868
	20	37806	37559	37995	37432	38064	38032	37867	37850	37657	37509	37589	37877	99.713
	21	37677	37983	37357	37789	37442	37037	38590	38206	37354	37312	38015	37546	99.508
	22	37209	37299	38280	37894	37843	37868	37268	37506	37663	37778	37396	37891	99.417
	23	36960	37191	37963	37460	37402	37773	37093	37826	37857	37883	37809	37486	99.155
16	0	37337	37237	38303	37702	37754	37678	37786	37445	37528	37621	37860	37635	99.415
	1	37545	37308	37631	38189	37769	37993	37683	38548	38598	38230	37969	38397	100.290
	2	37665	38079	37874	38354	38377	38146	37735	37450	38168	37908	37826	38041	100.237
	3	38297	38063	37456	37706	37840	37642	37980	38170	37960	37433	37642	37624	99.839
	4	37779	37871	37405	38306	37315	38157	38023	38007	37940	37947	37773	37978	99.990
	5	38225	38087	37605	37710	37558	37601	37445	38779	38179	38445	38029	37588	100.155
	6	38232	37638	37261	38128	37798	37930	38008	37944	37812	38263	38087	37539	100.021
	7	38087	37861	37835	37298	37828	37614	37888	37868	37678	37703	37953	38038	99.803
	8	37972	38075	37677	38085	37939	37915	38347	38110	38260	38022	37928	37977	100.388
	9	37755	38612	38192	37827	37833	38471	38218	37888	37759	38302	38438	37989	100.602
	10	37610	37760	37715	38236	38328	38393	38484	37929	38125	38344	38085	38274	100.603
	11	38506	37923	37620	38042	37703	37939	37774	37821	37860	38329	38145	37843	100.211
	12	38432	38296	38018	37681	37648	37829	37588	38521	38029	38196	37961	37694	100.296
	13	37899	37936	38127	38307	37682	37927	38007	37742	37850	38219	37995	38423	100.345
	14	37720	37468	37790	37452	37652	38012	38034	37693	37804	37686	37626	37954	99.636
	15	38275	37568	37666	37315	37961	38142	37541	37867	37737	38600	37889	38046	100.014
	16	37069	37827	38091	38190	38174	37496	37981	37489	37684	37092	37360	38104	99.563
	17	38201	37986	38590	37588	37488	37751	38247	38174	37831	37773	37924	38506	100.333
	18	37755	37078	37501	37848	38361	37910	37759	37199	37947	37396	37773	38047	99.566
	19	38268	37513	37496	37504	37975	38079	37806	38606	37254	37803	37738	37731	99.830
	20	37721	37846	37852	37832	37714	38272	37857	37599	36933	38118	37680	37743	99.697
	21	37784	38164	37445	38192	37873	37547	37871	37805	37493	38020	37752	37344	99.724
	22	37661	37819	37430	37650	38066	37911	37393	36947	38132	38051	37976	37826	99.629
	23	37610	37374	38057	38570	37824	37433	37816	38115	37740	38059	37545	37960	99.902



INAF/UNIRomaTre		S.V.I.R.CO. Observatory - Pressure Corrected Data – October 2017											20 NM-64	
day	hh	00_05	05_10	10_15	15_20	20_25	25_30	30_35	35_40	40_45	45_50	50_55	55_60	h-norm
17	0	37265	37228	37899	37353	37560	38050	38085	37264	38099	37584	37670	37868	99.421
	1	38096	37932	37799	38274	38308	37585	37892	37553	38009	37911	37648	37552	100.003
	2	37846	38743	37639	37632	37736	37534	37609	38168	38257	38103	38200	37698	100.136
	3	37662	38080	38620	38168	37605	37895	38006	37962	37984	38088	38736	38537	100.616
	4	38188	37531	37768	38728	37865	38146	37516	38564	38162	37961	38474	38146	100.551
	5	37597	37854	37664	38157	38118	38357	37970	38114	38002	38247	37892	38366	100.394
	6	37366	37836	37890	37953	38849	38328	37625	38104	38534	38292	37894	37776	100.418
	7	38634	38102	38406	38287	37893	38060	37717	37650	38087	37457	38482	38292	100.555
	8	37484	37830	38056	38670	38334	38161	37901	38121	37856	38845	38104	37991	100.618
	9	37952	37884	37904	38852	38300	38112	38221	37703	38057	38454	38506	38170	100.786
	10	37478	38506	38216	38114	38211	38288	38760	37907	37938	38354	37890	38391	100.772
	11	38470	38437	38100	37702	37969	38133	38630	38643	38193	38061	38191	38632	101.015
	12	38549	38221	37596	37715	38018	37642	38240	38155	37878	38559	37877	37573	100.325
	13	37594	37957	37770	37901	37832	37886	38435	38169	37681	38526	38368	38588	100.476
	14	37688	37880	38292	38211	37768	37890	38183	38092	38124	38303	38493	38239	100.576
	15	37550	37611	38036	38346	37648	38608	37801	37648	37415	37947	38297	38406	100.169
	16	37571	38065	38093	38550	37469	37723	38471	38143	38550	37482	38081	37909	100.344
	17	38167	37935	38519	37485	38245	37620	37976	37573	38232	38235	37605	37806	100.187
	18	38464	37647	38303	38237	38416	38189	38899	38064	38446	37904	38229	37513	100.829
	19	38134	38012	37851	38326	37592	38057	37983	38054	38068	37860	37732	37865	100.217
	20	38421	37791	37934	38091	38380	38170	38069	37977	37701	38455	38280	37471	100.483
	21	37730	38032	38181	37884	38534	38164	37648	37682	37953	38097	38229	38343	100.425
	22	37981	38047	37874	37630	37947	38106	38196	38219	38225	37913	38437	38011	100.449
	23	37753	38047	37872	38180	38075	37810	37693	38017	37972	38448	38183	38372	100.413
18	0	38053	37452	37871	38103	38453	38207	37725	37547	38230	37957	37868	37746	88.179
	1	38228	38400	37869	37641	37914	37283	38650	37932	37892	38318	37639	38198	88.275
	2	38020	37941	37797	38256	38247	38655	37590	37695	38408	38093	37707	38184	88.474
	3	38261	38444	37560	38432	38163	38901	37475	38525	37595	38363	37696	38601	88.585
	4	37912	37787	37883	37910	37584	38616	38348	38090	38186	38545	38124	38673	88.583
	5	37826	37968	38282	38443	38504	37821	38429	38368	37907	38044	38187	38863	88.739
	6	37882	37674	37915	37412	38276	38520	37641	38047	37929	38007	38037	37961	88.062
	7	38024	38112	38426	38088	38121	38269	38338	38672	38166	38107	38158	38383	88.829
	8	37793	38119	38035	38198	37811	38034	38623	38214	38037	38447	38328	38299	88.598
	9	37997	34111	33555	33419	33411	33856	33657	33550	33627	33652	33445	33826	88.634
	10	32949	33696	33252	33467	33316	33585	33339	33444	33203	33139	33936	33204	88.081
	11	33261	33373	33133	33062	33833	33537	34158	33346	33526	33999	33919	33816	88.615
	12	33325	33437	33555	33470	33684	33513	33650	33616	33620	33875	33256	34202	88.670
	13	33575	33704	33302	33492	33651	33464	33832	33300	33753	33854	33492	33910	88.695
	14	34068	33034	33480	33210	33476	33174	33287	33593	33882	33479	33658	33364	88.340
	15	33337	33512	33264	33599	33593	33339	33422	33867	34035	33823	33250	33498	88.521
	16	33676	33806	33625	33565	33680	33454	33779	33453	33763	33431	33280	32871	88.489
	17	33386	33903	33605	33534	33428	33728	33615	33598	33641	33364	34226	33859	88.820
	18	33976	33490	33401	33444	33601	33371	34090	33649	33902	33615	33446	33305	88.687
	19	33619	33214	33517	34247	33859	33907	33453	33510	33228	33690	34039	33591	88.817
	20	33992	33572	33229	33143	33708	33486	33720	33747	33437	33804	33783	33553	88.660
	21	33411	33296	33709	33915	33412	33621	33721	34096	33831	33324	32912	33588	88.589
	22	33365	33780	33594	34180	33748	33507	33685	33671	33766	33598	33469	33956	88.915
	23	32996	34123	33430	33637	33639	33591	33759	33504	33954	34074	33505	33649	88.812

INAF/UNIRomaTre			S.V.I.R.CO. Observatory - Pressure Corrected Data – October 2017											20 NM-64	
day	hh	00_05	05_10	10_15	15_20	20_25	25_30	30_35	35_40	40_45	45_50	50_55	55_60	h-norm	
19	0	33534	33694	33506	33473	33299	33647	33467	33790	33260	33751	33877	33866	73.028	
	1	33544	33825	33707	33688	33546	33516	33832	33348	33768	33595	33959	33705	73.188	
	2	33746	33969	33668	33265	33407	33169	33479	33390	34126	33472	33417	34174	73.052	
	3	33607	33788	33201	33276	33974	33510	34132	33627	33369	33236	33279	33652	72.935	
	4	33335	33676	33380	33819	33106	33979	33748	33671	33759	33540	33674	33560	73.045	
	5	33303	33666	33544	33103	34284	33625	34191	33597	33665	34146	33425	33669	73.221	
	6	34014	33543	33737	33898	33677	33181	33920	34186	33973	33553	34260	34153	73.561	
	7	33469	33803	33346	34502	33719	33739	33903	33617	34107	33898	34087	33758	73.535	
	8	34036	34015	34083	33388	34332	33712	33637	33878	33509	33907	33419	33183	73.378	
	9	34008	32981	33936	33760	33682	33542	33499	33495	33219	34041	33694	33736	73.108	
	10	33797	33390	33832	33476	33454	33891	33433	33686	33505	33586	33862	33639	73.100	
	11	34005	33917	33914	33904	33113	33971	34071	33570	33441	33755	32998	33667	73.246	
	12	33802	33338	34146	33987	33834	33599	33689	33361	33462	34149	36907	38102	73.266	
	13	38466	38217	37733	37854	38086	38245	38307	38441	38529	38149	37623	38462	72.874	
	14	37904	37832	38338	38491	38079	38226	38019	38092	38492	38302	38410	38513	73.173	
	15	37586	38076	38428	38615	38266	38000	38681	38513	37850	37690	38243	37978	72.991	
	16	38289	38018	38819	37880	38571	38116	37831	38330	38412	38364	37813	38292	73.238	
	17	38219	38097	38503	37978	38890	38639	38644	38321	37874	38175	38137	38037	73.170	
	18	39063	38169	38774	37956	38342	38692	38275	38241	38374	38396	38287	38194	73.476	
	19	38117	38043	38596	38498	38236	37843	38453	38231	37960	38305	38468	38479	73.292	
	20	38641	37948	37636	38213	38421	38209	38711	38073	38244	37943	38504	38499	73.219	
	21	38397	38021	37227	38206	38192	38380	38630	38100	37694	37835	38629	38421	72.980	
	22	38011	38553	38449	38126	38230	38156	38436	38091	38790	38271	38566	37857	73.331	
	23	38464	38976	37732	38070	38012	38633	38062	38190	38041	38104	38265	38196	73.113	
20	0	38327	38402	38472	38532	38559	38297	38076	38061	38403	38079	38083	38137	101.076	
	1	38100	38223	37449	38285	38273	38597	37885	38243	38321	38606	38145	37736	100.730	
	2	38030	38460	38443	38089	38261	38460	38238	38305	38064	38048	38424	37967	100.934	
	3	37806	38660	38228	38535	37969	38500	38227	38707	38878	38453	38102	38502	101.324	
	4	38293	38065	38607	38214	38776	37958	38710	38078	38560	39126	38414	38434	101.472	
	5	38689	38599	38543	38590	38281	38666	38318	38439	38546	38280	38632	38256	101.605	
	6	38159	38329	38252	37844	38120	38364	38248	38324	37851	37943	38412	38258	100.783	
	7	38648	38491	38517	38261	37991	38270	38586	37933	38529	38328	38257	38364	101.239	
	8	38142	37917	38702	38006	37764	37921	38368	38508	38424	38942	38042	38128	100.950	
	9	38297	38289	38181	37686	37496	38428	38246	38226	38420	38394	37793	37987	100.637	
	10	38019	37885	38383	37830	38337	38359	38234	38285	38298	38009	38174	38616	100.855	
	11	38551	37646	37558	38386	38532	37915	37838	38080	37862	38024	38096	37711	100.363	
	12	37982	38357	38333	38423	37959	38266	38175	38286	38118	38349	38726	38365	101.055	
	13	38207	38573	37987	38166	38305	38631	38351	38433	37996	37980	37771	38329	100.921	
	14	38691	37530	38629	38157	38470	38218	38561	37771	37701	38595	38586	37601	100.872	
	15	38658	38396	38398	38403	39028	38833	38191	38267	38591	38227	38277	38149	101.512	
	16	38017	38031	38674	38182	38527	38536	38350	37981	37753	38169	38306	38320	100.946	
	17	38364	37994	38643	38029	37855	37985	37808	38002	38645	38077	38831	38139	100.842	
	18	37990	38821	38293	38228	38912	38585	37984	38440	38142	38298	38142	37704	101.099	
	19	38071	38423	38516	37737	37645	38237	38866	38647	38345	37938	38084	38222	100.921	
	20	38022	38697	37760	38207	37501	38418	38490	38132	37584	38624	37590	37976	100.540	
	21	38322	37893	38326	38019	38279	38363	38710	38124	38062	37650	38357	37937	100.770	
	22	38148	38227	38127	38207	38028	38603	38690	38136	37625	37791	37647	38056	100.603	
	23	38550	38171	37735	38572	38198	37876	37863	38143	37773	38174	38589	38299	100.747	

INAF/UNIRomaTre				S.V.I.R.CO. Observatory - Pressure Corrected Data – October 2017										20 NM-64	
day	hh	00_05	05_10	10_15	15_20	20_25	25_30	30_35	35_40	40_45	45_50	50_55	55_60	h-norm	
21	0	38714	38590	38243	37957	37928	37554	38279	38125	37874	38139	37773	38363	100.653	
	1	38492	38140	38129	38695	37878	38356	38736	38456	37994	37962	37575	38445	100.949	
	2	38052	38492	38400	38472	38499	37947	38027	37833	37906	38003	38268	38125	100.765	
	3	38250	38142	38593	38435	37986	38280	38572	37976	38311	38164	37830	38507	100.990	
	4	38417	37880	38495	37747	38542	38042	38047	37808	38748	38011	37542	38243	100.655	
	5	37688	38238	38047	37844	38427	38787	38328	37879	38271	38078	38364	38085	100.768	
	6	38012	38205	38896	38260	38447	38329	37897	37952	38102	37922	38105	38442	100.886	
	7	37860	38549	38245	38280	37817	38564	37858	38507	37509	37835	38102	38738	100.730	
	8	37990	37864	37735	38112	38082	38230	38016	38347	37483	38496	38489	37574	100.412	
	9	38066	37580	37636	37638	38025	38048	37975	37838	38097	37899	37652	38607	100.113	
	10	38160	37642	37788	38059	37568	37824	38316	37847	37877	38536	38230	37861	100.256	
	11	37779	37933	37401	38122	38520	38675	38199	38180	38080	38279	38455	37632	100.596	
	12	38043	38377	38408	38311	38266	38072	38061	38618	37589	38329	38072	37848	100.759	
	13	38514	38692	37917	37910	38348	38088	37694	37950	38396	37752	38910	37461	100.679	
	14	38145	38202	38148	38242	37575	38727	37903	37661	38295	38057	37987	38107	100.551	
	15	38029	37531	37967	38603	38164	38117	37866	38307	38162	38186	38542	38226	100.694	
	16	37883	38496	38026	37506	38299	37887	37846	37662	38556	38349	38084	37724	100.390	
	17	37979	37987	38407	37738	38307	38392	37822	37987	37874	38522	37670	38236	100.523	
	18	38115	38227	37927	38318	37960	38577	38433	37984	37949	38023	37973	38219	100.696	
	19	37816	37828	37941	38416	38059	38242	38138	38268	38147	37712	37938	38153	100.464	
	20	37845	38000	38362	37911	37732	37953	38346	37502	38215	38051	37600	38072	100.230	
	21	37572	37938	38227	38578	38792	38030	38362	38188	38195	38212	38203	38318	100.895	
	22	38518	37372	37658	38284	37126	38151	37846	37397	38176	37505	37926	37217	99.698	
	23	37233	37529	37867	38149	37866	37885	37496	37963	38027	37170	37373	37373	99.425	
22	0	37661	37595	37771	38144	38412	38010	37899	37585	38032	37834	38407	37660	100.099	
	1	38071	37557	37771	37611	38687	38667	38591	38050	37736	38221	37817	38410	100.582	
	2	37608	37451	38090	37717	38436	37823	38233	37394	38133	37490	37842	37365	99.788	
	3	37820	37717	38123	37893	37246	37568	37869	38715	38588	37707	38028	37461	100.042	
	4	37562	38081	37817	37498	37644	37579	37614	37799	38330	37905	37958	38423	99.927	
	5	38378	37833	38074	37902	37554	38255	38038	38345	37911	38414	38008	38227	100.527	
	6	38108	37830	37793	38176	37659	37856	38129	38167	38052	37362	37683	37385	99.924	
	7	37453	37711	37885	38219	37635	37828	37552	37628	38127	37985	38135	37458	99.795	
	8	37908	37905	37715	38126	37430	37937	38288	37855	38471	37883	37128	37631	99.941	
	9	37511	37251	37825	38058	38254	38167	38493	37712	37731	38308	37655	38391	100.179	
	10	38149	37871	37371	38020	37884	37811	37648	37480	38479	37560	37621	38107	99.880	
	11	38089	37961	38300	38232	37619	37720	37554	38439	37499	37787	37516	38233	100.088	
	12	38214	37852	37826	38346	37830	37698	38035	37893	38031	38094	37580	37697	100.121	
	13	37823	37752	37655	38239	38203	38248	38300	38108	38894	37720	37784	37655	100.404	
	14	38587	37997	38642	37783	37751	38012	37954	37845	38175	37975	37984	38533	100.592	
	15	37517	38096	37939	38235	38242	38141	38095	38017	37705	38056	37467	38093	100.233	
	16	38397	38178	37980	38298	37466	38144	37871	38396	38421	37709	38115	37499	100.425	
	17	37893	38189	38239	38027	37525	38099	37723	38016	38336	37555	38070	37898	100.225	
	18	38007	37890	38007	37981	37401	38251	38418	38651	37642	38076	37921	39643	100.735	
	19	38085	38157	38205	38047	38358	38121	38235	38348	37875	38028	38350	37811	100.677	
	20	38398	37780	38158	38200	38026	37862	38460	38267	38026	38086	37814	37541	100.456	
	21	37962	37681	38117	38038	37846	37769	37730	38129	38024	38490	37704	37978	100.203	
	22	38086	38428	38240	37932	38078	37479	37952	38198	38581	37692	38064	37903	100.459	
	23	37865	38255	38498	38482	38168	38254	38177	37683	37824	37527	38230	38099	100.554	

INAF/UNIRomaTre		S.V.I.R.CO. Observatory - Pressure Corrected Data – October 2017											20 NM-64	
day	hh	00_05	05_10	10_15	15_20	20_25	25_30	30_35	35_40	40_45	45_50	50_55	55_60	h-norm
23	0	38095	37902	38367	37958	37604	38482	37857	37651	38069	37827	38326	37598	100.254
	1	38166	38665	38137	37617	38050	38279	37205	37843	37888	37623	38071	37825	100.181
	2	38203	37741	37827	38081	37989	38325	38166	37953	37536	37811	37577	38332	100.219
	3	38176	37914	38004	38094	37537	37896	37564	37337	38133	37525	37667	38132	99.876
	4	37872	38326	38070	38061	37715	37450	38042	38184	38203	37705	37997	37826	100.199
	5	38063	38757	37653	37652	38072	37387	37887	37943	38096	38001	38247	38238	100.319
	6	37860	37587	37792	37967	38186	37951	37901	37938	38408	37622	38416	38101	100.260
	7	38171	38261	38281	38271	38136	37981	38366	38034	37823	38136	37909	38168	100.658
	8	37965	38100	38192	37852	37982	38622	38113	38083	38006	37805	38065	38148	100.525
	9	38005	38120	38275	38761	38083	37964	38013	38057	38285	38606	38440	37897	100.871
	10	37999	37866	37726	37638	37933	38406	37380	37855	38461	38131	37871	37893	100.135
	11	37513	38017	38354	37503	38006	37962	37895	38211	37786	37881	38655	38001	100.273
	12	37904	38054	37759	37957	37703	38322	37919	38646	37981	37748	37926	38057	100.315
	13	38234	38752	37855	37386	38532	38055	37815	37710	37857	38303	38688	37743	100.525
	14	37795	37875	38112	38085	37727	37956	38020	38542	37723	38115	38024	37573	100.220
	15	38056	38312	38777	37835	38615	38035	38212	38398	38241	38721	37863	37988	100.992
	16	37992	37383	37883	38136	38434	37877	37904	38030	37739	37997	38155	38088	100.236
	17	38185	38182	37794	38166	38319	37744	37610	37954	38229	37539	38088	38081	100.296
	18	37843	37700	37720	38047	38422	37961	37813	38217	37684	37950	37838	38012	100.145
	19	37704	37959	38268	38103	37635	38040	38210	37922	37724	38072	38298	37600	100.218
	20	38469	38339	38458	37491	37665	37504	37820	38180	37893	38052	37752	37844	100.203
	21	37916	37830	37616	37969	38113	38090	38404	38071	37772	38044	38021	38158	100.321
	22	37882	37972	38055	37749	38619	37923	38152	37692	37594	37826	37993	38132	100.230
	23	37699	37717	38704	37775	38240	38107	37435	38369	38239	38217	37930	38003	100.416
24	0	38140	38214	38102	38393	38061	37816	37867	38190	37943	37431	38089	38548	100.498
	1	37958	38440	38214	37745	38361	38452	38080	37913	38019	38016	38267	38056	100.655
	2	38316	37988	37319	37642	37842	38344	38063	38154	37852	38206	38419	38203	100.397
	3	38441	38324	37963	38000	37856	38371	38126	38095	38274	37673	38452	38168	100.704
	4	37770	38287	37769	38259	38203	37729	38427	38313	38338	38022	38323	38665	100.783
	5	38147	38299	37768	38259	38233	38098	37487	38532	38171	38057	37583	37899	100.438
	6	38319	38234	37724	37629	38399	38270	37857	38376	38469	37428	38514	38136	100.618
	7	37711	38133	37602	38211	37925	38295	38495	37898	37929	37765	38026	37768	100.267
	8	37875	37552	37999	38275	37983	37826	38226	38408	37901	38259	38132	37762	100.364
	9	37638	37289	37866	37773	37792	37799	37801	37659	38290	38458	38221	37961	100.001
	10	37862	38062	38057	38064	38023	37695	37886	37476	37763	38113	37942	37640	100.008
	11	38132	38090	37836	38129	37209	37882	37732	37803	38251	37557	38115	37832	100.004
	12	37367	38444	38103	38115	37685	38296	38301	38255	37904	37511	37196	37479	100.024
	13	37947	37816	37726	38316	37577	37977	38244	37290	37370	38097	38376	38240	100.095
	14	38315	38000	38194	38411	38024	38632	38455	38459	38437	38347	38160	38295	101.141
	15	38398	38204	38229	38146	38455	38427	38338	37872	38325	38065	38170	38521	101.013
	16	37726	37949	37385	37935	37585	37793	38364	38167	37522	37788	37864	38427	99.991
	17	37639	37860	38202	38175	37775	37846	37960	38122	37786	37798	38436	37591	100.142
	18	38252	38200	37832	37641	38160	37828	38153	37990	38458	38039	38096	38194	100.505
	19	38329	38484	38173	38176	38089	38337	38135	37847	38881	38590	38131	38247	101.072
	20	38201	38522	38496	38037	37887	38417	37987	37813	38052	37819	38060	38315	100.673
	21	38222	38474	38684	37836	38123	37942	37845	38220	38128	38113	37627	37889	100.563
	22	37570	37815	37090	38175	37735	37983	37760	37662	38071	38242	38050	38252	99.969
	23	38259	38363	38343	38963	38029	38155	37819	37832	38562	38466	38276	38147	101.027

INAF/UNIRomaTre		S.V.I.R.CO. Observatory - Pressure Corrected Data – October 2017											20 NM-64	
day	hh	00_05	05_10	10_15	15_20	20_25	25_30	30_35	35_40	40_45	45_50	50_55	55_60	h-norm
25	0	38392	37844	37782	37873	38536	38118	38356	38294	37558	37347	38175	37869	100.356
	1	38057	38360	38208	38175	38952	38306	38158	38290	37996	37947	37789	38228	100.863
	2	38185	38214	38181	37956	37717	38156	37670	38105	38150	37564	38165	37944	100.322
	3	38593	37892	37822	37905	38083	38367	37930	38306	38009	38009	38137	38118	100.578
	4	38709	38232	38056	38130	37988	37841	38092	38116	38120	37899	38104	38209	100.649
	5	38382	37858	38709	37759	38495	37873	37844	38419	37485	37977	37581	37808	100.362
	6	37931	38300	38130	37838	37786	37949	38325	38348	38417	38331	38002	37885	100.593
	7	37815	37584	38347	38459	38145	37749	37952	38569	38005	38713	38117	37979	100.635
	8	38275	37816	37901	38220	37752	38282	37985	37839	38111	38354	38327	38051	100.521
	9	38511	37580	37610	37899	37627	37961	37859	38014	37995	37504	37164	37879	99.793
	10	37658	37659	37428	38175	37783	38401	37724	38011	37193	37435	38285	37212	99.652
	11	38439	37820	37757	37761	38679	37523	38600	38139	38200	37973	38340	37448	100.469
	12	38172	37611	37857	37940	37667	38564	37969	37689	37905	38283	37786	37855	100.166
	13	37823	37832	37828	37714	37538	38079	38228	38292	38071	38304	37696	37869	100.160
	14	37795	37709	38074	36978	37794	37763	37898	38082	38239	38402	37831	37602	99.917
	15	37926	37362	38160	37859	38030	38265	38574	37854	37918	37994	38013	37939	100.297
	16	38162	38297	37846	37865	37602	37646	38253	37950	37523	37732	37848	38589	100.169
	17	37958	37838	37451	37891	37955	37810	37957	38114	38275	38465	37821	38326	100.289
	18	37840	38487	37579	38075	37492	38091	37537	38415	37865	38439	37941	37788	100.221
	19	37620	38249	38187	37188	37483	38258	37699	38562	37669	38013	37973	38375	100.160
	20	38070	37666	38062	37554	38124	37660	38238	37750	37243	38520	38089	37907	100.074
	21	37982	37973	38382	37102	38180	37944	37985	37852	37392	37732	37845	37692	99.894
	22	38258	38074	37977	37740	37678	37457	37922	37869	38674	37585	37919	38425	100.227
	23	37759	37744	38130	38311	37957	37712	37630	38044	38569	38197	38013	38172	100.372
26	0	38307	38317	38168	37571	38112	37649	37843	38349	37791	37823	37777	38029	100.266
	1	37738	37969	37919	38131	38101	38494	37918	37831	38525	38738	38602	38172	100.790
	2	37982	38073	38049	38041	38216	37879	37704	37660	37854	38034	37978	38311	100.272
	3	37804	38077	37809	38249	38685	38350	38125	38234	38724	37934	37920	37784	100.693
	4	38101	38446	37653	37623	37908	37626	37995	38321	38168	37458	37650	38394	100.176
	5	38223	38330	38447	38003	38275	38258	38033	37862	37629	37870	38187	38097	100.587
	6	37790	38308	38329	38040	37626	38060	38010	38072	38003	38063	38109	38644	100.552
	7	38046	38001	37609	38702	38195	38001	38186	37625	37745	38440	38088	38009	100.463
	8	37848	38095	37755	37765	37767	38302	38115	37339	37882	37831	37768	38544	100.103
	9	38350	38232	37452	38008	38039	37673	37840	37882	38408	37792	38278	37672	100.238
	10	38062	37791	38205	37740	37775	38202	37654	37396	37819	37914	38136	37905	100.012
	11	38139	38221	38531	38056	37573	38249	37930	37711	38034	37979	38170	37675	100.378
	12	37964	38006	37965	38251	37699	38072	37806	38112	38033	37734	38425	37825	100.296
	13	38781	37950	37811	38431	38406	37758	38128	38098	38263	38131	38147	38064	100.753
	14	38299	38012	38166	38313	38396	38352	37917	37981	37850	37897	38172	38354	100.696
	15	38510	38532	38336	38309	38184	38480	37889	37700	38216	37972	38187	38161	100.865
	16	38717	38831	38323	38278	38488	38371	38089	37977	38133	38340	38056	38566	101.238
	17	38277	38077	38811	38568	38388	38523	38239	38190	38206	38206	38484	37872	101.165
	18	37920	38564	38029	38226	38218	38558	38544	38518	38372	38216	37952	38508	101.118
	19	38142	38455	38521	38146	38406	37605	38177	38297	37721	38392	37781	38053	100.693
	20	38131	38032	37874	37876	38499	37804	38675	37995	37783	37472	38020	38256	100.412
	21	38386	37776	38465	38247	38220	38049	38383	38706	38066	37943	37872	38491	100.893
	22	38561	38571	37795	37987	38757	37596	39151	38335	38600	37891	38366	38111	101.139
	23	38334	38423	38170	38431	38143	37591	38097	37924	38148	38823	38244	38243	100.886

INAF/UNIRomaTre		S.V.I.R.CO. Observatory - Pressure Corrected Data – October 2017											20 NM-64	
day	hh	00_05	05_10	10_15	15_20	20_25	25_30	30_35	35_40	40_45	45_50	50_55	55_60	h-norm
27	0	38112	38275	38810	38109	38561	38076	38530	38282	38239	38762	38220	38021	101.196
	1	38481	38241	38136	38091	38523	38568	37537	38304	38218	38798	38236	37713	100.946
	2	38023	37703	37980	37935	38972	38420	37914	38000	38326	38117	38346	38473	100.806
	3	38097	37704	37743	37907	38153	37660	37960	38345	38460	38143	37664	38727	100.444
	4	38231	37868	37616	37634	37771	38222	37778	37617	38285	37739	37877	38181	100.060
	5	38585	37880	38140	37814	38095	38045	38330	37838	37964	38503	38322	38054	100.665
	6	37862	37916	38029	38284	38396	37881	37888	38257	37329	38465	38154	37799	100.377
	7	37860	37905	38306	37772	37880	38440	38197	37468	37566	38184	38212	38557	100.397
	8	38113	37971	38394	37964	37591	38076	37886	37498	38461	38186	37875	37696	100.256
	9	38231	37956	37913	37813	37830	38081	37679	37871	37985	37720	37684	37661	99.973
	10	38214	37571	37895	38338	37933	37710	38373	37812	37958	38099	37894	38112	100.300
	11	38121	38189	38244	37527	37894	38382	38031	37915	38319	38721	37552	37937	100.503
	12	38490	37926	38239	38000	37513	37893	37685	37854	37740	38262	38167	37976	100.263
	13	37671	38071	38278	37509	37826	37686	38184	38277	37649	37766	38030	37946	100.077
	14	37922	37948	37704	37886	37862	37672	37714	38029	38387	38512	38032	37979	100.243
	15	37990	38275	37738	38042	38297	38035	38019	38056	38377	37981	38478	37760	100.551
	16	38084	38336	38198	37967	38280	37989	38041	37782	38128	38249	38226	37507	100.493
	17	38084	38104	37327	37940	38151	38181	37738	38052	38090	37859	37704	37729	100.091
	18	38470	38211	38271	38100	37962	38008	37544	38349	38672	38043	38503	38395	100.876
	19	37778	38380	37488	37946	38970	38148	38152	38500	38242	38246	38525	37890	100.818
	20	38284	37787	38273	38078	38100	38877	37900	37696	38300	38085	38272	38276	100.744
	21	38046	38144	38395	37605	38280	38314	38151	38085	38194	38364	38036	38296	100.740
	22	38365	38349	38125	38193	38408	38301	38622	38220	38612	38507	38279	38325	101.267
	23	38453	37590	38215	38312	38353	38965	38107	38313	37856	38087	37903	38498	100.904
28	0	38454	38167	37989	37399	38167	37819	38296	38035	37942	38668	37810	37864	100.454
	1	38134	38207	38666	37613	37758	37177	38747	37996	37460	37787	38701	37971	100.368
	2	38392	38142	38331	38424	37829	38586	38503	37532	37995	38035	38296	38064	100.788
	3	37754	37626	38211	37643	38094	37679	38050	38342	38427	38720	38672	38115	100.613
	4	38265	38333	38680	38860	38322	38479	37685	38394	37826	38201	37548	38086	100.909
	5	37987	37988	38211	37587	38030	37934	38032	37926	38231	38560	38180	37887	100.442
	6	37719	38778	38205	38452	37821	38298	38342	38200	37989	38592	37748	37408	100.662
	7	37854	38060	38092	38573	38701	38237	38454	38534	38045	38120	38577	37921	101.017
	8	38541	38148	38497	37866	38034	37701	37806	38274	38502	38184	37555	37919	100.547
	9	38152	37850	37831	37919	38504	38245	38207	38590	37898	38184	38344	37992	100.698
	10	38344	38188	38024	38181	37964	37922	38441	37820	38305	37613	38097	37739	100.460
	11	37791	37874	38248	38289	37911	39113	37657	38495	38038	38239	38214	37949	100.721
	12	38332	38374	38502	38035	37847	38096	37990	38041	38078	38248	38271	37636	100.639
	13	38199	37584	38356	38055	38332	37792	37702	38251	37777	38123	38850	38211	100.591
	14	38264	38304	38230	38184	37767	38173	38208	38180	38544	38142	38209	37860	100.774
	15	37977	37740	38410	38369	38040	38164	37947	37916	38603	38116	37992	38173	100.638
	16	38254	37909	37919	37997	38451	38169	37464	37863	38130	38354	38030	37591	100.349
	17	38212	38089	37998	38164	37515	37995	37926	38102	38247	38231	37369	38274	100.347
	18	37831	37619	37888	38700	38658	37496	38395	37767	38173	38203	38852	38000	100.668
	19	38187	38141	37449	38367	37880	37910	37714	38070	38112	37655	38314	38202	100.321
	20	38591	37794	38578	38019	37824	38200	38497	38356	38046	37696	38322	38030	100.750
	21	38398	37635	38215	38464	37638	37825	38085	38295	37833	38461	38059	38285	100.582
	22	38308	37326	39016	38417	38725	38384	38149	37987	37539	37714	37669	38086	100.611
	23	38362	38322	38132	37931	38296	38486	38394	38645	38295	38207	38280	38240	101.110

INAF/UNIRomaTre				S.V.I.R.CO. Observatory - Pressure Corrected Data – October 2017										20 NM-64	
day	hh	00_05	05_10	10_15	15_20	20_25	25_30	30_35	35_40	40_45	45_50	50_55	55_60	h-norm	
29	0	37943	38445	37923	38614	38182	38253	38339	38452	38254	38473	38200	38071	101.004	
	1	38763	37750	38008	37737	38543	37966	38224	38178	38181	38038	37515	37827	100.480	
	2	37737	38115	38360	38093	38523	38345	38585	38016	37995	37610	38365	38055	100.716	
	3	37948	38477	37935	38400	38519	37667	38189	38620	38451	38265	38666	38568	101.135	
	4	38655	38502	38292	38276	37847	38281	37918	38449	38332	37970	37999	37963	100.866	
	5	37766	38416	38588	37651	37923	38626	38217	38443	37934	38697	38322	38673	101.036	
	6	37814	38185	37917	38805	37959	37713	38741	38362	38025	38662	37837	38302	100.831	
	7	38091	38154	38369	38361	38370	38150	38450	38311	37747	37988	38409	37867	100.819	
	8	37728	37837	38120	38247	38745	39058	38598	37533	37673	37877	38224	38338	100.756	
	9	38623	38000	38148	37835	38229	38425	38013	37838	38174	37837	37881	38405	100.630	
	10	37997	37611	38210	38237	37548	38085	37858	38113	38013	38312	37777	37610	100.182	
	11	38800	38184	38388	37591	38094	38258	38174	38008	38308	38508	38367	38300	100.976	
	12	38218	38198	37892	37737	38168	37850	37748	37814	37816	37734	38038	38083	100.165	
	13	38597	38277	38330	38177	38460	38014	37847	37567	38071	37691	37981	37597	100.453	
	14	38016	37850	37841	38388	38344	38125	38167	38366	37857	38353	38587	37787	100.690	
	15	38173	38089	38316	39000	37616	38039	38056	38317	38031	38429	37823	37444	100.613	
	16	37810	38026	38211	38431	37970	37739	37956	38425	38431	38220	38000	38549	100.709	
	17	38160	37910	37844	38334	38081	38648	38091	38469	38028	38219	38057	37673	100.653	
	18	38668	37900	38383	38993	38279	37982	37763	38044	38610	38261	38131	38196	101.027	
	19	37729	38042	38521	38184	37746	37951	37843	37636	38593	37684	37964	38255	100.352	
	20	38164	38218	38150	37563	37726	38035	38045	37690	38149	38350	38277	38118	100.427	
	21	37884	38492	38168	37616	37868	38029	37907	38347	38419	38034	37979	37999	100.483	
	22	37925	38305	38562	38227	38468	38224	37499	37463	37937	38308	38256	38480	100.684	
	23	38282	38127	38203	38806	38203	38675	37568	37900	38242	37693	38641	38281	100.897	
30	0	38302	38450	38412	38085	37947	37855	38327	38601	38197	37813	38161	38571	100.923	
	1	39111	37592	38109	37997	38256	38912	37960	37539	38197	38203	38310	38350	100.878	
	2	38804	38258	37911	38087	38136	38647	38106	37736	38380	37871	38655	37478	100.776	
	3	38040	37993	38458	38629	38275	38396	37973	38010	38179	38479	37978	38439	100.947	
	4	38258	38512	38552	37672	37707	39066	38535	37631	38577	38274	38359	37807	100.969	
	5	37996	38717	38105	38459	38586	37603	38400	38496	38353	38540	38231	38466	101.189	
	6	37980	38052	38220	38002	38714	38123	37812	37899	38105	38514	37890	38219	100.657	
	7	38126	37972	37733	37852	37862	38491	37955	38160	38105	37817	38828	37927	100.502	
	8	38455	38354	37878	38122	37972	38521	38223	38557	38196	38258	38442	38219	101.024	
	9	37947	37893	38569	38431	38000	38078	38454	38912	38309	37984	37822	38505	100.959	
	10	38386	38096	38801	38361	38533	38415	38169	38509	37903	38623	38217	37833	101.166	
	11	38732	38278	38769	38053	38595	38252	37949	38430	37901	38409	38335	38814	101.314	
	12	38137	38493	38173	37989	38153	38382	37965	38386	38214	38677	38699	38310	101.107	
	13	38449	38420	37912	37815	37842	38908	38253	38782	38131	38135	38113	38291	100.991	
	14	38431	38074	38437	38506	38268	38235	38524	37938	38181	38272	37888	37789	100.880	
	15	38120	38653	38108	38177	37949	38303	38207	38177	38433	38198	38535	38168	100.986	
	16	38088	38648	38269	38133	37788	38224	38229	37909	37770	38358	37853	38428	100.694	
	17	38568	37674	38548	38763	37917	38405	38138	37798	38417	38091	38612	38278	101.026	
	18	38162	37524	37968	38379	38448	38106	37834	38563	37497	38099	38453	38100	100.569	
	19	38287	38575	38638	38443	38446	37784	38338	38323	38115	38154	38379	38153	101.120	
	20	38096	38061	38097	37489	38183	38866	38413	38475	38148	37966	38279	38281	100.838	
	21	37989	38696	38054	38249	37993	37977	38440	38006	38875	38049	38116	38001	100.858	
	22	38950	37927	38462	38315	38401	38218	38063	37682	38514	38430	37670	38264	100.958	
	23	38275	38538	38656	37779	38840	38611	37966	37869	37766	37812	37761	38124	100.760	

INAF/UNIRomaTre		S.V.I.R.CO. Observatory - Pressure Corrected Data – October 2017											20 NM-64	
day	hh	00_05	05_10	10_15	15_20	20_25	25_30	30_35	35_40	40_45	45_50	50_55	55_60	h-norm
31	0	38025	37993	38695	38378	37914	37377	37973	38348	38170	37786	38256	38439	100.618
	1	38067	38393	38049	37907	37790	38431	38130	38597	37912	38029	38272	38377	100.750
	2	38164	38407	38066	38503	38124	38240	37990	37737	38380	38631	38089	38155	100.867
	3	38732	37754	37915	38809	38306	38280	38401	38580	38073	37695	38773	38237	101.102
	4	38585	38173	38531	38335	38176	38595	39149	37980	38558	38101	38477	37913	101.326
	5	38630	38414	38322	38702	38686	38166	38361	38505	38220	38396	37774	38444	101.337
	6	38875	38080	38807	38325	38547	37827	38206	38401	38578	38390	38929	37921	101.395
	7	38820	38473	38170	38499	38441	37811	38074	37766	38801	38294	38859	38161	101.237
	8	39000	38707	38687	38219	38620	38715	37875	38319	38478	38476	38403	38362	101.610
	9	38880	38481	38316	38324	38097	38600	38332	38441	38299	39033	38795	38473	101.656
	10	38612	38627	37843	38329	38332	38717	38099	38303	38379	38822	38629	38300	101.419
	11	38993	38682	39005	38876	38444	39132	38757	38734	38700	38768	38538	38989	102.436
	12	38570	38607	38835	38716	38729	38577	38474	38413	38791	38202	38311	38697	101.843
	13	38933	38633	37636	38732	38459	38776	38566	38645	38448	38661	38360	38419	101.699
	14	38368	38482	39024	39187	38601	38440	38664	38624	38361	38037	38508	38641	101.846
	15	38542	38194	38776	38674	38852	38269	38170	38668	38667	38143	38551	38892	101.728
	16	38682	38519	38845	38775	38724	38793	38155	38487	38445	38477	38542	38552	101.859
	17	38571	38416	38360	38101	38353	38652	39023	38857	38353	38655	38403	38611	101.718
	18	38247	38785	39006	38512	39040	38676	38770	38498	38523	38597	38331	38885	102.051
	19	38259	38780	38113	38431	38378	38756	38776	38302	38829	38913	38183	38358	101.658
	20	38488	38341	38222	38467	38636	38516	38521	38572	38608	38054	38813	38024	101.477
	21	38951	38377	38467	38468	38285	38302	38555	38531	38212	38115	38710	38607	101.548
	22	38323	38113	37580	38237	38579	38712	38437	38717	38927	38707	38433	38529	101.485
	23	38516	38498	38569	38347	38480	38757	38600	38278	38295	38290	38209	38509	101.496



S.V.I.R.CO. Observatory - Pressure in hectoPascal – October 2017

day	hh	00_05	05_10	10_15	15_20	20_25	25_30	30_35	35_40	40_45	45_50	50_55	55_60	average
1	0	1017.12	1017.10	1017.07	1017.05	1017.04	1017.07	1017.09	1017.09	1017.09	1017.08	1017.08	1017.05	1017.07
	1	1016.99	1016.96	1016.96	1016.94	1016.93	1016.92	1016.90	1016.89	1016.90	1016.92	1016.93	1016.91	1016.93
	2	1016.91	1016.96	1017.00	1017.03	1017.06	1017.09	1017.15	1017.23	1017.26	1017.28	1017.29	1017.30	1017.13
	3	1017.28	1017.23	1017.20	1017.18	1017.16	1017.14	1017.12	1017.09	1017.09	1017.11	1017.12	1017.14	1017.15
	4	1017.18	1017.24	1017.27	1017.29	1017.34	1017.38	1017.39	1017.38	1017.37	1017.37	1017.34	1017.25	1017.31
	5	1017.15	1017.11	1017.21	1017.30	1017.35	1017.40	1017.42	1017.41	1017.43	1017.47	1017.51	1017.57	1017.36
	6	1017.66	1017.75	1017.82	1017.85	1017.83	1017.84	1017.89	1017.96	1018.04	1018.11	1018.15	1018.19	1017.92
	7	1018.28	1018.34	1018.37	1018.42	1018.47	1018.51	1018.56	1018.60	1018.63	1018.66	1018.71	1018.75	1018.52
	8	1018.79	1018.82	1018.84	1018.85	1018.86	1018.87	1018.88	1018.91	1018.95	1018.97	1018.96	1018.95	1018.89
	9	1018.94	1018.92	1018.91	1018.94	1018.96	1018.97	1018.99	1019.00	1018.98	1018.96	1018.96	1018.97	1018.96
	10	1018.95	1018.93	1018.91	1018.90	1018.91	1018.89	1018.85	1018.81	1018.79	1018.78	1018.74	1018.69	1018.85
	11	1018.67	1018.67	1018.66	1018.64	1018.62	1018.61	1018.59	1018.57	1018.52	1018.47	1018.47	1018.49	1018.58
	12	1018.49	1018.48	1018.48	1018.49	1018.52	1018.53	1018.53	1018.51	1018.47	1018.42	1018.38	1018.35	1018.47
	13	1018.36	1018.37	1018.40	1018.44	1018.45	1018.42	1018.34	1018.27	1018.21	1018.19	1018.18	1018.17	1018.31
	14	1018.16	1018.17	1018.18	1018.16	1018.13	1018.13	1018.16	1018.18	1018.18	1018.18	1018.20	1018.22	1018.17
	15	1018.21	1018.17	1018.14	1018.14	1018.16	1018.16	1018.16	1018.16	1018.18	1018.19	1018.19	1018.17	1018.17
	16	1018.15	1018.16	1018.18	1018.17	1018.15	1018.16	1018.19	1018.23	1018.21	1018.17	1018.18	1018.19	1018.18
	17	1018.21	1018.23	1018.24	1018.25	1018.27	1018.32	1018.36	1018.43	1018.50	1018.56	1018.62	1018.68	1018.39
	18	1018.71	1018.73	1018.79	1018.85	1018.90	1018.95	1019.00	1019.00	1018.98	1019.00	1019.06	1019.11	1018.92
	19	1019.12	1019.12	1019.15	1019.21	1019.27	1019.30	1019.33	1019.34	1019.36	1019.39	1019.43	1019.46	1019.29
	20	1019.47	1019.50	1019.55	1019.61	1019.66	1019.70	1019.74	1019.77	1019.82	1019.86	1019.88	1019.88	1019.70
	21	1019.88	1019.88	1019.88	1019.87	1019.89	1019.91	1019.93	1019.97	1020.00	1020.01	1020.00	1020.00	1019.93
	22	1020.00	1019.98	1019.96	1019.93	1019.91	1019.90	1019.90	1019.90	1019.91	1019.91	1019.92	1019.94	1019.93
	23	1019.97	1020.00	1020.02	1020.02	1020.03	1020.02	1020.00	1020.00	1020.00	1019.98	1019.97	1019.95	1019.99
2	0	1019.89	1019.87	1019.84	1019.85	1019.84	1019.83	1019.82	1019.81	1019.81	1019.83	1019.82	1019.77	1019.83
	1	1019.73	1019.70	1019.65	1019.63	1019.64	1019.61	1019.56	1019.55	1019.54	1019.53	1019.53	1019.54	1019.60
	2	1019.55	1019.56	1019.51	1019.45	1019.42	1019.41	1019.39	1019.40	1019.44	1019.46	1019.45	1019.44	1019.46
	3	1019.43	1019.44	1019.45	1019.46	1019.45	1019.44	1019.41	1019.40	1019.44	1019.51	1019.54	1019.56	1019.46
	4	1019.57	1019.59	1019.63	1019.67	1019.72	1019.74	1019.75	1019.77	1019.78	1019.82	1019.86	1019.89	1019.73
	5	1019.93	1019.96	1020.00	1020.02	1020.04	1020.05	1020.07	1020.08	1020.09	1020.09	1020.10	1020.12	1020.04
	6	1020.16	1020.20	1020.22	1020.24	1020.30	1020.37	1020.41	1020.45	1020.48	1020.51	1020.53	1020.53	1020.36
	7	1020.52	1020.51	1020.53	1020.57	1020.61	1020.66	1020.67	1020.64	1020.63	1020.68	1020.72	1020.75	1020.62
	8	1020.75	1020.71	1020.73	1020.77	1020.78	1020.80	1020.80	1020.81	1020.88	1020.96	1021.02	1021.05	1020.84
	9	1021.05	1021.06	1021.08	1021.09	1021.13	1021.16	1021.20	1021.23	1021.23	1021.19	1021.13	1021.07	1021.13
	10	1021.05	1021.03	1020.98	1020.93	1020.92	1020.92	1020.94	1020.96	1020.95	1020.89	1020.84	1020.80	1020.93
	11	1020.77	1020.73	1020.72	1020.74	1020.71	1020.61	1020.56	1020.54	1020.52	1020.49	1020.44	1020.39	1020.60
	12	1020.35	1020.33	1020.32	1020.32	1020.29	1020.29	1020.30	1020.26	1020.23	1020.18	1020.15	1020.14	1020.26
	13	1020.11	1020.10	1020.12	1020.11	1020.10	1020.10	1020.05	1020.01	1020.03	1020.02	1019.97	1019.92	1020.05
	14	1019.87	1019.83	1019.83	1019.85	1019.87	1019.86	1019.86	1019.86	1019.85	1019.89	1019.94	1019.97	1019.87
	15	1019.97	1019.95	1019.92	1019.88	1019.87	1019.87	1019.92	1020.00	1020.03	1020.04	1020.08	1020.11	1019.97
	16	1020.13	1020.16	1020.17	1020.18	1020.22	1020.28	1020.30	1020.30	1020.31	1020.34	1020.38	1020.42	1020.26
	17	1020.46	1020.48	1020.51	1020.55	1020.56	1020.57	1020.62	1020.68	1020.74	1020.78	1020.81	1020.87	1020.63
	18	1020.93	1020.99	1021.04	1021.12	1021.23	1021.29	1021.31	1021.32	1021.32	1021.34	1021.38	1021.43	1021.22
	19	1021.48	1021.52	1021.53	1021.54	1021.56	1021.57	1021.59	1021.60	1021.63	1021.66	1021.68	1021.75	1021.59
	20	1021.83	1021.88	1021.89	1021.88	1021.89	1021.90	1021.89	1021.88	1021.87	1021.86	1021.85	1021.86	1021.87
	21	1021.87	1021.83	1021.77	1021.71	1021.67	1021.65	1021.64	1021.65	1021.65	1021.64	1021.61	1021.53	1021.68
	22	1021.46	1021.41	1021.40	1021.39	1021.36	1021.35	1021.34	1021.35	1021.34	1021.30	1021.28	1021.29	1021.35
	23	1021.31	1021.31	1021.29	1021.27	1021.23	1021.19	1021.17	1021.16	1021.15	1021.14	1021.13	1021.11	1021.20

S.V.I.R.CO. Observatory - Pressure in hectoPascal – October 2017

day	hh	00_05	05_10	10_15	15_20	20_25	25_30	30_35	35_40	40_45	45_50	50_55	55_60	average
3	0	1021.11	1021.11	1021.10	1021.07	1021.06	1021.06	1021.05	1021.02	1021.01	1021.00	1020.99	1020.98	1021.04
	1	1020.95	1020.90	1020.86	1020.83	1020.76	1020.69	1020.62	1020.60	1020.57	1020.54	1020.54	1020.55	1020.70
	2	1020.53	1020.51	1020.49	1020.48	1020.48	1020.48	1020.50	1020.48	1020.45	1020.44	1020.44	1020.42	1020.47
	3	1020.39	1020.38	1020.36	1020.37	1020.39	1020.37	1020.35	1020.36	1020.40	1020.40	1020.38	1020.36	1020.37
	4	1020.35	1020.36	1020.34	1020.33	1020.32	1020.31	1020.29	1020.32	1020.36	1020.36	1020.34	1020.36	1020.33
	5	1020.41	1020.45	1020.45	1020.45	1020.44	1020.43	1020.44	1020.47	1020.49	1020.50	1020.52	1020.56	1020.47
	6	1020.56	1020.55	1020.56	1020.58	1020.57	1020.55	1020.55	1020.58	1020.62	1020.62	1020.63	1020.65	1020.58
	7	1020.68	1020.72	1020.74	1020.77	1020.80	1020.82	1020.86	1020.89	1020.90	1020.87	1020.84	1020.86	1020.81
	8	1020.89	1020.93	1020.96	1020.93	1020.89	1020.84	1020.78	1020.73	1020.70	1020.73	1020.73	1020.70	1020.82
	9	1020.66	1020.62	1020.58	1020.54	1020.55	1020.55	1020.52	1020.50	1020.49	1020.48	1020.43	1020.38	1020.52
	10	1020.35	1020.34	1020.32	1020.30	1020.29	1020.22	1020.12	1020.05	1019.97	1019.87	1019.79	1019.69	1020.11
	11	1019.59	1019.51	1019.46	1019.41	1019.34	1019.25	1019.19	1019.15	1019.09	1019.08	1019.12	1019.17	1019.28
	12	1019.20	1019.19	1019.18	1019.20	1019.21	1019.21	1019.19	1019.15	1019.14	1019.16	1019.17	1019.18	1019.18
	13	1019.17	1019.16	1019.17	1019.18	1019.18	1019.17	1019.18	1019.19	1019.19	1019.16	1019.09	1019.05	1019.15
	14	1019.02	1018.95	1018.88	1018.85	1018.83	1018.81	1018.78	1018.73	1018.68	1018.62	1018.56	1018.55	1018.77
	15	1018.56	1018.58	1018.61	1018.65	1018.70	1018.71	1018.72	1018.75	1018.81	1018.87	1018.91	1018.93	1018.73
	16	1018.95	1018.98	1019.01	1019.04	1019.03	1019.01	1019.01	1019.05	1019.10	1019.13	1019.18	1019.19	1019.06
	17	1019.17	1019.20	1019.26	1019.30	1019.31	1019.28	1019.31	1019.39	1019.46	1019.50	1019.55	1019.63	1019.36
	18	1019.71	1019.81	1019.91	1019.96	1019.98	1020.00	1020.04	1020.10	1020.18	1020.24	1020.28	1020.33	1020.04
	19	1020.38	1020.44	1020.48	1020.49	1020.47	1020.43	1020.42	1020.46	1020.50	1020.52	1020.55	1020.62	1020.48
	20	1020.67	1020.70	1020.71	1020.70	1020.68	1020.69	1020.73	1020.77	1020.83	1020.91	1020.96	1021.04	1020.78
	21	1021.12	1021.15	1021.17	1021.18	1021.17	1021.16	1021.21	1021.28	1021.32	1021.32	1021.34	1021.36	1021.23
	22	1021.32	1021.28	1021.29	1021.29	1021.29	1021.29	1021.32	1021.35	1021.39	1021.45	1021.45	1021.39	1021.34
	23	1021.38	1021.40	1021.43	1021.47	1021.47	1021.43	1021.43	1021.47	1021.47	1021.47	1021.49	1021.45	1021.44
4	0	1021.38	1021.42	1021.44	1021.42	1021.42	1021.38	1021.32	1021.31	1021.32	1021.34	1021.35	1021.34	1021.37
	1	1021.31	1021.31	1021.31	1021.26	1021.18	1021.10	1021.10	1021.13	1021.10	1021.10	1021.12	1021.12	1021.18
	2	1021.13	1021.12	1021.07	1021.01	1020.98	1020.99	1021.03	1021.08	1021.14	1021.18	1021.21	1021.23	1021.10
	3	1021.24	1021.24	1021.22	1021.22	1021.25	1021.27	1021.29	1021.30	1021.34	1021.40	1021.42	1021.39	1021.30
	4	1021.35	1021.32	1021.26	1021.26	1021.32	1021.37	1021.37	1021.35	1021.34	1021.37	1021.41	1021.45	1021.35
	5	1021.51	1021.58	1021.61	1021.62	1021.62	1021.65	1021.67	1021.67	1021.70	1021.71	1021.72	1021.79	1021.65
	6	1021.89	1021.98	1022.03	1022.04	1022.05	1022.10	1022.15	1022.19	1022.26	1022.35	1022.41	1022.45	1022.16
	7	1022.47	1022.50	1022.50	1022.47	1022.46	1022.49	1022.55	1022.61	1022.64	1022.66	1022.69	1022.73	1022.56
	8	1022.77	1022.81	1022.80	1022.75	1022.75	1022.76	1022.76	1022.77	1022.77	1022.77	1022.78	1022.80	1022.77
	9	1022.82	1022.82	1022.85	1022.82	1022.75	1022.68	1022.60	1022.52	1022.46	1022.43	1022.39	1022.37	1022.62
	10	1022.36	1022.33	1022.25	1022.17	1022.17	1022.16	1022.09	1022.09	1022.14	1022.17	1022.15	1022.11	1022.18
	11	1022.05	1022.00	1021.96	1021.92	1021.86	1021.86	1021.84	1021.81	1021.79	1021.68	1021.58	1021.54	1021.82
	12	1021.48	1021.43	1021.42	1021.45	1021.46	1021.43	1021.43	1021.47	1021.50	1021.55	1021.57	1021.55	1021.48
	13	1021.53	1021.51	1021.46	1021.39	1021.34	1021.31	1021.31	1021.29	1021.26	1021.23	1021.19	1021.18	1021.33
	14	1021.22	1021.25	1021.25	1021.25	1021.25	1021.23	1021.18	1021.13	1021.13	1021.15	1021.13	1021.07	1021.19
	15	1020.99	1020.95	1020.93	1020.92	1020.91	1020.95	1021.00	1020.96	1020.89	1020.85	1020.83	1020.78	1020.91
	16	1020.75	1020.79	1020.85	1020.88	1020.89	1020.91	1020.95	1020.96	1020.95	1020.93	1020.91	1020.94	1020.89
	17	1020.98	1021.03	1021.08	1021.12	1021.13	1021.14	1021.17	1021.18	1021.19	1021.23	1021.28	1021.28	1021.15
	18	1021.27	1021.30	1021.33	1021.41	1021.48	1021.53	1021.57	1021.56	1021.54	1021.52	1021.54	1021.59	1021.47
	19	1021.65	1021.72	1021.75	1021.74	1021.73	1021.76	1021.77	1021.77	1021.78	1021.77	1021.81	1021.87	1021.76
	20	1021.93	1021.98	1022.02	1022.02	1021.99	1021.96	1021.95	1021.97	1021.97	1021.97	1021.95	1021.89	1021.96
	21	1021.84	1021.85	1021.88	1021.88	1021.86	1021.85	1021.84	1021.85	1021.85	1021.88	1021.93	1021.96	1021.87
	22	1021.98	1021.92	1021.83	1021.74	1021.69	1021.70	1021.69	1021.64	1021.64	1021.68	1021.67	1021.67	1021.73
	23	1021.67	1021.65	1021.62	1021.60	1021.62	1021.64	1021.62	1021.57	1021.53	1021.49	1021.49	1021.46	1021.58

S.V.I.R.CO. Observatory - Pressure in hectoPascal – October 2017

day	hh	00_05	05_10	10_15	15_20	20_25	25_30	30_35	35_40	40_45	45_50	50_55	55_60	average
5	0	1021.38	1021.36	1021.30	1021.27	1021.26	1021.23	1021.17	1021.12	1021.08	1021.04	1021.02	1020.97	1021.17
	1	1020.89	1020.83	1020.81	1020.81	1020.81	1020.77	1020.71	1020.69	1020.70	1020.71	1020.69	1020.66	1020.75
	2	1020.63	1020.60	1020.56	1020.55	1020.54	1020.47	1020.41	1020.38	1020.33	1020.31	1020.31	1020.30	1020.45
	3	1020.29	1020.28	1020.25	1020.20	1020.14	1020.11	1020.10	1020.10	1020.07	1020.04	1020.03	1020.02	1020.13
	4	1020.01	1020.00	1020.00	1019.97	1019.94	1019.93	1019.92	1019.93	1019.94	1019.95	1019.98	1019.99	1019.96
	5	1019.97	1019.95	1019.98	1020.06	1020.09	1020.07	1020.06	1020.05	1020.05	1020.05	1020.11	1020.15	1020.05
	6	1020.18	1020.23	1020.23	1020.21	1020.21	1020.27	1020.34	1020.36	1020.37	1020.37	1020.37	1020.38	1020.29
	7	1020.43	1020.46	1020.44	1020.41	1020.37	1020.39	1020.42	1020.40	1020.38	1020.34	1020.29	1020.25	1020.38
	8	1020.23	1020.23	1020.22	1020.21	1020.19	1020.14	1020.11	1020.09	1020.10	1020.12	1020.10	1020.07	1020.15
	9	1020.03	1019.98	1019.92	1019.86	1019.79	1019.74	1019.70	1019.68	1019.67	1019.65	1019.61	1019.53	1019.76
	10	1019.51	1019.53	1019.53	1019.50	1019.48	1019.48	1019.48	1019.49	1019.46	1019.41	1019.36	1019.31	1019.46
	11	1019.25	1019.16	1019.05	1018.97	1018.89	1018.80	1018.70	1018.55	1018.43	1018.35	1018.24	1018.12	1018.71
	12	1018.01	1017.89	1017.79	1017.71	1017.64	1017.57	1017.47	1017.39	1017.32	1017.24	1017.15	1017.08	1017.52
	13	1017.03	1016.95	1016.90	1016.87	1016.82	1016.78	1016.75	1016.67	1016.58	1016.49	1016.41	1016.35	1016.71
	14	1016.30	1016.28	1016.28	1016.28	1016.25	1016.17	1016.10	1016.07	1016.04	1016.04	1016.03	1016.01	1016.15
	15	1015.97	1015.92	1015.89	1015.84	1015.79	1015.74	1015.67	1015.62	1015.57	1015.53	1015.52	1015.50	1015.71
	16	1015.44	1015.38	1015.32	1015.29	1015.27	1015.22	1015.16	1015.13	1015.15	1015.17	1015.20	1015.26	1015.25
	17	1015.29	1015.26	1015.24	1015.23	1015.21	1015.18	1015.15	1015.12	1015.11	1015.11	1015.13	1015.16	1015.18
	18	1015.16	1015.14	1015.08	1015.04	1015.03	1015.03	1015.05	1015.07	1015.06	1015.07	1015.10	1015.10	1015.08
	19	1015.08	1015.04	1015.02	1015.03	1015.01	1015.00	1015.02	1015.04	1015.04	1015.04	1015.03	1015.04	1015.03
	20	1015.02	1014.95	1014.91	1014.90	1014.88	1014.87	1014.82	1014.77	1014.78	1014.78	1014.71	1014.64	1014.83
	21	1014.60	1014.60	1014.57	1014.54	1014.52	1014.51	1014.50	1014.48	1014.44	1014.39	1014.37	1014.33	1014.49
	22	1014.27	1014.20	1014.13	1014.06	1014.03	1014.01	1013.96	1013.93	1013.88	1013.77	1013.68	1013.61	1013.96
	23	1013.55	1013.50	1013.43	1013.34	1013.28	1013.23	1013.18	1013.17	1013.16	1013.11	1013.08	1013.05	1013.26
6	0	1012.96	1012.90	1012.77	1012.68	1012.61	1012.53	1012.43	1012.30	1012.22	1012.21	1012.16	1012.08	1012.46
	1	1012.04	1011.96	1011.87	1011.83	1011.73	1011.60	1011.55	1011.47	1011.38	1011.32	1011.26	1011.21	1011.60
	2	1011.17	1011.11	1011.04	1010.98	1010.92	1010.87	1010.86	1010.81	1010.75	1010.67	1010.56	1010.50	1010.85
	3	1010.46	1010.38	1010.27	1010.18	1010.10	1010.02	1009.95	1009.93	1009.92	1009.89	1009.85	1009.75	1010.06
	4	1009.65	1009.59	1009.58	1009.58	1009.55	1009.52	1009.54	1009.59	1009.51	1009.36	1009.28	1009.30	1009.50
	5	1009.34	1009.35	1009.29	1009.19	1009.14	1009.13	1009.09	1009.02	1008.94	1008.92	1008.90	1008.86	1009.10
	6	1008.83	1008.80	1008.80	1008.80	1008.80	1008.82	1008.85	1008.78	1008.73	1008.72	1008.68	1008.70	1008.77
	7	1008.76	1008.81	1008.83	1008.86	1008.86	1008.84	1008.84	1008.76	1008.62	1008.60	1008.59	1008.48	1008.73
	8	1008.40	1008.33	1008.30	1008.26	1008.13	1008.05	1008.05	1008.03	1007.97	1007.92	1007.90	1007.88	1008.10
	9	1007.86	1007.85	1007.83	1007.77	1007.75	1007.73	1007.67	1007.64	1007.64	1007.70	1007.74	1007.75	1007.74
	10	1007.72	1007.61	1007.52	1007.50	1007.52	1007.51	1007.49	1007.46	1007.39	1007.28	1007.25	1007.28	1007.46
	11	1007.21	1007.10	1006.98	1006.85	1006.74	1006.64	1006.55	1006.48	1006.32	1006.17	1006.07	1005.98	1006.59
	12	1005.93	1005.84	1005.74	1005.69	1005.59	1005.42	1005.36	1005.36	1005.35	1005.34	1005.32	1005.35	1005.52
	13	1005.39	1005.39	1005.34	1005.27	1005.19	1005.08	1005.00	1004.98	1004.99	1004.94	1004.86	1004.83	1005.10
	14	1004.81	1004.74	1004.65	1004.62	1004.66	1004.62	1004.57	1004.55	1004.41	1004.26	1004.16	1004.07	1004.51
	15	1004.04	1004.04	1004.04	1004.06	1004.07	1004.05	1004.07	1004.09	1004.05	1004.06	1004.07	1004.11	1004.06
	16	1004.17	1004.18	1004.20	1004.23	1004.24	1004.27	1004.28	1004.25	1004.28	1004.31	1004.30	1004.29	1004.25
	17	1004.30	1004.31	1004.34	1004.43	1004.52	1004.55	1004.59	1004.67	1004.67	1004.63	1004.64	1004.66	1004.52
	18	1004.67	1004.75	1004.81	1004.91	1005.05	1005.09	1005.08	1005.09	1005.13	1005.19	1005.23	1005.20	1005.01
	19	1005.15	1005.17	1005.19	1005.22	1005.21	1005.26	1005.41	1005.57	1005.71	1005.89	1006.04	1006.30	1005.51
	20	1006.65	1006.80	1006.94	1007.18	1007.32	1007.40	1007.48	1007.52	1007.63	1007.84	1008.00	1008.10	1007.40
	21	1008.23	1008.41	1008.36	1008.28	1008.39	1008.43	1008.45	1008.51	1008.57	1008.55	1008.37	1008.17	1008.39
	22	1008.17	1008.30	1008.35	1008.36	1008.40	1008.43	1008.47	1008.45	1008.42	1008.43	1008.40	1008.42	1008.38
	23	1008.47	1008.51	1008.54	1008.60	1008.66	1008.62	1008.61	1008.75	1008.88	1008.95	1008.98	1008.95	1008.71

S.V.I.R.CO. Observatory - Pressure in hectoPascal – October 2017

day	hh	00_05	05_10	10_15	15_20	20_25	25_30	30_35	35_40	40_45	45_50	50_55	55_60	average
7	0	1008.85	1008.86	1008.90	1008.93	1008.91	1008.95	1009.09	1009.30	1009.52	1009.67	1009.71	1009.62	1009.20
	1	1009.52	1009.50	1009.56	1009.57	1009.55	1009.59	1009.61	1009.76	1009.95	1010.03	1010.12	1010.28	1009.75
	2	1010.39	1010.45	1010.54	1010.61	1010.75	1010.89	1010.98	1011.11	1011.21	1011.39	1011.59	1011.71	1010.97
	3	1011.79	1011.79	1011.78	1011.83	1011.94	1012.07	1012.15	1012.15	1012.17	1012.25	1012.39	1012.51	1012.07
	4	1012.60	1012.67	1012.80	1012.92	1012.90	1012.97	1013.04	1013.07	1013.12	1013.17	1013.19	1013.24	1012.97
	5	1013.20	1013.17	1013.24	1013.17	1013.25	1013.45	1013.51	1013.67	1013.83	1013.92	1014.10	1014.26	1013.56
	6	1014.38	1014.49	1014.55	1014.64	1014.75	1014.85	1014.89	1014.92	1015.00	1015.08	1015.17	1015.31	1014.83
	7	1015.47	1015.57	1015.69	1015.77	1015.78	1015.87	1015.98	1016.08	1016.16	1016.21	1016.28	1016.33	1015.93
	8	1016.37	1016.42	1016.50	1016.57	1016.61	1016.63	1016.66	1016.65	1016.63	1016.65	1016.68	1016.67	1016.58
	9	1016.66	1016.69	1016.64	1016.62	1016.66	1016.66	1016.68	1016.75	1016.81	1016.84	1016.90	1016.97	1016.74
	10	1017.01	1017.02	1016.97	1016.94	1016.97	1016.94	1016.84	1016.93	1017.04	1017.09	1017.14	1017.16	1017.00
	11	1017.19	1017.27	1017.34	1017.28	1017.21	1017.14	1017.07	1017.01	1016.96	1016.99	1017.00	1017.02	1017.12
	12	1016.99	1016.90	1016.88	1016.87	1016.86	1016.85	1016.83	1016.80	1016.79	1016.82	1016.85	1016.82	1016.85
	13	1016.81	1016.82	1016.82	1016.83	1016.80	1016.76	1016.73	1016.72	1016.70	1016.66	1016.65	1016.66	1016.75
	14	1016.68	1016.70	1016.73	1016.78	1016.77	1016.74	1016.74	1016.78	1016.80	1016.80	1016.83	1016.85	1016.77
	15	1016.86	1016.83	1016.82	1016.83	1016.85	1016.88	1016.89	1016.88	1016.91	1016.97	1017.00	1017.00	1016.89
	16	1017.04	1017.08	1017.11	1017.13	1017.17	1017.22	1017.23	1017.25	1017.32	1017.39	1017.41	1017.45	1017.23
	17	1017.56	1017.64	1017.67	1017.70	1017.75	1017.83	1017.87	1017.85	1017.84	1017.86	1017.88	1017.88	1017.77
	18	1017.93	1018.01	1018.07	1018.11	1018.12	1018.17	1018.26	1018.31	1018.29	1018.25	1018.22	1018.19	1018.16
	19	1018.19	1018.19	1018.20	1018.23	1018.31	1018.41	1018.48	1018.54	1018.60	1018.69	1018.75	1018.76	1018.44
	20	1018.78	1018.76	1018.71	1018.70	1018.71	1018.70	1018.67	1018.72	1018.80	1018.83	1018.84	1018.87	1018.75
	21	1018.91	1018.90	1018.86	1018.83	1018.77	1018.74	1018.75	1018.79	1018.80	1018.81	1018.82	1018.77	1018.81
	22	1018.72	1018.69	1018.71	1018.74	1018.74	1018.72	1018.74	1018.77	1018.79	1018.83	1018.80	1018.73	1018.75
	23	1018.70	1018.71	1018.68	1018.62	1018.57	1018.60	1018.70	1018.80	1018.79	1018.76	1018.79	1018.81	1018.71
8	0	1018.85	1018.85	1018.81	1018.76	1018.74	1018.72	1018.66	1018.59	1018.59	1018.57	1018.47	1018.35	1018.65
	1	1018.29	1018.27	1018.22	1018.17	1018.15	1018.15	1018.14	1018.07	1017.98	1017.96	1017.97	1017.99	1018.11
	2	1018.00	1017.99	1017.99	1017.98	1017.92	1017.88	1017.84	1017.82	1017.85	1017.88	1017.88	1017.86	1017.90
	3	1017.84	1017.79	1017.77	1017.77	1017.71	1017.62	1017.61	1017.60	1017.58	1017.58	1017.58	1017.60	1017.67
	4	1017.64	1017.64	1017.63	1017.60	1017.55	1017.51	1017.51	1017.54	1017.56	1017.54	1017.51	1017.51	1017.56
	5	1017.52	1017.53	1017.50	1017.46	1017.50	1017.59	1017.66	1017.67	1017.69	1017.75	1017.83	1017.91	1017.63
	6	1017.91	1017.89	1017.93	1017.99	1018.01	1017.98	1017.95	1018.04	1018.12	1018.13	1018.14	1018.13	1018.02
	7	1018.12	1018.09	1018.08	1018.09	1018.07	1018.08	1018.13	1018.17	1018.12	1018.03	1018.00	1017.98	1018.08
	8	1017.96	1017.98	1017.96	1017.92	1017.87	1017.81	1017.78	1017.74	1017.70	1017.67	1017.65	1017.68	1017.81
	9	1017.72	1017.70	1017.70	1017.75	1017.77	1017.74	1017.70	1017.66	1017.61	1017.62	1017.65	1017.66	1017.69
	10	1017.63	1017.57	1017.52	1017.47	1017.40	1017.35	1017.31	1017.27	1017.21	1017.14	1017.10	1017.06	1017.33
	11	1017.03	1016.98	1016.96	1016.98	1016.97	1016.93	1016.90	1016.88	1016.85	1016.78	1016.71	1016.70	1016.89
	12	1016.69	1016.67	1016.66	1016.65	1016.64	1016.62	1016.57	1016.52	1016.48	1016.41	1016.34	1016.35	1016.55
	13	1016.31	1016.25	1016.20	1016.14	1016.10	1016.07	1016.02	1015.99	1015.92	1015.87	1015.85	1015.83	1016.04
	14	1015.80	1015.74	1015.68	1015.65	1015.64	1015.63	1015.60	1015.58	1015.55	1015.53	1015.53	1015.57	1015.62
	15	1015.58	1015.58	1015.56	1015.52	1015.49	1015.48	1015.50	1015.55	1015.57	1015.56	1015.58	1015.60	1015.55
	16	1015.60	1015.59	1015.61	1015.65	1015.70	1015.75	1015.78	1015.81	1015.83	1015.83	1015.85	1015.89	1015.74
	17	1015.93	1015.98	1016.00	1016.00	1016.01	1016.02	1016.05	1016.10	1016.13	1016.16	1016.19	1016.21	1016.06
	18	1016.24	1016.29	1016.34	1016.35	1016.36	1016.36	1016.34	1016.34	1016.34	1016.31	1016.28	1016.31	1016.32
	19	1016.36	1016.32	1016.27	1016.25	1016.25	1016.27	1016.28	1016.27	1016.26	1016.29	1016.36	1016.40	1016.30
	20	1016.43	1016.44	1016.44	1016.45	1016.46	1016.47	1016.46	1016.45	1016.45	1016.44	1016.42	1016.39	1016.44
	21	1016.34	1016.30	1016.29	1016.29	1016.29	1016.30	1016.29	1016.27	1016.26	1016.23	1016.19	1016.16	1016.26
	22	1016.16	1016.12	1016.08	1016.05	1016.03	1016.03	1016.02	1016.00	1015.99	1015.99	1016.01	1016.03	1016.04
	23	1016.00	1015.95	1015.90	1015.85	1015.85	1015.90	1015.91	1015.87	1015.84	1015.81	1015.80	1015.79	1015.87

S.V.I.R.CO. Observatory - Pressure in hectoPascal – October 2017

day	hh	00_05	05_10	10_15	15_20	20_25	25_30	30_35	35_40	40_45	45_50	50_55	55_60	average
9	0	1015.81	1015.81	1015.77	1015.72	1015.69	1015.64	1015.58	1015.54	1015.52	1015.48	1015.42	1015.37	1015.60
	1	1015.36	1015.34	1015.26	1015.16	1015.11	1015.08	1015.05	1015.00	1014.96	1014.96	1014.97	1014.97	1015.10
	2	1014.97	1014.98	1014.94	1014.89	1014.89	1014.88	1014.84	1014.83	1014.84	1014.85	1014.83	1014.82	1014.88
	3	1014.85	1014.84	1014.81	1014.81	1014.80	1014.79	1014.78	1014.76	1014.75	1014.75	1014.73	1014.69	1014.78
	4	1014.67	1014.66	1014.66	1014.68	1014.71	1014.78	1014.84	1014.84	1014.82	1014.84	1014.86	1014.82	1014.76
	5	1014.77	1014.80	1014.87	1014.93	1014.99	1014.98	1014.93	1014.96	1015.03	1015.09	1015.17	1015.27	1014.98
	6	1015.34	1015.37	1015.39	1015.42	1015.41	1015.40	1015.42	1015.45	1015.51	1015.58	1015.61	1015.62	1015.46
	7	1015.63	1015.67	1015.73	1015.80	1015.86	1015.90	1015.90	1015.92	1015.96	1016.01	1016.04	1016.05	1015.87
	8	1016.07	1016.13	1016.19	1016.24	1016.27	1016.30	1016.32	1016.32	1016.33	1016.34	1016.37	1016.40	1016.27
	9	1016.41	1016.40	1016.40	1016.41	1016.40	1016.41	1016.44	1016.43	1016.42	1016.40	1016.37	1016.34	1016.40
	10	1016.33	1016.31	1016.30	1016.29	1016.26	1016.23	1016.21	1016.19	1016.16	1016.09	1016.04	1016.00	1016.20
	11	1015.95	1015.92	1015.92	1015.92	1015.88	1015.84	1015.81	1015.79	1015.77	1015.74	1015.71	1015.69	1015.83
	12	1015.67	1015.63	1015.59	1015.55	1015.53	1015.52	1015.45	1015.37	1015.34	1015.35	1015.37	1015.36	1015.47
	13	1015.35	1015.35	1015.33	1015.29	1015.26	1015.25	1015.25	1015.26	1015.27	1015.26	1015.23	1015.22	1015.28
	14	1015.23	1015.23	1015.21	1015.21	1015.21	1015.21	1015.17	1015.14	1015.11	1015.11	1015.15	1015.16	1015.18
	15	1015.18	1015.21	1015.24	1015.28	1015.28	1015.27	1015.26	1015.27	1015.28	1015.27	1015.24	1015.23	1015.25
	16	1015.25	1015.29	1015.30	1015.32	1015.35	1015.40	1015.41	1015.41	1015.44	1015.46	1015.48	1015.49	1015.38
	17	1015.52	1015.56	1015.55	1015.55	1015.57	1015.59	1015.62	1015.66	1015.68	1015.69	1015.73	1015.75	1015.62
	18	1015.72	1015.70	1015.71	1015.73	1015.74	1015.76	1015.78	1015.81	1015.86	1015.89	1015.92	1015.98	1015.80
	19	1016.02	1015.99	1015.95	1015.96	1016.00	1016.05	1016.08	1016.12	1016.17	1016.23	1016.27	1016.31	1016.09
	20	1016.38	1016.44	1016.48	1016.52	1016.55	1016.58	1016.59	1016.60	1016.62	1016.61	1016.62	1016.65	1016.55
	21	1016.64	1016.61	1016.62	1016.63	1016.63	1016.66	1016.66	1016.64	1016.63	1016.67	1016.69	1016.69	1016.64
	22	1016.70	1016.72	1016.72	1016.71	1016.68	1016.64	1016.64	1016.64	1016.64	1016.65	1016.68	1016.69	1016.67
	23	1016.67	1016.66	1016.67	1016.68	1016.69	1016.67	1016.66	1016.70	1016.74	1016.77	1016.78	1016.80	1016.71
10	0	1016.85	1016.85	1016.83	1016.79	1016.77	1016.72	1016.68	1016.66	1016.62	1016.55	1016.53	1016.52	1016.69
	1	1016.49	1016.45	1016.42	1016.39	1016.33	1016.29	1016.26	1016.25	1016.26	1016.24	1016.22	1016.21	1016.32
	2	1016.21	1016.22	1016.22	1016.24	1016.27	1016.29	1016.30	1016.31	1016.32	1016.32	1016.33	1016.33	1016.28
	3	1016.31	1016.33	1016.37	1016.39	1016.39	1016.38	1016.38	1016.40	1016.40	1016.40	1016.42	1016.41	1016.38
	4	1016.38	1016.37	1016.41	1016.46	1016.49	1016.48	1016.47	1016.50	1016.51	1016.50	1016.48	1016.47	1016.46
	5	1016.49	1016.52	1016.55	1016.57	1016.61	1016.69	1016.74	1016.78	1016.81	1016.83	1016.89	1016.97	1016.70
	6	1017.01	1017.02	1017.06	1017.13	1017.18	1017.20	1017.22	1017.23	1017.24	1017.25	1017.28	1017.34	1017.18
	7	1017.37	1017.39	1017.42	1017.46	1017.52	1017.58	1017.63	1017.65	1017.68	1017.72	1017.74	1017.75	1017.57
	8	1017.74	1017.73	1017.73	1017.72	1017.73	1017.76	1017.80	1017.81	1017.82	1017.86	1017.91	1017.95	1017.79
	9	1017.96	1017.95	1017.94	1017.92	1017.90	1017.88	1017.85	1017.83	1017.80	1017.77	1017.77	1017.77	1017.86
	10	1017.76	1017.78	1017.82	1017.84	1017.85	1017.83	1017.81	1017.78	1017.75	1017.72	1017.68	1017.63	1017.77
	11	1017.56	1017.48	1017.41	1017.35	1017.30	1017.25	1017.20	1017.15	1017.12	1017.10	1017.07	1017.06	1017.25
	12	1017.03	1017.00	1017.00	1016.99	1016.97	1016.95	1016.92	1016.88	1016.85	1016.82	1016.78	1016.76	1016.91
	13	1016.79	1016.79	1016.75	1016.77	1016.79	1016.78	1016.79	1016.79	1016.81	1016.80	1016.78	1016.80	1016.78
	14	1016.81	1016.80	1016.78	1016.79	1016.82	1016.86	1016.86	1016.89	1016.94	1016.94	1016.94	1016.95	1016.86
	15	1016.94	1016.93	1016.95	1016.98	1017.00	1017.01	1017.02	1017.03	1017.06	1017.08	1017.12	1017.18	1017.02
	16	1017.23	1017.30	1017.39	1017.47	1017.55	1017.62	1017.68	1017.73	1017.75	1017.76	1017.80	1017.85	1017.59
	17	1017.87	1017.92	1017.98	1017.99	1018.00	1018.03	1018.05	1018.10	1018.14	1018.17	1018.25	1018.32	1018.07
	18	1018.33	1018.35	1018.40	1018.41	1018.44	1018.50	1018.55	1018.61	1018.67	1018.74	1018.82	1018.90	1018.56
	19	1018.98	1019.06	1019.13	1019.17	1019.22	1019.26	1019.28	1019.25	1019.23	1019.23	1019.23	1019.24	1019.19
	20	1019.28	1019.32	1019.32	1019.33	1019.36	1019.36	1019.42	1019.50	1019.52	1019.55	1019.58	1019.62	1019.43
	21	1019.65	1019.67	1019.68	1019.68	1019.67	1019.69	1019.69	1019.68	1019.69	1019.69	1019.68	1019.69	1019.68
	22	1019.70	1019.69	1019.69	1019.72	1019.76	1019.80	1019.85	1019.88	1019.89	1019.91	1019.92	1019.95	1019.81
	23	1019.95	1019.93	1019.94	1019.94	1019.93	1019.95	1019.97	1019.99	1020.00	1020.02	1020.06	1020.12	1019.98

S.V.I.R.CO. Observatory - Pressure in hectoPascal – October 2017

day	hh	00_05	05_10	10_15	15_20	20_25	25_30	30_35	35_40	40_45	45_50	50_55	55_60	average
11	0	1020.15	1020.17	1020.19	1020.18	1020.15	1020.12	1020.15	1020.21	1020.21	1020.17	1020.16	1020.18	1020.17
	1	1020.18	1020.17	1020.18	1020.19	1020.20	1020.22	1020.25	1020.26	1020.28	1020.32	1020.33	1020.30	1020.24
	2	1020.27	1020.27	1020.25	1020.22	1020.21	1020.21	1020.24	1020.29	1020.30	1020.30	1020.31	1020.29	1020.26
	3	1020.31	1020.36	1020.39	1020.41	1020.41	1020.41	1020.41	1020.41	1020.41	1020.44	1020.48	1020.50	1020.41
	4	1020.51	1020.49	1020.48	1020.50	1020.53	1020.55	1020.54	1020.53	1020.53	1020.54	1020.59	1020.62	1020.53
	5	1020.64	1020.67	1020.70	1020.73	1020.76	1020.78	1020.81	1020.85	1020.87	1020.90	1020.97	1021.03	1020.81
	6	1021.08	1021.08	1021.08	1021.11	1021.14	1021.15	1021.13	1021.15	1021.21	1021.27	1021.32	1021.39	1021.17
	7	1021.47	1021.54	1021.59	1021.62	1021.65	1021.69	1021.72	1021.76	1021.81	1021.84	1021.85	1021.85	1021.70
	8	1021.85	1021.85	1021.84	1021.84	1021.86	1021.89	1021.91	1021.93	1021.94	1021.95	1021.95	1021.96	1021.90
	9	1021.98	1021.99	1021.99	1021.99	1022.00	1021.99	1021.96	1021.94	1021.94	1021.94	1021.94	1021.96	1021.97
	10	1021.97	1021.97	1021.97	1021.95	1021.92	1021.89	1021.85	1021.81	1021.76	1021.70	1021.66	1021.63	1021.84
	11	1021.61	1021.59	1021.55	1021.48	1021.44	1021.40	1021.36	1021.33	1021.29	1021.26	1021.24	1021.21	1021.39
	12	1021.18	1021.14	1021.11	1021.08	1021.04	1021.01	1020.97	1020.91	1020.88	1020.85	1020.84	1020.86	1020.99
	13	1020.86	1020.87	1020.92	1020.90	1020.88	1020.90	1020.94	1020.97	1020.98	1021.00	1021.02	1021.02	1020.94
	14	1021.02	1021.03	1021.04	1021.05	1021.07	1021.08	1021.09	1021.10	1021.10	1021.09	1021.10	1021.12	1021.07
	15	1021.15	1021.19	1021.21	1021.22	1021.23	1021.23	1021.22	1021.22	1021.22	1021.25	1021.27	1021.27	1021.22
	16	1021.27	1021.28	1021.31	1021.36	1021.41	1021.44	1021.46	1021.48	1021.51	1021.55	1021.59	1021.64	1021.44
	17	1021.69	1021.73	1021.78	1021.85	1021.88	1021.91	1021.97	1022.01	1022.03	1022.04	1022.04	1022.04	1021.91
	18	1022.08	1022.13	1022.17	1022.24	1022.30	1022.33	1022.35	1022.39	1022.42	1022.44	1022.43	1022.43	1022.31
	19	1022.48	1022.53	1022.56	1022.59	1022.60	1022.58	1022.58	1022.59	1022.62	1022.67	1022.70	1022.71	1022.60
	20	1022.72	1022.78	1022.86	1022.91	1022.92	1022.95	1022.98	1022.99	1022.98	1022.99	1023.02	1023.04	1022.93
	21	1023.05	1023.06	1023.06	1023.05	1023.02	1023.01	1023.01	1023.00	1022.98	1022.97	1022.99	1023.01	1023.01
	22	1023.03	1023.05	1023.08	1023.12	1023.17	1023.18	1023.18	1023.18	1023.19	1023.21	1023.23	1023.22	1023.15
	23	1023.22	1023.22	1023.22	1023.26	1023.29	1023.30	1023.31	1023.33	1023.34	1023.35	1023.37	1023.41	1023.30
12	0	1023.43	1023.42	1023.40	1023.39	1023.36	1023.35	1023.35	1023.31	1023.27	1023.24	1023.21	1023.18	1023.32
	1	1023.15	1023.13	1023.08	1023.03	1023.00	1022.98	1022.97	1022.98	1022.98	1022.97	1022.95	1022.91	1023.01
	2	1022.86	1022.82	1022.80	1022.82	1022.85	1022.89	1022.93	1022.94	1022.96	1022.98	1023.01	1023.05	1022.91
	3	1023.07	1023.10	1023.12	1023.13	1023.14	1023.12	1023.09	1023.06	1023.07	1023.09	1023.12	1023.16	1023.10
	4	1023.17	1023.18	1023.21	1023.22	1023.24	1023.27	1023.31	1023.32	1023.31	1023.31	1023.29	1023.28	1023.26
	5	1023.29	1023.32	1023.35	1023.39	1023.43	1023.51	1023.59	1023.66	1023.68	1023.70	1023.76	1023.81	1023.54
	6	1023.85	1023.86	1023.89	1023.95	1024.00	1024.02	1024.02	1024.05	1024.11	1024.14	1024.13	1024.15	1024.01
	7	1024.22	1024.28	1024.30	1024.35	1024.44	1024.48	1024.51	1024.54	1024.53	1024.54	1024.61	1024.68	1024.45
	8	1024.72	1024.73	1024.75	1024.79	1024.84	1024.87	1024.86	1024.82	1024.79	1024.80	1024.81	1024.80	1024.80
	9	1024.76	1024.75	1024.79	1024.82	1024.80	1024.77	1024.75	1024.73	1024.72	1024.69	1024.66	1024.63	1024.74
	10	1024.60	1024.58	1024.57	1024.56	1024.54	1024.53	1024.51	1024.46	1024.40	1024.35	1024.29	1024.23	1024.47
	11	1024.18	1024.12	1024.06	1023.98	1023.92	1023.87	1023.86	1023.83	1023.79	1023.78	1023.77	1023.79	1023.91
	12	1023.81	1023.80	1023.80	1023.82	1023.80	1023.78	1023.76	1023.76	1023.77	1023.74	1023.69	1023.66	1023.76
	13	1023.66	1023.68	1023.71	1023.73	1023.75	1023.75	1023.73	1023.73	1023.71	1023.69	1023.67	1023.67	1023.70
	14	1023.72	1023.76	1023.78	1023.79	1023.80	1023.83	1023.85	1023.85	1023.84	1023.85	1023.87	1023.92	1023.82
	15	1023.99	1024.01	1023.99	1023.98	1023.99	1023.99	1023.99	1023.99	1023.99	1023.97	1023.97	1023.96	1023.98
	16	1023.94	1023.93	1023.93	1023.96	1024.04	1024.10	1024.12	1024.14	1024.15	1024.18	1024.21	1024.22	1024.07
	17	1024.24	1024.24	1024.27	1024.31	1024.29	1024.27	1024.26	1024.26	1024.25	1024.23	1024.25	1024.27	1024.26
	18	1024.28	1024.26	1024.27	1024.32	1024.39	1024.43	1024.46	1024.51	1024.59	1024.67	1024.73	1024.75	1024.47
	19	1024.75	1024.74	1024.73	1024.76	1024.82	1024.90	1024.95	1024.94	1024.94	1024.94	1024.94	1024.94	1024.86
	20	1024.96	1024.98	1024.93	1024.87	1024.85	1024.84	1024.84	1024.84	1024.84	1024.83	1024.81	1024.81	1024.86
	21	1024.84	1024.87	1024.88	1024.87	1024.84	1024.81	1024.79	1024.74	1024.69	1024.69	1024.70	1024.69	1024.78
	22	1024.66	1024.62	1024.62	1024.63	1024.64	1024.64	1024.62	1024.60	1024.59	1024.59	1024.60	1024.60	1024.62
	23	1024.60	1024.59	1024.57	1024.57	1024.57	1024.59	1024.61	1024.59	1024.58	1024.61	1024.64	1024.67	1024.60

S.V.I.R.CO. Observatory - Pressure in hectoPascal – October 2017

day	hh	00_05	05_10	10_15	15_20	20_25	25_30	30_35	35_40	40_45	45_50	50_55	55_60	average
13	0	1024.65	1024.65	1024.65	1024.67	1024.69	1024.68	1024.64	1024.61	1024.59	1024.56	1024.52	1024.49	1024.61
	1	1024.45	1024.43	1024.44	1024.45	1024.45	1024.41	1024.36	1024.37	1024.38	1024.37	1024.40	1024.43	1024.41
	2	1024.45	1024.46	1024.44	1024.44	1024.42	1024.40	1024.40	1024.38	1024.35	1024.33	1024.33	1024.35	1024.39
	3	1024.37	1024.38	1024.38	1024.38	1024.41	1024.44	1024.45	1024.45	1024.48	1024.52	1024.54	1024.55	1024.44
	4	1024.55	1024.55	1024.55	1024.54	1024.56	1024.59	1024.62	1024.65	1024.69	1024.71	1024.69	1024.66	1024.61
	5	1024.65	1024.66	1024.68	1024.67	1024.65	1024.66	1024.70	1024.73	1024.78	1024.83	1024.87	1024.92	1024.73
	6	1024.97	1025.01	1025.04	1025.05	1025.08	1025.08	1025.07	1025.09	1025.13	1025.17	1025.23	1025.30	1025.10
	7	1025.37	1025.41	1025.45	1025.49	1025.52	1025.54	1025.55	1025.55	1025.54	1025.55	1025.57	1025.60	1025.51
	8	1025.63	1025.68	1025.72	1025.75	1025.76	1025.74	1025.74	1025.78	1025.80	1025.79	1025.76	1025.73	1025.74
	9	1025.70	1025.68	1025.66	1025.66	1025.68	1025.67	1025.64	1025.62	1025.61	1025.61	1025.61	1025.61	1025.64
	10	1025.59	1025.56	1025.53	1025.51	1025.46	1025.39	1025.34	1025.30	1025.24	1025.18	1025.14	1025.08	1025.36
	11	1025.03	1024.99	1024.94	1024.89	1024.86	1024.82	1024.75	1024.69	1024.65	1024.60	1024.55	1024.49	1024.77
	12	1024.45	1024.43	1024.38	1024.32	1024.26	1024.18	1024.10	1024.06	1024.02	1023.97	1023.94	1023.91	1024.17
	13	1023.87	1023.84	1023.81	1023.79	1023.77	1023.76	1023.78	1023.78	1023.77	1023.74	1023.70	1023.71	1023.77
	14	1023.70	1023.68	1023.66	1023.63	1023.61	1023.62	1023.63	1023.65	1023.64	1023.64	1023.67	1023.68	1023.65
	15	1023.68	1023.68	1023.70	1023.74	1023.76	1023.77	1023.78	1023.79	1023.79	1023.79	1023.82	1023.85	1023.76
	16	1023.88	1023.88	1023.90	1023.93	1023.94	1023.97	1024.00	1024.03	1024.08	1024.10	1024.10	1024.13	1023.99
	17	1024.17	1024.20	1024.20	1024.20	1024.20	1024.21	1024.22	1024.22	1024.22	1024.25	1024.27	1024.27	1024.22
	18	1024.28	1024.29	1024.30	1024.30	1024.29	1024.32	1024.33	1024.32	1024.32	1024.33	1024.35	1024.39	1024.32
	19	1024.41	1024.41	1024.39	1024.37	1024.36	1024.36	1024.39	1024.42	1024.46	1024.50	1024.54	1024.59	1024.43
	20	1024.62	1024.61	1024.62	1024.64	1024.64	1024.65	1024.64	1024.62	1024.59	1024.57	1024.58	1024.60	1024.61
	21	1024.62	1024.64	1024.66	1024.66	1024.65	1024.64	1024.66	1024.70	1024.69	1024.68	1024.70	1024.72	1024.67
	22	1024.71	1024.71	1024.71	1024.72	1024.76	1024.79	1024.75	1024.72	1024.70	1024.69	1024.68	1024.70	1024.72
	23	1024.72	1024.71	1024.68	1024.69	1024.72	1024.73	1024.75	1024.82	1024.91	1024.99	1025.05	1025.07	1024.82
14	0	1025.05	1025.05	1025.07	1025.09	1025.09	1025.06	1025.03	1025.00	1024.99	1024.99	1024.99	1024.99	1025.03
	1	1024.98	1024.98	1024.99	1024.99	1024.99	1025.00	1025.00	1024.98	1024.98	1024.99	1024.96	1024.96	1024.98
	2	1024.99	1025.02	1025.02	1025.03	1025.02	1024.98	1024.97	1024.97	1025.00	1025.02	1025.02	1025.02	1025.00
	3	1025.01	1024.99	1024.98	1024.96	1024.99	1025.01	1025.02	1025.09	1025.12	1025.12	1025.13	1025.13	1025.04
	4	1025.11	1025.09	1025.12	1025.17	1025.15	1025.09	1025.07	1025.09	1025.11	1025.14	1025.18	1025.20	1025.12
	5	1025.20	1025.21	1025.23	1025.27	1025.30	1025.32	1025.34	1025.37	1025.40	1025.43	1025.47	1025.52	1025.34
	6	1025.58	1025.63	1025.65	1025.67	1025.73	1025.78	1025.84	1025.91	1025.96	1026.00	1026.02	1026.02	1025.81
	7	1026.04	1026.09	1026.13	1026.12	1026.15	1026.20	1026.22	1026.22	1026.22	1026.23	1026.27	1026.31	1026.18
	8	1026.35	1026.37	1026.43	1026.47	1026.49	1026.49	1026.53	1026.59	1026.64	1026.67	1026.67	1026.67	1026.53
	9	1026.66	1026.61	1026.56	1026.55	1026.56	1026.58	1026.61	1026.62	1026.59	1026.55	1026.54	1026.53	1026.58
	10	1026.51	1026.49	1026.46	1026.44	1026.42	1026.38	1026.32	1026.27	1026.23	1026.17	1026.11	1026.05	1026.32
	11	1026.00	1025.96	1025.90	1025.83	1025.76	1025.71	1025.68	1025.64	1025.61	1025.57	1025.53	1025.47	1025.72
	12	1025.40	1025.33	1025.29	1025.28	1025.24	1025.19	1025.16	1025.12	1025.05	1024.99	1024.92	1024.88	1025.15
	13	1024.88	1024.86	1024.84	1024.83	1024.83	1024.81	1024.79	1024.79	1024.77	1024.74	1024.73	1024.74	1024.80
	14	1024.75	1024.76	1024.78	1024.79	1024.80	1024.84	1024.86	1024.87	1024.90	1024.92	1024.93	1024.93	1024.84
	15	1024.95	1024.97	1025.01	1025.04	1025.08	1025.11	1025.13	1025.15	1025.17	1025.19	1025.22	1025.27	1025.10
	16	1025.31	1025.31	1025.32	1025.33	1025.33	1025.34	1025.37	1025.40	1025.43	1025.45	1025.50	1025.56	1025.38
	17	1025.61	1025.64	1025.64	1025.64	1025.65	1025.67	1025.71	1025.75	1025.79	1025.81	1025.83	1025.85	1025.71
	18	1025.84	1025.86	1025.90	1025.93	1025.95	1025.99	1026.01	1026.02	1026.02	1026.02	1026.03	1026.04	1025.96
	19	1026.06	1026.10	1026.13	1026.17	1026.18	1026.17	1026.17	1026.17	1026.15	1026.14	1026.15	1026.16	1026.14
	20	1026.16	1026.17	1026.18	1026.20	1026.23	1026.24	1026.24	1026.25	1026.25	1026.24	1026.22	1026.22	1026.21
	21	1026.24	1026.25	1026.25	1026.24	1026.25	1026.25	1026.26	1026.28	1026.31	1026.33	1026.33	1026.30	1026.27
	22	1026.29	1026.29	1026.29	1026.29	1026.29	1026.27	1026.24	1026.22	1026.22	1026.23	1026.23	1026.20	1026.25
	23	1026.19	1026.20	1026.22	1026.23	1026.22	1026.20	1026.20	1026.22	1026.22	1026.22	1026.26	1026.28	1026.22

S.V.I.R.CO. Observatory - Pressure in hectoPascal – October 2017

day	hh	00_05	05_10	10_15	15_20	20_25	25_30	30_35	35_40	40_45	45_50	50_55	55_60	average
15	0	1026.30	1026.32	1026.33	1026.34	1026.36	1026.37	1026.37	1026.38	1026.37	1026.35	1026.33	1026.32	1026.34
	1	1026.33	1026.31	1026.26	1026.22	1026.20	1026.21	1026.20	1026.18	1026.15	1026.15	1026.16	1026.14	1026.21
	2	1026.11	1026.10	1026.12	1026.12	1026.12	1026.14	1026.18	1026.23	1026.24	1026.24	1026.25	1026.29	1026.18
	3	1026.31	1026.32	1026.32	1026.32	1026.32	1026.32	1026.32	1026.34	1026.35	1026.36	1026.38	1026.41	1026.34
	4	1026.44	1026.46	1026.47	1026.50	1026.53	1026.54	1026.51	1026.50	1026.52	1026.55	1026.60	1026.62	1026.52
	5	1026.62	1026.63	1026.68	1026.70	1026.69	1026.69	1026.70	1026.72	1026.76	1026.80	1026.83	1026.86	1026.72
	6	1026.89	1026.94	1027.01	1027.08	1027.14	1027.19	1027.23	1027.26	1027.28	1027.28	1027.29	1027.32	1027.16
	7	1027.35	1027.37	1027.38	1027.40	1027.42	1027.44	1027.45	1027.46	1027.47	1027.47	1027.46	1027.47	1027.43
	8	1027.47	1027.45	1027.46	1027.48	1027.52	1027.55	1027.56	1027.56	1027.56	1027.56	1027.56	1027.57	1027.52
	9	1027.57	1027.54	1027.52	1027.53	1027.53	1027.51	1027.48	1027.45	1027.47	1027.50	1027.53	1027.53	1027.51
	10	1027.51	1027.48	1027.41	1027.33	1027.25	1027.17	1027.10	1027.04	1026.99	1026.94	1026.89	1026.84	1027.16
	11	1026.80	1026.76	1026.72	1026.68	1026.62	1026.54	1026.44	1026.36	1026.31	1026.29	1026.28	1026.22	1026.50
	12	1026.14	1026.11	1026.09	1026.06	1026.05	1026.01	1025.95	1025.88	1025.81	1025.74	1025.69	1025.68	1025.93
	13	1025.67	1025.64	1025.65	1025.68	1025.68	1025.67	1025.66	1025.67	1025.67	1025.64	1025.62	1025.60	1025.65
	14	1025.57	1025.53	1025.51	1025.51	1025.49	1025.45	1025.41	1025.41	1025.43	1025.45	1025.42	1025.40	1025.46
	15	1025.42	1025.43	1025.43	1025.45	1025.46	1025.45	1025.44	1025.42	1025.41	1025.39	1025.38	1025.39	1025.42
	16	1025.40	1025.39	1025.40	1025.44	1025.47	1025.51	1025.54	1025.57	1025.61	1025.62	1025.63	1025.65	1025.52
	17	1025.67	1025.68	1025.68	1025.73	1025.78	1025.80	1025.82	1025.86	1025.88	1025.89	1025.90	1025.91	1025.80
	18	1025.93	1025.94	1025.95	1025.96	1025.96	1025.98	1026.01	1026.03	1026.04	1026.04	1026.05	1026.07	1026.00
	19	1026.06	1026.05	1026.07	1026.10	1026.10	1026.06	1026.05	1026.07	1026.11	1026.15	1026.15	1026.09	1026.09
	20	1026.03	1025.99	1025.98	1026.02	1026.07	1026.12	1026.18	1026.20	1026.19	1026.19	1026.19	1026.22	1026.11
	21	1026.27	1026.32	1026.34	1026.35	1026.36	1026.36	1026.36	1026.35	1026.37	1026.38	1026.40	1026.41	1026.35
	22	1026.42	1026.42	1026.42	1026.41	1026.39	1026.35	1026.30	1026.26	1026.26	1026.27	1026.27	1026.27	1026.33
	23	1026.24	1026.22	1026.20	1026.17	1026.16	1026.16	1026.14	1026.11	1026.10	1026.11	1026.13	1026.14	1026.15
16	0	1026.13	1026.14	1026.17	1026.19	1026.18	1026.14	1026.13	1026.11	1026.09	1026.06	1026.02	1026.02	1026.11
	1	1026.02	1026.02	1026.01	1025.95	1025.89	1025.85	1025.82	1025.82	1025.80	1025.77	1025.76	1025.76	1025.87
	2	1025.75	1025.71	1025.65	1025.64	1025.65	1025.62	1025.59	1025.57	1025.58	1025.61	1025.60	1025.56	1025.63
	3	1025.56	1025.56	1025.60	1025.65	1025.69	1025.71	1025.71	1025.71	1025.72	1025.72	1025.71	1025.68	1025.67
	4	1025.63	1025.60	1025.62	1025.67	1025.70	1025.70	1025.71	1025.73	1025.77	1025.80	1025.82	1025.83	1025.71
	5	1025.83	1025.86	1025.91	1025.92	1025.94	1025.94	1025.90	1025.89	1025.91	1025.98	1026.07	1026.14	1025.94
	6	1026.20	1026.21	1026.23	1026.27	1026.30	1026.33	1026.37	1026.43	1026.48	1026.52	1026.58	1026.60	1026.38
	7	1026.58	1026.58	1026.57	1026.54	1026.54	1026.59	1026.64	1026.65	1026.66	1026.67	1026.67	1026.70	1026.61
	8	1026.75	1026.79	1026.78	1026.75	1026.75	1026.79	1026.80	1026.80	1026.81	1026.81	1026.84	1026.89	1026.79
	9	1026.91	1026.90	1026.89	1026.88	1026.90	1026.92	1026.91	1026.90	1026.88	1026.84	1026.80	1026.77	1026.87
	10	1026.74	1026.71	1026.67	1026.63	1026.60	1026.59	1026.59	1026.58	1026.56	1026.53	1026.49	1026.44	1026.59
	11	1026.38	1026.35	1026.31	1026.24	1026.20	1026.15	1026.08	1026.00	1025.94	1025.89	1025.83	1025.75	1026.09
	12	1025.68	1025.64	1025.60	1025.56	1025.52	1025.48	1025.46	1025.43	1025.39	1025.35	1025.30	1025.27	1025.47
	13	1025.24	1025.21	1025.17	1025.13	1025.09	1025.05	1025.01	1024.98	1024.97	1024.97	1024.97	1024.94	1025.06
	14	1024.90	1024.87	1024.87	1024.85	1024.85	1024.86	1024.86	1024.84	1024.79	1024.77	1024.75	1024.73	1024.83
	15	1024.72	1024.74	1024.78	1024.80	1024.80	1024.81	1024.81	1024.82	1024.84	1024.85	1024.86	1024.87	1024.81
	16	1024.88	1024.92	1024.95	1024.95	1024.93	1024.94	1025.00	1025.04	1025.06	1025.10	1025.14	1025.17	1025.00
	17	1025.20	1025.23	1025.27	1025.33	1025.38	1025.40	1025.41	1025.43	1025.45	1025.44	1025.42	1025.42	1025.36
	18	1025.41	1025.39	1025.38	1025.38	1025.38	1025.41	1025.43	1025.43	1025.46	1025.50	1025.52	1025.54	1025.43
	19	1025.57	1025.60	1025.62	1025.61	1025.57	1025.54	1025.52	1025.54	1025.55	1025.55	1025.56	1025.58	1025.57
	20	1025.58	1025.59	1025.61	1025.66	1025.68	1025.67	1025.67	1025.67	1025.70	1025.73	1025.72	1025.71	1025.66
	21	1025.69	1025.69	1025.68	1025.67	1025.65	1025.60	1025.56	1025.52	1025.48	1025.48	1025.49	1025.47	1025.58
	22	1025.44	1025.40	1025.37	1025.35	1025.36	1025.37	1025.36	1025.32	1025.27	1025.26	1025.23	1025.17	1025.32
	23	1025.12	1025.07	1025.03	1025.03	1025.04	1025.04	1025.05	1025.08	1025.10	1025.08	1025.04	1025.00	1025.05



S.V.I.R.CO. Observatory - Pressure in hectoPascal – October 2017

day	hh	00_05	05_10	10_15	15_20	20_25	25_30	30_35	35_40	40_45	45_50	50_55	55_60	average
17	0	1024.99	1024.98	1024.94	1024.90	1024.88	1024.88	1024.89	1024.90	1024.90	1024.85	1024.79	1024.74	1024.88
	1	1024.68	1024.60	1024.56	1024.55	1024.51	1024.47	1024.45	1024.43	1024.39	1024.36	1024.33	1024.30	1024.47
	2	1024.28	1024.27	1024.29	1024.31	1024.28	1024.27	1024.26	1024.24	1024.24	1024.24	1024.23	1024.22	1024.26
	3	1024.25	1024.28	1024.27	1024.24	1024.21	1024.21	1024.21	1024.17	1024.13	1024.06	1024.00	1024.00	1024.17
	4	1024.06	1024.14	1024.19	1024.21	1024.22	1024.24	1024.25	1024.26	1024.26	1024.25	1024.30	1024.36	1024.23
	5	1024.39	1024.39	1024.39	1024.36	1024.34	1024.36	1024.41	1024.49	1024.57	1024.62	1024.66	1024.73	1024.47
	6	1024.78	1024.83	1024.91	1024.98	1025.03	1025.09	1025.13	1025.17	1025.19	1025.20	1025.26	1025.32	1025.07
	7	1025.35	1025.37	1025.38	1025.39	1025.43	1025.47	1025.48	1025.48	1025.48	1025.47	1025.45	1025.41	1025.43
	8	1025.36	1025.32	1025.28	1025.28	1025.28	1025.26	1025.25	1025.23	1025.20	1025.18	1025.17	1025.16	1025.25
	9	1025.14	1025.10	1025.05	1025.00	1024.98	1024.99	1024.98	1024.96	1024.95	1024.93	1024.92	1024.87	1024.99
	10	1024.83	1024.79	1024.75	1024.70	1024.65	1024.60	1024.54	1024.47	1024.42	1024.35	1024.28	1024.20	1024.55
	11	1024.12	1024.04	1023.94	1023.86	1023.78	1023.69	1023.60	1023.53	1023.46	1023.38	1023.28	1023.20	1023.65
	12	1023.14	1023.07	1022.99	1022.90	1022.80	1022.71	1022.64	1022.57	1022.52	1022.48	1022.43	1022.40	1022.72
	13	1022.40	1022.36	1022.32	1022.32	1022.30	1022.26	1022.22	1022.21	1022.23	1022.20	1022.14	1022.10	1022.25
	14	1022.09	1022.07	1022.06	1022.04	1022.02	1021.98	1021.98	1022.00	1022.00	1021.98	1021.95	1021.94	1022.01
	15	1021.94	1021.92	1021.92	1021.93	1021.94	1021.93	1021.94	1021.94	1021.92	1021.91	1021.91	1021.91	1021.92
	16	1021.89	1021.86	1021.84	1021.84	1021.84	1021.85	1021.87	1021.87	1021.88	1021.89	1021.88	1021.89	1021.86
	17	1021.92	1021.95	1021.97	1021.98	1022.00	1022.00	1021.98	1021.98	1022.00	1022.01	1022.02	1022.04	1021.98
	18	1022.05	1022.06	1022.06	1022.06	1022.07	1022.08	1022.08	1022.06	1022.06	1022.08	1022.07	1022.05	1022.06
	19	1022.04	1022.03	1022.04	1022.06	1022.06	1022.04	1022.05	1022.07	1022.08	1022.08	1022.05	1022.01	1022.05
	20	1022.01	1022.02	1022.03	1022.04	1022.06	1022.05	1022.04	1022.02	1022.01	1022.01	1022.01	1022.01	1022.02
	21	1022.00	1021.98	1021.97	1021.96	1021.98	1021.99	1021.98	1021.94	1021.89	1021.86	1021.82	1021.80	1021.93
	22	1021.79	1021.75	1021.68	1021.62	1021.58	1021.56	1021.53	1021.50	1021.48	1021.45	1021.42	1021.41	1021.56
	23	1021.42	1021.42	1021.42	1021.43	1021.45	1021.43	1021.40	1021.39	1021.39	1021.38	1021.36	1021.34	1021.40
18	0	1021.32	1021.31	1021.29	1021.27	1021.23	1021.21	1021.19	1021.18	1021.17	1021.17	1021.16	1021.15	1021.21
	1	1021.12	1021.08	1021.04	1021.00	1020.96	1020.96	1020.96	1020.95	1020.92	1020.89	1020.87	1020.85	1020.96
	2	1020.83	1020.82	1020.81	1020.78	1020.75	1020.73	1020.72	1020.71	1020.70	1020.70	1020.67	1020.63	1020.74
	3	1020.60	1020.55	1020.48	1020.43	1020.39	1020.36	1020.36	1020.37	1020.37	1020.37	1020.38	1020.37	1020.42
	4	1020.34	1020.32	1020.31	1020.29	1020.24	1020.19	1020.15	1020.16	1020.15	1020.12	1020.12	1020.12	1020.21
	5	1020.10	1020.10	1020.11	1020.11	1020.09	1020.08	1020.09	1020.11	1020.12	1020.11	1020.12	1020.14	1020.10
	6	1020.19	1020.26	1020.27	1020.29	1020.33	1020.35	1020.38	1020.40	1020.45	1020.50	1020.53	1020.57	1020.37
	7	1020.60	1020.61	1020.61	1020.64	1020.68	1020.71	1020.72	1020.72	1020.69	1020.67	1020.66	1020.65	1020.66
	8	1020.63	1020.59	1020.56	1020.56	1020.57	1020.56	1020.53	1020.54	1020.57	1020.56	1020.56	1020.54	1020.56
	9	1020.50	1020.49	1020.47	1020.44	1020.41	1020.37	1020.35	1020.35	1020.36	1020.33	1020.27	1020.20	1020.37
	10	1020.14	1020.10	1020.05	1019.95	1019.86	1019.81	1019.77	1019.72	1019.65	1019.56	1019.48	1019.42	1019.79
	11	1019.34	1019.27	1019.21	1019.13	1019.09	1019.06	1019.01	1018.93	1018.83	1018.75	1018.68	1018.61	1018.99
	12	1018.51	1018.45	1018.40	1018.31	1018.23	1018.18	1018.13	1018.07	1018.00	1017.91	1017.85	1017.81	1018.15
	13	1017.76	1017.72	1017.68	1017.63	1017.59	1017.56	1017.55	1017.54	1017.48	1017.46	1017.45	1017.38	1017.57
	14	1017.34	1017.35	1017.36	1017.33	1017.29	1017.27	1017.25	1017.25	1017.27	1017.26	1017.26	1017.27	1017.29
	15	1017.29	1017.31	1017.34	1017.37	1017.39	1017.39	1017.38	1017.38	1017.42	1017.46	1017.46	1017.43	1017.38
	16	1017.42	1017.44	1017.48	1017.49	1017.49	1017.52	1017.55	1017.56	1017.57	1017.55	1017.54	1017.56	1017.51
	17	1017.59	1017.62	1017.66	1017.68	1017.68	1017.69	1017.71	1017.72	1017.73	1017.72	1017.73	1017.75	1017.69
	18	1017.75	1017.76	1017.79	1017.79	1017.78	1017.75	1017.74	1017.76	1017.80	1017.84	1017.85	1017.83	1017.79
	19	1017.86	1017.90	1017.92	1017.95	1017.98	1018.00	1018.01	1018.03	1018.05	1018.07	1018.11	1018.15	1018.00
	20	1018.18	1018.20	1018.19	1018.19	1018.24	1018.29	1018.33	1018.36	1018.35	1018.37	1018.42	1018.44	1018.30
	21	1018.43	1018.44	1018.47	1018.44	1018.38	1018.37	1018.38	1018.39	1018.40	1018.42	1018.39	1018.32	1018.40
	22	1018.27	1018.23	1018.21	1018.21	1018.18	1018.15	1018.14	1018.17	1018.21	1018.22	1018.22	1018.21	1018.20
	23	1018.20	1018.19	1018.19	1018.16	1018.13	1018.10	1018.09	1018.09	1018.11	1018.12	1018.14	1018.17	1018.14

S.V.I.R.CO. Observatory - Pressure in hectoPascal – October 2017

day	hh	00_05	05_10	10_15	15_20	20_25	25_30	30_35	35_40	40_45	45_50	50_55	55_60	average
19	0	1018.13	1018.13	1018.15	1018.14	1018.13	1018.11	1018.07	1018.04	1018.01	1017.97	1017.92	1017.87	1018.05
	1	1017.86	1017.83	1017.78	1017.75	1017.73	1017.69	1017.68	1017.65	1017.59	1017.58	1017.59	1017.59	1017.69
	2	1017.59	1017.59	1017.57	1017.57	1017.59	1017.61	1017.62	1017.61	1017.58	1017.55	1017.49	1017.47	1017.57
	3	1017.49	1017.50	1017.48	1017.43	1017.39	1017.39	1017.43	1017.44	1017.42	1017.40	1017.36	1017.32	1017.42
	4	1017.32	1017.33	1017.34	1017.31	1017.29	1017.32	1017.33	1017.31	1017.33	1017.34	1017.33	1017.34	1017.32
	5	1017.37	1017.38	1017.40	1017.42	1017.44	1017.48	1017.50	1017.54	1017.60	1017.66	1017.71	1017.76	1017.52
	6	1017.82	1017.90	1017.95	1018.01	1018.06	1018.12	1018.19	1018.23	1018.28	1018.30	1018.32	1018.36	1018.13
	7	1018.40	1018.42	1018.42	1018.44	1018.47	1018.46	1018.43	1018.44	1018.48	1018.50	1018.49	1018.45	1018.45
	8	1018.41	1018.37	1018.34	1018.33	1018.35	1018.35	1018.34	1018.33	1018.25	1018.22	1018.23	1018.22	1018.31
	9	1018.20	1018.18	1018.17	1018.19	1018.22	1018.21	1018.16	1018.15	1018.20	1018.25	1018.27	1018.27	1018.20
	10	1018.25	1018.20	1018.13	1018.07	1018.02	1017.98	1017.93	1017.87	1017.78	1017.67	1017.58	1017.54	1017.92
	11	1017.52	1017.46	1017.36	1017.27	1017.19	1017.11	1017.04	1016.97	1016.92	1016.86	1016.83	1016.80	1017.11
	12	1016.75	1016.66	1016.56	1016.51	1016.48	1016.42	1016.36	1016.30	1016.24	1016.22	1016.16	1016.12	1016.40
	13	1016.11	1016.08	1016.07	1016.05	1016.02	1015.99	1015.94	1015.90	1015.87	1015.86	1015.85	1015.82	1015.96
	14	1015.77	1015.73	1015.75	1015.77	1015.76	1015.76	1015.77	1015.73	1015.66	1015.61	1015.59	1015.54	1015.70
	15	1015.51	1015.51	1015.50	1015.49	1015.52	1015.58	1015.62	1015.66	1015.72	1015.79	1015.82	1015.85	1015.63
	16	1015.88	1015.92	1015.98	1015.99	1015.99	1016.01	1016.01	1015.99	1016.02	1016.08	1016.14	1016.20	1016.02
	17	1016.24	1016.26	1016.28	1016.32	1016.36	1016.40	1016.42	1016.43	1016.45	1016.47	1016.53	1016.59	1016.39
	18	1016.64	1016.69	1016.70	1016.72	1016.74	1016.75	1016.77	1016.80	1016.82	1016.83	1016.81	1016.78	1016.75
	19	1016.73	1016.69	1016.67	1016.66	1016.66	1016.65	1016.65	1016.68	1016.69	1016.68	1016.70	1016.74	1016.68
	20	1016.76	1016.77	1016.78	1016.77	1016.76	1016.76	1016.74	1016.72	1016.73	1016.75	1016.76	1016.78	1016.75
	21	1016.79	1016.80	1016.79	1016.79	1016.81	1016.85	1016.87	1016.90	1016.92	1016.94	1016.95	1016.88	1016.86
	22	1016.81	1016.82	1016.87	1016.88	1016.88	1016.88	1016.90	1016.91	1016.92	1016.95	1016.99	1017.02	1016.90
	23	1017.04	1017.02	1016.99	1016.99	1017.01	1017.00	1017.00	1017.00	1017.00	1017.00	1017.01	1017.03	1017.00
20	0	1017.00	1017.01	1017.03	1017.06	1017.04	1017.05	1017.09	1017.11	1017.09	1017.06	1017.08	1017.12	1017.06
	1	1017.18	1017.21	1017.20	1017.16	1017.12	1017.10	1017.13	1017.12	1017.10	1017.10	1017.11	1017.12	1017.14
	2	1017.08	1017.03	1017.00	1016.98	1016.95	1016.91	1016.87	1016.84	1016.81	1016.83	1016.89	1016.92	1016.92
	3	1016.95	1016.95	1016.91	1016.91	1016.93	1016.94	1016.98	1017.04	1017.09	1017.12	1017.15	1017.18	1017.01
	4	1017.19	1017.17	1017.14	1017.13	1017.14	1017.12	1017.09	1017.10	1017.08	1017.07	1017.09	1017.13	1017.12
	5	1017.13	1017.11	1017.10	1017.12	1017.15	1017.16	1017.21	1017.26	1017.31	1017.34	1017.39	1017.49	1017.23
	6	1017.56	1017.68	1017.79	1017.81	1017.85	1017.89	1017.94	1017.98	1018.00	1018.07	1018.19	1018.29	1017.92
	7	1018.36	1018.45	1018.50	1018.50	1018.53	1018.58	1018.60	1018.63	1018.67	1018.71	1018.77	1018.81	1018.59
	8	1018.82	1018.82	1018.83	1018.83	1018.80	1018.79	1018.82	1018.87	1018.87	1018.85	1018.84	1018.81	1018.83
	9	1018.76	1018.77	1018.80	1018.79	1018.72	1018.69	1018.73	1018.73	1018.70	1018.64	1018.59	1018.56	1018.70
	10	1018.52	1018.49	1018.48	1018.49	1018.51	1018.51	1018.48	1018.43	1018.40	1018.36	1018.34	1018.32	1018.44
	11	1018.27	1018.23	1018.22	1018.21	1018.16	1018.12	1018.11	1018.10	1018.04	1017.97	1017.92	1017.83	1018.10
	12	1017.73	1017.67	1017.62	1017.60	1017.61	1017.61	1017.58	1017.52	1017.45	1017.36	1017.27	1017.22	1017.52
	13	1017.23	1017.21	1017.19	1017.19	1017.20	1017.19	1017.17	1017.16	1017.19	1017.25	1017.30	1017.29	1017.21
	14	1017.22	1017.18	1017.22	1017.28	1017.34	1017.39	1017.40	1017.42	1017.47	1017.57	1017.61	1017.58	1017.39
	15	1017.57	1017.62	1017.66	1017.68	1017.72	1017.74	1017.76	1017.81	1017.83	1017.82	1017.85	1017.92	1017.75
	16	1017.99	1018.08	1018.18	1018.25	1018.30	1018.34	1018.40	1018.49	1018.56	1018.60	1018.63	1018.68	1018.37
	17	1018.77	1018.82	1018.85	1018.92	1018.99	1019.03	1019.05	1019.06	1019.10	1019.14	1019.15	1019.17	1019.00
	18	1019.17	1019.19	1019.22	1019.22	1019.21	1019.23	1019.27	1019.29	1019.30	1019.32	1019.34	1019.39	1019.26
	19	1019.40	1019.39	1019.38	1019.39	1019.45	1019.46	1019.48	1019.50	1019.50	1019.50	1019.53	1019.56	1019.46
	20	1019.58	1019.61	1019.64	1019.67	1019.72	1019.77	1019.80	1019.83	1019.87	1019.94	1019.98	1019.97	1019.78
	21	1019.98	1019.98	1019.99	1020.01	1020.02	1020.05	1020.10	1020.12	1020.13	1020.17	1020.19	1020.19	1020.08
	22	1020.21	1020.23	1020.26	1020.27	1020.25	1020.18	1020.10	1020.09	1020.11	1020.13	1020.11	1020.11	1020.17
	23	1020.14	1020.18	1020.16	1020.14	1020.16	1020.16	1020.16	1020.15	1020.14	1020.15	1020.17	1020.17	1020.15

S.V.I.R.CO. Observatory - Pressure in hectoPascal – October 2017

day	hh	00_05	05_10	10_15	15_20	20_25	25_30	30_35	35_40	40_45	45_50	50_55	55_60	average
21	0	1020.15	1020.13	1020.08	1020.02	1019.99	1020.01	1019.98	1019.92	1019.91	1019.90	1019.86	1019.81	1019.97
	1	1019.77	1019.74	1019.74	1019.76	1019.76	1019.74	1019.71	1019.67	1019.63	1019.59	1019.59	1019.59	1019.69
	2	1019.57	1019.57	1019.58	1019.61	1019.63	1019.66	1019.72	1019.76	1019.75	1019.71	1019.69	1019.68	1019.66
	3	1019.67	1019.66	1019.62	1019.59	1019.60	1019.62	1019.62	1019.65	1019.65	1019.63	1019.66	1019.74	1019.64
	4	1019.81	1019.81	1019.78	1019.76	1019.75	1019.77	1019.79	1019.78	1019.80	1019.82	1019.84	1019.88	1019.80
	5	1019.90	1019.90	1019.91	1019.96	1020.01	1020.02	1020.04	1020.05	1020.11	1020.19	1020.25	1020.30	1020.05
	6	1020.35	1020.39	1020.42	1020.43	1020.44	1020.49	1020.57	1020.66	1020.69	1020.71	1020.74	1020.83	1020.56
	7	1020.88	1020.90	1020.94	1020.99	1021.01	1020.96	1020.96	1020.99	1020.99	1021.03	1021.06	1021.04	1020.98
	8	1021.00	1020.94	1020.90	1020.89	1020.90	1020.93	1020.94	1020.92	1020.89	1020.91	1020.92	1020.91	1020.92
	9	1020.92	1020.93	1020.90	1020.86	1020.81	1020.77	1020.78	1020.80	1020.79	1020.78	1020.79	1020.80	1020.83
	10	1020.79	1020.75	1020.69	1020.65	1020.64	1020.58	1020.52	1020.46	1020.37	1020.29	1020.24	1020.19	1020.51
	11	1020.12	1020.05	1020.00	1019.95	1019.91	1019.85	1019.76	1019.69	1019.63	1019.57	1019.51	1019.44	1019.79
	12	1019.37	1019.30	1019.25	1019.21	1019.16	1019.16	1019.16	1019.12	1019.07	1019.04	1019.04	1019.04	1019.16
	13	1019.05	1019.07	1019.06	1019.03	1019.03	1019.06	1019.11	1019.14	1019.17	1019.16	1019.13	1019.12	1019.09
	14	1019.11	1019.08	1019.08	1019.11	1019.14	1019.16	1019.17	1019.14	1019.11	1019.10	1019.12	1019.13	1019.12
	15	1019.12	1019.14	1019.13	1019.10	1019.10	1019.09	1019.07	1019.08	1019.09	1019.06	1019.03	1019.05	1019.09
	16	1019.05	1019.02	1019.03	1019.04	1019.05	1019.07	1019.07	1019.07	1019.09	1019.11	1019.12	1019.14	1019.07
	17	1019.17	1019.20	1019.21	1019.19	1019.20	1019.23	1019.27	1019.28	1019.26	1019.28	1019.34	1019.37	1019.25
	18	1019.40	1019.46	1019.50	1019.56	1019.59	1019.60	1019.63	1019.64	1019.67	1019.70	1019.72	1019.71	1019.60
	19	1019.73	1019.78	1019.80	1019.80	1019.84	1019.88	1019.85	1019.81	1019.76	1019.75	1019.79	1019.79	1019.80
	20	1019.80	1019.82	1019.76	1019.73	1019.74	1019.76	1019.78	1019.81	1019.82	1019.81	1019.81	1019.81	1019.79
	21	1019.79	1019.79	1019.78	1019.77	1019.76	1019.77	1019.76	1019.76	1019.78	1019.81	1019.77	1019.72	1019.77
	22	1019.70	1019.68	1019.66	1019.63	1019.60	1019.62	1019.60	1019.53	1019.47	1019.41	1019.34	1019.33	1019.55
	23	1019.35	1019.34	1019.32	1019.29	1019.23	1019.18	1019.17	1019.19	1019.23	1019.23	1019.23	1019.23	1019.25
22	0	1019.14	1019.14	1019.11	1019.07	1019.03	1019.01	1019.03	1019.06	1019.05	1019.03	1019.01	1018.98	1019.05
	1	1018.95	1018.95	1018.91	1018.83	1018.78	1018.74	1018.70	1018.67	1018.62	1018.51	1018.44	1018.38	1018.71
	2	1018.33	1018.26	1018.18	1018.14	1018.08	1018.02	1018.00	1017.96	1017.90	1017.84	1017.77	1017.73	1018.02
	3	1017.68	1017.61	1017.59	1017.60	1017.60	1017.57	1017.55	1017.54	1017.54	1017.54	1017.55	1017.57	1017.58
	4	1017.59	1017.59	1017.55	1017.51	1017.46	1017.37	1017.26	1017.20	1017.17	1017.16	1017.16	1017.16	1017.35
	5	1017.15	1017.13	1017.12	1017.11	1017.11	1017.09	1017.03	1016.99	1016.99	1016.97	1016.95	1016.94	1017.05
	6	1016.93	1016.92	1016.90	1016.87	1016.87	1016.90	1016.89	1016.84	1016.80	1016.82	1016.84	1016.83	1016.87
	7	1016.81	1016.79	1016.77	1016.76	1016.78	1016.79	1016.78	1016.75	1016.69	1016.63	1016.60	1016.59	1016.72
	8	1016.59	1016.58	1016.56	1016.49	1016.40	1016.37	1016.34	1016.34	1016.32	1016.28	1016.25	1016.20	1016.39
	9	1016.15	1016.07	1016.02	1015.99	1015.90	1015.81	1015.78	1015.75	1015.71	1015.67	1015.66	1015.59	1015.84
	10	1015.55	1015.56	1015.45	1015.26	1015.18	1015.10	1014.99	1014.95	1014.87	1014.70	1014.42	1014.26	1015.02
	11	1014.38	1014.41	1014.32	1014.26	1014.09	1013.89	1013.69	1013.53	1013.36	1013.40	1013.54	1013.49	1013.86
	12	1013.42	1013.33	1013.23	1013.10	1012.98	1012.94	1012.90	1012.79	1012.73	1012.66	1012.57	1012.59	1012.93
	13	1012.56	1012.49	1012.47	1012.47	1012.45	1012.43	1012.39	1012.36	1012.32	1012.33	1012.34	1012.31	1012.41
	14	1012.28	1012.14	1011.99	1011.91	1011.90	1011.89	1011.82	1011.79	1011.77	1011.71	1011.63	1011.55	1011.86
	15	1011.55	1011.55	1011.46	1011.35	1011.22	1011.15	1011.05	1010.99	1010.99	1010.98	1010.97	1010.89	1011.18
	16	1010.86	1010.91	1010.96	1011.05	1011.12	1011.12	1011.05	1011.04	1011.10	1011.05	1010.97	1010.94	1011.01
	17	1010.86	1010.76	1010.72	1010.68	1010.65	1010.65	1010.56	1010.45	1010.36	1010.27	1010.20	1010.16	1010.52
	18	1010.07	1009.97	1009.88	1009.75	1009.68	1009.67	1009.58	1009.52	1009.49	1009.50	1009.60	1009.70	1009.70
	19	1009.80	1009.88	1009.95	1010.00	1010.03	1010.09	1010.14	1010.18	1010.22	1010.23	1010.23	1010.28	1010.08
	20	1010.33	1010.28	1010.19	1010.16	1010.18	1010.17	1010.19	1010.22	1010.22	1010.22	1010.22	1010.25	1010.22
	21	1010.28	1010.25	1010.22	1010.34	1010.38	1010.35	1010.40	1010.38	1010.33	1010.26	1010.22	1010.19	1010.30
	22	1010.14	1010.07	1009.97	1009.94	1009.92	1009.82	1009.75	1009.73	1009.70	1009.68	1009.61	1009.53	1009.82
	23	1009.46	1009.35	1009.28	1009.22	1009.13	1009.04	1008.94	1008.88	1008.85	1008.78	1008.69	1008.65	1009.02

S.V.I.R.CO. Observatory - Pressure in hectoPascal – October 2017

day	hh	00_05	05_10	10_15	15_20	20_25	25_30	30_35	35_40	40_45	45_50	50_55	55_60	average
23	0	1008.63	1008.58	1008.50	1008.45	1008.43	1008.41	1008.37	1008.31	1008.27	1008.26	1008.19	1008.14	1008.37
	1	1008.08	1008.02	1008.01	1007.99	1007.98	1007.94	1008.01	1008.09	1008.00	1008.01	1008.13	1008.06	1008.02
	2	1007.92	1007.93	1007.92	1007.91	1007.93	1007.89	1007.82	1007.87	1008.10	1008.27	1008.40	1008.48	1008.03
	3	1008.53	1008.63	1008.63	1008.59	1008.63	1008.75	1008.85	1008.86	1008.89	1009.00	1009.20	1009.30	1008.82
	4	1009.30	1009.31	1009.33	1009.37	1009.42	1009.44	1009.41	1009.42	1009.41	1009.42	1009.47	1009.50	1009.40
	5	1009.53	1009.54	1009.53	1009.53	1009.56	1009.55	1009.54	1009.57	1009.58	1009.63	1009.77	1009.88	1009.60
	6	1009.90	1009.89	1009.98	1010.07	1010.10	1010.13	1010.17	1010.27	1010.37	1010.45	1010.51	1010.58	1010.20
	7	1010.65	1010.69	1010.69	1010.69	1010.67	1010.62	1010.51	1010.44	1010.48	1010.48	1010.43	1010.41	1010.56
	8	1010.45	1010.42	1010.47	1010.55	1010.59	1010.68	1010.74	1010.82	1010.87	1010.87	1010.86	1010.83	1010.68
	9	1010.83	1010.84	1010.89	1010.97	1011.08	1011.21	1011.28	1011.33	1011.38	1011.41	1011.39	1011.41	1011.17
	10	1011.45	1011.41	1011.34	1011.32	1011.36	1011.42	1011.42	1011.45	1011.47	1011.49	1011.55	1011.55	1011.43
	11	1011.50	1011.41	1011.38	1011.34	1011.33	1011.31	1011.25	1011.26	1011.26	1011.24	1011.21	1011.19	1011.30
	12	1011.17	1011.13	1011.08	1011.10	1011.14	1011.14	1011.11	1011.10	1011.12	1011.12	1011.10	1011.06	1011.11
	13	1011.00	1010.97	1010.99	1010.97	1010.94	1010.98	1011.03	1011.01	1010.99	1011.00	1011.00	1010.98	1010.99
	14	1010.99	1011.02	1011.08	1011.13	1011.15	1011.18	1011.19	1011.21	1011.25	1011.28	1011.32	1011.38	1011.18
	15	1011.40	1011.41	1011.44	1011.45	1011.44	1011.44	1011.45	1011.50	1011.52	1011.53	1011.55	1011.60	1011.48
	16	1011.66	1011.70	1011.78	1011.89	1011.98	1012.03	1012.09	1012.15	1012.20	1012.25	1012.27	1012.29	1012.02
	17	1012.31	1012.33	1012.37	1012.43	1012.50	1012.57	1012.61	1012.63	1012.66	1012.69	1012.71	1012.72	1012.54
	18	1012.75	1012.79	1012.79	1012.79	1012.81	1012.85	1012.87	1012.89	1012.93	1012.96	1013.01	1013.08	1012.88
	19	1013.16	1013.23	1013.27	1013.31	1013.33	1013.30	1013.25	1013.21	1013.20	1013.23	1013.31	1013.35	1013.26
	20	1013.33	1013.31	1013.33	1013.37	1013.44	1013.54	1013.60	1013.64	1013.68	1013.70	1013.66	1013.61	1013.51
	21	1013.57	1013.56	1013.61	1013.62	1013.66	1013.84	1013.90	1013.81	1013.77	1013.75	1013.74	1013.75	1013.71
	22	1013.76	1013.75	1013.75	1013.80	1013.89	1013.95	1014.00	1014.02	1014.00	1013.98	1013.94	1013.88	1013.89
	23	1013.85	1013.84	1013.82	1013.82	1013.82	1013.83	1013.86	1013.88	1013.86	1013.85	1013.86	1013.86	1013.84
24	0	1013.87	1013.88	1013.89	1013.89	1013.93	1013.98	1014.01	1014.02	1014.03	1014.05	1014.03	1014.01	1013.97
	1	1014.01	1013.99	1014.00	1014.02	1014.04	1014.04	1014.00	1013.99	1014.00	1013.99	1013.96	1013.95	1014.00
	2	1013.99	1014.04	1014.09	1014.10	1014.08	1014.06	1014.05	1014.08	1014.11	1014.16	1014.22	1014.27	1014.10
	3	1014.30	1014.33	1014.38	1014.44	1014.48	1014.51	1014.52	1014.52	1014.57	1014.61	1014.54	1014.45	1014.47
	4	1014.43	1014.43	1014.43	1014.44	1014.46	1014.51	1014.56	1014.60	1014.62	1014.64	1014.68	1014.75	1014.54
	5	1014.80	1014.78	1014.78	1014.79	1014.81	1014.81	1014.78	1014.76	1014.81	1014.93	1015.02	1015.08	1014.84
	6	1015.13	1015.16	1015.20	1015.24	1015.23	1015.26	1015.31	1015.38	1015.42	1015.43	1015.47	1015.50	1015.31
	7	1015.51	1015.53	1015.57	1015.62	1015.65	1015.66	1015.71	1015.78	1015.82	1015.84	1015.83	1015.81	1015.69
	8	1015.82	1015.86	1015.93	1015.94	1015.91	1015.83	1015.80	1015.81	1015.76	1015.69	1015.60	1015.55	1015.79
	9	1015.55	1015.58	1015.58	1015.55	1015.46	1015.41	1015.46	1015.43	1015.33	1015.34	1015.31	1015.15	1015.43
	10	1014.98	1014.91	1014.97	1014.95	1014.84	1014.78	1014.79	1014.81	1014.76	1014.63	1014.49	1014.45	1014.78
	11	1014.39	1014.31	1014.25	1014.22	1014.19	1014.15	1014.17	1014.12	1014.06	1014.01	1014.01	1014.04	1014.16
	12	1014.04	1014.08	1014.12	1014.09	1014.07	1014.07	1014.05	1014.03	1014.04	1014.00	1013.94	1013.87	1014.03
	13	1013.81	1013.78	1013.87	1013.95	1013.89	1013.84	1013.88	1013.94	1013.97	1013.91	1013.79	1013.75	1013.86
	14	1013.76	1013.85	1013.88	1013.81	1013.79	1013.78	1013.82	1013.83	1013.83	1013.95	1014.03	1014.03	1013.86
	15	1014.07	1014.08	1014.13	1014.25	1014.36	1014.41	1014.42	1014.46	1014.53	1014.64	1014.73	1014.76	1014.40
	16	1014.82	1014.87	1014.94	1015.06	1015.11	1015.19	1015.30	1015.30	1015.31	1015.33	1015.34	1015.34	1015.16
	17	1015.36	1015.40	1015.43	1015.45	1015.48	1015.55	1015.58	1015.60	1015.64	1015.64	1015.64	1015.69	1015.54
	18	1015.74	1015.74	1015.73	1015.68	1015.67	1015.72	1015.76	1015.78	1015.80	1015.88	1015.94	1015.95	1015.78
	19	1015.95	1015.98	1015.99	1015.96	1015.99	1016.02	1016.05	1016.11	1016.17	1016.22	1016.27	1016.31	1016.08
	20	1016.29	1016.28	1016.30	1016.31	1016.30	1016.32	1016.32	1016.30	1016.33	1016.36	1016.36	1016.37	1016.32
	21	1016.41	1016.49	1016.57	1016.62	1016.59	1016.55	1016.54	1016.56	1016.69	1016.79	1016.83	1016.90	1016.63
	22	1016.93	1016.90	1016.91	1016.91	1016.92	1016.94	1016.89	1016.84	1016.83	1016.80	1016.79	1016.80	1016.87
	23	1016.79	1016.70	1016.67	1016.82	1016.87	1016.87	1016.84	1016.73	1016.74	1016.77	1016.69	1016.64	1016.76

S.V.I.R.CO. Observatory - Pressure in hectoPascal – October 2017

day	hh	00_05	05_10	10_15	15_20	20_25	25_30	30_35	35_40	40_45	45_50	50_55	55_60	average
25	0	1016.69	1016.73	1016.78	1016.72	1016.76	1016.89	1016.99	1016.96	1016.85	1016.85	1016.91	1017.03	1016.85
	1	1017.06	1016.97	1016.99	1017.11	1017.13	1017.12	1017.12	1017.10	1017.07	1017.04	1017.12	1017.15	1017.08
	2	1017.10	1017.05	1017.01	1017.00	1017.01	1017.03	1017.03	1017.04	1017.09	1017.15	1017.15	1017.19	1017.07
	3	1017.21	1017.15	1017.21	1017.20	1017.20	1017.23	1017.30	1017.40	1017.44	1017.56	1017.64	1017.61	1017.34
	4	1017.60	1017.64	1017.65	1017.73	1017.84	1017.92	1017.99	1018.00	1018.05	1018.10	1018.11	1018.15	1017.90
	5	1018.16	1018.15	1018.19	1018.26	1018.34	1018.41	1018.38	1018.34	1018.39	1018.44	1018.43	1018.48	1018.33
	6	1018.59	1018.69	1018.77	1018.84	1018.93	1018.98	1018.98	1019.03	1019.13	1019.21	1019.26	1019.30	1018.97
	7	1019.36	1019.42	1019.47	1019.48	1019.47	1019.44	1019.39	1019.41	1019.47	1019.55	1019.65	1019.70	1019.48
	8	1019.68	1019.73	1019.85	1019.88	1019.86	1019.87	1019.88	1019.90	1019.87	1019.85	1019.91	1020.01	1019.86
	9	1020.12	1020.23	1020.30	1020.33	1020.41	1020.53	1020.59	1020.60	1020.61	1020.60	1020.58	1020.54	1020.45
	10	1020.53	1020.57	1020.56	1020.52	1020.47	1020.43	1020.37	1020.35	1020.40	1020.42	1020.40	1020.39	1020.45
	11	1020.37	1020.24	1020.12	1020.14	1020.14	1020.09	1020.05	1020.02	1020.00	1020.00	1020.00	1019.97	1020.09
	12	1019.94	1019.94	1019.93	1019.92	1019.94	1019.99	1019.99	1019.95	1019.95	1019.95	1019.95	1019.92	1019.94
	13	1019.92	1019.96	1019.94	1019.92	1019.90	1019.87	1019.83	1019.82	1019.84	1019.83	1019.81	1019.81	1019.87
	14	1019.82	1019.78	1019.77	1019.78	1019.77	1019.78	1019.80	1019.84	1019.87	1019.91	1019.95	1019.98	1019.84
	15	1020.07	1020.14	1020.18	1020.22	1020.26	1020.29	1020.31	1020.37	1020.45	1020.49	1020.52	1020.57	1020.32
	16	1020.63	1020.73	1020.83	1020.90	1020.97	1021.06	1021.18	1021.26	1021.29	1021.34	1021.41	1021.46	1021.09
	17	1021.46	1021.50	1021.60	1021.66	1021.69	1021.76	1021.87	1021.92	1021.91	1021.97	1022.05	1022.06	1021.79
	18	1022.00	1021.97	1022.01	1022.06	1022.09	1022.12	1022.18	1022.23	1022.22	1022.20	1022.22	1022.26	1022.13
	19	1022.29	1022.35	1022.40	1022.40	1022.39	1022.42	1022.46	1022.49	1022.56	1022.57	1022.55	1022.57	1022.45
	20	1022.62	1022.71	1022.80	1022.83	1022.87	1022.94	1023.01	1023.03	1023.07	1023.15	1023.19	1023.21	1022.95
	21	1023.29	1023.38	1023.42	1023.42	1023.41	1023.39	1023.38	1023.38	1023.39	1023.43	1023.44	1023.44	1023.40
	22	1023.45	1023.47	1023.48	1023.46	1023.47	1023.47	1023.48	1023.53	1023.56	1023.58	1023.63	1023.66	1023.52
	23	1023.65	1023.64	1023.59	1023.57	1023.57	1023.60	1023.67	1023.73	1023.79	1023.80	1023.78	1023.79	1023.68
26	0	1023.80	1023.80	1023.78	1023.78	1023.82	1023.87	1023.93	1023.96	1024.03	1024.11	1024.10	1024.09	1023.92
	1	1024.04	1023.99	1023.97	1023.93	1023.94	1023.96	1023.96	1024.01	1024.08	1024.13	1024.20	1024.25	1024.04
	2	1024.25	1024.21	1024.21	1024.22	1024.21	1024.19	1024.16	1024.16	1024.18	1024.19	1024.23	1024.27	1024.21
	3	1024.29	1024.35	1024.43	1024.46	1024.47	1024.50	1024.53	1024.53	1024.53	1024.53	1024.56	1024.59	1024.48
	4	1024.61	1024.65	1024.69	1024.74	1024.81	1024.84	1024.84	1024.85	1024.86	1024.88	1024.93	1024.96	1024.80
	5	1024.94	1024.97	1024.99	1024.96	1024.97	1025.03	1025.07	1025.10	1025.15	1025.17	1025.19	1025.23	1025.06
	6	1025.29	1025.35	1025.38	1025.43	1025.48	1025.51	1025.53	1025.55	1025.59	1025.60	1025.61	1025.64	1025.49
	7	1025.67	1025.67	1025.67	1025.69	1025.68	1025.67	1025.69	1025.69	1025.67	1025.67	1025.70	1025.74	1025.68
	8	1025.77	1025.81	1025.88	1025.96	1026.01	1026.04	1026.01	1025.97	1025.94	1025.91	1025.93	1025.98	1025.93
	9	1026.01	1026.03	1026.01	1025.99	1025.98	1026.00	1026.03	1026.02	1026.01	1026.02	1026.03	1026.04	1026.01
	10	1026.02	1026.02	1026.01	1025.95	1025.87	1025.83	1025.80	1025.75	1025.70	1025.63	1025.58	1025.56	1025.81
	11	1025.55	1025.52	1025.47	1025.41	1025.32	1025.21	1025.14	1025.12	1025.07	1025.03	1025.00	1024.94	1025.23
	12	1024.85	1024.76	1024.69	1024.63	1024.56	1024.50	1024.46	1024.44	1024.44	1024.40	1024.37	1024.37	1024.54
	13	1024.37	1024.34	1024.31	1024.31	1024.30	1024.28	1024.25	1024.22	1024.22	1024.22	1024.24	1024.26	1024.27
	14	1024.23	1024.19	1024.19	1024.20	1024.22	1024.22	1024.25	1024.33	1024.34	1024.30	1024.29	1024.27	1024.25
	15	1024.23	1024.23	1024.24	1024.27	1024.30	1024.32	1024.36	1024.40	1024.42	1024.38	1024.39	1024.46	1024.33
	16	1024.46	1024.47	1024.48	1024.44	1024.44	1024.46	1024.48	1024.52	1024.52	1024.51	1024.53	1024.56	1024.49
	17	1024.56	1024.56	1024.56	1024.57	1024.60	1024.61	1024.63	1024.65	1024.67	1024.71	1024.71	1024.67	1024.62
	18	1024.64	1024.64	1024.63	1024.62	1024.59	1024.57	1024.56	1024.59	1024.63	1024.67	1024.76	1024.80	1024.64
	19	1024.81	1024.85	1024.89	1024.95	1024.96	1024.93	1024.94	1024.97	1025.03	1025.03	1025.00	1024.98	1024.94
	20	1024.98	1024.98	1024.93	1024.90	1024.89	1024.88	1024.88	1024.93	1024.93	1024.93	1024.94	1024.90	1024.92
	21	1024.89	1024.86	1024.85	1024.87	1024.85	1024.79	1024.79	1024.79	1024.77	1024.77	1024.76	1024.74	1024.81
	22	1024.71	1024.66	1024.63	1024.60	1024.61	1024.60	1024.50	1024.45	1024.44	1024.41	1024.40	1024.40	1024.53
	23	1024.36	1024.32	1024.24	1024.14	1024.10	1024.07	1024.01	1023.99	1023.95	1023.87	1023.77	1023.73	1024.04

S.V.I.R.CO. Observatory - Pressure in hectoPascal – October 2017

day	hh	00_05	05_10	10_15	15_20	20_25	25_30	30_35	35_40	40_45	45_50	50_55	55_60	average
27	0	1023.69	1023.72	1023.74	1023.72	1023.72	1023.68	1023.60	1023.54	1023.51	1023.44	1023.35	1023.27	1023.57
	1	1023.21	1023.14	1023.08	1022.99	1022.84	1022.72	1022.60	1022.51	1022.44	1022.39	1022.38	1022.35	1022.72
	2	1022.32	1022.27	1022.28	1022.28	1022.23	1022.21	1022.20	1022.19	1022.14	1022.06	1022.01	1021.96	1022.18
	3	1021.94	1021.98	1021.97	1021.97	1021.95	1021.90	1021.92	1021.89	1021.83	1021.87	1021.87	1021.81	1021.90
	4	1021.79	1021.82	1021.86	1021.84	1021.82	1021.75	1021.68	1021.69	1021.62	1021.54	1021.52	1021.52	1021.70
	5	1021.44	1021.37	1021.32	1021.24	1021.15	1021.09	1021.06	1021.00	1020.95	1020.93	1020.91	1020.92	1021.11
	6	1020.97	1020.97	1020.95	1020.93	1020.86	1020.84	1020.91	1020.91	1020.88	1020.91	1020.93	1020.86	1020.91
	7	1020.76	1020.64	1020.56	1020.55	1020.51	1020.42	1020.28	1020.13	1020.05	1020.02	1019.97	1019.89	1020.31
	8	1019.80	1019.71	1019.60	1019.44	1019.29	1019.17	1019.06	1018.93	1018.77	1018.70	1018.70	1018.67	1019.15
	9	1018.55	1018.44	1018.44	1018.46	1018.45	1018.39	1018.28	1018.16	1018.07	1017.99	1017.85	1017.76	1018.23
	10	1017.73	1017.66	1017.65	1017.64	1017.59	1017.51	1017.37	1017.25	1017.16	1017.06	1016.96	1016.91	1017.37
	11	1016.86	1016.76	1016.65	1016.57	1016.44	1016.30	1016.21	1016.09	1015.99	1015.96	1015.90	1015.81	1016.29
	12	1015.73	1015.61	1015.49	1015.42	1015.31	1015.17	1015.02	1014.95	1014.91	1014.84	1014.83	1014.78	1015.17
	13	1014.69	1014.63	1014.59	1014.54	1014.49	1014.43	1014.39	1014.31	1014.21	1014.10	1013.97	1013.92	1014.35
	14	1013.95	1013.93	1013.87	1013.81	1013.80	1013.78	1013.75	1013.65	1013.52	1013.45	1013.43	1013.42	1013.69
	15	1013.35	1013.30	1013.33	1013.27	1013.11	1013.01	1012.99	1012.98	1013.03	1013.04	1012.98	1012.94	1013.11
	16	1012.97	1012.99	1012.97	1012.91	1012.78	1012.69	1012.69	1012.68	1012.63	1012.66	1012.69	1012.64	1012.77
	17	1012.58	1012.58	1012.66	1012.73	1012.76	1012.79	1012.86	1012.92	1012.91	1012.89	1012.89	1012.83	1012.78
	18	1012.76	1012.79	1012.82	1012.83	1012.89	1012.91	1012.86	1012.81	1012.71	1012.66	1012.69	1012.75	1012.79
	19	1012.82	1012.88	1012.92	1012.95	1012.98	1013.05	1013.11	1013.10	1013.10	1013.07	1013.04	1013.05	1013.00
	20	1013.02	1013.01	1012.98	1012.94	1012.99	1013.05	1013.05	1013.09	1013.20	1013.24	1013.25	1013.26	1013.09
	21	1013.29	1013.31	1013.36	1013.29	1013.20	1013.21	1013.22	1013.16	1013.07	1013.09	1013.17	1013.22	1013.21
	22	1013.21	1013.15	1013.12	1013.11	1013.10	1013.09	1013.06	1013.09	1013.17	1013.20	1013.16	1013.14	1013.13
	23	1013.16	1013.16	1013.19	1013.24	1013.28	1013.38	1013.48	1013.56	1013.70	1013.87	1013.99	1013.98	1013.50
28	0	1014.04	1013.98	1013.89	1013.88	1013.94	1013.99	1013.99	1014.02	1014.06	1014.15	1014.27	1014.28	1014.04
	1	1014.28	1014.28	1014.22	1014.19	1014.27	1014.30	1014.29	1014.27	1014.20	1014.14	1014.12	1014.09	1014.22
	2	1014.12	1014.15	1014.16	1014.16	1014.14	1014.19	1014.30	1014.39	1014.50	1014.65	1014.73	1014.76	1014.35
	3	1014.76	1014.79	1014.84	1014.86	1014.83	1014.87	1014.82	1014.83	1014.95	1014.99	1015.05	1015.11	1014.89
	4	1015.16	1015.14	1015.15	1015.24	1015.26	1015.26	1015.21	1015.10	1015.08	1015.12	1015.13	1015.19	1015.17
	5	1015.25	1015.26	1015.27	1015.44	1015.61	1015.68	1015.74	1015.77	1015.82	1015.87	1015.94	1015.94	1015.63
	6	1015.98	1016.06	1016.15	1016.17	1016.09	1015.99	1015.88	1015.94	1016.05	1016.15	1016.37	1016.56	1016.11
	7	1016.65	1016.71	1016.79	1016.82	1016.86	1016.98	1017.04	1017.07	1017.09	1017.10	1017.11	1017.06	1016.94
	8	1017.09	1017.16	1017.28	1017.42	1017.37	1017.27	1017.23	1017.24	1017.30	1017.42	1017.52	1017.58	1017.32
	9	1017.58	1017.56	1017.44	1017.34	1017.39	1017.45	1017.50	1017.55	1017.50	1017.42	1017.42	1017.41	1017.46
	10	1017.34	1017.35	1017.37	1017.33	1017.23	1017.15	1017.11	1017.08	1017.04	1016.94	1016.81	1016.81	1017.13
	11	1016.89	1016.89	1016.79	1016.66	1016.59	1016.56	1016.54	1016.53	1016.51	1016.48	1016.42	1016.37	1016.60
	12	1016.31	1016.27	1016.20	1016.14	1016.11	1016.02	1015.93	1015.89	1015.83	1015.76	1015.73	1015.70	1015.99
	13	1015.70	1015.70	1015.70	1015.67	1015.61	1015.58	1015.56	1015.54	1015.52	1015.49	1015.40	1015.27	1015.56
	14	1015.20	1015.11	1015.07	1015.09	1015.01	1014.89	1014.91	1015.00	1015.00	1015.01	1015.07	1015.01	1015.03
	15	1014.98	1014.99	1015.00	1015.04	1015.10	1015.13	1015.10	1015.10	1015.14	1015.15	1015.19	1015.25	1015.10
	16	1015.28	1015.27	1015.23	1015.13	1015.08	1015.11	1015.17	1015.30	1015.36	1015.30	1015.30	1015.33	1015.24
	17	1015.35	1015.40	1015.45	1015.49	1015.48	1015.52	1015.53	1015.53	1015.52	1015.46	1015.44	1015.47	1015.47
	18	1015.49	1015.52	1015.55	1015.54	1015.50	1015.45	1015.41	1015.45	1015.48	1015.48	1015.44	1015.42	1015.47
	19	1015.42	1015.52	1015.67	1015.74	1015.72	1015.67	1015.72	1015.80	1015.80	1015.74	1015.66	1015.63	1015.67
	20	1015.68	1015.75	1015.78	1015.77	1015.74	1015.74	1015.75	1015.81	1015.95	1016.05	1016.08	1016.01	1015.84
	21	1015.89	1015.82	1015.76	1015.71	1015.67	1015.67	1015.66	1015.70	1015.78	1015.85	1015.88	1015.82	1015.77
	22	1015.71	1015.64	1015.62	1015.57	1015.55	1015.57	1015.59	1015.61	1015.65	1015.72	1015.79	1015.78	1015.65
	23	1015.76	1015.80	1015.80	1015.71	1015.63	1015.56	1015.53	1015.53	1015.47	1015.41	1015.37	1015.30	1015.57

S.V.I.R.CO. Observatory - Pressure in hectoPascal – October 2017

day	hh	00_05	05_10	10_15	15_20	20_25	25_30	30_35	35_40	40_45	45_50	50_55	55_60	average
29	0	1015.28	1015.25	1015.17	1015.06	1015.01	1015.04	1015.01	1014.93	1014.85	1014.77	1014.72	1014.67	1014.96
	1	1014.61	1014.55	1014.51	1014.46	1014.45	1014.47	1014.42	1014.37	1014.34	1014.31	1014.29	1014.25	1014.42
	2	1014.23	1014.21	1014.16	1014.09	1014.03	1014.02	1013.99	1013.95	1013.91	1013.86	1013.83	1013.79	1014.00
	3	1013.77	1013.78	1013.76	1013.73	1013.71	1013.69	1013.67	1013.66	1013.65	1013.65	1013.64	1013.66	1013.70
	4	1013.68	1013.65	1013.59	1013.53	1013.47	1013.40	1013.35	1013.26	1013.20	1013.23	1013.23	1013.25	1013.40
	5	1013.28	1013.25	1013.24	1013.23	1013.21	1013.19	1013.16	1013.12	1013.10	1013.11	1013.13	1013.17	1013.18
	6	1013.19	1013.19	1013.19	1013.17	1013.15	1013.12	1013.12	1013.12	1013.05	1012.94	1012.89	1012.90	1013.08
	7	1012.92	1012.92	1012.96	1012.97	1012.96	1012.98	1012.95	1012.86	1012.78	1012.72	1012.69	1012.69	1012.86
	8	1012.67	1012.65	1012.60	1012.50	1012.38	1012.29	1012.25	1012.16	1012.11	1012.15	1012.15	1012.15	1012.34
	9	1012.23	1012.26	1012.21	1012.10	1011.94	1011.72	1011.51	1011.38	1011.35	1011.38	1011.47	1011.57	1011.76
	10	1011.64	1011.64	1011.60	1011.55	1011.44	1011.32	1011.23	1011.16	1011.05	1010.88	1010.73	1010.63	1011.23
	11	1010.55	1010.44	1010.33	1010.21	1010.10	1010.07	1010.06	1010.04	1009.96	1009.84	1009.80	1009.78	1010.10
	12	1009.73	1009.70	1009.64	1009.51	1009.43	1009.40	1009.28	1009.15	1009.12	1009.15	1009.13	1009.08	1009.36
	13	1009.02	1008.94	1008.92	1008.90	1008.81	1008.70	1008.71	1008.75	1008.69	1008.65	1008.65	1008.63	1008.78
	14	1008.60	1008.57	1008.54	1008.54	1008.52	1008.45	1008.34	1008.23	1008.15	1008.07	1007.98	1007.88	1008.32
	15	1007.73	1007.53	1007.38	1007.28	1007.23	1007.19	1007.14	1007.09	1007.12	1007.21	1007.23	1007.25	1007.28
	16	1007.26	1007.22	1007.21	1007.22	1007.19	1007.21	1007.32	1007.42	1007.40	1007.35	1007.34	1007.33	1007.29
	17	1007.31	1007.26	1007.24	1007.30	1007.39	1007.44	1007.39	1007.36	1007.37	1007.35	1007.33	1007.30	1007.33
	18	1007.26	1007.26	1007.30	1007.33	1007.35	1007.35	1007.30	1007.25	1007.26	1007.32	1007.35	1007.34	1007.30
	19	1007.32	1007.35	1007.41	1007.51	1007.58	1007.60	1007.64	1007.68	1007.75	1007.79	1007.80	1007.85	1007.61
	20	1007.88	1007.86	1007.91	1007.97	1007.95	1007.96	1008.00	1008.00	1008.01	1008.02	1008.01	1008.01	1007.96
	21	1008.02	1008.00	1007.94	1007.87	1007.81	1007.79	1007.77	1007.75	1007.73	1007.69	1007.67	1007.64	1007.80
	22	1007.62	1007.60	1007.60	1007.60	1007.58	1007.55	1007.54	1007.51	1007.44	1007.42	1007.49	1007.55	1007.54
	23	1007.55	1007.52	1007.51	1007.51	1007.47	1007.43	1007.46	1007.52	1007.55	1007.56	1007.60	1007.62	1007.52
30	0	1007.62	1007.62	1007.66	1007.70	1007.70	1007.73	1007.75	1007.78	1007.82	1007.87	1007.87	1007.85	1007.75
	1	1007.83	1007.86	1007.90	1007.93	1007.93	1007.90	1007.90	1007.92	1007.93	1007.99	1008.02	1008.02	1007.93
	2	1008.05	1008.05	1008.05	1008.04	1008.00	1007.99	1008.00	1008.03	1008.06	1008.09	1008.09	1008.10	1008.04
	3	1008.13	1008.14	1008.17	1008.21	1008.23	1008.23	1008.25	1008.24	1008.24	1008.28	1008.34	1008.36	1008.23
	4	1008.35	1008.37	1008.33	1008.31	1008.37	1008.40	1008.42	1008.46	1008.54	1008.63	1008.69	1008.71	1008.46
	5	1008.75	1008.80	1008.86	1008.91	1008.94	1009.00	1009.03	1009.09	1009.15	1009.14	1009.14	1009.16	1009.00
	6	1009.25	1009.37	1009.48	1009.56	1009.64	1009.75	1009.87	1009.97	1010.06	1010.16	1010.28	1010.34	1009.81
	7	1010.41	1010.51	1010.56	1010.55	1010.59	1010.64	1010.71	1010.76	1010.78	1010.84	1010.84	1010.84	1010.67
	8	1010.88	1010.92	1010.96	1010.96	1010.93	1010.90	1010.89	1010.89	1010.90	1010.94	1010.99	1011.02	1010.93
	9	1011.07	1011.09	1011.08	1011.10	1011.15	1011.22	1011.26	1011.26	1011.28	1011.28	1011.28	1011.30	1011.20
	10	1011.31	1011.32	1011.30	1011.29	1011.29	1011.26	1011.25	1011.27	1011.28	1011.28	1011.28	1011.29	1011.28
	11	1011.27	1011.24	1011.22	1011.20	1011.18	1011.15	1011.11	1011.09	1011.08	1011.05	1011.00	1010.98	1011.13
	12	1010.98	1010.99	1011.00	1011.03	1011.04	1011.06	1011.10	1011.12	1011.16	1011.18	1011.19	1011.21	1011.09
	13	1011.20	1011.17	1011.20	1011.26	1011.28	1011.36	1011.42	1011.46	1011.49	1011.51	1011.54	1011.56	1011.37
	14	1011.59	1011.62	1011.65	1011.68	1011.70	1011.69	1011.71	1011.76	1011.79	1011.79	1011.80	1011.81	1011.71
	15	1011.83	1011.88	1011.90	1011.89	1011.92	1011.95	1011.97	1012.01	1012.05	1012.09	1012.13	1012.17	1011.98
	16	1012.21	1012.28	1012.35	1012.42	1012.51	1012.61	1012.70	1012.81	1012.90	1012.99	1013.10	1013.22	1012.67
	17	1013.32	1013.40	1013.47	1013.54	1013.62	1013.67	1013.71	1013.79	1013.87	1013.92	1013.98	1014.04	1013.69
	18	1014.11	1014.20	1014.28	1014.34	1014.41	1014.45	1014.48	1014.53	1014.58	1014.62	1014.66	1014.70	1014.44
	19	1014.74	1014.80	1014.88	1014.93	1014.98	1015.04	1015.08	1015.14	1015.22	1015.29	1015.35	1015.41	1015.07
	20	1015.47	1015.53	1015.59	1015.66	1015.75	1015.80	1015.83	1015.87	1015.90	1015.92	1015.96	1016.00	1015.77
	21	1016.05	1016.10	1016.14	1016.16	1016.18	1016.20	1016.21	1016.19	1016.18	1016.20	1016.21	1016.21	1016.17
	22	1016.23	1016.25	1016.29	1016.33	1016.37	1016.40	1016.41	1016.44	1016.44	1016.44	1016.47	1016.49	1016.38
	23	1016.49	1016.49	1016.50	1016.53	1016.56	1016.57	1016.56	1016.55	1016.56	1016.57	1016.58	1016.60	1016.54

S.V.I.R.CO. Observatory - Pressure in hectoPascal – October 2017

day	hh	00_05	05_10	10_15	15_20	20_25	25_30	30_35	35_40	40_45	45_50	50_55	55_60	average
31	0	1016.62	1016.62	1016.61	1016.60	1016.60	1016.60	1016.62	1016.65	1016.65	1016.67	1016.70	1016.71	1016.64
	1	1016.74	1016.74	1016.71	1016.69	1016.69	1016.68	1016.66	1016.63	1016.63	1016.64	1016.64	1016.64	1016.67
	2	1016.63	1016.63	1016.66	1016.68	1016.68	1016.68	1016.69	1016.69	1016.69	1016.72	1016.78	1016.83	1016.69
	3	1016.86	1016.87	1016.88	1016.91	1016.96	1017.02	1017.08	1017.12	1017.16	1017.21	1017.25	1017.30	1017.05
	4	1017.33	1017.38	1017.41	1017.43	1017.47	1017.49	1017.50	1017.53	1017.55	1017.54	1017.52	1017.51	1017.47
	5	1017.50	1017.49	1017.50	1017.53	1017.59	1017.63	1017.64	1017.71	1017.79	1017.85	1017.91	1017.99	1017.68
	6	1018.05	1018.10	1018.16	1018.22	1018.30	1018.35	1018.42	1018.51	1018.61	1018.71	1018.76	1018.83	1018.42
	7	1018.91	1018.98	1019.04	1019.07	1019.10	1019.14	1019.21	1019.30	1019.36	1019.39	1019.41	1019.41	1019.19
	8	1019.42	1019.45	1019.45	1019.47	1019.52	1019.60	1019.67	1019.72	1019.75	1019.79	1019.84	1019.88	1019.63
	9	1019.89	1019.89	1019.91	1019.94	1019.98	1020.01	1020.01	1020.02	1020.05	1020.09	1020.09	1020.06	1019.99
	10	1020.01	1019.99	1019.96	1019.92	1019.89	1019.84	1019.79	1019.74	1019.71	1019.67	1019.64	1019.61	1019.81
	11	1019.59	1019.55	1019.52	1019.48	1019.43	1019.39	1019.35	1019.31	1019.26	1019.24	1019.22	1019.18	1019.37
	12	1019.14	1019.12	1019.13	1019.12	1019.13	1019.16	1019.18	1019.19	1019.20	1019.20	1019.21	1019.21	1019.16
	13	1019.21	1019.21	1019.21	1019.22	1019.24	1019.27	1019.28	1019.30	1019.32	1019.36	1019.35	1019.33	1019.27
	14	1019.34	1019.37	1019.39	1019.40	1019.41	1019.41	1019.41	1019.42	1019.44	1019.47	1019.51	1019.52	1019.42
	15	1019.51	1019.50	1019.50	1019.52	1019.55	1019.58	1019.61	1019.62	1019.62	1019.63	1019.67	1019.73	1019.58
	16	1019.79	1019.83	1019.88	1019.94	1019.99	1020.04	1020.12	1020.19	1020.23	1020.27	1020.31	1020.35	1020.08
	17	1020.38	1020.41	1020.44	1020.48	1020.54	1020.60	1020.65	1020.68	1020.70	1020.73	1020.76	1020.77	1020.59
	18	1020.79	1020.81	1020.83	1020.85	1020.87	1020.89	1020.92	1020.96	1021.01	1021.04	1021.06	1021.10	1020.93
	19	1021.16	1021.20	1021.22	1021.23	1021.24	1021.23	1021.22	1021.24	1021.26	1021.29	1021.32	1021.37	1021.25
	20	1021.40	1021.42	1021.43	1021.45	1021.47	1021.47	1021.49	1021.51	1021.53	1021.53	1021.52	1021.50	1021.47
	21	1021.51	1021.52	1021.53	1021.53	1021.54	1021.56	1021.57	1021.56	1021.55	1021.56	1021.54	1021.52	1021.54
	22	1021.56	1021.63	1021.68	1021.73	1021.78	1021.79	1021.78	1021.77	1021.74	1021.69	1021.65	1021.60	1021.70
	23	1021.55	1021.52	1021.50	1021.49	1021.50	1021.51	1021.50	1021.47	1021.46	1021.44	1021.42	1021.40	1021.48



