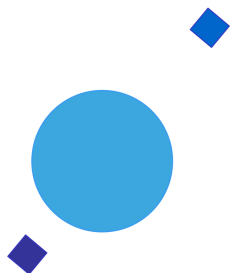


**INAF**



**ISTITUTO NAZIONALE DI ASTROFISICA**  
NATIONAL INSTITUTE FOR ASTROPHYSICS

**SVIRCO Prompt Report: January 2017**

Fabrizio Signoretto and Francesco Re

INAF/IAPS-2017-02

February 2017

**ISTITUTO DI ASTROFISICA E PLANETOLOGIA SPAZIALI**

**AREA DI RICERCA ROMA - TOR VERGATA**

**Via del Fosso del Cavaliere, 100 - 00133 Roma (ITALIA)**



## **SVIRCO Prompt Report: January 2017**

**Fabrizio Signoretti and Francesco Re**

*IAPS - INAF, Area di Ricerca Roma - Tor Vergata  
Via del Fosso del Cavaliere, 100 - 00133 Roma, Italy,*

### **Abstract**

*The pressure corrected intensity of the nucleonic component, produced by primary cosmic rays and recorded in January 2017 by the Neutron Monitor of SVIRCO-Rome (present geographic position:  $41.86^\circ$  N -  $12.47^\circ$  E; altitude about s.l. ), is reported in prompt form together with the barometric pressure data.*



## SVIRCO OBSERVATORY

During the 1<sup>st</sup> International Geophysics Year (1957) an international network of “ground-based detectors” for continuous cosmic ray measurements was world-wide established.

The cosmic ray station of Rome joined this network with the purpose to study the time variations of primary cosmic rays (**Studio Variazioni Intensità Raggi Cosmici: S.V.I.R.CO**) and their modulation in the heliosphere.

From July 1957 to April 1997, the SVIRCO Station (now Observatory) performed uninterrupted measurements at the Physics Department “G. Marconi” of “La Sapienza” University of Rome (41.90° N, 12.52° E, altitude about 60 m a.s.l.)

In May 1997 the neutron monitor was moved to the Physics Department “E. Amaldi” of “Roma Tre” University. Since then it has been continuously running at the new location (41.86° N, 12.47° E, altitude about 0 m a.s.l.).

The SVIRCO Observatory (INAF/IAPS-UNIRomaTre collaboration) is housed in a reserved building provided with a double air-conditioning system. The inner temperature is permanently restrained in a range of 23°-26° C, meanwhile the relative humidity is kept below 57%. Either the environmental parameters are continuously checked and recorded by digital sensors.

On January 1, 2005 three counters were added to the detector. This upgrade, from 17 to 20 NM-64, made the SVIRCO neutron monitor still consist of 5 sections but modified its geometry. Actually the new arrangement has been composed of three 3-counter, one 5-counter and one 6-counter units. The enhancement improved not only the overall counting rate of 15.6 % (January 2005) but, as a result, also the statistical quality of the recorded data.

Each of the 20 BF<sub>3</sub> proportional counters (BP-28 type) is equipped with a smart amplifier/discriminator circuit complete with a spectrum stabilizer. This new electronic unit, developed in our laboratory, holds firmly the pulse height spectrum of the amplifier output (within a range of more than 150 volts around the operating voltage), providing the counter with a great immunity against high voltage variations.

Anyway, systematic and exhaustive tests of the counters are regularly performed. The output pulses of the amplifiers, discriminated by the threshold gates, are collected and stored into a multi-channel analyzer. The analysis of the height distribution (spectrum) of the amplifier pulses coinciding with the discriminator ones, is essential to verify the long term efficiency of each counter together with the amplifier gain and the discriminator threshold level.

As well as the amplifier/discriminator circuits, a large part of the electronic instrumentation operating in the Observatory was designed and realized in our laboratory together with the software for data acquisition and pre-elaboration.

In order to improve the reliability of the recorded data and to prevent measurement breakdowns, two independent systems perform contemporary the data acquisition. Each system is remotely controlled by a dedicated computer and is timed by a high stability quartz clock and/or a GPS receiver. One equipment runs according to a timing of 1 minute and fulfils the acquisition of the 20 counters separately. The other one records the individual 5-minute counting rate of each detector section in addition to the rates of the overall multiplicity, sorted into separated counting channels ( from 1 to greater than 8 ).

A special care is devoted to the atmospheric pressure measurements, thus they are carried out by means of not less than three barometers at the same time. These instruments (achieving a resolution up to 0.01 hPa), are constantly checked out each other for the best measuring accuracy and reliability. Furthermore the devices in use are equipped with different types of transducer such as vibrating cylinder, force balance and quartz, therefore, throughout their different behaviours, it is possible to point out the occurrence of any long-term drift and eventually to re-calibrate the instruments themselves.

## DATA PRESENTATION

In a preliminary step, the intensity data, of the secondary nucleonic component of cosmic ray, detected at SVIRCO Observatory, were corrected for pressure variations at a reference level of 1009.25 hPa with an attenuation coefficient of 0.70% / hPa.

The five-minutes counting rates, of the examined month, are reported in tabular form together with the hourly normalized data, which provide a continuous data set for long-term analysis.

The normalization was evaluated as percentage of the counting rate average of January-February 1997, when the Monitor operated at the previous location of "La Sapienza" University. The reference counting rate level (100%), computed for such period, is equal to 554946 counts/hour.

The atmospheric pressure data (in hectoPascal) are also collected in a monthly table which presents the five-minutes averages and the hourly ones.

The hourly averages of the normalized intensity and pressure, plotted in monthly graphs, are reported too.

## CONDITIONS FOR SVIRCO DATA USE

You are welcome to use neutron monitor data of SVIRCO, IAPS/INAF-UNIRomaTre collaboration, under the following conditions:

*-You agree to acknowledge our financial supports in any published use of the data.*

*Example: "SVIRCO NM is supported by the INAF - UNIRomaTre collaboration"*

*-You are kindly requested to send a copy of any published work derived from our data to:*

Dr. Monica Laurenza  
Head of SVIRCO Observatory & TPL  
Istituto di Astrofisica e Planetologia Spaziali - Area di Ricerca Tor Vergata  
Via del Fosso del Cavaliere, 100 00133 Roma - Italy,

[monica.laurenza@iaps.inaf.it](mailto:monica.laurenza@iaps.inaf.it)



# S.V.I.R.CO. Observatory

Rome

Italy







INAF/UNIRomaTre		S.V.I.R.CO. Observatory - Pressure Corrected Data – January 2017											20 NM-64	
day	hh	00_05	05_10	10_15	15_20	20_25	25_30	30_35	35_40	40_45	45_50	50_55	55_60	h-norm
1	0	46651	46025	46297	46480	46862	47107	47055	46647	46699	46383	46420	46647	101.347
	1	46760	47051	46244	46814	46605	46701	46411	46098	46937	46505	46582	46900	101.409
	2	45998	46160	46588	46999	46873	46497	46600	46842	46064	46203	46735	46802	101.183
	3	46636	46839	46485	46757	46256	47062	47123	46646	46089	46478	45947	46596	101.283
	4	46543	47069	47575	45994	46579	46561	46176	47615	46034	46844	46868	46477	101.541
	5	46659	47163	46680	46458	46530	46918	46375	46519	46599	47048	47072	47131	101.689
	6	46626	46680	46696	46730	47016	47205	46321	46671	46294	46618	47251	46943	101.670
	7	46423	47153	46947	46591	46906	46276	47346	46478	46291	47077	46887	46932	101.717
	8	46249	47213	46374	46062	46783	46246	46785	46753	46902	46483	47259	46201	101.355
	9	46284	47102	46587	46350	46524	47091	46945	46335	46647	46575	46971	46899	101.537
	10	46776	47021	47032	46792	46901	46872	46849	47374	47037	46800	47747	46736	102.194
	11	46809	47176	46582	46736	46761	46996	46883	46864	47297	46560	46702	46789	101.871
	12	46314	47214	47338	46909	46286	46575	46539	47035	46700	46578	46751	46283	101.574
	13	46877	46866	46552	47234	46468	47248	46027	46346	46882	46787	46905	47059	101.707
	14	47070	46890	47016	46481	46236	46288	46573	46932	46835	46103	47032	46842	101.534
	15	46502	46680	46790	46751	47003	47138	46696	46435	46412	46388	45906	46547	101.344
	16	46576	46535	45571	46634	46723	46497	46248	46326	46646	46861	46640	46756	101.119
	17	47133	46612	46311	45928	46638	46146	46542	47452	46596	46864	46222	46504	101.289
	18	46364	47164	46259	46818	47078	45961	46209	46130	46675	46617	46579	46114	101.112
	19	46318	46289	47006	46605	46285	46664	47012	46567	46632	46591	46788	46581	101.360
	20	46442	46326	46390	46659	46396	46400	46648	47201	46243	46758	46374	46515	101.181
	21	46165	46860	46992	46746	46361	46439	46741	46780	46498	46186	46923	46996	101.423
	22	46410	46581	46007	46069	46538	47111	46595	46706	46449	46727	46456	46685	101.178
	23	46390	47082	47104	46289	46730	46100	46308	46092	46491	46903	47663	46456	101.409
2	0	46731	46305	46210	46699	46569	46672	46147	46252	47364	46905	46822	46847	101.394
	1	46741	46176	46942	46279	46772	47150	47505	46124	46838	46943	47491	46788	101.797
	2	46430	46749	47066	46386	47380	46718	46555	46167	46516	46402	46239	46889	101.388
	3	46614	46285	46657	46231	46515	46288	47041	46911	46475	46491	46445	46590	101.216
	4	46904	46402	46573	46048	46414	46548	47246	47064	46970	47079	46658	46424	101.540
	5	46843	47116	46138	46145	46693	46396	45884	46771	46160	46331	46751	46157	101.006
	6	46355	46059	47117	47373	47259	45963	45959	47264	46852	47081	46832	46753	101.637
	7	46297	46436	46922	46169	46836	46605	47355	46982	46515	46767	46903	47039	101.630
	8	46917	46734	47264	46439	46797	46722	46507	46186	46818	46440	46232	46545	101.408
	9	46880	46465	47348	46352	46846	46825	46900	46796	46436	46502	46833	46737	101.647
	10	46411	47158	46748	46904	46566	46787	46568	46520	46542	46183	47123	47085	101.588
	11	47070	46424	46304	46741	46794	46668	46603	46781	46870	46831	46861	46953	101.644
	12	46613	46908	46588	46350	46475	46641	46983	46617	47141	46591	46784	46809	101.571
	13	46674	46354	46510	47057	46748	46606	47059	47019	47203	45821	46741	46872	101.600
	14	46957	46447	47228	46794	46993	46563	46850	47115	47325	46888	46647	46275	101.857
	15	46960	47385	46933	46818	47015	46447	46775	47694	46682	46682	46765	47258	102.098
	16	46275	46380	47081	46843	46694	46875	46373	46382	47444	47005	47416	46598	101.727
	17	46279	46832	46896	46935	46298	46521	47192	47384	46727	46279	46700	46967	101.663
	18	46677	46967	46501	46430	46282	46674	46602	46140	46789	46924	47020	46862	101.456
	19	46327	46383	46805	46512	46636	45629	46403	47091	46630	46884	46554	46496	101.181
	20	46031	46583	46490	46927	47008	47046	46722	46330	46351	46338	45814	46836	101.204
	21	46642	46632	46607	46767	45994	46285	46339	46037	46328	46340	46749	46341	100.947
	22	46348	46284	46701	46059	46197	46174	46349	46346	46640	46446	46346	45923	100.721
	23	45660	46273	46589	45712	45693	45932	45750	46030	46105	46220	46112	46259	100.091

INAF/UNIRomaTre		S.V.I.R.CO. Observatory - Pressure Corrected Data – January 2017											20 NM-64	
day	hh	00_05	05_10	10_15	15_20	20_25	25_30	30_35	35_40	40_45	45_50	50_55	55_60	h-norm
3	0	46153	45912	46088	46245	46236	46016	45996	46298	46492	46397	46023	46057	100.374
	1	45823	45919	46492	45821	46461	46099	45692	46265	45829	46421	46009	46677	100.304
	2	46403	46085	46326	46740	46206	46096	46126	45294	46216	45863	45971	46856	100.425
	3	46262	46426	46968	46520	46699	46803	46095	46643	45824	46295	46012	46313	100.911
	4	45617	46173	45943	46019	45805	46600	45789	46436	46520	46280	45982	46215	100.281
	5	46210	46857	46879	46611	46580	46334	46279	46568	46136	46509	46090	46314	101.002
	6	46417	46648	46652	45907	46930	47067	46412	46975	45946	46083	46582	46595	101.156
	7	46592	46328	46602	46612	46642	46673	46277	46636	46412	46840	46693	47063	101.366
	8	46643	46586	46803	46519	46588	46202	46181	47020	46637	46645	46424	46710	101.291
	9	46423	47185	46771	46932	46422	46569	46358	46620	46631	46945	46615	46187	101.418
	10	46225	46794	46340	47314	46502	46464	47133	46915	46840	46842	46772	46355	101.570
	11	47256	46799	47053	46431	45927	47418	47177	46795	46504	46762	46701	47073	101.824
	12	47681	47020	47317	47049	46573	46852	47031	47466	47026	46463	46265	46735	102.110
	13	46778	47005	46795	46948	46704	46886	46680	46729	47085	46332	47296	47026	101.891
	14	47217	46489	47465	46458	46573	46725	46583	46319	47617	46812	46183	46966	101.735
	15	46894	47707	46020	46786	46784	46637	46674	46408	46405	46717	46501	46477	101.481
	16	46701	47686	46797	47506	46427	46622	47544	46210	46796	46656	46330	46668	101.833
	17	47322	46948	46975	46571	47455	47324	45930	46644	46735	47043	47025	46918	102.004
	18	47354	47460	46799	46397	46963	46344	47231	46380	47027	46482	47301	47244	102.021
	19	46720	46325	46440	46821	46466	46346	46813	47135	46742	46867	46510	46871	101.490
	20	46197	46890	46497	47204	46741	46795	46583	46841	46185	47037	46540	46690	101.516
	21	47170	46193	46597	47144	47064	47270	46538	46293	46964	46438	46093	46848	101.591
	22	46108	46691	46286	46185	45700	46479	46066	46798	46561	46679	46565	46391	100.847
	23	46375	46443	46307	46567	45962	46875	45866	46520	46282	46289	46882	46201	100.858
4	0	46019	46726	45865	46320	46855	46340	46370	45930	46283	47417	46194	46395	100.887
	1	46570	46633	46771	46437	47306	46102	46284	46682	45798	46353	46396	45835	100.967
	2	46546	46548	46333	45933	46939	46054	46074	46497	47089	46464	46093	46828	101.008
	3	46626	46423	46465	46287	46742	46418	46918	46463	46950	46671	46886	46633	101.386
	4	47011	46335	47123	46324	46558	47030	45987	46363	46018	46733	46825	46125	101.196
	5	47193	46987	46960	46180	46551	45708	46685	46626	46388	46428	46285	46617	101.228
	6	46750	46603	46019	47152	46309	46026	46708	46598	46175	47285	46248	46821	101.243
	7	46305	46509	46684	46786	46720	47232	46480	46659	47962	46383	46139	45936	101.443
	8	46223	47162	46316	46689	46494	46837	47101	46759	46413	46526	46762	47151	101.558
	9	46385	46778	47105	46522	47030	46720	46878	46417	46507	47230	47038	45784	101.551
	10	46664	46699	46366	45924	46321	46678	46306	46617	46893	46668	47007	46234	101.186
	11	46380	46420	46915	46314	46593	47011	47051	46526	47601	45993	46312	46358	101.384
	12	46310	46074	46530	46395	46539	46892	46611	46744	47223	47304	46270	46382	101.349
	13	46782	46464	46803	46629	47195	47122	46869	46720	47005	47107	47089	46968	101.979
	14	46407	46487	46935	46793	46636	46667	46439	47277	46036	46483	46496	46303	101.291
	15	46719	47002	46394	46387	46486	46299	46090	47192	46485	46052	46680	46224	101.119
	16	46664	46828	46316	45861	46989	46641	46437	46466	46557	46692	46531	46785	101.257
	17	46971	46151	46123	46087	46194	47072	46518	46365	46295	46392	46688	46439	100.990
	18	46201	46511	45607	46449	46823	46534	46799	46578	46977	46621	46366	46211	101.059
	19	46260	46638	45918	45811	45816	46086	45876	46615	45675	46514	46356	46278	100.364
	20	45902	46573	46128	46584	46576	46281	46175	46309	46507	46570	46871	45991	100.840
	21	46773	46657	46502	45869	46551	46074	45965	46211	45706	46665	46056	46507	100.671
	22	46469	46509	45574	45407	46490	46298	45878	46273	46093	46315	46086	45765	100.240
	23	45848	46601	46010	46033	46133	46541	46118	46129	46273	45995	46858	46566	100.593

INAF/UNIRomaTre		S.V.I.R.CO. Observatory - Pressure Corrected Data – January 2017											20 NM-64	
day	hh	00_05	05_10	10_15	15_20	20_25	25_30	30_35	35_40	40_45	45_50	50_55	55_60	h-norm
5	0	45973	46050	46718	46139	46178	46431	46232	46171	46389	46097	46078	46302	100.525
	1	46833	46185	45175	46725	46284	46506	47250	45926	46048	46383	46720	46360	100.827
	2	46035	46281	46167	46198	45825	46924	46556	46540	46833	46271	46669	46368	100.877
	3	46810	46860	46781	46334	46479	46488	46640	46414	46195	46058	46670	45944	101.058
	4	46375	46195	46099	46871	46482	46621	45966	46863	47192	46171	46102	46454	101.007
	5	46502	47080	46055	45999	46087	46315	46866	46442	46172	46727	46081	46057	100.824
	6	46524	46594	46881	46231	46318	46793	46777	46252	46656	46744	45935	46291	101.117
	7	47104	46755	46369	46589	46448	46750	46377	46912	46802	46978	47077	46599	101.618
	8	46129	47125	46800	47333	46305	47121	46572	46939	47330	46878	47052	46788	101.910
	9	47207	46642	46847	46418	46551	46781	46929	46952	46740	46313	46908	47302	101.768
	10	46496	46540	46355	46638	46080	46383	46970	46414	47204	47065	46903	47896	101.651
	11	47006	46790	47100	47183	46591	46496	46238	46957	47355	46508	47208	46830	101.890
	12	46927	46422	47382	46715	47055	46545	46954	46934	46890	46846	47042	46650	101.908
	13	46591	46774	46988	47037	46293	46443	46602	47318	47023	47110	47378	46538	101.859
	14	46978	46553	47195	46722	46813	46512	46728	46825	47250	47028	47162	46629	101.914
	15	46778	47011	46551	47082	46887	47013	46812	46281	46678	47060	47161	46991	101.897
	16	46336	47141	46920	47028	46643	46446	46450	46147	46216	46349	46993	46495	101.329
	17	46474	46886	46576	46985	46836	46567	46358	46671	47203	46365	46507	46578	101.481
	18	46376	46746	46828	46344	47133	45854	46676	46147	46235	46043	46078	46556	100.940
	19	46583	46132	46658	46399	46312	46486	45689	46092	46364	46861	46169	46850	100.863
	20	46869	46690	46635	46380	46607	46335	45923	46544	45972	46710	46602	46190	101.019
	21	46264	46586	46225	46866	46096	46845	46504	46191	45919	46150	46268	46504	100.831
	22	46366	45996	46578	46724	46171	45833	45785	47069	46253	46399	46162	46617	100.747
	23	46702	46925	46119	45866	46008	46828	45835	46619	45967	46605	46672	46417	100.857
6	0	45993	46801	45780	45921	46113	45847	45331	46852	46447	46099	46131	46747	100.417
	1	46261	46113	46843	46551	45731	46210	46518	46139	46343	46294	46343	46508	100.729
	2	45901	45936	46565	46200	45995	46526	45641	46542	46919	46808	46467	46625	100.777
	3	46423	46015	46121	46754	45846	46674	46074	45890	46716	46558	46506	46581	100.784
	4	46762	45707	45908	46069	46647	46272	46580	46799	46346	46935	46717	46338	100.951
	5	46102	46538	47285	45623	46409	46219	46545	46685	46398	46287	46358	46608	100.946
	6	45941	46641	46835	46969	46310	46629	46851	46137	47169	46083	46559	46730	101.272
	7	46268	45953	46646	46119	46889	46594	46745	46438	47109	47272	46749	46604	101.368
	8	46674	46969	46509	47853	47161	46868	46667	46829	47328	46721	47047	47289	102.190
	9	46809	46787	47295	46818	47748	46744	46819	46586	46236	46935	46479	46696	101.834
	10	46670	46961	47108	46858	47218	47227	46297	47165	46806	46881	47068	46852	102.044
	11	46297	46998	47130	46812	47492	47015	46509	47137	47401	47312	47202	47386	102.330
	12	46877	47438	46639	46915	46702	47102	47108	47279	47219	47150	47056	46882	102.271
	13	46549	46409	46575	47106	46542	46420	47264	46487	46869	47020	46559	47334	101.685
	14	46324	46509	46517	46444	46257	46471	47137	46739	46314	46691	46390	46967	101.255
	15	46264	46502	46932	46424	46311	47412	46780	46769	45861	46958	47336	46452	101.480
	16	47290	47130	46232	47258	47185	46656	46832	46418	46635	46771	46375	46374	101.690
	17	47471	46823	46314	46936	46666	46544	47121	46204	46556	46138	46409	46148	101.359
	18	46250	46386	46259	46630	45981	47341	46415	46402	46241	47009	46656	46208	101.077
	19	46261	45781	46448	46762	46379	46433	45943	45813	45982	46687	45978	46217	100.516
	20	46528	46530	46746	46687	46832	46457	46624	46827	46311	46222	45899	46060	101.068
	21	45860	45810	46027	46207	46688	46095	46718	46062	46094	46494	45865	45650	100.315
	22	45726	45427	46406	45696	46077	45624	45946	46072	45642	45905	46107	46329	99.841
	23	45901	45631	46730	45548	45903	46403	47084	46942	46887	46004	46392	47025	100.837

INAF/UNIRomaTre		S.V.I.R.CO. Observatory - Pressure Corrected Data – January 2017											20 NM-64	
day	hh	00_05	05_10	10_15	15_20	20_25	25_30	30_35	35_40	40_45	45_50	50_55	55_60	h-norm
7	0	47032	47313	47001	46699	46182	45915	46692	46207	46446	46255	46183	46006	101.108
	1	46484	46299	46240	46038	46590	45753	46549	47044	45798	46220	46529	46427	100.750
	2	46233	46115	46400	46943	46432	46202	46242	46682	47029	46073	45955	46467	100.895
	3	46621	46374	46623	46495	46613	46916	46223	46342	45890	46373	46089	46942	101.027
	4	46513	46306	46384	45928	46225	45626	45914	46503	46415	46444	46741	46622	100.686
	5	46175	46237	46256	46566	46109	46576	46400	46614	46201	46036	47087	46899	100.965
	6	46637	45744	46262	47067	46878	46597	46786	47219	46683	46311	46532	46370	101.314
	7	46929	47351	46286	47017	47016	46123	47317	46811	46546	46783	47090	46656	101.829
	8	47326	46716	46693	46830	46955	46972	47429	47004	46963	46608	46725	47637	102.179
	9	47514	47412	47121	47352	47615	46956	47270	47756	47122	47266	47263	47093	102.883
	10	46698	47231	47509	47097	46835	47596	46675	47069	47130	46951	47312	46925	102.391
	11	46708	46901	46638	46593	46393	47078	46572	46712	47344	46874	47135	47230	101.875
	12	47002	47397	46919	46847	46612	46526	46923	47218	46712	47434	47287	47037	102.189
	13	47500	46970	46450	46502	46661	47066	46532	46352	46683	46986	47134	46355	101.696
	14	46564	46323	46851	46867	46056	46123	46350	46987	46217	46808	47210	46883	101.342
	15	46911	46629	46572	46504	46460	46632	46505	46532	47424	46475	46504	46758	101.463
	16	46617	46374	46466	46559	45745	47213	46069	46761	46072	45729	46054	46937	100.863
	17	46839	46824	46413	45996	46645	46493	46859	46154	46162	46719	46939	46784	101.268
	18	46065	46389	46690	46532	46657	46604	46113	46546	46520	46955	46588	45984	101.053
	19	47052	46718	46059	46648	46255	46689	46001	46488	46630	46670	45812	46689	101.065
	20	46517	46146	46760	46464	45775	46833	46340	46491	46453	46598	46667	46157	100.973
	21	45996	46006	46295	46551	46801	46491	46694	46415	46962	47433	46851	46765	101.346
	22	46599	46655	46518	45858	46948	46343	45814	46541	46898	46024	46621	46385	100.973
	23	46734	46363	46694	45990	46519	46418	46959	46299	46366	46932	45999	46279	101.036
8	0	46508	46089	46977	46991	46741	46028	46747	46015	46774	45920	47157	46427	101.182
	1	46223	46227	46427	46569	46679	46802	46824	46951	46994	46292	46459	46767	101.338
	2	46940	46108	46518	45811	45749	46718	46245	46901	46352	46774	46497	46644	100.983
	3	47026	46665	46455	46139	46635	46258	46096	46978	46134	46992	46984	46260	101.231
	4	45965	46129	46167	46102	46180	47138	46305	46979	46763	46154	46387	46535	100.901
	5	46733	46606	46230	47600	47080	46401	46661	46394	46481	46918	46481	46628	101.518
	6	46333	46387	46914	46932	46502	46558	46481	46548	46944	47575	46775	46740	101.605
	7	45623	46487	46621	46091	46680	46300	46686	46206	46787	46484	46456	46722	100.962
	8	46404	46586	46116	46076	47115	46529	46748	46003	46572	46281	46970	46718	101.139
	9	46513	46624	46841	46364	47260	47101	47094	46639	46286	46944	46435	47197	101.715
	10	46406	46921	46158	46661	46731	47148	46740	46481	46404	47129	46393	47078	101.526
	11	46625	47077	47139	47148	46810	46659	46906	46269	46695	47080	47133	46087	101.775
	12	46379	46711	46853	46631	46723	46557	46949	46328	46911	47110	46679	46257	101.496
	13	47200	47357	46715	46898	46830	46208	46623	46448	46835	46928	46566	47014	101.774
	14	46753	46521	45984	47125	46397	46153	47135	46707	46544	46417	46815	46144	101.243
	15	46283	45773	46293	47562	46883	46353	46874	46252	46674	46631	46368	45966	101.102
	16	46506	47015	46213	46666	47394	46976	47024	46794	46416	46742	46688	46372	101.626
	17	46979	46076	46758	46072	46329	46685	46512	46514	46315	46575	46685	46577	101.132
	18	46443	46273	46969	46848	47063	46580	47258	46819	46478	46979	47157	46354	101.701
	19	46663	47393	46139	46662	46183	46974	47063	46772	46486	46564	46601	46419	101.465
	20	47270	46708	46403	47164	46703	46149	47137	47166	46835	46737	47079	46448	101.806
	21	46214	46557	47019	47528	46533	46548	46872	46613	46185	47277	46620	46804	101.620
	22	47190	47033	46692	46583	46715	46699	46672	46705	46448	46706	47160	46636	101.704
	23	46238	46728	47171	47226	47155	47013	46804	47287	46805	46894	47529	46681	102.120

INAF/UNIRomaTre		S.V.I.R.CO. Observatory - Pressure Corrected Data – January 2017											20 NM-64	
day	hh	00_05	05_10	10_15	15_20	20_25	25_30	30_35	35_40	40_45	45_50	50_55	55_60	h-norm
9	0	46576	47123	46645	47037	47071	46492	46541	47122	46478	46753	46327	46622	101.623
	1	46536	46595	46452	46256	46518	46919	46692	46015	46712	47177	46304	46516	101.243
	2	46302	46414	46638	47067	46472	46882	46925	46441	46450	46949	47195	47194	101.648
	3	46985	46436	46843	46562	47160	46121	46736	46532	46276	46606	46500	47298	101.490
	4	46607	46962	46388	47447	46425	46845	46867	47052	46819	46341	46743	46719	101.700
	5	46610	47093	46233	46772	46465	46963	46811	47422	46609	47113	46912	47244	101.887
	6	46912	46521	46742	46099	46980	46176	46361	46540	46957	47216	46985	46090	101.404
	7	46738	46477	46623	46694	46996	46902	46347	46450	47077	46765	47278	47422	101.800
	8	46472	46499	46572	47089	46371	46877	46542	46509	46437	46594	47053	46613	101.412
	9	46329	47285	46306	47350	46169	46764	46857	46615	46072	47134	46784	47392	101.672
	10	46485	47231	47608	47094	46413	47320	46562	46589	47347	46582	46628	47087	102.014
	11	47246	46965	46860	46862	46803	46678	46737	46484	46841	47118	47200	46704	101.932
	12	47128	46398	46383	47167	46590	46337	46498	46653	47267	47048	46430	46797	101.607
	13	46590	47122	47013	46576	46961	47308	47060	47140	46400	46345	46718	47053	101.894
	14	46906	47273	46937	47203	46572	46754	46840	46866	46609	46624	47034	46441	101.853
	15	46493	47208	46557	47290	46469	47517	47005	46375	46875	46690	47200	46270	101.833
	16	46596	46600	46847	46980	46671	46478	46350	46692	46939	47144	47091	47243	101.776
	17	46327	46568	46820	46712	47045	46830	47118	46899	46652	45879	47079	46867	101.624
	18	47336	46608	47226	47415	47139	46591	46215	46730	46423	47081	46708	46038	101.754
	19	46692	46953	46980	46671	46580	47082	46196	46393	46627	46333	47130	46709	101.543
	20	46997	46277	45998	46644	46252	46192	46450	46457	46413	46781	47036	47074	101.221
	21	46698	46956	47046	46427	46483	46906	47350	46986	47490	47082	47073	47197	102.150
	22	47054	47114	46946	47512	46467	47327	46370	46182	46426	46061	46335	45986	101.439
	23	46717	47420	47344	46782	46888	46532	46737	46896	47224	46159	47238	46811	101.978
10	0	46424	46507	46392	46490	46723	46606	46548	47041	46512	46904	46601	47249	101.471
	1	46682	47369	46413	46008	47096	45689	46295	46640	47086	47119	46618	46831	101.453
	2	46983	46405	46671	46749	46880	46650	46659	46388	46884	46833	46695	46777	101.584
	3	46563	46624	47126	47024	46747	46833	46276	46645	46504	46417	46574	46636	101.474
	4	46331	46909	46786	47432	46796	46176	46930	46341	46701	46037	46668	46354	101.382
	5	46986	46757	46747	46777	46833	46711	47675	46680	46633	46464	46852	46414	101.757
	6	46168	46666	47018	46759	46961	46603	45953	46277	46487	46743	46701	46175	101.210
	7	45897	46525	46979	45798	46997	46362	46442	46517	46055	46668	46657	46585	101.023
	8	46650	47117	46661	46556	46998	46125	45904	46781	46815	46378	46950	46593	101.395
	9	46940	46639	46918	46519	46984	46598	46824	46532	47186	46640	46037	46387	101.516
	10	46979	46971	45778	47040	46689	46134	46414	46620	46792	46836	46897	47067	101.520
	11	46713	46887	46499	46504	46819	46717	46752	46637	47311	46773	46880	46742	101.704
	12	46903	46869	46701	46600	46554	47075	46672	47108	46694	46612	46714	46723	101.702
	13	46707	47049	46854	46591	46676	46444	47184	47262	46918	47101	46942	47559	102.076
	14	46596	46544	46534	46786	46849	46446	47189	47361	46655	46244	46546	46958	101.609
	15	47309	46429	46869	46517	46013	46702	45966	46510	46267	47066	47131	46815	101.406
	16	46340	46513	46729	46492	46696	46859	46580	46421	46844	47126	47001	47162	101.618
	17	46684	46757	46646	46654	47372	46696	46275	46562	47454	47380	47075	47528	102.038
	18	46578	47278	46461	46476	47816	47156	46859	47091	47321	46570	47146	46903	102.142
	19	47096	46977	47207	47269	47497	47711	47345	47157	47425	47299	47388	47145	102.842
	20	46900	46444	47254	47622	46773	46897	47014	46187	47602	47024	46948	46978	102.140
	21	46551	47808	46875	47490	47045	46385	47066	46879	46558	46927	46871	46824	102.075
	22	47148	46762	47153	47184	46933	47063	47108	46938	47763	47128	46912	47192	102.437
	23	46845	46693	47244	46616	47280	46905	47555	47736	46972	46520	47196	46957	102.299

INAF/UNIRomaTre		S.V.I.R.CO. Observatory - Pressure Corrected Data – January 2017											20 NM-64	
day	hh	00_05	05_10	10_15	15_20	20_25	25_30	30_35	35_40	40_45	45_50	50_55	55_60	h-norm
11	0	46925	47217	47170	47168	47506	47546	47209	46938	47498	47746	47011	47009	102.743
	1	46735	47197	47005	47171	46600	47210	47074	47041	46992	46861	46216	47032	102.048
	2	46838	46919	47380	46731	46790	46331	46929	46438	46548	46447	46905	46508	101.619
	3	47075	47261	46899	46328	46549	47437	46764	46161	47181	46552	46759	47334	101.897
	4	46233	47327	47418	46869	46880	46744	46848	46607	46666	47458	47295	46566	102.007
	5	46788	46191	46190	46308	47100	47409	46951	46185	47544	47260	46417	47495	101.812
	6	46786	46503	46856	47106	46336	46959	47075	47169	46387	47281	46722	46699	101.821
	7	46388	46233	46674	47164	47345	47038	46809	47143	46667	47548	47038	46526	101.946
	8	46746	47056	47116	46768	47246	47089	46415	47138	47155	47198	46375	46814	102.045
	9	46723	47034	46454	46336	47200	46382	47458	46898	47254	47118	47015	47291	102.053
	10	46724	47077	47241	47165	46832	47673	46847	46340	47247	46030	46084	46090	101.725
	11	46811	47085	47399	46958	46834	46753	46753	46829	47206	45873	46577	46838	101.827
	12	46536	46746	46543	46772	46527	46899	46745	46899	47246	46707	46599	47384	101.770
	13	46409	46792	46918	47251	47149	46593	46913	46810	46976	46905	46928	46685	101.902
	14	46817	46718	46272	47013	46486	46514	47282	46834	46278	46499	46747	47886	101.724
	15	46826	46995	46827	46467	46884	46939	46406	46764	47271	47073	46452	46911	101.809
	16	46853	46576	47334	47204	47023	46917	47280	47492	46228	46466	46622	46767	101.981
	17	47071	47014	46788	46865	46521	46642	47385	47481	45958	46987	46923	47056	101.968
	18	47431	47102	46770	47035	47009	46720	47244	46469	47439	47635	46796	47243	102.367
	19	47061	46751	47698	47793	47493	47366	46454	47279	47126	46872	47218	46883	102.567
	20	47147	46940	47121	47114	47070	47327	47039	46818	47293	47377	47556	47489	102.620
	21	47156	47115	47550	46660	46979	47570	46879	47201	46972	46958	47241	47047	102.446
	22	46249	46556	46466	46673	47095	46197	46698	47520	47364	46652	46860	47036	101.727
	23	47532	46868	46701	47193	47129	47203	47635	46623	46416	47669	46433	46626	102.210
12	0	46830	46781	47269	46905	47045	47112	47467	46187	47602	47255	47113	46803	102.273
	1	47410	46508	45821	47289	46672	46796	46835	46787	47017	47072	46800	46882	101.823
	2	46752	46657	47154	46990	46884	46517	46794	46968	46414	47010	46543	46253	101.649
	3	46963	46529	46795	46845	47112	46725	47117	46691	46677	46896	46908	46474	101.794
	4	47474	46550	46610	47441	46556	47235	47108	47022	47240	46940	47075	46568	102.172
	5	46176	47234	46275	46536	46834	46165	46974	46606	46339	46673	46216	47160	101.333
	6	47091	46690	46718	46507	46613	47287	45959	46983	47230	46390	46760	46228	101.563
	7	46795	46128	46283	46977	46563	47157	46587	46801	46328	46982	46742	46711	101.490
	8	46575	46714	46340	46282	46261	46828	46284	46439	46420	46364	45848	46069	100.832
	9	46859	46083	46365	46432	45701	46613	46894	46524	46879	47142	46612	47280	101.368
	10	46529	46003	46566	46358	46696	46630	46457	46622	45914	46836	46857	46327	101.081
	11	46365	46619	46412	46372	46734	47009	46434	46010	46503	46610	46641	46621	101.177
	12	46331	45863	46013	46208	46502	46872	45769	46567	45944	46448	46343	47034	100.736
	13	46009	46786	46824	47211	46578	46671	46937	46924	46317	46680	47265	47380	101.767
	14	46655	46437	46843	46659	46504	46688	46057	46429	46452	47372	46750	46875	101.430
	15	46487	45939	46300	46446	47057	46319	46366	46723	46124	45617	46597	46853	100.905
	16	46767	46225	46974	46834	47000	46573	46855	46520	47299	46127	46734	46912	101.628
	17	46960	46430	46462	46826	46692	46900	46738	46704	46578	47084	46569	47301	101.705
	18	47219	47053	46858	46738	46468	46492	46833	46751	46595	46702	46598	46922	101.702
	19	47369	46980	46803	47055	46598	46894	46532	47246	46661	47108	46738	46589	101.946
	20	46631	47508	47729	47541	47584	46489	47407	46829	46793	46865	47156	47186	102.516
	21	47494	46421	47359	47138	46662	46703	47155	47360	47134	47190	46350	46724	102.148
	22	47335	46114	46977	47423	46405	46867	47228	46742	46755	47129	46867	47109	102.015
	23	46616	46184	46496	47436	46813	47022	46825	46831	46286	46857	46725	46913	101.662

INAF/UNIRomaTre		S.V.I.R.CO. Observatory - Pressure Corrected Data – January 2017											20 NM-64	
day	hh	00_05	05_10	10_15	15_20	20_25	25_30	30_35	35_40	40_45	45_50	50_55	55_60	h-norm
13	0	46992	45922	46814	46596	46550	46677	46915	46560	46536	46609	47084	46655	101.457
	1	47032	46093	46632	46711	46812	47059	46241	46960	46720	45936	46293	47108	101.407
	2	46522	46684	46473	46300	47222	46586	46585	46623	47033	46726	46429	46161	101.361
	3	46343	46557	47254	46261	47068	46265	46922	46666	46633	46674	46538	46629	101.446
	4	46954	47139	46469	46314	46843	47025	46524	46743	45744	46641	46024	46394	101.264
	5	46452	46783	45806	46558	46825	46363	45736	46514	46029	46481	46214	46331	100.772
	6	47321	46006	46707	45787	46646	46509	46483	46622	46417	46689	46714	46669	101.221
	7	46263	46682	46476	46553	46911	46625	45993	46390	46835	45742	46467	46092	100.941
	8	46518	46732	46442	46163	46751	46315	46658	46143	46592	46045	46279	46459	100.954
	9	46339	46965	46337	46559	46245	46376	46156	45945	46468	45957	46052	46665	100.767
	10	46399	46522	46132	46471	46809	46616	46822	46426	47173	46691	46673	46412	101.327
	11	46424	46430	46856	46853	46805	46569	46208	46833	46528	46812	47200	46892	101.554
	12	46684	46724	47163	46451	46618	46279	46969	46566	46199	46929	46095	47042	101.429
	13	46686	46549	46134	46179	46764	46769	46764	46447	46711	46367	45674	46955	101.117
	14	46655	47057	46015	46736	45814	46426	46634	46610	46599	46273	46696	46707	101.158
	15	46631	46975	46751	46238	46617	46581	46188	46977	46664	47228	47046	46967	101.637
	16	46692	46493	46920	46769	47154	47149	46445	46486	46556	46949	46847	46669	101.685
	17	47243	47681	46063	46863	46914	46292	46696	46701	46796	46793	47197	46480	101.793
	18	46309	46937	46979	46390	47716	46827	46461	46851	46269	47255	46363	47526	101.821
	19	46829	46747	46763	46675	47237	46646	46712	47289	46693	47347	47078	46565	101.948
	20	47231	47089	46771	46540	47337	46939	46926	47090	47072	47326	46727	47069	102.227
	21	47141	47009	47028	47163	47052	46940	46387	47220	46605	46817	47098	46639	102.041
	22	47264	46205	46853	46806	47175	47171	46597	46849	46809	46337	47260	47435	101.981
	23	46434	46816	47035	46428	47051	46072	46444	46931	47255	47107	46551	47254	101.730
14	0	46611	46819	46220	46589	46681	47600	47035	46790	47429	46867	46473	46989	101.863
	1	47198	46525	46185	46924	47609	46193	46290	47233	46722	47030	45778	47371	101.672
	2	47073	46934	47178	46906	46872	47087	47068	46760	46163	46686	46419	47011	101.871
	3	47468	46386	46409	46929	46552	46872	46423	47047	46663	46119	47049	46884	101.625
	4	46784	46448	47106	46782	46798	47226	46898	46655	46633	46705	46958	47378	101.909
	5	46338	47507	46511	47540	46148	46677	46829	46553	46424	47111	47054	46435	101.684
	6	47231	47014	46617	46413	46897	46592	46898	47246	46921	47400	46985	46512	101.974
	7	46606	46162	46495	47226	46783	46575	47508	47039	46692	46508	46386	46771	101.616
	8	46767	47399	46436	47086	46522	47113	46595	46863	46771	46839	47160	46728	101.893
	9	46199	46797	46740	46688	46732	46084	47019	46658	46344	47115	47281	47012	101.601
	10	46529	46665	47558	46614	47242	46803	46595	46203	47674	46880	47181	46571	101.936
	11	46663	46479	46988	46565	47127	46655	46391	46376	46345	46193	46100	47528	101.373
	12	46690	46883	46664	46757	46692	46541	47002	46948	46885	47205	47078	46043	101.732
	13	47225	47286	46783	46167	46924	46649	46930	46508	46220	46617	46247	46693	101.525
	14	46740	47084	46021	46717	46382	47278	45848	46721	46274	47112	46247	47086	101.391
	15	46857	46669	46689	46332	46769	46152	46894	46737	46535	46475	46242	46493	101.271
	16	47123	47296	46628	47027	46575	46771	46933	47054	46296	47198	46597	47077	101.946
	17	46636	46796	46813	47062	46715	46782	46571	46717	46463	47123	46934	46319	101.649
	18	46953	46971	46627	47026	46060	46555	47376	47346	47060	46615	46298	46552	101.741
	19	46949	46599	47239	46966	46886	47012	47176	47051	46626	46812	47279	47132	102.155
	20	47227	47048	46896	47126	46754	46568	47480	47121	47288	47464	46472	47260	102.332
	21	46729	46325	47202	46738	46847	46469	47708	46728	47390	47109	46901	47062	102.062
	22	46881	47200	46921	46630	46797	47232	46779	46692	47021	47177	47099	46636	102.035
	23	47010	46269	46768	46725	47027	46761	46579	47017	46619	46806	47054	47536	101.873

INAF/UNIRomaTre		S.V.I.R.CO. Observatory - Pressure Corrected Data – January 2017											20 NM-64	
day	hh	00_05	05_10	10_15	15_20	20_25	25_30	30_35	35_40	40_45	45_50	50_55	55_60	h-norm
15	0	47195	46402	46361	47448	46624	46565	46912	46554	47185	46670	47395	46342	101.771
	1	47131	46808	46811	46746	47171	47260	46825	46700	46823	46641	46588	46855	101.907
	2	47107	46915	47070	46997	46465	46453	47667	46357	46495	46958	46827	46917	101.884
	3	46852	47385	46990	46432	46969	46740	45991	47010	46808	47159	46302	47334	101.837
	4	46688	46934	47149	47023	46592	46566	47314	46763	46768	47069	46881	46482	101.884
	5	46577	46431	46965	46669	46488	47315	47009	45863	46693	46661	46841	46435	101.471
	6	46959	46918	46449	47067	47362	47377	46115	46396	47175	46829	46683	46856	101.876
	7	47626	46418	47182	46789	46806	46717	46408	47111	46900	46830	46304	46674	101.800
	8	46621	46639	46792	46528	47241	46572	46027	46490	46894	46935	46823	46274	101.450
	9	46930	46116	46576	47762	47291	46954	47005	46998	46865	47344	46723	46575	102.049
	10	46991	46563	46820	46853	46726	46422	46973	46771	46689	47019	46697	46698	101.702
	11	46673	47195	46488	47299	46197	46445	46847	47248	46283	46913	46731	46383	101.607
	12	46998	46880	47490	47070	46775	47113	46392	46152	47167	46874	46799	46954	101.963
	13	46980	46703	46227	46920	47414	47467	46605	47005	46318	46915	46508	47262	101.901
	14	46872	46653	47147	47039	46551	47290	47057	47290	46493	46586	46736	46929	101.959
	15	47411	47126	46836	47401	46810	46902	46532	47322	46902	46460	46962	46598	102.071
	16	46452	46549	47298	47047	46523	46421	47142	46743	47421	47160	47070	46459	101.894
	17	46913	46856	47419	47408	46815	47102	46637	46972	46864	47132	46748	47289	102.233
	18	47350	47113	46905	46623	47064	46961	46663	47361	47334	47178	46818	46875	102.249
	19	47188	47013	47435	47031	46473	46267	47127	46797	46637	46879	46998	47150	102.022
	20	46875	47944	47043	46805	46929	46789	46924	46724	46422	47242	47413	47187	102.259
	21	46543	46580	46746	46337	46952	46195	46264	46905	46520	46284	47489	46821	101.414
	22	46556	47518	46410	47504	47104	46450	46538	46886	46644	46580	46860	46605	101.780
	23	46371	46977	46532	46693	46639	46569	46692	47010	47332	47064	46553	46391	101.629
16	0	46585	46785	46906	46280	46945	46833	47032	46344	46875	47448	46622	47136	101.802
	1	46901	46707	46752	47345	46645	47332	46686	46430	46537	47265	46031	46250	101.639
	2	47285	46619	46417	46635	46531	47300	46455	46683	47106	46882	46873	46549	101.722
	3	46142	46673	46636	46835	46514	47022	46764	46959	47046	46748	46976	46825	101.687
	4	47076	46427	46754	47348	46052	47163	47182	47400	46966	46451	46345	47311	101.928
	5	47065	46811	47028	46856	46939	47613	46765	46371	46741	47358	46821	47138	102.115
	6	46918	47072	46936	46981	46607	47387	46722	46946	47177	46326	47341	46734	102.050
	7	47295	47534	46881	47238	47046	47033	47006	46460	47459	46682	46897	47090	102.317
	8	46459	47326	46802	47255	46936	47308	47232	47009	46959	47048	47006	47048	102.275
	9	46867	46744	47236	46810	46932	47111	46744	46871	46781	46627	46724	46761	101.880
	10	47084	47781	46612	46824	46745	46963	46853	47264	46833	46965	46643	47009	102.128
	11	47828	47175	47247	47086	47809	47211	46957	47460	47253	46912	47114	47542	102.856
	12	47854	47304	47199	47515	46673	46873	47439	46982	47004	46738	47247	46813	102.502
	13	46824	47326	47780	46908	46986	47046	46638	46976	47046	46891	46547	46964	102.192
	14	46984	47221	47715	46346	47285	46847	46762	46738	46730	46958	46519	47498	102.133
	15	46838	46790	46860	47329	46381	46813	46905	46631	46626	46832	46929	46878	101.808
	16	47092	47131	47124	46975	46597	46449	46764	46497	47202	47111	46504	46485	101.830
	17	46999	46920	47450	47057	46748	46278	46702	46532	46809	46483	46752	46486	101.700
	18	46661	45930	47164	47381	46450	46859	47099	46234	47098	47044	46562	46957	101.741
	19	47033	47133	46489	46229	46962	46560	45985	46047	47166	46344	47328	46568	101.452
	20	46825	46772	46832	46638	47062	46757	46847	46861	46699	46829	46933	46184	101.704
	21	46468	46140	47220	47040	47209	46308	47106	46778	46767	47099	46206	45900	101.524
	22	46043	47129	46888	46914	46528	46698	46765	47062	46417	47217	46611	46457	101.612
	23	46876	47026	46714	46639	46966	46190	46618	47167	46864	46905	47277	46914	101.871



INAF/UNIRomaTre			S.V.I.R.CO. Observatory - Pressure Corrected Data – January 2017										20 NM-64	
day	hh	00_05	05_10	10_15	15_20	20_25	25_30	30_35	35_40	40_45	45_50	50_55	55_60	h-norm
17	0	46209	46086	46793	46736	46951	47054	46573	46521	46799	47006	46530	46255	101.395
	1	46443	46721	46825	46776	46625	46978	46452	47111	46900	46443	46897	46791	101.655
	2	46873	46268	46302	46861	46775	46622	46695	47176	47015	47111	46956	47029	101.785
	3	46646	46459	46456	46176	46818	46602	46647	46777	46748	46950	46848	46978	101.499
	4	46918	46881	46880	47021	46690	46830	46434	46681	47028	46871	47079	47091	101.916
	5	47276	46710	47163	47147	46472	46684	47038	46922	47178	46689	46419	47144	101.995
	6	46672	46697	47063	46808	46498	47316	47186	47528	46742	47326	46774	46405	102.026
	7	46971	46385	46927	46639	46696	47060	47046	47246	46792	47196	47212	47521	102.150
	8	47238	47229	47835	47020	46905	47098	47191	46931	47042	46850	47694	47160	102.602
	9	47400	47023	46565	47116	47734	47278	47612	47279	47253	46709	47002	47804	102.707
	10	47157	47018	47630	46895	47295	47294	46773	47394	47319	47439	47104	46838	102.595
	11	47233	47051	46598	47145	46723	46601	46889	46450	47010	47369	47250	46825	102.049
	12	46687	47033	46523	46730	47307	46364	47186	46562	47138	47483	47448	47390	102.178
	13	47097	46818	47270	46935	46578	47108	46654	46911	46514	46693	47031	46738	101.905
	14	46941	46576	46913	46990	46835	47366	46931	46574	46141	46652	46282	46578	101.621
	15	46595	46803	47425	47648	46665	47174	46939	46770	46712	46718	46237	46486	101.874
	16	47500	46407	46820	47117	46386	46695	47055	46752	46549	46471	46938	46584	101.711
	17	46328	47399	46889	46890	46121	47049	46737	46527	46821	46617	46385	46686	101.562
	18	46804	46110	46460	46523	46610	46044	46453	46516	46652	46749	46874	46094	101.097
	19	46139	46215	46544	46702	47022	46767	46685	46116	46601	46261	46982	46588	101.230
	20	46449	46224	46892	46281	46480	46331	46192	46624	46509	46612	46182	46324	100.954
	21	46368	46236	46613	46663	46167	46678	46507	46139	46512	46701	47030	46176	101.079
	22	45992	46426	46901	47221	46507	46580	46551	46497	46306	46134	46745	45844	101.065
	23	46759	46279	46458	46342	46418	46570	46415	46305	47592	46562	46405	47004	101.318
18	0	46549	46839	46533	47047	46116	46882	46558	46602	46590	46399	46302	45813	101.173
	1	47151	46793	45976	46123	45739	46522	46362	46614	46318	46893	46416	46771	101.059
	2	46547	47269	46633	46290	46704	46579	46315	46547	46434	46658	46037	46402	101.193
	3	46801	47038	46111	46635	46799	46815	46053	47000	46370	46882	46317	46547	101.365
	4	46882	46598	46527	46484	45959	46941	46376	45782	46389	46624	46993	46655	101.155
	5	47177	45917	46746	46364	46528	46510	46403	46775	46739	46757	47614	46046	101.403
	6	46562	46845	47360	46455	46841	46662	45980	46787	46911	46108	46880	46762	101.508
	7	46543	46277	46497	46578	46404	46943	46944	47285	46803	46836	47153	46661	101.647
	8	47032	46889	47226	47251	47071	47845	46816	47254	47657	47230	46654	46648	102.490
	9	46368	47052	47062	47070	46853	46823	47057	47581	47584	47330	47354	47127	102.433
	10	47411	47244	46760	47535	47213	47126	46938	47372	46516	46798	46859	47695	102.470
	11	47143	46869	47195	47323	46811	47451	47213	47021	47847	48000	47191	46967	102.754
	12	46903	46933	46701	47403	46721	47182	47262	47003	46943	47298	47024	47125	102.295
	13	47376	47145	47532	46899	46992	46752	47060	46642	47194	46813	47633	46975	102.389
	14	47533	47261	47248	47156	47064	47416	47334	47307	47095	46798	46627	47090	102.555
	15	46904	47654	47031	46970	46650	46595	47095	46461	47567	46096	46916	46846	101.986
	16	46724	46641	47018	47077	47512	47287	46633	46985	46708	46681	46381	47246	102.004
	17	46526	46937	46725	46824	47044	46316	46828	47242	47157	46538	47010	47035	101.875
	18	46856	46412	46996	47187	47018	46343	47268	46692	46451	47108	46682	46592	101.771
	19	46578	46458	46963	46227	47048	47662	46895	47248	46348	46876	47024	46908	101.885
	20	46849	47155	47334	47794	46962	47449	47735	46874	46639	47109	47034	46711	102.503
	21	46551	47140	46795	47641	46481	47199	47421	46833	46977	46881	46473	47086	102.110
	22	46903	46866	47278	46982	46751	47116	47511	47018	46784	46995	46971	47247	102.281
	23	47132	47078	46902	47405	46884	46928	47122	46928	46891	46630	47530	47307	102.338

INAF/UNIRomaTre		S.V.I.R.CO. Observatory - Pressure Corrected Data – January 2017											20 NM-64	
day	hh	00_05	05_10	10_15	15_20	20_25	25_30	30_35	35_40	40_45	45_50	50_55	55_60	h-norm
19	0	47309	46249	47206	46839	46828	47131	46978	47275	46687	47205	46643	47214	102.138
	1	47388	47228	46650	46895	46499	46775	46571	46440	47226	46820	46656	46771	101.828
	2	46776	46769	46658	46967	46587	46409	46741	47024	46520	47417	47024	46477	101.728
	3	46833	47069	46802	46816	46338	46710	47125	46678	46558	47256	46568	46474	101.702
	4	46503	46522	46711	46503	47048	46114	46633	46616	46581	46665	46619	46390	101.282
	5	47004	46720	46328	46612	46594	46472	46838	46433	46210	46682	46450	46386	101.250
	6	46950	46974	46810	46720	46942	46952	47289	46372	46986	46679	46926	47008	101.953
	7	46781	46013	46912	46583	46599	46999	47028	46825	46600	46836	47296	47029	101.752
	8	46325	46402	46691	46635	46668	46875	46566	47188	46842	47135	47368	47141	101.812
	9	47126	47465	47278	47226	46693	47811	46822	47108	47277	46825	47573	47581	102.709
	10	46669	47626	47222	46485	47162	46897	47208	47261	46653	46623	47210	47175	102.240
	11	46950	47230	47553	46938	47171	47689	47140	47215	47085	47370	47637	46233	102.605
	12	47228	47174	47600	47387	46786	47538	47262	46689	47478	46381	47283	46887	102.512
	13	46889	47496	46933	47266	47510	46958	47137	47057	47058	46518	46587	47317	102.337
	14	46807	46369	46858	46855	46250	47396	47188	46591	46691	46764	47349	46965	101.857
	15	46494	46909	46309	46404	46842	47163	46785	46114	46492	47419	47123	46695	101.616
	16	46872	46551	47006	47165	46579	47723	46609	46791	46724	46703	46628	47029	101.911
	17	47245	46431	46576	46296	46719	47011	46365	47199	47181	46526	46401	46736	101.604
	18	47168	46623	46586	47324	47539	46608	46940	46840	46742	46681	46116	46828	101.842
	19	46983	46401	47439	46113	46509	45957	46713	47010	46463	47293	46121	46389	101.370
	20	46399	46369	46260	46721	46238	46703	46110	46893	47123	46392	46544	46379	101.141
	21	46389	46630	46945	46648	46926	47064	46638	47400	46951	45939	46416	46635	101.585
	22	46027	45648	46826	46913	46601	46834	47349	46391	46167	46696	46323	46424	101.154
	23	46096	46312	46325	45799	46065	46657	46514	47525	46314	46821	46504	46532	101.020
20	0	46437	46529	46553	46359	46477	46309	46628	47462	45965	46543	46398	46052	101.068
	1	46685	46670	46313	46436	46101	46332	46377	45854	46232	46494	47232	45819	100.854
	2	46527	46351	45680	46004	45844	46114	45963	46101	46534	46349	46732	47258	100.657
	3	46039	45978	47299	46036	46020	46834	46009	46232	46616	45629	46122	46959	100.714
	4	46183	46470	46234	46718	46331	46635	46301	46284	45943	47065	46553	45739	100.838
	5	46153	47541	46756	46371	46580	46384	46795	46550	46663	46890	47225	46604	101.572
	6	46652	45761	46101	46666	46739	46126	46348	47041	46965	46101	46981	46546	101.122
	7	45861	47145	46630	46734	46792	46805	46623	46350	46739	46574	46646	46666	101.401
	8	46619	46656	46859	46188	46599	47170	45938	47104	46858	46272	46293	46940	101.389
	9	46456	46616	46883	47648	46511	46369	46178	46288	46543	46314	46587	46671	101.310
	10	46947	46673	46894	46890	46772	46896	46932	45601	46772	46802	46715	46989	101.640
	11	46677	47509	46947	46871	46711	46709	46892	46619	46590	46761	46246	46368	101.643
	12	47046	46623	46100	46514	47113	46417	46875	46800	47308	46488	47276	47483	101.851
	13	46800	45916	46871	46344	46866	46947	46378	47474	46951	46970	46799	46732	101.670
	14	47273	46544	46816	46876	46804	46750	47397	47211	46638	46395	46140	47363	101.880
	15	47315	47414	46673	47072	46669	46469	46688	46887	46521	46720	46682	46558	101.782
	16	45842	46359	46777	46536	46326	47287	46797	46929	46963	46438	46747	46379	101.367
	17	47031	46988	46247	46415	45938	46578	46565	47164	47065	46112	46224	46381	101.246
	18	46314	46403	46472	46848	47054	47428	46138	46831	46630	47065	46790	46875	101.634
	19	46464	46028	46568	46582	46558	47064	46214	46829	46594	46078	47252	46561	101.261
	20	46604	46936	46285	46734	46756	46115	46846	46492	46351	46917	45673	46417	101.140
	21	45591	45878	46611	46667	45289	46443	46324	45788	46390	46163	46435	46504	100.407
	22	45924	46544	46223	46178	46500	46564	46133	46255	46027	46556	45990	46256	100.601
	23	47005	46296	46968	45801	46385	46613	45836	46252	46004	46803	46870	45904	100.889

INAF/UNIRomaTre		S.V.I.R.CO. Observatory - Pressure Corrected Data – January 2017											20 NM-64	
day	hh	00_05	05_10	10_15	15_20	20_25	25_30	30_35	35_40	40_45	45_50	50_55	55_60	h-norm
21	0	46348	46326	46665	46519	46711	46732	46788	46703	46594	46634	46547	46806	101.364
	1	46429	46437	45934	46054	46813	46674	46801	46238	46672	46564	47291	46829	101.251
	2	46696	46312	47066	46686	46483	45887	46716	46106	46652	46787	46018	46616	101.122
	3	46428	46390	46224	46824	46316	46625	46068	46891	46977	46164	46734	47155	101.262
	4	46762	46505	46429	46300	45988	46610	46272	46437	46329	46540	46132	46268	100.859
	5	46438	47196	46074	46561	46082	46735	46431	45746	47010	46634	46997	46634	101.215
	6	46645	46860	46589	46545	46581	46080	46489	46677	45988	46905	47000	46401	101.255
	7	47113	46846	46621	46591	46666	46530	46897	46180	46834	46795	47165	46444	101.603
	8	46642	46802	47301	47516	47051	46613	46432	46521	46811	46980	47213	47074	102.016
	9	47041	46865	46741	46806	46164	47272	46851	46923	47028	46563	46627	46649	101.757
	10	46961	46878	46615	46393	47414	47421	46342	47004	46345	46608	45990	46742	101.608
	11	46650	46917	47057	46337	47224	46329	46805	46482	46784	46745	46636	47323	101.714
	12	46845	46482	46741	46532	46346	46704	46680	46569	46545	46409	47379	46790	101.484
	13	46574	46548	47046	46611	46212	47018	46747	46851	46363	46982	46124	46360	101.378
	14	46652	46675	46704	46323	46688	46570	46889	46540	46521	46541	46142	46835	101.313
	15	46386	46278	46514	46527	46217	46634	47064	46423	46370	46633	47024	46361	101.196
	16	46163	46975	46972	46243	46954	46188	46282	46763	46409	46870	46215	46634	101.239
	17	46152	46484	46459	46616	46987	46479	46000	46822	45889	46507	46608	46311	100.993
	18	46195	46584	46352	46435	46859	46448	46869	46239	46728	46445	46390	46051	101.044
	19	46658	45967	46670	46405	47096	46815	46578	46680	47327	46767	46831	46409	101.517
	20	46467	47499	45847	46160	46465	46828	46267	46709	46275	46786	46249	46672	101.158
	21	46820	46505	46343	47140	46387	46949	46157	46522	46076	45714	46472	46771	101.091
	22	46483	46089	46374	47208	47015	47046	46415	46188	46652	46319	46670	46617	101.312
	23	46593	46025	46739	46955	46257	46090	46215	46383	46595	46666	46495	46586	101.045
22	0	46323	46402	46678	46433	47079	46554	47436	47075	45673	46261	46181	45997	101.133
	1	46724	46789	46909	46764	46863	47155	46407	46542	46790	46819	46899	46698	101.726
	2	47356	47026	46749	46569	46190	46128	46751	46875	47332	46864	46821	46804	101.745
	3	46511	47160	46642	46896	46916	46421	46941	46219	46723	46822	47184	46678	101.682
	4	46921	47033	46811	46276	46839	46644	46043	46740	46189	46745	46841	46900	101.476
	5	46619	47055	46502	46095	46563	47159	46845	46985	46728	47258	46640	46790	101.704
	6	46504	46791	46834	46646	46975	46452	46584	47124	46647	46421	46413	46881	101.529
	7	46586	46384	46721	46662	46791	45465	46767	47389	46031	46691	46274	46397	101.146
	8	46706	46756	46350	46970	46785	46950	46678	47282	46638	46581	47047	46813	101.762
	9	46718	46843	46871	46784	46688	46791	46906	46757	46726	47059	46104	46552	101.625
	10	46705	47057	46356	46424	46498	46283	46267	47027	47173	47155	46788	46188	101.466
	11	46882	46138	46531	46387	46241	47113	46986	46868	46231	47310	46634	46696	101.483
	12	46474	46746	46977	46973	47510	47015	47060	46257	47598	46633	46221	46958	101.919
	13	46795	47487	46741	45932	46359	46153	46362	47152	46700	46712	46271	46576	101.342
	14	46678	46614	46103	46223	46102	46764	46302	47367	45967	46508	46782	45887	100.990
	15	46774	46743	46701	47315	46633	47119	46937	46992	46253	46669	46602	46489	101.702
	16	47508	46402	46470	47216	46411	45946	46662	47269	46593	46678	46268	46471	101.461
	17	46553	46763	46309	46931	46788	46475	46981	46350	47052	46647	45561	46491	101.281
	18	46482	46310	46409	46335	46217	46814	46311	46514	46867	46001	46336	46683	100.987
	19	46652	46193	46003	46678	46752	46154	46495	46282	46947	46485	46526	46840	101.119
	20	46484	46444	46166	46539	46593	46351	46645	46024	46373	46508	46458	46535	100.958
	21	46746	46329	47188	47237	46495	46209	46865	47163	46284	46993	46743	46819	101.674
	22	47510	46529	46778	47024	46978	46340	46661	46958	46125	46519	47223	47232	101.820
	23	46628	46282	47508	46789	46290	47406	46557	46983	46723	46522	46864	46282	101.631

INAF/UNIRomaTre		S.V.I.R.CO. Observatory - Pressure Corrected Data – January 2017											20 NM-64	
day	hh	00_05	05_10	10_15	15_20	20_25	25_30	30_35	35_40	40_45	45_50	50_55	55_60	h-norm
23	0	47045	47818	46266	46226	46744	46942	47167	46122	47092	46773	47080	46773	101.847
	1	46663	46474	46162	45900	46542	46812	46578	46162	46182	47053	46439	47083	101.127
	2	47117	46581	47079	46794	47009	46690	47090	46783	46742	46689	46987	46546	101.861
	3	46547	46549	46824	46251	46921	46768	46318	46769	46563	46786	46110	46465	101.275
	4	47092	47239	47068	46670	47316	45973	46810	46967	46707	46725	47664	46137	101.909
	5	46708	46554	46800	46461	46727	46773	46919	46902	46938	46381	45941	47104	101.518
	6	46768	46706	46914	46687	46915	46839	46945	46756	45939	47037	46914	45994	101.555
	7	47363	46818	46356	46723	47088	47081	46669	46374	46735	47004	46586	47074	101.819
	8	46388	47020	47239	46491	47261	47186	46794	46789	46427	46548	46326	46583	101.671
	9	46887	46832	46625	46364	46821	46832	46739	47122	47196	46984	46363	47455	101.882
	10	47064	47407	47180	46787	46675	45785	46298	46361	46769	47006	45990	47385	101.608
	11	46920	46455	46565	46292	46204	46680	46226	47096	46723	46656	46705	46249	101.258
	12	46615	46763	46492	47024	47294	46972	46619	46571	46094	46493	46761	46406	101.499
	13	46303	47086	46449	46714	46321	46885	46892	46229	46574	46618	46442	46055	101.220
	14	46824	46684	46175	46457	46770	47422	46995	46767	46658	47354	46711	47085	101.825
	15	46556	46852	47291	47019	47056	46271	46461	46545	46534	46526	47005	46558	101.602
	16	46108	46705	46366	46238	46755	47046	46721	46601	47153	47114	46956	46438	101.516
	17	46800	46416	46514	47082	46527	47078	46251	46603	46662	46888	46633	46971	101.557
	18	46414	46446	47088	46793	46673	46560	47086	46323	47465	47468	47285	46030	101.776
	19	46765	46370	46811	46944	47177	47242	47009	46840	46459	46829	46664	46884	101.841
	20	46545	46643	46780	46511	47038	46648	46851	46873	46804	47004	46552	45837	101.496
	21	46253	46949	46379	46620	47028	46688	46799	47318	46469	46424	46282	46151	101.364
	22	46634	47028	46233	46329	46498	46213	46474	46646	47410	47263	47117	46890	101.613
	23	46575	46291	47391	47050	46989	46980	46154	46969	46790	46497	47278	46608	101.765
24	0	46809	46891	46876	47046	47528	47035	46659	46628	46497	46907	46941	46906	101.968
	1	46605	46967	46998	47092	46784	47268	47074	46262	46483	46535	46594	46672	101.722
	2	46604	46390	47068	46604	47479	46110	46115	46267	46035	46460	47233	46114	101.204
	3	46941	47460	46323	46769	46788	46612	47116	47612	46697	46452	46891	46935	101.950
	4	46645	46243	46808	46712	46982	46882	47141	46557	46684	47068	46938	46747	101.735
	5	46744	47056	46833	46704	46833	46648	46841	47295	46813	46869	47677	46906	102.063
	6	46743	46578	46864	47444	47248	47195	47205	46947	47000	47006	46432	47325	102.203
	7	46615	47007	47168	46948	46821	47284	47206	47523	46833	46733	47018	46496	102.142
	8	47194	46925	46547	46638	46055	46811	46320	47201	46908	47003	47230	46964	101.805
	9	46712	46769	46575	46426	47205	46702	46853	45982	46077	46920	46311	46540	101.312
	10	46756	46498	46331	46565	46995	46571	46741	46583	47137	47386	46251	46689	101.571
	11	46721	46978	46772	47090	46861	47377	46773	46164	46596	46860	46051	47136	101.730
	12	46807	46229	46372	46897	46702	46696	47366	46210	46931	46602	47306	46831	101.653
	13	46290	46940	46745	46447	46963	46617	46974	46666	46585	46452	46867	46773	101.538
	14	46516	45984	47124	46242	46638	46162	46577	46553	47065	46536	47016	47079	101.388
	15	46587	46972	46222	46333	46900	46488	46794	47042	46774	46665	46153	46678	101.409
	16	47241	46695	46307	46966	47040	46336	46443	46013	46510	46590	46466	46859	101.383
	17	46959	46638	47008	46648	46890	46574	46765	46975	46810	47209	46240	46588	101.716
	18	47096	47013	46994	46901	47268	46312	46456	46067	47180	47033	47006	46623	101.833
	19	46331	46569	46627	46548	46427	46979	46895	46742	46741	46691	46433	46719	101.426
	20	46832	47005	47123	47301	46653	46708	46138	47281	46345	46627	46357	46196	101.583
	21	47165	46401	46616	46774	46496	46917	47172	46411	47314	46861	46445	47040	101.772
	22	46674	46378	46620	47095	46671	46510	46516	46999	47007	47214	47052	46523	101.708
	23	47381	46163	47220	46301	46932	46914	46842	46602	46705	46974	46954	46504	101.750

INAF/UNIRomaTre			S.V.I.R.CO. Observatory - Pressure Corrected Data – January 2017										20 NM-64	
day	hh	00_05	05_10	10_15	15_20	20_25	25_30	30_35	35_40	40_45	45_50	50_55	55_60	h-norm
25	0	46988	46940	46727	47034	46569	47278	47119	46794	46993	47390	46539	46569	102.015
	1	46846	46928	46755	47380	47312	47534	46715	46824	47171	46476	46897	47114	102.196
	2	46172	47100	46460	47092	47267	47047	46557	46389	46662	47132	46318	46795	101.660
	3	47247	46890	46909	47229	47349	46920	46951	46824	47205	47870	46922	46408	102.336
	4	46908	47001	46743	46581	47076	47424	47071	47043	47345	46883	46750	46955	102.165
	5	46603	47064	46898	47218	46802	47353	47113	46762	47169	46570	46651	47300	102.115
	6	47092	46573	46664	46380	46471	46780	47820	46815	47019	46990	46954	47174	101.975
	7	46483	46906	46609	46407	46968	46549	46942	46490	47688	47572	47576	46929	102.045
	8	47134	46917	47477	46986	46542	47324	47007	47170	46813	46509	46949	46716	102.123
	9	47104	46463	46824	46899	47261	46856	46863	47221	46720	46598	46968	46637	101.918
	10	46949	47700	47288	47346	47054	46746	46543	46715	46809	46703	47398	46772	102.209
	11	46303	47017	47088	47911	47102	46857	46780	46684	47176	46755	47081	47224	102.201
	12	46818	47249	47273	46907	46683	46363	46884	47245	46752	46833	46843	47041	102.004
	13	46759	47219	46451	46489	46901	47103	47119	47104	46539	46985	46727	46891	101.894
	14	46431	46725	46882	47612	47622	47148	47258	46496	46950	47750	46494	46753	102.227
	15	46893	45888	46994	47390	46192	47353	46486	46914	46741	47243	46615	46358	101.673
	16	46646	46251	46764	46587	47013	46978	46086	46552	46381	46102	46532	46715	101.228
	17	46318	46381	46696	46317	46699	47257	46949	46633	46889	47227	46896	46378	101.596
	18	47371	47304	46361	46529	46831	46090	46584	46753	46223	46146	46654	47334	101.513
	19	47055	46570	46768	46096	46740	46461	46989	46966	46978	45855	46813	47092	101.549
	20	47363	46342	46877	46609	46613	47169	46667	46606	46453	46463	46752	46535	101.562
	21	46822	46037	46966	46677	47649	46576	46816	46619	46897	46626	46302	46739	101.612
	22	46562	46450	46223	46774	47071	46023	46587	46739	46394	46936	46978	46458	101.334
	23	46649	47078	47035	46338	46787	45739	46724	46926	46902	46688	46301	46566	101.432
26	0	46381	46021	46804	46707	46554	46689	46793	46978	46573	46345	47178	46203	101.342
	1	45967	46282	46427	46919	46638	46946	46085	46627	46919	47593	46460	46791	101.417
	2	47184	47059	46723	47126	46595	46694	46275	46601	47695	46733	47094	47035	101.990
	3	46918	46815	46617	46543	46494	47074	46743	46146	46750	47072	46725	46987	101.640
	4	46132	46024	46621	46325	46947	47145	47110	46436	46865	47150	46925	46642	101.538
	5	46940	46396	46456	46072	46264	46402	46681	46654	47049	46308	46372	46916	101.210
	6	46881	47158	46605	47035	46502	46446	46768	47264	47002	46557	47301	47362	102.001
	7	46533	46228	46780	46985	46398	47151	46465	47305	46510	46715	46641	47165	101.638
	8	46130	47203	47235	46329	47031	47241	46473	46963	46829	47080	47099	46804	101.918
	9	46627	47221	46843	46328	46413	46368	47172	46487	46812	46592	47769	47044	101.784
	10	46728	46611	46788	46741	47015	46997	47400	46955	46659	47040	46169	47041	101.869
	11	46890	45815	46966	46568	46920	46926	46207	46499	46827	46977	46813	46549	101.472
	12	45611	46627	46371	46403	47080	47262	46521	46433	47773	47017	46574	46804	101.566
	13	46843	46939	46434	46650	47123	46509	46563	46846	46499	46884	46560	46802	101.598
	14	46480	46288	47410	46191	47067	46468	46547	46797	46674	46545	47030	46516	101.482
	15	46823	46441	46834	47382	46573	46886	46653	46318	46588	47446	46458	47117	101.755
	16	47119	46771	47553	46166	46601	46529	46957	46640	46070	46416	46117	46572	101.392
	17	46348	46397	46933	46245	46869	46241	46241	46657	46256	46986	46812	47192	101.331
	18	46547	47260	46754	47257	46606	47035	47481	47745	46854	47160	47295	46650	102.322
	19	46693	46642	46862	46758	46964	46538	46819	46292	46771	46936	47416	46466	101.690
	20	46880	47086	46652	47329	47297	46254	46994	46734	47263	46203	46901	46913	101.934
	21	46086	46702	46705	47403	46945	47482	46128	46851	46385	46575	47029	46839	101.685
	22	46273	46558	46932	46407	46573	46006	46075	46679	46550	46645	46963	46891	101.218
	23	46135	46228	46383	46528	46185	46817	46767	46301	46362	46743	46535	46467	101.018

INAF/UNIRomaTre		S.V.I.R.CO. Observatory - Pressure Corrected Data – January 2017											20 NM-64	
day	hh	00_05	05_10	10_15	15_20	20_25	25_30	30_35	35_40	40_45	45_50	50_55	55_60	h-norm
27	0	46590	47109	46286	46184	45658	47089	46480	46223	46244	46141	47205	46774	101.116
	1	46446	46661	46708	46382	46556	46155	45975	46568	46695	46441	46609	46508	101.064
	2	46907	46377	46401	46315	46407	46645	46289	46994	46642	46593	46272	46336	101.150
	3	46864	46175	46801	47006	46349	47009	46619	46226	47048	46644	46173	46560	101.385
	4	46323	46810	46996	46473	46083	45724	46523	46107	46499	46524	47111	46943	101.139
	5	46732	46247	46299	46471	46460	46652	47021	46466	47301	45978	46924	46228	101.259
	6	46721	46049	46665	47079	46804	46275	46675	47111	46561	46485	46595	47170	101.514
	7	46543	47220	46430	45999	46599	46242	47260	46902	46785	46772	46724	46819	101.533
	8	47458	46853	46785	47017	47454	46608	46120	47494	46896	47043	46738	47027	102.113
	9	47546	46675	47506	46539	47725	46677	47025	46589	46844	47018	47328	47037	102.297
	10	46751	47105	47055	46849	46652	46634	47214	46903	46896	45948	47180	47252	101.922
	11	47560	46780	46933	46483	46832	47118	47226	47026	46869	46783	46958	46762	102.083
	12	46737	47513	46669	46542	46532	47375	46892	46491	47116	47368	47149	46532	102.009
	13	47118	47529	46632	47142	46917	47126	47197	47095	46810	46634	46736	46169	102.042
	14	47552	46701	46492	46666	46336	46498	46756	46705	46989	47158	47065	46825	101.796
	15	47408	47373	46806	46671	47386	46776	46271	46808	46175	47371	47009	46357	101.917
	16	46652	46948	46408	46627	46855	46517	47098	46527	46268	46410	46051	47368	101.431
	17	47128	47252	46330	46278	46660	46125	47071	47149	47180	47007	47428	47349	102.016
	18	46608	46968	46414	46817	46689	46533	46477	47288	46687	46435	46534	46872	101.538
	19	46658	46593	46855	46798	46940	46297	47044	46672	46705	46632	46888	46816	101.642
	20	46887	46684	46890	46429	46622	46382	46900	46412	46640	46108	46575	46458	101.296
	21	45843	46443	46550	46244	46616	46573	46854	46728	46394	46950	47127	47060	101.368
	22	46430	46584	47067	46635	46525	46368	46978	46557	46433	47071	47082	46847	101.585
	23	46369	47031	46334	47045	46329	46778	46816	46841	46036	46046	47010	47054	101.424
28	0	46996	46307	47384	46322	46457	46728	46259	47430	47076	46938	46526	46116	101.570
	1	46958	47085	47893	46654	46665	46698	46942	46482	46800	46816	46936	47589	102.117
	2	47386	46761	47120	47340	46839	46941	47265	46601	46682	46393	46346	46913	101.948
	3	46831	46845	46949	46855	46825	46427	46453	46463	46902	47128	46978	46824	101.748
	4	46711	47126	46957	46540	46682	46388	45670	46635	46568	47288	46567	46979	101.500
	5	46869	46366	47053	46357	47088	46910	46737	46731	47346	47242	46329	47366	101.914
	6	46931	46942	46818	46753	47251	46671	47098	47075	46756	46319	46714	46989	101.900
	7	46646	47265	47037	47219	47397	47204	46902	47158	46526	46732	47339	47362	102.347
	8	47315	47214	47244	47405	46977	47335	47050	47218	47280	46787	47020	47484	102.627
	9	46743	46826	46980	47118	47457	47112	46644	47458	46781	46556	46903	46601	102.056
	10	47230	47092	46443	47008	47364	47096	46918	47120	47128	46605	47073	46573	102.141
	11	47096	46884	47177	46821	46457	47393	47007	46562	46651	46775	47112	46263	101.878
	12	47226	47362	47266	46733	46598	46934	46602	46590	47395	46765	46741	46872	102.039
	13	46794	46970	46988	45934	46291	46806	47078	46214	46563	47231	46980	47221	101.674
	14	47517	46456	47109	46586	46436	46834	46114	46871	46735	47316	47331	47020	101.901
	15	46457	46528	46799	47278	46741	47012	47041	46927	46631	46946	46846	46931	101.867
	16	46266	46755	47397	47434	46921	46719	47203	46859	46844	46729	46923	46709	101.980
	17	46922	46357	47444	46940	47192	46477	46147	46843	46803	46584	47220	46126	101.671
	18	46702	46859	47050	47178	46915	46527	46817	46995	47049	46804	46737	46746	101.911
	19	46380	46724	47473	46477	46789	46812	46810	46994	47125	46831	46306	46839	101.763
	20	47078	46487	46253	46800	46891	46310	46569	47237	47368	46406	46631	47523	101.761
	21	45931	47075	46582	47309	47153	47246	47195	46484	47117	47333	46800	46639	101.999
	22	46292	47361	47095	46664	46541	46026	47237	46897	47068	46506	46662	47122	101.746
	23	47292	46309	46746	47056	46561	47122	46701	46798	46746	46637	47300	47094	101.908

INAF/UNIRomaTre		S.V.I.R.CO. Observatory - Pressure Corrected Data – January 2017											20 NM-64	
day	hh	00_05	05_10	10_15	15_20	20_25	25_30	30_35	35_40	40_45	45_50	50_55	55_60	h-norm
29	0	47325	47019	46786	46922	46312	47481	46986	46686	47017	46736	47097	47090	102.106
	1	46964	47146	46660	46653	46694	47050	46671	46510	46613	47169	46948	47040	101.864
	2	47017	46640	46746	46542	46309	46503	46839	47300	46607	46827	46347	46643	101.538
	3	46309	46877	47015	46519	47057	46210	46883	47265	46946	47540	47096	46693	101.916
	4	46780	47320	46624	46711	46950	46578	47092	46573	47665	46447	46491	47510	101.977
	5	46328	46321	46909	47188	47063	46347	47157	46522	47178	46745	47021	46112	101.641
	6	47185	47303	47291	47183	46772	46860	47485	47308	46983	46919	47068	46899	102.433
	7	46892	46708	46926	47385	46173	47148	46974	47353	47142	46510	46698	47397	102.079
	8	46727	47487	46881	46723	46902	47079	46986	47040	46586	46805	46959	46797	102.019
	9	46951	47218	46974	47606	46988	47076	47259	46691	46717	46709	47088	46958	102.247
	10	46743	46686	47087	47130	46726	47212	47560	47499	47139	47173	46920	47031	102.369
	11	46546	47001	46840	47246	46646	46823	47312	47188	46392	47161	46864	46938	102.016
	12	46828	47155	46590	47349	46901	46497	47018	47381	46668	47206	47014	47086	102.150
	13	46536	47075	46446	47121	47381	46653	46680	46878	46548	46817	46653	47154	101.832
	14	46582	46707	46721	47178	46913	46880	47772	46467	47187	47015	47144	47838	102.278
	15	47116	46517	46657	47199	47017	46647	46382	46867	46662	46617	46864	46728	101.711
	16	46853	46887	46465	46446	47119	46685	46444	46607	46958	46556	47343	46445	101.627
	17	47291	47291	46954	47271	46889	47434	46711	46970	47167	46944	46459	46738	102.226
	18	47288	46296	46685	46950	46835	46455	46463	46585	46618	46319	46893	47057	101.560
	19	46981	46580	47086	46351	46686	47291	46832	47201	46345	46557	46782	46464	101.690
	20	46544	46568	46859	47137	47126	46523	46236	47093	47186	46441	46489	46962	101.691
	21	46931	46766	46262	46450	46916	46697	47369	47378	46678	47287	46763	46851	101.905
	22	46625	46343	46658	46393	46226	46593	46688	46357	47207	46944	46494	46365	101.279
	23	47117	46641	46907	46068	46833	46662	46371	45983	46418	46748	46735	46975	101.382
30	0	46724	46845	47287	46432	47358	47163	46383	46633	47608	46549	46713	46978	101.962
	1	46343	47419	47467	46304	46572	46602	46621	47530	46270	46748	46628	46612	101.682
	2	47417	47339	47031	46392	46772	46945	46806	47158	46234	47019	46511	46923	101.941
	3	47115	46795	46025	46489	46667	46684	46786	46508	47241	46008	46951	47337	101.590
	4	47664	46988	46440	46460	46553	46876	47147	46927	47308	46694	47044	46714	101.990
	5	47665	47263	47166	47498	46397	47203	47065	47978	46684	47282	47378	47059	102.683
	6	47436	47103	47539	47430	46759	46727	46627	47278	47220	47544	46963	46305	102.374
	7	47218	46788	46660	47042	47430	46907	47055	47070	47138	46927	46599	46941	102.164
	8	46856	46518	47194	47207	47120	47200	46693	46523	47113	47030	46915	47211	102.129
	9	46836	46985	46629	46929	46885	47375	46641	47250	47062	46615	46530	46754	101.932
	10	47213	46698	46974	46801	47171	47611	47378	47343	47909	47453	46497	46805	102.541
	11	46162	47532	46399	46992	47362	47277	47046	46908	47151	47620	46819	46821	102.221
	12	46820	47363	46678	47573	46325	46682	46396	46840	47073	47056	46640	46705	101.869
	13	47120	46587	46938	47413	46907	46847	46558	47332	47460	47007	46634	47456	102.252
	14	46892	47611	46480	46810	47093	47050	46349	47083	46322	46916	46636	47475	101.972
	15	46853	46908	47601	46618	47351	46914	46668	46805	46862	47012	47455	47390	102.284
	16	46322	46774	46810	46508	46576	46778	47050	47361	46786	47413	45871	46530	101.621
	17	46704	46897	46638	46740	46633	47023	47481	46995	46620	47279	46352	46635	101.842
	18	46441	47184	46998	47496	47146	46991	47717	46599	46665	47125	47097	46958	102.281
	19	46633	46584	46777	47006	46695	47130	47183	47025	46083	46837	47064	47301	101.900
	20	46523	46995	46457	46315	46236	47236	46742	47002	46462	46194	47230	47414	101.626
	21	46868	46945	46699	46630	47203	46869	46724	46868	47017	46193	46740	47091	101.815
	22	46755	47399	47110	47114	47371	46890	46756	47085	47187	46610	47850	46412	102.303
	23	47266	47225	46903	46888	46471	46582	46999	47018	46196	46569	45989	46812	101.646

INAF/UNIRomaTre		S.V.I.R.CO. Observatory - Pressure Corrected Data – January 2017										20 NM-64		
day	hh	00_05	05_10	10_15	15_20	20_25	25_30	30_35	35_40	40_45	45_50	50_55	55_60	h-norm
31	0	46657	46777	46624	46017	46983	46625	46777	46496	46859	46934	47153	46401	101.535
	1	47553	47157	47177	46761	47008	46807	47300	47377	46812	46796	46029	47359	102.229
	2	46759	46861	47485	46797	46589	46535	46152	46598	46807	47253	46451	46625	101.645
	3	47127	46628	47525	46649	47025	47000	46779	46890	45640	46893	46489	46917	101.763
	4	46166	46985	46587	46631	46684	47174	46353	46900	47604	46681	47304	46898	101.836
	5	47129	46696	46799	47506	46911	47083	47033	46927	46645	47726	46858	47561	102.363
	6	47062	46129	46675	46692	46986	46775	46951	46859	46552	46829	46705	47012	101.702
	7	47283	46725	47257	46532	46820	46667	46862	46915	46835	46497	47068	46556	101.846
	8	46287	47312	46979	46451	46881	46539	46998	46228	46760	47155	46706	46796	101.678
	9	46578	46281	47121	47474	47016	46708	46980	46735	46529	47205	47033	46973	101.957
	10	46829	47041	47221	47297	46788	46685	46716	46591	46781	46562	46334	47429	101.892
	11	46774	47158	46853	47826	47142	47248	46894	47203	47060	47055	46459	47107	102.346
	12	46710	46997	47018	47162	47300	46673	46389	47158	47255	47675	46236	47053	102.137
	13	46840	46830	47619	46892	47084	46843	46905	47294	45717	46513	46613	46585	101.795
	14	46709	46509	46413	46700	46958	46197	46159	47164	46665	46141	46825	46467	101.282
	15	46623	46484	46713	46071	46661	46357	46162	46939	47088	46846	47285	47130	101.545
	16	47075	46413	46929	47533	47152	47231	46790	46479	46750	47482	46468	46630	102.011
	17	46963	46482	46630	46702	46721	46228	46593	45935	46391	47162	46371	46336	101.211
	18	46973	46860	46960	46220	46662	46559	46378	46582	46814	46357	46595	47026	101.478
	19	46865	46401	46116	47423	46560	46953	46702	46730	46677	46049	46820	46888	101.514
	20	47237	46782	46661	46299	45834	46796	46414	46645	47332	46737	47181	47117	101.668
	21	46602	46609	47642	46414	46794	46970	46827	46589	46545	46601	46707	46008	101.536
	22	46675	46303	47335	46712	46872	46203	46712	46325	47270	46355	46491	46676	101.467
	23	46108	46061	47289	46738	47313	46798	46973	46768	46992	47000	46526	46632	101.697



S.V.I.R.CO. Observatory - Pressure in hectoPascal – January 2017

day	hh	00_05	05_10	10_15	15_20	20_25	25_30	30_35	35_40	40_45	45_50	50_55	55_60	average
1	0	1026.61	1026.60	1026.60	1026.61	1026.60	1026.59	1026.57	1026.57	1026.59	1026.55	1026.49	1026.50	1026.57
	1	1026.46	1026.42	1026.40	1026.35	1026.33	1026.32	1026.29	1026.30	1026.28	1026.23	1026.19	1026.17	1026.31
	2	1026.13	1026.11	1026.11	1026.09	1026.05	1026.00	1025.97	1025.92	1025.84	1025.79	1025.73	1025.70	1025.95
	3	1025.70	1025.67	1025.65	1025.63	1025.53	1025.50	1025.48	1025.42	1025.43	1025.42	1025.41	1025.41	1025.52
	4	1025.38	1025.35	1025.29	1025.24	1025.22	1025.20	1025.18	1025.17	1025.23	1025.28	1025.28	1025.28	1025.26
	5	1025.29	1025.33	1025.36	1025.36	1025.34	1025.33	1025.35	1025.38	1025.38	1025.39	1025.39	1025.37	1025.35
	6	1025.36	1025.36	1025.34	1025.34	1025.36	1025.39	1025.39	1025.36	1025.37	1025.37	1025.36	1025.37	1025.36
	7	1025.36	1025.33	1025.32	1025.32	1025.36	1025.39	1025.41	1025.42	1025.43	1025.44	1025.44	1025.44	1025.39
	8	1025.44	1025.45	1025.45	1025.45	1025.47	1025.47	1025.44	1025.44	1025.49	1025.51	1025.52	1025.54	1025.47
	9	1025.55	1025.55	1025.55	1025.55	1025.53	1025.52	1025.48	1025.47	1025.46	1025.41	1025.36	1025.31	1025.48
	10	1025.27	1025.24	1025.17	1025.08	1025.01	1024.95	1024.88	1024.78	1024.71	1024.66	1024.60	1024.50	1024.90
	11	1024.42	1024.35	1024.30	1024.26	1024.20	1024.14	1024.10	1024.04	1023.98	1023.93	1023.89	1023.85	1024.12
	12	1023.82	1023.79	1023.73	1023.67	1023.63	1023.56	1023.49	1023.42	1023.34	1023.27	1023.22	1023.17	1023.51
	13	1023.14	1023.10	1023.05	1023.02	1023.00	1022.99	1022.99	1022.99	1022.98	1022.96	1022.95	1022.95	1023.01
	14	1022.95	1022.97	1023.02	1023.04	1023.03	1023.05	1023.08	1023.10	1023.11	1023.09	1023.07	1023.06	1023.05
	15	1023.07	1023.07	1023.07	1023.05	1023.02	1022.99	1022.99	1023.00	1022.99	1022.99	1022.99	1023.00	1023.02
	16	1023.02	1023.03	1023.05	1023.07	1023.10	1023.15	1023.20	1023.24	1023.27	1023.32	1023.36	1023.37	1023.18
	17	1023.38	1023.37	1023.36	1023.37	1023.38	1023.40	1023.43	1023.44	1023.46	1023.47	1023.46	1023.48	1023.41
	18	1023.53	1023.57	1023.61	1023.63	1023.65	1023.68	1023.70	1023.69	1023.70	1023.73	1023.71	1023.68	1023.65
	19	1023.66	1023.64	1023.63	1023.66	1023.69	1023.70	1023.72	1023.74	1023.77	1023.82	1023.88	1023.92	1023.73
	20	1023.94	1023.96	1023.98	1023.99	1024.00	1024.01	1024.03	1024.06	1024.08	1024.06	1024.00	1023.96	1024.00
	21	1023.97	1024.00	1023.99	1023.99	1024.00	1024.03	1024.07	1024.09	1024.08	1024.07	1024.09	1024.11	1024.04
	22	1024.11	1024.09	1024.10	1024.12	1024.13	1024.15	1024.14	1024.10	1024.10	1024.10	1024.08	1024.07	1024.11
	23	1024.05	1024.03	1024.03	1024.01	1024.01	1024.01	1024.00	1023.99	1023.99	1023.99	1023.98	1023.95	1024.00
2	0	1023.87	1023.86	1023.84	1023.84	1023.85	1023.86	1023.88	1023.90	1023.91	1023.93	1023.95	1023.96	1023.89
	1	1023.97	1023.97	1023.98	1023.98	1024.00	1024.04	1024.04	1024.02	1024.03	1024.05	1024.03	1024.01	1024.01
	2	1024.00	1024.00	1023.98	1023.94	1023.89	1023.87	1023.84	1023.77	1023.69	1023.64	1023.62	1023.58	1023.82
	3	1023.51	1023.45	1023.41	1023.39	1023.38	1023.39	1023.47	1023.54	1023.56	1023.58	1023.57	1023.54	1023.48
	4	1023.52	1023.47	1023.42	1023.40	1023.41	1023.41	1023.39	1023.34	1023.35	1023.38	1023.34	1023.30	1023.39
	5	1023.27	1023.23	1023.20	1023.22	1023.28	1023.35	1023.37	1023.35	1023.34	1023.32	1023.36	1023.40	1023.31
	6	1023.40	1023.40	1023.43	1023.44	1023.43	1023.45	1023.47	1023.51	1023.53	1023.56	1023.61	1023.60	1023.48
	7	1023.59	1023.58	1023.54	1023.54	1023.52	1023.49	1023.48	1023.46	1023.45	1023.44	1023.42	1023.43	1023.49
	8	1023.43	1023.41	1023.41	1023.42	1023.40	1023.34	1023.29	1023.28	1023.29	1023.32	1023.32	1023.30	1023.35
	9	1023.31	1023.33	1023.33	1023.35	1023.38	1023.35	1023.34	1023.33	1023.27	1023.24	1023.24	1023.21	1023.30
	10	1023.13	1023.09	1023.08	1023.02	1022.96	1022.93	1022.90	1022.85	1022.78	1022.73	1022.68	1022.60	1022.89
	11	1022.52	1022.45	1022.39	1022.32	1022.28	1022.23	1022.16	1022.14	1022.11	1022.09	1022.05	1021.93	1022.22
	12	1021.82	1021.76	1021.68	1021.58	1021.50	1021.44	1021.39	1021.33	1021.27	1021.22	1021.14	1021.05	1021.43
	13	1020.97	1020.92	1020.90	1020.88	1020.87	1020.86	1020.86	1020.87	1020.90	1020.92	1020.91	1020.88	1020.89
	14	1020.84	1020.81	1020.78	1020.74	1020.72	1020.70	1020.65	1020.60	1020.58	1020.60	1020.62	1020.61	1020.68
	15	1020.59	1020.56	1020.54	1020.52	1020.49	1020.47	1020.45	1020.42	1020.40	1020.40	1020.39	1020.41	1020.47
	16	1020.44	1020.43	1020.43	1020.43	1020.37	1020.26	1020.18	1020.17	1020.22	1020.26	1020.30	1020.31	1020.31
	17	1020.29	1020.16	1020.06	1020.15	1020.21	1020.20	1020.21	1020.23	1020.27	1020.29	1020.29	1020.31	1020.22
	18	1020.32	1020.28	1020.21	1020.12	1020.10	1020.11	1020.05	1020.06	1020.10	1020.05	1020.01	1020.02	1020.12
	19	1020.00	1019.98	1019.95	1019.91	1019.89	1019.84	1019.84	1019.87	1019.81	1019.76	1019.71	1019.63	1019.85
	20	1019.62	1019.60	1019.54	1019.50	1019.48	1019.50	1019.53	1019.51	1019.48	1019.44	1019.38	1019.35	1019.49
	21	1019.32	1019.19	1019.04	1018.94	1018.87	1018.84	1018.88	1019.00	1019.14	1019.08	1018.99	1019.05	1019.03
	22	1019.10	1019.07	1018.94	1018.77	1018.64	1018.50	1018.35	1018.27	1018.29	1018.45	1018.57	1018.45	1018.61
	23	1018.26	1018.08	1017.94	1017.85	1017.83	1017.81	1017.77	1017.75	1017.72	1017.65	1017.58	1017.54	1017.81

S.V.I.R.CO. Observatory - Pressure in hectoPascal – January 2017

day	hh	00_05	05_10	10_15	15_20	20_25	25_30	30_35	35_40	40_45	45_50	50_55	55_60	average
3	0	1017.44	1017.42	1017.37	1017.37	1017.37	1017.35	1017.32	1017.30	1017.31	1017.31	1017.30	1017.28	1017.34
	1	1017.24	1017.21	1017.18	1017.17	1017.15	1017.14	1017.13	1017.07	1016.99	1016.93	1016.86	1016.78	1017.07
	2	1016.71	1016.67	1016.64	1016.58	1016.53	1016.48	1016.41	1016.34	1016.26	1016.21	1016.19	1016.13	1016.43
	3	1016.05	1015.97	1015.93	1015.91	1015.88	1015.84	1015.82	1015.74	1015.60	1015.57	1015.60	1015.53	1015.78
	4	1015.47	1015.51	1015.45	1015.29	1015.21	1015.19	1015.16	1015.13	1015.10	1015.07	1015.02	1014.96	1015.21
	5	1014.92	1014.92	1014.96	1014.93	1014.84	1014.75	1014.74	1014.74	1014.65	1014.59	1014.61	1014.66	1014.77
	6	1014.69	1014.66	1014.61	1014.59	1014.57	1014.55	1014.51	1014.46	1014.42	1014.39	1014.33	1014.28	1014.50
	7	1014.27	1014.25	1014.27	1014.30	1014.26	1014.26	1014.29	1014.31	1014.35	1014.36	1014.39	1014.47	1014.31
	8	1014.49	1014.47	1014.50	1014.52	1014.54	1014.57	1014.57	1014.56	1014.57	1014.56	1014.58	1014.66	1014.55
	9	1014.71	1014.69	1014.66	1014.64	1014.61	1014.52	1014.44	1014.42	1014.39	1014.30	1014.24	1014.23	1014.48
	10	1014.22	1014.25	1014.26	1014.20	1014.12	1014.03	1013.96	1013.93	1013.89	1013.86	1013.87	1013.89	1014.04
	11	1014.08	1014.24	1014.16	1014.12	1014.13	1014.04	1013.94	1013.91	1013.90	1014.00	1014.22	1014.47	1014.10
	12	1014.65	1014.63	1014.49	1014.37	1014.34	1014.30	1014.19	1014.06	1013.98	1013.97	1013.96	1013.91	1014.23
	13	1013.89	1013.92	1013.91	1013.84	1013.82	1013.90	1013.97	1013.93	1013.88	1013.88	1013.89	1013.89	1013.89
	14	1013.90	1013.98	1014.06	1014.08	1014.08	1014.04	1013.99	1014.03	1014.14	1014.21	1014.25	1014.30	1014.09
	15	1014.37	1014.41	1014.42	1014.42	1014.41	1014.41	1014.39	1014.40	1014.46	1014.49	1014.50	1014.55	1014.43
	16	1014.67	1014.76	1014.80	1014.87	1014.94	1014.97	1014.99	1015.01	1015.02	1015.07	1015.16	1015.24	1014.96
	17	1015.29	1015.33	1015.38	1015.39	1015.38	1015.39	1015.41	1015.45	1015.51	1015.52	1015.56	1015.62	1015.43
	18	1015.67	1015.71	1015.70	1015.72	1015.76	1015.82	1015.90	1015.99	1016.05	1016.05	1016.05	1016.10	1015.87
	19	1016.17	1016.21	1016.24	1016.25	1016.26	1016.28	1016.32	1016.38	1016.43	1016.46	1016.46	1016.47	1016.32
	20	1016.50	1016.53	1016.55	1016.55	1016.55	1016.56	1016.52	1016.47	1016.49	1016.56	1016.58	1016.56	1016.53
	21	1016.55	1016.55	1016.53	1016.47	1016.45	1016.47	1016.45	1016.44	1016.43	1016.40	1016.37	1016.37	1016.45
	22	1016.35	1016.37	1016.38	1016.36	1016.36	1016.36	1016.35	1016.34	1016.36	1016.36	1016.37	1016.38	1016.36
	23	1016.37	1016.35	1016.32	1016.28	1016.26	1016.26	1016.25	1016.20	1016.14	1016.13	1016.12	1016.09	1016.23
4	0	1016.04	1016.09	1016.12	1016.10	1016.10	1016.13	1016.19	1016.22	1016.21	1016.21	1016.23	1016.23	1016.16
	1	1016.22	1016.22	1016.23	1016.23	1016.26	1016.27	1016.25	1016.24	1016.24	1016.23	1016.24	1016.22	1016.24
	2	1016.21	1016.19	1016.14	1016.10	1016.10	1016.09	1016.08	1016.06	1016.01	1015.99	1015.95	1015.89	1016.07
	3	1015.88	1015.90	1015.90	1015.90	1015.91	1015.88	1015.84	1015.83	1015.81	1015.79	1015.81	1015.80	1015.85
	4	1015.74	1015.72	1015.73	1015.72	1015.70	1015.67	1015.62	1015.62	1015.65	1015.63	1015.62	1015.66	1015.67
	5	1015.69	1015.70	1015.68	1015.63	1015.58	1015.56	1015.58	1015.56	1015.53	1015.56	1015.54	1015.50	1015.59
	6	1015.49	1015.49	1015.49	1015.47	1015.45	1015.41	1015.39	1015.41	1015.42	1015.43	1015.45	1015.48	1015.45
	7	1015.50	1015.52	1015.48	1015.41	1015.40	1015.40	1015.40	1015.40	1015.43	1015.45	1015.41	1015.33	1015.42
	8	1015.31	1015.34	1015.34	1015.33	1015.34	1015.37	1015.35	1015.29	1015.29	1015.31	1015.33	1015.34	1015.33
	9	1015.33	1015.32	1015.30	1015.27	1015.32	1015.43	1015.53	1015.59	1015.61	1015.58	1015.51	1015.41	1015.43
	10	1015.29	1015.17	1015.11	1015.06	1015.00	1014.95	1014.89	1014.82	1014.75	1014.66	1014.62	1014.60	1014.91
	11	1014.57	1014.54	1014.43	1014.34	1014.30	1014.25	1014.18	1014.13	1014.06	1013.98	1013.95	1013.90	1014.22
	12	1013.75	1013.59	1013.47	1013.34	1013.25	1013.16	1013.06	1012.96	1012.86	1012.73	1012.64	1012.57	1013.11
	13	1012.51	1012.48	1012.45	1012.45	1012.46	1012.43	1012.37	1012.32	1012.29	1012.26	1012.23	1012.21	1012.37
	14	1012.21	1012.20	1012.17	1012.11	1012.00	1011.97	1012.02	1012.00	1011.94	1011.88	1011.82	1011.82	1012.01
	15	1011.76	1011.69	1011.73	1011.77	1011.73	1011.65	1011.54	1011.43	1011.41	1011.42	1011.42	1011.42	1011.58
	16	1011.43	1011.44	1011.39	1011.33	1011.28	1011.24	1011.23	1011.23	1011.23	1011.24	1011.24	1011.24	1011.29
	17	1011.25	1011.26	1011.23	1011.22	1011.23	1011.22	1011.20	1011.17	1011.11	1011.06	1011.01	1010.99	1011.16
	18	1011.00	1010.99	1010.98	1010.99	1011.02	1011.03	1011.04	1011.04	1010.99	1010.99	1011.01	1011.00	1011.01
	19	1011.00	1010.95	1010.88	1010.80	1010.72	1010.65	1010.56	1010.47	1010.40	1010.38	1010.36	1010.30	1010.62
	20	1010.26	1010.19	1010.06	1009.94	1009.86	1009.78	1009.70	1009.62	1009.55	1009.50	1009.41	1009.32	1009.76
	21	1009.26	1009.15	1009.01	1008.97	1008.95	1008.89	1008.86	1008.82	1008.80	1008.78	1008.71	1008.66	1008.90
	22	1008.60	1008.54	1008.51	1008.46	1008.39	1008.38	1008.34	1008.24	1008.18	1008.13	1008.00	1007.90	1008.30
	23	1007.85	1007.76	1007.70	1007.71	1007.72	1007.66	1007.55	1007.43	1007.35	1007.35	1007.33	1007.22	1007.55

S.V.I.R.CO. Observatory - Pressure in hectoPascal – January 2017

day	hh	00_05	05_10	10_15	15_20	20_25	25_30	30_35	35_40	40_45	45_50	50_55	55_60	average
5	0	1006.97	1007.00	1006.99	1006.97	1006.97	1006.99	1006.95	1006.82	1006.65	1006.50	1006.44	1006.35	1006.79
	1	1006.29	1006.35	1006.41	1006.44	1006.41	1006.40	1006.43	1006.37	1006.26	1006.14	1006.04	1005.98	1006.29
	2	1005.97	1005.98	1005.96	1005.84	1005.65	1005.32	1005.20	1005.27	1005.19	1005.01	1004.95	1004.89	1005.43
	3	1004.67	1004.59	1004.46	1004.31	1004.25	1004.19	1004.24	1004.32	1004.36	1004.35	1004.27	1004.21	1004.35
	4	1004.14	1004.06	1003.94	1003.97	1004.23	1004.45	1004.55	1004.60	1004.54	1004.37	1004.25	1004.11	1004.26
	5	1003.90	1003.70	1003.50	1003.48	1003.60	1003.62	1003.66	1003.69	1003.66	1003.68	1003.67	1003.60	1003.64
	6	1003.47	1003.36	1003.38	1003.51	1003.51	1003.47	1003.42	1003.37	1003.49	1003.61	1003.64	1003.58	1003.48
	7	1003.51	1003.47	1003.52	1003.64	1003.71	1003.78	1003.90	1004.04	1004.11	1004.12	1004.16	1004.26	1003.85
	8	1004.33	1004.39	1004.43	1004.47	1004.55	1004.73	1004.92	1005.04	1005.10	1005.18	1005.32	1005.47	1004.83
	9	1005.56	1005.59	1005.65	1005.68	1005.70	1005.80	1005.93	1006.00	1006.01	1006.11	1006.25	1006.35	1005.88
	10	1006.46	1006.57	1006.66	1006.69	1006.66	1006.66	1006.65	1006.63	1006.65	1006.64	1006.60	1006.60	1006.62
	11	1006.61	1006.64	1006.69	1006.67	1006.66	1006.61	1006.51	1006.43	1006.30	1006.20	1006.09	1006.04	1006.45
	12	1006.10	1006.20	1006.29	1006.32	1006.34	1006.37	1006.30	1006.24	1006.26	1006.30	1006.36	1006.39	1006.29
	13	1006.45	1006.50	1006.47	1006.47	1006.62	1006.78	1006.88	1006.99	1007.20	1007.35	1007.41	1007.56	1006.89
	14	1007.76	1007.85	1007.94	1008.04	1008.07	1008.15	1008.27	1008.38	1008.50	1008.67	1008.83	1008.94	1008.28
	15	1009.03	1009.10	1009.16	1009.17	1009.24	1009.35	1009.38	1009.47	1009.55	1009.62	1009.77	1009.90	1009.39
	16	1009.92	1009.96	1010.02	1010.07	1010.09	1010.14	1010.18	1010.15	1010.17	1010.24	1010.30	1010.38	1010.13
	17	1010.47	1010.56	1010.66	1010.80	1010.90	1010.95	1011.05	1011.14	1011.16	1011.07	1011.01	1011.07	1010.90
	18	1011.11	1011.12	1011.19	1011.32	1011.47	1011.50	1011.56	1011.72	1011.83	1011.93	1012.04	1012.10	1011.57
	19	1012.12	1012.15	1012.23	1012.37	1012.45	1012.48	1012.52	1012.56	1012.61	1012.57	1012.55	1012.53	1012.43
	20	1012.50	1012.51	1012.50	1012.47	1012.48	1012.52	1012.55	1012.57	1012.60	1012.67	1012.78	1012.87	1012.58
	21	1012.94	1013.01	1013.07	1013.18	1013.31	1013.43	1013.49	1013.48	1013.46	1013.48	1013.62	1013.74	1013.35
	22	1013.76	1013.83	1013.94	1014.04	1014.02	1014.03	1014.14	1014.21	1014.21	1014.22	1014.28	1014.38	1014.09
	23	1014.48	1014.53	1014.57	1014.65	1014.71	1014.74	1014.82	1014.93	1015.00	1015.04	1015.12	1015.27	1014.82
6	0	1015.34	1015.36	1015.43	1015.51	1015.59	1015.70	1015.82	1015.96	1016.04	1016.10	1016.16	1016.22	1015.78
	1	1016.34	1016.47	1016.58	1016.68	1016.85	1016.96	1017.00	1017.07	1017.15	1017.26	1017.34	1017.36	1016.92
	2	1017.38	1017.43	1017.47	1017.46	1017.48	1017.61	1017.70	1017.76	1017.84	1017.89	1017.92	1017.95	1017.66
	3	1017.98	1018.04	1018.07	1018.09	1018.17	1018.23	1018.25	1018.28	1018.30	1018.30	1018.34	1018.37	1018.20
	4	1018.44	1018.57	1018.67	1018.74	1018.77	1018.74	1018.80	1018.88	1018.90	1018.93	1018.99	1019.01	1018.78
	5	1019.04	1019.06	1019.09	1019.15	1019.19	1019.27	1019.41	1019.55	1019.62	1019.71	1019.80	1019.87	1019.39
	6	1019.94	1020.01	1020.07	1020.15	1020.22	1020.27	1020.35	1020.45	1020.43	1020.45	1020.55	1020.61	1020.29
	7	1020.72	1020.82	1020.85	1020.87	1020.93	1021.03	1021.12	1021.18	1021.21	1021.17	1021.14	1021.19	1021.02
	8	1021.21	1021.28	1021.37	1021.42	1021.43	1021.47	1021.52	1021.55	1021.61	1021.65	1021.75	1021.79	1021.50
	9	1021.75	1021.75	1021.74	1021.75	1021.85	1021.96	1022.02	1022.01	1021.97	1022.07	1022.08	1022.04	1021.91
	10	1022.10	1022.05	1022.03	1022.00	1021.97	1021.90	1021.82	1021.81	1021.81	1021.81	1021.78	1021.75	1021.90
	11	1021.72	1021.70	1021.70	1021.70	1021.64	1021.68	1021.70	1021.72	1021.70	1021.66	1021.79	1021.85	1021.71
	12	1021.86	1021.84	1021.87	1021.91	1021.83	1021.78	1021.83	1021.92	1021.97	1021.96	1022.01	1022.04	1021.90
	13	1021.96	1022.00	1022.11	1022.13	1022.11	1022.14	1022.21	1022.21	1022.24	1022.23	1022.23	1022.39	1022.16
	14	1022.48	1022.41	1022.37	1022.41	1022.55	1022.63	1022.62	1022.61	1022.62	1022.63	1022.69	1022.81	1022.57
	15	1022.81	1022.73	1022.73	1022.79	1022.82	1022.82	1022.87	1022.87	1022.82	1022.78	1022.86	1022.95	1022.82
	16	1022.92	1022.97	1023.08	1023.09	1023.10	1023.20	1023.27	1023.32	1023.27	1023.22	1023.29	1023.32	1023.17
	17	1023.33	1023.34	1023.37	1023.42	1023.44	1023.47	1023.54	1023.61	1023.64	1023.68	1023.73	1023.78	1023.53
	18	1023.82	1023.87	1023.89	1023.90	1023.88	1023.88	1023.92	1023.95	1023.97	1023.98	1024.02	1024.07	1023.93
	19	1024.10	1024.12	1024.13	1024.14	1024.19	1024.25	1024.28	1024.22	1024.20	1024.28	1024.39	1024.44	1024.23
	20	1024.48	1024.52	1024.53	1024.52	1024.52	1024.53	1024.53	1024.51	1024.53	1024.60	1024.63	1024.65	1024.54
	21	1024.68	1024.74	1024.75	1024.76	1024.76	1024.79	1024.82	1024.79	1024.79	1024.82	1024.84	1024.83	1024.78
	22	1024.86	1024.90	1024.89	1024.90	1024.91	1024.92	1024.92	1024.93	1024.94	1024.93	1024.93	1024.96	1024.91
	23	1024.95	1024.91	1024.86	1024.79	1024.78	1024.81	1024.78	1024.72	1024.66	1024.61	1024.61	1024.64	1024.76

S.V.I.R.CO. Observatory - Pressure in hectoPascal – January 2017

day	hh	00_05	05_10	10_15	15_20	20_25	25_30	30_35	35_40	40_45	45_50	50_55	55_60	average
7	0	1024.62	1024.63	1024.63	1024.63	1024.61	1024.65	1024.71	1024.76	1024.81	1024.80	1024.79	1024.79	1024.70
	1	1024.79	1024.77	1024.79	1024.86	1024.91	1024.94	1024.95	1024.93	1024.91	1024.90	1024.89	1024.85	1024.87
	2	1024.84	1024.85	1024.87	1024.86	1024.83	1024.85	1024.87	1024.88	1024.89	1024.86	1024.84	1024.84	1024.85
	3	1024.87	1024.86	1024.84	1024.86	1024.84	1024.81	1024.81	1024.83	1024.85	1024.86	1024.91	1024.96	1024.86
	4	1024.91	1024.86	1024.86	1024.86	1024.88	1024.93	1024.99	1025.02	1025.06	1025.11	1025.17	1025.18	1024.98
	5	1025.14	1025.16	1025.22	1025.25	1025.25	1025.24	1025.25	1025.29	1025.33	1025.34	1025.30	1025.31	1025.26
	6	1025.33	1025.37	1025.45	1025.48	1025.52	1025.58	1025.65	1025.74	1025.78	1025.81	1025.87	1025.89	1025.62
	7	1025.91	1025.97	1026.04	1026.08	1026.04	1026.06	1026.14	1026.17	1026.19	1026.22	1026.27	1026.32	1026.12
	8	1026.33	1026.33	1026.36	1026.37	1026.34	1026.35	1026.34	1026.31	1026.33	1026.31	1026.29	1026.25	1026.32
	9	1026.22	1026.25	1026.33	1026.41	1026.46	1026.48	1026.47	1026.44	1026.40	1026.39	1026.42	1026.38	1026.39
	10	1026.27	1026.22	1026.17	1026.12	1026.07	1025.99	1025.96	1026.00	1025.98	1025.91	1025.85	1025.76	1026.02
	11	1025.72	1025.66	1025.61	1025.57	1025.51	1025.48	1025.44	1025.39	1025.37	1025.33	1025.28	1025.23	1025.46
	12	1025.18	1025.09	1024.99	1024.94	1024.91	1024.85	1024.73	1024.65	1024.63	1024.59	1024.55	1024.50	1024.80
	13	1024.46	1024.47	1024.44	1024.43	1024.44	1024.46	1024.52	1024.59	1024.58	1024.55	1024.53	1024.42	1024.49
	14	1024.38	1024.43	1024.48	1024.53	1024.50	1024.46	1024.48	1024.49	1024.51	1024.52	1024.52	1024.58	1024.49
	15	1024.63	1024.65	1024.65	1024.68	1024.75	1024.80	1024.82	1024.83	1024.87	1024.93	1024.99	1024.98	1024.79
	16	1024.99	1025.03	1025.04	1025.02	1025.02	1025.04	1025.02	1025.06	1025.10	1025.18	1025.29	1025.32	1025.09
	17	1025.36	1025.39	1025.33	1025.28	1025.32	1025.33	1025.32	1025.32	1025.31	1025.34	1025.36	1025.37	1025.33
	18	1025.36	1025.36	1025.39	1025.42	1025.46	1025.47	1025.51	1025.60	1025.66	1025.72	1025.76	1025.77	1025.54
	19	1025.81	1025.85	1025.86	1025.91	1025.95	1026.00	1026.10	1026.11	1026.13	1026.15	1026.11	1026.11	1026.01
	20	1026.13	1026.17	1026.15	1026.11	1026.10	1026.07	1026.07	1026.09	1026.04	1025.93	1025.87	1025.89	1026.05
	21	1025.91	1025.98	1026.04	1026.03	1026.00	1025.95	1025.88	1025.92	1026.05	1026.08	1026.09	1026.13	1026.00
	22	1026.07	1026.00	1026.00	1025.94	1025.83	1025.80	1025.80	1025.76	1025.68	1025.65	1025.62	1025.55	1025.81
	23	1025.49	1025.48	1025.50	1025.44	1025.38	1025.34	1025.25	1025.11	1025.01	1025.00	1025.01	1024.95	1025.24
8	0	1024.79	1024.77	1024.76	1024.74	1024.69	1024.65	1024.64	1024.65	1024.65	1024.63	1024.60	1024.58	1024.67
	1	1024.57	1024.61	1024.65	1024.60	1024.53	1024.50	1024.50	1024.48	1024.37	1024.26	1024.20	1024.15	1024.45
	2	1024.17	1024.21	1024.17	1024.11	1024.02	1023.90	1023.84	1023.78	1023.73	1023.77	1023.73	1023.67	1023.92
	3	1023.66	1023.60	1023.60	1023.62	1023.58	1023.61	1023.59	1023.41	1023.26	1023.12	1022.99	1022.86	1023.41
	4	1022.77	1022.83	1022.88	1022.78	1022.68	1022.66	1022.70	1022.71	1022.65	1022.60	1022.58	1022.59	1022.70
	5	1022.63	1022.64	1022.63	1022.63	1022.65	1022.65	1022.64	1022.60	1022.49	1022.49	1022.56	1022.54	1022.59
	6	1022.51	1022.54	1022.48	1022.43	1022.49	1022.53	1022.53	1022.50	1022.50	1022.52	1022.59	1022.68	1022.52
	7	1022.66	1022.61	1022.59	1022.54	1022.57	1022.61	1022.62	1022.59	1022.59	1022.71	1022.82	1022.80	1022.64
	8	1022.63	1022.51	1022.55	1022.60	1022.62	1022.61	1022.57	1022.54	1022.44	1022.42	1022.51	1022.58	1022.55
	9	1022.59	1022.56	1022.59	1022.64	1022.66	1022.61	1022.56	1022.61	1022.64	1022.60	1022.52	1022.40	1022.58
	10	1022.40	1022.40	1022.34	1022.27	1022.25	1022.19	1022.08	1022.02	1021.92	1021.80	1021.68	1021.58	1022.07
	11	1021.52	1021.51	1021.46	1021.39	1021.32	1021.23	1021.15	1021.10	1021.04	1020.99	1020.92	1020.87	1021.21
	12	1020.83	1020.79	1020.72	1020.67	1020.66	1020.65	1020.59	1020.51	1020.44	1020.35	1020.26	1020.19	1020.55
	13	1020.13	1020.05	1020.00	1020.00	1019.99	1019.97	1019.95	1019.94	1019.91	1019.86	1019.84	1019.80	1019.95
	14	1019.79	1019.80	1019.77	1019.74	1019.69	1019.66	1019.64	1019.55	1019.48	1019.48	1019.52	1019.57	1019.64
	15	1019.57	1019.52	1019.53	1019.57	1019.56	1019.62	1019.70	1019.80	1019.84	1019.84	1019.86	1019.82	1019.68
	16	1019.76	1019.70	1019.72	1019.75	1019.81	1019.88	1019.83	1019.78	1019.78	1019.72	1019.69	1019.64	1019.75
	17	1019.59	1019.59	1019.61	1019.61	1019.64	1019.65	1019.64	1019.62	1019.57	1019.57	1019.61	1019.61	1019.61
	18	1019.60	1019.60	1019.63	1019.65	1019.65	1019.65	1019.62	1019.63	1019.67	1019.72	1019.81	1019.89	1019.67
	19	1019.94	1019.97	1019.99	1019.97	1019.96	1019.94	1019.95	1020.01	1020.03	1020.00	1019.92	1019.79	1019.95
	20	1019.76	1019.82	1019.87	1019.89	1019.87	1019.85	1019.88	1019.87	1019.84	1019.87	1019.90	1019.88	1019.86
	21	1019.85	1019.88	1019.88	1019.82	1019.81	1019.85	1019.86	1019.82	1019.86	1019.88	1019.88	1019.91	1019.86
	22	1019.91	1019.89	1019.83	1019.83	1019.90	1019.89	1019.84	1019.87	1019.94	1019.91	1019.85	1019.83	1019.87
	23	1019.83	1019.88	1019.88	1019.79	1019.77	1019.83	1019.85	1019.84	1019.78	1019.73	1019.73	1019.73	1019.80

S.V.I.R.CO. Observatory - Pressure in hectoPascal – January 2017

day	hh	00_05	05_10	10_15	15_20	20_25	25_30	30_35	35_40	40_45	45_50	50_55	55_60	average
9	0	1019.64	1019.64	1019.62	1019.64	1019.64	1019.58	1019.57	1019.60	1019.67	1019.72	1019.70	1019.68	1019.64
	1	1019.65	1019.63	1019.62	1019.62	1019.66	1019.67	1019.67	1019.70	1019.76	1019.80	1019.80	1019.79	1019.70
	2	1019.79	1019.77	1019.73	1019.70	1019.75	1019.82	1019.82	1019.82	1019.78	1019.76	1019.79	1019.85	1019.78
	3	1019.87	1019.81	1019.70	1019.63	1019.65	1019.70	1019.74	1019.74	1019.71	1019.73	1019.77	1019.84	1019.74
	4	1019.90	1019.90	1019.86	1019.77	1019.67	1019.64	1019.61	1019.55	1019.56	1019.61	1019.59	1019.55	1019.68
	5	1019.55	1019.51	1019.41	1019.35	1019.40	1019.41	1019.41	1019.44	1019.41	1019.38	1019.39	1019.42	1019.42
	6	1019.45	1019.47	1019.46	1019.43	1019.43	1019.50	1019.54	1019.50	1019.43	1019.40	1019.41	1019.50	1019.46
	7	1019.61	1019.67	1019.65	1019.61	1019.64	1019.65	1019.60	1019.55	1019.56	1019.63	1019.68	1019.70	1019.63
	8	1019.75	1019.77	1019.73	1019.70	1019.67	1019.71	1019.70	1019.73	1019.78	1019.70	1019.65	1019.66	1019.71
	9	1019.64	1019.67	1019.74	1019.77	1019.75	1019.72	1019.71	1019.66	1019.58	1019.44	1019.36	1019.31	1019.61
	10	1019.26	1019.25	1019.25	1019.29	1019.27	1019.19	1019.10	1019.02	1018.98	1018.93	1018.81	1018.71	1019.09
	11	1018.68	1018.63	1018.57	1018.48	1018.43	1018.41	1018.39	1018.40	1018.35	1018.29	1018.28	1018.29	1018.43
	12	1018.25	1018.20	1018.12	1018.02	1017.94	1017.88	1017.82	1017.78	1017.77	1017.72	1017.61	1017.50	1017.88
	13	1017.39	1017.33	1017.26	1017.21	1017.23	1017.16	1017.08	1017.03	1017.00	1016.96	1016.90	1016.86	1017.11
	14	1016.83	1016.76	1016.70	1016.65	1016.62	1016.66	1016.66	1016.58	1016.50	1016.52	1016.52	1016.47	1016.62
	15	1016.50	1016.57	1016.60	1016.62	1016.59	1016.58	1016.59	1016.59	1016.64	1016.69	1016.73	1016.76	1016.62
	16	1016.79	1016.83	1016.85	1016.83	1016.82	1016.81	1016.78	1016.73	1016.68	1016.69	1016.72	1016.77	1016.77
	17	1016.84	1016.86	1016.89	1016.92	1016.90	1016.89	1016.90	1016.91	1016.93	1016.95	1016.94	1016.91	1016.90
	18	1016.86	1016.86	1016.88	1016.91	1016.93	1016.90	1016.85	1016.78	1016.74	1016.76	1016.81	1016.89	1016.84
	19	1016.95	1016.98	1016.96	1016.92	1016.87	1016.79	1016.72	1016.68	1016.69	1016.69	1016.68	1016.68	1016.80
	20	1016.69	1016.68	1016.70	1016.77	1016.83	1016.84	1016.86	1016.85	1016.78	1016.71	1016.65	1016.61	1016.75
	21	1016.55	1016.47	1016.39	1016.33	1016.28	1016.22	1016.17	1016.15	1016.18	1016.18	1016.12	1016.09	1016.26
	22	1016.10	1016.09	1016.06	1016.02	1016.00	1015.97	1015.93	1015.90	1015.84	1015.78	1015.72	1015.65	1015.92
	23	1015.61	1015.59	1015.52	1015.43	1015.37	1015.33	1015.29	1015.23	1015.15	1015.05	1014.94	1014.88	1015.28
10	0	1014.77	1014.74	1014.71	1014.69	1014.64	1014.57	1014.45	1014.31	1014.21	1014.18	1014.17	1014.16	1014.45
	1	1014.13	1014.11	1014.16	1014.19	1014.16	1014.13	1014.09	1014.00	1013.94	1013.92	1013.87	1013.80	1014.04
	2	1013.69	1013.63	1013.62	1013.61	1013.60	1013.59	1013.52	1013.42	1013.33	1013.30	1013.25	1013.13	1013.47
	3	1013.04	1013.00	1012.97	1012.91	1012.81	1012.73	1012.66	1012.56	1012.48	1012.43	1012.38	1012.25	1012.68
	4	1012.13	1012.06	1011.99	1011.94	1011.87	1011.78	1011.69	1011.63	1011.61	1011.60	1011.57	1011.48	1011.78
	5	1011.39	1011.34	1011.28	1011.22	1011.20	1011.20	1011.11	1011.01	1010.93	1010.88	1010.80	1010.69	1011.09
	6	1010.62	1010.57	1010.56	1010.51	1010.48	1010.47	1010.36	1010.21	1010.17	1010.25	1010.27	1010.30	1010.39
	7	1010.31	1010.26	1010.20	1010.19	1010.25	1010.31	1010.34	1010.36	1010.39	1010.42	1010.35	1010.32	1010.31
	8	1010.30	1010.31	1010.40	1010.35	1010.26	1010.27	1010.27	1010.21	1010.13	1010.05	1010.02	1010.00	1010.21
	9	1009.99	1009.99	1010.01	1010.02	1009.97	1009.89	1009.82	1009.78	1009.73	1009.62	1009.52	1009.43	1009.81
	10	1009.37	1009.32	1009.28	1009.22	1009.13	1009.05	1008.96	1008.82	1008.68	1008.57	1008.48	1008.39	1008.94
	11	1008.28	1008.18	1008.11	1008.04	1007.94	1007.84	1007.73	1007.62	1007.51	1007.37	1007.22	1007.13	1007.74
	12	1007.08	1007.00	1006.91	1006.87	1006.85	1006.79	1006.73	1006.65	1006.56	1006.49	1006.44	1006.44	1006.73
	13	1006.48	1006.47	1006.45	1006.42	1006.38	1006.36	1006.38	1006.35	1006.28	1006.27	1006.27	1006.24	1006.36
	14	1006.20	1006.16	1006.13	1006.12	1006.13	1006.16	1006.18	1006.17	1006.14	1006.08	1006.04	1006.05	1006.13
	15	1006.04	1006.07	1006.07	1006.04	1006.03	1006.01	1006.03	1006.05	1006.06	1006.08	1006.10	1006.09	1006.05
	16	1006.10	1006.15	1006.21	1006.27	1006.32	1006.40	1006.48	1006.56	1006.63	1006.68	1006.75	1006.82	1006.45
	17	1006.86	1006.87	1006.92	1006.98	1007.04	1007.11	1007.18	1007.27	1007.34	1007.39	1007.45	1007.51	1007.16
	18	1007.53	1007.56	1007.57	1007.55	1007.57	1007.61	1007.64	1007.68	1007.72	1007.75	1007.79	1007.80	1007.65
	19	1007.82	1007.88	1007.94	1008.01	1008.10	1008.15	1008.15	1008.15	1008.18	1008.19	1008.19	1008.27	1008.08
	20	1008.34	1008.37	1008.42	1008.48	1008.56	1008.66	1008.75	1008.78	1008.81	1008.87	1008.94	1008.97	1008.66
	21	1008.98	1009.01	1009.05	1009.10	1009.18	1009.30	1009.39	1009.43	1009.46	1009.52	1009.59	1009.63	1009.30
	22	1009.64	1009.69	1009.75	1009.78	1009.81	1009.87	1009.95	1009.98	1009.98	1009.98	1009.96	1009.96	1009.86
	23	1009.94	1009.91	1009.87	1009.89	1009.95	1010.00	1010.05	1010.11	1010.18	1010.24	1010.31	1010.38	1010.07

S.V.I.R.CO. Observatory - Pressure in hectoPascal – January 2017

day	hh	00_05	05_10	10_15	15_20	20_25	25_30	30_35	35_40	40_45	45_50	50_55	55_60	average
11	0	1010.43	1010.43	1010.44	1010.47	1010.51	1010.57	1010.62	1010.63	1010.64	1010.69	1010.73	1010.75	1010.58
	1	1010.78	1010.83	1010.89	1010.97	1011.05	1011.09	1011.10	1011.19	1011.32	1011.38	1011.40	1011.41	1011.11
	2	1011.44	1011.47	1011.48	1011.51	1011.57	1011.63	1011.65	1011.64	1011.67	1011.67	1011.67	1011.70	1011.59
	3	1011.76	1011.83	1011.90	1011.96	1012.02	1012.08	1012.11	1012.14	1012.20	1012.28	1012.35	1012.42	1012.09
	4	1012.49	1012.55	1012.61	1012.62	1012.59	1012.62	1012.65	1012.70	1012.75	1012.79	1012.83	1012.89	1012.67
	5	1013.00	1013.09	1013.12	1013.17	1013.23	1013.30	1013.34	1013.39	1013.46	1013.53	1013.63	1013.71	1013.33
	6	1013.75	1013.77	1013.84	1013.94	1014.02	1014.09	1014.16	1014.20	1014.24	1014.35	1014.48	1014.60	1014.12
	7	1014.73	1014.83	1014.87	1014.94	1015.01	1015.06	1015.09	1015.13	1015.20	1015.31	1015.35	1015.38	1015.07
	8	1015.51	1015.66	1015.81	1015.90	1015.95	1016.01	1016.07	1016.16	1016.28	1016.38	1016.50	1016.55	1016.06
	9	1016.53	1016.55	1016.58	1016.60	1016.64	1016.71	1016.81	1016.87	1016.90	1016.90	1016.88	1016.88	1016.74
	10	1016.92	1017.00	1017.08	1017.08	1017.03	1016.95	1016.88	1016.91	1016.97	1016.96	1016.93	1016.89	1016.96
	11	1016.83	1016.77	1016.70	1016.70	1016.74	1016.75	1016.75	1016.73	1016.69	1016.64	1016.57	1016.53	1016.70
	12	1016.54	1016.54	1016.53	1016.55	1016.54	1016.52	1016.53	1016.52	1016.55	1016.61	1016.60	1016.56	1016.55
	13	1016.50	1016.45	1016.45	1016.44	1016.42	1016.42	1016.44	1016.51	1016.63	1016.73	1016.80	1016.80	1016.55
	14	1016.79	1016.81	1016.80	1016.77	1016.81	1016.83	1016.82	1016.84	1016.85	1016.88	1016.93	1016.96	1016.84
	15	1017.01	1017.07	1017.11	1017.14	1017.15	1017.19	1017.28	1017.37	1017.46	1017.54	1017.58	1017.59	1017.29
	16	1017.58	1017.64	1017.78	1017.90	1018.00	1018.03	1018.07	1018.16	1018.24	1018.31	1018.37	1018.39	1018.04
	17	1018.44	1018.46	1018.42	1018.39	1018.42	1018.53	1018.68	1018.74	1018.76	1018.80	1018.83	1018.85	1018.61
	18	1018.85	1018.92	1019.02	1019.11	1019.26	1019.42	1019.55	1019.64	1019.75	1019.79	1019.79	1019.81	1019.41
	19	1019.74	1019.62	1019.56	1019.55	1019.62	1019.72	1019.86	1020.05	1020.14	1020.15	1020.12	1020.09	1019.85
	20	1020.10	1020.16	1020.19	1020.17	1020.20	1020.16	1020.10	1020.09	1020.12	1020.21	1020.30	1020.39	1020.18
	21	1020.49	1020.60	1020.70	1020.80	1020.84	1020.83	1020.84	1020.89	1020.92	1020.91	1020.88	1020.85	1020.79
	22	1020.87	1020.98	1021.07	1021.10	1021.10	1021.11	1021.11	1021.10	1021.16	1021.17	1021.14	1021.08	1021.08
	23	1021.01	1020.97	1020.92	1020.93	1021.00	1021.06	1021.12	1021.18	1021.18	1021.16	1021.17	1021.19	1021.07
12	0	1021.25	1021.27	1021.30	1021.35	1021.38	1021.35	1021.30	1021.25	1021.22	1021.29	1021.32	1021.30	1021.30
	1	1021.36	1021.40	1021.33	1021.19	1021.13	1021.15	1021.17	1021.09	1020.99	1020.96	1020.89	1020.88	1021.13
	2	1020.91	1020.89	1020.85	1020.81	1020.75	1020.72	1020.74	1020.74	1020.71	1020.67	1020.50	1020.34	1020.72
	3	1020.40	1020.43	1020.35	1020.20	1020.13	1020.20	1020.18	1020.06	1020.02	1020.03	1020.03	1020.06	1020.17
	4	1020.08	1019.99	1019.91	1019.92	1019.88	1019.78	1019.79	1019.89	1019.86	1019.80	1019.79	1019.78	1019.87
	5	1019.80	1019.81	1019.84	1019.92	1019.97	1020.00	1020.04	1020.10	1020.21	1020.24	1020.23	1020.24	1020.03
	6	1020.23	1020.26	1020.34	1020.46	1020.55	1020.63	1020.67	1020.66	1020.65	1020.70	1020.67	1020.57	1020.53
	7	1020.55	1020.56	1020.50	1020.44	1020.50	1020.56	1020.54	1020.50	1020.51	1020.62	1020.68	1020.69	1020.55
	8	1020.67	1020.66	1020.68	1020.63	1020.60	1020.61	1020.64	1020.68	1020.76	1020.89	1021.00	1021.05	1020.74
	9	1021.07	1021.06	1021.06	1021.06	1021.02	1020.95	1020.95	1020.98	1020.97	1020.94	1020.95	1020.97	1021.00
	10	1020.99	1021.01	1021.01	1020.97	1020.87	1020.84	1020.87	1020.85	1020.77	1020.67	1020.64	1020.64	1020.84
	11	1020.62	1020.60	1020.57	1020.54	1020.56	1020.57	1020.57	1020.56	1020.51	1020.48	1020.44	1020.34	1020.53
	12	1020.28	1020.24	1020.13	1020.00	1019.88	1019.76	1019.67	1019.61	1019.55	1019.48	1019.45	1019.43	1019.79
	13	1019.38	1019.36	1019.35	1019.32	1019.25	1019.14	1019.10	1019.10	1019.04	1019.04	1019.09	1019.15	1019.19
	14	1019.19	1019.21	1019.14	1019.01	1018.96	1019.00	1019.00	1018.96	1018.90	1018.83	1018.79	1018.78	1018.98
	15	1018.77	1018.76	1018.76	1018.71	1018.62	1018.55	1018.53	1018.51	1018.51	1018.49	1018.39	1018.26	1018.57
	16	1018.13	1018.03	1018.01	1018.04	1018.12	1018.18	1018.23	1018.28	1018.22	1018.09	1017.99	1017.92	1018.10
	17	1017.84	1017.81	1017.84	1017.88	1017.93	1017.88	1017.84	1018.00	1018.13	1018.09	1018.01	1017.94	1017.93
	18	1017.79	1017.70	1017.69	1017.58	1017.40	1017.31	1017.35	1017.36	1017.27	1017.18	1017.12	1017.11	1017.40
	19	1017.02	1016.87	1016.81	1016.84	1016.92	1016.96	1016.95	1017.00	1017.05	1017.03	1016.93	1016.86	1016.93
	20	1016.86	1016.84	1016.80	1016.81	1016.84	1016.85	1016.79	1016.73	1016.68	1016.64	1016.63	1016.56	1016.75
	21	1016.51	1016.51	1016.42	1016.35	1016.34	1016.24	1016.18	1016.10	1015.96	1015.87	1015.80	1015.70	1016.16
	22	1015.74	1015.82	1015.77	1015.72	1015.65	1015.56	1015.48	1015.46	1015.50	1015.50	1015.43	1015.37	1015.58
	23	1015.30	1015.22	1015.16	1015.13	1015.11	1014.98	1014.89	1014.84	1014.73	1014.67	1014.58	1014.46	1014.92

S.V.I.R.CO. Observatory - Pressure in hectoPascal – January 2017

day	hh	00_05	05_10	10_15	15_20	20_25	25_30	30_35	35_40	40_45	45_50	50_55	55_60	average
13	0	1014.35	1014.34	1014.28	1014.25	1014.27	1014.24	1014.15	1014.04	1013.97	1013.91	1013.84	1013.76	1014.10
	1	1013.72	1013.65	1013.50	1013.40	1013.33	1013.20	1013.09	1013.03	1012.98	1012.91	1012.77	1012.63	1013.18
	2	1012.53	1012.43	1012.32	1012.16	1012.02	1011.94	1011.91	1011.87	1011.75	1011.62	1011.55	1011.48	1011.96
	3	1011.41	1011.32	1011.16	1011.03	1010.96	1010.86	1010.70	1010.54	1010.40	1010.25	1010.14	1010.08	1010.74
	4	1009.97	1009.86	1009.74	1009.64	1009.57	1009.48	1009.39	1009.29	1009.20	1009.13	1009.08	1009.05	1009.45
	5	1009.04	1008.99	1008.90	1008.85	1008.75	1008.58	1008.46	1008.37	1008.32	1008.24	1008.15	1008.05	1008.56
	6	1007.93	1007.81	1007.72	1007.69	1007.71	1007.72	1007.70	1007.61	1007.43	1007.27	1007.10	1006.93	1007.55
	7	1006.80	1006.79	1006.79	1006.70	1006.59	1006.50	1006.42	1006.38	1006.36	1006.34	1006.25	1006.15	1006.50
	8	1006.11	1006.01	1005.93	1005.92	1005.86	1005.72	1005.64	1005.61	1005.55	1005.43	1005.37	1005.35	1005.71
	9	1005.34	1005.32	1005.19	1005.06	1004.99	1004.92	1004.84	1004.72	1004.60	1004.52	1004.36	1004.20	1004.84
	10	1004.03	1003.82	1003.56	1003.36	1003.25	1003.07	1002.85	1002.69	1002.58	1002.51	1002.42	1002.24	1003.03
	11	1002.04	1002.03	1002.11	1002.16	1002.16	1001.99	1001.78	1001.63	1001.74	1002.06	1002.14	1002.28	1002.01
	12	1002.49	1002.52	1002.55	1002.50	1002.31	1002.27	1002.31	1002.36	1002.46	1002.54	1002.55	1002.53	1002.45
	13	1002.49	1002.45	1002.50	1002.49	1002.35	1002.22	1002.21	1002.14	1002.07	1002.04	1002.04	1002.09	1002.26
	14	1002.16	1002.14	1002.16	1002.18	1002.06	1002.07	1002.01	1001.97	1001.99	1001.92	1001.85	1001.86	1002.03
	15	1001.68	1001.43	1001.35	1001.23	1001.06	1001.03	1001.04	1001.00	1001.00	1000.96	1000.98	1001.09	1001.15
	16	1001.14	1001.08	1000.97	1000.97	1001.02	1001.04	1001.08	1001.12	1001.19	1001.26	1001.27	1001.27	1001.12
	17	1001.32	1001.42	1001.80	1002.25	1002.46	1002.60	1002.52	1002.39	1002.39	1002.38	1002.45	1002.65	1002.22
	18	1002.80	1002.85	1002.95	1003.05	1003.07	1003.04	1003.01	1003.09	1003.24	1003.38	1003.47	1003.45	1003.12
	19	1003.40	1003.44	1003.52	1003.61	1003.74	1003.84	1003.90	1003.92	1003.96	1004.01	1004.04	1004.07	1003.79
	20	1004.16	1004.34	1004.61	1004.94	1005.21	1005.33	1005.41	1005.56	1005.74	1005.95	1006.03	1006.06	1005.28
	21	1006.10	1006.08	1006.02	1005.93	1005.86	1005.75	1005.64	1005.48	1005.32	1005.35	1005.43	1005.49	1005.70
	22	1005.49	1005.47	1005.49	1005.52	1005.46	1005.42	1005.60	1005.68	1005.47	1005.19	1005.01	1005.04	1005.40
	23	1005.19	1005.34	1005.48	1005.68	1005.79	1005.63	1005.55	1005.58	1005.58	1005.61	1005.58	1005.52	1005.54
14	0	1005.61	1005.59	1005.61	1005.66	1005.65	1005.54	1005.54	1005.53	1005.61	1005.80	1005.85	1005.93	1005.66
	1	1005.97	1005.95	1005.92	1005.88	1005.89	1005.89	1005.92	1005.96	1005.95	1005.97	1006.03	1006.08	1005.95
	2	1006.10	1006.06	1006.06	1006.13	1006.17	1006.14	1006.08	1006.10	1006.07	1006.05	1006.13	1006.18	1006.10
	3	1006.23	1006.24	1006.19	1006.20	1006.24	1006.23	1006.24	1006.32	1006.40	1006.45	1006.47	1006.54	1006.31
	4	1006.68	1006.83	1006.86	1006.89	1007.00	1007.07	1007.15	1007.25	1007.34	1007.41	1007.49	1007.59	1007.13
	5	1007.68	1007.74	1007.78	1007.78	1007.79	1007.81	1007.85	1007.91	1007.97	1008.07	1008.17	1008.22	1007.90
	6	1008.23	1008.20	1008.20	1008.25	1008.27	1008.25	1008.24	1008.30	1008.37	1008.44	1008.54	1008.64	1008.33
	7	1008.72	1008.79	1008.90	1009.00	1009.11	1009.21	1009.31	1009.37	1009.38	1009.43	1009.49	1009.53	1009.18
	8	1009.61	1009.67	1009.64	1009.61	1009.63	1009.66	1009.67	1009.72	1009.81	1009.83	1009.86	1009.89	1009.71
	9	1009.93	1010.01	1010.05	1010.05	1010.06	1010.11	1010.17	1010.20	1010.20	1010.18	1010.20	1010.21	1010.11
	10	1010.18	1010.16	1010.18	1010.22	1010.26	1010.31	1010.35	1010.35	1010.35	1010.36	1010.35	1010.31	1010.28
	11	1010.22	1010.15	1010.13	1010.10	1010.04	1009.98	1009.94	1009.95	1010.01	1010.07	1010.06	1010.00	1010.05
	12	1009.99	1010.00	1009.97	1009.98	1010.03	1010.03	1009.99	1009.98	1009.97	1009.94	1009.92	1009.89	1009.97
	13	1009.88	1009.91	1009.94	1009.93	1009.91	1009.93	1009.96	1009.99	1010.00	1009.98	1009.96	1009.94	1009.94
	14	1009.93	1009.94	1009.97	1010.01	1010.03	1010.04	1010.06	1010.09	1010.07	1010.02	1009.99	1009.97	1010.01
	15	1009.95	1009.93	1009.93	1009.94	1009.99	1010.04	1010.06	1010.07	1010.07	1010.07	1010.10	1010.13	1010.02
	16	1010.15	1010.18	1010.23	1010.28	1010.32	1010.36	1010.43	1010.46	1010.48	1010.53	1010.54	1010.53	1010.37
	17	1010.51	1010.50	1010.52	1010.54	1010.56	1010.61	1010.65	1010.66	1010.69	1010.70	1010.68	1010.65	1010.60
	18	1010.61	1010.57	1010.57	1010.56	1010.50	1010.47	1010.49	1010.52	1010.51	1010.47	1010.43	1010.40	1010.51
	19	1010.38	1010.36	1010.35	1010.31	1010.28	1010.27	1010.25	1010.23	1010.23	1010.21	1010.19	1010.17	1010.27
	20	1010.16	1010.13	1010.10	1010.06	1010.00	1009.96	1009.95	1009.96	1010.01	1010.05	1010.06	1010.04	1010.04
	21	1010.02	1009.98	1009.93	1009.89	1009.86	1009.84	1009.82	1009.77	1009.74	1009.74	1009.78	1009.81	1009.84
	22	1009.78	1009.71	1009.65	1009.65	1009.67	1009.65	1009.56	1009.44	1009.41	1009.46	1009.52	1009.55	1009.59
	23	1009.53	1009.50	1009.46	1009.45	1009.49	1009.59	1009.74	1009.79	1009.77	1009.73	1009.69	1009.69	1009.62

S.V.I.R.CO. Observatory - Pressure in hectoPascal – January 2017

day	hh	00_05	05_10	10_15	15_20	20_25	25_30	30_35	35_40	40_45	45_50	50_55	55_60	average
15	0	1009.66	1009.60	1009.50	1009.46	1009.39	1009.30	1009.23	1009.20	1009.24	1009.31	1009.39	1009.41	1009.38
	1	1009.38	1009.34	1009.32	1009.33	1009.35	1009.28	1009.18	1009.07	1008.99	1008.95	1008.94	1008.90	1009.17
	2	1008.88	1008.87	1008.83	1008.82	1008.84	1008.89	1008.94	1008.90	1008.81	1008.67	1008.60	1008.63	1008.80
	3	1008.62	1008.57	1008.52	1008.43	1008.31	1008.15	1007.98	1007.86	1007.75	1007.65	1007.60	1007.58	1008.08
	4	1007.48	1007.41	1007.38	1007.32	1007.24	1007.16	1007.19	1007.31	1007.39	1007.34	1007.28	1007.24	1007.31
	5	1007.23	1007.23	1007.24	1007.24	1007.29	1007.40	1007.49	1007.55	1007.61	1007.67	1007.73	1007.79	1007.45
	6	1007.82	1007.82	1007.81	1007.79	1007.72	1007.68	1007.69	1007.70	1007.73	1007.82	1007.92	1007.96	1007.79
	7	1007.92	1007.89	1007.90	1007.88	1007.84	1007.81	1007.80	1007.80	1007.82	1007.85	1007.88	1007.86	1007.85
	8	1007.85	1007.87	1007.92	1007.99	1007.99	1007.97	1007.97	1007.96	1007.99	1008.05	1008.10	1008.09	1007.98
	9	1008.07	1008.03	1007.98	1007.94	1007.96	1007.99	1007.99	1007.97	1007.93	1007.91	1007.86	1007.80	1007.95
	10	1007.74	1007.61	1007.49	1007.44	1007.41	1007.39	1007.32	1007.28	1007.27	1007.25	1007.23	1007.17	1007.38
	11	1007.13	1007.13	1007.10	1007.08	1007.09	1007.09	1007.09	1007.05	1007.02	1007.02	1007.00	1006.96	1007.06
	12	1006.92	1006.86	1006.80	1006.75	1006.78	1006.85	1006.81	1006.73	1006.65	1006.60	1006.61	1006.63	1006.75
	13	1006.68	1006.71	1006.72	1006.77	1006.81	1006.82	1006.80	1006.76	1006.76	1006.78	1006.77	1006.79	1006.76
	14	1006.80	1006.79	1006.80	1006.83	1006.87	1006.91	1006.95	1007.00	1007.03	1007.04	1007.02	1006.95	1006.91
	15	1006.80	1006.71	1006.75	1006.77	1006.73	1006.62	1006.51	1006.47	1006.44	1006.41	1006.39	1006.38	1006.58
	16	1006.39	1006.38	1006.37	1006.38	1006.39	1006.35	1006.31	1006.32	1006.35	1006.39	1006.42	1006.41	1006.37
	17	1006.42	1006.42	1006.38	1006.34	1006.33	1006.34	1006.35	1006.39	1006.42	1006.43	1006.45	1006.49	1006.39
	18	1006.55	1006.61	1006.63	1006.64	1006.64	1006.62	1006.61	1006.62	1006.62	1006.63	1006.64	1006.63	1006.62
	19	1006.60	1006.54	1006.51	1006.54	1006.54	1006.48	1006.41	1006.33	1006.26	1006.25	1006.29	1006.30	1006.42
	20	1006.27	1006.25	1006.19	1006.15	1006.14	1006.10	1006.09	1006.11	1006.11	1006.11	1006.09	1006.12	1006.14
	21	1006.15	1006.15	1006.12	1006.09	1006.09	1006.08	1006.08	1006.06	1006.02	1005.99	1005.94	1005.90	1006.05
	22	1005.86	1005.82	1005.77	1005.75	1005.78	1005.81	1005.81	1005.80	1005.80	1005.79	1005.75	1005.71	1005.78
	23	1005.68	1005.66	1005.61	1005.56	1005.55	1005.51	1005.47	1005.43	1005.40	1005.39	1005.37	1005.38	1005.50
16	0	1005.35	1005.34	1005.32	1005.34	1005.32	1005.25	1005.20	1005.18	1005.17	1005.17	1005.17	1005.19	1005.24
	1	1005.22	1005.22	1005.21	1005.21	1005.21	1005.20	1005.18	1005.17	1005.17	1005.14	1005.08	1005.04	1005.17
	2	1005.00	1004.95	1004.89	1004.85	1004.80	1004.75	1004.74	1004.73	1004.72	1004.71	1004.69	1004.67	1004.79
	3	1004.64	1004.58	1004.52	1004.48	1004.42	1004.40	1004.38	1004.36	1004.33	1004.27	1004.29	1004.30	1004.41
	4	1004.27	1004.24	1004.26	1004.28	1004.24	1004.24	1004.24	1004.20	1004.17	1004.22	1004.25	1004.28	1004.24
	5	1004.33	1004.35	1004.36	1004.40	1004.47	1004.52	1004.53	1004.54	1004.55	1004.57	1004.59	1004.61	1004.48
	6	1004.62	1004.61	1004.64	1004.66	1004.67	1004.69	1004.70	1004.73	1004.79	1004.82	1004.87	1004.91	1004.72
	7	1004.94	1004.96	1004.98	1004.97	1004.98	1005.00	1005.00	1005.03	1005.02	1005.02	1005.03	1005.02	1004.99
	8	1005.02	1005.03	1005.06	1005.05	1005.03	1005.01	1004.98	1004.98	1005.01	1005.01	1005.00	1005.01	1005.01
	9	1005.02	1005.03	1005.05	1005.09	1005.10	1005.09	1005.06	1005.04	1005.03	1005.03	1005.00	1004.97	1005.04
	10	1004.92	1004.85	1004.84	1004.86	1004.89	1004.84	1004.74	1004.67	1004.62	1004.55	1004.46	1004.36	1004.71
	11	1004.30	1004.22	1004.15	1004.10	1004.07	1004.07	1004.06	1004.03	1004.02	1004.01	1003.95	1003.84	1004.06
	12	1003.80	1003.79	1003.77	1003.73	1003.69	1003.62	1003.53	1003.49	1003.47	1003.42	1003.36	1003.29	1003.58
	13	1003.27	1003.25	1003.20	1003.17	1003.12	1003.04	1002.96	1002.91	1002.89	1002.89	1002.89	1002.88	1003.04
	14	1002.88	1002.87	1002.86	1002.83	1002.78	1002.75	1002.73	1002.68	1002.66	1002.68	1002.71	1002.70	1002.76
	15	1002.67	1002.64	1002.59	1002.53	1002.49	1002.47	1002.46	1002.41	1002.37	1002.36	1002.33	1002.32	1002.47
	16	1002.31	1002.31	1002.29	1002.27	1002.28	1002.29	1002.29	1002.26	1002.21	1002.16	1002.17	1002.17	1002.25
	17	1002.17	1002.19	1002.18	1002.14	1002.13	1002.12	1002.13	1002.17	1002.17	1002.13	1002.11	1002.11	1002.14
	18	1002.15	1002.19	1002.18	1002.17	1002.18	1002.18	1002.15	1002.10	1002.06	1002.07	1002.08	1002.10	1002.13
	19	1002.10	1002.08	1002.09	1002.11	1002.14	1002.19	1002.24	1002.26	1002.24	1002.23	1002.24	1002.25	1002.18
	20	1002.28	1002.32	1002.33	1002.32	1002.27	1002.21	1002.17	1002.15	1002.15	1002.11	1002.05	1002.03	1002.20
	21	1002.03	1002.01	1002.00	1002.00	1002.00	1001.97	1001.94	1001.93	1001.92	1001.92	1001.92	1001.92	1001.96
	22	1001.92	1001.90	1001.86	1001.82	1001.77	1001.74	1001.74	1001.75	1001.75	1001.73	1001.71	1001.67	1001.78
	23	1001.65	1001.61	1001.56	1001.50	1001.46	1001.43	1001.44	1001.41	1001.38	1001.39	1001.40	1001.39	1001.46



S.V.I.R.CO. Observatory - Pressure in hectoPascal – January 2017

day	hh	00_05	05_10	10_15	15_20	20_25	25_30	30_35	35_40	40_45	45_50	50_55	55_60	average
17	0	1001.40	1001.43	1001.45	1001.42	1001.44	1001.50	1001.53	1001.55	1001.53	1001.52	1001.52	1001.49	1001.48
	1	1001.45	1001.46	1001.49	1001.49	1001.49	1001.47	1001.42	1001.38	1001.34	1001.31	1001.28	1001.24	1001.40
	2	1001.23	1001.23	1001.19	1001.14	1001.11	1001.07	1001.06	1001.03	1001.00	1000.98	1000.91	1000.84	1001.06
	3	1000.80	1000.77	1000.76	1000.74	1000.69	1000.63	1000.60	1000.56	1000.50	1000.49	1000.49	1000.46	1000.62
	4	1000.48	1000.51	1000.50	1000.53	1000.56	1000.58	1000.64	1000.67	1000.67	1000.71	1000.82	1000.92	1000.63
	5	1000.96	1001.02	1001.11	1001.20	1001.28	1001.29	1001.30	1001.35	1001.41	1001.45	1001.58	1001.74	1001.31
	6	1001.81	1001.88	1001.93	1001.93	1001.97	1002.03	1002.07	1002.13	1002.17	1002.18	1002.24	1002.33	1002.05
	7	1002.40	1002.45	1002.47	1002.44	1002.35	1002.24	1002.11	1002.05	1002.09	1002.10	1002.12	1002.16	1002.25
	8	1002.23	1002.29	1002.28	1002.23	1002.17	1002.12	1002.09	1002.05	1002.01	1002.03	1002.11	1002.14	1002.14
	9	1002.14	1002.21	1002.30	1002.41	1002.52	1002.52	1002.47	1002.41	1002.33	1002.21	1002.12	1002.10	1002.31
	10	1002.10	1002.05	1001.98	1001.94	1001.97	1001.94	1001.91	1001.95	1001.90	1001.77	1001.68	1001.62	1001.90
	11	1001.61	1001.60	1001.52	1001.40	1001.32	1001.27	1001.22	1001.21	1001.19	1001.19	1001.17	1001.14	1001.32
	12	1001.10	1001.06	1001.09	1001.08	1001.06	1001.06	1001.06	1001.06	1001.03	1001.02	1001.03	1000.97	1001.05
	13	1000.99	1001.09	1001.12	1001.13	1001.20	1001.23	1001.23	1001.23	1001.29	1001.38	1001.40	1001.43	1001.22
	14	1001.50	1001.63	1001.73	1001.76	1001.78	1001.84	1001.87	1001.86	1001.87	1002.01	1002.19	1002.25	1001.85
	15	1002.24	1002.27	1002.28	1002.29	1002.31	1002.32	1002.36	1002.49	1002.63	1002.71	1002.76	1002.82	1002.45
	16	1002.88	1002.93	1002.96	1002.96	1002.98	1003.08	1003.18	1003.28	1003.40	1003.48	1003.53	1003.62	1003.19
	17	1003.81	1003.91	1003.88	1003.88	1003.95	1004.04	1004.12	1004.13	1004.17	1004.23	1004.23	1004.23	1004.05
	18	1004.30	1004.42	1004.52	1004.56	1004.56	1004.55	1004.53	1004.57	1004.63	1004.72	1004.78	1004.73	1004.57
	19	1004.72	1004.72	1004.69	1004.67	1004.64	1004.66	1004.73	1004.83	1004.92	1004.92	1004.87	1004.85	1004.77
	20	1004.90	1004.93	1004.86	1004.86	1004.94	1004.93	1004.95	1004.99	1005.00	1005.05	1005.16	1005.27	1004.98
	21	1005.34	1005.39	1005.41	1005.41	1005.41	1005.46	1005.53	1005.54	1005.52	1005.50	1005.52	1005.65	1005.47
	22	1005.75	1005.73	1005.69	1005.72	1005.80	1005.94	1006.00	1006.04	1006.18	1006.28	1006.35	1006.51	1006.00
	23	1006.73	1006.85	1006.80	1006.62	1006.49	1006.45	1006.45	1006.48	1006.51	1006.51	1006.30	1006.10	1006.52
18	0	1006.23	1006.43	1006.64	1006.68	1006.71	1006.71	1006.68	1006.67	1006.72	1006.77	1006.80	1006.90	1006.68
	1	1006.99	1007.01	1007.07	1007.16	1007.13	1007.12	1007.17	1007.16	1007.16	1007.23	1007.28	1007.34	1007.15
	2	1007.38	1007.35	1007.31	1007.22	1007.22	1007.32	1007.36	1007.32	1007.27	1007.23	1007.17	1007.17	1007.28
	3	1007.19	1007.22	1007.25	1007.25	1007.30	1007.32	1007.28	1007.28	1007.26	1007.13	1007.06	1007.07	1007.22
	4	1007.04	1006.99	1007.07	1007.15	1007.14	1007.10	1007.06	1007.08	1007.07	1007.07	1007.11	1007.19	1007.09
	5	1007.31	1007.38	1007.44	1007.51	1007.53	1007.54	1007.54	1007.59	1007.66	1007.72	1007.80	1007.91	1007.58
	6	1008.00	1008.05	1008.05	1008.04	1008.07	1008.13	1008.20	1008.30	1008.31	1008.32	1008.37	1008.40	1008.18
	7	1008.46	1008.53	1008.57	1008.60	1008.65	1008.71	1008.81	1008.81	1008.80	1008.81	1008.81	1008.86	1008.70
	8	1008.92	1008.91	1008.94	1009.01	1009.07	1009.12	1009.12	1009.08	1009.09	1009.25	1009.42	1009.52	1009.12
	9	1009.65	1009.75	1009.81	1009.83	1009.81	1009.75	1009.73	1009.71	1009.66	1009.62	1009.57	1009.55	1009.70
	10	1009.53	1009.51	1009.50	1009.45	1009.38	1009.33	1009.28	1009.23	1009.18	1009.12	1009.10	1009.09	1009.30
	11	1009.02	1008.91	1008.87	1008.87	1008.83	1008.77	1008.72	1008.62	1008.50	1008.48	1008.50	1008.57	1008.72
	12	1008.65	1008.62	1008.61	1008.63	1008.64	1008.65	1008.65	1008.68	1008.71	1008.73	1008.78	1008.81	1008.68
	13	1008.85	1008.84	1008.84	1008.91	1008.95	1008.89	1008.86	1008.95	1008.99	1009.02	1009.05	1009.21	1008.94
	14	1009.29	1009.35	1009.46	1009.45	1009.48	1009.45	1009.45	1009.49	1009.54	1009.58	1009.55	1009.56	1009.47
	15	1009.63	1009.66	1009.68	1009.74	1009.84	1009.98	1010.12	1010.25	1010.36	1010.46	1010.50	1010.53	1010.06
	16	1010.62	1010.71	1010.78	1010.87	1010.96	1011.04	1011.12	1011.17	1011.16	1011.17	1011.25	1011.32	1011.01
	17	1011.41	1011.52	1011.59	1011.64	1011.69	1011.71	1011.72	1011.74	1011.79	1011.83	1011.84	1011.88	1011.69
	18	1011.96	1012.00	1012.04	1012.13	1012.20	1012.26	1012.34	1012.39	1012.44	1012.51	1012.58	1012.65	1012.29
	19	1012.70	1012.71	1012.72	1012.76	1012.79	1012.85	1012.92	1013.00	1013.10	1013.21	1013.25	1013.34	1012.94
	20	1013.44	1013.46	1013.51	1013.59	1013.63	1013.67	1013.72	1013.80	1013.87	1013.89	1013.94	1014.00	1013.71
	21	1013.98	1014.01	1014.10	1014.15	1014.18	1014.19	1014.21	1014.28	1014.34	1014.33	1014.32	1014.32	1014.20
	22	1014.33	1014.38	1014.43	1014.48	1014.50	1014.48	1014.45	1014.46	1014.51	1014.52	1014.51	1014.53	1014.46
	23	1014.56	1014.61	1014.68	1014.69	1014.69	1014.73	1014.78	1014.82	1014.87	1014.90	1014.94	1014.99	1014.77

S.V.I.R.CO. Observatory - Pressure in hectoPascal – January 2017

day	hh	00_05	05_10	10_15	15_20	20_25	25_30	30_35	35_40	40_45	45_50	50_55	55_60	average
19	0	1015.06	1015.10	1015.19	1015.28	1015.34	1015.41	1015.48	1015.53	1015.58	1015.70	1015.80	1015.85	1015.46
	1	1015.90	1015.96	1016.02	1016.09	1016.13	1016.14	1016.19	1016.24	1016.24	1016.25	1016.29	1016.32	1016.15
	2	1016.34	1016.38	1016.43	1016.41	1016.40	1016.44	1016.46	1016.49	1016.49	1016.47	1016.49	1016.49	1016.44
	3	1016.48	1016.53	1016.55	1016.56	1016.58	1016.59	1016.60	1016.62	1016.64	1016.65	1016.64	1016.61	1016.58
	4	1016.60	1016.59	1016.59	1016.63	1016.69	1016.76	1016.84	1016.88	1016.94	1017.03	1017.12	1017.16	1016.82
	5	1017.20	1017.23	1017.26	1017.29	1017.33	1017.38	1017.43	1017.46	1017.49	1017.51	1017.54	1017.61	1017.39
	6	1017.65	1017.69	1017.74	1017.79	1017.85	1017.94	1018.03	1018.09	1018.18	1018.25	1018.29	1018.34	1017.98
	7	1018.40	1018.46	1018.54	1018.61	1018.66	1018.74	1018.83	1018.89	1018.92	1018.96	1019.02	1019.06	1018.75
	8	1019.10	1019.17	1019.24	1019.26	1019.30	1019.37	1019.41	1019.44	1019.50	1019.58	1019.66	1019.76	1019.40
	9	1019.84	1019.86	1019.85	1019.85	1019.90	1019.99	1020.07	1020.12	1020.14	1020.14	1020.15	1020.14	1020.00
	10	1020.13	1020.12	1020.10	1020.09	1020.08	1020.10	1020.09	1020.06	1020.08	1020.12	1020.10	1020.06	1020.09
	11	1020.06	1020.09	1020.09	1020.09	1020.11	1020.11	1020.08	1020.05	1020.01	1019.96	1019.92	1019.91	1020.04
	12	1019.89	1019.86	1019.84	1019.85	1019.86	1019.85	1019.83	1019.82	1019.83	1019.84	1019.86	1019.90	1019.85
	13	1019.91	1019.89	1019.91	1019.94	1019.96	1019.99	1020.01	1020.03	1020.06	1020.13	1020.17	1020.19	1020.01
	14	1020.22	1020.23	1020.24	1020.27	1020.30	1020.37	1020.46	1020.52	1020.56	1020.58	1020.62	1020.67	1020.42
	15	1020.72	1020.76	1020.82	1020.88	1020.92	1020.94	1020.95	1020.99	1021.05	1021.09	1021.12	1021.14	1020.95
	16	1021.15	1021.16	1021.19	1021.21	1021.25	1021.29	1021.31	1021.33	1021.39	1021.46	1021.53	1021.59	1021.32
	17	1021.65	1021.73	1021.84	1021.96	1022.05	1022.14	1022.20	1022.24	1022.29	1022.33	1022.38	1022.47	1022.10
	18	1022.55	1022.63	1022.72	1022.79	1022.81	1022.82	1022.86	1022.89	1022.89	1022.91	1022.96	1023.05	1022.82
	19	1023.12	1023.16	1023.20	1023.26	1023.33	1023.39	1023.48	1023.54	1023.59	1023.66	1023.73	1023.81	1023.44
	20	1023.87	1023.92	1023.96	1024.01	1024.06	1024.09	1024.15	1024.23	1024.29	1024.30	1024.29	1024.29	1024.12
	21	1024.32	1024.35	1024.36	1024.37	1024.40	1024.48	1024.54	1024.59	1024.65	1024.65	1024.68	1024.74	1024.51
	22	1024.75	1024.75	1024.74	1024.74	1024.74	1024.73	1024.74	1024.74	1024.77	1024.82	1024.81	1024.81	1024.76
	23	1024.83	1024.81	1024.78	1024.77	1024.77	1024.77	1024.81	1024.87	1024.92	1024.93	1024.92	1024.90	1024.84
20	0	1024.88	1024.89	1024.90	1024.88	1024.90	1024.94	1024.96	1024.98	1025.01	1025.04	1025.04	1025.04	1024.96
	1	1025.03	1025.02	1025.05	1025.09	1025.09	1025.08	1025.08	1025.12	1025.15	1025.16	1025.23	1025.29	1025.11
	2	1025.30	1025.31	1025.34	1025.34	1025.30	1025.27	1025.25	1025.23	1025.22	1025.23	1025.24	1025.24	1025.27
	3	1025.24	1025.23	1025.20	1025.16	1025.15	1025.14	1025.18	1025.25	1025.26	1025.25	1025.26	1025.25	1025.21
	4	1025.24	1025.23	1025.22	1025.23	1025.25	1025.25	1025.26	1025.27	1025.29	1025.34	1025.38	1025.39	1025.28
	5	1025.46	1025.52	1025.52	1025.51	1025.50	1025.51	1025.54	1025.58	1025.61	1025.62	1025.65	1025.71	1025.56
	6	1025.75	1025.77	1025.75	1025.73	1025.78	1025.86	1025.89	1025.91	1025.99	1026.03	1026.04	1026.05	1025.88
	7	1026.09	1026.13	1026.13	1026.14	1026.15	1026.15	1026.15	1026.17	1026.23	1026.27	1026.29	1026.28	1026.18
	8	1026.31	1026.35	1026.42	1026.51	1026.59	1026.65	1026.68	1026.72	1026.76	1026.80	1026.83	1026.88	1026.62
	9	1026.92	1026.96	1027.01	1027.07	1027.12	1027.14	1027.11	1027.06	1027.05	1027.04	1027.01	1026.99	1027.04
	10	1027.00	1026.99	1026.94	1026.90	1026.85	1026.78	1026.71	1026.68	1026.64	1026.59	1026.57	1026.51	1026.76
	11	1026.42	1026.34	1026.28	1026.18	1026.07	1026.00	1025.94	1025.89	1025.84	1025.74	1025.64	1025.57	1025.99
	12	1025.52	1025.46	1025.36	1025.26	1025.18	1025.13	1025.10	1025.04	1024.99	1024.94	1024.89	1024.88	1025.14
	13	1024.83	1024.79	1024.78	1024.77	1024.76	1024.74	1024.70	1024.68	1024.68	1024.71	1024.73	1024.73	1024.74
	14	1024.71	1024.70	1024.68	1024.66	1024.64	1024.61	1024.58	1024.56	1024.54	1024.51	1024.48	1024.51	1024.60
	15	1024.54	1024.53	1024.55	1024.58	1024.60	1024.60	1024.59	1024.59	1024.59	1024.62	1024.64	1024.64	1024.59
	16	1024.63	1024.64	1024.66	1024.67	1024.68	1024.69	1024.69	1024.68	1024.72	1024.78	1024.84	1024.88	1024.71
	17	1024.89	1024.90	1024.92	1024.95	1025.00	1025.04	1025.07	1025.09	1025.10	1025.12	1025.16	1025.19	1025.03
	18	1025.23	1025.26	1025.30	1025.32	1025.34	1025.35	1025.38	1025.41	1025.44	1025.47	1025.49	1025.51	1025.37
	19	1025.55	1025.56	1025.53	1025.54	1025.57	1025.61	1025.65	1025.68	1025.71	1025.75	1025.77	1025.78	1025.64
	20	1025.81	1025.83	1025.83	1025.80	1025.76	1025.79	1025.80	1025.78	1025.79	1025.81	1025.81	1025.82	1025.80
	21	1025.84	1025.86	1025.87	1025.87	1025.88	1025.90	1025.92	1025.93	1025.95	1025.98	1026.02	1026.02	1025.92
	22	1026.00	1025.97	1025.95	1025.95	1025.94	1025.90	1025.85	1025.81	1025.76	1025.73	1025.68	1025.64	1025.85
	23	1025.63	1025.62	1025.62	1025.62	1025.59	1025.56	1025.55	1025.56	1025.55	1025.53	1025.49	1025.48	1025.57

S.V.I.R.CO. Observatory - Pressure in hectoPascal – January 2017

day	hh	00_05	05_10	10_15	15_20	20_25	25_30	30_35	35_40	40_45	45_50	50_55	55_60	average
21	0	1025.47	1025.47	1025.45	1025.41	1025.38	1025.38	1025.38	1025.36	1025.33	1025.32	1025.33	1025.33	1025.38
	1	1025.34	1025.37	1025.40	1025.43	1025.42	1025.41	1025.42	1025.41	1025.37	1025.34	1025.34	1025.33	1025.38
	2	1025.27	1025.22	1025.20	1025.17	1025.13	1025.08	1025.02	1024.96	1024.93	1024.90	1024.86	1024.82	1025.04
	3	1024.79	1024.77	1024.74	1024.70	1024.68	1024.67	1024.64	1024.60	1024.56	1024.49	1024.43	1024.39	1024.62
	4	1024.38	1024.37	1024.38	1024.39	1024.35	1024.35	1024.37	1024.33	1024.31	1024.31	1024.32	1024.33	1024.35
	5	1024.30	1024.24	1024.21	1024.20	1024.20	1024.19	1024.21	1024.22	1024.22	1024.22	1024.21	1024.19	1024.22
	6	1024.15	1024.13	1024.15	1024.15	1024.09	1024.05	1024.08	1024.08	1024.04	1024.03	1024.02	1023.98	1024.08
	7	1023.96	1023.95	1023.94	1023.95	1024.01	1024.11	1024.18	1024.19	1024.19	1024.17	1024.18	1024.22	1024.09
	8	1024.21	1024.19	1024.19	1024.20	1024.21	1024.19	1024.18	1024.18	1024.19	1024.19	1024.19	1024.18	1024.19
	9	1024.14	1024.11	1024.11	1024.10	1024.07	1024.04	1024.00	1023.95	1023.87	1023.73	1023.62	1023.55	1023.94
	10	1023.49	1023.44	1023.38	1023.31	1023.23	1023.15	1023.05	1022.95	1022.89	1022.78	1022.67	1022.59	1023.08
	11	1022.51	1022.45	1022.38	1022.25	1022.15	1022.09	1022.08	1022.06	1021.98	1021.89	1021.79	1021.69	1022.11
	12	1021.60	1021.55	1021.51	1021.44	1021.37	1021.30	1021.26	1021.22	1021.14	1021.09	1021.04	1020.96	1021.29
	13	1020.90	1020.85	1020.82	1020.81	1020.82	1020.80	1020.80	1020.82	1020.82	1020.79	1020.75	1020.71	1020.80
	14	1020.67	1020.68	1020.70	1020.69	1020.68	1020.69	1020.67	1020.63	1020.60	1020.60	1020.60	1020.60	1020.65
	15	1020.59	1020.55	1020.51	1020.45	1020.40	1020.38	1020.38	1020.33	1020.30	1020.28	1020.29	1020.34	1020.40
	16	1020.40	1020.40	1020.39	1020.41	1020.44	1020.44	1020.43	1020.45	1020.46	1020.48	1020.49	1020.48	1020.44
	17	1020.50	1020.52	1020.58	1020.63	1020.60	1020.57	1020.56	1020.56	1020.59	1020.59	1020.60	1020.62	1020.58
	18	1020.63	1020.66	1020.68	1020.70	1020.74	1020.78	1020.84	1020.87	1020.87	1020.90	1020.93	1020.96	1020.80
	19	1020.96	1020.97	1020.99	1021.01	1021.00	1020.97	1020.98	1020.99	1020.98	1020.99	1020.99	1020.99	1020.98
	20	1021.04	1021.04	1021.07	1021.13	1021.20	1021.21	1021.12	1021.01	1021.01	1021.08	1021.07	1021.07	1021.08
	21	1021.15	1021.19	1021.16	1021.10	1021.06	1021.08	1021.15	1021.17	1021.14	1021.13	1021.15	1021.14	1021.13
	22	1021.09	1021.08	1021.12	1021.18	1021.22	1021.25	1021.28	1021.28	1021.27	1021.25	1021.23	1021.20	1021.20
	23	1021.16	1021.18	1021.24	1021.20	1021.13	1021.05	1021.00	1021.01	1021.00	1020.95	1020.92	1020.90	1021.06
22	0	1020.89	1020.90	1020.85	1020.80	1020.82	1020.84	1020.85	1020.84	1020.83	1020.84	1020.86	1020.86	1020.84
	1	1020.83	1020.83	1020.83	1020.78	1020.72	1020.69	1020.72	1020.77	1020.76	1020.72	1020.63	1020.55	1020.73
	2	1020.54	1020.56	1020.54	1020.52	1020.48	1020.46	1020.48	1020.49	1020.50	1020.56	1020.59	1020.57	1020.52
	3	1020.57	1020.60	1020.61	1020.56	1020.49	1020.43	1020.40	1020.40	1020.36	1020.30	1020.28	1020.25	1020.43
	4	1020.24	1020.22	1020.20	1020.21	1020.22	1020.25	1020.29	1020.28	1020.24	1020.23	1020.22	1020.24	1020.23
	5	1020.27	1020.28	1020.24	1020.25	1020.30	1020.34	1020.40	1020.33	1020.14	1020.18	1020.40	1020.56	1020.31
	6	1020.62	1020.63	1020.63	1020.59	1020.57	1020.52	1020.50	1020.53	1020.52	1020.49	1020.50	1020.51	1020.55
	7	1020.50	1020.51	1020.52	1020.54	1020.57	1020.58	1020.59	1020.61	1020.63	1020.66	1020.71	1020.75	1020.59
	8	1020.77	1020.79	1020.84	1020.88	1020.91	1020.99	1021.02	1021.01	1021.03	1021.05	1021.05	1021.03	1020.95
	9	1021.01	1020.99	1020.98	1020.98	1020.95	1020.90	1020.92	1020.93	1020.93	1020.99	1021.02	1021.00	1020.96
	10	1020.97	1020.92	1020.86	1020.84	1020.80	1020.74	1020.69	1020.63	1020.58	1020.52	1020.46	1020.41	1020.70
	11	1020.35	1020.29	1020.23	1020.19	1020.10	1020.03	1019.94	1019.81	1019.74	1019.68	1019.62	1019.55	1019.96
	12	1019.49	1019.44	1019.36	1019.31	1019.31	1019.28	1019.22	1019.19	1019.13	1019.06	1019.01	1018.97	1019.23
	13	1018.93	1018.89	1018.83	1018.81	1018.81	1018.80	1018.82	1018.81	1018.80	1018.81	1018.77	1018.72	1018.81
	14	1018.70	1018.70	1018.71	1018.72	1018.74	1018.74	1018.70	1018.69	1018.72	1018.74	1018.73	1018.70	1018.71
	15	1018.70	1018.71	1018.71	1018.72	1018.70	1018.65	1018.61	1018.62	1018.61	1018.58	1018.57	1018.55	1018.64
	16	1018.53	1018.54	1018.56	1018.55	1018.54	1018.55	1018.52	1018.49	1018.51	1018.51	1018.49	1018.49	1018.52
	17	1018.48	1018.47	1018.49	1018.50	1018.52	1018.57	1018.62	1018.61	1018.61	1018.61	1018.62	1018.65	1018.56
	18	1018.66	1018.62	1018.60	1018.57	1018.53	1018.53	1018.53	1018.53	1018.56	1018.56	1018.54	1018.52	1018.56
	19	1018.49	1018.46	1018.46	1018.44	1018.41	1018.40	1018.40	1018.44	1018.42	1018.37	1018.37	1018.38	1018.42
	20	1018.40	1018.44	1018.51	1018.54	1018.51	1018.45	1018.44	1018.46	1018.49	1018.51	1018.52	1018.49	1018.48
	21	1018.49	1018.55	1018.60	1018.62	1018.63	1018.67	1018.69	1018.68	1018.67	1018.69	1018.74	1018.74	1018.64
	22	1018.73	1018.74	1018.75	1018.72	1018.67	1018.65	1018.62	1018.61	1018.61	1018.61	1018.61	1018.60	1018.66
	23	1018.58	1018.57	1018.53	1018.49	1018.46	1018.42	1018.36	1018.30	1018.25	1018.22	1018.16	1018.07	1018.37

S.V.I.R.CO. Observatory - Pressure in hectoPascal – January 2017

day	hh	00_05	05_10	10_15	15_20	20_25	25_30	30_35	35_40	40_45	45_50	50_55	55_60	average
23	0	1017.90	1017.90	1017.89	1017.87	1017.83	1017.78	1017.76	1017.74	1017.72	1017.69	1017.62	1017.56	1017.76
	1	1017.51	1017.52	1017.50	1017.45	1017.40	1017.35	1017.32	1017.31	1017.30	1017.28	1017.25	1017.21	1017.36
	2	1017.19	1017.16	1017.10	1017.01	1016.92	1016.88	1016.85	1016.81	1016.78	1016.72	1016.66	1016.63	1016.89
	3	1016.64	1016.64	1016.58	1016.50	1016.43	1016.35	1016.29	1016.25	1016.17	1016.05	1015.97	1015.90	1016.31
	4	1015.86	1015.86	1015.82	1015.76	1015.72	1015.70	1015.67	1015.67	1015.68	1015.67	1015.66	1015.63	1015.72
	5	1015.58	1015.53	1015.48	1015.47	1015.48	1015.46	1015.46	1015.54	1015.55	1015.54	1015.54	1015.52	1015.51
	6	1015.54	1015.58	1015.54	1015.49	1015.48	1015.47	1015.48	1015.54	1015.53	1015.47	1015.48	1015.51	1015.51
	7	1015.48	1015.41	1015.37	1015.37	1015.37	1015.38	1015.37	1015.33	1015.35	1015.37	1015.40	1015.46	1015.39
	8	1015.53	1015.61	1015.64	1015.62	1015.58	1015.54	1015.53	1015.51	1015.52	1015.54	1015.53	1015.55	1015.56
	9	1015.56	1015.55	1015.55	1015.52	1015.48	1015.45	1015.42	1015.41	1015.38	1015.34	1015.36	1015.38	1015.45
	10	1015.36	1015.33	1015.27	1015.22	1015.16	1015.08	1014.96	1014.87	1014.81	1014.77	1014.72	1014.63	1015.01
	11	1014.54	1014.45	1014.38	1014.30	1014.22	1014.16	1014.10	1014.04	1013.97	1013.89	1013.82	1013.75	1014.13
	12	1013.70	1013.65	1013.58	1013.50	1013.45	1013.41	1013.37	1013.38	1013.40	1013.39	1013.42	1013.47	1013.47
	13	1013.50	1013.47	1013.38	1013.31	1013.27	1013.24	1013.23	1013.24	1013.20	1013.14	1013.14	1013.12	1013.27
	14	1013.08	1013.06	1013.04	1013.03	1013.04	1013.03	1012.98	1012.94	1012.92	1012.91	1012.92	1012.91	1012.99
	15	1012.86	1012.82	1012.85	1012.89	1012.91	1012.93	1012.91	1012.89	1012.88	1012.89	1012.88	1012.86	1012.88
	16	1012.87	1012.87	1012.87	1012.89	1012.90	1012.91	1012.92	1012.93	1012.96	1012.96	1012.95	1012.97	1012.92
	17	1013.01	1013.06	1013.11	1013.15	1013.18	1013.20	1013.18	1013.13	1013.09	1013.09	1013.09	1013.09	1013.11
	18	1013.08	1013.09	1013.10	1013.11	1013.12	1013.12	1013.13	1013.15	1013.19	1013.20	1013.20	1013.23	1013.14
	19	1013.28	1013.33	1013.36	1013.35	1013.34	1013.35	1013.36	1013.38	1013.41	1013.41	1013.38	1013.33	1013.35
	20	1013.30	1013.28	1013.26	1013.26	1013.26	1013.27	1013.26	1013.23	1013.21	1013.19	1013.19	1013.21	1013.24
	21	1013.22	1013.21	1013.20	1013.21	1013.23	1013.23	1013.26	1013.27	1013.25	1013.24	1013.25	1013.22	1013.23
	22	1013.19	1013.20	1013.22	1013.23	1013.22	1013.19	1013.17	1013.20	1013.21	1013.20	1013.19	1013.16	1013.20
	23	1013.14	1013.12	1013.06	1012.99	1012.93	1012.87	1012.82	1012.77	1012.76	1012.71	1012.65	1012.61	1012.87
24	0	1012.53	1012.50	1012.46	1012.41	1012.36	1012.32	1012.32	1012.32	1012.30	1012.30	1012.31	1012.30	1012.36
	1	1012.28	1012.27	1012.24	1012.21	1012.21	1012.22	1012.19	1012.14	1012.10	1012.04	1012.00	1011.96	1012.15
	2	1011.90	1011.87	1011.86	1011.84	1011.81	1011.76	1011.71	1011.65	1011.62	1011.62	1011.59	1011.55	1011.73
	3	1011.50	1011.44	1011.41	1011.41	1011.41	1011.43	1011.45	1011.41	1011.38	1011.34	1011.32	1011.30	1011.40
	4	1011.25	1011.23	1011.25	1011.27	1011.29	1011.32	1011.34	1011.35	1011.37	1011.36	1011.34	1011.31	1011.30
	5	1011.30	1011.33	1011.36	1011.40	1011.48	1011.54	1011.54	1011.53	1011.55	1011.59	1011.64	1011.71	1011.49
	6	1011.74	1011.70	1011.67	1011.70	1011.76	1011.81	1011.84	1011.83	1011.81	1011.79	1011.81	1011.87	1011.78
	7	1011.94	1011.98	1012.01	1012.02	1012.01	1011.96	1011.94	1011.97	1011.98	1011.99	1012.02	1012.04	1011.99
	8	1012.09	1012.14	1012.14	1012.13	1012.16	1012.23	1012.32	1012.36	1012.37	1012.44	1012.51	1012.57	1012.28
	9	1012.64	1012.66	1012.66	1012.71	1012.77	1012.83	1012.89	1012.92	1012.96	1013.00	1012.99	1013.00	1012.83
	10	1013.00	1012.93	1012.86	1012.85	1012.85	1012.78	1012.70	1012.66	1012.63	1012.58	1012.52	1012.48	1012.73
	11	1012.45	1012.36	1012.26	1012.24	1012.19	1012.12	1012.08	1012.06	1012.04	1012.03	1012.02	1011.97	1012.15
	12	1011.90	1011.85	1011.82	1011.80	1011.77	1011.72	1011.65	1011.57	1011.47	1011.43	1011.41	1011.35	1011.64
	13	1011.31	1011.31	1011.31	1011.26	1011.23	1011.19	1011.11	1011.03	1011.00	1011.00	1011.00	1010.99	1011.14
	14	1011.01	1011.05	1011.07	1011.07	1011.07	1011.10	1011.13	1011.15	1011.17	1011.16	1011.14	1011.12	1011.10
	15	1011.10	1011.10	1011.13	1011.19	1011.25	1011.30	1011.33	1011.38	1011.43	1011.50	1011.55	1011.54	1011.31
	16	1011.52	1011.53	1011.55	1011.58	1011.62	1011.64	1011.66	1011.71	1011.77	1011.80	1011.82	1011.84	1011.67
	17	1011.84	1011.85	1011.86	1011.85	1011.84	1011.84	1011.87	1011.92	1011.97	1012.01	1012.04	1012.04	1011.91
	18	1012.07	1012.13	1012.16	1012.16	1012.16	1012.20	1012.23	1012.26	1012.29	1012.31	1012.35	1012.40	1012.22
	19	1012.45	1012.49	1012.51	1012.52	1012.52	1012.55	1012.58	1012.58	1012.61	1012.64	1012.67	1012.70	1012.56
	20	1012.73	1012.76	1012.80	1012.85	1012.87	1012.88	1012.90	1012.94	1013.00	1013.04	1013.07	1013.08	1012.91
	21	1013.09	1013.11	1013.14	1013.15	1013.15	1013.18	1013.23	1013.30	1013.35	1013.38	1013.40	1013.43	1013.24
	22	1013.47	1013.51	1013.53	1013.53	1013.53	1013.54	1013.56	1013.55	1013.55	1013.55	1013.56	1013.58	1013.54
	23	1013.59	1013.58	1013.57	1013.56	1013.57	1013.58	1013.58	1013.57	1013.57	1013.57	1013.57	1013.58	1013.57

S.V.I.R.CO. Observatory - Pressure in hectoPascal – January 2017

day	hh	00_05	05_10	10_15	15_20	20_25	25_30	30_35	35_40	40_45	45_50	50_55	55_60	average
25	0	1013.58	1013.59	1013.60	1013.60	1013.59	1013.62	1013.64	1013.65	1013.69	1013.71	1013.72	1013.75	1013.65
	1	1013.78	1013.81	1013.82	1013.80	1013.78	1013.77	1013.76	1013.74	1013.73	1013.75	1013.78	1013.78	1013.77
	2	1013.77	1013.77	1013.77	1013.77	1013.77	1013.76	1013.78	1013.80	1013.82	1013.83	1013.84	1013.84	1013.79
	3	1013.87	1013.91	1013.97	1014.03	1014.08	1014.13	1014.16	1014.19	1014.21	1014.22	1014.23	1014.24	1014.10
	4	1014.25	1014.28	1014.32	1014.36	1014.42	1014.47	1014.50	1014.51	1014.54	1014.59	1014.63	1014.68	1014.46
	5	1014.72	1014.73	1014.76	1014.82	1014.88	1014.94	1014.97	1014.98	1015.02	1015.06	1015.09	1015.10	1014.92
	6	1015.13	1015.20	1015.26	1015.31	1015.37	1015.39	1015.41	1015.46	1015.51	1015.55	1015.60	1015.67	1015.40
	7	1015.73	1015.77	1015.83	1015.88	1015.93	1016.00	1016.04	1016.07	1016.11	1016.17	1016.25	1016.29	1016.00
	8	1016.34	1016.42	1016.49	1016.56	1016.62	1016.66	1016.69	1016.74	1016.81	1016.88	1016.93	1016.96	1016.67
	9	1016.99	1017.03	1017.07	1017.10	1017.14	1017.20	1017.28	1017.34	1017.40	1017.44	1017.44	1017.43	1017.24
	10	1017.42	1017.38	1017.35	1017.34	1017.32	1017.31	1017.31	1017.28	1017.25	1017.21	1017.17	1017.13	1017.29
	11	1017.09	1017.04	1017.00	1017.00	1017.01	1016.97	1016.93	1016.90	1016.85	1016.82	1016.79	1016.74	1016.93
	12	1016.69	1016.63	1016.57	1016.55	1016.54	1016.52	1016.51	1016.49	1016.46	1016.42	1016.38	1016.35	1016.51
	13	1016.32	1016.31	1016.31	1016.30	1016.27	1016.25	1016.26	1016.31	1016.35	1016.37	1016.38	1016.40	1016.32
	14	1016.44	1016.47	1016.50	1016.55	1016.58	1016.61	1016.62	1016.64	1016.68	1016.71	1016.73	1016.75	1016.60
	15	1016.76	1016.78	1016.81	1016.86	1016.91	1016.94	1017.00	1017.05	1017.10	1017.15	1017.20	1017.26	1016.98
	16	1017.33	1017.42	1017.47	1017.51	1017.55	1017.60	1017.66	1017.73	1017.79	1017.81	1017.83	1017.87	1017.63
	17	1017.92	1017.95	1017.97	1018.02	1018.11	1018.19	1018.23	1018.24	1018.27	1018.33	1018.36	1018.40	1018.16
	18	1018.47	1018.53	1018.58	1018.67	1018.75	1018.80	1018.84	1018.87	1018.88	1018.91	1018.96	1019.01	1018.77
	19	1019.04	1019.03	1019.01	1019.05	1019.12	1019.19	1019.26	1019.32	1019.39	1019.47	1019.51	1019.54	1019.24
	20	1019.58	1019.62	1019.64	1019.68	1019.72	1019.78	1019.82	1019.87	1019.93	1019.96	1019.98	1020.01	1019.80
	21	1020.03	1020.07	1020.14	1020.22	1020.25	1020.27	1020.31	1020.34	1020.36	1020.39	1020.43	1020.47	1020.27
	22	1020.53	1020.58	1020.62	1020.65	1020.66	1020.67	1020.67	1020.67	1020.68	1020.71	1020.74	1020.74	1020.66
	23	1020.76	1020.78	1020.78	1020.77	1020.79	1020.83	1020.89	1020.95	1020.97	1020.98	1020.99	1021.01	1020.87
26	0	1020.97	1020.97	1020.97	1021.01	1021.04	1021.05	1021.07	1021.07	1021.06	1021.06	1021.09	1021.16	1021.04
	1	1021.24	1021.27	1021.32	1021.36	1021.36	1021.37	1021.37	1021.36	1021.36	1021.32	1021.32	1021.33	1021.33
	2	1021.30	1021.25	1021.22	1021.19	1021.16	1021.17	1021.18	1021.18	1021.17	1021.15	1021.13	1021.11	1021.18
	3	1021.09	1021.07	1021.10	1021.10	1021.09	1021.07	1021.05	1021.05	1021.07	1021.13	1021.16	1021.17	1021.09
	4	1021.18	1021.18	1021.18	1021.17	1021.18	1021.22	1021.24	1021.24	1021.26	1021.30	1021.34	1021.41	1021.24
	5	1021.42	1021.39	1021.37	1021.40	1021.45	1021.51	1021.56	1021.61	1021.65	1021.69	1021.72	1021.75	1021.54
	6	1021.77	1021.79	1021.80	1021.84	1021.88	1021.91	1021.96	1022.01	1022.04	1022.05	1022.09	1022.17	1021.94
	7	1022.25	1022.32	1022.40	1022.46	1022.51	1022.56	1022.61	1022.63	1022.65	1022.67	1022.68	1022.71	1022.54
	8	1022.77	1022.82	1022.85	1022.91	1022.97	1023.04	1023.11	1023.16	1023.19	1023.22	1023.24	1023.28	1023.04
	9	1023.32	1023.31	1023.30	1023.31	1023.34	1023.37	1023.40	1023.43	1023.44	1023.45	1023.47	1023.48	1023.38
	10	1023.46	1023.44	1023.44	1023.46	1023.46	1023.40	1023.35	1023.31	1023.28	1023.30	1023.30	1023.27	1023.37
	11	1023.24	1023.23	1023.21	1023.17	1023.13	1023.12	1023.11	1023.06	1022.98	1022.94	1022.91	1022.87	1023.08
	12	1022.86	1022.84	1022.80	1022.76	1022.75	1022.73	1022.72	1022.72	1022.72	1022.72	1022.75	1022.78	1022.76
	13	1022.80	1022.82	1022.86	1022.88	1022.91	1022.95	1022.98	1023.01	1023.02	1023.02	1023.01	1023.01	1022.94
	14	1023.03	1023.05	1023.05	1023.06	1023.08	1023.10	1023.10	1023.09	1023.09	1023.10	1023.13	1023.18	1023.09
	15	1023.21	1023.22	1023.21	1023.20	1023.22	1023.23	1023.23	1023.25	1023.30	1023.36	1023.44	1023.50	1023.28
	16	1023.54	1023.59	1023.61	1023.63	1023.68	1023.76	1023.85	1023.93	1024.02	1024.10	1024.13	1024.13	1023.83
	17	1024.13	1024.14	1024.15	1024.19	1024.23	1024.24	1024.28	1024.33	1024.36	1024.38	1024.43	1024.47	1024.27
	18	1024.50	1024.54	1024.56	1024.56	1024.55	1024.50	1024.47	1024.49	1024.52	1024.57	1024.61	1024.61	1024.54
	19	1024.61	1024.62	1024.65	1024.67	1024.72	1024.78	1024.82	1024.85	1024.88	1024.94	1025.01	1025.08	1024.80
	20	1025.11	1025.13	1025.17	1025.22	1025.29	1025.35	1025.39	1025.49	1025.60	1025.65	1025.66	1025.69	1025.39
	21	1025.74	1025.77	1025.81	1025.85	1025.89	1025.92	1025.97	1026.05	1026.11	1026.14	1026.18	1026.26	1025.97
	22	1026.32	1026.36	1026.40	1026.45	1026.51	1026.54	1026.54	1026.53	1026.51	1026.53	1026.53	1026.55	1026.48
	23	1026.59	1026.60	1026.59	1026.58	1026.60	1026.64	1026.66	1026.65	1026.66	1026.69	1026.71	1026.74	1026.64

S.V.I.R.CO. Observatory - Pressure in hectoPascal – January 2017

day	hh	00_05	05_10	10_15	15_20	20_25	25_30	30_35	35_40	40_45	45_50	50_55	55_60	average
27	0	1026.77	1026.77	1026.78	1026.78	1026.79	1026.81	1026.82	1026.83	1026.82	1026.82	1026.86	1026.92	1026.81
	1	1026.99	1027.06	1027.10	1027.11	1027.12	1027.14	1027.11	1027.05	1027.03	1027.01	1026.97	1026.97	1027.05
	2	1026.98	1026.95	1026.92	1026.94	1026.98	1027.01	1027.00	1026.94	1026.90	1026.89	1026.91	1026.90	1026.94
	3	1026.85	1026.82	1026.80	1026.80	1026.80	1026.78	1026.76	1026.73	1026.72	1026.70	1026.67	1026.68	1026.76
	4	1026.68	1026.65	1026.60	1026.55	1026.53	1026.50	1026.46	1026.43	1026.42	1026.43	1026.47	1026.51	1026.52
	5	1026.52	1026.48	1026.47	1026.48	1026.48	1026.48	1026.47	1026.46	1026.46	1026.45	1026.45	1026.46	1026.47
	6	1026.48	1026.53	1026.59	1026.61	1026.63	1026.71	1026.76	1026.78	1026.86	1026.97	1027.07	1027.13	1026.76
	7	1027.19	1027.25	1027.29	1027.29	1027.29	1027.31	1027.33	1027.38	1027.44	1027.47	1027.46	1027.44	1027.34
	8	1027.45	1027.48	1027.48	1027.49	1027.51	1027.49	1027.49	1027.49	1027.47	1027.43	1027.47	1027.59	1027.49
	9	1027.65	1027.66	1027.73	1027.77	1027.74	1027.74	1027.72	1027.71	1027.73	1027.70	1027.64	1027.62	1027.70
	10	1027.62	1027.59	1027.54	1027.50	1027.45	1027.36	1027.26	1027.18	1027.09	1026.99	1026.92	1026.86	1027.28
	11	1026.80	1026.73	1026.65	1026.55	1026.44	1026.32	1026.20	1026.11	1026.04	1025.98	1025.93	1025.88	1026.30
	12	1025.81	1025.74	1025.67	1025.59	1025.52	1025.46	1025.39	1025.29	1025.25	1025.24	1025.22	1025.18	1025.44
	13	1025.12	1025.08	1025.04	1024.99	1024.95	1024.94	1024.96	1024.95	1024.93	1024.91	1024.88	1024.88	1024.97
	14	1024.88	1024.84	1024.81	1024.80	1024.78	1024.80	1024.80	1024.78	1024.80	1024.80	1024.79	1024.81	1024.81
	15	1024.82	1024.81	1024.82	1024.85	1024.89	1024.90	1024.89	1024.89	1024.90	1024.91	1024.89	1024.88	1024.87
	16	1024.89	1024.91	1024.93	1024.95	1024.97	1024.99	1025.03	1025.02	1024.98	1024.97	1024.97	1024.97	1024.96
	17	1024.98	1024.99	1025.00	1025.01	1024.99	1024.95	1024.95	1024.95	1024.94	1024.92	1024.91	1024.88	1024.95
	18	1024.83	1024.84	1024.85	1024.82	1024.77	1024.70	1024.66	1024.66	1024.66	1024.64	1024.60	1024.61	1024.72
	19	1024.64	1024.64	1024.63	1024.62	1024.65	1024.62	1024.59	1024.58	1024.54	1024.52	1024.52	1024.51	1024.59
	20	1024.49	1024.48	1024.46	1024.45	1024.46	1024.47	1024.46	1024.43	1024.41	1024.42	1024.42	1024.40	1024.44
	21	1024.39	1024.39	1024.41	1024.46	1024.51	1024.51	1024.49	1024.48	1024.44	1024.41	1024.37	1024.34	1024.43
	22	1024.35	1024.34	1024.32	1024.33	1024.33	1024.33	1024.32	1024.33	1024.32	1024.30	1024.27	1024.23	1024.31
	23	1024.19	1024.15	1024.12	1024.09	1024.07	1024.05	1024.00	1023.94	1023.88	1023.84	1023.81	1023.78	1023.99
28	0	1023.70	1023.69	1023.64	1023.57	1023.51	1023.46	1023.41	1023.34	1023.27	1023.22	1023.21	1023.20	1023.42
	1	1023.18	1023.13	1023.08	1023.03	1022.99	1022.96	1022.93	1022.90	1022.87	1022.85	1022.81	1022.79	1022.96
	2	1022.78	1022.75	1022.70	1022.64	1022.58	1022.56	1022.54	1022.49	1022.44	1022.39	1022.35	1022.31	1022.54
	3	1022.26	1022.20	1022.15	1022.13	1022.10	1022.06	1022.00	1021.93	1021.87	1021.83	1021.84	1021.87	1022.02
	4	1021.82	1021.79	1021.77	1021.73	1021.70	1021.67	1021.64	1021.62	1021.62	1021.62	1021.61	1021.61	1021.68
	5	1021.64	1021.67	1021.67	1021.67	1021.67	1021.66	1021.67	1021.65	1021.63	1021.68	1021.75	1021.79	1021.68
	6	1021.79	1021.83	1021.88	1021.92	1021.94	1021.93	1021.90	1021.87	1021.86	1021.89	1021.93	1021.94	1021.89
	7	1021.92	1021.91	1021.92	1021.94	1021.95	1021.93	1021.94	1021.95	1021.96	1021.95	1021.94	1021.94	1021.93
	8	1021.93	1021.96	1021.98	1021.97	1021.97	1021.99	1022.02	1022.00	1021.99	1021.99	1022.00	1022.01	1021.98
	9	1021.99	1021.97	1021.98	1021.96	1021.93	1021.91	1021.88	1021.87	1021.87	1021.85	1021.81	1021.75	1021.90
	10	1021.71	1021.65	1021.57	1021.53	1021.52	1021.50	1021.45	1021.37	1021.30	1021.23	1021.16	1021.10	1021.42
	11	1021.00	1020.92	1020.85	1020.79	1020.74	1020.65	1020.60	1020.53	1020.44	1020.35	1020.23	1020.14	1020.60
	12	1020.08	1020.04	1020.01	1019.96	1019.91	1019.85	1019.79	1019.75	1019.71	1019.69	1019.69	1019.69	1019.84
	13	1019.68	1019.66	1019.65	1019.62	1019.59	1019.59	1019.57	1019.55	1019.57	1019.57	1019.56	1019.58	1019.60
	14	1019.59	1019.60	1019.63	1019.67	1019.71	1019.71	1019.68	1019.66	1019.67	1019.67	1019.65	1019.62	1019.65
	15	1019.61	1019.63	1019.67	1019.72	1019.75	1019.79	1019.85	1019.89	1019.94	1019.98	1020.01	1020.04	1019.82
	16	1020.05	1020.03	1020.01	1019.99	1019.97	1019.98	1020.01	1020.05	1020.07	1020.08	1020.08	1020.08	1020.03
	17	1020.11	1020.13	1020.12	1020.10	1020.08	1020.07	1020.05	1020.03	1020.04	1020.06	1020.06	1020.05	1020.07
	18	1020.03	1020.05	1020.10	1020.13	1020.15	1020.19	1020.22	1020.23	1020.23	1020.24	1020.27	1020.30	1020.18
	19	1020.33	1020.36	1020.37	1020.37	1020.36	1020.33	1020.33	1020.33	1020.33	1020.36	1020.37	1020.38	1020.35
	20	1020.39	1020.40	1020.41	1020.43	1020.44	1020.45	1020.48	1020.51	1020.51	1020.55	1020.61	1020.65	1020.48
	21	1020.69	1020.71	1020.72	1020.73	1020.75	1020.80	1020.84	1020.89	1020.93	1020.96	1020.99	1021.03	1020.83
	22	1021.07	1021.08	1021.10	1021.11	1021.10	1021.08	1021.07	1021.06	1021.05	1021.06	1021.10	1021.15	1021.08
	23	1021.17	1021.19	1021.19	1021.18	1021.19	1021.21	1021.19	1021.19	1021.23	1021.23	1021.19	1021.16	1021.19

S.V.I.R.CO. Observatory - Pressure in hectoPascal – January 2017

day	hh	00_05	05_10	10_15	15_20	20_25	25_30	30_35	35_40	40_45	45_50	50_55	55_60	average
29	0	1021.10	1021.10	1021.08	1021.07	1021.06	1021.08	1021.10	1021.08	1021.06	1021.06	1021.07	1021.08	1021.08
	1	1021.10	1021.09	1021.06	1021.04	1021.03	1021.03	1021.00	1020.97	1020.95	1020.93	1020.88	1020.83	1020.99
	2	1020.83	1020.87	1020.89	1020.87	1020.82	1020.81	1020.85	1020.86	1020.87	1020.88	1020.87	1020.84	1020.85
	3	1020.82	1020.80	1020.82	1020.86	1020.88	1020.91	1020.95	1020.99	1021.01	1021.00	1021.00	1021.00	1020.92
	4	1021.00	1021.02	1021.05	1021.09	1021.09	1021.08	1021.09	1021.10	1021.11	1021.14	1021.18	1021.24	1021.10
	5	1021.31	1021.36	1021.39	1021.41	1021.43	1021.47	1021.52	1021.54	1021.55	1021.59	1021.67	1021.72	1021.50
	6	1021.77	1021.83	1021.89	1021.93	1021.94	1021.98	1022.02	1022.04	1022.05	1022.06	1022.08	1022.10	1021.97
	7	1022.11	1022.15	1022.21	1022.24	1022.25	1022.29	1022.36	1022.41	1022.44	1022.45	1022.45	1022.48	1022.32
	8	1022.51	1022.52	1022.54	1022.60	1022.64	1022.68	1022.70	1022.69	1022.72	1022.75	1022.75	1022.76	1022.65
	9	1022.76	1022.77	1022.83	1022.88	1022.90	1022.94	1022.96	1022.97	1022.98	1022.99	1023.01	1023.01	1022.91
	10	1022.96	1022.89	1022.84	1022.77	1022.71	1022.65	1022.57	1022.52	1022.49	1022.46	1022.43	1022.40	1022.64
	11	1022.36	1022.31	1022.28	1022.25	1022.19	1022.13	1022.09	1022.04	1021.98	1021.93	1021.89	1021.85	1022.11
	12	1021.81	1021.78	1021.72	1021.64	1021.57	1021.50	1021.43	1021.37	1021.32	1021.30	1021.28	1021.24	1021.49
	13	1021.18	1021.14	1021.11	1021.08	1021.04	1021.04	1021.06	1021.03	1021.02	1021.01	1021.01	1021.01	1021.06
	14	1021.02	1021.01	1020.98	1020.99	1021.01	1021.04	1021.04	1021.04	1021.05	1021.05	1021.08	1021.11	1021.03
	15	1021.13	1021.16	1021.19	1021.22	1021.26	1021.32	1021.38	1021.40	1021.40	1021.40	1021.42	1021.47	1021.31
	16	1021.52	1021.56	1021.57	1021.58	1021.60	1021.64	1021.67	1021.70	1021.74	1021.78	1021.82	1021.84	1021.67
	17	1021.86	1021.86	1021.86	1021.90	1021.93	1021.96	1021.99	1022.01	1022.05	1022.07	1022.09	1022.14	1021.97
	18	1022.18	1022.19	1022.21	1022.25	1022.27	1022.28	1022.30	1022.31	1022.31	1022.33	1022.38	1022.41	1022.28
	19	1022.41	1022.43	1022.47	1022.50	1022.52	1022.52	1022.53	1022.55	1022.58	1022.63	1022.68	1022.71	1022.54
	20	1022.72	1022.76	1022.81	1022.82	1022.82	1022.83	1022.86	1022.89	1022.90	1022.95	1022.99	1022.99	1022.86
	21	1023.00	1023.03	1023.07	1023.08	1023.05	1023.06	1023.09	1023.15	1023.20	1023.24	1023.29	1023.33	1023.13
	22	1023.34	1023.36	1023.38	1023.38	1023.37	1023.38	1023.40	1023.40	1023.40	1023.41	1023.42	1023.43	1023.39
	23	1023.43	1023.43	1023.40	1023.36	1023.34	1023.32	1023.31	1023.30	1023.32	1023.35	1023.38	1023.37	1023.36
30	0	1023.34	1023.34	1023.34	1023.33	1023.29	1023.27	1023.24	1023.20	1023.18	1023.21	1023.24	1023.24	1023.26
	1	1023.22	1023.24	1023.29	1023.31	1023.32	1023.31	1023.30	1023.31	1023.34	1023.35	1023.35	1023.34	1023.30
	2	1023.30	1023.30	1023.30	1023.27	1023.25	1023.24	1023.22	1023.19	1023.16	1023.13	1023.13	1023.14	1023.22
	3	1023.12	1023.09	1023.06	1023.03	1023.00	1022.98	1022.99	1023.02	1023.04	1023.04	1022.99	1022.93	1023.02
	4	1022.92	1022.90	1022.84	1022.80	1022.78	1022.76	1022.75	1022.75	1022.77	1022.81	1022.81	1022.77	1022.80
	5	1022.76	1022.74	1022.74	1022.82	1022.88	1022.89	1022.90	1022.94	1022.98	1023.03	1023.05	1023.05	1022.90
	6	1023.06	1023.09	1023.07	1023.08	1023.15	1023.22	1023.28	1023.32	1023.34	1023.39	1023.43	1023.45	1023.24
	7	1023.44	1023.44	1023.45	1023.47	1023.48	1023.46	1023.44	1023.42	1023.43	1023.46	1023.47	1023.47	1023.45
	8	1023.44	1023.42	1023.46	1023.50	1023.51	1023.48	1023.45	1023.44	1023.45	1023.47	1023.52	1023.62	1023.48
	9	1023.69	1023.70	1023.66	1023.67	1023.67	1023.68	1023.73	1023.77	1023.80	1023.82	1023.83	1023.84	1023.74
	10	1023.82	1023.77	1023.70	1023.65	1023.63	1023.62	1023.59	1023.55	1023.52	1023.48	1023.39	1023.29	1023.58
	11	1023.24	1023.22	1023.16	1023.08	1023.00	1022.91	1022.81	1022.73	1022.66	1022.59	1022.49	1022.39	1022.85
	12	1022.32	1022.24	1022.16	1022.08	1022.01	1021.93	1021.83	1021.75	1021.69	1021.64	1021.60	1021.57	1021.90
	13	1021.54	1021.51	1021.48	1021.47	1021.45	1021.44	1021.42	1021.39	1021.35	1021.33	1021.32	1021.30	1021.41
	14	1021.31	1021.31	1021.31	1021.32	1021.32	1021.29	1021.28	1021.29	1021.33	1021.35	1021.36	1021.39	1021.32
	15	1021.42	1021.46	1021.48	1021.47	1021.48	1021.51	1021.52	1021.54	1021.58	1021.61	1021.63	1021.66	1021.53
	16	1021.70	1021.71	1021.72	1021.73	1021.71	1021.69	1021.72	1021.77	1021.82	1021.83	1021.86	1021.90	1021.76
	17	1021.93	1021.96	1021.97	1021.98	1022.02	1022.07	1022.10	1022.12	1022.15	1022.15	1022.16	1022.19	1022.06
	18	1022.20	1022.20	1022.20	1022.18	1022.18	1022.18	1022.19	1022.22	1022.22	1022.22	1022.23	1022.24	1022.20
	19	1022.25	1022.27	1022.29	1022.32	1022.34	1022.33	1022.33	1022.35	1022.38	1022.41	1022.43	1022.45	1022.34
	20	1022.49	1022.52	1022.52	1022.52	1022.52	1022.49	1022.45	1022.48	1022.50	1022.49	1022.44	1022.40	1022.48
	21	1022.40	1022.40	1022.39	1022.38	1022.39	1022.41	1022.43	1022.44	1022.42	1022.38	1022.35	1022.35	1022.39
	22	1022.36	1022.35	1022.34	1022.35	1022.37	1022.34	1022.33	1022.36	1022.37	1022.35	1022.32	1022.28	1022.34
	23	1022.25	1022.22	1022.21	1022.20	1022.19	1022.20	1022.17	1022.16	1022.19	1022.19	1022.19	1022.20	1022.19

S.V.I.R.CO. Observatory - Pressure in hectoPascal – January 2017

day	hh	00_05	05_10	10_15	15_20	20_25	25_30	30_35	35_40	40_45	45_50	50_55	55_60	average
31	0	1022.19	1022.19	1022.19	1022.18	1022.15	1022.16	1022.19	1022.20	1022.21	1022.20	1022.20	1022.25	1022.19
	1	1022.29	1022.28	1022.28	1022.28	1022.26	1022.28	1022.32	1022.32	1022.30	1022.28	1022.28	1022.26	1022.28
	2	1022.24	1022.21	1022.15	1022.05	1021.98	1021.95	1021.92	1021.88	1021.85	1021.84	1021.83	1021.79	1021.97
	3	1021.79	1021.80	1021.81	1021.80	1021.75	1021.74	1021.76	1021.77	1021.78	1021.78	1021.78	1021.82	1021.78
	4	1021.86	1021.89	1021.94	1021.98	1021.97	1021.97	1022.00	1022.03	1022.08	1022.13	1022.16	1022.19	1022.01
	5	1022.20	1022.21	1022.26	1022.28	1022.33	1022.42	1022.47	1022.48	1022.46	1022.41	1022.37	1022.38	1022.35
	6	1022.39	1022.39	1022.38	1022.37	1022.36	1022.39	1022.42	1022.44	1022.48	1022.55	1022.64	1022.71	1022.46
	7	1022.73	1022.74	1022.75	1022.79	1022.83	1022.86	1022.89	1022.88	1022.87	1022.85	1022.81	1022.83	1022.82
	8	1022.88	1022.92	1022.94	1022.94	1022.95	1022.98	1023.00	1023.00	1023.01	1023.08	1023.15	1023.19	1023.00
	9	1023.23	1023.30	1023.38	1023.44	1023.49	1023.53	1023.55	1023.55	1023.56	1023.60	1023.61	1023.60	1023.48
	10	1023.60	1023.60	1023.61	1023.61	1023.57	1023.53	1023.49	1023.44	1023.38	1023.35	1023.33	1023.31	1023.48
	11	1023.29	1023.25	1023.23	1023.21	1023.14	1023.09	1023.05	1022.99	1022.92	1022.87	1022.80	1022.70	1023.04
	12	1022.66	1022.66	1022.63	1022.56	1022.52	1022.48	1022.41	1022.35	1022.31	1022.29	1022.28	1022.23	1022.45
	13	1022.22	1022.19	1022.12	1022.11	1022.13	1022.16	1022.18	1022.17	1022.16	1022.19	1022.19	1022.21	1022.17
	14	1022.22	1022.21	1022.18	1022.16	1022.14	1022.12	1022.11	1022.10	1022.08	1022.05	1022.04	1022.01	1022.12
	15	1021.99	1022.00	1022.03	1022.04	1022.04	1022.04	1022.05	1022.05	1022.07	1022.10	1022.14	1022.17	1022.06
	16	1022.20	1022.22	1022.22	1022.23	1022.23	1022.27	1022.33	1022.35	1022.34	1022.34	1022.35	1022.41	1022.29
	17	1022.46	1022.46	1022.51	1022.57	1022.59	1022.63	1022.64	1022.64	1022.66	1022.70	1022.70	1022.66	1022.60
	18	1022.66	1022.65	1022.62	1022.60	1022.61	1022.67	1022.72	1022.74	1022.74	1022.69	1022.61	1022.58	1022.65
	19	1022.56	1022.55	1022.55	1022.56	1022.57	1022.56	1022.57	1022.55	1022.56	1022.58	1022.59	1022.60	1022.56
	20	1022.59	1022.58	1022.54	1022.54	1022.56	1022.52	1022.42	1022.36	1022.35	1022.34	1022.32	1022.33	1022.45
	21	1022.33	1022.35	1022.36	1022.32	1022.28	1022.25	1022.24	1022.25	1022.25	1022.26	1022.28	1022.32	1022.29
	22	1022.38	1022.42	1022.42	1022.43	1022.45	1022.45	1022.46	1022.49	1022.46	1022.44	1022.42	1022.35	1022.43
	23	1022.32	1022.31	1022.28	1022.27	1022.26	1022.22	1022.19	1022.16	1022.15	1022.10	1022.06	1022.05	1022.20



