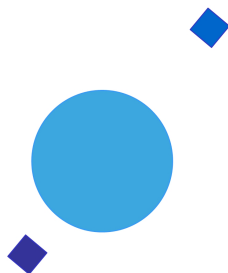


INAF



ISTITUTO NAZIONALE DI ASTROFISICA
NATIONAL INSTITUTE FOR ASTROPHYSICS

SVIRCO Prompt Report: December 2016

Fabrizio Signoretto and Francesco Re

INAF/IAPS-2017-01

January 2017

ISTITUTO DI ASTROFISICA E PLANETOLOGIA SPAZIALI

AREA DI RICERCA ROMA - TOR VERGATA

Via del Fosso del Cavaliere, 100 - 00133 Roma (ITALIA)

SVIRCO Prompt Report: December 2016

Fabrizio Signoretti and Francesco Re

*IAPS - INAF, Area di Ricerca Roma - Tor Vergata
Via del Fosso del Cavaliere, 100 - 00133 Roma, Italy,*

Abstract

The pressure corrected intensity of the nucleonic component, produced by primary cosmic rays and recorded in December 2016 by the Neutron Monitor of SVIRCO-Rome (present geographic position: 41.86° N - 12.47° E; altitude about s.l.), is reported in prompt form together with the barometric pressure data.

SVIRCO OBSERVATORY

During the 1st International Geophysics Year (1957) an international network of “ground-based detectors” for continuous cosmic ray measurements was world-wide established.

The cosmic ray station of Rome joined this network with the purpose to study the time variations of primary cosmic rays (**Studio Variazioni Intensità Raggi Cosmici: S.V.I.R.CO**) and their modulation in the heliosphere.

From July 1957 to April 1997, the SVIRCO Station (now Observatory) performed uninterrupted measurements at the Physics Department “G. Marconi” of “La Sapienza” University of Rome (41.90° N, 12.52° E, altitude about 60 m a.s.l.)

In May 1997 the neutron monitor was moved to the Physics Department “E. Amaldi” of “Roma Tre” University. Since then it has been continuously running at the new location (41.86° N, 12.47° E, altitude about 0 m a.s.l.).

The SVIRCO Observatory (INAF/IAPS-UNIRomaTre collaboration) is housed in a reserved building provided with a double air-conditioning system. The inner temperature is permanently restrained in a range of 23°-26° C, meanwhile the relative humidity is kept below 57%. Either the environmental parameters are continuously checked and recorded by digital sensors.

On January 1, 2005 three counters were added to the detector. This upgrade, from 17 to 20 NM-64, made the SVIRCO neutron monitor still consist of 5 sections but modified its geometry. Actually the new arrangement has been composed of three 3-counter, one 5-counter and one 6-counter units. The enhancement improved not only the overall counting rate of 15.6 % (January 2005) but, as a result, also the statistical quality of the recorded data.

Each of the 20 BF₃ proportional counters (BP-28 type) is equipped with a smart amplifier/discriminator circuit complete with a spectrum stabilizer. This new electronic unit, developed in our laboratory, holds firmly the pulse height spectrum of the amplifier output (within a range of more than 150 volts around the operating voltage), providing the counter with a great immunity against high voltage variations.

Anyway, systematic and exhaustive tests of the counters are regularly performed. The output pulses of the amplifiers, discriminated by the threshold gates, are collected and stored into a multi-channel analyzer. The analysis of the height distribution (spectrum) of the amplifier pulses coinciding with the discriminator ones, is essential to verify the long term efficiency of each counter together with the amplifier gain and the discriminator threshold level.

As well as the amplifier/discriminator circuits, a large part of the electronic instrumentation operating in the Observatory was designed and realized in our laboratory together with the software for data acquisition and pre-elaboration.

In order to improve the reliability of the recorded data and to prevent measurement breakdowns, two independent systems perform contemporary the data acquisition. Each system is remotely controlled by a dedicated computer and is timed by a high stability quartz clock and/or a GPS receiver. One equipment runs according to a timing of 1 minute and fulfils the acquisition of the 20 counters separately. The other one records the individual 5-minute counting rate of each detector section in addition to the rates of the overall multiplicity, sorted into separated counting channels (from 1 to greater than 8).

A special care is devoted to the atmospheric pressure measurements, thus they are carried out by means of not less than three barometers at the same time. These instruments (achieving a resolution up to 0.01 hPa), are constantly checked out each other for the best measuring accuracy and reliability. Furthermore the devices in use are equipped with different types of transducer such as vibrating cylinder, force balance and quartz, therefore, throughout their different behaviours, it is possible to point out the occurrence of any long-term drift and eventually to re-calibrate the instruments themselves.

DATA PRESENTATION

In a preliminary step, the intensity data, of the secondary nucleonic component of cosmic ray, detected at SVIRCO Observatory, were corrected for pressure variations at a reference level of 1009.25 hPa with an attenuation coefficient of 0.70% / hPa.

The five-minutes counting rates, of the examined month, are reported in tabular form together with the hourly normalized data, which provide a continuous data set for long-term analysis.

The normalization was evaluated as percentage of the counting rate average of January-February 1997, when the Monitor operated at the previous location of "La Sapienza" University. The reference counting rate level (100%), computed for such period, is equal to 554946 counts/hour.

The atmospheric pressure data (in hectoPascal) are also collected in a monthly table which presents the five-minutes averages and the hourly ones.

The hourly averages of the normalized intensity and pressure, plotted in monthly graphs, are reported too.

CONDITIONS FOR SVIRCO DATA USE

You are welcome to use neutron monitor data of SVIRCO, IAPS/INAF-UNIRomaTre collaboration, under the following conditions:

-You agree to acknowledge our financial supports in any published use of the data.

Example: "SVIRCO NM is supported by the INAF - UNIRomaTre collaboration"

-You are kindly requested to send a copy of any published work derived from our data to:

Dr. Monica Laurenza
Head of SVIRCO Observatory & TPL
Istituto di Astrofisica e Planetologia Spaziali - Area di Ricerca Tor Vergata
Via del Fosso del Cavaliere, 100 00133 Roma - Italy,

monica.laurenza@iaps.inaf.it



S.V.I.R.CO. Observatory

Rome

Italy



		INAF/UNIRomaTre			S.V.I.R.CO. Observatory - Pressure Corrected Data – December 2016							20 NM-64		
day	hh	00_05	05_10	10_15	15_20	20_25	25_30	30_35	35_40	40_45	45_50	50_55	55_60	h-norm
1	0	46675	46513	46388	46069	46147	46597	46255	46287	46419	45903	45778	46979	100.760
	1	45606	46219	46827	46949	45965	46526	46506	46176	46398	46571	46388	46208	100.817
	2	47132	46333	46562	46485	45728	46075	46351	46656	46538	46576	46276	46296	100.937
	3	46452	46774	46064	46479	45958	46848	46453	46529	45765	46189	46605	45612	100.706
	4	46281	45643	46062	46056	46139	45898	45980	45969	46143	46384	46600	45701	100.186
	5	47032	46253	46009	46520	46414	46398	46523	46268	46644	46668	46446	46979	101.145
	6	46542	45785	46428	45774	46793	46892	46384	45750	46323	46506	46445	46714	100.816
	7	46397	46276	46568	46178	47079	46553	46865	46765	46991	46503	46037	46743	101.290
	8	46419	46268	47308	46967	46560	46112	46922	46367	46253	46117	46760	46705	101.255
	9	46354	46495	46509	46230	46647	46671	46652	46663	46387	46414	46861	46182	101.129
	10	46440	46437	46885	46201	46636	46980	46553	45760	46948	46469	46808	46272	101.188
	11	46535	46270	46122	46638	46048	47265	46604	47108	46446	46522	46652	46508	101.248
	12	46295	46258	46692	46564	46751	46001	46136	46400	46082	46304	47143	47007	101.052
	13	47069	46086	46906	46511	46193	46193	45956	46912	46854	46047	46389	46265	101.006
	14	46580	46731	46628	46520	46583	45809	46769	46155	46615	46496	46564	47000	101.199
	15	46633	46254	46430	46858	46830	46663	46586	46052	46560	46282	46523	46167	101.088
	16	46393	46667	46367	46129	46140	46109	46307	46280	46397	46542	46427	45831	100.681
	17	46307	46009	46297	46401	46416	47014	46389	46641	45895	46673	46499	46493	100.943
	18	46590	46113	46109	46540	46530	45888	46066	46556	46049	46745	46486	46093	100.713
	19	46460	46112	46197	46671	46493	46750	46030	47328	46923	46101	46784	46571	101.194
	20	47007	45863	45583	45810	46023	46452	46291	45403	46390	45585	46458	45173	100.037
	21	46265	45586	46066	46219	46081	46833	45947	45890	46055	45563	45839	45797	100.056
	22	46321	46240	46086	46513	46536	45600	46241	46895	46556	45734	45777	45999	100.483
	23	46654	45941	45529	46208	46277	45762	46009	46162	46641	45557	46056	46561	100.276
2	0	46186	45855	46481	46304	46042	45922	46137	45571	46056	46403	46332	45887	100.241
	1	46370	46348	46111	46113	46707	46379	46003	46317	46204	46316	46142	46149	100.603
	2	46172	45731	46408	46250	46499	45982	46375	46161	46370	46078	46016	46428	100.478
	3	46334	46375	46249	45928	47029	45894	46304	46442	46293	46711	46519	45781	100.729
	4	46245	46929	46024	46602	46243	46586	46085	46453	46399	46683	46492	46170	100.920
	5	46245	46850	46827	46090	46040	46483	45626	45907	46893	46415	46241	46441	100.766
	6	46884	46804	46701	46119	45905	47099	46755	46570	45880	46249	46589	46818	101.184
	7	46333	46981	46500	46608	46373	46037	46844	46701	46767	46431	46701	46756	101.304
	8	46879	46346	47325	46806	46054	46256	46474	46527	47231	46521	46999	46126	101.397
	9	46378	46649	46684	46222	46966	46624	45914	46432	46818	46323	46522	46755	101.170
	10	46509	46600	47057	46759	46250	45737	45861	46168	46818	46674	47069	47168	101.239
	11	46996	46539	46714	46316	46285	46337	46815	46700	46291	46411	47250	45792	101.198
	12	46113	46709	47014	46863	45859	46549	46091	45931	46560	46758	46985	46931	101.183
	13	46773	46323	47124	46648	45841	46117	45644	46984	46046	46770	46725	46200	100.971
	14	46760	46311	45948	46072	45927	46595	46093	46598	46448	46461	46344	46510	100.767
	15	46913	46392	46296	46257	46978	46507	46591	45922	47254	46702	46154	46187	101.145
	16	46375	46164	46599	46885	46768	46670	46127	46694	46432	46373	46955	46705	101.253
	17	46298	46325	46332	45841	46567	46883	46593	46274	45872	46464	47068	46624	100.962
	18	46829	46625	46859	46041	46567	47001	46772	45586	47024	46713	47071	46422	101.391
	19	47369	46491	45890	46096	46038	46357	46843	46790	46272	46436	46326	46749	101.055
	20	46539	46303	45987	46440	46940	46543	45773	46337	45995	46290	46494	46094	100.707
	21	46291	46795	46324	47098	45970	46173	46575	46370	46062	46565	46651	46562	101.015
	22	46284	46760	46796	46426	46733	46200	46190	46433	46662	46348	46723	45606	100.966
	23	46194	46403	46258	46211	46932	46624	46380	47025	46361	46339	46682	46418	101.086

		S.V.I.R.CO. Observatory - Pressure Corrected Data – December 2016												20 NM-64
		INAF/UNIRomaTre												
day	hh	00_05	05_10	10_15	15_20	20_25	25_30	30_35	35_40	40_45	45_50	50_55	55_60	h-norm
3	0	46510	46314	47201	46767	46988	46468	46211	46300	46727	46137	47014	46667	101.352
	1	46226	46668	46823	46493	46237	46611	46493	46114	46740	46679	46548	46219	101.090
	2	45950	47021	46813	46410	46608	46844	46673	46161	47306	46522	46937	46730	101.475
	3	46872	46477	46264	46588	46365	46874	46818	46744	46746	46993	46866	46219	101.448
	4	47086	46988	46695	46662	47072	47513	46730	46864	46703	46482	46902	47016	101.972
	5	46389	46294	46489	46067	46915	46748	47028	46606	46664	47009	46569	46617	101.370
	6	46726	46355	46847	46196	46857	46759	46277	47310	46784	46801	46492	46519	101.466
	7	46434	47258	46398	46332	46753	46995	46679	46711	46811	46821	47704	46607	101.752
	8	46995	46129	46844	46539	46341	47187	47043	46835	46686	45739	46701	45816	101.273
	9	46506	47063	46650	46520	46641	46838	46407	47047	46521	46796	46086	47062	101.505
	10	46540	46923	46657	46331	47027	46405	46409	46264	46337	46211	46473	46767	101.180
	11	46672	46264	46634	46942	46767	46512	46064	46749	45792	46267	46695	45946	100.991
	12	46746	46629	46833	46436	47207	46334	46758	47275	46853	46270	46582	46241	101.510
	13	46732	47348	46342	46629	46507	46535	46422	47693	46208	46628	46436	46296	101.440
	14	46579	46477	46472	47595	46624	46817	46181	46451	47379	46572	46756	46606	101.572
	15	46485	46738	46698	46628	46747	46834	47084	47140	47228	46987	46455	46085	101.681
	16	46791	46967	46753	46833	47317	46247	46978	46255	46931	46924	46755	47252	101.843
	17	46923	46265	47160	46876	46303	46195	46276	46581	46345	46636	46368	46673	101.227
	18	46556	46704	46963	47301	47273	46698	47237	46759	46760	47215	46948	46997	102.098
	19	46607	47137	46730	47158	47047	47495	46140	47184	46804	46719	46736	47023	101.984
	20	46536	46400	46582	46666	46549	46860	46908	46817	46643	47236	46593	46910	101.607
	21	46843	46522	46641	46500	46809	46652	46065	47025	46898	46763	46310	46372	101.371
	22	46549	46230	46366	46695	46415	46761	46650	46920	46709	46784	47043	47365	101.568
	23	46097	46509	46086	46299	46789	46143	47303	46393	46773	46509	46278	46780	101.110
4	0	46599	46716	47251	46771	46805	46680	46213	46465	47489	46624	47136	47253	101.843
	1	46876	46477	47657	46048	46833	47070	46478	46625	47335	47031	46604	46194	101.703
	2	46502	46991	46129	46987	47152	46982	46412	46947	46893	46946	47052	47230	101.883
	3	46830	46612	46489	46731	46738	46375	47267	47037	46877	46691	46534	46875	101.671
	4	46477	47051	46729	46603	47164	46370	46629	46812	46940	46486	46739	46434	101.558
	5	46452	47161	46261	46784	46611	46931	46647	45781	46687	46852	46906	47987	101.672
	6	47123	46051	46392	46560	46252	46647	46892	47396	47261	46310	47118	46751	101.616
	7	47154	47082	46819	47357	46376	46191	47134	46459	46799	46535	47057	46671	101.776
	8	46556	46901	46703	46667	46828	47122	46939	47473	46906	46767	47018	47228	102.043
	9	46849	47091	46847	46634	46530	47071	46041	46938	46149	47334	47304	46658	101.742
	10	45929	47120	46573	46409	46992	46445	46243	46074	47132	46496	47046	46925	101.368
	11	47087	46550	46317	47021	46366	46646	46612	47062	47637	46486	47333	47432	101.942
	12	47634	45744	46780	46696	46819	47232	46993	46575	46567	46255	46718	46627	101.596
	13	46895	46786	46499	46933	46497	47119	46624	46840	46817	46759	46841	46810	101.738
	14	46304	46727	46863	47139	46606	46370	46796	46910	46427	46489	46563	46745	101.469
	15	46559	47089	46765	47069	46514	46874	46346	46480	46785	46722	46335	47216	101.616
	16	46579	46823	46904	46889	46743	46547	46222	46845	46235	46376	46661	46232	101.309
	17	46984	46640	47179	46743	46357	47247	46547	47119	46335	46667	46793	46734	101.724
	18	47110	46366	47375	46354	46714	47032	46113	46805	46483	46549	46817	46749	101.565
	19	46532	46324	46955	46826	46651	46643	46607	46077	46623	46387	46684	46177	101.206
	20	46637	47055	46789	46655	46262	47114	47082	45871	46690	46655	46793	46516	101.502
	21	46775	47151	46817	45954	46378	46653	46373	46874	46801	46852	46692	47658	101.657
	22	47407	46419	47068	47339	47191	46589	46974	47295	46283	47480	47210	46234	102.112
	23	46855	47420	47564	46908	47187	47206	47076	46775	46866	47259	47080	46897	102.403

		INAF/UNIRomaTre			S.V.I.R.CO. Observatory - Pressure Corrected Data – December 2016							20 NM-64		
day	hh	00_05	05_10	10_15	15_20	20_25	25_30	30_35	35_40	40_45	45_50	50_55	55_60	h-norm
5	0	47005	46599	46594	46905	47087	47054	46869	47524	46593	46482	47291	46436	101.921
	1	46481	47368	47062	46681	47053	46793	46890	46615	47032	46875	46791	46745	101.912
	2	47133	47276	47145	46742	47250	47454	47234	47025	46841	47001	46698	47153	102.378
	3	47121	47209	46552	47486	46733	47174	47623	47059	46281	46864	45969	47113	102.057
	4	47134	46596	47045	46891	47488	45939	46942	46447	46752	47096	46746	47759	101.994
	5	47226	47215	46896	46819	47120	47170	46932	46628	46554	46796	46285	47279	102.010
	6	46671	46947	47248	46900	46917	47762	46009	46372	47043	46750	47567	46408	101.950
	7	46173	46868	46749	46936	46285	47092	46298	47094	46907	46612	47357	46445	101.627
	8	47652	46693	46656	46554	47180	46324	46813	47039	46916	46868	46697	46744	101.867
	9	46715	46780	46894	45979	46485	47017	46297	46930	46451	46911	47426	47067	101.653
	10	46590	46096	46808	46027	46283	47305	46954	46760	47034	46778	46957	46929	101.575
	11	46950	46525	46727	46676	47330	46261	47077	46397	46988	47172	46823	46106	101.667
	12	46913	47078	46416	46990	46659	47154	46639	46707	46646	46151	46721	46898	101.656
	13	46679	46914	46725	46925	46224	46516	46484	47000	46094	46453	46097	46380	101.206
	14	46607	46608	46937	46555	46213	46622	46749	47197	46759	46522	46821	47100	101.605
	15	46400	46381	46937	45911	46739	46829	46603	46549	46500	46760	46016	46441	101.130
	16	46679	47027	46514	45732	46758	46180	46787	46755	46585	46208	47073	47089	101.369
	17	47063	45951	47203	46670	46969	47055	46550	47030	46186	46638	47081	47032	101.739
	18	46543	46618	46758	46235	46512	46147	46682	46035	46784	46520	46693	45988	101.030
	19	46386	46655	46477	46591	46917	46511	46651	46163	46463	46647	46603	46622	101.242
	20	46800	46737	46473	46652	46848	46656	46689	46378	46755	46884	46434	46674	101.476
	21	46680	47125	46583	45988	46200	45703	46790	46262	46261	46653	47345	46404	101.117
	22	46298	46825	46924	46974	46460	46494	46762	46224	46680	45956	46692	46266	101.218
	23	46453	46163	46489	46354	46506	46355	46922	46670	46537	46872	46935	46375	101.232
6	0	46151	46421	46887	46876	46361	46238	46578	46763	47186	46413	46794	46194	101.274
	1	47287	47371	46217	46055	46533	47011	45897	46787	46460	46014	45953	46031	101.048
	2	46509	46480	45974	47308	46765	46449	47058	46179	46977	47076	46857	46904	101.577
	3	47122	46348	47451	46773	46421	46348	46707	46681	46716	46689	46584	46589	101.557
	4	46500	47153	46433	47300	46753	46669	46818	46511	46318	45987	46856	46910	101.518
	5	46605	47266	46556	46429	46271	46682	46458	46588	46851	46950	46522	46194	101.366
	6	47311	47198	47211	46599	46771	46860	46411	46966	47295	46938	46708	46639	102.007
	7	46600	47057	46238	46697	46467	46346	46307	47021	46398	46525	46455	46474	101.223
	8	47451	46610	46761	46562	46361	47011	46097	46697	46992	45779	46832	46376	101.395
	9	46738	46318	46749	46398	46206	46113	46228	46845	47069	46526	46676	46257	101.140
	10	46751	46159	46295	46913	46800	46201	46099	47188	45857	46500	46446	45475	100.879
	11	46214	46883	46888	46357	46317	46299	46604	46669	45958	46537	46144	46949	101.085
	12	46072	46748	45592	46068	47255	46310	46606	46808	46937	46591	46870	46704	101.220
	13	46721	46488	46552	46510	46580	46728	46718	46531	46797	47206	46964	46911	101.608
	14	47070	47288	46119	46682	46507	47294	46534	45530	46333	46224	46822	47140	101.397
	15	46487	46426	46091	46546	46922	46691	47199	46853	46915	46778	46920	46832	101.599
	16	47173	46796	47425	47131	47056	46275	46259	46978	46870	46027	46641	46546	101.694
	17	46328	47207	46651	47007	46495	46328	46146	46224	46443	47159	46326	46479	101.261
	18	46882	47014	46590	47235	46445	47173	47055	46943	47205	47011	46404	46706	101.962
	19	46919	46415	46566	46818	46394	46359	47018	47129	47209	46974	46839	47288	101.829
	20	46202	47037	46723	47647	46802	46804	47085	46476	46696	47263	46755	47023	101.935
	21	46897	46592	47306	46891	46576	46030	46765	46723	46896	47045	45597	46757	101.494
	22	46756	47117	46525	46099	46581	47065	46728	47059	46331	46928	47484	46672	101.724
	23	46381	46425	46878	47570	46928	47081	46526	47118	46765	46833	47523	46399	101.920

		S.V.I.R.CO. Observatory - Pressure Corrected Data – December 2016											20 NM-64		
		INAF/UNIRomaTre													
day	hh	00_05	05_10	10_15	15_20	20_25	25_30	30_35	35_40	40_45	45_50	50_55	55_60	h-norm	
7	0	46120	46539	46890	47071	47150	46533	47037	46793	46042	47447	46753	45997	101.550	
	1	47216	46546	46723	45788	46989	46661	46677	46433	46267	46239	46077	46781	101.190	
	2	46725	46516	46501	47374	47227	46527	46430	46794	46895	46480	46608	46301	101.549	
	3	46179	46074	46806	47190	46103	46498	47076	46360	46530	46474	47032	46137	101.201	
	4	46399	46801	46733	47086	46902	47122	46101	47014	46916	46858	47056	47088	101.856	
	5	46544	46258	46428	46081	46438	46631	47487	46724	46430	47174	46440	46955	101.405	
	6	46288	46753	47067	46324	46449	46849	46734	46680	46491	47017	46369	47211	101.522	
	7	46532	46093	46745	46962	46490	46722	46632	46336	46588	46964	46560	46735	101.364	
	8	46918	47013	46809	47770	47492	47099	46735	46295	46912	46332	46611	46954	102.013	
	9	47082	47022	46921	47416	46197	46404	46816	46568	46764	47424	46597	47178	101.913	
	10	46546	46907	47017	46676	46659	46645	46784	47205	46789	46616	46850	47453	101.869	
	11	47185	46882	46397	47224	46590	46674	47434	45990	46313	47108	47032	46757	101.767	
	12	47393	46781	46210	47514	46801	46667	47011	47332	46472	46815	46911	46719	101.956	
	13	46372	47816	46952	47214	46984	46911	46597	46928	47578	46789	46822	47016	102.201	
	14	46977	46351	47455	46075	46737	46517	47369	46718	46793	47299	47230	46856	101.910	
	15	46747	46837	46547	46640	46877	47387	46969	47261	46820	46976	46280	47048	101.913	
	16	46962	46632	47321	47082	47100	46886	47489	46644	46738	46690	46692	47188	102.101	
	17	47179	47492	46917	46967	47247	46826	46585	46145	47002	47253	47260	47008	102.184	
	18	46047	47192	46708	47014	46697	46817	46523	46709	46673	46380	46643	47311	101.609	
	19	47313	46048	46843	46323	47254	46328	46825	47073	46890	47075	47188	47162	101.901	
	20	47391	46867	47086	46626	47917	47171	46758	47108	47185	46826	46714	46817	102.290	
	21	46931	46604	47140	46776	46967	47093	46772	46557	46154	46889	46845	45905	101.595	
	22	47232	46899	46888	46886	46518	46812	46859	46763	47338	47531	46287	46651	101.962	
	23	47006	46855	46949	46833	46890	46772	47037	46916	46352	45789	46108	46489	101.479	
8	0	46544	46732	46851	47860	47471	46652	46531	46721	46553	46760	46382	46429	101.754	
	1	46854	47311	46995	46870	47160	46696	47282	46622	47294	46813	47387	46746	102.210	
	2	46487	47207	46990	47564	47506	46897	46449	46530	46840	47063	46991	46077	101.951	
	3	47073	47472	47386	46965	46744	46637	47205	46932	47002	46768	47292	46951	102.283	
	4	46810	47218	46769	46424	47241	46831	47397	46560	46886	47361	46544	46711	101.978	
	5	46660	46225	46954	46519	47104	46547	47368	47025	46000	47171	47531	46859	101.836	
	6	46794	46708	46781	46788	47365	46467	46775	47128	46743	46840	46741	46677	101.808	
	7	46577	47079	46984	47121	47420	46562	46669	46437	47178	46684	46749	46975	101.921	
	8	47261	47259	47209	46502	47000	46823	46873	46973	47079	46672	46801	46380	101.994	
	9	47437	46706	47302	46592	46960	46926	46417	46931	46774	46933	47164	47318	102.107	
	10	46777	46381	47614	47776	46750	47696	47478	46796	47009	47576	47141	47009	102.568	
	11	47281	47089	47187	46708	46729	47336	46883	47186	47012	47067	47074	47153	102.332	
	12	47039	47137	47277	46364	46657	46854	47577	47418	47322	46354	46868	47391	102.252	
	13	47239	46632	46247	46873	46888	46855	46840	46953	46525	47208	47036	46530	101.811	
	14	46988	47323	46732	47491	46874	46863	46587	46719	46649	46666	46386	47466	101.977	
	15	46598	46413	46771	47162	47128	47261	47205	46528	46889	47560	47315	46241	102.037	
	16	46987	47338	46304	45953	46654	46214	46823	46679	46486	47335	47392	46972	101.686	
	17	46879	46455	46326	46637	47194	46960	46279	46894	47105	46758	46396	46355	101.523	
	18	46440	46598	46543	46994	46865	46246	46478	46507	46204	46359	47237	47092	101.401	
	19	46329	46126	46941	47030	46684	46206	46824	46917	46321	46915	47476	45916	101.423	
	20	47039	46260	46843	47134	46653	47252	47017	46959	46666	46314	46326	46941	101.734	
	21	47161	46346	46461	46813	45790	46849	46619	46320	47244	47307	46259	46311	101.385	
	22	46687	46902	46000	46882	46815	46787	46442	46727	46121	46469	46874	46622	101.358	
	23	46641	46860	47074	47328	46698	45941	46536	46689	46885	47327	46605	47511	101.860	

		INAF/UNIRomaTre			S.V.I.R.CO. Observatory - Pressure Corrected Data – December 2016							20 NM-64		
day	hh	00_05	05_10	10_15	15_20	20_25	25_30	30_35	35_40	40_45	45_50	50_55	55_60	h-norm
9	0	46902	46651	46459	47080	46988	46768	46591	46428	46927	46803	46657	46294	101.576
	1	46174	46453	47093	46548	47163	46497	46673	46928	46933	45861	46169	46502	101.298
	2	47465	46825	45975	47005	46602	47127	46595	45958	46460	46397	46530	45988	101.285
	3	46085	46378	46655	46058	46752	46713	46928	46641	45984	46633	46346	46515	101.061
	4	46434	46870	46837	46434	46391	45917	46401	46383	46839	46721	46825	46625	101.240
	5	46781	46833	46404	46233	46282	46901	46316	46766	46887	46463	46620	46689	101.330
	6	46593	46236	46335	46650	47823	46353	46223	46800	46490	45964	46883	46712	101.310
	7	46842	46888	46162	46216	46927	47100	46409	46658	46302	45822	46185	46635	101.144
	8	46488	45849	46697	46473	46177	46320	46992	47014	46539	46998	46342	46763	101.236
	9	46957	46156	46563	46860	46437	46582	46114	46081	47183	46611	46148	46654	101.180
	10	47023	47338	46184	46705	46321	46410	46877	46807	46006	46362	46332	47281	101.416
	11	46101	46759	46743	46481	46267	46758	46476	46419	46198	46557	46672	46566	101.117
	12	47396	46594	46550	46467	47092	46978	46681	46935	45921	46559	46323	46631	101.503
	13	47178	46787	46350	46214	46648	46829	46768	46212	47284	46358	46543	47280	101.562
	14	46494	46621	47076	47017	46563	46580	47085	46212	47075	46526	46535	46816	101.589
	15	47134	46758	46687	47014	46425	46750	46407	46008	46811	46867	46509	46838	101.518
	16	46572	46450	46546	46124	45928	45725	46050	46213	46153	46113	46298	46394	100.495
	17	46225	47088	46693	45786	46358	46283	46087	46800	46623	46191	46290	46641	100.948
	18	46061	47064	46858	46608	46463	46854	46469	46588	46601	46695	46928	46271	101.382
	19	46776	46647	46872	46155	47065	46513	46305	46165	45723	47286	46139	46932	101.222
	20	46156	46973	45845	45687	46654	46065	46091	45718	45930	46764	46862	45915	100.513
	21	46204	46325	45860	46583	45905	46459	45648	45778	45780	46358	46398	46861	100.422
	22	46125	46805	46704	45339	45976	46488	46470	46366	46513	45723	46462	46537	100.666
	23	46026	46886	46196	45729	46142	46771	46524	45967	46426	45956	45618	46173	100.468
10	0	46295	46136	46277	46141	46343	47232	46286	46308	45934	46470	46021	46370	100.716
	1	45756	46135	47030	45769	47220	46690	46303	46208	45953	46295	45575	45979	100.558
	2	45799	46948	46315	46009	45983	46022	46550	46150	46452	46082	46122	46201	100.507
	3	46425	46399	46255	45717	46964	45731	46244	46104	46853	45606	46742	46793	100.725
	4	46903	46317	45695	46084	46633	45945	46908	46968	46196	46110	45280	46071	100.594
	5	46092	46508	46988	46003	46412	46258	45929	46555	46058	46520	46547	45866	100.707
	6	46491	46595	45800	45787	46240	46157	45855	46390	46370	45883	46858	46520	100.564
	7	45990	46501	46435	46326	46277	46905	46221	46430	46481	46628	46172	46681	100.945
	8	46297	46596	46466	46322	46491	47372	47133	46409	47372	47066	45791	46691	101.481
	9	46701	46443	45888	46011	46275	46244	46354	46941	46501	46804	46347	46385	100.917
	10	47185	46747	46554	46241	46812	46775	46517	46709	46665	46744	47329	46529	101.626
	11	46604	46620	47514	46810	46853	47111	46871	47108	45969	47022	47439	46716	101.958
	12	46934	46091	47106	47103	46962	46094	47456	47362	46465	46326	46763	47230	101.823
	13	46349	46745	46552	46688	46498	46571	46875	46466	46238	46419	45966	46723	101.134
	14	45935	46308	47070	46969	46900	46493	46697	46711	46633	46747	46334	46231	101.304
	15	46405	46594	46480	46819	46578	46159	46517	46421	45966	46274	46551	45612	100.823
	16	46128	47016	46727	46057	46444	46157	46017	45531	46645	46199	46131	45555	100.503
	17	46148	46317	45809	46102	46069	45998	46168	45851	46531	46009	45610	45663	100.080
	18	46117	46022	45616	45692	46458	46114	46482	45505	46030	45909	46247	46554	100.166
	19	46233	46609	45437	46236	45630	46513	46804	46411	45602	46397	46001	45694	100.314
	20	46609	46212	46252	45802	45932	44981	45990	45964	45865	45773	45940	46135	99.931
	21	46538	45968	46432	46210	46377	46286	46794	45549	46245	46056	46717	46614	100.716
	22	46454	46470	45844	46616	46059	46048	46277	46518	46242	45846	45835	45972	100.425
	23	45857	45452	46121	46102	46267	46249	45550	45750	46009	45972	46083	46107	99.943

		INAF/UNIRomaTre S.V.I.R.CO. Observatory - Pressure Corrected Data – December 2016												20 NM-64
day	hh	00_05	05_10	10_15	15_20	20_25	25_30	30_35	35_40	40_45	45_50	50_55	55_60	h-norm
11	0	46079	46063	46177	45995	45699	46492	45143	46414	45426	46309	46526	45964	100.078
	1	46042	45790	45672	46248	46240	46032	46233	45801	46391	45876	46266	46589	100.244
	2	46329	46407	46489	45754	46226	46867	45973	46050	45869	46324	46050	46114	100.475
	3	45819	46807	46089	46182	46198	46439	46150	45957	45538	45662	46409	46199	100.292
	4	46227	45641	45697	46480	45934	46211	46218	45997	46701	46308	46050	46405	100.369
	5	46037	46247	46278	46460	45925	46882	45514	47018	45887	46097	47046	46593	100.752
	6	46522	46234	46367	47019	46030	46502	46351	46509	46440	46056	46415	46190	100.870
	7	46286	46468	46325	46699	46949	45997	46517	45995	46719	46271	46559	45960	100.890
	8	46337	46358	45808	46328	46384	46794	46408	46242	46350	46592	45744	46190	100.671
	9	45728	46417	46795	46555	45498	46610	46186	46989	46075	46531	46903	46794	100.952
	10	46510	46447	46449	45999	45905	46460	46561	46082	46461	46226	46165	46405	100.696
	11	46209	46763	46619	46633	46414	45758	46582	45886	46112	47007	46551	46324	100.911
	12	46442	46467	46752	45540	46049	46575	46443	47091	46337	46935	47014	46439	101.133
	13	46912	46546	46033	46240	46089	46039	45856	46856	46581	46250	46799	46247	100.837
	14	46724	45942	46105	46217	46043	45940	46015	46616	46185	46060	46810	46083	100.527
	15	46671	46437	46189	46344	46359	46409	46808	45863	45273	46845	46592	46217	100.756
	16	46107	46580	46265	46250	46537	46421	45679	46682	45627	46413	46679	45948	100.607
	17	45633	45771	45850	45774	46748	46241	46081	46074	46001	46595	46059	46169	100.211
	18	46786	46508	46286	46938	45899	46661	46054	46061	46233	45955	46130	45934	100.655
	19	45862	45672	46283	45548	46125	46058	45745	46003	46774	45898	46714	46347	100.217
	20	46023	45963	46367	45724	46068	46274	46585	46182	45762	46268	45483	46017	100.160
	21	46799	46572	46629	45841	46182	46210	46377	46450	46231	46523	46408	46481	100.882
	22	45972	46338	46165	46235	45967	47116	46066	46014	46928	46679	46390	46036	100.738
	23	46482	46201	46279	46571	46378	45877	46678	45912	46686	46793	45943	46945	100.890
12	0	46089	46755	46475	46945	46842	46335	45680	46449	46651	46031	46136	46743	100.954
	1	46692	46015	45988	46157	46690	46189	46588	45903	46805	46297	45914	46139	100.642
	2	45958	46887	46841	46413	46380	46121	45953	46341	45929	45816	46434	45633	100.520
	3	46215	45937	46082	45810	46383	45639	46295	46676	45916	46365	46268	46629	100.432
	4	46742	46416	45725	46341	46142	45697	46271	45966	45962	45933	46681	46439	100.450
	5	46037	45927	45828	45501	46420	45644	45888	45413	46075	45812	45788	46208	99.766
	6	46198	45720	46131	46206	45966	45949	46375	45322	46073	45417	45833	45903	99.866
	7	45981	46293	46015	46052	44946	45704	46027	46043	45955	45923	45520	45534	99.667
	8	45916	46352	46201	46368	45384	45780	46160	45180	45712	46053	46592	45905	99.958
	9	46108	46905	46072	45738	46245	46146	45701	46401	45993	46181	46268	46613	100.460
	10	46402	46007	45873	46410	46031	46198	46380	46303	45970	46793	46065	46021	100.475
	11	46679	46196	46264	46262	46235	46676	46298	46287	45722	45956	46311	46768	100.692
	12	45998	46413	46479	46965	46379	46570	46610	46706	46170	46236	46706	46578	101.083
	13	46348	46298	46248	46802	46961	46984	46625	46440	46219	46227	46730	46504	101.187
	14	46962	46445	46101	46543	46381	46034	46056	45882	46346	45488	46424	46478	100.599
	15	46037	45922	46426	45641	46383	46517	46099	46267	45552	46251	45867	46249	100.250
	16	45883	47073	46445	46275	46185	46260	45906	46491	46265	46495	46473	46303	100.765
	17	46156	46441	46409	45747	46429	46202	46794	46077	46072	45808	45804	46478	100.469
	18	46104	45981	45892	46661	46048	45574	45273	46255	46346	46303	46447	46324	100.249
	19	46243	45772	46058	46547	46053	46381	45905	46266	45865	46568	46532	46345	100.489
	20	46286	46438	45864	45642	46259	46016	46096	47181	45940	46758	46511	46022	100.576
	21	46352	46877	46154	46343	46112	46925	46518	46292	46290	47445	46226	46318	101.091
	22	46409	47151	46638	46652	46132	47018	47369	46574	46830	46740	46823	46843	101.694
	23	46533	46139	46875	46610	46470	45974	46257	47030	46051	46508	47398	46257	101.136

		INAF/UNIRomaTre			S.V.I.R.CO. Observatory - Pressure Corrected Data – December 2016							20 NM-64		
day	hh	00_05	05_10	10_15	15_20	20_25	25_30	30_35	35_40	40_45	45_50	50_55	55_60	h-norm
13	0	46535	46195	47228	46828	46832	46807	46733	45976	46154	46765	46871	46838	101.444
	1	46555	46726	46394	46466	46929	46172	46583	46057	46818	46413	46783	46846	101.252
	2	46373	45924	46620	46191	46147	46731	46657	46899	46267	46884	46361	46297	101.000
	3	46746	46101	46938	46060	47134	47130	46931	46420	46486	47078	46176	46359	101.400
	4	47054	47222	46553	46229	46205	45609	46145	46166	46794	46580	46080	46266	100.919
	5	46434	46004	46045	47193	46560	46090	46348	46032	46980	46654	46346	46391	100.950
	6	46446	46589	46338	46661	46388	46460	45890	46201	46284	46476	46442	46509	100.880
	7													
	8													
	9						46046	46230	45842	45840	46349	45861	46516	
	10	46028	47096	46703	46889	45965	46477	46586	46898	46641	46009	46909	46404	101.227
	11	46273	46015	46602	46925	45883	46838	46313	46576	47106	46479	46033	45693	100.889
	12	46178	46428	46727	45966	46353	46425	46635	45696	46746	45857	46531	45971	100.667
	13	46667	46940	46790	46752	46619	46404	46157	45597	46537	45865	46388	46886	101.045
	14	46160	46683	46218	46992	46112	46381	46719	46637	45963	45705	46533	46921	100.940
	15	46426	46350	46355	45492	46078	45908	46373	46477	46985	46561	46596	46141	100.708
	16	46449	45750	46556	47102	46580	46054	46160	45865	46692	47116	46414	46848	101.042
	17	46303	46484	45803	46804	46551	46564	45998	45797	46376	46569	46851	47163	100.984
	18	47337	47583	46650	46607	46172	46658	46520	46160	47063	46912	47217	46051	101.649
	19	46051	46286	46218	46168	46160	46045	46660	46512	46920	45533	47265	47122	100.925
	20	46833	45938	46040	46409	46877	47004	46498	46718	46605	46733	46212	46416	101.169
	21	45839	46974	46441	47021	46785	46613	46417	46802	46615	46621	46822	47243	101.515
	22	46837	46869	46267	47036	46545	47266	47067	46244	46521	46435	46048	46705	101.450
	23	46097	46616	47061	46099	47138	46681	46684	46904	45966	46541	46453	47058	101.353
14	0	46614	47112	46719	46406	46863	46372	46904	46551	46647	46799	47399	46351	101.615
	1	46710	47208	46899	46231	46603	46839	46446	46554	46661	46435	46890	46714	101.514
	2	45865	46702	46296	46683	46336	46871	46525	46613	45941	47017	46693	45977	101.031
	3	46528	46557	46333	46558	46462	46579	47130	47025	46655	46529	46558	46172	101.314
	4	46436	47211	46463	46437	47089	46426	47229	45890	46360	46098	45927	46603	101.148
	5	46251	46963	46703	46797	46516	46309	46397	46834	46312	46262	46565	46112	101.121
	6	46890	46360	46724	46608	45800	47331	46864	47047	45978	46262	46983	46144	101.297
	7	46384	46837	46043	45895	46954	46346	46062	46130	46289	46091	46168	46482	100.697
	8	46205	46965	45330	46225	46033	46450	45938	46932	46086	46971	46220	47062	100.831
	9	45902	46086	46841	46878	45845	46061	45689	46262	46550	46115	46427	46660	100.631
	10	46347	46998	45913	46299	47240	46536	46387	46302	46149	45565	46082	46662	100.842
	11	46085	45859	46208	47009	46847	46149	46770	46834	46283	46316	46773	46241	101.004
	12	46257	46138	46937	46403	46191	46272	46857	46581	47108	47108	46185	46589	101.231
	13	47092	46761	46752	46526	46285	47144	46299	46465	46944	46686	46396	46439	101.442
	14	46549	46097	46405	46204	46223	46257	46479	46074	46463	46266	46266	46254	100.671
	15	45704	46641	46785	46674	46968	47228	46045	46312	46757	46642	46448	46447	101.236
	16	46124	46576	46137	46343	46793	46594	46922	46485	46090	47259	45596	46376	100.990
	17	45991	46657	46212	46347	47121	46762	47252	46733	46711	47112	46295	45837	101.305
	18	46981	46653	47121	46558	46506	46668	46628	46775	46670	46549	47026	46576	101.609
	19	46870	47259	46566	47302	46702	46567	46187	46642	46525	46736	46383	47003	101.615
	20	46881	46746	46860	45907	46832	46876	47067	47230	46081	45939	46530	45815	101.256
	21	46798	46110	46948	46550	46803	46861	46598	47300	47240	45960	46853	46435	101.562
	22	46225	47226	46917	46600	46616	46241	46968	46592	46611	46466	45930	46271	101.238
	23	46685	46981	45930	47204	47288	47366	46973	47363	47099	46719	46635	46555	101.987

		S.V.I.R.CO. Observatory - Pressure Corrected Data – December 2016											20 NM-64	
		INAF/UNIRomaTre												
day	hh	00_05	05_10	10_15	15_20	20_25	25_30	30_35	35_40	40_45	45_50	50_55	55_60	h-norm
15	0	46684	46719	47018	46856	47258	46811	46170	46303	46548	47036	46383	47331	101.682
	1	46580	46179	47148	47059	46846	46938	46360	46966	46524	46591	46316	46879	101.550
	2	46594	46429	46726	46654	47438	46728	46857	46365	46822	46566	46772	47118	101.674
	3	46869	46499	46590	46711	46634	45932	46304	47003	46914	47047	46436	46254	101.334
	4	46211	46700	46249	46511	46979	47250	46477	46501	46938	46739	46980	46407	101.470
	5	46269	47063	46455	46452	47380	46622	46592	46693	46855	46362	46479	46408	101.413
	6	46557	46816	46242	46605	46502	46515	47099	46440	46449	46589	46813	46475	101.317
	7	46446	45699	46625	46619	46567	46368	46597	46128	46354	46073	46628	46372	100.841
	8	46737	46573	46400	45987	47161	46190	46802	46832	46727	46732	46957	46606	101.427
	9	46859	46854	46852	46397	46187	46998	46193	46358	45796	46203	46849	46429	101.112
	10	46541	46163	46674	46248	46519	46302	47277	47013	46453	45779	46727	46455	101.145
	11	46524	46561	46807	46444	46775	46823	46053	45966	46734	46717	47433	46106	101.289
	12	46800	46728	46506	47093	45914	46334	46050	46376	47182	45955	47286	46346	101.221
	13	46907	46751	46420	47343	46580	45997	46574	46439	46279	46633	46334	45983	101.161
	14	46285	46890	46092	46988	46454	46573	46906	47378	46789	46694	46428	46839	101.537
	15	46663	46727	46224	46351	46988	46211	46657	46439	46420	46683	46472	46110	101.108
	16	46973	46121	46675	46236	46614	46373	46882	47194	46501	46630	47179	46648	101.485
	17	46974	46982	47224	47081	46566	46724	46261	47091	47089	46883	45757	46123	101.617
	18	46866	46169	46133	46625	46803	46415	46368	47050	46814	47164	46180	46760	101.361
	19	46572	46721	46787	46716	46734	47212	46927	47070	46677	47437	47031	46935	101.991
	20	46545	47442	46836	46496	46949	47080	46685	47100	46435	46755	46789	46172	101.713
	21	46908	46536	46657	46214	46559	46346	46270	47122	46634	46735	46929	46953	101.455
	22	47064	46932	46389	46786	46724	46721	46692	47072	46440	46988	46562	46769	101.687
	23	46819	46279	46862	45999	46762	46335	46826	46686	46322	46394	46805	47069	101.327
16	0	47100	47143	46491	46587	46592	46499	46203	47146	46579	46172	46923	46747	101.514
	1	46631	46637	46830	46308	46817	46882	46742	46810	46418	46760	46568	46070	101.385
	2	47298	46839	47057	46912	46453	46980	47339	46541	47365	47159	46641	46625	102.061
	3	46910	46953	46805	46701	46902	47383	46782	46227	47043	46519	46978	47457	101.962
	4	46759	47371	46544	47209	46941	47101	46796	46439	46309	46838	46606	46211	101.684
	5	47219	47287	46908	46748	47005	46649	46443	46190	46851	46467	47263	46638	101.783
	6	46139	46849	46747	46902	47172	47280	46213	46873	46538	46518	47893	46953	101.856
	7	46578	46319	46376	47298	46688	46210	46615	46928	46703	46786	46622	47088	101.518
	8	47136	46736	46860	46261	45865	46707	46482	46664	46356	46797	46683	46609	101.327
	9	46011	46542	46496	47094	47252	46821	46364	47315	46423	46715	47583	47117	101.794
	10	46506	46942	46482	46303	46924	46406	46310	46856	46497	46900	47287	47038	101.562
	11	46981	46863	46686	47269	46252	46694	46181	46793	46509	46462	47443	46312	101.561
	12	46910	47093	46530	46133	46479	46420	46868	46700	46534	46921	47055	46498	101.505
	13	46471	46531	47299	46730	46718	46551	46740	47227	46861	46101	46754	46711	101.606
	14	46960	46609	46423	47104	46484	46150	47280	47006	46848	46873	46414	46307	101.563
	15	46724	46843	46523	47061	46967	46541	46933	47039	46693	46505	47183	46851	101.818
	16	46676	46877	46948	46762	47075	46730	46734	46755	46972	46649	46895	46902	101.838
	17	47241	46554	46706	47004	46620	46094	46404	47375	46900	46763	46461	46419	101.578
	18	46783	46925	47164	46754	47602	47200	47093	47023	46855	47114	46849	46792	102.233
	19	47268	47294	46805	46576	46173	47294	46690	46631	45830	47159	46665	46874	101.709
	20	46724	47446	46928	46985	46910	46685	46755	46476	46913	46634	47177	46737	101.910
	21	46075	46824	47131	46815	46396	47058	47143	47208	46363	46936	47463	46446	101.816
	22	47169	46823	46790	47150	46974	47238	46769	46785	46974	46721	46575	46823	101.986
	23	46728	47040	46450	47358	47284	47048	47304	46596	46650	47459	46872	46800	102.130

		INAF/UNIRomaTre			S.V.I.R.CO. Observatory - Pressure Corrected Data – December 2016							20 NM-64		
day	hh	00_05	05_10	10_15	15_20	20_25	25_30	30_35	35_40	40_45	45_50	50_55	55_60	h-norm
17	0	46662	47225	46302	46972	47451	47515	46992	47285	46939	47393	46385	47189	102.264
	1	47382	47456	46932	46896	46795	46642	46861	47176	46679	47433	47248	46628	102.228
	2	46725	46378	46646	46502	45941	47016	47125	46264	46942	46947	47506	47339	101.721
	3	47362	46272	47024	46970	47176	45827	46284	46312	46908	46970	46470	47447	101.665
	4	47347	47181	46321	47157	46829	46463	46810	46612	46686	46852	46617	47215	101.859
	5	46876	46862	47211	47041	46172	46939	46273	46778	46897	46435	47179	47314	101.838
	6	46984	46969	46000	47305	46498	46771	47226	46967	46769	46852	47265	46765	101.909
	7	46777	46447	46085	47233	46621	46976	46901	46633	46539	47110	47439	46514	101.711
	8	46008	46616	46826	46232	47077	46298	46799	46975	46709	46965	46901	46322	101.430
	9	46622	46981	47641	47159	46806	46588	46923	47955	46540	46883	46383	46436	102.009
	10	46682	46207	46440	46196	46887	46782	46864	47318	46778	47143	47262	46820	101.730
	11	47078	46851	46778	46762	47221	47151	46330	46773	46721	46990	47732	47035	102.100
	12	47003	47924	46879	46737	47224	47234	46907	46472	47209	46788	47581	47671	102.500
	13	46991	46298	47104	47361	46874	46469	47347	46560	47065	47312	46445	47427	102.070
	14	46133	46818	47660	46840	46351	47375	46315	46959	46814	47071	46616	46723	101.783
	15	47378	46966	46931	46564	46698	47297	46697	47437	46994	46429	47025	46985	102.096
	16	46862	46843	46893	47298	46752	47168	46966	46588	46966	47527	46257	46699	101.991
	17	46902	47568	46593	46321	46833	46619	47417	46636	46877	46182	46662	47112	101.792
	18	46750	46988	47267	46904	46963	46823	47920	47085	46957	47825	47107	47147	102.519
	19	46577	46570	47395	46845	47380	46933	47058	46856	47003	46910	47011	46830	102.090
	20	47098	47057	47348	45766	46606	46510	46824	46766	46973	47012	47631	46552	101.868
	21	46444	47232	47236	47160	46544	45995	46646	46618	46555	46690	46389	47330	101.632
	22	46810	46885	47255	46353	47352	47010	46881	47284	47513	45988	46967	47670	102.199
	23	47122	46485	46474	47212	46984	46612	46576	47042	46142	46803	46498	47187	101.686
18	0	47105	46946	46122	47579	46170	46759	46804	47111	47002	46123	46806	46676	101.697
	1	47563	46494	46730	47605	46568	46464	46763	46953	47495	46211	47094	47140	102.038
	2	46553	46666	47007	46945	46663	46592	46171	46370	46982	46850	46976	46601	101.548
	3	46340	46911	46273	47139	47086	46326	46891	45756	47007	46881	47171	46827	101.590
	4	46869	46477	46818	46822	45934	45996	46755	46400	46415	46260	46548	46722	101.120
	5	46469	46724	46834	46630	46724	46284	46570	46894	46681	46924	46081	46590	101.372
	6	46506	47001	46799	47296	47579	46826	47203	47105	46662	47316	46581	46851	102.155
	7	46339	46745	47296	46491	47044	46426	46977	46492	46923	46619	46974	47109	101.740
	8	46940	46505	47116	47157	47090	47502	46407	46727	47205	46483	47231	46961	102.083
	9	47099	47099	46678	47136	46649	47290	47370	46704	46651	47582	46578	46935	102.163
	10	46582	47121	46829	47369	47356	46861	47865	46739	46814	46305	46913	46974	102.155
	11	47512	47640	47094	47437	46906	47369	46577	46705	46960	46532	47040	47735	102.478
	12	47268	46759	47071	46918	46622	47333	46502	47272	47231	46420	46884	46924	102.061
	13	46696	47349	46740	47159	46700	46368	47147	47237	46449	47189	46987	46839	101.998
	14	46461	46658	46902	46755	47408	46439	46465	46965	46189	46654	46522	47031	101.561
	15	47308	47048	46370	46230	46816	46895	45765	46783	46678	45998	46404	46746	101.306
	16	46631	46675	46248	46485	46972	46226	46089	46314	46526	47150	47046	46392	101.254
	17	46935	46236	46951	46107	47090	47256	46423	46950	46027	47245	46999	46253	101.565
	18	46771	47000	46468	46841	46763	46904	46725	46494	46838	46088	46483	46614	101.478
	19	46109	46358	46958	46650	46584	46486	46481	46717	46769	47306	46910	46727	101.490
	20	46383	47220	46581	47026	46380	46709	46757	47120	46657	46685	46148	46074	101.433
	21	46480	46593	46474	46763	46349	47165	46431	46747	46636	46825	46399	46544	101.372
	22	46631	46642	46807	46664	46496	47171	46933	46868	46835	46163	46393	46413	101.483
	23	46762	46384	46226	46136	46711	46343	46508	46155	46617	46649	46391	46596	101.023

		S.V.I.R.CO. Observatory - Pressure Corrected Data – December 2016											20 NM-64	
		INAF/UNIRomaTre												
day	hh	00_05	05_10	10_15	15_20	20_25	25_30	30_35	35_40	40_45	45_50	50_55	55_60	h-norm
19	0	46107	46641	46493	46185	46604	46667	47265	46508	46813	46635	46919	46207	101.307
	1	46212	46622	46724	47124	46839	46940	46134	46352	46409	46394	46933	46722	101.372
	2	46542	46329	46917	46928	46756	46493	46604	46982	46829	46487	47151	46945	101.655
	3	46736	46950	46796	46914	46687	46662	47105	46676	46576	46951	46529	46760	101.723
	4	47277	46482	46294	46711	46852	46293	47114	46415	46370	46359	45875	46717	101.255
	5	46368	46196	46784	46420	46902	46798	46452	46861	46714	46243	46595	46471	101.263
	6	46733	46419	47033	47154	46464	46054	46573	46056	46684	46789	46660	46895	101.392
	7	47043	46953	46719	47137	47486	47944	46573	46350	46949	46599	46751	47257	102.161
	8	46830	46422	47059	46496	46156	46295	47317	46809	46406	46257	46464	46597	101.318
	9	47229	46184	46802	46552	46094	47167	46698	46455	46304	47235	46858	47027	101.590
	10	46543	45996	47056	46867	47069	46955	46803	47002	47435	45783	46676	46171	101.545
	11	46636	47057	47405	46085	46829	46883	46882	46785	45842	46772	46887	46856	101.646
	12	46416	46005	46171	46544	46403	46102	46649	46636	46621	45954	46358	45717	100.678
	13	46649	46187	46543	46437	46283	45776	46211	46404	46745	46292	45901	46481	100.738
	14	46656	46464	45956	45849	46510	46622	46571	47287	45833	46283	46550	45569	100.782
	15	46403	46651	46137	46061	46536	45868	46087	45757	46235	46238	46196	47135	100.629
	16	46644	46582	46398	46077	45887	46089	46091	46724	46376	46218	45601	46196	100.553
	17	46527	45987	45791	46157	45867	46005	46254	46190	46067	46299	46389	46763	100.446
	18	46024	45721	45941	46676	46129	45997	46384	46152	45993	45850	45867	46133	100.187
	19	46362	46238	46338	46063	47031	47029	46325	46576	46368	45936	46291	46589	100.963
	20	46192	46416	46150	46477	46070	46390	46210	46825	46107	46344	45855	46412	100.655
	21	46373	46254	46404	46153	46590	46573	46098	45907	46911	46243	46432	46469	100.829
	22	46843	46366	46723	46413	45739	46007	46619	46178	46758	46626	46708	46698	101.060
	23	45927	45939	46374	46395	47090	46803	46786	46361	46242	46408	46866	46602	101.081
20	0	46556	46546	46075	46318	46836	46326	46680	46022	45675	45801	46773	46342	100.740
	1	46196	46523	46539	46420	46045	46091	46409	46419	46715	46160	45798	46851	100.785
	2	46173	46485	46986	45884	46582	46189	46617	46297	45997	46687	46393	46414	100.882
	3	46028	46886	46011	46311	46139	46387	46350	46668	46545	46446	46653	46311	100.888
	4	46181	46160	46604	47111	46271	46147	46761	46217	46174	47570	46509	46496	101.154
	5	46502	46778	46097	46528	47099	46285	46666	46796	47312	46600	46562	46559	101.441
	6	46867	46984	46047	46835	47070	47056	46651	46895	46487	46357	46652	46344	101.524
	7	46257	46857	46317	46547	46727	45925	46527	46856	46465	46936	47222	46575	101.337
	8	46430	46408	46701	46412	46429	46767	46545	46652	46958	46759	46562	46768	101.370
	9	46805	46880	46524	46864	47146	46395	46010	46220	47343	47064	46747	46588	101.586
	10	46867	47207	46845	46520	46658	46846	46663	46719	46571	46880	46087	47135	101.661
	11	46306	46345	46746	46957	46242	46438	46644	46530	46730	46205	46658	46883	101.241
	12	46451	47077	46155	46608	46281	46148	45963	46628	46772	46560	45833	46267	100.890
	13	46379	46111	46010	45625	46126	46585	46617	46209	46269	46740	45818	46846	100.635
	14	46339	46327	46553	46373	46122	46093	46311	46826	46982	45929	46455	46586	100.917
	15	45906	46109	46226	46405	46587	45809	46854	46120	46476	46107	46026	46226	100.547
	16	45944	46478	47147	45744	46256	46193	46020	46020	46381	45520	46343	46257	100.448
	17	45963	46081	46304	46020	46106	46459	46786	46242	46058	46292	46443	46203	100.566
	18	46269	45634	45634	45770	46413	45869	46322	46325	45864	45901	46224	45960	100.063
	19	46152	46043	46283	46203	45195	45927	45776	45477	45790	46101	46543	46425	100.015
	20	46271	45343	45884	46358	46140	46411	45451	46366	45890	46231	45767	46133	100.075
	21	46157	46289	46623	45551	45493	46428	45793	46050	45985	45933	45758	45409	99.934
	22	45727	46654	45908	46975	46134	46414	45651	45926	45814	45873	46105	46182	100.277
	23	46210	45633	46277	46563	45780	46023	46391	46415	46018	45979	45786	46051	100.234

		INAF/UNIRomaTre			S.V.I.R.CO. Observatory - Pressure Corrected Data – December 2016								20 NM-64		
day	hh	00_05	05_10	10_15	15_20	20_25	25_30	30_35	35_40	40_45	45_50	50_55	55_60	h-norm	
21	0	46322	46597	46273	46140	45738	46780	45913	46235	45965	45901	46730	46262	100.549	
	1	45459	46367	46147	46300	46270	46548	46223	46704	46139	45448	45857	46691	100.420	
	2	46076	46283	45856	45721	46282	46401	45967	46375	46079	46122	45876	46607	100.328	
	3	46580	46013	46174	46414	46530	46476	46182	46184	45894	46316	46541	46247	100.674	
	4	45946	45803	46150	46397	46374	46288	46451	45999	45970	46085	45920	45854	100.254	
	5	46218	46579	46259	45798	46081	45918	46303	46238	46323	45836	45822	46232	100.321	
	6	46236	46448	46049	46041	46298	45097	46436	45396	46223	46473	46678	45523	100.193	
	7	46018	46254	46333	46277	46320	45859	46373	46544	45984	45391	46531	46245	100.416	
	8	45957	46354	47049	45871	46345	45957	46548	45762	45872	46290	46606	45747	100.458	
	9	46171	46074	45951	46164	46236	46495	46106	46432	46007	46777	46321	46812	100.673	
	10	46463	46319	46046	46719	46108	45856	46265	46930	46888	46398	45912	46493	100.827	
	11	46879	46381	45629	46559	46439	46357	46705	46174	46013	46088	46327	46108	100.693	
	12	46368	46240	45976	46530	46689	46316	45912	46378	45875	45906	46405	46126	100.523	
	13	46972	46276	45848	46593	46573	46515	46539	46468	45550	45674	46293	46292	100.682	
	14	46558	46801	45996	46387	46785	46122	46364	46239	47182	46621	46833	46177	101.129	
	15	46004	46517	45997	46986	46126	46730	46346	46610	46489	47269	47064	46590	101.249	
	16	46967	46715	46286	46877	46774	46393	46238	46478	46168	46312	47280	46568	101.309	
	17	46301	46396	46240	46805	46559	47122	46771	46253	46677	46951	46365	46189	101.231	
	18	46515	46366	46523	45677	46315	46299	46474	45710	46261	45833	46296	46189	100.476	
	19	46463	45863	46089	46647	46661	46002	46588	46307	45741	46002	46443	45946	100.529	
	20	46170	46416	46118	46787	46867	46565	46367	46313	46049	46866	45976	46064	100.856	
	21	45904	45665	46301	46977	46511	46827	46120	45881	46123	45884	46768	46246	100.611	
	22	46225	46578	45885	46263	46217	46136	47002	46091	45943	45017	46474	46296	100.416	
	23	46445	46424	46868	46714	46711	46043	46345	45919	46014	45837	46471	45388	100.607	
22	0	46065	46136	46106	46347	46357	47032	45728	45930	45829	46822	46276	45614	100.442	
	1	46448	46713	46501	46018	46124	45856	46067	45912	46155	46432	46085	46253	100.495	
	2	46602	46122	45997	45968	45556	46535	46796	46876	46328	46200	45954	45973	100.557	
	3	46026	46263	46649	46370	46905	46474	46333	47137	46524	46454	46365	46270	101.076	
	4	45847	46590	46164	46090	46041	45697	46112	45662	46453	46120	47224	46415	100.468	
	5	45981	46675	46179	46587	46189	46568	46408	46504	46312	46132	46778	47032	100.999	
	6	46130	46221	46407	46377	46089	45740	46564	47226	46168	46520	46535	46206	100.788	
	7	46422	46420	46322	46794	47216	46045	46112	46107	46655	46440	46882	46155	101.040	
	8	45893	47464	47140	46440	46494	46558	46687	46165	47146	46023	46594	46676	101.350	
	9	46617	46505	47022	47074	46048	46440	45923	46763	46515	46369	46388	47218	101.277	
	10	45886	46923	46536	46830	45846	46276	46507	46770	46183	46337	46752	46938	101.079	
	11	46680	46168	46659	46395	46512	46566	46342	46397	46622	46352	46175	46703	101.040	
	12	46548	46732	46221	46271	46443	46722	46312	46299	46199	46417	45958	46111	100.797	
	13	46808	46860	46569	46362	46037	46320	46553	45761	46254	46460	46125	45980	100.771	
	14	45996	45934	46456	46330	46075	46459	47025	46436	46507	46275	46499	46615	100.865	
	15	45409	45533	46159	46330	46172	45410	45973	46515	46362	46412	45688	45858	99.998	
	16	46862	47026	46811	46236	46763	46545	45810	46015	45829	46653	46301	46233	100.951	
	17	45804	45804	46017	46169	46161	46485	46383	45673	45548	46308	46040	45607	100.030	
	18	46307	46311	46808	46191	46186	46945	46171	45877	46532	45560	47275	46072	100.798	
	19	46126	46114	46285	46387	46057	46193	45465	46358	46560	46540	45947	46473	100.484	
	20	46085	46540	46030	46498	46122	46540	46718	46263	46319	46096	45691	46132	100.580	
	21	46692	45899	46103	45979	46288	45550	46493	45646	46456	46543	45911	46151	100.340	
	22	46088	45920	46747	46460	45987	45708	45313	45958	46179	47056	45954	46912	100.444	
	23	46072	46037	45574	45587	45955	45734	45523	46194	46573	45973	45976	46097	99.902	

		INAF/UNIRomaTre S.V.I.R.CO. Observatory - Pressure Corrected Data – December 2016												20 NM-64
day	hh	00_05	05_10	10_15	15_20	20_25	25_30	30_35	35_40	40_45	45_50	50_55	55_60	h-norm
23	0	46449	46300	46430	46583	46207	46245	45626	45685	45951	45739	46188	46214	100.320
	1	45972	45724	45799	45671	46342	46324	46050	46180	45507	46135	45789	45416	99.833
	2	46068	45960	46029	46046	46364	46464	46250	46084	46159	46631	46780	46312	100.601
	3	46651	46005	46240	46513	46656	45873	46148	46222	46133	46112	45903	46548	100.575
	4	46282	46466	46223	46349	46240	45796	45676	46308	46291	45966	46620	46271	100.481
	5	46378	47004	46391	46329	45779	46600	46320	46669	46924	46600	46155	46496	101.053
	6	46522	46635	46475	46180	46610	46482	46096	45676	45750	46455	46359	46564	100.720
	7	46727	45725	46109	45627	45733	46368	45958	46628	46580	46611	45825	47079	100.568
	8	46174	46814	46172	45676	46044	46807	46215	46735	46825	46101	45664	46867	100.772
	9	46744	45705	46582	46404	46979	46087	46884	46298	46355	46142	46311	47222	101.066
	10	46342	46927	45903	46307	46368	47148	46471	46563	45808	46814	46221	46567	101.016
	11	46233	46842	46355	46925	46599	46572	46794	46477	46802	46982	46453	46636	101.420
	12	46512	46391	46315	46316	45987	46353	46362	46820	45877	46219	46121	46701	100.750
	13	46194	46348	46592	46496	46214	46486	45977	46388	46303	46758	46269	46599	100.868
	14	46188	46308	45968	46594	46144	46123	45864	46092	46092	45875	45949	45941	100.236
	15	46001	45950	46513	46538	45974	45906	45818	46407	45582	46922	46312	46229	100.420
	16	46132	45808	46104	45968	46115	46070	46065	45951	45856	45589	46581	46679	100.196
	17	46120	45808	46423	45977	46261	46353	45907	46174	46627	46451	46423	45821	100.455
	18	45447	46011	46177	46538	46199	46554	46508	45159	46557	46321	46293	45452	100.250
	19	46035	45853	47061	46764	46168	46352	45686	46028	46376	45975	46359	46241	100.555
	20	46018	46125	46589	46096	45726	46579	46704	46612	45832	46390	46569	46566	100.721
	21	45493	46588	46420	45848	46394	45716	45754	46451	46349	46479	46109	45793	100.283
	22	46029	45848	46002	45880	46172	46256	45458	46146	46563	46299	46077	45758	100.119
	23	45802	46381	46177	46412	45315	45977	46213	46509	46226	45593	45584	46013	100.067
24	0	45844	46408	46136	46228	46147	46063	46535	46336	46094	45229	46326	46561	100.375
	1	46269	46009	45585	45831	45756	45875	46266	45824	45168	45728	46221	45931	99.752
	2	46865	46154	46017	46262	46177	46400	46507	46006	46461	46120	45857	46315	100.599
	3	45980	45675	45909	46012	45458	45782	45409	45445	46066	46091	46368	45987	99.701
	4	46550	46215	45709	46034	45853	45370	46229	45357	45567	46461	46190	46497	100.036
	5	46490	46129	46178	45972	45890	45962	46708	46294	46189	46387	46181	45489	100.369
	6	45890	45669	46305	45931	46436	46287	46375	45531	46446	46560	46445	46786	100.512
	7	46150	46414	46281	45645	45791	46361	46615	45877	45574	46017	45840	46310	100.189
	8	46295	46046	46315	46143	46528	47056	46831	46477	45948	46258	46219	46421	100.853
	9	45696	46280	46193	47118	46136	46676	46909	46238	46525	45717	45646	46545	100.697
	10	46787	46868	46904	46861	46459	46739	46253	46531	46429	46255	46435	46364	101.278
	11	46351	46257	46113	46399	45940	46638	46418	46662	46234	46220	46856	46436	100.851
	12	46293	46484	46010	46915	46312	46701	45868	46461	45944	45382	45299	45524	100.246
	13	45825	46108	46149	45449	45600	46264	45936	45988	45825	46525	45802	45702	99.880
	14	46251	45901	46254	45749	46034	46485	46058	46562	46522	45527	45414	45051	99.995
	15	46029	46183	46367	45734	46359	46204	46075	46473	46109	45477	46006	46115	100.235
	16	45649	45687	45919	46188	45460	45888	45949	46486	45581	46175	46167	46197	99.912
	17	46048	45793	45408	45775	45962	45945	46294	46204	46152	45920	46275	45060	99.820
	18	45820	46078	45417	46085	46159	46129	46118	45771	46480	45969	45694	45835	99.950
	19	45938	46168	46184	45743	46636	46201	45825	45423	45737	46114	46214	46597	100.172
	20	45787	46607	45937	45597	45503	45757	46364	45565	45818	45043	45981	46120	99.682
	21	46326	45823	45936	45685	46546	45882	46017	46141	46028	45439	45924	45234	99.845
	22	46360	46347	44865	45964	45884	45580	46259	45893	46408	46104	47013	46213	100.191
	23	45706	46167	46208	46112	45844	46098	46610	45537	46143	45963	45987	45984	100.095

		INAF/UNIRomaTre			S.V.I.R.CO. Observatory - Pressure Corrected Data – December 2016							20 NM-64		
day	hh	00_05	05_10	10_15	15_20	20_25	25_30	30_35	35_40	40_45	45_50	50_55	55_60	h-norm
25	0	45598	46218	46627	45443	45636	45746	45794	45799	46380	45563	45518	45660	99.666
	1	46361	46147	45890	45992	46127	46265	45919	45815	45692	45527	46435	45854	100.035
	2	45475	46300	46359	45640	45451	46177	46165	45904	45739	46124	46384	46333	100.040
	3	46575	46020	45635	46551	45278	45941	45610	46840	46124	45950	46309	46022	100.185
	4	45708	46370	45804	45882	46348	46326	46491	45860	45565	46709	45887	45734	100.154
	5	46025	45879	45887	46628	45286	45954	45987	46322	45631	45775	46359	46714	100.112
	6	45880	46462	45944	45349	46226	46284	45925	45925	45287	46120	46379	46001	99.991
	7	45700	45875	45691	45737	45653	46020	45808	46562	46167	46068	46149	46137	99.952
	8	46352	46585	45973	45841	46129	45144	45782	46210	45863	46196	46086	46295	100.113
	9	45958	46321	46066	45429	46219	46467	45891	46387	46478	45996	45417	46334	100.205
	10	46445	46307	45971	45761	45772	45982	46464	45979	46654	46787	45497	46057	100.334
	11	46159	46025	46495	45645	46079	46202	46392	46496	46335	46651	45434	46283	100.428
	12	45619	46240	46892	46353	46360	46743	45845	45966	46123	46153	45802	47132	100.615
	13	47018	46283	45962	46284	45840	46388	46163	46465	46107	45811	46104	46397	100.541
	14	46243	45789	45892	45266	46240	45948	45765	45745	45987	45438	45745	46392	99.749
	15	45760	45733	46159	45498	45882	46000	46354	46009	45789	45377	46507	45282	99.731
	16	45666	46489	45283	45750	45465	45854	45489	45889	46016	45655	45850	46160	99.589
	17	45859	46257	46848	46074	45703	46255	46000	45684	45813	45914	46413	45994	100.178
	18	46065	46230	46160	46234	46419	45959	45770	46002	45961	46015	46071	46112	100.212
	19	46022	45865	45976	45889	46204	46326	46172	45798	46125	45888	45851	46344	100.114
	20	46254	45783	46465	46399	46248	45716	45883	46512	46562	46260	46605	46413	100.592
	21	46873	46643	45683	46289	45871	45394	46433	45988	46313	46276	46025	45822	100.322
	22	46510	45880	46565	46130	45114	45485	45732	46415	46535	46197	45916	46197	100.153
	23	45644	46028	45757	45876	46819	46488	45736	46052	46013	45458	46603	46013	100.118
26	0	46204	46276	46117	46661	46209	46360	46281	46081	45855	46377	46123	46524	100.583
	1	45989	46142	46174	45895	46115	45680	46034	45948	45842	45769	46947	45549	100.045
	2	45981	46383	46087	46062	46485	45692	46479	46726	46115	46185	46420	46253	100.550
	3	45667	46170	45753	45353	46483	46084	45891	46144	45548	46410	46190	45634	99.908
	4	45951	46079	45859	46446	45475	46193	46396	46550	45906	45807	46293	46833	100.354
	5	46073	46051	46184	46109	46431	46124	46039	46125	46200	45649	46115	46841	100.382
	6	45777	45664	45980	45755	46486	45933	45676	46128	46577	46664	45927	45431	100.030
	7	45572	46674	45988	46482	46393	46004	45601	46387	46084	46851	45860	45854	100.348
	8	45831	46680	45772	46061	45675	46563	46489	45338	46179	45884	46797	45816	100.227
	9	46232	46325	45248	45803	45862	45985	45888	46736	46202	46040	46305	45744	100.097
	10	46145	46348	46430	46146	46007	46022	45965	46350	46003	46273	46265	46504	100.476
	11	46359	45737	46290	46425	46349	46091	45649	46154	46027	45945	46344	46354	100.343
	12	46147	45523	46956	46527	45968	45289	46053	46433	45830	45931	46321	46480	100.294
	13	46370	45405	45850	46321	45480	45943	46085	45144	45911	45277	46283	46137	99.705
	14	45609	45819	46232	46226	45636	45941	46158	46176	45841	46179	46210	45901	100.017
	15	45951	45312	45509	45818	45954	46668	45919	46280	45903	45691	45937	46357	99.903
	16	45432	46881	46063	45878	46085	46930	45708	45947	45550	45789	45319	45690	99.899
	17	46246	45755	45711	46148	46305	46372	46067	46198	45987	45627	45956	46026	100.103
	18	46117	45818	45919	46428	46620	45649	46266	46117	46122	46446	46240	46339	100.407
	19	46297	46205	45885	45674	46566	45753	46133	46156	45857	46347	45699	46258	100.181
	20	46383	45970	45708	45422	46413	46020	45754	45960	45532	45571	45553	46534	99.816
	21	45686	45697	45936	45890	46243	46173	46607	45823	45845	45538	46453	46194	100.046
	22	45651	46030	45944	46727	46340	45860	45640	46659	46174	46105	46086	46596	100.359
	23	46805	46284	46206	46331	46454	46136	45700	46185	45792	45896	45728	45903	100.287

		INAF/UNIRomaTre S.V.I.R.CO. Observatory - Pressure Corrected Data – December 2016												20 NM-64
day	hh	00_05	05_10	10_15	15_20	20_25	25_30	30_35	35_40	40_45	45_50	50_55	55_60	h-norm
27	0	45767	46297	46287	46192	46356	45871	47015	45509	46243	46222	45473	46002	100.253
	1	46211	45163	46114	46253	46115	46090	45375	45887	45942	45959	46281	46688	100.044
	2	46508	45999	46061	46187	45829	46202	46352	46202	46359	45774	46173	46574	100.432
	3	46487	45694	46179	46176	45987	45758	46703	46682	45971	46108	45814	46194	100.348
	4	46414	46057	45893	46267	46446	45885	46556	46372	46246	45855	46314	46167	100.478
	5	46511	46226	46031	46398	46194	46097	46187	45594	46472	46139	46016	45719	100.317
	6	46126	46011	45733	46611	45644	46142	46118	45891	46299	46035	45917	45785	100.087
	7	46336	46929	46850	46694	46221	45844	45925	46207	46196	46292	46457	46007	100.748
	8	46167	45778	46223	46864	46309	46662	46444	46581	46072	45589	46444	46521	100.692
	9	45969	46636	46092	46837	46170	46543	45806	47202	46468	46467	46573	45514	100.805
	10	45899	46366	47165	46244	46300	46187	46347	46247	46358	46397	46841	46188	100.853
	11	46259	46561	46180	46547	46344	46631	45846	46097	46173	45955	46454	45799	100.545
	12	46022	46816	46206	46492	45602	45927	45757	45972	46277	46220	46486	46348	100.415
	13	46375	46776	46288	45942	45873	46332	46617	46080	46155	45835	46853	46117	100.618
	14	46856	46640	46480	46412	46555	46887	46059	45906	45955	45526	46130	46645	100.765
	15	46278	45985	46462	46141	46226	46266	46033	46348	45508	46094	45527	46703	100.315
	16	46096	45894	46065	45728	45527	45852	45884	46180	46548	46540	45512	45651	99.936
	17	46238	46047	46286	45861	46843	45745	46322	45793	46106	45743	45624	46305	100.196
	18	45373	46364	45686	45767	46076	46057	46190	46374	46216	45629	46600	45854	100.064
	19	46861	46547	46866	46933	46565	46699	46126	45879	46251	46471	45718	46392	100.993
	20	46180	45283	46350	46264	46454	46166	46096	46294	46995	46088	46270	46224	100.513
	21	46325	45784	46182	46606	46317	46123	46562	45917	46923	46799	46214	46114	100.730
	22	46751	46610	46188	46668	47079	46309	46355	46165	46323	46899	46018	46392	101.074
	23	45955	46061	46471	46476	45870	46506	45567	46438	45881	45687	46365	46189	100.296
28	0	46381	46658	46278	46046	46089	46502	46609	46531	46763	46870	46095	45802	100.870
	1	47072	45865	45961	45933	46732	46333	46538	46552	47329	46726	46884	46399	101.176
	2	46634	46875	46569	46871	46899	46537	46175	46153	46582	46060	46634	47050	101.306
	3	46153	46263	46672	46449	46746	46774	45963	46830	46187	45824	46094	46876	100.906
	4	46851	45968	46585	46348	46305	47029	46653	46378	47166	46504	46422	46905	101.319
	5	47268	47106	46507	46802	46916	46320	46195	46502	46496	46118	45937	46288	101.201
	6	46985	46984	46265	46776	46788	46697	47248	46619	47123	46580	46513	46632	101.699
	7	46656	46859	46161	46167	45862	47179	46552	47009	46272	46796	46538	46304	101.182
	8	46693	47490	46362	46130	46151	46842	46819	46395	46706	46698	46646	46710	101.415
	9	46808	46679	46796	47055	46844	46712	46641	46075	46753	46362	46231	47396	101.544
	10	46740	46632	46735	46138	45856	46336	46773	46314	47027	46962	46459	46398	101.185
	11	46474	46048	46877	47005	46424	46777	46823	46573	46527	46561	46128	46801	101.302
	12	46442	46158	46697	47373	46526	46892	46367	46379	46594	46175	46517	46161	101.168
	13	46408	46296	46404	47135	46190	46654	46339	46270	46371	46120	46162	45758	100.774
	14	46569	46924	46977	46543	46620	46493	46663	46505	46417	45739	46035	45814	100.990
	15	45731	46480	46256	46752	46436	46743	45995	46368	46160	46660	45701	46908	100.790
	16	46204	45933	46373	46646	46157	46711	46186	46226	46448	46547	45929	46435	100.718
	17	46234	45763	46260	46382	46052	46292	46200	46292	46370	46347	46624	45896	100.522
	18	46569	46979	46119	45996	46472	46761	45930	46217	46702	45555	46645	46524	100.840
	19	46680	46456	46187	46388	46302	46212	46439	46423	46468	46729	46594	45804	100.879
	20	46113	46195	46335	46478	46429	46669	46347	47208	46488	46760	46947	46463	101.196
	21	46157	46835	46182	46835	46905	46526	46397	46331	46534	46054	46870	46752	101.186
	22	46457	46991	46194	45884	46753	46464	46566	45922	46749	46452	46229	46584	100.981
	23	46070	45995	46729	46259	46485	47187	46441	46815	46566	46563	46008	46871	101.116

		INAF/UNIRomaTre			S.V.I.R.CO. Observatory - Pressure Corrected Data – December 2016							20 NM-64		
day	hh	00_05	05_10	10_15	15_20	20_25	25_30	30_35	35_40	40_45	45_50	50_55	55_60	h-norm
29	0	46080	45813	45862	46174	46977	46115	46646	46508	46744	46565	46174	46605	100.805
	1	46799	46579	46358	46758	47140	46242	46744	46897	46546	46745	46482	45822	101.319
	2	46546	46762	46856	46370	46390	46706	47167	46594	46601	46619	45911	46866	101.369
	3	46376	46218	46661	47299	46207	46134	46569	46483	46123	46141	46558	45928	100.882
	4	46422	46149	46645	46150	47201	46914	45978	47337	46558	46527	47405	46043	101.358
	5	47356	46415	46885	45829	46471	46840	47321	46422	46222	46355	46426	46167	101.246
	6	46798	46301	46869	46419	46116	47020	46539	46900	46425	45710	46603	47042	101.252
	7	46648	46628	46386	47284	46702	46631	46816	47355	46267	46531	46800	47250	101.715
	8	46434	47361	46581	46458	46784	46829	46945	47355	46499	46553	47154	47405	101.908
	9	46974	46241	46420	46843	46812	46396	47368	46708	46233	47117	46613	47135	101.636
	10	46378	45976	46842	47011	46336	46468	46213	46651	47095	47335	46594	47146	101.489
	11	46365	46423	46742	47022	46641	46651	46870	46773	47428	46932	46962	47257	101.856
	12	47068	46401	46771	46839	46747	46755	46749	46892	47463	46787	47194	46571	101.885
	13	46048	47000	46718	46345	46589	46266	47448	46886	46129	47253	45823	46773	101.349
	14	46366	46622	46536	46965	46935	46217	47660	46706	46950	46686	46801	46922	101.728
	15	47026	47102	47461	46891	47037	46922	46732	46299	47347	46978	47045	46965	102.169
	16	46686	46765	47037	46964	47236	47141	46772	46599	46616	46820	46420	46809	101.818
	17	46712	47521	46416	47381	47000	46812	46887	46739	46004	46800	46366	46217	101.637
	18	46831	47332	47534	45825	46957	47192	46994	46364	46532	47207	46529	47343	101.959
	19	46670	46313	46403	47008	46648	47137	46659	46668	46145	46663	46175	46898	101.369
	20	46275	46889	46857	45651	46623	47190	46431	47185	46546	46257	46043	47156	101.317
	21	46853	46560	46909	46622	46627	46549	46260	46540	46922	47559	47176	46815	101.732
	22	46376	46630	47094	46845	46516	46534	46663	47410	46625	47023	47108	46296	101.683
	23	46990	47258	46934	45520	46520	46983	46781	47350	47020	46763	46489	46519	101.685
30	0	46655	46961	46584	46724	46887	47157	46758	46121	46343	47348	46515	46954	101.660
	1	46465	46877	46076	45907	47045	47475	46765	46569	46530	46703	47386	46759	101.581
	2	46181	46757	46649	46651	46384	47370	47049	46702	46441	46642	46249	46787	101.455
	3	46261	46870	47073	46805	46740	46192	47223	47165	46836	46856	46634	46983	101.777
	4	46756	46531	46652	46510	47032	46263	46861	46673	46361	46461	46872	47117	101.496
	5	46710	46629	46956	46483	46872	46970	46482	46945	46849	46908	46415	46905	101.684
	6	46779	46674	46882	46065	46743	46384	46795	46839	47949	46678	46737	46872	101.733
	7	46989	46856	46276	46754	46077	47249	46854	47043	47003	46858	46614	46983	101.762
	8	46919	46474	47653	46207	47179	46959	46918	46641	46686	46420	46691	46672	101.737
	9	46592	47127	46647	47363	46736	46850	47413	46219	46538	46784	46236	46888	101.732
	10	47126	47465	47053	46668	46851	47391	46130	46405	46845	46963	46689	46925	101.935
	11	46498	46686	46654	47475	46332	46417	47626	46628	46886	46326	47237	46530	101.715
	12	46869	46427	47224	46569	46879	46874	46223	47229	47328	46970	46639	46899	101.866
	13	47326	46722	47194	46890	47168	47263	46194	46829	47433	46821	46873	46459	102.055
	14	46916	47346	46299	46854	46580	46283	46913	46434	46352	46617	46454	46496	101.397
	15	46916	46557	46754	46807	47197	46769	47036	46571	46613	46522	46297	46310	101.543
	16	46633	46593	46761	46964	46784	47113	46297	46544	46329	46921	46899	47056	101.642
	17	46390	46937	46670	46614	46661	46604	47064	46910	46581	46903	47351	47052	101.794
	18	47501	46836	46322	47258	46669	47205	46963	46411	47158	47274	47309	47231	102.230
	19	46961	46920	47198	47051	46501	46903	47089	47543	47059	46687	47468	47045	102.282
	20	46673	46879	46377	47274	46884	46901	47274	46763	47082	47248	46489	46875	101.973
	21	47226	46552	47326	47486	46809	46873	47044	46623	47249	47548	46683	46617	102.211
	22	47233	47130	46893	46297	47188	46660	46423	46599	46866	46690	46483	47127	101.768
	23	46773	46614	45873	47038	46681	46578	46834	46925	46311	46241	46704	47160	101.431

		INAF/UNIRomaTre S.V.I.R.CO. Observatory - Pressure Corrected Data – December 2016												20 NM-64
day	hh	00_05	05_10	10_15	15_20	20_25	25_30	30_35	35_40	40_45	45_50	50_55	55_60	h-norm
31	0	46931	46588	46341	46388	47022	47000	47101	47078	46618	46369	46367	46882	101.607
	1	46886	46833	46554	46638	47011	47202	46807	46739	47002	46222	46640	46916	101.743
	2	46568	46894	47053	46473	47094	46135	46584	46603	46846	47098	46561	46701	101.591
	3	46815	47256	47090	46308	46309	46761	46631	47440	46665	47073	46455	46358	101.690
	4	46544	46729	46976	47414	46336	46830	46697	47117	46377	46316	46817	46860	101.664
	5	47316	46415	46732	46855	46471	46436	46698	47019	46729	47675	47435	46883	101.963
	6	46659	46407	46654	46916	46856	46821	47107	47374	46554	45951	47044	46668	101.663
	7	46494	46590	46510	46916	46998	47067	46485	47006	46727	46886	46856	46816	101.725
	8	47579	47659	46705	47125	47306	46974	47199	46729	46334	47053	46981	47174	102.353
	9	46367	47051	46842	47138	46447	46829	46750	47135	46762	47120	46678	46742	101.817
	10	46429	47005	46913	46734	46514	46919	47155	47122	46641	47403	47188	46811	101.994
	11	46657	47087	47284	47150	47068	46945	46861	47104	47506	46769	46796	46006	102.065
	12	46659	45817	46851	46990	47073	46948	46298	46525	46988	46695	47125	46140	101.500
	13	46848	47144	47031	46675	46584	47464	47812	46851	46857	47469	46915	46672	102.263
	14	46709	47472	46875	47271	47060	46652	46725	47113	46535	46824	47103	46970	102.080
	15	46946	46715	46471	46834	47061	46998	47169	46923	47244	46563	47352	46754	102.029
	16	45877	47584	46223	46644	47096	46788	47018	46466	47865	46981	46746	46555	101.814
	17	47387	46322	46584	46733	47058	46652	46930	47394	46828	46717	47441	46937	102.020
	18	46441	46524	46333	46848	46289	46294	46722	46495	46966	46827	47084	46781	101.408
	19	46275	45941	46941	46305	46403	47240	47198	47241	46579	46611	46624	46568	101.467
	20	47267	46986	46035	46968	46378	46700	47309	46721	46870	46210	46059	46492	101.479
	21	46453	46823	46991	46970	46066	46566	46754	46788	47264	46571	46793	47053	101.678
	22	46058	46150	46458	46563	47157	46508	46686	46875	46660	46228	46653	46931	101.285
	23	46994	46707	46954	46595	46890	46486	46594	46937	46564	46686	46344	46549	101.534

S.V.I.R.CO. Observatory - Pressure in hectoPascal – December 2016

day	hh	00_05	05_10	10_15	15_20	20_25	25_30	30_35	35_40	40_45	45_50	50_55	55_60	average
1	0	1027.24	1027.23	1027.20	1027.19	1027.22	1027.25	1027.31	1027.41	1027.47	1027.49	1027.52	1027.55	1027.34
	1	1027.52	1027.48	1027.47	1027.46	1027.40	1027.31	1027.28	1027.28	1027.26	1027.20	1027.16	1027.17	1027.33
	2	1027.12	1027.03	1026.93	1026.83	1026.80	1026.79	1026.73	1026.66	1026.61	1026.63	1026.61	1026.53	1026.77
	3	1026.45	1026.40	1026.40	1026.36	1026.35	1026.35	1026.28	1026.24	1026.17	1026.09	1026.06	1026.08	1026.27
	4	1026.10	1026.07	1026.08	1026.10	1026.08	1026.10	1026.14	1026.14	1026.12	1026.10	1026.08	1026.04	1026.09
	5	1026.02	1026.05	1026.02	1025.97	1025.99	1026.01	1025.98	1025.95	1026.00	1026.01	1025.98	1025.96	1025.99
	6	1025.90	1025.85	1025.75	1025.71	1025.70	1025.63	1025.58	1025.63	1025.71	1025.72	1025.70	1025.74	1025.72
	7	1025.80	1025.84	1025.87	1025.88	1025.86	1025.90	1025.96	1025.96	1025.90	1025.85	1025.90	1025.93	1025.88
	8	1025.97	1025.99	1025.94	1025.89	1025.88	1025.89	1025.86	1025.84	1025.84	1025.83	1025.84	1025.85	1025.88
	9	1025.84	1025.79	1025.73	1025.73	1025.74	1025.71	1025.65	1025.61	1025.59	1025.50	1025.43	1025.37	1025.64
	10	1025.31	1025.23	1025.13	1025.05	1024.98	1024.91	1024.83	1024.75	1024.71	1024.64	1024.55	1024.44	1024.87
	11	1024.33	1024.26	1024.18	1024.10	1024.02	1023.95	1023.86	1023.77	1023.71	1023.64	1023.56	1023.53	1023.91
	12	1023.48	1023.40	1023.31	1023.26	1023.22	1023.15	1023.06	1022.96	1022.86	1022.76	1022.67	1022.63	1023.06
	13	1022.58	1022.49	1022.45	1022.45	1022.45	1022.42	1022.36	1022.34	1022.33	1022.30	1022.28	1022.27	1022.39
	14	1022.26	1022.25	1022.24	1022.21	1022.17	1022.11	1022.07	1022.03	1021.96	1021.93	1021.91	1021.90	1022.08
	15	1021.92	1021.89	1021.86	1021.84	1021.82	1021.81	1021.81	1021.81	1021.79	1021.81	1021.85	1021.83	1021.83
	16	1021.78	1021.75	1021.74	1021.74	1021.78	1021.78	1021.75	1021.74	1021.73	1021.74	1021.75	1021.77	1021.75
	17	1021.79	1021.78	1021.76	1021.71	1021.62	1021.55	1021.50	1021.47	1021.42	1021.40	1021.44	1021.49	1021.57
	18	1021.52	1021.52	1021.51	1021.46	1021.43	1021.43	1021.41	1021.38	1021.36	1021.32	1021.30	1021.33	1021.41
	19	1021.32	1021.28	1021.28	1021.26	1021.25	1021.27	1021.33	1021.38	1021.40	1021.45	1021.48	1021.46	1021.34
	20	1021.43	1021.42	1021.43	1021.43	1021.41	1021.39	1021.37	1021.31	1021.27	1021.27	1021.28	1021.27	1021.35
	21	1021.25	1021.24	1021.21	1021.18	1021.19	1021.19	1021.18	1021.17	1021.17	1021.20	1021.21	1021.22	1021.20
	22	1021.22	1021.21	1021.20	1021.21	1021.22	1021.21	1021.21	1021.18	1021.14	1021.12	1021.09	1021.07	1021.17
	23	1021.01	1020.99	1020.92	1020.77	1020.62	1020.50	1020.42	1020.36	1020.34	1020.29	1020.27	1020.26	1020.56
2	0	1020.20	1020.21	1020.18	1020.13	1020.12	1020.15	1020.18	1020.13	1020.10	1020.07	1020.05	1020.04	1020.13
	1	1020.00	1019.97	1020.00	1020.01	1020.01	1020.06	1020.07	1020.07	1020.06	1020.00	1019.96	1019.92	1020.01
	2	1019.82	1019.76	1019.79	1019.83	1019.80	1019.73	1019.65	1019.59	1019.54	1019.46	1019.34	1019.25	1019.63
	3	1019.23	1019.19	1019.16	1019.06	1018.99	1019.02	1019.03	1019.00	1018.93	1018.90	1018.84	1018.74	1019.01
	4	1018.72	1018.75	1018.73	1018.67	1018.61	1018.55	1018.49	1018.44	1018.40	1018.39	1018.39	1018.35	1018.54
	5	1018.32	1018.28	1018.21	1018.17	1018.15	1018.10	1018.12	1018.20	1018.22	1018.16	1018.08	1018.07	1018.17
	6	1018.09	1018.04	1018.05	1018.06	1018.06	1018.07	1018.02	1017.98	1017.95	1017.94	1017.94	1017.92	1018.01
	7	1017.90	1017.90	1017.89	1017.87	1017.86	1017.87	1017.87	1017.86	1017.83	1017.81	1017.79	1017.77	1017.85
	8	1017.75	1017.78	1017.82	1017.82	1017.83	1017.86	1017.88	1017.88	1017.89	1017.89	1017.89	1017.89	1017.85
	9	1017.88	1017.86	1017.84	1017.82	1017.79	1017.75	1017.72	1017.68	1017.63	1017.58	1017.54	1017.50	1017.71
	10	1017.46	1017.42	1017.36	1017.29	1017.22	1017.17	1017.13	1017.06	1016.98	1016.90	1016.85	1016.83	1017.14
	11	1016.79	1016.74	1016.70	1016.64	1016.54	1016.48	1016.46	1016.43	1016.40	1016.35	1016.28	1016.22	1016.50
	12	1016.17	1016.13	1016.10	1016.06	1016.00	1015.96	1015.91	1015.87	1015.84	1015.80	1015.79	1015.79	1015.95
	13	1015.78	1015.78	1015.77	1015.75	1015.75	1015.76	1015.79	1015.79	1015.77	1015.74	1015.73	1015.73	1015.76
	14	1015.74	1015.78	1015.79	1015.78	1015.79	1015.78	1015.75	1015.73	1015.72	1015.69	1015.69	1015.68	1015.74
	15	1015.67	1015.67	1015.67	1015.68	1015.71	1015.74	1015.74	1015.71	1015.72	1015.76	1015.75	1015.72	1015.71
	16	1015.72	1015.71	1015.70	1015.74	1015.77	1015.76	1015.79	1015.80	1015.80	1015.81	1015.83	1015.86	1015.77
	17	1015.87	1015.89	1015.91	1015.91	1015.92	1015.93	1015.94	1015.96	1015.98	1015.99	1016.01	1016.03	1015.94
	18	1016.05	1016.07	1016.08	1016.08	1016.08	1016.06	1016.04	1016.03	1016.01	1016.02	1016.05	1016.06	1016.05
	19	1016.07	1016.11	1016.13	1016.09	1016.04	1016.02	1016.00	1015.96	1015.92	1015.94	1015.99	1016.00	1016.02
	20	1016.00	1016.01	1016.01	1015.98	1015.97	1015.98	1015.96	1015.89	1015.84	1015.84	1015.86	1015.85	1015.93
	21	1015.85	1015.82	1015.79	1015.82	1015.86	1015.90	1015.95	1015.99	1016.05	1016.08	1016.12	1016.13	1015.94
	22	1016.12	1016.16	1016.21	1016.23	1016.27	1016.31	1016.35	1016.38	1016.41	1016.41	1016.40	1016.39	1016.30
	23	1016.39	1016.39	1016.36	1016.35	1016.37	1016.39	1016.41	1016.46	1016.45	1016.42	1016.37	1016.34	1016.39

S.V.I.R.CO. Observatory - Pressure in hectoPascal – December 2016

day	hh	00_05	05_10	10_15	15_20	20_25	25_30	30_35	35_40	40_45	45_50	50_55	55_60	average
3	0	1016.39	1016.37	1016.35	1016.34	1016.31	1016.30	1016.31	1016.33	1016.32	1016.31	1016.33	1016.33	1016.33
	1	1016.33	1016.36	1016.39	1016.37	1016.36	1016.35	1016.31	1016.27	1016.29	1016.33	1016.35	1016.34	1016.34
	2	1016.32	1016.32	1016.32	1016.31	1016.31	1016.32	1016.31	1016.29	1016.26	1016.24	1016.25	1016.26	1016.29
	3	1016.25	1016.23	1016.22	1016.21	1016.24	1016.25	1016.24	1016.27	1016.31	1016.33	1016.29	1016.27	1016.26
	4	1016.29	1016.31	1016.35	1016.38	1016.38	1016.31	1016.26	1016.29	1016.31	1016.31	1016.31	1016.30	1016.31
	5	1016.31	1016.34	1016.39	1016.42	1016.44	1016.48	1016.50	1016.53	1016.58	1016.60	1016.61	1016.59	1016.48
	6	1016.57	1016.60	1016.65	1016.66	1016.65	1016.71	1016.75	1016.75	1016.78	1016.87	1016.92	1016.97	1016.74
	7	1017.04	1017.10	1017.15	1017.18	1017.24	1017.30	1017.37	1017.43	1017.45	1017.45	1017.46	1017.47	1017.30
	8	1017.49	1017.53	1017.58	1017.65	1017.70	1017.72	1017.77	1017.81	1017.88	1017.97	1018.02	1018.05	1017.76
	9	1018.11	1018.15	1018.16	1018.15	1018.16	1018.15	1018.13	1018.14	1018.12	1018.12	1018.09	1018.05	1018.13
	10	1018.02	1017.95	1017.89	1017.86	1017.85	1017.80	1017.74	1017.72	1017.72	1017.69	1017.65	1017.64	1017.79
	11	1017.64	1017.62	1017.59	1017.56	1017.51	1017.47	1017.46	1017.45	1017.47	1017.47	1017.42	1017.36	1017.50
	12	1017.31	1017.28	1017.26	1017.24	1017.20	1017.15	1017.12	1017.12	1017.12	1017.12	1017.10	1017.09	1017.17
	13	1017.11	1017.12	1017.11	1017.12	1017.13	1017.15	1017.16	1017.17	1017.19	1017.18	1017.17	1017.20	1017.15
	14	1017.22	1017.27	1017.32	1017.35	1017.39	1017.40	1017.40	1017.38	1017.37	1017.40	1017.44	1017.47	1017.37
	15	1017.49	1017.55	1017.59	1017.60	1017.64	1017.71	1017.76	1017.77	1017.78	1017.82	1017.85	1017.86	1017.70
	16	1017.91	1017.96	1018.02	1018.13	1018.21	1018.23	1018.22	1018.25	1018.30	1018.31	1018.32	1018.34	1018.18
	17	1018.34	1018.32	1018.32	1018.36	1018.40	1018.43	1018.48	1018.54	1018.60	1018.67	1018.77	1018.85	1018.50
	18	1018.89	1018.88	1018.89	1018.91	1018.95	1019.03	1019.07	1019.08	1019.09	1019.10	1019.14	1019.19	1019.02
	19	1019.24	1019.29	1019.32	1019.35	1019.37	1019.40	1019.42	1019.43	1019.45	1019.49	1019.54	1019.56	1019.40
	20	1019.52	1019.46	1019.46	1019.49	1019.49	1019.49	1019.51	1019.52	1019.52	1019.52	1019.56	1019.61	1019.51
	21	1019.64	1019.64	1019.64	1019.67	1019.76	1019.84	1019.86	1019.86	1019.90	1019.95	1019.98	1020.01	1019.81
	22	1020.02	1020.04	1020.06	1020.07	1020.11	1020.14	1020.17	1020.17	1020.12	1020.08	1020.08	1020.08	1020.09
	23	1020.09	1020.13	1020.16	1020.18	1020.20	1020.20	1020.22	1020.21	1020.21	1020.23	1020.25	1020.27	1020.19
4	0	1020.24	1020.24	1020.22	1020.21	1020.21	1020.23	1020.25	1020.26	1020.26	1020.25	1020.27	1020.33	1020.25
	1	1020.36	1020.37	1020.37	1020.38	1020.40	1020.43	1020.44	1020.42	1020.41	1020.41	1020.39	1020.39	1020.40
	2	1020.38	1020.32	1020.29	1020.27	1020.22	1020.19	1020.20	1020.22	1020.22	1020.18	1020.14	1020.13	1020.23
	3	1020.12	1020.12	1020.14	1020.15	1020.17	1020.22	1020.27	1020.33	1020.37	1020.39	1020.41	1020.43	1020.26
	4	1020.43	1020.44	1020.48	1020.49	1020.48	1020.50	1020.50	1020.50	1020.49	1020.49	1020.51	1020.53	1020.48
	5	1020.56	1020.57	1020.60	1020.61	1020.61	1020.63	1020.66	1020.69	1020.75	1020.79	1020.79	1020.78	1020.67
	6	1020.79	1020.82	1020.87	1020.92	1020.94	1020.96	1021.01	1021.02	1021.01	1021.02	1021.07	1021.14	1020.96
	7	1021.21	1021.26	1021.28	1021.33	1021.39	1021.43	1021.45	1021.48	1021.52	1021.55	1021.61	1021.70	1021.43
	8	1021.75	1021.80	1021.90	1021.99	1022.05	1022.11	1022.15	1022.18	1022.22	1022.26	1022.29	1022.30	1022.08
	9	1022.28	1022.25	1022.24	1022.26	1022.27	1022.25	1022.22	1022.18	1022.18	1022.19	1022.16	1022.13	1022.21
	10	1022.11	1022.10	1022.10	1022.10	1022.11	1022.11	1022.10	1022.08	1022.07	1022.07	1022.04	1022.01	1022.08
	11	1022.00	1022.00	1021.95	1021.90	1021.87	1021.82	1021.75	1021.69	1021.65	1021.63	1021.62	1021.59	1021.79
	12	1021.58	1021.56	1021.53	1021.51	1021.48	1021.45	1021.42	1021.40	1021.38	1021.36	1021.34	1021.33	1021.44
	13	1021.32	1021.32	1021.34	1021.37	1021.40	1021.40	1021.39	1021.38	1021.38	1021.37	1021.35	1021.36	1021.36
	14	1021.37	1021.37	1021.35	1021.33	1021.33	1021.34	1021.35	1021.36	1021.38	1021.41	1021.43	1021.42	1021.37
	15	1021.39	1021.38	1021.42	1021.48	1021.52	1021.52	1021.50	1021.51	1021.55	1021.59	1021.60	1021.60	1021.50
	16	1021.62	1021.66	1021.74	1021.83	1021.89	1021.92	1021.96	1022.00	1022.04	1022.10	1022.17	1022.23	1021.93
	17	1022.29	1022.34	1022.38	1022.42	1022.48	1022.52	1022.53	1022.53	1022.55	1022.59	1022.64	1022.70	1022.50
	18	1022.77	1022.82	1022.84	1022.88	1022.91	1022.94	1022.99	1023.02	1023.04	1023.08	1023.12	1023.18	1022.96
	19	1023.23	1023.27	1023.31	1023.35	1023.42	1023.47	1023.49	1023.53	1023.54	1023.56	1023.59	1023.63	1023.45
	20	1023.69	1023.71	1023.71	1023.71	1023.72	1023.76	1023.76	1023.75	1023.75	1023.74	1023.72	1023.72	1023.73
	21	1023.74	1023.74	1023.76	1023.80	1023.81	1023.84	1023.90	1023.94	1023.95	1023.97	1023.99	1024.00	1023.87
	22	1024.01	1024.04	1024.06	1024.07	1024.09	1024.12	1024.14	1024.17	1024.17	1024.13	1024.12	1024.12	1024.10
	23	1024.12	1024.15	1024.18	1024.18	1024.18	1024.21	1024.22	1024.21	1024.22	1024.23	1024.23	1024.21	1024.19

S.V.I.R.CO. Observatory - Pressure in hectoPascal – December 2016

day	hh	00_05	05_10	10_15	15_20	20_25	25_30	30_35	35_40	40_45	45_50	50_55	55_60	average
5	0	1024.20	1024.18	1024.13	1024.07	1024.05	1024.08	1024.13	1024.16	1024.20	1024.23	1024.26	1024.30	1024.16
	1	1024.30	1024.29	1024.31	1024.30	1024.25	1024.23	1024.26	1024.27	1024.25	1024.21	1024.19	1024.19	1024.25
	2	1024.19	1024.22	1024.26	1024.25	1024.24	1024.25	1024.26	1024.30	1024.31	1024.29	1024.32	1024.35	1024.27
	3	1024.35	1024.38	1024.45	1024.45	1024.42	1024.45	1024.49	1024.54	1024.54	1024.55	1024.61	1024.67	1024.49
	4	1024.70	1024.69	1024.66	1024.70	1024.76	1024.76	1024.76	1024.78	1024.82	1024.89	1024.94	1024.97	1024.78
	5	1024.98	1024.98	1024.99	1025.03	1025.06	1025.08	1025.10	1025.13	1025.14	1025.16	1025.17	1025.17	1025.08
	6	1025.16	1025.15	1025.18	1025.24	1025.33	1025.41	1025.46	1025.48	1025.51	1025.54	1025.57	1025.59	1025.38
	7	1025.59	1025.62	1025.67	1025.73	1025.80	1025.86	1025.91	1025.94	1025.98	1026.04	1026.09	1026.12	1025.86
	8	1026.16	1026.19	1026.18	1026.21	1026.23	1026.23	1026.25	1026.25	1026.25	1026.24	1026.20	1026.14	1026.21
	9	1026.08	1026.04	1026.05	1026.10	1026.14	1026.15	1026.15	1026.12	1026.10	1026.10	1026.06	1025.99	1026.09
	10	1025.91	1025.84	1025.82	1025.80	1025.76	1025.69	1025.61	1025.53	1025.45	1025.38	1025.35	1025.33	1025.62
	11	1025.33	1025.29	1025.23	1025.17	1025.12	1025.06	1025.00	1024.93	1024.86	1024.81	1024.77	1024.72	1025.02
	12	1024.70	1024.66	1024.61	1024.56	1024.50	1024.45	1024.41	1024.38	1024.36	1024.34	1024.32	1024.28	1024.46
	13	1024.26	1024.26	1024.26	1024.26	1024.26	1024.27	1024.31	1024.32	1024.34	1024.35	1024.35	1024.36	1024.30
	14	1024.38	1024.38	1024.40	1024.42	1024.43	1024.46	1024.47	1024.48	1024.50	1024.53	1024.56	1024.59	1024.47
	15	1024.63	1024.68	1024.71	1024.70	1024.68	1024.68	1024.71	1024.75	1024.80	1024.85	1024.86	1024.86	1024.74
	16	1024.87	1024.85	1024.81	1024.81	1024.84	1024.88	1024.90	1024.90	1024.93	1024.97	1024.99	1025.00	1024.89
	17	1025.02	1025.04	1025.04	1025.05	1025.08	1025.10	1025.13	1025.16	1025.21	1025.26	1025.28	1025.30	1025.14
	18	1025.35	1025.41	1025.46	1025.47	1025.49	1025.54	1025.60	1025.65	1025.64	1025.66	1025.71	1025.75	1025.56
	19	1025.76	1025.76	1025.77	1025.77	1025.77	1025.77	1025.78	1025.80	1025.79	1025.81	1025.84	1025.83	1025.79
	20	1025.79	1025.77	1025.79	1025.82	1025.84	1025.83	1025.83	1025.84	1025.86	1025.88	1025.88	1025.92	1025.84
	21	1025.98	1026.00	1026.02	1026.03	1026.02	1026.05	1026.11	1026.11	1026.04	1026.00	1025.98	1025.96	1026.02
	22	1025.94	1025.94	1025.93	1025.91	1025.89	1025.89	1025.88	1025.85	1025.80	1025.75	1025.74	1025.74	1025.85
	23	1025.76	1025.80	1025.80	1025.77	1025.72	1025.67	1025.62	1025.57	1025.57	1025.57	1025.49	1025.42	1025.64
6	0	1025.38	1025.39	1025.41	1025.44	1025.44	1025.41	1025.39	1025.34	1025.30	1025.33	1025.36	1025.38	1025.38
	1	1025.40	1025.38	1025.34	1025.33	1025.32	1025.31	1025.32	1025.34	1025.33	1025.30	1025.29	1025.29	1025.33
	2	1025.28	1025.26	1025.21	1025.16	1025.10	1025.06	1025.01	1024.95	1024.93	1024.93	1024.87	1024.81	1025.04
	3	1024.76	1024.71	1024.68	1024.65	1024.63	1024.61	1024.58	1024.57	1024.58	1024.56	1024.51	1024.49	1024.61
	4	1024.53	1024.55	1024.56	1024.59	1024.62	1024.60	1024.58	1024.60	1024.62	1024.63	1024.60	1024.56	1024.58
	5	1024.54	1024.56	1024.60	1024.62	1024.61	1024.61	1024.64	1024.70	1024.72	1024.71	1024.70	1024.68	1024.64
	6	1024.69	1024.72	1024.76	1024.80	1024.81	1024.81	1024.80	1024.80	1024.81	1024.85	1024.89	1024.92	1024.80
	7	1024.94	1024.94	1024.92	1024.93	1024.94	1024.95	1025.00	1025.07	1025.14	1025.22	1025.28	1025.34	1025.05
	8	1025.39	1025.42	1025.43	1025.44	1025.48	1025.51	1025.53	1025.55	1025.59	1025.62	1025.58	1025.56	1025.51
	9	1025.57	1025.59	1025.60	1025.59	1025.59	1025.58	1025.55	1025.55	1025.55	1025.54	1025.52	1025.47	1025.56
	10	1025.44	1025.37	1025.31	1025.28	1025.31	1025.36	1025.43	1025.44	1025.37	1025.42	1025.50	1025.47	1025.39
	11	1025.37	1025.33	1025.31	1025.26	1025.24	1025.18	1025.12	1025.08	1025.09	1025.12	1025.08	1025.02	1025.18
	12	1025.00	1024.98	1024.96	1025.05	1025.13	1025.11	1025.03	1024.93	1024.91	1024.91	1024.88	1024.85	1024.98
	13	1024.80	1024.73	1024.69	1024.66	1024.64	1024.61	1024.62	1024.66	1024.69	1024.71	1024.76	1024.80	1024.69
	14	1024.81	1024.79	1024.80	1024.85	1024.89	1024.91	1024.91	1024.91	1024.94	1024.98	1025.00	1024.99	1024.90
	15	1024.97	1024.99	1025.02	1025.08	1025.17	1025.22	1025.27	1025.34	1025.36	1025.38	1025.41	1025.38	1025.21
	16	1025.39	1025.44	1025.48	1025.57	1025.62	1025.63	1025.65	1025.65	1025.70	1025.76	1025.79	1025.77	1025.62
	17	1025.76	1025.77	1025.82	1025.84	1025.82	1025.83	1025.89	1025.92	1025.94	1026.00	1026.06	1026.12	1025.89
	18	1026.15	1026.17	1026.22	1026.26	1026.29	1026.31	1026.33	1026.37	1026.41	1026.44	1026.44	1026.44	1026.32
	19	1026.43	1026.44	1026.46	1026.47	1026.48	1026.48	1026.49	1026.52	1026.49	1026.46	1026.46	1026.49	1026.47
	20	1026.55	1026.59	1026.59	1026.59	1026.59	1026.63	1026.66	1026.63	1026.58	1026.55	1026.55	1026.54	1026.59
	21	1026.54	1026.54	1026.55	1026.59	1026.63	1026.65	1026.65	1026.66	1026.71	1026.75	1026.74	1026.70	1026.64
	22	1026.66	1026.66	1026.68	1026.69	1026.68	1026.67	1026.68	1026.65	1026.64	1026.63	1026.61	1026.61	1026.65
	23	1026.62	1026.61	1026.62	1026.63	1026.63	1026.62	1026.58	1026.56	1026.58	1026.62	1026.62	1026.64	1026.61

S.V.I.R.CO. Observatory - Pressure in hectoPascal – December 2016

day	hh	00_05	05_10	10_15	15_20	20_25	25_30	30_35	35_40	40_45	45_50	50_55	55_60	average
7	0	1026.68	1026.69	1026.72	1026.76	1026.76	1026.77	1026.79	1026.77	1026.79	1026.84	1026.86	1026.90	1026.78
	1	1026.96	1026.99	1026.97	1026.99	1026.99	1026.99	1027.01	1027.02	1027.07	1027.12	1027.15	1027.15	1027.03
	2	1027.15	1027.17	1027.23	1027.27	1027.27	1027.28	1027.26	1027.23	1027.26	1027.27	1027.25	1027.21	1027.23
	3	1027.18	1027.17	1027.19	1027.22	1027.19	1027.15	1027.15	1027.15	1027.15	1027.18	1027.19	1027.19	1027.18
	4	1027.23	1027.28	1027.32	1027.32	1027.31	1027.33	1027.36	1027.38	1027.39	1027.42	1027.44	1027.43	1027.35
	5	1027.43	1027.46	1027.50	1027.55	1027.60	1027.60	1027.61	1027.64	1027.68	1027.73	1027.74	1027.75	1027.60
	6	1027.77	1027.76	1027.78	1027.84	1027.88	1027.92	1027.95	1027.96	1027.97	1028.01	1028.09	1028.15	1027.92
	7	1028.20	1028.26	1028.33	1028.40	1028.46	1028.54	1028.62	1028.69	1028.76	1028.79	1028.78	1028.76	1028.55
	8	1028.76	1028.77	1028.81	1028.87	1028.93	1028.99	1029.07	1029.13	1029.16	1029.18	1029.19	1029.22	1029.00
	9	1029.22	1029.21	1029.26	1029.29	1029.29	1029.26	1029.22	1029.20	1029.16	1029.14	1029.14	1029.13	1029.21
	10	1029.09	1029.07	1029.06	1029.03	1028.98	1028.90	1028.84	1028.79	1028.75	1028.67	1028.62	1028.57	1028.86
	11	1028.52	1028.51	1028.49	1028.43	1028.35	1028.29	1028.24	1028.19	1028.13	1028.05	1027.99	1027.98	1028.26
	12	1027.98	1027.99	1028.02	1028.03	1028.05	1028.06	1028.06	1028.03	1027.98	1027.95	1027.93	1027.94	1028.00
	13	1027.96	1027.95	1027.92	1027.92	1027.95	1028.00	1028.05	1028.05	1028.05	1028.05	1028.04	1028.08	1028.00
	14	1028.10	1028.14	1028.23	1028.31	1028.34	1028.37	1028.39	1028.39	1028.41	1028.45	1028.49	1028.53	1028.34
	15	1028.58	1028.65	1028.71	1028.75	1028.84	1028.93	1028.98	1029.03	1029.05	1029.11	1029.19	1029.26	1028.92
	16	1029.31	1029.36	1029.39	1029.43	1029.49	1029.54	1029.58	1029.61	1029.61	1029.64	1029.68	1029.68	1029.52
	17	1029.69	1029.73	1029.77	1029.82	1029.86	1029.92	1029.99	1030.06	1030.10	1030.16	1030.25	1030.30	1029.97
	18	1030.33	1030.40	1030.48	1030.56	1030.69	1030.81	1030.87	1030.91	1030.94	1031.01	1031.06	1031.08	1030.76
	19	1031.08	1031.13	1031.21	1031.30	1031.36	1031.39	1031.41	1031.42	1031.43	1031.49	1031.59	1031.65	1031.37
	20	1031.71	1031.79	1031.85	1031.87	1031.92	1032.00	1032.06	1032.09	1032.11	1032.13	1032.14	1032.17	1031.98
	21	1032.20	1032.24	1032.26	1032.26	1032.31	1032.37	1032.39	1032.38	1032.41	1032.46	1032.51	1032.55	1032.36
	22	1032.58	1032.60	1032.60	1032.60	1032.59	1032.59	1032.62	1032.65	1032.68	1032.73	1032.75	1032.71	1032.64
	23	1032.68	1032.68	1032.68	1032.65	1032.65	1032.68	1032.66	1032.65	1032.66	1032.66	1032.70	1032.72	1032.67
8	0	1032.81	1032.85	1032.89	1032.87	1032.84	1032.89	1032.99	1033.03	1033.06	1033.08	1033.08	1033.08	1032.96
	1	1033.08	1033.10	1033.15	1033.20	1033.22	1033.17	1033.16	1033.16	1033.16	1033.13	1033.12	1033.14	1033.15
	2	1033.18	1033.22	1033.17	1033.08	1033.05	1033.03	1032.99	1032.99	1033.00	1032.92	1032.85	1032.86	1033.03
	3	1032.92	1032.95	1032.94	1032.95	1032.99	1033.03	1033.03	1033.03	1032.99	1032.96	1032.97	1032.98	1032.97
	4	1032.98	1033.00	1033.03	1033.06	1033.07	1033.08	1033.11	1033.12	1033.14	1033.18	1033.21	1033.22	1033.10
	5	1033.21	1033.21	1033.20	1033.21	1033.26	1033.33	1033.38	1033.38	1033.40	1033.47	1033.52	1033.56	1033.34
	6	1033.58	1033.57	1033.58	1033.56	1033.55	1033.60	1033.67	1033.73	1033.75	1033.76	1033.82	1033.88	1033.67
	7	1033.90	1033.91	1033.91	1033.96	1034.08	1034.18	1034.29	1034.38	1034.43	1034.48	1034.57	1034.64	1034.23
	8	1034.68	1034.67	1034.70	1034.77	1034.79	1034.84	1034.92	1034.97	1035.00	1035.03	1035.06	1035.09	1034.87
	9	1035.10	1035.10	1035.09	1035.08	1035.07	1035.04	1035.02	1034.98	1034.91	1034.84	1034.78	1034.74	1034.98
	10	1034.73	1034.73	1034.70	1034.65	1034.61	1034.62	1034.65	1034.64	1034.64	1034.66	1034.68	1034.64	1034.66
	11	1034.56	1034.48	1034.38	1034.30	1034.29	1034.29	1034.25	1034.23	1034.25	1034.23	1034.18	1034.13	1034.30
	12	1034.08	1034.01	1033.97	1033.94	1033.89	1033.84	1033.80	1033.75	1033.67	1033.58	1033.52	1033.49	1033.79
	13	1033.46	1033.45	1033.43	1033.39	1033.36	1033.33	1033.32	1033.34	1033.34	1033.33	1033.34	1033.35	1033.37
	14	1033.34	1033.32	1033.28	1033.25	1033.25	1033.25	1033.24	1033.21	1033.17	1033.15	1033.16	1033.18	1033.23
	15	1033.16	1033.14	1033.15	1033.19	1033.19	1033.20	1033.25	1033.27	1033.26	1033.25	1033.26	1033.26	1033.21
	16	1033.27	1033.29	1033.31	1033.32	1033.33	1033.33	1033.31	1033.30	1033.33	1033.35	1033.38	1033.40	1033.33
	17	1033.41	1033.41	1033.42	1033.46	1033.54	1033.58	1033.60	1033.63	1033.66	1033.69	1033.71	1033.73	1033.57
	18	1033.77	1033.82	1033.87	1033.87	1033.87	1033.90	1033.92	1033.94	1033.96	1034.03	1034.06	1034.06	1033.92
	19	1034.09	1034.16	1034.25	1034.27	1034.26	1034.26	1034.18	1034.10	1034.10	1034.10	1034.10	1034.13	1034.16
	20	1034.15	1034.17	1034.20	1034.26	1034.28	1034.25	1034.26	1034.27	1034.28	1034.30	1034.30	1034.32	1034.25
	21	1034.34	1034.32	1034.27	1034.22	1034.22	1034.26	1034.25	1034.21	1034.19	1034.20	1034.20	1034.18	1034.24
	22	1034.16	1034.17	1034.17	1034.18	1034.19	1034.18	1034.14	1034.10	1034.07	1034.04	1034.01	1033.96	1034.11
	23	1033.91	1033.89	1033.89	1033.87	1033.83	1033.80	1033.77	1033.73	1033.68	1033.62	1033.58	1033.56	1033.76

S.V.I.R.CO. Observatory - Pressure in hectoPascal – December 2016

day	hh	00_05	05_10	10_15	15_20	20_25	25_30	30_35	35_40	40_45	45_50	50_55	55_60	average
9	0	1033.51	1033.51	1033.50	1033.51	1033.52	1033.50	1033.47	1033.40	1033.34	1033.28	1033.23	1033.21	1033.41
	1	1033.20	1033.19	1033.16	1033.12	1033.12	1033.14	1033.14	1033.16	1033.17	1033.15	1033.11	1033.08	1033.14
	2	1033.03	1032.99	1032.99	1033.00	1032.99	1032.97	1032.93	1032.90	1032.88	1032.87	1032.84	1032.81	1032.93
	3	1032.78	1032.74	1032.68	1032.62	1032.58	1032.57	1032.58	1032.57	1032.54	1032.51	1032.46	1032.40	1032.58
	4	1032.33	1032.26	1032.23	1032.18	1032.12	1032.11	1032.08	1032.03	1032.02	1032.06	1032.05	1032.01	1032.12
	5	1031.95	1031.93	1031.95	1031.96	1031.97	1032.00	1032.07	1032.12	1032.13	1032.13	1032.11	1032.10	1032.03
	6	1032.13	1032.15	1032.17	1032.16	1032.20	1032.30	1032.40	1032.48	1032.50	1032.51	1032.52	1032.53	1032.34
	7	1032.46	1032.39	1032.40	1032.42	1032.47	1032.53	1032.54	1032.51	1032.54	1032.58	1032.61	1032.66	1032.51
	8	1032.68	1032.67	1032.67	1032.67	1032.66	1032.70	1032.74	1032.77	1032.80	1032.87	1032.92	1032.91	1032.75
	9	1032.92	1032.93	1032.87	1032.81	1032.85	1032.89	1032.87	1032.88	1032.86	1032.80	1032.72	1032.57	1032.83
	10	1032.44	1032.33	1032.28	1032.33	1032.34	1032.29	1032.25	1032.21	1032.17	1032.11	1032.01	1031.94	1032.22
	11	1031.88	1031.78	1031.73	1031.64	1031.56	1031.52	1031.45	1031.38	1031.38	1031.41	1031.37	1031.26	1031.53
	12	1031.16	1031.09	1031.03	1030.99	1030.98	1030.91	1030.82	1030.78	1030.74	1030.66	1030.58	1030.53	1030.85
	13	1030.50	1030.47	1030.48	1030.49	1030.47	1030.42	1030.38	1030.38	1030.40	1030.36	1030.33	1030.31	1030.41
	14	1030.28	1030.28	1030.29	1030.29	1030.25	1030.19	1030.18	1030.16	1030.11	1030.10	1030.09	1030.06	1030.19
	15	1030.05	1030.03	1029.99	1029.93	1029.89	1029.90	1029.91	1029.89	1029.87	1029.90	1029.94	1029.92	1029.93
	16	1029.88	1029.86	1029.84	1029.82	1029.82	1029.83	1029.84	1029.84	1029.87	1029.89	1029.89	1029.90	1029.86
	17	1029.92	1029.91	1029.86	1029.84	1029.86	1029.88	1029.88	1029.87	1029.86	1029.85	1029.87	1029.88	1029.87
	18	1029.87	1029.87	1029.87	1029.89	1029.90	1029.93	1029.96	1029.97	1029.97	1029.98	1030.02	1030.06	1029.94
	19	1030.05	1030.04	1030.06	1030.06	1030.05	1030.06	1030.06	1030.02	1030.01	1030.02	1029.97	1029.92	1030.02
	20	1029.92	1029.94	1029.96	1029.93	1029.92	1029.96	1030.00	1030.03	1030.04	1030.05	1030.06	1030.07	1029.99
	21	1030.07	1030.05	1030.04	1030.02	1030.00	1030.03	1030.06	1030.07	1030.04	1030.01	1029.99	1029.95	1030.03
	22	1029.93	1029.92	1029.93	1029.93	1029.90	1029.87	1029.85	1029.82	1029.81	1029.83	1029.79	1029.70	1029.85
	23	1029.66	1029.64	1029.61	1029.59	1029.59	1029.57	1029.56	1029.51	1029.43	1029.40	1029.39	1029.36	1029.52
10	0	1029.38	1029.35	1029.29	1029.26	1029.21	1029.15	1029.14	1029.14	1029.12	1029.11	1029.10	1029.12	1029.19
	1	1029.14	1029.14	1029.17	1029.21	1029.19	1029.15	1029.16	1029.15	1029.14	1029.13	1029.07	1029.01	1029.14
	2	1028.95	1028.92	1028.91	1028.89	1028.88	1028.89	1028.89	1028.86	1028.80	1028.76	1028.70	1028.63	1028.84
	3	1028.58	1028.53	1028.51	1028.51	1028.51	1028.48	1028.44	1028.40	1028.35	1028.31	1028.25	1028.20	1028.42
	4	1028.12	1028.07	1028.08	1028.09	1028.09	1028.12	1028.10	1028.07	1028.05	1028.03	1028.03	1028.01	1028.07
	5	1027.97	1027.92	1027.89	1027.91	1027.97	1028.03	1028.03	1028.03	1028.04	1028.06	1028.07	1028.08	1028.00
	6	1028.11	1028.12	1028.09	1028.09	1028.11	1028.14	1028.16	1028.15	1028.13	1028.14	1028.15	1028.17	1028.13
	7	1028.22	1028.28	1028.33	1028.38	1028.40	1028.40	1028.41	1028.42	1028.43	1028.46	1028.50	1028.52	1028.39
	8	1028.54	1028.58	1028.60	1028.61	1028.68	1028.74	1028.78	1028.81	1028.85	1028.89	1028.89	1028.87	1028.73
	9	1028.86	1028.85	1028.83	1028.82	1028.82	1028.80	1028.75	1028.72	1028.74	1028.76	1028.73	1028.67	1028.78
	10	1028.59	1028.51	1028.45	1028.40	1028.33	1028.25	1028.16	1028.05	1027.95	1027.87	1027.78	1027.70	1028.17
	11	1027.65	1027.60	1027.55	1027.52	1027.48	1027.40	1027.29	1027.18	1027.09	1027.02	1026.98	1026.95	1027.31
	12	1026.89	1026.84	1026.80	1026.75	1026.74	1026.71	1026.66	1026.61	1026.56	1026.55	1026.54	1026.52	1026.68
	13	1026.48	1026.42	1026.38	1026.35	1026.35	1026.37	1026.33	1026.29	1026.28	1026.28	1026.27	1026.25	1026.33
	14	1026.21	1026.18	1026.17	1026.17	1026.17	1026.16	1026.13	1026.11	1026.11	1026.11	1026.12	1026.12	1026.15
	15	1026.10	1026.09	1026.09	1026.09	1026.11	1026.14	1026.17	1026.18	1026.17	1026.15	1026.17	1026.19	1026.13
	16	1026.22	1026.25	1026.26	1026.28	1026.29	1026.31	1026.33	1026.32	1026.32	1026.33	1026.37	1026.40	1026.30
	17	1026.42	1026.42	1026.42	1026.42	1026.42	1026.44	1026.48	1026.48	1026.45	1026.44	1026.43	1026.42	1026.43
	18	1026.39	1026.38	1026.38	1026.37	1026.37	1026.38	1026.37	1026.35	1026.33	1026.31	1026.27	1026.25	1026.34
	19	1026.23	1026.21	1026.20	1026.20	1026.21	1026.22	1026.25	1026.29	1026.30	1026.25	1026.21	1026.20	1026.23
	20	1026.21	1026.23	1026.22	1026.18	1026.13	1026.08	1026.07	1026.09	1026.10	1026.06	1026.02	1026.03	1026.12
	21	1026.06	1026.03	1026.01	1026.02	1026.01	1026.01	1025.98	1025.95	1025.95	1025.92	1025.92	1025.95	1025.98
	22	1025.94	1025.92	1025.89	1025.85	1025.79	1025.76	1025.77	1025.79	1025.80	1025.83	1025.83	1025.80	1025.83
	23	1025.76	1025.72	1025.67	1025.61	1025.53	1025.51	1025.53	1025.53	1025.53	1025.49	1025.45	1025.45	1025.56

S.V.I.R.CO. Observatory - Pressure in hectoPascal – December 2016

day	hh	00_05	05_10	10_15	15_20	20_25	25_30	30_35	35_40	40_45	45_50	50_55	55_60	average
11	0	1025.47	1025.46	1025.43	1025.38	1025.37	1025.36	1025.27	1025.23	1025.25	1025.18	1025.16	1025.22	1025.30
	1	1025.22	1025.20	1025.18	1025.13	1025.07	1025.08	1025.05	1024.95	1024.91	1024.87	1024.80	1024.77	1025.02
	2	1024.76	1024.69	1024.63	1024.53	1024.40	1024.36	1024.34	1024.41	1024.43	1024.40	1024.37	1024.30	1024.47
	3	1024.24	1024.24	1024.22	1024.20	1024.18	1024.17	1024.17	1024.12	1024.06	1023.99	1023.94	1023.87	1024.11
	4	1023.82	1023.79	1023.76	1023.75	1023.70	1023.67	1023.66	1023.62	1023.58	1023.56	1023.55	1023.52	1023.66
	5	1023.47	1023.44	1023.43	1023.45	1023.43	1023.42	1023.42	1023.40	1023.38	1023.38	1023.38	1023.35	1023.41
	6	1023.33	1023.33	1023.30	1023.27	1023.24	1023.20	1023.18	1023.16	1023.15	1023.15	1023.14	1023.16	1023.21
	7	1023.18	1023.17	1023.17	1023.20	1023.22	1023.24	1023.28	1023.31	1023.29	1023.27	1023.24	1023.23	1023.23
	8	1023.24	1023.27	1023.31	1023.31	1023.28	1023.25	1023.22	1023.15	1023.11	1023.07	1023.04	1023.02	1023.19
	9	1023.02	1023.04	1023.05	1023.03	1022.99	1022.96	1022.87	1022.81	1022.77	1022.68	1022.58	1022.48	1022.85
	10	1022.35	1022.25	1022.19	1022.09	1022.00	1021.89	1021.80	1021.73	1021.62	1021.54	1021.48	1021.42	1021.86
	11	1021.35	1021.31	1021.27	1021.21	1021.14	1020.99	1020.86	1020.82	1020.74	1020.70	1020.66	1020.53	1020.96
	12	1020.46	1020.40	1020.28	1020.21	1020.18	1020.10	1020.03	1020.00	1019.93	1019.82	1019.70	1019.62	1020.06
	13	1019.55	1019.52	1019.49	1019.43	1019.40	1019.34	1019.27	1019.22	1019.16	1019.10	1019.01	1018.96	1019.29
	14	1018.94	1018.87	1018.78	1018.73	1018.69	1018.63	1018.57	1018.51	1018.47	1018.44	1018.45	1018.45	1018.63
	15	1018.39	1018.32	1018.31	1018.30	1018.25	1018.20	1018.19	1018.19	1018.18	1018.14	1018.11	1018.10	1018.22
	16	1018.06	1018.01	1017.99	1018.01	1018.01	1017.98	1017.98	1017.96	1017.95	1017.95	1017.95	1017.99	1017.98
	17	1017.97	1017.94	1017.95	1017.95	1017.94	1017.91	1017.91	1017.92	1017.89	1017.83	1017.74	1017.72	1017.89
	18	1017.73	1017.72	1017.69	1017.64	1017.64	1017.64	1017.60	1017.65	1017.76	1017.78	1017.77	1017.72	1017.69
	19	1017.69	1017.66	1017.58	1017.47	1017.39	1017.38	1017.36	1017.34	1017.30	1017.31	1017.31	1017.26	1017.42
	20	1017.24	1017.25	1017.25	1017.23	1017.21	1017.23	1017.21	1017.14	1017.08	1017.08	1017.13	1017.15	1017.18
	21	1017.15	1017.20	1017.21	1017.16	1017.07	1017.00	1016.96	1016.92	1016.90	1016.89	1016.86	1016.82	1017.01
	22	1016.81	1016.84	1016.86	1016.81	1016.73	1016.64	1016.58	1016.55	1016.48	1016.43	1016.41	1016.36	1016.62
	23	1016.31	1016.28	1016.23	1016.19	1016.15	1016.12	1016.10	1016.04	1015.97	1015.91	1015.84	1015.80	1016.08
12	0	1015.77	1015.73	1015.64	1015.57	1015.55	1015.56	1015.57	1015.56	1015.54	1015.53	1015.53	1015.50	1015.58
	1	1015.44	1015.38	1015.33	1015.30	1015.27	1015.21	1015.15	1015.13	1015.11	1015.09	1015.06	1015.02	1015.20
	2	1014.97	1014.92	1014.84	1014.77	1014.77	1014.80	1014.76	1014.68	1014.62	1014.63	1014.61	1014.54	1014.74
	3	1014.51	1014.49	1014.45	1014.45	1014.42	1014.40	1014.41	1014.43	1014.45	1014.46	1014.45	1014.48	1014.45
	4	1014.54	1014.56	1014.54	1014.52	1014.51	1014.48	1014.46	1014.45	1014.40	1014.38	1014.38	1014.37	1014.46
	5	1014.35	1014.36	1014.37	1014.39	1014.41	1014.38	1014.33	1014.31	1014.30	1014.32	1014.31	1014.30	1014.34
	6	1014.30	1014.26	1014.28	1014.36	1014.45	1014.56	1014.62	1014.67	1014.72	1014.78	1014.84	1014.87	1014.56
	7	1014.95	1015.01	1015.05	1015.14	1015.23	1015.29	1015.32	1015.37	1015.39	1015.42	1015.50	1015.57	1015.27
	8	1015.62	1015.68	1015.70	1015.70	1015.69	1015.66	1015.67	1015.64	1015.54	1015.50	1015.52	1015.56	1015.62
	9	1015.60	1015.64	1015.65	1015.69	1015.74	1015.75	1015.74	1015.73	1015.73	1015.67	1015.61	1015.61	1015.68
	10	1015.61	1015.58	1015.59	1015.57	1015.49	1015.43	1015.38	1015.30	1015.27	1015.27	1015.24	1015.20	1015.41
	11	1015.14	1015.10	1015.05	1015.01	1014.99	1014.97	1014.96	1014.93	1014.89	1014.90	1014.91	1014.87	1014.98
	12	1014.84	1014.80	1014.75	1014.71	1014.70	1014.71	1014.71	1014.68	1014.66	1014.64	1014.62	1014.61	1014.70
	13	1014.60	1014.61	1014.65	1014.66	1014.64	1014.61	1014.59	1014.60	1014.62	1014.65	1014.63	1014.64	1014.62
	14	1014.70	1014.74	1014.77	1014.79	1014.74	1014.69	1014.73	1014.80	1014.89	1014.97	1015.06	1015.20	1014.84
	15	1015.32	1015.38	1015.39	1015.42	1015.48	1015.54	1015.61	1015.64	1015.66	1015.72	1015.80	1015.88	1015.57
	16	1015.98	1016.09	1016.19	1016.25	1016.30	1016.37	1016.44	1016.50	1016.55	1016.61	1016.64	1016.66	1016.38
	17	1016.76	1016.86	1016.93	1017.00	1017.05	1017.10	1017.17	1017.21	1017.26	1017.36	1017.48	1017.60	1017.15
	18	1017.72	1017.80	1017.85	1017.90	1017.94	1018.02	1018.11	1018.19	1018.27	1018.34	1018.39	1018.47	1018.08
	19	1018.55	1018.61	1018.67	1018.73	1018.79	1018.84	1018.89	1018.98	1019.07	1019.12	1019.21	1019.29	1018.89
	20	1019.38	1019.45	1019.47	1019.48	1019.49	1019.57	1019.69	1019.78	1019.87	1019.90	1019.94	1019.99	1019.67
	21	1020.05	1020.10	1020.17	1020.25	1020.31	1020.35	1020.39	1020.46	1020.56	1020.65	1020.73	1020.81	1020.40
	22	1020.89	1020.97	1021.03	1021.07	1021.14	1021.23	1021.30	1021.37	1021.42	1021.41	1021.40	1021.46	1021.22
	23	1021.51	1021.54	1021.59	1021.61	1021.62	1021.63	1021.67	1021.73	1021.77	1021.80	1021.85	1021.90	1021.68

S.V.I.R.CO. Observatory - Pressure in hectoPascal – December 2016

day	hh	00_05	05_10	10_15	15_20	20_25	25_30	30_35	35_40	40_45	45_50	50_55	55_60	average
13	0	1021.95	1021.98	1022.03	1022.05	1022.06	1022.08	1022.16	1022.25	1022.30	1022.32	1022.38	1022.48	1022.18
	1	1022.55	1022.57	1022.60	1022.62	1022.62	1022.66	1022.67	1022.68	1022.69	1022.66	1022.65	1022.67	1022.63
	2	1022.70	1022.74	1022.79	1022.85	1022.89	1022.86	1022.83	1022.83	1022.82	1022.79	1022.77	1022.81	1022.80
	3	1022.84	1022.85	1022.85	1022.82	1022.81	1022.83	1022.86	1022.85	1022.85	1022.94	1023.05	1023.07	1022.88
	4	1023.07	1023.11	1023.12	1023.11	1023.14	1023.20	1023.26	1023.32	1023.39	1023.44	1023.47	1023.50	1023.26
	5	1023.57	1023.64	1023.70	1023.76	1023.82	1023.88	1023.92	1023.97	1024.06	1024.15	1024.26	1024.40	1023.93
	6	1024.50	1024.56	1024.61	1024.68	1024.77	1024.82	1024.88	1024.98	1025.07	1025.14	1025.24	1025.24	1024.87
	7													
	8													
	9						1026.80	1026.85	1026.87	1026.90	1026.94	1026.93	1026.93	1026.88
	10	1026.92	1026.90	1026.88	1026.86	1026.83	1026.81	1026.80	1026.78	1026.76	1026.72	1026.68	1026.62	1026.79
	11	1026.56	1026.53	1026.50	1026.45	1026.40	1026.36	1026.34	1026.31	1026.28	1026.26	1026.20	1026.12	1026.36
	12	1026.06	1026.03	1026.02	1025.99	1025.97	1025.95	1025.94	1025.92	1025.90	1025.90	1025.90	1025.90	1025.96
	13	1025.90	1025.88	1025.83	1025.82	1025.82	1025.82	1025.82	1025.82	1025.81	1025.78	1025.77	1025.78	1025.82
	14	1025.79	1025.78	1025.76	1025.76	1025.75	1025.71	1025.68	1025.67	1025.67	1025.67	1025.66	1025.65	1025.71
	15	1025.64	1025.65	1025.67	1025.67	1025.68	1025.71	1025.72	1025.73	1025.74	1025.75	1025.75	1025.77	1025.70
	16	1025.78	1025.77	1025.80	1025.86	1025.88	1025.92	1026.00	1026.06	1026.08	1026.11	1026.13	1026.15	1025.96
	17	1026.17	1026.20	1026.26	1026.29	1026.31	1026.31	1026.30	1026.31	1026.32	1026.33	1026.33	1026.35	1026.29
	18	1026.40	1026.46	1026.51	1026.51	1026.53	1026.57	1026.59	1026.60	1026.60	1026.62	1026.65	1026.68	1026.56
	19	1026.71	1026.78	1026.85	1026.90	1026.95	1026.98	1026.99	1026.99	1026.99	1027.00	1027.04	1027.09	1026.94
	20	1027.10	1027.10	1027.10	1027.09	1027.10	1027.11	1027.12	1027.13	1027.13	1027.14	1027.18	1027.21	1027.12
	21	1027.22	1027.22	1027.26	1027.30	1027.27	1027.23	1027.22	1027.18	1027.16	1027.18	1027.21	1027.21	1027.22
	22	1027.22	1027.21	1027.21	1027.20	1027.19	1027.21	1027.23	1027.21	1027.19	1027.17	1027.13	1027.09	1027.19
	23	1027.07	1027.03	1027.00	1027.00	1026.96	1026.95	1026.96	1026.94	1026.94	1026.94	1026.91	1026.89	1026.96
14	0	1026.88	1026.88	1026.89	1026.90	1026.92	1026.94	1026.94	1026.97	1027.02	1027.03	1027.03	1027.01	1026.95
	1	1027.00	1027.00	1026.99	1026.99	1026.99	1026.98	1026.96	1026.94	1026.92	1026.85	1026.83	1026.81	1026.94
	2	1026.73	1026.67	1026.63	1026.61	1026.58	1026.56	1026.54	1026.50	1026.48	1026.46	1026.43	1026.45	1026.55
	3	1026.44	1026.43	1026.43	1026.43	1026.41	1026.39	1026.39	1026.38	1026.35	1026.31	1026.29	1026.28	1026.38
	4	1026.30	1026.33	1026.35	1026.37	1026.40	1026.44	1026.48	1026.49	1026.45	1026.44	1026.47	1026.47	1026.41
	5	1026.46	1026.46	1026.46	1026.44	1026.44	1026.43	1026.42	1026.48	1026.51	1026.49	1026.45	1026.41	1026.45
	6	1026.41	1026.41	1026.39	1026.38	1026.39	1026.38	1026.37	1026.38	1026.42	1026.42	1026.42	1026.44	1026.40
	7	1026.42	1026.39	1026.37	1026.37	1026.37	1026.37	1026.36	1026.33	1026.30	1026.31	1026.31	1026.27	1026.34
	8	1026.25	1026.26	1026.29	1026.34	1026.41	1026.45	1026.47	1026.51	1026.54	1026.56	1026.57	1026.59	1026.43
	9	1026.60	1026.61	1026.61	1026.58	1026.53	1026.46	1026.43	1026.39	1026.34	1026.25	1026.17	1026.16	1026.42
	10	1026.16	1026.16	1026.14	1026.12	1026.11	1026.09	1026.04	1026.02	1026.00	1025.97	1025.93	1025.89	1026.05
	11	1025.84	1025.80	1025.77	1025.75	1025.73	1025.69	1025.63	1025.59	1025.51	1025.44	1025.40	1025.35	1025.62
	12	1025.29	1025.27	1025.25	1025.23	1025.19	1025.13	1025.08	1025.05	1025.06	1025.06	1025.04	1025.01	1025.14
	13	1024.98	1024.95	1024.93	1024.88	1024.86	1024.86	1024.84	1024.80	1024.76	1024.72	1024.69	1024.68	1024.83
	14	1024.68	1024.66	1024.61	1024.58	1024.57	1024.57	1024.57	1024.55	1024.55	1024.56	1024.56	1024.56	1024.58
	15	1024.54	1024.52	1024.48	1024.45	1024.43	1024.44	1024.46	1024.46	1024.46	1024.45	1024.44	1024.43	1024.46
	16	1024.43	1024.45	1024.51	1024.56	1024.57	1024.58	1024.59	1024.62	1024.64	1024.64	1024.62	1024.59	1024.56
	17	1024.57	1024.57	1024.53	1024.50	1024.52	1024.55	1024.55	1024.53	1024.53	1024.56	1024.58	1024.61	1024.55
	18	1024.64	1024.66	1024.69	1024.71	1024.72	1024.70	1024.65	1024.59	1024.54	1024.51	1024.50	1024.49	1024.61
	19	1024.47	1024.47	1024.49	1024.53	1024.57	1024.60	1024.63	1024.66	1024.67	1024.67	1024.68	1024.67	1024.59
	20	1024.67	1024.70	1024.68	1024.66	1024.66	1024.66	1024.70	1024.72	1024.71	1024.72	1024.76	1024.79	1024.70
	21	1024.79	1024.80	1024.84	1024.89	1024.91	1024.92	1024.90	1024.86	1024.88	1024.93	1024.93	1024.91	1024.88
	22	1024.92	1024.98	1025.02	1025.04	1025.06	1025.04	1025.01	1024.98	1024.97	1024.94	1024.87	1024.82	1024.97
	23	1024.82	1024.84	1024.83	1024.81	1024.79	1024.79	1024.78	1024.78	1024.79	1024.76	1024.70	1024.66	1024.78

S.V.I.R.CO. Observatory - Pressure in hectoPascal – December 2016

day	hh	00_05	05_10	10_15	15_20	20_25	25_30	30_35	35_40	40_45	45_50	50_55	55_60	average
15	0	1024.68	1024.69	1024.72	1024.73	1024.70	1024.66	1024.64	1024.64	1024.64	1024.64	1024.65	1024.65	1024.67
	1	1024.64	1024.64	1024.67	1024.71	1024.70	1024.64	1024.61	1024.63	1024.64	1024.67	1024.68	1024.67	1024.66
	2	1024.65	1024.62	1024.57	1024.52	1024.47	1024.44	1024.46	1024.49	1024.46	1024.42	1024.41	1024.41	1024.49
	3	1024.43	1024.46	1024.50	1024.49	1024.46	1024.46	1024.47	1024.47	1024.47	1024.47	1024.43	1024.39	1024.46
	4	1024.36	1024.36	1024.34	1024.29	1024.26	1024.24	1024.22	1024.19	1024.13	1024.10	1024.09	1024.10	1024.22
	5	1024.12	1024.14	1024.18	1024.21	1024.23	1024.25	1024.26	1024.27	1024.29	1024.31	1024.33	1024.35	1024.24
	6	1024.36	1024.37	1024.38	1024.41	1024.40	1024.37	1024.35	1024.34	1024.34	1024.32	1024.33	1024.35	1024.36
	7	1024.36	1024.39	1024.43	1024.48	1024.53	1024.57	1024.59	1024.62	1024.66	1024.69	1024.72	1024.75	1024.56
	8	1024.74	1024.75	1024.84	1024.91	1024.95	1024.98	1024.98	1024.97	1024.99	1025.00	1025.01	1025.03	1024.93
	9	1025.05	1025.03	1024.99	1024.97	1024.94	1024.89	1024.85	1024.81	1024.76	1024.68	1024.61	1024.58	1024.84
	10	1024.55	1024.52	1024.48	1024.44	1024.38	1024.33	1024.25	1024.19	1024.14	1024.05	1024.00	1023.98	1024.27
	11	1023.92	1023.83	1023.73	1023.64	1023.57	1023.51	1023.45	1023.42	1023.37	1023.29	1023.22	1023.17	1023.51
	12	1023.10	1023.02	1022.98	1022.92	1022.85	1022.79	1022.76	1022.75	1022.69	1022.63	1022.57	1022.52	1022.80
	13	1022.52	1022.55	1022.58	1022.61	1022.60	1022.56	1022.54	1022.53	1022.51	1022.52	1022.55	1022.55	1022.55
	14	1022.53	1022.50	1022.48	1022.47	1022.48	1022.47	1022.45	1022.45	1022.46	1022.51	1022.57	1022.62	1022.50
	15	1022.65	1022.68	1022.72	1022.74	1022.74	1022.71	1022.70	1022.70	1022.71	1022.74	1022.77	1022.77	1022.72
	16	1022.76	1022.77	1022.79	1022.79	1022.80	1022.84	1022.88	1022.93	1022.96	1022.99	1023.02	1023.04	1022.88
	17	1023.06	1023.05	1023.05	1023.09	1023.13	1023.17	1023.21	1023.22	1023.21	1023.22	1023.25	1023.29	1023.16
	18	1023.34	1023.37	1023.36	1023.34	1023.35	1023.38	1023.40	1023.43	1023.48	1023.51	1023.50	1023.49	1023.41
	19	1023.49	1023.50	1023.50	1023.52	1023.54	1023.55	1023.59	1023.66	1023.71	1023.73	1023.74	1023.75	1023.61
	20	1023.78	1023.81	1023.82	1023.83	1023.90	1023.96	1024.00	1024.05	1024.09	1024.12	1024.15	1024.17	1023.97
	21	1024.18	1024.23	1024.26	1024.26	1024.30	1024.36	1024.40	1024.42	1024.46	1024.50	1024.51	1024.52	1024.36
	22	1024.52	1024.52	1024.56	1024.59	1024.57	1024.56	1024.57	1024.58	1024.58	1024.59	1024.58	1024.57	1024.56
	23	1024.55	1024.53	1024.51	1024.49	1024.51	1024.53	1024.54	1024.55	1024.56	1024.58	1024.58	1024.57	1024.54
16	0	1024.59	1024.59	1024.57	1024.56	1024.57	1024.59	1024.61	1024.63	1024.67	1024.72	1024.77	1024.81	1024.64
	1	1024.86	1024.88	1024.89	1024.90	1024.89	1024.85	1024.79	1024.76	1024.72	1024.71	1024.70	1024.68	1024.80
	2	1024.65	1024.61	1024.60	1024.60	1024.59	1024.57	1024.54	1024.52	1024.49	1024.47	1024.45	1024.43	1024.54
	3	1024.42	1024.42	1024.41	1024.39	1024.40	1024.41	1024.40	1024.37	1024.35	1024.35	1024.32	1024.33	1024.38
	4	1024.37	1024.40	1024.42	1024.42	1024.41	1024.43	1024.45	1024.48	1024.52	1024.54	1024.55	1024.56	1024.46
	5	1024.62	1024.69	1024.72	1024.78	1024.85	1024.88	1024.90	1024.91	1024.92	1024.94	1024.95	1024.95	1024.84
	6	1024.96	1024.98	1025.01	1025.04	1025.08	1025.07	1025.05	1025.09	1025.13	1025.13	1025.14	1025.13	1025.07
	7	1025.15	1025.21	1025.25	1025.26	1025.28	1025.32	1025.36	1025.40	1025.43	1025.44	1025.49	1025.54	1025.34
	8	1025.59	1025.63	1025.67	1025.69	1025.71	1025.75	1025.78	1025.82	1025.84	1025.85	1025.88	1025.90	1025.76
	9	1025.89	1025.90	1025.93	1025.94	1025.94	1025.93	1025.87	1025.82	1025.81	1025.77	1025.75	1025.77	1025.86
	10	1025.79	1025.78	1025.75	1025.71	1025.69	1025.65	1025.60	1025.55	1025.52	1025.48	1025.47	1025.46	1025.62
	11	1025.42	1025.37	1025.31	1025.28	1025.28	1025.26	1025.23	1025.22	1025.21	1025.17	1025.13	1025.08	1025.24
	12	1025.03	1025.01	1025.00	1024.98	1024.98	1025.00	1025.01	1024.97	1024.94	1024.93	1024.93	1024.93	1024.97
	13	1024.95	1024.97	1024.96	1024.96	1024.99	1025.03	1025.03	1025.05	1025.09	1025.12	1025.14	1025.14	1025.03
	14	1025.19	1025.24	1025.29	1025.32	1025.34	1025.34	1025.34	1025.36	1025.39	1025.43	1025.47	1025.48	1025.35
	15	1025.49	1025.51	1025.56	1025.63	1025.69	1025.76	1025.82	1025.87	1025.91	1025.96	1026.00	1026.02	1025.77
	16	1026.03	1026.06	1026.11	1026.16	1026.22	1026.30	1026.38	1026.45	1026.49	1026.54	1026.57	1026.59	1026.32
	17	1026.62	1026.66	1026.68	1026.69	1026.73	1026.78	1026.83	1026.86	1026.89	1026.92	1026.97	1027.05	1026.80
	18	1027.12	1027.18	1027.21	1027.24	1027.30	1027.36	1027.38	1027.37	1027.38	1027.44	1027.50	1027.53	1027.33
	19	1027.60	1027.68	1027.75	1027.81	1027.87	1027.92	1027.99	1028.05	1028.11	1028.17	1028.19	1028.20	1027.94
	20	1028.20	1028.21	1028.26	1028.33	1028.42	1028.46	1028.47	1028.49	1028.50	1028.52	1028.57	1028.59	1028.41
	21	1028.59	1028.61	1028.64	1028.69	1028.74	1028.76	1028.78	1028.80	1028.85	1028.92	1029.02	1029.14	1028.79
	22	1029.21	1029.24	1029.24	1029.25	1029.24	1029.21	1029.21	1029.23	1029.21	1029.17	1029.18	1029.20	1029.21
	23	1029.23	1029.27	1029.29	1029.29	1029.28	1029.33	1029.41	1029.42	1029.41	1029.42	1029.42	1029.41	1029.35

S.V.I.R.CO. Observatory - Pressure in hectoPascal – December 2016

day	hh	00_05	05_10	10_15	15_20	20_25	25_30	30_35	35_40	40_45	45_50	50_55	55_60	average
17	0	1029.34	1029.34	1029.33	1029.34	1029.40	1029.45	1029.47	1029.49	1029.49	1029.47	1029.52	1029.58	1029.44
	1	1029.64	1029.69	1029.68	1029.71	1029.79	1029.85	1029.88	1029.89	1029.93	1029.97	1030.01	1030.02	1029.84
	2	1030.00	1030.00	1030.00	1029.99	1029.93	1029.90	1029.88	1029.86	1029.88	1029.90	1029.88	1029.83	1029.92
	3	1029.79	1029.81	1029.85	1029.90	1029.93	1029.97	1029.99	1029.97	1029.96	1029.93	1029.92	1029.94	1029.91
	4	1029.99	1030.05	1030.11	1030.12	1030.10	1030.12	1030.12	1030.11	1030.13	1030.17	1030.23	1030.29	1030.13
	5	1030.35	1030.42	1030.49	1030.54	1030.54	1030.55	1030.60	1030.66	1030.74	1030.82	1030.82	1030.84	1030.61
	6	1030.90	1030.96	1031.02	1031.13	1031.23	1031.28	1031.31	1031.31	1031.34	1031.38	1031.40	1031.47	1031.22
	7	1031.55	1031.54	1031.50	1031.48	1031.46	1031.48	1031.53	1031.64	1031.71	1031.78	1031.85	1031.89	1031.62
	8	1031.95	1032.06	1032.13	1032.18	1032.21	1032.20	1032.19	1032.22	1032.27	1032.34	1032.39	1032.42	1032.21
	9	1032.44	1032.46	1032.46	1032.46	1032.46	1032.44	1032.42	1032.42	1032.40	1032.37	1032.32	1032.23	1032.40
	10	1032.19	1032.21	1032.20	1032.14	1032.10	1032.06	1031.99	1031.95	1031.91	1031.88	1031.85	1031.82	1032.02
	11	1031.79	1031.74	1031.69	1031.64	1031.62	1031.58	1031.54	1031.50	1031.48	1031.48	1031.47	1031.48	1031.58
	12	1031.49	1031.45	1031.39	1031.35	1031.34	1031.37	1031.37	1031.33	1031.30	1031.29	1031.29	1031.28	1031.35
	13	1031.27	1031.26	1031.23	1031.23	1031.27	1031.32	1031.36	1031.42	1031.43	1031.40	1031.39	1031.39	1031.33
	14	1031.43	1031.49	1031.53	1031.60	1031.64	1031.62	1031.60	1031.60	1031.62	1031.62	1031.63	1031.67	1031.59
	15	1031.74	1031.80	1031.84	1031.83	1031.84	1031.92	1031.98	1032.02	1032.07	1032.13	1032.20	1032.22	1031.96
	16	1032.24	1032.29	1032.33	1032.35	1032.37	1032.42	1032.45	1032.48	1032.52	1032.54	1032.58	1032.64	1032.43
	17	1032.68	1032.74	1032.78	1032.82	1032.87	1032.90	1032.92	1032.99	1033.04	1033.04	1033.07	1033.07	1032.91
	18	1033.05	1033.05	1033.08	1033.12	1033.16	1033.20	1033.26	1033.28	1033.28	1033.30	1033.31	1033.36	1033.20
	19	1033.39	1033.40	1033.43	1033.48	1033.56	1033.61	1033.63	1033.66	1033.71	1033.72	1033.70	1033.69	1033.58
	20	1033.71	1033.77	1033.79	1033.81	1033.84	1033.84	1033.82	1033.82	1033.84	1033.85	1033.85	1033.86	1033.81
	21	1033.89	1033.90	1033.92	1033.94	1033.94	1033.97	1034.04	1034.10	1034.12	1034.17	1034.20	1034.20	1034.03
	22	1034.21	1034.22	1034.26	1034.27	1034.27	1034.28	1034.28	1034.28	1034.29	1034.32	1034.33	1034.29	1034.27
	23	1034.26	1034.24	1034.20	1034.17	1034.16	1034.15	1034.15	1034.16	1034.13	1034.08	1034.02	1033.98	1034.14
18	0	1033.95	1033.94	1033.89	1033.88	1033.89	1033.87	1033.90	1033.93	1033.93	1033.96	1033.98	1033.98	1033.92
	1	1034.04	1034.08	1034.08	1034.06	1034.05	1034.06	1034.07	1034.07	1034.05	1034.05	1034.06	1034.09	1034.06
	2	1034.12	1034.10	1034.12	1034.19	1034.24	1034.24	1034.22	1034.21	1034.19	1034.15	1034.10	1034.08	1034.16
	3	1034.05	1034.01	1034.02	1034.02	1034.00	1034.00	1033.99	1033.97	1033.98	1033.99	1033.97	1033.97	1034.00
	4	1033.99	1033.99	1033.98	1033.96	1033.97	1034.01	1034.04	1034.05	1034.06	1034.09	1034.14	1034.16	1034.03
	5	1034.15	1034.13	1034.10	1034.06	1034.06	1034.06	1034.02	1034.00	1034.00	1033.98	1033.91	1033.83	1034.02
	6	1033.83	1033.89	1033.92	1033.95	1033.98	1034.01	1034.03	1034.02	1033.98	1033.94	1033.95	1033.94	1033.95
	7	1033.90	1033.87	1033.85	1033.85	1033.87	1033.87	1033.89	1033.89	1033.87	1033.88	1033.91	1033.93	1033.88
	8	1033.92	1033.90	1033.88	1033.86	1033.83	1033.79	1033.78	1033.81	1033.86	1033.90	1033.94	1033.95	1033.86
	9	1033.93	1033.93	1033.95	1033.97	1033.97	1033.97	1033.96	1033.92	1033.83	1033.74	1033.68	1033.61	1033.87
	10	1033.55	1033.46	1033.36	1033.28	1033.17	1033.06	1032.96	1032.83	1032.74	1032.66	1032.57	1032.51	1033.01
	11	1032.46	1032.42	1032.37	1032.31	1032.23	1032.14	1032.05	1031.97	1031.93	1031.87	1031.78	1031.65	1032.10
	12	1031.51	1031.38	1031.30	1031.26	1031.18	1031.04	1030.92	1030.82	1030.73	1030.66	1030.63	1030.61	1031.00
	13	1030.55	1030.49	1030.43	1030.37	1030.31	1030.25	1030.19	1030.15	1030.11	1030.07	1030.06	1030.03	1030.25
	14	1030.00	1029.97	1029.94	1029.91	1029.86	1029.83	1029.80	1029.78	1029.73	1029.67	1029.62	1029.59	1029.81
	15	1029.56	1029.50	1029.47	1029.47	1029.46	1029.46	1029.42	1029.33	1029.29	1029.28	1029.26	1029.25	1029.39
	16	1029.25	1029.24	1029.20	1029.19	1029.20	1029.17	1029.14	1029.12	1029.10	1029.08	1029.04	1029.01	1029.14
	17	1028.98	1028.99	1028.96	1028.94	1028.93	1028.91	1028.93	1028.96	1028.98	1028.98	1028.97	1028.97	1028.96
	18	1028.97	1028.97	1028.96	1028.94	1028.95	1028.92	1028.90	1028.90	1028.90	1028.88	1028.86	1028.88	1028.92
	19	1028.88	1028.87	1028.88	1028.92	1028.93	1028.87	1028.82	1028.77	1028.76	1028.79	1028.80	1028.80	1028.84
	20	1028.84	1028.87	1028.85	1028.81	1028.79	1028.75	1028.65	1028.60	1028.62	1028.64	1028.64	1028.66	1028.72
	21	1028.68	1028.67	1028.66	1028.63	1028.63	1028.60	1028.56	1028.55	1028.56	1028.54	1028.50	1028.49	1028.59
	22	1028.47	1028.44	1028.42	1028.40	1028.34	1028.27	1028.24	1028.22	1028.19	1028.16	1028.13	1028.12	1028.28
	23	1028.10	1028.06	1028.03	1028.00	1027.95	1027.90	1027.85	1027.81	1027.80	1027.76	1027.73	1027.70	1027.89

S.V.I.R.CO. Observatory - Pressure in hectoPascal – December 2016

day	hh	00_05	05_10	10_15	15_20	20_25	25_30	30_35	35_40	40_45	45_50	50_55	55_60	average
19	0	1027.59	1027.59	1027.59	1027.59	1027.58	1027.60	1027.62	1027.64	1027.67	1027.68	1027.68	1027.69	1027.63
	1	1027.71	1027.71	1027.71	1027.75	1027.82	1027.85	1027.82	1027.79	1027.75	1027.71	1027.65	1027.60	1027.74
	2	1027.57	1027.54	1027.53	1027.53	1027.53	1027.52	1027.51	1027.49	1027.44	1027.40	1027.35	1027.27	1027.47
	3	1027.22	1027.22	1027.23	1027.21	1027.18	1027.17	1027.17	1027.14	1027.11	1027.08	1027.00	1026.91	1027.14
	4	1026.90	1026.96	1026.98	1026.94	1026.92	1026.94	1026.92	1026.86	1026.86	1026.83	1026.73	1026.71	1026.88
	5	1026.68	1026.60	1026.57	1026.56	1026.52	1026.44	1026.38	1026.36	1026.36	1026.36	1026.30	1026.27	1026.45
	6	1026.28	1026.25	1026.20	1026.15	1026.11	1026.06	1026.10	1026.13	1026.13	1026.17	1026.19	1026.19	1026.16
	7	1026.19	1026.16	1026.10	1026.07	1026.07	1026.09	1026.06	1026.00	1026.01	1026.04	1026.02	1025.99	1026.06
	8	1026.02	1026.12	1026.17	1026.21	1026.20	1026.14	1026.10	1026.06	1026.03	1026.02	1026.00	1026.03	1026.09
	9	1026.07	1026.01	1025.94	1025.89	1025.83	1025.75	1025.69	1025.70	1025.68	1025.65	1025.59	1025.53	1025.77
	10	1025.49	1025.42	1025.34	1025.28	1025.25	1025.17	1025.12	1025.08	1024.93	1024.79	1024.69	1024.65	1025.10
	11	1024.64	1024.60	1024.57	1024.59	1024.58	1024.51	1024.47	1024.48	1024.42	1024.34	1024.28	1024.19	1024.47
	12	1024.10	1024.03	1023.99	1024.01	1023.99	1023.95	1023.93	1023.89	1023.84	1023.80	1023.78	1023.78	1023.92
	13	1023.76	1023.73	1023.70	1023.68	1023.65	1023.62	1023.67	1023.72	1023.71	1023.71	1023.70	1023.65	1023.69
	14	1023.61	1023.60	1023.60	1023.57	1023.57	1023.61	1023.65	1023.68	1023.66	1023.65	1023.69	1023.77	1023.64
	15	1023.78	1023.76	1023.75	1023.72	1023.68	1023.67	1023.66	1023.63	1023.57	1023.48	1023.42	1023.45	1023.63
	16	1023.57	1023.72	1023.80	1023.80	1023.73	1023.60	1023.54	1023.55	1023.56	1023.59	1023.59	1023.55	1023.63
	17	1023.55	1023.52	1023.46	1023.43	1023.39	1023.37	1023.36	1023.36	1023.43	1023.39	1023.30	1023.29	1023.40
	18	1023.29	1023.31	1023.34	1023.33	1023.31	1023.28	1023.25	1023.18	1023.16	1023.20	1023.15	1023.08	1023.24
	19	1023.08	1023.07	1023.00	1022.87	1022.77	1022.73	1022.66	1022.65	1022.65	1022.64	1022.69	1022.62	1022.78
	20	1022.48	1022.36	1022.28	1022.21	1022.07	1022.04	1022.03	1021.94	1021.88	1021.73	1021.57	1021.61	1022.01
	21	1021.69	1021.62	1021.55	1021.48	1021.38	1021.26	1021.17	1021.15	1021.17	1021.12	1021.10	1021.14	1021.32
	22	1021.19	1021.23	1021.16	1021.07	1021.00	1020.92	1020.84	1020.71	1020.60	1020.49	1020.41	1020.35	1020.83
	23	1020.27	1020.17	1020.08	1020.05	1020.06	1020.04	1020.02	1020.04	1020.01	1019.95	1019.94	1019.89	1020.04
20	0	1019.81	1019.78	1019.72	1019.64	1019.58	1019.57	1019.53	1019.56	1019.58	1019.54	1019.55	1019.58	1019.61
	1	1019.66	1019.74	1019.73	1019.76	1019.80	1019.77	1019.72	1019.72	1019.74	1019.72	1019.70	1019.73	1019.73
	2	1019.79	1019.79	1019.84	1019.90	1019.86	1019.81	1019.77	1019.74	1019.75	1019.72	1019.64	1019.57	1019.76
	3	1019.51	1019.47	1019.42	1019.39	1019.35	1019.32	1019.31	1019.30	1019.28	1019.24	1019.22	1019.19	1019.33
	4	1019.12	1019.02	1018.97	1018.95	1018.90	1018.81	1018.73	1018.70	1018.70	1018.69	1018.68	1018.64	1018.82
	5	1018.59	1018.55	1018.49	1018.47	1018.59	1018.68	1018.63	1018.54	1018.46	1018.40	1018.31	1018.27	1018.50
	6	1018.30	1018.33	1018.37	1018.37	1018.34	1018.29	1018.16	1018.00	1017.95	1017.94	1017.90	1017.90	1018.15
	7	1017.90	1017.91	1017.92	1017.91	1017.94	1017.92	1017.91	1017.94	1017.92	1017.93	1018.02	1018.16	1017.95
	8	1018.20	1018.17	1018.15	1018.11	1018.13	1018.22	1018.33	1018.36	1018.35	1018.36	1018.35	1018.29	1018.25
	9	1018.24	1018.21	1018.16	1018.16	1018.18	1018.13	1018.09	1018.05	1017.94	1017.83	1017.80	1017.84	1018.05
	10	1017.91	1017.94	1017.88	1017.79	1017.76	1017.72	1017.68	1017.65	1017.56	1017.50	1017.47	1017.47	1017.69
	11	1017.46	1017.38	1017.31	1017.25	1017.19	1017.11	1017.03	1017.01	1017.04	1017.01	1016.98	1016.99	1017.14
	12	1016.96	1016.87	1016.79	1016.79	1016.79	1016.74	1016.79	1016.92	1016.97	1016.94	1016.91	1016.81	1016.85
	13	1016.80	1016.85	1016.77	1016.72	1016.70	1016.72	1016.72	1016.73	1016.79	1016.78	1016.76	1016.78	1016.76
	14	1016.81	1016.87	1016.95	1017.01	1017.05	1017.09	1017.11	1017.07	1017.03	1017.04	1017.07	1017.08	1017.01
	15	1017.04	1016.98	1016.95	1016.95	1016.99	1017.06	1017.13	1017.14	1017.17	1017.20	1017.21	1017.24	1017.09
	16	1017.29	1017.30	1017.28	1017.26	1017.24	1017.21	1017.19	1017.16	1017.13	1017.08	1017.02	1016.98	1017.18
	17	1016.98	1017.02	1017.06	1017.13	1017.23	1017.34	1017.40	1017.42	1017.44	1017.51	1017.59	1017.63	1017.31
	18	1017.64	1017.61	1017.61	1017.60	1017.59	1017.58	1017.57	1017.58	1017.60	1017.58	1017.60	1017.63	1017.60
	19	1017.64	1017.63	1017.62	1017.60	1017.56	1017.56	1017.59	1017.58	1017.57	1017.58	1017.57	1017.60	1017.59
	20	1017.68	1017.73	1017.79	1017.85	1017.90	1017.95	1017.97	1017.97	1017.98	1017.98	1018.03	1018.07	1017.91
	21	1018.05	1018.06	1018.14	1018.18	1018.17	1018.16	1018.21	1018.28	1018.34	1018.38	1018.40	1018.41	1018.23
	22	1018.40	1018.43	1018.47	1018.47	1018.47	1018.48	1018.50	1018.46	1018.37	1018.36	1018.38	1018.42	1018.43
	23	1018.48	1018.54	1018.59	1018.61	1018.63	1018.63	1018.61	1018.58	1018.58	1018.62	1018.69	1018.71	1018.60

S.V.I.R.CO. Observatory - Pressure in hectoPascal – December 2016

day	hh	00_05	05_10	10_15	15_20	20_25	25_30	30_35	35_40	40_45	45_50	50_55	55_60	average
21	0	1018.79	1018.78	1018.77	1018.76	1018.70	1018.72	1018.82	1018.89	1018.88	1018.88	1018.96	1019.04	1018.83
	1	1019.10	1019.16	1019.21	1019.25	1019.29	1019.29	1019.25	1019.24	1019.25	1019.24	1019.24	1019.24	1019.23
	2	1019.22	1019.27	1019.27	1019.25	1019.30	1019.33	1019.35	1019.35	1019.33	1019.33	1019.34	1019.31	1019.30
	3	1019.26	1019.23	1019.23	1019.24	1019.30	1019.33	1019.35	1019.39	1019.39	1019.44	1019.53	1019.59	1019.35
	4	1019.59	1019.58	1019.62	1019.69	1019.75	1019.78	1019.75	1019.75	1019.80	1019.85	1019.88	1019.87	1019.74
	5	1019.93	1020.05	1020.13	1020.17	1020.18	1020.17	1020.13	1020.13	1020.16	1020.19	1020.28	1020.34	1020.15
	6	1020.36	1020.34	1020.31	1020.29	1020.31	1020.34	1020.37	1020.43	1020.42	1020.39	1020.45	1020.49	1020.37
	7	1020.55	1020.65	1020.72	1020.82	1020.85	1020.83	1020.85	1020.91	1020.95	1021.00	1021.07	1021.12	1020.86
	8	1021.17	1021.26	1021.32	1021.35	1021.40	1021.48	1021.59	1021.69	1021.76	1021.84	1021.90	1021.95	1021.56
	9	1022.01	1022.05	1022.07	1022.12	1022.14	1022.13	1022.11	1022.07	1022.01	1022.02	1022.10	1022.13	1022.08
	10	1022.17	1022.16	1022.10	1022.05	1022.02	1021.98	1021.96	1021.96	1021.96	1021.97	1021.95	1021.92	1022.01
	11	1021.90	1021.88	1021.82	1021.76	1021.72	1021.67	1021.60	1021.54	1021.52	1021.51	1021.51	1021.51	1021.66
	12	1021.50	1021.51	1021.54	1021.57	1021.59	1021.58	1021.58	1021.60	1021.60	1021.59	1021.62	1021.63	1021.57
	13	1021.65	1021.69	1021.72	1021.73	1021.77	1021.82	1021.86	1021.91	1021.98	1022.06	1022.12	1022.15	1021.87
	14	1022.19	1022.23	1022.25	1022.27	1022.32	1022.37	1022.40	1022.42	1022.46	1022.49	1022.50	1022.50	1022.36
	15	1022.51	1022.54	1022.56	1022.56	1022.58	1022.62	1022.65	1022.69	1022.72	1022.79	1022.87	1022.93	1022.67
	16	1023.01	1023.08	1023.15	1023.24	1023.33	1023.41	1023.48	1023.54	1023.60	1023.64	1023.66	1023.68	1023.40
	17	1023.71	1023.76	1023.83	1023.90	1023.96	1024.02	1024.06	1024.11	1024.18	1024.24	1024.28	1024.32	1024.03
	18	1024.37	1024.42	1024.46	1024.46	1024.44	1024.46	1024.52	1024.60	1024.68	1024.74	1024.76	1024.77	1024.55
	19	1024.79	1024.80	1024.81	1024.84	1024.89	1024.92	1024.94	1025.00	1025.04	1025.06	1025.11	1025.16	1024.94
	20	1025.20	1025.23	1025.28	1025.31	1025.31	1025.35	1025.39	1025.40	1025.41	1025.45	1025.46	1025.49	1025.35
	21	1025.55	1025.61	1025.64	1025.65	1025.70	1025.77	1025.84	1025.90	1025.96	1026.02	1026.07	1026.13	1025.82
	22	1026.17	1026.18	1026.20	1026.18	1026.18	1026.21	1026.24	1026.24	1026.24	1026.26	1026.28	1026.28	1026.22
	23	1026.29	1026.30	1026.31	1026.32	1026.31	1026.30	1026.30	1026.30	1026.35	1026.40	1026.41	1026.40	1026.33
22	0	1026.44	1026.45	1026.46	1026.48	1026.51	1026.54	1026.59	1026.65	1026.73	1026.79	1026.82	1026.87	1026.62
	1	1026.96	1027.01	1027.02	1027.07	1027.12	1027.13	1027.19	1027.27	1027.32	1027.37	1027.38	1027.38	1027.18
	2	1027.37	1027.39	1027.43	1027.44	1027.47	1027.44	1027.37	1027.34	1027.33	1027.32	1027.33	1027.35	1027.38
	3	1027.38	1027.41	1027.44	1027.46	1027.43	1027.39	1027.38	1027.34	1027.30	1027.30	1027.27	1027.25	1027.36
	4	1027.28	1027.30	1027.31	1027.33	1027.39	1027.48	1027.54	1027.55	1027.57	1027.60	1027.60	1027.63	1027.46
	5	1027.70	1027.73	1027.75	1027.78	1027.81	1027.86	1027.89	1027.91	1027.91	1027.88	1027.87	1027.92	1027.83
	6	1027.95	1027.95	1027.96	1028.01	1028.07	1028.12	1028.16	1028.20	1028.24	1028.31	1028.39	1028.43	1028.15
	7	1028.46	1028.49	1028.47	1028.48	1028.55	1028.61	1028.64	1028.66	1028.72	1028.84	1028.89	1028.91	1028.64
	8	1028.92	1028.88	1028.84	1028.80	1028.79	1028.81	1028.86	1028.91	1028.96	1029.00	1029.03	1029.03	1028.90
	9	1029.03	1029.00	1029.00	1029.02	1029.01	1028.98	1028.98	1028.98	1028.96	1028.94	1028.89	1028.80	1028.96
	10	1028.72	1028.70	1028.67	1028.63	1028.59	1028.54	1028.51	1028.48	1028.43	1028.38	1028.32	1028.29	1028.52
	11	1028.27	1028.24	1028.21	1028.17	1028.11	1028.03	1027.97	1027.89	1027.81	1027.75	1027.70	1027.64	1027.98
	12	1027.55	1027.45	1027.38	1027.33	1027.26	1027.21	1027.21	1027.20	1027.17	1027.11	1027.06	1027.04	1027.25
	13	1027.03	1027.01	1026.99	1026.94	1026.92	1026.88	1026.83	1026.80	1026.78	1026.76	1026.73	1026.74	1026.87
	14	1026.75	1026.77	1026.78	1026.77	1026.79	1026.79	1026.76	1026.75	1026.76	1026.74	1026.70	1026.68	1026.75
	15	1026.68	1026.68	1026.66	1026.67	1026.67	1026.65	1026.65	1026.65	1026.66	1026.68	1026.71	1026.75	1026.67
	16	1026.78	1026.79	1026.79	1026.80	1026.82	1026.84	1026.88	1026.92	1026.94	1026.97	1027.03	1027.10	1026.89
	17	1027.14	1027.18	1027.24	1027.29	1027.34	1027.39	1027.43	1027.44	1027.48	1027.51	1027.53	1027.56	1027.38
	18	1027.58	1027.59	1027.62	1027.64	1027.66	1027.69	1027.72	1027.76	1027.78	1027.77	1027.76	1027.77	1027.69
	19	1027.79	1027.83	1027.86	1027.90	1027.93	1027.97	1028.01	1028.05	1028.08	1028.09	1028.09	1028.09	1027.97
	20	1028.09	1028.05	1028.03	1028.03	1027.99	1027.95	1027.93	1027.94	1027.93	1027.91	1027.89	1027.88	1027.97
	21	1027.89	1027.87	1027.83	1027.80	1027.80	1027.84	1027.87	1027.86	1027.83	1027.85	1027.90	1027.94	1027.85
	22	1027.96	1027.97	1027.99	1027.98	1027.96	1027.95	1027.92	1027.87	1027.82	1027.78	1027.75	1027.73	1027.89
	23	1027.73	1027.73	1027.70	1027.71	1027.72	1027.74	1027.79	1027.83	1027.84	1027.81	1027.75	1027.70	1027.75

S.V.I.R.CO. Observatory - Pressure in hectoPascal – December 2016

day	hh	00_05	05_10	10_15	15_20	20_25	25_30	30_35	35_40	40_45	45_50	50_55	55_60	average
23	0	1027.70	1027.70	1027.68	1027.66	1027.66	1027.63	1027.58	1027.55	1027.53	1027.51	1027.49	1027.50	1027.59
	1	1027.53	1027.53	1027.52	1027.51	1027.51	1027.53	1027.52	1027.50	1027.49	1027.50	1027.52	1027.53	1027.51
	2	1027.51	1027.49	1027.46	1027.44	1027.44	1027.43	1027.47	1027.52	1027.51	1027.46	1027.43	1027.42	1027.46
	3	1027.41	1027.45	1027.51	1027.51	1027.50	1027.50	1027.47	1027.42	1027.39	1027.40	1027.42	1027.45	1027.45
	4	1027.47	1027.44	1027.39	1027.36	1027.37	1027.40	1027.42	1027.41	1027.42	1027.47	1027.49	1027.50	1027.43
	5	1027.52	1027.52	1027.52	1027.54	1027.56	1027.57	1027.58	1027.61	1027.66	1027.71	1027.78	1027.85	1027.62
	6	1027.89	1027.92	1027.96	1027.96	1027.95	1027.94	1027.95	1027.99	1028.04	1028.11	1028.16	1028.23	1028.01
	7	1028.31	1028.32	1028.31	1028.34	1028.38	1028.40	1028.41	1028.43	1028.49	1028.55	1028.56	1028.58	1028.42
	8	1028.62	1028.68	1028.75	1028.81	1028.85	1028.87	1028.92	1028.97	1029.03	1029.10	1029.14	1029.16	1028.91
	9	1029.17	1029.19	1029.20	1029.19	1029.19	1029.20	1029.18	1029.14	1029.14	1029.12	1029.11	1029.12	1029.16
	10	1029.10	1029.06	1029.02	1028.99	1028.97	1028.93	1028.90	1028.86	1028.83	1028.82	1028.80	1028.77	1028.92
	11	1028.76	1028.77	1028.75	1028.71	1028.66	1028.61	1028.59	1028.60	1028.58	1028.53	1028.49	1028.42	1028.62
	12	1028.35	1028.30	1028.24	1028.21	1028.18	1028.14	1028.14	1028.14	1028.15	1028.15	1028.13	1028.13	1028.19
	13	1028.15	1028.16	1028.18	1028.20	1028.21	1028.20	1028.18	1028.18	1028.20	1028.20	1028.20	1028.23	1028.19
	14	1028.23	1028.22	1028.19	1028.15	1028.13	1028.14	1028.15	1028.15	1028.15	1028.18	1028.24	1028.28	1028.18
	15	1028.33	1028.38	1028.43	1028.43	1028.42	1028.42	1028.43	1028.45	1028.48	1028.49	1028.48	1028.50	1028.44
	16	1028.56	1028.62	1028.65	1028.65	1028.65	1028.65	1028.67	1028.71	1028.77	1028.83	1028.88	1028.94	1028.71
	17	1028.98	1029.01	1029.03	1029.00	1028.96	1028.96	1028.96	1028.97	1028.99	1029.01	1029.03	1029.05	1028.99
	18	1029.07	1029.07	1029.09	1029.14	1029.19	1029.19	1029.15	1029.14	1029.13	1029.11	1029.13	1029.16	1029.13
	19	1029.18	1029.19	1029.16	1029.16	1029.20	1029.24	1029.24	1029.23	1029.24	1029.28	1029.33	1029.39	1029.24
	20	1029.42	1029.39	1029.40	1029.41	1029.37	1029.34	1029.33	1029.33	1029.34	1029.36	1029.38	1029.37	1029.37
	21	1029.36	1029.36	1029.34	1029.32	1029.33	1029.37	1029.38	1029.37	1029.37	1029.38	1029.41	1029.47	1029.37
	22	1029.52	1029.57	1029.58	1029.60	1029.61	1029.58	1029.54	1029.49	1029.46	1029.47	1029.49	1029.50	1029.53
	23	1029.50	1029.51	1029.52	1029.53	1029.52	1029.43	1029.34	1029.33	1029.35	1029.38	1029.43	1029.44	1029.44
24	0	1029.41	1029.38	1029.35	1029.35	1029.35	1029.38	1029.41	1029.44	1029.44	1029.43	1029.44	1029.42	1029.40
	1	1029.37	1029.35	1029.36	1029.37	1029.35	1029.33	1029.33	1029.31	1029.31	1029.34	1029.37	1029.40	1029.35
	2	1029.40	1029.37	1029.38	1029.39	1029.37	1029.39	1029.40	1029.38	1029.33	1029.30	1029.31	1029.30	1029.36
	3	1029.30	1029.24	1029.18	1029.15	1029.07	1029.00	1028.98	1028.95	1028.92	1028.89	1028.83	1028.75	1029.02
	4	1028.68	1028.64	1028.59	1028.57	1028.58	1028.57	1028.57	1028.57	1028.54	1028.51	1028.52	1028.55	1028.57
	5	1028.53	1028.51	1028.52	1028.56	1028.62	1028.63	1028.60	1028.60	1028.59	1028.60	1028.64	1028.66	1028.59
	6	1028.66	1028.65	1028.63	1028.61	1028.61	1028.65	1028.67	1028.68	1028.71	1028.75	1028.78	1028.81	1028.68
	7	1028.83	1028.86	1028.88	1028.90	1028.92	1028.95	1028.99	1029.01	1029.00	1028.98	1029.00	1029.00	1028.94
	8	1028.99	1029.00	1029.02	1029.02	1029.04	1029.07	1029.12	1029.20	1029.20	1029.16	1029.11	1029.06	1029.08
	9	1029.06	1029.05	1029.03	1029.02	1029.00	1028.96	1028.94	1028.92	1028.85	1028.80	1028.83	1028.84	1028.94
	10	1028.78	1028.71	1028.68	1028.65	1028.65	1028.66	1028.65	1028.62	1028.63	1028.58	1028.54	1028.53	1028.64
	11	1028.49	1028.45	1028.39	1028.32	1028.24	1028.14	1028.03	1027.94	1027.88	1027.84	1027.80	1027.73	1028.10
	12	1027.64	1027.56	1027.50	1027.46	1027.42	1027.36	1027.31	1027.28	1027.26	1027.21	1027.12	1027.05	1027.35
	13	1027.00	1026.96	1026.91	1026.88	1026.86	1026.78	1026.71	1026.69	1026.68	1026.68	1026.68	1026.65	1026.79
	14	1026.67	1026.70	1026.75	1026.79	1026.84	1026.90	1026.91	1026.90	1026.84	1026.77	1026.77	1026.80	1026.80
	15	1026.82	1026.81	1026.75	1026.75	1026.79	1026.77	1026.68	1026.62	1026.61	1026.61	1026.61	1026.60	1026.70
	16	1026.59	1026.53	1026.48	1026.47	1026.49	1026.52	1026.47	1026.38	1026.37	1026.36	1026.34	1026.36	1026.44
	17	1026.42	1026.51	1026.57	1026.49	1026.44	1026.49	1026.49	1026.45	1026.50	1026.62	1026.67	1026.65	1026.52
	18	1026.63	1026.62	1026.64	1026.68	1026.73	1026.85	1026.92	1026.90	1026.96	1027.02	1027.01	1027.03	1026.83
	19	1027.14	1027.25	1027.27	1027.31	1027.37	1027.43	1027.46	1027.44	1027.47	1027.47	1027.47	1027.46	1027.37
	20	1027.34	1027.17	1027.06	1027.03	1027.05	1027.03	1026.84	1026.68	1026.76	1026.85	1026.81	1026.79	1026.95
	21	1026.69	1026.57	1026.57	1026.63	1026.60	1026.50	1026.40	1026.36	1026.40	1026.35	1026.28	1026.31	1026.47
	22	1026.27	1026.16	1026.10	1026.13	1026.19	1026.26	1026.31	1026.29	1026.28	1026.28	1026.20	1026.13	1026.22
	23	1026.06	1025.95	1025.91	1025.92	1025.96	1025.98	1026.00	1025.99	1025.91	1025.88	1025.92	1025.94	1025.95

S.V.I.R.CO. Observatory - Pressure in hectoPascal – December 2016

day	hh	00_05	05_10	10_15	15_20	20_25	25_30	30_35	35_40	40_45	45_50	50_55	55_60	average
25	0	1025.93	1025.90	1025.92	1025.94	1025.87	1025.87	1025.95	1025.96	1025.92	1026.00	1026.10	1026.16	1025.96
	1	1026.17	1026.14	1026.18	1026.21	1026.18	1026.15	1026.20	1026.26	1026.26	1026.20	1026.12	1026.03	1026.17
	2	1025.93	1025.91	1025.92	1025.96	1025.86	1025.67	1025.67	1025.69	1025.60	1025.44	1025.27	1025.15	1025.67
	3	1025.10	1025.15	1025.17	1025.13	1025.03	1024.90	1024.84	1024.75	1024.67	1024.72	1024.73	1024.56	1024.89
	4	1024.49	1024.54	1024.58	1024.58	1024.61	1024.68	1024.71	1024.65	1024.56	1024.62	1024.80	1024.74	1024.63
	5	1024.64	1024.71	1024.80	1024.92	1024.95	1024.91	1024.87	1024.84	1024.80	1024.73	1024.61	1024.50	1024.77
	6	1024.47	1024.38	1024.29	1024.34	1024.44	1024.62	1024.78	1024.78	1024.81	1024.87	1024.81	1024.67	1024.60
	7	1024.57	1024.52	1024.54	1024.65	1024.66	1024.56	1024.49	1024.51	1024.63	1024.71	1024.68	1024.71	1024.60
	8	1024.79	1024.86	1024.86	1024.87	1024.97	1024.99	1025.07	1025.22	1025.22	1025.24	1025.28	1025.27	1025.05
	9	1025.30	1025.32	1025.29	1025.22	1025.18	1025.18	1025.13	1025.11	1025.15	1025.07	1024.90	1024.74	1025.13
	10	1024.74	1024.76	1024.72	1024.69	1024.69	1024.68	1024.59	1024.57	1024.52	1024.42	1024.38	1024.36	1024.59
	11	1024.33	1024.26	1024.24	1024.29	1024.29	1024.29	1024.30	1024.24	1024.12	1024.00	1023.94	1023.86	1024.18
	12	1023.79	1023.76	1023.72	1023.73	1023.72	1023.64	1023.60	1023.63	1023.60	1023.52	1023.50	1023.48	1023.64
	13	1023.40	1023.34	1023.31	1023.28	1023.34	1023.36	1023.31	1023.29	1023.31	1023.32	1023.30	1023.29	1023.32
	14	1023.32	1023.35	1023.33	1023.34	1023.35	1023.30	1023.28	1023.35	1023.45	1023.46	1023.42	1023.44	1023.36
	15	1023.47	1023.49	1023.54	1023.55	1023.54	1023.56	1023.56	1023.56	1023.59	1023.62	1023.63	1023.67	1023.56
	16	1023.69	1023.71	1023.74	1023.75	1023.76	1023.83	1023.94	1023.94	1023.92	1023.94	1023.89	1023.89	1023.83
	17	1023.95	1023.98	1024.03	1024.10	1024.12	1024.15	1024.22	1024.24	1024.22	1024.26	1024.33	1024.37	1024.16
	18	1024.35	1024.31	1024.27	1024.22	1024.31	1024.40	1024.40	1024.43	1024.51	1024.54	1024.54	1024.64	1024.41
	19	1024.74	1024.80	1024.87	1024.95	1024.99	1025.09	1025.17	1025.15	1025.27	1025.43	1025.53	1025.60	1025.13
	20	1025.70	1025.81	1025.90	1025.94	1025.93	1025.91	1025.91	1025.94	1025.99	1026.03	1026.09	1026.19	1025.94
	21	1026.26	1026.28	1026.27	1026.23	1026.26	1026.39	1026.43	1026.45	1026.51	1026.50	1026.53	1026.63	1026.39
	22	1026.70	1026.71	1026.73	1026.82	1026.86	1026.85	1026.85	1026.86	1026.88	1026.85	1026.82	1026.75	1026.80
	23	1026.75	1026.78	1026.71	1026.70	1026.75	1026.77	1026.75	1026.72	1026.70	1026.70	1026.78	1026.84	1026.74
26	0	1026.80	1026.75	1026.60	1026.44	1026.36	1026.41	1026.48	1026.56	1026.74	1026.92	1027.01	1027.13	1026.68
	1	1027.26	1027.31	1027.34	1027.39	1027.48	1027.54	1027.54	1027.56	1027.62	1027.67	1027.73	1027.77	1027.52
	2	1027.73	1027.71	1027.71	1027.74	1027.78	1027.75	1027.72	1027.68	1027.65	1027.62	1027.54	1027.55	1027.68
	3	1027.60	1027.58	1027.59	1027.65	1027.63	1027.59	1027.59	1027.60	1027.62	1027.62	1027.64	1027.68	1027.61
	4	1027.67	1027.68	1027.74	1027.73	1027.68	1027.72	1027.75	1027.77	1027.78	1027.72	1027.68	1027.66	1027.71
	5	1027.63	1027.67	1027.73	1027.78	1027.82	1027.86	1027.88	1027.90	1027.88	1027.87	1027.94	1028.00	1027.83
	6	1027.98	1027.95	1027.98	1027.99	1027.99	1028.04	1028.10	1028.12	1028.10	1028.15	1028.17	1028.19	1028.06
	7	1028.27	1028.29	1028.32	1028.37	1028.37	1028.41	1028.51	1028.60	1028.62	1028.62	1028.64	1028.65	1028.47
	8	1028.69	1028.66	1028.61	1028.66	1028.74	1028.79	1028.88	1028.98	1029.02	1029.03	1029.09	1029.22	1028.86
	9	1029.26	1029.23	1029.24	1029.25	1029.25	1029.28	1029.26	1029.25	1029.31	1029.34	1029.31	1029.24	1029.27
	10	1029.13	1029.05	1029.02	1028.99	1028.92	1028.86	1028.86	1028.81	1028.80	1028.82	1028.79	1028.75	1028.90
	11	1028.73	1028.72	1028.69	1028.65	1028.59	1028.54	1028.51	1028.48	1028.44	1028.40	1028.33	1028.25	1028.53
	12	1028.21	1028.19	1028.14	1028.12	1028.08	1028.03	1028.03	1028.00	1027.97	1027.97	1027.90	1027.83	1028.04
	13	1027.77	1027.71	1027.68	1027.62	1027.55	1027.51	1027.45	1027.39	1027.37	1027.38	1027.36	1027.33	1027.51
	14	1027.31	1027.30	1027.28	1027.29	1027.29	1027.25	1027.22	1027.21	1027.19	1027.15	1027.14	1027.16	1027.23
	15	1027.14	1027.13	1027.14	1027.12	1027.08	1027.05	1027.04	1027.07	1027.06	1027.04	1027.03	1027.03	1027.08
	16	1027.04	1027.04	1027.07	1027.09	1027.14	1027.23	1027.27	1027.27	1027.27	1027.27	1027.26	1027.21	1027.18
	17	1027.14	1027.10	1027.14	1027.19	1027.22	1027.25	1027.29	1027.35	1027.40	1027.44	1027.51	1027.59	1027.30
	18	1027.59	1027.54	1027.54	1027.53	1027.53	1027.55	1027.56	1027.55	1027.57	1027.59	1027.55	1027.47	1027.54
	19	1027.44	1027.47	1027.50	1027.48	1027.47	1027.52	1027.53	1027.50	1027.52	1027.60	1027.63	1027.64	1027.52
	20	1027.67	1027.73	1027.77	1027.76	1027.77	1027.75	1027.70	1027.67	1027.64	1027.62	1027.64	1027.65	1027.69
	21	1027.66	1027.70	1027.70	1027.70	1027.70	1027.69	1027.66	1027.63	1027.63	1027.63	1027.64	1027.69	1027.67
	22	1027.73	1027.74	1027.72	1027.72	1027.68	1027.60	1027.52	1027.51	1027.55	1027.55	1027.56	1027.56	1027.62
	23	1027.54	1027.54	1027.55	1027.55	1027.58	1027.58	1027.56	1027.55	1027.50	1027.47	1027.47	1027.49	1027.53

S.V.I.R.CO. Observatory - Pressure in hectoPascal – December 2016

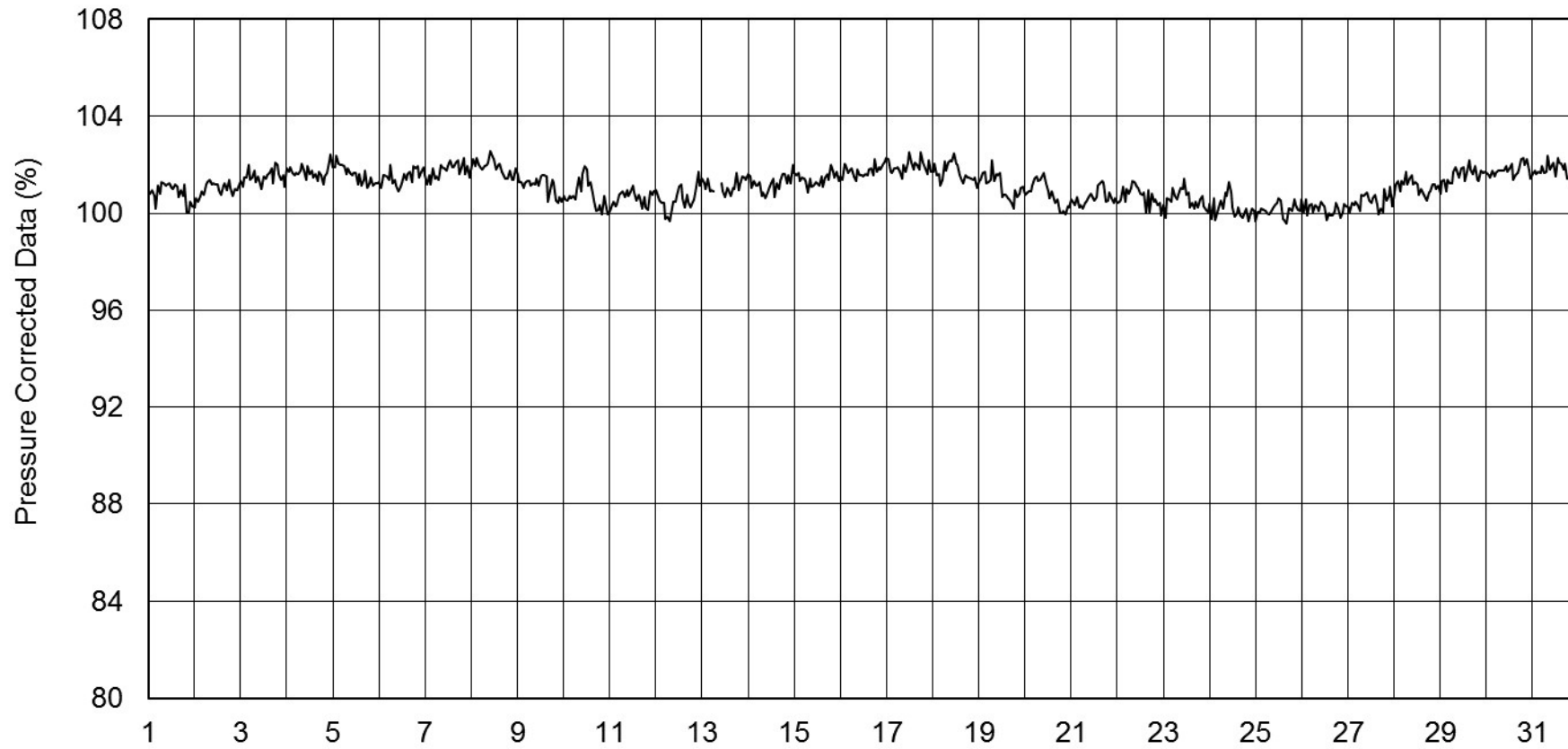
day	hh	00_05	05_10	10_15	15_20	20_25	25_30	30_35	35_40	40_45	45_50	50_55	55_60	average
27	0	1027.45	1027.44	1027.41	1027.36	1027.34	1027.35	1027.38	1027.43	1027.45	1027.46	1027.42	1027.41	1027.41
	1	1027.42	1027.45	1027.47	1027.45	1027.41	1027.36	1027.36	1027.37	1027.33	1027.31	1027.32	1027.35	1027.38
	2	1027.36	1027.33	1027.27	1027.24	1027.26	1027.29	1027.30	1027.29	1027.25	1027.19	1027.16	1027.14	1027.25
	3	1027.08	1027.05	1027.08	1027.07	1027.01	1026.96	1026.95	1026.92	1026.92	1026.96	1027.00	1027.02	1027.00
	4	1027.00	1026.98	1027.00	1027.03	1027.03	1027.01	1026.98	1026.94	1026.93	1026.95	1026.93	1026.93	1026.97
	5	1026.95	1026.94	1026.93	1026.95	1026.98	1027.03	1027.07	1027.09	1027.11	1027.09	1027.03	1026.98	1027.01
	6	1027.02	1027.05	1027.03	1027.05	1027.10	1027.10	1027.10	1027.13	1027.13	1027.12	1027.11	1027.08	1027.08
	7	1027.11	1027.22	1027.29	1027.34	1027.45	1027.55	1027.63	1027.66	1027.59	1027.60	1027.69	1027.67	1027.48
	8	1027.71	1027.77	1027.81	1027.86	1027.94	1028.04	1028.07	1028.11	1028.09	1028.04	1028.04	1027.99	1027.95
	9	1028.01	1028.03	1028.04	1028.09	1028.11	1028.13	1028.18	1028.19	1028.15	1028.14	1028.12	1028.02	1028.10
	10	1027.94	1027.90	1027.87	1027.84	1027.84	1027.88	1027.88	1027.85	1027.81	1027.75	1027.75	1027.67	1027.83
	11	1027.57	1027.56	1027.50	1027.41	1027.31	1027.25	1027.20	1027.17	1027.13	1027.05	1026.91	1026.77	1027.23
	12	1026.66	1026.53	1026.42	1026.26	1026.23	1026.26	1026.11	1025.94	1025.91	1025.98	1026.04	1025.99	1026.19
	13	1025.90	1025.86	1025.88	1025.88	1025.81	1025.77	1025.75	1025.75	1025.78	1025.79	1025.78	1025.80	1025.81
	14	1025.86	1025.92	1025.95	1025.98	1026.04	1026.09	1026.14	1026.19	1026.20	1026.13	1026.08	1026.08	1026.05
	15	1026.09	1026.12	1026.10	1026.08	1026.10	1026.05	1025.99	1026.06	1026.14	1026.18	1026.27	1026.36	1026.13
	16	1026.43	1026.54	1026.62	1026.69	1026.77	1026.80	1026.83	1026.87	1026.89	1026.90	1026.90	1026.95	1026.76
	17	1027.01	1027.05	1027.09	1027.11	1027.17	1027.24	1027.27	1027.36	1027.45	1027.56	1027.72	1027.78	1027.32
	18	1027.82	1027.90	1027.95	1027.95	1028.03	1028.22	1028.38	1028.46	1028.46	1028.49	1028.52	1028.55	1028.22
	19	1028.58	1028.60	1028.67	1028.73	1028.83	1028.96	1029.04	1028.98	1028.93	1028.97	1029.05	1029.11	1028.87
	20	1029.13	1029.17	1029.13	1029.11	1029.16	1029.16	1029.12	1029.31	1029.45	1029.38	1029.38	1029.41	1029.24
	21	1029.58	1029.73	1029.75	1029.74	1029.77	1029.89	1029.96	1030.04	1030.14	1030.19	1030.17	1030.22	1029.93
	22	1030.36	1030.43	1030.45	1030.46	1030.44	1030.43	1030.50	1030.63	1030.69	1030.78	1030.82	1030.79	1030.56
	23	1030.81	1030.74	1030.68	1030.73	1030.72	1030.71	1030.72	1030.68	1030.65	1030.66	1030.71	1030.74	1030.71
28	0	1030.72	1030.72	1030.76	1030.76	1030.72	1030.70	1030.67	1030.65	1030.68	1030.80	1030.95	1031.02	1030.76
	1	1031.02	1031.11	1031.19	1031.25	1031.34	1031.44	1031.39	1031.32	1031.34	1031.32	1031.34	1031.35	1031.28
	2	1031.36	1031.35	1031.30	1031.30	1031.31	1031.35	1031.38	1031.39	1031.38	1031.35	1031.32	1031.38	1031.35
	3	1031.53	1031.62	1031.58	1031.51	1031.49	1031.57	1031.67	1031.67	1031.67	1031.71	1031.78	1031.81	1031.63
	4	1031.81	1031.79	1031.78	1031.88	1032.00	1032.10	1032.17	1032.19	1032.20	1032.18	1032.15	1032.15	1032.03
	5	1032.19	1032.19	1032.19	1032.20	1032.26	1032.45	1032.61	1032.61	1032.56	1032.59	1032.61	1032.64	1032.42
	6	1032.76	1032.86	1032.97	1033.02	1032.98	1032.96	1032.98	1033.01	1033.00	1033.03	1033.08	1033.05	1032.97
	7	1032.98	1032.98	1033.05	1033.14	1033.19	1033.17	1033.13	1033.12	1033.10	1033.04	1033.01	1032.95	1033.07
	8	1032.84	1032.82	1032.83	1032.77	1032.73	1032.64	1032.57	1032.61	1032.59	1032.56	1032.55	1032.49	1032.66
	9	1032.47	1032.47	1032.47	1032.50	1032.54	1032.53	1032.53	1032.53	1032.48	1032.43	1032.43	1032.47	1032.48
	10	1032.44	1032.40	1032.53	1032.61	1032.54	1032.46	1032.47	1032.39	1032.24	1032.18	1032.15	1032.11	1032.37
	11	1032.02	1031.93	1031.85	1031.74	1031.65	1031.58	1031.47	1031.42	1031.39	1031.24	1031.13	1031.05	1031.54
	12	1030.95	1030.93	1030.94	1030.91	1030.88	1030.83	1030.79	1030.75	1030.70	1030.62	1030.57	1030.51	1030.78
	13	1030.45	1030.42	1030.40	1030.40	1030.38	1030.38	1030.41	1030.38	1030.33	1030.27	1030.26	1030.26	1030.36
	14	1030.23	1030.18	1030.10	1030.01	1029.96	1029.92	1029.88	1029.85	1029.87	1029.88	1029.86	1029.86	1029.96
	15	1029.85	1029.81	1029.80	1029.76	1029.68	1029.59	1029.52	1029.50	1029.43	1029.30	1029.25	1029.25	1029.56
	16	1029.24	1029.19	1029.13	1029.12	1029.13	1029.14	1029.12	1029.13	1029.25	1029.34	1029.35	1029.35	1029.21
	17	1029.34	1029.34	1029.38	1029.40	1029.34	1029.27	1029.23	1029.23	1029.26	1029.26	1029.19	1029.11	1029.28
	18	1029.06	1028.98	1028.91	1028.95	1028.97	1028.91	1028.89	1028.86	1028.76	1028.72	1028.69	1028.67	1028.86
	19	1028.62	1028.53	1028.48	1028.36	1028.20	1028.13	1028.09	1028.04	1028.01	1028.00	1028.08	1028.10	1028.22
	20	1028.07	1028.08	1028.16	1028.21	1028.20	1028.24	1028.23	1028.21	1028.21	1028.13	1028.08	1028.06	1028.15
	21	1028.03	1028.01	1028.00	1027.98	1027.91	1027.87	1027.82	1027.76	1027.75	1027.78	1027.77	1027.79	1027.87
	22	1027.83	1027.86	1027.83	1027.75	1027.73	1027.75	1027.85	1027.97	1027.99	1027.99	1028.04	1028.05	1027.88
	23	1027.97	1027.88	1027.86	1027.82	1027.71	1027.63	1027.64	1027.74	1027.78	1027.84	1027.92	1027.91	1027.81

S.V.I.R.CO. Observatory - Pressure in hectoPascal – December 2016

day	hh	00_05	05_10	10_15	15_20	20_25	25_30	30_35	35_40	40_45	45_50	50_55	55_60	average
29	0	1027.86	1027.88	1027.93	1027.98	1028.03	1028.04	1027.99	1027.92	1027.91	1027.92	1027.94	1028.11	1027.96
	1	1028.25	1028.31	1028.41	1028.37	1028.35	1028.51	1028.54	1028.45	1028.39	1028.37	1028.40	1028.45	1028.40
	2	1028.49	1028.52	1028.60	1028.73	1028.82	1028.77	1028.78	1028.89	1028.77	1028.75	1028.87	1028.91	1028.74
	3	1028.99	1028.97	1028.99	1029.04	1029.00	1029.03	1029.09	1029.15	1029.21	1029.26	1029.27	1029.28	1029.10
	4	1029.35	1029.36	1029.36	1029.40	1029.41	1029.48	1029.54	1029.58	1029.66	1029.71	1029.71	1029.78	1029.53
	5	1029.91	1030.00	1030.06	1030.16	1030.25	1030.28	1030.33	1030.38	1030.34	1030.32	1030.32	1030.35	1030.22
	6	1030.40	1030.40	1030.33	1030.37	1030.40	1030.40	1030.53	1030.53	1030.46	1030.51	1030.62	1030.58	1030.46
	7	1030.58	1030.59	1030.56	1030.57	1030.57	1030.60	1030.63	1030.72	1030.84	1030.90	1030.94	1030.93	1030.70
	8	1030.92	1030.95	1030.91	1030.85	1030.82	1030.81	1030.74	1030.54	1030.30	1030.07	1030.04	1030.13	1030.59
	9	1030.16	1030.22	1030.23	1030.36	1030.58	1030.77	1031.04	1031.26	1031.42	1031.48	1031.44	1031.39	1030.86
	10	1031.29	1031.16	1031.07	1031.01	1030.94	1030.85	1030.81	1030.80	1030.77	1030.73	1030.70	1030.68	1030.90
	11	1030.67	1030.67	1030.58	1030.52	1030.52	1030.48	1030.44	1030.32	1030.20	1030.21	1030.19	1030.14	1030.41
	12	1030.09	1030.07	1030.10	1030.03	1029.92	1029.88	1029.89	1029.94	1029.89	1029.90	1029.91	1029.84	1029.95
	13	1029.80	1029.74	1029.73	1029.82	1029.86	1029.83	1029.84	1029.82	1029.76	1029.78	1029.85	1029.90	1029.81
	14	1029.89	1029.86	1029.77	1029.74	1029.76	1029.68	1029.68	1029.80	1029.84	1029.84	1029.88	1029.89	1029.80
	15	1029.86	1029.84	1029.81	1029.80	1029.86	1029.93	1030.02	1030.07	1030.06	1030.06	1030.16	1030.31	1029.98
	16	1030.45	1030.55	1030.63	1030.73	1030.78	1030.81	1030.82	1030.86	1030.91	1030.93	1030.99	1031.07	1030.79
	17	1031.13	1031.08	1030.97	1031.01	1031.19	1031.40	1031.60	1031.75	1031.83	1031.87	1031.90	1031.95	1031.47
	18	1031.93	1031.88	1031.93	1032.04	1032.10	1032.10	1032.14	1032.22	1032.27	1032.29	1032.37	1032.38	1032.13
	19	1032.33	1032.43	1032.52	1032.50	1032.48	1032.54	1032.62	1032.69	1032.71	1032.71	1032.73	1032.74	1032.58
	20	1032.75	1032.75	1032.83	1032.93	1032.98	1033.06	1033.08	1033.04	1033.04	1033.06	1033.09	1033.10	1032.97
	21	1033.15	1033.23	1033.28	1033.31	1033.29	1033.30	1033.36	1033.38	1033.39	1033.42	1033.48	1033.54	1033.34
	22	1033.57	1033.62	1033.63	1033.63	1033.67	1033.69	1033.69	1033.69	1033.68	1033.70	1033.74	1033.76	1033.67
	23	1033.78	1033.80	1033.79	1033.75	1033.69	1033.65	1033.58	1033.51	1033.51	1033.56	1033.63	1033.65	1033.66
30	0	1033.66	1033.66	1033.63	1033.62	1033.61	1033.53	1033.51	1033.59	1033.58	1033.54	1033.56	1033.56	1033.58
	1	1033.55	1033.58	1033.60	1033.59	1033.59	1033.56	1033.53	1033.51	1033.50	1033.48	1033.47	1033.44	1033.53
	2	1033.41	1033.43	1033.46	1033.43	1033.38	1033.32	1033.20	1033.08	1033.04	1033.04	1033.07	1033.09	1033.24
	3	1033.03	1032.98	1032.92	1032.78	1032.69	1032.67	1032.66	1032.66	1032.70	1032.72	1032.69	1032.68	1032.76
	4	1032.67	1032.59	1032.49	1032.42	1032.40	1032.42	1032.41	1032.38	1032.36	1032.30	1032.23	1032.23	1032.41
	5	1032.24	1032.21	1032.20	1032.23	1032.23	1032.21	1032.19	1032.20	1032.20	1032.16	1032.16	1032.19	1032.20
	6	1032.16	1032.09	1032.05	1032.06	1032.09	1032.10	1032.07	1032.02	1031.98	1031.89	1031.82	1031.80	1032.01
	7	1031.80	1031.75	1031.73	1031.76	1031.77	1031.81	1031.82	1031.79	1031.77	1031.76	1031.76	1031.78	1031.77
	8	1031.80	1031.84	1031.83	1031.77	1031.70	1031.67	1031.69	1031.67	1031.66	1031.71	1031.75	1031.73	1031.73
	9	1031.70	1031.72	1031.72	1031.69	1031.71	1031.70	1031.67	1031.66	1031.67	1031.71	1031.72	1031.67	1031.69
	10	1031.61	1031.54	1031.46	1031.39	1031.31	1031.25	1031.24	1031.23	1031.18	1031.15	1031.13	1031.11	1031.30
	11	1031.08	1031.02	1030.92	1030.87	1030.86	1030.76	1030.62	1030.48	1030.31	1030.19	1030.15	1030.11	1030.61
	12	1030.01	1029.90	1029.83	1029.80	1029.80	1029.78	1029.73	1029.67	1029.62	1029.58	1029.56	1029.61	1029.74
	13	1029.61	1029.53	1029.53	1029.51	1029.45	1029.42	1029.43	1029.43	1029.45	1029.48	1029.50	1029.46	1029.48
	14	1029.45	1029.50	1029.50	1029.51	1029.52	1029.52	1029.51	1029.46	1029.45	1029.49	1029.52	1029.58	1029.50
	15	1029.66	1029.69	1029.70	1029.72	1029.68	1029.67	1029.71	1029.70	1029.65	1029.62	1029.64	1029.61	1029.67
	16	1029.57	1029.59	1029.61	1029.63	1029.65	1029.63	1029.64	1029.65	1029.67	1029.71	1029.75	1029.74	1029.65
	17	1029.71	1029.73	1029.76	1029.80	1029.84	1029.87	1029.90	1029.96	1030.05	1030.08	1030.11	1030.18	1029.91
	18	1030.21	1030.23	1030.29	1030.35	1030.39	1030.40	1030.44	1030.49	1030.54	1030.58	1030.58	1030.59	1030.42
	19	1030.58	1030.52	1030.49	1030.46	1030.45	1030.47	1030.54	1030.62	1030.63	1030.63	1030.64	1030.66	1030.55
	20	1030.69	1030.68	1030.67	1030.68	1030.70	1030.71	1030.68	1030.61	1030.56	1030.53	1030.52	1030.53	1030.63
	21	1030.54	1030.53	1030.52	1030.52	1030.50	1030.49	1030.51	1030.54	1030.50	1030.46	1030.47	1030.48	1030.50
	22	1030.49	1030.53	1030.55	1030.53	1030.53	1030.51	1030.49	1030.46	1030.39	1030.35	1030.36	1030.38	1030.46
	23	1030.39	1030.37	1030.30	1030.25	1030.25	1030.33	1030.37	1030.36	1030.40	1030.47	1030.54	1030.58	1030.38

S.V.I.R.CO. Observatory - Pressure in hectoPascal – December 2016

day	hh	00_05	05_10	10_15	15_20	20_25	25_30	30_35	35_40	40_45	45_50	50_55	55_60	average
31	0	1030.59	1030.57	1030.56	1030.53	1030.55	1030.66	1030.69	1030.72	1030.77	1030.76	1030.79	1030.83	1030.67
	1	1030.88	1030.90	1030.86	1030.83	1030.80	1030.78	1030.78	1030.79	1030.77	1030.84	1030.91	1030.94	1030.84
	2	1031.01	1031.05	1031.07	1031.01	1030.91	1030.90	1030.85	1030.80	1030.72	1030.64	1030.60	1030.56	1030.84
	3	1030.56	1030.66	1030.76	1030.78	1030.79	1030.78	1030.78	1030.73	1030.67	1030.67	1030.63	1030.54	1030.69
	4	1030.51	1030.47	1030.45	1030.47	1030.51	1030.53	1030.55	1030.56	1030.57	1030.56	1030.56	1030.59	1030.53
	5	1030.60	1030.61	1030.62	1030.57	1030.53	1030.50	1030.45	1030.44	1030.47	1030.49	1030.47	1030.52	1030.52
	6	1030.61	1030.62	1030.56	1030.58	1030.58	1030.47	1030.39	1030.39	1030.43	1030.50	1030.58	1030.57	1030.52
	7	1030.50	1030.51	1030.55	1030.51	1030.51	1030.55	1030.58	1030.61	1030.64	1030.70	1030.72	1030.67	1030.58
	8	1030.66	1030.65	1030.65	1030.62	1030.64	1030.72	1030.74	1030.79	1030.79	1030.79	1030.82	1030.84	1030.72
	9	1030.82	1030.82	1030.85	1030.83	1030.75	1030.71	1030.68	1030.61	1030.61	1030.53	1030.42	1030.37	1030.66
	10	1030.30	1030.18	1030.04	1029.95	1029.88	1029.74	1029.65	1029.66	1029.60	1029.46	1029.44	1029.45	1029.78
	11	1029.33	1029.24	1029.21	1029.11	1029.04	1029.05	1029.04	1028.94	1028.84	1028.79	1028.73	1028.63	1028.99
	12	1028.56	1028.54	1028.48	1028.42	1028.36	1028.29	1028.22	1028.22	1028.20	1028.11	1028.03	1027.98	1028.28
	13	1027.91	1027.84	1027.81	1027.80	1027.80	1027.81	1027.80	1027.75	1027.70	1027.66	1027.63	1027.65	1027.76
	14	1027.66	1027.63	1027.61	1027.61	1027.59	1027.56	1027.54	1027.54	1027.55	1027.53	1027.51	1027.49	1027.57
	15	1027.45	1027.44	1027.45	1027.42	1027.38	1027.40	1027.40	1027.38	1027.35	1027.35	1027.34	1027.35	1027.39
	16	1027.37	1027.35	1027.32	1027.29	1027.25	1027.21	1027.18	1027.19	1027.21	1027.21	1027.22	1027.22	1027.25
	17	1027.24	1027.24	1027.24	1027.25	1027.24	1027.21	1027.19	1027.22	1027.23	1027.23	1027.23	1027.21	1027.22
	18	1027.22	1027.23	1027.24	1027.25	1027.28	1027.29	1027.28	1027.25	1027.23	1027.22	1027.18	1027.15	1027.23
	19	1027.13	1027.08	1027.05	1027.05	1027.00	1027.00	1027.08	1027.10	1027.12	1027.15	1027.16	1027.19	1027.09
	20	1027.25	1027.29	1027.26	1027.24	1027.24	1027.18	1027.17	1027.18	1027.15	1027.14	1027.13	1027.06	1027.19
	21	1026.98	1026.97	1027.00	1027.07	1027.15	1027.19	1027.21	1027.17	1027.14	1027.13	1027.15	1027.15	1027.11
	22	1027.12	1027.13	1027.13	1027.14	1027.16	1027.15	1027.14	1027.09	1027.06	1027.09	1027.11	1027.06	1027.11
	23	1027.04	1027.03	1026.95	1026.89	1026.83	1026.77	1026.75	1026.73	1026.69	1026.69	1026.64	1026.61	1026.80



S.V.I.R.CO. Observatory - Pressure in hectoPascal

December 2016

