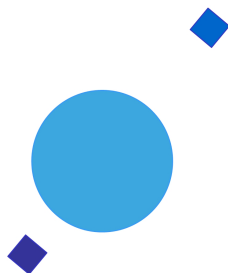


INAF



ISTITUTO NAZIONALE DI ASTROFISICA
NATIONAL INSTITUTE FOR ASTROPHYSICS

SVIRCO Prompt Report: November 2016

Fabrizio Signoretto and Francesco Re

INAF/IAPS-2016-21

December 2016

ISTITUTO DI ASTROFISICA E PLANETOLOGIA SPAZIALI

AREA DI RICERCA ROMA - TOR VERGATA

Via del Fosso del Cavaliere, 100 - 00133 Roma (ITALIA)

SVIRCO Prompt Report: November 2016

Fabrizio Signoretti and Francesco Re

*IAPS - INAF, Area di Ricerca Roma - Tor Vergata
Via del Fosso del Cavaliere, 100 - 00133 Roma, Italy,*

Abstract

The pressure corrected intensity of the nucleonic component, produced by primary cosmic rays and recorded in November 2016 by the Neutron Monitor of SVIRCO-Rome (present geographic position: 41.86° N - 12.47° E; altitude about s.l.), is reported in prompt form together with the barometric pressure data.

SVIRCO OBSERVATORY

During the 1st International Geophysics Year (1957) an international network of “ground-based detectors” for continuous cosmic ray measurements was world-wide established.

The cosmic ray station of Rome joined this network with the purpose to study the time variations of primary cosmic rays (**Studio Variazioni Intensità Raggi Cosmici: S.V.I.R.CO**) and their modulation in the heliosphere.

From July 1957 to April 1997, the SVIRCO Station (now Observatory) performed uninterrupted measurements at the Physics Department “G. Marconi” of “La Sapienza” University of Rome (41.90° N, 12.52° E, altitude about 60 m a.s.l.)

In May 1997 the neutron monitor was moved to the Physics Department “E. Amaldi” of “Roma Tre” University. Since then it has been continuously running at the new location (41.86° N, 12.47° E, altitude about 0 m a.s.l.).

The SVIRCO Observatory (INAF/IAPS-UNIRomaTre collaboration) is housed in a reserved building provided with a double air-conditioning system. The inner temperature is permanently restrained in a range of 23°-26° C, meanwhile the relative humidity is kept below 57%. Either the environmental parameters are continuously checked and recorded by digital sensors.

On January 1, 2005 three counters were added to the detector. This upgrade, from 17 to 20 NM-64, made the SVIRCO neutron monitor still consist of 5 sections but modified its geometry. Actually the new arrangement has been composed of three 3-counter, one 5-counter and one 6-counter units. The enhancement improved not only the overall counting rate of 15.6 % (January 2005) but, as a result, also the statistical quality of the recorded data.

Each of the 20 BF₃ proportional counters (BP-28 type) is equipped with a smart amplifier/discriminator circuit complete with a spectrum stabilizer. This new electronic unit, developed in our laboratory, holds firmly the pulse height spectrum of the amplifier output (within a range of more than 150 volts around the operating voltage), providing the counter with a great immunity against high voltage variations.

Anyway, systematic and exhaustive tests of the counters are regularly performed. The output pulses of the amplifiers, discriminated by the threshold gates, are collected and stored into a multi-channel analyzer. The analysis of the height distribution (spectrum) of the amplifier pulses coinciding with the discriminator ones, is essential to verify the long term efficiency of each counter together with the amplifier gain and the discriminator threshold level.

As well as the amplifier/discriminator circuits, a large part of the electronic instrumentation operating in the Observatory was designed and realized in our laboratory together with the software for data acquisition and pre-elaboration.

In order to improve the reliability of the recorded data and to prevent measurement breakdowns, two independent systems perform contemporary the data acquisition. Each system is remotely controlled by a dedicated computer and is timed by a high stability quartz clock and/or a GPS receiver. One equipment runs according to a timing of 1 minute and fulfils the acquisition of the 20 counters separately. The other one records the individual 5-minute counting rate of each detector section in addition to the rates of the overall multiplicity, sorted into separated counting channels (from 1 to greater than 8).

A special care is devoted to the atmospheric pressure measurements, thus they are carried out by means of not less than three barometers at the same time. These instruments (achieving a resolution up to 0.01 hPa), are constantly checked out each other for the best measuring accuracy and reliability. Furthermore the devices in use are equipped with different types of transducer such as vibrating cylinder, force balance and quartz, therefore, throughout their different behaviours, it is possible to point out the occurrence of any long-term drift and eventually to re-calibrate the instruments themselves.

DATA PRESENTATION

In a preliminary step, the intensity data, of the secondary nucleonic component of cosmic ray, detected at SVIRCO Observatory, were corrected for pressure variations at a reference level of 1009.25 hPa with an attenuation coefficient of 0.70% / hPa.

The five-minutes counting rates, of the examined month, are reported in tabular form together with the hourly normalized data, which provide a continuous data set for long-term analysis.

The normalization was evaluated as percentage of the counting rate average of January-February 1997, when the Monitor operated at the previous location of "La Sapienza" University. The reference counting rate level (100%), computed for such period, is equal to 554946 counts/hour.

The atmospheric pressure data (in hectoPascal) are also collected in a monthly table which presents the five-minutes averages and the hourly ones.

The hourly averages of the normalized intensity and pressure, plotted in monthly graphs, are reported too.

CONDITIONS FOR SVIRCO DATA USE

You are welcome to use neutron monitor data of SVIRCO, IAPS/INAF-UNIRomaTre collaboration, under the following conditions:

-You agree to acknowledge our financial supports in any published use of the data.

Example: "SVIRCO NM is supported by the INAF - UNIRomaTre collaboration"

-You are kindly requested to send a copy of any published work derived from our data to:

Dr. Monica Laurenza
Head of SVIRCO Observatory & TPL
Istituto di Astrofisica e Planetologia Spaziali - Area di Ricerca Tor Vergata
Via del Fosso del Cavaliere, 100 00133 Roma - Italy,

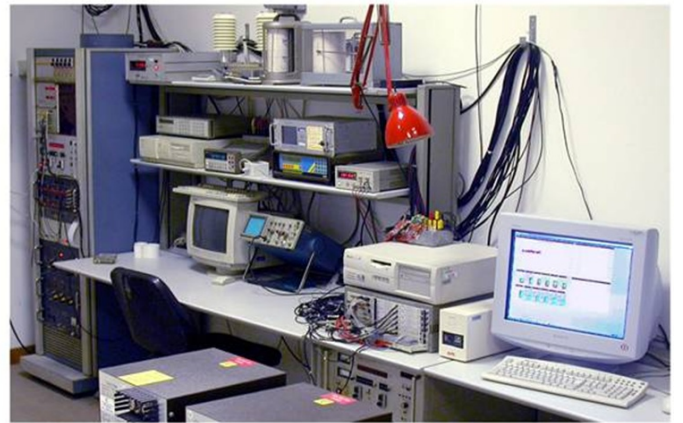
monica.laurenza@iaps.inaf.it



S.V.I.R.CO. Observatory

Rome

Italy



INAF/UNIRomaTre				S.V.I.R.CO. Observatory - Pressure Corrected Data – November 2016									20 NM-64	
day	hh	00_05	05_10	10_15	15_20	20_25	25_30	30_35	35_40	40_45	45_50	50_55	55_60	h-norm
1	0	46410	46168	45843	45828	46313	45443	46157	46713	45607	45296	46391	46089	100.076
	1	46584	46198	46427	45732	45782	46566	46560	46121	45778	46254	46342	46103	100.474
	2	46317	46257	46537	46817	45793	46033	46568	45834	46619	46181	47213	46167	100.816
	3	45827	45863	46243	45523	46081	46111	46224	45567	45234	46434	46045	45971	99.871
	4	46851	46435	45477	46423	45927	46353	46239	46541	46336	45424	46322	46025	100.457
	5	46498	46621	46709	46431	46348	46224	46091	46331	46380	47055	46567	46650	101.100
	6	46862	45593	46782	46036	45747	46291	46339	46779	46300	45858	46681	46065	100.634
	7	46119	46837	46059	46056	46156	46414	46902	46131	46270	46272	46700	47115	100.942
	8	46641	46329	45988	46421	46180	46445	46400	46053	46450	46153	46456	46459	100.751
	9	46471	46138	46688	46401	46244	45963	46477	46152	46071	46464	46799	46131	100.755
	10	45983	46826	47048	46638	45771	46126	46230	46442	46445	46100	46344	46596	100.855
	11	46208	46043	46777	46301	46375	46700	46281	46984	45692	47012	46885	46979	101.161
	12	46791	46542	46598	46320	46337	46225	46618	46301	46045	46325	46704	45987	100.899
	13	46824	46934	46291	46786	46175	45820	46219	47010	46378	47069	45974	46673	101.145
	14	47038	46065	46454	47172	46432	46060	46267	46528	46112	46404	46247	46588	101.003
	15	46591	47083	46829	46492	45925	46551	46196	45892	46509	46675	46739	46153	101.051
	16	46614	46480	46531	46168	46820	47134	46439	46521	46848	46420	46753	45892	101.230
	17	46179	46523	46160	46219	46863	45956	46824	45672	46049	46652	46304	45898	100.628
	18	45686	46578	46664	46330	46289	46072	46208	46739	46518	45757	46468	46554	100.730
	19	46081	46702	46059	46156	46695	46371	46859	46135	45954	46034	46168	45956	100.605
	20	46068	46795	46578	45935	45696	46542	45712	46260	45572	46098	45817	46013	100.227
	21	46574	45224	46114	45917	46660	46736	46073	46546	45986	45949	45756	46475	100.394
	22	46355	46022	46438	46483	46434	46786	46691	46081	45697	46368	45736	46668	100.711
	23	45872	46191	46730	46678	45868	45848	47167	46286	46162	46443	46695	46666	100.865
2	0	46612	46127	45789	46392	46329	46198	46650	46372	46341	46071	46055	46826	100.709
	1	46828	46480	46346	46706	46404	46234	46312	46021	47092	47003	46618	46396	101.197
	2	46957	47320	46620	46716	47335	46735	47010	46412	46924	46412	46539	46403	101.731
	3	46717	45582	46097	47264	47141	46045	46425	46259	46156	46482	46411	45798	100.823
	4	47364	46564	47194	46843	46636	47059	46940	46194	46279	46759	46147	46453	101.558
	5	46572	46389	46415	46221	45965	46887	47187	46894	46761	46191	46497	47250	101.340
	6	46247	46495	46415	46479	46578	46558	46325	46282	46927	46487	46272	46428	101.025
	7	47052	46757	46524	46431	46778	45964	46540	46269	46434	46273	45604	47280	101.101
	8	46796	46743	46427	46551	46519	46515	46537	46306	46517	46274	46545	46349	101.132
	9	46180	46537	46502	46367	46463	46448	46146	46267	46415	46072	46121	46535	100.764
	10	46308	46203	46208	46072	46126	45996	45939	45933	46330	46452	46362	46394	100.452
	11	46067	46643	46343	46398	46335	46424	46145	46385	46826	46249	46583	46273	100.877
	12	46112	46082	46606	47073	46126	46274	46496	46028	46806	46575	46196	46432	100.901
	13	46432	46969	46218	46664	46919	46359	46294	46475	46182	46423	46119	46380	101.015
	14	46844	46056	46446	46866	45679	46664	46644	46152	46625	46163	46784	46701	101.050
	15	46671	46022	46447	46166	46696	46733	46593	46537	46486	46226	46228	46158	100.930
	16	45924	46254	46232	46357	46436	46302	45702	45969	46276	46528	46538	46136	100.511
	17	46225	46343	46279	46692	45660	46419	46197	45891	47234	45987	46626	45723	100.624
	18	45626	46925	45873	46667	45716	45776	46187	46233	45887	45659	46009	46127	100.155
	19	46651	46153	46038	46200	45666	46221	46706	45786	46061	46840	46419	46142	100.553
	20	46452	46162	46331	47074	45975	46432	46354	46504	45940	47111	46171	46200	100.883
	21	46598	45905	47202	46165	46151	46363	46285	45683	45981	46359	46124	46421	100.617
	22	46383	46142	46224	46167	45637	46438	45739	45892	46708	46245	46408	46207	100.427
	23	46026	46072	45830	45682	45301	45905	45893	45535	46419	45839	46064	46526	99.866

INAF/UNIromaTre		S.V.I.R.CO. Observatory - Pressure Corrected Data – November 2016											20 NM-64	
day	hh	00_05	05_10	10_15	15_20	20_25	25_30	30_35	35_40	40_45	45_50	50_55	55_60	h-norm
3	0	45674	45978	46072	46715	46444	46215	46231	46610	46741	46655	46242	45786	100.634
	1	46116	46991	46381	45702	46259	46590	45675	45598	46588	46279	46219	46386	100.535
	2	45571	46232	46415	46091	46378	46610	46285	45305	45982	46584	45824	46135	100.286
	3	46117	45484	45936	45972	45504	46332	46255	45910	46255	45734	46024	45984	99.941
	4	45137	45624	46356	46173	45935	45414	45965	45413	45911	46273	46306	46339	99.821
	5	45769	46254	46326	46452	45982	46264	46795	46387	46432	46407	45939	45780	100.535
	6	46328	46048	46188	46249	46405	46411	46496	46402	46184	46334	46839	45818	100.701
	7	46463	45764	46408	46338	46286	45676	46034	45836	46291	46820	46149	46412	100.479
	8	45956	46127	46175	46558	46619	46570	46005	46107	45811	46275	46280	47059	100.672
	9	46737	45942	45427	46349	46187	46049	46835	46283	46643	46116	45734	46031	100.453
	10	45508	46359	46511	46159	45738	46241	46043	46540	45877	45931	46466	45975	100.275
	11	45740	46355	45379	46760	45993	45943	46661	45936	45906	46338	46260	46541	100.359
	12	45932	46410	46295	46458	46463	45755	46427	46034	46119	46355	46018	45794	100.403
	13	46054	46598	46249	46110	46353	46402	46989	45718	46128	45806	46025	46148	100.498
	14	46265	46514	46206	45822	45934	46901	46042	46572	45721	45653	46162	46114	100.376
	15	46523	46309	46213	46692	45845	46172	46441	46280	45916	46113	45854	46366	100.524
	16	46211	46531	46898	46315	46189	45962	46158	46259	46092	46649	45893	45905	100.586
	17	46375	45857	45972	46433	46697	46598	46663	45908	46703	45613	45985	46109	100.558
	18	46958	46348	46278	46042	45894	46205	46164	46056	46264	45870	45771	45979	100.363
	19	45989	46015	46163	46198	46037	45689	45849	45654	46439	45633	46297	46191	100.058
	20	45537	45859	45641	46311	46558	45873	45382	46205	45683	46204	46133	46369	99.986
	21	45723	46396	45696	45886	46336	45948	45683	45654	45877	46548	45907	45748	99.922
	22	46012	45990	46231	46158	45622	46072	46431	46346	45845	45681	45803	46196	100.100
	23	45435	45870	46128	45499	45584	46424	46215	45816	46513	45507	45985	45716	99.793
4	0	46066	45446	45872	46230	45845	45970	45846	45913	46424	46258	46076	46197	100.058
	1	46024	46369	46001	46518	45533	46703	46498	46218	46209	46512	46228	46378	100.609
	2	45955	46465	45903	45896	45338	45433	46488	46496	46277	46495	47243	45830	100.360
	3	46263	46705	46142	46117	46197	45968	45894	45379	46404	47033	46069	45456	100.325
	4	45911	45668	46168	46073	46366	46307	45861	46195	46630	45717	46736	46733	100.459
	5	45783	46130	46235	46424	46307	45602	46491	45845	45752	46613	46101	46349	100.326
	6	46276	46327	46059	46960	46053	46084	46156	46253	45937	46266	46458	46502	100.634
	7	46565	46287	46575	45938	46678	46070	46271	46519	46742	46587	46175	46100	100.847
	8	46560	46315	45796	46678	46526	46417	46319	46608	45964	46664	46200	46241	100.807
	9	46700	46369	46832	46113	46261	46071	46237	46034	46837	45665	46251	46081	100.656
	10	46676	46015	47153	45591	46047	46249	45667	46355	46632	45931	46840	46419	100.678
	11	45749	46381	46011	45372	46136	46349	46481	45747	45989	46144	46115	45425	100.012
	12	46454	45891	46329	46086	45723	46894	46132	46268	46142	46664	46575	46205	100.640
	13	46203	46329	45732	45672	45660	45943	45872	45794	45822	45951	46036	45274	99.720
	14	46406	45622	45554	46516	46303	46325	46115	46433	46207	46281	45732	46046	100.309
	15	46391	45870	45924	46159	45777	46415	45609	46039	46052	45822	46147	45733	100.019
	16	46301	45978	45672	45851	46043	46065	45821	46124	46419	45393	45547	45781	99.848
	17	46469	45486	46393	46310	46281	45375	45775	46347	45426	46229	45696	45829	99.961
	18	45761	46072	46645	45460	45754	46353	46216	45951	45650	46255	46773	45979	100.187
	19	45339	46294	46184	46477	46090	46419	46570	46119	45085	46637	46489	45856	100.313
	20	46149	46061	46020	46133	46233	46030	46579	46756	46091	46152	46499	46502	100.611
	21	46193	46177	46014	46843	45815	46400	45895	46767	45762	46103	46379	46768	100.595
	22	46158	46508	46353	46320	45493	45460	46350	45639	46134	46245	45766	46482	100.195
	23	46344	46227	47150	45881	46681	46607	46738	46603	46238	46594	46659	46605	101.177

INAF/UNIRomaTre				S.V.I.R.CO. Observatory - Pressure Corrected Data – November 2016										20 NM-64	
day	hh	00_05	05_10	10_15	15_20	20_25	25_30	30_35	35_40	40_45	45_50	50_55	55_60	h-norm	
5	0	47122	45978	46972	45810	46711	46305	46036	46781	45643	46236	46264	46399	100.790	
	1	46783	46797	46089	46472	46876	46387	46229	46361	46807	46341	46959	46828	101.286	
	2	46583	46341	46029	46726	46904	46114	46234	47043	47103	46742	46762	45992	101.222	
	3	46842	47062	46094	45846	46153	45611	45981	46170	46697	46487	46984	46697	100.868	
	4	46288	46637	46088	46344	46419	46811	46431	46040	46523	46632	46089	46575	100.914	
	5	45963	46242	46781	46374	45912	46232	47160	46345	46325	46554	46977	46649	101.030	
	6	46076	46438	46985	46211	46532	46576	46749	46329	45913	46460	46829	46173	100.985	
	7	46316	46798	46580	46603	46388	46570	47040	45934	46317	46445	46174	47074	101.161	
	8	46401	46089	46902	46099	46580	46368	46441	46364	46877	46416	45970	46515	100.940	
	9	46529	46388	46591	46536	46617	45890	46533	46773	46948	46910	46500	46418	101.232	
	10	46728	46714	46316	46278	46020	46432	46277	46176	46043	46798	46248	46469	100.845	
	11	46022	46444	46357	46481	45753	46809	46676	46235	46254	47600	46748	45911	100.989	
	12	46462	46207	46107	46404	46776	46314	46381	46312	46497	46028	45907	46299	100.700	
	13	46166	46678	46422	46325	46915	45927	46297	46188	46643	46514	45964	46894	100.924	
	14	46266	46478	47035	46007	47206	46232	46307	46218	46419	46147	46673	46357	100.999	
	15	46285	46717	45967	46029	46534	45750	46538	46203	46325	46362	46337	46046	100.591	
	16	46396	45666	46298	45755	46059	46606	46514	46296	46798	46545	46587	46601	100.777	
	17	46189	46193	46377	46189	45548	46103	45764	46350	46066	46435	46548	46681	100.473	
	18	45831	46481	46132	46377	45564	45990	45935	46628	46428	45777	46609	46400	100.420	
	19	45874	45771	46470	46221	46186	46250	45833	46350	46431	46039	46098	45848	100.279	
	20	46228	46109	46418	45729	46209	46073	46020	46264	46307	46517	46312	46077	100.441	
	21	46561	46247	46392	46465	46576	46571	46111	46066	46511	46788	46483	46004	100.895	
	22	45256	46639	46223	46202	45957	46320	46615	46329	46169	45763	46188	46418	100.407	
	23	45929	46236	46366	46185	46320	46030	45834	45937	45942	46034	46244	46511	100.315	
6	0	45379	46387	45869	46620	46127	45837	46413	45912	46054	46093	45809	45774	100.077	
	1	45878	46325	46147	45615	45875	46065	46117	46102	45839	46521	45942	46088	100.123	
	2	46480	46307	46363	46541	46243	46170	46429	46227	46185	46623	46517	46249	100.816	
	3	46385	46270	46554	46572	46196	46653	46877	46274	46227	46886	46230	45650	100.896	
	4	46533	45856	46001	46315	46570	46588	46163	46564	46161	46704	46279	45543	100.624	
	5	46487	46490	46518	46415	47043	46455	46105	46565	46612	46383	46781	46131	101.115	
	6	47023	46712	46510	46465	46758	45895	46346	46551	46895	46342	46184	46102	101.078	
	7	46872	46186	46529	46729	46513	46183	46443	46178	46461	46875	46854	46234	101.128	
	8	46318	46588	45804	46669	46488	46372	46530	46607	46705	46227	46652	46515	101.022	
	9	46514	46723	46533	46506	46703	46063	46393	46335	45911	46191	46578	46512	100.929	
	10	46108	47150	46571	47017	45991	46599	46774	46285	47059	46337	46422	46358	101.239	
	11	46713	46200	46744	46458	46842	46712	46505	46287	46168	46091	46052	46498	100.985	
	12	46316	46788	46752	47101	46496	47228	46560	46360	46475	47366	46851	45901	101.515	
	13	46236	47135	46539	47347	46194	46788	46682	46752	46737	45917	46673	46722	101.430	
	14	46183	45999	46313	46860	46878	46919	46960	46295	46958	46412	46871	46178	101.267	
	15	46834	46696	46697	46626	46859	46447	45767	46991	46846	47057	46706	46347	101.457	
	16	46873	46475	46730	47168	46535	46497	46949	46982	46386	46855	46326	46837	101.592	
	17	46993	46561	47338	46478	47166	46842	46722	46985	46614	46385	46886	47288	101.890	
	18	47091	46364	46869	46665	46414	46240	46367	46679	47121	47008	46442	46763	101.484	
	19	46584	46746	47095	46647	47068	46995	46786	46003	46834	46650	46411	46411	101.522	
	20	46523	46980	46726	46524	46910	46071	46705	46859	47043	46221	47057	47212	101.630	
	21	45743	46395	46886	46638	46875	46835	46534	46580	46164	46825	46304	46383	101.147	
	22	46399	46278	46099	46930	46773	46753	46540	46984	46286	46329	47038	46365	101.258	
	23	46696	47583	47006	46696	47062	47132	46791	47390	46457	47105	46634	46862	102.099	

INAF/UNIromaTre		S.V.I.R.CO. Observatory - Pressure Corrected Data – November 2016											20 NM-64	
day	hh	00_05	05_10	10_15	15_20	20_25	25_30	30_35	35_40	40_45	45_50	50_55	55_60	h-norm
7	0	46725	46520	46582	46783	46701	47228	47063	46775	47141	47619	47098	47147	102.094
	1	46598	46825	45857	46623	46797	46412	46761	47386	46910	46029	47159	46790	101.506
	2	46947	47165	46132	46567	46499	46773	46484	47315	46429	46533	46928	47109	101.639
	3	46870	46481	46853	46617	46310	46565	47058	46980	46549	46173	46416	47254	101.503
	4	46745	46626	46477	47171	46510	46581	45985	46228	46839	46635	45907	46378	101.133
	5	46103	46728	46879	46545	46430	46698	46639	46780	46249	46528	46372	46524	101.204
	6	46211	46783	46302	46507	46574	46402	46203	46453	46788	46335	46022	46449	100.942
	7	46620	46622	46661	47174	46656	45782	46417	46433	46759	46652	46185	46278	101.161
	8	46371	46523	46171	46066	46551	46632	46741	45860	46980	47162	46755	46282	101.135
	9	47003	46612	47107	46980	46690	46421	46750	46805	45896	47180	46523	46509	101.566
	10	46192	46487	46948	46287	46061	47105	46858	46038	46184	46804	46692	46951	101.228
	11	46548	46632	46578	46303	46435	46935	46461	46769	46120	46575	46633	46572	101.219
	12	46451	45959	46749	46985	46661	45855	46386	45840	46179	46915	46522	47034	101.034
	13	46797	46774	46621	46977	46454	46152	46235	46815	46039	46882	46802	45798	101.180
	14	46733	46281	45947	46675	46861	46822	46745	46342	46632	46352	46215	46453	101.128
	15	46304	46369	46491	46745	46403	46979	46125	46741	46532	46507	46189	47205	101.225
	16	46567	46128	46551	46143	46599	46381	46627	46378	47203	46408	46814	46540	101.179
	17	46595	46457	46048	46383	46478	46171	46627	46544	46158	46418	46038	46179	100.772
	18	45875	46005	46831	46049	46607	46240	46166	46192	46563	46508	46696	46836	100.859
	19	46363	45928	45856	46207	46192	46308	46202	46833	46184	46270	46021	46279	100.509
	20	45778	45912	46042	45635	45874	46777	46830	46610	46332	45917	45388	46545	100.328
	21	45604	46332	45710	46139	46582	45736	46107	45990	45932	46094	46153	46126	100.122
	22	46383	46320	45595	45848	46560	46096	45859	45975	45656	46039	46047	46449	100.180
	23	45832	46361	46295	46655	45614	45966	46291	46315	46036	45852	46452	46838	100.485
8	0	45962	46015	46228	46856	45997	46143	46497	46438	46193	46472	46010	45732	100.489
	1	46755	45950	46666	46902	46178	46613	46543	46030	45943	47133	46368	47080	101.147
	2	46650	46577	46107	46291	46828	46318	46027	46688	46163	46527	46685	46435	100.990
	3	46169	46725	46714	46224	46630	46438	46705	46145	46882	47192	46753	46044	101.230
	4	46844	46560	47151	46668	45835	47104	46708	46343	46423	46551	46902	46441	101.395
	5	46273	46099	46947	46296	46113	47112	46756	46658	47024	46758	46878	46609	101.393
	6	46781	46446	46741	46866	46455	46978	46503	46934	46464	46908	46180	46787	101.487
	7	46694	47542	46929	46773	46815	46520	47105	46894	46367	46487	47003	46436	101.764
	8	47457	46253	47222	47362	46457	46741	47222	46991	46386	47055	47156	46942	102.068
	9	46441	46624	46945	46850	46763	46744	46765	46988	46547	47028	46470	46197	101.546
	10	46696	46974	46992	47093	46884	46716	46803	47146	46707	46700	46451	46282	101.742
	11	46568	47063	47289	46448	46655	46925	46065	46411	46552	46361	46618	47217	101.511
	12	46434	46435	46407	46918	46533	46621	47247	46524	46594	46708	46960	47170	101.580
	13	47015	46853	47184	46818	46912	46214	46280	46474	46890	46692	46773	46552	101.599
	14	47090	46366	46504	47013	46292	46226	46877	46994	46669	46251	46958	46327	101.401
	15	46577	46400	46006	46105	46451	46545	46319	46364	45973	46293	46924	46051	100.756
	16	45913	47381	46589	46319	45961	46804	46539	46603	46411	46403	46157	46378	101.020
	17	46285	46058	46833	46717	46276	45780	46112	46110	46553	46358	46613	45852	100.673
	18	46105	46130	46399	46090	46033	46228	46751	46177	45786	45562	46111	46194	100.314
	19	46241	46214	45911	46375	46186	46420	46513	46764	45927	46166	46476	45809	100.574
	20	45874	46671	46266	46438	45994	46594	45603	46458	46234	46202	46210	46116	100.513
	21	46346	46171	46173	46660	46132	46469	46044	46151	45757	46315	46299	45921	100.472
	22	46784	46599	46256	46606	45941	46343	46433	46502	45898	45755	46317	46226	100.694
	23	47031	45850	46330	45974	46184	45993	46261	46268	45896	46374	46449	46192	100.538

INAF/UNIRomaTre				S.V.I.R.CO. Observatory - Pressure Corrected Data – November 2016									20 NM-64	
day	hh	00_05	05_10	10_15	15_20	20_25	25_30	30_35	35_40	40_45	45_50	50_55	55_60	h-norm
9	0	46197	45989	45796	46606	46466	46694	45928	46099	45526	46887	45862	46248	100.446
	1	46165	46620	46091	46735	46385	46142	46281	46279	46448	46380	46425	46782	100.888
	2	46523	46316	46437	46334	46792	46656	46448	46405	47149	46849	46192	46869	101.293
	3	46453	46323	46871	46284	46347	47217	46366	46705	46705	47331	46854	46741	101.516
	4	46854	47056	46788	46529	46872	46455	46720	46652	47231	46016	46947	46729	101.634
	5	46456	46237	46697	46057	46927	46593	46459	46454	46582	47066	46704	47104	101.359
	6	47083	46206	47181	46473	47030	46520	46144	47050	46817	45984	46054	46766	101.355
	7	46268	46946	46861	46706	46683	46860	46898	46791	46313	46198	46384	46911	101.448
	8	46530	46764	46121	46231	46460	46830	46507	46077	46858	46546	46083	46373	101.006
	9	46545	46558	46542	46612	46531	46478	46269	46660	46761	46376	46610	46501	101.198
	10	46380	46340	46423	46503	46418	45849	45773	46976	46400	47403	46813	46810	101.134
	11	46570	46738	47124	46319	46823	46703	46225	46816	46638	46560	46962	47065	101.578
	12	46964	46174	46156	46550	46295	46334	46768	46629	46486	45813	46841	46332	100.998
	13	45948	46437	46903	46929	46590	46279	46807	46169	46672	46574	46607	46314	101.159
	14	46488	46554	46109	46460	46026	46370	46374	46633	46330	46836	46419	46241	100.907
	15	46085	45963	46718	46188	46610	46461	46220	46657	45889	46637	46173	46269	100.732
	16	45956	46542	46903	46530	46303	46661	46478	46483	46410	46689	46092	46456	101.027
	17	46653	45941	46233	45854	46047	46305	46219	46331	46264	46474	46350	46226	100.555
	18	46182	46285	46513	46688	46429	46605	46034	46026	45668	45924	45913	47273	100.672
	19	46111	46325	45632	46419	46426	45838	46396	46320	46259	46414	46592	45875	100.503
	20	45944	46523	46003	45924	46123	46160	46301	45728	45471	45727	45956	46190	100.040
	21	45510	46245	45492	46651	45977	46265	46239	45754	46432	46008	46446	45722	100.165
	22	45956	46192	46310	45942	46215	46726	46403	46604	46477	45711	45806	45998	100.455
	23	46311	46144	46325	45820	46022	46262	46000	46356	46151	46349	46433	46456	100.506
10	0	45642	46236	46904	46279	46204	45931	46199	46057	46849	45932	46812	46857	100.741
	1	45529	45796	45862	46032	46019	46029	45627	45997	45445	46074	46231	45876	99.761
	2	46163	46942	46096	45700	46066	45898	46542	46221	45749	45829	45915	45656	100.171
	3	46220	45918	47146	46370	45896	46619	46061	46494	46400	45974	46258	46754	100.775
	4	45405	46660	45703	46186	46075	45743	46805	45919	46248	46205	46323	46273	100.310
	5	46395	46327	46812	46636	46109	46444	46530	45860	46038	46825	46453	46930	101.002
	6	46871	47154	46660	45991	46194	46647	46208	46774	46035	45957	46521	45836	100.910
	7	46883	45768	46251	46344	46384	46227	46563	46329	46562	46272	46043	46618	100.799
	8	46688	47059	46285	46356	46099	45730	46298	46174	46485	46443	46206	45488	100.631
	9	46117	46089	46815	46412	46115	45641	45479	46800	46415	46215	46002	46165	100.441
	10	45564	46071	45994	46012	46010	45885	46361	46347	46518	46254	46537	45683	100.254
	11	46445	47050	46409	46371	45792	46617	46362	46755	46665	46539	45881	46638	101.031
	12	46117	46570	46477	46498	46389	47002	46640	46399	46417	46491	46274	46495	101.076
	13	46961	47279	46716	46412	46764	46567	47034	46671	46676	46749	46494	46541	101.636
	14	46529	46148	46227	47009	46407	46727	46306	46106	46244	47149	46335	46898	101.133
	15	46937	46710	47695	46479	46740	46584	46892	47443	47132	46724	47513	47081	102.192
	16	47280	47082	46863	46616	47345	46941	47094	46689	46456	46431	46834	46911	101.941
	17	47078	47153	46724	47056	47362	47726	47380	47250	46857	46508	46929	46735	102.343
	18	46796	46164	46838	46993	46925	46484	46520	46619	47034	47125	46814	47079	101.732
	19	46569	46691	46725	47199	46447	46980	46417	46214	47014	46021	46978	46209	101.383
	20	46431	46242	46642	46306	46748	46462	46821	47380	46097	46123	46768	46581	101.226
	21	46047	46142	46068	46397	45877	46515	46076	46389	46467	45816	46190	46129	100.413
	22	46139	46136	46424	46278	45759	46750	45513	46002	45792	47053	46615	45900	100.458
	23	46424	46633	46633	46361	46930	46411	46193	46352	45465	46051	46371	46848	100.877

INAF/UNIromaTre		S.V.I.R.CO. Observatory - Pressure Corrected Data – November 2016											20 NM-64	
day	hh	00_05	05_10	10_15	15_20	20_25	25_30	30_35	35_40	40_45	45_50	50_55	55_60	h-norm
11	0	46017	46483	45861	46680	45906	46252	46650	46307	46283	46146	46518	46425	100.667
	1	46089	45869	46362	46852	46089	46329	46836	46442	46354	46084	46311	47329	100.927
	2	46010	45929	46558	46107	45995	46416	46740	46168	46326	46452	46346	46397	100.655
	3	46802	46360	46689	46310	46555	46328	46274	46422	46258	46674	45824	46224	100.885
	4	45720	46930	46882	45877	45932	46415	46345	46478	46284	46397	45589	46857	100.702
	5	46485	46779	46446	45879	46115	46720	46310	46873	46798	46163	46435	46076	100.951
	6	46372	46508	46336	46571	46000	46415	46747	46275	46357	46888	46501	46130	100.954
	7	46328	46325	46619	46753	46590	46263	46535	45989	46331	46515	46730	45952	100.924
	8	47273	46337	46544	46525	46413	46355	46520	46143	46600	46404	46476	46592	101.150
	9	46208	46690	46344	46282	46966	46100	46254	46442	46191	46163	46004	46168	100.721
	10	46590	46513	45704	46438	46348	46256	45593	46566	46346	46250	47032	46925	100.857
	11	46300	46511	46323	46890	45898	46448	46452	46202	46614	46576	46406	46378	100.936
	12	46462	46491	46277	45784	46661	46128	46335	46594	46280	46490	46105	46332	100.744
	13	46570	46492	46889	45908	46446	46180	45620	46354	46974	46385	46048	46735	100.864
	14	46472	46415	46086	46972	46386	46894	46188	46493	46665	46318	45702	46399	100.934
	15	46857	45860	46559	46196	46123	47450	46327	45996	46497	46461	46548	46523	101.008
	16	46224	46019	46304	46331	46392	46168	45836	46438	46287	46395	45135	46741	100.442
	17	46329	45711	46324	46800	46732	46322	46333	45975	45699	46410	45640	45896	100.424
	18	45879	46468	46481	45957	45844	46343	46186	45741	46796	46921	46034	46536	100.608
	19	46046	46335	46354	46317	45719	45950	46411	45963	46087	46474	45853	46368	100.371
	20	45777	45546	46067	45777	46008	46098	45870	46003	46427	46409	46809	46303	100.229
	21	46119	45670	45889	46393	45886	46456	46100	46380	46203	46301	45846	45979	100.252
	22	46305	46492	46188	45728	46100	46331	46426	46012	45656	46448	45845	46806	100.454
	23	46189	46348	46417	45898	46202	45928	46434	46439	45908	46507	45713	46153	100.417
12	0	45858	46791	46288	46196	45835	46363	46058	45681	46338	46498	46054	45754	100.343
	1	46232	46478	46627	45710	46387	46633	46314	46665	45703	46262	46601	45922	100.671
	2	46094	46991	46729	46383	46314	46339	45884	45986	46096	46143	46500	46344	100.719
	3	45739	46516	46067	46627	45788	46659	46595	46213	46247	45700	45859	45719	100.344
	4	45749	46463	46415	46066	46567	46539	46346	46612	46451	46100	46009	47433	100.890
	5	46252	46610	46854	47052	46332	46736	46683	46015	45793	46698	46017	47005	101.127
	6	46219	46869	46529	46437	47099	46847	46341	46184	46459	45912	46924	46123	101.108
	7	46633	46658	46606	46086	46392	46503	46925	46530	45815	46736	46633	47199	101.247
	8	46429	46056	47029	46391	46971	46826	46384	46628	46135	46082	47081	46706	101.247
	9	46598	45904	46999	45944	46739	46746	46944	46614	46317	46800	46554	47393	101.398
	10	46424	47592	46649	46793	46429	47440	47176	46638	47251	46886	46890	47255	102.100
	11	46802	46364	46394	47151	46478	46872	47321	47217	46629	47073	47090	46455	101.815
	12	46795	46987	46077	46596	47327	46775	46914	46808	46268	46023	46635	46397	101.408
	13	46823	46738	46489	46874	46820	46961	46742	47021	46931	47150	47004	46837	101.913
	14	46575	46341	46763	46620	46223	46004	46763	46696	46276	46948	46307	46642	101.146
	15	46078	46855	46579	46847	46705	45784	46324	46626	46861	45989	46615	46620	101.096
	16	46140	45949	45627	46535	46257	45946	46042	46761	46083	45944	46390	45899	100.315
	17	46437	46080	45558	45915	46676	46114	47256	46534	46047	47156	46224	46012	100.756
	18	45624	46187	46587	46409	46171	46586	46494	45771	45579	45786	45786	46299	100.262
	19	46130	45956	45729	45707	46185	46547	46163	46024	46219	46299	46227	46084	100.260
	20	45870	45545	45789	47007	45868	46361	45739	45995	45751	45484	46033	45987	99.927
	21	45686	46725	46457	45795	45370	45310	46266	45766	45746	46203	46123	45892	99.910
	22	46442	45821	45951	45500	46053	45902	45813	45790	46041	46127	45590	45609	99.784
	23	45929	45582	46036	46577	45769	46174	45894	45833	45750	45859	45927	46264	99.957

INAF/UNIRomaTre				S.V.I.R.CO. Observatory - Pressure Corrected Data – November 2016									20 NM-64	
day	hh	00_05	05_10	10_15	15_20	20_25	25_30	30_35	35_40	40_45	45_50	50_55	55_60	h-norm
13	0	45401	46230	46030	45975	46140	46169	45853	45863	46042	46360	45714	46108	100.011
	1	45955	45749	45718	45971	46128	45835	45914	45911	45945	46323	45687	46097	99.891
	2	46169	45824	46504	45855	46723	46073	45612	45487	46107	46567	45523	46042	100.118
	3	45899	46415	45948	46401	46132	46400	45879	45852	46488	46516	46582	45648	100.421
	4	45984	45871	45753	46530	46299	46796	45864	45519	46416	45391	46158	46111	100.156
	5	45971	46362	45396	45944	46539	46062	46241	45997	46337	45866	46786	45675	100.243
	6	46090	46462	46112	46204	46741	45849	45709	45603	46095	45856	45248	46150	100.053
	7	45852	45876	46104	46040	46011	45883	46418	46084	46157	45868	46331	47186	100.358
	8	45358	45143	45577	46766	46026	46023	46351	46958	45869	46112	46214	45750	100.057
	9	46240	46279	46064	45781	46345	45981	45220	46793	46530	46193	46258	46925	100.503
	10	45798	46478	46644	46046	46350	46807	46501	46705	46171	46052	46219	46636	100.829
	11	45849	46317	46828	45958	46288	45757	45729	45834	46633	46637	46621	46530	100.571
	12	46999	46479	46230	46253	45856	46660	45722	46431	46105	46095	46067	46377	100.623
	13	46030	46556	46139	46846	45945	46615	46215	46067	46408	46457	46440	46511	100.797
	14	46180	46654	46449	45964	46338	45885	45963	46111	46605	46157	46612	46009	100.561
	15	45979	46085	46257	45858	46225	46144	46066	46433	46242	45981	45599	46649	100.305
	16	46147	45859	45810	45710	46366	45823	46149	46167	45802	45845	46372	46613	100.150
	17	45835	46024	46090	45663	46418	45793	45883	46519	46289	46038	46018	45758	100.090
	18	45731	46099	46170	46129	46088	46183	45739	46042	46102	45952	46061	46006	100.085
	19	45994	45319	45735	46098	46575	46068	46142	46112	46119	45977	46345	45943	100.107
	20	45815	46037	45912	45216	46133	46089	45863	46474	46561	45942	46229	46088	100.095
	21	45796	46732	45294	46464	46121	46280	45355	46182	45687	46094	46295	47088	100.282
	22	45855	46911	46008	46323	45874	46204	46071	46649	45996	46528	46456	46393	100.623
	23	46808	46566	45914	46135	46400	46121	46747	45655	45923	45444	46046	45964	100.342
14	0	45764	46730	45894	45602	45725	45884	45882	45945	46391	46092	46579	46729	100.250
	1	45755	46169	46282	45939	45533	45844	45856	45731	45949	46220	45813	46349	99.929
	2	46155	46096	46366	46204	46104	46188	45497	46404	45414	46398	46361	46025	100.250
	3	46502	45266	45629	46186	45427	45878	46223	46066	45786	45935	46439	46158	99.939
	4	46227	46182	46741	45908	46633	46092	46318	46058	46468	45768	45863	45645	100.375
	5	46250	45956	46128	46812	46482	45991	45819	45998	46352	46781	45311	46235	100.414
	6	45643	45522	45515	45729	46396	46289	45712	45444	45595	45715	46029	46082	99.608
	7	45759	45931	45768	46123	45722	45779	46247	45712	46110	45201	45598	46175	99.690
	8	45856	45502	45795	46130	45696	46526	45481	46326	46088	46279	46242	45880	99.994
	9	45770	46228	46201	46139	45765	45649	46475	45521	45912	45280	46037	45385	99.734
	10	47286	46461	45422	46172	46422	46829	46179	45986	45511	46531	45783	45940	100.487
	11	45970	45869	45944	45469	46040	46537	46698	45959	46251	45991	46217	45082	100.035
	12	46019	45964	46109	46378	46267	45918	46911	46819	46479	46508	46536	46673	100.861
	13	46291	46124	45831	45740	45913	45775	45880	46145	46053	46303	46237	46187	100.117
	14	45525	46160	46111	46072	46376	46911	46538	46061	46526	46189	45706	46106	100.444
	15	46661	45355	45961	46109	46332	45988	45400	45938	46392	45919	45549	45482	99.865
	16	46607	45419	46378	45934	46120	45976	46846	45505	45781	46572	45716	45844	100.157
	17	46597	46125	46128	46508	46009	45679	46297	46457	45545	46613	46247	46363	100.496
	18	45681	46186	46235	46045	46277	46497	45855	46191	46178	46574	46254	45468	100.292
	19	46487	46375	46350	45743	45992	46601	45996	45873	46037	46617	46556	45834	100.476
	20	46252	46188	45655	45837	46062	46555	45885	46252	45846	46503	46256	46494	100.353
	21	46552	46152	46188	46644	45891	46225	46440	46300	46219	46270	45759	45831	100.478
	22	45938	46329	46194	46635	46221	45753	45757	45805	46018	46359	45597	45953	100.132
	23	45958	45082	46013	46592	46397	47202	45968	45646	46113	46228	45876	46247	100.270

INAF/UNIromaTre		S.V.I.R.CO. Observatory - Pressure Corrected Data – November 2016											20 NM-64	
day	hh	00_05	05_10	10_15	15_20	20_25	25_30	30_35	35_40	40_45	45_50	50_55	55_60	h-norm
15	0	46232	46059	45796	46452	45936	45425	46277	46476	46757	46237	46909	46744	100.633
	1	46597	45334	45742	46533	46365	46246	46397	46340	45960	45967	46615	46731	100.543
	2	46837	46294	46572	45843	46558	46047	46246	46278	45198	46506	46261	46390	100.579
	3	45895	46630	46485	47122	45739	45568	46221	45985	45465	46756	45924	45796	100.318
	4	46480	45709	45813	46088	45989	46483	45806	46085	46460	46577	46253	46337	100.407
	5	45732	45511	46094	47054	46126	46377	46113	45837	46536	46111	45985	46219	100.337
	6	45906	45904	46142	45478	45962	45835	46489	46069	46358	45956	45824	45778	99.976
	7	46365	45821	45710	46548	46404	46388	46358	46163	45811	46444	46163	45725	100.375
	8	45898	46688	46114	46281	46151	46216	46432	46290	46394	46633	46431	45948	100.660
	9	46217	46845	45748	45758	45800	46224	46492	45936	45905	46112	46246	46248	100.308
	10	46379	45974	45780	46273	46614	45595	46576	45731	46483	46002	46433	46517	100.458
	11	46579	46276	46342	46833	46619	46350	46932	46056	47012	46465	46169	46595	101.159
	12	46196	46089	45564	46495	46009	46103	46831	46144	46126	46184	45610	46032	100.281
	13	46368	46626	45737	46632	45997	46378	47095	46321	45799	46068	46663	46819	100.846
	14	46156	45768	46262	46468	46270	46563	46728	45929	45614	46785	45979	45864	100.463
	15	46663	46279	45852	46247	46171	46395	45201	46548	46241	46021	45586	45745	100.202
	16	45891	46302	46032	46377	45796	45871	46373	46644	46784	46118	46148	46113	100.474
	17	46102	46089	46848	46504	44761	46772	46152	46478	46271	46345	46270	46201	100.536
	18	46260	46565	46193	45742	46423	46203	46019	46314	45904	47318	45520	46559	100.577
	19	46011	46362	46568	46029	45769	46303	45748	45301	46211	45732	45530	46409	100.025
	20	45711	45993	46491	46353	46648	46144	46335	46257	45927	46655	46487	46774	100.714
	21	46411	45693	45771	45974	45736	46429	46353	45554	46102	46014	46645	46616	100.265
	22	46801	46230	46561	46551	46727	46944	46638	46296	46521	45930	46164	46714	101.131
	23	46238	46505	46334	46431	46022	46579	46300	46675	46919	46136	46678	46780	101.045
16	0	46600	46436	46019	46006	45915	46147	45851	45944	46178	45916	45870	46993	100.368
	1	46449	46001	46282	46727	46624	46749	46404	46845	46903	46138	47208	46296	101.231
	2	46678	45755	46333	46461	45940	46041	45838	46457	45929	45943	45816	46806	100.392
	3	46071	46174	46159	46151	45675	46132	46319	46133	45940	46703	46319	46138	100.377
	4	46515	46435	46154	45316	46247	46571	46346	46715	46453	46129	46346	45704	100.561
	5	46088	46470	45758	46291	45887	45857	46084	45745	46373	46532	46046	46298	100.289
	6	45721	46046	46177	46281	45820	46300	46864	46863	45996	45888	45525	46209	100.336
	7	46299	46132	45513	45625	46556	46267	46470	46120	45635	45433	46032	45094	99.881
	8	46214	46078	45760	46195	46529	45692	45833	45891	46178	46217	46087	46003	100.153
	9	45825	46062	46201	46767	46536	45886	46755	46081	46271	46071	46849	45795	100.592
	10	46242	46382	46571	46399	46460	46304	46219	46543	46482	45804	46019	46017	100.654
	11	46493	46281	45942	47086	46104	46396	46534	46580	46911	45981	46399	46051	100.892
	12	45605	46697	46359	46068	46233	46722	46172	45824	45740	46251	46151	46194	100.395
	13	46259	46064	46570	46224	46821	46040	46090	46568	46524	45988	46491	46648	100.807
	14	46632	46885	46040	46151	46060	46460	46136	46504	46471	46562	46304	46338	100.854
	15	45987	46239	46441	46175	46375	46633	46746	45958	46138	46660	46711	46123	100.788
	16	45960	46210	45954	46532	46299	46287	46769	45819	46340	46198	45772	46257	100.465
	17	47463	46068	46144	46835	46696	46119	46078	47302	46732	46733	46044	46486	101.245
	18	46521	46378	46143	46978	46825	45618	46725	46849	46270	46997	46213	46327	101.089
	19	46022	46602	46157	46527	46813	46270	46537	46168	46942	46657	46311	46184	100.971
	20	45943	46366	46689	46966	46264	45925	46349	47071	46013	46147	46400	46751	100.915
	21	45837	47092	46197	46757	46401	46149	46970	46588	46245	46939	46939	46159	101.167
	22	46314	46357	45992	45886	46734	46362	46265	46524	46433	46344	46323	46916	100.836
	23	46091	46775	46223	46509	46124	46493	46063	46615	45603	46358	46307	46348	100.666

INAF/UNIRomaTre				S.V.I.R.CO. Observatory - Pressure Corrected Data – November 2016									20 NM-64	
day	hh	00_05	05_10	10_15	15_20	20_25	25_30	30_35	35_40	40_45	45_50	50_55	55_60	h-norm
17	0	46634	46317	46298	46476	46319	46301	45860	46859	45782	46033	47098	46334	100.811
	1	45454	46955	45888	46511	46813	46590	45940	46361	46296	46128	46532	46736	100.792
	2	46377	46103	46237	45644	46141	46460	46690	46276	46165	46524	46222	45622	100.476
	3	46178	46628	46216	46220	46665	45914	46231	46227	46393	45935	46822	46363	100.718
	4	45993	45718	46721	46665	46461	46092	46301	46958	46377	46444	47060	46769	101.039
	5	46763	46558	46464	46048	46137	46557	46441	45948	46321	46233	46474	46326	100.804
	6	46521	46540	46700	46247	46332	46470	46820	46268	46323	45691	46273	46129	100.812
	7	46082	46367	45619	45654	46170	46544	46212	45466	45831	45976	46098	46812	100.181
	8	45612	46247	45763	46586	46801	46140	46444	46403	45933	46206	46058	46209	100.466
	9	46233	46606	46224	46011	46668	45599	46581	46252	46228	46142	45595	46521	100.512
	10	46251	46712	46269	46093	45737	46369	45495	45913	46570	45984	46325	46143	100.367
	11	46254	46608	46430	46410	46201	46679	46264	46011	46756	46053	46334	46380	100.824
	12	46662	46301	46482	46433	46568	46115	46324	46495	46113	46294	46183	46267	100.798
	13	46251	46812	46717	46245	46888	46381	46104	46258	46842	46330	45696	46876	101.009
	14	46652	47101	46344	46464	46262	46617	46516	46177	46328	46530	46398	46330	101.067
	15	45871	46526	46787	46139	46273	46332	46400	46127	46171	45786	46687	46150	100.619
	16	46810	45598	46571	46543	45821	46491	46219	46612	46572	45659	46020	46597	100.667
	17	46549	46510	46471	46539	45983	46346	46225	46552	46501	46374	46419	46896	101.003
	18	46342	46139	46549	46836	46224	46575	46374	46571	46286	46443	46257	46313	100.920
	19	45877	46315	46010	46552	45966	46437	46496	46672	46161	46416	46637	46865	100.828
	20	46237	46183	46600	46626	45992	45706	46619	46139	46866	46641	46452	46466	100.850
	21	45684	46791	46991	46662	46810	46354	46475	46399	46442	46633	46398	46968	101.228
	22	46309	46808	46350	46270	46737	46186	46751	46675	46867	46192	46574	46559	101.168
	23	46570	46204	46595	46177	46299	46609	46423	46153	45585	46031	46519	46828	100.754
18	0	46425	46159	46428	46571	46563	47430	46388	46888	46167	46562	46594	46136	101.175
	1	46392	46521	46838	47323	46628	46401	46436	46364	46513	46257	46645	46630	101.289
	2	46867	46771	46318	45961	45868	46504	46898	45954	46221	45733	47204	47185	101.024
	3	46804	46629	46577	46771	46902	46230	46847	46263	46785	45986	45994	46527	101.175
	4	46368	46283	46022	46770	45935	46483	46459	46331	46033	45918	46877	45231	100.522
	5	46447	46446	47171	46054	46352	45987	47090	46394	46606	47099	46125	46476	101.162
	6	46702	46548	45925	46173	46624	46923	46708	45727	45950	46146	46022	46040	100.663
	7	45667	46550	46518	45933	46822	46220	46508	46417	46053	46501	46096	45861	100.600
	8	46501	46684	46128	45812	46282	46615	46166	45910	45977	46442	46650	45648	100.540
	9	46744	46890	46202	46065	46198	46733	46458	46102	45900	46081	45764	46778	100.740
	10	47007	46157	46740	45830	46481	46478	46713	46159	46041	46502	46240	46189	100.852
	11	45553	46485	46555	46121	46324	46561	46722	46584	46510	45386	46475	46167	100.654
	12	46665	45711	45788	46841	46269	46265	46547	46137	45852	46423	46550	45652	100.520
	13	46589	46375	46028	46202	47341	46558	46659	46043	46578	46975	45894	46829	101.130
	14	46379	46437	46710	46452	46068	46597	46918	46306	46166	46337	46439	46147	100.928
	15	46449	46598	46018	46562	47474	46228	46405	45899	45831	45429	45875	47218	100.753
	16	46404	46491	46627	46092	46652	46607	46497	47104	46862	46408	46575	46673	101.297
	17	45710	46687	46123	47080	46840	46615	46806	46304	46422	46038	45889	46577	100.952
	18	46480	46212	46779	46900	47491	46366	45996	46772	46616	46977	46689	46262	101.397
	19	46410	46401	46149	46067	46486	46922	47285	46517	46104	46449	46390	45784	100.930
	20	46157	46672	46398	46634	46238	46568	46801	46295	46500	46394	47125	46467	101.163
	21	46610	46583	47150	47147	46928	46644	46548	46563	46397	46296	46470	46735	101.493
	22	46469	46724	46202	46409	46792	46460	46382	46344	46679	46651	46686	46103	101.100
	23	46791	46152	46023	46203	46416	46426	46457	46787	46200	47115	46910	46459	101.107

INAF/UNIromaTre		S.V.I.R.CO. Observatory - Pressure Corrected Data – November 2016											20 NM-64	
day	hh	00_05	05_10	10_15	15_20	20_25	25_30	30_35	35_40	40_45	45_50	50_55	55_60	h-norm
19	0	46171	46584	45926	46187	46402	47139	46199	46645	46446	46463	46344	47031	101.032
	1	46910	46656	46555	45722	46536	45994	45896	45982	46275	46368	46538	46528	100.748
	2	46543	46365	46285	45897	46250	46656	46717	46527	46471	46028	46023	46696	100.838
	3	46261	45736	46655	46533	46760	46704	46219	46464	46232	46254	46408	46319	100.854
	4	46876	46553	46882	45937	46649	46131	46477	46352	46540	46904	46642	46648	101.224
	5	46019	46066	46607	46566	46559	46438	46806	46006	46412	46988	46935	46061	101.021
	6	46756	46769	46727	47242	46109	46495	46520	46928	46555	46516	46478	46265	101.364
	7	46433	46532	47089	46513	46645	46726	47024	46794	46770	47122	46400	46345	101.551
	8	45994	46866	46885	46283	46532	46677	46661	46376	46820	46460	46262	46306	101.140
	9	46402	46921	46961	46454	46969	46416	47388	46079	46395	46121	47000	46261	101.365
	10	46455	46993	46064	46488	46144	46787	46541	46518	46493	46631	46105	46209	101.014
	11	46524	46781	46206	47061	46104	46709	46808	46123	46445	46231	46552	46169	101.065
	12	46658	46786	46704	46121	46727	46886	46209	45881	46443	46374	46565	46635	101.116
	13	46623	45803	46763	46147	46142	46756	46164	46266	46469	45951	46852	46201	100.780
	14	46748	46122	46569	47192	45782	46345	46852	46463	46605	46760	46666	46426	101.214
	15	46317	46435	46048	46125	46438	46642	46550	46584	46705	46941	46506	46564	101.091
	16	46256	46594	46075	46028	46990	46506	46628	46537	47260	46160	46222	46488	101.071
	17	46602	46845	46927	46366	46682	46824	46420	47145	46347	45988	46576	46505	101.340
	18	47101	46261	46230	46676	46618	46523	46157	47047	46896	47440	46522	46390	101.455
	19	47157	46314	46747	46337	47103	47357	46041	46790	47598	46434	46512	46370	101.618
	20	46165	46947	46571	46909	45901	46735	46186	46848	46659	46562	46972	45871	101.177
	21	46675	46389	46415	46988	47031	46336	46250	46312	46152	46420	47105	46367	101.197
	22	46038	46693	47180	47267	46547	46168	46005	46210	46623	46419	45828	46665	101.053
	23	46641	46693	46578	46103	46590	46774	46862	46268	46151	46016	46389	46540	101.046
20	0	45945	46369	46598	46205	46474	46540	45871	46102	46392	46500	46263	46318	100.679
	1	46295	46481	46986	46020	46846	46299	46861	46585	46402	46590	46615	46766	101.253
	2	46331	46947	46137	46251	46432	46203	46503	46687	46066	46102	46535	46016	100.793
	3	46733	46049	46111	46378	46709	46720	46394	46668	46760	46748	46438	46582	101.170
	4	47135	46583	46644	46231	46122	46766	46509	46462	46207	46865	45735	46496	101.073
	5	46781	46813	46643	46650	45963	45619	46530	46767	46772	46318	47271	46773	101.280
	6	46441	46203	46768	47149	46678	45622	46614	46749	46423	46226	46497	46805	101.149
	7	46936	46080	46417	46476	46166	46749	46136	45889	46381	46338	46258	46258	100.770
	8	46964	45973	45590	46627	46670	46843	46068	46300	46712	46815	46626	47115	101.172
	9	46808	46493	46553	46123	47159	46725	46690	46494	46469	46640	46542	46738	101.377
	10	46568	46207	46444	46618	46041	46415	46447	46557	46075	45902	47093	46614	100.933
	11	46266	46208	46388	46919	46537	46416	46474	46320	46585	46084	46333	46527	100.947
	12	46514	46734	46350	46455	46599	46580	46377	46764	46530	46767	46089	46847	101.227
	13	46376	45632	46168	46474	46304	46401	46823	46646	46275	46882	46756	46237	100.932
	14	46771	46279	46114	46540	46481	46435	46506	46476	46796	46422	46657	45792	100.985
	15	46302	46763	46087	46676	45928	46836	46750	46979	46763	46534	46065	46541	101.158
	16	46183	46382	46313	46018	46633	46734	46309	46477	46248	46509	46760	47050	101.048
	17	46518	47017	45708	46474	46649	46063	47199	47294	45967	46676	46730	46443	101.251
	18	46575	46403	46410	47152	46490	46191	46309	46825	46981	46589	46804	45841	101.221
	19	46480	46590	45572	46147	46824	46746	45278	46160	46345	46527	46056	46175	100.556
	20	46704	46285	46772	46627	46738	46353	46534	46611	46476	46703	46384	46672	101.273
	21	46871	46323	46837	46386	46325	46311	45901	46121	46068	46801	46962	46480	101.006
	22	46086	46738	46825	46730	46175	46705	46289	46538	46438	46397	46112	46302	100.997
	23	46228	46692	46810	46117	46496	46592	46706	46895	46215	46444	46607	46269	101.130

INAF/UNIRomaTre				S.V.I.R.CO. Observatory - Pressure Corrected Data – November 2016									20 NM-64	
day	hh	00_05	05_10	10_15	15_20	20_25	25_30	30_35	35_40	40_45	45_50	50_55	55_60	h-norm
21	0	46494	46295	47304	46576	46485	46644	46740	46145	46150	46210	45661	46650	100.999
	1	45909	46401	46934	47242	47322	46010	46867	46801	46867	46343	46375	46413	101.386
	2	46641	46352	46091	45985	46319	46406	46392	46775	47196	46553	46941	45913	101.039
	3	46437	46286	46685	46916	46378	46630	46335	47276	46857	46404	46840	45951	101.298
	4	46005	47347	46350	46814	47027	46502	46675	46779	46292	47038	46755	46208	101.442
	5	47103	46561	46922	46405	46786	46736	46801	46262	46436	46282	46358	46673	101.358
	6	46362	46028	46202	45968	46290	46411	46411	45972	47007	46559	46817	46073	100.773
	7	46417	46787	47530	46907	47102	46058	45911	46558	47328	46552	46688	46010	101.452
	8	46159	47310	47037	47115	47020	46427	45895	46732	46669	46637	46269	45930	101.335
	9	46663	46701	46763	46829	46452	46257	46388	46622	46821	46653	47082	46494	101.430
	10	46424	46998	46160	46605	46611	46405	46754	46037	46905	46722	46411	46354	101.188
	11	46445	46444	46896	46369	46658	45915	46636	46394	46431	46085	46579	46693	101.035
	12	46571	46078	46370	46790	46491	46133	46152	46774	46422	46051	46422	46116	100.822
	13	46951	46086	46578	46220	46406	46361	46474	46488	46719	46326	46138	45985	100.888
	14	46596	46361	46597	46883	46626	46410	45866	46372	46905	46468	46187	46620	101.097
	15	45781	46370	46953	46259	46259	46217	46311	47004	46710	46721	46297	46655	101.033
	16	46744	46128	46108	46492	45687	46572	46848	46517	46546	47611	46285	46863	101.190
	17	45962	46356	46279	46417	46479	46044	46641	46561	46545	46091	46540	46073	100.753
	18	46172	46640	46311	45875	46475	47214	46073	46558	46666	46092	46543	46770	101.007
	19	46537	46578	46425	46380	46927	46911	47394	46121	46691	46423	46606	46735	101.431
	20	46422	46713	46693	47014	46257	46279	46923	46439	46490	47204	46968	46594	101.479
	21	46145	46500	46677	46435	46991	46768	47039	46972	46815	45916	46490	46797	101.398
	22	46209	46487	46614	46321	46589	46399	47113	46548	46403	46946	46398	45962	101.116
	23	46926	46302	46611	46507	46797	46074	46177	45881	46716	46545	46668	46044	100.982
22	0	46706	46654	46344	45961	46292	46331	46416	45889	46493	46638	46950	46594	100.987
	1	46725	46556	46205	46449	46729	46646	47238	46071	46577	46696	46302	45923	101.139
	2	45788	46484	46601	47347	46193	46894	46719	46812	47012	46360	46208	46241	101.237
	3	45285	46649	45807	45927	46438	46322	46147	46138	46430	46100	46530	46421	100.428
	4	45927	46838	46985	46433	46470	46072	45909	45536	46154	45521	46057	46373	100.442
	5	45959	46170	46366	46297	46458	46076	46825	46218	45821	46303	45522	45982	100.392
	6	46686	46236	46337	46355	46050	46733	45965	46492	45572	46866	46182	45902	100.643
	7	46392	46363	46292	45615	46640	46273	45757	46152	45985	46310	46394	46016	100.427
	8	46462	46174	46736	45715	46459	46721	46735	46108	46746	45755	46415	46640	100.875
	9	45998	45941	46338	45784	45900	46415	46325	46196	46061	45824	46100	45865	100.166
	10	46273	46219	45920	45853	45971	46021	46459	46061	46062	46245	45869	46104	100.222
	11	45458	45368	46002	46350	46142	46421	45745	45735	45756	46399	46403	45955	99.982
	12	46421	46533	46329	45783	46340	46620	46167	46729	46439	46032	46458	46762	100.866
	13	46249	46127	46024	46533	46194	45992	46391	46855	45827	46636	46202	46619	100.691
	14	45787	46165	46517	46500	47094	46374	46219	45604	46041	46056	45643	46217	100.432
	15	46589	45926	45686	46060	46367	46666	45997	46317	45817	46328	45860	46059	100.333
	16	46421	45816	46688	46214	46343	46358	46324	46475	45549	45890	45416	46241	100.345
	17	46382	46319	46220	46194	46132	46275	45811	46070	45617	46219	45689	45697	100.144
	18	46232	45946	45811	45686	45734	45602	45741	46244	45900	46432	45825	45745	99.831
	19	45784	46234	45547	46208	46067	45524	45861	45352	46062	45779	46064	45749	99.709
	20	46012	45604	45328	45508	46273	46457	46276	45405	45298	44940	45641	45706	99.387
	21	46117	45463	45587	45675	45430	45787	46406	46217	45462	45470	45157	45967	99.439
	22	45892	45786	44887	45931	45953	45589	45539	45780	45320	46382	46346	45826	99.529
	23	45139	45987	46154	45622	46253	46476	45548	45879	45896	45579	45737	45433	99.614

INAF/UNIromaTre		S.V.I.R.CO. Observatory - Pressure Corrected Data – November 2016											20 NM-64	
day	hh	00_05	05_10	10_15	15_20	20_25	25_30	30_35	35_40	40_45	45_50	50_55	55_60	h-norm
23	0	45554	45747	45872	45889	45824	45820	45973	46172	45581	45785	46171	45573	99.661
	1	45988	45423	45441	46066	45452	45759	45779	46028	45806	45496	45929	46091	99.534
	2	45001	45256	46100	45281	46051	45962	45767	45745	45554	46045	45524	45297	99.230
	3	46544	46358	45639	45436	46074	45755	45796	45495	46145	45223	46183	45456	99.687
	4	45992	46055	45626	45676	45468	45656	46139	45983	45734	46232	45551	46065	99.700
	5	45929	46045	45642	45784	46374	45499	45768	45612	45749	45632	46383	45813	99.710
	6	45728	46117	45726	45368	45418	46168	46095	46111	46051	45842	45907	46182	99.797
	7	45569	45220	46150	46015	45599	45801	45811	45959	46039	45689	45842	45547	99.530
	8	46117	46152	46019	45482	45225	46037	45581	45740	45911	45896	45555	46075	99.630
	9	45297	46332	45631	45565	45970	46303	45408	45769	46043	45829	46086	45771	99.669
	10	46175	46267	45956	45224	45912	45722	46163	45768	45966	46020	46267	45994	99.928
	11	45895	45700	45661	45279	45788	46123	46129	45713	45751	45937	45469	46517	99.661
	12	45493	45823	45412	45413	45940	45482	45868	45602	45845	45501	46114	45840	99.366
	13	45573	45994	45632	45449	46090	46109	45757	46058	45937	46444	45654	45426	99.690
	14	46150	45997	45674	45619	46120	45926	45426	46126	45705	45208	46142	45025	99.508
	15	46185	45598	46132	45350	46116	45353	45650	46142	46381	45707	45894	46066	99.772
	16	46350	45893	45716	45552	45958	45967	45862	46116	46508	45901	45826	45970	99.961
	17	45722	46168	45895	46642	45838	46301	45557	45583	46790	45772	45196	45691	99.877
	18	45911	45631	45421	46228	45992	45913	45361	45858	45633	46035	46104	45919	99.669
	19	45456	45515	45697	45801	46008	45590	46009	45342	45692	45327	45600	45740	99.265
	20	46077	45991	45578	45527	46011	45601	46172	45321	45810	45838	45514	45298	99.439
	21	46208	45649	45330	45638	45721	45869	46029	46161	45087	46439	45865	45586	99.592
	22	45695	45286	45072	45053	45744	45344	44946	45931	45436	46143	45904	45799	99.007
	23	45378	45712	45869	45441	45743	45134	45952	45546	45334	45731	45784	45384	99.126
24	0	45717	46019	45614	45604	45523	45809	45744	45463	45591	45880	45105	45548	99.233
	1	46396	45689	45594	45404	45399	45522	45706	46034	46165	45823	45723	45736	99.521
	2	46504	45577	45838	45797	45854	45751	45165	45525	45095	45833	45143	45159	99.167
	3	45647	45586	45519	45924	45264	45939	45874	45606	45670	46061	45504	45388	99.302
	4	45434	45787	45465	45857	46575	45744	46277	45377	46350	45879	45694	46317	99.804
	5	45470	46097	45750	45926	45984	45943	45767	46376	45965	45737	46039	46173	99.890
	6	45776	46246	45776	45871	45904	46011	45847	45649	46284	45587	45445	45900	99.722
	7	45398	46082	45508	46137	46141	46126	45514	45241	45582	45965	45830	46155	99.610
	8	45553	46111	45859	45869	45408	45529	45352	46023	45576	45819	45505	45929	99.402
	9	45060	45448	45643	46494	45676	46624	45164	45939	46497	45940	46118	46028	99.782
	10	45477	46238	45513	45447	45896	45877	46012	45991	45774	45830	45744	46141	99.657
	11	46000	45946	46353	45972	45166	46351	46349	46177	45777	46105	45845	45471	99.942
	12	45687	45568	45706	46635	47003	46089	46044	46315	46101	45927	46211	45613	100.193
	13	45600	45827	45515	45558	45961	46229	45916	46657	45962	45789	45668	46466	99.876
	14	46104	45734	46139	45916	46065	45911	45734	46468	46122	45809	45583	46061	99.966
	15	45631	46041	45834	45619	46416	46249	45526	45307	45756	46035	46810	46420	99.967
	16	46174	45464	45450	45622	45734	45236	45461	45753	45679	46321	45754	45468	99.327
	17	45557	46299	45718	46317	45721	45586	45928	45845	46032	45850	46570	45949	99.916
	18	46387	45774	45376	45483	45374	45829	45859	46005	46480	45780	45928	45410	99.611
	19	45612	45190	46145	45899	46116	45492	45986	45611	45459	45865	45604	45879	99.461
	20	45476	45140	45449	45820	45455	44939	45543	45633	45763	46021	45667	45841	99.078
	21	46137	45159	45502	45687	45148	45648	45414	45955	45378	45463	45439	45757	99.068
	22	45330	45812	45497	45852	45797	45595	45643	45501	46094	45809	45387	45562	99.284
	23	45723	45855	45439	45773	45339	45709	45844	45600	46031	46045	46329	45678	99.553

INAF/UNIRomaTre				S.V.I.R.CO. Observatory - Pressure Corrected Data – November 2016									20 NM-64	
day	hh	00_05	05_10	10_15	15_20	20_25	25_30	30_35	35_40	40_45	45_50	50_55	55_60	h-norm
25	0	46236	45855	45851	45744	46084	45457	45345	46491	45759	45388	45513	45289	99.480
	1	45355	44993	45705	45518	45921	45436	45407	45943	45528	45713	45233	45989	99.077
	2	45365	45554	46039	45633	45939	45674	45955	46112	45494	45493	45690	45089	99.312
	3	46198	46212	45699	46098	45866	45622	45407	46075	46314	45747	45490	45101	99.637
	4	45743	45933	46016	45957	45374	45709	46488	45555	45687	45981	45522	45595	99.588
	5	45939	45425	45939	45969	45732	46573	45138	46054	45504	45598	46278	46275	99.745
	6	46160	45639	46435	45529	45721	45483	45629	46080	45624	46102	46161	45576	99.693
	7	46027	46060	45880	46493	45462	45800	46101	45805	46153	46003	46069	46223	100.044
	8	46096	45625	46994	46022	45755	46265	46105	46057	46241	46076	45727	46039	100.212
	9	46413	46629	45912	45556	46330	46549	45621	45479	45909	45818	46111	46866	100.247
	10	46408	46265	46558	46654	46286	46757	46640	45472	46599	46353	46434	45792	100.795
	11	45620	46481	45589	45899	45432	45807	46061	46430	46421	45825	45456	45920	99.839
	12	46060	46305	45523	46604	45471	46288	46099	45899	45510	45609	46076	45965	99.923
	13	46144	46663	45788	46925	46022	45945	45854	45770	46181	45603	45993	46416	100.266
	14	45847	45219	46002	46058	45210	45982	46175	45406	45597	45442	46112	46125	99.518
	15	46362	46193	44984	46119	45768	45597	45776	45629	45949	45898	46209	46090	99.772
	16	45650	45962	46610	45835	45920	46064	46006	45750	46007	46634	45547	45259	99.894
	17	46214	45721	45627	45337	46094	46383	46147	45697	45343	46113	46019	45231	99.654
	18	46019	46102	45881	45688	46164	45890	46222	45424	45991	46316	45815	46226	99.983
	19	46310	45895	45929	45095	46008	46262	45847	46411	46011	45895	46528	45173	99.915
	20	45392	45923	45921	46243	45946	45407	45287	45724	46203	46080	45779	46179	99.683
	21	45997	46197	46317	46621	46144	45623	46444	46067	45453	45517	45549	46448	100.099
	22	46062	45504	45985	45648	45341	45309	45968	45341	45576	46465	45689	45141	99.311
	23	45477	46217	45885	45807	45625	46033	46179	45144	45820	45650	45719	45582	99.512
26	0	45677	45629	46074	45631	45242	46289	45038	45862	44978	45123	45688	46321	99.228
	1	45536	45306	45571	46045	45068	45963	46014	45465	45433	45691	45563	45417	99.137
	2	45913	45266	46312	45158	46291	45804	46226	46144	45565	45690	46198	45466	99.674
	3	45593	46314	45413	45637	45488	45568	45976	45736	45576	45563	45795	45801	99.389
	4	45914	45612	45904	45984	45452	45614	45832	45801	45967	46059	46264	46131	99.764
	5	46185	45925	45819	46039	45384	45050	45317	46030	45817	45822	46248	46113	99.622
	6	45476	46341	46230	46195	46114	46641	45890	45640	46486	45364	46010	45539	100.017
	7	45734	45862	45612	45585	45574	45955	45215	45650	46546	45718	45905	45715	99.499
	8	45675	45867	46462	46144	45788	45654	46321	45941	45866	46070	45613	46043	99.929
	9	45461	45893	45031	46427	46333	46787	45810	45625	46240	45723	45895	45494	99.798
	10	46111	46089	46395	45559	46289	45913	45879	45811	45663	46019	45582	45649	99.841
	11	45998	45958	46072	45682	45347	46101	45113	46165	46354	45381	46179	46353	99.796
	12	45277	45731	46327	45760	45608	46089	46186	45924	45682	45672	46320	46039	99.780
	13	45919	45680	45183	45764	45865	46123	45794	45889	45557	46213	46521	45170	99.610
	14	45690	45889	45759	46161	46068	46114	46318	46324	45605	45127	46112	45491	99.787
	15	46016	45709	45424	45820	46294	45882	45282	45543	46334	45917	45577	46135	99.656
	16	45563	45942	45582	45964	45834	45755	46016	45526	45794	45344	45911	46392	99.599
	17	46309	46214	46229	45920	45728	46297	45594	45839	46346	46415	46034	45861	100.173
	18	45608	46550	45582	46251	46217	45907	46069	46137	45760	45602	46080	45542	99.905
	19	46167	45820	45778	46172	45643	45964	45547	46229	45739	46066	45787	45928	99.820
	20	45415	46173	46249	46291	45831	45538	45522	45837	45083	45832	45877	45650	99.540
	21	45900	45530	46155	46149	45747	45894	45794	45850	45557	45616	46017	44552	99.444
	22	46278	45149	45940	46419	46493	45753	45673	45727	46134	45456	46087	45662	99.808
	23	45882	46233	46123	44922	45751	46031	45356	46074	45932	45738	45519	45462	99.490

INAF/UNIromaTre		S.V.I.R.CO. Observatory - Pressure Corrected Data – November 2016											20 NM-64	
day	hh	00_05	05_10	10_15	15_20	20_25	25_30	30_35	35_40	40_45	45_50	50_55	55_60	h-norm
27	0	46162	45837	46180	46357	46124	45535	46102	45446	45770	46054	45489	46180	99.889
	1	45322	45906	46403	45776	45648	46525	46181	45661	45753	45437	44944	45428	99.484
	2	45634	46055	45979	46569	45964	45726	45959	45996	45788	46025	45722	45740	99.877
	3	46003	45658	45817	46501	46462	46108	45911	46019	45408	46361	45843	46236	100.089
	4	45734	46403	45293	46066	45902	45817	46675	45514	45379	46336	45687	46105	99.833
	5	45893	45522	45357	46027	46094	45816	45701	45819	45613	45710	45573	45938	99.498
	6	45854	46263	45592	45717	45740	45652	46203	45994	45652	45947	45493	46248	99.732
	7	45966	46026	45966	45645	46061	45772	45904	46112	46263	45291	46929	46332	100.078
	8	46007	46574	45781	46033	45853	46184	46039	45710	45688	47012	46074	46268	100.252
	9	45230	46143	45622	46007	46100	45583	45883	45598	45542	45544	45901	46549	99.614
	10	45587	46037	45801	46260	46071	46018	45956	46082	45754	46026	46181	45746	99.943
	11	46117	45617	45911	45931	45756	46468	45990	45619	45505	46187	45875	45636	99.779
	12	45663	46303	46355	46054	45341	46043	45675	46510	45939	45975	45537	46313	99.977
	13	45891	45972	45804	46046	46037	46019	46385	46374	45713	45997	46150	46016	100.104
	14	46159	45764	46242	46198	45512	45632	45905	46436	45380	45830	45582	45993	99.782
	15	46173	45979	46039	46019	45925	45832	46084	45690	45902	46156	46183	45900	100.009
	16	45522	45715	46178	46321	46595	46303	45936	46280	46351	45791	45506	45970	100.115
	17	45906	45946	46118	45815	45514	45405	45803	45795	46339	45789	46198	46011	99.784
	18	46083	46263	45623	45984	46319	46110	45905	45160	46394	45850	45761	45832	99.901
	19	46032	45692	46050	45442	46021	46305	46213	46265	46171	46003	45746	46668	100.140
	20	45739	46060	46159	46875	45890	46208	46360	46240	45799	46250	46173	45938	100.337
	21	46070	46144	45806	45969	45728	46645	46485	46098	45726	46071	45869	45962	100.134
	22	45937	46320	46080	45625	46501	45784	45739	45363	46060	46304	45813	45827	99.913
	23	45694	45675	46374	46481	46500	45975	46034	45871	45770	45536	45758	45636	99.904
28	0	45575	46228	45936	45488	46152	45594	45662	45505	46202	45799	45926	46325	99.739
	1	45904	46091	46027	45895	46703	46227	46223	45846	45804	45806	46436	45744	100.158
	2	46211	46717	45599	46167	45770	45684	46006	46222	45890	46366	45615	45777	100.035
	3	46107	46215	46357	46367	45830	45987	46103	46039	46087	46039	45819	46384	100.272
	4	45702	46421	46254	45879	46166	46304	46298	46621	45916	46425	46072	45683	100.346
	5	45971	45593	46191	45909	46611	46108	45905	46128	45235	46625	46519	46020	100.178
	6	46103	46065	46187	46561	47031	45554	45716	45871	46099	45606	46267	46035	100.229
	7	46553	45540	45896	46324	46295	46698	45769	46157	45855	46347	46631	46747	100.539
	8	45745	46475	45747	45962	46602	46378	46022	45890	46371	45841	45925	46299	100.258
	9	46297	46113	46350	46010	46288	46651	45599	46026	46192	45906	45851	45976	100.258
	10	46256	46321	45944	45811	45978	46496	46070	46624	46369	46246	45854	46530	100.483
	11	46077	46036	45588	46083	46169	46153	45652	45745	45896	46031	46371	46516	100.088
	12	46315	46344	46121	45811	46071	45711	45946	46380	46345	46536	46215	45803	100.320
	13	46047	46328	45913	46249	45356	46737	46110	46304	46583	46287	45802	46498	100.431
	14	46415	46481	45511	46337	45680	45694	46360	45864	45963	45920	45873	45908	100.032
	15	46323	45625	46033	45660	45512	45810	46416	46354	46210	45597	46475	45992	100.031
	16	45252	45753	46094	46305	45859	46325	46114	45712	46392	45974	46060	46218	100.041
	17	46624	45807	46250	45792	45894	46344	45817	45609	46377	46108	46353	46636	100.322
	18	46218	46281	46308	45959	45947	45481	46559	46635	45891	46278	46299	45868	100.343
	19	45959	46113	46319	46200	46357	46807	45680	46312	46327	45854	45795	45517	100.256
	20	45666	45967	46609	46387	46826	46363	46183	45995	46314	45299	46259	45928	100.356
	21	46327	45877	46786	46405	46075	45692	46304	46813	46492	46300	45867	46608	100.673
	22	46434	46219	46045	46192	46850	46034	46320	46257	46044	46538	46183	46480	100.682
	23	46105	46764	46079	46138	46776	46284	46404	46506	46114	45702	46055	45952	100.553

INAF/UNIRomaTre				S.V.I.R.CO. Observatory - Pressure Corrected Data – November 2016										20 NM-64	
day	hh	00_05	05_10	10_15	15_20	20_25	25_30	30_35	35_40	40_45	45_50	50_55	55_60	h-norm	
29	0	45700	45754	45442	46376	46750	46780	46125	45573	46170	46084	46193	46080	100.224	
	1	45756	46106	45806	46261	46369	46003	45881	45959	46917	45826	46331	45873	100.227	
	2	46030	46083	45526	46741	46536	46584	45907	46043	45743	46849	47048	46386	100.660	
	3	46541	46601	46453	46039	45895	46112	46173	46017	46239	46598	46465	45947	100.588	
	4	45890	46178	46981	46416	46306	46318	46535	46149	46838	45849	46107	46361	100.742	
	5	46299	46800	46074	45916	46225	46256	46104	46607	45664	46536	46129	46500	100.594	
	6	47011	46148	46401	46198	45750	46202	46071	46326	46413	46255	46557	46328	100.694	
	7	46927	46279	46407	46839	46016	46055	46176	46642	46680	46717	46474	45880	100.953	
	8	46295	46178	46446	46070	46582	46121	46052	46587	46581	46851	46306	46555	100.868	
	9	45598	46498	45933	46768	46476	46823	46686	46536	46412	46746	46514	46887	101.095	
	10	46621	46723	46459	46815	46315	45452	46336	45951	46510	47092	46228	46466	100.930	
	11	46461	46979	46128	45859	46482	45931	45611	46308	46210	46607	46305	45911	100.536	
	12	46259	46306	46140	46187	46205	46564	45912	46438	45822	46260	46688	46461	100.617	
	13	46621	46513	46319	46305	46760	45519	45845	46321	45594	46411	46865	46547	100.686	
	14	45884	46348	46210	45806	46525	45769	46814	46045	46211	46061	46363	46134	100.423	
	15	47182	46779	46144	46219	46395	47389	46059	46436	46485	47077	45907	46657	101.250	
	16	46117	46339	46271	46270	45933	46216	46302	45794	46542	46503	45842	46599	100.524	
	17	45663	46401	46312	45843	46534	46051	46374	46109	46463	46309	46490	46149	100.519	
	18	46087	47106	45482	46554	47201	45925	47093	46864	46329	46494	46636	46167	101.106	
	19	46234	46872	46118	46134	46299	46361	45450	46831	46108	46569	46201	46635	100.721	
	20	46547	46401	46211	46745	46275	45862	45870	46621	46447	46386	45724	47429	100.849	
	21	46280	46856	46008	46969	46255	46231	46468	47323	46185	46476	45920	45517	100.844	
	22	46138	46425	46394	47340	46394	46824	47204	46470	46749	46105	46179	46823	101.307	
	23	45709	46500	47047	47205	45807	46915	45767	46234	47077	46607	46088	46539	101.026	
30	0	47037	46101	46223	46973	46266	46467	46967	46509	45900	45891	46469	46150	100.935	
	1	45997	46033	45883	46469	46527	45971	46262	46139	45800	46548	46415	46467	100.485	
	2	46312	46693	46779	46900	46626	46172	46605	46203	46739	46338	46872	46879	101.320	
	3	46379	47175	46190	46895	46103	46487	46368	46373	46887	46087	46148	46190	100.987	
	4	45774	46574	46332	46713	46356	46652	46047	46740	46500	46184	46615	46643	100.960	
	5	46529	46245	46542	45807	47050	46294	45992	46620	46203	46869	46295	46038	100.843	
	6	46296	46379	45696	46668	45793	47062	47033	46227	46309	46456	47030	46354	100.991	
	7	46804	46441	46598	46102	46311	46483	46707	46535	46547	47164	45798	46774	101.165	
	8	45488	46502	46446	46353	46982	45595	46362	46587	46514	47050	46943	46329	100.963	
	9	46253	46956	46758	46324	46132	46530	47051	47127	46427	46679	46542	46367	101.325	
	10	46522	46335	46552	46241	46231	45890	46014	46318	46474	46864	46350	46525	100.812	
	11	46657	46907	47051	46701	46210	46161	46145	46453	46168	46364	46677	46494	101.115	
	12	46967	46625	46991	46267	45728	46160	45998	46332	46883	46563	46769	46174	101.019	
	13	46433	46769	46391	46220	46024	46123	46793	46642	46696	46279	46782	45892	100.945	
	14	45926	46832	46215	45988	45432	46146	46813	46706	46260	47231	46010	46101	100.693	
	15	46232	46574	45997	46104	46154	46534	45629	47177	46172	46211	46347	46446	100.679	
	16	46195	46415	46393	46686	46813	46263	46049	46334	46821	45836	46159	46605	100.858	
	17	46966	46461	47070	46470	46986	46571	46120	46380	46222	46198	46405	46807	101.237	
	18	46159	46346	46680	46652	46594	45742	46372	45952	46402	46753	46688	46198	100.853	
	19	46662	46848	46184	46378	46499	46504	46523	45775	46404	46690	46426	46413	100.991	
	20	46467	46918	46615	45879	46628	46486	46667	46587	46661	46490	46322	46330	101.126	
	21	46319	46784	46581	46553	46431	45932	46300	45825	46236	46661	46405	45896	100.741	
	22	47097	46167	46672	46591	46162	45455	46927	46513	47199	46778	46485	46113	101.146	
	23	46854	45962	46608	46084	46501	46149	46130	45871	46051	46599	45834	46278	100.560	

S.V.I.R.CO. Observatory - Pressure in hectoPascal – November 2016

day	hh	00_05	05_10	10_15	15_20	20_25	25_30	30_35	35_40	40_45	45_50	50_55	55_60	average
1	0	1023.70	1023.71	1023.69	1023.65	1023.61	1023.58	1023.60	1023.65	1023.68	1023.71	1023.71	1023.70	1023.66
	1	1023.69	1023.66	1023.62	1023.59	1023.57	1023.54	1023.48	1023.42	1023.39	1023.36	1023.32	1023.30	1023.49
	2	1023.28	1023.26	1023.24	1023.22	1023.19	1023.18	1023.20	1023.22	1023.22	1023.23	1023.25	1023.26	1023.23
	3	1023.26	1023.27	1023.29	1023.31	1023.33	1023.32	1023.30	1023.28	1023.24	1023.20	1023.19	1023.20	1023.26
	4	1023.19	1023.17	1023.17	1023.20	1023.23	1023.25	1023.28	1023.32	1023.34	1023.35	1023.40	1023.43	1023.27
	5	1023.43	1023.43	1023.43	1023.43	1023.44	1023.47	1023.50	1023.53	1023.54	1023.58	1023.64	1023.69	1023.51
	6	1023.73	1023.78	1023.79	1023.81	1023.84	1023.88	1023.93	1023.95	1023.98	1023.98	1023.96	1023.94	1023.88
	7	1023.93	1023.93	1023.95	1024.01	1024.05	1024.06	1024.06	1024.07	1024.09	1024.10	1024.12	1024.13	1024.04
	8	1024.14	1024.14	1024.11	1024.11	1024.12	1024.12	1024.12	1024.14	1024.17	1024.18	1024.19	1024.20	1024.14
	9	1024.20	1024.20	1024.22	1024.26	1024.29	1024.28	1024.25	1024.24	1024.23	1024.21	1024.18	1024.14	1024.22
	10	1024.10	1024.03	1023.96	1023.93	1023.88	1023.82	1023.76	1023.73	1023.71	1023.67	1023.60	1023.53	1023.81
	11	1023.45	1023.39	1023.34	1023.30	1023.25	1023.20	1023.17	1023.13	1023.08	1023.04	1022.99	1022.94	1023.19
	12	1022.91	1022.85	1022.79	1022.74	1022.69	1022.65	1022.61	1022.55	1022.50	1022.49	1022.47	1022.46	1022.64
	13	1022.44	1022.40	1022.38	1022.35	1022.29	1022.28	1022.29	1022.27	1022.24	1022.25	1022.25	1022.24	1022.30
	14	1022.25	1022.26	1022.24	1022.23	1022.21	1022.17	1022.14	1022.10	1022.06	1022.05	1022.04	1022.05	1022.15
	15	1022.06	1022.06	1022.08	1022.12	1022.13	1022.10	1022.09	1022.09	1022.11	1022.11	1022.11	1022.12	1022.10
	16	1022.16	1022.19	1022.21	1022.24	1022.26	1022.28	1022.30	1022.31	1022.34	1022.37	1022.39	1022.40	1022.28
	17	1022.44	1022.49	1022.52	1022.53	1022.52	1022.50	1022.50	1022.54	1022.55	1022.55	1022.56	1022.56	1022.52
	18	1022.55	1022.52	1022.48	1022.47	1022.48	1022.48	1022.50	1022.51	1022.51	1022.49	1022.49	1022.48	1022.49
	19	1022.48	1022.50	1022.51	1022.51	1022.51	1022.53	1022.54	1022.54	1022.53	1022.54	1022.58	1022.60	1022.53
	20	1022.61	1022.62	1022.62	1022.64	1022.65	1022.65	1022.66	1022.66	1022.64	1022.63	1022.61	1022.57	1022.63
	21	1022.54	1022.54	1022.55	1022.55	1022.54	1022.50	1022.45	1022.42	1022.42	1022.41	1022.39	1022.37	1022.47
	22	1022.34	1022.33	1022.33	1022.30	1022.25	1022.22	1022.20	1022.17	1022.17	1022.18	1022.19	1022.19	1022.24
	23	1022.20	1022.21	1022.18	1022.16	1022.12	1022.06	1022.01	1021.99	1021.95	1021.90	1021.87	1021.82	1022.04
2	0	1021.75	1021.74	1021.70	1021.68	1021.69	1021.69	1021.63	1021.62	1021.62	1021.56	1021.51	1021.47	1021.63
	1	1021.41	1021.38	1021.37	1021.34	1021.28	1021.26	1021.26	1021.24	1021.22	1021.25	1021.27	1021.25	1021.29
	2	1021.21	1021.19	1021.21	1021.20	1021.17	1021.13	1021.10	1021.10	1021.07	1021.00	1020.96	1020.91	1021.10
	3	1020.87	1020.85	1020.83	1020.85	1020.84	1020.77	1020.71	1020.66	1020.58	1020.48	1020.40	1020.34	1020.68
	4	1020.30	1020.27	1020.25	1020.20	1020.16	1020.13	1020.10	1020.06	1020.02	1020.04	1020.01	1019.99	1020.12
	5	1019.99	1019.96	1019.94	1019.91	1019.92	1019.97	1019.96	1019.92	1019.91	1019.95	1019.96	1019.96	1019.94
	6	1019.99	1020.02	1020.04	1020.07	1020.08	1020.08	1020.10	1020.10	1020.12	1020.16	1020.17	1020.15	1020.09
	7	1020.14	1020.13	1020.11	1020.09	1020.06	1020.05	1020.06	1020.06	1020.03	1020.00	1019.97	1019.95	1020.05
	8	1019.95	1019.92	1019.88	1019.86	1019.86	1019.85	1019.85	1019.84	1019.79	1019.77	1019.78	1019.77	1019.84
	9	1019.75	1019.75	1019.78	1019.73	1019.69	1019.71	1019.71	1019.68	1019.64	1019.51	1019.36	1019.38	1019.64
	10	1019.41	1019.35	1019.27	1019.18	1019.11	1019.04	1018.96	1018.88	1018.78	1018.70	1018.65	1018.62	1018.99
	11	1018.60	1018.56	1018.49	1018.43	1018.40	1018.35	1018.24	1018.16	1018.11	1018.04	1017.95	1017.91	1018.27
	12	1017.91	1017.88	1017.83	1017.76	1017.69	1017.62	1017.55	1017.48	1017.43	1017.37	1017.31	1017.29	1017.59
	13	1017.29	1017.28	1017.28	1017.26	1017.16	1017.10	1017.03	1016.97	1016.94	1016.87	1016.81	1016.77	1017.06
	14	1016.77	1016.75	1016.68	1016.65	1016.62	1016.58	1016.55	1016.52	1016.46	1016.39	1016.36	1016.37	1016.56
	15	1016.37	1016.35	1016.33	1016.34	1016.29	1016.21	1016.16	1016.15	1016.16	1016.13	1016.14	1016.12	1016.23
	16	1016.07	1016.09	1016.12	1016.15	1016.13	1016.11	1016.10	1016.12	1016.16	1016.16	1016.16	1016.15	1016.12
	17	1016.10	1016.07	1016.07	1016.08	1016.10	1016.11	1016.11	1016.10	1016.10	1016.07	1016.07	1016.10	1016.09
	18	1016.13	1016.15	1016.14	1016.10	1016.05	1015.97	1015.88	1015.80	1015.76	1015.80	1015.88	1015.92	1015.96
	19	1015.92	1015.94	1015.94	1015.92	1015.92	1015.92	1015.93	1015.94	1015.91	1015.89	1015.89	1015.87	1015.91
	20	1015.86	1015.87	1015.87	1015.90	1015.97	1016.02	1016.04	1016.05	1016.06	1016.05	1016.03	1015.99	1015.97
	21	1015.95	1015.95	1015.94	1015.94	1015.93	1015.91	1015.89	1015.88	1015.89	1015.93	1015.91	1015.89	1015.92
	22	1015.87	1015.84	1015.80	1015.79	1015.83	1015.85	1015.82	1015.78	1015.71	1015.67	1015.66	1015.62	1015.77
	23	1015.54	1015.52	1015.55	1015.51	1015.40	1015.26	1015.13	1015.02	1014.95	1014.99	1015.01	1014.93	1015.23

S.V.I.R.CO. Observatory - Pressure in hectoPascal – November 2016

day	hh	00_05	05_10	10_15	15_20	20_25	25_30	30_35	35_40	40_45	45_50	50_55	55_60	average
3	0	1014.70	1014.71	1014.71	1014.65	1014.55	1014.51	1014.50	1014.45	1014.41	1014.37	1014.31	1014.24	1014.50
	1	1014.17	1014.13	1014.10	1013.98	1013.85	1013.75	1013.67	1013.65	1013.65	1013.56	1013.47	1013.47	1013.78
	2	1013.44	1013.41	1013.37	1013.26	1013.23	1013.12	1012.94	1012.92	1013.02	1013.13	1013.20	1013.21	1013.18
	3	1013.18	1013.03	1012.91	1013.08	1013.16	1012.96	1012.72	1012.76	1012.94	1012.95	1012.99	1012.90	1012.96
	4	1012.88	1012.96	1012.94	1012.88	1012.74	1012.65	1012.61	1012.58	1012.57	1012.55	1012.53	1012.47	1012.69
	5	1012.45	1012.46	1012.43	1012.35	1012.28	1012.40	1012.55	1012.59	1012.54	1012.49	1012.53	1012.58	1012.47
	6	1012.63	1012.65	1012.64	1012.67	1012.71	1012.73	1012.70	1012.67	1012.66	1012.65	1012.66	1012.70	1012.67
	7	1012.73	1012.75	1012.75	1012.72	1012.75	1012.80	1012.83	1012.82	1012.80	1012.82	1012.87	1012.89	1012.79
	8	1012.87	1012.86	1012.85	1012.86	1012.89	1012.93	1012.96	1012.99	1013.03	1013.10	1013.18	1013.23	1012.98
	9	1013.32	1013.41	1013.44	1013.39	1013.37	1013.42	1013.46	1013.47	1013.47	1013.47	1013.46	1013.46	1013.43
	10	1013.43	1013.36	1013.26	1013.22	1013.22	1013.22	1013.21	1013.19	1013.17	1013.15	1013.12	1013.09	1013.22
	11	1013.06	1013.03	1012.99	1012.95	1012.89	1012.83	1012.80	1012.78	1012.72	1012.66	1012.64	1012.62	1012.83
	12	1012.61	1012.60	1012.59	1012.62	1012.63	1012.63	1012.65	1012.67	1012.65	1012.62	1012.59	1012.56	1012.61
	13	1012.57	1012.58	1012.57	1012.62	1012.67	1012.70	1012.68	1012.64	1012.64	1012.63	1012.61	1012.64	1012.63
	14	1012.69	1012.73	1012.76	1012.81	1012.87	1012.91	1012.95	1013.00	1013.04	1013.05	1013.10	1013.14	1012.92
	15	1013.17	1013.17	1013.19	1013.24	1013.26	1013.26	1013.26	1013.27	1013.29	1013.30	1013.29	1013.32	1013.25
	16	1013.35	1013.38	1013.43	1013.48	1013.50	1013.53	1013.60	1013.69	1013.78	1013.87	1013.96	1014.03	1013.63
	17	1014.08	1014.11	1014.14	1014.19	1014.24	1014.29	1014.33	1014.36	1014.42	1014.48	1014.51	1014.54	1014.30
	18	1014.56	1014.57	1014.61	1014.65	1014.68	1014.71	1014.74	1014.79	1014.86	1014.93	1015.01	1015.07	1014.76
	19	1015.10	1015.15	1015.22	1015.27	1015.32	1015.37	1015.38	1015.39	1015.43	1015.46	1015.48	1015.50	1015.34
	20	1015.52	1015.54	1015.58	1015.62	1015.64	1015.65	1015.69	1015.74	1015.81	1015.87	1015.91	1015.96	1015.71
	21	1016.00	1016.04	1016.08	1016.12	1016.15	1016.18	1016.21	1016.21	1016.22	1016.25	1016.28	1016.31	1016.17
	22	1016.35	1016.38	1016.41	1016.44	1016.48	1016.50	1016.54	1016.60	1016.65	1016.66	1016.68	1016.66	1016.53
	23	1016.62	1016.63	1016.64	1016.65	1016.69	1016.71	1016.72	1016.72	1016.73	1016.74	1016.76	1016.77	1016.70
4	0	1016.81	1016.82	1016.83	1016.86	1016.88	1016.87	1016.88	1016.89	1016.91	1016.95	1016.97	1016.99	1016.89
	1	1017.01	1017.03	1017.07	1017.07	1017.06	1017.05	1017.04	1017.02	1017.03	1017.02	1016.99	1016.99	1017.03
	2	1016.99	1017.00	1017.03	1017.04	1017.04	1017.08	1017.14	1017.16	1017.17	1017.19	1017.22	1017.23	1017.11
	3	1017.23	1017.25	1017.28	1017.30	1017.32	1017.33	1017.36	1017.41	1017.43	1017.45	1017.48	1017.48	1017.36
	4	1017.45	1017.42	1017.39	1017.39	1017.38	1017.36	1017.36	1017.34	1017.35	1017.34	1017.28	1017.24	1017.36
	5	1017.25	1017.27	1017.30	1017.33	1017.36	1017.41	1017.47	1017.51	1017.55	1017.59	1017.58	1017.56	1017.43
	6	1017.56	1017.62	1017.68	1017.71	1017.79	1017.89	1017.95	1017.98	1017.99	1018.02	1018.06	1018.13	1017.86
	7	1018.19	1018.25	1018.29	1018.26	1018.28	1018.31	1018.30	1018.31	1018.34	1018.36	1018.37	1018.37	1018.30
	8	1018.37	1018.37	1018.38	1018.41	1018.43	1018.46	1018.45	1018.49	1018.54	1018.56	1018.58	1018.57	1018.47
	9	1018.54	1018.51	1018.49	1018.51	1018.54	1018.54	1018.53	1018.53	1018.54	1018.54	1018.57	1018.57	1018.53
	10	1018.53	1018.50	1018.49	1018.48	1018.47	1018.47	1018.45	1018.40	1018.33	1018.31	1018.32	1018.33	1018.42
	11	1018.30	1018.25	1018.22	1018.19	1018.15	1018.12	1018.10	1018.10	1018.09	1018.04	1017.95	1017.85	1018.11
	12	1017.82	1017.85	1017.86	1017.83	1017.82	1017.83	1017.81	1017.77	1017.74	1017.71	1017.73	1017.77	1017.79
	13	1017.76	1017.76	1017.78	1017.76	1017.72	1017.71	1017.72	1017.71	1017.67	1017.67	1017.67	1017.64	1017.71
	14	1017.64	1017.64	1017.66	1017.68	1017.68	1017.65	1017.62	1017.62	1017.64	1017.64	1017.62	1017.64	1017.64
	15	1017.69	1017.72	1017.75	1017.76	1017.76	1017.83	1017.86	1017.81	1017.72	1017.67	1017.69	1017.75	1017.75
	16	1017.80	1017.82	1017.86	1017.92	1017.96	1017.99	1018.03	1018.08	1018.10	1018.09	1018.10	1018.14	1017.99
	17	1018.19	1018.25	1018.32	1018.39	1018.43	1018.47	1018.52	1018.54	1018.56	1018.60	1018.64	1018.69	1018.46
	18	1018.74	1018.78	1018.80	1018.84	1018.89	1018.95	1018.99	1018.97	1019.00	1019.08	1019.13	1019.12	1018.94
	19	1019.10	1019.10	1019.09	1019.07	1019.07	1019.06	1019.06	1019.06	1019.04	1018.97	1018.88	1018.77	1019.02
	20	1018.72	1018.71	1018.68	1018.60	1018.55	1018.58	1018.63	1018.71	1018.77	1018.73	1018.71	1018.75	1018.68
	21	1018.76	1018.71	1018.63	1018.59	1018.54	1018.54	1018.53	1018.52	1018.58	1018.58	1018.54	1018.55	1018.59
	22	1018.58	1018.61	1018.62	1018.65	1018.67	1018.67	1018.71	1018.76	1018.77	1018.75	1018.72	1018.69	1018.68
	23	1018.66	1018.60	1018.48	1018.38	1018.35	1018.35	1018.36	1018.34	1018.27	1018.25	1018.25	1018.18	1018.37

S.V.I.R.CO. Observatory - Pressure in hectoPascal – November 2016

day	hh	00_05	05_10	10_15	15_20	20_25	25_30	30_35	35_40	40_45	45_50	50_55	55_60	average
5	0	1018.07	1018.02	1017.91	1017.83	1017.76	1017.65	1017.57	1017.52	1017.50	1017.54	1017.56	1017.58	1017.69
	1	1017.62	1017.63	1017.61	1017.58	1017.58	1017.64	1017.68	1017.56	1017.40	1017.27	1017.19	1017.14	1017.49
	2	1017.14	1017.17	1017.12	1017.06	1017.05	1017.03	1016.97	1016.90	1016.79	1016.69	1016.62	1016.65	1016.93
	3	1016.70	1016.70	1016.70	1016.68	1016.72	1016.77	1016.74	1016.74	1016.74	1016.71	1016.72	1016.68	1016.72
	4	1016.62	1016.62	1016.62	1016.56	1016.50	1016.48	1016.44	1016.40	1016.40	1016.41	1016.39	1016.37	1016.48
	5	1016.33	1016.25	1016.16	1016.10	1016.07	1016.05	1015.94	1015.79	1015.69	1015.66	1015.67	1015.72	1015.95
	6	1015.76	1015.72	1015.66	1015.60	1015.56	1015.56	1015.52	1015.45	1015.45	1015.46	1015.38	1015.29	1015.53
	7	1015.28	1015.35	1015.51	1015.65	1015.63	1015.58	1015.58	1015.58	1015.60	1015.58	1015.52	1015.46	1015.52
	8	1015.38	1015.25	1015.12	1015.02	1014.90	1014.92	1015.02	1015.04	1014.98	1014.97	1014.98	1014.96	1015.04
	9	1014.94	1014.89	1014.87	1014.86	1014.89	1014.89	1014.85	1014.89	1014.88	1014.80	1014.75	1014.69	1014.85
	10	1014.62	1014.61	1014.63	1014.64	1014.55	1014.41	1014.38	1014.42	1014.40	1014.33	1014.26	1014.21	1014.45
	11	1014.14	1014.07	1014.02	1013.96	1013.88	1013.82	1013.83	1013.87	1013.83	1013.69	1013.54	1013.50	1013.84
	12	1013.52	1013.46	1013.34	1013.21	1013.12	1013.09	1013.01	1012.93	1012.90	1012.84	1012.75	1012.63	1013.07
	13	1012.54	1012.51	1012.44	1012.33	1012.23	1012.14	1012.09	1011.97	1011.87	1011.85	1011.81	1011.73	1012.12
	14	1011.68	1011.64	1011.54	1011.44	1011.41	1011.35	1011.30	1011.31	1011.30	1011.21	1011.15	1011.17	1011.37
	15	1011.14	1011.10	1011.06	1010.97	1010.91	1010.83	1010.73	1010.70	1010.67	1010.69	1010.64	1010.62	1010.84
	16	1010.64	1010.60	1010.55	1010.56	1010.56	1010.51	1010.47	1010.48	1010.51	1010.44	1010.29	1010.09	1010.47
	17	1009.93	1009.82	1009.68	1009.53	1009.47	1009.57	1009.64	1009.59	1009.55	1009.55	1009.46	1009.35	1009.59
	18	1009.32	1009.35	1009.38	1009.40	1009.33	1009.10	1008.96	1009.03	1009.09	1009.12	1009.13	1009.10	1009.19
	19	1008.98	1008.91	1008.91	1008.88	1008.84	1008.73	1008.64	1008.57	1008.55	1008.57	1008.56	1008.59	1008.73
	20	1008.60	1008.54	1008.48	1008.44	1008.51	1008.49	1008.51	1008.65	1008.56	1008.38	1008.33	1008.28	1008.48
	21	1008.21	1008.22	1008.24	1008.22	1008.23	1008.24	1008.23	1008.28	1008.24	1008.12	1008.03	1008.15	1008.20
	22	1008.17	1008.15	1008.22	1008.16	1008.09	1008.08	1008.07	1008.05	1008.01	1007.98	1007.95	1007.89	1008.07
	23	1007.76	1007.70	1007.70	1007.63	1007.62	1007.64	1007.62	1007.54	1007.55	1007.53	1007.42	1007.36	1007.59
6	0	1007.27	1007.25	1007.23	1007.24	1007.24	1007.19	1007.18	1007.15	1007.13	1007.16	1007.14	1007.06	1007.18
	1	1007.01	1007.03	1006.99	1006.87	1006.76	1006.74	1006.69	1006.58	1006.49	1006.48	1006.51	1006.44	1006.71
	2	1006.32	1006.27	1006.23	1006.18	1006.10	1006.03	1005.92	1005.84	1005.83	1005.80	1005.77	1005.73	1006.00
	3	1005.67	1005.58	1005.53	1005.49	1005.35	1005.29	1005.26	1005.17	1005.12	1005.14	1005.19	1005.20	1005.33
	4	1005.16	1005.14	1005.11	1005.03	1004.95	1004.88	1004.86	1004.78	1004.67	1004.58	1004.53	1004.46	1004.84
	5	1004.33	1004.19	1004.01	1003.90	1003.94	1003.91	1003.87	1004.01	1004.09	1003.95	1003.81	1003.80	1003.98
	6	1003.82	1003.84	1003.87	1003.82	1003.77	1003.84	1003.96	1004.08	1004.19	1004.24	1004.26	1004.31	1004.00
	7	1004.36	1004.42	1004.46	1004.45	1004.41	1004.35	1004.23	1004.12	1004.07	1004.07	1004.01	1004.00	1004.24
	8	1004.11	1004.26	1004.34	1004.24	1004.16	1004.16	1004.17	1004.14	1004.08	1004.04	1004.04	1004.03	1004.14
	9	1004.06	1004.11	1004.15	1004.15	1004.11	1004.13	1004.19	1004.22	1004.19	1004.16	1004.05	1003.93	1004.12
	10	1003.91	1003.88	1003.82	1003.71	1003.69	1003.79	1003.85	1003.80	1003.66	1003.54	1003.51	1003.49	1003.72
	11	1003.52	1003.62	1003.64	1003.65	1003.62	1003.31	1003.08	1003.03	1003.08	1002.90	1002.69	1002.68	1003.23
	12	1002.56	1002.51	1002.40	1002.22	1002.14	1002.08	1002.02	1001.96	1001.84	1001.78	1001.80	1001.77	1002.09
	13	1001.69	1001.66	1001.60	1001.55	1001.50	1001.49	1001.55	1001.59	1001.66	1001.76	1001.72	1001.55	1001.61
	14	1001.44	1001.40	1001.40	1001.45	1001.51	1001.66	1001.76	1001.29	1000.71	1000.63	1000.68	1000.63	1001.21
	15	1000.51	1000.37	1000.23	1000.04	999.81	999.69	999.67	999.50	999.37	999.27	999.05	999.01	999.71
	16	999.05	998.94	998.90	1000.01	1000.57	1000.22	1000.03	1000.01	1000.40	1000.46	1000.48	1000.60	999.97
	17	1000.45	1000.22	1000.52	1000.98	1001.09	1001.02	1001.12	1001.26	1001.34	1001.33	1001.27	1001.26	1000.99
	18	1001.26	1001.27	1001.31	1001.38	1001.42	1001.47	1001.57	1001.65	1001.67	1001.73	1001.92	1002.03	1001.55
	19	1002.06	1002.12	1002.26	1002.43	1002.52	1002.59	1002.65	1002.71	1002.77	1002.76	1002.76	1002.85	1002.54
	20	1002.93	1002.98	1003.03	1003.02	1003.06	1003.16	1003.23	1003.26	1003.32	1003.39	1003.48	1003.57	1003.20
	21	1003.55	1003.48	1003.46	1003.46	1003.51	1003.54	1003.56	1003.67	1003.75	1003.77	1003.77	1003.77	1003.61
	22	1003.79	1003.84	1003.94	1004.09	1004.23	1004.32	1004.41	1004.49	1004.58	1004.68	1004.78	1004.82	1004.33
	23	1004.80	1004.78	1004.83	1004.89	1004.97	1005.06	1005.12	1005.17	1005.20	1005.19	1005.20	1005.31	1005.04

S.V.I.R.CO. Observatory - Pressure in hectoPascal – November 2016

day	hh	00_05	05_10	10_15	15_20	20_25	25_30	30_35	35_40	40_45	45_50	50_55	55_60	average
7	0	1005.48	1005.48	1005.46	1005.45	1005.44	1005.44	1005.47	1005.49	1005.56	1005.65	1005.76	1005.82	1005.54
	1	1005.84	1005.94	1006.03	1006.07	1006.09	1006.14	1006.16	1006.19	1006.20	1006.14	1006.09	1006.04	1006.08
	2	1005.98	1005.99	1006.03	1006.08	1006.11	1006.08	1006.03	1006.03	1006.10	1006.15	1006.16	1006.15	1006.07
	3	1006.11	1006.14	1006.20	1006.26	1006.31	1006.31	1006.32	1006.29	1006.32	1006.40	1006.40	1006.38	1006.29
	4	1006.35	1006.32	1006.31	1006.31	1006.32	1006.36	1006.40	1006.39	1006.37	1006.44	1006.55	1006.64	1006.40
	5	1006.67	1006.66	1006.67	1006.70	1006.74	1006.81	1006.84	1006.79	1006.82	1006.89	1006.90	1006.94	1006.79
	6	1007.01	1007.01	1007.05	1007.10	1007.13	1007.14	1007.14	1007.18	1007.27	1007.39	1007.49	1007.53	1007.20
	7	1007.60	1007.67	1007.67	1007.69	1007.68	1007.55	1007.49	1007.54	1007.63	1007.85	1008.06	1007.98	1007.70
	8	1007.93	1007.97	1007.93	1008.03	1008.00	1007.88	1007.97	1008.04	1008.07	1008.05	1008.05	1008.18	1008.01
	9	1008.26	1008.25	1008.24	1008.22	1008.18	1008.18	1008.15	1008.14	1008.18	1008.22	1008.25	1008.30	1008.21
	10	1008.36	1008.35	1008.33	1008.29	1008.20	1008.27	1008.33	1008.25	1008.03	1007.89	1007.85	1007.74	1008.16
	11	1007.65	1007.55	1007.50	1007.54	1007.52	1007.51	1007.54	1007.54	1007.49	1007.37	1007.31	1007.27	1007.48
	12	1007.17	1007.02	1006.85	1006.76	1006.73	1006.70	1006.73	1006.77	1006.73	1006.63	1006.51	1006.46	1006.75
	13	1006.48	1006.47	1006.39	1006.31	1006.33	1006.34	1006.29	1006.24	1006.14	1006.02	1006.02	1006.06	1006.26
	14	1006.14	1006.25	1006.28	1006.23	1006.20	1006.23	1006.20	1006.17	1006.13	1006.11	1006.08	1005.97	1006.16
	15	1005.84	1005.71	1005.63	1005.60	1005.51	1005.37	1005.34	1005.44	1005.52	1005.56	1005.45	1005.34	1005.52
	16	1005.30	1005.26	1005.28	1005.10	1005.01	1005.11	1005.18	1005.28	1005.34	1005.35	1005.31	1005.21	1005.22
	17	1005.17	1005.08	1004.92	1004.85	1004.84	1004.85	1004.76	1004.60	1004.45	1004.36	1004.32	1004.31	1004.71
	18	1004.29	1004.25	1004.23	1004.23	1004.20	1004.17	1004.15	1004.11	1004.06	1003.98	1003.94	1003.98	1004.13
	19	1004.10	1004.22	1004.26	1004.27	1004.29	1004.26	1004.23	1004.27	1004.32	1004.41	1004.45	1004.41	1004.29
	20	1004.35	1004.29	1004.24	1004.21	1004.17	1004.13	1004.05	1004.00	1003.97	1003.91	1003.88	1003.89	1004.09
	21	1003.87	1003.88	1003.90	1003.88	1003.91	1004.01	1004.02	1003.87	1003.78	1003.77	1003.75	1003.75	1003.86
	22	1003.77	1003.82	1003.84	1003.85	1003.93	1004.05	1004.18	1004.24	1004.21	1004.17	1004.11	1004.07	1004.02
	23	1004.07	1004.03	1004.01	1004.02	1003.96	1003.82	1003.70	1003.62	1003.59	1003.56	1003.51	1003.49	1003.78
8	0	1003.48	1003.44	1003.38	1003.37	1003.32	1003.24	1003.18	1003.20	1003.33	1003.51	1003.63	1003.60	1003.38
	1	1003.56	1003.59	1003.61	1003.54	1003.44	1003.39	1003.41	1003.45	1003.42	1003.36	1003.25	1003.14	1003.43
	2	1003.12	1003.07	1003.04	1003.10	1003.16	1003.16	1003.12	1003.06	1002.94	1002.83	1002.81	1002.90	1003.02
	3	1002.99	1003.08	1003.11	1003.04	1002.97	1002.91	1002.87	1002.83	1002.74	1002.67	1002.70	1002.72	1002.88
	4	1002.74	1002.78	1002.78	1002.70	1002.64	1002.60	1002.44	1002.26	1002.15	1002.14	1002.16	1002.21	1002.46
	5	1002.34	1002.48	1002.56	1002.53	1002.46	1002.48	1002.53	1002.55	1002.56	1002.60	1002.64	1002.70	1002.53
	6	1002.84	1003.08	1003.25	1003.31	1003.31	1003.33	1003.37	1003.31	1003.19	1003.20	1003.32	1003.48	1003.25
	7	1003.58	1003.61	1003.65	1003.64	1003.65	1003.66	1003.69	1003.78	1003.87	1003.92	1003.87	1003.94	1003.74
	8	1004.02	1004.00	1003.95	1003.91	1003.88	1003.84	1003.78	1003.81	1003.96	1004.06	1004.05	1004.01	1003.94
	9	1004.01	1003.98	1003.90	1003.91	1004.05	1004.17	1004.24	1004.36	1004.49	1004.57	1004.61	1004.63	1004.24
	10	1004.65	1004.70	1004.75	1004.77	1004.81	1004.89	1004.92	1004.99	1005.13	1005.14	1005.03	1004.84	1004.88
	11	1004.58	1004.26	1003.95	1003.80	1003.78	1003.75	1003.71	1003.71	1003.64	1003.59	1003.64	1003.76	1003.85
	12	1003.78	1003.73	1003.73	1003.70	1003.58	1003.53	1003.56	1003.50	1003.42	1003.35	1003.27	1003.21	1003.53
	13	1003.18	1003.15	1003.11	1003.07	1003.07	1003.07	1003.07	1003.05	1003.00	1002.92	1002.88	1002.90	1003.04
	14	1003.00	1003.04	1002.93	1002.79	1002.69	1002.69	1002.70	1002.65	1002.65	1002.65	1002.65	1002.65	1002.76
	15	1002.63	1002.64	1002.72	1002.79	1002.86	1002.88	1002.89	1002.91	1002.89	1002.84	1002.81	1002.74	1002.80
	16	1002.61	1002.55	1002.58	1002.60	1002.64	1002.77	1002.89	1003.00	1003.12	1003.21	1003.28	1003.31	1002.88
	17	1003.29	1003.24	1003.18	1003.06	1002.94	1002.91	1002.90	1002.96	1003.11	1003.22	1003.30	1003.38	1003.12
	18	1003.42	1003.47	1003.50	1003.46	1003.40	1003.38	1003.40	1003.40	1003.38	1003.40	1003.44	1003.49	1003.43
	19	1003.51	1003.46	1003.44	1003.45	1003.43	1003.44	1003.46	1003.47	1003.49	1003.52	1003.53	1003.51	1003.47
	20	1003.48	1003.45	1003.47	1003.53	1003.61	1003.68	1003.74	1003.83	1003.88	1003.90	1003.92	1003.99	1003.70
	21	1004.05	1004.01	1003.93	1003.83	1003.74	1003.65	1003.62	1003.65	1003.68	1003.68	1003.60	1003.50	1003.74
	22	1003.53	1003.64	1003.71	1003.75	1003.81	1003.89	1003.90	1003.90	1003.94	1003.95	1003.96	1003.97	1003.83
	23	1004.02	1004.03	1003.97	1003.91	1003.84	1003.85	1003.96	1004.04	1004.03	1004.04	1004.07	1004.08	1003.98

S.V.I.R.CO. Observatory - Pressure in hectoPascal – November 2016

day	hh	00_05	05_10	10_15	15_20	20_25	25_30	30_35	35_40	40_45	45_50	50_55	55_60	average
9	0	1004.18	1004.20	1004.23	1004.19	1004.15	1004.17	1004.16	1004.15	1004.17	1004.14	1004.13	1004.16	1004.17
	1	1004.20	1004.24	1004.24	1004.26	1004.29	1004.28	1004.23	1004.20	1004.18	1004.15	1004.08	1004.02	1004.20
	2	1004.03	1004.07	1004.12	1004.16	1004.23	1004.29	1004.30	1004.32	1004.35	1004.38	1004.38	1004.44	1004.25
	3	1004.50	1004.51	1004.53	1004.54	1004.59	1004.64	1004.62	1004.62	1004.65	1004.64	1004.66	1004.67	1004.59
	4	1004.66	1004.68	1004.72	1004.67	1004.68	1004.74	1004.75	1004.81	1004.86	1004.91	1004.97	1005.02	1004.79
	5	1005.07	1005.12	1005.13	1005.16	1005.24	1005.35	1005.41	1005.43	1005.49	1005.57	1005.66	1005.75	1005.36
	6	1005.80	1005.84	1005.86	1005.91	1006.03	1006.17	1006.28	1006.39	1006.51	1006.61	1006.64	1006.69	1006.23
	7	1006.73	1006.76	1006.83	1006.90	1006.95	1007.01	1007.12	1007.28	1007.45	1007.61	1007.73	1007.83	1007.18
	8	1007.90	1007.92	1007.99	1008.08	1008.18	1008.28	1008.32	1008.34	1008.39	1008.47	1008.52	1008.55	1008.24
	9	1008.59	1008.63	1008.74	1008.80	1008.76	1008.72	1008.72	1008.76	1008.80	1008.81	1008.82	1008.89	1008.75
	10	1008.94	1008.94	1008.92	1008.89	1008.88	1008.84	1008.79	1008.75	1008.70	1008.69	1008.68	1008.64	1008.80
	11	1008.61	1008.57	1008.54	1008.51	1008.53	1008.56	1008.56	1008.57	1008.57	1008.55	1008.53	1008.54	1008.55
	12	1008.50	1008.43	1008.37	1008.36	1008.40	1008.43	1008.48	1008.51	1008.50	1008.51	1008.49	1008.46	1008.45
	13	1008.47	1008.47	1008.44	1008.37	1008.30	1008.26	1008.27	1008.35	1008.46	1008.50	1008.48	1008.49	1008.40
	14	1008.54	1008.59	1008.63	1008.64	1008.62	1008.57	1008.49	1008.40	1008.33	1008.23	1008.20	1008.27	1008.46
	15	1008.28	1008.24	1008.24	1008.26	1008.27	1008.27	1008.20	1008.14	1008.22	1008.29	1008.27	1008.29	1008.25
	16	1008.28	1008.28	1008.35	1008.39	1008.43	1008.46	1008.48	1008.49	1008.48	1008.39	1008.27	1008.13	1008.37
	17	1008.07	1008.14	1008.21	1008.27	1008.34	1008.37	1008.35	1008.36	1008.37	1008.34	1008.33	1008.34	1008.29
	18	1008.36	1008.34	1008.28	1008.21	1008.17	1008.10	1007.99	1007.94	1007.87	1007.74	1007.65	1007.60	1008.02
	19	1007.59	1007.61	1007.54	1007.44	1007.37	1007.35	1007.40	1007.41	1007.40	1007.33	1007.27	1007.31	1007.42
	20	1007.31	1007.21	1007.13	1007.10	1007.04	1006.94	1006.92	1007.16	1007.38	1007.34	1007.23	1007.16	1007.16
	21	1007.28	1007.30	1007.01	1006.79	1006.62	1006.32	1006.27	1006.47	1006.60	1006.68	1006.73	1006.74	1006.73
	22	1006.77	1006.83	1006.89	1006.94	1007.02	1007.11	1007.18	1007.25	1007.31	1007.39	1007.47	1007.51	1007.14
	23	1007.50	1007.44	1007.39	1007.36	1007.37	1007.47	1007.52	1007.52	1007.53	1007.56	1007.57	1007.55	1007.48
10	0	1007.60	1007.64	1007.68	1007.71	1007.72	1007.70	1007.74	1007.79	1007.82	1007.86	1007.86	1007.87	1007.75
	1	1007.93	1007.96	1007.98	1008.02	1008.01	1008.01	1008.02	1008.03	1008.04	1008.06	1008.08	1008.09	1008.02
	2	1008.12	1008.16	1008.22	1008.25	1008.25	1008.28	1008.40	1008.51	1008.56	1008.56	1008.58	1008.61	1008.37
	3	1008.60	1008.56	1008.51	1008.57	1008.68	1008.73	1008.76	1008.80	1008.88	1008.95	1009.00	1008.96	1008.75
	4	1008.95	1009.01	1009.01	1009.05	1009.11	1009.17	1009.24	1009.34	1009.40	1009.42	1009.45	1009.45	1009.21
	5	1009.42	1009.37	1009.38	1009.49	1009.59	1009.70	1009.78	1009.82	1009.90	1009.97	1009.97	1009.99	1009.70
	6	1010.02	1010.03	1010.02	1010.04	1010.04	1010.11	1010.24	1010.34	1010.39	1010.40	1010.43	1010.53	1010.21
	7	1010.61	1010.66	1010.81	1010.98	1011.07	1011.18	1011.31	1011.43	1011.49	1011.54	1011.65	1011.73	1011.20
	8	1011.79	1011.86	1011.89	1011.89	1011.95	1012.04	1012.09	1012.18	1012.32	1012.38	1012.38	1012.37	1012.09
	9	1012.35	1012.39	1012.43	1012.41	1012.41	1012.43	1012.44	1012.44	1012.45	1012.44	1012.44	1012.47	1012.42
	10	1012.48	1012.43	1012.42	1012.47	1012.47	1012.43	1012.41	1012.40	1012.39	1012.37	1012.36	1012.34	1012.41
	11	1012.29	1012.24	1012.18	1012.19	1012.23	1012.23	1012.23	1012.24	1012.25	1012.24	1012.22	1012.23	1012.23
	12	1012.23	1012.21	1012.17	1012.17	1012.15	1012.06	1011.98	1011.96	1011.99	1012.06	1012.11	1012.10	1012.10
	13	1012.09	1012.10	1012.12	1012.13	1012.11	1012.10	1012.13	1012.17	1012.19	1012.22	1012.26	1012.31	1012.16
	14	1012.36	1012.42	1012.54	1012.61	1012.59	1012.56	1012.59	1012.64	1012.62	1012.60	1012.62	1012.59	1012.56
	15	1012.55	1012.54	1012.55	1012.56	1012.54	1012.53	1012.54	1012.56	1012.58	1012.62	1012.68	1012.74	1012.58
	16	1012.78	1012.80	1012.82	1012.85	1012.89	1012.94	1013.00	1013.01	1013.02	1013.07	1013.11	1013.16	1012.95
	17	1013.20	1013.24	1013.28	1013.32	1013.37	1013.45	1013.55	1013.63	1013.69	1013.79	1013.91	1013.98	1013.53
	18	1013.97	1013.94	1013.91	1013.94	1013.99	1014.03	1014.05	1014.00	1014.01	1014.06	1014.09	1014.11	1014.01
	19	1014.10	1014.06	1014.04	1014.07	1014.08	1014.06	1014.11	1014.19	1014.23	1014.26	1014.31	1014.33	1014.15
	20	1014.35	1014.40	1014.45	1014.47	1014.49	1014.54	1014.56	1014.55	1014.60	1014.61	1014.59	1014.62	1014.52
	21	1014.67	1014.67	1014.67	1014.66	1014.62	1014.57	1014.53	1014.54	1014.55	1014.56	1014.60	1014.63	1014.60
	22	1014.66	1014.72	1014.74	1014.71	1014.64	1014.63	1014.69	1014.72	1014.68	1014.63	1014.63	1014.60	1014.67
	23	1014.52	1014.46	1014.43	1014.48	1014.57	1014.54	1014.48	1014.42	1014.37	1014.36	1014.35	1014.32	1014.44

S.V.I.R.CO. Observatory - Pressure in hectoPascal – November 2016

day	hh	00_05	05_10	10_15	15_20	20_25	25_30	30_35	35_40	40_45	45_50	50_55	55_60	average
11	0	1014.25	1014.25	1014.22	1014.16	1014.16	1014.18	1014.13	1014.09	1014.11	1014.14	1014.14	1014.14	1014.16
	1	1014.15	1014.18	1014.20	1014.18	1014.15	1014.13	1014.03	1013.93	1013.85	1013.75	1013.66	1013.55	1013.98
	2	1013.46	1013.46	1013.50	1013.44	1013.35	1013.31	1013.30	1013.28	1013.29	1013.30	1013.32	1013.35	1013.36
	3	1013.33	1013.30	1013.30	1013.30	1013.30	1013.26	1013.22	1013.20	1013.17	1013.19	1013.20	1013.16	1013.24
	4	1013.16	1013.12	1013.10	1013.14	1013.09	1012.99	1012.93	1012.90	1012.87	1012.84	1012.85	1012.87	1012.99
	5	1012.89	1012.91	1012.90	1012.89	1012.89	1012.86	1012.79	1012.73	1012.66	1012.69	1012.77	1012.77	1012.81
	6	1012.76	1012.80	1012.84	1012.87	1012.91	1012.93	1012.88	1012.81	1012.81	1012.84	1012.88	1012.90	1012.85
	7	1012.88	1012.87	1012.89	1012.93	1012.99	1012.97	1012.92	1012.91	1012.83	1012.76	1012.76	1012.73	1012.87
	8	1012.67	1012.59	1012.57	1012.57	1012.54	1012.55	1012.59	1012.59	1012.58	1012.55	1012.55	1012.56	1012.57
	9	1012.57	1012.61	1012.58	1012.52	1012.42	1012.30	1012.27	1012.25	1012.20	1012.15	1012.10	1012.07	1012.33
	10	1012.05	1012.03	1011.96	1011.83	1011.77	1011.77	1011.70	1011.60	1011.55	1011.50	1011.38	1011.24	1011.70
	11	1011.15	1011.12	1011.07	1011.04	1011.01	1010.92	1010.87	1010.82	1010.72	1010.66	1010.64	1010.58	1010.88
	12	1010.50	1010.43	1010.39	1010.33	1010.27	1010.21	1010.14	1010.10	1010.09	1010.06	1010.02	1009.94	1010.20
	13	1009.84	1009.75	1009.68	1009.62	1009.61	1009.66	1009.60	1009.51	1009.48	1009.45	1009.43	1009.45	1009.59
	14	1009.44	1009.39	1009.43	1009.44	1009.52	1009.48	1009.31	1009.29	1009.30	1009.28	1009.26	1009.22	1009.36
	15	1009.27	1009.28	1009.22	1009.18	1009.14	1009.16	1009.24	1009.27	1009.21	1009.16	1009.12	1009.11	1009.20
	16	1009.17	1009.19	1009.14	1009.10	1009.07	1009.12	1009.18	1009.15	1009.09	1009.05	1009.08	1009.04	1009.11
	17	1008.97	1008.94	1008.86	1008.76	1008.71	1008.64	1008.58	1008.58	1008.75	1008.91	1008.91	1008.90	1008.79
	18	1008.78	1008.54	1008.55	1008.78	1008.92	1008.95	1008.96	1009.07	1009.18	1009.32	1009.36	1009.30	1008.97
	19	1009.43	1009.55	1009.51	1009.49	1009.56	1009.63	1009.63	1009.54	1009.49	1009.51	1009.54	1009.59	1009.54
	20	1009.59	1009.59	1009.65	1009.71	1009.78	1009.84	1009.75	1009.57	1009.43	1009.40	1009.43	1009.45	1009.60
	21	1009.59	1009.79	1009.78	1009.57	1009.46	1009.46	1009.53	1009.56	1009.57	1009.75	1009.99	1010.06	1009.67
	22	1009.89	1009.72	1009.71	1009.72	1009.69	1009.63	1009.61	1009.63	1009.62	1009.62	1009.61	1009.61	1009.67
	23	1009.59	1009.59	1009.55	1009.50	1009.51	1009.53	1009.54	1009.56	1009.56	1009.55	1009.48	1009.39	1009.53
12	0	1009.40	1009.41	1009.40	1009.43	1009.46	1009.42	1009.40	1009.60	1009.62	1009.34	1009.33	1009.55	1009.45
	1	1009.82	1009.96	1009.98	1010.01	1009.86	1009.66	1009.54	1009.42	1009.36	1009.35	1009.35	1009.32	1009.63
	2	1009.30	1009.29	1009.22	1009.14	1009.14	1009.19	1009.20	1009.21	1009.18	1009.14	1009.10	1009.05	1009.18
	3	1009.06	1009.09	1009.12	1009.18	1009.18	1009.13	1009.05	1009.01	1009.06	1009.13	1009.22	1009.44	1009.14
	4	1009.69	1009.82	1009.89	1009.93	1009.98	1010.05	1010.11	1010.15	1010.15	1010.16	1010.22	1010.29	1010.03
	5	1010.32	1010.33	1010.40	1010.48	1010.53	1010.60	1010.74	1010.93	1011.06	1011.16	1011.28	1011.39	1010.77
	6	1011.44	1011.44	1011.55	1011.70	1011.77	1011.84	1011.94	1012.02	1012.12	1012.29	1012.48	1012.66	1011.93
	7	1012.84	1013.01	1013.14	1013.21	1013.24	1013.26	1013.36	1013.44	1013.49	1013.57	1013.66	1013.75	1013.33
	8	1013.80	1013.79	1013.80	1013.81	1013.81	1013.81	1013.79	1013.74	1013.69	1013.68	1013.71	1013.79	1013.77
	9	1013.97	1014.09	1014.18	1014.28	1014.31	1014.33	1014.33	1014.37	1014.44	1014.49	1014.50	1014.47	1014.31
	10	1014.45	1014.44	1014.41	1014.38	1014.37	1014.36	1014.31	1014.28	1014.26	1014.25	1014.26	1014.24	1014.33
	11	1014.18	1014.17	1014.14	1014.05	1014.01	1014.02	1014.00	1014.00	1014.03	1014.06	1014.08	1014.10	1014.07
	12	1014.10	1014.08	1014.12	1014.15	1014.17	1014.23	1014.27	1014.26	1014.29	1014.37	1014.43	1014.50	1014.25
	13	1014.56	1014.62	1014.65	1014.69	1014.71	1014.73	1014.79	1014.85	1014.89	1014.93	1014.96	1014.99	1014.78
	14	1015.05	1015.13	1015.21	1015.28	1015.38	1015.51	1015.59	1015.64	1015.70	1015.74	1015.77	1015.80	1015.48
	15	1015.87	1015.94	1015.99	1016.04	1016.06	1016.06	1016.08	1016.10	1016.12	1016.18	1016.30	1016.38	1016.09
	16	1016.39	1016.41	1016.49	1016.57	1016.65	1016.73	1016.80	1016.87	1016.90	1016.96	1017.06	1017.15	1016.75
	17	1017.24	1017.35	1017.44	1017.53	1017.62	1017.72	1017.80	1017.87	1017.94	1017.98	1017.99	1018.03	1017.71
	18	1018.08	1018.11	1018.13	1018.14	1018.16	1018.22	1018.30	1018.34	1018.34	1018.32	1018.32	1018.36	1018.23
	19	1018.43	1018.52	1018.61	1018.67	1018.73	1018.79	1018.83	1018.86	1018.90	1018.92	1018.93	1018.98	1018.76
	20	1019.08	1019.17	1019.20	1019.22	1019.28	1019.34	1019.41	1019.47	1019.52	1019.59	1019.66	1019.68	1019.38
	21	1019.68	1019.70	1019.74	1019.72	1019.70	1019.72	1019.75	1019.80	1019.84	1019.85	1019.84	1019.82	1019.76
	22	1019.86	1019.94	1020.01	1020.01	1019.99	1019.99	1019.95	1019.91	1019.95	1020.02	1020.06	1020.08	1019.98
	23	1020.07	1020.07	1020.14	1020.14	1020.08	1020.10	1020.10	1020.04	1020.05	1020.06	1020.07	1020.14	1020.09

S.V.I.R.CO. Observatory - Pressure in hectoPascal – November 2016

day	hh	00_05	05_10	10_15	15_20	20_25	25_30	30_35	35_40	40_45	45_50	50_55	55_60	average
13	0	1020.14	1020.14	1020.15	1020.15	1020.09	1020.15	1020.21	1020.20	1020.26	1020.27	1020.31	1020.36	1020.20
	1	1020.29	1020.25	1020.22	1020.10	1020.09	1020.12	1020.09	1020.08	1020.09	1020.12	1020.09	1020.06	1020.13
	2	1020.15	1020.18	1020.12	1020.04	1019.96	1019.92	1019.92	1019.90	1019.89	1019.91	1019.98	1020.02	1020.00
	3	1020.01	1020.11	1020.13	1020.10	1020.13	1020.16	1020.19	1020.20	1020.23	1020.29	1020.32	1020.31	1020.18
	4	1020.31	1020.36	1020.43	1020.50	1020.52	1020.48	1020.44	1020.41	1020.41	1020.45	1020.48	1020.47	1020.44
	5	1020.47	1020.48	1020.47	1020.46	1020.46	1020.49	1020.47	1020.45	1020.47	1020.48	1020.52	1020.56	1020.48
	6	1020.61	1020.65	1020.74	1020.83	1020.88	1020.97	1021.08	1021.15	1021.20	1021.23	1021.30	1021.40	1021.00
	7	1021.46	1021.50	1021.56	1021.60	1021.61	1021.62	1021.66	1021.64	1021.63	1021.71	1021.79	1021.84	1021.63
	8	1021.86	1021.90	1021.96	1021.96	1021.93	1021.96	1021.99	1022.01	1022.02	1022.06	1022.11	1022.13	1021.99
	9	1022.12	1022.11	1022.12	1022.12	1022.11	1022.10	1022.11	1022.11	1022.07	1022.04	1021.97	1021.91	1022.07
	10	1021.87	1021.84	1021.82	1021.76	1021.68	1021.61	1021.58	1021.57	1021.57	1021.57	1021.55	1021.52	1021.66
	11	1021.45	1021.35	1021.28	1021.18	1021.12	1021.09	1021.04	1020.99	1020.95	1020.89	1020.84	1020.80	1021.08
	12	1020.77	1020.77	1020.77	1020.78	1020.76	1020.70	1020.64	1020.59	1020.55	1020.52	1020.50	1020.49	1020.65
	13	1020.49	1020.48	1020.46	1020.44	1020.39	1020.36	1020.36	1020.37	1020.35	1020.34	1020.35	1020.37	1020.39
	14	1020.38	1020.38	1020.35	1020.32	1020.30	1020.27	1020.25	1020.24	1020.23	1020.21	1020.18	1020.15	1020.27
	15	1020.16	1020.19	1020.19	1020.19	1020.19	1020.17	1020.16	1020.16	1020.17	1020.17	1020.15	1020.13	1020.17
	16	1020.11	1020.12	1020.17	1020.23	1020.26	1020.25	1020.25	1020.28	1020.28	1020.28	1020.31	1020.35	1020.24
	17	1020.39	1020.40	1020.41	1020.42	1020.45	1020.49	1020.54	1020.56	1020.55	1020.55	1020.55	1020.55	1020.49
	18	1020.57	1020.57	1020.55	1020.56	1020.60	1020.63	1020.63	1020.63	1020.61	1020.62	1020.62	1020.62	1020.60
	19	1020.65	1020.67	1020.65	1020.63	1020.67	1020.71	1020.74	1020.74	1020.73	1020.73	1020.73	1020.76	1020.70
	20	1020.80	1020.85	1020.90	1020.93	1020.94	1020.94	1020.95	1020.96	1020.96	1020.96	1020.97	1020.97	1020.92
	21	1020.94	1020.92	1020.90	1020.89	1020.87	1020.86	1020.85	1020.83	1020.84	1020.82	1020.81	1020.81	1020.86
	22	1020.79	1020.77	1020.76	1020.73	1020.71	1020.73	1020.75	1020.76	1020.75	1020.76	1020.77	1020.74	1020.75
	23	1020.72	1020.67	1020.63	1020.65	1020.66	1020.64	1020.60	1020.57	1020.53	1020.48	1020.44	1020.38	1020.58
14	0	1020.33	1020.35	1020.37	1020.37	1020.35	1020.30	1020.26	1020.26	1020.27	1020.28	1020.28	1020.28	1020.30
	1	1020.27	1020.28	1020.30	1020.27	1020.22	1020.18	1020.15	1020.13	1020.10	1020.07	1020.05	1020.04	1020.17
	2	1020.04	1020.02	1020.02	1020.02	1020.01	1020.01	1019.97	1019.91	1019.88	1019.86	1019.84	1019.87	1019.95
	3	1019.91	1019.95	1019.98	1019.97	1019.95	1019.95	1019.95	1019.96	1019.96	1019.96	1019.98	1020.01	1019.96
	4	1020.03	1020.02	1020.02	1020.01	1019.98	1019.94	1019.91	1019.94	1019.97	1019.97	1019.97	1019.99	1019.98
	5	1020.03	1020.06	1020.09	1020.10	1020.08	1020.10	1020.17	1020.15	1020.11	1020.14	1020.20	1020.25	1020.12
	6	1020.26	1020.25	1020.26	1020.29	1020.32	1020.35	1020.41	1020.45	1020.48	1020.55	1020.65	1020.72	1020.41
	7	1020.76	1020.82	1020.89	1020.91	1020.91	1020.92	1020.93	1020.92	1020.91	1020.91	1020.93	1020.97	1020.90
	8	1021.03	1021.04	1021.01	1021.00	1021.04	1021.05	1021.04	1021.04	1021.07	1021.13	1021.18	1021.24	1021.07
	9	1021.27	1021.31	1021.36	1021.40	1021.46	1021.50	1021.53	1021.55	1021.54	1021.54	1021.56	1021.56	1021.46
	10	1021.55	1021.52	1021.51	1021.50	1021.50	1021.48	1021.46	1021.43	1021.38	1021.30	1021.24	1021.19	1021.42
	11	1021.15	1021.14	1021.13	1021.14	1021.16	1021.15	1021.11	1021.11	1021.14	1021.14	1021.10	1021.05	1021.13
	12	1021.03	1020.99	1020.94	1020.90	1020.89	1020.88	1020.87	1020.85	1020.81	1020.76	1020.75	1020.74	1020.86
	13	1020.73	1020.71	1020.71	1020.73	1020.73	1020.71	1020.70	1020.71	1020.73	1020.73	1020.73	1020.74	1020.72
	14	1020.77	1020.79	1020.81	1020.82	1020.82	1020.80	1020.79	1020.79	1020.82	1020.85	1020.86	1020.89	1020.82
	15	1020.93	1020.95	1020.95	1020.94	1020.92	1020.93	1020.96	1020.98	1021.01	1021.02	1021.02	1021.01	1020.97
	16	1021.03	1021.05	1021.06	1021.07	1021.07	1021.10	1021.13	1021.15	1021.17	1021.19	1021.20	1021.23	1021.12
	17	1021.30	1021.39	1021.47	1021.53	1021.57	1021.60	1021.62	1021.64	1021.66	1021.69	1021.74	1021.79	1021.58
	18	1021.84	1021.89	1021.94	1021.99	1022.03	1022.04	1022.01	1022.00	1022.00	1021.97	1021.96	1021.96	1021.97
	19	1021.97	1022.00	1022.02	1022.07	1022.13	1022.19	1022.25	1022.27	1022.31	1022.41	1022.52	1022.60	1022.23
	20	1022.67	1022.74	1022.79	1022.85	1022.90	1022.96	1023.03	1023.08	1023.12	1023.14	1023.16	1023.18	1022.96
	21	1023.15	1023.14	1023.19	1023.23	1023.22	1023.20	1023.18	1023.12	1023.04	1023.00	1022.95	1022.90	1023.11
	22	1022.89	1022.91	1022.93	1022.97	1022.98	1022.96	1022.94	1022.95	1022.93	1022.86	1022.85	1022.87	1022.92
	23	1022.88	1022.89	1022.88	1022.90	1022.91	1022.92	1022.95	1022.97	1022.99	1023.00	1023.04	1023.06	1022.95

S.V.I.R.CO. Observatory - Pressure in hectoPascal – November 2016

day	hh	00_05	05_10	10_15	15_20	20_25	25_30	30_35	35_40	40_45	45_50	50_55	55_60	average
15	0	1023.08	1023.09	1023.10	1023.12	1023.16	1023.21	1023.26	1023.29	1023.34	1023.37	1023.40	1023.44	1023.24
	1	1023.46	1023.48	1023.48	1023.47	1023.46	1023.47	1023.46	1023.42	1023.37	1023.36	1023.38	1023.40	1023.43
	2	1023.42	1023.45	1023.45	1023.45	1023.44	1023.43	1023.47	1023.53	1023.54	1023.49	1023.45	1023.40	1023.46
	3	1023.34	1023.29	1023.29	1023.31	1023.33	1023.32	1023.32	1023.38	1023.41	1023.41	1023.43	1023.44	1023.35
	4	1023.44	1023.45	1023.46	1023.49	1023.53	1023.55	1023.58	1023.59	1023.58	1023.60	1023.63	1023.65	1023.54
	5	1023.69	1023.73	1023.75	1023.78	1023.82	1023.91	1023.98	1023.99	1023.99	1024.01	1024.03	1024.04	1023.89
	6	1024.06	1024.09	1024.11	1024.15	1024.20	1024.26	1024.32	1024.40	1024.43	1024.43	1024.43	1024.46	1024.28
	7	1024.49	1024.53	1024.60	1024.64	1024.68	1024.73	1024.81	1024.90	1024.95	1024.97	1025.00	1025.03	1024.77
	8	1025.05	1025.07	1025.09	1025.09	1025.10	1025.13	1025.14	1025.15	1025.20	1025.25	1025.28	1025.31	1025.15
	9	1025.34	1025.38	1025.42	1025.45	1025.47	1025.50	1025.54	1025.58	1025.63	1025.64	1025.64	1025.61	1025.52
	10	1025.57	1025.53	1025.48	1025.45	1025.43	1025.39	1025.31	1025.22	1025.16	1025.13	1025.08	1025.03	1025.31
	11	1025.01	1025.01	1025.00	1025.00	1025.00	1024.99	1025.00	1024.98	1024.94	1024.90	1024.85	1024.79	1024.95
	12	1024.76	1024.74	1024.73	1024.72	1024.70	1024.68	1024.62	1024.56	1024.54	1024.55	1024.53	1024.49	1024.63
	13	1024.46	1024.44	1024.40	1024.39	1024.38	1024.36	1024.34	1024.32	1024.32	1024.33	1024.31	1024.31	1024.36
	14	1024.32	1024.33	1024.34	1024.33	1024.30	1024.28	1024.27	1024.27	1024.26	1024.28	1024.29	1024.28	1024.29
	15	1024.24	1024.22	1024.24	1024.23	1024.20	1024.20	1024.18	1024.20	1024.28	1024.35	1024.38	1024.39	1024.26
	16	1024.43	1024.47	1024.46	1024.46	1024.52	1024.58	1024.62	1024.66	1024.72	1024.76	1024.78	1024.81	1024.60
	17	1024.85	1024.88	1024.91	1024.99	1025.09	1025.16	1025.18	1025.22	1025.27	1025.32	1025.40	1025.47	1025.14
	18	1025.51	1025.55	1025.62	1025.68	1025.70	1025.72	1025.74	1025.75	1025.76	1025.80	1025.83	1025.85	1025.71
	19	1025.85	1025.90	1025.94	1025.91	1025.87	1025.85	1025.84	1025.81	1025.81	1025.86	1025.89	1025.94	1025.87
	20	1025.97	1025.97	1025.98	1026.01	1026.02	1026.02	1026.02	1026.02	1026.05	1026.07	1026.11	1026.16	1026.03
	21	1026.19	1026.16	1026.16	1026.19	1026.22	1026.24	1026.25	1026.25	1026.24	1026.25	1026.28	1026.30	1026.23
	22	1026.28	1026.29	1026.30	1026.31	1026.29	1026.27	1026.30	1026.35	1026.39	1026.41	1026.40	1026.39	1026.33
	23	1026.42	1026.44	1026.44	1026.42	1026.41	1026.36	1026.26	1026.20	1026.16	1026.10	1026.07	1026.04	1026.28
16	0	1025.97	1025.99	1025.98	1025.94	1025.94	1025.93	1025.88	1025.85	1025.85	1025.87	1025.90	1025.90	1025.91
	1	1025.92	1025.96	1026.00	1026.02	1026.01	1025.98	1025.96	1025.93	1025.87	1025.79	1025.77	1025.76	1025.91
	2	1025.73	1025.68	1025.63	1025.61	1025.60	1025.56	1025.56	1025.53	1025.49	1025.43	1025.35	1025.33	1025.54
	3	1025.34	1025.35	1025.37	1025.35	1025.29	1025.25	1025.24	1025.26	1025.25	1025.22	1025.21	1025.20	1025.28
	4	1025.19	1025.19	1025.22	1025.25	1025.26	1025.26	1025.26	1025.26	1025.24	1025.21	1025.19	1025.17	1025.22
	5	1025.15	1025.16	1025.17	1025.19	1025.22	1025.23	1025.24	1025.27	1025.31	1025.35	1025.37	1025.35	1025.25
	6	1025.33	1025.33	1025.32	1025.30	1025.29	1025.32	1025.37	1025.40	1025.42	1025.43	1025.42	1025.42	1025.36
	7	1025.46	1025.50	1025.52	1025.52	1025.53	1025.53	1025.57	1025.63	1025.62	1025.59	1025.57	1025.54	1025.55
	8	1025.51	1025.47	1025.45	1025.41	1025.37	1025.35	1025.30	1025.30	1025.33	1025.31	1025.29	1025.34	1025.37
	9	1025.38	1025.38	1025.40	1025.38	1025.33	1025.29	1025.28	1025.27	1025.27	1025.27	1025.26	1025.21	1025.31
	10	1025.14	1025.09	1025.02	1024.90	1024.82	1024.75	1024.66	1024.56	1024.47	1024.40	1024.35	1024.27	1024.70
	11	1024.16	1024.06	1023.97	1023.91	1023.85	1023.80	1023.74	1023.68	1023.61	1023.54	1023.46	1023.41	1023.76
	12	1023.36	1023.29	1023.20	1023.12	1023.09	1023.07	1023.03	1022.98	1022.89	1022.80	1022.76	1022.73	1023.02
	13	1022.72	1022.70	1022.63	1022.58	1022.53	1022.49	1022.47	1022.46	1022.46	1022.46	1022.42	1022.37	1022.52
	14	1022.32	1022.29	1022.28	1022.25	1022.24	1022.23	1022.21	1022.19	1022.16	1022.14	1022.12	1022.09	1022.21
	15	1022.08	1022.12	1022.13	1022.12	1022.13	1022.15	1022.16	1022.16	1022.18	1022.17	1022.12	1022.10	1022.13
	16	1022.07	1022.06	1022.08	1022.08	1022.07	1022.10	1022.13	1022.14	1022.13	1022.13	1022.13	1022.11	1022.10
	17	1022.08	1022.06	1022.06	1022.07	1022.04	1022.02	1021.99	1021.96	1021.99	1022.02	1022.02	1022.00	1022.02
	18	1021.98	1022.01	1022.06	1022.10	1022.14	1022.13	1022.10	1022.08	1022.08	1022.06	1022.04	1022.02	1022.06
	19	1022.02	1022.06	1022.07	1022.06	1022.07	1022.08	1022.09	1022.10	1022.09	1022.06	1022.00	1021.98	1022.05
	20	1022.01	1022.07	1022.12	1022.13	1022.13	1022.13	1022.15	1022.15	1022.16	1022.17	1022.18	1022.18	1022.13
	21	1022.13	1022.12	1022.12	1022.10	1022.11	1022.18	1022.21	1022.18	1022.14	1022.12	1022.12	1022.14	1022.14
	22	1022.18	1022.18	1022.13	1022.14	1022.19	1022.23	1022.20	1022.15	1022.14	1022.17	1022.21	1022.15	1022.17
	23	1022.07	1022.05	1022.07	1022.07	1022.07	1022.06	1022.05	1022.00	1021.91	1021.84	1021.82	1021.81	1021.98

S.V.I.R.CO. Observatory - Pressure in hectoPascal – November 2016

day	hh	00_05	05_10	10_15	15_20	20_25	25_30	30_35	35_40	40_45	45_50	50_55	55_60	average
17	0	1021.75	1021.72	1021.69	1021.70	1021.72	1021.77	1021.79	1021.81	1021.82	1021.78	1021.74	1021.70	1021.75
	1	1021.71	1021.77	1021.84	1021.88	1021.83	1021.75	1021.73	1021.72	1021.62	1021.54	1021.47	1021.40	1021.69
	2	1021.36	1021.36	1021.37	1021.32	1021.24	1021.22	1021.22	1021.22	1021.18	1021.11	1021.05	1021.01	1021.22
	3	1021.02	1021.03	1021.03	1021.01	1020.98	1020.94	1020.91	1020.90	1020.81	1020.70	1020.56	1020.45	1020.86
	4	1020.54	1020.66	1020.65	1020.61	1020.52	1020.45	1020.26	1020.09	1020.06	1020.00	1020.00	1020.04	1020.32
	5	1020.08	1020.12	1020.09	1020.01	1019.95	1019.95	1019.99	1020.03	1020.05	1020.08	1020.12	1020.17	1020.05
	6	1020.17	1020.16	1020.19	1020.22	1020.25	1020.28	1020.29	1020.29	1020.29	1020.27	1020.24	1020.29	1020.24
	7	1020.38	1020.43	1020.49	1020.50	1020.45	1020.51	1020.62	1020.69	1020.71	1020.76	1020.77	1020.70	1020.58
	8	1020.64	1020.59	1020.57	1020.60	1020.66	1020.70	1020.73	1020.77	1020.83	1020.87	1020.91	1020.94	1020.73
	9	1020.95	1020.96	1020.92	1020.90	1020.89	1020.87	1020.85	1020.81	1020.77	1020.74	1020.65	1020.57	1020.82
	10	1020.54	1020.52	1020.49	1020.38	1020.32	1020.37	1020.44	1020.43	1020.35	1020.31	1020.26	1020.17	1020.38
	11	1020.08	1020.04	1020.02	1020.03	1020.01	1019.96	1019.91	1019.86	1019.83	1019.79	1019.76	1019.77	1019.92
	12	1019.71	1019.62	1019.58	1019.53	1019.45	1019.38	1019.33	1019.29	1019.27	1019.30	1019.32	1019.32	1019.42
	13	1019.30	1019.28	1019.28	1019.28	1019.25	1019.24	1019.28	1019.26	1019.21	1019.21	1019.24	1019.28	1019.26
	14	1019.28	1019.28	1019.36	1019.43	1019.40	1019.37	1019.36	1019.37	1019.41	1019.43	1019.46	1019.45	1019.38
	15	1019.42	1019.42	1019.40	1019.39	1019.40	1019.35	1019.30	1019.28	1019.29	1019.32	1019.32	1019.29	1019.35
	16	1019.27	1019.27	1019.26	1019.24	1019.23	1019.25	1019.27	1019.26	1019.23	1019.23	1019.22	1019.18	1019.24
	17	1019.13	1019.11	1019.09	1019.03	1019.00	1019.00	1019.02	1019.07	1019.11	1019.12	1019.09	1019.08	1019.07
	18	1019.12	1019.15	1019.16	1019.19	1019.22	1019.24	1019.22	1019.20	1019.18	1019.13	1019.09	1019.06	1019.16
	19	1019.07	1019.10	1019.12	1019.14	1019.15	1019.15	1019.16	1019.18	1019.19	1019.18	1019.20	1019.24	1019.15
	20	1019.29	1019.32	1019.35	1019.40	1019.40	1019.41	1019.44	1019.45	1019.44	1019.41	1019.39	1019.40	1019.39
	21	1019.41	1019.41	1019.43	1019.48	1019.50	1019.49	1019.46	1019.43	1019.43	1019.45	1019.46	1019.43	1019.45
	22	1019.38	1019.40	1019.44	1019.43	1019.38	1019.33	1019.32	1019.32	1019.28	1019.22	1019.17	1019.19	1019.32
	23	1019.23	1019.22	1019.17	1019.14	1019.12	1019.08	1019.04	1019.00	1018.96	1018.92	1018.87	1018.90	1019.05
18	0	1018.91	1018.92	1018.95	1018.97	1018.94	1018.94	1018.96	1018.95	1018.94	1018.97	1019.00	1018.98	1018.95
	1	1018.94	1018.94	1018.90	1018.81	1018.75	1018.74	1018.75	1018.76	1018.79	1018.79	1018.77	1018.75	1018.80
	2	1018.73	1018.69	1018.61	1018.53	1018.51	1018.50	1018.46	1018.41	1018.35	1018.29	1018.26	1018.23	1018.46
	3	1018.21	1018.19	1018.20	1018.20	1018.21	1018.24	1018.27	1018.28	1018.25	1018.21	1018.20	1018.21	1018.22
	4	1018.21	1018.21	1018.19	1018.17	1018.15	1018.14	1018.13	1018.13	1018.13	1018.13	1018.14	1018.15	1018.15
	5	1018.16	1018.15	1018.16	1018.16	1018.16	1018.15	1018.14	1018.12	1018.09	1018.07	1018.08	1018.08	1018.12
	6	1018.06	1018.04	1018.02	1018.03	1018.05	1018.08	1018.17	1018.27	1018.33	1018.38	1018.42	1018.45	1018.19
	7	1018.45	1018.47	1018.51	1018.51	1018.52	1018.54	1018.54	1018.56	1018.59	1018.62	1018.65	1018.65	1018.55
	8	1018.65	1018.62	1018.52	1018.47	1018.44	1018.41	1018.41	1018.37	1018.38	1018.40	1018.39	1018.39	1018.45
	9	1018.38	1018.37	1018.39	1018.39	1018.34	1018.28	1018.29	1018.31	1018.31	1018.31	1018.28	1018.26	1018.32
	10	1018.24	1018.21	1018.17	1018.16	1018.16	1018.15	1018.12	1018.09	1018.05	1018.00	1017.94	1017.92	1018.10
	11	1017.92	1017.91	1017.87	1017.84	1017.81	1017.72	1017.60	1017.50	1017.47	1017.46	1017.42	1017.39	1017.66
	12	1017.36	1017.32	1017.26	1017.18	1017.08	1017.00	1016.96	1016.93	1016.87	1016.81	1016.78	1016.74	1017.02
	13	1016.70	1016.66	1016.63	1016.61	1016.62	1016.64	1016.66	1016.64	1016.60	1016.56	1016.54	1016.53	1016.61
	14	1016.51	1016.49	1016.49	1016.47	1016.46	1016.47	1016.45	1016.41	1016.40	1016.41	1016.43	1016.44	1016.45
	15	1016.43	1016.44	1016.43	1016.46	1016.51	1016.56	1016.59	1016.59	1016.60	1016.60	1016.64	1016.69	1016.54
	16	1016.68	1016.69	1016.69	1016.66	1016.67	1016.69	1016.74	1016.83	1016.89	1016.92	1016.92	1016.86	1016.77
	17	1016.82	1016.81	1016.79	1016.82	1016.86	1016.88	1016.88	1016.86	1016.87	1016.89	1016.88	1016.89	1016.85
	18	1016.92	1016.94	1016.93	1016.91	1016.91	1016.89	1016.86	1016.84	1016.88	1016.92	1016.98	1017.03	1016.92
	19	1017.03	1017.03	1017.04	1016.98	1016.94	1016.95	1016.93	1016.90	1016.90	1016.89	1016.87	1016.85	1016.94
	20	1016.83	1016.83	1016.83	1016.81	1016.79	1016.77	1016.74	1016.74	1016.75	1016.78	1016.79	1016.75	1016.78
	21	1016.70	1016.68	1016.68	1016.67	1016.64	1016.61	1016.61	1016.62	1016.63	1016.64	1016.63	1016.57	1016.64
	22	1016.56	1016.57	1016.55	1016.50	1016.45	1016.40	1016.32	1016.30	1016.33	1016.34	1016.35	1016.34	1016.42
	23	1016.29	1016.23	1016.19	1016.16	1016.10	1016.04	1016.00	1015.99	1015.95	1015.87	1015.79	1015.75	1016.03

S.V.I.R.CO. Observatory - Pressure in hectoPascal – November 2016

day	hh	00_05	05_10	10_15	15_20	20_25	25_30	30_35	35_40	40_45	45_50	50_55	55_60	average
19	0	1015.73	1015.72	1015.69	1015.65	1015.61	1015.59	1015.63	1015.65	1015.65	1015.67	1015.69	1015.71	1015.66
	1	1015.72	1015.71	1015.69	1015.67	1015.63	1015.54	1015.50	1015.50	1015.54	1015.57	1015.54	1015.51	1015.59
	2	1015.46	1015.40	1015.34	1015.30	1015.23	1015.17	1015.13	1015.12	1015.11	1015.06	1014.98	1014.91	1015.18
	3	1014.82	1014.70	1014.65	1014.66	1014.69	1014.71	1014.69	1014.67	1014.66	1014.60	1014.53	1014.48	1014.65
	4	1014.41	1014.37	1014.36	1014.29	1014.25	1014.25	1014.23	1014.26	1014.33	1014.37	1014.36	1014.31	1014.31
	5	1014.32	1014.31	1014.28	1014.25	1014.17	1014.18	1014.23	1014.28	1014.29	1014.21	1014.18	1014.16	1014.24
	6	1014.17	1014.21	1014.21	1014.20	1014.25	1014.29	1014.30	1014.38	1014.47	1014.51	1014.52	1014.51	1014.33
	7	1014.51	1014.56	1014.58	1014.57	1014.56	1014.55	1014.54	1014.54	1014.59	1014.65	1014.67	1014.63	1014.58
	8	1014.57	1014.54	1014.53	1014.56	1014.56	1014.56	1014.58	1014.59	1014.62	1014.63	1014.63	1014.63	1014.58
	9	1014.67	1014.67	1014.67	1014.71	1014.76	1014.78	1014.80	1014.83	1014.81	1014.80	1014.82	1014.78	1014.76
	10	1014.74	1014.70	1014.66	1014.62	1014.58	1014.55	1014.46	1014.39	1014.38	1014.36	1014.33	1014.27	1014.50
	11	1014.22	1014.18	1014.07	1013.99	1013.94	1013.83	1013.79	1013.78	1013.78	1013.82	1013.83	1013.79	1013.92
	12	1013.77	1013.82	1013.88	1013.87	1013.79	1013.74	1013.72	1013.70	1013.68	1013.69	1013.68	1013.61	1013.74
	13	1013.54	1013.52	1013.46	1013.37	1013.32	1013.31	1013.30	1013.26	1013.25	1013.27	1013.26	1013.25	1013.34
	14	1013.26	1013.26	1013.28	1013.26	1013.23	1013.19	1013.17	1013.17	1013.20	1013.26	1013.35	1013.41	1013.25
	15	1013.45	1013.50	1013.54	1013.59	1013.60	1013.60	1013.57	1013.58	1013.66	1013.72	1013.75	1013.77	1013.61
	16	1013.77	1013.80	1013.85	1013.87	1013.90	1013.97	1014.00	1014.00	1014.00	1013.99	1013.99	1014.04	1013.93
	17	1014.08	1014.09	1014.12	1014.15	1014.16	1014.19	1014.22	1014.22	1014.18	1014.16	1014.19	1014.19	1014.16
	18	1014.18	1014.17	1014.14	1014.08	1014.00	1013.90	1013.82	1013.79	1013.84	1013.86	1013.86	1013.93	1013.96
	19	1014.00	1014.08	1014.17	1014.22	1014.25	1014.23	1014.20	1014.21	1014.24	1014.29	1014.34	1014.38	1014.22
	20	1014.42	1014.47	1014.52	1014.54	1014.54	1014.52	1014.49	1014.51	1014.54	1014.53	1014.54	1014.57	1014.51
	21	1014.59	1014.63	1014.71	1014.78	1014.82	1014.82	1014.85	1014.88	1014.90	1014.92	1014.92	1014.89	1014.81
	22	1014.87	1014.90	1014.99	1015.09	1015.15	1015.14	1015.15	1015.14	1015.10	1015.11	1015.15	1015.13	1015.08
	23	1015.06	1014.99	1014.99	1015.04	1015.03	1015.02	1015.00	1014.97	1014.96	1014.86	1014.76	1014.78	1014.95
20	0	1014.80	1014.80	1014.80	1014.84	1014.86	1014.84	1014.77	1014.74	1014.77	1014.78	1014.82	1014.86	1014.81
	1	1014.92	1014.98	1014.97	1014.91	1014.86	1014.84	1014.84	1014.82	1014.80	1014.77	1014.75	1014.74	1014.85
	2	1014.71	1014.69	1014.66	1014.66	1014.70	1014.73	1014.70	1014.66	1014.66	1014.68	1014.67	1014.64	1014.68
	3	1014.64	1014.64	1014.61	1014.57	1014.53	1014.50	1014.49	1014.50	1014.50	1014.46	1014.43	1014.40	1014.52
	4	1014.41	1014.43	1014.43	1014.43	1014.48	1014.55	1014.59	1014.60	1014.62	1014.63	1014.63	1014.64	1014.53
	5	1014.66	1014.72	1014.81	1014.86	1014.89	1014.92	1014.97	1015.03	1015.08	1015.12	1015.17	1015.24	1014.95
	6	1015.31	1015.35	1015.35	1015.34	1015.33	1015.36	1015.39	1015.42	1015.45	1015.48	1015.51	1015.53	1015.40
	7	1015.58	1015.65	1015.72	1015.74	1015.72	1015.74	1015.79	1015.83	1015.90	1015.93	1015.94	1015.94	1015.79
	8	1015.95	1016.00	1016.01	1016.04	1016.08	1016.09	1016.10	1016.10	1016.14	1016.20	1016.23	1016.25	1016.10
	9	1016.28	1016.24	1016.20	1016.20	1016.19	1016.18	1016.17	1016.18	1016.20	1016.21	1016.23	1016.22	1016.21
	10	1016.22	1016.20	1016.16	1016.11	1016.08	1016.07	1016.04	1015.99	1015.96	1015.91	1015.83	1015.78	1016.03
	11	1015.74	1015.72	1015.69	1015.65	1015.64	1015.62	1015.57	1015.55	1015.53	1015.50	1015.46	1015.41	1015.59
	12	1015.37	1015.34	1015.32	1015.29	1015.28	1015.29	1015.27	1015.21	1015.13	1015.09	1015.06	1015.02	1015.22
	13	1014.95	1014.90	1014.88	1014.86	1014.85	1014.86	1014.88	1014.88	1014.89	1014.90	1014.93	1014.97	1014.89
	14	1014.98	1014.97	1014.97	1015.00	1015.01	1015.03	1015.03	1015.00	1015.02	1015.06	1015.04	1015.07	1015.01
	15	1015.14	1015.18	1015.21	1015.20	1015.17	1015.18	1015.17	1015.17	1015.21	1015.24	1015.24	1015.23	1015.19
	16	1015.25	1015.29	1015.33	1015.39	1015.42	1015.41	1015.42	1015.45	1015.45	1015.45	1015.49	1015.51	1015.40
	17	1015.55	1015.63	1015.69	1015.73	1015.76	1015.76	1015.77	1015.81	1015.85	1015.87	1015.91	1015.93	1015.77
	18	1015.95	1016.00	1016.05	1016.11	1016.14	1016.15	1016.16	1016.17	1016.16	1016.15	1016.17	1016.21	1016.12
	19	1016.24	1016.25	1016.29	1016.34	1016.36	1016.34	1016.35	1016.35	1016.34	1016.32	1016.29	1016.27	1016.31
	20	1016.25	1016.22	1016.20	1016.17	1016.16	1016.17	1016.18	1016.19	1016.19	1016.21	1016.23	1016.21	1016.20
	21	1016.21	1016.24	1016.24	1016.24	1016.24	1016.23	1016.23	1016.26	1016.29	1016.32	1016.36	1016.40	1016.27
	22	1016.45	1016.51	1016.52	1016.49	1016.46	1016.44	1016.39	1016.38	1016.40	1016.40	1016.40	1016.37	1016.43
	23	1016.33	1016.31	1016.28	1016.28	1016.32	1016.32	1016.32	1016.32	1016.33	1016.35	1016.37	1016.36	1016.32

S.V.I.R.CO. Observatory - Pressure in hectoPascal – November 2016

day	hh	00_05	05_10	10_15	15_20	20_25	25_30	30_35	35_40	40_45	45_50	50_55	55_60	average
21	0	1016.31	1016.31	1016.28	1016.27	1016.28	1016.26	1016.23	1016.21	1016.22	1016.28	1016.30	1016.31	1016.27
	1	1016.32	1016.32	1016.31	1016.32	1016.34	1016.34	1016.33	1016.32	1016.33	1016.33	1016.33	1016.32	1016.32
	2	1016.31	1016.33	1016.33	1016.30	1016.26	1016.27	1016.29	1016.27	1016.24	1016.20	1016.20	1016.24	1016.27
	3	1016.23	1016.19	1016.16	1016.16	1016.15	1016.15	1016.18	1016.20	1016.17	1016.16	1016.21	1016.26	1016.18
	4	1016.29	1016.29	1016.29	1016.33	1016.37	1016.37	1016.35	1016.35	1016.34	1016.34	1016.37	1016.40	1016.34
	5	1016.41	1016.42	1016.43	1016.43	1016.43	1016.44	1016.45	1016.47	1016.52	1016.60	1016.64	1016.64	1016.49
	6	1016.65	1016.69	1016.74	1016.77	1016.79	1016.80	1016.80	1016.81	1016.85	1016.87	1016.85	1016.83	1016.79
	7	1016.82	1016.86	1016.90	1016.93	1016.95	1016.92	1016.89	1016.90	1016.90	1016.91	1016.91	1016.87	1016.89
	8	1016.87	1016.91	1016.91	1016.92	1016.96	1016.98	1017.00	1017.01	1017.01	1017.01	1016.98	1016.95	1016.96
	9	1016.90	1016.85	1016.85	1016.82	1016.77	1016.72	1016.70	1016.67	1016.64	1016.61	1016.57	1016.54	1016.72
	10	1016.52	1016.47	1016.42	1016.36	1016.32	1016.26	1016.21	1016.20	1016.19	1016.17	1016.15	1016.14	1016.28
	11	1016.13	1016.09	1016.06	1016.02	1016.01	1016.01	1015.97	1015.94	1015.92	1015.92	1015.93	1015.92	1015.99
	12	1015.90	1015.87	1015.83	1015.80	1015.82	1015.84	1015.84	1015.82	1015.80	1015.78	1015.77	1015.76	1015.82
	13	1015.75	1015.76	1015.76	1015.76	1015.78	1015.80	1015.80	1015.81	1015.84	1015.86	1015.86	1015.87	1015.80
	14	1015.88	1015.87	1015.85	1015.86	1015.85	1015.79	1015.76	1015.77	1015.80	1015.84	1015.85	1015.83	1015.83
	15	1015.82	1015.83	1015.85	1015.88	1015.88	1015.88	1015.91	1015.91	1015.91	1015.91	1015.90	1015.90	1015.88
	16	1015.95	1016.02	1016.06	1016.05	1016.05	1016.07	1016.08	1016.09	1016.12	1016.13	1016.09	1016.03	1016.06
	17	1016.03	1016.05	1016.04	1016.04	1016.04	1016.02	1016.02	1016.03	1016.05	1016.07	1016.10	1016.11	1016.05
	18	1016.13	1016.15	1016.17	1016.18	1016.19	1016.20	1016.24	1016.28	1016.32	1016.37	1016.40	1016.42	1016.25
	19	1016.48	1016.54	1016.55	1016.58	1016.61	1016.62	1016.65	1016.69	1016.72	1016.74	1016.75	1016.76	1016.64
	20	1016.77	1016.79	1016.83	1016.84	1016.85	1016.88	1016.92	1016.95	1016.98	1017.00	1017.02	1017.04	1016.90
	21	1017.06	1017.08	1017.10	1017.14	1017.16	1017.15	1017.14	1017.13	1017.14	1017.13	1017.11	1017.08	1017.12
	22	1017.06	1017.04	1017.04	1017.05	1017.03	1017.03	1017.05	1017.06	1017.10	1017.12	1017.09	1017.05	1017.06
	23	1017.02	1017.05	1017.06	1017.07	1017.08	1017.07	1017.06	1017.06	1017.03	1016.99	1016.98	1016.97	1017.03
22	0	1016.96	1016.97	1016.99	1016.98	1016.96	1016.98	1017.01	1017.05	1017.09	1017.11	1017.13	1017.14	1017.03
	1	1017.15	1017.15	1017.11	1017.08	1017.07	1017.07	1017.07	1017.06	1017.05	1017.06	1017.05	1017.02	1017.08
	2	1017.00	1016.96	1016.93	1016.92	1016.91	1016.89	1016.91	1016.93	1016.93	1016.94	1016.96	1016.96	1016.94
	3	1016.94	1016.92	1016.89	1016.87	1016.85	1016.85	1016.87	1016.90	1016.93	1016.92	1016.88	1016.83	1016.89
	4	1016.84	1016.88	1016.91	1016.90	1016.89	1016.86	1016.85	1016.87	1016.89	1016.89	1016.88	1016.85	1016.87
	5	1016.81	1016.81	1016.83	1016.87	1016.88	1016.84	1016.81	1016.79	1016.80	1016.83	1016.86	1016.91	1016.83
	6	1016.97	1017.01	1017.06	1017.15	1017.22	1017.27	1017.35	1017.41	1017.45	1017.49	1017.53	1017.55	1017.29
	7	1017.59	1017.67	1017.74	1017.78	1017.80	1017.85	1017.86	1017.90	1017.94	1017.96	1017.99	1018.01	1017.84
	8	1018.04	1018.07	1018.10	1018.10	1018.13	1018.15	1018.16	1018.19	1018.19	1018.19	1018.19	1018.19	1018.14
	9	1018.18	1018.17	1018.15	1018.11	1018.08	1018.06	1018.04	1018.04	1018.05	1018.04	1018.00	1017.97	1018.07
	10	1017.95	1017.91	1017.91	1017.90	1017.87	1017.86	1017.83	1017.78	1017.75	1017.73	1017.71	1017.69	1017.82
	11	1017.62	1017.57	1017.53	1017.46	1017.41	1017.39	1017.36	1017.33	1017.29	1017.22	1017.17	1017.16	1017.37
	12	1017.13	1017.11	1017.10	1017.05	1017.01	1017.02	1017.03	1017.00	1016.99	1016.97	1016.95	1016.94	1017.02
	13	1016.92	1016.90	1016.88	1016.85	1016.85	1016.88	1016.90	1016.90	1016.92	1016.94	1016.97	1016.99	1016.91
	14	1016.99	1016.99	1016.97	1016.95	1016.96	1016.98	1016.99	1017.02	1017.03	1017.04	1017.07	1017.08	1017.00
	15	1017.09	1017.10	1017.11	1017.15	1017.19	1017.20	1017.22	1017.26	1017.29	1017.30	1017.32	1017.35	1017.21
	16	1017.39	1017.45	1017.49	1017.53	1017.57	1017.62	1017.68	1017.72	1017.71	1017.71	1017.76	1017.78	1017.61
	17	1017.79	1017.83	1017.88	1017.93	1017.97	1018.02	1018.06	1018.11	1018.16	1018.21	1018.25	1018.27	1018.04
	18	1018.28	1018.29	1018.30	1018.31	1018.32	1018.34	1018.38	1018.42	1018.44	1018.47	1018.51	1018.56	1018.38
	19	1018.61	1018.65	1018.67	1018.70	1018.76	1018.80	1018.85	1018.90	1018.91	1018.93	1018.95	1018.94	1018.81
	20	1018.96	1019.02	1019.03	1019.02	1019.04	1019.04	1019.05	1019.07	1019.10	1019.12	1019.14	1019.17	1019.06
	21	1019.22	1019.22	1019.20	1019.24	1019.28	1019.29	1019.32	1019.33	1019.32	1019.34	1019.40	1019.45	1019.30
	22	1019.45	1019.46	1019.50	1019.54	1019.54	1019.51	1019.49	1019.47	1019.44	1019.41	1019.36	1019.31	1019.46
	23	1019.28	1019.25	1019.23	1019.25	1019.24	1019.20	1019.18	1019.18	1019.20	1019.18	1019.14	1019.16	1019.20

S.V.I.R.CO. Observatory - Pressure in hectoPascal – November 2016

day	hh	00_05	05_10	10_15	15_20	20_25	25_30	30_35	35_40	40_45	45_50	50_55	55_60	average
23	0	1019.13	1019.13	1019.12	1019.11	1019.11	1019.13	1019.14	1019.12	1019.12	1019.15	1019.19	1019.19	1019.13
	1	1019.22	1019.23	1019.22	1019.23	1019.22	1019.17	1019.13	1019.11	1019.08	1019.05	1019.03	1019.04	1019.14
	2	1019.04	1019.04	1019.00	1018.98	1019.01	1019.00	1018.96	1018.93	1018.90	1018.86	1018.80	1018.76	1018.94
	3	1018.75	1018.74	1018.73	1018.73	1018.75	1018.76	1018.75	1018.78	1018.77	1018.76	1018.76	1018.76	1018.75
	4	1018.76	1018.76	1018.75	1018.74	1018.76	1018.78	1018.79	1018.77	1018.76	1018.78	1018.79	1018.82	1018.77
	5	1018.87	1018.93	1018.97	1018.98	1019.02	1019.06	1019.10	1019.11	1019.11	1019.14	1019.21	1019.27	1019.06
	6	1019.34	1019.42	1019.47	1019.49	1019.52	1019.54	1019.58	1019.67	1019.75	1019.77	1019.77	1019.79	1019.59
	7	1019.82	1019.88	1019.92	1019.97	1020.02	1020.08	1020.11	1020.13	1020.21	1020.27	1020.27	1020.26	1020.08
	8	1020.29	1020.30	1020.25	1020.23	1020.23	1020.24	1020.27	1020.29	1020.29	1020.27	1020.25	1020.26	1020.26
	9	1020.29	1020.32	1020.32	1020.32	1020.30	1020.26	1020.27	1020.25	1020.23	1020.20	1020.16	1020.15	1020.25
	10	1020.13	1020.12	1020.06	1019.99	1019.95	1019.90	1019.86	1019.84	1019.75	1019.65	1019.62	1019.60	1019.87
	11	1019.60	1019.59	1019.50	1019.42	1019.40	1019.40	1019.39	1019.30	1019.21	1019.16	1019.10	1019.06	1019.34
	12	1019.04	1019.04	1019.02	1018.99	1018.97	1018.97	1018.98	1018.95	1018.94	1018.93	1018.88	1018.82	1018.96
	13	1018.79	1018.77	1018.77	1018.80	1018.87	1018.93	1018.96	1018.97	1018.96	1019.00	1019.04	1019.03	1018.91
	14	1019.02	1019.01	1018.97	1018.93	1018.93	1018.92	1018.93	1018.95	1018.97	1018.95	1018.90	1018.88	1018.95
	15	1018.90	1018.90	1018.90	1018.93	1018.95	1018.97	1019.03	1019.06	1019.07	1019.11	1019.16	1019.19	1019.01
	16	1019.18	1019.12	1019.10	1019.13	1019.16	1019.22	1019.29	1019.35	1019.37	1019.35	1019.35	1019.36	1019.25
	17	1019.36	1019.38	1019.43	1019.45	1019.45	1019.46	1019.45	1019.43	1019.41	1019.41	1019.39	1019.33	1019.41
	18	1019.31	1019.34	1019.36	1019.36	1019.40	1019.45	1019.47	1019.48	1019.45	1019.36	1019.31	1019.30	1019.38
	19	1019.33	1019.35	1019.31	1019.30	1019.31	1019.35	1019.38	1019.38	1019.40	1019.43	1019.45	1019.48	1019.37
	20	1019.53	1019.56	1019.61	1019.66	1019.66	1019.69	1019.72	1019.65	1019.63	1019.69	1019.72	1019.75	1019.65
	21	1019.77	1019.84	1019.92	1019.94	1019.96	1019.99	1019.95	1019.92	1019.97	1019.98	1019.97	1019.98	1019.93
	22	1019.98	1019.98	1019.95	1019.93	1019.93	1019.89	1019.86	1019.88	1019.91	1019.93	1019.89	1019.90	1019.92
	23	1019.97	1019.97	1019.92	1019.93	1019.96	1019.91	1019.84	1019.85	1019.90	1019.89	1019.89	1019.92	1019.91
24	0	1019.88	1019.88	1019.86	1019.83	1019.81	1019.83	1019.83	1019.79	1019.76	1019.72	1019.68	1019.62	1019.79
	1	1019.52	1019.46	1019.46	1019.44	1019.39	1019.40	1019.44	1019.43	1019.37	1019.27	1019.23	1019.23	1019.38
	2	1019.22	1019.17	1019.08	1018.99	1018.93	1018.91	1018.85	1018.77	1018.70	1018.63	1018.61	1018.63	1018.87
	3	1018.65	1018.63	1018.55	1018.48	1018.39	1018.30	1018.23	1018.12	1018.09	1018.11	1018.10	1018.07	1018.31
	4	1018.05	1018.02	1018.01	1018.01	1017.99	1017.95	1017.89	1017.94	1018.05	1018.08	1018.06	1018.02	1018.00
	5	1017.93	1017.86	1017.81	1017.79	1017.81	1017.81	1017.79	1017.77	1017.78	1017.83	1017.91	1017.93	1017.83
	6	1017.92	1017.86	1017.82	1017.85	1017.86	1017.86	1017.88	1017.92	1017.98	1018.06	1018.08	1018.04	1017.93
	7	1018.00	1018.01	1018.01	1017.99	1018.00	1018.02	1018.07	1018.11	1018.11	1018.11	1018.12	1018.14	1018.06
	8	1018.12	1018.04	1017.98	1017.91	1017.83	1017.78	1017.76	1017.70	1017.53	1017.46	1017.50	1017.54	1017.76
	9	1017.54	1017.52	1017.54	1017.55	1017.54	1017.56	1017.60	1017.67	1017.69	1017.64	1017.60	1017.55	1017.58
	10	1017.48	1017.41	1017.36	1017.35	1017.30	1017.18	1017.04	1016.94	1016.89	1016.90	1016.96	1017.01	1017.15
	11	1017.03	1017.00	1016.88	1016.81	1016.80	1016.75	1016.74	1016.76	1016.73	1016.70	1016.71	1016.66	1016.80
	12	1016.58	1016.54	1016.54	1016.55	1016.52	1016.52	1016.51	1016.47	1016.40	1016.31	1016.25	1016.12	1016.44
	13	1015.98	1015.87	1015.84	1015.98	1016.09	1016.14	1016.21	1016.23	1016.19	1016.18	1016.09	1015.97	1016.06
	14	1015.92	1015.87	1015.86	1015.85	1015.83	1015.84	1015.81	1015.78	1015.78	1015.75	1015.73	1015.72	1015.81
	15	1015.75	1015.75	1015.73	1015.81	1015.88	1015.85	1015.81	1015.75	1015.65	1015.57	1015.51	1015.44	1015.71
	16	1015.32	1015.22	1015.18	1015.13	1015.09	1015.03	1014.95	1014.85	1014.72	1014.58	1014.50	1014.45	1014.92
	17	1014.37	1014.32	1014.35	1014.35	1014.30	1014.33	1014.43	1014.52	1014.59	1014.60	1014.58	1014.49	1014.43
	18	1014.34	1014.27	1014.29	1014.30	1014.28	1014.25	1014.11	1013.99	1013.99	1014.00	1014.04	1014.07	1014.16
	19	1014.05	1014.06	1014.04	1014.01	1013.95	1013.84	1013.74	1013.69	1013.67	1013.62	1013.57	1013.50	1013.81
	20	1013.40	1013.31	1013.31	1013.35	1013.43	1013.52	1013.54	1013.57	1013.52	1013.43	1013.45	1013.51	1013.44
	21	1013.63	1013.73	1013.74	1013.80	1013.89	1013.91	1013.85	1013.83	1013.90	1013.94	1014.00	1014.05	1013.85
	22	1014.04	1014.03	1014.05	1014.09	1014.08	1014.10	1014.18	1014.26	1014.36	1014.51	1014.62	1014.61	1014.24
	23	1014.53	1014.52	1014.45	1014.30	1014.20	1014.16	1014.16	1014.18	1014.20	1014.18	1014.13	1014.10	1014.26

S.V.I.R.CO. Observatory - Pressure in hectoPascal – November 2016

day	hh	00_05	05_10	10_15	15_20	20_25	25_30	30_35	35_40	40_45	45_50	50_55	55_60	average
25	0	1014.06	1014.04	1014.02	1014.01	1013.82	1013.60	1013.57	1013.61	1013.61	1013.61	1013.68	1013.72	1013.76
	1	1013.70	1013.66	1013.63	1013.56	1013.50	1013.53	1013.60	1013.67	1013.72	1013.79	1013.93	1014.07	1013.70
	2	1014.19	1014.33	1014.29	1014.09	1013.91	1013.79	1013.61	1013.42	1013.29	1013.29	1013.49	1013.61	1013.77
	3	1013.56	1013.54	1013.55	1013.51	1013.46	1013.40	1013.34	1013.31	1013.25	1013.18	1013.12	1013.06	1013.35
	4	1012.98	1012.90	1012.80	1012.68	1012.62	1012.55	1012.46	1012.35	1012.29	1012.31	1012.28	1012.22	1012.53
	5	1012.21	1012.23	1012.21	1012.15	1012.08	1012.12	1012.20	1012.25	1012.26	1012.17	1012.16	1012.18	1012.18
	6	1012.23	1012.36	1012.55	1012.72	1012.78	1012.77	1012.88	1012.97	1013.02	1013.17	1013.32	1013.32	1012.84
	7	1013.32	1013.39	1013.57	1013.71	1013.42	1013.19	1013.23	1013.27	1013.33	1013.37	1013.42	1013.54	1013.39
	8	1013.66	1013.67	1013.66	1013.69	1013.69	1013.67	1013.75	1013.89	1013.98	1014.11	1014.22	1014.13	1013.84
	9	1014.00	1013.94	1013.89	1013.94	1014.07	1014.14	1014.15	1014.12	1014.04	1013.95	1013.93	1013.97	1014.01
	10	1013.96	1013.90	1013.81	1013.73	1013.64	1013.60	1013.62	1013.61	1013.56	1013.53	1013.56	1013.55	1013.67
	11	1013.49	1013.48	1013.53	1013.50	1013.39	1013.34	1013.33	1013.20	1013.04	1013.01	1012.98	1012.89	1013.26
	12	1012.88	1012.87	1012.80	1012.78	1012.80	1012.82	1012.84	1012.82	1012.73	1012.59	1012.51	1012.45	1012.74
	13	1012.41	1012.40	1012.35	1012.29	1012.25	1012.23	1012.27	1012.32	1012.36	1012.31	1012.22	1012.17	1012.30
	14	1012.15	1012.13	1012.09	1012.04	1012.04	1012.09	1012.15	1012.14	1012.13	1012.19	1012.24	1012.25	1012.14
	15	1012.26	1012.24	1012.23	1012.23	1012.22	1012.20	1012.18	1012.23	1012.31	1012.31	1012.26	1012.24	1012.24
	16	1012.27	1012.32	1012.36	1012.40	1012.41	1012.41	1012.45	1012.52	1012.55	1012.56	1012.59	1012.65	1012.45
	17	1012.72	1012.75	1012.77	1012.83	1012.89	1012.89	1012.89	1012.96	1012.98	1012.95	1012.97	1013.01	1012.88
	18	1013.04	1013.10	1013.18	1013.22	1013.23	1013.21	1013.16	1013.10	1013.08	1013.07	1013.07	1013.04	1013.12
	19	1013.02	1013.07	1013.11	1013.17	1013.26	1013.31	1013.37	1013.39	1013.40	1013.39	1013.37	1013.38	1013.27
	20	1013.39	1013.38	1013.37	1013.41	1013.48	1013.54	1013.58	1013.66	1013.74	1013.80	1013.86	1013.92	1013.59
	21	1013.96	1014.01	1014.06	1014.10	1014.13	1014.15	1014.16	1014.18	1014.20	1014.18	1014.15	1014.14	1014.12
	22	1014.13	1014.14	1014.15	1014.13	1014.11	1014.11	1014.13	1014.18	1014.23	1014.29	1014.26	1014.20	1014.17
	23	1014.18	1014.20	1014.23	1014.24	1014.22	1014.17	1014.11	1014.08	1014.09	1014.11	1014.10	1014.09	1014.15
26	0	1014.06	1014.04	1014.04	1014.11	1014.19	1014.23	1014.23	1014.25	1014.27	1014.27	1014.26	1014.26	1014.19
	1	1014.30	1014.33	1014.35	1014.37	1014.43	1014.50	1014.53	1014.57	1014.60	1014.56	1014.52	1014.48	1014.46
	2	1014.48	1014.46	1014.43	1014.42	1014.43	1014.43	1014.42	1014.45	1014.49	1014.49	1014.49	1014.51	1014.46
	3	1014.51	1014.50	1014.50	1014.52	1014.54	1014.60	1014.67	1014.70	1014.72	1014.78	1014.82	1014.87	1014.64
	4	1014.93	1015.00	1015.03	1015.02	1015.02	1015.04	1015.07	1015.10	1015.13	1015.13	1015.15	1015.19	1015.06
	5	1015.23	1015.29	1015.35	1015.39	1015.40	1015.40	1015.38	1015.39	1015.41	1015.43	1015.45	1015.49	1015.38
	6	1015.52	1015.55	1015.59	1015.65	1015.69	1015.73	1015.77	1015.81	1015.87	1015.93	1015.98	1016.02	1015.76
	7	1016.04	1016.04	1016.05	1016.06	1016.06	1016.07	1016.09	1016.10	1016.15	1016.22	1016.28	1016.31	1016.12
	8	1016.31	1016.32	1016.34	1016.37	1016.40	1016.41	1016.39	1016.39	1016.42	1016.46	1016.48	1016.48	1016.40
	9	1016.47	1016.47	1016.50	1016.53	1016.50	1016.44	1016.41	1016.39	1016.34	1016.30	1016.28	1016.24	1016.40
	10	1016.20	1016.16	1016.10	1016.05	1016.00	1015.94	1015.87	1015.82	1015.75	1015.65	1015.59	1015.57	1015.89
	11	1015.59	1015.59	1015.56	1015.51	1015.48	1015.45	1015.40	1015.33	1015.30	1015.29	1015.27	1015.26	1015.42
	12	1015.26	1015.24	1015.21	1015.17	1015.12	1015.06	1015.00	1014.93	1014.83	1014.76	1014.74	1014.71	1015.00
	13	1014.66	1014.59	1014.50	1014.43	1014.46	1014.52	1014.53	1014.47	1014.43	1014.44	1014.43	1014.42	1014.49
	14	1014.43	1014.40	1014.38	1014.38	1014.38	1014.39	1014.38	1014.37	1014.36	1014.35	1014.35	1014.36	1014.38
	15	1014.38	1014.42	1014.47	1014.48	1014.44	1014.41	1014.42	1014.42	1014.43	1014.46	1014.46	1014.46	1014.44
	16	1014.45	1014.44	1014.38	1014.31	1014.33	1014.37	1014.38	1014.37	1014.36	1014.38	1014.44	1014.48	1014.39
	17	1014.48	1014.48	1014.49	1014.50	1014.48	1014.48	1014.52	1014.54	1014.53	1014.55	1014.56	1014.54	1014.51
	18	1014.53	1014.52	1014.51	1014.53	1014.55	1014.59	1014.61	1014.59	1014.58	1014.61	1014.64	1014.65	1014.57
	19	1014.65	1014.67	1014.67	1014.67	1014.70	1014.73	1014.73	1014.72	1014.71	1014.73	1014.73	1014.72	1014.70
	20	1014.67	1014.61	1014.55	1014.52	1014.51	1014.50	1014.49	1014.50	1014.51	1014.48	1014.49	1014.50	1014.53
	21	1014.47	1014.45	1014.42	1014.44	1014.48	1014.48	1014.49	1014.51	1014.53	1014.52	1014.48	1014.47	1014.48
	22	1014.48	1014.49	1014.50	1014.50	1014.51	1014.53	1014.54	1014.54	1014.55	1014.57	1014.57	1014.57	1014.53
	23	1014.61	1014.63	1014.61	1014.56	1014.52	1014.52	1014.52	1014.49	1014.44	1014.38	1014.31	1014.23	1014.48

S.V.I.R.CO. Observatory - Pressure in hectoPascal – November 2016

day	hh	00_05	05_10	10_15	15_20	20_25	25_30	30_35	35_40	40_45	45_50	50_55	55_60	average
27	0	1014.25	1014.21	1014.15	1014.12	1014.13	1014.17	1014.16	1014.15	1014.16	1014.17	1014.19	1014.15	1014.16
	1	1014.05	1014.00	1013.97	1013.95	1013.97	1013.97	1013.96	1013.95	1013.88	1013.83	1013.80	1013.77	1013.92
	2	1013.73	1013.69	1013.68	1013.69	1013.67	1013.63	1013.59	1013.54	1013.50	1013.47	1013.46	1013.42	1013.59
	3	1013.37	1013.32	1013.27	1013.26	1013.23	1013.22	1013.21	1013.20	1013.18	1013.17	1013.16	1013.17	1013.23
	4	1013.17	1013.11	1013.05	1013.02	1012.99	1012.98	1013.00	1012.97	1012.90	1012.84	1012.80	1012.76	1012.96
	5	1012.71	1012.70	1012.70	1012.65	1012.63	1012.63	1012.59	1012.57	1012.57	1012.55	1012.57	1012.59	1012.62
	6	1012.59	1012.62	1012.66	1012.70	1012.74	1012.79	1012.84	1012.86	1012.85	1012.88	1012.93	1012.98	1012.79
	7	1013.03	1013.06	1013.10	1013.15	1013.17	1013.16	1013.16	1013.17	1013.19	1013.20	1013.21	1013.24	1013.15
	8	1013.29	1013.32	1013.32	1013.27	1013.26	1013.26	1013.23	1013.16	1013.13	1013.15	1013.18	1013.17	1013.23
	9	1013.17	1013.17	1013.18	1013.19	1013.16	1013.15	1013.16	1013.17	1013.18	1013.16	1013.12	1013.06	1013.15
	10	1013.00	1012.93	1012.84	1012.77	1012.69	1012.62	1012.55	1012.47	1012.40	1012.36	1012.30	1012.22	1012.59
	11	1012.13	1012.07	1012.00	1011.90	1011.83	1011.80	1011.77	1011.72	1011.65	1011.56	1011.44	1011.33	1011.76
	12	1011.22	1011.13	1011.07	1011.02	1010.94	1010.86	1010.78	1010.71	1010.63	1010.55	1010.48	1010.41	1010.81
	13	1010.35	1010.29	1010.24	1010.18	1010.12	1010.06	1010.01	1009.98	1009.92	1009.87	1009.84	1009.80	1010.05
	14	1009.78	1009.80	1009.82	1009.84	1009.86	1009.86	1009.86	1009.86	1009.85	1009.85	1009.83	1009.82	1009.83
	15	1009.82	1009.81	1009.81	1009.81	1009.77	1009.73	1009.70	1009.66	1009.63	1009.61	1009.57	1009.53	1009.70
	16	1009.51	1009.49	1009.46	1009.44	1009.42	1009.42	1009.43	1009.44	1009.47	1009.51	1009.52	1009.53	1009.47
	17	1009.52	1009.52	1009.53	1009.52	1009.52	1009.52	1009.54	1009.58	1009.62	1009.66	1009.68	1009.69	1009.57
	18	1009.70	1009.70	1009.70	1009.70	1009.68	1009.69	1009.71	1009.70	1009.70	1009.72	1009.73	1009.73	1009.70
	19	1009.76	1009.79	1009.81	1009.83	1009.85	1009.86	1009.85	1009.86	1009.85	1009.79	1009.74	1009.74	1009.81
	20	1009.75	1009.75	1009.75	1009.76	1009.75	1009.74	1009.72	1009.69	1009.66	1009.59	1009.54	1009.53	1009.68
	21	1009.50	1009.51	1009.55	1009.59	1009.62	1009.61	1009.58	1009.56	1009.55	1009.57	1009.59	1009.60	1009.57
	22	1009.59	1009.56	1009.56	1009.55	1009.53	1009.55	1009.56	1009.55	1009.53	1009.51	1009.48	1009.46	1009.53
	23	1009.42	1009.39	1009.39	1009.35	1009.28	1009.24	1009.20	1009.16	1009.13	1009.08	1009.03	1008.99	1009.22
28	0	1008.95	1008.94	1008.93	1008.93	1008.95	1008.98	1008.98	1008.92	1008.92	1008.94	1008.93	1008.93	1008.94
	1	1008.92	1008.91	1008.90	1008.89	1008.89	1008.87	1008.83	1008.80	1008.80	1008.77	1008.75	1008.73	1008.84
	2	1008.70	1008.66	1008.62	1008.56	1008.50	1008.45	1008.43	1008.42	1008.41	1008.41	1008.42	1008.43	1008.50
	3	1008.44	1008.46	1008.47	1008.47	1008.50	1008.53	1008.52	1008.50	1008.47	1008.44	1008.44	1008.40	1008.47
	4	1008.35	1008.33	1008.34	1008.35	1008.34	1008.34	1008.35	1008.40	1008.46	1008.50	1008.51	1008.54	1008.40
	5	1008.57	1008.60	1008.64	1008.66	1008.67	1008.69	1008.71	1008.72	1008.76	1008.81	1008.82	1008.85	1008.71
	6	1008.86	1008.86	1008.90	1008.95	1009.01	1009.08	1009.08	1009.07	1009.06	1009.08	1009.09	1009.08	1009.01
	7	1009.11	1009.16	1009.21	1009.23	1009.27	1009.31	1009.34	1009.37	1009.36	1009.37	1009.38	1009.40	1009.29
	8	1009.46	1009.48	1009.46	1009.45	1009.44	1009.46	1009.48	1009.47	1009.50	1009.54	1009.52	1009.50	1009.48
	9	1009.49	1009.45	1009.41	1009.41	1009.40	1009.38	1009.34	1009.30	1009.26	1009.21	1009.16	1009.15	1009.33
	10	1009.15	1009.13	1009.11	1009.07	1009.03	1008.99	1008.94	1008.90	1008.85	1008.81	1008.80	1008.79	1008.96
	11	1008.78	1008.74	1008.71	1008.70	1008.69	1008.67	1008.66	1008.64	1008.62	1008.60	1008.58	1008.53	1008.66
	12	1008.50	1008.46	1008.42	1008.38	1008.36	1008.35	1008.34	1008.33	1008.31	1008.29	1008.25	1008.20	1008.35
	13	1008.16	1008.14	1008.14	1008.14	1008.14	1008.14	1008.14	1008.12	1008.10	1008.07	1008.04	1008.02	1008.11
	14	1008.04	1008.09	1008.13	1008.13	1008.10	1008.08	1008.08	1008.08	1008.08	1008.10	1008.14	1008.16	1008.10
	15	1008.15	1008.17	1008.21	1008.25	1008.32	1008.38	1008.41	1008.43	1008.48	1008.55	1008.62	1008.67	1008.38
	16	1008.72	1008.76	1008.77	1008.77	1008.81	1008.87	1008.92	1008.98	1009.01	1009.05	1009.10	1009.15	1008.91
	17	1009.20	1009.24	1009.28	1009.32	1009.36	1009.39	1009.43	1009.50	1009.55	1009.59	1009.63	1009.67	1009.43
	18	1009.71	1009.75	1009.77	1009.81	1009.87	1009.89	1009.93	1009.98	1010.01	1010.05	1010.12	1010.19	1009.92
	19	1010.25	1010.29	1010.34	1010.37	1010.39	1010.44	1010.51	1010.60	1010.64	1010.65	1010.68	1010.73	1010.49
	20	1010.79	1010.84	1010.89	1010.95	1011.03	1011.07	1011.07	1011.09	1011.10	1011.13	1011.18	1011.23	1011.03
	21	1011.24	1011.26	1011.31	1011.35	1011.37	1011.38	1011.42	1011.45	1011.50	1011.56	1011.64	1011.70	1011.43
	22	1011.76	1011.85	1011.91	1011.95	1012.00	1012.06	1012.10	1012.09	1012.13	1012.20	1012.27	1012.31	1012.05
	23	1012.32	1012.36	1012.46	1012.55	1012.59	1012.62	1012.64	1012.67	1012.73	1012.78	1012.86	1012.96	1012.63

S.V.I.R.CO. Observatory - Pressure in hectoPascal – November 2016

day	hh	00_05	05_10	10_15	15_20	20_25	25_30	30_35	35_40	40_45	45_50	50_55	55_60	average
29	0	1013.00	1013.04	1013.13	1013.19	1013.23	1013.26	1013.30	1013.35	1013.35	1013.37	1013.42	1013.45	1013.27
	1	1013.47	1013.47	1013.46	1013.50	1013.55	1013.53	1013.54	1013.59	1013.62	1013.62	1013.62	1013.64	1013.55
	2	1013.65	1013.65	1013.72	1013.77	1013.78	1013.80	1013.81	1013.82	1013.85	1013.88	1013.92	1013.95	1013.80
	3	1013.98	1014.04	1014.13	1014.19	1014.19	1014.19	1014.25	1014.28	1014.30	1014.32	1014.32	1014.32	1014.21
	4	1014.31	1014.30	1014.32	1014.33	1014.38	1014.45	1014.51	1014.53	1014.55	1014.57	1014.60	1014.64	1014.45
	5	1014.71	1014.81	1014.88	1014.91	1014.96	1015.06	1015.17	1015.24	1015.29	1015.31	1015.34	1015.46	1015.09
	6	1015.58	1015.66	1015.73	1015.82	1015.92	1016.06	1016.17	1016.25	1016.29	1016.35	1016.41	1016.45	1016.06
	7	1016.54	1016.69	1016.82	1016.89	1016.92	1016.94	1016.92	1016.90	1016.95	1017.06	1017.19	1017.32	1016.93
	8	1017.42	1017.49	1017.56	1017.65	1017.69	1017.74	1017.82	1017.87	1017.88	1017.93	1018.02	1018.06	1017.76
	9	1018.10	1018.12	1018.11	1018.16	1018.21	1018.23	1018.24	1018.27	1018.31	1018.32	1018.30	1018.30	1018.22
	10	1018.30	1018.32	1018.36	1018.34	1018.31	1018.31	1018.27	1018.30	1018.38	1018.40	1018.40	1018.41	1018.34
	11	1018.46	1018.51	1018.49	1018.45	1018.46	1018.54	1018.61	1018.62	1018.68	1018.75	1018.77	1018.78	1018.59
	12	1018.83	1018.84	1018.82	1018.80	1018.79	1018.81	1018.85	1018.92	1018.93	1018.90	1018.90	1018.96	1018.86
	13	1019.02	1019.05	1019.11	1019.14	1019.12	1019.19	1019.31	1019.35	1019.39	1019.50	1019.57	1019.62	1019.28
	14	1019.70	1019.77	1019.87	1019.99	1020.05	1020.11	1020.17	1020.23	1020.31	1020.38	1020.38	1020.41	1020.11
	15	1020.47	1020.56	1020.71	1020.81	1020.88	1020.94	1020.98	1021.04	1021.13	1021.21	1021.29	1021.39	1020.95
	16	1021.47	1021.55	1021.64	1021.71	1021.78	1021.84	1021.87	1021.92	1022.01	1022.09	1022.14	1022.22	1021.85
	17	1022.30	1022.38	1022.51	1022.59	1022.62	1022.69	1022.81	1022.91	1022.88	1022.91	1023.06	1023.13	1022.73
	18	1023.15	1023.20	1023.25	1023.26	1023.28	1023.36	1023.49	1023.57	1023.62	1023.69	1023.75	1023.77	1023.45
	19	1023.81	1023.93	1024.03	1024.12	1024.11	1024.13	1024.20	1024.25	1024.35	1024.43	1024.50	1024.57	1024.20
	20	1024.67	1024.81	1024.91	1024.97	1025.04	1025.11	1025.20	1025.31	1025.36	1025.38	1025.45	1025.52	1025.14
	21	1025.64	1025.79	1025.91	1026.00	1026.05	1026.12	1026.22	1026.36	1026.43	1026.46	1026.52	1026.60	1026.17
	22	1026.67	1026.68	1026.69	1026.75	1026.83	1026.90	1026.96	1027.00	1027.02	1027.02	1027.04	1027.04	1026.88
	23	1027.06	1027.12	1027.17	1027.17	1027.12	1027.08	1027.06	1027.07	1027.12	1027.17	1027.18	1027.17	1027.12
30	0	1027.17	1027.15	1027.21	1027.32	1027.38	1027.44	1027.48	1027.47	1027.44	1027.49	1027.59	1027.69	1027.41
	1	1027.78	1027.82	1027.82	1027.80	1027.80	1027.77	1027.76	1027.83	1027.91	1027.94	1027.91	1027.90	1027.83
	2	1027.91	1027.93	1027.98	1028.04	1028.07	1028.08	1028.08	1028.10	1028.10	1028.10	1028.09	1028.04	1028.04
	3	1027.98	1027.94	1027.92	1027.92	1027.90	1027.89	1027.87	1027.89	1027.96	1028.03	1028.00	1027.92	1027.93
	4	1027.87	1027.84	1027.87	1027.88	1027.87	1027.87	1027.87	1027.90	1027.89	1027.90	1027.97	1028.02	1027.89
	5	1028.05	1028.06	1028.06	1028.11	1028.18	1028.24	1028.30	1028.33	1028.35	1028.36	1028.42	1028.48	1028.24
	6	1028.46	1028.47	1028.52	1028.52	1028.50	1028.50	1028.48	1028.46	1028.47	1028.53	1028.64	1028.71	1028.52
	7	1028.72	1028.70	1028.72	1028.75	1028.72	1028.72	1028.74	1028.74	1028.78	1028.84	1028.87	1028.88	1028.76
	8	1028.91	1028.92	1028.96	1029.03	1029.06	1029.14	1029.20	1029.18	1029.21	1029.30	1029.39	1029.45	1029.14
	9	1029.50	1029.50	1029.46	1029.44	1029.45	1029.47	1029.41	1029.32	1029.22	1029.18	1029.15	1029.07	1029.35
	10	1029.02	1028.94	1028.86	1028.79	1028.69	1028.62	1028.62	1028.64	1028.62	1028.56	1028.49	1028.39	1028.68
	11	1028.34	1028.37	1028.39	1028.37	1028.34	1028.29	1028.24	1028.24	1028.24	1028.18	1028.09	1028.02	1028.26
	12	1027.93	1027.82	1027.76	1027.74	1027.72	1027.69	1027.68	1027.66	1027.64	1027.63	1027.60	1027.55	1027.70
	13	1027.51	1027.53	1027.59	1027.59	1027.55	1027.54	1027.50	1027.46	1027.41	1027.39	1027.40	1027.38	1027.49
	14	1027.35	1027.31	1027.29	1027.29	1027.29	1027.33	1027.35	1027.37	1027.43	1027.49	1027.50	1027.50	1027.37
	15	1027.52	1027.53	1027.53	1027.51	1027.42	1027.37	1027.34	1027.32	1027.34	1027.35	1027.39	1027.41	1027.42
	16	1027.37	1027.32	1027.32	1027.35	1027.39	1027.44	1027.48	1027.52	1027.59	1027.63	1027.65	1027.66	1027.47
	17	1027.68	1027.74	1027.83	1027.91	1027.95	1028.01	1028.06	1028.05	1028.06	1028.05	1028.02	1028.07	1027.95
	18	1028.14	1028.19	1028.24	1028.29	1028.32	1028.34	1028.34	1028.35	1028.37	1028.39	1028.40	1028.37	1028.31
	19	1028.39	1028.40	1028.40	1028.43	1028.45	1028.40	1028.32	1028.30	1028.30	1028.30	1028.26	1028.22	1028.35
	20	1028.18	1028.13	1028.11	1028.09	1028.11	1028.20	1028.23	1028.20	1028.14	1028.07	1028.01	1028.00	1028.12
	21	1028.04	1028.07	1028.11	1028.09	1028.07	1028.11	1028.19	1028.24	1028.24	1028.21	1028.20	1028.21	1028.15
	22	1028.19	1028.13	1028.11	1028.07	1028.01	1027.94	1027.88	1027.90	1027.91	1027.84	1027.71	1027.61	1027.94
	23	1027.58	1027.57	1027.53	1027.49	1027.48	1027.48	1027.45	1027.39	1027.31	1027.29	1027.31	1027.31	1027.43

