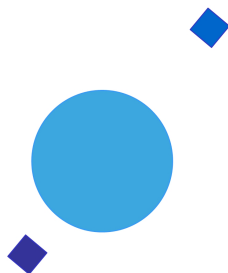


INAF



ISTITUTO NAZIONALE DI ASTROFISICA
NATIONAL INSTITUTE FOR ASTROPHYSICS

SVIRCO Prompt Report: October 2016

Fabrizio Signoretto and Francesco Re

INAF/IAPS-2016-20

November 2016

ISTITUTO DI ASTROFISICA E PLANETOLOGIA SPAZIALI

AREA DI RICERCA ROMA - TOR VERGATA

Via del Fosso del Cavaliere, 100 - 00133 Roma (ITALIA)

SVIRCO Prompt Report: October 2016

Fabrizio Signoretti and Francesco Re

*IAPS - INAF, Area di Ricerca Roma - Tor Vergata
Via del Fosso del Cavaliere, 100 - 00133 Roma, Italy,*

Abstract

The pressure corrected intensity of the nucleonic component, produced by primary cosmic rays and recorded in October 2016 by the Neutron Monitor of SVIRCO-Rome (present geographic position: 41.86° N - 12.47° E; altitude about s.l.), is reported in prompt form together with the barometric pressure data.

SVIRCO OBSERVATORY

During the 1st International Geophysics Year (1957) an international network of “ground-based detectors” for continuous cosmic ray measurements was world-wide established.

The cosmic ray station of Rome joined this network with the purpose to study the time variations of primary cosmic rays (**Studio Variazioni Intensità Raggi Cosmici: S.V.I.R.CO**) and their modulation in the heliosphere.

From July 1957 to April 1997, the SVIRCO Station (now Observatory) performed uninterrupted measurements at the Physics Department “G. Marconi” of “La Sapienza” University of Rome (41.90° N, 12.52° E, altitude about 60 m a.s.l.)

In May 1997 the neutron monitor was moved to the Physics Department “E. Amaldi” of “Roma Tre” University. Since then it has been continuously running at the new location (41.86° N, 12.47° E, altitude about 0 m a.s.l.).

The SVIRCO Observatory (INAF/IAPS-UNIRomaTre collaboration) is housed in a reserved building provided with a double air-conditioning system. The inner temperature is permanently restrained in a range of 23°-26° C, meanwhile the relative humidity is kept below 57%. Either the environmental parameters are continuously checked and recorded by digital sensors.

On January 1, 2005 three counters were added to the detector. This upgrade, from 17 to 20 NM-64, made the SVIRCO neutron monitor still consist of 5 sections but modified its geometry. Actually the new arrangement has been composed of three 3-counter, one 5-counter and one 6-counter units. The enhancement improved not only the overall counting rate of 15.6 % (January 2005) but, as a result, also the statistical quality of the recorded data.

Each of the 20 BF₃ proportional counters (BP-28 type) is equipped with a smart amplifier/discriminator circuit complete with a spectrum stabilizer. This new electronic unit, developed in our laboratory, holds firmly the pulse height spectrum of the amplifier output (within a range of more than 150 volts around the operating voltage), providing the counter with a great immunity against high voltage variations.

Anyway, systematic and exhaustive tests of the counters are regularly performed. The output pulses of the amplifiers, discriminated by the threshold gates, are collected and stored into a multi-channel analyzer. The analysis of the height distribution (spectrum) of the amplifier pulses coinciding with the discriminator ones, is essential to verify the long term efficiency of each counter together with the amplifier gain and the discriminator threshold level.

As well as the amplifier/discriminator circuits, a large part of the electronic instrumentation operating in the Observatory was designed and realized in our laboratory together with the software for data acquisition and pre-elaboration.

In order to improve the reliability of the recorded data and to prevent measurement breakdowns, two independent systems perform contemporary the data acquisition. Each system is remotely controlled by a dedicated computer and is timed by a high stability quartz clock and/or a GPS receiver. One equipment runs according to a timing of 1 minute and fulfils the acquisition of the 20 counters separately. The other one records the individual 5-minute counting rate of each detector section in addition to the rates of the overall multiplicity, sorted into separated counting channels (from 1 to greater than 8).

A special care is devoted to the atmospheric pressure measurements, thus they are carried out by means of not less than three barometers at the same time. These instruments (achieving a resolution up to 0.01 hPa), are constantly checked out each other for the best measuring accuracy and reliability. Furthermore the devices in use are equipped with different types of transducer such as vibrating cylinder, force balance and quartz, therefore, throughout their different behaviours, it is possible to point out the occurrence of any long-term drift and eventually to re-calibrate the instruments themselves.

DATA PRESENTATION

In a preliminary step, the intensity data, of the secondary nucleonic component of cosmic ray, detected at SVIRCO Observatory, were corrected for pressure variations at a reference level of 1009.25 hPa with an attenuation coefficient of 0.70% / hPa.

The five-minutes counting rates, of the examined month, are reported in tabular form together with the hourly normalized data, which provide a continuous data set for long-term analysis.

The normalization was evaluated as percentage of the counting rate average of January-February 1997, when the Monitor operated at the previous location of "La Sapienza" University. The reference counting rate level (100%), computed for such period, is equal to 554946 counts/hour.

The atmospheric pressure data (in hectoPascal) are also collected in a monthly table which presents the five-minutes averages and the hourly ones.

The hourly averages of the normalized intensity and pressure, plotted in monthly graphs, are reported too.

CONDITIONS FOR SVIRCO DATA USE

You are welcome to use neutron monitor data of SVIRCO, IAPS/INAF-UNIRomaTre collaboration, under the following conditions:

-You agree to acknowledge our financial supports in any published use of the data.

Example: "SVIRCO NM is supported by the INAF - UNIRomaTre collaboration"

-You are kindly requested to send a copy of any published work derived from our data to:

Dr. Monica Laurenza
Head of SVIRCO Observatory & TPL
Istituto di Astrofisica e Planetologia Spaziali - Area di Ricerca Tor Vergata
Via del Fosso del Cavaliere, 100 00133 Roma - Italy,

monica.laurenza@iaps.inaf.it



S.V.I.R.CO. Observatory

Rome

Italy



INAF/UNIRomaTre		S.V.I.R.CO. Observatory - Pressure Corrected Data – October 2016											20 NM-64	
day	hh	00_05	05_10	10_15	15_20	20_25	25_30	30_35	35_40	40_45	45_50	50_55	55_60	h-norm
1	0	45467	45907	46608	45688	45671	45663	45883	45844	46647	45705	45549	45607	99.700
	1	45717	45813	45972	45962	45953	45743	45589	46541	45115	46476	45706	45997	99.774
	2	46468	45735	45573	46643	45943	45851	45066	45388	45992	45651	46305	45862	99.754
	3	45579	46184	45851	46182	46216	45521	45380	46493	45886	45670	45559	46169	99.793
	4	45612	45902	45242	45705	45894	45544	46049	45475	46367	46375	46062	45581	99.633
	5	46187	45853	46181	45920	45733	45800	45410	45426	45535	45940	46300	45896	99.701
	6	46494	45579	45388	46133	45654	45737	45813	45469	46158	45595	45849	45539	99.560
	7	45605	45809	46564	46326	46273	46236	45646	45473	46663	46089	46410	46637	100.344
	8	46061	45625	46200	46091	46026	46003	46419	46034	45541	46215	46070	45620	100.013
	9	45990	46219	46461	45609	45641	46074	45892	46218	45623	45764	45550	45977	99.852
	10	46108	45818	46230	45342	45772	46678	45970	45724	46127	45984	46107	46204	100.042
	11	45881	46164	45982	46048	45278	45613	45959	45971	46286	46122	45729	45906	99.838
	12	45178	45954	45585	46229	46623	45307	45820	46100	46427	45598	45449	46204	99.754
	13	46471	45661	45777	46092	46394	46422	46305	46054	45393	45993	45653	45530	99.984
	14	45830	44988	46094	46473	46252	45836	46024	45853	45531	45673	45645	45688	99.647
	15	45777	45793	45623	45530	46314	45445	45828	45594	45687	46214	45682	45761	99.532
	16	46024	46076	45792	45833	45542	45360	45858	46287	45544	46183	46015	45920	99.747
	17	45571	45898	46217	45961	45703	45849	46079	45579	46771	45998	46298	46645	100.133
	18	45456	45590	45722	45905	45571	45956	46308	46465	45950	45529	45881	45548	99.646
	19	46064	45625	45655	45949	46229	45838	46142	45838	45961	45837	46591	46114	100.002
	20	45401	45337	45584	45860	46266	46653	45681	45782	46518	46089	46027	45570	99.807
	21	45840	46437	46075	45951	45388	45300	45630	46240	45590	45429	46348	45606	99.637
	22	46101	45212	45744	45347	46242	45791	45780	45391	46159	45934	45989	45845	99.584
	23	45019	45562	44806	45769	45954	46054	45912	45866	45655	45761	45076	45041	99.030
2	0	45857	45496	45318	45673	45539	45837	45821	46288	45571	45491	45639	45616	99.322
	1	45932	45214	45883	45530	45753	45302	45834	44950	46305	45578	45989	45343	99.235
	2	45713	46028	45582	45972	46256	45900	45650	44964	45836	45374	45887	45679	99.458
	3	45695	46063	46067	45672	45879	45532	46106	45645	46110	45444	46350	45056	99.599
	4	45832	45312	45877	46076	46020	45683	45571	45983	45486	45569	46329	45848	99.593
	5	46522	46333	45779	46670	46003	45842	46153	45962	45714	46111	46516	45856	100.295
	6	45619	46010	45531	45814	45761	45794	45936	45749	45452	45942	45906	45802	99.544
	7	46021	45829	46080	46023	46207	45821	46064	45705	45832	45066	45732	45779	99.697
	8	46394	46022	45906	45632	45987	45872	46397	45411	45640	45860	46090	46480	99.975
	9	46610	45657	46508	45592	46237	46105	46079	45942	45676	45810	45608	46225	100.039
	10	46182	46038	45308	46405	45653	45915	45348	45992	46181	45893	45524	45586	99.673
	11	45878	46264	46046	46302	45469	45949	46169	45555	46525	46481	45412	45748	99.993
	12	45713	45428	45630	45959	45127	45868	45459	46000	46183	45559	46585	45966	99.573
	13	46723	46359	45583	45958	45571	45597	45928	45987	46086	46333	45927	45966	100.033
	14	45368	45610	46015	46461	46513	45817	45451	45760	46800	45496	46519	46182	100.029
	15	45897	45778	45949	46261	45625	46210	45891	45648	45619	45653	45634	45512	99.610
	16	45491	46134	45772	46272	45723	45951	45739	45919	46033	46190	45738	45657	99.780
	17	45688	45815	45736	45496	46140	45213	45910	45712	46083	45780	45640	46359	99.590
	18	45346	45913	46060	45538	45938	46121	45848	45810	45500	45586	45565	45751	99.482
	19	45818	45385	46304	45824	46105	45463	45846	46470	46107	45515	46350	46084	99.897
	20	45822	46097	45857	45825	45708	45845	45552	45871	45570	45684	46330	47384	99.948
	21	45826	46527	45997	45799	46049	45668	46091	46065	46374	45775	46063	45510	99.984
	22	45189	45600	45533	45860	46083	46005	45386	45784	46000	45966	45717	46037	99.515
	23	45735	45987	45205	45873	45708	45946	45550	45857	45774	46009	46101	46339	99.683

INAF/UNIRomaTre		S.V.I.R.CO. Observatory - Pressure Corrected Data – October 2016											20 NM-64	
day	hh	00_05	05_10	10_15	15_20	20_25	25_30	30_35	35_40	40_45	45_50	50_55	55_60	h-norm
3	0	45722	45892	45830	45716	46108	45811	45593	45665	44820	45862	46093	46029	99.512
	1	45716	45907	45614	45338	46033	45459	45896	45892	46448	46040	45844	46078	99.716
	2	45964	46270	46366	45653	45710	45861	45841	45242	45756	45802	45976	46352	99.812
	3	45473	45013	45854	45992	45274	45108	46062	45857	46082	45772	46243	45608	99.366
	4	46199	45450	46274	45355	45811	45443	45520	45847	46332	46216	46364	46425	99.892
	5	46134	45882	45627	45939	45575	45865	46146	46299	46096	46060	45806	45712	99.875
	6	45435	46222	45643	45494	45723	46136	45400	45657	46211	46208	45758	45472	99.551
	7	45670	45662	46083	45832	45617	45532	45178	45910	45243	45536	45809	45425	99.214
	8	45578	45780	45752	45529	45558	45697	45811	45835	45446	45738	45840	45681	99.350
	9	46288	45857	45888	45725	45488	45232	45312	45298	45190	45592	45750	46008	99.238
	10	45039	45661	45569	45671	45981	45399	46027	45942	45961	45413	45978	45681	99.364
	11	45715	46171	45589	45589	45109	45446	45534	45869	45490	46108	45197	44801	99.054
	12	45745	45825	45219	44899	46304	45947	45967	45460	46148	45660	45405	46031	99.416
	13	45750	46305	45251	45597	45610	45508	46450	46235	45549	46225	45527	45712	99.617
	14	46484	45578	45458	45766	45829	45801	46212	45417	45549	45396	45923	46389	99.632
	15	45888	46012	45350	45692	45958	45532	45352	45319	45463	45556	45385	45891	99.196
	16	45629	45612	46034	46141	45483	46166	45477	45878	45798	45372	45887	45410	99.466
	17	46097	45808	45689	45889	45031	45343	46220	45627	45994	45596	46094	46408	99.631
	18	45790	46046	45514	45554	45433	45608	46118	46255	45416	46070	46068	44920	99.449
	19	45213	45326	45420	45722	46006	45835	45198	46055	46504	45749	45803	45925	99.442
	20	45837	45885	45796	46084	46199	46039	45714	46538	46196	45760	46106	45579	99.982
	21	46226	45926	45882	46312	45828	45583	46153	45448	46562	45530	45990	46442	100.009
	22	45597	45612	45919	46238	46069	45872	45749	45844	46825	46151	46252	45929	100.041
	23	45509	46326	45948	45714	45865	46233	46748	45794	46057	46062	45796	46121	100.061
4	0	45614	46099	45591	45505	45584	45311	45990	46141	45487	45868	46160	46030	99.555
	1	45549	46346	45785	46230	46518	45364	46478	46023	45977	46008	46029	46063	100.097
	2	46386	46157	45964	45925	46365	46386	46061	46152	46588	45781	46054	45831	100.329
	3	45493	46164	46142	45915	46225	46444	46196	46419	46030	45581	46205	46025	100.182
	4	46154	46242	46176	46652	46272	45922	46031	46648	46258	46426	46669	46193	100.691
	5	46011	45982	46068	46798	45989	46395	46164	46047	45440	46066	46080	46060	100.230
	6	45772	45584	45708	45141	45674	46160	46017	45900	45784	45938	46316	46191	99.701
	7	46584	46306	46488	45869	45718	45523	45531	46643	45747	45563	46437	46276	100.155
	8	46330	46194	46413	45646	45475	45568	46275	45695	46407	45923	45624	45950	99.940
	9	46115	45680	45791	46230	45713	46191	46387	46889	46395	46534	45205	45961	100.228
	10	45668	46128	46652	45877	45988	45694	46100	45946	46252	45915	46088	46025	100.091
	11	45710	45834	46066	45514	45494	45915	45992	45993	45723	46551	46778	46156	99.981
	12	46117	45978	46442	45636	46467	46007	45766	45859	46079	45230	45917	46470	100.024
	13	46356	45590	46160	46239	46473	45825	46104	46420	46039	46478	45233	46205	100.234
	14	45932	46281	46268	46230	45906	45442	45393	45898	45998	46200	46311	45670	99.945
	15	46338	46155	45906	45825	46427	45416	45752	45939	45870	45371	45920	46195	99.870
	16	45938	45838	45939	46174	46310	45904	46526	46629	46232	46148	46652	45614	100.375
	17	46032	45631	45506	46343	46124	45891	45674	46268	45491	45728	46298	45920	99.832
	18	46383	45820	46159	45349	46126	45898	45570	45646	45827	46005	46459	46327	99.952
	19	46006	46186	45587	45906	45350	46446	45919	45939	45606	45441	46269	46144	99.813
	20	45825	45743	46071	45854	45708	45836	46316	46042	45253	45674	46953	46018	99.902
	21	46159	46320	46098	46272	45565	45899	46433	46201	46248	46355	46699	46441	100.518
	22	46307	46117	45829	46067	45741	46595	46055	46161	45800	46502	46367	46143	100.335
	23	46086	46569	46252	46372	45856	46261	46795	45589	45869	45772	45607	46339	100.278

INAF/UNIRomaTre			S.V.I.R.CO. Observatory - Pressure Corrected Data – October 2016										20 NM-64	
day	hh	00_05	05_10	10_15	15_20	20_25	25_30	30_35	35_40	40_45	45_50	50_55	55_60	h-norm
5	0	45968	46028	46365	46059	46431	46474	45698	45959	45881	46671	46217	46159	100.377
	1	45907	45439	46168	45745	46229	45461	46141	45735	45798	47254	45683	46701	100.078
	2	46301	45669	46021	46046	45207	46152	46283	46241	45724	46354	46537	46063	100.139
	3	46475	45603	45631	46405	46320	45652	46779	45798	46683	46856	45624	46604	100.470
	4	46167	46594	45749	46397	45351	45626	46033	46153	45879	46005	46579	46588	100.233
	5	45902	45859	46543	46178	46562	46034	46463	46434	46295	46127	46179	46645	100.614
	6	46388	46418	46101	45855	46251	46293	46393	46199	45795	46805	46623	46702	100.722
	7	46250	46823	46461	45618	46380	46243	46913	46195	45804	45932	45386	46720	100.524
	8	46173	45769	46223	46446	46603	46479	46872	46305	47182	47155	46066	46644	101.103
	9	45934	45896	45996	46466	45978	46454	46191	46577	45796	46227	45958	45991	100.296
	10	46489	46344	46435	46089	46315	46035	46225	45834	45965	46458	46281	46578	100.583
	11	45630	46320	46655	46400	45979	46070	46224	45839	46047	46666	46140	46286	100.439
	12	45983	46032	46220	46240	46580	46058	46546	46256	46025	46417	46524	46726	100.685
	13	46351	46060	46290	46314	45716	45813	45982	46465	45889	45789	46480	46227	100.279
	14	46772	45550	46474	46221	46279	46394	47010	46359	46169	46191	46032	46929	100.824
	15	45696	45913	45874	45949	45615	46996	46997	46151	46766	46226	46263	45608	100.403
	16	45822	46264	46292	46366	45849	45787	45940	45903	46799	46194	46073	46537	100.361
	17	45921	45715	46071	46400	45473	46712	46349	45882	46825	46784	45951	46163	100.438
	18	46721	46730	46822	45983	45837	45838	46389	46570	45558	45960	46194	45618	100.432
	19	45942	46275	45326	46622	45861	46703	45534	46129	46099	45574	46096	45525	99.973
	20	46223	46025	46987	46359	45484	46746	46190	45896	45845	46148	45954	45917	100.352
	21	45661	45978	45984	46680	45943	46172	45986	46154	46159	46027	46102	46109	100.203
	22	46505	46686	45668	45782	45796	45594	46286	45628	46300	46453	46439	45675	100.178
	23	45690	46651	46050	46235	45458	45885	46827	46309	47084	46434	45746	46058	100.469
6	0	46345	46092	46149	46425	45987	46508	45973	46371	46105	45639	45378	45744	100.153
	1	45873	46144	46055	46013	46333	46274	46083	46344	46240	46087	46679	46225	100.456
	2	45817	46686	46615	46370	46407	46522	46273	46489	46251	45986	46004	46739	100.784
	3	46367	45910	46496	46583	45950	46720	46281	46144	45852	46388	46602	46095	100.644
	4	45889	46536	46276	46804	46819	46685	46335	46730	46738	46315	46062	46648	101.088
	5	46130	45890	46215	46737	46546	46103	46042	46296	46476	46199	46356	46337	100.633
	6	46509	46511	46142	46249	46461	46170	46814	46418	46451	46292	46310	46045	100.822
	7	46168	46289	46307	46052	46519	46400	45932	46771	46602	46146	46674	45924	100.716
	8	45836	46325	46432	47217	46304	46475	46429	46218	46217	46824	46305	45741	100.814
	9	46590	45801	46092	46418	46521	46501	46412	46164	46579	46174	46038	46405	100.700
	10	46152	46559	46553	46394	45887	46495	46043	46156	47257	46056	46384	46203	100.781
	11	46141	46633	45409	46432	46168	45615	46400	45981	46445	46096	46448	46474	100.437
	12	46443	46134	46026	46323	46653	46106	46323	46450	44993	46799	45737	46342	100.453
	13	45743	45908	46480	46756	46314	45810	46572	46166	46160	45552	46196	45624	100.262
	14	46366	46436	45991	45983	46516	46339	46498	46182	46469	46285	45578	45862	100.484
	15	46694	46677	45989	46635	45762	46742	46534	46213	45892	46196	45930	46359	100.687
	16	46386	45963	46408	46686	46344	46470	46088	46210	46217	46601	46060	46420	100.729
	17	46625	45856	46084	46584	46336	46328	46083	46828	46874	46438	46020	46925	100.933
	18	46488	46021	46121	46092	46032	46257	46725	46274	46820	46369	46922	45797	100.741
	19	45733	46439	46460	46388	47079	46152	46042	45856	46413	46575	46641	46231	100.757
	20	46125	47276	46125	46184	46119	46073	45958	46427	46749	45901	46359	45386	100.516
	21	45808	46037	46038	46264	46344	46004	45999	46577	45941	45489	46153	46377	100.217
	22	46412	46423	45721	45861	46174	46028	46345	46289	46431	45705	46139	46510	100.400
	23	45587	46246	46055	45898	46440	45804	46125	46043	46457	45981	45995	46223	100.185

INAF/UNIRomaTre		S.V.I.R.CO. Observatory - Pressure Corrected Data – October 2016											20 NM-64	
day	hh	00_05	05_10	10_15	15_20	20_25	25_30	30_35	35_40	40_45	45_50	50_55	55_60	h-norm
7	0	45779	46144	46088	46112	46144	46289	46602	46071	45656	46002	45914	46492	100.254
	1	46162	46074	46042	46135	46547	45745	45657	45908	45697	46390	46160	45526	100.038
	2	46283	46215	45839	46131	46340	45850	46309	46065	46166	46551	46552	46117	100.469
	3	46398	46341	45198	45782	46191	46622	46386	45876	45858	45670	46258	46402	100.208
	4	46313	46316	46126	45974	46409	46753	46205	46540	46134	46706	46518	46590	100.861
	5	46184	46459	46483	46132	46630	46272	46163	46543	45926	46542	45596	46009	100.563
	6	46372	46406	45639	46021	45959	46596	45829	46611	46138	46742	46352	46378	100.582
	7	46217	46126	46502	46496	46307	46326	46712	46583	46399	45864	46173	46486	100.790
	8	45955	46823	46872	45907	46792	46135	46292	46101	46245	45366	45936	46577	100.574
	9	46410	46419	46769	46110	45760	46121	46274	46676	46346	46217	45931	46076	100.594
	10	46709	45618	46665	46528	46456	46262	46269	45760	46484	45932	46838	46251	100.714
	11	45735	46519	45895	45918	46374	46324	46590	46099	46084	46057	47043	46291	100.561
	12	46231	45948	46150	46026	45971	45727	45907	46514	46537	46078	46132	46069	100.264
	13	46050	45538	46388	45982	45601	46405	46396	46570	46117	46410	46161	46098	100.341
	14	46332	46325	46188	46155	46291	46963	46278	46497	46531	46075	45979	46117	100.706
	15	46142	45860	46671	45521	45999	46736	46315	45993	46357	45204	46576	46508	100.371
	16	45891	46561	46361	46110	46151	46142	46391	45964	46711	46239	46072	46016	100.504
	17	46183	45837	46158	45892	46297	46197	46541	46142	46425	46085	46520	46490	100.531
	18	46306	46047	46013	46542	46073	46440	46315	46351	46145	46580	46243	46564	100.686
	19	45989	46654	47152	45597	46901	46585	46296	46639	45698	46159	46403	46186	100.802
	20	45915	45962	46221	45831	46852	46376	45913	45829	46769	46245	46594	46078	100.499
	21	46388	46478	45740	46544	46670	46678	45835	46336	46351	46152	46465	46346	100.752
	22	46315	46609	46421	46741	46052	46323	45900	45919	46294	46180	46279	46354	100.644
	23	45985	46002	45665	45752	46306	45975	46402	46032	46063	46511	46288	46218	100.248
8	0	46807	45636	45743	46230	46002	46054	45305	46132	46315	46554	46532	46349	100.333
	1	46180	46308	46819	46442	46397	46270	46618	46616	45952	46428	45991	46866	100.916
	2	46112	45818	46572	45686	46437	46617	45882	46463	46997	46246	45880	46306	100.577
	3	46199	46748	45930	45914	46438	47000	46182	46145	46368	45769	46788	46481	100.748
	4	46591	46434	46080	46738	46291	46571	46788	45536	46758	46031	46455	46294	100.858
	5	46438	46237	46669	46887	46529	46316	46490	46635	46008	46254	46781	46820	101.129
	6	46418	45910	46336	46201	46240	46860	46655	46341	46721	46753	46665	46507	101.046
	7	46496	46618	46472	46163	46279	46234	46508	46401	46836	46522	46810	46607	101.108
	8	46311	45790	46359	46422	46639	46499	46497	46446	46171	45973	46444	46670	100.795
	9	46266	46666	46817	46250	46072	46190	46754	46603	46650	45852	45986	47079	100.970
	10	46864	46433	46398	47135	46602	46260	46376	46027	46881	46220	46304	46137	101.051
	11	46210	46298	46436	46780	46753	46541	46599	46285	46945	46376	46342	46079	101.053
	12	47025	46515	46576	46175	46577	46665	46460	46056	46548	45960	46206	46173	100.925
	13	45996	45633	46238	46067	46417	46731	46316	46408	47169	45992	46229	46783	100.751
	14	46515	46345	46858	46126	45850	46939	46334	46626	47105	47004	46674	47077	101.380
	15	45939	46520	46730	46373	46558	46266	46663	46003	46645	46591	46693	46629	101.047
	16	46457	46632	46061	46301	46668	45824	46635	46383	46196	46620	46321	46361	100.838
	17	46331	46725	46387	46181	46681	45642	46046	46675	47100	46836	46071	47062	101.070
	18	46573	46974	47093	46387	46740	45976	46091	46136	46848	47425	46138	46863	101.344
	19	46625	46279	46041	46214	46364	46851	46538	46980	45878	46561	46211	46569	100.957
	20	46619	45939	45747	46225	45977	46452	46584	46735	46271	46711	46502	46857	100.867
	21	46302	46474	46485	46316	46773	47110	46353	46224	46147	46326	46930	46502	101.107
	22	46982	45846	46885	47066	46342	45936	46731	46649	46116	46284	46353	46502	101.061
	23	46482	46470	46363	46387	46079	46498	47162	46351	47144	46820	46469	46235	101.201

INAF/UNIRomaTre		S.V.I.R.CO. Observatory - Pressure Corrected Data – October 2016											20 NM-64	
day	hh	00_05	05_10	10_15	15_20	20_25	25_30	30_35	35_40	40_45	45_50	50_55	55_60	h-norm
9	0	46657	46562	46980	46656	46938	46771	45723	47070	46596	46635	46346	47146	101.494
	1	45959	46068	46256	45810	45978	45563	46655	46706	46221	46552	46802	46476	100.582
	2	46941	46217	45936	46134	46896	46773	45955	46635	45968	46003	45844	46970	100.804
	3	46354	46973	46967	45688	45781	46662	46192	46366	46358	46426	46723	46312	100.900
	4	46579	46218	46561	46286	46570	46433	46619	46545	46388	46108	46720	45961	100.934
	5	46270	45864	46253	46826	46516	46322	46360	46769	46984	46152	46245	46752	100.993
	6	46043	46246	46288	46700	46774	46375	46464	46385	46576	46084	46457	47256	101.054
	7	46464	46439	46762	46540	46506	46567	46795	46339	46905	46561	46636	46709	101.339
	8	46536	47026	46456	46835	45836	46939	46548	47400	46009	46642	46750	46150	101.322
	9	46676	46608	46783	45874	46661	46254	46063	46413	45916	46487	46604	46629	100.931
	10	46145	47045	46501	46861	46515	46224	46674	46363	46255	46301	46981	46922	101.260
	11	46540	46814	47162	46629	46917	46311	46419	46910	46591	46334	46774	46696	101.497
	12	46890	46441	46432	46695	46633	46186	46421	46391	46423	46489	45919	46186	100.955
	13	46634	46291	46900	46749	46689	46144	47009	46373	46437	46675	46437	46674	101.301
	14	46720	46276	46275	46703	46363	46627	46016	46611	46875	46177	46447	46274	101.002
	15	46647	45944	46213	46061	46573	46497	46142	46956	46506	46532	46837	47109	101.121
	16	47062	46023	46537	46051	46587	46458	46531	46564	46178	45911	46517	46351	100.894
	17	46115	46433	45872	46612	46140	46445	46360	46558	46533	46364	46853	46568	100.910
	18	46725	46886	47014	45529	46659	46122	46507	47069	45663	46617	46456	46881	101.140
	19	46438	46954	46720	46118	46348	46327	46653	46944	47116	46034	47159	45974	101.260
	20	46384	46855	46530	47615	46411	46392	46574	46247	46505	46518	46221	46417	101.239
	21	46754	46236	46850	46607	46110	46153	46445	46481	46298	46152	46003	46348	100.835
	22	46490	46445	46370	46460	46279	46552	46739	46562	46414	46516	46704	46305	101.088
	23	46411	46777	46138	46896	46213	46509	46707	46884	46366	46323	46608	46753	101.224
10	0	46767	46958	46519	46495	46802	46403	46957	46865	46679	46757	46883	46732	101.621
	1	46139	46616	46794	46556	46455	46763	46378	46872	46615	46113	46410	46797	101.209
	2	46321	46084	46424	46411	45892	46782	46277	46824	46736	46838	46820	46965	101.185
	3	46642	46056	47317	46525	46029	46097	46689	46983	47191	46363	46998	46466	101.364
	4	46651	46536	46540	47131	47033	47015	47057	46933	47023	46773	46620	46575	101.822
	5	46481	47021	46359	46994	46426	46400	46641	46849	46559	46629	46864	46214	101.378
	6	46352	46433	47085	46703	46272	46611	46156	46826	46920	46490	46384	46464	101.244
	7	46421	45896	47178	46197	46212	47317	46753	46287	46285	46166	46283	47015	101.119
	8	46739	46543	46244	46445	46411	46382	46250	46964	46635	46403	45696	46561	100.986
	9	46552	45972	46518	46718	46818	46625	46523	46201	46497	46152	46854	45851	100.987
	10	47098	45800	46553	45992	45983	45834	46269	46440	46273	47042	46430	46433	100.782
	11	46159	46468	46249	46976	46694	46428	46185	46411	46714	46886	46265	46460	101.099
	12	46391	46119	46551	46243	46238	46188	46030	46285	46232	46880	46494	46702	100.819
	13	46508	46228	47065	46552	46096	46404	46506	46682	46497	46655	46769	46433	101.189
	14	46239	46614	46193	46314	46419	46185	46708	46199	46878	46564	46906	46742	101.110
	15	46052	46748	46293	46306	46292	46567	46763	46543	46641	46046	46468	47139	101.092
	16	46418	46500	46207	47247	46742	46704	46685	47009	46510	47098	47021	47085	101.702
	17	46405	46544	46842	46655	46857	46716	46368	46827	46756	46629	47404	46805	101.626
	18	46969	46284	47055	47089	47167	46651	46796	46718	46736	47035	46113	46516	101.685
	19	47247	47091	45855	46963	47155	46579	47166	47045	47312	46818	47073	46447	101.979
	20	46024	46597	46309	46945	46865	46921	47116	46613	46731	46648	46427	46511	101.427
	21	46699	47230	46808	46859	47368	47069	47102	47153	46761	46541	47029	46127	101.978
	22	46994	46976	47142	47111	46756	46748	47685	47339	46280	46506	46645	47017	102.060
	23	46957	46625	46450	47291	46407	46837	46793	46558	47006	46477	47074	47027	101.752

INAF/UNIRomaTre		S.V.I.R.CO. Observatory - Pressure Corrected Data – October 2016											20 NM-64	
day	hh	00_05	05_10	10_15	15_20	20_25	25_30	30_35	35_40	40_45	45_50	50_55	55_60	h-norm
11	0	46785	47299	46973	47174	46761	46850	47313	47018	46760	46777	47838	46815	102.258
	1	47796	47021	46626	46535	47091	46989	46609	46946	47276	47130	47210	46934	102.234
	2	46975	46848	46914	47121	46571	47239	46208	46951	46760	46999	46613	46502	101.788
	3	46565	47071	46467	47010	46357	46100	46279	46313	46360	47070	45678	46553	101.085
	4	46155	46069	46308	46571	46049	46244	46726	46200	46487	46392	46435	47005	100.872
	5	46369	46221	46828	47005	46544	46403	45744	46285	46556	46857	46318	46085	100.975
	6	46239	46428	46513	47146	45787	46197	46508	46706	46626	47192	45772	46574	101.061
	7	46342	46810	46497	47021	46154	46126	46385	46139	46212	46553	46171	46465	100.914
	8	46641	46069	46305	45477	46846	46876	46834	46808	46234	46164	46699	46180	100.960
	9	46322	46393	46518	45999	46467	46447	45873	45602	46542	46372	46898	46490	100.741
	10	46063	46692	46943	46394	46693	46541	45863	46013	46172	46105	46092	46569	100.780
	11	46258	46156	46467	45984	46201	46998	46803	46852	45756	46285	46975	46461	100.972
	12	46722	46601	46568	46139	46350	46464	46562	46244	46542	47242	46126	47207	101.258
	13	46547	46560	46335	46538	46626	46564	46618	46526	46843	46056	46439	46938	101.225
	14	46394	45923	47273	46509	46263	46585	47076	46090	46349	46354	46814	46567	101.154
	15	47228	46694	46982	46586	46715	46888	46436	46174	46639	46680	46397	46567	101.479
	16	47105	46232	46478	46708	46832	46890	46676	45586	46577	46457	46563	47396	101.390
	17	46566	46343	46195	46291	46613	45997	46229	46202	46660	46327	46574	46401	100.827
	18	46369	45728	47098	46574	46187	46417	46294	46908	46548	46746	46350	46866	101.133
	19	46516	46258	46439	46168	46462	46194	46555	46596	46489	46083	46967	46895	101.049
	20	46552	46673	46422	46413	46339	45995	46316	46817	46305	46033	46180	46445	100.845
	21	45826	45947	46821	45893	46130	46360	46498	46287	46411	46085	46751	46666	100.696
	22	46127	46115	46366	46633	46148	46304	46181	46118	45930	46066	46269	46063	100.450
	23	46040	46507	45294	46225	45931	46254	45384	46325	45938	46545	46642	45990	100.225
12	0	45497	45499	46332	45710	45866	46074	46196	46474	46050	45804	45953	46264	99.990
	1	46221	46244	45875	46223	46236	46154	46064	45809	46479	45724	46379	46150	100.313
	2	46024	45976	45949	45622	45680	45799	45942	45477	46218	46075	45629	46111	99.759
	3	45830	46956	45705	45504	46011	46416	46225	46151	46463	45898	46262	46439	100.367
	4	46468	46328	46118	46442	45866	46351	46420	46973	46833	45454	46197	45979	100.652
	5	46586	46157	45949	46483	46508	46430	46136	46510	46113	46082	46251	46196	100.647
	6	46671	46033	47123	46456	45753	46810	46118	46395	46900	46726	46393	46511	101.097
	7	46353	46377	46648	46834	46533	46655	46722	46358	46258	46912	46540	46508	101.244
	8	47206	46809	47124	46579	46645	46471	46304	46967	46324	45898	46753	46733	101.446
	9	46092	46685	46569	46661	46312	46437	46753	46321	46109	46309	47256	45912	101.011
	10	46954	46127	47036	46571	45793	46407	46292	46362	46609	46304	46277	46086	100.903
	11	46592	46054	46583	46179	46420	46509	46136	46326	46516	46108	46457	46130	100.757
	12	46571	45979	46593	46523	46739	46268	46464	46751	46558	46479	46273	46362	101.038
	13	46585	46319	46788	46733	46105	46340	46333	46717	46491	46797	46969	47001	101.331
	14	46848	46658	46499	46663	46575	46964	46178	46226	46468	46396	46366	46248	101.134
	15	46758	46276	46465	46721	46710	46318	46569	46554	46502	46161	46254	46229	101.030
	16	46469	46641	46800	46207	46781	46332	46650	46369	46145	46619	46571	45838	101.013
	17	46697	46149	45996	46197	46969	46363	46282	46263	46535	46635	45606	46020	100.703
	18	45964	46097	45699	46263	45926	46554	45873	46094	45333	46149	45374	46034	99.915
	19	46202	46010	46018	45928	45408	45834	45656	46245	46248	45736	46414	46304	100.031
	20	45853	45927	45806	46176	45713	45996	45729	45152	46424	45724	45731	46130	99.733
	21	45142	46082	45954	45853	45838	45167	45638	45840	46164	45863	45669	45556	99.444
	22	45648	45577	46300	45515	46175	45837	45745	45415	45250	45257	45621	45348	99.249
	23	46279	45765	45699	45644	45330	46156	46364	45719	45780	45618	45643	45718	99.616

INAF/UNIRomaTre		S.V.I.R.CO. Observatory - Pressure Corrected Data – October 2016											20 NM-64	
day	hh	00_05	05_10	10_15	15_20	20_25	25_30	30_35	35_40	40_45	45_50	50_55	55_60	h-norm
13	0	45155	45401	45644	46562	45775	46077	45761	45894	45816	45538	45381	46079	99.498
	1	46093	45740	45885	45433	45286	46255	45328	45920	45503	46004	45982	45680	99.506
	2	46043	45509	46180	45642	45481	45881	46088	45711	45953	46433	45453	45339	99.616
	3	45766	45901	45769	46112	45319	45766	46373	45397	45602	46039	45976	46317	99.729
	4	45939	45811	45532	46351	45937	45639	46119	46365	46113	46163	46071	46236	100.081
	5	45934	45756	45806	46242	46738	46319	45875	45858	46419	46138	46407	46478	100.387
	6	45686	46205	46255	46893	46255	46358	46350	46708	47125	46361	46919	46127	100.980
	7	45912	46742	46409	46580	46257	46817	46345	46233	46872	46708	46531	46809	101.157
	8	46160	46370	46616	46489	46671	45881	46576	47111	46632	46580	45652	46562	100.991
	9	45865	46533	46302	46583	46716	46440	46423	46876	46058	45874	46524	46675	100.913
	10	46406	45800	46279	46066	45994	47073	46437	46765	46195	46477	46154	46404	100.765
	11	46913	46629	46726	46347	45699	46105	46390	45742	46415	46589	46083	46033	100.695
	12	46332	46643	46242	45952	46664	46668	45977	46380	46424	45890	46021	46210	100.647
	13	46140	46788	46612	45970	46089	45889	46815	46582	46193	46805	45702	46286	100.732
	14	46552	46744	46449	45937	46012	46739	46287	46035	47258	46291	46964	46507	101.077
	15	46229	46664	46649	46529	47491	46212	46490	46640	46250	46455	46515	46482	101.228
	16	45635	46149	46699	46824	46627	46631	46713	46569	47018	46235	46945	47092	101.324
	17	46566	46733	45897	46854	47042	46313	46780	46548	46749	46321	46232	46383	101.193
	18	46405	46882	46552	46704	46515	45980	46514	46756	46763	46779	47342	46728	101.466
	19	46724	47002	46149	47086	46538	46746	46869	46407	47074	46488	47148	46587	101.628
	20	46299	45911	46297	46807	46527	46448	46482	46622	46315	46428	46495	46788	101.012
	21	47047	46277	45907	45875	46479	46125	45991	46249	46411	46677	45900	46341	100.624
	22	46326	46221	47132	46897	46750	46720	46437	46786	46711	46797	46256	46238	101.348
	23	46582	46015	47442	46024	46198	46963	46624	46725	46911	46657	46256	46220	101.229
14	0	46472	46309	45790	46662	46175	46713	47226	46661	46973	46285	45877	46393	101.027
	1	46447	46528	46613	47805	46483	47006	46674	46460	46987	46724	46368	46433	101.576
	2	46378	46569	46455	46833	46231	45903	46157	46984	46517	46561	46728	47136	101.199
	3	46191	45943	46876	46300	46894	46860	46894	46601	46615	47014	46554	46705	101.380
	4	46631	46640	46536	47019	47381	46346	46024	47131	46654	46771	46751	46651	101.577
	5	47075	46742	46734	46665	46082	46329	46965	46278	46782	47196	47097	46626	101.584
	6	47055	47066	46551	46384	46315	46172	47219	46248	46238	46455	46050	46951	101.245
	7	47121	46446	46707	46958	46089	46604	47127	46616	46709	46133	45958	46371	101.270
	8	46920	46576	47175	46390	46286	46679	46647	46759	46806	46478	46930	46827	101.566
	9	46857	46307	46065	46788	46799	46888	46305	46546	46524	46727	46733	47118	101.419
	10	46692	46688	46576	46305	46499	46928	46669	46166	47180	47139	47269	46091	101.517
	11	46299	46095	46864	46794	46409	46440	46683	46195	45957	46832	46050	46524	100.962
	12	46382	46410	46475	45872	46870	46471	46478	46585	46376	46559	47031	47051	101.219
	13	46436	46418	46774	46585	47225	46458	46673	46354	46703	46676	46292	47019	101.410
	14	47230	46486	46557	46719	46365	46736	46715	46936	46165	47121	46329	47028	101.551
	15	47609	46348	46789	46841	46834	46985	46170	46267	46662	46845	46062	46602	101.482
	16	46745	46693	46244	47044	46321	46153	46340	46627	46126	46024	46520	46409	100.983
	17	46619	46267	45952	46077	46541	46193	46437	45598	46336	45808	46996	46030	100.548
	18	46288	45859	45919	45854	45929	46764	46011	45579	46574	45548	46161	45856	100.092
	19	45879	46030	45785	46160	46038	46611	45674	45876	46286	46373	46217	45976	100.194
	20	46173	46192	45443	46199	45633	46163	45955	46013	46110	46093	45905	45577	99.932
	21	45772	45600	45193	45808	46145	46468	45537	45570	45177	46418	45703	45975	99.553
	22	45995	46325	45565	45665	46204	46057	45597	45247	45257	46329	45994	45404	99.603
	23	45516	45886	45979	46354	46152	45300	46474	45135	45567	45903	45416	46293	99.663

INAF/UNIRomaTre		S.V.I.R.CO. Observatory - Pressure Corrected Data – October 2016											20 NM-64	
day	hh	00_05	05_10	10_15	15_20	20_25	25_30	30_35	35_40	40_45	45_50	50_55	55_60	h-norm
15	0	45962	45263	45224	46682	45474	45340	45757	45624	45578	45777	46480	45656	99.458
	1	45375	45610	45572	45783	45579	45844	45720	45322	45450	45929	45829	45827	99.276
	2	45912	45382	45474	46233	45726	45880	45379	45628	45787	46034	45326	45597	99.370
	3	46677	45576	45763	46427	46077	45584	45503	46136	45674	45545	45247	45606	99.635
	4	45789	46042	45858	45339	45949	45924	45956	45800	45628	46009	45363	45666	99.545
	5	45666	45749	46022	45712	45174	46303	45849	46133	46170	45983	46331	46339	99.927
	6	45663	46079	46008	46179	46599	46941	46079	45620	45756	46000	46091	45775	100.174
	7	46165	46477	45514	45966	46637	45694	46295	45772	45984	45858	46355	46733	100.293
	8	46305	46194	45921	46193	46228	46463	45918	46032	45436	46697	45656	46174	100.251
	9	45932	46124	46382	46116	46018	46698	45891	46011	46118	46000	46006	46774	100.405
	10	45938	45919	46300	45803	46839	46513	45567	46536	45939	45886	46364	46121	100.343
	11	46083	46365	46031	45898	46309	46684	45929	46384	46521	46081	46575	46927	100.717
	12	45624	46087	46295	46167	45891	46055	46086	46204	46303	46115	46431	46331	100.318
	13	46207	46130	46094	46397	45945	46217	45886	46525	46173	46277	46285	46108	100.437
	14	45878	45871	45627	46006	45935	45578	46131	45424	46149	46189	46148	45547	99.755
	15	45714	45793	46344	45993	46117	45915	45631	45591	45794	45949	46222	45534	99.776
	16	46131	45578	45990	45945	46425	45880	45922	45509	46338	45699	45947	45741	99.868
	17	45445	45563	46785	46235	46386	45777	45528	46146	46031	45631	45769	45378	99.790
	18	46280	46267	45931	45750	46581	45875	45769	45253	45925	45740	45913	46444	99.981
	19	45837	45691	45639	45998	45529	45695	45552	45727	45614	45849	45796	46338	99.534
	20	45539	45518	46159	45383	45781	46317	45337	46353	44890	45602	46099	45361	99.367
	21	45237	45720	45282	45429	45931	45241	45679	45572	45408	46004	45705	45456	99.063
	22	46393	45090	46100	45617	45774	45731	46285	45566	45530	44951	45682	45749	99.390
	23	45685	46206	45333	45877	45849	46063	45973	46482	45190	45696	46115	46316	99.810
16	0	45978	46536	45634	45755	45767	45528	45563	45344	45926	46019	45516	45408	99.484
	1	45523	46166	45947	46200	45897	46423	45412	45846	46067	45623	46092	46007	99.886
	2	45062	46131	45990	46423	45988	45993	46023	46219	46213	45993	46005	46329	100.097
	3	46462	46429	46224	45939	46441	46295	46147	45914	45834	45810	46772	45805	100.406
	4	45956	46068	45917	46111	45749	46399	45509	46224	45545	46496	46683	45816	100.116
	5	46128	46092	45558	45802	45807	45993	45686	45831	46437	45551	45869	45845	99.776
	6	46150	45481	46392	45355	45443	46560	45769	45843	45534	46063	45950	45874	99.743
	7	45770	45646	45437	46569	45850	45912	46358	46454	46151	45731	46119	45926	100.016
	8	45791	45464	46414	46509	45600	46025	45592	46041	46573	46014	46651	46288	100.205
	9	46243	46531	46628	47099	46439	46213	47033	46495	46537	46434	46769	46866	101.351
	10	46482	46802	46720	46247	46322	46032	46584	46319	46425	46553	46080	46410	100.932
	11	46522	46682	46569	46393	46873	46720	46970	46622	46021	46008	47054	45988	101.194
	12	46481	46580	46843	46710	46914	46508	46006	46033	46932	46229	46272	46077	101.042
	13	46130	46433	46614	46753	46314	45667	46393	46956	46168	46297	46250	46046	100.759
	14	46532	46131	46390	46091	46085	46112	46070	46237	45781	45655	45740	46300	100.234
	15	45392	46116	46212	45900	45965	46140	45882	46275	45896	46042	46693	46534	100.220
	16	46563	46349	46654	46235	45965	46064	46161	45537	45511	45932	45877	46096	100.201
	17	46564	45893	45822	46258	45644	45914	46415	46238	46189	46780	45868	46623	100.430
	18	46297	45750	46020	45740	46241	46294	45945	46297	46102	45891	45864	45197	99.965
	19	45710	45800	46012	45994	45360	45921	45392	45699	46063	45345	45704	45759	99.443
	20	46099	46227	46009	46292	45129	46327	45803	46682	46135	46735	46098	46374	100.376
	21	46028	46134	45892	45873	46271	45473	45784	45854	45838	45979	45615	45297	99.675
	22	45811	46099	46053	45952	46199	45863	45627	46197	45899	45675	46616	46065	100.040
	23	46084	45508	45262	46058	45982	46026	45953	46657	46046	45141	45678	45989	99.737

INAF/UNIRomaTre			S.V.I.R.CO. Observatory - Pressure Corrected Data – October 2016										20 NM-64	
day	hh	00_05	05_10	10_15	15_20	20_25	25_30	30_35	35_40	40_45	45_50	50_55	55_60	h-norm
17	0	45768	46199	46403	46042	45800	46001	45937	45559	46204	45878	46056	46133	100.029
	1	46539	45761	45825	46383	45437	46130	46096	46203	45924	46041	46098	46516	100.203
	2	45562	46169	45957	45697	46182	46326	45916	46240	46303	45713	46120	45936	100.052
	3	46617	45439	45391	45609	45831	46215	46244	46329	46116	46152	45794	45606	99.912
	4	46013	46084	45754	46388	45893	45893	45703	45862	45943	46033	45645	45756	99.843
	5	46370	45789	45610	46233	45759	45570	46139	46200	46614	45488	46179	45797	99.984
	6	45184	45709	46400	46362	46250	45731	45666	46108	46413	46034	45567	46177	99.957
	7	46163	46178	46051	45951	46121	45957	45312	45567	46373	46381	46361	45997	100.105
	8	45619	46454	46381	46168	46392	45685	46426	46149	46323	45936	46251	46460	100.437
	9	46170	45642	46196	45992	46188	46563	46599	46657	46337	46342	46563	45780	100.579
	10	46230	45907	46084	46481	45588	45876	45937	47082	46405	46097	47414	46277	100.643
	11	46088	46649	46436	46365	45971	45901	46572	46377	45796	46829	46272	46085	100.636
	12	46058	45704	46285	46502	45858	46176	46372	46403	45950	45720	45845	45748	100.143
	13	45281	46139	46072	45694	46001	45923	46864	46309	45786	46180	46321	45858	100.108
	14	46131	45824	45973	45956	46306	46056	46108	45989	46257	46055	46000	46423	100.226
	15	45660	45424	45939	46013	45880	45570	46211	45558	46783	45821	45963	45906	99.799
	16	46133	45923	45918	45799	45858	46069	45780	46593	45877	46058	46089	45298	99.921
	17	45620	46140	45572	46035	45578	45660	45806	45819	45945	45820	45954	45389	99.548
	18	46119	45671	45819	45051	45444	46200	46313	46210	46101	46155	45089	45811	99.665
	19	46199	45564	46117	45692	45690	45960	46628	45747	45917	45512	45325	45994	99.731
	20	45951	45415	45850	46013	46029	45599	45301	46175	45279	45686	45376	45728	99.379
	21	46090	46257	46512	46060	45567	44823	45996	46377	46022	45714	46291	46121	99.999
	22	46322	45745	45359	45888	45752	45726	46329	46631	45564	46097	45264	45854	99.764
	23	45850	45768	45737	46261	45968	45560	45820	45644	46130	45862	46200	46573	99.917
18	0	46086	46182	46186	45838	45846	45730	45186	46183	45675	45917	45854	46359	99.851
	1	46271	45989	46438	46097	45714	46004	46735	45794	45804	46606	45922	45650	100.215
	2	45881	46470	45433	45903	45655	45668	45487	46045	45678	46241	45910	46315	99.792
	3	46638	46510	46507	45931	46321	46177	46186	46351	45403	45152	46631	45848	100.330
	4	46525	45877	46327	45891	44606	46092	46257	45725	46222	46157	45496	46094	99.898
	5	46118	46857	46189	46780	46652	45702	45912	45349	46721	46030	45993	45708	100.395
	6	45827	45942	46115	45839	46129	46346	45274	46207	45752	46138	45915	45867	99.913
	7	46497	45721	46362	46173	45618	46014	45860	46067	46041	46273	46520	45808	100.203
	8	45554	45412	45570	45770	46475	45490	46004	46055	45784	46323	46344	45913	99.793
	9	46207	46020	46121	45978	45942	46279	46011	46768	45980	46339	45876	46346	100.368
	10	45851	46705	46296	46177	45775	46384	46301	46041	46008	45964	45556	45733	100.173
	11	46261	46338	45693	46312	45249	45854	45690	45812	45698	45846	46253	45997	99.850
	12	46214	45997	46040	46486	46043	46110	46685	45917	46327	46486	45965	45762	100.399
	13	46260	46129	46147	46243	46798	46104	45774	46115	45738	45848	45584	46087	100.180
	14	46475	46310	45849	45811	46555	45446	45788	46222	46167	46133	45940	46137	100.181
	15	46407	45957	46131	45752	45795	45976	45428	45703	46172	46051	46100	46237	99.977
	16	45710	45939	45831	45797	45958	46455	46242	45878	46213	45584	46147	46728	100.117
	17	45839	45705	46232	46100	46377	45640	45866	46226	45166	46137	45849	45587	99.799
	18	45182	45894	45691	46210	45615	46583	45894	46040	46152	46720	46221	45713	100.015
	19	46068	46327	45729	45629	45907	46376	45541	45445	45801	46041	46089	45987	99.838
	20	46339	46198	46276	45745	46193	46087	45911	46233	45653	45771	45819	45711	100.019
	21	45602	45712	45483	46015	45537	45363	45644	46096	46217	46325	46106	46135	99.710
	22	45609	45747	45918	45507	45561	45701	46534	46297	46207	45251	46348	45789	99.753
	23	46371	46047	45562	45940	46510	46102	46337	46306	46080	46111	46103	46904	100.460

INAF/UNIRomaTre		S.V.I.R.CO. Observatory - Pressure Corrected Data – October 2016											20 NM-64	
day	hh	00_05	05_10	10_15	15_20	20_25	25_30	30_35	35_40	40_45	45_50	50_55	55_60	h-norm
19	0	45566	45988	45870	45825	46200	46485	46348	45977	46461	46005	45918	45599	100.068
	1	46033	45501	46228	46057	45585	45686	45732	45721	45656	46766	45849	45560	99.736
	2	45891	46061	46143	46569	46131	46282	45956	46542	46036	46469	46024	46881	100.572
	3	45899	45866	46218	46238	46248	46697	46272	46727	45308	45972	46825	46549	100.541
	4	46069	46048	46518	46116	46179	46274	46054	45355	46043	46149	46178	46115	100.229
	5	46651	45537	45582	45284	46434	46122	46391	45717	45919	46192	45821	45919	99.952
	6	46076	46444	45937	46713	46198	46041	45890	45876	46436	45751	45929	45984	100.262
	7	46559	46454	45960	46546	45758	45838	46537	45411	46179	45680	45892	46065	100.189
	8	46173	45996	45816	45888	45869	46431	46251	45832	45709	46304	46059	45819	100.057
	9	46122	45593	46765	46051	46200	45658	46179	45512	45921	46142	45654	46058	100.004
	10	46397	45866	46013	45906	45719	45618	45987	46441	45870	46169	45832	45681	99.939
	11	46144	45285	46069	46204	46074	46485	46489	46061	45980	46154	45942	46373	100.259
	12	45282	45857	46234	45994	45820	46419	45258	46042	46443	46337	46759	46485	100.200
	13	45842	46488	46434	45678	45761	45666	46149	46421	45868	45370	45951	46358	100.028
	14	45543	45217	45616	46258	46335	46358	45592	46445	46424	45692	45751	45785	99.852
	15	45496	45988	45835	45702	45533	45511	45866	46464	45946	45747	45936	45464	99.575
	16	46168	45587	46224	46061	45960	46251	45660	46810	46059	46127	45671	45814	100.101
	17	46017	46004	45282	46265	46019	45202	45862	46070	46049	46087	46534	45435	99.818
	18	45449	45564	45565	46133	46432	45758	45562	45671	46299	46026	46394	45749	99.777
	19	46241	45806	46065	46086	46089	45797	46046	45949	45569	45817	46007	46232	99.977
	20	46206	46199	46444	45787	46487	46374	46345	46376	46393	45954	45923	45715	100.429
	21	46360	46953	45887	46273	46146	46077	46252	46025	46425	45593	46000	46228	100.432
	22	46081	45605	45279	45759	45473	45762	46545	46064	46110	46724	45964	45697	99.860
	23	46300	46037	45713	46386	45707	45925	47014	45904	46093	45606	47037	45967	100.336
20	0	46606	46254	46054	45980	46025	45390	46183	46109	45878	46351	46200	46366	100.277
	1	46214	46325	46560	46019	46660	45750	45989	46301	45938	46112	46022	45533	100.288
	2	46455	45806	46075	46235	46106	46023	45911	46257	45841	46236	46327	45809	100.226
	3	46453	45688	46131	46261	46391	46406	45662	46310	46765	46003	46597	45360	100.398
	4	46334	46334	46578	46088	46386	45475	46021	46562	46164	46738	46354	46743	100.715
	5	46391	46770	46219	46048	47365	46387	45905	45810	46135	46173	45904	46429	100.671
	6	46030	46332	45583	46585	46143	46488	46209	46040	45924	45711	45977	46181	100.248
	7	46111	46687	45883	46196	46289	45780	46872	46127	46513	45977	45724	46064	100.433
	8	46251	46008	45678	46642	45984	46650	45501	45936	46091	46258	45902	45723	100.144
	9	45662	46076	46238	46347	45914	45947	46308	46290	46242	46097	46487	46361	100.387
	10	46503	46378	46229	45882	45971	46028	46356	45604	46010	46657	46160	46117	100.374
	11	46069	45751	46084	46351	46183	46206	45774	46020	46039	45835	46493	45817	100.143
	12	46123	46237	45396	46071	45710	46361	45666	45530	46243	45808	46827	46174	100.057
	13	46280	46692	46593	46405	46220	46723	45963	46123	46190	45922	46523	46316	100.746
	14	46123	46100	46316	46683	45926	46683	46661	46706	47018	46351	46236	46680	101.024
	15	46554	46796	45951	45780	46432	46498	45506	46004	45832	45631	46141	46322	100.292
	16	45680	45827	46254	46157	46643	46407	46248	46192	46147	46315	45742	46543	100.421
	17	45745	46258	45343	46471	46041	45932	45905	46001	46082	46232	45708	46386	100.049
	18	46045	46106	45903	46047	46190	45972	46389	46466	46879	46437	45498	45481	100.286
	19	46284	46199	46261	45600	46102	45891	46268	45982	45923	46828	46111	45970	100.287
	20	45887	46245	46323	46465	46556	45802	46361	46456	46689	45849	46213	45832	100.516
	21	45857	46515	45941	46280	46403	45675	45649	45667	46094	46467	46048	46135	100.163
	22	46131	45938	46431	45960	45705	46189	46207	46674	46020	45577	45816	46405	100.221
	23	46469	45903	46791	45578	46284	45671	46310	45908	46018	46641	46076	46864	100.486

INAF/UNIRomaTre			S.V.I.R.CO. Observatory - Pressure Corrected Data – October 2016										20 NM-64	
day	hh	00_05	05_10	10_15	15_20	20_25	25_30	30_35	35_40	40_45	45_50	50_55	55_60	h-norm
21	0	45940	46340	45881	45840	46164	45935	46033	45550	46333	46685	45815	45653	100.055
	1	46039	45979	46528	46032	45994	46214	46428	46034	45621	46511	46070	46178	100.325
	2	46207	46386	45878	45827	46690	46582	46483	45832	46865	46490	46169	45879	100.626
	3	46228	46285	45527	46096	46658	46127	46082	46232	46346	46453	45728	45782	100.310
	4	46260	46165	46411	46178	46805	46528	45548	45912	45884	45785	45911	46638	100.397
	5	46378	45681	46211	46233	46676	46607	45937	46604	46008	46592	46223	46186	100.635
	6	46768	46315	46772	46237	46390	46770	46492	46290	46371	46122	45927	46567	100.940
	7	46620	45670	46350	46070	46319	46349	46459	45754	45726	46577	45902	45775	100.315
	8	46068	46120	46015	45988	46005	46132	46103	45921	46799	46156	46522	45774	100.321
	9	46117	46236	46214	46474	45937	45628	46563	46353	46666	46948	46336	45985	100.657
	10	46811	45294	46192	46765	46720	46223	46774	47021	46616	46272	45998	46363	100.945
	11	46289	45750	45578	46083	46894	46497	46094	46324	46240	46346	46276	46652	100.578
	12	46073	45897	47100	46313	45980	46286	46327	46047	45827	45970	46200	46123	100.419
	13	45750	46662	46104	46719	45939	46081	46212	47137	46341	45943	46735	46380	100.756
	14	45917	46329	46653	46673	46311	46684	46441	46003	46113	46589	45824	46136	100.696
	15	46563	46179	46248	46127	46243	46616	46483	45494	45915	46109	47083	46380	100.653
	16	46423	46603	46527	46551	46369	46588	46099	46645	46507	46229	46397	47130	101.130
	17	46229	46293	46198	46219	45810	45996	45938	46297	46382	46324	46098	46687	100.478
	18	46436	46506	46003	46525	46580	46713	46618	46246	46346	46502	45705	46217	100.827
	19	46489	45787	46516	45683	46214	46986	46395	45848	46247	46238	46177	46444	100.578
	20	46984	46194	46108	45744	46233	47152	46533	46643	46319	47100	46480	45814	100.992
	21	46368	47022	46403	46191	46235	46778	45406	45849	46754	45969	46425	45828	100.615
	22	46979	46111	46038	46572	47199	46391	46068	45733	46265	46004	46213	46349	100.741
	23	46401	46013	45968	46343	46235	46701	46314	46044	46156	46198	45840	46898	100.594
22	0	46182	46257	46313	46201	46385	46091	46534	46503	46554	46403	46716	45995	100.776
	1	46089	46328	46646	46762	46663	46347	45620	46019	45807	45853	46362	46320	100.541
	2	46184	46505	46341	46088	46376	46177	46382	46473	46519	46167	46157	46197	100.677
	3	46006	46408	46052	46497	46516	46216	46820	45847	46516	45696	46401	46277	100.619
	4	46560	46328	45787	46270	46275	45865	46734	46658	46559	46817	46372	46053	100.805
	5	46055	46587	46207	45819	46387	46106	46686	45833	46284	46301	45863	46441	100.496
	6	46163	46064	46262	45920	46357	46652	46602	46404	47218	46339	46126	46313	100.831
	7	46319	46737	46044	46209	46387	46690	46224	46188	46466	46063	46399	46334	100.766
	8	46709	46157	46816	46566	46039	46511	46676	46363	47141	46493	46479	45736	101.061
	9	46653	46219	46154	46513	46272	46536	46248	46521	46043	46909	46386	46501	100.928
	10	46376	46480	46681	46346	46565	46760	46980	46550	46630	46697	46331	46664	101.309
	11	46090	46597	46816	46484	46149	46351	46373	46216	46561	46877	46239	46547	100.991
	12	46680	46557	46531	46161	46698	46649	46093	46028	47096	46137	47253	46110	101.116
	13	46651	46097	46596	45994	46018	46121	46392	46333	46868	45861	46537	46342	100.721
	14	46248	46207	46230	47433	46580	46624	46789	45907	46412	46636	46152	46053	100.986
	15	46079	46214	46614	46820	46004	47068	46204	46312	46267	46763	45841	45957	100.781
	16	46858	46742	46038	46021	46639	46357	46484	46607	46198	46133	46081	46349	100.847
	17	46358	46215	45969	46251	46427	46539	46348	46571	45914	46659	46201	46908	100.820
	18	46168	46515	46583	46140	46636	46810	46260	46264	46716	46766	46133	46595	101.043
	19	46783	45926	46697	46625	46185	46408	46294	46614	46401	45805	46722	46178	100.870
	20	45970	46156	47085	46504	46426	46242	46661	46090	46015	46744	46136	46022	100.765
	21	45985	46513	46512	45858	46459	46352	46469	46721	45986	46262	46665	46072	100.729
	22	46641	46789	46714	46733	47004	46268	46487	46408	46226	46636	46562	46578	101.307
	23	46535	45903	46539	47057	46291	46616	46500	46702	46315	46393	45900	46817	101.039

INAF/UNIRomaTre		S.V.I.R.CO. Observatory - Pressure Corrected Data – October 2016											20 NM-64	
day	hh	00_05	05_10	10_15	15_20	20_25	25_30	30_35	35_40	40_45	45_50	50_55	55_60	h-norm
23	0	47344	46672	46181	46226	46216	46753	46269	45964	46137	46268	46330	46586	100.926
	1	46041	46556	46841	46165	46489	46749	46712	46054	46137	46578	46580	46243	100.963
	2	46260	46678	46359	46674	46677	46444	46454	45942	47509	46033	46130	46531	101.061
	3	46439	46310	46330	46830	45697	46967	46339	46212	46173	46487	46328	46580	100.880
	4	46361	46202	46896	46206	46414	46230	46569	45690	45757	45922	46064	46090	100.466
	5	45955	46471	46286	45821	46060	46010	46356	46619	46883	46353	46362	46656	100.724
	6	46050	46062	46534	45756	46180	46412	46355	46634	46319	46117	46394	46664	100.660
	7	46399	45602	46873	46011	46717	46241	46350	46658	46627	46261	46719	46235	100.881
	8	47162	46307	45880	46626	45967	46185	46511	46472	46217	46299	46338	45896	100.730
	9	46906	46013	45845	46418	46462	46256	46336	46425	46379	46065	46507	46904	100.849
	10	46794	46749	46423	46319	45970	47360	46815	45855	46248	46137	47204	46835	101.246
	11	46440	46603	46379	46741	46295	46440	46079	46682	47039	46553	46061	46608	101.103
	12	46765	46616	46406	46014	46190	45993	46544	45982	46636	46630	46437	46689	100.919
	13	45958	46893	46391	46076	45736	46534	46542	46490	46392	46728	46281	46092	100.776
	14	46225	46358	46327	46076	46125	45795	46393	47039	46436	46284	46735	46348	100.781
	15	46115	46525	47242	46230	46797	46236	46511	46368	45878	45900	46024	45988	100.722
	16	45825	45884	46254	45600	46108	46525	47038	46154	45746	46112	46528	47185	100.566
	17	46037	46355	46582	46319	46032	46475	46709	46628	46781	45699	46375	46124	100.776
	18	46024	46737	46117	46447	46094	46396	46242	46545	46346	46547	46081	46237	100.721
	19	46218	46365	46319	45676	46406	46013	46078	45900	45601	46021	46068	45914	100.136
	20	45643	46313	45748	46190	45311	46137	46271	45961	46258	46564	45715	46648	100.168
	21	46658	46262	46354	45985	46181	46208	45580	46202	46107	46126	46635	45893	100.427
	22	46836	46368	45906	45788	46343	45298	45859	46317	46429	46756	45824	46123	100.365
	23	46437	46292	45817	45998	46203	45845	46303	45925	45986	46095	46236	45879	100.214
24	0	45825	46620	46013	45484	46295	46253	46042	46443	46422	46798	46555	46489	100.619
	1	46143	46582	46355	45686	45537	46688	46443	46481	46558	46869	46456	46152	100.746
	2	46660	46568	46144	45858	45898	46036	46344	46128	46218	46027	45994	46150	100.397
	3	46498	45867	46016	46439	45851	46395	46645	46050	46978	45906	45656	46078	100.462
	4	46418	45814	46204	46544	46462	45730	45473	46570	46511	46494	46522	46099	100.545
	5	46259	46558	46423	45957	46258	45525	46622	46531	45939	45902	45928	46627	100.489
	6	46395	46150	46165	46224	46789	45849	46289	45820	46161	46032	46339	45979	100.428
	7	46273	46655	46141	46309	46554	46626	46395	45685	45935	46192	46238	46408	100.648
	8	45898	46184	46200	47161	45949	46428	45874	45397	45983	45768	46162	45736	100.164
	9	46478	46471	45977	45604	45943	46006	46078	46243	45827	46519	46054	46388	100.318
	10	46486	46365	46620	46023	46573	46373	45838	46379	46508	46690	46027	45832	100.703
	11	46014	46244	46266	46191	46425	46162	45877	46429	46461	46455	46197	46306	100.579
	12	46610	45608	46422	46055	46346	46258	45981	46773	46671	46811	46844	46224	100.864
	13	46589	46534	46726	46675	45885	46681	46781	46073	45865	46907	46657	46194	101.039
	14	46223	46510	46420	46841	46665	46371	46516	46237	45803	46523	46324	46590	100.940
	15	46478	46904	46691	47097	45951	46848	46134	46436	46212	46765	46520	45417	101.018
	16	45539	47118	45858	46893	45285	46488	45958	46477	46511	45868	46459	46673	100.597
	17	46214	46468	46568	46492	46060	46700	46195	46734	46546	46772	46411	45668	100.905
	18	46042	46310	46035	46256	46610	46390	45777	45957	46335	46450	45695	45657	100.305
	19	46655	46007	46352	45469	45905	46446	46331	46610	45615	46124	46273	46383	100.423
	20	46284	47007	46031	45767	46422	46254	46386	46513	46183	46824	46353	46527	100.855
	21	46209	45658	46272	46045	46927	45876	46221	46257	45759	45706	46403	46224	100.312
	22	46794	46265	46098	46362	46445	46100	46301	45716	46077	46939	46165	45958	100.614
	23	46206	45730	45952	46016	46055	46252	45839	46390	46399	46427	46211	46358	100.362

INAF/UNIRomaTre		S.V.I.R.CO. Observatory - Pressure Corrected Data – October 2016											20 NM-64	
day	hh	00_05	05_10	10_15	15_20	20_25	25_30	30_35	35_40	40_45	45_50	50_55	55_60	h-norm
25	0	46173	46189	46456	46032	46052	47125	46257	45961	46086	45862	46467	46490	100.603
	1	45707	46400	45910	46314	46605	45813	46697	46378	46343	46491	46921	45813	100.646
	2	47151	46136	46044	46461	46483	46709	46853	46549	46322	46194	47617	45910	101.195
	3	46186	46249	46372	46745	46641	46032	46032	45928	46057	46111	45454	46409	100.432
	4	46108	46336	46350	46417	46002	46087	46123	46286	45562	46802	46224	46548	100.546
	5	45691	45638	45665	46437	45572	46159	46266	46860	46077	46487	45991	45523	100.097
	6	45872	46354	46819	46095	46406	46468	45829	46518	46106	45774	46426	46543	100.612
	7	45598	46247	46533	46107	46344	46296	45874	46621	45712	45946	46479	46342	100.411
	8	46105	46481	45841	46377	46426	46220	45904	46605	46133	46377	46304	45677	100.474
	9	46370	47011	46259	45579	46746	46332	45733	45965	46233	45546	46423	46607	100.538
	10	46296	46427	45773	46222	46447	46790	46160	46174	46147	46096	46110	46154	100.537
	11	46127	45998	46296	46475	46956	46877	46472	46706	46100	45917	46910	46514	100.999
	12	46350	46321	45901	46447	46589	46712	46349	46040	46336	46236	46283	45980	100.672
	13	46043	46281	46453	47073	46299	46902	46752	46419	46506	46929	46381	47794	101.450
	14	45769	46805	46589	46159	46581	46002	46199	46612	46861	45541	45710	45778	100.503
	15	46499	45818	46200	46145	45890	46154	46722	46657	45457	45432	46162	46023	100.240
	16	45901	46120	46018	46739	45698	46382	46090	46883	46696	46378	46440	46496	100.726
	17	46966	46620	45950	46665	46831	45968	46014	46525	46128	45974	46088	45378	100.594
	18	45788	46165	45836	46504	45626	45529	45890	46139	46118	45915	45962	45915	99.919
	19	45641	47272	46207	46388	46135	46107	45795	46730	45744	46470	45892	45534	100.377
	20	45773	46411	46374	46506	46009	46661	45609	45834	45957	45331	46674	45768	100.194
	21	45797	45810	45681	45710	45364	45469	45893	45941	45597	46181	45854	46010	99.542
	22	45168	46232	45620	45896	45628	45581	45799	45929	45392	46356	46318	45834	99.623
	23	45817	45949	45648	45156	45380	45400	46474	45819	46381	45574	45942	45761	99.541
26	0	45412	46178	45768	45628	45501	45919	46201	45303	46224	45616	46047	45356	99.512
	1	46350	45456	45516	45925	45945	46019	45502	45919	45853	44708	45802	45893	99.466
	2	45803	45739	45482	45763	45841	46078	45736	45646	45937	46026	45916	45458	99.564
	3	45400	45934	45059	45613	46292	46001	45559	45490	45838	45494	45661	46215	99.406
	4	46354	46145	46156	44808	46227	46237	46519	45543	45701	45488	45449	45661	99.720
	5	45939	45613	46436	45484	45451	45238	45461	46432	46240	45704	45432	46009	99.566
	6	46623	45672	45795	46055	45282	46028	45782	45910	45640	45832	45378	46090	99.683
	7	46341	46082	45622	45619	46082	46249	46497	46390	46386	46308	46078	45594	100.256
	8	45870	47171	45925	46205	46090	45914	45587	45605	46013	45845	45995	45915	100.055
	9	45698	46008	46406	46657	45510	46200	45622	45838	46090	45480	46047	46615	100.062
	10	46214	46575	46016	46505	45937	45570	46120	45561	45757	46455	46579	46061	100.275
	11	46189	45541	46233	45764	46121	45683	45773	45896	46048	46256	45516	46310	99.909
	12	45893	45773	45329	46361	45269	46241	45746	45555	45722	45551	45208	45327	99.301
	13	46080	46045	45932	45146	46249	45898	46071	45391	45775	46693	45670	45290	99.711
	14	46326	44930	45685	45963	45728	46098	46383	45762	45635	46215	46027	45893	99.784
	15	47127	46197	45939	46069	45305	45791	46145	46273	45414	46344	46256	45842	100.157
	16	45836	46132	45950	46521	45449	46189	45693	46136	45816	45651	46286	46582	100.074
	17	45247	45960	45994	45776	46114	45691	45926	46308	45062	46237	45887	45277	99.573
	18	45595	45509	45601	45733	46289	45980	45592	45882	46021	46109	46116	45531	99.660
	19	45789	46894	45789	45833	44668	46011	45700	46099	45983	45489	46501	45879	99.783
	20	46251	45690	45609	45924	45284	46092	45615	45775	45670	45657	45237	45731	99.402
	21	46155	45123	46023	46085	45818	46175	44819	45273	45099	45526	45879	45870	99.278
	22	45365	46003	45816	45791	45751	45974	46154	45405	45782	46327	46081	45934	99.738
	23	45596	45216	46681	46030	45375	45793	45745	45651	45886	45804	44853	45720	99.368

INAF/UNIRomaTre		S.V.I.R.CO. Observatory - Pressure Corrected Data – October 2016											20 NM-64	
day	hh	00_05	05_10	10_15	15_20	20_25	25_30	30_35	35_40	40_45	45_50	50_55	55_60	h-norm
27	0	45383	45700	45517	45183	45013	45858	46183	45227	45332	45768	45066	44941	98.796
	1	45641	46009	45559	45300	45186	45325	45188	45008	45428	45165	45053	45439	98.635
	2	45781	45370	45737	45656	45602	45602	45917	45717	45381	45733	46045	45874	99.382
	3	45751	46219	45765	44907	45956	46398	46208	45186	45578	45291	45816	45685	99.443
	4	46195	45519	45051	45909	45680	45831	46265	45408	45491	45698	45445	45988	99.393
	5	46158	45537	46003	45438	45420	46280	45911	45986	45589	45156	45139	45468	99.322
	6	45775	45534	45192	45659	46078	45978	45684	46100	46208	45847	46279	45088	99.563
	7	45550	46581	46368	46325	45798	45806	45652	46084	45908	45866	45812	45770	99.944
	8	46096	45734	45783	45956	44998	46155	46242	45667	45479	45416	45461	46290	99.537
	9	45990	46332	45516	46632	45480	45582	45460	45491	45999	45580	45278	46047	99.557
	10	46388	46469	45424	46204	45816	46463	45914	45612	46030	46253	46156	46158	100.191
	11	46377	46142	45820	46256	46172	45433	46614	45640	45723	46725	45046	46685	100.145
	12	45932	46515	46198	45812	46045	45885	46305	45792	45687	45764	45974	46210	100.052
	13	46014	45915	45986	45793	45586	46380	46440	46693	46298	45861	46106	45506	100.135
	14	46117	45984	45534	46191	45976	45650	46450	45927	45907	46321	45448	46337	100.002
	15	46570	45872	45690	45926	46173	46097	46405	46140	45959	46140	46477	45995	100.292
	16	46265	45630	45894	45633	46136	46110	46029	46381	46181	45519	46667	45403	100.003
	17	46132	45606	45531	46049	46362	46007	46214	45655	46094	46078	45569	46227	99.944
	18	45753	46706	46042	45822	45613	46186	45748	46049	45296	45632	44910	46513	99.717
	19	46040	45859	45804	46207	45649	45833	45605	46147	45907	45897	46193	45163	99.723
	20	46453	46150	45901	46053	45678	45955	45510	46084	45322	45794	45872	46755	99.945
	21	46451	45755	46751	46310	45464	45173	45454	46425	46102	46190	46253	45642	100.025
	22	46321	45743	45894	45965	45909	45776	46013	45451	45560	46177	45626	45838	99.717
	23	46496	45747	45736	45390	46326	45675	45522	46678	45743	46577	45714	45764	99.916
28	0	45626	45556	45930	45355	45748	45807	46128	45448	45836	45581	46180	46223	99.567
	1	45725	45408	45876	46306	46318	45879	45301	46220	45823	46090	45724	45771	99.748
	2	45969	45998	45265	45351	45800	45626	46304	45252	46199	46142	45673	45998	99.591
	3	46100	45876	46203	46433	45640	46036	45538	46516	46116	46421	46708	45707	100.265
	4	45696	46217	46256	45732	46076	45834	45955	45684	46254	45402	45785	45602	99.757
	5	45876	46192	45631	45808	45475	45372	45617	46041	45360	45930	45606	45562	99.391
	6	45758	45851	45962	46454	46443	45460	45927	45792	46209	46341	45780	45889	100.006
	7	45247	46164	45784	46590	46638	45458	45843	46143	45777	45575	45944	46159	99.908
	8	45979	45372	45964	45687	46404	46448	46578	45589	46556	45449	45832	45696	99.949
	9	46001	45086	46182	45823	45491	46110	45938	45831	46072	46058	45657	46148	99.740
	10	46302	45901	46252	45571	45915	45501	45705	46387	45911	45922	45833	45706	99.832
	11	45776	45723	46237	46326	45974	46158	45904	45990	46356	46086	46200	45220	100.021
	12	45897	46978	46213	45765	46112	46287	46438	46069	45289	45882	45846	46287	100.223
	13	45597	45985	46040	45447	46281	45998	45856	46461	45872	46209	45771	45685	99.885
	14	46063	45543	45909	45757	46219	45882	46525	46392	45944	45703	45955	45736	99.963
	15	45804	45815	45930	46104	45792	45422	45879	45860	45242	45962	45976	45855	99.603
	16	46192	46225	46387	45840	45848	46876	45525	46390	46130	46046	45988	45133	100.136
	17	46978	45861	46004	45878	46079	46043	46305	46071	45616	45680	46107	46125	100.166
	18	46086	46288	45979	45701	45774	45193	45906	45333	46105	46472	46209	45966	99.851
	19	46073	46341	45252	46061	46345	45259	45777	46770	45589	46890	45715	45681	99.985
	20	45982	45744	45831	46280	45795	45495	46190	45195	46597	45857	45600	46096	99.788
	21	45554	45645	45017	46310	45619	46114	46242	45863	45894	46196	46162	46081	99.794
	22	46341	45732	46401	45635	46028	46059	46514	46154	45923	46129	46548	46510	100.388
	23	45469	46287	46105	46457	45793	45812	45957	45809	46410	45685	45017	45414	99.706

INAF/UNIRomaTre		S.V.I.R.CO. Observatory - Pressure Corrected Data – October 2016											20 NM-64	
day	hh	00_05	05_10	10_15	15_20	20_25	25_30	30_35	35_40	40_45	45_50	50_55	55_60	h-norm
29	0	45599	45505	46007	46045	45721	45785	45860	46245	46410	46131	45739	45886	99.828
	1	46643	46251	46325	46101	45943	45730	45359	46212	45863	46639	46758	46075	100.374
	2	46268	46257	45902	46022	45549	45794	46375	45536	46346	46399	46287	45961	100.157
	3	45997	47033	46038	46106	46201	46365	45557	46680	46470	46759	45975	45985	100.604
	4	45801	46009	46097	46057	45561	46265	45800	45613	45201	46018	45636	46223	99.719
	5	45842	45620	45672	45538	46020	45942	45024	46218	45133	46360	45607	45391	99.372
	6	46814	46509	45887	46238	46072	45681	46498	45681	45862	45340	45562	45746	100.011
	7	45719	45647	46231	46263	45530	46246	46081	46224	46001	45506	46129	46277	100.004
	8	46147	46606	45967	45484	46175	45856	45918	46285	46510	45683	45342	45849	99.998
	9	45562	46039	45987	45610	46185	46340	45512	46091	46197	46271	46160	45965	100.016
	10	45777	46174	45124	45713	45305	46134	45547	45936	45670	46186	46393	45865	99.636
	11	45682	46401	45235	46058	46060	45228	46069	45338	45560	46575	45758	46466	99.746
	12	46018	45895	46108	46183	46108	45540	45633	46183	45519	45537	46343	45501	99.771
	13	45894	46127	46321	45674	45669	46455	46216	46141	45821	46173	45683	45981	100.058
	14	46176	45964	46380	46527	46032	46072	45805	46045	45717	45561	45863	45635	99.989
	15	45830	45921	45624	45924	45621	45994	46489	45818	45306	46246	46141	46461	99.917
	16	46571	46394	45653	45440	45950	45758	45536	45748	45507	45700	45851	45492	99.596
	17	45200	45661	46070	45921	45514	45647	45550	46766	46153	45683	45872	45710	99.622
	18	45766	46051	45891	45553	45367	45770	45854	45541	45635	45766	46327	46197	99.616
	19	46023	45778	45714	46197	46488	45739	45764	46204	45957	46568	45959	45375	99.988
	20	45333	46542	46100	45269	45914	46220	46335	46104	45819	45821	45698	45721	99.826
	21	45028	45585	46417	46106	45749	45954	45698	45943	45968	45660	45126	45653	99.466
	22	45408	45664	45753	45654	45269	45222	46196	45673	45710	45585	46152	45819	99.324
	23	45841	45399	46193	45365	45244	45865	45392	45440	45780	45906	46402	45807	99.420
30	0	45829	45542	45410	46115	45702	45696	45789	45634	45697	46058	45439	45639	99.402
	1	46534	45725	46169	45996	45816	45467	45512	45930	46101	45464	46372	45811	99.830
	2	45874	45631	46215	45341	45574	45574	45845	45777	45518	45173	45811	45974	99.361
	3	45415	46040	45656	46193	45688	45789	45772	45755	46123	45617	46070	46166	99.719
	4	45761	45772	45817	45422	45957	45817	45695	46421	45712	46270	46614	46144	99.922
	5	46154	45832	45590	46181	46018	45889	45884	45413	45590	46253	46264	46016	99.864
	6	46165	46359	46355	45490	46180	46214	45545	46355	45421	45994	46416	46211	100.158
	7	46786	46862	45925	45829	46430	45565	45822	45677	46321	46289	45830	45356	100.156
	8	46273	46446	45862	45921	45604	45472	45571	45905	45735	45664	46314	46471	99.892
	9	45520	46435	46187	45973	46288	46286	45628	45310	45777	45710	45966	46093	99.880
	10	46092	46006	45816	46396	45092	46176	45698	45216	45891	46239	45749	46380	99.804
	11	45644	46335	45662	46558	45947	46231	46143	45398	46292	45857	45908	46135	100.050
	12	46120	45963	45879	46560	45716	46210	45536	46266	46586	45437	46259	45589	100.052
	13	46702	45687	46783	46039	46726	46424	46280	46735	46343	46073	46358	46268	100.831
	14	45817	46118	45787	45890	46062	46649	46583	45667	45939	45533	45942	46095	100.045
	15	45707	46010	46049	45628	45577	46231	45871	46166	45792	45838	45843	45710	99.744
	16	45973	45909	45993	45502	45846	46370	46735	45905	45583	45984	45354	45397	99.768
	17	45610	46027	46078	46372	45826	46226	46198	45766	46084	46130	46314	46205	100.182
	18	45326	45818	45758	45784	45954	46425	45876	45793	45715	46229	45856	45782	99.725
	19	45681	46138	46143	45691	45793	46218	45837	46254	45842	46027	45480	45572	99.791
	20	45915	45785	45493	45711	45652	45488	46602	45960	46286	45405	45716	45846	99.642
	21	46180	45918	45713	46162	46010	46797	45303	46208	45803	45592	45611	45805	99.867
	22	46037	46358	46391	45734	45965	46313	45602	46182	45977	45745	45443	45985	99.982
	23	45867	45792	45758	45824	46357	45719	45704	45420	45446	46403	46545	46365	99.885

INAF/UNIRomaTre			S.V.I.R.CO. Observatory - Pressure Corrected Data – October 2016										20 NM-64	
day	hh	00_05	05_10	10_15	15_20	20_25	25_30	30_35	35_40	40_45	45_50	50_55	55_60	h-norm
31	0	45807	46724	46312	46257	45804	45948	45787	46199	45799	46307	46497	45550	100.209
	1	45997	46434	46559	45803	45855	45776	45952	45725	46455	46675	45736	45328	100.084
	2	45517	46291	45918	46159	46706	46284	46363	46370	45958	46281	45737	45762	100.274
	3	46174	45766	46244	46126	46171	46567	46764	45678	45952	45967	46540	46180	100.416
	4	46071	45941	46252	46006	46097	45640	46367	45904	46090	46036	46434	46724	100.313
	5	45766	46370	45643	45957	46219	46010	45717	46073	46433	45422	45997	46444	100.039
	6	45794	45932	45617	45967	46566	46532	46037	46341	46016	46090	45147	45815	100.004
	7	46109	45763	46096	45610	46451	46509	46008	46293	46557	46206	45522	45605	100.162
	8	46516	46179	45567	45845	46299	45612	46158	46309	45471	46079	45764	46280	100.045
	9	45306	46031	45765	46178	46158	45787	46152	46500	46042	46039	46210	45752	100.016
	10	46520	45717	45867	45710	46167	46196	46363	46055	45977	45636	46440	46189	100.182
	11	45606	45956	45933	46264	46484	46007	44914	46473	45925	45672	46193	46117	99.948
	12	45776	46290	45894	46505	46223	46199	45841	45411	46432	46622	45893	46119	100.248
	13	46281	46077	46278	46191	45612	46379	45999	45879	45965	45812	45707	45703	100.009
	14	46132	45851	46221	46482	45541	46097	45998	45899	45676	45657	45972	45772	99.903
	15	46174	45472	45982	45999	46604	46477	45256	46560	46367	45826	46413	45884	100.214
	16	45501	46464	46042	45960	45816	46177	46157	46789	45623	46492	46268	46302	100.318
	17	46596	46131	45363	45806	46522	45976	46163	46452	46216	46048	46474	46105	100.366
	18	46344	46067	47007	46124	45774	46063	46052	46335	45573	45880	46311	46614	100.419
	19	46728	46172	45846	45647	45332	46619	46059	45987	45902	46238	46388	46030	100.202
	20	45531	46098	45972	45983	46015	45810	45443	46076	46322	45711	46252	46480	99.974
	21	46491	46076	46158	46247	46411	45641	46370	45996	46445	46088	45519	46757	100.429
	22	46430	46148	46047	46436	45848	46151	46467	45863	46320	45949	45914	45816	100.282
	23	46031	45815	45948	45944	46561	45846	46029	46360	45712	46313	46065	46032	100.149

S.V.I.R.CO. Observatory - Pressure in hectoPascal – October 2016

day	hh	00_05	05_10	10_15	15_20	20_25	25_30	30_35	35_40	40_45	45_50	50_55	55_60	average
1	0	1019.16	1019.10	1019.01	1018.95	1018.86	1018.74	1018.62	1018.57	1018.61	1018.67	1018.65	1018.59	1018.78
	1	1018.54	1018.50	1018.47	1018.44	1018.41	1018.42	1018.44	1018.45	1018.49	1018.51	1018.50	1018.48	1018.47
	2	1018.42	1018.33	1018.22	1018.14	1018.08	1017.96	1017.89	1017.90	1017.87	1017.86	1017.85	1017.79	1018.02
	3	1017.80	1017.87	1017.92	1017.93	1017.90	1017.89	1017.88	1017.87	1017.87	1017.82	1017.77	1017.72	1017.85
	4	1017.67	1017.65	1017.64	1017.63	1017.63	1017.59	1017.55	1017.51	1017.48	1017.44	1017.36	1017.34	1017.54
	5	1017.42	1017.50	1017.50	1017.51	1017.59	1017.66	1017.74	1017.79	1017.80	1017.84	1017.93	1018.00	1017.69
	6	1017.97	1017.90	1017.84	1017.84	1017.84	1017.80	1017.84	1017.86	1017.79	1017.69	1017.62	1017.64	1017.80
	7	1017.62	1017.59	1017.63	1017.62	1017.62	1017.60	1017.55	1017.50	1017.48	1017.51	1017.52	1017.53	1017.56
	8	1017.62	1017.71	1017.75	1017.78	1017.81	1017.77	1017.68	1017.63	1017.62	1017.60	1017.61	1017.63	1017.68
	9	1017.63	1017.58	1017.48	1017.40	1017.33	1017.26	1017.32	1017.38	1017.31	1017.25	1017.28	1017.32	1017.38
	10	1017.34	1017.32	1017.29	1017.22	1017.11	1017.01	1016.97	1016.93	1016.84	1016.75	1016.64	1016.49	1016.99
	11	1016.43	1016.46	1016.42	1016.30	1016.15	1016.05	1015.99	1015.93	1015.93	1015.91	1015.79	1015.72	1016.09
	12	1015.74	1015.68	1015.60	1015.62	1015.71	1015.75	1015.75	1015.77	1015.78	1015.81	1015.83	1015.77	1015.73
	13	1015.69	1015.64	1015.55	1015.46	1015.45	1015.51	1015.53	1015.53	1015.52	1015.47	1015.42	1015.36	1015.51
	14	1015.32	1015.30	1015.27	1015.25	1015.27	1015.31	1015.28	1015.20	1015.07	1014.99	1015.00	1015.01	1015.19
	15	1014.99	1014.91	1014.74	1014.58	1014.40	1014.24	1014.15	1014.03	1013.93	1013.93	1013.88	1013.81	1014.30
	16	1013.73	1013.63	1013.58	1013.55	1013.57	1013.62	1013.63	1013.61	1013.64	1013.71	1013.76	1013.79	1013.65
	17	1013.86	1013.98	1014.04	1014.08	1014.14	1014.21	1014.28	1014.37	1014.44	1014.42	1014.29	1014.11	1014.18
	18	1013.95	1013.85	1013.88	1014.00	1014.09	1014.06	1014.00	1013.97	1013.98	1013.99	1013.99	1013.95	1013.97
	19	1013.88	1013.87	1013.86	1013.85	1013.88	1013.92	1013.93	1013.95	1013.95	1014.01	1014.23	1014.33	1013.97
	20	1014.33	1014.49	1014.62	1014.54	1014.38	1014.33	1014.37	1014.49	1014.55	1014.38	1014.28	1014.28	1014.42
	21	1014.18	1014.17	1014.21	1014.14	1014.03	1013.95	1013.88	1013.95	1013.98	1013.87	1013.74	1013.74	1013.98
	22	1013.77	1013.70	1013.66	1013.61	1013.51	1013.48	1013.51	1013.49	1013.41	1013.25	1013.07	1012.94	1013.45
	23	1012.89	1012.76	1012.74	1012.77	1012.64	1012.76	1013.09	1013.30	1013.31	1013.48	1013.76	1013.55	1013.09
2	0	1013.46	1013.69	1013.48	1013.08	1012.95	1012.85	1012.87	1012.92	1013.05	1013.09	1013.10	1012.93	1013.10
	1	1012.80	1012.83	1012.84	1012.82	1012.72	1012.59	1012.36	1012.15	1011.99	1011.82	1011.83	1011.81	1012.38
	2	1011.70	1011.63	1011.54	1011.55	1011.65	1011.68	1011.69	1011.81	1011.92	1011.91	1011.89	1011.85	1011.73
	3	1011.74	1011.68	1011.72	1011.73	1011.61	1011.51	1011.50	1011.48	1011.48	1011.46	1011.40	1011.45	1011.56
	4	1011.53	1011.52	1011.48	1011.40	1011.32	1011.35	1011.51	1011.59	1011.59	1011.63	1011.65	1011.74	1011.52
	5	1011.78	1011.73	1011.78	1011.86	1011.90	1011.97	1012.05	1012.09	1012.15	1012.18	1012.17	1012.21	1011.99
	6	1012.27	1012.31	1012.34	1012.43	1012.49	1012.46	1012.43	1012.42	1012.42	1012.41	1012.40	1012.42	1012.40
	7	1012.53	1012.64	1012.65	1012.67	1012.73	1012.77	1012.76	1012.73	1012.68	1012.65	1012.72	1012.83	1012.69
	8	1012.93	1012.98	1013.04	1013.11	1013.16	1013.19	1013.22	1013.26	1013.30	1013.34	1013.39	1013.45	1013.19
	9	1013.50	1013.51	1013.53	1013.57	1013.59	1013.59	1013.61	1013.66	1013.77	1013.80	1013.75	1013.77	1013.63
	10	1013.83	1013.90	1013.94	1013.98	1014.05	1014.13	1014.17	1014.17	1014.18	1014.19	1014.23	1014.23	1014.08
	11	1014.17	1014.18	1014.21	1014.17	1014.12	1014.17	1014.21	1014.20	1014.16	1014.12	1014.11	1014.06	1014.15
	12	1014.01	1014.03	1014.01	1013.97	1013.96	1013.95	1013.93	1013.88	1013.80	1013.76	1013.74	1013.71	1013.89
	13	1013.72	1013.74	1013.70	1013.68	1013.73	1013.78	1013.81	1013.80	1013.73	1013.69	1013.71	1013.67	1013.73
	14	1013.64	1013.66	1013.70	1013.74	1013.71	1013.69	1013.71	1013.71	1013.70	1013.69	1013.69	1013.74	1013.70
	15	1013.75	1013.70	1013.72	1013.79	1013.83	1013.89	1013.92	1013.97	1014.04	1014.05	1014.06	1014.10	1013.90
	16	1014.13	1014.13	1014.13	1014.14	1014.17	1014.21	1014.22	1014.24	1014.30	1014.40	1014.51	1014.62	1014.27
	17	1014.68	1014.72	1014.77	1014.80	1014.83	1014.89	1014.95	1015.02	1015.10	1015.17	1015.22	1015.31	1014.95
	18	1015.41	1015.48	1015.55	1015.62	1015.69	1015.77	1015.84	1015.91	1015.99	1016.07	1016.13	1016.16	1015.80
	19	1016.17	1016.19	1016.24	1016.32	1016.44	1016.54	1016.55	1016.56	1016.58	1016.60	1016.68	1016.77	1016.47
	20	1016.77	1016.71	1016.65	1016.65	1016.71	1016.75	1016.79	1016.83	1016.84	1016.84	1016.81	1016.81	1016.76
	21	1016.82	1016.80	1016.83	1016.93	1017.02	1017.05	1017.05	1017.04	1017.05	1017.09	1017.10	1017.12	1016.99
	22	1017.17	1017.20	1017.26	1017.32	1017.36	1017.38	1017.36	1017.35	1017.36	1017.39	1017.40	1017.41	1017.33
	23	1017.43	1017.45	1017.49	1017.53	1017.54	1017.56	1017.58	1017.58	1017.58	1017.59	1017.58	1017.59	1017.54

S.V.I.R.CO. Observatory - Pressure in hectoPascal – October 2016

day	hh	00_05	05_10	10_15	15_20	20_25	25_30	30_35	35_40	40_45	45_50	50_55	55_60	average
3	0	1017.65	1017.65	1017.69	1017.73	1017.73	1017.73	1017.71	1017.67	1017.62	1017.53	1017.42	1017.35	1017.62
	1	1017.37	1017.40	1017.45	1017.51	1017.53	1017.56	1017.57	1017.55	1017.54	1017.49	1017.44	1017.41	1017.48
	2	1017.38	1017.35	1017.35	1017.40	1017.45	1017.46	1017.49	1017.54	1017.59	1017.60	1017.55	1017.57	1017.48
	3	1017.60	1017.62	1017.63	1017.60	1017.58	1017.59	1017.62	1017.64	1017.68	1017.74	1017.79	1017.83	1017.66
	4	1017.88	1017.93	1017.92	1017.87	1017.90	1017.94	1017.92	1017.88	1017.83	1017.84	1017.87	1017.89	1017.89
	5	1017.91	1017.95	1017.99	1018.00	1018.06	1018.13	1018.15	1018.09	1018.06	1018.08	1018.08	1018.09	1018.05
	6	1018.15	1018.22	1018.27	1018.34	1018.42	1018.51	1018.51	1018.48	1018.51	1018.54	1018.50	1018.57	1018.42
	7	1018.62	1018.60	1018.65	1018.66	1018.69	1018.73	1018.72	1018.77	1018.86	1018.91	1018.96	1019.00	1018.76
	8	1019.01	1019.00	1018.98	1018.95	1018.94	1018.98	1019.03	1019.07	1019.06	1019.04	1019.02	1018.99	1019.00
	9	1018.95	1018.94	1018.94	1018.90	1018.86	1018.83	1018.84	1018.83	1018.83	1018.85	1018.84	1018.81	1018.87
	10	1018.76	1018.70	1018.64	1018.63	1018.63	1018.58	1018.64	1018.77	1018.83	1018.82	1018.72	1018.69	1018.70
	11	1018.70	1018.62	1018.54	1018.50	1018.50	1018.46	1018.36	1018.28	1018.26	1018.29	1018.31	1018.27	1018.42
	12	1018.22	1018.21	1018.24	1018.24	1018.21	1018.22	1018.22	1018.20	1018.19	1018.16	1018.09	1018.05	1018.19
	13	1018.07	1018.08	1018.04	1017.99	1017.97	1017.95	1017.90	1017.86	1017.81	1017.73	1017.67	1017.65	1017.89
	14	1017.65	1017.63	1017.62	1017.62	1017.62	1017.63	1017.63	1017.63	1017.64	1017.63	1017.62	1017.58	1017.62
	15	1017.51	1017.43	1017.38	1017.39	1017.40	1017.39	1017.39	1017.38	1017.34	1017.30	1017.29	1017.29	1017.37
	16	1017.33	1017.37	1017.40	1017.44	1017.47	1017.48	1017.48	1017.48	1017.49	1017.52	1017.54	1017.57	1017.46
	17	1017.60	1017.62	1017.65	1017.68	1017.71	1017.73	1017.78	1017.85	1017.87	1017.86	1017.85	1017.87	1017.75
	18	1017.90	1017.90	1017.90	1017.89	1017.88	1017.89	1017.93	1017.96	1017.99	1018.04	1018.10	1018.14	1017.96
	19	1018.16	1018.18	1018.17	1018.15	1018.14	1018.17	1018.21	1018.23	1018.23	1018.24	1018.24	1018.25	1018.20
	20	1018.31	1018.36	1018.38	1018.42	1018.44	1018.44	1018.43	1018.40	1018.37	1018.34	1018.35	1018.37	1018.38
	21	1018.36	1018.36	1018.35	1018.33	1018.32	1018.32	1018.33	1018.33	1018.31	1018.32	1018.32	1018.34	1018.33
	22	1018.36	1018.34	1018.30	1018.27	1018.24	1018.22	1018.20	1018.17	1018.11	1018.06	1018.05	1018.03	1018.19
	23	1018.02	1018.01	1017.99	1017.99	1018.03	1018.05	1018.07	1018.08	1018.10	1018.12	1018.08	1018.04	1018.05
4	0	1018.01	1018.03	1018.04	1018.04	1018.05	1018.06	1018.06	1018.03	1017.98	1017.94	1017.89	1017.85	1018.00
	1	1017.84	1017.81	1017.78	1017.75	1017.69	1017.63	1017.60	1017.60	1017.59	1017.55	1017.52	1017.49	1017.65
	2	1017.48	1017.49	1017.48	1017.46	1017.44	1017.44	1017.45	1017.47	1017.48	1017.44	1017.40	1017.36	1017.45
	3	1017.33	1017.31	1017.28	1017.26	1017.27	1017.26	1017.25	1017.25	1017.26	1017.24	1017.24	1017.24	1017.26
	4	1017.22	1017.19	1017.19	1017.19	1017.19	1017.22	1017.26	1017.27	1017.24	1017.21	1017.21	1017.21	1017.21
	5	1017.20	1017.21	1017.21	1017.21	1017.20	1017.18	1017.18	1017.21	1017.23	1017.24	1017.25	1017.25	1017.21
	6	1017.28	1017.32	1017.34	1017.36	1017.37	1017.37	1017.38	1017.41	1017.45	1017.47	1017.46	1017.46	1017.39
	7	1017.47	1017.46	1017.46	1017.48	1017.51	1017.53	1017.52	1017.52	1017.53	1017.52	1017.50	1017.50	1017.50
	8	1017.47	1017.44	1017.43	1017.41	1017.41	1017.40	1017.36	1017.30	1017.25	1017.19	1017.11	1017.04	1017.32
	9	1017.00	1016.96	1016.91	1016.86	1016.83	1016.81	1016.79	1016.78	1016.75	1016.73	1016.72	1016.71	1016.82
	10	1016.69	1016.64	1016.64	1016.62	1016.57	1016.54	1016.49	1016.44	1016.41	1016.37	1016.32	1016.26	1016.50
	11	1016.19	1016.15	1016.12	1016.10	1016.07	1016.01	1015.93	1015.83	1015.77	1015.78	1015.77	1015.69	1015.95
	12	1015.57	1015.49	1015.47	1015.43	1015.36	1015.26	1015.19	1015.15	1015.16	1015.17	1015.14	1015.11	1015.29
	13	1015.08	1015.03	1014.99	1014.97	1014.96	1014.95	1014.94	1014.92	1014.90	1014.88	1014.85	1014.84	1014.94
	14	1014.83	1014.81	1014.77	1014.75	1014.75	1014.76	1014.77	1014.75	1014.74	1014.72	1014.71	1014.72	1014.76
	15	1014.73	1014.71	1014.68	1014.69	1014.72	1014.74	1014.75	1014.75	1014.76	1014.76	1014.76	1014.77	1014.73
	16	1014.81	1014.86	1014.88	1014.90	1014.90	1014.90	1014.93	1014.96	1015.02	1015.08	1015.12	1015.17	1014.96
	17	1015.17	1015.19	1015.22	1015.23	1015.23	1015.25	1015.29	1015.32	1015.34	1015.36	1015.38	1015.41	1015.28
	18	1015.45	1015.49	1015.50	1015.52	1015.56	1015.63	1015.69	1015.73	1015.74	1015.74	1015.75	1015.76	1015.63
	19	1015.77	1015.75	1015.71	1015.72	1015.75	1015.81	1015.86	1015.89	1015.93	1015.97	1016.04	1016.07	1015.85
	20	1016.09	1016.16	1016.24	1016.28	1016.32	1016.36	1016.38	1016.38	1016.37	1016.34	1016.33	1016.37	1016.30
	21	1016.41	1016.42	1016.39	1016.37	1016.40	1016.42	1016.45	1016.48	1016.49	1016.47	1016.46	1016.47	1016.43
	22	1016.45	1016.45	1016.47	1016.45	1016.42	1016.40	1016.38	1016.39	1016.41	1016.43	1016.44	1016.43	1016.42
	23	1016.45	1016.48	1016.51	1016.55	1016.58	1016.57	1016.56	1016.57	1016.59	1016.58	1016.56	1016.55	1016.54

S.V.I.R.CO. Observatory - Pressure in hectoPascal – October 2016

day	hh	00_05	05_10	10_15	15_20	20_25	25_30	30_35	35_40	40_45	45_50	50_55	55_60	average
5	0	1016.57	1016.56	1016.56	1016.59	1016.64	1016.67	1016.68	1016.64	1016.56	1016.53	1016.53	1016.51	1016.59
	1	1016.51	1016.50	1016.47	1016.47	1016.47	1016.47	1016.49	1016.50	1016.47	1016.42	1016.40	1016.40	1016.46
	2	1016.40	1016.39	1016.38	1016.39	1016.43	1016.46	1016.47	1016.47	1016.47	1016.50	1016.54	1016.57	1016.45
	3	1016.58	1016.58	1016.60	1016.62	1016.62	1016.60	1016.57	1016.53	1016.54	1016.55	1016.55	1016.55	1016.57
	4	1016.57	1016.59	1016.58	1016.56	1016.58	1016.62	1016.64	1016.62	1016.62	1016.62	1016.57	1016.54	1016.59
	5	1016.56	1016.59	1016.59	1016.60	1016.62	1016.61	1016.64	1016.68	1016.67	1016.67	1016.67	1016.65	1016.63
	6	1016.70	1016.76	1016.79	1016.84	1016.86	1016.86	1016.88	1016.90	1016.95	1017.01	1017.03	1017.05	1016.88
	7	1017.02	1017.03	1017.09	1017.09	1017.10	1017.10	1017.11	1017.15	1017.15	1017.18	1017.23	1017.23	1017.12
	8	1017.24	1017.27	1017.27	1017.24	1017.23	1017.21	1017.15	1017.13	1017.13	1017.08	1017.01	1016.97	1017.16
	9	1016.96	1016.97	1016.99	1016.97	1016.93	1016.90	1016.87	1016.83	1016.79	1016.79	1016.80	1016.81	1016.88
	10	1016.78	1016.76	1016.75	1016.75	1016.73	1016.68	1016.62	1016.55	1016.50	1016.43	1016.37	1016.31	1016.60
	11	1016.24	1016.16	1016.10	1016.05	1015.98	1015.91	1015.87	1015.81	1015.74	1015.71	1015.70	1015.67	1015.91
	12	1015.64	1015.63	1015.63	1015.62	1015.58	1015.51	1015.47	1015.45	1015.44	1015.43	1015.37	1015.29	1015.50
	13	1015.22	1015.23	1015.23	1015.24	1015.29	1015.30	1015.31	1015.32	1015.28	1015.23	1015.20	1015.16	1015.25
	14	1015.11	1015.10	1015.09	1015.05	1014.97	1014.91	1014.88	1014.86	1014.82	1014.79	1014.78	1014.79	1014.93
	15	1014.84	1014.83	1014.81	1014.78	1014.71	1014.65	1014.65	1014.67	1014.64	1014.61	1014.60	1014.56	1014.69
	16	1014.52	1014.47	1014.46	1014.50	1014.47	1014.41	1014.40	1014.41	1014.46	1014.54	1014.59	1014.58	1014.48
	17	1014.57	1014.57	1014.58	1014.60	1014.63	1014.64	1014.64	1014.67	1014.70	1014.67	1014.63	1014.58	1014.62
	18	1014.54	1014.53	1014.53	1014.53	1014.56	1014.60	1014.60	1014.58	1014.57	1014.56	1014.54	1014.53	1014.55
	19	1014.50	1014.47	1014.46	1014.46	1014.44	1014.42	1014.43	1014.47	1014.51	1014.49	1014.43	1014.40	1014.45
	20	1014.38	1014.34	1014.34	1014.35	1014.33	1014.33	1014.31	1014.29	1014.33	1014.34	1014.28	1014.26	1014.32
	21	1014.27	1014.23	1014.21	1014.19	1014.12	1014.06	1013.99	1013.94	1013.89	1013.83	1013.81	1013.80	1014.03
	22	1013.78	1013.76	1013.74	1013.71	1013.66	1013.61	1013.55	1013.49	1013.46	1013.43	1013.38	1013.34	1013.57
	23	1013.29	1013.24	1013.20	1013.13	1013.11	1013.16	1013.22	1013.27	1013.28	1013.27	1013.24	1013.16	1013.21
6	0	1012.90	1012.88	1012.77	1012.61	1012.52	1012.46	1012.38	1012.41	1012.60	1012.78	1012.86	1012.82	1012.65
	1	1012.77	1012.85	1012.89	1012.86	1012.74	1012.62	1012.57	1012.49	1012.42	1012.48	1012.64	1012.72	1012.67
	2	1012.73	1012.72	1012.72	1012.76	1012.78	1012.78	1012.74	1012.68	1012.64	1012.58	1012.51	1012.38	1012.67
	3	1012.27	1012.31	1012.36	1012.28	1012.18	1012.17	1012.20	1012.15	1012.04	1012.02	1012.02	1011.94	1012.16
	4	1011.87	1011.85	1011.80	1011.77	1011.78	1011.75	1011.70	1011.70	1011.72	1011.77	1011.83	1011.91	1011.79
	5	1011.98	1012.00	1011.96	1011.94	1011.91	1011.80	1011.68	1011.58	1011.60	1011.66	1011.67	1011.68	1011.79
	6	1011.67	1011.71	1011.80	1011.91	1012.00	1012.04	1012.05	1012.02	1012.03	1012.04	1012.00	1011.91	1011.93
	7	1011.75	1011.62	1011.55	1011.49	1011.39	1011.37	1011.43	1011.45	1011.43	1011.43	1011.46	1011.47	1011.48
	8	1011.45	1011.45	1011.47	1011.48	1011.51	1011.54	1011.52	1011.50	1011.46	1011.39	1011.36	1011.37	1011.46
	9	1011.27	1011.15	1011.14	1011.11	1011.15	1011.15	1011.19	1011.27	1011.26	1011.27	1011.25	1011.23	1011.20
	10	1011.29	1011.42	1011.53	1011.63	1011.80	1011.98	1012.09	1012.22	1012.25	1012.13	1012.01	1011.92	1011.85
	11	1011.83	1011.77	1011.73	1011.72	1011.75	1011.77	1011.87	1011.96	1011.95	1011.88	1011.64	1011.35	1011.77
	12	1011.13	1010.95	1010.71	1010.54	1010.53	1010.55	1010.60	1010.65	1010.67	1010.73	1010.79	1010.78	1010.72
	13	1010.74	1010.72	1010.77	1010.84	1010.88	1010.86	1010.81	1010.80	1010.81	1010.78	1010.74	1010.72	1010.79
	14	1010.64	1010.51	1010.41	1010.36	1010.35	1010.40	1010.45	1010.44	1010.49	1010.51	1010.48	1010.45	1010.46
	15	1010.44	1010.48	1010.50	1010.50	1010.52	1010.55	1010.53	1010.51	1010.51	1010.52	1010.54	1010.52	1010.51
	16	1010.51	1010.55	1010.61	1010.63	1010.60	1010.62	1010.65	1010.72	1010.80	1010.80	1010.72	1010.71	1010.66
	17	1010.75	1010.84	1010.92	1010.94	1010.95	1010.96	1010.98	1011.03	1011.02	1010.89	1010.79	1010.77	1010.90
	18	1010.83	1010.92	1010.91	1010.79	1010.76	1010.80	1010.84	1010.92	1010.95	1010.93	1010.95	1011.01	1010.88
	19	1011.00	1010.93	1010.90	1010.83	1010.72	1010.63	1010.60	1010.65	1010.66	1010.60	1010.55	1010.50	1010.71
	20	1010.42	1010.37	1010.33	1010.29	1010.25	1010.20	1010.15	1010.05	1009.99	1010.04	1010.09	1010.13	1010.19
	21	1010.19	1010.24	1010.25	1010.20	1010.13	1010.11	1010.16	1010.14	1010.04	1010.01	1010.07	1010.27	1010.15
	22	1010.59	1011.03	1011.31	1011.21	1011.08	1010.84	1010.45	1010.43	1010.81	1011.00	1010.75	1010.40	1010.82
	23	1010.25	1010.17	1010.02	1009.78	1009.62	1009.55	1009.52	1009.64	1009.74	1009.69	1009.61	1009.60	1009.76

S.V.I.R.CO. Observatory - Pressure in hectoPascal – October 2016

day	hh	00_05	05_10	10_15	15_20	20_25	25_30	30_35	35_40	40_45	45_50	50_55	55_60	average
7	0	1009.53	1009.48	1009.43	1009.38	1009.36	1009.31	1009.17	1009.04	1008.96	1008.92	1008.80	1008.61	1009.15
	1	1008.45	1008.30	1008.20	1008.12	1008.05	1007.93	1007.84	1007.85	1007.84	1007.84	1007.83	1007.77	1008.00
	2	1007.75	1007.82	1007.85	1007.83	1007.84	1007.82	1007.77	1007.75	1007.73	1007.69	1007.67	1007.67	1007.76
	3	1007.62	1007.50	1007.42	1007.36	1007.31	1007.21	1007.09	1007.04	1006.98	1006.92	1006.82	1006.69	1007.16
	4	1006.59	1006.60	1006.62	1006.58	1006.53	1006.50	1006.47	1006.45	1006.43	1006.38	1006.23	1006.12	1006.46
	5	1006.01	1006.26	1006.60	1006.64	1006.75	1006.80	1006.74	1006.64	1006.46	1006.33	1006.38	1006.44	1006.50
	6	1006.59	1006.67	1006.54	1006.42	1006.41	1006.38	1006.31	1006.24	1006.14	1006.07	1006.05	1006.10	1006.32
	7	1006.39	1006.29	1005.94	1005.89	1005.91	1005.94	1006.01	1006.22	1006.31	1006.23	1006.10	1006.01	1006.10
	8	1006.00	1005.96	1005.87	1005.76	1005.72	1005.77	1005.77	1005.75	1005.75	1005.74	1005.73	1005.69	1005.79
	9	1005.68	1005.74	1005.77	1005.78	1005.82	1005.85	1005.90	1005.96	1006.00	1006.05	1006.11	1006.10	1005.89
	10	1006.09	1006.08	1006.11	1006.20	1006.34	1006.47	1006.55	1006.61	1006.70	1006.78	1006.85	1006.92	1006.47
	11	1007.00	1007.05	1007.07	1007.08	1007.06	1007.05	1007.05	1007.03	1006.98	1006.96	1006.96	1007.01	1007.02
	12	1007.13	1007.23	1007.31	1007.38	1007.43	1007.44	1007.44	1007.49	1007.56	1007.64	1007.71	1007.76	1007.46
	13	1007.86	1007.96	1008.05	1008.17	1008.25	1008.28	1008.32	1008.33	1008.41	1008.51	1008.54	1008.53	1008.27
	14	1008.55	1008.59	1008.60	1008.62	1008.67	1008.71	1008.78	1008.87	1008.92	1008.99	1009.06	1009.12	1008.79
	15	1009.20	1009.28	1009.35	1009.38	1009.44	1009.52	1009.61	1009.67	1009.68	1009.68	1009.70	1009.77	1009.52
	16	1009.88	1010.00	1010.09	1010.16	1010.22	1010.29	1010.37	1010.49	1010.58	1010.65	1010.73	1010.84	1010.36
	17	1010.95	1011.07	1011.15	1011.18	1011.21	1011.24	1011.30	1011.39	1011.48	1011.59	1011.71	1011.77	1011.33
	18	1011.83	1011.91	1011.97	1012.06	1012.15	1012.18	1012.21	1012.26	1012.28	1012.33	1012.43	1012.50	1012.17
	19	1012.53	1012.50	1012.46	1012.45	1012.50	1012.57	1012.62	1012.70	1012.77	1012.80	1012.83	1012.89	1012.63
	20	1012.94	1012.92	1012.93	1012.96	1012.98	1013.00	1013.03	1013.05	1013.13	1013.29	1013.42	1013.48	1013.09
	21	1013.54	1013.66	1013.74	1013.74	1013.71	1013.71	1013.75	1013.80	1013.81	1013.80	1013.78	1013.80	1013.73
	22	1013.83	1013.91	1014.03	1014.06	1014.04	1013.98	1013.95	1014.04	1014.15	1014.18	1014.20	1014.27	1014.05
	23	1014.31	1014.30	1014.32	1014.36	1014.38	1014.35	1014.32	1014.36	1014.36	1014.31	1014.32	1014.36	1014.34
8	0	1014.45	1014.52	1014.56	1014.53	1014.46	1014.43	1014.52	1014.58	1014.53	1014.50	1014.56	1014.64	1014.52
	1	1014.66	1014.67	1014.68	1014.67	1014.63	1014.59	1014.57	1014.60	1014.66	1014.66	1014.62	1014.66	1014.64
	2	1014.71	1014.70	1014.72	1014.77	1014.78	1014.79	1014.80	1014.73	1014.65	1014.67	1014.70	1014.70	1014.72
	3	1014.69	1014.65	1014.63	1014.58	1014.50	1014.50	1014.57	1014.55	1014.54	1014.58	1014.58	1014.53	1014.57
	4	1014.49	1014.45	1014.45	1014.49	1014.52	1014.52	1014.49	1014.50	1014.49	1014.46	1014.45	1014.47	1014.48
	5	1014.50	1014.52	1014.54	1014.54	1014.52	1014.57	1014.59	1014.62	1014.71	1014.76	1014.82	1014.87	1014.63
	6	1014.88	1014.89	1014.89	1014.89	1014.91	1014.96	1015.04	1015.13	1015.21	1015.27	1015.32	1015.35	1015.06
	7	1015.38	1015.37	1015.31	1015.29	1015.36	1015.44	1015.48	1015.51	1015.53	1015.53	1015.51	1015.50	1015.43
	8	1015.49	1015.49	1015.54	1015.57	1015.60	1015.65	1015.71	1015.74	1015.77	1015.80	1015.83	1015.85	1015.67
	9	1015.87	1015.87	1015.85	1015.82	1015.78	1015.73	1015.69	1015.74	1015.79	1015.78	1015.78	1015.76	1015.79
	10	1015.74	1015.77	1015.79	1015.80	1015.77	1015.72	1015.69	1015.64	1015.60	1015.56	1015.50	1015.43	1015.67
	11	1015.37	1015.32	1015.29	1015.29	1015.27	1015.20	1015.15	1015.15	1015.13	1015.11	1015.07	1014.99	1015.19
	12	1014.93	1014.86	1014.79	1014.74	1014.70	1014.65	1014.63	1014.63	1014.61	1014.56	1014.52	1014.51	1014.68
	13	1014.51	1014.48	1014.42	1014.41	1014.46	1014.57	1014.63	1014.63	1014.61	1014.59	1014.59	1014.57	1014.54
	14	1014.57	1014.59	1014.61	1014.62	1014.67	1014.73	1014.75	1014.72	1014.66	1014.64	1014.65	1014.64	1014.65
	15	1014.62	1014.62	1014.60	1014.55	1014.48	1014.38	1014.33	1014.34	1014.37	1014.39	1014.39	1014.38	1014.45
	16	1014.36	1014.33	1014.32	1014.30	1014.25	1014.26	1014.27	1014.33	1014.36	1014.26	1014.20	1014.23	1014.29
	17	1014.29	1014.23	1014.15	1014.05	1014.00	1014.02	1013.99	1014.08	1014.08	1014.00	1014.03	1014.09	1014.08
	18	1014.15	1014.11	1014.00	1013.99	1014.37	1014.51	1014.35	1014.40	1014.48	1014.63	1014.63	1014.62	1014.35
	19	1014.66	1014.65	1014.68	1014.77	1014.88	1014.87	1014.87	1014.92	1014.95	1014.97	1014.95	1014.93	1014.84
	20	1014.93	1014.88	1014.87	1014.90	1014.90	1014.89	1014.88	1014.90	1014.91	1014.92	1014.98	1015.02	1014.91
	21	1015.01	1014.99	1014.96	1014.92	1014.89	1014.87	1014.84	1014.80	1014.75	1014.73	1014.67	1014.60	1014.83
	22	1014.57	1014.56	1014.53	1014.51	1014.49	1014.45	1014.41	1014.35	1014.30	1014.28	1014.23	1014.18	1014.40
	23	1014.15	1014.15	1014.17	1014.18	1014.19	1014.20	1014.21	1014.23	1014.25	1014.27	1014.27	1014.25	1014.21

S.V.I.R.CO. Observatory - Pressure in hectoPascal – October 2016

day	hh	00_05	05_10	10_15	15_20	20_25	25_30	30_35	35_40	40_45	45_50	50_55	55_60	average
9	0	1014.21	1014.21	1014.19	1014.18	1014.19	1014.21	1014.24	1014.24	1014.22	1014.18	1014.15	1014.13	1014.19
	1	1014.10	1014.09	1014.09	1014.06	1014.00	1013.96	1013.95	1013.95	1013.95	1013.99	1014.02	1014.04	1014.02
	2	1014.04	1014.04	1014.06	1014.07	1014.06	1014.06	1014.06	1014.08	1014.10	1014.08	1014.07	1014.06	1014.06
	3	1014.08	1014.07	1014.05	1014.06	1014.10	1014.10	1014.09	1014.11	1014.15	1014.17	1014.16	1014.17	1014.11
	4	1014.20	1014.23	1014.27	1014.28	1014.30	1014.32	1014.35	1014.38	1014.41	1014.44	1014.44	1014.43	1014.33
	5	1014.46	1014.52	1014.57	1014.57	1014.58	1014.62	1014.67	1014.72	1014.74	1014.74	1014.77	1014.82	1014.64
	6	1014.88	1014.96	1015.06	1015.14	1015.15	1015.14	1015.19	1015.23	1015.24	1015.27	1015.29	1015.31	1015.15
	7	1015.35	1015.40	1015.46	1015.52	1015.54	1015.57	1015.63	1015.67	1015.71	1015.74	1015.75	1015.75	1015.59
	8	1015.76	1015.76	1015.74	1015.75	1015.77	1015.78	1015.77	1015.75	1015.72	1015.70	1015.71	1015.73	1015.74
	9	1015.74	1015.73	1015.72	1015.72	1015.70	1015.67	1015.66	1015.64	1015.62	1015.61	1015.62	1015.57	1015.66
	10	1015.52	1015.50	1015.46	1015.41	1015.34	1015.28	1015.22	1015.20	1015.15	1015.10	1015.08	1015.06	1015.28
	11	1015.00	1014.92	1014.87	1014.83	1014.79	1014.78	1014.76	1014.70	1014.62	1014.53	1014.48	1014.43	1014.72
	12	1014.36	1014.31	1014.32	1014.36	1014.36	1014.33	1014.28	1014.22	1014.23	1014.24	1014.17	1014.10	1014.27
	13	1014.05	1014.04	1014.04	1013.99	1013.96	1013.94	1013.90	1013.85	1013.82	1013.79	1013.76	1013.76	1013.91
	14	1013.77	1013.80	1013.83	1013.85	1013.88	1013.90	1013.86	1013.82	1013.77	1013.75	1013.76	1013.80	1013.81
	15	1013.83	1013.86	1013.90	1013.87	1013.83	1013.82	1013.84	1013.86	1013.91	1013.96	1013.97	1013.95	1013.88
	16	1013.93	1013.95	1013.97	1014.00	1014.00	1013.95	1013.92	1013.93	1013.95	1013.95	1013.97	1014.00	1013.96
	17	1014.07	1014.16	1014.22	1014.27	1014.31	1014.36	1014.38	1014.39	1014.37	1014.33	1014.31	1014.32	1014.29
	18	1014.33	1014.31	1014.32	1014.31	1014.28	1014.29	1014.29	1014.30	1014.34	1014.38	1014.42	1014.52	1014.34
	19	1014.59	1014.58	1014.60	1014.66	1014.67	1014.67	1014.74	1014.81	1014.82	1014.82	1014.83	1014.86	1014.72
	20	1014.84	1014.76	1014.72	1014.67	1014.64	1014.64	1014.63	1014.61	1014.61	1014.58	1014.53	1014.46	1014.64
	21	1014.35	1014.26	1014.20	1014.19	1014.19	1014.19	1014.17	1014.12	1014.13	1014.19	1014.21	1014.19	1014.20
	22	1014.18	1014.20	1014.22	1014.21	1014.20	1014.11	1014.05	1014.05	1014.01	1014.00	1014.07	1014.12	1014.12
	23	1014.06	1013.98	1013.95	1013.96	1013.93	1013.85	1013.73	1013.64	1013.60	1013.60	1013.59	1013.59	1013.79
10	0	1013.44	1013.43	1013.41	1013.33	1013.17	1013.11	1013.17	1013.21	1013.20	1013.13	1013.04	1012.99	1013.21
	1	1012.96	1012.98	1012.93	1012.89	1012.89	1012.86	1012.81	1012.76	1012.72	1012.69	1012.63	1012.56	1012.80
	2	1012.51	1012.47	1012.42	1012.38	1012.42	1012.48	1012.50	1012.45	1012.37	1012.37	1012.38	1012.32	1012.42
	3	1012.27	1012.23	1012.18	1012.16	1012.14	1012.10	1012.10	1012.10	1012.02	1011.98	1011.99	1012.04	1012.11
	4	1012.14	1012.20	1012.18	1012.08	1012.06	1012.10	1012.07	1012.04	1012.00	1011.95	1011.95	1012.00	1012.06
	5	1012.06	1012.09	1012.09	1012.07	1012.08	1012.12	1012.14	1012.12	1012.05	1012.01	1012.01	1012.02	1012.07
	6	1011.94	1011.82	1011.85	1011.93	1011.95	1011.99	1012.03	1012.05	1012.09	1012.12	1012.14	1012.16	1012.00
	7	1012.16	1012.14	1012.16	1012.13	1012.05	1012.03	1012.05	1012.06	1012.08	1012.09	1012.11	1012.16	1012.10
	8	1012.16	1012.12	1012.08	1012.04	1012.03	1012.04	1012.04	1012.04	1012.06	1012.10	1012.09	1012.05	1012.07
	9	1012.06	1012.09	1012.08	1012.07	1012.09	1012.09	1012.09	1012.11	1012.11	1012.11	1012.11	1012.03	1012.08
	10	1012.01	1012.00	1011.97	1011.93	1011.87	1011.85	1011.81	1011.74	1011.70	1011.69	1011.68	1011.63	1011.82
	11	1011.50	1011.42	1011.34	1011.24	1011.21	1011.24	1011.24	1011.18	1011.06	1010.96	1010.95	1010.93	1011.19
	12	1010.87	1010.84	1010.80	1010.76	1010.74	1010.71	1010.72	1010.73	1010.72	1010.73	1010.72	1010.71	1010.75
	13	1010.70	1010.74	1010.74	1010.68	1010.68	1010.69	1010.73	1010.77	1010.79	1010.81	1010.82	1010.81	1010.75
	14	1010.78	1010.75	1010.73	1010.70	1010.68	1010.70	1010.73	1010.75	1010.78	1010.81	1010.84	1010.83	1010.75
	15	1010.79	1010.76	1010.76	1010.80	1010.85	1010.82	1010.77	1010.75	1010.74	1010.74	1010.77	1010.81	1010.78
	16	1010.86	1010.96	1011.05	1011.11	1011.14	1011.21	1011.28	1011.31	1011.33	1011.39	1011.47	1011.51	1011.22
	17	1011.54	1011.56	1011.57	1011.59	1011.62	1011.59	1011.55	1011.56	1011.56	1011.57	1011.61	1011.65	1011.58
	18	1011.68	1011.73	1011.76	1011.74	1011.76	1011.80	1011.84	1011.88	1011.87	1011.88	1011.90	1011.88	1011.81
	19	1011.88	1011.90	1011.92	1011.94	1011.97	1011.98	1012.00	1012.01	1011.98	1011.97	1012.00	1012.02	1011.96
	20	1012.00	1012.01	1012.03	1012.04	1012.05	1012.06	1012.07	1012.06	1012.04	1012.01	1011.99	1011.99	1012.03
	21	1012.01	1012.07	1012.12	1012.09	1012.06	1012.02	1011.96	1011.93	1011.95	1011.99	1011.99	1011.94	1012.01
	22	1011.91	1011.89	1011.87	1011.90	1011.93	1011.91	1011.91	1011.91	1011.85	1011.82	1011.84	1011.83	1011.88
	23	1011.77	1011.69	1011.62	1011.61	1011.64	1011.68	1011.70	1011.67	1011.64	1011.61	1011.57	1011.55	1011.64

S.V.I.R.CO. Observatory - Pressure in hectoPascal – October 2016

day	hh	00_05	05_10	10_15	15_20	20_25	25_30	30_35	35_40	40_45	45_50	50_55	55_60	average
11	0	1011.49	1011.45	1011.32	1011.22	1011.14	1011.04	1010.97	1010.93	1010.95	1010.91	1010.81	1010.78	1011.06
	1	1010.78	1010.76	1010.72	1010.69	1010.66	1010.60	1010.55	1010.50	1010.43	1010.41	1010.44	1010.49	1010.58
	2	1010.49	1010.41	1010.31	1010.26	1010.21	1010.13	1010.09	1010.05	1010.02	1010.01	1010.03	1010.03	1010.17
	3	1010.01	1009.99	1009.92	1009.86	1009.83	1009.78	1009.78	1009.79	1009.84	1009.89	1009.81	1009.69	1009.85
	4	1009.64	1009.62	1009.59	1009.56	1009.59	1009.61	1009.55	1009.53	1009.55	1009.57	1009.58	1009.51	1009.57
	5	1009.37	1009.29	1009.31	1009.27	1009.17	1009.11	1009.08	1009.11	1009.09	1009.00	1008.97	1008.93	1009.14
	6	1008.88	1008.88	1008.92	1008.97	1008.99	1009.03	1009.09	1009.18	1009.18	1009.14	1009.13	1009.11	1009.04
	7	1009.07	1009.01	1008.97	1009.01	1009.05	1008.99	1008.93	1008.91	1008.89	1008.86	1008.85	1008.87	1008.95
	8	1008.89	1008.88	1008.90	1008.90	1008.87	1008.87	1008.87	1008.82	1008.74	1008.68	1008.64	1008.60	1008.80
	9	1008.55	1008.52	1008.48	1008.44	1008.44	1008.41	1008.36	1008.26	1008.15	1008.06	1008.03	1007.99	1008.31
	10	1007.90	1007.82	1007.74	1007.67	1007.64	1007.66	1007.68	1007.68	1007.65	1007.57	1007.47	1007.38	1007.65
	11	1007.31	1007.27	1007.19	1007.10	1007.04	1006.98	1006.89	1006.77	1006.69	1006.66	1006.64	1006.75	1006.94
	12	1007.07	1007.39	1007.47	1007.37	1007.26	1007.12	1006.88	1006.68	1006.57	1006.43	1006.32	1006.24	1006.90
	13	1006.20	1006.18	1006.18	1006.17	1006.14	1006.07	1006.02	1006.04	1005.99	1005.89	1005.77	1005.66	1006.02
	14	1005.51	1005.38	1005.28	1005.21	1005.14	1005.02	1004.89	1004.81	1004.80	1004.67	1004.48	1004.34	1004.96
	15	1004.21	1004.11	1004.52	1004.88	1004.80	1004.82	1004.80	1004.77	1004.77	1004.81	1004.92	1005.00	1004.70
	16	1005.07	1005.19	1005.26	1005.28	1005.27	1005.33	1005.51	1005.64	1005.63	1005.59	1005.58	1005.60	1005.41
	17	1005.59	1005.60	1005.62	1005.65	1005.68	1005.67	1005.70	1005.73	1005.70	1005.73	1005.83	1005.90	1005.70
	18	1005.95	1005.96	1006.00	1006.10	1006.17	1006.22	1006.26	1006.22	1006.14	1006.18	1006.25	1006.27	1006.14
	19	1006.28	1006.33	1006.35	1006.33	1006.33	1006.38	1006.49	1006.56	1006.56	1006.61	1006.67	1006.75	1006.47
	20	1006.88	1006.98	1007.11	1007.24	1007.31	1007.32	1007.27	1007.27	1007.36	1007.44	1007.37	1007.37	1007.24
	21	1007.47	1007.54	1007.55	1007.55	1007.55	1007.56	1007.59	1007.61	1007.60	1007.57	1007.58	1007.62	1007.56
	22	1007.67	1007.69	1007.73	1007.79	1007.79	1007.79	1007.80	1007.79	1007.76	1007.72	1007.71	1007.68	1007.74
	23	1007.64	1007.62	1007.60	1007.60	1007.64	1007.66	1007.66	1007.67	1007.63	1007.58	1007.55	1007.55	1007.61
12	0	1007.61	1007.68	1007.78	1007.85	1007.93	1008.06	1008.13	1008.13	1008.14	1008.11	1008.08	1008.06	1007.98
	1	1008.05	1008.09	1008.18	1008.27	1008.34	1008.40	1008.46	1008.53	1008.54	1008.48	1008.45	1008.45	1008.35
	2	1008.46	1008.46	1008.50	1008.54	1008.53	1008.53	1008.54	1008.58	1008.66	1008.71	1008.72	1008.73	1008.58
	3	1008.75	1008.81	1008.89	1008.98	1009.07	1009.12	1009.14	1009.13	1009.14	1009.18	1009.26	1009.34	1009.07
	4	1009.46	1009.62	1009.71	1009.72	1009.65	1009.63	1009.72	1009.81	1009.94	1010.09	1010.21	1010.31	1009.82
	5	1010.38	1010.40	1010.41	1010.44	1010.45	1010.46	1010.49	1010.52	1010.54	1010.57	1010.63	1010.74	1010.50
	6	1010.89	1011.02	1011.10	1011.17	1011.22	1011.23	1011.28	1011.35	1011.38	1011.37	1011.38	1011.40	1011.23
	7	1011.44	1011.49	1011.51	1011.55	1011.62	1011.72	1011.80	1011.84	1011.84	1011.85	1011.93	1012.05	1011.72
	8	1012.06	1012.06	1012.12	1012.17	1012.22	1012.25	1012.27	1012.27	1012.27	1012.28	1012.30	1012.36	1012.22
	9	1012.47	1012.59	1012.68	1012.71	1012.67	1012.65	1012.64	1012.64	1012.68	1012.73	1012.80	1012.86	1012.67
	10	1012.88	1012.86	1012.85	1012.87	1012.84	1012.81	1012.80	1012.80	1012.77	1012.71	1012.69	1012.67	1012.79
	11	1012.65	1012.70	1012.69	1012.67	1012.72	1012.74	1012.76	1012.75	1012.70	1012.71	1012.68	1012.62	1012.70
	12	1012.59	1012.59	1012.56	1012.50	1012.54	1012.57	1012.54	1012.54	1012.52	1012.46	1012.46	1012.51	1012.53
	13	1012.57	1012.57	1012.56	1012.55	1012.51	1012.51	1012.52	1012.53	1012.56	1012.56	1012.55	1012.56	1012.54
	14	1012.56	1012.57	1012.59	1012.56	1012.54	1012.54	1012.51	1012.50	1012.52	1012.55	1012.59	1012.60	1012.55
	15	1012.63	1012.66	1012.67	1012.67	1012.67	1012.69	1012.71	1012.69	1012.72	1012.81	1012.91	1012.99	1012.73
	16	1013.03	1013.09	1013.13	1013.14	1013.20	1013.31	1013.40	1013.45	1013.46	1013.49	1013.57	1013.63	1013.32
	17	1013.70	1013.79	1013.83	1013.94	1014.09	1014.17	1014.21	1014.21	1014.19	1014.18	1014.20	1014.20	1014.06
	18	1014.18	1014.18	1014.13	1014.15	1014.19	1014.18	1014.22	1014.36	1014.45	1014.44	1014.41	1014.34	1014.27
	19	1014.31	1014.39	1014.45	1014.43	1014.45	1014.55	1014.65	1014.70	1014.74	1014.77	1014.81	1014.85	1014.59
	20	1014.87	1014.88	1014.89	1014.91	1014.96	1015.03	1015.04	1014.99	1014.97	1014.96	1014.95	1014.96	1014.95
	21	1014.99	1015.07	1015.16	1015.23	1015.28	1015.27	1015.24	1015.22	1015.26	1015.33	1015.31	1015.25	1015.22
	22	1015.18	1015.12	1015.10	1015.05	1015.03	1015.05	1015.06	1015.07	1015.07	1015.09	1015.09	1015.05	1015.08
	23	1015.03	1015.05	1015.11	1015.13	1015.09	1015.07	1015.10	1015.14	1015.20	1015.21	1015.19	1015.17	1015.12

S.V.I.R.CO. Observatory - Pressure in hectoPascal – October 2016

day	hh	00_05	05_10	10_15	15_20	20_25	25_30	30_35	35_40	40_45	45_50	50_55	55_60	average
13	0	1015.13	1015.12	1015.10	1015.04	1014.99	1014.99	1014.98	1014.97	1014.95	1014.96	1014.99	1014.96	1015.01
	1	1014.91	1014.88	1014.84	1014.76	1014.66	1014.57	1014.50	1014.43	1014.39	1014.37	1014.34	1014.30	1014.58
	2	1014.27	1014.22	1014.21	1014.21	1014.19	1014.18	1014.18	1014.20	1014.18	1014.16	1014.20	1014.27	1014.20
	3	1014.34	1014.41	1014.45	1014.48	1014.53	1014.50	1014.39	1014.39	1014.48	1014.51	1014.45	1014.35	1014.44
	4	1014.27	1014.22	1014.26	1014.23	1014.10	1013.94	1013.80	1013.73	1013.68	1013.61	1013.58	1013.58	1013.91
	5	1013.57	1013.66	1013.72	1013.70	1013.64	1013.62	1013.81	1013.98	1014.09	1014.27	1014.43	1014.49	1013.91
	6	1014.51	1014.51	1014.44	1014.33	1014.22	1014.28	1014.42	1014.56	1014.57	1014.26	1013.91	1013.92	1014.33
	7	1014.18	1014.35	1014.47	1014.52	1014.42	1014.48	1014.59	1014.47	1014.33	1014.31	1014.37	1014.46	1014.41
	8	1014.57	1014.61	1014.53	1014.40	1014.35	1014.31	1014.28	1014.27	1014.23	1014.26	1014.44	1014.72	1014.41
	9	1014.94	1014.98	1014.91	1014.78	1014.71	1014.73	1014.55	1014.38	1014.48	1014.74	1015.02	1015.16	1014.78
	10	1015.23	1015.16	1014.97	1014.92	1014.86	1014.66	1014.56	1014.48	1014.26	1014.14	1014.23	1014.23	1014.64
	11	1014.05	1013.87	1013.85	1013.83	1013.74	1013.66	1013.58	1013.46	1013.28	1013.15	1013.17	1013.21	1013.57
	12	1013.15	1013.06	1013.00	1012.99	1012.97	1012.92	1012.94	1012.95	1012.89	1012.83	1012.69	1012.55	1012.91
	13	1012.49	1012.47	1012.46	1012.37	1012.20	1012.06	1011.93	1011.87	1011.86	1011.80	1011.76	1011.68	1012.08
	14	1011.59	1011.55	1011.46	1011.38	1011.39	1011.38	1011.33	1011.31	1011.26	1011.25	1011.26	1011.29	1011.37
	15	1011.34	1011.34	1011.32	1011.30	1011.29	1011.32	1011.40	1011.48	1011.50	1011.54	1011.57	1011.50	1011.41
	16	1011.45	1011.47	1011.48	1011.49	1011.54	1011.61	1011.61	1011.58	1011.58	1011.52	1011.45	1011.47	1011.52
	17	1011.47	1011.36	1011.19	1011.08	1011.07	1011.13	1011.10	1011.11	1011.16	1011.19	1011.29	1011.32	1011.20
	18	1011.32	1011.29	1011.24	1011.24	1011.22	1011.20	1011.16	1011.12	1011.05	1011.01	1011.06	1011.10	1011.17
	19	1011.12	1011.13	1011.16	1011.23	1011.26	1011.25	1011.28	1011.30	1011.26	1011.23	1011.24	1011.23	1011.22
	20	1011.21	1011.17	1011.11	1011.09	1011.10	1011.14	1011.18	1011.18	1011.14	1011.14	1011.19	1011.16	1011.15
	21	1011.08	1010.99	1010.88	1010.81	1010.74	1010.67	1010.63	1010.59	1010.53	1010.51	1010.54	1010.59	1010.71
	22	1010.58	1010.53	1010.51	1010.53	1010.58	1010.61	1010.61	1010.50	1010.43	1010.47	1010.45	1010.37	1010.51
	23	1010.31	1010.24	1010.20	1010.20	1010.15	1010.06	1010.10	1010.19	1010.27	1010.29	1010.30	1010.31	1010.22
14	0	1010.34	1010.34	1010.26	1010.18	1010.17	1010.12	1010.09	1010.09	1010.03	1009.98	1009.96	1009.91	1010.11
	1	1009.86	1009.77	1009.69	1009.69	1009.63	1009.58	1009.54	1009.47	1009.49	1009.57	1009.62	1009.63	1009.63
	2	1009.62	1009.59	1009.61	1009.60	1009.57	1009.64	1009.77	1009.94	1010.11	1010.31	1010.42	1010.43	1009.88
	3	1010.35	1010.20	1010.22	1010.25	1010.28	1010.33	1010.28	1010.21	1010.16	1010.12	1010.07	1010.01	1010.20
	4	1009.93	1009.84	1009.83	1009.89	1009.80	1009.64	1009.58	1009.44	1009.36	1009.38	1009.38	1009.32	1009.61
	5	1009.24	1009.26	1009.39	1009.51	1009.54	1009.53	1009.51	1009.56	1009.50	1009.42	1009.43	1009.33	1009.43
	6	1009.21	1009.09	1008.89	1008.83	1008.96	1009.10	1009.13	1008.97	1008.78	1008.65	1008.63	1008.77	1008.91
	7	1009.01	1009.18	1009.21	1009.28	1009.34	1009.33	1009.24	1009.15	1009.16	1009.17	1009.12	1009.10	1009.19
	8	1009.19	1009.36	1009.54	1009.72	1009.80	1009.80	1009.83	1009.99	1010.16	1010.27	1010.23	1010.10	1009.83
	9	1010.07	1010.11	1010.17	1010.26	1010.36	1010.38	1010.23	1010.04	1009.76	1009.37	1009.23	1009.25	1009.93
	10	1009.23	1009.09	1008.72	1008.50	1008.54	1008.61	1008.48	1008.16	1008.07	1008.07	1007.95	1007.80	1008.43
	11	1007.65	1007.54	1007.50	1007.47	1007.35	1007.20	1007.16	1007.14	1007.08	1007.01	1007.00	1006.94	1007.25
	12	1006.84	1006.86	1006.88	1006.93	1007.13	1007.17	1007.13	1007.31	1007.40	1007.23	1006.96	1006.75	1007.05
	13	1006.85	1007.19	1007.50	1007.68	1007.85	1007.99	1007.98	1007.79	1007.64	1007.56	1007.38	1007.37	1007.56
	14	1007.47	1007.40	1007.32	1007.18	1006.94	1006.78	1006.65	1006.55	1006.59	1006.51	1006.22	1005.99	1006.80
	15	1005.80	1005.70	1005.71	1005.75	1005.58	1005.24	1005.18	1005.36	1005.47	1005.49	1005.54	1005.55	1005.53
	16	1005.60	1005.71	1005.83	1005.89	1005.95	1006.10	1006.22	1006.35	1006.62	1006.89	1007.17	1007.44	1006.31
	17	1007.51	1007.52	1007.55	1007.73	1007.88	1007.87	1007.89	1007.96	1008.01	1008.06	1008.30	1008.63	1007.91
	18	1008.63	1008.53	1008.53	1008.58	1008.66	1008.56	1008.42	1008.28	1008.19	1008.21	1008.20	1008.21	1008.41
	19	1008.25	1008.23	1008.24	1008.26	1008.22	1008.18	1008.23	1008.34	1008.41	1008.55	1008.78	1008.74	1008.37
	20	1008.61	1008.61	1008.60	1008.54	1008.45	1008.30	1008.27	1008.39	1008.45	1008.55	1008.61	1008.65	1008.50
	21	1008.57	1008.44	1008.38	1008.34	1008.43	1008.54	1008.58	1008.69	1008.83	1008.91	1008.95	1009.02	1008.64
	22	1009.11	1009.24	1009.36	1009.39	1009.33	1009.34	1009.43	1009.50	1009.50	1009.50	1009.61	1009.68	1009.41
	23	1009.71	1009.77	1009.81	1009.82	1009.76	1009.70	1009.67	1009.68	1009.78	1009.86	1009.87	1009.85	1009.77

S.V.I.R.CO. Observatory - Pressure in hectoPascal – October 2016

day	hh	00_05	05_10	10_15	15_20	20_25	25_30	30_35	35_40	40_45	45_50	50_55	55_60	average
15	0	1009.88	1009.93	1010.00	1010.00	1009.99	1010.01	1010.03	1010.05	1010.10	1010.12	1010.12	1010.12	1010.03
	1	1010.12	1010.17	1010.24	1010.27	1010.29	1010.33	1010.32	1010.31	1010.33	1010.38	1010.44	1010.47	1010.30
	2	1010.48	1010.50	1010.53	1010.60	1010.66	1010.70	1010.74	1010.79	1010.85	1010.89	1010.89	1010.82	1010.70
	3	1010.79	1010.85	1010.93	1010.98	1011.00	1010.97	1010.94	1010.93	1010.94	1010.98	1011.03	1011.11	1010.95
	4	1011.20	1011.30	1011.39	1011.45	1011.48	1011.50	1011.50	1011.52	1011.56	1011.57	1011.59	1011.61	1011.47
	5	1011.61	1011.62	1011.65	1011.66	1011.70	1011.79	1011.87	1011.90	1011.95	1012.03	1012.13	1012.22	1011.84
	6	1012.28	1012.33	1012.40	1012.48	1012.55	1012.56	1012.55	1012.56	1012.63	1012.72	1012.78	1012.85	1012.56
	7	1012.92	1012.96	1013.03	1013.13	1013.20	1013.24	1013.29	1013.36	1013.41	1013.43	1013.47	1013.53	1013.25
	8	1013.57	1013.61	1013.66	1013.71	1013.72	1013.74	1013.81	1013.85	1013.82	1013.83	1013.87	1013.87	1013.75
	9	1013.86	1013.88	1013.91	1013.95	1014.00	1014.02	1014.05	1014.07	1014.08	1014.10	1014.15	1014.22	1014.02
	10	1014.26	1014.27	1014.26	1014.26	1014.26	1014.25	1014.20	1014.19	1014.27	1014.33	1014.36	1014.38	1014.27
	11	1014.39	1014.37	1014.33	1014.33	1014.32	1014.33	1014.33	1014.30	1014.27	1014.26	1014.25	1014.25	1014.31
	12	1014.25	1014.28	1014.25	1014.20	1014.21	1014.21	1014.21	1014.22	1014.21	1014.20	1014.22	1014.20	1014.22
	13	1014.17	1014.15	1014.14	1014.11	1014.09	1014.10	1014.13	1014.16	1014.16	1014.16	1014.18	1014.21	1014.14
	14	1014.24	1014.25	1014.26	1014.28	1014.32	1014.37	1014.41	1014.44	1014.44	1014.43	1014.43	1014.47	1014.36
	15	1014.50	1014.52	1014.56	1014.60	1014.63	1014.68	1014.73	1014.74	1014.75	1014.78	1014.79	1014.82	1014.67
	16	1014.83	1014.86	1014.88	1014.87	1014.87	1014.89	1014.93	1014.97	1015.02	1015.11	1015.17	1015.21	1014.96
	17	1015.29	1015.37	1015.37	1015.38	1015.46	1015.55	1015.59	1015.62	1015.66	1015.68	1015.69	1015.71	1015.53
	18	1015.75	1015.77	1015.80	1015.86	1015.90	1015.95	1016.05	1016.11	1016.14	1016.19	1016.24	1016.29	1016.00
	19	1016.33	1016.36	1016.40	1016.47	1016.55	1016.61	1016.65	1016.71	1016.78	1016.86	1016.92	1016.97	1016.63
	20	1016.98	1016.98	1017.00	1017.05	1017.11	1017.13	1017.17	1017.24	1017.30	1017.34	1017.41	1017.48	1017.18
	21	1017.53	1017.55	1017.57	1017.60	1017.64	1017.67	1017.68	1017.71	1017.73	1017.74	1017.73	1017.72	1017.65
	22	1017.73	1017.73	1017.71	1017.69	1017.68	1017.71	1017.75	1017.76	1017.78	1017.83	1017.89	1017.94	1017.77
	23	1017.97	1018.00	1018.03	1018.04	1018.02	1017.99	1017.97	1017.97	1017.98	1018.00	1018.02	1018.05	1018.00
16	0	1018.02	1018.04	1018.04	1018.02	1018.03	1018.04	1018.05	1018.07	1018.09	1018.15	1018.17	1018.17	1018.07
	1	1018.16	1018.14	1018.12	1018.08	1018.03	1018.02	1018.01	1018.01	1018.03	1018.04	1018.01	1017.98	1018.05
	2	1017.98	1018.00	1017.99	1017.98	1017.99	1018.00	1018.03	1018.04	1018.06	1018.07	1018.07	1018.09	1018.02
	3	1018.07	1018.07	1018.09	1018.10	1018.07	1018.05	1018.02	1017.99	1018.00	1018.03	1018.04	1018.08	1018.05
	4	1018.12	1018.10	1018.06	1018.07	1018.10	1018.11	1018.12	1018.16	1018.20	1018.24	1018.29	1018.31	1018.15
	5	1018.32	1018.34	1018.37	1018.40	1018.42	1018.43	1018.47	1018.53	1018.55	1018.55	1018.58	1018.64	1018.47
	6	1018.69	1018.70	1018.74	1018.84	1018.95	1019.03	1019.07	1019.10	1019.14	1019.18	1019.23	1019.26	1018.99
	7	1019.27	1019.29	1019.34	1019.39	1019.42	1019.45	1019.47	1019.50	1019.56	1019.62	1019.66	1019.69	1019.47
	8	1019.74	1019.80	1019.84	1019.87	1019.89	1019.90	1019.93	1019.95	1019.96	1019.97	1019.97	1019.98	1019.90
	9	1019.98	1019.97	1019.97	1019.96	1019.92	1019.88	1019.89	1019.92	1019.95	1019.97	1020.00	1020.00	1019.95
	10	1019.98	1019.97	1019.95	1019.92	1019.89	1019.86	1019.83	1019.81	1019.77	1019.70	1019.64	1019.59	1019.82
	11	1019.54	1019.47	1019.39	1019.34	1019.33	1019.29	1019.24	1019.19	1019.15	1019.11	1019.07	1019.02	1019.26
	12	1018.95	1018.93	1018.95	1018.93	1018.90	1018.90	1018.87	1018.82	1018.79	1018.77	1018.74	1018.73	1018.85
	13	1018.73	1018.74	1018.74	1018.70	1018.67	1018.65	1018.65	1018.67	1018.68	1018.65	1018.60	1018.53	1018.66
	14	1018.45	1018.40	1018.41	1018.47	1018.49	1018.44	1018.41	1018.40	1018.44	1018.48	1018.51	1018.56	1018.45
	15	1018.62	1018.72	1018.75	1018.74	1018.78	1018.82	1018.89	1018.91	1018.90	1018.92	1018.95	1018.98	1018.83
	16	1019.01	1019.01	1019.02	1019.05	1019.08	1019.09	1019.09	1019.11	1019.13	1019.18	1019.27	1019.35	1019.11
	17	1019.41	1019.46	1019.54	1019.62	1019.69	1019.72	1019.74	1019.79	1019.84	1019.87	1019.88	1019.85	1019.70
	18	1019.88	1019.95	1019.99	1020.02	1020.10	1020.20	1020.26	1020.28	1020.31	1020.36	1020.44	1020.49	1020.19
	19	1020.50	1020.55	1020.57	1020.58	1020.63	1020.69	1020.69	1020.67	1020.66	1020.65	1020.69	1020.79	1020.64
	20	1020.87	1020.90	1020.86	1020.83	1020.86	1020.87	1020.86	1020.86	1020.88	1020.89	1020.94	1021.02	1020.89
	21	1021.06	1021.05	1021.04	1021.05	1021.07	1021.09	1021.11	1021.12	1021.11	1021.11	1021.12	1021.15	1021.09
	22	1021.19	1021.24	1021.30	1021.33	1021.28	1021.25	1021.26	1021.28	1021.30	1021.28	1021.26	1021.27	1021.27
	23	1021.30	1021.33	1021.35	1021.35	1021.35	1021.39	1021.43	1021.42	1021.38	1021.38	1021.42	1021.44	1021.38

S.V.I.R.CO. Observatory - Pressure in hectoPascal – October 2016

day	hh	00_05	05_10	10_15	15_20	20_25	25_30	30_35	35_40	40_45	45_50	50_55	55_60	average
17	0	1021.43	1021.45	1021.48	1021.51	1021.57	1021.62	1021.59	1021.53	1021.47	1021.44	1021.45	1021.42	1021.50
	1	1021.39	1021.38	1021.34	1021.28	1021.25	1021.24	1021.23	1021.23	1021.21	1021.20	1021.17	1021.12	1021.25
	2	1021.06	1021.02	1021.07	1021.14	1021.16	1021.14	1021.11	1021.07	1021.03	1021.02	1021.04	1021.07	1021.08
	3	1021.10	1021.08	1021.03	1021.00	1021.02	1021.00	1020.95	1020.95	1020.99	1021.04	1021.04	1021.03	1021.02
	4	1021.04	1021.06	1021.08	1021.13	1021.18	1021.21	1021.23	1021.22	1021.20	1021.21	1021.25	1021.29	1021.17
	5	1021.31	1021.29	1021.28	1021.29	1021.30	1021.32	1021.37	1021.42	1021.46	1021.48	1021.49	1021.52	1021.38
	6	1021.55	1021.62	1021.74	1021.79	1021.81	1021.86	1021.93	1022.02	1022.08	1022.13	1022.14	1022.16	1021.90
	7	1022.22	1022.27	1022.28	1022.31	1022.36	1022.40	1022.44	1022.45	1022.43	1022.46	1022.50	1022.52	1022.38
	8	1022.54	1022.55	1022.56	1022.58	1022.59	1022.61	1022.66	1022.72	1022.79	1022.81	1022.80	1022.80	1022.67
	9	1022.79	1022.75	1022.73	1022.75	1022.74	1022.71	1022.69	1022.70	1022.73	1022.74	1022.75	1022.74	1022.73
	10	1022.74	1022.72	1022.69	1022.66	1022.62	1022.56	1022.51	1022.49	1022.46	1022.39	1022.30	1022.24	1022.53
	11	1022.19	1022.17	1022.15	1022.10	1022.03	1021.95	1021.90	1021.87	1021.83	1021.78	1021.75	1021.71	1021.95
	12	1021.66	1021.64	1021.65	1021.65	1021.61	1021.58	1021.58	1021.58	1021.56	1021.52	1021.50	1021.51	1021.58
	13	1021.48	1021.40	1021.33	1021.27	1021.24	1021.24	1021.19	1021.15	1021.22	1021.26	1021.22	1021.20	1021.26
	14	1021.17	1021.13	1021.12	1021.14	1021.14	1021.14	1021.14	1021.10	1021.09	1021.07	1021.04	1021.00	1021.11
	15	1020.96	1020.93	1020.91	1020.91	1020.93	1020.98	1021.02	1021.05	1021.07	1021.05	1021.02	1021.05	1020.99
	16	1021.08	1021.07	1021.05	1021.05	1021.10	1021.18	1021.23	1021.26	1021.30	1021.35	1021.38	1021.39	1021.20
	17	1021.41	1021.44	1021.43	1021.42	1021.45	1021.50	1021.55	1021.59	1021.58	1021.56	1021.57	1021.58	1021.51
	18	1021.58	1021.57	1021.56	1021.54	1021.54	1021.52	1021.50	1021.49	1021.49	1021.52	1021.56	1021.60	1021.54
	19	1021.62	1021.65	1021.67	1021.67	1021.67	1021.69	1021.73	1021.74	1021.76	1021.83	1021.86	1021.80	1021.72
	20	1021.77	1021.76	1021.72	1021.69	1021.74	1021.79	1021.75	1021.72	1021.71	1021.72	1021.74	1021.75	1021.74
	21	1021.76	1021.73	1021.71	1021.70	1021.66	1021.61	1021.57	1021.50	1021.48	1021.47	1021.43	1021.45	1021.59
	22	1021.50	1021.53	1021.52	1021.47	1021.42	1021.40	1021.42	1021.41	1021.41	1021.41	1021.32	1021.19	1021.41
	23	1021.18	1021.23	1021.23	1021.21	1021.21	1021.22	1021.19	1021.15	1021.10	1021.01	1020.98	1020.96	1021.14
18	0	1020.83	1020.79	1020.77	1020.80	1020.76	1020.63	1020.52	1020.49	1020.53	1020.54	1020.51	1020.54	1020.63
	1	1020.60	1020.56	1020.51	1020.53	1020.55	1020.64	1020.73	1020.73	1020.76	1020.80	1020.69	1020.52	1020.63
	2	1020.46	1020.48	1020.48	1020.40	1020.30	1020.30	1020.28	1020.20	1020.13	1020.10	1020.15	1020.13	1020.28
	3	1020.10	1020.10	1020.09	1020.11	1020.15	1020.17	1020.13	1020.04	1020.01	1020.00	1019.98	1020.02	1020.07
	4	1020.08	1020.11	1020.14	1020.12	1020.08	1020.14	1020.19	1020.14	1020.11	1020.11	1020.10	1020.12	1020.12
	5	1020.16	1020.11	1020.04	1020.04	1020.04	1020.04	1020.05	1020.01	1019.89	1019.82	1019.80	1019.75	1019.98
	6	1019.69	1019.64	1019.71	1019.86	1019.92	1019.96	1020.01	1020.10	1020.19	1020.19	1020.16	1020.22	1019.97
	7	1020.33	1020.40	1020.41	1020.43	1020.45	1020.47	1020.50	1020.54	1020.52	1020.44	1020.40	1020.44	1020.44
	8	1020.49	1020.52	1020.54	1020.59	1020.63	1020.59	1020.54	1020.53	1020.46	1020.36	1020.32	1020.26	1020.48
	9	1020.23	1020.32	1020.40	1020.39	1020.38	1020.42	1020.50	1020.56	1020.60	1020.64	1020.68	1020.76	1020.49
	10	1020.88	1020.97	1021.01	1021.01	1021.01	1021.05	1021.03	1020.93	1020.79	1020.69	1020.60	1020.51	1020.87
	11	1020.47	1020.44	1020.38	1020.32	1020.24	1020.14	1020.10	1020.04	1019.96	1019.98	1020.01	1019.98	1020.17
	12	1019.99	1019.95	1019.88	1019.86	1019.82	1019.80	1019.81	1019.83	1019.84	1019.83	1019.85	1019.89	1019.86
	13	1019.86	1019.76	1019.71	1019.78	1019.83	1019.81	1019.82	1019.85	1019.81	1019.79	1019.77	1019.73	1019.79
	14	1019.76	1019.78	1019.72	1019.70	1019.74	1019.81	1019.83	1019.78	1019.67	1019.60	1019.60	1019.61	1019.72
	15	1019.62	1019.62	1019.63	1019.55	1019.45	1019.45	1019.45	1019.43	1019.39	1019.31	1019.30	1019.29	1019.46
	16	1019.29	1019.30	1019.26	1019.22	1019.22	1019.30	1019.41	1019.48	1019.48	1019.46	1019.48	1019.48	1019.36
	17	1019.52	1019.61	1019.71	1019.77	1019.76	1019.74	1019.74	1019.72	1019.67	1019.61	1019.62	1019.68	1019.68
	18	1019.72	1019.76	1019.77	1019.77	1019.76	1019.70	1019.63	1019.61	1019.63	1019.62	1019.64	1019.67	1019.69
	19	1019.63	1019.64	1019.68	1019.71	1019.77	1019.82	1019.84	1019.87	1019.91	1019.92	1019.93	1019.95	1019.80
	20	1019.97	1020.00	1020.01	1020.00	1020.02	1020.03	1020.02	1020.01	1020.02	1020.02	1020.00	1020.00	1020.01
	21	1019.99	1019.97	1019.96	1019.97	1019.99	1020.02	1020.06	1020.09	1020.10	1020.06	1020.05	1020.08	1020.03
	22	1020.08	1020.08	1020.07	1020.07	1020.07	1020.07	1020.04	1019.98	1019.90	1019.87	1019.90	1019.94	1020.00
	23	1019.94	1019.90	1019.87	1019.84	1019.80	1019.77	1019.77	1019.77	1019.77	1019.77	1019.74	1019.69	1019.80

S.V.I.R.CO. Observatory - Pressure in hectoPascal – October 2016

day	hh	00_05	05_10	10_15	15_20	20_25	25_30	30_35	35_40	40_45	45_50	50_55	55_60	average
19	0	1019.64	1019.62	1019.55	1019.48	1019.44	1019.43	1019.40	1019.38	1019.35	1019.34	1019.33	1019.31	1019.43
	1	1019.26	1019.20	1019.16	1019.13	1019.10	1019.08	1019.05	1019.02	1019.02	1019.01	1018.98	1018.98	1019.08
	2	1018.98	1018.98	1018.97	1018.93	1018.86	1018.77	1018.68	1018.65	1018.63	1018.62	1018.60	1018.57	1018.77
	3	1018.54	1018.50	1018.50	1018.50	1018.50	1018.53	1018.54	1018.49	1018.46	1018.47	1018.47	1018.44	1018.49
	4	1018.40	1018.37	1018.34	1018.32	1018.28	1018.25	1018.26	1018.24	1018.16	1018.12	1018.11	1018.08	1018.24
	5	1018.06	1018.04	1018.01	1018.01	1018.02	1017.97	1017.92	1017.90	1017.90	1017.93	1017.96	1018.00	1017.98
	6	1018.03	1018.05	1018.09	1018.16	1018.24	1018.28	1018.31	1018.37	1018.42	1018.48	1018.53	1018.54	1018.29
	7	1018.47	1018.41	1018.46	1018.53	1018.53	1018.55	1018.53	1018.51	1018.51	1018.49	1018.48	1018.46	1018.49
	8	1018.43	1018.44	1018.45	1018.44	1018.41	1018.40	1018.41	1018.40	1018.41	1018.37	1018.31	1018.32	1018.40
	9	1018.34	1018.35	1018.35	1018.35	1018.35	1018.32	1018.28	1018.26	1018.24	1018.23	1018.24	1018.24	1018.29
	10	1018.23	1018.20	1018.16	1018.13	1018.11	1018.06	1017.98	1017.91	1017.82	1017.76	1017.70	1017.62	1017.97
	11	1017.55	1017.48	1017.41	1017.34	1017.26	1017.23	1017.21	1017.16	1017.10	1017.05	1017.02	1016.98	1017.23
	12	1016.93	1016.88	1016.84	1016.82	1016.77	1016.70	1016.66	1016.64	1016.61	1016.57	1016.51	1016.45	1016.70
	13	1016.41	1016.36	1016.29	1016.22	1016.19	1016.15	1016.09	1016.02	1016.00	1016.01	1016.03	1016.02	1016.15
	14	1016.06	1016.13	1016.06	1015.94	1015.85	1015.83	1015.82	1015.77	1015.71	1015.64	1015.60	1015.54	1015.83
	15	1015.49	1015.46	1015.44	1015.41	1015.37	1015.34	1015.34	1015.35	1015.36	1015.36	1015.33	1015.29	1015.37
	16	1015.24	1015.18	1015.15	1015.13	1015.14	1015.17	1015.18	1015.19	1015.19	1015.21	1015.22	1015.21	1015.18
	17	1015.22	1015.25	1015.27	1015.31	1015.36	1015.38	1015.36	1015.32	1015.32	1015.34	1015.34	1015.33	1015.31
	18	1015.34	1015.34	1015.34	1015.36	1015.38	1015.39	1015.40	1015.41	1015.42	1015.41	1015.42	1015.43	1015.38
	19	1015.43	1015.44	1015.44	1015.44	1015.45	1015.45	1015.44	1015.47	1015.49	1015.48	1015.48	1015.50	1015.46
	20	1015.52	1015.50	1015.48	1015.48	1015.48	1015.46	1015.40	1015.33	1015.26	1015.19	1015.16	1015.16	1015.36
	21	1015.12	1015.09	1015.08	1015.05	1015.01	1014.99	1014.98	1014.92	1014.84	1014.74	1014.62	1014.55	1014.91
	22	1014.55	1014.55	1014.54	1014.58	1014.63	1014.69	1014.70	1014.62	1014.57	1014.55	1014.57	1014.55	1014.59
	23	1014.49	1014.44	1014.40	1014.37	1014.32	1014.29	1014.23	1014.16	1014.13	1014.07	1013.98	1013.97	1014.23
20	0	1013.96	1013.93	1013.88	1013.85	1013.79	1013.78	1013.77	1013.73	1013.69	1013.65	1013.63	1013.60	1013.76
	1	1013.45	1013.32	1013.31	1013.29	1013.21	1013.13	1013.10	1013.05	1012.98	1012.91	1012.89	1012.90	1013.13
	2	1012.89	1012.85	1012.80	1012.75	1012.70	1012.67	1012.67	1012.66	1012.64	1012.63	1012.59	1012.54	1012.70
	3	1012.51	1012.48	1012.46	1012.45	1012.44	1012.43	1012.40	1012.38	1012.37	1012.35	1012.32	1012.32	1012.41
	4	1012.36	1012.36	1012.33	1012.33	1012.33	1012.33	1012.28	1012.21	1012.18	1012.16	1012.14	1012.14	1012.26
	5	1012.16	1012.16	1012.16	1012.17	1012.17	1012.18	1012.20	1012.19	1012.16	1012.15	1012.17	1012.21	1012.17
	6	1012.27	1012.32	1012.38	1012.44	1012.50	1012.52	1012.51	1012.50	1012.52	1012.52	1012.52	1012.55	1012.46
	7	1012.56	1012.57	1012.61	1012.63	1012.63	1012.64	1012.63	1012.61	1012.60	1012.59	1012.56	1012.54	1012.60
	8	1012.52	1012.49	1012.48	1012.49	1012.48	1012.45	1012.44	1012.52	1012.59	1012.60	1012.61	1012.59	1012.52
	9	1012.59	1012.61	1012.60	1012.59	1012.58	1012.56	1012.50	1012.45	1012.46	1012.48	1012.49	1012.48	1012.53
	10	1012.44	1012.40	1012.35	1012.32	1012.31	1012.27	1012.21	1012.12	1012.02	1011.97	1011.92	1011.85	1012.18
	11	1011.79	1011.75	1011.71	1011.69	1011.67	1011.65	1011.63	1011.61	1011.57	1011.54	1011.56	1011.61	1011.65
	12	1011.61	1011.59	1011.56	1011.58	1011.59	1011.59	1011.58	1011.60	1011.64	1011.61	1011.59	1011.58	1011.59
	13	1011.56	1011.55	1011.56	1011.57	1011.57	1011.58	1011.65	1011.74	1011.76	1011.75	1011.75	1011.71	1011.64
	14	1011.64	1011.57	1011.52	1011.52	1011.54	1011.52	1011.55	1011.59	1011.58	1011.53	1011.52	1011.51	1011.55
	15	1011.47	1011.49	1011.55	1011.59	1011.59	1011.58	1011.56	1011.53	1011.50	1011.47	1011.45	1011.44	1011.52
	16	1011.47	1011.48	1011.48	1011.50	1011.49	1011.45	1011.43	1011.42	1011.40	1011.36	1011.28	1011.25	1011.42
	17	1011.29	1011.34	1011.33	1011.31	1011.29	1011.30	1011.28	1011.20	1011.14	1011.13	1011.11	1011.11	1011.23
	18	1011.15	1011.12	1011.15	1011.19	1011.25	1011.43	1011.52	1011.57	1011.44	1011.26	1011.31	1011.35	1011.31
	19	1011.32	1011.22	1011.16	1011.18	1011.23	1011.24	1011.24	1011.27	1011.24	1011.16	1011.13	1011.17	1011.21
	20	1011.16	1011.20	1011.19	1011.13	1011.16	1011.21	1011.22	1011.23	1011.23	1011.20	1011.17	1011.15	1011.19
	21	1011.13	1011.07	1011.01	1010.97	1010.97	1010.97	1010.92	1010.92	1010.89	1010.92	1010.97	1010.99	1010.98
	22	1011.10	1011.16	1011.18	1011.23	1011.23	1011.22	1011.21	1011.21	1011.20	1011.21	1011.26	1011.32	1011.21
	23	1011.36	1011.34	1011.32	1011.34	1011.32	1011.28	1011.22	1011.16	1011.13	1011.11	1011.12	1011.11	1011.23

S.V.I.R.CO. Observatory - Pressure in hectoPascal – October 2016

day	hh	00_05	05_10	10_15	15_20	20_25	25_30	30_35	35_40	40_45	45_50	50_55	55_60	average
21	0	1011.07	1011.06	1011.02	1010.98	1010.95	1010.93	1010.92	1010.90	1010.82	1010.72	1010.65	1010.62	1010.88
	1	1010.63	1010.63	1010.61	1010.57	1010.52	1010.45	1010.36	1010.33	1010.33	1010.31	1010.28	1010.24	1010.44
	2	1010.18	1010.11	1010.06	1010.03	1009.99	1009.97	1009.94	1009.95	1009.97	1009.96	1009.90	1009.81	1009.99
	3	1009.74	1009.70	1009.65	1009.58	1009.52	1009.49	1009.48	1009.54	1009.61	1009.63	1009.62	1009.57	1009.59
	4	1009.53	1009.52	1009.50	1009.46	1009.45	1009.49	1009.50	1009.48	1009.45	1009.39	1009.32	1009.28	1009.45
	5	1009.28	1009.32	1009.32	1009.29	1009.33	1009.37	1009.37	1009.39	1009.43	1009.44	1009.42	1009.43	1009.36
	6	1009.49	1009.55	1009.60	1009.68	1009.72	1009.71	1009.72	1009.75	1009.81	1009.91	1009.96	1009.95	1009.74
	7	1009.96	1010.01	1010.06	1010.06	1010.06	1010.09	1010.12	1010.21	1010.34	1010.39	1010.36	1010.34	1010.16
	8	1010.31	1010.28	1010.27	1010.25	1010.24	1010.26	1010.32	1010.38	1010.42	1010.46	1010.50	1010.52	1010.35
	9	1010.52	1010.52	1010.54	1010.57	1010.59	1010.60	1010.62	1010.69	1010.75	1010.78	1010.83	1010.87	1010.66
	10	1010.86	1010.86	1010.82	1010.78	1010.76	1010.73	1010.74	1010.79	1010.79	1010.72	1010.69	1010.69	1010.77
	11	1010.68	1010.64	1010.57	1010.54	1010.52	1010.48	1010.48	1010.51	1010.50	1010.48	1010.45	1010.43	1010.52
	12	1010.42	1010.37	1010.32	1010.32	1010.35	1010.33	1010.24	1010.15	1010.12	1010.10	1010.06	1010.04	1010.23
	13	1010.04	1010.03	1010.01	1009.99	1009.97	1009.97	1009.94	1009.91	1009.94	1009.98	1010.01	1010.00	1009.98
	14	1009.96	1009.93	1009.91	1009.91	1009.94	1009.97	1010.00	1010.01	1010.04	1010.08	1010.11	1010.11	1010.00
	15	1010.13	1010.15	1010.15	1010.18	1010.23	1010.26	1010.28	1010.31	1010.33	1010.37	1010.42	1010.43	1010.27
	16	1010.41	1010.37	1010.36	1010.37	1010.40	1010.45	1010.47	1010.47	1010.51	1010.56	1010.58	1010.57	1010.46
	17	1010.59	1010.69	1010.81	1010.90	1010.95	1010.93	1010.94	1010.99	1011.03	1011.07	1011.09	1011.13	1010.93
	18	1011.20	1011.23	1011.24	1011.25	1011.27	1011.30	1011.32	1011.33	1011.33	1011.31	1011.32	1011.37	1011.29
	19	1011.39	1011.39	1011.38	1011.41	1011.42	1011.42	1011.45	1011.48	1011.52	1011.53	1011.56	1011.60	1011.46
	20	1011.63	1011.71	1011.79	1011.83	1011.86	1011.90	1011.94	1011.96	1011.97	1011.99	1011.99	1011.98	1011.88
	21	1011.99	1012.00	1012.01	1012.01	1011.99	1011.97	1011.92	1011.84	1011.80	1011.86	1011.95	1011.96	1011.94
	22	1011.99	1012.02	1012.01	1012.06	1012.10	1012.13	1012.14	1012.14	1012.12	1012.10	1012.11	1012.12	1012.08
	23	1012.13	1012.16	1012.21	1012.26	1012.31	1012.33	1012.36	1012.41	1012.44	1012.45	1012.45	1012.46	1012.33
22	0	1012.49	1012.47	1012.42	1012.39	1012.39	1012.37	1012.35	1012.35	1012.35	1012.35	1012.37	1012.39	1012.38
	1	1012.36	1012.34	1012.35	1012.36	1012.34	1012.31	1012.30	1012.30	1012.31	1012.33	1012.35	1012.38	1012.33
	2	1012.40	1012.42	1012.45	1012.49	1012.49	1012.51	1012.54	1012.54	1012.55	1012.57	1012.54	1012.54	1012.50
	3	1012.58	1012.65	1012.69	1012.71	1012.73	1012.76	1012.82	1012.85	1012.83	1012.80	1012.76	1012.72	1012.74
	4	1012.74	1012.79	1012.79	1012.80	1012.81	1012.81	1012.84	1012.89	1012.96	1013.03	1013.02	1012.98	1012.87
	5	1012.96	1012.95	1012.98	1013.02	1013.06	1013.12	1013.16	1013.19	1013.25	1013.31	1013.35	1013.42	1013.15
	6	1013.52	1013.56	1013.57	1013.63	1013.70	1013.82	1013.92	1013.94	1013.97	1013.97	1013.98	1014.01	1013.80
	7	1014.03	1014.05	1014.08	1014.11	1014.15	1014.19	1014.19	1014.20	1014.23	1014.23	1014.18	1014.14	1014.15
	8	1014.18	1014.24	1014.26	1014.28	1014.29	1014.31	1014.30	1014.23	1014.24	1014.28	1014.30	1014.31	1014.27
	9	1014.30	1014.27	1014.26	1014.25	1014.21	1014.19	1014.20	1014.18	1014.17	1014.19	1014.21	1014.21	1014.22
	10	1014.21	1014.18	1014.13	1014.12	1014.12	1014.12	1014.09	1014.04	1014.00	1013.99	1013.97	1013.92	1014.07
	11	1013.87	1013.84	1013.81	1013.78	1013.76	1013.75	1013.69	1013.62	1013.57	1013.53	1013.50	1013.49	1013.68
	12	1013.49	1013.46	1013.41	1013.38	1013.36	1013.33	1013.33	1013.35	1013.35	1013.31	1013.29	1013.26	1013.36
	13	1013.21	1013.18	1013.14	1013.09	1013.07	1013.07	1013.05	1013.02	1013.03	1013.06	1013.05	1013.05	1013.08
	14	1013.05	1013.05	1013.02	1013.00	1013.06	1013.10	1013.13	1013.17	1013.17	1013.17	1013.16	1013.21	1013.10
	15	1013.29	1013.39	1013.48	1013.54	1013.57	1013.54	1013.55	1013.56	1013.58	1013.65	1013.70	1013.74	1013.55
	16	1013.78	1013.81	1013.87	1013.97	1014.06	1014.12	1014.16	1014.19	1014.20	1014.19	1014.19	1014.22	1014.06
	17	1014.28	1014.35	1014.39	1014.46	1014.56	1014.65	1014.67	1014.59	1014.58	1014.63	1014.66	1014.70	1014.54
	18	1014.75	1014.77	1014.75	1014.73	1014.72	1014.75	1014.75	1014.70	1014.68	1014.74	1014.77	1014.79	1014.74
	19	1014.82	1014.87	1014.88	1014.85	1014.90	1015.01	1015.05	1015.04	1015.09	1015.11	1015.08	1015.04	1014.98
	20	1014.98	1014.94	1014.95	1014.96	1014.97	1014.98	1014.99	1015.03	1015.05	1015.09	1015.11	1015.11	1015.01
	21	1015.12	1015.11	1015.08	1015.05	1015.04	1015.00	1014.98	1014.98	1014.93	1014.88	1014.91	1014.97	1015.00
	22	1015.06	1015.10	1015.06	1015.05	1015.05	1015.03	1015.13	1015.24	1015.26	1015.27	1015.23	1015.22	1015.14
	23	1015.21	1015.19	1015.19	1015.15	1015.17	1015.17	1015.17	1015.18	1015.18	1015.19	1015.12	1015.12	1015.17

S.V.I.R.CO. Observatory - Pressure in hectoPascal – October 2016

day	hh	00_05	05_10	10_15	15_20	20_25	25_30	30_35	35_40	40_45	45_50	50_55	55_60	average
23	0	1015.23	1015.22	1015.21	1015.19	1015.19	1015.24	1015.23	1015.19	1015.21	1015.26	1015.29	1015.24	1015.22
	1	1015.17	1015.12	1015.10	1015.07	1015.01	1015.04	1015.08	1015.08	1015.08	1015.06	1015.00	1014.92	1015.06
	2	1014.88	1014.85	1014.86	1014.90	1014.91	1014.87	1014.80	1014.79	1014.82	1014.82	1014.80	1014.75	1014.84
	3	1014.69	1014.68	1014.71	1014.71	1014.68	1014.72	1014.77	1014.73	1014.67	1014.58	1014.54	1014.52	1014.66
	4	1014.39	1014.25	1014.12	1014.00	1013.94	1013.92	1013.94	1014.04	1014.05	1014.12	1014.24	1014.16	1014.09
	5	1014.03	1014.02	1014.06	1014.09	1014.13	1014.13	1014.15	1014.22	1014.30	1014.39	1014.45	1014.40	1014.20
	6	1014.39	1014.46	1014.54	1014.60	1014.66	1014.74	1014.75	1014.72	1014.71	1014.69	1014.71	1014.81	1014.65
	7	1014.86	1014.84	1014.81	1014.78	1014.81	1014.88	1014.96	1015.05	1015.14	1015.27	1015.36	1015.45	1015.02
	8	1015.50	1015.51	1015.51	1015.56	1015.65	1015.71	1015.72	1015.76	1015.81	1015.87	1015.93	1015.95	1015.70
	9	1016.00	1015.99	1015.96	1015.95	1015.92	1015.87	1015.86	1015.87	1015.83	1015.76	1015.74	1015.77	1015.87
	10	1015.78	1015.77	1015.74	1015.71	1015.66	1015.60	1015.53	1015.43	1015.42	1015.43	1015.38	1015.33	1015.56
	11	1015.34	1015.36	1015.34	1015.33	1015.37	1015.40	1015.38	1015.34	1015.29	1015.27	1015.26	1015.21	1015.32
	12	1015.18	1015.14	1015.07	1015.02	1014.98	1014.95	1014.89	1014.89	1014.95	1014.99	1015.04	1015.08	1015.01
	13	1015.14	1015.22	1015.28	1015.28	1015.26	1015.27	1015.30	1015.27	1015.22	1015.20	1015.14	1015.07	1015.22
	14	1015.03	1014.99	1014.99	1015.02	1015.01	1015.02	1015.03	1015.00	1015.00	1015.02	1015.06	1015.12	1015.02
	15	1015.20	1015.34	1015.43	1015.46	1015.47	1015.51	1015.56	1015.57	1015.60	1015.61	1015.60	1015.59	1015.49
	16	1015.57	1015.56	1015.60	1015.68	1015.73	1015.79	1015.86	1015.91	1016.01	1016.14	1016.16	1016.18	1015.85
	17	1016.26	1016.34	1016.39	1016.39	1016.38	1016.38	1016.42	1016.50	1016.55	1016.59	1016.63	1016.63	1016.45
	18	1016.65	1016.70	1016.77	1016.85	1016.90	1016.95	1017.00	1016.99	1016.99	1017.09	1017.19	1017.21	1016.94
	19	1017.22	1017.25	1017.30	1017.34	1017.41	1017.50	1017.57	1017.61	1017.64	1017.59	1017.57	1017.62	1017.47
	20	1017.70	1017.81	1017.83	1017.82	1017.83	1017.82	1017.84	1017.87	1017.87	1017.86	1017.86	1017.89	1017.83
	21	1017.92	1017.91	1017.87	1017.81	1017.79	1017.78	1017.77	1017.79	1017.83	1017.85	1017.85	1017.82	1017.83
	22	1017.78	1017.81	1017.86	1017.89	1017.93	1017.99	1018.05	1018.12	1018.17	1018.16	1018.14	1018.14	1018.00
	23	1018.16	1018.20	1018.28	1018.35	1018.36	1018.34	1018.34	1018.35	1018.38	1018.42	1018.49	1018.58	1018.35
24	0	1018.64	1018.66	1018.66	1018.64	1018.64	1018.68	1018.72	1018.74	1018.74	1018.74	1018.75	1018.75	1018.70
	1	1018.73	1018.74	1018.73	1018.71	1018.74	1018.77	1018.70	1018.56	1018.43	1018.37	1018.35	1018.30	1018.59
	2	1018.22	1018.23	1018.27	1018.28	1018.30	1018.37	1018.46	1018.52	1018.50	1018.47	1018.50	1018.56	1018.39
	3	1018.58	1018.57	1018.57	1018.59	1018.59	1018.62	1018.77	1018.84	1018.84	1018.86	1018.88	1018.90	1018.72
	4	1018.92	1018.94	1018.96	1018.98	1018.99	1019.01	1019.05	1019.06	1019.08	1019.09	1019.11	1019.13	1019.03
	5	1019.13	1019.12	1019.14	1019.15	1019.16	1019.14	1019.12	1019.17	1019.23	1019.28	1019.33	1019.34	1019.19
	6	1019.35	1019.39	1019.43	1019.48	1019.54	1019.59	1019.62	1019.63	1019.69	1019.72	1019.71	1019.69	1019.57
	7	1019.67	1019.69	1019.73	1019.75	1019.77	1019.83	1019.91	1019.92	1019.86	1019.82	1019.79	1019.75	1019.79
	8	1019.67	1019.59	1019.54	1019.56	1019.60	1019.58	1019.53	1019.52	1019.54	1019.50	1019.46	1019.47	1019.54
	9	1019.47	1019.42	1019.42	1019.49	1019.51	1019.51	1019.50	1019.48	1019.42	1019.33	1019.29	1019.23	1019.42
	10	1019.17	1019.12	1019.08	1019.06	1018.97	1018.88	1018.85	1018.80	1018.71	1018.64	1018.64	1018.60	1018.87
	11	1018.53	1018.48	1018.45	1018.35	1018.09	1017.83	1017.77	1017.90	1018.13	1018.38	1018.50	1018.48	1018.24
	12	1018.46	1018.46	1018.47	1018.49	1018.50	1018.53	1018.53	1018.54	1018.62	1018.65	1018.62	1018.59	1018.54
	13	1018.56	1018.52	1018.52	1018.63	1018.63	1018.58	1018.63	1018.68	1018.73	1018.78	1018.80	1018.79	1018.65
	14	1018.82	1018.84	1018.86	1018.91	1018.96	1018.98	1018.96	1018.96	1018.97	1018.98	1019.00	1018.99	1018.93
	15	1018.98	1019.00	1019.04	1019.07	1019.07	1019.03	1018.97	1018.91	1018.88	1018.87	1018.84	1018.80	1018.95
	16	1018.78	1018.81	1018.88	1018.94	1018.99	1019.11	1019.22	1019.30	1019.41	1019.51	1019.55	1019.54	1019.17
	17	1019.55	1019.57	1019.62	1019.65	1019.64	1019.63	1019.63	1019.63	1019.65	1019.68	1019.70	1019.69	1019.63
	18	1019.65	1019.62	1019.63	1019.68	1019.71	1019.70	1019.73	1019.82	1019.93	1020.02	1020.05	1020.03	1019.80
	19	1020.02	1020.01	1020.01	1020.02	1020.03	1020.04	1020.05	1020.08	1020.10	1020.14	1020.20	1020.24	1020.08
	20	1020.24	1020.27	1020.32	1020.34	1020.36	1020.41	1020.45	1020.48	1020.49	1020.50	1020.52	1020.55	1020.41
	21	1020.61	1020.68	1020.74	1020.74	1020.72	1020.68	1020.61	1020.59	1020.66	1020.73	1020.77	1020.82	1020.69
	22	1020.84	1020.85	1020.87	1020.85	1020.80	1020.77	1020.76	1020.79	1020.84	1020.89	1020.94	1020.97	1020.85
	23	1021.00	1021.01	1020.99	1021.02	1021.07	1021.11	1021.18	1021.27	1021.30	1021.32	1021.39	1021.47	1021.17

S.V.I.R.CO. Observatory - Pressure in hectoPascal – October 2016

day	hh	00_05	05_10	10_15	15_20	20_25	25_30	30_35	35_40	40_45	45_50	50_55	55_60	average
25	0	1021.64	1021.69	1021.74	1021.71	1021.67	1021.69	1021.73	1021.76	1021.78	1021.73	1021.64	1021.61	1021.70
	1	1021.62	1021.60	1021.54	1021.47	1021.46	1021.47	1021.44	1021.37	1021.29	1021.28	1021.30	1021.30	1021.43
	2	1021.30	1021.26	1021.21	1021.19	1021.15	1021.11	1021.09	1021.09	1021.06	1021.00	1021.00	1021.03	1021.12
	3	1021.01	1020.97	1020.98	1021.06	1021.14	1021.20	1021.24	1021.25	1021.25	1021.21	1021.20	1021.23	1021.14
	4	1021.24	1021.24	1021.31	1021.35	1021.31	1021.31	1021.32	1021.32	1021.33	1021.33	1021.33	1021.35	1021.31
	5	1021.36	1021.37	1021.42	1021.48	1021.50	1021.46	1021.42	1021.44	1021.51	1021.57	1021.62	1021.62	1021.48
	6	1021.59	1021.63	1021.72	1021.81	1021.86	1021.85	1021.86	1021.97	1022.11	1022.24	1022.36	1022.45	1021.95
	7	1022.48	1022.48	1022.52	1022.59	1022.61	1022.57	1022.52	1022.55	1022.66	1022.74	1022.83	1022.91	1022.62
	8	1022.93	1022.97	1023.07	1023.12	1023.14	1023.18	1023.26	1023.32	1023.32	1023.29	1023.27	1023.28	1023.18
	9	1023.27	1023.24	1023.20	1023.14	1023.07	1023.05	1023.04	1023.01	1023.02	1023.04	1023.03	1023.02	1023.09
	10	1023.01	1022.97	1022.92	1022.88	1022.86	1022.80	1022.76	1022.77	1022.72	1022.63	1022.57	1022.47	1022.78
	11	1022.35	1022.25	1022.19	1022.10	1022.00	1021.93	1021.86	1021.87	1021.96	1021.97	1021.83	1021.72	1022.00
	12	1021.68	1021.63	1021.54	1021.48	1021.45	1021.42	1021.48	1021.57	1021.61	1021.60	1021.58	1021.62	1021.55
	13	1021.61	1021.54	1021.50	1021.46	1021.49	1021.54	1021.51	1021.53	1021.53	1021.49	1021.44	1021.40	1021.50
	14	1021.40	1021.34	1021.28	1021.33	1021.42	1021.48	1021.49	1021.52	1021.61	1021.68	1021.73	1021.77	1021.50
	15	1021.77	1021.79	1021.83	1021.76	1021.64	1021.58	1021.55	1021.52	1021.48	1021.47	1021.51	1021.55	1021.62
	16	1021.54	1021.48	1021.40	1021.37	1021.38	1021.41	1021.49	1021.51	1021.54	1021.60	1021.56	1021.53	1021.48
	17	1021.57	1021.61	1021.66	1021.71	1021.79	1021.85	1021.83	1021.79	1021.81	1021.80	1021.82	1021.92	1021.76
	18	1021.97	1021.96	1021.95	1021.99	1022.05	1022.09	1022.12	1022.11	1022.08	1022.06	1022.07	1022.10	1022.04
	19	1022.06	1022.03	1022.09	1022.17	1022.24	1022.29	1022.30	1022.28	1022.28	1022.22	1022.13	1022.10	1022.18
	20	1022.06	1021.97	1021.89	1021.83	1021.78	1021.80	1021.86	1021.88	1021.89	1021.88	1021.81	1021.77	1021.87
	21	1021.80	1021.77	1021.64	1021.56	1021.57	1021.62	1021.69	1021.70	1021.75	1021.77	1021.67	1021.58	1021.67
	22	1021.57	1021.59	1021.58	1021.53	1021.47	1021.43	1021.39	1021.36	1021.31	1021.23	1021.25	1021.33	1021.42
	23	1021.31	1021.35	1021.40	1021.36	1021.34	1021.34	1021.33	1021.39	1021.48	1021.54	1021.57	1021.51	1021.41
26	0	1021.44	1021.42	1021.40	1021.40	1021.45	1021.46	1021.39	1021.37	1021.33	1021.23	1021.18	1021.20	1021.35
	1	1021.18	1021.03	1021.02	1021.07	1021.10	1021.20	1021.21	1021.16	1021.02	1020.93	1020.93	1020.84	1021.05
	2	1020.83	1020.80	1020.64	1020.53	1020.51	1020.50	1020.48	1020.40	1020.33	1020.34	1020.30	1020.25	1020.49
	3	1020.24	1020.22	1020.22	1020.20	1020.16	1020.16	1020.16	1020.12	1020.06	1019.99	1019.91	1019.82	1020.10
	4	1019.79	1019.74	1019.71	1019.63	1019.49	1019.56	1019.63	1019.71	1019.66	1019.43	1019.34	1019.40	1019.59
	5	1019.43	1019.45	1019.51	1019.52	1019.55	1019.63	1019.75	1019.86	1019.87	1019.81	1019.83	1019.99	1019.68
	6	1020.12	1020.08	1019.59	1019.06	1019.15	1019.74	1020.15	1020.18	1020.11	1020.07	1020.31	1020.64	1019.93
	7	1020.78	1020.82	1020.87	1021.10	1021.39	1021.34	1021.10	1020.97	1020.99	1021.08	1021.04	1020.89	1021.03
	8	1020.87	1021.03	1021.28	1021.47	1021.42	1021.28	1021.14	1021.06	1021.25	1021.37	1021.29	1021.31	1021.23
	9	1021.45	1021.54	1021.62	1021.72	1021.75	1021.69	1021.66	1021.65	1021.55	1021.45	1021.39	1021.36	1021.57
	10	1021.36	1021.34	1021.32	1021.19	1021.04	1020.91	1020.70	1020.58	1020.41	1020.20	1020.05	1019.95	1020.75
	11	1019.84	1019.77	1019.78	1019.79	1019.70	1019.40	1019.18	1019.20	1019.14	1018.95	1018.81	1018.72	1019.35
	12	1018.65	1018.58	1018.46	1018.38	1018.40	1018.44	1018.43	1018.36	1018.32	1018.32	1018.34	1018.32	1018.41
	13	1018.21	1018.16	1018.18	1018.15	1018.14	1018.20	1018.28	1018.28	1018.32	1018.39	1018.36	1018.23	1018.24
	14	1018.11	1018.00	1017.97	1018.01	1018.04	1018.10	1018.19	1018.28	1018.35	1018.39	1018.37	1018.35	1018.18
	15	1018.35	1018.27	1018.23	1018.24	1018.21	1018.27	1018.34	1018.34	1018.32	1018.30	1018.22	1018.13	1018.27
	16	1018.04	1017.94	1017.87	1017.83	1017.76	1017.65	1017.53	1017.46	1017.48	1017.40	1017.30	1017.36	1017.63
	17	1017.36	1017.40	1017.54	1017.59	1017.62	1017.62	1017.59	1017.63	1017.68	1017.74	1017.74	1017.69	1017.60
	18	1017.75	1017.82	1017.74	1017.69	1017.73	1017.76	1017.74	1017.62	1017.53	1017.50	1017.56	1017.72	1017.68
	19	1017.83	1017.86	1017.86	1017.87	1017.84	1017.79	1017.78	1017.80	1017.84	1017.85	1017.83	1017.81	1017.83
	20	1017.81	1017.72	1017.66	1017.65	1017.71	1017.81	1017.78	1017.72	1017.62	1017.45	1017.29	1017.35	1017.63
	21	1017.38	1017.33	1017.37	1017.56	1017.75	1017.74	1017.75	1017.98	1017.90	1017.50	1017.28	1017.09	1017.55
	22	1016.86	1016.58	1016.46	1016.48	1016.55	1016.66	1016.56	1016.42	1016.35	1016.22	1016.14	1016.07	1016.44
	23	1015.93	1015.86	1015.92	1015.95	1015.86	1015.83	1015.78	1015.74	1015.73	1015.63	1015.50	1015.40	1015.76

S.V.I.R.CO. Observatory - Pressure in hectoPascal – October 2016

day	hh	00_05	05_10	10_15	15_20	20_25	25_30	30_35	35_40	40_45	45_50	50_55	55_60	average
27	0	1015.49	1015.54	1015.62	1015.69	1015.58	1015.44	1015.38	1015.33	1015.50	1015.72	1015.81	1015.85	1015.58
	1	1015.84	1015.82	1015.78	1015.69	1015.60	1015.61	1015.64	1015.63	1015.60	1015.56	1015.57	1015.60	1015.66
	2	1015.56	1015.52	1015.52	1015.50	1015.39	1015.23	1015.01	1014.84	1014.70	1014.50	1014.24	1013.90	1014.99
	3	1013.52	1013.15	1012.79	1012.57	1012.52	1012.50	1012.48	1012.45	1012.46	1012.59	1012.72	1012.83	1012.71
	4	1013.04	1013.47	1013.91	1014.17	1014.27	1014.25	1014.28	1014.39	1014.45	1014.45	1014.47	1014.55	1014.14
	5	1014.59	1014.63	1014.69	1014.71	1014.75	1014.84	1014.89	1014.96	1015.06	1015.14	1015.28	1015.43	1014.91
	6	1015.54	1015.64	1015.68	1015.74	1015.87	1015.95	1015.95	1015.94	1015.95	1016.00	1016.07	1016.12	1015.87
	7	1016.15	1016.19	1016.25	1016.31	1016.34	1016.36	1016.37	1016.34	1016.35	1016.35	1016.35	1016.41	1016.31
	8	1016.48	1016.50	1016.49	1016.47	1016.50	1016.53	1016.57	1016.62	1016.62	1016.62	1016.60	1016.59	1016.55
	9	1016.61	1016.69	1016.77	1016.80	1016.89	1017.01	1017.13	1017.19	1017.23	1017.27	1017.29	1017.34	1017.02
	10	1017.38	1017.44	1017.55	1017.60	1017.65	1017.68	1017.69	1017.67	1017.65	1017.62	1017.58	1017.56	1017.59
	11	1017.55	1017.51	1017.43	1017.40	1017.40	1017.38	1017.36	1017.33	1017.32	1017.35	1017.36	1017.39	1017.40
	12	1017.38	1017.35	1017.35	1017.34	1017.34	1017.33	1017.32	1017.31	1017.28	1017.29	1017.28	1017.29	1017.32
	13	1017.31	1017.33	1017.35	1017.38	1017.39	1017.39	1017.45	1017.44	1017.43	1017.46	1017.46	1017.47	1017.40
	14	1017.46	1017.48	1017.53	1017.59	1017.62	1017.59	1017.54	1017.50	1017.50	1017.54	1017.56	1017.59	1017.54
	15	1017.62	1017.62	1017.62	1017.59	1017.57	1017.60	1017.63	1017.67	1017.70	1017.73	1017.76	1017.78	1017.65
	16	1017.82	1017.90	1017.99	1018.07	1018.15	1018.23	1018.31	1018.35	1018.39	1018.45	1018.54	1018.62	1018.23
	17	1018.67	1018.69	1018.76	1018.87	1018.98	1019.04	1019.09	1019.18	1019.25	1019.30	1019.38	1019.43	1019.05
	18	1019.42	1019.41	1019.45	1019.50	1019.52	1019.53	1019.57	1019.64	1019.71	1019.78	1019.88	1019.98	1019.62
	19	1020.05	1020.12	1020.19	1020.23	1020.28	1020.31	1020.34	1020.38	1020.44	1020.51	1020.56	1020.59	1020.33
	20	1020.59	1020.63	1020.73	1020.80	1020.84	1020.90	1020.96	1020.99	1020.99	1021.04	1021.08	1021.09	1020.88
	21	1021.12	1021.15	1021.21	1021.26	1021.26	1021.24	1021.23	1021.24	1021.22	1021.22	1021.25	1021.24	1021.22
	22	1021.26	1021.29	1021.28	1021.23	1021.23	1021.29	1021.35	1021.43	1021.46	1021.42	1021.40	1021.41	1021.33
	23	1021.43	1021.50	1021.54	1021.48	1021.44	1021.45	1021.45	1021.45	1021.46	1021.48	1021.50	1021.49	1021.47
28	0	1021.53	1021.59	1021.63	1021.64	1021.68	1021.66	1021.67	1021.76	1021.82	1021.80	1021.73	1021.70	1021.69
	1	1021.67	1021.60	1021.57	1021.58	1021.62	1021.64	1021.68	1021.69	1021.64	1021.59	1021.53	1021.48	1021.60
	2	1021.45	1021.44	1021.39	1021.35	1021.36	1021.40	1021.41	1021.42	1021.45	1021.48	1021.44	1021.44	1021.42
	3	1021.52	1021.53	1021.53	1021.60	1021.65	1021.62	1021.63	1021.69	1021.70	1021.67	1021.71	1021.82	1021.64
	4	1021.86	1021.85	1021.80	1021.66	1021.61	1021.71	1021.81	1021.85	1021.89	1021.93	1021.96	1022.01	1021.83
	5	1022.08	1022.14	1022.17	1022.21	1022.19	1022.14	1022.16	1022.22	1022.28	1022.38	1022.47	1022.47	1022.24
	6	1022.46	1022.48	1022.52	1022.61	1022.68	1022.77	1022.89	1022.95	1022.98	1023.01	1023.08	1023.18	1022.80
	7	1023.24	1023.25	1023.20	1023.20	1023.28	1023.35	1023.42	1023.46	1023.49	1023.48	1023.46	1023.44	1023.35
	8	1023.46	1023.53	1023.55	1023.55	1023.58	1023.68	1023.78	1023.87	1023.91	1023.85	1023.76	1023.75	1023.69
	9	1023.81	1023.89	1023.92	1023.91	1023.87	1023.84	1023.85	1023.86	1023.82	1023.81	1023.80	1023.71	1023.84
	10	1023.68	1023.67	1023.66	1023.67	1023.68	1023.70	1023.68	1023.56	1023.46	1023.46	1023.52	1023.54	1023.60
	11	1023.52	1023.46	1023.41	1023.41	1023.38	1023.33	1023.30	1023.26	1023.23	1023.21	1023.22	1023.19	1023.32
	12	1023.14	1023.14	1023.16	1023.21	1023.29	1023.29	1023.14	1023.06	1023.03	1022.99	1022.94	1022.91	1023.11
	13	1022.99	1023.07	1023.07	1023.11	1023.13	1023.14	1023.18	1023.18	1023.16	1023.15	1023.12	1023.16	1023.12
	14	1023.21	1023.17	1023.11	1023.08	1023.04	1023.02	1023.04	1023.03	1023.04	1023.05	1023.04	1023.05	1023.07
	15	1023.05	1023.09	1023.21	1023.30	1023.26	1023.24	1023.32	1023.40	1023.47	1023.55	1023.59	1023.63	1023.34
	16	1023.68	1023.75	1023.77	1023.79	1023.85	1023.88	1023.91	1023.98	1024.00	1024.02	1024.04	1024.04	1023.89
	17	1024.02	1024.03	1024.13	1024.22	1024.29	1024.39	1024.44	1024.47	1024.51	1024.54	1024.55	1024.61	1024.35
	18	1024.69	1024.73	1024.71	1024.67	1024.69	1024.72	1024.76	1024.85	1024.93	1024.92	1024.83	1024.77	1024.77
	19	1024.76	1024.76	1024.80	1024.89	1024.98	1025.00	1025.02	1025.08	1025.13	1025.14	1025.17	1025.17	1024.99
	20	1025.17	1025.16	1025.12	1025.02	1024.93	1024.94	1024.98	1025.05	1025.07	1025.06	1025.02	1024.97	1025.04
	21	1024.98	1025.09	1025.16	1025.15	1025.15	1025.13	1025.11	1025.18	1025.24	1025.24	1025.28	1025.30	1025.17
	22	1025.31	1025.37	1025.46	1025.52	1025.45	1025.37	1025.36	1025.32	1025.26	1025.21	1025.16	1025.14	1025.33
	23	1025.17	1025.21	1025.20	1025.15	1025.10	1025.02	1024.95	1024.94	1024.97	1024.97	1024.98	1025.03	1025.06

S.V.I.R.CO. Observatory - Pressure in hectoPascal – October 2016

day	hh	00_05	05_10	10_15	15_20	20_25	25_30	30_35	35_40	40_45	45_50	50_55	55_60	average
29	0	1025.05	1025.00	1024.93	1024.91	1024.88	1024.80	1024.72	1024.67	1024.59	1024.52	1024.48	1024.42	1024.73
	1	1024.35	1024.27	1024.23	1024.22	1024.21	1024.21	1024.19	1024.15	1024.10	1024.07	1024.02	1024.00	1024.17
	2	1024.02	1024.02	1023.98	1023.91	1023.85	1023.82	1023.83	1023.84	1023.81	1023.77	1023.73	1023.68	1023.85
	3	1023.66	1023.65	1023.61	1023.58	1023.60	1023.63	1023.66	1023.72	1023.72	1023.69	1023.66	1023.65	1023.65
	4	1023.63	1023.52	1023.49	1023.53	1023.57	1023.60	1023.59	1023.60	1023.62	1023.65	1023.63	1023.60	1023.58
	5	1023.59	1023.58	1023.64	1023.71	1023.69	1023.66	1023.69	1023.76	1023.76	1023.75	1023.79	1023.77	1023.70
	6	1023.69	1023.67	1023.69	1023.68	1023.65	1023.60	1023.60	1023.67	1023.79	1023.82	1023.78	1023.74	1023.70
	7	1023.69	1023.67	1023.70	1023.73	1023.72	1023.71	1023.71	1023.74	1023.77	1023.75	1023.69	1023.63	1023.71
	8	1023.57	1023.56	1023.60	1023.68	1023.76	1023.77	1023.69	1023.62	1023.60	1023.64	1023.68	1023.71	1023.65
	9	1023.78	1023.79	1023.73	1023.66	1023.66	1023.66	1023.59	1023.54	1023.52	1023.51	1023.48	1023.45	1023.61
	10	1023.38	1023.31	1023.27	1023.18	1023.11	1023.12	1023.11	1023.05	1022.98	1022.91	1022.83	1022.73	1023.08
	11	1022.60	1022.48	1022.40	1022.34	1022.28	1022.24	1022.17	1022.07	1022.01	1022.01	1021.98	1021.91	1022.21
	12	1021.84	1021.76	1021.71	1021.67	1021.64	1021.61	1021.52	1021.44	1021.37	1021.32	1021.29	1021.28	1021.54
	13	1021.32	1021.30	1021.22	1021.14	1021.05	1021.03	1021.03	1021.04	1021.05	1021.07	1021.10	1021.11	1021.12
	14	1021.11	1021.09	1021.04	1020.99	1020.97	1020.92	1020.87	1020.84	1020.80	1020.78	1020.78	1020.74	1020.91
	15	1020.71	1020.69	1020.71	1020.73	1020.70	1020.65	1020.64	1020.64	1020.63	1020.62	1020.60	1020.58	1020.65
	16	1020.62	1020.68	1020.73	1020.78	1020.81	1020.86	1020.91	1020.96	1021.02	1021.08	1021.11	1021.11	1020.89
	17	1021.12	1021.13	1021.15	1021.16	1021.15	1021.12	1021.12	1021.12	1021.11	1021.06	1021.04	1021.05	1021.11
	18	1021.02	1020.99	1020.97	1020.96	1021.03	1021.10	1021.12	1021.16	1021.19	1021.19	1021.21	1021.24	1021.10
	19	1021.28	1021.29	1021.30	1021.28	1021.20	1021.17	1021.18	1021.20	1021.24	1021.25	1021.21	1021.19	1021.23
	20	1021.19	1021.20	1021.21	1021.23	1021.24	1021.21	1021.17	1021.12	1021.08	1021.05	1021.04	1021.05	1021.15
	21	1021.05	1021.06	1021.12	1021.20	1021.24	1021.23	1021.21	1021.20	1021.17	1021.13	1021.09	1021.11	1021.15
	22	1021.12	1021.11	1021.11	1021.14	1021.16	1021.12	1021.04	1021.00	1021.01	1021.03	1021.04	1021.05	1021.07
	23	1021.05	1021.06	1021.10	1021.12	1021.12	1021.12	1021.17	1021.22	1021.23	1021.22	1021.17	1021.15	1021.14
30	0	1021.11	1021.10	1021.06	1021.02	1021.02	1021.04	1021.02	1020.98	1020.97	1020.95	1020.88	1020.86	1020.99
	1	1020.84	1020.82	1020.85	1020.89	1020.87	1020.83	1020.83	1020.85	1020.88	1020.92	1020.88	1020.75	1020.85
	2	1020.68	1020.63	1020.59	1020.57	1020.55	1020.55	1020.55	1020.54	1020.48	1020.45	1020.51	1020.62	1020.56
	3	1020.66	1020.69	1020.67	1020.59	1020.60	1020.68	1020.70	1020.71	1020.78	1020.82	1020.88	1020.88	1020.72
	4	1020.83	1020.83	1020.80	1020.79	1020.80	1020.80	1020.76	1020.73	1020.71	1020.70	1020.72	1020.74	1020.77
	5	1020.71	1020.68	1020.70	1020.76	1020.79	1020.76	1020.78	1020.83	1020.87	1020.91	1020.91	1020.92	1020.80
	6	1020.94	1020.97	1020.99	1021.00	1020.99	1020.99	1021.07	1021.13	1021.13	1021.15	1021.15	1021.12	1021.05
	7	1021.12	1021.12	1021.14	1021.15	1021.12	1021.10	1021.06	1021.01	1021.02	1021.02	1021.05	1021.13	1021.08
	8	1021.18	1021.21	1021.22	1021.16	1021.09	1021.08	1021.09	1021.08	1021.06	1021.04	1021.07	1021.12	1021.11
	9	1021.17	1021.21	1021.21	1021.22	1021.22	1021.22	1021.23	1021.22	1021.19	1021.15	1021.13	1021.12	1021.19
	10	1021.09	1021.02	1020.94	1020.85	1020.77	1020.71	1020.67	1020.62	1020.53	1020.43	1020.35	1020.27	1020.68
	11	1020.23	1020.23	1020.22	1020.18	1020.13	1020.07	1020.03	1020.00	1019.93	1019.85	1019.77	1019.71	1020.03
	12	1019.66	1019.61	1019.55	1019.49	1019.41	1019.31	1019.21	1019.15	1019.11	1019.07	1019.03	1019.01	1019.30
	13	1019.01	1019.01	1018.99	1018.94	1018.92	1018.91	1018.89	1018.88	1018.86	1018.85	1018.84	1018.82	1018.91
	14	1018.82	1018.82	1018.82	1018.81	1018.81	1018.84	1018.87	1018.88	1018.90	1018.93	1018.97	1019.02	1018.87
	15	1019.04	1019.05	1019.07	1019.10	1019.14	1019.17	1019.19	1019.20	1019.21	1019.22	1019.23	1019.25	1019.15
	16	1019.30	1019.34	1019.37	1019.41	1019.44	1019.50	1019.57	1019.63	1019.70	1019.77	1019.82	1019.86	1019.56
	17	1019.88	1019.91	1019.93	1019.94	1019.99	1020.02	1020.04	1020.07	1020.12	1020.16	1020.20	1020.23	1020.04
	18	1020.21	1020.20	1020.21	1020.23	1020.25	1020.27	1020.31	1020.36	1020.38	1020.40	1020.42	1020.46	1020.31
	19	1020.51	1020.59	1020.67	1020.75	1020.80	1020.84	1020.87	1020.88	1020.92	1020.95	1020.97	1020.99	1020.81
	20	1021.01	1021.04	1021.08	1021.12	1021.17	1021.24	1021.25	1021.22	1021.18	1021.15	1021.13	1021.17	1021.14
	21	1021.19	1021.19	1021.19	1021.20	1021.20	1021.18	1021.17	1021.18	1021.17	1021.15	1021.18	1021.21	1021.18
	22	1021.25	1021.34	1021.41	1021.43	1021.40	1021.37	1021.32	1021.30	1021.30	1021.29	1021.27	1021.23	1021.32
	23	1021.16	1021.13	1021.13	1021.13	1021.13	1021.11	1021.06	1021.02	1021.00	1020.97	1020.94	1020.92	1021.06

S.V.I.R.CO. Observatory - Pressure in hectoPascal – October 2016

day	hh	00_05	05_10	10_15	15_20	20_25	25_30	30_35	35_40	40_45	45_50	50_55	55_60	average
31	0	1020.94	1020.93	1020.93	1020.96	1020.97	1020.94	1020.91	1020.91	1020.92	1020.88	1020.83	1020.78	1020.90
	1	1020.76	1020.77	1020.75	1020.69	1020.65	1020.64	1020.62	1020.62	1020.63	1020.58	1020.52	1020.53	1020.64
	2	1020.54	1020.53	1020.48	1020.45	1020.47	1020.47	1020.48	1020.50	1020.53	1020.56	1020.55	1020.56	1020.51
	3	1020.57	1020.54	1020.55	1020.55	1020.56	1020.58	1020.58	1020.57	1020.55	1020.53	1020.53	1020.55	1020.55
	4	1020.58	1020.58	1020.57	1020.58	1020.60	1020.62	1020.66	1020.70	1020.74	1020.78	1020.80	1020.83	1020.67
	5	1020.88	1020.94	1020.97	1021.00	1021.01	1021.03	1021.07	1021.06	1021.07	1021.10	1021.13	1021.17	1021.03
	6	1021.24	1021.33	1021.40	1021.48	1021.54	1021.57	1021.59	1021.62	1021.66	1021.72	1021.81	1021.89	1021.57
	7	1021.95	1022.03	1022.05	1022.03	1022.06	1022.11	1022.15	1022.18	1022.22	1022.25	1022.27	1022.29	1022.13
	8	1022.33	1022.37	1022.38	1022.36	1022.34	1022.35	1022.38	1022.40	1022.42	1022.44	1022.45	1022.48	1022.39
	9	1022.52	1022.53	1022.52	1022.51	1022.51	1022.52	1022.53	1022.55	1022.56	1022.55	1022.54	1022.51	1022.53
	10	1022.48	1022.44	1022.39	1022.35	1022.30	1022.26	1022.23	1022.23	1022.22	1022.22	1022.20	1022.17	1022.29
	11	1022.16	1022.16	1022.15	1022.16	1022.13	1022.08	1022.04	1022.00	1021.96	1021.92	1021.87	1021.84	1022.04
	12	1021.83	1021.84	1021.83	1021.79	1021.76	1021.76	1021.76	1021.78	1021.80	1021.82	1021.82	1021.81	1021.80
	13	1021.81	1021.82	1021.83	1021.83	1021.83	1021.84	1021.85	1021.85	1021.84	1021.84	1021.86	1021.88	1021.84
	14	1021.89	1021.90	1021.93	1021.96	1021.99	1022.02	1022.05	1022.08	1022.10	1022.11	1022.14	1022.16	1022.02
	15	1022.19	1022.22	1022.24	1022.22	1022.20	1022.21	1022.26	1022.30	1022.31	1022.33	1022.35	1022.38	1022.27
	16	1022.41	1022.44	1022.46	1022.48	1022.51	1022.54	1022.58	1022.63	1022.69	1022.73	1022.75	1022.79	1022.58
	17	1022.85	1022.91	1022.95	1022.96	1022.96	1022.97	1023.01	1023.05	1023.07	1023.09	1023.12	1023.13	1023.00
	18	1023.16	1023.19	1023.20	1023.19	1023.20	1023.21	1023.21	1023.23	1023.26	1023.29	1023.33	1023.34	1023.23
	19	1023.32	1023.31	1023.32	1023.36	1023.41	1023.43	1023.44	1023.45	1023.46	1023.48	1023.50	1023.52	1023.41
	20	1023.55	1023.59	1023.65	1023.72	1023.78	1023.83	1023.86	1023.90	1023.94	1023.94	1023.93	1023.95	1023.80
	21	1023.95	1023.94	1023.92	1023.88	1023.84	1023.82	1023.82	1023.79	1023.78	1023.80	1023.82	1023.82	1023.85
	22	1023.80	1023.78	1023.78	1023.78	1023.78	1023.76	1023.74	1023.72	1023.73	1023.75	1023.74	1023.78	1023.76
	23	1023.83	1023.85	1023.85	1023.84	1023.83	1023.81	1023.76	1023.72	1023.70	1023.68	1023.70	1023.73	1023.77

