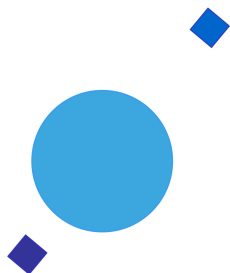


**INAF**



**ISTITUTO NAZIONALE DI ASTROFISICA**  
NATIONAL INSTITUTE FOR ASTROPHYSICS

**SVIRCO Prompt Report: September 2016**

Fabrizio Signoretto and Francesco Re

INAF/IAPS-2016-19

October 2016

**ISTITUTO DI ASTROFISICA E PLANETOLOGIA SPAZIALI**

**AREA DI RICERCA ROMA - TOR VERGATA**

**Via del Fosso del Cavaliere, 100 - 00133 Roma (ITALIA)**



## **SVIRCO Prompt Report: September 2016**

**Fabrizio Signoretti and Francesco Re**

*IAPS - INAF, Area di Ricerca Roma - Tor Vergata  
Via del Fosso del Cavaliere, 100 - 00133 Roma, Italy,*

### **Abstract**

*The pressure corrected intensity of the nucleonic component, produced by primary cosmic rays and recorded in September 2016 by the Neutron Monitor of SVIRCO-Rome (present geographic position:  $41.86^\circ$  N -  $12.47^\circ$  E; altitude about s.l. ), is reported in prompt form together with the barometric pressure data.*



## SVIRCO OBSERVATORY

During the 1<sup>st</sup> International Geophysics Year (1957) an international network of “ground-based detectors” for continuous cosmic ray measurements was world-wide established.

The cosmic ray station of Rome joined this network with the purpose to study the time variations of primary cosmic rays (**Studio Variazioni Intensità Raggi Cosmici: S.V.I.R.CO**) and their modulation in the heliosphere.

From July 1957 to April 1997, the SVIRCO Station (now Observatory) performed uninterrupted measurements at the Physics Department “G. Marconi” of “La Sapienza” University of Rome (41.90° N, 12.52° E, altitude about 60 m a.s.l.)

In May 1997 the neutron monitor was moved to the Physics Department “E. Amaldi” of “Roma Tre” University. Since then it has been continuously running at the new location (41.86° N, 12.47° E, altitude about 0 m a.s.l.).

The SVIRCO Observatory (INAF/IAPS-UNIRomaTre collaboration) is housed in a reserved building provided with a double air-conditioning system. The inner temperature is permanently restrained in a range of 23°-26° C, meanwhile the relative humidity is kept below 57%. Either the environmental parameters are continuously checked and recorded by digital sensors.

On January 1, 2005 three counters were added to the detector. This upgrade, from 17 to 20 NM-64, made the SVIRCO neutron monitor still consist of 5 sections but modified its geometry. Actually the new arrangement has been composed of three 3-counter, one 5-counter and one 6-counter units. The enhancement improved not only the overall counting rate of 15.6 % (January 2005) but, as a result, also the statistical quality of the recorded data.

Each of the 20 BF<sub>3</sub> proportional counters (BP-28 type) is equipped with a smart amplifier/discriminator circuit complete with a spectrum stabilizer. This new electronic unit, developed in our laboratory, holds firmly the pulse height spectrum of the amplifier output (within a range of more than 150 volts around the operating voltage), providing the counter with a great immunity against high voltage variations.

Anyway, systematic and exhaustive tests of the counters are regularly performed. The output pulses of the amplifiers, discriminated by the threshold gates, are collected and stored into a multi-channel analyzer. The analysis of the height distribution (spectrum) of the amplifier pulses coinciding with the discriminator ones, is essential to verify the long term efficiency of each counter together with the amplifier gain and the discriminator threshold level.

As well as the amplifier/discriminator circuits, a large part of the electronic instrumentation operating in the Observatory was designed and realized in our laboratory together with the software for data acquisition and pre-elaboration.

In order to improve the reliability of the recorded data and to prevent measurement breakdowns, two independent systems perform contemporary the data acquisition. Each system is remotely controlled by a dedicated computer and is timed by a high stability quartz clock and/or a GPS receiver. One equipment runs according to a timing of 1 minute and fulfils the acquisition of the 20 counters separately. The other one records the individual 5-minute counting rate of each detector section in addition to the rates of the overall multiplicity, sorted into separated counting channels ( from 1 to greater than 8 ).

A special care is devoted to the atmospheric pressure measurements, thus they are carried out by means of not less than three barometers at the same time. These instruments (achieving a resolution up to 0.01 hPa), are constantly checked out each other for the best measuring accuracy and reliability. Furthermore the devices in use are equipped with different types of transducer such as vibrating cylinder, force balance and quartz, therefore, throughout their different behaviours, it is possible to point out the occurrence of any long-term drift and eventually to re-calibrate the instruments themselves.

## DATA PRESENTATION

In a preliminary step, the intensity data, of the secondary nucleonic component of cosmic ray, detected at SVIRCO Observatory, were corrected for pressure variations at a reference level of 1009.25 hPa with an attenuation coefficient of 0.70% / hPa.

The five-minutes counting rates, of the examined month, are reported in tabular form together with the hourly normalized data, which provide a continuous data set for long-term analysis.

The normalization was evaluated as percentage of the counting rate average of January-February 1997, when the Monitor operated at the previous location of "La Sapienza" University. The reference counting rate level (100%), computed for such period, is equal to 554946 counts/hour.

The atmospheric pressure data (in hectoPascal) are also collected in a monthly table which presents the five-minutes averages and the hourly ones.

The hourly averages of the normalized intensity and pressure, plotted in monthly graphs, are reported too.

## CONDITIONS FOR SVIRCO DATA USE

You are welcome to use neutron monitor data of SVIRCO, IAPS/INAF-UNIRomaTre collaboration, under the following conditions:

*-You agree to acknowledge our financial supports in any published use of the data.*

*Example: "SVIRCO NM is supported by the INAF - UNIRomaTre collaboration"*

*-You are kindly requested to send a copy of any published work derived from our data to:*

Dr. Monica Laurenza  
Head of SVIRCO Observatory & TPL  
Istituto di Astrofisica e Planetologia Spaziali - Area di Ricerca Tor Vergata  
Via del Fosso del Cavaliere, 100 00133 Roma - Italy,

[monica.laurenza@iaps.inaf.it](mailto:monica.laurenza@iaps.inaf.it)



# S.V.I.R.CO. Observatory

Rome

Italy







INAF/UNIRomaTre				S.V.I.R.CO. Observatory - Pressure Corrected Data – September 2016									20 NM-64	
day	hh	00_05	05_10	10_15	15_20	20_25	25_30	30_35	35_40	40_45	45_50	50_55	55_60	h-norm
1	0	45824	45881	46093	46246	45786	46235	46093	46251	45522	45628	45590	46146	99.904
	1	46292	46519	45604	46054	45679	45512	45864	45557	45482	46013	46412	45945	99.837
	2	46172	45843	46344	45870	46187	45804	46474	46282	45658	45774	46498	46019	100.198
	3	45998	45872	46538	46299	45969	45637	45464	46056	46440	45931	46316	46264	100.172
	4	46425	46434	46054	45693	45640	45688	46034	46377	45991	46042	45504	46783	100.151
	5	46873	46114	46787	46293	46208	46582	46015	46023	46509	46210	46782	45693	100.772
	6	46638	46299	46107	45610	45684	46113	45926	46908	46038	46476	45668	45795	100.259
	7	46186	45555	46456	46220	46606	46395	46351	45894	46047	46074	46472	46130	100.463
	8	46127	46285	46408	45886	46163	46485	45845	45618	45433	46207	46272	46113	100.183
	9	46022	45976	46430	46576	46674	46314	46175	45612	46483	45847	46499	46792	100.647
	10	46110	45803	46241	45908	46259	46206	46003	46212	46265	45701	46241	46484	100.290
	11	46203	45791	46112	45426	46106	45982	46235	45664	45851	46305	45688	46062	99.926
	12	45470	46330	46366	46718	45972	45373	45870	45813	45525	45909	46200	46232	99.990
	13	46319	45775	46795	46350	45942	46291	46262	46556	46013	45834	45581	45716	100.290
	14	46294	46048	44860	45686	46002	46612	45801	45865	46262	45771	46137	45827	99.879
	15	46246	45865	46156	46468	45931	45614	45350	45807	45768	45614	45791	45696	99.723
	16	46066	45403	45982	46174	45783	45822	45593	45335	46143	45094	45888	45638	99.472
	17	46155	45517	46153	46329	45427	45915	45266	45795	45661	45669	45313	45975	99.519
	18	45645	45644	45656	45990	45674	45455	46113	45281	45793	45872	45467	45985	99.409
	19	45994	45597	45868	46332	46040	46301	45668	45785	45369	45668	45742	45168	99.583
	20	45787	45464	45752	45619	45676	45807	45545	45889	46004	45175	45226	45414	99.189
	21	45682	45767	45383	46038	45487	46101	45518	45697	45630	46036	45453	45669	99.389
	22	45517	45599	45907	45719	45742	45519	45498	45055	45929	45945	45488	45661	99.229
	23	45506	46462	46016	46481	45515	45707	46069	45277	45438	45248	46029	45635	99.556
2	0	45672	45619	45851	45722	45717	45033	45773	45650	45412	45747	45935	45381	99.216
	1	45617	46088	45899	46235	45365	45325	45839	45737	46254	45496	46106	45731	99.612
	2	45073	45629	45455	45987	45513	45594	45791	45380	46154	45693	46116	45306	99.250
	3	45883	46365	46345	45017	45984	46332	45646	45455	45731	45829	45896	45335	99.635
	4	46095	45643	46062	45586	45684	45747	46032	45634	45748	46055	45099	45743	99.510
	5	45745	45537	45849	45676	46192	46374	45578	46004	45845	46098	45968	45962	99.818
	6	45192	46222	45952	45892	45300	45853	45865	45483	46209	45353	45867	46169	99.551
	7	45927	45599	46207	45660	46279	46125	45652	45600	45637	45557	45818	45324	99.557
	8	46039	46405	45485	45972	45745	45670	46189	45960	45753	45844	45786	45937	99.810
	9	45701	45771	46659	45303	46023	45825	45507	45642	45664	45845	46087	45406	99.565
	10	46280	45670	46337	46152	45928	45958	45440	45915	45715	46011	45840	45861	99.869
	11	46714	45853	46347	45622	46324	45528	46187	46667	46302	45386	46187	46033	100.238
	12	45832	46187	46193	45972	45385	45044	45893	45351	45819	45652	45508	46027	99.462
	13	45824	45803	45911	45872	45651	46248	45782	46161	46306	46369	45952	45997	100.008
	14	45785	45524	46329	46025	45594	45494	45697	45458	45698	46015	45862	45525	99.488
	15	46237	45870	46129	45068	45908	45383	46189	46051	46073	46008	45822	45751	99.756
	16	46307	45747	46093	46528	45382	45752	45631	45759	46164	46193	45491	46257	99.904
	17	45731	45821	45632	45769	45723	45628	45623	46214	46407	45361	46261	45536	99.614
	18	45786	45958	45208	45493	45258	45307	45606	45650	45980	44897	45501	45733	99.011
	19	46134	45460	45557	45548	46336	45929	45799	45689	45759	44908	45089	46067	99.356
	20	45532	46091	45009	45870	45491	46005	45190	45732	45231	45794	45137	45439	99.037
	21	46174	45902	45860	44926	45267	45025	45232	45666	45323	45895	45952	45713	99.112
	22	45214	45343	46002	45609	45501	45313	45546	45680	45651	44953	45759	46154	99.074
	23	45531	45632	45647	45589	45428	45369	45303	45576	45830	45868	45943	45746	99.208

INAF/UNIRomaTre		S.V.I.R.CO. Observatory - Pressure Corrected Data – September 2016											20 NM-64	
day	hh	00_05	05_10	10_15	15_20	20_25	25_30	30_35	35_40	40_45	45_50	50_55	55_60	h-norm
3	0	45828	45478	46337	45729	46052	44826	45499	45766	45857	46021	44958	45807	99.334
	1	45366	45438	45700	45480	45433	45510	44848	45181	46183	45365	45787	45953	98.987
	2	45901	45665	45905	45959	44920	45038	45118	45328	45579	45747	46310	45441	99.108
	3	45582	45525	45537	45599	44938	46022	45259	45504	46060	45980	45807	45731	99.222
	4	45788	45865	45670	44937	45576	45268	45568	45782	46103	45942	45371	45743	99.235
	5	45679	45612	46079	45295	45570	45183	46204	45993	44873	46253	45397	45764	99.287
	6	45901	45642	45992	45236	45912	45827	46603	45334	45660	46032	45812	46066	99.671
	7	46048	45211	45508	45801	45472	44971	45599	46307	45809	45841	45526	46187	99.356
	8	46170	45656	45638	45655	45531	46167	45780	45942	46189	45626	45848	45969	99.699
	9	46046	45690	45700	45771	45351	46296	46065	46403	46054	45424	45824	46067	99.793
	10	45845	45981	46367	45729	45844	45283	45920	45705	46409	46053	45781	45679	99.776
	11	46037	45778	45855	46260	45663	45502	45791	45649	45993	45974	45648	45390	99.584
	12	45831	45361	46136	45554	45516	45942	46079	46232	45826	45122	46133	46571	99.723
	13	46328	46080	45735	46231	45398	45841	45536	45835	45456	45555	46219	45669	99.646
	14	45712	45800	45431	46212	45669	45961	45625	45977	45361	45434	46245	45575	99.487
	15	46338	45637	45615	45609	45850	45913	45675	45313	45964	45407	45341	45529	99.340
	16	45396	45403	45532	46006	45931	46145	45542	45429	45365	46068	45229	45112	99.152
	17	45250	45015	45782	45873	44911	45786	45723	46027	45224	45897	45242	45214	98.933
	18	45483	45472	45951	45994	46146	45984	45470	45704	45580	45452	45311	45938	99.393
	19	45995	45962	45546	45510	45602	45281	45369	46084	45532	45510	45135	45620	99.151
	20	45679	46006	45759	46002	45490	45299	45050	45443	46344	45556	45484	45369	99.211
	21	44946	45977	45027	45609	44874	45457	45794	45523	45691	45606	45286	45657	98.843
	22	45859	45797	45327	45263	45869	45528	46109	45838	45699	45458	45835	45099	99.248
	23	45588	45929	45404	45128	46102	44998	46027	45242	45134	44696	45072	45494	98.728
4	0	45640	45246	45273	45316	45459	45552	45677	45348	46237	45035	45419	45448	98.881
	1	45076	45960	45129	45419	46034	45312	45206	46083	45809	45280	45266	45437	98.945
	2	45388	45263	45666	45627	45447	45832	45263	45693	44961	44735	45552	45724	98.789
	3	45899	44754	45315	45009	45427	46113	45674	45443	45689	45571	45568	45125	98.868
	4	45007	45613	45436	44992	45940	45390	45465	45813	45027	45652	44730	45446	98.673
	5	46031	45874	45436	45542	45772	45606	45770	45690	45824	45054	45115	45715	99.202
	6	45774	45750	45628	45751	46244	45445	45168	45782	45580	45625	45232	45055	99.130
	7	45959	46184	45430	45555	45734	45085	45548	45863	45385	45337	45744	45535	99.189
	8	45922	45339	46023	45938	45443	45324	45995	45860	46339	46084	45738	45716	99.617
	9	45686	45541	45638	45721	45859	45264	46285	45266	45411	45159	45192	45596	99.055
	10	45243	46121	45566	45311	45978	45890	45787	45880	45536	46770	45576	45615	99.537
	11	46411	45375	45720	45093	45878	46227	45363	45295	45650	45816	45825	46105	99.443
	12	45813	45974	44657	45332	45898	45340	46284	45374	46032	45700	46140	45787	99.366
	13	45347	45672	45657	45424	45385	45582	46234	45824	46373	45235	45810	45243	99.267
	14	45994	45971	45444	45363	46100	45902	45654	45620	45291	46151	45275	45337	99.324
	15	45151	45729	45667	45278	45738	45744	45458	45699	45084	45417	45473	45413	98.916
	16	45569	45841	45589	46033	45789	46019	46047	46157	45597	45848	45066	45531	99.502
	17	45638	45445	45537	45937	45331	45763	46022	45540	44982	46268	45458	45584	99.216
	18	45446	45842	45742	45835	45667	45707	45712	46339	45271	45983	45662	45249	99.388
	19	45477	45663	45707	45250	45277	45564	45757	45481	45679	45603	45897	45367	99.074
	20	45683	45734	45699	45327	45439	45159	45800	44897	45667	45261	45465	45493	98.875
	21	46098	45542	45877	45949	44775	45674	45917	45963	45367	45771	45191	44716	99.095
	22	45419	45897	45719	45359	45565	45625	45939	45498	45859	45429	45816	45178	99.179
	23	45288	45242	45276	45885	45121	45520	45866	45691	45529	46386	46081	46074	99.299

INAF/UNIRomaTre				S.V.I.R.CO. Observatory - Pressure Corrected Data – September 2016									20 NM-64	
day	hh	00_05	05_10	10_15	15_20	20_25	25_30	30_35	35_40	40_45	45_50	50_55	55_60	h-norm
5	0	45517	46129	45470	45415	46355	45588	44990	45231	45561	45876	46040	45362	99.216
	1	45532	45663	46254	44944	45777	45746	46041	45539	45218	45398	45927	45048	99.140
	2	45723	45423	45811	45448	45463	46329	45644	45194	45651	45403	45415	45751	99.170
	3	45475	45287	45375	46408	45000	45717	45666	45936	45440	45193	45555	46143	99.159
	4	45715	45204	45135	45651	45701	45930	45837	45269	45828	45838	45711	45598	99.200
	5	46099	45459	46308	45279	45599	45950	45765	45191	45259	46046	45814	45378	99.332
	6	45672	45368	45587	45538	45936	45653	46188	45410	45578	45922	45582	45438	99.282
	7	45627	46071	45819	45262	45101	45628	45706	45325	45119	45537	45340	45555	98.959
	8	45576	46076	44841	46120	45709	45826	45464	45586	45499	45826	45684	45879	99.321
	9	45319	45326	45627	45686	45898	46300	45129	45984	45839	46035	45845	46270	99.534
	10	44835	45713	45527	45538	45102	45102	45933	46064	44933	45829	45152	45641	98.829
	11	45555	45855	45763	45784	45700	46267	45488	45580	45657	45239	46026	46293	99.524
	12	45411	45763	45453	45411	45682	45617	45859	45596	46056	45219	45858	45487	99.199
	13	45369	45597	45498	46062	45504	44991	45499	45586	45313	46070	45712	45402	99.052
	14	45249	45960	44293	45452	45654	45998	45700	45419	45178	45690	45400	45660	98.881
	15	45686	45389	45878	44970	45320	45681	45202	45367	45807	45113	45728	45401	98.860
	16	45282	45217	45830	46031	45485	46068	45894	45149	45132	44782	45587	45334	98.905
	17	45447	45305	46401	45278	45770	46080	45697	45162	45725	45914	45367	45797	99.295
	18	46205	45691	44994	45544	46250	45653	45872	45232	45240	45228	45725	45704	99.187
	19	45902	45687	44727	45824	45995	45708	45849	45587	45543	45366	45318	45829	99.185
	20	45237	45437	45679	45373	45718	45651	45350	46285	45249	45749	46114	46112	99.297
	21	45007	45854	45443	45715	46101	44820	46365	45675	45722	45411	45765	45639	99.218
	22	45475	45562	45601	45652	45588	45362	45307	46040	45742	45853	45501	45689	99.191
	23	45991	45336	45849	45939	46158	45524	45375	45850	45465	45917	45483	45814	99.433
6	0	46219	45226	46168	45633	45403	46124	45735	45240	45803	45902	45419	45634	99.399
	1	45828	45788	45754	45592	45629	45507	45703	45652	45687	45500	45891	45702	99.347
	2	45791	45889	46270	45865	45916	45960	45241	46025	46411	45497	45627	45364	99.642
	3	45726	45285	45645	46425	45378	46123	46075	46065	46115	45632	45790	46507	99.806
	4	46058	45411	46237	45583	46339	45635	45745	45557	45983	45253	46278	45828	99.651
	5	45738	45493	45299	46076	45981	46627	45677	45946	46091	45647	45844	46234	99.786
	6	45628	46073	45338	45926	44985	45854	45527	45476	46384	46049	45366	45030	99.240
	7	45531	45738	46109	44856	45677	46277	46187	46377	45891	46017	46360	45765	99.810
	8	46359	46134	46123	45622	45708	45828	46374	45654	45899	45845	45826	45956	99.908
	9	45973	46368	46025	45708	45577	45929	45731	46249	46214	45527	45784	45731	99.816
	10	46004	45744	46221	45525	45688	45065	45597	46166	45669	45609	45904	45854	99.495
	11	46229	46189	46397	46396	46087	45775	46229	46352	45550	46169	45596	45953	100.197
	12	46679	46024	46116	46077	46007	45000	45751	46155	46048	46086	45773	45710	99.926
	13	45874	46294	46415	45363	46062	45894	46000	45889	45660	45755	46159	45265	99.782
	14	46025	44953	45959	46343	45580	46187	45569	45603	46183	45571	45690	45691	99.551
	15	45823	45499	45313	45832	45953	46012	45934	45278	45981	45620	45508	45693	99.386
	16	45810	45600	45808	45421	45925	46547	45311	46260	45784	45942	45435	46548	99.739
	17	45350	45912	46065	45808	45924	45644	46178	46446	45088	46031	45322	45493	99.534
	18	45456	45680	45561	46263	46063	45932	45966	45542	45968	46015	45501	46029	99.664
	19	45443	45948	45541	46094	45573	46060	46040	45960	46019	46421	45672	46014	99.810
	20	45532	45643	45839	45545	45642	46366	45185	45507	45571	45595	45406	46217	99.314
	21	46095	46473	45775	45894	46072	46244	45993	45853	46243	45834	46281	45857	100.142
	22	44812	45906	45729	46157	46096	46039	45815	46188	46404	45875	45844	45232	99.685
	23	46067	45995	45892	46205	45837	45376	46481	46884	46192	45935	46007	45870	100.164

INAF/UNIRomaTre				S.V.I.R.CO. Observatory - Pressure Corrected Data – September 2016									20 NM-64	
day	hh	00_05	05_10	10_15	15_20	20_25	25_30	30_35	35_40	40_45	45_50	50_55	55_60	h-norm
7	0	46278	46238	45946	45970	45591	45729	46473	46374	45989	45401	45612	45847	99.927
	1	45790	46045	47189	46242	46275	46238	46058	45812	46197	45459	46100	45727	100.235
	2	45891	46844	45815	46345	45977	45471	46142	46032	46218	46004	46243	45726	100.159
	3	46521	45991	46156	45661	46164	45941	45777	45455	46085	45732	46023	45613	99.870
	4	46924	46142	46257	45609	46099	46208	45758	45850	46048	46165	45193	45714	100.024
	5	46180	45667	46166	45989	46289	46405	45625	46484	45951	45971	46516	45708	100.202
	6	46098	46215	45929	45986	45645	45632	46109	46821	45438	45609	45822	45456	99.805
	7	45502	46026	45452	46088	45806	45825	46213	46523	45980	46538	46056	45655	99.969
	8	46343	45995	45892	45679	46375	45643	45724	45904	45897	45990	46342	45733	99.943
	9	45731	45932	45832	45039	45932	45829	46184	45928	46442	45644	45458	45833	99.629
	10	45845	46529	45287	45956	46370	46014	46450	45973	45626	45273	46166	46390	100.008
	11	45826	45860	45470	46151	45976	46173	45592	45775	45550	45411	45980	45507	99.535
	12	45427	46001	45508	45875	46061	46007	46058	46142	46541	45754	45975	46166	99.942
	13	45486	46468	45359	45539	45927	45903	46083	46141	45835	46097	45539	45591	99.662
	14	46261	45842	45504	44795	45786	45654	45834	45718	45629	45857	45998	45788	99.426
	15	45923	46236	45373	45739	45573	45682	46381	46462	46218	46279	46243	45275	99.919
	16	45762	45888	46181	45647	46055	45622	45880	46629	46089	46138	45795	46336	100.035
	17	46054	45249	46089	45968	45820	45856	46379	45716	45922	45739	46300	45729	99.817
	18	46020	45984	46243	45799	46413	45408	46196	46214	46200	45991	46175	46066	100.159
	19	45034	45892	45742	46109	45388	45915	45927	45330	45390	45664	45444	45898	99.257
	20	45906	45230	45917	45755	45392	45921	46195	45982	45236	46076	45955	46391	99.660
	21	45711	46092	46153	45592	46234	45652	45375	45489	45880	45343	45753	45518	99.449
	22	46123	46068	45772	45317	45699	45906	46463	46005	45770	45966	46308	45652	99.858
	23	45675	46040	46137	46079	46105	46090	45495	46010	46536	45857	45857	46243	100.053
8	0	46192	45539	46155	46547	45574	45949	46670	46048	46115	45906	45951	46247	100.186
	1	45983	46311	45623	46232	45582	46406	46635	45808	45656	45928	46282	45969	100.106
	2	46011	46693	46391	46462	45721	46674	45987	46106	46021	46396	45730	46178	100.459
	3	45797	45927	46042	46316	46167	46093	45891	46322	45722	45988	45806	45415	99.937
	4	46459	46293	45825	46625	45622	46041	45555	46356	45995	46206	45468	46533	100.208
	5	45966	45511	46389	45350	45084	46500	45881	46342	46168	45770	45268	46464	99.793
	6	45630	45525	45686	46027	45474	45584	45673	46185	45808	45992	45340	45558	99.393
	7	45879	45358	45762	46604	45718	45945	45932	45470	45795	45787	45522	45790	99.588
	8	45880	45486	45887	45758	45883	45644	45812	45728	45246	45905	46167	44824	99.345
	9	45165	46060	45662	45934	46454	45441	45681	46212	45368	45721	45402	46029	99.510
	10	45740	45722	45455	45813	46162	45987	45375	45905	45758	45544	45923	45655	99.494
	11	45257	46560	45490	44971	45686	45695	45584	46049	45525	45915	46044	45542	99.363
	12	45838	45193	45972	45327	46038	45784	45982	45856	46282	45949	46152	45287	99.606
	13	46059	45275	45867	46020	45713	45914	45343	46020	46205	45833	45900	45305	99.569
	14	45449	45263	45485	45583	44995	46004	45982	45823	46411	44861	45858	46034	99.260
	15	45662	45925	45514	45524	45377	45955	46004	45938	45294	46072	45603	45138	99.306
	16	45860	45720	45846	45521	46020	46008	46000	45261	45723	45594	45034	45752	99.367
	17	47128	45909	46074	46121	46422	45567	45414	45655	46180	46129	46042	46066	100.159
	18	46117	46590	45896	45960	46280	45830	45376	46092	45366	45624	45696	45538	99.735
	19	46391	45731	45428	45572	46340	46039	45688	46807	45663	45630	45851	45661	99.813
	20	45468	45074	45247	45960	45569	45569	45587	46030	45613	45781	45263	45762	99.110
	21	45240	46008	45538	45644	45500	45612	45904	46031	46000	45982	45952	46288	99.613
	22	45434	46125	45480	45201	45408	45975	45279	46195	46341	45891	45362	46280	99.481
	23	45635	45861	45926	45519	45958	46032	45603	45638	45695	46283	46255	45851	99.714

INAF/UNIRomaTre				S.V.I.R.CO. Observatory - Pressure Corrected Data – September 2016									20 NM-64	
day	hh	00_05	05_10	10_15	15_20	20_25	25_30	30_35	35_40	40_45	45_50	50_55	55_60	h-norm
9	0	45678	45689	45701	45804	46086	45990	46168	46381	45155	45841	45980	46304	99.807
	1	45623	45573	45438	45889	45170	45902	45393	45223	46027	46580	45570	46240	99.419
	2	46049	45997	45674	45541	46166	45991	45792	45844	45999	46136	45662	46110	99.842
	3	45691	45628	45354	45743	45582	46309	45656	45533	45992	45750	45478	46181	99.468
	4	46434	45888	45947	45548	45732	45436	45670	45429	45597	45960	46028	45876	99.586
	5	45674	46386	45682	45647	45755	45936	45863	46443	45560	46088	45972	46019	99.853
	6	45751	45842	45933	45580	46158	45195	45727	45769	46144	45804	45521	45686	99.506
	7	45738	46333	45289	44928	45269	45854	45498	45576	45914	45746	45651	45632	99.202
	8	45461	45938	45610	45365	45717	46302	45200	45520	45878	45450	45720	46124	99.357
	9	45322	45505	45731	45650	45893	46135	45812	45873	45941	46100	45771	46402	99.693
	10	45572	45263	46460	45204	45493	45457	45536	45850	46554	45671	45372	45956	99.376
	11	45851	46030	45858	45395	45611	45893	45803	45793	46104	46233	45620	45727	99.653
	12	45299	45766	45733	46489	46026	46028	45955	45959	46495	46035	45710	45774	99.898
	13	45892	45653	45924	45520	45002	45974	46394	45895	45868	46163	45722	45871	99.646
	14	45396	45717	46346	46272	45696	46482	46060	46445	45477	45711	46199	46037	100.003
	15	45237	44996	45804	45644	46335	46022	45621	45415	45685	45937	45662	45528	99.284
	16	45616	45434	45651	46153	45909	46067	45801	45107	46028	46051	46201	45651	99.608
	17	45811	45884	45490	46075	45515	46192	45765	45365	45600	45958	45731	45873	99.534
	18	46125	45667	45370	45314	45717	45189	45358	45816	45787	45926	45216	46608	99.322
	19	45811	46456	45826	45614	46003	45435	46001	46051	46135	46167	45909	45433	99.820
	20	46300	45792	46408	46624	45759	45535	46285	46512	45939	45794	46336	46491	100.352
	21	46083	45457	45856	46327	46251	46154	46337	45621	47163	45926	46262	46512	100.384
	22	45676	46092	45702	45997	45656	46282	46379	46089	46001	46455	46544	46319	100.246
	23	45524	46234	46314	45973	46209	45793	45287	45745	46308	45751	45748	45796	99.792
10	0	46059	45664	46213	45760	45865	46332	46135	46000	46165	46183	45611	46471	100.111
	1	46318	45911	45155	45817	46309	45728	45571	46014	45848	45491	45847	46206	99.707
	2	46339	45571	46186	45968	46586	46261	45963	46122	45593	45966	46169	46171	100.192
	3	45738	45817	45781	45537	46235	45755	46135	46426	45927	46090	46026	46090	99.950
	4	46311	45934	45920	46250	46437	46906	46122	45997	45656	46290	46114	45688	100.325
	5	45735	45631	46219	45957	46088	46626	45608	46372	45846	45777	46363	46184	100.104
	6	46248	46425	46110	45494	45707	46219	46195	45799	46281	45741	46783	46124	100.234
	7	46496	45795	46266	46357	46175	45788	45968	46230	45799	46903	46555	46054	100.463
	8	46539	45789	45936	46025	45937	46090	45712	46404	46126	46388	46049	46803	100.356
	9	46121	46015	45918	46348	45891	45876	45401	45516	46290	45401	46151	45839	99.807
	10	46233	45677	45648	46176	45791	46480	45582	45896	46056	45429	45931	46243	99.875
	11	45383	45740	45937	45843	46011	45632	45597	46281	46532	46150	46760	46191	100.040
	12	46089	45650	45224	45893	46184	45693	45817	45591	46192	46397	46389	46170	99.902
	13	46206	46148	45951	45906	45796	46338	46164	46155	46012	45841	45514	46151	100.064
	14	46362	46070	45946	46085	45706	46009	46061	46076	46272	45990	45908	45760	100.074
	15	46561	46365	45750	46755	46109	45750	46201	46283	45935	45683	46495	46506	100.464
	16	45918	46456	45808	45663	46010	46340	46341	46357	45928	46307	46151	45982	100.259
	17	45638	46277	46216	46574	45910	46743	46484	46172	46565	46511	45683	46462	100.616
	18	46079	46593	46508	46880	46126	46172	46716	46489	46525	46433	46282	46413	100.976
	19	46222	46537	46440	46309	46476	45980	46758	46296	45982	46049	46369	46776	100.790
	20	46260	46232	46462	46109	46149	46016	46235	45967	46329	46406	46735	46195	100.591
	21	46685	46094	45986	46210	46601	46468	45883	47247	46099	46692	46325	46359	100.873
	22	46108	46684	46561	46422	46291	45924	46290	46290	46746	46696	46320	46934	100.985
	23	46553	46303	46272	46015	46627	45934	46340	46554	46700	46473	46640	46095	100.847

INAF/UNIRomaTre		S.V.I.R.CO. Observatory - Pressure Corrected Data – September 2016											20 NM-64	
day	hh	00_05	05_10	10_15	15_20	20_25	25_30	30_35	35_40	40_45	45_50	50_55	55_60	h-norm
11	0	45717	46734	46359	46714	46323	45883	46564	46737	45639	46531	46178	46698	100.768
	1	45790	46297	46612	46254	46529	46322	47071	46791	45995	46342	46113	46489	100.865
	2	46755	46799	46316	46441	46227	46381	47019	45750	46032	46372	46003	46862	100.928
	3	46252	45972	46733	46031	46536	46500	46635	47013	46972	46547	46532	46902	101.231
	4	46334	46725	46543	46372	47110	46402	46853	46146	46018	46983	46193	46554	101.160
	5	46005	46650	45976	46555	46437	46488	46425	46248	45853	46224	46751	46752	100.821
	6	46694	46791	46650	46061	46177	46199	45997	45962	45602	45979	46187	46941	100.617
	7	46379	45690	46093	46012	46610	46566	46012	47027	46124	46075	46255	46949	100.717
	8	46210	46267	45661	45320	46524	46388	46299	46389	46045	45340	46622	45909	100.207
	9	46614	46584	46097	46644	45509	46071	45480	45810	45658	45808	45762	46281	100.088
	10	45906	46246	45961	45789	46446	45796	45885	46830	46249	46398	45813	46421	100.346
	11	46416	45912	45948	46859	46134	45752	46393	46035	45878	46128	45831	45996	100.262
	12	46214	46362	45936	46538	45754	45815	46239	45710	46207	46162	46379	46331	100.328
	13	44935	46294	46462	45399	45749	46175	46084	45651	46299	45975	45335	46528	99.829
	14	45875	46539	46074	45726	46033	46293	45979	46588	46315	45126	46354	46311	100.250
	15	46317	46356	45893	45908	46139	45956	45985	45963	46215	45909	46443	46173	100.259
	16	46547	45608	45983	46532	46167	46651	45769	45363	46024	46062	45785	46160	100.148
	17	45893	46104	46241	45754	46357	46523	46300	45544	46356	46228	45453	46102	100.185
	18	45789	45890	46388	46323	45900	45770	45678	46289	45906	46314	46229	46108	100.136
	19	46500	46721	46531	46038	46642	45751	46249	46633	46472	46319	46484	46504	100.908
	20	46402	46331	46675	45958	45840	46959	46023	45810	46530	46244	45862	46407	100.582
	21	46263	46391	46399	46171	46071	46901	47006	46634	46193	46576	46486	46463	101.037
	22	46264	46713	46694	46937	46800	46123	46432	46135	46671	47036	46863	46861	101.395
	23	46400	46422	46542	46765	46196	46513	46331	46121	46744	47025	46231	46304	101.044
12	0	46219	46932	47317	46787	46750	46983	46101	46805	46580	46327	46384	46409	101.405
	1	46018	46685	46515	46347	46177	45997	45806	46539	46001	45631	46108	46476	100.447
	2	46805	46700	46385	46507	46693	46416	45974	45864	46491	46477	45750	46960	100.940
	3	46603	46361	46383	46640	46336	45970	46578	45542	45924	46710	46459	45588	100.591
	4	46320	46175	46397	45692	45881	45549	47352	45864	46500	46608	46375	46276	100.571
	5	46077	46432	46383	46294	46055	46525	45498	46358	46323	46082	46498	46262	100.535
	6	46450	45654	46440	45629	46484	46381	46141	46128	46055	45982	46270	46584	100.428
	7	46533	46030	46498	45946	45957	45993	46371	46208	46201	45986	46112	46582	100.468
	8	45939	45822	45956	46174	45811	45851	45916	46548	46154	45981	45572	46366	100.046
	9	46280	45614	46728	46212	46227	46386	46039	46866	45878	46200	46341	46244	100.577
	10	46070	46011	45934	45864	46207	46877	46407	46138	45994	45752	46221	45482	100.204
	11	45873	46250	45635	45618	46181	45900	45456	46056	46025	46023	45967	46079	99.861
	12	45788	45546	45932	45592	45689	45667	46209	45854	45462	46150	45875	46050	99.634
	13	46242	45979	46297	46398	46369	45899	45338	45613	45760	46726	45710	45622	100.021
	14	45937	45742	45921	45762	46296	46310	45789	46123	45660	46121	46074	45918	99.967
	15	45676	45943	45766	46413	45873	46003	46384	45808	45511	46032	46161	46001	99.952
	16	46148	45584	46575	45972	46495	46351	45874	45488	46124	45875	45589	45812	100.010
	17	46192	45628	45784	45601	46680	45996	45584	45537	45710	45632	45851	46293	99.756
	18	45838	45150	45595	46318	46247	46020	46528	46236	45754	46090	46479	46305	100.131
	19	46097	46402	46364	45906	45853	45941	46355	46501	45927	45984	46634	45762	100.343
	20	46352	46606	46176	45660	46218	46655	46601	46021	46364	45602	46284	46790	100.634
	21	45711	46365	46199	46383	45996	46400	46747	45982	46324	46363	46479	46213	100.603
	22	46308	46076	46373	46500	46108	46254	46205	46437	45655	46506	46504	46418	100.636
	23	46018	46270	46126	46429	46175	45775	46151	46185	46327	46296	45579	46536	100.369

INAF/UNIRomaTre				S.V.I.R.CO. Observatory - Pressure Corrected Data – September 2016									20 NM-64	
day	hh	00_05	05_10	10_15	15_20	20_25	25_30	30_35	35_40	40_45	45_50	50_55	55_60	h-norm
13	0	45718	46559	46686	45817	45824	46168	45800	46262	46199	46013	46133	46321	100.297
	1	47072	45929	45720	46246	46346	46082	46326	46465	46086	46148	46232	46258	100.557
	2	46093	46189	46185	46831	46183	45834	45794	45624	45957	46565	46943	46367	100.495
	3	46323	45974	46122	46004	46196	46533	46317	45752	46563	45440	46064	45988	100.262
	4	45929	46041	46013	46312	46225	46079	45945	45894	46383	45646	46527	46288	100.262
	5	46314	46136	46124	45819	46618	46608	46022	46111	46064	46529	46513	46576	100.653
	6	46520	46138	46608	46452	46153	46351	45738	46419	46518	46549	46133	46616	100.790
	7	46308	46002	46194	46097	46301	46668	46264	46392	46669	46173	46626	46450	100.781
	8	45933	46031	45888	46363	45953	46574	46561	46730	46716	46507	46177	46119	100.674
	9	46126	46569	46424	46360	46549	46065	46027	46082	46380	46115	46263	45725	100.517
	10	45785	46297	46522	46481	45670	46966	46024	46149	46278	46163	46686	46606	100.688
	11	45941	46741	45517	45722	46259	45940	46263	46341	46568	45974	46431	46071	100.351
	12	45523	46008	46100	46253	45964	45692	45674	46176	46247	46699	45355	45833	99.944
	13	45928	46420	46329	46102	46265	45886	46010	46188	46923	46022	46289	46773	100.598
	14	46027	46650	46379	45700	46223	46067	45879	46774	45964	46332	45734	46561	100.445
	15	46402	46372	46348	46269	46490	46236	46001	46551	46293	46272	46484	46552	100.805
	16	46397	46012	46333	46497	46638	46133	46662	46279	46305	46462	45737	45942	100.646
	17	46296	46417	46392	46406	46202	46729	46862	46393	46576	46818	46149	46339	101.041
	18	46801	46479	46563	46654	46847	46724	46442	45604	46600	46902	45930	46361	101.101
	19	46306	46762	46292	46247	46393	46965	46704	46419	46234	46035	46649	46516	101.031
	20	45968	46634	46360	46083	46610	46177	46183	45789	46546	46638	46375	45822	100.607
	21	46339	46100	46175	46349	45671	45640	46205	46112	46074	46504	45859	46208	100.254
	22	46409	46467	46008	46110	46520	46072	45992	46226	46318	46032	45949	46301	100.466
	23	46168	46552	46057	45873	45907	46698	45918	46311	46561	46681	46089	46139	100.566
14	0	46291	46331	46047	45855	46030	46044	46232	46406	46594	46543	46038	46597	100.572
	1	46488	45824	46354	46681	47063	46489	45723	46583	46504	46287	46267	46103	100.821
	2	46274	47041	46023	45996	46262	46589	45909	46659	46291	47125	46223	46203	100.863
	3	45841	46719	46238	46024	45879	46318	46599	46261	46531	46099	46619	46523	100.692
	4	45976	46631	46331	46436	46588	45687	46374	46505	46035	45990	46534	46373	100.657
	5	46218	46116	46112	46546	46798	46812	45942	45853	46380	46489	46314	46071	100.692
	6	45436	46216	46755	46023	46342	46284	46243	46092	46619	45816	46182	45616	100.324
	7	46221	46543	46403	45684	45988	46530	46488	45998	46206	46153	46332	46779	100.632
	8	46495	46070	46773	46055	46623	46425	45928	46096	46220	46410	46080	45780	100.566
	9	46070	46364	45867	46981	46635	46336	46085	46333	46061	45430	46239	46187	100.499
	10	46592	46118	46497	46981	45996	46183	46689	45881	46498	45993	45733	46134	100.627
	11	46151	46009	46638	45965	45829	46744	45953	46223	46683	45518	46303	46695	100.521
	12	46155	46314	45968	45719	46052	46322	46836	46524	46297	45881	46015	46422	100.484
	13	46295	46653	46242	45971	45871	46192	46258	45811	46742	46835	46443	47005	100.812
	14	46469	45909	46207	46039	46080	46158	46188	46402	46213	46095	46358	46188	100.448
	15	46772	45916	46680	47019	45926	46869	46168	46327	46903	46198	46550	46459	101.079
	16	46280	46336	46459	46440	45989	46164	46709	46286	46098	46440	46786	46129	100.776
	17	46001	46463	46558	45987	46296	46756	46635	46085	46267	46286	46319	46422	100.769
	18	46759	46537	46320	46322	46684	46321	46826	46353	46615	46285	46256	46267	101.035
	19	45874	45914	46676	46370	46482	45822	46333	45751	46352	45371	46461	46374	100.353
	20	46871	46620	45941	46394	46988	46392	46216	46348	46259	46120	46711	46288	100.963
	21	46226	47149	46253	46338	46123	46759	46231	46572	46691	46439	45936	46571	100.989
	22	46615	45559	46234	47046	46921	46820	46765	46935	45982	46807	46417	45978	101.132
	23	46844	46770	46248	46531	46119	46904	46456	46246	45825	45905	46875	46046	100.895



INAF/UNIRomaTre		S.V.I.R.CO. Observatory - Pressure Corrected Data – September 2016											20 NM-64	
day	hh	00_05	05_10	10_15	15_20	20_25	25_30	30_35	35_40	40_45	45_50	50_55	55_60	h-norm
15	0	46204	46624	46994	46527	46195	46264	46302	46485	46955	46595	46003	46436	101.040
	1	46239	46731	46583	47004	45687	46268	46185	46254	46478	46660	47083	46412	101.042
	2	46397	46276	47267	46187	46474	45707	46471	46892	46187	46146	46156	46540	100.882
	3	46805	46940	45708	46882	46986	46640	45925	46097	45988	46634	45821	46898	100.995
	4	46725	46656	46727	46161	46484	46212	46883	46769	46794	46477	46121	45934	101.108
	5	46263	46316	46296	46298	45848	46551	46168	45962	46836	47159	46247	46175	100.777
	6	46324	46253	46549	46117	46098	46389	46294	46208	46242	46024	46396	46088	100.571
	7	46188	47213	46237	46528	46646	46720	46590	46739	46284	46516	46076	45959	101.062
	8	46566	46577	46490	46566	46996	46672	46795	46074	46816	46873	46563	47028	101.483
	9	46438	46459	46662	47166	47180	46883	46601	46558	45987	46154	46265	46960	101.355
	10	46599	47040	47182	46089	46479	46509	46382	46629	46022	46132	46409	46221	101.062
	11	46618	46352	46339	46476	46150	46045	46194	46501	46776	46729	46054	45757	100.753
	12	46478	46621	45727	46542	46395	46161	46711	46827	46736	46353	46957	46329	101.088
	13	45679	46084	46858	46690	46305	46242	46342	46451	46364	46558	46282	47553	101.010
	14	46636	46297	46485	46146	46395	46472	46598	46411	46454	46341	47057	46390	101.060
	15	46730	46836	47505	46655	46335	46483	46775	46822	46645	46354	46937	45692	101.438
	16	47136	46756	46613	45767	46438	47446	46678	46543	45737	46391	46333	45905	101.071
	17	46829	46258	45423	46473	46851	45815	46121	45827	46248	45996	45541	46343	100.343
	18	46867	46229	46345	46939	45370	46163	46370	46088	46559	46997	46796	46994	101.065
	19	46239	46328	46437	46126	46803	46058	46086	46756	45751	46551	46341	46787	100.803
	20	46124	45779	46163	46439	46619	46282	46273	46532	46480	46377	46335	47122	100.850
	21	46298	45853	46242	45982	46512	45714	46585	46303	46444	46187	45828	46249	100.429
	22	46314	45554	46499	46329	46524	45718	45747	46001	45966	46494	45948	46097	100.246
	23	46875	45714	46206	46113	45862	46039	45953	45876	45846	46003	46278	46114	100.190
16	0	45906	46793	46214	46554	46146	46200	45931	45916	46230	45897	46062	45526	100.272
	1	46162	45822	46704	46353	46130	46236	46645	46066	46019	46979	46053	45784	100.565
	2	45751	45941	45440	46119	46264	45859	45746	45687	45747	46547	45859	46589	99.949
	3	46159	45823	45491	46540	45996	46203	46594	46275	45832	46094	46027	45883	100.196
	4	46875	45912	45946	45990	46398	46510	46042	45437	46255	45964	45898	46944	100.424
	5	45936	46778	46515	45981	46678	46175	45996	46133	46253	46538	46400	45781	100.603
	6	46713	46414	46405	46365	46193	45923	46594	46248	46257	46351	46466	46487	100.831
	7	46793	46146	46340	46390	45571	46135	45636	46008	45744	46854	46029	45791	100.291
	8	45869	46166	45811	45975	46598	47145	45800	46375	46184	46457	46000	46132	100.485
	9	46413	46136	46243	45807	47031	46061	46067	45825	46324	46041	46523	45838	100.449
	10	46096	46602	46079	46197	46448	45166	46365	46040	45575	46468	46680	45978	100.337
	11	46268	46155	46182	46235	46013	46118	45997	46101	46139	45921	45821	45688	100.146
	12	45959	45964	46224	46019	45805	46173	46117	46181	46092	45843	45755	46391	100.125
	13	46290	45838	45592	45635	46105	45672	45776	46566	46198	45980	46534	45807	100.029
	14	45823	45288	45566	45393	46170	45283	45481	46130	46191	45153	45850	46257	99.412
	15	45878	46267	46009	45869	45317	46227	46165	46100	45859	46116	46459	46176	100.112
	16	46547	45935	46325	46081	45643	45742	46038	45641	45954	46545	45961	46096	100.123
	17	45635	46095	45756	45493	45599	46039	45597	46071	45673	45562	46430	45638	99.593
	18	45775	45602	45585	45935	46844	45820	45916	45819	45970	45631	45542	45651	99.684
	19	46097	45849	46248	46200	46229	45941	45313	45593	45341	45282	45950	45811	99.642
	20	45265	45506	45615	45209	46212	45491	46077	45787	45418	45639	45850	46056	99.328
	21	46088	45738	46168	45658	45788	46067	45953	45519	45648	46044	46106	45262	99.675
	22	45633	45678	45402	45865	45379	45617	46041	45888	46356	46211	45900	45536	99.578
	23	45916	46112	45258	46162	45717	45493	46042	45441	46011	45829	46233	46060	99.718



INAF/UNIRomaTre				S.V.I.R.CO. Observatory - Pressure Corrected Data – September 2016								20 NM-64		
day	hh	00_05	05_10	10_15	15_20	20_25	25_30	30_35	35_40	40_45	45_50	50_55	55_60	h-norm
17	0	45747	46201	45885	46116	45932	45692	46260	46015	46065	46111	46276	46340	100.148
	1	46738	45800	45824	46063	45549	45983	45814	45620	45847	46373	46106	46222	100.019
	2	45720	46026	46250	45440	45727	45087	46684	45634	46200	45973	46424	46836	100.031
	3	46346	45745	46380	46180	46275	46022	46095	46517	46172	46462	46201	46106	100.483
	4	46718	45952	46506	46770	46388	45647	46629	46671	46483	46482	46688	45944	100.914
	5	46283	46735	46509	45689	46768	46203	46249	46278	46716	46684	46792	46999	101.100
	6	46629	46083	46885	46188	46180	46772	46615	46642	46155	46512	46027	46364	100.945
	7	46652	46768	46692	46401	46085	47114	46858	46684	46911	46125	46870	46319	101.386
	8	47368	46601	46490	46522	46467	45979	46802	46604	47233	46308	46459	46407	101.342
	9	46488	46279	46573	46195	46702	46099	46388	46597	46222	47321	47075	46522	101.201
	10	46073	46866	47141	46827	46428	46327	46497	46654	46303	46114	46401	46821	101.199
	11	46179	46483	46249	46222	46625	46530	46095	46565	46358	46001	46303	46103	100.703
	12	46550	46231	46306	46584	46547	46594	46674	46096	46295	47139	46480	46238	101.070
	13	46500	46655	46622	46448	46007	46229	46564	46473	45466	46359	46550	46421	100.808
	14	46400	45591	46492	46160	45639	45949	46875	46340	46472	45872	45589	45384	100.168
	15	45657	46196	45942	46047	45719	45771	45753	45697	45560	45793	45855	46111	99.686
	16	46086	45499	45126	44854	45930	46134	45970	45383	45964	45602	45524	46157	99.347
	17	45727	45494	45879	45614	46373	46109	45903	45743	45593	45916	46252	46565	99.879
	18	46057	46487	45896	46147	45817	46078	45912	45963	46041	45986	45464	46447	100.084
	19	46296	45639	45839	45921	46091	45663	45597	46134	45798	45956	46188	46119	99.893
	20	45432	45831	45723	46038	46092	45657	46274	45833	45687	45123	45478	45362	99.402
	21	45629	45439	45663	45499	46044	45625	45327	45725	46041	45633	45550	45743	99.291
	22	45472	45885	45288	45333	45644	45114	46167	46300	45611	45827	45439	45808	99.285
	23	45871	45736	46000	46053	45437	45934	45220	45451	45728	46022	45510	45938	99.469
18	0	45907	45917	45892	45805	45379	45353	45934	46056	45159	46171	45831	45436	99.457
	1	45573	46070	45955	45969	45249	46061	46002	45221	45566	45475	45524	46013	99.428
	2	45834	45638	45516	45780	46084	45625	45437	46346	45931	45841	45869	44940	99.458
	3	46000	45685	45709	45860	45583	45802	45641	46171	45794	45888	45859	45962	99.660
	4	45547	45924	45427	45647	45436	45757	45841	46032	45605	45505	45490	45755	99.299
	5	45773	45761	45871	45835	45663	46161	45887	46132	45685	45627	46409	46115	99.834
	6	46082	45646	45756	45518	46145	45537	46608	46211	45600	45891	45780	45388	99.697
	7	45919	45698	46111	45641	45953	45887	45991	46115	46336	46004	46199	45592	99.930
	8	45792	46051	46060	45972	45988	45736	46254	45465	45810	45994	45845	45972	99.838
	9	45619	45893	46504	46136	45935	45771	46051	45779	46043	46149	46226	45907	100.033
	10	46445	46454	45891	45708	46566	46009	46037	46227	46399	46541	45978	46019	100.442
	11	45907	45800	45974	46280	46409	46009	46351	46716	46903	45875	46487	46706	100.650
	12	45984	45846	45904	45430	46082	45940	46332	46780	45060	45928	46361	46275	100.016
	13	46512	46193	46573	46576	45915	45600	46523	46204	45722	46120	46431	45958	100.452
	14	45895	46320	45689	46685	46298	45874	46827	45748	46243	46087	45938	46957	100.495
	15	46207	45983	46388	46087	45593	46071	46152	45960	46061	45805	46200	46250	100.167
	16	46113	46491	46799	45838	45778	45901	45589	46600	46375	46112	46712	45875	100.426
	17	45655	45687	46282	46233	46247	46018	46009	46458	46515	45587	45836	45888	100.105
	18	46393	46215	45709	46066	45759	46144	46506	45176	45540	46054	45505	45432	99.758
	19	45054	45667	46089	45741	45926	46160	46196	45619	46045	45697	46028	45155	99.555
	20	45417	45484	45906	45273	45606	45485	46090	45230	45617	45641	46119	45498	99.190
	21	45805	45979	45472	45572	45360	45621	45766	46000	45523	45721	45959	45005	99.266
	22	46246	46031	45221	46099	46558	46093	45780	46149	46158	46217	45632	45696	100.008
	23	45986	45161	45739	46337	46582	46009	46211	45824	45666	45518	46148	46287	99.934

INAF/UNIRomaTre		S.V.I.R.CO. Observatory - Pressure Corrected Data – September 2016											20 NM-64	
day	hh	00_05	05_10	10_15	15_20	20_25	25_30	30_35	35_40	40_45	45_50	50_55	55_60	h-norm
19	0	45701	46052	45663	46348	46013	45780	45828	45459	45936	45787	45645	45430	99.604
	1	45465	46870	46033	45886	45780	46305	45508	46489	46037	46158	46154	45931	100.142
	2	46148	46481	46513	46101	45703	46066	45701	45844	46210	46066	46266	46038	100.236
	3	45689	45618	45873	45456	45889	45706	45722	46062	45914	45457	46392	46032	99.633
	4	46080	46113	45094	46153	45424	45357	45597	45786	46791	45778	45914	46126	99.707
	5	45891	45989	46157	45756	45971	45755	46547	46002	45487	45969	46088	45428	99.857
	6	45869	46188	45673	46561	46140	45828	46246	45849	45491	45498	45975	46442	99.986
	7	45836	46022	46203	45819	45755	46175	45090	46043	45724	46205	45631	46355	99.823
	8	45867	45844	45975	46548	45679	45691	46221	45776	45764	46442	46158	46273	100.073
	9	46180	45997	46357	45960	45908	46076	45604	46887	45809	46281	46397	46467	100.379
	10	45870	45867	46126	46305	45831	46565	46178	45844	46742	46122	46465	46338	100.439
	11	45622	46113	45909	45960	46313	46047	46742	46187	46589	46141	46031	46951	100.502
	12	46324	45605	46817	46159	46795	46269	46131	46546	46770	46065	46298	46395	100.787
	13	46003	45678	46314	47117	46326	47093	45628	46207	46191	45959	46116	45776	100.467
	14	45614	46356	45722	45868	45647	46604	46391	46370	46000	46292	46289	45375	100.126
	15	46057	45722	46369	46629	46006	45666	46214	46644	45509	45854	46234	46052	100.204
	16	46028	46034	45856	46035	46238	46240	45796	45768	45740	45446	45955	45561	99.794
	17	45724	46210	46017	45593	45903	45683	45823	45826	46425	46051	45726	45631	99.779
	18	46195	46428	46436	46241	45569	46211	45772	46168	46172	46203	45697	46044	100.236
	19	45434	45953	46005	46051	45554	46053	45890	45836	46619	45428	46211	46071	99.868
	20	45493	45449	45754	45371	45541	45981	45667	45729	45709	45855	46424	45383	99.370
	21	46427	45404	45607	45689	46058	45754	45520	45298	45654	45604	45370	45870	99.352
	22	46316	45981	45993	44999	45863	45767	45942	45941	46274	45400	45170	45171	99.454
	23	45970	45641	45776	45354	46206	45678	45299	45297	45206	45739	45931	45241	99.186
20	0	45972	45616	46166	44969	45108	46334	46314	45907	46004	45936	45378	45727	99.564
	1	45770	45006	45992	45625	45643	46190	45759	45890	46395	45698	45368	45865	99.523
	2	45995	45830	46111	45699	46077	45385	45895	46157	45628	46230	45747	46478	99.891
	3	46372	45832	45914	45935	46399	45952	45755	46149	45767	45467	46302	45901	99.984
	4	45782	45893	45873	45747	45084	45839	45645	45553	45412	45664	45968	45544	99.306
	5	46551	46134	46281	45859	45591	45738	46395	46236	45744	45910	46268	45668	100.098
	6	45483	45708	45388	46160	45614	45773	45749	45554	45755	45816	45994	46011	99.487
	7	45800	46096	45863	46121	45560	46211	45666	45715	45549	45248	45805	46604	99.711
	8	46163	45533	45912	46422	45883	46544	45805	46383	46884	46194	46314	46705	100.527
	9	46005	45609	45894	46225	45741	45459	46012	45981	45503	46279	46325	46042	99.863
	10	46157	46077	45743	45957	45653	46695	46437	46075	46777	46475	46147	46041	100.435
	11	45391	46478	46135	46279	46865	46145	46408	46214	46293	45742	45963	46104	100.396
	12	45897	46585	46169	46234	45826	46346	46072	46206	45703	45760	46437	46089	100.270
	13	46112	45567	45409	46010	45659	45851	46193	46230	46292	45947	45551	45877	99.794
	14	46252	46119	45985	46519	45982	46301	46106	45816	46019	45622	46124	45661	100.122
	15	45452	46496	46197	45323	45782	46003	46376	45831	45625	46373	45949	45937	99.911
	16	46550	46141	46073	46783	45896	45924	45646	46423	45672	45528	46057	46566	100.258
	17	46015	46092	45629	46026	46157	45860	46037	46596	45596	45795	45671	46161	99.964
	18	46462	45602	45965	45753	45998	45333	44878	46907	45841	45956	45310	46138	99.694
	19	45557	45804	46102	45228	45686	45766	46265	45608	45817	45937	46149	46322	99.711
	20	45575	45539	45803	45227	45406	45548	45606	46188	45475	45862	46030	44998	99.171
	21	46180	44905	46100	45023	46205	45755	45657	46514	46541	45700	45776	45684	99.675
	22	45919	45682	45918	45862	45558	45996	45669	45754	45535	45583	46101	46077	99.605
	23	45544	45255	45802	45498	45173	45549	46193	46063	45574	45573	45578	45802	99.234

INAF/UNIRomaTre				S.V.I.R.CO. Observatory - Pressure Corrected Data – September 2016										20 NM-64	
day	hh	00_05	05_10	10_15	15_20	20_25	25_30	30_35	35_40	40_45	45_50	50_55	55_60	h-norm	
21	0	45289	45626	45924	45724	46038	45353	45386	46005	45806	45381	46608	45573	99.427	
	1	45443	45265	45376	45970	45271	45384	46179	45711	45251	46009	46012	45730	99.233	
	2	45968	45655	45842	45296	45539	46252	46068	45828	45546	45611	46264	45984	99.641	
	3	45717	45465	46128	46132	45079	45192	45697	45220	46322	45741	46109	46277	99.501	
	4	45513	45801	45893	46561	46128	45661	45729	46016	45384	46231	45796	46710	99.926	
	5	45836	45268	46043	45986	46234	45712	45859	46718	46217	45953	45929	46000	99.986	
	6	46361	46239	45277	46282	46439	45687	45976	46006	45737	45758	45940	45790	99.939	
	7	46442	46349	46152	46116	46143	45810	46613	45929	46061	46024	45562	45864	100.224	
	8	46095	45447	46295	46292	45744	46112	46613	46606	45970	45933	45890	46020	100.215	
	9	45687	46030	46433	46159	45762	46558	45837	45788	46123	46060	46068	46666	100.242	
	10	45542	45776	46104	46566	46149	46524	46169	46029	46577	46315	45899	46592	100.437	
	11	45793	45747	46051	46802	45638	45947	46027	45712	46137	45883	45847	46474	100.041	
	12	45752	46256	45722	46659	46436	45731	46170	46107	46194	45595	46044	45718	100.100	
	13	45308	46550	46131	46824	45619	46312	45488	45934	45868	45782	45584	45581	99.845	
	14	45817	45508	45624	45985	46100	46351	45771	45953	45998	46171	46256	45774	99.905	
	15	45413	46218	45866	45955	45859	46446	45652	46137	46217	45974	45570	45989	99.903	
	16	45453	45874	45889	46021	45961	46522	45613	46358	45497	46053	46057	46295	99.956	
	17	45492	46044	45963	46613	45302	45334	45872	45897	46075	46500	45853	46128	99.862	
	18	45083	45772	45869	45511	45239	45045	46479	45856	45699	46062	45393	45635	99.240	
	19	45941	45545	45810	45366	46260	45812	45681	46098	45616	45569	45654	45437	99.449	
	20	46083	45487	45894	45536	46171	45797	45625	45644	45877	46333	45398	46305	99.695	
	21	46110	45478	45648	45571	45945	45877	45586	45835	46162	45719	45627	45621	99.519	
	22	46195	45752	45269	45956	45653	45656	46004	45566	45525	44948	45708	46107	99.367	
	23	45797	45598	45590	45625	46154	45628	45567	45246	45784	45662	45991	45820	99.389	
22	0	46259	46069	45410	45897	45694	46057	45774	46121	45792	44822	46464	46463	99.817	
	1	46186	45678	45673	46374	45527	45868	46236	45740	46091	45526	45805	46413	99.870	
	2	46284	45536	45605	46523	45812	46169	46410	45578	45188	45688	46759	46144	99.975	
	3	46173	45785	45455	45528	45867	45633	46170	45872	45257	45872	46080	45812	99.578	
	4	45729	45503	46212	45544	45963	45640	45834	46054	45754	46094	45498	46805	99.782	
	5	46098	46148	45387	45551	46205	46080	45408	46101	46007	46171	45834	45401	99.738	
	6	46096	46183	46092	46908	45859	45698	45763	45831	45978	45553	46148	45874	100.028	
	7	45531	46013	45628	45236	45523	45950	46207	45706	45983	46445	45318	45490	99.492	
	8	45786	46048	45687	45649	45892	47039	46206	45705	45436	45627	45726	45696	99.758	
	9	45731	45867	46172	45683	46497	45600	45750	45915	46169	46007	46026	45653	99.862	
	10	45449	46389	46623	46093	45792	45484	46362	45962	46270	45968	46044	45952	100.101	
	11	45420	46088	46520	45891	45441	45678	45945	46166	45720	46488	45663	45335	99.732	
	12	46423	46377	45962	45441	45444	46585	46237	45249	45765	46371	45969	45985	99.995	
	13	45872	46215	45559	45947	45440	45844	45475	45935	46086	46324	45222	46204	99.690	
	14	46312	46222	45639	45924	45351	46397	45978	45425	45492	45416	46119	45878	99.696	
	15	46622	45986	45613	46345	45626	46090	46683	45745	46428	45479	45577	45489	99.973	
	16	45455	45810	45153	45750	46429	46480	46313	45931	46115	45727	45876	45415	99.750	
	17	45374	45876	45991	45974	46092	46303	46278	45733	46228	45722	45400	45375	99.731	
	18	45634	45455	46031	45803	45319	45626	45135	45971	45868	45648	45491	46563	99.404	
	19	45515	45938	45691	45555	45250	45529	45916	45535	45739	45905	46078	46051	99.432	
	20	45590	45829	45814	45402	45453	46074	45566	45239	45940	45659	45581	45723	99.282	
	21	46173	45571	45230	46398	44624	46064	45640	45400	45809	45835	45986	46137	99.462	
	22	46057	45806	45968	45939	45688	45977	45741	45240	45668	45662	46004	45501	99.532	
	23	45247	46451	46754	46425	45955	46159	45700	45920	45857	45828	45342	45655	99.902	

INAF/UNIRomaTre		S.V.I.R.CO. Observatory - Pressure Corrected Data – September 2016											20 NM-64	
day	hh	00_05	05_10	10_15	15_20	20_25	25_30	30_35	35_40	40_45	45_50	50_55	55_60	h-norm
23	0	46076	45821	46127	45936	45737	45743	46106	46096	45598	45701	46234	45959	99.870
	1	46210	46046	45855	45631	46165	45953	45994	46180	45480	45580	45998	45808	99.831
	2	45405	45294	45849	46182	45873	46295	45845	45552	46032	45296	45705	45740	99.499
	3	45917	45574	45193	45807	45779	45748	46139	45825	45189	46007	46138	45555	99.463
	4	45829	45989	46038	45948	46407	45998	45869	46789	45540	45716	45041	45036	99.705
	5	45675	45979	45798	45811	45552	45492	45769	46094	45856	46257	46331	45652	99.716
	6	45479	46014	45650	45870	46365	45545	46478	45515	45388	46073	45943	45493	99.634
	7	45650	45619	46089	46178	46373	45501	45210	46289	45985	45922	45735	45388	99.657
	8	46053	45835	45374	45881	45903	45849	45437	45999	45713	45370	45300	45700	99.380
	9	46278	46054	45617	45807	45810	45917	46177	45505	46081	45972	45929	45104	99.713
	10	45691	45706	45372	45745	45437	46359	45567	45600	45093	45508	45726	46147	99.297
	11	45956	44904	45586	47033	45872	45945	45508	45490	46370	45243	45865	45904	99.609
	12	45582	45412	45832	46061	45797	45374	45925	45112	45652	45683	45958	45365	99.261
	13	45906	45274	45577	45404	45650	45693	45879	46070	45222	45894	46338	45719	99.419
	14	45701	45680	45799	45423	45739	45554	45748	45672	45778	45750	45831	45435	99.325
	15	45767	45733	45088	45790	45414	45556	45635	46159	45548	45715	45405	45642	99.206
	16	45391	45769	46021	45981	46205	45901	45892	45403	45289	45588	45611	45742	99.449
	17	45573	45503	45856	45928	45097	45480	45214	45836	45306	45743	45274	45763	99.047
	18	45992	45911	46138	45567	45580	45358	45647	45856	45958	46108	45286	45611	99.489
	19	45558	45150	45213	45696	45417	45702	45900	45183	45781	45495	45298	46137	99.039
	20	45732	45866	45787	46303	45478	46411	46028	45621	46068	46005	45658	45942	99.831
	21	45801	45643	45196	45599	45295	45434	45920	45652	45536	45762	45977	45953	99.263
	22	45372	45804	45491	45950	45832	46080	46054	45204	45539	46132	46191	45539	99.520
	23	46086	45253	45630	46082	45848	45810	45577	45328	45471	46040	46049	45467	99.422
24	0	45166	45981	45374	45860	45891	45672	46033	45359	46205	45636	46120	45481	99.445
	1	44792	46081	45671	45374	45459	45173	45334	45149	46019	45660	45743	45874	99.003
	2	44876	45999	45730	45909	45332	45510	45601	45555	46555	45381	45251	45692	99.195
	3	45529	45763	46082	46234	45929	45782	45671	46121	45481	45939	45529	45515	99.591
	4	45326	45975	46017	45739	45670	45986	45972	45128	45844	45735	45876	46631	99.650
	5	45886	45570	46734	45764	45313	45149	45966	45987	45336	46390	46021	46260	99.736
	6	45655	46171	45724	45581	46356	46092	45960	45253	46001	46220	45440	46141	99.775
	7	46575	45643	46449	45935	45836	45525	46299	46597	45294	46168	45467	45933	99.980
	8	46235	46477	45692	45785	46112	46111	46085	45827	45454	46115	46259	46190	100.092
	9	45809	46203	46170	46124	46530	46064	45756	45634	46007	45819	45633	45977	99.980
	10	46298	45881	45327	45437	45819	45806	46123	45789	45884	45748	46039	45885	99.674
	11	45534	45860	46013	45557	45486	45806	45843	46096	45630	45856	45277	46087	99.495
	12	45804	46243	45760	45270	45274	45512	46232	46233	46333	45813	46641	45926	99.857
	13	45866	45829	46203	45745	45844	46006	46310	46226	45766	46103	45743	45739	99.918
	14	45472	46217	46329	45615	45901	45479	46311	46252	46088	45962	45787	46124	99.946
	15	46026	45877	46290	46108	45908	46098	46420	46464	46089	45322	46170	45952	100.161
	16	46122	45752	46217	46828	46042	45740	46063	46118	46114	46043	46011	46003	100.221
	17	46137	46439	45346	46048	45647	45944	46547	45898	45824	45841	46104	45661	99.928
	18	45096	45390	46048	45374	45748	46124	46057	45769	45786	46578	45885	45955	99.633
	19	45660	45492	46189	45902	45945	46035	45620	45708	46603	46257	46115	45910	99.928
	20	45523	45786	45901	46452	46474	46292	46325	46043	45218	46283	45859	45803	100.023
	21	45966	46134	46276	46008	46443	45708	46176	45724	46030	46403	45346	45830	100.038
	22	46016	45535	45079	46401	46328	45767	46911	45503	46474	45698	45581	46387	99.972
	23	45918	45851	46507	45769	46023	45971	46166	45813	45946	46124	46087	46204	100.099

INAF/UNIRomaTre				S.V.I.R.CO. Observatory - Pressure Corrected Data – September 2016									20 NM-64	
day	hh	00_05	05_10	10_15	15_20	20_25	25_30	30_35	35_40	40_45	45_50	50_55	55_60	h-norm
25	0	45538	46009	46014	46588	46503	45712	46283	46287	45656	46302	46954	46201	100.401
	1	45589	45670	46130	46776	46368	45784	45722	46390	45946	46281	46479	45867	100.212
	2	45560	46072	46400	46065	46333	46133	45766	46340	45669	45248	45949	46111	99.966
	3	45655	46742	45595	46499	45529	46357	46050	46152	46067	46449	46180	46920	100.428
	4	45692	46028	45637	45912	46787	46696	45462	45737	46034	46549	45798	46527	100.186
	5	46837	46153	46550	46031	46263	46201	46513	46118	45878	46456	46301	46042	100.636
	6	45684	45567	46037	45985	45649	45900	46457	46014	46164	46539	45922	46504	100.107
	7	45665	46074	46195	45763	45999	46576	46207	45397	46234	45866	45585	45994	99.949
	8	46082	45591	45493	45836	46321	45935	46209	46615	46286	46236	46336	45863	100.176
	9	45716	46533	46225	46012	46654	46715	46132	46010	46538	45778	46391	46500	100.611
	10	46088	46121	45991	46654	46472	46342	46370	46641	46413	47126	46514	46299	100.943
	11	46569	46465	46821	46541	46720	46489	47073	46873	47038	46321	46288	47141	101.541
	12	46492	46319	46757	46768	46492	46228	46283	46545	46485	46044	46268	46245	100.922
	13	46891	46726	46014	46235	46197	46590	46283	46291	46594	45554	46412	46462	100.800
	14	46888	46720	46108	46855	46392	46106	46461	46101	45799	46473	46282	47080	100.984
	15	47012	46473	46584	46823	46147	45809	46605	46204	46145	46593	46309	46409	100.957
	16	45969	45969	46172	46096	46232	46231	46892	45977	46074	45795	46061	46994	100.476
	17	45284	45953	45782	46322	46566	46366	47325	46237	46072	46204	46716	46044	100.550
	18	45830	46281	46195	46950	46802	46511	46442	46276	46451	46445	46202	46638	100.940
	19	45982	46651	46705	46652	46600	46183	46499	46117	46338	47017	46811	46464	101.121
	20	46506	47165	46344	46209	45985	46794	45846	47223	46818	46278	46492	45908	101.039
	21	46637	46657	46057	46569	46312	46630	46907	46871	46647	46478	45946	46044	101.073
	22	46514	46397	46658	45692	46818	45870	46388	46435	46825	46208	46687	46684	100.968
	23	46318	46701	46222	46023	45986	47124	46034	46179	46059	46032	46435	46073	100.608
26	0	46404	46460	46199	46533	46299	45874	46232	46343	45999	46201	45922	45883	100.448
	1	45993	46527	46115	46330	46136	46349	45847	45669	46449	46782	45840	46424	100.476
	2	46016	46158	46190	46396	46548	46451	46202	46375	46671	45838	46145	45565	100.493
	3	45601	46542	46318	46572	46620	46337	46702	46735	46382	46465	46269	46133	100.878
	4	46700	46387	46600	45938	46136	46501	46235	46153	46773	46405	46655	46781	100.984
	5	46349	46648	46614	46651	46700	45988	46560	47026	46519	46371	46199	45979	101.046
	6	45992	46475	46221	46749	46914	45971	46011	46671	46201	46702	46890	46138	100.925
	7	46543	46175	46524	46212	46393	46461	46925	46413	46411	46360	46079	45642	100.780
	8	46708	46161	46164	47020	46707	47075	46462	46311	46405	46699	45634	46429	101.077
	9	46628	46288	46229	46087	46041	47071	46712	46895	46634	46369	46550	46119	101.050
	10	47031	46706	46041	46397	46338	46693	46303	47024	45987	46782	46587	46366	101.164
	11	45334	46921	46770	46159	47209	46816	46637	46959	47310	46425	46354	46215	101.319
	12	47245	46293	46764	46314	46742	46572	46138	46687	46780	46606	46849	46681	101.420
	13	46716	47160	46405	46680	46787	46474	47176	46316	46498	46558	46826	46939	101.577
	14	46683	46337	46534	46477	46342	46398	46462	46564	46496	46824	46607	45815	101.034
	15	46905	46164	46170	46600	46212	46622	46414	46768	46838	46442	46180	46323	101.052
	16	46890	46608	46469	46171	46928	47156	46434	46533	46582	46663	46708	46737	101.458
	17	46503	46469	46548	46304	46307	46768	46520	46680	45867	46521	46526	46168	100.970
	18	46616	46395	46812	46634	46152	46279	46260	47146	46304	46708	46006	46273	101.042
	19	45294	47383	45831	46144	46802	46048	46111	46359	46190	45800	46076	46678	100.522
	20	47189	46183	46525	46158	46075	45867	46642	46640	45838	47249	46448	45733	100.855
	21	46348	46341	45947	45743	46627	45876	46629	46149	46187	46494	46249	46351	100.563
	22	46178	46286	46973	46049	46178	46321	45859	46409	46541	45451	46178	46167	100.499
	23	46483	46666	45800	46641	46469	46020	46757	46601	46051	46016	46721	46164	100.826

INAF/UNIRomaTre		S.V.I.R.CO. Observatory - Pressure Corrected Data – September 2016											20 NM-64	
day	hh	00_05	05_10	10_15	15_20	20_25	25_30	30_35	35_40	40_45	45_50	50_55	55_60	h-norm
27	0	46096	45452	46056	45965	46054	46146	46091	45857	46455	45838	46391	46555	100.206
	1	46432	46780	46069	46318	46337	46997	46359	46254	45906	46892	46577	46488	101.011
	2	46975	46366	45957	46213	46634	46311	46349	46543	46088	46017	46081	46288	100.723
	3	46485	46172	45737	45905	46285	46336	46027	45966	46579	46134	46251	46602	100.480
	4	46526	46508	46229	46596	46449	46090	46332	46962	46350	46671	46423	46088	100.977
	5	46210	46220	46258	45625	46272	46308	46699	45992	46556	46490	46471	46130	100.615
	6	46228	46001	46006	46320	46626	45577	45967	46580	45748	46449	46467	46593	100.494
	7	46242	46255	46356	46838	46501	45945	45648	46161	46244	46353	45936	46776	100.620
	8	46442	46416	46042	46350	46564	46481	46592	46198	46588	47217	46758	46030	101.059
	9	46456	46988	46190	46435	46564	46667	46811	46553	46608	46345	46176	46447	101.161
	10	46322	47201	47250	46414	46243	45721	46747	46791	46633	46508	46506	46830	101.329
	11	46423	46278	46643	47059	46094	46268	46238	46022	46415	46931	46097	46752	100.976
	12	46746	46049	46822	46633	45832	46409	46382	46350	46208	46595	46081	46645	100.892
	13	45998	46343	46264	46528	46277	47107	46390	46743	46358	45744	46454	46229	100.834
	14	46656	46185	46187	46081	46780	46606	47207	45934	46494	46702	46137	45754	100.886
	15	47068	45844	46062	46641	46659	46300	46579	46646	45971	46278	46362	46171	100.860
	16	46078	46944	46186	46186	46593	46609	45941	45820	46513	45722	46243	46329	100.604
	17	45202	46209	46412	45961	46369	46284	46664	45969	46404	45860	46195	45998	100.307
	18	46301	45802	46435	45618	46666	46275	46984	45856	46926	46136	45910	46322	100.616
	19	45514	46283	45918	46313	46086	45674	45600	46414	46229	45770	45811	46607	100.070
	20	45681	45448	45827	46320	46174	45598	45957	45557	46230	46332	45848	45760	99.801
	21	45632	45507	45534	46225	45944	46187	45739	46179	46186	45608	46118	46069	99.836
	22	45645	45536	45914	46219	45915	45673	45443	45792	45837	45976	46356	46305	99.778
	23	45339	45702	46251	45178	45789	45918	46162	45353	45562	45446	45505	45954	99.334
28	0	45848	45979	46339	45811	46175	45943	46065	45584	45332	46176	46035	45614	99.833
	1	46100	46078	45758	46038	45918	45753	46132	45568	46354	46768	45611	45948	100.035
	2	45642	46176	46565	46358	46446	46292	46587	46321	45834	46145	45823	46584	100.533
	3	46088	45732	45798	45763	45329	46099	45522	45662	45971	45738	46243	45947	99.648
	4	45901	45801	45843	46304	45768	46496	46031	45381	46349	46435	46143	45984	100.109
	5	45794	45527	45908	46204	45931	46213	45199	45650	45739	45957	46101	46346	99.771
	6	45774	45768	45643	46536	45911	46087	46026	45485	45894	45971	45998	45496	99.775
	7	45894	45788	46256	45825	46545	46473	46338	45591	45834	46907	46356	45542	100.275
	8	46445	45648	46120	46681	46265	45961	45549	46054	45629	45866	46263	46127	100.141
	9	46624	45998	46573	45988	46107	46244	45514	45415	46297	45827	45805	45871	100.078
	10	45620	46284	45765	45797	45610	45950	46841	45869	46102	46802	46342	46157	100.237
	11	46114	45485	46480	46096	45527	46416	46351	45809	46093	46032	45209	46064	99.971
	12	46380	46176	47049	45682	46166	46765	46019	46056	46168	45704	46302	46214	100.516
	13	46464	46352	45840	45671	46217	46126	46272	45972	45731	46425	46201	45888	100.240
	14	46006	46225	45852	46645	46833	46011	46041	46065	46330	46543	45983	45862	100.465
	15	45640	45950	46148	46006	45801	46068	46655	46566	45867	45884	45705	45308	99.958
	16	46479	46830	46242	46226	46405	46120	45956	45674	45905	45826	46298	46011	100.388
	17	46114	46146	46443	46548	46066	45971	45773	45330	46673	46093	45884	46270	100.267
	18	46164	45652	46516	46178	46127	45710	45669	45593	45530	45764	45513	45442	99.643
	19	46181	45844	45530	45790	46475	45974	46278	46018	45771	46474	46705	45617	100.149
	20	45839	45910	46505	46339	45456	45890	45717	45820	45726	45122	45789	45546	99.606
	21	45781	45842	46292	45185	45822	46076	46206	45716	45813	45533	45934	46379	99.773
	22	46300	45971	45461	45334	46080	45809	46305	45736	46519	45841	46131	46459	100.020
	23	46006	45772	46129	45429	45944	45649	45709	46472	45694	45719	45485	46034	99.675

INAF/UNIRomaTre				S.V.I.R.CO. Observatory - Pressure Corrected Data – September 2016									20 NM-64	
day	hh	00_05	05_10	10_15	15_20	20_25	25_30	30_35	35_40	40_45	45_50	50_55	55_60	h-norm
29	0	45779	46088	45798	45412	46296	45838	45568	45609	45202	45353	45696	45497	99.325
	1	45447	45972	45888	45393	45398	46364	45795	46086	46199	45960	45393	45853	99.622
	2	45663	46184	44869	45841	46441	45612	45871	45689	45454	45999	45823	46060	99.578
	3	45936	45580	45228	45406	45765	45646	45819	45477	45693	45643	45757	45306	99.171
	4	45998	45733	45948	45882	45972	45356	46800	45806	45869	46119	45800	46183	99.933
	5	46025	45843	44883	45460	46167	45841	46005	46101	46197	45853	46485	45782	99.784
	6	46348	46600	45986	45072	46069	45940	46043	45608	45503	45786	45985	45956	99.830
	7	45872	45616	45902	45875	46493	46281	46283	46867	45925	46299	46075	45564	100.221
	8	46587	45308	45719	46106	46062	45449	46652	46370	46132	46485	45950	46511	100.272
	9	45730	46120	46386	46335	46163	45897	45931	46312	46351	46388	46912	45912	100.472
	10	46433	45933	46834	45954	45692	45921	46241	45681	46009	46226	46359	46528	100.359
	11	45409	45894	46274	45769	45996	45771	45913	45621	46269	46124	46392	46090	99.944
	12	46016	46601	45744	46145	46554	46163	45616	46287	46015	46252	45733	46342	100.296
	13	46468	45828	47114	46221	45894	45461	46624	46410	46590	45769	46771	46268	100.650
	14	46756	45508	46258	46410	46104	46336	46195	46133	46678	46226	46330	46202	100.599
	15	46461	46275	46191	46308	46237	46255	46659	46650	46470	45561	46633	46052	100.710
	16	46061	45959	46410	46378	46384	46318	45750	46550	46078	45922	46022	45864	100.338
	17	46127	46154	46212	46138	46132	46464	45880	45433	46590	46493	46110	46043	100.352
	18	45702	46377	45985	46560	46098	46289	46152	45362	46984	46004	45488	46014	100.214
	19	45779	46017	45846	45637	45821	45575	45908	46069	46061	46231	45294	45837	99.681
	20	45744	46383	46200	46147	45741	45767	45904	45435	46361	45683	45424	46046	99.819
	21	45473	45907	46116	46010	45800	45647	45950	45313	45901	46040	46075	45617	99.641
	22	45822	45519	45577	46152	46346	45620	45825	45651	44996	45667	45611	45874	99.425
	23	45433	45763	45107	45603	45626	45765	46264	45572	45104	45492	45990	45553	99.173
30	0	45893	46057	44813	45457	45647	45672	45312	45320	45521	45491	45778	46248	99.159
	1	45823	45653	45539	45695	45891	46124	46245	45976	46019	45641	46035	46391	99.855
	2	46118	45871	45254	45784	45959	45524	45669	45333	45753	45883	46258	46141	99.586
	3	45888	45618	45813	45495	45312	45569	45968	45722	45223	45742	46413	46157	99.473
	4	45157	45190	46075	45272	46097	45668	46154	45766	45317	46080	46019	45297	99.322
	5	45889	45755	45231	45793	45827	45210	45603	45990	46083	45978	45936	45396	99.431
	6	45600	45960	45839	45705	46032	46328	45752	45694	45677	45586	46253	45331	99.624
	7	45879	46311	45692	46044	45458	46169	45837	46062	45589	46265	46060	46240	99.959
	8	45661	45998	45671	45640	46248	46173	46083	46163	46397	45756	45895	45754	99.929
	9	45684	45631	46292	46073	45637	45699	45945	46381	46138	45767	45749	45558	99.768
	10	46183	45829	46460	45735	45435	45990	45789	46070	46293	46358	46077	46030	100.076
	11	46423	45795	45876	46037	45285	46356	45863	45550	45494	45670	46161	45911	99.744
	12	45899	45745	46036	46877	45691	45205	45242	46203	45502	45848	46351	45855	99.750
	13	45309	46046	45865	45937	45852	45716	46254	46297	45665	45965	45981	45764	99.786
	14	46226	45506	45908	46023	45576	45406	45824	45753	46413	45071	46270	45947	99.654
	15	45839	45253	46042	45333	45401	45820	45916	45696	46524	45646	45521	45955	99.477
	16	45745	45795	46360	45897	45838	46112	45952	45858	45426	45498	45485	46205	99.699
	17	45957	45515	45782	45690	45862	46296	45742	45954	46343	45804	46256	46156	99.914
	18	45649	46329	46165	46458	45792	45322	45924	45795	45576	45216	45725	45613	99.589
	19	46262	45434	46276	45339	45940	46335	46387	45740	45719	46505	45555	46135	99.963
	20	45975	46379	45663	45275	44989	45869	45262	45708	46277	46244	45638	46550	99.637
	21	46625	46001	45974	45992	45846	46260	45954	46091	46243	46614	45873	46161	100.327
	22	46147	45639	45590	46546	45740	45803	46044	46227	45908	45368	46251	45982	99.894
	23	46154	46037	46000	45707	45903	45848	45724	46079	45721	46519	45673	45930	99.903



S.V.I.R.CO. Observatory - Pressure in hectoPascal –September 2016

day	hh	00_05	05_10	10_15	15_20	20_25	25_30	30_35	35_40	40_45	45_50	50_55	55_60	average
1	0	1017.34	1017.32	1017.32	1017.34	1017.32	1017.34	1017.39	1017.42	1017.42	1017.42	1017.44	1017.42	1017.37
	1	1017.38	1017.36	1017.35	1017.33	1017.32	1017.29	1017.27	1017.27	1017.26	1017.24	1017.20	1017.16	1017.28
	2	1017.17	1017.20	1017.18	1017.12	1017.06	1017.05	1017.06	1017.06	1017.05	1017.05	1017.04	1017.03	1017.09
	3	1017.03	1017.03	1017.03	1017.04	1017.07	1017.09	1017.11	1017.11	1017.09	1017.08	1017.06	1017.03	1017.06
	4	1017.01	1017.00	1017.04	1017.10	1017.16	1017.21	1017.24	1017.25	1017.27	1017.26	1017.27	1017.30	1017.17
	5	1017.31	1017.32	1017.34	1017.35	1017.35	1017.36	1017.41	1017.47	1017.50	1017.52	1017.55	1017.56	1017.42
	6	1017.57	1017.57	1017.56	1017.57	1017.57	1017.58	1017.63	1017.65	1017.68	1017.72	1017.75	1017.78	1017.63
	7	1017.84	1017.93	1017.99	1018.01	1018.06	1018.13	1018.19	1018.22	1018.24	1018.25	1018.27	1018.26	1018.11
	8	1018.25	1018.25	1018.23	1018.23	1018.23	1018.21	1018.20	1018.23	1018.25	1018.24	1018.21	1018.18	1018.22
	9	1018.16	1018.15	1018.14	1018.13	1018.10	1018.07	1018.07	1018.07	1018.04	1017.98	1017.92	1017.88	1018.06
	10	1017.84	1017.81	1017.78	1017.74	1017.67	1017.61	1017.54	1017.46	1017.40	1017.35	1017.32	1017.29	1017.56
	11	1017.24	1017.17	1017.12	1017.05	1016.97	1016.91	1016.88	1016.87	1016.90	1016.90	1016.88	1016.90	1016.98
	12	1016.89	1016.88	1016.86	1016.84	1016.81	1016.79	1016.79	1016.78	1016.70	1016.62	1016.57	1016.54	1016.75
	13	1016.52	1016.46	1016.40	1016.39	1016.39	1016.37	1016.34	1016.31	1016.25	1016.25	1016.28	1016.28	1016.35
	14	1016.28	1016.30	1016.29	1016.25	1016.19	1016.16	1016.18	1016.22	1016.28	1016.32	1016.31	1016.33	1016.26
	15	1016.36	1016.38	1016.37	1016.33	1016.29	1016.29	1016.28	1016.30	1016.37	1016.45	1016.51	1016.54	1016.37
	16	1016.52	1016.48	1016.52	1016.62	1016.72	1016.81	1016.88	1016.83	1016.72	1016.60	1016.45	1016.33	1016.62
	17	1016.24	1016.21	1016.23	1016.26	1016.36	1016.54	1016.68	1016.79	1016.86	1016.92	1017.00	1016.99	1016.59
	18	1016.98	1017.04	1017.11	1017.17	1017.20	1017.21	1017.19	1017.16	1017.18	1017.19	1017.18	1017.18	1017.15
	19	1017.21	1017.23	1017.25	1017.28	1017.32	1017.38	1017.42	1017.45	1017.41	1017.32	1017.18	1017.17	1017.30
	20	1017.29	1017.37	1017.38	1017.36	1017.41	1017.45	1017.46	1017.48	1017.51	1017.53	1017.56	1017.58	1017.45
	21	1017.59	1017.63	1017.69	1017.71	1017.71	1017.74	1017.78	1017.77	1017.76	1017.77	1017.77	1017.75	1017.72
	22	1017.74	1017.73	1017.73	1017.74	1017.75	1017.75	1017.75	1017.76	1017.77	1017.75	1017.72	1017.69	1017.74
	23	1017.67	1017.68	1017.68	1017.64	1017.60	1017.64	1017.68	1017.69	1017.69	1017.66	1017.62	1017.58	1017.65
2	0	1017.56	1017.56	1017.56	1017.55	1017.54	1017.52	1017.51	1017.53	1017.54	1017.53	1017.52	1017.51	1017.53
	1	1017.49	1017.47	1017.48	1017.47	1017.43	1017.40	1017.39	1017.37	1017.36	1017.34	1017.30	1017.25	1017.39
	2	1017.21	1017.16	1017.11	1017.09	1017.06	1017.02	1017.01	1017.01	1016.99	1016.96	1016.93	1016.91	1017.04
	3	1016.90	1016.92	1016.96	1016.96	1016.98	1016.98	1016.98	1017.01	1017.02	1016.99	1016.97	1016.97	1016.97
	4	1016.97	1016.97	1016.96	1016.93	1016.90	1016.90	1016.90	1016.88	1016.84	1016.84	1016.85	1016.86	1016.90
	5	1016.86	1016.87	1016.92	1016.98	1017.04	1017.11	1017.17	1017.18	1017.14	1017.11	1017.10	1017.08	1017.04
	6	1017.05	1017.03	1017.05	1017.06	1017.06	1017.07	1017.07	1017.07	1017.09	1017.12	1017.11	1017.10	1017.07
	7	1017.10	1017.13	1017.12	1017.09	1017.11	1017.13	1017.13	1017.14	1017.15	1017.17	1017.16	1017.13	1017.13
	8	1017.12	1017.14	1017.17	1017.21	1017.23	1017.22	1017.23	1017.24	1017.22	1017.17	1017.16	1017.13	1017.18
	9	1017.09	1017.04	1016.98	1016.93	1016.91	1016.88	1016.84	1016.80	1016.77	1016.75	1016.71	1016.66	1016.86
	10	1016.59	1016.53	1016.48	1016.46	1016.45	1016.44	1016.43	1016.41	1016.37	1016.31	1016.24	1016.17	1016.40
	11	1016.12	1016.05	1015.99	1015.95	1015.92	1015.88	1015.85	1015.81	1015.72	1015.67	1015.65	1015.60	1015.85
	12	1015.56	1015.52	1015.48	1015.41	1015.37	1015.38	1015.39	1015.39	1015.39	1015.39	1015.39	1015.38	1015.42
	13	1015.37	1015.37	1015.35	1015.32	1015.32	1015.29	1015.24	1015.22	1015.28	1015.31	1015.31	1015.32	1015.31
	14	1015.31	1015.31	1015.32	1015.31	1015.30	1015.28	1015.23	1015.14	1015.07	1015.05	1015.03	1014.99	1015.19
	15	1014.97	1014.99	1014.99	1014.96	1014.95	1014.93	1014.88	1014.84	1014.81	1014.77	1014.74	1014.72	1014.88
	16	1014.70	1014.67	1014.62	1014.58	1014.57	1014.56	1014.57	1014.58	1014.55	1014.51	1014.49	1014.48	1014.57
	17	1014.49	1014.51	1014.54	1014.58	1014.63	1014.66	1014.67	1014.70	1014.75	1014.80	1014.82	1014.86	1014.66
	18	1014.92	1015.01	1015.10	1015.15	1015.16	1015.19	1015.21	1015.25	1015.30	1015.34	1015.40	1015.44	1015.20
	19	1015.46	1015.47	1015.48	1015.52	1015.53	1015.57	1015.62	1015.63	1015.66	1015.68	1015.69	1015.70	1015.58
	20	1015.73	1015.78	1015.80	1015.81	1015.83	1015.87	1015.91	1015.93	1015.97	1016.03	1016.04	1016.03	1015.89
	21	1016.07	1016.10	1016.10	1016.10	1016.12	1016.12	1016.11	1016.09	1016.06	1016.05	1016.06	1016.10	1016.09
	22	1016.12	1016.13	1016.15	1016.17	1016.16	1016.13	1016.14	1016.16	1016.17	1016.19	1016.21	1016.20	1016.16
	23	1016.16	1016.11	1016.09	1016.11	1016.10	1016.08	1016.07	1016.00	1015.91	1015.87	1015.87	1015.88	1016.02



S.V.I.R.CO. Observatory - Pressure in hectoPascal –September 2016

day	hh	00_05	05_10	10_15	15_20	20_25	25_30	30_35	35_40	40_45	45_50	50_55	55_60	average
3	0	1015.87	1015.89	1015.92	1015.92	1015.92	1015.92	1015.89	1015.84	1015.80	1015.79	1015.80	1015.81	1015.86
	1	1015.80	1015.80	1015.80	1015.80	1015.78	1015.76	1015.75	1015.75	1015.74	1015.73	1015.71	1015.67	1015.76
	2	1015.64	1015.66	1015.69	1015.69	1015.68	1015.66	1015.65	1015.65	1015.65	1015.65	1015.65	1015.64	1015.66
	3	1015.66	1015.68	1015.68	1015.68	1015.67	1015.69	1015.73	1015.74	1015.75	1015.76	1015.77	1015.80	1015.71
	4	1015.81	1015.82	1015.84	1015.84	1015.84	1015.86	1015.88	1015.89	1015.91	1015.93	1015.98	1016.03	1015.88
	5	1016.03	1016.02	1016.03	1016.04	1016.05	1016.05	1016.06	1016.09	1016.13	1016.18	1016.23	1016.26	1016.10
	6	1016.30	1016.34	1016.35	1016.35	1016.36	1016.36	1016.36	1016.36	1016.40	1016.44	1016.48	1016.52	1016.38
	7	1016.56	1016.57	1016.58	1016.61	1016.63	1016.65	1016.67	1016.68	1016.67	1016.67	1016.67	1016.70	1016.64
	8	1016.74	1016.78	1016.79	1016.78	1016.79	1016.80	1016.77	1016.75	1016.77	1016.79	1016.79	1016.77	1016.77
	9	1016.75	1016.72	1016.69	1016.65	1016.62	1016.58	1016.55	1016.52	1016.48	1016.45	1016.42	1016.39	1016.56
	10	1016.35	1016.32	1016.28	1016.22	1016.15	1016.10	1016.06	1016.01	1015.95	1015.89	1015.82	1015.77	1016.07
	11	1015.71	1015.68	1015.66	1015.59	1015.52	1015.47	1015.46	1015.51	1015.54	1015.54	1015.54	1015.55	1015.56
	12	1015.59	1015.59	1015.59	1015.60	1015.58	1015.54	1015.51	1015.50	1015.47	1015.43	1015.39	1015.39	1015.51
	13	1015.35	1015.29	1015.25	1015.21	1015.18	1015.13	1015.05	1015.01	1015.00	1014.98	1014.98	1014.95	1015.11
	14	1014.89	1014.84	1014.82	1014.79	1014.75	1014.72	1014.71	1014.71	1014.67	1014.67	1014.70	1014.72	1014.75
	15	1014.73	1014.72	1014.71	1014.73	1014.70	1014.67	1014.64	1014.61	1014.60	1014.58	1014.54	1014.51	1014.64
	16	1014.48	1014.44	1014.39	1014.38	1014.40	1014.39	1014.35	1014.32	1014.32	1014.31	1014.31	1014.34	1014.37
	17	1014.35	1014.36	1014.39	1014.42	1014.42	1014.44	1014.47	1014.51	1014.56	1014.62	1014.68	1014.73	1014.49
	18	1014.76	1014.79	1014.82	1014.86	1014.88	1014.89	1014.91	1014.93	1014.96	1015.02	1015.07	1015.11	1014.91
	19	1015.12	1015.15	1015.18	1015.20	1015.23	1015.27	1015.32	1015.37	1015.40	1015.43	1015.47	1015.48	1015.30
	20	1015.50	1015.55	1015.56	1015.53	1015.53	1015.56	1015.60	1015.65	1015.69	1015.71	1015.71	1015.71	1015.61
	21	1015.73	1015.78	1015.82	1015.84	1015.87	1015.89	1015.90	1015.87	1015.84	1015.83	1015.85	1015.86	1015.84
	22	1015.84	1015.81	1015.81	1015.81	1015.77	1015.75	1015.77	1015.77	1015.76	1015.76	1015.76	1015.75	1015.78
	23	1015.74	1015.76	1015.76	1015.71	1015.68	1015.66	1015.64	1015.64	1015.66	1015.67	1015.67	1015.68	1015.69
4	0	1015.64	1015.65	1015.67	1015.68	1015.67	1015.66	1015.66	1015.68	1015.71	1015.75	1015.74	1015.70	1015.68
	1	1015.68	1015.66	1015.65	1015.64	1015.63	1015.63	1015.63	1015.62	1015.62	1015.60	1015.55	1015.53	1015.62
	2	1015.54	1015.54	1015.56	1015.60	1015.63	1015.62	1015.61	1015.61	1015.61	1015.59	1015.60	1015.61	1015.59
	3	1015.60	1015.62	1015.67	1015.70	1015.70	1015.68	1015.65	1015.65	1015.63	1015.59	1015.58	1015.60	1015.64
	4	1015.59	1015.56	1015.53	1015.51	1015.50	1015.48	1015.49	1015.56	1015.66	1015.71	1015.78	1015.86	1015.60
	5	1015.92	1015.98	1016.02	1016.03	1016.06	1016.10	1016.12	1016.16	1016.25	1016.34	1016.40	1016.44	1016.15
	6	1016.49	1016.55	1016.56	1016.55	1016.55	1016.55	1016.54	1016.52	1016.48	1016.45	1016.47	1016.51	1016.52
	7	1016.54	1016.56	1016.57	1016.56	1016.56	1016.61	1016.67	1016.70	1016.69	1016.67	1016.66	1016.63	1016.62
	8	1016.59	1016.61	1016.68	1016.71	1016.71	1016.73	1016.79	1016.83	1016.81	1016.77	1016.74	1016.74	1016.72
	9	1016.74	1016.75	1016.76	1016.72	1016.69	1016.71	1016.74	1016.75	1016.71	1016.64	1016.61	1016.59	1016.70
	10	1016.54	1016.49	1016.43	1016.36	1016.31	1016.26	1016.20	1016.13	1016.07	1016.03	1016.00	1015.99	1016.23
	11	1015.96	1015.90	1015.86	1015.83	1015.77	1015.71	1015.69	1015.68	1015.64	1015.64	1015.63	1015.59	1015.74
	12	1015.56	1015.51	1015.44	1015.40	1015.37	1015.32	1015.31	1015.30	1015.24	1015.18	1015.15	1015.12	1015.32
	13	1015.08	1015.02	1014.98	1015.00	1014.97	1014.90	1014.89	1014.91	1014.94	1014.96	1014.97	1014.98	1014.96
	14	1014.96	1014.98	1015.03	1015.03	1015.03	1015.03	1015.03	1015.02	1015.00	1015.02	1015.05	1015.02	1015.01
	15	1014.99	1014.97	1014.94	1014.86	1014.74	1014.73	1014.81	1014.85	1014.81	1014.71	1014.66	1014.63	1014.81
	16	1014.57	1014.54	1014.57	1014.59	1014.61	1014.55	1014.51	1014.46	1014.36	1014.34	1014.42	1014.48	1014.50
	17	1014.49	1014.54	1014.57	1014.58	1014.57	1014.56	1014.56	1014.61	1014.68	1014.77	1014.84	1014.81	1014.63
	18	1014.84	1014.87	1014.85	1014.88	1014.94	1015.00	1015.02	1015.06	1015.14	1015.18	1015.19	1015.17	1015.01
	19	1015.16	1015.16	1015.13	1015.07	1015.06	1015.08	1015.09	1015.14	1015.18	1015.23	1015.30	1015.34	1015.16
	20	1015.35	1015.35	1015.34	1015.35	1015.37	1015.38	1015.39	1015.41	1015.37	1015.34	1015.32	1015.31	1015.35
	21	1015.31	1015.30	1015.34	1015.37	1015.35	1015.32	1015.27	1015.22	1015.24	1015.27	1015.28	1015.30	1015.30
	22	1015.28	1015.27	1015.27	1015.25	1015.24	1015.20	1015.14	1015.10	1015.09	1015.14	1015.25	1015.31	1015.21
	23	1015.29	1015.21	1015.09	1014.97	1014.93	1014.94	1014.95	1014.95	1014.87	1014.75	1014.71	1014.69	1014.94

S.V.I.R.CO. Observatory - Pressure in hectoPascal –September 2016

day	hh	00_05	05_10	10_15	15_20	20_25	25_30	30_35	35_40	40_45	45_50	50_55	55_60	average
5	0	1014.60	1014.57	1014.52	1014.51	1014.53	1014.56	1014.54	1014.42	1014.28	1014.26	1014.26	1014.24	1014.43
	1	1014.26	1014.21	1014.15	1014.13	1014.08	1014.02	1014.00	1013.95	1013.85	1013.80	1013.78	1013.67	1013.99
	2	1013.59	1013.59	1013.54	1013.47	1013.42	1013.39	1013.34	1013.29	1013.33	1013.36	1013.37	1013.45	1013.43
	3	1013.46	1013.42	1013.47	1013.54	1013.62	1013.73	1013.77	1013.74	1013.77	1013.84	1013.81	1013.65	1013.65
	4	1013.44	1013.42	1013.49	1013.33	1013.17	1013.18	1013.30	1013.33	1013.18	1013.11	1013.17	1013.20	1013.27
	5	1013.22	1013.25	1013.23	1013.13	1013.07	1013.08	1013.08	1013.08	1013.04	1012.99	1012.94	1012.89	1013.08
	6	1012.88	1012.86	1012.84	1012.85	1012.84	1012.82	1012.80	1012.77	1012.72	1012.70	1012.73	1012.73	1012.79
	7	1012.74	1012.75	1012.73	1012.72	1012.70	1012.65	1012.60	1012.56	1012.53	1012.52	1012.55	1012.61	1012.64
	8	1012.61	1012.58	1012.59	1012.55	1012.52	1012.50	1012.49	1012.55	1012.63	1012.63	1012.57	1012.54	1012.56
	9	1012.51	1012.44	1012.32	1012.19	1012.15	1012.16	1012.14	1012.10	1012.09	1012.07	1011.98	1011.94	1012.17
	10	1011.95	1011.89	1011.82	1011.79	1011.73	1011.66	1011.56	1011.43	1011.35	1011.30	1011.27	1011.25	1011.58
	11	1011.20	1011.16	1011.15	1011.19	1011.15	1010.99	1010.86	1010.80	1010.73	1010.68	1010.65	1010.63	1010.93
	12	1010.59	1010.55	1010.56	1010.52	1010.39	1010.28	1010.22	1010.28	1010.30	1010.20	1010.22	1010.29	1010.37
	13	1010.33	1010.32	1010.26	1010.13	1009.99	1009.86	1009.72	1009.62	1009.58	1009.56	1009.57	1009.54	1009.87
	14	1009.50	1009.53	1009.52	1009.42	1009.30	1009.25	1009.22	1009.19	1009.18	1009.13	1009.06	1009.00	1009.27
	15	1008.96	1009.00	1009.03	1009.00	1008.97	1008.94	1008.97	1009.05	1009.09	1009.10	1009.03	1008.91	1009.00
	16	1008.85	1008.86	1008.88	1008.85	1008.83	1008.81	1008.80	1008.77	1008.75	1008.75	1008.68	1008.60	1008.78
	17	1008.61	1008.67	1008.73	1008.80	1008.91	1008.97	1008.90	1008.75	1008.67	1008.67	1008.74	1008.87	1008.77
	18	1008.93	1008.94	1008.98	1009.08	1009.38	1009.89	1010.29	1010.21	1010.05	1010.07	1010.24	1010.40	1009.70
	19	1010.39	1010.38	1010.40	1010.43	1010.46	1010.54	1010.54	1010.51	1010.62	1010.64	1010.55	1010.54	1010.50
	20	1010.61	1010.64	1010.54	1010.47	1010.44	1010.42	1010.43	1010.48	1010.59	1010.67	1010.61	1010.51	1010.53
	21	1010.43	1010.33	1010.24	1010.21	1010.35	1010.54	1010.54	1010.47	1010.49	1010.49	1010.43	1010.45	1010.41
	22	1010.47	1010.40	1010.33	1010.30	1010.29	1010.27	1010.26	1010.28	1010.39	1010.49	1010.52	1010.57	1010.38
	23	1010.63	1010.70	1010.73	1010.72	1010.78	1010.82	1010.79	1010.76	1010.76	1010.78	1010.85	1010.90	1010.77
6	0	1010.90	1010.90	1010.90	1010.94	1010.98	1010.95	1010.91	1010.94	1010.99	1010.99	1011.03	1011.07	1010.96
	1	1011.10	1011.17	1011.22	1011.25	1011.24	1011.27	1011.28	1011.28	1011.30	1011.28	1011.24	1011.22	1011.24
	2	1011.24	1011.26	1011.22	1011.16	1011.19	1011.23	1011.23	1011.21	1011.18	1011.15	1011.08	1011.01	1011.18
	3	1011.01	1011.05	1011.10	1011.13	1011.19	1011.23	1011.24	1011.27	1011.30	1011.35	1011.40	1011.42	1011.22
	4	1011.44	1011.48	1011.49	1011.51	1011.56	1011.61	1011.64	1011.62	1011.65	1011.66	1011.68	1011.74	1011.59
	5	1011.74	1011.74	1011.77	1011.78	1011.77	1011.79	1011.81	1011.82	1011.80	1011.78	1011.79	1011.80	1011.78
	6	1011.81	1011.84	1011.86	1011.89	1011.94	1011.95	1011.91	1011.91	1011.92	1011.89	1011.89	1011.89	1011.89
	7	1011.86	1011.87	1011.92	1011.98	1012.06	1012.12	1012.16	1012.18	1012.16	1012.14	1012.16	1012.15	1012.06
	8	1012.12	1012.12	1012.12	1012.15	1012.19	1012.15	1012.14	1012.18	1012.18	1012.14	1012.08	1012.04	1012.13
	9	1012.03	1011.99	1011.97	1011.94	1011.88	1011.83	1011.75	1011.69	1011.64	1011.59	1011.54	1011.47	1011.77
	10	1011.27	1011.03	1010.97	1010.98	1010.98	1011.00	1010.89	1010.83	1010.83	1010.77	1010.77	1010.74	1010.92
	11	1010.68	1010.62	1010.58	1010.54	1010.49	1010.53	1010.56	1010.56	1010.55	1010.50	1010.47	1010.48	1010.54
	12	1010.42	1010.33	1010.33	1010.34	1010.34	1010.31	1010.20	1010.08	1010.03	1010.08	1010.05	1009.91	1010.20
	13	1009.80	1009.79	1009.86	1009.86	1009.85	1009.80	1009.75	1009.69	1009.60	1009.58	1009.62	1009.71	1009.74
	14	1009.77	1009.74	1009.72	1009.73	1009.79	1009.77	1009.72	1009.83	1009.95	1010.01	1010.10	1010.17	1009.86
	15	1010.27	1010.39	1010.44	1010.48	1010.55	1010.57	1010.58	1010.58	1010.60	1010.67	1010.70	1010.71	1010.54
	16	1010.76	1010.83	1010.88	1010.91	1010.96	1011.07	1011.17	1011.28	1011.38	1011.40	1011.40	1011.39	1011.12
	17	1011.39	1011.40	1011.46	1011.52	1011.56	1011.61	1011.59	1011.57	1011.55	1011.55	1011.62	1011.74	1011.54
	18	1011.82	1011.88	1011.99	1012.05	1012.03	1012.03	1012.04	1011.99	1011.95	1012.04	1012.15	1012.21	1012.01
	19	1012.26	1012.24	1012.18	1012.09	1012.06	1012.11	1012.18	1012.25	1012.27	1012.25	1012.21	1012.13	1012.18
	20	1012.06	1011.99	1011.93	1011.94	1011.92	1011.89	1011.93	1011.98	1011.99	1011.97	1011.95	1011.97	1011.96
	21	1012.03	1012.03	1011.99	1011.98	1011.99	1012.05	1012.06	1012.07	1012.14	1012.17	1012.23	1012.31	1012.09
	22	1012.36	1012.40	1012.42	1012.45	1012.45	1012.49	1012.53	1012.54	1012.58	1012.59	1012.62	1012.66	1012.50
	23	1012.71	1012.74	1012.77	1012.82	1012.82	1012.76	1012.75	1012.76	1012.71	1012.71	1012.71	1012.67	1012.74

S.V.I.R.CO. Observatory - Pressure in hectoPascal –September 2016

day	hh	00_05	05_10	10_15	15_20	20_25	25_30	30_35	35_40	40_45	45_50	50_55	55_60	average
7	0	1012.63	1012.60	1012.55	1012.53	1012.53	1012.55	1012.54	1012.52	1012.53	1012.51	1012.50	1012.47	1012.53
	1	1012.42	1012.42	1012.41	1012.39	1012.34	1012.25	1012.20	1012.17	1012.16	1012.12	1012.05	1012.03	1012.24
	2	1012.03	1012.05	1012.05	1012.02	1011.98	1011.99	1011.96	1011.87	1011.81	1011.81	1011.83	1011.80	1011.93
	3	1011.77	1011.80	1011.84	1011.82	1011.80	1011.77	1011.71	1011.62	1011.56	1011.53	1011.52	1011.54	1011.69
	4	1011.54	1011.48	1011.43	1011.40	1011.44	1011.47	1011.46	1011.46	1011.44	1011.43	1011.40	1011.41	1011.44
	5	1011.44	1011.46	1011.46	1011.45	1011.43	1011.48	1011.55	1011.60	1011.58	1011.49	1011.38	1011.33	1011.47
	6	1011.31	1011.27	1011.20	1011.09	1011.04	1011.03	1011.00	1011.01	1010.99	1010.96	1010.96	1010.95	1011.07
	7	1011.00	1011.06	1011.07	1011.06	1011.07	1011.13	1011.20	1011.25	1011.26	1011.23	1011.28	1011.39	1011.16
	8	1011.44	1011.50	1011.56	1011.56	1011.51	1011.48	1011.48	1011.47	1011.38	1011.26	1011.13	1011.03	1011.40
	9	1011.05	1011.11	1011.12	1011.11	1011.14	1011.14	1011.11	1011.13	1011.12	1011.10	1011.09	1011.06	1011.10
	10	1011.00	1010.92	1010.87	1010.78	1010.68	1010.64	1010.62	1010.58	1010.53	1010.50	1010.49	1010.49	1010.67
	11	1010.50	1010.51	1010.49	1010.47	1010.49	1010.48	1010.46	1010.46	1010.45	1010.40	1010.35	1010.32	1010.45
	12	1010.29	1010.29	1010.32	1010.37	1010.41	1010.43	1010.40	1010.41	1010.46	1010.49	1010.55	1010.71	1010.43
	13	1010.86	1010.92	1011.00	1010.99	1010.94	1010.93	1010.86	1010.79	1010.78	1010.74	1010.67	1010.58	1010.84
	14	1010.53	1010.55	1010.56	1010.59	1010.59	1010.56	1010.52	1010.51	1010.54	1010.56	1010.56	1010.57	1010.55
	15	1010.55	1010.52	1010.47	1010.41	1010.40	1010.39	1010.37	1010.34	1010.34	1010.37	1010.35	1010.32	1010.40
	16	1010.33	1010.31	1010.25	1010.19	1010.11	1010.08	1010.07	1010.08	1010.09	1010.06	1010.02	1010.05	1010.13
	17	1010.11	1010.11	1010.09	1010.12	1010.16	1010.21	1010.27	1010.28	1010.26	1010.32	1010.37	1010.38	1010.22
	18	1010.38	1010.39	1010.48	1010.54	1010.53	1010.55	1010.61	1010.67	1010.72	1010.79	1010.89	1010.99	1010.63
	19	1011.03	1011.02	1010.99	1010.94	1010.90	1010.90	1010.91	1010.94	1010.97	1011.00	1011.04	1011.01	1010.97
	20	1011.03	1011.10	1011.10	1011.10	1011.17	1011.24	1011.27	1011.33	1011.35	1011.28	1011.28	1011.34	1011.21
	21	1011.37	1011.36	1011.33	1011.32	1011.33	1011.35	1011.37	1011.38	1011.39	1011.40	1011.41	1011.40	1011.36
	22	1011.39	1011.38	1011.37	1011.44	1011.49	1011.51	1011.53	1011.59	1011.65	1011.66	1011.71	1011.76	1011.54
	23	1011.74	1011.73	1011.78	1011.82	1011.84	1011.86	1011.88	1011.89	1011.85	1011.80	1011.77	1011.76	1011.81
8	0	1011.73	1011.73	1011.71	1011.70	1011.68	1011.61	1011.54	1011.47	1011.40	1011.35	1011.27	1011.18	1011.52
	1	1011.11	1011.09	1011.10	1011.13	1011.16	1011.17	1011.19	1011.23	1011.26	1011.23	1011.19	1011.20	1011.17
	2	1011.26	1011.30	1011.28	1011.25	1011.21	1011.18	1011.16	1011.12	1011.07	1011.04	1010.99	1010.90	1011.14
	3	1010.85	1010.81	1010.76	1010.70	1010.68	1010.67	1010.64	1010.63	1010.61	1010.56	1010.50	1010.47	1010.65
	4	1010.46	1010.44	1010.46	1010.47	1010.46	1010.44	1010.50	1010.58	1010.55	1010.49	1010.48	1010.47	1010.48
	5	1010.40	1010.36	1010.43	1010.52	1010.54	1010.55	1010.57	1010.56	1010.56	1010.57	1010.65	1010.75	1010.54
	6	1010.77	1010.76	1010.82	1010.87	1010.88	1010.88	1010.87	1010.92	1010.98	1010.98	1011.00	1011.08	1010.90
	7	1011.14	1011.09	1011.02	1011.00	1011.01	1011.03	1011.05	1011.03	1010.97	1010.94	1010.94	1010.92	1011.01
	8	1010.92	1010.89	1010.81	1010.76	1010.74	1010.75	1010.77	1010.73	1010.61	1010.49	1010.43	1010.36	1010.68
	9	1010.29	1010.25	1010.20	1010.14	1010.13	1010.14	1010.14	1010.10	1010.04	1009.98	1009.92	1009.87	1010.10
	10	1009.82	1009.79	1009.77	1009.73	1009.66	1009.59	1009.55	1009.52	1009.53	1009.55	1009.54	1009.55	1009.63
	11	1009.53	1009.50	1009.47	1009.45	1009.43	1009.36	1009.33	1009.34	1009.33	1009.27	1009.17	1009.13	1009.36
	12	1009.12	1009.10	1009.07	1009.02	1009.00	1008.98	1008.95	1008.93	1008.89	1008.81	1008.76	1008.77	1008.95
	13	1008.75	1008.73	1008.71	1008.69	1008.70	1008.70	1008.69	1008.66	1008.65	1008.61	1008.57	1008.57	1008.67
	14	1008.56	1008.50	1008.48	1008.48	1008.47	1008.52	1008.54	1008.51	1008.52	1008.59	1008.62	1008.61	1008.53
	15	1008.60	1008.58	1008.57	1008.57	1008.58	1008.58	1008.58	1008.56	1008.54	1008.51	1008.45	1008.42	1008.54
	16	1008.41	1008.38	1008.37	1008.38	1008.38	1008.38	1008.35	1008.31	1008.26	1008.23	1008.22	1008.23	1008.32
	17	1008.25	1008.25	1008.24	1008.23	1008.24	1008.27	1008.32	1008.39	1008.45	1008.44	1008.45	1008.53	1008.34
	18	1008.56	1008.58	1008.65	1008.69	1008.70	1008.72	1008.77	1008.82	1008.86	1008.89	1008.93	1008.96	1008.76
	19	1009.01	1009.04	1009.06	1009.10	1009.13	1009.16	1009.18	1009.18	1009.17	1009.16	1009.16	1009.16	1009.12
	20	1009.18	1009.20	1009.21	1009.22	1009.22	1009.22	1009.21	1009.22	1009.26	1009.32	1009.39	1009.45	1009.26
	21	1009.51	1009.53	1009.50	1009.52	1009.54	1009.54	1009.58	1009.60	1009.63	1009.63	1009.60	1009.59	1009.56
	22	1009.58	1009.55	1009.47	1009.45	1009.50	1009.52	1009.50	1009.52	1009.60	1009.69	1009.70	1009.69	1009.56
	23	1009.68	1009.66	1009.68	1009.72	1009.75	1009.73	1009.70	1009.69	1009.71	1009.73	1009.70	1009.66	1009.70

**S.V.I.R.CO. Observatory - Pressure in hectoPascal –September 2016**

day	hh	00_05	05_10	10_15	15_20	20_25	25_30	30_35	35_40	40_45	45_50	50_55	55_60	average
9	0	1009.59	1009.56	1009.54	1009.55	1009.55	1009.53	1009.53	1009.53	1009.52	1009.54	1009.53	1009.51	1009.54
	1	1009.51	1009.51	1009.50	1009.47	1009.44	1009.45	1009.45	1009.45	1009.46	1009.47	1009.47	1009.44	1009.47
	2	1009.37	1009.34	1009.33	1009.29	1009.27	1009.32	1009.35	1009.36	1009.34	1009.30	1009.26	1009.22	1009.31
	3	1009.19	1009.18	1009.20	1009.26	1009.32	1009.31	1009.27	1009.26	1009.26	1009.25	1009.28	1009.32	1009.26
	4	1009.36	1009.37	1009.37	1009.40	1009.45	1009.49	1009.57	1009.63	1009.65	1009.66	1009.65	1009.65	1009.52
	5	1009.64	1009.64	1009.67	1009.68	1009.68	1009.71	1009.76	1009.79	1009.79	1009.81	1009.85	1009.87	1009.74
	6	1009.85	1009.82	1009.79	1009.79	1009.81	1009.81	1009.78	1009.75	1009.76	1009.80	1009.82	1009.84	1009.80
	7	1009.84	1009.88	1009.95	1009.98	1010.01	1010.05	1010.07	1010.09	1010.14	1010.15	1010.11	1010.08	1010.03
	8	1010.08	1010.09	1010.10	1010.09	1010.09	1010.10	1010.11	1010.14	1010.19	1010.23	1010.23	1010.23	1010.14
	9	1010.24	1010.25	1010.26	1010.29	1010.30	1010.27	1010.23	1010.20	1010.16	1010.06	1009.95	1009.88	1010.17
	10	1009.83	1009.80	1009.78	1009.74	1009.70	1009.65	1009.62	1009.60	1009.57	1009.54	1009.54	1009.55	1009.66
	11	1009.54	1009.53	1009.53	1009.52	1009.54	1009.54	1009.51	1009.48	1009.48	1009.45	1009.38	1009.34	1009.48
	12	1009.28	1009.21	1009.17	1009.13	1009.05	1009.00	1008.96	1008.91	1008.87	1008.83	1008.78	1008.70	1008.99
	13	1008.67	1008.67	1008.64	1008.59	1008.53	1008.49	1008.46	1008.46	1008.47	1008.49	1008.51	1008.54	1008.54
	14	1008.58	1008.62	1008.62	1008.58	1008.55	1008.58	1008.63	1008.87	1009.72	1010.04	1009.62	1009.46	1008.99
	15	1009.31	1009.21	1009.20	1009.23	1009.30	1009.35	1009.41	1009.46	1009.49	1009.49	1009.45	1009.40	1009.36
	16	1009.40	1009.39	1009.41	1009.45	1009.47	1009.52	1009.57	1009.56	1009.56	1009.57	1009.60	1009.63	1009.51
	17	1009.66	1009.70	1009.76	1009.80	1009.84	1009.91	1009.96	1010.00	1010.07	1010.12	1010.14	1010.17	1009.93
	18	1010.20	1010.19	1010.20	1010.28	1010.41	1010.52	1010.61	1010.69	1010.72	1010.75	1010.80	1010.82	1010.51
	19	1010.80	1010.79	1010.78	1010.78	1010.83	1010.89	1010.95	1010.98	1010.99	1011.02	1011.07	1011.10	1010.91
	20	1011.12	1011.18	1011.27	1011.31	1011.27	1011.23	1011.20	1011.18	1011.23	1011.28	1011.33	1011.37	1011.25
	21	1011.36	1011.37	1011.38	1011.36	1011.35	1011.36	1011.36	1011.31	1011.28	1011.28	1011.32	1011.34	1011.34
	22	1011.33	1011.36	1011.41	1011.44	1011.49	1011.51	1011.52	1011.54	1011.52	1011.51	1011.53	1011.56	1011.47
	23	1011.52	1011.48	1011.51	1011.49	1011.44	1011.41	1011.41	1011.45	1011.46	1011.47	1011.46	1011.45	1011.46
10	0	1011.41	1011.42	1011.42	1011.40	1011.38	1011.35	1011.30	1011.26	1011.24	1011.26	1011.28	1011.24	1011.32
	1	1011.18	1011.14	1011.15	1011.13	1011.09	1011.11	1011.12	1011.05	1010.98	1010.90	1010.85	1010.86	1011.04
	2	1010.87	1010.84	1010.83	1010.81	1010.79	1010.78	1010.77	1010.76	1010.75	1010.71	1010.65	1010.60	1010.76
	3	1010.57	1010.56	1010.58	1010.60	1010.61	1010.62	1010.64	1010.64	1010.62	1010.63	1010.62	1010.60	1010.60
	4	1010.59	1010.58	1010.63	1010.72	1010.76	1010.78	1010.82	1010.87	1010.88	1010.90	1010.92	1010.92	1010.78
	5	1010.91	1010.90	1010.87	1010.84	1010.84	1010.85	1010.86	1010.91	1010.94	1010.91	1010.88	1010.86	1010.88
	6	1010.87	1010.88	1010.88	1010.88	1010.88	1010.87	1010.89	1010.92	1010.94	1010.96	1010.96	1010.95	1010.90
	7	1010.98	1011.03	1011.05	1011.02	1011.02	1011.04	1011.07	1011.06	1011.01	1010.98	1010.97	1010.99	1011.02
	8	1011.02	1011.01	1011.00	1010.99	1011.00	1011.04	1011.06	1011.04	1011.02	1011.02	1011.00	1010.96	1011.01
	9	1010.91	1010.90	1010.88	1010.86	1010.86	1010.84	1010.81	1010.79	1010.78	1010.75	1010.69	1010.63	1010.81
	10	1010.63	1010.66	1010.67	1010.64	1010.58	1010.49	1010.43	1010.37	1010.30	1010.26	1010.23	1010.16	1010.45
	11	1010.12	1010.10	1010.09	1010.08	1010.07	1010.05	1010.03	1010.06	1010.09	1010.09	1010.11	1010.13	1010.08
	12	1010.09	1010.01	1009.93	1009.89	1009.86	1009.83	1009.78	1009.73	1009.69	1009.68	1009.68	1009.72	1009.82
	13	1009.74	1009.81	1010.01	1010.15	1010.21	1010.30	1010.42	1010.55	1010.64	1010.73	1010.85	1010.94	1010.36
	14	1010.94	1010.75	1010.56	1010.49	1010.47	1010.53	1010.66	1010.74	1010.75	1010.79	1010.85	1010.83	1010.69
	15	1010.74	1010.73	1010.80	1010.90	1011.00	1011.02	1011.00	1011.01	1011.03	1011.06	1011.10	1011.13	1010.96
	16	1011.16	1011.17	1011.17	1011.16	1011.10	1011.03	1010.97	1010.92	1010.88	1010.86	1010.91	1010.98	1011.02
	17	1011.05	1011.11	1011.18	1011.25	1011.30	1011.33	1011.38	1011.45	1011.53	1011.59	1011.60	1011.62	1011.36
	18	1011.70	1011.81	1011.92	1012.03	1012.10	1012.11	1012.12	1012.15	1012.16	1012.16	1012.17	1012.16	1012.05
	19	1012.14	1012.14	1012.15	1012.16	1012.14	1012.12	1012.13	1012.15	1012.16	1012.14	1012.12	1012.12	1012.14
	20	1012.13	1012.17	1012.19	1012.20	1012.23	1012.26	1012.28	1012.27	1012.25	1012.24	1012.24	1012.25	1012.22
	21	1012.25	1012.28	1012.33	1012.36	1012.40	1012.43	1012.42	1012.40	1012.39	1012.39	1012.40	1012.41	1012.37
	22	1012.42	1012.43	1012.43	1012.41	1012.39	1012.36	1012.35	1012.38	1012.40	1012.41	1012.38	1012.38	1012.39
	23	1012.44	1012.49	1012.49	1012.48	1012.51	1012.52	1012.51	1012.50	1012.48	1012.44	1012.42	1012.41	1012.47

S.V.I.R.CO. Observatory - Pressure in hectoPascal –September 2016

day	hh	00_05	05_10	10_15	15_20	20_25	25_30	30_35	35_40	40_45	45_50	50_55	55_60	average
11	0	1012.38	1012.40	1012.41	1012.40	1012.36	1012.29	1012.28	1012.31	1012.33	1012.34	1012.35	1012.32	1012.34
	1	1012.26	1012.25	1012.27	1012.30	1012.33	1012.39	1012.40	1012.35	1012.32	1012.32	1012.34	1012.37	1012.32
	2	1012.40	1012.38	1012.37	1012.38	1012.35	1012.32	1012.27	1012.20	1012.15	1012.13	1012.13	1012.13	1012.26
	3	1012.11	1012.06	1012.02	1011.99	1012.01	1011.99	1011.97	1012.00	1012.03	1012.04	1012.06	1012.07	1012.03
	4	1012.11	1012.12	1012.12	1012.13	1012.14	1012.19	1012.20	1012.22	1012.27	1012.28	1012.34	1012.38	1012.21
	5	1012.42	1012.45	1012.46	1012.51	1012.52	1012.52	1012.52	1012.51	1012.52	1012.53	1012.54	1012.58	1012.50
	6	1012.59	1012.57	1012.58	1012.56	1012.60	1012.67	1012.68	1012.67	1012.66	1012.69	1012.70	1012.69	1012.64
	7	1012.72	1012.75	1012.76	1012.79	1012.83	1012.86	1012.89	1012.92	1012.95	1012.99	1013.04	1013.09	1012.88
	8	1013.09	1013.07	1013.07	1013.07	1013.04	1013.00	1012.98	1013.01	1013.02	1012.97	1012.93	1012.92	1013.01
	9	1012.88	1012.85	1012.83	1012.84	1012.89	1012.91	1012.89	1012.90	1012.90	1012.89	1012.91	1012.93	1012.88
	10	1012.91	1012.88	1012.86	1012.83	1012.83	1012.82	1012.81	1012.82	1012.83	1012.81	1012.78	1012.76	1012.83
	11	1012.74	1012.70	1012.59	1012.47	1012.41	1012.36	1012.29	1012.26	1012.28	1012.29	1012.26	1012.17	1012.40
	12	1012.05	1011.94	1011.85	1011.76	1011.70	1011.67	1011.66	1011.66	1011.65	1011.73	1011.90	1011.97	1011.79
	13	1011.94	1011.95	1012.03	1012.15	1012.19	1012.15	1012.38	1012.69	1012.70	1013.03	1013.47	1013.47	1012.51
	14	1013.45	1013.50	1013.53	1013.50	1013.34	1013.06	1012.82	1012.67	1012.59	1012.58	1012.61	1012.70	1013.03
	15	1012.85	1012.97	1013.00	1013.01	1013.09	1013.26	1013.41	1013.41	1013.33	1013.30	1013.33	1013.36	1013.19
	16	1013.40	1013.46	1013.50	1013.54	1013.59	1013.62	1013.64	1013.66	1013.66	1013.65	1013.66	1013.67	1013.59
	17	1013.67	1013.69	1013.73	1013.75	1013.70	1013.64	1013.62	1013.64	1013.67	1013.69	1013.75	1013.78	1013.69
	18	1013.80	1013.89	1013.96	1013.98	1014.05	1014.13	1014.16	1014.20	1014.23	1014.24	1014.27	1014.28	1014.10
	19	1014.30	1014.38	1014.43	1014.45	1014.45	1014.46	1014.46	1014.46	1014.44	1014.42	1014.45	1014.51	1014.43
	20	1014.51	1014.49	1014.49	1014.55	1014.64	1014.69	1014.72	1014.80	1014.91	1014.96	1014.97	1014.95	1014.72
	21	1014.95	1014.99	1015.02	1015.02	1015.07	1015.09	1015.09	1015.13	1015.15	1015.15	1015.09	1015.02	1015.06
	22	1014.99	1014.99	1015.00	1015.01	1015.00	1014.94	1014.93	1014.97	1014.96	1014.93	1014.91	1014.90	1014.96
	23	1014.96	1014.99	1014.98	1015.02	1015.10	1015.11	1015.10	1015.09	1015.12	1015.12	1015.08	1015.05	1015.06
12	0	1015.07	1015.09	1015.12	1015.12	1015.07	1015.02	1015.00	1014.99	1014.97	1014.96	1014.97	1014.95	1015.02
	1	1014.90	1014.84	1014.80	1014.79	1014.78	1014.77	1014.76	1014.71	1014.72	1014.76	1014.79	1014.81	1014.78
	2	1014.83	1014.82	1014.78	1014.77	1014.80	1014.81	1014.80	1014.78	1014.76	1014.78	1014.84	1014.89	1014.80
	3	1014.91	1014.93	1014.94	1014.93	1014.95	1014.98	1014.99	1015.01	1015.00	1014.98	1014.98	1014.99	1014.96
	4	1015.00	1015.03	1015.08	1015.12	1015.19	1015.26	1015.32	1015.36	1015.36	1015.37	1015.43	1015.48	1015.25
	5	1015.51	1015.54	1015.52	1015.47	1015.44	1015.44	1015.49	1015.57	1015.62	1015.65	1015.68	1015.69	1015.55
	6	1015.72	1015.79	1015.85	1015.87	1015.89	1015.96	1016.03	1016.09	1016.12	1016.12	1016.11	1016.10	1015.97
	7	1016.11	1016.14	1016.16	1016.14	1016.14	1016.16	1016.16	1016.17	1016.22	1016.27	1016.27	1016.23	1016.18
	8	1016.19	1016.15	1016.11	1016.07	1016.05	1016.04	1016.05	1016.06	1016.04	1016.02	1016.02	1015.98	1016.06
	9	1015.94	1015.96	1015.97	1015.96	1015.97	1015.98	1015.94	1015.91	1015.90	1015.89	1015.87	1015.86	1015.93
	10	1015.84	1015.76	1015.65	1015.59	1015.59	1015.56	1015.49	1015.50	1015.51	1015.44	1015.40	1015.38	1015.56
	11	1015.33	1015.30	1015.27	1015.21	1015.18	1015.18	1015.16	1015.12	1015.05	1014.98	1014.94	1014.90	1015.13
	12	1014.83	1014.76	1014.70	1014.67	1014.65	1014.62	1014.56	1014.49	1014.43	1014.41	1014.42	1014.42	1014.58
	13	1014.40	1014.36	1014.32	1014.31	1014.25	1014.17	1014.10	1014.02	1014.00	1014.01	1014.00	1013.99	1014.16
	14	1014.00	1014.04	1014.08	1014.13	1014.15	1014.13	1014.09	1014.00	1014.01	1014.19	1014.33	1014.36	1014.12
	15	1014.29	1014.18	1014.21	1014.32	1014.38	1014.43	1014.52	1014.60	1014.71	1014.85	1014.89	1014.91	1014.52
	16	1015.05	1015.17	1015.14	1015.02	1014.93	1014.97	1015.07	1015.13	1015.20	1015.27	1015.25	1015.17	1015.11
	17	1015.09	1015.05	1015.05	1015.06	1015.08	1015.09	1015.11	1015.12	1015.14	1015.19	1015.26	1015.30	1015.13
	18	1015.28	1015.28	1015.34	1015.35	1015.35	1015.36	1015.38	1015.42	1015.41	1015.42	1015.46	1015.47	1015.37
	19	1015.47	1015.54	1015.59	1015.59	1015.62	1015.60	1015.56	1015.56	1015.59	1015.67	1015.74	1015.76	1015.61
	20	1015.78	1015.82	1015.85	1015.84	1015.78	1015.74	1015.74	1015.72	1015.75	1015.79	1015.79	1015.80	1015.78
	21	1015.83	1015.85	1015.85	1015.87	1015.91	1015.96	1015.99	1015.99	1015.95	1015.91	1015.88	1015.83	1015.90
	22	1015.80	1015.76	1015.71	1015.68	1015.67	1015.67	1015.68	1015.68	1015.66	1015.64	1015.63	1015.66	1015.68
	23	1015.68	1015.65	1015.63	1015.59	1015.55	1015.54	1015.54	1015.52	1015.47	1015.44	1015.42	1015.38	1015.53

S.V.I.R.CO. Observatory - Pressure in hectoPascal –September 2016

day	hh	00_05	05_10	10_15	15_20	20_25	25_30	30_35	35_40	40_45	45_50	50_55	55_60	average
13	0	1015.33	1015.32	1015.29	1015.28	1015.27	1015.24	1015.16	1015.08	1015.01	1014.98	1014.97	1014.94	1015.15
	1	1014.94	1014.95	1014.91	1014.87	1014.85	1014.87	1014.89	1014.87	1014.82	1014.79	1014.76	1014.74	1014.85
	2	1014.75	1014.72	1014.68	1014.65	1014.64	1014.65	1014.66	1014.64	1014.65	1014.66	1014.68	1014.69	1014.67
	3	1014.69	1014.67	1014.64	1014.63	1014.65	1014.66	1014.67	1014.69	1014.72	1014.72	1014.69	1014.68	1014.67
	4	1014.69	1014.68	1014.66	1014.65	1014.67	1014.70	1014.74	1014.77	1014.81	1014.84	1014.87	1014.87	1014.74
	5	1014.88	1014.91	1014.91	1014.90	1014.89	1014.89	1014.95	1015.03	1015.08	1015.10	1015.11	1015.15	1014.98
	6	1015.20	1015.24	1015.28	1015.28	1015.26	1015.29	1015.36	1015.43	1015.48	1015.51	1015.52	1015.53	1015.36
	7	1015.54	1015.53	1015.51	1015.50	1015.52	1015.56	1015.57	1015.58	1015.59	1015.58	1015.56	1015.56	1015.55
	8	1015.58	1015.59	1015.60	1015.58	1015.54	1015.49	1015.42	1015.33	1015.26	1015.22	1015.20	1015.18	1015.42
	9	1015.17	1015.16	1015.13	1015.12	1015.13	1015.11	1015.09	1015.07	1015.02	1014.98	1014.95	1014.93	1015.07
	10	1014.89	1014.83	1014.79	1014.76	1014.72	1014.68	1014.63	1014.60	1014.55	1014.45	1014.37	1014.31	1014.63
	11	1014.27	1014.22	1014.18	1014.14	1014.07	1014.04	1014.05	1014.04	1013.97	1013.92	1013.87	1013.81	1014.05
	12	1013.77	1013.71	1013.64	1013.57	1013.51	1013.49	1013.50	1013.49	1013.43	1013.39	1013.37	1013.32	1013.51
	13	1013.27	1013.20	1013.14	1013.10	1013.07	1013.04	1012.98	1012.89	1012.88	1012.92	1012.95	1012.99	1013.03
	14	1013.00	1012.96	1012.94	1012.94	1012.87	1012.87	1012.95	1013.12	1013.28	1013.31	1013.24	1013.16	1013.05
	15	1013.24	1013.53	1013.80	1013.97	1014.11	1014.26	1014.27	1014.17	1014.11	1013.98	1013.78	1013.67	1013.91
	16	1013.60	1013.46	1013.37	1013.37	1013.36	1013.42	1013.56	1013.65	1013.73	1013.77	1013.73	1013.73	1013.56
	17	1013.80	1013.89	1013.91	1013.92	1013.93	1013.83	1013.73	1013.72	1013.74	1013.76	1013.79	1013.84	1013.82
	18	1013.86	1013.89	1013.89	1013.89	1013.88	1013.85	1013.90	1013.96	1013.91	1013.82	1013.72	1013.65	1013.85
	19	1013.61	1013.62	1013.69	1013.78	1013.85	1013.92	1013.98	1014.02	1014.06	1014.08	1014.09	1014.10	1013.90
	20	1014.13	1014.14	1014.06	1013.97	1013.97	1013.98	1013.96	1013.99	1014.03	1014.00	1013.92	1013.84	1014.00
	21	1013.84	1013.87	1013.84	1013.84	1013.85	1013.85	1013.81	1013.74	1013.72	1013.74	1013.76	1013.75	1013.80
	22	1013.74	1013.72	1013.71	1013.74	1013.82	1013.91	1013.95	1013.94	1013.93	1013.94	1013.94	1013.98	1013.86
	23	1014.01	1014.02	1014.02	1014.03	1014.04	1014.02	1014.01	1014.01	1013.98	1013.94	1013.90	1013.86	1013.98
14	0	1013.88	1013.88	1013.86	1013.84	1013.81	1013.76	1013.73	1013.73	1013.70	1013.67	1013.64	1013.62	1013.75
	1	1013.60	1013.55	1013.50	1013.46	1013.40	1013.38	1013.40	1013.38	1013.36	1013.36	1013.33	1013.30	1013.42
	2	1013.29	1013.24	1013.18	1013.16	1013.15	1013.15	1013.14	1013.14	1013.15	1013.12	1013.10	1013.07	1013.15
	3	1013.03	1013.04	1013.11	1013.15	1013.11	1013.07	1013.05	1013.02	1013.00	1013.00	1012.99	1012.98	1013.04
	4	1012.97	1012.99	1013.02	1013.06	1013.11	1013.12	1013.12	1013.11	1013.12	1013.14	1013.17	1013.21	1013.09
	5	1013.27	1013.31	1013.33	1013.33	1013.32	1013.30	1013.28	1013.29	1013.33	1013.35	1013.35	1013.36	1013.31
	6	1013.37	1013.39	1013.44	1013.43	1013.40	1013.41	1013.48	1013.55	1013.59	1013.62	1013.67	1013.71	1013.50
	7	1013.73	1013.77	1013.81	1013.86	1013.87	1013.89	1013.95	1014.00	1014.00	1014.00	1014.01	1014.05	1013.91
	8	1014.10	1014.13	1014.16	1014.18	1014.17	1014.14	1014.10	1014.08	1014.05	1014.03	1014.03	1014.03	1014.10
	9	1014.00	1013.95	1013.91	1013.91	1013.89	1013.86	1013.85	1013.85	1013.84	1013.84	1013.85	1013.85	1013.88
	10	1013.82	1013.79	1013.75	1013.69	1013.64	1013.61	1013.61	1013.63	1013.63	1013.60	1013.56	1013.52	1013.65
	11	1013.51	1013.52	1013.49	1013.41	1013.34	1013.31	1013.31	1013.29	1013.22	1013.17	1013.15	1013.13	1013.32
	12	1013.11	1013.09	1013.10	1013.13	1013.11	1013.05	1012.99	1012.92	1012.85	1012.80	1012.77	1012.73	1012.97
	13	1012.68	1012.68	1012.68	1012.63	1012.61	1012.62	1012.60	1012.61	1012.64	1012.71	1012.89	1013.01	1012.69
	14	1013.03	1013.05	1013.08	1013.13	1013.13	1013.12	1013.08	1013.05	1013.10	1013.18	1013.20	1013.21	1013.11
	15	1013.27	1013.29	1013.30	1013.27	1013.23	1013.28	1013.31	1013.29	1013.32	1013.34	1013.38	1013.41	1013.31
	16	1013.43	1013.48	1013.51	1013.58	1013.68	1013.71	1013.71	1013.74	1013.76	1013.77	1013.82	1013.89	1013.67
	17	1013.91	1013.90	1013.91	1013.93	1013.99	1014.07	1014.08	1014.08	1014.06	1014.03	1014.03	1014.06	1014.00
	18	1014.08	1014.10	1014.16	1014.23	1014.30	1014.39	1014.48	1014.52	1014.56	1014.63	1014.67	1014.67	1014.40
	19	1014.68	1014.71	1014.72	1014.67	1014.63	1014.61	1014.65	1014.65	1014.58	1014.57	1014.57	1014.59	1014.63
	20	1014.58	1014.58	1014.56	1014.49	1014.50	1014.58	1014.61	1014.60	1014.55	1014.51	1014.51	1014.48	1014.54
	21	1014.42	1014.36	1014.34	1014.35	1014.32	1014.27	1014.27	1014.30	1014.32	1014.37	1014.39	1014.36	1014.34
	22	1014.37	1014.34	1014.28	1014.26	1014.26	1014.24	1014.23	1014.21	1014.14	1014.13	1014.14	1014.16	1014.23
	23	1014.18	1014.15	1014.13	1014.21	1014.31	1014.37	1014.42	1014.51	1014.56	1014.58	1014.69	1014.76	1014.40

S.V.I.R.CO. Observatory - Pressure in hectoPascal –September 2016

day	hh	00_05	05_10	10_15	15_20	20_25	25_30	30_35	35_40	40_45	45_50	50_55	55_60	average
15	0	1014.83	1014.81	1014.77	1014.74	1014.77	1014.86	1014.88	1014.74	1014.62	1014.69	1014.76	1014.78	1014.76
	1	1014.88	1014.98	1015.07	1015.15	1015.20	1015.26	1015.29	1015.25	1015.20	1015.21	1015.20	1015.12	1015.15
	2	1015.08	1015.09	1015.06	1015.04	1015.06	1015.07	1015.05	1015.00	1014.97	1014.94	1014.88	1014.81	1015.00
	3	1014.73	1014.67	1014.65	1014.62	1014.62	1014.70	1014.77	1014.82	1014.81	1014.75	1014.71	1014.67	1014.71
	4	1014.61	1014.53	1014.49	1014.51	1014.54	1014.57	1014.59	1014.65	1014.76	1014.84	1014.90	1014.93	1014.66
	5	1014.98	1015.08	1015.12	1015.09	1015.05	1015.04	1015.08	1015.15	1015.18	1015.21	1015.26	1015.29	1015.12
	6	1015.37	1015.44	1015.45	1015.44	1015.38	1015.34	1015.40	1015.49	1015.53	1015.54	1015.59	1015.64	1015.46
	7	1015.66	1015.66	1015.65	1015.64	1015.62	1015.56	1015.54	1015.52	1015.47	1015.44	1015.41	1015.50	1015.55
	8	1015.66	1015.66	1015.56	1015.53	1015.54	1015.54	1015.63	1015.69	1015.72	1015.80	1015.81	1015.73	1015.65
	9	1015.72	1015.72	1015.67	1015.64	1015.65	1015.70	1015.74	1015.73	1015.68	1015.68	1015.70	1015.68	1015.69
	10	1015.70	1015.67	1015.66	1015.71	1015.75	1015.81	1015.84	1015.79	1015.73	1015.68	1015.66	1015.66	1015.72
	11	1015.69	1015.71	1015.70	1015.64	1015.60	1015.60	1015.58	1015.56	1015.54	1015.49	1015.47	1015.52	1015.59
	12	1015.55	1015.57	1015.59	1015.59	1015.55	1015.51	1015.50	1015.47	1015.38	1015.33	1015.29	1015.25	1015.46
	13	1015.24	1015.24	1015.21	1015.18	1015.18	1015.21	1015.23	1015.24	1015.26	1015.28	1015.27	1015.20	1015.23
	14	1015.14	1015.12	1015.12	1015.14	1015.17	1015.21	1015.21	1015.18	1015.19	1015.19	1015.18	1015.18	1015.17
	15	1015.17	1015.18	1015.28	1015.36	1015.37	1015.37	1015.37	1015.36	1015.36	1015.36	1015.36	1015.35	1015.32
	16	1015.39	1015.51	1015.58	1015.65	1015.72	1015.70	1015.65	1015.62	1015.59	1015.57	1015.59	1015.56	1015.59
	17	1015.54	1015.58	1015.62	1015.63	1015.64	1015.67	1015.74	1015.84	1015.91	1015.94	1015.96	1016.01	1015.75
	18	1016.10	1016.21	1016.27	1016.32	1016.38	1016.46	1016.58	1016.68	1016.77	1016.85	1016.88	1016.91	1016.53
	19	1016.92	1016.87	1016.82	1016.83	1016.87	1016.85	1016.81	1016.76	1016.68	1016.62	1016.62	1016.60	1016.77
	20	1016.53	1016.51	1016.52	1016.53	1016.57	1016.63	1016.70	1016.69	1016.59	1016.57	1016.57	1016.59	1016.58
	21	1016.68	1016.77	1016.80	1016.75	1016.66	1016.67	1016.75	1016.76	1016.74	1016.70	1016.63	1016.56	1016.70
	22	1016.50	1016.59	1016.75	1016.84	1016.92	1016.98	1017.03	1017.07	1017.09	1017.12	1017.10	1017.07	1016.92
	23	1017.06	1017.00	1016.95	1016.96	1016.93	1016.89	1016.85	1016.84	1016.78	1016.71	1016.65	1016.50	1016.84
16	0	1016.41	1016.39	1016.39	1016.37	1016.31	1016.25	1016.16	1016.05	1015.98	1015.96	1015.95	1015.98	1016.17
	1	1015.90	1015.72	1015.57	1015.49	1015.48	1015.48	1015.52	1015.60	1015.62	1015.61	1015.63	1015.67	1015.61
	2	1015.63	1015.44	1015.34	1015.31	1015.21	1015.09	1015.03	1015.04	1015.06	1015.09	1015.02	1014.96	1015.18
	3	1015.05	1015.07	1015.08	1015.13	1015.16	1015.22	1015.23	1015.18	1015.20	1015.27	1015.35	1015.49	1015.20
	4	1015.55	1015.51	1015.46	1015.27	1015.14	1015.23	1015.33	1015.43	1015.51	1015.51	1015.44	1015.41	1015.40
	5	1015.46	1015.48	1015.57	1015.66	1015.65	1015.65	1015.68	1015.65	1015.63	1015.67	1015.70	1015.89	1015.64
	6	1016.08	1016.16	1016.10	1015.91	1015.80	1015.84	1016.17	1016.46	1016.49	1016.62	1016.84	1017.10	1016.30
	7	1017.33	1017.42	1017.50	1017.55	1017.48	1017.32	1017.18	1016.99	1016.89	1017.00	1017.12	1017.14	1017.24
	8	1017.22	1017.25	1017.17	1017.09	1017.12	1017.14	1017.13	1017.15	1017.11	1016.98	1016.80	1016.85	1017.08
	9	1016.84	1016.73	1016.71	1016.63	1016.41	1016.04	1015.80	1015.96	1016.21	1016.18	1016.01	1016.00	1016.29
	10	1015.99	1015.93	1015.87	1015.78	1015.81	1015.80	1015.69	1015.59	1015.54	1015.49	1015.56	1015.59	1015.72
	11	1015.48	1015.39	1015.35	1015.41	1015.50	1015.54	1015.26	1014.29	1013.60	1013.89	1014.35	1014.45	1014.87
	12	1014.30	1014.12	1013.96	1014.03	1014.14	1014.09	1013.98	1013.83	1013.78	1013.77	1013.63	1013.46	1013.92
	13	1013.43	1013.31	1013.21	1013.09	1012.70	1012.66	1012.89	1013.20	1013.34	1013.01	1012.95	1012.89	1013.05
	14	1012.68	1012.45	1012.39	1012.49	1012.42	1012.43	1012.35	1012.08	1012.11	1012.15	1012.13	1012.00	1012.30
	15	1011.67	1011.49	1011.35	1011.42	1011.44	1011.46	1011.52	1011.45	1011.33	1010.93	1010.49	1010.49	1011.25
	16	1010.82	1010.62	1010.42	1011.20	1011.48	1011.09	1011.13	1011.50	1011.85	1011.94	1011.68	1011.53	1011.27
	17	1011.71	1011.65	1011.58	1011.84	1012.04	1012.21	1012.29	1012.31	1012.31	1012.41	1012.63	1012.65	1012.13
	18	1012.63	1012.73	1012.80	1012.81	1012.95	1013.15	1013.13	1012.96	1013.01	1013.17	1013.18	1013.20	1012.98
	19	1013.25	1013.37	1013.49	1013.50	1013.40	1013.31	1013.34	1013.51	1013.69	1013.73	1013.62	1013.51	1013.47
	20	1013.48	1013.43	1013.32	1013.30	1013.38	1013.41	1013.44	1013.47	1013.44	1013.33	1013.25	1013.22	1013.37
	21	1013.12	1013.12	1013.28	1013.32	1013.25	1013.22	1013.25	1013.34	1013.39	1013.31	1013.15	1013.01	1013.23
	22	1012.95	1013.00	1013.00	1012.97	1013.03	1013.03	1012.91	1012.85	1012.87	1012.87	1012.86	1012.78	1012.92
	23	1012.75	1012.75	1012.77	1012.81	1012.77	1012.74	1012.66	1012.61	1012.63	1012.57	1012.49	1012.46	1012.67

S.V.I.R.CO. Observatory - Pressure in hectoPascal –September 2016

day	hh	00_05	05_10	10_15	15_20	20_25	25_30	30_35	35_40	40_45	45_50	50_55	55_60	average
17	0	1012.57	1012.58	1012.59	1012.57	1012.57	1012.59	1012.64	1012.67	1012.70	1012.72	1012.75	1012.82	1012.65
	1	1012.82	1012.80	1012.81	1012.82	1012.82	1012.80	1012.78	1012.78	1012.76	1012.70	1012.70	1012.71	1012.77
	2	1012.71	1012.71	1012.67	1012.67	1012.70	1012.72	1012.65	1012.60	1012.64	1012.61	1012.58	1012.55	1012.65
	3	1012.59	1012.69	1012.69	1012.71	1012.75	1012.76	1012.76	1012.74	1012.65	1012.60	1012.58	1012.54	1012.67
	4	1012.47	1012.38	1012.36	1012.38	1012.43	1012.48	1012.45	1012.39	1012.32	1012.31	1012.38	1012.39	1012.39
	5	1012.39	1012.43	1012.43	1012.42	1012.44	1012.46	1012.48	1012.47	1012.50	1012.53	1012.54	1012.58	1012.47
	6	1012.61	1012.60	1012.58	1012.54	1012.52	1012.51	1012.50	1012.49	1012.47	1012.44	1012.42	1012.42	1012.51
	7	1012.43	1012.44	1012.46	1012.47	1012.48	1012.50	1012.53	1012.56	1012.56	1012.60	1012.69	1012.73	1012.53
	8	1012.74	1012.74	1012.75	1012.75	1012.77	1012.82	1012.86	1012.88	1012.89	1012.95	1013.03	1013.06	1012.85
	9	1013.06	1013.05	1013.07	1013.07	1013.05	1013.06	1013.10	1013.08	1013.00	1012.94	1012.91	1012.85	1013.02
	10	1012.73	1012.61	1012.58	1012.59	1012.59	1012.59	1012.61	1012.62	1012.58	1012.57	1012.57	1012.54	1012.60
	11	1012.55	1012.57	1012.54	1012.52	1012.50	1012.49	1012.51	1012.51	1012.50	1012.50	1012.52	1012.50	1012.52
	12	1012.49	1012.45	1012.43	1012.41	1012.36	1012.34	1012.31	1012.26	1012.18	1012.14	1012.18	1012.22	1012.31
	13	1012.21	1012.19	1012.18	1012.21	1012.20	1012.16	1012.19	1012.19	1012.14	1012.09	1012.08	1012.09	1012.16
	14	1012.09	1012.08	1012.09	1012.14	1012.17	1012.21	1012.30	1012.32	1012.28	1012.26	1012.27	1012.36	1012.21
	15	1012.35	1012.28	1012.32	1012.33	1012.32	1012.36	1012.40	1012.38	1012.34	1012.33	1012.33	1012.30	1012.33
	16	1012.26	1012.24	1012.26	1012.24	1012.25	1012.31	1012.34	1012.33	1012.29	1012.28	1012.29	1012.29	1012.28
	17	1012.25	1012.23	1012.22	1012.19	1012.20	1012.23	1012.23	1012.21	1012.22	1012.27	1012.30	1012.32	1012.24
	18	1012.36	1012.39	1012.46	1012.54	1012.60	1012.65	1012.70	1012.77	1012.82	1012.84	1012.84	1012.87	1012.65
	19	1012.88	1012.84	1012.83	1012.83	1012.85	1012.89	1012.87	1012.85	1012.83	1012.81	1012.83	1012.90	1012.85
	20	1012.90	1012.87	1012.88	1012.87	1012.88	1012.93	1012.97	1013.00	1013.03	1012.96	1012.92	1012.97	1012.93
	21	1013.04	1012.99	1012.92	1012.89	1012.89	1012.93	1012.93	1012.89	1012.82	1012.79	1012.82	1012.85	1012.89
	22	1012.87	1012.84	1012.77	1012.72	1012.70	1012.67	1012.64	1012.64	1012.63	1012.60	1012.57	1012.51	1012.68
	23	1012.45	1012.44	1012.50	1012.54	1012.56	1012.61	1012.65	1012.64	1012.61	1012.63	1012.66	1012.69	1012.58
18	0	1012.78	1012.78	1012.77	1012.75	1012.77	1012.78	1012.77	1012.77	1012.75	1012.71	1012.71	1012.69	1012.75
	1	1012.64	1012.62	1012.61	1012.59	1012.58	1012.56	1012.54	1012.53	1012.52	1012.55	1012.64	1012.67	1012.59
	2	1012.65	1012.71	1012.78	1012.77	1012.73	1012.70	1012.69	1012.65	1012.60	1012.58	1012.54	1012.51	1012.66
	3	1012.50	1012.47	1012.45	1012.38	1012.28	1012.17	1012.05	1011.98	1011.98	1012.02	1012.06	1012.06	1012.20
	4	1012.01	1011.94	1011.92	1011.94	1011.95	1011.93	1011.94	1011.96	1012.00	1011.97	1011.89	1011.83	1011.94
	5	1011.82	1011.78	1011.75	1011.79	1011.83	1011.79	1011.73	1011.77	1011.83	1011.84	1011.84	1011.87	1011.80
	6	1011.93	1011.90	1011.86	1011.85	1011.81	1011.75	1011.70	1011.63	1011.60	1011.62	1011.65	1011.67	1011.75
	7	1011.67	1011.68	1011.70	1011.76	1011.84	1011.92	1011.96	1011.97	1011.96	1011.91	1011.85	1011.80	1011.83
	8	1011.75	1011.74	1011.73	1011.74	1011.79	1011.80	1011.80	1011.78	1011.75	1011.75	1011.73	1011.71	1011.75
	9	1011.72	1011.69	1011.66	1011.65	1011.60	1011.53	1011.45	1011.33	1011.27	1011.25	1011.21	1011.19	1011.46
	10	1011.16	1011.13	1011.14	1011.11	1011.07	1011.04	1010.97	1010.90	1010.83	1010.74	1010.66	1010.63	1010.95
	11	1010.62	1010.64	1010.64	1010.62	1010.58	1010.53	1010.47	1010.41	1010.43	1010.40	1010.33	1010.26	1010.49
	12	1010.20	1010.18	1010.17	1010.20	1010.23	1010.19	1010.16	1010.14	1010.08	1010.00	1009.94	1009.95	1010.12
	13	1009.94	1009.88	1009.88	1009.89	1009.89	1009.85	1009.79	1009.73	1009.67	1009.63	1009.63	1009.62	1009.78
	14	1009.64	1009.69	1009.66	1009.61	1009.56	1009.48	1009.43	1009.37	1009.29	1009.24	1009.25	1009.24	1009.45
	15	1009.21	1009.17	1009.12	1009.09	1009.07	1009.07	1009.04	1008.97	1008.91	1008.89	1008.91	1008.94	1009.03
	16	1008.95	1008.98	1008.97	1008.90	1008.78	1008.63	1008.53	1008.52	1008.56	1008.61	1008.68	1008.74	1008.73
	17	1008.70	1008.65	1008.58	1008.43	1008.41	1008.44	1008.63	1008.97	1009.11	1009.15	1009.02	1008.87	1008.74
	18	1008.80	1008.74	1008.75	1008.74	1008.81	1008.89	1008.90	1008.92	1008.94	1008.92	1008.80	1008.69	1008.82
	19	1008.66	1008.65	1008.72	1008.82	1008.87	1008.82	1008.68	1008.59	1008.55	1008.65	1008.75	1008.76	1008.71
	20	1008.71	1008.67	1008.65	1008.57	1008.58	1008.61	1008.66	1008.87	1008.99	1008.94	1008.94	1008.87	1008.75
	21	1008.74	1008.63	1008.57	1008.57	1008.56	1008.57	1008.65	1008.66	1008.63	1008.60	1008.53	1008.54	1008.60
	22	1008.53	1008.42	1008.28	1008.23	1008.23	1008.21	1008.19	1008.17	1008.10	1008.04	1008.01	1008.02	1008.20
	23	1008.00	1007.93	1007.88	1007.83	1007.79	1007.76	1007.71	1007.65	1007.65	1007.71	1007.73	1007.61	1007.77



S.V.I.R.CO. Observatory - Pressure in hectoPascal –September 2016

day	hh	00_05	05_10	10_15	15_20	20_25	25_30	30_35	35_40	40_45	45_50	50_55	55_60	average
19	0	1007.63	1007.59	1007.58	1007.68	1007.68	1007.60	1007.60	1007.62	1007.66	1007.72	1007.77	1007.78	1007.66
	1	1007.73	1007.73	1007.71	1007.59	1007.42	1007.24	1007.18	1007.20	1007.14	1007.09	1007.11	1007.12	1007.35
	2	1007.12	1007.14	1007.18	1007.22	1007.27	1007.32	1007.32	1007.31	1007.31	1007.32	1007.30	1007.24	1007.25
	3	1007.13	1007.06	1007.00	1006.99	1007.05	1007.09	1007.14	1007.16	1007.16	1007.18	1007.17	1007.16	1007.10
	4	1007.15	1007.10	1007.06	1007.07	1007.07	1007.08	1007.12	1007.13	1007.13	1007.13	1007.13	1007.14	1007.11
	5	1007.18	1007.21	1007.18	1007.16	1007.21	1007.28	1007.35	1007.40	1007.43	1007.45	1007.45	1007.43	1007.31
	6	1007.42	1007.43	1007.48	1007.54	1007.52	1007.44	1007.45	1007.51	1007.50	1007.52	1007.56	1007.60	1007.50
	7	1007.62	1007.62	1007.63	1007.63	1007.65	1007.66	1007.67	1007.71	1007.77	1007.85	1007.94	1008.04	1007.73
	8	1008.09	1008.14	1008.21	1008.23	1008.25	1008.29	1008.30	1008.30	1008.33	1008.40	1008.47	1008.46	1008.29
	9	1008.45	1008.50	1008.50	1008.44	1008.34	1008.28	1008.23	1008.21	1008.25	1008.30	1008.29	1008.23	1008.33
	10	1008.16	1008.15	1008.16	1008.13	1008.10	1008.10	1008.10	1008.08	1008.07	1008.05	1008.01	1007.98	1008.09
	11	1007.98	1007.96	1007.94	1007.92	1007.94	1008.00	1008.04	1008.01	1007.99	1007.99	1007.95	1007.95	1007.97
	12	1008.00	1008.02	1007.99	1007.98	1007.96	1007.95	1007.99	1008.01	1008.03	1008.03	1008.01	1008.04	1008.00
	13	1008.05	1008.06	1008.03	1007.97	1007.95	1007.96	1007.96	1007.98	1007.99	1007.98	1007.97	1007.96	1007.99
	14	1007.95	1007.95	1007.92	1007.88	1007.84	1007.83	1007.84	1007.84	1007.86	1007.90	1007.92	1007.95	1007.89
	15	1007.97	1007.98	1008.05	1008.12	1008.15	1008.18	1008.15	1008.10	1008.06	1008.08	1008.12	1008.11	1008.09
	16	1008.10	1008.09	1008.09	1008.06	1008.01	1007.99	1007.96	1007.97	1007.97	1007.95	1007.96	1008.00	1008.01
	17	1008.02	1007.99	1007.97	1007.98	1007.99	1008.01	1008.05	1008.12	1008.19	1008.23	1008.27	1008.35	1008.09
	18	1008.43	1008.51	1008.56	1008.61	1008.65	1008.70	1008.76	1008.78	1008.79	1008.83	1008.87	1008.92	1008.70
	19	1008.98	1009.01	1009.02	1009.04	1009.08	1009.11	1009.13	1009.15	1009.16	1009.15	1009.13	1009.13	1009.09
	20	1009.14	1009.12	1009.11	1009.10	1009.10	1009.13	1009.15	1009.12	1009.12	1009.14	1009.17	1009.20	1009.13
	21	1009.21	1009.23	1009.21	1009.19	1009.25	1009.33	1009.35	1009.34	1009.33	1009.33	1009.35	1009.35	1009.29
	22	1009.36	1009.41	1009.45	1009.47	1009.51	1009.56	1009.57	1009.54	1009.48	1009.44	1009.44	1009.48	1009.47
	23	1009.53	1009.60	1009.65	1009.68	1009.71	1009.72	1009.76	1009.81	1009.81	1009.78	1009.82	1009.86	1009.72
20	0	1009.82	1009.84	1009.86	1009.86	1009.85	1009.82	1009.76	1009.74	1009.70	1009.65	1009.66	1009.65	1009.76
	1	1009.63	1009.62	1009.63	1009.68	1009.70	1009.69	1009.69	1009.72	1009.73	1009.75	1009.75	1009.74	1009.69
	2	1009.74	1009.75	1009.75	1009.75	1009.77	1009.74	1009.71	1009.68	1009.62	1009.59	1009.59	1009.62	1009.69
	3	1009.66	1009.67	1009.70	1009.74	1009.71	1009.70	1009.71	1009.72	1009.71	1009.72	1009.72	1009.76	1009.71
	4	1009.82	1009.89	1009.95	1010.00	1010.06	1010.10	1010.09	1010.08	1010.11	1010.15	1010.15	1010.21	1010.05
	5	1010.31	1010.36	1010.34	1010.32	1010.33	1010.38	1010.45	1010.52	1010.59	1010.63	1010.65	1010.63	1010.46
	6	1010.69	1010.82	1010.90	1010.91	1010.91	1010.84	1010.76	1010.78	1010.81	1010.81	1010.83	1010.85	1010.82
	7	1010.86	1010.87	1010.83	1010.72	1010.64	1010.66	1010.72	1010.78	1010.83	1010.87	1010.87	1010.87	1010.79
	8	1010.92	1010.97	1010.99	1011.00	1011.02	1011.03	1011.03	1011.00	1010.99	1011.01	1011.01	1011.00	1011.00
	9	1011.02	1011.05	1011.06	1011.05	1011.05	1011.06	1011.08	1011.11	1011.13	1011.15	1011.14	1011.08	1011.08
	10	1010.99	1010.93	1010.93	1010.97	1010.97	1010.97	1010.98	1010.96	1010.94	1010.91	1010.87	1010.88	1010.94
	11	1010.91	1010.92	1010.96	1010.96	1010.90	1010.86	1010.89	1010.89	1010.88	1010.90	1010.89	1010.89	1010.90
	12	1010.88	1010.85	1010.84	1010.82	1010.78	1010.73	1010.70	1010.64	1010.55	1010.51	1010.48	1010.44	1010.68
	13	1010.41	1010.41	1010.45	1010.47	1010.45	1010.45	1010.48	1010.50	1010.50	1010.50	1010.49	1010.50	1010.46
	14	1010.50	1010.47	1010.46	1010.46	1010.45	1010.44	1010.43	1010.43	1010.44	1010.46	1010.45	1010.42	1010.45
	15	1010.40	1010.42	1010.46	1010.47	1010.45	1010.45	1010.48	1010.51	1010.56	1010.60	1010.60	1010.59	1010.50
	16	1010.58	1010.60	1010.64	1010.68	1010.68	1010.68	1010.72	1010.78	1010.84	1010.89	1010.93	1010.94	1010.74
	17	1010.93	1010.92	1010.96	1011.03	1011.09	1011.17	1011.28	1011.38	1011.46	1011.51	1011.53	1011.57	1011.23
	18	1011.62	1011.67	1011.72	1011.76	1011.79	1011.85	1011.86	1011.83	1011.84	1011.85	1011.84	1011.85	1011.79
	19	1011.85	1011.82	1011.86	1011.90	1011.87	1011.83	1011.83	1011.85	1011.86	1011.89	1011.88	1011.88	1011.86
	20	1011.90	1011.89	1011.88	1011.90	1011.92	1011.95	1011.97	1011.97	1011.97	1011.97	1011.96	1011.95	1011.93
	21	1011.95	1011.94	1011.95	1011.96	1011.96	1011.99	1012.03	1012.07	1012.09	1012.10	1012.12	1012.12	1012.02
	22	1012.12	1012.11	1012.08	1012.04	1011.98	1011.91	1011.85	1011.79	1011.78	1011.77	1011.73	1011.72	1011.90
	23	1011.74	1011.76	1011.75	1011.69	1011.60	1011.53	1011.51	1011.49	1011.45	1011.42	1011.40	1011.40	1011.56

S.V.I.R.CO. Observatory - Pressure in hectoPascal –September 2016

day	hh	00_05	05_10	10_15	15_20	20_25	25_30	30_35	35_40	40_45	45_50	50_55	55_60	average
21	0	1011.35	1011.33	1011.28	1011.22	1011.16	1011.11	1011.05	1010.99	1010.97	1010.97	1010.95	1010.91	1011.09
	1	1010.91	1010.96	1010.99	1010.98	1010.94	1010.92	1010.87	1010.83	1010.85	1010.88	1010.89	1010.89	1010.91
	2	1010.91	1010.88	1010.83	1010.83	1010.83	1010.85	1010.87	1010.88	1010.92	1010.93	1010.92	1010.93	1010.88
	3	1010.95	1010.98	1011.03	1011.04	1011.04	1011.08	1011.14	1011.17	1011.22	1011.31	1011.35	1011.40	1011.14
	4	1011.55	1011.72	1011.78	1011.77	1011.72	1011.60	1011.49	1011.47	1011.46	1011.44	1011.42	1011.39	1011.57
	5	1011.29	1011.16	1011.02	1010.84	1010.76	1010.87	1010.98	1010.91	1010.83	1010.80	1010.72	1010.69	1010.90
	6	1010.72	1010.78	1010.87	1010.94	1010.99	1011.04	1011.09	1011.12	1011.14	1011.14	1011.17	1011.21	1011.01
	7	1011.22	1011.21	1011.20	1011.21	1011.23	1011.24	1011.18	1011.10	1011.10	1011.15	1011.19	1011.22	1011.19
	8	1011.24	1011.24	1011.26	1011.35	1011.41	1011.45	1011.46	1011.47	1011.55	1011.62	1011.65	1011.67	1011.45
	9	1011.71	1011.77	1011.82	1011.82	1011.79	1011.79	1011.80	1011.77	1011.74	1011.73	1011.76	1011.78	1011.77
	10	1011.83	1011.86	1011.84	1011.79	1011.76	1011.75	1011.72	1011.73	1011.76	1011.70	1011.61	1011.55	1011.74
	11	1011.50	1011.45	1011.45	1011.51	1011.56	1011.54	1011.47	1011.41	1011.40	1011.47	1011.51	1011.50	1011.48
	12	1011.50	1011.49	1011.50	1011.57	1011.64	1011.63	1011.54	1011.44	1011.39	1011.36	1011.30	1011.27	1011.47
	13	1011.25	1011.24	1011.23	1011.24	1011.24	1011.22	1011.18	1011.12	1011.04	1010.99	1010.94	1010.87	1011.13
	14	1010.82	1010.77	1010.72	1010.68	1010.63	1010.59	1010.58	1010.58	1010.59	1010.60	1010.58	1010.59	1010.64
	15	1010.63	1010.65	1010.65	1010.65	1010.66	1010.67	1010.68	1010.71	1010.71	1010.71	1010.71	1010.72	1010.68
	16	1010.78	1010.84	1010.88	1010.95	1011.01	1011.03	1011.00	1010.96	1010.92	1010.92	1010.93	1010.98	1010.93
	17	1011.07	1011.18	1011.30	1011.34	1011.30	1011.27	1011.27	1011.26	1011.27	1011.33	1011.37	1011.44	1011.28
	18	1011.54	1011.63	1011.71	1011.73	1011.74	1011.77	1011.80	1011.86	1011.88	1011.90	1011.97	1012.03	1011.79
	19	1012.09	1012.16	1012.19	1012.21	1012.23	1012.23	1012.27	1012.33	1012.35	1012.37	1012.38	1012.37	1012.26
	20	1012.34	1012.33	1012.33	1012.33	1012.33	1012.34	1012.38	1012.44	1012.50	1012.55	1012.63	1012.68	1012.43
	21	1012.71	1012.79	1012.81	1012.82	1012.90	1012.98	1013.03	1013.10	1013.16	1013.19	1013.19	1013.17	1012.99
	22	1013.14	1013.10	1013.07	1013.03	1013.05	1013.06	1013.02	1013.00	1013.00	1013.03	1013.03	1013.02	1013.04
	23	1013.08	1013.13	1013.14	1013.12	1013.07	1013.07	1013.10	1013.16	1013.23	1013.24	1013.21	1013.22	1013.15
22	0	1013.27	1013.26	1013.25	1013.23	1013.24	1013.28	1013.30	1013.32	1013.29	1013.28	1013.33	1013.36	1013.28
	1	1013.33	1013.29	1013.27	1013.28	1013.30	1013.30	1013.30	1013.32	1013.36	1013.39	1013.43	1013.46	1013.33
	2	1013.51	1013.52	1013.54	1013.58	1013.61	1013.63	1013.61	1013.59	1013.59	1013.58	1013.54	1013.55	1013.57
	3	1013.61	1013.69	1013.72	1013.72	1013.72	1013.70	1013.67	1013.70	1013.75	1013.70	1013.64	1013.64	1013.69
	4	1013.71	1013.81	1013.86	1013.87	1013.86	1013.85	1013.91	1014.01	1014.11	1014.17	1014.18	1014.19	1013.96
	5	1014.21	1014.21	1014.22	1014.25	1014.29	1014.32	1014.32	1014.35	1014.41	1014.47	1014.55	1014.63	1014.35
	6	1014.66	1014.67	1014.68	1014.70	1014.76	1014.84	1014.92	1014.97	1015.00	1015.04	1015.08	1015.10	1014.87
	7	1015.14	1015.18	1015.21	1015.26	1015.31	1015.37	1015.46	1015.52	1015.57	1015.64	1015.72	1015.76	1015.43
	8	1015.81	1015.87	1015.92	1015.97	1016.01	1016.05	1016.10	1016.14	1016.19	1016.23	1016.24	1016.25	1016.06
	9	1016.26	1016.26	1016.26	1016.27	1016.29	1016.31	1016.32	1016.31	1016.31	1016.33	1016.33	1016.34	1016.30
	10	1016.36	1016.38	1016.42	1016.44	1016.45	1016.47	1016.49	1016.49	1016.50	1016.51	1016.51	1016.52	1016.46
	11	1016.54	1016.55	1016.55	1016.53	1016.50	1016.49	1016.47	1016.47	1016.49	1016.49	1016.47	1016.47	1016.50
	12	1016.48	1016.50	1016.49	1016.44	1016.41	1016.40	1016.36	1016.33	1016.30	1016.29	1016.31	1016.36	1016.39
	13	1016.40	1016.42	1016.48	1016.54	1016.53	1016.51	1016.54	1016.57	1016.58	1016.60	1016.61	1016.62	1016.53
	14	1016.63	1016.64	1016.66	1016.70	1016.72	1016.73	1016.77	1016.82	1016.86	1016.92	1016.98	1016.98	1016.78
	15	1017.00	1017.02	1017.01	1017.02	1017.05	1017.08	1017.15	1017.23	1017.28	1017.32	1017.36	1017.39	1017.16
	16	1017.41	1017.46	1017.53	1017.57	1017.61	1017.67	1017.74	1017.81	1017.85	1017.87	1017.87	1017.89	1017.69
	17	1017.93	1017.97	1018.03	1018.11	1018.18	1018.24	1018.29	1018.35	1018.40	1018.45	1018.51	1018.57	1018.25
	18	1018.61	1018.65	1018.72	1018.77	1018.80	1018.82	1018.86	1018.90	1018.94	1018.99	1019.04	1019.07	1018.85
	19	1019.11	1019.16	1019.19	1019.20	1019.22	1019.26	1019.29	1019.34	1019.38	1019.39	1019.40	1019.41	1019.28
	20	1019.45	1019.46	1019.48	1019.53	1019.59	1019.65	1019.71	1019.77	1019.84	1019.90	1019.93	1019.97	1019.69
	21	1020.03	1020.07	1020.08	1020.09	1020.11	1020.12	1020.15	1020.17	1020.20	1020.22	1020.22	1020.22	1020.14
	22	1020.24	1020.26	1020.26	1020.27	1020.30	1020.32	1020.36	1020.42	1020.47	1020.52	1020.58	1020.63	1020.38
	23	1020.65	1020.65	1020.65	1020.67	1020.69	1020.69	1020.71	1020.75	1020.79	1020.84	1020.91	1020.98	1020.75

S.V.I.R.CO. Observatory - Pressure in hectoPascal –September 2016

day	hh	00_05	05_10	10_15	15_20	20_25	25_30	30_35	35_40	40_45	45_50	50_55	55_60	average
23	0	1021.00	1020.99	1020.96	1020.94	1020.89	1020.84	1020.83	1020.83	1020.83	1020.85	1020.85	1020.84	1020.88
	1	1020.85	1020.84	1020.82	1020.83	1020.84	1020.82	1020.85	1020.89	1020.90	1020.88	1020.79	1020.71	1020.83
	2	1020.60	1020.52	1020.50	1020.46	1020.44	1020.44	1020.45	1020.45	1020.43	1020.46	1020.45	1020.39	1020.46
	3	1020.37	1020.35	1020.34	1020.37	1020.41	1020.45	1020.49	1020.52	1020.53	1020.55	1020.59	1020.63	1020.46
	4	1020.67	1020.73	1020.78	1020.81	1020.82	1020.86	1020.93	1020.99	1021.06	1021.13	1021.20	1021.25	1020.93
	5	1021.31	1021.41	1021.53	1021.60	1021.68	1021.76	1021.81	1021.84	1021.88	1021.94	1022.00	1022.06	1021.73
	6	1022.14	1022.20	1022.26	1022.30	1022.34	1022.38	1022.42	1022.46	1022.47	1022.49	1022.49	1022.49	1022.37
	7	1022.54	1022.58	1022.57	1022.61	1022.67	1022.72	1022.78	1022.82	1022.83	1022.84	1022.87	1022.89	1022.72
	8	1022.90	1022.94	1022.98	1023.02	1023.05	1023.09	1023.11	1023.11	1023.11	1023.11	1023.10	1023.11	1023.05
	9	1023.12	1023.11	1023.12	1023.13	1023.11	1023.10	1023.08	1023.08	1023.09	1023.06	1023.03	1023.00	1023.08
	10	1022.94	1022.92	1022.94	1022.94	1022.90	1022.90	1022.93	1022.97	1022.96	1022.95	1022.95	1022.96	1022.94
	11	1022.98	1022.99	1022.99	1022.97	1022.96	1022.98	1022.99	1022.97	1022.93	1022.88	1022.83	1022.75	1022.93
	12	1022.67	1022.62	1022.56	1022.52	1022.48	1022.43	1022.37	1022.29	1022.23	1022.19	1022.16	1022.12	1022.38
	13	1022.10	1022.08	1022.03	1022.00	1021.95	1021.88	1021.81	1021.80	1021.77	1021.76	1021.78	1021.79	1021.89
	14	1021.80	1021.81	1021.77	1021.72	1021.72	1021.72	1021.71	1021.71	1021.70	1021.68	1021.66	1021.65	1021.72
	15	1021.67	1021.70	1021.69	1021.64	1021.62	1021.62	1021.60	1021.60	1021.60	1021.61	1021.63	1021.65	1021.63
	16	1021.69	1021.71	1021.71	1021.72	1021.74	1021.75	1021.75	1021.76	1021.74	1021.72	1021.69	1021.66	1021.72
	17	1021.64	1021.66	1021.71	1021.73	1021.72	1021.73	1021.75	1021.78	1021.83	1021.90	1021.97	1022.03	1021.79
	18	1022.10	1022.15	1022.18	1022.21	1022.25	1022.27	1022.29	1022.32	1022.37	1022.39	1022.43	1022.45	1022.28
	19	1022.45	1022.48	1022.54	1022.58	1022.56	1022.56	1022.56	1022.55	1022.57	1022.60	1022.64	1022.65	1022.56
	20	1022.66	1022.66	1022.66	1022.66	1022.65	1022.62	1022.59	1022.58	1022.57	1022.58	1022.60	1022.59	1022.62
	21	1022.60	1022.58	1022.56	1022.55	1022.52	1022.51	1022.56	1022.61	1022.63	1022.61	1022.60	1022.59	1022.57
	22	1022.59	1022.57	1022.55	1022.55	1022.56	1022.54	1022.50	1022.48	1022.46	1022.47	1022.48	1022.43	1022.51
	23	1022.36	1022.32	1022.30	1022.28	1022.26	1022.25	1022.24	1022.25	1022.25	1022.25	1022.24	1022.24	1022.27
24	0	1022.25	1022.27	1022.29	1022.27	1022.23	1022.23	1022.23	1022.21	1022.18	1022.15	1022.12	1022.11	1022.21
	1	1022.11	1022.10	1022.09	1022.08	1022.07	1022.07	1022.06	1022.03	1022.01	1022.02	1022.04	1022.04	1022.06
	2	1022.03	1022.02	1022.03	1022.08	1022.09	1022.06	1022.04	1022.03	1022.05	1022.07	1022.07	1022.08	1022.05
	3	1022.09	1022.07	1022.07	1022.10	1022.11	1022.09	1022.09	1022.09	1022.11	1022.10	1022.09	1022.11	1022.09
	4	1022.14	1022.15	1022.14	1022.13	1022.15	1022.18	1022.21	1022.24	1022.25	1022.29	1022.32	1022.35	1022.21
	5	1022.38	1022.42	1022.46	1022.48	1022.51	1022.55	1022.60	1022.66	1022.69	1022.69	1022.70	1022.73	1022.57
	6	1022.76	1022.79	1022.84	1022.87	1022.89	1022.89	1022.89	1022.91	1022.95	1022.98	1022.98	1022.97	1022.89
	7	1022.95	1022.93	1022.94	1022.98	1023.02	1023.01	1022.98	1022.99	1023.01	1023.02	1023.03	1023.04	1022.99
	8	1023.06	1023.06	1023.05	1023.06	1023.09	1023.08	1023.07	1023.06	1023.03	1022.99	1022.96	1022.92	1023.03
	9	1022.86	1022.82	1022.79	1022.75	1022.71	1022.70	1022.70	1022.69	1022.66	1022.62	1022.59	1022.56	1022.70
	10	1022.54	1022.50	1022.45	1022.42	1022.41	1022.41	1022.40	1022.39	1022.38	1022.36	1022.31	1022.24	1022.40
	11	1022.17	1022.10	1022.03	1021.97	1021.92	1021.89	1021.87	1021.84	1021.79	1021.71	1021.64	1021.58	1021.87
	12	1021.51	1021.45	1021.41	1021.37	1021.32	1021.24	1021.18	1021.15	1021.13	1021.10	1021.07	1021.04	1021.25
	13	1020.99	1020.94	1020.89	1020.82	1020.75	1020.68	1020.62	1020.59	1020.58	1020.58	1020.61	1020.63	1020.72
	14	1020.64	1020.63	1020.58	1020.54	1020.56	1020.56	1020.52	1020.47	1020.43	1020.38	1020.37	1020.38	1020.50
	15	1020.34	1020.35	1020.36	1020.36	1020.38	1020.36	1020.32	1020.29	1020.27	1020.23	1020.22	1020.21	1020.31
	16	1020.20	1020.23	1020.26	1020.32	1020.36	1020.39	1020.42	1020.43	1020.45	1020.46	1020.46	1020.44	1020.37
	17	1020.42	1020.38	1020.34	1020.34	1020.37	1020.42	1020.45	1020.45	1020.45	1020.44	1020.42	1020.42	1020.41
	18	1020.44	1020.45	1020.44	1020.47	1020.49	1020.51	1020.54	1020.55	1020.57	1020.58	1020.58	1020.59	1020.52
	19	1020.62	1020.63	1020.65	1020.66	1020.66	1020.67	1020.66	1020.63	1020.62	1020.62	1020.65	1020.69	1020.65
	20	1020.70	1020.71	1020.69	1020.66	1020.62	1020.60	1020.60	1020.60	1020.59	1020.57	1020.53	1020.49	1020.61
	21	1020.46	1020.44	1020.45	1020.45	1020.46	1020.43	1020.37	1020.38	1020.39	1020.37	1020.34	1020.30	1020.40
	22	1020.28	1020.26	1020.22	1020.20	1020.21	1020.21	1020.17	1020.16	1020.16	1020.13	1020.10	1020.09	1020.18
	23	1020.07	1020.03	1019.99	1019.98	1020.00	1020.00	1019.97	1019.95	1019.96	1019.94	1019.89	1019.89	1019.97

**S.V.I.R.CO. Observatory - Pressure in hectoPascal –September 2016**

day	hh	00_05	05_10	10_15	15_20	20_25	25_30	30_35	35_40	40_45	45_50	50_55	55_60	average
25	0	1019.96	1019.99	1020.00	1019.98	1019.95	1019.93	1019.93	1019.91	1019.89	1019.89	1019.88	1019.85	1019.93
	1	1019.82	1019.80	1019.79	1019.79	1019.80	1019.79	1019.76	1019.73	1019.72	1019.73	1019.71	1019.68	1019.76
	2	1019.66	1019.61	1019.56	1019.52	1019.49	1019.47	1019.46	1019.44	1019.43	1019.45	1019.50	1019.53	1019.51
	3	1019.55	1019.56	1019.53	1019.50	1019.49	1019.50	1019.48	1019.43	1019.40	1019.38	1019.35	1019.31	1019.45
	4	1019.30	1019.31	1019.33	1019.35	1019.37	1019.38	1019.38	1019.34	1019.29	1019.26	1019.23	1019.19	1019.31
	5	1019.16	1019.16	1019.20	1019.22	1019.24	1019.25	1019.22	1019.19	1019.21	1019.24	1019.22	1019.22	1019.21
	6	1019.24	1019.24	1019.24	1019.21	1019.16	1019.14	1019.14	1019.13	1019.13	1019.13	1019.11	1019.12	1019.16
	7	1019.18	1019.22	1019.23	1019.22	1019.22	1019.21	1019.20	1019.18	1019.15	1019.10	1019.06	1019.07	1019.17
	8	1019.04	1019.01	1019.01	1018.98	1018.95	1018.95	1018.94	1018.90	1018.88	1018.86	1018.80	1018.73	1018.92
	9	1018.67	1018.62	1018.56	1018.49	1018.43	1018.36	1018.27	1018.19	1018.11	1018.03	1017.98	1017.93	1018.30
	10	1017.87	1017.84	1017.80	1017.75	1017.71	1017.67	1017.62	1017.58	1017.53	1017.47	1017.45	1017.44	1017.64
	11	1017.39	1017.33	1017.28	1017.24	1017.17	1017.11	1017.05	1016.96	1016.88	1016.82	1016.75	1016.68	1017.05
	12	1016.60	1016.52	1016.47	1016.44	1016.40	1016.40	1016.37	1016.31	1016.28	1016.25	1016.20	1016.16	1016.36
	13	1016.11	1016.06	1016.03	1016.00	1015.98	1015.99	1015.98	1015.98	1015.97	1015.93	1015.90	1015.86	1015.98
	14	1015.78	1015.72	1015.67	1015.62	1015.61	1015.60	1015.56	1015.55	1015.55	1015.57	1015.59	1015.60	1015.62
	15	1015.59	1015.57	1015.56	1015.55	1015.56	1015.58	1015.59	1015.58	1015.59	1015.58	1015.58	1015.60	1015.57
	16	1015.63	1015.66	1015.67	1015.70	1015.73	1015.76	1015.76	1015.78	1015.82	1015.87	1015.91	1015.95	1015.77
	17	1015.97	1015.97	1015.96	1015.94	1015.95	1015.98	1016.00	1016.00	1016.01	1016.03	1016.06	1016.09	1015.99
	18	1016.11	1016.11	1016.10	1016.13	1016.19	1016.20	1016.18	1016.22	1016.28	1016.32	1016.38	1016.43	1016.22
	19	1016.48	1016.54	1016.57	1016.60	1016.64	1016.65	1016.65	1016.64	1016.64	1016.66	1016.67	1016.67	1016.62
	20	1016.67	1016.69	1016.69	1016.70	1016.72	1016.72	1016.68	1016.64	1016.63	1016.65	1016.66	1016.65	1016.67
	21	1016.62	1016.59	1016.59	1016.61	1016.63	1016.63	1016.64	1016.66	1016.65	1016.65	1016.67	1016.68	1016.63
	22	1016.70	1016.73	1016.75	1016.76	1016.76	1016.76	1016.76	1016.78	1016.81	1016.83	1016.81	1016.77	1016.77
	23	1016.74	1016.72	1016.71	1016.74	1016.79	1016.82	1016.84	1016.87	1016.89	1016.90	1016.88	1016.83	1016.81
26	0	1016.81	1016.79	1016.77	1016.72	1016.65	1016.61	1016.54	1016.46	1016.41	1016.35	1016.30	1016.27	1016.54
	1	1016.26	1016.25	1016.24	1016.23	1016.21	1016.19	1016.19	1016.23	1016.24	1016.23	1016.24	1016.26	1016.23
	2	1016.26	1016.25	1016.25	1016.24	1016.19	1016.15	1016.12	1016.07	1016.02	1016.00	1016.01	1016.03	1016.13
	3	1016.05	1016.07	1016.09	1016.07	1016.02	1016.02	1016.05	1016.05	1016.06	1016.09	1016.10	1016.07	1016.06
	4	1016.04	1016.05	1016.06	1016.05	1016.05	1016.04	1016.06	1016.07	1016.07	1016.10	1016.13	1016.16	1016.07
	5	1016.19	1016.20	1016.23	1016.28	1016.33	1016.37	1016.42	1016.43	1016.42	1016.45	1016.47	1016.44	1016.35
	6	1016.42	1016.45	1016.51	1016.58	1016.63	1016.65	1016.67	1016.73	1016.77	1016.82	1016.88	1016.94	1016.67
	7	1016.98	1017.02	1017.05	1017.07	1017.07	1017.09	1017.12	1017.17	1017.16	1017.13	1017.15	1017.17	1017.10
	8	1017.20	1017.24	1017.25	1017.28	1017.32	1017.35	1017.35	1017.34	1017.34	1017.33	1017.34	1017.35	1017.30
	9	1017.34	1017.34	1017.32	1017.30	1017.29	1017.27	1017.24	1017.19	1017.13	1017.10	1017.07	1017.04	1017.22
	10	1017.02	1017.00	1016.96	1016.92	1016.90	1016.89	1016.89	1016.90	1016.89	1016.87	1016.86	1016.83	1016.91
	11	1016.80	1016.78	1016.77	1016.77	1016.76	1016.75	1016.75	1016.74	1016.68	1016.62	1016.56	1016.52	1016.71
	12	1016.49	1016.44	1016.40	1016.37	1016.33	1016.29	1016.28	1016.29	1016.32	1016.33	1016.34	1016.34	1016.35
	13	1016.35	1016.36	1016.36	1016.40	1016.44	1016.48	1016.53	1016.57	1016.58	1016.57	1016.56	1016.55	1016.48
	14	1016.54	1016.51	1016.47	1016.42	1016.39	1016.37	1016.34	1016.33	1016.32	1016.29	1016.27	1016.26	1016.37
	15	1016.25	1016.23	1016.19	1016.15	1016.15	1016.16	1016.16	1016.22	1016.27	1016.31	1016.35	1016.37	1016.23
	16	1016.40	1016.40	1016.40	1016.42	1016.42	1016.41	1016.42	1016.43	1016.45	1016.48	1016.52	1016.54	1016.44
	17	1016.57	1016.62	1016.67	1016.73	1016.81	1016.86	1016.91	1016.98	1017.05	1017.08	1017.09	1017.13	1016.87
	18	1017.17	1017.24	1017.35	1017.46	1017.54	1017.60	1017.68	1017.76	1017.81	1017.85	1017.88	1017.91	1017.60
	19	1017.94	1017.96	1017.99	1018.04	1018.10	1018.17	1018.24	1018.28	1018.32	1018.36	1018.39	1018.41	1018.18
	20	1018.41	1018.43	1018.46	1018.48	1018.52	1018.57	1018.59	1018.59	1018.58	1018.59	1018.59	1018.59	1018.53
	21	1018.61	1018.65	1018.69	1018.72	1018.74	1018.73	1018.72	1018.72	1018.74	1018.73	1018.70	1018.72	1018.70
	22	1018.74	1018.75	1018.72	1018.67	1018.64	1018.62	1018.61	1018.60	1018.58	1018.57	1018.58	1018.58	1018.64
	23	1018.56	1018.57	1018.60	1018.62	1018.65	1018.68	1018.68	1018.66	1018.65	1018.64	1018.64	1018.67	1018.63

S.V.I.R.CO. Observatory - Pressure in hectoPascal –September 2016

day	hh	00_05	05_10	10_15	15_20	20_25	25_30	30_35	35_40	40_45	45_50	50_55	55_60	average
27	0	1018.65	1018.68	1018.73	1018.78	1018.82	1018.84	1018.84	1018.81	1018.77	1018.75	1018.71	1018.65	1018.75
	1	1018.60	1018.56	1018.54	1018.55	1018.57	1018.60	1018.61	1018.58	1018.53	1018.48	1018.46	1018.45	1018.54
	2	1018.44	1018.43	1018.45	1018.49	1018.50	1018.53	1018.58	1018.62	1018.66	1018.71	1018.71	1018.69	1018.56
	3	1018.67	1018.66	1018.67	1018.66	1018.64	1018.64	1018.64	1018.65	1018.66	1018.67	1018.67	1018.67	1018.66
	4	1018.66	1018.67	1018.70	1018.75	1018.79	1018.80	1018.82	1018.85	1018.88	1018.91	1018.94	1018.96	1018.81
	5	1019.01	1019.04	1019.06	1019.09	1019.13	1019.18	1019.23	1019.30	1019.35	1019.38	1019.42	1019.46	1019.22
	6	1019.50	1019.56	1019.61	1019.65	1019.70	1019.75	1019.79	1019.85	1019.91	1019.95	1020.00	1020.06	1019.77
	7	1020.11	1020.15	1020.19	1020.25	1020.27	1020.29	1020.34	1020.39	1020.45	1020.52	1020.57	1020.59	1020.34
	8	1020.59	1020.61	1020.63	1020.64	1020.67	1020.68	1020.69	1020.71	1020.74	1020.78	1020.80	1020.79	1020.69
	9	1020.77	1020.74	1020.72	1020.70	1020.70	1020.72	1020.73	1020.73	1020.74	1020.73	1020.71	1020.71	1020.72
	10	1020.72	1020.73	1020.71	1020.71	1020.71	1020.71	1020.70	1020.67	1020.61	1020.56	1020.52	1020.49	1020.65
	11	1020.47	1020.45	1020.41	1020.36	1020.32	1020.29	1020.26	1020.23	1020.21	1020.20	1020.19	1020.18	1020.30
	12	1020.20	1020.21	1020.20	1020.18	1020.21	1020.22	1020.21	1020.21	1020.20	1020.20	1020.18	1020.15	1020.19
	13	1020.15	1020.15	1020.14	1020.16	1020.18	1020.18	1020.20	1020.22	1020.20	1020.17	1020.13	1020.07	1020.16
	14	1020.05	1020.06	1020.04	1020.01	1020.00	1020.00	1019.99	1020.02	1020.05	1020.06	1020.08	1020.10	1020.04
	15	1020.09	1020.08	1020.08	1020.11	1020.13	1020.15	1020.18	1020.22	1020.27	1020.32	1020.38	1020.42	1020.20
	16	1020.44	1020.47	1020.54	1020.60	1020.66	1020.71	1020.75	1020.81	1020.88	1020.91	1020.95	1021.01	1020.73
	17	1021.09	1021.15	1021.20	1021.29	1021.37	1021.41	1021.44	1021.48	1021.55	1021.62	1021.68	1021.74	1021.42
	18	1021.77	1021.78	1021.81	1021.85	1021.92	1022.03	1022.12	1022.19	1022.28	1022.38	1022.46	1022.51	1022.09
	19	1022.56	1022.63	1022.69	1022.72	1022.77	1022.82	1022.86	1022.90	1022.94	1022.98	1023.01	1023.02	1022.82
	20	1023.05	1023.08	1023.09	1023.12	1023.18	1023.24	1023.26	1023.28	1023.32	1023.36	1023.40	1023.43	1023.23
	21	1023.45	1023.44	1023.45	1023.47	1023.46	1023.46	1023.47	1023.47	1023.45	1023.44	1023.45	1023.47	1023.45
	22	1023.49	1023.49	1023.50	1023.52	1023.54	1023.54	1023.55	1023.53	1023.50	1023.49	1023.50	1023.55	1023.51
	23	1023.60	1023.63	1023.62	1023.62	1023.63	1023.65	1023.69	1023.72	1023.75	1023.77	1023.78	1023.80	1023.69
28	0	1023.81	1023.81	1023.79	1023.80	1023.83	1023.87	1023.90	1023.92	1023.93	1023.94	1023.95	1023.95	1023.88
	1	1023.94	1023.94	1023.95	1023.96	1023.96	1023.97	1023.97	1023.94	1023.87	1023.82	1023.83	1023.88	1023.92
	2	1023.90	1023.90	1023.94	1023.99	1024.02	1024.06	1024.08	1024.08	1024.08	1024.08	1024.08	1024.10	1024.02
	3	1024.15	1024.18	1024.18	1024.17	1024.13	1024.08	1024.08	1024.10	1024.09	1024.09	1024.11	1024.12	1024.12
	4	1024.12	1024.12	1024.14	1024.16	1024.19	1024.21	1024.21	1024.23	1024.27	1024.33	1024.35	1024.34	1024.22
	5	1024.34	1024.37	1024.45	1024.54	1024.59	1024.64	1024.71	1024.76	1024.83	1024.92	1024.95	1024.95	1024.67
	6	1024.97	1025.02	1025.05	1025.05	1025.09	1025.15	1025.20	1025.26	1025.31	1025.38	1025.43	1025.47	1025.20
	7	1025.52	1025.58	1025.64	1025.73	1025.84	1025.89	1025.89	1025.91	1025.93	1025.95	1025.98	1026.04	1025.82
	8	1026.08	1026.12	1026.16	1026.19	1026.22	1026.26	1026.27	1026.30	1026.35	1026.38	1026.39	1026.39	1026.26
	9	1026.39	1026.41	1026.41	1026.38	1026.36	1026.33	1026.30	1026.31	1026.32	1026.33	1026.33	1026.33	1026.35
	10	1026.32	1026.28	1026.24	1026.24	1026.29	1026.33	1026.30	1026.25	1026.24	1026.21	1026.18	1026.20	1026.25
	11	1026.24	1026.25	1026.23	1026.19	1026.13	1026.10	1026.07	1026.06	1026.04	1025.95	1025.87	1025.84	1026.08
	12	1025.81	1025.77	1025.73	1025.67	1025.60	1025.58	1025.56	1025.54	1025.50	1025.49	1025.50	1025.51	1025.60
	13	1025.52	1025.55	1025.56	1025.56	1025.62	1025.65	1025.62	1025.59	1025.57	1025.57	1025.57	1025.54	1025.58
	14	1025.49	1025.44	1025.39	1025.32	1025.28	1025.33	1025.35	1025.32	1025.35	1025.38	1025.38	1025.42	1025.37
	15	1025.46	1025.45	1025.41	1025.38	1025.41	1025.44	1025.45	1025.45	1025.44	1025.46	1025.53	1025.62	1025.46
	16	1025.70	1025.71	1025.73	1025.79	1025.82	1025.84	1025.86	1025.89	1025.91	1025.91	1025.91	1025.92	1025.83
	17	1025.96	1026.03	1026.08	1026.09	1026.09	1026.11	1026.13	1026.11	1026.09	1026.11	1026.12	1026.13	1026.09
	18	1026.12	1026.14	1026.20	1026.23	1026.28	1026.35	1026.40	1026.45	1026.53	1026.63	1026.69	1026.75	1026.40
	19	1026.80	1026.84	1026.92	1026.96	1026.94	1026.97	1027.00	1027.03	1027.11	1027.18	1027.20	1027.20	1027.01
	20	1027.22	1027.23	1027.21	1027.15	1027.08	1027.06	1027.08	1027.12	1027.15	1027.14	1027.13	1027.19	1027.14
	21	1027.25	1027.30	1027.36	1027.41	1027.45	1027.46	1027.48	1027.54	1027.63	1027.72	1027.76	1027.73	1027.50
	22	1027.73	1027.77	1027.78	1027.77	1027.76	1027.76	1027.78	1027.78	1027.78	1027.76	1027.74	1027.70	1027.76
	23	1027.67	1027.65	1027.63	1027.64	1027.65	1027.65	1027.66	1027.67	1027.65	1027.62	1027.60	1027.58	1027.64

**S.V.I.R.CO. Observatory - Pressure in hectoPascal –September 2016**

day	hh	00_05	05_10	10_15	15_20	20_25	25_30	30_35	35_40	40_45	45_50	50_55	55_60	average
29	0	1027.49	1027.46	1027.41	1027.37	1027.37	1027.36	1027.33	1027.31	1027.32	1027.29	1027.23	1027.21	1027.34
	1	1027.20	1027.14	1027.09	1027.06	1027.04	1027.02	1027.01	1027.00	1026.96	1026.92	1026.88	1026.84	1027.01
	2	1026.81	1026.78	1026.73	1026.69	1026.70	1026.72	1026.72	1026.71	1026.72	1026.73	1026.71	1026.67	1026.72
	3	1026.64	1026.62	1026.61	1026.60	1026.60	1026.58	1026.55	1026.54	1026.55	1026.57	1026.57	1026.57	1026.58
	4	1026.58	1026.57	1026.53	1026.50	1026.50	1026.52	1026.52	1026.51	1026.50	1026.47	1026.46	1026.49	1026.51
	5	1026.56	1026.63	1026.66	1026.67	1026.69	1026.73	1026.75	1026.76	1026.78	1026.80	1026.80	1026.79	1026.72
	6	1026.83	1026.87	1026.93	1026.98	1026.98	1027.00	1027.04	1027.06	1027.09	1027.12	1027.14	1027.16	1027.02
	7	1027.18	1027.19	1027.20	1027.22	1027.24	1027.25	1027.26	1027.28	1027.27	1027.27	1027.28	1027.24	1027.24
	8	1027.22	1027.22	1027.23	1027.24	1027.24	1027.24	1027.21	1027.18	1027.14	1027.11	1027.07	1027.02	1027.17
	9	1026.98	1026.96	1026.95	1026.93	1026.92	1026.90	1026.87	1026.82	1026.77	1026.74	1026.72	1026.67	1026.85
	10	1026.60	1026.52	1026.45	1026.41	1026.40	1026.38	1026.32	1026.26	1026.20	1026.14	1026.06	1025.96	1026.31
	11	1025.87	1025.80	1025.73	1025.66	1025.60	1025.52	1025.44	1025.37	1025.30	1025.23	1025.12	1025.02	1025.47
	12	1024.96	1024.94	1024.91	1024.84	1024.76	1024.66	1024.55	1024.49	1024.40	1024.28	1024.22	1024.18	1024.60
	13	1024.12	1024.10	1024.06	1024.01	1023.99	1023.99	1023.95	1023.91	1023.85	1023.81	1023.76	1023.71	1023.94
	14	1023.68	1023.65	1023.61	1023.53	1023.51	1023.51	1023.48	1023.43	1023.37	1023.34	1023.32	1023.33	1023.48
	15	1023.35	1023.35	1023.33	1023.32	1023.30	1023.29	1023.31	1023.32	1023.31	1023.29	1023.27	1023.24	1023.30
	16	1023.24	1023.26	1023.29	1023.30	1023.28	1023.28	1023.30	1023.28	1023.22	1023.18	1023.18	1023.17	1023.25
	17	1023.17	1023.18	1023.19	1023.20	1023.22	1023.22	1023.22	1023.20	1023.20	1023.24	1023.29	1023.32	1023.22
	18	1023.32	1023.33	1023.34	1023.35	1023.35	1023.36	1023.35	1023.33	1023.33	1023.37	1023.41	1023.43	1023.35
	19	1023.46	1023.48	1023.46	1023.43	1023.38	1023.37	1023.41	1023.43	1023.44	1023.46	1023.46	1023.47	1023.44
	20	1023.49	1023.52	1023.53	1023.54	1023.58	1023.63	1023.64	1023.66	1023.69	1023.68	1023.66	1023.67	1023.61
	21	1023.68	1023.69	1023.68	1023.66	1023.66	1023.67	1023.68	1023.70	1023.70	1023.72	1023.73	1023.71	1023.69
	22	1023.70	1023.68	1023.66	1023.62	1023.57	1023.55	1023.53	1023.51	1023.50	1023.45	1023.38	1023.31	1023.54
	23	1023.24	1023.20	1023.18	1023.15	1023.12	1023.10	1023.05	1022.98	1022.93	1022.90	1022.91	1022.89	1023.05
30	0	1022.78	1022.78	1022.77	1022.76	1022.73	1022.71	1022.68	1022.67	1022.65	1022.62	1022.59	1022.55	1022.69
	1	1022.53	1022.51	1022.50	1022.47	1022.43	1022.37	1022.31	1022.25	1022.22	1022.20	1022.20	1022.22	1022.35
	2	1022.22	1022.20	1022.19	1022.17	1022.13	1022.07	1022.01	1021.99	1021.97	1021.93	1021.91	1021.88	1022.05
	3	1021.84	1021.82	1021.81	1021.81	1021.78	1021.77	1021.75	1021.73	1021.71	1021.69	1021.68	1021.63	1021.75
	4	1021.57	1021.53	1021.51	1021.48	1021.51	1021.56	1021.58	1021.56	1021.52	1021.49	1021.47	1021.49	1021.52
	5	1021.54	1021.56	1021.59	1021.61	1021.62	1021.63	1021.67	1021.68	1021.67	1021.65	1021.65	1021.67	1021.63
	6	1021.66	1021.66	1021.69	1021.71	1021.71	1021.72	1021.72	1021.71	1021.69	1021.68	1021.72	1021.77	1021.70
	7	1021.81	1021.87	1021.91	1021.95	1022.00	1022.04	1022.06	1022.08	1022.10	1022.13	1022.17	1022.22	1022.03
	8	1022.26	1022.29	1022.33	1022.37	1022.38	1022.39	1022.38	1022.39	1022.40	1022.39	1022.38	1022.38	1022.36
	9	1022.37	1022.34	1022.32	1022.32	1022.32	1022.31	1022.29	1022.25	1022.21	1022.22	1022.23	1022.21	1022.28
	10	1022.18	1022.14	1022.09	1022.08	1022.07	1022.02	1021.98	1021.93	1021.91	1021.88	1021.82	1021.81	1021.99
	11	1021.81	1021.76	1021.67	1021.59	1021.56	1021.53	1021.49	1021.43	1021.36	1021.30	1021.27	1021.23	1021.50
	12	1021.16	1021.09	1021.05	1021.00	1020.92	1020.86	1020.80	1020.72	1020.63	1020.53	1020.48	1020.45	1020.80
	13	1020.40	1020.34	1020.28	1020.23	1020.20	1020.18	1020.18	1020.18	1020.16	1020.15	1020.13	1020.10	1020.21
	14	1020.06	1020.03	1020.01	1019.96	1019.95	1019.95	1019.95	1019.93	1019.87	1019.81	1019.79	1019.79	1019.92
	15	1019.79	1019.78	1019.75	1019.72	1019.67	1019.60	1019.56	1019.51	1019.45	1019.39	1019.37	1019.38	1019.58
	16	1019.40	1019.42	1019.41	1019.40	1019.42	1019.44	1019.47	1019.48	1019.47	1019.46	1019.42	1019.39	1019.43
	17	1019.39	1019.38	1019.38	1019.39	1019.43	1019.47	1019.52	1019.55	1019.55	1019.58	1019.62	1019.61	1019.49
	18	1019.57	1019.54	1019.53	1019.54	1019.58	1019.59	1019.59	1019.59	1019.61	1019.66	1019.70	1019.76	1019.60
	19	1019.80	1019.84	1019.88	1019.91	1019.97	1020.03	1020.02	1020.02	1020.06	1020.09	1020.12	1020.14	1019.99
	20	1020.15	1020.16	1020.15	1020.12	1020.10	1020.09	1020.04	1019.99	1019.95	1019.91	1019.90	1019.89	1020.04
	21	1019.86	1019.83	1019.84	1019.83	1019.75	1019.66	1019.61	1019.57	1019.54	1019.53	1019.53	1019.52	1019.67
	22	1019.51	1019.50	1019.48	1019.48	1019.48	1019.48	1019.46	1019.43	1019.40	1019.39	1019.37	1019.33	1019.44
	23	1019.33	1019.34	1019.32	1019.28	1019.25	1019.25	1019.26	1019.27	1019.25	1019.27	1019.27	1019.24	1019.28

