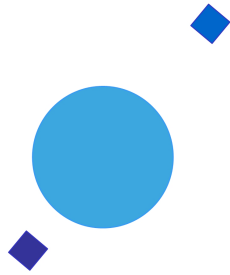


INAF



ISTITUTO NAZIONALE DI ASTROFISICA
NATIONAL INSTITUTE FOR ASTROPHYSICS

SVIRCO Prompt Report: October 2021

Francesco Re and Nello Vertoli

INAF/IAPS-2021-10

April 2022

ISTITUTO DI ASTROFISICA E PLANETOLOGIA SPAZIALI

AREA DI RICERCA ROMA - TOR VERGATA

Via del Fosso del Cavaliere, 100 - 00133 Roma (ITALIA)

SVIRCO Prompt Report: October 2021

Francesco Re and Nello Vertoli

*IAPS - INAF, Area di Ricerca Roma - Tor Vergata
Via del Fosso del Cavaliere, 100 - 00133 Roma, Italy,*

Abstract

The pressure corrected intensity of the nucleonic component, produced by primary cosmic rays and recorded in October 2021 by the Neutron Monitor of SVIRCO-Rome (present geographic position: 41.86° N - 12.47° E; altitude about s.l.), is reported in prompt form together with the barometric pressure data.

SVIRCO OBSERVATORY

During the 1st International Geophysics Year (1957) an international network of “ground-based detectors” for continuous cosmic ray measurements was world-wide established.

The cosmic ray station of Rome joined this network with the purpose to study the time variations of primary cosmic rays (**Studio Variazioni Intensità Raggi Cosmici: S.V.I.R.CO**) and their modulation in the heliosphere.

From July 1957 to April 1997, the SVIRCO Station (now Observatory) performed uninterrupted measurements at the Physics Department “G. Marconi” of “La Sapienza” University of Rome (41.90° N, 12.52° E, altitude about 60 m a.s.l.)

In May 1997 the neutron monitor was moved to the Physics Department “E. Amaldi” of “Roma Tre” University. Since then it has been continuously running at the new location (41.86° N, 12.47° E, altitude about 0 m a.s.l.).

The SVIRCO Observatory (INAF/IAPS-UNIRomaTre collaboration) is housed in a reserved building provided with a double air-conditioning system. The inner temperature is permanently restrained in a range of 23°-26° C, meanwhile the relative humidity is kept below 57%. Either the environmental parameters are continuously checked and recorded by digital sensors.

On January 1, 2005 three counters were added to the detector. This upgrade, from 17 to 20 NM-64, made the SVIRCO neutron monitor still consist of 5 sections but modified its geometry. Actually the new arrangement has been composed of three 3-counter, one 5-counter and one 6-counter units. The enhancement improved not only the overall counting rate of 15.6 % (January 2005) but, as a result, also the statistical quality of the recorded data.

On July 3, 2017 six counters experienced failure and were removed from the detector until 24 July. On 25 July 2017 a number of 2 counters was added to the detector up to a total of 16 counters. The new arrangement has been composed of three 3-counter, one 5-counter and one 2-counter units. The overall counting rate has decreased of about 20% (July 2017) with a lower statistical quality of the recorded data.

Each of the 16 BF₃ proportional counters (BP-28 type) is equipped with a smart amplifier/discriminator circuit complete with a spectrum stabilizer. This new electronic unit, developed in our laboratory, holds firmly the pulse height spectrum of the amplifier output (within a range of more than 150 volts around the operating voltage), providing the counter with a great immunity against high voltage variations.

Anyway, systematic and exhaustive tests of the counters are regularly performed. The output pulses of the amplifiers, discriminated by the threshold gates, are collected and stored into a multi-channel analyzer. The analysis of the height distribution (spectrum) of the amplifier pulses coinciding with the discriminator ones, is essential to verify the long term efficiency of each counter together with the amplifier gain and the discriminator threshold level.

As well as the amplifier/discriminator circuits, a large part of the electronic instrumentation operating in the Observatory was designed and realized in our laboratory together with the software for data acquisition and pre-elaboration.

In order to improve the reliability of the recorded data and to prevent measurement breakdowns, two independent systems perform contemporary the data acquisition. Each system is remotely controlled by a dedicated computer and is timed by a high stability quartz clock and/or a GPS receiver. One equipment runs according to a timing of 1 minute and fulfils the acquisition of the 16 counters separately. The other one records the individual 5-minute counting rate of each detector section in addition to the rates of the overall multiplicity, sorted into separated counting channels (from 1 to greater than 8).

A special care is devoted to the atmospheric pressure measurements; thus they are carried out by means of not less than three barometers at the same time. These instruments (achieving a resolution up to 0.01 hPa), are constantly checked out each other for the best measuring accuracy and reliability. Furthermore, the devices in use are equipped with different types of transducer such as vibrating cylinder, force balance and quartz, therefore, throughout their different behaviours, it is possible to point out the occurrence of any long-term drift and eventually to re-calibrate the instruments themselves.

DATA PRESENTATION

In a preliminary step, the intensity data, of the secondary nucleonic component of cosmic rays, detected at SVIRCO Observatory, were corrected for pressure variations at a reference level of 1009.25 hPa with an attenuation coefficient of 0.70% / hPa.

The five-minutes counting rates, of the examined month, are reported in tabular form together with the hourly normalized data, which provide a continuous data set for long-term analysis.

The normalization was evaluated as percentage of the counting rate average of January-February 1997, when the Monitor operated at the previous location of "La Sapienza" University. The reference counting rate level (100%), computed for such period, is equal to 554946 counts/hour.

The atmospheric pressure data (in hectoPascal) are also collected in a monthly table which presents the five-minutes averages and the hourly ones.

The hourly averages of the normalized intensity and pressure, plotted in monthly graphs, are reported too.

CONDITIONS FOR SVIRCO DATA USE

You are welcome to use neutron monitor data of SVIRCO, IAPS/INAF-UNIRomaTre collaboration, under the following conditions:

-You agree to acknowledge our financial supports in any published use of the data.

Example: "SVIRCO NM is supported by the INAF - UNIRomaTre collaboration"

-You are kindly requested to send a copy of any published work derived from our data to:

Dr. Monica Laurenza
Head of SVIRCO Observatory & TPL
Istituto di Astrofisica e Planetologia Spaziali - Area di Ricerca Tor Vergata
Via del Fosso del Cavaliere, 100 00133 Roma - Italy,

monica.laurenza@iaps.inaf.it



S.V.I.R.CO. Observatory

Rome

Italy



INAF/UNIRomaTre		S.V.I.R.CO. Observatory - Pressure Corrected Data – October 2021											16 NM-64	
day	hh	00_05	05_10	10_15	15_20	20_25	25_30	30_35	35_40	40_45	45_50	50_55	55_60	h-norm
1	0	38443	38768	38660	38530	38660	38552	38140	38324	38281	38530	38270	38786	101.628
	1	38144	38655	38411	38775	38608	38471	38546	38535	38428	38266	38277	38244	101.499
	2	38806	38460	38352	38709	38493	38569	38342	38547	38385	38342	38309	38482	101.595
	3	38535	38383	38071	38266	38724	39160	38976	37875	39138	38771	38231	38276	101.730
	4	38665	38944	38329	38566	38728	38988	38136	38577	38438	38535	38307	38372	101.768
	5	38426	39138	38491	38670	38770	39116	38687	38125	38482	38687	38578	38632	102.037
	6	38721	38544	38030	38307	38107	38649	38389	38584	38140	37901	38473	38815	101.345
	7	38343	38279	39064	38348	39270	37892	38348	38532	38358	38401	38629	38641	101.663
	8	38065	39021	38478	38216	38645	39250	38075	38744	38555	38674	38665	38600	101.857
	9	38631	38218	38741	38893	38457	38662	38000	38185	37977	38232	37930	38840	101.369
	10	38725	38487	38600	38546	38632	38290	38506	38721	38081	38239	38817	38471	101.665
	11	38266	38612	38886	38689	38456	38531	38310	38207	39056	38229	38170	38518	101.624
	12	38817	38542	38944	38848	38274	38246	38855	38457	38499	38848	38479	38488	101.925
	13	38536	38710	38676	38655	38772	38645	37962	38131	38856	39134	38818	38738	102.000
	14	38226	38792	39037	38768	38302	39034	38913	38870	38799	38458	38895	38456	102.201
	15	38668	38562	38988	38297	38639	38309	38841	38596	38084	38755	38756	38085	101.767
	16	38863	38713	38937	38435	38179	38309	38703	38682	38631	38379	37757	38679	101.699
	17	38430	38667	38366	37920	38882	38918	38482	38363	37882	38682	38553	38839	101.636
	18	38392	38408	38121	37912	38314	38026	38389	38314	38304	38340	37908	38477	100.959
	19	38866	38685	38091	38415	38076	38332	38625	38330	38736	38511	38415	38297	101.503
	20	38127	38309	38127	38361	38393	37998	38191	38309	38684	38384	38502	38845	101.250
	21	38340	38200	38811	38607	38179	38465	38818	38291	38676	38301	38206	38153	101.430
	22	38089	38663	38488	38456	38253	38242	37953	38863	38237	38135	38424	38262	101.214
	23	39255	38420	38089	38453	38325	38378	38153	38504	38134	38405	38534	38876	101.535
2	0	38010	38693	38155	38678	38719	38160	37839	38658	38020	38650	38824	37955	101.275
	1	38239	38399	38421	38655	38050	37794	38427	38027	38523	38162	38539	38766	101.201
	2	38431	39015	38077	38537	38378	37898	37876	39195	38688	38591	38892	38259	101.604
	3	38195	39081	38641	38371	38329	38541	38469	38922	38330	37907	38404	38489	101.569
	4	38603	37928	38320	38151	38656	38730	38188	38238	38441	38183	37348	38694	101.086
	5	38186	38026	38639	38385	38385	37836	37985	37760	39076	38833	38195	38148	101.080
	6	38367	38110	38344	38321	38776	38404	38512	38427	38523	38066	38713	38056	101.336
	7	38013	38427	38169	38080	38427	38676	38291	38673	38884	38382	38815	38161	101.419
	8	38630	38996	39091	38522	38491	38748	38704	38314	38724	38980	39140	38937	102.361
	9	38543	38575	38488	38243	38618	38861	38499	38808	38732	38518	39071	38690	102.002
	10	38927	38849	38546	38684	38758	38749	38856	38620	38266	38634	38691	38647	102.130
	11	38721	39269	38832	38529	39292	38898	38664	38951	38566	38700	39017	38186	102.437
	12	38184	38503	39049	38660	38858	38456	38953	38614	38805	39165	39430	38985	102.446
	13	39136	38874	38516	39097	39256	38706	38357	38167	38357	38568	38644	38254	102.065
	14	38739	38452	38664	38230	39650	39336	38670	39019	38332	38776	38977	38259	102.323
	15	38533	38596	38850	38408	38577	38202	38600	38547	38484	38410	39055	38664	101.844
	16	38410	38759	38659	38273	38328	38205	38548	38810	37831	38572	38403	38731	101.536
	17	38720	38357	38968	38788	38416	38268	38141	38416	39021	38809	38671	38395	101.853
	18	38024	39138	38448	38850	38436	38012	38585	38289	38084	38312	38369	38494	101.430
	19	38053	38209	38454	37926	38661	38758	38439	38973	37970	38139	38938	38524	101.430
	20	38331	38524	38706	38994	38230	38489	38093	38679	38253	38701	38447	37957	101.509
	21	38648	38616	38616	38670	37851	38021	38362	38602	38412	38294	38613	38213	101.402
	22	38563	39278	38119	38332	38236	38194	38416	38501	38618	39010	38491	38797	101.762
	23	38712	38469	38629	38119	38438	38607	38576	38342	38586	38742	38876	39313	101.950

INAF/UNIRomaTre		S.V.I.R.CO. Observatory - Pressure Corrected Data – October 2021											16 NM-64	
day	hh	00_05	05_10	10_15	15_20	20_25	25_30	30_35	35_40	40_45	45_50	50_55	55_60	h-norm
3	0	38704	37918	38333	37845	38555	38546	38165	38686	38632	38737	38620	38488	101.471
	1	38458	38685	38251	38762	38731	38288	37952	38967	38770	38483	37781	38851	101.636
	2	38660	38607	38194	38332	38777	38769	38634	38393	38764	39462	38191	39038	102.041
	3	38520	38955	39366	38413	38551	39017	38964	39038	39059	38392	38466	38551	102.364
	4	38381	38943	38817	38838	38424	38540	38510	39327	38192	38948	38803	39024	102.244
	5	38379	38940	38347	38495	38177	38654	38442	38875	38621	38230	38950	38304	101.731
	6	38707	39192	38631	38385	38710	38476	39213	38373	38756	38491	38788	39000	102.239
	7	38480	38385	38682	39277	39077	38504	38919	38588	38662	38802	38366	39142	102.274
	8	38823	38744	39269	38814	38635	39179	38706	38816	38959	38797	38903	38407	102.532
	9	38848	38576	38623	38325	38174	38541	39016	38205	38087	39022	38783	38153	101.718
	10	38941	38530	38742	38500	39150	38788	38291	38944	38488	38510	38589	38825	102.146
	11	38473	38409	38179	38756	38850	39049	38400	38652	38658	38869	38552	38242	101.880
	12	38200	39107	38813	38295	38750	38262	38389	38350	38121	38990	38730	38931	101.847
	13	38404	39405	38594	38436	38245	38626	39142	38572	38688	38910	38183	37951	101.894
	14	39617	38962	38614	38371	38540	38192	38782	39152	38139	38362	38362	38424	101.974
	15	38181	38531	38214	38751	38445	38835	38582	38698	38677	38506	39183	38277	101.834
	16	38622	38778	38544	39114	38501	38534	38293	38182	38674	39266	38429	38785	102.019
	17	38487	38741	38467	38584	38785	38974	38213	38443	38394	38777	38427	38279	101.766
	18	38268	38926	38300	38979	37907	38093	39229	38621	38560	37980	38471	38132	101.523
	19	38717	38250	38983	38685	38717	39342	38291	38855	38303	38228	38515	38461	101.936
	20	38499	38983	38311	39086	38797	38656	38310	39155	38753	38251	38368	38838	102.082
	21	38889	38648	38752	38950	38737	38776	38840	38777	38582	38877	38877	38770	102.405
	22	38664	39445	38649	38633	38616	38789	38605	38804	38461	39006	38963	38769	102.389
	23	38273	38312	38920	37766	38512	38448	38694	38929	38812	38206	38953	38045	101.611
4	0	38634	38975	38674	38917	38896	38792	38769	38278	38705	39270	38045	38994	102.287
	1	38856	38797	38331	39459	38479	38670	38306	38594	38988	38689	38030	38511	102.016
	2	39358	38371	38869	39135	38562	38723	38627	38627	38255	38499	38179	38595	102.036
	3	38902	38562	38615	38583	38476	38902	38977	38945	39275	38870	38082	39360	102.421
	4	38593	38478	38190	38583	38604	39019	39306	38697	38262	38388	38259	38847	101.910
	5	38721	38593	38487	38433	38582	38423	38678	38380	38572	38608	38710	38801	101.857
	6	38475	38217	38711	38731	38562	38690	39210	38279	38781	38770	38888	38833	102.112
	7	38854	38866	38909	38801	38990	38356	38751	38730	38409	38507	38934	38421	102.196
	8	38966	38079	38644	38815	38730	38344	38579	38623	38934	38742	39246	38440	102.111
	9	37929	38874	39052	38839	38666	38270	38931	38764	38642	38479	38326	38506	101.921
	10	38974	38363	38990	38622	38721	38318	38233	38860	38540	38189	39179	38668	102.004
	11	38604	39092	38411	38923	39009	38405	39007	38449	39060	38578	38409	38632	102.207
	12	38483	39227	38485	38933	38519	38593	39062	38788	39063	38236	39233	39116	102.463
	13	38226	38735	38289	38926	38735	38979	38473	39144	39091	38881	38833	39099	102.390
	14	38579	38907	38668	38851	38501	38195	39051	39132	38883	38667	38889	39174	102.410
	15	39088	38972	38666	38540	38373	38411	38618	38724	38628	38503	38761	38954	102.132
	16	38457	38203	39373	38909	38921	38394	38951	38772	38257	39323	38427	38430	102.171
	17	38474	38948	38506	39174	38867	39376	38635	38898	39332	38199	38528	39377	102.589
	18	38500	38666	38793	38551	38526	38175	38112	38480	38889	38730	38788	38220	101.735
	19	39253	38934	38332	38946	38725	38608	38779	38377	38061	38504	38701	38352	101.986
	20	38777	38181	38949	38981	38610	39130	38676	38654	38545	38857	38565	38182	102.104
	21	38492	38420	38847	38741	38804	39086	38821	38993	38300	39028	38485	38592	102.215
	22	39337	38572	38586	38882	38614	38561	38758	38346	38713	39240	38632	38344	102.209
	23	38532	39001	38628	38948	38480	38623	38245	38916	38798	38225	38555	38910	102.054

INAF/UNIRomaTre			S.V.I.R.CO. Observatory - Pressure Corrected Data – October 2021										16 NM-64	
day	hh	00_05	05_10	10_15	15_20	20_25	25_30	30_35	35_40	40_45	45_50	50_55	55_60	h-norm
5	0	38458	38670	38431	39180	38760	38666	38608	38583	38590	38939	38872	38438	102.098
	1	38591	38751	39018	38046	38548	38266	39018	38899	38741	38189	38835	38475	101.943
	2	39904	39011	38339	38707	38236	39382	38541	39017	38348	39222	38592	38732	102.527
	3	38306	39364	38613	38523	39495	38554	38683	39240	38864	38543	39116	38993	102.585
	4	38230	38187	38334	38818	37986	38480	38701	38776	39249	38795	38471	38850	101.832
	5	38061	38145	38639	39279	39058	38921	38576	39004	38915	38736	38290	39300	102.283
	6	38214	38825	38593	38382	38594	38402	39242	38545	38700	38568	39065	38886	102.083
	7	38558	38526	38780	38600	38949	38579	38981	38769	38124	38660	39035	38586	102.112
	8	38968	38413	37931	39142	38643	38430	39131	38696	38207	38958	38624	38623	102.029
	9	38821	38594	38481	38579	38525	38513	38410	39025	38477	38541	38790	38533	101.923
	10	38461	38429	39214	38348	38113	38209	38368	38368	39102	39018	38677	38411	101.798
	11	38826	38432	38428	39260	38523	38909	39138	38660	38436	38680	38520	38714	102.196
	12	39313	38839	38800	38578	38863	38780	38812	38251	38600	38711	38429	38987	102.292
	13	39008	37995	38915	38933	38537	38664	39055	38822	38939	38748	38791	39118	102.415
	14	38673	38588	38420	38611	38960	38928	38716	39118	39076	38389	38389	38830	102.234
	15	38541	38840	38297	38860	39304	38311	38470	39209	38565	38903	39420	39209	102.504
	16	39136	38663	38788	38882	38520	38302	38835	38499	38710	38512	38283	38578	102.015
	17	38495	38801	38462	38820	38522	38825	39036	38581	38897	38354	38518	38435	102.024
	18	38493	38923	38671	38350	38883	38544	38387	38292	38818	39082	38533	38607	101.988
	19	38681	38860	38575	38165	39053	38800	37923	38367	39180	38552	38188	38727	101.876
	20	39055	38928	37839	38473	39097	38664	38304	38293	38822	38727	38230	38558	101.858
	21	38949	38696	39065	38457	38636	39006	38583	39053	38648	38694	38501	39168	102.400
	22	39211	38098	38756	39254	39127	38982	38275	39112	38424	38657	38869	38794	102.423
	23	38551	38360	38489	39039	38339	38498	38318	38625	38657	38403	38319	38796	101.726
6	0	38434	38925	39246	39087	38420	38602	38929	38494	38452	38675	39006	38556	102.255
	1	39253	38580	38678	38688	38740	38807	38757	38874	38602	38686	39097	38889	102.443
	2	38619	38729	38219	39091	39051	38935	38920	38458	38667	38775	38779	38819	102.314
	3	38882	38831	38559	38611	38894	38789	38276	38538	38297	38857	38573	38346	101.959
	4	38654	38230	38544	38795	39088	39151	38230	38743	38429	38136	38324	38785	101.884
	5	38837	39350	38366	38984	38429	38383	38557	39481	38222	38456	39052	38882	102.300
	6	38707	38714	38798	38765	39318	38984	38883	38417	38844	38625	38761	38583	102.388
	7	38771	38776	38456	38822	38435	38268	38728	38519	39034	39570	38756	38849	102.297
	8	38683	38339	38744	37941	38807	39026	38995	39089	38369	38306	38776	38593	102.007
	9	38513	38552	38237	38715	38169	38879	38546	37802	38668	38398	38606	38263	101.496
	10	38820	38607	38736	38885	38140	39340	39063	39034	38995	38274	38660	38402	102.290
	11	38218	38560	38636	38149	38460	38749	39572	38873	38608	38200	38087	38426	101.758
	12	38537	38907	38744	38528	39309	38562	38328	38554	38520	38398	39109	38570	102.095
	13	38339	38777	39195	38793	38381	39019	39227	38297	38162	38282	38938	38582	102.078
	14	39090	38634	38934	39065	38619	39049	38801	38280	38954	39720	38909	38972	102.746
	15	38608	38823	39274	39342	39091	38425	39158	39309	38778	38862	38915	39381	102.953
	16	39068	39073	38687	38535	39459	38964	39265	38599	38976	39151	38605	38872	102.796
	17	39149	38843	38660	39543	39069	38795	39595	39261	38776	39456	38868	38917	103.165
	18	39322	39424	39239	38835	39063	39157	39058	39159	38633	38956	38897	39900	103.321
	19	39740	39061	39777	39415	39244	38589	38562	38384	39289	38947	38634	39007	103.102
	20	38752	38642	38890	39268	38988	38917	38867	38679	38869	38225	38257	38870	102.350
	21	38669	39311	38709	38600	38828	38829	38275	38586	38735	38815	38894	38392	102.221
	22	38714	39115	39151	38622	39272	38496	37970	38616	38400	38378	38908	39179	102.260
	23	38550	38400	39539	38798	38269	38689	38510	38769	39119	38999	39079	38309	102.306

INAF/UNIRomaTre		S.V.I.R.CO. Observatory - Pressure Corrected Data – October 2021											16 NM-64	
day	hh	00_05	05_10	10_15	15_20	20_25	25_30	30_35	35_40	40_45	45_50	50_55	55_60	h-norm
7	0	38867	38958	38120	38529	38380	38451	38951	38353	38841	38944	38876	38324	101.982
	1	38755	38621	39541	38367	38499	38986	38706	38698	38520	39254	38558	38578	102.319
	2	38358	38519	38739	39036	38059	38325	39142	39340	38928	38839	38513	38316	102.104
	3	38972	39171	39042	38852	38345	38723	38605	38834	38981	38584	38375	39158	102.441
	4	38548	38695	38900	38811	39049	39239	38802	39168	38491	39153	38478	38646	102.516
	5	38984	38585	38893	38761	39021	38995	38250	39086	39159	38717	38886	39024	102.600
	6	38668	38846	38480	38577	39191	39183	38470	38797	38907	38443	38521	38580	102.225
	7	38700	39214	39086	38738	38697	38897	38334	39125	39125	39026	38868	39471	102.802
	8	39175	38700	38641	38641	39096	38779	38689	38175	39541	39009	38624	38792	102.489
	9	38545	38644	38604	38268	39177	38605	39189	39474	38577	39119	38902	38498	102.433
	10	38784	38153	38172	39462	38747	39091	38217	39131	38476	38028	39033	38914	102.126
	11	39042	38668	39127	38813	38336	39318	38943	38787	38777	38639	39524	38848	102.702
	12	39094	38837	38710	39035	38662	38965	39397	38651	38945	39014	38788	38976	102.756
	13	39486	39259	38867	39112	39465	38759	38913	38860	39003	38600	39019	39338	103.110
	14	38582	39123	39446	38491	38766	39327	39357	39210	39061	38964	39388	39358	103.196
	15	39848	38238	39151	38651	38867	39112	39329	39043	38648	38384	39348	39308	102.944
	16	38895	38765	38626	39176	39018	38722	38969	39315	39236	39047	39007	38249	102.746
	17	38968	39351	38846	38964	39044	39337	39007	39633	38903	39209	39317	39012	103.310
	18	38361	39558	38970	38791	39515	39029	38851	39158	38774	38950	38817	38877	102.883
	19	38838	38937	38962	38662	39101	38921	38679	38576	39069	39074	39006	38019	102.486
	20	39290	39252	38365	38076	38648	38353	38396	38840	38778	38009	38598	38977	101.988
	21	38090	39448	38922	39112	38560	38710	38911	38563	39030	39338	38788	38259	102.461
	22	38718	38387	38515	38575	38743	39042	39314	39196	38669	38533	39054	38439	102.341
	23	38905	39161	38939	38997	39175	38843	39134	39072	38651	39013	38583	38767	102.793
8	0	38880	39352	38449	39251	38890	38629	39000	38358	38709	38830	38156	38407	102.280
	1	38719	39191	38890	38800	39121	39061	39010	39081	38980	38860	38659	39412	102.912
	2	39000	38569	38900	38679	38830	38388	39000	38859	38818	38459	39582	38770	102.488
	3	38499	38970	38459	39119	38517	38990	39221	38549	38930	38428	38378	38860	102.283
	4	38238	38758	38666	38798	38506	39138	38555	39259	38805	38895	38987	38549	102.334
	5	38577	39014	38712	38098	38622	38692	38199	39215	39252	38606	39323	38910	102.349
	6	38739	38642	38389	38342	38816	38664	38614	38685	39119	38796	38352	38463	101.996
	7	38839	39584	38772	38385	38545	38272	38403	39122	38810	38848	38520	38845	102.288
	8	38733	38561	38926	38469	38386	38761	38466	38790	38942	38689	38546	38536	102.037
	9	38337	38782	38420	37932	38654	38918	38562	38906	38537	39362	38811	38852	102.096
	10	38274	38442	38222	38622	38776	38430	38350	38508	39051	38549	38507	37956	101.571
	11	38694	38307	38071	38052	38670	39022	39044	39045	39217	38546	38089	38556	101.929
	12	39127	38404	38731	38663	38766	38827	39098	38171	38364	38722	38940	38678	102.188
	13	38120	38871	38971	39164	38506	38790	38384	38425	38445	38665	38640	38731	102.017
	14	38927	38886	38944	38609	38623	38105	38511	39121	39010	39496	39271	39029	102.637
	15	38940	38833	39250	38844	39045	38548	38139	39410	38903	38933	39254	38826	102.723
	16	38910	38777	39124	38910	39367	38927	38773	39058	38622	39183	39145	38777	102.866
	17	38857	38947	39020	38782	38983	38501	38882	39157	38693	38919	38978	39274	102.738
	18	39284	38594	39138	38151	38533	38460	38110	38079	38147	39352	38724	38827	101.946
	19	39084	38930	38659	38800	38324	38748	38739	38822	39431	39068	38675	38922	102.565
	20	38551	38449	38502	38385	38619	38495	39357	38928	38757	38984	38912	38417	102.158
	21	39212	38654	39127	39064	38205	38660	38399	39012	38682	38941	38194	38866	102.304
	22	38732	38587	39105	38681	38244	38783	38546	38608	38815	38567	38928	38855	102.179
	23	38807	38633	38813	38684	38769	38729	38757	38319	39095	38254	38964	38644	102.183

INAF/UNIRomaTre		S.V.I.R.CO. Observatory - Pressure Corrected Data – October 2021											16 NM-64	
day	hh	00_05	05_10	10_15	15_20	20_25	25_30	30_35	35_40	40_45	45_50	50_55	55_60	h-norm
9	0	38770	38946	38023	38924	38654	38915	38896	38731	38845	39167	38534	38888	102.364
	1	38630	38380	38425	38771	39301	38938	39168	39024	38671	38743	38660	38993	102.455
	2	38931	38546	38723	39253	38877	38763	39014	38297	38525	38359	39201	38243	102.241
	3	38753	38203	38754	38816	38264	38928	39468	39147	38565	38003	38284	38668	102.048
	4	38607	38889	38764	38441	38824	38263	38773	38804	38680	39251	38668	39137	102.322
	5	38669	38741	39314	38556	38629	39127	39043	38806	38350	38416	39108	38771	102.417
	6	38401	38999	39209	38668	38109	38600	39168	38925	39320	38713	38662	39062	102.483
	7	38780	39332	38795	38812	38927	38331	39449	39168	38856	39065	39576	38531	102.877
	8	38835	38574	38775	38790	39067	39079	39508	39028	39259	39206	39268	39603	103.178
	9	39363	39069	38901	39573	39383	39434	39278	38964	39351	39393	38973	39402	103.639
	10	39322	39264	39151	39255	38858	39024	38886	39054	38624	39355	38573	38928	103.025
	11	39554	39346	39044	39179	39492	39055	38823	39380	39039	38892	39433	39016	103.456
	12	38682	38641	39057	38886	39339	38798	39172	39122	38913	38839	38761	38624	102.704
	13	38800	39199	38919	39158	38534	39116	38949	38574	38960	39021	39071	38306	102.654
	14	39120	38736	39047	38611	38643	39462	38613	39351	38623	39007	39339	38694	102.794
	15	38601	39296	38995	38705	39130	39047	38777	39493	38404	39535	39068	38456	102.852
	16	39255	39068	38674	38733	38585	38533	39158	38997	38879	39099	39047	38756	102.692
	17	39027	39151	39138	39115	38854	39011	38667	38926	38779	38957	38269	38655	102.641
	18	39146	39449	38959	38611	39454	39204	38652	39107	38997	38632	38807	38836	102.928
	19	38670	38952	38697	38705	39114	38798	38807	38412	39095	38517	38147	38668	102.208
	20	38090	38552	39056	38727	38446	38495	38875	38894	38475	38458	38816	38364	101.915
	21	38374	38248	38653	38775	38740	39024	38690	38752	39193	39005	39142	38333	102.284
	22	37999	38789	38517	38505	39060	38433	38611	38978	37961	38297	38863	38905	101.842
	23	38412	38926	38873	38580	38841	38768	38946	38023	38924	38654	38915	38896	102.248
10	0	38916	38967	39728	38556	39351	39227	38498	39042	38873	38403	38948	38550	102.748
	1	39428	38826	39205	39142	38894	39334	38813	39188	38938	38991	39106	38729	103.091
	2	38989	39269	38456	39216	39172	39107	38982	38951	38845	38809	38606	38182	102.648
	3	38710	38422	38349	38380	38690	38949	38649	38640	38741	38645	38649	38042	101.830
	4	39029	39100	38696	38957	38333	38717	39100	38757	38349	39056	38969	39178	102.573
	5	38586	38390	39212	38649	38261	38604	39682	38552	39529	38752	38937	38379	102.417
	6	38909	38886	38763	38848	38817	38941	38817	38640	38835	38654	38571	39226	102.500
	7	38687	38645	39278	38593	38905	38988	38706	39017	38957	38604	39071	38407	102.489
	8	39268	38488	38789	38842	38749	38084	38924	38624	38209	38614	38884	38770	102.134
	9	38552	38894	38894	38687	38375	38417	38448	38666	38604	38905	38251	38822	101.973
	10	38634	38861	38909	38705	39076	38081	38609	39219	38888	39109	38998	38377	102.403
	11	38522	38222	38528	38437	38527	38591	38558	39065	38524	38857	39080	38677	101.990
	12	39587	38425	38795	38959	38909	39219	38388	38503	38832	38770	39264	38770	102.612
	13	38863	38798	39055	39292	39115	39115	39466	38806	38889	39311	38654	39212	103.087
	14	39109	38791	38986	38204	39397	39399	38400	38604	38420	39017	39253	39089	102.667
	15	38667	39274	38780	39152	39080	38544	39140	39469	39367	39284	38760	38566	102.978
	16	39615	38954	38705	39239	40001	39187	39598	39296	39451	39379	39400	38862	103.771
	17	39087	39304	39262	38910	39499	39096	39137	38589	39197	38978	39051	39339	103.279
	18	38687	38998	39389	39595	38663	38537	39233	37891	39182	39216	38963	39408	102.907
	19	39078	39111	38635	39756	39189	39168	39159	39403	38624	38908	39293	39277	103.312
	20	39035	38768	39099	38897	38868	39149	39451	38925	39710	38952	39492	39440	103.353
	21	38745	38734	39284	39222	38984	38454	38775	38786	39150	38268	38710	39276	102.605
	22	39466	39151	39575	38912	38821	38509	38922	39456	39171	38951	39585	38610	103.208
	23	39411	39493	39298	38738	38508	38465	39046	38725	39329	38503	38687	39155	102.819

INAF/UNIRomaTre		S.V.I.R.CO. Observatory - Pressure Corrected Data – October 2021											16 NM-64	
day	hh	00_05	05_10	10_15	15_20	20_25	25_30	30_35	35_40	40_45	45_50	50_55	55_60	h-norm
11	0	39060	38603	39019	39218	39187	39258	39468	38521	38988	39373	39810	39643	103.432
	1	38501	38754	38816	38979	39306	39239	38916	39178	39292	38744	39133	39253	102.984
	2	38730	38869	39361	38519	38582	39072	38791	39196	38764	39080	39609	39900	103.064
	3	39318	38725	39203	39827	38715	38905	39177	39428	38846	38824	38617	39520	103.203
	4	39012	39296	38709	39194	39052	38778	38720	38829	38589	38409	38869	39132	102.650
	5	38964	39752	38830	38975	39337	38622	39172	38993	39210	38699	38667	39195	103.052
	6	39186	39455	39370	39323	38832	38456	38895	37880	38974	39023	38968	38832	102.783
	7	38726	39061	38651	38472	39047	38656	38814	38815	38185	38855	39010	38169	102.182
	8	39060	38313	38688	38128	39158	38906	39274	38538	38664	38843	38580	39063	102.347
	9	39106	38075	39116	38368	38421	39085	38464	38496	39095	38780	38117	38685	102.037
	10	38822	39053	38548	39074	39547	38742	39113	38880	38922	38831	38984	38984	102.850
	11	38383	38272	38725	39332	38965	38322	38936	38509	38810	39142	38574	39203	102.339
	12	38223	38591	38320	39115	38447	38545	38275	38973	38816	38962	38355	38488	101.885
	13	38048	38922	38038	38113	38748	39011	38711	38859	38541	38863	38510	38853	101.909
	14	38728	38521	38522	38418	38977	38791	38788	39138	38078	38660	38692	39022	102.154
	15	38962	38559	38702	39349	38091	38357	38556	39502	38775	38525	38546	38827	102.245
	16	38842	38557	38922	39051	38867	38475	38344	38583	39033	38830	38945	38360	102.258
	17	38540	38583	38777	38827	38754	38590	39154	38678	38528	38674	39350	38888	102.375
	18	38656	39042	38761	38614	39158	38793	39065	39159	38767	38395	38627	39196	102.572
	19	38945	38892	38808	38934	38547	38976	38903	38076	38976	38913	39414	38472	102.488
	20	38976	38222	39154	39154	39109	38645	39379	38625	38647	38505	39164	38935	102.633
	21	38422	38725	39206	37960	38341	38740	38495	38933	38987	38624	38214	39632	102.141
	22	38946	38883	38956	38944	38733	38943	39370	38718	38933	38373	39023	39473	102.805
	23	39075	39002	39169	38981	39189	38812	39053	38493	38941	38630	39046	38630	102.744
12	0	39060	38621	39019	38641	38587	38653	39295	39065	38753	38763	38637	39264	102.596
	1	39349	39173	38669	39307	38826	39431	39401	39854	38729	39051	38799	39165	103.346
	2	38820	38611	38737	39018	38991	38746	38322	38358	38400	38117	38362	38231	101.796
	3	39042	38737	38484	38776	38680	38719	38333	38207	39030	38738	38781	38211	102.022
	4	38063	39031	38970	38681	38484	38786	38848	38638	38596	38575	38386	38646	102.015
	5	38625	38437	38616	38449	38406	38623	39214	38871	38694	38465	38716	38305	101.953
	6	38705	38870	38775	39032	38569	38412	38547	38489	38784	38772	38741	38627	102.151
	7	39145	39134	38832	38729	38781	38469	38367	39095	38761	38344	38437	39155	102.355
	8	38436	39154	39154	38811	38426	38417	38698	38573	38645	38550	38852	38396	102.104
	9	38790	38675	38750	38784	38454	38890	38393	38703	38703	38663	37994	38381	101.899
	10	37797	38678	38718	39119	38699	38385	38694	38806	38538	38694	39421	39052	102.213
	11	38998	39176	38716	39059	39464	39291	38725	38952	38850	39131	38320	38247	102.724
	12	38360	38837	39188	38798	38408	38696	38657	39100	38939	39473	38857	39108	102.614
	13	38648	38962	38524	38698	39140	38712	38507	38325	38593	38604	38718	38809	102.133
	14	38604	38828	39430	38798	39583	38370	38747	38764	39114	38847	38927	38405	102.611
	15	39800	38873	39057	38486	39362	39230	38598	39097	38670	38731	38996	38792	102.892
	16	39006	37998	38232	39220	39067	38130	38181	38121	38649	39279	38400	38866	101.893
	17	38696	38327	38684	38584	38451	38831	38788	38487	38824	38589	38742	38967	102.074
	18	38691	38866	38627	38831	38609	38340	38668	38830	38411	38708	38391	38216	101.902
	19	38411	39218	38963	38758	38717	38533	38361	38330	38247	38503	38196	38330	101.765
	20	38126	38680	38430	38655	38553	38190	38805	38341	37665	38616	38750	38527	101.495
	21	38303	38467	38815	38354	38385	37832	37945	38508	38181	38693	38487	38242	101.247
	22	38262	38755	38695	38530	38323	38612	37978	38468	39122	38170	38376	39093	101.724
	23	38928	38405	39072	38796	38315	38521	38521	38632	38457	38632	38693	39216	102.121

INAF/UNIRomaTre		S.V.I.R.CO. Observatory - Pressure Corrected Data – October 2021											16 NM-64	
day	hh	00_05	05_10	10_15	15_20	20_25	25_30	30_35	35_40	40_45	45_50	50_55	55_60	h-norm
13	0	38702	38692	38806	39213	38700	38564	38337	38990	39126	38647	39548	38280	102.430
	1	38790	38779	38670	39113	38510	38897	38682	38927	38099	38804	38980	39197	102.399
	2	38546	38617	38514	39095	39106	38525	39076	38617	38293	38652	38946	38457	102.178
	3	38194	38662	38082	38540	39070	38825	38856	38998	38947	38856	38479	38784	102.144
	4	38316	38520	38907	39579	38509	39141	39131	39222	38968	38469	38408	38632	102.476
	5	39110	38367	39294	38550	39201	39119	38662	38907	38755	38701	38625	38939	102.571
	6	39355	38828	38948	39006	39088	38941	38418	39299	38855	39078	39008	39264	102.980
	7	38799	39175	38552	38707	39384	38644	38747	38736	39258	38526	38845	39020	102.606
	8	38989	38804	38937	38649	39092	39215	39174	38793	39287	38865	38670	38618	102.760
	9	38948	38834	38793	39050	38886	38814	38570	38798	39117	38973	38644	39106	102.637
	10	38718	38721	39100	39070	38916	39121	38662	38214	39097	39167	39021	38756	102.644
	11	38644	38480	39039	38498	38862	38393	38608	38794	38633	38580	38630	39212	102.162
	12	39049	39111	39286	38738	38421	38714	38891	38610	38323	38864	38725	38370	102.322
	13	39245	38680	38897	38883	38761	38213	38990	39505	39000	38931	38568	38806	102.625
	14	38877	38693	39159	38642	38775	39065	38289	38658	39166	38421	38816	39020	102.428
	15	38680	38555	38965	38528	38662	38414	38757	38769	39264	38780	38650	38528	102.201
	16	38209	39239	38495	38134	38876	39253	38605	38616	38645	39054	39256	38863	102.353
	17	39249	39366	38931	38136	38409	38995	38228	39106	38907	38625	38352	39197	102.413
	18	38792	38624	39064	39207	38773	38718	38716	38341	38442	38273	38524	39243	102.238
	19	38617	38981	38001	38752	38989	38350	38652	38245	38716	39165	38674	39123	102.138
	20	38884	38941	38599	39161	39438	38711	38793	38417	38656	39328	38710	38297	102.506
	21	38735	39320	38430	38367	38714	38589	38599	38840	38630	38493	38901	38641	102.137
	22	39196	38494	39280	39311	38630	38578	38306	39217	39151	38777	39232	38584	102.687
	23	38699	39003	39212	39023	38804	39003	38647	38574	38417	39379	39515	38856	102.769
14	0	38741	38669	39088	39425	39015	38641	38820	38904	39007	38369	39189	39132	102.745
	1	38706	39212	39424	39081	38958	39562	38687	39285	38792	38886	39009	38346	102.949
	2	39564	39143	39248	38628	39195	39027	39090	38901	39647	38954	39153	38817	103.261
	3	38502	38250	39269	38943	39479	38786	39290	39563	38925	39778	38863	38724	103.042
	4	39181	39495	39169	39526	39232	38738	38937	38853	39190	38895	39011	39011	103.232
	5	39421	39284	38590	38801	39071	38403	38846	38784	38700	38752	39233	38851	102.682
	6	39115	39710	38389	38813	39477	39067	38577	39156	38831	38983	38794	38974	102.935
	7	39146	38260	39171	39160	39414	38640	38850	39221	38712	38629	38800	38270	102.580
	8	39086	39212	38479	38724	39137	38979	38927	38652	38620	39139	38482	38969	102.609
	9	38715	38673	39060	38961	39196	38801	38321	39180	39266	38748	39439	38295	102.664
	10	38367	38304	38719	38961	38908	38314	38515	38717	38834	38127	38191	38534	101.748
	11	39145	38636	38701	39103	38299	38098	39173	39028	39151	38760	38742	38883	102.458
	12	38682	39566	38614	38802	38558	39103	39152	38752	39237	39479	38678	38704	102.812
	13	38823	39347	38843	38686	38476	39053	38632	38716	39400	39011	38841	38991	102.701
	14	38450	38534	39038	39383	38858	38975	38996	39143	39027	38849	38828	38908	102.737
	15	39123	38544	39031	38695	39284	38716	39453	38906	39063	38822	38738	38927	102.806
	16	39200	38658	38876	38615	38954	39309	38893	38965	39445	39444	38887	39181	103.054
	17	39002	39003	39180	38689	39585	39296	39422	39284	38856	39278	39184	39175	103.390
	18	38782	39376	38858	39243	39349	38749	38955	38677	38987	38880	39293	38865	102.963
	19	39491	39342	39181	38925	38904	39106	39214	39043	38804	38407	38780	39410	103.094
	20	38739	38504	39538	39112	38781	39122	39133	39004	38993	38887	38407	39185	102.829
	21	38472	38793	38771	38313	39081	38792	38663	38769	39483	38631	39133	39506	102.610
	22	39058	38402	39193	38322	38396	39108	38940	38647	39380	38953	38497	39251	102.553
	23	38614	38422	38381	38882	39040	38985	38507	38232	39380	39137	38739	38867	102.341

INAF/UNIRomaTre		S.V.I.R.CO. Observatory - Pressure Corrected Data – October 2021											16 NM-64	
day	hh	00_05	05_10	10_15	15_20	20_25	25_30	30_35	35_40	40_45	45_50	50_55	55_60	h-norm
15	0	39270	38698	39122	39175	38252	39432	38904	38479	38575	39162	38549	39501	102.762
	1	39139	38424	39423	38860	38640	38483	38469	38717	38862	39030	39023	38880	102.509
	2	38743	38871	39014	38840	38745	38456	38792	38872	39494	38865	39075	39182	102.730
	3	39081	39319	38897	38960	38957	38932	39078	38628	39212	38743	38535	38837	102.779
	4	38683	39041	39008	38611	39115	39025	38608	38954	38885	38431	39183	38892	102.616
	5	38818	39222	39066	38536	39118	38920	38631	38912	39086	38989	39664	39047	102.962
	6	38865	38865	38793	39406	39530	39146	39146	39644	39188	39416	38710	39073	103.352
	7	39281	38830	38858	39348	38949	39397	39115	38814	38949	38970	38512	39362	103.045
	8	39285	38736	38694	39005	38957	39362	39085	39244	38726	39078	38944	39101	103.008
	9	39279	39332	39135	38699	38939	39439	39171	38954	38892	39925	39656	39696	103.646
	10	39440	39413	39301	39094	39054	39066	39047	39069	39016	38873	38773	38725	103.151
	11	39611	39192	39440	39051	39145	39248	39074	38736	39350	38707	39036	39027	103.315
	12	38853	38996	39125	38964	39164	38838	39318	39187	39535	39445	38977	39333	103.342
	13	38885	38703	39151	38530	38915	38917	38789	39490	38392	39053	38931	38882	102.660
	14	38822	39138	38662	38952	38521	38928	39015	39048	39012	38786	39123	39290	102.806
	15	38833	39238	39246	38744	38651	39426	39096	39179	39082	39052	39137	39146	103.143
	16	38428	39109	38691	38937	38886	38896	39161	38425	38607	38872	39298	38949	102.577
	17	38753	38383	38473	38862	38556	38895	38977	38949	38885	38357	38705	39191	102.297
	18	38859	38832	39018	38803	38557	39121	39138	38982	38828	38459	39004	38839	102.617
	19	39055	38354	38526	38978	38701	39061	38721	38474	38711	38629	38310	39090	102.215
	20	38535	39334	38510	38387	38696	38654	38417	38469	39252	39191	39049	38915	102.390
	21	38533	38470	38922	38768	38572	39211	38831	38584	39273	38201	38635	38853	102.268
	22	38821	38572	39211	39036	38706	38769	38975	39025	38974	39066	38490	38994	102.660
	23	38666	39058	39005	38902	38036	39015	39231	38862	39152	38985	38871	38572	102.598
16	0	38570	38625	38594	38934	39133	38443	38769	38856	38696	38298	39447	39219	102.429
	1	38860	38575	38773	38925	38674	38670	38661	39166	38516	39279	38625	38684	102.390
	2	38689	38978	38915	39108	38745	38296	38999	39152	38677	38919	38910	39115	102.630
	3	38910	39173	38902	39008	38655	38593	39115	39052	38452	38913	38995	38917	102.671
	4	38563	39412	38965	39156	39186	38444	38850	38676	38699	38975	38521	38860	102.588
	5	38945	38793	39154	38948	38640	38536	38720	39325	38882	39192	38779	38683	102.652
	6	38948	38345	38514	38703	38649	39299	39189	39011	38346	38975	38694	38557	102.350
	7	38753	39274	38827	38580	38980	38424	38474	38820	38944	38501	38763	38441	102.252
	8	38893	38800	38341	39145	38523	37682	38362	39133	38677	38535	38867	38303	101.918
	9	38566	38923	38393	38733	38449	38585	38498	37817	38490	38464	38851	38128	101.617
	10	38186	38804	38919	38704	39026	38632	38326	39085	38726	38645	38895	38445	102.166
	11	38490	38785	39129	38190	39096	38446	38881	38428	38345	38628	38474	38385	101.921
	12	39074	38246	38501	38492	38202	38581	38930	37976	38545	38075	38197	38785	101.553
	13	37918	38877	38146	38328	38677	38160	38659	37978	38414	38074	38469	38417	101.226
	14	38339	38671	38435	38232	38657	38544	39200	38296	38596	38212	38605	38401	101.681
	15	38279	38193	38674	38447	38387	38651	38194	37919	38573	38670	37976	38369	101.273
	16	37963	38420	38227	38601	38363	38545	38735	38915	38206	38267	37791	38115	101.233
	17	38624	38315	37573	39005	38147	38048	38011	38481	37900	37955	38066	37868	100.759
	18	38541	38301	37985	37929	38626	38268	37845	38509	38281	37908	38395	38161	100.925
	19	37833	37972	37597	38451	38141	37772	37921	37513	38392	38184	38236	38327	100.394
	20	37654	38015	38554	38363	37893	38094	37963	38266	37832	37653	38095	37891	100.380
	21	38189	38232	37941	38308	38138	38058	38458	38698	38036	37981	38451	38580	100.995
	22	38324	37980	38372	38503	37664	37967	38037	37537	38091	38376	38132	37873	100.508
	23	37516	37699	38330	38359	37629	37548	37791	38303	38194	37853	37887	38052	100.136

INAF/UNIRomaTre		S.V.I.R.CO. Observatory - Pressure Corrected Data – October 2021											16 NM-64	
day	hh	00_05	05_10	10_15	15_20	20_25	25_30	30_35	35_40	40_45	45_50	50_55	55_60	h-norm
17	0	38225	38107	38572	38405	38065	37991	37812	38299	38341	38278	38341	39219	101.124
	1	38532	39219	37992	38775	38204	38299	38214	39039	37917	38518	38317	38382	101.510
	2	38415	38821	39226	38343	38100	38519	38160	38887	38919	38401	38169	38813	101.810
	3	38496	38665	38369	38528	38443	38454	38993	39447	38179	38887	38570	38655	102.011
	4	38401	38560	38285	38454	38771	38347	38664	38359	38707	38465	38148	38718	101.613
	5	38053	38634	39248	38917	38923	38479	39001	38384	38705	38798	38857	38918	102.281
	6	38790	39056	39090	38615	38939	38615	38529	38210	38578	39191	39530	38860	102.520
	7	38522	39279	38024	38913	39068	39046	38831	39107	38690	38646	39116	38347	102.430
	8	38732	38819	38943	38401	38935	38873	39401	39058	38624	38667	38301	38790	102.420
	9	38994	37882	38353	39058	38931	38546	38255	38683	38341	39079	39164	38667	102.070
	10	38707	38451	38397	38961	38810	38457	38381	38776	38328	39685	38445	38221	101.996
	11	38082	38520	38684	38656	39008	38694	38325	38802	38780	38311	38876	38153	101.836
	12	38760	38273	38170	38266	38265	38508	38671	39312	38385	38376	38618	38337	101.627
	13	38194	38752	38868	38157	38539	38752	38826	38773	38677	38773	38371	38413	101.881
	14	38932	38274	38911	38252	38072	38507	38794	37912	38741	38826	38667	38603	101.748
	15	38560	38550	38741	38369	38932	37987	38922	38432	38718	38591	38868	38769	101.957
	16	38478	38371	38690	38447	38415	38064	38670	38658	38637	38202	38763	38708	101.663
	17	38566	38622	38546	39001	38476	38744	39000	38175	38761	39090	38544	38342	102.051
	18	38317	38599	38546	38640	38421	39171	38891	38838	38315	38363	38901	38676	102.009
	19	39024	39098	38172	38266	38802	38757	38499	38623	38833	38393	38271	38538	101.921
	20	38343	38374	38149	38660	38677	38733	38451	38961	38309	39440	38704	38779	101.987
	21	38238	38714	38336	38750	39046	38817	39335	38256	38793	38446	38926	38766	102.173
	22	38410	38205	38691	38688	38992	38889	38752	38719	38643	38546	39208	38308	102.092
	23	38523	39081	38439	38409	39214	39385	38471	39254	38928	38352	39038	38355	102.399
18	0	38582	37870	38280	38504	38262	38995	38282	38767	38466	38495	38823	38542	101.613
	1	38270	38288	38069	37929	38398	38464	38441	37930	38370	38524	38268	38589	101.099
	2	38321	38587	38359	38755	38448	38362	38467	38666	38748	38524	38302	38405	101.628
	3	38043	38993	38136	38900	38402	38548	38271	38397	39098	38479	38453	38755	101.745
	4	38808	38370	38743	38812	38472	38329	39095	38202	37865	38668	37973	38321	101.565
	5	38471	38457	38751	38604	38453	38678	38560	38575	37677	37995	38391	38050	101.346
	6	38430	38027	38067	38360	38509	38084	38628	38181	38345	38821	38921	37718	101.220
	7	38048	38340	38411	38612	38544	38563	37972	38363	38460	38619	38060	38961	101.410
	8	38745	38053	38593	37869	38659	38308	38075	38427	38437	38592	39160	37911	101.382
	9	37982	38795	38361	37815	38688	38533	37833	38270	38057	38606	38607	38009	101.102
	10	37893	38254	38120	38905	38624	38736	37887	37909	38946	38563	38192	38568	101.331
	11	38077	38353	38111	38026	38302	38877	38877	38158	38211	39101	37874	38166	101.230
	12	38311	38568	38023	38537	38411	38368	38085	38200	38255	38064	38355	38345	101.095
	13	38266	38100	38098	38553	38450	38174	38488	38856	38425	37846	38178	37862	101.045
	14	38663	38357	38266	38236	38257	38182	38448	38165	38119	37810	39006	38356	101.171
	15	38262	37478	38018	37846	38402	38680	38553	38715	38910	37960	38396	38445	101.126
	16	37892	38128	37925	38326	38251	38489	38040	38283	37859	38095	38841	38472	100.892
	17	38186	38594	38122	38096	38384	38265	38545	37800	38177	38424	37623	38263	100.866
	18	38150	38418	38662	38665	38179	38305	38592	38374	39022	38121	38166	38344	101.419
	19	38129	38208	38445	37958	37883	38377	38541	37942	38488	38601	38613	38847	101.206
	20	38534	38718	38590	38961	38152	38256	37772	38621	38050	38815	38293	38363	101.448
	21	38730	38027	38384	38266	38251	38498	38747	38174	38412	38889	38599	38529	101.531
	22	38286	38600	38139	38735	38187	38820	38274	38610	39096	38958	38593	38746	101.870
	23	38027	38410	38890	38591	38610	38156	38386	38656	38060	38418	38500	38174	101.393

INAF/UNIRomaTre				S.V.I.R.CO. Observatory - Pressure Corrected Data – October 2021										16 NM-64	
day	hh	00_05	05_10	10_15	15_20	20_25	25_30	30_35	35_40	40_45	45_50	50_55	55_60	h-norm	
19	0	38009	38222	38602	38457	38967	38648	38558	38771	38883	38178	38615	38896	101.821	
	1	38516	38317	38736	38391	38671	38670	38569	38189	38829	38460	38484	38899	101.800	
	2	38930	38230	39003	38680	38872	38558	38851	38691	38634	38658	38219	38317	102.001	
	3	39139	38019	38626	38514	38111	38496	38296	38759	38840	38480	38817	38761	101.829	
	4	38903	38954	37827	38345	38277	38795	39235	39512	38808	38616	38345	37963	101.988	
	5	38723	38084	39338	38887	37949	38299	37870	38762	38829	38490	38842	38909	101.856	
	6	38592	38915	39040	38582	38732	38897	38967	38650	38298	38491	38899	38988	102.311	
	7	38734	38740	38138	38604	39229	38796	38445	37890	39021	39001	38635	38669	102.058	
	8	38568	38841	38874	38362	38720	37879	38528	38055	39206	38145	38329	38237	101.584	
	9	38021	38158	37918	38716	38566	38739	38758	39118	38377	38386	39061	38655	101.744	
	10	38290	38183	38463	38853	37872	38494	38822	38611	38808	38524	38600	39163	101.791	
	11	38479	37872	38478	38294	38273	38542	38412	38491	38293	39113	39014	38714	101.636	
	12	38243	38723	38526	38174	38275	38108	38278	38006	38050	38799	38276	38647	101.224	
	13	38316	38429	38179	38694	38616	38187	37973	38751	38266	38580	37802	38740	101.317	
	14	38187	38480	38468	38534	38310	38219	38671	38773	38501	38659	38288	37926	101.424	
	15	38501	38288	38776	38360	38720	38178	38696	38852	38356	38548	38143	38022	101.517	
	16	38085	38376	38168	38590	38398	38410	38246	38692	38296	37776	38523	38907	101.303	
	17	38580	38083	38354	38179	38557	38450	38721	38925	38590	38579	38477	38581	101.656	
	18	38729	37889	38743	38779	38316	38230	37975	38045	39096	38829	38692	38045	101.501	
	19	38601	38669	38976	38385	38317	38241	38467	39113	38745	38840	38533	38373	101.918	
	20	38772	37805	38533	38544	38226	38559	38631	38107	38860	38532	38920	38339	101.601	
	21	38425	38567	38599	38552	38723	38553	38463	38291	38483	38530	38292	38382	101.609	
	22	37593	38222	38224	38486	38212	38030	38828	38719	38756	38732	38516	38744	101.434	
	23	38584	38002	38380	38473	38709	38570	38570	38544	38469	38749	38283	38692	101.646	
20	0	38495	38115	38408	37906	38704	38544	38476	38795	38272	38215	39125	38476	101.536	
	1	38859	37873	38367	37987	38625	38251	38636	38576	38698	38422	38458	38770	101.535	
	2	38357	38331	38610	38930	38510	38196	38411	38253	38434	38389	39149	38298	101.611	
	3	38570	38355	38411	38377	37969	38434	38321	38808	38491	38014	38672	38991	101.511	
	4	38174	38207	38786	38650	39103	38876	38241	38899	38400	39058	38411	38375	101.900	
	5	38551	38752	38300	38368	38854	38287	38735	38457	38842	38242	38107	37762	101.476	
	6	38061	38106	38185	38446	38854	37914	38663	38265	38752	38610	38287	38264	101.289	
	7	38468	38910	38383	38575	38170	38109	38093	37888	38331	38615	38462	38410	101.292	
	8	38467	38376	38615	38752	38513	38717	38409	38464	38009	38506	38070	38331	101.471	
	9	38684	38513	38013	38195	38081	38081	38479	38637	38398	38774	38258	38797	101.401	
	10	37979	38194	38508	38197	38491	39273	38490	38488	38439	38592	38161	38374	101.461	
	11	38483	38153	38915	38039	38490	38751	38074	38444	38960	38337	38456	38106	101.465	
	12	38843	38434	38446	38705	37823	38879	38499	38291	38377	38964	38993	38735	101.858	
	13	38994	37807	38478	38741	38534	39092	38342	38220	37851	38131	38982	38118	101.484	
	14	38494	38670	38938	38174	38610	38262	37713	38229	38582	38375	37784	38397	101.250	
	15	38598	38085	38302	38263	38331	38288	38221	39039	38153	38054	38243	38565	101.232	
	16	38442	38231	38075	39199	38064	38125	38528	38582	38204	38414	38214	38549	101.338	
	17	38304	37856	39035	38225	38091	38147	38291	38633	38197	38065	37865	38221	100.965	
	18	37953	38620	37674	37896	38396	38576	38086	38007	38718	38224	38610	38294	100.992	
	19	37698	38684	38015	38214	38047	37834	37932	37976	38240	38445	38109	37610	100.497	
	20	38220	38292	38906	38354	38775	38120	38296	38096	37865	38065	37688	38319	100.979	
	21	38342	38342	38364	38253	38076	38619	38153	38175	38452	38253	38009	38286	101.051	
	22	38076	38087	38596	38430	38608	38731	38243	38286	38608	38319	38452	38042	101.305	
	23	38664	38254	38297	38707	38492	38620	38122	37519	37978	37967	38155	38413	101.021	

INAF/UNIRomaTre		S.V.I.R.CO. Observatory - Pressure Corrected Data – October 2021											16 NM-64	
day	hh	00_05	05_10	10_15	15_20	20_25	25_30	30_35	35_40	40_45	45_50	50_55	55_60	h-norm
21	0	38505	37833	38692	38097	38764	38383	38504	38031	38240	37879	38146	39238	101.260
	1	38064	37767	37981	38163	37856	37898	38320	38151	37705	38442	38115	38728	100.582
	2	38111	37823	38532	38580	38606	38596	38175	38027	38080	38309	38201	37679	100.918
	3	38500	38256	38408	37690	38386	38080	38439	38146	37721	38330	38420	38250	100.898
	4	37968	38316	38665	38276	39273	38294	38321	38283	38773	38633	38600	38871	101.700
	5	38127	37989	38900	38337	39026	38597	38335	38336	38066	38140	38339	38290	101.306
	6	38571	38117	38225	38733	38408	38513	38578	38574	38116	38892	38547	38795	101.656
	7	39226	39043	38612	38795	38935	38914	38561	38468	39018	39137	38254	39018	102.516
	8	38502	38889	38577	38241	38448	38960	38026	38757	38363	38314	38690	38537	101.707
	9	38962	38521	38081	38530	38593	38431	38569	39246	38950	38748	38576	38840	102.090
	10	38790	38328	38296	38567	38271	38313	38543	38719	38503	38891	38521	37783	101.535
	11	39044	38670	39028	38709	38855	38639	38804	38472	38419	38186	38271	39172	102.139
	12	38571	39009	38678	38470	38017	38665	38420	38726	38409	38397	38639	37799	101.595
	13	38121	38891	38458	38444	38805	38486	38802	38732	38687	38613	38598	38398	101.868
	14	38220	39073	38799	38577	38477	38537	38873	38281	38521	38941	37954	38080	101.713
	15	38657	38668	38636	37681	38626	38069	38123	38321	38543	38150	38138	38767	101.283
	16	38538	37982	38034	38792	38261	38513	38722	38607	38543	38383	38349	38066	101.374
	17	38391	38894	38464	38150	38597	38047	38267	38165	38408	38779	38160	37552	101.173
	18	38996	38355	38230	38535	38525	38293	38419	38546	38461	38375	38649	38461	101.606
	19	38185	37879	38015	38771	38353	37881	38807	38239	37797	38744	37723	38218	100.894
	20	38260	38690	38300	38375	38037	38681	37883	37516	37895	37843	38562	38115	100.795
	21	37602	38455	38044	38234	38180	38243	37939	38381	37844	38455	38128	38307	100.718
	22	38476	38297	38014	38498	38288	39256	38191	37707	38265	38423	37939	37812	101.016
	23	38016	38251	38241	37883	38293	38409	38083	38798	37873	38714	38185	38455	101.024
22	0	38064	38201	38156	37891	37744	37767	38272	38137	38737	37909	38412	38220	100.645
	1	38804	38602	38577	38094	37697	38661	38626	38964	38268	38467	38989	39077	101.822
	2	38808	38380	38611	37796	38422	38209	38484	38866	38262	38522	38167	38135	101.346
	3	38189	38471	38659	38314	38531	38189	38784	38616	38208	38073	38981	38147	101.456
	4	38510	38104	38772	38533	38625	38406	38100	38360	38324	38642	39009	38153	101.539
	5	38882	38673	38799	38387	38681	38411	39481	38846	39106	38732	38576	38442	102.303
	6	37922	38567	38336	38374	39102	38790	38133	38673	38855	39145	38180	38909	101.856
	7	38847	38263	38667	38789	38643	38163	38591	38355	38738	38584	38511	38207	101.719
	8	38565	38470	38689	38154	38269	38290	38364	39076	38371	38713	38442	39079	101.746
	9	38363	39077	39037	38492	38444	38729	38549	38548	38639	38701	38743	38517	102.044
	10	38438	38468	38655	38707	38965	38458	38772	38313	38481	38301	39257	38864	102.010
	11	38740	38520	39001	38803	38519	38698	38680	38557	38129	38483	38276	38787	101.902
	12	39256	38264	38661	38464	38382	39186	38634	38156	38512	38793	38887	39271	102.182
	13	39074	38673	38714	38558	39122	38986	38592	39127	38524	38429	38543	38150	102.188
	14	38669	38429	38544	38343	38798	38310	39392	38662	38881	38496	38652	38610	102.033
	15	38085	38770	38101	38523	38826	38433	38260	37876	38563	38488	38593	38844	101.499
	16	38458	38041	38771	38333	38083	38694	38743	37973	38527	38087	38574	38010	101.265
	17	38477	37801	38691	38398	38573	37907	38285	38433	38139	38062	38257	38182	101.025
	18	38068	38274	38250	38682	38367	38841	38276	38655	38200	38259	37912	37607	101.066
	19	38418	38239	38709	38169	38778	38715	38094	38337	38348	38401	38202	38076	101.307
	20	38707	38066	37968	38365	38192	38162	38616	38598	38385	37857	37868	38005	100.934
	21	38123	37918	38304	38791	38209	37923	38209	37527	38031	38700	38203	38403	100.834
	22	37958	38551	38572	37661	38625	38223	38646	38192	38404	38371	38095	37990	101.043
	23	38658	38628	38489	38171	38681	38268	38457	37576	38297	38307	38118	37722	101.062

INAF/UNIRomaTre		S.V.I.R.CO. Observatory - Pressure Corrected Data – October 2021											16 NM-64	
day	hh	00_05	05_10	10_15	15_20	20_25	25_30	30_35	35_40	40_45	45_50	50_55	55_60	h-norm
23	0	38473	38442	37892	38008	38875	38602	38410	38264	38227	38438	38396	38387	101.288
	1	38323	38503	38441	38483	38736	38367	38187	37944	38451	38303	38693	38872	101.487
	2	38462	38103	38418	38566	37966	38388	38841	38857	38527	38453	38727	38591	101.618
	3	38644	39448	38563	38692	38370	38632	38706	38327	38370	38221	38760	38843	101.986
	4	38203	38699	38828	38501	38670	38850	39189	39021	38845	38994	38878	38138	102.259
	5	38432	38876	38212	38623	38600	38771	38613	38924	38802	38913	38948	39283	102.299
	6	38304	38257	38706	37885	38584	38942	38642	38822	38578	39168	38653	39293	102.042
	7	38162	38517	38364	38569	38762	38806	38471	38606	38723	38477	38991	38610	101.872
	8	38445	38898	39091	39166	38887	38855	38534	38287	38898	39134	38362	38416	102.294
	9	38716	39177	39134	38695	38307	38715	38519	38582	39367	38773	39254	38120	102.378
	10	38593	38818	38529	38872	38637	38950	38242	39153	38510	38810	38360	38971	102.178
	11	38402	38402	38349	38221	38683	38263	38819	38443	38862	38811	39023	38204	101.747
	12	38934	39030	39104	38546	38739	37901	38598	39060	38287	38646	38362	38168	101.943
	13	38800	38409	38637	39117	38594	38231	38638	38916	39050	38542	38102	39213	102.134
	14	38175	38590	38414	38905	38586	38607	38501	38856	38448	38225	38564	38475	101.716
	15	38552	38859	37900	38672	38649	38404	37836	38018	38254	38432	37773	38609	101.191
	16	38535	38397	38879	38073	39038	38384	38534	38555	39050	38129	37624	38381	101.547
	17	38173	38453	38326	38491	38386	38504	38269	38324	38184	37969	37689	38658	101.074
	18	38261	37992	38315	38196	37678	38163	38432	38475	39121	38313	38561	38216	101.139
	19	38152	38227	38346	37926	38137	38467	38285	37990	38688	38051	37855	38188	100.828
	20	38663	38011	38059	38135	38037	38824	38252	38096	38429	38756	38388	38606	101.256
	21	38746	38798	38658	38842	38300	37965	38192	37954	37955	38074	38614	38311	101.290
	22	38345	37641	38539	38181	38333	38897	38269	38419	38376	37976	38917	38560	101.300
	23	37748	38539	38128	38313	38257	39036	38365	38777	37932	38560	38593	38777	101.426
24	0	38777	38820	38679	38744	38019	38777	37943	37818	38417	38396	38544	38354	101.480
	1	38523	38836	38362	38720	38841	38531	38316	38904	38477	38390	38876	39283	102.093
	2	38421	38755	38678	38209	39493	38398	38710	38424	38533	38581	39387	38926	102.193
	3	39215	38643	38492	39576	38350	38785	38465	39216	39281	38260	38733	39238	102.576
	4	39054	39100	38640	38746	38617	39196	38732	39271	38701	39475	38948	38970	102.839
	5	38389	39077	38894	39528	39666	39030	38675	38687	38868	39091	38962	39415	103.022
	6	39207	38793	38652	38685	38793	38902	38844	39756	38852	39302	38593	39002	102.824
	7	38667	38269	39123	39058	38977	38995	39137	39396	39157	38756	38821	39058	102.831
	8	38475	38920	39494	38594	39438	38486	38421	38551	39503	39070	38820	38713	102.627
	9	39039	38806	38467	38454	38732	38128	39101	38615	39436	39004	38332	39233	102.376
	10	38525	38223	38817	38670	39428	38811	38930	39027	38941	38434	38560	38490	102.268
	11	38432	38920	38281	38377	38581	39380	38933	38805	38590	38476	38673	38855	102.147
	12	38614	38511	38513	38774	38927	38882	38391	38738	38752	38564	38802	38593	102.094
	13	38582	38843	38302	38948	38760	38813	38263	38744	39085	38639	38900	38204	102.098
	14	39472	38805	38466	38763	38974	38744	38557	38135	37999	39192	38407	38933	102.178
	15	38912	38153	38396	38322	38756	38429	38978	38511	38857	38359	38395	38073	101.671
	16	38346	38357	38664	38786	38549	38780	38448	38671	38395	38671	38216	38251	101.670
	17	38713	38568	38444	38568	38550	38815	38423	38434	38302	38916	38703	38426	101.830
	18	38601	39161	38716	38749	38482	38546	37895	38183	38877	38685	38620	38309	101.821
	19	38737	38557	38664	38824	38726	38306	38101	38430	38397	38953	38350	38273	101.710
	20	37921	38016	38728	38487	38544	38875	38380	38641	38202	38770	38157	38145	101.390
	21	38488	38392	38211	38812	38640	38703	38306	38736	38748	38062	38309	38480	101.615
	22	38115	38254	39027	38866	38973	38445	38824	38306	38358	38412	38392	38627	101.772
	23	38552	38360	38092	38456	38338	38524	38452	38110	38581	38357	38827	38710	101.499

INAF/UNIRomaTre		S.V.I.R.CO. Observatory - Pressure Corrected Data – October 2021											16 NM-64	
day	hh	00_05	05_10	10_15	15_20	20_25	25_30	30_35	35_40	40_45	45_50	50_55	55_60	h-norm
25	0	38515	38324	38772	38973	38845	38931	38683	38918	38159	38179	38693	38480	101.967
	1	38451	38784	38410	38125	38801	38834	38055	38418	38664	38461	38717	38525	101.694
	2	38578	38625	38533	38373	38074	38780	38656	38380	39029	38221	38891	38519	101.785
	3	37714	38834	38951	38294	38284	38252	38665	38547	38304	38708	37944	38377	101.393
	4	39308	39085	38925	38574	38245	38509	39338	38061	38541	38701	38731	38924	102.287
	5	39169	38796	38457	38649	38723	38169	38626	39126	38742	38483	38587	38503	102.087
	6	39057	38609	39025	38226	39013	38864	38737	38491	39130	38227	38218	38766	102.160
	7	38473	39104	38474	38889	39442	38974	38976	39157	38718	39037	38386	38718	102.597
	8	38718	38291	38493	39177	38474	38123	38750	38274	39128	38015	38699	38806	101.849
	9	38551	38317	37975	38839	38572	39129	38210	38520	39117	38476	38914	38583	101.904
	10	39375	38954	38524	38247	38813	39058	38234	38762	38704	38536	38195	38869	102.140
	11	39210	38746	38375	39056	38789	38586	38291	38201	39031	38412	38763	38040	101.970
	12	38550	38795	38923	38763	38587	39123	38453	39036	38175	39153	38495	38913	102.293
	13	39138	38375	38992	39575	38472	38397	38322	38398	39044	38873	38672	38671	102.284
	14	38304	38457	38595	38669	38403	38805	38425	39249	38080	38652	39407	38859	102.059
	15	38775	38690	38859	38965	38753	38794	38379	39158	38553	38522	38904	38447	102.256
	16	38510	38911	38950	38177	38781	38144	38004	39008	38074	38466	38669	38739	101.735
	17	38300	38809	38183	38809	37685	38684	38726	38335	38682	37984	37826	38997	101.424
	18	38329	38352	38832	38566	38473	38189	38508	38487	38742	37987	38529	38157	101.453
	19	38455	38050	37912	38136	38923	38274	38317	38423	38285	38689	38526	38181	101.237
	20	38265	38606	38138	38778	38086	38449	38481	38455	38514	38162	38279	38472	101.351
	21	37787	38749	38518	38300	38197	38806	38848	38923	37662	38442	38955	38143	101.493
	22	38378	38036	38238	38527	38549	38368	38133	38368	38250	37801	38685	37942	101.041
	23	38054	38138	38202	38624	38597	38219	38386	38205	38557	38728	38578	38578	101.391
26	0	38383	38129	38802	38659	38791	38660	38277	38202	37925	38373	38809	38410	101.509
	1	38575	38190	38732	38476	38338	38412	38365	38490	38311	37819	38378	38324	101.290
	2	38315	37720	38070	38081	38262	38061	38474	38612	38857	38155	38665	38007	101.041
	3	38773	38231	38729	38664	38878	38219	38749	37974	38694	38211	38663	38398	101.680
	4	38058	37931	38354	38248	38218	38047	38662	38419	38736	37960	38237	38112	100.976
	5	38515	38430	38727	38090	38292	38483	38122	38398	38299	38199	38220	38772	101.320
	6	38485	38507	38461	38787	38413	38954	38379	38238	38202	37752	38071	38774	101.426
	7	38781	38578	38521	38314	38154	38389	38528	38165	38667	38271	38341	38306	101.424
	8	38628	39205	38360	39023	38574	38146	38520	38809	38616	38306	38627	38703	101.974
	9	38693	39141	38649	38745	38221	39130	38370	38713	39226	38243	38632	39308	102.316
	10	38442	39274	38697	39329	39051	38238	38541	39037	38967	38834	38653	38928	102.519
	11	38586	38913	39279	38093	39572	38502	38555	38671	38207	38866	38728	38452	102.173
	12	38770	38816	38894	38798	38533	38668	38588	38363	38732	38244	38223	38817	101.958
	13	38139	38487	38489	38499	38964	38847	38044	37917	38181	38616	38191	38223	101.331
	14	38816	38604	38614	38376	38797	38247	38586	38226	38927	38492	38459	38671	101.819
	15	38301	38662	38279	38239	38690	38588	38356	38462	38592	37876	38485	38530	101.433
	16	38510	38114	38380	38338	37982	38221	38089	38066	38426	38049	38368	38720	101.038
	17	38139	38229	38270	38402	38181	38908	38170	38008	38102	37823	38481	38326	100.989
	18	38328	38437	37774	38266	38050	38082	38405	38898	38169	37752	38652	38286	101.002
	19	38875	38384	38469	38362	37825	38522	38330	37966	38925	37676	38191	37827	101.058
	20	37979	38182	38097	37923	38695	38209	38292	37754	37752	38269	38335	37862	100.617
	21	38334	37960	38225	38364	38459	38312	38703	38058	38725	38176	38250	38293	101.169
	22	38424	38067	38487	38089	37949	38605	37400	38573	38153	38122	38068	38261	100.804
	23	38367	38572	38627	38219	38821	38216	38615	38595	37735	38036	38122	37960	101.174

INAF/UNIRomaTre		S.V.I.R.CO. Observatory - Pressure Corrected Data – October 2021											16 NM-64	
day	hh	00_05	05_10	10_15	15_20	20_25	25_30	30_35	35_40	40_45	45_50	50_55	55_60	h-norm
27	0	38284	37561	38539	38690	38044	37734	37993	38078	38238	37797	38422	37606	100.537
	1	38477	37703	37886	38413	38747	38316	38068	38682	38004	38607	38230	37993	101.008
	2	37616	38576	38533	38112	38467	38305	38510	38144	38164	37830	38015	38208	100.865
	3	38176	38219	38359	38295	37358	38467	38779	38413	38175	38121	37842	38187	100.846
	4	38747	38790	38290	38620	38383	38286	38103	38372	38555	37898	38943	38922	101.620
	5	39256	38128	38588	38418	38472	38223	38785	37867	38536	38527	38771	38442	101.643
	6	38063	37950	39018	38169	38836	38695	38565	38359	38316	38646	38620	38459	101.573
	7	38937	38285	38263	38603	38455	38687	38666	38469	38114	38855	38426	38199	101.631
	8	39021	38319	38048	38975	38824	38792	37922	38803	37911	38553	38586	38455	101.686
	9	39117	38410	38248	38607	39032	38575	38107	38694	37992	38858	38477	38152	101.699
	10	38187	38920	38879	38781	38476	38007	38519	39096	39233	38378	38332	38768	101.987
	11	38420	38692	38093	38310	38115	38625	38503	38843	38460	38831	38575	38871	101.715
	12	38269	38805	37907	38724	38149	38914	38305	38372	39040	38747	38902	38809	101.848
	13	39057	38183	38809	38820	38814	38359	38380	38958	38753	38674	39055	38228	102.100
	14	38697	38646	38748	38978	38537	38646	37989	38440	38913	38738	38217	38340	101.835
	15	38464	39051	37991	38406	38236	38064	38290	38032	38333	38848	38170	38222	101.224
	16	38235	38655	38162	37979	37709	38365	37849	38290	38343	38075	38354	38236	100.815
	17	38204	38096	38791	38184	38529	38270	38514	38163	38539	38294	38484	37639	101.136
	18	38016	38286	37304	38608	38654	38388	39105	37985	37542	38180	38331	37283	100.690
	19	38277	38482	38127	37757	37983	38763	38276	38426	38512	38512	38264	38272	101.123
	20	37707	38000	39260	38269	38703	38313	38736	38714	37984	38714	37986	38722	101.444
	21	38808	38806	37986	38487	38638	38135	38324	38237	38867	37859	38281	38302	101.361
	22	38367	38053	38660	38228	38672	38228	38018	37990	38193	38468	38377	38280	101.098
	23	38414	38832	38313	38214	38604	38300	38311	37977	38411	38509	37869	38658	101.291
28	0	38184	38801	38648	38529	37869	38355	38551	38629	38633	38550	38397	38419	101.542
	1	38809	38258	38831	38225	38548	37911	39035	38278	38506	38993	38309	38638	101.715
	2	38814	38756	38376	38492	38902	38966	38793	38588	38232	38749	38833	38783	102.143
	3	38488	38402	38660	38574	38295	38617	38047	38488	38962	38048	37835	38393	101.378
	4	38445	38069	38811	38703	38962	38305	38866	38285	38219	38972	38359	38328	101.712
	5	39373	38586	38908	38231	38125	38437	38629	39329	38695	38943	39017	38908	102.340
	6	39195	39171	38158	39126	38923	38935	38580	38864	38474	38956	38224	38675	102.362
	7	38363	39158	38496	38345	38464	38863	38518	38430	38558	38914	38872	38280	101.917
	8	38992	38043	38431	38777	38474	38435	39018	38069	38418	38503	38211	38859	101.690
	9	38774	38698	38784	39302	38677	38881	38406	38805	38146	38392	38555	38717	102.110
	10	38306	38770	38477	39306	38446	38988	38569	38636	37929	38490	38468	38284	101.787
	11	39407	38207	38551	38339	38463	38647	39056	38416	38704	38516	38138	38667	101.884
	12	38670	38497	39176	39201	38431	38889	38755	38462	38183	38982	38862	38551	102.225
	13	38026	38640	38860	38615	39126	39456	38482	39203	38717	38501	38458	38307	102.166
	14	38984	38146	38539	38666	38380	38454	38518	38867	38718	38114	38146	38582	101.665
	15	38465	38305	38315	38208	38932	38219	38717	38558	39195	38304	38155	38878	101.695
	16	38316	38697	38177	38422	38463	39184	38612	38198	38591	38433	38284	38178	101.542
	17	38708	38453	38559	38676	38548	38568	38909	39090	38389	38072	37626	37988	101.549
	18	39022	38190	38523	38521	38690	38339	38541	38425	38530	38497	38082	38253	101.555
	19	37988	38468	38647	38136	38456	38266	39005	38298	38650	38066	38162	38407	101.320
	20	38691	38252	38337	38369	38371	38562	38649	38447	38592	38051	37954	38494	101.369
	21	38708	38189	38560	37828	38550	38369	38666	38327	38465	38624	38592	38836	101.577
	22	38847	38698	38157	37966	38454	38422	38262	38515	38764	38536	38684	39278	101.768
	23	37995	38302	38398	38444	38298	38796	38723	38310	38384	38903	38130	38564	101.474

INAF/UNIRomaTre		S.V.I.R.CO. Observatory - Pressure Corrected Data – October 2021											16 NM-64	
day	hh	00_05	05_10	10_15	15_20	20_25	25_30	30_35	35_40	40_45	45_50	50_55	55_60	h-norm
29	0	38543	39432	38935	38638	38470	38915	38829	38798	38503	38651	38724	38553	102.298
	1	38083	38536	38706	38332	38085	38348	37907	38600	38633	38697	38866	38074	101.391
	2	38619	38677	39117	38512	38365	38408	38809	39114	38703	38492	38651	39095	102.203
	3	38778	38925	38651	38345	38589	38727	38768	38925	38608	38355	38928	38489	102.099
	4	38762	38932	38711	38859	38743	38783	38668	38635	38676	38760	38548	38757	102.263
	5	39022	38370	38518	39032	38357	38558	38749	39024	38930	38928	39065	38106	102.225
	6	39368	38169	39158	39265	38226	38710	38531	39226	38110	38352	38834	38353	102.146
	7	38907	38570	38899	38404	38761	38425	38409	38622	38841	38292	38124	38842	101.881
	8	38758	38829	38669	38199	39015	38117	39134	38595	38605	38690	39462	38522	102.211
	9	38575	39092	39071	39155	38034	38601	38587	38670	39068	38940	38961	38603	102.379
	10	38656	38856	38639	38599	38620	38685	38527	38181	38479	38162	38901	38165	101.743
	11	39259	38103	38749	39110	37921	38668	38598	38038	38619	38908	38551	38802	101.932
	12	38519	38167	38516	38682	39042	38794	38804	38598	38915	38873	39164	38804	102.274
	13	38826	38843	38448	38721	39153	39156	38697	38354	38998	38219	38501	38697	102.215
	14	38717	38947	38822	39185	38166	39103	38519	37801	38571	39018	38613	38789	102.135
	15	38748	38873	38966	38623	38290	38540	39310	38384	39070	39133	38862	38779	102.427
	16	38019	38632	38996	38394	38424	38769	38663	38981	38720	38637	38696	38088	101.864
	17	38161	38473	38391	37793	38123	38414	38674	39017	38513	38723	38828	38722	101.603
	18	38231	38263	38644	39009	38896	38666	38163	38226	38112	38951	38572	38530	101.697
	19	38364	38705	38551	38730	38689	38231	38811	38914	38679	38594	38420	38649	101.934
	20	38105	38336	38863	38904	38883	38548	38652	38745	38556	38629	39060	38367	102.003
	21	38798	38568	38537	38800	38601	38685	38369	38905	38359	38612	38712	38454	101.948
	22	38656	38984	37803	38466	37752	38635	38045	38731	38403	38697	38065	38456	101.352
	23	38856	38986	37803	38449	38324	38745	38976	38438	38672	38661	39062	38280	101.916
30	0	38838	38428	38934	38291	38250	38946	38218	38840	38429	38682	38914	38445	101.907
	1	38427	38647	38814	38624	38760	38773	39147	37896	38673	38535	38340	39289	102.064
	2	39292	38813	38919	38824	38792	38446	38498	38729	38781	39211	38834	38425	102.424
	3	38896	38446	39200	38854	38820	38546	38350	38275	38440	38806	38766	38472	102.052
	4	38450	38387	38775	38901	38376	38314	38923	38734	38589	38850	38880	38964	102.111
	5	38745	37832	38785	38848	38534	38362	38254	38485	38844	38665	38516	38706	101.767
	6	38734	38499	38162	38132	38616	38089	38985	38574	38718	38673	38925	39020	101.888
	7	38409	38383	38514	38938	38422	39130	38769	38398	38379	38760	38917	39244	102.138
	8	38844	39063	38944	39460	38889	38859	38542	38657	38730	38719	39036	38624	102.601
	9	39026	38604	38161	38911	39470	38317	38412	38180	39026	39121	38423	38858	102.192
	10	38964	38455	38730	38496	38910	38886	38971	38856	38785	38701	38753	39010	102.413
	11	38286	38676	38665	39381	38363	38682	39660	39512	39278	38943	39033	38961	102.837
	12	38671	39465	38751	38799	38852	38936	39418	38695	39267	38507	39104	39018	102.846
	13	38794	38805	38983	38858	38388	38660	39119	38533	39077	38796	39100	38491	102.433
	14	38826	39119	38313	38743	38554	38346	38262	38886	38642	38548	38684	38736	102.005
	15	38705	38716	39135	38621	38904	39187	38810	38422	38307	39019	39093	38118	102.308
	16	38380	38579	38021	38311	38929	38570	39491	38921	38781	38414	39043	39038	102.184
	17	38911	38163	38658	38794	38957	38617	38156	38124	38377	38574	38973	38412	101.798
	18	38095	39183	38600	38653	38210	38385	38360	38627	38236	38659	39007	38859	101.832
	19	38160	38732	38416	38782	38174	38264	38915	38938	38303	38621	38717	38398	101.732
	20	38055	38497	38563	38768	39437	38309	39254	38580	38632	38815	38136	38667	102.017
	21	38518	37900	38643	38600	38405	38486	38183	38316	38233	38816	38225	38988	101.489
	22	38579	38142	38698	38773	38803	38525	38899	38729	38473	38666	38591	38611	101.968
	23	38898	38589	37843	38954	38367	39285	39071	39171	38547	38643	38185	38759	102.149

INAF/UNIRomaTre		S.V.I.R.CO. Observatory - Pressure Corrected Data – October 2021											16 NM-64	
day	hh	00_05	05_10	10_15	15_20	20_25	25_30	30_35	35_40	40_45	45_50	50_55	55_60	h-norm
31	0	38844	39247	38821	38716	38227	38867	38156	38403	38874	38442	38571	38921	102.095
	1	38592	38450	37976	38377	38111	38355	38237	38863	38176	38591	37943	38423	101.221
	2	38670	38638	38463	38722	39175	38962	38338	38539	38909	38370	38375	38760	102.063
	3	38633	38357	38272	38674	38591	38644	38211	38253	38526	38441	38694	38018	101.489
	4	38303	38284	38718	38485	38612	38496	38992	38707	38662	38383	38108	38806	101.763
	5	38299	38744	38335	38781	38264	38317	38707	38788	38464	38746	38545	39051	101.869
	6	38387	38524	38724	39220	37628	37934	38355	38478	38855	39003	38317	38749	101.678
	7	38317	39087	39119	38186	38813	38430	38947	38568	38503	38441	39012	39075	102.190
	8	38288	38410	38731	38714	39346	38735	38603	38471	38317	38958	38605	39006	102.121
	9	38555	39016	39131	38976	38968	38821	38087	38661	38789	39226	39294	38709	102.572
	10	39130	38502	38431	39008	38632	38650	38520	38517	38929	38801	38906	38511	102.198
	11	38015	38559	38724	38400	38826	38841	38772	39384	38800	38614	38693	38180	102.038
	12	38771	38709	38996	38874	38282	39149	38540	38705	38478	38476	38231	38205	101.952
	13	39402	38502	38787	39142	38705	38870	38293	39231	39004	38355	38479	39107	102.493
	14	38570	38703	38302	38468	38891	38508	38507	38931	38489	38571	38304	39076	101.931
	15	38515	38763	38255	38543	38874	39172	38338	38872	38843	39153	38196	38165	102.012
	16	38270	38632	37966	38796	38786	38726	38294	38777	38818	39147	38508	38040	101.807
	17	38558	38463	38882	38492	38512	38441	38871	38709	38710	38268	38923	38668	101.969
	18	38606	38442	38651	37617	38414	38703	38745	38459	38367	38253	38765	38574	101.551
	19	38289	38475	38663	38416	38517	38917	38408	38498	38456	37661	38377	38173	101.387
	20	37998	38427	38284	38691	38467	38115	38848	38769	38647	39067	38739	38042	101.660
	21	38563	38359	38788	38698	38484	38744	38714	38341	38050	38597	38513	38788	101.780
	22	38800	38472	38654	39144	38695	38816	38505	38244	38211	38781	37907	38051	101.702
	23	38784	38558	38813	38499	38356	38407	38823	38639	38235	38177	38848	38980	101.886

S.V.I.R.CO. Observatory - Pressure in hectoPascal – October 2021

day	hh	00_05	05_10	10_15	15_20	20_25	25_30	30_35	35_40	40_45	45_50	50_55	55_60	average
1	0	1020.83	1020.83	1020.83	1020.83	1020.83	1020.83	1020.83	1020.83	1020.83	1020.83	1020.83	1020.82	1020.83
	1	1020.77	1020.73	1020.67	1020.62	1020.52	1020.41	1020.41	1020.41	1020.41	1020.41	1020.41	1020.41	1020.51
	2	1020.41	1020.41	1020.41	1020.41	1020.41	1020.41	1020.41	1020.41	1020.41	1020.41	1020.41	1020.41	1020.41
	3	1020.41	1020.41	1020.41	1020.41	1020.39	1020.28	1020.20	1020.20	1020.20	1020.20	1020.20	1020.21	1020.29
	4	1020.21	1020.20	1020.20	1020.20	1020.20	1020.21	1020.21	1020.20	1020.21	1020.21	1020.20	1020.20	1020.20
	5	1020.20	1020.20	1020.20	1020.27	1020.36	1020.40	1020.41	1020.41	1020.41	1020.41	1020.41	1020.41	1020.34
	6	1020.50	1020.60	1020.62	1020.73	1020.83	1020.83	1020.83	1020.83	1020.83	1020.83	1020.86	1020.92	1020.77
	7	1020.94	1020.99	1021.04	1021.04	1021.04	1021.04	1021.04	1021.04	1021.04	1021.04	1021.04	1021.04	1021.03
	8	1021.04	1021.04	1021.04	1021.04	1021.10	1021.17	1021.16	1021.18	1021.21	1021.21	1021.21	1021.21	1021.13
	9	1021.21	1021.21	1021.21	1021.21	1021.13	1021.04	1021.04	1021.04	1021.04	1021.02	1020.98	1020.90	1021.08
	10	1020.83	1020.83	1020.81	1020.77	1020.69	1020.62	1020.62	1020.62	1020.57	1020.47	1020.41	1020.41	1020.64
	11	1020.41	1020.41	1020.31	1020.10	1019.99	1019.99	1019.89	1019.79	1019.78	1019.75	1019.65	1019.58	1019.97
	12	1019.58	1019.47	1019.37	1019.37	1019.35	1019.25	1019.16	1019.16	1019.15	1019.10	1019.00	1018.95	1019.24
	13	1018.93	1018.90	1018.82	1018.74	1018.74	1018.74	1018.74	1018.74	1018.73	1018.69	1018.59	1018.53	1018.74
	14	1018.53	1018.53	1018.53	1018.52	1018.50	1018.48	1018.47	1018.39	1018.32	1018.32	1018.32	1018.32	1018.43
	15	1018.31	1018.31	1018.31	1018.32	1018.32	1018.32	1018.32	1018.32	1018.32	1018.32	1018.32	1018.32	1018.32
	16	1018.32	1018.32	1018.32	1018.32	1018.32	1018.32	1018.32	1018.32	1018.33	1018.35	1018.37	1018.39	1018.33
	17	1018.42	1018.43	1018.42	1018.42	1018.43	1018.45	1018.45	1018.49	1018.52	1018.56	1018.64	1018.67	1018.49
	18	1018.67	1018.69	1018.70	1018.72	1018.74	1018.74	1018.74	1018.74	1018.74	1018.80	1018.86	1018.87	1018.75
	19	1018.89	1018.93	1018.95	1018.96	1019.01	1019.09	1019.14	1019.16	1019.16	1019.16	1019.16	1019.16	1019.06
	20	1019.16	1019.16	1019.16	1019.16	1019.16	1019.16	1019.16	1019.16	1019.16	1019.16	1019.16	1019.16	1019.16
	21	1019.16	1019.16	1019.16	1019.16	1019.16	1019.15	1019.14	1019.14	1019.13	1019.13	1019.14	1019.14	1019.14
	22	1019.14	1019.05	1018.95	1018.95	1018.95	1018.95	1018.95	1018.95	1018.93	1018.91	1018.91	1018.91	1018.96
	23	1018.90	1018.82	1018.74	1018.74	1018.74	1018.74	1018.74	1018.69	1018.59	1018.52	1018.53	1018.53	1018.69
2	0	1018.52	1018.52	1018.51	1018.47	1018.38	1018.32	1018.32	1018.31	1018.32	1018.32	1018.30	1018.27	1018.37
	1	1018.26	1018.18	1018.11	1018.11	1018.11	1018.11	1018.05	1017.94	1017.89	1017.89	1017.79	1017.69	1018.01
	2	1017.59	1017.48	1017.37	1017.27	1017.27	1017.26	1017.17	1017.09	1017.09	1017.08	1017.06	1017.06	1017.23
	3	1017.06	1017.06	1016.95	1016.85	1016.85	1016.86	1016.86	1016.86	1016.86	1016.85	1016.86	1016.86	1016.90
	4	1016.85	1016.85	1016.86	1016.86	1016.85	1016.85	1016.84	1016.83	1016.84	1016.90	1017.01	1017.07	1016.88
	5	1017.07	1017.06	1017.06	1017.06	1017.06	1017.06	1017.07	1017.17	1017.27	1017.27	1017.38	1017.48	1017.17
	6	1017.59	1017.70	1017.70	1017.69	1017.69	1017.69	1017.69	1017.69	1017.69	1017.69	1017.69	1017.69	1017.68
	7	1017.69	1017.69	1017.80	1017.90	1018.01	1018.18	1018.26	1018.29	1018.32	1018.32	1018.34	1018.37	1018.10
	8	1018.37	1018.38	1018.46	1018.52	1018.53	1018.53	1018.52	1018.50	1018.40	1018.32	1018.32	1018.32	1018.43
	9	1018.32	1018.32	1018.32	1018.32	1018.32	1018.32	1018.32	1018.32	1018.35	1018.43	1018.46	1018.47	1018.35
	10	1018.48	1018.51	1018.53	1018.53	1018.53	1018.53	1018.53	1018.53	1018.52	1018.50	1018.48	1018.39	1018.50
	11	1018.31	1018.21	1018.05	1017.99	1017.95	1017.90	1017.90	1017.90	1017.89	1017.88	1017.87	1017.78	1017.97
	12	1017.70	1017.70	1017.68	1017.57	1017.48	1017.48	1017.48	1017.48	1017.48	1017.48	1017.48	1017.48	1017.54
	13	1017.45	1017.35	1017.27	1017.27	1017.27	1017.27	1017.27	1017.27	1017.27	1017.27	1017.28	1017.28	1017.29
	14	1017.28	1017.27	1017.27	1017.27	1017.17	1017.06	1017.06	1017.06	1017.06	1017.06	1017.06	1017.06	1017.14
	15	1017.06	1017.06	1017.06	1017.07	1017.07	1017.17	1017.27	1017.27	1017.27	1017.27	1017.27	1017.27	1017.17
	16	1017.27	1017.27	1017.33	1017.39	1017.40	1017.42	1017.43	1017.46	1017.48	1017.48	1017.48	1017.48	1017.41
	17	1017.48	1017.59	1017.69	1017.69	1017.69	1017.69	1017.69	1017.69	1017.69	1017.69	1017.69	1017.69	1017.66
	18	1017.69	1017.69	1017.69	1017.69	1017.69	1017.77	1017.85	1017.85	1017.88	1017.90	1017.95	1018.06	1017.81
	19	1018.12	1018.23	1018.43	1018.53	1018.52	1018.53	1018.53	1018.53	1018.53	1018.53	1018.52	1018.53	1018.46
	20	1018.53	1018.53	1018.53	1018.53	1018.51	1018.48	1018.39	1018.31	1018.31	1018.32	1018.32	1018.32	1018.42
	21	1018.32	1018.32	1018.32	1018.32	1018.32	1018.32	1018.32	1018.30	1018.19	1018.11	1018.07	1017.96	1018.24
	22	1017.88	1017.78	1017.69	1017.69	1017.69	1017.69	1017.69	1017.69	1017.69	1017.69	1017.69	1017.69	1017.71
	23	1017.69	1017.69	1017.69	1017.69	1017.69	1017.69	1017.69	1017.69	1017.77	1017.88	1017.90	1017.91	1017.75

S.V.I.R.CO. Observatory - Pressure in hectoPascal – October 2021

day	hh	00_05	05_10	10_15	15_20	20_25	25_30	30_35	35_40	40_45	45_50	50_55	55_60	average
3	0	1017.97	1017.97	1017.98	1017.98	1017.97	1017.98	1017.98	1017.98	1017.98	1017.98	1017.98	1018.00	1017.98
	1	1018.01	1018.06	1018.11	1018.11	1018.07	1017.97	1017.90	1017.88	1017.86	1017.86	1017.78	1017.69	1017.94
	2	1017.69	1017.69	1017.69	1017.69	1017.69	1017.58	1017.48	1017.49	1017.49	1017.48	1017.48	1017.48	1017.58
	3	1017.49	1017.49	1017.48	1017.48	1017.48	1017.48	1017.48	1017.48	1017.48	1017.48	1017.48	1017.48	1017.48
	4	1017.48	1017.48	1017.49	1017.49	1017.48	1017.48	1017.49	1017.49	1017.49	1017.46	1017.44	1017.43	1017.47
	5	1017.43	1017.43	1017.43	1017.43	1017.43	1017.43	1017.43	1017.43	1017.43	1017.43	1017.43	1017.43	1017.43
	6	1017.43	1017.43	1017.43	1017.46	1017.48	1017.56	1017.66	1017.69	1017.69	1017.69	1017.69	1017.69	1017.57
	7	1017.69	1017.73	1017.77	1017.81	1017.86	1017.86	1017.86	1017.86	1017.86	1017.86	1017.86	1017.86	1017.82
	8	1017.86	1017.88	1017.90	1017.91	1017.91	1018.00	1018.10	1018.11	1018.17	1018.24	1018.39	1018.53	1018.08
	9	1018.58	1018.68	1018.74	1018.74	1018.74	1018.63	1018.53	1018.53	1018.53	1018.52	1018.50	1018.50	1018.60
	10	1018.49	1018.47	1018.39	1018.32	1018.32	1018.32	1018.22	1018.11	1018.08	1018.04	1018.02	1017.95	1018.23
	11	1017.90	1017.90	1017.80	1017.69	1017.69	1017.68	1017.67	1017.66	1017.57	1017.48	1017.49	1017.48	1017.67
	12	1017.44	1017.35	1017.28	1017.28	1017.28	1017.27	1017.27	1017.17	1017.06	1016.96	1016.85	1016.86	1017.17
	13	1016.86	1016.85	1016.86	1016.86	1016.85	1016.86	1016.86	1016.85	1016.85	1016.86	1016.86	1016.86	1016.85
	14	1016.86	1016.85	1016.85	1016.85	1016.85	1016.85	1016.85	1016.85	1016.85	1016.86	1016.86	1016.85	1016.85
	15	1016.85	1016.86	1016.86	1016.85	1016.85	1016.85	1016.85	1016.85	1016.85	1016.88	1016.93	1016.97	1016.87
	16	1016.96	1016.99	1017.06	1017.06	1017.06	1017.07	1017.07	1017.17	1017.27	1017.27	1017.34	1017.45	1017.15
	17	1017.48	1017.48	1017.49	1017.49	1017.49	1017.48	1017.53	1017.63	1017.69	1017.69	1017.69	1017.69	1017.57
	18	1017.69	1017.69	1017.69	1017.69	1017.69	1017.75	1017.83	1017.86	1017.87	1017.89	1017.90	1017.90	1017.79
	19	1017.90	1017.90	1017.90	1017.90	1017.90	1017.90	1017.90	1017.90	1017.90	1017.90	1017.90	1017.90	1017.90
	20	1017.92	1017.94	1017.93	1017.93	1017.96	1017.99	1018.05	1018.11	1018.11	1018.11	1018.11	1018.11	1018.02
	21	1018.11	1018.12	1018.19	1018.25	1018.29	1018.32	1018.32	1018.32	1018.43	1018.53	1018.53	1018.53	1018.33
	22	1018.61	1018.70	1018.68	1018.66	1018.67	1018.68	1018.67	1018.66	1018.65	1018.65	1018.65	1018.65	1018.66
	23	1018.63	1018.61	1018.61	1018.61	1018.60	1018.60	1018.61	1018.61	1018.61	1018.62	1018.62	1018.61	1018.61
4	0	1018.62	1018.62	1018.61	1018.60	1018.56	1018.53	1018.53	1018.53	1018.53	1018.53	1018.53	1018.53	1018.56
	1	1018.53	1018.51	1018.41	1018.32	1018.32	1018.32	1018.31	1018.31	1018.31	1018.31	1018.32	1018.32	1018.36
	2	1018.30	1018.28	1018.27	1018.27	1018.27	1018.28	1018.28	1018.28	1018.28	1018.28	1018.28	1018.28	1018.28
	3	1018.27	1018.27	1018.27	1018.27	1018.27	1018.27	1018.27	1018.27	1018.27	1018.27	1018.27	1018.27	1018.27
	4	1018.27	1018.28	1018.28	1018.27	1018.27	1018.27	1018.27	1018.26	1018.27	1018.26	1018.18	1018.11	1018.25
	5	1018.11	1018.11	1018.11	1018.11	1018.11	1018.11	1018.11	1018.11	1018.11	1018.17	1018.23	1018.25	1018.14
	6	1018.27	1018.30	1018.39	1018.47	1018.47	1018.47	1018.50	1018.53	1018.53	1018.53	1018.53	1018.53	1018.46
	7	1018.53	1018.53	1018.53	1018.57	1018.67	1018.74	1018.74	1018.74	1018.74	1018.74	1018.74	1018.74	1018.67
	8	1018.74	1018.74	1018.74	1018.74	1018.74	1018.73	1018.73	1018.74	1018.74	1018.74	1018.75	1018.77	1018.74
	9	1018.78	1018.80	1018.82	1018.83	1018.78	1018.74	1018.73	1018.63	1018.53	1018.52	1018.51	1018.50	1018.68
	10	1018.50	1018.41	1018.32	1018.30	1018.27	1018.28	1018.28	1018.27	1018.27	1018.27	1018.27	1018.19	1018.30
	11	1018.11	1018.11	1018.11	1018.11	1018.08	1018.05	1018.03	1017.97	1017.91	1017.90	1017.90	1017.90	1018.01
	12	1017.90	1017.90	1017.87	1017.84	1017.84	1017.76	1017.69	1017.69	1017.69	1017.69	1017.69	1017.69	1017.77
	13	1017.69	1017.69	1017.69	1017.69	1017.69	1017.69	1017.59	1017.48	1017.48	1017.49	1017.47	1017.36	1017.58
	14	1017.27	1017.27	1017.17	1017.07	1017.06	1017.06	1017.06	1017.05	1017.03	1016.93	1016.86	1016.86	1017.06
	15	1016.85	1016.85	1016.85	1016.85	1016.86	1016.84	1016.83	1016.83	1016.83	1016.83	1016.85	1016.86	1016.84
	16	1016.86	1016.85	1016.85	1016.85	1016.86	1016.86	1016.85	1016.85	1016.86	1016.86	1016.86	1016.76	1016.85
	17	1016.65	1016.65	1016.65	1016.70	1016.81	1016.86	1016.93	1017.01	1017.01	1017.00	1017.00	1017.02	1016.86
	18	1016.94	1016.85	1016.85	1016.85	1016.92	1017.03	1017.07	1017.06	1016.97	1016.89	1016.91	1017.00	1016.94
	19	1017.07	1017.06	1017.06	1017.07	1017.07	1017.07	1017.07	1017.07	1017.07	1017.07	1017.06	1017.06	1017.06
	20	1017.07	1017.17	1017.27	1017.27	1017.19	1017.20	1017.28	1017.28	1017.38	1017.56	1017.65	1017.69	1017.33
	21	1017.70	1017.59	1017.48	1017.48	1017.28	1017.08	1017.07	1016.97	1016.86	1016.86	1016.96	1017.24	1017.21
	22	1017.45	1017.48	1017.38	1017.06	1016.85	1016.93	1017.00	1016.92	1016.75	1016.64	1016.53	1016.44	1016.95
	23	1016.55	1016.65	1016.75	1016.96	1017.06	1018.22	1019.69	1019.78	1019.47	1018.81	1018.37	1018.38	1018.05

S.V.I.R.CO. Observatory - Pressure in hectoPascal – October 2021

day	hh	00_05	05_10	10_15	15_20	20_25	25_30	30_35	35_40	40_45	45_50	50_55	55_60	average
5	0	1018.52	1018.40	1017.67	1017.27	1017.47	1017.48	1017.58	1017.68	1017.55	1017.55	1017.77	1017.46	1017.66
	1	1016.96	1016.85	1016.75	1016.86	1016.96	1016.85	1016.75	1016.54	1016.54	1016.64	1016.85	1016.96	1016.79
	2	1016.75	1016.65	1016.65	1016.65	1016.62	1016.58	1016.50	1016.44	1016.33	1016.19	1016.15	1016.08	1016.46
	3	1016.02	1016.02	1015.91	1015.81	1015.81	1015.81	1015.82	1016.06	1016.30	1016.32	1016.34	1016.35	1016.04
	4	1016.40	1016.44	1016.44	1016.44	1016.43	1016.43	1016.43	1016.44	1016.44	1016.43	1016.44	1016.44	1016.43
	5	1016.44	1016.44	1016.44	1016.43	1016.43	1016.43	1016.44	1016.54	1016.64	1016.64	1016.67	1016.78	1016.52
	6	1016.86	1016.85	1016.85	1016.85	1016.86	1016.97	1017.07	1017.07	1017.17	1017.27	1017.27	1017.27	1017.03
	7	1017.27	1017.27	1017.27	1017.27	1017.27	1017.27	1017.27	1017.27	1017.27	1017.38	1017.59	1017.69	1017.34
	8	1017.77	1017.88	1017.90	1017.90	1017.90	1017.90	1017.90	1017.94	1017.98	1018.05	1018.19	1018.26	1017.96
	9	1018.29	1018.39	1018.49	1018.50	1018.49	1018.49	1018.50	1018.53	1018.51	1018.51	1018.53	1018.52	1018.48
	10	1018.49	1018.37	1018.28	1018.19	1018.11	1018.11	1018.11	1018.11	1018.11	1018.11	1018.11	1018.11	1018.18
	11	1018.11	1018.11	1018.05	1017.95	1017.89	1017.79	1017.69	1017.69	1017.69	1017.69	1017.68	1017.58	1017.82
	12	1017.48	1017.45	1017.35	1017.27	1017.27	1017.27	1017.27	1017.27	1017.27	1017.17	1017.07	1017.06	1017.27
	13	1017.06	1017.06	1017.07	1017.17	1017.27	1017.27	1017.27	1017.27	1017.27	1017.27	1017.27	1017.27	1017.21
	14	1017.27	1017.27	1017.27	1017.27	1017.27	1017.27	1017.27	1017.27	1017.27	1017.27	1017.27	1017.18	1017.26
	15	1017.09	1017.10	1017.09	1017.06	1017.06	1017.06	1017.06	1017.06	1017.06	1017.06	1017.06	1017.06	1017.07
	16	1017.07	1017.07	1017.07	1017.06	1017.05	1016.95	1016.85	1016.86	1016.86	1016.75	1016.64	1016.64	1016.90
	17	1016.65	1016.65	1016.64	1016.64	1016.75	1016.85	1016.85	1016.85	1016.85	1016.87	1016.89	1016.89	1016.78
	18	1016.91	1016.94	1016.99	1017.05	1017.07	1017.06	1017.07	1017.07	1017.06	1017.06	1017.06	1017.06	1017.03
	19	1017.06	1017.06	1017.06	1017.07	1017.07	1017.07	1017.07	1017.07	1017.07	1017.17	1017.27	1017.27	1017.11
	20	1017.27	1017.27	1017.27	1017.27	1017.27	1017.27	1017.27	1017.27	1017.27	1017.27	1017.27	1017.27	1017.27
	21	1017.27	1017.39	1017.50	1017.49	1017.48	1017.48	1017.48	1017.58	1017.69	1017.70	1017.69	1017.69	1017.53
	22	1017.69	1017.69	1017.69	1017.69	1017.69	1017.59	1017.48	1017.48	1017.48	1017.48	1017.48	1017.48	1017.58
	23	1017.48	1017.48	1017.49	1017.49	1017.48	1017.48	1017.48	1017.48	1017.48	1017.48	1017.49	1017.49	1017.48
6	0	1017.48	1017.42	1017.31	1017.27	1017.27	1017.28	1017.28	1017.27	1017.27	1017.20	1017.09	1017.07	1017.26
	1	1017.07	1016.96	1016.86	1016.85	1016.85	1016.75	1016.64	1016.65	1016.65	1016.65	1016.65	1016.55	1016.76
	2	1016.44	1016.42	1016.40	1016.40	1016.37	1016.29	1016.23	1016.23	1016.19	1016.09	1016.02	1016.02	1016.26
	3	1016.02	1016.02	1016.02	1016.02	1016.02	1016.02	1016.02	1016.02	1016.02	1016.00	1015.96	1015.89	1016.00
	4	1015.83	1015.81	1015.81	1015.81	1015.81	1015.81	1015.81	1015.81	1015.81	1015.81	1015.81	1015.81	1015.81
	5	1015.81	1015.81	1015.81	1015.81	1015.81	1015.80	1015.78	1015.79	1015.70	1015.60	1015.60	1015.59	1015.74
	6	1015.49	1015.40	1015.40	1015.39	1015.39	1015.39	1015.29	1015.18	1015.18	1015.18	1015.18	1015.18	1015.30
	7	1015.18	1015.39	1015.60	1015.60	1015.60	1015.60	1015.60	1015.60	1015.50	1015.40	1015.40	1015.39	1015.49
	8	1015.40	1015.40	1015.39	1015.39	1015.39	1015.39	1015.39	1015.39	1015.39	1015.39	1015.39	1015.22	1015.38
	9	1015.11	1015.18	1015.17	1015.17	1015.07	1014.97	1014.97	1014.87	1014.76	1014.76	1014.76	1014.76	1014.96
	10	1014.75	1014.73	1014.71	1014.68	1014.61	1014.45	1014.34	1014.24	1014.13	1014.03	1013.93	1013.93	1014.37
	11	1013.82	1013.63	1013.53	1013.40	1013.30	1013.30	1013.30	1013.30	1013.20	1013.09	1013.09	1013.09	1013.34
	12	1013.09	1013.09	1013.09	1013.09	1013.09	1012.99	1012.88	1012.88	1012.83	1012.72	1012.66	1012.56	1012.91
	13	1012.46	1012.46	1012.45	1012.55	1012.66	1012.67	1012.57	1012.46	1012.37	1012.36	1012.37	1012.30	1012.47
	14	1012.29	1012.27	1012.24	1012.31	1012.36	1012.29	1012.24	1012.24	1012.24	1012.24	1012.23	1012.20	1012.26
	15	1012.17	1012.10	1012.03	1011.98	1011.88	1011.83	1011.83	1011.79	1011.74	1011.68	1011.61	1011.53	1011.85
	16	1011.43	1011.41	1011.41	1011.41	1011.41	1011.34	1011.29	1011.31	1011.31	1011.32	1011.29	1011.23	1011.34
	17	1011.20	1011.20	1011.19	1011.09	1010.98	1010.98	1010.98	1010.98	1010.99	1010.99	1010.99	1010.98	1011.04
	18	1010.98	1010.99	1010.90	1010.79	1010.78	1010.68	1010.57	1010.57	1010.57	1010.57	1010.57	1010.55	1010.71
	19	1010.45	1010.36	1010.36	1010.26	1010.15	1010.14	1010.12	1010.02	1009.94	1009.94	1009.94	1009.83	1010.12
	20	1009.67	1009.56	1009.51	1009.50	1009.50	1009.54	1009.65	1009.73	1009.73	1009.72	1009.73	1009.73	1009.63
	21	1009.73	1009.73	1009.73	1009.66	1009.47	1009.32	1009.31	1009.31	1009.31	1009.31	1009.30	1009.30	1009.45
	22	1009.30	1009.31	1009.29	1009.19	1009.08	1009.05	1009.06	1009.09	1009.10	1009.10	1009.10	1009.10	1009.15
	23	1009.10	1009.10	1009.10	1009.10	1009.10	1009.10	1009.10	1009.10	1009.10	1009.10	1009.10	1009.10	1009.10

S.V.I.R.CO. Observatory - Pressure in hectoPascal – October 2021

day	hh	00_05	05_10	10_15	15_20	20_25	25_30	30_35	35_40	40_45	45_50	50_55	55_60	average
7	0	1009.09	1009.10	1009.10	1008.99	1008.84	1008.85	1008.89	1008.70	1008.59	1008.64	1008.54	1008.45	1008.80
	1	1008.39	1008.33	1008.35	1008.42	1008.47	1008.47	1008.46	1008.47	1008.47	1008.47	1008.47	1008.47	1008.43
	2	1008.46	1008.47	1008.47	1008.47	1006.01	1005.58	1007.91	1008.24	1008.25	1008.26	1008.26	1008.16	1007.88
	3	1008.05	1008.05	1008.05	1008.05	1008.04	1008.05	1008.05	1008.05	1008.05	1008.05	1008.04	1008.04	1008.05
	4	1008.02	1008.02	1008.04	1008.04	1008.04	1008.05	1008.05	1008.04	1007.96	1007.95	1008.02	1007.87	1008.01
	5	1007.73	1007.79	1007.94	1008.04	1008.05	1008.03	1008.02	1008.03	1007.94	1007.84	1007.84	1007.84	1007.92
	6	1007.84	1007.84	1007.84	1007.84	1007.84	1007.84	1007.84	1007.84	1007.74	1007.63	1007.63	1007.63	1007.78
	7	1007.63	1007.63	1007.63	1007.63	1007.62	1007.63	1007.63	1007.63	1007.63	1007.63	1007.63	1007.63	1007.63
	8	1007.63	1007.63	1007.63	1007.63	1007.63	1007.63	1007.63	1007.52	1007.42	1007.42	1007.42	1007.42	1007.55
	9	1007.42	1007.42	1007.42	1007.42	1007.42	1007.43	1007.32	1007.21	1007.21	1007.21	1007.21	1007.21	1007.32
	10	1007.21	1007.21	1007.21	1007.20	1007.15	1007.11	1007.12	1007.11	1007.06	1007.00	1007.00	1007.00	1007.11
	11	1007.00	1007.00	1006.99	1006.88	1006.79	1006.79	1006.78	1006.79	1006.68	1006.57	1006.57	1006.58	1006.78
	12	1006.58	1006.57	1006.57	1006.58	1006.58	1006.57	1006.57	1006.57	1006.57	1006.57	1006.57	1006.58	1006.57
	13	1006.58	1006.57	1006.57	1006.57	1006.57	1006.57	1006.56	1006.62	1006.68	1006.68	1006.74	1006.79	1006.62
	14	1006.79	1006.79	1006.79	1006.78	1006.78	1006.78	1006.79	1006.79	1006.78	1006.79	1006.79	1006.68	1006.78
	15	1006.57	1006.57	1006.57	1006.57	1006.57	1006.68	1006.79	1006.79	1006.78	1006.79	1006.79	1006.79	1006.69
	16	1006.82	1006.92	1006.99	1006.99	1007.09	1007.20	1007.20	1007.21	1007.21	1007.31	1007.42	1007.42	1007.15
	17	1007.42	1007.52	1007.62	1007.62	1007.62	1007.65	1007.71	1007.79	1007.83	1007.90	1008.01	1008.02	1007.72
	18	1007.99	1008.02	1008.04	1008.04	1008.04	1008.04	1008.04	1008.04	1008.09	1008.15	1008.14	1008.18	1008.07
	19	1008.25	1008.32	1008.42	1008.45	1008.45	1008.41	1008.40	1008.42	1008.44	1008.46	1008.47	1008.46	1008.41
	20	1008.45	1008.46	1008.38	1008.45	1008.73	1008.82	1008.83	1008.88	1008.88	1008.87	1008.87	1008.87	1008.70
	21	1008.88	1008.88	1008.89	1008.89	1008.88	1008.88	1008.89	1008.89	1008.89	1008.88	1008.91	1009.02	1008.90
	22	1009.10	1009.09	1009.20	1009.31	1009.41	1009.52	1009.52	1009.53	1009.55	1009.56	1009.60	1009.62	1009.42
	23	1009.68	1009.73	1009.73	1009.68	1009.64	1009.63	1009.63	1009.63	1009.63	1009.63	1009.64	1009.69	1009.66
8	0	1009.73	1009.73	1009.73	1009.73	1009.73	1009.73	1009.73	1009.73	1009.73	1009.73	1009.73	1009.73	1009.73
	1	1009.73	1009.73	1009.73	1009.73	1009.73	1009.73	1009.73	1009.73	1009.73	1009.73	1009.73	1009.73	1009.73
	2	1009.73	1009.73	1009.73	1009.73	1009.73	1009.73	1009.73	1009.73	1009.73	1009.73	1009.73	1009.73	1009.73
	3	1009.73	1009.73	1009.73	1009.73	1009.73	1009.73	1009.73	1009.73	1009.73	1009.73	1009.73	1009.73	1009.73
	4	1009.73	1009.84	1009.94	1009.95	1009.95	1009.94	1009.94	1009.94	1009.94	1009.94	1009.94	1010.03	1009.92
	5	1010.14	1010.15	1010.15	1010.15	1010.15	1010.15	1010.15	1010.15	1010.18	1010.28	1010.36	1010.36	1010.20
	6	1010.36	1010.45	1010.52	1010.54	1010.57	1010.57	1010.57	1010.57	1010.57	1010.57	1010.57	1010.57	1010.54
	7	1010.58	1010.69	1010.78	1010.89	1010.99	1010.99	1010.99	1010.99	1011.00	1011.10	1011.20	1011.20	1010.95
	8	1011.20	1011.20	1011.20	1011.24	1011.31	1011.34	1011.38	1011.41	1011.41	1011.41	1011.41	1011.41	1011.33
	9	1011.50	1011.61	1011.62	1011.62	1011.62	1011.62	1011.62	1011.73	1011.83	1011.83	1011.83	1011.83	1011.69
	10	1011.84	1011.86	1011.87	1011.88	1011.89	1011.89	1011.89	1011.91	1011.92	1011.91	1011.91	1011.91	1011.89
	11	1011.92	1011.92	1011.92	1011.92	1011.91	1011.89	1011.86	1011.83	1011.82	1011.83	1011.83	1011.83	1011.87
	12	1011.83	1011.79	1011.68	1011.62	1011.62	1011.62	1011.61	1011.60	1011.60	1011.54	1011.44	1011.41	1011.61
	13	1011.41	1011.41	1011.41	1011.41	1011.41	1011.41	1011.41	1011.41	1011.41	1011.48	1011.53	1011.53	1011.43
	14	1011.54	1011.54	1011.57	1011.61	1011.62	1011.62	1011.62	1011.62	1011.62	1011.62	1011.61	1011.62	1011.60
	15	1011.63	1011.65	1011.68	1011.76	1011.83	1011.83	1011.83	1011.82	1011.83	1011.83	1011.85	1011.96	1011.79
	16	1012.04	1012.04	1012.04	1012.04	1012.04	1012.14	1012.25	1012.25	1012.30	1012.41	1012.46	1012.46	1012.20
	17	1012.49	1012.59	1012.67	1012.78	1012.88	1012.88	1012.88	1012.99	1013.09	1013.09	1013.20	1013.30	1012.90
	18	1013.30	1013.30	1013.29	1013.30	1013.30	1013.30	1010.73	1010.84	1013.51	1013.51	1013.51	1013.51	1012.95
	19	1013.51	1013.51	1013.62	1013.72	1013.71	1013.72	1013.72	1013.72	1013.72	1013.72	1013.71	1013.71	1013.67
	20	1013.71	1013.72	1013.80	1013.90	1013.93	1013.93	1013.94	1013.96	1013.98	1014.05	1014.13	1014.14	1013.93
	21	1014.13	1014.13	1014.24	1014.35	1014.35	1014.35	1014.34	1014.35	1014.35	1014.35	1014.35	1014.34	1014.30
	22	1014.35	1014.35	1014.35	1014.35	1014.34	1014.34	1014.35	1014.35	1014.35	1014.35	1014.34	1014.30	1014.34
	23	1014.39	1014.48	1014.45	1014.44	1014.41	1014.41	1014.44	1014.47	1014.46	1014.50	1014.55	1014.56	1014.46

S.V.I.R.CO. Observatory - Pressure in hectoPascal – October 2021

day	hh	00_05	05_10	10_15	15_20	20_25	25_30	30_35	35_40	40_45	45_50	50_55	55_60	average
9	0	1014.56	1014.56	1014.56	1014.56	1014.56	1014.56	1014.57	1014.57	1014.57	1014.57	1014.57	1014.58	1014.56
	1	1014.58	1014.66	1014.75	1014.76	1014.76	1014.76	1014.77	1014.77	1014.77	1014.77	1014.77	1014.77	1014.74
	2	1014.77	1014.77	1014.77	1014.77	1014.77	1014.77	1014.77	1014.77	1014.77	1014.77	1014.77	1014.77	1014.77
	3	1014.77	1014.77	1014.77	1014.77	1014.77	1014.76	1014.76	1014.77	1014.77	1014.76	1014.76	1014.76	1014.76
	4	1014.77	1014.77	1014.77	1014.77	1014.76	1014.76	1014.77	1014.77	1014.77	1014.77	1014.76	1014.77	1014.76
	5	1014.77	1014.76	1014.77	1014.77	1014.77	1014.77	1014.77	1014.77	1014.78	1014.87	1014.97	1015.07	1014.82
	6	1015.16	1015.18	1015.18	1015.19	1015.20	1015.24	1015.34	1015.40	1015.40	1015.39	1015.40	1015.41	1015.29
	7	1015.41	1015.44	1015.54	1015.60	1015.60	1015.60	1015.60	1015.61	1015.61	1015.61	1015.61	1015.61	1015.57
	8	1015.61	1015.61	1015.62	1015.68	1015.77	1015.82	1015.82	1015.82	1015.82	1015.82	1015.82	1015.82	1015.75
	9	1015.82	1015.82	1015.82	1015.82	1015.82	1015.81	1015.82	1015.82	1015.82	1015.82	1015.81	1015.81	1015.81
	10	1015.79	1015.77	1015.77	1015.77	1015.77	1015.77	1015.76	1015.76	1015.68	1015.60	1015.61	1015.61	1015.72
	11	1015.60	1015.61	1015.61	1015.61	1015.61	1015.61	1015.61	1015.50	1015.40	1015.40	1015.39	1015.39	1015.53
	12	1015.28	1015.16	1015.16	1015.07	1014.97	1014.97	1014.97	1014.98	1014.98	1014.97	1014.95	1014.95	1015.03
	13	1014.94	1014.84	1014.77	1014.77	1014.77	1014.77	1014.76	1014.76	1014.77	1014.76	1014.75	1014.65	1014.77
	14	1014.55	1014.55	1014.55	1014.55	1014.55	1014.55	1014.56	1014.56	1014.56	1014.56	1014.56	1014.55	1014.55
	15	1014.55	1014.55	1014.55	1014.55	1014.55	1014.55	1014.55	1014.55	1014.55	1014.55	1014.55	1014.55	1014.55
	16	1014.55	1014.55	1014.55	1014.66	1014.76	1014.76	1014.77	1014.79	1014.89	1014.97	1014.97	1014.97	1014.76
	17	1014.97	1014.97	1015.08	1015.18	1015.18	1015.18	1015.18	1015.18	1015.17	1015.18	1015.18	1015.18	1015.13
	18	1015.18	1015.18	1015.18	1015.25	1015.35	1015.39	1015.40	1015.50	1015.59	1015.67	1015.78	1015.81	1015.44
	19	1015.81	1015.89	1015.99	1016.02	1016.02	1016.02	1016.01	1016.02	1016.03	1016.02	1016.05	1016.16	1016.00
	20	1016.23	1016.23	1016.23	1016.26	1016.31	1016.33	1016.34	1016.33	1016.34	1016.35	1016.35	1016.35	1016.30
	21	1016.35	1016.35	1016.33	1016.32	1016.31	1016.31	1016.28	1016.23	1016.23	1016.20	1016.16	1016.16	1016.27
	22	1016.09	1016.02	1016.02	1016.02	1016.02	1016.02	1016.02	1016.02	1016.02	1016.02	1016.02	1016.02	1016.02
	23	1016.02	1016.02	1016.02	1016.02	1015.29	1014.56	1014.56	1014.56	1014.56	1014.56	1014.56	1014.57	1015.11
10	0	1015.83	1015.83	1015.82	1015.82	1015.82	1015.71	1015.60	1015.60	1015.60	1015.60	1015.60	1015.60	1015.69
	1	1015.60	1015.50	1015.40	1015.24	1015.14	1015.18	1015.18	1015.18	1015.18	1015.19	1015.19	1015.18	1015.26
	2	1015.18	1015.17	1015.17	1015.17	1015.16	1015.15	1015.15	1015.15	1015.15	1015.05	1014.96	1014.97	1015.12
	3	1014.96	1014.85	1014.77	1014.77	1014.77	1014.76	1014.77	1014.77	1014.76	1014.68	1014.58	1014.56	1014.75
	4	1014.56	1014.56	1014.56	1014.56	1014.56	1014.56	1014.56	1014.55	1014.46	1014.36	1014.34	1014.35	1014.50
	5	1014.30	1014.27	1014.28	1014.31	1014.33	1014.33	1014.33	1014.33	1014.34	1014.34	1014.34	1014.34	1014.32
	6	1014.35	1014.34	1014.35	1014.35	1014.35	1014.35	1014.35	1014.35	1014.46	1014.56	1014.56	1014.56	1014.41
	7	1014.56	1014.56	1014.56	1014.56	1014.56	1014.56	1014.56	1014.56	1014.56	1014.56	1014.56	1014.56	1014.56
	8	1014.56	1014.56	1014.56	1014.56	1014.56	1014.56	1014.56	1014.56	1014.56	1014.56	1014.56	1014.56	1014.56
	9	1014.56	1014.56	1014.56	1014.56	1014.56	1014.56	1014.56	1014.56	1014.56	1014.56	1014.56	1014.56	1014.56
	10	1014.56	1014.48	1014.39	1014.36	1014.35	1014.35	1014.35	1014.35	1014.35	1014.25	1014.14	1014.14	1014.34
	11	1014.14	1014.14	1014.13	1014.02	1013.93	1013.94	1013.93	1013.93	1013.88	1013.78	1013.72	1013.72	1013.94
	12	1013.62	1013.51	1013.51	1013.51	1013.51	1013.48	1013.37	1013.30	1013.30	1013.30	1013.30	1013.30	1013.42
	13	1013.30	1013.41	1013.52	1013.52	1013.51	1013.51	1013.51	1013.51	1013.51	1013.51	1013.41	1013.30	1013.46
	14	1013.30	1013.30	1013.30	1013.30	1013.30	1013.31	1013.30	1013.30	1013.30	1013.30	1013.30	1013.30	1013.30
	15	1013.30	1013.30	1013.30	1013.31	1013.31	1013.30	1013.30	1013.30	1013.30	1013.30	1013.30	1013.31	1013.30
	16	1013.31	1013.11	1013.21	1013.51	1013.51	1013.51	1013.62	1013.72	1013.72	1013.72	1013.72	1013.83	1013.54
	17	1013.94	1013.94	1013.94	1013.93	1013.93	1013.93	1013.93	1013.93	1014.04	1014.15	1014.15	1014.14	1013.99
	18	1014.14	1014.14	1014.25	1014.36	1014.36	1014.35	1014.36	1014.38	1014.48	1014.56	1014.55	1014.54	1014.37
	19	1014.55	1014.56	1014.56	1014.56	1014.58	1014.58	1014.58	1014.60	1014.64	1014.65	1014.65	1014.67	1014.60
	20	1014.70	1014.67	1014.63	1014.61	1014.62	1014.66	1014.66	1014.64	1014.62	1014.70	1014.77	1014.77	1014.67
	21	1014.78	1014.78	1014.77	1014.77	1014.78	1014.78	1014.77	1014.78	1014.78	1014.82	1014.84	1014.86	1014.79
	22	1014.94	1014.86	1014.85	1014.97	1014.98	1014.98	1014.93	1014.91	1014.85	1014.77	1014.77	1014.78	1014.88
	23	1014.78	1014.78	1014.82	1014.87	1014.86	1014.86	1014.85	1014.86	1014.86	1014.92	1014.99	1014.99	1014.87

S.V.I.R.CO. Observatory - Pressure in hectoPascal – October 2021

day	hh	00_05	05_10	10_15	15_20	20_25	25_30	30_35	35_40	40_45	45_50	50_55	55_60	average
11	0	1014.98	1014.98	1014.98	1014.99	1014.99	1014.98	1014.99	1014.99	1014.98	1014.98	1014.98	1014.98	1014.98
	1	1015.03	1015.08	1015.12	1015.14	1015.16	1015.18	1015.18	1015.18	1015.18	1015.08	1014.98	1014.96	1015.10
	2	1014.95	1014.97	1014.98	1014.98	1014.98	1014.99	1014.99	1014.98	1014.96	1014.86	1014.78	1014.78	1014.93
	3	1014.78	1014.78	1014.78	1014.78	1014.78	1014.68	1014.57	1014.58	1014.58	1014.57	1014.57	1014.50	1014.66
	4	1014.42	1014.44	1014.45	1014.44	1014.42	1014.40	1014.42	1014.44	1014.43	1014.42	1014.39	1014.37	1014.42
	5	1014.36	1014.36	1014.36	1014.36	1014.36	1014.36	1014.36	1014.47	1014.62	1014.72	1014.80	1014.90	1014.50
	6	1015.10	1015.21	1015.31	1015.41	1015.41	1015.41	1015.41	1015.52	1015.62	1015.73	1015.83	1015.83	1015.48
	7	1015.83	1015.83	1015.90	1015.97	1016.01	1016.03	1016.04	1016.12	1016.19	1016.19	1016.22	1016.25	1016.05
	8	1016.25	1016.24	1016.35	1016.45	1016.45	1016.45	1016.45	1016.45	1016.45	1016.45	1016.45	1016.45	1016.41
	9	1016.45	1016.45	1016.45	1016.45	1016.45	1016.45	1016.45	1016.45	1016.45	1016.45	1016.45	1016.45	1016.45
	10	1016.45	1016.45	1016.45	1016.45	1016.45	1016.39	1016.29	1016.24	1016.20	1016.14	1016.12	1016.08	1016.31
	11	1016.03	1016.01	1015.90	1015.82	1015.82	1015.80	1015.79	1015.80	1015.75	1015.66	1015.61	1015.58	1015.80
	12	1015.55	1015.48	1015.41	1015.30	1015.18	1015.16	1015.16	1015.16	1015.16	1015.16	1015.15	1015.14	1015.25
	13	1015.13	1015.12	1015.05	1014.98	1014.98	1014.88	1014.77	1014.66	1014.56	1014.56	1014.56	1014.56	1014.82
	14	1014.56	1014.56	1014.57	1014.57	1014.56	1014.56	1014.67	1014.77	1014.77	1014.77	1014.77	1014.69	1014.65
	15	1014.62	1014.63	1014.62	1014.63	1014.66	1014.73	1014.77	1014.77	1014.77	1014.77	1014.77	1014.77	1014.71
	16	1014.79	1014.81	1014.82	1014.83	1014.81	1014.78	1014.79	1014.79	1014.88	1014.98	1014.98	1015.09	1014.86
	17	1015.25	1015.34	1015.36	1015.35	1015.35	1015.36	1015.36	1015.38	1015.40	1015.40	1015.51	1015.61	1015.39
	18	1015.61	1015.60	1015.61	1015.61	1015.61	1015.61	1015.61	1015.61	1015.63	1015.69	1015.77	1015.82	1015.65
	19	1015.82	1015.82	1015.82	1015.82	1015.82	1015.82	1015.82	1015.82	1015.82	1015.82	1015.82	1015.82	1015.82
	20	1015.82	1015.82	1015.82	1015.82	1015.81	1015.80	1015.80	1015.80	1015.81	1015.82	1015.82	1015.83	1015.81
	21	1015.83	1015.82	1015.82	1015.82	1015.84	1015.88	1015.90	1015.93	1015.98	1015.99	1015.99	1015.96	1015.89
	22	1015.94	1015.94	1015.94	1015.94	1015.93	1015.93	1015.96	1015.99	1016.01	1016.03	1016.03	1016.03	1015.97
	23	1016.03	1016.03	1016.03	1016.03	1016.03	1016.03	1016.03	1016.01	1016.00	1015.98	1015.89	1015.82	1015.99
12	0	1015.82	1015.83	1015.83	1015.82	1015.82	1015.71	1015.61	1015.61	1015.62	1015.62	1015.61	1015.61	1015.70
	1	1015.62	1015.62	1015.62	1015.62	1015.62	1015.61	1015.62	1015.52	1015.41	1015.41	1015.40	1015.40	1015.54
	2	1015.40	1015.40	1015.40	1015.40	1015.30	1015.13	1015.02	1015.00	1015.00	1015.00	1015.02	1015.07	1015.18
	3	1015.11	1015.13	1015.16	1015.16	1015.15	1015.14	1015.14	1015.14	1015.14	1015.14	1015.14	1015.15	1015.14
	4	1015.15	1015.14	1015.15	1015.16	1015.16	1015.16	1015.16	1015.15	1015.15	1015.15	1015.15	1015.07	1015.14
	5	1014.99	1014.99	1014.99	1014.99	1014.99	1014.94	1014.90	1014.90	1014.90	1014.90	1014.90	1014.88	1014.94
	6	1014.86	1014.86	1014.85	1014.88	1014.90	1014.89	1014.89	1014.91	1014.92	1014.92	1014.92	1014.92	1014.89
	7	1014.91	1014.91	1014.91	1014.91	1014.91	1014.91	1014.92	1014.96	1014.99	1014.99	1014.99	1014.99	1014.94
	8	1014.98	1014.98	1014.98	1014.98	1014.98	1014.99	1014.99	1014.99	1014.99	1014.98	1014.98	1014.99	1014.98
	9	1014.98	1014.98	1014.99	1014.88	1014.78	1014.78	1014.78	1014.78	1014.78	1014.78	1014.77	1014.66	1014.83
	10	1014.57	1014.57	1014.56	1014.51	1014.42	1014.37	1014.36	1014.35	1014.36	1014.36	1014.25	1014.15	1014.40
	11	1013.99	1013.89	1013.94	1013.84	1013.73	1013.63	1013.52	1013.52	1013.52	1013.42	1013.31	1013.31	1013.63
	12	1013.31	1013.21	1013.10	1013.10	1013.10	1013.03	1012.92	1012.82	1012.71	1012.68	1012.68	1012.58	1012.93
	13	1012.51	1012.50	1012.47	1012.47	1012.36	1012.25	1012.25	1012.26	1012.15	1012.04	1012.05	1012.05	1012.28
	14	1012.04	1012.04	1012.04	1012.04	1012.04	1012.04	1012.04	1011.99	1011.89	1011.85	1011.84	1011.83	1011.97
	15	1011.83	1011.83	1011.83	1011.83	1011.83	1011.83	1011.83	1011.83	1011.83	1011.83	1011.83	1011.83	1011.83
	16	1011.83	1011.83	1011.83	1011.83	1011.83	1011.83	1011.83	1011.84	1011.83	1011.83	1011.85	1011.96	1011.84
	17	1012.04	1012.04	1012.04	1012.04	1012.04	1012.05	1012.16	1012.25	1012.25	1012.25	1012.25	1012.25	1012.14
	18	1012.25	1012.26	1012.28	1012.32	1012.40	1012.47	1012.47	1012.46	1012.46	1012.47	1012.47	1012.46	1012.39
	19	1012.46	1012.46	1012.46	1012.46	1012.46	1012.46	1012.47	1012.47	1012.46	1012.46	1012.46	1012.47	1012.46
	20	1012.47	1012.48	1012.50	1012.50	1012.50	1012.52	1012.60	1012.66	1012.66	1012.66	1012.66	1012.67	1012.57
	21	1012.67	1012.67	1012.67	1012.67	1012.67	1012.67	1012.67	1012.67	1012.68	1012.68	1012.67	1012.67	1012.67
	22	1012.67	1012.68	1012.68	1012.68	1012.67	1012.68	1012.68	1012.68	1012.67	1012.67	1012.68	1012.68	1012.67
	23	1012.67	1012.67	1012.68	1012.68	1012.68	1012.68	1012.68	1012.68	1012.67	1012.68	1012.68	1012.68	1012.67

S.V.I.R.CO. Observatory - Pressure in hectoPascal – October 2021

day	hh	00_05	05_10	10_15	15_20	20_25	25_30	30_35	35_40	40_45	45_50	50_55	55_60	average
13	0	1012.67	1012.67	1012.68	1012.67	1012.63	1012.54	1012.49	1012.49	1012.46	1012.47	1012.47	1012.47	1012.55
	1	1012.47	1012.46	1012.36	1012.26	1012.26	1012.26	1012.26	1012.26	1012.25	1012.22	1012.11	1012.05	1012.27
	2	1012.05	1012.05	1012.05	1012.05	1012.05	1012.05	1012.05	1012.05	1011.95	1011.84	1011.84	1011.84	1011.99
	3	1011.84	1011.84	1011.84	1011.84	1011.84	1011.84	1011.84	1011.84	1011.84	1011.84	1011.84	1011.84	1011.84
	4	1011.84	1011.84	1011.84	1011.84	1011.84	1011.84	1011.84	1011.84	1011.84	1011.84	1011.84	1011.84	1011.84
	5	1011.84	1011.84	1011.84	1011.84	1011.84	1011.84	1011.84	1011.84	1011.88	1011.99	1012.16	1012.26	1011.92
	6	1012.33	1012.49	1012.60	1012.58	1012.62	1012.68	1012.68	1012.76	1012.86	1012.89	1012.89	1012.89	1012.69
	7	1012.99	1013.09	1013.10	1013.11	1013.10	1013.10	1013.10	1013.10	1013.13	1013.24	1013.31	1013.31	1013.14
	8	1013.31	1013.31	1013.31	1013.31	1013.31	1013.31	1013.31	1013.31	1013.31	1013.31	1013.31	1013.31	1013.31
	9	1013.31	1013.31	1013.31	1013.31	1013.31	1013.31	1013.21	1013.10	1013.10	1013.10	1013.10	1013.10	1013.21
	10	1013.00	1012.89	1012.89	1012.89	1012.89	1012.89	1012.83	1012.76	1012.77	1012.72	1012.68	1012.68	1012.82
	11	1012.68	1012.68	1012.59	1012.52	1012.51	1012.47	1012.47	1012.37	1012.26	1012.26	1012.25	1012.25	1012.44
	12	1012.25	1012.22	1012.11	1012.05	1012.01	1011.96	1011.90	1011.84	1011.75	1011.65	1011.62	1011.63	1011.91
	13	1011.63	1011.61	1011.51	1011.42	1011.42	1011.42	1011.40	1011.39	1011.36	1011.33	1011.34	1011.36	1011.43
	14	1011.36	1011.35	1011.35	1011.35	1011.36	1011.38	1011.40	1011.41	1011.49	1011.59	1011.62	1011.62	1011.44
	15	1011.64	1011.75	1011.83	1011.91	1011.99	1012.02	1012.04	1012.09	1012.14	1012.20	1012.25	1012.25	1012.01
	16	1012.36	1012.46	1012.47	1012.58	1012.67	1012.78	1012.88	1012.69	1012.80	1013.10	1013.20	1013.30	1012.77
	17	1012.80	1012.29	1012.91	1013.63	1013.72	1013.83	1013.93	1013.93	1014.04	1014.14	1014.24	1014.34	1013.65
	18	1014.45	1014.56	1014.58	1014.68	1014.77	1014.79	1014.90	1014.98	1015.04	1015.15	1015.19	1015.19	1014.86
	19	1015.19	1015.19	1015.19	1015.19	1015.29	1015.40	1015.40	1015.40	1015.40	1015.40	1015.40	1015.40	1015.32
	20	1015.41	1015.50	1015.51	1015.43	1015.45	1015.50	1015.53	1015.57	1015.61	1015.66	1015.77	1015.83	1015.56
	21	1015.82	1015.82	1015.82	1015.82	1015.82	1015.82	1015.82	1015.82	1015.82	1015.82	1015.82	1015.82	1015.82
	22	1015.82	1015.82	1015.82	1015.82	1015.82	1015.82	1015.82	1015.82	1015.81	1015.71	1015.61	1015.61	1015.77
	23	1015.61	1015.61	1015.61	1015.61	1015.61	1015.61	1015.61	1015.61	1015.61	1015.61	1015.61	1015.61	1015.61
14	0	1015.61	1015.62	1015.62	1015.67	1015.77	1015.82	1015.83	1015.83	1015.82	1015.82	1015.84	1015.86	1015.76
	1	1015.91	1015.96	1015.97	1015.98	1015.99	1016.01	1016.03	1016.03	1016.03	1016.03	1016.14	1016.25	1016.02
	2	1016.25	1016.24	1016.24	1016.24	1016.24	1016.24	1016.24	1016.24	1016.24	1016.24	1016.24	1016.24	1016.24
	3	1016.24	1016.24	1016.24	1016.24	1016.24	1016.24	1016.24	1016.24	1016.25	1016.30	1016.33	1016.36	1016.26
	4	1016.42	1016.45	1016.45	1016.45	1016.45	1016.45	1016.45	1016.45	1016.45	1016.45	1016.45	1016.45	1016.45
	5	1016.45	1016.45	1016.45	1016.45	1016.56	1016.66	1016.66	1016.66	1016.66	1016.66	1016.73	1016.83	1016.60
	6	1016.87	1016.89	1016.96	1017.04	1017.08	1017.08	1017.19	1017.29	1017.34	1017.40	1017.40	1017.40	1017.16
	7	1017.41	1017.46	1017.50	1017.50	1017.50	1017.50	1017.49	1017.49	1017.49	1017.50	1017.50	1017.50	1017.49
	8	1017.50	1017.50	1017.49	1017.50	1017.50	1017.50	1017.50	1017.50	1017.50	1017.50	1017.50	1017.50	1017.50
	9	1017.50	1017.50	1017.60	1017.71	1017.71	1017.70	1017.69	1017.69	1017.70	1017.70	1017.71	1017.71	1017.66
	10	1017.71	1017.71	1017.71	1017.71	1017.71	1017.71	1017.70	1017.71	1017.71	1017.60	1017.48	1017.46	1017.66
	11	1017.45	1017.37	1017.29	1017.29	1017.29	1017.29	1017.28	1017.17	1017.08	1017.08	1016.98	1016.87	1017.20
	12	1016.87	1016.86	1016.85	1016.85	1016.84	1016.75	1016.66	1016.66	1016.66	1016.66	1016.66	1016.56	1016.74
	13	1016.46	1016.45	1016.45	1016.46	1016.46	1016.45	1016.45	1016.45	1016.45	1016.45	1016.45	1016.34	1016.44
	14	1016.24	1016.24	1016.24	1016.24	1016.24	1016.24	1016.24	1016.24	1016.24	1016.24	1016.24	1016.31	1016.24
	15	1016.40	1016.44	1016.45	1016.45	1016.45	1016.45	1016.45	1016.45	1016.45	1016.45	1016.45	1016.45	1016.44
	16	1016.45	1016.51	1016.61	1016.66	1016.67	1016.77	1016.87	1016.94	1017.04	1017.07	1017.08	1017.08	1016.81
	17	1017.08	1017.08	1017.19	1017.29	1017.35	1017.46	1017.49	1017.57	1017.67	1017.70	1017.71	1017.71	1017.44
	18	1017.71	1017.79	1017.87	1017.88	1017.88	1017.90	1017.92	1017.91	1017.92	1017.92	1017.91	1018.02	1017.88
	19	1018.13	1018.13	1018.12	1018.12	1018.12	1018.12	1018.13	1018.20	1018.30	1018.33	1018.33	1018.34	1018.20
	20	1018.34	1018.34	1018.34	1018.34	1018.34	1018.34	1018.34	1018.33	1018.33	1018.33	1018.33	1018.33	1018.33
	21	1018.34	1018.34	1018.34	1018.34	1018.34	1018.34	1018.33	1018.33	1018.33	1018.33	1018.34	1018.34	1018.33
	22	1018.34	1018.31	1018.21	1018.13	1018.13	1018.05	1017.94	1017.92	1017.92	1017.91	1017.91	1017.91	1018.06
	23	1017.91	1017.91	1017.92	1017.92	1017.92	1017.91	1017.91	1017.92	1017.92	1017.81	1017.71	1017.71	1017.87

S.V.I.R.CO. Observatory - Pressure in hectoPascal – October 2021

day	hh	00_05	05_10	10_15	15_20	20_25	25_30	30_35	35_40	40_45	45_50	50_55	55_60	average
15	0	1017.71	1017.71	1017.71	1017.71	1017.71	1017.61	1017.50	1017.49	1017.49	1017.47	1017.44	1017.36	1017.57
	1	1017.19	1017.09	1017.07	1017.06	1017.07	1017.07	1016.98	1016.88	1016.87	1016.87	1016.77	1016.67	1016.96
	2	1016.67	1016.56	1016.35	1016.25	1016.25	1016.23	1016.19	1016.10	1016.03	1016.03	1015.99	1015.89	1016.21
	3	1015.82	1015.81	1015.80	1015.80	1015.71	1015.62	1015.62	1015.62	1015.61	1015.62	1015.62	1015.62	1015.69
	4	1015.51	1015.41	1015.40	1015.40	1015.30	1015.20	1015.20	1015.09	1014.99	1014.89	1014.78	1014.78	1015.16
	5	1014.78	1014.77	1014.77	1014.77	1014.77	1014.77	1014.78	1014.78	1014.77	1014.76	1014.76	1014.67	1014.76
	6	1014.57	1014.57	1014.57	1014.57	1014.57	1014.57	1014.57	1014.57	1014.57	1014.57	1014.57	1014.57	1014.57
	7	1014.57	1014.52	1014.47	1014.48	1014.46	1014.50	1014.57	1014.57	1014.57	1014.57	1014.49	1014.41	1014.51
	8	1014.40	1014.40	1014.40	1014.40	1014.41	1014.41	1014.39	1014.36	1014.36	1014.36	1014.36	1014.37	1014.38
	9	1014.34	1014.23	1014.15	1014.11	1014.00	1013.94	1013.94	1013.94	1013.94	1013.94	1013.94	1013.94	1014.03
	10	1013.83	1013.73	1013.74	1013.74	1013.63	1013.52	1013.53	1013.53	1013.53	1013.42	1013.31	1013.21	1013.56
	11	1013.11	1013.00	1012.90	1012.79	1012.68	1012.68	1012.68	1012.68	1012.61	1012.54	1012.51	1012.47	1012.72
	12	1012.47	1012.47	1012.46	1012.35	1012.26	1012.23	1012.12	1012.05	1012.02	1011.95	1011.88	1011.84	1012.17
	13	1011.84	1011.84	1011.84	1011.84	1011.80	1011.69	1011.63	1011.63	1011.63	1011.63	1011.63	1011.64	1011.72
	14	1011.64	1011.65	1011.65	1011.67	1011.70	1011.70	1011.72	1011.69	1011.63	1011.62	1011.52	1011.42	1011.63
	15	1011.42	1011.53	1011.63	1011.73	1011.84	1011.84	1011.75	1011.65	1011.63	1011.63	1011.72	1011.82	1011.68
	16	1011.84	1011.84	1011.84	1011.84	1011.84	1011.84	1011.88	1011.98	1012.05	1012.05	1012.16	1012.26	1011.95
	17	1012.37	1012.47	1012.47	1012.47	1012.47	1012.55	1012.63	1012.64	1012.67	1012.68	1012.68	1012.70	1012.56
	18	1012.72	1012.81	1012.89	1012.89	1013.01	1013.12	1013.11	1013.10	1013.10	1013.10	1013.10	1013.10	1013.00
	19	1013.10	1013.21	1013.31	1013.31	1013.31	1013.31	1013.31	1013.31	1013.31	1013.31	1013.31	1012.40	1013.21
	20	1012.51	1013.52	1013.52	1013.52	1013.52	1013.52	1013.52	1013.52	1013.52	1013.53	1013.53	1013.53	1013.44
	21	1013.53	1013.53	1013.52	1013.52	1013.52	1013.52	1013.53	1013.53	1013.52	1013.52	1013.53	1013.53	1013.52
	22	1013.53	1013.52	1013.52	1013.52	1013.52	1013.53	1013.53	1013.52	1013.52	1013.52	1013.52	1013.52	1013.52
	23	1013.53	1013.53	1013.52	1013.52	1013.52	1013.52	1013.52	1013.53	1013.53	1013.53	1013.52	1013.52	1013.52
16	0	1012.94	1012.92	1012.92	1013.00	1013.01	1012.97	1012.96	1012.94	1012.95	1012.96	1012.92	1012.91	1012.95
	1	1012.88	1012.81	1012.78	1012.74	1012.68	1012.70	1012.71	1012.68	1012.63	1012.57	1012.54	1012.53	1012.68
	2	1012.55	1012.52	1012.51	1012.51	1012.49	1012.49	1012.48	1012.44	1012.43	1012.45	1012.46	1012.46	1012.48
	3	1012.46	1012.45	1012.43	1012.44	1012.50	1012.53	1012.53	1012.53	1012.54	1012.58	1012.58	1012.56	1012.51
	4	1012.57	1012.61	1012.66	1012.68	1012.68	1012.70	1012.73	1012.73	1012.74	1012.77	1012.80	1012.80	1012.70
	5	1012.81	1012.86	1012.90	1012.94	1012.97	1012.97	1013.00	1013.08	1013.15	1013.23	1013.30	1013.36	1013.04
	6	1013.43	1013.48	1013.54	1013.59	1013.62	1013.66	1013.71	1013.77	1013.83	1013.87	1013.90	1013.93	1013.69
	7	1013.96	1014.02	1014.05	1014.05	1014.08	1014.09	1014.12	1014.17	1014.21	1014.26	1014.31	1014.34	1014.14
	8	1014.37	1014.37	1014.36	1014.38	1014.42	1014.45	1014.51	1014.56	1014.60	1014.65	1014.65	1014.64	1014.49
	9	1014.65	1014.67	1014.67	1014.66	1014.64	1014.61	1014.59	1014.61	1014.60	1014.58	1014.59	1014.61	1014.62
	10	1014.59	1014.57	1014.54	1014.51	1014.51	1014.51	1014.49	1014.46	1014.44	1014.41	1014.37	1014.36	1014.48
	11	1014.37	1014.39	1014.40	1014.37	1014.35	1014.36	1014.32	1014.26	1014.22	1014.19	1014.16	1014.13	1014.29
	12	1014.12	1014.08	1014.03	1013.99	1013.95	1013.90	1013.89	1013.92	1013.92	1013.90	1013.89	1013.89	1013.96
	13	1013.89	1013.89	1013.86	1013.84	1013.84	1013.83	1013.85	1013.85	1013.82	1013.78	1013.79	1013.83	1013.84
	14	1013.85	1013.85	1013.86	1013.87	1013.88	1013.88	1013.90	1013.92	1013.92	1013.91	1013.91	1013.92	1013.89
	15	1013.93	1013.96	1013.98	1013.98	1013.99	1014.01	1014.04	1014.05	1014.06	1014.08	1014.07	1014.07	1014.02
	16	1014.10	1014.15	1014.20	1014.28	1014.36	1014.42	1014.47	1014.52	1014.59	1014.66	1014.75	1014.83	1014.44
	17	1014.91	1014.96	1014.99	1015.01	1015.03	1015.09	1015.15	1015.19	1015.24	1015.29	1015.31	1015.35	1015.12
	18	1015.41	1015.45	1015.48	1015.51	1015.53	1015.56	1015.58	1015.60	1015.61	1015.62	1015.65	1015.67	1015.56
	19	1015.70	1015.75	1015.79	1015.82	1015.83	1015.86	1015.91	1015.95	1015.99	1015.99	1015.99	1016.02	1015.88
	20	1016.05	1016.07	1016.08	1016.11	1016.12	1016.13	1016.15	1016.18	1016.21	1016.21	1016.21	1016.23	1016.14
	21	1016.25	1016.25	1016.26	1016.30	1016.33	1016.31	1016.27	1016.27	1016.27	1016.26	1016.25	1016.26	1016.27
	22	1016.28	1016.33	1016.38	1016.40	1016.41	1016.40	1016.43	1016.45	1016.43	1016.44	1016.47	1016.48	1016.41
	23	1016.49	1016.50	1016.50	1016.49	1016.48	1016.49	1016.53	1016.56	1016.58	1016.61	1016.62	1016.64	1016.54

S.V.I.R.CO. Observatory - Pressure in hectoPascal – October 2021

day	hh	00_05	05_10	10_15	15_20	20_25	25_30	30_35	35_40	40_45	45_50	50_55	55_60	average
17	0	1017.29	1017.29	1017.29	1017.29	1017.29	1017.29	1017.29	1017.29	1017.29	1017.29	1017.29	1017.29	1017.29
	1	1017.29	1017.29	1017.29	1017.29	1017.29	1017.29	1017.29	1017.29	1017.29	1017.28	1017.28	1017.29	1017.29
	2	1017.29	1017.23	1017.16	1017.14	1017.10	1017.09	1017.09	1017.08	1017.08	1017.08	1017.08	1017.08	1017.12
	3	1017.08	1017.08	1017.08	1017.08	1017.08	1017.08	1017.08	1017.08	1017.08	1017.08	1017.08	1017.08	1017.08
	4	1017.08	1017.08	1017.08	1017.08	1017.08	1017.08	1017.08	1017.08	1017.08	1017.08	1017.08	1017.08	1017.08
	5	1017.08	1017.08	1017.17	1017.27	1017.29	1017.29	1017.35	1017.45	1017.50	1017.50	1017.60	1017.70	1017.36
	6	1017.70	1017.70	1017.75	1017.84	1017.90	1017.92	1017.91	1017.95	1018.06	1018.12	1018.19	1018.27	1017.94
	7	1018.28	1018.29	1018.29	1018.31	1018.33	1018.33	1018.36	1018.44	1018.51	1018.55	1018.55	1018.55	1018.40
	8	1018.55	1018.63	1018.74	1018.75	1018.75	1018.75	1018.81	1018.88	1018.90	1018.90	1018.93	1018.96	1018.79
	9	1018.96	1018.97	1018.97	1018.96	1018.97	1018.97	1018.96	1018.96	1018.96	1018.96	1018.96	1018.94	1018.96
	10	1018.93	1018.93	1018.93	1018.92	1018.92	1018.84	1018.75	1018.75	1018.75	1018.75	1018.75	1018.75	1018.83
	11	1018.75	1018.71	1018.61	1018.54	1018.54	1018.53	1018.50	1018.41	1018.33	1018.33	1018.33	1018.34	1018.49
	12	1018.30	1018.19	1018.12	1018.12	1018.12	1018.11	1018.09	1018.06	1018.05	1018.06	1018.05	1017.99	1018.10
	13	1017.93	1017.91	1017.91	1017.91	1017.91	1017.91	1017.91	1017.91	1017.91	1017.91	1017.92	1017.92	1017.91
	14	1017.91	1017.91	1017.91	1017.91	1017.91	1017.91	1017.91	1017.91	1017.91	1017.91	1017.91	1017.91	1017.91
	15	1017.91	1017.91	1017.91	1017.91	1017.91	1017.91	1017.91	1017.91	1017.91	1017.95	1017.99	1018.02	1017.93
	16	1018.04	1018.08	1018.12	1018.12	1018.12	1018.12	1018.12	1018.20	1018.28	1018.28	1018.31	1018.38	1018.18
	17	1018.49	1018.54	1018.53	1018.60	1018.71	1018.75	1018.79	1018.86	1018.93	1018.96	1018.96	1019.05	1018.76
	18	1019.15	1019.17	1019.17	1019.28	1019.38	1019.38	1019.37	1019.38	1019.43	1019.49	1019.53	1019.57	1019.36
	19	1019.59	1019.58	1019.66	1019.77	1019.80	1019.79	1019.79	1019.81	1019.83	1019.92	1020.03	1020.14	1019.81
	20	1020.22	1020.21	1020.26	1020.35	1020.41	1020.42	1020.50	1020.58	1020.61	1020.63	1020.63	1020.63	1020.45
	21	1020.63	1020.63	1020.63	1020.68	1020.74	1020.77	1020.80	1020.82	1020.84	1020.88	1020.97	1021.02	1020.78
	22	1021.03	1021.04	1021.03	1021.02	1021.02	1021.04	1021.05	1021.05	1021.05	1021.05	1021.05	1021.06	1021.04
	23	1021.09	1021.14	1021.18	1021.19	1021.19	1021.18	1021.18	1021.18	1021.18	1021.18	1021.19	1021.19	1021.17
18	0	1020.66	1020.67	1020.71	1020.74	1020.76	1020.79	1020.80	1020.79	1020.76	1020.70	1020.67	1020.68	1020.73
	1	1020.67	1020.66	1020.65	1020.65	1020.62	1020.59	1020.58	1020.57	1020.56	1020.53	1020.50	1020.49	1020.59
	2	1020.46	1020.44	1020.44	1020.42	1020.41	1020.41	1020.40	1020.37	1020.36	1020.37	1020.39	1020.41	1020.40
	3	1020.43	1020.42	1020.41	1020.40	1020.40	1020.42	1020.43	1020.46	1020.49	1020.56	1020.63	1020.66	1020.47
	4	1020.70	1020.72	1020.74	1020.75	1020.78	1020.81	1020.84	1020.86	1020.90	1020.94	1020.98	1021.02	1020.84
	5	1021.06	1021.09	1021.13	1021.15	1021.15	1021.18	1021.23	1021.28	1021.34	1021.39	1021.45	1021.52	1021.24
	6	1021.59	1021.64	1021.66	1021.70	1021.73	1021.77	1021.80	1021.85	1021.93	1021.99	1022.04	1022.08	1021.81
	7	1022.13	1022.20	1022.26	1022.27	1022.26	1022.29	1022.34	1022.36	1022.36	1022.34	1022.34	1022.35	1022.29
	8	1022.36	1022.35	1022.36	1022.40	1022.45	1022.49	1022.52	1022.52	1022.52	1022.52	1022.51	1022.52	1022.46
	9	1022.54	1022.54	1022.56	1022.57	1022.55	1022.55	1022.56	1022.55	1022.53	1022.53	1022.54	1022.56	1022.55
	10	1022.58	1022.57	1022.56	1022.54	1022.52	1022.49	1022.43	1022.39	1022.37	1022.33	1022.26	1022.19	1022.43
	11	1022.15	1022.12	1022.08	1022.00	1021.93	1021.88	1021.84	1021.80	1021.75	1021.74	1021.72	1021.67	1021.89
	12	1021.64	1021.62	1021.62	1021.59	1021.52	1021.44	1021.40	1021.43	1021.39	1021.32	1021.31	1021.32	1021.46
	13	1021.31	1021.30	1021.29	1021.28	1021.30	1021.33	1021.32	1021.32	1021.33	1021.32	1021.30	1021.30	1021.31
	14	1021.29	1021.28	1021.31	1021.32	1021.31	1021.32	1021.34	1021.38	1021.45	1021.52	1021.55	1021.56	1021.38
	15	1021.62	1021.66	1021.68	1021.69	1021.69	1021.71	1021.73	1021.76	1021.80	1021.84	1021.87	1021.89	1021.74
	16	1021.91	1021.93	1021.99	1022.02	1022.03	1022.06	1022.10	1022.15	1022.20	1022.22	1022.27	1022.32	1022.10
	17	1022.36	1022.41	1022.45	1022.47	1022.52	1022.57	1022.63	1022.72	1022.78	1022.80	1022.84	1022.89	1022.62
	18	1022.92	1022.98	1023.03	1023.04	1023.07	1023.13	1023.18	1023.23	1023.30	1023.35	1023.40	1023.44	1023.17
	19	1023.47	1023.51	1023.57	1023.61	1023.66	1023.73	1023.81	1023.89	1023.98	1024.07	1024.16	1024.24	1023.81
	20	1024.32	1024.42	1024.53	1024.58	1024.59	1024.57	1024.55	1024.56	1024.59	1024.62	1024.66	1024.72	1024.56
	21	1024.76	1024.75	1024.75	1024.77	1024.80	1024.89	1024.98	1025.01	1024.98	1024.93	1024.93	1024.96	1024.87
	22	1024.97	1024.98	1025.01	1025.02	1025.02	1025.01	1024.97	1024.93	1024.91	1024.90	1024.87	1024.86	1024.95
	23	1024.88	1024.89	1024.89	1024.86	1024.81	1024.78	1024.80	1024.85	1024.92	1024.96	1024.98	1025.01	1024.88

S.V.I.R.CO. Observatory - Pressure in hectoPascal – October 2021

day	hh	00_05	05_10	10_15	15_20	20_25	25_30	30_35	35_40	40_45	45_50	50_55	55_60	average
19	0	1025.44	1025.44	1025.44	1025.44	1025.55	1025.65	1025.65	1025.65	1025.65	1025.66	1025.66	1025.66	1025.58
	1	1025.66	1025.67	1025.69	1025.70	1025.70	1025.69	1025.69	1025.70	1025.74	1025.79	1025.79	1025.79	1025.72
	2	1025.78	1025.77	1025.76	1025.77	1025.78	1025.78	1025.78	1025.77	1025.77	1025.77	1025.77	1025.76	1025.77
	3	1025.81	1025.86	1025.86	1025.86	1025.87	1025.88	1025.93	1026.02	1026.07	1026.07	1026.07	1026.07	1025.95
	4	1026.10	1026.20	1026.28	1026.28	1026.28	1026.28	1026.28	1026.35	1026.45	1026.49	1026.49	1026.50	1026.33
	5	1026.56	1026.66	1026.70	1026.70	1026.70	1026.70	1026.70	1026.70	1026.70	1026.70	1026.70	1026.74	1026.69
	6	1026.78	1026.85	1027.02	1027.12	1027.18	1027.28	1027.33	1027.33	1027.33	1027.33	1027.37	1027.45	1027.20
	7	1027.52	1027.54	1027.54	1027.54	1027.54	1027.54	1027.63	1027.72	1027.74	1027.75	1027.74	1027.74	1027.63
	8	1027.75	1027.75	1027.74	1027.74	1027.76	1027.85	1027.94	1027.96	1027.96	1027.95	1027.96	1027.96	1027.86
	9	1027.96	1027.96	1027.96	1027.96	1027.95	1027.96	1027.99	1028.01	1028.01	1028.00	1028.01	1028.03	1027.98
	10	1028.03	1028.10	1028.16	1028.17	1028.13	1028.02	1027.93	1027.82	1027.75	1027.75	1027.74	1027.63	1027.93
	11	1027.54	1027.52	1027.50	1027.49	1027.41	1027.23	1027.12	1027.12	1027.02	1026.91	1026.84	1026.73	1027.20
	12	1026.70	1026.68	1026.66	1026.66	1026.65	1026.58	1026.50	1026.49	1026.49	1026.46	1026.45	1026.44	1026.56
	13	1026.43	1026.43	1026.46	1026.49	1026.49	1026.49	1026.49	1026.49	1026.49	1026.49	1026.49	1026.49	1026.48
	14	1026.49	1026.49	1026.49	1026.48	1026.49	1026.49	1026.49	1026.49	1026.49	1026.49	1026.49	1026.49	1026.49
	15	1026.49	1026.49	1026.50	1026.51	1026.50	1026.50	1026.50	1026.49	1026.49	1026.49	1026.50	1026.51	1026.50
	16	1026.58	1026.65	1026.68	1026.69	1026.69	1026.78	1026.88	1026.90	1026.90	1026.90	1026.90	1026.90	1026.79
	17	1026.91	1026.91	1026.91	1026.97	1027.03	1027.05	1027.09	1027.22	1027.32	1027.32	1027.32	1027.37	1027.12
	18	1027.42	1027.42	1027.43	1027.43	1027.44	1027.46	1027.48	1027.49	1027.51	1027.53	1027.53	1027.53	1027.47
	19	1027.53	1027.53	1027.53	1027.53	1027.53	1027.59	1027.67	1027.70	1027.73	1027.74	1027.74	1027.74	1027.63
	20	1027.74	1027.74	1027.74	1027.74	1027.74	1027.80	1027.85	1027.85	1027.86	1027.91	1027.95	1027.95	1027.82
	21	1027.98	1028.08	1028.16	1028.15	1028.15	1028.16	1028.16	1028.16	1028.15	1028.16	1028.16	1028.16	1028.13
	22	1028.15	1028.16	1028.16	1028.16	1028.16	1028.16	1028.16	1028.14	1028.11	1028.10	1028.10	1028.10	1028.14
	23	1028.10	1028.10	1028.11	1028.11	1028.10	1028.09	1028.09	1028.08	1028.01	1027.95	1027.96	1027.95	1028.05
20	0	1027.94	1027.93	1027.91	1027.91	1027.91	1027.91	1027.91	1027.91	1027.92	1027.92	1027.91	1027.91	1027.91
	1	1027.90	1027.87	1027.80	1027.74	1027.75	1027.75	1027.75	1027.73	1027.72	1027.71	1027.68	1027.65	1027.75
	2	1027.60	1027.54	1027.52	1027.49	1027.40	1027.33	1027.33	1027.33	1027.33	1027.33	1027.33	1027.33	1027.40
	3	1027.33	1027.33	1027.33	1027.33	1027.33	1027.33	1027.33	1027.33	1027.33	1027.33	1027.33	1027.34	1027.33
	4	1027.34	1027.33	1027.33	1027.33	1027.33	1027.33	1027.33	1027.33	1027.33	1027.33	1027.33	1027.32	1027.33
	5	1027.22	1027.12	1027.13	1027.13	1027.12	1027.12	1027.02	1026.91	1026.91	1026.91	1026.91	1026.98	1027.04
	6	1027.08	1027.12	1027.12	1027.12	1027.21	1027.30	1027.30	1027.29	1027.29	1027.31	1027.33	1027.33	1027.23
	7	1027.33	1027.33	1027.40	1027.48	1027.49	1027.52	1027.54	1027.54	1027.54	1027.54	1027.65	1027.75	1027.51
	8	1027.75	1027.75	1027.75	1027.75	1027.75	1027.75	1027.75	1027.74	1027.74	1027.64	1027.54	1027.54	1027.70
	9	1027.54	1027.54	1027.54	1027.54	1027.54	1027.54	1027.54	1027.54	1027.54	1027.54	1027.52	1027.42	1027.53
	10	1027.33	1027.33	1027.31	1027.21	1027.12	1027.12	1027.12	1027.11	1027.01	1026.91	1026.90	1026.90	1027.11
	11	1026.80	1026.70	1026.68	1026.57	1026.49	1026.49	1026.49	1026.48	1026.47	1026.38	1026.28	1026.19	1026.50
	12	1026.08	1026.07	1026.07	1026.03	1025.93	1025.84	1025.81	1025.79	1025.77	1025.70	1025.64	1025.64	1025.86
	13	1025.65	1025.65	1025.65	1025.54	1025.44	1025.43	1025.43	1025.44	1025.44	1025.44	1025.44	1025.43	1025.50
	14	1025.41	1025.40	1025.32	1025.22	1025.22	1025.22	1025.21	1025.22	1025.12	1025.01	1025.01	1025.01	1025.20
	15	1025.01	1025.01	1024.91	1024.80	1024.81	1024.81	1024.81	1024.70	1024.60	1024.60	1024.60	1024.60	1024.77
	16	1024.60	1024.60	1024.60	1024.60	1024.60	1024.58	1024.54	1024.54	1024.54	1024.53	1024.53	1024.54	1024.56
	17	1024.54	1024.53	1024.53	1024.53	1024.53	1024.53	1024.53	1024.56	1024.60	1024.60	1024.60	1024.60	1024.56
	18	1024.60	1024.60	1024.60	1024.59	1024.59	1024.60	1024.60	1024.59	1024.59	1024.57	1024.56	1024.54	1024.58
	19	1024.52	1024.50	1024.50	1024.49	1024.49	1024.44	1024.39	1024.39	1024.38	1024.28	1024.18	1024.18	1024.39
	20	1024.18	1024.12	1024.01	1023.98	1023.98	1023.97	1023.97	1023.97	1023.97	1023.97	1023.97	1023.97	1024.00
	21	1023.97	1023.97	1023.97	1023.97	1023.97	1023.97	1023.97	1023.97	1023.97	1023.97	1023.97	1023.97	1023.97
	22	1023.97	1023.97	1023.97	1023.97	1023.97	1023.98	1023.98	1023.97	1023.97	1023.97	1023.97	1023.97	1023.97
	23	1023.98	1023.98	1023.97	1023.97	1023.87	1023.77	1023.77	1023.67	1023.56	1023.56	1023.56	1023.45	1023.76

S.V.I.R.CO. Observatory - Pressure in hectoPascal – October 2021

day	hh	00_05	05_10	10_15	15_20	20_25	25_30	30_35	35_40	40_45	45_50	50_55	55_60	average
21	0	1023.30	1023.22	1023.14	1023.14	1023.04	1022.93	1022.93	1022.93	1022.93	1022.90	1022.87	1022.80	1023.00
	1	1022.72	1022.72	1022.62	1022.52	1022.52	1022.51	1022.41	1022.31	1022.28	1022.17	1022.09	1022.09	1022.41
	2	1022.08	1021.98	1021.89	1021.83	1021.72	1021.64	1021.54	1021.47	1021.47	1021.47	1021.47	1021.47	1021.67
	3	1021.37	1021.27	1021.27	1021.27	1021.27	1021.26	1021.26	1021.26	1021.26	1021.26	1021.23	1021.21	1021.26
	4	1021.21	1021.21	1021.13	1021.06	1021.05	1020.96	1020.86	1020.84	1020.85	1020.85	1020.85	1020.81	1020.97
	5	1020.70	1020.63	1020.64	1020.64	1020.62	1020.52	1020.43	1020.43	1020.43	1020.43	1020.40	1020.38	1020.52
	6	1020.30	1020.22	1020.22	1020.22	1020.22	1020.21	1020.17	1020.07	1020.01	1020.01	1020.01	1020.01	1020.14
	7	1020.01	1020.01	1020.01	1020.01	1020.01	1020.01	1019.90	1019.80	1019.80	1019.80	1019.80	1019.80	1019.91
	8	1019.80	1019.80	1019.80	1019.79	1019.76	1019.67	1019.59	1019.59	1019.49	1019.38	1019.38	1019.37	1019.62
	9	1019.36	1019.35	1019.35	1019.35	1019.34	1019.26	1019.13	1019.10	1019.04	1018.96	1018.96	1018.95	1019.18
	10	1018.92	1018.83	1018.75	1018.69	1018.58	1018.54	1018.52	1018.42	1018.33	1018.31	1018.20	1018.07	1018.51
	11	1018.01	1017.96	1017.91	1017.91	1017.90	1017.89	1017.79	1017.70	1017.70	1017.70	1017.70	1017.70	1017.82
	12	1017.60	1017.49	1017.44	1017.34	1017.19	1017.08	1017.07	1017.07	1017.07	1017.07	1017.06	1016.96	1017.20
	13	1016.86	1016.86	1016.86	1016.85	1016.74	1016.65	1016.65	1016.55	1016.50	1016.50	1016.44	1016.44	1016.66
	14	1016.44	1016.45	1016.45	1016.44	1016.42	1016.37	1016.33	1016.28	1016.23	1016.23	1016.23	1016.23	1016.34
	15	1016.23	1016.23	1016.23	1016.23	1016.23	1016.23	1016.20	1016.15	1016.08	1016.02	1016.02	1016.02	1016.15
	16	1016.02	1016.02	1016.02	1015.92	1015.81	1015.81	1015.81	1015.81	1015.85	1015.95	1016.02	1016.02	1015.92
	17	1016.02	1016.02	1016.02	1016.02	1016.13	1016.23	1016.23	1016.24	1016.24	1016.26	1016.34	1016.42	1016.18
	18	1016.44	1016.44	1016.44	1016.44	1016.44	1016.44	1016.44	1016.44	1016.44	1016.47	1016.55	1016.60	1016.46
	19	1016.59	1016.59	1016.58	1016.58	1016.59	1016.59	1016.59	1016.59	1016.59	1016.59	1016.59	1016.59	1016.59
	20	1016.59	1016.59	1016.59	1016.59	1016.59	1016.59	1016.60	1016.61	1016.61	1016.61	1016.62	1016.64	1016.60
	21	1016.65	1016.65	1016.65	1016.65	1016.65	1016.65	1016.65	1016.65	1016.65	1016.65	1016.65	1016.65	1016.65
	22	1016.65	1016.65	1016.66	1016.66	1016.66	1016.66	1016.65	1016.65	1016.65	1016.65	1016.65	1016.65	1016.65
	23	1016.55	1016.44	1016.44	1016.44	1016.44	1016.44	1016.44	1016.44	1016.44	1016.44	1016.43	1016.42	1016.45
22	0	1016.41	1016.41	1016.32	1016.23	1016.23	1016.20	1016.17	1016.09	1016.02	1016.02	1016.02	1016.01	1016.17
	1	1015.96	1015.87	1015.82	1015.81	1015.82	1015.82	1015.81	1015.70	1015.60	1015.60	1015.60	1015.50	1015.74
	2	1015.40	1015.40	1015.40	1015.40	1015.40	1015.38	1015.28	1015.19	1015.19	1015.19	1015.18	1015.18	1015.30
	3	1015.19	1015.19	1015.19	1015.19	1015.18	1015.19	1015.19	1015.19	1015.18	1015.18	1015.19	1015.19	1015.19
	4	1015.18	1015.18	1015.19	1015.19	1015.18	1015.18	1015.17	1015.13	1015.11	1015.13	1015.14	1015.13	1015.16
	5	1015.05	1014.97	1014.98	1014.88	1014.77	1014.77	1014.77	1014.77	1014.77	1014.77	1014.77	1014.77	1014.83
	6	1014.77	1014.77	1014.80	1014.87	1014.94	1014.98	1014.98	1015.05	1015.15	1015.18	1015.19	1015.19	1014.99
	7	1015.19	1015.19	1015.30	1015.40	1015.40	1015.40	1015.44	1015.54	1015.60	1015.61	1015.61	1015.69	1015.45
	8	1015.77	1015.77	1015.77	1015.76	1015.68	1015.61	1015.61	1015.61	1015.71	1015.82	1015.82	1015.89	1015.73
	9	1015.96	1015.96	1015.89	1015.85	1015.95	1015.99	1015.99	1015.98	1015.89	1015.81	1015.81	1015.71	1015.90
	10	1015.61	1015.61	1015.60	1015.60	1015.67	1015.73	1015.73	1015.73	1015.73	1015.73	1015.66	1015.60	1015.66
	11	1015.61	1015.61	1015.61	1015.61	1015.60	1015.61	1015.50	1015.39	1015.39	1015.39	1015.40	1015.40	1015.51
	12	1015.39	1015.39	1015.39	1015.40	1015.40	1015.40	1015.29	1015.18	1015.19	1015.19	1015.19	1015.14	1015.29
	13	1015.03	1014.97	1014.97	1014.97	1014.98	1014.98	1014.87	1014.77	1014.77	1014.76	1014.76	1014.77	1014.88
	14	1014.77	1014.76	1014.80	1014.91	1014.97	1014.98	1014.98	1014.97	1014.97	1014.97	1014.97	1014.97	1014.92
	15	1015.03	1015.10	1015.09	1015.07	1015.08	1015.09	1015.10	1015.15	1015.18	1015.18	1015.18	1015.18	1015.12
	16	1015.18	1015.18	1015.18	1015.18	1015.18	1015.28	1015.39	1015.40	1015.40	1015.39	1015.50	1015.65	1015.32
	17	1015.76	1015.81	1015.81	1015.89	1016.00	1016.02	1016.02	1016.02	1016.02	1016.13	1016.23	1016.22	1015.99
	18	1016.23	1016.25	1016.28	1016.29	1016.29	1016.29	1016.30	1016.30	1016.37	1016.43	1016.43	1016.43	1016.32
	19	1016.44	1016.44	1016.54	1016.65	1016.64	1016.64	1016.64	1016.65	1016.65	1016.65	1016.65	1016.65	1016.60
	20	1016.65	1016.66	1016.76	1016.87	1016.93	1017.02	1017.06	1017.07	1017.06	1017.06	1017.06	1017.06	1016.94
	21	1017.07	1017.17	1017.27	1017.27	1017.27	1017.27	1017.27	1017.33	1017.44	1017.49	1017.49	1017.48	1017.32
	22	1017.48	1017.48	1017.48	1017.48	1017.48	1017.48	1017.48	1017.49	1017.49	1017.48	1017.48	1017.48	1017.48
	23	1017.49	1017.49	1017.49	1017.49	1017.49	1017.49	1017.49	1017.48	1017.48	1017.48	1017.49	1017.43	1017.48

S.V.I.R.CO. Observatory - Pressure in hectoPascal – October 2021

day	hh	00_05	05_10	10_15	15_20	20_25	25_30	30_35	35_40	40_45	45_50	50_55	55_60	average
23	0	1017.27	1017.27	1017.27	1017.27	1017.27	1017.28	1017.19	1017.08	1017.06	1017.06	1017.06	1017.07	1017.17
	1	1017.07	1017.07	1017.07	1017.07	1017.07	1017.07	1017.07	1017.07	1017.07	1017.07	1017.07	1017.07	1017.07
	2	1017.07	1017.07	1017.07	1017.07	1017.07	1017.07	1017.07	1017.17	1017.28	1017.28	1017.27	1017.28	1017.14
	3	1017.28	1017.28	1017.29	1017.30	1017.28	1017.27	1017.27	1017.28	1017.28	1017.28	1017.28	1017.39	1017.29
	4	1017.49	1017.48	1017.49	1017.49	1017.49	1017.49	1017.45	1017.34	1017.28	1017.28	1017.28	1017.28	1017.40
	5	1017.28	1017.28	1017.28	1017.28	1017.27	1017.28	1017.28	1017.34	1017.39	1017.41	1017.46	1017.49	1017.33
	6	1017.59	1017.69	1017.70	1017.81	1017.96	1018.07	1018.18	1018.25	1018.29	1018.43	1018.53	1018.53	1018.08
	7	1018.53	1018.62	1018.73	1018.74	1018.74	1018.82	1018.93	1018.95	1018.95	1018.95	1018.95	1019.05	1018.83
	8	1019.15	1019.16	1019.16	1019.16	1019.16	1019.16	1019.16	1019.16	1019.16	1019.16	1019.16	1019.16	1019.16
	9	1019.16	1019.16	1019.16	1019.16	1019.16	1019.16	1019.19	1019.26	1019.31	1019.29	1019.29	1019.30	1019.21
	10	1019.30	1019.30	1019.30	1019.30	1019.31	1019.31	1019.31	1019.31	1019.31	1019.31	1019.31	1019.31	1019.31
	11	1019.31	1019.31	1019.31	1019.32	1019.32	1019.31	1019.31	1019.30	1019.31	1019.32	1019.35	1019.37	1019.32
	12	1019.37	1019.37	1019.37	1019.37	1019.37	1019.36	1019.36	1019.36	1019.36	1019.26	1019.16	1019.16	1019.32
	13	1019.12	1019.02	1018.95	1018.94	1018.95	1018.95	1018.95	1018.95	1018.93	1018.91	1018.91	1018.90	1018.95
	14	1018.90	1018.89	1018.88	1018.87	1018.88	1018.88	1018.88	1018.89	1018.88	1018.89	1018.92	1018.94	1018.89
	15	1019.03	1019.14	1019.16	1019.16	1019.15	1019.16	1019.16	1019.16	1019.16	1019.26	1019.37	1019.36	1019.19
	16	1019.37	1019.37	1019.37	1019.36	1019.36	1019.36	1019.36	1019.36	1019.37	1019.37	1019.37	1019.47	1019.37
	17	1019.58	1019.62	1019.71	1019.76	1019.77	1019.77	1019.78	1019.78	1019.78	1019.78	1019.78	1019.78	1019.74
	18	1019.79	1019.79	1019.79	1019.79	1019.78	1019.78	1019.78	1019.78	1019.78	1019.78	1019.78	1019.78	1019.78
	19	1019.78	1019.78	1019.78	1019.82	1019.93	1019.99	1020.04	1020.11	1020.13	1020.13	1020.17	1020.20	1019.99
	20	1020.28	1020.39	1020.41	1020.41	1020.45	1020.52	1020.56	1020.59	1020.62	1020.63	1020.63	1020.63	1020.51
	21	1020.63	1020.62	1020.62	1020.62	1020.62	1020.62	1020.62	1020.62	1020.63	1020.63	1020.62	1020.62	1020.62
	22	1020.63	1020.63	1020.62	1020.62	1020.62	1020.63	1020.63	1020.62	1020.62	1020.62	1020.62	1020.62	1020.62
	23	1020.62	1020.62	1020.63	1020.63	1020.62	1020.62	1020.62	1020.62	1020.62	1020.62	1020.62	1020.62	1020.62
24	0	1020.62	1020.62	1020.62	1020.62	1020.62	1020.62	1020.58	1020.48	1020.41	1020.41	1020.40	1020.30	1020.52
	1	1020.20	1020.20	1020.21	1020.21	1020.10	1019.99	1019.99	1019.98	1019.87	1019.79	1019.79	1019.79	1020.01
	2	1019.78	1019.78	1019.78	1019.67	1019.57	1019.58	1019.58	1019.55	1019.52	1019.50	1019.50	1019.50	1019.61
	3	1019.50	1019.49	1019.49	1019.48	1019.48	1019.50	1019.55	1019.58	1019.58	1019.58	1019.58	1019.58	1019.53
	4	1019.66	1019.75	1019.76	1019.75	1019.75	1019.74	1019.74	1019.74	1019.74	1019.74	1019.74	1019.74	1019.74
	5	1019.74	1019.74	1019.74	1019.74	1019.73	1019.73	1019.73	1019.73	1019.76	1019.79	1019.79	1019.80	1019.75
	6	1019.90	1020.00	1020.00	1020.00	1020.00	1020.05	1020.15	1020.21	1020.30	1020.41	1020.42	1020.42	1020.15
	7	1020.42	1020.42	1020.42	1020.42	1020.52	1020.63	1020.63	1020.63	1020.63	1020.63	1020.63	1020.62	1020.55
	8	1020.63	1020.63	1020.63	1020.63	1020.63	1020.63	1020.63	1020.63	1020.63	1020.63	1020.62	1020.63	1020.63
	9	1020.63	1020.57	1020.48	1020.43	1020.42	1020.42	1020.42	1020.42	1020.42	1020.42	1020.42	1020.39	1020.45
	10	1020.37	1020.29	1020.21	1020.19	1020.08	1019.99	1019.99	1019.99	1019.99	1019.99	1019.90	1019.80	1020.06
	11	1019.78	1019.68	1019.58	1019.58	1019.58	1019.55	1019.45	1019.37	1019.37	1019.27	1019.16	1019.16	1019.46
	12	1019.14	1019.04	1018.85	1018.74	1018.64	1018.51	1018.47	1018.45	1018.39	1018.32	1018.22	1018.11	1018.57
	13	1018.11	1018.05	1017.98	1017.93	1017.90	1017.90	1017.87	1017.77	1017.69	1017.69	1017.68	1017.57	1017.84
	14	1017.48	1017.48	1017.48	1017.48	1017.48	1017.45	1017.35	1017.27	1017.28	1017.19	1017.10	1017.10	1017.34
	15	1017.10	1017.10	1017.10	1017.10	1017.11	1017.11	1017.11	1017.10	1017.09	1017.08	1017.10	1017.20	1017.11
	16	1017.27	1017.27	1017.27	1017.33	1017.44	1017.59	1017.69	1017.69	1017.69	1017.69	1017.74	1017.79	1017.54
	17	1017.85	1017.90	1017.91	1017.94	1018.03	1018.11	1018.11	1018.19	1018.30	1018.32	1018.32	1018.32	1018.11
	18	1018.42	1018.52	1018.53	1018.53	1018.53	1018.53	1018.53	1018.53	1018.53	1018.53	1018.53	1018.52	1018.52
	19	1018.53	1018.53	1018.53	1018.53	1018.53	1018.63	1018.74	1018.74	1018.73	1018.73	1018.76	1018.83	1018.65
	20	1018.91	1018.95	1018.97	1019.03	1019.04	1019.04	1019.11	1019.16	1019.16	1019.16	1019.16	1019.15	1019.07
	21	1019.15	1019.15	1019.16	1019.16	1019.16	1019.15	1019.15	1019.16	1019.16	1019.16	1019.16	1019.16	1019.16
	22	1019.16	1019.16	1019.16	1019.16	1019.16	1019.15	1019.05	1018.95	1018.95	1018.95	1018.95	1018.95	1019.06
	23	1018.95	1018.95	1018.95	1018.95	1018.95	1018.85	1018.74	1018.74	1018.74	1018.74	1018.74	1018.74	1018.84

S.V.I.R.CO. Observatory - Pressure in hectoPascal – October 2021

day	hh	00_05	05_10	10_15	15_20	20_25	25_30	30_35	35_40	40_45	45_50	50_55	55_60	average
25	0	1018.73	1018.74	1018.74	1018.81	1018.89	1018.89	1018.88	1018.88	1018.88	1018.88	1018.88	1018.88	1018.84
	1	1018.81	1018.74	1018.74	1018.63	1018.53	1018.53	1018.53	1018.53	1018.53	1018.53	1018.53	1018.53	1018.60
	2	1018.53	1018.51	1018.40	1018.32	1018.32	1018.29	1018.19	1018.11	1018.11	1018.11	1018.11	1018.11	1018.26
	3	1018.01	1017.90	1017.90	1017.91	1017.91	1017.91	1017.91	1017.90	1017.91	1017.91	1017.91	1018.02	1017.92
	4	1018.12	1018.12	1018.12	1018.12	1018.12	1018.12	1018.11	1018.11	1018.12	1018.12	1018.11	1018.12	1018.12
	5	1018.12	1018.12	1018.12	1018.12	1018.12	1018.12	1018.12	1018.12	1018.11	1018.18	1018.25	1018.25	1018.14
	6	1018.25	1018.25	1018.25	1018.29	1018.33	1018.33	1018.33	1018.33	1018.33	1018.42	1018.50	1018.52	1018.34
	7	1018.54	1018.54	1018.54	1018.54	1018.53	1018.54	1018.54	1018.54	1018.54	1018.53	1018.53	1018.54	1018.54
	8	1018.54	1018.54	1018.61	1018.69	1018.70	1018.71	1018.73	1018.75	1018.75	1018.74	1018.74	1018.74	1018.69
	9	1018.75	1018.75	1018.75	1018.75	1018.75	1018.75	1018.75	1018.75	1018.75	1018.75	1018.75	1018.75	1018.75
	10	1018.75	1018.82	1018.89	1018.89	1018.89	1018.88	1018.88	1018.82	1018.72	1018.69	1018.62	1018.54	1018.78
	11	1018.54	1018.52	1018.41	1018.33	1018.33	1018.32	1018.30	1018.28	1018.28	1018.19	1018.11	1018.11	1018.31
	12	1018.11	1018.11	1018.11	1018.11	1018.01	1017.91	1017.91	1017.90	1017.90	1017.90	1017.91	1017.88	1017.98
	13	1017.77	1017.70	1017.70	1017.70	1017.70	1017.70	1017.70	1017.70	1017.70	1017.69	1017.70	1017.69	1017.70
	14	1017.59	1017.49	1017.49	1017.49	1017.48	1017.48	1017.49	1017.56	1017.62	1017.62	1017.55	1017.49	1017.53
	15	1017.49	1017.49	1017.49	1017.49	1017.49	1017.48	1017.47	1017.46	1017.45	1017.45	1017.46	1017.45	1017.47
	16	1017.45	1017.44	1017.43	1017.43	1017.43	1017.43	1017.46	1017.49	1017.48	1017.48	1017.49	1017.59	1017.46
	17	1017.69	1017.69	1017.69	1017.69	1017.69	1017.70	1017.78	1017.86	1017.89	1017.90	1017.91	1017.92	1017.78
	18	1017.92	1017.97	1018.01	1018.01	1018.06	1018.11	1018.11	1018.11	1018.11	1018.11	1018.11	1018.11	1018.06
	19	1018.11	1018.11	1018.11	1018.11	1018.11	1018.11	1018.19	1018.27	1018.27	1018.27	1018.30	1018.32	1018.19
	20	1018.32	1018.32	1018.32	1018.40	1018.49	1018.49	1018.49	1018.51	1018.53	1018.53	1018.53	1018.53	1018.45
	21	1018.57	1018.61	1018.67	1018.73	1018.74	1018.74	1018.74	1018.74	1018.74	1018.74	1018.74	1018.74	1018.71
	22	1018.74	1018.74	1018.74	1018.74	1018.74	1018.74	1018.74	1018.74	1018.74	1018.74	1018.73	1018.71	1018.74
	23	1018.69	1018.68	1018.68	1018.66	1018.64	1018.59	1018.53	1018.53	1018.53	1018.53	1018.53	1018.53	1018.59
26	0	1018.52	1018.53	1018.53	1018.52	1018.49	1018.40	1018.32	1018.32	1018.32	1018.32	1018.32	1018.30	1018.40
	1	1018.28	1018.28	1018.19	1018.11	1018.11	1018.07	1018.02	1017.97	1017.93	1017.92	1017.91	1017.90	1018.06
	2	1017.91	1017.91	1017.91	1017.91	1017.91	1017.91	1017.91	1017.91	1017.91	1017.91	1017.91	1017.91	1017.91
	3	1017.91	1017.91	1017.91	1017.90	1017.91	1017.91	1017.90	1017.90	1017.90	1017.80	1017.70	1017.70	1017.86
	4	1017.70	1017.70	1017.70	1017.70	1017.70	1017.70	1017.70	1017.70	1017.70	1017.69	1017.70	1017.70	1017.70
	5	1017.70	1017.70	1017.70	1017.70	1017.70	1017.70	1017.70	1017.74	1017.85	1017.91	1017.91	1017.91	1017.77
	6	1017.91	1017.91	1018.02	1018.12	1018.12	1018.19	1018.27	1018.30	1018.32	1018.39	1018.47	1018.51	1018.21
	7	1018.53	1018.53	1018.64	1018.74	1018.74	1018.74	1018.74	1018.74	1018.74	1018.74	1018.76	1018.83	1018.71
	8	1018.92	1018.95	1018.95	1018.95	1018.95	1018.95	1018.95	1018.95	1018.95	1018.95	1018.95	1018.96	1018.95
	9	1018.96	1018.95	1018.95	1018.95	1018.95	1018.95	1018.95	1018.95	1018.95	1018.92	1018.81	1018.74	1018.92
	10	1018.74	1018.74	1018.74	1018.74	1018.74	1018.70	1018.59	1018.53	1018.51	1018.49	1018.49	1018.41	1018.62
	11	1018.32	1018.31	1018.21	1018.11	1018.11	1018.05	1017.97	1017.93	1017.90	1017.90	1017.90	1017.90	1018.05
	12	1017.90	1017.80	1017.69	1017.69	1017.69	1017.68	1017.58	1017.49	1017.49	1017.48	1017.48	1017.49	1017.62
	13	1017.49	1017.48	1017.49	1017.49	1017.48	1017.48	1017.49	1017.49	1017.49	1017.49	1017.48	1017.48	1017.48
	14	1017.48	1017.48	1017.48	1017.58	1017.69	1017.69	1017.69	1017.69	1017.70	1017.70	1017.69	1017.69	1017.63
	15	1017.70	1017.70	1017.69	1017.74	1017.84	1017.90	1017.90	1017.90	1017.91	1018.02	1018.19	1018.27	1017.89
	16	1018.28	1018.27	1018.27	1018.27	1018.30	1018.39	1018.50	1018.53	1018.56	1018.67	1018.74	1018.74	1018.46
	17	1018.77	1018.82	1018.86	1018.87	1018.88	1018.88	1018.88	1018.92	1018.95	1018.95	1019.01	1019.07	1018.90
	18	1019.07	1019.08	1019.13	1019.16	1019.16	1019.16	1019.16	1019.16	1019.16	1019.16	1019.16	1019.16	1019.14
	19	1019.16	1019.16	1019.16	1019.16	1019.16	1019.16	1019.16	1019.16	1019.22	1019.32	1019.36	1019.37	1019.21
	20	1019.37	1019.37	1019.37	1019.41	1019.48	1019.55	1019.58	1019.58	1019.57	1019.58	1019.58	1019.58	1019.50
	21	1019.66	1019.75	1019.77	1019.77	1019.76	1019.78	1019.79	1019.79	1019.79	1019.79	1019.79	1019.79	1019.77
	22	1019.79	1019.79	1019.79	1019.79	1019.79	1019.79	1019.79	1019.79	1019.79	1019.79	1019.79	1019.79	1019.79
	23	1019.78	1019.78	1019.79	1019.79	1019.79	1019.78	1019.78	1019.79	1019.79	1019.79	1019.79	1019.79	1019.79

S.V.I.R.CO. Observatory - Pressure in hectoPascal – October 2021

day	hh	00_05	05_10	10_15	15_20	20_25	25_30	30_35	35_40	40_45	45_50	50_55	55_60	average
27	0	1019.79	1019.79	1019.78	1019.78	1019.78	1019.79	1019.79	1019.79	1019.78	1019.78	1019.79	1019.79	1019.78
	1	1019.79	1019.79	1019.79	1019.79	1019.79	1019.79	1019.79	1019.79	1019.79	1019.79	1019.79	1019.79	1019.79
	2	1019.79	1019.80	1019.80	1019.79	1019.79	1019.79	1019.79	1019.79	1019.79	1019.79	1019.79	1019.79	1019.79
	3	1019.79	1019.79	1019.79	1019.79	1019.79	1019.79	1019.79	1019.79	1019.79	1019.79	1019.79	1019.79	1019.79
	4	1019.79	1019.79	1019.90	1020.00	1020.00	1020.00	1020.00	1020.00	1020.00	1020.00	1020.00	1020.00	1019.96
	5	1020.00	1020.06	1020.16	1020.21	1020.21	1020.21	1020.21	1020.21	1020.21	1020.30	1020.40	1020.42	1020.22
	6	1020.50	1020.61	1020.63	1020.66	1020.76	1020.84	1020.84	1020.84	1020.88	1020.98	1021.05	1021.05	1020.80
	7	1021.05	1021.05	1021.05	1021.14	1021.24	1021.25	1021.26	1021.29	1021.35	1021.39	1021.42	1021.42	1021.24
	8	1021.40	1021.38	1021.39	1021.39	1021.40	1021.40	1021.40	1021.40	1021.40	1021.40	1021.40	1021.40	1021.40
	9	1021.40	1021.40	1021.40	1021.40	1021.40	1021.40	1021.40	1021.40	1021.42	1021.44	1021.44	1021.49	1021.42
	10	1021.54	1021.55	1021.56	1021.56	1021.56	1021.48	1021.40	1021.40	1021.38	1021.28	1021.19	1021.19	1021.42
	11	1021.19	1021.19	1021.19	1021.19	1021.19	1021.19	1021.14	1021.03	1020.98	1020.98	1020.88	1020.77	1021.07
	12	1020.75	1020.69	1020.61	1020.55	1020.50	1020.41	1020.32	1020.28	1020.28	1020.27	1020.21	1020.14	1020.41
	13	1020.14	1020.14	1020.14	1020.14	1020.12	1020.03	1019.95	1019.94	1019.94	1019.92	1019.90	1019.83	1020.01
	14	1019.77	1019.78	1019.76	1019.73	1019.73	1019.74	1019.74	1019.73	1019.73	1019.72	1019.70	1019.68	1019.73
	15	1019.66	1019.65	1019.58	1019.53	1019.53	1019.53	1019.53	1019.53	1019.53	1019.53	1019.53	1019.52	1019.55
	16	1019.53	1019.53	1019.54	1019.54	1019.53	1019.53	1019.53	1019.53	1019.53	1019.53	1019.53	1019.53	1019.53
	17	1019.53	1019.53	1019.64	1019.74	1019.74	1019.74	1019.77	1019.78	1019.86	1019.95	1019.98	1020.08	1019.78
	18	1020.16	1020.16	1020.16	1020.20	1020.25	1020.30	1020.36	1020.37	1020.37	1020.37	1020.37	1020.37	1020.29
	19	1020.37	1020.37	1020.42	1020.49	1020.53	1020.53	1020.53	1020.53	1020.52	1020.52	1020.53	1020.56	1020.49
	20	1020.59	1020.59	1020.69	1020.79	1020.79	1020.79	1020.79	1020.79	1020.78	1020.75	1020.74	1020.74	1020.73
	21	1020.74	1020.73	1020.74	1020.75	1020.75	1020.77	1020.79	1020.79	1020.80	1020.80	1020.79	1020.79	1020.77
	22	1020.79	1020.79	1020.79	1020.80	1020.80	1020.80	1020.78	1020.76	1020.75	1020.72	1020.71	1020.71	1020.76
	23	1020.64	1020.59	1020.59	1020.58	1020.58	1020.58	1020.58	1020.59	1020.59	1020.59	1020.59	1020.58	1020.59
28	0	1020.59	1020.59	1020.59	1020.59	1020.59	1020.58	1020.59	1020.56	1020.45	1020.38	1020.38	1020.38	1020.52
	1	1020.38	1020.38	1020.38	1020.38	1020.38	1020.38	1020.38	1020.38	1020.38	1020.38	1020.33	1020.23	1020.36
	2	1020.16	1020.15	1020.14	1020.13	1020.13	1020.05	1019.96	1019.96	1019.96	1019.96	1019.87	1019.77	1020.02
	3	1019.75	1019.75	1019.75	1019.75	1019.75	1019.75	1019.75	1019.75	1019.75	1019.76	1019.76	1019.76	1019.75
	4	1019.75	1019.75	1019.75	1019.75	1019.75	1019.75	1019.76	1019.76	1019.75	1019.75	1019.75	1019.76	1019.75
	5	1019.76	1019.76	1019.75	1019.76	1019.76	1019.76	1019.76	1019.76	1019.76	1019.76	1019.76	1019.79	1019.76
	6	1019.86	1019.89	1019.89	1019.92	1019.97	1019.97	1019.97	1020.03	1020.10	1020.13	1020.13	1020.13	1020.00
	7	1020.13	1020.16	1020.18	1020.18	1020.18	1020.18	1020.18	1020.18	1020.17	1020.17	1020.18	1020.18	1020.17
	8	1020.18	1020.18	1020.18	1020.18	1020.18	1020.16	1020.12	1020.04	1019.97	1019.97	1019.96	1019.97	1020.09
	9	1019.97	1019.97	1019.97	1019.97	1019.97	1019.97	1019.97	1019.97	1020.04	1020.12	1020.12	1020.12	1020.01
	10	1020.12	1020.12	1020.11	1020.11	1020.04	1019.97	1019.89	1019.78	1019.75	1019.76	1019.76	1019.75	1019.93
	11	1019.73	1019.63	1019.55	1019.52	1019.42	1019.34	1019.23	1019.12	1019.12	1019.02	1018.92	1018.90	1019.29
	12	1018.79	1018.71	1018.61	1018.51	1018.50	1018.50	1018.48	1018.38	1018.29	1018.29	1018.28	1018.27	1018.47
	13	1018.26	1018.17	1018.08	1018.08	1018.08	1018.08	1018.02	1017.93	1017.90	1017.89	1017.89	1017.88	1018.02
	14	1017.87	1017.87	1017.87	1017.87	1017.87	1017.87	1017.87	1017.87	1017.87	1017.87	1017.87	1017.87	1017.87
	15	1017.87	1017.87	1017.87	1017.87	1017.87	1017.87	1017.86	1017.86	1017.86	1017.87	1017.87	1017.87	1017.87
	16	1017.87	1017.87	1017.87	1017.87	1017.87	1017.86	1017.87	1017.87	1017.87	1017.87	1017.87	1017.87	1017.87
	17	1017.87	1017.87	1017.87	1017.87	1017.87	1017.86	1017.87	1017.87	1017.87	1017.87	1017.87	1017.88	1017.87
	18	1017.89	1017.92	1017.93	1018.00	1018.08	1018.08	1018.08	1018.08	1018.08	1018.07	1018.07	1018.07	1018.03
	19	1018.08	1018.08	1018.08	1018.07	1018.08	1018.08	1018.02	1017.96	1017.97	1017.97	1017.97	1017.97	1018.03
	20	1017.96	1017.95	1017.95	1017.95	1017.96	1017.96	1017.93	1017.89	1017.87	1017.87	1017.87	1017.86	1017.92
	21	1017.87	1017.87	1017.87	1017.87	1017.87	1017.87	1017.87	1017.87	1017.87	1017.87	1017.87	1017.87	1017.87
	22	1017.87	1017.87	1017.87	1017.87	1017.87	1017.87	1017.87	1017.82	1017.72	1017.66	1017.66	1017.66	1017.80
	23	1017.66	1017.66	1017.66	1017.56	1017.45	1017.45	1017.45	1017.45	1017.45	1017.45	1017.45	1017.45	1017.51

S.V.I.R.CO. Observatory - Pressure in hectoPascal – October 2021

day	hh	00_05	05_10	10_15	15_20	20_25	25_30	30_35	35_40	40_45	45_50	50_55	55_60	average
29	0	1017.45	1017.45	1017.45	1017.45	1017.46	1017.46	1017.45	1017.46	1017.46	1017.46	1017.46	1017.41	1017.45
	1	1017.36	1017.35	1017.35	1017.30	1017.24	1017.24	1017.13	1017.04	1017.04	1017.04	1017.04	1017.04	1017.18
	2	1017.03	1017.01	1016.92	1016.83	1016.83	1016.83	1016.83	1016.83	1016.83	1016.83	1016.83	1016.84	1016.87
	3	1016.84	1016.83	1016.83	1016.83	1016.84	1016.84	1016.84	1016.83	1016.83	1016.83	1016.73	1016.62	1016.81
	4	1016.62	1016.63	1016.63	1016.63	1016.63	1016.62	1016.62	1016.62	1016.61	1016.61	1016.61	1016.60	1016.62
	5	1016.61	1016.61	1016.61	1016.61	1016.60	1016.61	1016.61	1016.62	1016.62	1016.61	1016.61	1016.61	1016.61
	6	1016.60	1016.61	1016.61	1016.61	1016.62	1016.62	1016.62	1016.62	1016.62	1016.62	1016.73	1016.90	1016.65
	7	1016.96	1017.00	1017.05	1017.05	1017.05	1017.05	1017.07	1017.08	1017.07	1017.07	1017.07	1017.07	1017.05
	8	1017.07	1017.06	1017.06	1017.08	1017.09	1017.17	1017.25	1017.25	1017.25	1017.25	1017.25	1017.26	1017.17
	9	1017.26	1017.25	1017.25	1017.25	1017.25	1017.20	1017.11	1017.06	1017.05	1017.04	1017.04	1017.05	1017.15
	10	1017.05	1017.05	1016.95	1016.84	1016.84	1016.84	1016.84	1016.81	1016.70	1016.62	1016.63	1016.63	1016.81
	11	1016.63	1016.52	1016.42	1016.39	1016.35	1016.31	1016.25	1016.19	1016.09	1016.00	1015.99	1015.99	1016.26
	12	1015.95	1015.85	1015.79	1015.78	1015.68	1015.58	1015.57	1015.47	1015.37	1015.37	1015.36	1015.34	1015.59
	13	1015.31	1015.29	1015.22	1015.15	1015.13	1015.03	1014.95	1014.95	1014.94	1014.95	1014.95	1014.95	1015.07
	14	1014.94	1014.95	1014.95	1014.94	1014.95	1014.95	1014.94	1014.94	1014.94	1014.94	1014.94	1014.94	1014.94
	15	1014.94	1014.94	1014.94	1014.94	1014.94	1014.94	1014.94	1014.94	1014.94	1014.94	1014.94	1014.94	1014.94
	16	1014.94	1014.94	1014.94	1014.94	1014.94	1014.94	1015.01	1015.11	1015.15	1015.15	1015.25	1015.36	1015.05
	17	1015.36	1015.35	1015.36	1015.47	1015.57	1015.56	1015.60	1015.67	1015.74	1015.78	1015.78	1015.77	1015.58
	18	1015.78	1015.78	1015.83	1015.94	1015.99	1015.99	1015.99	1016.03	1016.08	1016.08	1016.07	1016.07	1015.97
	19	1016.08	1016.10	1016.11	1016.11	1016.12	1016.13	1016.14	1016.17	1016.20	1016.19	1016.29	1016.40	1016.17
	20	1016.41	1016.41	1016.41	1016.41	1016.41	1016.41	1016.41	1016.40	1016.40	1016.40	1016.40	1016.40	1016.40
	21	1016.40	1016.41	1016.41	1016.41	1016.41	1016.41	1016.41	1016.41	1016.41	1016.49	1016.59	1016.61	1016.45
	22	1016.62	1016.62	1016.62	1016.62	1016.62	1016.62	1016.62	1016.62	1016.62	1016.61	1016.61	1016.62	1016.62
	23	1016.62	1016.63	1016.70	1016.79	1016.83	1016.83	1016.83	1016.83	1016.83	1016.83	1016.83	1016.83	1016.78
30	0	1016.82	1016.83	1016.83	1016.83	1016.83	1016.83	1016.83	1016.83	1016.83	1016.83	1016.83	1016.81	1016.83
	1	1016.71	1016.62	1016.62	1016.62	1016.61	1016.51	1016.41	1016.41	1016.41	1016.40	1016.30	1016.20	1016.48
	2	1016.10	1015.99	1016.00	1016.00	1015.99	1015.99	1015.99	1015.99	1015.99	1015.99	1015.99	1015.99	1016.00
	3	1015.99	1015.99	1015.99	1015.99	1016.06	1016.13	1016.14	1016.14	1016.17	1016.20	1016.21	1016.21	1016.10
	4	1016.20	1016.20	1016.20	1016.20	1016.20	1016.21	1016.21	1016.21	1016.21	1016.21	1016.20	1016.20	1016.20
	5	1016.21	1016.21	1016.20	1016.20	1016.20	1016.31	1016.41	1016.41	1016.42	1016.42	1016.41	1016.41	1016.32
	6	1016.52	1016.62	1016.62	1016.63	1016.63	1016.62	1016.63	1016.63	1016.69	1016.80	1016.83	1016.83	1016.67
	7	1016.84	1016.94	1017.03	1017.04	1017.04	1017.04	1017.04	1017.03	1017.04	1017.04	1017.04	1017.04	1017.01
	8	1017.04	1017.15	1017.25	1017.25	1017.25	1017.25	1017.25	1017.25	1017.24	1017.24	1017.24	1017.24	1017.22
	9	1017.24	1017.25	1017.25	1017.25	1017.24	1017.24	1017.24	1017.24	1017.24	1017.24	1017.24	1017.25	1017.24
	10	1017.25	1017.24	1017.24	1017.24	1017.17	1017.08	1017.04	1016.93	1016.82	1016.82	1016.82	1016.80	1017.04
	11	1016.69	1016.61	1016.61	1016.61	1016.51	1016.40	1016.40	1016.40	1016.39	1016.36	1016.26	1016.19	1016.45
	12	1016.17	1016.12	1016.04	1015.98	1015.98	1015.98	1015.98	1015.98	1015.97	1015.95	1015.95	1015.94	1016.00
	13	1015.85	1015.77	1015.77	1015.77	1015.78	1015.78	1015.77	1015.77	1015.77	1015.78	1015.78	1015.77	1015.78
	14	1015.77	1015.77	1015.77	1015.77	1015.77	1015.78	1015.85	1015.95	1015.98	1015.98	1015.98	1015.98	1015.86
	15	1015.98	1015.98	1015.98	1015.98	1015.98	1015.98	1015.98	1015.98	1015.98	1015.98	1015.98	1015.98	1015.98
	16	1015.98	1015.98	1016.05	1016.12	1016.15	1016.30	1016.40	1016.51	1016.61	1016.66	1016.76	1016.82	1016.36
	17	1016.82	1016.82	1016.82	1016.82	1016.87	1016.98	1017.03	1017.03	1017.03	1017.14	1017.24	1017.24	1016.99
	18	1017.24	1017.24	1017.23	1017.23	1017.24	1017.30	1017.40	1017.45	1017.45	1017.45	1017.45	1017.45	1017.34
	19	1017.45	1017.45	1017.45	1017.55	1017.66	1017.72	1017.77	1017.82	1017.86	1017.86	1017.86	1017.86	1017.69
	20	1017.89	1017.91	1017.92	1017.93	1017.93	1017.93	1017.92	1017.91	1017.90	1017.91	1017.91	1017.91	1017.91
	21	1017.91	1017.91	1017.90	1017.90	1017.93	1017.95	1018.01	1018.07	1018.16	1018.27	1018.29	1018.35	1018.05
	22	1018.46	1018.50	1018.50	1018.50	1018.50	1018.49	1018.50	1018.50	1018.50	1018.50	1018.50	1018.50	1018.49
	23	1018.49	1018.49	1018.50	1018.50	1018.50	1018.50	1018.50	1018.48	1018.46	1018.46	1018.46	1018.37	1018.47

S.V.I.R.CO. Observatory - Pressure in hectoPascal – October 2021

day	hh	00_05	05_10	10_15	15_20	20_25	25_30	30_35	35_40	40_45	45_50	50_55	55_60	average
31	0	1018.29	1018.29	1018.29	1018.29	1018.26	1018.22	1018.15	1018.08	1018.01	1017.91	1017.87	1017.87	1018.12
	1	1017.87	1017.86	1017.75	1017.66	1017.66	1017.66	1017.66	1017.66	1017.67	1017.67	1017.67	1017.56	1017.69
	2	1017.45	1017.45	1017.39	1017.29	1017.25	1017.24	1017.24	1017.24	1017.24	1017.24	1017.14	1017.04	1017.27
	3	1017.04	1017.04	1017.03	1017.04	1017.04	1017.04	1017.04	1017.04	1017.04	1017.03	1017.03	1017.03	1017.04
	4	1017.03	1017.04	1017.04	1017.04	1017.04	1017.04	1017.04	1017.04	1017.15	1017.25	1017.25	1017.25	1017.10
	5	1017.25	1017.22	1017.11	1017.04	1017.04	1017.04	1017.04	1017.03	1016.96	1016.87	1016.83	1016.83	1017.02
	6	1016.83	1016.83	1016.83	1016.83	1016.83	1016.83	1016.83	1016.94	1017.04	1017.04	1017.04	1017.04	1016.91
	7	1017.04	1017.04	1017.04	1017.03	1016.93	1016.84	1016.84	1016.84	1016.83	1016.84	1016.84	1016.84	1016.91
	8	1016.86	1016.88	1016.90	1016.87	1016.83	1016.83	1016.81	1016.79	1016.77	1016.68	1016.62	1016.63	1016.79
	9	1016.63	1016.63	1016.62	1016.52	1016.41	1016.41	1016.42	1016.40	1016.29	1016.20	1016.18	1016.15	1016.40
	10	1016.12	1016.05	1015.90	1015.79	1015.67	1015.47	1015.37	1015.36	1015.34	1015.33	1015.14	1014.87	1015.53
	11	1014.77	1014.74	1014.74	1014.73	1014.73	1014.63	1014.53	1014.53	1014.44	1014.33	1014.32	1014.22	1014.56
	12	1014.11	1014.11	1013.98	1013.88	1013.90	1013.90	1013.90	1013.90	1013.90	1013.86	1013.75	1013.69	1013.91
	13	1013.69	1013.68	1013.59	1013.50	1013.48	1013.48	1013.48	1013.48	1013.48	1013.48	1013.48	1013.48	1013.52
	14	1013.48	1013.47	1013.48	1013.48	1013.48	1013.48	1013.47	1013.48	1013.48	1013.48	1013.48	1013.48	1013.48
	15	1013.39	1013.28	1013.26	1013.26	1013.27	1013.27	1013.26	1013.26	1013.27	1013.27	1013.27	1013.27	1013.28
	16	1013.16	1013.06	1013.06	1013.06	1013.06	1013.06	1013.06	1013.06	1013.06	1013.06	1012.98	1012.88	1013.04
	17	1012.86	1012.85	1012.84	1012.84	1012.84	1012.84	1012.84	1012.85	1012.85	1012.85	1012.84	1012.85	1012.84
	18	1012.85	1012.85	1012.79	1012.71	1012.67	1012.64	1012.64	1012.64	1012.64	1012.64	1012.64	1012.54	1012.68
	19	1012.43	1012.32	1012.22	1012.22	1012.21	1012.22	1012.22	1012.22	1012.21	1012.22	1012.22	1012.22	1012.24
	20	1012.22	1012.22	1012.22	1012.21	1012.22	1012.31	1012.42	1012.43	1012.43	1012.43	1012.43	1012.42	1012.33
	21	1012.42	1012.42	1012.42	1012.43	1012.43	1012.33	1012.22	1012.20	1012.18	1012.17	1012.08	1012.01	1012.27
	22	1012.01	1012.01	1012.00	1012.00	1012.00	1011.92	1011.83	1011.80	1011.79	1011.79	1011.80	1011.80	1011.89
	23	1011.80	1011.80	1011.80	1011.80	1011.80	1011.80	1011.80	1011.79	1011.69	1011.59	1011.59	1011.59	1011.74

