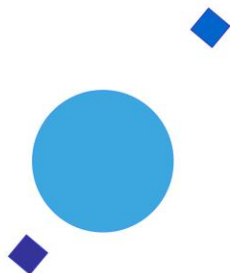


INAF



ISTITUTO NAZIONALE DI ASTROFISICA
NATIONAL INSTITUTE FOR ASTROPHYSICS

SVIRCO Prompt Report: September 2020

Francesco Re and Nello Vertoli

INAF/IAPS-2020-10

December 2021

ISTITUTO DI ASTROFISICA E PLANETOLOGIA SPAZIALI

AREA DI RICERCA ROMA - TOR VERGATA

Via del Fosso del Cavaliere, 100 - 00133 Roma (ITALIA)

SVIRCO Prompt Report: September 2020

Francesco Re and Nello Vertoli

*IAPS - INAF, Area di Ricerca Roma - Tor Vergata
Via del Fosso del Cavaliere, 100 - 00133 Roma, Italy,*

Abstract

The pressure corrected intensity of the nucleonic component, produced by primary cosmic rays and recorded in September 2020 by the Neutron Monitor of SVIRCO-Rome (present geographic position: 41.86° N - 12.47° E; altitude about s.l.), is reported in prompt form together with the barometric pressure data.

SVIRCO OBSERVATORY

During the 1st International Geophysics Year (1957) an international network of “ground-based detectors” for continuous cosmic ray measurements was world-wide established.

The cosmic ray station of Rome joined this network with the purpose to study the time variations of primary cosmic rays (**Studio Variazioni Intensità Raggi Cosmici: S.V.I.R.CO**) and their modulation in the heliosphere.

From July 1957 to April 1997, the SVIRCO Station (now Observatory) performed uninterrupted measurements at the Physics Department “G. Marconi” of “La Sapienza” University of Rome (41.90° N, 12.52° E, altitude about 60 m a.s.l.)

In May 1997 the neutron monitor was moved to the Physics Department “E. Amaldi” of “Roma Tre” University. Since then it has been continuously running at the new location (41.86° N, 12.47° E, altitude about 0 m a.s.l.).

The SVIRCO Observatory (INAF/IAPS-UNIRomaTre collaboration) is housed in a reserved building provided with a double air-conditioning system. The inner temperature is permanently restrained in a range of 23°-26° C, meanwhile the relative humidity is kept below 57%. Either the environmental parameters are continuously checked and recorded by digital sensors.

On January 1, 2005 three counters were added to the detector. This upgrade, from 17 to 20 NM-64, made the SVIRCO neutron monitor still consist of 5 sections but modified its geometry. Actually the new arrangement has been composed of three 3-counter, one 5-counter and one 6-counter units. The enhancement improved not only the overall counting rate of 15.6 % (January 2005) but, as a result, also the statistical quality of the recorded data.

On July 3, 2017 six counters experienced failure and were removed from the detector until 24 July. On 25 July 2017 a number of 2 counters was added to the detector up to a total of 16 counters. The new arrangement has been composed of three 3-counter, one 5-counter and one 2-counter units. The overall counting rate has decreased of about 20% (July 2017) with a lower statistical quality of the recorded data.

Each of the 16 BF₃ proportional counters (BP-28 type) is equipped with a smart amplifier/discriminator circuit complete with a spectrum stabilizer. This new electronic unit, developed in our laboratory, holds firmly the pulse height spectrum of the amplifier output (within a range of more than 150 volts around the operating voltage), providing the counter with a great immunity against high voltage variations.

Anyway, systematic and exhaustive tests of the counters are regularly performed. The output pulses of the amplifiers, discriminated by the threshold gates, are collected and stored into a multi-channel analyzer. The analysis of the height distribution (spectrum) of the amplifier pulses coinciding with the discriminator ones, is essential to verify the long term efficiency of each counter together with the amplifier gain and the discriminator threshold level.

As well as the amplifier/discriminator circuits, a large part of the electronic instrumentation operating in the Observatory was designed and realized in our laboratory together with the software for data acquisition and pre-elaboration.

In order to improve the reliability of the recorded data and to prevent measurement breakdowns, two independent systems perform contemporary the data acquisition. Each system is remotely controlled by a dedicated computer and is timed by a high stability quartz clock and/or a GPS receiver. One equipment runs according to a timing of 1 minute and fulfils the acquisition of the 16 counters separately. The other one records the individual 5-minute counting rate of each detector section in addition to the rates of the overall multiplicity, sorted into separated counting channels (from 1 to greater than 8).

A special care is devoted to the atmospheric pressure measurements; thus they are carried out by means of not less than three barometers at the same time. These instruments (achieving a resolution up to 0.01 hPa), are constantly checked out each other for the best measuring accuracy and reliability. Furthermore, the devices in use are equipped with different types of transducer such as vibrating cylinder, force balance and quartz, therefore, throughout their different behaviours, it is possible to point out the occurrence of any long-term drift and eventually to re-calibrate the instruments themselves.

DATA PRESENTATION

In a preliminary step, the intensity data, of the secondary nucleonic component of cosmic rays, detected at SVIRCO Observatory, were corrected for pressure variations at a reference level of 1009.25 hPa with an attenuation coefficient of 0.70% / hPa.

The five-minutes counting rates, of the examined month, are reported in tabular form together with the hourly normalized data, which provide a continuous data set for long-term analysis.

The normalization was evaluated as percentage of the counting rate average of January-February 1997, when the Monitor operated at the previous location of "La Sapienza" University. The reference counting rate level (100%), computed for such period, is equal to 554946 counts/hour.

The atmospheric pressure data (in hectoPascal) are also collected in a monthly table which presents the five-minutes averages and the hourly ones.

The hourly averages of the normalized intensity and pressure, plotted in monthly graphs, are reported too.

CONDITIONS FOR SVIRCO DATA USE

You are welcome to use neutron monitor data of SVIRCO, IAPS/INAF-UNIRomaTre collaboration, under the following conditions:

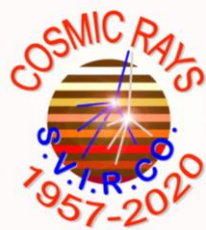
-You agree to acknowledge our financial supports in any published use of the data.

Example: "SVIRCO NM is supported by the INAF - UNIRomaTre collaboration"

-You are kindly requested to send a copy of any published work derived from our data to:

Dr. Monica Laurenza
Head of SVIRCO Observatory & TPL
Istituto di Astrofisica e Planetologia Spaziali - Area di Ricerca Tor Vergata
Via del Fosso del Cavaliere, 100 00133 Roma - Italy,

monica.laurenza@iaps.inaf.it



S.V.I.R.CO. Observatory

Rome

Italy



INAF/UNIRomaTre				S.V.I.R.CO. Observatory - Pressure Corrected Data – September 2020										16 NM-64	
day	hh	00_05	05_10	10_15	15_20	20_25	25_30	30_35	35_40	40_45	45_50	50_55	55_60	h-norm	
1	0	37809	37935	37869	37880	37851	38011	38677	37923	38298	38180	38223	38215	100.510	
	1	38359	38123	38288	38589	38338	38200	38384	38096	38202	38313	37671	38545	101.004	
	2	38313	38253	38373	38365	38293	38372	38888	38256	37566	38258	38047	38028	100.982	
	3	37844	38288	38068	38227	38453	38409	38477	38329	38454	38129	37619	37960	100.816	
	4	38978	37977	38110	37751	37701	38057	38100	38112	38039	38515	38725	38511	100.887	
	5	38618	38379	37985	38156	38187	38618	38318	38316	38781	38110	38679	38042	101.241	
	6	38031	38144	38744	38173	38970	38515	38006	38309	38335	37875	38111	38328	101.099	
	7	38420	38518	38098	38281	38113	38528	38630	38623	38104	38499	38347	38962	101.447	
	8	38615	38217	38115	38122	38525	37778	38299	37855	38818	38170	38191	38502	101.025	
	9	38128	38386	39076	37965	38568	38869	38563	38640	38625	38229	37829	38721	101.552	
	10	38605	38524	38208	38155	38167	38489	38841	38580	38468	38319	38509	37764	101.338	
	11	38143	38974	38034	38468	38135	38567	38521	38367	38132	38584	38154	38129	101.246	
	12	38015	38533	39128	38454	38535	38959	38035	38337	38456	38285	38462	38199	101.508	
	13	38081	38699	38821	38651	38830	38903	38260	38800	37955	39108	38589	37828	101.755	
	14	38443	38364	38652	38705	38457	38113	38969	38550	38153	38565	38792	38130	101.617	
	15	38520	38636	37949	38173	38504	38319	38915	38203	38253	38237	38402	38140	101.255	
	16	37980	38263	38504	38567	38126	38357	39288	38564	39321	38645	38947	38015	101.767	
	17	38230	38750	39177	38435	38437	38835	38312	37841	38502	38309	38422	38047	101.486	
	18	38135	38388	38266	38444	38782	38280	37874	38337	38657	38755	38217	37742	101.173	
	19	38682	38458	38568	38758	38604	38636	38469	38250	38364	38171	38037	38544	101.539	
	20	38391	38422	38400	38438	38568	38779	37823	38187	38139	38261	38299	38013	101.138	
	21	38992	38486	38479	38069	38851	38506	38168	38522	38724	38191	38228	38344	101.543	
	22	38999	38467	38244	38795	38417	38367	38638	38621	38348	38245	38437	38804	101.724	
	23	38156	38761	37917	38165	38306	38681	37977	38278	37990	38100	38405	38640	101.063	
2	0	38202	38635	38193	37959	38779	38747	37929	38774	38727	38494	37949	38487	101.391	
	1	38350	38493	38860	38267	38286	38466	38543	38762	38919	38629	38500	38517	101.771	
	2	38040	38125	38211	38367	38120	38545	38335	38603	38862	38175	37797	38326	101.091	
	3	38032	39153	38308	38086	38701	38493	38501	38519	38036	38269	38630	38664	101.507	
	4	37832	38487	38263	38372	38643	38530	38788	38647	38324	38603	38155	38706	101.497	
	5	38982	38403	38160	38345	38618	38843	38619	38187	38519	38165	38441	38091	101.502	
	6	38594	38375	38368	38404	39044	38403	39142	38477	38311	38491	38745	38363	101.798	
	7	38952	38065	38723	38154	38772	38922	38887	38575	37920	38985	38652	38022	101.779	
	8	38327	38351	38335	38314	38256	38411	38571	38690	38013	38466	38179	38018	101.185	
	9	38411	38426	37966	38620	38502	38882	38470	38009	38286	38410	38383	37771	101.230	
	10	38838	38235	38544	38179	38249	38633	38726	38474	38765	38317	38516	38622	101.661	
	11	38075	38540	39206	38734	38369	38346	38831	38772	38643	38446	37722	38503	101.681	
	12	38362	38360	38228	38069	38262	38599	38344	38132	38633	38372	38454	38336	101.233	
	13	38340	37969	38097	38346	38875	38001	38769	38176	38719	38258	38331	38394	101.260	
	14	38290	39192	38407	38467	38414	38297	38312	38216	38518	38864	38081	38059	101.446	
	15	38460	38331	38801	38773	38712	38776	38744	38119	38346	38794	38660	38983	101.970	
	16	38375	38484	38705	37963	38177	38171	38319	38559	39125	38480	38057	38324	101.363	
	17	38272	38614	38713	38480	38631	38833	38627	38530	38687	38473	38292	38184	101.714	
	18	38622	38740	38640	38291	38332	38383	38375	38846	38209	38444	38555	38107	101.541	
	19	38806	38624	38163	38403	38371	39212	38517	38418	38644	38183	37985	38273	101.552	
	20	38757	38753	38441	37919	38995	38655	38607	38759	37870	38593	37453	38644	101.518	
	21	37965	38126	38343	38705	38751	37856	38660	37956	38797	38542	38205	38855	101.368	
	22	38552	38221	38187	38199	38387	38430	38545	38551	38094	38684	38179	38588	101.336	
	23	38205	38081	38481	38287	38669	38267	38223	38153	38731	37963	38232	38025	101.050	

INAF/UNIRomaTre		S.V.I.R.CO. Observatory - Pressure Corrected Data – September 2020											16 NM-64	
day	hh	00_05	05_10	10_15	15_20	20_25	25_30	30_35	35_40	40_45	45_50	50_55	55_60	h-norm
3	0	38019	38170	38129	38074	38429	38170	38801	38147	38493	38190	38334	38401	101.055
	1	38122	38315	38004	38540	38307	38341	37920	39068	38921	38386	38266	38518	101.356
	2	38006	38819	38155	38633	38260	38143	38608	38305	38592	38668	38104	38849	101.451
	3	38523	38641	38858	38289	38645	38263	38240	38713	38697	38728	39001	37848	101.738
	4	38492	38460	38279	39119	38597	38255	38380	38116	38432	38758	38818	38816	101.755
	5	38305	38618	38804	38525	38064	38912	38711	38998	38744	38968	38201	38122	101.854
	6	38210	38487	38271	38624	38072	38670	38786	38443	38306	38449	38387	38316	101.425
	7	38371	38526	38529	38413	38789	38316	38442	38844	38120	38490	38562	38723	101.668
	8	39008	38190	38718	38179	38311	39014	38693	38093	38830	38729	38229	38698	101.792
	9	38640	38334	38140	38770	38618	38482	38489	38185	38250	38198	38386	38353	101.386
	10	38696	38539	37990	38698	38418	38700	38875	38305	38391	38647	38330	38805	101.727
	11	38124	38195	38747	38924	38563	38407	38455	38758	38190	38179	38219	38567	101.492
	12	37977	38266	38419	38198	38495	38924	38744	38665	37981	38235	38446	39059	101.510
	13	38877	38735	39066	38601	38873	38241	38789	38148	39114	38882	38640	38522	102.187
	14	38616	38433	38517	38065	38757	38370	38391	37954	38066	38262	38832	38281	101.320
	15	38859	38732	38247	38222	38266	38486	38258	38453	38823	38105	38251	38377	101.438
	16	38529	38157	38332	37778	38648	38550	38313	38269	38306	38761	38174	38057	101.172
	17	38054	38423	38297	38268	38291	38471	37650	38847	39064	37723	38195	38589	101.172
	18	38681	38692	38187	38286	38342	38049	38732	38723	38008	38363	38310	38682	101.432
	19	38612	38553	38530	38697	38353	38801	38571	38112	38233	38370	38495	38377	101.575
	20	38838	38157	38203	38573	38633	38086	38519	38417	38877	38357	38280	38047	101.417
	21	38129	38293	38761	38325	38392	38378	39051	38640	38776	38319	38171	37927	101.456
	22	38434	38796	38190	38646	38125	38414	38368	38263	38595	38348	38561	38460	101.464
	23	38688	38263	38330	38804	38819	38078	38572	38589	38875	38833	39045	39255	102.114
4	0	38468	38397	38194	39152	39162	37892	38433	38411	38364	38403	38410	37924	101.463
	1	38912	38536	38672	38758	38157	38270	38693	38066	39041	38485	38879	38106	101.767
	2	37739	38440	38361	38294	38716	38626	39003	38302	38222	38584	38174	38341	101.376
	3	38870	38156	38579	38718	38152	38590	38179	38554	38575	38617	38492	38526	101.642
	4	38533	38903	38273	38527	38327	38362	38669	38662	38557	38151	39027	38687	101.789
	5	38676	39084	37886	38705	39180	38542	38528	38218	38488	39102	38514	38477	101.948
	6	38459	39328	38547	39009	38849	38619	38877	38770	38694	38499	38230	38615	102.190
	7	38383	38875	38485	38794	38755	38449	38251	38730	38773	38980	38856	38954	102.142
	8	38903	39046	38392	38274	38661	38295	38474	38747	39000	38610	38469	38794	102.006
	9	38985	38425	38687	38304	39132	39046	38439	38646	38605	38542	38052	39270	102.109
	10	38643	38314	38620	38623	38311	38790	38851	38118	38529	38421	38685	38751	101.784
	11	38592	38177	38441	38532	38425	38517	39006	38367	38881	38279	38913	38357	101.748
	12	38270	38566	38718	38789	38691	39076	38337	38572	38440	38165	38993	39072	102.012
	13	38466	39093	38260	37859	38666	38872	38320	38608	38630	38593	38494	38837	101.794
	14	38410	38605	38830	38800	38871	39252	38718	38204	38612	38242	38358	38677	101.987
	15	38210	38873	38695	38969	38548	38813	39450	38962	38572	38189	39216	38287	102.253
	16	39144	38793	38434	39196	38447	38233	38400	39207	38556	39311	38042	38956	102.238
	17	39094	38702	38723	37910	39124	38707	38581	38364	38721	37986	38896	38347	101.894
	18	38871	38688	39123	38756	38787	38505	37999	38461	38419	38571	39086	39078	102.156
	19	38483	38074	38678	38714	38325	38782	38535	37927	38445	38699	38543	38762	101.633
	20	38666	39118	38473	38946	38413	38238	38474	38633	38043	38813	38846	38846	101.972
	21	38899	38554	38461	38192	38474	39052	38265	39041	38576	38400	38583	38954	101.959
	22	38583	38300	38568	38593	39032	38813	38666	38258	38520	38902	38782	38650	102.007
	23	38958	38805	38995	37955	38061	38739	38928	39140	38396	39107	37858	38554	101.969

INAF/UNIRomaTre				S.V.I.R.CO. Observatory - Pressure Corrected Data – September 2020										16 NM-64	
day	hh	00_05	05_10	10_15	15_20	20_25	25_30	30_35	35_40	40_45	45_50	50_55	55_60	h-norm	
5	0	38636	38839	39069	38713	38440	38461	38117	39177	38853	39135	38139	38280	102.043	
	1	38865	37964	38692	38930	38770	38182	38702	38539	38665	38884	38030	38988	101.907	
	2	38945	38987	38287	38599	38277	38586	38826	38516	38794	38010	38664	38519	101.862	
	3	38531	38013	39025	38322	38607	38242	38589	39308	38200	39016	38049	38690	101.771	
	4	38635	38376	38639	38380	38505	39226	39043	39337	38812	39147	39179	39008	102.583	
	5	38558	38821	38174	38773	38203	38832	38729	39502	39221	38891	38710	38582	102.299	
	6	38774	39033	38661	39335	38576	38289	38572	38752	38689	38548	38583	38623	102.176	
	7	38455	38408	38720	38639	38341	38639	38083	38527	38468	38723	38624	38496	101.667	
	8	38973	39128	38388	39138	38635	38275	38819	38758	38558	38943	38910	38501	102.306	
	9	38463	38830	38355	38986	38262	38563	38748	39185	38714	39191	38839	39371	102.412	
	10	38416	39135	38786	38227	38964	38277	38416	38387	38432	38518	38988	38523	101.875	
	11	38775	38651	38533	38843	39082	38849	38577	38393	38783	38709	38797	38982	102.294	
	12	39184	38672	38604	38994	38322	38720	38699	38720	38874	38723	38098	38402	102.082	
	13	38340	38846	38803	38102	38679	39078	38501	38703	38936	38282	38522	38939	102.021	
	14	38657	38321	38423	38048	38750	38669	38087	38421	38374	38460	38217	38668	101.441	
	15	38323	38864	38800	38605	38206	38108	38709	38392	38331	38569	38772	38978	101.785	
	16	38264	38371	38373	38662	38284	38327	38345	38233	38069	39011	38335	38280	101.322	
	17	38697	39186	38953	38286	38478	38662	38676	38346	38456	39051	38471	38914	102.119	
	18	38474	38688	38786	38792	38418	39210	38580	39120	38751	38689	39408	39314	102.570	
	19	38381	38496	38827	38194	38582	38800	38882	38853	38795	38554	38757	38285	101.949	
	20	38456	39052	38408	38324	38734	38555	38162	38270	39097	38447	39314	38584	101.949	
	21	38312	38718	39030	38741	38720	38771	38527	38669	38091	38415	38240	38822	101.872	
	22	38974	38531	38561	39162	38651	38896	38843	38162	38581	38554	39089	39282	102.363	
	23	38537	38522	38788	38908	38521	39008	38979	39001	38098	38364	38897	38935	102.203	
6	0	38067	38419	37987	38980	38672	38606	38893	39115	39131	38914	38765	39171	102.233	
	1	39111	38753	38964	38379	38541	39174	38645	38305	38303	39123	38521	38896	102.237	
	2	38539	38622	38541	38550	38419	38844	38602	38600	38313	39232	38652	38488	101.949	
	3	38405	37656	38827	38194	38699	38770	38551	38451	38313	38348	38852	38876	101.627	
	4	38617	38457	38662	38892	38580	38217	39016	39029	38328	38810	38326	39064	102.080	
	5	38579	38877	38428	39232	38434	38587	38807	38573	38542	38415	39049	38788	102.149	
	6	37962	38516	37917	38032	37915	39411	38256	38113	38812	38735	38840	39345	101.608	
	7	39011	38684	39301	38825	39013	39226	38599	39155	39108	38599	39373	39003	102.937	
	8	38975	38666	38719	38621	38489	38350	38813	38641	38921	38332	38961	38803	102.144	
	9	38463	38702	39600	38653	38847	38475	38647	38741	38590	38899	39362	38391	102.381	
	10	38782	39723	38684	38629	38134	39253	38298	38433	38515	39001	38305	39115	102.271	
	11	39023	38367	38768	39011	38792	39221	38811	38809	38670	38484	38759	38716	102.394	
	12	38818	38281	38342	38498	38860	38756	38552	38706	38932	38836	38832	38907	102.151	
	13	38860	38808	38904	38670	38690	38681	38043	39491	38453	38600	39040	38630	102.271	
	14	38694	39320	38738	38606	39205	38531	38360	38974	38532	38929	38333	38491	102.237	
	15	38741	38534	38914	38611	39096	38470	38310	38668	38544	38882	39236	38458	102.182	
	16	38927	38406	38569	38713	38529	38693	38643	38614	38584	38749	38584	38981	102.078	
	17	38960	38740	39126	39225	39188	39113	38506	38916	38625	39245	38027	38991	102.665	
	18	39090	38962	38667	38778	38808	38606	38709	38786	39146	38917	38165	38388	102.305	
	19	39009	38737	38866	39196	38997	38821	38637	38851	38531	39028	38524	39280	102.625	
	20	38660	38210	38871	38455	38636	38798	38665	38906	39314	38788	38964	38992	102.357	
	21	38680	39034	38787	38763	38800	38875	39125	39115	38815	39121	39015	38566	102.673	
	22	38784	38283	39079	39107	38811	38715	38424	38684	39008	39078	39048	39431	102.620	
	23	38539	39004	38636	39001	38621	38846	39068	39500	38525	39034	38928	38915	102.656	

INAF/UNIRomaTre		S.V.I.R.CO. Observatory - Pressure Corrected Data – September 2020											16 NM-64	
day	hh	00_05	05_10	10_15	15_20	20_25	25_30	30_35	35_40	40_45	45_50	50_55	55_60	h-norm
7	0	39013	38273	39469	38494	38673	38711	38793	38797	38963	39093	38730	38842	102.486
	1	38793	38999	39068	39142	38489	38644	38096	38842	38599	39499	38482	39047	102.454
	2	38800	38738	39435	38891	38507	38526	38634	38623	38643	38900	39064	38728	102.408
	3	38921	38734	38409	38732	38505	38989	39019	38472	38406	38939	38819	39044	102.297
	4	39298	39255	38892	39032	39504	38601	39176	38735	39199	38945	38821	39136	103.091
	5	39674	38741	39090	38223	38621	38857	38917	38465	38785	38890	38392	38549	102.345
	6	38471	38537	38379	39013	38940	38924	38749	38256	38363	38829	38380	38584	101.954
	7	38954	39085	38690	39140	38594	39294	38257	38804	38726	39150	38698	39262	102.664
	8	38575	38932	38819	38341	38731	38237	38575	38303	38400	38476	38963	38870	101.909
	9	39197	38554	39035	38612	38632	38549	38682	39348	38415	38848	38278	39137	102.363
	10	38512	38908	38346	38673	38642	38994	39418	38730	38805	38727	38722	38734	102.346
	11	38510	38780	39107	38416	38567	38898	38045	38764	38747	38629	38717	39038	102.128
	12	38820	38660	39058	38827	38691	39098	38930	38863	38675	38635	38608	38292	102.334
	13	38515	38987	39407	39152	39085	38718	39255	38631	38391	39241	38834	38937	102.774
	14	38324	39624	39225	39231	38879	38753	38549	38708	38642	38857	38565	39016	102.602
	15	39100	38970	38559	39660	39445	38635	38820	38846	38629	38635	39033	38548	102.714
	16	38929	39215	38943	39648	38754	38798	39211	38868	39033	38683	39317	39418	103.140
	17	38748	38263	39040	38733	39250	38795	38608	39186	38123	38906	38836	39013	102.410
	18	38498	38859	38728	38904	38898	39298	38863	38764	39226	39068	38653	38741	102.630
	19	39146	38978	38814	38846	38805	39164	38711	39449	38878	38689	38747	39085	102.809
	20	39061	38662	38957	38839	38676	38549	38571	38627	38770	38535	38468	39054	102.249
	21	38704	38834	38530	38267	39083	38667	38432	38368	38295	39071	39204	38583	102.089
	22	38771	39268	38013	38941	39188	39002	38539	39084	38576	38807	38159	38552	102.278
	23	39030	38663	38662	38492	38532	37844	38398	38161	38426	38509	38303	38892	101.621
8	0	38701	38746	38569	38743	38727	38493	38259	38239	38572	39053	38099	38639	101.827
	1	38516	38618	39159	39163	38837	38819	38097	38325	38543	38421	38595	38122	101.907
	2	38481	39120	38832	38621	38316	38882	38720	38274	38585	38251	39091	38365	101.979
	3	38226	38165	38595	38634	38704	38684	39111	38958	38457	38612	38954	38110	101.906
	4	39004	38285	38925	39337	39004	38659	38370	38926	38808	39100	38563	38625	102.433
	5	38982	38238	38536	38600	38378	38410	39007	38414	38283	38379	38722	38530	101.745
	6	38642	38975	38738	38912	38811	39045	38781	38756	38290	38258	38603	38656	102.183
	7	38694	38647	38642	38590	38274	38029	38409	39225	38520	38626	38858	38885	101.948
	8	39738	38495	38490	38766	38390	38664	38942	38663	38421	38849	38965	38931	102.369
	9	38410	38765	38777	38906	38671	38354	38228	38191	38757	38564	38576	38570	101.809
	10	39070	38526	38632	38288	38384	38417	38185	38738	38907	38863	38317	38692	101.864
	11	38845	38645	38699	38628	38771	38770	39000	38478	38587	38677	39449	38609	102.335
	12	38285	38111	38885	38425	38958	38710	38947	38544	39031	38636	38719	38493	102.024
	13	38997	38678	38622	38365	38627	38682	38711	38641	38893	38649	38728	38608	102.124
	14	38291	38994	38803	39049	39206	38985	39045	38721	39010	39087	38672	38642	102.631
	15	38872	38275	38365	39212	38701	38524	39054	38663	39404	38893	39814	39082	102.709
	16	38282	39292	38427	38688	38439	39250	38807	38701	38617	39164	38119	38900	102.230
	17	39182	38997	38550	38444	39163	39318	38977	38741	38652	38562	39007	38478	102.536
	18	38129	38504	38743	38509	38474	38752	39012	38232	39180	38801	39136	38165	102.000
	19	38575	38436	38209	38139	38952	39143	38764	38579	38983	39302	38775	38144	102.080
	20	38980	38899	38703	38776	39087	38731	38973	38534	39115	38492	39236	38335	102.490
	21	38262	37831	39115	38916	38591	39133	38136	38091	38415	38522	38924	38079	101.643
	22	38775	38250	38292	38614	39252	38678	38425	38794	38851	38516	38338	38869	102.004
	23	38877	38854	39466	38437	38473	38467	38814	38822	38345	37974	38345	38753	101.998

INAF/UNIRomaTre				S.V.I.R.CO. Observatory - Pressure Corrected Data – September 2020										16 NM-64	
day	hh	00_05	05_10	10_15	15_20	20_25	25_30	30_35	35_40	40_45	45_50	50_55	55_60	h-norm	
9	0	38249	38499	38880	38858	39192	38249	38884	38029	39469	38780	38174	38810	102.096	
	1	38726	38458	38290	38328	38745	38296	38377	38469	38594	38403	39123	38640	101.739	
	2	39003	38255	38975	38765	37895	38897	38999	38483	38230	39021	38847	38516	102.055	
	3	39367	38556	38791	38859	38801	38862	38511	38847	39116	38136	39002	38824	102.448	
	4	38393	39732	38606	38908	39244	39081	38722	39398	38707	38373	38392	38576	102.549	
	5	38490	38571	38011	38821	39142	38545	39020	38875	38712	38591	38796	39278	102.267	
	6	39216	38930	38578	39266	38821	38725	38142	38174	38698	38586	38673	38789	102.212	
	7	38236	39089	38278	38646	38518	38773	37944	38591	38824	38439	39009	38743	101.880	
	8	38385	38411	37971	38860	38751	38207	38463	38264	38878	38997	38386	38206	101.591	
	9	38509	38596	38534	38346	37756	38835	39011	38898	38545	38029	38229	38262	101.541	
	10	38624	38535	39060	38101	38277	38635	38284	37834	38550	37728	38029	38614	101.259	
	11	38317	38198	38551	38212	38382	38966	38574	38323	39021	38464	38952	38430	101.726	
	12	37918	38595	38586	38491	38864	38277	37898	38628	37669	38545	38650	38574	101.353	
	13	38843	38456	38394	38051	38604	38432	38525	37828	38124	38543	38593	38694	101.439	
	14	38479	38015	38287	38549	38484	39031	38786	37823	39042	38640	39087	38165	101.726	
	15	38617	38604	38846	38795	38433	38613	38647	38401	38306	38193	38759	38229	101.737	
	16	38505	38498	38098	38052	38698	38446	38557	38971	38533	38438	38233	38829	101.609	
	17	38281	38640	38414	38637	38275	38732	38378	38770	38411	38771	38263	38286	101.609	
	18	38665	38206	38627	38234	38796	38052	39082	38246	39201	38070	38965	39512	102.004	
	19	38975	38897	38084	38604	38275	38554	38510	38500	38677	39300	38436	38170	101.856	
	20	38837	38436	38767	38084	38141	37787	38210	38336	38356	38663	38783	38725	101.447	
	21	38259	38283	38199	38582	38352	38510	38274	38746	38758	38608	39046	38616	101.692	
	22	38674	38882	39198	38840	38574	38239	38052	38332	38155	37831	38106	38512	101.506	
	23	38429	38285	38955	38457	38448	38025	38677	38405	38169	38364	38271	38504	101.418	
10	0	38418	38334	38574	38474	38504	38551	38300	38208	38473	39263	38539	38304	101.622	
	1	38467	38090	38591	38234	38854	38842	39009	38298	38685	37899	38934	38503	101.729	
	2	38756	38278	38775	38627	38175	38664	38388	38081	38639	38706	38643	38152	101.614	
	3	38317	38152	38857	38395	38808	38633	38890	38622	38409	38418	38805	38760	101.875	
	4	38871	38574	38718	38143	39040	38729	38836	38684	38213	38748	38830	38483	102.051	
	5	38446	39247	38612	38535	38235	38590	38070	38534	38706	38441	39008	38298	101.799	
	6	38624	38909	38475	38305	38717	38445	38868	38203	38674	38493	38625	38309	101.782	
	7	38578	37972	38768	38425	38321	39187	38243	38795	38196	38506	38027	38381	101.508	
	8	38501	38658	38495	38353	38424	38473	38073	38539	37836	38619	37931	38580	101.306	
	9	38552	38775	38185	38600	38694	38383	38165	38095	38190	37851	38280	38397	101.236	
	10	38759	38366	37817	38525	38007	38892	38870	38704	38646	38441	38821	38129	101.635	
	11	38866	39018	38366	38283	38618	38512	38614	38257	38259	38279	38672	38912	101.784	
	12	38182	37997	38878	38788	38325	38318	38017	38426	38181	38231	38450	38720	101.313	
	13	39030	38141	38585	38440	38714	38021	38307	38509	38389	38002	38487	38724	101.497	
	14	38527	38738	38377	38392	38471	38392	38203	38234	38806	38323	38588	38246	101.485	
	15	38550	39192	38578	38645	38682	38575	38841	38287	38804	38541	38517	38302	101.973	
	16	38330	38039	38566	38191	38471	38436	37996	38453	38799	38411	38976	38548	101.468	
	17	38774	38321	38673	38783	38526	38717	38574	38504	38264	38517	38500	38730	101.835	
	18	38407	38673	38311	38182	38264	38425	38474	38703	38107	38895	37906	38112	101.301	
	19	38291	38874	38037	38551	38291	38582	38624	38580	38809	39296	38543	38527	101.861	
	20	38606	38663	38450	38307	38420	38465	38337	39034	38325	38637	38304	38447	101.638	
	21	38065	38429	38513	38972	38645	38501	38694	37772	38351	38061	38593	37829	101.293	
	22	38269	38541	38366	38689	38725	38181	38312	38092	38733	38674	38201	37824	101.333	
	23	38339	38354	37899	38875	38679	38731	38777	38371	38278	38014	38052	38473	101.385	

INAF/UNIRomaTre		S.V.I.R.CO. Observatory - Pressure Corrected Data – September 2020											16 NM-64	
day	hh	00_05	05_10	10_15	15_20	20_25	25_30	30_35	35_40	40_45	45_50	50_55	55_60	h-norm
11	0	38592	38181	38102	38361	38187	37900	38751	38057	38416	38056	38604	38591	101.158
	1	38076	38490	38698	38496	38303	38259	38519	39075	38504	38778	38545	38065	101.598
	2	38762	39156	38716	38523	38934	38109	38142	38025	38356	38502	38695	38414	101.713
	3	38735	38937	38455	38818	38612	38237	38644	38303	38867	38840	38595	38130	101.898
	4	38843	38589	38029	38499	38794	38025	39025	38176	38463	38756	37666	39142	101.641
	5	37790	38644	38283	38546	38560	38600	38473	38648	38534	38818	38245	38664	101.597
	6	38082	38381	38280	38328	38587	38312	38741	38661	38878	38373	38430	38583	101.560
	7	38894	38980	38642	38481	38785	38811	38891	38675	37994	38334	38477	39093	102.093
	8	39063	38902	38856	38951	38712	38303	38375	38648	38935	38244	38247	38864	102.102
	9	38332	37919	38575	38394	38393	38044	38875	38675	38284	38493	38487	38054	101.315
	10	38077	38672	38451	38422	38501	37957	38351	38552	38670	38582	38475	38546	101.476
	11	38525	38710	38409	37846	38592	38626	38123	38691	37937	38652	38694	39158	101.632
	12	38022	38443	38884	38637	38193	38728	38753	39057	38242	38557	38822	38189	101.756
	13	38391	38463	38325	37876	38460	38288	38467	38643	38356	38137	38773	38601	101.372
	14	38589	38235	38301	38312	38321	38091	38345	38400	38822	38720	38891	38230	101.477
	15	38640	38079	37927	38845	38660	37971	38043	39375	39108	38424	38650	38749	101.744
	16	38335	38385	38194	38862	38412	38535	38804	38738	38654	38744	38319	38796	101.811
	17	39088	38995	38766	38468	38987	38604	38808	38287	38334	38942	38818	38611	102.236
	18	38820	38510	38896	38499	38475	38728	37957	38733	38307	38691	38401	38372	101.726
	19	38658	38368	38886	38776	38552	38204	38206	39026	38919	38687	38319	37943	101.760
	20	38509	38655	38995	38065	38539	37816	38279	38434	39075	38808	38877	38685	101.802
	21	38726	38936	38242	38384	38370	38213	38624	38630	38349	38966	38030	39151	101.777
	22	38649	38454	38131	38729	38243	38904	38722	38236	38859	38528	38965	38904	101.932
	23	38720	38536	38281	38193	38407	38762	38494	38563	39103	38067	38276	38698	101.662
12	0	38910	38679	38210	38437	38735	38230	39003	38188	38690	38270	38791	39015	101.898
	1	38716	38391	38165	38766	38590	38583	38954	38121	38236	38549	38283	38736	101.660
	2	38556	38299	38581	38594	38603	38553	39015	38114	38375	38781	38408	38764	101.781
	3	38500	38253	38393	37932	38219	38230	38437	38775	38661	38774	37986	38960	101.446
	4	38528	38215	38070	38344	38220	38478	38374	38234	39186	39259	38878	38847	101.779
	5	38549	38816	38383	38795	38398	38868	38584	38103	38865	38506	38528	37631	101.646
	6	38605	38766	38327	37909	38149	38467	38580	38760	39111	38610	38201	38491	101.635
	7	38683	38318	38592	38469	38722	38368	38393	38625	38709	38080	38850	38273	101.659
	8	38737	38313	38807	38325	38757	38635	38812	38522	38616	38368	38156	38522	101.765
	9	38514	38333	38528	38412	38547	38283	38399	39109	38748	38576	38293	38515	101.697
	10	38392	38249	39134	38585	38455	38631	38786	38535	38698	38900	38684	38610	102.005
	11	38631	38640	38720	38482	38683	38737	38477	38523	38811	38848	38589	38660	102.036
	12	38605	38818	38869	38515	38375	38500	39092	38344	38436	38176	38897	38604	101.911
	13	38803	38547	38115	38428	38716	38711	39001	38713	38063	38783	38850	38417	101.892
	14	38806	38147	38160	39016	38285	38589	38690	38420	38522	38643	38051	37976	101.487
	15	38471	39028	38491	38999	38978	38447	38657	38600	38437	38629	38621	38314	102.008
	16	38744	38658	38584	38619	38594	38707	38468	38649	38841	38759	38852	38278	102.026
	17	38455	38445	38460	38790	38700	38110	38412	38653	38424	38337	38389	38085	101.477
	18	38637	38315	38788	38824	38794	38218	38765	38993	38682	38730	38425	38644	102.039
	19	38855	38942	38823	38485	38408	38383	38331	38677	38881	38936	38492	38692	102.059
	20	39102	38368	38994	37803	38645	39021	38982	38958	38648	39102	38501	38298	102.173
	21	38482	38484	38562	38837	38395	39421	38376	38746	38547	38156	38265	38689	101.851
	22	38643	37957	38107	38809	38465	38826	38238	38591	38626	38906	38837	38429	101.735
	23	38443	38604	38311	38310	38695	39098	38272	38717	38297	38501	38746	38754	101.805

INAF/UNIRomaTre				S.V.I.R.CO. Observatory - Pressure Corrected Data – September 2020										16 NM-64	
day	hh	00_05	05_10	10_15	15_20	20_25	25_30	30_35	35_40	40_45	45_50	50_55	55_60	h-norm	
13	0	38426	38842	38703	38554	38207	38631	38230	39066	38818	38475	38069	38073	101.661	
	1	38990	39157	38190	38105	39071	38352	38487	38904	38270	38718	37997	38801	101.869	
	2	38627	38562	38553	38698	38358	38169	38316	39035	38878	38480	39368	38770	102.039	
	3	38408	38319	38062	38380	38568	38415	38380	38508	38301	39161	38357	38794	101.563	
	4	38681	38689	38698	38712	37967	38593	38423	38566	37895	39072	38325	38223	101.606	
	5	39211	38359	38431	38680	37836	37928	38249	38261	39083	38847	38578	38703	101.676	
	6	38672	38718	38267	38636	38627	38964	37908	38551	38203	38225	38123	38349	101.474	
	7	38281	38222	38736	38310	38557	39264	38900	38582	38586	38427	38377	38837	101.877	
	8	39104	38519	38486	38672	38946	38714	37822	38397	38518	39120	38892	38600	102.034	
	9	38188	38221	38377	39096	38423	38498	38486	38631	38873	38228	38644	38429	101.661	
	10	37938	38433	38220	38555	39159	38377	38516	38416	38214	39108	37988	39045	101.634	
	11	38684	38740	38469	38701	38313	38960	38961	39232	38574	38281	38431	38986	102.153	
	12	38297	38465	38709	37847	38405	38425	38597	38993	38378	38722	38647	38414	101.618	
	13	38112	38422	38349	38194	38191	38609	38016	38999	38615	38590	38869	38606	101.546	
	14	38539	38330	38673	39389	38646	38618	38668	38729	38808	37913	38548	38396	101.916	
	15	38477	38712	38667	37972	38682	38196	38421	38521	37597	38429	39233	38385	101.484	
	16	38406	38801	38760	38229	38281	38514	39155	39448	38780	38867	38357	38629	102.130	
	17	38836	38135	38421	38212	38795	38979	38163	38477	38835	38673	38090	38315	101.626	
	18	38671	38749	38047	38287	38450	38010	38254	38542	38146	38265	38389	38939	101.365	
	19	38792	38214	38778	39091	38700	38696	38978	37894	37875	38225	38866	38762	101.832	
	20	38147	38684	39121	38561	38471	38153	38652	38617	38872	38733	38304	38932	101.915	
	21	39150	38344	38344	38775	38994	38804	38595	39408	37979	38996	38448	38960	102.255	
	22	39065	38609	38334	38466	38791	38853	39615	38748	38702	38820	39100	38461	102.424	
	23	38247	38655	38616	38759	38352	38596	38634	38555	38724	38245	38188	39118	101.791	
14	0	38553	39459	38499	38806	38162	38806	38481	38879	38479	38111	38588	38717	101.977	
	1	38844	38549	38599	38902	38782	38378	38318	38266	38504	38423	39071	38880	101.973	
	2	38911	39092	39149	38752	38819	38288	38293	39125	38272	38080	38895	38584	102.137	
	3	38586	39062	38798	38608	39336	38000	38408	38176	38482	38425	38432	38802	101.885	
	4	38690	38673	38294	38255	38864	39116	38316	38841	39281	38501	38406	38527	102.028	
	5	38681	39049	38143	39135	39148	38312	38702	38621	39004	39238	38579	38648	102.357	
	6	38468	38771	38850	38228	38708	39282	38813	38679	38717	38720	38263	38462	102.071	
	7	38238	38383	39182	39170	39059	38805	38384	38268	38498	38532	38713	38858	102.100	
	8	38971	38889	38858	38306	39086	38373	38003	37907	39151	38406	38414	38976	101.935	
	9	38696	38689	38666	39131	38239	38273	38456	38732	38103	38832	38719	38467	101.861	
	10	38593	38545	39200	38644	38550	38645	38177	39489	38317	38656	38612	38276	102.015	
	11	38159	38673	38417	37806	38759	38491	38422	38519	38864	38929	37845	38048	101.405	
	12	38892	38013	38008	38300	38525	39078	38416	38624	38660	38475	38864	38131	101.637	
	13	38694	38935	38641	38774	39246	38451	38289	38770	38500	39091	38666	38641	102.234	
	14	38352	38528	38297	38378	38642	38794	38003	38903	38461	38899	38251	37828	101.494	
	15	37949	38810	38621	39482	38135	38790	38442	38397	38543	38626	39260	38776	102.043	
	16	38954	38693	38233	38510	38852	38370	38530	38310	38696	38620	38609	38569	101.848	
	17	38354	39153	38359	38318	38569	38417	38229	38689	38379	38574	38513	38554	101.664	
	18	38676	38748	38110	38684	38483	38275	38857	38372	38804	38639	38800	38862	101.928	
	19	38230	38266	38685	38266	38216	38416	38826	38864	38563	38698	38272	38385	101.571	
	20	38777	38758	38290	37915	38206	38670	38166	38277	38510	38824	38541	38003	101.406	
	21	38507	38846	39149	38731	38581	38081	38590	38476	38443	37723	38417	38371	101.622	
	22	38691	38615	38480	38916	38224	38150	38443	38898	39081	38303	38726	38699	101.910	
	23	38846	38896	38848	39089	38303	38935	38393	38143	38638	38137	38567	38918	102.017	

INAF/UNIRomaTre		S.V.I.R.CO. Observatory - Pressure Corrected Data – September 2020											16 NM-64	
day	hh	00_05	05_10	10_15	15_20	20_25	25_30	30_35	35_40	40_45	45_50	50_55	55_60	h-norm
15	0	38043	38404	38480	38538	38461	38082	38965	38120	37850	38798	38453	38778	101.410
	1	38590	39030	38376	38727	38424	38826	38770	38278	38916	38658	38558	38848	102.080
	2	39056	38606	37922	38802	38751	38669	38437	38374	38591	38676	37903	38554	101.715
	3	38941	38560	38627	39058	38683	39120	38677	38627	38702	38797	38306	38571	102.227
	4	38814	38481	38480	38520	38952	38503	38346	38497	38525	38740	38751	38973	101.988
	5	38544	38547	38102	38655	38529	38163	38219	38631	38366	38937	38803	38641	101.670
	6	38247	38709	39194	38719	38354	38613	38857	38482	38482	38477	39142	38773	102.091
	7	38624	39154	38963	38637	38917	38702	38547	38680	38828	38206	39047	38646	102.289
	8	38710	38761	39093	38964	38150	38021	38703	38562	39067	38404	38316	38513	101.918
	9	39186	38265	38623	37828	38297	38679	38681	39179	38689	38460	38638	39007	101.977
	10	38322	38465	39141	38624	38740	38362	38612	38444	38440	39080	38207	38826	101.918
	11	38704	38480	38388	38512	38543	38848	38414	38313	38783	38697	38401	38317	101.728
	12	38428	39004	38220	38733	38707	38691	39028	38863	38655	38949	38762	38738	102.251
	13	38327	38605	38581	37694	38504	38671	38445	37980	38437	37695	38423	38515	101.173
	14	38724	38726	38481	38726	38318	38300	38529	38522	38442	38404	38777	38292	101.693
	15	38742	38762	38100	38788	38510	38999	38940	38703	38846	38615	38821	38630	102.180
	16	38646	39008	38578	38748	38811	38613	38540	38905	38374	38959	38581	38040	102.037
	17	38516	38642	38813	38723	38790	38366	38595	37908	39040	38864	38243	38091	101.770
	18	38741	38338	38980	38683	38614	38735	38623	38393	38574	38870	38670	38906	102.108
	19	38906	38750	37921	38617	38265	38638	38320	38677	38848	38285	38887	38849	101.852
	20	38698	38780	38110	39024	38545	38287	38471	38371	38807	38217	38396	38484	101.682
	21	39238	39002	39016	38837	38364	38347	38736	38722	38633	38995	38660	38829	102.383
	22	38787	39057	38921	38825	38284	38731	38919	38798	38269	38734	38383	38468	102.119
	23	38213	38645	39294	38246	38457	38664	38199	38563	38721	38243	38460	38583	101.703
16	0	38827	38437	38879	38463	38674	38368	38180	39040	38166	38216	39038	39143	101.949
	1	38634	38491	38461	38601	38663	38868	39008	38434	38770	38462	38299	38293	101.857
	2	38674	38431	38604	38833	38509	39133	38417	38799	38172	39196	38820	38284	102.052
	3	39153	38340	38236	38408	38507	38328	38507	38659	38644	38580	38387	38692	101.737
	4	38725	38689	38650	38819	38448	38998	39118	38112	38837	38709	38804	38624	102.197
	5	38679	38951	37956	38668	38696	38598	38563	38513	38500	38564	38495	38686	101.831
	6	38957	38763	38665	38675	38326	39055	38901	38017	38603	38699	39187	38414	102.138
	7	38710	38345	38328	38587	38530	38602	38420	38185	38528	38548	38315	38457	101.542
	8	38425	38088	38965	38313	38675	38932	38986	38966	38883	38629	38799	38320	102.076
	9	38757	38416	38644	38312	38499	38333	38139	38261	38886	38897	38683	38239	101.654
	10	38838	38265	38692	38967	38510	38949	37816	38567	38250	38712	38529	38706	101.816
	11	38432	38865	38891	38581	38103	38540	38397	38491	38560	38317	38501	38417	101.661
	12	38088	38489	38582	39376	38869	37901	38680	38945	38561	38576	38983	37976	101.865
	13	38281	38226	38410	38177	38579	39084	38521	38319	38744	38500	38052	38566	101.521
	14	38746	38072	39109	38497	38543	38532	38971	38923	38795	38325	39069	38532	102.105
	15	38461	38742	38932	38580	38847	38658	38247	38844	38868	38803	38440	38798	102.128
	16	38998	38482	38873	38535	38596	39015	38011	38642	38361	38826	38246	38542	101.888
	17	38521	38867	38766	38728	38432	38587	38698	39355	38595	38861	38700	38326	102.176
	18	38543	38169	38547	39145	38692	38389	38525	38609	39191	38487	38156	38928	101.944
	19	38544	38639	38955	38484	38396	38043	38199	38266	38285	38484	38354	38477	101.448
	20	38226	38688	38793	38628	38397	38095	38648	38948	38526	38744	38808	38765	101.919
	21	38638	38588	38888	39039	38673	38147	38557	38111	38842	38206	38654	38286	101.778
	22	38394	38536	38369	38852	38389	38447	38867	38280	39074	38635	38054	38331	101.690
	23	38920	38966	38118	39135	38452	38555	38193	37958	38060	38669	38317	38765	101.663

INAF/UNIRomaTre				S.V.I.R.CO. Observatory - Pressure Corrected Data – September 2020										16 NM-64	
day	hh	00_05	05_10	10_15	15_20	20_25	25_30	30_35	35_40	40_45	45_50	50_55	55_60	h-norm	
17	0	38274	38815	38690	38549	38365	38583	38391	38357	38401	38528	38483	38652	101.657	
	1	38477	38704	38860	39054	39155	39288	37657	37917	38442	38703	38390	39004	102.003	
	2	38018	38471	38929	38812	38207	38592	38055	38591	38857	38582	38619	38525	101.697	
	3	38102	38548	37697	38410	38549	38171	38566	39365	38827	38659	38788	38747	101.734	
	4	38396	38338	38491	38603	38480	38917	38956	39499	38929	38687	38138	38871	102.147	
	5	38551	39170	38482	39110	38927	38656	38620	39014	39138	38789	38435	38436	102.372	
	6	38303	38210	38610	38832	38616	38950	38705	38494	38954	38574	38246	38738	101.911	
	7	38575	39054	38580	38863	39062	39393	38871	38616	38849	38668	38641	38470	102.442	
	8	38460	38490	38581	39365	38593	38181	38646	38517	38934	38488	38137	39153	101.980	
	9	39092	38937	38465	38487	38742	38365	38205	38749	38601	38819	38600	38590	102.003	
	10	39243	38851	38529	38605	38915	38700	38431	38735	39381	38825	38757	38756	102.461	
	11	38815	38646	38685	38734	38848	38346	38597	38403	38239	37878	38487	38305	101.636	
	12	38787	38864	38904	39094	38903	38756	38533	38237	38467	38316	38994	38575	102.175	
	13	38583	38755	38582	38608	38938	37780	38832	38401	38893	38176	38240	38962	101.805	
	14	38751	38697	38855	38410	38190	38766	38231	38559	38820	38157	38691	38338	101.742	
	15	38619	38580	38728	38800	38945	38517	39683	38732	38225	38703	39024	38813	102.381	
	16	38739	38752	38915	38791	38185	38418	39278	38930	38368	38264	38643	38567	102.047	
	17	38712	39045	39107	38169	38418	38544	38267	38129	38403	38857	38863	38776	101.924	
	18	38570	38685	38965	38505	38425	38429	38479	38802	38547	38481	38816	38946	102.003	
	19	38777	38061	38411	38369	37587	39006	38955	38413	38689	38389	38394	38934	101.636	
	20	38369	38381	37550	38831	38457	38571	38862	38635	38767	38690	37955	39318	101.725	
	21	38230	38340	38803	38640	38295	38125	38800	38998	38786	38324	38239	38274	101.608	
	22	39256	38628	38854	38343	38523	38798	38486	38303	38109	38346	38021	38835	101.750	
	23	38282	38248	39152	38235	38483	38806	38880	38631	38811	38423	38051	38803	101.817	
18	0	38768	38901	38982	38481	38908	38540	38785	38709	38772	38437	38816	38506	102.209	
	1	38794	38745	38759	38322	38618	39238	39095	38744	38255	37817	38850	38382	101.996	
	2	38248	38903	38463	39024	38812	38527	38239	38417	38725	38865	38641	38867	102.021	
	3	38501	38673	38585	38116	39087	38728	38636	38774	38382	38502	38439	38850	101.920	
	4	38603	37862	38794	39401	38226	38772	39054	38618	38771	38149	38898	38787	102.066	
	5	38386	38443	38119	38203	38614	38701	38502	38672	38721	38502	39064	38997	101.843	
	6	38840	39229	38555	38485	38676	38634	38923	38854	38774	39275	38990	38432	102.447	
	7	38923	38873	38674	38954	38827	39054	38385	39110	38301	38580	38739	39282	102.455	
	8	38352	38743	38183	38547	38149	38822	38412	38871	38895	39174	38580	38549	101.921	
	9	38234	39185	38190	38530	39203	38533	38838	38765	38984	38870	38149	38462	102.067	
	10	38787	38149	38346	38369	38704	38261	38707	38742	38619	38516	38317	38323	101.605	
	11	38370	38456	38916	38152	38456	38166	38712	38675	39013	38685	39016	38403	101.865	
	12	38573	38535	38367	38896	38697	38329	38742	38627	39019	38294	38493	38491	101.874	
	13	38326	38779	38914	38325	38366	38300	38081	38335	38354	38610	38037	38527	101.410	
	14	37886	38489	39060	38361	38703	38724	38424	39156	38730	38189	38283	38417	101.733	
	15	38516	38627	38693	38284	38809	38320	38738	38183	38837	38157	37827	38678	101.567	
	16	38338	38251	38600	38577	38078	39525	38710	38962	38314	38758	38308	38527	101.848	
	17	38574	38401	38602	38231	38939	38863	38660	38365	38421	38203	38494	38503	101.697	
	18	38509	38641	38720	38334	38525	38021	38736	38029	38500	38541	38449	38837	101.605	
	19	37927	39106	38653	38414	38593	39359	38290	38978	38813	38736	38544	38427	102.045	
	20	38439	38600	38873	38141	38741	38696	38735	38527	38427	38153	38403	38311	101.650	
	21	38162	38235	38965	38648	38071	38641	39127	38372	38439	38851	38690	38424	101.778	
	22	38199	38289	38841	39246	38017	38530	38507	38641	38259	38737	38853	38785	101.839	
	23	39046	38673	38927	38144	38852	38615	38617	38301	38298	38820	39464	38963	102.239	

INAF/UNIRomaTre		S.V.I.R.CO. Observatory - Pressure Corrected Data – September 2020											16 NM-64	
day	hh	00_05	05_10	10_15	15_20	20_25	25_30	30_35	35_40	40_45	45_50	50_55	55_60	h-norm
19	0	38085	39280	38740	38354	38149	39352	38744	38429	38041	38493	38451	38184	101.706
	1	38628	38887	38686	39171	38491	38568	38138	39201	38581	37647	38958	38106	101.874
	2	39091	38553	38545	38115	38311	39343	38645	39060	38555	38145	38594	38298	101.916
	3	38450	38145	38457	39254	38533	38544	38052	38877	38636	38961	38857	39218	102.076
	4	38680	38827	38200	38748	38777	38888	38541	39075	38738	38288	38563	38785	102.104
	5	38565	38757	38967	38340	37887	38542	39084	38216	38281	38459	38871	38592	101.764
	6	38792	38883	37852	38929	39072	38528	38661	38566	39296	39256	39052	38626	102.413
	7	38258	39060	39394	38443	38438	38870	39268	37650	38704	39044	39113	38083	102.151
	8	38908	38723	38611	38490	38596	38591	38763	38591	38930	38051	38319	38246	101.820
	9	38963	38501	38698	38515	38612	38678	38479	39001	38290	38972	38617	38772	102.102
	10	38019	39203	38893	38690	39041	38093	38171	38837	38628	39189	38900	38663	102.152
	11	38719	37987	38415	38349	38656	38601	38228	38164	38823	38610	38650	38303	101.531
	12	38453	38809	38375	38708	38601	38750	38024	38805	38401	38358	37895	37892	101.435
	13	38359	39263	38816	38590	38508	38595	38211	38271	38695	38807	38108	38378	101.772
	14	38562	39543	38066	38893	38402	38115	38145	38759	38285	38672	38441	38521	101.729
	15	38502	38180	38856	38693	38452	38643	38700	38679	38361	39120	38729	38515	101.955
	16	38738	38556	38870	38453	38670	38438	38938	39014	38216	39285	38473	39000	102.223
	17	38795	38683	38460	38042	38305	38848	38136	38180	38977	38641	38337	37927	101.493
	18	38126	38758	38544	38324	38452	38684	39055	38782	38417	38669	38834	38085	101.800
	19	38690	39014	37989	37940	38539	38067	38009	38643	38430	38743	38437	38683	101.460
	20	38437	38146	38669	38878	39130	38471	38515	38948	39170	38661	38621	38789	102.176
	21	38399	38769	38334	38789	38336	38759	38716	37928	38526	38248	38130	38156	101.440
	22	38304	39058	38374	39055	38885	38682	38395	38722	39096	38878	38630	38766	102.266
	23	38340	38923	38568	38757	38638	38671	38819	38610	39170	38409	38783	38806	102.188
20	0	38684	38570	38159	38919	38978	38860	38982	38665	38142	38762	39216	38692	102.217
	1	39076	38533	38702	38891	38604	38243	38926	38964	39128	38578	38627	38868	102.331
	2	38044	38931	38828	38569	38228	38512	38800	38513	38535	37932	38796	38540	101.690
	3	38893	39063	38835	38955	37847	38911	38875	38594	38455	38799	38639	38504	102.162
	4	39088	39144	38728	38559	39263	38819	39010	38585	38839	39237	38357	38912	102.639
	5	38108	39113	38727	38854	38572	38657	39210	38709	38817	38571	38928	38576	102.265
	6	38592	38632	38548	38491	38585	38895	38352	39069	38913	38877	39300	38510	102.248
	7	38558	38426	38569	38385	38754	38327	38644	39084	38633	39200	39062	38610	102.135
	8	38359	39042	38814	39394	38572	38972	38396	38387	38376	38543	38856	39118	102.263
	9	38514	38746	38105	39096	38510	38648	38127	38668	38154	38936	38078	38437	101.644
	10	39249	38620	38893	38778	38589	38476	38220	38078	38668	38707	38532	38967	102.031
	11	38589	38784	38992	38180	38610	37779	38688	38821	38333	38977	38587	38992	101.933
	12	39085	38558	38390	39128	38639	38705	38962	38606	38759	38946	38579	38453	102.258
	13	38255	38472	38397	38482	38483	37869	38907	38752	38443	38696	38526	38701	101.636
	14	38942	38814	38419	38695	38258	38601	38779	38572	38480	38937	38476	38192	101.897
	15	39067	38673	38090	38939	38455	38467	38588	38830	38719	38391	38600	39195	102.083
	16	39045	38559	37913	38301	38258	38885	38769	38547	38213	39235	38612	39162	101.970
	17	39078	38561	39434	38785	38778	38874	38226	38663	38716	38302	38535	38427	102.164
	18	38994	38716	38779	38442	37946	38883	38472	38839	38337	38525	38301	38382	101.776
	19	38876	38750	38533	38829	38278	38182	38567	38433	38395	38926	39173	38655	101.991
	20	38632	38848	38430	38433	38676	38245	38600	38587	38473	39148	38236	38358	101.786
	21	38961	38661	38606	38139	39172	38715	38664	38768	38709	38557	38421	38395	102.029
	22	38664	38462	38452	38138	39177	39022	38673	38584	38754	38780	38766	38586	102.093
	23	38407	38163	38525	38475	38498	38658	38508	38646	39035	38798	39178	38959	102.047

INAF/UNIRomaTre				S.V.I.R.CO. Observatory - Pressure Corrected Data – September 2020										16 NM-64	
day	hh	00_05	05_10	10_15	15_20	20_25	25_30	30_35	35_40	40_45	45_50	50_55	55_60	h-norm	
21	0	38537	38215	38982	39178	38478	38632	38613	38936	37944	38635	38575	38702	101.958	
	1	38708	38060	38723	38532	38739	38248	38864	38425	38911	38860	38104	38652	101.822	
	2	38416	38441	38820	38301	38920	38459	39011	38885	39002	38695	38527	38346	102.041	
	3	38363	38632	38827	38696	38462	38527	38644	39377	38295	38563	38885	38628	102.058	
	4	38533	38459	38403	38282	38915	39110	38491	38985	38768	38388	38741	38913	102.077	
	5	39182	39737	38731	38367	38545	38176	38438	38322	38778	38811	38559	38215	102.050	
	6	38013	38510	38393	39216	38523	38686	38666	38639	39042	38174	38139	38477	101.745	
	7	38727	39038	38640	38543	38757	38428	39158	38537	39015	38441	38976	38848	102.324	
	8	38537	38134	38555	38288	38576	38433	38781	38722	38782	38420	38836	38540	101.773	
	9	38763	38175	38636	38745	38790	38544	38841	38622	38813	38531	38320	38484	101.918	
	10	38346	38918	39131	38834	38291	38336	38646	39216	38536	38127	38899	38718	102.079	
	11	38584	38488	38539	38461	38742	38510	37987	38242	38376	39133	39129	38262	101.740	
	12	38630	38573	39367	38312	38185	38578	38474	38873	38335	38925	38650	38253	101.894	
	13	38732	38531	38319	38341	38344	38372	39031	38546	38463	38558	38535	39022	101.815	
	14	38687	39290	38543	38488	38539	39255	38623	38214	38419	38185	38950	38003	101.903	
	15	38249	38254	38511	38346	38193	37732	38297	38668	39130	38958	38790	38228	101.498	
	16	38972	37921	38273	38506	38439	38489	39020	38543	38235	38620	38782	38669	101.743	
	17	38459	38492	38895	38367	38713	38684	38405	38498	38547	38385	38317	38618	101.724	
	18	38192	38178	38740	38708	37968	38470	38366	37846	38350	38003	38375	38451	101.122	
	19	38498	38117	38441	38616	38045	38351	38652	37953	38181	38489	38302	38246	101.177	
	20	38899	38381	38901	38014	38327	38596	38366	38372	38315	37920	39249	38434	101.591	
	21	38353	38360	38034	38604	38771	38441	38322	38332	38603	38811	38040	38965	101.560	
	22	37609	38525	38083	38969	38357	38670	38080	38190	38027	38083	38229	38816	101.120	
	23	38718	38447	38116	38307	38609	38590	38197	38435	39105	38526	38861	38495	101.729	
22	0	38645	38381	38744	38548	38438	38468	38251	38181	39068	38281	38088	39122	101.685	
	1	39020	38741	38104	38829	38723	37915	38675	38807	38918	38176	39023	38450	101.944	
	2	38468	38840	38599	38156	38649	37773	38203	38287	38205	38786	38319	38742	101.426	
	3	38763	38768	38428	38678	37937	38449	38665	38118	38130	38553	38551	38619	101.565	
	4	38347	38531	38949	38530	38870	38085	38283	38739	38407	38501	38530	38620	101.726	
	5	38499	38403	39055	38450	38815	38751	38257	38653	38599	37980	37806	39169	101.737	
	6	38501	38209	38224	38904	37894	38752	38649	38684	38338	38581	38426	38612	101.590	
	7	38713	38016	38840	38425	38313	38739	38771	38708	38419	38692	38680	38684	101.860	
	8	38339	38842	38648	39293	38170	39095	38841	38957	38475	38734	38869	38251	102.193	
	9	38784	38696	38196	38946	38613	38990	38570	38178	38186	38158	38545	38398	101.697	
	10	39503	39123	38625	38727	38804	37973	38320	38640	38749	38029	39007	38524	102.085	
	11	38860	38817	39023	38757	38511	38378	38261	38865	37759	38680	37502	38638	101.651	
	12	38905	38059	38209	38552	38456	38811	38442	38901	38737	38098	38536	38204	101.620	
	13	39126	38501	38282	38247	38520	39087	38458	38815	38707	38120	38532	38559	101.850	
	14	38363	38433	38615	38694	38047	38445	38822	38261	38620	38396	38795	38768	101.698	
	15	38465	38378	38607	38632	38677	39009	38462	38262	38731	38360	38688	38705	101.854	
	16	38462	38804	38370	38902	38337	38738	39028	38371	38672	38836	39219	38175	102.062	
	17	38599	38886	38751	39149	38422	38838	38122	38259	38287	38633	38729	38502	101.899	
	18	38130	38192	38716	38207	38338	39174	38745	38636	38410	38537	38110	38267	101.522	
	19	39145	38378	37914	38569	38503	39361	38781	38337	38512	38661	38982	38343	101.967	
	20	38872	38224	38573	38064	39295	38499	38566	38701	38502	38242	38218	38648	101.729	
	21	38846	38409	38437	38200	38377	38922	38850	38760	38004	38944	38717	38536	101.860	
	22	38511	38928	38410	39633	37873	38523	38493	38410	38612	38456	38981	38567	101.947	
	23	38518	38383	38575	38941	38522	38519	38150	38429	38618	38649	38276	38739	101.710	

INAF/UNIRomaTre		S.V.I.R.CO. Observatory - Pressure Corrected Data – September 2020											16 NM-64	
day	hh	00_05	05_10	10_15	15_20	20_25	25_30	30_35	35_40	40_45	45_50	50_55	55_60	h-norm
23	0	38645	38517	39442	38514	38280	38259	38691	38636	38780	38620	38569	38344	101.923
	1	38560	38507	38686	38335	38884	38636	38736	38194	38666	38410	38221	38346	101.680
	2	38887	38534	38752	38779	38639	38841	38203	38760	38748	38688	38791	38259	102.054
	3	38473	38808	38597	38335	38787	39137	38416	38137	38100	38666	38930	38492	101.833
	4	38827	38353	38403	38956	38477	38409	38411	39032	38810	38333	38751	38354	101.885
	5	38501	38288	39025	38357	38366	38593	38026	38949	39242	37889	38723	38742	101.794
	6	38365	38688	38676	38612	38775	39021	38622	38540	38852	38402	38860	38915	102.153
	7	38242	38543	39032	38269	37777	37814	38348	38322	38492	38222	38515	39159	101.362
	8	38251	38412	38480	38344	39413	38763	38589	38080	39152	38062	38881	38155	101.769
	9	38697	38543	38437	38558	38530	38343	38264	38562	38540	38592	38501	38650	101.688
	10	38463	38767	39265	38728	38520	38819	38683	38469	38219	38432	38795	38772	102.065
	11	38221	38506	38800	38847	38841	38209	38404	38848	38956	38356	38183	38460	101.778
	12	38561	38418	38440	38221	38768	39020	38789	38515	38632	38490	38391	38337	101.768
	13	39095	38085	38402	37889	38446	38088	38629	38527	38308	38414	39145	38843	101.612
	14	38396	38515	38642	38360	38660	38768	38640	37646	38847	37959	38509	37688	101.339
	15	38719	38560	38568	38600	38139	38558	38601	38793	38608	38273	38295	38861	101.766
	16	38072	38493	38560	38426	39141	38812	38352	37953	38267	38020	38616	38114	101.381
	17	38531	38695	38502	38946	38200	38359	38611	38596	38486	39262	38044	38740	101.854
	18	38638	38662	39039	37620	38123	38861	38270	38905	38571	38566	38613	38186	101.653
	19	38412	38775	38853	38463	38332	37863	38252	38246	38438	38441	38035	38052	101.235
	20	37890	38600	38488	38653	38804	38559	38095	38431	38955	38599	38774	38662	101.752
	21	37990	38369	38320	38009	38964	38240	38624	38773	38673	38358	38514	38387	101.468
	22	38787	38739	38050	38392	38708	38539	38401	38704	38974	39043	39019	38629	102.077
	23	38435	38797	38205	39201	39177	38614	38226	38266	38677	39000	38222	38554	101.942
24	0	39102	39019	38989	38604	38461	38655	38651	38665	38541	38362	38477	38924	102.180
	1	38516	38917	38033	38612	38708	38477	38932	38525	38822	38711	39314	38499	102.095
	2	39378	37954	38854	37827	38005	38263	38358	39087	39089	39209	38418	39027	101.963
	3	38440	38479	38023	38491	38754	38928	37933	38561	38452	38438	38446	38730	101.569
	4	38538	38775	38909	38945	39091	38809	38818	38275	38364	38540	38049	38212	101.932
	5	38525	38042	38706	38207	38734	37708	38643	38250	38106	38543	38608	38082	101.234
	6	37927	38068	38365	38329	38560	38543	38132	38374	39094	38654	38752	38127	101.403
	7	38589	38902	38398	38576	38229	38871	39156	38190	38105	38778	38823	38938	101.982
	8	38443	39327	38349	38527	38685	38237	38395	38351	38271	38739	38398	38622	101.716
	9	38163	38344	38285	38375	38616	38638	38198	38500	38447	38304	38106	38671	101.342
	10	38220	38757	38569	38719	38355	38564	38276	38230	38664	37928	38620	38665	101.545
	11	38350	38654	38391	38308	37988	39187	38290	38390	38362	38769	38447	37892	101.426
	12	38055	39008	38575	38925	38607	38403	38631	38594	38453	38710	38349	38902	101.907
	13	38279	38368	38294	38925	38276	37976	39019	38584	38636	38556	38652	38637	101.685
	14	38719	38224	38422	38876	38156	38768	38609	38938	38631	38751	37998	39021	101.885
	15	38309	38456	38213	38265	38135	38769	38619	38220	38830	38666	39042	38693	101.688
	16	38307	38157	38435	38715	37816	38380	38299	38513	38734	38440	38350	38768	101.401
	17	38382	38199	38923	38473	38815	38078	38413	38085	38079	37889	38609	38443	101.285
	18	38739	38423	38065	37603	38252	38718	38147	38668	38397	38606	38109	38147	101.172
	19	38488	38547	38783	38027	38640	38640	38627	38173	38862	38666	38141	38570	101.676
	20	38090	38557	38363	37974	38592	38592	38799	38998	38364	38761	38181	38166	101.517
	21	38603	38794	38845	38108	38710	38101	38403	38620	38508	38732	38600	38202	101.690
	22	38507	38803	39106	38357	38261	38325	38167	39032	38672	38638	38521	38910	101.926
	23	38285	38074	38575	38063	38219	38613	38327	38420	38376	38434	38226	38005	101.116

INAF/UNIRomaTre				S.V.I.R.CO. Observatory - Pressure Corrected Data – September 2020										16 NM-64	
day	hh	00_05	05_10	10_15	15_20	20_25	25_30	30_35	35_40	40_45	45_50	50_55	55_60	h-norm	
25	0	38773	38591	38120	38987	38282	38662	38317	38694	38327	38622	38400	38512	101.681	
	1	38117	38576	38321	37910	38673	38714	38168	38188	38541	38581	38323	38244	101.279	
	2	38462	38621	38021	38439	38305	38368	38503	39089	38635	38770	38575	38098	101.615	
	3	38642	38502	38055	39086	38374	38024	38643	38518	38674	38501	38538	37629	101.461	
	4	38090	38233	38164	37899	38176	38642	38592	38477	38340	38378	39109	38626	101.360	
	5	38513	38606	39198	38223	38461	38289	38510	38556	38515	38953	38570	38031	101.734	
	6	38691	38279	38424	38833	38454	38477	38166	38223	38485	38613	38543	38889	101.657	
	7	38183	38146	38648	38525	38582	38497	38455	38381	38113	38792	38874	38887	101.658	
	8	38371	38769	38244	38392	38498	38112	38526	38992	38711	38113	38334	37649	101.356	
	9	38409	38081	38606	39906	37956	38896	38451	38111	38459	38079	38838	37902	101.572	
	10	38649	39000	38253	38480	38815	39044	38899	38902	38484	38584	38750	39202	102.314	
	11	38565	38649	38269	38330	38333	38420	39095	38502	38511	38305	38923	38416	101.710	
	12	38582	38306	38743	38426	38702	38854	38049	38505	37974	38296	38141	38136	101.357	
	13	38590	38958	38490	38449	38488	37974	39008	38556	38304	38493	38410	38697	101.732	
	14	38536	38885	38314	38302	38461	38509	39013	38313	39308	38293	38595	38775	101.927	
	15	38435	38752	39040	38583	38550	38951	38872	38706	38653	38424	38176	38731	102.052	
	16	39338	38637	38486	38755	39643	39026	38596	38540	37944	38723	38796	38198	102.230	
	17	38834	38599	39087	39033	38431	38779	38224	38773	38511	38631	38520	39034	102.181	
	18	38320	38213	38624	38422	38410	38692	38492	38821	38874	38457	38761	38407	101.749	
	19	38860	38554	38531	38999	39095	39100	39004	38577	39010	38485	38620	39100	102.506	
	20	38575	38659	38809	39257	38504	38772	38866	37931	38338	38358	39129	38558	102.027	
	21	38780	38555	38771	38784	38731	38812	39095	38704	38627	38417	38881	38774	102.285	
	22	38840	38879	39137	38761	38331	38590	38546	38857	38517	38758	38703	38657	102.206	
	23	37955	38669	38852	38595	39033	38891	39102	38629	38496	39075	38383	38780	102.181	
26	0	38738	38950	39658	38615	39217	38814	38983	39516	39251	38582	39090	38767	103.004	
	1	38824	39062	39010	38919	39287	38776	39023	38857	38433	39108	38445	38844	102.649	
	2	39127	39016	39000	38963	39278	39161	38543	39067	39531	39084	38940	39280	103.177	
	3	38856	38582	38798	38901	39194	38636	38662	38654	39273	38443	38796	38930	102.459	
	4	38819	38667	38872	39085	37851	39039	38710	39587	38832	38771	38558	38701	102.409	
	5	38745	38491	38727	38127	38531	39264	38614	38844	39030	38820	39000	38440	102.219	
	6	39144	38737	38729	38796	39144	38624	39102	38914	38553	38939	38552	38290	102.415	
	7	39060	38850	38541	38983	39149	38477	38829	39215	38801	39000	39280	39017	102.784	
	8	38259	39209	39152	38840	38407	38806	38649	38471	38779	38784	38920	38825	102.323	
	9	38495	38866	38874	38455	38944	38204	38647	38588	38213	38769	38361	39051	101.963	
	10	38776	38756	39350	38681	38355	38546	39190	38602	38671	38474	38720	38392	102.193	
	11	38304	38617	38598	38630	38548	37988	38275	38158	38268	38585	39078	38932	101.636	
	12	38766	38498	38649	38594	38129	38924	38913	38636	38994	38711	38765	38758	102.154	
	13	39020	38549	38990	38570	38567	38694	38753	38270	38994	38203	38702	38700	102.085	
	14	39263	38714	39087	38531	38584	38804	39089	38229	38578	38602	38987	38722	102.342	
	15	38283	38579	38652	38646	38503	38067	37999	38930	38607	38373	38817	38567	101.645	
	16	38388	38914	38826	38329	39158	38915	38900	39418	38941	38746	38771	38185	102.408	
	17	38542	38575	38637	38483	38355	39085	39369	38449	38181	38598	38389	38625	101.924	
	18	38591	38621	38572	38315	38266	38621	38937	38761	38491	38467	38814	38289	101.804	
	19	39223	37943	37922	38283	38425	38340	38753	38000	38245	38675	39200	38390	101.508	
	20	38397	38960	38494	38753	38691	39141	38458	38740	37882	38606	38423	38566	101.884	
	21	38838	38593	39069	38255	39081	38833	38243	38284	38438	37796	38426	38534	101.727	
	22	38527	38462	38378	38463	38258	38195	38421	38425	38707	38744	38312	38244	101.450	
	23	38126	38377	38260	37939	38584	38732	38410	38477	38685	38528	37961	39226	101.487	

INAF/UNIRomaTre		S.V.I.R.CO. Observatory - Pressure Corrected Data – September 2020											16 NM-64	
day	hh	00_05	05_10	10_15	15_20	20_25	25_30	30_35	35_40	40_45	45_50	50_55	55_60	h-norm
27	0	38306	38371	38586	38606	38449	38535	38635	38264	38401	38305	38593	38384	101.512
	1	38744	38827	38995	38462	38926	38695	39167	38645	38789	38161	38446	38240	102.100
	2	38472	39121	38805	38650	38548	38553	38574	38448	38788	38856	38143	38419	101.943
	3	38755	38218	38928	38656	38692	38914	39317	39046	38474	38665	38553	38554	102.251
	4	38610	38645	38353	38713	38325	38563	38840	38855	38569	38521	38677	38428	101.882
	5	38284	38242	38117	38799	38277	38563	38782	38781	38134	38416	38241	38273	101.400
	6	38221	39106	38599	38563	37859	38424	38389	38513	38913	38504	39113	38740	101.848
	7	38484	38119	38139	38631	37964	38203	38894	38758	38079	38750	38257	38170	101.299
	8	38248	38863	38733	38521	38809	38435	38200	38732	38306	38418	38647	38438	101.717
	9	38209	38666	38184	38734	38331	38317	38595	38302	38588	38770	38401	38180	101.482
	10	38505	38467	39130	38511	38294	38388	38344	38632	38160	38826	38023	38257	101.538
	11	38120	38625	38669	39299	38383	38580	38803	38624	38676	38768	38143	38713	101.949
	12	38454	38890	38320	38614	38553	38772	38332	38537	38475	38684	37559	38283	101.524
	13	38759	38462	38447	38137	38593	38006	38845	38328	38578	38203	38807	38100	101.479
	14	38678	38251	38436	38323	38089	38360	38774	38607	38046	38069	38886	38811	101.493
	15	38435	38813	38251	38524	38167	38176	38199	38635	37620	38716	38202	38218	101.191
	16	37946	39096	38261	38277	38687	38845	38728	38435	38184	38408	37835	37922	101.338
	17	38557	38549	37942	38926	38634	38287	37700	38298	38725	38456	38442	38712	101.470
	18	38663	38290	38642	38517	38303	38340	38603	38141	38157	38466	38319	37879	101.272
	19	39083	37779	38054	38719	38490	38244	37712	37976	38234	38447	37983	38334	100.994
	20	38913	38383	38771	38104	38273	38528	38612	38891	38071	39062	38945	38265	101.821
	21	38249	38501	38798	38441	38391	38204	38929	38817	38696	39062	38548	38594	101.910
	22	38852	38881	38451	38178	38210	38299	38410	38280	38563	38554	38243	38146	101.435
	23	38640	38954	38565	38895	38365	38586	38419	38527	37959	38826	38521	39101	101.939
28	0	38186	38492	38541	38119	37743	38314	38443	38206	38668	38387	38341	38663	101.225
	1	37949	38667	38726	37916	39002	37605	38448	38272	38796	38223	38560	37965	101.228
	2	38331	38462	38657	38768	38453	38665	38702	38890	38463	38812	38446	38814	101.962
	3	38868	38540	38900	38585	39099	38157	38374	37804	38202	38469	38128	38907	101.647
	4	38749	38406	38722	37938	38300	38896	38564	38407	38416	38881	38781	38380	101.737
	5	38371	38565	38818	38783	38644	38178	38541	38237	38699	38505	38153	38646	101.671
	6	38408	38298	38788	38641	38797	38495	38376	38418	38592	38906	38581	38659	101.851
	7	37987	38891	38940	38587	38295	38479	38625	38966	37792	38483	38514	37946	101.531
	8	38502	38275	38445	38199	38470	38244	38707	38098	38550	38526	38797	38497	101.488
	9	38658	38290	38295	38337	38587	38138	38331	38195	38389	38247	38688	38508	101.347
	10	38579	38709	39018	38532	38456	38799	38834	38588	38428	38127	38390	38141	101.772
	11	38835	38442	38414	38695	38496	38448	38496	38553	37864	37707	38467	38433	101.387
	12	38359	38757	38554	38774	37447	38191	38391	38389	38509	38431	38927	38349	101.437
	13	37903	38361	38560	38247	39080	37901	38223	38600	37862	38031	38811	38739	101.270
	14	39467	38370	38408	38537	38316	38233	38599	38057	38365	38416	38079	38548	101.507
	15	38258	38585	38135	38218	38229	38651	39005	38618	37925	38416	38990	38396	101.514
	16	38555	38614	38242	38321	38272	38499	38338	38270	38544	38710	38255	38517	101.450
	17	38211	38076	38533	38239	37905	38421	38357	38371	38359	38159	38742	38143	101.094
	18	38320	37704	38660	39086	38293	38401	38089	38584	38591	38084	38381	38405	101.332
	19	38090	38545	38798	38352	38930	38169	38354	38137	38548	38663	38466	38602	101.564
	20	38340	38271	38389	38365	38523	37942	38380	38659	38385	38370	38746	38368	101.363
	21	38657	38491	38598	37898	38368	38465	38235	38736	38029	38243	37904	38344	101.194
	22	38479	37874	38358	38470	38264	38591	38537	38255	38078	38162	38167	38170	101.069
	23	38386	38330	38049	37651	38585	38085	38339	38316	38537	38513	38137	38378	101.047

INAF/UNIRomaTre				S.V.I.R.CO. Observatory - Pressure Corrected Data – September 2020										16 NM-64	
day	hh	00_05	05_10	10_15	15_20	20_25	25_30	30_35	35_40	40_45	45_50	50_55	55_60	h-norm	
29	0	37950	38246	38446	38143	37931	37712	38305	37914	37543	38635	38236	38380	100.642	
	1	38476	39213	38071	37873	38131	38429	38289	38377	38518	38481	37871	38379	101.224	
	2	37965	38431	38250	38467	38153	38385	37820	37779	38103	38542	37997	38601	100.868	
	3	38053	37799	38423	37995	38085	37781	38223	38461	38587	38073	37627	38362	100.643	
	4	38625	37990	38101	38321	38102	38437	38564	37496	38277	38258	37896	38234	100.826	
	5	37977	38191	38218	38286	38090	37812	37821	37866	38322	37795	37949	38139	100.422	
	6	38448	38147	37568	38641	38294	37888	38179	38270	38764	38559	37937	38687	101.064	
	7	38192	38364	38526	38380	38106	38810	38757	38655	38053	38533	38478	38812	101.566	
	8	38607	38076	38271	38311	37900	38300	38341	37596	38352	37939	38717	38368	100.931	
	9	38308	38148	38631	38361	38270	37831	38191	38167	38378	38105	38484	37970	100.946	
	10	37929	38073	38169	38089	38005	38425	38438	38319	38370	38525	38078	38017	100.856	
	11	38551	38706	38653	37795	38115	38303	38313	38464	38327	37894	37951	38524	101.111	
	12	38745	38010	37906	38318	38572	38218	38419	38336	38313	38145	38585	38648	101.248	
	13	38176	38394	38442	38358	38149	38091	38385	38749	38703	38294	38250	38723	101.358	
	14	37954	38545	38001	38715	38429	38394	38004	38166	37972	38393	38798	38228	101.112	
	15	38923	38390	38314	37962	37898	38303	38041	38590	38055	38582	38283	38013	101.058	
	16	38699	38115	38305	38362	38653	38147	38082	38208	38267	38186	38750	38358	101.229	
	17	38253	37707	38392	38219	38129	38121	37858	38392	37896	38382	37677	38469	100.649	
	18	38476	38505	37920	37912	38450	38459	37770	38313	38228	37953	37890	38533	100.850	
	19	38448	38546	38951	38329	38131	38220	38196	37674	37764	37978	38323	38322	100.954	
	20	38196	38541	38767	38210	38176	37927	38167	38502	38764	37804	38117	38222	101.067	
	21	37828	38220	38512	37992	37799	38383	38716	37836	38236	38149	38026	38122	100.720	
	22	38161	38268	38174	38664	37989	38061	37781	38229	38418	38319	37983	38333	100.844	
	23	38128	38072	37761	37623	38410	38163	38355	38402	37760	38168	38009	37966	100.500	
30	0	37812	37930	37876	38099	38385	38154	37900	38481	37734	37974	38630	38336	100.604	
	1	37819	37489	38409	38113	38214	38091	38188	38295	38291	38127	38131	38468	100.680	
	2	37797	38198	38117	37905	38209	38687	38680	38220	38203	37902	37960	38585	100.862	
	3	38848	38182	38799	38469	38804	38342	38541	38101	38436	38751	38455	38460	101.681	
	4	38245	38416	38040	38961	38839	38788	38115	38712	38423	38621	38474	38235	101.612	
	5	38344	38653	38593	38165	38485	38823	37859	38452	38885	38797	37867	37984	101.400	
	6	37878	38107	38297	38964	38325	38332	38100	38567	38222	38139	38230	38234	101.067	
	7	38953	38446	37968	37772	38388	39100	39130	38880	38612	38899	38757	38478	101.944	
	8	38391	38162	38745	38208	38600	37515	38597	38898	37575	38352	38475	38514	101.207	
	9	38812	38535	37876	38412	38484	38725	38742	38407	38341	38142	38442	38367	101.482	
	10	38573	38272	38731	38233	38290	38831	39130	38194	38192	38361	38146	38305	101.476	
	11	38995	38308	38657	38292	38370	37936	38854	38360	37562	38041	38184	39038	101.331	
	12	38356	38722	38086	38411	38340	38205	38563	38017	38348	37973	38945	38229	101.243	
	13	38335	38294	38806	38155	38141	38579	38002	38035	38463	38606	38146	38237	101.156	
	14	38768	37826	38366	38223	38293	38454	37957	38568	38200	37906	37963	38275	100.936	
	15	38142	38489	38350	38292	38737	38187	38289	37876	38204	38452	38468	38556	101.209	
	16	38388	38566	38443	38526	38536	38858	38310	38668	38067	38045	38743	38470	101.556	
	17	38481	38405	38416	38195	38100	38894	38686	38260	38463	38360	38160	38725	101.452	
	18	38646	38114	38275	38197	38218	38702	38316	38833	38244	38726	38583	38217	101.436	
	19	37915	38307	38576	38760	37957	38341	38380	38163	38258	38445	38891	38415	101.290	
	20	38529	38469	38520	37901	38601	38811	38675	38498	38133	38530	38022	38255	101.408	
	21	38583	37826	38160	38340	38273	38180	38652	38564	38763	38299	38338	37701	101.129	
	22	37840	38486	38668	38312	38366	38161	38462	38385	38024	38586	37908	38381	101.107	
	23	38327	38451	37911	38588	38622	38329	38079	38532	38447	38006	38073	38336	101.134	

S.V.I.R.CO. Observatory - Pressure in hectoPascal – September 2020

day	hh	00_05	05_10	10_15	15_20	20_25	25_30	30_35	35_40	40_45	45_50	50_55	55_60	average
1	0	1011.81	1011.79	1011.77	1011.77	1011.78	1011.77	1011.78	1011.78	1011.74	1011.71	1011.72	1011.73	1011.76
	1	1011.74	1011.77	1011.74	1011.68	1011.66	1011.64	1011.68	1011.74	1011.80	1011.83	1011.83	1011.82	1011.74
	2	1011.79	1011.72	1011.64	1011.57	1011.57	1011.63	1011.70	1011.69	1011.62	1011.55	1011.48	1011.37	1011.61
	3	1011.33	1011.36	1011.33	1011.32	1011.33	1011.35	1011.38	1011.40	1011.41	1011.41	1011.40	1011.42	1011.37
	4	1011.43	1011.45	1011.49	1011.48	1011.52	1011.56	1011.53	1011.50	1011.53	1011.60	1011.62	1011.62	1011.52
	5	1011.60	1011.58	1011.59	1011.62	1011.66	1011.64	1011.58	1011.58	1011.60	1011.60	1011.60	1011.62	1011.61
	6	1011.65	1011.69	1011.73	1011.80	1011.85	1011.86	1011.86	1011.89	1011.95	1012.02	1012.07	1012.08	1011.87
	7	1012.08	1012.10	1012.13	1012.13	1012.15	1012.14	1012.10	1012.11	1012.16	1012.22	1012.26	1012.27	1012.15
	8	1012.27	1012.27	1012.27	1012.26	1012.24	1012.24	1012.24	1012.22	1012.19	1012.17	1012.18	1012.19	1012.23
	9	1012.21	1012.22	1012.20	1012.21	1012.21	1012.19	1012.19	1012.18	1012.16	1012.13	1012.04	1012.02	1012.16
	10	1012.05	1012.05	1012.05	1012.00	1011.93	1011.84	1011.79	1011.80	1011.76	1011.70	1011.65	1011.60	1011.85
	11	1011.61	1011.60	1011.55	1011.50	1011.47	1011.49	1011.51	1011.46	1011.38	1011.33	1011.31	1011.29	1011.46
	12	1011.21	1011.14	1011.13	1011.11	1011.07	1010.99	1010.90	1010.86	1010.81	1010.78	1010.72	1010.64	1010.94
	13	1010.54	1010.44	1010.37	1010.34	1010.33	1010.30	1010.27	1010.25	1010.22	1010.13	1010.07	1010.04	1010.27
	14	1010.01	1010.02	1010.04	1010.05	1010.06	1010.06	1009.99	1009.92	1009.94	1009.98	1009.96	1009.93	1010.00
	15	1009.92	1009.94	1009.97	1010.02	1010.09	1010.11	1010.12	1010.17	1010.20	1010.22	1010.27	1010.31	1010.11
	16	1010.31	1010.32	1010.31	1010.29	1010.26	1010.25	1010.20	1010.16	1010.24	1010.31	1010.31	1010.29	1010.27
	17	1010.31	1010.37	1010.42	1010.43	1010.48	1010.53	1010.58	1010.63	1010.64	1010.60	1010.57	1010.60	1010.51
	18	1010.63	1010.67	1010.74	1010.77	1010.75	1010.76	1010.83	1010.93	1011.03	1011.13	1011.24	1011.29	1010.90
	19	1011.24	1011.23	1011.27	1011.26	1011.29	1011.37	1011.43	1011.44	1011.41	1011.41	1011.44	1011.44	1011.35
	20	1011.44	1011.40	1011.36	1011.31	1011.27	1011.26	1011.25	1011.28	1011.37	1011.45	1011.51	1011.58	1011.37
	21	1011.63	1011.68	1011.69	1011.64	1011.64	1011.68	1011.71	1011.74	1011.73	1011.68	1011.63	1011.57	1011.67
	22	1011.55	1011.61	1011.65	1011.62	1011.57	1011.50	1011.45	1011.50	1011.54	1011.58	1011.65	1011.73	1011.58
	23	1011.78	1011.79	1011.80	1011.77	1011.73	1011.69	1011.68	1011.66	1011.61	1011.57	1011.53	1011.46	1011.67
2	0	1011.30	1011.29	1011.27	1011.26	1011.22	1011.18	1011.15	1011.13	1011.14	1011.22	1011.30	1011.34	1011.23
	1	1011.36	1011.40	1011.37	1011.28	1011.24	1011.23	1011.21	1011.20	1011.18	1011.19	1011.20	1011.15	1011.25
	2	1011.15	1011.20	1011.26	1011.31	1011.34	1011.29	1011.27	1011.32	1011.38	1011.43	1011.46	1011.42	1011.32
	3	1011.39	1011.37	1011.36	1011.36	1011.35	1011.33	1011.32	1011.35	1011.40	1011.48	1011.50	1011.47	1011.39
	4	1011.51	1011.53	1011.57	1011.63	1011.66	1011.69	1011.74	1011.79	1011.83	1011.89	1011.93	1011.89	1011.72
	5	1011.86	1011.90	1011.98	1012.03	1012.02	1011.98	1011.95	1011.93	1011.95	1011.96	1011.93	1011.88	1011.95
	6	1011.85	1011.87	1011.92	1011.94	1011.94	1011.98	1012.03	1012.06	1012.13	1012.19	1012.19	1012.21	1012.02
	7	1012.20	1012.16	1012.18	1012.15	1012.14	1012.16	1012.15	1012.16	1012.23	1012.32	1012.45	1012.58	1012.24
	8	1012.61	1012.66	1012.79	1012.83	1012.80	1012.81	1012.79	1012.82	1012.89	1012.90	1012.86	1012.83	1012.80
	9	1012.81	1012.83	1012.83	1012.82	1012.84	1012.84	1012.84	1012.84	1012.84	1012.84	1012.86	1012.87	1012.84
	10	1012.83	1012.80	1012.81	1012.78	1012.74	1012.72	1012.72	1012.74	1012.75	1012.76	1012.74	1012.72	1012.76
	11	1012.70	1012.68	1012.68	1012.71	1012.73	1012.76	1012.81	1012.85	1012.91	1012.94	1012.92	1012.88	1012.79
	12	1012.89	1012.89	1012.85	1012.83	1012.83	1012.82	1012.79	1012.76	1012.76	1012.74	1012.74	1012.76	1012.80
	13	1012.77	1012.80	1012.82	1012.83	1012.86	1012.89	1012.92	1012.93	1012.96	1013.00	1013.01	1013.01	1012.90
	14	1013.05	1013.08	1013.02	1012.98	1013.01	1013.07	1013.13	1013.15	1013.17	1013.19	1013.23	1013.26	1013.11
	15	1013.30	1013.35	1013.38	1013.43	1013.47	1013.48	1013.47	1013.45	1013.45	1013.47	1013.47	1013.44	1013.43
	16	1013.44	1013.46	1013.48	1013.52	1013.55	1013.56	1013.58	1013.55	1013.55	1013.56	1013.56	1013.60	1013.53
	17	1013.67	1013.72	1013.70	1013.72	1013.74	1013.76	1013.80	1013.83	1013.87	1013.92	1013.94	1014.00	1013.80
	18	1014.09	1014.18	1014.27	1014.36	1014.48	1014.59	1014.68	1014.77	1014.91	1015.05	1015.15	1015.23	1014.65
	19	1015.27	1015.29	1015.29	1015.29	1015.32	1015.35	1015.36	1015.38	1015.41	1015.40	1015.36	1015.35	1015.34
	20	1015.36	1015.39	1015.43	1015.47	1015.51	1015.56	1015.62	1015.68	1015.72	1015.72	1015.72	1015.72	1015.57
	21	1015.72	1015.74	1015.73	1015.71	1015.73	1015.74	1015.74	1015.73	1015.74	1015.77	1015.84	1015.96	1015.76
	22	1016.04	1016.09	1016.16	1016.21	1016.20	1016.17	1016.13	1016.11	1016.13	1016.14	1016.13	1016.13	1016.13
	23	1016.15	1016.20	1016.24	1016.26	1016.24	1016.23	1016.26	1016.27	1016.27	1016.27	1016.25	1016.22	1016.24

S.V.I.R.CO. Observatory - Pressure in hectoPascal – September 2020

day	hh	00_05	05_10	10_15	15_20	20_25	25_30	30_35	35_40	40_45	45_50	50_55	55_60	average
3	0	1016.20	1016.18	1016.14	1016.13	1016.13	1016.10	1016.07	1016.05	1016.01	1015.98	1015.97	1015.94	1016.07
	1	1015.92	1015.90	1015.91	1015.95	1015.98	1015.99	1015.99	1015.97	1015.93	1015.89	1015.87	1015.83	1015.92
	2	1015.80	1015.78	1015.77	1015.75	1015.73	1015.72	1015.74	1015.74	1015.76	1015.77	1015.77	1015.78	1015.76
	3	1015.77	1015.78	1015.81	1015.84	1015.88	1015.90	1015.89	1015.93	1015.99	1016.03	1016.07	1016.11	1015.91
	4	1016.13	1016.12	1016.11	1016.12	1016.13	1016.14	1016.18	1016.21	1016.29	1016.41	1016.48	1016.55	1016.24
	5	1016.64	1016.71	1016.78	1016.84	1016.93	1017.06	1017.17	1017.22	1017.26	1017.30	1017.32	1017.34	1017.05
	6	1017.36	1017.40	1017.47	1017.52	1017.55	1017.57	1017.57	1017.55	1017.56	1017.58	1017.62	1017.63	1017.53
	7	1017.64	1017.67	1017.68	1017.72	1017.78	1017.87	1017.95	1017.98	1018.01	1018.05	1018.08	1018.12	1017.88
	8	1018.15	1018.16	1018.14	1018.12	1018.13	1018.17	1018.21	1018.23	1018.24	1018.26	1018.30	1018.34	1018.20
	9	1018.37	1018.38	1018.37	1018.37	1018.40	1018.41	1018.40	1018.42	1018.46	1018.47	1018.45	1018.45	1018.41
	10	1018.42	1018.39	1018.37	1018.34	1018.37	1018.39	1018.37	1018.35	1018.35	1018.35	1018.32	1018.31	1018.36
	11	1018.31	1018.30	1018.29	1018.27	1018.28	1018.29	1018.27	1018.25	1018.24	1018.20	1018.19	1018.17	1018.25
	12	1018.16	1018.20	1018.30	1018.35	1018.30	1018.27	1018.28	1018.26	1018.25	1018.25	1018.24	1018.26	1018.26
	13	1018.30	1018.28	1018.25	1018.22	1018.20	1018.19	1018.21	1018.24	1018.27	1018.28	1018.29	1018.36	1018.25
	14	1018.40	1018.39	1018.38	1018.37	1018.33	1018.35	1018.39	1018.39	1018.37	1018.35	1018.37	1018.38	1018.37
	15	1018.39	1018.39	1018.37	1018.36	1018.40	1018.47	1018.49	1018.54	1018.61	1018.64	1018.67	1018.70	1018.50
	16	1018.75	1018.79	1018.81	1018.86	1018.91	1018.94	1018.98	1019.01	1019.03	1019.05	1019.10	1019.14	1018.95
	17	1019.17	1019.23	1019.28	1019.33	1019.42	1019.49	1019.51	1019.57	1019.65	1019.71	1019.78	1019.89	1019.50
	18	1019.99	1020.07	1020.12	1020.16	1020.21	1020.25	1020.30	1020.34	1020.38	1020.41	1020.46	1020.51	1020.26
	19	1020.57	1020.64	1020.67	1020.69	1020.70	1020.71	1020.74	1020.77	1020.78	1020.80	1020.82	1020.83	1020.72
	20	1020.85	1020.86	1020.87	1020.91	1020.93	1020.92	1020.91	1020.94	1020.99	1021.04	1021.07	1021.10	1020.95
	21	1021.12	1021.16	1021.21	1021.24	1021.25	1021.24	1021.27	1021.32	1021.38	1021.46	1021.52	1021.55	1021.31
	22	1021.57	1021.58	1021.55	1021.51	1021.47	1021.45	1021.44	1021.46	1021.48	1021.49	1021.51	1021.54	1021.50
	23	1021.58	1021.62	1021.63	1021.61	1021.62	1021.66	1021.68	1021.66	1021.63	1021.59	1021.57	1021.58	1021.62
4	0	1021.57	1021.55	1021.53	1021.52	1021.52	1021.50	1021.44	1021.40	1021.39	1021.37	1021.36	1021.37	1021.45
	1	1021.40	1021.42	1021.44	1021.44	1021.43	1021.40	1021.36	1021.33	1021.32	1021.31	1021.32	1021.36	1021.38
	2	1021.41	1021.47	1021.50	1021.49	1021.48	1021.47	1021.46	1021.48	1021.51	1021.52	1021.53	1021.55	1021.49
	3	1021.57	1021.59	1021.62	1021.65	1021.70	1021.74	1021.76	1021.77	1021.81	1021.88	1021.95	1021.99	1021.75
	4	1022.02	1022.01	1022.03	1022.08	1022.15	1022.20	1022.24	1022.29	1022.35	1022.39	1022.43	1022.47	1022.22
	5	1022.51	1022.56	1022.59	1022.62	1022.63	1022.62	1022.65	1022.68	1022.71	1022.74	1022.76	1022.79	1022.65
	6	1022.80	1022.81	1022.80	1022.81	1022.82	1022.83	1022.85	1022.90	1022.94	1022.95	1022.98	1023.02	1022.87
	7	1023.05	1023.08	1023.11	1023.15	1023.21	1023.26	1023.30	1023.36	1023.40	1023.43	1023.46	1023.45	1023.27
	8	1023.43	1023.43	1023.46	1023.47	1023.47	1023.51	1023.56	1023.59	1023.58	1023.57	1023.58	1023.56	1023.51
	9	1023.53	1023.50	1023.45	1023.42	1023.42	1023.43	1023.43	1023.42	1023.39	1023.36	1023.34	1023.32	1023.41
	10	1023.28	1023.25	1023.20	1023.13	1023.07	1023.01	1022.95	1022.93	1022.90	1022.87	1022.83	1022.79	1023.01
	11	1022.77	1022.74	1022.70	1022.67	1022.64	1022.61	1022.59	1022.58	1022.58	1022.58	1022.57	1022.55	1022.63
	12	1022.55	1022.55	1022.54	1022.52	1022.48	1022.49	1022.47	1022.45	1022.45	1022.40	1022.34	1022.31	1022.46
	13	1022.26	1022.23	1022.22	1022.16	1022.11	1022.06	1022.00	1021.93	1021.89	1021.88	1021.83	1021.81	1022.03
	14	1021.80	1021.76	1021.70	1021.67	1021.65	1021.61	1021.57	1021.56	1021.54	1021.50	1021.45	1021.38	1021.60
	15	1021.34	1021.34	1021.32	1021.29	1021.26	1021.24	1021.22	1021.23	1021.23	1021.22	1021.20	1021.18	1021.25
	16	1021.18	1021.20	1021.24	1021.25	1021.21	1021.18	1021.16	1021.13	1021.09	1021.07	1021.08	1021.08	1021.15
	17	1021.07	1021.07	1021.07	1021.07	1021.06	1021.05	1021.06	1021.06	1021.06	1021.07	1021.10	1021.12	1021.07
	18	1021.13	1021.14	1021.14	1021.15	1021.14	1021.14	1021.16	1021.18	1021.19	1021.19	1021.20	1021.21	1021.16
	19	1021.22	1021.24	1021.22	1021.19	1021.16	1021.12	1021.09	1021.09	1021.08	1021.06	1021.04	1021.05	1021.13
	20	1021.06	1021.04	1021.02	1021.01	1021.00	1021.00	1020.99	1020.97	1020.96	1020.96	1020.96	1020.96	1020.99
	21	1020.95	1020.92	1020.90	1020.87	1020.83	1020.80	1020.77	1020.76	1020.76	1020.75	1020.71	1020.68	1020.81
	22	1020.67	1020.66	1020.65	1020.62	1020.57	1020.52	1020.49	1020.46	1020.43	1020.41	1020.36	1020.31	1020.51
	23	1020.29	1020.29	1020.27	1020.26	1020.25	1020.24	1020.22	1020.21	1020.21	1020.21	1020.18	1020.16	1020.23

S.V.I.R.CO. Observatory - Pressure in hectoPascal – September 2020

day	hh	00_05	05_10	10_15	15_20	20_25	25_30	30_35	35_40	40_45	45_50	50_55	55_60	average
5	0	1020.10	1020.09	1020.07	1020.03	1019.97	1019.93	1019.89	1019.83	1019.79	1019.76	1019.73	1019.70	1019.90
	1	1019.63	1019.56	1019.51	1019.48	1019.44	1019.41	1019.39	1019.34	1019.29	1019.27	1019.24	1019.22	1019.40
	2	1019.22	1019.21	1019.20	1019.21	1019.20	1019.16	1019.13	1019.14	1019.13	1019.13	1019.13	1019.15	1019.16
	3	1019.15	1019.14	1019.12	1019.09	1019.08	1019.07	1019.05	1019.02	1019.00	1018.97	1018.95	1018.95	1019.05
	4	1018.94	1018.93	1018.92	1018.91	1018.90	1018.87	1018.87	1018.89	1018.88	1018.90	1018.94	1018.98	1018.91
	5	1019.01	1019.04	1019.06	1019.06	1019.05	1019.04	1019.01	1018.98	1018.97	1018.98	1018.98	1018.98	1019.01
	6	1018.98	1018.99	1019.00	1019.00	1019.00	1019.01	1019.03	1019.06	1019.06	1019.06	1019.03	1019.02	1019.02
	7	1019.03	1019.01	1018.98	1018.96	1018.96	1018.96	1018.96	1018.94	1018.92	1018.91	1018.90	1018.90	1018.95
	8	1018.89	1018.87	1018.86	1018.86	1018.86	1018.84	1018.79	1018.72	1018.66	1018.62	1018.58	1018.52	1018.75
	9	1018.46	1018.40	1018.34	1018.31	1018.31	1018.32	1018.29	1018.22	1018.17	1018.12	1018.04	1017.96	1018.24
	10	1017.93	1017.88	1017.80	1017.74	1017.68	1017.65	1017.61	1017.58	1017.55	1017.52	1017.49	1017.46	1017.65
	11	1017.41	1017.38	1017.38	1017.35	1017.33	1017.37	1017.38	1017.33	1017.28	1017.28	1017.30	1017.28	1017.34
	12	1017.24	1017.19	1017.17	1017.20	1017.14	1017.05	1017.01	1016.97	1016.92	1016.83	1016.74	1016.69	1017.01
	13	1016.70	1016.74	1016.73	1016.67	1016.59	1016.51	1016.47	1016.44	1016.41	1016.36	1016.32	1016.30	1016.52
	14	1016.27	1016.23	1016.22	1016.23	1016.19	1016.12	1016.10	1016.06	1016.04	1016.01	1015.92	1015.88	1016.10
	15	1015.85	1015.80	1015.75	1015.73	1015.72	1015.67	1015.57	1015.52	1015.49	1015.48	1015.46	1015.41	1015.62
	16	1015.39	1015.40	1015.41	1015.40	1015.39	1015.39	1015.42	1015.43	1015.44	1015.45	1015.42	1015.37	1015.41
	17	1015.33	1015.33	1015.35	1015.36	1015.33	1015.32	1015.33	1015.39	1015.41	1015.37	1015.35	1015.36	1015.35
	18	1015.36	1015.34	1015.35	1015.41	1015.50	1015.57	1015.60	1015.58	1015.53	1015.50	1015.53	1015.57	1015.48
	19	1015.56	1015.56	1015.58	1015.60	1015.60	1015.60	1015.59	1015.60	1015.62	1015.62	1015.59	1015.59	1015.59
	20	1015.60	1015.60	1015.58	1015.54	1015.55	1015.58	1015.56	1015.53	1015.54	1015.53	1015.53	1015.53	1015.55
	21	1015.53	1015.53	1015.52	1015.50	1015.42	1015.34	1015.32	1015.31	1015.21	1015.10	1015.07	1015.10	1015.33
	22	1015.12	1015.10	1015.10	1015.09	1015.05	1015.07	1015.10	1015.09	1015.06	1015.03	1015.01	1014.99	1015.07
	23	1014.97	1014.95	1014.94	1014.92	1014.87	1014.83	1014.80	1014.76	1014.73	1014.71	1014.69	1014.64	1014.81
6	0	1014.65	1014.65	1014.62	1014.57	1014.51	1014.42	1014.33	1014.31	1014.33	1014.29	1014.24	1014.25	1014.42
	1	1014.25	1014.23	1014.25	1014.27	1014.25	1014.26	1014.29	1014.30	1014.29	1014.30	1014.29	1014.26	1014.27
	2	1014.21	1014.17	1014.14	1014.09	1014.03	1013.96	1013.90	1013.86	1013.83	1013.79	1013.74	1013.75	1013.95
	3	1013.78	1013.80	1013.82	1013.84	1013.84	1013.84	1013.83	1013.80	1013.79	1013.76	1013.76	1013.73	1013.80
	4	1013.73	1013.75	1013.74	1013.79	1013.86	1013.89	1013.94	1013.99	1014.00	1014.02	1014.07	1014.08	1013.90
	5	1014.09	1014.08	1014.06	1014.05	1014.05	1014.04	1014.01	1013.99	1013.99	1014.01	1014.03	1014.02	1014.03
	6	1014.02	1014.04	1014.01	1013.93	1013.88	1013.88	1013.92	1013.97	1013.99	1014.01	1014.02	1014.01	1013.97
	7	1014.04	1014.05	1014.04	1014.04	1014.05	1014.03	1014.01	1014.00	1013.98	1013.97	1013.96	1013.97	1014.01
	8	1013.98	1013.99	1013.99	1013.97	1013.94	1013.93	1013.92	1013.93	1013.94	1013.94	1013.93	1013.88	1013.94
	9	1013.85	1013.81	1013.78	1013.75	1013.70	1013.70	1013.69	1013.65	1013.63	1013.59	1013.55	1013.54	1013.68
	10	1013.50	1013.44	1013.40	1013.35	1013.31	1013.30	1013.27	1013.20	1013.16	1013.13	1013.10	1013.06	1013.27
	11	1013.02	1012.99	1012.95	1012.90	1012.85	1012.81	1012.77	1012.76	1012.74	1012.74	1012.77	1012.80	1012.84
	12	1012.80	1012.78	1012.74	1012.71	1012.69	1012.64	1012.61	1012.57	1012.54	1012.56	1012.58	1012.56	1012.65
	13	1012.50	1012.46	1012.47	1012.44	1012.40	1012.40	1012.39	1012.34	1012.32	1012.29	1012.26	1012.25	1012.37
	14	1012.26	1012.27	1012.27	1012.28	1012.30	1012.30	1012.27	1012.28	1012.34	1012.38	1012.36	1012.34	1012.30
	15	1012.32	1012.31	1012.32	1012.33	1012.31	1012.30	1012.32	1012.32	1012.31	1012.35	1012.38	1012.37	1012.33
	16	1012.37	1012.37	1012.37	1012.37	1012.41	1012.45	1012.45	1012.46	1012.50	1012.54	1012.54	1012.49	1012.44
	17	1012.45	1012.43	1012.42	1012.41	1012.39	1012.34	1012.32	1012.37	1012.42	1012.45	1012.48	1012.53	1012.42
	18	1012.55	1012.57	1012.58	1012.57	1012.57	1012.58	1012.62	1012.68	1012.72	1012.75	1012.73	1012.72	1012.64
	19	1012.78	1012.88	1012.94	1012.94	1012.93	1012.92	1012.92	1012.92	1012.91	1012.93	1012.96	1012.99	1012.92
	20	1012.97	1012.94	1012.92	1012.90	1012.84	1012.76	1012.72	1012.74	1012.77	1012.76	1012.73	1012.72	1012.81
	21	1012.74	1012.76	1012.76	1012.78	1012.84	1012.89	1012.91	1012.91	1012.94	1012.97	1012.96	1012.93	1012.86
	22	1012.90	1012.87	1012.85	1012.84	1012.85	1012.87	1012.86	1012.83	1012.82	1012.77	1012.74	1012.75	1012.83
	23	1012.79	1012.80	1012.81	1012.79	1012.79	1012.79	1012.77	1012.74	1012.70	1012.69	1012.71	1012.74	1012.76

S.V.I.R.CO. Observatory - Pressure in hectoPascal – September 2020

day	hh	00_05	05_10	10_15	15_20	20_25	25_30	30_35	35_40	40_45	45_50	50_55	55_60	average
7	0	1012.72	1012.71	1012.70	1012.70	1012.68	1012.67	1012.67	1012.64	1012.65	1012.68	1012.66	1012.66	1012.67
	1	1012.67	1012.67	1012.66	1012.63	1012.60	1012.61	1012.63	1012.62	1012.59	1012.55	1012.54	1012.55	1012.61
	2	1012.54	1012.50	1012.47	1012.46	1012.44	1012.40	1012.34	1012.30	1012.30	1012.31	1012.31	1012.31	1012.39
	3	1012.31	1012.30	1012.30	1012.33	1012.36	1012.37	1012.41	1012.46	1012.48	1012.49	1012.50	1012.50	1012.40
	4	1012.49	1012.52	1012.58	1012.64	1012.68	1012.68	1012.72	1012.79	1012.84	1012.89	1012.92	1012.95	1012.72
	5	1013.00	1013.04	1013.04	1013.10	1013.21	1013.28	1013.31	1013.32	1013.36	1013.40	1013.43	1013.44	1013.24
	6	1013.45	1013.47	1013.46	1013.48	1013.51	1013.53	1013.57	1013.61	1013.67	1013.71	1013.73	1013.76	1013.58
	7	1013.79	1013.82	1013.81	1013.79	1013.80	1013.79	1013.77	1013.77	1013.79	1013.83	1013.84	1013.82	1013.80
	8	1013.80	1013.79	1013.79	1013.78	1013.77	1013.77	1013.80	1013.83	1013.84	1013.86	1013.86	1013.86	1013.81
	9	1013.89	1013.92	1013.94	1013.98	1014.01	1014.05	1014.08	1014.10	1014.09	1014.05	1014.00	1014.01	1014.01
	10	1014.03	1014.00	1013.99	1014.01	1014.01	1013.98	1013.98	1013.99	1014.00	1013.98	1013.93	1013.89	1013.98
	11	1013.87	1013.87	1013.90	1013.90	1013.89	1013.85	1013.87	1013.93	1013.94	1013.96	1013.98	1013.99	1013.91
	12	1013.98	1013.93	1013.91	1013.93	1013.96	1013.98	1013.97	1013.95	1013.94	1013.95	1013.96	1013.98	1013.95
	13	1013.96	1013.91	1013.86	1013.84	1013.82	1013.80	1013.80	1013.82	1013.81	1013.78	1013.77	1013.77	1013.83
	14	1013.75	1013.71	1013.69	1013.67	1013.67	1013.66	1013.67	1013.68	1013.67	1013.66	1013.69	1013.72	1013.68
	15	1013.76	1013.77	1013.78	1013.81	1013.81	1013.83	1013.87	1013.89	1013.93	1013.99	1014.01	1014.01	1013.87
	16	1014.00	1014.03	1014.09	1014.14	1014.16	1014.17	1014.20	1014.24	1014.23	1014.24	1014.29	1014.32	1014.17
	17	1014.33	1014.34	1014.37	1014.43	1014.46	1014.50	1014.58	1014.64	1014.71	1014.80	1014.88	1014.96	1014.58
	18	1015.06	1015.12	1015.14	1015.17	1015.27	1015.36	1015.41	1015.43	1015.44	1015.43	1015.44	1015.50	1015.31
	19	1015.56	1015.64	1015.73	1015.77	1015.73	1015.71	1015.73	1015.79	1015.85	1015.88	1015.94	1015.99	1015.77
	20	1015.98	1015.98	1015.98	1015.97	1015.99	1016.03	1016.07	1016.08	1016.07	1016.09	1016.15	1016.19	1016.05
	21	1016.21	1016.23	1016.23	1016.23	1016.25	1016.31	1016.33	1016.33	1016.33	1016.33	1016.35	1016.39	1016.29
	22	1016.38	1016.39	1016.42	1016.43	1016.41	1016.38	1016.38	1016.41	1016.44	1016.44	1016.45	1016.47	1016.41
	23	1016.48	1016.53	1016.56	1016.56	1016.59	1016.61	1016.60	1016.58	1016.55	1016.54	1016.56	1016.56	1016.56
8	0	1016.55	1016.56	1016.61	1016.67	1016.69	1016.68	1016.67	1016.67	1016.66	1016.65	1016.62	1016.59	1016.64
	1	1016.61	1016.63	1016.65	1016.66	1016.70	1016.75	1016.77	1016.76	1016.75	1016.72	1016.74	1016.79	1016.71
	2	1016.83	1016.89	1016.92	1016.92	1016.92	1016.95	1016.97	1016.96	1016.98	1017.03	1017.06	1017.07	1016.96
	3	1017.10	1017.11	1017.10	1017.12	1017.15	1017.15	1017.17	1017.19	1017.21	1017.24	1017.25	1017.30	1017.17
	4	1017.36	1017.40	1017.42	1017.45	1017.47	1017.49	1017.52	1017.58	1017.69	1017.75	1017.80	1017.84	1017.56
	5	1017.86	1017.94	1018.02	1018.10	1018.14	1018.18	1018.27	1018.32	1018.35	1018.39	1018.39	1018.39	1018.19
	6	1018.41	1018.42	1018.41	1018.43	1018.49	1018.52	1018.53	1018.56	1018.61	1018.69	1018.78	1018.86	1018.56
	7	1018.92	1018.99	1019.09	1019.17	1019.19	1019.20	1019.22	1019.22	1019.23	1019.27	1019.29	1019.31	1019.17
	8	1019.33	1019.38	1019.44	1019.47	1019.47	1019.49	1019.52	1019.56	1019.62	1019.65	1019.65	1019.68	1019.52
	9	1019.70	1019.70	1019.67	1019.63	1019.63	1019.61	1019.62	1019.65	1019.63	1019.63	1019.64	1019.62	1019.64
	10	1019.60	1019.57	1019.57	1019.57	1019.52	1019.49	1019.46	1019.40	1019.35	1019.35	1019.35	1019.35	1019.46
	11	1019.36	1019.38	1019.38	1019.35	1019.33	1019.32	1019.30	1019.27	1019.24	1019.22	1019.18	1019.12	1019.29
	12	1019.07	1019.02	1019.00	1019.00	1018.99	1018.94	1018.91	1018.88	1018.86	1018.83	1018.78	1018.77	1018.92
	13	1018.78	1018.78	1018.81	1018.81	1018.79	1018.80	1018.79	1018.77	1018.75	1018.76	1018.81	1018.88	1018.79
	14	1018.94	1018.96	1019.01	1019.05	1019.07	1019.09	1019.07	1019.06	1019.06	1019.07	1019.08	1019.09	1019.04
	15	1019.07	1019.08	1019.13	1019.17	1019.19	1019.21	1019.26	1019.28	1019.29	1019.30	1019.30	1019.29	1019.21
	16	1019.30	1019.35	1019.40	1019.46	1019.49	1019.51	1019.54	1019.58	1019.63	1019.67	1019.70	1019.72	1019.53
	17	1019.73	1019.76	1019.82	1019.87	1019.90	1019.91	1019.93	1019.97	1020.04	1020.11	1020.16	1020.20	1019.95
	18	1020.22	1020.25	1020.30	1020.35	1020.42	1020.49	1020.53	1020.57	1020.63	1020.71	1020.79	1020.85	1020.51
	19	1020.88	1020.89	1020.89	1020.91	1020.99	1021.05	1021.10	1021.14	1021.14	1021.12	1021.10	1021.09	1021.02
	20	1021.09	1021.08	1021.09	1021.13	1021.17	1021.18	1021.19	1021.25	1021.35	1021.42	1021.47	1021.52	1021.24
	21	1021.54	1021.51	1021.47	1021.46	1021.50	1021.53	1021.51	1021.47	1021.42	1021.41	1021.45	1021.46	1021.47
	22	1021.42	1021.37	1021.36	1021.35	1021.33	1021.34	1021.33	1021.33	1021.34	1021.35	1021.33	1021.32	1021.35
	23	1021.35	1021.39	1021.40	1021.38	1021.35	1021.33	1021.32	1021.31	1021.32	1021.31	1021.28	1021.26	1021.33

S.V.I.R.CO. Observatory - Pressure in hectoPascal – September 2020

day	hh	00_05	05_10	10_15	15_20	20_25	25_30	30_35	35_40	40_45	45_50	50_55	55_60	average
9	0	1021.24	1021.24	1021.24	1021.24	1021.23	1021.20	1021.18	1021.19	1021.25	1021.32	1021.33	1021.31	1021.25
	1	1021.28	1021.25	1021.23	1021.21	1021.23	1021.26	1021.27	1021.25	1021.23	1021.21	1021.18	1021.20	1021.23
	2	1021.22	1021.18	1021.15	1021.14	1021.14	1021.11	1021.08	1021.10	1021.13	1021.12	1021.12	1021.14	1021.13
	3	1021.16	1021.17	1021.20	1021.25	1021.31	1021.34	1021.29	1021.24	1021.23	1021.23	1021.21	1021.24	1021.24
	4	1021.29	1021.34	1021.40	1021.43	1021.42	1021.42	1021.42	1021.43	1021.41	1021.38	1021.37	1021.37	1021.39
	5	1021.37	1021.39	1021.41	1021.47	1021.57	1021.62	1021.60	1021.59	1021.63	1021.67	1021.66	1021.63	1021.55
	6	1021.60	1021.59	1021.58	1021.54	1021.55	1021.60	1021.66	1021.70	1021.70	1021.69	1021.69	1021.75	1021.63
	7	1021.85	1021.89	1021.92	1021.95	1021.96	1021.98	1022.02	1022.07	1022.12	1022.16	1022.16	1022.15	1022.02
	8	1022.12	1022.13	1022.21	1022.26	1022.26	1022.27	1022.29	1022.24	1022.16	1022.12	1022.08	1022.06	1022.18
	9	1022.05	1022.01	1021.98	1021.97	1021.93	1021.88	1021.81	1021.75	1021.74	1021.73	1021.70	1021.66	1021.85
	10	1021.63	1021.58	1021.51	1021.42	1021.35	1021.30	1021.25	1021.15	1021.03	1020.92	1020.78	1020.66	1021.21
	11	1020.60	1020.56	1020.51	1020.45	1020.40	1020.32	1020.27	1020.22	1020.17	1020.10	1019.99	1019.90	1020.29
	12	1019.83	1019.79	1019.76	1019.76	1019.79	1019.81	1019.80	1019.79	1019.79	1019.76	1019.75	1019.75	1019.78
	13	1019.75	1019.75	1019.76	1019.77	1019.74	1019.74	1019.77	1019.78	1019.80	1019.80	1019.78	1019.76	1019.76
	14	1019.68	1019.59	1019.52	1019.46	1019.38	1019.26	1019.14	1019.03	1018.90	1018.80	1018.72	1018.66	1019.18
	15	1018.64	1018.59	1018.54	1018.51	1018.51	1018.50	1018.47	1018.43	1018.35	1018.29	1018.29	1018.34	1018.45
	16	1018.38	1018.39	1018.41	1018.44	1018.46	1018.48	1018.49	1018.49	1018.48	1018.49	1018.44	1018.36	1018.44
	17	1018.30	1018.29	1018.28	1018.28	1018.28	1018.23	1018.18	1018.14	1018.11	1018.10	1018.11	1018.16	1018.20
	18	1018.18	1018.18	1018.20	1018.24	1018.27	1018.28	1018.31	1018.33	1018.31	1018.31	1018.31	1018.32	1018.27
	19	1018.34	1018.33	1018.32	1018.31	1018.32	1018.32	1018.32	1018.28	1018.23	1018.25	1018.28	1018.20	1018.29
	20	1018.07	1018.00	1018.01	1018.04	1018.05	1018.04	1018.03	1018.03	1018.02	1018.06	1018.11	1018.13	1018.05
	21	1018.10	1018.03	1017.99	1017.99	1017.97	1017.92	1017.91	1017.93	1017.90	1017.85	1017.82	1017.76	1017.93
	22	1017.74	1017.77	1017.76	1017.73	1017.69	1017.62	1017.56	1017.50	1017.43	1017.32	1017.20	1017.10	1017.53
	23	1017.07	1017.04	1016.98	1016.98	1017.02	1017.06	1017.09	1017.10	1017.04	1016.90	1016.75	1016.72	1016.98
10	0	1016.71	1016.67	1016.59	1016.53	1016.52	1016.54	1016.55	1016.52	1016.45	1016.41	1016.46	1016.52	1016.53
	1	1016.54	1016.51	1016.49	1016.54	1016.57	1016.57	1016.56	1016.54	1016.49	1016.46	1016.40	1016.28	1016.49
	2	1016.13	1016.03	1016.01	1016.00	1016.00	1015.99	1015.97	1015.92	1015.85	1015.79	1015.75	1015.72	1015.93
	3	1015.67	1015.60	1015.58	1015.61	1015.59	1015.52	1015.47	1015.44	1015.43	1015.38	1015.35	1015.37	1015.50
	4	1015.40	1015.42	1015.41	1015.37	1015.33	1015.30	1015.31	1015.36	1015.40	1015.41	1015.44	1015.47	1015.38
	5	1015.45	1015.44	1015.44	1015.43	1015.44	1015.44	1015.41	1015.39	1015.37	1015.35	1015.36	1015.40	1015.41
	6	1015.49	1015.58	1015.63	1015.66	1015.68	1015.68	1015.66	1015.63	1015.60	1015.58	1015.61	1015.64	1015.62
	7	1015.67	1015.71	1015.71	1015.68	1015.68	1015.71	1015.74	1015.77	1015.80	1015.83	1015.84	1015.83	1015.75
	8	1015.85	1015.89	1015.90	1015.88	1015.83	1015.78	1015.73	1015.68	1015.63	1015.59	1015.55	1015.52	1015.73
	9	1015.49	1015.47	1015.45	1015.44	1015.40	1015.33	1015.29	1015.27	1015.19	1015.09	1014.98	1014.88	1015.27
	10	1014.79	1014.72	1014.69	1014.62	1014.50	1014.40	1014.36	1014.36	1014.37	1014.38	1014.37	1014.34	1014.49
	11	1014.27	1014.18	1014.10	1014.02	1013.96	1013.91	1013.83	1013.73	1013.62	1013.54	1013.47	1013.37	1013.83
	12	1013.30	1013.26	1013.21	1013.18	1013.18	1013.15	1013.06	1012.98	1012.91	1012.79	1012.69	1012.66	1013.03
	13	1012.60	1012.49	1012.43	1012.38	1012.34	1012.27	1012.15	1012.07	1012.04	1012.04	1012.06	1012.03	1012.24
	14	1011.98	1011.97	1011.96	1011.90	1011.81	1011.75	1011.69	1011.61	1011.51	1011.37	1011.23	1011.09	1011.65
	15	1011.01	1011.03	1011.08	1011.14	1011.16	1011.18	1011.19	1011.16	1011.16	1011.20	1011.30	1011.45	1011.17
	16	1011.55	1011.64	1011.71	1011.72	1011.74	1011.76	1011.75	1011.71	1011.63	1011.55	1011.50	1011.53	1011.65
	17	1011.62	1011.67	1011.69	1011.69	1011.68	1011.71	1011.74	1011.78	1011.88	1011.95	1011.96	1011.94	1011.77
	18	1011.95	1012.00	1012.01	1011.99	1011.99	1012.02	1012.01	1011.99	1012.01	1012.06	1012.10	1012.07	1012.02
	19	1012.02	1012.02	1012.06	1012.07	1012.05	1012.04	1012.04	1012.07	1012.16	1012.26	1012.27	1012.25	1012.11
	20	1012.24	1012.22	1012.23	1012.23	1012.23	1012.25	1012.26	1012.27	1012.30	1012.28	1012.18	1012.10	1012.23
	21	1012.05	1012.00	1011.93	1011.86	1011.85	1011.81	1011.70	1011.63	1011.63	1011.65	1011.66	1011.66	1011.78
	22	1011.63	1011.66	1011.69	1011.60	1011.47	1011.34	1011.18	1011.12	1011.09	1010.98	1010.92	1010.91	1011.30
	23	1010.90	1010.88	1010.81	1010.72	1010.66	1010.63	1010.62	1010.61	1010.52	1010.40	1010.36	1010.35	1010.62

S.V.I.R.CO. Observatory - Pressure in hectoPascal – September 2020

day	hh	00_05	05_10	10_15	15_20	20_25	25_30	30_35	35_40	40_45	45_50	50_55	55_60	average
11	0	1010.34	1010.35	1010.39	1010.46	1010.52	1010.54	1010.48	1010.41	1010.40	1010.45	1010.46	1010.41	1010.44
	1	1010.37	1010.37	1010.36	1010.32	1010.28	1010.23	1010.18	1010.12	1010.05	1010.02	1010.02	1009.99	1010.19
	2	1009.93	1009.90	1009.87	1009.82	1009.82	1009.85	1009.86	1009.84	1009.80	1009.78	1009.75	1009.72	1009.83
	3	1009.72	1009.68	1009.61	1009.54	1009.48	1009.43	1009.38	1009.38	1009.43	1009.47	1009.53	1009.59	1009.52
	4	1009.63	1009.66	1009.66	1009.70	1009.75	1009.76	1009.75	1009.76	1009.79	1009.79	1009.85	1009.88	1009.75
	5	1009.86	1009.86	1009.86	1009.87	1009.89	1009.92	1009.97	1010.03	1010.13	1010.21	1010.21	1010.20	1010.00
	6	1010.24	1010.31	1010.34	1010.30	1010.25	1010.27	1010.26	1010.19	1010.13	1010.09	1010.04	1010.01	1010.20
	7	1010.01	1010.03	1010.04	1010.04	1010.09	1010.18	1010.29	1010.39	1010.44	1010.47	1010.48	1010.52	1010.25
	8	1010.59	1010.67	1010.72	1010.74	1010.75	1010.77	1010.77	1010.77	1010.75	1010.74	1010.75	1010.79	1010.73
	9	1010.88	1011.00	1011.10	1011.15	1011.18	1011.20	1011.16	1011.14	1011.15	1011.21	1011.27	1011.32	1011.14
	10	1011.40	1011.58	1011.81	1011.86	1011.89	1012.06	1012.09	1012.15	1012.10	1012.00	1011.94	1011.52	1011.86
	11	1011.14	1011.15	1011.24	1011.18	1011.09	1010.99	1010.93	1010.93	1010.91	1010.83	1010.76	1010.72	1010.99
	12	1010.74	1010.76	1010.71	1010.62	1010.55	1010.51	1010.45	1010.35	1010.24	1010.17	1010.11	1010.04	1010.44
	13	1009.97	1009.90	1009.83	1009.81	1009.81	1009.81	1009.80	1009.78	1009.76	1009.73	1009.71	1009.70	1009.80
	14	1009.66	1009.65	1009.71	1009.75	1009.74	1009.71	1009.68	1009.70	1009.74	1009.77	1009.77	1009.78	1009.72
	15	1009.77	1009.74	1009.73	1009.75	1009.77	1009.75	1009.72	1009.71	1009.69	1009.68	1009.66	1009.66	1009.72
	16	1009.68	1009.76	1009.83	1009.89	1009.97	1010.02	1010.01	1010.02	1010.05	1010.05	1010.00	1009.94	1009.93
	17	1009.94	1010.01	1010.09	1010.14	1010.16	1010.16	1010.10	1010.07	1010.17	1010.37	1010.69	1010.79	1010.22
	18	1010.66	1010.75	1010.76	1010.67	1010.69	1010.81	1011.03	1011.16	1011.24	1011.20	1010.98	1010.84	1010.90
	19	1010.81	1010.75	1010.68	1010.69	1010.72	1010.78	1010.90	1011.05	1011.18	1011.29	1011.40	1011.47	1010.97
	20	1011.54	1011.59	1011.64	1011.63	1011.50	1011.41	1011.36	1011.30	1011.30	1011.37	1011.40	1011.36	1011.45
	21	1011.36	1011.43	1011.45	1011.41	1011.40	1011.42	1011.47	1011.50	1011.43	1011.39	1011.42	1011.43	1011.42
	22	1011.42	1011.45	1011.45	1011.41	1011.38	1011.35	1011.31	1011.28	1011.22	1011.12	1011.05	1011.05	1011.29
	23	1011.08	1011.07	1011.03	1011.00	1011.01	1011.01	1010.99	1010.98	1011.00	1011.02	1011.05	1011.11	1011.03
12	0	1011.18	1011.19	1011.18	1011.16	1011.17	1011.25	1011.37	1011.44	1011.42	1011.37	1011.34	1011.38	1011.29
	1	1011.48	1011.55	1011.58	1011.66	1011.84	1012.08	1012.24	1012.26	1012.19	1012.14	1012.14	1012.12	1011.94
	2	1012.05	1012.01	1012.03	1012.04	1012.04	1012.04	1012.05	1012.08	1012.10	1012.13	1012.15	1012.18	1012.07
	3	1012.26	1012.29	1012.28	1012.28	1012.28	1012.32	1012.33	1012.30	1012.25	1012.22	1012.21	1012.23	1012.27
	4	1012.25	1012.27	1012.30	1012.33	1012.32	1012.33	1012.36	1012.38	1012.38	1012.39	1012.38	1012.34	1012.33
	5	1012.29	1012.30	1012.40	1012.52	1012.57	1012.57	1012.61	1012.69	1012.74	1012.74	1012.75	1012.77	1012.58
	6	1012.77	1012.79	1012.84	1012.85	1012.86	1012.90	1012.94	1012.96	1012.97	1012.98	1012.98	1012.99	1012.90
	7	1013.02	1013.04	1013.06	1013.10	1013.16	1013.22	1013.28	1013.34	1013.38	1013.42	1013.45	1013.48	1013.24
	8	1013.52	1013.56	1013.59	1013.64	1013.67	1013.72	1013.76	1013.80	1013.84	1013.84	1013.82	1013.80	1013.71
	9	1013.77	1013.75	1013.74	1013.73	1013.74	1013.75	1013.76	1013.75	1013.72	1013.69	1013.67	1013.66	1013.73
	10	1013.66	1013.66	1013.66	1013.65	1013.62	1013.59	1013.55	1013.54	1013.53	1013.52	1013.52	1013.51	1013.58
	11	1013.47	1013.43	1013.42	1013.42	1013.44	1013.45	1013.44	1013.42	1013.38	1013.36	1013.36	1013.31	1013.41
	12	1013.30	1013.33	1013.33	1013.31	1013.33	1013.33	1013.31	1013.36	1013.36	1013.31	1013.28	1013.26	1013.32
	13	1013.27	1013.28	1013.24	1013.22	1013.22	1013.24	1013.24	1013.21	1013.16	1013.12	1013.14	1013.14	1013.20
	14	1013.13	1013.13	1013.10	1013.07	1013.07	1013.09	1013.08	1013.07	1013.11	1013.14	1013.15	1013.18	1013.11
	15	1013.22	1013.27	1013.30	1013.31	1013.35	1013.36	1013.34	1013.36	1013.40	1013.47	1013.51	1013.52	1013.37
	16	1013.55	1013.61	1013.64	1013.66	1013.68	1013.68	1013.67	1013.69	1013.72	1013.76	1013.80	1013.81	1013.69
	17	1013.82	1013.82	1013.87	1013.95	1014.00	1014.03	1014.04	1014.05	1014.05	1014.03	1014.03	1014.06	1013.98
	18	1014.11	1014.14	1014.21	1014.30	1014.38	1014.48	1014.58	1014.70	1014.81	1014.88	1014.90	1014.94	1014.53
	19	1014.99	1015.08	1015.18	1015.24	1015.31	1015.37	1015.41	1015.45	1015.47	1015.48	1015.50	1015.51	1015.33
	20	1015.52	1015.55	1015.58	1015.62	1015.68	1015.72	1015.77	1015.83	1015.89	1015.98	1016.04	1016.07	1015.77
	21	1016.13	1016.10	1016.07	1016.12	1016.12	1016.11	1016.12	1016.17	1016.21	1016.24	1016.26	1016.27	1016.16
	22	1016.34	1016.40	1016.45	1016.48	1016.46	1016.47	1016.51	1016.49	1016.47	1016.53	1016.59	1016.60	1016.48
	23	1016.65	1016.70	1016.71	1016.70	1016.72	1016.77	1016.80	1016.77	1016.73	1016.75	1016.76	1016.71	1016.73

S.V.I.R.CO. Observatory - Pressure in hectoPascal – September 2020

day	hh	00_05	05_10	10_15	15_20	20_25	25_30	30_35	35_40	40_45	45_50	50_55	55_60	average
13	0	1016.70	1016.72	1016.75	1016.75	1016.71	1016.68	1016.68	1016.69	1016.71	1016.73	1016.75	1016.76	1016.72
	1	1016.76	1016.76	1016.73	1016.68	1016.67	1016.70	1016.73	1016.76	1016.79	1016.81	1016.83	1016.84	1016.75
	2	1016.82	1016.82	1016.82	1016.81	1016.80	1016.81	1016.84	1016.89	1016.89	1016.90	1016.91	1016.88	1016.85
	3	1016.87	1016.93	1017.00	1017.04	1017.11	1017.17	1017.20	1017.24	1017.30	1017.35	1017.39	1017.44	1017.17
	4	1017.49	1017.52	1017.56	1017.61	1017.64	1017.64	1017.64	1017.66	1017.69	1017.72	1017.79	1017.88	1017.65
	5	1017.96	1018.03	1018.10	1018.16	1018.19	1018.21	1018.22	1018.22	1018.27	1018.34	1018.41	1018.48	1018.21
	6	1018.56	1018.62	1018.65	1018.67	1018.67	1018.70	1018.74	1018.79	1018.85	1018.89	1018.91	1018.95	1018.75
	7	1019.02	1019.08	1019.12	1019.17	1019.21	1019.21	1019.21	1019.22	1019.24	1019.28	1019.34	1019.37	1019.20
	8	1019.41	1019.43	1019.46	1019.52	1019.54	1019.55	1019.59	1019.61	1019.58	1019.54	1019.50	1019.45	1019.51
	9	1019.43	1019.44	1019.46	1019.46	1019.43	1019.43	1019.42	1019.40	1019.39	1019.34	1019.29	1019.25	1019.39
	10	1019.22	1019.19	1019.15	1019.12	1019.10	1019.06	1019.02	1018.96	1018.89	1018.83	1018.80	1018.76	1019.01
	11	1018.69	1018.62	1018.56	1018.51	1018.46	1018.41	1018.37	1018.35	1018.32	1018.30	1018.26	1018.23	1018.42
	12	1018.20	1018.15	1018.15	1018.15	1018.09	1018.04	1018.01	1017.94	1017.87	1017.80	1017.76	1017.72	1017.99
	13	1017.70	1017.71	1017.76	1017.77	1017.76	1017.78	1017.78	1017.77	1017.72	1017.71	1017.76	1017.81	1017.75
	14	1017.79	1017.77	1017.78	1017.76	1017.72	1017.69	1017.64	1017.59	1017.57	1017.55	1017.55	1017.58	1017.66
	15	1017.60	1017.61	1017.60	1017.58	1017.58	1017.58	1017.59	1017.61	1017.60	1017.62	1017.65	1017.65	1017.60
	16	1017.65	1017.66	1017.67	1017.67	1017.66	1017.66	1017.68	1017.70	1017.70	1017.71	1017.75	1017.77	1017.69
	17	1017.79	1017.83	1017.87	1017.88	1017.92	1017.97	1018.02	1018.08	1018.14	1018.21	1018.26	1018.31	1018.02
	18	1018.40	1018.49	1018.58	1018.68	1018.73	1018.76	1018.84	1018.91	1018.95	1019.00	1019.06	1019.12	1018.79
	19	1019.13	1019.13	1019.15	1019.20	1019.26	1019.33	1019.38	1019.42	1019.47	1019.49	1019.48	1019.49	1019.32
	20	1019.52	1019.52	1019.55	1019.62	1019.69	1019.71	1019.72	1019.75	1019.78	1019.78	1019.79	1019.80	1019.68
	21	1019.81	1019.82	1019.82	1019.82	1019.83	1019.85	1019.87	1019.93	1019.98	1020.00	1020.00	1020.02	1019.89
	22	1020.05	1020.08	1020.10	1020.11	1020.12	1020.11	1020.09	1020.08	1020.07	1020.06	1020.06	1020.05	1020.08
	23	1020.06	1020.09	1020.11	1020.12	1020.17	1020.23	1020.29	1020.32	1020.31	1020.29	1020.28	1020.25	1020.21
14	0	1020.15	1020.11	1020.07	1020.09	1020.10	1020.09	1020.09	1020.08	1020.08	1020.07	1020.08	1020.08	1020.09
	1	1020.07	1020.06	1020.04	1020.05	1020.04	1020.02	1020.00	1019.97	1019.93	1019.95	1020.00	1020.01	1020.01
	2	1020.00	1019.99	1019.97	1019.93	1019.90	1019.89	1019.87	1019.84	1019.83	1019.84	1019.82	1019.79	1019.89
	3	1019.76	1019.73	1019.70	1019.68	1019.67	1019.70	1019.73	1019.75	1019.77	1019.80	1019.82	1019.84	1019.74
	4	1019.86	1019.88	1019.87	1019.89	1019.95	1020.00	1020.03	1020.06	1020.09	1020.12	1020.17	1020.22	1020.01
	5	1020.27	1020.31	1020.36	1020.39	1020.40	1020.42	1020.47	1020.53	1020.62	1020.69	1020.69	1020.71	1020.49
	6	1020.72	1020.72	1020.73	1020.76	1020.77	1020.77	1020.80	1020.82	1020.84	1020.85	1020.85	1020.86	1020.79
	7	1020.88	1020.89	1020.92	1020.95	1020.98	1021.01	1021.02	1021.03	1021.04	1021.04	1021.07	1021.08	1020.99
	8	1021.10	1021.12	1021.12	1021.13	1021.16	1021.18	1021.18	1021.18	1021.16	1021.14	1021.13	1021.12	1021.14
	9	1021.13	1021.14	1021.14	1021.13	1021.12	1021.13	1021.12	1021.10	1021.06	1021.03	1021.01	1021.00	1021.09
	10	1020.99	1020.97	1020.94	1020.89	1020.83	1020.78	1020.73	1020.69	1020.64	1020.58	1020.53	1020.49	1020.75
	11	1020.46	1020.44	1020.41	1020.35	1020.28	1020.20	1020.11	1020.03	1019.99	1019.95	1019.88	1019.84	1020.16
	12	1019.81	1019.79	1019.77	1019.73	1019.69	1019.67	1019.64	1019.58	1019.55	1019.54	1019.51	1019.50	1019.65
	13	1019.48	1019.46	1019.44	1019.42	1019.38	1019.33	1019.29	1019.24	1019.20	1019.16	1019.14	1019.12	1019.30
	14	1019.08	1019.02	1019.00	1018.98	1018.93	1018.86	1018.82	1018.79	1018.73	1018.69	1018.67	1018.64	1018.85
	15	1018.61	1018.56	1018.53	1018.52	1018.51	1018.49	1018.46	1018.45	1018.44	1018.43	1018.41	1018.40	1018.48
	16	1018.42	1018.48	1018.56	1018.60	1018.60	1018.59	1018.59	1018.61	1018.61	1018.61	1018.61	1018.58	1018.57
	17	1018.53	1018.53	1018.55	1018.52	1018.46	1018.45	1018.46	1018.51	1018.55	1018.60	1018.65	1018.68	1018.54
	18	1018.70	1018.73	1018.78	1018.81	1018.85	1018.88	1018.89	1018.92	1018.97	1019.04	1019.08	1019.11	1018.89
	19	1019.15	1019.20	1019.25	1019.28	1019.30	1019.32	1019.37	1019.39	1019.39	1019.41	1019.47	1019.53	1019.34
	20	1019.55	1019.56	1019.57	1019.58	1019.58	1019.59	1019.59	1019.61	1019.63	1019.64	1019.63	1019.59	1019.59
	21	1019.54	1019.52	1019.53	1019.54	1019.54	1019.56	1019.57	1019.55	1019.54	1019.58	1019.61	1019.64	1019.56
	22	1019.67	1019.66	1019.64	1019.62	1019.61	1019.57	1019.50	1019.44	1019.40	1019.38	1019.36	1019.34	1019.51
	23	1019.33	1019.31	1019.29	1019.27	1019.26	1019.26	1019.24	1019.22	1019.23	1019.24	1019.25	1019.24	1019.26

S.V.I.R.CO. Observatory - Pressure in hectoPascal – September 2020

day	hh	00_05	05_10	10_15	15_20	20_25	25_30	30_35	35_40	40_45	45_50	50_55	55_60	average
15	0	1019.21	1019.20	1019.16	1019.14	1019.13	1019.12	1019.09	1019.06	1019.01	1018.95	1018.90	1018.88	1019.06
	1	1018.85	1018.82	1018.81	1018.81	1018.79	1018.78	1018.77	1018.73	1018.68	1018.63	1018.58	1018.54	1018.73
	2	1018.52	1018.52	1018.51	1018.49	1018.50	1018.51	1018.48	1018.45	1018.42	1018.38	1018.32	1018.28	1018.45
	3	1018.26	1018.23	1018.24	1018.26	1018.25	1018.21	1018.19	1018.20	1018.20	1018.20	1018.19	1018.19	1018.21
	4	1018.18	1018.17	1018.17	1018.16	1018.14	1018.13	1018.14	1018.15	1018.18	1018.22	1018.26	1018.30	1018.18
	5	1018.33	1018.34	1018.35	1018.38	1018.43	1018.46	1018.47	1018.49	1018.50	1018.48	1018.46	1018.45	1018.42
	6	1018.45	1018.46	1018.48	1018.50	1018.53	1018.58	1018.62	1018.61	1018.61	1018.63	1018.64	1018.66	1018.56
	7	1018.70	1018.73	1018.73	1018.75	1018.80	1018.83	1018.85	1018.87	1018.90	1018.94	1018.96	1018.98	1018.84
	8	1018.98	1018.97	1018.97	1018.97	1018.97	1018.97	1018.96	1018.95	1018.96	1018.96	1018.95	1018.93	1018.96
	9	1018.88	1018.84	1018.82	1018.80	1018.76	1018.67	1018.60	1018.58	1018.59	1018.57	1018.52	1018.46	1018.67
	10	1018.41	1018.39	1018.37	1018.31	1018.22	1018.16	1018.10	1018.03	1017.98	1017.91	1017.82	1017.76	1018.12
	11	1017.70	1017.61	1017.51	1017.46	1017.45	1017.41	1017.33	1017.23	1017.13	1017.04	1016.96	1016.89	1017.31
	12	1016.79	1016.70	1016.64	1016.59	1016.57	1016.59	1016.55	1016.49	1016.46	1016.42	1016.39	1016.38	1016.54
	13	1016.37	1016.31	1016.22	1016.16	1016.09	1016.01	1015.95	1015.90	1015.88	1015.89	1015.91	1015.94	1016.05
	14	1015.90	1015.83	1015.81	1015.83	1015.79	1015.72	1015.68	1015.65	1015.63	1015.56	1015.51	1015.50	1015.70
	15	1015.46	1015.42	1015.36	1015.32	1015.34	1015.37	1015.38	1015.39	1015.46	1015.57	1015.68	1015.74	1015.46
	16	1015.76	1015.79	1015.82	1015.83	1015.83	1015.87	1015.95	1016.02	1016.08	1016.15	1016.22	1016.28	1015.97
	17	1016.33	1016.33	1016.30	1016.28	1016.30	1016.32	1016.31	1016.34	1016.37	1016.34	1016.37	1016.39	1016.33
	18	1016.39	1016.45	1016.49	1016.56	1016.66	1016.68	1016.69	1016.78	1016.86	1016.90	1016.94	1017.00	1016.70
	19	1017.00	1016.97	1016.94	1016.94	1016.97	1016.98	1017.02	1017.05	1017.02	1016.96	1016.93	1016.90	1016.97
	20	1016.89	1016.88	1016.86	1016.85	1016.83	1016.81	1016.79	1016.77	1016.75	1016.75	1016.79	1016.80	1016.81
	21	1016.78	1016.77	1016.74	1016.70	1016.67	1016.64	1016.64	1016.67	1016.69	1016.70	1016.71	1016.71	1016.70
	22	1016.71	1016.70	1016.66	1016.66	1016.68	1016.70	1016.73	1016.75	1016.75	1016.75	1016.78	1016.78	1016.72
	23	1016.77	1016.81	1016.87	1016.90	1016.90	1016.88	1016.84	1016.78	1016.74	1016.73	1016.75	1016.78	1016.81
16	0	1016.78	1016.78	1016.74	1016.68	1016.65	1016.60	1016.53	1016.48	1016.48	1016.47	1016.44	1016.40	1016.58
	1	1016.34	1016.28	1016.21	1016.14	1016.10	1016.08	1016.06	1016.03	1016.03	1016.05	1016.07	1016.05	1016.12
	2	1016.02	1016.02	1016.00	1015.95	1015.88	1015.82	1015.81	1015.79	1015.75	1015.71	1015.67	1015.66	1015.84
	3	1015.67	1015.68	1015.68	1015.66	1015.64	1015.63	1015.64	1015.66	1015.68	1015.67	1015.66	1015.66	1015.66
	4	1015.67	1015.65	1015.62	1015.59	1015.57	1015.56	1015.54	1015.53	1015.54	1015.57	1015.61	1015.64	1015.59
	5	1015.65	1015.65	1015.65	1015.65	1015.68	1015.70	1015.73	1015.74	1015.73	1015.73	1015.75	1015.76	1015.70
	6	1015.75	1015.73	1015.72	1015.72	1015.74	1015.77	1015.78	1015.80	1015.80	1015.77	1015.75	1015.76	1015.75
	7	1015.77	1015.77	1015.79	1015.82	1015.84	1015.83	1015.82	1015.80	1015.79	1015.79	1015.78	1015.76	1015.79
	8	1015.76	1015.75	1015.74	1015.73	1015.72	1015.70	1015.67	1015.63	1015.60	1015.58	1015.56	1015.52	1015.66
	9	1015.48	1015.41	1015.37	1015.34	1015.33	1015.34	1015.31	1015.26	1015.22	1015.19	1015.13	1015.06	1015.28
	10	1015.01	1014.97	1014.93	1014.87	1014.79	1014.73	1014.68	1014.66	1014.64	1014.58	1014.52	1014.52	1014.74
	11	1014.50	1014.42	1014.32	1014.25	1014.20	1014.17	1014.10	1014.03	1013.98	1013.92	1013.83	1013.75	1014.12
	12	1013.68	1013.60	1013.52	1013.45	1013.36	1013.28	1013.24	1013.23	1013.21	1013.19	1013.18	1013.18	1013.34
	13	1013.17	1013.11	1013.07	1013.05	1013.05	1013.06	1012.99	1012.92	1012.90	1012.87	1012.85	1012.85	1012.99
	14	1012.83	1012.77	1012.74	1012.75	1012.73	1012.65	1012.57	1012.54	1012.52	1012.49	1012.48	1012.46	1012.62
	15	1012.42	1012.40	1012.39	1012.41	1012.41	1012.43	1012.46	1012.48	1012.53	1012.55	1012.53	1012.50	1012.46
	16	1012.48	1012.46	1012.43	1012.39	1012.35	1012.32	1012.31	1012.30	1012.28	1012.30	1012.34	1012.38	1012.36
	17	1012.42	1012.45	1012.45	1012.43	1012.43	1012.43	1012.43	1012.59	1012.77	1012.77	1012.78	1012.80	1012.56
	18	1012.80	1012.82	1012.82	1012.83	1012.86	1012.88	1012.89	1012.90	1012.89	1012.86	1012.85	1012.86	1012.85
	19	1012.88	1012.89	1012.89	1012.85	1012.83	1012.85	1012.90	1012.96	1012.99	1013.00	1013.02	1013.02	1012.92
	20	1013.04	1013.04	1013.05	1013.08	1013.10	1013.12	1013.12	1013.09	1013.08	1013.09	1013.10	1013.13	1013.08
	21	1013.16	1013.16	1013.17	1013.16	1013.13	1013.13	1013.12	1013.11	1013.11	1013.12	1013.10	1013.11	1013.13
	22	1013.13	1013.12	1013.11	1013.11	1013.07	1013.02	1012.98	1012.93	1012.91	1012.88	1012.85	1012.85	1012.99
	23	1012.83	1012.81	1012.82	1012.83	1012.85	1012.85	1012.80	1012.76	1012.72	1012.66	1012.65	1012.64	1012.77

S.V.I.R.CO. Observatory - Pressure in hectoPascal – September 2020

day	hh	00_05	05_10	10_15	15_20	20_25	25_30	30_35	35_40	40_45	45_50	50_55	55_60	average
17	0	1012.60	1012.60	1012.59	1012.60	1012.60	1012.57	1012.54	1012.49	1012.43	1012.37	1012.35	1012.37	1012.50
	1	1012.33	1012.26	1012.27	1012.27	1012.27	1012.27	1012.20	1012.14	1012.12	1012.11	1012.08	1012.01	1012.19
	2	1011.95	1011.93	1011.89	1011.87	1011.85	1011.81	1011.82	1011.84	1011.85	1011.85	1011.83	1011.79	1011.85
	3	1011.73	1011.68	1011.66	1011.66	1011.65	1011.60	1011.60	1011.62	1011.62	1011.60	1011.59	1011.59	1011.63
	4	1011.61	1011.66	1011.70	1011.70	1011.73	1011.81	1011.84	1011.81	1011.81	1011.86	1011.86	1011.86	1011.77
	5	1011.88	1011.91	1011.97	1011.99	1011.99	1012.01	1012.03	1012.01	1011.98	1011.97	1011.98	1012.02	1011.98
	6	1012.06	1012.06	1012.03	1012.02	1012.05	1012.08	1012.11	1012.13	1012.09	1012.08	1012.15	1012.24	1012.09
	7	1012.28	1012.27	1012.26	1012.28	1012.34	1012.39	1012.46	1012.54	1012.57	1012.58	1012.60	1012.61	1012.43
	8	1012.61	1012.61	1012.60	1012.59	1012.61	1012.64	1012.65	1012.67	1012.66	1012.64	1012.63	1012.60	1012.62
	9	1012.56	1012.56	1012.55	1012.52	1012.48	1012.48	1012.50	1012.50	1012.49	1012.42	1012.37	1012.33	1012.48
	10	1012.29	1012.28	1012.26	1012.20	1012.14	1012.10	1012.08	1012.04	1011.94	1011.84	1011.78	1011.74	1012.05
	11	1011.69	1011.63	1011.59	1011.58	1011.59	1011.57	1011.56	1011.56	1011.55	1011.53	1011.49	1011.46	1011.57
	12	1011.40	1011.35	1011.31	1011.26	1011.19	1011.14	1011.14	1011.13	1011.12	1011.08	1011.01	1010.95	1011.17
	13	1010.91	1010.87	1010.90	1010.93	1010.91	1010.93	1010.97	1010.98	1010.97	1010.94	1010.91	1010.89	1010.92
	14	1010.86	1010.84	1010.87	1010.90	1010.91	1010.91	1010.88	1010.86	1010.85	1010.83	1010.82	1010.82	1010.86
	15	1010.82	1010.78	1010.77	1010.81	1010.86	1010.89	1010.90	1010.90	1010.89	1010.90	1010.89	1010.86	1010.85
	16	1010.85	1010.82	1010.83	1010.85	1010.86	1010.90	1010.97	1011.03	1011.09	1011.15	1011.21	1011.26	1010.98
	17	1011.31	1011.34	1011.38	1011.44	1011.46	1011.48	1011.51	1011.52	1011.56	1011.62	1011.68	1011.74	1011.50
	18	1011.80	1011.85	1011.91	1011.98	1012.02	1012.07	1012.15	1012.21	1012.25	1012.27	1012.30	1012.36	1012.09
	19	1012.42	1012.46	1012.50	1012.54	1012.56	1012.58	1012.62	1012.66	1012.70	1012.73	1012.78	1012.85	1012.61
	20	1012.88	1012.89	1012.89	1012.92	1012.94	1012.95	1013.00	1013.07	1013.10	1013.08	1013.06	1013.09	1012.99
	21	1013.13	1013.16	1013.16	1013.13	1013.10	1013.08	1013.07	1013.08	1013.10	1013.10	1013.09	1013.10	1013.11
	22	1013.12	1013.12	1013.12	1013.13	1013.11	1013.10	1013.13	1013.13	1013.10	1013.06	1013.04	1013.01	1013.10
	23	1013.02	1013.04	1013.04	1013.03	1013.04	1013.06	1013.06	1013.05	1013.07	1013.08	1013.07	1013.08	1013.05
18	0	1013.14	1013.10	1013.06	1013.07	1013.05	1013.02	1013.02	1013.00	1012.97	1012.94	1012.94	1012.93	1013.01
	1	1012.90	1012.87	1012.84	1012.86	1012.89	1012.91	1012.87	1012.79	1012.72	1012.73	1012.76	1012.78	1012.82
	2	1012.81	1012.85	1012.89	1012.95	1013.00	1013.01	1013.05	1013.10	1013.10	1013.08	1013.05	1013.02	1012.99
	3	1013.07	1013.17	1013.23	1013.24	1013.26	1013.26	1013.26	1013.24	1013.24	1013.22	1013.18	1013.22	1013.21
	4	1013.29	1013.33	1013.35	1013.35	1013.35	1013.39	1013.44	1013.46	1013.46	1013.44	1013.43	1013.44	1013.39
	5	1013.48	1013.54	1013.60	1013.61	1013.60	1013.66	1013.72	1013.78	1013.85	1013.88	1013.85	1013.87	1013.70
	6	1013.94	1014.00	1014.07	1014.12	1014.14	1014.14	1014.13	1014.15	1014.16	1014.17	1014.23	1014.31	1014.13
	7	1014.36	1014.37	1014.36	1014.36	1014.39	1014.46	1014.52	1014.59	1014.67	1014.71	1014.72	1014.73	1014.52
	8	1014.75	1014.77	1014.81	1014.85	1014.88	1014.91	1014.93	1014.94	1014.95	1014.98	1014.98	1014.98	1014.89
	9	1014.97	1014.94	1014.92	1014.91	1014.93	1014.96	1014.97	1014.97	1014.97	1014.93	1014.88	1014.85	1014.93
	10	1014.82	1014.80	1014.76	1014.73	1014.74	1014.76	1014.75	1014.73	1014.70	1014.66	1014.62	1014.60	1014.72
	11	1014.58	1014.55	1014.53	1014.50	1014.48	1014.44	1014.35	1014.21	1014.08	1014.02	1014.02	1014.01	1014.31
	12	1013.95	1013.88	1013.87	1013.88	1013.87	1013.85	1013.85	1013.84	1013.80	1013.79	1013.80	1013.80	1013.85
	13	1013.80	1013.79	1013.80	1013.83	1013.83	1013.82	1013.81	1013.79	1013.79	1013.78	1013.76	1013.74	1013.79
	14	1013.73	1013.71	1013.69	1013.70	1013.70	1013.70	1013.70	1013.66	1013.61	1013.59	1013.60	1013.60	1013.66
	15	1013.58	1013.57	1013.59	1013.60	1013.60	1013.58	1013.60	1013.65	1013.66	1013.67	1013.67	1013.65	1013.62
	16	1013.65	1013.67	1013.70	1013.73	1013.76	1013.77	1013.73	1013.67	1013.64	1013.64	1013.65	1013.66	1013.69
	17	1013.68	1013.69	1013.67	1013.67	1013.70	1013.72	1013.77	1013.83	1013.88	1013.96	1014.04	1014.11	1013.81
	18	1014.17	1014.24	1014.30	1014.37	1014.42	1014.48	1014.55	1014.63	1014.68	1014.68	1014.64	1014.66	1014.48
	19	1014.71	1014.77	1014.82	1014.86	1014.91	1014.93	1014.94	1014.95	1014.95	1014.98	1015.00	1015.03	1014.90
	20	1015.07	1015.09	1015.10	1015.09	1015.07	1015.10	1015.13	1015.13	1015.10	1015.09	1015.09	1015.10	1015.09
	21	1015.09	1015.09	1015.13	1015.15	1015.18	1015.24	1015.30	1015.33	1015.34	1015.36	1015.35	1015.33	1015.24
	22	1015.34	1015.37	1015.40	1015.43	1015.48	1015.57	1015.64	1015.67	1015.69	1015.71	1015.72	1015.70	1015.56
	23	1015.66	1015.63	1015.64	1015.65	1015.64	1015.65	1015.66	1015.65	1015.64	1015.63	1015.62	1015.58	1015.63

S.V.I.R.CO. Observatory - Pressure in hectoPascal – September 2020

day	hh	00_05	05_10	10_15	15_20	20_25	25_30	30_35	35_40	40_45	45_50	50_55	55_60	average
19	0	1015.54	1015.56	1015.53	1015.49	1015.51	1015.55	1015.58	1015.58	1015.57	1015.58	1015.58	1015.56	1015.55
	1	1015.54	1015.53	1015.52	1015.50	1015.50	1015.51	1015.51	1015.50	1015.52	1015.55	1015.56	1015.58	1015.53
	2	1015.59	1015.61	1015.62	1015.62	1015.61	1015.60	1015.64	1015.71	1015.74	1015.73	1015.73	1015.75	1015.66
	3	1015.77	1015.77	1015.76	1015.77	1015.77	1015.81	1015.85	1015.88	1015.92	1016.00	1016.08	1016.13	1015.87
	4	1016.16	1016.16	1016.09	1015.99	1015.94	1015.96	1016.00	1015.99	1015.99	1015.99	1016.04	1016.12	1016.03
	5	1016.20	1016.25	1016.29	1016.34	1016.42	1016.51	1016.57	1016.59	1016.63	1016.71	1016.75	1016.77	1016.50
	6	1016.77	1016.76	1016.72	1016.69	1016.68	1016.65	1016.68	1016.71	1016.76	1016.85	1016.87	1016.86	1016.75
	7	1016.90	1016.94	1016.93	1016.92	1016.94	1016.98	1017.01	1017.00	1016.95	1016.92	1016.94	1017.00	1016.95
	8	1017.04	1017.06	1017.08	1017.14	1017.14	1017.08	1017.09	1017.08	1017.05	1017.00	1016.93	1016.90	1017.05
	9	1016.90	1016.90	1016.89	1016.84	1016.77	1016.74	1016.70	1016.65	1016.59	1016.54	1016.51	1016.50	1016.71
	10	1016.52	1016.50	1016.48	1016.43	1016.33	1016.24	1016.18	1016.12	1016.05	1015.99	1015.97	1015.94	1016.23
	11	1015.88	1015.84	1015.84	1015.79	1015.72	1015.71	1015.69	1015.64	1015.61	1015.55	1015.51	1015.50	1015.69
	12	1015.47	1015.44	1015.42	1015.41	1015.40	1015.41	1015.43	1015.42	1015.40	1015.35	1015.34	1015.33	1015.40
	13	1015.32	1015.34	1015.35	1015.32	1015.33	1015.30	1015.23	1015.18	1015.13	1015.08	1015.04	1015.00	1015.22
	14	1014.95	1014.92	1014.92	1014.94	1014.93	1014.87	1014.83	1014.79	1014.77	1014.78	1014.81	1014.83	1014.86
	15	1014.84	1014.80	1014.77	1014.78	1014.77	1014.75	1014.73	1014.73	1014.70	1014.67	1014.64	1014.62	1014.73
	16	1014.60	1014.58	1014.59	1014.58	1014.58	1014.60	1014.61	1014.62	1014.63	1014.59	1014.58	1014.61	1014.59
	17	1014.66	1014.70	1014.72	1014.75	1014.80	1014.85	1014.91	1015.00	1015.06	1015.09	1015.12	1015.14	1014.90
	18	1015.15	1015.13	1015.11	1015.11	1015.16	1015.25	1015.31	1015.34	1015.38	1015.42	1015.45	1015.46	1015.27
	19	1015.46	1015.46	1015.46	1015.47	1015.52	1015.59	1015.61	1015.60	1015.62	1015.66	1015.65	1015.63	1015.56
	20	1015.61	1015.58	1015.58	1015.62	1015.66	1015.66	1015.63	1015.60	1015.61	1015.59	1015.52	1015.52	1015.59
	21	1015.51	1015.48	1015.50	1015.52	1015.54	1015.52	1015.44	1015.38	1015.36	1015.37	1015.40	1015.42	1015.45
	22	1015.46	1015.47	1015.45	1015.42	1015.37	1015.32	1015.26	1015.19	1015.15	1015.15	1015.16	1015.16	1015.30
	23	1015.17	1015.17	1015.16	1015.17	1015.15	1015.12	1015.13	1015.13	1015.08	1015.04	1015.07	1015.12	1015.12
20	0	1015.05	1015.02	1014.96	1014.92	1014.95	1015.01	1015.04	1015.02	1015.01	1015.03	1015.06	1015.04	1015.01
	1	1015.00	1014.96	1014.93	1014.93	1014.91	1014.92	1014.95	1014.93	1014.89	1014.81	1014.80	1014.85	1014.90
	2	1014.88	1014.89	1014.93	1015.01	1015.06	1015.07	1015.10	1015.11	1015.12	1015.12	1015.08	1015.02	1015.03
	3	1015.02	1015.07	1015.07	1015.09	1015.12	1015.12	1015.14	1015.07	1014.98	1014.98	1014.96	1014.93	1015.04
	4	1014.89	1014.83	1014.79	1014.78	1014.85	1014.90	1014.87	1014.76	1014.59	1014.49	1014.53	1014.67	1014.74
	5	1014.69	1014.64	1014.71	1014.80	1014.75	1014.72	1014.81	1014.84	1014.85	1014.94	1014.99	1014.96	1014.81
	6	1014.94	1014.94	1015.01	1015.15	1015.23	1015.29	1015.29	1015.24	1015.21	1015.19	1015.21	1015.26	1015.16
	7	1015.28	1015.37	1015.48	1015.53	1015.54	1015.43	1015.37	1015.41	1015.33	1015.19	1015.18	1015.20	1015.36
	8	1015.32	1015.49	1015.61	1015.67	1015.64	1015.69	1015.81	1015.85	1015.77	1015.69	1015.69	1015.69	1015.66
	9	1015.70	1015.71	1015.70	1015.69	1015.61	1015.46	1015.39	1015.34	1015.25	1015.18	1015.12	1015.06	1015.43
	10	1014.95	1014.78	1014.71	1014.75	1014.74	1014.67	1014.60	1014.50	1014.38	1014.29	1014.14	1013.99	1014.54
	11	1013.93	1013.93	1013.93	1013.95	1013.89	1013.84	1013.88	1013.95	1013.98	1013.95	1013.92	1013.89	1013.92
	12	1013.89	1013.89	1013.88	1013.82	1013.77	1013.79	1013.78	1013.76	1013.72	1013.69	1013.70	1013.73	1013.78
	13	1013.76	1013.73	1013.68	1013.65	1013.61	1013.59	1013.54	1013.50	1013.46	1013.45	1013.47	1013.43	1013.57
	14	1013.37	1013.35	1013.34	1013.29	1013.27	1013.25	1013.22	1013.22	1013.22	1013.24	1013.32	1013.41	1013.29
	15	1013.45	1013.48	1013.53	1013.58	1013.59	1013.55	1013.54	1013.56	1013.57	1013.58	1013.63	1013.65	1013.56
	16	1013.63	1013.63	1013.60	1013.59	1013.58	1013.54	1013.49	1013.51	1013.57	1013.61	1013.67	1013.72	1013.59
	17	1013.72	1013.67	1013.62	1013.66	1013.71	1013.69	1013.69	1013.71	1013.71	1013.75	1013.81	1013.87	1013.72
	18	1013.94	1014.02	1014.10	1014.15	1014.16	1014.14	1014.11	1014.13	1014.19	1014.23	1014.28	1014.32	1014.14
	19	1014.30	1014.26	1014.26	1014.28	1014.24	1014.19	1014.16	1014.16	1014.17	1014.18	1014.18	1014.21	1014.21
	20	1014.28	1014.35	1014.42	1014.43	1014.37	1014.31	1014.28	1014.23	1014.19	1014.16	1014.16	1014.15	1014.27
	21	1014.12	1014.12	1014.15	1014.18	1014.17	1014.17	1014.17	1014.17	1014.18	1014.16	1014.11	1014.09	1014.15
	22	1014.09	1014.11	1014.11	1014.06	1014.04	1014.04	1014.05	1014.07	1014.08	1014.10	1014.09	1014.11	1014.08
	23	1014.14	1014.12	1014.12	1014.12	1014.13	1014.15	1014.17	1014.22	1014.24	1014.21	1014.16	1014.11	1014.15

S.V.I.R.CO. Observatory - Pressure in hectoPascal – September 2020

day	hh	00_05	05_10	10_15	15_20	20_25	25_30	30_35	35_40	40_45	45_50	50_55	55_60	average
21	0	1013.89	1013.85	1013.86	1013.93	1013.98	1014.01	1013.98	1014.03	1014.15	1014.22	1014.26	1014.20	1014.03
	1	1014.14	1014.16	1014.08	1014.03	1013.99	1013.93	1013.92	1013.86	1013.82	1013.79	1013.78	1013.78	1013.94
	2	1013.63	1013.46	1013.49	1013.59	1013.44	1013.41	1013.58	1013.50	1013.32	1013.25	1013.20	1013.22	1013.42
	3	1013.40	1013.55	1013.51	1013.45	1013.50	1013.55	1013.45	1013.30	1013.26	1013.22	1013.20	1013.23	1013.38
	4	1013.26	1013.29	1013.28	1013.21	1013.19	1013.19	1013.07	1013.00	1013.14	1013.26	1013.27	1013.30	1013.20
	5	1013.34	1013.38	1013.39	1013.41	1013.50	1013.58	1013.68	1013.74	1013.71	1013.68	1013.67	1013.65	1013.56
	6	1013.67	1013.83	1013.89	1013.84	1013.92	1014.02	1014.10	1014.08	1014.04	1014.04	1014.03	1014.05	1013.96
	7	1014.14	1014.18	1014.16	1014.18	1014.21	1014.22	1014.24	1014.24	1014.24	1014.23	1014.18	1014.12	1014.19
	8	1014.08	1014.05	1014.07	1014.12	1014.15	1014.20	1014.22	1014.23	1014.26	1014.34	1014.39	1014.40	1014.21
	9	1014.42	1014.43	1014.41	1014.39	1014.41	1014.42	1014.37	1014.32	1014.26	1014.18	1014.16	1014.12	1014.32
	10	1014.03	1013.96	1013.95	1013.96	1014.01	1014.03	1013.95	1013.92	1013.85	1013.75	1013.70	1013.68	1013.90
	11	1013.68	1013.71	1013.71	1013.65	1013.66	1013.79	1013.84	1013.75	1013.71	1013.84	1013.94	1013.83	1013.76
	12	1013.74	1013.87	1014.02	1014.05	1014.08	1014.08	1014.00	1013.91	1013.91	1013.95	1014.00	1014.03	1013.97
	13	1014.00	1013.95	1013.89	1013.85	1013.83	1013.78	1013.73	1013.69	1013.65	1013.62	1013.54	1013.47	1013.75
	14	1013.45	1013.47	1013.57	1013.63	1013.55	1013.42	1013.37	1013.38	1013.45	1013.58	1013.66	1013.71	1013.52
	15	1013.74	1013.72	1013.68	1013.64	1013.65	1013.70	1013.77	1013.88	1013.91	1013.77	1013.72	1013.78	1013.74
	16	1013.74	1013.67	1013.64	1013.58	1013.49	1013.44	1013.50	1013.57	1013.57	1013.55	1013.54	1013.54	1013.57
	17	1013.52	1013.53	1013.61	1013.60	1013.51	1013.52	1013.59	1013.71	1013.81	1013.90	1013.96	1013.96	1013.68
	18	1013.99	1014.06	1014.15	1014.22	1014.24	1014.26	1014.26	1014.25	1014.27	1014.29	1014.33	1014.42	1014.22
	19	1014.52	1014.57	1014.54	1014.49	1014.45	1014.43	1014.47	1014.57	1014.65	1014.68	1014.68	1014.66	1014.56
	20	1014.66	1014.66	1014.66	1014.69	1014.73	1014.73	1014.64	1014.59	1014.61	1014.61	1014.61	1014.63	1014.65
	21	1014.67	1014.70	1014.68	1014.68	1014.68	1014.69	1014.67	1014.63	1014.64	1014.64	1014.63	1014.63	1014.66
	22	1014.65	1014.66	1014.63	1014.65	1014.69	1014.65	1014.58	1014.57	1014.62	1014.67	1014.71	1014.66	1014.64
	23	1014.56	1014.56	1014.56	1014.58	1014.66	1014.67	1014.63	1014.67	1014.69	1014.70	1014.71	1014.70	1014.64
22	0	1014.75	1014.74	1014.70	1014.66	1014.64	1014.64	1014.64	1014.65	1014.67	1014.64	1014.61	1014.60	1014.66
	1	1014.57	1014.57	1014.56	1014.51	1014.47	1014.39	1014.33	1014.32	1014.31	1014.24	1014.16	1014.11	1014.38
	2	1014.06	1014.02	1014.01	1014.01	1014.04	1014.05	1014.03	1014.00	1013.96	1013.93	1013.93	1013.96	1014.00
	3	1014.00	1014.06	1014.06	1014.03	1014.04	1014.06	1014.02	1013.95	1013.91	1013.95	1014.06	1014.12	1014.02
	4	1014.22	1014.52	1014.80	1014.87	1014.70	1014.41	1014.14	1013.99	1014.02	1014.14	1014.17	1014.12	1014.34
	5	1014.10	1014.05	1013.97	1014.03	1014.12	1014.19	1014.24	1014.28	1014.35	1014.32	1014.25	1014.20	1014.17
	6	1014.14	1014.06	1014.00	1013.99	1014.00	1014.00	1013.96	1013.94	1013.96	1013.98	1013.98	1013.98	1014.00
	7	1013.97	1013.99	1014.02	1013.97	1013.94	1013.95	1013.99	1014.03	1014.07	1014.12	1014.15	1014.17	1014.03
	8	1014.27	1014.41	1014.53	1014.69	1014.88	1015.03	1015.06	1015.06	1015.09	1015.12	1015.08	1014.99	1014.85
	9	1014.92	1014.87	1014.82	1014.75	1014.71	1014.72	1014.75	1014.76	1014.75	1014.68	1014.61	1014.61	1014.74
	10	1014.59	1014.53	1014.45	1014.37	1014.31	1014.22	1014.12	1014.04	1013.91	1013.77	1013.68	1013.65	1014.13
	11	1013.60	1013.55	1013.51	1013.52	1013.60	1013.68	1013.71	1013.65	1013.64	1013.66	1013.61	1013.54	1013.60
	12	1013.50	1013.45	1013.40	1013.33	1013.28	1013.26	1013.19	1013.10	1013.07	1013.06	1013.01	1012.92	1013.21
	13	1012.84	1012.84	1012.86	1012.81	1012.76	1012.77	1012.79	1012.79	1012.80	1012.79	1012.76	1012.75	1012.79
	14	1012.67	1012.62	1012.65	1012.64	1012.56	1012.48	1012.40	1012.36	1012.37	1012.33	1012.30	1012.23	1012.47
	15	1012.21	1012.19	1012.13	1012.11	1012.12	1012.14	1012.12	1012.10	1012.10	1012.08	1012.09	1012.11	1012.12
	16	1012.12	1012.14	1012.20	1012.24	1012.23	1012.24	1012.25	1012.24	1012.18	1012.15	1012.17	1012.19	1012.19
	17	1012.21	1012.29	1012.40	1012.43	1012.47	1012.49	1012.49	1012.51	1012.50	1012.49	1012.51	1012.54	1012.44
	18	1012.56	1012.56	1012.61	1012.70	1012.73	1012.71	1012.68	1012.65	1012.73	1012.78	1012.79	1012.81	1012.69
	19	1012.79	1012.72	1012.67	1012.75	1012.81	1012.87	1012.89	1013.11	1013.22	1012.90	1012.87	1013.05	1012.89
	20	1013.07	1013.07	1013.07	1013.05	1012.97	1012.87	1012.81	1012.74	1012.65	1012.60	1012.55	1012.51	1012.83
	21	1012.52	1012.53	1012.52	1012.52	1012.53	1012.50	1012.50	1012.51	1012.47	1012.47	1012.42	1012.32	1012.48
	22	1012.23	1012.15	1012.12	1012.08	1012.09	1012.16	1012.20	1012.23	1012.26	1012.33	1012.38	1012.40	1012.22
	23	1012.41	1012.40	1012.35	1012.31	1012.31	1012.33	1012.37	1012.38	1012.40	1012.44	1012.46	1012.47	1012.38

S.V.I.R.CO. Observatory - Pressure in hectoPascal – September 2020

day	hh	00_05	05_10	10_15	15_20	20_25	25_30	30_35	35_40	40_45	45_50	50_55	55_60	average
23	0	1012.38	1012.36	1012.35	1012.35	1012.32	1012.28	1012.25	1012.24	1012.28	1012.33	1012.37	1012.37	1012.32
	1	1012.30	1012.29	1012.35	1012.33	1012.25	1012.20	1012.12	1012.00	1011.93	1011.93	1011.87	1011.73	1012.10
	2	1011.66	1011.67	1011.72	1011.82	1011.83	1011.71	1011.65	1011.68	1011.71	1011.67	1011.64	1011.67	1011.70
	3	1011.71	1011.74	1011.79	1011.84	1011.85	1011.87	1011.87	1011.86	1011.83	1011.78	1011.70	1011.63	1011.79
	4	1011.62	1011.64	1011.56	1011.46	1011.42	1011.35	1011.36	1011.41	1011.37	1011.34	1011.34	1011.38	1011.44
	5	1011.43	1011.47	1011.49	1011.54	1011.61	1011.66	1011.71	1011.77	1011.77	1011.73	1011.77	1011.84	1011.65
	6	1011.87	1011.79	1011.67	1011.69	1011.73	1011.78	1011.73	1011.69	1011.79	1011.82	1011.78	1011.69	1011.75
	7	1011.53	1011.55	1011.85	1012.12	1012.12	1011.95	1012.08	1012.48	1012.65	1012.48	1012.17	1012.06	1012.08
	8	1012.17	1012.20	1012.26	1012.21	1012.02	1012.10	1012.37	1012.53	1012.56	1012.54	1012.65	1012.85	1012.37
	9	1012.92	1013.03	1013.10	1012.97	1012.91	1012.78	1012.53	1012.53	1012.72	1012.76	1012.61	1012.48	1012.78
	10	1012.47	1012.46	1012.45	1012.46	1012.45	1012.42	1012.41	1012.45	1012.47	1012.43	1012.45	1012.48	1012.45
	11	1012.40	1012.40	1012.54	1012.56	1012.47	1012.36	1012.32	1012.38	1012.29	1012.07	1011.92	1011.85	1012.29
	12	1011.77	1011.73	1011.77	1011.75	1011.63	1011.59	1011.63	1011.75	1011.84	1011.88	1011.86	1011.77	1011.75
	13	1011.75	1011.78	1011.78	1011.73	1011.64	1011.56	1011.49	1011.45	1011.39	1011.30	1011.26	1011.27	1011.53
	14	1011.19	1011.11	1011.13	1011.17	1011.19	1011.18	1011.16	1011.15	1011.06	1010.96	1010.93	1010.97	1011.10
	15	1011.04	1011.05	1011.00	1010.97	1011.06	1011.19	1011.24	1011.20	1011.15	1011.15	1011.12	1011.04	1011.10
	16	1011.00	1011.06	1011.12	1011.15	1011.17	1011.19	1011.18	1011.09	1011.01	1010.96	1010.92	1010.93	1011.06
	17	1010.90	1010.95	1011.02	1010.94	1010.91	1010.98	1010.94	1010.92	1011.04	1011.21	1011.20	1011.00	1011.00
	18	1010.85	1010.75	1010.76	1011.02	1011.12	1010.96	1011.02	1010.90	1011.01	1011.56	1011.89	1012.31	1011.18
	19	1013.00	1013.09	1012.81	1012.81	1012.67	1012.56	1012.56	1012.38	1012.22	1012.16	1012.09	1012.19	1012.54
	20	1012.39	1012.41	1012.26	1012.22	1012.25	1012.18	1012.20	1012.23	1012.21	1012.21	1012.22	1012.18	1012.24
	21	1012.03	1011.93	1011.93	1011.95	1011.98	1012.05	1012.12	1012.18	1012.30	1012.34	1012.35	1012.30	1012.12
	22	1012.27	1012.28	1012.22	1012.20	1012.20	1012.26	1012.39	1012.41	1012.39	1012.38	1012.33	1012.36	1012.31
	23	1012.36	1012.30	1012.34	1012.40	1012.39	1012.38	1012.38	1012.38	1012.35	1012.30	1012.29	1012.27	1012.34
24	0	1012.26	1012.33	1012.41	1012.38	1012.35	1012.38	1012.41	1012.38	1012.34	1012.24	1012.14	1012.09	1012.31
	1	1012.09	1012.11	1012.08	1012.07	1012.09	1012.06	1012.09	1012.13	1012.13	1012.10	1012.07	1012.07	1012.09
	2	1012.04	1012.01	1012.02	1012.00	1011.94	1011.91	1011.92	1011.91	1011.88	1011.87	1011.88	1011.95	1011.94
	3	1012.00	1012.03	1012.04	1012.00	1011.96	1011.92	1011.93	1012.00	1012.05	1012.03	1012.02	1012.02	1012.00
	4	1011.95	1011.96	1012.00	1011.98	1012.00	1012.01	1012.00	1012.03	1012.02	1011.96	1012.03	1012.10	1012.00
	5	1012.05	1012.04	1012.04	1012.08	1012.15	1012.16	1012.15	1012.21	1012.28	1012.31	1012.32	1012.38	1012.18
	6	1012.45	1012.44	1012.48	1012.50	1012.49	1012.46	1012.45	1012.52	1012.57	1012.61	1012.63	1012.63	1012.52
	7	1012.63	1012.65	1012.68	1012.70	1012.74	1012.80	1012.83	1012.86	1012.85	1012.84	1012.93	1013.01	1012.79
	8	1013.04	1013.05	1013.04	1013.05	1013.06	1013.08	1013.09	1013.12	1013.13	1013.11	1013.14	1013.17	1013.09
	9	1013.15	1013.13	1013.14	1013.13	1013.11	1013.12	1013.09	1012.99	1012.87	1012.79	1012.82	1012.82	1013.01
	10	1012.78	1012.72	1012.63	1012.51	1012.48	1012.58	1012.57	1012.59	1012.68	1012.65	1012.63	1012.65	1012.62
	11	1012.66	1012.68	1012.62	1012.54	1012.41	1012.35	1012.39	1012.39	1012.40	1012.43	1012.41	1012.36	1012.47
	12	1012.36	1012.44	1012.50	1012.47	1012.43	1012.47	1012.52	1012.42	1012.32	1012.28	1012.27	1012.31	1012.40
	13	1012.39	1012.46	1012.37	1012.21	1012.11	1012.10	1012.07	1012.04	1012.05	1012.05	1012.07	1012.05	1012.16
	14	1011.98	1011.92	1011.90	1011.84	1011.78	1011.78	1011.76	1011.66	1011.58	1011.53	1011.53	1011.55	1011.73
	15	1011.59	1011.57	1011.53	1011.50	1011.47	1011.52	1011.57	1011.52	1011.45	1011.40	1011.37	1011.32	1011.48
	16	1011.28	1011.25	1011.22	1011.25	1011.30	1011.32	1011.32	1011.33	1011.32	1011.24	1011.17	1011.11	1011.26
	17	1011.06	1011.02	1010.97	1010.91	1010.87	1010.95	1011.03	1011.01	1010.99	1010.96	1010.97	1010.95	1010.97
	18	1010.89	1010.88	1010.86	1010.84	1010.92	1011.00	1011.02	1011.00	1010.97	1010.96	1010.95	1010.94	1010.93
	19	1010.97	1011.04	1011.05	1010.99	1010.93	1010.93	1010.92	1010.93	1010.97	1010.95	1010.88	1010.82	1010.95
	20	1010.77	1010.70	1010.58	1010.44	1010.34	1010.30	1010.29	1010.17	1010.02	1009.89	1009.78	1009.69	1010.24
	21	1009.60	1009.53	1009.49	1009.47	1009.44	1009.37	1009.26	1009.18	1009.10	1009.04	1008.96	1008.85	1009.27
	22	1008.72	1008.64	1008.54	1008.46	1008.43	1008.41	1008.42	1008.38	1008.30	1008.25	1008.18	1008.08	1008.40
	23	1008.04	1008.07	1007.98	1007.88	1007.87	1007.79	1007.68	1007.58	1007.46	1007.27	1007.08	1006.99	1007.64

S.V.I.R.CO. Observatory - Pressure in hectoPascal – September 2020

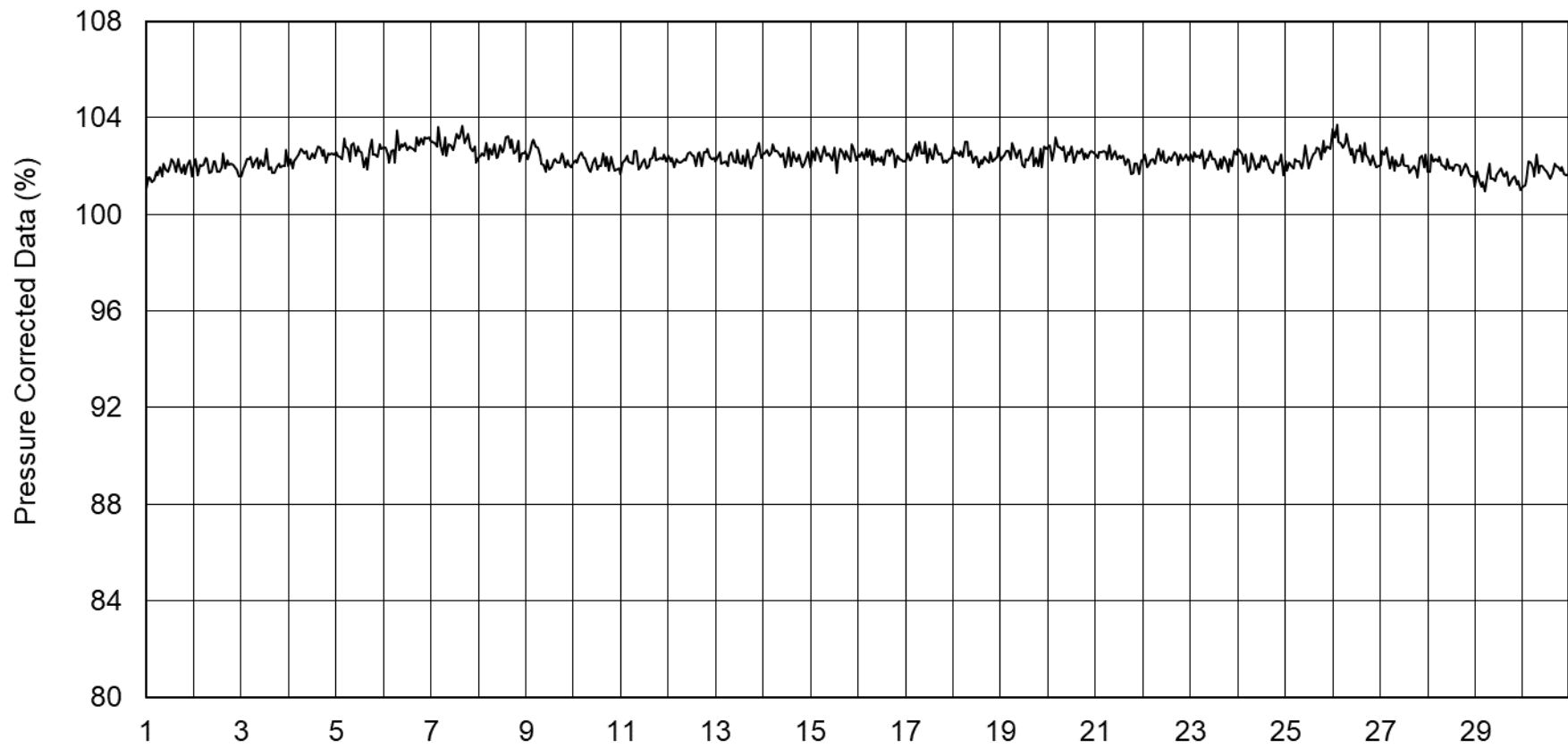
day	hh	00_05	05_10	10_15	15_20	20_25	25_30	30_35	35_40	40_45	45_50	50_55	55_60	average
25	0	1006.77	1006.68	1006.50	1006.29	1006.15	1006.00	1005.88	1005.75	1005.66	1005.67	1005.60	1005.62	1006.01
	1	1005.60	1005.50	1005.38	1005.15	1005.06	1005.18	1005.28	1005.28	1005.22	1005.08	1004.92	1004.87	1005.21
	2	1004.82	1004.76	1004.80	1004.91	1005.10	1005.19	1005.04	1004.77	1004.56	1004.60	1004.66	1004.62	1004.82
	3	1004.55	1004.64	1004.78	1004.90	1005.00	1004.89	1004.77	1004.70	1004.71	1004.71	1004.60	1004.53	1004.73
	4	1004.44	1004.43	1004.43	1004.38	1004.40	1004.34	1004.22	1004.15	1004.18	1004.18	1004.10	1004.10	1004.28
	5	1004.07	1003.99	1004.00	1004.00	1003.84	1003.60	1003.45	1003.52	1003.54	1003.49	1003.53	1003.60	1003.72
	6	1003.48	1003.31	1003.31	1003.30	1003.24	1003.19	1003.06	1002.95	1002.93	1002.91	1002.86	1002.83	1003.11
	7	1002.80	1002.81	1002.90	1003.04	1003.08	1002.98	1002.96	1003.01	1002.97	1002.90	1002.85	1002.93	1002.93
	8	1003.01	1003.06	1003.10	1003.08	1003.09	1003.11	1003.23	1003.28	1003.27	1003.22	1003.12	1003.03	1003.13
	9	1002.90	1002.85	1002.85	1002.74	1002.63	1002.51	1002.38	1002.25	1002.12	1002.05	1001.98	1001.89	1002.43
	10	1001.73	1001.63	1001.67	1001.74	1001.72	1001.72	1001.78	1001.65	1001.47	1001.42	1001.48	1001.47	1001.62
	11	1001.35	1001.31	1001.27	1001.22	1001.26	1001.34	1001.32	1001.19	1001.08	1000.98	1000.82	1000.62	1001.15
	12	1000.47	1000.39	1000.26	1000.13	1000.04	999.95	999.84	999.76	999.70	999.68	999.70	999.68	999.96
	13	999.73	999.81	999.81	999.87	999.94	1000.13	1000.10	999.92	999.96	999.93	999.83	999.78	999.90
	14	999.74	999.65	999.54	999.46	999.36	999.26	999.22	999.15	999.11	999.01	998.85	998.76	999.26
	15	998.81	998.98	999.05	999.01	999.03	999.06	999.01	999.05	999.20	999.15	999.09	999.08	999.04
	16	999.12	999.21	999.14	999.10	999.07	998.96	998.92	998.92	998.88	998.81	998.70	998.55	998.95
	17	998.50	998.59	998.64	998.72	998.79	998.81	998.85	998.96	999.02	998.95	998.92	998.96	998.81
	18	998.97	998.99	998.92	998.93	999.06	999.07	999.05	999.03	998.95	998.89	998.88	998.91	998.97
	19	998.97	998.97	998.99	998.97	998.84	998.76	998.75	998.68	998.56	998.51	998.53	998.55	998.75
	20	998.46	998.33	998.30	998.35	998.44	998.51	998.48	998.52	998.65	998.69	998.69	998.61	998.50
	21	998.47	998.42	998.37	998.31	998.22	998.14	998.13	998.08	998.00	997.98	997.95	997.90	998.16
	22	997.87	997.84	997.74	997.68	997.73	997.73	997.67	997.66	997.63	997.50	997.36	997.29	997.64
	23	997.25	997.13	997.03	997.00	996.92	996.80	996.73	996.68	996.56	996.43	996.38	996.36	996.77
26	0	996.37	996.38	996.46	996.49	996.42	996.45	996.57	996.61	996.61	996.61	996.56	996.55	996.51
	1	996.45	996.35	996.30	996.26	996.27	996.31	996.44	996.44	996.22	996.02	996.13	996.36	996.29
	2	996.42	996.28	996.16	996.22	996.27	996.31	996.33	996.37	996.43	996.33	996.17	996.11	996.28
	3	996.10	996.06	996.15	996.60	996.84	996.74	996.60	996.53	996.62	996.67	996.65	996.64	996.51
	4	996.60	996.45	996.70	997.04	997.06	996.87	996.57	996.43	996.35	996.32	996.21	996.00	996.55
	5	995.96	996.06	996.23	996.51	996.79	996.99	997.17	997.27	997.28	997.18	997.07	997.03	996.79
	6	996.99	996.94	996.98	996.99	997.06	997.10	997.17	997.22	997.11	997.11	997.21	997.33	997.10
	7	997.42	997.43	997.51	997.68	997.78	997.89	998.10	998.19	998.07	997.95	997.96	997.98	997.83
	8	997.94	997.97	998.00	998.04	998.29	998.56	998.74	998.84	998.81	998.83	998.85	998.77	998.47
	9	998.79	998.85	998.88	998.95	999.07	999.20	999.28	999.31	999.27	999.22	999.19	999.16	999.10
	10	999.11	999.07	999.06	999.10	999.13	999.12	999.09	999.08	999.10	999.13	999.24	999.41	999.13
	11	999.50	999.55	999.62	999.67	999.75	999.90	999.99	1000.01	1000.00	999.92	999.87	999.89	999.80
	12	999.90	999.84	999.78	999.75	999.79	999.89	999.96	999.94	999.94	1000.04	1000.14	1000.15	999.92
	13	1000.11	1000.21	1000.48	1000.70	1000.97	1001.34	1001.56	1001.74	1001.96	1002.16	1002.28	1002.28	1001.31
	14	1002.35	1002.40	1002.30	1002.21	1002.13	1001.96	1001.85	1001.83	1001.68	1001.42	1001.23	1001.16	1001.87
	15	1001.11	1001.05	1001.04	1001.06	1001.12	1001.22	1001.29	1001.41	1001.47	1001.41	1001.34	1001.29	1001.23
	16	1001.29	1001.31	1001.27	1001.21	1001.17	1001.14	1001.16	1001.22	1001.31	1001.32	1001.31	1001.31	1001.25
	17	1001.30	1001.25	1001.13	1001.01	1000.89	1000.76	1000.70	1000.64	1000.66	1000.74	1000.77	1000.80	1000.88
	18	1000.85	1000.89	1000.92	1000.98	1001.08	1001.14	1001.15	1001.20	1001.22	1001.20	1001.19	1001.17	1001.08
	19	1001.16	1001.22	1001.28	1001.25	1001.15	1001.08	1001.10	1001.15	1001.15	1001.13	1001.11	1001.09	1001.15
	20	1001.11	1001.17	1001.19	1001.24	1001.29	1001.35	1001.34	1001.33	1001.38	1001.43	1001.56	1001.67	1001.34
	21	1001.70	1001.77	1001.85	1001.86	1001.93	1002.10	1002.24	1002.36	1002.54	1002.57	1002.39	1002.33	1002.13
	22	1002.48	1002.60	1002.57	1002.56	1002.62	1002.63	1002.62	1002.67	1002.73	1002.76	1002.75	1002.71	1002.64
	23	1002.73	1002.85	1002.95	1002.93	1002.87	1002.85	1002.79	1002.79	1002.86	1002.98	1003.05	1002.98	1002.88

S.V.I.R.CO. Observatory - Pressure in hectoPascal – September 2020

day	hh	00_05	05_10	10_15	15_20	20_25	25_30	30_35	35_40	40_45	45_50	50_55	55_60	average
27	0	1003.01	1002.93	1002.81	1002.81	1002.83	1002.83	1002.88	1002.89	1002.87	1002.87	1002.94	1002.98	1002.88
	1	1003.00	1003.45	1003.79	1003.85	1003.89	1003.78	1003.78	1003.81	1003.77	1003.51	1003.21	1003.09	1003.58
	2	1003.10	1003.05	1003.02	1003.05	1003.02	1003.01	1002.98	1003.04	1003.20	1003.31	1003.41	1003.47	1003.14
	3	1003.54	1003.73	1003.86	1003.85	1003.77	1003.60	1003.49	1003.55	1003.68	1003.67	1003.58	1003.51	1003.65
	4	1003.50	1003.67	1003.76	1003.78	1003.80	1003.86	1003.93	1003.95	1004.07	1004.10	1004.07	1004.19	1003.89
	5	1004.30	1004.32	1004.36	1004.38	1004.42	1004.47	1004.53	1004.60	1004.64	1004.68	1004.72	1004.66	1004.51
	6	1004.50	1004.37	1004.36	1004.37	1004.26	1004.17	1004.22	1004.29	1004.27	1004.22	1004.19	1004.20	1004.28
	7	1004.22	1004.19	1004.23	1004.37	1004.48	1004.47	1004.41	1004.44	1004.44	1004.34	1004.34	1004.52	1004.37
	8	1004.71	1004.65	1004.67	1004.68	1004.42	1004.50	1004.53	1004.10	1003.95	1004.11	1004.28	1004.33	1004.41
	9	1004.16	1003.82	1003.56	1003.43	1003.29	1003.20	1003.09	1003.00	1002.85	1002.75	1002.62	1002.40	1003.18
	10	1002.19	1001.98	1001.93	1001.93	1001.79	1001.72	1001.69	1001.60	1001.50	1001.41	1001.38	1001.33	1001.70
	11	1001.21	1001.08	1000.79	1000.85	1000.99	1000.85	1000.80	1000.73	1000.82	1000.84	1000.55	1000.15	1000.80
	12	999.92	999.80	999.63	999.37	999.00	998.68	998.42	998.12	997.75	997.39	997.21	997.17	998.54
	13	997.06	997.01	997.20	997.48	997.88	998.21	998.23	998.06	997.96	997.97	997.88	997.73	997.72
	14	997.61	997.50	997.40	997.32	997.20	997.08	996.98	996.84	996.73	996.74	996.88	996.91	997.10
	15	996.74	996.72	996.77	996.77	996.80	997.01	997.16	997.21	997.37	997.51	997.66	997.72	997.12
	16	997.67	997.66	997.64	997.46	997.30	997.34	997.35	997.32	997.31	997.33	997.39	997.44	997.43
	17	997.50	997.47	997.41	997.44	997.45	997.49	997.61	997.74	997.85	997.95	997.97	997.98	997.65
	18	998.07	998.13	998.23	998.32	998.35	998.45	998.57	998.68	998.81	998.92	999.03	999.13	998.56
	19	999.21	999.25	999.33	999.45	999.60	999.80	999.95	1000.06	1000.22	1000.46	1000.73	1000.88	999.91
	20	1000.93	1001.03	1001.17	1001.29	1001.39	1001.53	1001.70	1001.89	1002.13	1002.31	1002.44	1002.57	1001.70
	21	1002.66	1002.78	1002.92	1003.09	1003.26	1003.35	1003.40	1003.49	1003.61	1003.75	1003.92	1004.09	1003.36
	22	1004.26	1004.36	1004.42	1004.52	1004.64	1004.75	1004.84	1004.86	1004.94	1005.05	1005.09	1005.13	1004.74
	23	1005.16	1005.20	1005.35	1005.52	1005.58	1005.61	1005.67	1005.71	1005.74	1005.77	1005.76	1005.74	1005.57
28	0	1005.86	1005.84	1005.80	1005.79	1005.81	1005.83	1005.87	1005.97	1006.09	1006.21	1006.26	1006.22	1005.97
	1	1006.18	1006.20	1006.23	1006.21	1006.17	1006.18	1006.15	1006.15	1006.20	1006.18	1006.16	1006.21	1006.18
	2	1006.26	1006.31	1006.38	1006.46	1006.53	1006.55	1006.65	1006.80	1006.86	1006.84	1006.80	1006.78	1006.60
	3	1006.76	1006.78	1006.77	1006.69	1006.60	1006.49	1006.46	1006.49	1006.47	1006.44	1006.45	1006.40	1006.56
	4	1006.32	1006.28	1006.29	1006.33	1006.40	1006.46	1006.51	1006.51	1006.39	1006.34	1006.44	1006.55	1006.40
	5	1006.63	1006.69	1006.76	1006.84	1006.91	1006.94	1006.93	1006.97	1007.04	1007.09	1007.14	1007.21	1006.93
	6	1007.32	1007.42	1007.48	1007.52	1007.59	1007.64	1007.68	1007.72	1007.82	1007.95	1008.07	1008.18	1007.70
	7	1008.30	1008.41	1008.48	1008.54	1008.56	1008.62	1008.75	1008.83	1008.77	1008.63	1008.56	1008.56	1008.58
	8	1008.55	1008.60	1008.71	1008.76	1008.77	1008.86	1008.87	1008.72	1008.73	1008.79	1008.80	1008.91	1008.75
	9	1008.99	1009.18	1009.35	1009.24	1009.24	1009.47	1009.63	1009.72	1009.70	1009.65	1009.62	1009.54	1009.44
	10	1009.47	1009.43	1009.43	1009.45	1009.42	1009.32	1009.30	1009.28	1009.28	1009.39	1009.51	1009.56	1009.40
	11	1009.57	1009.60	1009.64	1009.57	1009.46	1009.51	1009.54	1009.49	1009.42	1009.32	1009.28	1009.30	1009.47
	12	1009.25	1009.17	1009.16	1009.16	1009.13	1009.11	1009.14	1009.17	1009.14	1009.14	1009.13	1009.10	1009.15
	13	1009.11	1009.11	1009.10	1009.09	1009.07	1009.07	1009.08	1009.07	1009.03	1008.99	1008.96	1008.95	1009.05
	14	1008.95	1008.95	1008.98	1009.02	1009.01	1009.00	1009.03	1009.05	1009.05	1009.05	1009.06	1009.10	1009.02
	15	1009.13	1009.12	1009.12	1009.13	1009.14	1009.18	1009.27	1009.36	1009.42	1009.50	1009.58	1009.65	1009.30
	16	1009.68	1009.71	1009.79	1009.86	1009.90	1009.96	1010.03	1010.08	1010.09	1010.11	1010.17	1010.29	1009.97
	17	1010.39	1010.45	1010.50	1010.53	1010.56	1010.61	1010.63	1010.68	1010.75	1010.80	1010.82	1010.81	1010.63
	18	1010.83	1010.87	1010.93	1011.05	1011.15	1011.21	1011.26	1011.33	1011.43	1011.51	1011.55	1011.57	1011.22
	19	1011.57	1011.60	1011.67	1011.75	1011.82	1011.90	1011.95	1011.97	1012.02	1012.07	1012.10	1012.11	1011.87
	20	1012.16	1012.21	1012.27	1012.33	1012.35	1012.35	1012.39	1012.44	1012.48	1012.50	1012.53	1012.57	1012.38
	21	1012.62	1012.69	1012.74	1012.77	1012.80	1012.86	1012.92	1012.99	1013.07	1013.10	1013.02	1012.94	1012.87
	22	1012.95	1012.95	1012.92	1012.95	1013.03	1012.98	1012.93	1012.95	1012.94	1012.95	1013.01	1013.10	1012.97
	23	1013.21	1013.27	1013.30	1013.31	1013.34	1013.40	1013.50	1013.64	1013.74	1013.80	1013.86	1013.88	1013.52

S.V.I.R.CO. Observatory - Pressure in hectoPascal – September 2020

day	hh	00_05	05_10	10_15	15_20	20_25	25_30	30_35	35_40	40_45	45_50	50_55	55_60	average
29	0	1013.74	1013.77	1013.78	1013.77	1013.79	1013.90	1014.03	1014.07	1014.08	1014.06	1014.04	1014.04	1013.93
	1	1014.05	1014.02	1014.00	1014.04	1014.11	1014.22	1014.32	1014.34	1014.32	1014.30	1014.26	1014.27	1014.19
	2	1014.27	1014.27	1014.29	1014.32	1014.35	1014.33	1014.27	1014.27	1014.32	1014.37	1014.43	1014.51	1014.33
	3	1014.68	1014.78	1014.78	1014.81	1014.84	1014.87	1014.89	1014.88	1014.89	1014.91	1014.95	1014.94	1014.85
	4	1014.91	1014.95	1015.01	1015.10	1015.14	1015.14	1015.19	1015.21	1015.21	1015.25	1015.30	1015.32	1015.14
	5	1015.33	1015.39	1015.45	1015.47	1015.48	1015.54	1015.57	1015.58	1015.65	1015.71	1015.78	1015.86	1015.57
	6	1015.92	1015.93	1015.96	1016.02	1016.05	1016.10	1016.17	1016.28	1016.36	1016.41	1016.49	1016.54	1016.18
	7	1016.58	1016.63	1016.68	1016.73	1016.77	1016.84	1016.91	1016.97	1017.04	1017.14	1017.25	1017.35	1016.91
	8	1017.42	1017.45	1017.43	1017.38	1017.34	1017.34	1017.37	1017.44	1017.45	1017.41	1017.39	1017.35	1017.40
	9	1017.33	1017.36	1017.39	1017.37	1017.34	1017.36	1017.40	1017.39	1017.39	1017.44	1017.43	1017.41	1017.38
	10	1017.41	1017.40	1017.36	1017.38	1017.38	1017.37	1017.38	1017.37	1017.32	1017.31	1017.34	1017.31	1017.36
	11	1017.25	1017.23	1017.23	1017.23	1017.24	1017.23	1017.19	1017.16	1017.12	1017.08	1017.06	1017.03	1017.17
	12	1016.99	1016.92	1016.85	1016.77	1016.70	1016.67	1016.64	1016.60	1016.56	1016.48	1016.43	1016.39	1016.66
	13	1016.36	1016.35	1016.33	1016.29	1016.22	1016.16	1016.12	1016.07	1016.01	1015.97	1015.97	1015.97	1016.15
	14	1015.96	1015.93	1015.94	1015.94	1015.89	1015.84	1015.83	1015.85	1015.83	1015.80	1015.78	1015.73	1015.86
	15	1015.74	1015.82	1015.85	1015.83	1015.78	1015.73	1015.73	1015.79	1015.82	1015.84	1015.89	1015.98	1015.82
	16	1016.08	1016.17	1016.25	1016.31	1016.33	1016.41	1016.48	1016.48	1016.46	1016.47	1016.50	1016.53	1016.37
	17	1016.57	1016.57	1016.54	1016.52	1016.50	1016.47	1016.43	1016.42	1016.41	1016.38	1016.38	1016.39	1016.46
	18	1016.42	1016.45	1016.46	1016.47	1016.48	1016.47	1016.49	1016.52	1016.51	1016.51	1016.55	1016.59	1016.49
	19	1016.59	1016.56	1016.54	1016.54	1016.54	1016.56	1016.59	1016.61	1016.63	1016.68	1016.75	1016.83	1016.62
	20	1016.87	1016.86	1016.83	1016.80	1016.79	1016.81	1016.84	1016.87	1016.86	1016.86	1016.89	1016.89	1016.84
	21	1016.87	1016.84	1016.79	1016.77	1016.76	1016.74	1016.72	1016.70	1016.70	1016.69	1016.66	1016.67	1016.74
	22	1016.70	1016.70	1016.67	1016.65	1016.64	1016.60	1016.53	1016.48	1016.44	1016.42	1016.42	1016.43	1016.55
	23	1016.45	1016.44	1016.42	1016.41	1016.41	1016.43	1016.44	1016.42	1016.41	1016.41	1016.40	1016.40	1016.42
30	0	1016.33	1016.30	1016.26	1016.23	1016.20	1016.16	1016.15	1016.16	1016.12	1016.07	1016.05	1016.01	1016.16
	1	1016.00	1016.02	1016.01	1016.00	1016.03	1016.04	1016.01	1015.94	1015.88	1015.86	1015.83	1015.80	1015.95
	2	1015.76	1015.73	1015.74	1015.73	1015.73	1015.72	1015.70	1015.66	1015.59	1015.56	1015.58	1015.65	1015.68
	3	1015.70	1015.67	1015.63	1015.61	1015.57	1015.53	1015.53	1015.56	1015.57	1015.57	1015.60	1015.58	1015.59
	4	1015.52	1015.41	1015.33	1015.31	1015.24	1015.21	1015.26	1015.31	1015.32	1015.28	1015.24	1015.24	1015.30
	5	1015.26	1015.25	1015.18	1015.14	1015.13	1015.14	1015.16	1015.20	1015.22	1015.20	1015.19	1015.20	1015.19
	6	1015.23	1015.23	1015.24	1015.28	1015.27	1015.22	1015.21	1015.24	1015.23	1015.20	1015.19	1015.20	1015.23
	7	1015.24	1015.25	1015.26	1015.31	1015.35	1015.36	1015.35	1015.35	1015.37	1015.35	1015.32	1015.33	1015.32
	8	1015.36	1015.36	1015.36	1015.38	1015.40	1015.40	1015.39	1015.34	1015.27	1015.21	1015.17	1015.12	1015.31
	9	1015.06	1015.00	1014.95	1014.93	1014.93	1014.90	1014.84	1014.80	1014.78	1014.78	1014.77	1014.76	1014.87
	10	1014.76	1014.76	1014.73	1014.65	1014.59	1014.56	1014.51	1014.47	1014.42	1014.39	1014.36	1014.30	1014.54
	11	1014.25	1014.23	1014.22	1014.21	1014.19	1014.16	1014.15	1014.16	1014.15	1014.12	1014.08	1014.02	1014.16
	12	1013.99	1013.96	1013.90	1013.81	1013.73	1013.69	1013.64	1013.57	1013.49	1013.44	1013.38	1013.32	1013.66
	13	1013.29	1013.29	1013.28	1013.23	1013.18	1013.17	1013.12	1013.05	1013.00	1012.96	1012.89	1012.81	1013.11
	14	1012.76	1012.73	1012.72	1012.72	1012.71	1012.70	1012.68	1012.67	1012.63	1012.60	1012.59	1012.57	1012.67
	15	1012.57	1012.60	1012.62	1012.59	1012.57	1012.58	1012.58	1012.57	1012.53	1012.50	1012.52	1012.55	1012.56
	16	1012.53	1012.51	1012.51	1012.51	1012.51	1012.49	1012.47	1012.47	1012.48	1012.47	1012.48	1012.49	1012.49
	17	1012.50	1012.52	1012.52	1012.54	1012.56	1012.59	1012.61	1012.63	1012.66	1012.69	1012.71	1012.72	1012.60
	18	1012.73	1012.73	1012.72	1012.74	1012.74	1012.71	1012.68	1012.66	1012.68	1012.72	1012.72	1012.70	1012.71
	19	1012.68	1012.69	1012.70	1012.70	1012.68	1012.66	1012.65	1012.65	1012.66	1012.67	1012.69	1012.71	1012.67
	20	1012.71	1012.72	1012.72	1012.70	1012.68	1012.66	1012.65	1012.64	1012.61	1012.60	1012.62	1012.61	1012.66
	21	1012.57	1012.53	1012.48	1012.43	1012.41	1012.40	1012.37	1012.35	1012.33	1012.31	1012.31	1012.29	1012.40
	22	1012.28	1012.25	1012.20	1012.17	1012.14	1012.10	1012.08	1012.06	1012.05	1012.05	1012.03	1012.01	1012.12
	23	1012.00	1011.97	1011.93	1011.91	1011.88	1011.85	1011.83	1011.81	1011.80	1011.79	1011.77	1011.73	1011.85



S.V.I.R.CO. Observatory - Pressure in hectoPascal

September 2020

