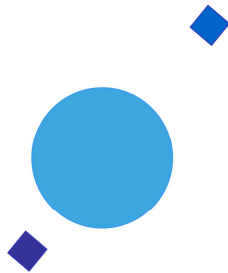


**INAF**



**ISTITUTO NAZIONALE DI ASTROFISICA**  
NATIONAL INSTITUTE FOR ASTROPHYSICS

***SVIRCO Prompt Report: September 2019***

Francesco Re and Nello Vertoli

INAF/IAPS-2019-10

November 2019

**ISTITUTO DI ASTROFISICA E PLANETOLOGIA SPAZIALI**

**AREA DI RICERCA ROMA - TOR VERGATA**

**Via del Fosso del Cavaliere, 100 - 00133 Roma (ITALIA)**



## **SVIRCO Prompt Report: September 2019**

**Francesco Re and Nello Vertoli**

*IAPS - INAF, Area di Ricerca Roma - Tor Vergata  
Via del Fosso del Cavaliere, 100 - 00133 Roma, Italy,*

### **Abstract**

*The pressure corrected intensity of the nucleonic component, produced by primary cosmic rays and recorded in September 2019 by the Neutron Monitor of SVIRCO-Rome (present geographic position:  $41.86^\circ$  N -  $12.47^\circ$  E; altitude about s.l. ), is reported in prompt form together with the barometric pressure data.*



## SVIRCO OBSERVATORY

During the 1<sup>st</sup> International Geophysics Year (1957) an international network of “ground-based detectors” for continuous cosmic ray measurements was world-wide established.

The cosmic ray station of Rome joined this network with the purpose to study the time variations of primary cosmic rays (**Studio Variazioni Intensità Raggi Cosmici: S.V.I.R.CO**) and their modulation in the heliosphere.

From July 1957 to April 1997, the SVIRCO Station (now Observatory) performed uninterrupted measurements at the Physics Department “G. Marconi” of “La Sapienza” University of Rome (41.90° N, 12.52° E, altitude about 60 m a.s.l.)

In May 1997 the neutron monitor was moved to the Physics Department “E. Amaldi” of “Roma Tre” University. Since then it has been continuously running at the new location (41.86° N, 12.47° E, altitude about 0 m a.s.l.).

The SVIRCO Observatory (INAF/IAPS-UNIRomaTre collaboration) is housed in a reserved building provided with a double air-conditioning system. The inner temperature is permanently restrained in a range of 23°-26° C, meanwhile the relative humidity is kept below 57%. Either the environmental parameters are continuously checked and recorded by digital sensors.

On January 1, 2005 three counters were added to the detector. This upgrade, from 17 to 20 NM-64, made the SVIRCO neutron monitor still consist of 5 sections but modified its geometry. Actually the new arrangement has been composed of three 3-counter, one 5-counter and one 6-counter units. The enhancement improved not only the overall counting rate of 15.6 % (January 2005) but, as a result, also the statistical quality of the recorded data.

On July 3, 2017 six counters experienced failure and were removed from the detector until 24 July. On 25 July 2017 a number of 2 counters was added to the detector up to a total of 16 counters. The new arrangement has been composed of three 3-counter, one 5-counter and one 2-counter units. The overall counting rate has decreased of about 20% (July 2017) with a lower statistical quality of the recorded data.

Each of the 16 BF<sub>3</sub> proportional counters (BP-28 type) is equipped with a smart amplifier/discriminator circuit complete with a spectrum stabilizer. This new electronic unit, developed in our laboratory, holds firmly the pulse height spectrum of the amplifier output (within a range of more than 150 volts around the operating voltage), providing the counter with a great immunity against high voltage variations.

Anyway, systematic and exhaustive tests of the counters are regularly performed. The output pulses of the amplifiers, discriminated by the threshold gates, are collected and stored into a multi-channel analyzer. The analysis of the height distribution (spectrum) of the amplifier pulses coinciding with the discriminator ones, is essential to verify the long term efficiency of each counter together with the amplifier gain and the discriminator threshold level.

As well as the amplifier/discriminator circuits, a large part of the electronic instrumentation operating in the Observatory was designed and realized in our laboratory together with the software for data acquisition and pre-elaboration.

In order to improve the reliability of the recorded data and to prevent measurement breakdowns, two independent systems perform contemporary the data acquisition. Each system is remotely controlled by a dedicated computer and is timed by a high stability quartz clock and/or a GPS receiver. One equipment runs according to a timing of 1 minute and fulfils the acquisition of the 16 counters separately. The other one records the individual 5-minute counting rate of each detector section in addition to the rates of the overall multiplicity, sorted into separated counting channels (from 1 to greater than 8).

A special care is devoted to the atmospheric pressure measurements; thus they are carried out by means of not less than three barometers at the same time. These instruments (achieving a resolution up to 0.01 hPa), are constantly checked out each other for the best measuring accuracy and reliability. Furthermore, the devices in use are equipped with different types of transducer such as vibrating cylinder, force balance and quartz, therefore, throughout their different behaviours, it is possible to point out the occurrence of any long-term drift and eventually to re-calibrate the instruments themselves.

## DATA PRESENTATION

In a preliminary step, the intensity data, of the secondary nucleonic component of cosmic rays, detected at SVIRCO Observatory, were corrected for pressure variations at a reference level of 1009.25 hPa with an attenuation coefficient of 0.70% / hPa.

The five-minutes counting rates, of the examined month, are reported in tabular form together with the hourly normalized data, which provide a continuous data set for long-term analysis.

The normalization was evaluated as percentage of the counting rate average of January-February 1997, when the Monitor operated at the previous location of "La Sapienza" University. The reference counting rate level (100%), computed for such period, is equal to 554946 counts/hour.

The atmospheric pressure data (in hectoPascal) are also collected in a monthly table which presents the five-minutes averages and the hourly ones.

The hourly averages of the normalized intensity and pressure, plotted in monthly graphs, are reported too.

## CONDITIONS FOR SVIRCO DATA USE

You are welcome to use neutron monitor data of SVIRCO, IAPS/INAF-UNIRomaTre collaboration, under the following conditions:

*-You agree to acknowledge our financial supports in any published use of the data.*

*Example: "SVIRCO NM is supported by the INAF - UNIRomaTre collaboration"*

*-You are kindly requested to send a copy of any published work derived from our data to:*

Dr. Monica Laurenza  
Head of SVIRCO Observatory & TPL  
Istituto di Astrofisica e Planetologia Spaziali - Area di Ricerca Tor Vergata  
Via del Fosso del Cavaliere, 100 00133 Roma - Italy,

[monica.laurenza@iaps.inaf.it](mailto:monica.laurenza@iaps.inaf.it)

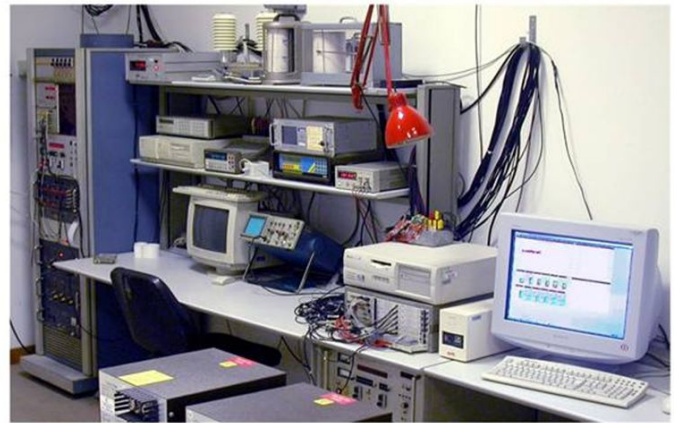




# S.V.I.R.CO. Observatory

Rome

Italy







INAF/UNIRomaTre				S.V.I.R.CO. Observatory - Pressure Corrected Data – September 2019										16 NM-64
day	hh	00_05	05_10	10_15	15_20	20_25	25_30	30_35	35_40	40_45	45_50	50_55	55_60	h-norm
1	0	38401	38623	37923	38217	38403	38810	38630	39020	38846	38698	38619	38417	101.769
	1	38253	38175	38660	38909	38682	38642	39103	38627	38430	38629	38887	38456	101.960
	2	39075	38122	38438	38557	37936	38700	38247	39004	38916	38395	38538	38212	101.671
	3	37847	38393	38719	38236	38516	38157	38264	38621	37884	39056	38475	38694	101.390
	4	37963	37906	38537	38841	38006	38191	38249	38739	38171	38888	37443	38263	101.023
	5	38434	38254	38525	38470	38216	38671	38283	38453	38316	38746	38666	37890	101.403
	6	38273	38682	38559	38844	38322	38492	38775	38967	38832	38238	38828	38289	101.882
	7	38668	38724	38574	38695	38624	38562	38178	38930	38751	39401	39246	39214	102.425
	8	38746	38956	38473	38056	38171	38005	38062	38406	38219	38797	38880	39044	101.600
	9	38712	38717	38849	38495	38338	38600	38951	38805	38190	39136	38743	38932	102.184
	10	39216	38995	38965	39072	39185	39330	38942	38694	38531	38869	38817	38953	102.865
	11	38931	38254	38828	38765	38537	38698	39031	38740	38390	39326	38501	38640	102.221
	12	38956	38242	38767	38546	38747	38172	38764	38522	39177	38581	38918	38631	102.084
	13	38486	38685	38271	38875	38510	38304	38463	38628	38728	38735	38729	38540	101.850
	14	38803	38656	38856	38335	38158	39127	38359	39051	38476	38140	38252	38921	101.890
	15	38371	38380	38252	38126	39304	38126	37991	38505	37952	38329	38496	38959	101.374
	16	38042	38023	38537	38940	38123	38571	38611	37941	38283	38420	38134	38444	101.215
	17	38477	38573	38081	38612	38417	37724	37945	38143	38178	38546	38222	38043	100.972
	18	38171	38188	38300	38155	38297	38526	38493	38153	38483	38132	38550	38297	101.143
	19	37958	38446	38486	38193	38583	38170	38668	38395	38329	38528	38790	38468	101.423
	20	38499	38811	38641	38233	38026	39036	38538	38043	38231	37969	38834	38560	101.513
	21	38795	38180	38155	38497	39017	38593	38625	38511	38661	38632	38550	38418	101.780
	22	37946	38445	38284	38518	38791	38712	38610	37856	38222	38813	38523	37756	101.305
	23	38556	38390	39192	38468	38442	38182	37856	38817	38550	38598	37952	38261	101.478
2	0	38398	38203	38406	38094	38527	38254	38362	38602	37767	38479	38278	38242	101.109
	1	38334	38524	37790	38389	38283	38682	38452	38348	38229	37691	38638	38338	101.134
	2	38435	38122	38441	38216	38805	38388	38645	38854	38152	38204	38638	38438	101.494
	3	37964	38301	38397	37922	38683	38600	37935	38287	37906	38483	37892	38015	100.844
	4	38017	38040	38048	38410	38107	39162	38552	37992	38286	38359	38662	38418	101.212
	5	38156	38175	38726	38106	38280	38461	38346	37923	38255	38590	38527	38507	101.211
	6	38213	38192	38503	38999	38053	38612	38250	38360	38518	38266	37910	38851	101.360
	7	38874	38458	38285	38209	38170	39085	38490	38511	38466	38692	37736	38686	101.566
	8	38314	38525	37977	38307	38152	38816	38744	38290	38999	38739	38774	37945	101.548
	9	38207	39073	38694	38267	38756	38136	38993	38074	38527	38480	38431	38390	101.646
	10	37885	38495	38454	38454	38341	38315	38598	37897	38596	38661	38495	38308	101.310
	11	38573	38295	38287	38544	38593	37973	38118	38741	38125	38794	37656	38475	101.238
	12	38459	37964	38492	38344	38668	38462	38103	37896	38329	38495	38264	38629	101.223
	13	38756	38103	38018	38216	38784	37957	38774	38281	38600	38214	38142	38092	101.186
	14	38777	38297	38338	38595	38554	38074	38107	38136	38369	38352	37890	39060	101.321
	15	38859	39120	39030	38376	38970	37987	38572	38431	37849	37751	38173	38726	101.606
	16	37933	38733	38357	38169	37887	38353	38810	39021	37841	38356	38144	38173	101.151
	17	38453	38420	38833	38358	38669	38240	38277	38691	38118	37805	38533	38210	101.334
	18	37382	38790	38406	38282	38662	38218	38311	38284	38750	38345	38548	38219	101.243
	19	38325	38368	38334	38172	38585	38516	38405	38188	37921	38559	38672	38461	101.311
	20	38321	37871	38104	37865	38322	38567	37865	37789	38794	38575	38681	38662	101.073
	21	37648	38037	38052	37929	38180	37970	38108	38484	37824	38298	37820	39001	100.616
	22	38089	38009	38925	37961	38500	38236	37868	38204	38171	38132	38424	38038	100.883
	23	38187	38231	38069	38428	38121	37986	38462	38039	38314	38347	38272	38591	100.990

INAF/UNIRomaTre		S.V.I.R.CO. Observatory - Pressure Corrected Data – September 2019											16 NM-64	
day	hh	00_05	05_10	10_15	15_20	20_25	25_30	30_35	35_40	40_45	45_50	50_55	55_60	h-norm
3	0	38039	38356	37835	38418	37817	38127	37858	37881	37890	38417	37650	38255	100.432
	1	38685	37979	38359	38588	38400	37591	37655	38394	38052	38018	37830	38083	100.679
	2	38462	38187	37702	38746	37970	38000	38335	37849	38115	38581	38094	38151	100.802
	3	37829	38338	38283	38448	38251	38222	38427	38399	37746	38410	38916	38977	101.254
	4	38144	38023	38256	38385	38045	38202	38514	38668	38466	38377	38122	38411	101.115
	5	38151	38253	38431	38355	38319	38674	38457	38593	37954	38453	38217	38157	101.203
	6	38574	38240	38476	38088	38250	38391	38487	37968	38165	38312	38519	38415	101.175
	7	38193	38353	38445	38791	38825	38234	38734	38456	38709	38767	38086	38407	101.640
	8	38224	38090	38552	38678	38643	38389	38395	38095	38367	38455	38255	37982	101.228
	9	38403	38245	38499	38516	38211	38860	38467	38388	38103	37970	38599	38242	101.311
	10	38675	38246	37928	38378	38720	37983	38082	38365	38403	38439	38557	38361	101.230
	11	38469	38363	38624	38705	38180	37917	38576	38161	38391	38358	38478	38250	101.304
	12	38558	37944	37984	38691	38407	39145	37901	38125	39172	37957	38719	38409	101.423
	13	37785	38269	38449	38507	38300	38337	38664	38339	38576	38769	38145	38594	101.362
	14	38168	38272	38716	38398	38199	38087	38278	38880	38231	38047	39080	38844	101.464
	15	37970	38378	38793	37983	38693	37872	38337	38555	38467	38424	38732	38442	101.342
	16	38139	38605	38335	38161	38185	37941	38536	38240	38291	37933	38166	38254	100.933
	17	38374	38665	38034	37483	38129	38154	38354	38876	38322	38593	38263	38137	101.065
	18	38354	38150	38785	38577	37952	38245	38378	37752	38355	39008	38331	37936	101.162
	19	38522	38875	38513	38400	38555	38354	38249	38529	38106	38877	38407	38903	101.704
	20	38436	38436	37746	37878	38001	37981	38612	38310	37927	38236	38289	38222	100.777
	21	38657	38394	38564	38345	37871	38526	38519	37856	38522	38003	38541	38607	101.289
	22	38226	38667	38452	38949	38375	38243	38192	38738	38509	38003	38234	37931	101.314
	23	38826	38132	38777	38121	38214	38272	38997	38076	38730	38291	38231	38236	101.398
4	0	38132	38604	38484	38539	38312	38624	38013	38384	38548	38019	38049	37907	101.109
	1	39111	38575	38281	38310	38566	38195	37924	38168	38559	38348	38025	37439	101.090
	2	38064	38388	38556	38212	38307	38042	38435	38739	38001	39000	38182	38980	101.399
	3	38083	38552	38566	37660	38514	38856	38492	38907	38444	38610	38332	38011	101.426
	4	38340	38960	38346	38466	38578	38119	37966	38616	38232	38868	38788	38090	101.502
	5	38476	38175	39060	38774	38042	37425	37999	38850	38690	38581	38327	39064	101.522
	6	38624	38055	38428	38494	37776	38824	38374	38920	38921	38186	38570	38752	101.623
	7	38779	38454	38572	38866	38382	38524	38673	38372	38633	38359	38789	38014	101.731
	8	38487	38738	38424	38673	38186	37953	38019	38933	38321	38419	38555	38365	101.436
	9	38910	38834	38504	39022	38175	38215	38075	38658	38551	38350	38577	38185	101.652
	10	38675	38468	38097	38788	38338	38646	38092	38282	38055	37692	38087	38566	101.152
	11	38009	38950	39118	38825	38429	39133	38150	38084	38164	37966	38085	38829	101.582
	12	38722	38227	37854	38226	38403	38323	38174	37946	38382	38095	38472	38142	100.972
	13	38101	38554	38472	38627	38762	38352	38157	38132	38764	38282	38868	38383	101.520
	14	38907	38786	38644	38228	37917	38198	38214	38746	37905	38124	39214	38741	101.557
	15	37962	38024	37851	38586	38418	38451	37861	38829	38940	38471	38181	38632	101.245
	16	38439	38837	38330	38615	38019	38434	39087	38612	38256	38758	38505	38211	101.663
	17	38396	38046	38907	38394	38812	39037	38615	38467	38477	38942	38734	39020	102.046
	18	38565	38205	38151	39101	39061	37867	38703	38960	39000	38864	38194	38620	101.923
	19	38907	38477	38375	38549	38839	38403	38470	38105	38223	38308	38432	38471	101.543
	20	38543	38389	37970	38477	38807	38882	38293	37627	38606	38415	38148	38301	101.301
	21	38639	38418	38115	38798	38479	38133	38097	38526	38354	37956	38614	38281	101.290
	22	38730	38721	38683	38282	38539	38670	38581	39310	38096	38540	38566	38899	101.996
	23	38325	38677	37984	38245	38297	38922	37960	38471	38287	38740	38624	38562	101.440

INAF/UNIRomaTre				S.V.I.R.CO. Observatory - Pressure Corrected Data – September 2019										16 NM-64	
day	hh	00_05	05_10	10_15	15_20	20_25	25_30	30_35	35_40	40_45	45_50	50_55	55_60	h-norm	
5	0	38949	38432	38166	38536	38252	38459	38461	38415	38656	38370	38047	38600	101.489	
	1	38396	37921	38739	38031	38266	38104	39068	38982	38566	38412	38774	38540	101.596	
	2	38259	38904	38830	38544	38874	38674	38800	38617	38253	38613	38433	38244	101.870	
	3	38165	38654	38576	38652	38293	38477	38481	38514	39020	38725	38962	39057	101.986	
	4	38922	38911	38771	38726	38293	38527	37767	38900	38728	38767	38598	38962	102.052	
	5	39239	38484	38194	38868	38569	38727	38796	38698	38847	38231	38639	38938	102.131	
	6	38673	38936	38750	38569	38584	38450	38809	39128	38289	38775	38642	38373	102.075	
	7	38296	39154	38363	38778	38706	38260	38706	38851	38386	38218	38567	38782	101.875	
	8	38010	38738	37912	37894	38691	38771	38832	38020	38045	38397	39108	38797	101.468	
	9	38442	38275	38636	38534	38253	38501	38432	38119	38796	38879	37979	38714	101.543	
	10	38485	38297	38912	37835	38183	38347	38024	38342	38924	38705	38601	38474	101.449	
	11	38418	38532	38416	38412	38821	38877	38612	38526	38354	38752	38671	39005	101.947	
	12	38500	38648	38628	38712	38581	38611	38626	38929	38197	38632	37923	38532	101.754	
	13	38457	38269	38619	38584	38384	38620	38424	38583	38601	38759	38290	38863	101.740	
	14	38288	38535	38104	38640	38509	39111	38900	38789	38641	38857	38540	38571	101.967	
	15	38163	38392	38925	38604	38858	38081	38595	38177	38458	38179	38725	38625	101.592	
	16	38528	38107	38702	38350	38612	38712	38665	38484	38530	38930	38294	38672	101.769	
	17	38404	38574	38246	38353	38471	38598	38594	38844	38599	38698	38869	38601	101.827	
	18	38520	38296	38824	39091	37960	38893	39058	38384	38041	38257	38330	38231	101.615	
	19	38563	37930	38113	38582	38143	38419	38755	38455	39087	38506	38534	38806	101.616	
	20	37939	38205	38164	38474	38256	38326	38560	38763	38410	38062	38951	38489	101.332	
	21	37911	38651	38672	38555	38700	37964	38598	38555	38573	38385	39158	38923	101.782	
	22	38303	39048	38118	38879	38966	38492	38230	38663	38698	38907	39083	38889	102.141	
	23	38802	38548	38559	38777	38755	38752	38672	39057	38731	38507	39267	38460	102.275	
6	0	38775	38664	39260	38703	39065	38895	38403	38313	38367	38452	38967	38056	102.060	
	1	38721	38138	38729	39052	38544	38443	39006	38428	38378	38437	38596	38881	101.938	
	2	38381	38118	38384	38875	38118	38105	38342	38790	38498	38231	38308	38350	101.310	
	3	38319	38495	38772	38434	38168	38702	38342	38512	38933	38584	38565	38129	101.630	
	4	38547	38793	38720	38121	38709	38992	38380	38355	38153	38657	38624	38087	101.671	
	5	39406	37824	38415	38547	38660	37880	38214	38863	38415	38265	38368	38235	101.440	
	6	38702	38667	38539	38254	38732	38091	38454	37895	38112	38287	38636	37797	101.237	
	7	38038	38261	38625	38531	38301	38567	38266	38428	38442	38384	38217	37987	101.211	
	8	39125	37723	38550	38640	38945	38432	38500	38036	38484	38620	38784	38942	101.812	
	9	38256	38317	38126	38426	38685	38460	38147	38539	38420	38300	38623	38869	101.457	
	10	38526	38285	38332	38784	38657	38451	38905	38913	38554	38561	38289	38057	101.709	
	11	38704	38719	38628	38663	38552	38154	38562	38391	38354	38326	38731	38921	101.795	
	12	39032	38388	38091	38098	38742	38294	38594	38151	38142	38406	38423	37672	101.207	
	13	38442	38420	38916	38537	38548	38892	38929	38720	39137	38434	38865	38567	102.170	
	14	38176	38696	38128	38207	38779	38420	38551	38298	38747	38749	38326	38734	101.598	
	15	38416	38618	38796	39052	38030	38650	38796	38407	38994	38542	38737	38948	102.077	
	16	38401	37895	38666	38359	38437	38968	38839	39088	38262	38407	39179	38686	101.902	
	17	38721	38548	38460	38841	38456	38507	38813	38625	38768	38326	39280	38445	102.034	
	18	38515	38280	39019	38440	38291	38928	38690	39380	38937	38735	39128	38941	102.362	
	19	38794	38512	38167	38925	38813	38374	38637	38250	38336	38417	38792	39595	101.995	
	20	38105	38905	39311	38410	38609	38460	38438	38271	38428	39477	38636	38933	102.076	
	21	38678	38156	39143	38460	38525	39154	38837	38426	38286	38673	38514	38863	102.018	
	22	38725	38422	38164	37783	38625	38875	37809	38694	38264	39048	38626	38856	101.616	
	23	38987	38675	38132	38209	38577	38696	38785	38256	38687	39870	39783	38952	102.434	

INAF/UNIRomaTre		S.V.I.R.CO. Observatory - Pressure Corrected Data – September 2019											16 NM-64	
day	hh	00_05	05_10	10_15	15_20	20_25	25_30	30_35	35_40	40_45	45_50	50_55	55_60	h-norm
7	0	38561	39622	39184	38447	38500	38588	39010	38695	38649	38400	38606	38102	102.157
	1	38411	37973	38474	38995	38455	38464	38293	38499	38291	38076	38574	38065	101.325
	2	38357	38848	38192	38071	39204	38231	38180	38490	38501	38812	38271	39066	101.689
	3	38050	38385	38890	37845	38052	38615	38505	38993	38602	38311	38713	38838	101.595
	4	38758	38719	38160	38340	38430	38661	38031	38236	38410	37960	38834	38623	101.455
	5	38241	38937	38187	38463	38488	38471	38334	38621	38185	38094	38459	38685	101.456
	6	38660	38909	38354	38220	38530	38605	38231	38680	38407	38390	38176	38973	101.670
	7	39058	38458	38969	38636	38440	39116	38671	37810	38816	38901	37537	37907	101.710
	8	38218	38476	38176	37970	38906	38441	38174	38560	38785	38921	38625	37815	101.435
	9	38014	38392	38271	38758	38849	39011	38881	38493	38729	39170	38184	38257	101.862
	10	38733	38772	38310	38147	38924	38059	38566	38732	38029	38466	38373	38311	101.513
	11	38620	38177	38537	37938	38724	38150	37929	38731	38592	37942	38580	38325	101.254
	12	38591	38788	37777	38589	38575	38982	38448	38427	39201	38479	38565	38282	101.796
	13	38120	38700	38017	39132	38143	38212	38525	38513	38453	38366	38511	38475	101.457
	14	39320	38216	38448	38670	38812	39365	38632	38725	38487	37938	38339	38336	101.924
	15	38474	38741	38386	38195	38669	38513	38452	38858	38300	38301	38625	39045	101.763
	16	38116	38805	38877	38292	37913	38918	38407	38038	38392	39605	38155	38815	101.713
	17	38524	38292	38389	39312	38351	38698	38965	38380	39104	38951	38369	37967	101.926
	18	38305	38437	38637	38218	38270	38402	38691	38438	38824	38158	38585	38202	101.457
	19	38911	39063	38847	38955	38658	38381	38417	38958	38697	38551	38813	38429	102.230
	20	38877	39241	38568	37925	38510	38160	38911	38891	38575	38411	38941	38566	101.987
	21	38390	38073	38393	38753	38645	38656	38838	38446	38724	38425	38950	38861	101.894
	22	38659	38706	38227	38349	38823	38389	38199	38369	38619	39005	38639	38642	101.777
	23	39006	38730	39069	38846	38784	38625	38950	38524	38397	39540	38534	38474	102.405
8	0	38712	38772	38754	38759	38539	38661	39374	38661	38324	39194	38939	38221	102.278
	1	38905	38736	38321	38654	38283	39035	38207	38357	38463	38427	38278	38831	101.749
	2	37872	38896	38913	38783	38249	38978	38692	38774	38682	38423	38309	38705	101.921
	3	38351	38418	38155	38375	37794	38108	38479	38531	38313	38827	38390	37996	101.142
	4	38408	38827	38364	38693	38449	38544	38204	38550	38418	38832	38303	38706	101.705
	5	38517	38322	38136	38548	38946	37995	38485	38615	38168	38756	38309	38675	101.524
	6	38950	38376	38693	38891	38294	37987	38478	38017	38741	38608	38698	38204	101.627
	7	38480	38058	38598	38203	38236	37957	38084	38322	38259	37959	38293	38214	100.906
	8	38063	38929	39165	38520	39028	38594	38514	38493	38227	37980	38835	38749	101.881
	9	38340	38697	38549	38447	38232	38375	38954	38668	38710	38368	37923	38541	101.597
	10	38448	38586	38585	38643	38770	38193	38937	38244	38287	38357	38402	38711	101.676
	11	38445	38739	38385	38608	38392	38787	38210	38999	38418	38333	38630	38603	101.761
	12	38832	38195	38764	38601	38515	38223	38539	38458	38738	38243	38318	38314	101.583
	13	38684	38658	38859	38134	38682	38881	38518	38296	38609	38523	38577	38013	101.735
	14	38611	38503	38180	38434	38780	38551	38911	38780	38705	38593	38361	38726	101.890
	15	39046	38476	38664	38524	38600	38736	38677	38414	38401	38137	38274	38001	101.629
	16	39012	38638	37964	39014	38675	38718	39312	39121	38743	38739	38892	39364	102.562
	17	38738	38379	38427	38507	38791	38790	38694	38833	38049	38862	38780	38618	101.963
	18	38472	38207	38417	39109	39399	38700	38788	38619	38582	38956	38353	39080	102.230
	19	39089	38580	38669	38883	39060	38622	38799	38340	38830	38396	38944	38613	102.262
	20	38151	38195	38907	38746	38046	38264	38524	38777	38917	38521	38977	38618	101.781
	21	38441	38676	39073	39187	38560	38878	38197	38562	38303	38622	38777	38983	102.137
	22	38686	38775	38580	39016	38692	38938	38891	38468	39035	38681	39119	37921	102.256
	23	38105	38508	38812	38697	38495	38555	38032	38931	38961	38716	38842	38755	101.950

INAF/UNIRomaTre				S.V.I.R.CO. Observatory - Pressure Corrected Data – September 2019										16 NM-64	
day	hh	00_05	05_10	10_15	15_20	20_25	25_30	30_35	35_40	40_45	45_50	50_55	55_60	h-norm	
9	0	38768	38602	38761	38921	38228	38843	38444	38519	38237	38855	38266	38742	101.896	
	1	38592	38523	38541	38777	38768	38653	38616	38872	38677	39058	38708	38919	102.235	
	2	39132	38925	39060	38621	38729	38975	39231	39143	38579	38502	39003	38368	102.579	
	3	38703	38764	39134	38930	38107	38623	38813	38029	37943	38232	38959	38177	101.730	
	4	38748	38726	38826	38566	38420	39076	38332	39081	38720	38872	38852	38185	102.169	
	5	38583	38596	37968	38568	38796	38931	38840	38385	38370	38259	38878	38361	101.758	
	6	39066	38158	38470	38159	38539	38427	38620	38878	38267	38712	38385	38250	101.625	
	7	38686	38806	38710	39254	38736	38585	38925	38169	38326	38513	38895	38709	102.150	
	8	38302	38499	38789	38849	38599	38199	38881	38532	38555	38048	38606	38274	101.669	
	9	38682	38218	38524	38014	39044	37977	38713	38394	39353	38413	37817	38499	101.562	
	10	38562	38720	38541	38582	38844	38401	38415	38272	39339	38917	38664	38669	102.063	
	11	38286	39003	38357	38795	37813	38619	38830	38800	38552	38432	38969	38011	101.743	
	12	38346	38589	38714	38216	38703	38818	38566	38465	38891	38950	38851	38737	102.046	
	13	39060	39248	38621	38625	39001	38217	37796	38872	38682	38224	39266	38996	102.214	
	14	38485	38673	38559	38853	38169	38397	39563	38752	38483	38810	38759	38606	102.104	
	15	38510	38886	38938	38879	38651	38498	38760	38693	38764	39348	38631	38820	102.383	
	16	39019	39135	38804	39447	38639	38976	38826	38423	38736	38499	39273	38881	102.665	
	17	38845	39180	38997	38565	39546	39063	39397	38771	39054	39421	38869	39040	103.124	
	18	38427	38722	38632	38092	38760	39124	39019	38269	38893	38410	39161	39143	102.223	
	19	38742	39221	39139	39039	38752	38965	39170	38578	38607	39052	38874	38350	102.628	
	20	38710	38441	38833	38738	38964	39469	38663	38478	38828	38771	38808	38728	102.395	
	21	38604	38455	39191	38458	39235	38739	38826	39076	38791	38575	39028	38904	102.494	
	22	38654	38864	38718	38694	38615	39094	38640	38721	38597	38409	39340	38865	102.347	
	23	38609	38553	38698	38721	38666	38317	38893	38727	38880	38391	38413	38289	101.894	
10	0	38935	38781	39011	38845	38632	38804	39109	38605	39094	38786	38984	38922	102.623	
	1	38471	38970	39247	39070	38413	39122	38489	38879	39002	38701	38527	38540	102.395	
	2	37889	38610	38536	38388	38646	38956	38642	38705	38501	38771	38771	38472	101.835	
	3	38394	38787	38168	38544	39068	38228	38658	38882	38566	38731	38431	39186	102.001	
	4	38708	38233	38376	38096	38597	38813	38368	38753	38726	38566	38742	38869	101.826	
	5	38448	38133	38502	38546	38457	38709	38824	38558	38589	38086	38524	38377	101.585	
	6	38591	38853	38391	38246	38633	38730	38247	37961	38090	38799	38143	39122	101.597	
	7	37954	39172	38332	38602	38619	38074	38437	38409	38783	38251	38854	38530	101.644	
	8	38302	38251	38702	38640	37970	38613	38705	37976	38391	38726	38469	38293	101.428	
	9	38150	38566	38758	38659	38889	38280	38438	38763	39216	38911	38392	38417	101.957	
	10	38779	38260	38498	38589	38701	38473	38554	38733	38088	38569	38504	38386	101.669	
	11	38602	38305	38649	38446	38389	38025	38820	38083	38975	38176	38713	38335	101.534	
	12	38238	38476	38485	38881	38908	38511	38839	38850	38865	39089	38690	38546	102.164	
	13	38845	38884	38904	38850	39064	38830	38652	38318	38821	38724	38744	38430	102.315	
	14	38485	38391	38944	38109	38384	39013	38545	38590	39004	38718	39071	38282	101.978	
	15	38293	38935	38097	39076	38579	38086	38456	38487	38683	38317	38936	38994	101.847	
	16	38767	39038	39039	38284	38651	38682	38895	38630	39198	38829	39464	38681	102.555	
	17	38710	39081	38882	38756	38806	38644	38879	38345	38332	38998	38521	39184	102.331	
	18	38275	38810	39125	38785	39156	38671	38846	38328	38524	38749	38764	38791	102.261	
	19	38237	38737	39323	39039	38709	38747	38952	38289	39076	38637	38148	38766	102.225	
	20	38863	39063	39231	38714	38896	38904	38830	37803	38192	38167	38480	38641	102.033	
	21	38703	38554	38693	38279	39338	39139	38701	39145	38198	38329	38525	38807	102.170	
	22	38881	38897	39103	38599	38691	39122	38185	38853	39134	38426	38829	38711	102.395	
	23	38625	38756	38981	38778	38301	39152	38814	38640	38079	38693	38992	38717	102.196	

INAF/UNIRomaTre		S.V.I.R.CO. Observatory - Pressure Corrected Data – September 2019											16 NM-64	
day	hh	00_05	05_10	10_15	15_20	20_25	25_30	30_35	35_40	40_45	45_50	50_55	55_60	h-norm
11	0	38967	38620	38081	38773	38456	38590	38488	38710	38166	38646	38722	38367	101.774
	1	38619	38750	38482	38747	39016	39000	38330	38597	38782	38620	38546	38498	102.077
	2	38805	38444	38520	38880	38850	38615	38433	38374	38500	38401	38711	38684	101.908
	3	38186	38815	38813	38673	38599	38541	38438	38509	38725	38706	37690	38451	101.673
	4	38361	38772	38422	38473	38456	38658	38189	38387	38090	38524	38777	38213	101.491
	5	38281	38836	38539	38751	38483	38480	38931	38255	38535	38765	38266	38014	101.670
	6	38322	38391	38324	38262	38957	38412	38926	38131	38946	38798	38581	37871	101.623
	7	38587	38747	38934	38912	38774	38395	38596	38503	38451	38931	38673	38794	102.146
	8	39074	38034	38589	38283	38019	38513	39177	38975	38422	38304	38188	38487	101.654
	9	38385	38258	38567	38398	38130	38958	38525	38776	37804	38659	38696	38116	101.480
	10	38253	37985	38678	39002	38684	38313	38091	38649	38515	38320	38604	38004	101.442
	11	38431	38299	38554	38591	38432	39044	38497	38069	38259	38347	38003	38403	101.404
	12	38694	38176	38473	38432	38654	38653	38412	38460	38765	38881	38624	38554	101.811
	13	38663	38611	38321	38236	38448	38549	38895	38205	38160	37894	38799	37827	101.334
	14	39233	39071	38686	38461	38526	39287	38226	39194	38366	38760	38197	38746	102.246
	15	39019	38551	38528	38547	38498	38408	37887	38913	39205	38683	37695	38963	101.838
	16	37817	39183	38512	38880	38089	39249	38837	38037	38597	38846	38756	38402	101.905
	17	38446	38856	38621	39190	38452	38552	38899	38263	38409	39004	38624	39152	102.183
	18	38864	38226	38327	38272	37539	38665	38439	38244	38518	37899	38648	39045	101.351
	19	38701	38992	38188	38853	39104	38786	38786	38656	38964	38554	38344	38686	102.215
	20	38791	38527	38550	38661	38782	38856	38716	38369	38250	38682	38291	38405	101.834
	21	38719	38674	38276	38420	38592	38409	39053	38480	38474	38715	38836	38980	101.998
	22	38836	38866	38565	39254	38389	38570	39181	38751	38236	38936	38756	38817	102.335
	23	38383	38556	38851	38744	39038	39046	38655	39563	38277	38783	38219	38400	102.194
12	0	38587	38652	38890	39453	38526	38798	38885	38599	38823	38890	38633	38358	102.319
	1	38460	38692	38893	38691	39146	38889	38606	38321	38480	39253	38729	37921	102.098
	2	38092	38555	39264	38509	39007	38713	38607	38282	38787	38802	38261	38488	101.941
	3	38471	39058	38326	38713	38386	38282	38356	38146	38555	38739	38961	38311	101.706
	4	38924	38515	38641	38702	38479	39042	38928	38799	39137	38815	38463	38668	102.325
	5	38806	38458	38680	38501	38451	38470	38154	38463	38065	38025	38443	38734	101.475
	6	38282	38068	38443	38692	38573	38374	38855	38969	38142	39119	38845	38553	101.841
	7	38562	38612	38460	38078	38518	38445	38113	38568	37992	38499	38991	38692	101.536
	8	37992	38125	38823	38030	38284	38467	38077	38624	38033	37773	38258	38328	100.939
	9	38758	38256	38994	38460	38270	39045	38477	38265	38221	38674	38541	38570	101.757
	10	38545	38583	38225	38949	38678	38136	38242	38969	37852	38339	38262	39221	101.641
	11	38288	38331	38269	38599	38703	37805	38129	38618	38683	38652	37819	38422	101.270
	12	38407	38334	38614	38597	39134	38134	38041	37939	38065	38021	38303	38178	101.149
	13	37809	38099	38106	38343	38130	38002	38254	38258	37844	38700	38340	38383	100.819
	14	38141	38512	38250	38381	38013	38193	37927	39048	38285	38915	38382	38025	101.216
	15	38852	39060	38229	38979	37909	38373	37883	37878	38649	38522	38967	38326	101.558
	16	38411	38761	38461	38253	38352	38520	38883	38678	38584	37937	38347	38434	101.557
	17	38867	38616	39017	38804	38290	38724	38938	39085	38704	38787	38404	38498	102.242
	18	38876	38697	38460	38550	38311	38600	39132	39084	38266	38609	38844	38828	102.136
	19	38011	39293	37961	38732	38905	38740	38689	38991	38388	38628	38234	38355	101.844
	20	38317	38414	39743	38182	38432	38330	38576	38461	37991	38058	38847	38437	101.594
	21	38813	38422	38511	38214	38549	38924	38197	38574	38498	38628	38722	38709	101.808
	22	38628	38062	38823	38910	38319	38400	38105	38057	38422	38154	38836	38229	101.408
	23	38165	38456	38676	38555	39012	38250	38544	37990	38230	38720	38547	37968	101.445

INAF/UNIRomaTre				S.V.I.R.CO. Observatory - Pressure Corrected Data – September 2019										16 NM-64	
day	hh	00_05	05_10	10_15	15_20	20_25	25_30	30_35	35_40	40_45	45_50	50_55	55_60	h-norm	
13	0	37869	38108	38095	38566	37872	38608	38047	38570	37834	38775	38178	37981	100.873	
	1	38133	38113	38619	38056	38344	38083	38583	38369	38607	38558	37819	38581	101.171	
	2	38515	38869	38346	38619	38292	38091	38309	38507	38105	38101	37985	38573	101.268	
	3	38399	38142	38963	38743	38414	38314	38453	37825	37915	38339	39229	38623	101.499	
	4	38136	38236	38405	38224	38684	38629	38228	38238	37980	38667	37685	37947	100.993	
	5	38471	38654	38414	38870	38412	38068	38135	38620	38240	38161	38464	38056	101.324	
	6	38353	38210	38913	37881	38676	38234	37813	38069	38386	38487	38193	38004	101.029	
	7	37682	38192	38115	38751	38205	38405	38647	38602	38783	38367	38029	38156	101.185	
	8	38011	38263	38559	38332	38416	38365	38634	38030	38276	38059	38228	38702	101.173	
	9	37726	37926	37795	38249	38583	38563	38638	38642	38136	37699	38251	38107	100.830	
	10	37799	38758	38308	38514	38109	38171	38205	38833	38277	38621	38038	37889	101.095	
	11	38627	38270	38040	38164	38128	38281	38857	38482	38412	37850	38872	38205	101.241	
	12	38200	38272	38553	38719	38209	38620	38337	38320	38681	38870	38199	38855	101.604	
	13	38364	38869	36976	38328	38078	38704	38915	38775	38708	38505	38375	38663	101.477	
	14	38279	38619	38287	38023	38001	38060	38714	38743	39112	38693	37998	38603	101.449	
	15	38532	38605	38672	39122	38720	38536	38510	38888	38363	38897	38863	38711	102.172	
	16	38528	38201	38662	38734	39179	38558	39017	38932	38820	38228	37655	38193	101.796	
	17	38672	39458	38468	39020	38088	38700	38139	38653	38355	38285	38156	38280	101.701	
	18	38722	38501	37999	38410	38330	39257	38042	38359	38788	38501	38275	38078	101.478	
	19	38454	38478	38664	38818	38751	38550	38797	37671	38307	38465	38713	38622	101.704	
	20	38356	38275	38685	37940	38276	38661	38043	38796	38249	37909	38065	38323	101.107	
	21	38598	38526	38344	38628	38178	38722	38428	38127	38143	38454	38913	38485	101.540	
	22	38411	38278	38638	38742	38918	38015	38968	39068	38419	39015	38534	38398	101.949	
	23	38574	38164	37935	38434	37845	38720	37991	38546	38278	38604	38483	38666	101.253	
14	0	38218	38192	38692	38746	37890	37827	38493	38646	38239	38201	37969	38246	101.053	
	1	38221	37982	38739	38920	38719	38424	38561	38161	38247	38421	38919	38815	101.669	
	2	38641	38650	38074	38230	38380	37997	38237	38289	38361	38673	38581	38197	101.268	
	3	38084	38802	38440	38699	38828	38596	38002	38184	38390	38097	38071	38450	101.342	
	4	38819	38409	38409	37925	38126	38120	37642	38770	38235	38540	38288	38519	101.156	
	5	38499	38074	38166	38461	38623	38717	37859	38099	38396	38426	38359	37802	101.087	
	6	37998	37969	38498	37978	38986	38753	38916	38559	38441	38340	37974	38339	101.365	
	7	38005	38925	38515	38526	38770	38529	38210	38160	38331	39067	38613	37704	101.498	
	8	38216	38347	39365	37512	37956	38530	38143	38187	38704	38533	38263	37838	101.111	
	9	37844	38644	38469	38665	38441	38242	38862	38562	38252	38180	38714	38024	101.398	
	10	38481	38103	38593	38543	38195	38283	38117	38285	38075	38108	37599	37918	100.826	
	11	37594	38306	38395	38447	38125	38523	38250	38141	38325	37917	37852	38669	100.880	
	12	37323	38418	38658	38396	38426	38496	38570	38425	38540	38341	37915	38200	101.136	
	13	38344	38178	37932	37346	37636	38269	38475	38071	37829	37684	38493	38301	100.443	
	14	39345	38154	38463	38208	38786	38063	37918	38498	38910	38425	38546	37974	101.484	
	15	38795	38395	38092	38468	38414	38137	38479	37724	38202	38497	38108	38582	101.177	
	16	38215	38895	38373	38323	38647	38328	38222	38847	38040	38466	38837	38628	101.601	
	17	38655	38422	38358	38805	38140	38375	38921	38251	38638	38227	37869	38104	101.368	
	18	38039	38576	38151	38819	37951	38421	38565	38545	38253	38567	38718	38399	101.421	
	19	39051	38768	38553	37962	37853	38432	38424	38397	39205	38318	37695	38104	101.368	
	20	38542	37849	38353	38790	38729	38466	39048	37710	38068	38534	38426	38584	101.442	
	21	38693	37987	38636	38480	38284	38657	38993	39044	38118	38241	38468	38557	101.675	
	22	38633	38283	37897	38603	38605	38415	38885	38289	38379	38607	38526	39010	101.669	
	23	38892	38327	37960	38150	38141	38298	38381	38510	38080	38339	38531	38200	101.158	



INAF/UNIRomaTre		S.V.I.R.CO. Observatory - Pressure Corrected Data – September 2019											16 NM-64	
day	hh	00_05	05_10	10_15	15_20	20_25	25_30	30_35	35_40	40_45	45_50	50_55	55_60	h-norm
15	0	38792	38975	38137	38604	38515	38479	38532	38278	38626	38777	38349	38265	101.715
	1	38885	39060	38794	38572	37703	38822	38211	38535	38397	38147	38349	38647	101.666
	2	38089	38117	38835	38421	38323	38665	37972	38558	39015	37981	38809	38463	101.474
	3	38305	38367	38595	37973	38398	37757	38281	38493	38601	37969	38490	38572	101.156
	4	38454	38323	38261	37811	38575	37983	38481	38503	38367	37853	37990	37818	100.853
	5	38390	38756	38398	37727	38281	38577	37982	37873	38503	38418	38015	38743	101.126
	6	38924	38442	38247	38923	38921	38741	38305	38116	38437	37940	38521	38430	101.629
	7	38096	37748	38108	38698	38080	38560	38124	38288	38467	38663	38258	38347	101.076
	8	38429	38296	37861	38162	38151	38603	37826	38428	38235	38602	38888	38445	101.184
	9	38649	38220	37920	37755	37888	39296	38536	38191	38382	38125	38310	38389	101.126
	10	38432	37979	38018	38278	38169	38411	38462	38517	37947	38450	39002	38239	101.179
	11	38009	38300	38136	38443	38344	38551	37924	37961	38183	38330	37894	38488	100.884
	12	37891	38732	38275	37780	38417	37954	38065	38459	38285	38732	37914	37118	100.677
	13	38397	38325	38913	38352	38466	37696	38301	38729	38196	38437	38418	37841	101.216
	14	38563	38629	38265	38398	37740	38145	38042	38176	38566	38353	38725	38806	101.290
	15	38556	38241	38789	38370	38890	38411	38378	38442	37997	37879	38474	38496	101.403
	16	38239	38897	38473	38150	37944	38365	38036	38211	38698	38638	38207	38299	101.234
	17	37922	38503	38084	38468	38616	38222	38840	38505	38633	38406	38283	37817	101.266
	18	38328	38044	39150	39159	38975	38024	38671	38143	38493	38608	38433	38513	101.759
	19	38393	38279	38921	38527	38637	38227	38782	38142	38211	38785	38217	38199	101.490
	20	38181	38540	39053	38558	38546	38742	38244	38165	38153	39146	39289	38198	101.819
	21	38225	38113	38874	38588	38129	37977	38149	37969	37763	38635	38611	39077	101.224
	22	38696	38309	38498	38002	38468	38580	38600	38771	37996	38812	38605	38397	101.581
	23	38422	38280	38275	38632	38113	38186	38210	38769	38291	38288	38052	38551	101.216
16	0	38580	37866	38482	38886	38872	38184	38311	38527	38261	38687	38508	38773	101.621
	1	38162	38408	38718	38041	38775	38881	39120	38111	38867	38589	37871	38167	101.576
	2	38692	37881	38139	38500	37982	38486	38380	38286	38309	38622	39001	38063	101.275
	3	38459	38621	38363	38694	38763	38327	38182	38357	38680	38736	38286	38162	101.559
	4	37885	38434	38407	38486	39120	37905	38291	38194	38341	38880	37903	38427	101.260
	5	38349	38747	38210	38362	38622	38302	38433	38241	38206	38864	38645	38524	101.531
	6	37882	38752	38558	38621	39024	37875	38810	38468	38174	38062	38253	38837	101.489
	7	37992	37617	38475	38640	37769	39242	38624	38645	38781	38828	38102	37989	101.355
	8	38640	38445	38420	38377	38471	38040	38393	38382	38249	38372	38124	37855	101.149
	9	38496	38138	38190	38509	38117	38387	37998	38574	38919	38091	38143	38186	101.145
	10	38342	38507	38072	38263	38225	38282	38068	38868	38253	37839	38263	38003	100.976
	11	38838	38214	37995	38352	38003	38357	38400	37881	38336	38052	38311	38270	100.981
	12	38319	38615	37898	37740	38187	37568	38270	38285	38192	37721	38304	38379	100.645
	13	38316	38961	38030	37972	38301	38531	37921	37889	38304	38184	37774	38068	100.815
	14	38335	38368	38490	38880	38012	38441	38672	38436	38164	38156	38000	38704	101.344
	15	38532	38482	38900	38542	38548	37901	38303	38162	37737	38847	38101	38128	101.241
	16	37536	38208	38082	38523	38772	38243	38310	38571	38690	38210	38572	38979	101.353
	17	38416	38081	38161	38488	38611	38873	38509	38286	37997	37899	38361	39234	101.401
	18	39026	38394	38964	38916	38884	39195	38189	38935	38285	39122	38915	38996	102.480
	19	38324	38160	38798	39189	38457	38541	39056	38224	38573	38464	38536	39364	102.011
	20	38601	38507	38445	38129	38730	37750	38767	38993	38644	38315	38505	38598	101.637
	21	38244	38683	38588	38866	37577	38372	38502	38543	38281	38136	38446	38116	101.278
	22	38500	38332	37930	38472	39120	38549	38705	38433	38192	38581	38229	38907	101.629
	23	38123	38088	38474	38229	38272	38525	38279	38359	38086	38235	38181	38482	101.053

INAF/UNIRomaTre				S.V.I.R.CO. Observatory - Pressure Corrected Data – September 2019										16 NM-64	
day	hh	00_05	05_10	10_15	15_20	20_25	25_30	30_35	35_40	40_45	45_50	50_55	55_60	h-norm	
17	0	38296	38312	38721	38163	38462	38374	38155	38687	37894	38340	38525	38559	101.305	
	1	38597	39244	38452	38341	38166	38011	37990	37959	38143	38435	38199	38838	101.282	
	2	38477	38624	38057	38208	38609	38571	38286	37966	38690	38967	38512	38009	101.415	
	3	38340	38647	38327	37991	38247	38457	37940	38145	38145	37970	38260	38742	101.026	
	4	38361	38194	38324	38847	38146	38635	38415	38536	38894	38548	38993	38847	101.803	
	5	38385	38386	38518	38704	38271	38539	38536	38674	38226	38788	38303	38366	101.573	
	6	38957	39068	37913	38619	38211	38448	38708	38321	38172	38577	38610	37202	101.378	
	7	38840	38140	38539	38518	38581	38038	39028	38351	38228	38651	37478	38200	101.331	
	8	38667	38068	37675	38573	38155	38198	38078	38597	38208	38913	39096	37869	101.221	
	9	37870	38496	38623	38000	37974	38519	38155	38255	38499	38273	38417	38164	101.034	
	10	38699	37487	38026	37820	37985	38332	38276	38043	38448	38617	38081	37879	100.692	
	11	37927	38092	37951	38113	38353	38163	37950	38438	37412	38364	37827	38214	100.497	
	12	38588	38017	38144	38240	38296	38798	38181	38313	38045	38376	37016	38427	100.857	
	13	38538	37996	37854	38520	38278	38206	38087	38607	38257	38039	38110	38013	100.871	
	14	38212	37857	38679	38046	38118	38311	38117	38463	37995	38508	38580	38077	100.972	
	15	38173	38083	37944	38553	38007	38334	38624	38206	38336	38571	38068	37936	100.943	
	16	38252	38076	38531	38090	38238	38787	38830	38463	38258	38987	38080	38325	101.402	
	17	38383	38659	38036	38150	37899	38154	38118	38929	38492	38335	38248	38049	101.079	
	18	38293	37458	38519	37775	38356	37978	37920	38484	38433	38212	37973	38108	100.653	
	19	38225	38396	38450	37968	38702	38357	38661	38480	38440	38922	37705	38211	101.314	
	20	38412	38131	38269	38516	38313	38475	38289	38564	38648	38260	38573	38343	101.374	
	21	38773	37869	38245	38411	38178	38156	38184	38081	37983	38603	38529	38007	100.984	
	22	38394	38687	38081	37825	38215	38270	38608	38767	38208	38163	38030	38352	101.112	
	23	39153	38401	38163	38398	38972	38425	38781	38006	38193	38636	38381	38127	101.560	
18	0	38456	38392	37892	38803	38343	38157	38144	38484	38419	38268	38436	38388	101.239	
	1	38597	38493	38191	38647	38217	37766	38465	38396	38289	38353	37936	38465	101.159	
	2	37875	38705	38167	38326	38526	38396	38253	38571	38291	38284	38920	38686	101.420	
	3	38659	38758	38285	38438	38270	38780	38278	38128	38773	38266	38466	38763	101.610	
	4	38352	37929	38519	38632	38517	38462	37943	38092	38722	38433	37951	38328	101.174	
	5	38487	38138	38985	38397	38377	38252	38335	38380	38392	38594	37623	38549	101.312	
	6	38719	38912	38980	38849	38160	38275	38659	38546	38736	38093	38513	38483	101.844	
	7	38620	38617	38872	38639	38874	38596	38167	38169	38336	38140	38293	38441	101.588	
	8	38100	38583	38139	38755	38681	37943	38335	38161	38130	38760	38011	38624	101.249	
	9	38502	38654	38354	38341	38291	38328	38315	38123	37872	38449	38297	38235	101.147	
	10	38196	38783	38831	38211	38450	38559	37932	38780	38364	38356	38556	38381	101.507	
	11	38223	37756	38915	38584	38437	38375	38536	38373	38739	38033	38493	38320	101.373	
	12	38461	38102	38127	38399	38240	38404	38275	38572	38133	38334	37598	38537	101.020	
	13	37737	37794	38422	38608	38428	38282	37935	38442	38173	38438	38758	37943	100.971	
	14	38004	38814	38008	38065	37907	38052	37948	38146	38460	38536	38569	38297	100.937	
	15	38056	37758	38524	38585	38182	38283	38476	38523	38110	38496	38242	39058	101.264	
	16	37598	38906	38054	38881	38128	38798	38356	38266	38079	37949	38809	38340	101.236	
	17	38679	37926	39151	37789	38631	38601	39278	38083	39098	38060	38134	38575	101.642	
	18	38721	39016	38731	38504	37984	38336	38239	37816	38427	38330	38876	38315	101.485	
	19	37933	38837	38566	38621	38591	38455	38568	38627	38000	38434	38104	38830	101.545	
	20	37978	38989	38415	38603	38216	38961	38656	38237	38347	38243	38075	38609	101.492	
	21	38293	38751	38109	38953	38554	38431	38152	38353	37586	38437	38817	38502	101.406	
	22	38285	38747	38133	38455	38551	38505	38503	38090	38244	38628	38084	38043	101.259	
	23	38324	38650	38093	38440	37926	38215	38314	38350	38261	38020	38264	38806	101.126	

INAF/UNIRomaTre		S.V.I.R.CO. Observatory - Pressure Corrected Data – September 2019											16 NM-64	
day	hh	00_05	05_10	10_15	15_20	20_25	25_30	30_35	35_40	40_45	45_50	50_55	55_60	h-norm
19	0	38460	38230	37992	38449	38606	38075	37999	38135	38587	38479	38452	38529	101.195
	1	38424	38196	38590	37677	38129	38585	38325	38247	38657	38714	38388	37986	101.182
	2	38721	38540	39228	38160	38546	38257	37998	38469	38952	37931	38303	38616	101.579
	3	38452	37997	38689	38820	38241	37971	38380	39714	38222	38249	37797	38654	101.461
	4	38496	38377	38527	38325	38254	38356	38123	38627	38414	38675	38592	38649	101.512
	5	38299	38526	38531	38385	38351	38238	38350	38456	38166	38607	38172	38170	101.256
	6	38550	37698	38408	38441	38680	38647	38618	38397	38466	38941	37913	38599	101.499
	7	38124	38552	38107	38099	38442	38800	38768	38703	38437	38505	38888	37791	101.467
	8	38215	39046	38467	38531	38748	38745	38169	37619	38171	38489	37877	37862	101.187
	9	38813	38732	38547	38469	38521	38703	38109	38230	38325	37596	38932	38376	101.497
	10	38614	38441	38862	38482	38824	39099	37931	38125	37994	38907	38242	38482	101.641
	11	38814	38465	37837	38565	38166	38017	38356	38090	38001	38262	38573	38456	101.112
	12	38639	38738	38548	38191	37788	39239	37883	37863	38178	38368	38998	38668	101.442
	13	38229	38141	38013	38683	37820	38478	38489	38123	38016	38155	38599	38519	101.038
	14	38129	38131	38107	38545	38090	38312	38199	38412	38689	38416	37866	38551	101.078
	15	38618	38389	37940	38267	38509	38290	38886	38940	38807	38094	37821	38370	101.405
	16	38286	38703	38247	38194	38385	38183	38636	39031	38795	38589	38911	38735	101.793
	17	38746	38896	38705	38936	38568	38323	38884	38917	38549	38861	38434	38530	102.157
	18	39155	38573	38788	38997	38272	38633	38689	38652	38588	38887	38234	38486	102.071
	19	38376	38678	38559	39019	38857	38661	38446	38469	38869	38501	38320	38222	101.855
	20	38593	38250	38856	39153	38373	38426	39127	38927	38903	38579	38649	38633	102.183
	21	39321	38307	38973	39110	38519	38780	38473	38659	38355	39036	38028	38744	102.147
	22	38335	38614	38452	38348	38571	38788	38589	38102	38620	38359	38394	38854	101.645
	23	38637	38491	38662	38437	38726	38580	38438	39127	39011	38537	39287	39058	102.298
20	0	38908	38851	39213	38895	38749	39157	38248	38949	39235	38600	38700	38506	102.520
	1	38148	38052	39542	38316	39153	38666	38274	39120	38276	38838	38478	38318	101.900
	2	38739	38846	38759	38759	38253	37995	38670	39074	39149	37942	38384	38410	101.856
	3	38653	37881	38191	38593	38730	38682	39296	38787	38501	38289	38129	38224	101.630
	4	38205	38200	38460	38435	38383	38068	38818	38195	38850	38549	38403	38405	101.414
	5	38251	38714	38424	38546	38719	38982	38873	38752	38839	38464	38645	39244	102.179
	6	38045	38291	38743	38352	39158	38679	38396	38154	38540	38221	38130	38324	101.427
	7	38995	38583	37929	38199	38898	38491	38393	38501	38635	38225	38497	38517	101.610
	8	38683	38410	38655	37794	38548	38826	38696	38578	38782	38420	38515	38498	101.729
	9	38555	38503	38142	38620	38282	38431	38330	38545	38788	38537	38871	38358	101.632
	10	38889	38297	38796	38364	38837	38079	38423	38882	38093	38238	38873	38971	101.803
	11	38754	37988	38999	38050	38889	38050	38455	38918	38474	37553	38145	38939	101.467
	12	38504	38138	38109	38707	38765	38198	38537	38090	38281	38439	38825	38858	101.519
	13	38292	39341	38941	38692	38453	38311	38885	38096	38088	38032	38440	38055	101.557
	14	38475	38661	38608	38779	38268	38713	38312	38851	38887	38634	38367	38179	101.802
	15	38734	38815	38040	38792	38367	38518	38141	38177	38530	37858	37718	38308	101.199
	16	38203	38992	38623	38347	38730	38303	38186	38677	38715	38532	38762	38089	101.675
	17	38013	38080	38785	38761	38821	38338	38550	38618	38440	38462	39142	38394	101.729
	18	38433	38051	38740	38876	38605	38728	38449	38541	39421	38388	38423	38502	101.894
	19	38663	38521	39000	38303	39080	38850	38850	39337	39121	38766	39187	38771	102.618
	20	38969	38735	38255	37958	38976	39266	38844	38873	39055	38892	38025	38775	102.217
	21	38758	38282	38632	38291	38386	38748	39155	38340	38530	38810	38621	38886	101.957
	22	38508	38165	38889	38669	39348	38353	38820	37810	38494	38557	38710	38409	101.801
	23	38397	38365	39013	38702	38906	38812	38267	38821	38831	38408	37955	38720	101.903

INAF/UNIRomaTre				S.V.I.R.CO. Observatory - Pressure Corrected Data – September 2019										16 NM-64	
day	hh	00_05	05_10	10_15	15_20	20_25	25_30	30_35	35_40	40_45	45_50	50_55	55_60	h-norm	
21	0	38398	38735	38548	39248	38409	38829	38602	39302	38944	38724	38846	39190	102.471	
	1	38606	38530	38708	38213	38382	38511	38859	38523	39385	38854	38383	38181	101.889	
	2	38455	38471	38746	39053	38376	38414	38312	38475	38636	38511	38199	39043	101.792	
	3	38154	38845	38238	38689	38616	37801	38685	38230	38380	38448	39130	38512	101.580	
	4	38559	38012	38154	38639	38354	38177	38428	38356	38516	38806	38963	38574	101.538	
	5	38486	38324	38412	38325	38726	38741	38575	38655	37927	38522	38310	38408	101.511	
	6	38198	38542	38634	38515	38755	38372	38085	38480	38123	39051	38697	38239	101.572	
	7	38614	38463	38242	38395	38245	38464	38570	38654	38447	38160	39010	38191	101.520	
	8	38846	38870	38352	39184	38143	37917	38742	38046	38843	38567	38629	38251	101.725	
	9	38536	38693	38775	38882	38617	38892	38546	38498	38620	38916	38273	37876	101.887	
	10	38810	38262	38738	38355	38530	38014	38317	38319	38733	38812	38166	38439	101.529	
	11	39024	37827	39211	38744	38526	38900	39478	38866	38425	38491	37993	38693	102.119	
	12	38505	38873	38534	39114	38462	38546	39480	38386	38477	38556	38492	38073	101.970	
	13	38809	38221	38982	38508	38554	38209	38551	38360	39391	38708	38450	38811	101.982	
	14	38484	38082	38391	37994	38478	38675	38984	38637	38381	38608	38644	38777	101.670	
	15	38781	38479	38960	38900	38972	38581	38321	38985	38689	38286	39092	38499	102.200	
	16	38337	38727	38586	38153	38830	38723	39015	38897	38760	38437	39507	39074	102.310	
	17	38624	39506	38425	38448	39121	38685	38534	38495	38802	38519	38428	38393	102.076	
	18	38474	38755	38774	38660	38769	38616	39057	38455	38772	38372	38854	38411	102.073	
	19	38091	37865	39357	38262	38337	38868	38366	38445	38905	38649	39384	38820	101.937	
	20	38732	38665	38626	38794	38155	38326	38261	39265	38285	38768	38819	39002	102.013	
	21	38519	38969	38512	38779	38628	39048	39037	38545	38447	38332	38870	38488	102.118	
	22	38348	38716	38851	38261	38575	39089	38993	38231	38945	38824	37872	38271	101.855	
	23	38316	39430	38614	38833	38722	38472	38583	38571	38376	38695	38582	38863	102.093	
22	0	38737	38825	38050	38546	38770	38949	39317	38705	38439	38551	39015	38593	102.184	
	1	38329	38785	38542	38313	38525	38494	38605	38785	38880	38681	38764	38707	101.951	
	2	38261	38664	38188	38780	38224	38747	38772	38894	38644	38290	38559	38712	101.802	
	3	39006	38038	38194	38721	38884	38271	38804	38788	38422	38692	38753	38539	101.885	
	4	38415	38393	38592	38056	38447	38576	38401	38572	38360	38217	38202	38586	101.380	
	5	37922	38970	38250	38588	38259	37805	38471	38904	38866	38990	38451	38733	101.686	
	6	38203	38420	38096	38239	38827	38449	38039	37967	38102	38365	38225	38520	101.080	
	7	37876	38073	38657	38525	38297	38846	38584	38190	38342	38574	38432	38328	101.360	
	8	38676	38170	38090	38694	38314	37925	38617	38316	38333	38685	38696	38015	101.317	
	9	38244	38259	38819	38617	38124	38845	38493	38385	38544	38208	38481	38371	101.506	
	10	38580	38670	38555	37857	38552	38498	38316	38295	38146	37942	37172	38276	100.948	
	11	38336	38080	38162	38555	38552	38408	38489	38437	38170	38523	38488	38910	101.444	
	12	38236	38515	38095	38436	38181	39203	38796	38123	38292	38072	38607	38332	101.395	
	13	38224	38643	38695	38244	38612	38357	37718	38580	38505	38316	38245	38474	101.335	
	14	38267	38106	37981	37894	38490	37732	38223	38354	38371	38148	38850	38493	100.962	
	15	38455	38776	38341	38516	38576	38172	38524	38241	38386	38856	38957	38133	101.625	
	16	38025	39299	38178	38790	38631	38148	38497	38612	38732	38468	38650	39109	101.891	
	17	38347	38433	38003	38202	38479	38123	39026	38003	37642	38070	37993	38051	100.841	
	18	38577	38184	38881	38862	38294	38501	38012	37969	37867	37619	38561	37790	101.005	
	19	38623	37889	38301	38211	38477	37749	37886	38114	37663	38006	38008	37732	100.465	
	20	38083	38653	38132	38571	38228	38180	38079	38078	37299	37236	37820	37941	100.386	
	21	37769	38173	38169	37936	37862	37982	37919	37583	38460	38086	38414	38023	100.403	
	22	38368	38475	37716	38055	38536	38181	38225	38134	38378	38411	38222	38079	100.932	
	23	37958	38610	37701	37985	38204	38054	37742	37941	38109	38203	38607	38523	100.681	

INAF/UNIRomaTre		S.V.I.R.CO. Observatory - Pressure Corrected Data – September 2019											16 NM-64	
day	hh	00_05	05_10	10_15	15_20	20_25	25_30	30_35	35_40	40_45	45_50	50_55	55_60	h-norm
23	0	38042	38219	37572	38306	38048	38058	37931	37803	37653	37980	38018	38659	100.371
	1	37174	37804	38049	37783	37897	38149	38011	38568	38530	37903	38486	37599	100.310
	2	37283	37951	37799	38216	37963	37917	37790	38154	38695	38207	37657	38306	100.306
	3	37961	38080	38110	38063	37650	38290	38334	38041	38082	38542	38336	38542	100.767
	4	38465	38321	38293	38474	38138	37699	38218	37984	37880	38447	38027	37951	100.737
	5	38230	38152	37989	38170	38612	38126	38056	37625	37822	38622	38101	38304	100.718
	6	38757	38552	38078	38093	37943	38554	38267	38103	38447	38117	38080	38281	101.040
	7	38501	38151	38215	38276	39091	37845	37881	38857	38805	38509	38378	38261	101.369
	8	38004	38733	37794	37946	38115	37950	38552	38087	38497	37890	38002	38668	100.813
	9	38347	38336	37807	38232	37626	38032	38579	38460	38236	37950	38409	38424	100.857
	10	38341	38100	38249	37806	38250	38221	38225	38447	37841	38282	37992	38560	100.829
	11	37798	38276	38266	39155	38298	38018	38010	38488	38369	38481	38352	38149	101.125
	12	37980	38593	38231	38932	37616	37924	38790	37796	38681	37711	37909	38159	100.831
	13	38391	38561	38370	38175	38172	38296	37986	38083	38031	38361	38021	38604	100.991
	14	38519	38041	38171	38399	38151	38619	38526	38248	37967	38670	38195	38577	101.218
	15	37893	38349	38004	38356	38167	38495	38267	37970	38843	38599	38384	38355	101.130
	16	38249	38315	38489	38182	38690	37923	38241	38479	38055	38119	38022	38153	100.962
	17	38606	38640	38026	38011	38776	38790	38078	38393	37879	38403	38463	38445	101.312
	18	38184	38192	38468	38340	37620	38380	38526	38434	37837	38188	38061	38180	100.850
	19	38477	38571	38529	38466	38676	38106	37848	38225	38507	38429	37782	38119	101.142
	20	37946	38206	38200	38276	37851	38137	37707	38369	38261	38749	38661	38666	100.986
	21	38172	38170	38247	38156	38210	38669	38135	37883	38349	38521	38449	38080	100.989
	22	37868	38682	38376	38430	38690	38065	38343	38159	38479	38552	38249	38645	101.318
	23	38099	38702	38128	38122	38059	38263	38340	38020	38077	38098	38353	37735	100.759
24	0	38735	37956	38820	38050	38449	38259	38051	38552	38415	38580	38245	38178	101.267
	1	38094	38480	38228	38002	38337	38245	38336	38291	38489	38438	38922	38034	101.177
	2	38013	38659	38131	38472	38436	38329	38160	38016	38305	38859	38427	38800	101.334
	3	38420	38403	38709	39130	38756	38379	38155	38332	38322	38883	38407	38179	101.657
	4	38149	38308	38783	38798	38772	39039	38457	38496	38057	38863	38476	38238	101.736
	5	39145	38558	38465	39088	37965	38494	38586	38680	38600	38824	38692	38755	102.048
	6	38242	38367	38276	38544	38473	38332	38594	38396	38618	38780	38212	38610	101.518
	7	38622	38107	38074	37890	38594	37958	38710	38634	38577	38465	38336	38526	101.308
	8	38589	38475	38365	38330	38115	38552	38180	38981	38425	38458	38772	38899	101.671
	9	38106	38494	38077	38935	38358	38654	38307	38375	38453	38432	38545	38021	101.366
	10	38315	38597	38882	38424	38408	38209	38406	38613	38763	38451	38763	38469	101.706
	11	38595	38204	38220	38336	38321	38122	38385	38557	38553	38365	37766	38473	101.177
	12	38491	37912	38279	39032	38390	38879	38906	38454	38339	38802	38357	38791	101.779
	13	38138	38269	38297	38147	38400	38755	38161	38479	38184	38832	38165	38386	101.247
	14	38476	37993	38328	38171	38563	38242	38743	38215	38473	38544	38838	38674	101.477
	15	38666	38170	37845	38876	38089	37756	38407	38782	39197	38555	37803	38263	101.290
	16	38514	38520	39031	38104	38347	38427	38464	38295	38488	37991	37917	38596	101.353
	17	37762	38088	38767	39047	38211	38045	38267	38397	38758	38607	38936	37819	101.355
	18	38426	38302	38985	38457	38679	38792	38004	38391	38329	38212	38463	38133	101.458
	19	38828	38340	38060	38269	37721	38396	38902	38365	38348	37980	38794	38251	101.256
	20	38329	38253	38348	38552	38113	38746	38532	38289	38237	38460	38720	38029	101.334
	21	38178	38265	38536	38220	38270	38596	38424	38149	38705	37945	38261	37967	101.093
	22	38552	38675	38060	38414	38754	38209	38410	38510	38555	38173	38303	38242	101.388
	23	37935	38522	37837	37792	38365	38408	38034	38594	38511	38471	39085	38289	101.165

INAF/UNIRomaTre				S.V.I.R.CO. Observatory - Pressure Corrected Data – September 2019										16 NM-64	
day	hh	00_05	05_10	10_15	15_20	20_25	25_30	30_35	35_40	40_45	45_50	50_55	55_60	h-norm	
25	0	38564	38321	37992	38439	38334	38499	38216	38734	38207	38246	38733	38519	101.373	
	1	38216	38689	38588	38459	38335	38686	38342	38511	38550	38907	38273	38913	101.743	
	2	38488	38470	37884	38513	38400	38348	38726	38660	38659	38104	38577	38411	101.473	
	3	38680	38082	37932	38322	38385	38702	38267	38077	37705	38085	38106	38473	100.939	
	4	38014	38499	38437	38463	38671	38623	38403	37898	38799	38135	38149	38363	101.300	
	5	38349	38440	38138	38023	37964	38643	37934	38779	38689	38574	38217	38496	101.254	
	6	38296	38226	38248	38808	38987	38871	38930	38594	37611	38376	38849	38738	101.757	
	7	38264	38499	38131	38388	38463	38775	38291	38703	38873	38938	38242	38594	101.675	
	8	38884	38336	38951	38660	38649	38670	38550	38126	38776	38052	39066	37916	101.780	
	9	38273	38670	38527	38026	38327	38352	37804	38300	38899	38768	38499	38313	101.367	
	10	38348	37891	38856	38590	38442	38889	38621	38287	38474	37971	38337	37812	101.314	
	11	38881	38096	38368	38447	38431	38799	38549	38603	38513	38282	38985	38318	101.700	
	12	38559	38581	38665	38291	38406	38504	38133	38260	37980	38228	38214	38154	101.195	
	13	38800	38183	38296	38534	38108	38653	38382	37905	38430	38267	37923	38695	101.239	
	14	38424	38066	38798	38963	38637	38523	38305	38138	38475	38382	38439	38664	101.599	
	15	38530	38242	37971	38430	38317	38024	37998	38487	38631	38171	38623	38338	101.148	
	16	38289	38084	38119	38652	37967	37635	38107	38348	38082	38100	38641	38189	100.807	
	17	38001	38177	37877	38755	38312	38158	38533	38182	38268	38632	37994	38488	101.063	
	18	38598	38107	38211	38550	38136	38468	38163	38313	38043	38456	38596	38100	101.143	
	19	37833	38003	37934	38575	38106	38025	38427	38331	38634	37876	38604	38320	100.906	
	20	38436	38373	38938	38686	38494	38051	38410	38452	38081	38582	38776	37988	101.478	
	21	37848	38122	38613	37486	38277	37955	38360	38131	38888	38085	37803	38503	100.776	
	22	38721	38046	37994	38410	37816	38277	38230	38290	38256	37698	38227	38490	100.860	
	23	38830	38218	38294	38393	37825	38068	37823	38161	38131	38888	37652	38515	100.935	
26	0	38598	37789	38857	38441	38603	38318	38599	38456	39052	37864	38267	38169	101.422	
	1	38643	38746	39159	38097	38307	38420	38436	38905	38333	38038	38270	37921	101.481	
	2	38135	38702	38461	38281	38135	38374	38199	38323	38717	38451	38631	38379	101.373	
	3	39275	38558	38875	38243	38421	38146	38415	38474	38923	38408	38264	38066	101.655	
	4	38382	38430	38283	38635	39318	38172	38511	37790	38673	38043	39185	38849	101.700	
	5	38614	38377	38136	37797	38809	38097	38271	37950	38706	38549	38840	38836	101.416	
	6	38289	38270	38002	38772	38701	38574	37683	38957	38374	38514	38152	38250	101.319	
	7	38627	38769	38335	38181	38226	37939	38402	38983	38793	38497	38853	38956	101.763	
	8	39310	38782	38391	38948	38471	39083	38233	38375	38443	38643	38614	38477	102.030	
	9	38269	38731	38440	38556	38848	38016	38974	38701	38871	38684	38684	38332	101.883	
	10	38681	38109	39105	38294	38509	38904	38698	38079	38420	38525	38698	38644	101.787	
	11	38629	38367	38647	38334	39043	38223	38307	38576	38550	38637	38310	38527	101.673	
	12	38672	38092	38553	38704	38548	38149	38394	38595	38893	38257	38360	38670	101.615	
	13	38740	38591	38661	38323	38654	39179	38748	38065	38882	38868	38421	38980	102.105	
	14	38526	38713	38455	38559	39163	38764	38498	38486	38310	38092	38598	38602	101.808	
	15	38708	38545	38352	38577	38244	38277	38948	40364	38725	38735	38017	38678	102.117	
	16	38836	38720	38902	38492	38614	38921	38605	38489	39063	38925	38511	38180	102.137	
	17	38479	38639	38452	38114	38344	38686	38454	38633	38549	38702	38961	38456	101.743	
	18	39047	38025	38261	38509	38181	38169	38679	38566	38639	38978	38370	38631	101.652	
	19	39054	38278	38940	37828	38728	38591	38032	38503	38349	38306	39013	38271	101.617	
	20	38404	38152	38061	38490	38362	38802	38212	37870	38265	38595	38584	38358	101.234	
	21	38665	38162	38439	38506	38181	38170	38039	38188	38344	37691	38750	38090	101.030	
	22	38233	38419	37960	38149	38839	38665	38562	38006	38495	38314	38340	38572	101.322	
	23	38068	39143	38464	38303	38246	38459	38382	38368	38169	38166	37967	38996	101.361	

INAF/UNIRomaTre		S.V.I.R.CO. Observatory - Pressure Corrected Data – September 2019											16 NM-64	
day	hh	00_05	05_10	10_15	15_20	20_25	25_30	30_35	35_40	40_45	45_50	50_55	55_60	h-norm
27	0	38552	38699	37876	37955	38521	38377	38264	38595	38517	38542	38680	38812	101.506
	1	38956	38751	38758	38479	38225	38438	38655	37811	38396	38906	38149	38174	101.574
	2	38367	38351	39173	38940	38749	37843	38011	39105	38160	38526	38119	38264	101.554
	3	37998	38911	38033	38413	38932	37839	38458	38300	37957	37953	38346	38249	101.066
	4	37905	38217	38770	38195	38509	38436	38731	37965	38749	38282	38407	38457	101.337
	5	38717	38318	38632	38271	38403	39127	37742	38702	38505	38198	38804	38958	101.723
	6	38473	38857	38285	38382	38799	38538	38392	38434	38459	38326	38514	38637	101.661
	7	39031	38307	38532	38908	38075	38700	38798	38383	38410	38130	39132	39032	101.957
	8	38622	38303	38626	38030	38978	38445	39062	38478	38190	39057	38521	38818	101.889
	9	38251	38512	38480	38692	38336	37948	38278	38227	37803	37663	38701	38695	101.109
	10	38024	38136	38673	38301	38119	38351	38646	38471	38672	38449	38060	38731	101.339
	11	38801	38375	37994	38459	38885	38731	38555	38359	38765	37896	38624	39032	101.745
	12	38046	38545	39252	38276	38400	38583	38531	38780	38334	38411	39154	37929	101.693
	13	38356	38459	39051	38837	39012	38634	38585	38344	38849	39309	38408	38503	102.157
	14	38545	38546	38247	38623	38670	38107	38309	38649	38023	38245	38874	38657	101.529
	15	38325	38594	39070	38773	38261	39454	38944	38903	38621	38201	38423	38495	102.094
	16	38648	38499	38569	38732	38608	38838	38938	38322	39123	38853	38570	38881	102.208
	17	38492	38191	38003	38523	38324	38826	38679	38404	38054	38631	38537	38862	101.536
	18	39048	38819	38756	38719	39234	38265	38117	38719	38330	38756	38753	38331	102.047
	19	38234	37905	38187	38044	38700	38701	39148	38994	38413	38552	38491	38406	101.590
	20	39011	38428	38314	38959	38323	38272	38807	38721	38619	38628	38770	38466	101.930
	21	38569	39040	38829	38694	38312	39278	38354	38566	38800	38503	38741	38813	102.190
	22	38623	38479	38842	38709	38501	38395	38674	38374	38673	38692	38408	38716	101.879
	23	38427	38672	38615	38806	38522	39337	38815	38705	38774	38773	38650	38041	102.111
28	0	38692	38997	38255	38255	38276	38617	38471	38318	38447	38566	38568	38554	101.643
	1	38019	38582	38408	38660	37665	39127	38731	38069	38429	38370	37840	38823	101.359
	2	38421	37835	38706	38970	38625	38475	38526	38148	38725	38828	38345	38005	101.554
	3	38082	39040	38670	38151	38321	38650	38301	38240	38268	38206	38321	38991	101.473
	4	38548	38630	38632	37988	38595	38431	38762	38369	38510	38001	38483	38057	101.422
	5	38194	38312	38408	39061	38344	38927	38361	38140	38234	38225	38399	38602	101.465
	6	38271	38624	38550	38846	38479	38085	38590	38453	38230	38915	38553	38583	101.680
	7	38858	38331	38179	38781	37884	38516	38827	39293	38504	38908	38736	38458	101.921
	8	38033	38462	38410	38716	39082	39111	38363	38370	38383	38903	38523	38522	101.833
	9	38255	39212	38810	37877	38554	38836	38975	37927	38712	38548	38856	38369	101.845
	10	38729	38063	38520	38976	38294	37958	38629	38426	38205	38334	37955	38589	101.349
	11	38802	38609	37749	38157	38179	38689	38765	38731	39440	38602	38346	38515	101.769
	12	37978	38574	38188	38282	38783	38544	38473	38756	38335	38241	38515	38466	101.450
	13	38391	38405	38575	38085	38565	38397	38526	38384	39006	38583	38711	38431	101.653
	14	38382	38460	38730	38066	38396	38382	38622	38383	38542	38674	38908	38666	101.686
	15	38470	38194	38876	38540	38055	37925	38284	38911	38129	38223	38079	38728	101.291
	16	38534	38742	38184	38143	38751	38297	38895	38280	38653	38086	38275	38193	101.427
	17	38374	38871	38427	38008	38624	39019	38538	38296	38356	37762	38423	38469	101.457
	18	38078	38448	38529	38763	38053	38426	38611	38916	38907	38065	37971	37964	101.361
	19	38070	39057	38783	38171	38134	38244	39377	38424	38955	37920	37781	38907	101.601
	20	37938	38308	38106	38105	38480	39093	38718	38713	38568	38193	38246	38968	101.515
	21	38553	38183	38069	38533	37900	38314	37952	38674	38516	38453	38788	38875	101.378
	22	38356	38125	38242	38381	38306	38591	38360	38383	38689	38004	38578	38454	101.303
	23	38603	38592	39058	38434	38988	38850	38612	38877	38483	37530	38550	38299	101.833



INAF/UNIRomaTre				S.V.I.R.CO. Observatory - Pressure Corrected Data – September 2019										16 NM-64	
day	hh	00_05	05_10	10_15	15_20	20_25	25_30	30_35	35_40	40_45	45_50	50_55	55_60	h-norm	
29	0	38518	38137	38061	38003	38520	38141	38484	38804	38221	38626	38318	38278	101.219	
	1	38521	39148	38153	38531	38608	38848	38495	38499	38149	39080	38497	38729	101.917	
	2	38643	38154	38835	37985	38554	38691	38965	38437	38434	38868	38686	38822	101.876	
	3	38031	37977	38749	38925	38678	38450	38793	38274	38862	38734	38832	38934	101.913	
	4	38704	38485	38615	38312	38042	37615	38449	38630	37531	38776	38592	38718	101.303	
	5	38481	38443	38744	38109	38642	38768	38812	38471	38360	39017	38486	38209	101.759	
	6	38654	38429	38857	39081	38670	38838	38616	38612	38298	38606	38469	39380	102.192	
	7	38251	38158	38768	39430	39028	38434	38830	38685	38954	38108	38279	38751	102.008	
	8	38939	38582	38572	38698	38563	38358	38264	38704	38193	39012	38791	39108	102.033	
	9	38565	38678	38123	38516	38809	38457	39073	38676	38988	38734	38230	38820	102.007	
	10	38831	38765	38700	38109	38683	38909	38606	38589	38326	38458	38844	37995	101.819	
	11	38621	37991	38481	38777	38382	37984	38755	38542	38511	38472	38373	38575	101.522	
	12	38485	38558	38169	38424	38576	38647	38355	38255	38129	38378	38466	38666	101.444	
	13	38603	38544	38532	38691	38056	38252	38634	38162	38639	38509	38477	38391	101.528	
	14	38963	38504	38745	38606	38630	38017	38209	38329	38641	39008	38462	38832	101.848	
	15	38458	38635	38306	38682	38710	38324	38878	38735	39429	38693	39243	38510	102.213	
	16	38175	38660	38635	38570	39477	38510	38930	38658	38554	38351	38549	38520	101.990	
	17	38397	38683	38660	38391	38773	39319	38702	38884	39003	38748	38811	38964	102.373	
	18	38391	38418	37895	38159	38169	38875	38822	38479	38317	39152	38593	38304	101.546	
	19	38132	38658	38752	38504	38529	38609	38405	38388	38666	38886	38929	38201	101.785	
	20	38554	38271	38526	38478	38445	39536	38678	38735	38505	38140	38918	38906	102.012	
	21	38846	38613	38384	38333	38617	38103	38884	38371	38584	38665	38338	39026	101.808	
	22	38136	38244	38740	38331	38811	38794	38171	38962	38455	38792	38539	38750	101.800	
	23	38662	38574	39009	38697	39343	38899	38985	38708	38564	38887	38447	38778	102.422	
30	0	39070	38873	38621	38686	38372	39036	38998	38278	38562	38751	39675	38860	102.472	
	1	38734	38804	38265	38401	38439	38569	38927	39177	37984	39017	38866	38998	102.120	
	2	38555	38726	38672	37948	38672	38643	38280	38545	38639	38648	38407	38516	101.695	
	3	38088	38411	38728	38536	38218	38452	38130	38140	38343	38729	38779	38200	101.366	
	4	38597	38554	38792	38744	38502	38147	39088	38336	38441	38676	38246	38645	101.809	
	5	38413	38161	38601	38367	39207	39052	38002	39017	38238	38899	37962	38586	101.751	
	6	38424	39059	38482	38896	38772	39234	38417	38743	38557	38910	38902	38949	102.376	
	7	38512	38388	38565	37768	38642	38869	38900	38649	38678	38423	39346	38537	101.921	
	8	38155	38389	38734	39211	38773	38925	38690	38247	38434	39356	38719	38448	102.097	
	9	38573	38213	38212	38986	38393	39166	38687	38659	38765	38452	38494	38421	101.865	
	10	39059	38773	38034	38235	38933	38376	38338	38768	37976	38727	37836	38291	101.496	
	11	38180	38378	38664	38654	38177	38660	38187	38476	38451	38794	38494	38757	101.612	
	12	38869	38076	39302	38990	38580	38341	38477	38301	38940	38210	38596	39124	102.038	
	13	38671	38828	38682	38299	38803	38877	38379	38625	37933	38016	39019	38421	101.762	
	14	38913	38281	38225	38479	38602	38555	38788	38861	38148	38698	38810	38251	101.775	
	15	38354	38815	38350	38169	38555	38463	38446	38685	38538	38623	38440	38150	101.549	
	16	38513	38767	38923	39006	38656	38572	38541	38271	38384	38266	37958	38386	101.694	
	17	38388	38162	38307	38239	38860	38475	38763	38540	38215	38708	38465	38531	101.563	
	18	38837	38339	38295	38348	38574	38803	38623	38357	38310	38252	38549	39297	101.768	
	19	38503	38448	38614	38490	38357	38593	38430	37935	38857	38911	37783	38129	101.431	
	20	38022	38818	38084	38305	38374	38131	38732	38486	38318	38569	38906	38473	101.468	
	21	38788	38996	38922	38154	39131	38660	38133	38131	39084	38450	37673	38864	101.857	
	22	38635	38386	38986	39131	39246	38097	38596	38583	38250	39034	38396	38751	102.100	
	23	38727	38055	38613	38905	38296	38170	38681	38105	38727	39242	38101	38653	101.701	

**S.V.I.R.CO. Observatory - Pressure in hectoPascal – September 2019**

day	hh	00_05	05_10	10_15	15_20	20_25	25_30	30_35	35_40	40_45	45_50	50_55	55_60	average
1	0	1011.93	1011.92	1011.90	1011.85	1011.79	1011.75	1011.76	1011.77	1011.77	1011.75	1011.68	1011.61	1011.78
	1	1011.57	1011.54	1011.53	1011.51	1011.46	1011.43	1011.41	1011.37	1011.36	1011.34	1011.28	1011.23	1011.42
	2	1011.19	1011.15	1011.12	1011.11	1011.10	1011.08	1011.05	1011.04	1011.05	1011.04	1011.00	1010.96	1011.07
	3	1010.92	1010.92	1010.89	1010.86	1010.85	1010.83	1010.81	1010.79	1010.75	1010.71	1010.69	1010.68	1010.81
	4	1010.67	1010.64	1010.62	1010.67	1010.75	1010.80	1010.79	1010.74	1010.77	1010.88	1010.96	1011.00	1010.77
	5	1010.99	1011.00	1011.03	1011.05	1011.05	1011.01	1010.96	1010.91	1010.89	1010.91	1010.92	1010.89	1010.97
	6	1010.85	1010.79	1010.74	1010.71	1010.65	1010.61	1010.61	1010.65	1010.71	1010.75	1010.77	1010.75	1010.71
	7	1010.74	1010.76	1010.84	1010.91	1010.95	1010.94	1010.91	1010.88	1010.86	1010.83	1010.82	1010.85	1010.85
	8	1010.91	1010.98	1011.03	1011.02	1010.96	1010.94	1010.93	1010.89	1010.87	1010.88	1010.88	1010.89	1010.93
	9	1010.90	1010.92	1010.96	1010.96	1010.94	1010.93	1010.92	1010.91	1010.88	1010.82	1010.75	1010.67	1010.88
	10	1010.60	1010.56	1010.53	1010.48	1010.45	1010.42	1010.37	1010.31	1010.26	1010.25	1010.24	1010.22	1010.39
	11	1010.22	1010.21	1010.17	1010.12	1010.06	1009.99	1009.88	1009.77	1009.74	1009.75	1009.74	1009.77	1009.95
	12	1009.83	1009.82	1009.72	1009.65	1009.61	1009.56	1009.56	1009.78	1010.05	1010.11	1010.17	1010.22	1009.84
	13	1010.17	1010.05	1009.93	1009.86	1009.92	1010.06	1010.09	1009.99	1009.84	1009.68	1009.58	1009.59	1009.89
	14	1009.63	1009.68	1009.68	1009.61	1009.51	1009.46	1009.47	1009.51	1009.57	1009.67	1009.79	1009.85	1009.62
	15	1009.82	1009.78	1009.75	1009.69	1009.60	1009.54	1009.52	1009.57	1009.68	1009.77	1009.87	1009.99	1009.71
	16	1010.09	1010.17	1010.21	1010.18	1010.09	1010.04	1010.04	1010.05	1010.05	1010.04	1010.02	1010.05	1010.08
	17	1010.10	1010.16	1010.24	1010.30	1010.33	1010.34	1010.37	1010.40	1010.38	1010.36	1010.35	1010.40	1010.31
	18	1010.46	1010.49	1010.53	1010.59	1010.63	1010.73	1010.84	1010.89	1010.91	1010.92	1010.97	1011.05	1010.75
	19	1011.07	1011.04	1011.04	1011.04	1011.02	1011.03	1011.04	1011.04	1011.02	1010.97	1010.89	1010.82	1011.00
	20	1010.78	1010.78	1010.75	1010.70	1010.68	1010.68	1010.70	1010.74	1010.76	1010.73	1010.68	1010.67	1010.72
	21	1010.68	1010.69	1010.71	1010.74	1010.76	1010.76	1010.76	1010.79	1010.82	1010.83	1010.82	1010.82	1010.76
	22	1010.83	1010.85	1010.85	1010.82	1010.82	1010.90	1010.97	1011.03	1011.07	1011.05	1010.99	1010.96	1010.92
	23	1010.96	1010.94	1010.95	1011.01	1011.02	1011.00	1010.95	1010.91	1010.90	1010.89	1010.89	1010.88	1010.94
2	0	1010.78	1010.77	1010.74	1010.67	1010.59	1010.55	1010.54	1010.53	1010.54	1010.56	1010.56	1010.58	1010.61
	1	1010.58	1010.58	1010.59	1010.64	1010.73	1010.79	1010.80	1010.79	1010.76	1010.75	1010.77	1010.79	1010.71
	2	1010.77	1010.77	1010.79	1010.78	1010.79	1010.82	1010.76	1010.68	1010.66	1010.66	1010.66	1010.63	1010.73
	3	1010.63	1010.65	1010.63	1010.67	1010.68	1010.63	1010.64	1010.63	1010.57	1010.50	1010.44	1010.41	1010.59
	4	1010.45	1010.50	1010.46	1010.41	1010.49	1010.58	1010.64	1010.70	1010.74	1010.79	1010.83	1010.82	1010.62
	5	1010.79	1010.78	1010.84	1010.86	1010.83	1010.79	1010.82	1010.90	1010.97	1011.01	1011.00	1011.00	1010.88
	6	1011.04	1011.07	1011.06	1011.02	1011.01	1011.05	1011.14	1011.21	1011.23	1011.24	1011.27	1011.34	1011.14
	7	1011.42	1011.50	1011.54	1011.56	1011.56	1011.60	1011.66	1011.66	1011.64	1011.65	1011.69	1011.70	1011.60
	8	1011.68	1011.71	1011.79	1011.85	1011.88	1011.88	1011.88	1011.90	1011.88	1011.86	1011.88	1011.90	1011.84
	9	1011.89	1011.89	1011.92	1011.93	1011.93	1011.93	1011.90	1011.85	1011.83	1011.81	1011.78	1011.74	1011.86
	10	1011.68	1011.64	1011.64	1011.64	1011.63	1011.65	1011.64	1011.61	1011.60	1011.57	1011.56	1011.58	1011.62
	11	1011.55	1011.50	1011.47	1011.40	1011.36	1011.39	1011.44	1011.46	1011.39	1011.35	1011.46	1011.56	1011.44
	12	1011.62	1011.67	1011.63	1011.57	1011.45	1011.36	1011.39	1011.33	1011.21	1011.18	1011.34	1011.49	1011.43
	13	1011.47	1011.39	1011.33	1011.24	1011.13	1011.10	1011.02	1010.84	1010.71	1010.66	1010.66	1010.62	1011.01
	14	1010.58	1010.63	1010.71	1010.73	1010.76	1010.78	1010.75	1010.71	1010.64	1010.54	1010.47	1010.47	1010.65
	15	1010.55	1010.65	1010.77	1010.85	1010.84	1010.80	1010.79	1010.83	1010.85	1010.78	1010.74	1010.76	1010.77
	16	1010.82	1010.86	1010.78	1010.68	1010.69	1010.84	1011.07	1011.22	1011.28	1011.35	1011.43	1011.46	1011.04
	17	1011.56	1011.89	1012.40	1012.80	1013.04	1012.90	1012.42	1012.25	1012.25	1012.11	1012.04	1012.06	1012.31
	18	1012.13	1012.20	1012.41	1012.63	1012.56	1012.51	1012.63	1012.79	1013.08	1013.41	1013.43	1013.28	1012.75
	19	1013.18	1013.07	1012.90	1012.91	1013.07	1013.05	1012.98	1012.86	1012.74	1012.67	1012.64	1012.69	1012.89
	20	1012.66	1012.63	1012.66	1012.64	1012.55	1012.47	1012.37	1012.24	1012.07	1011.90	1011.84	1011.80	1012.32
	21	1011.70	1011.67	1011.81	1011.92	1012.06	1012.23	1012.29	1012.32	1012.29	1012.23	1012.28	1012.45	1012.10
	22	1012.56	1012.61	1012.66	1012.70	1012.80	1012.92	1013.00	1013.03	1013.06	1013.11	1013.16	1013.22	1012.90
	23	1013.20	1013.17	1013.18	1013.22	1013.22	1013.18	1013.15	1013.18	1013.25	1013.30	1013.29	1013.25	1013.21

S.V.I.R.CO. Observatory - Pressure in hectoPascal – September 2019

day	hh	00_05	05_10	10_15	15_20	20_25	25_30	30_35	35_40	40_45	45_50	50_55	55_60	average
3	0	1013.22	1013.18	1013.11	1013.03	1012.93	1012.90	1012.89	1012.90	1012.93	1012.91	1012.88	1012.88	1012.97
	1	1012.87	1012.84	1012.77	1012.70	1012.65	1012.65	1012.70	1012.71	1012.69	1012.72	1012.78	1012.81	1012.74
	2	1012.77	1012.74	1012.76	1012.80	1012.77	1012.73	1012.72	1012.70	1012.66	1012.68	1012.77	1012.83	1012.74
	3	1012.86	1012.92	1012.98	1013.02	1013.05	1013.06	1013.06	1013.03	1013.01	1013.00	1013.01	1013.04	1013.00
	4	1013.08	1013.12	1013.11	1013.06	1013.05	1013.10	1013.15	1013.19	1013.24	1013.26	1013.26	1013.27	1013.16
	5	1013.26	1013.25	1013.27	1013.33	1013.42	1013.48	1013.52	1013.56	1013.60	1013.62	1013.62	1013.63	1013.46
	6	1013.61	1013.59	1013.59	1013.52	1013.44	1013.46	1013.55	1013.58	1013.54	1013.55	1013.59	1013.63	1013.55
	7	1013.65	1013.67	1013.66	1013.61	1013.58	1013.61	1013.63	1013.63	1013.65	1013.67	1013.67	1013.68	1013.64
	8	1013.69	1013.69	1013.68	1013.65	1013.63	1013.69	1013.75	1013.74	1013.72	1013.70	1013.69	1013.67	1013.69
	9	1013.66	1013.69	1013.71	1013.74	1013.75	1013.75	1013.75	1013.68	1013.62	1013.62	1013.62	1013.60	1013.68
	10	1013.56	1013.54	1013.54	1013.53	1013.50	1013.48	1013.46	1013.44	1013.39	1013.33	1013.31	1013.31	1013.45
	11	1013.29	1013.28	1013.26	1013.18	1013.10	1013.03	1012.96	1012.95	1012.96	1012.92	1012.87	1012.86	1013.05
	12	1012.82	1012.79	1012.74	1012.71	1012.68	1012.64	1012.62	1012.58	1012.52	1012.45	1012.39	1012.34	1012.60
	13	1012.30	1012.28	1012.26	1012.21	1012.16	1012.11	1012.08	1012.04	1011.98	1011.94	1011.89	1011.82	1012.09
	14	1011.78	1011.79	1011.78	1011.77	1011.75	1011.71	1011.66	1011.56	1011.45	1011.37	1011.36	1011.42	1011.61
	15	1011.54	1011.69	1011.80	1011.85	1011.88	1011.90	1011.96	1012.01	1012.06	1012.09	1012.06	1012.05	1011.91
	16	1012.06	1012.01	1011.95	1011.95	1011.92	1011.89	1011.94	1012.05	1012.09	1012.13	1012.20	1012.26	1012.03
	17	1012.33	1012.38	1012.39	1012.40	1012.40	1012.42	1012.44	1012.48	1012.55	1012.61	1012.68	1012.74	1012.48
	18	1012.79	1012.87	1012.98	1013.08	1013.17	1013.22	1013.30	1013.38	1013.44	1013.50	1013.55	1013.61	1013.24
	19	1013.68	1013.73	1013.76	1013.80	1013.84	1013.86	1013.86	1013.86	1013.90	1013.93	1013.91	1013.91	1013.83
	20	1013.94	1013.98	1013.99	1013.98	1013.97	1013.94	1013.90	1013.89	1013.89	1013.89	1013.89	1013.91	1013.93
	21	1013.95	1013.97	1013.99	1014.02	1014.03	1014.04	1014.09	1014.13	1014.14	1014.18	1014.21	1014.23	1014.08
	22	1014.24	1014.26	1014.31	1014.34	1014.37	1014.42	1014.46	1014.48	1014.52	1014.57	1014.58	1014.57	1014.42
	23	1014.58	1014.58	1014.55	1014.50	1014.46	1014.45	1014.44	1014.41	1014.38	1014.32	1014.29	1014.31	1014.44
4	0	1014.31	1014.29	1014.23	1014.17	1014.13	1014.10	1014.06	1014.01	1014.01	1014.04	1014.04	1014.01	1014.11
	1	1013.99	1013.99	1013.98	1013.93	1013.92	1013.93	1013.92	1013.90	1013.90	1013.92	1013.95	1013.96	1013.94
	2	1013.94	1013.91	1013.92	1013.95	1013.96	1013.93	1013.90	1013.87	1013.86	1013.85	1013.84	1013.85	1013.90
	3	1013.85	1013.83	1013.81	1013.78	1013.77	1013.77	1013.76	1013.73	1013.70	1013.70	1013.74	1013.78	1013.77
	4	1013.81	1013.85	1013.87	1013.90	1013.93	1013.95	1014.00	1014.03	1014.03	1014.01	1013.98	1013.96	1013.94
	5	1013.97	1014.01	1014.07	1014.12	1014.13	1014.14	1014.16	1014.13	1014.11	1014.13	1014.15	1014.16	1014.10
	6	1014.18	1014.22	1014.26	1014.23	1014.18	1014.19	1014.21	1014.20	1014.20	1014.24	1014.28	1014.27	1014.22
	7	1014.21	1014.20	1014.21	1014.23	1014.24	1014.23	1014.20	1014.16	1014.17	1014.19	1014.17	1014.18	1014.20
	8	1014.24	1014.29	1014.28	1014.24	1014.20	1014.18	1014.16	1014.13	1014.13	1014.07	1014.00	1013.98	1014.16
	9	1013.97	1014.00	1014.00	1013.93	1013.89	1013.85	1013.82	1013.84	1013.87	1013.85	1013.77	1013.73	1013.87
	10	1013.71	1013.67	1013.67	1013.67	1013.65	1013.61	1013.54	1013.48	1013.44	1013.39	1013.33	1013.27	1013.53
	11	1013.23	1013.21	1013.18	1013.16	1013.14	1013.09	1012.98	1012.89	1012.84	1012.79	1012.74	1012.69	1012.99
	12	1012.67	1012.66	1012.60	1012.54	1012.47	1012.40	1012.34	1012.29	1012.24	1012.20	1012.16	1012.11	1012.39
	13	1012.07	1012.01	1011.97	1011.98	1011.95	1011.90	1011.86	1011.80	1011.77	1011.75	1011.74	1011.71	1011.87
	14	1011.69	1011.62	1011.55	1011.55	1011.57	1011.55	1011.54	1011.51	1011.44	1011.39	1011.40	1011.42	1011.52
	15	1011.39	1011.36	1011.32	1011.33	1011.39	1011.40	1011.39	1011.41	1011.44	1011.47	1011.49	1011.50	1011.41
	16	1011.50	1011.51	1011.55	1011.59	1011.61	1011.60	1011.57	1011.54	1011.54	1011.56	1011.56	1011.56	1011.56
	17	1011.57	1011.59	1011.62	1011.60	1011.57	1011.57	1011.59	1011.61	1011.61	1011.60	1011.62	1011.66	1011.60
	18	1011.71	1011.73	1011.76	1011.81	1011.85	1011.88	1011.92	1011.96	1012.00	1012.02	1012.03	1012.03	1011.89
	19	1012.03	1012.06	1012.10	1012.10	1012.08	1012.09	1012.11	1012.12	1012.14	1012.19	1012.24	1012.27	1012.13
	20	1012.27	1012.27	1012.27	1012.25	1012.23	1012.20	1012.21	1012.24	1012.24	1012.21	1012.21	1012.21	1012.23
	21	1012.17	1012.15	1012.16	1012.16	1012.15	1012.11	1012.05	1012.02	1012.02	1012.02	1012.00	1011.98	1012.08
	22	1011.94	1011.91	1011.88	1011.87	1011.84	1011.80	1011.77	1011.75	1011.74	1011.73	1011.71	1011.70	1011.80
	23	1011.72	1011.75	1011.74	1011.73	1011.73	1011.75	1011.73	1011.70	1011.66	1011.60	1011.59	1011.58	1011.69

S.V.I.R.CO. Observatory - Pressure in hectoPascal – September 2019

day	hh	00_05	05_10	10_15	15_20	20_25	25_30	30_35	35_40	40_45	45_50	50_55	55_60	average
5	0	1011.51	1011.48	1011.43	1011.41	1011.37	1011.31	1011.28	1011.26	1011.22	1011.17	1011.14	1011.12	1011.30
	1	1011.12	1011.08	1011.04	1011.00	1011.01	1011.01	1010.94	1010.89	1010.88	1010.91	1010.94	1010.94	1010.98
	2	1010.91	1010.86	1010.81	1010.76	1010.71	1010.68	1010.66	1010.66	1010.66	1010.64	1010.61	1010.59	1010.71
	3	1010.55	1010.50	1010.51	1010.56	1010.54	1010.51	1010.53	1010.54	1010.54	1010.57	1010.63	1010.64	1010.55
	4	1010.63	1010.63	1010.63	1010.65	1010.69	1010.74	1010.77	1010.77	1010.77	1010.80	1010.85	1010.89	1010.73
	5	1010.90	1010.92	1010.97	1011.03	1011.08	1011.10	1011.10	1011.11	1011.10	1011.07	1011.04	1011.02	1011.03
	6	1011.02	1011.02	1011.00	1010.97	1010.91	1010.90	1010.96	1010.98	1010.94	1010.91	1010.90	1010.92	1010.95
	7	1010.93	1010.96	1010.99	1010.99	1010.99	1010.95	1010.88	1010.85	1010.85	1010.87	1010.89	1010.90	1010.92
	8	1010.92	1010.96	1010.97	1010.94	1010.90	1010.89	1010.89	1010.88	1010.90	1010.93	1010.94	1010.95	1010.92
	9	1010.95	1010.89	1010.84	1010.84	1010.85	1010.87	1010.87	1010.84	1010.80	1010.77	1010.73	1010.68	1010.82
	10	1010.66	1010.63	1010.59	1010.57	1010.55	1010.52	1010.48	1010.42	1010.38	1010.35	1010.34	1010.35	1010.48
	11	1010.37	1010.34	1010.29	1010.27	1010.29	1010.28	1010.27	1010.28	1010.24	1010.19	1010.15	1010.12	1010.25
	12	1010.07	1010.06	1010.10	1010.11	1010.08	1010.00	1009.98	1009.99	1009.99	1009.97	1009.91	1009.89	1010.01
	13	1009.88	1009.81	1009.73	1009.68	1009.64	1009.62	1009.60	1009.60	1009.59	1009.58	1009.55	1009.52	1009.65
	14	1009.51	1009.46	1009.42	1009.40	1009.40	1009.40	1009.44	1009.47	1009.48	1009.46	1009.44	1009.44	1009.44
	15	1009.49	1009.52	1009.53	1009.53	1009.50	1009.48	1009.49	1009.50	1009.51	1009.51	1009.49	1009.49	1009.50
	16	1009.51	1009.47	1009.41	1009.40	1009.45	1009.48	1009.49	1009.53	1009.59	1009.62	1009.64	1009.67	1009.52
	17	1009.68	1009.68	1009.69	1009.71	1009.74	1009.77	1009.83	1009.90	1009.92	1009.91	1009.91	1009.93	1009.80
	18	1009.96	1009.99	1010.01	1010.03	1010.05	1010.08	1010.09	1010.13	1010.16	1010.18	1010.23	1010.27	1010.10
	19	1010.31	1010.35	1010.40	1010.42	1010.43	1010.45	1010.50	1010.58	1010.64	1010.66	1010.65	1010.65	1010.50
	20	1010.65	1010.67	1010.66	1010.65	1010.67	1010.70	1010.75	1010.79	1010.79	1010.74	1010.66	1010.63	1010.69
	21	1010.62	1010.60	1010.60	1010.62	1010.59	1010.56	1010.55	1010.58	1010.61	1010.62	1010.61	1010.60	1010.59
	22	1010.62	1010.65	1010.68	1010.73	1010.79	1010.83	1010.84	1010.87	1010.92	1010.95	1010.96	1010.99	1010.82
	23	1011.01	1011.00	1011.01	1011.03	1011.06	1011.08	1011.09	1011.09	1011.08	1011.08	1011.08	1011.09	1011.06
6	0	1011.13	1011.13	1011.13	1011.13	1011.12	1011.09	1011.07	1011.03	1011.01	1011.02	1011.02	1010.98	1011.07
	1	1010.93	1010.91	1010.92	1010.92	1010.91	1010.91	1010.90	1010.90	1010.90	1010.89	1010.84	1010.78	1010.89
	2	1010.76	1010.72	1010.66	1010.64	1010.68	1010.71	1010.69	1010.70	1010.74	1010.76	1010.79	1010.79	1010.72
	3	1010.79	1010.81	1010.82	1010.84	1010.83	1010.82	1010.84	1010.83	1010.82	1010.84	1010.88	1010.91	1010.83
	4	1010.96	1011.01	1011.04	1011.11	1011.19	1011.22	1011.28	1011.34	1011.38	1011.37	1011.36	1011.40	1011.22
	5	1011.44	1011.48	1011.53	1011.57	1011.61	1011.62	1011.61	1011.61	1011.60	1011.61	1011.62	1011.58	1011.57
	6	1011.54	1011.52	1011.54	1011.57	1011.57	1011.61	1011.67	1011.71	1011.73	1011.77	1011.86	1011.88	1011.66
	7	1011.87	1011.90	1012.01	1012.07	1012.09	1012.13	1012.15	1012.15	1012.16	1012.21	1012.27	1012.29	1012.11
	8	1012.31	1012.34	1012.37	1012.40	1012.47	1012.54	1012.57	1012.63	1012.70	1012.75	1012.82	1012.91	1012.57
	9	1012.96	1012.92	1012.89	1012.98	1013.06	1013.07	1013.09	1013.13	1013.15	1013.12	1013.10	1013.10	1013.04
	10	1013.12	1013.14	1013.09	1013.01	1012.92	1012.92	1012.97	1012.96	1012.96	1012.95	1012.93	1012.98	1012.99
	11	1013.06	1013.08	1013.04	1013.06	1013.10	1013.15	1013.22	1013.19	1013.13	1013.14	1013.20	1013.18	1013.13
	12	1013.13	1013.14	1013.11	1013.06	1013.05	1013.02	1013.03	1013.06	1013.07	1013.02	1012.97	1012.96	1013.05
	13	1012.96	1012.96	1012.93	1012.93	1012.94	1012.88	1012.87	1012.85	1012.80	1012.78	1012.78	1012.82	1012.87
	14	1012.81	1012.80	1012.82	1012.81	1012.77	1012.73	1012.72	1012.77	1012.84	1012.88	1012.87	1012.83	1012.80
	15	1012.79	1012.78	1012.75	1012.68	1012.69	1012.78	1012.83	1012.83	1012.80	1012.76	1012.76	1012.75	1012.76
	16	1012.73	1012.72	1012.65	1012.58	1012.52	1012.48	1012.46	1012.47	1012.52	1012.53	1012.54	1012.61	1012.57
	17	1012.70	1012.75	1012.76	1012.81	1012.82	1012.82	1012.85	1012.92	1012.99	1013.03	1013.02	1013.01	1012.87
	18	1013.04	1013.09	1013.16	1013.22	1013.24	1013.28	1013.31	1013.35	1013.39	1013.40	1013.45	1013.52	1013.29
	19	1013.58	1013.61	1013.59	1013.61	1013.65	1013.67	1013.69	1013.71	1013.72	1013.71	1013.69	1013.65	1013.65
	20	1013.63	1013.65	1013.66	1013.69	1013.70	1013.68	1013.68	1013.67	1013.64	1013.59	1013.57	1013.56	1013.64
	21	1013.53	1013.51	1013.50	1013.49	1013.46	1013.43	1013.40	1013.40	1013.42	1013.40	1013.42	1013.46	1013.45
	22	1013.44	1013.42	1013.42	1013.42	1013.41	1013.39	1013.36	1013.36	1013.37	1013.38	1013.38	1013.35	1013.39
	23	1013.34	1013.33	1013.30	1013.28	1013.27	1013.26	1013.21	1013.19	1013.22	1013.23	1013.17	1013.10	1013.24

S.V.I.R.CO. Observatory - Pressure in hectoPascal – September 2019

day	hh	00_05	05_10	10_15	15_20	20_25	25_30	30_35	35_40	40_45	45_50	50_55	55_60	average
7	0	1013.02	1013.04	1013.05	1013.02	1012.99	1012.97	1012.94	1012.91	1012.89	1012.84	1012.81	1012.80	1012.93
	1	1012.81	1012.82	1012.81	1012.81	1012.78	1012.74	1012.71	1012.72	1012.74	1012.74	1012.73	1012.70	1012.76
	2	1012.68	1012.64	1012.60	1012.61	1012.60	1012.56	1012.56	1012.61	1012.65	1012.70	1012.71	1012.65	1012.63
	3	1012.61	1012.60	1012.61	1012.57	1012.54	1012.58	1012.62	1012.65	1012.72	1012.82	1012.90	1012.95	1012.68
	4	1012.95	1012.92	1012.83	1012.81	1012.88	1012.90	1012.88	1012.88	1012.92	1012.96	1012.93	1012.87	1012.89
	5	1012.79	1012.71	1012.70	1012.77	1012.90	1013.03	1013.13	1013.13	1013.08	1013.04	1013.06	1013.18	1012.96
	6	1013.31	1013.40	1013.40	1013.36	1013.33	1013.30	1013.33	1013.43	1013.52	1013.57	1013.62	1013.67	1013.44
	7	1013.72	1013.75	1013.81	1013.84	1013.88	1013.89	1013.85	1013.84	1013.85	1013.86	1013.86	1013.85	1013.83
	8	1013.86	1013.86	1013.85	1013.86	1013.84	1013.80	1013.77	1013.75	1013.74	1013.75	1013.76	1013.74	1013.79
	9	1013.71	1013.70	1013.67	1013.60	1013.56	1013.55	1013.52	1013.50	1013.49	1013.49	1013.46	1013.42	1013.55
	10	1013.39	1013.35	1013.31	1013.24	1013.19	1013.18	1013.16	1013.12	1013.11	1013.13	1013.13	1013.09	1013.20
	11	1013.01	1013.01	1013.09	1013.11	1013.13	1013.14	1013.08	1013.04	1013.02	1013.01	1013.02	1012.95	1013.05
	12	1012.91	1012.95	1012.93	1012.90	1012.92	1012.95	1012.91	1012.79	1012.74	1012.76	1012.77	1012.79	1012.86
	13	1012.83	1012.89	1012.87	1012.82	1012.84	1012.87	1012.89	1012.88	1012.89	1012.91	1012.91	1012.89	1012.87
	14	1012.87	1012.88	1012.91	1012.93	1012.93	1012.92	1012.94	1013.02	1013.09	1013.11	1013.08	1013.03	1012.97
	15	1013.04	1013.08	1013.10	1013.11	1013.16	1013.19	1013.23	1013.25	1013.24	1013.24	1013.22	1013.18	1013.17
	16	1013.16	1013.17	1013.17	1013.17	1013.17	1013.17	1013.18	1013.22	1013.27	1013.35	1013.39	1013.43	1013.23
	17	1013.50	1013.55	1013.61	1013.63	1013.62	1013.61	1013.60	1013.61	1013.62	1013.67	1013.73	1013.77	1013.62
	18	1013.80	1013.83	1013.84	1013.86	1013.90	1013.93	1013.96	1014.02	1014.07	1014.10	1014.11	1014.11	1013.96
	19	1014.13	1014.15	1014.16	1014.21	1014.30	1014.35	1014.37	1014.38	1014.41	1014.44	1014.45	1014.45	1014.31
	20	1014.42	1014.43	1014.47	1014.47	1014.48	1014.53	1014.59	1014.63	1014.65	1014.66	1014.66	1014.65	1014.55
	21	1014.66	1014.67	1014.67	1014.65	1014.68	1014.72	1014.74	1014.75	1014.74	1014.75	1014.77	1014.75	1014.71
	22	1014.73	1014.75	1014.78	1014.77	1014.76	1014.81	1014.87	1014.89	1014.89	1014.89	1014.85	1014.78	1014.81
	23	1014.74	1014.68	1014.63	1014.61	1014.58	1014.53	1014.46	1014.38	1014.33	1014.31	1014.30	1014.31	1014.49
8	0	1014.27	1014.26	1014.24	1014.22	1014.21	1014.20	1014.16	1014.12	1014.14	1014.18	1014.19	1014.18	1014.19
	1	1014.14	1014.09	1014.05	1014.02	1013.98	1013.94	1013.93	1013.95	1013.96	1013.94	1013.93	1013.91	1013.98
	2	1013.88	1013.88	1013.91	1013.92	1013.90	1013.84	1013.78	1013.74	1013.70	1013.66	1013.66	1013.63	1013.79
	3	1013.58	1013.56	1013.54	1013.56	1013.58	1013.60	1013.60	1013.56	1013.56	1013.59	1013.57	1013.53	1013.57
	4	1013.53	1013.55	1013.55	1013.55	1013.60	1013.65	1013.69	1013.71	1013.68	1013.65	1013.63	1013.60	1013.61
	5	1013.55	1013.55	1013.59	1013.59	1013.57	1013.52	1013.47	1013.45	1013.44	1013.40	1013.39	1013.45	1013.49
	6	1013.51	1013.52	1013.51	1013.52	1013.52	1013.53	1013.56	1013.57	1013.58	1013.54	1013.53	1013.57	1013.54
	7	1013.60	1013.64	1013.70	1013.72	1013.73	1013.73	1013.70	1013.74	1013.78	1013.74	1013.71	1013.69	1013.70
	8	1013.66	1013.70	1013.73	1013.71	1013.68	1013.72	1013.73	1013.73	1013.74	1013.74	1013.77	1013.80	1013.72
	9	1013.81	1013.83	1013.86	1013.86	1013.83	1013.83	1013.79	1013.76	1013.77	1013.72	1013.68	1013.64	1013.78
	10	1013.60	1013.61	1013.57	1013.52	1013.53	1013.53	1013.46	1013.41	1013.46	1013.49	1013.43	1013.39	1013.50
	11	1013.43	1013.38	1013.36	1013.43	1013.43	1013.40	1013.36	1013.31	1013.22	1013.17	1013.20	1013.22	1013.32
	12	1013.23	1013.19	1013.17	1013.25	1013.31	1013.26	1013.25	1013.33	1013.34	1013.33	1013.34	1013.37	1013.28
	13	1013.40	1013.42	1013.40	1013.31	1013.24	1013.22	1013.21	1013.18	1013.16	1013.19	1013.20	1013.20	1013.26
	14	1013.21	1013.15	1013.10	1013.05	1013.00	1013.02	1013.03	1013.00	1012.95	1012.91	1012.97	1012.99	1013.03
	15	1012.96	1012.94	1012.95	1012.96	1012.90	1012.87	1012.88	1012.90	1012.92	1012.93	1012.95	1012.96	1012.92
	16	1012.98	1013.04	1013.06	1013.03	1013.03	1013.03	1012.99	1012.97	1012.94	1012.92	1012.99	1013.03	1013.00
	17	1013.03	1013.03	1013.06	1013.05	1013.04	1013.07	1013.10	1013.12	1013.14	1013.15	1013.19	1013.27	1013.10
	18	1013.30	1013.31	1013.37	1013.45	1013.46	1013.46	1013.52	1013.58	1013.64	1013.65	1013.67	1013.72	1013.51
	19	1013.76	1013.78	1013.81	1013.80	1013.76	1013.75	1013.79	1013.81	1013.79	1013.79	1013.79	1013.75	1013.78
	20	1013.72	1013.69	1013.66	1013.63	1013.60	1013.60	1013.57	1013.56	1013.58	1013.56	1013.57	1013.58	1013.61
	21	1013.57	1013.60	1013.62	1013.59	1013.52	1013.47	1013.47	1013.45	1013.40	1013.33	1013.25	1013.22	1013.46
	22	1013.14	1013.09	1013.13	1013.15	1013.13	1013.09	1013.07	1013.06	1012.99	1012.97	1013.04	1013.09	1013.08
	23	1013.12	1013.13	1013.08	1013.03	1013.01	1012.96	1012.96	1012.99	1012.98	1012.99	1013.00	1012.98	1013.02

S.V.I.R.CO. Observatory - Pressure in hectoPascal – September 2019

day	hh	00_05	05_10	10_15	15_20	20_25	25_30	30_35	35_40	40_45	45_50	50_55	55_60	average
9	0	1012.99	1013.02	1013.00	1012.87	1012.81	1012.85	1012.89	1012.87	1012.77	1012.67	1012.61	1012.59	1012.82
	1	1012.57	1012.58	1012.57	1012.53	1012.50	1012.45	1012.43	1012.39	1012.35	1012.36	1012.35	1012.30	1012.45
	2	1012.26	1012.21	1012.18	1012.18	1012.20	1012.21	1012.17	1012.11	1012.10	1012.12	1012.12	1012.19	1012.17
	3	1012.26	1012.26	1012.19	1012.12	1012.05	1012.00	1011.95	1011.91	1011.93	1011.95	1011.92	1011.89	1012.03
	4	1011.90	1011.93	1011.92	1011.90	1011.93	1011.98	1012.02	1012.03	1012.02	1011.98	1011.94	1011.92	1011.95
	5	1011.93	1011.94	1011.91	1011.87	1011.85	1011.86	1011.90	1011.95	1011.97	1011.97	1011.96	1011.97	1011.92
	6	1012.02	1012.05	1012.11	1012.17	1012.22	1012.26	1012.29	1012.34	1012.35	1012.33	1012.33	1012.36	1012.23
	7	1012.42	1012.49	1012.51	1012.52	1012.53	1012.54	1012.59	1012.63	1012.64	1012.69	1012.74	1012.77	1012.59
	8	1012.82	1012.87	1012.88	1012.87	1012.86	1012.86	1012.88	1012.88	1012.89	1012.91	1012.92	1012.95	1012.88
	9	1012.98	1012.97	1012.92	1012.90	1012.91	1012.91	1012.90	1012.90	1012.88	1012.85	1012.85	1012.87	1012.90
	10	1012.87	1012.85	1012.83	1012.83	1012.82	1012.81	1012.82	1012.86	1012.90	1012.90	1012.87	1012.85	1012.85
	11	1012.84	1012.87	1012.91	1012.90	1012.91	1012.97	1013.03	1013.03	1013.07	1013.12	1013.13	1013.12	1012.99
	12	1013.10	1013.13	1013.17	1013.15	1013.13	1013.14	1013.12	1013.09	1013.07	1013.06	1013.03	1013.03	1013.10
	13	1013.05	1013.06	1013.02	1012.99	1013.02	1013.04	1013.00	1012.96	1012.98	1012.99	1012.94	1012.92	1012.99
	14	1012.93	1012.94	1012.98	1012.96	1012.94	1012.95	1012.97	1013.01	1013.04	1013.03	1013.00	1013.04	1012.98
	15	1013.14	1013.16	1013.16	1013.17	1013.17	1013.17	1013.15	1013.13	1013.17	1013.20	1013.21	1013.18	1013.17
	16	1013.20	1013.28	1013.31	1013.33	1013.35	1013.34	1013.36	1013.35	1013.33	1013.33	1013.37	1013.45	1013.33
	17	1013.50	1013.52	1013.53	1013.57	1013.62	1013.66	1013.71	1013.76	1013.82	1013.84	1013.86	1013.92	1013.69
	18	1013.98	1014.00	1014.01	1014.08	1014.18	1014.26	1014.30	1014.36	1014.44	1014.50	1014.55	1014.60	1014.27
	19	1014.61	1014.62	1014.62	1014.64	1014.69	1014.75	1014.81	1014.89	1014.92	1014.91	1014.95	1015.01	1014.78
	20	1015.03	1015.00	1014.99	1014.98	1014.97	1014.99	1015.01	1014.98	1014.93	1014.91	1014.93	1014.95	1014.97
	21	1014.95	1014.94	1014.93	1014.95	1014.97	1014.99	1015.04	1015.08	1015.06	1015.07	1015.09	1015.10	1015.01
	22	1015.10	1015.10	1015.10	1015.05	1015.03	1015.07	1015.08	1015.04	1015.00	1015.00	1014.98	1014.95	1015.04
	23	1014.97	1014.99	1014.99	1014.96	1014.95	1014.97	1014.94	1014.90	1014.89	1014.89	1014.86	1014.78	1014.92
10	0	1014.71	1014.64	1014.53	1014.46	1014.40	1014.34	1014.32	1014.34	1014.34	1014.35	1014.36	1014.36	1014.41
	1	1014.38	1014.38	1014.37	1014.41	1014.43	1014.41	1014.37	1014.35	1014.35	1014.31	1014.28	1014.29	1014.36
	2	1014.29	1014.28	1014.27	1014.26	1014.22	1014.14	1014.09	1014.09	1014.10	1014.07	1013.99	1013.92	1014.14
	3	1013.90	1013.86	1013.82	1013.80	1013.79	1013.82	1013.80	1013.79	1013.81	1013.81	1013.80	1013.81	1013.82
	4	1013.87	1013.91	1013.91	1013.90	1013.92	1013.92	1013.88	1013.89	1013.86	1013.81	1013.77	1013.74	1013.86
	5	1013.75	1013.81	1013.84	1013.85	1013.86	1013.88	1013.88	1013.93	1013.97	1013.94	1013.96	1013.99	1013.89
	6	1013.98	1013.95	1013.96	1013.96	1013.98	1013.99	1013.97	1013.98	1014.00	1013.98	1013.96	1013.99	1013.97
	7	1014.07	1014.10	1014.05	1014.02	1014.04	1014.05	1014.06	1014.11	1014.15	1014.14	1014.11	1014.10	1014.08
	8	1014.09	1014.10	1014.08	1014.04	1014.01	1013.98	1013.98	1013.96	1013.89	1013.86	1013.87	1013.87	1013.98
	9	1013.87	1013.88	1013.87	1013.85	1013.86	1013.82	1013.79	1013.85	1013.88	1013.86	1013.85	1013.87	1013.85
	10	1013.83	1013.74	1013.71	1013.66	1013.58	1013.54	1013.49	1013.51	1013.52	1013.47	1013.46	1013.48	1013.58
	11	1013.44	1013.37	1013.31	1013.28	1013.26	1013.25	1013.22	1013.16	1013.11	1013.08	1013.05	1013.02	1013.21
	12	1012.97	1012.94	1012.93	1012.92	1012.86	1012.80	1012.76	1012.73	1012.71	1012.66	1012.63	1012.59	1012.79
	13	1012.48	1012.40	1012.36	1012.31	1012.27	1012.24	1012.18	1012.12	1012.05	1012.00	1011.96	1011.93	1012.19
	14	1011.90	1011.89	1011.87	1011.79	1011.72	1011.67	1011.63	1011.61	1011.60	1011.60	1011.59	1011.56	1011.70
	15	1011.53	1011.50	1011.48	1011.46	1011.46	1011.44	1011.38	1011.34	1011.35	1011.35	1011.35	1011.38	1011.42
	16	1011.40	1011.43	1011.43	1011.42	1011.42	1011.43	1011.39	1011.38	1011.42	1011.41	1011.43	1011.50	1011.42
	17	1011.49	1011.44	1011.45	1011.51	1011.58	1011.66	1011.74	1011.80	1011.83	1011.88	1011.96	1012.04	1011.70
	18	1012.11	1012.20	1012.31	1012.37	1012.42	1012.52	1012.60	1012.65	1012.73	1012.77	1012.75	1012.77	1012.51
	19	1012.85	1012.95	1013.03	1013.04	1013.04	1013.03	1013.03	1013.08	1013.14	1013.19	1013.21	1013.17	1013.06
	20	1013.15	1013.13	1013.11	1013.13	1013.20	1013.27	1013.30	1013.30	1013.33	1013.36	1013.33	1013.28	1013.24
	21	1013.28	1013.34	1013.40	1013.43	1013.42	1013.37	1013.31	1013.28	1013.32	1013.35	1013.39	1013.40	1013.36
	22	1013.33	1013.32	1013.32	1013.32	1013.39	1013.42	1013.42	1013.46	1013.47	1013.48	1013.48	1013.50	1013.41
	23	1013.57	1013.63	1013.70	1013.75	1013.74	1013.72	1013.73	1013.74	1013.72	1013.70	1013.70	1013.72	1013.70

S.V.I.R.CO. Observatory - Pressure in hectoPascal – September 2019

day	hh	00_05	05_10	10_15	15_20	20_25	25_30	30_35	35_40	40_45	45_50	50_55	55_60	average
11	0	1013.80	1013.85	1013.92	1013.96	1013.97	1013.97	1013.98	1014.00	1014.01	1014.03	1014.04	1014.03	1013.97
	1	1014.04	1013.99	1013.88	1013.83	1013.79	1013.77	1013.81	1013.88	1013.92	1013.89	1013.85	1013.82	1013.87
	2	1013.81	1013.81	1013.83	1013.82	1013.83	1013.87	1013.93	1013.98	1014.02	1014.04	1014.04	1014.05	1013.92
	3	1014.09	1014.12	1014.15	1014.20	1014.24	1014.25	1014.29	1014.33	1014.36	1014.40	1014.44	1014.50	1014.28
	4	1014.55	1014.57	1014.58	1014.58	1014.59	1014.65	1014.68	1014.68	1014.70	1014.73	1014.78	1014.85	1014.66
	5	1014.91	1014.96	1015.02	1015.11	1015.20	1015.26	1015.31	1015.32	1015.27	1015.28	1015.32	1015.35	1015.19
	6	1015.41	1015.48	1015.54	1015.62	1015.71	1015.83	1015.95	1016.03	1016.10	1016.17	1016.26	1016.36	1015.87
	7	1016.40	1016.45	1016.52	1016.59	1016.70	1016.78	1016.83	1016.87	1016.91	1016.97	1017.03	1017.05	1016.76
	8	1017.07	1017.13	1017.19	1017.23	1017.27	1017.30	1017.29	1017.25	1017.24	1017.23	1017.27	1017.32	1017.23
	9	1017.34	1017.34	1017.31	1017.31	1017.29	1017.27	1017.27	1017.26	1017.22	1017.14	1017.08	1017.08	1017.24
	10	1017.04	1016.99	1016.97	1016.96	1016.96	1016.91	1016.87	1016.87	1016.88	1016.90	1016.93	1016.94	1016.93
	11	1016.88	1016.82	1016.83	1016.85	1016.80	1016.73	1016.69	1016.71	1016.71	1016.68	1016.66	1016.62	1016.74
	12	1016.60	1016.63	1016.64	1016.65	1016.69	1016.72	1016.73	1016.71	1016.67	1016.67	1016.73	1016.75	1016.68
	13	1016.76	1016.80	1016.82	1016.86	1016.94	1017.00	1017.03	1017.10	1017.13	1017.12	1017.15	1017.19	1016.99
	14	1017.23	1017.29	1017.32	1017.27	1017.27	1017.31	1017.30	1017.28	1017.27	1017.28	1017.31	1017.34	1017.29
	15	1017.41	1017.48	1017.52	1017.59	1017.64	1017.66	1017.74	1017.84	1017.94	1018.05	1018.18	1018.26	1017.77
	16	1018.28	1018.29	1018.33	1018.39	1018.46	1018.53	1018.54	1018.50	1018.48	1018.50	1018.52	1018.51	1018.44
	17	1018.52	1018.53	1018.53	1018.55	1018.58	1018.59	1018.61	1018.67	1018.74	1018.80	1018.90	1018.99	1018.67
	18	1019.08	1019.17	1019.23	1019.27	1019.29	1019.33	1019.41	1019.52	1019.62	1019.68	1019.75	1019.82	1019.43
	19	1019.86	1019.86	1019.88	1019.91	1019.92	1019.94	1020.02	1020.10	1020.12	1020.12	1020.14	1020.17	1020.00
	20	1020.20	1020.22	1020.22	1020.23	1020.24	1020.24	1020.24	1020.23	1020.23	1020.23	1020.22	1020.25	1020.23
	21	1020.29	1020.32	1020.33	1020.30	1020.30	1020.30	1020.29	1020.24	1020.22	1020.23	1020.20	1020.18	1020.26
	22	1020.16	1020.15	1020.16	1020.15	1020.15	1020.18	1020.24	1020.29	1020.34	1020.41	1020.47	1020.49	1020.26
	23	1020.53	1020.57	1020.58	1020.62	1020.67	1020.66	1020.65	1020.69	1020.74	1020.81	1020.89	1020.91	1020.69
12	0	1020.92	1020.88	1020.80	1020.76	1020.78	1020.82	1020.86	1020.89	1020.87	1020.88	1020.97	1021.04	1020.87
	1	1021.06	1021.07	1021.09	1021.11	1021.10	1021.12	1021.20	1021.27	1021.29	1021.30	1021.29	1021.28	1021.18
	2	1021.27	1021.29	1021.34	1021.36	1021.35	1021.35	1021.36	1021.37	1021.38	1021.40	1021.45	1021.53	1021.37
	3	1021.58	1021.62	1021.61	1021.59	1021.59	1021.61	1021.64	1021.67	1021.69	1021.73	1021.78	1021.84	1021.66
	4	1021.89	1021.91	1021.93	1021.96	1022.02	1022.08	1022.10	1022.15	1022.23	1022.29	1022.37	1022.44	1022.11
	5	1022.46	1022.47	1022.52	1022.59	1022.65	1022.72	1022.77	1022.82	1022.85	1022.87	1022.91	1022.97	1022.72
	6	1023.01	1023.03	1023.07	1023.14	1023.23	1023.31	1023.37	1023.43	1023.47	1023.53	1023.58	1023.65	1023.32
	7	1023.72	1023.78	1023.84	1023.90	1023.97	1024.03	1024.07	1024.11	1024.16	1024.19	1024.20	1024.20	1024.01
	8	1024.20	1024.24	1024.28	1024.30	1024.34	1024.36	1024.35	1024.36	1024.40	1024.42	1024.45	1024.50	1024.35
	9	1024.57	1024.61	1024.62	1024.62	1024.62	1024.60	1024.56	1024.52	1024.48	1024.47	1024.47	1024.45	1024.55
	10	1024.44	1024.42	1024.37	1024.33	1024.32	1024.28	1024.22	1024.16	1024.09	1024.00	1023.92	1023.87	1024.20
	11	1023.81	1023.77	1023.74	1023.69	1023.63	1023.58	1023.51	1023.44	1023.39	1023.36	1023.34	1023.32	1023.55
	12	1023.31	1023.28	1023.26	1023.24	1023.18	1023.11	1023.09	1023.08	1023.02	1022.98	1022.96	1022.95	1023.12
	13	1022.92	1022.86	1022.84	1022.86	1022.85	1022.82	1022.82	1022.83	1022.85	1022.84	1022.81	1022.81	1022.84
	14	1022.85	1022.88	1022.89	1022.88	1022.86	1022.84	1022.79	1022.71	1022.65	1022.62	1022.60	1022.58	1022.76
	15	1022.55	1022.51	1022.48	1022.45	1022.43	1022.40	1022.37	1022.35	1022.33	1022.30	1022.29	1022.27	1022.39
	16	1022.30	1022.34	1022.32	1022.32	1022.32	1022.30	1022.30	1022.35	1022.41	1022.45	1022.47	1022.51	1022.36
	17	1022.57	1022.61	1022.63	1022.62	1022.62	1022.65	1022.67	1022.68	1022.69	1022.72	1022.76	1022.83	1022.67
	18	1022.88	1022.91	1022.93	1022.98	1023.03	1023.08	1023.14	1023.16	1023.19	1023.24	1023.25	1023.23	1023.08
	19	1023.23	1023.24	1023.25	1023.25	1023.27	1023.32	1023.33	1023.31	1023.24	1023.15	1023.07	1023.07	1023.22
	20	1023.18	1023.21	1023.19	1023.21	1023.24	1023.31	1023.36	1023.47	1023.61	1023.70	1023.75	1023.79	1023.42
	21	1023.83	1023.86	1023.86	1023.87	1023.84	1023.79	1023.72	1023.64	1023.61	1023.60	1023.62	1023.65	1023.74
	22	1023.68	1023.71	1023.79	1023.86	1023.89	1023.90	1023.92	1023.94	1023.98	1024.02	1024.04	1024.05	1023.90
	23	1024.06	1024.07	1024.10	1024.15	1024.20	1024.25	1024.31	1024.32	1024.30	1024.31	1024.28	1024.28	1024.22



S.V.I.R.CO. Observatory - Pressure in hectoPascal – September 2019

day	hh	00_05	05_10	10_15	15_20	20_25	25_30	30_35	35_40	40_45	45_50	50_55	55_60	average
13	0	1024.28	1024.30	1024.34	1024.35	1024.38	1024.43	1024.41	1024.37	1024.36	1024.35	1024.40	1024.45	1024.37
	1	1024.48	1024.53	1024.59	1024.65	1024.69	1024.71	1024.75	1024.78	1024.80	1024.82	1024.89	1024.95	1024.72
	2	1024.95	1024.98	1025.03	1025.01	1024.99	1024.99	1024.97	1024.96	1025.00	1025.07	1025.10	1025.08	1025.01
	3	1025.10	1025.14	1025.16	1025.18	1025.20	1025.24	1025.30	1025.34	1025.34	1025.38	1025.44	1025.48	1025.27
	4	1025.50	1025.54	1025.58	1025.62	1025.66	1025.71	1025.72	1025.71	1025.71	1025.72	1025.74	1025.80	1025.67
	5	1025.91	1026.01	1026.04	1026.06	1026.11	1026.09	1026.00	1025.97	1025.93	1025.89	1025.93	1025.96	1025.99
	6	1025.89	1025.86	1025.89	1025.89	1025.88	1025.91	1025.93	1025.92	1025.93	1025.97	1026.01	1026.06	1025.93
	7	1026.12	1026.17	1026.22	1026.24	1026.26	1026.30	1026.32	1026.36	1026.40	1026.41	1026.41	1026.38	1026.30
	8	1026.30	1026.23	1026.20	1026.19	1026.17	1026.15	1026.14	1026.11	1026.07	1026.01	1025.97	1025.94	1026.12
	9	1025.86	1025.76	1025.69	1025.63	1025.58	1025.55	1025.53	1025.51	1025.46	1025.41	1025.34	1025.26	1025.55
	10	1025.20	1025.15	1025.14	1025.11	1025.06	1025.04	1025.00	1024.93	1024.90	1024.89	1024.88	1024.86	1025.01
	11	1024.83	1024.79	1024.76	1024.72	1024.67	1024.62	1024.57	1024.54	1024.53	1024.50	1024.46	1024.42	1024.61
	12	1024.40	1024.38	1024.31	1024.22	1024.18	1024.18	1024.16	1024.14	1024.12	1024.08	1024.06	1024.03	1024.19
	13	1023.97	1023.96	1023.96	1023.96	1023.98	1024.00	1024.00	1024.02	1024.02	1023.96	1023.93	1023.89	1023.97
	14	1023.86	1023.89	1023.89	1023.86	1023.82	1023.79	1023.79	1023.82	1023.83	1023.84	1023.85	1023.83	1023.84
	15	1023.77	1023.72	1023.72	1023.71	1023.69	1023.71	1023.73	1023.78	1023.80	1023.81	1023.85	1023.86	1023.76
	16	1023.84	1023.86	1023.89	1023.87	1023.87	1023.87	1023.85	1023.86	1023.90	1023.92	1023.93	1023.91	1023.88
	17	1023.92	1023.96	1023.95	1023.94	1023.98	1023.99	1024.00	1024.02	1024.02	1024.05	1024.11	1024.16	1024.01
	18	1024.19	1024.24	1024.27	1024.31	1024.39	1024.44	1024.47	1024.49	1024.52	1024.57	1024.60	1024.61	1024.42
	19	1024.64	1024.69	1024.72	1024.75	1024.79	1024.83	1024.84	1024.80	1024.80	1024.81	1024.82	1024.85	1024.78
	20	1024.86	1024.85	1024.84	1024.80	1024.81	1024.83	1024.81	1024.79	1024.79	1024.81	1024.81	1024.78	1024.81
	21	1024.76	1024.74	1024.69	1024.63	1024.57	1024.48	1024.38	1024.29	1024.23	1024.23	1024.28	1024.30	1024.46
	22	1024.27	1024.23	1024.21	1024.22	1024.26	1024.29	1024.32	1024.36	1024.39	1024.41	1024.44	1024.43	1024.32
	23	1024.38	1024.35	1024.36	1024.36	1024.32	1024.31	1024.32	1024.32	1024.27	1024.21	1024.17	1024.15	1024.29
14	0	1024.09	1024.08	1024.04	1023.95	1023.90	1023.91	1023.92	1023.87	1023.80	1023.74	1023.70	1023.70	1023.88
	1	1023.73	1023.79	1023.80	1023.74	1023.65	1023.58	1023.51	1023.46	1023.45	1023.44	1023.45	1023.47	1023.59
	2	1023.48	1023.47	1023.47	1023.47	1023.50	1023.55	1023.58	1023.57	1023.55	1023.56	1023.59	1023.60	1023.53
	3	1023.59	1023.59	1023.60	1023.61	1023.64	1023.64	1023.65	1023.67	1023.70	1023.76	1023.79	1023.80	1023.67
	4	1023.81	1023.85	1023.89	1023.86	1023.83	1023.85	1023.88	1023.92	1023.95	1023.93	1023.94	1024.01	1023.89
	5	1024.06	1024.09	1024.15	1024.21	1024.28	1024.34	1024.41	1024.48	1024.51	1024.58	1024.70	1024.79	1024.38
	6	1024.81	1024.83	1024.85	1024.86	1024.88	1024.88	1024.87	1024.87	1024.88	1024.88	1024.89	1024.92	1024.87
	7	1024.96	1024.98	1024.99	1025.03	1025.03	1025.00	1025.02	1025.04	1025.01	1024.97	1024.94	1024.92	1024.99
	8	1024.92	1024.91	1024.88	1024.83	1024.82	1024.84	1024.81	1024.77	1024.74	1024.73	1024.72	1024.71	1024.80
	9	1024.69	1024.64	1024.61	1024.60	1024.55	1024.51	1024.46	1024.42	1024.43	1024.41	1024.37	1024.36	1024.50
	10	1024.33	1024.24	1024.17	1024.10	1024.05	1024.00	1023.96	1023.93	1023.89	1023.84	1023.80	1023.75	1024.00
	11	1023.74	1023.76	1023.72	1023.66	1023.62	1023.58	1023.55	1023.51	1023.50	1023.46	1023.38	1023.34	1023.56
	12	1023.30	1023.23	1023.18	1023.14	1023.17	1023.23	1023.22	1023.21	1023.19	1023.14	1023.16	1023.19	1023.19
	13	1023.20	1023.15	1023.10	1023.05	1022.98	1022.96	1022.99	1023.00	1022.96	1022.91	1022.85	1022.71	1022.98
	14	1022.59	1022.53	1022.49	1022.48	1022.43	1022.35	1022.26	1022.17	1022.12	1022.06	1022.03	1022.01	1022.29
	15	1021.98	1021.95	1021.92	1021.90	1021.94	1022.01	1022.02	1022.02	1022.05	1022.09	1022.15	1022.24	1022.02
	16	1022.30	1022.35	1022.40	1022.42	1022.44	1022.48	1022.49	1022.53	1022.55	1022.54	1022.54	1022.53	1022.46
	17	1022.51	1022.50	1022.51	1022.50	1022.51	1022.57	1022.64	1022.68	1022.69	1022.72	1022.78	1022.83	1022.62
	18	1022.88	1022.91	1022.93	1022.96	1023.00	1023.07	1023.16	1023.21	1023.23	1023.21	1023.19	1023.20	1023.08
	19	1023.20	1023.22	1023.24	1023.29	1023.34	1023.32	1023.25	1023.19	1023.16	1023.18	1023.20	1023.21	1023.23
	20	1023.24	1023.24	1023.19	1023.13	1023.11	1023.16	1023.23	1023.26	1023.24	1023.21	1023.17	1023.15	1023.19
	21	1023.14	1023.10	1023.05	1023.05	1023.01	1022.97	1022.95	1022.93	1022.89	1022.85	1022.84	1022.80	1022.96
	22	1022.76	1022.72	1022.67	1022.60	1022.57	1022.56	1022.55	1022.58	1022.59	1022.58	1022.56	1022.57	1022.61
	23	1022.58	1022.60	1022.62	1022.63	1022.64	1022.65	1022.68	1022.67	1022.62	1022.60	1022.62	1022.62	1022.63

S.V.I.R.CO. Observatory - Pressure in hectoPascal – September 2019

day	hh	00_05	05_10	10_15	15_20	20_25	25_30	30_35	35_40	40_45	45_50	50_55	55_60	average
15	0	1022.49	1022.48	1022.50	1022.57	1022.60	1022.63	1022.67	1022.66	1022.65	1022.64	1022.60	1022.61	1022.59
	1	1022.71	1022.79	1022.78	1022.73	1022.69	1022.60	1022.49	1022.39	1022.29	1022.21	1022.19	1022.16	1022.50
	2	1022.12	1022.10	1022.08	1022.05	1021.93	1021.82	1021.80	1021.79	1021.82	1021.87	1021.83	1021.76	1021.91
	3	1021.78	1021.85	1021.92	1021.97	1021.96	1021.94	1021.93	1021.99	1022.07	1022.08	1022.06	1022.08	1021.97
	4	1022.09	1022.05	1022.02	1022.06	1022.13	1022.21	1022.31	1022.44	1022.50	1022.51	1022.53	1022.58	1022.28
	5	1022.71	1022.89	1023.03	1023.07	1023.04	1023.04	1023.04	1023.04	1023.09	1023.10	1023.08	1023.12	1023.02
	6	1023.18	1023.23	1023.29	1023.26	1023.21	1023.24	1023.30	1023.33	1023.34	1023.34	1023.32	1023.27	1023.27
	7	1023.26	1023.28	1023.26	1023.28	1023.32	1023.34	1023.36	1023.36	1023.33	1023.32	1023.33	1023.37	1023.32
	8	1023.43	1023.47	1023.50	1023.51	1023.51	1023.50	1023.49	1023.47	1023.45	1023.42	1023.37	1023.37	1023.45
	9	1023.39	1023.35	1023.30	1023.26	1023.22	1023.17	1023.13	1023.08	1023.01	1022.91	1022.78	1022.71	1023.11
	10	1022.70	1022.69	1022.63	1022.58	1022.54	1022.50	1022.45	1022.41	1022.41	1022.44	1022.46	1022.43	1022.52
	11	1022.39	1022.33	1022.29	1022.25	1022.21	1022.17	1022.07	1021.96	1021.85	1021.79	1021.75	1021.69	1022.06
	12	1021.62	1021.50	1021.42	1021.36	1021.30	1021.24	1021.12	1021.05	1021.01	1020.94	1020.88	1020.86	1021.19
	13	1020.86	1020.88	1020.89	1020.90	1020.88	1020.84	1020.83	1020.81	1020.76	1020.69	1020.66	1020.69	1020.80
	14	1020.67	1020.60	1020.53	1020.50	1020.51	1020.53	1020.55	1020.56	1020.56	1020.54	1020.51	1020.53	1020.55
	15	1020.53	1020.48	1020.47	1020.44	1020.40	1020.39	1020.39	1020.42	1020.46	1020.46	1020.46	1020.46	1020.44
	16	1020.43	1020.39	1020.34	1020.30	1020.30	1020.30	1020.28	1020.25	1020.21	1020.19	1020.19	1020.21	1020.28
	17	1020.22	1020.21	1020.22	1020.24	1020.27	1020.33	1020.38	1020.42	1020.45	1020.45	1020.44	1020.43	1020.33
	18	1020.44	1020.43	1020.40	1020.40	1020.40	1020.40	1020.39	1020.40	1020.41	1020.44	1020.47	1020.49	1020.42
	19	1020.52	1020.54	1020.52	1020.50	1020.47	1020.43	1020.40	1020.39	1020.41	1020.41	1020.39	1020.36	1020.44
	20	1020.30	1020.27	1020.29	1020.29	1020.29	1020.25	1020.21	1020.20	1020.19	1020.15	1020.12	1020.12	1020.22
	21	1020.10	1020.08	1020.06	1020.04	1020.06	1020.06	1020.01	1019.99	1019.98	1019.98	1019.97	1019.98	1020.02
	22	1020.00	1020.01	1019.99	1019.99	1020.00	1019.97	1019.93	1019.88	1019.84	1019.80	1019.75	1019.69	1019.90
	23	1019.63	1019.58	1019.56	1019.57	1019.60	1019.63	1019.64	1019.60	1019.54	1019.49	1019.45	1019.43	1019.56
16	0	1019.41	1019.39	1019.33	1019.28	1019.26	1019.26	1019.25	1019.22	1019.18	1019.17	1019.15	1019.10	1019.24
	1	1019.05	1019.01	1018.97	1018.92	1018.87	1018.82	1018.80	1018.78	1018.77	1018.77	1018.76	1018.75	1018.86
	2	1018.76	1018.76	1018.77	1018.76	1018.74	1018.71	1018.67	1018.64	1018.60	1018.58	1018.56	1018.52	1018.67
	3	1018.49	1018.45	1018.41	1018.37	1018.35	1018.35	1018.37	1018.38	1018.40	1018.41	1018.40	1018.37	1018.39
	4	1018.37	1018.39	1018.41	1018.43	1018.45	1018.49	1018.54	1018.57	1018.60	1018.58	1018.52	1018.49	1018.48
	5	1018.47	1018.49	1018.51	1018.52	1018.54	1018.58	1018.59	1018.55	1018.54	1018.56	1018.58	1018.61	1018.54
	6	1018.64	1018.66	1018.66	1018.65	1018.68	1018.74	1018.76	1018.76	1018.78	1018.80	1018.79	1018.78	1018.72
	7	1018.78	1018.81	1018.86	1018.88	1018.90	1018.93	1018.94	1018.94	1018.93	1018.90	1018.87	1018.85	1018.88
	8	1018.84	1018.83	1018.82	1018.82	1018.81	1018.80	1018.80	1018.80	1018.82	1018.84	1018.83	1018.78	1018.81
	9	1018.70	1018.64	1018.60	1018.55	1018.52	1018.50	1018.48	1018.48	1018.49	1018.47	1018.42	1018.42	1018.52
	10	1018.41	1018.35	1018.27	1018.23	1018.21	1018.18	1018.14	1018.07	1018.03	1018.04	1017.99	1017.89	1018.15
	11	1017.84	1017.81	1017.78	1017.77	1017.73	1017.67	1017.59	1017.51	1017.43	1017.40	1017.38	1017.34	1017.60
	12	1017.33	1017.29	1017.22	1017.18	1017.15	1017.09	1017.03	1017.00	1016.97	1016.95	1016.92	1016.88	1017.08
	13	1016.84	1016.77	1016.72	1016.70	1016.67	1016.62	1016.59	1016.54	1016.48	1016.43	1016.39	1016.39	1016.59
	14	1016.40	1016.41	1016.39	1016.36	1016.33	1016.33	1016.33	1016.31	1016.27	1016.24	1016.21	1016.17	1016.31
	15	1016.16	1016.17	1016.20	1016.23	1016.26	1016.27	1016.28	1016.27	1016.25	1016.24	1016.23	1016.22	1016.23
	16	1016.20	1016.20	1016.20	1016.20	1016.19	1016.18	1016.15	1016.15	1016.20	1016.25	1016.27	1016.26	1016.20
	17	1016.23	1016.20	1016.18	1016.19	1016.18	1016.18	1016.19	1016.22	1016.28	1016.34	1016.38	1016.38	1016.24
	18	1016.39	1016.43	1016.47	1016.53	1016.57	1016.59	1016.60	1016.64	1016.69	1016.74	1016.80	1016.82	1016.60
	19	1016.83	1016.85	1016.87	1016.87	1016.86	1016.86	1016.89	1016.93	1016.94	1016.92	1016.92	1016.90	1016.88
	20	1016.88	1016.89	1016.89	1016.89	1016.89	1016.90	1016.91	1016.97	1017.04	1017.08	1017.08	1017.07	1016.96
	21	1017.05	1017.03	1017.03	1017.04	1017.04	1017.01	1016.99	1016.98	1016.99	1017.00	1017.01	1017.04	1017.02
	22	1017.06	1017.06	1017.06	1017.02	1016.98	1016.95	1016.92	1016.89	1016.85	1016.81	1016.79	1016.81	1016.93
	23	1016.83	1016.82	1016.76	1016.75	1016.76	1016.76	1016.74	1016.73	1016.69	1016.62	1016.57	1016.56	1016.71

S.V.I.R.CO. Observatory - Pressure in hectoPascal – September 2019

day	hh	00_05	05_10	10_15	15_20	20_25	25_30	30_35	35_40	40_45	45_50	50_55	55_60	average
17	0	1016.53	1016.51	1016.51	1016.51	1016.48	1016.47	1016.48	1016.50	1016.48	1016.42	1016.37	1016.34	1016.46
	1	1016.28	1016.23	1016.21	1016.23	1016.24	1016.21	1016.17	1016.17	1016.19	1016.19	1016.17	1016.16	1016.20
	2	1016.15	1016.15	1016.15	1016.12	1016.09	1016.07	1016.06	1016.08	1016.12	1016.14	1016.12	1016.12	1016.11
	3	1016.15	1016.16	1016.14	1016.10	1016.07	1016.07	1016.06	1016.04	1016.04	1016.06	1016.04	1016.00	1016.08
	4	1015.99	1015.99	1016.01	1016.04	1016.05	1016.03	1016.03	1016.02	1016.02	1016.06	1016.12	1016.16	1016.04
	5	1016.16	1016.16	1016.18	1016.17	1016.16	1016.18	1016.21	1016.26	1016.31	1016.33	1016.32	1016.32	1016.23
	6	1016.33	1016.35	1016.36	1016.36	1016.37	1016.39	1016.42	1016.43	1016.42	1016.44	1016.45	1016.45	1016.40
	7	1016.48	1016.50	1016.50	1016.50	1016.50	1016.47	1016.44	1016.46	1016.55	1016.64	1016.70	1016.72	1016.54
	8	1016.70	1016.66	1016.65	1016.66	1016.67	1016.68	1016.66	1016.63	1016.60	1016.56	1016.53	1016.55	1016.63
	9	1016.55	1016.53	1016.50	1016.45	1016.43	1016.42	1016.40	1016.34	1016.27	1016.25	1016.24	1016.19	1016.38
	10	1016.15	1016.13	1016.11	1016.08	1016.03	1015.96	1015.87	1015.82	1015.81	1015.81	1015.80	1015.75	1015.94
	11	1015.70	1015.65	1015.63	1015.61	1015.57	1015.52	1015.47	1015.42	1015.37	1015.34	1015.32	1015.28	1015.49
	12	1015.28	1015.29	1015.29	1015.26	1015.24	1015.24	1015.24	1015.22	1015.20	1015.19	1015.21	1015.22	1015.24
	13	1015.21	1015.17	1015.14	1015.10	1015.05	1015.02	1014.96	1014.92	1014.90	1014.90	1014.89	1014.88	1015.01
	14	1014.88	1014.88	1014.84	1014.81	1014.80	1014.79	1014.76	1014.73	1014.73	1014.75	1014.74	1014.73	1014.78
	15	1014.70	1014.67	1014.66	1014.64	1014.62	1014.60	1014.60	1014.59	1014.61	1014.63	1014.62	1014.59	1014.62
	16	1014.53	1014.45	1014.41	1014.39	1014.36	1014.36	1014.36	1014.35	1014.32	1014.29	1014.27	1014.26	1014.36
	17	1014.28	1014.31	1014.34	1014.38	1014.41	1014.43	1014.45	1014.46	1014.49	1014.53	1014.55	1014.58	1014.43
	18	1014.60	1014.63	1014.67	1014.73	1014.76	1014.79	1014.80	1014.81	1014.82	1014.81	1014.81	1014.81	1014.75
	19	1014.82	1014.83	1014.84	1014.87	1014.89	1014.88	1014.85	1014.84	1014.84	1014.86	1014.89	1014.92	1014.86
	20	1014.93	1014.93	1014.90	1014.89	1014.91	1014.93	1014.94	1014.92	1014.88	1014.87	1014.87	1014.87	1014.90
	21	1014.84	1014.81	1014.77	1014.73	1014.72	1014.71	1014.70	1014.70	1014.73	1014.75	1014.75	1014.74	1014.74
	22	1014.75	1014.76	1014.74	1014.76	1014.78	1014.75	1014.73	1014.71	1014.67	1014.66	1014.67	1014.67	1014.72
	23	1014.67	1014.70	1014.74	1014.80	1014.85	1014.86	1014.87	1014.85	1014.81	1014.80	1014.82	1014.84	1014.80
18	0	1014.90	1014.90	1014.89	1014.88	1014.87	1014.87	1014.86	1014.85	1014.84	1014.82	1014.83	1014.84	1014.86
	1	1014.81	1014.77	1014.77	1014.76	1014.75	1014.73	1014.70	1014.68	1014.67	1014.63	1014.59	1014.59	1014.70
	2	1014.59	1014.59	1014.60	1014.57	1014.54	1014.52	1014.53	1014.56	1014.56	1014.53	1014.50	1014.48	1014.55
	3	1014.50	1014.56	1014.61	1014.64	1014.67	1014.68	1014.66	1014.65	1014.61	1014.62	1014.67	1014.69	1014.63
	4	1014.71	1014.72	1014.67	1014.63	1014.63	1014.65	1014.65	1014.63	1014.62	1014.66	1014.76	1014.81	1014.68
	5	1014.86	1014.96	1014.97	1014.99	1015.07	1015.11	1015.11	1015.12	1015.13	1015.07	1015.02	1014.98	1015.03
	6	1014.91	1014.90	1014.92	1014.93	1014.96	1014.96	1014.92	1014.93	1014.98	1014.98	1015.00	1015.00	1014.95
	7	1014.93	1014.84	1014.79	1014.81	1014.83	1014.84	1014.83	1014.80	1014.84	1014.89	1014.88	1014.85	1014.84
	8	1014.78	1014.72	1014.69	1014.66	1014.66	1014.65	1014.64	1014.65	1014.65	1014.64	1014.64	1014.64	1014.67
	9	1014.65	1014.67	1014.68	1014.63	1014.60	1014.58	1014.57	1014.59	1014.58	1014.57	1014.54	1014.50	1014.59
	10	1014.47	1014.46	1014.44	1014.41	1014.38	1014.36	1014.34	1014.29	1014.25	1014.22	1014.19	1014.20	1014.33
	11	1014.19	1014.14	1014.10	1014.07	1014.06	1014.06	1014.04	1014.01	1013.99	1013.98	1014.00	1014.01	1014.05
	12	1014.03	1014.08	1014.10	1014.11	1014.13	1014.13	1014.11	1014.10	1014.08	1014.06	1014.01	1013.97	1014.07
	13	1013.91	1013.89	1013.96	1014.00	1013.95	1013.90	1013.92	1013.92	1013.88	1013.87	1013.87	1013.87	1013.91
	14	1013.87	1013.88	1013.92	1013.90	1013.85	1013.85	1013.85	1013.82	1013.80	1013.77	1013.74	1013.73	1013.83
	15	1013.71	1013.72	1013.77	1013.80	1013.84	1013.87	1013.86	1013.88	1013.92	1013.93	1013.95	1013.98	1013.85
	16	1014.01	1014.03	1014.06	1014.09	1014.10	1014.09	1014.10	1014.11	1014.11	1014.13	1014.13	1014.16	1014.09
	17	1014.23	1014.28	1014.29	1014.31	1014.36	1014.40	1014.45	1014.52	1014.55	1014.55	1014.55	1014.57	1014.42
	18	1014.61	1014.67	1014.73	1014.77	1014.85	1014.96	1015.02	1015.04	1015.03	1015.05	1015.11	1015.11	1014.91
	19	1015.09	1015.04	1015.00	1015.01	1015.02	1014.98	1014.93	1014.84	1014.75	1014.70	1014.56	1014.40	1014.86
	20	1014.51	1014.64	1014.63	1014.71	1014.78	1014.73	1014.64	1014.63	1014.69	1014.69	1014.60	1014.58	1014.65
	21	1014.60	1014.61	1014.65	1014.66	1014.65	1014.65	1014.66	1014.67	1014.68	1014.64	1014.62	1014.65	1014.64
	22	1014.65	1014.63	1014.59	1014.51	1014.44	1014.43	1014.42	1014.43	1014.46	1014.42	1014.36	1014.33	1014.47
	23	1014.33	1014.35	1014.36	1014.42	1014.47	1014.47	1014.45	1014.43	1014.41	1014.40	1014.42	1014.47	1014.41

S.V.I.R.CO. Observatory - Pressure in hectoPascal – September 2019

day	hh	00_05	05_10	10_15	15_20	20_25	25_30	30_35	35_40	40_45	45_50	50_55	55_60	average
19	0	1014.49	1014.48	1014.45	1014.41	1014.42	1014.45	1014.43	1014.36	1014.31	1014.29	1014.27	1014.21	1014.37
	1	1014.16	1014.12	1014.09	1014.08	1014.03	1013.92	1013.83	1013.81	1013.84	1013.90	1013.91	1013.88	1013.96
	2	1013.81	1013.67	1013.55	1013.41	1013.31	1013.35	1013.42	1013.52	1013.63	1013.75	1013.71	1013.57	1013.56
	3	1013.54	1013.57	1013.61	1013.72	1013.71	1013.63	1013.54	1013.37	1013.29	1013.28	1013.24	1013.25	1013.48
	4	1013.39	1013.56	1013.66	1013.64	1013.49	1013.33	1013.11	1012.96	1012.90	1012.91	1013.06	1013.08	1013.26
	5	1013.00	1012.93	1012.91	1012.83	1012.70	1012.85	1013.12	1013.17	1013.31	1013.54	1013.61	1013.64	1013.13
	6	1013.59	1013.45	1013.33	1013.30	1013.27	1013.27	1013.46	1013.75	1013.97	1014.12	1014.23	1014.24	1013.66
	7	1014.20	1014.22	1014.18	1014.15	1014.19	1014.25	1014.29	1014.28	1014.17	1014.00	1013.93	1013.92	1014.15
	8	1013.85	1013.79	1013.86	1013.95	1013.98	1014.01	1014.06	1014.09	1014.07	1014.06	1014.05	1014.07	1013.98
	9	1014.15	1014.19	1014.24	1014.25	1014.18	1014.16	1014.22	1014.25	1014.22	1014.12	1014.05	1013.98	1014.17
	10	1013.95	1013.96	1013.95	1013.92	1013.81	1013.72	1013.71	1013.66	1013.60	1013.54	1013.48	1013.42	1013.72
	11	1013.35	1013.28	1013.20	1013.11	1013.04	1013.02	1012.99	1012.91	1012.81	1012.71	1012.65	1012.59	1012.97
	12	1012.55	1012.54	1012.52	1012.52	1012.58	1012.61	1012.63	1012.67	1012.70	1012.69	1012.67	1012.70	1012.61
	13	1012.70	1012.64	1012.58	1012.56	1012.67	1012.83	1012.91	1012.96	1012.98	1012.96	1012.90	1012.94	1012.80
	14	1013.10	1013.18	1013.36	1013.54	1013.61	1013.82	1013.82	1013.58	1013.54	1013.75	1013.97	1013.98	1013.60
	15	1013.92	1013.99	1014.17	1014.35	1014.52	1014.63	1014.53	1014.39	1014.43	1014.44	1014.43	1014.43	1014.35
	16	1014.38	1014.39	1014.39	1014.35	1014.33	1014.35	1014.37	1014.38	1014.39	1014.39	1014.36	1014.36	1014.37
	17	1014.32	1014.19	1014.13	1014.18	1014.20	1014.17	1014.18	1014.23	1014.28	1014.36	1014.43	1014.48	1014.26
	18	1014.53	1014.56	1014.67	1014.83	1014.95	1015.06	1015.15	1015.28	1015.43	1015.53	1015.63	1015.71	1015.11
	19	1015.77	1015.84	1015.91	1015.94	1015.96	1016.01	1016.07	1016.12	1016.20	1016.28	1016.31	1016.37	1016.06
	20	1016.46	1016.56	1016.62	1016.63	1016.66	1016.70	1016.72	1016.76	1016.79	1016.76	1016.75	1016.77	1016.68
	21	1016.78	1016.81	1016.82	1016.82	1016.85	1016.88	1016.92	1016.98	1017.03	1017.05	1017.07	1017.06	1016.92
	22	1017.07	1017.13	1017.19	1017.24	1017.24	1017.22	1017.23	1017.27	1017.31	1017.36	1017.41	1017.47	1017.26
	23	1017.49	1017.50	1017.50	1017.49	1017.50	1017.51	1017.54	1017.58	1017.58	1017.55	1017.54	1017.56	1017.53
20	0	1017.51	1017.50	1017.46	1017.42	1017.39	1017.41	1017.46	1017.47	1017.47	1017.47	1017.45	1017.43	1017.45
	1	1017.44	1017.44	1017.43	1017.44	1017.44	1017.44	1017.44	1017.47	1017.52	1017.53	1017.53	1017.52	1017.47
	2	1017.51	1017.52	1017.55	1017.59	1017.60	1017.58	1017.57	1017.58	1017.58	1017.58	1017.61	1017.63	1017.57
	3	1017.63	1017.63	1017.64	1017.64	1017.60	1017.54	1017.50	1017.49	1017.49	1017.49	1017.49	1017.49	1017.55
	4	1017.50	1017.52	1017.54	1017.56	1017.61	1017.66	1017.69	1017.70	1017.73	1017.75	1017.76	1017.81	1017.65
	5	1017.87	1017.89	1017.92	1017.94	1017.95	1017.98	1018.01	1018.03	1018.04	1018.03	1018.03	1018.04	1017.97
	6	1018.05	1018.06	1018.04	1018.01	1018.04	1018.08	1018.05	1018.02	1018.03	1018.07	1018.09	1018.14	1018.05
	7	1018.26	1018.35	1018.38	1018.39	1018.41	1018.45	1018.56	1018.68	1018.74	1018.77	1018.83	1018.86	1018.55
	8	1018.88	1018.94	1018.98	1019.04	1019.14	1019.21	1019.29	1019.37	1019.37	1019.30	1019.25	1019.27	1019.17
	9	1019.28	1019.29	1019.30	1019.28	1019.26	1019.26	1019.24	1019.24	1019.23	1019.21	1019.18	1019.15	1019.24
	10	1019.13	1019.12	1019.10	1019.05	1019.02	1019.02	1019.03	1019.02	1019.00	1018.98	1018.99	1018.96	1019.03
	11	1018.91	1018.88	1018.86	1018.87	1018.85	1018.83	1018.83	1018.80	1018.74	1018.69	1018.67	1018.64	1018.80
	12	1018.61	1018.56	1018.49	1018.46	1018.47	1018.47	1018.42	1018.34	1018.30	1018.25	1018.18	1018.15	1018.39
	13	1018.10	1018.05	1018.02	1018.01	1018.03	1018.05	1018.05	1018.00	1017.97	1017.96	1017.94	1017.93	1018.01
	14	1017.91	1017.89	1017.85	1017.86	1017.89	1017.93	1017.98	1018.04	1018.10	1018.11	1018.10	1018.12	1017.98
	15	1018.08	1018.03	1018.03	1018.02	1018.02	1018.03	1018.05	1018.07	1018.04	1018.03	1018.02	1018.00	1018.03
	16	1018.01	1018.05	1018.07	1018.07	1018.11	1018.14	1018.18	1018.23	1018.25	1018.24	1018.23	1018.22	1018.15
	17	1018.21	1018.22	1018.23	1018.26	1018.33	1018.39	1018.47	1018.56	1018.65	1018.70	1018.72	1018.76	1018.46
	18	1018.83	1018.92	1018.97	1019.00	1019.07	1019.17	1019.25	1019.31	1019.39	1019.46	1019.51	1019.56	1019.20
	19	1019.60	1019.63	1019.66	1019.66	1019.67	1019.70	1019.74	1019.79	1019.86	1019.94	1019.99	1020.04	1019.77
	20	1020.10	1020.11	1020.13	1020.15	1020.16	1020.24	1020.31	1020.34	1020.37	1020.41	1020.40	1020.42	1020.26
	21	1020.43	1020.43	1020.45	1020.47	1020.46	1020.44	1020.46	1020.53	1020.59	1020.59	1020.53	1020.47	1020.48
	22	1020.43	1020.40	1020.36	1020.30	1020.30	1020.33	1020.34	1020.32	1020.30	1020.29	1020.30	1020.30	1020.33
	23	1020.30	1020.30	1020.30	1020.31	1020.34	1020.39	1020.42	1020.43	1020.42	1020.42	1020.42	1020.41	1020.37

**S.V.I.R.CO. Observatory - Pressure in hectoPascal – September 2019**

day	hh	00_05	05_10	10_15	15_20	20_25	25_30	30_35	35_40	40_45	45_50	50_55	55_60	average
21	0	1020.38	1020.35	1020.30	1020.33	1020.38	1020.38	1020.38	1020.41	1020.44	1020.43	1020.40	1020.39	1020.38
	1	1020.35	1020.31	1020.33	1020.38	1020.40	1020.40	1020.37	1020.36	1020.39	1020.43	1020.45	1020.46	1020.38
	2	1020.43	1020.41	1020.47	1020.52	1020.50	1020.48	1020.50	1020.51	1020.46	1020.40	1020.36	1020.33	1020.45
	3	1020.32	1020.32	1020.31	1020.30	1020.27	1020.25	1020.28	1020.32	1020.31	1020.33	1020.33	1020.32	1020.30
	4	1020.34	1020.35	1020.40	1020.43	1020.42	1020.44	1020.49	1020.55	1020.62	1020.65	1020.63	1020.63	1020.49
	5	1020.67	1020.71	1020.76	1020.80	1020.84	1020.85	1020.84	1020.81	1020.81	1020.84	1020.86	1020.86	1020.80
	6	1020.93	1021.00	1021.02	1021.02	1021.02	1021.05	1021.08	1021.13	1021.18	1021.19	1021.21	1021.25	1021.09
	7	1021.31	1021.31	1021.30	1021.30	1021.31	1021.27	1021.22	1021.25	1021.29	1021.28	1021.24	1021.23	1021.27
	8	1021.24	1021.25	1021.26	1021.28	1021.29	1021.30	1021.34	1021.38	1021.39	1021.37	1021.36	1021.33	1021.31
	9	1021.30	1021.28	1021.26	1021.21	1021.16	1021.13	1021.09	1021.08	1021.09	1021.10	1021.09	1021.07	1021.15
	10	1021.07	1021.05	1021.00	1020.99	1020.99	1020.93	1020.85	1020.81	1020.82	1020.83	1020.81	1020.78	1020.91
	11	1020.74	1020.72	1020.71	1020.70	1020.70	1020.68	1020.61	1020.55	1020.56	1020.57	1020.57	1020.59	1020.64
	12	1020.66	1020.74	1020.81	1020.83	1020.82	1020.81	1020.78	1020.78	1020.76	1020.69	1020.65	1020.58	1020.74
	13	1020.50	1020.45	1020.38	1020.31	1020.24	1020.20	1020.15	1020.12	1020.10	1020.05	1020.01	1019.99	1020.21
	14	1019.94	1019.84	1019.75	1019.67	1019.59	1019.53	1019.48	1019.47	1019.43	1019.40	1019.37	1019.31	1019.56
	15	1019.28	1019.28	1019.23	1019.21	1019.20	1019.18	1019.17	1019.17	1019.18	1019.20	1019.17	1019.15	1019.20
	16	1019.15	1019.12	1019.16	1019.26	1019.35	1019.35	1019.32	1019.36	1019.48	1019.56	1019.58	1019.57	1019.35
	17	1019.58	1019.62	1019.60	1019.60	1019.67	1019.68	1019.60	1019.50	1019.48	1019.51	1019.53	1019.48	1019.57
	18	1019.42	1019.43	1019.46	1019.51	1019.48	1019.39	1019.35	1019.31	1019.25	1019.24	1019.24	1019.26	1019.36
	19	1019.31	1019.31	1019.27	1019.27	1019.31	1019.33	1019.30	1019.31	1019.35	1019.27	1019.18	1019.11	1019.27
	20	1019.02	1018.97	1018.99	1018.98	1018.95	1018.95	1018.94	1018.98	1019.03	1019.08	1019.11	1019.11	1019.01
	21	1019.15	1019.23	1019.20	1019.16	1019.19	1019.24	1019.28	1019.28	1019.24	1019.17	1019.14	1019.03	1019.19
	22	1018.95	1019.00	1019.07	1019.10	1019.12	1019.00	1018.88	1018.99	1019.14	1019.17	1019.13	1019.06	1019.05
	23	1019.03	1018.99	1018.90	1018.88	1018.95	1018.97	1018.95	1018.94	1018.85	1018.73	1018.63	1018.48	1018.86
22	0	1018.33	1018.26	1018.11	1018.02	1018.10	1018.21	1018.19	1018.17	1018.21	1018.23	1018.14	1018.03	1018.16
	1	1017.88	1017.72	1017.69	1017.70	1017.70	1017.63	1017.53	1017.45	1017.37	1017.38	1017.45	1017.43	1017.57
	2	1017.39	1017.35	1017.31	1017.31	1017.33	1017.35	1017.32	1017.30	1017.36	1017.38	1017.32	1017.37	1017.34
	3	1017.99	1018.47	1018.41	1018.51	1018.64	1018.70	1018.66	1018.64	1018.71	1018.68	1018.63	1018.51	1018.54
	4	1018.28	1017.92	1017.60	1017.49	1017.57	1017.50	1017.36	1017.56	1017.96	1018.22	1018.24	1018.32	1017.83
	5	1018.71	1018.56	1017.78	1017.46	1017.62	1017.87	1018.13	1018.12	1017.98	1018.28	1018.81	1018.99	1018.19
	6	1018.97	1019.10	1019.25	1019.14	1018.74	1018.05	1017.59	1017.56	1017.63	1017.70	1017.57	1017.37	1018.22
	7	1017.09	1016.72	1016.58	1016.68	1016.69	1016.74	1016.70	1016.57	1016.47	1016.39	1016.37	1016.53	1016.63
	8	1016.69	1016.65	1016.75	1016.80	1016.64	1016.60	1016.71	1016.80	1016.87	1017.00	1017.20	1017.30	1016.83
	9	1017.40	1017.42	1017.34	1017.26	1017.03	1016.69	1016.40	1016.35	1016.55	1016.75	1016.75	1016.58	1016.88
	10	1016.49	1016.59	1016.75	1016.86	1016.82	1016.66	1016.45	1016.21	1016.01	1015.91	1016.01	1016.18	1016.41
	11	1016.13	1016.04	1016.03	1016.13	1016.23	1016.13	1015.96	1015.88	1015.86	1016.01	1016.27	1016.31	1016.08
	12	1016.31	1016.37	1016.49	1016.62	1016.69	1016.77	1016.75	1016.59	1016.56	1016.64	1016.59	1016.39	1016.56
	13	1016.14	1015.95	1015.83	1015.71	1015.60	1015.54	1015.46	1015.36	1015.36	1015.39	1015.40	1015.32	1015.59
	14	1015.25	1015.23	1015.15	1015.06	1014.87	1014.60	1014.54	1014.48	1014.39	1014.37	1014.25	1014.07	1014.69
	15	1013.89	1013.78	1013.70	1013.62	1013.54	1013.45	1013.61	1013.94	1013.98	1013.70	1013.54	1013.58	1013.69
	16	1013.71	1013.81	1013.71	1013.57	1013.51	1013.52	1013.51	1013.44	1013.31	1013.17	1013.05	1012.96	1013.44
	17	1012.91	1012.81	1012.74	1012.68	1012.60	1012.57	1012.58	1012.62	1012.61	1012.57	1012.62	1012.69	1012.67
	18	1012.70	1012.73	1012.73	1012.73	1012.68	1012.61	1012.62	1012.57	1012.46	1012.41	1012.41	1012.44	1012.59
	19	1012.42	1012.35	1012.36	1012.37	1012.37	1012.40	1012.41	1012.42	1012.38	1012.36	1012.33	1012.22	1012.36
	20	1012.04	1011.88	1011.88	1011.96	1011.97	1011.94	1011.91	1011.87	1011.85	1011.92	1012.12	1012.27	1011.96
	21	1012.36	1012.49	1012.59	1012.56	1012.40	1012.20	1011.96	1011.80	1011.85	1011.90	1011.90	1011.81	1012.15
	22	1011.73	1011.94	1012.23	1012.28	1012.13	1012.02	1011.92	1011.85	1012.04	1012.08	1011.95	1012.18	1012.03
	23	1012.88	1013.43	1013.85	1014.38	1014.39	1014.06	1013.85	1013.67	1013.45	1013.45	1013.46	1013.26	1013.68

S.V.I.R.CO. Observatory - Pressure in hectoPascal – September 2019

day	hh	00_05	05_10	10_15	15_20	20_25	25_30	30_35	35_40	40_45	45_50	50_55	55_60	average
23	0	1013.23	1013.20	1013.13	1013.03	1012.95	1012.87	1012.74	1012.64	1012.58	1012.46	1012.41	1012.40	1012.78
	1	1012.39	1012.41	1012.37	1012.29	1012.22	1012.17	1012.15	1012.14	1012.15	1012.17	1012.17	1012.18	1012.23
	2	1012.18	1012.16	1012.12	1012.08	1012.09	1012.18	1012.24	1012.27	1012.30	1012.35	1012.40	1012.42	1012.23
	3	1012.39	1012.37	1012.41	1012.46	1012.53	1012.51	1012.41	1012.34	1012.38	1012.46	1012.45	1012.42	1012.42
	4	1012.40	1012.43	1012.48	1012.51	1012.55	1012.56	1012.58	1012.67	1012.74	1012.75	1012.71	1012.66	1012.58
	5	1012.63	1012.57	1012.49	1012.48	1012.49	1012.51	1012.55	1012.63	1012.67	1012.68	1012.72	1012.75	1012.60
	6	1012.76	1012.80	1012.83	1012.85	1012.90	1012.92	1012.92	1012.92	1012.90	1012.94	1013.03	1013.01	1012.90
	7	1012.88	1012.87	1012.92	1012.88	1012.86	1012.88	1012.94	1012.98	1013.01	1013.10	1013.18	1013.21	1012.97
	8	1013.21	1013.17	1013.07	1013.03	1013.01	1012.96	1012.91	1012.86	1012.82	1012.78	1012.81	1012.81	1012.95
	9	1012.61	1012.41	1012.35	1012.29	1012.20	1012.15	1012.18	1012.27	1012.31	1012.27	1012.27	1012.28	1012.30
	10	1012.24	1012.22	1012.16	1012.03	1011.94	1011.87	1011.81	1011.76	1011.66	1011.56	1011.50	1011.46	1011.85
	11	1011.46	1011.43	1011.39	1011.37	1011.32	1011.22	1011.11	1011.08	1011.09	1011.06	1011.03	1010.99	1011.21
	12	1010.92	1010.91	1010.92	1010.93	1010.96	1010.98	1010.96	1010.95	1010.90	1010.82	1010.81	1010.72	1010.90
	13	1010.61	1010.60	1010.60	1010.59	1010.66	1010.67	1010.60	1010.59	1010.58	1010.61	1010.66	1010.72	1010.62
	14	1010.71	1010.58	1010.50	1010.49	1010.46	1010.48	1010.51	1010.49	1010.49	1010.52	1010.55	1010.62	1010.53
	15	1010.67	1010.60	1010.52	1010.51	1010.49	1010.47	1010.48	1010.54	1010.60	1010.52	1010.47	1010.47	1010.53
	16	1010.45	1010.47	1010.48	1010.47	1010.44	1010.40	1010.35	1010.30	1010.29	1010.27	1010.21	1010.13	1010.35
	17	1010.09	1010.15	1010.22	1010.28	1010.28	1010.25	1010.19	1010.09	1010.08	1010.16	1010.24	1010.32	1010.19
	18	1010.40	1010.43	1010.44	1010.45	1010.48	1010.53	1010.58	1010.62	1010.61	1010.60	1010.62	1010.65	1010.53
	19	1010.66	1010.64	1010.63	1010.66	1010.73	1010.83	1010.88	1010.89	1010.89	1010.86	1010.82	1010.80	1010.77
	20	1010.76	1010.71	1010.72	1010.74	1010.78	1010.83	1010.81	1010.79	1010.80	1010.85	1010.90	1010.92	1010.80
	21	1010.92	1010.95	1011.01	1011.01	1010.99	1011.00	1011.01	1010.98	1010.94	1010.94	1010.94	1010.92	1010.97
	22	1010.88	1010.86	1010.93	1011.02	1011.04	1011.05	1011.03	1011.06	1011.12	1011.13	1011.17	1011.21	1011.04
	23	1011.22	1011.16	1011.10	1011.08	1011.07	1011.04	1011.02	1011.07	1011.14	1011.18	1011.18	1011.18	1011.12
24	0	1011.17	1011.18	1011.19	1011.19	1011.24	1011.29	1011.27	1011.28	1011.30	1011.31	1011.35	1011.36	1011.26
	1	1011.35	1011.32	1011.25	1011.20	1011.20	1011.20	1011.16	1011.10	1011.12	1011.12	1011.11	1011.13	1011.19
	2	1011.12	1011.15	1011.19	1011.21	1011.23	1011.28	1011.33	1011.29	1011.23	1011.22	1011.23	1011.26	1011.23
	3	1011.28	1011.26	1011.19	1011.13	1011.17	1011.24	1011.28	1011.29	1011.22	1011.16	1011.16	1011.18	1011.21
	4	1011.22	1011.24	1011.27	1011.33	1011.38	1011.43	1011.46	1011.45	1011.48	1011.53	1011.53	1011.51	1011.40
	5	1011.52	1011.53	1011.56	1011.65	1011.71	1011.71	1011.71	1011.76	1011.88	1012.03	1012.07	1012.00	1011.76
	6	1011.95	1011.92	1011.92	1011.97	1011.93	1011.83	1011.85	1011.95	1011.98	1011.98	1012.06	1012.18	1011.96
	7	1012.22	1012.24	1012.27	1012.31	1012.38	1012.41	1012.40	1012.42	1012.51	1012.63	1012.68	1012.70	1012.43
	8	1012.71	1012.74	1012.75	1012.70	1012.70	1012.72	1012.67	1012.64	1012.59	1012.60	1012.70	1012.72	1012.69
	9	1012.74	1012.70	1012.59	1012.62	1012.65	1012.61	1012.57	1012.56	1012.58	1012.58	1012.54	1012.50	1012.60
	10	1012.49	1012.47	1012.43	1012.40	1012.34	1012.24	1012.18	1012.11	1012.03	1011.97	1011.95	1011.92	1012.21
	11	1011.86	1011.84	1011.79	1011.73	1011.71	1011.65	1011.61	1011.60	1011.59	1011.57	1011.53	1011.52	1011.66
	12	1011.47	1011.43	1011.44	1011.37	1011.28	1011.22	1011.13	1011.07	1011.09	1011.12	1011.08	1011.04	1011.23
	13	1011.02	1011.06	1011.09	1011.06	1011.02	1010.98	1010.96	1010.97	1010.97	1010.93	1010.93	1010.93	1010.99
	14	1010.92	1010.90	1010.86	1010.84	1010.83	1010.84	1010.86	1010.86	1010.84	1010.88	1010.92	1010.91	1010.87
	15	1010.88	1010.84	1010.83	1010.83	1010.76	1010.73	1010.82	1010.93	1011.01	1011.07	1011.10	1011.11	1010.91
	16	1011.10	1011.01	1010.96	1011.01	1011.05	1011.04	1011.07	1011.12	1011.16	1011.19	1011.22	1011.26	1011.10
	17	1011.29	1011.29	1011.25	1011.24	1011.30	1011.36	1011.39	1011.42	1011.41	1011.41	1011.46	1011.50	1011.36
	18	1011.57	1011.64	1011.68	1011.72	1011.75	1011.76	1011.78	1011.82	1011.85	1011.87	1011.86	1011.88	1011.76
	19	1011.97	1012.05	1012.11	1012.12	1012.10	1012.10	1012.16	1012.22	1012.27	1012.30	1012.29	1012.29	1012.16
	20	1012.31	1012.33	1012.34	1012.34	1012.34	1012.34	1012.34	1012.35	1012.35	1012.34	1012.32	1012.30	1012.33
	21	1012.32	1012.34	1012.32	1012.32	1012.32	1012.28	1012.25	1012.25	1012.23	1012.17	1012.13	1012.10	1012.25
	22	1012.08	1012.08	1012.07	1012.06	1012.07	1012.05	1012.00	1011.96	1011.94	1011.92	1011.91	1011.91	1012.00
	23	1011.90	1011.85	1011.76	1011.71	1011.68	1011.65	1011.62	1011.63	1011.66	1011.66	1011.64	1011.63	1011.70

S.V.I.R.CO. Observatory - Pressure in hectoPascal – September 2019

day	hh	00_05	05_10	10_15	15_20	20_25	25_30	30_35	35_40	40_45	45_50	50_55	55_60	average
25	0	1011.59	1011.56	1011.50	1011.47	1011.45	1011.46	1011.47	1011.47	1011.47	1011.47	1011.46	1011.42	1011.48
	1	1011.35	1011.30	1011.23	1011.16	1011.15	1011.18	1011.22	1011.24	1011.24	1011.21	1011.19	1011.19	1011.22
	2	1011.23	1011.28	1011.29	1011.29	1011.28	1011.28	1011.29	1011.31	1011.30	1011.28	1011.26	1011.25	1011.28
	3	1011.27	1011.31	1011.28	1011.18	1011.15	1011.20	1011.20	1011.17	1011.15	1011.13	1011.13	1011.14	1011.19
	4	1011.13	1011.12	1011.12	1011.10	1011.05	1010.98	1010.99	1011.03	1011.03	1011.05	1011.06	1011.07	1011.06
	5	1011.09	1011.09	1011.10	1011.12	1011.17	1011.21	1011.21	1011.18	1011.15	1011.14	1011.13	1011.11	1011.14
	6	1011.12	1011.20	1011.28	1011.33	1011.35	1011.37	1011.44	1011.48	1011.48	1011.53	1011.59	1011.63	1011.40
	7	1011.65	1011.65	1011.68	1011.73	1011.78	1011.81	1011.79	1011.77	1011.76	1011.77	1011.79	1011.78	1011.74
	8	1011.76	1011.73	1011.71	1011.72	1011.72	1011.68	1011.65	1011.66	1011.70	1011.69	1011.72	1011.79	1011.71
	9	1011.83	1011.83	1011.83	1011.82	1011.77	1011.75	1011.79	1011.78	1011.70	1011.63	1011.61	1011.60	1011.74
	10	1011.58	1011.58	1011.58	1011.54	1011.48	1011.40	1011.31	1011.35	1011.41	1011.39	1011.39	1011.40	1011.45
	11	1011.34	1011.25	1011.24	1011.23	1011.17	1011.11	1011.08	1011.06	1011.02	1010.99	1010.97	1010.94	1011.11
	12	1010.86	1010.79	1010.76	1010.76	1010.78	1010.80	1010.81	1010.80	1010.81	1010.83	1010.81	1010.82	1010.80
	13	1010.81	1010.81	1010.82	1010.80	1010.76	1010.72	1010.72	1010.72	1010.68	1010.63	1010.63	1010.65	1010.73
	14	1010.69	1010.71	1010.69	1010.67	1010.62	1010.65	1010.70	1010.72	1010.73	1010.72	1010.71	1010.65	1010.69
	15	1010.56	1010.50	1010.43	1010.38	1010.37	1010.40	1010.46	1010.48	1010.41	1010.39	1010.38	1010.41	1010.43
	16	1010.41	1010.36	1010.38	1010.38	1010.38	1010.38	1010.34	1010.33	1010.36	1010.35	1010.34	1010.34	1010.36
	17	1010.32	1010.30	1010.27	1010.24	1010.24	1010.26	1010.31	1010.35	1010.41	1010.45	1010.44	1010.44	1010.33
	18	1010.51	1010.60	1010.69	1010.75	1010.75	1010.74	1010.74	1010.77	1010.82	1010.81	1010.81	1010.84	1010.73
	19	1010.86	1010.86	1010.86	1010.88	1010.86	1010.86	1010.89	1010.91	1010.95	1010.99	1011.02	1011.02	1010.91
	20	1010.96	1010.88	1010.84	1010.88	1010.88	1010.81	1010.75	1010.76	1010.81	1010.83	1010.84	1010.88	1010.84
	21	1010.92	1010.96	1010.94	1010.89	1010.94	1010.98	1010.94	1010.88	1010.88	1010.90	1010.90	1010.91	1010.92
	22	1010.93	1010.94	1010.94	1010.94	1010.95	1010.94	1010.87	1010.83	1010.86	1010.89	1010.90	1010.90	1010.91
	23	1010.89	1010.87	1010.89	1010.95	1010.95	1010.91	1010.90	1010.92	1010.96	1010.99	1010.98	1010.92	1010.92
26	0	1010.85	1010.85	1010.87	1010.91	1010.91	1010.86	1010.82	1010.77	1010.74	1010.75	1010.75	1010.68	1010.81
	1	1010.64	1010.69	1010.72	1010.72	1010.71	1010.68	1010.66	1010.64	1010.65	1010.68	1010.68	1010.66	1010.68
	2	1010.63	1010.64	1010.64	1010.65	1010.67	1010.66	1010.64	1010.69	1010.77	1010.79	1010.79	1010.75	1010.69
	3	1010.74	1010.78	1010.87	1010.96	1010.98	1010.94	1010.92	1010.95	1010.97	1010.97	1010.96	1010.94	1010.91
	4	1010.91	1010.90	1010.92	1010.95	1011.01	1011.07	1011.09	1011.05	1011.02	1011.01	1011.00	1011.03	1011.00
	5	1011.06	1011.08	1011.09	1011.11	1011.11	1011.06	1011.07	1011.15	1011.25	1011.31	1011.30	1011.28	1011.15
	6	1011.32	1011.37	1011.43	1011.53	1011.57	1011.55	1011.60	1011.73	1011.83	1011.90	1011.95	1011.98	1011.64
	7	1011.98	1012.01	1012.07	1012.14	1012.23	1012.30	1012.32	1012.35	1012.40	1012.44	1012.47	1012.51	1012.27
	8	1012.57	1012.63	1012.66	1012.67	1012.69	1012.72	1012.76	1012.79	1012.81	1012.83	1012.88	1012.90	1012.74
	9	1012.89	1012.89	1012.88	1012.85	1012.83	1012.83	1012.84	1012.86	1012.88	1012.91	1012.91	1012.90	1012.87
	10	1012.90	1012.91	1012.95	1013.02	1013.10	1013.11	1013.11	1013.14	1013.15	1013.12	1013.11	1013.10	1013.06
	11	1013.05	1013.03	1013.04	1013.02	1012.98	1012.95	1012.92	1012.89	1012.87	1012.85	1012.81	1012.78	1012.93
	12	1012.79	1012.80	1012.80	1012.79	1012.78	1012.79	1012.78	1012.77	1012.73	1012.69	1012.69	1012.67	1012.76
	13	1012.62	1012.56	1012.52	1012.56	1012.61	1012.62	1012.61	1012.59	1012.54	1012.57	1012.62	1012.64	1012.59
	14	1012.66	1012.67	1012.67	1012.67	1012.67	1012.67	1012.67	1012.67	1012.70	1012.73	1012.70	1012.72	1012.68
	15	1012.77	1012.77	1012.78	1012.78	1012.80	1012.88	1012.97	1013.01	1013.02	1013.06	1013.10	1013.15	1012.92
	16	1013.24	1013.31	1013.33	1013.38	1013.41	1013.44	1013.49	1013.56	1013.62	1013.72	1013.83	1013.87	1013.52
	17	1013.87	1013.89	1013.92	1013.97	1014.02	1014.06	1014.12	1014.13	1014.13	1014.20	1014.31	1014.40	1014.08
	18	1014.44	1014.45	1014.48	1014.52	1014.53	1014.57	1014.61	1014.65	1014.69	1014.72	1014.70	1014.66	1014.58
	19	1014.65	1014.66	1014.73	1014.85	1014.95	1015.02	1015.07	1015.12	1015.20	1015.31	1015.38	1015.38	1015.02
	20	1015.37	1015.40	1015.45	1015.46	1015.45	1015.45	1015.43	1015.44	1015.47	1015.50	1015.53	1015.55	1015.46
	21	1015.56	1015.60	1015.62	1015.67	1015.75	1015.78	1015.80	1015.81	1015.81	1015.83	1015.88	1015.88	1015.75
	22	1015.86	1015.85	1015.82	1015.78	1015.74	1015.72	1015.72	1015.76	1015.79	1015.81	1015.83	1015.84	1015.79
	23	1015.83	1015.82	1015.83	1015.81	1015.79	1015.81	1015.83	1015.86	1015.86	1015.85	1015.85	1015.82	1015.83



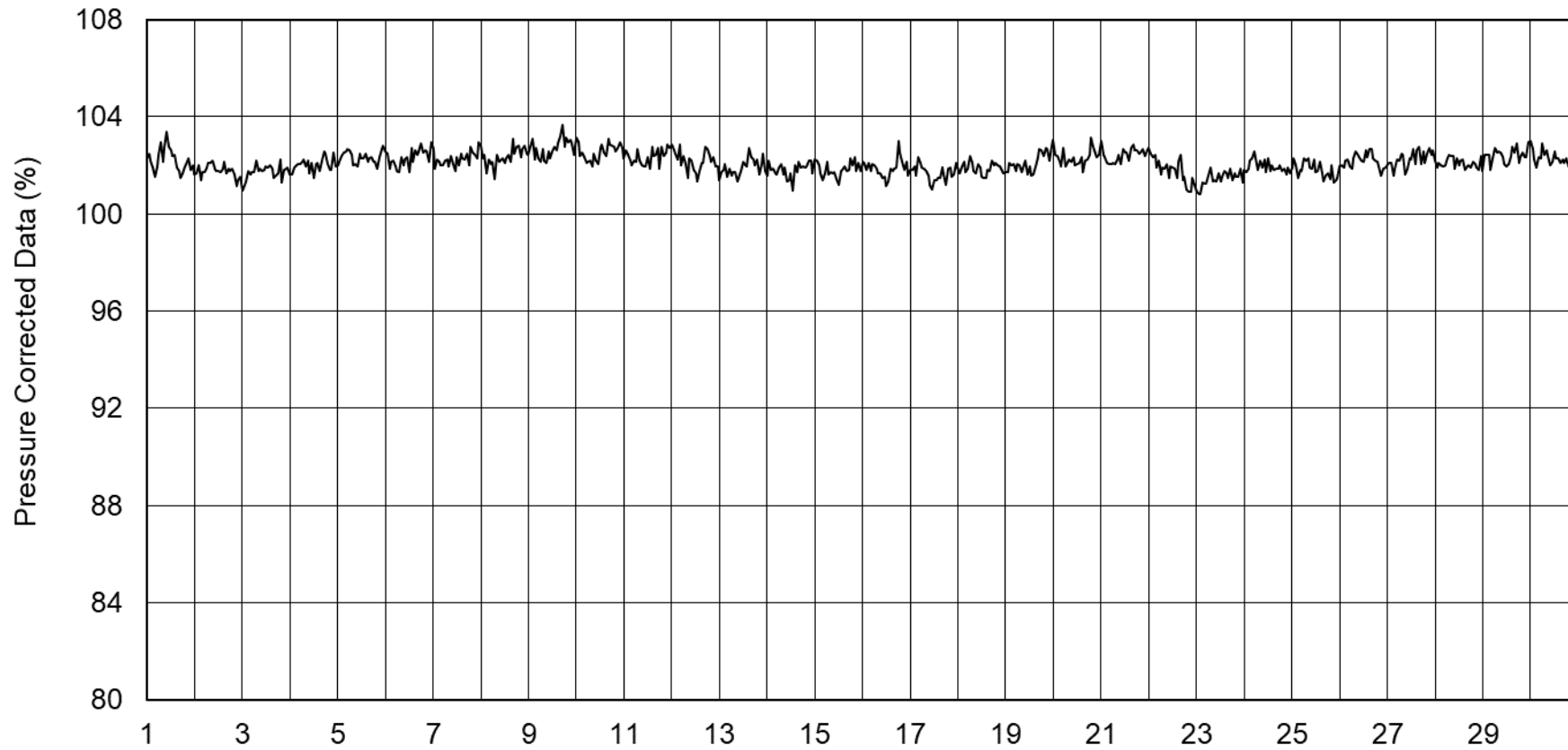
S.V.I.R.CO. Observatory - Pressure in hectoPascal – September 2019

day	hh	00_05	05_10	10_15	15_20	20_25	25_30	30_35	35_40	40_45	45_50	50_55	55_60	average
27	0	1015.80	1015.84	1015.90	1015.88	1015.84	1015.81	1015.78	1015.77	1015.75	1015.77	1015.81	1015.87	1015.82
	1	1015.90	1015.88	1015.87	1015.84	1015.79	1015.77	1015.76	1015.77	1015.85	1015.91	1015.94	1015.96	1015.85
	2	1015.97	1015.99	1016.01	1016.04	1016.07	1016.05	1016.01	1015.99	1015.98	1015.98	1015.99	1016.06	1016.01
	3	1016.08	1016.05	1016.10	1016.14	1016.12	1016.12	1016.08	1016.00	1015.97	1015.99	1016.01	1016.00	1016.05
	4	1016.01	1016.04	1016.03	1015.96	1015.88	1015.88	1015.96	1016.04	1016.07	1016.09	1016.12	1016.15	1016.02
	5	1016.18	1016.22	1016.26	1016.28	1016.30	1016.34	1016.39	1016.44	1016.49	1016.52	1016.50	1016.53	1016.37
	6	1016.60	1016.66	1016.69	1016.70	1016.72	1016.77	1016.81	1016.81	1016.83	1016.84	1016.87	1016.94	1016.77
	7	1016.99	1017.05	1017.10	1017.12	1017.17	1017.21	1017.22	1017.21	1017.23	1017.29	1017.32	1017.34	1017.19
	8	1017.35	1017.35	1017.33	1017.28	1017.22	1017.21	1017.22	1017.21	1017.20	1017.20	1017.25	1017.30	1017.26
	9	1017.31	1017.34	1017.34	1017.34	1017.31	1017.29	1017.29	1017.30	1017.30	1017.25	1017.18	1017.15	1017.28
	10	1017.13	1017.08	1017.07	1017.10	1017.09	1017.05	1017.01	1016.99	1016.95	1016.91	1016.87	1016.86	1017.01
	11	1016.84	1016.79	1016.74	1016.67	1016.61	1016.58	1016.52	1016.45	1016.40	1016.37	1016.34	1016.30	1016.55
	12	1016.26	1016.21	1016.14	1016.10	1016.06	1016.00	1015.96	1015.91	1015.89	1015.90	1015.94	1015.94	1016.02
	13	1015.89	1015.85	1015.83	1015.81	1015.80	1015.80	1015.81	1015.85	1015.86	1015.85	1015.89	1015.93	1015.85
	14	1015.93	1015.90	1015.88	1015.87	1015.85	1015.86	1015.87	1015.85	1015.86	1015.87	1015.87	1015.92	1015.88
	15	1015.97	1016.00	1016.01	1016.00	1016.01	1016.04	1016.05	1016.09	1016.14	1016.18	1016.22	1016.25	1016.08
	16	1016.28	1016.31	1016.33	1016.35	1016.36	1016.36	1016.34	1016.35	1016.40	1016.45	1016.49	1016.52	1016.38
	17	1016.56	1016.57	1016.58	1016.63	1016.68	1016.70	1016.74	1016.78	1016.81	1016.84	1016.84	1016.87	1016.71
	18	1016.94	1016.99	1017.03	1017.05	1017.08	1017.13	1017.17	1017.20	1017.25	1017.30	1017.33	1017.33	1017.15
	19	1017.33	1017.32	1017.35	1017.37	1017.37	1017.37	1017.38	1017.40	1017.40	1017.37	1017.34	1017.38	1017.36
	20	1017.42	1017.46	1017.51	1017.54	1017.58	1017.63	1017.65	1017.68	1017.74	1017.77	1017.78	1017.80	1017.63
	21	1017.79	1017.76	1017.77	1017.78	1017.78	1017.78	1017.74	1017.70	1017.70	1017.70	1017.68	1017.67	1017.73
	22	1017.67	1017.69	1017.70	1017.68	1017.65	1017.65	1017.66	1017.65	1017.62	1017.61	1017.62	1017.62	1017.65
	23	1017.61	1017.62	1017.64	1017.64	1017.61	1017.61	1017.64	1017.66	1017.68	1017.72	1017.73	1017.72	1017.65
28	0	1017.73	1017.72	1017.72	1017.72	1017.72	1017.73	1017.74	1017.76	1017.77	1017.74	1017.70	1017.65	1017.72
	1	1017.59	1017.56	1017.54	1017.53	1017.50	1017.46	1017.44	1017.42	1017.38	1017.36	1017.36	1017.35	1017.46
	2	1017.35	1017.34	1017.35	1017.39	1017.40	1017.44	1017.47	1017.48	1017.54	1017.61	1017.66	1017.70	1017.48
	3	1017.71	1017.72	1017.73	1017.73	1017.73	1017.73	1017.74	1017.75	1017.77	1017.78	1017.77	1017.78	1017.74
	4	1017.79	1017.78	1017.78	1017.80	1017.80	1017.83	1017.87	1017.91	1017.92	1017.93	1017.94	1017.94	1017.86
	5	1017.93	1017.94	1017.94	1017.96	1017.98	1017.97	1017.96	1017.97	1017.96	1017.97	1017.98	1017.99	1017.96
	6	1017.98	1017.95	1017.91	1017.91	1017.93	1017.96	1018.02	1018.07	1018.11	1018.16	1018.20	1018.23	1018.03
	7	1018.23	1018.21	1018.24	1018.26	1018.25	1018.26	1018.31	1018.34	1018.34	1018.33	1018.37	1018.40	1018.29
	8	1018.41	1018.42	1018.38	1018.37	1018.42	1018.45	1018.45	1018.43	1018.44	1018.43	1018.41	1018.40	1018.42
	9	1018.40	1018.43	1018.48	1018.50	1018.52	1018.54	1018.50	1018.49	1018.55	1018.62	1018.65	1018.67	1018.53
	10	1018.66	1018.64	1018.63	1018.62	1018.63	1018.61	1018.56	1018.48	1018.37	1018.30	1018.27	1018.26	1018.50
	11	1018.22	1018.17	1018.14	1018.07	1017.96	1017.88	1017.84	1017.80	1017.79	1017.79	1017.75	1017.70	1017.92
	12	1017.68	1017.65	1017.63	1017.63	1017.60	1017.54	1017.51	1017.50	1017.47	1017.47	1017.51	1017.52	1017.56
	13	1017.52	1017.49	1017.45	1017.40	1017.42	1017.46	1017.47	1017.45	1017.40	1017.33	1017.25	1017.19	1017.40
	14	1017.17	1017.14	1017.13	1017.09	1017.06	1017.13	1017.20	1017.21	1017.21	1017.23	1017.24	1017.20	1017.17
	15	1017.14	1017.10	1017.08	1017.09	1017.13	1017.20	1017.20	1017.17	1017.17	1017.17	1017.18	1017.20	1017.15
	16	1017.18	1017.17	1017.18	1017.22	1017.28	1017.29	1017.27	1017.26	1017.27	1017.29	1017.28	1017.25	1017.24
	17	1017.22	1017.18	1017.18	1017.23	1017.24	1017.22	1017.24	1017.28	1017.31	1017.34	1017.40	1017.45	1017.27
	18	1017.50	1017.53	1017.56	1017.60	1017.64	1017.65	1017.67	1017.70	1017.70	1017.69	1017.69	1017.71	1017.63
	19	1017.71	1017.75	1017.79	1017.81	1017.83	1017.84	1017.87	1017.88	1017.88	1017.90	1017.94	1017.94	1017.84
	20	1017.93	1017.96	1017.96	1017.96	1018.01	1018.07	1018.10	1018.12	1018.14	1018.13	1018.13	1018.12	1018.05
	21	1018.08	1018.05	1018.06	1018.09	1018.11	1018.14	1018.18	1018.18	1018.14	1018.11	1018.09	1018.09	1018.11
	22	1018.10	1018.07	1018.03	1018.00	1017.95	1017.95	1017.96	1017.96	1017.96	1017.94	1017.94	1017.95	1017.98
	23	1017.95	1017.91	1017.87	1017.88	1017.88	1017.84	1017.83	1017.83	1017.82	1017.83	1017.83	1017.85	1017.86

S.V.I.R.CO. Observatory - Pressure in hectoPascal – September 2019

day	hh	00_05	05_10	10_15	15_20	20_25	25_30	30_35	35_40	40_45	45_50	50_55	55_60	average
29	0	1017.87	1017.88	1017.87	1017.85	1017.80	1017.73	1017.67	1017.60	1017.56	1017.49	1017.40	1017.33	1017.66
	1	1017.25	1017.23	1017.22	1017.21	1017.22	1017.17	1017.12	1017.09	1017.01	1016.94	1016.93	1016.89	1017.10
	2	1016.84	1016.83	1016.77	1016.71	1016.71	1016.75	1016.75	1016.74	1016.73	1016.70	1016.65	1016.61	1016.73
	3	1016.60	1016.60	1016.61	1016.60	1016.54	1016.52	1016.54	1016.57	1016.56	1016.52	1016.49	1016.52	1016.55
	4	1016.52	1016.45	1016.43	1016.47	1016.49	1016.50	1016.51	1016.52	1016.54	1016.56	1016.58	1016.61	1016.51
	5	1016.63	1016.65	1016.67	1016.70	1016.72	1016.72	1016.73	1016.75	1016.73	1016.71	1016.69	1016.68	1016.70
	6	1016.73	1016.79	1016.82	1016.83	1016.83	1016.82	1016.82	1016.85	1016.89	1016.94	1016.98	1017.03	1016.86
	7	1017.11	1017.16	1017.19	1017.21	1017.25	1017.28	1017.26	1017.23	1017.21	1017.21	1017.22	1017.24	1017.21
	8	1017.27	1017.28	1017.29	1017.28	1017.25	1017.24	1017.24	1017.23	1017.21	1017.19	1017.20	1017.20	1017.24
	9	1017.18	1017.17	1017.15	1017.12	1017.11	1017.09	1017.07	1017.04	1016.99	1016.95	1016.92	1016.87	1017.05
	10	1016.84	1016.83	1016.78	1016.74	1016.72	1016.70	1016.67	1016.64	1016.64	1016.63	1016.61	1016.59	1016.70
	11	1016.57	1016.53	1016.48	1016.44	1016.38	1016.35	1016.32	1016.27	1016.24	1016.21	1016.15	1016.08	1016.33
	12	1016.02	1015.98	1015.94	1015.91	1015.93	1015.92	1015.89	1015.87	1015.87	1015.82	1015.72	1015.64	1015.87
	13	1015.64	1015.62	1015.57	1015.58	1015.59	1015.58	1015.56	1015.56	1015.54	1015.53	1015.52	1015.48	1015.56
	14	1015.43	1015.39	1015.36	1015.34	1015.32	1015.29	1015.26	1015.24	1015.20	1015.13	1015.12	1015.14	1015.27
	15	1015.14	1015.14	1015.12	1015.08	1015.03	1014.99	1014.96	1014.93	1014.92	1014.89	1014.85	1014.83	1014.99
	16	1014.82	1014.85	1014.87	1014.86	1014.83	1014.83	1014.85	1014.84	1014.84	1014.86	1014.86	1014.87	1014.85
	17	1014.88	1014.86	1014.85	1014.85	1014.84	1014.86	1014.93	1014.98	1015.04	1015.10	1015.14	1015.16	1014.95
	18	1015.20	1015.23	1015.26	1015.31	1015.35	1015.37	1015.41	1015.45	1015.47	1015.47	1015.49	1015.50	1015.37
	19	1015.52	1015.54	1015.54	1015.55	1015.56	1015.59	1015.61	1015.58	1015.57	1015.61	1015.61	1015.59	1015.57
	20	1015.58	1015.57	1015.55	1015.53	1015.52	1015.54	1015.53	1015.51	1015.51	1015.51	1015.49	1015.49	1015.53
	21	1015.50	1015.49	1015.49	1015.49	1015.50	1015.53	1015.56	1015.56	1015.53	1015.52	1015.55	1015.58	1015.52
	22	1015.58	1015.55	1015.53	1015.56	1015.56	1015.54	1015.51	1015.46	1015.44	1015.41	1015.37	1015.34	1015.49
	23	1015.32	1015.30	1015.29	1015.26	1015.22	1015.23	1015.24	1015.22	1015.19	1015.15	1015.10	1015.09	1015.22
30	0	1015.09	1015.10	1015.13	1015.14	1015.13	1015.12	1015.10	1015.09	1015.10	1015.11	1015.10	1015.09	1015.11
	1	1015.08	1015.07	1015.04	1014.97	1014.84	1014.74	1014.68	1014.65	1014.65	1014.63	1014.57	1014.52	1014.79
	2	1014.50	1014.48	1014.47	1014.48	1014.51	1014.48	1014.44	1014.38	1014.31	1014.23	1014.18	1014.20	1014.38
	3	1014.22	1014.19	1014.10	1014.04	1014.01	1013.96	1013.91	1013.87	1013.86	1013.84	1013.79	1013.83	1013.97
	4	1013.88	1013.92	1013.92	1013.89	1013.88	1013.86	1013.83	1013.80	1013.80	1013.83	1013.81	1013.79	1013.85
	5	1013.85	1013.91	1013.94	1013.91	1013.89	1013.89	1013.90	1013.91	1013.89	1013.89	1013.90	1013.88	1013.89
	6	1013.89	1013.91	1013.92	1013.96	1014.00	1014.02	1014.02	1014.04	1014.08	1014.12	1014.17	1014.19	1014.03
	7	1014.18	1014.18	1014.23	1014.27	1014.28	1014.28	1014.28	1014.31	1014.34	1014.35	1014.36	1014.39	1014.28
	8	1014.44	1014.46	1014.47	1014.47	1014.46	1014.45	1014.46	1014.51	1014.59	1014.66	1014.68	1014.68	1014.52
	9	1014.72	1014.77	1014.77	1014.75	1014.71	1014.68	1014.68	1014.65	1014.62	1014.62	1014.62	1014.62	1014.68
	10	1014.67	1014.73	1014.72	1014.70	1014.67	1014.64	1014.62	1014.59	1014.62	1014.60	1014.56	1014.60	1014.64
	11	1014.61	1014.61	1014.59	1014.52	1014.44	1014.39	1014.32	1014.24	1014.19	1014.19	1014.19	1014.13	1014.37
	12	1014.01	1013.94	1013.93	1013.89	1013.82	1013.74	1013.67	1013.63	1013.59	1013.52	1013.46	1013.43	1013.72
	13	1013.39	1013.33	1013.28	1013.27	1013.27	1013.24	1013.19	1013.15	1013.13	1013.10	1013.05	1013.00	1013.20
	14	1012.96	1012.94	1012.92	1012.91	1012.91	1012.89	1012.84	1012.77	1012.71	1012.66	1012.58	1012.52	1012.80
	15	1012.52	1012.52	1012.50	1012.48	1012.47	1012.47	1012.44	1012.42	1012.40	1012.38	1012.38	1012.41	1012.45
	16	1012.39	1012.34	1012.32	1012.32	1012.35	1012.38	1012.38	1012.36	1012.36	1012.38	1012.41	1012.45	1012.37
	17	1012.49	1012.53	1012.53	1012.55	1012.57	1012.59	1012.63	1012.68	1012.69	1012.69	1012.70	1012.72	1012.61
	18	1012.75	1012.77	1012.80	1012.84	1012.88	1012.93	1012.99	1013.03	1013.04	1013.06	1013.09	1013.12	1012.94
	19	1013.15	1013.18	1013.18	1013.18	1013.18	1013.22	1013.22	1013.18	1013.17	1013.18	1013.19	1013.21	1013.18
	20	1013.24	1013.25	1013.28	1013.33	1013.40	1013.45	1013.47	1013.47	1013.50	1013.51	1013.54	1013.58	1013.42
	21	1013.60	1013.60	1013.60	1013.62	1013.65	1013.66	1013.65	1013.65	1013.66	1013.68	1013.71	1013.73	1013.65
	22	1013.72	1013.71	1013.72	1013.72	1013.73	1013.71	1013.69	1013.68	1013.67	1013.67	1013.67	1013.65	1013.69
	23	1013.64	1013.63	1013.64	1013.65	1013.65	1013.64	1013.62	1013.63	1013.64	1013.64	1013.61	1013.59	1013.63







S.V.I.R.CO. Observatory - Pressure in hectoPascal

September 2019

