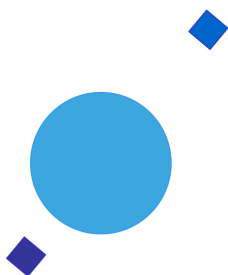


**INAF**



**ISTITUTO NAZIONALE DI ASTROFISICA  
NATIONAL INSTITUTE FOR ASTROPHYSICS**

***SVIRCO Prompt Report: January 2019***

Francesco Re and Nello Vertoli

INAF/IAPS-2019-02

February 2019

**ISTITUTO DI ASTROFISICA E PLANETOLOGIA SPAZIALI**

**AREA DI RICERCA ROMA - TOR VERGATA**

**Via del Fosso del Cavaliere, 100 - 00133 Roma (ITALIA)**



## **SVIRCO Prompt Report: January 2019**

**Francesco Re and Nello Vertoli**

*IAPS - INAF, Area di Ricerca Roma - Tor Vergata  
Via del Fosso del Cavaliere, 100 - 00133 Roma, Italy,*

### **Abstract**

*The pressure corrected intensity of the nucleonic component, produced by primary cosmic rays and recorded in January 2019 by the Neutron Monitor of SVIRCO-Rome (present geographic position:  $41.86^\circ$  N -  $12.47^\circ$  E; altitude about s.l. ), is reported in prompt form together with the barometric pressure data.*



## SVIRCO OBSERVATORY

During the 1<sup>st</sup> International Geophysics Year (1957) an international network of “ground-based detectors” for continuous cosmic ray measurements was world-wide established.

The cosmic ray station of Rome joined this network with the purpose to study the time variations of primary cosmic rays (**Studio Variazioni Intensità Raggi Cosmici: S.V.I.R.CO**) and their modulation in the heliosphere.

From July 1957 to April 1997, the SVIRCO Station (now Observatory) performed uninterrupted measurements at the Physics Department “G. Marconi” of “La Sapienza” University of Rome (41.90° N, 12.52° E, altitude about 60 m a.s.l.)

In May 1997 the neutron monitor was moved to the Physics Department “E. Amaldi” of “Roma Tre” University. Since then it has been continuously running at the new location (41.86° N, 12.47° E, altitude about 0 m a.s.l.).

The SVIRCO Observatory (INAF/IAPS-UNIRomaTre collaboration) is housed in a reserved building provided with a double air-conditioning system. The inner temperature is permanently restrained in a range of 23°-26° C, meanwhile the relative humidity is kept below 57%. Either the environmental parameters are continuously checked and recorded by digital sensors.

On January 1, 2005 three counters were added to the detector. This upgrade, from 17 to 20 NM-64, made the SVIRCO neutron monitor still consist of 5 sections but modified its geometry. Actually the new arrangement has been composed of three 3-counter, one 5-counter and one 6-counter units. The enhancement improved not only the overall counting rate of 15.6 % (January 2005) but, as a result, also the statistical quality of the recorded data.

On July 3, 2017 six counters experienced failure and were removed from the detector until 24 July. On 25 July 2017 a number of 2 counters was added to the detector up to a total of 16 counters. The new arrangement has been composed of three 3-counter, one 5-counter and one 2-counter units. The overall counting rate has decreased of about 20% (July 2017) with a lower statistical quality of the recorded data.

Each of the 16 BF<sub>3</sub> proportional counters (BP-28 type) is equipped with a smart amplifier/discriminator circuit complete with a spectrum stabilizer. This new electronic unit, developed in our laboratory, holds firmly the pulse height spectrum of the amplifier output (within a range of more than 150 volts around the operating voltage), providing the counter with a great immunity against high voltage variations.

Anyway, systematic and exhaustive tests of the counters are regularly performed. The output pulses of the amplifiers, discriminated by the threshold gates, are collected and stored into a multi-channel analyzer. The analysis of the height distribution (spectrum) of the amplifier pulses coinciding with the discriminator ones, is essential to verify the long term efficiency of each counter together with the amplifier gain and the discriminator threshold level.

As well as the amplifier/discriminator circuits, a large part of the electronic instrumentation operating in the Observatory was designed and realized in our laboratory together with the software for data acquisition and pre-elaboration.

In order to improve the reliability of the recorded data and to prevent measurement breakdowns, two independent systems perform contemporary the data acquisition. Each system is remotely controlled by a dedicated computer and is timed by a high stability quartz clock and/or a GPS receiver. One equipment runs according to a timing of 1 minute and fulfils the acquisition of the 16 counters separately. The other one records the individual 5-minute counting rate of each detector section in addition to the rates of the overall multiplicity, sorted into separated counting channels (from 1 to greater than 8).

A special care is devoted to the atmospheric pressure measurements; thus they are carried out by means of not less than three barometers at the same time. These instruments (achieving a resolution up to 0.01 hPa), are constantly checked out each other for the best measuring accuracy and reliability. Furthermore, the devices in use are equipped with different types of transducer such as vibrating cylinder, force balance and quartz, therefore, throughout their different behaviours, it is possible to point out the occurrence of any long-term drift and eventually to re-calibrate the instruments themselves.

## DATA PRESENTATION

In a preliminary step, the intensity data, of the secondary nucleonic component of cosmic rays, detected at SVIRCO Observatory, were corrected for pressure variations at a reference level of 1009.25 hPa with an attenuation coefficient of 0.70% / hPa.

The five-minutes counting rates, of the examined month, are reported in tabular form together with the hourly normalized data, which provide a continuous data set for long-term analysis.

The normalization was evaluated as percentage of the counting rate average of January-February 1997, when the Monitor operated at the previous location of "La Sapienza" University. The reference counting rate level (100%), computed for such period, is equal to 554946 counts/hour.

The atmospheric pressure data (in hectoPascal) are also collected in a monthly table which presents the five-minutes averages and the hourly ones.

The hourly averages of the normalized intensity and pressure, plotted in monthly graphs, are reported too.

## CONDITIONS FOR SVIRCO DATA USE

You are welcome to use neutron monitor data of SVIRCO, IAPS/INAF-UNIRomaTre collaboration, under the following conditions:

*-You agree to acknowledge our financial supports in any published use of the data.*

*Example: "SVIRCO NM is supported by the INAF - UNIRomaTre collaboration"*

*-You are kindly requested to send a copy of any published work derived from our data to:*

Dr. Monica Laurenza  
Head of SVIRCO Observatory & TPL  
Istituto di Astrofisica e Planetologia Spaziali - Area di Ricerca Tor Vergata  
Via del Fosso del Cavaliere, 100 00133 Roma - Italy,

[monica.laurenza@iaps.inaf.it](mailto:monica.laurenza@iaps.inaf.it)

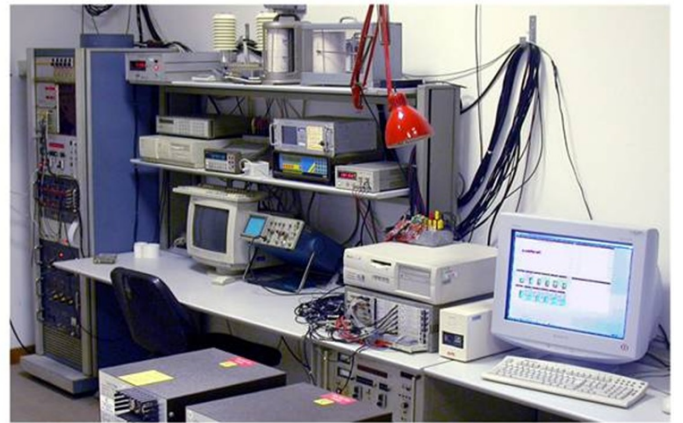




# S.V.I.R.CO. Observatory

Rome

Italy







INAF/UNIRomaTre		S.V.I.R.CO. Observatory - Pressure Corrected Data – January 2019											16 NM-64	
day	hh	00_05	05_10	10_15	15_20	20_25	25_30	30_35	35_40	40_45	45_50	50_55	55_60	h-norm
1	0	38754	38449	38404	38122	38002	38405	38459	38607	38373	38189	38663	38783	101.472
	1	38348	38740	38675	38534	38517	38489	37867	38799	38672	38302	38988	38519	101.739
	2	38484	38424	38662	38436	38614	38444	38242	38498	38836	38371	38673	37766	101.519
	3	38621	38554	39036	39278	37929	38314	38209	38650	38083	38725	38545	38189	101.670
	4	38349	38401	38337	38211	38756	38374	38478	38628	38526	38920	38282	38841	101.662
	5	37928	38010	37849	37932	38220	38285	38717	38565	38987	38426	38476	39012	101.289
	6	38219	38201	38638	38823	38838	38185	37868	38220	38564	38282	38054	38813	101.355
	7	38445	38128	38097	38178	38255	37966	38660	38530	38455	38608	38830	39063	101.468
	8	38943	38500	39230	38138	38273	38166	38622	39349	38275	38799	38720	38906	102.063
	9	38808	39068	38607	38644	38717	38584	38280	39090	38428	38640	38883	39035	102.252
	10	38649	38723	38578	38236	38725	38575	38751	38677	38259	38611	38344	38426	101.762
	11	37865	38929	38619	38818	38385	38404	38554	38821	38068	38256	38191	38208	101.446
	12	39010	39214	38247	38584	38255	38420	39268	38460	38590	38911	38178	38703	102.045
	13	38511	38519	38970	38527	38595	38881	38095	38388	38954	38526	38087	38391	101.738
	14	38451	39000	38918	38925	38523	38165	38346	38429	38663	38455	38949	38795	101.996
	15	38358	37717	38028	38848	38409	38853	38493	38236	38034	38653	37971	38540	101.231
	16	38322	38160	38841	38172	38467	38682	38317	38417	38186	38405	38852	38207	101.426
	17	38542	38668	39132	38558	38551	38299	38207	38023	38301	38901	38677	38475	101.713
	18	38277	38398	37852	38520	38367	38810	38444	38519	38452	38171	38973	38395	101.459
	19	38392	38512	38409	38802	38689	38256	38166	37984	38545	38484	38016	38517	101.370
	20	38584	38225	38394	38343	38575	38632	37832	37590	38059	38828	38217	38413	101.132
	21	38622	39204	39055	38132	38410	38462	38866	38627	38474	38361	38434	38493	101.890
	22	38850	38228	38443	38337	38338	38491	38145	38618	38205	38330	37935	38032	101.189
	23	38356	38490	38474	38677	37887	38432	38236	38734	37957	38577	38954	38689	101.522
2	0	38841	38361	38200	38507	38105	38301	38868	38523	38043	38493	38455	38449	101.440
	1	38195	38227	38583	38653	38453	38118	38681	38502	39208	38623	38030	38504	101.590
	2	38410	38524	38282	38859	38646	38970	38272	38697	38223	37964	38126	39159	101.669
	3	38506	38620	38433	38432	38851	39362	38502	38318	38355	38383	38933	38594	101.923
	4	38677	38292	38101	38775	38500	38604	38478	38477	37965	38821	38763	38555	101.642
	5	38521	38960	38422	38661	38859	38982	38482	38406	38676	38513	38610	38637	102.020
	6	38779	38427	38632	38656	39166	38465	37753	38048	38142	38465	38380	39104	101.644
	7	38557	38298	39102	38701	38360	39134	38297	38312	38922	38270	38301	38183	101.736
	8	38395	38129	38296	38913	38869	38188	38304	38844	38844	38246	38437	38953	101.732
	9	38340	38838	38353	38253	38707	38701	38674	38449	38202	38410	38813	38464	101.685
	10	38249	38965	38228	38640	38924	38471	38325	38257	38938	39041	38417	38569	101.866
	11	38713	38805	38825	38397	38655	38995	38835	38164	38495	38399	38633	38658	101.986
	12	38046	38775	38305	38347	38923	38204	38751	38858	38195	38542	38465	38468	101.614
	13	38497	38349	38795	38725	38994	38452	38299	38270	38188	38902	38488	38557	101.753
	14	38371	38828	38587	38646	38605	38591	38702	38617	38100	38092	39110	38061	101.708
	15	38577	38784	38529	38868	38211	38965	39036	39004	38517	38575	38779	38449	102.145
	16	38332	38554	38133	38493	38332	38293	39066	38753	37843	38404	38340	37786	101.273
	17	38129	38642	38299	38611	38605	38543	38439	38329	39095	38428	38549	38296	101.632
	18	38961	38651	38325	37976	38304	38753	38794	38373	38808	38831	38418	38849	101.870
	19	38669	38728	38547	38353	38999	37970	38900	38202	38488	38811	38610	38378	101.785
	20	38266	38114	38555	38713	38278	38732	38645	38451	38945	38232	38554	38446	101.624
	21	38315	38783	37889	38443	37824	38228	37870	38888	39219	38451	38832	38349	101.440
	22	39096	38678	38307	38884	38688	38821	38672	38967	38478	38371	38331	38989	102.142
	23	38606	38960	38320	38585	38506	39227	38883	37817	39231	38886	38437	38990	102.179

INAF/UNIRomaTre		S.V.I.R.CO. Observatory - Pressure Corrected Data – January 2019											16 NM-64	
day	hh	00_05	05_10	10_15	15_20	20_25	25_30	30_35	35_40	40_45	45_50	50_55	55_60	h-norm
3	0	38878	38983	38344	38031	38819	38676	38670	38259	38269	38350	38309	38423	101.649
	1	38388	38430	38411	38531	39144	38560	38711	39097	38895	38261	38499	38581	101.972
	2	38777	38789	38516	39117	38780	38762	38539	38431	38510	38267	38391	38713	101.991
	3	38811	38439	38916	38878	38029	38584	38839	38307	39124	38176	38390	39394	102.055
	4	38480	38247	38687	38323	38581	38991	38273	39207	38972	38544	38967	38769	102.089
	5	38359	38580	38835	38821	38883	38570	38400	39000	39297	38628	38813	38735	102.282
	6	38867	38660	38382	38837	38973	39419	39520	38869	38631	38991	39557	39075	102.911
	7	38514	38708	38963	39018	38686	38824	38400	38856	38527	38795	38681	38531	102.191
	8	38841	39233	38933	39022	39108	39305	38245	38889	39013	38466	38903	38750	102.676
	9	39128	39041	39001	38693	38340	38283	38679	38841	39164	39229	39024	38851	102.581
	10	38746	38936	38329	38843	38954	38375	38561	39429	38695	39298	38870	38825	102.489
	11	39373	39296	39219	38913	39261	38929	38864	38733	38893	38690	39050	39172	103.046
	12	38344	38556	39236	38868	37995	38654	38588	39280	38559	39538	38498	39216	102.373
	13	38187	38143	38817	38810	39200	38538	39109	38708	39284	38369	38626	38569	102.159
	14	38742	38886	38233	38850	38613	38647	38794	38994	38501	38738	38680	38398	102.097
	15	38432	38760	39045	39431	38543	38888	39151	38031	38686	38869	38258	38406	102.190
	16	39054	38958	38186	39023	38907	39004	38710	39113	38309	38960	39034	38576	102.484
	17	38385	38560	38482	38861	38683	38681	37887	38841	38452	38394	38335	39063	101.777
	18	38453	38838	38682	38844	38756	38977	38884	38825	38589	38574	38701	38763	102.275
	19	38435	38657	39081	38902	38498	38952	38431	39026	38797	37603	38497	39452	102.153
	20	38409	38546	38190	38280	38871	38648	38329	38524	38721	38580	39308	38554	101.851
	21	38325	38572	38909	38629	38633	38709	38506	38501	38979	38809	38519	38825	102.061
	22	38293	38557	38375	38905	38356	38979	37974	38850	38644	38725	38650	38828	101.890
	23	38372	38504	38810	38736	38172	38941	38463	38716	38245	38425	38733	38532	101.783
4	0	38377	39173	38838	37981	38956	38421	38446	38793	38266	38756	38959	38635	101.999
	1	39189	38868	38451	38488	38738	38949	38386	38357	38601	38095	38163	38997	101.922
	2	39047	38590	38963	38986	38681	38281	38506	38597	38002	39021	38785	38452	102.060
	3	38706	38144	38722	38822	38634	38926	39308	38741	39259	38546	39049	39089	102.508
	4	39025	38516	37862	38702	38347	38397	38447	39091	39229	38515	38371	38271	101.810
	5	39023	38375	38715	39027	38280	38799	38339	38913	39171	38747	38793	38602	102.252
	6	38709	39075	38823	38627	38492	38562	38252	39153	39067	38497	39102	38788	102.332
	7	37994	39079	38736	39034	38701	38831	38470	38891	38211	38595	38698	38772	102.082
	8	38713	39339	38327	38851	38699	38613	38924	39303	38735	38401	39294	39074	102.580
	9	38909	39022	38776	39071	38400	38157	38941	38991	38944	38928	38739	39186	102.534
	10	39060	39165	38897	39001	39151	38745	38092	38887	39084	38909	38573	38521	102.538
	11	38743	39139	39002	38887	39185	39261	39085	38949	38410	39342	38589	39002	102.871
	12	38442	38332	38878	38187	38558	38638	38455	38788	39018	39089	38977	38419	102.032
	13	39203	38517	39239	38446	38731	38197	38777	38655	38562	38874	38675	38237	102.105
	14	39243	38584	39294	38846	39233	39070	38664	39373	38782	39037	39303	38796	103.010
	15	38809	38702	39009	39237	38280	38910	38690	39167	38497	38294	38581	39152	102.373
	16	38640	38529	38558	39058	39023	38836	39024	38636	38361	38780	38950	39183	102.427
	17	38376	39006	39180	38448	38759	38566	38990	38590	39303	38445	38838	38529	102.307
	18	38622	38833	39355	38745	39413	39339	38423	39242	39159	38944	39044	39122	103.013
	19	39274	39254	38967	38417	39064	38784	38577	38994	39081	38516	38917	39043	102.715
	20	38789	38710	38534	39387	39400	38907	38830	38977	38826	38959	39254	39171	102.904
	21	38976	39210	39289	39243	39647	38806	39363	39069	38231	38995	38194	39097	102.986
	22	39055	38218	39209	38865	38380	38674	38786	38724	38601	38723	39500	38915	102.443
	23	38548	38692	38322	39001	38966	38549	39061	39178	38333	38692	38713	39168	102.349

INAF/UNIRomaTre		S.V.I.R.CO. Observatory - Pressure Corrected Data – January 2019											16 NM-64	
day	hh	00_05	05_10	10_15	15_20	20_25	25_30	30_35	35_40	40_45	45_50	50_55	55_60	h-norm
5	0	38958	39448	38983	38512	38851	38808	39229	38965	38359	38648	38657	39025	102.618
	1	38791	39732	38294	38557	39480	38948	39180	38293	38955	38929	38913	38919	102.738
	2	38672	39684	38574	38367	38439	39540	37946	39123	38368	38927	38780	38702	102.327
	3	38073	38560	39131	38735	38838	38544	38363	38728	38879	38345	38992	38878	102.095
	4	38973	38683	38656	39177	39394	38573	38807	38624	38638	38537	38406	38782	102.355
	5	38759	38229	38222	39056	38675	38648	38621	38699	38993	38797	38624	37898	101.909
	6	38627	38448	38129	39101	38607	38950	38525	38764	39100	38744	38448	38737	102.120
	7	38463	38210	38501	39080	38846	38587	39027	39238	39076	39197	38900	38486	102.435
	8	38736	38529	38747	38978	39068	38620	39060	38829	38944	38617	39159	39320	102.654
	9	38766	38961	38523	38826	39232	38872	39106	38563	38507	39245	39110	38582	102.585
	10	38833	39281	39338	38551	38958	38658	39039	38826	38456	38363	38908	38853	102.534
	11	38488	38988	38919	38689	38749	38698	38508	38466	39088	38713	39331	38561	102.344
	12	38827	38530	38704	38706	38612	39066	38825	38924	38875	39523	38643	38412	102.443
	13	39070	39194	39221	38872	38541	38969	38192	38198	38372	39128	38228	39133	102.325
	14	38517	38767	38747	38809	38990	37696	38706	38750	38909	38535	38746	38386	101.983
	15	38672	38650	38674	38278	38208	38272	38142	38651	37881	38109	39095	38452	101.438
	16	37878	38789	38640	38417	38636	38305	38438	38595	38665	38682	38660	38448	101.674
	17	39181	38779	38181	38315	37993	38673	38971	38029	38860	38640	38643	38634	101.838
	18	38631	38404	38902	38086	38401	38774	39040	38675	38396	38648	38527	38372	101.828
	19	38417	38161	38299	38326	38359	38219	37850	38597	38466	38189	38128	38565	101.107
	20	38875	38106	38338	38625	38690	38132	38218	38431	39063	38792	38624	38570	101.742
	21	38606	38386	37997	37976	37844	38304	38583	38675	38189	38486	37869	38947	101.170
	22	38588	38183	38359	38427	38311	39120	38379	38402	39096	38225	38002	38948	101.649
	23	38807	39026	38608	38408	38991	38741	38305	38712	38686	39129	38158	38258	102.043
6	0	37801	38391	37892	38765	38198	38389	38214	38743	38223	38223	38008	38595	101.078
	1	38885	38339	38546	38464	38489	38486	38130	38045	38714	38137	38709	38464	101.510
	2	38073	38861	38580	38754	38559	38819	38671	38648	38734	38411	37717	38453	101.701
	3	38358	38211	38508	38930	38787	37961	39107	37825	38758	38084	38966	37799	101.484
	4	38969	38519	38387	38132	38266	38631	38843	38402	37798	38640	38208	38954	101.585
	5	38588	38726	38642	38718	38962	38840	37806	38198	38640	38080	38427	38280	101.620
	6	38596	38077	38524	38733	38654	38566	38957	39399	38434	38936	38841	38472	102.122
	7	38788	38575	38960	39088	38058	38683	38449	38285	38689	38066	38946	38658	101.914
	8	38486	38427	38963	38954	38568	38570	38485	38273	38508	38965	38891	38119	101.906
	9	38973	38526	38895	38947	38409	39427	38650	38212	38714	38925	38722	38576	102.295
	10	38292	39154	38855	38658	38491	38504	38703	38734	39010	38732	38444	38570	102.112
	11	38987	38969	38877	38659	38423	38322	38933	38851	38887	39009	38359	38406	102.230
	12	38859	37989	38766	38732	38604	38658	38860	38374	38826	38918	38376	38949	102.061
	13	38542	38401	38449	38677	38431	38173	38415	38238	38488	38227	38677	39054	101.590
	14	38623	39094	38962	38018	38182	38079	37980	38453	38535	39125	38189	38965	101.685
	15	38744	38630	38471	38747	38176	38032	38123	38742	38779	38671	38665	37897	101.569
	16	38054	38675	38904	38544	38085	38185	38181	38056	38071	38178	38318	38997	101.254
	17	38216	38819	38659	38680	38456	38500	39148	38258	38361	38504	38170	38028	101.596
	18	37790	38604	38451	38624	38512	38578	38234	38237	38652	37972	38159	38778	101.330
	19	38690	38548	38377	38841	38580	38237	38113	38758	38605	38853	38821	38467	101.836
	20	38427	38253	38571	38437	38659	38841	38311	38894	38467	38412	38580	39069	101.843
	21	38773	38277	38369	38479	38702	38610	38614	38077	38153	38766	38410	38129	101.499
	22	38809	38228	38611	38208	39497	38489	38378	38438	38176	38955	37943	38345	101.657
	23	38955	38561	38350	38738	38765	38482	39057	38831	39172	38882	38133	38966	102.276

INAF/UNIRomaTre		S.V.I.R.CO. Observatory - Pressure Corrected Data – January 2019											16 NM-64	
day	hh	00_05	05_10	10_15	15_20	20_25	25_30	30_35	35_40	40_45	45_50	50_55	55_60	h-norm
7	0	37976	38386	38529	38371	39032	38932	38920	38655	38127	38690	38697	38679	101.862
	1	38226	38453	38856	38900	38614	38860	38674	38695	38432	38257	38977	38555	101.970
	2	38257	38500	38674	38476	38400	38495	38316	38488	38645	38718	38409	38385	101.588
	3	39070	38694	38404	38502	38796	38882	38532	38655	38381	37962	38362	37973	101.687
	4	38269	38144	37924	38205	38899	38441	38145	38666	38490	38813	38475	39099	101.545
	5	38702	38092	38911	37800	38598	38263	38730	38139	38215	38186	38242	38475	101.278
	6	38650	37904	38050	38313	38596	38311	38276	38445	38959	38801	38475	38280	101.433
	7	38015	38316	37988	38108	38603	38876	38425	38839	38554	38890	38792	38479	101.614
	8	38815	38589	38756	38271	38906	38673	37922	39134	38680	38956	38632	38482	102.040
	9	38276	38013	38489	38253	38483	38443	38794	38659	38756	38419	38635	38015	101.471
	10	37861	38640	38529	38580	39311	38808	38566	38226	37982	38352	39125	38336	101.710
	11	38577	38094	38843	38408	38349	38407	38740	38769	38908	38383	38298	38890	101.787
	12	37901	38916	38016	38283	38670	37730	38143	38809	37885	38291	38415	38085	101.012
	13	38466	39385	38356	38742	38976	38391	38442	38599	38386	38834	37861	38881	101.930
	14	38650	38429	38107	38115	38723	39058	38433	38893	38486	38395	38493	38300	101.658
	15	38373	38190	38763	38205	38632	38758	38912	38749	39039	38872	38355	38339	101.901
	16	38408	38475	38365	37981	38345	37801	38678	38522	38124	38722	38264	38392	101.218
	17	38134	38733	38625	39126	38952	38793	38527	38367	37610	38541	38710	38557	101.789
	18	38316	38263	38054	38200	38619	38698	38703	38832	38925	38748	38840	38089	101.703
	19	38911	38279	38790	38453	38736	38566	38833	38851	39131	38382	38577	38382	102.056
	20	38679	38343	38716	38637	37536	38938	37990	38412	38589	38895	38286	38366	101.505
	21	38522	38180	38099	38371	38543	38181	38550	38330	38273	38816	38542	38586	101.418
	22	38405	38432	38751	38628	37874	39000	39059	38639	38475	38367	38696	38296	101.777
	23	38547	38600	38330	38064	38346	38347	38764	38601	39053	38658	37927	38540	101.591
8	0	37982	38687	38050	38402	37951	38082	38497	38458	38778	38693	38509	38409	101.304
	1	38024	38411	38620	38891	38573	38246	38226	38617	38262	38529	38081	38186	101.346
	2	38493	37740	38595	38202	38180	38568	38565	38746	38182	38063	38405	38760	101.310
	3	38178	38307	38698	38359	37916	38210	39084	39185	38403	38901	38237	38382	101.610
	4	37857	38254	38172	39075	38645	38073	38399	38822	38333	38828	37677	38931	101.435
	5	38240	38007	38101	38444	38747	38015	38705	38254	38480	38529	38399	38356	101.261
	6	38750	38273	38688	38812	38449	38610	38209	38489	38820	38281	38241	38449	101.655
	7	38481	38292	38117	38698	38650	38307	38261	38844	38939	38437	38092	39100	101.688
	8	38708	38511	38256	38374	38895	38330	38341	39104	38658	38412	38142	38919	101.783
	9	38340	38518	38643	38594	38578	38736	38310	38208	39021	38375	38318	37844	101.527
	10	38611	38507	38316	39115	39003	38604	38588	38545	38631	38629	38660	38558	102.030
	11	38974	38527	38440	38424	38644	38489	38636	38739	38424	38911	38267	38269	101.804
	12	38812	38497	38785	38436	38521	38475	38359	38614	38997	38015	39020	38636	101.897
	13	38661	38357	38336	39085	38449	38303	38846	37728	38483	38340	38270	38320	101.459
	14	38566	38757	38380	38062	38378	38582	38208	38812	37938	37981	38201	38477	101.275
	15	38067	38631	38348	38312	38003	38071	38697	37692	37944	37916	38521	38208	100.850
	16	38682	38296	38248	38774	38082	38545	37878	38095	38313	37791	38931	37957	101.110
	17	38290	38154	38512	38196	38203	38186	37772	38414	38997	38154	38343	38228	101.079
	18	38241	38247	38608	38265	38419	38114	38236	38528	38130	38008	38029	38489	101.049
	19	38053	38184	38527	38486	38435	38287	38230	38185	38666	38391	38285	38001	101.141
	20	38032	38064	38626	38034	38132	38151	38272	38220	38552	38015	37724	38287	100.784
	21	38544	38275	38288	37445	38186	38837	38548	37959	38320	38550	38929	37809	101.132
	22	38374	37942	38405	37990	38169	38405	37999	38363	39116	38093	38465	38680	101.202
	23	38780	38263	37904	38123	38344	38640	38055	38100	38669	37932	38394	37959	101.016

INAF/UNIRomaTre		S.V.I.R.CO. Observatory - Pressure Corrected Data – January 2019											16 NM-64	
day	hh	00_05	05_10	10_15	15_20	20_25	25_30	30_35	35_40	40_45	45_50	50_55	55_60	h-norm
9	0	38183	38532	38886	38403	38344	38292	37943	37887	38161	38755	37638	38200	101.019
	1	38363	38724	38296	38405	38462	38396	38730	37764	38551	38143	38843	38136	101.379
	2	37716	38197	39210	38870	38244	38654	38246	38312	38324	38912	38088	38404	101.459
	3	38276	38402	38423	38276	38112	38152	38372	37840	38903	38083	38660	38311	101.158
	4	38528	39112	38580	38380	38350	38484	38586	38487	38399	38370	38332	38143	101.585
	5	38551	37879	37991	38342	38544	38049	38615	38581	37492	38444	37746	38677	100.960
	6	38293	38035	38518	38397	38549	38943	38602	38402	37948	38770	38575	38269	101.486
	7	38725	38292	38772	38019	38419	38252	38680	38519	38737	38629	38529	38360	101.626
	8	38767	38484	37871	38201	38491	38142	38153	38463	38687	38504	38130	38532	101.294
	9	38542	38639	38702	38884	38107	38527	38694	38744	38056	38296	38425	38098	101.577
	10	38284	38380	38975	38231	38674	38765	38052	38913	38337	38556	38155	38723	101.650
	11	37903	38653	38492	38356	38552	37945	38598	38306	38324	38820	38362	38477	101.374
	12	38223	37888	37779	38486	38772	38330	38129	38541	38327	37963	38829	38224	101.089
	13	38824	38249	37943	38740	38380	38052	38461	37992	38448	38391	38349	38443	101.260
	14	38266	38117	38004	38312	38084	38462	38211	38236	38159	38548	38251	38630	101.042
	15	38180	38092	38309	38079	38622	38427	38589	38655	39018	38255	38173	38089	101.308
	16	38212	38321	37906	37894	38422	38496	38033	38494	38353	38270	38007	38041	100.859
	17	38464	38148	38231	38602	37939	38842	38546	38269	38687	38246	38685	37851	101.313
	18	38187	38228	38366	38563	38970	38468	38231	38292	38492	38321	38309	38830	101.477
	19	38847	39111	38404	38727	38286	38331	38030	38593	38257	37948	37974	38543	101.432
	20	38116	38430	38121	38537	38780	39284	38375	38750	37990	38708	38445	38014	101.541
	21	38576	38376	38507	38832	38978	38683	38539	38457	38423	38468	38872	38130	101.825
	22	38555	38418	38467	38623	38441	38046	38897	38830	38009	38684	38680	38504	101.674
	23	38670	38754	38714	38797	38401	38898	38211	39053	38977	38500	38445	38667	102.099
10	0	38621	38453	38377	38553	38617	39384	38595	38287	38823	38028	38723	38792	101.921
	1	38153	38932	38846	38651	38886	38537	38605	38359	38697	38713	38244	38819	101.957
	2	38623	38578	38819	38477	38871	38946	38087	38307	38412	38715	38602	38458	101.837
	3	38420	38517	38794	38371	38712	38009	38438	38714	38729	38543	38922	38810	101.856
	4	38687	39361	38641	38433	38808	38792	38964	38246	38598	38876	38186	38867	102.181
	5	39205	38790	38185	38549	38669	38145	38897	38347	38432	38311	38408	38961	101.838
	6	38195	38600	38630	38718	38527	38575	39019	38326	38287	38630	38446	38942	101.837
	7	38532	38591	38625	38571	39264	38832	38328	38567	38681	38373	38787	38467	101.996
	8	38795	38059	39256	37990	38608	37962	39324	38519	38678	38989	38671	38833	102.010
	9	38710	38236	38411	38716	38758	38493	38638	38161	38597	38600	38504	37701	101.536
	10	38752	38671	38919	38074	38102	38679	37753	38632	38302	38201	39140	38543	101.589
	11	38294	39054	38875	38333	38759	38547	38038	37932	38205	39002	38660	37932	101.559
	12	38439	38109	38027	38428	37957	38653	38638	38291	38161	37958	38244	38104	100.982
	13	38160	38753	38218	38973	38225	38332	38648	38307	38243	38440	38573	37879	101.365
	14	38551	38082	38239	37832	38536	38625	38556	38531	38670	38640	38205	38325	101.374
	15	38086	38998	38682	38500	38636	37869	38153	38714	38472	38466	38075	37814	101.303
	16	38111	38641	37988	38657	38358	38244	38519	38342	38494	38155	38596	38096	101.244
	17	38523	38250	37783	38432	38403	38154	38085	38480	38242	38376	38316	38328	101.062
	18	38966	38841	37992	38409	38336	38488	38758	38350	38321	38081	38492	38659	101.573
	19	38803	38404	38072	38362	38202	38464	38186	38434	38656	37887	38222	37969	101.126
	20	38290	38854	38295	38784	38395	38648	38315	38796	38556	38717	38244	38671	101.764
	21	38382	38293	38863	38756	38281	38403	38337	38344	37937	38313	38105	38464	101.305
	22	37926	38313	38404	38729	38333	38058	37808	37653	38082	38163	38525	38307	100.826
	23	38587	38728	38365	38191	38227	38008	38085	38196	38406	38109	38326	38761	101.197

INAF/UNIRomaTre		S.V.I.R.CO. Observatory - Pressure Corrected Data – January 2019											16 NM-64	
day	hh	00_05	05_10	10_15	15_20	20_25	25_30	30_35	35_40	40_45	45_50	50_55	55_60	h-norm
11	0	38468	38954	38548	37630	38668	38205	38196	37947	38871	38395	38619	37942	101.300
	1	38216	38846	38128	38762	38390	38296	38350	38126	38556	38409	37903	38097	101.218
	2	38431	38489	38047	38406	38880	37926	39064	37929	38645	38118	38633	38121	101.351
	3	38351	38390	38293	38326	37869	38185	38544	38633	38071	38717	38112	38250	101.143
	4	38424	38070	38726	38683	38360	38544	38201	38834	38348	38760	38220	38615	101.593
	5	38607	38026	38327	38615	38158	38428	38171	38415	38838	38552	38252	38280	101.348
	6	38347	39074	38013	38644	38554	38559	38494	38276	38297	39242	38246	38522	101.699
	7	38848	38590	39062	38559	38909	38098	38002	38618	38484	39072	38521	38863	101.998
	8	38169	38354	38827	39105	39211	38865	38713	38729	38344	38838	38612	38249	102.083
	9	38839	39006	38655	38541	38764	38953	38251	38537	38491	38338	38655	38708	102.022
	10	38937	38337	38117	39099	38617	38376	38453	38377	38855	38638	38121	38512	101.736
	11	38171	38652	38333	39037	38141	38355	38720	39290	38162	38330	38560	38090	101.605
	12	38527	38589	38431	38315	38522	38667	38262	39067	38364	38736	38213	38442	101.670
	13	38294	38140	38287	38854	38277	38216	38903	38298	38422	38537	38097	38605	101.405
	14	38005	38537	38180	38343	38393	38017	38185	38321	39081	38586	38595	37910	101.234
	15	38729	38163	38852	38625	38155	38886	38658	38264	37827	38348	38269	38405	101.460
	16	38170	37907	37919	37893	38590	38042	38540	38306	38071	37890	38218	38283	100.722
	17	38124	38488	38628	37972	38985	38096	38566	38244	38404	38904	38645	38620	101.569
	18	38453	38441	38511	38082	38825	38546	38307	37997	38546	38565	38718	38674	101.566
	19	38553	38481	38520	38265	38458	38222	38419	38462	38466	38592	38235	38567	101.473
	20	38373	38385	38713	38239	38436	38647	38143	38329	37580	38165	38371	38154	101.097
	21	38819	38285	38592	38461	38537	38771	37609	38747	38782	38520	38076	38549	101.585
	22	37962	37901	38678	38543	38601	38796	38616	38634	38759	38177	38323	38501	101.528
	23	38294	38652	38429	38726	38535	38699	38209	38110	38510	38127	38810	38587	101.571
12	0	38069	37721	38185	38113	38015	38869	38105	38034	38401	38622	38647	38106	100.955
	1	37775	38271	38764	38175	38355	37847	38680	38820	38414	38793	38631	38686	101.466
	2	38971	38401	38497	38501	38997	38604	38318	38707	38324	38168	38904	38197	101.769
	3	38198	38410	38311	38112	38878	37928	38444	38871	38790	38290	38446	38640	101.490
	4	38879	38648	38207	38033	38524	38335	38293	38489	38151	37984	38626	38277	101.298
	5	38344	38137	38177	38118	38298	38852	38801	38587	38599	38644	38025	38387	101.413
	6	38501	39408	38385	38424	38829	38808	38869	38303	38128	39068	38982	38487	102.122
	7	38494	38150	38806	38706	38513	38550	38752	37854	38184	38307	38318	38540	101.459
	8	38238	38707	38571	38809	38286	38940	38439	38365	38710	38773	38200	38280	101.709
	9	39054	38269	38866	38551	39272	38374	38742	38666	38794	38107	38458	38405	101.983
	10	39080	38487	38903	38703	39168	38302	37637	38523	38594	38459	38403	38373	101.779
	11	37899	38316	38512	38240	38633	38414	38715	38025	38607	38509	38465	37947	101.262
	12	38487	38692	38150	38214	38068	38566	38631	39207	37993	38647	38227	38813	101.573
	13	38221	38451	38090	38564	38081	37824	38368	38397	38521	39019	37890	38183	101.114
	14	38610	38756	38847	38095	38433	38556	38014	38149	38812	37925	38088	38497	101.372
	15	38550	37744	38482	37893	38475	37990	37793	38011	38195	38343	38654	37690	100.721
	16	38212	38679	38358	38327	38555	38481	38439	38562	38441	38650	38350	38631	101.571
	17	38072	38606	38821	38004	38537	38763	38064	38516	38119	38653	38502	38011	101.347
	18	37915	38341	38301	38797	38351	38245	38950	37931	38921	38638	38238	38591	101.468
	19	38689	38258	38535	38168	38803	38998	38601	38668	38697	38259	38073	38453	101.685
	20	38394	38462	38507	38100	38840	38618	38664	38302	38061	38438	38573	38351	101.488
	21	38153	37865	38106	38121	38033	37873	38931	37944	37930	38263	38056	38472	100.704
	22	37782	38500	38160	38478	38366	38117	38358	39135	38173	38368	37715	38187	101.055
	23	38169	38002	38819	38536	38430	38915	38138	38807	38338	38858	38089	38394	101.529

INAF/UNIRomaTre		S.V.I.R.CO. Observatory - Pressure Corrected Data – January 2019											16 NM-64	
day	hh	00_05	05_10	10_15	15_20	20_25	25_30	30_35	35_40	40_45	45_50	50_55	55_60	h-norm
13	0	38421	38172	37752	38528	38535	38419	38431	38146	38423	37827	38131	38613	101.068
	1	38060	38361	38210	38220	37842	38347	37847	37917	38535	38617	38423	38081	100.862
	2	38560	37910	38420	38593	38197	38000	38480	38882	38115	38627	38687	38170	101.341
	3	38258	38017	38672	38526	38581	38560	38399	38486	38096	38307	38883	38573	101.499
	4	38313	38520	38326	38330	38463	38511	38466	38468	38585	37930	38774	38252	101.406
	5	38409	39137	38541	38405	38375	38289	38829	38688	39048	38601	38929	38066	101.930
	6	38045	38716	38165	37989	38665	38651	38005	38309	38393	38539	38565	38154	101.243
	7	39068	38886	38663	38927	38507	38631	38970	38547	38318	38318	38314	38983	102.109
	8	38321	38193	38296	38317	38265	39025	38516	38604	38425	37861	38634	38639	101.442
	9	38411	38957	38674	38336	38396	38545	38792	38790	38849	38245	38952	38302	101.915
	10	38595	38704	38208	38424	38060	38214	38051	38172	38145	38309	38767	38472	101.227
	11	38268	38681	38739	38118	38023	38012	38271	38461	38792	38339	38885	38210	101.376
	12	38112	38048	38242	38282	37934	37988	38721	38363	38227	38366	38087	38557	100.965
	13	37656	38651	38637	37775	38215	38558	37980	38618	38406	38225	38190	38130	100.989
	14	38217	38412	38842	38406	38541	38470	38329	38572	38395	38305	38313	37744	101.320
	15	37952	37700	38225	38381	38310	38709	38056	38362	38104	38354	37974	38152	100.821
	16	38827	39033	38663	38284	38783	38129	38250	38114	37829	38403	38088	38276	101.350
	17	38143	37768	38037	38212	38387	38270	38157	38038	38109	38318	38934	37994	100.841
	18	38163	38360	38100	38479	38247	38645	38251	38621	38029	38688	38144	38140	101.170
	19	38887	37979	38201	38793	38243	38417	38276	37618	37920	38772	38263	38401	101.149
	20	38204	38590	38249	38143	38843	38163	38791	38192	38412	38024	38529	38979	101.446
	21	38146	38294	38644	38193	38935	37992	38444	39038	37994	37881	38413	38374	101.277
	22	38208	38349	38402	38360	38274	38366	38109	38704	38263	38780	38380	38565	101.368
	23	38535	38222	37943	38082	37696	38978	38307	38329	38323	38207	38164	38224	100.982
14	0	38107	38779	38045	38137	38220	38516	38407	38556	38175	38181	38291	38183	101.103
	1	38202	37631	38040	38314	38584	38421	38344	38188	37953	37998	38323	38128	100.789
	2	37852	38530	37765	37473	38510	38006	37962	37776	38502	38086	38615	38464	100.660
	3	38120	38291	38139	37574	38141	38375	38423	38217	38150	38920	38526	38518	101.069
	4	38096	38369	38646	38197	38097	38263	38118	37990	38140	38368	38397	38458	101.011
	5	37911	38039	38102	38291	38256	38789	38207	38208	37941	38525	38464	38384	101.006
	6	38529	38474	38465	38386	38568	38781	38359	38381	38363	38427	38578	38520	101.603
	7	38704	38433	38306	38503	38541	38489	38184	38605	38647	38231	38827	38112	101.549
	8	38634	37968	38191	38048	38795	38180	38446	38607	38813	38292	38187	38559	101.358
	9	39018	38355	38835	38288	38749	38845	38600	38472	38524	38159	39134	38664	102.002
	10	38180	38753	38906	38728	38444	37689	38221	38408	38884	38149	37879	38715	101.410
	11	38059	38662	38660	38465	38372	38362	38486	38728	37859	38507	38918	37741	101.380
	12	38649	38174	38074	38703	38551	38982	39043	38148	38338	38286	38425	38435	101.598
	13	38386	38442	38865	38177	38352	38202	38339	38701	38142	38584	38695	38594	101.526
	14	38044	38760	38589	38265	38067	38150	39063	38331	37934	38494	38173	38184	101.212
	15	38454	38521	38594	38712	38080	38539	38576	38356	38212	38636	38240	38399	101.491
	16	38044	37780	38490	38692	38035	38334	38674	38533	38536	38539	38366	38340	101.279
	17	38857	38372	38792	38100	38104	38163	38385	38826	38105	38336	38155	38233	101.295
	18	38679	38367	38468	38423	38456	38368	38595	38406	38476	38503	38487	38353	101.548
	19	38357	38721	38929	38751	38442	38819	38574	37991	38394	38615	38129	39046	101.809
	20	38577	38083	38296	37925	38597	38488	38035	38761	38244	38397	38468	38140	101.203
	21	38097	38699	38520	37832	37965	38705	38281	38572	38364	38664	38384	37978	101.213
	22	38618	38178	38186	38188	38459	38467	37915	38048	38272	38016	38540	38699	101.109
	23	38313	38239	38237	38329	37850	38575	38191	38062	37884	38396	38288	38236	100.893



INAF/UNIRomaTre		S.V.I.R.CO. Observatory - Pressure Corrected Data – January 2019											16 NM-64	
day	hh	00_05	05_10	10_15	15_20	20_25	25_30	30_35	35_40	40_45	45_50	50_55	55_60	h-norm
15	0	38996	38626	38828	38212	38639	38204	38899	38912	38290	38634	38241	38086	101.777
	1	38715	37975	38784	37809	38816	38388	38329	38039	39057	38484	38206	38494	101.441
	2	38792	38664	38355	38382	38745	37925	38630	38785	38577	38472	38287	38613	101.690
	3	38758	38284	38509	38626	38293	38639	38192	38538	38511	37958	38278	38369	101.410
	4	38408	38243	38838	38810	38877	38264	38518	37980	37934	38636	39168	38192	101.612
	5	38859	38180	39025	38048	38536	38449	38635	38641	38299	38639	38832	38110	101.696
	6	38239	38027	38675	38769	38670	38323	38813	38568	37649	38181	38573	38789	101.481
	7	38812	38712	38461	38472	38809	38417	38323	38884	38911	38644	38493	38598	101.978
	8	38386	38697	38675	38592	38586	38044	38203	38660	38571	38410	38669	38213	101.576
	9	38781	38190	38471	38108	38031	38250	38406	38461	38531	39217	37875	38037	101.279
	10	38776	38349	38624	38343	38798	38176	38099	38924	37934	38285	38804	38264	101.502
	11	38589	38436	38300	38825	38372	38276	38467	38339	38327	38921	38309	38394	101.542
	12	38468	38832	38911	38125	38181	38469	38299	38148	38502	38313	38108	39004	101.500
	13	38230	38609	38093	38088	38582	38578	37760	38460	38200	38431	38070	37782	100.954
	14	37885	38104	38930	37957	38202	38603	38013	38728	38518	38137	38491	38071	101.121
	15	38032	38330	38281	38243	38058	38892	38545	38055	38176	38228	38265	38457	101.103
	16	38209	38494	38040	38269	37898	37946	37883	38537	38382	38172	38214	38085	100.789
	17	38148	38133	38397	38919	37905	38611	38194	38662	37612	38013	37854	37722	100.798
	18	38222	38794	38774	38269	38352	38226	37915	38460	38578	38635	38325	37877	101.295
	19	38374	38265	37807	37935	38514	37878	38481	37759	37642	38259	38240	38335	100.647
	20	38130	38247	37906	38765	38206	38633	38197	38393	38191	38450	38485	38076	101.129
	21	37911	38545	38428	38569	38124	38020	38595	38266	38168	37878	38743	38394	101.121
	22	39267	38254	38225	38523	37944	37966	38398	38647	38333	37906	38393	38137	101.199
	23	38496	38479	38161	39066	38511	38316	37989	37840	38044	38399	38080	38491	101.172
16	0	38651	38003	38311	38315	38462	37426	38153	38301	38518	37991	38062	38625	100.940
	1	38438	38705	38293	38463	38513	38503	38362	38450	38184	37821	38280	37939	101.189
	2	38361	38564	37887	38284	38084	38422	38422	38422	38980	38527	38033	38421	101.290
	3	38070	38416	38075	38466	38281	37986	38803	38594	38175	38532	38046	38029	101.084
	4	38608	39101	38343	38117	38345	38856	38316	38506	37374	38596	38552	38771	101.527
	5	38433	38362	38411	37852	39511	38294	38548	38863	38497	38657	38938	38518	101.834
	6	38604	38116	38861	38204	38179	38770	38380	37960	38586	38566	38298	38571	101.441
	7	38800	38627	38487	38701	38984	38477	38420	38294	38618	38668	38321	38320	101.798
	8	38797	38403	38839	39188	38797	38350	38234	38549	38268	38320	38154	38531	101.735
	9	38965	38792	38242	38479	38062	38550	38444	38461	38284	38770	38298	38806	101.673
	10	38632	38971	39284	39006	38774	38322	38593	38744	39115	38268	38996	38155	102.269
	11	38733	38425	38365	38365	38460	38596	38333	38156	38602	38855	38886	38478	101.696
	12	38477	38889	37710	38677	38084	37504	38350	38476	38907	38960	38716	38769	101.535
	13	38590	39019	38249	38405	38644	38092	38801	38725	38319	38545	38909	38348	101.782
	14	39034	38128	38355	38626	39141	38418	38505	38365	38804	38640	38696	38316	101.866
	15	38541	37807	38734	38578	38518	38829	38472	38335	38316	38216	37701	38311	101.279
	16	38517	38441	38710	38623	38785	38362	38153	38026	38614	38149	38263	38714	101.498
	17	38262	37699	38496	38494	38170	38160	38353	38867	38575	38225	38597	37773	101.128
	18	38448	38639	38470	39118	38629	38433	38412	38786	38992	38620	38332	38639	101.974
	19	38742	38345	38179	38637	38423	38088	38094	38345	38662	38163	37995	38031	101.135
	20	38480	38404	38377	38120	38122	38300	38549	38999	37892	38500	38667	38698	101.444
	21	38341	38384	38218	38320	38959	38910	38494	38540	39110	38642	38133	38478	101.756
	22	38754	39166	38804	38792	38728	38509	38329	38020	38835	38576	38549	38542	101.992
	23	38671	38836	38991	38487	38678	38805	39176	38062	38811	38816	38718	38833	102.275

INAF/UNIRomaTre		S.V.I.R.CO. Observatory - Pressure Corrected Data – January 2019											16 NM-64	
day	hh	00_05	05_10	10_15	15_20	20_25	25_30	30_35	35_40	40_45	45_50	50_55	55_60	h-norm
17	0	38563	38742	38814	38872	38658	38505	39174	38403	38078	38694	38371	39588	102.178
	1	38569	38417	38739	38771	38511	38957	38761	38437	38789	38154	38277	38903	101.923
	2	38943	38180	38509	38437	38211	38426	38923	38565	38415	38663	37818	38480	101.545
	3	38402	38511	38625	37743	38617	38575	38594	38724	38980	38613	38580	38937	101.839
	4	38829	38065	39188	38463	38475	38557	38617	38857	38549	38230	38562	38841	101.911
	5	38284	38554	39058	38226	38705	39111	38976	38056	39058	38479	38739	38829	102.097
	6	38868	38203	38448	38892	38705	38898	38875	38315	38548	38077	38660	38511	101.860
	7	38842	39207	38610	38271	38726	38574	38362	38763	38673	38479	38981	38577	102.094
	8	38314	38690	38626	38601	38818	38750	38921	39109	38410	38386	38818	39076	102.194
	9	38590	38751	38282	38863	38369	38271	38858	38839	38404	38511	39360	38889	102.077
	10	38441	38592	39213	39035	38044	38522	38979	38670	38484	39139	38606	38436	102.115
	11	38490	38771	38517	39111	38671	38780	38519	38677	38361	38807	38271	38708	102.010
	12	38494	38686	38359	38003	38558	38469	38974	39281	38728	38170	38676	38880	101.922
	13	38732	38364	38994	38562	38419	38292	38290	38528	38888	38683	38645	38526	101.843
	14	38652	38531	38368	38232	38854	38454	38720	38485	38509	38600	38141	39118	101.786
	15	38126	38998	38629	39625	38759	38359	38695	38146	38053	38920	38093	38870	101.920
	16	38445	38155	38531	38374	37927	38422	38362	38825	38893	38374	38580	37883	101.370
	17	38397	38582	38687	38351	38299	38025	38214	38160	38417	38564	38365	39040	101.442
	18	38303	38255	38196	38391	38032	38964	38224	38071	38027	38780	37787	38425	101.080
	19	38863	38445	38259	38445	37562	38365	38673	38023	38343	37900	38652	38158	101.132
	20	38838	38229	37939	38565	38372	38456	38724	38249	38031	38615	38609	37938	101.324
	21	37848	38430	38262	38496	38754	38964	38190	38754	38473	38371	38222	38339	101.443
	22	38496	38694	38822	38865	38382	38340	38811	38623	38441	37948	38686	38736	101.825
	23	38616	38584	38586	38664	38154	38328	38008	38199	38742	38388	37811	38392	101.304
18	0	38496	38282	38126	38755	38113	37827	38619	38260	38688	38950	38606	38308	101.423
	1	38097	38100	38315	39267	38492	38415	38570	38310	39194	37984	38714	38659	101.666
	2	38551	38870	37983	38171	37589	38485	38439	38765	38330	38510	38568	38463	101.359
	3	38275	38776	38417	38687	38539	38080	38890	38424	38432	38493	37881	38479	101.501
	4	38731	38666	38400	38445	38476	39052	38488	38729	38645	38355	38872	38548	101.949
	5	38499	38650	38558	38455	38309	38330	38495	38636	39175	38587	38308	39033	101.868
	6	38621	38354	38959	38502	38576	39137	39644	38551	38665	38578	38331	38731	102.223
	7	38280	38629	38393	38414	38474	38470	38998	38480	38756	39216	38918	38838	102.050
	8	38679	38978	38737	38272	38521	38289	38671	38955	38865	38360	38897	38605	102.042
	9	38771	38626	39025	38736	38983	38361	38260	38914	38887	38488	39200	38859	102.324
	10	38730	38653	38996	38690	38867	39371	38103	38381	38238	38496	38836	38428	102.033
	11	38624	38714	38658	38404	38496	38955	38615	38697	38361	38116	38575	39058	101.920
	12	39046	38219	38555	38922	38523	38390	38356	38793	38650	38314	38488	38135	101.726
	13	38665	38027	38786	38676	38378	38432	38504	38434	38597	38440	38512	38714	101.676
	14	38882	38540	38570	38516	39096	37892	38072	38381	38646	38656	38429	38705	101.725
	15	38642	38264	37862	39087	38962	38262	38529	38172	38441	38114	38226	38503	101.434
	16	38829	38954	38419	39046	38199	38369	38398	38334	38584	38762	38926	38544	101.940
	17	38233	38452	38058	38345	38100	38889	38100	38567	38048	38066	38360	38230	101.079
	18	39010	38120	39053	38353	38758	38659	38561	38326	38686	38090	38305	39370	101.924
	19	38383	38404	38782	38635	37993	38325	38743	38664	38328	38818	38174	39033	101.702
	20	38706	38880	37928	38579	38628	38886	38411	38590	38376	38648	37838	38203	101.568
	21	38434	38466	38728	38335	38687	38553	38364	38426	38642	38688	38664	38725	101.797
	22	38765	38291	38122	38549	38852	38624	38540	39014	38174	38250	38360	38654	101.683
	23	38150	38304	38854	38740	38709	38306	38490	38126	37714	38403	39088	39203	101.659

INAF/UNIRomaTre		S.V.I.R.CO. Observatory - Pressure Corrected Data – January 2019											16 NM-64	
day	hh	00_05	05_10	10_15	15_20	20_25	25_30	30_35	35_40	40_45	45_50	50_55	55_60	h-norm
19	0	38439	39287	38275	38996	38282	38671	38386	38736	38694	38304	38425	38645	101.887
	1	38286	38608	38236	38440	38173	38751	39007	38397	38686	38760	39014	38345	101.795
	2	39143	38485	38338	38140	38573	38068	38932	38361	39247	38204	38900	38483	101.833
	3	39054	38827	38483	38570	38305	38658	38409	38892	38691	38664	38532	39094	102.119
	4	38995	38124	38719	38531	38447	38719	38527	38487	39238	38887	39029	38617	102.150
	5	38799	38808	38746	38982	38773	39107	39205	38548	39068	38524	38933	38932	102.614
	6	38260	39219	38152	38586	38972	38642	38944	38797	38313	38763	38931	38364	102.067
	7	39619	39069	39404	38491	38459	38714	38600	38907	38489	38936	39181	39022	102.716
	8	38560	38801	38331	38256	38362	38705	39157	39032	38542	38906	38984	38946	102.208
	9	38941	39074	38366	38737	39104	38954	38138	38778	38878	38625	38491	38827	102.281
	10	38124	38991	39041	38556	38912	38419	39076	38774	38346	39131	38775	39176	102.371
	11	38391	38406	39305	38848	38351	38813	38326	38616	38707	38612	39215	38357	102.068
	12	38298	38936	38725	39190	38808	38974	38656	38522	38452	38833	38043	37743	101.899
	13	38552	38897	39027	38599	38550	38645	38698	38615	38345	38466	38407	38356	101.894
	14	38354	38863	38767	39144	37900	38632	38472	38589	38936	38346	38291	38666	101.851
	15	38429	38877	38703	38816	38607	38040	38916	38248	38624	38178	38721	39119	101.921
	16	38847	38710	38148	39242	38409	38093	38138	38469	38572	38617	38748	38773	101.808
	17	38229	38488	38569	38749	38195	38467	38079	38572	38289	39199	38514	38500	101.607
	18	38466	38992	38522	38693	38647	39285	38199	39131	39015	38698	37969	38863	102.186
	19	38614	38720	39042	38689	38082	38691	38969	38897	38051	38828	38770	38523	102.053
	20	38452	39210	38450	38521	38828	38598	38295	38721	38978	38144	38516	38958	102.007
	21	38941	38701	38924	38549	38421	38638	38055	38113	38539	38795	38461	38833	101.853
	22	38002	38886	39035	38675	38422	38754	38523	38192	38560	38044	38858	38272	101.689
	23	38648	39247	38541	39513	38615	38810	38395	38851	38593	38516	39135	38674	102.418
20	0	38547	38533	38562	38907	38956	38122	38702	38284	38155	38859	38814	38733	101.896
	1	38789	39203	39136	38979	38473	38573	38650	37819	38979	38524	38665	39015	102.257
	2	39025	38143	38506	38692	39084	38658	38845	38611	38622	38598	38635	38296	102.017
	3	39132	38700	38709	39103	38644	39238	38034	38778	38394	39337	38640	38707	102.391
	4	38929	38421	38550	38347	38790	39192	38592	38392	38623	38683	39030	38384	102.065
	5	38776	38992	38418	38828	38882	38293	39007	38893	39005	39487	38233	38619	102.395
	6	38154	39276	38594	38793	38991	38416	38729	38320	38438	38347	39004	38158	101.909
	7	38721	38573	38680	38113	38575	38383	38787	39042	39055	38570	38246	38835	101.988
	8	38438	38988	38486	39097	38436	39145	39008	38753	38909	38771	38582	38525	102.330
	9	38616	38913	38611	38749	38362	39233	38509	38055	38436	39264	38762	38389	102.058
	10	38614	38603	38917	39166	38650	38852	38100	38176	38724	38560	38313	38245	101.842
	11	38510	38679	38355	39025	38233	38879	38249	38765	38790	38985	38620	38609	102.014
	12	39299	38656	38528	37685	39268	39088	38325	38004	38504	38414	38490	38443	101.794
	13	39297	38644	38144	38768	38811	38687	38655	38608	38231	38517	38806	38240	101.950
	14	38192	38650	38698	39119	38622	37992	38192	38537	38413	38418	38382	38434	101.563
	15	38534	39097	38421	37975	38046	38407	38299	38658	38225	38633	38835	38993	101.667
	16	38655	38542	38304	38854	38714	37904	38493	39038	37817	38646	38274	38349	101.550
	17	38120	38714	37867	38595	38889	38937	38099	38767	37974	38866	37963	38755	101.540
	18	38326	38440	38327	38706	38266	38194	38508	38459	38581	37894	38552	38677	101.404
	19	38510	37875	38604	38893	39043	38737	38666	38033	38387	37759	38167	38693	101.501
	20	38174	38202	38400	38600	38462	38957	38745	38217	38319	38909	38990	38726	101.794
	21	38671	38384	39039	38884	38533	38838	38045	38590	38832	38299	38879	38746	102.023
	22	38176	38142	38318	38782	38938	38597	38495	39259	38598	38127	38753	38413	101.772
	23	38943	38052	38542	38434	38054	38046	38288	37937	38399	38227	38110	38296	101.052

INAF/UNIRomaTre		S.V.I.R.CO. Observatory - Pressure Corrected Data – January 2019											16 NM-64	
day	hh	00_05	05_10	10_15	15_20	20_25	25_30	30_35	35_40	40_45	45_50	50_55	55_60	h-norm
21	0	38641	38304	37970	38473	38343	38171	38677	38636	38440	38723	38573	38815	101.586
	1	38589	38898	39112	38832	38166	38751	38550	38382	38826	38743	38745	37942	101.978
	2	38265	38997	38154	38526	39022	38244	38546	38580	38162	38680	38332	37932	101.517
	3	38673	38692	38771	38795	38521	39434	38927	38284	38629	39302	38575	38834	102.396
	4	38244	38322	39101	38646	38402	38777	38829	38333	38531	39005	38432	38625	101.914
	5	38150	38982	38673	38265	38815	38823	39023	38373	38436	39023	38130	38408	101.882
	6	38731	38823	38757	38821	39711	38389	38869	38746	38853	38693	38366	39130	102.496
	7	38827	38289	38782	39012	38840	38921	38469	38850	39133	38802	38816	38008	102.245
	8	39226	38447	39192	38760	38200	38968	38621	38595	38661	38364	38781	38851	102.226
	9	39048	38316	38576	39010	38547	38981	39001	38620	38710	38783	38650	38793	102.308
	10	38896	38457	38808	38806	38624	39036	38797	38564	38808	38691	39029	38461	102.295
	11	38650	39523	38839	38424	38679	38734	38836	38537	38808	38729	38307	39212	102.361
	12	38852	38304	38761	38379	39032	38720	38828	38768	38711	38451	38650	38666	102.107
	13	38252	38123	38374	39083	38479	38599	39114	38990	38552	38485	38411	38648	101.884
	14	38857	38418	38472	38510	38599	38460	38590	38538	38826	38236	38322	37998	101.602
	15	38589	38593	38508	38352	38111	38653	38001	38768	38464	38786	38770	38641	101.692
	16	38628	38734	38497	38533	38287	37793	37706	38321	37853	38646	38842	38410	101.255
	17	38711	38505	38303	38403	38675	38544	38942	38539	38433	38748	38651	38349	101.817
	18	38541	38450	38409	38183	38633	38961	38203	38098	38437	37823	38591	38135	101.302
	19	38710	39478	38677	38581	38598	38208	38395	39072	38098	38571	39046	38531	102.072
	20	38858	38620	38200	38306	38410	38391	38375	38347	39047	38315	38869	38283	101.645
	21	38543	38796	38811	38660	38376	38391	38538	38546	38288	38958	39037	38550	101.969
	22	38297	38758	38416	38592	38171	38091	38676	38675	38583	38167	38562	38063	101.431
	23	38405	38349	38871	38618	38386	38478	38375	38423	38563	38315	38986	38986	101.807
22	0	38052	38555	38685	38138	38224	38703	38865	38332	37937	38596	38816	38634	101.531
	1	38825	38616	38180	38042	38245	38767	38494	38811	38502	38621	38866	37801	101.590
	2	38779	38573	38456	38711	38015	38204	38734	38908	38526	38901	38765	38371	101.848
	3	38674	39111	38407	38792	38425	38715	38762	38424	38888	38644	38779	38395	102.084
	4	39292	38251	38193	38517	38695	38081	38527	38975	38496	38413	38516	38465	101.733
	5	38221	38939	38448	39023	38618	38587	38518	38970	38456	38552	38495	39045	102.052
	6	38530	39046	38907	38643	38706	38558	38862	38936	38387	38758	38482	38904	102.238
	7	38880	38330	38684	38922	39001	38664	38651	38465	38658	38420	39118	38323	102.106
	8	38233	38837	38612	39075	38795	38832	39001	38626	38629	38503	38799	38613	102.202
	9	38950	38515	38700	38337	38423	38510	38812	38645	38653	38619	38905	38426	101.969
	10	39144	39380	38585	38243	38086	38824	38682	38520	38599	39039	38578	38992	102.228
	11	39436	38861	38361	38590	38748	39050	38932	38415	39033	39180	38906	39238	102.685
	12	38963	39129	38504	38713	38832	38726	38510	38791	38051	38988	39216	39159	102.428
	13	38802	38814	38270	38372	38903	38580	38338	38400	38941	38656	39136	38237	101.959
	14	38684	39092	38934	38613	38986	38309	38403	39070	38880	38233	38228	38634	102.095
	15	38584	38702	38805	38245	38748	38364	38804	38993	38749	38969	38726	38726	102.171
	16	38683	38898	38260	38778	38901	38619	38319	38651	38619	38586	38372	38462	101.893
	17	38790	38699	38498	38767	38776	38548	38732	38718	38689	38559	38365	38117	101.917
	18	38554	38450	38598	38573	38407	38629	38658	38605	38443	38364	38754	38670	101.796
	19	38913	38599	38602	39371	38409	38500	38780	39319	38764	38635	38509	38851	102.356
	20	38925	38887	38735	39040	38697	39163	38972	38891	38653	38739	38624	38777	102.543
	21	38484	39178	38603	38996	38405	38932	38614	38785	39196	38452	39210	38877	102.461
	22	38944	38627	38480	39293	38292	38657	38635	38759	38748	38909	38690	38910	102.288
	23	38945	38534	38799	38672	39166	38266	38596	38642	38926	38477	38613	39082	102.238

INAF/UNIRomaTre		S.V.I.R.CO. Observatory - Pressure Corrected Data – January 2019											16 NM-64	
day	hh	00_05	05_10	10_15	15_20	20_25	25_30	30_35	35_40	40_45	45_50	50_55	55_60	h-norm
23	0	38291	38687	38622	38659	39347	38389	38512	39238	38547	38553	38438	38424	102.013
	1	38729	39300	39461	38935	39268	38843	38784	38608	38802	38399	38270	39333	102.681
	2	38603	38522	38456	38591	39225	39466	38583	39221	38215	39261	38787	38504	102.395
	3	38502	38626	38669	38934	38609	39329	38822	38053	39127	38921	38882	38962	102.396
	4	38802	38639	38788	38630	39180	39268	38953	38994	38699	39166	38710	38524	102.598
	5	39314	39668	38496	38172	39520	38420	38472	38357	38913	38963	39112	38705	102.545
	6	38571	39309	38768	39117	38722	38639	38702	39043	39236	38475	38739	39467	102.693
	7	39026	38660	38776	39401	38704	38935	39059	38530	39006	39075	38735	38547	102.620
	8	38818	38808	38580	38835	38970	38826	38997	38781	39131	38778	39260	38787	102.646
	9	38872	38400	38777	38969	39361	38610	38845	38757	38920	38935	38989	38561	102.519
	10	38704	38395	38787	39000	39554	39050	38474	39287	38589	38741	38781	38824	102.561
	11	38683	38619	39281	38842	39254	38856	39607	39044	39185	38453	38879	38378	102.757
	12	39153	39130	38687	38347	38770	38655	38665	38574	38539	38633	39179	38988	102.371
	13	38812	38485	38517	38250	38530	38783	38438	38750	39075	39470	39000	39024	102.330
	14	38849	38827	38893	38597	38719	39222	38815	38720	38459	38465	38876	38820	102.357
	15	38767	38722	38470	38517	38154	39148	38442	39243	38301	38820	39112	38734	102.175
	16	38617	38491	38223	38952	38461	38962	38665	38712	38791	38733	38680	38770	102.093
	17	38482	38664	38538	38769	39155	38619	38711	38749	38730	38972	38523	38882	102.255
	18	38583	39022	39002	38412	39157	38553	39000	39376	38833	39142	38692	38603	102.604
	19	38968	38727	38767	38816	38649	38666	38958	38976	38652	38980	39084	38788	102.527
	20	38756	38163	38811	38348	38678	39452	38794	38988	38497	38707	38665	38524	102.164
	21	38750	39044	38664	39144	38713	38606	38493	38752	38453	38690	37991	38177	101.965
	22	38259	38655	38951	38728	38910	39092	38421	38829	38863	38560	39341	38478	102.319
	23	39294	39418	38744	39497	38767	39478	38860	38596	38669	38699	38489	38762	102.800
24	0	38817	38475	38649	38810	39702	38433	38845	38733	38808	38539	38760	38994	102.420
	1	38975	38875	38625	38895	39196	38907	38969	38870	39084	39051	38822	38932	102.785
	2	38788	39687	38504	38864	39009	38658	38814	38999	38180	38618	39170	39061	102.597
	3	39128	38917	38177	38978	38626	38422	38717	39007	39290	38535	38996	39138	102.505
	4	39009	38961	39431	38726	38817	38806	38587	39263	39090	38753	38985	38772	102.784
	5	38538	38785	39066	38907	38941	38769	38997	39241	39585	38559	38600	38626	102.655
	6	38749	39220	38819	39282	39116	39008	39087	39376	39098	39151	38977	39223	103.203
	7	38990	39331	38904	39191	38770	38725	39923	39359	38815	39063	39102	39148	103.251
	8	38601	38744	39068	38420	38919	39014	39171	38875	38946	38922	38865	39645	102.781
	9	39302	38558	39056	39172	39607	38983	38733	39053	39402	38391	38987	38707	102.950
	10	38944	38698	39094	38446	38692	39096	38786	39328	38908	38962	39221	39009	102.780
	11	38396	38997	38951	38533	39120	38865	38768	39001	38912	39449	39071	38958	102.745
	12	38701	38627	38701	38658	38804	38475	38775	39279	39020	38859	38537	39000	102.396
	13	38879	38819	38482	38778	38899	38770	39042	38474	38610	38668	38916	38593	102.284
	14	39133	38060	38949	38512	38822	39272	38734	38734	38851	39049	38838	39402	102.598
	15	38728	38783	38716	39078	39028	38285	38697	38251	38764	39143	38511	39077	102.313
	16	38615	38647	39373	38270	38731	38806	38057	38241	38473	38596	38338	39038	101.901
	17	39183	37803	38938	38416	38456	38922	39092	37973	38564	38544	38527	38163	101.768
	18	38684	38634	38519	39508	39290	39062	38645	39182	38573	38556	38396	38808	102.489
	19	38603	38221	38703	39107	38982	38708	38339	38715	38750	38597	38895	38520	102.111
	20	38898	38831	38831	38072	38605	38384	38830	38755	38728	38649	38759	38798	102.111
	21	38277	38594	38343	38409	38691	38743	38223	39279	38475	38712	38983	38461	101.902
	22	39042	38745	38456	38761	38513	38455	38433	38911	38779	38806	38672	38596	102.117
	23	38656	38708	38722	38772	39007	38075	38772	38673	38525	38103	38642	38269	101.843

INAF/UNIRomaTre			S.V.I.R.CO. Observatory - Pressure Corrected Data – January 2019										16 NM-64	
day	hh	00_05	05_10	10_15	15_20	20_25	25_30	30_35	35_40	40_45	45_50	50_55	55_60	h-norm
25	0	38591	38328	38332	38049	38691	38158	38374	38799	38704	38787	38508	38372	101.572
	1	38658	38672	38681	38704	38619	38262	38645	38437	38556	38497	38896	38672	101.926
	2	38636	39332	38256	38576	38261	38722	38967	38510	39110	38631	38222	38730	102.070
	3	38461	38573	38660	38617	38789	38674	38543	38300	39088	38144	38516	38807	101.898
	4	38373	38549	38671	38763	38689	39276	38473	38615	38771	38446	38777	39118	102.195
	5	38512	39205	39081	38718	38033	38671	38779	39049	39188	39120	38784	39305	102.618
	6	38870	38248	39034	39348	38133	38328	39001	38748	39114	38414	38748	39428	102.391
	7	38411	38827	38878	38081	38493	38965	39541	38889	38696	38156	38747	38639	102.151
	8	38539	38750	38643	38877	38436	38569	38419	38756	38839	39111	38840	38910	102.231
	9	38850	38984	39022	38347	38703	38907	38239	38850	38964	39395	38706	38931	102.497
	10	38470	38920	38417	38762	38822	38582	38757	38430	38838	38489	38451	38518	101.960
	11	38554	38662	38410	38748	38470	38711	38895	38601	38807	38704	38577	38355	101.968
	12	38956	38525	39255	38385	39438	38030	39216	38512	38736	38870	38490	38377	102.254
	13	38415	38803	38601	38309	38371	38873	38710	38652	38722	38643	38754	38831	102.011
	14	38704	39025	38968	38822	38649	38893	38843	39007	38851	38659	38887	39085	102.606
	15	38602	38373	39082	38885	38702	38844	38491	38636	38939	39134	38116	39012	102.260
	16	38632	38947	38285	39235	39140	38628	38144	38536	38768	38368	38817	38496	102.080
	17	38496	38286	38629	38915	38982	38672	38878	38530	38370	38391	38695	38446	101.924
	18	38406	38660	38339	38591	38899	39276	38423	39043	38716	38711	38361	38458	102.054
	19	38502	38602	38371	38611	38116	38773	38203	38378	38686	38875	38456	38755	101.712
	20	38655	38320	38328	38169	38313	38549	38413	38760	38731	38852	38792	38102	101.636
	21	38552	38624	38165	38714	38375	37598	38529	38531	38887	38806	38690	39084	101.762
	22	38210	38151	38950	38203	38317	38428	38450	39344	38424	38284	38529	38417	101.576
	23	38397	38221	38426	37942	38599	38723	38581	38293	38526	37883	38458	38664	101.356
26	0	38859	38706	38777	38409	38727	38787	38503	38672	38984	38423	38884	38667	102.176
	1	38595	38662	38801	38473	39268	38365	38747	38300	38558	38280	38737	38352	101.891
	2	38640	38592	38902	38652	38631	38794	38527	38634	38763	38700	38390	38249	101.964
	3	38410	38867	38045	38498	38633	38218	38979	38411	38496	38973	38457	38869	101.828
	4	38660	38577	38404	38796	39003	38065	38622	38078	38481	38823	38062	38278	101.608
	5	38557	38576	39341	39526	38740	39147	38575	38415	38507	39089	39312	38868	102.664
	6	38977	38621	38628	38674	39058	38199	38938	38926	38702	38484	38546	38425	102.120
	7	38848	38681	38653	38940	38392	38285	38196	38405	38118	38177	38945	38768	101.730
	8	38595	38730	38407	39038	38910	38674	38819	38931	38556	38490	38062	38086	101.926
	9	38562	38629	38132	38885	38974	38242	38166	38419	38520	38512	38510	38455	101.642
	10	38771	38661	38294	38682	39119	38837	38441	38406	38376	38534	39204	38586	102.061
	11	38780	38707	38601	38784	38678	38664	39231	38467	38430	38344	38675	38961	102.151
	12	38861	38816	38709	38011	38339	38278	38950	38353	39630	38467	38421	38739	101.986
	13	38290	37810	38583	39188	38173	38625	38744	38731	38164	38520	38850	38642	101.711
	14	38820	38675	38545	38668	38525	38665	38668	37998	38907	39271	38476	38861	102.098
	15	38669	38869	38676	38441	38595	38536	38115	38763	38276	38557	38671	38438	101.773
	16	38356	38545	38637	38437	38420	38587	39032	38515	38938	38442	38455	38579	101.848
	17	38606	39098	38476	38437	38478	38170	38682	38333	38916	38030	38260	38598	101.659
	18	38171	38174	38359	38636	38569	38139	37907	38560	39140	39157	38220	38699	101.580
	19	38106	38620	38533	38857	38489	38992	38567	38286	38278	38416	38195	38766	101.663
	20	38939	38317	39143	38993	38464	38323	38760	38134	38788	39076	38612	38528	102.097
	21	38902	37871	38262	38916	38600	38550	38977	38408	38597	38903	38189	38452	101.778
	22	38193	38402	37948	38442	38463	38359	38455	38622	38337	38025	37941	39136	101.271
	23	38175	38659	38764	38253	38225	38394	38241	38606	38211	38440	38461	38496	101.404

INAF/UNIRomaTre		S.V.I.R.CO. Observatory - Pressure Corrected Data – January 2019											16 NM-64	
day	hh	00_05	05_10	10_15	15_20	20_25	25_30	30_35	35_40	40_45	45_50	50_55	55_60	h-norm
27	0	38553	38280	38098	38454	38899	37919	38662	38892	38605	37994	38584	38673	101.554
	1	38444	38557	38468	37960	38430	38810	38634	38333	38038	38900	37957	38124	101.344
	2	38132	37613	38318	38342	38574	38232	38237	37790	38010	38337	38683	38455	100.919
	3	38558	38098	38552	38527	38062	38237	38385	38743	38739	38529	38548	38120	101.441
	4	38751	38421	38476	38531	38208	38788	38714	38564	38874	37886	38385	38569	101.676
	5	38293	38219	38556	38339	38600	38785	38512	38455	38518	38604	38718	38285	101.614
	6	38516	37995	38910	38591	38495	38704	38484	38111	38635	38128	38289	38708	101.545
	7	38498	38191	38444	38550	38666	38994	38746	38892	38940	38535	38673	38340	101.964
	8	38424	38500	38685	38411	39346	38576	38199	38592	38468	38700	38534	38802	101.912
	9	38309	38670	37663	38821	38456	38383	38661	38489	38417	38578	38765	38803	101.644
	10	38116	38466	38602	38513	38281	38623	38367	38225	38521	38730	39299	38666	101.731
	11	38533	38428	38536	38115	38496	38144	38640	38269	38115	38750	38545	38585	101.455
	12	38555	38192	38642	38562	38661	38475	38257	38575	37964	38559	38477	38409	101.492
	13	38274	38130	38688	38926	38467	38025	38340	38466	38409	38432	38540	38911	101.554
	14	39033	38412	38389	38337	38744	38741	38425	38094	38384	38808	38864	38328	101.764
	15	38692	37962	38815	39174	38050	38403	38170	38278	38262	38475	38718	38980	101.635
	16	38238	37817	38318	37953	38191	38774	38619	38387	38220	38823	38278	38263	101.174
	17	38273	38424	38007	38469	38652	38307	38367	38587	38583	38368	38271	38764	101.436
	18	38431	38278	38577	38564	37973	38563	38487	38306	38574	38619	38407	38194	101.414
	19	38282	38282	38294	38923	38569	38489	38011	37983	38578	38002	38466	38541	101.293
	20	38479	38859	38211	39210	38103	38482	38450	38503	38446	38179	37702	37944	101.324
	21	38174	38550	38437	38100	37953	38231	38538	38112	38290	38657	38471	38458	101.195
	22	39045	37826	37983	38076	38807	38419	38447	38264	38765	38649	38089	38294	101.347
	23	38462	37833	38475	38412	37895	38162	38729	38149	38596	38536	38691	38869	101.378
28	0	38104	37818	38879	38712	38766	38494	38595	38296	38071	38627	38792	38524	101.559
	1	38659	38590	38663	38488	38378	38725	38202	38787	38232	38473	38441	38066	101.575
	2	38711	38031	38308	38156	38341	39025	38242	38806	38318	38596	38926	38137	101.552
	3	38329	38553	38769	38675	38094	38755	38753	38390	37808	38383	38711	38667	101.615
	4	38649	38997	38234	38567	39173	38220	38530	38628	37920	38201	38204	39037	101.719
	5	38641	38429	38850	38124	38822	38831	38500	38137	38351	38834	38338	38332	101.682
	6	38236	38621	38124	38976	38764	38577	38086	38365	38499	38874	38276	38666	101.654
	7	38456	38580	38885	38571	38709	38633	38390	38750	38814	38444	39064	38679	102.074
	8	38634	38597	38097	38917	38570	38759	38441	38771	38575	38260	38619	39006	101.914
	9	38678	38987	38423	37855	38521	38449	38594	38197	39041	38608	38965	38358	101.789
	10	38162	38149	37686	38275	38685	38706	38743	38258	38851	38446	38556	38644	101.455
	11	38488	37905	38773	38481	38440	38257	38483	38737	37988	38565	38504	38328	101.409
	12	38736	38676	38159	38912	39229	39016	38796	38831	38932	38856	38497	38384	102.306
	13	38631	37737	38712	38604	38379	37992	38042	38477	38541	38446	38423	38524	101.312
	14	38364	38790	37718	38405	38418	38784	37716	38356	37890	38504	38258	38842	101.210
	15	38409	38476	38117	38854	38623	38247	38974	38594	38807	38691	38651	38333	101.811
	16	38650	38824	38416	39197	38549	38820	38096	38268	38491	37972	37964	38308	101.542
	17	38073	38353	38634	38310	38579	38388	38500	38775	38401	38177	38235	38799	101.469
	18	38506	38734	38252	38424	38863	38599	38259	38052	38470	39046	38685	38330	101.689
	19	38743	38419	38856	38810	38219	38669	38320	38867	38972	37834	38700	38822	101.911
	20	38319	38582	38472	38774	38149	38571	38279	38677	37868	38377	38274	38754	101.441
	21	38418	39242	38216	38347	38454	38247	38910	38320	38683	38259	38689	38440	101.690
	22	37762	38223	38865	38038	38383	38328	38817	38349	38565	38223	38370	38689	101.335
	23	38960	38345	38270	39195	38866	38064	38469	38860	37784	38080	38954	38497	101.716



INAF/UNIRomaTre		S.V.I.R.CO. Observatory - Pressure Corrected Data – January 2019											16 NM-64	
day	hh	00_05	05_10	10_15	15_20	20_25	25_30	30_35	35_40	40_45	45_50	50_55	55_60	h-norm
29	0	39095	38496	38947	38648	38478	38625	38296	38791	38263	38469	38856	39219	102.126
	1	38693	38546	38266	38669	38290	39239	38369	38152	38870	38165	38591	38639	101.747
	2	38724	38462	39065	38555	38141	38738	38570	38530	38337	38920	38575	38397	101.863
	3	38991	38397	38977	38694	38884	38532	38493	38846	38476	38556	39233	38641	102.239
	4	38853	38708	38326	39014	38463	38350	38416	38393	38726	38171	39262	38801	101.966
	5	38542	38602	38821	38782	38376	38852	38735	39217	38441	38808	38934	38754	102.270
	6	39221	38554	38781	38332	38721	38758	38654	38542	38879	38877	38662	38095	102.097
	7	38485	38728	39140	37899	38259	38159	38251	38112	38605	38487	38496	38365	101.417
	8	38348	38565	38867	38441	39083	38875	38865	38902	38724	38348	38192	38386	101.992
	9	38307	38663	38657	38056	38834	38401	38262	38755	38231	38898	38291	38561	101.622
	10	37994	38300	38740	37827	38643	38241	38673	39045	38397	38510	38770	38562	101.575
	11	39115	38547	38496	38608	38234	39111	38195	39159	38313	38575	38772	38603	102.020
	12	38025	38982	38536	38497	38198	38822	38960	38598	38470	38534	38664	38728	101.864
	13	38886	38636	38406	38579	38666	38478	38046	38044	38540	38666	38887	38476	101.708
	14	37854	38803	38040	38547	38489	37968	38328	38513	38405	38008	38524	38631	101.224
	15	38713	38240	39015	38272	39056	38596	38572	38979	38463	38814	38151	38625	101.969
	16	38125	38020	37841	38659	38411	38534	38313	38159	38589	38834	38062	38555	101.222
	17	38104	38303	38586	38746	38202	38329	38404	38842	38433	38579	38566	38894	101.637
	18	38503	38459	38342	39057	38615	38022	38444	38624	39134	37850	38696	38637	101.724
	19	39070	38848	38837	38230	38031	38866	38485	38427	38503	38479	38301	38339	101.732
	20	38025	38580	38966	38417	39008	38352	38696	38512	38805	38357	38676	38787	101.900
	21	38189	38479	38055	38527	38472	39060	38358	38053	38670	38670	38461	38965	101.631
	22	38476	38796	38610	38277	38700	38281	38613	38413	38614	38576	38205	38818	101.724
	23	38724	38405	38263	38320	38004	38660	38894	38665	38691	38701	38762	38523	101.775
30	0	39077	38580	38372	38500	38406	38449	38321	38781	38845	39076	38522	38742	102.004
	1	38402	38507	38911	38313	38646	37706	37987	38181	38801	38000	38514	38686	101.344
	2	38847	38881	38922	38585	38726	38637	38720	38260	38313	38470	39149	39261	102.250
	3	38599	38660	38782	38631	38556	38520	38781	38893	38786	39086	38152	38230	102.008
	4	38542	38549	38927	38493	38941	38684	38687	38817	38784	38294	38528	38538	102.033
	5	39045	38638	38429	38614	39281	38448	38415	38564	38226	38959	38419	38990	102.086
	6	38622	38467	38468	38903	37921	39127	39034	38863	38257	38742	38912	38390	102.015
	7	38892	39234	38566	38588	38329	38267	38792	37877	38483	38604	39066	38789	101.967
	8	38123	38802	38596	38845	38455	38887	38985	38575	38652	38465	38791	38673	102.047
	9	38811	37944	38984	38875	38783	38781	38826	38643	38642	38791	38507	38370	102.071
	10	38571	39304	38685	38896	38206	38630	38430	38552	38292	39001	38400	38949	102.062
	11	39099	38162	38252	38608	38953	38126	38879	38557	38556	38611	38456	38433	101.792
	12	38544	38474	38858	38549	38526	38623	38709	38252	38735	38863	38512	38830	101.965
	13	38457	38557	39201	38320	37947	38622	37938	38521	38225	39049	38144	38296	101.481
	14	38561	38593	38581	38798	38291	38214	38707	38330	38252	38425	38658	38829	101.693
	15	38012	38406	38299	38893	38545	38461	38278	38570	38170	38758	38999	38173	101.544
	16	38659	38163	38769	38409	38327	39066	38465	38407	38477	38518	37914	39004	101.680
	17	38202	39151	38609	38253	38547	37794	38528	38707	38720	38785	38356	38727	101.723
	18	38531	38529	38255	38373	38557	38390	38111	38813	38917	38289	39106	38630	101.750
	19	38201	38411	38340	38250	38339	38669	38368	38057	38267	38590	38169	37932	101.111
	20	38352	38421	39343	38386	38835	38662	38383	38658	38919	38078	38569	38149	101.806
	21	38591	38615	38480	38102	38887	38407	38139	38305	38301	39094	39094	38486	101.751
	22	38535	38843	38360	38544	39109	38314	38277	38477	38425	38544	38571	39083	101.878
	23	38832	38558	38846	38389	38654	38836	38349	38729	38601	38739	38490	38560	101.989

INAF/UNIRomaTre		S.V.I.R.CO. Observatory - Pressure Corrected Data – January 2019											16 NM-64	
day	hh	00_05	05_10	10_15	15_20	20_25	25_30	30_35	35_40	40_45	45_50	50_55	55_60	h-norm
31	0	38712	38758	38664	38547	38765	39253	38279	38863	38787	38419	37588	38849	101.975
	1	38883	38777	38409	38229	38812	38254	38823	39055	38492	38823	38448	38126	101.889
	2	38818	38721	38658	38544	38667	38032	38564	38109	38384	38837	38299	38515	101.673
	3	38446	38173	38136	38351	38062	38698	38535	37938	39160	37644	38224	38538	101.179
	4	37883	38699	38242	37593	38351	38345	38140	38205	38239	38130	38064	38317	100.806
	5	39013	37924	37821	38336	38440	38301	39077	38826	38344	39206	38164	38523	101.634
	6	38507	38273	38921	37910	38490	38557	38498	38759	37652	38691	38500	38232	101.418
	7	37881	38456	38406	38691	38293	38344	38488	38564	38430	38529	38105	38592	101.371
	8	38539	38745	38950	38473	38887	38344	38435	38314	38577	38577	37984	38076	101.619
	9	38965	38041	38803	38695	38636	38714	38531	38509	38645	38234	38281	38720	101.810
	10	38291	38805	38301	38597	38825	38401	38437	38667	38770	38333	38852	38136	101.731
	11	38328	38574	38398	38821	38165	38614	38587	38445	38582	37922	38610	38693	101.583
	12	38877	38341	37813	38631	38341	38603	38197	38412	38679	38573	38291	38204	101.412
	13	38803	38465	38602	38950	38497	38102	38734	38359	38391	38297	38734	38519	101.739
	14	38508	39126	38655	38803	38598	39068	38393	38340	38908	38474	38535	38575	102.076
	15	38312	38511	38858	38417	38154	38126	38355	38592	38680	38383	39031	38599	101.644
	16	38565	38149	38101	38209	38440	38710	38186	38741	38391	38522	38490	38696	101.464
	17	38180	38873	38837	37862	38508	38659	38165	38075	38548	38199	38308	38916	101.449
	18	38559	38869	37953	38905	38301	38251	38516	39051	37835	38624	38282	37904	101.431
	19	38914	38408	38453	38246	38433	38011	38449	38200	38487	38361	38469	38702	101.449
	20	38292	37816	39137	37568	38222	38454	38376	38388	38073	37806	38464	37995	100.890
	21	38463	38538	37978	38258	38461	39209	38296	38123	38745	37900	38189	38607	101.369
	22	38499	38523	38103	38515	38516	38545	38457	38606	38127	38760	38508	38714	101.612
	23	38800	38367	38613	38486	38871	39022	37876	38597	38301	38389	38000	38173	101.528

S.V.I.R.CO. Observatory - Pressure in hectoPascal – January 2019

day	hh	00_05	05_10	10_15	15_20	20_25	25_30	30_35	35_40	40_45	45_50	50_55	55_60	average
1	0	1023.57	1023.60	1023.67	1023.74	1023.79	1023.81	1023.77	1023.78	1023.83	1023.86	1023.89	1023.91	1023.78
	1	1023.92	1023.93	1023.98	1024.07	1024.16	1024.18	1024.13	1024.06	1023.97	1023.92	1023.89	1023.85	1024.00
	2	1023.79	1023.78	1023.77	1023.71	1023.63	1023.57	1023.56	1023.54	1023.48	1023.45	1023.48	1023.52	1023.61
	3	1023.52	1023.46	1023.40	1023.39	1023.40	1023.39	1023.36	1023.29	1023.23	1023.23	1023.24	1023.22	1023.34
	4	1023.18	1023.16	1023.17	1023.22	1023.27	1023.28	1023.33	1023.38	1023.43	1023.48	1023.46	1023.40	1023.31
	5	1023.42	1023.43	1023.41	1023.42	1023.49	1023.54	1023.57	1023.58	1023.60	1023.64	1023.66	1023.67	1023.54
	6	1023.69	1023.68	1023.66	1023.69	1023.75	1023.74	1023.70	1023.78	1023.89	1023.90	1023.92	1023.99	1023.78
	7	1024.05	1024.13	1024.20	1024.21	1024.22	1024.25	1024.27	1024.23	1024.16	1024.10	1024.05	1023.94	1024.15
	8	1023.81	1023.73	1023.70	1023.78	1023.92	1024.07	1024.23	1024.30	1024.25	1024.16	1024.10	1024.02	1024.00
	9	1023.95	1023.97	1024.07	1024.17	1024.24	1024.28	1024.25	1024.18	1024.11	1024.06	1024.03	1024.00	1024.11
	10	1023.92	1023.89	1023.91	1023.93	1023.96	1023.96	1023.89	1023.84	1023.84	1023.88	1023.91	1023.86	1023.90
	11	1023.77	1023.71	1023.66	1023.60	1023.54	1023.49	1023.43	1023.38	1023.34	1023.32	1023.28	1023.21	1023.48
	12	1023.08	1022.96	1022.95	1023.01	1023.01	1022.94	1022.81	1022.69	1022.63	1022.60	1022.59	1022.59	1022.82
	13	1022.59	1022.64	1022.68	1022.65	1022.62	1022.61	1022.61	1022.62	1022.58	1022.54	1022.56	1022.57	1022.60
	14	1022.49	1022.42	1022.44	1022.50	1022.51	1022.48	1022.42	1022.41	1022.42	1022.40	1022.35	1022.34	1022.43
	15	1022.37	1022.36	1022.27	1022.15	1022.14	1022.17	1022.15	1022.14	1022.14	1022.15	1022.13	1022.14	1022.19
	16	1022.17	1022.19	1022.19	1022.18	1022.20	1022.23	1022.25	1022.27	1022.32	1022.33	1022.29	1022.29	1022.24
	17	1022.30	1022.33	1022.34	1022.30	1022.26	1022.24	1022.26	1022.26	1022.30	1022.37	1022.39	1022.39	1022.31
	18	1022.40	1022.40	1022.42	1022.40	1022.32	1022.25	1022.25	1022.32	1022.35	1022.33	1022.24	1022.12	1022.32
	19	1022.12	1022.13	1022.03	1021.90	1021.82	1021.83	1021.83	1021.75	1021.67	1021.66	1021.68	1021.63	1021.84
	20	1021.55	1021.55	1021.57	1021.51	1021.42	1021.42	1021.42	1021.37	1021.28	1021.20	1021.15	1021.10	1021.38
	21	1021.00	1020.89	1020.82	1020.79	1020.73	1020.65	1020.64	1020.65	1020.54	1020.41	1020.40	1020.43	1020.66
	22	1020.38	1020.27	1020.20	1020.19	1020.17	1020.11	1020.04	1020.01	1020.00	1020.00	1019.93	1019.85	1020.10
	23	1019.89	1019.97	1019.98	1019.90	1019.88	1019.88	1019.83	1019.77	1019.73	1019.65	1019.52	1019.40	1019.78
2	0	1019.29	1019.23	1019.11	1019.01	1018.92	1018.85	1018.83	1018.80	1018.75	1018.72	1018.72	1018.73	1018.90
	1	1018.76	1018.73	1018.68	1018.64	1018.64	1018.60	1018.52	1018.51	1018.52	1018.41	1018.27	1018.24	1018.54
	2	1018.28	1018.28	1018.21	1018.13	1017.99	1017.81	1017.70	1017.66	1017.62	1017.52	1017.38	1017.34	1017.83
	3	1017.35	1017.28	1017.22	1017.23	1017.20	1017.13	1017.08	1017.02	1016.93	1016.82	1016.73	1016.62	1017.05
	4	1016.43	1016.27	1016.24	1016.18	1016.01	1015.90	1015.91	1015.94	1015.91	1015.85	1015.75	1015.65	1016.00
	5	1015.63	1015.65	1015.63	1015.65	1015.65	1015.57	1015.47	1015.41	1015.39	1015.38	1015.37	1015.34	1015.51
	6	1015.32	1015.35	1015.41	1015.39	1015.35	1015.31	1015.23	1015.17	1015.14	1015.12	1015.11	1015.11	1015.25
	7	1015.10	1015.06	1015.07	1015.07	1015.06	1015.07	1015.11	1015.17	1015.17	1015.14	1015.18	1015.21	1015.12
	8	1015.19	1015.23	1015.26	1015.24	1015.19	1015.18	1015.16	1015.06	1015.00	1014.99	1014.94	1014.90	1015.11
	9	1014.83	1014.75	1014.71	1014.67	1014.62	1014.57	1014.52	1014.45	1014.34	1014.24	1014.21	1014.17	1014.51
	10	1014.08	1014.02	1013.97	1013.88	1013.75	1013.62	1013.52	1013.41	1013.29	1013.20	1013.14	1013.08	1013.58
	11	1012.97	1012.85	1012.78	1012.78	1012.74	1012.65	1012.54	1012.44	1012.37	1012.33	1012.28	1012.20	1012.58
	12	1012.12	1012.03	1011.98	1011.95	1011.89	1011.80	1011.71	1011.63	1011.55	1011.50	1011.53	1011.57	1011.77
	13	1011.54	1011.47	1011.41	1011.42	1011.44	1011.46	1011.45	1011.42	1011.44	1011.47	1011.49	1011.53	1011.46
	14	1011.59	1011.67	1011.75	1011.89	1012.02	1012.08	1012.09	1012.12	1012.14	1012.17	1012.23	1012.29	1012.00
	15	1012.37	1012.48	1012.60	1012.68	1012.78	1012.93	1013.08	1013.16	1013.21	1013.32	1013.48	1013.62	1012.98
	16	1013.75	1013.86	1013.91	1013.96	1014.05	1014.17	1014.29	1014.39	1014.44	1014.50	1014.54	1014.53	1014.20
	17	1014.48	1014.44	1014.45	1014.46	1014.44	1014.47	1014.57	1014.66	1014.74	1014.77	1014.74	1014.72	1014.58
	18	1014.75	1014.85	1014.96	1015.05	1015.08	1015.11	1015.14	1015.18	1015.27	1015.40	1015.52	1015.63	1015.16
	19	1015.73	1015.85	1015.97	1016.11	1016.25	1016.38	1016.49	1016.55	1016.57	1016.56	1016.57	1016.64	1016.31
	20	1016.74	1016.87	1017.01	1017.12	1017.19	1017.28	1017.41	1017.59	1017.71	1017.69	1017.63	1017.62	1017.32
	21	1017.66	1017.68	1017.58	1017.41	1017.28	1017.21	1017.18	1017.22	1017.27	1017.27	1017.23	1017.21	1017.35
	22	1017.25	1017.31	1017.36	1017.37	1017.38	1017.41	1017.44	1017.52	1017.58	1017.61	1017.67	1017.72	1017.47
	23	1017.73	1017.72	1017.72	1017.74	1017.78	1017.86	1017.96	1018.02	1018.02	1018.04	1018.11	1018.17	1017.91

S.V.I.R.CO. Observatory - Pressure in hectoPascal – January 2019

day	hh	00_05	05_10	10_15	15_20	20_25	25_30	30_35	35_40	40_45	45_50	50_55	55_60	average
3	0	1018.32	1018.37	1018.43	1018.49	1018.51	1018.52	1018.57	1018.58	1018.60	1018.65	1018.73	1018.81	1018.56
	1	1018.86	1018.95	1019.00	1018.96	1018.95	1019.01	1019.05	1019.06	1019.11	1019.19	1019.23	1019.19	1019.04
	2	1019.17	1019.20	1019.23	1019.25	1019.24	1019.29	1019.35	1019.36	1019.36	1019.39	1019.40	1019.40	1019.30
	3	1019.42	1019.44	1019.45	1019.53	1019.62	1019.68	1019.76	1019.82	1019.87	1019.92	1019.93	1019.93	1019.70
	4	1019.94	1019.99	1020.06	1020.13	1020.19	1020.21	1020.24	1020.28	1020.33	1020.39	1020.44	1020.44	1020.22
	5	1020.44	1020.48	1020.55	1020.63	1020.69	1020.75	1020.83	1020.93	1021.03	1021.08	1021.11	1021.12	1020.80
	6	1021.15	1021.19	1021.26	1021.34	1021.39	1021.40	1021.42	1021.45	1021.54	1021.62	1021.63	1021.66	1021.42
	7	1021.73	1021.83	1021.90	1021.91	1021.95	1022.03	1022.10	1022.20	1022.28	1022.34	1022.43	1022.55	1022.10
	8	1022.67	1022.78	1022.84	1022.82	1022.78	1022.82	1022.84	1022.83	1022.85	1022.90	1022.92	1022.97	1022.83
	9	1023.05	1023.10	1023.11	1023.12	1023.12	1023.14	1023.13	1023.10	1023.07	1023.02	1022.99	1023.01	1023.08
	10	1023.00	1023.00	1023.04	1023.04	1023.02	1023.00	1022.94	1022.92	1022.91	1022.87	1022.83	1022.77	1022.94
	11	1022.72	1022.68	1022.64	1022.61	1022.60	1022.60	1022.58	1022.55	1022.53	1022.51	1022.47	1022.44	1022.58
	12	1022.43	1022.42	1022.39	1022.39	1022.43	1022.45	1022.43	1022.39	1022.35	1022.33	1022.34	1022.35	1022.39
	13	1022.33	1022.29	1022.30	1022.34	1022.37	1022.40	1022.43	1022.46	1022.49	1022.52	1022.56	1022.59	1022.42
	14	1022.61	1022.63	1022.63	1022.65	1022.68	1022.71	1022.75	1022.80	1022.86	1022.90	1022.95	1023.03	1022.76
	15	1023.10	1023.13	1023.12	1023.10	1023.15	1023.22	1023.28	1023.33	1023.37	1023.41	1023.46	1023.50	1023.26
	16	1023.52	1023.56	1023.60	1023.66	1023.74	1023.83	1023.92	1024.00	1024.07	1024.14	1024.21	1024.26	1023.88
	17	1024.30	1024.33	1024.33	1024.32	1024.32	1024.34	1024.38	1024.44	1024.50	1024.56	1024.60	1024.63	1024.42
	18	1024.62	1024.60	1024.63	1024.67	1024.68	1024.70	1024.72	1024.76	1024.73	1024.69	1024.68	1024.67	1024.68
	19	1024.68	1024.66	1024.65	1024.67	1024.70	1024.73	1024.76	1024.79	1024.86	1024.96	1025.02	1025.06	1024.79
	20	1025.08	1025.08	1025.06	1025.04	1025.02	1025.00	1024.97	1024.94	1024.93	1024.95	1024.90	1024.83	1024.98
	21	1024.76	1024.74	1024.77	1024.84	1024.90	1024.91	1024.93	1024.97	1024.98	1025.00	1024.99	1024.98	1024.90
	22	1025.02	1025.07	1025.09	1025.08	1025.07	1025.06	1025.05	1025.05	1025.09	1025.12	1025.12	1025.13	1025.08
	23	1025.18	1025.26	1025.30	1025.28	1025.26	1025.29	1025.31	1025.32	1025.31	1025.31	1025.36	1025.41	1025.30
4	0	1025.45	1025.48	1025.50	1025.48	1025.51	1025.54	1025.58	1025.64	1025.74	1025.88	1026.00	1026.08	1025.66
	1	1026.10	1026.05	1025.96	1025.89	1025.86	1025.88	1025.91	1025.88	1025.85	1025.85	1025.82	1025.79	1025.90
	2	1025.79	1025.78	1025.73	1025.63	1025.62	1025.60	1025.52	1025.46	1025.38	1025.31	1025.28	1025.33	1025.53
	3	1025.42	1025.45	1025.43	1025.41	1025.39	1025.42	1025.46	1025.46	1025.41	1025.40	1025.44	1025.48	1025.43
	4	1025.47	1025.47	1025.41	1025.32	1025.29	1025.28	1025.25	1025.25	1025.25	1025.25	1025.25	1025.31	1025.32
	5	1025.41	1025.51	1025.60	1025.64	1025.66	1025.67	1025.67	1025.70	1025.71	1025.68	1025.70	1025.76	1025.64
	6	1025.81	1025.88	1025.96	1026.00	1026.00	1026.06	1026.17	1026.28	1026.40	1026.51	1026.54	1026.52	1026.18
	7	1026.58	1026.70	1026.75	1026.79	1026.84	1026.88	1026.90	1026.94	1026.97	1027.00	1027.07	1027.16	1026.88
	8	1027.22	1027.23	1027.28	1027.41	1027.53	1027.56	1027.58	1027.63	1027.67	1027.71	1027.79	1027.89	1027.54
	9	1027.93	1027.87	1027.77	1027.70	1027.67	1027.65	1027.70	1027.73	1027.71	1027.66	1027.61	1027.54	1027.71
	10	1027.46	1027.37	1027.24	1027.16	1027.10	1027.03	1026.97	1026.94	1026.92	1026.87	1026.83	1026.81	1027.06
	11	1026.80	1026.79	1026.78	1026.77	1026.75	1026.71	1026.69	1026.63	1026.52	1026.43	1026.40	1026.32	1026.63
	12	1026.22	1026.18	1026.22	1026.20	1026.12	1026.03	1025.97	1025.94	1025.96	1025.95	1025.89	1025.85	1026.04
	13	1025.85	1025.84	1025.81	1025.81	1025.88	1025.94	1025.92	1025.89	1025.89	1025.94	1025.96	1025.95	1025.89
	14	1025.95	1025.94	1025.95	1025.96	1025.96	1025.96	1026.01	1026.07	1026.11	1026.12	1026.12	1026.12	1026.02
	15	1026.11	1026.10	1026.11	1026.13	1026.17	1026.21	1026.21	1026.24	1026.30	1026.34	1026.37	1026.41	1026.23
	16	1026.45	1026.47	1026.47	1026.49	1026.50	1026.52	1026.56	1026.61	1026.65	1026.71	1026.75	1026.78	1026.58
	17	1026.82	1026.86	1026.87	1026.91	1026.96	1026.95	1026.94	1026.98	1027.03	1027.06	1027.05	1027.00	1026.95
	18	1026.98	1026.98	1026.97	1026.99	1027.05	1027.08	1027.12	1027.17	1027.20	1027.20	1027.15	1027.14	1027.08
	19	1027.13	1027.12	1027.11	1027.09	1027.08	1027.07	1027.09	1027.10	1027.08	1027.05	1027.04	1027.03	1027.08
	20	1027.00	1026.97	1026.94	1026.91	1026.87	1026.84	1026.81	1026.76	1026.70	1026.67	1026.68	1026.70	1026.82
	21	1026.67	1026.62	1026.62	1026.65	1026.64	1026.61	1026.58	1026.57	1026.57	1026.56	1026.52	1026.45	1026.59
	22	1026.41	1026.37	1026.31	1026.25	1026.20	1026.16	1026.14	1026.14	1026.15	1026.13	1026.11	1026.10	1026.20
	23	1026.06	1026.03	1026.01	1025.99	1025.95	1025.91	1025.86	1025.81	1025.76	1025.72	1025.68	1025.64	1025.87

S.V.I.R.CO. Observatory - Pressure in hectoPascal – January 2019

day	hh	00_05	05_10	10_15	15_20	20_25	25_30	30_35	35_40	40_45	45_50	50_55	55_60	average
5	0	1025.56	1025.57	1025.57	1025.57	1025.59	1025.60	1025.60	1025.58	1025.57	1025.57	1025.58	1025.60	1025.58
	1	1025.59	1025.58	1025.57	1025.60	1025.63	1025.59	1025.52	1025.43	1025.35	1025.38	1025.44	1025.40	1025.51
	2	1025.38	1025.40	1025.43	1025.41	1025.33	1025.27	1025.23	1025.18	1025.14	1025.10	1025.02	1024.91	1025.23
	3	1024.82	1024.75	1024.67	1024.60	1024.53	1024.48	1024.48	1024.48	1024.44	1024.42	1024.42	1024.40	1024.54
	4	1024.41	1024.43	1024.41	1024.39	1024.38	1024.38	1024.39	1024.38	1024.40	1024.43	1024.44	1024.45	1024.41
	5	1024.45	1024.44	1024.40	1024.30	1024.22	1024.18	1024.14	1024.09	1024.06	1024.06	1024.11	1024.20	1024.22
	6	1024.28	1024.27	1024.24	1024.22	1024.19	1024.23	1024.29	1024.33	1024.36	1024.37	1024.39	1024.45	1024.30
	7	1024.50	1024.54	1024.56	1024.57	1024.56	1024.52	1024.50	1024.48	1024.43	1024.39	1024.44	1024.48	1024.50
	8	1024.44	1024.38	1024.38	1024.35	1024.29	1024.23	1024.21	1024.24	1024.29	1024.30	1024.30	1024.28	1024.31
	9	1024.23	1024.19	1024.18	1024.14	1024.06	1023.97	1023.87	1023.81	1023.75	1023.69	1023.60	1023.47	1023.91
	10	1023.38	1023.35	1023.29	1023.21	1023.14	1023.11	1023.11	1023.09	1023.00	1022.86	1022.74	1022.66	1023.08
	11	1022.57	1022.46	1022.35	1022.26	1022.17	1022.09	1021.97	1021.83	1021.76	1021.73	1021.66	1021.58	1022.04
	12	1021.50	1021.41	1021.32	1021.24	1021.20	1021.14	1021.05	1020.97	1020.91	1020.88	1020.85	1020.81	1021.11
	13	1020.77	1020.71	1020.62	1020.54	1020.49	1020.44	1020.38	1020.31	1020.22	1020.13	1020.06	1020.00	1020.39
	14	1019.95	1019.92	1019.93	1019.94	1019.89	1019.83	1019.83	1019.88	1019.91	1019.94	1019.97	1019.95	1019.91
	15	1019.88	1019.84	1019.79	1019.73	1019.68	1019.64	1019.61	1019.59	1019.58	1019.62	1019.66	1019.66	1019.69
	16	1019.63	1019.61	1019.60	1019.59	1019.63	1019.65	1019.61	1019.58	1019.60	1019.60	1019.54	1019.51	1019.60
	17	1019.46	1019.42	1019.40	1019.40	1019.41	1019.43	1019.45	1019.44	1019.47	1019.48	1019.37	1019.32	1019.42
	18	1019.33	1019.36	1019.39	1019.42	1019.41	1019.37	1019.33	1019.31	1019.33	1019.37	1019.45	1019.52	1019.38
	19	1019.51	1019.44	1019.34	1019.33	1019.41	1019.42	1019.38	1019.37	1019.36	1019.32	1019.32	1019.34	1019.38
	20	1019.30	1019.23	1019.24	1019.24	1019.20	1019.17	1019.14	1019.11	1019.10	1019.10	1019.07	1019.03	1019.16
	21	1019.05	1019.07	1019.04	1019.00	1018.97	1018.97	1018.95	1018.89	1018.85	1018.81	1018.73	1018.72	1018.92
	22	1018.74	1018.74	1018.74	1018.72	1018.72	1018.70	1018.65	1018.64	1018.65	1018.58	1018.47	1018.41	1018.65
	23	1018.41	1018.41	1018.41	1018.40	1018.40	1018.45	1018.52	1018.55	1018.55	1018.56	1018.58	1018.67	1018.49
6	0	1018.77	1018.77	1018.76	1018.74	1018.72	1018.72	1018.75	1018.79	1018.83	1018.89	1018.93	1018.92	1018.80
	1	1018.94	1018.96	1018.95	1018.95	1018.94	1018.87	1018.80	1018.77	1018.77	1018.82	1018.86	1018.82	1018.87
	2	1018.74	1018.68	1018.64	1018.66	1018.69	1018.65	1018.60	1018.54	1018.50	1018.43	1018.36	1018.33	1018.57
	3	1018.38	1018.41	1018.34	1018.24	1018.16	1018.14	1018.13	1018.08	1018.05	1018.04	1017.99	1017.86	1018.15
	4	1017.68	1017.72	1018.03	1018.20	1018.22	1018.30	1018.39	1018.43	1018.43	1018.45	1018.45	1018.44	1018.23
	5	1018.45	1018.46	1018.48	1018.47	1018.42	1018.50	1018.65	1018.67	1018.60	1018.58	1018.61	1018.64	1018.54
	6	1018.62	1018.59	1018.59	1018.55	1018.46	1018.43	1018.38	1018.35	1018.45	1018.58	1018.67	1018.73	1018.53
	7	1018.79	1018.84	1018.83	1018.86	1018.94	1018.99	1019.01	1019.01	1019.02	1019.06	1019.09	1019.11	1018.96
	8	1019.14	1019.17	1019.19	1019.21	1019.24	1019.29	1019.34	1019.36	1019.35	1019.29	1019.22	1019.16	1019.25
	9	1019.09	1019.06	1019.08	1019.12	1019.18	1019.26	1019.33	1019.37	1019.35	1019.32	1019.25	1019.15	1019.21
	10	1019.05	1018.93	1018.82	1018.73	1018.71	1018.77	1018.87	1018.98	1019.00	1018.98	1018.98	1018.95	1018.90
	11	1018.92	1018.87	1018.83	1018.80	1018.77	1018.75	1018.71	1018.64	1018.56	1018.50	1018.46	1018.39	1018.68
	12	1018.32	1018.33	1018.38	1018.41	1018.38	1018.36	1018.37	1018.31	1018.24	1018.16	1018.08	1018.01	1018.28
	13	1017.91	1017.83	1017.83	1017.87	1017.91	1017.93	1017.91	1017.90	1017.87	1017.91	1018.00	1018.02	1017.91
	14	1018.01	1018.04	1018.09	1018.09	1018.06	1018.04	1018.04	1018.02	1018.01	1018.03	1018.06	1018.10	1018.05
	15	1018.13	1018.13	1018.10	1018.13	1018.18	1018.17	1018.15	1018.19	1018.26	1018.31	1018.37	1018.40	1018.21
	16	1018.38	1018.38	1018.44	1018.50	1018.55	1018.60	1018.65	1018.64	1018.59	1018.60	1018.68	1018.73	1018.56
	17	1018.73	1018.76	1018.81	1018.82	1018.85	1018.92	1019.00	1019.07	1019.12	1019.18	1019.26	1019.31	1018.99
	18	1019.35	1019.40	1019.44	1019.45	1019.45	1019.45	1019.48	1019.53	1019.58	1019.62	1019.66	1019.68	1019.51
	19	1019.67	1019.64	1019.64	1019.64	1019.66	1019.69	1019.71	1019.71	1019.73	1019.75	1019.75	1019.76	1019.70
	20	1019.76	1019.75	1019.75	1019.77	1019.78	1019.82	1019.88	1019.95	1019.98	1019.99	1020.01	1020.04	1019.87
	21	1020.04	1020.04	1020.08	1020.16	1020.21	1020.22	1020.24	1020.29	1020.31	1020.30	1020.35	1020.44	1020.23
	22	1020.49	1020.51	1020.53	1020.55	1020.56	1020.56	1020.57	1020.60	1020.66	1020.72	1020.74	1020.74	1020.60
	23	1020.78	1020.86	1020.89	1020.86	1020.83	1020.79	1020.78	1020.79	1020.81	1020.80	1020.75	1020.75	1020.81

S.V.I.R.CO. Observatory - Pressure in hectoPascal – January 2019

day	hh	00_05	05_10	10_15	15_20	20_25	25_30	30_35	35_40	40_45	45_50	50_55	55_60	average
7	0	1020.76	1020.75	1020.72	1020.71	1020.72	1020.74	1020.79	1020.87	1020.91	1020.97	1021.10	1021.24	1020.86
	1	1021.35	1021.43	1021.48	1021.58	1021.68	1021.76	1021.78	1021.79	1021.92	1022.12	1022.23	1022.25	1021.78
	2	1022.23	1022.17	1022.09	1022.03	1022.00	1021.96	1021.91	1021.95	1021.97	1021.91	1021.87	1021.81	1021.99
	3	1021.71	1021.63	1021.57	1021.54	1021.54	1021.57	1021.58	1021.55	1021.52	1021.50	1021.45	1021.42	1021.55
	4	1021.44	1021.50	1021.57	1021.58	1021.51	1021.46	1021.46	1021.50	1021.60	1021.74	1021.84	1021.83	1021.58
	5	1021.73	1021.66	1021.68	1021.76	1021.79	1021.84	1021.92	1022.07	1022.21	1022.28	1022.34	1022.39	1021.97
	6	1022.43	1022.43	1022.40	1022.45	1022.57	1022.67	1022.74	1022.80	1022.82	1022.87	1022.98	1023.08	1022.69
	7	1023.15	1023.19	1023.21	1023.25	1023.27	1023.29	1023.35	1023.41	1023.48	1023.59	1023.71	1023.85	1023.40
	8	1023.94	1023.95	1023.97	1024.00	1024.01	1024.02	1024.06	1024.11	1024.14	1024.16	1024.18	1024.21	1024.06
	9	1024.22	1024.29	1024.39	1024.47	1024.55	1024.60	1024.65	1024.73	1024.79	1024.80	1024.78	1024.77	1024.59
	10	1024.77	1024.76	1024.74	1024.68	1024.61	1024.55	1024.54	1024.54	1024.51	1024.42	1024.34	1024.29	1024.56
	11	1024.23	1024.18	1024.17	1024.17	1024.17	1024.14	1024.11	1024.08	1024.06	1024.06	1024.06	1024.02	1024.12
	12	1023.94	1023.88	1023.83	1023.76	1023.73	1023.72	1023.65	1023.53	1023.44	1023.44	1023.54	1023.63	1023.67
	13	1023.64	1023.63	1023.64	1023.64	1023.64	1023.66	1023.65	1023.63	1023.62	1023.63	1023.67	1023.69	1023.65
	14	1023.70	1023.71	1023.73	1023.76	1023.76	1023.75	1023.76	1023.76	1023.78	1023.81	1023.84	1023.86	1023.77
	15	1023.89	1023.94	1023.98	1023.98	1023.98	1024.02	1024.06	1024.07	1024.08	1024.10	1024.12	1024.14	1024.03
	16	1024.18	1024.23	1024.25	1024.25	1024.26	1024.29	1024.32	1024.33	1024.34	1024.39	1024.48	1024.55	1024.32
	17	1024.60	1024.63	1024.66	1024.68	1024.69	1024.70	1024.74	1024.81	1024.87	1024.90	1024.92	1024.98	1024.76
	18	1025.04	1025.06	1025.06	1025.09	1025.11	1025.09	1025.07	1025.09	1025.11	1025.15	1025.18	1025.17	1025.10
	19	1025.15	1025.14	1025.17	1025.21	1025.21	1025.19	1025.18	1025.17	1025.19	1025.21	1025.24	1025.24	1025.19
	20	1025.24	1025.26	1025.28	1025.25	1025.22	1025.21	1025.22	1025.22	1025.17	1025.11	1025.13	1025.20	1025.21
	21	1025.24	1025.25	1025.29	1025.35	1025.38	1025.37	1025.36	1025.34	1025.32	1025.31	1025.34	1025.36	1025.33
	22	1025.36	1025.32	1025.26	1025.21	1025.18	1025.16	1025.14	1025.14	1025.12	1025.09	1025.11	1025.13	1025.18
	23	1025.15	1025.15	1025.14	1025.15	1025.14	1025.13	1025.12	1025.11	1025.09	1025.07	1025.09	1025.12	1025.12
8	0	1025.12	1025.12	1025.08	1025.03	1024.99	1024.94	1024.89	1024.87	1024.84	1024.79	1024.79	1024.82	1024.93
	1	1024.82	1024.79	1024.70	1024.58	1024.53	1024.50	1024.43	1024.31	1024.20	1024.13	1024.10	1024.09	1024.43
	2	1024.08	1024.06	1024.03	1024.00	1024.00	1024.01	1024.02	1024.03	1024.04	1024.03	1024.00	1023.95	1024.02
	3	1023.89	1023.84	1023.78	1023.71	1023.63	1023.56	1023.48	1023.45	1023.44	1023.38	1023.29	1023.23	1023.56
	4	1023.20	1023.16	1023.10	1023.08	1023.06	1022.99	1022.96	1022.97	1023.00	1023.01	1022.95	1022.85	1023.03
	5	1022.76	1022.65	1022.59	1022.62	1022.63	1022.56	1022.51	1022.51	1022.54	1022.51	1022.45	1022.40	1022.56
	6	1022.35	1022.33	1022.29	1022.24	1022.23	1022.25	1022.29	1022.30	1022.27	1022.27	1022.30	1022.27	1022.28
	7	1022.22	1022.23	1022.18	1022.09	1022.08	1022.05	1022.01	1021.97	1021.90	1021.84	1021.77	1021.74	1022.01
	8	1021.74	1021.70	1021.62	1021.57	1021.59	1021.62	1021.63	1021.66	1021.67	1021.66	1021.63	1021.59	1021.64
	9	1021.53	1021.46	1021.38	1021.30	1021.20	1021.16	1021.16	1021.11	1021.03	1020.96	1020.88	1020.79	1021.16
	10	1020.72	1020.64	1020.53	1020.43	1020.34	1020.24	1020.14	1020.03	1019.89	1019.73	1019.56	1019.39	1020.14
	11	1019.25	1019.12	1018.96	1018.76	1018.59	1018.44	1018.30	1018.22	1018.13	1017.99	1017.86	1017.76	1018.45
	12	1017.65	1017.50	1017.38	1017.30	1017.28	1017.20	1017.06	1016.90	1016.71	1016.51	1016.34	1016.27	1017.01
	13	1016.19	1016.07	1016.01	1015.94	1015.86	1015.76	1015.65	1015.58	1015.55	1015.53	1015.48	1015.39	1015.75
	14	1015.26	1015.14	1015.05	1014.96	1014.83	1014.71	1014.63	1014.53	1014.46	1014.44	1014.45	1014.42	1014.74
	15	1014.36	1014.30	1014.22	1014.15	1014.10	1014.09	1014.04	1013.98	1013.94	1013.89	1013.83	1013.75	1014.05
	16	1013.68	1013.60	1013.54	1013.44	1013.29	1013.17	1013.09	1013.00	1012.88	1012.74	1012.65	1012.59	1013.14
	17	1012.54	1012.46	1012.35	1012.29	1012.32	1012.37	1012.38	1012.34	1012.29	1012.24	1012.19	1012.17	1012.33
	18	1012.10	1012.03	1011.98	1011.89	1011.83	1011.79	1011.74	1011.66	1011.57	1011.45	1011.34	1011.25	1011.72
	19	1011.20	1011.17	1011.17	1011.16	1011.06	1010.95	1010.84	1010.76	1010.71	1010.65	1010.57	1010.48	1010.89
	20	1010.37	1010.22	1010.10	1010.00	1009.93	1009.88	1009.82	1009.80	1009.76	1009.71	1009.68	1009.65	1009.91
	21	1009.63	1009.60	1009.56	1009.51	1009.43	1009.35	1009.29	1009.22	1009.15	1009.06	1008.95	1008.83	1009.30
	22	1008.70	1008.62	1008.55	1008.47	1008.39	1008.31	1008.19	1008.05	1007.93	1007.82	1007.73	1007.66	1008.20
	23	1007.61	1007.54	1007.47	1007.44	1007.42	1007.37	1007.27	1007.11	1006.97	1006.86	1006.78	1006.71	1007.21

S.V.I.R.CO. Observatory - Pressure in hectoPascal – January 2019

day	hh	00_05	05_10	10_15	15_20	20_25	25_30	30_35	35_40	40_45	45_50	50_55	55_60	average
9	0	1006.53	1006.53	1006.49	1006.39	1006.28	1006.22	1006.22	1006.21	1006.12	1006.02	1005.94	1005.89	1006.22
	1	1005.84	1005.79	1005.75	1005.69	1005.58	1005.45	1005.35	1005.31	1005.24	1005.14	1005.02	1004.91	1005.42
	2	1004.84	1004.80	1004.76	1004.70	1004.65	1004.60	1004.49	1004.37	1004.26	1004.11	1003.96	1003.85	1004.45
	3	1003.79	1003.73	1003.70	1003.65	1003.57	1003.49	1003.42	1003.38	1003.36	1003.32	1003.27	1003.22	1003.49
	4	1003.17	1003.11	1003.03	1002.99	1002.97	1002.93	1002.88	1002.86	1002.87	1002.88	1002.85	1002.82	1002.95
	5	1002.79	1002.77	1002.74	1002.73	1002.72	1002.71	1002.69	1002.68	1002.68	1002.66	1002.63	1002.63	1002.70
	6	1002.66	1002.71	1002.72	1002.69	1002.65	1002.61	1002.59	1002.57	1002.55	1002.57	1002.56	1002.53	1002.62
	7	1002.53	1002.56	1002.58	1002.57	1002.51	1002.44	1002.40	1002.37	1002.35	1002.28	1002.13	1002.01	1002.39
	8	1001.99	1001.97	1001.96	1001.99	1002.05	1002.05	1001.97	1001.90	1001.87	1001.86	1001.85	1001.82	1001.94
	9	1001.78	1001.73	1001.66	1001.57	1001.49	1001.41	1001.35	1001.32	1001.30	1001.31	1001.36	1001.38	1001.47
	10	1001.36	1001.33	1001.27	1001.20	1001.18	1001.15	1001.09	1001.03	1000.99	1000.93	1000.87	1000.81	1001.10
	11	1000.74	1000.64	1000.51	1000.44	1000.40	1000.35	1000.26	1000.16	1000.09	1000.04	999.97	999.89	1000.29
	12	999.83	999.82	999.77	999.68	999.57	999.43	999.25	999.08	998.94	998.82	998.76	998.74	999.31
	13	998.77	998.82	998.83	998.80	998.80	998.83	998.86	998.89	998.91	998.93	998.97	999.03	998.87
	14	998.99	998.93	998.93	998.90	998.85	998.83	998.83	998.87	998.97	998.99	998.93	998.90	998.91
	15	998.94	998.99	999.00	998.97	998.88	998.75	998.62	998.52	998.52	998.59	998.64	998.65	998.75
	16	998.65	998.70	998.87	999.02	999.10	999.16	999.15	999.11	999.11	999.17	999.21	999.17	999.03
	17	999.12	999.04	999.01	999.06	999.11	999.12	999.13	999.17	999.27	999.34	999.39	999.43	999.18
	18	999.45	999.49	999.54	999.55	999.60	999.66	999.67	999.68	999.74	999.78	999.82	999.80	999.65
	19	999.73	999.67	999.67	999.69	999.70	999.70	999.70	999.72	999.78	999.89	999.98	1000.05	999.77
	20	1000.09	1000.07	1000.06	1000.03	1000.00	1000.00	1000.01	1000.02	1000.05	1000.08	1000.12	1000.15	1000.06
	21	1000.19	1000.22	1000.26	1000.29	1000.32	1000.37	1000.38	1000.37	1000.41	1000.44	1000.45	1000.50	1000.35
	22	1000.54	1000.57	1000.63	1000.67	1000.68	1000.67	1000.65	1000.67	1000.69	1000.69	1000.72	1000.73	1000.66
	23	1000.71	1000.68	1000.70	1000.75	1000.78	1000.80	1000.81	1000.82	1000.83	1000.86	1000.90	1000.95	1000.80
10	0	1001.00	1001.02	1001.04	1001.05	1001.10	1001.15	1001.19	1001.20	1001.23	1001.29	1001.33	1001.37	1001.17
	1	1001.39	1001.42	1001.47	1001.50	1001.51	1001.52	1001.51	1001.54	1001.57	1001.56	1001.55	1001.53	1001.51
	2	1001.48	1001.45	1001.45	1001.42	1001.36	1001.31	1001.27	1001.23	1001.19	1001.18	1001.20	1001.22	1001.31
	3	1001.19	1001.17	1001.20	1001.25	1001.28	1001.26	1001.25	1001.27	1001.32	1001.36	1001.36	1001.34	1001.27
	4	1001.33	1001.33	1001.35	1001.40	1001.44	1001.51	1001.59	1001.67	1001.75	1001.84	1001.90	1001.95	1001.59
	5	1001.99	1002.02	1002.03	1002.06	1002.11	1002.19	1002.26	1002.33	1002.42	1002.50	1002.56	1002.60	1002.26
	6	1002.64	1002.70	1002.75	1002.78	1002.81	1002.85	1002.89	1002.95	1003.00	1003.04	1003.08	1003.14	1002.89
	7	1003.19	1003.24	1003.29	1003.35	1003.42	1003.51	1003.60	1003.71	1003.81	1003.88	1003.95	1004.02	1003.58
	8	1004.08	1004.14	1004.19	1004.23	1004.27	1004.29	1004.31	1004.31	1004.32	1004.33	1004.38	1004.49	1004.28
	9	1004.59	1004.68	1004.76	1004.84	1004.91	1004.98	1005.05	1005.11	1005.15	1005.17	1005.18	1005.21	1004.97
	10	1005.24	1005.28	1005.31	1005.32	1005.34	1005.37	1005.38	1005.38	1005.40	1005.45	1005.48	1005.50	1005.37
	11	1005.49	1005.45	1005.42	1005.41	1005.42	1005.44	1005.44	1005.45	1005.47	1005.47	1005.47	1005.45	1005.45
	12	1005.42	1005.38	1005.33	1005.32	1005.33	1005.33	1005.33	1005.31	1005.32	1005.35	1005.37	1005.41	1005.35
	13	1005.46	1005.51	1005.54	1005.57	1005.61	1005.65	1005.69	1005.73	1005.78	1005.84	1005.90	1005.98	1005.69
	14	1006.05	1006.13	1006.19	1006.23	1006.30	1006.39	1006.46	1006.49	1006.53	1006.62	1006.71	1006.78	1006.41
	15	1006.86	1006.94	1007.01	1007.08	1007.16	1007.21	1007.26	1007.33	1007.43	1007.54	1007.63	1007.70	1007.26
	16	1007.75	1007.82	1007.90	1007.95	1008.00	1008.05	1008.09	1008.15	1008.24	1008.33	1008.43	1008.52	1008.10
	17	1008.58	1008.63	1008.69	1008.75	1008.82	1008.87	1008.89	1008.92	1008.95	1009.00	1009.10	1009.19	1008.87
	18	1009.26	1009.31	1009.39	1009.45	1009.50	1009.58	1009.66	1009.72	1009.79	1009.84	1009.85	1009.85	1009.60
	19	1009.87	1009.89	1009.94	1010.01	1010.07	1010.17	1010.27	1010.33	1010.36	1010.36	1010.37	1010.40	1010.17
	20	1010.41	1010.42	1010.43	1010.46	1010.49	1010.51	1010.52	1010.51	1010.52	1010.55	1010.60	1010.65	1010.50
	21	1010.67	1010.70	1010.74	1010.79	1010.82	1010.85	1010.87	1010.90	1010.97	1011.04	1011.08	1011.10	1010.88
	22	1011.11	1011.14	1011.19	1011.24	1011.26	1011.26	1011.29	1011.35	1011.39	1011.41	1011.39	1011.37	1011.28
	23	1011.40	1011.44	1011.47	1011.48	1011.50	1011.54	1011.56	1011.55	1011.54	1011.54	1011.53	1011.56	1011.51



S.V.I.R.CO. Observatory - Pressure in hectoPascal – January 2019

day	hh	00_05	05_10	10_15	15_20	20_25	25_30	30_35	35_40	40_45	45_50	50_55	55_60	average
11	0	1011.63	1011.64	1011.65	1011.66	1011.65	1011.66	1011.69	1011.73	1011.77	1011.79	1011.81	1011.85	1011.72
	1	1011.90	1011.95	1012.03	1012.12	1012.19	1012.22	1012.20	1012.19	1012.21	1012.25	1012.30	1012.35	1012.16
	2	1012.39	1012.40	1012.42	1012.43	1012.44	1012.45	1012.46	1012.47	1012.48	1012.46	1012.45	1012.46	1012.44
	3	1012.47	1012.46	1012.43	1012.42	1012.40	1012.39	1012.39	1012.38	1012.39	1012.42	1012.43	1012.45	1012.42
	4	1012.50	1012.58	1012.69	1012.79	1012.85	1012.89	1012.93	1012.97	1013.01	1013.08	1013.16	1013.22	1012.89
	5	1013.29	1013.38	1013.45	1013.50	1013.55	1013.58	1013.60	1013.61	1013.61	1013.62	1013.63	1013.66	1013.54
	6	1013.71	1013.76	1013.78	1013.78	1013.80	1013.85	1013.89	1013.94	1013.98	1014.01	1014.02	1014.04	1013.88
	7	1014.10	1014.13	1014.13	1014.11	1014.12	1014.16	1014.22	1014.29	1014.35	1014.40	1014.47	1014.53	1014.25
	8	1014.55	1014.56	1014.57	1014.61	1014.66	1014.71	1014.74	1014.76	1014.78	1014.81	1014.83	1014.82	1014.70
	9	1014.84	1014.87	1014.90	1014.90	1014.89	1014.86	1014.83	1014.79	1014.77	1014.77	1014.79	1014.82	1014.84
	10	1014.83	1014.82	1014.79	1014.77	1014.74	1014.71	1014.68	1014.66	1014.63	1014.63	1014.63	1014.63	1014.71
	11	1014.61	1014.58	1014.58	1014.58	1014.56	1014.51	1014.48	1014.46	1014.42	1014.40	1014.38	1014.35	1014.49
	12	1014.33	1014.30	1014.25	1014.23	1014.20	1014.18	1014.17	1014.16	1014.14	1014.13	1014.14	1014.13	1014.20
	13	1014.09	1014.06	1014.04	1014.04	1014.05	1014.05	1014.05	1014.07	1014.12	1014.15	1014.18	1014.21	1014.09
	14	1014.23	1014.22	1014.22	1014.25	1014.29	1014.31	1014.33	1014.35	1014.38	1014.40	1014.42	1014.45	1014.32
	15	1014.49	1014.53	1014.59	1014.65	1014.70	1014.75	1014.79	1014.84	1014.88	1014.89	1014.94	1015.03	1014.76
	16	1015.08	1015.15	1015.21	1015.28	1015.35	1015.43	1015.50	1015.56	1015.61	1015.66	1015.70	1015.73	1015.44
	17	1015.77	1015.82	1015.87	1015.92	1015.97	1016.01	1016.04	1016.09	1016.15	1016.20	1016.24	1016.28	1016.03
	18	1016.33	1016.38	1016.43	1016.46	1016.48	1016.52	1016.56	1016.55	1016.55	1016.58	1016.59	1016.61	1016.50
	19	1016.65	1016.72	1016.78	1016.82	1016.86	1016.90	1016.94	1016.98	1017.00	1017.02	1017.05	1017.08	1016.90
	20	1017.11	1017.14	1017.16	1017.16	1017.16	1017.17	1017.19	1017.21	1017.21	1017.20	1017.21	1017.22	1017.18
	21	1017.23	1017.26	1017.29	1017.32	1017.34	1017.34	1017.34	1017.33	1017.31	1017.29	1017.27	1017.27	1017.30
	22	1017.28	1017.30	1017.30	1017.29	1017.29	1017.28	1017.27	1017.27	1017.26	1017.25	1017.24	1017.23	1017.27
	23	1017.23	1017.25	1017.27	1017.34	1017.41	1017.41	1017.39	1017.37	1017.35	1017.32	1017.31	1017.29	1017.33
12	0	1017.23	1017.24	1017.23	1017.19	1017.15	1017.14	1017.19	1017.21	1017.21	1017.23	1017.30	1017.37	1017.22
	1	1017.37	1017.35	1017.35	1017.38	1017.39	1017.37	1017.35	1017.33	1017.30	1017.29	1017.30	1017.32	1017.34
	2	1017.31	1017.26	1017.26	1017.32	1017.35	1017.30	1017.26	1017.27	1017.27	1017.23	1017.21	1017.19	1017.27
	3	1017.15	1017.15	1017.17	1017.14	1017.10	1017.08	1017.08	1017.07	1017.08	1017.09	1017.10	1017.09	1017.11
	4	1017.07	1017.05	1017.07	1017.09	1017.09	1017.08	1017.08	1017.11	1017.14	1017.15	1017.15	1017.14	1017.10
	5	1017.14	1017.16	1017.16	1017.15	1017.16	1017.17	1017.18	1017.19	1017.18	1017.19	1017.23	1017.27	1017.18
	6	1017.32	1017.36	1017.37	1017.36	1017.35	1017.37	1017.43	1017.48	1017.48	1017.47	1017.46	1017.48	1017.41
	7	1017.50	1017.53	1017.55	1017.58	1017.66	1017.77	1017.85	1017.89	1017.91	1017.94	1018.00	1018.05	1017.77
	8	1018.10	1018.14	1018.19	1018.23	1018.24	1018.26	1018.31	1018.37	1018.40	1018.41	1018.44	1018.46	1018.29
	9	1018.46	1018.47	1018.52	1018.59	1018.61	1018.64	1018.70	1018.71	1018.63	1018.56	1018.52	1018.49	1018.57
	10	1018.44	1018.41	1018.36	1018.25	1018.15	1018.10	1018.07	1018.03	1017.95	1017.86	1017.83	1017.82	1018.10
	11	1017.80	1017.75	1017.65	1017.60	1017.59	1017.56	1017.51	1017.45	1017.43	1017.39	1017.33	1017.29	1017.53
	12	1017.25	1017.19	1017.15	1017.09	1017.00	1016.92	1016.87	1016.91	1016.93	1016.90	1016.88	1016.84	1016.99
	13	1016.81	1016.82	1016.80	1016.73	1016.68	1016.66	1016.64	1016.61	1016.59	1016.58	1016.58	1016.58	1016.67
	14	1016.58	1016.58	1016.56	1016.51	1016.45	1016.40	1016.37	1016.37	1016.45	1016.55	1016.60	1016.59	1016.50
	15	1016.55	1016.53	1016.51	1016.50	1016.52	1016.54	1016.56	1016.57	1016.58	1016.62	1016.66	1016.69	1016.57
	16	1016.73	1016.76	1016.78	1016.80	1016.82	1016.84	1016.83	1016.84	1016.89	1016.91	1016.88	1016.86	1016.83
	17	1016.87	1016.88	1016.90	1016.94	1017.03	1017.13	1017.20	1017.29	1017.34	1017.37	1017.40	1017.42	1017.15
	18	1017.44	1017.46	1017.46	1017.45	1017.44	1017.44	1017.43	1017.43	1017.43	1017.38	1017.30	1017.31	1017.41
	19	1017.34	1017.36	1017.36	1017.30	1017.25	1017.28	1017.35	1017.46	1017.56	1017.61	1017.63	1017.61	1017.43
	20	1017.55	1017.52	1017.55	1017.61	1017.66	1017.69	1017.68	1017.65	1017.66	1017.63	1017.54	1017.41	1017.60
	21	1017.28	1017.23	1017.21	1017.20	1017.18	1017.15	1017.12	1017.08	1017.02	1016.93	1016.86	1016.86	1017.09
	22	1016.91	1016.90	1016.77	1016.62	1016.57	1016.55	1016.46	1016.36	1016.30	1016.28	1016.28	1016.23	1016.52
	23	1016.18	1016.13	1016.06	1016.04	1015.99	1015.94	1015.98	1015.97	1015.94	1015.93	1015.89	1015.87	1015.99

S.V.I.R.CO. Observatory - Pressure in hectoPascal – January 2019

day	hh	00_05	05_10	10_15	15_20	20_25	25_30	30_35	35_40	40_45	45_50	50_55	55_60	average
13	0	1015.88	1015.84	1015.83	1015.93	1015.97	1015.96	1015.93	1015.91	1015.94	1015.91	1015.85	1015.85	1015.90
	1	1015.87	1015.86	1015.83	1015.79	1015.75	1015.74	1015.73	1015.72	1015.66	1015.58	1015.49	1015.40	1015.70
	2	1015.32	1015.24	1015.21	1015.19	1015.13	1015.10	1015.06	1014.98	1014.90	1014.84	1014.76	1014.69	1015.03
	3	1014.67	1014.64	1014.54	1014.42	1014.34	1014.27	1014.16	1014.08	1014.05	1014.04	1013.98	1013.93	1014.26
	4	1013.89	1013.84	1013.76	1013.59	1013.50	1013.53	1013.52	1013.37	1013.33	1013.44	1013.46	1013.43	1013.56
	5	1013.48	1013.56	1013.56	1013.48	1013.44	1013.40	1013.33	1013.28	1013.25	1013.25	1013.26	1013.30	1013.38
	6	1013.37	1013.43	1013.41	1013.35	1013.26	1013.13	1013.00	1012.97	1013.04	1013.09	1013.11	1013.09	1013.19
	7	1013.00	1012.96	1012.94	1012.94	1013.03	1013.13	1013.08	1013.04	1013.06	1013.05	1013.07	1013.08	1013.03
	8	1013.05	1013.01	1012.94	1012.81	1012.73	1012.71	1012.70	1012.65	1012.54	1012.51	1012.52	1012.48	1012.72
	9	1012.44	1012.39	1012.38	1012.37	1012.32	1012.32	1012.32	1012.30	1012.29	1012.24	1012.14	1012.08	1012.30
	10	1012.03	1011.99	1011.97	1011.96	1011.95	1011.90	1011.85	1011.77	1011.67	1011.59	1011.53	1011.48	1011.81
	11	1011.44	1011.41	1011.40	1011.41	1011.37	1011.30	1011.21	1011.12	1011.08	1011.08	1011.04	1010.97	1011.24
	12	1010.88	1010.81	1010.72	1010.64	1010.60	1010.57	1010.52	1010.42	1010.29	1010.19	1010.12	1010.02	1010.48
	13	1009.91	1009.88	1009.86	1009.81	1009.74	1009.64	1009.57	1009.57	1009.60	1009.59	1009.57	1009.55	1009.69
	14	1009.55	1009.57	1009.61	1009.67	1009.70	1009.68	1009.58	1009.47	1009.40	1009.35	1009.29	1009.24	1009.51
	15	1009.19	1009.21	1009.26	1009.38	1009.47	1009.44	1009.44	1009.49	1009.53	1009.51	1009.45	1009.43	1009.40
	16	1009.41	1009.43	1009.47	1009.54	1009.60	1009.60	1009.54	1009.45	1009.41	1009.43	1009.43	1009.46	1009.48
	17	1009.55	1009.58	1009.59	1009.61	1009.60	1009.60	1009.61	1009.59	1009.60	1009.66	1009.72	1009.76	1009.62
	18	1009.78	1009.79	1009.68	1009.57	1009.54	1009.50	1009.50	1009.62	1009.74	1009.74	1009.67	1009.54	1009.64
	19	1009.45	1009.46	1009.46	1009.43	1009.45	1009.42	1009.28	1009.20	1009.20	1009.17	1009.07	1008.94	1009.29
	20	1008.89	1008.97	1009.03	1009.04	1009.04	1008.99	1008.93	1009.01	1009.15	1009.20	1009.25	1009.33	1009.07
	21	1009.42	1009.48	1009.45	1009.40	1009.34	1009.28	1009.26	1009.23	1009.17	1009.09	1009.03	1009.05	1009.26
	22	1009.03	1008.89	1008.76	1008.74	1008.70	1008.56	1008.43	1008.26	1008.18	1008.22	1008.22	1008.13	1008.51
	23	1007.99	1007.84	1007.75	1007.73	1007.70	1007.63	1007.55	1007.43	1007.30	1007.28	1007.30	1007.26	1007.56
14	0	1007.13	1007.11	1007.03	1006.95	1006.95	1007.02	1007.01	1006.89	1006.72	1006.62	1006.63	1006.54	1006.87
	1	1006.42	1006.35	1006.24	1006.10	1006.00	1005.90	1005.65	1005.44	1005.32	1005.16	1005.08	1005.05	1005.72
	2	1004.94	1004.79	1004.79	1004.78	1004.69	1004.60	1004.50	1004.46	1004.35	1004.16	1003.96	1003.80	1004.48
	3	1003.71	1003.69	1003.71	1003.77	1003.82	1003.70	1003.43	1003.21	1003.05	1002.78	1002.48	1002.29	1003.30
	4	1002.08	1001.97	1001.97	1001.86	1001.79	1001.91	1002.04	1002.01	1001.95	1001.93	1001.83	1001.66	1001.92
	5	1001.44	1001.13	1000.90	1000.81	1000.79	1000.78	1000.88	1000.99	1000.98	1000.95	1001.01	1001.05	1000.98
	6	1001.04	1001.07	1000.98	1000.76	1000.64	1000.70	1000.66	1000.51	1000.43	1000.26	1000.11	1000.20	1000.61
	7	1000.42	1000.49	1000.50	1000.18	999.37	999.00	999.24	999.45	999.88	1000.29	1000.39	1000.51	999.98
	8	1000.67	1000.79	1000.81	1000.79	1000.79	1000.84	1000.91	1000.97	1001.07	1001.15	1001.23	1001.35	1000.95
	9	1001.50	1001.70	1001.92	1002.11	1002.17	1002.03	1001.99	1002.08	1002.11	1002.15	1002.22	1002.30	1002.02
	10	1002.33	1002.28	1002.20	1002.10	1001.96	1001.81	1001.70	1001.61	1001.50	1001.39	1001.33	1001.31	1001.79
	11	1001.28	1001.22	1001.18	1001.16	1001.13	1001.08	1001.04	1001.02	1001.00	1000.94	1000.91	1000.91	1001.07
	12	1000.95	1001.00	1000.99	1000.94	1000.92	1000.90	1000.91	1000.98	1001.04	1001.06	1001.07	1001.05	1000.98
	13	1001.01	1001.04	1001.12	1001.16	1001.20	1001.26	1001.31	1001.35	1001.35	1001.30	1001.27	1001.26	1001.22
	14	1001.27	1001.29	1001.32	1001.32	1001.28	1001.25	1001.26	1001.32	1001.44	1001.58	1001.69	1001.75	1001.40
	15	1001.78	1001.82	1001.90	1002.04	1002.16	1002.22	1002.24	1002.26	1002.34	1002.46	1002.57	1002.64	1002.20
	16	1002.68	1002.74	1002.83	1002.94	1003.06	1003.14	1003.16	1003.17	1003.16	1003.17	1003.24	1003.35	1003.05
	17	1003.43	1003.49	1003.55	1003.64	1003.73	1003.82	1003.92	1004.03	1004.17	1004.31	1004.44	1004.56	1003.92
	18	1004.68	1004.76	1004.84	1004.88	1004.91	1004.97	1005.04	1005.11	1005.16	1005.15	1005.11	1005.16	1004.98
	19	1005.28	1005.33	1005.31	1005.34	1005.44	1005.53	1005.61	1005.70	1005.76	1005.80	1005.84	1005.89	1005.57
	20	1006.00	1006.20	1006.40	1006.50	1006.59	1006.63	1006.54	1006.41	1006.36	1006.35	1006.41	1006.52	1006.41
	21	1006.59	1006.64	1006.70	1006.76	1006.79	1006.83	1006.89	1006.96	1007.04	1007.12	1007.15	1007.12	1006.88
	22	1007.13	1007.17	1007.20	1007.25	1007.32	1007.37	1007.42	1007.47	1007.52	1007.58	1007.65	1007.71	1007.40
	23	1007.77	1007.85	1007.94	1008.02	1008.07	1008.12	1008.17	1008.25	1008.34	1008.42	1008.49	1008.59	1008.17

S.V.I.R.CO. Observatory - Pressure in hectoPascal – January 2019

day	hh	00_05	05_10	10_15	15_20	20_25	25_30	30_35	35_40	40_45	45_50	50_55	55_60	average
15	0	1008.75	1008.78	1008.84	1008.90	1008.96	1009.06	1009.15	1009.19	1009.28	1009.41	1009.51	1009.56	1009.13
	1	1009.60	1009.63	1009.63	1009.64	1009.66	1009.72	1009.82	1009.89	1009.94	1009.99	1010.05	1010.10	1009.81
	2	1010.14	1010.18	1010.24	1010.31	1010.43	1010.51	1010.52	1010.51	1010.51	1010.53	1010.58	1010.63	1010.42
	3	1010.72	1010.86	1010.96	1011.04	1011.13	1011.17	1011.18	1011.22	1011.30	1011.36	1011.35	1011.30	1011.13
	4	1011.25	1011.24	1011.27	1011.34	1011.46	1011.61	1011.75	1011.86	1011.96	1012.03	1012.11	1012.22	1011.68
	5	1012.34	1012.45	1012.51	1012.56	1012.67	1012.81	1012.99	1013.12	1013.20	1013.29	1013.41	1013.58	1012.91
	6	1013.73	1013.83	1013.98	1014.15	1014.29	1014.40	1014.49	1014.61	1014.71	1014.76	1014.77	1014.77	1014.37
	7	1014.78	1014.83	1014.95	1015.08	1015.21	1015.32	1015.45	1015.58	1015.67	1015.74	1015.80	1015.92	1015.36
	8	1016.01	1016.08	1016.18	1016.28	1016.37	1016.47	1016.57	1016.66	1016.72	1016.79	1016.89	1016.99	1016.50
	9	1017.11	1017.22	1017.34	1017.45	1017.55	1017.64	1017.66	1017.63	1017.61	1017.66	1017.71	1017.72	1017.53
	10	1017.71	1017.70	1017.69	1017.67	1017.67	1017.63	1017.54	1017.47	1017.44	1017.43	1017.40	1017.38	1017.56
	11	1017.38	1017.38	1017.38	1017.40	1017.40	1017.38	1017.35	1017.34	1017.32	1017.24	1017.16	1017.13	1017.32
	12	1017.18	1017.23	1017.28	1017.33	1017.42	1017.49	1017.50	1017.48	1017.47	1017.43	1017.42	1017.44	1017.39
	13	1017.46	1017.47	1017.50	1017.52	1017.51	1017.53	1017.58	1017.64	1017.68	1017.71	1017.72	1017.71	1017.59
	14	1017.74	1017.79	1017.82	1017.82	1017.82	1017.85	1017.86	1017.88	1017.89	1017.91	1017.93	1017.95	1017.85
	15	1017.99	1018.02	1018.03	1018.04	1018.04	1018.04	1018.07	1018.10	1018.13	1018.18	1018.21	1018.22	1018.09
	16	1018.25	1018.29	1018.36	1018.52	1018.68	1018.79	1018.92	1019.02	1019.10	1019.16	1019.20	1019.25	1018.79
	17	1019.31	1019.38	1019.46	1019.54	1019.61	1019.67	1019.72	1019.76	1019.80	1019.85	1019.88	1019.90	1019.66
	18	1019.93	1019.97	1020.02	1020.09	1020.16	1020.23	1020.30	1020.36	1020.40	1020.44	1020.49	1020.55	1020.24
	19	1020.60	1020.67	1020.76	1020.85	1020.91	1020.99	1021.02	1021.04	1021.11	1021.18	1021.24	1021.28	1020.97
	20	1021.35	1021.43	1021.48	1021.51	1021.57	1021.63	1021.66	1021.67	1021.71	1021.81	1021.88	1021.93	1021.64
	21	1021.97	1022.01	1022.07	1022.11	1022.13	1022.15	1022.17	1022.18	1022.20	1022.24	1022.28	1022.28	1022.15
	22	1022.33	1022.43	1022.48	1022.53	1022.60	1022.63	1022.63	1022.66	1022.68	1022.66	1022.65	1022.62	1022.57
	23	1022.59	1022.54	1022.53	1022.56	1022.60	1022.59	1022.56	1022.56	1022.56	1022.58	1022.63	1022.68	1022.58
16	0	1022.77	1022.78	1022.78	1022.78	1022.81	1022.79	1022.77	1022.75	1022.73	1022.71	1022.71	1022.73	1022.76
	1	1022.75	1022.77	1022.78	1022.79	1022.81	1022.83	1022.85	1022.86	1022.87	1022.85	1022.84	1022.87	1022.82
	2	1022.88	1022.87	1022.86	1022.85	1022.82	1022.80	1022.78	1022.74	1022.70	1022.67	1022.61	1022.58	1022.76
	3	1022.54	1022.50	1022.48	1022.47	1022.45	1022.42	1022.37	1022.34	1022.36	1022.39	1022.42	1022.44	1022.43
	4	1022.45	1022.46	1022.47	1022.49	1022.48	1022.47	1022.47	1022.50	1022.51	1022.51	1022.53	1022.54	1022.49
	5	1022.56	1022.58	1022.61	1022.65	1022.74	1022.82	1022.84	1022.86	1022.87	1022.88	1022.91	1022.92	1022.77
	6	1022.94	1022.99	1023.02	1023.04	1023.06	1023.07	1023.08	1023.08	1023.06	1023.02	1023.00	1023.00	1023.03
	7	1023.00	1023.03	1023.04	1023.06	1023.10	1023.16	1023.19	1023.22	1023.25	1023.29	1023.33	1023.36	1023.17
	8	1023.40	1023.48	1023.53	1023.54	1023.57	1023.62	1023.67	1023.70	1023.74	1023.78	1023.81	1023.81	1023.64
	9	1023.79	1023.78	1023.76	1023.75	1023.75	1023.74	1023.73	1023.74	1023.74	1023.75	1023.75	1023.75	1023.75
	10	1023.72	1023.67	1023.60	1023.54	1023.49	1023.42	1023.34	1023.26	1023.19	1023.14	1023.09	1023.02	1023.37
	11	1022.96	1022.91	1022.86	1022.81	1022.77	1022.74	1022.67	1022.59	1022.51	1022.44	1022.39	1022.32	1022.66
	12	1022.26	1022.20	1022.12	1022.06	1022.01	1021.97	1021.94	1021.90	1021.85	1021.82	1021.77	1021.72	1021.97
	13	1021.69	1021.67	1021.64	1021.63	1021.64	1021.64	1021.65	1021.64	1021.61	1021.59	1021.59	1021.60	1021.63
	14	1021.63	1021.67	1021.69	1021.67	1021.65	1021.62	1021.59	1021.57	1021.55	1021.53	1021.52	1021.52	1021.60
	15	1021.50	1021.48	1021.46	1021.46	1021.47	1021.46	1021.44	1021.42	1021.40	1021.41	1021.40	1021.40	1021.44
	16	1021.43	1021.45	1021.46	1021.46	1021.45	1021.45	1021.43	1021.42	1021.40	1021.39	1021.36	1021.36	1021.42
	17	1021.37	1021.36	1021.38	1021.38	1021.37	1021.35	1021.35	1021.37	1021.37	1021.39	1021.40	1021.38	1021.37
	18	1021.39	1021.40	1021.41	1021.43	1021.49	1021.54	1021.58	1021.58	1021.58	1021.59	1021.59	1021.61	1021.52
	19	1021.62	1021.63	1021.63	1021.62	1021.63	1021.63	1021.63	1021.63	1021.62	1021.61	1021.61	1021.62	1021.62
	20	1021.63	1021.65	1021.67	1021.70	1021.72	1021.75	1021.80	1021.81	1021.77	1021.72	1021.68	1021.65	1021.71
	21	1021.67	1021.72	1021.75	1021.76	1021.78	1021.77	1021.76	1021.76	1021.74	1021.73	1021.73	1021.73	1021.74
	22	1021.72	1021.70	1021.67	1021.65	1021.61	1021.58	1021.56	1021.53	1021.50	1021.46	1021.41	1021.38	1021.56
	23	1021.37	1021.37	1021.35	1021.34	1021.34	1021.30	1021.26	1021.22	1021.18	1021.14	1021.09	1021.02	1021.25

S.V.I.R.CO. Observatory - Pressure in hectoPascal – January 2019

day	hh	00_05	05_10	10_15	15_20	20_25	25_30	30_35	35_40	40_45	45_50	50_55	55_60	average
17	0	1020.94	1020.93	1020.91	1020.88	1020.87	1020.85	1020.83	1020.80	1020.77	1020.75	1020.75	1020.76	1020.83
	1	1020.75	1020.73	1020.70	1020.68	1020.67	1020.65	1020.62	1020.57	1020.51	1020.45	1020.38	1020.31	1020.59
	2	1020.26	1020.20	1020.12	1020.03	1019.96	1019.88	1019.80	1019.76	1019.70	1019.61	1019.53	1019.47	1019.86
	3	1019.41	1019.35	1019.28	1019.21	1019.10	1019.02	1018.99	1018.92	1018.85	1018.81	1018.75	1018.65	1019.03
	4	1018.59	1018.60	1018.58	1018.53	1018.51	1018.52	1018.52	1018.53	1018.52	1018.49	1018.45	1018.41	1018.52
	5	1018.38	1018.37	1018.38	1018.35	1018.30	1018.28	1018.26	1018.29	1018.32	1018.31	1018.30	1018.27	1018.32
	6	1018.22	1018.18	1018.14	1018.09	1018.04	1018.02	1018.00	1017.97	1017.96	1017.96	1017.95	1017.91	1018.04
	7	1017.87	1017.84	1017.80	1017.77	1017.78	1017.77	1017.75	1017.74	1017.74	1017.69	1017.65	1017.64	1017.75
	8	1017.64	1017.62	1017.61	1017.61	1017.60	1017.63	1017.68	1017.72	1017.77	1017.81	1017.83	1017.84	1017.70
	9	1017.83	1017.82	1017.82	1017.84	1017.84	1017.84	1017.85	1017.86	1017.83	1017.79	1017.79	1017.79	1017.83
	10	1017.75	1017.71	1017.67	1017.60	1017.51	1017.39	1017.30	1017.25	1017.22	1017.18	1017.11	1017.02	1017.39
	11	1016.93	1016.85	1016.77	1016.70	1016.64	1016.57	1016.46	1016.34	1016.24	1016.13	1016.03	1015.95	1016.47
	12	1015.88	1015.83	1015.77	1015.72	1015.66	1015.61	1015.58	1015.52	1015.44	1015.39	1015.37	1015.40	1015.60
	13	1015.44	1015.44	1015.41	1015.31	1015.16	1015.10	1015.13	1015.13	1015.07	1015.02	1014.98	1014.95	1015.18
	14	1014.91	1014.87	1014.84	1014.82	1014.81	1014.79	1014.76	1014.74	1014.69	1014.63	1014.59	1014.55	1014.75
	15	1014.51	1014.45	1014.39	1014.32	1014.26	1014.20	1014.11	1014.05	1014.03	1013.96	1013.88	1013.85	1014.17
	16	1013.83	1013.82	1013.83	1013.83	1013.82	1013.83	1013.80	1013.74	1013.70	1013.67	1013.69	1013.73	1013.78
	17	1013.74	1013.71	1013.68	1013.73	1013.78	1013.74	1013.70	1013.68	1013.65	1013.64	1013.71	1013.91	1013.72
	18	1014.05	1014.05	1013.94	1013.94	1014.02	1013.92	1013.80	1013.81	1013.79	1013.74	1013.72	1013.67	1013.87
	19	1013.60	1013.57	1013.56	1013.58	1013.61	1013.65	1013.69	1013.70	1013.68	1013.67	1013.68	1013.71	1013.64
	20	1013.72	1013.71	1013.69	1013.67	1013.67	1013.71	1013.77	1013.79	1013.81	1013.83	1013.86	1013.88	1013.76
	21	1013.88	1013.87	1013.85	1013.82	1013.79	1013.76	1013.74	1013.74	1013.77	1013.80	1013.80	1013.77	1013.80
	22	1013.77	1013.77	1013.75	1013.71	1013.69	1013.67	1013.64	1013.58	1013.52	1013.59	1013.64	1013.57	1013.66
	23	1013.51	1013.52	1013.52	1013.48	1013.41	1013.36	1013.32	1013.29	1013.27	1013.27	1013.23	1013.21	1013.37
18	0	1013.17	1013.15	1013.12	1013.10	1013.08	1013.06	1013.03	1013.02	1013.01	1013.00	1012.98	1012.96	1013.05
	1	1012.95	1012.95	1012.95	1012.93	1012.89	1012.83	1012.76	1012.70	1012.67	1012.66	1012.65	1012.64	1012.80
	2	1012.60	1012.55	1012.48	1012.41	1012.39	1012.37	1012.33	1012.29	1012.27	1012.25	1012.22	1012.16	1012.36
	3	1012.09	1012.05	1012.00	1011.97	1011.96	1011.94	1011.90	1011.84	1011.78	1011.74	1011.71	1011.67	1011.89
	4	1011.67	1011.67	1011.63	1011.63	1011.62	1011.55	1011.50	1011.47	1011.43	1011.42	1011.42	1011.44	1011.54
	5	1011.45	1011.46	1011.47	1011.44	1011.41	1011.44	1011.46	1011.45	1011.46	1011.46	1011.41	1011.37	1011.44
	6	1011.38	1011.40	1011.42	1011.44	1011.43	1011.42	1011.44	1011.45	1011.45	1011.45	1011.45	1011.50	1011.44
	7	1011.55	1011.57	1011.59	1011.60	1011.59	1011.60	1011.67	1011.76	1011.79	1011.82	1011.85	1011.88	1011.69
	8	1011.92	1011.97	1012.03	1012.05	1012.07	1012.13	1012.16	1012.16	1012.11	1012.07	1012.11	1012.22	1012.08
	9	1012.28	1012.32	1012.40	1012.53	1012.59	1012.58	1012.56	1012.55	1012.53	1012.51	1012.52	1012.51	1012.49
	10	1012.50	1012.47	1012.43	1012.38	1012.37	1012.40	1012.36	1012.27	1012.19	1012.12	1012.06	1012.01	1012.29
	11	1012.01	1012.01	1012.00	1011.98	1011.96	1011.94	1011.90	1011.89	1011.90	1011.92	1011.94	1011.94	1011.95
	12	1011.92	1011.89	1011.84	1011.82	1011.82	1011.80	1011.76	1011.72	1011.71	1011.74	1011.74	1011.70	1011.79
	13	1011.66	1011.67	1011.70	1011.71	1011.71	1011.68	1011.67	1011.69	1011.71	1011.73	1011.73	1011.72	1011.70
	14	1011.74	1011.75	1011.73	1011.73	1011.74	1011.79	1011.85	1011.92	1011.96	1011.99	1012.02	1012.03	1011.85
	15	1012.04	1012.05	1012.07	1012.11	1012.14	1012.15	1012.17	1012.21	1012.24	1012.25	1012.24	1012.23	1012.16
	16	1012.24	1012.25	1012.24	1012.22	1012.22	1012.22	1012.20	1012.21	1012.23	1012.25	1012.28	1012.31	1012.24
	17	1012.33	1012.33	1012.34	1012.38	1012.40	1012.41	1012.46	1012.50	1012.52	1012.57	1012.64	1012.71	1012.47
	18	1012.77	1012.79	1012.78	1012.78	1012.78	1012.76	1012.76	1012.78	1012.82	1012.85	1012.86	1012.87	1012.80
	19	1012.90	1012.94	1012.94	1012.93	1012.91	1012.89	1012.86	1012.84	1012.85	1012.87	1012.87	1012.86	1012.89
	20	1012.86	1012.90	1012.94	1012.97	1012.99	1013.02	1013.04	1013.06	1013.06	1013.07	1013.09	1013.10	1013.01
	21	1013.10	1013.08	1013.07	1013.07	1013.09	1013.12	1013.15	1013.20	1013.25	1013.26	1013.27	1013.29	1013.16
	22	1013.33	1013.34	1013.35	1013.38	1013.42	1013.48	1013.51	1013.51	1013.51	1013.50	1013.48	1013.44	1013.44
	23	1013.40	1013.36	1013.35	1013.34	1013.34	1013.33	1013.32	1013.31	1013.29	1013.27	1013.25	1013.23	1013.31

S.V.I.R.CO. Observatory - Pressure in hectoPascal – January 2019

day	hh	00_05	05_10	10_15	15_20	20_25	25_30	30_35	35_40	40_45	45_50	50_55	55_60	average
19	0	1013.24	1013.20	1013.16	1013.14	1013.13	1013.11	1013.09	1013.06	1013.05	1013.04	1013.04	1013.02	1013.10
	1	1013.00	1013.00	1013.00	1012.99	1012.99	1012.99	1013.00	1013.00	1012.99	1012.97	1012.94	1012.90	1012.98
	2	1012.88	1012.85	1012.83	1012.81	1012.79	1012.78	1012.80	1012.80	1012.78	1012.76	1012.74	1012.73	1012.80
	3	1012.70	1012.67	1012.63	1012.58	1012.56	1012.55	1012.54	1012.53	1012.52	1012.49	1012.46	1012.44	1012.56
	4	1012.42	1012.40	1012.39	1012.40	1012.39	1012.37	1012.37	1012.40	1012.39	1012.35	1012.33	1012.33	1012.38
	5	1012.33	1012.33	1012.29	1012.23	1012.23	1012.25	1012.25	1012.23	1012.24	1012.27	1012.29	1012.31	1012.27
	6	1012.32	1012.34	1012.36	1012.37	1012.38	1012.40	1012.43	1012.45	1012.46	1012.46	1012.47	1012.48	1012.41
	7	1012.49	1012.54	1012.57	1012.59	1012.58	1012.57	1012.58	1012.58	1012.56	1012.56	1012.57	1012.61	1012.57
	8	1012.65	1012.71	1012.77	1012.81	1012.83	1012.85	1012.85	1012.84	1012.86	1012.93	1013.01	1013.09	1012.85
	9	1013.15	1013.17	1013.22	1013.27	1013.29	1013.27	1013.26	1013.29	1013.34	1013.36	1013.38	1013.39	1013.28
	10	1013.39	1013.38	1013.37	1013.33	1013.26	1013.20	1013.14	1013.07	1013.03	1012.99	1012.92	1012.88	1013.16
	11	1012.85	1012.83	1012.80	1012.76	1012.71	1012.64	1012.57	1012.49	1012.41	1012.35	1012.31	1012.27	1012.58
	12	1012.24	1012.22	1012.20	1012.15	1012.09	1012.05	1012.04	1012.01	1011.96	1011.91	1011.89	1011.90	1012.06
	13	1011.90	1011.89	1011.88	1011.88	1011.88	1011.86	1011.83	1011.80	1011.77	1011.74	1011.71	1011.71	1011.82
	14	1011.70	1011.69	1011.72	1011.76	1011.77	1011.79	1011.81	1011.79	1011.77	1011.79	1011.85	1011.89	1011.78
	15	1011.91	1011.90	1011.90	1011.88	1011.85	1011.85	1011.88	1011.94	1011.99	1011.99	1011.96	1011.90	1011.91
	16	1011.80	1011.70	1011.69	1011.71	1011.70	1011.67	1011.66	1011.70	1011.76	1011.81	1011.82	1011.82	1011.74
	17	1011.83	1011.84	1011.87	1011.90	1011.94	1011.99	1012.03	1012.08	1012.14	1012.18	1012.22	1012.26	1012.02
	18	1012.31	1012.40	1012.43	1012.39	1012.39	1012.41	1012.44	1012.45	1012.45	1012.46	1012.46	1012.45	1012.42
	19	1012.45	1012.44	1012.41	1012.37	1012.37	1012.39	1012.41	1012.43	1012.45	1012.48	1012.52	1012.54	1012.44
	20	1012.55	1012.53	1012.50	1012.48	1012.49	1012.53	1012.57	1012.61	1012.65	1012.66	1012.65	1012.64	1012.57
	21	1012.66	1012.68	1012.69	1012.70	1012.72	1012.74	1012.74	1012.75	1012.75	1012.76	1012.78	1012.81	1012.73
	22	1012.84	1012.88	1012.90	1012.91	1012.91	1012.94	1012.95	1012.93	1012.91	1012.90	1012.87	1012.84	1012.90
	23	1012.81	1012.80	1012.77	1012.74	1012.72	1012.71	1012.70	1012.65	1012.58	1012.52	1012.48	1012.46	1012.66
20	0	1012.44	1012.43	1012.42	1012.41	1012.37	1012.33	1012.33	1012.34	1012.34	1012.32	1012.31	1012.31	1012.36
	1	1012.33	1012.36	1012.38	1012.38	1012.38	1012.37	1012.38	1012.38	1012.35	1012.31	1012.26	1012.18	1012.34
	2	1012.12	1012.10	1012.10	1012.10	1012.09	1012.04	1011.98	1011.93	1011.90	1011.91	1011.89	1011.83	1012.00
	3	1011.83	1011.84	1011.84	1011.86	1011.86	1011.84	1011.79	1011.77	1011.78	1011.78	1011.75	1011.71	1011.80
	4	1011.66	1011.64	1011.63	1011.62	1011.60	1011.56	1011.56	1011.56	1011.55	1011.58	1011.63	1011.67	1011.61
	5	1011.70	1011.72	1011.74	1011.78	1011.83	1011.86	1011.88	1011.89	1011.90	1011.92	1011.93	1011.94	1011.84
	6	1011.93	1011.93	1011.95	1011.98	1012.03	1012.07	1012.12	1012.17	1012.19	1012.21	1012.24	1012.25	1012.09
	7	1012.27	1012.31	1012.34	1012.33	1012.31	1012.30	1012.31	1012.31	1012.33	1012.36	1012.39	1012.39	1012.33
	8	1012.41	1012.43	1012.43	1012.44	1012.48	1012.53	1012.54	1012.54	1012.55	1012.57	1012.59	1012.60	1012.51
	9	1012.61	1012.63	1012.65	1012.68	1012.70	1012.72	1012.74	1012.74	1012.70	1012.66	1012.64	1012.62	1012.67
	10	1012.59	1012.56	1012.51	1012.45	1012.39	1012.33	1012.27	1012.23	1012.18	1012.14	1012.10	1012.06	1012.32
	11	1012.01	1011.97	1011.94	1011.90	1011.83	1011.78	1011.74	1011.68	1011.60	1011.53	1011.49	1011.45	1011.74
	12	1011.39	1011.33	1011.26	1011.18	1011.13	1011.09	1011.03	1010.96	1010.93	1010.90	1010.86	1010.80	1011.07
	13	1010.78	1010.78	1010.75	1010.70	1010.64	1010.59	1010.57	1010.61	1010.63	1010.63	1010.63	1010.62	1010.66
	14	1010.63	1010.66	1010.66	1010.63	1010.60	1010.57	1010.57	1010.61	1010.63	1010.64	1010.66	1010.68	1010.63
	15	1010.68	1010.66	1010.67	1010.67	1010.64	1010.60	1010.58	1010.55	1010.54	1010.54	1010.53	1010.50	1010.60
	16	1010.51	1010.52	1010.48	1010.44	1010.41	1010.42	1010.44	1010.50	1010.57	1010.61	1010.63	1010.66	1010.51
	17	1010.66	1010.66	1010.66	1010.69	1010.76	1010.79	1010.78	1010.81	1010.87	1010.91	1010.91	1010.91	1010.78
	18	1010.93	1010.96	1010.97	1010.98	1011.02	1011.07	1011.07	1011.02	1010.97	1010.96	1011.00	1011.06	1011.00
	19	1011.10	1011.13	1011.14	1011.13	1011.13	1011.17	1011.25	1011.30	1011.31	1011.27	1011.22	1011.19	1011.19
	20	1011.17	1011.17	1011.18	1011.21	1011.24	1011.28	1011.31	1011.32	1011.31	1011.29	1011.27	1011.27	1011.25
	21	1011.29	1011.32	1011.37	1011.40	1011.41	1011.39	1011.39	1011.39	1011.37	1011.39	1011.46	1011.56	1011.40
	22	1011.63	1011.61	1011.55	1011.53	1011.53	1011.53	1011.53	1011.52	1011.53	1011.52	1011.50	1011.52	1011.54
	23	1011.55	1011.49	1011.41	1011.39	1011.36	1011.29	1011.22	1011.18	1011.16	1011.16	1011.13	1011.11	1011.29

S.V.I.R.CO. Observatory - Pressure in hectoPascal – January 2019

day	hh	00_05	05_10	10_15	15_20	20_25	25_30	30_35	35_40	40_45	45_50	50_55	55_60	average
21	0	1011.09	1011.09	1011.08	1011.06	1011.03	1010.98	1010.94	1010.94	1010.96	1010.97	1010.99	1011.01	1011.01
	1	1011.05	1011.08	1011.10	1011.08	1011.05	1011.03	1011.02	1011.01	1010.99	1010.97	1010.97	1010.95	1011.02
	2	1010.89	1010.86	1010.87	1010.85	1010.81	1010.77	1010.72	1010.68	1010.66	1010.62	1010.59	1010.59	1010.74
	3	1010.60	1010.59	1010.55	1010.52	1010.50	1010.47	1010.48	1010.47	1010.45	1010.43	1010.42	1010.41	1010.49
	4	1010.43	1010.45	1010.42	1010.37	1010.32	1010.33	1010.38	1010.41	1010.41	1010.41	1010.41	1010.41	1010.40
	5	1010.43	1010.45	1010.47	1010.49	1010.53	1010.55	1010.53	1010.52	1010.54	1010.59	1010.65	1010.68	1010.54
	6	1010.69	1010.73	1010.76	1010.76	1010.77	1010.78	1010.79	1010.79	1010.78	1010.77	1010.80	1010.83	1010.77
	7	1010.80	1010.76	1010.79	1010.88	1010.93	1010.93	1010.90	1010.89	1010.91	1010.94	1010.96	1010.99	1010.89
	8	1011.02	1011.02	1011.00	1010.98	1010.98	1010.98	1010.98	1011.02	1011.06	1011.09	1011.11	1011.11	1011.03
	9	1011.12	1011.13	1011.13	1011.16	1011.18	1011.16	1011.15	1011.15	1011.17	1011.20	1011.25	1011.29	1011.17
	10	1011.31	1011.31	1011.30	1011.32	1011.34	1011.35	1011.33	1011.36	1011.42	1011.38	1011.30	1011.13	1011.32
	11	1010.91	1010.83	1010.84	1010.80	1010.73	1010.64	1010.52	1010.43	1010.35	1010.31	1010.28	1010.22	1010.57
	12	1010.14	1010.06	1009.98	1009.91	1009.84	1009.78	1009.71	1009.63	1009.56	1009.52	1009.46	1009.40	1009.75
	13	1009.35	1009.29	1009.22	1009.19	1009.21	1009.19	1009.15	1009.10	1009.05	1009.02	1008.97	1008.90	1009.14
	14	1008.86	1008.85	1008.82	1008.79	1008.80	1008.83	1008.83	1008.79	1008.74	1008.70	1008.71	1008.71	1008.78
	15	1008.66	1008.63	1008.61	1008.59	1008.56	1008.53	1008.51	1008.46	1008.41	1008.38	1008.34	1008.31	1008.50
	16	1008.28	1008.23	1008.23	1008.28	1008.32	1008.35	1008.38	1008.39	1008.41	1008.44	1008.44	1008.43	1008.35
	17	1008.47	1008.49	1008.45	1008.40	1008.35	1008.27	1008.23	1008.23	1008.23	1008.24	1008.24	1008.25	1008.32
	18	1008.24	1008.24	1008.24	1008.25	1008.27	1008.27	1008.25	1008.21	1008.16	1008.12	1008.10	1008.08	1008.20
	19	1008.08	1008.09	1008.11	1008.10	1008.08	1008.06	1008.07	1008.07	1008.06	1008.08	1008.12	1008.16	1008.09
	20	1008.17	1008.16	1008.14	1008.13	1008.12	1008.08	1008.02	1007.99	1007.97	1007.96	1007.94	1007.90	1008.05
	21	1007.84	1007.75	1007.65	1007.56	1007.48	1007.41	1007.35	1007.30	1007.28	1007.26	1007.25	1007.27	1007.45
	22	1007.28	1007.24	1007.19	1007.16	1007.16	1007.17	1007.16	1007.12	1007.08	1007.02	1006.98	1006.94	1007.13
	23	1006.89	1006.83	1006.76	1006.68	1006.63	1006.56	1006.48	1006.39	1006.29	1006.19	1006.10	1005.96	1006.48
22	0	1005.73	1005.72	1005.68	1005.62	1005.55	1005.50	1005.47	1005.42	1005.38	1005.31	1005.23	1005.18	1005.47
	1	1005.17	1005.15	1005.11	1005.07	1005.01	1004.96	1004.94	1004.89	1004.83	1004.76	1004.64	1004.51	1004.92
	2	1004.41	1004.37	1004.32	1004.22	1004.12	1004.03	1003.92	1003.82	1003.76	1003.70	1003.63	1003.56	1003.99
	3	1003.51	1003.50	1003.47	1003.41	1003.36	1003.30	1003.22	1003.19	1003.17	1003.14	1003.06	1002.96	1003.27
	4	1002.86	1002.78	1002.75	1002.72	1002.71	1002.71	1002.71	1002.75	1002.75	1002.70	1002.64	1002.61	1002.72
	5	1002.58	1002.54	1002.51	1002.47	1002.42	1002.37	1002.33	1002.28	1002.24	1002.21	1002.18	1002.15	1002.36
	6	1002.14	1002.17	1002.22	1002.32	1002.42	1002.52	1002.58	1002.58	1002.59	1002.65	1002.68	1002.66	1002.46
	7	1002.64	1002.60	1002.49	1002.40	1002.41	1002.37	1002.31	1002.40	1002.54	1002.58	1002.56	1002.51	1002.48
	8	1002.50	1002.51	1002.50	1002.50	1002.54	1002.56	1002.55	1002.58	1002.62	1002.61	1002.63	1002.68	1002.56
	9	1002.70	1002.71	1002.77	1002.91	1003.04	1003.11	1003.11	1003.08	1003.07	1003.08	1003.12	1003.14	1002.99
	10	1003.12	1003.12	1003.13	1003.14	1003.17	1003.19	1003.15	1003.09	1003.06	1003.04	1003.03	1003.00	1003.10
	11	1002.96	1002.91	1002.88	1002.87	1002.83	1002.75	1002.68	1002.62	1002.57	1002.55	1002.54	1002.54	1002.73
	12	1002.55	1002.53	1002.49	1002.46	1002.42	1002.36	1002.30	1002.28	1002.27	1002.23	1002.18	1002.12	1002.35
	13	1002.03	1001.94	1001.90	1001.88	1001.85	1001.85	1001.85	1001.85	1001.83	1001.80	1001.79	1001.79	1001.86
	14	1001.77	1001.78	1001.81	1001.85	1001.89	1001.93	1001.99	1002.04	1002.07	1002.07	1002.06	1002.02	1001.94
	15	1001.99	1001.98	1001.96	1001.97	1001.99	1002.01	1002.03	1002.03	1002.03	1002.03	1002.02	1002.02	1002.00
	16	1002.05	1002.10	1002.13	1002.13	1002.10	1002.06	1002.03	1001.99	1001.98	1002.03	1002.09	1002.10	1002.07
	17	1002.08	1002.09	1002.10	1002.11	1002.14	1002.16	1002.16	1002.15	1002.15	1002.18	1002.22	1002.24	1002.15
	18	1002.24	1002.25	1002.24	1002.19	1002.16	1002.14	1002.12	1002.12	1002.13	1002.14	1002.13	1002.13	1002.16
	19	1002.16	1002.18	1002.17	1002.17	1002.18	1002.21	1002.23	1002.22	1002.18	1002.17	1002.17	1002.19	1002.19
	20	1002.21	1002.21	1002.22	1002.22	1002.21	1002.18	1002.14	1002.11	1002.09	1002.06	1002.03	1002.01	1002.14
	21	1001.98	1001.96	1001.94	1001.94	1001.99	1002.05	1002.09	1002.09	1002.08	1002.08	1002.10	1002.12	1002.03
	22	1002.11	1002.10	1002.10	1002.08	1002.04	1002.00	1002.02	1002.04	1002.01	1001.95	1001.90	1001.86	1002.02
	23	1001.77	1001.68	1001.62	1001.54	1001.44	1001.40	1001.37	1001.29	1001.22	1001.14	1001.07	1001.01	1001.38

S.V.I.R.CO. Observatory - Pressure in hectoPascal – January 2019

day	hh	00_05	05_10	10_15	15_20	20_25	25_30	30_35	35_40	40_45	45_50	50_55	55_60	average
23	0	1000.94	1000.95	1000.97	1001.00	1001.03	1000.97	1000.88	1000.80	1000.76	1000.73	1000.70	1000.67	1000.86
	1	1000.63	1000.55	1000.46	1000.42	1000.38	1000.32	1000.25	1000.25	1000.29	1000.29	1000.25	1000.22	1000.36
	2	1000.18	1000.14	1000.09	1000.02	999.93	999.88	999.86	999.86	999.83	999.79	999.79	999.80	999.93
	3	999.79	999.80	999.78	999.73	999.71	999.68	999.62	999.53	999.44	999.34	999.27	999.23	999.58
	4	999.19	999.12	999.06	999.01	998.96	998.88	998.83	998.85	998.89	998.90	998.90	998.88	998.96
	5	998.84	998.80	998.77	998.76	998.75	998.74	998.70	998.67	998.65	998.64	998.65	998.63	998.72
	6	998.61	998.60	998.59	998.58	998.54	998.50	998.49	998.47	998.43	998.42	998.45	998.44	998.51
	7	998.37	998.29	998.27	998.26	998.25	998.26	998.24	998.18	998.13	998.12	998.10	998.07	998.21
	8	998.05	997.99	997.91	997.86	997.80	997.73	997.68	997.65	997.64	997.60	997.54	997.51	997.75
	9	997.51	997.48	997.41	997.34	997.27	997.24	997.23	997.21	997.14	997.07	997.01	996.95	997.24
	10	996.90	996.87	996.86	996.84	996.77	996.69	996.60	996.49	996.37	996.26	996.14	996.05	996.57
	11	995.97	995.83	995.71	995.63	995.59	995.54	995.48	995.42	995.37	995.28	995.15	995.02	995.50
	12	994.91	994.78	994.64	994.52	994.41	994.32	994.22	994.06	993.84	993.65	993.57	993.53	994.20
	13	993.50	993.51	993.49	993.46	993.49	993.55	993.60	993.58	993.53	993.55	993.55	993.52	993.53
	14	993.49	993.46	993.47	993.53	993.54	993.46	993.35	993.24	993.21	993.24	993.29	993.27	993.38
	15	993.11	992.99	992.96	992.98	993.05	993.01	992.84	992.64	992.52	992.38	992.29	992.26	992.75
	16	992.28	992.42	992.61	992.66	992.61	992.55	992.47	992.37	992.29	992.22	992.15	992.06	992.39
	17	992.00	992.00	991.98	991.94	991.90	991.84	991.78	991.72	991.65	991.62	991.64	991.78	991.82
	18	992.00	992.15	992.21	992.21	992.11	991.79	991.46	991.35	991.35	991.44	991.64	991.80	991.79
	19	991.83	991.72	991.55	991.44	991.38	991.28	991.19	991.11	991.00	990.94	990.95	990.99	991.28
	20	990.97	990.88	990.78	990.76	990.81	990.85	990.86	990.84	990.80	990.74	990.71	990.74	990.81
	21	990.79	990.78	990.74	990.69	990.66	990.61	990.57	990.54	990.51	990.50	990.48	990.42	990.61
	22	990.37	990.35	990.33	990.26	990.19	990.14	990.11	990.07	990.05	990.03	989.99	989.94	990.15
	23	989.92	989.90	989.87	989.86	989.86	989.84	989.79	989.71	989.65	989.64	989.60	989.51	989.76
24	0	989.41	989.40	989.39	989.36	989.33	989.31	989.29	989.23	989.21	989.20	989.16	989.12	989.28
	1	989.10	989.07	989.06	989.05	989.02	988.99	988.99	988.99	988.98	988.93	988.86	988.80	988.99
	2	988.72	988.61	988.53	988.52	988.51	988.45	988.37	988.25	988.12	988.02	987.89	987.79	988.31
	3	987.73	987.68	987.62	987.51	987.36	987.29	987.29	987.25	987.24	987.25	987.24	987.24	987.39
	4	987.19	987.12	987.07	987.04	987.02	986.95	986.87	986.80	986.74	986.71	986.67	986.63	986.90
	5	986.61	986.56	986.54	986.57	986.58	986.57	986.55	986.54	986.53	986.50	986.46	986.46	986.54
	6	986.47	986.43	986.37	986.31	986.25	986.26	986.31	986.36	986.46	986.57	986.57	986.46	986.40
	7	986.36	986.27	986.34	986.50	986.59	986.58	986.58	986.69	986.79	986.80	986.77	986.75	986.58
	8	986.70	986.61	986.54	986.56	986.74	986.89	986.95	987.05	987.13	987.12	987.17	987.34	986.90
	9	987.51	987.66	987.78	987.87	987.93	987.98	987.98	988.00	988.09	988.19	988.29	988.35	987.97
	10	988.36	988.35	988.41	988.49	988.53	988.60	988.70	988.70	988.69	988.81	988.98	989.09	988.64
	11	989.17	989.23	989.28	989.35	989.38	989.36	989.35	989.28	989.18	989.19	989.29	989.34	989.28
	12	989.35	989.37	989.40	989.43	989.45	989.47	989.44	989.42	989.44	989.45	989.47	989.51	989.43
	13	989.59	989.64	989.63	989.61	989.58	989.61	989.71	989.80	989.82	989.84	989.86	989.83	989.71
	14	989.77	989.71	989.67	989.66	989.63	989.63	989.72	989.81	989.81	989.77	989.74	989.73	989.72
	15	989.76	989.78	989.77	989.76	989.79	989.80	989.79	989.80	989.85	989.87	989.89	989.98	989.82
	16	990.06	990.12	990.16	990.17	990.17	990.20	990.27	990.36	990.47	990.52	990.53	990.55	990.30
	17	990.58	990.60	990.64	990.73	990.82	990.87	990.94	991.04	991.10	991.13	991.15	991.20	990.90
	18	991.23	991.24	991.27	991.31	991.32	991.35	991.42	991.47	991.47	991.48	991.53	991.57	991.39
	19	991.63	991.71	991.80	991.88	991.90	991.94	992.00	992.03	992.01	991.94	991.91	991.94	991.89
	20	991.96	991.98	992.01	992.05	992.11	992.17	992.21	992.29	992.43	992.60	992.71	992.77	992.27
	21	992.75	992.67	992.65	992.69	992.76	992.85	992.93	992.94	992.91	992.92	992.98	993.04	992.84
	22	993.04	993.06	993.15	993.24	993.32	993.38	993.35	993.32	993.35	993.37	993.37	993.40	993.28
	23	993.45	993.46	993.48	993.54	993.58	993.59	993.56	993.52	993.51	993.48	993.45	993.46	993.51



S.V.I.R.CO. Observatory - Pressure in hectoPascal – January 2019

day	hh	00_05	05_10	10_15	15_20	20_25	25_30	30_35	35_40	40_45	45_50	50_55	55_60	average
25	0	993.50	993.51	993.52	993.50	993.47	993.46	993.46	993.46	993.47	993.47	993.45	993.42	993.47
	1	993.42	993.43	993.43	993.43	993.42	993.40	993.40	993.39	993.35	993.33	993.35	993.35	993.39
	2	993.33	993.36	993.39	993.43	993.47	993.48	993.48	993.44	993.40	993.37	993.35	993.35	993.40
	3	993.37	993.39	993.43	993.43	993.40	993.39	993.43	993.43	993.41	993.42	993.43	993.46	993.42
	4	993.49	993.48	993.47	993.45	993.43	993.44	993.43	993.40	993.43	993.50	993.57	993.61	993.47
	5	993.65	993.70	993.75	993.82	993.94	994.01	994.08	994.14	994.18	994.24	994.31	994.38	994.02
	6	994.46	994.51	994.51	994.50	994.50	994.50	994.52	994.56	994.60	994.71	994.85	994.92	994.60
	7	994.91	994.86	994.84	994.89	994.99	995.07	995.12	995.15	995.18	995.25	995.32	995.39	995.08
	8	995.45	995.51	995.55	995.62	995.66	995.68	995.70	995.72	995.73	995.77	995.84	995.89	995.67
	9	995.94	996.01	996.07	996.13	996.18	996.23	996.25	996.24	996.23	996.30	996.36	996.42	996.20
	10	996.50	996.54	996.50	996.47	996.42	996.38	996.35	996.34	996.32	996.26	996.21	996.18	996.37
	11	996.19	996.23	996.24	996.25	996.28	996.26	996.21	996.19	996.18	996.18	996.16	996.13	996.21
	12	996.12	996.12	996.15	996.16	996.18	996.24	996.26	996.24	996.26	996.31	996.35	996.36	996.23
	13	996.38	996.39	996.42	996.51	996.58	996.64	996.69	996.70	996.68	996.67	996.68	996.70	996.59
	14	996.73	996.75	996.76	996.78	996.85	996.91	996.92	996.94	997.01	997.09	997.16	997.20	996.92
	15	997.27	997.35	997.38	997.41	997.49	997.57	997.65	997.75	997.83	997.92	998.00	998.07	997.64
	16	998.11	998.12	998.16	998.26	998.37	998.47	998.57	998.67	998.78	998.93	999.08	999.15	998.56
	17	999.18	999.21	999.26	999.31	999.38	999.42	999.45	999.48	999.51	999.53	999.55	999.58	999.41
	18	999.62	999.68	999.75	999.81	999.85	999.89	999.94	999.98	1000.00	1000.03	1000.08	1000.13	999.90
	19	1000.19	1000.26	1000.32	1000.36	1000.39	1000.45	1000.51	1000.55	1000.59	1000.64	1000.67	1000.70	1000.47
	20	1000.73	1000.78	1000.83	1000.85	1000.89	1000.95	1001.02	1001.06	1001.08	1001.08	1001.09	1001.09	1000.95
	21	1001.08	1001.08	1001.08	1001.07	1001.06	1001.08	1001.09	1001.10	1001.16	1001.24	1001.29	1001.36	1001.14
	22	1001.45	1001.49	1001.51	1001.56	1001.60	1001.65	1001.74	1001.80	1001.83	1001.90	1001.96	1001.96	1001.70
	23	1001.97	1002.00	1002.01	1002.05	1002.11	1002.10	1002.14	1002.22	1002.26	1002.32	1002.37	1002.42	1002.16
26	0	1002.52	1002.52	1002.56	1002.64	1002.71	1002.76	1002.85	1002.91	1002.90	1002.91	1003.00	1003.07	1002.79
	1	1003.13	1003.17	1003.17	1003.14	1003.13	1003.14	1003.13	1003.11	1003.12	1003.14	1003.12	1003.08	1003.13
	2	1003.10	1003.15	1003.24	1003.33	1003.38	1003.42	1003.43	1003.42	1003.41	1003.43	1003.45	1003.49	1003.35
	3	1003.54	1003.52	1003.50	1003.52	1003.59	1003.62	1003.60	1003.61	1003.66	1003.71	1003.70	1003.75	1003.61
	4	1003.83	1003.82	1003.84	1003.83	1003.87	1003.99	1004.12	1004.26	1004.34	1004.41	1004.51	1004.62	1004.12
	5	1004.69	1004.72	1004.79	1004.81	1004.78	1004.76	1004.78	1004.86	1004.97	1005.00	1004.98	1005.01	1004.85
	6	1005.10	1005.15	1005.16	1005.19	1005.21	1005.24	1005.31	1005.37	1005.43	1005.44	1005.49	1005.63	1005.31
	7	1005.77	1005.83	1005.81	1005.82	1005.95	1006.06	1006.11	1006.17	1006.28	1006.33	1006.25	1006.25	1006.05
	8	1006.33	1006.38	1006.43	1006.45	1006.50	1006.57	1006.64	1006.68	1006.71	1006.77	1006.80	1006.87	1006.59
	9	1006.91	1006.91	1006.95	1006.99	1007.03	1007.09	1007.11	1007.13	1007.21	1007.30	1007.33	1007.33	1007.11
	10	1007.35	1007.39	1007.45	1007.53	1007.55	1007.56	1007.59	1007.61	1007.62	1007.61	1007.55	1007.49	1007.52
	11	1007.47	1007.42	1007.41	1007.41	1007.42	1007.43	1007.42	1007.40	1007.39	1007.40	1007.41	1007.36	1007.41
	12	1007.29	1007.32	1007.37	1007.34	1007.28	1007.25	1007.20	1007.17	1007.16	1007.17	1007.20	1007.23	1007.25
	13	1007.23	1007.17	1007.12	1007.14	1007.19	1007.21	1007.24	1007.28	1007.32	1007.32	1007.30	1007.31	1007.23
	14	1007.36	1007.42	1007.48	1007.55	1007.63	1007.72	1007.79	1007.79	1007.79	1007.78	1007.77	1007.81	1007.66
	15	1007.84	1007.87	1007.90	1007.95	1007.99	1007.99	1008.00	1008.04	1008.09	1008.15	1008.20	1008.23	1008.02
	16	1008.24	1008.23	1008.25	1008.31	1008.35	1008.39	1008.43	1008.47	1008.48	1008.49	1008.56	1008.64	1008.40
	17	1008.66	1008.65	1008.69	1008.71	1008.65	1008.63	1008.68	1008.74	1008.78	1008.78	1008.79	1008.84	1008.72
	18	1008.91	1008.95	1008.95	1008.90	1008.89	1008.93	1009.00	1009.06	1009.06	1009.07	1009.06	1008.97	1008.98
	19	1008.93	1008.96	1008.97	1008.96	1008.99	1009.03	1009.04	1009.03	1009.02	1009.10	1009.12	1009.01	1009.01
	20	1008.93	1008.91	1008.90	1008.87	1008.84	1008.80	1008.79	1008.86	1009.02	1009.16	1009.19	1009.20	1008.96
	21	1009.22	1009.21	1009.25	1009.26	1009.24	1009.27	1009.26	1009.26	1009.27	1009.25	1009.26	1009.30	1009.25
	22	1009.38	1009.48	1009.56	1009.54	1009.48	1009.48	1009.50	1009.53	1009.53	1009.50	1009.51	1009.57	1009.51
	23	1009.61	1009.55	1009.46	1009.48	1009.49	1009.46	1009.49	1009.48	1009.56	1009.61	1009.56	1009.52	1009.52

S.V.I.R.CO. Observatory - Pressure in hectoPascal – January 2019

day	hh	00_05	05_10	10_15	15_20	20_25	25_30	30_35	35_40	40_45	45_50	50_55	55_60	average
27	0	1009.43	1009.41	1009.35	1009.32	1009.33	1009.39	1009.47	1009.48	1009.45	1009.41	1009.38	1009.39	1009.40
	1	1009.47	1009.50	1009.45	1009.50	1009.60	1009.63	1009.65	1009.65	1009.65	1009.67	1009.71	1009.74	1009.60
	2	1009.73	1009.65	1009.55	1009.51	1009.46	1009.35	1009.30	1009.27	1009.19	1009.19	1009.20	1009.15	1009.38
	3	1009.09	1009.05	1009.05	1009.08	1009.08	1009.04	1009.02	1009.06	1009.07	1009.05	1009.04	1009.01	1009.05
	4	1008.96	1008.86	1008.73	1008.66	1008.65	1008.59	1008.53	1008.56	1008.55	1008.51	1008.49	1008.42	1008.62
	5	1008.30	1008.20	1008.17	1008.16	1008.14	1008.17	1008.21	1008.24	1008.25	1008.28	1008.33	1008.34	1008.23
	6	1008.32	1008.28	1008.23	1008.13	1008.08	1007.98	1007.92	1007.98	1008.03	1008.02	1007.96	1007.92	1008.07
	7	1007.89	1007.86	1007.82	1007.76	1007.69	1007.63	1007.57	1007.54	1007.54	1007.53	1007.52	1007.55	1007.66
	8	1007.57	1007.57	1007.55	1007.54	1007.53	1007.49	1007.47	1007.46	1007.49	1007.49	1007.39	1007.30	1007.49
	9	1007.28	1007.30	1007.30	1007.29	1007.28	1007.26	1007.22	1007.18	1007.16	1007.14	1007.13	1007.12	1007.22
	10	1007.06	1007.00	1006.96	1006.93	1006.94	1006.96	1006.91	1006.86	1006.80	1006.70	1006.59	1006.47	1006.85
	11	1006.38	1006.34	1006.27	1006.18	1006.11	1006.06	1006.03	1005.97	1005.88	1005.80	1005.77	1005.77	1006.04
	12	1005.76	1005.69	1005.61	1005.55	1005.48	1005.38	1005.26	1005.12	1004.98	1004.88	1004.78	1004.71	1005.27
	13	1004.66	1004.57	1004.43	1004.29	1004.21	1004.16	1004.13	1004.11	1004.09	1004.10	1004.09	1004.06	1004.24
	14	1004.03	1003.96	1003.91	1003.89	1003.85	1003.78	1003.70	1003.61	1003.54	1003.49	1003.46	1003.39	1003.72
	15	1003.30	1003.28	1003.25	1003.16	1003.08	1003.04	1002.99	1002.92	1002.83	1002.76	1002.70	1002.61	1002.99
	16	1002.55	1002.50	1002.41	1002.34	1002.32	1002.30	1002.24	1002.17	1002.11	1002.04	1001.96	1001.96	1002.24
	17	1001.96	1001.92	1001.89	1001.84	1001.75	1001.69	1001.64	1001.57	1001.48	1001.41	1001.38	1001.34	1001.66
	18	1001.29	1001.19	1001.00	1000.93	1000.99	1000.97	1000.90	1000.89	1000.97	1001.08	1001.09	1001.03	1001.03
	19	1001.00	1001.00	1001.11	1001.28	1001.38	1001.46	1001.52	1001.42	1001.21	1001.03	1000.92	1000.89	1001.18
	20	1000.83	1000.66	1000.46	1000.37	1000.40	1000.46	1000.43	1000.32	1000.15	1000.00	1000.04	1000.15	1000.36
	21	1000.13	999.92	999.74	999.65	999.57	999.46	999.31	999.11	998.87	998.68	998.55	998.46	999.29
	22	998.45	998.54	998.62	998.55	998.50	998.47	998.39	998.32	998.29	998.30	998.30	998.28	998.42
	23	998.30	998.32	998.28	998.21	998.19	998.18	998.13	998.10	998.08	998.05	998.01	998.00	998.15
28	0	997.89	997.84	997.76	997.73	997.69	997.62	997.53	997.47	997.43	997.38	997.30	997.24	997.56
	1	997.22	997.21	997.18	997.10	997.04	997.00	996.99	996.93	996.87	996.84	996.80	996.71	996.99
	2	996.62	996.58	996.56	996.52	996.46	996.37	996.27	996.20	996.13	996.06	996.00	995.95	996.31
	3	995.87	995.82	995.78	995.70	995.67	995.66	995.67	995.65	995.63	995.60	995.55	995.46	995.67
	4	995.37	995.32	995.28	995.23	995.17	995.07	994.98	994.91	994.84	994.80	994.79	994.79	995.04
	5	994.78	994.76	994.72	994.67	994.63	994.58	994.56	994.54	994.50	994.47	994.44	994.44	994.59
	6	994.43	994.41	994.40	994.41	994.42	994.41	994.38	994.39	994.41	994.43	994.47	994.51	994.42
	7	994.53	994.52	994.50	994.51	994.53	994.52	994.54	994.59	994.63	994.67	994.69	994.70	994.58
	8	994.71	994.74	994.73	994.70	994.67	994.64	994.62	994.60	994.59	994.57	994.56	994.56	994.64
	9	994.54	994.52	994.54	994.58	994.63	994.67	994.71	994.72	994.69	994.65	994.67	994.68	994.63
	10	994.63	994.58	994.55	994.54	994.56	994.60	994.62	994.62	994.59	994.55	994.52	994.51	994.57
	11	994.52	994.49	994.43	994.36	994.32	994.30	994.28	994.27	994.31	994.37	994.39	994.32	994.36
	12	994.26	994.25	994.21	994.16	994.13	994.14	994.17	994.20	994.23	994.27	994.34	994.40	994.23
	13	994.45	994.50	994.56	994.62	994.76	994.97	995.12	995.27	995.49	995.63	995.66	995.67	995.06
	14	995.69	995.69	995.70	995.75	995.76	995.74	995.75	995.74	995.75	995.84	995.95	996.10	995.79
	15	996.24	996.41	996.58	996.70	996.60	996.35	996.34	996.39	996.32	996.34	996.44	996.54	996.44
	16	996.63	996.85	997.21	997.40	997.37	997.31	997.28	997.24	997.23	997.28	997.31	997.30	997.20
	17	997.35	997.42	997.46	997.47	997.47	997.45	997.45	997.47	997.48	997.50	997.55	997.61	997.47
	18	997.67	997.72	997.78	997.83	997.88	997.98	998.11	998.22	998.30	998.31	998.31	998.33	998.04
	19	998.37	998.39	998.40	998.41	998.40	998.39	998.44	998.55	998.68	998.76	998.79	998.83	998.53
	20	998.87	998.88	998.87	998.88	998.91	998.96	998.99	999.05	999.12	999.17	999.22	999.25	999.01
	21	999.23	999.21	999.21	999.24	999.28	999.33	999.35	999.36	999.36	999.37	999.37	999.34	999.31
	22	999.28	999.27	999.33	999.38	999.38	999.34	999.30	999.31	999.31	999.32	999.35	999.38	999.33
	23	999.39	999.39	999.39	999.40	999.40	999.39	999.40	999.42	999.44	999.47	999.49	999.48	999.42

S.V.I.R.CO. Observatory - Pressure in hectoPascal – January 2019

day	hh	00_05	05_10	10_15	15_20	20_25	25_30	30_35	35_40	40_45	45_50	50_55	55_60	average
29	0	999.51	999.54	999.60	999.65	999.68	999.70	999.73	999.77	999.79	999.79	999.80	999.80	999.70
	1	999.81	999.85	999.87	999.86	999.85	999.86	999.89	999.99	1000.08	1000.13	1000.19	1000.22	999.97
	2	1000.18	1000.13	1000.08	1000.08	1000.12	1000.14	1000.13	1000.13	1000.17	1000.21	1000.23	1000.26	1000.16
	3	1000.30	1000.33	1000.31	1000.25	1000.20	1000.20	1000.23	1000.26	1000.31	1000.36	1000.36	1000.35	1000.29
	4	1000.35	1000.39	1000.43	1000.46	1000.51	1000.56	1000.57	1000.60	1000.68	1000.79	1000.83	1000.83	1000.58
	5	1000.87	1000.90	1000.93	1000.97	1001.02	1001.05	1001.06	1001.09	1001.16	1001.24	1001.30	1001.38	1001.08
	6	1001.49	1001.56	1001.62	1001.68	1001.75	1001.82	1001.86	1001.91	1001.97	1002.03	1002.11	1002.19	1001.83
	7	1002.25	1002.32	1002.39	1002.45	1002.51	1002.58	1002.64	1002.72	1002.82	1002.92	1002.98	1003.04	1002.64
	8	1003.09	1003.13	1003.14	1003.18	1003.29	1003.40	1003.47	1003.50	1003.53	1003.55	1003.58	1003.59	1003.37
	9	1003.60	1003.61	1003.59	1003.58	1003.63	1003.71	1003.74	1003.72	1003.69	1003.68	1003.67	1003.71	1003.66
	10	1003.73	1003.70	1003.68	1003.65	1003.58	1003.52	1003.48	1003.45	1003.42	1003.37	1003.33	1003.28	1003.52
	11	1003.22	1003.16	1003.12	1003.09	1003.05	1003.02	1003.01	1002.99	1002.95	1002.93	1002.90	1002.86	1003.02
	12	1002.80	1002.71	1002.61	1002.48	1002.40	1002.36	1002.40	1002.49	1002.53	1002.54	1002.56	1002.55	1002.54
	13	1002.48	1002.40	1002.37	1002.39	1002.42	1002.41	1002.36	1002.32	1002.31	1002.29	1002.31	1002.28	1002.36
	14	1002.21	1002.20	1002.21	1002.19	1002.20	1002.24	1002.25	1002.24	1002.23	1002.24	1002.27	1002.27	1002.23
	15	1002.28	1002.28	1002.26	1002.26	1002.26	1002.26	1002.25	1002.20	1002.18	1002.20	1002.23	1002.28	1002.24
	16	1002.31	1002.35	1002.43	1002.47	1002.45	1002.44	1002.44	1002.48	1002.55	1002.59	1002.59	1002.64	1002.48
	17	1002.72	1002.76	1002.74	1002.74	1002.79	1002.85	1002.89	1002.92	1002.95	1002.96	1002.96	1002.97	1002.85
	18	1003.00	1003.02	1003.01	1003.01	1003.06	1003.13	1003.17	1003.19	1003.19	1003.16	1003.14	1003.14	1003.10
	19	1003.13	1003.13	1003.13	1003.15	1003.19	1003.21	1003.21	1003.22	1003.25	1003.27	1003.27	1003.28	1003.20
	20	1003.28	1003.28	1003.29	1003.28	1003.29	1003.29	1003.26	1003.25	1003.26	1003.28	1003.30	1003.30	1003.28
	21	1003.29	1003.27	1003.25	1003.25	1003.25	1003.24	1003.23	1003.17	1003.08	1003.01	1002.98	1002.96	1003.16
	22	1002.97	1002.99	1002.99	1002.98	1002.99	1003.02	1003.04	1003.06	1003.05	1003.04	1003.10	1003.08	1003.02
	23	1003.00	1002.94	1002.83	1002.75	1002.72	1002.68	1002.64	1002.59	1002.52	1002.44	1002.40	1002.40	1002.66
30	0	1002.45	1002.46	1002.46	1002.41	1002.34	1002.32	1002.29	1002.25	1002.24	1002.27	1002.29	1002.29	1002.34
	1	1002.27	1002.26	1002.27	1002.27	1002.26	1002.26	1002.28	1002.28	1002.24	1002.23	1002.25	1002.24	1002.26
	2	1002.18	1002.09	1002.01	1001.93	1001.88	1001.83	1001.74	1001.66	1001.64	1001.66	1001.67	1001.65	1001.83
	3	1001.59	1001.53	1001.48	1001.40	1001.33	1001.27	1001.23	1001.20	1001.18	1001.18	1001.15	1001.07	1001.30
	4	1001.04	1001.08	1001.09	1001.09	1001.09	1001.06	1001.04	1001.03	1001.00	1000.96	1000.97	1000.98	1001.04
	5	1000.96	1000.93	1000.86	1000.76	1000.68	1000.65	1000.61	1000.58	1000.57	1000.57	1000.60	1000.60	1000.70
	6	1000.58	1000.57	1000.54	1000.51	1000.53	1000.53	1000.49	1000.51	1000.52	1000.51	1000.49	1000.51	1000.52
	7	1000.56	1000.60	1000.58	1000.52	1000.42	1000.39	1000.34	1000.30	1000.37	1000.43	1000.47	1000.48	1000.46
	8	1000.46	1000.46	1000.47	1000.48	1000.45	1000.40	1000.39	1000.42	1000.40	1000.35	1000.32	1000.32	1000.41
	9	1000.33	1000.32	1000.29	1000.23	1000.18	1000.14	1000.08	1000.00	999.90	999.84	999.86	999.88	1000.09
	10	999.88	999.83	999.80	999.79	999.73	999.66	999.62	999.62	999.62	999.61	999.58	999.57	999.69
	11	999.53	999.47	999.42	999.37	999.33	999.25	999.16	999.06	998.93	998.75	998.58	998.47	999.11
	12	998.42	998.38	998.30	998.19	998.04	997.88	997.73	997.63	997.60	997.51	997.41	997.37	997.87
	13	997.29	997.08	996.84	996.78	996.79	996.81	996.88	996.89	996.81	996.71	996.66	996.68	996.85
	14	996.66	996.58	996.58	996.59	996.58	996.58	996.60	996.60	996.62	996.64	996.64	996.63	996.61
	15	996.59	996.56	996.56	996.55	996.51	996.46	996.43	996.39	996.33	996.29	996.26	996.24	996.43
	16	996.24	996.17	996.06	995.99	995.98	995.97	996.04	996.16	996.11	995.98	995.94	996.03	996.06
	17	996.42	996.85	997.06	997.19	997.25	997.23	997.17	997.11	997.21	997.42	997.57	997.66	997.18
	18	997.73	997.77	997.75	997.70	997.71	997.72	997.70	997.69	997.72	997.74	997.73	997.76	997.73
	19	997.78	997.80	997.85	997.90	997.95	998.04	998.18	998.33	998.46	998.57	998.59	998.51	998.16
	20	998.46	998.43	998.33	998.24	998.21	998.17	998.17	998.16	998.18	998.29	998.46	998.62	998.31
	21	998.74	998.73	998.65	998.66	998.74	998.85	998.94	998.98	998.94	998.87	998.91	999.05	998.84
	22	999.22	999.33	999.38	999.41	999.44	999.39	999.25	999.27	999.37	999.43	999.51	999.61	999.38
	23	999.70	999.74	999.77	999.85	999.91	999.90	999.85	999.82	999.84	999.84	999.82	999.83	999.82

S.V.I.R.CO. Observatory - Pressure in hectoPascal – January 2019

day	hh	00_05	05_10	10_15	15_20	20_25	25_30	30_35	35_40	40_45	45_50	50_55	55_60	average
31	0	999.84	999.83	999.82	999.87	999.95	1000.01	1000.06	1000.15	1000.22	1000.28	1000.37	1000.47	1000.08
	1	1000.53	1000.61	1000.68	1000.75	1000.89	1000.98	1001.04	1001.13	1001.22	1001.27	1001.32	1001.39	1000.98
	2	1001.50	1001.60	1001.65	1001.65	1001.66	1001.64	1001.62	1001.61	1001.60	1001.62	1001.66	1001.72	1001.63
	3	1001.79	1001.81	1001.78	1001.72	1001.70	1001.74	1001.79	1001.84	1001.91	1001.99	1002.07	1002.12	1001.85
	4	1002.15	1002.19	1002.22	1002.25	1002.23	1002.25	1002.36	1002.43	1002.49	1002.59	1002.62	1002.60	1002.36
	5	1002.61	1002.67	1002.76	1002.84	1002.88	1002.87	1002.81	1002.80	1002.87	1002.92	1002.96	1002.97	1002.83
	6	1002.95	1002.96	1003.00	1003.07	1003.11	1003.10	1003.13	1003.15	1003.20	1003.26	1003.29	1003.31	1003.13
	7	1003.32	1003.29	1003.23	1003.22	1003.26	1003.32	1003.39	1003.44	1003.43	1003.44	1003.48	1003.49	1003.36
	8	1003.50	1003.54	1003.56	1003.55	1003.57	1003.63	1003.66	1003.69	1003.76	1003.83	1003.90	1003.95	1003.68
	9	1003.97	1004.00	1004.06	1004.14	1004.20	1004.24	1004.25	1004.25	1004.27	1004.34	1004.40	1004.46	1004.22
	10	1004.52	1004.52	1004.53	1004.56	1004.59	1004.63	1004.65	1004.63	1004.63	1004.62	1004.57	1004.52	1004.58
	11	1004.50	1004.50	1004.51	1004.54	1004.61	1004.69	1004.74	1004.72	1004.64	1004.59	1004.58	1004.52	1004.59
	12	1004.44	1004.38	1004.32	1004.30	1004.28	1004.27	1004.24	1004.19	1004.14	1004.07	1004.00	1003.97	1004.22
	13	1003.95	1003.89	1003.84	1003.76	1003.66	1003.60	1003.57	1003.53	1003.50	1003.52	1003.60	1003.69	1003.68
	14	1003.74	1003.75	1003.76	1003.76	1003.79	1003.84	1003.85	1003.85	1003.84	1003.83	1003.80	1003.78	1003.80
	15	1003.75	1003.69	1003.63	1003.55	1003.52	1003.50	1003.49	1003.45	1003.40	1003.39	1003.40	1003.44	1003.52
	16	1003.51	1003.56	1003.64	1003.74	1003.83	1003.90	1003.92	1003.89	1003.89	1003.97	1004.07	1004.16	1003.84
	17	1004.15	1004.09	1004.11	1004.23	1004.32	1004.33	1004.33	1004.33	1004.32	1004.33	1004.38	1004.45	1004.28
	18	1004.54	1004.67	1004.74	1004.73	1004.71	1004.71	1004.74	1004.78	1004.79	1004.79	1004.82	1004.83	1004.74
	19	1004.83	1004.82	1004.78	1004.72	1004.64	1004.55	1004.50	1004.46	1004.41	1004.38	1004.39	1004.38	1004.57
	20	1004.34	1004.30	1004.26	1004.18	1004.09	1004.03	1003.97	1003.93	1003.96	1003.98	1003.96	1003.92	1004.08
	21	1003.89	1003.87	1003.86	1003.86	1003.83	1003.75	1003.74	1003.74	1003.71	1003.66	1003.59	1003.54	1003.75
	22	1003.56	1003.61	1003.62	1003.64	1003.66	1003.70	1003.74	1003.75	1003.76	1003.81	1003.84	1003.84	1003.71
	23	1003.84	1003.83	1003.79	1003.74	1003.69	1003.64	1003.58	1003.56	1003.57	1003.57	1003.55	1003.55	1003.66

