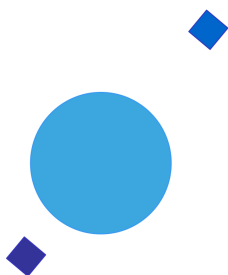


INAF



ISTITUTO NAZIONALE DI ASTROFISICA
NATIONAL INSTITUTE FOR ASTROPHYSICS

SVIRCO Prompt Report: October 2018

Francesco Re

INAF/IAPS-2018-16

November 2018

ISTITUTO DI ASTROFISICA E PLANETOLOGIA SPAZIALI

AREA DI RICERCA ROMA - TOR VERGATA

Via del Fosso del Cavaliere, 100 - 00133 Roma (ITALIA)

SVIRCO Prompt Report: October 2018

Francesco Re

*IAPS - INAF, Area di Ricerca Roma - Tor Vergata
Via del Fosso del Cavaliere, 100 - 00133 Roma, Italy,*

Abstract

The pressure corrected intensity of the nucleonic component, produced by primary cosmic rays and recorded in October 2018 by the Neutron Monitor of SVIRCO-Rome (present geographic position: 41.86° N - 12.47° E; altitude about s.l.), is reported in prompt form together with the barometric pressure data.

SVIRCO OBSERVATORY

During the 1st International Geophysics Year (1957) an international network of “ground-based detectors” for continuous cosmic ray measurements was world-wide established.

The cosmic ray station of Rome joined this network with the purpose to study the time variations of primary cosmic rays (**Studio Variazioni Intensità Raggi Cosmici: S.V.I.R.CO**) and their modulation in the heliosphere.

From July 1957 to April 1997, the SVIRCO Station (now Observatory) performed uninterrupted measurements at the Physics Department “G. Marconi” of “La Sapienza” University of Rome (41.90° N, 12.52° E, altitude about 60 m a.s.l.)

In May 1997 the neutron monitor was moved to the Physics Department “E. Amaldi” of “Roma Tre” University. Since then it has been continuously running at the new location (41.86° N, 12.47° E, altitude about 0 m a.s.l.).

The SVIRCO Observatory (INAF/IAPS-UNIRomaTre collaboration) is housed in a reserved building provided with a double air-conditioning system. The inner temperature is permanently restrained in a range of 23°-26° C, meanwhile the relative humidity is kept below 57%. Either the environmental parameters are continuously checked and recorded by digital sensors.

On January 1, 2005 three counters were added to the detector. This upgrade, from 17 to 20 NM-64, made the SVIRCO neutron monitor still consist of 5 sections but modified its geometry. Actually the new arrangement has been composed of three 3-counter, one 5-counter and one 6-counter units. The enhancement improved not only the overall counting rate of 15.6 % (January 2005) but, as a result, also the statistical quality of the recorded data.

On July 3, 2017 six counters experienced failure and were removed from the detector until 24 July. On 25 July 2017 a number of 2 counters was added to the detector up to a total of 16 counters. The new arrangement has been composed of three 3-counter, one 5-counter and one 2-counter units. The overall counting rate has decreased of about 20% (July 2017) with a lower statistical quality of the recorded data.

Each of the 16 BF₃ proportional counters (BP-28 type) is equipped with a smart amplifier/discriminator circuit complete with a spectrum stabilizer. This new electronic unit, developed in our laboratory, holds firmly the pulse height spectrum of the amplifier output (within a range of more than 150 volts around the operating voltage), providing the counter with a great immunity against high voltage variations.

Anyway, systematic and exhaustive tests of the counters are regularly performed. The output pulses of the amplifiers, discriminated by the threshold gates, are collected and stored into a multi-channel analyzer. The analysis of the height distribution (spectrum) of the amplifier pulses coinciding with the discriminator ones, is essential to verify the long term efficiency of each counter together with the amplifier gain and the discriminator threshold level.

As well as the amplifier/discriminator circuits, a large part of the electronic instrumentation operating in the Observatory was designed and realized in our laboratory together with the software for data acquisition and pre-elaboration.

In order to improve the reliability of the recorded data and to prevent measurement breakdowns, two independent systems perform contemporary the data acquisition. Each system is remotely controlled by a dedicated computer and is timed by a high stability quartz clock and/or a GPS receiver. One equipment runs according to a timing of 1 minute and fulfils the acquisition of the 16 counters separately. The other one records the individual 5-minute counting rate of each detector section in addition to the rates of the overall multiplicity, sorted into separated counting channels (from 1 to greater than 8).

A special care is devoted to the atmospheric pressure measurements; thus they are carried out by means of not less than three barometers at the same time. These instruments (achieving a resolution up to 0.01 hPa), are constantly checked out each other for the best measuring accuracy and reliability. Furthermore, the devices in use are equipped with different types of transducer such as vibrating cylinder, force balance and quartz, therefore, throughout their different behaviours, it is possible to point out the occurrence of any long-term drift and eventually to re-calibrate the instruments themselves.

DATA PRESENTATION

In a preliminary step, the intensity data, of the secondary nucleonic component of cosmic rays, detected at SVIRCO Observatory, were corrected for pressure variations at a reference level of 1009.25 hPa with an attenuation coefficient of 0.70% / hPa.

The five-minutes counting rates, of the examined month, are reported in tabular form together with the hourly normalized data, which provide a continuous data set for long-term analysis.

The normalization was evaluated as percentage of the counting rate average of January-February 1997, when the Monitor operated at the previous location of "La Sapienza" University. The reference counting rate level (100%), computed for such period, is equal to 554946 counts/hour.

The atmospheric pressure data (in hectoPascal) are also collected in a monthly table which presents the five-minutes averages and the hourly ones.

The hourly averages of the normalized intensity and pressure, plotted in monthly graphs, are reported too.

CONDITIONS FOR SVIRCO DATA USE

You are welcome to use neutron monitor data of SVIRCO, IAPS/INAF-UNIRomaTre collaboration, under the following conditions:

-You agree to acknowledge our financial supports in any published use of the data.

Example: "SVIRCO NM is supported by the INAF - UNIRomaTre collaboration"

-You are kindly requested to send a copy of any published work derived from our data to:

Dr. Monica Laurenza
Head of SVIRCO Observatory & TPL
Istituto di Astrofisica e Planetologia Spaziali - Area di Ricerca Tor Vergata
Via del Fosso del Cavaliere, 100 00133 Roma - Italy,

monica.laurenza@iaps.inaf.it



S.V.I.R.CO. Observatory

Rome

Italy



INAF/UNIRomaTre		S.V.I.R.CO. Observatory - Pressure Corrected Data – October 2018											16 NM-64	
day	hh	00_05	05_10	10_15	15_20	20_25	25_30	30_35	35_40	40_45	45_50	50_55	55_60	h-norm
1	0	38410	38320	38344	38189	38219	38687	38279	38150	38698	38570	38802	38688	101.491
	1	38499	38724	38620	38506	38401	38806	38341	38420	38302	38584	38745	38787	101.802
	2	38557	37726	38614	38310	38981	38693	38951	38971	39036	38567	38431	38549	101.945
	3	38263	39024	38073	38670	38369	38773	38491	38289	38432	38413	38845	38319	101.631
	4	38702	38722	38471	38479	38750	38314	38331	38456	38390	38144	38016	38391	101.456
	5	38927	39050	37913	38042	38396	38878	38816	38658	38753	38326	38217	38649	101.778
	6	38687	38495	38203	38427	38779	38848	39289	38179	38638	37827	38396	38189	101.630
	7	38713	38739	38147	38061	38449	38606	38581	37718	38271	39008	38236	38482	101.423
	8	38324	38385	38048	38794	38800	38914	38441	38186	38630	39070	38388	38443	101.733
	9	38636	38456	38517	39277	39361	38513	38095	38268	38735	38172	37956	38727	101.797
	10	38444	38554	38458	38226	39105	38775	38277	38383	38104	38433	38624	38715	101.662
	11	38547	38709	38692	38207	38131	37612	38406	38354	38098	38249	38290	38819	101.225
	12	37836	38300	38327	38920	38994	38093	38060	38098	38185	38147	38548	38512	101.205
	13	38775	39034	38258	38315	38658	38194	38992	38370	37730	38602	39020	38246	101.683
	14	38232	38678	38738	38249	38504	38784	38358	38400	38374	38252	38488	38225	101.482
	15	38569	38312	38355	39037	38425	38387	38448	38636	38473	38106	38386	38988	101.667
	16	38408	38468	38046	38651	38462	38643	38093	38738	38989	38799	39346	38726	101.941
	17	38491	38326	38785	38311	38511	38403	38492	38739	38679	38885	38953	38677	101.916
	18	38777	38431	38603	38780	39019	38861	38526	38990	38761	38368	38643	38727	102.187
	19	38788	38678	39012	38840	38423	38475	38956	38784	38404	38836	38532	38841	102.205
	20	38351	38491	38214	38227	38246	38349	38717	37894	38495	38932	38621	39466	101.641
	21	38144	38099	39243	37912	38318	38929	38507	38668	38653	38872	38316	38517	101.679
	22	38653	38666	38469	38603	38331	38655	38633	38006	38432	38458	38093	38638	101.560
	23	38243	38912	38410	38755	38665	38699	38544	38326	38660	38419	38766	38603	101.860
2	0	38192	38339	38566	38551	38321	39229	38781	38805	39035	38396	38398	38659	101.918
	1	37852	38875	38651	38819	38596	38397	38536	38712	38953	38663	38933	38262	101.914
	2	38457	38623	38468	38206	39011	38558	38611	38633	38727	38948	38668	38471	101.944
	3	38930	38349	38351	38771	38911	38747	38709	38407	38138	38163	38632	38635	101.804
	4	38391	38698	38935	38267	38487	38554	39373	38790	38869	38733	39163	38890	102.333
	5	38895	39137	39089	38702	38286	38504	38463	38402	39278	38212	38667	38054	102.012
	6	39046	38770	38578	38525	38519	38690	38923	38751	39293	38797	39085	38993	102.513
	7	38987	38772	38558	38394	38547	38709	38495	38437	38865	39046	38617	38847	102.141
	8	39349	38089	38509	38622	38658	38327	37933	38265	38450	38786	38063	38555	101.554
	9	38120	38678	38568	38346	38847	38870	38140	38253	38518	38605	39078	38689	101.796
	10	38480	38706	38677	38015	38351	38777	38366	38783	38575	38679	38524	38015	101.629
	11	38278	38222	38212	38183	38756	38433	38199	39026	37844	38602	38239	39109	101.443
	12	38947	38741	38837	38030	37987	37979	38300	39104	38327	38200	38749	38179	101.503
	13	37839	38651	38444	38737	38904	38778	38129	38612	38572	38695	38841	38877	101.877
	14	38672	38529	38285	38473	38495	38194	38258	38391	38743	39118	38567	38845	101.765
	15	38776	38964	38626	38360	38378	38332	38843	38337	37818	38227	38405	38621	101.571
	16	38279	38632	38898	38944	38492	38778	38227	38115	38669	38740	38944	38964	102.010
	17	38688	38891	38470	38090	38427	38510	38563	38695	38579	38216	39170	38813	101.884
	18	38706	38029	38428	38464	38968	38683	38280	38610	39109	38335	38705	38242	101.763
	19	39156	38652	38103	38630	38666	38417	38878	39128	37868	38598	38726	39109	102.065
	20	39140	38526	39187	38588	38681	38761	38124	38748	38683	38400	38697	38761	102.145
	21	38702	38604	38401	38398	39581	38997	38885	38888	38611	38678	38264	38947	102.290
	22	38842	38544	38792	38844	38782	38589	38926	38927	39148	38592	38591	38666	102.354
	23	39238	38493	38514	38455	38637	38186	38930	38554	38632	38546	39021	38762	102.073

INAF/UNIRomaTre		S.V.I.R.CO. Observatory - Pressure Corrected Data – October 2018											16 NM-64	
day	hh	00_05	05_10	10_15	15_20	20_25	25_30	30_35	35_40	40_45	45_50	50_55	55_60	h-norm
3	0	39027	38069	38689	39251	39213	38674	38563	38704	38425	38663	39370	38707	102.380
	1	38802	38874	38254	38571	38957	38413	39128	38987	38675	38593	39096	39152	102.411
	2	38635	38357	38385	38518	38375	39496	38150	38043	38769	38395	38997	38568	101.792
	3	38440	38340	38568	38983	38614	38575	38155	38458	38940	39093	39063	38840	102.095
	4	38462	38737	38381	39425	38604	38681	38844	38968	38522	38703	38036	38867	102.131
	5	38887	39091	38562	38287	38332	38509	39054	39193	38374	39072	38815	38443	102.216
	6	38468	39014	39090	38040	39032	38414	38789	38229	38394	38388	38588	39131	101.987
	7	38558	37841	38564	38417	39234	37795	38221	38937	38151	38496	38641	39138	101.638
	8	38140	38704	38482	38274	38873	38629	38028	38856	38639	38517	38553	38799	101.748
	9	38174	38617	38491	38338	38071	38102	37938	38379	38608	38842	38280	38545	101.285
	10	38708	38553	38708	38156	38667	38443	38818	38126	37882	38609	38325	38832	101.602
	11	38506	38374	38551	38579	38989	38256	38536	38477	38729	38445	38224	38446	101.664
	12	38422	38486	38311	38639	38210	38364	38693	38672	38722	38769	38675	38921	101.836
	13	38257	38411	38704	38338	38322	37793	39105	38544	38535	38643	38528	38409	101.550
	14	38601	38531	38056	38380	38300	38629	38493	38628	38363	38597	38534	38437	101.540
	15	37823	38263	38506	38725	39147	38406	38533	38245	38639	37902	38945	38469	101.553
	16	38772	38981	38090	38772	38698	38502	38761	38745	38567	38450	38128	38741	101.906
	17	38338	38319	38445	38560	38972	37989	38212	38502	38626	38278	38313	38346	101.398
	18	38706	38277	38154	39033	38410	38777	38508	38450	38311	38687	38182	38436	101.625
	19	38189	38565	38486	38654	38525	38430	38244	38240	38646	38329	38417	38803	101.536
	20	38543	38643	38123	38403	38627	38304	38664	38940	38699	38782	38709	38578	101.863
	21	38902	38842	39245	38884	38725	38096	39822	38709	39067	38511	38847	38563	102.567
	22	38721	38337	38639	38530	38851	38883	38894	38795	38515	38048	38745	38156	101.885
	23	38364	38688	38173	38498	38573	38227	38501	38736	38512	38788	38444	37872	101.503
4	0	38596	37762	38064	38534	38803	38709	38173	37939	38387	38792	38502	38378	101.338
	1	38278	39064	38998	39124	38424	38646	38150	38413	38368	38392	38454	38396	101.796
	2	38602	38665	38526	38210	38322	38309	38016	39085	38679	38727	38741	38727	101.774
	3	38466	38868	38303	38648	38231	38846	38312	38692	38434	38613	38898	38536	101.826
	4	38945	38449	38559	38190	38564	38726	39029	38869	38931	38111	38722	38272	101.941
	5	39020	38397	38752	38585	38183	38961	39062	38406	38791	38339	38756	38311	101.984
	6	38663	38033	38363	38221	38936	38518	38365	38295	38825	38523	38304	38793	101.604
	7	38887	38640	38758	38707	38181	38426	38435	38594	38309	37946	38506	38498	101.616
	8	38677	38014	38769	38143	38265	39091	38293	37940	38790	38547	38322	38709	101.543
	9	38019	38492	38274	38119	37978	39234	39203	38344	39035	38241	38757	37750	101.518
	10	38374	38194	38614	38417	38551	38684	38384	37749	37982	38760	38499	38243	101.299
	11	38123	37752	38113	38411	37763	38682	38707	38943	38334	38298	38393	38408	101.184
	12	38350	38595	38293	38336	38178	38125	38566	38027	39070	38520	38525	37926	101.312
	13	38763	37998	37955	38845	38409	38262	38294	37735	38658	38744	38542	38820	101.426
	14	38605	38257	37956	38145	38838	38740	38639	38203	38080	38282	38734	38314	101.375
	15	38266	38806	37754	38756	38355	38458	38328	37919	38918	38187	38563	38642	101.409
	16	38467	39070	38949	38591	38130	38567	38427	38289	38686	38482	38820	38286	101.809
	17	38281	38469	38400	38595	38447	38122	38427	38657	38558	37740	38220	38633	101.320
	18	38486	38432	38461	38043	38900	38099	38616	38381	38746	38199	38195	38755	101.489
	19	38660	37853	38786	38273	37679	39102	38620	39013	38357	38455	38431	38012	101.473
	20	38343	38401	38420	38282	37906	38427	38456	38955	38013	38966	38149	37879	101.243
	21	38334	38886	37997	38602	38810	38798	38337	38447	38625	38301	38512	38444	101.660
	22	38441	38751	38315	38544	38544	38281	38544	38513	38553	38377	38699	38458	101.645
	23	38348	38720	38516	38876	38578	38548	38737	38217	38378	38635	38733	38710	101.859

INAF/UNIRomaTre		S.V.I.R.CO. Observatory - Pressure Corrected Data – October 2018											16 NM-64	
day	hh	00_05	05_10	10_15	15_20	20_25	25_30	30_35	35_40	40_45	45_50	50_55	55_60	h-norm
5	0	38452	38506	38683	38647	38469	38710	38711	38777	38191	38783	38592	38787	101.926
	1	38721	38357	38579	38297	38174	38307	38007	38573	38124	38066	38387	38281	101.172
	2	38630	38561	38695	38080	38213	38714	38163	37824	38841	38611	38671	38700	101.574
	3	38164	38802	39430	38365	38580	38497	38851	38719	38660	38845	38819	38613	102.156
	4	38755	38664	38696	38698	38410	38509	38375	39151	38843	38380	38204	38443	101.888
	5	38256	37935	38576	38431	38378	38710	38638	38971	38681	38541	38943	38818	101.834
	6	38668	38476	38606	38946	38344	38532	38673	38767	38956	38588	38693	38301	101.981
	7	38342	38389	39026	38306	38565	38769	38609	38735	38647	39239	38193	38314	101.889
	8	38890	38899	38641	38588	38339	38483	38428	38344	38624	38428	38128	38579	101.721
	9	38033	38468	38934	38174	38501	39000	38731	38164	38141	38030	38740	38155	101.435
	10	39142	38579	38871	38535	38744	38563	38512	38418	39049	38414	38637	37980	101.957
	11	38604	38497	37771	38318	38311	38899	38474	38616	38408	38672	38654	38617	101.605
	12	38519	38340	38270	38527	38916	38632	38469	38698	38126	38808	38309	38090	101.575
	13	38883	38435	38262	38585	38514	38979	38768	38269	38673	38462	37809	38591	101.691
	14	38319	38297	38448	38144	38347	38823	38268	38532	38801	38826	39088	38187	101.658
	15	38578	38674	38261	38471	38586	38908	38774	38297	38875	38598	39036	38699	102.027
	16	38525	38662	37945	38460	38803	38537	38425	38874	38698	38229	38906	37972	101.648
	17	38420	38704	39191	38505	38637	38962	38861	38224	38256	38724	39020	38078	101.988
	18	38449	38121	38310	38788	38379	38924	38714	38319	38655	39138	38222	38029	101.651
	19	38491	38752	37956	38310	38428	38675	38592	38775	37975	37983	38502	38491	101.405
	20	38877	38367	38403	38610	38744	38273	38476	38503	38351	38159	38905	37926	101.550
	21	38583	38762	38804	38464	38583	38473	38621	38820	38564	38581	38065	38339	101.785
	22	38958	39090	38029	38586	38541	38125	38316	38582	38297	38154	38750	38410	101.605
	23	38662	38750	38257	38344	38228	38093	38068	38022	38099	38158	38503	38231	101.072
6	0	39067	38106	38159	38747	38709	38734	38302	38513	38455	38643	38371	38242	101.649
	1	38041	37866	38680	38122	38609	38256	38271	38078	38305	38915	39110	38508	101.368
	2	38458	38486	38507	38692	38626	38105	38250	38336	38711	38030	38293	38127	101.336
	3	38586	38897	38425	38836	38452	38317	37726	38621	38442	38508	38105	37650	101.325
	4	38603	38002	38721	38305	38469	38250	38839	38351	38117	38339	38490	38504	101.418
	5	38772	38372	38578	38356	38566	38220	38335	37994	38177	37966	38408	38228	101.194
	6	38665	38449	38163	38068	38451	38537	38496	38459	38584	38155	38259	38593	101.393
	7	37907	38367	37819	38631	38477	38411	38414	38190	38605	38693	38871	38310	101.353
	8	38116	38532	37953	38099	38683	38150	38227	38784	38564	37902	38515	39070	101.330
	9	38445	38843	38959	38289	38082	38907	38611	38315	38401	38874	38206	38500	101.735
	10	38500	38340	38292	38424	38384	38572	38510	38002	37841	38740	38883	38800	101.483
	11	39034	38577	38801	38782	38581	38372	37945	38749	39053	38285	38503	38127	101.817
	12	38329	39185	38190	38678	38030	37983	38125	38234	38380	38489	38831	37983	101.296
	13	38280	37830	38502	38496	38605	38323	38639	37934	38305	38456	38485	38343	101.244
	14	38930	37784	38963	38884	37980	38937	37731	38319	38300	38077	38649	38384	101.406
	15	38335	38377	37991	38454	38337	39134	38440	38476	37992	38341	38119	38332	101.272
	16	38758	38179	37896	38242	38257	38400	38156	38736	38505	38470	38606	38536	101.363
	17	38638	38156	38536	38747	38147	38609	38124	38343	38226	40706	38186	38962	101.944
	18	38640	38343	38246	38244	37825	38911	38307	37977	38487	37878	38563	37955	101.063
	19	38201	38253	38292	38241	38221	38593	38206	38379	38043	38499	37742	38721	101.066
	20	38243	38376	38482	38352	38480	38182	38193	38074	38030	38168	37804	37472	100.728
	21	38045	38164	38154	38088	38427	38437	37959	37988	37831	38239	38397	38186	100.741
	22	38286	37972	37939	38224	38434	37919	38123	38073	38107	38058	38211	38485	100.723
	23	38199	37988	38169	38040	37783	38232	38179	38471	38178	37876	37932	38261	100.608

INAF/UNIRomaTre		S.V.I.R.CO. Observatory - Pressure Corrected Data – October 2018											16 NM-64	
day	hh	00_05	05_10	10_15	15_20	20_25	25_30	30_35	35_40	40_45	45_50	50_55	55_60	h-norm
7	0	38053	37189	38171	38515	37916	38024	38797	38493	38791	38053	38326	38474	100.938
	1	37907	38249	37874	37753	38215	38109	37918	37954	38079	37554	37835	38811	100.377
	2	38404	38426	38038	38407	38423	38861	38102	37805	38368	38351	38571	38411	101.237
	3	38405	38630	38071	38756	38332	38409	38085	38534	38316	38214	38266	38360	101.283
	4	38584	38269	38055	38331	37943	38501	38247	38297	37685	38741	38193	38301	101.013
	5	38243	38524	38812	38390	38424	38077	38292	37705	38577	38222	37962	38166	101.067
	6	37994	38412	37728	38623	38489	38372	38657	38236	38608	38251	38776	38173	101.270
	7	38520	38654	38951	38592	38122	38857	38515	38237	38485	38325	38736	38690	101.791
	8	37683	38345	38394	38669	38066	39007	38244	38227	38435	38788	37979	38544	101.284
	9	38000	38181	38910	38331	37838	38206	38558	38438	38040	37985	38187	38075	100.925
	10	38410	38407	38152	38092	37906	38351	37611	38482	38545	37699	38141	38673	100.864
	11	38342	37956	38150	38068	37929	37907	38481	37468	38628	38456	38616	38214	100.807
	12	38206	38844	38289	38347	38626	38418	38069	38422	38203	38651	38028	38510	101.335
	13	37697	38524	38466	38713	38332	38000	38437	38283	38291	38535	38381	38353	101.203
	14	38413	38380	39014	38601	38434	38475	38335	38019	38711	38929	37829	38716	101.609
	15	38211	38492	38210	38040	38572	38266	38374	38494	38257	39044	38672	38611	101.473
	16	38978	38746	38866	38913	38412	38499	37775	38569	39081	39152	38533	38538	102.094
	17	38746	39239	38802	39198	38586	38950	38616	39408	38209	38222	38416	38491	102.276
	18	39364	38277	37832	38221	38581	38184	38336	38789	38404	38584	38472	38658	101.575
	19	38405	38305	38644	38468	38718	38195	38332	38871	38525	38772	38867	38690	101.814
	20	38822	38334	38645	37962	38478	39022	38217	38487	37933	38108	38181	38222	101.290
	21	38555	38481	37845	38478	39016	38448	38733	38763	38845	38921	38276	38454	101.819
	22	38557	38134	38400	38384	38797	38245	38005	38634	38865	38237	38646	38432	101.494
	23	38240	38076	38606	38073	38157	38325	38166	38081	37715	37926	38544	38355	100.818
8	0	38148	38274	38822	37973	38652	38079	38414	38344	38794	38409	38578	38671	101.454
	1	38477	38780	38214	38450	37726	37931	38554	38594	38861	38119	38874	38129	101.356
	2	38749	38386	38174	38507	38408	38228	39178	38018	38118	37941	38770	38641	101.446
	3	38908	38667	38448	38468	38748	38268	38092	38495	38306	38152	38767	38580	101.618
	4	38647	38221	38075	38083	38536	38668	38329	38045	38150	38403	38472	37775	101.069
	5	38157	38458	38080	37268	38253	38084	38346	38244	38647	38185	37620	38205	100.660
	6	38280	37973	38559	38429	37988	38514	38466	37763	38494	38108	38305	38700	101.107
	7	38235	38312	38556	38297	38193	38969	38523	38502	38110	38358	37699	38360	101.225
	8	38316	38464	38190	38463	38247	39107	38014	38004	38743	38838	38403	38381	101.458
	9	38095	38340	38128	37934	37934	38239	38822	37847	38336	37936	38575	38425	100.895
	10	38685	38266	38645	38392	38419	38105	38352	37795	37795	38147	37998	38377	100.975
	11	38311	38165	38970	38045	38267	38466	38407	38515	38079	38215	38469	38135	101.209
	12	38361	37917	38286	38240	37997	38777	38458	38795	38540	37626	38435	38412	101.166
	13	38681	39011	38524	38337	38299	38459	38170	37983	38154	38366	38160	38428	101.326
	14	38325	37996	38704	38470	38620	38517	38234	38712	38247	38742	38226	38259	101.432
	15	38719	37976	38177	38571	37942	37731	38406	37875	38160	38128	38493	38463	100.901
	16	38289	38379	38484	38274	38068	38011	38271	37993	38451	38932	38813	38470	101.296
	17	38177	38198	37991	38516	38264	38425	38376	38321	38544	38639	38210	38119	101.151
	18	38750	38434	38708	37647	38132	38115	38597	38326	38554	38800	38869	37676	101.333
	19	38521	38592	37840	37982	38207	38733	37791	37815	38035	38335	37905	38801	100.882
	20	38093	38627	38659	38342	38357	38229	38276	38466	38160	37852	37927	38676	101.126
	21	38118	38776	38141	38248	38365	38482	38473	37693	38644	38359	38143	38162	101.113
	22	38294	38592	38421	38189	37646	38116	37847	38147	38279	38694	38506	37586	100.830
	23	38004	38213	38319	38582	38503	38846	38126	38334	37848	38515	38536	38412	101.252

INAF/UNIRomaTre		S.V.I.R.CO. Observatory - Pressure Corrected Data – October 2018											16 NM-64	
day	hh	00_05	05_10	10_15	15_20	20_25	25_30	30_35	35_40	40_45	45_50	50_55	55_60	h-norm
9	0	38027	38602	38244	38433	38454	38209	37799	38142	38185	38612	38503	38592	101.155
	1	38874	38265	38093	38166	38105	38753	37784	37939	37865	38061	38421	38533	100.949
	2	38247	38448	38783	37515	38041	38276	38910	38342	38542	38090	38633	37962	101.154
	3	38662	38178	37918	38469	38577	38305	38363	38687	38573	38278	38854	38361	101.469
	4	38538	38310	38940	38530	38229	37950	37607	38612	38345	37712	38011	38511	101.045
	5	37978	38287	38155	38634	38656	38133	38481	38852	38407	38482	38684	37870	101.336
	6	38446	38824	38565	38088	38197	37715	38308	38271	38583	37622	38164	38487	101.039
	7	38261	38430	38085	38233	38816	38259	38971	38473	38501	37798	38672	38049	101.321
	8	38116	38232	38520	38751	38763	38260	38853	38729	38708	38472	38429	38459	101.704
	9	38051	38500	38247	37683	38028	38298	38422	38478	37959	38346	37520	37800	100.613
	10	38516	38279	38474	38018	38388	38302	38385	38097	38506	38039	37894	38206	101.003
	11	38436	38510	38848	38330	38469	38645	37787	38054	38556	37968	38508	37492	101.112
	12	38466	38521	38705	38228	38032	38240	37932	37878	38330	38261	38077	38253	100.963
	13	38627	38000	38195	38086	38772	38560	38306	38827	38154	38691	38213	38077	101.312
	14	37922	38647	38787	37827	38833	37906	38070	38437	38461	38384	38365	39155	101.375
	15	38256	38358	38697	38276	38052	37894	38185	38798	38564	38276	39054	38397	101.377
	16	37907	37466	38561	38271	38355	37915	38860	38857	38122	38114	38485	38954	101.170
	17	38424	38315	37873	38506	38449	38744	38583	38440	38434	38039	38658	38865	101.493
	18	38418	38371	39226	38407	38938	38428	38383	38749	38841	38756	37869	38940	101.932
	19	38735	38495	39096	38505	37753	38612	38480	38641	38576	38222	38576	38342	101.648
	20	38282	38615	39227	38598	38693	39069	38555	38289	38385	39279	37621	38796	101.950
	21	38307	37851	38542	38392	38013	38356	38404	39007	38452	38537	38145	38538	101.319
	22	38400	38463	37858	38401	38302	38195	38017	38515	38523	38401	38408	38609	101.220
	23	38139	38358	38559	38649	38519	38022	39257	39075	38539	38342	39043	38256	101.807
10	0	38713	38475	38511	38198	38648	38961	38795	37567	38672	38700	37940	38567	101.584
	1	38275	38713	38247	38826	38230	38472	38960	38538	38394	38685	38178	38301	101.600
	2	38560	38515	38797	38683	38435	38842	38532	39350	38998	38611	39073	38254	102.223
	3	38767	38949	38365	38858	38239	38317	38687	38527	38556	38312	38782	38841	101.904
	4	38895	38707	38849	38370	38753	38830	38634	38522	39053	38762	37881	38299	101.982
	5	38382	38972	38222	38436	38789	38024	38353	38328	38476	38448	38374	38255	101.433
	6	38380	39113	38694	38899	38632	38932	37836	38310	38557	38197	39144	38166	101.829
	7	38488	38809	38305	38111	38887	38341	38692	38405	38452	37834	38693	38409	101.514
	8	38529	37919	38495	38574	38566	38353	38072	38112	38685	38538	39095	38046	101.416
	9	38499	38730	38558	38398	38631	38056	38282	38539	38460	38760	38463	38358	101.581
	10	38371	38558	38408	37916	38547	38517	38498	38692	37759	38530	37688	38847	101.273
	11	37742	38088	38326	38847	38450	38290	38357	37994	37939	38221	38621	38148	100.985
	12	38703	38863	38062	38411	38622	38215	38108	38259	38295	38411	38287	38618	101.388
	13	38736	38105	38179	38431	38527	39002	38379	39036	38266	38504	38161	39036	101.720
	14	38516	38826	38475	38627	38877	38729	38452	38178	38701	38527	39160	39060	102.108
	15	38838	38545	37997	38475	38402	38258	38811	38607	38373	38827	39078	37848	101.653
	16	39229	38504	39060	38262	38443	39160	38751	38445	38788	38392	38721	38663	102.172
	17	38408	38612	38769	38770	38559	38207	38805	39290	38674	38573	38136	39251	102.092
	18	38814	38441	38138	38651	39117	38809	38616	38733	38762	38473	38624	38405	101.989
	19	39153	38278	38685	38747	39000	38665	38613	38368	38388	39040	38798	38671	102.169
	20	38500	38676	38584	38568	38612	39053	38916	38614	38451	38129	38583	38590	101.921
	21	38702	39022	39049	39037	38611	38229	38186	38891	38636	38022	38317	38819	101.974
	22	38250	38261	38621	38813	39133	39067	38460	38641	38470	38766	38303	38594	101.943
	23	38193	38410	38942	38319	38360	38594	38762	38446	38560	38958	38247	38572	101.720

INAF/UNIRomaTre		S.V.I.R.CO. Observatory - Pressure Corrected Data – October 2018											16 NM-64	
day	hh	00_05	05_10	10_15	15_20	20_25	25_30	30_35	35_40	40_45	45_50	50_55	55_60	h-norm
11	0	38178	38951	38488	38782	38822	38496	38608	38300	38615	38784	38336	38450	101.817
	1	38388	37945	38360	38039	38227	38477	37892	37847	38760	38546	38186	38622	101.043
	2	38550	38100	38703	38227	38473	38654	38288	38009	38149	38388	37777	38648	101.192
	3	38186	38641	38363	38907	38484	37979	38174	38303	39089	38481	38540	38342	101.528
	4	38912	38416	38469	38468	38440	38609	37976	38210	38352	38595	38567	39024	101.648
	5	38484	38975	37987	38560	38815	38596	38620	38677	38299	38645	38715	38021	101.727
	6	38614	39146	38226	37513	38094	38993	38278	38757	38891	38705	38564	38895	101.789
	7	38810	38727	38636	38378	38064	38658	38437	38281	38225	39249	38115	38003	101.548
	8	38191	38557	38290	38457	38250	38309	38376	38673	38239	38501	38388	38428	101.345
	9	38785	38642	38390	38327	38392	38677	38585	38770	38717	38379	38040	38383	101.659
	10	38476	38371	38346	38903	38243	38629	37968	38360	38542	38903	38245	37999	101.417
	11	38029	38488	38447	38370	37624	38008	38665	38356	39023	38183	38339	38198	101.141
	12	38152	38171	38273	38678	37874	38701	38871	37933	38036	38102	38229	38809	101.162
	13	38235	37742	38831	38501	38524	38537	38297	38817	38506	38495	38335	38175	101.419
	14	38681	38822	38915	38406	37968	38690	38460	38070	38800	37683	38686	38501	101.570
	15	38739	38057	38779	38731	38408	38607	38142	38511	38376	38159	38405	38238	101.454
	16	37904	38315	38254	38633	38668	39218	38274	38916	38822	38241	38498	38787	101.756
	17	38517	38132	38637	38987	38818	38524	38089	38334	38685	38357	38432	38631	101.671
	18	38314	38146	38567	38632	38075	38671	38167	38417	38251	38893	38699	37919	101.365
	19	38251	38313	38340	38638	38496	38746	38473	38214	38190	38307	38894	38520	101.504
	20	38859	38981	39042	38931	38591	38744	38243	38530	38891	38865	38903	38928	102.412
	21	38546	38963	38473	39224	38979	38092	38786	38374	37822	38894	38733	37949	101.824
	22	38860	38803	39252	38419	39011	38409	39244	38483	39297	38655	38305	38440	102.339
	23	38826	38732	39105	38250	38704	38060	39490	38769	38690	38203	38441	38594	102.050
12	0	38604	38712	38610	38421	39043	38360	38543	38585	38433	38954	38594	38508	101.939
	1	38230	38927	38427	39258	38555	38650	38266	38455	38429	38519	38626	38609	101.849
	2	38847	38731	38266	38178	38641	38574	38215	39412	38164	38767	38785	38552	101.889
	3	38090	38166	38644	38433	38882	38929	38853	38228	38576	38710	39032	38569	101.884
	4	38506	38459	38488	38534	38585	38401	38722	37836	38208	38290	38368	38258	101.344
	5	38872	38407	38522	38472	37639	38062	37815	38529	38729	37883	38374	38220	101.096
	6	38625	38137	38590	38231	38262	38699	38107	38801	38270	38535	39365	39165	101.813
	7	38550	38619	38617	38720	38042	38556	38387	38964	39078	37859	38760	38374	101.756
	8	38034	38481	39034	38345	38942	38118	38525	38657	38121	38305	38334	38402	101.486
	9	38308	38254	38061	38226	38639	38205	38197	38330	37854	38321	37972	37987	100.838
	10	37950	38448	38512	38477	37958	38081	38183	38785	38743	38345	38531	38808	101.381
	11	38410	37736	38209	38534	37770	38497	38645	38486	38802	38228	38572	38862	101.365
	12	38014	38479	38291	38417	38614	38443	37963	38537	38301	38468	38637	38235	101.288
	13	37866	37918	38628	37696	38528	38572	38460	38816	38737	38750	38266	38109	101.276
	14	38989	38377	38848	38693	38546	38829	38750	38525	38398	38640	38385	38070	101.871
	15	38523	38427	38778	38297	38363	38633	38071	38224	38317	38325	38520	38512	101.418
	16	38851	38898	38166	38626	38472	38299	38903	38209	38449	38269	38428	37768	101.495
	17	38118	39311	38705	38600	38347	38509	38027	39056	39183	38052	37701	38887	101.750
	18	38868	38211	38438	38709	38868	38671	38305	38410	38187	38786	38744	38246	101.737
	19	38493	38827	38564	38639	39159	38277	38375	38873	38851	37585	38841	39041	101.975
	20	38267	38915	38072	38658	38139	38251	38418	38482	38796	38628	39390	38298	101.709
	21	38575	38668	38653	38650	38286	38278	38424	39174	39215	38799	38517	38945	102.120
	22	38746	38575	37958	38569	39001	39010	38728	38670	38566	38593	38602	38462	101.966
	23	38302	38551	38424	38098	38992	38838	38814	38497	38048	38158	38678	38799	101.684

INAF/UNIRomaTre		S.V.I.R.CO. Observatory - Pressure Corrected Data – October 2018											16 NM-64	
day	hh	00_05	05_10	10_15	15_20	20_25	25_30	30_35	35_40	40_45	45_50	50_55	55_60	h-norm
13	0	38578	38745	38487	39230	38715	38775	38411	38828	39038	38744	38625	38659	102.262
	1	38801	38458	38597	38808	38424	39443	38275	38821	38882	38578	38998	38436	102.195
	2	38314	39387	38194	38499	39099	38343	38527	37859	38827	38770	38368	38437	101.778
	3	38635	38601	38710	38129	38602	38300	38403	38544	38387	38815	38747	37767	101.561
	4	38581	38391	39034	38247	38197	38958	38170	38438	38664	38863	38362	38180	101.659
	5	38323	38408	38522	37973	38018	38784	38643	37786	38682	38593	38322	38537	101.330
	6	38483	38581	39085	38405	38751	38660	39364	38128	38357	38486	38145	38572	101.864
	7	38989	38416	38435	38468	38437	38251	39071	38416	38214	38415	38013	38462	101.549
	8	38389	38375	38954	38164	37775	38166	38434	38797	38450	38606	37736	38744	101.330
	9	38879	38869	38194	38358	37787	38338	38895	38326	38795	38674	38529	38109	101.586
	10	38278	38281	38648	38318	38259	38517	38342	37991	38257	38249	37976	38498	101.115
	11	38360	38375	38314	38025	38212	38234	37771	38066	38383	38677	38227	37843	100.867
	12	38809	37895	38574	38323	38667	38808	38257	38193	38117	38260	38274	38297	101.304
	13	38408	37955	38682	38127	38825	38057	38167	38429	38348	38479	38774	38654	101.399
	14	38178	38698	38247	38036	38493	38592	38370	38352	38404	38453	38396	37983	101.244
	15	38543	38836	38458	38577	38507	38370	38356	37864	38581	38174	39118	38046	101.515
	16	37757	38663	37894	38520	38786	38690	38604	38408	38768	38797	38567	38600	101.651
	17	38698	38353	38827	38680	38593	38704	39238	38881	38632	39119	39042	38374	102.331
	18	38566	38955	39128	38386	38712	38934	38424	38652	38390	38488	38705	38796	102.110
	19	38318	38508	38759	38926	38594	38309	38381	38478	38124	38335	38555	38734	101.645
	20	38443	38872	38636	38148	38590	38542	37949	38477	38301	38527	38815	38416	101.577
	21	38484	37793	38775	38073	38535	38850	38916	38539	38246	38194	38531	38370	101.487
	22	38068	38393	38156	38712	38535	38202	38127	38274	38520	38594	38945	38197	101.359
	23	38468	38463	38524	38607	38545	38587	38167	38482	38948	39175	38994	39115	102.097
14	0	38341	38133	38574	38612	38603	38475	38714	38562	38443	37865	38427	39068	101.597
	1	39004	38496	38408	37913	39102	38802	38782	38741	38432	39186	38387	38053	101.927
	2	38566	38251	38639	38218	38578	38500	38496	38657	38384	38539	38167	38650	101.562
	3	37899	38914	38959	38513	38667	38768	38908	39036	39178	38578	39082	38330	102.263
	4	38590	38630	38585	38064	38563	37793	39134	38373	38607	38422	38876	38441	101.657
	5	39056	38429	38668	38191	38269	38939	38660	38973	39005	38508	38644	38593	102.066
	6	38890	38882	38713	37932	39037	38558	38576	38433	38852	38501	38830	38689	102.057
	7	38689	38288	38525	38410	38253	39140	38665	38610	39366	38484	38223	38128	101.812
	8	38686	38951	38671	38767	38413	38531	38588	38713	38379	39136	38832	39018	102.231
	9	38356	38813	39080	38332	38936	39385	39132	37812	38345	38548	38479	38215	101.955
	10	38664	38754	38084	38363	38589	38414	38413	38185	38190	38636	38454	38779	101.536
	11	38415	38842	37932	38390	39074	38702	38125	38533	38654	37977	39267	38683	101.771
	12	38861	39112	38254	38767	38837	38399	38520	38900	38675	38869	38595	38506	102.145
	13	38268	38427	38392	39010	38994	38762	38676	38519	38489	38732	38273	38374	101.842
	14	38021	38407	38666	38621	38496	38556	38436	39222	38745	38560	38178	38604	101.753
	15	38804	38315	38490	38447	38433	37969	38860	38874	38359	38318	38778	38359	101.641
	16	38943	38778	38503	38922	38341	38982	38620	38543	38394	38514	37964	38946	101.960
	17	38379	38118	38523	39094	38234	38156	39343	38626	38824	38331	38366	38321	101.709
	18	38233	38004	38735	38460	38467	38250	37870	37780	38706	38715	38487	37845	101.101
	19	38876	38220	38143	38335	37828	38149	38508	37491	38860	38679	38830	37762	101.130
	20	38124	37999	38255	38546	38410	38303	37920	38341	38082	38096	38246	38579	100.958
	21	38173	37666	38103	38910	38187	38314	39032	38280	38357	38768	38477	38311	101.327
	22	38354	38471	38572	38413	38891	38716	37819	38312	38398	38730	38335	38095	101.444
	23	38117	38086	38540	38285	38209	38327	38013	37898	37600	38083	38396	37887	100.637

INAF/UNIRomaTre		S.V.I.R.CO. Observatory - Pressure Corrected Data – October 2018											16 NM-64	
day	hh	00_05	05_10	10_15	15_20	20_25	25_30	30_35	35_40	40_45	45_50	50_55	55_60	h-norm
15	0	38270	38579	38258	38054	37724	37991	37997	37556	38173	38393	38382	38344	100.692
	1	38207	38609	38058	37438	37697	38326	37959	38664	38314	38113	37984	38264	100.679
	2	38337	38298	37799	37920	37958	37972	37658	38253	38424	38764	37945	38074	100.628
	3	37858	38401	38893	38290	37945	38176	37963	38041	37821	38110	38491	38348	100.834
	4	38153	38244	38531	38348	38419	38144	38872	38590	38565	38762	38282	37745	101.344
	5	38494	38269	38564	38238	38823	38002	38375	38880	38406	39120	37959	38445	101.547
	6	38607	38898	38553	38442	38016	38759	37815	38632	38558	38616	38227	38806	101.625
	7	38501	38063	38086	38426	38490	38954	37928	38563	38478	38335	38205	38868	101.397
	8	38612	38129	39061	38501	38741	38680	38592	38192	38746	38495	38447	38401	101.771
	9	38720	39049	38273	38803	38857	38626	38809	37920	38154	38954	38541	38393	101.882
	10	38895	38721	38201	38787	38355	38821	38779	38558	38600	39113	38754	38685	102.139
	11	39346	38502	38315	38128	38709	38607	38682	38910	38706	38532	38095	38649	101.900
	12	38513	37948	39102	38337	38550	38641	38208	38533	38751	38589	38504	38780	101.740
	13	38413	38688	38618	37753	38392	38921	38079	38691	38266	39007	38786	38500	101.665
	14	38696	38292	38314	38157	38250	37815	38706	38572	38740	38794	38509	38372	101.468
	15	38676	38492	38515	38365	38282	38298	37912	38446	38104	38504	38145	38438	101.239
	16	38758	38505	37910	38630	38533	38562	37717	38531	38113	38382	38292	38642	101.326
	17	38368	37915	38002	38290	38393	38635	38072	38233	38264	38085	38900	38637	101.154
	18	37754	38183	38410	38446	38775	38152	37724	38570	38288	38714	38505	38388	101.180
	19	38331	38853	38473	38347	38674	38501	38678	38354	38326	38298	38072	38573	101.526
	20	38119	38082	38263	38871	38356	39346	38821	39074	38155	39006	38876	38490	101.961
	21	38611	38433	38590	38113	38010	38710	38616	38396	38557	38530	38974	38181	101.579
	22	38743	38367	37634	38743	38522	38814	38576	38344	37956	37904	38215	37894	101.137
	23	38010	38373	38482	38594	38361	38040	38332	38338	38315	38589	38505	38439	101.283
16	0	39110	37899	38520	38333	38067	38723	38526	38881	38011	38488	38157	38616	101.490
	1	38450	37632	38377	38108	37976	38428	38403	38170	37857	38260	37789	38093	100.659
	2	38098	38659	38522	38016	38402	38099	38830	38444	38713	38568	38077	38217	101.342
	3	38090	38686	37890	38505	38377	38169	38643	37936	38277	38460	38360	38749	101.231
	4	38432	38572	38341	38256	37928	37939	37994	38149	38197	38214	37770	38355	100.792
	5	38030	38523	37735	38780	38224	38253	38675	38230	38169	38767	37715	38759	101.169
	6	38636	37953	38606	38417	38803	38075	38751	38403	38581	38298	38704	38339	101.544
	7	38493	38263	38389	38619	38422	38012	38261	38596	38362	38236	38488	38129	101.259
	8	38352	38511	38425	38181	38451	38617	37987	38298	38492	38710	38481	38709	101.467
	9	38620	37726	38779	38660	37874	38142	38339	38368	38135	38921	39039	38754	101.498
	10	38424	38196	38017	38086	38545	38203	38768	38543	38645	38713	38252	37977	101.281
	11	38490	38470	38002	38756	38577	38229	38123	38275	38688	37827	38317	38275	101.207
	12	38193	38237	37946	38842	38284	38299	38444	38876	38210	38181	37693	38315	101.094
	13	38894	38985	38466	38711	38433	38049	38419	38468	38888	38409	38385	38207	101.709
	14	38741	38863	37992	38870	38156	38414	38476	38636	39153	38584	38522	38666	101.876
	15	38527	37858	38084	38823	38259	38345	38229	38093	37998	38502	38592	38623	101.185
	16	38125	37892	38250	37930	37925	38840	38262	37907	38539	38375	38286	38328	100.905
	17	38336	38210	38835	38024	38301	38271	37984	38423	38503	38381	38446	38211	101.183
	18	38183	38440	38311	38431	37997	37921	37800	38170	38562	38310	38544	38207	100.953
	19	37931	38299	38253	38393	37399	37480	38088	38504	38620	37960	38525	38000	100.639
	20	37803	37996	38310	38196	38407	38043	37711	38486	38226	38130	38333	37894	100.658
	21	38272	38226	38150	38173	37629	38464	38532	37527	37414	38121	38060	38883	100.639
	22	38539	38647	37866	38147	38177	38096	38399	37578	37925	38050	38124	37627	100.578
	23	38305	38006	38273	38400	38493	37439	38207	37922	38101	37863	38187	37661	100.509

INAF/UNIRomaTre		S.V.I.R.CO. Observatory - Pressure Corrected Data – October 2018											16 NM-64	
day	hh	00_05	05_10	10_15	15_20	20_25	25_30	30_35	35_40	40_45	45_50	50_55	55_60	h-norm
17	0	37725	38072	37926	38468	38965	38196	38621	38592	38466	38334	38066	37607	100.987
	1	38158	37700	38111	38404	38162	37786	38309	37847	37962	38292	38315	37764	100.498
	2	38155	38633	38238	38520	37960	38007	37446	38041	38458	37964	38413	38117	100.749
	3	38263	38610	37973	38412	37949	38704	38387	38597	38095	38580	38157	38406	101.229
	4	38095	38338	38436	38164	38249	38215	38331	38025	38248	38532	38735	38103	101.084
	5	37785	38361	37913	38264	37974	37970	38370	37773	38130	38167	38444	38434	100.669
	6	38528	38364	37742	38120	37962	38559	38537	38208	37949	38572	38294	38460	101.045
	7	38749	38589	38239	38772	38819	38190	37779	38335	38609	38157	38343	38139	101.358
	8	38345	38150	38500	38722	38518	38571	38426	38739	38725	38194	38628	38787	101.707
	9	38315	38140	37877	38342	38393	38062	38423	37806	38698	38457	38443	38640	101.111
	10	38420	38843	38162	37941	38415	38469	38411	38776	38538	38030	38340	38302	101.343
	11	38214	38123	38241	38454	37824	38132	37729	38609	38015	38421	37980	38563	100.827
	12	38285	38374	38357	38610	38332	38454	37893	38743	38585	38551	38396	38492	101.436
	13	39070	38203	38317	38643	38574	38080	38249	38547	38440	38489	38373	37984	101.413
	14	38166	38037	38528	38043	38056	38407	38557	38246	38389	38770	38498	38632	101.272
	15	38290	39007	38453	38593	38357	38659	38390	37696	37976	38381	38069	38293	101.236
	16	38327	37936	38745	38870	38427	38195	38753	38126	38504	38138	38193	38179	101.287
	17	38759	38196	38098	38695	37831	38329	38365	38416	38576	38144	38326	38560	101.265
	18	38334	38506	38168	38051	38206	38368	38758	37758	38304	38577	38915	38225	101.238
	19	38222	38389	38182	38573	38012	38015	38047	38596	38357	38442	38841	38394	101.215
	20	38406	38446	38150	38462	38375	38846	38524	38239	38099	38458	38278	38149	101.295
	21	38509	38019	38170	37670	38103	37960	37577	38046	38289	38052	38531	37866	100.494
	22	38260	38054	38172	37866	38473	38209	38079	38586	38463	38435	37699	38079	100.842
	23	38747	38423	38130	38263	38744	38174	38866	37717	38248	38237	38185	38382	101.226
18	0	38672	38092	38477	38087	38124	38231	38045	37594	38436	38557	38453	37884	100.897
	1	38522	38180	38262	38007	38161	38343	37668	38445	38169	38302	38098	37755	100.741
	2	38532	37977	38405	38027	37838	38357	38934	38158	38867	38207	37985	38412	101.134
	3	38322	38419	38454	38256	38145	38195	38307	38421	38023	38499	38248	37968	101.037
	4	38439	38585	38610	38030	38700	38442	37736	38091	38206	38181	37619	38187	100.942
	5	38487	38131	38425	38587	38803	38379	38358	37998	38295	38622	38630	38312	101.426
	6	38624	37752	38450	38326	38490	38429	38632	38494	38754	38717	38024	38514	101.465
	7	38848	38318	38156	37985	37857	38346	38722	38726	38182	38442	38067	38703	101.278
	8	38118	38774	37874	38261	38572	38877	38830	38211	38586	37982	38393	38758	101.472
	9	38221	38452	38269	38492	37810	38037	38596	38121	38563	38580	38383	37901	101.074
	10	38256	38238	38046	38309	38626	38186	38132	38442	38114	38890	38818	38320	101.283
	11	38439	38356	38758	37973	38091	38644	38133	38731	38387	38302	38586	38176	101.327
	12	38230	38038	38827	38661	38243	38427	38798	38467	38763	38316	38342	38565	101.569
	13	38410	38459	38230	38152	38389	38362	38569	38808	38355	38650	37572	38092	101.211
	14	38184	38128	38661	38867	38727	39169	38211	38760	38859	39091	39038	38622	102.150
	15	38795	38143	38757	37838	38584	38613	38569	38374	38489	38080	38598	38842	101.570
	16	38430	37906	38506	39066	38553	38506	38293	38022	38718	38925	38753	38354	101.647
	17	38233	38138	38362	37957	38644	38407	38434	37960	38523	38334	38460	38116	101.105
	18	38696	38185	38219	38280	37972	38776	37982	38214	38069	38458	38024	38038	100.961
	19	38161	38638	38284	38421	38040	38432	38352	37870	38156	38219	38297	38151	100.985
	20	38290	38825	38302	38283	38429	37736	38214	38223	37939	38349	37852	38168	100.895
	21	38495	38168	38237	37916	37914	38228	38392	38210	38334	37981	37964	38227	100.775
	22	38297	37838	38802	38173	38422	38183	37807	37848	38147	37976	38005	38202	100.694
	23	38446	38307	38333	38688	38726	38063	38615	38501	38400	37993	38249	38660	101.416

INAF/UNIRomaTre		S.V.I.R.CO. Observatory - Pressure Corrected Data – October 2018											16 NM-64	
day	hh	00_05	05_10	10_15	15_20	20_25	25_30	30_35	35_40	40_45	45_50	50_55	55_60	h-norm
19	0	37730	38807	38206	38156	38466	38090	38594	38383	38396	38271	38223	38423	101.145
	1	38450	38271	37888	38178	38978	37519	38091	38514	38470	38370	38353	38556	101.120
	2	38148	38190	38674	38179	38565	39011	38406	38032	38688	39205	38469	39025	101.770
	3	38485	39271	38650	38312	38909	38460	38729	38602	38511	38559	38123	38205	101.819
	4	38308	38680	38234	38481	38064	38568	38765	38263	38830	39145	38349	38660	101.716
	5	38493	38489	37804	38344	37846	38514	38260	38571	38899	38502	38261	38877	101.388
	6	38495	38417	38317	38130	38192	38877	38430	38419	38028	38800	38841	38607	101.542
	7	39380	38421	39023	38978	38248	38338	38285	38401	38677	38319	38339	38342	101.806
	8	38148	38294	38329	39159	39125	38829	38421	38893	38899	38439	38840	38328	102.015
	9	38576	37880	38552	38147	38331	38264	38388	38132	38702	38736	38938	37712	101.279
	10	38652	39115	38750	38447	38923	37922	38535	38119	38275	38814	38637	38292	101.745
	11	38651	38117	38790	38695	38408	38371	38402	38772	38841	38033	38524	38664	101.699
	12	37999	38153	38531	38212	38331	38616	38827	38716	38127	38533	38383	38892	101.491
	13	38481	38266	38539	38168	38650	39076	38549	38466	38538	38430	38542	37957	101.566
	14	38179	38511	38760	38509	38631	38494	37789	38429	38715	38577	37833	38187	101.335
	15	38191	38239	38234	38374	38276	38264	38350	38272	38108	38023	38577	38207	101.005
	16	38122	38463	38422	38087	37659	38591	38392	38648	38051	38477	38158	38706	101.151
	17	38238	38186	38364	38086	38518	38272	38331	38099	38564	37982	38626	38698	101.192
	18	38351	38140	37818	38081	38381	38197	38436	37986	38159	38543	38808	38117	100.983
	19	38089	37925	38398	38345	38743	38428	38733	38161	37991	38480	37671	38334	101.046
	20	38740	38156	38382	37764	38514	38373	37831	38221	37979	38387	37950	38429	100.920
	21	38457	38290	37876	37993	38682	38234	38264	37680	38270	38726	38164	38195	100.943
	22	38840	37757	38076	38247	37625	38359	38465	38201	38268	38110	38256	38334	100.879
	23	38657	37528	38413	37947	38328	38698	38446	37855	38413	38388	38636	38638	101.188
20	0	38527	38317	38697	38250	38329	38417	37982	38380	38221	37983	38870	39222	101.463
	1	38199	38478	37779	38292	38905	38980	38348	38047	38579	38060	38559	38836	101.434
	2	38688	38415	38851	38841	38191	38485	38413	38081	38916	38845	38788	37872	101.725
	3	38716	38543	38759	38353	38989	37791	38153	38645	38414	38609	39001	38787	101.807
	4	38629	39016	38344	38721	38264	38166	38241	38368	38789	38672	38260	38670	101.671
	5	38084	38480	38901	38614	38975	39212	38324	38913	38837	38803	38672	38834	102.223
	6	38836	38746	38625	39055	38604	38776	38767	38786	38304	38859	38503	38376	102.132
	7	38625	38439	38483	37985	38775	38849	38663	38904	38425	39040	38890	38287	101.940
	8	38790	38547	39093	38933	39105	38684	38613	38159	38324	37948	38264	38358	101.820
	9	38976	38351	38370	38660	38604	38196	37934	38359	38363	38286	38737	38480	101.490
	10	38222	38220	38441	38819	38344	38407	37872	38660	38050	38565	39653	38144	101.508
	11	38572	37948	38817	37966	38857	37979	38065	38713	38386	38057	38372	38528	101.257
	12	38055	37955	38099	37780	38548	38346	38050	37983	38434	38271	38169	38417	100.784
	13	38833	38971	38979	38110	38637	38259	38435	37985	38374	38501	38207	38786	101.657
	14	38334	38787	38720	38341	38789	38203	37724	38017	38432	38842	37980	38169	101.275
	15	38542	38045	37838	38128	38032	37980	38282	38110	38157	38456	38178	38395	100.791
	16	38049	37724	38542	38339	38542	38375	38396	38476	38538	37854	39010	38149	101.199
	17	37764	38201	37975	38505	38194	38079	38707	37865	38159	37819	38329	37988	100.669
	18	38527	38575	38107	38691	38603	38392	38788	38206	38045	37906	38325	38151	101.270
	19	37877	38626	37742	38630	38227	38020	38237	37952	38469	38273	37989	38044	100.779
	20	38250	38266	37595	38099	38455	38475	38214	38566	38005	37933	37992	38287	100.790
	21	38077	38148	38319	38115	38195	38056	38581	38752	37687	37890	37800	38013	100.679
	22	38316	37989	37912	37768	38250	38555	38509	37802	37757	38392	38120	38525	100.737
	23	38807	38145	38483	38839	37860	37947	38040	38121	38543	38085	38230	38229	101.052

INAF/UNIRomaTre		S.V.I.R.CO. Observatory - Pressure Corrected Data – October 2018											16 NM-64	
day	hh	00_05	05_10	10_15	15_20	20_25	25_30	30_35	35_40	40_45	45_50	50_55	55_60	h-norm
21	0	39048	38570	38765	38093	38356	38102	38927	38434	38377	38589	38671	38259	101.679
	1	38713	38108	38505	38552	38409	37712	38593	38586	38684	38272	38595	38001	101.361
	2	38393	38145	38419	38165	38287	38451	38479	37905	38525	38338	38718	38515	101.275
	3	38582	38322	38138	38221	38168	38160	38362	38582	38163	38211	38439	38680	101.206
	4	38003	37800	38865	38187	38381	38411	38421	37880	38475	38188	38287	38390	101.043
	5	39036	38312	38514	38887	38351	38582	38300	38420	38393	38821	38710	38635	101.851
	6	38558	38682	38203	38023	38753	38604	38558	38049	38444	38472	38681	38324	101.497
	7	38781	38699	38909	38455	38329	38432	38256	39097	38129	37840	38360	38488	101.590
	8	38571	38273	38750	37831	37893	38229	37818	37930	38419	37662	38490	37996	100.729
	9	38901	37874	39288	38297	38368	37944	38474	38245	37872	37844	38580	38035	101.139
	10	38356	38352	38821	38618	38377	37841	37719	38548	38232	38411	38922	38440	101.340
	11	38433	38167	38460	38214	37836	38115	38282	38435	37854	37882	38393	38529	100.892
	12	38710	37785	38079	38479	38134	38167	38380	37688	38434	38366	38564	37929	100.917
	13	38585	38093	38627	38249	38271	38347	38086	38381	38455	38426	38700	38545	101.369
	14	38274	38187	38250	37965	38673	37909	37947	38070	37980	38273	38166	38614	100.827
	15	37939	38557	38085	38039	37616	38158	38387	38051	38319	38250	38375	38068	100.726
	16	38140	38380	38116	38343	38588	37791	37857	38582	38145	37758	38318	37637	100.684
	17	38200	38552	38765	38143	38251	38729	38101	38012	38030	38417	38668	38424	101.264
	18	37836	38839	38003	37456	38219	38371	38882	38272	38311	38393	38794	37889	101.039
	19	38385	38267	38613	37881	38183	38172	38071	38437	38305	38383	38366	38697	101.147
	20	38286	38719	39380	38805	38171	38309	38716	38174	37881	38385	38464	38206	101.529
	21	38718	38948	38148	37966	39037	37931	38785	38033	38306	38004	38315	38423	101.335
	22	38127	38636	38825	38667	38325	37886	37889	38943	38928	39156	38552	38436	101.722
	23	37972	38279	38303	38175	37990	38514	38070	38362	38495	38266	38330	38677	101.075
22	0	38696	38719	38729	38294	38249	38055	38967	38301	38046	38600	38928	38340	101.623
	1	38502	38502	38502	38414	38277	38419	38371	38179	38377	38263	38632	38825	101.478
	2	38930	38247	38567	38113	38559	38307	37898	38413	38226	38511	38277	38155	101.244
	3	38061	38802	38555	38018	38684	38678	38508	38449	37818	38964	38536	38810	101.614
	4	38835	38966	38484	38707	38397	38889	38166	38561	38404	38340	37717	38863	101.712
	5	38722	38827	38686	38185	38072	38091	38310	38833	38957	38270	38370	38592	101.621
	6	38673	38680	38029	37957	39210	38850	38780	38621	38444	38805	38340	38524	101.841
	7	38903	38407	38470	38280	38428	38583	39493	38652	38072	38704	38593	39157	102.023
	8	38488	38415	38809	38455	38515	38369	38428	37949	38517	37987	38240	38884	101.432
	9	38835	39316	38426	38945	38533	37980	38896	38605	37994	38654	38693	38924	102.036
	10	38463	38238	38472	38336	38577	39112	38691	38821	38388	38727	38444	38132	101.728
	11	38364	38550	38070	38098	38077	38454	38100	38511	38435	38009	38298	38309	101.041
	12	38705	38947	38657	38472	38962	38577	38378	38364	37986	37866	38279	38250	101.518
	13	38550	38681	38602	38554	38307	38773	38996	38281	38410	38726	38356	38652	101.835
	14	38906	38173	38793	39024	38873	38413	37974	38711	38192	39090	38400	38433	101.856
	15	38407	38313	38341	38806	38949	39367	38726	38221	39276	38774	38425	37957	101.983
	16	38646	38268	38882	39072	38256	38932	38554	38925	38494	38008	38879	38587	101.971
	17	38436	38664	38816	38392	38588	38111	38726	38309	38484	38455	38902	38697	101.768
	18	38362	38528	38346	38084	38269	38435	38634	38394	38553	38642	38158	38166	101.325
	19	38253	38693	38589	38289	38335	38188	38592	38145	38620	38483	39211	38001	101.508
	20	38155	38994	38323	38221	38394	38784	38154	38694	38425	38884	39260	38175	101.742
	21	38412	38486	38329	38517	38767	38627	38793	38630	38453	39102	38684	38810	101.994
	22	38700	38844	38866	38020	38258	38370	37974	37938	38210	38483	38493	38746	101.399
	23	38692	38701	38292	38979	38785	38257	38233	38100	37974	38633	38652	38688	101.637

INAF/UNIRomaTre		S.V.I.R.CO. Observatory - Pressure Corrected Data – October 2018											16 NM-64	
day	hh	00_05	05_10	10_15	15_20	20_25	25_30	30_35	35_40	40_45	45_50	50_55	55_60	h-norm
23	0	39312	38766	38462	38371	38719	38356	38332	38571	38062	38297	38125	37608	101.415
	1	38034	38962	37907	38348	38067	38344	38333	38667	38370	38331	38670	38923	101.410
	2	38286	38357	38584	38163	38305	39082	38857	38325	38635	38567	37720	38322	101.465
	3	38996	38011	38270	38784	39123	37964	39069	38895	38734	38545	38138	38699	101.910
	4	38326	38372	38964	38743	38205	38653	38765	38353	38733	38303	38468	37840	101.580
	5	38532	38522	38819	38629	38831	38633	38568	38812	39058	38480	38211	39186	102.142
	6	38687	38473	38572	38240	38334	38624	38392	38117	38171	38095	38346	38443	101.309
	7	38430	38027	38462	38956	38981	38859	38698	38146	38432	38553	38356	38534	101.735
	8	37920	38491	38456	38676	38891	38246	38380	38760	39028	39010	38362	38110	101.713
	9	38865	39309	37974	38370	38356	38169	38573	38269	38424	38544	38638	38812	101.707
	10	38265	38778	38601	38884	38366	38393	38815	38384	38308	38286	38648	38350	101.657
	11	38023	38678	38318	38244	38085	38469	39154	38267	38605	38587	38559	38342	101.493
	12	38450	38581	38300	38051	37934	38509	38495	38080	38180	38501	38654	38420	101.234
	13	38385	38084	37893	38020	38133	38582	37987	38880	38580	38871	38599	38181	101.244
	14	38547	38385	38795	38108	38644	38006	38048	38281	38411	38643	38153	38408	101.294
	15	38376	38290	38069	38852	38292	38383	38354	38665	38922	38428	38841	38206	101.569
	16	38258	39283	38663	38666	38364	38754	38242	38410	38330	38788	38514	38414	101.791
	17	38441	38447	38613	37928	38700	38602	38704	38301	38252	38224	38146	38888	101.475
	18	38208	38856	39196	38082	38311	38323	38270	39091	38168	38585	38199	38629	101.622
	19	38468	38844	39054	38692	38556	38314	38572	39223	38380	38574	38678	38303	102.005
	20	38512	38459	38659	38391	38457	38325	38325	37957	38095	38492	38049	38760	101.306
	21	38312	38505	38674	38643	38530	38808	38098	38438	38115	38516	38692	38113	101.517
	22	38772	38950	38344	38499	38441	38491	38772	38244	38591	38694	38623	38675	101.881
	23	37985	38447	38494	38495	38649	38359	38598	38014	38179	39211	39165	38632	101.691
24	0	38264	38771	39186	38413	38636	38408	38744	39014	37553	38406	38146	38838	101.722
	1	39397	38230	38513	38141	38427	38330	38268	38509	38334	38788	38583	38971	101.748
	2	38323	38429	38727	38132	38322	38378	38597	38163	38251	38615	38645	39092	101.568
	3	37581	38184	38700	38310	38763	38559	38750	38393	38567	39059	38436	38740	101.650
	4	38377	38526	38568	38440	38510	38840	38387	38249	38451	38690	38418	38988	101.738
	5	38319	38517	38289	37989	38124	38896	38789	38809	38649	38298	37360	38896	101.406
	6	38265	38410	38598	38103	38332	38417	38361	38817	38185	38139	38619	38515	101.368
	7	38558	38301	38778	38419	38712	37922	38378	38450	38511	38078	38206	38253	101.324
	8	38792	38320	38416	38482	38573	38890	38467	38349	38365	38466	38331	38576	101.646
	9	38343	38253	38612	38299	38650	38108	38061	38248	38824	38446	38245	37817	101.179
	10	37810	38264	38381	38496	38584	38544	38582	38486	38373	38331	38460	38841	101.454
	11	38505	38587	38996	37895	38744	38538	38483	38741	38705	38375	38630	38339	101.758
	12	38298	38399	38856	38693	38180	38494	38745	38598	38087	38123	38185	38191	101.386
	13	38394	38072	38680	38109	38708	38308	37911	38574	38208	37944	38277	38744	101.185
	14	38172	38177	38517	38393	38226	38528	38287	38950	38164	38885	38182	38612	101.441
	15	39063	39011	38863	38764	38074	37953	38378	38717	38514	38654	38632	38370	101.859
	16	38551	38642	38408	38464	38176	38297	38512	38538	38398	38328	38484	38856	101.564
	17	38986	37836	37972	38308	38288	39227	38130	38175	38382	38430	38833	38591	101.454
	18	38220	38104	38606	38103	38139	38245	38070	38685	38944	39008	38097	38882	101.442
	19	38023	38360	38462	38351	38377	37615	38253	38941	38357	38248	38396	38336	101.138
	20	38167	38538	38625	37818	38634	38182	38371	38349	38517	38531	38506	38252	101.308
	21	38372	38596	39313	38512	37702	37926	38250	38156	37897	38624	38456	38334	101.231
	22	38327	38392	38829	38068	38529	38249	38206	38499	38226	37824	38083	38656	101.175
	23	38478	38528	38236	38251	38417	38452	38453	38730	37786	37756	38587	37840	101.093

INAF/UNIRomaTre		S.V.I.R.CO. Observatory - Pressure Corrected Data – October 2018											16 NM-64	
day	hh	00_05	05_10	10_15	15_20	20_25	25_30	30_35	35_40	40_45	45_50	50_55	55_60	h-norm
25	0	38616	38451	38418	38064	38409	38816	38297	38375	38841	38543	38955	37975	101.587
	1	38410	38557	38911	37989	38347	38224	38634	38045	38120	38932	38528	37977	101.349
	2	38584	38114	38230	38353	38071	38551	38171	38046	38802	38273	38659	38536	101.285
	3	38203	38926	37883	38038	38168	38781	37925	38529	37955	37685	38495	38118	100.916
	4	38749	38714	38544	38068	38488	38203	38746	38639	39178	38633	38496	38165	101.778
	5	38468	38503	38700	38140	38411	38276	38988	38584	38263	38557	37975	38791	101.565
	6	38606	38412	38644	38551	38689	38235	38614	37983	38255	38466	39039	38315	101.598
	7	38472	38508	38088	38726	38642	37713	38696	38223	38349	38588	38605	38380	101.418
	8	38606	38648	38325	38124	38075	38867	37648	38475	38945	38616	38554	38738	101.557
	9	38164	38139	37432	38482	38296	38390	38504	38048	38918	38801	38232	38896	101.266
	10	38296	38094	38412	38522	38366	38459	38433	38095	38429	38178	38119	38678	101.218
	11	38373	38533	38233	38689	38735	38762	38613	38686	38337	38179	38196	38209	101.540
	12	38563	37829	38119	38035	38469	38603	38780	38074	38168	38083	38233	38901	101.169
	13	38384	38354	38197	38340	39397	38379	38684	38615	38113	38353	38442	38405	101.566
	14	38441	38140	38438	38602	38667	38991	38153	38135	38357	38744	38303	38052	101.425
	15	38585	38916	38953	38328	38885	38324	38684	38425	37781	38093	38585	38297	101.608
	16	38319	38622	38251	38384	39039	38991	38400	37704	38646	38476	38372	38532	101.582
	17	38437	38707	38405	38608	38347	38187	38115	38691	37564	37861	38329	38233	101.087
	18	38312	38360	38921	38345	37964	38475	38564	38290	38609	38626	38630	38253	101.497
	19	38576	38379	38925	38260	38425	38679	38733	38927	38452	38907	38440	38479	101.900
	20	37862	38000	38350	38024	38370	38436	38346	38869	38824	38552	37704	38738	101.217
	21	38701	38248	38416	38142	38803	38291	38246	38544	38077	38130	38289	38236	101.227
	22	38356	37988	38267	38608	38332	38799	38521	38767	38344	38966	38788	38697	101.735
	23	38470	38463	37752	37918	38033	38739	37944	38346	38478	38670	38848	37873	101.098
26	0	38783	37948	37323	38427	37899	38348	38573	38502	38444	38649	38428	38148	101.079
	1	38123	38635	38266	38432	38245	38370	38375	38499	38104	38486	38758	38633	101.404
	2	38519	38605	38687	38370	37958	38466	37679	38815	38617	38093	38621	39053	101.526
	3	38774	38392	38246	38530	38685	39315	38374	37929	38603	38044	38693	38254	101.605
	4	38271	38506	38472	38411	38027	38881	38732	38137	37919	38044	38928	38714	101.429
	5	38252	38402	38243	39218	38353	38813	38343	38669	37897	38582	38395	38160	101.492
	6	38490	38628	38994	38546	38487	39047	38430	38599	38251	38211	38271	38237	101.682
	7	38771	38128	38555	38331	39012	39211	38658	38374	38660	38678	38139	38688	101.905
	8	38000	38416	37876	38776	37855	38007	38198	38232	38353	38758	38501	38500	101.084
	9	38535	38391	37921	37933	38241	38501	38275	37913	38448	37851	38266	37973	100.815
	10	37969	38205	38202	38304	38686	38620	38264	38665	38541	38030	38204	38547	101.252
	11	38652	38575	38750	38555	37996	38277	38489	38607	37942	38263	38485	38713	101.487
	12	38402	38340	38426	38186	38159	37541	38945	38709	38130	37955	38432	38212	101.076
	13	38872	38392	38923	38155	38822	38572	38290	38116	38606	38093	38269	38385	101.529
	14	39078	38160	38939	38626	38192	38621	38463	38648	38440	38495	38248	38674	101.768
	15	38492	38138	38319	38615	38625	38488	39041	38475	37743	38641	37997	38561	101.450
	16	38501	38587	38934	38192	38711	38400	38634	38199	38315	38198	38517	38058	101.475
	17	38023	38256	38268	38006	38593	38245	38604	38575	37963	38221	39087	38310	101.233
	18	38111	38387	38338	38547	38696	37937	38433	38224	38315	38092	38536	38288	101.179
	19	38282	38475	38854	38251	38341	38558	38395	38173	38241	38094	38501	39185	101.497
	20	38533	38173	38841	38497	38335	38614	38140	38153	38071	38745	37847	39148	101.441
	21	38548	38795	38649	37972	38110	38541	38494	38161	38115	38494	38248	38389	101.313
	22	38791	38647	38610	38582	38760	38412	38646	38476	38559	38226	38229	38123	101.653
	23	38937	38046	38404	38357	38108	38450	38542	38678	38685	38544	38206	37927	101.394

		S.V.I.R.CO. Observatory - Pressure Corrected Data – October 2018											16 NM-64	
INAF/UNIRomaTre														
day	hh	00_05	05_10	10_15	15_20	20_25	25_30	30_35	35_40	40_45	45_50	50_55	55_60	h-norm
27	0	38218	37990	37822	38212	38364	38043	38149	38791	38531	38807	38267	38582	101.146
	1	38354	38263	38577	38481	38473	38287	38865	38526	38256	38576	38236	37938	101.383
	2	38665	38188	38979	38433	38121	38632	38649	38349	38190	38696	39150	37668	101.578
	3	38651	38551	38743	38557	37789	38784	38607	38384	38236	38837	38207	38305	101.563
	4	39048	38702	38409	38489	38217	38178	38500	38136	38225	38194	38710	38171	101.415
	5	38804	38905	38438	38658	38646	37889	38602	38704	38400	38848	38211	38484	101.769
	6													
	7													
	8													
	9													
	10													
	11													
	12													
	13													
	14													
	15			38775	38765	39002	38408	39949	38728	38125	38515	38501	38305	
	16	38839	39046	38165	38783	37948	38349	38700	38199	38376	38624	38405	39150	101.768
	17	38625	38089	38316	38396	38996	38410	38248	37911	38892	38046	38696	38868	101.528
	18	38122	38380	38206	37914	38307	38310	38275	38745	38412	38785	38222	38610	101.264
	19	38009	38629	38337	38737	38165	38545	37800	38795	38693	38856	38532	38496	101.550
	20	38298	38966	38523	38479	38686	38778	38777	38125	38151	38342	38676	38825	101.778
	21	38445	38806	38209	38475	38496	38179	38609	38502	37754	38452	38884	38295	101.444
	22	38250	38245	38878	38464	38275	37964	38706	38192	38073	38250	38691	37783	101.149
	23	38243	38203	38929	37968	38134	38611	38226	38294	39074	38611	38081	38975	101.497
28	0	38575	38215	38263	38777	38429	38542	38695	37841	38418	38368	38819	38592	101.534
	1	38233	38610	37859	38617	38574	38626	38569	38659	38246	38894	38331	38769	101.638
	2	39012	38081	38152	38553	38953	38843	37918	38645	38536	38870	38366	38559	101.747
	3	38514	38916	38359	38365	38294	38384	38432	38281	38499	38541	38782	38419	101.593
	4	38168	38195	38870	38536	38343	38721	38153	38640	38688	38576	38519	38738	101.672
	5	38778	38670	39212	38281	38161	38701	38812	38709	38824	38701	38766	38297	102.061
	6	38261	38693	38843	38609	38101	38472	38293	38106	39031	38990	38450	38292	101.671
	7	39004	38717	39305	38810	38785	38298	38364	39141	38452	38324	38753	38513	102.183
	8	38412	37826	38550	38641	38989	38192	38351	39191	38229	38063	38376	38618	101.517
	9	38949	38643	38193	37851	38720	38731	39101	38061	38839	38617	38659	38352	101.798
	10	38499	37778	38932	38376	38561	38515	38485	38237	38045	38108	38582	38755	101.392
	11	38813	38471	38692	38666	38194	38392	38577	38535	38052	38165	38335	38096	101.418
	12	38387	38186	38318	38166	38235	38271	38236	38735	38267	38513	38205	38544	101.214
	13	37982	38367	38250	38299	38155	38274	38238	39082	38498	38003	38489	38742	101.283
	14	37865	38456	38559	38110	38579	38240	38368	38242	38371	38910	38672	38282	101.343
	15	38322	38945	38146	38799	38281	38385	38737	38519	38168	39040	38409	38734	101.747
	16	38284	38970	38615	37876	38791	38574	38345	37962	38629	38964	38395	38053	101.521
	17	38405	38224	38791	38956	37889	38404	38140	38046	38394	38649	38665	38300	101.390
	18	38336	38641	38541	38170	37867	38464	38228	38355	38177	38515	38805	37917	101.203
	19	38675	39089	38709	38857	38370	38530	38523	37865	38476	38170	38237	38206	101.576
	20	39006	38602	38232	38118	38430	38761	38360	38394	38042	38406	38658	38560	101.545
	21	38571	38720	38711	38407	38408	38504	38578	38845	39073	39122	38172	38339	101.959
	22	38660	38344	38064	38599	38435	38036	37744	38273	38447	38199	38851	38935	101.329
	23	38112	38761	38719	38530	38045	38626	38547	38347	38135	38758	38430	38902	101.621

INAF/UNIRomaTre		S.V.I.R.CO. Observatory - Pressure Corrected Data – October 2018											16 NM-64	
day	hh	00_05	05_10	10_15	15_20	20_25	25_30	30_35	35_40	40_45	45_50	50_55	55_60	h-norm
29	0	38487	38451	39301	38477	38933	38280	38602	38148	38530	38121	38346	38509	101.668
	1	38846	38362	38859	38396	38869	38423	38511	38297	38360	38545	38574	38696	101.802
	2	38824	38513	38789	38657	38273	38351	39051	38611	38325	38202	38401	38881	101.833
	3	38253	38245	38013	38520	38440	38727	38780	38446	38569	39507	38672	39267	101.959
	4	38926	38525	38493	37919	38771	38420	38388	38335	38637	38619	38120	39080	101.692
	5	38422	38298	38840	38403	38634	39105	38369	38608	38551	38343	38643	37990	101.685
	6	38830	38434	38839	38693	38670	38605	38938	38659	38536	38657	38424	38758	102.089
	7	38685	38086	39030	38931	39373	39011	38562	38881	38511	38494	38671	38754	102.298
	8	38857	39113	37841	38742	38445	37938	38367	38926	38346	38376	38240	38499	101.571
	9	38951	39045	38636	38798	38569	38715	38502	38528	38168	38676	38358	38593	101.978
	10	38612	38419	38399	38332	38185	38779	38547	38788	38356	38711	38000	38604	101.582
	11	38281	39232	38132	38808	39036	38436	38831	38872	38805	38700	38388	38483	102.081
	12	38878	38322	38431	38790	38485	38660	38330	39217	38528	38600	38938	38857	102.090
	13	40162	38465	38491	38806	38744	38816	38082	38084	38399	37839	38746	39040	102.006
	14	38586	39033	38226	38105	38564	37944	38922	38363	38798	38450	39235	39056	101.922
	15	38496	38638	38459	38898	37993	38557	38400	38473	38212	38929	38621	38302	101.637
	16	38863	38474	38288	38433	38336	38893	38337	38308	38919	38887	38532	38695	101.852
	17	39124	38525	38873	38644	38327	37881	38618	37940	38227	38295	38144	38821	101.515
	18	37928	38283	38701	38404	38829	38732	38286	38790	38325	38185	38091	38428	101.416
	19	38571	38286	38645	38501	38682	38508	38263	38768	38428	38535	38121	38088	101.508
	20	38256	38336	38113	38120	38198	38740	38245	38251	38518	38407	38000	38025	101.026
	21	38831	38489	38468	37777	38594	38483	38945	38538	37958	38558	38248	38371	101.477
	22	38474	38974	38190	38094	38213	38347	38528	38770	38409	38402	37980	38500	101.394
	23	38383	37884	38080	38150	38744	38271	38247	38336	38077	38279	38106	38352	100.960
30	0	38419	38738	38185	38190	37915	38516	38685	38285	38345	38663	38746	38825	101.538
	1	37910	38445	38475	38489	38289	38629	38651	38482	38450	38538	38318	38961	101.560
	2	38334	39003	38646	38099	38677	38374	38841	38802	37769	38605	38550	38433	101.669
	3	38610	38954	37777	38542	38748	38654	38384	39239	38514	38539	38684	38989	101.999
	4	38440	38284	38431	38028	38704	38830	37764	38701	38608	38917	38625	38531	101.610
	5	38515	38642	38511	39290	38410	38708	39274	38334	38788	38165	38713	38295	102.003
	6	38834	38823	37895	38558	38968	38203	38611	38711	39180	38780	38555	38151	101.920
	7	38328	37864	38224	38513	38537	38953	38776	38374	38717	38672	38187	38432	101.547
	8	38666	38265	38782	38679	38597	38103	38229	38446	38538	38766	38467	37905	101.518
	9	38595	38320	38860	38170	38764	38423	38458	38637	38267	38542	38007	38401	101.518
	10	38413	38147	38992	37664	38201	38365	38945	38957	38095	38759	38321	37847	101.355
	11	38396	37949	38510	37836	38789	38956	38383	38691	38375	38869	38176	38165	101.441
	12	38350	38151	38549	38187	38882	38816	38474	38119	38870	38494	38327	38429	101.563
	13	38804	38529	38251	38959	38683	38237	38654	38386	38030	38524	38694	38182	101.626
	14	38061	38272	38501	38664	38470	38737	38070	38125	38069	38282	37953	38608	101.159
	15	38712	38496	37827	38009	38487	38859	38006	37933	38552	38316	38445	38311	101.190
	16	39521	38499	38856	39574	38926	38242	38138	38347	38276	38264	37758	38251	101.786
	17	38250	37975	38661	38149	37665	38160	38401	38385	37891	38634	38560	38395	101.007
	18	37961	38599	37688	38407	38310	38172	38221	38143	38099	38791	38405	38390	101.020
	19	38650	37965	38369	37695	38540	38119	38444	38122	38213	38522	38611	38652	101.178
	20	38639	38424	38412	38115	38642	38767	38280	38414	38327	38081	38391	38269	101.368
	21	38792	38528	38333	38343	38252	38609	38636	38884	38865	38629	38480	38708	101.873
	22	38387	37835	38553	38446	38309	38158	38066	38385	38329	38201	38945	37809	101.073
	23	38577	38661	39080	38554	38614	37909	38371	38621	38174	38391	38393	38091	101.516

INAF/UNIRomaTre		S.V.I.R.CO. Observatory - Pressure Corrected Data – October 2018											16 NM-64	
day	hh	00_05	05_10	10_15	15_20	20_25	25_30	30_35	35_40	40_45	45_50	50_55	55_60	h-norm
31	0	38650	38202	38482	38251	38545	38089	38516	39134	38222	38423	38643	38489	101.565
	1	38629	38591	38106	38393	38478	38044	38677	38738	38533	38011	38687	37545	101.295
	2	38144	38148	38413	38712	37979	38399	38914	38408	38025	38684	38938	38319	101.438
	3	38802	37924	38335	38488	38214	38401	38068	38682	38524	38720	38719	38525	101.509
	4	37783	39151	38576	37561	38451	38049	38848	38645	38712	38558	38448	38314	101.441
	5	38357	38453	38400	38581	39048	38049	38000	38206	38168	38144	38694	38444	101.320
	6	38349	38096	38369	37798	38818	38974	38470	38329	38366	38366	38306	38653	101.397
	7	38719	37925	38350	38260	38793	38476	38776	38278	38864	38968	38162	38391	101.632
	8	39107	38738	38381	38593	38510	38274	38657	38418	38525	38295	38696	38856	101.871
	9	38722	38624	37743	38580	38389	38281	38570	38581	38833	38636	38893	38444	101.706
	10	38312	38955	38554	38562	38224	37983	38736	38554	38131	38473	38745	38755	101.637
	11	38564	37870	38877	38232	38325	38555	37996	37807	38557	38587	37996	38774	101.231
	12	38844	38442	38410	38602	38265	38198	38168	38506	38622	38013	38122	38416	101.334
	13	38549	38470	38722	38461	38168	38431	38668	38625	38447	37911	38691	38730	101.612
	14	37962	38603	38466	38526	38741	38228	38518	38706	38866	38393	38661	38607	101.701
	15	37710	38487	38761	39318	38754	38848	37924	38360	38173	38607	38510	38571	101.645
	16	38996	37981	38569	38587	38371	38443	38145	38518	38428	38174	38879	38002	101.441
	17	38532	37672	38998	38321	38548	38630	38631	38848	38347	38268	38109	38516	101.512
	18	38749	38515	37889	37904	38546	38236	38134	38049	38154	38177	38936	37663	100.970
	19	38395	38316	37869	38221	38360	38477	38439	38214	37789	38408	38314	38390	101.022
	20	38681	38088	38752	37680	38597	38575	38269	38293	38763	38350	38934	38191	101.458
	21	37981	38144	38453	38913	38933	38408	38693	38953	38431	39061	38588	38417	101.855
	22	39052	38113	38235	37956	38479	38563	38988	38236	38487	38009	38082	38563	101.368
	23	38493	38070	38993	38414	38535	38535	38098	38273	38196	38023	38178	38218	101.205

S.V.I.R.CO. Observatory - Pressure in hectoPascal – October 2018

day	hh	00_05	05_10	10_15	15_20	20_25	25_30	30_35	35_40	40_45	45_50	50_55	55_60	average
1	0	1012.42	1012.39	1012.33	1012.28	1012.24	1012.20	1012.16	1012.14	1012.13	1012.07	1011.98	1011.94	1012.18
	1	1011.92	1011.88	1011.80	1011.72	1011.67	1011.58	1011.52	1011.47	1011.37	1011.36	1011.40	1011.36	1011.59
	2	1011.34	1011.30	1011.25	1011.21	1011.14	1011.05	1011.00	1010.96	1010.97	1010.96	1010.87	1010.78	1011.07
	3	1010.73	1010.71	1010.70	1010.67	1010.64	1010.60	1010.53	1010.45	1010.38	1010.31	1010.23	1010.19	1010.51
	4	1010.15	1010.11	1010.08	1010.03	1009.99	1009.94	1009.93	1009.95	1009.96	1009.98	1009.99	1009.97	1010.01
	5	1009.94	1009.95	1009.95	1009.90	1009.84	1009.80	1009.79	1009.80	1009.78	1009.76	1009.77	1009.77	1009.84
	6	1009.76	1009.76	1009.75	1009.73	1009.69	1009.69	1009.69	1009.66	1009.62	1009.51	1009.46	1009.47	1009.65
	7	1009.41	1009.40	1009.39	1009.37	1009.36	1009.35	1009.26	1009.21	1009.26	1009.28	1009.24	1009.11	1009.30
	8	1009.04	1009.12	1009.13	1009.05	1008.99	1008.94	1008.85	1008.79	1008.88	1008.92	1008.87	1008.85	1008.95
	9	1008.76	1008.57	1008.39	1008.30	1008.28	1008.30	1008.30	1008.24	1008.24	1008.29	1008.30	1008.32	1008.35
	10	1008.34	1008.34	1008.32	1008.27	1008.21	1008.13	1008.05	1008.04	1007.96	1007.85	1007.86	1007.83	1008.10
	11	1007.76	1007.74	1007.71	1007.67	1007.65	1007.59	1007.53	1007.52	1007.49	1007.42	1007.39	1007.41	1007.57
	12	1007.39	1007.36	1007.35	1007.28	1007.22	1007.21	1007.20	1007.12	1007.04	1007.08	1007.10	1007.04	1007.20
	13	1007.00	1007.01	1007.01	1007.04	1007.04	1006.96	1006.93	1006.92	1006.84	1006.79	1006.81	1006.82	1006.93
	14	1006.81	1006.78	1006.71	1006.69	1006.68	1006.67	1006.62	1006.55	1006.57	1006.59	1006.59	1006.60	1006.65
	15	1006.60	1006.63	1006.64	1006.62	1006.68	1006.72	1006.77	1006.85	1006.86	1006.89	1006.94	1006.98	1006.76
	16	1007.02	1007.06	1007.11	1007.12	1007.11	1007.13	1007.17	1007.22	1007.28	1007.30	1007.28	1007.29	1007.17
	17	1007.30	1007.31	1007.36	1007.40	1007.41	1007.45	1007.48	1007.48	1007.48	1007.51	1007.54	1007.55	1007.44
	18	1007.55	1007.59	1007.64	1007.67	1007.68	1007.68	1007.68	1007.72	1007.75	1007.72	1007.71	1007.77	1007.68
	19	1007.81	1007.81	1007.80	1007.75	1007.67	1007.68	1007.77	1007.80	1007.78	1007.77	1007.71	1007.68	1007.75
	20	1007.73	1007.74	1007.74	1007.82	1007.86	1007.80	1007.73	1007.76	1007.83	1007.87	1007.85	1007.83	1007.79
	21	1007.85	1007.86	1007.88	1007.87	1007.87	1007.93	1007.94	1007.92	1007.90	1007.94	1008.01	1007.98	1007.91
	22	1007.90	1007.87	1007.91	1007.93	1007.92	1007.87	1007.82	1007.77	1007.74	1007.80	1007.84	1007.84	1007.85
	23	1007.85	1007.79	1007.69	1007.62	1007.54	1007.48	1007.46	1007.45	1007.48	1007.54	1007.55	1007.53	1007.58
2	0	1007.54	1007.54	1007.50	1007.52	1007.58	1007.61	1007.57	1007.51	1007.52	1007.49	1007.43	1007.33	1007.51
	1	1007.30	1007.37	1007.38	1007.34	1007.32	1007.31	1007.35	1007.38	1007.36	1007.35	1007.29	1007.18	1007.33
	2	1007.13	1007.16	1007.17	1007.19	1007.18	1007.14	1007.19	1007.27	1007.29	1007.31	1007.37	1007.44	1007.24
	3	1007.53	1007.58	1007.55	1007.49	1007.46	1007.51	1007.59	1007.68	1007.75	1007.77	1007.78	1007.87	1007.63
	4	1007.99	1008.03	1008.02	1008.05	1008.09	1008.12	1008.14	1008.15	1008.15	1008.12	1008.13	1008.22	1008.10
	5	1008.28	1008.29	1008.26	1008.26	1008.34	1008.41	1008.45	1008.48	1008.52	1008.55	1008.54	1008.55	1008.41
	6	1008.65	1008.70	1008.65	1008.68	1008.80	1008.88	1008.97	1009.07	1009.12	1009.17	1009.23	1009.34	1008.94
	7	1009.46	1009.56	1009.62	1009.68	1009.76	1009.84	1009.87	1009.88	1009.94	1010.01	1010.10	1010.17	1009.82
	8	1010.24	1010.31	1010.33	1010.38	1010.47	1010.56	1010.59	1010.59	1010.60	1010.61	1010.63	1010.65	1010.49
	9	1010.69	1010.77	1010.85	1010.89	1010.91	1010.96	1010.99	1011.00	1011.04	1011.10	1011.13	1011.19	1010.96
	10	1011.24	1011.25	1011.26	1011.25	1011.21	1011.21	1011.23	1011.24	1011.29	1011.30	1011.25	1011.21	1011.24
	11	1011.17	1011.15	1011.15	1011.15	1011.17	1011.14	1011.06	1011.01	1010.94	1010.87	1010.83	1010.83	1011.04
	12	1010.83	1010.82	1010.76	1010.69	1010.64	1010.65	1010.68	1010.70	1010.71	1010.69	1010.70	1010.72	1010.71
	13	1010.73	1010.75	1010.77	1010.77	1010.79	1010.84	1010.91	1010.98	1011.02	1011.02	1011.00	1011.02	1010.88
	14	1011.09	1011.12	1011.16	1011.18	1011.18	1011.23	1011.28	1011.29	1011.31	1011.35	1011.34	1011.35	1011.24
	15	1011.40	1011.42	1011.41	1011.40	1011.43	1011.45	1011.46	1011.50	1011.54	1011.55	1011.57	1011.61	1011.47
	16	1011.67	1011.69	1011.70	1011.72	1011.78	1011.86	1011.93	1011.97	1011.98	1012.02	1012.09	1012.20	1011.88
	17	1012.28	1012.31	1012.38	1012.45	1012.52	1012.64	1012.76	1012.87	1013.01	1013.15	1013.26	1013.35	1012.75
	18	1013.41	1013.46	1013.52	1013.62	1013.69	1013.74	1013.82	1013.89	1013.94	1014.02	1014.13	1014.22	1013.79
	19	1014.27	1014.32	1014.40	1014.47	1014.52	1014.56	1014.58	1014.58	1014.61	1014.66	1014.71	1014.74	1014.53
	20	1014.78	1014.81	1014.84	1014.85	1014.85	1014.88	1014.94	1014.98	1015.01	1015.04	1015.06	1015.07	1014.92
	21	1015.08	1015.10	1015.12	1015.15	1015.13	1015.09	1015.10	1015.08	1015.05	1015.11	1015.16	1015.18	1015.11
	22	1015.21	1015.27	1015.30	1015.30	1015.26	1015.24	1015.22	1015.14	1015.11	1015.14	1015.17	1015.14	1015.21
	23	1015.10	1015.12	1015.16	1015.21	1015.23	1015.22	1015.27	1015.34	1015.36	1015.35	1015.37	1015.42	1015.26

S.V.I.R.CO. Observatory - Pressure in hectoPascal – October 2018

day	hh	00_05	05_10	10_15	15_20	20_25	25_30	30_35	35_40	40_45	45_50	50_55	55_60	average
3	0	1015.43	1015.44	1015.46	1015.49	1015.54	1015.56	1015.53	1015.51	1015.49	1015.48	1015.47	1015.45	1015.49
	1	1015.45	1015.45	1015.43	1015.41	1015.37	1015.32	1015.27	1015.25	1015.25	1015.26	1015.27	1015.24	1015.33
	2	1015.22	1015.19	1015.14	1015.09	1015.07	1015.05	1015.04	1015.03	1015.02	1015.02	1015.02	1015.05	1015.08
	3	1015.11	1015.17	1015.20	1015.23	1015.26	1015.27	1015.26	1015.30	1015.38	1015.41	1015.41	1015.44	1015.28
	4	1015.47	1015.48	1015.48	1015.48	1015.45	1015.43	1015.41	1015.45	1015.54	1015.59	1015.63	1015.69	1015.51
	5	1015.73	1015.71	1015.65	1015.63	1015.65	1015.64	1015.65	1015.66	1015.69	1015.75	1015.81	1015.90	1015.70
	6	1016.04	1016.08	1016.05	1016.08	1016.14	1016.15	1016.14	1016.16	1016.19	1016.21	1016.25	1016.28	1016.14
	7	1016.29	1016.36	1016.43	1016.47	1016.50	1016.51	1016.49	1016.45	1016.46	1016.53	1016.56	1016.53	1016.46
	8	1016.54	1016.60	1016.64	1016.61	1016.60	1016.60	1016.59	1016.62	1016.59	1016.53	1016.51	1016.52	1016.58
	9	1016.55	1016.55	1016.55	1016.49	1016.40	1016.36	1016.33	1016.29	1016.28	1016.26	1016.20	1016.17	1016.37
	10	1016.15	1016.12	1016.07	1016.05	1016.04	1016.02	1016.05	1016.05	1016.00	1015.98	1015.93	1015.87	1016.03
	11	1015.83	1015.76	1015.68	1015.59	1015.49	1015.36	1015.24	1015.17	1015.14	1015.09	1015.01	1014.90	1015.35
	12	1014.81	1014.74	1014.67	1014.58	1014.49	1014.40	1014.32	1014.24	1014.16	1014.06	1013.98	1013.94	1014.36
	13	1013.93	1013.92	1013.86	1013.80	1013.74	1013.69	1013.66	1013.57	1013.46	1013.37	1013.28	1013.18	1013.62
	14	1013.13	1013.14	1013.13	1013.11	1013.08	1013.05	1013.00	1012.93	1012.86	1012.81	1012.81	1012.83	1012.99
	15	1012.83	1012.87	1012.93	1012.95	1012.95	1012.94	1012.92	1012.92	1012.93	1012.98	1013.04	1013.10	1012.94
	16	1013.20	1013.28	1013.30	1013.27	1013.30	1013.38	1013.42	1013.44	1013.47	1013.53	1013.56	1013.58	1013.39
	17	1013.65	1013.69	1013.70	1013.71	1013.71	1013.73	1013.76	1013.80	1013.84	1013.89	1013.94	1013.99	1013.78
	18	1014.06	1014.08	1014.08	1014.16	1014.27	1014.32	1014.32	1014.34	1014.40	1014.45	1014.42	1014.40	1014.27
	19	1014.45	1014.50	1014.55	1014.63	1014.69	1014.73	1014.73	1014.72	1014.76	1014.82	1014.87	1014.92	1014.69
	20	1014.99	1015.13	1015.25	1015.33	1015.34	1015.31	1015.33	1015.42	1015.46	1015.42	1015.38	1015.36	1015.31
	21	1015.36	1015.37	1015.39	1015.41	1015.44	1015.43	1015.40	1015.38	1015.31	1015.22	1015.12	1015.03	1015.32
	22	1014.96	1014.96	1015.00	1015.02	1015.02	1015.02	1015.10	1015.12	1015.08	1015.09	1015.09	1015.10	1015.04
	23	1015.14	1015.18	1015.21	1015.21	1015.14	1015.06	1015.03	1015.09	1015.19	1015.21	1015.21	1015.25	1015.16
4	0	1015.38	1015.39	1015.35	1015.31	1015.34	1015.38	1015.36	1015.31	1015.23	1015.18	1015.15	1015.12	1015.28
	1	1015.09	1015.03	1015.02	1015.06	1015.05	1015.03	1015.00	1015.09	1015.23	1015.21	1015.17	1015.14	1015.09
	2	1015.10	1015.10	1015.16	1015.23	1015.26	1015.29	1015.32	1015.38	1015.38	1015.37	1015.42	1015.52	1015.29
	3	1015.56	1015.50	1015.50	1015.54	1015.58	1015.65	1015.69	1015.66	1015.64	1015.64	1015.73	1015.78	1015.62
	4	1015.79	1015.85	1015.91	1015.94	1016.00	1016.10	1016.13	1016.16	1016.24	1016.31	1016.36	1016.40	1016.10
	5	1016.45	1016.52	1016.62	1016.71	1016.78	1016.81	1016.83	1016.86	1016.92	1017.01	1017.07	1017.06	1016.80
	6	1017.07	1017.13	1017.18	1017.24	1017.26	1017.28	1017.34	1017.44	1017.56	1017.69	1017.79	1017.87	1017.40
	7	1017.94	1018.01	1018.09	1018.14	1018.20	1018.28	1018.36	1018.43	1018.52	1018.56	1018.54	1018.55	1018.30
	8	1018.58	1018.62	1018.65	1018.66	1018.68	1018.73	1018.78	1018.78	1018.80	1018.85	1018.89	1018.94	1018.75
	9	1019.00	1019.01	1018.99	1019.01	1019.05	1019.06	1019.02	1018.97	1018.96	1018.99	1019.00	1018.99	1019.00
	10	1019.05	1019.09	1019.10	1019.13	1019.11	1019.12	1019.20	1019.19	1019.14	1019.13	1019.15	1019.16	1019.13
	11	1019.11	1019.08	1019.07	1019.06	1019.04	1019.00	1018.93	1018.89	1018.90	1018.88	1018.84	1018.77	1018.96
	12	1018.72	1018.71	1018.70	1018.66	1018.63	1018.63	1018.65	1018.67	1018.65	1018.63	1018.65	1018.65	1018.66
	13	1018.62	1018.64	1018.64	1018.61	1018.62	1018.63	1018.63	1018.61	1018.59	1018.55	1018.52	1018.52	1018.60
	14	1018.51	1018.49	1018.44	1018.35	1018.27	1018.26	1018.28	1018.29	1018.26	1018.22	1018.24	1018.30	1018.32
	15	1018.28	1018.23	1018.24	1018.24	1018.22	1018.20	1018.20	1018.22	1018.25	1018.31	1018.36	1018.37	1018.26
	16	1018.36	1018.34	1018.37	1018.38	1018.41	1018.45	1018.49	1018.53	1018.58	1018.61	1018.64	1018.68	1018.48
	17	1018.70	1018.72	1018.78	1018.83	1018.88	1018.94	1018.96	1018.94	1018.97	1019.00	1019.03	1019.13	1018.91
	18	1019.18	1019.22	1019.29	1019.29	1019.29	1019.30	1019.27	1019.27	1019.27	1019.23	1019.22	1019.23	1019.25
	19	1019.19	1019.14	1019.14	1019.15	1019.17	1019.20	1019.20	1019.19	1019.18	1019.19	1019.26	1019.34	1019.19
	20	1019.33	1019.31	1019.30	1019.22	1019.18	1019.20	1019.23	1019.25	1019.22	1019.14	1019.09	1019.08	1019.21
	21	1019.10	1019.16	1019.20	1019.22	1019.19	1019.19	1019.23	1019.24	1019.26	1019.29	1019.28	1019.27	1019.22
	22	1019.30	1019.29	1019.19	1019.04	1018.92	1018.86	1018.80	1018.73	1018.64	1018.62	1018.66	1018.68	1018.89
	23	1018.71	1018.70	1018.70	1018.69	1018.61	1018.54	1018.49	1018.42	1018.34	1018.23	1018.12	1018.07	1018.47

S.V.I.R.CO. Observatory - Pressure in hectoPascal – October 2018

day	hh	00_05	05_10	10_15	15_20	20_25	25_30	30_35	35_40	40_45	45_50	50_55	55_60	average
5	0	1018.02	1017.99	1017.93	1017.92	1017.97	1018.03	1018.04	1018.01	1018.00	1017.99	1017.91	1017.81	1017.96
	1	1017.68	1017.59	1017.51	1017.48	1017.54	1017.56	1017.55	1017.49	1017.43	1017.37	1017.31	1017.23	1017.48
	2	1017.11	1017.01	1016.96	1016.87	1016.73	1016.60	1016.47	1016.50	1016.60	1016.69	1016.75	1016.78	1016.75
	3	1016.83	1016.85	1016.79	1016.71	1016.69	1016.69	1016.68	1016.66	1016.63	1016.58	1016.48	1016.34	1016.66
	4	1016.28	1016.30	1016.30	1016.27	1016.21	1016.19	1016.16	1016.16	1016.18	1016.18	1016.15	1016.14	1016.21
	5	1016.15	1016.12	1016.13	1016.13	1016.13	1016.16	1016.16	1016.11	1016.09	1016.11	1016.05	1016.05	1016.11
	6	1016.16	1016.26	1016.28	1016.21	1016.28	1016.31	1016.25	1016.37	1016.52	1016.48	1016.48	1016.63	1016.35
	7	1016.82	1016.96	1016.97	1016.96	1017.02	1017.08	1016.99	1016.99	1017.09	1017.13	1017.13	1017.11	1017.02
	8	1017.09	1017.13	1017.19	1017.19	1017.17	1017.11	1017.06	1017.07	1017.01	1016.95	1016.93	1016.92	1017.06
	9	1016.93	1016.94	1016.98	1017.02	1017.02	1016.99	1016.97	1016.91	1016.86	1016.84	1016.77	1016.71	1016.91
	10	1016.70	1016.72	1016.67	1016.60	1016.55	1016.51	1016.47	1016.48	1016.48	1016.46	1016.39	1016.29	1016.53
	11	1016.27	1016.26	1016.22	1016.14	1016.08	1016.08	1016.06	1016.04	1016.05	1015.98	1015.95	1015.93	1016.08
	12	1015.91	1015.91	1015.88	1015.87	1015.87	1015.83	1015.73	1015.65	1015.62	1015.59	1015.52	1015.52	1015.74
	13	1015.56	1015.60	1015.70	1015.69	1015.58	1015.53	1015.52	1015.49	1015.44	1015.43	1015.45	1015.48	1015.54
	14	1015.52	1015.55	1015.61	1015.61	1015.51	1015.41	1015.37	1015.38	1015.41	1015.42	1015.54	1015.89	1015.52
	15	1016.02	1015.87	1015.77	1015.70	1015.70	1015.73	1015.73	1015.67	1015.57	1015.55	1015.66	1015.77	1015.72
	16	1015.78	1015.82	1015.92	1016.05	1016.11	1016.14	1016.19	1016.30	1016.31	1016.20	1016.18	1016.14	1016.09
	17	1016.05	1015.98	1015.96	1015.98	1015.96	1015.89	1015.86	1015.91	1015.95	1016.01	1016.06	1016.07	1015.97
	18	1016.08	1016.11	1016.15	1016.21	1016.29	1016.33	1016.33	1016.30	1016.30	1016.30	1016.29	1016.40	1016.26
	19	1016.47	1016.51	1016.60	1016.94	1017.14	1017.20	1017.24	1017.29	1017.55	1017.62	1017.46	1017.30	1017.11
	20	1017.32	1017.47	1017.52	1017.43	1017.37	1017.35	1017.28	1017.15	1017.01	1016.93	1016.88	1016.84	1017.21
	21	1016.82	1016.82	1016.85	1016.88	1016.88	1016.84	1016.76	1016.76	1016.82	1016.85	1016.77	1016.65	1016.81
	22	1016.61	1016.63	1016.60	1016.55	1016.54	1016.56	1016.53	1016.46	1016.42	1016.39	1016.42	1016.45	1016.51
	23	1016.37	1016.30	1016.35	1016.36	1016.36	1016.40	1016.39	1016.37	1016.42	1016.41	1016.40	1016.41	1016.38
6	0	1016.31	1016.29	1016.29	1016.33	1016.31	1016.28	1016.32	1016.32	1016.30	1016.22	1016.14	1016.05	1016.26
	1	1015.93	1015.82	1015.70	1015.60	1015.55	1015.48	1015.42	1015.44	1015.47	1015.44	1015.39	1015.33	1015.54
	2	1015.26	1015.25	1015.21	1015.12	1015.03	1014.91	1014.75	1014.65	1014.69	1014.75	1014.68	1014.60	1014.91
	3	1014.57	1014.61	1014.63	1014.58	1014.58	1014.58	1014.58	1014.59	1014.58	1014.63	1014.72	1014.72	1014.61
	4	1014.64	1014.60	1014.69	1014.73	1014.68	1014.68	1014.74	1014.70	1014.68	1014.74	1014.72	1014.69	1014.69
	5	1014.65	1014.59	1014.62	1014.72	1014.71	1014.65	1014.72	1014.85	1014.83	1014.82	1014.92	1014.98	1014.75
	6	1015.02	1014.99	1014.97	1015.01	1015.04	1015.05	1015.05	1015.07	1015.07	1014.98	1014.90	1014.91	1015.00
	7	1014.83	1014.76	1014.77	1014.78	1014.75	1014.77	1014.82	1014.80	1014.80	1014.82	1014.82	1014.82	1014.79
	8	1014.84	1014.84	1014.85	1014.89	1014.93	1014.96	1014.98	1015.00	1015.03	1015.05	1015.04	1015.02	1014.95
	9	1014.98	1014.95	1014.88	1014.78	1014.71	1014.65	1014.63	1014.65	1014.66	1014.60	1014.51	1014.52	1014.71
	10	1014.56	1014.55	1014.52	1014.43	1014.32	1014.25	1014.25	1014.33	1014.39	1014.41	1014.37	1014.29	1014.39
	11	1014.24	1014.23	1014.26	1014.26	1014.21	1014.16	1014.11	1013.99	1013.85	1013.64	1013.42	1013.32	1013.97
	12	1013.31	1013.28	1013.17	1013.11	1013.19	1013.28	1013.35	1013.34	1013.31	1013.37	1013.45	1013.48	1013.30
	13	1013.47	1013.48	1013.45	1013.39	1013.30	1013.21	1013.24	1013.29	1013.22	1013.17	1013.16	1013.17	1013.29
	14	1013.17	1013.19	1013.22	1013.15	1013.08	1013.01	1012.95	1012.96	1013.01	1013.02	1013.01	1013.05	1013.07
	15	1013.18	1013.22	1013.16	1013.12	1013.07	1013.02	1012.99	1012.97	1013.01	1013.08	1013.10	1013.09	1013.08
	16	1013.14	1013.17	1013.15	1013.14	1013.15	1013.19	1013.20	1013.18	1013.16	1013.14	1013.11	1013.12	1013.15
	17	1013.16	1013.24	1013.27	1013.29	1013.40	1013.51	1013.58	1013.59	1013.58	1013.53	1013.47	1013.44	1013.42
	18	1013.47	1013.55	1013.61	1013.68	1013.78	1013.82	1013.84	1013.88	1013.94	1013.98	1013.99	1013.96	1013.79
	19	1013.91	1013.87	1013.86	1013.83	1013.79	1013.79	1013.81	1013.84	1013.86	1013.90	1013.93	1013.92	1013.86
	20	1013.95	1013.95	1013.88	1013.82	1013.79	1013.80	1013.80	1013.78	1013.73	1013.67	1013.62	1013.57	1013.78
	21	1013.52	1013.46	1013.42	1013.41	1013.44	1013.52	1013.54	1013.50	1013.41	1013.32	1013.25	1013.23	1013.42
	22	1013.22	1013.20	1013.23	1013.26	1013.24	1013.27	1013.31	1013.27	1013.25	1013.18	1013.10	1013.01	1013.21
	23	1012.94	1012.91	1012.86	1012.80	1012.76	1012.71	1012.67	1012.61	1012.51	1012.45	1012.43	1012.36	1012.67

S.V.I.R.CO. Observatory - Pressure in hectoPascal – October 2018

day	hh	00_05	05_10	10_15	15_20	20_25	25_30	30_35	35_40	40_45	45_50	50_55	55_60	average
7	0	1012.27	1012.29	1012.29	1012.32	1012.37	1012.39	1012.42	1012.43	1012.36	1012.23	1012.15	1012.17	1012.31
	1	1012.18	1012.09	1011.94	1011.91	1011.92	1011.87	1011.72	1011.55	1011.41	1011.27	1011.18	1011.15	1011.68
	2	1011.18	1011.23	1011.26	1011.27	1011.29	1011.34	1011.38	1011.41	1011.43	1011.44	1011.47	1011.51	1011.35
	3	1011.53	1011.50	1011.46	1011.44	1011.45	1011.47	1011.47	1011.44	1011.42	1011.42	1011.43	1011.44	1011.45
	4	1011.44	1011.44	1011.47	1011.52	1011.51	1011.51	1011.55	1011.58	1011.61	1011.64	1011.69	1011.79	1011.56
	5	1011.87	1011.86	1011.79	1011.74	1011.71	1011.75	1011.79	1011.84	1011.90	1011.95	1011.97	1012.01	1011.85
	6	1012.09	1012.16	1012.20	1012.23	1012.30	1012.36	1012.35	1012.31	1012.25	1012.25	1012.30	1012.38	1012.26
	7	1012.41	1012.42	1012.46	1012.53	1012.65	1012.75	1012.81	1012.85	1012.89	1012.95	1012.99	1013.01	1012.72
	8	1013.04	1013.10	1013.13	1013.12	1013.13	1013.19	1013.26	1013.31	1013.36	1013.37	1013.38	1013.42	1013.23
	9	1013.39	1013.33	1013.33	1013.35	1013.36	1013.35	1013.32	1013.29	1013.30	1013.33	1013.35	1013.36	1013.34
	10	1013.34	1013.29	1013.26	1013.31	1013.34	1013.31	1013.24	1013.19	1013.19	1013.18	1013.10	1013.06	1013.23
	11	1013.05	1012.99	1012.98	1012.98	1012.92	1012.88	1012.88	1012.89	1012.89	1012.86	1012.85	1012.88	1012.92
	12	1012.85	1012.82	1012.81	1012.80	1012.81	1012.82	1012.79	1012.77	1012.80	1012.82	1012.79	1012.76	1012.80
	13	1012.78	1012.81	1012.82	1012.86	1012.90	1012.88	1012.87	1012.87	1012.86	1012.89	1012.89	1012.82	1012.85
	14	1012.78	1012.81	1012.88	1012.87	1012.86	1012.89	1012.87	1012.84	1012.86	1012.87	1012.86	1012.84	1012.85
	15	1012.83	1012.84	1012.86	1012.88	1012.91	1012.96	1012.98	1013.00	1013.04	1013.06	1013.05	1013.06	1012.95
	16	1013.12	1013.18	1013.20	1013.22	1013.23	1013.25	1013.31	1013.40	1013.46	1013.50	1013.53	1013.59	1013.33
	17	1013.67	1013.74	1013.80	1013.89	1013.96	1014.04	1014.15	1014.24	1014.33	1014.38	1014.40	1014.41	1014.08
	18	1014.46	1014.54	1014.63	1014.72	1014.79	1014.82	1014.84	1014.86	1014.90	1014.95	1014.96	1014.96	1014.78
	19	1014.98	1015.00	1014.98	1014.95	1014.91	1014.90	1014.94	1015.01	1015.08	1015.15	1015.23	1015.31	1015.03
	20	1015.33	1015.34	1015.37	1015.43	1015.49	1015.49	1015.49	1015.48	1015.48	1015.47	1015.47	1015.51	1015.44
	21	1015.54	1015.58	1015.58	1015.57	1015.55	1015.53	1015.54	1015.54	1015.53	1015.58	1015.63	1015.63	1015.57
	22	1015.63	1015.61	1015.55	1015.49	1015.47	1015.48	1015.48	1015.49	1015.49	1015.49	1015.49	1015.51	1015.51
	23	1015.54	1015.55	1015.54	1015.50	1015.50	1015.54	1015.57	1015.61	1015.65	1015.69	1015.70	1015.69	1015.59
8	0	1015.70	1015.70	1015.72	1015.71	1015.71	1015.72	1015.72	1015.69	1015.65	1015.62	1015.59	1015.55	1015.67
	1	1015.56	1015.60	1015.56	1015.50	1015.49	1015.51	1015.54	1015.49	1015.48	1015.47	1015.41	1015.39	1015.50
	2	1015.45	1015.50	1015.52	1015.52	1015.46	1015.41	1015.45	1015.53	1015.55	1015.51	1015.49	1015.51	1015.49
	3	1015.53	1015.53	1015.57	1015.61	1015.60	1015.60	1015.61	1015.60	1015.63	1015.64	1015.59	1015.56	1015.59
	4	1015.57	1015.62	1015.70	1015.77	1015.78	1015.77	1015.75	1015.75	1015.79	1015.87	1015.93	1015.95	1015.77
	5	1015.97	1016.00	1016.00	1015.98	1015.94	1015.89	1015.89	1015.90	1015.92	1015.96	1016.00	1016.03	1015.95
	6	1016.04	1016.07	1016.10	1016.13	1016.16	1016.21	1016.26	1016.31	1016.33	1016.38	1016.45	1016.51	1016.24
	7	1016.58	1016.63	1016.68	1016.73	1016.78	1016.80	1016.83	1016.87	1016.90	1016.92	1016.94	1016.97	1016.80
	8	1017.00	1017.04	1017.08	1017.12	1017.14	1017.15	1017.18	1017.22	1017.25	1017.25	1017.25	1017.28	1017.16
	9	1017.32	1017.33	1017.33	1017.31	1017.27	1017.23	1017.19	1017.14	1017.08	1017.04	1017.02	1017.01	1017.19
	10	1017.00	1016.97	1017.01	1017.05	1017.03	1017.00	1016.94	1016.87	1016.83	1016.80	1016.76	1016.68	1016.91
	11	1016.59	1016.51	1016.46	1016.42	1016.38	1016.34	1016.32	1016.33	1016.35	1016.35	1016.31	1016.28	1016.38
	12	1016.30	1016.33	1016.34	1016.32	1016.32	1016.33	1016.35	1016.39	1016.42	1016.42	1016.42	1016.45	1016.36
	13	1016.48	1016.49	1016.52	1016.57	1016.58	1016.55	1016.53	1016.54	1016.55	1016.56	1016.57	1016.55	1016.54
	14	1016.52	1016.51	1016.52	1016.55	1016.56	1016.53	1016.46	1016.40	1016.39	1016.39	1016.39	1016.35	1016.46
	15	1016.38	1016.40	1016.40	1016.46	1016.47	1016.46	1016.47	1016.45	1016.42	1016.45	1016.48	1016.45	1016.44
	16	1016.47	1016.53	1016.57	1016.69	1016.82	1016.85	1016.83	1016.86	1016.91	1016.98	1017.04	1017.06	1016.80
	17	1017.03	1017.03	1017.05	1017.04	1017.04	1017.05	1017.11	1017.18	1017.18	1017.18	1017.24	1017.29	1017.12
	18	1017.32	1017.36	1017.40	1017.39	1017.38	1017.40	1017.42	1017.47	1017.49	1017.46	1017.48	1017.54	1017.42
	19	1017.57	1017.60	1017.64	1017.69	1017.74	1017.73	1017.69	1017.66	1017.61	1017.55	1017.52	1017.51	1017.62
	20	1017.51	1017.57	1017.61	1017.61	1017.59	1017.59	1017.60	1017.56	1017.53	1017.56	1017.61	1017.63	1017.58
	21	1017.65	1017.69	1017.73	1017.74	1017.70	1017.62	1017.59	1017.60	1017.59	1017.56	1017.54	1017.53	1017.63
	22	1017.51	1017.48	1017.43	1017.40	1017.38	1017.36	1017.34	1017.32	1017.26	1017.23	1017.24	1017.24	1017.35
	23	1017.22	1017.21	1017.25	1017.32	1017.38	1017.44	1017.44	1017.42	1017.47	1017.51	1017.51	1017.48	1017.38

S.V.I.R.CO. Observatory - Pressure in hectoPascal – October 2018

day	hh	00_05	05_10	10_15	15_20	20_25	25_30	30_35	35_40	40_45	45_50	50_55	55_60	average
9	0	1017.46	1017.44	1017.40	1017.40	1017.40	1017.39	1017.40	1017.42	1017.42	1017.43	1017.46	1017.48	1017.42
	1	1017.46	1017.44	1017.43	1017.43	1017.40	1017.37	1017.39	1017.45	1017.49	1017.51	1017.55	1017.57	1017.46
	2	1017.57	1017.57	1017.60	1017.61	1017.60	1017.60	1017.60	1017.57	1017.57	1017.58	1017.59	1017.58	1017.58
	3	1017.54	1017.51	1017.49	1017.49	1017.50	1017.47	1017.41	1017.40	1017.41	1017.37	1017.31	1017.25	1017.43
	4	1017.20	1017.18	1017.16	1017.17	1017.19	1017.21	1017.24	1017.24	1017.27	1017.31	1017.32	1017.33	1017.23
	5	1017.36	1017.41	1017.47	1017.52	1017.56	1017.58	1017.62	1017.66	1017.70	1017.78	1017.86	1017.91	1017.62
	6	1017.96	1017.98	1018.01	1018.05	1018.10	1018.13	1018.12	1018.14	1018.19	1018.22	1018.26	1018.31	1018.12
	7	1018.38	1018.46	1018.52	1018.60	1018.66	1018.70	1018.76	1018.82	1018.88	1019.01	1019.12	1019.19	1018.76
	8	1019.24	1019.24	1019.23	1019.25	1019.26	1019.22	1019.19	1019.17	1019.13	1019.09	1019.05	1019.00	1019.17
	9	1018.96	1018.96	1018.93	1018.86	1018.83	1018.80	1018.75	1018.72	1018.69	1018.70	1018.73	1018.74	1018.80
	10	1018.78	1018.77	1018.74	1018.75	1018.78	1018.78	1018.73	1018.69	1018.70	1018.71	1018.69	1018.66	1018.73
	11	1018.64	1018.60	1018.54	1018.52	1018.48	1018.42	1018.36	1018.29	1018.21	1018.16	1018.11	1018.05	1018.36
	12	1018.04	1018.00	1017.94	1017.90	1017.84	1017.79	1017.75	1017.70	1017.73	1017.79	1017.81	1017.76	1017.83
	13	1017.73	1017.72	1017.70	1017.69	1017.71	1017.71	1017.68	1017.64	1017.54	1017.45	1017.37	1017.33	1017.60
	14	1017.35	1017.37	1017.42	1017.47	1017.47	1017.45	1017.47	1017.49	1017.54	1017.61	1017.62	1017.56	1017.48
	15	1017.57	1017.59	1017.55	1017.56	1017.64	1017.68	1017.78	1017.85	1017.81	1017.80	1017.85	1017.94	1017.72
	16	1018.01	1018.03	1018.07	1018.14	1018.14	1018.12	1018.16	1018.18	1018.22	1018.31	1018.42	1018.50	1018.19
	17	1018.55	1018.59	1018.61	1018.66	1018.73	1018.75	1018.75	1018.73	1018.71	1018.63	1018.47	1018.33	1018.62
	18	1018.29	1018.32	1018.29	1018.21	1018.21	1018.21	1018.24	1018.30	1018.32	1018.40	1018.55	1018.65	1018.33
	19	1018.72	1018.82	1018.87	1018.90	1018.92	1018.94	1018.96	1018.96	1018.96	1018.96	1018.96	1019.01	1018.91
	20	1019.02	1019.07	1019.11	1019.08	1019.08	1019.12	1019.16	1019.17	1019.17	1019.18	1019.20	1019.18	1019.13
	21	1019.16	1019.17	1019.19	1019.19	1019.18	1019.18	1019.20	1019.21	1019.22	1019.21	1019.19	1019.18	1019.19
	22	1019.14	1019.10	1019.08	1019.07	1019.06	1019.06	1019.07	1019.09	1019.08	1019.07	1019.09	1019.12	1019.08
	23	1019.13	1019.15	1019.18	1019.19	1019.19	1019.17	1019.18	1019.18	1019.18	1019.21	1019.22	1019.21	1019.18
10	0	1019.19	1019.18	1019.16	1019.15	1019.15	1019.16	1019.18	1019.19	1019.20	1019.18	1019.19	1019.21	1019.17
	1	1019.20	1019.19	1019.17	1019.09	1019.03	1019.01	1019.00	1018.98	1018.96	1018.93	1018.91	1018.93	1019.03
	2	1018.94	1018.93	1018.91	1018.88	1018.87	1018.84	1018.80	1018.82	1018.82	1018.81	1018.82	1018.84	1018.85
	3	1018.84	1018.84	1018.85	1018.86	1018.90	1018.95	1018.98	1018.98	1018.97	1018.97	1018.97	1018.95	1018.92
	4	1018.95	1018.97	1018.98	1018.99	1018.98	1018.95	1018.94	1018.96	1018.98	1018.98	1018.96	1018.97	1018.97
	5	1018.96	1018.92	1018.92	1018.92	1018.88	1018.86	1018.85	1018.83	1018.87	1018.92	1018.97	1019.00	1018.91
	6	1019.03	1019.05	1019.08	1019.13	1019.17	1019.21	1019.24	1019.25	1019.25	1019.27	1019.32	1019.35	1019.19
	7	1019.35	1019.35	1019.35	1019.35	1019.36	1019.40	1019.47	1019.52	1019.54	1019.56	1019.59	1019.62	1019.45
	8	1019.66	1019.72	1019.70	1019.67	1019.68	1019.69	1019.68	1019.67	1019.68	1019.70	1019.69	1019.63	1019.68
	9	1019.55	1019.53	1019.53	1019.50	1019.48	1019.46	1019.46	1019.50	1019.53	1019.56	1019.58	1019.59	1019.52
	10	1019.60	1019.57	1019.53	1019.50	1019.49	1019.46	1019.39	1019.31	1019.23	1019.15	1019.08	1019.05	1019.36
	11	1019.00	1018.94	1018.87	1018.82	1018.77	1018.69	1018.62	1018.58	1018.54	1018.47	1018.41	1018.36	1018.67
	12	1018.32	1018.36	1018.44	1018.47	1018.42	1018.37	1018.37	1018.34	1018.31	1018.31	1018.32	1018.32	1018.36
	13	1018.29	1018.24	1018.20	1018.18	1018.18	1018.17	1018.15	1018.18	1018.24	1018.30	1018.29	1018.22	1018.22
	14	1018.18	1018.19	1018.19	1018.20	1018.22	1018.22	1018.22	1018.23	1018.24	1018.22	1018.20	1018.19	1018.21
	15	1018.19	1018.21	1018.23	1018.27	1018.31	1018.33	1018.33	1018.32	1018.32	1018.31	1018.29	1018.31	1018.28
	16	1018.34	1018.34	1018.30	1018.27	1018.31	1018.40	1018.46	1018.51	1018.56	1018.59	1018.63	1018.65	1018.44
	17	1018.65	1018.66	1018.69	1018.73	1018.78	1018.82	1018.82	1018.79	1018.81	1018.83	1018.84	1018.85	1018.77
	18	1018.89	1018.94	1018.96	1019.00	1019.02	1018.99	1018.95	1018.99	1019.02	1018.98	1018.94	1018.92	1018.97
	19	1018.92	1018.93	1018.93	1018.92	1018.95	1018.97	1018.98	1018.98	1018.98	1018.94	1018.87	1018.84	1018.93
	20	1018.84	1018.82	1018.75	1018.69	1018.62	1018.51	1018.44	1018.43	1018.42	1018.41	1018.43	1018.46	1018.57
	21	1018.44	1018.40	1018.34	1018.30	1018.30	1018.30	1018.30	1018.31	1018.31	1018.33	1018.35	1018.36	1018.33
	22	1018.38	1018.46	1018.53	1018.57	1018.61	1018.64	1018.65	1018.65	1018.61	1018.52	1018.46	1018.43	1018.54
	23	1018.45	1018.50	1018.54	1018.56	1018.59	1018.59	1018.54	1018.52	1018.58	1018.67	1018.73	1018.79	1018.59

S.V.I.R.CO. Observatory - Pressure in hectoPascal – October 2018

day	hh	00_05	05_10	10_15	15_20	20_25	25_30	30_35	35_40	40_45	45_50	50_55	55_60	average
11	0	1018.79	1018.77	1018.75	1018.77	1018.80	1018.78	1018.72	1018.69	1018.71	1018.74	1018.74	1018.73	1018.75
	1	1018.70	1018.64	1018.59	1018.55	1018.46	1018.39	1018.36	1018.35	1018.42	1018.45	1018.38	1018.30	1018.46
	2	1018.27	1018.26	1018.24	1018.22	1018.18	1018.14	1018.09	1018.08	1018.12	1018.14	1018.12	1018.12	1018.16
	3	1018.14	1018.17	1018.21	1018.21	1018.18	1018.12	1018.10	1018.14	1018.18	1018.17	1018.15	1018.13	1018.16
	4	1018.11	1018.09	1018.05	1018.04	1018.06	1018.09	1018.15	1018.19	1018.21	1018.20	1018.17	1018.17	1018.13
	5	1018.18	1018.19	1018.19	1018.19	1018.19	1018.20	1018.21	1018.23	1018.25	1018.27	1018.29	1018.32	1018.22
	6	1018.35	1018.35	1018.37	1018.42	1018.48	1018.53	1018.57	1018.60	1018.62	1018.65	1018.68	1018.72	1018.52
	7	1018.76	1018.77	1018.75	1018.74	1018.77	1018.79	1018.80	1018.82	1018.85	1018.88	1018.88	1018.86	1018.80
	8	1018.84	1018.81	1018.81	1018.84	1018.82	1018.80	1018.77	1018.73	1018.70	1018.68	1018.62	1018.57	1018.75
	9	1018.55	1018.49	1018.39	1018.27	1018.20	1018.19	1018.20	1018.22	1018.26	1018.27	1018.23	1018.20	1018.29
	10	1018.19	1018.20	1018.18	1018.16	1018.16	1018.17	1018.16	1018.12	1018.08	1018.08	1018.04	1018.04	1018.13
	11	1018.07	1018.08	1018.08	1018.07	1018.07	1018.11	1018.18	1018.22	1018.21	1018.21	1018.24	1018.23	1018.15
	12	1018.21	1018.21	1018.19	1018.15	1018.13	1018.12	1018.12	1018.11	1018.10	1018.11	1018.14	1018.16	1018.14
	13	1018.17	1018.19	1018.21	1018.21	1018.21	1018.22	1018.24	1018.23	1018.22	1018.22	1018.22	1018.22	1018.21
	14	1018.20	1018.17	1018.16	1018.17	1018.16	1018.16	1018.17	1018.19	1018.21	1018.21	1018.18	1018.13	1018.17
	15	1018.10	1018.10	1018.05	1018.03	1018.02	1017.97	1017.94	1017.93	1017.94	1017.96	1017.97	1017.98	1018.00
	16	1018.00	1018.03	1018.04	1018.02	1018.04	1018.10	1018.15	1018.17	1018.17	1018.23	1018.31	1018.36	1018.13
	17	1018.38	1018.42	1018.43	1018.43	1018.47	1018.53	1018.58	1018.62	1018.65	1018.70	1018.70	1018.69	1018.55
	18	1018.70	1018.71	1018.73	1018.73	1018.73	1018.72	1018.71	1018.73	1018.75	1018.79	1018.82	1018.82	1018.74
	19	1018.83	1018.86	1018.88	1018.91	1018.94	1018.96	1018.98	1019.01	1019.04	1019.04	1019.03	1019.03	1018.96
	20	1019.06	1019.07	1019.06	1019.05	1019.06	1019.07	1019.08	1019.07	1019.02	1019.00	1019.02	1019.04	1019.05
	21	1019.05	1019.05	1019.06	1019.06	1019.03	1018.99	1018.99	1019.01	1019.02	1019.03	1019.03	1019.02	1019.02
	22	1019.02	1019.09	1019.16	1019.17	1019.18	1019.22	1019.25	1019.29	1019.33	1019.33	1019.31	1019.29	1019.22
	23	1019.29	1019.30	1019.33	1019.38	1019.44	1019.48	1019.48	1019.44	1019.38	1019.37	1019.38	1019.39	1019.39
12	0	1019.38	1019.39	1019.41	1019.42	1019.42	1019.39	1019.32	1019.23	1019.19	1019.17	1019.19	1019.19	1019.30
	1	1019.15	1019.11	1019.12	1019.15	1019.16	1019.20	1019.24	1019.27	1019.25	1019.19	1019.15	1019.16	1019.18
	2	1019.17	1019.18	1019.16	1019.11	1019.04	1018.99	1019.01	1019.04	1019.06	1019.07	1019.06	1019.11	1019.08
	3	1019.23	1019.31	1019.37	1019.43	1019.46	1019.47	1019.47	1019.50	1019.56	1019.58	1019.58	1019.61	1019.46
	4	1019.66	1019.72	1019.79	1019.80	1019.79	1019.83	1019.90	1019.97	1019.99	1019.98	1019.99	1020.02	1019.87
	5	1020.06	1020.09	1020.12	1020.17	1020.25	1020.30	1020.34	1020.39	1020.41	1020.44	1020.45	1020.44	1020.29
	6	1020.50	1020.62	1020.69	1020.73	1020.76	1020.78	1020.79	1020.83	1020.87	1020.93	1020.99	1021.05	1020.79
	7	1021.11	1021.16	1021.24	1021.30	1021.32	1021.33	1021.35	1021.35	1021.37	1021.41	1021.44	1021.47	1021.32
	8	1021.46	1021.46	1021.49	1021.52	1021.55	1021.57	1021.58	1021.63	1021.66	1021.70	1021.72	1021.73	1021.59
	9	1021.75	1021.75	1021.76	1021.77	1021.76	1021.77	1021.78	1021.79	1021.81	1021.80	1021.76	1021.73	1021.77
	10	1021.72	1021.70	1021.70	1021.69	1021.66	1021.63	1021.61	1021.58	1021.54	1021.52	1021.52	1021.50	1021.61
	11	1021.44	1021.36	1021.30	1021.25	1021.20	1021.15	1021.14	1021.11	1021.08	1021.04	1021.03	1021.02	1021.17
	12	1021.01	1021.01	1020.99	1020.98	1020.94	1020.91	1020.90	1020.90	1020.87	1020.84	1020.83	1020.82	1020.91
	13	1020.82	1020.77	1020.71	1020.67	1020.62	1020.59	1020.57	1020.57	1020.56	1020.52	1020.49	1020.47	1020.61
	14	1020.45	1020.42	1020.41	1020.43	1020.45	1020.42	1020.40	1020.41	1020.42	1020.40	1020.37	1020.37	1020.41
	15	1020.36	1020.37	1020.39	1020.41	1020.41	1020.41	1020.41	1020.42	1020.44	1020.47	1020.51	1020.56	1020.43
	16	1020.62	1020.67	1020.69	1020.71	1020.74	1020.74	1020.73	1020.73	1020.73	1020.75	1020.78	1020.82	1020.72
	17	1020.87	1020.91	1020.96	1021.01	1021.08	1021.16	1021.23	1021.29	1021.36	1021.40	1021.43	1021.47	1021.18
	18	1021.52	1021.55	1021.54	1021.58	1021.64	1021.68	1021.70	1021.72	1021.75	1021.78	1021.83	1021.84	1021.68
	19	1021.83	1021.81	1021.81	1021.80	1021.79	1021.80	1021.84	1021.86	1021.86	1021.86	1021.86	1021.88	1021.83
	20	1021.92	1021.98	1022.01	1022.04	1022.06	1022.07	1022.08	1022.07	1022.06	1022.05	1022.03	1022.04	1022.03
	21	1022.05	1022.07	1022.10	1022.13	1022.16	1022.17	1022.14	1022.12	1022.11	1022.11	1022.12	1022.13	1022.12
	22	1022.12	1022.09	1022.08	1022.07	1022.05	1022.00	1021.97	1021.96	1021.94	1021.92	1021.91	1021.92	1022.00
	23	1021.93	1021.92	1021.90	1021.90	1021.94	1021.97	1021.97	1021.97	1021.96	1021.92	1021.91	1021.91	1021.93

S.V.I.R.CO. Observatory - Pressure in hectoPascal – October 2018

day	hh	00_05	05_10	10_15	15_20	20_25	25_30	30_35	35_40	40_45	45_50	50_55	55_60	average
13	0	1021.90	1021.91	1021.93	1021.93	1021.92	1021.90	1021.85	1021.82	1021.83	1021.83	1021.79	1021.76	1021.86
	1	1021.76	1021.74	1021.69	1021.66	1021.65	1021.63	1021.63	1021.63	1021.61	1021.58	1021.56	1021.58	1021.64
	2	1021.57	1021.55	1021.57	1021.61	1021.65	1021.68	1021.67	1021.62	1021.61	1021.64	1021.65	1021.66	1021.62
	3	1021.67	1021.66	1021.66	1021.65	1021.67	1021.68	1021.66	1021.65	1021.64	1021.61	1021.56	1021.52	1021.63
	4	1021.51	1021.49	1021.49	1021.52	1021.54	1021.53	1021.52	1021.50	1021.49	1021.46	1021.42	1021.39	1021.49
	5	1021.36	1021.35	1021.37	1021.39	1021.40	1021.41	1021.45	1021.47	1021.48	1021.51	1021.56	1021.59	1021.44
	6	1021.59	1021.59	1021.60	1021.62	1021.65	1021.64	1021.62	1021.65	1021.69	1021.72	1021.75	1021.80	1021.66
	7	1021.85	1021.87	1021.86	1021.86	1021.86	1021.82	1021.79	1021.79	1021.81	1021.86	1021.91	1021.92	1021.85
	8	1021.89	1021.88	1021.88	1021.86	1021.84	1021.83	1021.85	1021.86	1021.87	1021.88	1021.86	1021.83	1021.86
	9	1021.80	1021.77	1021.73	1021.69	1021.68	1021.66	1021.62	1021.61	1021.57	1021.53	1021.52	1021.49	1021.64
	10	1021.43	1021.36	1021.31	1021.26	1021.20	1021.15	1021.10	1021.05	1020.99	1020.92	1020.83	1020.75	1021.11
	11	1020.68	1020.62	1020.55	1020.48	1020.41	1020.33	1020.26	1020.19	1020.12	1020.05	1019.98	1019.92	1020.30
	12	1019.86	1019.79	1019.71	1019.66	1019.58	1019.50	1019.45	1019.41	1019.37	1019.30	1019.23	1019.20	1019.50
	13	1019.17	1019.12	1019.08	1019.04	1019.01	1018.98	1018.95	1018.93	1018.91	1018.88	1018.86	1018.85	1018.98
	14	1018.83	1018.82	1018.81	1018.78	1018.73	1018.70	1018.67	1018.64	1018.64	1018.66	1018.69	1018.70	1018.72
	15	1018.72	1018.74	1018.76	1018.77	1018.74	1018.71	1018.70	1018.70	1018.70	1018.70	1018.71	1018.74	1018.72
	16	1018.74	1018.73	1018.73	1018.75	1018.79	1018.83	1018.87	1018.89	1018.92	1018.95	1018.97	1018.97	1018.84
	17	1018.98	1019.01	1019.06	1019.11	1019.14	1019.16	1019.15	1019.14	1019.13	1019.15	1019.18	1019.21	1019.11
	18	1019.24	1019.25	1019.26	1019.25	1019.23	1019.22	1019.23	1019.24	1019.23	1019.19	1019.16	1019.14	1019.22
	19	1019.16	1019.19	1019.20	1019.23	1019.27	1019.28	1019.27	1019.27	1019.27	1019.26	1019.24	1019.23	1019.24
	20	1019.22	1019.22	1019.22	1019.20	1019.17	1019.15	1019.14	1019.11	1019.09	1019.10	1019.09	1019.08	1019.15
	21	1019.10	1019.12	1019.14	1019.16	1019.13	1019.06	1019.03	1019.02	1019.01	1019.01	1019.03	1019.03	1019.07
	22	1019.02	1019.04	1019.03	1019.03	1019.05	1019.04	1019.00	1018.95	1018.91	1018.91	1018.94	1018.94	1018.99
	23	1018.92	1018.90	1018.85	1018.80	1018.77	1018.72	1018.67	1018.65	1018.68	1018.69	1018.65	1018.62	1018.74
14	0	1018.60	1018.58	1018.56	1018.54	1018.51	1018.51	1018.52	1018.51	1018.51	1018.50	1018.45	1018.37	1018.51
	1	1018.33	1018.31	1018.26	1018.20	1018.15	1018.14	1018.14	1018.11	1018.07	1018.06	1018.06	1018.04	1018.15
	2	1018.01	1017.99	1017.97	1017.94	1017.90	1017.85	1017.83	1017.84	1017.85	1017.83	1017.79	1017.77	1017.88
	3	1017.78	1017.77	1017.74	1017.74	1017.72	1017.70	1017.71	1017.71	1017.72	1017.74	1017.72	1017.69	1017.73
	4	1017.67	1017.66	1017.65	1017.64	1017.65	1017.66	1017.68	1017.69	1017.69	1017.67	1017.63	1017.63	1017.66
	5	1017.63	1017.58	1017.56	1017.56	1017.58	1017.59	1017.61	1017.63	1017.63	1017.64	1017.63	1017.68	1017.61
	6	1017.76	1017.81	1017.85	1017.91	1017.95	1017.94	1017.93	1017.95	1017.97	1018.01	1018.08	1018.11	1017.94
	7	1018.11	1018.13	1018.14	1018.14	1018.15	1018.17	1018.18	1018.18	1018.18	1018.18	1018.16	1018.12	1018.15
	8	1018.10	1018.10	1018.09	1018.09	1018.12	1018.16	1018.17	1018.16	1018.11	1018.04	1018.01	1017.99	1018.09
	9	1017.94	1017.90	1017.91	1017.93	1017.93	1017.90	1017.87	1017.81	1017.74	1017.71	1017.69	1017.65	1017.83
	10	1017.63	1017.61	1017.56	1017.49	1017.47	1017.45	1017.40	1017.34	1017.24	1017.13	1017.04	1016.96	1017.36
	11	1016.86	1016.76	1016.67	1016.57	1016.49	1016.44	1016.40	1016.36	1016.30	1016.24	1016.16	1016.06	1016.44
	12	1015.98	1015.90	1015.82	1015.75	1015.66	1015.58	1015.53	1015.47	1015.41	1015.35	1015.30	1015.24	1015.58
	13	1015.17	1015.10	1015.05	1015.03	1015.01	1014.96	1014.87	1014.83	1014.83	1014.81	1014.76	1014.71	1014.93
	14	1014.67	1014.64	1014.60	1014.59	1014.59	1014.58	1014.56	1014.55	1014.55	1014.55	1014.56	1014.56	1014.58
	15	1014.57	1014.61	1014.64	1014.64	1014.62	1014.63	1014.67	1014.72	1014.77	1014.81	1014.82	1014.81	1014.69
	16	1014.82	1014.86	1014.92	1014.97	1015.02	1015.04	1015.05	1015.07	1015.10	1015.12	1015.13	1015.14	1015.02
	17	1015.16	1015.20	1015.23	1015.26	1015.32	1015.38	1015.41	1015.42	1015.42	1015.41	1015.42	1015.49	1015.34
	18	1015.55	1015.55	1015.55	1015.58	1015.60	1015.61	1015.64	1015.65	1015.64	1015.63	1015.64	1015.66	1015.61
	19	1015.69	1015.70	1015.68	1015.66	1015.64	1015.59	1015.56	1015.59	1015.59	1015.58	1015.59	1015.59	1015.62
	20	1015.61	1015.61	1015.59	1015.59	1015.55	1015.54	1015.55	1015.56	1015.57	1015.58	1015.60	1015.63	1015.58
	21	1015.68	1015.70	1015.69	1015.66	1015.61	1015.58	1015.57	1015.57	1015.58	1015.60	1015.56	1015.53	1015.61
	22	1015.53	1015.54	1015.57	1015.60	1015.59	1015.60	1015.60	1015.57	1015.54	1015.49	1015.46	1015.46	1015.54
	23	1015.47	1015.47	1015.45	1015.43	1015.46	1015.47	1015.47	1015.47	1015.45	1015.42	1015.42	1015.43	1015.45

S.V.I.R.CO. Observatory - Pressure in hectoPascal – October 2018

day	hh	00_05	05_10	10_15	15_20	20_25	25_30	30_35	35_40	40_45	45_50	50_55	55_60	average
15	0	1015.45	1015.44	1015.41	1015.35	1015.28	1015.23	1015.17	1015.16	1015.17	1015.13	1015.05	1014.99	1015.22
	1	1014.94	1014.93	1014.93	1014.95	1014.98	1015.00	1014.99	1014.98	1014.99	1014.98	1014.93	1014.88	1014.95
	2	1014.81	1014.74	1014.66	1014.57	1014.55	1014.57	1014.60	1014.65	1014.67	1014.66	1014.66	1014.64	1014.64
	3	1014.57	1014.54	1014.56	1014.55	1014.54	1014.55	1014.57	1014.59	1014.62	1014.62	1014.57	1014.54	1014.57
	4	1014.51	1014.46	1014.41	1014.42	1014.45	1014.43	1014.40	1014.40	1014.42	1014.42	1014.45	1014.49	1014.44
	5	1014.50	1014.55	1014.61	1014.59	1014.57	1014.56	1014.56	1014.59	1014.64	1014.67	1014.71	1014.78	1014.61
	6	1014.81	1014.81	1014.80	1014.77	1014.77	1014.79	1014.80	1014.78	1014.78	1014.80	1014.82	1014.81	1014.79
	7	1014.80	1014.79	1014.80	1014.83	1014.87	1014.90	1014.95	1015.03	1015.06	1015.11	1015.13	1015.08	1014.94
	8	1015.02	1015.00	1015.02	1015.03	1014.99	1014.96	1014.98	1015.00	1015.01	1015.01	1014.95	1014.89	1014.99
	9	1014.88	1014.90	1014.92	1014.88	1014.85	1014.84	1014.82	1014.80	1014.78	1014.78	1014.79	1014.78	1014.83
	10	1014.76	1014.73	1014.73	1014.70	1014.64	1014.60	1014.56	1014.55	1014.55	1014.53	1014.50	1014.48	1014.61
	11	1014.43	1014.38	1014.30	1014.22	1014.18	1014.15	1014.08	1014.05	1014.06	1014.03	1013.98	1013.92	1014.15
	12	1013.88	1013.85	1013.84	1013.84	1013.82	1013.78	1013.70	1013.61	1013.54	1013.51	1013.46	1013.42	1013.68
	13	1013.43	1013.46	1013.46	1013.46	1013.47	1013.52	1013.57	1013.58	1013.57	1013.53	1013.51	1013.52	1013.50
	14	1013.52	1013.52	1013.52	1013.51	1013.51	1013.54	1013.56	1013.60	1013.65	1013.66	1013.67	1013.70	1013.58
	15	1013.72	1013.76	1013.81	1013.83	1013.83	1013.85	1013.87	1013.90	1013.97	1014.04	1014.09	1014.14	1013.90
	16	1014.17	1014.23	1014.29	1014.31	1014.34	1014.37	1014.39	1014.41	1014.43	1014.47	1014.52	1014.59	1014.37
	17	1014.65	1014.74	1014.84	1014.90	1014.94	1014.95	1014.94	1014.92	1014.88	1014.84	1014.81	1014.80	1014.85
	18	1014.84	1014.89	1014.92	1014.94	1014.93	1014.93	1014.97	1014.98	1014.97	1014.97	1014.97	1015.00	1014.94
	19	1015.06	1015.06	1015.04	1015.04	1015.02	1014.99	1014.99	1015.03	1015.04	1015.01	1015.02	1015.07	1015.03
	20	1015.12	1015.18	1015.23	1015.28	1015.31	1015.34	1015.37	1015.34	1015.26	1015.20	1015.22	1015.26	1015.26
	21	1015.32	1015.40	1015.44	1015.45	1015.46	1015.46	1015.46	1015.46	1015.47	1015.49	1015.51	1015.51	1015.45
	22	1015.50	1015.50	1015.50	1015.50	1015.50	1015.46	1015.43	1015.42	1015.41	1015.41	1015.40	1015.37	1015.45
	23	1015.34	1015.29	1015.23	1015.18	1015.17	1015.18	1015.22	1015.28	1015.31	1015.32	1015.32	1015.34	1015.26
16	0	1015.39	1015.39	1015.37	1015.34	1015.32	1015.31	1015.32	1015.32	1015.30	1015.25	1015.19	1015.15	1015.30
	1	1015.11	1015.09	1015.07	1015.04	1015.01	1014.95	1014.90	1014.88	1014.88	1014.87	1014.86	1014.83	1014.96
	2	1014.81	1014.81	1014.80	1014.77	1014.74	1014.73	1014.75	1014.74	1014.74	1014.74	1014.73	1014.71	1014.75
	3	1014.70	1014.71	1014.73	1014.74	1014.76	1014.80	1014.82	1014.82	1014.82	1014.84	1014.89	1014.95	1014.80
	4	1015.01	1015.06	1015.09	1015.09	1015.07	1015.07	1015.08	1015.08	1015.06	1015.05	1015.02	1014.99	1015.05
	5	1014.94	1014.84	1014.73	1014.68	1014.73	1014.84	1014.90	1014.91	1014.92	1014.94	1014.97	1015.02	1014.87
	6	1015.07	1015.12	1015.19	1015.22	1015.26	1015.35	1015.42	1015.44	1015.48	1015.52	1015.55	1015.59	1015.35
	7	1015.62	1015.66	1015.70	1015.70	1015.71	1015.70	1015.69	1015.73	1015.76	1015.76	1015.72	1015.67	1015.70
	8	1015.68	1015.73	1015.76	1015.79	1015.78	1015.77	1015.80	1015.83	1015.85	1015.85	1015.81	1015.80	1015.79
	9	1015.78	1015.77	1015.79	1015.78	1015.73	1015.68	1015.63	1015.62	1015.65	1015.70	1015.75	1015.78	1015.72
	10	1015.79	1015.84	1015.88	1015.90	1015.89	1015.87	1015.83	1015.81	1015.84	1015.82	1015.74	1015.65	1015.82
	11	1015.57	1015.50	1015.51	1015.55	1015.55	1015.53	1015.53	1015.51	1015.49	1015.48	1015.47	1015.47	1015.51
	12	1015.44	1015.37	1015.33	1015.33	1015.27	1015.25	1015.32	1015.42	1015.46	1015.43	1015.40	1015.43	1015.37
	13	1015.44	1015.43	1015.44	1015.50	1015.59	1015.68	1015.74	1015.76	1015.77	1015.74	1015.73	1015.73	1015.63
	14	1015.73	1015.75	1015.78	1015.82	1015.85	1015.87	1015.87	1015.88	1015.90	1015.88	1015.85	1015.84	1015.83
	15	1015.87	1015.87	1015.85	1015.84	1015.84	1015.85	1015.85	1015.81	1015.77	1015.77	1015.76	1015.76	1015.82
	16	1015.81	1015.84	1015.85	1015.87	1015.93	1015.98	1015.97	1015.98	1015.99	1016.00	1016.02	1016.02	1015.94
	17	1016.05	1016.09	1016.11	1016.14	1016.16	1016.16	1016.19	1016.18	1016.17	1016.18	1016.19	1016.17	1016.15
	18	1016.15	1016.13	1016.12	1016.13	1016.16	1016.19	1016.21	1016.22	1016.27	1016.35	1016.44	1016.51	1016.24
	19	1016.58	1016.62	1016.65	1016.70	1016.76	1016.79	1016.78	1016.76	1016.76	1016.77	1016.80	1016.84	1016.73
	20	1016.86	1016.83	1016.78	1016.79	1016.83	1016.85	1016.87	1016.89	1016.90	1016.90	1016.87	1016.84	1016.85
	21	1016.84	1016.82	1016.77	1016.70	1016.64	1016.61	1016.59	1016.57	1016.58	1016.59	1016.59	1016.60	1016.66
	22	1016.61	1016.62	1016.62	1016.60	1016.60	1016.57	1016.48	1016.40	1016.36	1016.32	1016.28	1016.23	1016.47
	23	1016.17	1016.15	1016.13	1016.10	1016.05	1016.03	1016.04	1016.03	1016.00	1015.97	1015.97	1016.00	1016.05

S.V.I.R.CO. Observatory - Pressure in hectoPascal – October 2018

day	hh	00_05	05_10	10_15	15_20	20_25	25_30	30_35	35_40	40_45	45_50	50_55	55_60	average
17	0	1015.96	1015.97	1015.97	1015.96	1015.94	1015.92	1015.94	1015.95	1015.91	1015.85	1015.79	1015.71	1015.90
	1	1015.62	1015.55	1015.48	1015.41	1015.32	1015.28	1015.25	1015.20	1015.20	1015.18	1015.15	1015.16	1015.31
	2	1015.14	1015.10	1015.10	1015.10	1015.07	1015.05	1015.06	1015.02	1014.99	1015.01	1015.01	1015.00	1015.05
	3	1015.00	1014.97	1014.92	1014.89	1014.91	1014.97	1015.03	1015.08	1015.11	1015.13	1015.15	1015.14	1015.02
	4	1015.15	1015.16	1015.18	1015.21	1015.26	1015.29	1015.29	1015.32	1015.37	1015.46	1015.55	1015.57	1015.32
	5	1015.55	1015.48	1015.37	1015.31	1015.28	1015.27	1015.28	1015.27	1015.24	1015.22	1015.21	1015.21	1015.31
	6	1015.21	1015.22	1015.23	1015.24	1015.24	1015.21	1015.20	1015.22	1015.23	1015.26	1015.31	1015.34	1015.24
	7	1015.37	1015.36	1015.38	1015.42	1015.40	1015.35	1015.29	1015.27	1015.28	1015.34	1015.41	1015.47	1015.36
	8	1015.54	1015.59	1015.65	1015.70	1015.72	1015.72	1015.72	1015.76	1015.82	1015.87	1015.89	1015.90	1015.74
	9	1015.90	1015.87	1015.82	1015.80	1015.80	1015.77	1015.75	1015.75	1015.76	1015.76	1015.71	1015.66	1015.78
	10	1015.62	1015.56	1015.52	1015.47	1015.37	1015.22	1015.12	1015.05	1014.94	1014.79	1014.62	1014.48	1015.15
	11	1014.35	1014.24	1014.18	1014.12	1014.09	1014.08	1014.04	1013.97	1013.91	1013.84	1013.78	1013.72	1014.02
	12	1013.64	1013.59	1013.57	1013.55	1013.51	1013.47	1013.45	1013.43	1013.42	1013.41	1013.40	1013.42	1013.49
	13	1013.42	1013.41	1013.42	1013.40	1013.38	1013.34	1013.28	1013.24	1013.22	1013.21	1013.20	1013.21	1013.31
	14	1013.20	1013.14	1013.09	1013.08	1013.09	1013.14	1013.16	1013.19	1013.22	1013.23	1013.21	1013.17	1013.16
	15	1013.12	1013.08	1013.04	1013.03	1013.03	1013.01	1013.00	1013.01	1013.02	1013.00	1012.99	1013.02	1013.03
	16	1013.03	1012.99	1012.94	1012.95	1012.98	1013.00	1013.01	1013.05	1013.08	1013.09	1013.11	1013.13	1013.03
	17	1013.19	1013.27	1013.33	1013.37	1013.45	1013.54	1013.60	1013.63	1013.65	1013.66	1013.68	1013.71	1013.50
	18	1013.71	1013.70	1013.67	1013.66	1013.70	1013.76	1013.79	1013.80	1013.79	1013.77	1013.76	1013.77	1013.74
	19	1013.76	1013.76	1013.80	1013.83	1013.86	1013.83	1013.76	1013.73	1013.76	1013.81	1013.83	1013.86	1013.80
	20	1013.90	1013.90	1013.87	1013.84	1013.83	1013.81	1013.77	1013.74	1013.76	1013.75	1013.73	1013.71	1013.80
	21	1013.67	1013.65	1013.64	1013.62	1013.62	1013.62	1013.62	1013.60	1013.58	1013.58	1013.56	1013.50	1013.60
	22	1013.47	1013.47	1013.45	1013.42	1013.42	1013.44	1013.41	1013.38	1013.35	1013.32	1013.30	1013.26	1013.39
	23	1013.22	1013.20	1013.18	1013.18	1013.21	1013.23	1013.20	1013.13	1013.08	1013.08	1013.04	1012.97	1013.14
18	0	1012.90	1012.84	1012.75	1012.71	1012.69	1012.67	1012.63	1012.59	1012.60	1012.63	1012.62	1012.60	1012.67
	1	1012.61	1012.56	1012.44	1012.41	1012.41	1012.36	1012.28	1012.25	1012.25	1012.25	1012.25	1012.23	1012.36
	2	1012.19	1012.14	1012.06	1011.98	1011.92	1011.88	1011.83	1011.78	1011.77	1011.74	1011.67	1011.63	1011.88
	3	1011.64	1011.66	1011.67	1011.69	1011.70	1011.69	1011.66	1011.63	1011.62	1011.61	1011.63	1011.64	1011.65
	4	1011.62	1011.59	1011.61	1011.61	1011.57	1011.55	1011.57	1011.57	1011.51	1011.45	1011.44	1011.40	1011.54
	5	1011.34	1011.34	1011.38	1011.41	1011.42	1011.43	1011.43	1011.41	1011.42	1011.43	1011.42	1011.45	1011.40
	6	1011.51	1011.56	1011.58	1011.61	1011.62	1011.62	1011.62	1011.63	1011.69	1011.74	1011.78	1011.82	1011.65
	7	1011.85	1011.89	1011.89	1011.86	1011.88	1011.92	1011.95	1012.00	1012.03	1012.05	1012.09	1012.11	1011.96
	8	1012.13	1012.18	1012.21	1012.21	1012.19	1012.18	1012.20	1012.21	1012.20	1012.20	1012.17	1012.12	1012.18
	9	1012.10	1012.08	1012.09	1012.08	1012.09	1012.10	1012.09	1012.07	1012.04	1012.03	1012.02	1012.01	1012.06
	10	1011.96	1011.89	1011.82	1011.78	1011.75	1011.70	1011.65	1011.59	1011.54	1011.52	1011.48	1011.40	1011.67
	11	1011.35	1011.31	1011.22	1011.13	1011.07	1011.02	1010.93	1010.86	1010.86	1010.88	1010.88	1010.86	1011.03
	12	1010.84	1010.80	1010.73	1010.67	1010.66	1010.63	1010.54	1010.44	1010.38	1010.33	1010.27	1010.24	1010.54
	13	1010.23	1010.22	1010.23	1010.28	1010.30	1010.27	1010.26	1010.25	1010.25	1010.26	1010.26	1010.24	1010.25
	14	1010.25	1010.26	1010.26	1010.24	1010.21	1010.17	1010.12	1010.11	1010.14	1010.18	1010.17	1010.15	1010.19
	15	1010.16	1010.17	1010.17	1010.16	1010.16	1010.16	1010.14	1010.17	1010.18	1010.16	1010.14	1010.15	1010.16
	16	1010.19	1010.22	1010.21	1010.23	1010.31	1010.32	1010.35	1010.43	1010.47	1010.49	1010.56	1010.66	1010.37
	17	1010.73	1010.83	1010.95	1010.99	1010.98	1011.01	1011.07	1011.15	1011.21	1011.26	1011.32	1011.36	1011.07
	18	1011.40	1011.47	1011.52	1011.52	1011.54	1011.59	1011.58	1011.61	1011.68	1011.69	1011.70	1011.72	1011.58
	19	1011.64	1011.60	1011.65	1011.70	1011.76	1011.82	1011.86	1011.89	1011.89	1011.90	1011.92	1011.99	1011.80
	20	1012.13	1012.26	1012.32	1012.37	1012.38	1012.39	1012.45	1012.53	1012.54	1012.54	1012.59	1012.67	1012.43
	21	1012.74	1012.78	1012.81	1012.80	1012.75	1012.74	1012.70	1012.63	1012.60	1012.58	1012.59	1012.66	1012.70
	22	1012.73	1012.77	1012.78	1012.76	1012.77	1012.80	1012.81	1012.81	1012.78	1012.71	1012.67	1012.60	1012.75
	23	1012.56	1012.57	1012.59	1012.62	1012.65	1012.66	1012.65	1012.65	1012.65	1012.70	1012.78	1012.82	1012.66

S.V.I.R.CO. Observatory - Pressure in hectoPascal – October 2018

day	hh	00_05	05_10	10_15	15_20	20_25	25_30	30_35	35_40	40_45	45_50	50_55	55_60	average
19	0	1012.79	1012.79	1012.81	1012.81	1012.78	1012.80	1012.84	1012.86	1012.87	1012.90	1012.95	1012.97	1012.85
	1	1012.95	1012.94	1012.92	1012.93	1012.93	1012.89	1012.88	1012.89	1012.91	1012.92	1012.90	1012.93	1012.91
	2	1012.98	1012.98	1012.95	1012.94	1012.96	1012.98	1012.98	1013.04	1013.15	1013.24	1013.29	1013.33	1013.07
	3	1013.31	1013.29	1013.35	1013.44	1013.44	1013.37	1013.34	1013.33	1013.30	1013.28	1013.27	1013.23	1013.33
	4	1013.23	1013.24	1013.22	1013.22	1013.20	1013.20	1013.25	1013.29	1013.33	1013.36	1013.34	1013.31	1013.26
	5	1013.34	1013.37	1013.38	1013.48	1013.58	1013.61	1013.59	1013.63	1013.74	1013.80	1013.86	1013.93	1013.61
	6	1013.93	1013.98	1014.07	1014.11	1014.15	1014.19	1014.19	1014.18	1014.23	1014.29	1014.33	1014.38	1014.17
	7	1014.44	1014.46	1014.50	1014.60	1014.71	1014.81	1014.92	1014.97	1014.99	1015.01	1015.01	1015.06	1014.79
	8	1015.11	1015.11	1015.13	1015.15	1015.18	1015.20	1015.20	1015.17	1015.12	1015.07	1015.09	1015.12	1015.14
	9	1015.12	1015.08	1015.03	1014.99	1014.98	1015.00	1015.04	1015.01	1015.00	1015.05	1015.11	1015.12	1015.04
	10	1015.09	1015.07	1015.07	1015.06	1015.01	1014.93	1014.85	1014.81	1014.81	1014.76	1014.65	1014.56	1014.89
	11	1014.51	1014.45	1014.41	1014.36	1014.30	1014.24	1014.16	1014.07	1014.02	1013.98	1013.96	1013.94	1014.20
	12	1013.93	1013.92	1013.87	1013.80	1013.78	1013.76	1013.74	1013.75	1013.75	1013.72	1013.70	1013.68	1013.78
	13	1013.64	1013.61	1013.59	1013.59	1013.62	1013.63	1013.63	1013.63	1013.59	1013.61	1013.72	1013.73	1013.63
	14	1013.67	1013.72	1013.80	1013.86	1013.93	1013.96	1013.95	1013.95	1013.98	1014.00	1014.04	1014.13	1013.91
	15	1014.18	1014.21	1014.23	1014.21	1014.15	1014.11	1014.12	1014.14	1014.14	1014.17	1014.23	1014.28	1014.18
	16	1014.31	1014.35	1014.43	1014.49	1014.52	1014.59	1014.66	1014.73	1014.83	1014.94	1015.07	1015.21	1014.68
	17	1015.33	1015.41	1015.45	1015.47	1015.48	1015.54	1015.64	1015.71	1015.73	1015.75	1015.77	1015.80	1015.59
	18	1015.87	1015.91	1015.88	1015.84	1015.83	1015.85	1015.88	1015.92	1015.98	1016.04	1016.09	1016.14	1015.93
	19	1016.19	1016.20	1016.21	1016.24	1016.28	1016.32	1016.40	1016.50	1016.57	1016.63	1016.68	1016.75	1016.41
	20	1016.81	1016.84	1016.85	1016.87	1016.91	1016.94	1016.96	1017.00	1017.04	1017.07	1017.05	1017.07	1016.95
	21	1017.09	1017.10	1017.13	1017.18	1017.22	1017.25	1017.28	1017.31	1017.30	1017.27	1017.22	1017.18	1017.21
	22	1017.14	1017.12	1017.13	1017.18	1017.22	1017.24	1017.24	1017.24	1017.26	1017.26	1017.25	1017.27	1017.21
	23	1017.29	1017.30	1017.32	1017.36	1017.40	1017.44	1017.45	1017.45	1017.48	1017.51	1017.52	1017.53	1017.42
20	0	1017.51	1017.52	1017.51	1017.51	1017.52	1017.54	1017.53	1017.52	1017.52	1017.54	1017.57	1017.57	1017.53
	1	1017.55	1017.53	1017.53	1017.54	1017.54	1017.54	1017.56	1017.58	1017.59	1017.59	1017.59	1017.60	1017.56
	2	1017.60	1017.61	1017.61	1017.58	1017.56	1017.55	1017.52	1017.51	1017.50	1017.51	1017.54	1017.56	1017.55
	3	1017.58	1017.61	1017.63	1017.65	1017.69	1017.73	1017.78	1017.83	1017.88	1017.90	1017.89	1017.89	1017.75
	4	1017.89	1017.91	1017.94	1018.00	1018.04	1018.03	1018.03	1018.03	1018.01	1018.01	1018.02	1018.04	1017.99
	5	1018.04	1018.01	1017.99	1017.99	1017.99	1018.00	1018.02	1018.04	1018.07	1018.14	1018.21	1018.26	1018.06
	6	1018.30	1018.36	1018.43	1018.48	1018.55	1018.63	1018.72	1018.79	1018.86	1018.94	1019.01	1019.09	1018.68
	7	1019.18	1019.25	1019.29	1019.32	1019.34	1019.38	1019.40	1019.42	1019.44	1019.45	1019.49	1019.52	1019.37
	8	1019.52	1019.53	1019.56	1019.57	1019.57	1019.56	1019.54	1019.53	1019.54	1019.54	1019.52	1019.51	1019.54
	9	1019.53	1019.56	1019.63	1019.71	1019.74	1019.75	1019.73	1019.71	1019.73	1019.76	1019.80	1019.80	1019.70
	10	1019.80	1019.84	1019.86	1019.86	1019.86	1019.81	1019.78	1019.79	1019.76	1019.68	1019.61	1019.59	1019.77
	11	1019.58	1019.54	1019.50	1019.45	1019.41	1019.37	1019.33	1019.27	1019.21	1019.18	1019.16	1019.10	1019.34
	12	1019.01	1018.92	1018.86	1018.82	1018.78	1018.70	1018.63	1018.58	1018.55	1018.54	1018.52	1018.49	1018.70
	13	1018.45	1018.41	1018.36	1018.30	1018.24	1018.18	1018.16	1018.15	1018.13	1018.13	1018.14	1018.16	1018.23
	14	1018.14	1018.08	1018.03	1018.01	1018.01	1018.01	1018.00	1018.03	1018.03	1018.01	1018.01	1018.00	1018.03
	15	1018.00	1018.01	1018.03	1018.04	1018.04	1018.05	1018.02	1018.02	1018.03	1018.04	1018.03	1018.01	1018.03
	16	1017.99	1018.00	1018.04	1018.08	1018.12	1018.17	1018.21	1018.27	1018.34	1018.42	1018.51	1018.60	1018.23
	17	1018.68	1018.76	1018.83	1018.90	1018.93	1018.94	1018.93	1018.90	1018.88	1018.93	1019.00	1018.96	1018.89
	18	1018.90	1018.92	1018.97	1018.95	1018.90	1018.91	1018.95	1018.94	1018.90	1018.90	1018.94	1018.97	1018.93
	19	1018.99	1018.99	1018.96	1018.96	1018.98	1018.96	1018.93	1018.95	1019.00	1019.03	1019.01	1018.97	1018.98
	20	1018.98	1019.04	1019.10	1019.14	1019.15	1019.14	1019.17	1019.20	1019.23	1019.24	1019.26	1019.28	1019.16
	21	1019.26	1019.20	1019.16	1019.16	1019.14	1019.10	1019.06	1019.02	1019.04	1019.04	1018.98	1018.94	1019.09
	22	1018.91	1018.93	1018.92	1018.86	1018.86	1018.92	1018.95	1018.95	1018.94	1018.91	1018.90	1018.89	1018.91
	23	1018.87	1018.83	1018.81	1018.79	1018.76	1018.77	1018.76	1018.74	1018.72	1018.68	1018.67	1018.66	1018.75

S.V.I.R.CO. Observatory - Pressure in hectoPascal – October 2018

day	hh	00_05	05_10	10_15	15_20	20_25	25_30	30_35	35_40	40_45	45_50	50_55	55_60	average
21	0	1018.61	1018.62	1018.63	1018.63	1018.62	1018.55	1018.48	1018.47	1018.46	1018.41	1018.36	1018.30	1018.51
	1	1018.20	1018.17	1018.14	1018.12	1018.10	1018.04	1017.99	1017.97	1017.94	1017.91	1017.88	1017.85	1018.02
	2	1017.84	1017.83	1017.78	1017.78	1017.80	1017.78	1017.73	1017.68	1017.66	1017.64	1017.59	1017.59	1017.72
	3	1017.60	1017.58	1017.60	1017.64	1017.60	1017.57	1017.57	1017.56	1017.58	1017.60	1017.58	1017.57	1017.58
	4	1017.57	1017.57	1017.55	1017.51	1017.44	1017.36	1017.31	1017.31	1017.32	1017.31	1017.29	1017.24	1017.40
	5	1017.20	1017.22	1017.23	1017.20	1017.13	1017.13	1017.22	1017.27	1017.29	1017.31	1017.29	1017.28	1017.23
	6	1017.31	1017.34	1017.41	1017.45	1017.45	1017.48	1017.55	1017.59	1017.60	1017.62	1017.65	1017.70	1017.51
	7	1017.75	1017.76	1017.75	1017.72	1017.72	1017.71	1017.69	1017.70	1017.65	1017.56	1017.52	1017.56	1017.67
	8	1017.60	1017.59	1017.55	1017.48	1017.44	1017.39	1017.35	1017.34	1017.31	1017.28	1017.26	1017.23	1017.40
	9	1017.21	1017.21	1017.20	1017.17	1017.12	1017.07	1017.04	1017.01	1016.96	1016.85	1016.77	1016.74	1017.03
	10	1016.72	1016.66	1016.57	1016.48	1016.40	1016.28	1016.14	1016.02	1015.94	1015.86	1015.78	1015.70	1016.21
	11	1015.63	1015.58	1015.54	1015.48	1015.39	1015.34	1015.30	1015.21	1015.10	1015.01	1014.94	1014.86	1015.28
	12	1014.80	1014.76	1014.70	1014.64	1014.59	1014.56	1014.54	1014.51	1014.43	1014.33	1014.26	1014.21	1014.53
	13	1014.15	1014.09	1014.03	1013.97	1013.90	1013.84	1013.79	1013.73	1013.66	1013.59	1013.54	1013.50	1013.81
	14	1013.45	1013.39	1013.40	1013.41	1013.36	1013.31	1013.26	1013.22	1013.19	1013.14	1013.08	1013.03	1013.27
	15	1012.96	1012.93	1012.93	1012.91	1012.90	1012.90	1012.76	1012.69	1012.73	1012.67	1012.56	1012.48	1012.78
	16	1012.48	1012.62	1012.78	1012.82	1012.82	1012.71	1012.61	1012.61	1012.54	1012.35	1012.12	1011.97	1012.53
	17	1011.90	1011.89	1012.07	1012.26	1012.17	1011.98	1011.99	1012.23	1012.34	1012.56	1012.81	1012.82	1012.25
	18	1013.08	1013.44	1013.67	1013.75	1013.36	1012.89	1012.96	1013.17	1013.16	1013.09	1013.16	1013.43	1013.26
	19	1013.59	1013.69	1013.83	1013.99	1014.15	1014.23	1014.39	1014.52	1014.38	1014.20	1014.22	1014.18	1014.11
	20	1014.07	1013.95	1013.76	1013.55	1013.45	1013.50	1013.64	1013.77	1013.87	1013.98	1014.08	1014.12	1013.81
	21	1014.03	1013.96	1013.90	1013.84	1013.83	1013.79	1013.70	1013.63	1013.57	1013.56	1013.56	1013.47	1013.73
	22	1013.28	1013.07	1012.94	1012.96	1012.91	1012.92	1013.04	1012.84	1012.52	1012.42	1012.42	1012.44	1012.81
	23	1012.47	1012.47	1012.44	1012.42	1012.42	1012.43	1012.41	1012.36	1012.36	1012.38	1012.35	1012.31	1012.40
22	0	1012.23	1012.20	1012.20	1012.26	1012.28	1012.28	1012.33	1012.36	1012.28	1012.18	1012.11	1012.05	1012.23
	1	1012.01	1012.01	1012.01	1011.94	1011.89	1011.85	1011.74	1011.63	1011.58	1011.57	1011.54	1011.54	1011.77
	2	1011.55	1011.55	1011.53	1011.54	1011.57	1011.54	1011.49	1011.48	1011.47	1011.43	1011.35	1011.28	1011.48
	3	1011.27	1011.27	1011.29	1011.33	1011.36	1011.37	1011.38	1011.43	1011.50	1011.57	1011.64	1011.71	1011.42
	4	1011.73	1011.69	1011.67	1011.67	1011.65	1011.63	1011.62	1011.62	1011.64	1011.67	1011.62	1011.57	1011.64
	5	1011.57	1011.59	1011.59	1011.54	1011.46	1011.42	1011.40	1011.38	1011.35	1011.33	1011.32	1011.32	1011.44
	6	1011.32	1011.34	1011.41	1011.49	1011.54	1011.63	1011.71	1011.73	1011.71	1011.69	1011.70	1011.78	1011.59
	7	1011.87	1011.95	1012.04	1012.09	1012.11	1012.08	1012.05	1012.03	1012.04	1012.07	1012.04	1011.94	1012.02
	8	1011.88	1011.83	1011.78	1011.75	1011.75	1011.77	1011.73	1011.65	1011.64	1011.68	1011.67	1011.65	1011.73
	9	1011.65	1011.63	1011.61	1011.57	1011.55	1011.57	1011.54	1011.52	1011.51	1011.47	1011.43	1011.38	1011.53
	10	1011.37	1011.40	1011.36	1011.23	1011.15	1011.14	1011.20	1011.26	1011.16	1010.99	1010.92	1010.92	1011.17
	11	1010.92	1010.94	1010.96	1010.95	1010.91	1010.84	1010.84	1010.90	1010.92	1010.92	1010.90	1010.83	1010.90
	12	1010.80	1010.83	1010.81	1010.76	1010.70	1010.70	1010.75	1010.81	1010.83	1010.84	1010.87	1010.87	1010.79
	13	1010.90	1010.90	1010.90	1010.95	1010.97	1010.94	1010.90	1010.91	1010.90	1010.88	1010.85	1010.79	1010.90
	14	1010.76	1010.77	1010.82	1010.86	1010.86	1010.88	1010.86	1010.78	1010.73	1010.76	1010.75	1010.73	1010.79
	15	1010.70	1010.69	1010.68	1010.65	1010.65	1010.63	1010.54	1010.39	1010.37	1010.42	1010.43	1010.49	1010.55
	16	1010.54	1010.56	1010.52	1010.48	1010.44	1010.52	1010.61	1010.68	1010.88	1011.07	1011.18	1011.26	1010.73
	17	1011.30	1011.28	1011.32	1011.44	1011.57	1011.65	1011.63	1011.59	1011.67	1011.79	1011.86	1011.93	1011.58
	18	1011.94	1011.95	1011.99	1012.12	1012.24	1012.21	1012.19	1012.25	1012.19	1012.11	1012.17	1012.31	1012.14
	19	1012.45	1012.49	1012.52	1012.66	1012.87	1012.97	1013.06	1013.20	1013.36	1013.50	1013.52	1013.51	1013.01
	20	1013.54	1013.60	1013.71	1013.79	1013.78	1013.81	1013.85	1013.90	1013.94	1013.95	1013.97	1014.01	1013.82
	21	1014.16	1014.28	1014.27	1014.16	1014.09	1014.15	1014.23	1014.31	1014.35	1014.37	1014.44	1014.37	1014.26
	22	1014.30	1014.45	1014.61	1014.63	1014.63	1014.66	1014.65	1014.71	1014.80	1014.73	1014.65	1014.67	1014.62
	23	1014.74	1014.81	1014.79	1014.80	1014.89	1014.94	1014.96	1014.97	1015.01	1015.10	1015.09	1014.99	1014.92

S.V.I.R.CO. Observatory - Pressure in hectoPascal – October 2018

day	hh	00_05	05_10	10_15	15_20	20_25	25_30	30_35	35_40	40_45	45_50	50_55	55_60	average
23	0	1014.95	1014.97	1015.00	1014.97	1014.91	1014.88	1014.87	1014.90	1014.91	1014.85	1014.83	1014.84	1014.90
	1	1014.76	1014.62	1014.52	1014.50	1014.53	1014.56	1014.56	1014.53	1014.50	1014.47	1014.46	1014.48	1014.54
	2	1014.46	1014.42	1014.37	1014.35	1014.38	1014.34	1014.27	1014.26	1014.29	1014.39	1014.44	1014.40	1014.36
	3	1014.40	1014.52	1014.56	1014.58	1014.60	1014.58	1014.59	1014.60	1014.62	1014.65	1014.68	1014.72	1014.59
	4	1014.77	1014.82	1014.82	1014.77	1014.74	1014.78	1014.85	1014.91	1014.93	1014.87	1014.87	1014.93	1014.84
	5	1014.99	1015.03	1015.05	1015.04	1015.02	1015.02	1015.05	1015.10	1015.20	1015.30	1015.39	1015.40	1015.13
	6	1015.37	1015.39	1015.37	1015.34	1015.50	1015.80	1015.95	1015.94	1015.98	1016.05	1016.05	1016.02	1015.73
	7	1016.05	1016.15	1016.25	1016.29	1016.34	1016.40	1016.38	1016.36	1016.37	1016.35	1016.28	1016.24	1016.29
	8	1016.22	1016.16	1016.11	1016.11	1016.13	1016.15	1016.14	1016.11	1016.09	1016.10	1016.19	1016.23	1016.14
	9	1016.19	1016.12	1016.07	1016.06	1016.09	1016.13	1016.08	1016.04	1016.07	1016.05	1015.97	1015.91	1016.06
	10	1015.94	1015.94	1015.87	1015.83	1015.85	1015.80	1015.73	1015.76	1015.71	1015.59	1015.54	1015.52	1015.76
	11	1015.47	1015.42	1015.40	1015.32	1015.23	1015.22	1015.25	1015.25	1015.15	1015.04	1015.05	1015.06	1015.23
	12	1015.00	1014.90	1014.94	1015.02	1015.01	1014.98	1014.89	1014.82	1014.80	1014.84	1014.90	1014.88	1014.91
	13	1014.83	1014.83	1014.82	1014.87	1014.86	1014.75	1014.70	1014.70	1014.71	1014.67	1014.62	1014.61	1014.75
	14	1014.58	1014.52	1014.50	1014.49	1014.44	1014.42	1014.42	1014.40	1014.35	1014.32	1014.31	1014.30	1014.42
	15	1014.33	1014.40	1014.50	1014.60	1014.68	1014.75	1014.79	1014.83	1014.89	1014.99	1015.06	1015.06	1014.74
	16	1015.02	1015.00	1015.01	1015.06	1015.10	1015.08	1015.11	1015.20	1015.25	1015.28	1015.31	1015.33	1015.14
	17	1015.35	1015.41	1015.49	1015.54	1015.58	1015.64	1015.71	1015.73	1015.74	1015.75	1015.77	1015.81	1015.62
	18	1015.85	1015.88	1015.86	1015.81	1015.80	1015.85	1015.88	1015.90	1015.89	1015.89	1015.93	1016.01	1015.88
	19	1016.04	1016.03	1016.07	1016.13	1016.17	1016.17	1016.19	1016.23	1016.22	1016.20	1016.23	1016.32	1016.16
	20	1016.40	1016.43	1016.47	1016.49	1016.50	1016.52	1016.52	1016.52	1016.49	1016.44	1016.43	1016.46	1016.47
	21	1016.43	1016.41	1016.41	1016.41	1016.42	1016.36	1016.30	1016.32	1016.33	1016.25	1016.17	1016.08	1016.32
	22	1016.00	1015.96	1015.93	1015.88	1015.82	1015.77	1015.73	1015.75	1015.79	1015.79	1015.76	1015.72	1015.82
	23	1015.72	1015.72	1015.63	1015.55	1015.54	1015.47	1015.47	1015.51	1015.39	1015.27	1015.29	1015.32	1015.49
24	0	1015.35	1015.34	1015.33	1015.32	1015.34	1015.38	1015.39	1015.35	1015.31	1015.26	1015.18	1015.12	1015.30
	1	1015.07	1015.07	1015.04	1015.01	1014.99	1014.94	1014.94	1014.94	1014.87	1014.78	1014.72	1014.69	1014.92
	2	1014.72	1014.76	1014.71	1014.58	1014.52	1014.42	1014.27	1014.27	1014.37	1014.37	1014.37	1014.34	1014.47
	3	1014.34	1014.43	1014.46	1014.43	1014.35	1014.20	1014.11	1014.09	1014.04	1014.06	1014.13	1014.11	1014.23
	4	1014.03	1013.93	1013.85	1013.84	1013.79	1013.71	1013.68	1013.70	1013.69	1013.62	1013.60	1013.61	1013.75
	5	1013.62	1013.59	1013.54	1013.54	1013.58	1013.62	1013.56	1013.52	1013.58	1013.58	1013.50	1013.50	1013.56
	6	1013.57	1013.65	1013.77	1013.85	1013.94	1013.98	1013.93	1013.86	1013.77	1013.68	1013.62	1013.69	1013.77
	7	1013.82	1013.90	1013.87	1013.80	1013.77	1013.75	1013.68	1013.57	1013.53	1013.56	1013.54	1013.52	1013.69
	8	1013.50	1013.47	1013.48	1013.46	1013.41	1013.37	1013.36	1013.38	1013.40	1013.47	1013.51	1013.42	1013.43
	9	1013.32	1013.25	1013.25	1013.31	1013.35	1013.33	1013.34	1013.35	1013.24	1013.05	1012.88	1012.93	1013.22
	10	1013.02	1012.99	1013.00	1012.97	1012.84	1012.73	1012.68	1012.59	1012.55	1012.51	1012.42	1012.35	1012.72
	11	1012.28	1012.21	1012.10	1011.98	1011.84	1011.68	1011.59	1011.57	1011.55	1011.49	1011.46	1011.43	1011.76
	12	1011.36	1011.32	1011.24	1011.13	1011.07	1011.07	1011.06	1011.00	1010.91	1010.81	1010.82	1010.84	1011.05
	13	1010.81	1010.81	1010.82	1010.76	1010.73	1010.71	1010.62	1010.57	1010.60	1010.60	1010.60	1010.61	1010.68
	14	1010.62	1010.56	1010.51	1010.58	1010.59	1010.52	1010.48	1010.47	1010.44	1010.42	1010.39	1010.38	1010.49
	15	1010.41	1010.47	1010.49	1010.49	1010.52	1010.52	1010.48	1010.43	1010.46	1010.53	1010.60	1010.72	1010.51
	16	1010.75	1010.71	1010.71	1010.69	1010.67	1010.67	1010.72	1010.70	1010.71	1010.75	1010.73	1010.68	1010.71
	17	1010.64	1010.65	1010.66	1010.79	1010.98	1011.12	1011.26	1011.31	1011.25	1011.17	1011.12	1011.09	1011.00
	18	1011.06	1011.05	1011.07	1011.08	1011.10	1011.16	1011.19	1011.25	1011.31	1011.39	1011.48	1011.53	1011.22
	19	1011.54	1011.51	1011.51	1011.59	1011.65	1011.69	1011.76	1011.82	1011.84	1011.82	1011.80	1011.80	1011.69
	20	1011.86	1011.95	1012.01	1012.04	1012.08	1012.10	1012.12	1012.16	1012.14	1012.11	1012.13	1012.14	1012.07
	21	1012.13	1012.13	1012.17	1012.23	1012.26	1012.29	1012.32	1012.35	1012.45	1012.53	1012.56	1012.60	1012.33
	22	1012.61	1012.58	1012.57	1012.64	1012.71	1012.78	1012.85	1012.87	1012.88	1012.88	1012.85	1012.84	1012.75
	23	1012.87	1012.94	1012.96	1012.94	1012.98	1012.96	1012.89	1012.89	1012.93	1012.93	1012.93	1012.94	1012.93

S.V.I.R.CO. Observatory - Pressure in hectoPascal – October 2018

day	hh	00_05	05_10	10_15	15_20	20_25	25_30	30_35	35_40	40_45	45_50	50_55	55_60	average
25	0	1012.88	1012.88	1012.83	1012.74	1012.72	1012.83	1012.92	1012.90	1012.88	1012.92	1012.96	1012.98	1012.87
	1	1013.00	1013.01	1013.03	1013.07	1013.14	1013.22	1013.29	1013.36	1013.37	1013.33	1013.36	1013.42	1013.21
	2	1013.45	1013.43	1013.40	1013.40	1013.42	1013.48	1013.56	1013.64	1013.69	1013.75	1013.81	1013.85	1013.57
	3	1013.88	1013.92	1014.00	1014.11	1014.17	1014.22	1014.31	1014.36	1014.39	1014.42	1014.43	1014.49	1014.22
	4	1014.56	1014.55	1014.57	1014.62	1014.67	1014.73	1014.78	1014.81	1014.84	1014.94	1015.05	1015.18	1014.77
	5	1015.30	1015.35	1015.34	1015.36	1015.36	1015.40	1015.52	1015.61	1015.70	1015.78	1015.88	1016.03	1015.55
	6	1016.12	1016.22	1016.30	1016.31	1016.31	1016.34	1016.38	1016.42	1016.46	1016.54	1016.63	1016.72	1016.39
	7	1016.80	1016.85	1016.94	1017.03	1017.11	1017.16	1017.20	1017.21	1017.20	1017.19	1017.17	1017.16	1017.08
	8	1017.14	1017.14	1017.15	1017.19	1017.25	1017.28	1017.27	1017.28	1017.30	1017.29	1017.34	1017.39	1017.25
	9	1017.42	1017.45	1017.50	1017.62	1017.72	1017.71	1017.66	1017.62	1017.59	1017.55	1017.56	1017.58	1017.58
	10	1017.56	1017.52	1017.44	1017.34	1017.31	1017.30	1017.24	1017.20	1017.19	1017.16	1017.13	1017.09	1017.29
	11	1017.06	1017.02	1016.97	1016.94	1016.87	1016.78	1016.69	1016.61	1016.53	1016.45	1016.39	1016.36	1016.72
	12	1016.31	1016.28	1016.30	1016.34	1016.31	1016.23	1016.18	1016.13	1016.09	1016.09	1016.10	1016.09	1016.20
	13	1016.04	1016.00	1016.04	1016.11	1016.17	1016.25	1016.33	1016.39	1016.40	1016.39	1016.33	1016.27	1016.23
	14	1016.25	1016.22	1016.24	1016.26	1016.27	1016.26	1016.27	1016.28	1016.29	1016.28	1016.24	1016.17	1016.25
	15	1016.04	1015.95	1015.93	1015.98	1016.03	1015.97	1015.94	1015.99	1015.94	1015.89	1015.89	1015.87	1015.95
	16	1015.87	1015.87	1015.89	1015.96	1015.98	1015.99	1016.06	1016.12	1016.19	1016.30	1016.38	1016.35	1016.08
	17	1016.31	1016.38	1016.43	1016.40	1016.41	1016.44	1016.52	1016.59	1016.59	1016.56	1016.54	1016.53	1016.47
	18	1016.47	1016.38	1016.35	1016.36	1016.35	1016.34	1016.28	1016.23	1016.25	1016.27	1016.29	1016.25	1016.32
	19	1016.20	1016.25	1016.29	1016.28	1016.27	1016.31	1016.36	1016.30	1016.25	1016.26	1016.28	1016.31	1016.28
	20	1016.36	1016.41	1016.50	1016.58	1016.57	1016.58	1016.60	1016.59	1016.62	1016.70	1016.72	1016.73	1016.58
	21	1016.75	1016.75	1016.74	1016.74	1016.77	1016.79	1016.78	1016.79	1016.78	1016.74	1016.70	1016.70	1016.75
	22	1016.76	1016.80	1016.82	1016.83	1016.82	1016.80	1016.74	1016.68	1016.67	1016.67	1016.68	1016.73	1016.75
	23	1016.75	1016.72	1016.70	1016.69	1016.61	1016.54	1016.55	1016.56	1016.54	1016.51	1016.51	1016.52	1016.60
26	0	1016.54	1016.53	1016.51	1016.47	1016.42	1016.41	1016.39	1016.36	1016.34	1016.32	1016.28	1016.21	1016.39
	1	1016.16	1016.07	1015.99	1015.94	1015.95	1015.98	1016.00	1016.00	1015.97	1015.95	1015.95	1015.95	1015.99
	2	1015.91	1015.88	1015.88	1015.83	1015.73	1015.64	1015.59	1015.54	1015.50	1015.49	1015.48	1015.49	1015.66
	3	1015.50	1015.44	1015.36	1015.33	1015.33	1015.34	1015.37	1015.39	1015.37	1015.35	1015.36	1015.39	1015.38
	4	1015.42	1015.44	1015.43	1015.43	1015.48	1015.51	1015.50	1015.50	1015.51	1015.47	1015.45	1015.47	1015.47
	5	1015.46	1015.44	1015.39	1015.37	1015.37	1015.34	1015.30	1015.31	1015.35	1015.37	1015.37	1015.35	1015.37
	6	1015.34	1015.35	1015.35	1015.35	1015.37	1015.39	1015.43	1015.47	1015.50	1015.51	1015.50	1015.49	1015.42
	7	1015.49	1015.55	1015.66	1015.68	1015.65	1015.65	1015.65	1015.65	1015.62	1015.61	1015.63	1015.65	1015.62
	8	1015.66	1015.65	1015.62	1015.59	1015.58	1015.60	1015.61	1015.62	1015.65	1015.60	1015.50	1015.45	1015.59
	9	1015.47	1015.44	1015.40	1015.40	1015.42	1015.46	1015.47	1015.45	1015.42	1015.41	1015.40	1015.40	1015.42
	10	1015.38	1015.37	1015.39	1015.42	1015.41	1015.32	1015.20	1015.14	1015.10	1015.02	1014.93	1014.85	1015.21
	11	1014.82	1014.80	1014.76	1014.73	1014.70	1014.70	1014.68	1014.61	1014.53	1014.49	1014.47	1014.39	1014.64
	12	1014.35	1014.35	1014.36	1014.36	1014.33	1014.35	1014.37	1014.34	1014.30	1014.31	1014.31	1014.26	1014.33
	13	1014.21	1014.24	1014.25	1014.20	1014.18	1014.14	1014.13	1014.13	1014.11	1014.09	1014.05	1014.02	1014.14
	14	1014.02	1014.03	1014.00	1013.95	1013.95	1013.97	1013.96	1013.96	1013.95	1013.93	1013.89	1013.86	1013.95
	15	1013.84	1013.83	1013.85	1013.87	1013.87	1013.86	1013.88	1013.89	1013.90	1013.93	1013.96	1013.94	1013.88
	16	1013.91	1013.92	1013.95	1013.95	1013.96	1014.00	1014.02	1014.02	1014.03	1014.05	1014.09	1014.15	1014.00
	17	1014.21	1014.27	1014.32	1014.34	1014.37	1014.42	1014.49	1014.53	1014.57	1014.61	1014.62	1014.63	1014.45
	18	1014.62	1014.61	1014.58	1014.51	1014.44	1014.40	1014.35	1014.31	1014.26	1014.20	1014.16	1014.16	1014.38
	19	1014.17	1014.16	1014.15	1014.14	1014.12	1014.12	1014.13	1014.15	1014.18	1014.21	1014.22	1014.22	1014.16
	20	1014.26	1014.31	1014.33	1014.36	1014.41	1014.45	1014.46	1014.47	1014.43	1014.39	1014.37	1014.31	1014.38
	21	1014.28	1014.27	1014.27	1014.25	1014.23	1014.21	1014.19	1014.15	1014.09	1014.04	1014.01	1013.99	1014.16
	22	1013.95	1013.92	1013.89	1013.87	1013.84	1013.77	1013.72	1013.70	1013.67	1013.62	1013.59	1013.58	1013.76
	23	1013.58	1013.56	1013.51	1013.45	1013.37	1013.30	1013.26	1013.23	1013.18	1013.11	1013.08	1013.07	1013.31

S.V.I.R.CO. Observatory - Pressure in hectoPascal – October 2018

day	hh	00_05	05_10	10_15	15_20	20_25	25_30	30_35	35_40	40_45	45_50	50_55	55_60	average
27	0	1013.15	1013.14	1013.12	1013.10	1013.07	1013.02	1012.97	1012.95	1012.93	1012.87	1012.80	1012.71	1012.98
	1	1012.62	1012.56	1012.49	1012.41	1012.34	1012.27	1012.19	1012.12	1012.05	1011.98	1011.93	1011.86	1012.23
	2	1011.77	1011.71	1011.67	1011.65	1011.64	1011.61	1011.55	1011.47	1011.42	1011.38	1011.32	1011.23	1011.53
	3	1011.12	1011.04	1010.97	1010.89	1010.81	1010.72	1010.67	1010.66	1010.66	1010.64	1010.60	1010.55	1010.78
	4	1010.51	1010.46	1010.42	1010.40	1010.38	1010.35	1010.31	1010.26	1010.19	1010.12	1010.03	1010.00	1010.28
	5	1010.00	1009.99	1009.96	1009.93	1009.89	1009.83	1009.76	1009.74	1009.72	1009.66	1009.60	1009.56	1009.80
	6	1009.56												
	7													
	8													
	9													
	10													
	11													
	12													
	13													
	14													
	15			1005.85	1005.82	1005.74	1005.68	1005.59	1005.49	1005.41	1005.35	1005.29	1005.26	
	16	1005.28	1005.26	1005.21	1005.18	1005.17	1005.19	1005.20	1005.23	1005.23	1005.19	1005.22	1005.26	1005.22
	17	1005.36	1005.41	1005.38	1005.34	1005.32	1005.36	1005.36	1005.34	1005.37	1005.42	1005.44	1005.44	1005.38
	18	1005.48	1005.48	1005.48	1005.55	1005.53	1005.44	1005.35	1005.32	1005.37	1005.41	1005.39	1005.32	1005.43
	19	1005.28	1005.27	1005.23	1005.23	1005.21	1005.20	1005.23	1005.22	1005.23	1005.27	1005.29	1005.27	1005.24
	20	1005.26	1005.25	1005.22	1005.23	1005.27	1005.31	1005.36	1005.41	1005.45	1005.45	1005.43	1005.40	1005.34
	21	1005.37	1005.36	1005.34	1005.35	1005.35	1005.32	1005.31	1005.32	1005.33	1005.33	1005.28	1005.20	1005.32
	22	1005.14	1005.12	1005.12	1005.13	1005.15	1005.13	1005.05	1004.96	1004.93	1004.93	1004.91	1004.88	1005.04
	23	1004.84	1004.81	1004.76	1004.70	1004.71	1004.71	1004.67	1004.62	1004.55	1004.50	1004.45	1004.41	1004.64
28	0	1004.40	1004.41	1004.40	1004.36	1004.30	1004.28	1004.28	1004.25	1004.24	1004.22	1004.13	1004.01	1004.27
	1	1003.97	1003.98	1003.95	1003.92	1003.90	1003.82	1003.71	1003.66	1003.63	1003.62	1003.63	1003.62	1003.78
	2	1003.55	1003.49	1003.47	1003.42	1003.37	1003.32	1003.28	1003.23	1003.20	1003.22	1003.20	1003.16	1003.33
	3	1003.13	1003.08	1003.02	1002.99	1003.04	1003.10	1003.11	1003.05	1003.00	1002.99	1003.00	1003.02	1003.04
	4	1003.03	1003.02	1003.05	1003.07	1003.03	1002.99	1002.97	1002.93	1002.89	1002.86	1002.82	1002.78	1002.95
	5	1002.69	1002.58	1002.47	1002.37	1002.31	1002.26	1002.27	1002.29	1002.27	1002.25	1002.20	1002.20	1002.35
	6	1002.23	1002.28	1002.35	1002.42	1002.47	1002.48	1002.52	1002.61	1002.68	1002.72	1002.79	1002.90	1002.54
	7	1002.97	1002.96	1003.01	1003.10	1003.13	1003.17	1003.21	1003.23	1003.24	1003.30	1003.34	1003.37	1003.17
	8	1003.35	1003.32	1003.27	1003.13	1002.99	1002.87	1002.75	1002.75	1002.78	1002.75	1002.69	1002.64	1002.94
	9	1002.55	1002.50	1002.51	1002.50	1002.50	1002.36	1002.34	1002.44	1002.34	1002.22	1002.14	1002.03	1002.37
	10	1002.00	1002.12	1002.22	1002.32	1002.36	1002.31	1002.21	1002.11	1002.05	1001.92	1001.80	1001.68	1002.09
	11	1001.57	1001.42	1001.30	1001.35	1001.35	1001.27	1001.28	1001.37	1001.41	1001.48	1001.62	1001.72	1001.43
	12	1001.76	1001.81	1001.84	1001.87	1001.90	1001.88	1001.84	1001.82	1001.86	1001.90	1001.94	1002.00	1001.87
	13	1002.03	1002.03	1002.02	1002.03	1002.04	1002.07	1002.09	1002.05	1002.00	1001.96	1001.93	1001.97	1002.02
	14	1002.04	1002.10	1002.17	1002.21	1002.22	1002.18	1002.16	1002.18	1002.18	1002.14	1002.11	1002.11	1002.15
	15	1002.12	1002.08	1002.01	1001.95	1001.85	1001.78	1001.75	1001.71	1001.66	1001.58	1001.51	1001.52	1001.79
	16	1001.63	1001.72	1001.77	1001.84	1001.95	1002.09	1002.18	1002.23	1002.28	1002.37	1002.49	1002.58	1002.09
	17	1002.66	1002.77	1002.88	1002.96	1003.04	1003.13	1003.20	1003.24	1003.30	1003.42	1003.52	1003.59	1003.14
	18	1003.66	1003.70	1003.69	1003.69	1003.72	1003.75	1003.82	1003.93	1004.01	1004.04	1004.07	1004.09	1003.85
	19	1004.07	1004.02	1003.97	1003.97	1003.98	1003.97	1003.98	1004.00	1004.01	1004.05	1004.09	1004.12	1004.02
	20	1004.16	1004.18	1004.19	1004.26	1004.32	1004.37	1004.39	1004.42	1004.48	1004.51	1004.51	1004.49	1004.36
	21	1004.49	1004.51	1004.56	1004.60	1004.61	1004.63	1004.63	1004.61	1004.55	1004.49	1004.49	1004.50	1004.55
	22	1004.47	1004.41	1004.40	1004.44	1004.43	1004.37	1004.30	1004.31	1004.34	1004.36	1004.39	1004.39	1004.38
	23	1004.37	1004.36	1004.29	1004.15	1004.12	1004.14	1004.09	1004.03	1004.00	1003.99	1004.01	1004.08	1004.14

S.V.I.R.CO. Observatory - Pressure in hectoPascal – October 2018

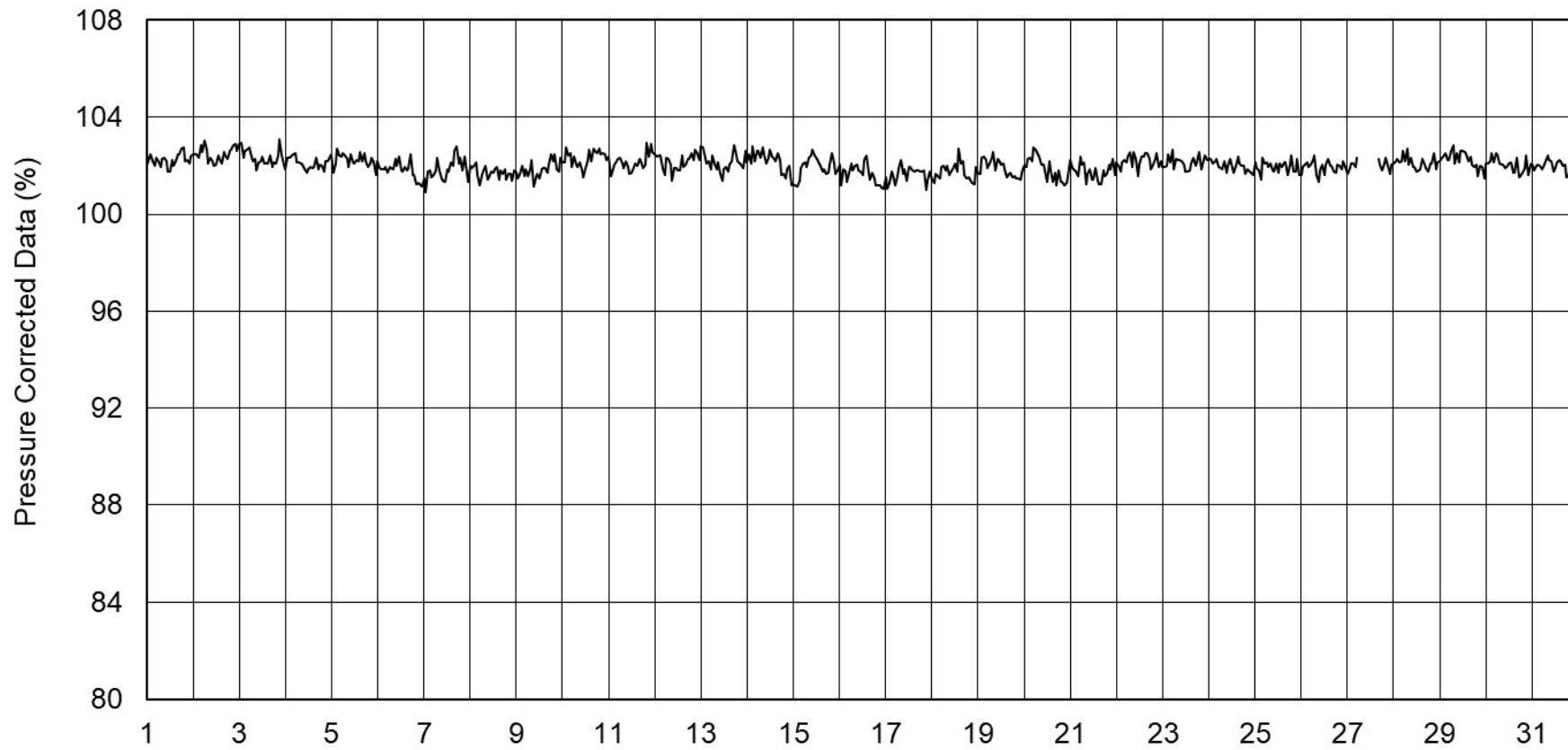
day	hh	00_05	05_10	10_15	15_20	20_25	25_30	30_35	35_40	40_45	45_50	50_55	55_60	average
29	0	1003.97	1003.95	1003.87	1003.78	1003.71	1003.62	1003.55	1003.50	1003.44	1003.30	1003.13	1003.00	1003.55
	1	1002.91	1002.81	1002.70	1002.62	1002.61	1002.59	1002.54	1002.52	1002.39	1002.23	1002.18	1002.33	1002.54
	2	1002.37	1002.09	1001.90	1001.86	1001.84	1001.84	1001.84	1001.81	1001.73	1001.60	1001.50	1001.42	1001.82
	3	1001.40	1001.41	1001.41	1001.36	1001.27	1001.18	1001.09	1001.06	1001.05	1000.86	1000.64	1000.50	1001.10
	4	1000.50	1000.55	1000.75	1001.31	1001.74	1001.87	1001.87	1001.75	1001.71	1001.68	1001.66	1001.52	1001.41
	5	1001.42	1001.45	1001.30	1001.08	1000.95	1000.84	1000.70	1000.57	1000.51	1000.45	1000.39	1000.34	1000.83
	6	1000.22	1000.18	1000.20	1000.12	1000.03	999.88	999.71	999.71	999.77	999.76	999.70	999.71	999.91
	7	999.67	999.57	999.49	999.43	999.52	999.73	999.94	1000.06	1000.17	1000.21	1000.03	999.95	999.81
	8	999.94	999.74	999.32	998.94	998.84	998.82	998.90	999.05	999.11	999.06	998.96	998.89	999.13
	9	998.86	998.87	998.85	998.78	998.71	998.65	998.53	998.37	998.15	998.00	997.95	997.85	998.46
	10	997.80	997.77	997.62	997.41	997.20	996.90	996.58	996.38	996.20	996.06	995.98	995.86	996.81
	11	995.79	995.71	995.59	995.52	995.41	995.35	995.59	995.73	995.50	995.39	995.33	995.14	995.50
	12	994.95	994.75	994.76	994.83	994.79	994.69	994.29	993.86	993.74	993.65	993.61	993.71	994.30
	13	993.69	993.54	993.43	993.19	992.90	992.73	992.67	992.61	992.56	992.58	992.72	992.86	992.96
	14	993.01	993.25	993.39	993.57	993.76	993.93	994.11	994.33	994.44	994.14	994.06	994.27	993.86
	15	994.25	994.18	994.12	994.19	994.54	995.03	995.44	995.72	995.88	995.97	996.14	996.32	995.15
	16	996.55	996.86	997.14	997.22	997.28	997.45	997.66	997.79	997.93	998.21	998.54	998.72	997.61
	17	998.78	998.95	999.12	999.26	999.48	999.71	999.90	1000.08	1000.17	1000.16	1000.16	1000.22	999.67
	18	1000.20	1000.16	1000.21	1000.30	1000.37	1000.41	1000.48	1000.61	1000.74	1000.80	1000.76	1000.80	1000.49
	19	1000.89	1000.99	1001.11	1001.25	1001.41	1001.48	1001.56	1001.73	1001.98	1002.06	1002.04	1002.12	1001.55
	20	1002.24	1002.43	1002.56	1002.57	1002.63	1002.74	1002.73	1002.72	1002.81	1002.93	1003.04	1003.16	1002.71
	21	1003.16	1003.11	1003.12	1003.20	1003.29	1003.37	1003.38	1003.36	1003.34	1003.36	1003.54	1003.91	1003.34
	22	1004.05	1003.93	1003.89	1003.90	1003.92	1003.96	1004.04	1004.11	1004.14	1004.18	1004.23	1004.30	1004.05
	23	1004.35	1004.42	1004.53	1004.65	1004.79	1004.92	1005.02	1005.08	1005.15	1005.23	1005.31	1005.40	1004.90
30	0	1005.49	1005.52	1005.60	1005.65	1005.66	1005.62	1005.59	1005.62	1005.67	1005.68	1005.71	1005.75	1005.64
	1	1005.81	1006.16	1006.41	1006.37	1006.35	1006.28	1006.24	1006.26	1006.24	1006.16	1006.11	1006.15	1006.21
	2	1006.24	1006.29	1006.24	1006.21	1006.26	1006.23	1006.11	1006.02	1006.06	1006.19	1006.26	1006.31	1006.20
	3	1006.36	1006.41	1006.50	1006.60	1006.69	1006.76	1006.74	1006.68	1006.68	1006.69	1006.71	1006.79	1006.63
	4	1006.78	1006.64	1006.61	1006.88	1007.08	1007.06	1007.07	1007.05	1007.02	1007.06	1007.13	1007.16	1006.96
	5	1007.17	1007.13	1007.10	1007.10	1007.07	1007.09	1007.13	1007.21	1007.39	1007.60	1007.81	1007.90	1007.31
	6	1007.90	1008.03	1008.22	1008.31	1008.46	1008.56	1008.56	1008.66	1008.83	1008.98	1009.02	1009.09	1008.55
	7	1009.13	1009.15	1009.26	1009.32	1009.31	1009.38	1009.47	1009.57	1009.65	1009.73	1009.78	1009.78	1009.46
	8	1009.81	1009.86	1009.92	1010.02	1010.16	1010.26	1010.32	1010.35	1010.37	1010.41	1010.50	1010.62	1010.22
	9	1010.73	1010.83	1010.91	1011.01	1011.10	1011.17	1011.21	1011.27	1011.36	1011.47	1011.68	1011.83	1011.21
	10	1011.81	1011.81	1011.84	1011.82	1011.79	1011.81	1011.85	1011.86	1011.83	1011.80	1011.78	1011.76	1011.81
	11	1011.78	1011.83	1011.93	1012.03	1012.09	1012.11	1012.13	1012.17	1012.22	1012.30	1012.40	1012.49	1012.12
	12	1012.54	1012.56	1012.54	1012.58	1012.68	1012.74	1012.80	1012.86	1012.92	1012.99	1013.05	1013.07	1012.78
	13	1013.07	1013.07	1013.09	1013.14	1013.21	1013.28	1013.34	1013.40	1013.44	1013.45	1013.49	1013.55	1013.30
	14	1013.59	1013.62	1013.68	1013.74	1013.80	1013.84	1013.90	1013.96	1013.98	1013.99	1014.02	1014.05	1013.85
	15	1014.07	1014.11	1014.17	1014.20	1014.20	1014.20	1014.22	1014.26	1014.33	1014.41	1014.43	1014.43	1014.25
	16	1014.46	1014.51	1014.57	1014.61	1014.65	1014.77	1014.90	1015.00	1015.08	1015.15	1015.20	1015.26	1014.85
	17	1015.34	1015.39	1015.41	1015.46	1015.53	1015.60	1015.68	1015.74	1015.78	1015.83	1015.91	1016.02	1015.64
	18	1016.11	1016.16	1016.20	1016.26	1016.28	1016.31	1016.37	1016.43	1016.48	1016.55	1016.63	1016.66	1016.37
	19	1016.70	1016.74	1016.76	1016.77	1016.80	1016.83	1016.88	1016.98	1017.07	1017.11	1017.13	1017.17	1016.91
	20	1017.20	1017.25	1017.32	1017.41	1017.49	1017.53	1017.54	1017.58	1017.62	1017.68	1017.77	1017.82	1017.52
	21	1017.84	1017.88	1017.88	1017.87	1017.89	1017.86	1017.83	1017.82	1017.81	1017.79	1017.79	1017.83	1017.84
	22	1017.89	1017.91	1017.93	1017.94	1017.95	1017.95	1017.95	1017.95	1017.99	1018.06	1018.14	1018.16	1017.98
	23	1018.16	1018.19	1018.21	1018.21	1018.23	1018.29	1018.34	1018.33	1018.32	1018.34	1018.35	1018.34	1018.28

S.V.I.R.CO. Observatory - Pressure in hectoPascal – October 2018

day	hh	00_05	05_10	10_15	15_20	20_25	25_30	30_35	35_40	40_45	45_50	50_55	55_60	average
31	0	1018.39	1018.41	1018.45	1018.49	1018.51	1018.50	1018.51	1018.50	1018.50	1018.51	1018.52	1018.54	1018.49
	1	1018.56	1018.58	1018.57	1018.54	1018.55	1018.56	1018.55	1018.50	1018.45	1018.44	1018.45	1018.45	1018.52
	2	1018.46	1018.48	1018.48	1018.45	1018.41	1018.34	1018.29	1018.31	1018.37	1018.41	1018.39	1018.37	1018.40
	3	1018.41	1018.45	1018.47	1018.50	1018.54	1018.57	1018.56	1018.53	1018.52	1018.56	1018.58	1018.57	1018.52
	4	1018.58	1018.63	1018.68	1018.69	1018.70	1018.73	1018.75	1018.77	1018.80	1018.86	1018.91	1018.93	1018.75
	5	1018.96	1018.98	1019.01	1019.06	1019.08	1019.10	1019.16	1019.19	1019.22	1019.24	1019.27	1019.33	1019.13
	6	1019.39	1019.43	1019.47	1019.51	1019.50	1019.49	1019.55	1019.66	1019.72	1019.70	1019.69	1019.74	1019.57
	7	1019.82	1019.88	1019.93	1020.00	1020.08	1020.09	1020.09	1020.10	1020.07	1020.00	1019.93	1019.86	1019.99
	8	1019.88	1019.94	1019.99	1020.04	1020.04	1020.06	1020.13	1020.15	1020.11	1020.05	1020.02	1020.00	1020.03
	9	1019.97	1019.90	1019.80	1019.76	1019.74	1019.70	1019.68	1019.70	1019.70	1019.65	1019.56	1019.54	1019.72
	10	1019.58	1019.58	1019.55	1019.50	1019.47	1019.49	1019.47	1019.39	1019.27	1019.17	1019.13	1019.10	1019.39
	11	1019.13	1019.15	1019.15	1019.23	1019.28	1019.32	1019.39	1019.34	1019.25	1019.19	1019.15	1019.20	1019.23
	12	1019.30	1019.36	1019.33	1019.34	1019.33	1019.31	1019.32	1019.29	1019.29	1019.29	1019.28	1019.30	1019.31
	13	1019.23	1019.20	1019.18	1019.09	1019.09	1019.13	1019.15	1019.16	1019.14	1019.07	1018.98	1018.91	1019.11
	14	1018.84	1018.76	1018.71	1018.68	1018.65	1018.63	1018.64	1018.69	1018.71	1018.70	1018.69	1018.65	1018.70
	15	1018.57	1018.45	1018.34	1018.28	1018.27	1018.28	1018.28	1018.31	1018.35	1018.34	1018.29	1018.24	1018.33
	16	1018.23	1018.27	1018.31	1018.28	1018.30	1018.37	1018.43	1018.52	1018.59	1018.69	1018.80	1018.84	1018.47
	17	1018.80	1018.79	1018.86	1018.95	1018.94	1018.88	1018.81	1018.73	1018.68	1018.67	1018.73	1018.80	1018.80
	18	1018.86	1018.88	1018.88	1018.86	1018.83	1018.77	1018.72	1018.66	1018.59	1018.52	1018.46	1018.39	1018.70
	19	1018.36	1018.39	1018.41	1018.36	1018.26	1018.19	1018.10	1018.04	1018.06	1018.09	1018.09	1018.08	1018.20
	20	1018.08	1018.07	1018.03	1017.96	1017.91	1017.89	1017.90	1017.97	1018.01	1017.99	1017.97	1017.93	1017.98
	21	1017.93	1017.93	1017.92	1017.89	1017.84	1017.81	1017.81	1017.81	1017.78	1017.72	1017.63	1017.56	1017.80
	22	1017.55	1017.57	1017.56	1017.50	1017.47	1017.48	1017.47	1017.41	1017.36	1017.32	1017.24	1017.17	1017.42
	23	1017.11	1017.02	1016.92	1016.80	1016.79	1016.81	1016.72	1016.60	1016.51	1016.52	1016.54	1016.46	1016.73

S.V.I.R.CO. Observatory - Pressure corrected data

October 2018



S.V.I.R.CO. Observatory - Pressure in hectoPascal

October 2018

