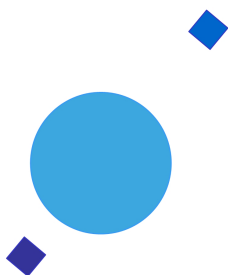


**INAF**



**ISTITUTO NAZIONALE DI ASTROFISICA**  
**NATIONAL INSTITUTE FOR ASTROPHYSICS**

***SVIRCO Prompt Report: September 2018***

Francesco Re

INAF/IAPS-2018-14

October 2018

**ISTITUTO DI ASTROFISICA E PLANETOLOGIA SPAZIALI**

**AREA DI RICERCA ROMA - TOR VERGATA**

**Via del Fosso del Cavaliere, 100 - 00133 Roma (ITALIA)**



## **SVIRCO Prompt Report: September 2018**

**Francesco Re**

*IAPS - INAF, Area di Ricerca Roma - Tor Vergata  
Via del Fosso del Cavaliere, 100 - 00133 Roma, Italy,*

### **Abstract**

*The pressure corrected intensity of the nucleonic component, produced by primary cosmic rays and recorded in September 2018 by the Neutron Monitor of SVIRCO-Rome (present geographic position:  $41.86^\circ$  N -  $12.47^\circ$  E; altitude about s.l. ), is reported in prompt form together with the barometric pressure data.*



## SVIRCO OBSERVATORY

During the 1<sup>st</sup> International Geophysics Year (1957) an international network of “ground-based detectors” for continuous cosmic ray measurements was world-wide established.

The cosmic ray station of Rome joined this network with the purpose to study the time variations of primary cosmic rays (**Studio Variazioni Intensità Raggi Cosmici: S.V.I.R.CO**) and their modulation in the heliosphere.

From July 1957 to April 1997, the SVIRCO Station (now Observatory) performed uninterrupted measurements at the Physics Department “G. Marconi” of “La Sapienza” University of Rome (41.90° N, 12.52° E, altitude about 60 m a.s.l.)

In May 1997 the neutron monitor was moved to the Physics Department “E. Amaldi” of “Roma Tre” University. Since then it has been continuously running at the new location (41.86° N, 12.47° E, altitude about 0 m a.s.l.).

The SVIRCO Observatory (INAF/IAPS-UNIRomaTre collaboration) is housed in a reserved building provided with a double air-conditioning system. The inner temperature is permanently restrained in a range of 23°-26° C, meanwhile the relative humidity is kept below 57%. Either the environmental parameters are continuously checked and recorded by digital sensors.

On January 1, 2005 three counters were added to the detector. This upgrade, from 17 to 20 NM-64, made the SVIRCO neutron monitor still consist of 5 sections but modified its geometry. Actually the new arrangement has been composed of three 3-counter, one 5-counter and one 6-counter units. The enhancement improved not only the overall counting rate of 15.6 % (January 2005) but, as a result, also the statistical quality of the recorded data.

On July 3, 2017 six counters experienced failure and were removed from the detector until 24 July. On 25 July 2017 a number of 2 counters was added to the detector up to a total of 16 counters. The new arrangement has been composed of three 3-counter, one 5-counter and one 2-counter units. The overall counting rate has decreased of about 20% (July 2017) with a lower statistical quality of the recorded data.

Each of the 16 BF<sub>3</sub> proportional counters (BP-28 type) is equipped with a smart amplifier/discriminator circuit complete with a spectrum stabilizer. This new electronic unit, developed in our laboratory, holds firmly the pulse height spectrum of the amplifier output (within a range of more than 150 volts around the operating voltage), providing the counter with a great immunity against high voltage variations.

Anyway, systematic and exhaustive tests of the counters are regularly performed. The output pulses of the amplifiers, discriminated by the threshold gates, are collected and stored into a multi-channel analyzer. The analysis of the height distribution (spectrum) of the amplifier pulses coinciding with the discriminator ones, is essential to verify the long term efficiency of each counter together with the amplifier gain and the discriminator threshold level.

As well as the amplifier/discriminator circuits, a large part of the electronic instrumentation operating in the Observatory was designed and realized in our laboratory together with the software for data acquisition and pre-elaboration.

In order to improve the reliability of the recorded data and to prevent measurement breakdowns, two independent systems perform contemporary the data acquisition. Each system is remotely controlled by a dedicated computer and is timed by a high stability quartz clock and/or a GPS receiver. One equipment runs according to a timing of 1 minute and fulfils the acquisition of the 16 counters separately. The other one records the individual 5-minute counting rate of each detector section in addition to the rates of the overall multiplicity, sorted into separated counting channels (from 1 to greater than 8).

A special care is devoted to the atmospheric pressure measurements; thus they are carried out by means of not less than three barometers at the same time. These instruments (achieving a resolution up to 0.01 hPa), are constantly checked out each other for the best measuring accuracy and reliability. Furthermore, the devices in use are equipped with different types of transducer such as vibrating cylinder, force balance and quartz, therefore, throughout their different behaviours, it is possible to point out the occurrence of any long-term drift and eventually to re-calibrate the instruments themselves.

## DATA PRESENTATION

In a preliminary step, the intensity data, of the secondary nucleonic component of cosmic rays, detected at SVIRCO Observatory, were corrected for pressure variations at a reference level of 1009.25 hPa with an attenuation coefficient of 0.70% / hPa.

The five-minutes counting rates, of the examined month, are reported in tabular form together with the hourly normalized data, which provide a continuous data set for long-term analysis.

The normalization was evaluated as percentage of the counting rate average of January-February 1997, when the Monitor operated at the previous location of "La Sapienza" University. The reference counting rate level (100%), computed for such period, is equal to 554946 counts/hour.

The atmospheric pressure data (in hectoPascal) are also collected in a monthly table which presents the five-minutes averages and the hourly ones.

The hourly averages of the normalized intensity and pressure, plotted in monthly graphs, are reported too.

## CONDITIONS FOR SVIRCO DATA USE

You are welcome to use neutron monitor data of SVIRCO, IAPS/INAF-UNIRomaTre collaboration, under the following conditions:

*-You agree to acknowledge our financial supports in any published use of the data.*

*Example: "SVIRCO NM is supported by the INAF - UNIRomaTre collaboration"*

*-You are kindly requested to send a copy of any published work derived from our data to:*

Dr. Monica Laurenza  
Head of SVIRCO Observatory & TPL  
Istituto di Astrofisica e Planetologia Spaziali - Area di Ricerca Tor Vergata  
Via del Fosso del Cavaliere, 100 00133 Roma - Italy,

[monica.laurenza@iaps.inaf.it](mailto:monica.laurenza@iaps.inaf.it)

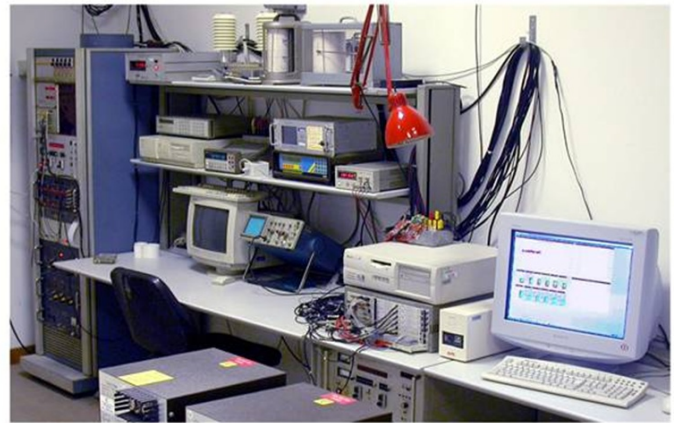




# S.V.I.R.CO. Observatory

Rome

Italy







INAF/UNIRomaTre				S.V.I.R.CO. Observatory - Pressure Corrected Data – September 2018										16 NM-64	
day	hh	00_05	05_10	10_15	15_20	20_25	25_30	30_35	35_40	40_45	45_50	50_55	55_60	h-norm	
1	0	37892	38567	38218	38122	38560	38724	38315	37668	38615	38227	37909	37926	100.923	
	1	38241	38213	37727	38233	38451	37679	38456	38404	38786	38419	38409	38105	101.007	
	2	38276	38459	37625	38796	38607	38363	38135	38643	38539	38292	38381	38623	101.363	
	3	38549	38346	38391	38407	38194	38052	38476	38381	38363	38633	38865	38754	101.511	
	4	38764	38386	38401	38414	38296	38192	38540	38128	38789	38570	38205	38456	101.451	
	5	38641	38629	37819	38588	38631	38126	38167	38173	38610	38741	38331	38679	101.450	
	6	38208	38567	38260	38441	38327	38771	38758	38828	38360	37827	38427	38946	101.578	
	7	38695	38389	38920	38382	38983	38472	38637	37744	37804	38428	38380	38134	101.413	
	8	38722	38602	38405	38409	37905	38438	38240	38360	38566	38524	38273	38258	101.354	
	9	37976	38763	38427	38084	38298	38184	38472	38305	38450	38636	38181	38297	101.216	
	10	38301	38148	37702	38380	38264	38388	37781	38197	38505	38320	38430	38151	100.885	
	11	38029	38098	37807	37966	37812	38382	38352	37938	38653	38250	38360	38247	100.737	
	12	38692	38289	38138	38443	38305	38344	38620	38292	38662	38099	37668	38707	101.257	
	13	38695	38646	38167	38386	38293	37872	37994	38040	38523	39001	38663	38339	101.337	
	14	38533	38277	38224	37526	37835	38113	38689	38341	38508	37639	38367	38610	100.905	
	15	39009	38077	38192	38583	37945	38684	38448	38275	38859	38159	38622	38362	101.468	
	16	38584	38414	38703	38327	38523	38699	37666	38386	38325	38500	38571	38291	101.417	
	17	38869	38709	38313	38231	38525	38799	38084	39508	39285	38256	38429	38736	102.024	
	18	38598	38276	37811	38724	38629	38580	38495	38313	38539	38043	38189	38219	101.292	
	19	38465	38533	38451	38510	38091	38172	38636	37874	38265	38197	38349	38372	101.182	
	20	38015	38345	38471	38153	38468	38589	38511	38341	38616	38573	38347	38230	101.345	
	21	38436	38243	38312	38128	38431	38349	37967	38270	38448	38415	38053	38677	101.141	
	22	38547	38118	38417	38917	38677	38655	38128	38409	38791	38432	38477	38061	101.558	
	23	38612	38414	38291	38265	38600	37974	38626	38601	37985	38098	38231	38484	101.239	
2	0	38464	38561	38651	38265	38860	38279	39046	38631	38125	38195	38073	38284	101.519	
	1	38272	38385	38362	38524	38055	38474	38553	38541	38364	38481	38254	38391	101.344	
	2	38475	38730	38027	38610	38123	38658	38455	38249	38788	38686	38636	38500	101.626	
	3	38435	38403	38720	38350	38809	38926	38592	39002	38329	38629	38248	38504	101.848	
	4	38879	38556	38251	38417	38517	38050	38332	38037	38559	38412	38045	38615	101.348	
	5	38962	38357	38671	38352	38998	38567	38112	38255	37673	39180	38687	38712	101.756	
	6	38280	38368	38260	38555	37904	38582	38815	38336	38472	38704	38351	38530	101.454	
	7	38285	38909	38426	38084	38133	38094	38862	38699	38265	38682	37968	38255	101.346	
	8	38573	38635	38355	38007	38100	38846	38638	38714	38370	38967	38775	38144	101.667	
	9	38418	38752	38553	38068	38367	38551	38171	38454	38505	38960	38423	38824	101.650	
	10	38653	38699	38305	38677	39171	38388	38626	37738	38590	37893	38442	38672	101.608	
	11	38647	38439	38187	38181	38569	38387	37858	38051	38392	38553	38916	38883	101.434	
	12	38700	38745	38519	37804	38605	38782	38872	38190	38150	38345	38149	38948	101.598	
	13	38515	38755	39190	38622	39001	38480	38261	38013	38666	38371	38188	38320	101.724	
	14	38576	38648	38374	38801	38537	38637	38246	38302	38234	38561	37889	38379	101.461	
	15	39028	38524	38800	38541	38447	38117	38438	39020	38515	38491	38569	38586	101.877	
	16	38877	38856	38201	38497	38267	39223	38452	38414	38402	38307	38208	38158	101.610	
	17	38611	38472	38982	38989	38122	39073	39041	38681	38372	38547	38385	38891	102.117	
	18	38260	39311	38700	38641	38437	38487	38878	38171	38588	38266	38614	38507	101.830	
	19	38197	38923	38437	38688	38316	38809	38390	38821	38866	38285	38681	38470	101.834	
	20	38255	38352	38330	38393	38290	38510	38579	39066	38938	38507	38377	38318	101.621	
	21	38795	38735	38270	38186	38827	38334	38441	38260	38905	38047	38485	39062	101.716	
	22	38391	38475	39364	38046	38918	38858	38983	38712	38202	38747	38128	38728	101.981	
	23	38664	38235	37868	38186	38304	37923	38479	38884	38328	38766	38669	38219	101.316	

INAF/UNIRomaTre		S.V.I.R.CO. Observatory - Pressure Corrected Data – September 2018											16 NM-64	
day	hh	00_05	05_10	10_15	15_20	20_25	25_30	30_35	35_40	40_45	45_50	50_55	55_60	h-norm
3	0	38341	38781	38624	38153	38047	38681	38571	38587	38740	38486	38426	38397	101.600
	1	39122	38332	38174	38398	38255	39217	38476	38374	38380	37918	38380	37921	101.408
	2	38715	37969	38022	38069	38634	38069	38585	38466	38226	38208	38637	38357	101.191
	3	38420	38346	38486	38326	38270	38041	38451	38401	38401	38194	38370	38793	101.310
	4	38597	38416	38699	38158	38348	38439	38314	38257	38889	38481	38649	38319	101.544
	5	38396	38833	38982	38448	38301	38727	38801	38881	39007	38108	38635	38009	101.889
	6	38744	38227	38707	37989	38118	38642	38476	38131	38667	38838	38698	38275	101.533
	7	38453	37937	38264	38234	39130	38460	38434	38385	38358	38496	38119	38632	101.399
	8	39178	37944	38097	38297	38123	38480	38070	38593	38908	38042	38890	38587	101.466
	9	37821	38572	38442	38859	38154	38140	38759	38852	38435	38251	39058	38447	101.594
	10	38683	38330	38444	38019	38382	38605	38489	38525	37682	38029	37863	38157	101.026
	11	38333	38345	37946	38569	38141	38761	38282	38091	38213	38659	38368	38410	101.226
	12	37906	38528	38117	38690	38456	38307	38608	38251	38398	38266	38369	37913	101.158
	13	38764	38820	38193	38426	38379	37829	38395	38422	38706	38450	38327	38121	101.383
	14	37839	38483	38690	38720	38651	38481	38100	38090	38487	38263	38700	37985	101.308
	15	38481	39049	38886	38738	38754	38679	38360	38966	38532	38039	38361	38665	101.972
	16	38822	38081	38653	38463	38322	38236	38520	38590	38135	38167	38476	38764	101.470
	17	38406	38493	39035	38633	38119	38545	38838	38463	37969	39118	38029	38259	101.620
	18	38970	38347	37872	38410	38483	38353	38719	37906	38433	38426	38453	38487	101.389
	19	37843	38603	38716	38751	38657	38209	38800	38439	38627	38772	38381	38903	101.794
	20	38495	38874	38891	38385	38343	39083	37964	38142	38028	38788	38377	38416	101.593
	21	38433	38579	38147	38612	38732	38492	38234	38172	38259	38340	37837	38695	101.317
	22	38420	38576	38971	38837	38272	38559	38169	38210	38141	38443	38238	38815	101.563
	23	38353	38482	38867	38448	38556	38095	38813	37984	38373	38515	38510	38455	101.519
4	0	38410	38572	37953	38313	38359	38407	38385	38480	38832	38660	38069	38734	101.456
	1	38514	38185	38882	38318	38749	38349	38711	38428	38123	37941	38668	38423	101.484
	2	38945	38154	38552	38826	38565	38124	38335	38942	38020	38525	38460	38256	101.575
	3	39195	38502	38645	38086	38162	38705	38713	38471	38044	38554	38245	38989	101.708
	4	38301	38649	38745	38442	37810	38507	38365	38304	38424	39005	38357	38649	101.543
	5	38306	38529	38532	38654	38000	38302	38538	38213	38250	38598	38470	38113	101.311
	6	38499	38516	38468	37958	38793	38538	38435	38449	39036	38192	38552	39138	101.766
	7	38258	38627	38396	38291	38523	38391	38632	38607	37975	38154	38967	38322	101.451
	8	38612	38687	38263	38371	38473	38455	38479	38486	38611	37894	38534	39062	101.624
	9	38147	39149	38155	37834	38793	37992	38738	38336	37973	38299	38791	38378	101.329
	10	39045	38719	38758	38633	38354	38472	38633	38211	38194	38475	38663	38003	101.675
	11	38693	38214	38526	38609	38516	38727	38596	38469	38517	38534	38614	38402	101.732
	12	38122	38299	38532	38160	38348	38584	38208	38359	38341	37907	39081	38174	101.225
	13	38517	38397	38208	38777	38338	38000	38406	38218	38449	38027	38752	38373	101.302
	14	38314	38630	38468	38838	38018	38764	38200	38877	38913	38313	38527	38315	101.679
	15	38274	38032	38600	38262	38608	38677	38034	38628	38070	38167	38238	38234	101.161
	16	38264	38728	38296	38481	38335	38954	38256	38119	38748	38500	38315	39111	101.664
	17	38740	38289	38402	38642	38758	38162	38666	38416	38159	38297	38659	37780	101.414
	18	38124	38160	38633	38249	38604	37891	38920	38379	38780	38556	38480	38989	101.587
	19	38498	38792	38104	38686	38877	38626	38534	39392	38362	38277	39133	38621	102.059
	20	38756	38431	38601	38561	38170	38845	38197	38943	38905	38720	38794	38242	101.896
	21	38592	38079	38848	38840	38819	38686	38609	38159	38500	38380	38501	38311	101.711
	22	38435	38382	38726	38842	39007	38234	38606	38759	38717	38499	38718	38816	102.023
	23	38344	38395	38415	39098	38619	38479	38760	38805	38461	39071	38483	38622	101.982

INAF/UNIRomaTre				S.V.I.R.CO. Observatory - Pressure Corrected Data – September 2018										16 NM-64	
day	hh	00_05	05_10	10_15	15_20	20_25	25_30	30_35	35_40	40_45	45_50	50_55	55_60	h-norm	
5	0	38703	38772	38539	39246	38728	38624	38879	38795	39105	38742	38570	38702	102.393	
	1	38879	38855	39329	38595	38690	38865	38665	38768	38182	38425	38605	38666	102.195	
	2	38455	38507	38333	38410	38392	38637	38631	38637	38505	38378	38482	38244	101.555	
	3	38515	38634	38163	39041	38505	38078	38683	39203	38308	38446	38996	38377	101.849	
	4	38644	38320	38844	38585	38678	38790	38279	38287	38527	37996	38670	38283	101.619	
	5	38181	37713	38615	38786	38434	38270	38502	38419	38392	38568	38201	38224	101.267	
	6	38507	38450	38744	38485	38393	38037	38387	38386	37947	38358	38142	37954	101.154	
	7	38682	37477	38517	38641	38597	38209	38781	38675	37983	37724	38754	38619	101.345	
	8	37969	38045	38900	38934	38589	38692	38301	37996	38934	38285	38705	38806	101.675	
	9	38393	38411	38799	38335	38595	38476	38559	38301	38510	38956	38424	38266	101.646	
	10	38939	38685	38371	38846	38235	38883	38166	38102	37783	38726	38736	38200	101.568	
	11	38483	38660	38699	38434	39081	38180	38737	38639	38825	38486	38260	38339	101.821	
	12	38655	38137	38271	38694	38347	38295	38240	38322	38771	38669	38058	38361	101.380	
	13	38897	38327	38319	38444	38526	38219	38427	38109	39011	38551	38473	38512	101.599	
	14	38587	38340	38215	39005	38468	38172	38806	38657	38306	38679	38480	38984	101.794	
	15	38890	38435	37916	37853	38681	38181	38169	38691	38256	38403	38300	38138	101.181	
	16	38537	38621	38328	38253	38668	37817	38487	38934	38708	38871	38708	38276	101.686	
	17	38630	37867	38738	38561	38630	38481	38382	38782	38343	38477	38491	39007	101.726	
	18	38524	38796	38938	38308	37912	38396	38454	38487	38494	38602	38605	38815	101.713	
	19	38792	38535	38489	38769	38515	38651	39077	39190	38732	38708	38429	38116	102.081	
	20	38624	38701	38761	38345	38473	39168	38141	38469	38303	39074	39080	38391	101.976	
	21	38273	38594	38521	39064	38188	38829	38795	38577	38747	37863	38734	38429	101.775	
	22	38260	38081	38893	38812	38658	38652	38381	38359	38527	39152	38458	38766	101.860	
	23	38495	38374	38750	38453	39317	38088	38187	39316	38770	38701	38423	38844	102.018	
6	0	38687	38304	38104	38821	38565	38644	38716	38616	38202	38346	38594	38682	101.699	
	1	37932	37846	38685	38603	38432	37600	39195	38627	38876	38622	38239	38764	101.513	
	2	38234	39012	38625	38085	38787	38327	38187	38084	38533	38122	38516	38438	101.409	
	3	38218	38460	38991	38609	38633	39024	38100	38670	38607	38755	38382	38304	101.806	
	4	38983	38674	38410	38075	38234	39037	38861	38188	38182	38049	38612	38623	101.624	
	5	38978	38988	38628	38767	38308	39173	38801	38770	38372	38343	37800	38704	101.999	
	6	38301	39210	38288	38664	38422	37742	38797	39059	38763	38604	38466	38232	101.761	
	7	38621	38578	38884	38792	38545	38472	38119	39283	38572	38384	38134	38138	101.755	
	8	38554	38263	39057	38466	38671	38901	37989	38544	39045	38631	38585	39281	102.077	
	9	39056	38309	38980	39104	38668	38998	38251	38098	38719	38823	38787	38487	102.141	
	10	37661	38398	38143	38659	38371	38751	38464	38804	38048	38606	38813	38194	101.401	
	11	38435	38540	38439	38814	38268	38673	38393	38233	38655	39341	38469	38687	101.849	
	12	38606	38294	38477	38281	38403	38637	38949	38094	38622	38188	38523	38629	101.574	
	13	38453	38222	38839	38388	38611	38714	38658	38161	38312	38832	38126	38591	101.620	
	14	38215	38211	38823	38642	38001	39023	38503	38398	38846	38277	38642	38585	101.677	
	15	38249	38033	38205	38374	38526	38072	38364	38905	38506	38121	38411	38565	101.273	
	16	38155	38555	38393	38172	38618	38769	38522	38534	38335	38424	38079	38847	101.509	
	17	38771	37897	38635	38312	38267	38704	38800	38549	38921	38164	38606	38556	101.680	
	18	38515	38341	38343	39048	38481	38120	38442	39499	38398	38142	38926	38441	101.793	
	19	38736	38480	38393	37896	37902	38512	38469	38858	38155	38043	38847	38390	101.350	
	20	38055	38385	38547	38904	38664	38482	38178	38654	38941	37849	38380	38588	101.558	
	21	38241	38497	38568	38539	38428	38492	38853	38530	37733	38729	38910	38878	101.728	
	22	38713	38562	37919	38696	38778	38407	38663	38442	38388	38598	38362	38665	101.682	
	23	38990	38493	38368	38256	38663	37995	38042	38274	38232	37937	38732	38300	101.262	

INAF/UNIRomaTre		S.V.I.R.CO. Observatory - Pressure Corrected Data – September 2018											16 NM-64	
day	hh	00_05	05_10	10_15	15_20	20_25	25_30	30_35	35_40	40_45	45_50	50_55	55_60	h-norm
7	0	38473	38232	38896	38332	38623	38365	38593	38633	37872	38687	38617	38114	101.513
	1	38927	38707	37943	38536	38241	39086	38437	38262	38807	38789	39113	38169	101.864
	2	38658	38187	38253	38533	38461	38515	38956	38607	38240	38449	38644	38898	101.728
	3	38939	38954	38106	38288	38536	38441	39015	38571	38525	38876	38455	38516	101.910
	4	38888	38414	38299	38646	37946	38296	38945	37852	38588	37926	38440	38729	101.413
	5	37864	38301	38465	38457	38068	38872	38623	38276	38182	38093	38575	38484	101.257
	6	38909	38461	38251	39007	38118	38704	38453	37923	37923	38507	38314	38026	101.332
	7	38872	38353	37953	38287	38198	38381	38510	38522	37994	38427	38474	37717	101.131
	8	38348	38014	37872	38355	38650	38432	37836	37792	38174	38791	38519	37988	100.929
	9	38377	38238	38170	38814	38343	38280	38427	38546	38205	38485	38291	38364	101.319
	10	38086	38555	38146	37962	38451	38521	38453	38751	38764	37954	37811	38982	101.296
	11	38850	38504	38390	38132	38058	38905	38613	38560	38096	38227	37965	38518	101.380
	12	37940	37630	38469	38629	38654	38638	38076	38763	37960	38919	38237	37509	101.073
	13	38271	38811	38709	38022	37987	38609	38231	38645	38389	38591	38235	38148	101.342
	14	38734	38627	38631	38740	38601	38021	38074	38598	38167	38770	37874	38145	101.417
	15	39009	38195	38460	38904	38102	38136	38364	38066	38624	37980	38634	38496	101.414
	16	38335	38077	39013	38711	38521	37943	37522	38148	38780	38526	38349	38701	101.337
	17	38018	38022	38255	38709	38860	38037	38622	38320	38349	38012	38425	38046	101.129
	18	38725	38205	38603	38281	38190	38663	38360	38651	38165	38039	38491	38795	101.457
	19	38522	37943	38343	37914	38545	38711	38101	38231	38529	38277	38780	38270	101.236
	20	38170	38112	37986	38827	38293	38734	37563	38670	38596	38550	38154	38217	101.171
	21	37927	38210	37939	38120	38559	37966	37754	38303	38078	38573	38314	38854	100.891
	22	38234	37732	38717	38478	37719	38103	38121	38171	39120	38099	38054	37991	100.879
	23	37792	38347	38559	38023	38403	38642	38658	37944	38910	38167	39002	37992	101.296
8	0	38482	38626	38800	38174	38183	38462	38245	38811	38387	39199	38718	38484	101.769
	1	38193	38463	38794	37949	37834	38580	38435	37882	38375	38584	37981	38516	101.109
	2	38338	38152	38680	38500	38304	38619	38893	38421	38566	38537	38615	38825	101.739
	3	37936	38456	38634	38796	38126	38413	38297	38548	38208	38330	39017	38389	101.453
	4	38777	38298	38466	38451	38262	38723	38934	38678	39054	38656	38259	38848	101.949
	5	38088	38571	38346	37836	38245	38469	38768	38360	38199	38730	38425	38787	101.381
	6	38722	38132	39176	38213	38401	37981	38462	38003	37804	38034	38551	37687	101.017
	7	38210	37911	38383	38103	38709	38141	37822	37777	38196	37822	38870	38252	100.803
	8	38601	38397	38567	37681	38863	38006	38479	38465	38758	38563	37948	38334	101.346
	9	39001	38637	38819	38471	38634	38673	38529	38445	38600	38655	38107	38381	101.850
	10	38352	38527	38474	38475	38534	38270	38373	39249	38583	38596	38092	37743	101.479
	11	38235	38439	37950	38251	38458	38276	38357	38331	38193	38942	38922	38507	101.389
	12	38400	38543	38449	38880	38097	38717	38151	38006	38365	37992	37451	38530	101.107
	13	38205	38195	38084	38418	38109	38441	38084	37893	38424	38643	38202	38513	101.026
	14	38055	37974	37821	38489	38181	38539	38028	38338	38296	38203	37934	38259	100.785
	15	38379	38255	37880	37961	38082	38282	38408	38396	38417	38211	38073	38048	100.846
	16	38481	38235	38792	37998	38001	38703	38466	38076	38327	38268	38025	38078	101.079
	17	38381	38237	38752	38273	38395	37898	38457	37992	37941	39080	38102	38160	101.127
	18	38502	37937	38220	38743	38116	38347	38018	38225	38324	38528	38205	38319	101.087
	19	38471	38071	38160	38078	38181	38451	38620	38021	38275	38777	38456	38235	101.155
	20	38585	38510	38378	38767	37866	38776	38266	38261	38546	38830	38326	37844	101.410
	21	37636	37831	38323	38760	38119	38847	37763	38207	38769	38231	38191	37865	100.879
	22	37701	38440	37727	38444	38464	38419	38175	38417	38478	37975	37655	37720	100.675
	23	38353	38101	37969	37930	38177	38032	38830	38117	38088	38473	38498	38534	101.003

INAF/UNIRomaTre				S.V.I.R.CO. Observatory - Pressure Corrected Data – September 2018										16 NM-64	
day	hh	00_05	05_10	10_15	15_20	20_25	25_30	30_35	35_40	40_45	45_50	50_55	55_60	h-norm	
9	0	38571	38570	37799	37941	38679	38291	38259	39176	37960	38166	38436	38105	101.190	
	1	38379	38643	38275	38431	37979	37867	38974	39358	38741	38286	38298	38688	101.622	
	2	38609	38748	38351	38104	38390	38565	38305	38157	38258	38132	38853	38526	101.419	
	3	38355	38724	38591	38094	38364	38519	38669	37965	37991	38186	38574	38618	101.343	
	4	38501	38405	38307	38259	38355	37996	38822	38770	38366	38214	38435	38330	101.368	
	5	37823	39318	38353	38322	38811	38382	38835	38308	38829	38210	38448	38766	101.729	
	6	38068	38057	38289	38405	38198	38603	38677	38713	38061	38507	38720	38472	101.369	
	7	37973	38147	38471	38641	38176	38374	37603	38405	38638	38297	38274	38098	101.001	
	8	38137	38352	38471	38325	38002	38600	38071	38597	38237	38584	38829	38231	101.296	
	9	38091	38420	37969	38028	38490	38888	38704	38124	38328	39027	38639	38598	101.488	
	10	38214	38291	38567	38083	38469	38448	38452	38330	38286	37995	38175	38328	101.120	
	11	38121	38715	38896	38670	38717	38542	38235	38045	38698	38106	38939	38230	101.621	
	12	37811	38266	38085	39010	38219	37751	38608	38452	38512	38122	38775	37854	101.082	
	13	38318	38471	38530	38458	38822	38490	38029	39045	37940	38178	38175	38349	101.377	
	14	38649	38610	37961	38222	37747	38048	38420	37717	38384	38473	37981	38104	100.830	
	15	38250	38225	38451	38675	38177	38343	37482	37905	38189	37968	38096	38369	100.789	
	16	38169	37373	38529	37970	38432	38125	38323	38571	38110	38177	38129	38494	100.848	
	17	38269	38497	38450	38594	38361	38403	38289	38198	38269	37777	38595	38362	101.214	
	18	38325	38030	37938	38067	37881	38302	38123	38253	38501	38584	38386	38507	100.957	
	19	38416	38813	37739	37756	38108	38054	38301	38443	38553	38215	38809	38412	101.116	
	20	37838	37538	38030	38370	37992	38223	38129	38699	38181	37749	38307	38712	100.709	
	21	38063	38255	37984	37822	37872	38215	38263	38101	38294	38019	38377	38245	100.652	
	22	38505	37927	37930	38299	38519	38096	38372	37863	37980	37744	38705	38155	100.781	
	23	37592	38139	38685	38410	38305	38333	38239	38282	38379	38183	38716	38452	101.138	
10	0	38194	38177	38309	38090	38880	38290	38378	38259	38002	38263	38716	38525	101.216	
	1	38137	38194	38801	38397	38231	37617	38429	38342	38531	38467	38751	38273	101.237	
	2	37799	38171	38546	38285	38278	38306	38668	38422	37820	38397	38536	38314	101.100	
	3	37922	38194	38488	38234	38209	38074	37828	38223	38729	38485	38389	38487	101.038	
	4	38813	38887	38465	38202	38464	38630	37917	38500	38361	38294	38931	38716	101.680	
	5	38620	38779	38810	38710	38325	38757	38558	38033	38357	38437	38206	38244	101.604	
	6	38238	38624	38425	38371	38390	37714	38237	38668	38235	38117	38412	38478	101.180	
	7	38017	38422	38246	38484	38183	38479	38315	37898	38744	38712	38124	38681	101.267	
	8	38484	38274	38280	37948	38737	38472	38545	38569	37858	38597	38495	38744	101.420	
	9	37985	38197	38650	38424	38395	38231	38095	38572	38187	38457	38561	38632	101.285	
	10	39019	38043	37906	38629	38136	38570	38063	38134	38526	38325	38225	38498	101.217	
	11	39033	38319	38810	38372	38621	37956	38331	38950	38260	38676	38727	38297	101.717	
	12	38743	38445	38212	38954	38694	38658	39138	38123	38444	38269	38314	38608	101.773	
	13	38217	38006	37995	38215	38749	38780	38373	38498	38410	38179	38050	38510	101.196	
	14	38741	38410	38938	38016	38191	38850	38440	38738	38020	38016	38274	38676	101.489	
	15	38214	38373	38528	38561	38276	38594	39038	38244	38431	37710	38398	37976	101.276	
	16	38346	38667	38350	38578	38205	38378	38256	38362	38338	38748	38460	38917	101.554	
	17	38449	38632	38562	38180	38709	37979	37967	38246	38570	38618	38461	38245	101.336	
	18	39185	38512	38487	38628	38791	38385	38196	38243	38143	38306	38899	38285	101.654	
	19	38758	38602	38042	38727	38644	38532	38305	38157	38234	37795	38439	38679	101.401	
	20	37830	38356	38398	38313	38546	38201	38501	38162	38363	38720	39056	38716	101.456	
	21	38617	38014	38648	38488	38512	38215	38773	39339	38629	38766	38548	38769	101.930	
	22	38357	38621	38732	38827	37878	38844	38595	38572	39319	38594	38521	38982	102.046	
	23	38862	38866	38848	38735	38315	38530	38813	39018	38667	38412	37761	38582	101.950	

INAF/UNIRomaTre		S.V.I.R.CO. Observatory - Pressure Corrected Data – September 2018											16 NM-64	
day	hh	00_05	05_10	10_15	15_20	20_25	25_30	30_35	35_40	40_45	45_50	50_55	55_60	h-norm
11	0	38236	38420	38594	38507	38769	38815	38509	38358	38601	38999	38787	38244	101.827
	1	38353	38514	38699	38029	38476	38419	38739	38492	38473	39004	39538	38392	101.888
	2	38510	39124	38170	38305	39029	38329	38687	38481	38248	38720	38396	38428	101.734
	3	38567	37835	38609	38162	38652	38571	38735	38984	38706	38229	38295	38702	101.650
	4	38522	38304	37905	38229	38594	38215	38231	38722	38319	38881	37598	38215	101.142
	5	38745	38478	38295	38860	38767	38413	38067	38674	38483	38894	38165	38360	101.685
	6	38098	38674	38546	38566	39003	37918	38796	38427	38119	38304	38202	37998	101.344
	7	37869	37755	38393	38166	38701	38043	38580	38315	38690	38154	38519	38816	101.200
	8	38983	38474	38495	38667	39088	38437	39029	38557	38814	38446	38713	38525	102.131
	9	38423	38836	38640	38792	39338	38181	39172	38438	38759	38212	38384	38441	101.996
	10	38530	39036	38963	39005	38420	37725	37969	38630	38345	37946	37838	38333	101.363
	11	38831	37937	38138	38560	38652	38529	38690	39205	38219	38218	38684	38936	101.772
	12	38871	38672	38955	38021	38675	38633	38053	37958	38654	38418	39078	38436	101.734
	13	38239	38465	38241	38111	38112	38426	38518	38272	38376	38266	38642	38071	101.143
	14	38880	38849	38561	38281	38603	37856	38019	38641	38086	38411	38504	38301	101.418
	15	38522	38122	38516	38411	38734	38494	38347	38629	38607	38546	38930	38132	101.638
	16	38786	38291	37917	38304	38420	38210	37955	38173	38574	38646	38523	38663	101.301
	17	38300	38791	38750	38630	38845	38338	38458	38645	38403	38266	38699	37820	101.628
	18	37874	38773	38038	38026	38689	38794	38354	38473	38438	38181	38415	38184	101.252
	19	38514	38468	38570	38299	38162	38416	39044	38049	38141	38097	38305	38329	101.287
	20	38358	38389	38230	38320	38114	38518	38700	38286	38077	38253	38641	38005	101.176
	21	38243	38448	38416	38264	38741	37721	38652	38265	37858	38141	38202	37926	100.953
	22	38554	38314	37868	38381	37942	37904	38604	38064	38421	38253	38098	38579	100.976
	23	38450	38236	38679	38441	38510	38302	38723	38346	38260	38308	38081	37890	101.250
12	0	38510	38225	38013	38405	37936	38272	38826	38927	38097	38362	37715	38032	101.046
	1	38247	37865	37745	38165	38218	38170	38743	38269	38605	38020	38353	38312	100.917
	2	38093	38911	38495	37276	38060	38254	38858	38494	38324	38089	38077	38257	101.021
	3	37904	37824	38374	38980	38750	38240	37969	38084	38032	37462	38364	37888	100.732
	4	38126	37888	38416	38240	38030	37954	38674	38982	38616	38664	38492	38410	101.308
	5	38514	38668	38340	37683	38092	38665	38483	37546	37791	38205	37941	38109	100.768
	6	38441	38543	38532	38255	37940	38447	37711	38275	37807	38234	38102	38099	100.845
	7	37435	38411	38508	38168	37743	38209	38191	38464	37837	38222	38433	38016	100.680
	8	38323	38183	38083	38407	37706	38489	37746	38183	38050	38465	37917	38015	100.665
	9	38913	38214	38662	37767	37704	38102	37728	38030	38088	38031	38203	37738	100.579
	10	37992	38175	38524	37748	37826	38124	37740	38494	37932	38268	38689	38752	100.819
	11	38417	38599	38363	38002	38564	38231	38592	38309	38655	38994	38857	38027	101.555
	12	38442	37739	38627	38733	37979	38297	38460	38627	38409	38553	38153	38392	101.290
	13	37903	38259	38529	38310	38790	37882	38289	38026	38247	38440	38326	37974	100.974
	14	38305	37504	37715	38405	38340	38436	38302	38717	38235	37796	38058	38222	100.768
	15	38400	37819	38597	38289	38287	38530	38709	38315	38433	38092	38126	38263	101.169
	16	38014	38015	37988	38282	38722	38759	37827	38090	38269	38144	38021	38280	100.851
	17	38673	37924	38759	38538	38696	38292	38369	38121	37754	38579	38440	37809	101.190
	18	38695	38231	38395	38344	38779	38043	38498	38328	38405	37810	38492	39123	101.451
	19	38545	38247	38331	38464	38524	38401	38130	38055	38445	38057	38227	38153	101.107
	20	38353	37664	38531	38667	38321	38545	38399	38419	38399	38003	38404	38227	101.185
	21	38783	38351	38718	38192	38338	38240	38940	38343	38744	38542	38518	38185	101.616
	22	39078	38375	38815	38061	38485	38125	38687	37975	38319	38053	38572	38736	101.481
	23	37791	38490	38626	38778	38508	37834	38361	38451	38841	38381	38384	38600	101.430

INAF/UNIRomaTre				S.V.I.R.CO. Observatory - Pressure Corrected Data – September 2018										16 NM-64	
day	hh	00_05	05_10	10_15	15_20	20_25	25_30	30_35	35_40	40_45	45_50	50_55	55_60	h-norm	
13	0	39004	38615	38586	38098	38174	38666	38135	38863	38970	38587	38244	38334	101.697	
	1	38050	38834	38481	38356	38520	38708	38284	38487	38401	38489	38256	38254	101.447	
	2	37953	38130	38443	38719	38499	38214	38002	38491	38096	38218	38734	38349	101.167	
	3	38426	38479	38474	38921	38115	38738	38291	38442	38129	38919	38933	38428	101.705	
	4	38779	38454	38451	38537	38350	38197	38221	38618	38498	38364	38455	38794	101.578	
	5	38759	38403	38704	38583	38002	38042	38617	38578	38063	38610	38532	38434	101.492	
	6	38430	38550	38342	38642	39243	38324	38591	39086	38850	38851	38020	38192	101.887	
	7	37973	38527	38624	38871	38041	38106	38227	38180	37991	38434	38276	38228	101.085	
	8	38416	38231	38317	38152	38635	38741	38368	38165	38906	38679	38229	38396	101.472	
	9	38161	38582	37868	38581	38820	38424	38134	38569	38475	38363	37968	38333	101.261	
	10	38129	38198	38979	38067	38143	38092	38607	38897	38420	38558	38431	38224	101.364	
	11	37875	38236	38555	38593	38582	38514	38578	38996	38969	38775	38360	38446	101.746	
	12	38986	39137	38120	38827	38454	39185	38470	38545	37886	38392	38067	37860	101.624	
	13	38242	38332	38435	38556	38962	38480	38785	38451	38152	38487	38743	38111	101.582	
	14	38543	38323	38460	38425	38591	38597	39075	38140	38352	38651	38598	38624	101.724	
	15	38423	39019	38398	38582	38309	38133	38232	38703	38628	38760	38666	38803	101.785	
	16	38610	38617	38512	38378	38178	38878	38599	38152	37972	38891	39106	38516	101.730	
	17	38451	38393	38679	38520	38772	38583	38745	38278	38365	38917	38461	38311	101.744	
	18	38413	38745	38328	38882	38688	38080	38608	38211	38461	38762	38424	38500	101.662	
	19	38998	38428	38294	38363	38155	38615	39208	38514	38686	38671	38761	38455	101.892	
	20	38832	38425	38782	38329	38215	38559	38357	38230	38630	38088	38195	39026	101.568	
	21	38231	37794	37988	38953	38287	38596	38600	38410	38129	38636	38369	38668	101.345	
	22	38379	38790	38312	38448	38802	38480	38197	38785	37789	38710	38409	38455	101.542	
	23	38901	38879	38349	38831	38384	38269	38898	38312	38103	38154	38468	38059	101.553	
14	0	38719	38471	39217	38392	38452	38760	38544	38682	38719	37944	39082	38693	102.006	
	1	38043	38277	38252	38409	38940	38521	38295	38877	38227	38355	38377	38537	101.444	
	2	38179	39113	37890	38861	38519	38822	38554	38215	38388	38731	38771	38620	101.786	
	3	39114	38586	38708	38699	38935	38506	38457	38856	38563	38972	39087	38410	102.277	
	4	38253	38848	38352	38442	38364	38247	37746	38821	38792	39397	38758	38453	101.744	
	5	38569	38133	38308	38657	38461	38307	38211	38346	38464	38100	38460	38564	101.328	
	6	38588	38092	38280	38596	38436	38275	38727	38294	38578	38377	39051	37853	101.452	
	7	38962	38009	38464	38484	38487	37715	37971	38110	38579	38579	38652	38907	101.402	
	8	37680	37757	38337	38622	38236	38430	38379	38585	38384	38165	38073	38284	100.965	
	9	38401	38844	38438	38331	38352	38973	38195	38584	38241	38054	38199	38082	101.352	
	10	38228	38161	38192	38607	39134	38132	38328	38059	38393	37993	38181	38758	101.237	
	11	38764	38490	38885	38195	38110	37973	38649	38240	38783	38697	38718	38536	101.649	
	12	38371	38024	38519	38315	38416	38104	38447	38610	38515	38630	38376	38654	101.415	
	13	38615	38282	38684	38667	38340	38679	37774	38216	38692	38295	38518	38808	101.545	
	14	38432	38210	38362	38153	38376	38433	38269	38348	38618	38446	38539	37943	101.228	
	15	38430	38510	38173	38493	38398	37915	38834	37693	37885	38576	38090	37831	100.942	
	16	37624	38970	38345	38043	38639	38387	38215	38732	38148	37938	38441	38377	101.169	
	17	38609	38569	38635	38535	38157	38567	37777	38216	38240	38619	38044	38040	101.202	
	18	38048	38626	38258	38111	39084	38527	38097	37635	37983	38430	37889	38278	100.973	
	19	38302	38315	38264	37493	38351	38658	38015	37682	38154	38116	38191	39129	100.907	
	20	38098	38030	38202	38220	38503	38354	37975	38653	37924	38184	38252	38630	100.986	
	21	37693	38164	38540	38206	37540	38084	37969	38710	38531	38855	38109	38222	100.897	
	22	38379	38033	37831	37879	38124	38237	37636	37447	38574	38721	38366	37766	100.538	
	23	38184	38403	37783	37585	38312	39040	38360	38814	38341	38653	38546	38658	101.349	



INAF/UNIRomaTre		S.V.I.R.CO. Observatory - Pressure Corrected Data – September 2018											16 NM-64	
day	hh	00_05	05_10	10_15	15_20	20_25	25_30	30_35	35_40	40_45	45_50	50_55	55_60	h-norm
15	0	38541	38739	38565	38078	38528	38165	38422	38261	38521	37999	38221	38426	101.300
	1	38522	38274	38161	37669	38632	38226	38513	38478	38291	38526	37813	38227	101.053
	2	37874	38508	37894	38856	38422	37816	38792	38390	37933	37969	38593	38473	101.095
	3	38418	38113	38972	38371	38683	38471	38522	38768	38342	38683	38698	38166	101.686
	4	38197	38333	38528	38754	38564	38563	38643	38283	38716	38672	37763	38757	101.591
	5	38611	38029	38143	37956	38196	38701	38611	38052	38461	38521	38398	38418	101.222
	6	38561	38023	38559	38199	38908	38755	38497	38341	38929	37988	38849	38397	101.642
	7	38666	38460	39132	38265	38227	38234	38285	37862	38520	38937	38473	37909	101.414
	8	38163	38093	39115	38110	38528	38518	38290	38457	38239	38529	38233	38225	101.310
	9	38569	38349	38170	38843	38334	38506	38166	37876	38218	37960	38651	38725	101.281
	10	38374	38235	38865	38544	37977	38091	38613	38345	38633	38103	37846	38273	101.178
	11	38387	38118	38675	38883	37507	38544	37868	38627	38026	38489	37972	37719	100.939
	12	38451	38567	38346	38427	38319	38709	37956	37833	37959	37931	38782	38639	101.182
	13	37660	38271	38061	38712	38406	37859	38653	38516	38348	38456	38062	38086	101.000
	14	38285	38566	38635	37936	38086	38106	38198	37842	38721	38317	38194	38587	101.084
	15	38263	38426	38494	38382	38948	38283	38244	38553	38206	39241	38511	38552	101.663
	16	38543	38558	38218	38390	38821	38156	38436	38470	38515	38164	38309	38588	101.457
	17	37883	38279	38944	38361	37889	38043	38492	37657	38372	38263	38019	39062	101.038
	18	38420	38633	38465	38935	38101	38944	38095	37704	38719	38719	38276	38152	101.457
	19	38303	38324	38362	38034	38371	38581	38044	38907	38114	38036	38198	38953	101.250
	20	38830	38537	37893	38721	38530	38278	38387	37970	38193	37553	38518	37993	101.069
	21	38068	38380	38382	38256	37924	38733	38018	38570	38712	38320	38363	38123	101.167
	22	38111	38802	38860	38215	38723	38072	38515	38539	38266	38382	38046	38512	101.429
	23	38080	38209	38693	38608	38099	38166	38516	37956	38393	38319	38643	38201	101.174
16	0	38193	38265	38972	38311	38431	38539	38111	38218	37808	38035	38360	38563	101.154
	1	39117	38667	38003	38359	38520	38088	38495	38089	38295	38453	38268	37844	101.243
	2	38143	38611	38207	38297	38691	37910	38102	38219	38621	38869	38397	38641	101.356
	3	37822	38605	37813	38581	38654	38324	38169	38161	38231	37967	38305	38136	100.929
	4	38442	38126	38036	38526	38360	38223	38432	38336	39012	37886	38666	38850	101.396
	5	38362	38202	38302	37711	38436	37853	38336	38184	38414	38327	37950	38491	100.885
	6	38892	38209	39174	38590	38666	38003	38492	38107	38229	38558	37951	38465	101.494
	7	38559	38078	38038	38709	38025	38956	38818	38123	37779	38490	37954	38067	101.111
	8	38737	38564	38524	38331	38263	38007	38637	38466	37838	38647	38793	38530	101.494
	9	38494	38575	38832	38850	38604	38688	38221	38736	38282	38709	37907	39019	101.842
	10	38221	38843	38508	38682	38389	38835	38320	38559	38502	38216	38325	38601	101.640
	11	38375	37663	37920	38529	38650	38464	38397	38114	37997	38463	38352	38873	101.155
	12	38612	38343	38037	38795	37948	38697	38009	38120	38763	39069	38605	38322	101.491
	13	39234	38087	38136	38091	38385	38655	37721	38472	38383	38093	37874	38292	101.073
	14	38253	38803	38542	38594	38769	38421	38418	38537	38543	38643	38478	38696	101.794
	15	38362	38388	38684	38339	38386	38271	38329	38024	38204	38526	38496	38631	101.341
	16	38005	38673	38059	38309	38172	38763	38428	38581	38694	38678	38125	38367	101.388
	17	38352	38292	38176	38166	38898	38260	38426	38129	38913	37943	38538	38917	101.422
	18	38482	39386	38663	38579	38685	38073	38495	38736	38346	38813	38322	38773	101.938
	19	38114	38592	38704	38205	39145	37771	38449	38774	38518	37989	38798	38548	101.554
	20	38639	38897	38366	38304	38704	38516	38892	38418	38528	38499	38617	38623	101.860
	21	38268	38217	38545	38450	37751	38315	38494	38677	38133	38187	38019	38059	101.005
	22	38059	37998	38182	38575	38710	38262	38840	38250	38267	38655	38305	38573	101.349
	23	38819	38305	38445	38418	38270	37956	38173	38609	38074	38188	38578	38432	101.258

INAF/UNIRomaTre				S.V.I.R.CO. Observatory - Pressure Corrected Data – September 2018										16 NM-64	
day	hh	00_05	05_10	10_15	15_20	20_25	25_30	30_35	35_40	40_45	45_50	50_55	55_60	h-norm	
17	0	38093	38316	38119	38154	38212	38530	38000	38278	38022	38152	38040	37959	100.732	
	1	38620	38399	37942	38204	38108	38930	38416	37789	38632	38802	38447	38886	101.459	
	2	38142	38392	38147	38204	38161	38596	38850	38438	37962	38826	38732	38327	101.371	
	3	38698	38288	38733	38729	38437	38243	38282	38243	38359	38773	38674	38601	101.653	
	4	38255	38300	39128	38400	38959	38523	38880	38476	38738	38660	38852	38503	102.009	
	5	38408	38607	38905	38683	38487	38611	38183	39006	38461	38445	39182	38549	101.976	
	6	38875	38562	38528	38977	39540	38132	38817	38569	38282	38608	38846	38912	102.223	
	7	38549	38383	38727	38775	37835	38775	38071	38104	38579	38747	38768	39059	101.722	
	8	38275	38023	38315	38855	38135	38138	38402	38900	39240	38258	39087	38374	101.640	
	9	38682	38554	38751	38783	39145	38105	38500	38315	38103	38957	38352	38600	101.826	
	10	38928	38764	38584	38549	38957	38345	39050	38978	38088	38666	38573	38799	102.142	
	11	38252	38605	38262	37753	38759	38332	38174	38226	39157	38862	37783	38697	101.390	
	12	38769	38589	39017	38078	39024	39508	38449	38274	38368	38479	38378	38705	102.000	
	13	38919	38831	38538	38343	38547	38073	38559	38823	38563	38627	38681	38517	101.865	
	14	38435	38814	39086	39311	38401	38158	38622	38568	38161	38443	38034	38745	101.811	
	15	38540	38001	38552	38552	38475	38650	38104	38624	38682	38963	38601	38341	101.659	
	16	38275	38725	38438	38274	38553	38137	38589	38270	38759	38293	38584	38271	101.457	
	17	38435	38595	38389	39055	38583	38143	38733	38370	38695	39070	38246	38838	101.893	
	18	39000	37871	39031	38559	38507	38766	38755	38025	38620	38678	38322	38179	101.709	
	19	38309	38649	38297	38629	38652	38713	38573	38477	38368	38621	38773	38851	101.840	
	20	38425	38791	38064	38229	38546	39379	38879	38005	38198	38600	37708	38609	101.515	
	21	37368	38313	38277	38198	38709	38624	38041	38834	38142	38466	38338	38692	101.201	
	22	38207	38558	38230	38403	38436	38640	38116	38199	37792	37929	38028	38690	101.030	
	23	38122	38379	38471	38395	38556	38402	38287	37863	38504	38152	38293	37904	101.052	
18	0	38325	38158	38152	38002	38519	38439	37829	38761	38799	37797	37716	38563	100.988	
	1	38833	38507	38204	37989	38096	38376	38171	38037	38288	38526	38066	38389	101.086	
	2	37966	37824	38236	38364	38170	38507	38316	38336	38642	38215	37971	38433	100.976	
	3	37814	38425	38804	38772	38132	38610	38622	38302	38649	38681	38374	38868	101.652	
	4	37989	38189	38410	38369	37919	38493	38442	38147	38800	38327	38546	38542	101.238	
	5	38302	38474	38605	38421	38714	38403	38217	38211	38477	38332	38229	37904	101.264	
	6	38822	38259	38973	38215	38096	38490	38636	38053	38014	38106	38714	38023	101.288	
	7	38492	38620	39068	39345	38337	38570	38975	38337	39178	38670	38566	38147	102.147	
	8	38539	38670	38322	39049	37935	38306	37980	37899	38368	38325	38595	38534	101.315	
	9	38137	38937	38502	37943	38137	38672	38398	38724	38168	38617	38590	38200	101.426	
	10	38257	38903	38081	37951	39536	38676	37948	38350	38445	38317	38625	38578	101.567	
	11	37938	38515	38939	38516	38455	38596	38923	38357	37902	38740	38094	38770	101.584	
	12	38717	38190	38413	37893	38580	38029	38278	38376	38086	38473	38819	38450	101.267	
	13	38532	38807	38600	38394	38047	38496	38130	38776	38722	38718	38320	38917	101.741	
	14	38904	38389	38244	38240	38726	38084	38326	38806	38480	38817	38195	38546	101.587	
	15	37930	37961	38194	38237	37919	38506	37698	38721	38130	38441	38882	38272	100.956	
	16	38014	38417	38634	38918	38317	38374	37732	37812	38502	37860	38437	38079	101.001	
	17	37967	37841	38841	38413	38191	38082	38262	38894	38144	38286	38113	38122	101.014	
	18	38306	38684	38652	38242	38715	38566	38084	38621	38102	38047	37931	38019	101.194	
	19	38356	38976	38008	38393	38045	38150	38389	38126	38058	38050	38689	38128	101.062	
	20	37486	38041	38686	38510	38330	38500	38271	38423	38246	38682	38399	38453	101.206	
	21	38738	37756	38217	38199	37904	38005	37964	37867	38118	38346	38419	38137	100.687	
	22	38076	38223	38378	38022	38641	37438	37635	38346	37605	38210	38288	37902	100.488	
	23	38695	38701	38619	38546	38093	38555	38307	38727	38243	38098	37802	38212	101.331	

INAF/UNIRomaTre		S.V.I.R.CO. Observatory - Pressure Corrected Data – September 2018											16 NM-64	
day	hh	00_05	05_10	10_15	15_20	20_25	25_30	30_35	35_40	40_45	45_50	50_55	55_60	h-norm
19	0	37549	38161	38236	38243	37979	38187	38037	38259	37939	37739	37956	37866	100.354
	1	38301	38271	37899	38013	38127	37990	37887	37149	38280	38765	38460	37946	100.560
	2	37393	38243	38069	38342	38159	38256	37812	38551	38054	38017	38544	38156	100.671
	3	38164	38141	38280	37796	37582	38736	38326	38315	37889	38125	37962	37806	100.566
	4	37802	38387	37922	38209	38907	38541	38973	38716	38667	38011	38174	38209	101.314
	5	38092	38333	38305	38165	38724	38810	38460	37582	38054	38205	38472	38275	101.085
	6	38349	38065	38648	38562	37876	38317	38295	37956	38628	38726	38450	38638	101.312
	7	38327	38195	38490	38070	38147	38804	38276	38243	37939	38263	38425	38202	101.064
	8	38466	37816	38312	38340	38259	38620	37846	37936	38525	38581	38070	38400	101.018
	9	38048	38351	39268	37536	38661	38041	37972	38336	38256	39010	38277	38695	101.300
	10	38204	37987	38478	38105	38536	38374	38555	38846	38862	38033	38781	38647	101.510
	11	38213	38241	38438	38476	38448	38311	38123	38049	38677	38546	38345	38687	101.322
	12	37804	38455	38278	38235	37752	38570	38631	38565	38641	38700	38384	38528	101.320
	13	38023	38538	38349	38198	38254	38383	38253	38667	38286	38247	38106	39096	101.288
	14	38942	37962	38340	38431	38782	38378	38238	38522	38093	38162	38621	38354	101.381
	15	38343	38319	38774	37955	38310	37974	38251	38120	38436	37939	38659	38360	101.076
	16	38350	37753	37746	38764	38185	37910	37825	38484	38031	38336	37986	37760	100.569
	17	38009	38848	38441	37856	38362	38084	38540	38140	38372	37665	38489	38797	101.113
	18	38336	37920	38618	37974	38382	37743	38077	38668	38091	37841	38134	38596	100.844
	19	37955	38457	37844	37887	38527	38350	38523	38297	37795	37664	38145	38094	100.658
	20	37907	38035	37633	38388	37925	38397	38340	37673	37538	37957	38033	38332	100.355
	21	38171	37861	38055	37731	37483	37914	38005	38627	37697	38139	37836	37955	100.204
	22	38123	38047	37566	38074	38348	38284	38048	37976	37984	38875	38609	37956	100.736
	23	37757	37839	37803	37511	37959	38497	37992	38235	37780	38115	37725	38005	100.148
20	0	37767	38414	38515	38091	38128	38286	37944	38322	38065	38363	37797	38328	100.758
	1	37786	38256	37926	37347	38174	38125	38459	38170	38353	38773	37727	38166	100.598
	2	38401	37277	38397	37854	38235	38677	38149	38121	38103	38833	37979	38032	100.773
	3	38202	37935	37700	38098	37888	37970	38285	38293	38073	38789	38384	38192	100.718
	4	37857	38045	38091	38183	39654	38488	38766	38615	38268	37606	38237	38388	101.244
	5	38020	38307	38435	37974	38076	37911	38872	37991	38160	38423	38166	37942	100.821
	6	38100	38762	38182	38043	38413	37868	38378	38714	38032	38533	38155	38307	101.087
	7	38230	38551	38231	38199	38643	37967	38150	38361	38776	38486	38187	38501	101.262
	8	38894	38450	38540	38523	38067	38698	38002	38570	38328	38518	38492	38301	101.505
	9	37256	38402	38012	38545	38378	37815	37954	38519	37736	38305	38218	38044	100.581
	10	38371	38041	38535	38012	38506	38062	38203	38452	38272	38926	37939	38281	101.112
	11	37892	38055	37985	38310	38332	37972	37928	37946	38181	38665	37956	37707	100.524
	12	38905	38319	38408	38181	38110	37908	38607	38812	37998	38687	37580	38286	101.156
	13	38004	38393	38378	38599	37912	38170	38777	38539	38241	38344	38133	38116	101.114
	14	38178	37995	38395	38288	38380	37544	37537	37799	37967	38389	38864	38056	100.627
	15	38372	38068	37950	38639	38366	38003	37721	37862	38260	37760	38007	38000	100.541
	16	37772	37742	37691	38006	37984	38141	38443	38262	37882	37907	38367	37310	100.212
	17	37888	38116	37818	38463	38006	37585	38143	38037	37877	37907	37789	37927	100.222
	18	37964	37851	37712	38162	38288	38623	37880	38242	38230	38118	38546	38258	100.733
	19	38031	37652	37209	37688	37857	38294	37961	37395	38094	38165	37788	37619	99.826
	20	37881	37948	38249	38360	38301	38575	38167	38186	37939	38834	37784	37940	100.796
	21	38408	37767	38492	37766	37931	38262	38192	37534	38286	38052	37923	37738	100.397
	22	37890	37625	37919	38026	37973	38441	38281	38179	37723	37978	37845	38349	100.370
	23	38575	38118	38530	38219	37816	38017	37276	38285	37281	38042	37868	37674	100.254

INAF/UNIRomaTre				S.V.I.R.CO. Observatory - Pressure Corrected Data – September 2018										16 NM-64	
day	hh	00_05	05_10	10_15	15_20	20_25	25_30	30_35	35_40	40_45	45_50	50_55	55_60	h-norm	
21	0	38385	37872	37727	38081	38245	38265	37542	38054	38357	37944	37965	38258	100.472	
	1	38575	38187	37755	38005	38390	37744	38344	37882	38313	38528	38150	37469	100.615	
	2	38144	38174	37519	38600	37795	37671	38008	38066	37433	38160	37845	38050	100.202	
	3	38152	38478	38755	38231	38639	38699	39064	38403	38294	38013	38293	38061	101.438	
	4	38091	37880	38190	38185	38285	37920	38396	38368	38474	38654	38565	38359	101.061	
	5	38322	38183	38796	38129	38329	38537	38203	38422	38378	38756	38422	38566	101.429	
	6	38285	38316	38034	38309	38933	39014	38393	38314	38797	38402	38784	38666	101.694	
	7	38914	38117	38388	39084	38538	38444	39288	38850	38706	38799	38524	37845	101.970	
	8	38833	38439	38921	38683	38570	38603	38180	38430	38495	38293	38728	38844	101.864	
	9	38083	38583	39024	38726	37426	38371	38682	38684	38190	38196	38653	39052	101.567	
	10	38893	38625	38036	38506	38620	38091	38319	38591	38352	38851	38457	39129	101.744	
	11	38438	38346	38241	38275	38230	38444	39011	38449	38174	38488	38189	38496	101.372	
	12	38130	38610	38561	38056	38505	38412	38144	38112	38321	38045	38316	38695	101.180	
	13	38195	38153	38325	38113	37936	38715	37731	38429	38257	37962	38323	37699	100.724	
	14	37858	38361	37901	38682	38078	38366	37905	38314	38617	38269	38661	37975	100.977	
	15	38036	37983	37984	38676	38177	38227	38494	38233	37957	38479	38051	38423	100.918	
	16	38657	38029	38118	38082	37844	38876	37991	37978	37551	38050	38526	37929	100.679	
	17	37523	38147	37812	38498	37614	37427	37801	37857	38348	37663	37807	37691	99.921	
	18	38200	38455	37923	37866	37648	37320	38172	38051	38304	37619	38109	37735	100.189	
	19	37559	37707	37999	38119	37818	37820	37892	37827	37747	37523	38280	38070	99.959	
	20	37186	37836	38017	37730	38029	37722	37464	37793	37959	37643	37825	38076	99.721	
	21	38316	37610	37521	37654	37758	38120	38468	38122	37700	37814	37493	37986	100.003	
	22	37636	38177	37957	37974	37431	38614	37745	38179	37961	37862	37655	38203	100.187	
	23	37856	38112	38047	38161	38200	37650	38397	37356	38497	37444	37711	38086	100.214	
22	0	38471	37851	37391	37924	38326	37834	37686	37395	38255	38319	37507	38122	100.116	
	1	37591	38407	38354	38126	38113	38056	37826	37977	38540	38204	38012	38302	100.652	
	2	38320	38106	37958	38505	37995	38095	38579	38095	38849	38173	38490	38400	101.105	
	3	38133	38223	38393	38097	38250	38000	37757	37343	38293	38285	38269	38385	100.634	
	4	37886	38445	38248	37669	38556	37843	38338	38043	38549	38155	38279	38291	100.826	
	5	37973	38230	39409	38484	38327	38673	38440	38451	38492	38523	38259	38425	101.571	
	6	38149	38560	38710	38137	38458	38212	38527	38129	38087	38819	38255	38289	101.273	
	7	38510	38423	38269	38163	38948	38091	38433	38024	38275	38446	38489	38297	101.281	
	8	38220	37899	38036	38528	38219	37935	38349	38148	37950	38455	38518	38250	100.871	
	9	38313	38154	38521	38657	38552	38300	38628	37808	38369	38626	37947	38344	101.248	
	10	38528	38351	38486	38367	38308	38094	37771	38309	37906	38413	38366	37691	100.890	
	11	37977	38386	38414	38135	38326	38183	37670	38153	38071	37814	37704	38409	100.593	
	12	38445	38588	38170	38548	37758	38911	37893	37933	38466	37734	38047	38520	100.983	
	13	37893	38384	37936	37994	38176	38464	38026	38367	37996	37791	38283	37903	100.587	
	14	37909	38191	37691	38184	38616	38197	38170	38015	37888	38224	38221	37620	100.524	
	15	38696	38443	38113	38088	38194	38017	38433	37807	38276	37869	38388	38073	100.847	
	16	38432	38207	37948	38464	38024	38433	38284	38720	38254	38125	38060	38270	101.029	
	17	37876	37610	37923	38101	38436	38176	37774	37722	38766	38077	38726	38180	100.621	
	18	37856	38173	37924	38216	38326	38223	38096	37974	38338	37869	38382	38287	100.686	
	19	38274	37723	38584	38676	37705	38944	38658	38636	37563	38423	37974	38189	101.056	
	20	38173	38356	38089	38618	38434	38222	38271	38125	38362	38265	38120	38288	101.051	
	21	38404	38453	38086	38263	38322	38566	38432	37932	38596	38257	38352	38615	101.261	
	22	37896	38888	38394	38817	38450	38770	38344	38797	38250	38558	38726	38174	101.654	
	23	38424	38666	38350	38297	38251	38243	37870	38722	38149	38714	37630	38274	101.110	

INAF/UNIRomaTre		S.V.I.R.CO. Observatory - Pressure Corrected Data – September 2018											16 NM-64	
day	hh	00_05	05_10	10_15	15_20	20_25	25_30	30_35	35_40	40_45	45_50	50_55	55_60	h-norm
23	0	37758	38331	38436	38601	38785	38626	38533	38149	38720	38760	38436	38663	101.593
	1	38474	38633	38094	38824	38106	38235	38734	38901	38060	38049	37963	38518	101.330
	2	37785	38680	38373	38068	38502	38448	38161	38225	38288	38400	38840	38304	101.216
	3	38130	38441	38446	37849	37927	38565	38194	38451	38292	38255	37975	38205	100.920
	4	38422	38441	37809	38733	38170	38243	38391	38288	38205	38308	38278	38247	101.098
	5	38175	38126	38225	38467	38315	37947	38186	38044	38527	38891	38732	38205	101.165
	6	38715	38345	38287	38686	38137	38466	39096	38162	38281	37891	38080	38866	101.423
	7	38979	38665	38731	38523	37875	38354	38511	38354	37882	38485	38650	38676	101.571
	8	38578	37710	38269	38303	38519	38148	38197	38298	38098	38354	38070	38108	100.904
	9	38975	38425	38962	38192	38260	38600	37961	38563	38173	38295	38240	37920	101.325
	10	38157	38309	38006	38026	38046	37673	37303	38243	37930	38269	38365	38314	100.461
	11	38429	38571	38156	38427	38381	37841	37946	38083	37971	38417	38369	38400	100.978
	12	38130	37697	37971	38385	37578	38317	38274	38070	37873	38251	38470	37791	100.498
	13	37585	38186	38219	38598	38307	38288	37302	38104	37910	37871	38321	38065	100.487
	14	37840	37712	38571	37974	38219	38463	38489	37560	37903	38159	37971	37893	100.486
	15	38555	37915	37858	37789	38098	38115	37489	37976	38307	37836	38172	38241	100.398
	16	37786	37783	37868	38611	37874	37590	37877	37671	38205	38476	38348	38009	100.342
	17	38609	37972	38312	38241	38342	38091	37532	38028	38345	38022	37988	37571	100.552
	18	37833	37452	37500	37755	37954	38013	38262	37701	38132	37914	37968	37948	99.975
	19	38026	37832	37114	37893	38005	37981	37806	38431	38373	38057	38194	38510	100.369
	20	38756	38041	37955	37572	37773	38362	38925	38318	38124	37473	37525	37881	100.474
	21	38283	38534	37936	38063	38208	38045	37282	38118	37698	38015	38056	38372	100.454
	22	37652	38211	37833	38064	38384	38016	38597	38104	37945	38151	37349	38168	100.424
	23	37151	37969	37991	37972	38052	38404	37707	38039	38285	37944	38259	38464	100.373
24	0	37949	38125	38447	37997	37962	38547	38272	38523	37915	38077	38199	38633	100.896
	1	37905	38326	37527	38301	37863	38146	38177	38488	38614	38316	38141	38381	100.802
	2	38525	38331	38768	38151	38120	38283	38321	38065	37994	38226	37935	38520	101.032
	3	37860	37600	38306	38052	38908	38647	38350	38363	38559	38011	38383	37842	100.954
	4	38924	38504	38332	38253	38513	38222	37759	38221	37783	38606	37913	38372	101.069
	5	38090	37931	38202	38494	37717	38375	38044	38142	38930	38418	37967	38347	100.905
	6	38502	38207	37904	38460	38167	38386	37925	37923	37726	37834	38778	37953	100.708
	7	38446	37715	38373	38006	38069	37462	38099	38168	37667	37823	37722	38274	100.282
	8	38489	38118	38310	37818	38220	38076	37617	37805	38042	38121	38141	37968	100.480
	9	37944	37704	38135	38349	38194	38011	38411	38218	37711	38574	38060	38210	100.655
	10	38480	37682	38186	37939	37907	37737	38030	37827	38012	37697	37816	38029	100.175
	11	38466	37947	37853	38179	37655	37752	37552	38089	37999	38450	37387	37748	100.117
	12	38029	37370	38121	37882	37858	37968	38328	38339	37907	38064	37451	37875	100.142
	13	38171	37609	37537	38156	38098	38098	37672	37973	37718	37767	38206	37852	100.068
	14	38502	37508	37812	37813	37817	38691	37680	38571	37796	37861	38159	37982	100.362
	15	37747	37658	37720	38245	38356	38230	37777	38330	38390	37705	38623	37869	100.463
	16	37183	37614	38231	38050	37696	37906	38605	37790	38272	38380	38602	37731	100.333
	17	38488	37988	38190	37717	38075	37436	38655	38865	38148	38348	38281	38112	100.827
	18	38262	38451	37639	37872	38947	38163	37950	38353	37915	38394	38150	38104	100.804
	19	37907	38585	38036	37965	38577	38310	38592	38219	38364	38326	38173	38360	101.071
	20	38194	38318	38117	38215	37538	37931	38408	37408	38163	38142	38200	38157	100.494
	21	37851	38217	39069	37757	37808	38501	37623	37988	37799	38032	38201	38044	100.516
	22	38364	38104	38132	38041	38321	38269	37505	37985	37512	38439	37858	38798	100.612
	23	38355	37521	38641	38033	38326	38223	38338	37990	37838	37627	37986	38270	100.573

INAF/UNIRomaTre				S.V.I.R.CO. Observatory - Pressure Corrected Data – September 2018										16 NM-64	
day	hh	00_05	05_10	10_15	15_20	20_25	25_30	30_35	35_40	40_45	45_50	50_55	55_60	h-norm	
25	0	37582	37830	37606	38134	38436	38680	37996	37565	38038	37657	38227	38223	100.319	
	1	38439	37421	38262	37628	38464	38154	37980	38191	38032	38361	38185	38508	100.677	
	2	38062	37998	38499	38282	38125	38137	38158	37891	38074	38355	37919	38542	100.769	
	3	38039	38223	38071	38170	37502	37887	38179	37909	38339	38208	38514	38151	100.582	
	4	37828	38845	37991	37688	38153	38441	37964	38366	38316	38831	38558	38346	101.052	
	5	38114	37877	38503	38340	38168	38207	38034	38277	38404	37998	38186	37786	100.737	
	6	38313	37889	38468	38030	38615	37973	38101	37974	38743	38112	37922	38328	100.863	
	7	37925	38402	37788	38529	38577	38803	38006	38320	38564	38104	38115	37407	100.879	
	8	38569	38678	38559	38029	38179	38322	37916	38245	37886	38214	38179	38128	100.959	
	9	37859	37365	37895	38095	38458	38732	38105	38209	38071	38179	38375	38188	100.657	
	10	38276	38620	37855	37975	37953	38161	38044	38444	38406	38361	38655	37798	100.881	
	11	38223	38415	37825	38401	38361	38179	38253	38349	38185	38469	37719	38130	100.872	
	12	37939	38378	38199	38396	38585	38343	38233	37849	38408	38511	38154	37607	100.892	
	13	37813	37424	37967	38356	38874	38083	38385	38336	38019	38316	38342	38005	100.743	
	14	38273	38048	38001	38426	38232	38372	38314	37911	37805	38509	38138	38182	100.806	
	15	38290	38440	38144	38084	38431	38196	38699	38195	38109	38061	38662	38617	101.184	
	16	38041	38162	38309	37721	38246	37920	38187	37885	38640	38562	38594	38425	100.912	
	17	38466	38755	38329	37926	38609	37970	38624	38122	38542	38519	39228	37576	101.347	
	18	38750	38303	37965	38533	38463	38281	38479	37980	38867	38643	39004	38289	101.543	
	19	37965	38219	38607	38169	38104	38497	38527	38406	38354	38232	38559	38729	101.281	
	20	38637	38569	38797	38398	38489	38609	38275	38531	38675	38004	38298	38477	101.587	
	21	38428	37961	38447	38823	38865	38623	38698	38302	38136	38761	38434	38910	101.725	
	22	38268	38333	38658	37783	39192	38390	38310	37538	38044	38812	38260	38662	101.255	
	23	38379	38659	38726	38545	38392	37799	38653	38041	37668	38190	38231	38918	101.245	
26	0	38066	38358	37959	38475	38272	38694	38577	38905	38196	38743	38852	38709	101.602	
	1	38490	38644	38291	38383	38434	39104	38862	38342	38381	38266	39166	39003	101.941	
	2	38465	38217	38510	38667	38785	38728	38416	38371	38698	38117	38452	37861	101.483	
	3	38354	37967	38677	38554	38526	38150	38542	38321	38559	38419	37831	37884	101.153	
	4	38227	37605	38374	38097	38631	38725	38540	39057	38762	38601	38514	38337	101.523	
	5	38261	38540	38313	38547	38545	38280	38196	38379	38743	38270	38792	38839	101.575	
	6	38399	37843	38602	38792	38448	38710	37921	38818	38488	38291	37712	38225	101.255	
	7	38373	38251	38422	38399	38055	38688	38247	38408	38362	39384	38893	38757	101.692	
	8	38675	38778	38856	38437	38579	37878	38664	38427	38842	38825	38289	37980	101.691	
	9	37678	37687	38518	39234	38714	38116	38768	38241	38537	38377	38780	38488	101.450	
	10	38376	38052	38345	38440	38848	37795	38114	38409	38590	38119	38177	38776	101.209	
	11	38322	38716	37979	38925	37983	38579	38536	38235	38803	38392	38649	38199	101.490	
	12	38145	38271	38616	38181	38331	38514	38322	38254	38707	38712	38664	39182	101.618	
	13	38745	38309	38916	37933	38544	38639	38169	38406	38509	38367	38442	38514	101.528	
	14	38271	39121	38178	38558	38435	38494	38693	38429	38491	38894	38568	38811	101.848	
	15	38020	38227	38122	39204	38610	38597	38195	38944	38048	38559	38981	38864	101.721	
	16	38695	38672	38786	38961	38946	38698	38796	39118	39128	39263	38550	38510	102.547	
	17	39008	38931	38025	38698	38919	38858	38077	37907	38426	38221	38270	38690	101.647	
	18	38667	39108	38791	38958	38686	38850	39403	39181	38982	38802	38395	39071	102.717	
	19	38752	39009	38873	38835	38339	38536	38436	38617	38445	39469	38871	38864	102.310	
	20	39027	38648	39101	38444	38973	38682	39483	38589	38797	39011	38578	38639	102.514	
	21	38511	38692	39514	38534	38868	38429	38736	38209	38718	38732	38716	38033	102.012	
	22	38314	38792	38953	38456	38920	38348	38135	38374	38832	38832	38633	38335	101.843	
	23	38543	38472	38534	38715	38647	38781	38479	38436	38066	38382	38618	38761	101.736	

INAF/UNIRomaTre		S.V.I.R.CO. Observatory - Pressure Corrected Data – September 2018											16 NM-64	
day	hh	00_05	05_10	10_15	15_20	20_25	25_30	30_35	35_40	40_45	45_50	50_55	55_60	h-norm
27	0	38751	38329	38794	38667	37921	38921	38469	38652	38555	38707	38721	38244	101.799
	1	38776	38480	38526	38098	38500	38582	37929	38456	38418	38918	38600	38708	101.638
	2	38904	38752	38647	38835	38341	38434	38056	38200	39150	38236	38796	38611	101.852
	3	37948	38828	38454	38491	38298	39103	38338	39004	38763	38194	38821	38293	101.758
	4	38788	38696	38823	38843	38553	37540	38593	38997	38588	38526	38705	38931	101.988
	5	38623	38752	39042	38905	38632	38059	38288	38592	38861	38693	38823	39123	102.167
	6	38803	38625	38687	38992	38515	38357	38638	38632	38128	38436	38915	38257	101.857
	7	37906	38173	38545	38175	38948	38375	38501	38836	38660	38594	38477	38046	101.472
	8	38577	38986	38522	38627	38715	38645	38480	38649	38516	38447	38195	38362	101.799
	9	38346	37988	39151	37931	38224	38900	38300	39168	38047	37999	38636	39192	101.614
	10	38388	38773	38270	38083	38614	38204	38504	38183	38477	38658	38403	38380	101.406
	11	39094	37527	38693	38612	38320	38584	38408	38577	39195	38875	38377	39103	101.942
	12	38345	38500	38386	38390	38387	37973	38393	38186	38311	38875	38599	37752	101.221
	13	38417	38426	38511	38196	38146	38171	38288	38375	38936	38281	38078	38779	101.334
	14	38480	38748	38614	38504	38379	38629	38237	38342	38213	38759	38489	38909	101.707
	15	38429	38894	38963	38470	38111	38811	38398	39030	38071	38507	37921	38691	101.705
	16	38645	38680	37973	38472	38884	38590	38984	38502	38208	38370	38384	38144	101.604
	17	39065	38510	38407	38845	37870	38697	38449	38321	39014	37936	39037	38959	101.884
	18	39161	38809	38304	38597	38707	39199	38894	38273	38702	38823	38568	38487	102.196
	19	39078	38616	38553	38280	38247	38578	38582	38960	39017	38200	38732	38331	101.899
	20	37990	38336	38651	38559	38237	38192	38619	38719	38196	38253	39013	38892	101.564
	21	38762	38831	38727	39276	38783	38578	39235	38497	38342	38717	39556	38544	102.487
	22	38394	38061	37838	38044	39025	38607	39242	38137	38627	38519	38075	38650	101.469
	23	38712	37529	37749	38832	37717	38219	38792	38037	38879	38091	38517	38402	101.085
28	0	37908	37781	38390	38463	38421	38086	38373	38550	38641	38824	38534	38088	101.206
	1	38535	39026	38698	38638	38696	38159	38309	39207	38535	38233	38444	38447	101.843
	2	39076	38505	39324	38615	38658	38575	38778	38770	38964	38481	38204	38123	102.096
	3	38458	38656	38564	38457	38731	38600	38647	38814	38561	38561	38688	38692	101.954
	4	38702	38475	38970	38377	38172	38577	38509	38003	38886	38667	38598	38308	101.693
	5	38810	38703	38987	38447	38337	38756	37795	38171	38596	38906	38019	38422	101.628
	6	39161	38474	39080	38814	38872	38727	38401	38648	38871	38595	38152	38481	102.140
	7	39043	38729	38287	38879	38333	39003	38928	39004	38440	38547	38241	38039	101.964
	8	38846	39212	38497	38590	38475	38118	38844	38137	38108	38869	38554	38520	101.809
	9	38350	38252	38637	38706	38781	37911	38526	38760	38962	37898	38501	38620	101.619
	10	38731	38664	38536	38747	38297	38069	38327	38507	38837	37993	38168	38604	101.526
	11	38261	38246	38233	38465	38486	38336	38354	38295	38725	38429	38434	38581	101.387
	12	38655	38279	38476	38394	38634	38392	38294	38905	38458	38726	38339	38290	101.605
	13	39051	38668	38173	38277	38618	38136	38518	38663	38177	38647	38190	38532	101.563
	14	38220	38855	38545	38397	38620	38117	38392	38113	38166	38444	38413	38722	101.421
	15	38776	38655	38806	38316	37916	38125	38800	38425	37849	38740	38852	38218	101.525
	16	38651	38233	38578	38168	38120	38144	38535	38512	37890	38045	38226	38540	101.121
	17	38238	38550	38052	38645	38015	38128	38764	38589	38596	38484	38755	38199	101.423
	18	38449	38520	38344	38470	38291	38456	38476	38395	38272	38718	38440	37694	101.316
	19	38920	38501	38385	38338	38438	37810	38797	38912	37815	38647	37372	38166	101.222
	20	38488	38275	38749	38433	38077	38428	38478	37942	38697	38887	38206	38447	101.444
	21	38534	38850	38297	39087	38529	38730	38422	38393	38263	38554	38134	38597	101.726
	22	38389	38242	38603	38464	38093	38275	38375	38112	37901	38487	38382	38098	101.073
	23	39245	38570	38750	38678	38256	38229	38277	38487	38562	38143	37938	38315	101.519



INAF/UNIRomaTre				S.V.I.R.CO. Observatory - Pressure Corrected Data – September 2018										16 NM-64	
day	hh	00_05	05_10	10_15	15_20	20_25	25_30	30_35	35_40	40_45	45_50	50_55	55_60	h-norm	
29	0	38800	38696	38474	37622	38736	38508	38342	38479	37772	38659	38076	38255	101.291	
	1	38340	38832	38644	38320	38483	38476	38292	38167	38447	38335	38351	38422	101.444	
	2	38758	39089	38306	38364	37899	38305	38396	38775	38501	38773	38508	38121	101.595	
	3	38687	38120	39146	38091	38733	38646	38267	38717	38494	38750	38419	38790	101.829	
	4	38245	38692	38077	38763	38997	38638	38239	38358	38870	38373	39131	39123	101.971	
	5	38215	38503	38263	38543	38348	38208	39133	38487	38393	38359	38439	38373	101.478	
	6	38439	38456	38364	38036	38376	38573	38735	38221	38691	38975	38409	38521	101.595	
	7	37926	38855	38735	38177	37742	38181	38487	38688	38758	38238	38413	38219	101.292	
	8	38656	38718	39247	38183	37981	38861	38373	38398	38974	38220	38222	38208	101.650	
	9	38701	38335	39012	38585	38390	38833	38272	38944	38043	39237	38897	38493	102.023	
	10	38423	38426	38041	38475	38385	38488	38227	38415	38234	38240	38356	38638	101.276	
	11	37888	38145	38609	38274	38499	38100	38352	38552	38639	38548	38786	38709	101.443	
	12	38876	38006	38320	38225	38511	39249	38678	38700	38589	38713	38900	38762	101.977	
	13	38265	38732	38790	38679	38669	37893	38401	38593	38516	38492	38200	39126	101.719	
	14	38641	38355	38118	38492	38831	38877	38330	38579	38268	38182	38571	38727	101.634	
	15	38376	38706	38848	38796	38502	38603	38502	37957	38186	38242	38189	39020	101.624	
	16	38602	38330	38215	38072	38800	38516	38515	39332	37474	38558	38398	38787	101.552	
	17	38888	38861	38634	38181	39205	38480	38677	38763	38347	38420	38582	38601	102.002	
	18	38515	38394	38983	38672	38803	38363	39225	38322	39113	38825	38472	38014	102.014	
	19	38346	38554	38532	39171	38677	38230	38503	38100	38697	38267	38512	38195	101.593	
	20	38350	38749	38540	37974	38833	38931	38435	38227	38685	38714	38355	38457	101.695	
	21	38498	38768	39183	38182	38572	38732	38328	39186	38627	38891	38352	38373	102.012	
	22	37788	38886	38574	38202	38822	38322	38839	38774	38844	38521	38567	38661	101.816	
	23	38823	38829	38705	38761	38656	39284	38095	38889	38308	38847	38654	38304	102.114	
30	0	38496	38236	38458	38721	38485	38546	38348	38228	39007	38623	38481	38563	101.679	
	1	38605	38683	38390	38064	39204	38360	38708	38174	38965	38339	38785	37903	101.680	
	2	39046	38300	38557	37998	38642	38670	38167	39082	38972	38754	38651	38978	102.040	
	3	38440	38726	37908	38123	38157	38640	38884	38689	38162	38294	38830	38552	101.509	
	4	38613	38600	38671	38978	38094	38920	38657	38690	38487	38823	38246	38406	101.901	
	5	38399	38455	38087	38276	38391	38515	38498	38433	38881	39167	38425	38965	101.748	
	6	38442	38743	38274	38932	38662	38615	38492	38596	38705	38596	38742	38261	101.873	
	7	38346	38157	38472	38681	38813	38941	38483	38988	38461	39111	38249	38473	101.898	
	8	38673	39111	38408	38243	39134	37696	38376	38388	38255	38476	38760	38475	101.639	
	9	38544	38630	38265	38802	38329	38524	38501	38983	38317	37959	38340	38228	101.512	
	10	38727	38950	38800	38445	38370	38560	38649	38520	38876	38527	38563	38181	101.896	
	11	38330	38872	38379	38339	38493	38458	38849	38417	38435	38763	37936	37979	101.475	
	12	38579	38532	38171	38436	38392	38351	38698	38308	38093	39329	38073	38560	101.535	
	13	38380	38575	38395	38255	38310	38588	38855	38819	38638	38224	38290	38250	101.547	
	14	38384	38291	37678	38266	38722	38443	37837	38329	38623	38709	38238	38509	101.207	
	15	38814	38988	38187	38909	38525	38207	38334	38428	38205	38072	38358	37906	101.405	
	16	38786	38745	38758	37879	38379	37912	38966	38370	39094	38120	38584	38579	101.677	
	17	39089	38023	38464	38252	38290	38654	37780	38473	38403	38363	38069	38676	101.318	
	18	38534	38346	38583	38697	38371	38253	38518	38441	38535	39049	38068	38735	101.669	
	19	38273	38256	38465	38389	37957	38397	38499	39467	38024	38389	38517	38544	101.459	
	20	38950	38268	39131	38729	37802	38094	39026	38109	38781	38766	38649	38367	101.788	
	21	37939	38808	38751	38761	38373	38731	38416	38819	38900	38441	38082	38949	101.854	
	22	37861	38405	37999	38775	38996	38343	38227	38819	38691	38458	38357	39001	101.625	
	23	38690	38211	38245	38328	38560	38890	38327	38658	38426	38698	38725	38451	101.686	

S.V.I.R.CO. Observatory - Pressure in hectoPascal – September 2018

day	hh	00_05	05_10	10_15	15_20	20_25	25_30	30_35	35_40	40_45	45_50	50_55	55_60	average
1	0	1014.42	1014.39	1014.44	1014.55	1014.48	1014.51	1014.61	1014.52	1014.37	1014.28	1014.21	1014.16	1014.41
	1	1014.14	1014.19	1014.27	1014.30	1014.26	1014.20	1014.17	1014.09	1014.05	1014.03	1013.99	1013.94	1014.13
	2	1013.73	1013.60	1013.68	1013.70	1013.58	1013.47	1013.51	1013.56	1013.59	1013.59	1013.58	1013.56	1013.59
	3	1013.51	1013.49	1013.50	1013.52	1013.50	1013.43	1013.36	1013.35	1013.40	1013.44	1013.46	1013.47	1013.45
	4	1013.47	1013.44	1013.38	1013.36	1013.38	1013.41	1013.44	1013.40	1013.30	1013.25	1013.27	1013.28	1013.36
	5	1013.24	1013.20	1013.25	1013.28	1013.28	1013.32	1013.36	1013.42	1013.40	1013.35	1013.39	1013.42	1013.32
	6	1013.43	1013.47	1013.51	1013.57	1013.61	1013.65	1013.64	1013.63	1013.69	1013.71	1013.71	1013.72	1013.61
	7	1013.71	1013.69	1013.67	1013.70	1013.71	1013.73	1013.76	1013.78	1013.85	1013.91	1013.92	1013.97	1013.78
	8	1014.00	1013.98	1013.94	1013.95	1013.96	1013.95	1013.98	1014.00	1014.00	1014.00	1014.02	1014.08	1013.99
	9	1014.15	1014.15	1014.14	1014.21	1014.23	1014.27	1014.34	1014.34	1014.34	1014.37	1014.42	1014.42	1014.28
	10	1014.44	1014.37	1014.41	1014.54	1014.57	1014.69	1014.71	1014.63	1014.70	1014.78	1014.77	1014.69	1014.61
	11	1014.63	1014.61	1014.61	1014.66	1014.67	1014.59	1014.55	1014.60	1014.67	1014.68	1014.70	1014.74	1014.64
	12	1014.74	1014.74	1014.80	1014.85	1014.88	1014.87	1014.85	1014.87	1014.86	1014.77	1014.71	1014.68	1014.80
	13	1014.63	1014.60	1014.60	1014.60	1014.60	1014.58	1014.53	1014.47	1014.42	1014.31	1014.24	1014.23	1014.48
	14	1014.18	1014.12	1014.07	1014.05	1013.97	1013.93	1013.92	1013.85	1013.78	1013.74	1013.72	1013.78	1013.92
	15	1013.92	1014.03	1014.03	1013.95	1013.88	1013.86	1013.87	1013.88	1013.90	1013.91	1013.86	1013.82	1013.91
	16	1013.80	1013.78	1013.78	1013.80	1013.84	1013.84	1013.84	1013.83	1013.83	1013.87	1013.90	1013.94	1013.83
	17	1014.01	1014.11	1014.10	1014.06	1014.08	1014.06	1014.05	1014.12	1014.17	1014.19	1014.22	1014.25	1014.12
	18	1014.27	1014.31	1014.31	1014.32	1014.35	1014.40	1014.43	1014.41	1014.40	1014.44	1014.49	1014.48	1014.38
	19	1014.47	1014.53	1014.61	1014.64	1014.66	1014.66	1014.64	1014.67	1014.69	1014.67	1014.66	1014.67	1014.63
	20	1014.61	1014.53	1014.49	1014.51	1014.52	1014.51	1014.49	1014.47	1014.45	1014.45	1014.46	1014.48	1014.50
	21	1014.48	1014.42	1014.36	1014.30	1014.27	1014.31	1014.35	1014.36	1014.29	1014.25	1014.29	1014.33	1014.33
	22	1014.35	1014.34	1014.25	1014.26	1014.33	1014.29	1014.30	1014.34	1014.37	1014.39	1014.32	1014.28	1014.32
	23	1014.25	1014.20	1014.17	1014.15	1014.16	1014.22	1014.22	1014.17	1014.15	1014.14	1014.14	1014.08	1014.17
2	0	1014.04	1014.06	1014.08	1014.15	1014.21	1014.20	1014.17	1014.16	1014.21	1014.24	1014.21	1014.14	1014.16
	1	1014.10	1014.06	1014.01	1013.96	1013.90	1013.89	1013.91	1013.91	1013.90	1013.91	1013.88	1013.85	1013.94
	2	1013.85	1013.80	1013.80	1013.82	1013.69	1013.57	1013.51	1013.43	1013.41	1013.41	1013.45	1013.52	1013.60
	3	1013.51	1013.51	1013.61	1013.73	1013.83	1013.88	1013.90	1013.89	1013.85	1013.81	1013.78	1013.77	1013.75
	4	1013.78	1013.81	1013.83	1013.83	1013.82	1013.81	1013.78	1013.76	1013.74	1013.77	1013.79	1013.80	1013.79
	5	1013.86	1013.91	1013.97	1013.97	1013.95	1013.93	1013.92	1013.96	1013.98	1014.01	1014.03	1014.00	1013.96
	6	1013.97	1013.99	1014.01	1014.00	1013.96	1013.94	1013.96	1013.95	1013.96	1013.97	1013.97	1013.94	1013.97
	7	1013.95	1014.01	1014.02	1014.01	1014.00	1013.97	1013.95	1013.92	1013.92	1013.93	1013.97	1014.00	1013.97
	8	1013.99	1013.99	1013.98	1013.96	1013.92	1013.89	1013.88	1013.90	1013.92	1013.95	1013.97	1013.97	1013.94
	9	1013.99	1014.00	1013.95	1013.91	1013.91	1013.94	1013.99	1014.04	1014.12	1014.16	1014.12	1014.11	1014.02
	10	1014.17	1014.22	1014.22	1014.22	1014.21	1014.18	1014.18	1014.19	1014.20	1014.15	1014.08	1014.05	1014.17
	11	1013.92	1013.76	1013.70	1013.68	1013.63	1013.60	1013.59	1013.54	1013.54	1013.53	1013.46	1013.45	1013.61
	12	1013.46	1013.44	1013.40	1013.38	1013.38	1013.35	1013.34	1013.33	1013.29	1013.25	1013.21	1013.24	1013.34
	13	1013.27	1013.32	1013.37	1013.36	1013.36	1013.37	1013.36	1013.36	1013.34	1013.27	1013.24	1013.27	1013.32
	14	1013.31	1013.31	1013.32	1013.34	1013.32	1013.27	1013.23	1013.17	1013.18	1013.25	1013.28	1013.30	1013.27
	15	1013.31	1013.31	1013.34	1013.41	1013.48	1013.52	1013.56	1013.62	1013.66	1013.68	1013.70	1013.73	1013.52
	16	1013.74	1013.77	1013.83	1013.86	1013.85	1013.79	1013.73	1013.70	1013.70	1013.69	1013.70	1013.71	1013.75
	17	1013.67	1013.65	1013.63	1013.62	1013.65	1013.70	1013.73	1013.74	1013.74	1013.74	1013.75	1013.79	1013.70
	18	1013.82	1013.85	1013.88	1013.89	1013.90	1013.94	1013.97	1013.99	1014.04	1014.11	1014.18	1014.24	1013.98
	19	1014.32	1014.40	1014.48	1014.53	1014.53	1014.52	1014.50	1014.48	1014.46	1014.46	1014.43	1014.37	1014.45
	20	1014.38	1014.44	1014.43	1014.40	1014.40	1014.41	1014.43	1014.43	1014.42	1014.43	1014.45	1014.46	1014.42
	21	1014.46	1014.47	1014.52	1014.55	1014.54	1014.52	1014.50	1014.44	1014.37	1014.34	1014.31	1014.26	1014.44
	22	1014.23	1014.20	1014.16	1014.14	1014.15	1014.16	1014.16	1014.16	1014.15	1014.13	1014.10	1014.06	1014.15
	23	1014.06	1014.08	1014.06	1014.05	1014.02	1013.95	1013.91	1013.91	1013.92	1013.94	1013.96	1013.94	1013.98

S.V.I.R.CO. Observatory - Pressure in hectoPascal – September 2018

day	hh	00_05	05_10	10_15	15_20	20_25	25_30	30_35	35_40	40_45	45_50	50_55	55_60	average
3	0	1013.89	1013.84	1013.75	1013.73	1013.76	1013.77	1013.79	1013.81	1013.80	1013.82	1013.82	1013.79	1013.79
	1	1013.76	1013.74	1013.77	1013.80	1013.76	1013.73	1013.74	1013.78	1013.81	1013.82	1013.81	1013.75	1013.77
	2	1013.71	1013.70	1013.66	1013.61	1013.56	1013.49	1013.42	1013.40	1013.38	1013.32	1013.23	1013.14	1013.47
	3	1013.07	1013.06	1013.13	1013.18	1013.20	1013.19	1013.19	1013.23	1013.23	1013.15	1013.08	1013.08	1013.15
	4	1013.12	1013.13	1013.15	1013.21	1013.26	1013.26	1013.25	1013.31	1013.32	1013.30	1013.31	1013.35	1013.25
	5	1013.37	1013.38	1013.40	1013.41	1013.36	1013.30	1013.30	1013.33	1013.34	1013.33	1013.34	1013.38	1013.35
	6	1013.40	1013.39	1013.37	1013.38	1013.44	1013.48	1013.47	1013.45	1013.42	1013.40	1013.42	1013.45	1013.42
	7	1013.46	1013.46	1013.49	1013.49	1013.45	1013.41	1013.39	1013.40	1013.42	1013.43	1013.45	1013.48	1013.44
	8	1013.52	1013.52	1013.52	1013.50	1013.46	1013.45	1013.46	1013.45	1013.43	1013.43	1013.40	1013.39	1013.46
	9	1013.37	1013.33	1013.27	1013.21	1013.19	1013.18	1013.15	1013.11	1013.09	1013.09	1013.08	1013.06	1013.18
	10	1013.06	1013.04	1013.01	1012.95	1012.89	1012.84	1012.83	1012.85	1012.88	1012.91	1012.91	1012.89	1012.92
	11	1012.86	1012.79	1012.72	1012.67	1012.64	1012.62	1012.63	1012.65	1012.64	1012.66	1012.69	1012.65	1012.68
	12	1012.60	1012.56	1012.55	1012.59	1012.59	1012.61	1012.63	1012.59	1012.57	1012.53	1012.50	1012.55	1012.57
	13	1012.60	1012.58	1012.57	1012.56	1012.54	1012.51	1012.48	1012.47	1012.46	1012.46	1012.46	1012.41	1012.50
	14	1012.35	1012.35	1012.32	1012.28	1012.29	1012.27	1012.26	1012.26	1012.25	1012.29	1012.32	1012.32	1012.30
	15	1012.31	1012.29	1012.29	1012.27	1012.26	1012.28	1012.31	1012.32	1012.34	1012.37	1012.35	1012.31	1012.31
	16	1012.28	1012.26	1012.26	1012.28	1012.32	1012.38	1012.41	1012.41	1012.39	1012.39	1012.40	1012.41	1012.35
	17	1012.41	1012.39	1012.35	1012.30	1012.29	1012.32	1012.34	1012.35	1012.38	1012.43	1012.49	1012.55	1012.38
	18	1012.60	1012.65	1012.67	1012.65	1012.66	1012.71	1012.77	1012.80	1012.81	1012.86	1012.93	1012.98	1012.75
	19	1012.99	1012.99	1012.99	1013.00	1013.04	1013.09	1013.15	1013.18	1013.19	1013.20	1013.23	1013.26	1013.11
	20	1013.24	1013.19	1013.14	1013.09	1013.05	1013.02	1013.02	1012.99	1012.95	1012.95	1012.99	1013.02	1013.05
	21	1013.04	1013.13	1013.20	1013.21	1013.24	1013.30	1013.34	1013.34	1013.35	1013.39	1013.43	1013.48	1013.29
	22	1013.49	1013.50	1013.51	1013.47	1013.44	1013.51	1013.63	1013.63	1013.53	1013.46	1013.47	1013.51	1013.51
	23	1013.55	1013.57	1013.51	1013.41	1013.39	1013.43	1013.42	1013.36	1013.36	1013.39	1013.41	1013.39	1013.43
4	0	1013.26	1013.29	1013.29	1013.25	1013.23	1013.18	1013.13	1013.10	1013.11	1013.12	1013.10	1013.09	1013.17
	1	1013.04	1012.92	1012.81	1012.77	1012.81	1012.88	1012.93	1012.95	1012.96	1013.01	1013.08	1013.08	1012.93
	2	1013.04	1013.04	1013.07	1013.09	1013.11	1013.12	1013.14	1013.18	1013.23	1013.27	1013.26	1013.23	1013.14
	3	1013.24	1013.19	1013.14	1013.17	1013.18	1013.25	1013.36	1013.45	1013.51	1013.49	1013.49	1013.50	1013.33
	4	1013.51	1013.50	1013.48	1013.50	1013.52	1013.55	1013.52	1013.48	1013.51	1013.49	1013.49	1013.54	1013.50
	5	1013.61	1013.71	1013.80	1013.83	1013.81	1013.82	1013.86	1013.92	1013.98	1014.00	1013.99	1013.97	1013.85
	6	1014.02	1014.04	1014.02	1013.97	1013.96	1013.97	1013.90	1013.83	1013.83	1013.76	1013.68	1013.63	1013.88
	7	1013.58	1013.61	1013.67	1013.67	1013.61	1013.58	1013.59	1013.65	1013.72	1013.73	1013.76	1013.82	1013.66
	8	1013.86	1013.87	1013.87	1013.89	1013.88	1013.82	1013.75	1013.78	1013.82	1013.84	1013.84	1013.77	1013.83
	9	1013.71	1013.71	1013.70	1013.65	1013.62	1013.59	1013.60	1013.60	1013.56	1013.50	1013.42	1013.30	1013.58
	10	1013.22	1013.23	1013.26	1013.25	1013.25	1013.23	1013.18	1013.17	1013.19	1013.16	1013.10	1013.05	1013.19
	11	1013.06	1013.11	1013.08	1013.01	1013.01	1012.99	1012.92	1012.83	1012.78	1012.85	1012.95	1012.93	1012.96
	12	1012.88	1012.89	1012.88	1012.87	1012.84	1012.80	1012.78	1012.77	1012.78	1012.80	1012.78	1012.73	1012.81
	13	1012.67	1012.60	1012.55	1012.46	1012.38	1012.34	1012.33	1012.35	1012.38	1012.37	1012.33	1012.32	1012.42
	14	1012.33	1012.33	1012.37	1012.42	1012.41	1012.45	1012.52	1012.56	1012.62	1012.67	1012.71	1012.72	1012.51
	15	1012.72	1012.73	1012.75	1012.75	1012.70	1012.62	1012.55	1012.47	1012.41	1012.39	1012.43	1012.53	1012.58
	16	1012.64	1012.77	1012.88	1012.88	1012.79	1012.73	1012.69	1012.67	1012.65	1012.57	1012.53	1012.52	1012.69
	17	1012.47	1012.43	1012.39	1012.37	1012.39	1012.41	1012.46	1012.56	1012.63	1012.73	1012.85	1012.94	1012.55
	18	1013.00	1013.06	1013.14	1013.24	1013.30	1013.32	1013.36	1013.42	1013.45	1013.50	1013.56	1013.58	1013.33
	19	1013.63	1013.73	1013.78	1013.79	1013.81	1013.84	1013.84	1013.81	1013.78	1013.77	1013.77	1013.78	1013.77
	20	1013.78	1013.80	1013.82	1013.83	1013.83	1013.85	1013.89	1013.94	1013.95	1013.92	1013.89	1013.91	1013.87
	21	1013.94	1013.96	1013.97	1014.02	1014.09	1014.14	1014.16	1014.18	1014.18	1014.19	1014.22	1014.24	1014.10
	22	1014.28	1014.32	1014.32	1014.29	1014.25	1014.27	1014.30	1014.33	1014.37	1014.37	1014.37	1014.39	1014.32
	23	1014.41	1014.44	1014.48	1014.47	1014.43	1014.41	1014.41	1014.39	1014.38	1014.41	1014.42	1014.40	1014.42

S.V.I.R.CO. Observatory - Pressure in hectoPascal – September 2018

day	hh	00_05	05_10	10_15	15_20	20_25	25_30	30_35	35_40	40_45	45_50	50_55	55_60	average
5	0	1014.35	1014.38	1014.44	1014.48	1014.52	1014.56	1014.54	1014.50	1014.50	1014.50	1014.48	1014.43	1014.48
	1	1014.39	1014.38	1014.37	1014.38	1014.34	1014.26	1014.21	1014.21	1014.23	1014.21	1014.18	1014.18	1014.28
	2	1014.20	1014.24	1014.25	1014.23	1014.20	1014.15	1014.09	1014.07	1014.12	1014.15	1014.15	1014.15	1014.16
	3	1014.12	1014.10	1014.12	1014.15	1014.16	1014.15	1014.13	1014.10	1014.08	1014.09	1014.14	1014.18	1014.12
	4	1014.21	1014.24	1014.26	1014.26	1014.26	1014.29	1014.32	1014.35	1014.39	1014.42	1014.42	1014.41	1014.32
	5	1014.42	1014.41	1014.41	1014.43	1014.47	1014.52	1014.53	1014.53	1014.55	1014.58	1014.61	1014.62	1014.50
	6	1014.63	1014.65	1014.66	1014.66	1014.67	1014.66	1014.68	1014.76	1014.79	1014.77	1014.78	1014.81	1014.71
	7	1014.85	1014.86	1014.86	1014.89	1014.92	1014.91	1014.87	1014.83	1014.84	1014.93	1015.00	1015.04	1014.90
	8	1015.07	1015.08	1015.08	1015.09	1015.09	1015.08	1015.06	1015.01	1014.98	1014.96	1014.94	1014.93	1015.03
	9	1014.94	1014.93	1014.90	1014.88	1014.84	1014.78	1014.74	1014.71	1014.68	1014.64	1014.59	1014.54	1014.76
	10	1014.50	1014.44	1014.39	1014.38	1014.39	1014.37	1014.32	1014.28	1014.24	1014.21	1014.17	1014.14	1014.32
	11	1014.11	1014.08	1014.03	1014.01	1013.99	1013.99	1013.94	1013.85	1013.77	1013.70	1013.67	1013.65	1013.90
	12	1013.60	1013.51	1013.48	1013.48	1013.41	1013.33	1013.28	1013.24	1013.19	1013.16	1013.14	1013.16	1013.33
	13	1013.20	1013.22	1013.23	1013.24	1013.24	1013.24	1013.25	1013.25	1013.24	1013.25	1013.27	1013.26	1013.24
	14	1013.27	1013.27	1013.27	1013.30	1013.33	1013.34	1013.32	1013.30	1013.30	1013.31	1013.33	1013.33	1013.30
	15	1013.33	1013.32	1013.26	1013.22	1013.20	1013.18	1013.13	1013.09	1013.07	1013.05	1013.01	1012.98	1013.15
	16	1012.97	1012.98	1012.96	1012.95	1012.96	1012.97	1012.98	1013.00	1013.00	1012.99	1013.00	1012.99	1012.98
	17	1012.97	1012.96	1012.96	1012.95	1012.94	1012.92	1012.89	1012.89	1012.94	1012.98	1012.99	1013.00	1012.95
	18	1013.04	1013.13	1013.20	1013.23	1013.29	1013.33	1013.35	1013.40	1013.42	1013.44	1013.45	1013.47	1013.31
	19	1013.50	1013.54	1013.56	1013.53	1013.50	1013.47	1013.45	1013.45	1013.47	1013.49	1013.49	1013.47	1013.49
	20	1013.45	1013.43	1013.42	1013.41	1013.38	1013.40	1013.41	1013.37	1013.36	1013.40	1013.42	1013.46	1013.41
	21	1013.52	1013.57	1013.56	1013.51	1013.51	1013.56	1013.55	1013.50	1013.48	1013.49	1013.47	1013.41	1013.51
	22	1013.36	1013.30	1013.26	1013.27	1013.27	1013.25	1013.23	1013.19	1013.09	1013.01	1012.98	1012.98	1013.18
	23	1013.01	1013.05	1013.08	1013.04	1012.97	1012.90	1012.85	1012.82	1012.77	1012.74	1012.74	1012.74	1012.89
6	0	1012.69	1012.68	1012.66	1012.66	1012.66	1012.65	1012.61	1012.54	1012.52	1012.53	1012.54	1012.52	1012.60
	1	1012.51	1012.53	1012.53	1012.49	1012.47	1012.45	1012.45	1012.51	1012.56	1012.56	1012.55	1012.52	1012.51
	2	1012.49	1012.49	1012.46	1012.39	1012.34	1012.30	1012.28	1012.27	1012.27	1012.26	1012.25	1012.22	1012.33
	3	1012.20	1012.15	1012.08	1012.06	1012.07	1012.09	1012.10	1012.10	1012.09	1012.07	1012.09	1012.18	1012.10
	4	1012.24	1012.23	1012.23	1012.28	1012.34	1012.40	1012.43	1012.43	1012.45	1012.49	1012.53	1012.57	1012.38
	5	1012.59	1012.59	1012.59	1012.61	1012.65	1012.71	1012.77	1012.81	1012.85	1012.90	1012.86	1012.79	1012.72
	6	1012.74	1012.73	1012.73	1012.76	1012.81	1012.84	1012.87	1012.89	1012.86	1012.92	1013.01	1012.98	1012.84
	7	1012.94	1012.93	1012.93	1012.93	1012.89	1012.81	1012.71	1012.66	1012.68	1012.71	1012.69	1012.67	1012.79
	8	1012.65	1012.64	1012.58	1012.48	1012.37	1012.27	1012.18	1012.12	1012.13	1012.14	1012.16	1012.21	1012.33
	9	1012.17	1012.08	1012.04	1012.04	1012.05	1011.99	1011.90	1011.83	1011.79	1011.72	1011.63	1011.53	1011.90
	10	1011.40	1011.31	1011.31	1011.30	1011.29	1011.27	1011.26	1011.20	1011.10	1011.03	1010.97	1010.89	1011.19
	11	1010.85	1010.82	1010.79	1010.75	1010.75	1010.75	1010.73	1010.70	1010.61	1010.57	1010.60	1010.62	1010.71
	12	1010.62	1010.62	1010.66	1010.72	1010.73	1010.73	1010.80	1010.86	1010.90	1010.91	1010.87	1010.85	1010.77
	13	1010.84	1010.84	1010.88	1010.90	1010.86	1010.87	1010.89	1010.88	1010.92	1010.93	1010.90	1010.86	1010.88
	14	1010.86	1010.88	1010.79	1010.68	1010.62	1010.59	1010.57	1010.56	1010.57	1010.60	1010.64	1010.65	1010.66
	15	1010.64	1010.59	1010.55	1010.58	1010.58	1010.58	1010.58	1010.57	1010.55	1010.54	1010.53	1010.50	1010.56
	16	1010.44	1010.35	1010.31	1010.28	1010.29	1010.29	1010.19	1010.09	1010.02	1010.02	1010.08	1010.17	1010.21
	17	1010.22	1010.27	1010.31	1010.31	1010.33	1010.38	1010.33	1010.29	1010.29	1010.25	1010.24	1010.21	1010.28
	18	1010.17	1010.27	1010.35	1010.39	1010.49	1010.50	1010.50	1010.49	1010.41	1010.39	1010.42	1010.49	1010.40
	19	1010.54	1010.56	1010.58	1010.53	1010.44	1010.38	1010.26	1010.13	1010.14	1010.21	1010.20	1010.15	1010.34
	20	1010.22	1010.32	1010.44	1010.49	1010.46	1010.46	1010.45	1010.42	1010.44	1010.54	1010.57	1010.44	1010.43
	21	1010.35	1010.36	1010.40	1010.44	1010.48	1010.49	1010.52	1010.56	1010.56	1010.51	1010.47	1010.47	1010.47
	22	1010.45	1010.42	1010.39	1010.35	1010.28	1010.18	1010.08	1010.01	1009.99	1010.03	1009.97	1009.90	1010.17
	23	1009.84	1009.79	1009.77	1009.76	1009.78	1009.80	1009.83	1009.91	1010.01	1010.11	1010.19	1010.23	1009.92

S.V.I.R.CO. Observatory - Pressure in hectoPascal – September 2018

day	hh	00_05	05_10	10_15	15_20	20_25	25_30	30_35	35_40	40_45	45_50	50_55	55_60	average
7	0	1010.27	1010.24	1010.24	1010.27	1010.23	1010.17	1010.16	1010.16	1010.13	1010.10	1010.10	1010.10	1010.17
	1	1010.02	1009.95	1009.91	1009.87	1009.93	1010.05	1010.14	1010.05	1009.83	1009.77	1009.74	1009.66	1009.91
	2	1009.58	1009.43	1009.38	1009.49	1009.67	1009.68	1009.64	1009.84	1010.00	1010.11	1010.20	1010.32	1009.77
	3	1010.28	1010.34	1010.67	1011.13	1011.56	1011.44	1010.93	1010.34	1009.87	1009.87	1010.06	1010.06	1010.54
	4	1010.21	1010.39	1010.45	1010.65	1010.72	1010.63	1010.45	1010.25	1010.18	1010.22	1010.26	1010.29	1010.39
	5	1010.33	1010.23	1010.09	1009.99	1009.89	1009.89	1009.90	1009.91	1009.94	1009.98	1010.05	1010.16	1010.03
	6	1010.28	1010.38	1010.42	1010.42	1010.57	1010.68	1010.69	1010.75	1010.78	1010.81	1010.89	1010.94	1010.63
	7	1011.00	1011.07	1011.13	1011.16	1011.17	1011.21	1011.24	1011.25	1011.28	1011.31	1011.29	1011.31	1011.20
	8	1011.35	1011.36	1011.36	1011.34	1011.31	1011.29	1011.30	1011.32	1011.35	1011.42	1011.50	1011.53	1011.37
	9	1011.54	1011.47	1011.37	1011.35	1011.37	1011.40	1011.42	1011.45	1011.43	1011.37	1011.37	1011.38	1011.41
	10	1011.36	1011.37	1011.36	1011.31	1011.28	1011.24	1011.22	1011.19	1011.13	1011.09	1011.09	1011.07	1011.22
	11	1011.07	1011.07	1011.06	1011.04	1011.03	1011.09	1011.13	1011.12	1011.13	1011.17	1011.17	1011.16	1011.10
	12	1011.12	1011.05	1011.01	1011.00	1010.98	1010.96	1010.94	1010.86	1010.81	1010.77	1010.73	1010.71	1010.91
	13	1010.69	1010.70	1010.74	1010.81	1010.87	1010.89	1010.88	1010.84	1010.86	1010.94	1010.97	1010.95	1010.84
	14	1010.87	1010.77	1010.75	1010.78	1010.86	1010.96	1011.05	1011.11	1011.21	1011.30	1011.33	1011.35	1011.03
	15	1011.36	1011.35	1011.39	1011.42	1011.38	1011.40	1011.45	1011.55	1011.66	1011.73	1011.85	1011.91	1011.54
	16	1011.91	1011.94	1011.93	1011.95	1012.00	1012.05	1012.04	1012.05	1012.13	1012.21	1012.31	1012.36	1012.07
	17	1012.41	1012.42	1012.42	1012.43	1012.42	1012.44	1012.49	1012.47	1012.46	1012.54	1012.63	1012.71	1012.48
	18	1012.76	1012.77	1012.80	1012.86	1012.90	1012.91	1012.92	1013.01	1013.08	1013.07	1013.07	1013.13	1012.94
	19	1013.18	1013.25	1013.32	1013.37	1013.42	1013.43	1013.42	1013.44	1013.48	1013.54	1013.57	1013.55	1013.41
	20	1013.60	1013.65	1013.68	1013.74	1013.83	1013.89	1013.88	1013.85	1013.84	1013.86	1013.89	1013.85	1013.79
	21	1013.81	1013.79	1013.78	1013.80	1013.86	1013.96	1013.98	1013.98	1013.99	1013.95	1013.91	1013.92	1013.89
	22	1013.96	1013.97	1013.95	1013.94	1014.00	1014.01	1013.96	1013.95	1013.95	1013.91	1013.86	1013.82	1013.94
	23	1013.81	1013.84	1013.86	1013.86	1013.85	1013.82	1013.80	1013.76	1013.74	1013.78	1013.78	1013.78	1013.80
8	0	1013.76	1013.76	1013.76	1013.77	1013.80	1013.84	1013.88	1013.91	1013.95	1014.01	1014.06	1014.08	1013.88
	1	1014.07	1014.08	1014.08	1014.09	1014.12	1014.17	1014.17	1014.15	1014.17	1014.18	1014.17	1014.16	1014.13
	2	1014.11	1014.11	1014.15	1014.18	1014.18	1014.16	1014.14	1014.11	1014.11	1014.12	1014.10	1014.08	1014.13
	3	1014.08	1014.05	1014.02	1014.05	1014.09	1014.12	1014.15	1014.20	1014.25	1014.28	1014.29	1014.30	1014.15
	4	1014.36	1014.39	1014.40	1014.42	1014.45	1014.51	1014.59	1014.68	1014.77	1014.83	1014.90	1014.97	1014.60
	5	1015.04	1015.14	1015.19	1015.23	1015.28	1015.34	1015.40	1015.44	1015.46	1015.53	1015.60	1015.63	1015.36
	6	1015.62	1015.60	1015.60	1015.59	1015.59	1015.62	1015.66	1015.67	1015.67	1015.67	1015.68	1015.74	1015.64
	7	1015.78	1015.79	1015.80	1015.77	1015.73	1015.71	1015.73	1015.80	1015.88	1015.93	1015.97	1016.01	1015.82
	8	1016.06	1016.12	1016.17	1016.19	1016.18	1016.15	1016.16	1016.18	1016.18	1016.16	1016.17	1016.16	1016.16
	9	1016.15	1016.16	1016.13	1016.13	1016.15	1016.14	1016.11	1016.11	1016.14	1016.15	1016.14	1016.10	1016.13
	10	1016.07	1016.06	1016.06	1016.06	1016.05	1016.04	1016.03	1015.98	1015.96	1015.97	1015.96	1015.95	1016.01
	11	1015.95	1015.97	1015.98	1016.01	1016.04	1016.02	1016.01	1016.03	1016.07	1016.08	1016.09	1016.10	1016.03
	12	1016.10	1016.08	1016.04	1016.01	1015.98	1015.95	1015.91	1015.88	1015.85	1015.82	1015.80	1015.80	1015.93
	13	1015.80	1015.80	1015.85	1015.89	1015.91	1015.90	1015.89	1015.92	1015.91	1015.91	1015.94	1015.93	1015.89
	14	1015.90	1015.91	1015.97	1016.04	1016.06	1016.07	1016.08	1016.10	1016.14	1016.14	1016.12	1016.08	1016.05
	15	1016.02	1016.02	1016.03	1016.02	1016.04	1016.05	1016.05	1016.04	1016.04	1016.06	1016.09	1016.07	1016.04
	16	1016.05	1016.07	1016.07	1016.08	1016.09	1016.05	1016.03	1016.06	1016.10	1016.15	1016.22	1016.23	1016.10
	17	1016.22	1016.23	1016.27	1016.33	1016.35	1016.42	1016.43	1016.38	1016.42	1016.55	1016.63	1016.65	1016.41
	18	1016.67	1016.69	1016.68	1016.67	1016.65	1016.68	1016.75	1016.82	1016.87	1016.89	1016.94	1017.01	1016.77
	19	1017.07	1017.15	1017.25	1017.30	1017.29	1017.27	1017.27	1017.28	1017.28	1017.26	1017.25	1017.29	1017.24
	20	1017.37	1017.41	1017.39	1017.38	1017.42	1017.49	1017.57	1017.59	1017.58	1017.61	1017.63	1017.61	1017.50
	21	1017.59	1017.56	1017.54	1017.55	1017.57	1017.60	1017.63	1017.62	1017.62	1017.63	1017.64	1017.65	1017.60
	22	1017.63	1017.58	1017.57	1017.60	1017.63	1017.70	1017.74	1017.77	1017.80	1017.83	1017.86	1017.87	1017.71
	23	1017.89	1017.94	1017.97	1017.98	1017.99	1018.00	1018.01	1018.00	1018.01	1018.02	1018.04	1018.05	1017.99

S.V.I.R.CO. Observatory - Pressure in hectoPascal – September 2018

day	hh	00_05	05_10	10_15	15_20	20_25	25_30	30_35	35_40	40_45	45_50	50_55	55_60	average
9	0	1018.03	1018.03	1018.05	1018.06	1018.04	1018.02	1018.02	1018.03	1018.01	1017.99	1018.00	1018.04	1018.02
	1	1018.07	1018.10	1018.12	1018.10	1018.08	1018.06	1018.07	1018.11	1018.15	1018.16	1018.16	1018.19	1018.11
	2	1018.21	1018.25	1018.28	1018.27	1018.27	1018.25	1018.23	1018.23	1018.21	1018.22	1018.25	1018.26	1018.24
	3	1018.26	1018.24	1018.22	1018.20	1018.17	1018.15	1018.16	1018.15	1018.13	1018.10	1018.08	1018.09	1018.16
	4	1018.09	1018.09	1018.12	1018.18	1018.22	1018.23	1018.21	1018.22	1018.26	1018.29	1018.36	1018.44	1018.22
	5	1018.50	1018.55	1018.61	1018.69	1018.72	1018.72	1018.73	1018.72	1018.67	1018.71	1018.80	1018.83	1018.69
	6	1018.86	1018.90	1018.93	1018.96	1018.99	1018.98	1018.98	1018.99	1019.00	1019.02	1019.06	1019.05	1018.97
	7	1019.07	1019.08	1019.09	1019.12	1019.15	1019.17	1019.17	1019.16	1019.19	1019.24	1019.27	1019.30	1019.16
	8	1019.28	1019.28	1019.33	1019.38	1019.46	1019.53	1019.52	1019.52	1019.54	1019.51	1019.50	1019.51	1019.44
	9	1019.51	1019.50	1019.42	1019.36	1019.32	1019.24	1019.16	1019.11	1019.07	1019.01	1018.96	1018.92	1019.21
	10	1018.89	1018.86	1018.85	1018.84	1018.88	1018.88	1018.82	1018.80	1018.80	1018.75	1018.70	1018.71	1018.81
	11	1018.70	1018.64	1018.60	1018.56	1018.49	1018.44	1018.41	1018.41	1018.38	1018.32	1018.33	1018.35	1018.47
	12	1018.33	1018.32	1018.32	1018.32	1018.31	1018.27	1018.21	1018.18	1018.17	1018.14	1018.08	1018.01	1018.22
	13	1017.96	1017.90	1017.88	1017.85	1017.86	1017.89	1017.87	1017.90	1017.94	1017.95	1017.94	1017.92	1017.90
	14	1017.93	1017.98	1018.02	1018.04	1018.05	1018.06	1018.06	1018.06	1018.09	1018.10	1018.09	1018.11	1018.05
	15	1018.14	1018.13	1018.10	1018.10	1018.15	1018.17	1018.18	1018.21	1018.23	1018.24	1018.28	1018.39	1018.19
	16	1018.48	1018.53	1018.55	1018.53	1018.54	1018.55	1018.50	1018.39	1018.30	1018.27	1018.29	1018.34	1018.44
	17	1018.37	1018.39	1018.41	1018.43	1018.44	1018.44	1018.45	1018.47	1018.49	1018.53	1018.52	1018.48	1018.45
	18	1018.50	1018.56	1018.61	1018.62	1018.60	1018.62	1018.67	1018.71	1018.76	1018.83	1018.93	1019.02	1018.70
	19	1019.04	1019.05	1019.07	1019.10	1019.13	1019.17	1019.21	1019.26	1019.31	1019.29	1019.27	1019.31	1019.18
	20	1019.33	1019.33	1019.36	1019.39	1019.38	1019.36	1019.33	1019.34	1019.37	1019.36	1019.36	1019.39	1019.36
	21	1019.41	1019.40	1019.39	1019.35	1019.25	1019.17	1019.11	1019.07	1019.03	1019.00	1018.98	1018.96	1019.17
	22	1018.98	1019.02	1019.03	1019.05	1019.07	1019.09	1019.12	1019.10	1019.05	1019.01	1019.00	1018.99	1019.04
	23	1018.96	1018.97	1018.97	1018.90	1018.83	1018.77	1018.70	1018.62	1018.55	1018.53	1018.53	1018.54	1018.74
10	0	1018.49	1018.43	1018.36	1018.38	1018.43	1018.45	1018.42	1018.38	1018.37	1018.39	1018.41	1018.45	1018.41
	1	1018.52	1018.57	1018.61	1018.65	1018.67	1018.65	1018.69	1018.77	1018.79	1018.79	1018.78	1018.71	1018.68
	2	1018.61	1018.61	1018.65	1018.67	1018.69	1018.71	1018.75	1018.75	1018.73	1018.73	1018.73	1018.74	1018.70
	3	1018.75	1018.73	1018.67	1018.60	1018.59	1018.64	1018.68	1018.68	1018.70	1018.74	1018.82	1018.91	1018.71
	4	1018.97	1019.00	1019.03	1019.04	1019.06	1019.08	1019.06	1019.04	1019.12	1019.23	1019.32	1019.40	1019.11
	5	1019.40	1019.36	1019.35	1019.42	1019.46	1019.51	1019.57	1019.58	1019.58	1019.60	1019.58	1019.56	1019.50
	6	1019.58	1019.58	1019.56	1019.56	1019.55	1019.51	1019.46	1019.42	1019.41	1019.45	1019.51	1019.55	1019.51
	7	1019.60	1019.63	1019.65	1019.66	1019.66	1019.68	1019.71	1019.76	1019.82	1019.90	1019.96	1019.99	1019.75
	8	1020.06	1020.12	1020.14	1020.15	1020.16	1020.17	1020.16	1020.17	1020.22	1020.24	1020.22	1020.14	1020.16
	9	1020.05	1019.99	1019.95	1019.91	1019.89	1019.88	1019.85	1019.82	1019.79	1019.76	1019.74	1019.73	1019.86
	10	1019.69	1019.66	1019.63	1019.60	1019.60	1019.62	1019.57	1019.47	1019.41	1019.38	1019.37	1019.39	1019.53
	11	1019.38	1019.36	1019.35	1019.36	1019.37	1019.37	1019.37	1019.31	1019.26	1019.21	1019.16	1019.16	1019.30
	12	1019.14	1019.11	1019.08	1019.09	1019.08	1019.03	1018.98	1018.95	1018.91	1018.85	1018.82	1018.80	1018.99
	13	1018.78	1018.75	1018.67	1018.61	1018.61	1018.61	1018.60	1018.59	1018.58	1018.64	1018.71	1018.72	1018.65
	14	1018.70	1018.70	1018.72	1018.75	1018.80	1018.83	1018.85	1018.97	1019.04	1019.07	1019.07	1019.05	1018.88
	15	1019.09	1019.16	1019.22	1019.26	1019.28	1019.31	1019.32	1019.32	1019.34	1019.37	1019.38	1019.36	1019.28
	16	1019.38	1019.46	1019.52	1019.53	1019.50	1019.42	1019.37	1019.32	1019.27	1019.24	1019.25	1019.23	1019.37
	17	1019.21	1019.21	1019.23	1019.24	1019.26	1019.29	1019.33	1019.33	1019.34	1019.36	1019.37	1019.41	1019.29
	18	1019.43	1019.44	1019.51	1019.63	1019.72	1019.73	1019.75	1019.84	1019.99	1020.12	1020.20	1020.24	1019.80
	19	1020.27	1020.34	1020.38	1020.36	1020.33	1020.32	1020.32	1020.33	1020.29	1020.27	1020.29	1020.34	1020.32
	20	1020.40	1020.43	1020.42	1020.43	1020.45	1020.45	1020.40	1020.35	1020.33	1020.33	1020.34	1020.32	1020.38
	21	1020.31	1020.32	1020.31	1020.31	1020.32	1020.34	1020.41	1020.46	1020.48	1020.50	1020.54	1020.55	1020.40
	22	1020.55	1020.57	1020.58	1020.57	1020.58	1020.59	1020.59	1020.59	1020.59	1020.63	1020.64	1020.62	1020.59
	23	1020.62	1020.63	1020.69	1020.75	1020.76	1020.75	1020.76	1020.79	1020.82	1020.80	1020.75	1020.66	1020.73

S.V.I.R.CO. Observatory - Pressure in hectoPascal – September 2018

day	hh	00_05	05_10	10_15	15_20	20_25	25_30	30_35	35_40	40_45	45_50	50_55	55_60	average
11	0	1020.58	1020.58	1020.59	1020.63	1020.67	1020.68	1020.71	1020.76	1020.77	1020.76	1020.74	1020.74	1020.69
	1	1020.74	1020.73	1020.74	1020.74	1020.75	1020.78	1020.80	1020.81	1020.82	1020.82	1020.83	1020.84	1020.78
	2	1020.84	1020.82	1020.82	1020.84	1020.87	1020.89	1020.89	1020.89	1020.87	1020.85	1020.86	1020.86	1020.86
	3	1020.85	1020.83	1020.80	1020.79	1020.80	1020.82	1020.83	1020.83	1020.84	1020.88	1020.93	1020.95	1020.84
	4	1020.96	1021.00	1021.05	1021.09	1021.11	1021.16	1021.22	1021.26	1021.30	1021.37	1021.41	1021.40	1021.19
	5	1021.43	1021.49	1021.54	1021.57	1021.59	1021.65	1021.75	1021.81	1021.83	1021.82	1021.83	1021.86	1021.68
	6	1021.86	1021.85	1021.90	1021.94	1021.94	1021.97	1022.02	1022.07	1022.11	1022.14	1022.17	1022.23	1022.01
	7	1022.28	1022.30	1022.31	1022.28	1022.24	1022.27	1022.36	1022.39	1022.40	1022.40	1022.37	1022.38	1022.33
	8	1022.43	1022.45	1022.49	1022.56	1022.61	1022.68	1022.76	1022.80	1022.82	1022.80	1022.77	1022.76	1022.66
	9	1022.79	1022.82	1022.82	1022.82	1022.80	1022.79	1022.80	1022.81	1022.82	1022.83	1022.81	1022.78	1022.80
	10	1022.74	1022.70	1022.64	1022.59	1022.58	1022.56	1022.53	1022.50	1022.50	1022.49	1022.45	1022.46	1022.56
	11	1022.47	1022.45	1022.42	1022.40	1022.38	1022.33	1022.24	1022.16	1022.11	1022.07	1022.05	1022.09	1022.26
	12	1022.14	1022.17	1022.20	1022.23	1022.22	1022.19	1022.19	1022.16	1022.06	1022.00	1021.97	1021.94	1022.12
	13	1021.94	1021.97	1021.95	1021.91	1021.87	1021.82	1021.76	1021.70	1021.68	1021.67	1021.65	1021.64	1021.79
	14	1021.65	1021.61	1021.55	1021.53	1021.51	1021.48	1021.44	1021.41	1021.41	1021.40	1021.38	1021.36	1021.48
	15	1021.33	1021.34	1021.39	1021.40	1021.39	1021.39	1021.41	1021.44	1021.48	1021.54	1021.59	1021.62	1021.44
	16	1021.66	1021.69	1021.67	1021.65	1021.64	1021.63	1021.65	1021.69	1021.72	1021.75	1021.78	1021.81	1021.69
	17	1021.84	1021.84	1021.85	1021.89	1021.92	1021.94	1021.98	1022.03	1022.06	1022.08	1022.11	1022.13	1021.97
	18	1022.17	1022.22	1022.25	1022.29	1022.35	1022.42	1022.45	1022.45	1022.44	1022.46	1022.52	1022.56	1022.38
	19	1022.56	1022.55	1022.56	1022.58	1022.60	1022.60	1022.57	1022.54	1022.52	1022.48	1022.43	1022.40	1022.53
	20	1022.39	1022.38	1022.36	1022.33	1022.29	1022.25	1022.19	1022.16	1022.15	1022.16	1022.18	1022.21	1022.25
	21	1022.24	1022.23	1022.19	1022.16	1022.14	1022.17	1022.22	1022.24	1022.28	1022.35	1022.42	1022.45	1022.26
	22	1022.46	1022.47	1022.48	1022.47	1022.47	1022.49	1022.49	1022.48	1022.46	1022.40	1022.36	1022.35	1022.45
	23	1022.40	1022.46	1022.48	1022.49	1022.54	1022.59	1022.60	1022.59	1022.55	1022.49	1022.46	1022.48	1022.51
12	0	1022.50	1022.46	1022.41	1022.40	1022.41	1022.39	1022.37	1022.34	1022.31	1022.32	1022.32	1022.27	1022.37
	1	1022.22	1022.22	1022.22	1022.20	1022.23	1022.26	1022.19	1022.09	1022.04	1022.02	1022.00	1021.97	1022.14
	2	1021.93	1021.88	1021.88	1021.89	1021.88	1021.87	1021.89	1021.91	1021.89	1021.83	1021.78	1021.76	1021.86
	3	1021.71	1021.65	1021.63	1021.61	1021.61	1021.58	1021.54	1021.56	1021.61	1021.60	1021.55	1021.52	1021.60
	4	1021.52	1021.52	1021.54	1021.62	1021.69	1021.73	1021.81	1021.90	1021.96	1022.02	1022.07	1022.05	1021.78
	5	1022.03	1022.03	1022.03	1022.03	1022.00	1022.02	1022.12	1022.17	1022.11	1022.02	1022.01	1022.07	1022.05
	6	1022.12	1022.14	1022.10	1022.04	1022.01	1021.98	1021.97	1021.99	1022.00	1022.00	1022.00	1021.95	1022.02
	7	1021.87	1021.81	1021.72	1021.63	1021.55	1021.54	1021.64	1021.72	1021.78	1021.84	1021.85	1021.84	1021.73
	8	1021.85	1021.85	1021.81	1021.75	1021.74	1021.73	1021.73	1021.73	1021.72	1021.68	1021.67	1021.71	1021.75
	9	1021.73	1021.68	1021.65	1021.68	1021.69	1021.63	1021.54	1021.44	1021.37	1021.32	1021.27	1021.24	1021.52
	10	1021.26	1021.25	1021.21	1021.16	1021.08	1021.02	1020.96	1020.94	1020.95	1020.91	1020.82	1020.73	1021.02
	11	1020.69	1020.65	1020.57	1020.52	1020.48	1020.44	1020.38	1020.29	1020.21	1020.15	1020.16	1020.16	1020.39
	12	1020.10	1020.05	1020.03	1019.98	1019.90	1019.84	1019.81	1019.75	1019.66	1019.59	1019.54	1019.51	1019.81
	13	1019.49	1019.42	1019.34	1019.29	1019.24	1019.25	1019.29	1019.31	1019.33	1019.33	1019.31	1019.27	1019.32
	14	1019.23	1019.20	1019.19	1019.16	1019.16	1019.12	1019.02	1018.97	1018.93	1018.80	1018.70	1018.68	1019.01
	15	1018.62	1018.57	1018.52	1018.49	1018.48	1018.47	1018.46	1018.43	1018.39	1018.35	1018.32	1018.31	1018.45
	16	1018.26	1018.18	1018.16	1018.18	1018.20	1018.18	1018.15	1018.14	1018.09	1018.06	1018.08	1018.10	1018.15
	17	1018.09	1018.08	1018.06	1018.03	1018.02	1018.02	1017.99	1017.98	1017.96	1017.90	1017.90	1017.96	1018.00
	18	1018.02	1018.03	1018.05	1018.06	1018.01	1017.96	1017.96	1018.00	1018.05	1018.05	1018.01	1017.99	1018.01
	19	1017.93	1017.85	1017.81	1017.75	1017.74	1017.79	1017.77	1017.77	1017.80	1017.78	1017.74	1017.66	1017.78
	20	1017.61	1017.61	1017.61	1017.64	1017.69	1017.70	1017.67	1017.62	1017.59	1017.57	1017.57	1017.54	1017.62
	21	1017.52	1017.53	1017.47	1017.45	1017.48	1017.47	1017.47	1017.46	1017.37	1017.25	1017.16	1017.18	1017.40
	22	1017.24	1017.22	1017.17	1017.11	1017.00	1016.92	1016.93	1016.95	1016.97	1017.00	1016.93	1016.76	1017.01
	23	1016.61	1016.55	1016.47	1016.37	1016.30	1016.30	1016.34	1016.40	1016.41	1016.34	1016.23	1016.14	1016.37



S.V.I.R.CO. Observatory - Pressure in hectoPascal – September 2018

day	hh	00_05	05_10	10_15	15_20	20_25	25_30	30_35	35_40	40_45	45_50	50_55	55_60	average
13	0	1016.00	1016.00	1015.97	1015.95	1015.96	1015.95	1015.89	1015.79	1015.76	1015.78	1015.75	1015.69	1015.87
	1	1015.69	1015.65	1015.58	1015.50	1015.37	1015.26	1015.19	1015.21	1015.32	1015.37	1015.32	1015.28	1015.39
	2	1015.24	1015.16	1015.09	1015.07	1015.06	1015.05	1015.03	1014.99	1014.92	1014.87	1014.85	1014.85	1015.01
	3	1014.87	1014.87	1014.85	1014.81	1014.75	1014.71	1014.71	1014.66	1014.57	1014.54	1014.51	1014.49	1014.69
	4	1014.48	1014.47	1014.46	1014.47	1014.47	1014.44	1014.41	1014.42	1014.44	1014.44	1014.43	1014.42	1014.44
	5	1014.41	1014.39	1014.40	1014.41	1014.41	1014.40	1014.38	1014.35	1014.36	1014.39	1014.41	1014.43	1014.39
	6	1014.46	1014.52	1014.59	1014.63	1014.62	1014.60	1014.59	1014.54	1014.51	1014.52	1014.51	1014.54	1014.55
	7	1014.57	1014.59	1014.60	1014.59	1014.55	1014.56	1014.63	1014.69	1014.72	1014.74	1014.77	1014.79	1014.65
	8	1014.79	1014.84	1014.93	1014.97	1015.03	1015.07	1015.08	1015.14	1015.22	1015.23	1015.22	1015.26	1015.06
	9	1015.32	1015.37	1015.39	1015.41	1015.48	1015.52	1015.53	1015.52	1015.48	1015.49	1015.50	1015.49	1015.46
	10	1015.47	1015.46	1015.45	1015.40	1015.37	1015.37	1015.35	1015.30	1015.23	1015.13	1015.04	1014.97	1015.29
	11	1014.91	1014.86	1014.77	1014.68	1014.60	1014.50	1014.43	1014.36	1014.30	1014.31	1014.31	1014.28	1014.52
	12	1014.25	1014.20	1014.15	1014.16	1014.20	1014.22	1014.22	1014.15	1014.09	1014.04	1013.99	1013.91	1014.13
	13	1013.83	1013.78	1013.74	1013.73	1013.71	1013.68	1013.70	1013.76	1013.84	1013.86	1013.81	1013.80	1013.77
	14	1013.80	1013.75	1013.68	1013.63	1013.59	1013.58	1013.59	1013.60	1013.59	1013.59	1013.58	1013.56	1013.63
	15	1013.54	1013.54	1013.53	1013.52	1013.54	1013.54	1013.52	1013.51	1013.50	1013.49	1013.49	1013.50	1013.52
	16	1013.51	1013.54	1013.57	1013.57	1013.55	1013.55	1013.55	1013.53	1013.51	1013.52	1013.55	1013.58	1013.54
	17	1013.61	1013.62	1013.65	1013.67	1013.69	1013.72	1013.74	1013.77	1013.79	1013.81	1013.84	1013.86	1013.73
	18	1013.85	1013.86	1013.88	1013.87	1013.84	1013.84	1013.85	1013.83	1013.84	1013.88	1013.93	1013.98	1013.87
	19	1014.03	1014.06	1014.10	1014.17	1014.24	1014.30	1014.34	1014.38	1014.41	1014.43	1014.45	1014.43	1014.28
	20	1014.37	1014.32	1014.30	1014.31	1014.31	1014.28	1014.26	1014.25	1014.24	1014.26	1014.31	1014.32	1014.29
	21	1014.29	1014.25	1014.20	1014.17	1014.15	1014.15	1014.16	1014.19	1014.18	1014.14	1014.11	1014.11	1014.17
	22	1014.11	1014.10	1014.09	1014.10	1014.11	1014.10	1014.09	1014.08	1014.07	1014.07	1014.07	1014.05	1014.08
	23	1014.05	1014.05	1014.00	1013.95	1013.94	1013.93	1013.93	1013.94	1013.93	1013.89	1013.83	1013.76	1013.93
14	0	1013.72	1013.72	1013.70	1013.66	1013.65	1013.65	1013.65	1013.66	1013.65	1013.60	1013.54	1013.51	1013.64
	1	1013.51	1013.50	1013.48	1013.45	1013.47	1013.56	1013.64	1013.70	1013.74	1013.75	1013.76	1013.78	1013.61
	2	1013.79	1013.77	1013.75	1013.75	1013.75	1013.72	1013.69	1013.65	1013.64	1013.65	1013.69	1013.70	1013.71
	3	1013.66	1013.61	1013.61	1013.61	1013.61	1013.62	1013.63	1013.58	1013.53	1013.52	1013.52	1013.53	1013.58
	4	1013.52	1013.48	1013.43	1013.42	1013.44	1013.46	1013.48	1013.49	1013.54	1013.56	1013.56	1013.58	1013.49
	5	1013.59	1013.58	1013.58	1013.61	1013.65	1013.69	1013.75	1013.83	1013.93	1014.00	1014.03	1014.11	1013.78
	6	1014.16	1014.12	1014.09	1014.07	1014.09	1014.15	1014.21	1014.26	1014.27	1014.26	1014.22	1014.20	1014.17
	7	1014.20	1014.24	1014.27	1014.27	1014.28	1014.30	1014.33	1014.38	1014.43	1014.51	1014.59	1014.61	1014.37
	8	1014.60	1014.62	1014.65	1014.71	1014.78	1014.84	1014.89	1014.92	1014.94	1014.98	1015.03	1015.04	1014.83
	9	1015.05	1015.07	1015.07	1015.06	1015.06	1015.08	1015.09	1015.07	1015.03	1014.99	1014.95	1014.90	1015.03
	10	1014.87	1014.85	1014.81	1014.77	1014.76	1014.78	1014.77	1014.74	1014.71	1014.69	1014.65	1014.63	1014.75
	11	1014.62	1014.60	1014.57	1014.55	1014.58	1014.57	1014.54	1014.48	1014.46	1014.41	1014.33	1014.31	1014.50
	12	1014.31	1014.29	1014.25	1014.26	1014.29	1014.28	1014.29	1014.28	1014.23	1014.20	1014.18	1014.13	1014.25
	13	1014.10	1014.10	1014.09	1014.07	1014.04	1014.07	1014.09	1014.08	1014.08	1014.07	1014.05	1014.05	1014.07
	14	1014.04	1014.02	1014.01	1014.00	1014.02	1014.04	1014.05	1014.03	1014.04	1014.05	1014.05	1014.07	1014.03
	15	1014.11	1014.14	1014.15	1014.15	1014.14	1014.16	1014.19	1014.22	1014.24	1014.27	1014.31	1014.35	1014.20
	16	1014.39	1014.46	1014.53	1014.56	1014.58	1014.61	1014.66	1014.69	1014.72	1014.75	1014.77	1014.80	1014.62
	17	1014.85	1014.90	1014.95	1015.00	1015.07	1015.12	1015.13	1015.13	1015.18	1015.20	1015.19	1015.22	1015.08
	18	1015.25	1015.30	1015.37	1015.44	1015.53	1015.59	1015.67	1015.74	1015.79	1015.86	1015.95	1015.99	1015.62
	19	1016.00	1016.05	1016.10	1016.12	1016.15	1016.16	1016.15	1016.16	1016.20	1016.25	1016.30	1016.31	1016.16
	20	1016.30	1016.32	1016.34	1016.33	1016.32	1016.32	1016.31	1016.33	1016.36	1016.35	1016.33	1016.33	1016.33
	21	1016.36	1016.39	1016.42	1016.43	1016.42	1016.45	1016.49	1016.47	1016.47	1016.50	1016.50	1016.49	1016.45
	22	1016.49	1016.49	1016.52	1016.55	1016.56	1016.59	1016.58	1016.54	1016.51	1016.51	1016.52	1016.52	1016.53
	23	1016.51	1016.50	1016.50	1016.51	1016.51	1016.52	1016.57	1016.62	1016.62	1016.61	1016.60	1016.63	1016.56

S.V.I.R.CO. Observatory - Pressure in hectoPascal – September 2018

day	hh	00_05	05_10	10_15	15_20	20_25	25_30	30_35	35_40	40_45	45_50	50_55	55_60	average
15	0	1016.62	1016.61	1016.59	1016.58	1016.57	1016.55	1016.53	1016.52	1016.51	1016.52	1016.53	1016.51	1016.55
	1	1016.51	1016.53	1016.54	1016.55	1016.53	1016.51	1016.52	1016.50	1016.47	1016.45	1016.42	1016.43	1016.49
	2	1016.49	1016.50	1016.48	1016.50	1016.53	1016.55	1016.54	1016.57	1016.63	1016.65	1016.66	1016.68	1016.56
	3	1016.71	1016.71	1016.70	1016.73	1016.76	1016.75	1016.75	1016.72	1016.70	1016.76	1016.85	1016.91	1016.75
	4	1016.91	1016.91	1016.93	1016.94	1016.94	1016.94	1016.96	1017.00	1017.04	1017.11	1017.19	1017.27	1017.01
	5	1017.35	1017.43	1017.50	1017.52	1017.54	1017.61	1017.63	1017.64	1017.66	1017.69	1017.70	1017.74	1017.58
	6	1017.80	1017.85	1017.91	1017.91	1017.86	1017.85	1017.87	1017.89	1017.90	1017.96	1018.00	1018.02	1017.90
	7	1018.07	1018.13	1018.18	1018.24	1018.30	1018.32	1018.35	1018.37	1018.36	1018.36	1018.38	1018.42	1018.29
	8	1018.46	1018.47	1018.51	1018.54	1018.54	1018.51	1018.49	1018.52	1018.54	1018.59	1018.64	1018.65	1018.54
	9	1018.62	1018.59	1018.60	1018.60	1018.62	1018.66	1018.67	1018.66	1018.66	1018.66	1018.64	1018.64	1018.63
	10	1018.65	1018.61	1018.57	1018.56	1018.56	1018.55	1018.54	1018.54	1018.54	1018.51	1018.47	1018.43	1018.54
	11	1018.42	1018.41	1018.38	1018.36	1018.35	1018.33	1018.31	1018.28	1018.22	1018.20	1018.22	1018.19	1018.30
	12	1018.18	1018.21	1018.22	1018.25	1018.28	1018.31	1018.32	1018.30	1018.25	1018.18	1018.10	1018.05	1018.22
	13	1018.04	1018.02	1017.99	1017.96	1017.93	1017.91	1017.86	1017.83	1017.79	1017.72	1017.72	1017.77	1017.88
	14	1017.76	1017.74	1017.76	1017.80	1017.85	1017.80	1017.75	1017.77	1017.80	1017.80	1017.81	1017.85	1017.79
	15	1017.83	1017.81	1017.82	1017.84	1017.85	1017.87	1017.92	1017.96	1017.98	1017.99	1017.97	1017.92	1017.90
	16	1017.93	1018.02	1018.14	1018.19	1018.17	1018.19	1018.24	1018.25	1018.22	1018.22	1018.24	1018.25	1018.17
	17	1018.28	1018.33	1018.35	1018.36	1018.43	1018.53	1018.61	1018.68	1018.72	1018.75	1018.88	1018.98	1018.57
	18	1019.02	1019.09	1019.19	1019.26	1019.27	1019.29	1019.41	1019.51	1019.57	1019.61	1019.64	1019.66	1019.37
	19	1019.66	1019.66	1019.68	1019.70	1019.72	1019.74	1019.74	1019.75	1019.76	1019.79	1019.83	1019.88	1019.74
	20	1019.90	1019.89	1019.90	1019.90	1019.87	1019.89	1019.90	1019.87	1019.86	1019.84	1019.86	1019.91	1019.88
	21	1019.95	1019.99	1020.04	1020.09	1020.14	1020.18	1020.21	1020.26	1020.30	1020.33	1020.29	1020.24	1020.17
	22	1020.28	1020.32	1020.33	1020.34	1020.34	1020.33	1020.33	1020.34	1020.33	1020.32	1020.32	1020.32	1020.32
	23	1020.32	1020.32	1020.31	1020.28	1020.27	1020.28	1020.30	1020.30	1020.32	1020.37	1020.41	1020.41	1020.32
16	0	1020.38	1020.37	1020.35	1020.34	1020.34	1020.34	1020.32	1020.27	1020.23	1020.19	1020.16	1020.11	1020.28
	1	1020.05	1020.02	1019.95	1019.87	1019.87	1019.91	1019.90	1019.83	1019.79	1019.78	1019.77	1019.76	1019.87
	2	1019.71	1019.69	1019.71	1019.72	1019.71	1019.68	1019.68	1019.67	1019.65	1019.61	1019.57	1019.56	1019.66
	3	1019.55	1019.55	1019.56	1019.58	1019.61	1019.66	1019.77	1019.86	1019.88	1019.86	1019.83	1019.84	1019.71
	4	1019.90	1019.93	1019.91	1019.93	1019.96	1019.97	1019.98	1020.03	1020.10	1020.16	1020.21	1020.29	1020.03
	5	1020.37	1020.42	1020.47	1020.52	1020.56	1020.57	1020.59	1020.63	1020.64	1020.64	1020.65	1020.61	1020.55
	6	1020.57	1020.56	1020.61	1020.69	1020.73	1020.77	1020.77	1020.79	1020.84	1020.86	1020.90	1020.95	1020.75
	7	1021.02	1021.13	1021.27	1021.42	1021.46	1021.40	1021.38	1021.34	1021.36	1021.41	1021.40	1021.38	1021.33
	8	1021.36	1021.36	1021.38	1021.39	1021.42	1021.44	1021.39	1021.32	1021.29	1021.27	1021.24	1021.24	1021.34
	9	1021.22	1021.20	1021.15	1021.09	1021.11	1021.14	1021.14	1021.11	1021.04	1020.97	1020.94	1020.92	1021.08
	10	1020.89	1020.87	1020.87	1020.87	1020.83	1020.80	1020.78	1020.74	1020.73	1020.71	1020.67	1020.65	1020.78
	11	1020.66	1020.67	1020.66	1020.63	1020.59	1020.55	1020.50	1020.45	1020.42	1020.42	1020.41	1020.38	1020.53
	12	1020.33	1020.30	1020.28	1020.25	1020.23	1020.21	1020.14	1020.11	1020.09	1020.03	1019.99	1019.94	1020.16
	13	1019.84	1019.78	1019.76	1019.76	1019.73	1019.69	1019.70	1019.69	1019.68	1019.68	1019.67	1019.62	1019.72
	14	1019.56	1019.52	1019.51	1019.51	1019.52	1019.54	1019.53	1019.53	1019.56	1019.53	1019.47	1019.41	1019.51
	15	1019.36	1019.34	1019.32	1019.32	1019.37	1019.46	1019.48	1019.50	1019.57	1019.61	1019.66	1019.72	1019.47
	16	1019.76	1019.76	1019.76	1019.81	1019.82	1019.77	1019.77	1019.78	1019.76	1019.74	1019.72	1019.74	1019.76
	17	1019.81	1019.90	1019.99	1020.04	1020.07	1020.07	1020.08	1020.14	1020.17	1020.21	1020.30	1020.34	1020.09
	18	1020.37	1020.44	1020.44	1020.45	1020.52	1020.54	1020.54	1020.59	1020.67	1020.72	1020.74	1020.77	1020.56
	19	1020.78	1020.78	1020.75	1020.67	1020.62	1020.63	1020.65	1020.69	1020.67	1020.63	1020.66	1020.70	1020.68
	20	1020.71	1020.75	1020.79	1020.76	1020.67	1020.58	1020.57	1020.58	1020.54	1020.52	1020.51	1020.53	1020.62
	21	1020.54	1020.55	1020.53	1020.45	1020.39	1020.35	1020.38	1020.37	1020.32	1020.32	1020.34	1020.37	1020.41
	22	1020.41	1020.46	1020.50	1020.48	1020.46	1020.48	1020.46	1020.43	1020.42	1020.41	1020.44	1020.43	1020.45
	23	1020.38	1020.28	1020.23	1020.29	1020.31	1020.30	1020.35	1020.40	1020.42	1020.40	1020.41	1020.39	1020.34

S.V.I.R.CO. Observatory - Pressure in hectoPascal – September 2018

day	hh	00_05	05_10	10_15	15_20	20_25	25_30	30_35	35_40	40_45	45_50	50_55	55_60	average
17	0	1020.33	1020.36	1020.35	1020.32	1020.29	1020.27	1020.31	1020.34	1020.31	1020.27	1020.25	1020.27	1020.30
	1	1020.28	1020.30	1020.33	1020.30	1020.27	1020.27	1020.25	1020.20	1020.17	1020.16	1020.20	1020.23	1020.24
	2	1020.19	1020.16	1020.09	1019.98	1019.94	1019.91	1019.86	1019.81	1019.76	1019.73	1019.74	1019.75	1019.91
	3	1019.73	1019.69	1019.66	1019.65	1019.60	1019.56	1019.54	1019.52	1019.47	1019.45	1019.44	1019.41	1019.56
	4	1019.40	1019.41	1019.42	1019.42	1019.43	1019.44	1019.45	1019.47	1019.48	1019.47	1019.47	1019.49	1019.44
	5	1019.53	1019.59	1019.66	1019.72	1019.75	1019.81	1019.86	1019.88	1019.93	1019.95	1019.93	1019.98	1019.80
	6	1020.07	1020.11	1020.10	1020.09	1020.09	1020.07	1020.01	1019.97	1019.95	1019.92	1019.88	1019.89	1020.01
	7	1019.98	1020.08	1020.16	1020.22	1020.25	1020.26	1020.29	1020.33	1020.33	1020.27	1020.19	1020.19	1020.21
	8	1020.24	1020.27	1020.31	1020.35	1020.37	1020.42	1020.44	1020.44	1020.46	1020.46	1020.41	1020.33	1020.37
	9	1020.31	1020.32	1020.33	1020.33	1020.31	1020.34	1020.36	1020.31	1020.25	1020.17	1020.13	1020.13	1020.27
	10	1020.10	1020.06	1020.07	1020.10	1020.09	1020.10	1020.16	1020.17	1020.11	1020.05	1020.03	1020.03	1020.09
	11	1020.04	1020.03	1019.95	1019.86	1019.80	1019.73	1019.70	1019.74	1019.72	1019.66	1019.65	1019.61	1019.79
	12	1019.52	1019.45	1019.40	1019.34	1019.27	1019.20	1019.09	1018.99	1018.94	1018.84	1018.74	1018.69	1019.12
	13	1018.65	1018.60	1018.54	1018.49	1018.50	1018.52	1018.50	1018.49	1018.48	1018.48	1018.48	1018.46	1018.51
	14	1018.44	1018.42	1018.44	1018.44	1018.43	1018.44	1018.42	1018.38	1018.33	1018.27	1018.25	1018.24	1018.37
	15	1018.23	1018.21	1018.17	1018.17	1018.15	1018.09	1017.99	1017.87	1017.81	1017.79	1017.79	1017.81	1018.00
	16	1017.84	1017.89	1017.93	1017.95	1018.00	1018.04	1018.06	1018.10	1018.14	1018.18	1018.20	1018.18	1018.04
	17	1018.20	1018.24	1018.30	1018.40	1018.47	1018.50	1018.51	1018.55	1018.65	1018.73	1018.77	1018.78	1018.51
	18	1018.79	1018.84	1018.90	1018.90	1018.90	1018.91	1018.91	1018.90	1018.89	1018.94	1019.01	1019.00	1018.91
	19	1019.00	1019.03	1019.04	1019.08	1019.12	1019.15	1019.15	1019.07	1019.02	1019.05	1019.10	1019.11	1019.07
	20	1019.08	1019.04	1019.01	1018.98	1018.97	1018.96	1018.93	1018.87	1018.83	1018.81	1018.75	1018.69	1018.91
	21	1018.68	1018.66	1018.60	1018.59	1018.58	1018.54	1018.48	1018.37	1018.30	1018.31	1018.35	1018.36	1018.48
	22	1018.38	1018.42	1018.43	1018.40	1018.32	1018.25	1018.28	1018.35	1018.38	1018.42	1018.43	1018.39	1018.37
	23	1018.34	1018.31	1018.29	1018.29	1018.29	1018.31	1018.32	1018.33	1018.34	1018.29	1018.22	1018.20	1018.29
18	0	1018.22	1018.24	1018.25	1018.25	1018.19	1018.09	1018.04	1017.99	1017.89	1017.80	1017.77	1017.80	1018.03
	1	1017.82	1017.79	1017.81	1017.88	1017.88	1017.86	1017.85	1017.82	1017.81	1017.82	1017.85	1017.87	1017.84
	2	1017.83	1017.82	1017.85	1017.89	1017.92	1017.95	1017.99	1018.03	1018.02	1018.01	1018.01	1017.99	1017.94
	3	1017.98	1018.00	1018.07	1018.11	1018.10	1018.10	1018.14	1018.18	1018.20	1018.20	1018.21	1018.26	1018.13
	4	1018.32	1018.39	1018.46	1018.51	1018.54	1018.57	1018.58	1018.60	1018.60	1018.55	1018.49	1018.48	1018.51
	5	1018.50	1018.50	1018.47	1018.42	1018.40	1018.44	1018.50	1018.56	1018.59	1018.61	1018.62	1018.69	1018.52
	6	1018.76	1018.78	1018.77	1018.77	1018.77	1018.72	1018.67	1018.64	1018.62	1018.60	1018.60	1018.61	1018.69
	7	1018.65	1018.69	1018.76	1018.84	1018.87	1018.90	1018.93	1018.95	1018.97	1018.99	1019.00	1019.00	1018.88
	8	1018.98	1018.95	1018.85	1018.77	1018.80	1018.87	1018.93	1018.99	1019.02	1019.02	1019.03	1019.08	1018.94
	9	1019.12	1019.11	1019.08	1019.08	1019.08	1019.08	1019.10	1019.11	1019.12	1019.11	1019.05	1019.00	1019.08
	10	1019.01	1019.02	1018.95	1018.86	1018.83	1018.82	1018.77	1018.72	1018.67	1018.63	1018.59	1018.53	1018.78
	11	1018.45	1018.34	1018.25	1018.26	1018.23	1018.16	1018.11	1018.03	1017.95	1017.91	1017.88	1017.82	1018.11
	12	1017.78	1017.80	1017.80	1017.80	1017.75	1017.67	1017.65	1017.58	1017.49	1017.43	1017.42	1017.42	1017.63
	13	1017.41	1017.37	1017.27	1017.17	1017.10	1017.08	1017.06	1017.02	1017.02	1017.00	1016.98	1016.92	1017.12
	14	1016.91	1016.96	1016.93	1016.91	1016.96	1017.00	1017.04	1017.06	1017.06	1017.06	1017.06	1017.03	1017.00
	15	1016.98	1016.94	1016.94	1016.94	1016.94	1016.96	1016.98	1016.98	1016.98	1017.03	1017.10	1017.11	1016.99
	16	1017.14	1017.18	1017.16	1017.12	1017.12	1017.18	1017.23	1017.21	1017.18	1017.19	1017.22	1017.26	1017.18
	17	1017.28	1017.24	1017.26	1017.32	1017.36	1017.39	1017.43	1017.46	1017.51	1017.60	1017.67	1017.70	1017.43
	18	1017.72	1017.70	1017.70	1017.75	1017.82	1017.85	1017.88	1017.90	1017.91	1017.94	1017.98	1017.99	1017.84
	19	1017.98	1017.96	1017.95	1017.96	1017.97	1018.01	1018.07	1018.16	1018.22	1018.19	1018.15	1018.16	1018.06
	20	1018.19	1018.28	1018.34	1018.32	1018.28	1018.20	1018.14	1018.15	1018.21	1018.32	1018.42	1018.42	1018.27
	21	1018.37	1018.29	1018.18	1018.15	1018.20	1018.22	1018.15	1018.06	1018.09	1018.14	1018.14	1018.12	1018.17
	22	1018.17	1018.28	1018.34	1018.33	1018.29	1018.25	1018.19	1018.10	1018.04	1018.03	1018.05	1018.03	1018.17
	23	1017.98	1017.92	1017.89	1017.86	1017.83	1017.81	1017.80	1017.82	1017.84	1017.81	1017.78	1017.72	1017.84

**S.V.I.R.CO. Observatory - Pressure in hectoPascal – September 2018**

day	hh	00_05	05_10	10_15	15_20	20_25	25_30	30_35	35_40	40_45	45_50	50_55	55_60	average
19	0	1017.66	1017.65	1017.61	1017.60	1017.64	1017.71	1017.70	1017.66	1017.65	1017.70	1017.76	1017.78	1017.67
	1	1017.78	1017.82	1017.86	1017.81	1017.72	1017.68	1017.70	1017.71	1017.70	1017.65	1017.58	1017.56	1017.71
	2	1017.59	1017.56	1017.50	1017.49	1017.48	1017.45	1017.37	1017.33	1017.33	1017.39	1017.50	1017.55	1017.46
	3	1017.54	1017.53	1017.54	1017.55	1017.54	1017.50	1017.47	1017.47	1017.50	1017.55	1017.54	1017.47	1017.52
	4	1017.45	1017.46	1017.47	1017.43	1017.35	1017.29	1017.24	1017.23	1017.25	1017.20	1017.14	1017.15	1017.30
	5	1017.19	1017.22	1017.24	1017.23	1017.22	1017.27	1017.30	1017.30	1017.29	1017.30	1017.31	1017.32	1017.26
	6	1017.36	1017.37	1017.37	1017.37	1017.33	1017.28	1017.28	1017.32	1017.34	1017.35	1017.38	1017.41	1017.34
	7	1017.44	1017.50	1017.53	1017.55	1017.56	1017.56	1017.60	1017.68	1017.73	1017.75	1017.76	1017.80	1017.62
	8	1017.84	1017.83	1017.86	1017.96	1018.06	1018.09	1018.10	1018.12	1018.14	1018.15	1018.15	1018.11	1018.03
	9	1018.06	1018.04	1018.01	1017.98	1017.93	1017.88	1017.82	1017.75	1017.69	1017.65	1017.61	1017.55	1017.83
	10	1017.49	1017.43	1017.37	1017.32	1017.31	1017.30	1017.26	1017.24	1017.26	1017.29	1017.28	1017.29	1017.32
	11	1017.33	1017.35	1017.34	1017.32	1017.34	1017.34	1017.31	1017.27	1017.24	1017.23	1017.23	1017.20	1017.29
	12	1017.14	1017.09	1017.06	1017.01	1016.94	1016.89	1016.84	1016.79	1016.72	1016.66	1016.66	1016.65	1016.87
	13	1016.61	1016.57	1016.53	1016.52	1016.53	1016.54	1016.53	1016.50	1016.49	1016.51	1016.53	1016.53	1016.53
	14	1016.51	1016.46	1016.42	1016.37	1016.31	1016.25	1016.20	1016.20	1016.20	1016.19	1016.18	1016.16	1016.28
	15	1016.12	1016.07	1016.04	1016.04	1016.03	1016.03	1016.05	1016.07	1016.07	1016.10	1016.12	1016.10	1016.07
	16	1016.07	1016.07	1016.08	1016.08	1016.08	1016.07	1016.10	1016.17	1016.25	1016.33	1016.39	1016.45	1016.18
	17	1016.52	1016.59	1016.64	1016.70	1016.74	1016.76	1016.77	1016.78	1016.78	1016.77	1016.74	1016.67	1016.70
	18	1016.64	1016.66	1016.67	1016.67	1016.70	1016.75	1016.78	1016.82	1016.87	1016.92	1016.95	1016.90	1016.78
	19	1016.83	1016.78	1016.73	1016.74	1016.80	1016.89	1016.87	1016.77	1016.71	1016.65	1016.64	1016.68	1016.76
	20	1016.69	1016.66	1016.69	1016.84	1017.00	1017.03	1016.97	1016.92	1016.89	1016.92	1017.01	1017.06	1016.89
	21	1017.05	1017.04	1017.05	1017.10	1017.17	1017.24	1017.26	1017.25	1017.22	1017.17	1017.14	1017.11	1017.15
	22	1017.07	1017.02	1016.96	1016.92	1016.88	1016.80	1016.75	1016.71	1016.70	1016.69	1016.68	1016.68	1016.82
	23	1016.64	1016.63	1016.62	1016.51	1016.41	1016.38	1016.34	1016.26	1016.21	1016.21	1016.20	1016.19	1016.38
20	0	1016.16	1016.15	1016.13	1016.12	1016.06	1015.98	1015.92	1015.84	1015.78	1015.76	1015.76	1015.75	1015.94
	1	1015.76	1015.79	1015.81	1015.80	1015.80	1015.81	1015.81	1015.78	1015.76	1015.77	1015.77	1015.77	1015.78
	2	1015.75	1015.73	1015.73	1015.74	1015.75	1015.76	1015.78	1015.80	1015.77	1015.76	1015.77	1015.74	1015.75
	3	1015.67	1015.61	1015.59	1015.55	1015.51	1015.50	1015.51	1015.54	1015.58	1015.60	1015.61	1015.63	1015.57
	4	1015.67	1015.71	1015.76	1015.79	1015.78	1015.72	1015.67	1015.65	1015.64	1015.63	1015.60	1015.58	1015.68
	5	1015.57	1015.55	1015.52	1015.52	1015.55	1015.60	1015.63	1015.66	1015.71	1015.75	1015.81	1015.87	1015.64
	6	1015.91	1015.92	1015.95	1015.98	1015.99	1015.99	1016.01	1016.02	1015.97	1015.97	1016.00	1016.02	1015.98
	7	1016.01	1015.99	1015.97	1015.93	1015.91	1015.89	1015.87	1015.83	1015.82	1015.87	1015.93	1015.96	1015.91
	8	1015.98	1016.05	1016.15	1016.24	1016.30	1016.31	1016.30	1016.30	1016.30	1016.30	1016.32	1016.35	1016.24
	9	1016.38	1016.38	1016.37	1016.36	1016.33	1016.30	1016.27	1016.23	1016.20	1016.17	1016.12	1016.06	1016.26
	10	1016.03	1016.05	1016.05	1016.02	1015.98	1015.97	1015.91	1015.82	1015.77	1015.75	1015.74	1015.73	1015.90
	11	1015.68	1015.63	1015.60	1015.56	1015.53	1015.51	1015.50	1015.49	1015.47	1015.41	1015.33	1015.30	1015.50
	12	1015.25	1015.21	1015.19	1015.16	1015.13	1015.07	1015.00	1014.95	1014.90	1014.87	1014.85	1014.81	1015.03
	13	1014.77	1014.71	1014.61	1014.51	1014.42	1014.34	1014.32	1014.32	1014.32	1014.33	1014.37	1014.39	1014.46
	14	1014.41	1014.42	1014.40	1014.47	1014.77	1015.19	1015.33	1015.21	1015.06	1014.92	1014.87	1014.88	1014.83
	15	1014.90	1014.85	1014.80	1014.81	1014.80	1014.76	1014.76	1014.66	1014.60	1014.63	1014.58	1014.52	1014.72
	16	1014.52	1014.56	1014.64	1014.66	1014.61	1014.58	1014.54	1014.53	1014.54	1014.56	1014.53	1014.50	1014.56
	17	1014.52	1014.56	1014.57	1014.62	1014.70	1014.75	1014.78	1014.81	1014.84	1014.83	1014.82	1014.83	1014.72
	18	1014.85	1014.86	1014.84	1014.85	1014.90	1014.90	1014.89	1014.92	1014.95	1014.96	1014.97	1014.98	1014.90
	19	1014.99	1015.01	1015.03	1015.03	1015.00	1014.96	1014.96	1014.98	1015.03	1015.18	1015.37	1015.48	1015.08
	20	1015.52	1015.54	1015.49	1015.44	1015.41	1015.42	1015.42	1015.37	1015.35	1015.34	1015.39	1015.43	1015.42
	21	1015.38	1015.37	1015.35	1015.28	1015.24	1015.19	1015.08	1015.00	1014.97	1014.91	1014.81	1014.74	1015.11
	22	1014.69	1014.67	1014.68	1014.69	1014.69	1014.65	1014.64	1014.60	1014.53	1014.51	1014.56	1014.62	1014.62
	23	1014.69	1014.73	1014.71	1014.68	1014.68	1014.70	1014.72	1014.77	1014.78	1014.79	1014.80	1014.82	1014.74

S.V.I.R.CO. Observatory - Pressure in hectoPascal – September 2018

day	hh	00_05	05_10	10_15	15_20	20_25	25_30	30_35	35_40	40_45	45_50	50_55	55_60	average
21	0	1014.83	1014.86	1014.86	1014.82	1014.77	1014.77	1014.83	1014.84	1014.80	1014.74	1014.70	1014.67	1014.79
	1	1014.65	1014.63	1014.57	1014.46	1014.31	1014.21	1014.21	1014.23	1014.21	1014.20	1014.18	1014.15	1014.33
	2	1014.16	1014.16	1014.11	1014.09	1014.09	1014.09	1014.08	1014.06	1014.05	1014.07	1014.09	1014.04	1014.09
	3	1014.00	1013.94	1013.86	1013.83	1013.85	1013.88	1013.89	1013.89	1013.87	1013.82	1013.75	1013.69	1013.85
	4	1013.65	1013.59	1013.56	1013.58	1013.57	1013.51	1013.48	1013.49	1013.50	1013.48	1013.46	1013.46	1013.53
	5	1013.47	1013.49	1013.51	1013.52	1013.58	1013.70	1013.80	1013.85	1013.88	1013.90	1013.89	1013.88	1013.70
	6	1013.88	1013.88	1013.90	1013.93	1013.94	1013.97	1014.01	1014.06	1014.09	1014.04	1014.00	1013.99	1013.97
	7	1013.99	1014.02	1014.11	1014.19	1014.24	1014.28	1014.33	1014.40	1014.44	1014.48	1014.50	1014.52	1014.29
	8	1014.57	1014.61	1014.62	1014.66	1014.71	1014.71	1014.69	1014.69	1014.70	1014.68	1014.68	1014.68	1014.66
	9	1014.67	1014.68	1014.70	1014.71	1014.74	1014.78	1014.78	1014.78	1014.80	1014.82	1014.82	1014.80	1014.75
	10	1014.79	1014.80	1014.81	1014.78	1014.74	1014.70	1014.66	1014.63	1014.59	1014.56	1014.52	1014.47	1014.67
	11	1014.41	1014.34	1014.29	1014.26	1014.25	1014.24	1014.19	1014.14	1014.12	1014.09	1014.06	1014.01	1014.20
	12	1013.95	1013.93	1013.94	1013.99	1014.04	1014.04	1014.01	1014.00	1013.97	1013.94	1013.95	1013.98	1013.98
	13	1014.00	1014.00	1013.99	1013.97	1014.00	1014.05	1014.05	1014.03	1014.00	1013.94	1013.86	1013.81	1013.97
	14	1013.78	1013.81	1013.87	1013.89	1013.91	1013.91	1013.92	1013.98	1014.00	1013.93	1013.85	1013.80	1013.89
	15	1013.79	1013.83	1013.83	1013.83	1013.86	1013.89	1013.92	1013.95	1014.04	1014.10	1014.12	1014.20	1013.95
	16	1014.22	1014.20	1014.14	1014.08	1014.08	1014.11	1014.09	1014.04	1014.03	1014.04	1014.04	1014.05	1014.09
	17	1014.08	1014.13	1014.20	1014.25	1014.27	1014.27	1014.27	1014.33	1014.42	1014.50	1014.53	1014.56	1014.32
	18	1014.57	1014.59	1014.62	1014.64	1014.68	1014.73	1014.77	1014.79	1014.84	1014.92	1014.97	1014.97	1014.75
	19	1014.93	1014.86	1014.83	1014.85	1014.89	1014.90	1014.89	1014.96	1015.05	1015.11	1015.14	1015.13	1014.96
	20	1015.14	1015.15	1015.17	1015.19	1015.21	1015.20	1015.17	1015.23	1015.34	1015.41	1015.47	1015.51	1015.26
	21	1015.55	1015.60	1015.66	1015.73	1015.77	1015.79	1015.84	1015.88	1015.87	1015.82	1015.76	1015.68	1015.74
	22	1015.66	1015.69	1015.69	1015.68	1015.64	1015.57	1015.52	1015.50	1015.51	1015.53	1015.50	1015.48	1015.58
	23	1015.51	1015.53	1015.52	1015.51	1015.54	1015.56	1015.50	1015.47	1015.52	1015.53	1015.51	1015.51	1015.51
22	0	1015.46	1015.45	1015.41	1015.41	1015.43	1015.42	1015.42	1015.42	1015.44	1015.40	1015.33	1015.29	1015.40
	1	1015.25	1015.22	1015.22	1015.23	1015.22	1015.24	1015.27	1015.29	1015.29	1015.32	1015.35	1015.34	1015.27
	2	1015.33	1015.35	1015.38	1015.36	1015.28	1015.23	1015.24	1015.23	1015.20	1015.21	1015.22	1015.24	1015.27
	3	1015.25	1015.28	1015.33	1015.39	1015.42	1015.42	1015.41	1015.38	1015.34	1015.31	1015.29	1015.34	1015.34
	4	1015.34	1015.29	1015.29	1015.31	1015.31	1015.30	1015.28	1015.27	1015.33	1015.41	1015.49	1015.57	1015.35
	5	1015.59	1015.58	1015.61	1015.63	1015.63	1015.63	1015.66	1015.74	1015.81	1015.85	1015.84	1015.80	1015.69
	6	1015.78	1015.79	1015.81	1015.82	1015.84	1015.90	1015.98	1016.02	1016.02	1016.02	1016.06	1016.11	1015.93
	7	1016.15	1016.22	1016.27	1016.31	1016.34	1016.35	1016.38	1016.42	1016.45	1016.46	1016.47	1016.50	1016.36
	8	1016.52	1016.54	1016.58	1016.61	1016.60	1016.56	1016.53	1016.53	1016.50	1016.46	1016.46	1016.48	1016.53
	9	1016.48	1016.47	1016.47	1016.43	1016.39	1016.39	1016.36	1016.32	1016.29	1016.27	1016.29	1016.28	1016.37
	10	1016.22	1016.19	1016.18	1016.17	1016.14	1016.13	1016.14	1016.15	1016.17	1016.22	1016.24	1016.23	1016.18
	11	1016.20	1016.16	1016.15	1016.16	1016.17	1016.15	1016.11	1016.07	1016.04	1016.02	1016.00	1016.01	1016.10
	12	1016.03	1016.05	1016.06	1016.06	1016.05	1015.97	1015.92	1015.92	1015.91	1015.92	1015.91	1015.92	1015.97
	13	1015.92	1015.92	1015.93	1015.95	1015.96	1015.94	1015.95	1015.97	1015.96	1015.97	1016.01	1016.04	1015.96
	14	1016.02	1015.98	1015.95	1015.95	1016.00	1016.04	1016.06	1016.03	1015.98	1015.95	1015.94	1015.96	1015.99
	15	1015.99	1015.98	1015.96	1015.95	1015.91	1015.84	1015.79	1015.80	1015.83	1015.83	1015.82	1015.85	1015.88
	16	1015.90	1015.92	1015.93	1015.98	1016.06	1016.10	1016.09	1016.08	1016.10	1016.17	1016.24	1016.32	1016.07
	17	1016.38	1016.40	1016.43	1016.43	1016.43	1016.48	1016.55	1016.59	1016.64	1016.70	1016.72	1016.73	1016.54
	18	1016.78	1016.82	1016.84	1016.90	1017.00	1017.09	1017.17	1017.22	1017.24	1017.27	1017.33	1017.37	1017.08
	19	1017.40	1017.44	1017.49	1017.55	1017.61	1017.64	1017.64	1017.64	1017.67	1017.72	1017.78	1017.83	1017.62
	20	1017.85	1017.90	1017.98	1018.01	1018.00	1018.00	1018.02	1018.07	1018.12	1018.12	1018.09	1018.09	1018.02
	21	1018.08	1018.11	1018.13	1018.15	1018.17	1018.13	1018.11	1018.11	1018.08	1018.05	1018.05	1018.08	1018.10
	22	1018.09	1018.10	1018.12	1018.15	1018.17	1018.18	1018.18	1018.16	1018.14	1018.14	1018.13	1018.10	1018.14
	23	1018.08	1018.11	1018.16	1018.20	1018.19	1018.16	1018.15	1018.16	1018.12	1018.09	1018.09	1018.07	1018.13

S.V.I.R.CO. Observatory - Pressure in hectoPascal – September 2018

day	hh	00_05	05_10	10_15	15_20	20_25	25_30	30_35	35_40	40_45	45_50	50_55	55_60	average
23	0	1018.05	1018.05	1018.04	1018.02	1018.00	1018.00	1017.97	1017.92	1017.91	1017.90	1017.88	1017.90	1017.96
	1	1017.91	1017.87	1017.84	1017.83	1017.80	1017.81	1017.85	1017.88	1017.91	1017.91	1017.90	1017.91	1017.86
	2	1017.87	1017.84	1017.89	1017.94	1017.97	1018.01	1018.01	1017.97	1017.93	1017.95	1018.00	1018.03	1017.95
	3	1018.01	1017.98	1017.96	1017.95	1017.97	1018.01	1018.05	1018.06	1018.02	1018.00	1017.99	1017.97	1018.00
	4	1017.95	1017.94	1017.96	1017.96	1017.96	1017.96	1017.95	1017.97	1017.97	1018.00	1018.05	1018.09	1017.98
	5	1018.14	1018.16	1018.17	1018.20	1018.23	1018.24	1018.26	1018.29	1018.30	1018.35	1018.39	1018.41	1018.26
	6	1018.45	1018.50	1018.52	1018.54	1018.56	1018.59	1018.63	1018.65	1018.70	1018.76	1018.79	1018.81	1018.62
	7	1018.87	1018.93	1018.94	1018.96	1019.02	1019.05	1019.04	1019.01	1019.01	1019.02	1019.04	1019.05	1018.99
	8	1019.09	1019.13	1019.17	1019.22	1019.27	1019.28	1019.27	1019.24	1019.22	1019.21	1019.23	1019.29	1019.22
	9	1019.33	1019.32	1019.32	1019.33	1019.34	1019.37	1019.39	1019.39	1019.38	1019.35	1019.35	1019.35	1019.35
	10	1019.32	1019.28	1019.27	1019.23	1019.18	1019.15	1019.13	1019.12	1019.11	1019.13	1019.13	1019.10	1019.18
	11	1019.09	1019.06	1019.03	1019.00	1018.95	1018.93	1018.93	1018.92	1018.90	1018.85	1018.79	1018.74	1018.93
	12	1018.69	1018.67	1018.66	1018.61	1018.58	1018.55	1018.51	1018.51	1018.45	1018.35	1018.29	1018.26	1018.51
	13	1018.24	1018.22	1018.19	1018.13	1018.08	1018.05	1018.02	1017.99	1017.98	1017.96	1017.93	1017.89	1018.05
	14	1017.84	1017.84	1017.83	1017.78	1017.75	1017.75	1017.73	1017.70	1017.68	1017.64	1017.61	1017.60	1017.73
	15	1017.62	1017.60	1017.59	1017.61	1017.61	1017.60	1017.55	1017.51	1017.48	1017.46	1017.45	1017.43	1017.54
	16	1017.39	1017.34	1017.34	1017.35	1017.37	1017.37	1017.34	1017.32	1017.30	1017.28	1017.28	1017.28	1017.33
	17	1017.27	1017.26	1017.26	1017.23	1017.18	1017.15	1017.15	1017.15	1017.15	1017.17	1017.20	1017.22	1017.20
	18	1017.21	1017.21	1017.23	1017.28	1017.27	1017.25	1017.27	1017.27	1017.26	1017.24	1017.24	1017.29	1017.25
	19	1017.30	1017.29	1017.25	1017.20	1017.18	1017.21	1017.23	1017.23	1017.21	1017.18	1017.18	1017.21	1017.22
	20	1017.22	1017.20	1017.19	1017.18	1017.18	1017.21	1017.22	1017.17	1017.03	1016.93	1016.88	1016.83	1017.10
	21	1016.80	1016.79	1016.80	1016.80	1016.75	1016.70	1016.68	1016.65	1016.62	1016.62	1016.66	1016.66	1016.71
	22	1016.64	1016.61	1016.57	1016.57	1016.51	1016.43	1016.40	1016.36	1016.28	1016.22	1016.17	1016.09	1016.40
	23	1016.05	1016.01	1015.94	1015.87	1015.81	1015.80	1015.81	1015.76	1015.67	1015.60	1015.57	1015.55	1015.78
24	0	1015.58	1015.54	1015.53	1015.57	1015.51	1015.40	1015.30	1015.27	1015.26	1015.24	1015.19	1015.06	1015.36
	1	1014.94	1014.92	1014.93	1014.87	1014.78	1014.71	1014.60	1014.52	1014.45	1014.30	1014.23	1014.16	1014.61
	2	1014.04	1013.89	1013.75	1013.72	1013.72	1013.64	1013.55	1013.48	1013.36	1013.42	1013.57	1013.60	1013.64
	3	1013.56	1013.55	1013.61	1013.62	1013.62	1013.69	1013.73	1013.63	1013.55	1013.58	1013.59	1013.61	1013.61
	4	1013.57	1013.54	1013.63	1013.72	1013.76	1013.76	1013.76	1013.79	1013.77	1013.69	1013.64	1013.66	1013.69
	5	1013.61	1013.51	1013.45	1013.35	1013.29	1013.25	1013.16	1013.11	1013.10	1013.10	1013.11	1013.14	1013.26
	6	1013.19	1013.16	1013.10	1013.14	1013.16	1013.10	1012.99	1012.90	1012.89	1012.95	1013.07	1013.13	1013.06
	7	1013.17	1013.20	1013.24	1013.33	1013.45	1013.53	1013.60	1013.71	1013.76	1013.77	1013.78	1013.80	1013.53
	8	1013.79	1013.75	1013.78	1013.79	1013.79	1013.87	1013.97	1014.01	1014.01	1014.04	1014.11	1014.16	1013.92
	9	1014.15	1014.14	1014.17	1014.19	1014.19	1014.17	1014.15	1014.17	1014.17	1014.14	1014.12	1014.14	1014.16
	10	1014.14	1014.10	1014.09	1014.05	1014.01	1013.99	1013.93	1013.86	1013.90	1013.92	1013.90	1013.88	1013.98
	11	1013.86	1013.85	1013.80	1013.75	1013.72	1013.66	1013.60	1013.57	1013.54	1013.53	1013.52	1013.52	1013.66
	12	1013.53	1013.54	1013.53	1013.52	1013.47	1013.38	1013.30	1013.27	1013.23	1013.16	1013.10	1012.99	1013.33
	13	1012.87	1012.80	1012.76	1012.70	1012.63	1012.56	1012.49	1012.43	1012.40	1012.39	1012.31	1012.21	1012.54
	14	1012.19	1012.22	1012.17	1012.14	1012.15	1012.14	1012.10	1012.07	1012.07	1012.05	1012.02	1012.00	1012.11
	15	1012.00	1012.05	1012.13	1012.19	1012.18	1012.21	1012.31	1012.39	1012.42	1012.42	1012.42	1012.43	1012.26
	16	1012.46	1012.51	1012.56	1012.61	1012.66	1012.76	1012.88	1012.90	1012.90	1013.00	1013.14	1013.26	1012.80
	17	1013.36	1013.50	1013.64	1013.72	1013.75	1013.79	1013.87	1013.96	1014.02	1014.11	1014.25	1014.39	1013.86
	18	1014.49	1014.57	1014.72	1014.86	1014.95	1015.05	1015.15	1015.22	1015.26	1015.29	1015.32	1015.34	1015.02
	19	1015.38	1015.42	1015.48	1015.56	1015.62	1015.68	1015.80	1015.89	1015.96	1016.09	1016.19	1016.22	1015.77
	20	1016.27	1016.34	1016.45	1016.58	1016.69	1016.78	1016.83	1016.88	1016.90	1016.94	1017.00	1017.08	1016.73
	21	1017.20	1017.30	1017.36	1017.40	1017.48	1017.53	1017.54	1017.56	1017.64	1017.76	1017.84	1017.89	1017.54
	22	1017.97	1018.07	1018.14	1018.20	1018.29	1018.37	1018.39	1018.35	1018.33	1018.37	1018.43	1018.48	1018.28
	23	1018.50	1018.49	1018.49	1018.49	1018.47	1018.52	1018.59	1018.61	1018.64	1018.65	1018.63	1018.70	1018.56

**S.V.I.R.CO. Observatory - Pressure in hectoPascal – September 2018**

day	hh	00_05	05_10	10_15	15_20	20_25	25_30	30_35	35_40	40_45	45_50	50_55	55_60	average
25	0	1018.80	1018.85	1018.89	1018.91	1018.96	1019.03	1019.07	1019.06	1019.03	1019.01	1019.02	1019.04	1018.98
	1	1019.09	1019.13	1019.15	1019.14	1019.10	1019.06	1019.05	1019.08	1019.13	1019.16	1019.18	1019.23	1019.12
	2	1019.28	1019.32	1019.35	1019.38	1019.40	1019.44	1019.48	1019.45	1019.41	1019.42	1019.43	1019.43	1019.40
	3	1019.44	1019.44	1019.48	1019.57	1019.64	1019.68	1019.72	1019.76	1019.80	1019.83	1019.89	1019.98	1019.68
	4	1020.02	1020.04	1020.07	1020.11	1020.15	1020.18	1020.17	1020.18	1020.24	1020.26	1020.25	1020.27	1020.16
	5	1020.29	1020.29	1020.33	1020.41	1020.49	1020.56	1020.60	1020.66	1020.73	1020.79	1020.84	1020.89	1020.57
	6	1020.95	1021.03	1021.09	1021.11	1021.15	1021.19	1021.22	1021.27	1021.34	1021.38	1021.40	1021.46	1021.21
	7	1021.54	1021.61	1021.64	1021.64	1021.65	1021.68	1021.72	1021.75	1021.77	1021.80	1021.84	1021.85	1021.71
	8	1021.87	1021.91	1021.95	1021.97	1022.00	1022.05	1022.12	1022.17	1022.18	1022.22	1022.25	1022.26	1022.08
	9	1022.28	1022.32	1022.38	1022.43	1022.43	1022.43	1022.42	1022.40	1022.38	1022.37	1022.41	1022.41	1022.39
	10	1022.41	1022.42	1022.43	1022.47	1022.51	1022.51	1022.48	1022.46	1022.44	1022.44	1022.43	1022.38	1022.45
	11	1022.29	1022.23	1022.19	1022.14	1022.11	1022.04	1021.95	1021.90	1021.86	1021.82	1021.79	1021.74	1022.00
	12	1021.67	1021.64	1021.63	1021.59	1021.56	1021.55	1021.51	1021.50	1021.47	1021.45	1021.46	1021.41	1021.53
	13	1021.36	1021.33	1021.29	1021.28	1021.26	1021.23	1021.18	1021.12	1021.11	1021.13	1021.10	1021.06	1021.20
	14	1021.05	1021.06	1021.09	1021.09	1021.06	1021.01	1021.00	1020.99	1020.96	1020.96	1020.99	1021.03	1021.02
	15	1021.07	1021.10	1021.13	1021.15	1021.15	1021.17	1021.22	1021.24	1021.25	1021.27	1021.32	1021.36	1021.20
	16	1021.40	1021.45	1021.47	1021.51	1021.56	1021.64	1021.75	1021.84	1021.93	1022.00	1022.08	1022.15	1021.73
	17	1022.22	1022.31	1022.40	1022.49	1022.59	1022.66	1022.72	1022.82	1022.91	1022.99	1023.08	1023.17	1022.69
	18	1023.23	1023.29	1023.35	1023.45	1023.56	1023.62	1023.74	1023.86	1023.95	1024.02	1024.09	1024.19	1023.69
	19	1024.27	1024.30	1024.34	1024.41	1024.50	1024.55	1024.62	1024.71	1024.77	1024.81	1024.91	1024.96	1024.59
	20	1024.91	1024.86	1024.84	1024.85	1024.90	1024.93	1024.89	1024.89	1024.92	1024.92	1024.93	1024.98	1024.90
	21	1025.00	1025.01	1025.07	1025.14	1025.17	1025.23	1025.26	1025.28	1025.33	1025.37	1025.44	1025.50	1025.23
	22	1025.53	1025.61	1025.65	1025.65	1025.63	1025.61	1025.65	1025.70	1025.70	1025.68	1025.63	1025.62	1025.64
	23	1025.65	1025.69	1025.78	1025.90	1026.00	1026.05	1026.05	1026.03	1026.06	1026.08	1026.11	1026.11	1025.96
26	0	1026.12	1026.12	1026.14	1026.22	1026.30	1026.28	1026.27	1026.27	1026.27	1026.34	1026.41	1026.42	1026.27
	1	1026.40	1026.39	1026.33	1026.26	1026.24	1026.26	1026.28	1026.31	1026.33	1026.28	1026.24	1026.22	1026.29
	2	1026.23	1026.27	1026.23	1026.18	1026.24	1026.37	1026.46	1026.46	1026.42	1026.40	1026.39	1026.45	1026.34
	3	1026.44	1026.39	1026.43	1026.43	1026.45	1026.48	1026.47	1026.40	1026.41	1026.52	1026.55	1026.50	1026.45
	4	1026.43	1026.42	1026.43	1026.49	1026.59	1026.61	1026.63	1026.66	1026.62	1026.65	1026.70	1026.72	1026.58
	5	1026.73	1026.80	1026.92	1026.99	1027.03	1027.05	1027.08	1027.13	1027.22	1027.31	1027.36	1027.36	1027.08
	6	1027.37	1027.41	1027.45	1027.52	1027.60	1027.56	1027.54	1027.58	1027.58	1027.60	1027.69	1027.87	1027.56
	7	1028.04	1028.14	1028.22	1028.26	1028.30	1028.36	1028.38	1028.38	1028.42	1028.44	1028.44	1028.53	1028.32
	8	1028.65	1028.65	1028.64	1028.70	1028.76	1028.76	1028.74	1028.84	1028.93	1028.95	1029.01	1029.10	1028.81
	9	1029.13	1029.12	1029.18	1029.27	1029.31	1029.26	1029.17	1029.17	1029.16	1029.08	1029.00	1028.89	1029.14
	10	1028.82	1028.81	1028.79	1028.76	1028.78	1028.79	1028.78	1028.73	1028.68	1028.67	1028.72	1028.77	1028.76
	11	1028.79	1028.85	1028.88	1028.86	1028.81	1028.76	1028.73	1028.68	1028.62	1028.58	1028.56	1028.50	1028.71
	12	1028.47	1028.43	1028.35	1028.30	1028.22	1028.14	1028.10	1028.06	1028.01	1027.94	1027.89	1027.91	1028.15
	13	1027.98	1028.01	1027.98	1027.93	1027.87	1027.84	1027.83	1027.78	1027.70	1027.63	1027.66	1027.67	1027.82
	14	1027.66	1027.65	1027.61	1027.58	1027.55	1027.51	1027.49	1027.44	1027.42	1027.40	1027.41	1027.43	1027.51
	15	1027.40	1027.36	1027.35	1027.37	1027.35	1027.35	1027.37	1027.37	1027.37	1027.33	1027.26	1027.20	1027.34
	16	1027.21	1027.25	1027.21	1027.14	1027.13	1027.13	1027.12	1027.18	1027.26	1027.29	1027.34	1027.40	1027.22
	17	1027.44	1027.49	1027.54	1027.60	1027.66	1027.68	1027.70	1027.70	1027.73	1027.81	1027.91	1027.99	1027.68
	18	1027.99	1028.02	1028.11	1028.18	1028.23	1028.24	1028.30	1028.37	1028.39	1028.40	1028.42	1028.47	1028.26
	19	1028.51	1028.49	1028.54	1028.61	1028.64	1028.73	1028.74	1028.69	1028.69	1028.71	1028.74	1028.76	1028.65
	20	1028.77	1028.81	1028.87	1028.90	1028.86	1028.85	1028.88	1028.89	1028.89	1028.96	1029.06	1029.11	1028.90
	21	1029.15	1029.18	1029.16	1029.11	1029.07	1029.02	1028.96	1028.97	1029.02	1029.03	1029.02	1029.04	1029.06
	22	1029.06	1029.04	1029.00	1028.95	1028.92	1028.93	1028.90	1028.85	1028.81	1028.81	1028.79	1028.75	1028.90
	23	1028.76	1028.79	1028.81	1028.84	1028.89	1028.92	1028.95	1028.96	1028.95	1028.88	1028.82	1028.84	1028.86



S.V.I.R.CO. Observatory - Pressure in hectoPascal – September 2018

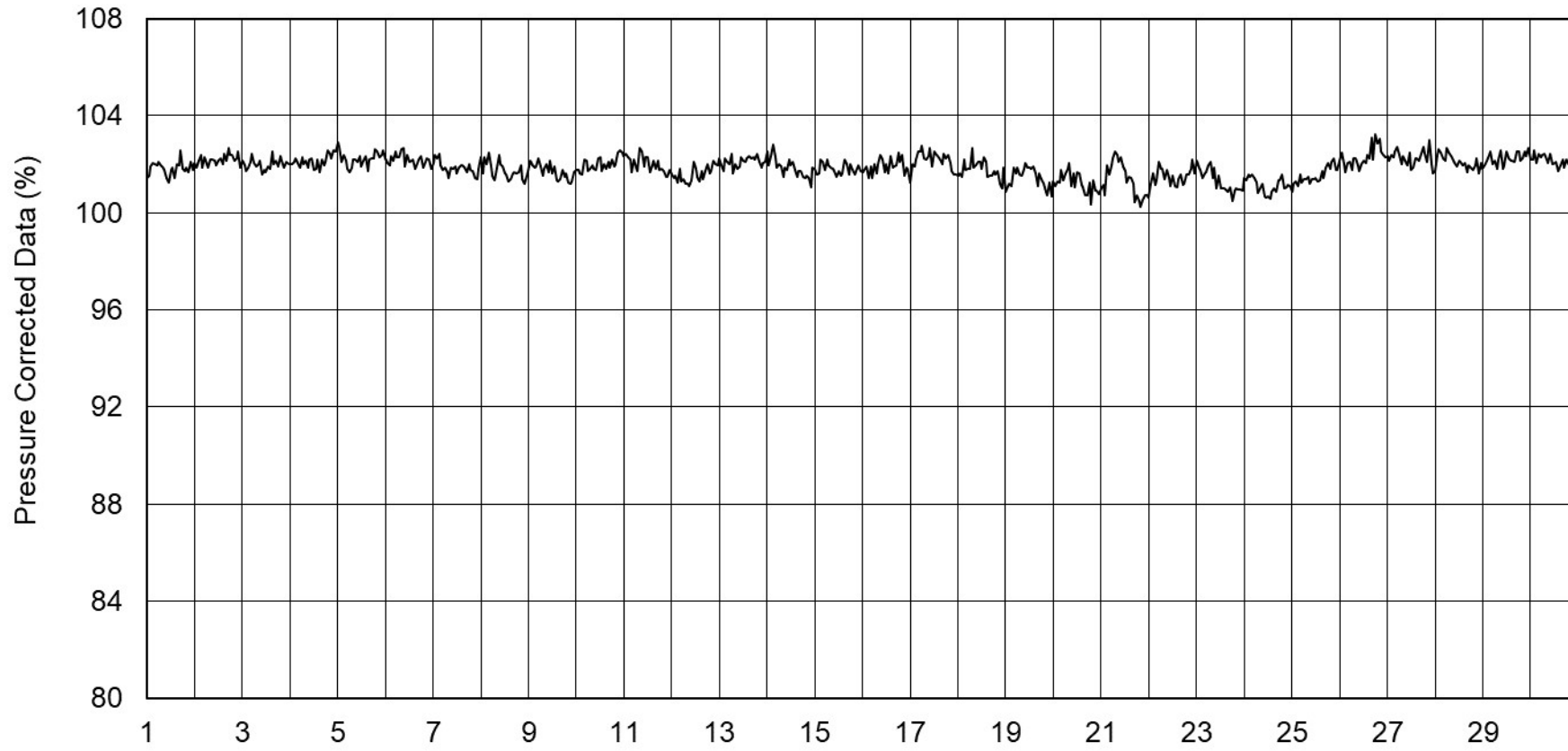
day	hh	00_05	05_10	10_15	15_20	20_25	25_30	30_35	35_40	40_45	45_50	50_55	55_60	average
27	0	1028.89	1028.86	1028.84	1028.88	1028.92	1028.93	1028.91	1028.86	1028.80	1028.77	1028.74	1028.67	1028.83
	1	1028.60	1028.52	1028.48	1028.46	1028.43	1028.39	1028.34	1028.31	1028.29	1028.28	1028.25	1028.22	1028.38
	2	1028.23	1028.22	1028.21	1028.19	1028.13	1028.10	1028.05	1027.99	1027.96	1027.95	1027.96	1027.95	1028.08
	3	1027.90	1027.87	1027.83	1027.80	1027.76	1027.71	1027.65	1027.59	1027.54	1027.50	1027.46	1027.40	1027.66
	4	1027.34	1027.34	1027.30	1027.25	1027.18	1027.12	1027.12	1027.11	1027.06	1027.04	1027.03	1027.03	1027.16
	5	1027.07	1027.08	1027.07	1027.10	1027.18	1027.20	1027.17	1027.16	1027.19	1027.20	1027.18	1027.11	1027.14
	6	1027.06	1027.03	1027.01	1027.01	1027.04	1027.09	1027.08	1027.06	1027.08	1027.09	1027.10	1027.09	1027.06
	7	1027.05	1027.03	1027.03	1027.04	1027.05	1027.03	1026.99	1026.93	1026.87	1026.87	1026.90	1026.90	1026.97
	8	1026.85	1026.82	1026.82	1026.79	1026.74	1026.69	1026.62	1026.53	1026.46	1026.41	1026.40	1026.39	1026.62
	9	1026.33	1026.25	1026.22	1026.21	1026.21	1026.21	1026.20	1026.16	1026.09	1026.00	1025.94	1025.92	1026.14
	10	1025.90	1025.87	1025.79	1025.68	1025.53	1025.42	1025.37	1025.34	1025.27	1025.19	1025.16	1025.07	1025.46
	11	1024.95	1024.84	1024.74	1024.65	1024.56	1024.42	1024.30	1024.19	1024.05	1023.90	1023.77	1023.72	1024.34
	12	1023.65	1023.57	1023.48	1023.37	1023.23	1023.09	1022.97	1022.85	1022.74	1022.64	1022.55	1022.46	1023.05
	13	1022.36	1022.27	1022.18	1022.11	1022.04	1021.93	1021.80	1021.71	1021.65	1021.57	1021.46	1021.35	1021.87
	14	1021.25	1021.16	1021.06	1020.98	1020.92	1020.88	1020.83	1020.78	1020.74	1020.68	1020.56	1020.47	1020.86
	15	1020.38	1020.26	1020.15	1020.09	1020.03	1019.91	1019.82	1019.77	1019.72	1019.66	1019.60	1019.59	1019.91
	16	1019.58	1019.55	1019.51	1019.45	1019.39	1019.33	1019.28	1019.24	1019.19	1019.11	1019.04	1018.99	1019.30
	17	1018.99	1019.03	1019.05	1019.01	1018.96	1019.01	1019.09	1019.17	1019.23	1019.25	1019.28	1019.35	1019.12
	18	1019.46	1019.51	1019.51	1019.52	1019.57	1019.60	1019.66	1019.75	1019.79	1019.84	1019.93	1019.99	1019.67
	19	1020.02	1020.07	1020.11	1020.18	1020.26	1020.33	1020.34	1020.34	1020.35	1020.37	1020.38	1020.37	1020.26
	20	1020.39	1020.43	1020.48	1020.50	1020.47	1020.42	1020.36	1020.33	1020.35	1020.36	1020.38	1020.41	1020.40
	21	1020.37	1020.30	1020.28	1020.27	1020.29	1020.33	1020.36	1020.39	1020.41	1020.40	1020.39	1020.36	1020.34
	22	1020.33	1020.29	1020.27	1020.23	1020.14	1020.03	1019.91	1019.85	1019.83	1019.79	1019.78	1019.79	1020.02
	23	1019.78	1019.75	1019.68	1019.67	1019.68	1019.67	1019.64	1019.63	1019.61	1019.51	1019.50	1019.51	1019.63
28	0	1019.47	1019.44	1019.39	1019.30	1019.22	1019.17	1019.16	1019.18	1019.12	1019.09	1019.04	1018.98	1019.20
	1	1018.97	1018.92	1018.86	1018.79	1018.69	1018.60	1018.52	1018.41	1018.33	1018.32	1018.31	1018.24	1018.58
	2	1018.21	1018.18	1018.06	1018.04	1018.04	1018.01	1017.93	1017.82	1017.72	1017.62	1017.57	1017.55	1017.89
	3	1017.49	1017.40	1017.37	1017.29	1017.21	1017.15	1017.09	1017.01	1016.92	1016.92	1016.93	1016.87	1017.14
	4	1016.79	1016.85	1016.92	1016.87	1016.74	1016.68	1016.66	1016.62	1016.57	1016.50	1016.44	1016.46	1016.67
	5	1016.49	1016.44	1016.44	1016.47	1016.45	1016.40	1016.39	1016.42	1016.47	1016.49	1016.44	1016.37	1016.44
	6	1016.35	1016.29	1016.24	1016.27	1016.21	1016.14	1016.18	1016.24	1016.25	1016.24	1016.19	1016.12	1016.22
	7	1016.15	1016.23	1016.26	1016.24	1016.20	1016.19	1016.19	1016.12	1016.09	1016.10	1016.13	1016.16	1016.17
	8	1016.12	1016.07	1016.03	1015.98	1016.02	1016.06	1015.99	1015.90	1015.83	1015.81	1015.81	1015.72	1015.94
	9	1015.60	1015.54	1015.54	1015.52	1015.49	1015.40	1015.32	1015.26	1015.16	1015.07	1014.99	1014.93	1015.32
	10	1014.96	1014.98	1014.93	1014.90	1014.85	1014.78	1014.73	1014.67	1014.62	1014.61	1014.60	1014.56	1014.76
	11	1014.48	1014.39	1014.30	1014.16	1014.05	1013.95	1013.79	1013.68	1013.63	1013.57	1013.51	1013.44	1013.91
	12	1013.37	1013.31	1013.24	1013.17	1013.10	1013.04	1012.98	1012.89	1012.79	1012.72	1012.65	1012.59	1012.99
	13	1012.52	1012.47	1012.45	1012.42	1012.40	1012.39	1012.37	1012.34	1012.28	1012.20	1012.13	1012.08	1012.34
	14	1012.02	1011.95	1011.90	1011.84	1011.80	1011.78	1011.78	1011.77	1011.74	1011.71	1011.67	1011.61	1011.80
	15	1011.59	1011.55	1011.51	1011.46	1011.41	1011.39	1011.41	1011.41	1011.42	1011.45	1011.49	1011.51	1011.47
	16	1011.50	1011.49	1011.49	1011.52	1011.53	1011.50	1011.48	1011.47	1011.46	1011.44	1011.43	1011.43	1011.48
	17	1011.44	1011.43	1011.42	1011.48	1011.51	1011.52	1011.54	1011.57	1011.60	1011.63	1011.70	1011.75	1011.55
	18	1011.77	1011.81	1011.83	1011.85	1011.86	1011.87	1011.91	1011.95	1011.98	1012.01	1012.04	1012.07	1011.91
	19	1012.12	1012.15	1012.18	1012.19	1012.18	1012.16	1012.15	1012.16	1012.18	1012.20	1012.21	1012.16	1012.17
	20	1012.10	1012.11	1012.13	1012.13	1012.13	1012.15	1012.14	1012.12	1012.12	1012.15	1012.16	1012.14	1012.13
	21	1012.16	1012.20	1012.19	1012.21	1012.26	1012.28	1012.28	1012.28	1012.29	1012.31	1012.31	1012.28	1012.25
	22	1012.31	1012.33	1012.30	1012.28	1012.27	1012.26	1012.29	1012.30	1012.28	1012.25	1012.24	1012.25	1012.28
	23	1012.26	1012.26	1012.24	1012.24	1012.23	1012.20	1012.19	1012.18	1012.15	1012.15	1012.15	1012.14	1012.20

**S.V.I.R.CO. Observatory - Pressure in hectoPascal – September 2018**

day	hh	00_05	05_10	10_15	15_20	20_25	25_30	30_35	35_40	40_45	45_50	50_55	55_60	average
29	0	1012.16	1012.16	1012.13	1012.11	1012.12	1012.10	1012.09	1012.15	1012.21	1012.21	1012.13	1012.07	1012.13
	1	1012.05	1012.02	1012.00	1011.97	1011.97	1012.02	1012.06	1012.05	1011.99	1011.95	1011.97	1011.97	1012.00
	2	1011.97	1011.95	1011.92	1011.91	1011.92	1011.95	1011.95	1011.96	1011.96	1011.95	1011.95	1011.95	1011.94
	3	1011.97	1011.99	1011.97	1011.99	1012.03	1012.01	1011.96	1011.93	1011.94	1011.94	1011.96	1011.98	1011.97
	4	1011.96	1011.95	1011.98	1012.03	1012.06	1012.09	1012.09	1012.04	1012.01	1012.02	1012.07	1012.11	1012.03
	5	1012.15	1012.20	1012.22	1012.23	1012.23	1012.20	1012.19	1012.21	1012.28	1012.35	1012.38	1012.40	1012.25
	6	1012.42	1012.44	1012.52	1012.59	1012.64	1012.69	1012.72	1012.75	1012.78	1012.81	1012.84	1012.87	1012.67
	7	1012.91	1012.97	1013.06	1013.12	1013.19	1013.25	1013.28	1013.30	1013.33	1013.35	1013.35	1013.36	1013.20
	8	1013.41	1013.49	1013.54	1013.57	1013.59	1013.64	1013.70	1013.76	1013.83	1013.90	1013.99	1014.05	1013.70
	9	1014.08	1014.10	1014.12	1014.15	1014.19	1014.18	1014.14	1014.10	1014.09	1014.11	1014.11	1014.11	1014.12
	10	1014.12	1014.13	1014.16	1014.20	1014.17	1014.13	1014.12	1014.09	1014.03	1013.98	1013.95	1013.96	1014.09
	11	1013.98	1013.97	1013.93	1013.87	1013.83	1013.76	1013.66	1013.56	1013.50	1013.47	1013.44	1013.38	1013.69
	12	1013.35	1013.33	1013.31	1013.30	1013.30	1013.29	1013.27	1013.23	1013.20	1013.21	1013.21	1013.20	1013.26
	13	1013.18	1013.16	1013.15	1013.16	1013.16	1013.14	1013.12	1013.14	1013.16	1013.15	1013.17	1013.21	1013.16
	14	1013.21	1013.17	1013.17	1013.19	1013.19	1013.17	1013.12	1013.05	1013.00	1012.99	1012.98	1012.99	1013.10
	15	1013.02	1013.07	1013.10	1013.13	1013.19	1013.22	1013.22	1013.22	1013.23	1013.25	1013.28	1013.31	1013.19
	16	1013.37	1013.43	1013.46	1013.50	1013.53	1013.54	1013.58	1013.59	1013.62	1013.66	1013.68	1013.71	1013.55
	17	1013.74	1013.79	1013.87	1013.95	1014.07	1014.14	1014.18	1014.23	1014.26	1014.30	1014.37	1014.44	1014.11
	18	1014.50	1014.59	1014.70	1014.78	1014.84	1014.90	1015.01	1015.10	1015.10	1015.07	1015.08	1015.08	1014.89
	19	1015.07	1015.07	1015.11	1015.16	1015.18	1015.19	1015.19	1015.21	1015.22	1015.21	1015.19	1015.17	1015.16
	20	1015.17	1015.18	1015.18	1015.16	1015.14	1015.16	1015.21	1015.25	1015.29	1015.32	1015.34	1015.37	1015.23
	21	1015.37	1015.36	1015.39	1015.44	1015.49	1015.50	1015.51	1015.56	1015.58	1015.59	1015.64	1015.72	1015.51
	22	1015.76	1015.76	1015.77	1015.79	1015.83	1015.88	1015.90	1015.89	1015.88	1015.88	1015.90	1015.90	1015.84
	23	1015.88	1015.90	1015.94	1015.96	1015.96	1015.95	1015.97	1016.00	1016.03	1016.04	1016.03	1016.01	1015.97
30	0	1016.06	1016.03	1016.00	1016.00	1015.98	1015.94	1015.90	1015.88	1015.90	1015.91	1015.93	1015.92	1015.95
	1	1015.88	1015.86	1015.86	1015.86	1015.85	1015.87	1015.88	1015.88	1015.90	1015.91	1015.89	1015.88	1015.87
	2	1015.89	1015.88	1015.86	1015.85	1015.83	1015.81	1015.81	1015.83	1015.85	1015.85	1015.82	1015.79	1015.84
	3	1015.78	1015.79	1015.82	1015.84	1015.85	1015.86	1015.83	1015.81	1015.79	1015.78	1015.79	1015.80	1015.81
	4	1015.80	1015.79	1015.78	1015.75	1015.73	1015.73	1015.73	1015.73	1015.76	1015.80	1015.79	1015.77	1015.76
	5	1015.78	1015.79	1015.83	1015.87	1015.91	1015.94	1015.95	1015.98	1016.01	1016.02	1016.03	1016.05	1015.93
	6	1016.10	1016.16	1016.21	1016.28	1016.37	1016.43	1016.48	1016.51	1016.53	1016.55	1016.55	1016.56	1016.39
	7	1016.60	1016.64	1016.68	1016.71	1016.73	1016.74	1016.76	1016.79	1016.83	1016.86	1016.87	1016.88	1016.76
	8	1016.88	1016.86	1016.83	1016.81	1016.79	1016.77	1016.75	1016.72	1016.69	1016.69	1016.69	1016.69	1016.76
	9	1016.67	1016.64	1016.61	1016.61	1016.58	1016.52	1016.47	1016.43	1016.37	1016.33	1016.30	1016.28	1016.48
	10	1016.26	1016.23	1016.18	1016.11	1016.06	1016.03	1015.97	1015.92	1015.88	1015.87	1015.84	1015.75	1016.00
	11	1015.68	1015.63	1015.55	1015.48	1015.43	1015.34	1015.28	1015.22	1015.13	1015.04	1014.98	1014.95	1015.31
	12	1014.86	1014.80	1014.77	1014.71	1014.66	1014.59	1014.53	1014.50	1014.44	1014.37	1014.32	1014.25	1014.56
	13	1014.15	1014.07	1014.02	1014.03	1014.05	1014.00	1014.00	1014.02	1014.00	1013.96	1013.93	1013.94	1014.01
	14	1013.94	1013.94	1013.92	1013.92	1013.93	1013.89	1013.86	1013.85	1013.83	1013.80	1013.78	1013.75	1013.86
	15	1013.73	1013.73	1013.70	1013.70	1013.69	1013.62	1013.56	1013.52	1013.50	1013.50	1013.53	1013.54	1013.61
	16	1013.51	1013.48	1013.45	1013.43	1013.42	1013.40	1013.42	1013.46	1013.47	1013.49	1013.53	1013.55	1013.46
	17	1013.57	1013.59	1013.58	1013.56	1013.55	1013.56	1013.57	1013.58	1013.58	1013.59	1013.61	1013.64	1013.58
	18	1013.69	1013.72	1013.72	1013.72	1013.73	1013.76	1013.78	1013.80	1013.81	1013.80	1013.80	1013.82	1013.76
	19	1013.83	1013.81	1013.78	1013.76	1013.77	1013.75	1013.71	1013.67	1013.63	1013.61	1013.59	1013.57	1013.70
	20	1013.55	1013.50	1013.46	1013.42	1013.38	1013.35	1013.34	1013.33	1013.34	1013.36	1013.39	1013.37	1013.40
	21	1013.31	1013.25	1013.23	1013.23	1013.24	1013.27	1013.29	1013.29	1013.25	1013.19	1013.15	1013.13	1013.23
	22	1013.09	1013.05	1013.03	1013.02	1013.00	1012.98	1012.96	1012.95	1012.93	1012.87	1012.80	1012.75	1012.95
	23	1012.70	1012.67	1012.65	1012.61	1012.56	1012.53	1012.53	1012.51	1012.48	1012.47	1012.45	1012.46	1012.55

S.V.I.R.CO. Observatory - Pressure corrected data

September 2018





S.V.I.R.CO. Observatory - Pressure in hectoPascal

September 2018

