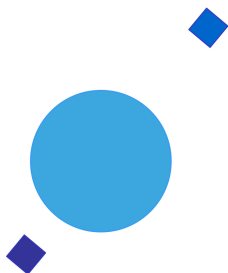


INAF



ISTITUTO NAZIONALE DI ASTROFISICA
NATIONAL INSTITUTE FOR ASTROPHYSICS

SVIRCO Prompt Report: April 2018

Francesco Re

INAF/IAPS-2018-05

April 2018

ISTITUTO DI ASTROFISICA E PLANETOLOGIA SPAZIALI

AREA DI RICERCA ROMA - TOR VERGATA

Via del Fosso del Cavaliere, 100 - 00133 Roma (ITALIA)

SVIRCO Prompt Report: April 2018

Francesco Re

*IAPS - INAF, Area di Ricerca Roma - Tor Vergata
Via del Fosso del Cavaliere, 100 - 00133 Roma, Italy,*

Abstract

The pressure corrected intensity of the nucleonic component, produced by primary cosmic rays and recorded in April 2018 by the Neutron Monitor of SVIRCO-Rome (present geographic position: 41.86° N - 12.47° E; altitude about s.l.), is reported in prompt form together with the barometric pressure data.

SVIRCO OBSERVATORY

During the 1st International Geophysics Year (1957) an international network of “ground-based detectors” for continuous cosmic ray measurements was world-wide established.

The cosmic ray station of Rome joined this network with the purpose to study the time variations of primary cosmic rays (**Studio Variazioni Intensità Raggi Cosmici: S.V.I.R.CO**) and their modulation in the heliosphere.

From July 1957 to April 1997, the SVIRCO Station (now Observatory) performed uninterrupted measurements at the Physics Department “G. Marconi” of “La Sapienza” University of Rome (41.90° N, 12.52° E, altitude about 60 m a.s.l.)

In May 1997 the neutron monitor was moved to the Physics Department “E. Amaldi” of “Roma Tre” University. Since then it has been continuously running at the new location (41.86° N, 12.47° E, altitude about 0 m a.s.l.).

The SVIRCO Observatory (INAF/IAPS-UNIRomaTre collaboration) is housed in a reserved building provided with a double air-conditioning system. The inner temperature is permanently restrained in a range of 23°-26° C, meanwhile the relative humidity is kept below 57%. Either the environmental parameters are continuously checked and recorded by digital sensors.

On January 1, 2005 three counters were added to the detector. This upgrade, from 17 to 20 NM-64, made the SVIRCO neutron monitor still consist of 5 sections but modified its geometry. Actually the new arrangement has been composed of three 3-counter, one 5-counter and one 6-counter units. The enhancement improved not only the overall counting rate of 15.6 % (January 2005) but, as a result, also the statistical quality of the recorded data.

On July 3, 2017 six counters experienced failure and were removed from the detector until 24 July. On 25 July 2017 a number of 2 counters was added to the detector up to a total of 16 counters. The new arrangement has been composed of three 3-counter, one 5-counter and one 2-counter units. The overall counting rate has decreased of about 20% (July 2017) with a lower statistical quality of the recorded data.

Each of the 16 BF₃ proportional counters (BP-28 type) is equipped with a smart amplifier/discriminator circuit complete with a spectrum stabilizer. This new electronic unit, developed in our laboratory, holds firmly the pulse height spectrum of the amplifier output (within a range of more than 150 volts around the operating voltage), providing the counter with a great immunity against high voltage variations.

Anyway, systematic and exhaustive tests of the counters are regularly performed. The output pulses of the amplifiers, discriminated by the threshold gates, are collected and stored into a multi-channel analyzer. The analysis of the height distribution (spectrum) of the amplifier pulses coinciding with the discriminator ones, is essential to verify the long term efficiency of each counter together with the amplifier gain and the discriminator threshold level.

As well as the amplifier/discriminator circuits, a large part of the electronic instrumentation operating in the Observatory was designed and realized in our laboratory together with the software for data acquisition and pre-elaboration.

In order to improve the reliability of the recorded data and to prevent measurement breakdowns, two independent systems perform contemporary the data acquisition. Each system is remotely controlled by a dedicated computer and is timed by a high stability quartz clock and/or a GPS receiver. One equipment runs according to a timing of 1 minute and fulfils the acquisition of the 16 counters separately. The other one records the individual 5-minute counting rate of each detector section in addition to the rates of the overall multiplicity, sorted into separated counting channels (from 1 to greater than 8).

A special care is devoted to the atmospheric pressure measurements; thus they are carried out by means of not less than three barometers at the same time. These instruments (achieving a resolution up to 0.01 hPa), are constantly checked out each other for the best measuring accuracy and reliability. Furthermore, the devices in use are equipped with different types of transducer such as vibrating cylinder, force balance and quartz, therefore, throughout their different behaviours, it is possible to point out the occurrence of any long-term drift and eventually to re-calibrate the instruments themselves.

DATA PRESENTATION

In a preliminary step, the intensity data, of the secondary nucleonic component of cosmic rays, detected at SVIRCO Observatory, were corrected for pressure variations at a reference level of 1009.25 hPa with an attenuation coefficient of 0.70% / hPa.

The five-minutes counting rates, of the examined month, are reported in tabular form together with the hourly normalized data, which provide a continuous data set for long-term analysis.

The normalization was evaluated as percentage of the counting rate average of January-February 1997, when the Monitor operated at the previous location of "La Sapienza" University. The reference counting rate level (100%), computed for such period, is equal to 554946 counts/hour.

The atmospheric pressure data (in hectoPascal) are also collected in a monthly table which presents the five-minutes averages and the hourly ones.

The hourly averages of the normalized intensity and pressure, plotted in monthly graphs, are reported too.

CONDITIONS FOR SVIRCO DATA USE

You are welcome to use neutron monitor data of SVIRCO, IAPS/INAF-UNIRomaTre collaboration, under the following conditions:

-You agree to acknowledge our financial supports in any published use of the data.

Example: "SVIRCO NM is supported by the INAF - UNIRomaTre collaboration"

-You are kindly requested to send a copy of any published work derived from our data to:

Dr. Monica Laurenza
Head of SVIRCO Observatory & TPL
Istituto di Astrofisica e Planetologia Spaziali - Area di Ricerca Tor Vergata
Via del Fosso del Cavaliere, 100 00133 Roma - Italy,

monica.laurenza@iaps.inaf.it



S.V.I.R.CO. Observatory

Rome

Italy



INAF/UNIRomaTre		S.V.I.R.CO. Observatory - Pressure Corrected Data – April 2018											16 NM-64	
day	hh	00_05	05_10	10_15	15_20	20_25	25_30	30_35	35_40	40_45	45_50	50_55	55_60	h-norm
1	0	38260	37688	37935	37416	37996	38431	37957	38289	38639	38159	38333	37751	100.506
	1	37796	38425	37793	38334	38304	38060	38065	38643	37829	37737	38051	37833	100.512
	2	37892	37761	37597	38710	38205	37799	37644	37843	38227	37813	37938	38347	100.271
	3	38277	37941	38408	37965	37856	38568	38227	38467	38104	37199	38359	38101	100.644
	4	37996	38160	38314	38036	37511	37990	38272	38917	38285	38205	38131	38185	100.760
	5	38401	38143	38423	37648	38275	37634	38024	38447	38706	38068	38217	38819	100.937
	6	38371	38784	38203	37848	37749	38191	38447	38012	37903	38183	37788	38109	100.671
	7	37750	38195	38199	38385	38284	38552	38016	38055	38388	38321	37975	37888	100.762
	8	37869	37842	38670	38118	38313	38444	38070	38074	38037	38044	38334	37930	100.704
	9	37494	37793	38550	38466	38473	38158	38203	37675	38309	37904	38316	38771	100.784
	10	37931	38292	38251	38391	38502	38156	38418	38088	38028	38099	38600	38222	100.975
	11	38137	37931	37872	38129	38079	38311	37402	38247	38163	38165	38345	38463	100.594
	12	38057	38229	37817	38554	38265	37949	37743	38402	38117	37693	38871	37844	100.659
	13	38166	37975	38289	38423	38093	37681	38228	38229	37602	38657	38144	38229	100.698
	14	37835	38428	38490	38249	37680	37837	37987	37888	37748	38143	38208	38597	100.560
	15	37655	38319	38522	38031	38129	38390	38582	38398	37655	38307	38387	38078	100.859
	16	38061	37951	38172	37999	37905	38166	38287	38347	38383	37651	38494	38465	100.734
	17	38224	38034	38191	38249	38181	37606	37804	38429	38104	38042	37847	38257	100.533
	18	37647	37967	38597	37898	38416	38430	37541	37657	38363	37686	38215	37904	100.391
	19	37867	38098	37419	38376	38336	37891	37463	37869	37670	37692	37834	37846	99.960
	20	37430	37442	38464	38361	37597	38056	37950	38137	38032	38188	37750	38366	100.270
	21	38624	38217	38161	38513	37867	37959	37907	38291	38016	38126	38297	38075	100.772
	22	38063	37921	37929	37564	38312	37524	38071	38333	37938	38304	37768	38164	100.296
	23	38932	38040	37510	37752	38028	38106	37584	38702	37930	37380	37697	38638	100.386
2	0	37567	38040	38178	38081	38078	37892	37436	37883	38345	38424	38164	37882	100.312
	1	37774	38372	38317	37830	37998	38307	37802	38115	38086	38946	37949	37645	100.571
	2	37955	38085	38159	38567	38284	38110	38707	38835	38315	37970	38529	38205	101.139
	3	38192	37783	38288	38017	37926	38557	38235	37996	38685	37592	37817	38023	100.564
	4	38032	38493	37751	38467	38342	37917	37744	38320	38058	38589	38035	37989	100.702
	5	38296	38472	38014	38839	38248	38508	37992	38450	38594	37829	37750	38248	101.033
	6	38594	38112	38173	38227	38489	38109	37995	38376	37497	38671	37694	37889	100.722
	7	37845	38034	38236	38455	38047	37959	37720	38424	38211	38040	38180	38615	100.708
	8	37774	37441	37934	38535	37111	38634	38496	38161	37696	38150	37761	38251	100.308
	9	38243	38189	37980	38226	38202	38219	39067	38364	37934	38237	38082	38668	101.070
	10	37815	38299	38629	38070	38280	38895	38547	38452	38107	38371	38261	38221	101.188
	11	38484	38427	38270	38339	38425	37938	38166	38778	38111	38188	38497	38457	101.218
	12	38371	38194	38377	38921	38361	37987	38218	38094	38338	38114	38281	38052	101.048
	13	38101	38348	38419	38487	38354	38039	38899	38016	38166	38575	38130	37891	101.073
	14	37979	38494	38614	38316	37586	38479	37538	38023	38307	38578	38213	38754	100.954
	15	37762	37573	38220	37819	38020	38407	38090	38499	38169	38247	38181	38385	100.622
	16	37608	37828	38156	38816	38208	37810	38094	38244	38668	37864	38889	38464	100.903
	17	38009	37740	38303	38682	38723	38258	37742	38271	38197	37963	37745	37919	100.662
	18	38416	37780	38496	37696	37895	38392	38146	38268	37850	38178	38189	38277	100.668
	19	37969	37658	37998	37772	37832	38411	37861	37625	38213	38028	38214	38305	100.295
	20	37910	38301	37935	38462	38206	38413	38133	37899	38222	38338	38488	38760	100.995
	21	38126	37935	38327	37899	38139	38106	38223	38342	38167	38645	38091	38337	100.835
	22	37881	38217	38087	38263	38956	38699	38195	38114	37975	38012	37646	38504	100.881
	23	38283	38089	38031	37827	38677	37935	38400	37915	38486	37972	38393	38159	100.797

		INAF/UNIRomaTre S.V.I.R.CO. Observatory - Pressure Corrected Data – April 2018											16 NM-64	
day	hh	00_05	05_10	10_15	15_20	20_25	25_30	30_35	35_40	40_45	45_50	50_55	55_60	h-norm
3	0	37986	38385	38507	38329	37902	38391	38563	37793	37985	38356	38018	38070	100.817
	1	38093	38262	38371	38375	38032	38646	38175	38591	38245	38413	37890	38504	101.111
	2	37914	38323	38145	38246	38604	38223	38614	38299	38230	37838	38419	38341	101.023
	3	38297	38155	38157	38598	38386	38803	38363	38371	37972	38447	37885	38020	101.080
	4	38528	38392	38061	38271	38001	38544	38384	38444	38143	38629	38245	38342	101.197
	5	37884	38757	38330	38007	37954	39028	38585	38507	38023	37985	38656	38211	101.184
	6	38058	37987	37777	37810	38094	38124	38256	38738	38248	38369	38193	38810	100.862
	7	38430	38244	38465	38269	38313	38035	37886	37935	37879	38142	38236	38307	100.791
	8	38202	38143	38394	37939	38280	38259	38072	37823	38254	38400	37689	38217	100.688
	9	37605	38337	38294	37981	37940	38153	37652	37787	38443	37875	38957	38820	100.726
	10	37926	38474	38073	38696	37911	38236	38734	38301	38186	38207	38191	37427	100.839
	11	38240	37938	38182	38360	38607	37975	38805	38042	37979	38119	37982	38020	100.815
	12	38720	38107	38326	37978	39017	37741	38398	38116	38342	37869	39086	37832	101.097
	13	38139	38030	38221	38011	38479	37881	38250	38989	38109	38173	38379	38173	100.944
	14	37915	38080	37494	38346	37994	38136	38414	37592	38493	37828	39088	38405	100.713
	15	38078	37978	38297	37690	37975	37997	38358	38193	38648	38170	38322	38284	100.758
	16	38252	38050	37637	38252	38135	38446	37960	38214	37847	37776	37832	38257	100.465
	17	38248	38067	37963	38126	38221	38251	38553	38632	38973	38095	38448	38222	101.156
	18	37852	37589	37544	38641	38199	38215	37921	38035	38265	37896	37992	38235	100.404
	19	37719	38100	37839	38314	38351	38090	38287	37789	38286	38552	38524	37845	100.693
	20	38088	38062	37991	38274	38316	38385	38189	38390	38110	38587	38317	38282	100.978
	21	38501	38466	38057	38458	37983	38104	38505	38120	38075	38146	38797	37903	101.005
	22	38075	38361	37736	38366	37712	37812	37930	38163	38204	38539	38369	37849	100.566
	23	38072	38326	38364	38125	38379	38434	38204	38729	38552	38459	38261	38136	101.209
4	0	38510	37903	38160	38630	38507	37849	38522	38211	38377	37812	37629	38242	100.832
	1	38341	38005	38323	38127	38183	38582	38234	38842	38641	38137	38368	38181	101.192
	2	37907	38618	37822	38513	38557	37839	38768	38039	38313	38124	38344	38131	100.974
	3	38173	38022	38073	38138	38439	38168	37885	37956	38024	38433	37599	38315	100.590
	4	38351	38074	38507	37980	38581	38400	37666	38107	38406	37900	37993	38237	100.804
	5	37855	38672	38547	37727	37848	37641	37982	38503	38253	38282	38091	38476	100.733
	6	38301	38833	37857	38151	38213	38345	37500	38397	38181	38451	38851	37478	100.883
	7	38257	38207	38231	38163	38940	37980	37684	38085	38044	38093	38024	38265	100.754
	8	38367	38696	37992	38065	38004	37861	37638	38552	38127	37579	38282	38633	100.715
	9	37540	38344	38328	37509	38380	37927	37892	37668	38156	38310	38109	37908	100.336
	10	37821	38438	37806	37863	37931	38212	37581	38048	38158	38224	38296	37805	100.361
	11	37910	38493	37670	38110	38310	38293	38446	38134	37927	38537	38292	38136	100.817
	12	37408	38257	38058	37555	38461	38100	38377	38266	38330	37723	37976	38637	100.573
	13	38625	38388	37522	38335	38814	38497	38351	37768	38078	38700	38352	38346	101.151
	14	38230	38030	38103	38760	38848	38714	38104	38583	38152	37804	37851	37955	101.009
	15	38274	38282	38156	37970	38223	38438	37840	38220	37692	38281	37808	38135	100.610
	16	37976	38446	37930	38371	38198	38102	38644	38061	37790	38096	37717	37958	100.604
	17	37851	37927	38254	38186	38366	38001	38115	38364	37836	38308	38226	38408	100.725
	18	37420	37714	38036	37895	38032	38302	38284	38323	37999	38218	37847	38268	100.394
	19	37790	38167	37864	38440	37886	38230	37713	37985	38392	38725	38315	38090	100.671
	20	38264	37768	38086	37825	38515	38052	37690	38277	38600	37950	37290	38859	100.579
	21	38202	37792	38337	38197	37744	38465	37311	37895	37925	38147	38261	38408	100.470
	22	38103	38548	38104	37871	38294	38232	38271	37695	38119	38227	38246	37905	100.675
	23	38320	38212	38314	38438	38640	38396	38531	38086	38144	38720	38536	38570	101.400

INAF/UNIRomaTre		S.V.I.R.CO. Observatory - Pressure Corrected Data – April 2018											16 NM-64	
day	hh	00_05	05_10	10_15	15_20	20_25	25_30	30_35	35_40	40_45	45_50	50_55	55_60	h-norm
5	0	38557	38136	38322	38570	38161	38258	38034	37768	38838	37611	38094	37870	100.799
	1	38843	38517	38604	37333	39170	38078	38132	38671	38308	38700	38151	38115	101.337
	2	37662	38428	38497	38167	37579	37901	38115	38093	38167	38713	37643	38155	100.566
	3	37821	38531	37624	37677	38804	38175	38125	38101	38474	38502	38137	37910	100.734
	4	38425	38314	38345	38043	38327	38313	38172	38350	38269	38335	38572	37974	101.078
	5	37817	38048	38167	37762	38037	38970	38370	38758	39244	38030	38778	38204	101.240
	6	38183	37538	38317	37838	38332	37761	38520	38330	37950	38679	38573	38329	100.837
	7	38330	37634	38464	38054	38280	37734	38373	38602	38072	37663	38500	38195	100.738
	8	37882	38204	38123	37839	38103	37489	38476	37897	38187	38094	38368	38525	100.581
	9	38043	38315	38394	38465	37986	37964	38452	38351	37603	38559	38085	37870	100.779
	10	37490	38312	38565	38501	38792	37912	37609	38104	38722	38173	38139	37712	100.767
	11	37872	37695	38628	38210	38345	38196	38062	37833	38418	37948	38858	38446	100.873
	12	38414	39091	38335	38081	38704	38312	38238	38603	38354	38270	38453	38719	101.546
	13	38004	38079	37886	38307	38379	37884	38363	38642	38063	38524	38963	38670	101.148
	14	38055	38059	37978	38118	37866	38560	38541	37821	38497	38459	38431	38132	100.874
	15	37697	37821	38105	38406	38137	38693	38456	38214	37971	38296	38507	38180	100.866
	16	37481	38059	38407	38325	38724	38459	38464	38165	38560	38146	38391	38324	101.091
	17	38499	37661	38333	37691	38069	39211	38348	38375	38213	38095	38076	37980	100.881
	18	37816	37872	38162	37578	38185	38246	38307	37940	38181	38094	37684	38167	100.371
	19	37874	38133	38014	37728	37731	38359	38023	38577	37922	38300	37442	38391	100.428
	20	37490	38517	38420	38222	37292	38439	37845	37989	37826	37870	38382	38547	100.504
	21	38374	38227	37818	38422	38029	38151	37884	37922	38267	37799	37655	37590	100.351
	22	38110	38092	37909	38369	38237	39034	38469	38446	38768	38356	38354	38563	101.356
	23	38092	38803	38079	38076	38063	38654	38030	38854	37939	38200	38527	38648	101.193
6	0	38314	37721	38672	38052	38706	38653	38695	38218	37781	38258	38143	38324	101.099
	1	38528	37947	37771	38436	37966	37942	38333	38176	38530	38486	38559	38286	100.971
	2	38488	38071	38203	38090	38328	38352	38029	38213	38123	38948	38254	38692	101.154
	3	38129	38530	37808	38734	38409	37932	38225	38989	38535	38039	38186	38154	101.128
	4	38624	38299	38440	38608	38350	38532	38037	38343	38109	38633	38472	38109	101.322
	5	37887	38550	38339	38117	38050	37886	37445	38499	38120	38119	37872	38163	100.551
	6	38290	38741	38230	38557	38072	38548	38353	38146	37812	38448	38426	38057	101.130
	7	38384	37989	38107	38603	38135	38788	38239	38279	38458	37885	38481	38482	101.163
	8	38356	38464	37967	38492	38323	38069	38179	37866	38228	38402	38117	38443	100.959
	9	37859	38147	38090	38940	38390	38042	38221	38264	38589	38423	38293	38613	101.172
	10	38723	38520	39061	38788	38293	38533	38305	38086	38825	38252	38940	38438	101.808
	11	38549	38256	38083	38558	38091	38780	37996	38079	38521	38008	37993	38731	101.122
	12	38207	38321	38393	37886	38421	38497	38263	38191	38314	38145	38276	37730	100.902
	13	38133	38725	38406	38396	38029	38441	38411	38033	38632	38237	37484	38384	101.048
	14	38356	38162	37989	37886	37974	38026	38444	38001	38183	37981	37858	37756	100.455
	15	38257	38274	38458	37492	37881	38740	38132	38237	38030	37959	37658	38076	100.582
	16	37973	38394	37946	38470	38106	38504	37895	38094	38732	37913	38390	37932	100.836
	17	38426	38345	37737	38246	37955	38181	38322	38175	37973	38376	37846	38002	100.669
	18	37634	38032	38222	37545	37985	38640	38309	37792	38187	37551	38106	37757	100.268
	19	38124	37781	38617	37623	37917	38308	38204	38419	38093	38390	38710	38058	100.814
	20	37796	37745	38195	37856	38283	38291	37980	38050	38301	38635	37999	38277	100.630
	21	38186	38316	37703	38059	37974	38599	37886	38743	38655	38148	37808	38572	100.903
	22	38514	38366	38141	38473	37893	38078	38503	38767	38339	38501	38424	37728	101.140
	23	38019	38040	38278	38471	37125	38156	37954	37814	38617	38396	37829	38105	100.497

		INAF/UNIRomaTre S.V.I.R.CO. Observatory - Pressure Corrected Data – April 2018												16 NM-64
day	hh	00_05	05_10	10_15	15_20	20_25	25_30	30_35	35_40	40_45	45_50	50_55	55_60	h-norm
7	0	38270	38191	38358	38649	38579	38033	38094	38187	38382	38408	38569	37741	101.084
	1	38085	37969	38477	38272	38229	38406	38152	37980	38581	38147	38019	38310	100.898
	2	38786	37991	37952	38515	38103	38352	38463	38069	38015	38675	38579	38600	101.222
	3	37903	38148	38997	37889	38902	38887	38539	38297	38163	38421	38554	38469	101.457
	4	37654	38436	38185	38427	38486	38636	38001	38548	38400	38404	38004	38220	101.068
	5	38298	38488	38498	38258	38290	37950	38688	38103	38490	38489	37955	37984	101.088
	6	38424	38131	38433	38249	38248	38132	38821	37979	38170	38767	38221	38183	101.146
	7	38375	37780	38115	38101	38940	38483	37865	38386	38204	38726	38245	38888	101.224
	8	38703	38545	38118	38138	37976	38273	38366	38318	38261	38364	38402	38176	101.121
	9	38400	37846	38515	38576	38751	38021	38499	38229	38373	38528	38413	38552	101.355
	10	39106	38194	37907	38289	38177	38264	38487	38145	39029	38285	38807	37810	101.310
	11	37993	38012	38581	38582	38246	38565	38668	38219	38455	38674	38331	38471	101.375
	12	38464	38752	38351	38214	37716	38130	38286	38124	38660	38391	38216	38663	101.193
	13	38146	38147	38703	38540	38685	38612	38537	38214	38542	38478	38059	38375	101.428
	14	38572	38510	38567	38686	38335	38586	38704	38601	38184	38458	39104	38650	101.851
	15	38313	38229	38332	37874	37854	38557	38465	37532	37893	38600	38111	38144	100.739
	16	38834	38560	38482	38428	37875	38223	38686	38162	38338	38192	38207	38631	101.336
	17	38167	37990	38206	37772	38374	38221	38241	38629	37745	38092	38518	38222	100.799
	18	38359	37721	38445	38741	37660	38402	38469	38559	38498	38271	38030	38514	101.127
	19	37980	38349	38257	37515	38521	38317	38209	38511	38337	37908	38236	38150	100.824
	20	37961	37616	38276	38066	38383	38369	37874	38199	37723	38233	38452	37922	100.556
	21	38240	38148	38306	38500	38891	38364	38244	38522	38849	37810	38441	38346	101.345
	22	38571	38282	38321	37953	38610	38966	38252	37873	38451	38331	38296	38320	101.250
	23	38044	38687	38065	38416	38833	37825	37955	38352	38395	38649	38310	38257	101.153
8	0	38225	38532	38465	38693	38602	38577	38365	38171	38750	38561	38046	38893	101.614
	1	38461	38540	38748	38259	37913	38408	38586	38472	38835	38090	38688	39152	101.674
	2	38672	38242	38549	38642	38520	38594	39051	38733	38784	38170	39141	38755	102.048
	3	38300	38630	38863	38789	38160	38362	38540	38854	38396	38719	38074	38534	101.688
	4	38356	38211	38372	38237	38249	38384	38649	38776	38234	38466	38209	38220	101.280
	5	38760	38726	38637	38923	38348	37752	38193	38197	38158	38129	38460	38626	101.400
	6	38169	38174	38207	38431	38191	38299	38483	38072	38478	38368	38088	38663	101.118
	7	38181	38305	38752	38817	38469	38042	38718	38393	38917	37866	38621	38400	101.526
	8	38291	38006	38289	37878	38463	38109	38791	38624	38717	38379	38352	38344	101.254
	9	38059	38624	38346	38798	38417	38718	38005	39218	38427	38554	38656	39101	101.843
	10	38517	38690	38849	38351	38345	38295	39131	38764	38449	38393	38315	38435	101.757
	11	38760	38462	38503	38383	38713	38403	38318	37965	38296	38668	38561	38528	101.543
	12	38429	38755	38498	38391	38422	38555	38109	38039	38881	38028	39085	38716	101.620
	13	38662	38804	38548	38679	38666	39093	39110	38063	38356	38712	37840	39147	102.009
	14	38241	38581	38139	38658	38631	38308	38550	38147	38733	38781	38646	38596	101.643
	15	38876	38855	38171	38046	38374	38122	38272	38628	38336	38507	38266	38519	101.414
	16	38120	38472	38113	38855	38654	38510	38440	38525	38052	38087	38255	38635	101.358
	17	39031	38645	38403	37767	38661	38402	38255	38545	38414	38325	38865	39273	101.770
	18	38495	38512	38525	38813	38718	37731	38810	38410	38122	38475	38361	38250	101.469
	19	38326	38934	38423	38103	38020	38421	38597	38739	37959	38220	38519	38857	101.446
	20	38675	38463	38243	38079	38933	38096	38302	38738	37987	38643	38974	38031	101.456
	21	37905	38432	38347	38442	38459	38113	38995	38875	38835	38851	38727	38729	101.795
	22	38585	38961	38340	38926	38856	38148	38181	37930	38352	38913	38509	38530	101.690
	23	38737	38408	38207	38560	38422	38616	38812	38452	38257	38483	38879	38391	101.690

		S.V.I.R.CO. Observatory - Pressure Corrected Data – April 2018												16 NM-64
		INAF/UNIRomaTre												
day	hh	00_05	05_10	10_15	15_20	20_25	25_30	30_35	35_40	40_45	45_50	50_55	55_60	h-norm
9	0	38634	38440	39270	38312	38619	38808	38435	38330	38392	37952	38452	38598	101.695
	1	38959	38615	38399	38240	38861	38868	38516	38753	38666	38541	38590	38482	101.968
	2	38218	38094	38669	38474	38795	37665	38328	38564	38530	39168	37781	38578	101.390
	3	38596	38387	38330	38411	38392	38783	38267	37896	38393	38084	38462	38823	101.381
	4	38081	38353	38193	38966	38182	38785	38002	38646	37876	38443	38659	38658	101.386
	5	38432	38221	38575	39110	38560	38793	38222	38915	38104	38378	38965	38415	101.792
	6	38472	38463	38806	38940	38473	38403	38943	39188	38102	38519	39107	38426	102.045
	7	39232	38222	38792	38537	38744	38718	38756	38531	38556	38760	38897	38926	102.227
	8	38036	38917	38222	38839	38560	38674	38744	38566	38153	38439	38367	38332	101.607
	9	39094	38826	38698	38538	38430	38390	37712	39014	38345	38553	38699	38468	101.810
	10	38633	38116	38821	38024	39030	38441	38645	38638	38636	38276	38190	38618	101.655
	11	39353	38300	38412	38646	38556	38673	38428	38420	38108	38568	38328	38346	101.671
	12	38827	38307	38283	38486	39163	38274	38092	38256	38695	38175	37985	38300	101.386
	13	38370	38319	38639	38185	38593	38206	38027	37650	38187	38033	38609	38249	100.995
	14	38381	38088	38372	38451	38253	38520	38478	38387	38161	38013	39011	38428	101.319
	15	38377	37843	38134	38110	37999	38243	38155	38126	38497	38400	38135	38130	100.792
	16	38214	38202	37976	38224	38046	38047	38329	37773	38412	38486	38463	37561	100.701
	17	38316	38496	38209	37864	38410	39008	37831	38347	38198	38513	38666	38347	101.245
	18	38646	38090	38624	38733	38232	38345	38171	38009	38415	38554	38364	38232	101.292
	19	38299	38094	37978	38565	38412	38126	38347	37978	38398	37916	38183	37614	100.741
	20	38239	38285	38124	38900	38543	38139	37988	38709	38540	38878	38674	38092	101.445
	21	38417	38312	38054	38240	38612	38312	38595	38787	38570	38426	38388	38511	101.469
	22	38322	38070	38674	37740	38111	38650	39077	38116	38396	38209	38086	38350	101.156
	23	38681	37897	38682	38108	38545	38004	38854	38682	38055	38423	38044	38126	101.222
10	0	38812	38539	37941	38013	38037	38259	37964	38015	38838	38016	38840	38301	101.103
	1	38145	38476	38447	38388	38729	38572	38367	37996	37966	37777	38254	38157	101.040
	2	38079	37907	38503	38022	38286	37702	38088	37923	38270	38467	38429	38473	100.793
	3	38517	38361	38070	38216	37981	38516	38615	38611	38162	38170	38158	38167	101.100
	4	38394	37684	38584	38553	38030	38207	38770	38247	38369	38086	38616	38183	101.140
	5	38131	38317	38453	38639	38812	38231	39000	38525	38777	37920	38259	38388	101.520
	6	38582	38711	38679	38719	38462	38983	38516	38566	38135	38220	38695	38755	101.865
	7	38360	38536	38050	38462	38927	38546	38356	38351	38009	38455	38440	38666	101.456
	8	38620	38360	38658	38606	39202	38667	38402	39029	39266	38225	38321	37822	101.899
	9	38713	38121	38272	38271	38357	39058	38602	38515	38743	38136	38630	38611	101.647
	10	38677	38674	38366	38373	38671	38573	39285	38061	38090	38733	38875	38359	101.802
	11	38282	38745	38481	38822	38289	38944	38504	38611	38328	38649	38722	38697	101.876
	12	38475	38752	38131	38754	38512	38069	38826	38607	38755	38016	38641	38115	101.564
	13	38421	38922	38659	38273	38331	38129	38555	38609	38391	38890	38384	39048	101.775
	14	38670	38822	38471	38729	38850	38391	38648	38115	38616	39229	38606	38895	102.089
	15	37972	38246	38731	38488	38556	38424	38383	38255	38758	38513	38231	38625	101.460
	16	38883	38410	38633	38574	38707	38875	38307	38214	38537	38637	38673	38495	101.848
	17	37859	38188	38545	38060	38314	38190	38531	38814	38539	38016	38306	38173	101.098
	18	37946	38395	38497	38383	38401	38832	39099	38871	38461	38312	38818	38450	101.743
	19	38413	38797	38034	38002	37417	38982	38265	38219	37926	38342	38668	38118	101.021
	20	38698	38064	38294	37869	38234	38638	38034	38396	38180	38012	38784	38793	101.199
	21	38559	38525	38191	38409	38091	38117	38337	38357	38913	38240	38573	38366	101.349
	22	37990	37725	38522	38899	37623	38186	38223	38465	38411	38460	38693	37931	101.008
	23	37748	38706	38358	38045	37770	38003	38387	39003	38455	37971	38698	38786	101.185

		S.V.I.R.CO. Observatory - Pressure Corrected Data – April 2018											16 NM-64	
		INAF/UNIRomaTre												
day	hh	00_05	05_10	10_15	15_20	20_25	25_30	30_35	35_40	40_45	45_50	50_55	55_60	h-norm
11	0	38741	37833	39040	39058	38735	38517	38719	38612	39134	38382	38733	38180	102.005
	1	38240	38908	38411	39109	38231	38357	38692	38338	38289	38568	38331	38363	101.604
	2	37973	38486	39010	38357	38392	38222	38280	38358	38308	38526	37908	38014	101.164
	3	38032	38069	39171	38396	38767	38955	38534	38596	38521	38790	38126	38739	101.793
	4	38065	38418	38020	38932	38425	38607	38624	38165	38007	39062	38401	38770	101.529
	5	38230	38573	38662	38416	38848	38876	38041	37953	38558	38663	38341	38311	101.524
	6	38289	38520	38766	38661	38799	38683	38732	38600	38626	38490	38405	38759	101.933
	7	38712	38399	38819	39205	38959	38296	38772	38558	38615	38826	38655	38763	102.208
	8	39351	38168	38846	38318	38723	38861	38489	39296	38289	38559	38747	38483	102.109
	9	38167	38794	38699	38489	38311	39188	38611	37992	38321	38672	38927	38401	101.766
	10	38958	38872	38682	38569	38673	38496	38764	38558	38881	39082	38301	38677	102.193
	11	38673	38249	38617	38598	38008	38384	38065	37726	38726	37892	38141	39266	101.276
	12	38754	38402	38797	38297	38453	38337	38563	38341	38915	38021	38449	38842	101.678
	13	38397	38524	38213	38832	37894	38262	38955	38716	38618	38296	38659	38015	101.504
	14	39044	38011	38657	38193	38426	38444	39133	38421	38266	38214	38696	38444	101.629
	15	38505	38784	38425	38566	38495	38223	38950	38162	38325	38456	38937	38509	101.714
	16	38281	38115	38389	38316	38308	38654	38451	38564	38882	38494	37838	38588	101.394
	17	38730	38488	38188	38021	38420	38605	38637	38348	38258	38735	38435	38490	101.498
	18	38102	38450	38376	38504	38240	38241	38795	38330	38414	38344	37881	38717	101.286
	19	38553	38410	38161	38494	37653	38738	38064	38616	38434	38629	38581	38554	101.395
	20	38694	38610	37884	38717	38225	38359	38407	38326	38591	38278	39114	38045	101.475
	21	38351	38075	38257	38539	38474	38586	38185	38164	38540	38328	38098	38414	101.202
	22	38378	38360	38572	38778	37957	38475	38766	38676	38964	38435	38034	38481	101.613
	23	38760	38248	38587	38558	38442	38288	38329	38244	38277	38223	37953	38658	101.324
12	0	38098	38204	38731	38742	39231	38336	38847	38649	38610	38063	38253	38172	101.621
	1	38639	38280	38820	38707	38134	38877	38632	38513	38735	38762	38505	38563	101.896
	2	38661	39155	38275	38635	38584	38043	38915	38483	38622	38624	38042	38194	101.692
	3	37994	38682	38482	39063	38713	38696	38475	38243	38422	38793	38819	38289	101.788
	4	38895	38317	38937	38658	37971	38642	38379	38679	37904	38617	38801	38538	101.715
	5	38855	38641	38700	38497	38596	38778	38643	38911	38327	37901	38345	38359	101.762
	6	37962	38413	37861	38649	38673	39380	38752	38254	38641	38338	38389	38678	101.638
	7	38295	39118	38046	38541	38375	37718	38789	38102	38227	38507	38827	39040	101.549
	8	38489	38807	38873	38578	38973	38442	38042	38829	38490	38448	38601	38801	101.942
	9	38256	38498	38556	38648	38031	38434	38578	38423	38278	37828	38194	38517	101.253
	10	38541	38722	38137	38451	38485	38283	38342	38021	39073	38442	38921	39221	101.780
	11	38229	38253	38559	39350	38295	38141	38433	38852	38672	38827	39058	38658	101.932
	12	38793	39029	38758	38435	38561	38250	38853	38289	38327	38315	38446	38346	101.730
	13	38906	38392	38525	38441	38636	38380	38779	38604	38296	38257	38262	38653	101.669
	14	37935	38462	38456	38476	38798	38005	38143	39204	39126	38132	38560	38690	101.638
	15	38500	38406	38966	38813	38871	38933	38295	38270	38187	37787	38289	38589	101.620
	16	38296	38233	38387	38349	39149	38632	38476	38587	38123	38073	38115	38552	101.414
	17	39025	38504	38928	38070	39002	38422	38503	38820	38210	38215	38056	38153	101.621
	18	38829	38467	38689	38564	38425	38673	38163	38284	38683	38407	38071	38413	101.567
	19	38460	38543	38160	38612	38172	38013	38514	38633	38755	38254	38052	38551	101.359
	20	38454	37923	38447	38275	38456	38832	38353	38852	38617	38602	38770	38362	101.628
	21	38830	38727	39012	38811	39074	38304	38225	38432	39221	38299	38123	38495	101.982
	22	38976	38143	38316	38412	38766	38058	38568	38274	38816	38626	38429	38476	101.609
	23	38066	38193	39130	38646	38684	38273	38648	38481	38412	38237	39168	38743	101.790

INAF/UNIRomaTre		S.V.I.R.CO. Observatory - Pressure Corrected Data – April 2018											16 NM-64	
day	hh	00_05	05_10	10_15	15_20	20_25	25_30	30_35	35_40	40_45	45_50	50_55	55_60	h-norm
13	0	38330	38867	38623	38200	38119	38523	38554	38497	38772	38323	38905	38593	101.707
	1	38451	38692	38685	38516	38719	38774	38441	39408	38504	38714	39127	38587	102.216
	2	38771	38350	39179	38741	38499	38506	38024	38087	39120	38799	38610	38164	101.827
	3	39083	38672	38424	39128	38388	38690	37992	38698	38537	38903	38724	38227	101.963
	4	38654	38176	38573	38296	38750	38155	39156	38513	37723	38254	38535	38634	101.512
	5	38578	38518	39170	38630	38261	39017	38524	38673	39047	38898	38198	39065	102.207
	6	38771	38735	38545	38334	38718	38749	38612	38471	38032	38702	38648	38583	101.838
	7	38542	38489	38846	38220	38527	38527	38681	38277	38741	38091	38443	38157	101.540
	8	38635	38452	38822	38373	39027	38154	38250	38334	38477	38456	38673	38599	101.695
	9	38866	38423	38856	38948	38238	38647	38652	38139	38225	38450	38441	38401	101.703
	10	38526	38048	38205	38410	38930	37960	38634	38572	38281	38617	38639	38449	101.480
	11	38445	38388	38466	38327	38339	38735	38312	38043	38194	38839	38704	38722	101.533
	12	38431	38599	38936	38620	38417	38527	39076	38817	38902	38304	38417	38765	102.038
	13	38120	38472	38412	38883	38420	38595	38491	38493	38695	38754	38441	38407	101.680
	14	38454	38476	38497	38401	37960	39108	38678	38872	38565	38402	38906	38304	101.777
	15	38199	38536	37996	38339	38196	38480	38845	38723	38383	38544	38963	38751	101.629
	16	38263	38658	38308	37835	38404	38267	38577	38471	38899	39097	38358	38939	101.657
	17	38838	38138	38798	38340	38027	38845	38813	38406	38666	38580	38619	38323	101.726
	18	38998	38600	38165	38460	38993	37989	38529	38459	38696	38967	39221	38230	101.928
	19	38397	38578	38121	38522	39073	38155	37623	38705	38450	38410	38633	37829	101.309
	20	38462	39161	38215	38684	38951	38856	38844	38093	38899	38482	38506	38840	102.078
	21	38463	38680	38637	38802	38602	38278	38801	38454	38492	38583	38973	38595	101.939
	22	38760	37957	38420	38878	38471	38583	38915	38100	38492	38009	38195	38529	101.488
	23	38664	38783	38266	38506	38233	38946	38851	38952	38724	38206	38704	38671	101.972
14	0	37360	37950	38286	38595	38362	38477	38081	38628	38375	38229	38775	38298	101.065
	1	38215	38326	38303	38839	38700	38366	38936	38748	38380	38178	38059	38719	101.589
	2	38155	38142	38313	38734	38692	38661	38295	38929	38174	38784	38398	38026	101.487
	3	38694	38822	38255	38436	38576	38375	38334	38161	38404	38276	38323	38386	101.429
	4	39408	38094	38515	39018	38340	38573	38516	37896	38989	38486	38382	38598	101.819
	5	38617	38191	38273	38932	38380	38064	38658	37943	37831	38431	39257	38320	101.397
	6	38040	38546	38131	38624	38352	38414	38743	39040	38615	38520	38383	38466	101.612
	7	38550	38352	38602	38453	38598	38615	39121	38155	39309	38531	38830	38124	101.913
	8	38525	39159	38915	38623	38089	38219	38505	38287	38240	38670	38572	38659	101.742
	9	38306	38289	38211	38575	38671	38393	38106	37942	38910	38572	38959	38642	101.547
	10	37889	38797	38271	38102	37880	38819	38734	38984	38417	38442	39022	38519	101.614
	11	38681	38945	38328	37923	38644	38812	38506	38916	38565	37818	38700	38439	101.701
	12	38499	38252	38178	39257	38402	38758	38215	38747	38524	39120	38512	38746	101.906
	13	39253	38445	38688	38359	38755	38640	38388	37820	38781	38724	38378	38449	101.789
	14	38399	38404	38263	38062	38264	38605	38572	38431	38522	38464	38589	38641	101.468
	15	38863	38373	38155	38613	38561	38524	38217	38834	38558	38561	38917	39308	101.967
	16	38553	38698	38710	38449	38897	38844	38544	38285	38994	38589	38428	38810	102.037
	17	38108	38469	38051	38703	38450	38875	38573	38295	38544	38644	38311	38738	101.587
	18	38530	38759	38709	38305	38617	38691	39271	38380	38623	38233	38211	38936	101.919
	19	38667	38940	38817	38351	38712	39248	38742	38615	38242	38913	38400	39121	102.249
	20	38336	39024	38584	39269	38629	39029	38980	38740	38981	38684	38982	38095	102.373
	21	38902	38451	38982	38911	38788	38505	38612	38713	38573	39448	39239	38770	102.497
	22	38401	38668	39093	39183	38498	38733	38623	39247	39141	39299	38421	38831	102.551
	23	38770	39057	38596	39413	38616	39046	38773	38508	39255	38729	38861	39004	102.658

		INAF/UNIRomaTre S.V.I.R.CO. Observatory - Pressure Corrected Data – April 2018											16 NM-64	
day	hh	00_05	05_10	10_15	15_20	20_25	25_30	30_35	35_40	40_45	45_50	50_55	55_60	h-norm
15	0	38964	38820	38367	39024	38304	38302	38681	38237	38757	38591	38996	38892	102.054
	1	38329	38488	38636	38663	38569	38699	38734	39079	39086	38223	39133	38944	102.209
	2	39338	39044	38920	38808	38869	38632	39038	38368	38651	38744	38666	38685	102.467
	3	38274	38576	38804	38601	38386	38840	38214	38358	38586	38937	39005	38689	101.919
	4	38684	38785	38969	39039	39228	38445	38992	38730	38591	37799	38715	38265	102.133
	5	38963	39139	38485	38861	39481	38237	38881	38566	38180	38477	38501	39165	102.286
	6	38919	39061	38475	38635	38520	39126	38889	38730	38872	39021	38812	38566	102.438
	7	38655	38907	38425	39001	39038	38517	38135	38727	38819	38645	38594	38110	101.986
	8	39208	38802	38850	38989	38419	39286	38406	38736	38677	38154	39063	38345	102.286
	9	38678	38445	38946	39007	38642	38750	38505	38226	38640	38988	39330	38966	102.327
	10	38999	39051	38220	38840	38807	38901	39057	38418	39093	38032	39233	38990	102.441
	11	38791	38912	38249	38837	38895	38666	38534	38566	38709	39471	38417	38649	102.233
	12	38252	38733	38685	39202	38677	38692	39404	38731	38254	38524	39051	38759	102.293
	13	38580	38147	38781	38179	38436	38969	38853	38133	38623	38948	38760	38843	101.915
	14	38942	38949	38122	38580	38756	39259	39362	39049	38496	38361	38570	38672	102.326
	15	38443	38807	38995	38666	38768	38360	38636	38699	38553	38522	38542	38828	102.040
	16	38409	38564	38502	39023	38301	38705	38683	38583	38952	38921	38322	38554	101.974
	17	38687	39023	39180	38605	38849	38364	39669	38974	38562	38493	38577	38320	102.368
	18	37989	38767	38158	38390	38450	39040	38752	38771	39227	38618	38656	39074	102.056
	19	38565	38286	38775	38723	38340	37986	38620	38595	38677	38813	38450	38277	101.664
	20	38664	38743	38542	38189	38383	38673	39056	38936	38694	39120	38520	38760	102.141
	21	38682	39075	38883	38575	38660	38736	38165	38741	38773	38646	38909	38690	102.197
	22	39237	38909	39183	38748	38746	38232	38097	38365	38567	38776	39094	39022	102.295
	23	38949	38990	38438	39128	39003	39357	38735	38366	38762	39090	39006	39136	102.731
16	0	38535	38598	38595	38921	38739	38402	38683	38618	38439	38881	38461	38367	101.912
	1	39022	38133	38646	39018	38557	38354	38816	38351	38136	39289	38225	38537	101.879
	2	38829	38713	38265	38803	38462	38449	38263	38548	38798	38672	38593	38704	101.882
	3	38254	38647	38621	38345	38488	39119	38021	38207	38178	38804	39057	38332	101.656
	4	38553	38863	38429	38893	38726	38240	38317	38655	38369	38732	39131	38723	101.999
	5	39020	38388	38880	38804	38467	38979	38763	38733	38420	38229	38939	38470	102.101
	6	38886	38608	38994	38333	38836	38389	38843	38550	38700	38409	38876	38658	102.099
	7	38576	39251	38895	38828	38712	38517	38690	38886	38767	38809	39245	38323	102.410
	8	38355	38659	38230	38483	38566	38635	38826	38403	38488	39034	38488	38556	101.799
	9	38636	38701	38742	38748	38243	37803	38261	38583	38419	38531	38930	38502	101.662
	10	39080	38655	38471	38781	38951	37992	38559	39089	38424	39150	38885	38616	102.224
	11	38989	38604	38842	38409	38706	38484	38755	38464	38479	38922	38988	38466	102.104
	12	38634	38648	39067	38287	38593	38892	38728	38927	38070	38740	38658	38830	102.096
	13	38871	38691	38757	38569	38778	38548	38412	38718	38200	39024	38672	38490	102.020
	14	38317	38803	38641	38537	38641	38453	38826	39009	38422	38650	38140	38609	101.871
	15	38832	38620	38499	38761	38808	38776	38675	38490	39355	38476	38093	38606	102.078
	16	38947	38590	38739	38947	38547	39040	38148	38277	38461	37991	38166	38211	101.656
	17	38625	38451	38056	38299	38850	39276	38987	38070	39181	38635	38583	38080	101.880
	18	38329	38627	38581	37747	38500	38340	39017	38512	38532	38117	38704	38766	101.590
	19	38888	39097	38535	38359	38060	38626	38231	38251	38758	38514	38802	38474	101.771
	20	38643	38817	37881	38536	38074	38925	38758	38976	38371	37546	38396	38805	101.581
	21	38710	39174	38658	38213	38440	38850	38726	38894	38633	38785	38604	38993	102.229
	22	38776	38961	38589	38308	38303	38232	38693	39294	37891	38837	38845	39235	102.072
	23	38565	38796	38934	38796	38399	38693	38398	38200	38752	38510	39000	38731	102.030

INAF/UNIRomaTre		S.V.I.R.CO. Observatory - Pressure Corrected Data – April 2018											16 NM-64	
day	hh	00_05	05_10	10_15	15_20	20_25	25_30	30_35	35_40	40_45	45_50	50_55	55_60	h-norm
17	0	38892	38731	38488	38148	38281	39441	38348	38947	38498	38806	38472	39083	102.116
	1	38323	38840	38881	38410	38833	39070	38786	38303	38626	38534	38873	38498	102.075
	2	38465	38676	38554	38805	38650	38660	38656	38800	38558	39068	38789	38446	102.108
	3	38716	38385	38994	37859	38289	38422	38921	38373	38786	38746	38398	38617	101.752
	4	38210	38362	38945	39247	38933	38303	38606	38706	38756	38188	38806	38103	101.896
	5	38762	38750	38627	38197	38794	37815	38482	38937	38162	38117	38484	38680	101.598
	6	38286	38964	38648	38676	38428	38786	38825	39314	38423	38480	38287	38785	102.059
	7	38594	38769	38134	38672	38742	39144	38733	38692	39072	38608	38757	38025	102.067
	8	38896	38308	38817	38956	38565	38447	38891	38524	38885	38617	38070	37912	101.835
	9	38527	38569	38445	38749	37841	39257	38393	38514	38489	39269	38730	38307	101.880
	10	38291	37958	38429	38461	38447	38417	38714	38579	38329	38336	38283	38180	101.293
	11	38524	38280	38964	38618	38032	38514	39310	38863	38365	38829	38768	38297	101.940
	12	38762	38798	38891	38457	38358	38176	38455	38425	38735	38313	38999	38816	101.901
	13	38639	38685	38061	38607	38255	38901	38351	38443	38918	38720	38536	38916	101.866
	14	38215	38248	37917	38777	38024	38753	39387	38781	38037	38265	38582	38300	101.483
	15	38602	38530	38199	39058	38845	38728	38673	38571	38546	38397	38544	38225	101.842
	16	38537	38731	38393	38132	38989	38723	39159	38637	38803	39118	38496	39077	102.255
	17	38744	38061	38274	38858	38677	38433	38660	37932	38320	38703	38488	38496	101.562
	18	39092	38287	39078	38682	38845	39315	38664	38696	38563	38643	38741	38690	102.366
	19	38157	38436	38405	38696	38064	38600	38958	38763	39561	38212	38537	38771	101.894
	20	38789	38661	38299	38401	38717	38914	38700	39036	38466	38366	38549	38847	102.024
	21	38284	38388	38760	38473	38358	38713	38848	38644	38864	38654	39066	38235	101.923
	22	38700	39054	38286	38433	39318	38013	38452	38690	38262	38718	38594	38454	101.854
	23	38320	38592	38435	39090	38259	38798	38331	37973	38265	38207	38713	38482	101.522
18	0	38110	38647	39150	38511	37982	38240	38506	39167	38835	39061	38529	38461	101.904
	1	38805	38726	38088	38951	38194	39052	38844	38564	38269	38412	38855	38901	102.006
	2	38625	38643	38976	38685	38495	38609	38628	38198	38280	38311	38575	38800	101.821
	3	38179	38213	38321	38203	38732	39038	38108	38698	38485	38560	38741	38802	101.658
	4	38854	39033	38503	38048	38507	38710	38806	38657	37638	38681	38805	38175	101.732
	5	38987	38640	38772	38161	38787	38656	38697	38032	38294	38302	38381	38462	101.678
	6	39099	38767	38245	38707	38181	38341	38572	38870	38783	38766	38196	38714	101.913
	7	38471	38346	38649	37899	38134	38709	38348	38094	38617	38235	38339	38734	101.327
	8	39046	38919	38833	38790	38331	38237	38429	38452	38026	38778	38261	37863	101.633
	9	38512	38622	38806	38977	38819	38461	38579	38438	38212	38585	38825	38424	101.918
	10	38620	38497	38243	38308	38244	38132	38280	38438	38628	38771	38342	38460	101.412
	11	38439	38472	38389	38133	38529	38551	38335	38764	38674	38685	38750	37989	101.576
	12	38388	37852	38170	38853	38424	38550	38682	38524	39238	38661	38837	38536	101.798
	13	39368	38097	37669	37674	38305	38624	38728	38726	38580	38300	38720	38420	101.467
	14	38083	38178	38239	38152	38136	38129	38745	38710	38510	38472	38697	38832	101.394
	15	38538	37891	38658	39097	38397	38544	38393	38627	38969	38174	38303	38947	101.759
	16	38942	38915	38295	38603	38605	38888	38512	38737	37933	38451	38513	38343	101.802
	17	38569	38274	38879	39216	38930	38829	37984	38194	38561	38607	38861	38070	101.854
	18	38382	38724	39104	38919	38200	38288	38475	38431	39018	37989	38336	38559	101.734
	19	38385	38783	38451	38458	38244	38276	38297	38170	39099	38755	38152	38483	101.542
	20	38913	38729	38007	38316	38333	38511	38093	38637	38319	38801	38410	38070	101.451
	21	38567	38855	38983	38447	38696	38388	37969	38265	38508	38293	38890	37845	101.575
	22	38184	38369	38188	38257	38136	38512	38100	38386	38196	39020	38611	38248	101.246
	23	38597	38405	39034	38192	38839	38049	38130	38144	38476	38197	38643	38424	101.449

		INAF/UNIRomaTre S.V.I.R.CO. Observatory - Pressure Corrected Data – April 2018											16 NM-64	
day	hh	00_05	05_10	10_15	15_20	20_25	25_30	30_35	35_40	40_45	45_50	50_55	55_60	h-norm
19	0	38254	39361	38162	38322	38561	38663	38791	38871	38758	38586	38811	38442	101.983
	1	38724	38502	38773	38237	37926	38263	38847	38477	38530	39079	39086	38909	101.938
	2	38925	37775	38250	38327	38511	38744	38401	38458	38470	39214	38678	38065	101.600
	3	38092	38768	38066	37973	38263	38264	39111	38128	38200	38493	38545	38564	101.303
	4	38460	38180	38528	38471	38426	38374	38861	38510	38991	38522	38529	38939	101.814
	5	38710	38742	38975	38271	38451	38891	37974	38798	38841	38004	37968	38615	101.693
	6	38198	38817	38342	38547	38379	38871	38191	38378	38374	38107	38611	37856	101.348
	7	38218	38099	38434	38106	38839	38367	38068	38933	38640	38027	38395	38170	101.265
	8	38565	38856	38935	38073	38351	38884	38479	39740	38471	38583	38946	38626	102.192
	9	38363	38368	38214	37944	38624	38723	39246	38371	38672	38644	38878	38768	101.820
	10	37997	38538	38677	38556	38203	38575	38472	38760	38946	38010	38980	38526	101.693
	11	38618	38342	37761	38105	38903	38578	38722	39088	38850	38660	38373	38096	101.661
	12	38672	38416	38809	38552	38783	38190	38806	38214	37894	38072	38954	38674	101.647
	13	38625	38312	38292	38410	38350	38191	38468	38623	38709	38714	38113	38173	101.415
	14	37858	38353	38507	38424	39069	38760	38742	38187	38014	37915	38826	38161	101.380
	15	38117	38674	38464	38484	37970	38533	38871	38279	39026	38685	38824	38105	101.647
	16	38299	38889	38526	38818	38543	38656	38320	38488	38119	38338	38825	37838	101.565
	17	38497	38234	39327	38326	38763	38835	38914	38468	38612	38221	38430	38787	101.951
	18	38381	38468	38459	38822	38603	38090	37914	38269	37843	38585	38582	38109	101.228
	19	37951	38478	38504	38335	38398	38677	38484	38556	38812	38624	38607	38981	101.730
	20	38197	37977	38394	38513	38863	38766	38038	38630	38980	38677	38265	38380	101.570
	21	38829	37889	38304	38471	38098	38077	38915	38343	38371	38484	38636	38290	101.355
	22	38033	38653	38411	38404	38196	38198	38099	38615	38347	39264	38245	38300	101.368
	23	38259	38094	38401	38595	38154	38494	38019	38457	38159	38491	37969	38781	101.172
20	0	37854	38246	38731	38848	38372	38614	38654	38305	38724	38323	38217	38125	101.420
	1	38697	38363	38932	39051	38517	38740	39030	38411	38459	38129	38207	38193	101.800
	2	38986	38387	38991	37953	38667	38636	38034	38584	38275	38677	38731	38058	101.635
	3	38338	38546	38181	38277	38655	38256	38582	37884	38935	38384	38503	38174	101.358
	4	38143	38113	38766	38621	38562	38720	38459	38265	38663	38385	38805	39033	101.758
	5	38882	38535	38577	39236	38860	38323	39166	38548	38873	38729	38091	38556	102.163
	6	38954	38329	38406	39021	38827	38981	39536	38752	39229	38439	38702	38482	102.445
	7	38647	38120	38613	38581	38554	37936	38783	38457	38237	38580	38616	38706	101.603
	8	38540	38423	38800	39188	39021	38767	38694	38791	38839	37982	38076	39116	102.132
	9	39618	38666	39111	38594	39574	38720	38929	39731	39035	39259	39182	39188	103.314
	10	39020	38988	39250	39407	38460	38534	38425	39081	39007	38590	38663	38857	102.582
	11	38500	38436	38810	38427	38570	38744	38871	39326	38728	38314	38560	38720	102.082
	12	39231	38655	39195	37989	38672	38429	38255	38922	38844	38443	39085	38625	102.156
	13	38718	38487	38581	37652	38615	37987	38235	38541	37818	38740	38496	38713	101.329
	14	38335	38620	38370	38665	37987	38540	38642	38056	38249	38393	39163	38097	101.445
	15	38529	38127	38649	38546	38319	38091	38382	37820	38513	38441	38474	38243	101.230
	16	38218	37925	38400	38684	38669	37930	38710	38743	38252	38530	38778	38910	101.585
	17	38759	38688	38397	38446	38068	37852	38453	37770	38723	38450	38786	38189	101.328
	18	38708	38300	38828	38261	38881	38947	38450	38132	38440	38419	38583	38704	101.784
	19	38636	38674	38741	38459	38698	38563	39052	38619	38734	38778	38348	38080	101.944
	20	38907	38895	38277	38943	38627	38181	38758	38128	38402	38360	38550	38379	101.729
	21	38727	38944	38326	38124	38761	38472	38404	38582	38270	38445	38624	38494	101.677
	22	37761	37797	38473	38313	39056	38519	38341	38677	38365	37883	38433	38406	101.205
	23	38824	38683	37735	38610	38511	38229	38497	38603	38676	37860	38657	38420	101.487

INAF/UNIRomaTre		S.V.I.R.CO. Observatory - Pressure Corrected Data – April 2018											16 NM-64	
day	hh	00_05	05_10	10_15	15_20	20_25	25_30	30_35	35_40	40_45	45_50	50_55	55_60	h-norm
21	0	38696	38099	38283	38844	38021	37925	38865	37721	38545	38961	38730	38307	101.418
	1	38563	38508	38469	37995	38575	38252	38462	38513	38454	38227	38401	38384	101.377
	2	38337	38614	38178	38038	38322	38211	38644	38483	37975	38049	38285	38413	101.100
	3	38243	38479	38368	38113	38331	38531	38311	38307	38245	38355	38813	38459	101.322
	4	37284	38769	38953	38488	38395	38891	38306	38934	38177	38253	38007	38532	101.417
	5	37939	38275	38323	38057	38319	38162	38597	38364	38349	38501	38027	38460	101.062
	6	38367	38829	38548	38346	38560	38667	38404	38426	38120	38283	38811	38207	101.545
	7	38499	38120	38669	37769	38049	38186	38960	38618	37898	38569	38929	38283	101.321
	8	38757	38929	38155	38847	38550	38161	38426	38378	38793	38494	38303	38173	101.632
	9	38433	38935	38652	38800	38441	39067	38097	38457	38418	38381	38198	38243	101.667
	10	38292	39155	38977	38553	38427	38097	38336	38196	38530	38449	38307	38067	101.504
	11	38655	38861	38103	38255	37897	38457	38953	38643	38490	38233	37983	38073	101.333
	12	38912	38612	38430	38191	38490	38445	38876	38784	38267	38495	38904	38912	101.930
	13	38635	38500	37841	38516	38509	38447	37981	38475	38705	38894	38500	38477	101.526
	14	38717	38878	38130	38125	37911	38711	38433	38742	38217	38064	38797	38173	101.398
	15	38515	38640	38438	38304	38462	38696	38329	38851	38623	38334	38664	37870	101.579
	16	38577	38390	38803	38712	38701	38456	38233	39034	38843	38605	37593	38328	101.700
	17	37981	37348	38600	38651	38270	38350	38278	38084	38573	38513	38762	38035	101.077
	18	38572	37651	38698	37995	38258	38008	38552	38409	38410	38370	38700	38260	101.174
	19	39127	38665	38316	38695	38334	38234	38357	38661	38173	38211	38591	38414	101.591
	20	38000	38260	38274	38362	38796	38836	38007	38385	38936	38450	38267	38494	101.435
	21	38234	38758	38461	39033	37995	38236	37948	38304	38506	38262	38740	38813	101.484
	22	38308	38455	38368	37511	38165	38736	38995	38929	38353	38455	38163	38289	101.360
	23	38476	39087	37993	38267	37767	38591	38114	38339	38400	38832	38715	37993	101.326
22	0	37825	38166	38356	38733	38089	38384	38432	38174	38412	38336	38637	38943	101.307
	1	38199	37984	38423	38454	38032	38052	38121	38433	38904	38146	38278	38686	101.137
	2	37679	38307	39034	38142	38277	38680	38351	38023	38271	38303	38538	38118	101.139
	3	38631	38464	37524	38341	38707	38337	38363	38492	38082	38681	37925	38585	101.229
	4	38699	38344	37968	38202	38070	38168	38294	37919	39102	38041	38280	38050	101.010
	5	37531	38382	38158	38259	38260	38100	38052	38580	38361	38157	37849	37918	100.673
	6	38866	38258	38169	38350	38542	38125	38300	37696	38222	38329	37938	38414	101.026
	7	38187	38138	38242	38364	37785	38179	38137	37879	38544	38431	38004	38264	100.794
	8	38809	38514	38174	38163	38145	38582	38348	37984	38408	38465	38053	38722	101.281
	9	38402	38234	38189	38203	38276	38708	38198	38390	38308	37647	38645	38857	101.213
	10	37865	38764	38115	38327	38331	38817	38686	38682	37772	38597	38574	38319	101.387
	11	37531	37918	38237	38328	38155	38822	38106	38652	38170	38318	38767	38495	101.090
	12	38164	38262	38472	38356	38319	37709	37882	38126	38477	38495	38255	38123	100.901
	13	38681	38514	38119	38243	37845	38810	38752	38869	38378	38329	38342	38413	101.485
	14	38818	38465	38147	38552	37779	38008	37875	37930	37841	38462	37792	38284	100.749
	15	37876	38305	38309	37854	38481	38049	38806	38446	38229	38641	38230	38293	101.094
	16	38898	37843	38198	37889	38244	38405	38327	38649	38447	38305	38228	38114	101.101
	17	38110	38317	38988	37790	38190	37785	38184	38245	37956	37871	38427	38664	100.876
	18	38136	37515	38171	38496	37881	38606	38120	38198	37984	38831	37888	38707	100.877
	19	38816	37925	38814	38216	37825	37670	38680	37979	38508	38275	38498	37513	100.918
	20	38530	37919	38499	38132	38173	38537	38045	38041	38535	38028	38323	38321	100.998
	21	38228	37918	38132	38212	38060	37903	38215	37984	38040	38147	38861	38182	100.734
	22	38187	38027	38021	38012	38040	38529	38101	38593	38880	38245	38536	38487	101.124
	23	38129	38266	37709	38028	37964	38608	38096	38380	37726	37633	38348	38017	100.519

		S.V.I.R.CO. Observatory - Pressure Corrected Data – April 2018											16 NM-64	
		INAF/UNIRomaTre												
day	hh	00_05	05_10	10_15	15_20	20_25	25_30	30_35	35_40	40_45	45_50	50_55	55_60	h-norm
23	0	38263	37877	38177	38240	38177	37926	37703	38321	37936	37846	38149	38172	100.489
	1	38622	38581	38012	38056	38268	38493	38405	37857	37886	38043	38273	38153	100.903
	2	38298	38090	38306	38635	38473	38149	38851	37983	38585	38587	38130	38160	101.255
	3	38127	38281	38281	37898	38442	37900	38257	38636	38409	38028	38258	38414	100.965
	4	37960	37954	37802	38434	38325	38276	38383	38080	38281	38452	38188	38376	100.872
	5	38791	38174	37814	37997	38405	38264	38222	38707	38621	38597	38470	38926	101.417
	6	38335	37948	38336	38505	38195	38274	37883	38250	38641	38105	38359	38003	100.944
	7	38092	38396	38039	38500	38175	38028	38547	38308	38671	37729	38225	38331	100.989
	8	38504	37957	39145	38590	38061	38383	38082	38598	38657	38420	37912	38167	101.305
	9	37963	38241	38477	38259	38265	37969	38466	38509	38647	38155	37744	38335	100.987
	10	38404	38633	38507	38088	37812	38398	38092	38118	38297	38298	38323	38082	100.991
	11	38480	38163	38856	38238	38097	38184	38382	38167	38140	38184	37888	38533	101.048
	12	37948	38042	38520	37847	37966	38629	38635	37564	38466	37973	38158	37940	100.691
	13	37989	38700	39464	38097	38186	38150	38348	37766	38154	38503	38218	38440	101.203
	14	38217	37829	38350	38417	38066	38384	38556	38559	37973	38660	38193	38471	101.129
	15	38476	37922	38012	38305	37941	38350	38350	38385	38569	38290	38101	38530	101.031
	16	38360	38361	38808	38322	38453	38117	38285	38091	38072	38189	38592	38248	101.177
	17	38497	38495	37683	38522	38010	38029	38015	37852	38194	38481	38211	37741	100.701
	18	38334	38379	38322	37771	38401	37953	38535	37896	38121	37794	38388	38618	100.873
	19	37957	38607	37786	38206	37915	37895	38570	38532	38145	38134	38008	37947	100.695
	20	38176	38155	38263	38089	38410	38218	38301	38026	38406	38071	38013	38345	100.864
	21	38797	37873	37844	37803	38386	38347	38786	38750	37893	38868	38429	38310	101.219
	22	37894	38111	38302	38302	38225	38763	38579	38480	38568	38255	38515	38045	101.209
	23	38238	38331	38402	38213	37726	37925	38843	38435	38082	37948	38653	37874	100.908
24	0	37934	38448	38107	38285	37881	38391	38333	37779	38611	38271	38251	38260	100.880
	1	37925	38210	38530	38402	38131	38353	38250	37870	38131	37782	38209	38320	100.785
	2	38073	37849	38281	38609	38098	38233	38190	38727	38301	38869	38466	37948	101.122
	3	38748	38686	38540	37926	37750	38329	38247	38640	38438	38085	38120	38481	101.198
	4	38093	37679	38608	37619	37870	38365	38159	38317	38509	38037	38482	38011	100.705
	5	37991	38074	38682	37509	37613	38169	37987	38423	37776	38797	38816	38269	100.783
	6	38338	37848	38310	38788	38282	38010	38083	38668	37793	38630	38481	38540	101.150
	7	37840	38106	38254	37738	38028	38456	38131	38683	38511	37933	38404	38338	100.853
	8	38081	38463	38139	38317	37868	37959	38236	38553	38039	38071	38348	37776	100.727
	9	38117	38061	38397	38381	38329	38406	37991	37828	37713	38914	37724	38483	100.835
	10	38317	37937	38398	38369	38342	38646	38306	37568	37914	38052	38428	38322	100.892
	11	38070	38655	38377	38430	38143	38507	38265	38859	39002	38131	37898	38131	101.303
	12	38501	38349	38271	38063	38712	37834	38811	38332	38235	38289	38477	38343	101.248
	13	37752	38306	38038	38117	38046	38916	38277	38607	38238	37719	38389	37703	100.784
	14	37793	38238	38141	38358	37475	37890	38145	38459	38158	38041	37891	38145	100.481
	15	38290	38239	37638	37712	37869	38173	38624	37981	38450	38556	37816	38232	100.667
	16	38135	38671	37964	37800	38574	37614	37944	38017	38458	38418	38195	38339	100.789
	17	38295	37492	38061	38130	37906	38565	38178	38101	38834	37882	37836	38852	100.789
	18	38720	37296	37706	38263	39238	38395	37978	37960	38243	38628	38329	38620	101.063
	19	38590	37959	38248	38359	38332	37972	38322	37883	38027	37827	38561	38110	100.802
	20	38574	38451	38077	38353	37994	38262	38462	37998	37704	38447	38081	37728	100.789
	21	38779	38162	37946	38241	38841	38290	37832	38555	38045	38367	38267	38132	101.081
	22	37846	37935	37995	38008	38291	38583	38386	38062	37810	38049	38610	38364	100.746
	23	38499	38399	37515	37823	38344	38392	38641	38537	37953	38310	37919	38311	100.902

		S.V.I.R.CO. Observatory - Pressure Corrected Data – April 2018												16 NM-64
		INAF/UNIRomaTre												
day	hh	00_05	05_10	10_15	15_20	20_25	25_30	30_35	35_40	40_45	45_50	50_55	55_60	h-norm
25	0	38016	38404	38222	37094	38333	38413	37757	38008	38922	37781	38193	38207	100.614
	1	37986	38524	38597	38281	38316	38255	38361	37951	38934	38943	37805	38458	101.291
	2	38158	38476	37884	38407	38235	38345	38257	38590	38370	38253	37837	38449	101.037
	3	38474	38109	38726	38450	38449	38867	38654	38653	38156	38245	38361	38295	101.517
	4	38352	38795	38094	37428	38588	37843	38106	38141	38306	37693	38780	38245	100.841
	5	38356	38313	37820	38612	38280	38538	38459	38251	38109	38150	38768	37947	101.113
	6	38427	38243	38324	38712	38642	38862	37759	38070	37879	38008	38193	38533	101.123
	7	38582	38238	37871	38293	38024	38394	38090	38983	38758	37707	38110	38476	101.096
	8	38290	38978	38603	38090	38515	38205	38253	38382	38314	38411	38346	38699	101.439
	9	39255	38314	37916	38260	38594	38231	38417	37461	37959	38553	38661	37694	101.049
	10	38451	38898	38455	39035	38162	38484	38381	38261	38321	38161	38532	38528	101.567
	11	37715	38505	38141	37591	37989	37793	38521	37966	37944	38248	38460	38157	100.547
	12	37699	38119	38287	37683	38196	37978	38146	38787	38676	38671	38292	38536	100.996
	13	37952	38071	38284	38186	38039	38098	37641	38055	38520	38840	37909	38350	100.748
	14	38116	38214	37876	38069	38559	38243	38670	38078	37904	38091	38442	38843	101.003
	15	37955	38758	37645	38613	38004	38343	38318	38520	38327	38140	38705	37860	101.021
	16	38574	38267	37600	38029	38730	38336	38166	38149	38675	37793	37907	38127	100.837
	17	38649	38500	37972	38393	37738	38062	38084	38707	38061	38124	38342	37790	100.852
	18	38424	38699	38234	38507	38435	37790	38275	38655	38571	38172	37928	38284	101.194
	19	38134	37475	38664	38171	38385	37916	38461	38021	38130	38143	37810	38638	100.748
	20	38678	38373	38395	37741	38374	38660	38011	38684	37877	38686	38577	38222	101.261
	21	38026	38319	38373	38193	38224	38350	38709	38252	38499	38509	38339	38056	101.167
	22	38698	37992	38581	38806	38530	38132	38188	38028	38187	38344	38158	38432	101.216
	23	37809	38370	38645	38152	38392	38211	38468	37903	38829	38224	38940	38217	101.235
26	0	38448	37950	38630	38387	38506	37918	38236	38587	38346	37831	38974	38201	101.196
	1	38314	38264	38193	38148	38714	38078	38416	39079	38301	38482	38567	38079	101.340
	2	37930	38405	37626	38540	38849	38464	38174	37977	38158	38253	37764	37903	100.769
	3	38783	38492	38445	38670	38165	38062	38332	38808	38669	38177	38567	38429	101.552
	4	38194	38417	38434	37788	38206	38249	38669	38358	38593	38339	38485	37447	101.019
	5	38620	38765	37682	38586	38025	38500	38047	38335	38077	38059	38744	38291	101.141
	6	38157	38631	37986	38537	37725	38398	38218	38076	38439	38354	38531	38503	101.102
	7	38174	38298	38155	38227	38221	37896	37963	38153	38478	38162	37972	37890	100.669
	8	38317	38062	37942	38183	38085	38329	38850	38289	38621	38414	38325	38473	101.176
	9	38003	38353	38087	38251	38251	37649	37909	38773	38390	38251	38426	38209	100.882
	10	38290	38135	38088	38823	39021	38477	37872	38597	38234	38270	38185	38028	101.204
	11	38088	38987	38097	38559	39182	38165	38636	37925	38819	37834	38607	37891	101.374
	12	38334	38318	38003	37984	38060	37939	37946	38398	38161	38189	38031	37794	100.575
	13	38000	38345	38399	38187	38362	38159	37791	37879	37838	38351	38295	38668	100.820
	14	38681	38469	38592	38967	38186	38324	37914	38579	37922	38124	38804	38415	101.415
	15	37956	38519	38447	38184	38444	38425	38086	38349	37513	38273	38389	38498	100.998
	16	38237	38031	38165	38489	38137	38017	38559	38079	37841	38132	38281	38002	100.753
	17	38176	38577	38551	38289	37942	38804	38264	38457	37485	38097	38079	38033	100.926
	18	38041	37824	38185	37905	38112	38348	37893	38170	38112	37919	38491	37761	100.488
	19	38491	38046	38432	38394	38611	38104	38964	37787	38489	38435	38548	38252	101.322
	20	38627	38198	38319	37891	38488	38060	38714	38891	38087	38627	38366	38344	101.335
	21	38227	38210	38370	38333	38074	38545	37968	38584	38285	38188	37903	38309	100.979
	22	38352	38355	37817	37770	38390	38226	38278	37994	38365	38732	38248	38189	100.918
	23	38291	38608	38429	37656	38292	38144	38488	38483	38303	38097	37613	37963	100.841

		S.V.I.R.CO. Observatory - Pressure Corrected Data – April 2018											16 NM-64		
		INAF/UNIRomaTre													
day	hh	00_05	05_10	10_15	15_20	20_25	25_30	30_35	35_40	40_45	45_50	50_55	55_60	h-norm	
27	0	38028	38360	38336	38474	38243	37930	38087	38052	38218	38402	38089	38219	100.857	
	1	38053	38129	37989	37973	38550	38126	37962	38539	38056	38314	38489	38277	100.860	
	2	38303	37762	38352	38173	38037	37913	38773	38827	37808	38089	38438	38119	100.891	
	3	38654	38171	38172	39071	38496	38333	38881	38452	38533	38433	37910	38401	101.531	
	4	38537	37996	38789	38352	38080	38218	38470	38450	38685	37732	38330	38095	101.142	
	5	38065	38574	38264	38471	38398	38579	38382	37618	37670	37999	38443	39018	101.086	
	6	39017	38899	38899	38092	38355	38222	38284	38160	38360	38942	38939	37760	101.624	
	7	38586	38490	38960	38528	38516	38264	38080	38372	38408	38346	38704	38492	101.584	
	8	38258	38091	37955	38546	38619	38212	38960	37953	38396	38077	38345	38523	101.186	
	9	38347	38128	37862	38492	38925	38316	38683	38528	38518	38559	38343	38165	101.391	
	10	38111	38209	38580	38559	37993	38635	38419	38500	38076	39039	38463	38585	101.457	
	11	37915	38560	38280	38319	37735	37884	38139	38791	38229	38806	38418	38564	101.121	
	12	38075	38359	38346	38122	38220	38441	38585	38319	38292	38222	37484	37950	100.851	
	13	38242	38348	38360	38128	38971	38249	38331	38804	37614	37761	38210	38506	101.095	
	14	38563	38668	38276	37817	38750	38374	37935	38741	37773	38374	38271	38355	101.177	
	15	38285	38582	38036	37797	38251	37672	38653	37865	38154	38334	38713	38870	101.026	
	16	38567	37751	38013	38416	37724	38024	37955	38272	38808	37986	38555	38591	100.906	
	17	38388	37973	38325	38345	37822	38174	38456	38118	38171	38086	38167	37649	100.689	
	18	38382	37923	37900	38092	38016	38481	38092	37990	38219	38299	38479	38616	100.867	
	19	38291	37490	38127	38523	38206	38174	38148	38610	37897	37802	38268	38326	100.730	
	20	38096	38228	38528	38336	38208	38009	38588	38290	37830	38479	38243	38347	101.020	
	21	38162	38311	38257	38168	37374	37550	38216	37753	38085	38161	38325	38438	100.496	
	22	37793	38630	38138	37803	38362	38161	38329	38037	39044	38217	38262	37871	100.902	
	23	38194	37962	37905	38128	37741	38242	37953	38589	38010	38035	38314	38415	100.648	
28	0	37923	38538	38134	38320	38367	37853	38567	37619	38388	38258	38107	38353	100.853	
	1	38423	38323	37764	38026	38296	37813	37829	38362	38370	38370	38171	38052	100.716	
	2	38308	38407	38286	37375	38300	38111	38101	38692	38127	38326	38368	38573	100.975	
	3	38162	38528	38389	38392	38331	38841	38473	38751	38251	38620	38335	38627	101.574	
	4	38410	38077	38022	38406	38372	38739	38195	38582	38473	38377	37954	37653	101.037	
	5	38261	38163	38741	38411	37848	38862	38315	38791	38015	38057	38202	38509	101.238	
	6	38417	38438	38636	38192	38583	38468	38511	38264	38453	38730	38261	38386	101.495	
	7	38177	38041	38320	38177	38337	37618	38490	38603	38710	39173	39047	38123	101.379	
	8	37872	38630	38171	38582	38061	38219	38332	38187	37849	38354	38168	38132	100.883	
	9	37742	38173	39074	38500	38912	38090	38165	38715	37882	38933	38138	38309	101.339	
	10	38768	38779	38640	38278	38314	38456	37535	38022	38502	38203	38216	38624	101.274	
	11	38361	38571	38484	37888	38371	38088	38185	38049	38062	38114	38423	38718	101.049	
	12	38301	37962	38319	38079	37976	38704	38407	38644	38062	38771	38056	37693	100.975	
	13	38410	38284	37768	38449	38505	38345	37846	38451	38079	37839	38627	38170	100.930	
	14	38346	38398	38388	38835	37836	37930	37926	37765	38049	38083	38410	38435	100.848	
	15	37954	38308	37734	38660	38641	38504	38201	37809	37655	38507	38085	38356	100.851	
	16	38215	38096	38421	38331	38133	37890	38214	37736	38281	38132	37887	38116	100.640	
	17	37688	37981	38124	38413	38509	38795	38763	38223	38132	38211	37624	38179	100.902	
	18	37562	38084	37798	37889	38210	37813	37703	38013	38811	37899	37902	38286	100.313	
	19	38262	38569	38136	37954	38016	37669	38467	38381	37944	38490	37925	38416	100.810	
	20	37976	37758	37598	37933	37798	38434	38353	37993	38467	37964	38361	38356	100.538	
	21	38310	38939	38202	38285	38292	38154	37991	38202	38771	38020	38265	37999	101.075	
	22	38355	37928	37805	38351	38239	38197	37909	37641	37994	37972	38339	38532	100.598	
	23	37892	38444	37905	38440	37789	38443	38119	38478	38914	37798	38031	38594	100.947	

INAF/UNIRomaTre		S.V.I.R.CO. Observatory - Pressure Corrected Data – April 2018											16 NM-64	
day	hh	00_05	05_10	10_15	15_20	20_25	25_30	30_35	35_40	40_45	45_50	50_55	55_60	h-norm
29	0	37988	38462	38645	38313	37997	38415	38157	38448	38202	38033	38295	38732	101.127
	1	38108	38069	38174	38473	38468	38481	38761	38027	37945	38715	38344	38999	101.324
	2	38388	38001	37810	38163	38196	37562	38267	38574	38280	38284	38391	38636	100.881
	3	38449	38586	38123	38343	38371	38135	38671	38556	37960	38035	38188	39022	101.297
	4	38623	38420	38219	37892	38622	38473	38303	39079	38041	38549	38325	38722	101.479
	5	38382	38397	38239	37863	38291	38067	38508	38344	38007	39193	38277	38264	101.163
	6	39150	38295	38717	38165	38557	38446	38699	38450	38360	38166	38516	38559	101.657
	7	38353	38553	38399	38837	38202	38843	38906	38293	38158	38619	38354	38537	101.652
	8	38786	39039	38506	38421	38474	38647	38955	38530	37976	38566	38812	38499	101.907
	9	38224	38668	38198	38360	38117	38275	39084	38570	38055	38881	38384	38177	101.418
	10	38246	38769	38309	39179	37994	38585	38339	38486	38374	38186	38219	38384	101.436
	11	38745	38028	38490	38294	37528	38269	38181	38319	38106	38029	38219	38662	100.951
	12	38193	38707	38464	38677	38384	38615	38201	38421	38447	38410	37871	37952	101.275
	13	38595	38849	38507	38438	37893	38422	38467	38443	38371	38338	37944	38249	101.313
	14	38220	38659	38313	38004	38519	38030	38288	38177	38091	38096	37737	38183	100.830
	15	37866	38069	38356	37899	37691	38206	37836	38283	38732	38456	37891	37964	100.595
	16	37913	38540	38355	37924	37989	38160	38052	38032	37983	38661	37867	38316	100.714
	17	37842	37703	38331	38058	38133	38159	38024	38187	38449	38493	38621	38346	100.836
	18	37690	38263	38061	38040	38813	38247	37928	38110	38495	38415	37804	38297	100.796
	19	38281	38402	38247	39003	38323	38771	38560	38119	38299	38518	38399	37596	101.314
	20	38476	37976	38075	37954	38607	38484	38179	38001	38195	37790	38529	38175	100.857
	21	38560	38254	38466	38079	38312	38263	38270	38285	38204	38444	38151	37920	101.026
	22	38029	37979	38333	37728	38353	38312	37347	38627	38545	37981	38579	38076	100.735
	23	38249	38165	38814	38240	38401	37705	38341	38140	38050	37929	38060	38166	100.817
30	0	38504	37970	38308	38675	38395	38294	38415	37996	38060	38309	38496	38049	101.085
	1	38257	38065	38395	37654	38845	38400	38243	38283	37541	37552	38525	38026	100.712
	2	38308	38002	37754	37949	38204	37960	38525	38438	38871	38113	38001	37965	100.780
	3	37718	38837	38693	37691	38262	38337	38854	37801	38635	38932	37921	37967	101.123
	4	38469	38644	37872	38263	38344	38447	38421	38285	38298	37848	37982	38619	101.088
	5	37838	38467	38329	38660	38596	38394	37908	37854	38285	38711	38459	38653	101.233
	6	38292	38143	38300	38695	37751	38216	38699	38459	38763	38138	38277	38686	101.292
	7	38350	38563	39371	38357	38777	38118	38425	38291	38328	38157	38752	38812	101.706
	8	38068	38553	38516	38393	38277	38101	38268	38720	38632	38899	38538	38371	101.494
	9	38466	37994	38405	38776	38524	38540	38343	38398	38099	38414	38653	38363	101.414
	10	38328	38614	38217	38089	38120	37926	38437	38570	38498	38502	38487	38602	101.286
	11	38497	38842	38174	38189	38400	38422	38129	37879	38519	38291	38316	38490	101.232
	12	38342	37935	38514	38708	37965	37946	38075	38659	37836	38167	38247	37780	100.798
	13	38740	38374	37980	38180	38382	38765	38008	38728	38166	37617	38326	38320	101.109
	14	38460	38257	37675	38256	38553	37924	38521	38411	38453	38772	38540	38785	101.334
	15	38795	38570	38388	38463	38093	38445	38115	38331	37565	38495	38961	38305	101.315
	16	38455	38629	38292	38366	38336	38333	38177	38460	37558	37995	38827	38267	101.133
	17	38188	38213	38077	38074	38060	38022	38240	38553	37947	38280	38035	38388	100.777
	18	38103	38643	38334	37929	37880	38105	38062	38355	37939	37966	38412	37822	100.660
	19	38405	38282	38121	38345	37453	38307	38417	38121	37868	38539	38241	37881	100.756
	20	38089	37977	38646	38059	37746	38261	38541	37408	38591	38044	38009	38466	100.724
	21	37798	39624	38046	38554	37985	38761	38248	37988	38516	38096	38433	38158	101.245
	22	37930	38335	37930	37577	37832	38419	38272	38255	38513	38278	38340	38347	100.766
	23	38100	38195	38191	38263	38255	37868	38317	37780	37852	38301	38425	37800	100.616

S.V.I.R.CO. Observatory - Pressure in hectoPascal – April 2018

day	hh	00_05	05_10	10_15	15_20	20_25	25_30	30_35	35_40	40_45	45_50	50_55	55_60	average
1	0	1002.98	1002.99	1003.02	1002.98	1002.93	1002.91	1002.85	1002.81	1002.83	1002.86	1002.86	1002.87	1002.90
	1	1002.82	1002.81	1002.81	1002.80	1002.83	1002.84	1002.83	1002.81	1002.77	1002.71	1002.67	1002.64	1002.78
	2	1002.61	1002.62	1002.65	1002.63	1002.60	1002.65	1002.75	1002.78	1002.79	1002.78	1002.74	1002.77	1002.70
	3	1002.83	1002.83	1002.79	1002.77	1002.80	1002.81	1002.79	1002.79	1002.87	1002.95	1002.96	1002.93	1002.84
	4	1002.93	1003.00	1003.04	1003.01	1003.05	1003.12	1003.17	1003.22	1003.26	1003.35	1003.51	1003.64	1003.19
	5	1003.73	1003.84	1003.95	1004.05	1004.16	1004.25	1004.34	1004.40	1004.47	1004.54	1004.59	1004.63	1004.24
	6	1004.70	1004.79	1004.87	1004.92	1004.95	1004.97	1005.05	1005.21	1005.38	1005.56	1005.72	1005.87	1005.16
	7	1006.02	1006.19	1006.31	1006.39	1006.45	1006.53	1006.62	1006.73	1006.84	1006.92	1007.06	1007.22	1006.60
	8	1007.29	1007.38	1007.48	1007.56	1007.63	1007.67	1007.72	1007.81	1007.93	1007.99	1008.04	1008.12	1007.72
	9	1008.20	1008.24	1008.25	1008.20	1008.19	1008.23	1008.25	1008.32	1008.39	1008.44	1008.49	1008.52	1008.31
	10	1008.50	1008.51	1008.55	1008.59	1008.63	1008.71	1008.80	1008.83	1008.83	1008.80	1008.81	1008.92	1008.70
	11	1009.02	1009.07	1009.11	1009.14	1009.17	1009.18	1009.22	1009.24	1009.26	1009.31	1009.27	1009.26	1009.19
	12	1009.32	1009.32	1009.32	1009.34	1009.35	1009.32	1009.30	1009.30	1009.28	1009.26	1009.26	1009.27	1009.30
	13	1009.31	1009.35	1009.32	1009.34	1009.38	1009.45	1009.51	1009.51	1009.53	1009.54	1009.53	1009.51	1009.44
	14	1009.54	1009.54	1009.55	1009.59	1009.63	1009.66	1009.73	1009.81	1009.82	1009.83	1009.85	1009.87	1009.70
	15	1009.84	1009.85	1009.89	1009.90	1009.93	1009.96	1009.97	1009.92	1009.88	1009.92	1009.95	1009.96	1009.91
	16	1009.97	1010.01	1010.09	1010.16	1010.18	1010.14	1010.07	1010.07	1010.09	1010.10	1010.13	1010.17	1010.10
	17	1010.25	1010.33	1010.39	1010.45	1010.54	1010.62	1010.72	1010.82	1010.86	1010.93	1011.03	1011.05	1010.66
	18	1011.12	1011.26	1011.34	1011.42	1011.53	1011.62	1011.72	1011.89	1012.06	1012.16	1012.23	1012.29	1011.72
	19	1012.34	1012.40	1012.50	1012.64	1012.76	1012.86	1012.95	1013.01	1013.03	1013.08	1013.15	1013.19	1012.82
	20	1013.29	1013.42	1013.47	1013.47	1013.50	1013.60	1013.74	1013.86	1013.93	1013.98	1013.96	1013.95	1013.68
	21	1013.98	1014.01	1013.99	1013.92	1013.90	1013.97	1014.05	1014.05	1013.99	1013.94	1013.92	1014.02	1013.98
	22	1014.17	1014.22	1014.25	1014.32	1014.36	1014.44	1014.55	1014.60	1014.56	1014.53	1014.54	1014.55	1014.42
	23	1014.55	1014.59	1014.67	1014.76	1014.82	1014.84	1014.87	1014.93	1015.00	1015.00	1014.94	1014.92	1014.82
2	0	1015.00	1014.98	1014.99	1015.02	1014.97	1014.93	1014.94	1014.94	1014.95	1014.94	1014.94	1014.97	1014.96
	1	1015.00	1014.98	1014.93	1014.93	1014.98	1014.97	1014.95	1014.99	1015.00	1014.98	1014.99	1015.02	1014.97
	2	1015.05	1015.07	1015.08	1015.04	1014.96	1014.89	1014.87	1014.84	1014.92	1015.03	1015.06	1015.09	1014.99
	3	1015.08	1015.03	1015.01	1014.97	1014.94	1014.93	1014.93	1014.93	1014.94	1014.98	1015.00	1015.07	1014.98
	4	1015.15	1015.16	1015.27	1015.25	1015.25	1015.38	1015.40	1015.41	1015.44	1015.51	1015.59	1015.65	1015.37
	5	1015.71	1015.78	1015.83	1015.90	1015.92	1015.91	1015.98	1016.05	1016.08	1016.12	1016.14	1016.12	1015.96
	6	1016.15	1016.20	1016.23	1016.31	1016.39	1016.42	1016.43	1016.48	1016.53	1016.60	1016.68	1016.74	1016.43
	7	1016.86	1016.93	1016.98	1017.05	1017.10	1017.13	1017.14	1017.17	1017.20	1017.27	1017.32	1017.37	1017.12
	8	1017.43	1017.49	1017.55	1017.58	1017.61	1017.63	1017.67	1017.73	1017.74	1017.73	1017.74	1017.75	1017.64
	9	1017.76	1017.79	1017.81	1017.81	1017.80	1017.79	1017.78	1017.73	1017.71	1017.70	1017.67	1017.68	1017.75
	10	1017.70	1017.73	1017.69	1017.67	1017.66	1017.62	1017.59	1017.59	1017.61	1017.64	1017.63	1017.60	1017.64
	11	1017.59	1017.57	1017.62	1017.60	1017.57	1017.57	1017.55	1017.54	1017.54	1017.59	1017.64	1017.65	1017.58
	12	1017.64	1017.65	1017.66	1017.68	1017.68	1017.67	1017.70	1017.72	1017.72	1017.71	1017.70	1017.72	1017.69
	13	1017.74	1017.75	1017.74	1017.76	1017.74	1017.71	1017.67	1017.58	1017.55	1017.57	1017.57	1017.59	1017.66
	14	1017.56	1017.51	1017.48	1017.40	1017.36	1017.37	1017.34	1017.33	1017.32	1017.27	1017.21	1017.18	1017.36
	15	1017.18	1017.23	1017.31	1017.36	1017.36	1017.34	1017.30	1017.33	1017.40	1017.38	1017.41	1017.50	1017.34
	16	1017.56	1017.51	1017.35	1017.33	1017.39	1017.44	1017.44	1017.40	1017.41	1017.37	1017.32	1017.32	1017.40
	17	1017.32	1017.34	1017.31	1017.30	1017.34	1017.38	1017.39	1017.39	1017.43	1017.46	1017.52	1017.62	1017.40
	18	1017.65	1017.65	1017.71	1017.74	1017.77	1017.84	1017.91	1017.97	1018.04	1018.11	1018.15	1018.16	1017.89
	19	1018.17	1018.20	1018.24	1018.23	1018.21	1018.27	1018.32	1018.36	1018.36	1018.35	1018.37	1018.43	1018.29
	20	1018.51	1018.53	1018.56	1018.58	1018.54	1018.51	1018.50	1018.51	1018.56	1018.59	1018.63	1018.65	1018.55
	21	1018.64	1018.60	1018.55	1018.55	1018.57	1018.52	1018.48	1018.49	1018.47	1018.50	1018.55	1018.59	1018.54
	22	1018.60	1018.58	1018.57	1018.59	1018.63	1018.66	1018.70	1018.71	1018.71	1018.73	1018.76	1018.77	1018.67
	23	1018.75	1018.70	1018.68	1018.68	1018.66	1018.64	1018.62	1018.65	1018.67	1018.66	1018.68	1018.68	1018.67

S.V.I.R.CO. Observatory - Pressure in hectoPascal – April 2018

day	hh	00_05	05_10	10_15	15_20	20_25	25_30	30_35	35_40	40_45	45_50	50_55	55_60	average
3	0	1018.59	1018.57	1018.51	1018.44	1018.40	1018.39	1018.40	1018.39	1018.31	1018.22	1018.19	1018.19	1018.37
	1	1018.19	1018.19	1018.16	1018.13	1018.16	1018.19	1018.18	1018.18	1018.16	1018.12	1018.11	1018.10	1018.15
	2	1018.04	1017.98	1017.95	1017.93	1017.92	1017.92	1017.91	1017.89	1017.87	1017.83	1017.78	1017.77	1017.90
	3	1017.76	1017.75	1017.75	1017.74	1017.70	1017.67	1017.65	1017.60	1017.58	1017.57	1017.53	1017.48	1017.65
	4	1017.44	1017.44	1017.47	1017.47	1017.45	1017.42	1017.41	1017.48	1017.54	1017.58	1017.57	1017.57	1017.48
	5	1017.60	1017.62	1017.65	1017.67	1017.71	1017.76	1017.81	1017.83	1017.85	1017.87	1017.91	1017.96	1017.77
	6	1017.98	1017.99	1017.96	1017.97	1018.00	1017.99	1017.97	1017.94	1017.90	1017.87	1017.85	1017.81	1017.93
	7	1017.74	1017.68	1017.68	1017.70	1017.70	1017.69	1017.69	1017.72	1017.75	1017.78	1017.81	1017.84	1017.73
	8	1017.88	1017.90	1017.93	1017.97	1017.98	1017.98	1017.99	1018.02	1018.04	1018.03	1017.99	1017.98	1017.97
	9	1018.00	1017.99	1017.99	1018.01	1018.02	1017.98	1017.97	1018.00	1018.03	1018.05	1018.04	1018.01	1018.01
	10	1017.96	1017.91	1017.88	1017.86	1017.83	1017.81	1017.77	1017.70	1017.66	1017.62	1017.56	1017.52	1017.75
	11	1017.51	1017.53	1017.53	1017.52	1017.53	1017.51	1017.48	1017.48	1017.48	1017.49	1017.53	1017.52	1017.51
	12	1017.44	1017.41	1017.39	1017.36	1017.29	1017.22	1017.19	1017.16	1017.14	1017.11	1017.04	1016.97	1017.22
	13	1016.93	1016.92	1016.88	1016.81	1016.78	1016.79	1016.79	1016.80	1016.82	1016.78	1016.72	1016.70	1016.81
	14	1016.68	1016.67	1016.68	1016.72	1016.74	1016.76	1016.74	1016.70	1016.68	1016.63	1016.58	1016.55	1016.68
	15	1016.50	1016.44	1016.42	1016.43	1016.43	1016.44	1016.45	1016.46	1016.47	1016.45	1016.43	1016.45	1016.45
	16	1016.45	1016.40	1016.35	1016.33	1016.28	1016.23	1016.18	1016.15	1016.15	1016.20	1016.29	1016.31	1016.27
	17	1016.27	1016.26	1016.31	1016.37	1016.41	1016.44	1016.43	1016.37	1016.35	1016.41	1016.47	1016.49	1016.38
	18	1016.56	1016.68	1016.75	1016.84	1016.92	1016.94	1016.94	1016.94	1016.97	1017.01	1017.05	1017.05	1016.89
	19	1016.98	1016.94	1017.03	1017.15	1017.21	1017.22	1017.17	1017.12	1017.13	1017.13	1017.11	1017.10	1017.11
	20	1017.14	1017.24	1017.33	1017.28	1017.20	1017.22	1017.24	1017.24	1017.22	1017.18	1017.12	1017.11	1017.21
	21	1017.18	1017.21	1017.18	1017.14	1017.14	1017.12	1017.08	1017.06	1017.05	1017.04	1017.02	1017.00	1017.10
	22	1016.97	1016.93	1016.92	1016.95	1016.99	1017.01	1017.02	1017.02	1017.02	1017.01	1017.00	1016.99	1016.98
	23	1017.00	1017.04	1017.10	1017.20	1017.28	1017.32	1017.37	1017.40	1017.37	1017.34	1017.31	1017.28	1017.25
4	0	1017.17	1017.16	1017.13	1017.11	1017.08	1017.03	1016.98	1016.92	1016.87	1016.85	1016.84	1016.84	1016.99
	1	1016.86	1016.86	1016.87	1016.89	1016.90	1016.89	1016.89	1016.88	1016.84	1016.80	1016.76	1016.73	1016.85
	2	1016.77	1016.83	1016.81	1016.79	1016.84	1016.87	1016.88	1016.87	1016.87	1016.87	1016.87	1016.86	1016.84
	3	1016.82	1016.73	1016.72	1016.77	1016.75	1016.68	1016.65	1016.68	1016.62	1016.49	1016.40	1016.41	1016.64
	4	1016.42	1016.37	1016.30	1016.25	1016.18	1016.02	1015.82	1015.74	1015.77	1015.71	1015.71	1015.84	1016.01
	5	1015.98	1016.09	1016.21	1016.45	1016.67	1016.76	1016.82	1016.87	1016.92	1016.95	1016.99	1017.05	1016.64
	6	1017.14	1017.27	1017.38	1017.41	1017.37	1017.35	1017.35	1017.26	1017.21	1017.23	1017.22	1017.19	1017.28
	7	1017.14	1017.15	1017.20	1017.26	1017.32	1017.33	1017.33	1017.32	1017.37	1017.43	1017.45	1017.48	1017.31
	8	1017.55	1017.63	1017.69	1017.73	1017.74	1017.76	1017.76	1017.76	1017.80	1017.86	1017.94	1018.06	1017.77
	9	1018.15	1018.18	1018.16	1018.12	1018.11	1018.13	1018.12	1018.11	1018.11	1018.09	1018.05	1017.98	1018.11
	10	1017.93	1017.89	1017.87	1017.85	1017.74	1017.64	1017.66	1017.74	1017.80	1017.81	1017.76	1017.71	1017.78
	11	1017.66	1017.62	1017.60	1017.54	1017.49	1017.47	1017.45	1017.43	1017.41	1017.35	1017.27	1017.20	1017.45
	12	1017.12	1017.06	1016.98	1016.92	1016.87	1016.78	1016.64	1016.50	1016.42	1016.39	1016.36	1016.31	1016.69
	13	1016.27	1016.21	1016.19	1016.21	1016.15	1016.07	1015.99	1015.93	1015.87	1015.85	1015.84	1015.78	1016.03
	14	1015.73	1015.77	1015.81	1015.80	1015.74	1015.67	1015.61	1015.57	1015.56	1015.55	1015.53	1015.49	1015.65
	15	1015.43	1015.38	1015.34	1015.31	1015.28	1015.26	1015.25	1015.19	1015.16	1015.18	1015.13	1015.06	1015.24
	16	1015.01	1014.98	1015.00	1015.01	1015.03	1015.02	1014.98	1014.98	1015.06	1015.11	1015.10	1015.06	1015.03
	17	1015.09	1015.14	1015.16	1015.22	1015.27	1015.27	1015.30	1015.34	1015.35	1015.36	1015.37	1015.38	1015.27
	18	1015.40	1015.36	1015.32	1015.30	1015.30	1015.34	1015.39	1015.46	1015.53	1015.57	1015.59	1015.64	1015.43
	19	1015.69	1015.81	1015.93	1015.97	1015.98	1016.01	1016.20	1016.35	1016.42	1016.52	1016.64	1016.75	1016.19
	20	1016.73	1016.64	1016.49	1016.38	1016.41	1016.37	1016.27	1016.26	1016.33	1016.30	1016.18	1016.09	1016.37
	21	1015.94	1015.78	1015.63	1015.45	1015.36	1015.32	1015.30	1015.34	1015.37	1015.34	1015.26	1015.11	1015.43
	22	1014.94	1014.82	1014.71	1014.62	1014.61	1014.61	1014.60	1014.66	1014.61	1014.43	1014.27	1014.24	1014.59
	23	1014.24	1014.18	1014.18	1014.18	1014.08	1013.98	1013.95	1013.98	1013.97	1013.77	1013.73	1013.82	1014.00

S.V.I.R.CO. Observatory - Pressure in hectoPascal – April 2018

day	hh	00_05	05_10	10_15	15_20	20_25	25_30	30_35	35_40	40_45	45_50	50_55	55_60	average
5	0	1013.81	1013.74	1013.63	1013.55	1013.49	1013.43	1013.44	1013.48	1013.52	1013.47	1013.39	1013.32	1013.51
	1	1013.27	1013.32	1013.37	1013.35	1013.30	1013.25	1013.19	1013.13	1013.15	1013.16	1013.06	1012.97	1013.21
	2	1012.88	1012.87	1013.01	1013.12	1013.15	1013.17	1013.24	1013.39	1013.55	1013.70	1013.67	1013.50	1013.27
	3	1013.64	1013.95	1014.07	1014.08	1013.96	1013.97	1013.93	1013.84	1014.00	1014.15	1014.21	1014.37	1014.01
	4	1014.48	1014.49	1014.49	1014.44	1014.23	1013.79	1013.45	1013.31	1013.01	1012.95	1013.03	1013.02	1013.72
	5	1013.24	1013.33	1013.36	1013.46	1013.41	1013.28	1013.46	1013.64	1013.49	1013.42	1013.41	1013.30	1013.40
	6	1013.26	1013.23	1013.15	1013.01	1012.90	1012.95	1013.02	1013.08	1013.16	1013.16	1013.14	1013.19	1013.10
	7	1013.20	1013.13	1013.12	1013.20	1013.28	1013.31	1013.32	1013.33	1013.39	1013.47	1013.52	1013.58	1013.32
	8	1013.64	1013.69	1013.69	1013.71	1013.77	1013.79	1013.82	1013.85	1013.86	1013.86	1013.88	1013.92	1013.79
	9	1013.98	1013.99	1013.94	1013.89	1013.96	1014.03	1014.04	1014.08	1014.07	1014.01	1013.94	1013.87	1013.98
	10	1013.84	1013.78	1013.80	1013.87	1013.92	1013.95	1013.94	1013.93	1013.93	1013.88	1013.79	1013.74	1013.86
	11	1013.68	1013.60	1013.50	1013.40	1013.33	1013.27	1013.23	1013.18	1013.14	1013.15	1013.13	1013.05	1013.30
	12	1012.97	1012.90	1012.87	1012.88	1012.87	1012.90	1012.93	1012.87	1012.79	1012.74	1012.66	1012.58	1012.83
	13	1012.63	1012.68	1012.72	1012.73	1012.69	1012.60	1012.51	1012.49	1012.46	1012.47	1012.46	1012.48	1012.57
	14	1012.55	1012.60	1012.64	1012.63	1012.61	1012.56	1012.49	1012.44	1012.44	1012.49	1012.54	1012.65	1012.55
	15	1012.78	1012.86	1012.89	1012.94	1013.01	1013.06	1013.17	1013.34	1013.43	1013.45	1013.47	1013.52	1013.16
	16	1013.57	1013.61	1013.64	1013.64	1013.63	1013.64	1013.66	1013.70	1013.75	1013.74	1013.69	1013.67	1013.66
	17	1013.67	1013.66	1013.67	1013.70	1013.76	1013.86	1013.96	1014.06	1014.15	1014.17	1014.18	1014.21	1013.92
	18	1014.25	1014.27	1014.27	1014.29	1014.35	1014.43	1014.46	1014.45	1014.46	1014.52	1014.58	1014.68	1014.41
	19	1014.79	1014.82	1014.80	1014.82	1014.87	1014.89	1014.88	1014.89	1014.93	1014.94	1014.96	1015.01	1014.88
	20	1015.07	1015.13	1015.16	1015.16	1015.15	1015.15	1015.15	1015.14	1015.16	1015.20	1015.25	1015.32	1015.17
	21	1015.41	1015.49	1015.52	1015.55	1015.61	1015.63	1015.65	1015.68	1015.68	1015.69	1015.70	1015.69	1015.61
	22	1015.68	1015.69	1015.71	1015.71	1015.72	1015.77	1015.81	1015.84	1015.83	1015.81	1015.85	1015.88	1015.77
	23	1015.92	1015.96	1015.99	1016.02	1016.01	1015.99	1015.97	1015.95	1015.94	1015.90	1015.87	1015.85	1015.94
6	0	1015.81	1015.79	1015.78	1015.81	1015.83	1015.83	1015.83	1015.85	1015.86	1015.88	1015.88	1015.85	1015.83
	1	1015.83	1015.81	1015.82	1015.84	1015.84	1015.83	1015.81	1015.77	1015.72	1015.71	1015.71	1015.71	1015.78
	2	1015.72	1015.73	1015.71	1015.72	1015.75	1015.80	1015.84	1015.87	1015.88	1015.91	1015.98	1016.05	1015.83
	3	1016.10	1016.11	1016.08	1016.05	1016.05	1016.07	1016.11	1016.10	1016.09	1016.12	1016.16	1016.20	1016.10
	4	1016.23	1016.27	1016.28	1016.28	1016.30	1016.31	1016.31	1016.31	1016.34	1016.38	1016.40	1016.42	1016.32
	5	1016.42	1016.38	1016.38	1016.41	1016.44	1016.49	1016.58	1016.62	1016.66	1016.74	1016.80	1016.78	1016.56
	6	1016.75	1016.78	1016.84	1016.88	1016.92	1016.96	1016.98	1017.00	1017.01	1017.02	1017.06	1017.10	1016.94
	7	1017.14	1017.20	1017.25	1017.24	1017.23	1017.22	1017.23	1017.22	1017.18	1017.17	1017.18	1017.23	1017.20
	8	1017.27	1017.28	1017.28	1017.26	1017.26	1017.30	1017.36	1017.38	1017.38	1017.40	1017.40	1017.40	1017.33
	9	1017.39	1017.36	1017.34	1017.32	1017.28	1017.24	1017.20	1017.16	1017.15	1017.16	1017.15	1017.12	1017.24
	10	1017.10	1017.09	1017.06	1017.03	1016.99	1016.94	1016.88	1016.81	1016.78	1016.76	1016.73	1016.67	1016.90
	11	1016.61	1016.58	1016.52	1016.49	1016.47	1016.45	1016.43	1016.39	1016.35	1016.36	1016.34	1016.27	1016.44
	12	1016.20	1016.15	1016.11	1016.06	1016.02	1015.99	1015.94	1015.90	1015.89	1015.85	1015.83	1015.82	1015.98
	13	1015.80	1015.75	1015.69	1015.65	1015.65	1015.66	1015.63	1015.62	1015.63	1015.60	1015.56	1015.53	1015.65
	14	1015.50	1015.48	1015.46	1015.46	1015.48	1015.44	1015.36	1015.34	1015.36	1015.35	1015.32	1015.29	1015.40
	15	1015.25	1015.23	1015.26	1015.27	1015.25	1015.22	1015.21	1015.17	1015.14	1015.11	1015.07	1015.08	1015.19
	16	1015.08	1015.06	1015.02	1014.99	1014.99	1015.00	1014.98	1014.95	1014.92	1014.89	1014.89	1014.89	1014.97
	17	1014.91	1014.95	1014.98	1014.97	1014.97	1015.00	1015.02	1015.06	1015.12	1015.19	1015.27	1015.31	1015.06
	18	1015.30	1015.30	1015.31	1015.36	1015.40	1015.43	1015.48	1015.54	1015.61	1015.66	1015.66	1015.69	1015.48
	19	1015.77	1015.82	1015.81	1015.85	1015.90	1015.91	1015.91	1015.89	1015.89	1015.90	1015.92	1015.95	1015.87
	20	1015.95	1015.96	1015.96	1015.94	1015.93	1015.92	1015.94	1015.96	1015.96	1015.96	1015.97	1015.99	1015.95
	21	1016.00	1016.02	1016.04	1016.04	1016.03	1016.02	1015.98	1015.97	1015.99	1016.02	1016.04	1016.03	1016.01
	22	1016.05	1016.09	1016.11	1016.13	1016.16	1016.19	1016.21	1016.21	1016.22	1016.24	1016.26	1016.25	1016.17
	23	1016.24	1016.28	1016.31	1016.32	1016.36	1016.40	1016.43	1016.46	1016.47	1016.47	1016.48	1016.49	1016.39

S.V.I.R.CO. Observatory - Pressure in hectoPascal – April 2018

day	hh	00_05	05_10	10_15	15_20	20_25	25_30	30_35	35_40	40_45	45_50	50_55	55_60	average
7	0	1016.47	1016.49	1016.53	1016.55	1016.57	1016.57	1016.56	1016.56	1016.58	1016.60	1016.61	1016.62	1016.56
	1	1016.65	1016.69	1016.70	1016.72	1016.75	1016.75	1016.70	1016.69	1016.69	1016.68	1016.68	1016.66	1016.69
	2	1016.63	1016.61	1016.62	1016.60	1016.60	1016.58	1016.57	1016.59	1016.58	1016.57	1016.57	1016.57	1016.59
	3	1016.56	1016.53	1016.56	1016.62	1016.67	1016.69	1016.69	1016.73	1016.78	1016.76	1016.71	1016.71	1016.67
	4	1016.69	1016.66	1016.67	1016.71	1016.77	1016.82	1016.89	1016.96	1017.00	1017.01	1017.06	1017.12	1016.86
	5	1017.17	1017.21	1017.25	1017.30	1017.34	1017.37	1017.40	1017.43	1017.45	1017.49	1017.51	1017.50	1017.37
	6	1017.48	1017.46	1017.44	1017.42	1017.42	1017.42	1017.42	1017.44	1017.48	1017.50	1017.48	1017.45	1017.45
	7	1017.42	1017.37	1017.36	1017.34	1017.32	1017.31	1017.29	1017.30	1017.33	1017.35	1017.37	1017.40	1017.34
	8	1017.42	1017.42	1017.45	1017.48	1017.51	1017.55	1017.58	1017.56	1017.55	1017.58	1017.60	1017.59	1017.52
	9	1017.55	1017.54	1017.55	1017.58	1017.60	1017.56	1017.53	1017.51	1017.49	1017.48	1017.44	1017.41	1017.52
	10	1017.38	1017.34	1017.29	1017.26	1017.23	1017.20	1017.17	1017.15	1017.14	1017.12	1017.14	1017.16	1017.21
	11	1017.14	1017.13	1017.16	1017.17	1017.13	1017.10	1017.09	1017.03	1017.01	1017.00	1016.98	1016.95	1017.07
	12	1016.88	1016.86	1016.82	1016.78	1016.73	1016.70	1016.69	1016.64	1016.59	1016.53	1016.47	1016.45	1016.68
	13	1016.44	1016.41	1016.36	1016.34	1016.30	1016.22	1016.18	1016.15	1016.12	1016.07	1016.00	1015.92	1016.21
	14	1015.88	1015.84	1015.78	1015.72	1015.66	1015.62	1015.59	1015.56	1015.52	1015.49	1015.49	1015.47	1015.63
	15	1015.42	1015.38	1015.33	1015.30	1015.30	1015.32	1015.32	1015.31	1015.29	1015.32	1015.37	1015.37	1015.33
	16	1015.38	1015.37	1015.35	1015.34	1015.30	1015.32	1015.33	1015.32	1015.32	1015.28	1015.26	1015.24	1015.31
	17	1015.18	1015.11	1015.10	1015.11	1015.10	1015.07	1014.99	1014.93	1014.89	1014.90	1014.98	1015.08	1015.03
	18	1015.16	1015.23	1015.29	1015.30	1015.32	1015.32	1015.34	1015.40	1015.45	1015.46	1015.49	1015.51	1015.35
	19	1015.50	1015.51	1015.52	1015.52	1015.53	1015.55	1015.54	1015.53	1015.51	1015.47	1015.48	1015.51	1015.51
	20	1015.51	1015.47	1015.44	1015.43	1015.45	1015.43	1015.38	1015.34	1015.36	1015.39	1015.39	1015.36	1015.41
	21	1015.34	1015.35	1015.35	1015.34	1015.32	1015.30	1015.28	1015.26	1015.28	1015.29	1015.27	1015.27	1015.30
	22	1015.29	1015.30	1015.29	1015.32	1015.36	1015.36	1015.39	1015.41	1015.43	1015.45	1015.47	1015.48	1015.38
	23	1015.47	1015.49	1015.51	1015.49	1015.49	1015.47	1015.45	1015.45	1015.41	1015.39	1015.41	1015.44	1015.45
8	0	1015.44	1015.42	1015.40	1015.43	1015.48	1015.51	1015.50	1015.47	1015.45	1015.45	1015.40	1015.36	1015.44
	1	1015.39	1015.41	1015.41	1015.41	1015.41	1015.38	1015.39	1015.39	1015.34	1015.29	1015.26	1015.24	1015.36
	2	1015.20	1015.15	1015.13	1015.13	1015.10	1015.07	1015.02	1015.00	1015.00	1014.96	1014.90	1014.85	1015.04
	3	1014.86	1014.89	1014.91	1014.90	1014.88	1014.86	1014.87	1014.87	1014.87	1014.87	1014.87	1014.88	1014.88
	4	1014.88	1014.84	1014.82	1014.82	1014.83	1014.83	1014.81	1014.78	1014.73	1014.71	1014.72	1014.72	1014.79
	5	1014.64	1014.63	1014.69	1014.71	1014.73	1014.76	1014.77	1014.79	1014.80	1014.81	1014.84	1014.84	1014.75
	6	1014.80	1014.74	1014.71	1014.69	1014.65	1014.59	1014.50	1014.40	1014.33	1014.30	1014.30	1014.32	1014.53
	7	1014.34	1014.34	1014.34	1014.35	1014.33	1014.28	1014.29	1014.36	1014.42	1014.40	1014.36	1014.38	1014.35
	8	1014.40	1014.34	1014.28	1014.25	1014.19	1014.11	1014.07	1014.02	1013.95	1013.92	1013.93	1013.94	1014.11
	9	1013.92	1013.87	1013.83	1013.79	1013.71	1013.64	1013.60	1013.55	1013.48	1013.42	1013.38	1013.35	1013.63
	10	1013.32	1013.31	1013.33	1013.31	1013.25	1013.22	1013.19	1013.13	1013.03	1012.93	1012.87	1012.78	1013.14
	11	1012.73	1012.69	1012.62	1012.51	1012.37	1012.24	1012.12	1012.02	1011.88	1011.79	1011.73	1011.72	1012.20
	12	1011.69	1011.58	1011.50	1011.48	1011.52	1011.56	1011.52	1011.45	1011.41	1011.37	1011.30	1011.21	1011.46
	13	1011.16	1011.16	1011.08	1010.89	1010.77	1010.70	1010.58	1010.47	1010.36	1010.19	1010.01	1009.83	1010.60
	14	1009.63	1009.52	1009.51	1009.47	1009.44	1009.51	1009.48	1009.35	1009.23	1009.11	1008.98	1008.87	1009.34
	15	1008.83	1008.79	1008.73	1008.67	1008.63	1008.70	1008.81	1008.91	1008.98	1009.02	1009.09	1009.21	1008.86
	16	1009.33	1009.37	1009.38	1009.38	1009.42	1009.44	1009.55	1009.68	1009.71	1009.73	1009.76	1009.79	1009.54
	17	1009.77	1009.72	1009.64	1009.51	1009.29	1009.11	1009.01	1008.86	1008.75	1008.67	1008.57	1008.46	1009.11
	18	1008.45	1008.44	1008.42	1008.42	1008.36	1008.27	1008.22	1008.21	1008.17	1008.05	1007.84	1007.69	1008.21
	19	1007.60	1007.55	1007.48	1007.54	1007.57	1007.59	1007.73	1007.89	1008.08	1008.17	1008.25	1008.32	1007.81
	20	1008.27	1008.22	1008.22	1008.12	1008.05	1008.00	1007.92	1007.92	1007.93	1007.90	1007.80	1007.72	1008.00
	21	1007.65	1007.55	1007.53	1007.70	1007.80	1007.80	1007.92	1008.02	1008.02	1008.01	1008.10	1008.14	1007.85
	22	1008.09	1007.97	1007.84	1007.74	1007.62	1007.38	1007.21	1007.08	1006.92	1006.89	1006.85	1006.78	1007.36
	23	1006.75	1006.73	1006.71	1006.64	1006.67	1006.66	1006.55	1006.27	1005.91	1005.88	1005.90	1006.04	1006.39

S.V.I.R.CO. Observatory - Pressure in hectoPascal – April 2018

day	hh	00_05	05_10	10_15	15_20	20_25	25_30	30_35	35_40	40_45	45_50	50_55	55_60	average
9	0	1006.29	1006.23	1006.15	1006.11	1006.16	1006.28	1006.32	1006.29	1006.52	1006.68	1006.53	1006.52	1006.34
	1	1006.55	1006.33	1006.26	1006.28	1005.97	1005.89	1005.96	1005.72	1005.43	1005.26	1005.19	1005.15	1005.83
	2	1005.18	1005.33	1005.52	1005.70	1005.77	1005.85	1005.88	1005.78	1005.69	1005.49	1005.22	1005.18	1005.55
	3	1005.17	1005.08	1005.12	1005.21	1005.28	1005.36	1005.36	1005.39	1005.43	1005.37	1005.33	1005.40	1005.29
	4	1005.50	1005.46	1005.27	1004.96	1004.75	1004.72	1004.80	1004.82	1004.77	1004.75	1004.69	1004.68	1004.93
	5	1004.71	1004.68	1004.70	1004.78	1004.79	1004.75	1004.68	1004.63	1004.60	1004.58	1004.64	1004.61	1004.68
	6	1004.60	1004.75	1004.91	1004.94	1004.75	1004.60	1004.59	1004.57	1004.52	1004.53	1004.52	1004.58	1004.65
	7	1004.62	1004.68	1004.75	1004.77	1004.82	1004.76	1004.76	1004.82	1004.92	1004.99	1004.99	1005.03	1004.82
	8	1005.08	1005.07	1005.08	1005.14	1005.15	1005.25	1005.36	1005.39	1005.48	1005.60	1005.66	1005.68	1005.33
	9	1005.68	1005.74	1005.84	1006.01	1006.12	1006.19	1006.29	1006.39	1006.60	1006.68	1006.68	1006.73	1006.24
	10	1006.76	1006.89	1006.91	1006.91	1007.03	1007.07	1007.10	1007.15	1007.21	1007.38	1007.46	1007.47	1007.11
	11	1007.49	1007.47	1007.52	1007.54	1007.54	1007.57	1007.61	1007.66	1007.67	1007.66	1007.68	1007.71	1007.59
	12	1007.74	1007.75	1007.77	1007.83	1007.95	1008.04	1008.02	1008.01	1008.02	1008.04	1008.03	1008.02	1007.93
	13	1008.06	1008.13	1008.18	1008.22	1008.23	1008.23	1008.30	1008.42	1008.49	1008.55	1008.58	1008.61	1008.33
	14	1008.70	1008.83	1008.96	1009.03	1009.08	1009.10	1009.13	1009.24	1009.29	1009.26	1009.29	1009.36	1009.10
	15	1009.43	1009.49	1009.57	1009.63	1009.66	1009.71	1009.72	1009.73	1009.76	1009.81	1009.87	1009.93	1009.69
	16	1009.98	1010.01	1010.03	1010.06	1010.07	1010.07	1010.11	1010.18	1010.23	1010.25	1010.24	1010.25	1010.12
	17	1010.29	1010.32	1010.38	1010.41	1010.41	1010.46	1010.51	1010.52	1010.53	1010.57	1010.62	1010.67	1010.47
	18	1010.73	1010.73	1010.72	1010.75	1010.81	1010.89	1010.92	1010.96	1011.07	1011.18	1011.26	1011.34	1010.94
	19	1011.40	1011.47	1011.53	1011.56	1011.59	1011.63	1011.65	1011.68	1011.69	1011.72	1011.76	1011.81	1011.62
	20	1011.82	1011.84	1011.89	1011.89	1011.89	1011.90	1011.91	1011.90	1011.92	1011.96	1011.96	1012.00	1011.91
	21	1012.07	1012.09	1012.08	1012.05	1012.03	1012.02	1012.01	1012.00	1011.99	1011.99	1012.00	1012.04	1012.03
	22	1012.09	1012.14	1012.19	1012.21	1012.22	1012.25	1012.28	1012.32	1012.33	1012.36	1012.40	1012.43	1012.27
	23	1012.44	1012.45	1012.48	1012.52	1012.54	1012.55	1012.55	1012.56	1012.55	1012.51	1012.47	1012.43	1012.50
10	0	1012.32	1012.29	1012.23	1012.20	1012.17	1012.16	1012.17	1012.17	1012.15	1012.13	1012.16	1012.21	1012.19
	1	1012.23	1012.29	1012.29	1012.26	1012.24	1012.15	1012.07	1012.02	1011.98	1012.04	1012.18	1012.28	1012.17
	2	1012.29	1012.30	1012.27	1012.19	1012.11	1012.06	1012.06	1012.01	1011.90	1011.80	1011.69	1011.59	1012.02
	3	1011.57	1011.59	1011.61	1011.58	1011.54	1011.53	1011.55	1011.58	1011.61	1011.64	1011.59	1011.63	1011.58
	4	1011.75	1011.80	1011.74	1011.70	1011.76	1011.78	1011.75	1011.74	1011.74	1011.78	1011.78	1011.80	1011.76
	5	1011.87	1011.85	1011.82	1011.79	1011.76	1011.87	1012.00	1012.05	1012.08	1012.12	1012.16	1012.19	1011.96
	6	1012.26	1012.36	1012.43	1012.43	1012.43	1012.46	1012.51	1012.58	1012.62	1012.59	1012.61	1012.60	1012.49
	7	1012.54	1012.51	1012.45	1012.39	1012.33	1012.28	1012.22	1012.09	1011.95	1011.87	1011.81	1011.78	1012.18
	8	1011.72	1011.63	1011.56	1011.56	1011.58	1011.63	1011.71	1011.77	1011.82	1011.88	1011.94	1011.94	1011.73
	9	1011.92	1011.91	1011.91	1011.94	1012.00	1012.06	1012.15	1012.17	1012.14	1012.12	1012.10	1012.11	1012.04
	10	1012.16	1012.23	1012.26	1012.28	1012.33	1012.38	1012.41	1012.38	1012.37	1012.37	1012.33	1012.35	1012.32
	11	1012.40	1012.41	1012.38	1012.36	1012.31	1012.28	1012.28	1012.30	1012.31	1012.32	1012.33	1012.27	1012.33
	12	1012.25	1012.21	1012.14	1012.07	1012.00	1011.95	1011.88	1011.83	1011.81	1011.79	1011.73	1011.70	1011.94
	13	1011.70	1011.71	1011.72	1011.68	1011.59	1011.48	1011.41	1011.38	1011.36	1011.33	1011.34	1011.28	1011.50
	14	1011.19	1011.19	1011.21	1011.22	1011.26	1011.25	1011.15	1011.09	1011.07	1011.01	1010.99	1011.01	1011.13
	15	1011.05	1011.05	1011.04	1011.08	1011.11	1011.11	1011.11	1011.08	1011.03	1010.99	1010.88	1010.76	1011.02
	16	1010.71	1010.68	1010.61	1010.54	1010.51	1010.49	1010.48	1010.51	1010.59	1010.58	1010.57	1010.62	1010.57
	17	1010.66	1010.68	1010.73	1010.77	1010.77	1010.65	1010.45	1010.34	1010.33	1010.41	1010.48	1010.47	1010.56
	18	1010.41	1010.36	1010.36	1010.39	1010.27	1010.19	1010.28	1010.37	1010.42	1010.46	1010.51	1010.53	1010.38
	19	1010.58	1010.58	1010.52	1010.43	1010.36	1010.26	1010.21	1010.30	1010.34	1010.31	1010.29	1010.26	1010.37
	20	1010.21	1010.14	1010.17	1010.31	1010.36	1010.29	1010.21	1010.17	1010.19	1010.21	1010.16	1010.08	1010.21
	21	1010.07	1010.09	1010.05	1010.00	1010.05	1010.11	1010.10	1010.10	1010.11	1010.12	1010.08	1010.02	1010.07
	22	1009.97	1009.96	1009.97	1009.91	1009.84	1009.80	1009.83	1009.87	1009.89	1009.89	1009.86	1009.86	1009.88
	23	1009.85	1009.83	1009.81	1009.76	1009.71	1009.64	1009.58	1009.56	1009.61	1009.60	1009.47	1009.31	1009.64

S.V.I.R.CO. Observatory - Pressure in hectoPascal – April 2018

day	hh	00_05	05_10	10_15	15_20	20_25	25_30	30_35	35_40	40_45	45_50	50_55	55_60	average
11	0	1009.29	1009.26	1009.22	1009.21	1009.20	1009.17	1009.14	1009.11	1009.08	1009.00	1008.93	1008.95	1009.12
	1	1008.95	1008.88	1008.77	1008.66	1008.51	1008.42	1008.45	1008.39	1008.28	1008.21	1008.14	1008.07	1008.47
	2	1007.99	1007.90	1007.83	1007.72	1007.63	1007.58	1007.58	1007.57	1007.50	1007.46	1007.44	1007.36	1007.63
	3	1007.31	1007.30	1007.26	1007.24	1007.22	1007.19	1007.16	1007.14	1007.11	1007.05	1006.96	1006.86	1007.15
	4	1006.84	1006.88	1006.90	1006.92	1006.90	1006.81	1006.73	1006.74	1006.77	1006.71	1006.67	1006.72	1006.80
	5	1006.76	1006.76	1006.72	1006.61	1006.47	1006.50	1006.64	1006.61	1006.56	1006.58	1006.59	1006.59	1006.61
	6	1006.65	1006.67	1006.53	1006.39	1006.29	1006.26	1006.26	1006.17	1006.12	1006.12	1006.13	1006.14	1006.31
	7	1006.07	1006.04	1006.07	1006.09	1006.08	1006.09	1006.08	1006.05	1006.00	1005.88	1005.72	1005.61	1005.98
	8	1005.62	1005.65	1005.67	1005.66	1005.61	1005.58	1005.61	1005.67	1005.63	1005.54	1005.52	1005.48	1005.60
	9	1005.50	1005.62	1005.77	1005.83	1005.78	1005.78	1005.77	1005.68	1005.64	1005.67	1005.71	1005.75	1005.71
	10	1005.79	1005.80	1005.67	1005.47	1005.28	1005.16	1005.11	1005.07	1005.04	1005.03	1005.05	1005.08	1005.29
	11	1005.06	1005.04	1004.96	1004.89	1004.90	1004.93	1004.97	1005.01	1005.04	1005.05	1004.96	1004.89	1004.97
	12	1004.86	1004.78	1004.70	1004.67	1004.68	1004.68	1004.65	1004.55	1004.42	1004.33	1004.27	1004.22	1004.56
	13	1004.14	1004.04	1004.00	1003.93	1003.85	1003.78	1003.71	1003.72	1003.75	1003.69	1003.61	1003.54	1003.81
	14	1003.47	1003.42	1003.36	1003.31	1003.25	1003.24	1003.24	1003.19	1003.19	1003.21	1003.22	1003.17	1003.27
	15	1003.15	1003.19	1003.21	1003.20	1003.15	1003.06	1003.02	1003.01	1002.98	1002.89	1002.80	1002.81	1003.04
	16	1002.85	1002.87	1002.89	1002.87	1002.88	1002.85	1002.80	1002.80	1002.77	1002.79	1002.84	1002.85	1002.84
	17	1002.88	1002.91	1002.89	1002.88	1002.87	1002.88	1002.93	1002.99	1003.05	1003.08	1003.10	1003.09	1002.96
	18	1003.07	1003.16	1003.24	1003.25	1003.23	1003.24	1003.30	1003.35	1003.42	1003.48	1003.51	1003.54	1003.31
	19	1003.58	1003.65	1003.80	1004.00	1004.18	1004.30	1004.45	1004.60	1004.75	1004.86	1004.94	1005.05	1004.34
	20	1005.10	1005.12	1005.20	1005.26	1005.28	1005.34	1005.41	1005.47	1005.55	1005.62	1005.65	1005.66	1005.39
	21	1005.64	1005.59	1005.58	1005.58	1005.59	1005.61	1005.64	1005.67	1005.69	1005.70	1005.64	1005.55	1005.62
	22	1005.52	1005.53	1005.52	1005.63	1005.96	1006.14	1006.09	1005.98	1005.81	1005.81	1005.99	1006.05	1005.83
	23	1006.00	1006.06	1006.12	1006.12	1006.05	1005.99	1005.96	1005.86	1005.84	1005.93	1005.94	1005.87	1005.97
12	0	1005.86	1005.78	1005.67	1005.64	1005.61	1005.69	1005.78	1005.77	1005.73	1005.66	1005.67	1005.70	1005.71
	1	1005.84	1005.99	1005.93	1005.69	1005.45	1005.53	1005.67	1005.59	1005.33	1005.21	1005.27	1005.16	1005.55
	2	1004.95	1004.62	1004.23	1003.95	1003.98	1004.08	1004.03	1003.96	1004.08	1004.34	1004.55	1004.72	1004.29
	3	1004.77	1004.74	1004.68	1004.50	1004.35	1004.36	1004.36	1004.36	1004.42	1004.43	1004.38	1004.32	1004.47
	4	1004.34	1004.39	1004.53	1004.68	1004.72	1004.73	1004.76	1004.83	1004.91	1005.00	1004.96	1004.74	1004.71
	5	1004.55	1004.69	1005.02	1005.17	1005.10	1004.98	1004.84	1004.76	1004.79	1004.93	1005.11	1005.12	1004.92
	6	1005.13	1005.07	1004.97	1004.97	1004.92	1004.95	1005.07	1005.06	1005.12	1005.26	1005.27	1005.26	1005.09
	7	1005.21	1005.16	1005.15	1005.19	1005.33	1005.49	1005.56	1005.55	1005.58	1005.60	1005.60	1005.59	1005.42
	8	1005.57	1005.56	1005.51	1005.50	1005.52	1005.54	1005.61	1005.60	1005.50	1005.42	1005.41	1005.43	1005.51
	9	1005.43	1005.39	1005.31	1005.29	1005.35	1005.40	1005.43	1005.51	1005.55	1005.54	1005.56	1005.60	1005.45
	10	1005.66	1005.71	1005.75	1005.79	1005.81	1005.86	1005.93	1006.01	1006.11	1006.23	1006.41	1006.58	1005.99
	11	1006.65	1006.63	1006.63	1006.69	1006.71	1006.72	1006.75	1006.74	1006.69	1006.57	1006.52	1006.45	1006.64
	12	1006.16	1005.98	1006.06	1006.21	1006.28	1006.43	1006.52	1006.47	1006.54	1006.60	1006.58	1006.46	1006.36
	13	1006.39	1006.41	1006.43	1006.49	1006.59	1006.66	1006.68	1006.73	1006.75	1006.75	1006.77	1006.76	1006.62
	14	1006.76	1006.71	1006.65	1006.62	1006.54	1006.51	1006.51	1006.48	1006.44	1006.47	1006.53	1006.54	1006.56
	15	1006.52	1006.54	1006.54	1006.59	1006.66	1006.67	1006.71	1006.73	1006.71	1006.76	1006.80	1006.78	1006.67
	16	1006.79	1006.77	1006.72	1006.73	1006.74	1006.72	1006.76	1006.85	1006.91	1006.87	1006.74	1006.64	1006.77
	17	1006.61	1006.61	1006.65	1006.75	1006.82	1006.82	1006.86	1006.98	1007.09	1007.15	1007.18	1007.25	1006.90
	18	1007.34	1007.43	1007.52	1007.57	1007.60	1007.68	1007.77	1007.85	1007.90	1007.90	1007.94	1008.04	1007.71
	19	1008.14	1008.23	1008.32	1008.37	1008.40	1008.44	1008.45	1008.49	1008.61	1008.74	1008.77	1008.77	1008.47
	20	1008.82	1008.85	1008.83	1008.82	1008.83	1008.82	1008.82	1008.82	1008.80	1008.78	1008.74	1008.74	1008.80
	21	1008.77	1008.76	1008.75	1008.78	1008.79	1008.82	1008.86	1008.89	1008.96	1009.06	1009.15	1009.20	1008.90
	22	1009.24	1009.34	1009.46	1009.60	1009.72	1009.81	1009.84	1009.79	1009.79	1009.83	1009.85	1009.87	1009.68
	23	1009.88	1009.83	1009.80	1009.83	1009.90	1009.90	1009.88	1009.93	1010.01	1010.03	1010.02	1009.97	1009.91

S.V.I.R.CO. Observatory - Pressure in hectoPascal – April 2018

day	hh	00_05	05_10	10_15	15_20	20_25	25_30	30_35	35_40	40_45	45_50	50_55	55_60	average
13	0	1009.85	1009.83	1009.82	1009.82	1009.81	1009.82	1009.83	1009.84	1009.85	1009.86	1009.86	1009.90	1009.84
	1	1009.97	1010.00	1010.01	1010.02	1010.03	1010.05	1010.08	1010.08	1010.05	1010.05	1010.09	1010.14	1010.04
	2	1010.18	1010.23	1010.31	1010.37	1010.41	1010.47	1010.52	1010.60	1010.76	1010.88	1010.93	1010.97	1010.55
	3	1010.96	1010.94	1010.96	1010.98	1010.97	1010.97	1010.97	1011.00	1011.04	1011.04	1011.02	1010.98	1010.98
	4	1010.98	1011.05	1011.13	1011.20	1011.26	1011.35	1011.49	1011.63	1011.72	1011.76	1011.79	1011.85	1011.43
	5	1011.95	1012.06	1012.17	1012.25	1012.36	1012.47	1012.54	1012.60	1012.66	1012.71	1012.78	1012.84	1012.45
	6	1012.89	1012.98	1013.08	1013.13	1013.19	1013.26	1013.33	1013.34	1013.35	1013.39	1013.46	1013.56	1013.24
	7	1013.64	1013.71	1013.81	1013.90	1013.97	1014.05	1014.12	1014.19	1014.30	1014.35	1014.43	1014.52	1014.08
	8	1014.56	1014.62	1014.68	1014.75	1014.78	1014.78	1014.83	1014.91	1014.90	1014.90	1014.97	1015.01	1014.81
	9	1014.96	1014.93	1014.96	1014.95	1014.94	1014.92	1014.90	1014.92	1014.93	1014.92	1014.92	1014.89	1014.93
	10	1014.89	1014.93	1014.94	1014.92	1014.96	1014.99	1015.02	1015.06	1015.10	1015.15	1015.16	1015.15	1015.02
	11	1015.17	1015.19	1015.17	1015.20	1015.20	1015.20	1015.18	1015.19	1015.25	1015.24	1015.20	1015.19	1015.20
	12	1015.20	1015.20	1015.21	1015.20	1015.18	1015.17	1015.15	1015.12	1015.09	1015.07	1015.07	1015.08	1015.14
	13	1015.09	1015.04	1014.97	1014.94	1014.92	1014.88	1014.84	1014.85	1014.86	1014.89	1014.92	1014.91	1014.92
	14	1014.86	1014.78	1014.71	1014.62	1014.56	1014.55	1014.57	1014.63	1014.73	1014.78	1014.80	1014.84	1014.70
	15	1014.91	1014.97	1014.97	1015.01	1015.02	1015.07	1015.15	1015.20	1015.25	1015.27	1015.24	1015.22	1015.10
	16	1015.23	1015.27	1015.32	1015.35	1015.37	1015.36	1015.31	1015.31	1015.35	1015.38	1015.39	1015.38	1015.33
	17	1015.39	1015.43	1015.44	1015.40	1015.36	1015.38	1015.38	1015.34	1015.33	1015.36	1015.39	1015.42	1015.38
	18	1015.48	1015.55	1015.57	1015.62	1015.69	1015.73	1015.76	1015.81	1015.87	1015.87	1015.84	1015.89	1015.72
	19	1015.93	1015.94	1015.99	1016.00	1016.06	1016.12	1016.13	1016.18	1016.20	1016.17	1016.14	1016.12	1016.08
	20	1016.09	1016.12	1016.19	1016.25	1016.27	1016.31	1016.34	1016.32	1016.27	1016.21	1016.14	1016.09	1016.21
	21	1016.10	1016.12	1016.16	1016.19	1016.18	1016.19	1016.22	1016.26	1016.28	1016.31	1016.31	1016.31	1016.22
	22	1016.34	1016.40	1016.48	1016.58	1016.67	1016.74	1016.80	1016.82	1016.83	1016.84	1016.82	1016.77	1016.67
	23	1016.73	1016.74	1016.77	1016.84	1016.89	1016.87	1016.83	1016.82	1016.83	1016.83	1016.80	1016.71	1016.80
14	0	1016.61	1016.62	1016.57	1016.51	1016.46	1016.42	1016.40	1016.36	1016.24	1016.12	1016.09	1016.03	1016.36
	1	1015.95	1015.94	1015.97	1016.01	1016.04	1016.01	1015.98	1015.99	1015.98	1015.93	1015.84	1015.76	1015.95
	2	1015.69	1015.64	1015.65	1015.66	1015.62	1015.59	1015.59	1015.57	1015.56	1015.58	1015.54	1015.52	1015.60
	3	1015.55	1015.56	1015.51	1015.45	1015.39	1015.30	1015.22	1015.20	1015.21	1015.24	1015.26	1015.26	1015.34
	4	1015.26	1015.26	1015.24	1015.21	1015.21	1015.22	1015.24	1015.26	1015.26	1015.25	1015.25	1015.20	1015.24
	5	1015.11	1015.08	1015.11	1015.16	1015.20	1015.23	1015.23	1015.24	1015.29	1015.31	1015.28	1015.29	1015.21
	6	1015.33	1015.35	1015.32	1015.29	1015.29	1015.29	1015.27	1015.25	1015.22	1015.22	1015.25	1015.29	1015.28
	7	1015.29	1015.25	1015.21	1015.20	1015.20	1015.22	1015.28	1015.30	1015.28	1015.30	1015.32	1015.34	1015.26
	8	1015.31	1015.27	1015.25	1015.25	1015.24	1015.22	1015.20	1015.20	1015.18	1015.12	1015.06	1015.04	1015.19
	9	1015.04	1015.02	1014.96	1014.92	1014.89	1014.86	1014.84	1014.81	1014.77	1014.79	1014.84	1014.74	1014.87
	10	1014.61	1014.55	1014.48	1014.39	1014.30	1014.21	1014.12	1014.05	1013.98	1013.92	1013.85	1013.75	1014.18
	11	1013.62	1013.49	1013.38	1013.29	1013.22	1013.15	1013.05	1012.97	1012.92	1012.89	1012.85	1012.80	1013.13
	12	1012.75	1012.67	1012.59	1012.53	1012.47	1012.42	1012.38	1012.31	1012.24	1012.18	1012.12	1012.08	1012.39
	13	1012.03	1011.94	1011.86	1011.81	1011.73	1011.61	1011.50	1011.47	1011.42	1011.32	1011.24	1011.20	1011.59
	14	1011.20	1011.18	1011.19	1011.23	1011.27	1011.29	1011.32	1011.32	1011.28	1011.26	1011.23	1011.16	1011.24
	15	1011.08	1010.99	1010.93	1010.91	1010.86	1010.80	1010.71	1010.60	1010.55	1010.53	1010.46	1010.42	1010.74
	16	1010.38	1010.32	1010.26	1010.15	1010.02	1009.90	1009.75	1009.57	1009.38	1009.25	1009.13	1008.99	1009.76
	17	1009.06	1009.17	1009.18	1009.23	1009.25	1009.23	1009.23	1009.38	1009.60	1009.53	1009.22	1009.02	1009.26
	18	1008.92	1008.95	1009.10	1009.20	1009.24	1009.29	1009.33	1009.40	1009.56	1009.60	1009.59	1009.64	1009.32
	19	1009.61	1009.58	1009.61	1009.67	1009.74	1009.79	1009.85	1009.90	1009.97	1010.08	1010.15	1010.25	1009.85
	20	1010.40	1010.52	1010.54	1010.46	1010.40	1010.43	1010.43	1010.37	1010.33	1010.35	1010.26	1009.99	1010.37
	21	1009.67	1009.33	1009.19	1009.26	1009.32	1009.31	1009.30	1009.34	1009.26	1009.06	1008.88	1008.74	1009.22
	22	1008.62	1008.62	1008.53	1008.39	1008.32	1008.23	1008.15	1008.04	1007.87	1007.83	1007.88	1007.93	1008.20
	23	1007.96	1007.96	1008.02	1008.00	1007.94	1007.92	1007.94	1007.95	1007.96	1007.96	1007.93	1007.91	1007.95

S.V.I.R.CO. Observatory - Pressure in hectoPascal – April 2018

day	hh	00_05	05_10	10_15	15_20	20_25	25_30	30_35	35_40	40_45	45_50	50_55	55_60	average
15	0	1007.80	1007.78	1007.72	1007.59	1007.48	1007.44	1007.34	1007.27	1007.22	1007.19	1007.19	1007.14	1007.41
	1	1007.02	1006.92	1006.88	1006.95	1006.93	1006.75	1006.66	1006.60	1006.48	1006.40	1006.33	1006.21	1006.67
	2	1005.93	1005.71	1005.51	1005.17	1004.96	1005.13	1005.33	1005.19	1005.16	1005.40	1005.47	1005.32	1005.35
	3	1005.31	1005.35	1005.37	1005.34	1005.19	1005.03	1005.20	1005.34	1005.21	1005.25	1005.28	1005.27	1005.26
	4	1005.39	1005.55	1005.58	1005.59	1005.64	1005.70	1005.70	1005.63	1005.55	1005.54	1005.58	1005.57	1005.58
	5	1005.49	1005.42	1005.41	1005.43	1005.42	1005.43	1005.36	1005.35	1005.47	1005.42	1005.40	1005.44	1005.42
	6	1005.47	1005.49	1005.45	1005.32	1005.29	1005.44	1005.39	1005.20	1005.04	1004.88	1005.00	1005.21	1005.26
	7	1005.28	1005.42	1005.55	1005.48	1005.37	1005.39	1005.49	1005.62	1005.64	1005.61	1005.64	1005.61	1005.51
	8	1005.56	1005.58	1005.61	1005.62	1005.67	1005.74	1005.81	1005.87	1005.87	1005.89	1005.96	1006.09	1005.77
	9	1006.20	1006.21	1006.25	1006.37	1006.47	1006.61	1006.69	1006.75	1006.90	1007.06	1007.23	1007.30	1006.67
	10	1007.31	1007.29	1007.24	1007.16	1007.04	1006.84	1006.77	1006.69	1006.65	1006.72	1006.69	1006.56	1006.91
	11	1006.26	1005.95	1005.73	1005.60	1005.49	1005.43	1005.56	1005.68	1005.63	1005.53	1005.23	1004.97	1005.59
	12	1004.87	1004.67	1004.53	1004.51	1004.36	1004.09	1004.05	1004.09	1004.01	1003.79	1003.64	1003.66	1004.19
	13	1003.71	1003.75	1003.71	1003.65	1003.61	1003.59	1003.51	1003.44	1003.62	1003.72	1003.67	1003.62	1003.63
	14	1003.59	1003.62	1003.58	1003.68	1003.72	1003.70	1003.69	1003.70	1003.76	1003.76	1003.78	1003.77	1003.69
	15	1003.70	1003.70	1003.68	1003.60	1003.55	1003.54	1003.53	1003.55	1003.58	1003.57	1003.54	1003.53	1003.59
	16	1003.54	1003.58	1003.64	1003.68	1003.71	1003.71	1003.70	1003.72	1003.74	1003.76	1003.83	1003.90	1003.71
	17	1003.97	1004.03	1004.08	1004.13	1004.17	1004.20	1004.28	1004.42	1004.54	1004.57	1004.60	1004.65	1004.30
	18	1004.75	1004.87	1004.92	1004.95	1004.99	1005.02	1005.07	1005.14	1005.21	1005.29	1005.43	1005.57	1005.10
	19	1005.64	1005.69	1005.73	1005.75	1005.82	1005.88	1005.91	1005.97	1006.02	1006.01	1006.01	1005.98	1005.86
	20	1005.93	1005.90	1005.88	1005.87	1005.87	1005.86	1005.83	1005.78	1005.75	1005.74	1005.72	1005.71	1005.82
	21	1005.71	1005.68	1005.66	1005.64	1005.63	1005.66	1005.67	1005.64	1005.61	1005.58	1005.54	1005.52	1005.63
	22	1005.49	1005.47	1005.47	1005.48	1005.44	1005.38	1005.34	1005.33	1005.32	1005.26	1005.18	1005.13	1005.36
	23	1005.11	1005.12	1005.13	1005.13	1005.13	1005.15	1005.15	1005.11	1005.10	1005.13	1005.14	1005.12	1005.13
16	0	1005.09	1005.07	1005.06	1005.08	1005.09	1005.07	1005.03	1005.00	1004.99	1005.01	1005.07	1005.15	1005.06
	1	1005.24	1005.33	1005.43	1005.55	1005.72	1005.87	1005.95	1006.00	1006.04	1006.07	1006.12	1006.19	1005.79
	2	1006.22	1006.19	1006.16	1006.16	1006.16	1006.11	1006.08	1006.12	1006.14	1006.11	1006.07	1006.04	1006.13
	3	1006.04	1006.09	1006.17	1006.24	1006.22	1006.24	1006.31	1006.38	1006.46	1006.52	1006.59	1006.63	1006.32
	4	1006.65	1006.67	1006.66	1006.63	1006.63	1006.69	1006.76	1006.81	1006.88	1006.95	1007.00	1007.06	1006.78
	5	1007.10	1007.17	1007.24	1007.29	1007.35	1007.42	1007.46	1007.50	1007.55	1007.57	1007.60	1007.66	1007.41
	6	1007.70	1007.73	1007.80	1007.89	1007.95	1008.02	1008.09	1008.14	1008.18	1008.21	1008.25	1008.28	1008.02
	7	1008.31	1008.38	1008.46	1008.47	1008.45	1008.46	1008.51	1008.58	1008.65	1008.70	1008.72	1008.74	1008.53
	8	1008.79	1008.88	1008.95	1008.97	1008.98	1009.01	1009.05	1009.08	1009.10	1009.16	1009.21	1009.24	1009.03
	9	1009.24	1009.22	1009.19	1009.17	1009.19	1009.19	1009.18	1009.19	1009.17	1009.18	1009.22	1009.22	1009.19
	10	1009.22	1009.23	1009.26	1009.26	1009.26	1009.30	1009.32	1009.32	1009.34	1009.36	1009.38	1009.42	1009.30
	11	1009.43	1009.42	1009.41	1009.40	1009.42	1009.45	1009.46	1009.45	1009.47	1009.52	1009.58	1009.65	1009.47
	12	1009.68	1009.69	1009.72	1009.73	1009.75	1009.78	1009.80	1009.83	1009.86	1009.88	1009.91	1009.96	1009.80
	13	1010.00	1010.00	1009.98	1009.96	1009.91	1009.88	1009.86	1009.84	1009.85	1009.86	1009.82	1009.81	1009.89
	14	1009.84	1009.86	1009.85	1009.84	1009.85	1009.90	1009.94	1009.95	1009.93	1009.96	1009.97	1009.96	1009.90
	15	1009.96	1009.92	1009.88	1009.89	1009.91	1009.94	1009.98	1010.00	1010.00	1010.02	1010.06	1010.09	1009.97
	16	1010.13	1010.15	1010.18	1010.28	1010.36	1010.43	1010.53	1010.60	1010.64	1010.70	1010.79	1010.88	1010.47
	17	1010.95	1010.98	1011.02	1011.13	1011.26	1011.33	1011.35	1011.38	1011.43	1011.48	1011.55	1011.64	1011.29
	18	1011.70	1011.79	1011.88	1011.96	1012.07	1012.20	1012.32	1012.42	1012.53	1012.63	1012.68	1012.76	1012.24
	19	1012.83	1012.84	1012.89	1012.96	1012.99	1013.00	1013.02	1013.09	1013.14	1013.15	1013.23	1013.31	1013.04
	20	1013.33	1013.36	1013.44	1013.54	1013.59	1013.61	1013.68	1013.76	1013.81	1013.85	1013.87	1013.85	1013.64
	21	1013.84	1013.88	1013.92	1013.92	1013.95	1014.02	1014.02	1013.99	1013.98	1014.01	1014.06	1014.09	1013.97
	22	1014.09	1014.08	1014.12	1014.19	1014.25	1014.30	1014.32	1014.39	1014.50	1014.54	1014.53	1014.52	1014.32
	23	1014.57	1014.62	1014.63	1014.70	1014.77	1014.78	1014.80	1014.84	1014.84	1014.83	1014.84	1014.92	1014.76

S.V.I.R.CO. Observatory - Pressure in hectoPascal – April 2018

day	hh	00_05	05_10	10_15	15_20	20_25	25_30	30_35	35_40	40_45	45_50	50_55	55_60	average
17	0	1015.01	1015.07	1015.14	1015.15	1015.18	1015.23	1015.28	1015.29	1015.29	1015.27	1015.23	1015.22	1015.20
	1	1015.22	1015.21	1015.20	1015.20	1015.14	1015.09	1015.08	1015.11	1015.15	1015.19	1015.25	1015.29	1015.18
	2	1015.32	1015.37	1015.42	1015.46	1015.51	1015.54	1015.57	1015.60	1015.59	1015.58	1015.60	1015.60	1015.51
	3	1015.60	1015.57	1015.54	1015.56	1015.60	1015.63	1015.66	1015.68	1015.70	1015.71	1015.74	1015.77	1015.64
	4	1015.78	1015.80	1015.82	1015.86	1015.93	1016.01	1016.04	1016.06	1016.09	1016.13	1016.16	1016.20	1015.99
	5	1016.23	1016.30	1016.39	1016.44	1016.51	1016.58	1016.64	1016.72	1016.82	1016.89	1016.92	1016.94	1016.61
	6	1016.97	1017.02	1017.10	1017.16	1017.18	1017.14	1017.13	1017.18	1017.20	1017.22	1017.25	1017.29	1017.15
	7	1017.37	1017.43	1017.47	1017.54	1017.60	1017.64	1017.65	1017.65	1017.72	1017.81	1017.85	1017.86	1017.63
	8	1017.86	1017.88	1017.92	1017.96	1018.01	1018.04	1018.07	1018.09	1018.09	1018.08	1018.07	1018.03	1018.01
	9	1017.99	1017.98	1018.00	1017.98	1018.00	1018.01	1018.00	1018.02	1018.04	1018.06	1018.03	1018.00	1018.01
	10	1017.98	1017.96	1017.94	1017.90	1017.89	1017.85	1017.81	1017.78	1017.72	1017.71	1017.71	1017.68	1017.83
	11	1017.66	1017.66	1017.68	1017.69	1017.68	1017.62	1017.55	1017.50	1017.46	1017.45	1017.50	1017.52	1017.58
	12	1017.52	1017.50	1017.45	1017.45	1017.47	1017.47	1017.44	1017.41	1017.34	1017.27	1017.26	1017.29	1017.40
	13	1017.30	1017.27	1017.27	1017.34	1017.37	1017.37	1017.37	1017.40	1017.51	1017.60	1017.62	1017.58	1017.41
	14	1017.49	1017.46	1017.41	1017.38	1017.41	1017.45	1017.52	1017.67	1017.74	1017.64	1017.64	1017.73	1017.54
	15	1017.79	1017.96	1018.23	1018.30	1018.06	1017.90	1017.94	1017.95	1017.86	1017.74	1017.77	1018.09	1017.96
	16	1018.42	1018.51	1018.48	1018.38	1018.32	1018.32	1018.24	1018.16	1018.10	1018.05	1018.07	1018.09	1018.26
	17	1018.04	1018.03	1018.07	1018.11	1018.11	1018.11	1018.16	1018.19	1018.17	1018.13	1018.12	1018.15	1018.11
	18	1018.19	1018.32	1018.49	1018.56	1018.61	1018.65	1018.69	1018.77	1018.87	1018.97	1019.06	1019.15	1018.69
	19	1019.24	1019.32	1019.40	1019.49	1019.57	1019.65	1019.70	1019.73	1019.82	1019.93	1020.01	1020.08	1019.66
	20	1020.15	1020.19	1020.21	1020.23	1020.24	1020.25	1020.26	1020.22	1020.19	1020.18	1020.14	1020.12	1020.20
	21	1020.16	1020.18	1020.20	1020.26	1020.31	1020.31	1020.29	1020.33	1020.39	1020.41	1020.45	1020.50	1020.31
	22	1020.54	1020.57	1020.57	1020.59	1020.62	1020.64	1020.66	1020.70	1020.76	1020.81	1020.87	1020.91	1020.68
	23	1020.94	1020.94	1020.88	1020.82	1020.79	1020.78	1020.82	1020.86	1020.90	1020.92	1020.91	1020.90	1020.87
18	0	1020.76	1020.74	1020.72	1020.72	1020.73	1020.72	1020.70	1020.74	1020.80	1020.83	1020.87	1020.86	1020.76
	1	1020.85	1020.84	1020.84	1020.83	1020.75	1020.76	1020.79	1020.76	1020.75	1020.76	1020.75	1020.76	1020.78
	2	1020.78	1020.77	1020.76	1020.76	1020.78	1020.80	1020.79	1020.77	1020.75	1020.78	1020.84	1020.87	1020.79
	3	1020.86	1020.86	1020.86	1020.87	1020.90	1020.91	1020.92	1020.89	1020.83	1020.78	1020.77	1020.76	1020.85
	4	1020.71	1020.69	1020.73	1020.77	1020.79	1020.82	1020.89	1020.94	1020.99	1021.03	1021.05	1021.13	1020.88
	5	1021.24	1021.28	1021.29	1021.32	1021.38	1021.42	1021.45	1021.49	1021.53	1021.56	1021.57	1021.59	1021.43
	6	1021.61	1021.63	1021.68	1021.69	1021.72	1021.79	1021.88	1021.93	1021.97	1022.03	1022.07	1022.08	1021.84
	7	1022.07	1022.01	1022.00	1022.02	1022.00	1021.98	1022.02	1022.09	1022.13	1022.13	1022.15	1022.20	1022.07
	8	1022.22	1022.23	1022.24	1022.20	1022.16	1022.18	1022.24	1022.37	1022.50	1022.56	1022.60	1022.59	1022.34
	9	1022.55	1022.51	1022.50	1022.53	1022.55	1022.61	1022.64	1022.60	1022.54	1022.50	1022.49	1022.47	1022.54
	10	1022.42	1022.41	1022.45	1022.49	1022.49	1022.48	1022.46	1022.44	1022.41	1022.37	1022.33	1022.28	1022.42
	11	1022.24	1022.20	1022.13	1022.08	1022.04	1022.00	1021.97	1021.94	1021.89	1021.89	1021.97	1021.99	1022.03
	12	1021.93	1021.88	1021.89	1021.91	1021.86	1021.80	1021.80	1021.78	1021.76	1021.72	1021.65	1021.58	1021.79
	13	1021.52	1021.49	1021.48	1021.50	1021.49	1021.42	1021.37	1021.36	1021.34	1021.31	1021.30	1021.27	1021.40
	14	1021.23	1021.22	1021.25	1021.25	1021.23	1021.24	1021.27	1021.26	1021.24	1021.26	1021.29	1021.31	1021.25
	15	1021.27	1021.25	1021.27	1021.24	1021.23	1021.25	1021.25	1021.23	1021.21	1021.21	1021.24	1021.25	1021.24
	16	1021.23	1021.25	1021.29	1021.35	1021.39	1021.39	1021.37	1021.40	1021.45	1021.47	1021.50	1021.55	1021.38
	17	1021.58	1021.58	1021.60	1021.64	1021.67	1021.70	1021.72	1021.77	1021.84	1021.89	1021.94	1022.00	1021.74
	18	1022.07	1022.12	1022.15	1022.19	1022.25	1022.29	1022.37	1022.45	1022.52	1022.61	1022.67	1022.73	1022.37
	19	1022.77	1022.82	1022.90	1022.96	1022.99	1022.98	1023.02	1023.08	1023.14	1023.21	1023.26	1023.26	1023.03
	20	1023.26	1023.32	1023.34	1023.34	1023.36	1023.37	1023.37	1023.38	1023.39	1023.42	1023.44	1023.45	1023.37
	21	1023.41	1023.37	1023.36	1023.33	1023.36	1023.40	1023.40	1023.40	1023.40	1023.38	1023.38	1023.39	1023.38
	22	1023.38	1023.37	1023.36	1023.37	1023.41	1023.45	1023.48	1023.48	1023.43	1023.37	1023.33	1023.33	1023.39
	23	1023.36	1023.34	1023.34	1023.37	1023.40	1023.41	1023.43	1023.44	1023.44	1023.43	1023.41	1023.37	1023.39

S.V.I.R.CO. Observatory - Pressure in hectoPascal – April 2018

day	hh	00_05	05_10	10_15	15_20	20_25	25_30	30_35	35_40	40_45	45_50	50_55	55_60	average
19	0	1023.31	1023.29	1023.26	1023.24	1023.18	1023.11	1023.06	1023.03	1023.02	1023.03	1023.05	1023.07	1023.13
	1	1023.09	1023.09	1023.07	1023.04	1023.03	1023.02	1022.98	1022.95	1022.95	1022.94	1022.93	1022.92	1023.00
	2	1022.94	1022.96	1022.97	1022.97	1022.96	1022.96	1022.96	1022.92	1022.89	1022.87	1022.88	1022.89	1022.93
	3	1022.87	1022.85	1022.86	1022.88	1022.89	1022.90	1022.86	1022.84	1022.86	1022.85	1022.88	1022.95	1022.87
	4	1023.01	1023.08	1023.14	1023.22	1023.26	1023.27	1023.23	1023.16	1023.14	1023.16	1023.19	1023.24	1023.17
	5	1023.29	1023.32	1023.33	1023.34	1023.35	1023.34	1023.34	1023.33	1023.36	1023.41	1023.44	1023.47	1023.36
	6	1023.48	1023.48	1023.48	1023.50	1023.49	1023.43	1023.41	1023.41	1023.39	1023.34	1023.29	1023.27	1023.41
	7	1023.26	1023.31	1023.41	1023.46	1023.48	1023.49	1023.49	1023.46	1023.44	1023.50	1023.55	1023.54	1023.45
	8	1023.53	1023.54	1023.55	1023.55	1023.55	1023.56	1023.58	1023.58	1023.59	1023.59	1023.59	1023.59	1023.56
	9	1023.60	1023.62	1023.62	1023.60	1023.58	1023.54	1023.51	1023.50	1023.47	1023.45	1023.42	1023.34	1023.52
	10	1023.30	1023.30	1023.29	1023.25	1023.16	1023.07	1023.02	1022.98	1022.94	1022.89	1022.86	1022.85	1023.07
	11	1022.82	1022.78	1022.74	1022.71	1022.66	1022.59	1022.60	1022.61	1022.58	1022.53	1022.48	1022.47	1022.63
	12	1022.45	1022.44	1022.43	1022.37	1022.30	1022.25	1022.18	1022.13	1022.12	1022.09	1022.04	1021.97	1022.23
	13	1021.91	1021.89	1021.85	1021.80	1021.78	1021.76	1021.74	1021.70	1021.70	1021.72	1021.71	1021.69	1021.77
	14	1021.66	1021.63	1021.60	1021.57	1021.54	1021.48	1021.46	1021.42	1021.38	1021.38	1021.37	1021.32	1021.48
	15	1021.28	1021.25	1021.23	1021.27	1021.26	1021.21	1021.17	1021.15	1021.14	1021.13	1021.16	1021.19	1021.20
	16	1021.19	1021.16	1021.14	1021.14	1021.12	1021.10	1021.10	1021.12	1021.12	1021.13	1021.12	1021.09	1021.13
	17	1021.03	1021.02	1021.05	1021.08	1021.09	1021.08	1021.09	1021.13	1021.18	1021.22	1021.23	1021.22	1021.12
	18	1021.25	1021.29	1021.34	1021.39	1021.43	1021.46	1021.50	1021.52	1021.56	1021.60	1021.63	1021.66	1021.47
	19	1021.68	1021.69	1021.71	1021.69	1021.64	1021.62	1021.63	1021.62	1021.60	1021.59	1021.56	1021.54	1021.63
	20	1021.50	1021.45	1021.42	1021.42	1021.46	1021.47	1021.43	1021.45	1021.45	1021.42	1021.38	1021.37	1021.43
	21	1021.38	1021.36	1021.29	1021.22	1021.21	1021.21	1021.21	1021.23	1021.25	1021.27	1021.27	1021.27	1021.26
	22	1021.25	1021.21	1021.20	1021.21	1021.21	1021.17	1021.13	1021.11	1021.12	1021.14	1021.15	1021.15	1021.17
	23	1021.12	1021.07	1021.04	1021.03	1021.01	1020.94	1020.87	1020.80	1020.74	1020.69	1020.68	1020.68	1020.89
20	0	1020.61	1020.58	1020.53	1020.49	1020.49	1020.50	1020.49	1020.48	1020.47	1020.46	1020.47	1020.45	1020.49
	1	1020.41	1020.37	1020.36	1020.36	1020.34	1020.33	1020.32	1020.31	1020.29	1020.30	1020.31	1020.30	1020.33
	2	1020.28	1020.26	1020.26	1020.25	1020.26	1020.26	1020.23	1020.19	1020.16	1020.13	1020.09	1020.08	1020.20
	3	1020.08	1020.05	1020.01	1020.01	1020.01	1020.01	1020.02	1020.03	1020.05	1020.09	1020.13	1020.15	1020.05
	4	1020.11	1020.08	1020.10	1020.17	1020.27	1020.33	1020.37	1020.41	1020.44	1020.45	1020.45	1020.45	1020.30
	5	1020.45	1020.45	1020.44	1020.44	1020.45	1020.46	1020.46	1020.46	1020.46	1020.45	1020.45	1020.45	1020.45
	6	1020.44	1020.45	1020.45	1020.45	1020.45	1020.46	1020.43	1020.37	1020.34	1020.33	1020.35	1020.37	1020.40
	7	1020.38	1020.35	1020.30	1020.26	1020.24	1020.23	1020.21	1020.20	1020.22	1020.25	1020.27	1020.28	1020.26
	8	1020.27	1020.23	1020.23	1020.23	1020.21	1020.19	1020.20	1020.24	1020.25	1020.28	1020.31	1020.32	1020.24
	9	1020.34	1020.33	1020.30	1020.27	1020.22	1020.17	1020.15	1020.12	1020.10	1020.09	1020.09	1020.07	1020.19
	10	1020.01	1019.93	1019.86	1019.81	1019.77	1019.72	1019.68	1019.64	1019.60	1019.57	1019.52	1019.45	1019.71
	11	1019.40	1019.36	1019.27	1019.24	1019.22	1019.15	1019.10	1019.04	1018.97	1018.90	1018.82	1018.74	1019.10
	12	1018.70	1018.70	1018.68	1018.64	1018.60	1018.53	1018.48	1018.46	1018.41	1018.35	1018.32	1018.27	1018.51
	13	1018.22	1018.19	1018.15	1018.09	1018.04	1017.99	1017.97	1017.92	1017.84	1017.79	1017.75	1017.69	1017.97
	14	1017.63	1017.58	1017.56	1017.51	1017.47	1017.44	1017.43	1017.41	1017.38	1017.37	1017.36	1017.33	1017.45
	15	1017.32	1017.32	1017.30	1017.31	1017.33	1017.31	1017.29	1017.28	1017.26	1017.23	1017.20	1017.16	1017.27
	16	1017.15	1017.16	1017.12	1017.07	1017.10	1017.10	1017.05	1017.02	1017.00	1016.97	1016.95	1016.93	1017.05
	17	1016.92	1016.93	1016.95	1016.97	1016.98	1016.96	1016.96	1017.01	1017.06	1017.11	1017.14	1017.16	1017.01
	18	1017.20	1017.26	1017.29	1017.31	1017.33	1017.38	1017.42	1017.46	1017.50	1017.54	1017.60	1017.66	1017.41
	19	1017.68	1017.70	1017.72	1017.73	1017.75	1017.76	1017.81	1017.85	1017.89	1017.93	1017.95	1017.94	1017.81
	20	1017.90	1017.85	1017.85	1017.87	1017.88	1017.88	1017.90	1017.88	1017.84	1017.84	1017.91	1017.95	1017.88
	21	1017.94	1017.96	1017.99	1017.99	1017.95	1017.94	1017.92	1017.87	1017.86	1017.88	1017.87	1017.86	1017.92
	22	1017.86	1017.84	1017.82	1017.82	1017.82	1017.84	1017.85	1017.83	1017.82	1017.80	1017.79	1017.77	1017.82
	23	1017.75	1017.74	1017.72	1017.70	1017.69	1017.67	1017.64	1017.60	1017.55	1017.51	1017.48	1017.47	1017.62

S.V.I.R.CO. Observatory - Pressure in hectoPascal – April 2018

day	hh	00_05	05_10	10_15	15_20	20_25	25_30	30_35	35_40	40_45	45_50	50_55	55_60	average
21	0	1017.43	1017.42	1017.39	1017.39	1017.40	1017.40	1017.39	1017.39	1017.38	1017.39	1017.40	1017.36	1017.39
	1	1017.29	1017.24	1017.22	1017.22	1017.22	1017.20	1017.19	1017.18	1017.16	1017.14	1017.16	1017.18	1017.20
	2	1017.16	1017.13	1017.08	1017.07	1017.06	1017.04	1017.04	1017.03	1017.03	1017.03	1017.00	1017.01	1017.05
	3	1017.04	1017.06	1017.04	1016.99	1016.98	1016.98	1016.98	1017.01	1017.05	1017.11	1017.12	1017.10	1017.04
	4	1017.13	1017.19	1017.25	1017.25	1017.22	1017.21	1017.20	1017.22	1017.23	1017.28	1017.35	1017.37	1017.24
	5	1017.37	1017.40	1017.46	1017.50	1017.53	1017.53	1017.54	1017.58	1017.60	1017.61	1017.62	1017.66	1017.53
	6	1017.71	1017.73	1017.75	1017.75	1017.75	1017.80	1017.84	1017.85	1017.81	1017.79	1017.82	1017.86	1017.79
	7	1017.88	1017.89	1017.88	1017.85	1017.83	1017.82	1017.82	1017.81	1017.82	1017.83	1017.82	1017.83	1017.84
	8	1017.85	1017.86	1017.87	1017.87	1017.87	1017.89	1017.89	1017.87	1017.87	1017.90	1017.94	1017.93	1017.88
	9	1017.91	1017.92	1017.90	1017.86	1017.86	1017.86	1017.85	1017.84	1017.82	1017.80	1017.79	1017.76	1017.84
	10	1017.70	1017.68	1017.65	1017.57	1017.53	1017.53	1017.51	1017.50	1017.48	1017.46	1017.40	1017.34	1017.53
	11	1017.32	1017.30	1017.31	1017.37	1017.41	1017.41	1017.40	1017.43	1017.45	1017.44	1017.42	1017.40	1017.39
	12	1017.41	1017.43	1017.43	1017.40	1017.37	1017.36	1017.35	1017.33	1017.25	1017.20	1017.18	1017.14	1017.32
	13	1017.13	1017.14	1017.12	1017.08	1017.01	1016.98	1016.97	1016.96	1016.96	1016.95	1016.94	1016.93	1017.01
	14	1016.92	1016.89	1016.86	1016.84	1016.83	1016.82	1016.81	1016.78	1016.75	1016.73	1016.71	1016.66	1016.80
	15	1016.60	1016.56	1016.55	1016.52	1016.48	1016.49	1016.50	1016.48	1016.46	1016.44	1016.41	1016.39	1016.49
	16	1016.40	1016.41	1016.42	1016.44	1016.43	1016.42	1016.41	1016.42	1016.45	1016.47	1016.50	1016.53	1016.44
	17	1016.57	1016.65	1016.72	1016.76	1016.79	1016.81	1016.82	1016.84	1016.90	1016.95	1016.97	1016.98	1016.81
	18	1016.97	1017.00	1017.09	1017.18	1017.26	1017.31	1017.37	1017.43	1017.47	1017.52	1017.56	1017.58	1017.31
	19	1017.58	1017.59	1017.63	1017.66	1017.70	1017.76	1017.79	1017.77	1017.77	1017.80	1017.83	1017.84	1017.73
	20	1017.84	1017.86	1017.87	1017.85	1017.84	1017.87	1017.91	1017.89	1017.85	1017.82	1017.81	1017.82	1017.85
	21	1017.84	1017.86	1017.86	1017.85	1017.86	1017.89	1017.93	1017.95	1017.95	1017.95	1017.95	1017.90	1017.90
	22	1017.84	1017.80	1017.75	1017.72	1017.70	1017.70	1017.71	1017.74	1017.77	1017.80	1017.82	1017.81	1017.76
	23	1017.80	1017.78	1017.74	1017.69	1017.64	1017.63	1017.63	1017.60	1017.55	1017.50	1017.46	1017.42	1017.62
22	0	1017.42	1017.43	1017.43	1017.41	1017.42	1017.45	1017.47	1017.46	1017.44	1017.43	1017.45	1017.48	1017.44
	1	1017.51	1017.54	1017.56	1017.56	1017.56	1017.56	1017.54	1017.52	1017.50	1017.47	1017.45	1017.43	1017.51
	2	1017.43	1017.44	1017.47	1017.50	1017.49	1017.45	1017.45	1017.41	1017.35	1017.31	1017.28	1017.29	1017.40
	3	1017.31	1017.32	1017.32	1017.33	1017.32	1017.28	1017.26	1017.26	1017.27	1017.26	1017.24	1017.22	1017.28
	4	1017.21	1017.22	1017.24	1017.29	1017.35	1017.40	1017.43	1017.46	1017.48	1017.52	1017.58	1017.63	1017.40
	5	1017.67	1017.68	1017.68	1017.70	1017.70	1017.70	1017.72	1017.75	1017.76	1017.75	1017.75	1017.77	1017.72
	6	1017.79	1017.81	1017.84	1017.84	1017.84	1017.83	1017.81	1017.78	1017.76	1017.76	1017.77	1017.76	1017.80
	7	1017.75	1017.76	1017.79	1017.81	1017.83	1017.84	1017.84	1017.83	1017.81	1017.83	1017.86	1017.88	1017.82
	8	1017.89	1017.90	1017.90	1017.90	1017.91	1017.91	1017.91	1017.90	1017.90	1017.91	1017.92	1017.92	1017.90
	9	1017.92	1017.92	1017.91	1017.89	1017.88	1017.87	1017.87	1017.87	1017.84	1017.79	1017.75	1017.71	1017.85
	10	1017.69	1017.68	1017.64	1017.60	1017.57	1017.53	1017.47	1017.46	1017.42	1017.38	1017.33	1017.29	1017.50
	11	1017.27	1017.25	1017.26	1017.24	1017.23	1017.23	1017.20	1017.15	1017.13	1017.13	1017.11	1017.08	1017.19
	12	1017.06	1017.04	1017.03	1017.03	1017.01	1016.98	1016.96	1016.92	1016.85	1016.80	1016.81	1016.83	1016.94
	13	1016.83	1016.83	1016.82	1016.73	1016.66	1016.64	1016.62	1016.59	1016.56	1016.58	1016.55	1016.50	1016.66
	14	1016.48	1016.46	1016.41	1016.35	1016.33	1016.32	1016.29	1016.26	1016.20	1016.13	1016.10	1016.09	1016.28
	15	1016.10	1016.09	1016.11	1016.13	1016.12	1016.12	1016.12	1016.11	1016.12	1016.13	1016.13	1016.13	1016.12
	16	1016.15	1016.17	1016.20	1016.23	1016.22	1016.19	1016.18	1016.20	1016.23	1016.25	1016.28	1016.28	1016.21
	17	1016.27	1016.26	1016.25	1016.29	1016.33	1016.35	1016.39	1016.46	1016.52	1016.56	1016.59	1016.61	1016.40
	18	1016.64	1016.68	1016.73	1016.81	1016.87	1016.94	1017.02	1017.07	1017.14	1017.23	1017.30	1017.39	1016.98
	19	1017.48	1017.52	1017.52	1017.54	1017.58	1017.64	1017.69	1017.72	1017.76	1017.80	1017.84	1017.89	1017.66
	20	1017.92	1017.90	1017.88	1017.90	1017.93	1017.94	1017.93	1017.92	1017.90	1017.87	1017.82	1017.81	1017.89
	21	1017.86	1017.89	1017.90	1017.88	1017.87	1017.88	1017.89	1017.90	1017.91	1017.92	1017.92	1017.93	1017.89
	22	1017.95	1017.94	1017.92	1017.97	1018.03	1018.07	1018.06	1018.03	1018.03	1018.04	1018.06	1018.07	1018.01
	23	1018.09	1018.08	1018.07	1018.03	1017.99	1017.97	1017.96	1017.95	1017.93	1017.94	1017.95	1017.95	1017.99

S.V.I.R.CO. Observatory - Pressure in hectoPascal – April 2018

day	hh	00_05	05_10	10_15	15_20	20_25	25_30	30_35	35_40	40_45	45_50	50_55	55_60	average
23	0	1017.91	1017.90	1017.87	1017.83	1017.79	1017.76	1017.76	1017.77	1017.76	1017.74	1017.72	1017.69	1017.78
	1	1017.67	1017.67	1017.69	1017.69	1017.69	1017.70	1017.73	1017.74	1017.73	1017.72	1017.71	1017.70	1017.70
	2	1017.69	1017.66	1017.64	1017.64	1017.63	1017.60	1017.57	1017.54	1017.53	1017.54	1017.53	1017.53	1017.59
	3	1017.52	1017.50	1017.46	1017.42	1017.39	1017.38	1017.37	1017.37	1017.35	1017.35	1017.38	1017.41	1017.41
	4	1017.41	1017.43	1017.45	1017.48	1017.55	1017.60	1017.65	1017.70	1017.74	1017.75	1017.75	1017.78	1017.61
	5	1017.82	1017.86	1017.86	1017.87	1017.89	1017.92	1017.96	1017.98	1018.02	1018.05	1018.05	1018.05	1017.94
	6	1018.06	1018.09	1018.11	1018.10	1018.10	1018.11	1018.12	1018.14	1018.13	1018.12	1018.11	1018.09	1018.11
	7	1018.07	1018.05	1018.07	1018.08	1018.06	1018.03	1018.02	1018.04	1018.05	1018.06	1018.09	1018.09	1018.06
	8	1018.10	1018.16	1018.19	1018.14	1018.11	1018.12	1018.15	1018.17	1018.19	1018.18	1018.15	1018.15	1018.15
	9	1018.18	1018.19	1018.16	1018.14	1018.12	1018.09	1018.04	1018.00	1017.96	1017.91	1017.88	1017.86	1018.04
	10	1017.84	1017.83	1017.83	1017.81	1017.77	1017.74	1017.71	1017.69	1017.68	1017.65	1017.62	1017.59	1017.73
	11	1017.57	1017.58	1017.55	1017.50	1017.45	1017.42	1017.41	1017.39	1017.37	1017.34	1017.30	1017.26	1017.43
	12	1017.21	1017.16	1017.13	1017.10	1017.07	1017.07	1017.09	1017.07	1017.01	1016.94	1016.88	1016.86	1017.05
	13	1016.84	1016.78	1016.72	1016.69	1016.67	1016.62	1016.57	1016.52	1016.43	1016.36	1016.28	1016.21	1016.56
	14	1016.20	1016.20	1016.18	1016.16	1016.14	1016.15	1016.17	1016.14	1016.11	1016.09	1016.07	1016.05	1016.14
	15	1016.07	1016.11	1016.10	1016.05	1016.03	1015.99	1015.95	1015.96	1015.98	1016.00	1016.04	1016.07	1016.03
	16	1016.10	1016.11	1016.09	1016.08	1016.06	1016.06	1016.06	1016.04	1016.01	1016.01	1016.07	1016.08	1016.06
	17	1016.07	1016.06	1016.04	1016.04	1016.05	1016.08	1016.11	1016.13	1016.15	1016.16	1016.17	1016.18	1016.10
	18	1016.20	1016.25	1016.31	1016.34	1016.37	1016.43	1016.48	1016.53	1016.59	1016.66	1016.72	1016.75	1016.47
	19	1016.76	1016.75	1016.75	1016.79	1016.84	1016.89	1016.89	1016.90	1016.95	1016.99	1017.07	1017.16	1016.89
	20	1017.19	1017.19	1017.20	1017.22	1017.23	1017.23	1017.22	1017.22	1017.22	1017.23	1017.25	1017.27	1017.22
	21	1017.30	1017.32	1017.33	1017.34	1017.34	1017.35	1017.37	1017.40	1017.40	1017.40	1017.42	1017.45	1017.37
	22	1017.48	1017.50	1017.50	1017.46	1017.45	1017.48	1017.47	1017.42	1017.39	1017.37	1017.35	1017.33	1017.43
	23	1017.34	1017.37	1017.40	1017.41	1017.41	1017.40	1017.39	1017.37	1017.31	1017.25	1017.19	1017.17	1017.33
24	0	1017.15	1017.14	1017.13	1017.12	1017.11	1017.12	1017.14	1017.13	1017.12	1017.15	1017.15	1017.15	1017.13
	1	1017.16	1017.16	1017.17	1017.20	1017.26	1017.30	1017.31	1017.31	1017.34	1017.38	1017.39	1017.37	1017.28
	2	1017.36	1017.39	1017.42	1017.38	1017.33	1017.32	1017.28	1017.19	1017.14	1017.17	1017.21	1017.21	1017.28
	3	1017.19	1017.20	1017.21	1017.20	1017.22	1017.25	1017.30	1017.34	1017.34	1017.32	1017.34	1017.34	1017.27
	4	1017.31	1017.31	1017.34	1017.36	1017.39	1017.46	1017.52	1017.56	1017.60	1017.66	1017.74	1017.80	1017.50
	5	1017.85	1017.92	1018.01	1018.08	1018.11	1018.12	1018.15	1018.19	1018.24	1018.32	1018.39	1018.45	1018.15
	6	1018.55	1018.64	1018.69	1018.72	1018.74	1018.76	1018.76	1018.75	1018.79	1018.84	1018.85	1018.87	1018.74
	7	1018.89	1018.88	1018.88	1018.87	1018.87	1018.91	1018.94	1018.96	1019.00	1019.04	1019.08	1019.11	1018.95
	8	1019.15	1019.18	1019.21	1019.23	1019.24	1019.22	1019.21	1019.27	1019.32	1019.32	1019.31	1019.30	1019.24
	9	1019.29	1019.32	1019.37	1019.39	1019.40	1019.41	1019.42	1019.41	1019.42	1019.42	1019.38	1019.37	1019.38
	10	1019.35	1019.34	1019.34	1019.31	1019.25	1019.18	1019.15	1019.12	1019.05	1019.00	1018.97	1018.93	1019.16
	11	1018.91	1018.86	1018.82	1018.78	1018.74	1018.74	1018.76	1018.78	1018.80	1018.78	1018.74	1018.74	1018.78
	12	1018.72	1018.71	1018.70	1018.68	1018.67	1018.66	1018.64	1018.61	1018.57	1018.53	1018.51	1018.49	1018.62
	13	1018.47	1018.47	1018.47	1018.44	1018.42	1018.40	1018.40	1018.40	1018.38	1018.35	1018.30	1018.29	1018.40
	14	1018.27	1018.22	1018.17	1018.15	1018.11	1018.07	1018.07	1018.05	1018.00	1017.96	1017.95	1017.95	1018.08
	15	1017.93	1017.90	1017.88	1017.88	1017.91	1017.93	1017.91	1017.89	1017.86	1017.82	1017.79	1017.76	1017.87
	16	1017.75	1017.73	1017.71	1017.69	1017.69	1017.71	1017.71	1017.71	1017.69	1017.66	1017.62	1017.56	1017.68
	17	1017.52	1017.52	1017.55	1017.57	1017.61	1017.61	1017.59	1017.62	1017.67	1017.68	1017.66	1017.66	1017.60
	18	1017.64	1017.63	1017.65	1017.67	1017.67	1017.69	1017.76	1017.81	1017.84	1017.85	1017.88	1017.94	1017.75
	19	1017.98	1018.01	1018.02	1018.03	1018.05	1018.06	1018.05	1018.08	1018.14	1018.19	1018.23	1018.30	1018.09
	20	1018.36	1018.38	1018.37	1018.37	1018.38	1018.39	1018.38	1018.36	1018.33	1018.32	1018.35	1018.38	1018.36
	21	1018.41	1018.41	1018.40	1018.39	1018.36	1018.33	1018.29	1018.25	1018.21	1018.18	1018.17	1018.18	1018.30
	22	1018.18	1018.16	1018.14	1018.15	1018.18	1018.19	1018.17	1018.16	1018.17	1018.19	1018.18	1018.17	1018.17
	23	1018.20	1018.22	1018.22	1018.22	1018.22	1018.24	1018.25	1018.22	1018.19	1018.17	1018.14	1018.09	1018.20

S.V.I.R.CO. Observatory - Pressure in hectoPascal – April 2018

day	hh	00_05	05_10	10_15	15_20	20_25	25_30	30_35	35_40	40_45	45_50	50_55	55_60	average
25	0	1018.02	1018.00	1018.00	1017.99	1017.98	1017.96	1017.89	1017.83	1017.84	1017.86	1017.85	1017.82	1017.91
	1	1017.79	1017.78	1017.81	1017.82	1017.79	1017.76	1017.72	1017.66	1017.61	1017.56	1017.55	1017.57	1017.70
	2	1017.60	1017.64	1017.64	1017.62	1017.61	1017.62	1017.61	1017.59	1017.60	1017.60	1017.59	1017.58	1017.60
	3	1017.55	1017.53	1017.54	1017.50	1017.46	1017.48	1017.47	1017.43	1017.39	1017.37	1017.37	1017.40	1017.46
	4	1017.41	1017.41	1017.40	1017.40	1017.42	1017.45	1017.48	1017.53	1017.60	1017.64	1017.66	1017.69	1017.51
	5	1017.74	1017.78	1017.76	1017.79	1017.86	1017.87	1017.89	1017.95	1017.97	1018.01	1018.05	1018.08	1017.89
	6	1018.09	1018.08	1018.10	1018.16	1018.18	1018.16	1018.14	1018.15	1018.19	1018.15	1018.09	1018.09	1018.13
	7	1018.11	1018.14	1018.16	1018.18	1018.21	1018.24	1018.26	1018.26	1018.25	1018.26	1018.30	1018.31	1018.22
	8	1018.29	1018.28	1018.31	1018.34	1018.34	1018.33	1018.31	1018.28	1018.22	1018.15	1018.10	1018.07	1018.25
	9	1018.04	1018.02	1018.01	1017.98	1017.96	1017.95	1017.93	1017.89	1017.85	1017.81	1017.81	1017.81	1017.92
	10	1017.74	1017.67	1017.60	1017.55	1017.49	1017.43	1017.40	1017.39	1017.34	1017.25	1017.18	1017.12	1017.43
	11	1017.08	1017.04	1016.98	1016.93	1016.92	1016.86	1016.78	1016.76	1016.71	1016.67	1016.63	1016.60	1016.83
	12	1016.58	1016.58	1016.58	1016.56	1016.55	1016.56	1016.56	1016.56	1016.54	1016.48	1016.44	1016.45	1016.53
	13	1016.46	1016.44	1016.37	1016.32	1016.32	1016.30	1016.24	1016.18	1016.15	1016.13	1016.10	1016.07	1016.25
	14	1016.01	1015.99	1015.98	1015.92	1015.87	1015.86	1015.85	1015.83	1015.85	1015.84	1015.82	1015.83	1015.89
	15	1015.80	1015.79	1015.78	1015.72	1015.67	1015.65	1015.63	1015.61	1015.59	1015.55	1015.48	1015.44	1015.64
	16	1015.46	1015.48	1015.49	1015.49	1015.53	1015.54	1015.49	1015.47	1015.48	1015.47	1015.42	1015.39	1015.47
	17	1015.35	1015.30	1015.27	1015.29	1015.30	1015.30	1015.34	1015.41	1015.45	1015.49	1015.53	1015.57	1015.38
	18	1015.60	1015.61	1015.67	1015.71	1015.72	1015.73	1015.75	1015.80	1015.87	1015.91	1015.90	1015.90	1015.76
	19	1015.96	1016.05	1016.10	1016.14	1016.20	1016.25	1016.28	1016.33	1016.38	1016.43	1016.44	1016.47	1016.25
	20	1016.54	1016.58	1016.55	1016.50	1016.51	1016.48	1016.45	1016.45	1016.42	1016.38	1016.36	1016.37	1016.46
	21	1016.35	1016.30	1016.31	1016.30	1016.26	1016.26	1016.31	1016.33	1016.31	1016.27	1016.22	1016.22	1016.28
	22	1016.23	1016.22	1016.18	1016.12	1016.11	1016.11	1016.09	1016.08	1016.08	1016.08	1016.09	1016.10	1016.12
	23	1016.08	1016.06	1016.03	1015.99	1015.95	1015.90	1015.80	1015.72	1015.74	1015.75	1015.73	1015.65	1015.87
26	0	1015.57	1015.51	1015.39	1015.34	1015.32	1015.27	1015.25	1015.27	1015.27	1015.25	1015.28	1015.27	1015.32
	1	1015.19	1015.08	1014.97	1014.92	1014.93	1014.93	1014.87	1014.78	1014.71	1014.69	1014.70	1014.70	1014.87
	2	1014.68	1014.63	1014.59	1014.63	1014.66	1014.62	1014.55	1014.51	1014.49	1014.45	1014.45	1014.42	1014.56
	3	1014.38	1014.38	1014.36	1014.31	1014.28	1014.24	1014.17	1014.09	1014.04	1014.01	1014.04	1014.07	1014.19
	4	1014.04	1013.98	1013.97	1013.99	1014.01	1013.97	1013.96	1014.03	1014.10	1014.12	1014.08	1014.03	1014.02
	5	1014.01	1014.05	1014.06	1014.07	1014.14	1014.18	1014.19	1014.18	1014.18	1014.23	1014.24	1014.25	1014.15
	6	1014.29	1014.28	1014.31	1014.39	1014.42	1014.41	1014.44	1014.45	1014.45	1014.44	1014.41	1014.38	1014.39
	7	1014.39	1014.39	1014.40	1014.43	1014.41	1014.36	1014.30	1014.27	1014.29	1014.31	1014.29	1014.26	1014.34
	8	1014.27	1014.28	1014.26	1014.19	1014.13	1014.12	1014.13	1014.12	1014.09	1014.05	1013.99	1013.92	1014.13
	9	1013.86	1013.82	1013.75	1013.67	1013.63	1013.58	1013.51	1013.47	1013.46	1013.40	1013.32	1013.28	1013.56
	10	1013.24	1013.16	1013.10	1013.08	1013.05	1012.98	1012.90	1012.85	1012.80	1012.70	1012.61	1012.56	1012.92
	11	1012.52	1012.48	1012.48	1012.44	1012.37	1012.31	1012.24	1012.21	1012.20	1012.18	1012.17	1012.12	1012.31
	12	1012.06	1012.00	1011.97	1011.97	1011.95	1011.92	1011.91	1011.88	1011.83	1011.79	1011.77	1011.72	1011.90
	13	1011.65	1011.61	1011.54	1011.47	1011.44	1011.44	1011.40	1011.31	1011.27	1011.25	1011.23	1011.19	1011.40
	14	1011.12	1011.09	1011.09	1011.09	1011.13	1011.19	1011.17	1011.16	1011.16	1011.12	1011.09	1011.07	1011.12
	15	1011.06	1011.08	1011.12	1011.16	1011.18	1011.15	1011.13	1011.17	1011.19	1011.19	1011.17	1011.16	1011.14
	16	1011.17	1011.15	1011.12	1011.12	1011.13	1011.14	1011.16	1011.18	1011.16	1011.15	1011.18	1011.16	1011.15
	17	1011.13	1011.15	1011.20	1011.25	1011.28	1011.31	1011.34	1011.34	1011.31	1011.29	1011.30	1011.35	1011.27
	18	1011.42	1011.48	1011.54	1011.60	1011.61	1011.58	1011.55	1011.56	1011.57	1011.57	1011.62	1011.67	1011.56
	19	1011.70	1011.75	1011.82	1011.87	1011.88	1011.93	1011.98	1012.00	1012.03	1012.10	1012.14	1012.14	1011.94
	20	1012.13	1012.09	1012.04	1012.01	1011.95	1011.91	1011.92	1011.90	1011.86	1011.86	1011.88	1011.91	1011.95
	21	1011.93	1011.94	1011.97	1011.98	1011.97	1011.94	1011.91	1011.89	1011.84	1011.78	1011.74	1011.70	1011.88
	22	1011.67	1011.68	1011.69	1011.66	1011.66	1011.70	1011.74	1011.74	1011.72	1011.69	1011.66	1011.67	1011.69
	23	1011.67	1011.64	1011.62	1011.58	1011.52	1011.50	1011.50	1011.52	1011.53	1011.52	1011.49	1011.43	1011.54

S.V.I.R.CO. Observatory - Pressure in hectoPascal – April 2018

day	hh	00_05	05_10	10_15	15_20	20_25	25_30	30_35	35_40	40_45	45_50	50_55	55_60	average
27	0	1011.33	1011.32	1011.31	1011.33	1011.38	1011.42	1011.44	1011.42	1011.40	1011.37	1011.33	1011.29	1011.36
	1	1011.20	1011.10	1011.07	1011.09	1011.12	1011.17	1011.20	1011.20	1011.17	1011.11	1011.05	1011.01	1011.12
	2	1011.00	1010.98	1010.95	1010.93	1010.91	1010.90	1010.86	1010.84	1010.85	1010.84	1010.78	1010.72	1010.88
	3	1010.68	1010.65	1010.62	1010.58	1010.55	1010.50	1010.48	1010.50	1010.50	1010.46	1010.47	1010.49	1010.54
	4	1010.51	1010.53	1010.51	1010.50	1010.54	1010.60	1010.64	1010.64	1010.65	1010.67	1010.68	1010.67	1010.59
	5	1010.67	1010.69	1010.70	1010.72	1010.78	1010.89	1010.95	1010.89	1010.82	1010.84	1010.88	1010.91	1010.81
	6	1010.94	1010.95	1010.95	1010.96	1010.96	1010.96	1010.96	1010.95	1010.91	1010.85	1010.80	1010.74	1010.91
	7	1010.69	1010.64	1010.58	1010.55	1010.55	1010.55	1010.54	1010.54	1010.56	1010.55	1010.53	1010.53	1010.57
	8	1010.56	1010.62	1010.64	1010.66	1010.70	1010.73	1010.77	1010.78	1010.78	1010.79	1010.81	1010.80	1010.72
	9	1010.78	1010.76	1010.71	1010.68	1010.68	1010.67	1010.64	1010.63	1010.63	1010.63	1010.62	1010.59	1010.67
	10	1010.58	1010.57	1010.56	1010.56	1010.55	1010.54	1010.52	1010.49	1010.45	1010.43	1010.39	1010.35	1010.50
	11	1010.37	1010.37	1010.34	1010.34	1010.34	1010.33	1010.34	1010.33	1010.30	1010.28	1010.26	1010.24	1010.32
	12	1010.22	1010.22	1010.21	1010.13	1010.04	1010.00	1009.98	1009.96	1009.90	1009.82	1009.80	1009.78	1010.00
	13	1009.75	1009.73	1009.70	1009.66	1009.59	1009.55	1009.56	1009.53	1009.50	1009.48	1009.48	1009.50	1009.58
	14	1009.52	1009.54	1009.54	1009.51	1009.51	1009.53	1009.54	1009.55	1009.57	1009.60	1009.59	1009.53	1009.54
	15	1009.50	1009.48	1009.46	1009.47	1009.48	1009.49	1009.49	1009.50	1009.49	1009.49	1009.52	1009.55	1009.49
	16	1009.58	1009.60	1009.60	1009.61	1009.65	1009.68	1009.69	1009.67	1009.65	1009.65	1009.64	1009.63	1009.64
	17	1009.62	1009.60	1009.57	1009.53	1009.53	1009.53	1009.54	1009.55	1009.56	1009.58	1009.62	1009.67	1009.57
	18	1009.71	1009.76	1009.78	1009.79	1009.84	1009.89	1009.90	1009.93	1009.96	1010.00	1010.07	1010.13	1009.90
	19	1010.16	1010.17	1010.18	1010.20	1010.22	1010.25	1010.30	1010.33	1010.34	1010.36	1010.37	1010.40	1010.27
	20	1010.45	1010.49	1010.52	1010.55	1010.60	1010.65	1010.70	1010.68	1010.62	1010.56	1010.47	1010.44	1010.56
	21	1010.47	1010.50	1010.52	1010.53	1010.54	1010.56	1010.59	1010.64	1010.67	1010.69	1010.74	1010.78	1010.60
	22	1010.79	1010.78	1010.83	1010.90	1010.91	1010.92	1010.94	1010.95	1010.93	1010.94	1010.96	1010.93	1010.90
	23	1010.93	1010.93	1010.91	1010.91	1010.94	1010.96	1010.94	1010.89	1010.88	1010.90	1010.89	1010.85	1010.91
28	0	1010.82	1010.82	1010.82	1010.83	1010.86	1010.86	1010.81	1010.74	1010.71	1010.71	1010.68	1010.62	1010.77
	1	1010.61	1010.62	1010.60	1010.60	1010.59	1010.56	1010.54	1010.50	1010.45	1010.45	1010.46	1010.47	1010.54
	2	1010.45	1010.40	1010.40	1010.43	1010.42	1010.43	1010.43	1010.38	1010.34	1010.29	1010.26	1010.27	1010.37
	3	1010.28	1010.25	1010.22	1010.20	1010.19	1010.18	1010.16	1010.15	1010.12	1010.11	1010.10	1010.10	1010.17
	4	1010.11	1010.15	1010.17	1010.17	1010.20	1010.21	1010.21	1010.23	1010.27	1010.33	1010.37	1010.37	1010.23
	5	1010.42	1010.55	1010.63	1010.64	1010.65	1010.67	1010.66	1010.67	1010.71	1010.76	1010.77	1010.78	1010.66
	6	1010.78	1010.78	1010.84	1010.96	1011.10	1011.20	1011.24	1011.27	1011.29	1011.30	1011.33	1011.31	1011.11
	7	1011.28	1011.34	1011.40	1011.44	1011.39	1011.36	1011.39	1011.43	1011.45	1011.48	1011.50	1011.46	1011.41
	8	1011.47	1011.53	1011.57	1011.58	1011.57	1011.59	1011.64	1011.63	1011.62	1011.64	1011.67	1011.69	1011.60
	9	1011.71	1011.73	1011.75	1011.77	1011.79	1011.80	1011.77	1011.74	1011.70	1011.68	1011.67	1011.66	1011.73
	10	1011.67	1011.67	1011.65	1011.62	1011.61	1011.57	1011.50	1011.46	1011.44	1011.42	1011.39	1011.36	1011.53
	11	1011.33	1011.28	1011.22	1011.15	1011.10	1011.06	1011.01	1010.95	1010.89	1010.82	1010.76	1010.70	1011.02
	12	1010.65	1010.63	1010.60	1010.57	1010.53	1010.46	1010.40	1010.35	1010.28	1010.26	1010.26	1010.22	1010.43
	13	1010.15	1010.09	1010.04	1010.00	1009.94	1009.91	1009.88	1009.82	1009.74	1009.70	1009.69	1009.67	1009.88
	14	1009.65	1009.62	1009.58	1009.60	1009.69	1009.78	1009.84	1009.84	1009.85	1009.87	1009.93	1010.02	1009.77
	15	1010.06	1010.11	1010.14	1010.18	1010.19	1010.16	1010.12	1010.12	1010.11	1010.06	1010.03	1009.99	1010.10
	16	1009.95	1009.92	1009.89	1009.86	1009.83	1009.82	1009.83	1009.85	1009.86	1009.86	1009.89	1009.92	1009.87
	17	1009.93	1009.94	1009.95	1010.01	1010.11	1010.20	1010.30	1010.39	1010.47	1010.54	1010.61	1010.68	1010.26
	18	1010.76	1010.78	1010.73	1010.69	1010.76	1010.90	1011.02	1011.12	1011.23	1011.31	1011.36	1011.39	1011.00
	19	1011.41	1011.42	1011.40	1011.40	1011.40	1011.40	1011.42	1011.44	1011.44	1011.43	1011.44	1011.49	1011.42
	20	1011.56	1011.62	1011.67	1011.70	1011.73	1011.75	1011.71	1011.66	1011.65	1011.63	1011.59	1011.57	1011.65
	21	1011.55	1011.51	1011.49	1011.50	1011.49	1011.46	1011.46	1011.45	1011.42	1011.42	1011.46	1011.49	1011.47
	22	1011.49	1011.49	1011.49	1011.52	1011.55	1011.55	1011.54	1011.52	1011.51	1011.47	1011.40	1011.36	1011.49
	23	1011.36	1011.37	1011.33	1011.28	1011.27	1011.25	1011.26	1011.27	1011.27	1011.23	1011.15	1011.06	1011.26

S.V.I.R.CO. Observatory - Pressure in hectoPascal – April 2018

day	hh	00_05	05_10	10_15	15_20	20_25	25_30	30_35	35_40	40_45	45_50	50_55	55_60	average
29	0	1010.95	1010.95	1010.91	1010.88	1010.87	1010.85	1010.83	1010.78	1010.73	1010.70	1010.66	1010.64	1010.80
	1	1010.64	1010.65	1010.63	1010.61	1010.59	1010.57	1010.56	1010.53	1010.49	1010.46	1010.47	1010.47	1010.55
	2	1010.41	1010.32	1010.20	1010.09	1010.10	1010.10	1010.07	1010.09	1010.08	1010.02	1009.97	1009.94	1010.11
	3	1009.88	1009.83	1009.83	1009.79	1009.74	1009.72	1009.70	1009.72	1009.71	1009.65	1009.62	1009.59	1009.73
	4	1009.56	1009.59	1009.62	1009.64	1009.67	1009.71	1009.75	1009.76	1009.75	1009.73	1009.72	1009.74	1009.69
	5	1009.78	1009.80	1009.81	1009.83	1009.86	1009.88	1009.88	1009.87	1009.85	1009.78	1009.73	1009.72	1009.81
	6	1009.73	1009.76	1009.76	1009.72	1009.69	1009.69	1009.69	1009.66	1009.59	1009.54	1009.54	1009.55	1009.66
	7	1009.56	1009.56	1009.55	1009.54	1009.52	1009.52	1009.53	1009.53	1009.55	1009.58	1009.60	1009.61	1009.55
	8	1009.61	1009.62	1009.65	1009.67	1009.68	1009.69	1009.71	1009.74	1009.73	1009.72	1009.74	1009.77	1009.69
	9	1009.79	1009.80	1009.81	1009.81	1009.84	1009.87	1009.89	1009.92	1009.95	1009.96	1009.94	1009.92	1009.87
	10	1009.88	1009.84	1009.81	1009.76	1009.72	1009.72	1009.74	1009.72	1009.68	1009.65	1009.62	1009.60	1009.73
	11	1009.57	1009.51	1009.48	1009.49	1009.51	1009.51	1009.52	1009.51	1009.50	1009.51	1009.55	1009.56	1009.52
	12	1009.53	1009.50	1009.49	1009.46	1009.42	1009.38	1009.37	1009.37	1009.35	1009.33	1009.33	1009.34	1009.40
	13	1009.27	1009.21	1009.17	1009.10	1009.04	1009.00	1008.94	1008.89	1008.85	1008.80	1008.78	1008.76	1008.98
	14	1008.77	1008.77	1008.78	1008.85	1008.91	1008.91	1008.91	1008.90	1008.92	1008.94	1008.94	1008.93	1008.87
	15	1008.90	1008.87	1008.86	1008.87	1008.88	1008.86	1008.82	1008.78	1008.74	1008.72	1008.73	1008.78	1008.82
	16	1008.81	1008.81	1008.79	1008.74	1008.68	1008.65	1008.62	1008.62	1008.70	1008.81	1008.90	1008.94	1008.75
	17	1008.96	1009.00	1009.07	1009.13	1009.15	1009.17	1009.19	1009.20	1009.21	1009.23	1009.29	1009.39	1009.16
	18	1009.48	1009.53	1009.56	1009.59	1009.60	1009.62	1009.66	1009.74	1009.83	1009.91	1009.95	1009.99	1009.70
	19	1010.08	1010.16	1010.18	1010.22	1010.28	1010.33	1010.37	1010.38	1010.41	1010.44	1010.45	1010.46	1010.31
	20	1010.47	1010.53	1010.75	1010.90	1010.92	1010.99	1011.06	1011.08	1011.05	1011.01	1011.05	1011.12	1010.91
	21	1011.09	1011.08	1011.15	1011.26	1011.37	1011.45	1011.52	1011.57	1011.61	1011.64	1011.68	1011.69	1011.42
	22	1011.64	1011.65	1011.68	1011.70	1011.71	1011.71	1011.72	1011.71	1011.75	1011.81	1011.80	1011.74	1011.72
	23	1011.71	1011.70	1011.73	1011.75	1011.70	1011.65	1011.63	1011.68	1011.72	1011.73	1011.72	1011.74	1011.70
30	0	1011.78	1011.77	1011.77	1011.81	1011.83	1011.84	1011.83	1011.83	1011.84	1011.89	1011.94	1011.95	1011.84
	1	1011.93	1011.89	1011.91	1011.96	1011.99	1012.00	1011.99	1011.95	1011.92	1011.92	1011.94	1011.94	1011.94
	2	1011.93	1011.89	1011.87	1011.84	1011.84	1011.84	1011.79	1011.77	1011.75	1011.77	1011.77	1011.75	1011.81
	3	1011.70	1011.62	1011.62	1011.67	1011.72	1011.69	1011.65	1011.67	1011.70	1011.67	1011.66	1011.72	1011.67
	4	1011.77	1011.81	1011.86	1011.87	1011.87	1011.91	1011.97	1011.99	1012.04	1012.11	1012.16	1012.17	1011.96
	5	1012.19	1012.22	1012.23	1012.21	1012.20	1012.25	1012.26	1012.21	1012.18	1012.21	1012.22	1012.22	1012.22
	6	1012.25	1012.26	1012.28	1012.30	1012.33	1012.42	1012.51	1012.49	1012.44	1012.44	1012.50	1012.54	1012.39
	7	1012.50	1012.50	1012.53	1012.49	1012.49	1012.52	1012.52	1012.51	1012.50	1012.55	1012.63	1012.62	1012.53
	8	1012.60	1012.61	1012.63	1012.70	1012.73	1012.72	1012.77	1012.78	1012.79	1012.83	1012.90	1012.93	1012.75
	9	1012.94	1013.01	1013.05	1013.06	1013.08	1013.10	1013.13	1013.18	1013.22	1013.28	1013.33	1013.32	1013.14
	10	1013.34	1013.37	1013.39	1013.49	1013.57	1013.61	1013.67	1013.71	1013.75	1013.76	1013.74	1013.71	1013.59
	11	1013.70	1013.68	1013.65	1013.67	1013.69	1013.73	1013.79	1013.75	1013.71	1013.67	1013.57	1013.52	1013.68
	12	1013.59	1013.65	1013.61	1013.57	1013.60	1013.65	1013.59	1013.58	1013.62	1013.63	1013.62	1013.61	1013.61
	13	1013.57	1013.48	1013.43	1013.44	1013.43	1013.44	1013.53	1013.53	1013.47	1013.42	1013.37	1013.35	1013.45
	14	1013.30	1013.31	1013.36	1013.34	1013.26	1013.25	1013.26	1013.19	1013.12	1013.01	1012.91	1012.90	1013.18
	15	1012.94	1012.94	1012.95	1012.96	1012.92	1012.90	1012.85	1012.78	1012.79	1012.85	1012.91	1012.95	1012.89
	16	1012.97	1013.05	1013.17	1013.25	1013.26	1013.21	1013.16	1013.11	1013.07	1013.06	1013.06	1013.11	1013.12
	17	1013.20	1013.26	1013.33	1013.39	1013.42	1013.47	1013.51	1013.53	1013.50	1013.47	1013.52	1013.64	1013.43
	18	1013.77	1013.75	1013.67	1013.66	1013.67	1013.70	1013.70	1013.71	1013.74	1013.72	1013.73	1013.80	1013.72
	19	1013.86	1013.90	1013.96	1013.98	1013.97	1014.00	1014.02	1014.00	1014.02	1014.09	1014.18	1014.22	1014.01
	20	1014.23	1014.27	1014.30	1014.35	1014.42	1014.41	1014.41	1014.43	1014.44	1014.49	1014.51	1014.51	1014.39
	21	1014.54	1014.46	1014.34	1014.26	1014.26	1014.34	1014.47	1014.47	1014.31	1014.21	1014.24	1014.29	1014.35
	22	1014.21	1014.10	1013.98	1013.85	1013.88	1013.91	1013.87	1013.84	1013.88	1013.89	1013.89	1013.88	1013.93
	23	1013.76	1013.73	1013.79	1013.79	1013.80	1013.82	1013.80	1013.68	1013.45	1013.24	1013.13	1013.06	1013.59

