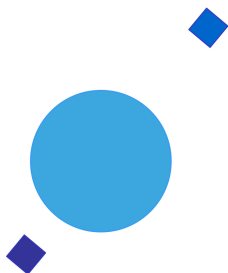


INAF



ISTITUTO NAZIONALE DI ASTROFISICA
NATIONAL INSTITUTE FOR ASTROPHYSICS

SVIRCO Prompt Report: January 2018

Francesco Re

INAF/IAPS-2018-02

February 2018

ISTITUTO DI ASTROFISICA E PLANETOLOGIA SPAZIALI

AREA DI RICERCA ROMA - TOR VERGATA

Via del Fosso del Cavaliere, 100 - 00133 Roma (ITALIA)

SVIRCO Prompt Report: January 2018

Francesco Re

*IAPS - INAF, Area di Ricerca Roma - Tor Vergata
Via del Fosso del Cavaliere, 100 - 00133 Roma, Italy,*

Abstract

The pressure corrected intensity of the nucleonic component, produced by primary cosmic rays and recorded in January 2018 by the Neutron Monitor of SVIRCO-Rome (present geographic position: 41.86° N - 12.47° E; altitude about s.l.), is reported in prompt form together with the barometric pressure data.

SVIRCO OBSERVATORY

During the 1st International Geophysics Year (1957) an international network of “ground-based detectors” for continuous cosmic ray measurements was world-wide established.

The cosmic ray station of Rome joined this network with the purpose to study the time variations of primary cosmic rays (**Studio Variazioni Intensità Raggi Cosmici: S.V.I.R.CO**) and their modulation in the heliosphere.

From July 1957 to April 1997, the SVIRCO Station (now Observatory) performed uninterrupted measurements at the Physics Department “G. Marconi” of “La Sapienza” University of Rome (41.90° N, 12.52° E, altitude about 60 m a.s.l.)

In May 1997 the neutron monitor was moved to the Physics Department “E. Amaldi” of “Roma Tre” University. Since then it has been continuously running at the new location (41.86° N, 12.47° E, altitude about 0 m a.s.l.).

The SVIRCO Observatory (INAF/IAPS-UNIRomaTre collaboration) is housed in a reserved building provided with a double air-conditioning system. The inner temperature is permanently restrained in a range of 23°-26° C, meanwhile the relative humidity is kept below 57%. Either the environmental parameters are continuously checked and recorded by digital sensors.

On January 1, 2005 three counters were added to the detector. This upgrade, from 17 to 20 NM-64, made the SVIRCO neutron monitor still consist of 5 sections but modified its geometry. Actually the new arrangement has been composed of three 3-counter, one 5-counter and one 6-counter units. The enhancement improved not only the overall counting rate of 15.6 % (January 2005) but, as a result, also the statistical quality of the recorded data.

On July 3, 2017 six counters experienced failure and were removed from the detector until 24 July. On 25 July 2017 a number of 2 counters was added to the detector up to a total of 16 counters. The new arrangement has been composed of three 3-counter, one 5-counter and one 2-counter units. The overall counting rate has decreased of about 20% (July 2017) with a lower statistical quality of the recorded data.

Each of the 16 BF₃ proportional counters (BP-28 type) is equipped with a smart amplifier/discriminator circuit complete with a spectrum stabilizer. This new electronic unit, developed in our laboratory, holds firmly the pulse height spectrum of the amplifier output (within a range of more than 150 volts around the operating voltage), providing the counter with a great immunity against high voltage variations.

Anyway, systematic and exhaustive tests of the counters are regularly performed. The output pulses of the amplifiers, discriminated by the threshold gates, are collected and stored into a multi-channel analyzer. The analysis of the height distribution (spectrum) of the amplifier pulses coinciding with the discriminator ones, is essential to verify the long term efficiency of each counter together with the amplifier gain and the discriminator threshold level.

As well as the amplifier/discriminator circuits, a large part of the electronic instrumentation operating in the Observatory was designed and realized in our laboratory together with the software for data acquisition and pre-elaboration.

In order to improve the reliability of the recorded data and to prevent measurement breakdowns, two independent systems perform contemporary the data acquisition. Each system is remotely controlled by a dedicated computer and is timed by a high stability quartz clock and/or a GPS receiver. One equipment runs according to a timing of 1 minute and fulfils the acquisition of the 16 counters separately. The other one records the individual 5-minute counting rate of each detector section in addition to the rates of the overall multiplicity, sorted into separated counting channels (from 1 to greater than 8).

A special care is devoted to the atmospheric pressure measurements; thus they are carried out by means of not less than three barometers at the same time. These instruments (achieving a resolution up to 0.01 hPa), are constantly checked out each other for the best measuring accuracy and reliability. Furthermore, the devices in use are equipped with different types of transducer such as vibrating cylinder, force balance and quartz, therefore, throughout their different behaviours, it is possible to point out the occurrence of any long-term drift and eventually to re-calibrate the instruments themselves.

DATA PRESENTATION

In a preliminary step, the intensity data, of the secondary nucleonic component of cosmic rays, detected at SVIRCO Observatory, were corrected for pressure variations at a reference level of 1009.25 hPa with an attenuation coefficient of 0.70% / hPa.

The five-minutes counting rates, of the examined month, are reported in tabular form together with the hourly normalized data, which provide a continuous data set for long-term analysis.

The normalization was evaluated as percentage of the counting rate average of January-February 1997, when the Monitor operated at the previous location of "La Sapienza" University. The reference counting rate level (100%), computed for such period, is equal to 554946 counts/hour.

The atmospheric pressure data (in hectoPascal) are also collected in a monthly table which presents the five-minutes averages and the hourly ones.

The hourly averages of the normalized intensity and pressure, plotted in monthly graphs, are reported too.

CONDITIONS FOR SVIRCO DATA USE

You are welcome to use neutron monitor data of SVIRCO, IAPS/INAF-UNIRomaTre collaboration, under the following conditions:

-You agree to acknowledge our financial supports in any published use of the data.

Example: "SVIRCO NM is supported by the INAF - UNIRomaTre collaboration"

-You are kindly requested to send a copy of any published work derived from our data to:

Dr. Monica Laurenza
Head of SVIRCO Observatory & TPL
Istituto di Astrofisica e Planetologia Spaziali - Area di Ricerca Tor Vergata
Via del Fosso del Cavaliere, 100 00133 Roma - Italy,

monica.laurenza@iaps.inaf.it



S.V.I.R.CO. Observatory

Rome

Italy



INAF/UNIRomaTre		S.V.I.R.CO. Observatory - Pressure Corrected Data – January 2018											20 NM-64	
day	hh	00_05	05_10	10_15	15_20	20_25	25_30	30_35	35_40	40_45	45_50	50_55	55_60	h-norm
1	0	38573	38014	38069	37682	37682	37873	38040	38036	37932	38073	37760	37905	100.235
	1	37830	37472	38125	37676	38205	37891	38177	38045	37861	37849	38040	37713	100.075
	2	38273	37497	37578	37836	38315	38200	37696	38300	37993	37862	37457	37908	100.082
	3	38276	38220	37390	38103	37365	37756	37743	37525	37925	38181	38222	37640	99.956
	4	37765	37911	38080	37771	37979	37425	37994	37813	37965	38163	37721	37700	99.943
	5	38383	38052	37731	38256	37176	37869	37675	37898	37648	37659	37737	37363	99.758
	6	37927	37912	37525	37852	38043	37736	37388	37714	37683	37397	38425	37611	99.707
	7	37758	38002	37816	38049	37945	38237	37848	38121	38705	37953	37861	37697	100.318
	8	37841	37817	38320	37582	37985	38516	37488	37738	38381	38250	37811	38478	100.366
	9	38063	37530	37681	37610	38505	37658	37541	38482	38119	38484	37660	37964	100.166
	10	37993	37799	37752	37931	37429	37784	37951	37662	37695	37681	37668	37828	99.698
	11	37548	38120	38408	38036	38021	37446	37897	37950	38123	37552	37874	37559	99.997
	12	38032	38097	37937	38482	37955	38404	38233	37751	38376	37351	37915	37635	100.356
	13	37564	38011	37948	37532	37941	37777	37701	37780	38501	38762	37810	38520	100.286
	14	37681	37610	38588	38208	38762	37928	37872	38072	37549	37700	38079	37444	100.209
	15	38025	38000	37444	38172	38164	37717	37098	37858	37879	37521	37871	37627	99.743
	16	38306	38521	37590	37622	37524	38033	37714	37297	37378	38646	36949	37797	99.743
	17	38148	37791	37480	37799	37739	37889	37759	38098	37257	37729	37500	37581	99.609
	18	37797	37713	38152	36949	37469	37688	37908	37384	37836	37983	38043	37961	99.635
	19	38103	37792	37855	37277	37593	37823	37924	37932	37332	37428	37859	37662	99.568
	20	37307	37609	37392	37691	37553	37977	37821	37806	37761	37742	37590	37920	99.477
	21	37297	37860	38008	37510	38272	37775	37279	37161	38213	38083	37860	37363	99.590
	22	37731	37577	37808	37756	37433	37923	37377	38117	38067	37734	37908	37930	99.740
	23	38291	37896	38324	37633	37847	37884	37786	37303	38223	37926	37757	37713	100.008
2	0	37782	37767	37423	38158	38474	37640	38395	38269	38096	37781	38357	37778	100.284
	1	37522	37785	37893	37545	37928	37624	37795	38008	38163	38338	38235	37426	99.939
	2	38534	37887	37621	37663	37678	37420	37694	37707	37928	37737	38179	37707	99.826
	3	37864	38161	37841	38197	37736	37836	37411	37394	37453	38210	37987	37757	99.846
	4	38321	38149	37468	37540	37506	37687	37834	38304	38272	38182	37878	38287	100.194
	5	38496	38282	37654	37867	38041	37776	37507	37854	38009	38108	37766	38492	100.287
	6	38370	37508	37956	37940	38119	37579	37965	37790	38167	38101	37730	37484	100.036
	7	38432	38202	37595	38117	38134	38221	37751	37863	37845	37493	37829	38368	100.288
	8	37561	37799	38318	38237	37913	37770	37750	37747	38229	37886	37741	38254	100.146
	9	38269	37914	38093	37494	38052	37872	37682	37912	38097	38034	37755	38369	100.220
	10	38198	38123	38209	38464	38353	38320	37777	38821	37961	38345	37828	37931	100.833
	11	37702	37774	37904	38040	38008	37815	38178	38208	37400	37384	37510	37487	99.750
	12	37989	37776	38450	37805	37623	38268	37704	38051	38079	37844	37988	38023	100.232
	13	37421	38098	38049	37841	38315	38205	37945	37696	38148	37625	38399	37890	100.239
	14	37619	37901	37508	37609	37622	37774	37950	37767	37558	38013	37670	37684	99.588
	15	38001	38214	37601	37695	37681	37238	37727	37297	37760	38284	37548	38040	99.679
	16	37707	37604	37897	38001	37503	37674	37598	38524	37647	38231	37796	38078	99.937
	17	38173	38057	38308	38029	37416	38232	37673	37526	37518	38492	37429	38252	100.123
	18	37340	37739	37596	37952	37731	37980	37878	37657	37973	37726	37823	37879	99.720
	19	37902	37361	37771	37953	38177	37791	37816	38160	37685	37873	37685	37358	99.777
	20	37649	37627	37578	37316	38059	37463	37711	37922	37405	37284	37599	37506	99.247
	21	37731	37891	37377	38236	37881	37580	37284	37990	37949	37370	37631	37086	99.441
	22	37629	37816	37678	37741	38163	37277	37710	37677	38057	38034	38291	37244	99.730
	23	37754	37814	38019	38603	37231	37565	38202	38137	37854	37420	37362	37663	99.798

INAF/UNIRomaTre		S.V.I.R.CO. Observatory - Pressure Corrected Data – January 2018											20 NM-64	
day	hh	00_05	05_10	10_15	15_20	20_25	25_30	30_35	35_40	40_45	45_50	50_55	55_60	h-norm
3	0	38251	37966	37849	37355	37880	37098	38156	37730	37693	38012	37475	38732	99.928
	1	37238	37676	37679	37832	38066	38601	38053	38210	38123	37918	37465	37662	99.995
	2	37354	37673	38048	37955	37262	37439	38262	37563	37460	38127	37999	37931	99.677
	3	38265	38030	37629	37449	38008	38022	37839	37898	37738	38467	37862	37512	100.038
	4	37903	37558	37952	37617	37859	37697	37649	37564	38269	37447	37741	37857	99.685
	5	38317	38210	37836	38273	38396	37272	38549	38349	38162	37835	38352	38072	100.677
	6	38086	38144	37389	38040	37909	38200	38192	38035	37798	38060	37278	38094	100.149
	7	37755	37681	38003	38273	37628	37984	37849	38419	37218	38272	37983	38533	100.232
	8	37979	38017	38035	37930	37506	38780	38193	38067	38419	38274	38176	38165	100.659
	9	38559	38202	38024	38287	37985	38059	37893	37712	37753	38008	37941	38013	100.415
	10	37743	37601	38218	38303	38083	38023	38248	37978	37682	38058	38126	37388	100.199
	11	37900	38271	37964	38143	37798	37461	37359	37422	36970	37922	37826	37212	99.494
	12	37879	38091	37599	37914	38094	37445	37986	37686	38050	37763	37410	37806	99.819
	13	38226	38596	37542	37981	37308	37554	37735	37619	37398	37687	37705	37666	99.664
	14	37547	37642	37266	37650	37448	37992	38286	37889	38051	37549	37636	37625	99.569
	15	37804	37176	37249	37708	37856	37679	37739	37362	37873	37695	37229	37596	99.213
	16	37725	37929	38180	37864	37412	37676	37846	37745	37354	38293	38323	37930	99.942
	17	37637	37422	37767	37126	37761	37586	37825	37831	37498	37685	38027	37884	99.450
	18	38120	37593	37379	37385	37468	37763	37504	37848	37633	37641	37438	37651	99.314
	19	37419	37329	37060	37972	37782	37561	37587	37664	37827	36874	37738	37669	99.106
	20	37852	38001	38031	37382	37904	37214	37137	37858	37355	37769	38009	37409	99.423
	21	37546	37135	37757	36957	38086	37515	37784	37993	37886	37701	37438	37895	99.372
	22	37745	37830	37451	37526	38026	37501	37360	37852	37981	38007	37887	37717	99.634
	23	37428	38167	38216	37689	37483	37546	37092	37903	37559	37473	38153	37493	99.484
4	0	37449	37496	38387	37940	37560	38372	38022	37401	37467	37812	37757	38400	99.899
	1	38248	37854	38040	37731	38422	38069	38470	37752	37836	38091	37671	38184	100.401
	2	37886	37475	37866	38057	38229	37504	37762	38121	37695	37437	38378	37753	99.916
	3	37958	37819	37425	37899	38203	37565	38592	38199	38124	38315	37679	37009	100.052
	4	37400	37699	37476	37571	37914	38103	37891	37773	37915	38068	38239	37955	99.881
	5	38321	37868	38231	38538	37746	38317	37909	38094	38170	37980	38224	37921	100.610
	6	37955	38026	38237	37882	38030	37953	38442	37798	37636	38377	37851	38072	100.377
	7	37957	38000	37987	38000	38336	37872	38196	37891	38131	38122	38049	37828	100.401
	8	38034	37835	38196	38199	38330	37927	38322	38220	38325	37943	38214	37735	100.602
	9	38184	38096	38116	38534	37727	37976	37842	38196	37874	38623	38261	37692	100.567
	10	37972	37929	38505	38363	37929	37860	38289	37948	37858	37819	37262	38328	100.333
	11	37673	37871	37560	38420	37892	37565	37648	37695	37391	37815	37627	37909	99.674
	12	37439	37629	38049	37932	37899	38051	37947	37999	38159	37955	38041	37888	100.098
	13	37879	37636	38148	37539	38453	38207	38026	37533	37900	37930	37916	38371	100.219
	14	38116	37628	37479	37948	37424	38479	38055	38013	37200	37900	37834	38552	100.018
	15	37662	38185	37969	37311	37897	38419	38389	38178	38348	37858	38447	37900	100.444
	16	37846	37925	38093	38036	37648	38231	37887	37575	37672	38463	37975	38366	100.258
	17	38227	37957	37435	38173	37676	37893	38035	38054	37746	37749	38067	37423	99.976
	18	37801	37634	37821	37466	37844	37803	37677	37708	37363	37849	38319	37729	99.663
	19	38060	37872	37662	38217	37386	37555	37571	37579	37917	37895	37481	37930	99.687
	20	37751	38091	37741	37466	37676	38071	38013	37659	37942	37764	37732	37996	99.859
	21	38321	37903	37374	37914	37620	38052	38004	37313	38110	37729	38155	37639	99.909
	22	38244	38154	37687	37712	37120	37919	38217	37912	37335	37822	37465	37670	99.717
	23	37657	37801	38057	37790	37625	37717	37452	37424	37758	38126	37933	37493	99.623

INAF/UNIRomaTre		S.V.I.R.CO. Observatory - Pressure Corrected Data – January 2018											20 NM-64	
day	hh	00_05	05_10	10_15	15_20	20_25	25_30	30_35	35_40	40_45	45_50	50_55	55_60	h-norm
5	0	38221	37919	37749	37547	37725	38026	37901	37523	37499	37507	38342	38172	99.898
	1	38076	38084	37562	37394	38410	37678	37597	37618	38382	37694	37704	37612	99.838
	2	37625	38158	38301	38206	37975	37690	37867	38094	37764	38035	37523	37936	100.138
	3	38249	38386	37824	38084	38485	37981	38170	37871	37959	37996	38273	38161	100.637
	4	37714	37895	37698	38547	37714	38410	38059	38358	37912	38514	38003	38213	100.548
	5	38071	38393	37696	37329	38161	37828	38216	38027	37631	38021	37558	37459	99.966
	6	37999	38018	38546	38091	37808	37809	38520	38381	37892	37834	38611	38229	100.702
	7	38459	38062	37655	37925	38454	38051	37941	38292	38247	38196	37805	37964	100.551
	8	38136	37654	38555	38338	38553	38033	38036	38177	37914	38545	37776	38272	100.758
	9	38241	37971	38462	37969	37977	38161	38070	37997	38498	38322	38192	38221	100.778
	10	38084	38022	38126	38206	38204	38282	37902	38273	38393	38185	37945	37876	100.650
	11	37870	38122	37629	38905	37536	38061	37856	37897	37697	37895	38119	37993	100.228
	12	38203	37855	38625	38201	38175	37687	38815	37998	37508	38194	37848	37832	100.527
	13	37850	37634	38044	37982	37677	37487	38178	38158	38408	37583	37962	38038	100.100
	14	37996	38453	38143	38055	37591	38146	38234	38090	37755	38102	37695	37359	100.236
	15	37490	38236	37891	37967	37633	37648	37726	37987	37549	38191	37936	37973	99.930
	16	38138	38057	37706	38061	37636	37851	37548	37290	38015	37689	38007	37681	99.809
	17	37888	37781	38540	37439	37788	38160	37698	37330	37936	38578	38292	37351	100.052
	18	38057	37521	37787	37530	38100	37833	37961	37691	38227	37785	37585	38030	99.904
	19	38118	37838	37942	37949	37880	37653	37288	37909	37749	38376	37731	37471	99.859
	20	37885	37856	37880	38064	38014	38478	37686	37376	37777	38365	38123	38511	100.323
	21	37518	37453	38160	37961	37942	37253	37634	37377	37673	37436	37627	37580	99.355
	22	37691	37357	37732	38038	37908	38325	37842	37724	38029	37840	38027	37635	99.912
	23	37431	38106	37935	37690	38154	38579	37896	37666	37985	37495	37450	38454	100.065
6	0	38133	38178	37934	37995	37356	38318	38110	38174	38112	37607	37970	38088	100.313
	1	37942	38312	37880	37482	37902	38551	38217	37917	37746	37125	38228	38239	100.219
	2	37925	37905	38335	38219	38691	38750	38225	38327	38294	38005	37858	37989	100.875
	3	37826	38447	38128	37979	38343	37654	38207	38257	37793	38404	37810	38219	100.555
	4	38472	38024	38605	38126	38679	38173	38534	37879	37747	38365	38160	37582	100.836
	5	38806	38302	37707	37988	37963	38816	38364	37937	38192	38426	37990	38628	101.006
	6	38520	38414	38245	38489	38336	38391	38924	37910	38289	38152	38264	38258	101.242
	7	38238	37920	37887	38101	38372	38379	37921	38418	38109	38849	38167	38192	100.882
	8	38093	38388	38223	38638	38511	37843	37728	38294	37385	37749	38687	37994	100.658
	9	38176	38301	37610	38075	37753	38326	38497	38767	38511	38156	37730	38269	100.798
	10	38260	38471	38179	38041	38160	38412	38346	38093	38367	38529	37857	38241	100.970
	11	38641	37839	38017	38289	38938	38176	38353	37656	38455	38639	37759	38178	100.967
	12	38172	38715	37624	38253	38328	38317	38613	37853	37875	37868	37866	38756	100.813
	13	38392	38452	38468	38111	38394	38274	37552	36957	37822	38633	37455	38230	100.483
	14	38013	38343	37969	37920	38386	37929	38110	37891	37754	37489	37851	38391	100.330
	15	37801	38691	38092	38050	38546	38170	37994	38445	38289	37754	38106	38004	100.747
	16	37847	37862	38685	38097	38025	38532	38286	38537	37918	38598	37661	37827	100.733
	17	37434	38176	38038	37856	38285	38682	37798	37776	38040	37795	37965	37900	100.264
	18	38198	38690	38000	38277	37676	38291	38275	37802	38575	37841	38392	38793	100.938
	19	37936	37930	38608	38249	38416	38307	37704	37805	38289	38140	38129	38130	100.681
	20	38372	38811	38031	37869	37860	38059	38175	37761	37746	38067	38257	38072	100.557
	21	38788	38090	38131	38330	38344	38624	37432	37999	38017	38391	38743	38105	100.979
	22	38838	38195	38331	38685	38126	38500	37951	38495	38863	37957	38428	38095	101.302
	23	37944	38608	38057	38334	38347	38156	37909	38313	38203	38086	38006	38477	100.857

INAF/UNIRomaTre		S.V.I.R.CO. Observatory - Pressure Corrected Data – January 2018											20 NM-64	
day	hh	00_05	05_10	10_15	15_20	20_25	25_30	30_35	35_40	40_45	45_50	50_55	55_60	h-norm
7	0	38219	37781	38071	38012	37970	37955	38618	37955	37864	38372	38382	38118	100.609
	1	38373	38113	38134	38313	38836	38193	38254	38574	38426	38387	38166	38854	101.336
	2	38166	37828	38288	37819	38706	37843	38424	38174	38435	38051	38508	37958	100.804
	3	38373	38506	38049	38685	38078	37985	38169	38461	38580	38511	38269	38682	101.277
	4	38298	38576	38032	38154	38183	38374	38002	38031	38059	38428	38321	38047	100.871
	5	38159	37637	37612	38761	38860	38130	38214	38723	38328	37824	37973	38719	100.967
	6	37638	38169	38211	38683	38234	38283	38480	38267	38366	38464	38191	37725	100.916
	7	38586	38465	38041	37889	38328	38065	38467	37967	38131	38598	38302	37667	100.872
	8	37972	38196	38217	38440	38380	38157	38236	38231	38892	38200	38233	38108	101.038
	9	38444	38551	38369	38469	38491	38776	38384	38727	38203	38536	38254	37713	101.401
	10	38391	38236	38568	38606	38181	37830	38244	38430	38480	37753	38417	38327	101.082
	11	38068	38093	38594	38123	38218	38636	38557	38137	38480	38063	38122	38550	101.121
	12	38184	38089	38057	37977	37739	37832	38245	38451	37994	37972	38115	37804	100.421
	13	38475	38469	38563	38595	38264	38805	38596	38034	38168	38334	38623	37507	101.295
	14	38372	38023	37872	38366	38247	38666	37884	38014	38473	38123	38564	38285	100.955
	15	38088	38261	38694	38526	38386	38348	38233	38107	37862	38046	38278	37687	100.874
	16	38513	38079	38266	38527	38590	37879	37897	37469	38369	37881	38610	38525	100.893
	17	38165	38415	37832	38261	38319	37964	37729	38541	38096	37969	38150	38382	100.721
	18	38157	37402	37905	38296	37941	37726	37782	38502	38742	37773	38149	38153	100.436
	19	38193	38191	38017	37684	38650	37504	37893	37870	38186	37960	38047	37829	100.326
	20	37946	38149	38615	37619	37877	38416	38321	37910	38462	38158	38325	37895	100.692
	21	37886	38080	37940	38171	38874	37795	38534	37726	38012	38198	38219	38200	100.680
	22	37641	38499	38037	37784	38438	37964	38127	38086	38365	38799	38155	37909	100.717
	23	38673	38442	38181	37942	38213	38224	37802	37830	37718	38039	37943	38076	100.557
8	0	38237	37897	37977	37888	38138	37725	38301	37937	37844	38408	38345	37841	100.447
	1	38017	38593	38042	38253	38347	38434	38369	37804	37823	38070	38240	37999	100.758
	2	38073	38188	38554	38035	37865	38204	38069	38645	37579	38260	38247	38455	100.799
	3	38100	38264	38264	37980	38234	38231	37922	38283	38293	37731	38166	38712	100.800
	4	38371	38403	37594	38238	38109	38330	38176	38458	38179	38023	38175	38370	100.854
	5	38621	37639	38380	38403	37673	38113	38363	38498	37728	37906	38021	38983	100.832
	6	37858	38241	38291	38555	38247	38472	37982	38063	38324	38352	37913	37893	100.802
	7	38035	38103	38194	38747	38603	38235	37591	37527	38007	37945	38487	38805	100.821
	8	38351	38044	37644	38132	37604	38158	38402	38588	38161	38053	37358	37845	100.395
	9	38067	38616	37879	38318	37942	38303	38103	37854	38017	38358	37955	38213	100.678
	10	37910	37427	37285	38051	37851	37770	38281	37961	37801	37733	38246	38158	99.985
	11	37971	37634	37629	37927	38284	38070	38062	38066	38347	38264	38133	37495	100.294
	12	38324	38241	38052	37960	37741	37967	37934	38854	38012	37647	37679	37711	100.346
	13	37799	37563	37915	37392	38040	37794	38228	38316	38459	38428	37785	38058	100.271
	14	37767	37901	38436	37943	38625	38143	38071	38606	38293	37949	37320	38192	100.595
	15	37991	38587	38478	38491	38577	38453	37872	38485	38408	37832	38074	37861	101.005
	16	37992	37779	38900	38162	38726	39003	38104	38153	38118	38096	37719	38656	101.070
	17	38293	38018	38140	38508	37275	38485	37635	37786	38381	38024	37540	38159	100.374
	18	38137	38307	37447	37902	38024	38502	38015	37897	37611	38009	37803	37819	100.204
	19	37935	37898	38503	37935	37613	37149	37205	37860	38090	38422	37944	37798	99.958
	20	37903	37725	37971	37689	37992	38101	38090	37477	38025	37918	37995	38570	100.200
	21	37412	37690	37197	38040	37900	37718	37661	38120	37800	38073	38186	37573	99.741
	22	38105	38045	38100	37636	37508	38098	37684	37708	37987	38293	37825	38262	100.155
	23	37668	37619	38426	37710	37840	38408	37727	37659	37909	37924	37981	38462	100.173

INAF/UNIRomaTre		S.V.I.R.CO. Observatory - Pressure Corrected Data – January 2018											20 NM-64	
day	hh	00_05	05_10	10_15	15_20	20_25	25_30	30_35	35_40	40_45	45_50	50_55	55_60	h-norm
9	0	38117	37995	38182	37939	38128	38049	37873	37619	38254	38179	38110	38289	100.488
	1	38213	38095	38453	38508	37720	38456	37850	38608	37725	38016	38082	37599	100.612
	2	38404	38437	37700	38131	38774	38278	37751	37722	38213	38295	37816	37895	100.632
	3	37699	37706	37870	37979	37706	38266	37939	38373	38116	38217	37936	37550	100.178
	4	37896	38239	37771	37683	37650	38416	38166	37606	38167	37755	38098	37639	100.119
	5	37942	37420	38203	38225	38077	38472	37890	38115	37868	37960	37657	37894	100.259
	6	38113	38135	38190	37695	38358	38308	37748	38231	38421	38445	38054	38461	100.795
	7	38569	37910	37808	38032	38435	38195	38270	38274	38495	38461	37970	38560	100.975
	8	37902	39214	37881	38385	38400	38095	38135	38007	38386	38064	37872	37913	100.817
	9	37566	38185	38463	37940	38090	38360	38500	37826	38487	38248	38786	39291	101.143
	10	38164	38545	38376	38331	37885	37808	38547	37918	38241	38291	38333	38052	100.868
	11	38451	38167	37890	38491	38645	38389	37909	38966	37871	38604	38383	38049	101.159
	12	38266	38141	38112	38388	38240	38334	38028	38227	37929	38354	38345	38095	100.861
	13	38313	38342	38165	38408	37809	38648	38625	38216	38255	38072	38074	38507	101.075
	14	38075	38541	37874	38555	38331	38463	37661	37875	38398	38080	38078	37965	100.737
	15	38529	37783	37941	38164	38537	37876	38093	38244	38410	38551	37992	37751	100.732
	16	37581	38032	38252	38026	38583	38110	38328	37539	38450	37500	38200	38181	100.492
	17	38452	38323	37649	37834	37640	38407	38232	38067	38094	38307	38188	38414	100.673
	18	37643	38140	38046	37922	38401	37943	37519	37479	38202	38021	38001	38173	100.208
	19	38215	37320	38291	37701	38453	38272	38000	37787	38047	38016	37562	37983	100.242
	20	37805	38178	37896	37574	38113	37729	37534	37691	37410	37507	37954	38240	99.799
	21	38215	38237	38225	37818	37990	37729	37577	38290	37822	37866	37878	37890	100.218
	22	38301	37502	37948	37688	37704	37655	38079	38012	37805	37644	37982	38226	100.000
	23	37903	38215	38265	37679	37838	38533	38206	38009	38145	37994	38053	38406	100.594
10	0	37957	37850	37838	37872	37744	37533	37511	37600	38090	38102	38053	37933	99.904
	1	37811	37733	37497	37408	38413	37930	37774	38100	37739	37684	37911	37930	99.865
	2	37954	37628	38245	38145	38121	38009	37936	38295	37626	38073	38158	38162	100.398
	3	38524	37909	37444	37790	38156	38249	37730	37795	38114	37415	38246	38466	100.284
	4	38207	38308	38217	38350	37546	37797	38383	38148	38144	37828	38230	37595	100.485
	5	37913	37985	38118	38609	37861	38289	37888	38306	37793	38001	38041	38454	100.597
	6	38512	37922	38156	38098	38213	38429	38546	38114	38636	38219	38001	38204	100.991
	7	38354	37874	37845	38758	37991	37896	38105	38648	38213	38363	38360	38246	100.903
	8	37902	37931	38824	38022	37999	38100	37664	38740	38341	39174	37721	38589	100.982
	9	38441	38894	38354	38812	37987	38852	38004	38298	37580	38451	38071	38419	101.236
	10	38256	37593	38090	37745	38628	38408	37958	38052	38136	38404	37840	38211	100.611
	11	38772	38145	38265	37628	38275	38594	38374	38768	38257	38232	37789	38247	101.056
	12	38269	37573	38016	38409	38055	37991	38827	38626	38081	38401	37945	38425	100.896
	13	38771	38039	38207	38281	37683	38227	38108	37848	38235	38418	37978	38235	100.767
	14	37948	38449	38018	38037	38531	38079	37768	38381	38413	38603	38056	37417	100.694
	15	37939	38345	38188	38246	38233	37732	38048	37621	37950	37969	37502	37238	100.102
	16	38208	38401	37862	37902	37989	38377	37905	37998	37126	37924	37304	37743	100.043
	17	38441	37726	37812	38163	37610	37737	37599	38047	37772	37964	38289	38113	100.160
	18	38182	37837	38298	37862	38099	37962	37549	38273	37981	37959	38222	37793	100.324
	19	37920	37800	38241	37870	37929	38540	37471	37402	37909	38029	37687	37819	100.016
	20	38552	37948	38954	38043	38068	38227	38054	38255	38010	37435	38445	38026	100.763
	21	37387	37736	37619	37298	37713	37722	37697	38318	37896	38150	37634	37575	99.604
	22	38039	37709	38200	37773	37845	37675	38175	38477	37694	37418	37987	38351	100.176
	23	38374	38698	38071	37542	38185	37957	38400	37909	38104	38300	38493	38136	100.797

INAF/UNIRomaTre		S.V.I.R.CO. Observatory - Pressure Corrected Data – January 2018											20 NM-64	
day	hh	00_05	05_10	10_15	15_20	20_25	25_30	30_35	35_40	40_45	45_50	50_55	55_60	h-norm
11	0	37779	37492	38323	38107	38113	37808	38141	39053	38222	38259	38299	37733	100.609
	1	37713	37966	37877	37836	38420	37709	37485	38045	38184	37687	38204	38236	100.180
	2	38069	37919	38461	38294	38310	38393	38187	38029	38191	38290	37995	38275	100.851
	3	37852	38470	38189	38013	37737	38048	37519	38317	37845	37963	37906	37647	100.211
	4	37999	38278	38292	38160	38046	37882	38341	37681	38209	38880	38104	38406	100.821
	5	37934	38349	37960	38016	37551	38486	38247	38102	38377	37604	39016	37783	100.634
	6	37659	37900	38245	38171	38670	38396	38250	38369	39001	38518	38384	37940	101.090
	7	37713	38017	38091	38889	38335	37921	38255	38288	37797	38161	38113	37968	100.661
	8	37887	37991	38350	38456	37982	37696	38294	38020	38762	38184	38277	38459	100.839
	9	38339	38538	37917	38094	38477	38214	38298	38548	38994	38440	38235	37985	101.218
	10	37911	38271	37652	38176	38245	38485	37968	37739	38577	38444	38370	38653	100.869
	11	38201	37620	37862	38135	38674	38205	37863	38756	37622	38371	37890	38600	100.716
	12	38321	38123	38656	38480	38001	37824	37666	37653	37644	38199	38758	38050	100.622
	13	38016	38388	38275	38403	37924	37671	38229	38348	38135	38422	38055	38229	100.781
	14	38428	37769	38123	38309	38745	37630	38657	38329	38283	37654	38459	38058	100.858
	15	37794	38271	38101	38209	38205	38152	37817	38322	38101	37656	38005	38206	100.504
	16	37640	38382	37827	37982	37893	38220	38163	38447	38025	38418	37587	38391	100.535
	17	37893	38051	38548	37759	38323	38517	38280	38013	38517	37935	38122	37897	100.728
	18	38026	37965	38369	38035	38047	38478	38013	37451	38316	38341	38076	37695	100.499
	19	38347	38477	37734	37722	38209	38057	38065	37803	38695	37968	38004	38361	100.637
	20	38306	38242	38386	38211	38020	38139	38189	38179	38298	38344	37747	37849	100.740
	21	38649	38099	38083	37779	38285	38497	38195	38193	38008	37597	37861	37913	100.575
	22	37690	37985	38548	38193	38046	37567	38270	37497	38006	38452	37178	38049	100.206
	23	38029	38239	38241	38109	38174	38157	38530	38070	38234	38695	38056	38119	100.904
12	0	38101	38591	38533	37987	37889	37594	38430	37978	37534	38289	37951	38507	100.626
	1	38221	38698	38226	38357	37730	37871	38147	37540	38309	37831	37860	38225	100.543
	2	38201	38275	37990	37630	38163	38203	38114	38576	38794	38481	38392	38432	101.035
	3	37959	37983	38303	37743	38317	38490	38110	38277	37784	37547	38348	38259	100.566
	4	38285	38545	37901	38222	37926	38603	38356	38080	37729	38536	38426	38671	101.041
	5	37883	38406	37949	38393	38137	38420	38244	37872	38819	37762	38031	38939	100.948
	6	37832	38621	38634	38041	38048	38045	38358	38526	38360	38638	38804	37846	101.146
	7	38715	38489	37875	38027	38347	38675	38464	38322	38329	38239	37943	38023	101.079
	8	38172	38909	38116	38524	38049	37725	38214	38844	38408	38592	38734	38526	101.379
	9	38149	38387	38647	38359	38186	38049	38304	38521	38497	38355	38191	38394	101.209
	10	38400	38187	37916	38557	38351	38519	38845	38337	38634	38158	38382	38959	101.474
	11	38778	38169	38718	38459	38317	38848	37820	38343	38674	38683	38342	38375	101.536
	12	37981	38037	38353	38145	38363	38406	38762	38082	38061	38358	38043	38132	100.919
	13	38809	38576	38367	37840	38376	38783	38519	38349	37976	38112	37659	38220	101.109
	14	38178	38389	38195	38629	38412	37791	37835	38068	38898	38109	38207	37996	100.916
	15	38245	38137	38289	38197	38124	38358	38042	38132	38073	37892	37660	37535	100.471
	16	38594	38204	38417	38187	38344	37775	37986	37705	38698	38295	37917	37813	100.746
	17	38304	39198	38733	38295	37308	37962	37973	38656	38112	38205	38395	37484	100.898
	18	38278	37932	38081	37785	38224	38827	38742	38045	38438	38478	38529	38112	101.084
	19	37927	38949	38362	38687	38463	37988	38828	38147	38118	38111	37901	38657	101.231
	20	37946	38187	38260	38102	38030	38183	38198	37955	38185	38236	37757	37871	100.521
	21	37420	38511	38375	38517	38305	38549	38142	38141	38259	38224	37696	38205	100.836
	22	38152	37849	37791	37887	38111	38191	38432	38430	38560	37701	37981	38239	100.611
	23	38569	37670	37944	38347	38293	38326	38296	37958	38299	38291	38048	37957	100.759

INAF/UNIRomaTre		S.V.I.R.CO. Observatory - Pressure Corrected Data – January 2018											20 NM-64	
day	hh	00_05	05_10	10_15	15_20	20_25	25_30	30_35	35_40	40_45	45_50	50_55	55_60	h-norm
13	0	38251	37809	38280	37988	38107	38447	38331	38090	38238	38648	38438	37779	100.853
	1	37617	37929	37860	38509	38444	38240	38346	38671	38436	38731	37995	38006	100.933
	2	38346	38015	37779	37527	38335	38063	38137	38360	38438	38412	38383	37712	100.652
	3	38250	38128	38534	38479	38008	38021	38647	38519	38864	37754	38425	39081	101.356
	4	38586	37867	38513	38392	38241	37873	38667	38584	38272	37634	38651	38131	101.070
	5	38519	38780	38528	38382	38604	38282	38410	38060	38577	38670	38523	38346	101.570
	6	38291	38367	38770	38239	38137	38180	38859	38221	37772	37854	38269	37584	100.879
	7	38877	37619	38665	37814	37888	38501	38361	37709	38077	38287	38509	38126	100.855
	8	38210	38038	39026	38721	38366	38299	38487	38297	37508	38472	38545	38762	101.361
	9	38454	38406	38114	38162	38096	38151	38456	38304	38283	38762	38028	38011	101.030
	10	37478	38563	38438	38768	37600	38832	38336	38738	38633	38420	38537	38630	101.415
	11	38173	38411	38404	38304	38750	38064	38655	38574	38054	38421	38185	38208	101.244
	12	38576	38551	38678	38027	38545	38626	38760	38821	37929	37943	38542	37871	101.391
	13	38149	38692	38037	38675	38026	38054	38230	37995	38580	38404	38104	38480	101.074
	14	38045	38196	38298	37833	38357	38072	38331	38236	38160	38595	38379	37752	100.816
	15	38437	38005	38073	38856	38004	38359	38513	38339	37844	38434	38235	38252	101.058
	16	37927	37951	37532	38382	37803	38238	37389	38807	37988	37627	38441	37994	100.337
	17	38127	38303	38027	38203	37740	37699	38185	38419	38339	38345	38194	38074	100.684
	18	38343	38160	38067	38631	38624	38563	38177	38685	38122	38673	37537	38494	101.217
	19	38601	38195	38859	38179	38294	38090	38486	38613	38446	38036	38451	38241	101.308
	20	38555	38025	38483	38360	38323	37956	38081	37976	38086	38381	38877	38294	101.067
	21	39074	38250	38715	38147	38249	37674	38510	38279	38568	38089	38485	38111	101.233
	22	38190	38162	37510	38262	38031	38857	38078	38436	38197	38117	38004	38113	100.750
	23	38608	38528	38265	38388	37803	38249	38414	38554	37843	38453	38045	38315	101.082
14	0	38559	38383	38461	37958	38587	38904	38850	38453	38364	38035	38611	38639	101.597
	1	38496	38481	38371	38373	38305	38412	38240	38255	38322	38061	38166	37958	101.077
	2	37685	38524	37929	38119	38270	38192	38339	38459	38113	38052	38034	37861	100.667
	3	38112	38389	38505	38558	38398	38225	38022	38391	38122	38812	38536	37934	101.201
	4	38173	38394	38491	38060	38772	38170	38643	38909	38507	38748	38023	38287	101.459
	5	37960	38592	38043	38502	38957	38521	38206	38746	38241	38362	38805	38041	101.415
	6	38621	38069	38410	38389	38345	38431	38422	38555	38138	39034	38999	38913	101.711
	7	38027	38016	38748	37682	38346	38874	38077	38516	38177	39126	38086	38848	101.315
	8	38860	38142	38226	38852	38406	38215	38591	38461	38431	38306	38618	38149	101.477
	9	38171	38230	38087	38651	38912	39170	38096	38351	38648	38221	38612	38365	101.533
	10	38566	38363	38347	37714	38095	38248	38610	38617	38149	39021	38983	38109	101.381
	11	38281	38594	38699	38336	38352	38803	38574	38337	38817	38711	39017	39070	101.990
	12	38298	38677	38613	38510	38275	38614	38293	38626	38754	38781	38115	37970	101.536
	13	38392	38566	37781	38045	38506	38700	38301	38456	38246	38644	38414	38398	101.298
	14	38753	38749	37905	38390	38813	38210	38083	38226	38465	38867	38716	38310	101.527
	15	38199	38583	37869	37992	38475	38584	38259	38241	38349	38195	38561	38660	101.192
	16	38232	38254	37365	38545	38660	38415	38272	38113	38275	38382	38549	38796	101.168
	17	38088	38214	38402	39027	38551	38438	38105	38410	38293	38421	38767	38150	101.391
	18	38415	37896	38299	38352	38178	38239	38410	38631	37894	38124	38553	38402	101.066
	19	38238	38347	38253	38819	38363	38083	37930	38683	38048	38262	38171	37688	100.955
	20	38198	38227	38155	38385	38099	38652	38185	38062	38140	37987	37850	38614	100.882
	21	38286	38119	37489	38977	38412	37792	38195	38572	38739	37684	38118	37673	100.772
	22	38077	38075	38137	37911	37871	38095	38230	38045	37808	37886	38506	37859	100.430
	23	38333	38799	38272	38320	38502	38195	38225	37856	38337	38067	38553	38331	101.154

INAF/UNIRomaTre		S.V.I.R.CO. Observatory - Pressure Corrected Data – January 2018											20 NM-64	
day	hh	00_05	05_10	10_15	15_20	20_25	25_30	30_35	35_40	40_45	45_50	50_55	55_60	h-norm
15	0	38426	38277	37377	38148	38101	38165	38973	38286	37911	38111	37466	38252	100.647
	1	38018	38355	38074	38509	38626	38760	38410	38463	37696	38013	38694	38588	101.246
	2	38507	38273	38066	38667	38417	38466	38340	38563	38156	38187	38370	38403	101.291
	3	38527	37858	38300	38274	38383	38352	38475	37871	37769	38171	38127	38169	100.821
	4	38408	38450	37662	38114	37999	38549	38361	38310	38131	39000	39121	38531	101.340
	5	38438	38613	38159	38197	38104	38533	38092	38310	38189	38015	38596	38677	101.183
	6	37945	38351	39067	37914	38335	37820	38900	37913	38355	38222	38439	38632	101.176
	7	38520	38489	38141	38238	38097	38016	38505	38605	38359	38496	38491	38817	101.370
	8	38634	38596	38291	38217	37880	38545	39126	38847	38445	39135	38556	38105	101.723
	9	38556	38488	38624	37853	38026	38824	38341	38534	38452	38426	38393	38569	101.439
	10	38781	38617	37653	38031	38252	38449	38548	38513	38073	38038	38541	38329	101.161
	11	38110	38676	37968	38483	38357	38405	38516	38095	38145	38232	38614	38195	101.155
	12	38379	38041	38972	37800	38525	38543	38563	38106	37974	38244	38671	37972	101.154
	13	38269	38189	38496	38325	38473	38225	38256	38387	38724	38813	38747	38235	101.451
	14	38507	38390	38016	38601	37740	38483	38394	38445	38580	38205	38231	38449	101.209
	15	38741	38736	38868	38576	38182	37933	38196	38696	38133	38682	38553	37767	101.434
	16	38011	38097	37735	37958	38763	37939	38114	37614	37837	38009	38057	38272	100.409
	17	38397	38381	39103	38097	38431	37701	38179	38491	37892	38410	38346	38305	101.142
	18	37978	38263	38086	38006	38042	38379	37986	38137	38848	38725	37628	38112	100.802
	19	37917	38220	38254	38516	38325	38399	37881	38468	37992	38507	38126	38003	100.894
	20	38015	38209	38203	38208	37828	38152	38252	38077	37720	38243	37823	38128	100.509
	21	38191	38056	38234	38317	38020	38268	38687	38107	37953	37893	38133	38311	100.798
	22	38560	38341	38150	38027	38019	38305	38293	38336	38055	37862	38451	38369	100.929
	23	38628	37989	37907	37714	37973	37613	38301	38276	38381	37951	39162	37902	100.716
16	0	38190	37662	38396	38224	38308	37872	38170	38627	38500	37998	38341	38104	100.841
	1	37766	38075	38247	37773	37739	38425	37755	38168	37850	38340	38095	38578	100.499
	2	37956	38006	38122	38677	37814	38316	38710	38064	38092	38428	38292	38505	100.976
	3	37990	38767	38168	38506	38271	38293	38206	38255	38118	38464	37797	38598	101.075
	4	38524	38088	37739	37974	38016	38458	38336	38172	38566	38146	38113	38794	100.964
	5	37799	38166	38428	38659	38791	38896	38299	38663	38048	38402	38154	37951	101.257
	6	38044	38545	37786	38823	38103	38345	38355	38348	38078	38440	38576	38355	101.156
	7	38398	38479	38910	38103	39143	38281	37987	38361	38066	38683	38254	38429	101.441
	8	38634	38064	37971	38136	38406	38206	38164	38075	38112	37998	38683	37635	100.779
	9	38195	38063	39028	38726	38320	37565	37645	38571	38577	38757	38518	38293	101.257
	10	37979	38204	38819	38518	38104	37991	38368	38351	38556	38038	38609	38142	101.130
	11	38811	38247	38074	38963	38513	37943	38315	38689	38071	38350	38378	38575	101.404
	12	38647	38740	37924	37887	38780	38367	38371	38504	38157	38191	38213	37587	101.060
	13	38261	38326	38738	38701	38161	38137	38044	38514	38346	38284	38746	38089	101.276
	14	38250	38188	38108	38666	38242	37528	38291	38272	38686	37977	38280	38385	100.952
	15	38028	37675	38456	38230	37553	38249	37958	38774	37944	37868	37917	38069	100.479
	16	38087	38322	37469	37885	38186	38072	37860	38283	38177	38478	38000	37730	100.441
	17	37474	38612	38044	37886	38214	37539	38063	38409	38294	37944	38073	37953	100.431
	18	37152	37744	38296	38046	37733	38410	38132	37947	38408	38113	37805	38141	100.304
	19	38249	38149	37440	37806	38095	38037	38487	38065	38137	38262	37844	37950	100.435
	20	37943	37608	38205	38309	38240	38306	37616	38011	38159	38332	38055	37928	100.476
	21	38108	37798	38360	38471	38272	38359	38751	38268	38213	38196	38418	38059	101.040
	22	38056	38599	37818	38190	37828	38112	38256	38023	38156	38036	38159	37965	100.584
	23	37809	37895	38644	38199	38069	38165	37340	38598	37915	37825	38530	38251	100.593

INAF/UNIRomaTre		S.V.I.R.CO. Observatory - Pressure Corrected Data – January 2018											20 NM-64	
day	hh	00_05	05_10	10_15	15_20	20_25	25_30	30_35	35_40	40_45	45_50	50_55	55_60	h-norm
17	0	37615	38356	38396	38164	38292	38244	37840	37891	38266	38478	38191	38478	100.793
	1	38349	37710	37874	38179	38228	38644	37875	38108	38696	38220	38232	37614	100.700
	2	38084	38563	38524	38241	38064	38200	38724	38463	38342	38064	38121	37692	100.998
	3	38600	38437	38044	38269	38079	38778	38660	38392	38169	38382	38411	37949	101.237
	4	38536	38512	38599	38751	38114	38164	38346	38382	38202	38725	38656	38539	101.536
	5	38456	39139	38369	37982	38348	38364	38834	38520	39116	38109	38251	38531	101.644
	6	38626	38661	38269	38554	38817	38792	38379	38213	38489	38386	38665	38623	101.744
	7	38592	38472	38271	38217	38993	38850	38695	39538	38812	37919	38899	38525	102.033
	8	38502	38026	38714	38283	38551	38612	38426	38107	38497	38395	38686	38982	101.591
	9	38499	38617	38158	38068	38360	38148	38327	38496	38077	38182	38824	38765	101.315
	10	38538	38718	38722	38428	38109	38429	38302	38697	38956	38549	38688	38923	101.873
	11	38305	38114	38187	38922	38983	38054	38576	38612	38508	38776	39058	38332	101.734
	12	38421	38911	38771	38706	38546	38775	38480	38476	38072	38434	38540	38353	101.747
	13	38387	38865	38152	38538	38402	38578	38714	38445	38119	37892	38548	38327	101.413
	14	38368	38513	38311	38255	39189	38609	38207	38577	37556	38541	38848	38447	101.513
	15	38129	38322	38327	38380	38375	38137	38534	38847	38313	38148	38643	38494	101.343
	16	38340	38465	38823	38480	38159	38427	38524	38237	38075	38273	38325	37980	101.226
	17	38311	38202	38421	38417	38290	38452	37854	38962	38266	38393	38519	38287	101.283
	18	38990	38202	38656	37982	38091	38384	38331	38130	38262	38355	38269	37768	101.074
	19	38737	37895	38750	38815	38030	38044	38288	38227	38223	38331	38323	38049	101.138
	20	38293	38660	38475	38763	39118	39081	38682	38056	37871	38415	37561	38820	101.597
	21	38556	37927	38182	38464	37848	38382	38948	38390	38204	38560	38541	38090	101.220
	22	38703	38373	38119	38531	38232	38006	38357	38154	38308	38445	38114	39042	101.285
	23	37678	38448	37968	38754	38457	38507	38969	38685	38225	38269	38276	38618	101.388
18	0	38332	38970	38327	38474	38594	38183	38693	38703	38608	38823	38382	38166	101.705
	1	38562	38553	38207	38353	38256	38038	38284	38544	38206	38283	38312	38052	101.123
	2	39085	38348	38952	38416	38834	38520	38145	38421	38412	38120	38539	38609	101.729
	3	38007	37932	37989	38636	38748	38805	38135	38593	38315	38514	38078	38482	101.252
	4	37871	38248	38482	38636	38292	38517	38605	38667	38390	37952	37943	39443	101.431
	5	38749	37874	38339	37910	38197	38800	37881	38719	38032	38877	38748	38426	101.321
	6	38087	38472	38928	38523	38172	38321	38760	37919	38303	38460	38039	37955	101.187
	7	38339	38569	39118	38088	38281	38074	38584	38613	38745	38538	38718	38200	101.611
	8	38686	38125	38098	38247	39447	38405	38687	38496	39257	38692	37807	37953	101.619
	9	37830	38523	38548	39170	38623	38592	38710	38521	38395	38436	38632	38328	101.707
	10	38522	38249	38519	38312	38397	38258	38330	38705	38601	38104	38167	37781	101.188
	11	38624	38894	38327	38390	38687	38303	38685	38523	38654	39214	38508	39164	102.075
	12	38526	39016	38165	38538	38573	38246	38876	38454	38974	38830	38615	38057	101.832
	13	38022	37976	38134	38496	38230	38416	38206	38704	38744	39038	38800	38127	101.398
	14	38524	38500	38498	38344	38345	38306	38236	38721	38571	38452	38776	38356	101.559
	15	38715	38363	38528	38078	38499	38580	38363	38531	38344	38984	38340	38535	101.609
	16	38273	38265	38434	38615	38294	38577	38786	38126	38263	38651	38588	38465	101.495
	17	38168	37676	38421	39119	38505	38188	37979	38774	38677	39052	38570	38204	101.494
	18	38368	37889	38592	38321	38453	38332	38746	38563	38625	38576	38606	38395	101.522
	19	38164	38040	38130	39088	38343	38546	38422	38218	37745	38317	38130	38301	101.078
	20	38077	38558	38228	38626	37548	38248	38674	37897	38149	38164	38076	37670	100.742
	21	38290	38190	38580	38520	37900	38665	37780	38792	38377	38082	38529	38230	101.186
	22	38129	38241	38413	38197	38654	38573	38646	38249	38192	38636	38314	38763	101.422
	23	38009	38153	38394	37853	37852	37770	38152	38832	38908	38534	38528	38283	101.039

INAF/UNIRomaTre		S.V.I.R.CO. Observatory - Pressure Corrected Data – January 2018											20 NM-64	
day	hh	00_05	05_10	10_15	15_20	20_25	25_30	30_35	35_40	40_45	45_50	50_55	55_60	h-norm
19	0	38280	38388	38018	37840	38259	38506	38485	38186	38477	38128	38553	38321	101.075
	1	38385	38526	38815	37729	38231	38438	38052	37992	38831	38318	38369	37810	101.088
	2	38036	38338	38176	38123	37999	38154	38265	38555	38242	37944	37969	38805	100.894
	3	38276	38474	38347	38579	38252	38117	38876	38278	38678	38353	38536	38379	101.452
	4	38584	38632	38335	38406	38856	38204	38819	38119	38798	38265	38542	38185	101.584
	5	38499	38707	38501	38544	38705	38229	38555	38549	38568	38075	38785	39074	101.814
	6	38437	38912	38533	38135	38677	38289	38342	38102	38465	38384	38309	38579	101.456
	7	38813	38915	38605	38494	38532	38324	38914	38456	38975	38203	38687	38517	101.956
	8	39052	38587	38505	38496	38556	38749	38947	38157	38588	38360	38815	38966	102.031
	9	38374	38550	38470	38524	38139	39230	38529	38743	38203	38972	38017	39045	101.815
	10	38838	39325	38629	39098	38214	38254	38878	38209	38290	38781	38709	39190	102.172
	11	38466	38807	38995	39076	38435	38607	38919	39469	38684	37990	38764	38493	102.235
	12	38835	38418	38501	38620	38887	38944	38708	38371	38303	38527	39249	38560	102.063
	13	38122	38326	38165	38697	38677	38526	38499	38435	38247	38445	37629	38911	101.350
	14	38556	38342	38829	38695	38140	38125	38564	38731	38674	38689	38321	38477	101.671
	15	38667	37937	38265	38749	38401	38297	38839	38845	38211	38271	38670	38328	101.526
	16	38656	38574	38289	38307	38265	38454	37649	38329	38165	39157	38327	38237	101.290
	17	38383	38371	38131	38302	38930	38587	38390	38719	38081	38197	38020	38909	101.425
	18	38486	38542	38448	38305	38814	38232	38673	38141	38546	38494	38167	38683	101.537
	19	38666	38670	38470	38683	38034	38546	38229	38557	37970	37645	37963	38665	101.222
	20	38795	37555	38527	38465	38498	38350	38567	38860	38273	38187	38345	38575	101.419
	21	38360	38471	37716	38072	38429	39107	38458	37746	38368	38631	38811	38541	101.357
	22	38292	38720	38494	38448	38307	38176	38816	38303	38228	38584	38277	38518	101.456
	23	38220	38352	38616	38591	38397	38606	38733	38458	38586	38282	38321	38410	101.546
20	0	37918	38308	38180	38110	38678	38617	38634	38105	38341	38644	38318	38174	101.207
	1	38263	38481	38172	38488	38739	38329	38580	38586	38753	38442	38645	38533	101.642
	2	37908	38128	38334	38037	38539	37856	38440	38571	38553	38510	38307	38046	101.030
	3	38672	38389	38408	38261	38500	38702	38640	38645	38166	38426	38832	38432	101.656
	4	38528	38998	38493	38510	38841	38561	38750	39246	38019	38531	38602	38817	102.057
	5	38384	38615	38363	38365	38714	38253	38594	39169	38328	38622	38797	38843	101.870
	6	38684	38389	38435	38554	38382	38904	38156	38398	38484	38828	38780	38487	101.746
	7	38496	39101	38480	38688	38681	38550	38591	38512	38517	38435	38439	38630	101.887
	8	38581	38559	38964	38788	38660	39412	38381	38777	38817	38791	38642	38676	102.311
	9	38699	38562	38892	38823	38532	38771	38467	38517	38643	38539	39053	38829	102.152
	10	37971	38429	38353	38579	38996	38611	38446	38954	38038	38940	38112	39025	101.740
	11	38197	38393	38509	38647	38125	38631	38669	38313	38481	38238	38301	38432	101.406
	12	38300	38688	38155	38901	38185	39097	38861	38405	38423	38430	38272	38931	101.783
	13	38216	38001	38503	38102	38664	39133	37887	38554	38496	38791	38090	38141	101.327
	14	38754	38512	38676	38925	38221	38177	38234	38488	38390	38680	38427	38714	101.684
	15	38123	38095	38321	37701	38505	38969	38276	38754	38440	38305	38034	38672	101.243
	16	38521	38787	38359	38096	38624	38386	38716	38413	38268	38300	38454	39058	101.636
	17	38485	39070	38045	39028	38138	38390	38709	39171	38577	38125	38080	38539	101.719
	18	38662	39168	38331	38310	38349	38299	38793	38275	38223	38279	38644	38181	101.533
	19	38631	38537	38253	38323	38655	38762	38030	37983	38124	38458	38349	38822	101.404
	20	38725	38670	38528	38657	38460	38208	38773	38653	38897	38399	38868	38643	101.966
	21	38083	38497	38408	38269	38157	38841	38355	37957	38835	38237	38530	37875	101.210
	22	38527	38812	38259	38408	38321	38280	39065	38286	37978	37852	38691	38510	101.418
	23	38495	38711	38744	38654	39339	38628	38843	38595	38155	38417	38255	38164	101.859

INAF/UNIRomaTre		S.V.I.R.CO. Observatory - Pressure Corrected Data – January 2018											20 NM-64	
day	hh	00_05	05_10	10_15	15_20	20_25	25_30	30_35	35_40	40_45	45_50	50_55	55_60	h-norm
21	0	38042	38414	38469	38663	38566	38154	38690	38785	38422	38868	39041	38288	101.722
	1	38629	38779	39001	38240	38106	38653	37996	38118	38324	38380	38563	38192	101.415
	2	38291	38031	39151	38470	38327	38301	38274	38315	37922	38399	37814	38121	101.071
	3	38139	37910	38724	38399	38184	37711	38165	38497	38774	37965	38794	38671	101.186
	4	37899	38187	38316	38616	38281	38327	38201	38654	38033	38316	38534	38788	101.234
	5	38613	37778	38516	38515	38377	37994	38762	38819	38393	38598	38724	38215	101.487
	6	38184	38480	38882	38290	38301	38340	38277	38536	38371	38500	38154	38297	101.335
	7	38833	38716	38431	38469	38367	38181	38813	38351	38249	38650	38749	38987	101.815
	8	39256	38614	38583	38824	38665	38602	38303	38275	38202	37759	38354	38112	101.542
	9	38790	38066	38288	38992	38301	38774	38726	38496	38131	38252	38459	38445	101.579
	10	38538	38034	38077	38402	38285	38458	38611	38444	38589	38322	38618	38808	101.461
	11	38205	38492	37754	38833	38829	38206	38585	38564	38593	38170	38495	38762	101.527
	12	38563	38230	38457	37729	38276	38295	38709	38842	38684	38525	38832	38873	101.643
	13	38193	38683	38937	38767	38181	38407	38790	38605	38874	38355	38618	38575	101.856
	14	38483	38791	38844	38206	38936	38551	38867	38714	38802	39021	38617	38723	102.202
	15	38593	38450	38294	38159	38995	38749	38229	38484	38083	38204	38293	38492	101.426
	16	38590	38033	38747	38261	38428	38466	38246	38359	39057	38033	38630	38488	101.494
	17	38048	38745	38087	38403	38578	38397	38166	38555	38179	38670	38625	38797	101.474
	18	38198	38689	38522	38697	38360	38373	38463	38192	38428	38250	38877	38093	101.452
	19	38434	38232	38005	38281	38334	38299	38231	38220	38250	37925	38011	38853	100.996
	20	38070	38624	38693	38678	38562	38736	37879	38473	38630	39064	38327	38911	101.782
	21	38647	38873	39367	38428	38998	38246	37946	38461	37789	38449	37974	38031	101.468
	22	38336	38547	38348	38069	38229	37641	38096	38274	38174	38655	38020	38620	100.982
	23	38213	38105	38339	37862	37740	38770	37900	38580	38819	37947	38714	38092	100.998
22	0	38144	38466	38327	38397	38050	37972	38741	38469	38020	38481	39057	38382	101.316
	1	38142	38328	38391	37788	38500	38578	38072	37597	38308	38269	38089	38044	100.783
	2	37747	38545	38480	37942	38514	38405	38407	38075	38095	37741	38062	38164	100.799
	3	38242	38024	38379	38323	38001	38065	38188	38275	38162	38792	38557	38507	101.094
	4	38300	37690	38084	38516	38229	37877	37768	38513	38392	38488	37870	38274	100.760
	5	38450	38162	37946	38468	37901	38775	38602	38664	38194	38126	38243	38275	101.157
	6	38041	38066	38343	38023	38196	37995	38006	38430	38361	38152	37984	37937	100.657
	7	38238	38331	38476	37898	38538	38496	38133	38377	37860	38846	38403	38232	101.162
	8	38658	38570	37995	38471	38836	38566	38274	38203	38404	38257	38270	39283	101.593
	9	38435	38895	38256	38250	38199	38593	39251	38416	38627	38229	38103	38417	101.567
	10	38309	38780	39074	38724	38655	38631	38413	38166	38662	38712	38554	38451	101.889
	11	38510	38455	38102	38200	38767	38506	38565	38117	38712	38378	38471	38638	101.513
	12	37915	38559	38877	38458	38097	38122	37921	38347	37949	38400	38022	38032	100.914
	13	38167	38525	38490	38309	38502	38575	38200	38504	37897	38738	38488	38258	101.344
	14	38344	38168	38810	38455	38512	38095	38247	38634	38093	38447	37990	38764	101.323
	15	38700	38835	38485	37829	38165	38390	38624	38478	38879	38367	38134	38454	101.495
	16	38402	38772	38556	38245	39337	38714	38203	38545	38238	37727	38687	38257	101.570
	17	38211	39086	38841	38612	38819	38104	38136	38644	38525	38663	38421	38624	101.791
	18	38245	38101	38386	38352	38402	38720	38643	38068	38114	38342	38887	38409	101.347
	19	38667	38449	38278	38659	38724	39391	38580	38470	38355	37970	38591	37958	101.660
	20	38415	38495	38405	38291	38469	38571	38503	38003	38434	38228	38173	38324	101.269
	21	38359	38695	38612	38321	38632	38918	38442	38883	38672	38380	39005	38400	101.930
	22	38254	38005	38127	38319	38555	38460	38534	38460	38538	38267	38349	38028	101.177
	23	38290	38344	38661	37831	38657	38513	38619	38684	38220	38640	38060	37812	101.273

INAF/UNIRomaTre		S.V.I.R.CO. Observatory - Pressure Corrected Data – January 2018											20 NM-64	
day	hh	00_05	05_10	10_15	15_20	20_25	25_30	30_35	35_40	40_45	45_50	50_55	55_60	h-norm
23	0	38368	38679	38280	38302	38318	38276	38489	38607	38435	37904	38265	38545	101.305
	1	38089	38390	37939	38417	38026	38019	38487	38141	38272	38617	38453	38546	101.067
	2	38672	38371	37906	38422	37976	38441	38982	38718	38433	38304	38509	38150	101.394
	3	38758	38190	38001	38865	38059	37854	38563	38093	38985	38299	38372	38529	101.325
	4	37935	38251	38364	38936	38081	38124	39107	38072	38711	37939	37662	38128	101.049
	5	38380	38275	38441	38035	38493	38578	39007	38167	38501	38092	37584	38263	101.159
	6	38136	38181	38499	38055	38147	37778	38006	38099	38306	38187	38468	38776	100.900
	7	38371	38232	38240	38203	38519	38162	38819	38903	38634	38448	38876	37707	101.445
	8	38087	38613	38673	38456	38132	38799	38662	38680	38687	38635	38045	38419	101.616
	9	38440	37569	38993	38177	38315	38211	38966	38705	38549	38852	37980	38186	101.408
	10	39038	38621	37993	38262	37979	38693	38723	38594	38549	38790	39041	38713	101.859
	11	38765	38801	38438	38443	38609	38931	38444	38025	38683	38497	38371	38506	101.753
	12	38600	38105	38472	38498	38873	38395	38413	38097	38236	38302	38524	38011	101.316
	13	38523	38753	38467	37998	38373	39048	38553	38633	38916	38433	38358	37795	101.607
	14	38770	38606	38859	38088	39089	38920	38526	38561	38499	38338	38421	38654	101.933
	15	38068	38179	38455	38372	38267	38210	38430	38110	38450	38598	38764	38191	101.221
	16	38303	38151	38110	38602	38461	38976	38418	38484	38512	38682	38511	38253	101.522
	17	38742	38418	37763	38449	38571	38231	38622	38239	38357	38345	38447	38342	101.316
	18	38964	38128	38007	38901	38232	37928	38102	38648	38419	38545	38439	38637	101.409
	19	38208	38418	38646	38435	37949	38446	38439	38458	38582	38737	38249	38650	101.468
	20	38940	38733	38571	38123	38625	38904	38703	37854	38645	38556	38116	38701	101.744
	21	38701	37608	38490	39312	38820	38459	38520	38504	38295	38552	39276	38164	101.795
	22	38127	38640	37849	38634	38792	38668	37926	38603	38593	38389	38132	38417	101.369
	23	38621	38294	38256	38687	38428	38266	37628	38100	38822	38180	38199	38468	101.189
24	0	38514	38366	38437	38574	38196	38796	38488	38186	38779	38234	38221	38567	101.504
	1	38574	39003	38441	38718	38789	38139	38404	38275	38279	38208	38483	38209	101.535
	2	38066	38207	38474	38358	38487	37988	38562	38589	38553	38346	38612	38338	101.328
	3	38434	38855	38323	38385	37945	38320	38226	38806	38532	38740	38616	38571	101.586
	4	38560	38401	37900	38287	38340	38353	38489	38601	38870	37653	38621	38707	101.372
	5	38131	37989	38902	38573	38691	38547	38686	39166	38457	38371	38830	37780	101.667
	6	38553	38667	38243	38302	38993	37459	38098	37948	39025	38118	38603	38087	101.221
	7	38442	38820	38083	38476	38850	38694	38339	38321	37462	38856	38892	38537	101.590
	8	38208	38188	38074	38820	38677	38558	38384	38497	38259	38889	37808	38074	101.296
	9	38815	38095	38530	38722	38587	38930	38581	38182	37960	38093	38488	38406	101.506
	10	38917	38303	38552	38402	38187	38232	38372	38154	37624	38401	37986	38196	101.051
	11	37781	38172	38198	38293	38019	38331	38498	38346	38944	38288	38989	38356	101.248
	12	38098	38151	38379	38323	38233	38015	38935	37780	38110	38595	38720	38876	101.248
	13	37833	38298	38660	38307	38706	38345	38437	38282	38210	38203	38939	38631	101.387
	14	38414	38405	37683	38347	38248	38155	38285	37972	38381	38381	38372	38264	100.959
	15	38734	38327	38276	38693	38546	38324	38343	38109	38120	38491	38356	38305	101.338
	16	38237	38418	37981	38103	38407	38901	38126	38279	38112	38059	38742	38621	101.196
	17	38766	38463	38600	38005	38547	38786	38317	38288	38463	38504	38467	38700	101.619
	18	38128	38086	37176	38527	38143	38533	38400	38540	37906	38257	38102	37854	100.683
	19	38539	37887	37829	38525	38918	38261	38504	38076	38470	38097	37700	38705	101.092
	20	38870	37684	37644	38471	38956	38406	38105	38567	38745	37976	38013	37920	101.059
	21	38500	37899	38784	38071	38535	37837	38745	38411	38694	38144	38869	38547	101.428
	22	38161	39070	38094	38135	38706	38630	38142	38136	38163	38339	38060	39006	101.342
	23	38480	38434	38329	38612	38168	38842	38525	38108	38238	38411	38903	38608	101.565

INAF/UNIRomaTre		S.V.I.R.CO. Observatory - Pressure Corrected Data – January 2018											20 NM-64	
day	hh	00_05	05_10	10_15	15_20	20_25	25_30	30_35	35_40	40_45	45_50	50_55	55_60	h-norm
25	0	38997	38257	38844	38658	37794	38193	38611	38550	38464	38353	37772	38363	101.386
	1	38223	38849	38376	38318	38686	38096	38662	38521	38337	38511	38596	38687	101.610
	2	38502	38239	38402	38283	38401	38588	38468	37844	38408	38849	37835	37926	101.144
	3	37858	38825	38380	38409	38271	38616	38703	38251	38125	38064	37940	38118	101.103
	4	38428	38567	38027	38164	38244	38465	38118	38272	38220	38277	37928	38034	100.923
	5	38005	38585	37914	38780	38714	38172	38370	37760	38011	37768	37777	37966	100.721
	6	38405	37780	38078	38008	38106	38797	38200	38417	38290	38673	39233	38768	101.366
	7	38600	38894	38770	38347	38010	39062	38956	38267	38524	38547	38649	38358	101.856
	8	38405	38465	38516	37452	38151	38033	38414	38432	37975	38176	38962	38814	101.155
	9	38697	38316	39054	38751	38012	38630	38163	38773	38480	38520	38050	38232	101.569
	10	38595	38230	38178	38619	38300	38203	38342	38389	38589	37773	39197	38407	101.381
	11	38386	38649	38101	39054	39132	38118	38388	38846	38152	38260	38357	38241	101.570
	12	38211	38559	38402	38686	38459	38016	38120	38222	38227	38389	38320	38622	101.252
	13	38775	37765	38191	38243	37900	38521	38730	38885	38600	37710	38224	38738	101.262
	14	38442	38331	38464	38643	37875	38131	37527	39054	38376	37661	38322	38194	100.985
	15	38489	38873	38065	38457	38373	38158	38814	39076	38520	38186	37883	38625	101.534
	16	38201	37914	38881	38422	38300	37699	38274	38931	38254	38581	38597	38665	101.359
	17	38058	38136	38258	38652	37624	38604	37943	38515	38477	38207	38345	37877	100.913
	18	38115	38123	38650	38585	38174	38866	38315	38252	39024	38021	38565	37965	101.344
	19	38273	38237	38337	38246	38245	38816	38425	37780	38307	38234	37806	38270	100.975
	20	38471	38586	38286	38137	38217	38483	38301	38848	38924	38817	38449	38669	101.681
	21	38494	38130	38389	38167	37988	38220	38633	38375	38793	38303	38851	38899	101.473
	22	37811	38038	38565	37452	38564	38744	38284	38074	38568	38069	38546	38967	101.130
	23	38442	37954	38323	38175	37743	38270	38111	38892	38158	38550	38500	38341	101.081
26	0	38349	38559	38332	38731	38022	38622	38453	37961	37788	38221	37961	38084	100.990
	1	38240	38484	38481	38465	38813	38557	38272	38339	38241	38452	38134	38326	101.377
	2	37996	38366	38483	38258	38098	38300	38279	38078	38723	37719	38119	37890	100.828
	3	38476	38494	38267	38826	38639	38082	38283	38627	38558	38681	38302	38138	101.502
	4	38178	38888	38833	38543	38766	38058	38604	38729	38473	38951	37982	38021	101.646
	5	37800	38907	37874	38046	38237	38035	37984	38592	38430	38417	38122	38079	100.875
	6	37590	39041	38144	38656	38990	38456	38322	38491	38390	38698	38238	37957	101.414
	7	37820	38202	38652	37912	38957	37906	38347	37968	38433	38562	37891	38840	101.088
	8	38389	38155	37759	38454	38189	37763	38690	38656	38001	38766	38493	38618	101.185
	9	38782	38242	37981	38688	38745	38949	38684	38420	38914	38415	38527	38605	101.849
	10	38625	38217	37921	38485	38667	38147	38438	38445	38113	38418	38172	38056	101.135
	11	38095	38174	38816	38059	38721	38620	38863	38046	37871	38300	38830	38204	101.332
	12	37825	38257	38837	38446	37979	38392	38343	38562	37905	38012	38041	38223	100.941
	13	38463	38680	37987	38247	38179	38165	38556	38584	38336	38602	38715	38152	101.346
	14	38749	38875	38512	38353	38428	38928	38560	38448	38881	38193	38026	38532	101.747
	15	38616	38089	38225	38214	38438	38772	38239	38060	38373	38440	38373	38363	101.244
	16	38029	38479	38726	37691	38771	38142	38244	38133	37877	38369	38435	38533	101.075
	17	38454	38210	38866	38805	38358	37846	38774	38270	38630	37988	38494	38021	101.358
	18	38114	38085	38235	38381	37787	38599	38339	38088	38382	38412	38143	38067	100.899
	19	38063	38089	38636	38341	38488	37852	38511	38378	38304	38601	38945	38104	101.269
	20	38089	37935	37199	38305	38735	38328	38253	38271	38774	38219	38233	37662	100.761
	21	38560	38334	38310	38175	38704	38639	37939	38329	38104	38119	38051	38753	101.204
	22	38072	37447	37810	38127	38220	38152	38390	37912	38641	38674	38529	38072	100.770
	23	37698	37768	38670	38464	38268	38079	38123	38347	38317	38116	38168	38796	100.939

INAF/UNIRomaTre		S.V.I.R.CO. Observatory - Pressure Corrected Data – January 2018											20 NM-64	
day	hh	00_05	05_10	10_15	15_20	20_25	25_30	30_35	35_40	40_45	45_50	50_55	55_60	h-norm
27	0	38501	37642	38210	38013	37906	38850	38127	38791	38608	37824	37381	38257	100.787
	1	37861	38081	38515	38386	38227	38368	37983	38292	38019	37662	38373	38331	100.782
	2	37811	38154	37792	38773	38168	38364	38183	38666	38476	38319	38178	38397	101.042
	3	37944	38037	37839	38452	38163	38339	37928	38385	37751	38033	38156	38133	100.575
	4	37810	37924	37870	38719	38848	38422	38605	38239	38488	38180	38236	38241	101.108
	5	38155	37636	37839	38249	38920	37779	37870	38184	38230	38528	37368	38113	100.512
	6	38314	38243	38469	37918	38058	38383	38264	38387	38330	38919	38357	38475	101.225
	7	38679	37954	38228	37982	38545	37830	38223	37832	38479	38308	38658	38074	100.934
	8	38299	38157	38048	38542	38131	38229	38790	37989	38224	38853	38260	39128	101.343
	9	37723	38188	38275	38226	38099	38436	38493	38510	38795	38409	38380	38939	101.303
	10	37653	38394	38695	38369	38098	37722	38343	38441	38087	38187	38358	38386	100.921
	11	37341	37869	37669	38196	38082	37972	38030	37492	38297	38624	37946	38146	100.247
	12	38199	38059	38503	37907	37913	38466	38147	38738	38525	38221	38726	38495	101.179
	13	38325	38745	37802	37946	37754	38021	37692	37915	37967	38300	37522	38222	100.366
	14	38901	38293	37922	38501	38417	37816	38572	38669	38546	38527	38568	37985	101.358
	15	37513	37960	38676	37830	38481	38206	37951	37675	38045	38187	38703	37933	100.575
	16	38806	38402	37810	38827	38234	38762	38866	38479	38623	38415	38497	38180	101.618
	17	38023	38464	38248	38227	38285	38315	37990	38623	38295	38128	38386	37502	100.867
	18	38710	38651	38324	37240	38637	38296	38133	38231	38559	38211	38092	38155	101.033
	19	38598	38652	37801	38263	38406	37916	38546	38640	38752	37565	38392	37951	101.087
	20	38303	38170	38622	38461	38561	38120	38249	38472	38017	37727	38082	38471	101.037
	21	38316	38346	38430	38437	38737	38218	38313	38262	38207	38262	38066	38352	101.188
	22	38040	38360	38199	38133	37851	38419	37788	38224	37843	38641	38116	38369	100.757
	23	37820	38242	37910	38334	38056	37835	37804	38545	37858	38522	38449	37919	100.605
28	0	38150	38477	37625	38289	38377	38048	38171	38183	38099	37722	37805	38626	100.666
	1	38216	38369	38369	37905	38912	37854	38023	38182	38281	38359	38166	37873	100.872
	2	37768	37919	37997	38080	38646	38433	38520	38505	38226	38574	38073	38306	100.991
	3	38325	38559	38458	38230	37870	37812	38351	38416	38123	37995	37696	38289	100.787
	4	38046	38040	38183	37783	38319	37965	37575	38315	38096	38003	37438	38303	100.335
	5	38429	38277	37900	37789	38926	38858	37911	38018	38128	38217	38583	38624	101.125
	6	37622	38068	37547	37881	38699	37962	38081	37889	37968	38361	38187	38587	100.507
	7	38144	38345	38053	38641	38103	38823	38196	38835	38210	37946	38108	38216	101.116
	8	38315	38174	38161	38249	38099	38515	37898	38514	37774	38469	38320	38233	100.919
	9	38331	37828	38734	38004	37930	37956	38369	38421	38648	37568	38217	38287	100.825
	10	38337	38312	37784	38165	38112	38561	38175	38393	37983	38396	37808	38229	100.816
	11	37925	38521	37873	38781	38146	38285	38492	38275	37815	37927	37789	37984	100.718
	12	37810	37845	37954	38224	37562	37858	38232	38027	38779	38136	38495	38163	100.560
	13	38058	38404	38513	37961	38094	38323	38277	37863	38595	38444	38353	38557	101.077
	14	38170	37747	38405	38095	37544	38370	37292	37930	38302	38111	37863	37882	100.256
	15	38842	38047	38491	38365	38386	38078	37904	38775	38057	38200	37937	38435	101.094
	16	38401	38297	37734	38210	37514	38108	38224	38216	38200	37919	37931	37920	100.468
	17	37578	38611	38418	38328	37724	38028	38285	38003	38221	37981	38014	37817	100.542
	18	37406	37574	38491	37929	38323	37662	37845	37857	37979	37971	38452	37861	100.177
	19	38541	37864	38156	38489	38201	37997	38077	38186	38201	38607	37930	38194	100.857
	20	38235	38213	37807	38011	37671	38082	37779	38334	37886	37819	38333	38289	100.421
	21	37698	38391	38866	38039	38109	38728	38081	38302	38691	37669	38306	38231	101.004
	22	38313	38388	38220	37991	37907	37956	37369	38132	38039	37710	37870	38060	100.310
	23	37712	37652	38564	38351	37710	38037	37969	38027	38198	38053	37754	37825	100.288

INAF/UNIRomaTre		S.V.I.R.CO. Observatory - Pressure Corrected Data – January 2018											20 NM-64	
day	hh	00_05	05_10	10_15	15_20	20_25	25_30	30_35	35_40	40_45	45_50	50_55	55_60	h-norm
29	0	38046	37906	37777	37360	37594	38304	38340	38327	38284	38377	37928	38161	100.408
	1	37840	37946	38029	37945	37743	38234	37957	38374	38079	37814	37982	38296	100.372
	2	37627	38009	38178	39166	38350	37551	38403	37899	38174	38343	38529	38116	100.836
	3	38086	37974	37991	37793	38215	38588	38194	38012	38295	38113	38437	38289	100.757
	4	38150	38161	37670	38303	38100	38055	37892	38214	37642	38448	38136	38782	100.662
	5	37775	38064	38762	38102	37805	38218	38086	37811	37798	38398	38068	38269	100.574
	6	38427	38348	37483	38003	37582	38415	37412	37983	38100	38546	38069	37439	100.278
	7	37661	37983	37931	38259	38602	38897	38072	37895	38673	38045	38446	37517	100.756
	8	37534	38414	37924	37985	38403	38369	37795	38060	38060	38511	38899	37926	100.733
	9	38350	37892	38088	38278	38342	38081	38230	37909	37534	38085	37695	37838	100.391
	10	37526	38593	38175	37913	38338	38366	37851	37860	37950	37708	37527	38231	100.328
	11	38169	38456	37872	37795	38383	37982	38234	38255	38336	37967	37969	38120	100.658
	12	37541	38285	38051	37828	38408	37974	38190	37926	37629	38444	38536	37985	100.496
	13	37926	37943	38097	37730	38091	37826	37543	38030	38453	37566	37723	37459	99.965
	14	38189	38083	37706	38306	37822	38014	37698	37568	37764	38454	38190	38094	100.295
	15	38346	37158	38040	38378	37956	38320	38008	37453	38693	38170	37930	38217	100.467
	16	37580	38232	37433	37597	38075	38010	37849	38323	38086	37561	38303	37774	100.061
	17	37927	37647	37259	37961	37338	37825	37884	37929	37621	37958	38084	38247	99.810
	18	37912	37996	37915	37689	38339	38322	38025	38049	37697	38184	38188	37968	100.382
	19	38330	37220	38326	38159	37552	37504	38602	37843	38383	38305	38270	37433	100.304
	20	38504	37890	38066	37621	37832	38016	38084	37889	37809	37649	38001	37624	100.096
	21	37724	37753	37858	38209	38264	37919	38203	37976	37733	38037	38120	36967	100.048
	22	37832	37902	38552	37770	38163	37572	37781	38477	38207	37880	37924	37572	100.239
	23	38084	38004	37996	38734	38100	38090	37882	37872	38181	38205	37586	38642	100.623
30	0	37308	37517	38293	38006	37961	37853	38017	38083	38231	38355	38141	38022	100.272
	1	38300	38659	38684	37276	37837	38476	38619	38666	38267	38346	38893	38164	101.241
	2	38251	38921	37989	37726	38250	38670	37933	38641	38257	38375	38163	38401	101.107
	3	37829	37902	37911	37932	38021	37609	37992	37834	37884	37923	38717	38291	100.286
	4	38220	37780	37948	38110	38216	38320	37520	38016	37941	38470	38322	38325	100.581
	5	38435	37641	38136	38411	37863	37798	38254	38350	37832	38498	38012	37420	100.463
	6	38544	38782	37624	38326	38299	37787	38086	38325	37953	38081	38552	38592	100.969
	7	38155	37544	37612	38096	38075	38259	37628	37850	38486	38387	38112	37738	100.307
	8	38153	38199	38552	37968	38148	38098	38093	38555	38080	38133	37576	38198	100.705
	9	38283	38180	38335	38123	38018	38041	37953	38457	37980	38062	38016	38624	100.776
	10	38119	37815	38126	37906	38549	37893	38223	38541	37964	38153	38086	38538	100.741
	11	37725	38168	38495	38051	38103	38384	38733	38823	38098	37811	38565	37976	100.965
	12	38109	37926	37751	38308	38067	38424	37676	37799	38377	38145	38426	38456	100.643
	13	38054	38043	37795	38387	37926	38092	38077	37547	37636	37461	37959	38245	100.149
	14	38274	38347	38029	38503	38017	38746	38016	38223	38069	38734	38048	38027	100.987
	15	37582	38043	38300	37943	38020	38046	37823	37814	37961	38275	38194	37796	100.276
	16	38622	38171	38596	38420	37646	38428	37787	38195	37601	37967	38093	38299	100.722
	17	37420	37592	37895	38436	37311	38316	37920	38240	38199	37865	38425	37668	100.163
	18	37662	38199	37992	38410	38289	37819	37582	38452	38061	37749	37663	37921	100.276
	19	38477	38086	37611	37470	38230	38407	37825	38479	37616	38249	38308	38365	100.567
	20	37902	37982	37450	38148	38135	38213	37976	37529	37962	37660	38140	38690	100.274
	21	38537	37932	38232	37956	38019	37705	37948	38242	37887	37888	37460	38174	100.316
	22	37798	37588	38124	37833	38030	38166	38150	37742	38162	38539	38323	38301	100.486
	23	38629	38224	38271	38513	38617	37621	38463	37807	37799	38195	38245	37800	100.801

INAF/UNIRomaTre		S.V.I.R.CO. Observatory - Pressure Corrected Data – January 2018											20 NM-64	
day	hh	00_05	05_10	10_15	15_20	20_25	25_30	30_35	35_40	40_45	45_50	50_55	55_60	h-norm
31	0	37931	38161	37977	37826	38346	38017	37938	37784	37897	38055	38343	37918	100.356
	1	37936	38335	37174	38014	38108	38494	38162	38157	38422	38593	37983	37892	100.600
	2	38051	38001	38710	37954	38300	38322	37985	38397	37709	37988	37502	38247	100.576
	3	38555	37784	37713	38251	38376	38180	38292	37963	37798	38115	38009	38201	100.592
	4	38595	37829	37949	38268	38053	37694	38331	37779	38069	38133	38199	38158	100.552
	5	37981	38459	37574	38418	37955	38476	38200	37993	37559	38196	38547	37532	100.516
	6	38266	38712	37799	37760	38004	38189	37960	38349	38010	38368	37977	38670	100.774
	7	37656	37963	37806	38097	37890	38259	38350	37617	38060	38602	37988	38605	100.517
	8	38306	38126	38210	37905	38491	38178	38279	38016	38218	38123	37907	38251	100.762
	9	38478	37918	38058	38213	38178	37760	38393	38376	37955	38140	38112	38272	100.728
	10	38106	37919	38942	38022	37996	38598	38318	37673	37764	37752	38361	38266	100.698
	11	38225	38416	38209	38432	38257	38281	38215	38158	37816	38239	37615	38314	100.799
	12	38001	38718	37500	38298	37776	38783	37772	38383	38216	37740	38427	38172	100.713
	13	38306	38219	38666	38103	38783	37506	37914	38075	37766	38369	38161	38647	100.874
	14	38192	38000	38022	38266	38331	37932	37883	38177	38510	38362	38010	37967	100.683
	15	38070	37854	38169	38282	37621	37971	38094	37927	38387	38619	38011	38275	100.602
	16	37905	38685	38139	38236	38128	38103	38156	38733	38130	38091	38186	38587	100.998
	17	38100	38568	37970	38382	38191	37881	38466	37711	38280	38068	38337	38262	100.808
	18	38143	37669	37977	38570	38585	37568	38264	38229	38363	38298	37664	38494	100.722
	19	38345	38212	37816	38635	38424	38090	37916	38027	38126	37884	38165	38218	100.728
	20	38248	38191	37946	37884	38336	38450	37785	37859	38471	38122	38168	38625	100.778
	21	37748	38036	38354	38255	38350	38242	38412	38409	37632	38491	38784	38347	100.993
	22	38023	37918	38425	38078	37966	38193	38475	38574	38277	38225	38057	38147	100.839
	23	38496	38206	38466	38497	38777	37999	38682	38229	38103	38057	38396	38775	101.351

S.V.I.R.CO. Observatory - Pressure in hectoPascal – January 2018

day	hh	00_05	05_10	10_15	15_20	20_25	25_30	30_35	35_40	40_45	45_50	50_55	55_60	average
1	0	1018.43	1018.38	1018.26	1018.21	1018.21	1018.21	1018.15	1018.18	1018.27	1018.24	1018.22	1018.17	1018.23
	1	1018.08	1018.02	1017.95	1017.90	1017.89	1017.83	1017.75	1017.73	1017.68	1017.63	1017.63	1017.60	1017.81
	2	1017.55	1017.46	1017.33	1017.22	1017.12	1017.04	1016.97	1016.90	1016.82	1016.68	1016.54	1016.46	1017.01
	3	1016.38	1016.21	1016.00	1015.85	1015.71	1015.56	1015.47	1015.44	1015.41	1015.35	1015.23	1015.12	1015.64
	4	1015.04	1014.93	1014.82	1014.79	1014.83	1014.90	1014.96	1014.95	1014.78	1014.58	1014.48	1014.44	1014.79
	5	1014.44	1014.48	1014.60	1014.70	1014.74	1014.77	1014.70	1014.60	1014.52	1014.44	1014.38	1014.34	1014.56
	6	1014.32	1014.22	1014.17	1014.15	1014.17	1014.22	1014.20	1014.22	1014.30	1014.23	1014.13	1014.10	1014.20
	7	1014.07	1014.02	1013.94	1014.00	1014.11	1014.12	1014.14	1014.15	1014.09	1014.03	1013.95	1013.84	1014.04
	8	1013.84	1013.82	1013.74	1013.68	1013.60	1013.62	1013.75	1013.88	1013.93	1013.94	1013.96	1013.98	1013.81
	9	1014.01	1013.91	1013.78	1013.74	1013.66	1013.53	1013.40	1013.30	1013.14	1013.00	1012.95	1012.90	1013.44
	10	1012.93	1012.94	1012.84	1012.74	1012.66	1012.61	1012.58	1012.53	1012.50	1012.53	1012.56	1012.54	1012.66
	11	1012.53	1012.52	1012.49	1012.44	1012.38	1012.29	1012.18	1012.15	1012.11	1012.04	1011.98	1011.87	1012.25
	12	1011.73	1011.63	1011.53	1011.44	1011.40	1011.37	1011.30	1011.17	1011.04	1010.99	1010.87	1010.73	1011.26
	13	1010.65	1010.54	1010.50	1010.53	1010.51	1010.42	1010.40	1010.47	1010.53	1010.60	1010.74	1010.86	1010.56
	14	1010.90	1010.90	1010.93	1011.02	1011.05	1010.92	1010.90	1011.00	1011.02	1011.01	1011.03	1010.96	1010.97
	15	1010.90	1010.88	1010.92	1010.92	1010.89	1010.96	1010.92	1010.96	1011.04	1010.95	1010.93	1011.00	1010.94
	16	1011.16	1011.32	1011.33	1011.29	1011.31	1011.35	1011.41	1011.45	1011.49	1011.67	1011.83	1011.77	1011.45
	17	1011.63	1011.63	1011.68	1011.66	1011.66	1011.73	1011.74	1011.67	1011.61	1011.62	1011.60	1011.60	1011.65
	18	1011.77	1012.03	1012.18	1012.19	1012.19	1012.13	1012.03	1012.06	1012.15	1012.24	1012.31	1012.39	1012.14
	19	1012.42	1012.37	1012.33	1012.47	1012.70	1012.83	1012.87	1012.90	1012.92	1012.89	1012.85	1012.88	1012.70
	20	1012.98	1013.03	1013.03	1013.11	1013.21	1013.14	1013.06	1013.04	1012.99	1012.88	1012.84	1012.77	1013.00
	21	1012.66	1012.55	1012.45	1012.42	1012.44	1012.57	1012.67	1012.69	1012.72	1012.69	1012.66	1012.68	1012.60
	22	1012.72	1012.68	1012.58	1012.46	1012.36	1012.36	1012.30	1012.24	1012.21	1012.11	1011.92	1011.77	1012.31
	23	1011.71	1011.68	1011.61	1011.49	1011.38	1011.29	1011.22	1011.12	1010.96	1010.76	1010.69	1010.57	1011.20
2	0	1010.40	1010.23	1009.99	1009.85	1009.75	1009.75	1009.68	1009.51	1009.43	1009.41	1009.43	1009.59	1009.72
	1	1009.68	1009.65	1009.64	1009.65	1009.62	1009.50	1009.35	1009.21	1009.04	1008.91	1008.86	1008.82	1009.32
	2	1008.67	1008.45	1008.23	1008.13	1008.11	1008.11	1008.09	1008.07	1008.00	1007.84	1007.72	1007.65	1008.09
	3	1007.57	1007.43	1007.26	1007.12	1007.01	1006.83	1006.64	1006.53	1006.46	1006.43	1006.44	1006.42	1006.84
	4	1006.33	1006.24	1006.22	1006.19	1006.14	1006.12	1006.12	1006.12	1006.18	1006.32	1006.47	1006.64	1006.26
	5	1006.80	1006.88	1006.81	1006.76	1006.83	1006.90	1006.93	1006.90	1006.93	1006.93	1006.98	1007.08	1006.89
	6	1007.21	1007.35	1007.47	1007.67	1007.83	1007.88	1007.88	1007.89	1007.93	1007.98	1008.00	1008.05	1007.76
	7	1008.11	1008.10	1008.13	1008.19	1008.26	1008.36	1008.50	1008.62	1008.63	1008.58	1008.61	1008.65	1008.39
	8	1008.65	1008.68	1008.72	1008.79	1008.89	1008.99	1009.10	1009.24	1009.36	1009.43	1009.52	1009.64	1009.08
	9	1009.77	1009.84	1009.87	1010.00	1010.13	1010.06	1009.95	1010.02	1010.11	1010.14	1010.19	1010.26	1010.02
	10	1010.34	1010.36	1010.30	1010.28	1010.28	1010.30	1010.42	1010.52	1010.58	1010.66	1010.69	1010.74	1010.45
	11	1010.79	1010.79	1010.79	1010.77	1010.76	1010.80	1010.87	1010.94	1010.99	1011.00	1010.98	1010.97	1010.87
	12	1010.96	1010.92	1010.90	1010.91	1010.91	1010.90	1010.91	1010.96	1010.99	1011.02	1011.11	1011.12	1010.97
	13	1011.11	1011.10	1011.11	1011.16	1011.19	1011.24	1011.29	1011.27	1011.29	1011.38	1011.47	1011.54	1011.26
	14	1011.59	1011.66	1011.75	1011.86	1011.99	1012.10	1012.15	1012.19	1012.25	1012.31	1012.41	1012.54	1012.07
	15	1012.65	1012.72	1012.81	1012.89	1012.96	1013.03	1013.09	1013.14	1013.22	1013.29	1013.31	1013.34	1013.04
	16	1013.45	1013.56	1013.62	1013.70	1013.85	1013.99	1014.13	1014.34	1014.59	1014.80	1014.88	1014.97	1014.15
	17	1015.09	1015.16	1015.24	1015.29	1015.30	1015.31	1015.37	1015.40	1015.37	1015.35	1015.39	1015.54	1015.32
	18	1015.61	1015.58	1015.55	1015.55	1015.59	1015.66	1015.71	1015.74	1015.71	1015.65	1015.66	1015.75	1015.64
	19	1015.88	1015.89	1015.90	1015.95	1016.01	1016.05	1016.03	1015.98	1016.01	1016.05	1016.01	1015.96	1015.97
	20	1015.99	1016.03	1016.04	1016.04	1016.04	1016.08	1016.15	1016.23	1016.34	1016.44	1016.52	1016.61	1016.21
	21	1016.70	1016.79	1016.88	1016.90	1016.87	1016.85	1016.85	1016.85	1016.81	1016.81	1016.76	1016.69	1016.81
	22	1016.64	1016.59	1016.58	1016.54	1016.51	1016.50	1016.50	1016.50	1016.46	1016.46	1016.43	1016.45	1016.51
	23	1016.55	1016.66	1016.68	1016.66	1016.64	1016.59	1016.61	1016.65	1016.69	1016.76	1016.82	1016.89	1016.68

S.V.I.R.CO. Observatory - Pressure in hectoPascal – January 2018

day	hh	00_05	05_10	10_15	15_20	20_25	25_30	30_35	35_40	40_45	45_50	50_55	55_60	average
3	0	1017.15	1017.23	1017.31	1017.28	1017.27	1017.27	1017.27	1017.30	1017.36	1017.45	1017.46	1017.41	1017.32
	1	1017.36	1017.34	1017.35	1017.33	1017.33	1017.39	1017.44	1017.40	1017.35	1017.41	1017.54	1017.61	1017.40
	2	1017.52	1017.41	1017.30	1017.23	1017.25	1017.32	1017.39	1017.43	1017.44	1017.44	1017.32	1017.14	1017.35
	3	1017.09	1017.08	1017.08	1017.04	1017.03	1017.13	1017.11	1017.10	1017.13	1016.97	1016.88	1016.87	1017.04
	4	1016.84	1016.93	1017.02	1017.07	1017.15	1017.22	1017.19	1017.19	1017.14	1017.11	1017.14	1017.18	1017.10
	5	1017.28	1017.32	1017.38	1017.51	1017.62	1017.66	1017.63	1017.60	1017.57	1017.50	1017.45	1017.39	1017.49
	6	1017.33	1017.39	1017.45	1017.55	1017.70	1017.72	1017.69	1017.65	1017.52	1017.39	1017.31	1017.32	1017.50
	7	1017.36	1017.40	1017.49	1017.55	1017.40	1017.22	1017.23	1017.23	1017.24	1017.27	1017.34	1017.42	1017.34
	8	1017.40	1017.19	1016.98	1016.94	1017.01	1017.12	1017.09	1017.06	1017.03	1017.00	1016.87	1016.63	1017.02
	9	1016.45	1016.42	1016.46	1016.42	1016.35	1016.31	1016.16	1016.03	1016.11	1016.28	1016.34	1016.18	1016.29
	10	1015.95	1015.81	1015.69	1015.73	1015.73	1015.47	1015.21	1014.94	1014.65	1014.46	1014.44	1014.36	1015.20
	11	1014.18	1014.13	1014.03	1014.04	1014.07	1013.88	1013.89	1014.01	1013.94	1013.75	1013.51	1013.36	1013.90
	12	1013.32	1013.15	1012.88	1012.83	1012.93	1012.80	1012.60	1012.51	1012.18	1011.79	1011.61	1011.34	1012.49
	13	1011.20	1011.18	1011.22	1011.23	1011.18	1011.27	1011.18	1011.01	1010.86	1010.85	1010.80	1010.61	1011.05
	14	1010.47	1010.18	1010.05	1010.05	1009.86	1009.49	1009.31	1009.55	1009.63	1009.48	1009.54	1009.65	1009.77
	15	1009.53	1009.31	1009.17	1009.13	1009.09	1008.91	1008.64	1008.46	1008.43	1008.32	1008.14	1008.02	1008.76
	16	1007.80	1007.45	1007.39	1007.50	1007.32	1007.12	1007.06	1006.97	1006.91	1006.81	1006.52	1006.11	1007.08
	17	1005.59	1005.37	1005.53	1005.73	1005.95	1006.07	1006.20	1006.26	1006.18	1006.22	1006.26	1006.27	1005.97
	18	1006.31	1006.36	1006.48	1006.61	1006.74	1006.82	1006.77	1006.77	1006.77	1006.76	1006.78	1006.88	1006.67
	19	1006.97	1007.34	1007.33	1007.01	1007.00	1006.87	1006.86	1006.89	1006.95	1007.07	1007.17	1007.21	1007.05
	20	1007.27	1007.49	1007.76	1007.77	1007.69	1007.70	1007.74	1007.85	1007.97	1008.08	1008.20	1008.33	1007.82
	21	1008.36	1008.39	1008.48	1008.51	1008.49	1008.47	1008.55	1008.62	1008.63	1008.65	1008.63	1008.59	1008.53
	22	1008.70	1008.76	1008.80	1008.89	1008.97	1009.03	1008.95	1008.88	1008.92	1009.05	1009.01	1008.82	1008.90
23	1008.75	1008.75	1008.71	1008.57	1008.50	1008.55	1008.53	1008.47	1008.45	1008.46	1008.48	1008.50	1008.56	
4	0	1008.75	1008.78	1008.83	1008.91	1008.95	1008.96	1009.00	1009.03	1009.01	1008.96	1008.86	1008.84	1008.91
	1	1009.06	1009.15	1009.06	1009.03	1008.89	1008.72	1008.66	1008.62	1008.56	1008.54	1008.61	1008.67	1008.79
	2	1008.63	1008.62	1008.63	1008.53	1008.43	1008.43	1008.58	1008.77	1008.89	1008.97	1009.10	1009.19	1008.73
	3	1009.21	1009.17	1009.12	1009.17	1009.19	1009.12	1009.07	1009.17	1009.27	1009.16	1009.10	1009.09	1009.15
	4	1009.06	1009.06	1009.12	1009.10	1009.00	1009.04	1008.99	1008.81	1008.67	1008.61	1008.61	1008.74	1008.90
	5	1008.81	1008.87	1008.99	1009.06	1009.12	1009.13	1009.21	1009.42	1009.52	1009.44	1009.34	1009.33	1009.18
	6	1009.35	1009.31	1009.35	1009.49	1009.59	1009.64	1009.71	1009.78	1009.73	1009.65	1009.71	1009.86	1009.60
	7	1009.85	1009.71	1009.66	1009.67	1009.69	1009.68	1009.73	1009.79	1009.78	1009.86	1010.00	1010.16	1009.79
	8	1010.25	1010.22	1010.14	1010.23	1010.38	1010.65	1011.03	1011.29	1011.31	1011.17	1011.16	1011.22	1010.75
	9	1011.23	1011.09	1010.98	1010.99	1010.96	1010.91	1010.82	1010.82	1010.87	1010.83	1010.76	1010.75	1010.92
	10	1010.78	1010.77	1010.73	1010.73	1010.81	1010.81	1010.75	1010.69	1010.69	1010.77	1010.77	1010.67	1010.75
	11	1010.60	1010.55	1010.36	1010.11	1010.02	1010.00	1009.93	1009.88	1009.95	1009.99	1009.93	1009.97	1010.11
	12	1010.02	1010.01	1009.97	1009.90	1009.82	1009.71	1009.66	1009.63	1009.59	1009.54	1009.48	1009.43	1009.73
	13	1009.36	1009.16	1008.98	1008.83	1008.59	1008.38	1008.30	1008.31	1008.27	1008.31	1008.45	1008.51	1008.62
	14	1008.56	1008.60	1008.56	1008.60	1008.73	1008.80	1008.86	1008.89	1008.87	1008.80	1008.74	1008.78	1008.73
	15	1008.80	1008.71	1008.72	1008.83	1008.83	1008.80	1008.76	1008.76	1008.80	1008.87	1008.91	1008.91	1008.81
	16	1008.97	1008.93	1008.89	1008.94	1008.98	1009.03	1009.05	1009.04	1009.03	1009.00	1008.93	1008.83	1008.97
	17	1008.79	1008.90	1009.00	1008.93	1008.86	1008.96	1009.01	1008.89	1008.90	1008.98	1008.98	1008.96	1008.93
	18	1008.99	1009.04	1009.07	1009.08	1009.08	1009.07	1009.05	1009.02	1009.00	1008.95	1008.84	1008.76	1008.99
	19	1008.76	1008.77	1008.77	1008.79	1008.85	1008.93	1008.91	1008.91	1008.98	1009.01	1008.99	1008.99	1008.89
	20	1008.99	1008.99	1009.03	1009.05	1009.05	1008.99	1008.89	1008.79	1008.73	1008.74	1008.77	1008.75	1008.89
	21	1008.66	1008.55	1008.50	1008.51	1008.57	1008.62	1008.63	1008.57	1008.50	1008.57	1008.67	1008.68	1008.58
	22	1008.63	1008.59	1008.60	1008.58	1008.48	1008.46	1008.49	1008.51	1008.54	1008.47	1008.36	1008.34	1008.50
23	1008.37	1008.35	1008.23	1008.08	1007.94	1007.80	1007.66	1007.67	1007.70	1007.74	1008.02	1008.27	1007.98	

S.V.I.R.CO. Observatory - Pressure in hectoPascal – January 2018														
day	hh	00_05	05_10	10_15	15_20	20_25	25_30	30_35	35_40	40_45	45_50	50_55	55_60	average
5	0	1008.28	1008.08	1007.74	1007.61	1007.76	1007.81	1007.64	1007.78	1007.99	1008.06	1008.22	1008.29	1007.92
	1	1008.34	1008.40	1008.35	1008.31	1008.43	1008.45	1008.25	1008.11	1008.03	1007.94	1007.87	1007.78	1008.19
	2	1007.64	1007.53	1007.51	1007.45	1007.36	1007.33	1007.32	1007.36	1007.42	1007.44	1007.48	1007.47	1007.44
	3	1007.42	1007.35	1007.42	1007.58	1007.64	1007.72	1007.72	1007.71	1007.75	1007.81	1007.92	1008.02	1007.67
	4	1008.06	1008.07	1008.11	1008.09	1008.13	1008.14	1008.20	1008.28	1008.24	1008.27	1008.25	1008.25	1008.17
	5	1008.24	1008.33	1008.52	1008.71	1008.81	1008.83	1008.86	1008.90	1008.95	1008.92	1008.86	1008.83	1008.73
	6	1008.83	1008.87	1008.98	1009.03	1009.02	1009.06	1009.14	1009.18	1009.22	1009.27	1009.26	1009.25	1009.09
	7	1009.29	1009.37	1009.54	1009.61	1009.68	1009.82	1009.94	1010.05	1010.11	1010.10	1010.03	1009.95	1009.79
	8	1009.92	1010.03	1010.20	1010.30	1010.35	1010.36	1010.37	1010.45	1010.56	1010.58	1010.53	1010.50	1010.34
	9	1010.50	1010.58	1010.61	1010.58	1010.61	1010.69	1010.84	1010.91	1010.89	1010.88	1010.81	1010.69	1010.71
	10	1010.67	1010.59	1010.48	1010.44	1010.40	1010.39	1010.36	1010.35	1010.35	1010.33	1010.26	1010.19	1010.40
	11	1010.13	1010.01	1009.90	1009.86	1009.89	1009.94	1009.96	1009.92	1009.89	1009.88	1009.93	1009.98	1009.94
	12	1009.90	1009.84	1009.87	1009.86	1009.87	1009.85	1009.86	1009.89	1009.86	1009.83	1009.85	1009.91	1009.86
	13	1009.97	1010.03	1010.02	1009.98	1009.97	1009.97	1010.00	1010.07	1010.14	1010.14	1010.13	1010.23	1010.05
	14	1010.30	1010.31	1010.36	1010.44	1010.48	1010.48	1010.55	1010.61	1010.61	1010.58	1010.57	1010.56	1010.49
	15	1010.56	1010.59	1010.59	1010.57	1010.60	1010.62	1010.61	1010.61	1010.59	1010.58	1010.60	1010.67	1010.60
	16	1010.72	1010.72	1010.73	1010.77	1010.81	1010.82	1010.82	1010.84	1010.83	1010.82	1010.83	1010.86	1010.79
	17	1010.88	1010.90	1010.94	1010.94	1010.96	1011.03	1011.08	1011.11	1011.14	1011.15	1011.14	1011.19	1011.04
	18	1011.21	1011.22	1011.27	1011.25	1011.22	1011.25	1011.27	1011.25	1011.24	1011.30	1011.31	1011.30	1011.26
	19	1011.33	1011.38	1011.39	1011.34	1011.43	1011.45	1011.45	1011.57	1011.58	1011.57	1011.63	1011.65	1011.48
	20	1011.68	1011.80	1011.81	1011.81	1011.93	1011.95	1012.00	1012.10	1012.12	1012.10	1012.07	1012.04	1011.95
	21	1011.98	1012.01	1012.02	1011.96	1011.97	1012.02	1012.00	1011.95	1011.99	1012.02	1012.09	1012.14	1012.01
	22	1012.14	1012.15	1012.14	1012.14	1012.15	1012.18	1012.25	1012.26	1012.26	1012.24	1012.17	1012.16	1012.18
	23	1012.16	1012.16	1012.21	1012.21	1012.23	1012.25	1012.22	1012.20	1012.21	1012.17	1012.11	1012.09	1012.18
6	0	1012.07	1012.05	1012.05	1012.05	1012.03	1012.00	1011.99	1012.00	1011.99	1012.01	1012.07	1012.10	1012.03
	1	1012.08	1012.06	1012.04	1012.04	1012.05	1012.07	1012.08	1012.07	1012.04	1012.00	1012.01	1012.01	1012.04
	2	1011.98	1011.94	1011.91	1011.90	1011.87	1011.83	1011.77	1011.69	1011.68	1011.71	1011.73	1011.72	1011.81
	3	1011.72	1011.72	1011.67	1011.65	1011.60	1011.57	1011.59	1011.58	1011.60	1011.64	1011.62	1011.59	1011.63
	4	1011.59	1011.59	1011.59	1011.59	1011.60	1011.61	1011.59	1011.58	1011.58	1011.57	1011.56	1011.61	1011.59
	5	1011.66	1011.71	1011.77	1011.80	1011.82	1011.88	1011.95	1011.99	1012.03	1012.06	1012.11	1012.13	1011.91
	6	1012.15	1012.21	1012.26	1012.30	1012.30	1012.31	1012.36	1012.39	1012.43	1012.45	1012.49	1012.54	1012.35
	7	1012.58	1012.62	1012.65	1012.68	1012.70	1012.69	1012.66	1012.64	1012.64	1012.65	1012.66	1012.68	1012.65
	8	1012.69	1012.68	1012.72	1012.78	1012.76	1012.68	1012.67	1012.72	1012.73	1012.75	1012.77	1012.78	1012.72
	9	1012.81	1012.86	1012.88	1012.89	1012.88	1012.87	1012.86	1012.84	1012.80	1012.70	1012.60	1012.51	1012.79
	10	1012.47	1012.46	1012.44	1012.42	1012.37	1012.35	1012.34	1012.31	1012.26	1012.26	1012.26	1012.25	1012.35
	11	1012.22	1012.16	1012.14	1012.12	1012.07	1012.04	1012.02	1011.97	1011.98	1011.98	1011.93	1011.90	1012.04
	12	1011.84	1011.77	1011.73	1011.68	1011.62	1011.54	1011.51	1011.48	1011.41	1011.38	1011.37	1011.32	1011.55
	13	1011.25	1011.21	1011.23	1011.30	1011.37	1011.42	1011.45	1011.47	1011.48	1011.51	1011.51	1011.48	1011.39
	14	1011.47	1011.49	1011.53	1011.54	1011.53	1011.50	1011.41	1011.35	1011.33	1011.37	1011.39	1011.36	1011.44
	15	1011.32	1011.27	1011.27	1011.26	1011.22	1011.18	1011.17	1011.15	1011.17	1011.22	1011.21	1011.24	1011.22
	16	1011.26	1011.28	1011.36	1011.40	1011.40	1011.43	1011.50	1011.57	1011.61	1011.64	1011.71	1011.76	1011.49
	17	1011.78	1011.81	1011.87	1011.91	1011.88	1011.80	1011.81	1011.84	1011.84	1011.84	1011.90	1012.00	1011.85
	18	1012.09	1012.17	1012.23	1012.19	1012.16	1012.17	1012.15	1012.13	1012.16	1012.20	1012.24	1012.29	1012.18
	19	1012.33	1012.39	1012.44	1012.51	1012.56	1012.53	1012.50	1012.49	1012.47	1012.41	1012.40	1012.45	1012.45
	20	1012.47	1012.54	1012.61	1012.62	1012.62	1012.60	1012.58	1012.56	1012.54	1012.48	1012.42	1012.46	1012.54
	21	1012.50	1012.53	1012.60	1012.70	1012.83	1012.95	1013.06	1013.15	1013.10	1013.08	1013.13	1013.16	1012.90
	22	1013.17	1013.15	1013.12	1013.10	1013.05	1012.99	1012.97	1012.97	1013.00	1013.07	1013.06	1013.05	1013.06
	23	1013.10	1013.12	1013.10	1013.06	1013.03	1013.04	1013.08	1013.09	1013.07	1013.01	1012.98	1012.98	1013.05

S.V.I.R.CO. Observatory - Pressure in hectoPascal – January 2018

day	hh	00_05	05_10	10_15	15_20	20_25	25_30	30_35	35_40	40_45	45_50	50_55	55_60	average
7	0	1012.93	1012.91	1012.88	1012.89	1012.92	1012.91	1012.85	1012.83	1012.87	1012.97	1013.01	1013.02	1012.91
	1	1013.01	1013.00	1013.04	1013.09	1013.13	1013.18	1013.22	1013.22	1013.21	1013.18	1013.20	1013.23	1013.14
	2	1013.24	1013.20	1013.19	1013.17	1013.14	1013.18	1013.20	1013.19	1013.17	1013.15	1013.13	1013.11	1013.17
	3	1013.13	1013.16	1013.18	1013.22	1013.25	1013.25	1013.25	1013.26	1013.25	1013.22	1013.24	1013.28	1013.22
	4	1013.31	1013.31	1013.31	1013.35	1013.38	1013.40	1013.43	1013.46	1013.49	1013.52	1013.55	1013.56	1013.42
	5	1013.56	1013.57	1013.63	1013.69	1013.71	1013.80	1013.88	1013.89	1013.92	1014.01	1014.10	1014.18	1013.83
	6	1014.28	1014.37	1014.37	1014.36	1014.38	1014.41	1014.49	1014.58	1014.64	1014.70	1014.73	1014.77	1014.51
	7	1014.84	1014.86	1014.87	1014.92	1014.97	1014.96	1014.94	1014.94	1014.93	1014.93	1014.95	1014.99	1014.92
	8	1015.04	1015.10	1015.14	1015.19	1015.28	1015.30	1015.29	1015.31	1015.32	1015.31	1015.35	1015.43	1015.25
	9	1015.48	1015.53	1015.59	1015.61	1015.65	1015.70	1015.72	1015.68	1015.59	1015.59	1015.59	1015.52	1015.60
	10	1015.48	1015.48	1015.47	1015.50	1015.51	1015.49	1015.47	1015.47	1015.46	1015.47	1015.53	1015.55	1015.49
	11	1015.52	1015.49	1015.49	1015.49	1015.45	1015.42	1015.39	1015.35	1015.30	1015.30	1015.29	1015.29	1015.40
	12	1015.33	1015.28	1015.24	1015.25	1015.22	1015.18	1015.16	1015.12	1015.08	1015.04	1014.99	1015.07	1015.16
	13	1015.17	1015.18	1015.18	1015.19	1015.20	1015.15	1015.15	1015.15	1015.15	1015.15	1015.14	1015.21	1015.17
	14	1015.29	1015.39	1015.45	1015.46	1015.48	1015.49	1015.49	1015.51	1015.55	1015.61	1015.65	1015.67	1015.50
	15	1015.71	1015.73	1015.75	1015.82	1015.89	1015.86	1015.82	1015.82	1015.85	1015.95	1016.07	1016.10	1015.86
	16	1016.09	1016.15	1016.22	1016.22	1016.22	1016.31	1016.34	1016.31	1016.37	1016.43	1016.45	1016.48	1016.30
	17	1016.51	1016.54	1016.57	1016.60	1016.66	1016.75	1016.82	1016.82	1016.85	1016.89	1016.93	1016.97	1016.74
	18	1017.00	1017.10	1017.16	1017.20	1017.26	1017.29	1017.30	1017.30	1017.33	1017.34	1017.33	1017.30	1017.24
	19	1017.33	1017.36	1017.39	1017.45	1017.54	1017.65	1017.72	1017.79	1017.86	1017.89	1017.90	1017.88	1017.64
	20	1017.88	1017.92	1017.96	1017.93	1017.86	1017.85	1017.89	1017.86	1017.82	1017.80	1017.79	1017.81	1017.86
	21	1017.81	1017.78	1017.74	1017.73	1017.70	1017.67	1017.66	1017.65	1017.65	1017.67	1017.67	1017.60	1017.69
	22	1017.53	1017.49	1017.46	1017.47	1017.46	1017.43	1017.44	1017.45	1017.42	1017.38	1017.35	1017.34	1017.43
	23	1017.35	1017.31	1017.25	1017.22	1017.21	1017.13	1017.01	1016.88	1016.81	1016.83	1016.83	1016.85	1017.05
8	0	1016.86	1016.93	1017.00	1017.02	1017.09	1017.20	1017.26	1017.28	1017.29	1017.27	1017.27	1017.32	1017.16
	1	1017.39	1017.40	1017.44	1017.52	1017.59	1017.64	1017.63	1017.58	1017.53	1017.59	1017.63	1017.64	1017.55
	2	1017.68	1017.67	1017.69	1017.69	1017.69	1017.73	1017.82	1017.87	1017.86	1017.90	1017.93	1017.88	1017.78
	3	1017.86	1017.92	1017.88	1017.81	1017.84	1017.83	1017.75	1017.71	1017.71	1017.71	1017.71	1017.65	1017.78
	4	1017.64	1017.68	1017.71	1017.78	1017.77	1017.73	1017.71	1017.73	1017.72	1017.73	1017.78	1017.84	1017.73
	5	1017.90	1017.96	1018.03	1018.08	1018.13	1018.19	1018.25	1018.31	1018.34	1018.37	1018.40	1018.49	1018.20
	6	1018.59	1018.63	1018.66	1018.72	1018.73	1018.69	1018.66	1018.60	1018.66	1018.80	1018.88	1018.89	1018.71
	7	1018.86	1018.79	1018.73	1018.72	1018.70	1018.69	1018.63	1018.55	1018.51	1018.48	1018.47	1018.46	1018.63
	8	1018.44	1018.37	1018.31	1018.30	1018.32	1018.32	1018.31	1018.37	1018.41	1018.44	1018.52	1018.58	1018.39
	9	1018.62	1018.71	1018.83	1018.92	1018.99	1019.06	1019.11	1019.06	1018.91	1018.79	1018.76	1018.72	1018.87
	10	1018.63	1018.58	1018.61	1018.64	1018.61	1018.58	1018.62	1018.62	1018.54	1018.44	1018.33	1018.24	1018.53
	11	1018.17	1018.11	1018.05	1018.01	1017.99	1017.95	1017.92	1017.93	1017.95	1017.92	1017.86	1017.82	1017.97
	12	1017.74	1017.67	1017.64	1017.57	1017.50	1017.40	1017.31	1017.27	1017.17	1017.03	1016.91	1016.79	1017.33
	13	1016.72	1016.75	1016.72	1016.70	1016.68	1016.62	1016.55	1016.49	1016.47	1016.51	1016.55	1016.51	1016.60
	14	1016.40	1016.31	1016.31	1016.35	1016.39	1016.47	1016.60	1016.67	1016.68	1016.65	1016.62	1016.58	1016.50
	15	1016.53	1016.60	1016.62	1016.63	1016.79	1016.84	1016.84	1016.88	1016.91	1016.97	1017.04	1017.08	1016.81
	16	1017.09	1017.09	1017.09	1017.14	1017.15	1017.20	1017.24	1017.26	1017.25	1017.21	1017.22	1017.24	1017.18
	17	1017.23	1017.19	1017.21	1017.28	1017.30	1017.28	1017.30	1017.35	1017.40	1017.41	1017.26	1017.01	1017.27
	18	1016.88	1016.93	1017.03	1017.11	1017.21	1017.30	1017.30	1017.29	1017.33	1017.32	1017.34	1017.44	1017.20
	19	1017.48	1017.46	1017.46	1017.48	1017.50	1017.55	1017.56	1017.63	1017.74	1017.83	1017.87	1017.84	1017.62
	20	1017.88	1017.89	1017.85	1017.91	1017.89	1017.90	1017.94	1017.91	1017.94	1017.89	1017.90	1018.03	1017.91
	21	1018.11	1018.12	1018.14	1018.15	1018.07	1018.06	1018.17	1018.21	1018.17	1018.20	1018.22	1018.20	1018.15
	22	1018.20	1018.21	1018.22	1018.24	1018.19	1018.09	1018.01	1018.06	1018.11	1018.14	1018.27	1018.35	1018.17
	23	1018.40	1018.37	1018.32	1018.23	1018.16	1018.22	1018.30	1018.32	1018.34	1018.36	1018.29	1018.22	1018.29

S.V.I.R.CO. Observatory - Pressure in hectoPascal – January 2018

day	hh	00_05	05_10	10_15	15_20	20_25	25_30	30_35	35_40	40_45	45_50	50_55	55_60	average
9	0	1018.16	1018.14	1018.13	1018.21	1018.36	1018.43	1018.49	1018.54	1018.56	1018.56	1018.50	1018.49	1018.39
	1	1018.56	1018.64	1018.70	1018.75	1018.80	1018.87	1018.89	1018.84	1018.86	1018.91	1018.87	1018.83	1018.79
	2	1018.88	1018.92	1018.93	1018.90	1018.86	1018.97	1019.04	1018.97	1018.96	1018.99	1019.04	1019.10	1018.96
	3	1019.00	1018.95	1018.96	1018.93	1018.91	1018.88	1018.86	1018.88	1018.88	1018.86	1018.81	1018.76	1018.89
	4	1018.74	1018.70	1018.71	1018.74	1018.74	1018.76	1018.83	1018.81	1018.75	1018.69	1018.61	1018.57	1018.72
	5	1018.59	1018.63	1018.61	1018.53	1018.53	1018.61	1018.63	1018.64	1018.71	1018.82	1018.80	1018.69	1018.65
	6	1018.63	1018.59	1018.64	1018.70	1018.67	1018.68	1018.70	1018.75	1018.78	1018.55	1018.41	1018.45	1018.63
	7	1018.54	1018.67	1018.77	1018.85	1018.91	1018.90	1018.86	1018.83	1018.74	1018.69	1018.77	1018.90	1018.78
	8	1019.04	1019.18	1019.33	1019.45	1019.58	1019.65	1019.60	1019.68	1019.85	1019.94	1020.07	1020.30	1019.64
	9	1020.38	1020.35	1020.38	1020.45	1020.52	1020.48	1020.48	1020.59	1020.71	1020.75	1020.66	1020.60	1020.53
	10	1020.64	1020.69	1020.70	1020.66	1020.61	1020.56	1020.53	1020.57	1020.64	1020.67	1020.58	1020.54	1020.61
	11	1020.50	1020.45	1020.50	1020.57	1020.58	1020.55	1020.45	1020.28	1020.19	1020.18	1020.12	1020.04	1020.37
	12	1019.97	1019.90	1019.92	1019.94	1019.87	1019.78	1019.76	1019.70	1019.63	1019.61	1019.58	1019.53	1019.76
	13	1019.46	1019.37	1019.27	1019.25	1019.30	1019.35	1019.38	1019.38	1019.40	1019.40	1019.38	1019.36	1019.36
	14	1019.33	1019.31	1019.30	1019.28	1019.29	1019.34	1019.35	1019.39	1019.42	1019.43	1019.46	1019.52	1019.37
	15	1019.62	1019.65	1019.64	1019.63	1019.57	1019.55	1019.56	1019.60	1019.66	1019.71	1019.79	1019.81	1019.65
	16	1019.82	1019.90	1020.00	1020.32	1020.47	1020.31	1020.32	1020.36	1020.37	1020.42	1020.41	1020.38	1020.25
	17	1020.38	1020.42	1020.49	1020.62	1020.75	1020.82	1020.80	1020.76	1020.74	1020.73	1020.69	1020.68	1020.65
	18	1020.72	1020.71	1020.81	1020.91	1020.96	1020.99	1021.03	1021.04	1021.07	1021.12	1021.17	1021.20	1020.98
	19	1021.20	1021.18	1021.16	1021.10	1021.11	1021.25	1021.29	1021.22	1021.18	1021.14	1021.11	1021.02	1021.16
	20	1020.88	1020.69	1020.53	1020.54	1020.57	1020.51	1020.51	1020.49	1020.49	1020.49	1020.46	1020.52	1020.55
	21	1020.55	1020.55	1020.54	1020.52	1020.51	1020.51	1020.38	1020.18	1020.04	1019.88	1019.72	1019.48	1020.24
	22	1019.33	1019.48	1019.62	1019.70	1019.76	1019.69	1019.59	1019.54	1019.45	1019.32	1019.22	1019.17	1019.49
	23	1019.05	1018.89	1018.80	1018.64	1018.56	1018.52	1018.50	1018.52	1018.39	1018.38	1018.48	1018.45	1018.60
10	0	1018.60	1018.72	1018.88	1018.93	1018.85	1018.78	1018.86	1018.95	1018.94	1018.79	1018.64	1018.59	1018.80
	1	1018.50	1018.40	1018.40	1018.38	1018.35	1018.38	1018.44	1018.42	1018.38	1018.46	1018.59	1018.62	1018.44
	2	1018.63	1018.65	1018.56	1018.47	1018.42	1018.36	1018.24	1018.15	1018.08	1017.96	1017.88	1017.81	1018.27
	3	1017.70	1017.58	1017.50	1017.49	1017.51	1017.46	1017.38	1017.35	1017.27	1017.23	1017.21	1017.17	1017.40
	4	1017.15	1017.17	1017.18	1017.13	1017.00	1016.95	1016.86	1016.73	1016.75	1016.79	1016.84	1016.91	1016.95
	5	1016.95	1016.95	1016.93	1016.99	1017.08	1017.14	1017.18	1017.20	1017.22	1017.25	1017.28	1017.32	1017.12
	6	1017.34	1017.31	1017.31	1017.33	1017.29	1017.23	1017.23	1017.23	1017.21	1017.15	1017.09	1017.06	1017.23
	7	1017.06	1017.09	1017.10	1017.07	1017.05	1017.05	1017.08	1017.14	1017.17	1017.22	1017.28	1017.29	1017.13
	8	1017.27	1017.26	1017.28	1017.29	1017.28	1017.26	1017.25	1017.24	1017.25	1017.28	1017.27	1017.23	1017.26
	9	1017.19	1017.15	1017.14	1017.16	1017.15	1017.15	1017.14	1017.09	1017.05	1016.99	1016.91	1016.83	1017.08
	10	1016.74	1016.66	1016.59	1016.52	1016.44	1016.36	1016.29	1016.21	1016.13	1016.03	1015.96	1015.90	1016.32
	11	1015.80	1015.73	1015.67	1015.55	1015.43	1015.34	1015.26	1015.17	1015.05	1014.96	1014.90	1014.86	1015.31
	12	1014.79	1014.67	1014.58	1014.53	1014.49	1014.40	1014.31	1014.30	1014.31	1014.27	1014.19	1014.13	1014.41
	13	1014.11	1014.12	1014.09	1014.05	1014.06	1014.05	1014.03	1014.06	1014.08	1014.06	1014.04	1014.04	1014.06
	14	1014.05	1014.06	1014.04	1013.99	1013.98	1013.96	1013.91	1013.89	1013.89	1013.91	1013.91	1013.91	1013.96
	15	1013.93	1013.95	1013.94	1013.92	1013.91	1013.89	1013.88	1013.86	1013.86	1013.85	1013.84	1013.86	1013.89
	16	1013.90	1013.92	1013.92	1013.91	1013.93	1013.91	1013.88	1013.88	1013.91	1013.92	1013.88	1013.82	1013.90
	17	1013.80	1013.79	1013.77	1013.77	1013.74	1013.72	1013.74	1013.76	1013.73	1013.72	1013.74	1013.77	1013.75
	18	1013.80	1013.78	1013.73	1013.68	1013.64	1013.63	1013.67	1013.68	1013.66	1013.70	1013.72	1013.69	1013.70
	19	1013.67	1013.68	1013.71	1013.71	1013.70	1013.67	1013.65	1013.62	1013.59	1013.57	1013.57	1013.60	1013.64
	20	1013.60	1013.58	1013.56	1013.55	1013.53	1013.50	1013.47	1013.45	1013.46	1013.47	1013.47	1013.48	1013.51
	21	1013.48	1013.48	1013.46	1013.42	1013.35	1013.27	1013.17	1013.15	1013.15	1013.14	1013.21	1013.26	1013.29
	22	1013.22	1013.14	1013.09	1013.07	1013.03	1013.01	1012.96	1012.90	1012.89	1012.85	1012.79	1012.74	1012.97
	23	1012.71	1012.69	1012.65	1012.58	1012.54	1012.49	1012.42	1012.38	1012.35	1012.32	1012.31	1012.28	1012.47

S.V.I.R.CO. Observatory - Pressure in hectoPascal – January 2018

day	hh	00_05	05_10	10_15	15_20	20_25	25_30	30_35	35_40	40_45	45_50	50_55	55_60	average
11	0	1012.20	1012.20	1012.17	1012.13	1012.11	1012.12	1012.10	1012.08	1012.06	1012.05	1012.01	1011.95	1012.09
	1	1011.91	1011.87	1011.84	1011.80	1011.74	1011.74	1011.74	1011.70	1011.69	1011.70	1011.65	1011.58	1011.74
	2	1011.53	1011.46	1011.36	1011.27	1011.21	1011.18	1011.17	1011.15	1011.11	1011.06	1011.02	1010.97	1011.20
	3	1010.90	1010.83	1010.76	1010.70	1010.69	1010.65	1010.59	1010.56	1010.49	1010.40	1010.34	1010.31	1010.60
	4	1010.31	1010.30	1010.31	1010.31	1010.26	1010.21	1010.16	1010.10	1010.04	1009.99	1009.95	1009.91	1010.15
	5	1009.91	1009.92	1009.93	1009.96	1010.10	1010.21	1010.18	1010.20	1010.22	1010.19	1010.20	1010.22	1010.10
	6	1010.20	1010.20	1010.25	1010.27	1010.29	1010.32	1010.31	1010.30	1010.29	1010.25	1010.20	1010.16	1010.25
	7	1010.14	1010.15	1010.16	1010.14	1010.13	1010.17	1010.17	1010.18	1010.19	1010.16	1010.13	1010.08	1010.15
	8	1010.04	1010.01	1010.00	1010.02	1010.02	1010.04	1010.09	1010.12	1010.11	1010.10	1010.07	1010.03	1010.05
	9	1010.00	1009.95	1009.92	1009.87	1009.80	1009.76	1009.73	1009.69	1009.67	1009.70	1009.68	1009.61	1009.78
	10	1009.52	1009.44	1009.37	1009.31	1009.27	1009.20	1009.13	1009.10	1009.06	1009.01	1008.95	1008.89	1009.19
	11	1008.84	1008.80	1008.77	1008.75	1008.71	1008.67	1008.62	1008.54	1008.42	1008.29	1008.12	1007.96	1008.54
	12	1007.88	1007.84	1007.80	1007.73	1007.64	1007.57	1007.50	1007.45	1007.45	1007.46	1007.44	1007.42	1007.60
	13	1007.40	1007.43	1007.45	1007.41	1007.35	1007.33	1007.31	1007.31	1007.37	1007.44	1007.51	1007.53	1007.40
	14	1007.54	1007.59	1007.58	1007.50	1007.43	1007.40	1007.36	1007.35	1007.37	1007.38	1007.40	1007.41	1007.44
	15	1007.42	1007.43	1007.42	1007.42	1007.44	1007.47	1007.51	1007.55	1007.57	1007.57	1007.58	1007.63	1007.50
	16	1007.66	1007.66	1007.66	1007.65	1007.65	1007.65	1007.66	1007.68	1007.70	1007.69	1007.69	1007.70	1007.67
	17	1007.68	1007.68	1007.73	1007.78	1007.81	1007.83	1007.84	1007.84	1007.83	1007.84	1007.84	1007.81	1007.79
	18	1007.81	1007.81	1007.80	1007.85	1007.89	1007.87	1007.84	1007.85	1007.90	1007.92	1007.93	1007.95	1007.86
	19	1007.94	1007.91	1007.91	1007.94	1007.98	1008.04	1008.07	1008.09	1008.13	1008.12	1008.10	1008.10	1008.02
	20	1008.12	1008.10	1008.05	1008.02	1008.01	1007.98	1007.94	1007.98	1008.05	1008.08	1008.07	1008.08	1008.04
	21	1008.10	1008.12	1008.14	1008.15	1008.15	1008.13	1008.11	1008.07	1008.01	1007.99	1008.01	1008.06	1008.08
	22	1008.08	1008.11	1008.13	1008.18	1008.26	1008.33	1008.36	1008.40	1008.45	1008.44	1008.44	1008.42	1008.30
	23	1008.42	1008.43	1008.40	1008.39	1008.37	1008.34	1008.36	1008.39	1008.41	1008.42	1008.45	1008.46	1008.40
12	0	1008.43	1008.40	1008.37	1008.38	1008.38	1008.39	1008.43	1008.49	1008.54	1008.58	1008.65	1008.76	1008.48
	1	1008.84	1008.91	1008.94	1008.94	1008.99	1009.03	1009.05	1009.06	1009.06	1009.07	1009.06	1009.08	1009.00
	2	1009.11	1009.12	1009.14	1009.14	1009.11	1009.11	1009.12	1009.13	1009.16	1009.18	1009.22	1009.22	1009.14
	3	1009.17	1009.15	1009.11	1009.07	1009.09	1009.10	1009.10	1009.09	1009.08	1009.09	1009.13	1009.17	1009.11
	4	1009.20	1009.23	1009.26	1009.30	1009.39	1009.49	1009.54	1009.55	1009.59	1009.65	1009.72	1009.81	1009.47
	5	1009.83	1009.80	1009.82	1009.86	1009.88	1009.89	1009.87	1009.87	1009.88	1009.91	1009.97	1010.02	1009.88
	6	1010.06	1010.11	1010.20	1010.28	1010.34	1010.41	1010.45	1010.47	1010.49	1010.51	1010.53	1010.53	1010.36
	7	1010.57	1010.63	1010.68	1010.68	1010.71	1010.76	1010.80	1010.88	1010.94	1010.98	1011.01	1011.05	1010.81
	8	1011.11	1011.18	1011.28	1011.37	1011.37	1011.38	1011.42	1011.46	1011.50	1011.54	1011.58	1011.64	1011.40
	9	1011.71	1011.80	1011.86	1011.89	1011.93	1011.99	1011.99	1012.00	1012.02	1012.03	1012.06	1012.10	1011.95
	10	1012.12	1012.12	1012.10	1012.06	1012.01	1011.99	1011.95	1011.92	1011.93	1011.90	1011.86	1011.85	1011.98
	11	1011.82	1011.75	1011.67	1011.62	1011.54	1011.48	1011.47	1011.45	1011.40	1011.35	1011.33	1011.30	1011.51
	12	1011.27	1011.25	1011.22	1011.24	1011.26	1011.27	1011.27	1011.27	1011.27	1011.28	1011.31	1011.34	1011.27
	13	1011.33	1011.33	1011.35	1011.35	1011.38	1011.42	1011.46	1011.51	1011.56	1011.57	1011.55	1011.56	1011.45
	14	1011.59	1011.62	1011.66	1011.72	1011.78	1011.82	1011.83	1011.83	1011.85	1011.91	1011.97	1012.02	1011.80
	15	1012.07	1012.13	1012.16	1012.20	1012.23	1012.27	1012.31	1012.38	1012.46	1012.51	1012.56	1012.63	1012.32
	16	1012.69	1012.72	1012.79	1012.85	1012.90	1012.96	1013.02	1013.09	1013.11	1013.14	1013.19	1013.22	1012.97
	17	1013.25	1013.29	1013.32	1013.33	1013.38	1013.44	1013.48	1013.53	1013.61	1013.69	1013.75	1013.81	1013.49
	18	1013.89	1013.95	1014.00	1014.06	1014.11	1014.16	1014.19	1014.22	1014.25	1014.29	1014.32	1014.35	1014.15
	19	1014.40	1014.46	1014.51	1014.56	1014.62	1014.67	1014.70	1014.72	1014.73	1014.78	1014.85	1014.88	1014.65
	20	1014.90	1014.95	1014.99	1015.02	1015.02	1015.05	1015.07	1015.05	1015.06	1015.09	1015.13	1015.17	1015.04
	21	1015.24	1015.30	1015.34	1015.36	1015.39	1015.44	1015.52	1015.60	1015.61	1015.59	1015.57	1015.56	1015.46
	22	1015.56	1015.56	1015.58	1015.58	1015.60	1015.63	1015.63	1015.62	1015.64	1015.63	1015.58	1015.57	1015.60
	23	1015.59	1015.59	1015.56	1015.51	1015.46	1015.43	1015.43	1015.46	1015.48	1015.49	1015.48	1015.45	1015.49

S.V.I.R.CO. Observatory - Pressure in hectoPascal – January 2018

day	hh	00_05	05_10	10_15	15_20	20_25	25_30	30_35	35_40	40_45	45_50	50_55	55_60	average
13	0	1015.34	1015.33	1015.33	1015.37	1015.43	1015.45	1015.45	1015.48	1015.57	1015.62	1015.61	1015.61	1015.47
	1	1015.59	1015.55	1015.52	1015.53	1015.52	1015.50	1015.50	1015.51	1015.49	1015.50	1015.52	1015.52	1015.52
	2	1015.50	1015.44	1015.37	1015.33	1015.31	1015.30	1015.31	1015.28	1015.22	1015.20	1015.21	1015.20	1015.30
	3	1015.18	1015.19	1015.23	1015.26	1015.25	1015.26	1015.26	1015.25	1015.26	1015.28	1015.25	1015.21	1015.24
	4	1015.19	1015.15	1015.15	1015.21	1015.27	1015.29	1015.30	1015.30	1015.30	1015.30	1015.32	1015.36	1015.26
	5	1015.41	1015.45	1015.44	1015.40	1015.41	1015.50	1015.55	1015.57	1015.62	1015.66	1015.66	1015.66	1015.52
	6	1015.69	1015.74	1015.76	1015.77	1015.78	1015.78	1015.82	1015.82	1015.78	1015.78	1015.80	1015.82	1015.78
	7	1015.84	1015.88	1015.91	1015.94	1015.98	1016.04	1016.07	1016.10	1016.18	1016.22	1016.23	1016.25	1016.05
	8	1016.33	1016.43	1016.47	1016.47	1016.48	1016.50	1016.58	1016.65	1016.66	1016.64	1016.64	1016.70	1016.54
	9	1016.81	1016.90	1016.96	1016.98	1016.97	1016.94	1016.89	1016.84	1016.80	1016.78	1016.75	1016.73	1016.86
	10	1016.74	1016.74	1016.71	1016.68	1016.65	1016.61	1016.56	1016.49	1016.42	1016.37	1016.33	1016.33	1016.55
	11	1016.35	1016.33	1016.27	1016.21	1016.19	1016.13	1016.07	1016.04	1016.02	1015.98	1015.92	1015.85	1016.11
	12	1015.78	1015.72	1015.69	1015.64	1015.58	1015.53	1015.49	1015.44	1015.39	1015.36	1015.34	1015.33	1015.52
	13	1015.35	1015.39	1015.44	1015.48	1015.52	1015.54	1015.58	1015.60	1015.60	1015.60	1015.61	1015.61	1015.53
	14	1015.59	1015.57	1015.56	1015.58	1015.62	1015.65	1015.68	1015.72	1015.75	1015.77	1015.78	1015.83	1015.67
	15	1015.84	1015.83	1015.85	1015.88	1015.91	1015.90	1015.89	1015.91	1015.98	1016.07	1016.11	1016.13	1015.94
	16	1016.17	1016.22	1016.27	1016.30	1016.34	1016.35	1016.36	1016.40	1016.44	1016.51	1016.56	1016.58	1016.37
	17	1016.61	1016.64	1016.67	1016.70	1016.74	1016.78	1016.83	1016.87	1016.93	1016.99	1017.06	1017.12	1016.83
	18	1017.18	1017.21	1017.22	1017.27	1017.32	1017.33	1017.31	1017.31	1017.34	1017.39	1017.45	1017.51	1017.32
	19	1017.51	1017.50	1017.49	1017.48	1017.47	1017.46	1017.44	1017.40	1017.37	1017.38	1017.39	1017.39	1017.44
	20	1017.42	1017.42	1017.39	1017.36	1017.34	1017.36	1017.39	1017.39	1017.41	1017.40	1017.40	1017.43	1017.39
	21	1017.46	1017.47	1017.46	1017.48	1017.50	1017.49	1017.49	1017.50	1017.51	1017.54	1017.55	1017.54	1017.50
	22	1017.56	1017.57	1017.55	1017.51	1017.48	1017.48	1017.50	1017.49	1017.47	1017.44	1017.42	1017.39	1017.49
	23	1017.34	1017.32	1017.32	1017.35	1017.38	1017.38	1017.37	1017.38	1017.41	1017.43	1017.45	1017.47	1017.38
14	0	1017.51	1017.53	1017.54	1017.52	1017.50	1017.50	1017.53	1017.55	1017.54	1017.53	1017.55	1017.57	1017.53
	1	1017.59	1017.62	1017.64	1017.65	1017.63	1017.64	1017.67	1017.68	1017.70	1017.71	1017.71	1017.68	1017.66
	2	1017.65	1017.62	1017.57	1017.53	1017.50	1017.49	1017.48	1017.46	1017.39	1017.32	1017.29	1017.28	1017.46
	3	1017.27	1017.27	1017.27	1017.27	1017.27	1017.25	1017.25	1017.28	1017.34	1017.39	1017.43	1017.43	1017.31
	4	1017.42	1017.41	1017.42	1017.43	1017.44	1017.44	1017.43	1017.44	1017.48	1017.47	1017.41	1017.41	1017.43
	5	1017.49	1017.56	1017.56	1017.58	1017.61	1017.65	1017.66	1017.66	1017.67	1017.69	1017.72	1017.76	1017.63
	6	1017.74	1017.74	1017.79	1017.83	1017.86	1017.83	1017.79	1017.81	1017.84	1017.90	1017.92	1017.96	1017.83
	7	1018.02	1018.06	1018.10	1018.13	1018.18	1018.25	1018.29	1018.34	1018.43	1018.51	1018.57	1018.62	1018.29
	8	1018.67	1018.74	1018.81	1018.87	1018.93	1018.97	1019.02	1019.05	1019.10	1019.15	1019.20	1019.25	1018.98
	9	1019.29	1019.31	1019.34	1019.40	1019.45	1019.49	1019.49	1019.48	1019.55	1019.64	1019.65	1019.61	1019.47
	10	1019.56	1019.53	1019.51	1019.47	1019.45	1019.42	1019.37	1019.35	1019.33	1019.30	1019.28	1019.26	1019.40
	11	1019.26	1019.23	1019.18	1019.14	1019.12	1019.09	1019.03	1018.99	1018.94	1018.91	1018.85	1018.77	1019.04
	12	1018.72	1018.70	1018.70	1018.68	1018.64	1018.59	1018.54	1018.55	1018.59	1018.61	1018.60	1018.57	1018.62
	13	1018.55	1018.57	1018.58	1018.57	1018.58	1018.59	1018.57	1018.55	1018.53	1018.54	1018.56	1018.54	1018.56
	14	1018.51	1018.53	1018.57	1018.59	1018.61	1018.63	1018.64	1018.65	1018.67	1018.65	1018.65	1018.65	1018.61
	15	1018.67	1018.75	1018.84	1018.90	1018.94	1018.99	1019.02	1019.03	1019.03	1019.06	1019.10	1019.15	1018.95
	16	1019.20	1019.24	1019.28	1019.32	1019.35	1019.36	1019.39	1019.43	1019.44	1019.48	1019.54	1019.58	1019.38
	17	1019.62	1019.65	1019.67	1019.68	1019.71	1019.77	1019.81	1019.86	1019.91	1019.94	1019.99	1020.02	1019.80
	18	1020.04	1020.04	1020.01	1020.01	1020.04	1020.11	1020.14	1020.16	1020.19	1020.20	1020.19	1020.19	1020.11
	19	1020.23	1020.27	1020.32	1020.38	1020.45	1020.54	1020.61	1020.68	1020.73	1020.80	1020.87	1020.89	1020.56
	20	1020.89	1020.92	1020.93	1020.90	1020.88	1020.92	1020.96	1020.99	1021.00	1020.99	1021.01	1021.06	1020.95
	21	1021.14	1021.16	1021.16	1021.20	1021.24	1021.24	1021.24	1021.27	1021.33	1021.37	1021.36	1021.37	1021.26
	22	1021.41	1021.49	1021.56	1021.57	1021.54	1021.52	1021.50	1021.46	1021.43	1021.43	1021.47	1021.54	1021.49
	23	1021.56	1021.51	1021.45	1021.43	1021.42	1021.41	1021.36	1021.28	1021.25	1021.25	1021.24	1021.22	1021.36

S.V.I.R.CO. Observatory - Pressure in hectoPascal – January 2018

day	hh	00_05	05_10	10_15	15_20	20_25	25_30	30_35	35_40	40_45	45_50	50_55	55_60	average
15	0	1021.25	1021.27	1021.28	1021.27	1021.26	1021.21	1021.19	1021.18	1021.16	1021.13	1021.12	1021.13	1021.20
	1	1021.15	1021.15	1021.12	1021.08	1021.07	1021.04	1020.99	1020.95	1020.92	1020.93	1020.96	1020.97	1021.02
	2	1020.95	1020.93	1020.92	1020.90	1020.86	1020.84	1020.81	1020.79	1020.81	1020.81	1020.76	1020.76	1020.84
	3	1020.78	1020.79	1020.74	1020.69	1020.69	1020.69	1020.71	1020.68	1020.62	1020.58	1020.58	1020.62	1020.68
	4	1020.66	1020.66	1020.62	1020.61	1020.63	1020.66	1020.69	1020.70	1020.72	1020.77	1020.81	1020.80	1020.69
	5	1020.77	1020.78	1020.78	1020.80	1020.82	1020.84	1020.90	1020.94	1020.98	1021.02	1021.08	1021.14	1020.90
	6	1021.16	1021.18	1021.17	1021.13	1021.08	1021.06	1021.08	1021.12	1021.15	1021.18	1021.26	1021.37	1021.16
	7	1021.44	1021.49	1021.53	1021.57	1021.61	1021.68	1021.75	1021.84	1021.90	1021.92	1021.94	1021.98	1021.72
	8	1021.99	1021.97	1021.97	1021.98	1021.99	1022.02	1022.07	1022.09	1022.06	1022.02	1022.06	1022.09	1022.02
	9	1022.10	1022.14	1022.19	1022.26	1022.29	1022.33	1022.36	1022.39	1022.37	1022.31	1022.27	1022.23	1022.27
	10	1022.21	1022.17	1022.12	1022.10	1022.07	1022.03	1021.99	1021.94	1021.89	1021.84	1021.80	1021.79	1021.99
	11	1021.74	1021.66	1021.58	1021.51	1021.44	1021.38	1021.31	1021.24	1021.18	1021.10	1021.02	1020.96	1021.34
	12	1020.88	1020.83	1020.78	1020.74	1020.69	1020.64	1020.59	1020.54	1020.49	1020.45	1020.39	1020.32	1020.61
	13	1020.30	1020.29	1020.22	1020.19	1020.18	1020.14	1020.09	1020.06	1020.03	1020.00	1019.99	1020.01	1020.12
	14	1020.02	1019.99	1019.92	1019.89	1019.89	1019.85	1019.84	1019.87	1019.89	1019.94	1020.00	1020.01	1019.92
	15	1020.01	1020.03	1020.04	1020.08	1020.14	1020.18	1020.19	1020.20	1020.20	1020.15	1020.15	1020.20	1020.13
	16	1020.23	1020.18	1020.16	1020.19	1020.17	1020.16	1020.13	1020.11	1020.14	1020.18	1020.24	1020.27	1020.18
	17	1020.26	1020.28	1020.35	1020.39	1020.38	1020.40	1020.45	1020.49	1020.51	1020.47	1020.35	1020.36	1020.39
	18	1020.43	1020.44	1020.47	1020.49	1020.51	1020.51	1020.50	1020.50	1020.49	1020.47	1020.49	1020.48	1020.48
	19	1020.40	1020.32	1020.29	1020.26	1020.23	1020.22	1020.18	1020.12	1020.07	1020.02	1020.01	1019.99	1020.17
	20	1019.96	1019.96	1019.97	1019.99	1020.02	1020.07	1020.12	1020.11	1020.06	1020.08	1020.17	1020.22	1020.06
	21	1020.25	1020.31	1020.33	1020.36	1020.42	1020.46	1020.49	1020.55	1020.62	1020.64	1020.60	1020.58	1020.47
	22	1020.58	1020.61	1020.67	1020.61	1020.54	1020.56	1020.51	1020.47	1020.43	1020.36	1020.42	1020.39	1020.51
	23	1020.23	1020.14	1020.08	1020.04	1020.00	1019.94	1019.86	1019.76	1019.71	1019.67	1019.66	1019.65	1019.89
16	0	1019.60	1019.60	1019.57	1019.57	1019.56	1019.50	1019.45	1019.39	1019.32	1019.28	1019.32	1019.12	1019.43
	1	1018.85	1018.93	1019.09	1019.12	1018.99	1018.88	1018.89	1018.92	1018.89	1018.84	1018.72	1018.57	1018.89
	2	1018.48	1018.39	1018.26	1018.19	1018.10	1018.03	1018.03	1018.04	1017.99	1017.89	1017.82	1017.75	1018.08
	3	1017.64	1017.54	1017.48	1017.43	1017.31	1017.15	1017.10	1017.05	1016.97	1016.92	1016.87	1016.83	1017.19
	4	1016.75	1016.74	1016.77	1016.63	1016.43	1016.35	1016.33	1016.30	1016.32	1016.36	1016.36	1016.31	1016.47
	5	1016.24	1016.16	1016.04	1016.01	1016.07	1016.07	1016.03	1016.10	1016.19	1016.18	1016.20	1016.22	1016.12
	6	1016.18	1016.13	1016.07	1016.03	1016.04	1016.09	1016.12	1016.10	1016.03	1015.97	1015.93	1015.93	1016.05
	7	1015.89	1015.88	1015.89	1015.89	1015.97	1016.04	1016.08	1016.11	1016.14	1016.13	1016.10	1016.05	1016.01
	8	1015.95	1015.90	1015.90	1015.93	1015.96	1016.04	1016.08	1016.10	1016.16	1016.20	1016.21	1016.18	1016.05
	9	1016.19	1016.29	1016.36	1016.33	1016.27	1016.23	1016.26	1016.30	1016.29	1016.29	1016.30	1016.28	1016.28
	10	1016.25	1016.19	1016.09	1016.03	1015.97	1015.86	1015.74	1015.64	1015.51	1015.37	1015.28	1015.21	1015.76
	11	1015.14	1015.09	1014.99	1014.85	1014.77	1014.69	1014.61	1014.57	1014.55	1014.47	1014.38	1014.30	1014.70
	12	1014.22	1014.11	1014.03	1013.97	1013.87	1013.80	1013.73	1013.69	1013.63	1013.52	1013.45	1013.38	1013.78
	13	1013.32	1013.26	1013.18	1013.12	1013.06	1012.97	1012.89	1012.89	1012.87	1012.79	1012.76	1012.79	1012.99
	14	1012.78	1012.82	1012.79	1012.65	1012.60	1012.53	1012.51	1012.56	1012.54	1012.49	1012.43	1012.37	1012.59
	15	1012.29	1012.23	1012.21	1012.21	1012.16	1012.13	1012.14	1012.14	1012.09	1012.00	1011.95	1011.95	1012.12
	16	1011.94	1011.90	1011.87	1011.79	1011.70	1011.65	1011.54	1011.45	1011.44	1011.42	1011.38	1011.32	1011.62
	17	1011.27	1011.20	1011.09	1010.99	1010.93	1010.94	1010.97	1011.01	1010.96	1010.86	1010.82	1010.82	1010.99
	18	1010.85	1010.87	1010.89	1010.83	1010.75	1010.79	1010.92	1010.95	1010.82	1010.74	1010.76	1010.81	1010.83
	19	1010.83	1010.80	1010.75	1010.72	1010.67	1010.64	1010.66	1010.60	1010.45	1010.35	1010.29	1010.24	1010.58
	20	1010.17	1010.20	1010.36	1010.53	1010.61	1010.63	1010.62	1010.54	1010.49	1010.39	1010.22	1010.12	1010.40
	21	1010.15	1010.27	1010.30	1010.30	1010.24	1010.07	1010.00	1010.00	1009.98	1009.95	1009.96	1009.93	1010.09
	22	1009.84	1009.73	1009.66	1009.59	1009.59	1009.64	1009.54	1009.45	1009.39	1009.31	1009.29	1009.31	1009.53
	23	1009.36	1009.27	1009.16	1009.10	1009.02	1008.93	1008.87	1008.84	1008.74	1008.67	1008.66	1008.66	1008.94

S.V.I.R.CO. Observatory - Pressure in hectoPascal – January 2018

day	hh	00_05	05_10	10_15	15_20	20_25	25_30	30_35	35_40	40_45	45_50	50_55	55_60	average
17	0	1008.70	1008.64	1008.49	1008.33	1008.25	1008.22	1008.16	1008.13	1008.12	1008.02	1007.91	1007.76	1008.21
	1	1007.58	1007.55	1007.54	1007.46	1007.42	1007.42	1007.47	1007.41	1007.32	1007.28	1007.21	1007.15	1007.40
	2	1007.14	1007.09	1006.94	1006.77	1006.58	1006.50	1006.48	1006.46	1006.45	1006.40	1006.32	1006.21	1006.61
	3	1006.09	1006.00	1005.88	1005.70	1005.57	1005.52	1005.48	1005.39	1005.32	1005.28	1005.17	1005.12	1005.54
	4	1005.13	1005.11	1005.08	1004.99	1004.93	1004.94	1004.93	1004.88	1004.83	1004.75	1004.75	1004.78	1004.92
	5	1004.76	1004.74	1004.76	1004.80	1004.83	1004.78	1004.65	1004.49	1004.34	1004.26	1004.21	1004.10	1004.56
	6	1004.03	1004.05	1004.03	1003.94	1003.95	1003.93	1003.79	1003.71	1003.59	1003.49	1003.53	1003.55	1003.80
	7	1003.44	1003.31	1003.31	1003.33	1003.36	1003.43	1003.53	1003.63	1003.65	1003.65	1003.58	1003.47	1003.47
	8	1003.49	1003.55	1003.46	1003.39	1003.39	1003.37	1003.35	1003.31	1003.33	1003.45	1003.57	1003.56	1003.43
	9	1003.52	1003.53	1003.54	1003.52	1003.57	1003.64	1003.56	1003.51	1003.45	1003.30	1003.16	1003.05	1003.44
	10	1003.02	1003.01	1002.96	1002.93	1002.85	1002.83	1002.93	1002.90	1002.80	1002.71	1002.69	1002.68	1002.86
	11	1002.65	1002.65	1002.64	1002.60	1002.65	1002.64	1002.52	1002.44	1002.48	1002.45	1002.40	1002.40	1002.54
	12	1002.34	1002.35	1002.40	1002.33	1002.20	1002.24	1002.31	1002.29	1002.21	1002.21	1002.32	1002.40	1002.30
	13	1002.46	1002.50	1002.51	1002.56	1002.66	1002.71	1002.79	1002.89	1002.99	1003.15	1003.20	1003.16	1002.79
	14	1003.28	1003.39	1003.50	1003.61	1003.65	1003.71	1003.79	1003.92	1004.03	1004.00	1003.96	1004.04	1003.74
	15	1004.12	1004.30	1004.53	1004.66	1004.75	1004.95	1005.09	1005.13	1005.28	1005.43	1005.49	1005.52	1004.93
	16	1005.56	1005.63	1005.76	1005.94	1006.05	1006.14	1006.25	1006.35	1006.51	1006.70	1006.79	1006.97	1006.22
	17	1007.47	1008.03	1008.33	1008.50	1008.69	1008.78	1008.81	1008.89	1008.94	1009.00	1009.06	1009.13	1008.63
	18	1009.25	1009.37	1009.50	1009.64	1009.78	1009.90	1010.01	1010.16	1010.31	1010.47	1010.57	1010.62	1009.96
	19	1010.73	1010.87	1011.00	1011.17	1011.30	1011.39	1011.47	1011.55	1011.65	1011.78	1011.91	1011.99	1011.40
	20	1012.06	1012.14	1012.25	1012.33	1012.36	1012.41	1012.56	1012.78	1012.94	1013.05	1013.16	1013.30	1012.61
	21	1013.46	1013.58	1013.68	1013.77	1013.86	1013.97	1014.07	1014.15	1014.23	1014.36	1014.48	1014.54	1014.01
	22	1014.62	1014.75	1014.85	1014.95	1015.08	1015.17	1015.23	1015.29	1015.36	1015.48	1015.57	1015.64	1015.16
	23	1015.70	1015.73	1015.73	1015.74	1015.76	1015.75	1015.80	1015.91	1015.91	1015.96	1016.06	1016.13	1015.85
18	0	1016.23	1016.26	1016.33	1016.41	1016.47	1016.54	1016.60	1016.60	1016.60	1016.61	1016.66	1016.68	1016.51
	1	1016.74	1016.82	1016.87	1016.90	1016.93	1017.03	1017.20	1017.34	1017.38	1017.39	1017.42	1017.44	1017.12
	2	1017.42	1017.48	1017.56	1017.61	1017.67	1017.72	1017.87	1017.95	1017.91	1017.85	1017.79	1017.78	1017.72
	3	1017.79	1017.83	1017.84	1017.80	1017.74	1017.72	1017.71	1017.80	1017.91	1017.94	1017.94	1017.90	1017.82
	4	1017.84	1017.82	1017.86	1017.88	1017.94	1017.95	1017.84	1017.80	1017.79	1017.82	1017.83	1017.76	1017.84
	5	1017.75	1017.85	1017.88	1017.94	1018.10	1018.21	1018.20	1018.26	1018.44	1018.57	1018.65	1018.76	1018.22
	6	1018.89	1018.89	1018.92	1019.04	1019.21	1019.45	1019.56	1019.51	1019.50	1019.57	1019.64	1019.65	1019.32
	7	1019.60	1019.53	1019.54	1019.62	1019.70	1019.73	1019.67	1019.62	1019.59	1019.66	1019.77	1019.76	1019.65
	8	1019.77	1019.84	1019.90	1019.82	1019.68	1019.60	1019.65	1019.78	1019.89	1019.99	1020.07	1020.09	1019.84
	9	1020.07	1020.12	1020.26	1020.36	1020.33	1020.34	1020.38	1020.32	1020.29	1020.24	1020.17	1020.08	1020.24
	10	1020.12	1020.23	1020.15	1019.98	1019.81	1019.66	1019.60	1019.64	1019.65	1019.56	1019.48	1019.44	1019.77
	11	1019.34	1019.27	1019.27	1019.27	1019.25	1019.22	1019.17	1019.08	1018.93	1018.87	1018.91	1018.84	1019.12
	12	1018.70	1018.61	1018.58	1018.58	1018.55	1018.49	1018.41	1018.43	1018.50	1018.52	1018.51	1018.46	1018.53
	13	1018.41	1018.35	1018.31	1018.27	1018.15	1018.01	1017.94	1017.93	1017.88	1017.83	1017.82	1017.80	1018.06
	14	1017.82	1017.81	1017.76	1017.74	1017.70	1017.68	1017.65	1017.60	1017.56	1017.51	1017.53	1017.51	1017.65
	15	1017.42	1017.41	1017.40	1017.38	1017.41	1017.43	1017.45	1017.49	1017.46	1017.36	1017.29	1017.23	1017.39
	16	1017.20	1017.17	1017.13	1017.13	1017.16	1017.19	1017.22	1017.28	1017.28	1017.23	1017.19	1017.16	1017.19
	17	1017.16	1017.14	1017.08	1017.04	1017.04	1017.00	1016.96	1016.94	1016.89	1016.87	1016.85	1016.78	1016.98
	18	1016.72	1016.70	1016.73	1016.78	1016.84	1016.94	1016.99	1016.98	1016.93	1016.91	1016.94	1016.90	1016.86
	19	1016.83	1016.80	1016.78	1016.77	1016.75	1016.72	1016.69	1016.63	1016.56	1016.49	1016.42	1016.39	1016.65
	20	1016.38	1016.33	1016.28	1016.27	1016.33	1016.39	1016.41	1016.34	1016.26	1016.23	1016.26	1016.31	1016.31
	21	1016.35	1016.33	1016.30	1016.27	1016.23	1016.22	1016.21	1016.19	1016.13	1016.08	1016.11	1016.09	1016.21
	22	1016.02	1016.01	1016.03	1016.00	1015.99	1015.96	1015.92	1015.88	1015.83	1015.73	1015.62	1015.58	1015.88
	23	1015.53	1015.48	1015.53	1015.57	1015.53	1015.50	1015.44	1015.37	1015.34	1015.35	1015.36	1015.42	1015.45

S.V.I.R.CO. Observatory - Pressure in hectoPascal - January 2018

day	hh	00_05	05_10	10_15	15_20	20_25	25_30	30_35	35_40	40_45	45_50	50_55	55_60	average
19	0	1015.41	1015.43	1015.45	1015.45	1015.41	1015.40	1015.40	1015.33	1015.25	1015.23	1015.26	1015.29	1015.35
	1	1015.30	1015.28	1015.27	1015.26	1015.23	1015.18	1015.14	1015.15	1015.17	1015.16	1015.08	1014.98	1015.18
	2	1014.93	1014.89	1014.87	1014.82	1014.71	1014.59	1014.50	1014.50	1014.53	1014.50	1014.44	1014.35	1014.63
	3	1014.31	1014.27	1014.22	1014.16	1014.10	1014.10	1014.11	1014.08	1014.03	1014.01	1014.00	1013.96	1014.11
	4	1013.87	1013.82	1013.83	1013.83	1013.85	1013.92	1013.94	1013.83	1013.67	1013.61	1013.60	1013.58	1013.78
	5	1013.56	1013.53	1013.53	1013.53	1013.52	1013.47	1013.42	1013.44	1013.43	1013.40	1013.36	1013.36	1013.46
	6	1013.40	1013.41	1013.38	1013.31	1013.30	1013.31	1013.32	1013.34	1013.32	1013.32	1013.35	1013.36	1013.34
	7	1013.35	1013.31	1013.26	1013.23	1013.26	1013.29	1013.23	1013.17	1013.19	1013.30	1013.38	1013.36	1013.27
	8	1013.36	1013.35	1013.31	1013.28	1013.27	1013.30	1013.35	1013.40	1013.43	1013.46	1013.47	1013.46	1013.37
	9	1013.40	1013.33	1013.37	1013.46	1013.48	1013.52	1013.59	1013.62	1013.57	1013.52	1013.53	1013.48	1013.49
	10	1013.40	1013.38	1013.35	1013.30	1013.30	1013.30	1013.28	1013.28	1013.24	1013.19	1013.15	1013.11	1013.27
	11	1013.05	1012.98	1012.96	1012.92	1012.82	1012.74	1012.72	1012.70	1012.64	1012.57	1012.52	1012.50	1012.76
	12	1012.44	1012.38	1012.34	1012.29	1012.26	1012.24	1012.20	1012.12	1012.06	1012.02	1011.98	1011.92	1012.19
	13	1011.88	1011.84	1011.77	1011.71	1011.67	1011.64	1011.58	1011.53	1011.51	1011.53	1011.55	1011.56	1011.64
	14	1011.52	1011.52	1011.56	1011.55	1011.53	1011.55	1011.55	1011.53	1011.51	1011.45	1011.44	1011.49	1011.51
	15	1011.52	1011.53	1011.46	1011.37	1011.36	1011.35	1011.37	1011.43	1011.45	1011.41	1011.42	1011.43	1011.42
	16	1011.37	1011.33	1011.32	1011.28	1011.16	1011.11	1011.13	1011.13	1011.12	1011.08	1011.05	1011.05	1011.17
	17	1011.07	1011.02	1011.00	1010.95	1010.88	1010.85	1010.87	1010.96	1011.00	1011.02	1011.11	1011.18	1010.99
	18	1011.11	1010.94	1010.86	1010.93	1010.98	1010.96	1010.94	1010.88	1010.81	1010.80	1010.83	1010.79	1010.90
	19	1010.73	1010.74	1010.83	1010.90	1010.94	1011.03	1011.10	1011.11	1011.19	1011.19	1011.13	1011.14	1011.00
	20	1011.13	1011.12	1011.11	1011.11	1011.12	1011.06	1011.00	1011.00	1011.00	1010.98	1010.93	1010.88	1011.03
	21	1010.87	1010.87	1010.84	1010.81	1010.75	1010.68	1010.67	1010.69	1010.67	1010.64	1010.59	1010.53	1010.71
	22	1010.46	1010.44	1010.43	1010.37	1010.41	1010.48	1010.46	1010.43	1010.41	1010.39	1010.37	1010.40	1010.42
	23	1010.46	1010.46	1010.47	1010.49	1010.48	1010.43	1010.38	1010.37	1010.32	1010.16	1010.04	1010.00	1010.34
20	0	1010.00	1009.96	1009.89	1009.89	1009.91	1009.91	1009.97	1010.06	1010.08	1010.12	1010.22	1010.32	1010.03
	1	1010.39	1010.42	1010.43	1010.44	1010.51	1010.60	1010.63	1010.62	1010.60	1010.57	1010.54	1010.53	1010.52
	2	1010.54	1010.49	1010.43	1010.41	1010.41	1010.42	1010.41	1010.41	1010.38	1010.30	1010.29	1010.33	1010.40
	3	1010.30	1010.22	1010.14	1010.16	1010.19	1010.15	1010.15	1010.16	1010.14	1010.14	1010.19	1010.23	1010.18
	4	1010.25	1010.24	1010.20	1010.19	1010.26	1010.34	1010.40	1010.45	1010.50	1010.53	1010.57	1010.65	1010.38
	5	1010.66	1010.65	1010.69	1010.74	1010.76	1010.77	1010.84	1010.94	1011.01	1011.05	1011.14	1011.23	1010.87
	6	1011.28	1011.32	1011.34	1011.40	1011.48	1011.53	1011.59	1011.62	1011.67	1011.70	1011.71	1011.76	1011.53
	7	1011.79	1011.85	1011.92	1011.94	1011.91	1011.92	1011.96	1012.00	1012.10	1012.21	1012.30	1012.37	1012.02
	8	1012.41	1012.48	1012.54	1012.57	1012.59	1012.57	1012.54	1012.53	1012.53	1012.55	1012.56	1012.54	1012.53
	9	1012.55	1012.61	1012.69	1012.78	1012.80	1012.81	1012.83	1012.82	1012.79	1012.79	1012.79	1012.76	1012.75
	10	1012.73	1012.72	1012.71	1012.67	1012.62	1012.56	1012.52	1012.47	1012.41	1012.34	1012.30	1012.28	1012.53
	11	1012.24	1012.21	1012.18	1012.13	1012.04	1011.99	1011.94	1011.87	1011.81	1011.74	1011.63	1011.55	1011.94
	12	1011.55	1011.56	1011.54	1011.52	1011.50	1011.46	1011.41	1011.38	1011.33	1011.28	1011.22	1011.18	1011.41
	13	1011.16	1011.12	1011.06	1011.00	1010.98	1010.96	1010.92	1010.91	1010.92	1010.97	1010.99	1011.00	1011.00
	14	1010.98	1010.98	1011.03	1011.09	1011.14	1011.13	1011.12	1011.08	1011.02	1010.97	1010.97	1011.02	1011.04
	15	1011.04	1011.01	1010.99	1010.98	1010.96	1010.95	1010.97	1010.98	1010.98	1011.00	1011.01	1011.01	1010.99
	16	1011.05	1011.14	1011.17	1011.13	1011.10	1011.12	1011.18	1011.22	1011.24	1011.21	1011.14	1011.13	1011.15
	17	1011.15	1011.17	1011.17	1011.13	1011.14	1011.13	1011.11	1011.10	1011.04	1010.97	1010.96	1010.93	1011.08
	18	1010.94	1010.98	1010.99	1011.02	1010.98	1010.87	1010.82	1010.78	1010.70	1010.64	1010.65	1010.65	1010.83
	19	1010.60	1010.51	1010.47	1010.47	1010.46	1010.41	1010.31	1010.25	1010.21	1010.14	1010.04	1009.96	1010.32
	20	1009.94	1010.00	1010.10	1010.13	1010.19	1010.26	1010.30	1010.27	1010.20	1010.15	1010.06	1009.93	1010.13
	21	1009.79	1009.69	1009.58	1009.47	1009.39	1009.29	1009.23	1009.20	1009.12	1009.09	1009.14	1009.16	1009.35
	22	1009.09	1009.04	1009.02	1009.06	1009.11	1009.10	1009.05	1008.98	1008.94	1008.84	1008.70	1008.62	1008.96
	23	1008.53	1008.41	1008.31	1008.23	1008.20	1008.17	1008.09	1008.01	1008.00	1007.98	1007.89	1007.77	1008.13

S.V.I.R.CO. Observatory - Pressure in hectoPascal – January 2018

day	hh	00_05	05_10	10_15	15_20	20_25	25_30	30_35	35_40	40_45	45_50	50_55	55_60	average
21	0	1007.72	1007.71	1007.69	1007.68	1007.61	1007.51	1007.41	1007.40	1007.44	1007.41	1007.32	1007.24	1007.50
	1	1007.15	1007.08	1007.07	1006.98	1006.81	1006.73	1006.66	1006.56	1006.49	1006.37	1006.28	1006.18	1006.69
	2	1006.00	1005.87	1005.78	1005.68	1005.58	1005.48	1005.38	1005.29	1005.20	1005.09	1004.94	1004.78	1005.42
	3	1004.70	1004.64	1004.50	1004.40	1004.36	1004.25	1004.11	1004.01	1003.97	1003.90	1003.79	1003.66	1004.19
	4	1003.54	1003.47	1003.41	1003.38	1003.42	1003.38	1003.30	1003.27	1003.21	1003.12	1003.08	1003.10	1003.30
	5	1003.05	1003.01	1003.05	1003.01	1002.96	1002.96	1002.89	1002.86	1002.87	1002.82	1002.72	1002.64	1002.90
	6	1002.63	1002.66	1002.63	1002.67	1002.74	1002.78	1002.87	1002.87	1002.83	1002.81	1002.77	1002.73	1002.75
	7	1002.73	1002.72	1002.69	1002.62	1002.60	1002.69	1002.73	1002.72	1002.76	1002.83	1002.85	1002.84	1002.73
	8	1002.88	1002.98	1003.08	1003.12	1003.17	1003.19	1003.22	1003.33	1003.38	1003.37	1003.37	1003.33	1003.20
	9	1003.28	1003.26	1003.27	1003.39	1003.57	1003.61	1003.61	1003.72	1003.80	1003.85	1003.91	1003.96	1003.60
	10	1004.02	1004.05	1004.03	1003.98	1003.94	1003.90	1003.86	1003.85	1003.85	1003.83	1003.78	1003.74	1003.90
	11	1003.71	1003.71	1003.72	1003.72	1003.71	1003.72	1003.70	1003.65	1003.62	1003.55	1003.50	1003.50	1003.65
	12	1003.47	1003.41	1003.40	1003.44	1003.44	1003.44	1003.48	1003.47	1003.46	1003.47	1003.51	1003.52	1003.46
	13	1003.49	1003.45	1003.43	1003.44	1003.48	1003.50	1003.53	1003.59	1003.66	1003.63	1003.57	1003.59	1003.53
	14	1003.60	1003.64	1003.69	1003.72	1003.71	1003.71	1003.74	1003.82	1003.89	1003.92	1003.92	1003.99	1003.78
	15	1004.12	1004.20	1004.26	1004.34	1004.36	1004.41	1004.53	1004.61	1004.71	1004.83	1004.91	1004.93	1004.52
	16	1004.97	1005.07	1005.16	1005.23	1005.31	1005.41	1005.54	1005.67	1005.83	1005.98	1006.10	1006.19	1005.54
	17	1006.30	1006.38	1006.45	1006.56	1006.67	1006.80	1006.89	1006.95	1007.01	1007.08	1007.13	1007.22	1006.78
	18	1007.34	1007.41	1007.52	1007.62	1007.62	1007.59	1007.63	1007.73	1007.87	1008.06	1008.18	1008.25	1007.73
	19	1008.34	1008.44	1008.52	1008.58	1008.63	1008.65	1008.73	1008.80	1008.84	1008.89	1008.92	1008.97	1008.69
	20	1009.06	1009.16	1009.23	1009.28	1009.33	1009.35	1009.29	1009.26	1009.33	1009.38	1009.35	1009.37	1009.28
	21	1009.46	1009.56	1009.64	1009.73	1009.87	1009.95	1009.96	1010.04	1010.16	1010.26	1010.33	1010.35	1009.94
	22	1010.40	1010.47	1010.52	1010.61	1010.72	1010.79	1010.79	1010.74	1010.70	1010.69	1010.69	1010.71	1010.65
	23	1010.70	1010.71	1010.75	1010.78	1010.86	1011.00	1011.16	1011.27	1011.33	1011.37	1011.39	1011.42	1011.06
22	0	1011.46	1011.49	1011.50	1011.50	1011.53	1011.58	1011.61	1011.62	1011.65	1011.74	1011.87	1012.01	1011.64
	1	1012.11	1012.12	1012.12	1012.16	1012.19	1012.17	1012.11	1012.01	1012.00	1011.97	1011.79	1011.74	1012.04
	2	1011.73	1011.75	1011.92	1012.01	1011.97	1012.02	1012.07	1012.12	1012.20	1012.13	1012.04	1012.04	1012.00
	3	1012.14	1012.20	1012.19	1012.17	1012.11	1012.05	1012.01	1012.03	1012.03	1011.95	1011.87	1011.83	1012.05
	4	1011.86	1011.90	1012.00	1012.09	1012.09	1012.11	1012.16	1012.16	1012.13	1012.14	1012.20	1012.26	1012.09
	5	1012.34	1012.37	1012.41	1012.52	1012.62	1012.71	1012.79	1012.87	1012.92	1012.89	1012.95	1013.03	1012.70
	6	1013.04	1013.05	1013.13	1013.20	1013.27	1013.37	1013.41	1013.45	1013.50	1013.49	1013.48	1013.54	1013.33
	7	1013.62	1013.66	1013.74	1013.82	1013.86	1013.85	1013.85	1013.91	1013.95	1013.96	1014.01	1014.03	1013.85
	8	1014.03	1014.09	1014.11	1014.11	1014.12	1014.15	1014.22	1014.27	1014.32	1014.35	1014.36	1014.35	1014.21
	9	1014.36	1014.37	1014.39	1014.40	1014.37	1014.37	1014.39	1014.40	1014.38	1014.36	1014.40	1014.45	1014.38
	10	1014.51	1014.52	1014.54	1014.55	1014.52	1014.47	1014.43	1014.44	1014.43	1014.35	1014.22	1014.19	1014.43
	11	1014.21	1014.16	1014.08	1014.06	1014.02	1013.97	1013.96	1013.94	1013.89	1013.80	1013.80	1013.77	1013.97
	12	1013.69	1013.63	1013.58	1013.60	1013.56	1013.50	1013.48	1013.45	1013.43	1013.42	1013.35	1013.31	1013.50
	13	1013.36	1013.39	1013.37	1013.35	1013.34	1013.30	1013.25	1013.19	1013.19	1013.22	1013.25	1013.27	1013.29
	14	1013.29	1013.32	1013.34	1013.39	1013.45	1013.43	1013.39	1013.33	1013.35	1013.44	1013.50	1013.47	1013.39
	15	1013.39	1013.35	1013.35	1013.32	1013.27	1013.23	1013.22	1013.21	1013.21	1013.26	1013.31	1013.35	1013.29
	16	1013.39	1013.39	1013.39	1013.42	1013.46	1013.48	1013.45	1013.38	1013.31	1013.33	1013.38	1013.35	1013.39
	17	1013.25	1013.18	1013.15	1013.21	1013.29	1013.31	1013.32	1013.22	1013.16	1013.21	1013.27	1013.33	1013.24
	18	1013.38	1013.46	1013.60	1013.70	1013.81	1013.96	1013.90	1013.68	1013.58	1013.63	1013.66	1013.68	1013.67
	19	1013.68	1013.83	1014.00	1013.88	1013.74	1013.84	1013.97	1013.99	1014.02	1014.05	1014.09	1014.08	1013.93
	20	1014.05	1014.04	1013.98	1013.90	1013.75	1013.48	1013.23	1013.28	1013.58	1013.82	1013.88	1013.87	1013.74
	21	1013.92	1013.90	1013.75	1013.62	1013.59	1013.62	1013.69	1013.64	1013.66	1013.77	1013.79	1013.80	1013.73
	22	1013.95	1014.18	1014.29	1014.31	1014.23	1014.07	1014.03	1013.99	1013.86	1013.73	1013.54	1013.45	1013.97
	23	1013.55	1013.63	1013.62	1013.49	1013.34	1013.30	1013.24	1013.21	1013.25	1013.28	1013.30	1013.30	1013.37

S.V.I.R.CO. Observatory - Pressure in hectoPascal – January 2018

day	hh	00_05	05_10	10_15	15_20	20_25	25_30	30_35	35_40	40_45	45_50	50_55	55_60	average
23	0	1013.26	1013.23	1013.20	1013.28	1013.34	1013.30	1013.25	1013.23	1013.24	1013.33	1013.49	1013.54	1013.31
	1	1013.53	1013.61	1013.78	1013.91	1013.95	1013.96	1014.01	1014.07	1014.06	1014.00	1013.96	1013.96	1013.90
	2	1014.01	1014.04	1014.04	1014.08	1014.07	1014.03	1014.05	1014.03	1014.00	1014.02	1014.02	1014.03	1014.03
	3	1014.06	1014.02	1014.01	1014.03	1014.04	1014.04	1014.10	1014.24	1014.36	1014.43	1014.47	1014.48	1014.19
	4	1014.47	1014.52	1014.64	1014.72	1014.74	1014.79	1014.89	1014.98	1015.04	1015.07	1015.09	1015.12	1014.84
	5	1015.16	1015.24	1015.23	1015.16	1015.12	1015.12	1015.17	1015.22	1015.26	1015.29	1015.35	1015.35	1015.22
	6	1015.30	1015.28	1015.26	1015.31	1015.38	1015.37	1015.36	1015.44	1015.55	1015.65	1015.80	1015.90	1015.46
	7	1015.91	1015.90	1015.89	1015.87	1015.84	1015.87	1015.94	1016.02	1016.07	1016.08	1016.19	1016.37	1015.99
	8	1016.58	1016.93	1017.23	1017.33	1017.42	1017.58	1017.78	1017.96	1018.03	1018.07	1018.13	1018.18	1017.60
	9	1018.22	1018.18	1018.14	1018.15	1018.15	1018.16	1018.19	1018.21	1018.23	1018.24	1018.25	1018.26	1018.20
	10	1018.26	1018.26	1018.26	1018.23	1018.16	1018.09	1018.08	1018.12	1018.15	1018.17	1018.16	1018.08	1018.17
	11	1018.00	1017.94	1017.89	1017.87	1017.90	1017.95	1017.99	1018.02	1017.97	1017.91	1017.92	1017.95	1017.94
	12	1017.94	1017.96	1017.98	1018.00	1018.01	1017.97	1017.96	1017.97	1017.97	1017.98	1018.01	1018.08	1017.98
	13	1018.13	1018.19	1018.28	1018.32	1018.36	1018.42	1018.44	1018.46	1018.52	1018.55	1018.55	1018.64	1018.40
	14	1018.77	1018.87	1018.94	1018.94	1018.96	1019.05	1019.13	1019.22	1019.31	1019.39	1019.46	1019.53	1019.13
	15	1019.63	1019.72	1019.79	1019.84	1019.93	1020.04	1020.10	1020.15	1020.25	1020.32	1020.38	1020.46	1020.05
	16	1020.55	1020.63	1020.72	1020.82	1020.90	1021.00	1021.10	1021.19	1021.29	1021.44	1021.57	1021.71	1021.07
	17	1021.86	1022.00	1022.08	1022.15	1022.24	1022.36	1022.47	1022.56	1022.63	1022.71	1022.84	1022.94	1022.40
	18	1023.00	1023.05	1023.05	1023.10	1023.23	1023.37	1023.49	1023.59	1023.68	1023.78	1023.88	1023.96	1023.43
	19	1024.01	1024.09	1024.16	1024.20	1024.25	1024.32	1024.42	1024.53	1024.66	1024.74	1024.79	1024.83	1024.42
	20	1024.87	1024.93	1024.95	1024.95	1024.99	1024.99	1024.99	1025.07	1025.14	1025.19	1025.21	1025.27	1025.04
	21	1025.35	1025.41	1025.44	1025.50	1025.54	1025.58	1025.64	1025.70	1025.80	1025.92	1025.98	1026.03	1025.66
	22	1026.10	1026.21	1026.32	1026.39	1026.44	1026.48	1026.53	1026.57	1026.62	1026.66	1026.67	1026.68	1026.47
	23	1026.72	1026.81	1026.88	1026.88	1026.89	1026.92	1026.94	1026.97	1027.01	1027.02	1027.05	1027.08	1026.93
24	0	1027.12	1027.12	1027.13	1027.14	1027.16	1027.20	1027.24	1027.34	1027.43	1027.48	1027.51	1027.53	1027.29
	1	1027.56	1027.59	1027.61	1027.63	1027.64	1027.67	1027.73	1027.76	1027.77	1027.76	1027.73	1027.72	1027.68
	2	1027.74	1027.76	1027.78	1027.81	1027.83	1027.83	1027.85	1027.87	1027.90	1027.94	1027.95	1027.99	1027.85
	3	1028.01	1028.01	1028.02	1028.04	1028.06	1028.05	1028.04	1028.04	1028.04	1028.05	1028.05	1028.01	1028.03
	4	1027.97	1027.97	1027.97	1027.97	1027.96	1027.92	1027.92	1027.95	1028.02	1028.12	1028.20	1028.26	1028.02
	5	1028.33	1028.40	1028.48	1028.57	1028.67	1028.77	1028.86	1028.90	1028.91	1028.93	1028.93	1028.91	1028.72
	6	1028.92	1028.96	1029.01	1029.01	1029.02	1029.08	1029.15	1029.24	1029.31	1029.36	1029.41	1029.46	1029.16
	7	1029.49	1029.53	1029.57	1029.58	1029.55	1029.53	1029.54	1029.56	1029.58	1029.62	1029.67	1029.68	1029.57
	8	1029.65	1029.62	1029.63	1029.66	1029.68	1029.75	1029.84	1029.91	1029.97	1030.04	1030.10	1030.15	1029.83
	9	1030.19	1030.23	1030.25	1030.28	1030.29	1030.32	1030.31	1030.29	1030.33	1030.31	1030.27	1030.26	1030.28
	10	1030.23	1030.18	1030.16	1030.16	1030.14	1030.09	1030.05	1030.01	1029.98	1029.94	1029.90	1029.87	1030.06
	11	1029.83	1029.78	1029.70	1029.63	1029.59	1029.55	1029.49	1029.44	1029.39	1029.35	1029.30	1029.26	1029.52
	12	1029.20	1029.14	1029.09	1029.01	1028.93	1028.88	1028.85	1028.82	1028.77	1028.74	1028.73	1028.72	1028.90
	13	1028.67	1028.61	1028.55	1028.52	1028.51	1028.49	1028.45	1028.42	1028.41	1028.43	1028.44	1028.45	1028.49
	14	1028.45	1028.46	1028.49	1028.54	1028.55	1028.55	1028.56	1028.59	1028.62	1028.62	1028.63	1028.66	1028.56
	15	1028.66	1028.68	1028.70	1028.72	1028.73	1028.75	1028.78	1028.81	1028.85	1028.86	1028.87	1028.85	1028.77
	16	1028.81	1028.80	1028.80	1028.78	1028.76	1028.77	1028.78	1028.80	1028.82	1028.83	1028.86	1028.88	1028.81
	17	1028.90	1028.93	1028.93	1028.93	1028.94	1028.94	1028.94	1028.96	1028.97	1028.95	1028.94	1028.96	1028.94
	18	1028.96	1028.98	1029.01	1029.04	1029.06	1029.06	1029.04	1029.00	1028.99	1029.02	1029.04	1029.06	1029.02
	19	1029.08	1029.09	1029.09	1029.12	1029.17	1029.20	1029.25	1029.29	1029.30	1029.32	1029.34	1029.36	1029.22
	20	1029.33	1029.33	1029.35	1029.34	1029.35	1029.36	1029.35	1029.36	1029.38	1029.39	1029.40	1029.44	1029.36
	21	1029.45	1029.44	1029.44	1029.44	1029.45	1029.43	1029.42	1029.46	1029.49	1029.50	1029.50	1029.50	1029.46
	22	1029.48	1029.43	1029.40	1029.38	1029.36	1029.34	1029.32	1029.30	1029.27	1029.24	1029.23	1029.20	1029.33
	23	1029.16	1029.16	1029.16	1029.14	1029.11	1029.06	1029.03	1029.02	1028.99	1028.99	1028.99	1028.96	1029.06

S.V.I.R.CO. Observatory - Pressure in hectoPascal – January 2018

day	hh	00_05	05_10	10_15	15_20	20_25	25_30	30_35	35_40	40_45	45_50	50_55	55_60	average
25	0	1028.95	1028.93	1028.90	1028.89	1028.87	1028.86	1028.88	1028.87	1028.85	1028.82	1028.79	1028.81	1028.86
	1	1028.80	1028.79	1028.82	1028.82	1028.78	1028.76	1028.77	1028.80	1028.80	1028.77	1028.74	1028.70	1028.78
	2	1028.65	1028.61	1028.57	1028.56	1028.53	1028.50	1028.48	1028.45	1028.47	1028.49	1028.51	1028.50	1028.52
	3	1028.46	1028.40	1028.36	1028.34	1028.30	1028.26	1028.25	1028.22	1028.22	1028.21	1028.21	1028.24	1028.29
	4	1028.24	1028.25	1028.24	1028.24	1028.24	1028.25	1028.24	1028.17	1028.15	1028.15	1028.12	1028.09	1028.20
	5	1028.11	1028.19	1028.24	1028.24	1028.20	1028.18	1028.20	1028.22	1028.22	1028.21	1028.24	1028.27	1028.21
	6	1028.29	1028.30	1028.30	1028.34	1028.36	1028.38	1028.42	1028.46	1028.45	1028.43	1028.43	1028.45	1028.38
	7	1028.46	1028.45	1028.45	1028.45	1028.43	1028.43	1028.42	1028.41	1028.39	1028.35	1028.34	1028.32	1028.41
	8	1028.29	1028.25	1028.23	1028.22	1028.23	1028.26	1028.28	1028.30	1028.30	1028.28	1028.28	1028.28	1028.27
	9	1028.27	1028.25	1028.24	1028.21	1028.18	1028.15	1028.15	1028.17	1028.18	1028.20	1028.20	1028.15	1028.19
	10	1028.10	1028.06	1027.99	1027.94	1027.89	1027.83	1027.75	1027.67	1027.57	1027.49	1027.43	1027.36	1027.75
	11	1027.32	1027.29	1027.23	1027.15	1027.06	1027.00	1026.95	1026.89	1026.83	1026.77	1026.71	1026.65	1026.98
	12	1026.58	1026.49	1026.41	1026.34	1026.25	1026.15	1026.07	1026.03	1025.97	1025.86	1025.77	1025.72	1026.13
	13	1025.67	1025.62	1025.58	1025.52	1025.50	1025.47	1025.46	1025.45	1025.43	1025.41	1025.41	1025.41	1025.49
	14	1025.39	1025.35	1025.30	1025.26	1025.23	1025.19	1025.14	1025.09	1025.02	1024.97	1024.94	1024.92	1025.15
	15	1024.90	1024.87	1024.85	1024.82	1024.80	1024.83	1024.86	1024.88	1024.89	1024.89	1024.88	1024.86	1024.86
	16	1024.86	1024.87	1024.86	1024.85	1024.86	1024.86	1024.84	1024.80	1024.77	1024.74	1024.72	1024.72	1024.81
	17	1024.74	1024.74	1024.74	1024.76	1024.79	1024.83	1024.86	1024.87	1024.89	1024.93	1024.94	1024.94	1024.83
	18	1024.92	1024.90	1024.91	1024.92	1024.93	1024.93	1024.91	1024.89	1024.85	1024.81	1024.76	1024.73	1024.87
	19	1024.71	1024.70	1024.70	1024.70	1024.69	1024.66	1024.62	1024.58	1024.55	1024.53	1024.51	1024.49	1024.62
	20	1024.46	1024.43	1024.43	1024.45	1024.46	1024.46	1024.44	1024.41	1024.40	1024.38	1024.33	1024.32	1024.41
21	1024.33	1024.34	1024.36	1024.36	1024.35	1024.31	1024.23	1024.22	1024.25	1024.24	1024.22	1024.19	1024.28	
22	1024.15	1024.12	1024.14	1024.17	1024.18	1024.19	1024.21	1024.22	1024.20	1024.20	1024.20	1024.15	1024.18	
23	1024.10	1024.06	1024.03	1023.97	1023.89	1023.83	1023.81	1023.80	1023.78	1023.76	1023.70	1023.60	1023.86	
26	0	1023.46	1023.42	1023.36	1023.32	1023.27	1023.21	1023.15	1023.08	1023.05	1023.07	1023.08	1023.09	1023.20
	1	1023.10	1023.10	1023.09	1023.07	1023.06	1023.05	1023.05	1023.05	1023.02	1022.98	1022.95	1022.92	1023.03
	2	1022.92	1022.91	1022.85	1022.79	1022.73	1022.66	1022.62	1022.61	1022.60	1022.58	1022.56	1022.52	1022.69
	3	1022.50	1022.44	1022.33	1022.25	1022.21	1022.17	1022.15	1022.12	1022.11	1022.12	1022.14	1022.14	1022.22
	4	1022.12	1022.12	1022.12	1022.10	1022.03	1021.96	1021.92	1021.89	1021.88	1021.87	1021.88	1021.90	1021.98
	5	1021.93	1021.99	1022.05	1022.08	1022.10	1022.12	1022.13	1022.16	1022.16	1022.16	1022.16	1022.16	1022.10
	6	1022.22	1022.28	1022.24	1022.19	1022.17	1022.14	1022.13	1022.15	1022.18	1022.18	1022.14	1022.07	1022.17
	7	1022.01	1021.97	1021.93	1021.86	1021.81	1021.80	1021.81	1021.87	1021.93	1021.96	1021.95	1021.90	1021.90
	8	1021.89	1021.91	1021.94	1021.97	1021.96	1021.96	1021.99	1022.03	1022.07	1022.11	1022.11	1022.13	1022.00
	9	1022.17	1022.20	1022.20	1022.19	1022.20	1022.22	1022.21	1022.21	1022.25	1022.23	1022.16	1022.12	1022.19
	10	1022.08	1022.02	1021.98	1021.96	1021.95	1021.92	1021.91	1021.89	1021.88	1021.83	1021.81	1021.83	1021.92
	11	1021.85	1021.86	1021.85	1021.84	1021.82	1021.77	1021.70	1021.67	1021.62	1021.60	1021.58	1021.56	1021.73
	12	1021.53	1021.52	1021.53	1021.53	1021.54	1021.53	1021.51	1021.48	1021.46	1021.46	1021.44	1021.43	1021.49
13	1021.39	1021.35	1021.32	1021.36	1021.39	1021.38	1021.37	1021.32	1021.28	1021.30	1021.32	1021.33	1021.34	
14	1021.32	1021.31	1021.33	1021.35	1021.34	1021.34	1021.39	1021.46	1021.49	1021.48	1021.51	1021.57	1021.40	
15	1021.60	1021.62	1021.64	1021.64	1021.62	1021.61	1021.61	1021.64	1021.67	1021.67	1021.71	1021.75	1021.65	
16	1021.77	1021.78	1021.76	1021.77	1021.81	1021.82	1021.84	1021.87	1021.89	1021.90	1021.94	1021.98	1021.84	
17	1022.01	1022.04	1022.04	1022.01	1022.02	1022.07	1022.10	1022.14	1022.22	1022.31	1022.40	1022.44	1022.15	
18	1022.42	1022.43	1022.46	1022.47	1022.51	1022.55	1022.60	1022.65	1022.68	1022.71	1022.73	1022.78	1022.58	
19	1022.80	1022.82	1022.85	1022.90	1022.95	1022.96	1022.96	1022.99	1023.05	1023.09	1023.14	1023.21	1022.97	
20	1023.27	1023.32	1023.33	1023.30	1023.30	1023.34	1023.35	1023.38	1023.44	1023.47	1023.48	1023.50	1023.37	
21	1023.51	1023.49	1023.48	1023.51	1023.55	1023.60	1023.62	1023.64	1023.66	1023.68	1023.67	1023.73	1023.59	
22	1023.83	1023.90	1023.93	1023.96	1023.97	1023.97	1023.99	1024.02	1024.06	1024.10	1024.13	1024.13	1024.00	
23	1024.10	1024.11	1024.16	1024.18	1024.15	1024.15	1024.15	1024.16	1024.17	1024.17	1024.15	1024.14	1024.15	

S.V.I.R.CO. Observatory - Pressure in hectoPascal – January 2018

day	hh	00_05	05_10	10_15	15_20	20_25	25_30	30_35	35_40	40_45	45_50	50_55	55_60	average
27	0	1024.11	1024.14	1024.19	1024.20	1024.17	1024.17	1024.21	1024.24	1024.26	1024.28	1024.28	1024.28	1024.21
	1	1024.25	1024.24	1024.25	1024.22	1024.21	1024.20	1024.21	1024.24	1024.26	1024.30	1024.34	1024.35	1024.25
	2	1024.36	1024.35	1024.33	1024.30	1024.28	1024.26	1024.25	1024.27	1024.31	1024.30	1024.27	1024.26	1024.29
	3	1024.27	1024.29	1024.29	1024.30	1024.34	1024.38	1024.38	1024.38	1024.42	1024.44	1024.44	1024.48	1024.37
	4	1024.52	1024.57	1024.62	1024.67	1024.70	1024.69	1024.71	1024.75	1024.81	1024.87	1024.95	1025.01	1024.74
	5	1025.02	1025.05	1025.10	1025.17	1025.25	1025.33	1025.38	1025.43	1025.47	1025.50	1025.52	1025.54	1025.31
	6	1025.58	1025.65	1025.70	1025.73	1025.80	1025.88	1025.94	1025.98	1026.02	1026.07	1026.16	1026.22	1025.89
	7	1026.27	1026.34	1026.39	1026.44	1026.52	1026.59	1026.63	1026.64	1026.66	1026.69	1026.69	1026.70	1026.55
	8	1026.74	1026.76	1026.78	1026.81	1026.88	1026.95	1027.01	1027.07	1027.10	1027.16	1027.23	1027.26	1026.98
	9	1027.30	1027.39	1027.46	1027.49	1027.52	1027.59	1027.64	1027.66	1027.70	1027.75	1027.77	1027.77	1027.58
	10	1027.77	1027.78	1027.80	1027.81	1027.82	1027.82	1027.80	1027.78	1027.78	1027.77	1027.73	1027.66	1027.77
	11	1027.62	1027.60	1027.57	1027.55	1027.50	1027.47	1027.48	1027.46	1027.41	1027.36	1027.33	1027.32	1027.47
	12	1027.30	1027.29	1027.25	1027.23	1027.21	1027.16	1027.11	1027.07	1027.04	1027.00	1026.99	1026.97	1027.13
	13	1026.97	1027.01	1027.04	1027.03	1027.03	1027.06	1027.06	1027.04	1027.07	1027.09	1027.10	1027.13	1027.05
	14	1027.17	1027.19	1027.20	1027.20	1027.18	1027.18	1027.21	1027.24	1027.24	1027.26	1027.28	1027.31	1027.22
	15	1027.32	1027.34	1027.39	1027.45	1027.51	1027.54	1027.61	1027.68	1027.75	1027.81	1027.87	1027.93	1027.60
	16	1028.00	1028.06	1028.11	1028.16	1028.24	1028.34	1028.43	1028.48	1028.50	1028.54	1028.59	1028.64	1028.34
	17	1028.70	1028.76	1028.81	1028.86	1028.91	1028.93	1028.96	1029.01	1029.07	1029.14	1029.20	1029.25	1028.96
	18	1029.29	1029.33	1029.35	1029.39	1029.45	1029.51	1029.54	1029.57	1029.59	1029.62	1029.69	1029.76	1029.50
	19	1029.82	1029.85	1029.86	1029.90	1029.96	1030.03	1030.10	1030.14	1030.17	1030.19	1030.21	1030.25	1030.04
	20	1030.31	1030.38	1030.42	1030.47	1030.54	1030.58	1030.59	1030.60	1030.63	1030.68	1030.70	1030.72	1030.55
	21	1030.75	1030.78	1030.79	1030.77	1030.72	1030.69	1030.70	1030.72	1030.78	1030.85	1030.90	1030.93	1030.78
	22	1030.98	1031.05	1031.10	1031.16	1031.19	1031.22	1031.26	1031.28	1031.29	1031.31	1031.31	1031.30	1031.20
	23	1031.29	1031.30	1031.28	1031.25	1031.26	1031.26	1031.28	1031.30	1031.31	1031.30	1031.29	1031.32	1031.29
28	0	1031.35	1031.35	1031.35	1031.35	1031.33	1031.32	1031.34	1031.39	1031.42	1031.41	1031.41	1031.47	1031.37
	1	1031.51	1031.56	1031.56	1031.53	1031.54	1031.56	1031.58	1031.60	1031.62	1031.61	1031.59	1031.58	1031.57
	2	1031.58	1031.58	1031.57	1031.53	1031.50	1031.49	1031.47	1031.46	1031.46	1031.45	1031.46	1031.50	1031.50
	3	1031.53	1031.53	1031.54	1031.56	1031.57	1031.62	1031.67	1031.69	1031.73	1031.78	1031.80	1031.83	1031.65
	4	1031.88	1031.95	1032.00	1032.04	1032.07	1032.11	1032.14	1032.19	1032.25	1032.30	1032.34	1032.36	1032.13
	5	1032.40	1032.44	1032.48	1032.51	1032.54	1032.59	1032.66	1032.71	1032.72	1032.70	1032.71	1032.73	1032.60
	6	1032.72	1032.76	1032.84	1032.90	1032.92	1032.94	1032.99	1033.02	1033.10	1033.20	1033.30	1033.38	1033.00
	7	1033.45	1033.54	1033.60	1033.62	1033.65	1033.68	1033.69	1033.68	1033.70	1033.73	1033.76	1033.81	1033.66
	8	1033.87	1033.92	1033.96	1033.98	1033.99	1034.04	1034.09	1034.12	1034.16	1034.18	1034.20	1034.23	1034.06
	9	1034.24	1034.23	1034.23	1034.26	1034.30	1034.31	1034.29	1034.26	1034.22	1034.23	1034.26	1034.25	1034.25
	10	1034.26	1034.26	1034.24	1034.24	1034.22	1034.21	1034.19	1034.16	1034.14	1034.13	1034.15	1034.17	1034.19
	11	1034.14	1034.10	1034.08	1034.05	1033.99	1033.93	1033.86	1033.81	1033.77	1033.75	1033.72	1033.65	1033.90
	12	1033.57	1033.53	1033.49	1033.44	1033.35	1033.26	1033.20	1033.14	1033.08	1033.06	1033.04	1032.99	1033.26
	13	1032.95	1032.92	1032.88	1032.85	1032.77	1032.70	1032.66	1032.61	1032.58	1032.54	1032.51	1032.48	1032.70
	14	1032.44	1032.44	1032.44	1032.42	1032.43	1032.44	1032.45	1032.46	1032.45	1032.44	1032.43	1032.42	1032.44
	15	1032.40	1032.37	1032.36	1032.38	1032.37	1032.36	1032.37	1032.37	1032.37	1032.37	1032.40	1032.42	1032.38
	16	1032.42	1032.47	1032.52	1032.54	1032.58	1032.65	1032.73	1032.79	1032.82	1032.82	1032.82	1032.83	1032.66
	17	1032.83	1032.85	1032.88	1032.90	1032.93	1032.97	1033.00	1033.05	1033.12	1033.19	1033.23	1033.24	1033.01
	18	1033.25	1033.26	1033.29	1033.31	1033.32	1033.33	1033.35	1033.39	1033.41	1033.42	1033.45	1033.45	1033.35
	19	1033.47	1033.51	1033.54	1033.54	1033.53	1033.52	1033.51	1033.52	1033.53	1033.54	1033.58	1033.59	1033.53
	20	1033.61	1033.62	1033.61	1033.62	1033.63	1033.66	1033.68	1033.67	1033.68	1033.70	1033.67	1033.64	1033.65
	21	1033.64	1033.66	1033.67	1033.68	1033.67	1033.64	1033.61	1033.60	1033.59	1033.58	1033.57	1033.55	1033.62
	22	1033.55	1033.56	1033.56	1033.54	1033.54	1033.54	1033.56	1033.58	1033.59	1033.60	1033.62	1033.62	1033.57
	23	1033.61	1033.60	1033.60	1033.60	1033.60	1033.58	1033.55	1033.50	1033.47	1033.46	1033.45	1033.45	1033.54

S.V.I.R.CO. Observatory - Pressure in hectoPascal – January 2018

day	hh	00_05	05_10	10_15	15_20	20_25	25_30	30_35	35_40	40_45	45_50	50_55	55_60	average
29	0	1033.48	1033.49	1033.49	1033.48	1033.47	1033.47	1033.47	1033.47	1033.44	1033.43	1033.44	1033.42	1033.46
	1	1033.42	1033.42	1033.42	1033.41	1033.41	1033.39	1033.37	1033.38	1033.38	1033.36	1033.33	1033.31	1033.38
	2	1033.28	1033.25	1033.22	1033.20	1033.20	1033.17	1033.13	1033.10	1033.07	1033.04	1032.99	1032.94	1033.13
	3	1032.92	1032.90	1032.87	1032.84	1032.83	1032.86	1032.88	1032.86	1032.82	1032.80	1032.78	1032.75	1032.84
	4	1032.76	1032.76	1032.73	1032.72	1032.71	1032.67	1032.63	1032.65	1032.67	1032.69	1032.71	1032.70	1032.70
	5	1032.68	1032.66	1032.67	1032.71	1032.75	1032.75	1032.74	1032.73	1032.72	1032.72	1032.72	1032.72	1032.71
	6	1032.74	1032.75	1032.78	1032.83	1032.84	1032.83	1032.87	1032.93	1032.97	1033.01	1033.03	1033.06	1032.88
	7	1033.10	1033.11	1033.09	1033.08	1033.08	1033.08	1033.09	1033.09	1033.08	1033.08	1033.07	1033.09	1033.08
	8	1033.11	1033.13	1033.15	1033.16	1033.18	1033.18	1033.20	1033.22	1033.22	1033.23	1033.26	1033.30	1033.19
	9	1033.29	1033.26	1033.24	1033.24	1033.26	1033.26	1033.24	1033.23	1033.24	1033.23	1033.23	1033.23	1033.24
	10	1033.21	1033.18	1033.12	1033.07	1033.02	1032.95	1032.88	1032.82	1032.76	1032.69	1032.63	1032.58	1032.91
	11	1032.52	1032.45	1032.38	1032.31	1032.22	1032.13	1032.06	1032.01	1031.96	1031.94	1031.90	1031.85	1032.14
	12	1031.79	1031.73	1031.68	1031.63	1031.57	1031.52	1031.46	1031.39	1031.32	1031.23	1031.14	1031.08	1031.46
	13	1031.03	1030.97	1030.93	1030.91	1030.87	1030.83	1030.77	1030.72	1030.70	1030.68	1030.66	1030.63	1030.81
	14	1030.62	1030.62	1030.60	1030.58	1030.55	1030.53	1030.52	1030.51	1030.51	1030.49	1030.45	1030.40	1030.53
	15	1030.34	1030.32	1030.28	1030.25	1030.23	1030.20	1030.20	1030.21	1030.17	1030.12	1030.08	1030.03	1030.20
	16	1029.98	1029.96	1029.95	1029.96	1029.98	1029.99	1030.00	1030.00	1030.02	1030.04	1030.05	1030.06	1030.00
	17	1030.07	1030.06	1030.04	1030.03	1030.03	1030.04	1030.04	1030.04	1030.01	1029.97	1029.97	1029.97	1030.02
	18	1029.97	1029.98	1029.98	1029.96	1029.93	1029.91	1029.92	1029.92	1029.90	1029.91	1029.92	1029.92	1029.93
	19	1029.94	1029.98	1030.01	1030.03	1030.05	1030.05	1030.05	1030.06	1030.09	1030.15	1030.19	1030.22	1030.07
	20	1030.24	1030.24	1030.25	1030.27	1030.28	1030.28	1030.27	1030.28	1030.28	1030.29	1030.31	1030.33	1030.27
	21	1030.36	1030.38	1030.38	1030.39	1030.38	1030.35	1030.33	1030.30	1030.26	1030.23	1030.23	1030.25	1030.32
	22	1030.24	1030.20	1030.20	1030.22	1030.22	1030.22	1030.22	1030.23	1030.21	1030.20	1030.19	1030.17	1030.21
	23	1030.14	1030.10	1030.07	1030.06	1030.07	1030.08	1030.08	1030.08	1030.07	1030.03	1029.96	1029.89	1030.05
30	0	1029.78	1029.79	1029.80	1029.80	1029.81	1029.79	1029.76	1029.75	1029.74	1029.73	1029.70	1029.65	1029.75
	1	1029.61	1029.57	1029.54	1029.53	1029.51	1029.45	1029.38	1029.34	1029.31	1029.31	1029.29	1029.23	1029.42
	2	1029.17	1029.14	1029.13	1029.09	1029.03	1029.02	1029.01	1028.99	1028.97	1028.94	1028.92	1028.91	1029.03
	3	1028.92	1028.93	1028.97	1029.00	1028.99	1028.95	1028.93	1028.94	1028.95	1028.97	1028.98	1028.97	1028.96
	4	1028.96	1028.95	1028.93	1028.94	1028.95	1028.95	1028.96	1028.97	1028.99	1029.00	1029.00	1029.06	1028.97
	5	1029.12	1029.16	1029.17	1029.16	1029.18	1029.19	1029.22	1029.24	1029.23	1029.23	1029.26	1029.33	1029.21
	6	1029.40	1029.47	1029.54	1029.58	1029.56	1029.54	1029.54	1029.57	1029.60	1029.61	1029.65	1029.71	1029.56
	7	1029.71	1029.67	1029.67	1029.71	1029.72	1029.71	1029.73	1029.74	1029.74	1029.76	1029.77	1029.75	1029.72
	8	1029.75	1029.75	1029.73	1029.70	1029.69	1029.67	1029.65	1029.66	1029.69	1029.72	1029.75	1029.79	1029.71
	9	1029.80	1029.81	1029.83	1029.85	1029.89	1029.94	1029.95	1029.94	1029.92	1029.93	1029.93	1029.91	1029.89
	10	1029.88	1029.82	1029.78	1029.73	1029.68	1029.64	1029.58	1029.52	1029.47	1029.40	1029.32	1029.25	1029.59
	11	1029.18	1029.11	1029.05	1028.98	1028.91	1028.85	1028.78	1028.73	1028.68	1028.59	1028.46	1028.35	1028.80
	12	1028.29	1028.20	1028.10	1028.01	1027.92	1027.85	1027.77	1027.72	1027.67	1027.61	1027.56	1027.50	1027.85
	13	1027.44	1027.40	1027.36	1027.33	1027.30	1027.24	1027.23	1027.24	1027.23	1027.21	1027.17	1027.13	1027.27
	14	1027.12	1027.09	1027.05	1027.00	1026.96	1026.93	1026.91	1026.88	1026.86	1026.85	1026.82	1026.78	1026.93
	15	1026.77	1026.76	1026.75	1026.72	1026.71	1026.73	1026.74	1026.75	1026.75	1026.74	1026.73	1026.72	1026.74
	16	1026.73	1026.73	1026.71	1026.73	1026.75	1026.76	1026.77	1026.78	1026.80	1026.81	1026.82	1026.83	1026.77
	17	1026.84	1026.85	1026.88	1026.92	1026.94	1026.98	1026.98	1026.99	1027.05	1027.11	1027.17	1027.22	1026.99
	18	1027.24	1027.26	1027.29	1027.33	1027.34	1027.37	1027.41	1027.44	1027.47	1027.49	1027.51	1027.54	1027.39
	19	1027.58	1027.60	1027.61	1027.64	1027.67	1027.70	1027.73	1027.80	1027.85	1027.87	1027.88	1027.88	1027.73
	20	1027.90	1027.90	1027.87	1027.84	1027.79	1027.78	1027.83	1027.86	1027.86	1027.84	1027.85	1027.86	1027.85
	21	1027.84	1027.84	1027.85	1027.84	1027.82	1027.80	1027.77	1027.76	1027.75	1027.71	1027.69	1027.68	1027.78
	22	1027.67	1027.65	1027.62	1027.59	1027.56	1027.56	1027.59	1027.59	1027.59	1027.55	1027.51	1027.51	1027.58
	23	1027.47	1027.40	1027.36	1027.33	1027.34	1027.35	1027.36	1027.36	1027.33	1027.29	1027.26	1027.25	1027.34

S.V.I.R.CO. Observatory - Pressure in hectoPascal – January 2018

day	hh	00_05	05_10	10_15	15_20	20_25	25_30	30_35	35_40	40_45	45_50	50_55	55_60	average
31	0	1027.23	1027.20	1027.15	1027.09	1027.05	1027.00	1026.96	1026.93	1026.93	1026.93	1026.91	1026.88	1027.01
	1	1026.87	1026.84	1026.76	1026.69	1026.66	1026.63	1026.57	1026.51	1026.44	1026.37	1026.32	1026.27	1026.57
	2	1026.19	1026.13	1026.09	1026.04	1025.99	1025.94	1025.90	1025.85	1025.79	1025.74	1025.69	1025.66	1025.92
	3	1025.64	1025.61	1025.59	1025.59	1025.56	1025.54	1025.54	1025.52	1025.49	1025.46	1025.44	1025.41	1025.53
	4	1025.37	1025.35	1025.34	1025.32	1025.31	1025.31	1025.31	1025.33	1025.37	1025.40	1025.40	1025.37	1025.35
	5	1025.34	1025.28	1025.28	1025.30	1025.32	1025.35	1025.36	1025.38	1025.39	1025.39	1025.36	1025.37	1025.34
	6	1025.40	1025.39	1025.37	1025.35	1025.38	1025.45	1025.47	1025.46	1025.49	1025.53	1025.49	1025.44	1025.43
	7	1025.46	1025.52	1025.52	1025.48	1025.46	1025.41	1025.38	1025.40	1025.38	1025.36	1025.32	1025.29	1025.41
	8	1025.30	1025.29	1025.27	1025.26	1025.24	1025.15	1025.11	1025.17	1025.22	1025.20	1025.14	1025.13	1025.21
	9	1025.15	1025.14	1025.12	1025.12	1025.15	1025.18	1025.16	1025.14	1025.15	1025.18	1025.20	1025.21	1025.16
	10	1025.18	1025.10	1025.09	1025.11	1025.10	1025.01	1024.92	1024.89	1024.85	1024.81	1024.75	1024.69	1024.96
	11	1024.66	1024.62	1024.56	1024.48	1024.40	1024.33	1024.25	1024.16	1024.08	1024.00	1023.91	1023.83	1024.27
	12	1023.73	1023.64	1023.59	1023.56	1023.51	1023.43	1023.37	1023.30	1023.21	1023.12	1023.05	1023.01	1023.38
	13	1022.93	1022.85	1022.80	1022.75	1022.74	1022.73	1022.70	1022.68	1022.68	1022.67	1022.68	1022.69	1022.74
	14	1022.67	1022.65	1022.65	1022.62	1022.57	1022.56	1022.54	1022.49	1022.46	1022.44	1022.40	1022.36	1022.53
	15	1022.33	1022.30	1022.25	1022.18	1022.08	1022.00	1021.97	1021.96	1021.96	1021.97	1021.95	1021.91	1022.07
	16	1021.88	1021.85	1021.85	1021.85	1021.81	1021.76	1021.71	1021.67	1021.61	1021.55	1021.50	1021.45	1021.70
	17	1021.38	1021.34	1021.30	1021.21	1021.15	1021.13	1021.08	1021.02	1020.99	1020.97	1020.96	1020.97	1021.12
	18	1020.97	1020.94	1020.91	1020.90	1020.88	1020.84	1020.81	1020.80	1020.82	1020.82	1020.80	1020.78	1020.85
	19	1020.75	1020.70	1020.63	1020.58	1020.52	1020.44	1020.36	1020.33	1020.33	1020.32	1020.32	1020.27	1020.46
	20	1020.22	1020.21	1020.14	1020.07	1020.07	1020.05	1020.02	1020.02	1020.01	1019.95	1019.92	1019.94	1020.05
	21	1019.92	1019.91	1019.89	1019.85	1019.84	1019.84	1019.79	1019.62	1019.61	1019.72	1019.73	1019.71	1019.78
	22	1019.66	1019.55	1019.48	1019.46	1019.41	1019.37	1019.30	1019.19	1019.08	1019.01	1018.94	1018.92	1019.28
	23	1018.90	1018.82	1018.71	1018.63	1018.60	1018.56	1018.56	1018.62	1018.63	1018.62	1018.57	1018.51	1018.64

