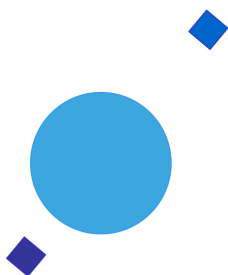


INAF



ISTITUTO NAZIONALE DI ASTROFISICA
NATIONAL INSTITUTE FOR ASTROPHYSICS

SVIRCO Prompt Report: December 2017

Francesco Re

INAF/IAPS-2018-01

January 2018

ISTITUTO DI ASTROFISICA E PLANETOLOGIA SPAZIALI

AREA DI RICERCA ROMA - TOR VERGATA

Via del Fosso del Cavaliere, 100 - 00133 Roma (ITALIA)

SVIRCO Prompt Report: December 2017

Francesco Re

*IAPS - INAF, Area di Ricerca Roma - Tor Vergata
Via del Fosso del Cavaliere, 100 - 00133 Roma, Italy,*

Abstract

The pressure corrected intensity of the nucleonic component, produced by primary cosmic rays and recorded in December 2017 by the Neutron Monitor of SVIRCO-Rome (present geographic position: 41.86° N - 12.47° E; altitude about s.l.), is reported in prompt form together with the barometric pressure data.

SVIRCO OBSERVATORY

During the 1st International Geophysics Year (1957) an international network of “ground-based detectors” for continuous cosmic ray measurements was world-wide established.

The cosmic ray station of Rome joined this network with the purpose to study the time variations of primary cosmic rays (**Studio Variazioni Intensità Raggi Cosmici: S.V.I.R.CO**) and their modulation in the heliosphere.

From July 1957 to April 1997, the SVIRCO Station (now Observatory) performed uninterrupted measurements at the Physics Department “G. Marconi” of “La Sapienza” University of Rome (41.90° N, 12.52° E, altitude about 60 m a.s.l.)

In May 1997 the neutron monitor was moved to the Physics Department “E. Amaldi” of “Roma Tre” University. Since then it has been continuously running at the new location (41.86° N, 12.47° E, altitude about 0 m a.s.l.).

The SVIRCO Observatory (INAF/IAPS-UNIRomaTre collaboration) is housed in a reserved building provided with a double air-conditioning system. The inner temperature is permanently restrained in a range of 23°-26° C, meanwhile the relative humidity is kept below 57%. Either the environmental parameters are continuously checked and recorded by digital sensors.

On January 1, 2005 three counters were added to the detector. This upgrade, from 17 to 20 NM-64, made the SVIRCO neutron monitor still consist of 5 sections but modified its geometry. Actually the new arrangement has been composed of three 3-counter, one 5-counter and one 6-counter units. The enhancement improved not only the overall counting rate of 15.6 % (January 2005) but, as a result, also the statistical quality of the recorded data.

On July 3, 2017 six counters experienced failure and were removed from the detector until 24 July. On 25 July 2017 a number of 2 counters was added to the detector up to a total of 16 counters. The new arrangement has been composed of three 3-counter, one 5-counter and one 2-counter units. The overall counting rate has decreased of about 20% (July 2017) with a lower statistical quality of the recorded data.

Each of the 16 BF₃ proportional counters (BP-28 type) is equipped with a smart amplifier/discriminator circuit complete with a spectrum stabilizer. This new electronic unit, developed in our laboratory, holds firmly the pulse height spectrum of the amplifier output (within a range of more than 150 volts around the operating voltage), providing the counter with a great immunity against high voltage variations.

Anyway, systematic and exhaustive tests of the counters are regularly performed. The output pulses of the amplifiers, discriminated by the threshold gates, are collected and stored into a multi-channel analyzer. The analysis of the height distribution (spectrum) of the amplifier pulses coinciding with the discriminator ones, is essential to verify the long term efficiency of each counter together with the amplifier gain and the discriminator threshold level.

As well as the amplifier/discriminator circuits, a large part of the electronic instrumentation operating in the Observatory was designed and realized in our laboratory together with the software for data acquisition and pre-elaboration.

In order to improve the reliability of the recorded data and to prevent measurement breakdowns, two independent systems perform contemporary the data acquisition. Each system is remotely controlled by a dedicated computer and is timed by a high stability quartz clock and/or a GPS receiver. One equipment runs according to a timing of 1 minute and fulfils the acquisition of the 16 counters separately. The other one records the individual 5-minute counting rate of each detector section in addition to the rates of the overall multiplicity, sorted into separated counting channels (from 1 to greater than 8).

A special care is devoted to the atmospheric pressure measurements; thus they are carried out by means of not less than three barometers at the same time. These instruments (achieving a resolution up to 0.01 hPa), are constantly checked out each other for the best measuring accuracy and reliability. Furthermore, the devices in use are equipped with different types of transducer such as vibrating cylinder, force balance and quartz, therefore, throughout their different behaviours, it is possible to point out the occurrence of any long-term drift and eventually to re-calibrate the instruments themselves.

DATA PRESENTATION

In a preliminary step, the intensity data, of the secondary nucleonic component of cosmic rays, detected at SVIRCO Observatory, were corrected for pressure variations at a reference level of 1009.25 hPa with an attenuation coefficient of 0.70% / hPa.

The five-minutes counting rates, of the examined month, are reported in tabular form together with the hourly normalized data, which provide a continuous data set for long-term analysis.

The normalization was evaluated as percentage of the counting rate average of January-February 1997, when the Monitor operated at the previous location of "La Sapienza" University. The reference counting rate level (100%), computed for such period, is equal to 554946 counts/hour.

The atmospheric pressure data (in hectoPascal) are also collected in a monthly table which presents the five-minutes averages and the hourly ones.

The hourly averages of the normalized intensity and pressure, plotted in monthly graphs, are reported too.

CONDITIONS FOR SVIRCO DATA USE

You are welcome to use neutron monitor data of SVIRCO, IAPS/INAF-UNIRomaTre collaboration, under the following conditions:

-You agree to acknowledge our financial supports in any published use of the data.

Example: "SVIRCO NM is supported by the INAF - UNIRomaTre collaboration"

-You are kindly requested to send a copy of any published work derived from our data to:

Dr. Monica Laurenza
Head of SVIRCO Observatory & TPL
Istituto di Astrofisica e Planetologia Spaziali - Area di Ricerca Tor Vergata
Via del Fosso del Cavaliere, 100 00133 Roma - Italy,

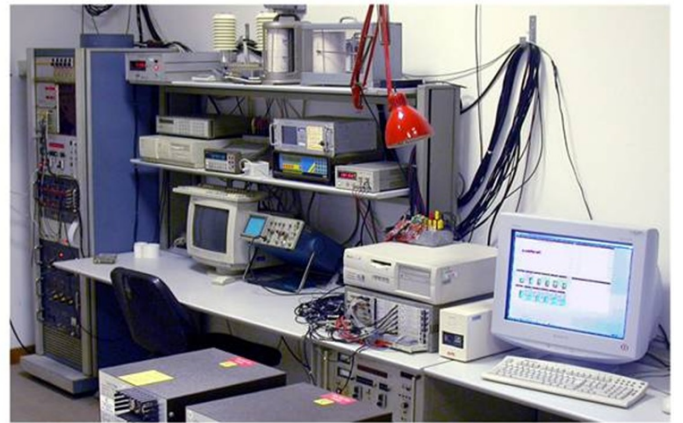
monica.laurenza@iaps.inaf.it



S.V.I.R.CO. Observatory

Rome

Italy



INAF/UNIRomaTre				S.V.I.R.CO. Observatory - Pressure Corrected Data – December 2017									20 NM-64	
day	hh	00_05	05_10	10_15	15_20	20_25	25_30	30_35	35_40	40_45	45_50	50_55	55_60	h-norm
1	0	37378	37388	37982	37866	37628	37838	38002	38110	37906	37842	38055	37907	99.857
	1	37566	37901	37599	37606	37637	37539	37467	37417	37695	37792	37934	37304	99.321
	2	37375	37543	37754	37848	37774	38403	37409	37721	37456	37658	37527	37838	99.507
	3	37678	37619	37808	38219	37945	37642	38275	37382	37678	37531	37846	37654	99.721
	4	37294	38241	38217	37919	38233	37449	38014	37995	37899	37914	37941	37694	100.059
	5	38226	38467	38195	37794	37688	38491	38131	38129	37741	38447	38124	38848	100.823
	6	37840	37884	37691	38040	38056	37793	37621	38054	37632	37793	38322	38319	100.109
	7	37879	37891	37914	37876	38135	38387	37817	37901	38273	38085	37833	38393	100.404
	8	37895	38197	38496	37920	37753	38760	38303	38462	38265	37707	38183	37289	100.591
	9	38573	38237	38007	37810	38254	37714	38098	37693	38203	37918	38369	37992	100.511
	10	38213	38628	38041	37485	38346	38227	37588	37673	37853	37549	37631	37786	100.104
	11	38139	37971	38122	38346	37973	37921	37808	38598	38174	37752	37996	37734	100.438
	12	38039	38211	38208	38004	38465	37222	38457	37638	37912	37661	37940	37936	100.252
	13	38018	38120	38027	38571	37484	38339	38175	37894	37343	38376	37969	37907	100.369
	14	38022	37862	38362	38022	38244	38079	37834	37984	38718	37464	38312	37877	100.492
	15	37739	37955	37871	37999	37433	38182	37801	38434	38428	38331	38333	38167	100.468
	16	37603	37545	38278	37880	37869	37762	38297	37401	37993	37633	38255	37706	99.929
	17	37886	38254	37979	38139	37756	38005	37956	38397	37478	37581	37651	38036	100.127
	18	37841	37596	37807	38236	38178	37296	38265	37778	38178	37335	37978	37875	99.960
	19	37753	37962	37979	37843	37660	37941	38015	37963	38184	38209	37962	38293	100.268
	20	37411	38203	37485	37927	37836	37987	38119	37837	37755	38406	37802	38507	100.161
	21	38024	37441	37350	37597	38310	37098	38100	37695	37358	37627	37263	37761	99.358
	22	37855	37728	38226	38123	38274	37629	38234	38238	37776	37566	37857	38182	100.251
	23	37820	37399	37788	37819	37776	37610	37418	38283	37829	38126	37885	37279	99.668
2	0	37947	37849	37701	38182	37954	37829	37393	37920	38037	38123	37880	37629	99.977
	1	37606	37540	37907	37410	38257	37878	37654	37963	38022	37681	37633	37915	99.762
	2	37684	38203	37162	37773	38605	37986	37830	38204	37748	38047	37567	37921	100.041
	3	38428	38076	38183	37954	38263	38055	38381	38231	37733	37685	38015	38298	100.606
	4	38265	38277	37818	38001	37555	38376	38070	38298	38355	38060	37690	38532	100.605
	5	38020	38102	38505	37980	38198	37749	37858	38090	37701	38226	38157	38169	100.486
	6	37983	37836	37572	38289	38019	38717	38358	37768	38494	38310	38001	37992	100.614
	7	37890	37870	38383	38119	38236	38411	38126	38485	38131	37679	38160	37971	100.642
	8	38348	38549	38436	38512	38254	38352	38491	38639	38440	38319	38153	38229	101.359
	9	38839	38535	38293	37971	38270	38163	38597	38141	38201	37690	38272	38206	101.019
	10	37939	37996	38519	38532	38370	38106	38913	38376	38198	38301	37862	38292	101.069
	11	38572	38355	37827	38354	38251	38118	38650	38140	37932	38930	38803	38402	101.274
	12	38204	38004	37682	37928	38329	38022	38468	37859	38333	38089	38055	38318	100.604
	13	37965	38661	38850	38036	38476	38446	38018	37848	38575	37853	38543	38146	101.072
	14	38082	38052	38912	38197	37940	38022	38046	38610	38201	37998	38366	38216	100.901
	15	38726	38015	38440	38297	38099	37602	37965	37801	38321	37897	38318	37602	100.559
	16	37844	37909	38162	38430	38684	38054	38331	38095	38152	38045	38150	38440	100.825
	17	37576	38375	37761	38138	38321	38218	37925	37774	37349	37637	38334	38115	100.215
	18	38200	38300	38056	37554	38200	37979	37534	38055	37957	38353	38259	37690	100.350
	19	38256	38130	37773	37634	37719	37887	38056	38313	38316	37932	38518	37957	100.428
	20	37814	37735	38744	38237	37708	37443	38190	38315	37759	38227	37605	37961	100.263
	21	37718	38287	37998	38192	37966	37649	38090	38234	38188	37843	37689	37298	100.134
	22	38007	37868	37859	37954	38186	37992	38097	38077	38093	38036	38165	37922	100.376
	23	37225	37634	38589	37850	38173	37934	37919	37481	37688	37938	38185	37681	99.945

INAF/UNIromaTre		S.V.I.R.CO. Observatory - Pressure Corrected Data – December 2017											20 NM-64	
day	hh	00_05	05_10	10_15	15_20	20_25	25_30	30_35	35_40	40_45	45_50	50_55	55_60	h-norm
3	0	38233	37713	37892	38381	38098	37823	37728	37747	37760	38047	38530	38182	100.352
	1	37675	38312	37862	38021	38026	37933	37891	37630	37805	38162	37889	38109	100.169
	2	37845	38074	38472	38487	37620	37805	38314	38467	37992	38549	38455	38086	100.796
	3	38777	38107	38483	38092	38281	37570	38465	38212	38006	37623	38038	38540	100.803
	4	37607	37601	37787	37772	38526	38721	37871	37924	38420	38153	38132	38427	100.527
	5	38140	38575	38369	38207	37995	38690	39053	37722	38402	38458	37104	38060	100.931
	6	38335	38354	37902	38038	38030	38212	38205	38005	38209	38364	38651	38293	100.892
	7	38011	37951	38292	38216	38097	38605	37921	38564	37763	38203	38177	38717	100.874
	8	38141	38006	38243	38316	38145	38093	38043	38052	38540	38655	37915	38249	100.848
	9	38835	38530	38267	37935	37780	38092	38347	38396	38452	38424	38563	38164	101.153
	10	38231	37744	38059	38332	38542	38370	38478	38377	38212	38439	37852	38937	101.107
	11	37709	38354	38269	37828	38289	38101	38968	37680	37586	38936	37889	38762	100.842
	12	38300	38005	38510	38539	38070	38204	38260	38292	37421	39040	38089	38157	100.955
	13	38271	37854	38224	38102	38228	38550	38512	38645	38245	38439	38122	37945	101.010
	14	38970	37551	37804	37458	38193	38267	38407	38420	37916	38582	38624	38524	100.917
	15	37965	37874	37880	38130	37745	37821	37368	38009	38506	37962	38181	38110	100.221
	16	38730	38155	38418	37823	38581	38234	38664	38297	38140	38108	38202	37865	101.028
	17	37868	38263	38472	37829	38125	38248	38645	38317	38206	37801	38158	37745	100.689
	18	38339	38041	38332	38092	38246	37436	38292	38106	37666	37786	38424	38149	100.520
	19	37662	37866	37899	38169	37590	38229	37612	38618	37367	37820	37677	37738	99.934
	20	37873	38488	37870	37844	38369	37444	38134	37922	38150	37408	38163	38798	100.421
	21	37914	38097	38377	37842	37986	37778	38299	37220	37774	37719	37829	38352	100.141
	22	38002	38352	38862	38664	37851	38826	37927	37773	37919	37980	38133	38061	100.837
	23	38155	37726	37442	37828	37870	37565	38166	37952	37825	38224	37921	38273	100.089
4	0	38381	38018	37984	38168	38048	38111	38405	36942	38247	38261	38152	38261	100.540
	1	38142	38187	37527	37903	38450	38073	38146	37828	37903	37962	38179	38286	100.449
	2	37511	38150	38193	38149	37982	38269	37852	37732	37901	37598	38235	37743	100.169
	3	37902	37584	37899	38048	38528	37892	38484	38361	37273	37531	38388	37646	100.218
	4	37817	38309	37906	38067	37959	37817	38048	37911	37770	38135	37657	37715	100.125
	5	37830	37594	38373	38184	37990	37929	37992	37622	37875	38191	37756	37816	100.134
	6	38644	37557	37975	38121	37841	37492	38332	38027	38183	38061	37897	37714	100.286
	7	38095	38306	38449	38257	38128	38493	38241	37801	38211	38482	37764	38300	100.876
	8	38208	38031	38096	38167	37929	38535	38300	37873	38986	37725	38441	38121	100.850
	9	38393	38574	38486	38009	38139	38515	38161	37559	38082	38737	38591	37946	101.022
	10	37917	38226	37924	38751	38282	37897	38123	37844	38377	38244	39121	37694	100.848
	11	38345	38230	38637	38127	38362	38440	37560	37972	38036	37975	38290	38102	100.777
	12	37964	38512	38193	38165	38119	38011	38635	38602	38707	38544	37814	38298	101.104
	13	38502	38517	38082	38482	38208	38434	38755	38250	39008	38372	38738	38002	101.498
	14	38644	38140	38582	38756	38588	38711	38672	37931	38630	38225	38151	37938	101.414
	15	38291	37996	38805	38300	38473	38070	38160	38745	38680	38121	38606	38397	101.341
	16	38196	37688	38872	38188	38399	38704	37969	38646	38007	38482	37843	38424	101.072
	17	38541	38196	37846	38941	38768	38679	38188	38308	37844	38155	38713	38588	101.370
	18	38249	38728	38398	38926	37677	38292	38738	38390	38472	38599	39133	38737	101.715
	19	38237	38377	38688	38238	38210	38110	38722	38411	38397	37871	39016	39157	101.515
	20	38443	37662	38613	38415	38454	38265	38476	38716	38437	38281	38560	38240	101.323
	21	38323	38682	38500	38455	38381	37818	38141	38972	38223	38131	38416	39029	101.436
	22	38330	38371	38280	38628	38519	38171	38512	38745	37777	38547	38106	38177	101.236
	23	38113	38278	38287	38738	37716	37964	38102	38665	38232	38390	38016	37927	100.854

INAF/UNIRomaTre				S.V.I.R.CO. Observatory - Pressure Corrected Data – December 2017										20 NM-64	
day	hh	00_05	05_10	10_15	15_20	20_25	25_30	30_35	35_40	40_45	45_50	50_55	55_60	h-norm	
5	0	37707	38204	38197	37823	37967	38184	38205	38262	37814	38729	38306	38115	100.657	
	1	38027	38334	37726	38010	38515	38367	38403	38112	38506	38524	38006	38266	100.935	
	2	37694	37777	38546	38121	38608	38990	38308	38354	37986	37810	37840	38040	100.776	
	3	38061	38698	38102	37990	37725	37872	37620	38110	38036	38392	37821	38059	100.427	
	4	38195	38117	37982	38092	38086	38184	37941	38123	38206	38192	38518	38422	100.773	
	5	38188	38207	38059	38732	37882	38344	38258	38067	38633	38922	38326	38365	101.196	
	6	38534	38119	38081	37997	38034	37732	38397	38129	38144	38142	38324	38606	100.813	
	7	38029	38102	38345	38488	38727	38494	37661	38649	37663	37974	38563	38318	100.983	
	8	38547	38593	38211	38476	38259	37940	38542	38551	37913	37956	38910	37654	101.102	
	9	38338	39012	38053	38127	38235	38351	38202	38597	38059	38569	38332	38345	101.248	
	10	37917	38144	38394	38037	38763	38265	37966	38299	38318	38596	38542	37912	101.014	
	11	38079	38776	37858	38508	38289	38701	38377	37803	38109	38199	38079	38591	101.061	
	12	38186	38043	37993	37756	38487	38314	38292	38176	37900	38912	38200	37927	100.801	
	13	38309	38560	38297	37987	38079	38188	37935	37999	38240	38554	38378	38293	100.940	
	14	37634	38217	37821	38330	38468	38027	38766	38353	38329	38239	38284	37608	100.777	
	15	38151	38770	38079	37792	38352	37702	38186	38484	38224	38095	38047	37930	100.719	
	16	38255	38413	38416	38309	37630	39010	38093	37901	38260	38497	38067	37769	100.897	
	17	37922	38369	38817	38308	38438	38255	37883	38272	37908	38436	37946	37895	100.859	
	18	38169	38265	38362	38255	38264	38272	37232	37823	38557	37916	37434	38715	100.598	
	19	38026	38447	38137	38380	38114	38203	37725	38306	38498	38655	38182	39022	101.133	
	20	37732	38565	38040	37839	37840	37582	38139	37983	38537	38313	37699	38278	100.440	
	21	37934	38094	38382	38313	38103	38075	37822	38650	38115	37716	37565	37980	100.485	
	22														
	23		37889	37494	37862	38146	38583	37688	38448	38385	38455	38396	37543	100.532	
6	0	38266	37872	38283	37652	38058	37303	37900	37561	38631	38086	38037	37805	100.200	
	1	37668	37815	37849	37679	37987	37876	37453	38061	37493	38113	38527	38655	100.138	
	2	38009	38269	38329	38031	37540	37380	37719	37632	38357	38271	37963	38675	100.359	
	3	38000	38202	38015	37734	37921	38466	37729	38360	38544	38210	38044	38131	100.618	
	4	38373	38062	37915	38004	38261	38549	37824	37983	38851	38466	38322	38008	100.896	
	5	38448	37616	37637	37991	38164	38554	38795	38298	38511	37827	38386	37913	100.791	
	6	38330	38991	38432	38743	38403	38635	38508	38081	37936	38564	37650	38381	101.344	
	7	37772	38368	38291	37934	37761	38016	38714	38548	38961	37873	38278	38441	100.970	
	8	38155	38468	38579	38056	38280	37662	38045	38366	37981	37953	37907	38105	100.663	
	9	37921	38721	38596	38262	38354	38315	38021	37677	38401	37498	38187	38494	100.859	
	10	38207	38636	38391	37782	38418	38019	38496	38279	37892	38730	38080	38757	101.131	
	11	38358	37699	38726	37861	37825	38369	37860	38401	38156	38839	38119	37906	100.787	
	12	38415	38716	38145	38010	37932	38020	37841	38048	38520	38182	38419	37905	100.794	
	13	38050	37947	38429	38256	37888	38378	38148	37656	38179	38006	37957	37338	100.371	
	14	38258	37923	37532	38157	38538	38275	38062	38319	38391	38502	38466	38566	100.978	
	15	37732	38503	38053	37749	38350	38388	38193	38186	38435	37601	38080	38429	100.694	
	16	37971	37749	38061	38025	37742	38058	37982	38712	37795	37244	38157	38078	100.226	
	17	37900	37522	37753	38568	38169	37991	38578	37968	38235	38071	38231	37802	100.493	
	18	38013	38088	38034	37672	38129	37691	38029	37727	38413	37187	38485	38322	100.274	
	19	38066	37587	38379	37597	38192	37447	38126	37614	37614	37792	38094	37741	99.935	
	20	37458	37578	38191	38213	37941	38316	37697	37967	37987	38576	37736	38125	100.273	
	21	37978	38221	37501	37913	37633	37998	38280	38200	38058	37720	38417	38445	100.400	
	22	38075	38235	37947	38240	37919	38494	37773	37719	38314	38214	37852	37587	100.401	
	23	37921	37519	37555	37824	38518	37809	38471	37979	38098	37154	38108	38665	100.237	

INAF/UNIRomaTre		S.V.I.R.CO. Observatory - Pressure Corrected Data – December 2017											20 NM-64	
day	hh	00_05	05_10	10_15	15_20	20_25	25_30	30_35	35_40	40_45	45_50	50_55	55_60	h-norm
7	0	37887	37909	37585	37338	38335	37983	37985	37970	38015	37978	37648	37548	99.916
	1	37974	38250	37986	37709	37699	37743	37522	37495	37906	37735	37895	38283	99.924
	2	37862	37581	38184	38110	38779	37824	37539	38221	38118	38525	38086	38747	100.667
	3	37911	37577	37870	38527	38084	38227	38330	37737	37846	37809	37699	38374	100.318
	4	38184	37897	37446	38242	38168	37859	37987	37856	37798	37950	37454	38152	100.099
	5	38291	37851	38468	38520	37633	38236	38336	38174	37639	37762	37773	38292	100.534
	6	37945	38247	38396	38348	37836	38284	37775	38019	38884	38323	38316	38260	100.899
	7	38323	38645	37965	37754	37496	37779	38095	38808	38465	37931	37927	38133	100.611
	8	38455	38531	37998	38222	38885	38594	38191	38088	38609	38047	37954	37919	101.089
	9	38427	38397	37401	38604	37929	37818	38043	38034	38073	38090	38845	38378	100.768
	10	38260	38068	38121	37942	38811	37951	38508	38893	38233	38869	38207	38124	101.197
	11	38325	38553	38090	38061	37737	38467	38155	38248	38470	37764	38015	38087	100.753
	12	38228	37664	37963	38029	37652	37707	38011	37975	38173	38094	38389	38207	100.340
	13	37954	38050	38093	37726	37935	38066	38569	37789	38499	37817	38190	38151	100.505
	14	38610	38363	37971	37669	38428	37418	38394	38828	38409	38670	38488	38336	101.109
	15	38188	38268	38332	37797	38338	37388	38008	38421	38825	38567	38466	38065	100.906
	16	37840	37896	37854	37941	38093	37639	37885	37410	38063	37967	37671	38466	100.040
	17	38256	38253	37684	37734	38069	37537	37906	37992	37340	38695	38160	38266	100.296
	18	38398	37823	37835	37714	37925	37693	37999	38439	37626	38162	38160	38039	100.279
	19	38289	37928	38069	37842	38089	37438	38255	37794	37621	38285	37963	38009	100.228
	20	37964	38554	38087	37992	38447	38083	38500	37714	37865	38315	37833	37862	100.588
	21	38131	38100	38006	38242	38196	37660	37825	38075	37897	37583	38453	37599	100.269
	22	38497	38011	37861	37904	37956	38167	38171	37851	37922	38555	38672	37519	100.559
	23	37737	37555	38084	37812	37954	37529	38226	37920	38001	37682	38370	38218	100.120
8	0	37837	38406	37802	37979	37927	38274	37649	37771	37592	37703	37938	37991	100.064
	1	38291	38355	37635	38358	38233	37936	37932	38290	37684	37953	37749	38131	100.440
	2	38339	37851	37507	37692	37853	37667	38012	38010	38068	38165	37766	38321	100.156
	3	38083	37970	38203	38602	38275	38057	38547	37794	37707	38243	37993	37408	100.514
	4	38423	37803	37975	37922	38021	37747	38173	37981	37735	37629	38768	37749	100.304
	5	38236	37484	38590	38195	38044	37948	38324	38096	38342	37794	38120	38399	100.666
	6	38063	38345	38365	38806	38576	38093	38772	38470	38145	38505	38560	37940	101.341
	7	38699	38233	38495	37797	37926	38076	37937	38389	37980	38264	38455	38380	100.899
	8	38440	37848	37785	38253	38585	37865	37684	38616	38171	38127	38121	38438	100.746
	9	38643	38438	38102	37470	38014	38475	38204	38415	37579	37938	38376	37690	100.615
	10	37525	37875	38148	37482	38567	37960	38338	38179	38281	38426	37919	38042	100.484
	11	38074	38521	38231	38389	38372	38361	38459	38148	38410	38748	37620	38482	101.160
	12	37983	38585	37897	38413	38230	38304	38006	38463	38480	38170	38086	37789	100.850
	13	37919	37528	38080	38048	38055	38344	37400	38118	37667	38242	37845	38567	100.280
	14	38086	38506	38246	38018	37899	37795	38058	37904	38374	38017	38247	37773	100.523
	15	38629	37819	38369	37842	38187	38208	38011	37594	38062	38628	37904	38296	100.661
	16	38172	38014	37539	38427	37547	38081	38083	37944	37586	38082	37160	37879	99.993
	17	37725	38152	37418	38008	37947	37551	37967	37812	37204	37483	38544	37985	99.835
	18	37933	37939	37946	38025	37735	38572	37807	38298	38053	38086	37464	38167	100.326
	19	38279	38218	37872	38197	38301	38059	37920	37572	37963	38093	38320	38201	100.539
	20	37919	38083	37876	38109	37616	37952	37570	37857	37763	37728	37914	37826	99.927
	21	37644	37586	37692	38215	37684	37495	37581	37728	38353	37549	38325	38220	99.897
	22	37646	37971	38274	37490	38063	37578	37974	37679	37893	37937	37175	37925	99.793
	23	38058	38156	38152	37847	37951	38213	37468	38072	37877	38468	37997	37989	100.375

INAF/UNIRomaTre				S.V.I.R.CO. Observatory - Pressure Corrected Data – December 2017										20 NM-64
day	hh	00_05	05_10	10_15	15_20	20_25	25_30	30_35	35_40	40_45	45_50	50_55	55_60	h-norm
9	0	38300	38083	37741	38409	37826	37513	38138	37442	37748	38454	37903	38392	100.300
	1	38518	37724	37880	37547	37879	37983	38216	37957	38153	38072	37684	38021	100.240
	2	38025	38222	37982	38315	38090	38205	38594	38037	37844	38125	37938	37901	100.602
	3	38426	37954	37855	38136	38246	38228	38359	38737	38076	38213	38430	38607	101.039
	4	38327	38325	38723	38143	38403	38213	38216	37897	38671	38349	38280	38101	101.122
	5	38378	38635	38147	38262	38340	38378	38653	38218	38376	38273	38432	38227	101.271
	6	38197	38060	38145	37939	38000	37823	37741	38281	38870	38459	38019	38224	100.707
	7	38630	37851	38399	37978	38077	38017	38334	38214	38536	39074	38542	38559	101.246
	8	38420	38490	38037	37828	37793	38417	38633	38008	37582	38197	38275	38490	100.797
	9	38645	38198	38491	38196	38645	38504	38724	38491	38277	38268	38539	38458	101.516
	10	38509	38146	38123	38383	38263	38699	38327	37893	38197	38090	38618	38346	101.111
	11	37917	38303	38786	38675	38297	38556	38353	38682	38488	37844	37832	38005	101.142
	12	38631	38572	37987	38035	38382	38714	38194	38638	38543	38122	38232	38353	101.289
	13	38343	38168	37895	38448	38491	38385	38175	38635	38103	38580	38257	38572	101.211
	14	38447	38007	38535	38270	38173	38350	38015	38188	38388	37981	37892	38019	100.819
	15	38754	38060	37642	38272	38144	37904	37728	37676	37937	37914	38373	38132	100.438
	16	38594	37977	38410	38083	37895	38069	38472	37947	38425	38364	37622	38240	100.782
	17	38346	38580	38212	38311	38269	38271	38547	37732	37990	38126	38053	37358	100.717
	18	38085	37653	37371	38323	38032	38168	37797	38194	38123	38231	37447	37970	100.187
	19	37599	38065	38187	38130	37760	38604	37790	37776	38349	38082	38766	37965	100.555
	20	38601	38211	37519	37936	38142	38050	37636	37843	38198	38325	38472	38526	100.641
	21	38152	38211	38258	37618	37814	37677	37702	37826	38341	38160	38130	38064	100.309
	22	37656	38162	38466	37587	38392	38773	38566	38356	38386	37734	38111	38257	100.858
	23	37452	38175	38261	37370	38379	37819	37967	37862	38221	37331	37828	37905	100.006
10	0	38628	38053	37914	38266	38341	38208	37821	37556	38072	38163	38007	38201	100.596
	1	38680	37806	38175	38150	38234	37952	38177	38698	38036	38124	38952	38258	101.033
	2	38159	38065	38089	37737	38206	38239	38556	38291	38447	38362	38960	37962	100.996
	3	38779	38316	38416	37909	38260	37886	37754	38232	37796	38512	38135	38426	100.852
	4	38147	38345	38020	38309	38522	38057	38126	38062	38619	38616	37944	38918	101.131
	5	38687	38676	38219	38211	38093	38025	38122	38651	38468	39129	38447	38332	101.432
	6	38552	38328	38379	38036	38319	38007	38553	38858	38237	37715	38423	38130	101.098
	7	37930	38545	38265	38166	38196	37975	37779	38398	38442	38425	38216	38080	100.851
	8	38669	38207	38586	37979	38399	37797	37895	37921	38665	38416	37889	38534	100.971
	9	37869	38270	39125	39055	38570	38532	38764	38054	38203	38514	38338	37824	101.445
	10	38161	37929	38347	38368	38464	38275	38051	38346	37663	38584	38470	38072	100.921
	11	38419	38759	38352	37872	38443	38334	38128	37915	38072	38262	38440	37842	100.944
	12	38489	38625	38034	39174	38167	38037	38561	38162	38012	38415	38316	38417	101.289
	13	38471	38312	38524	38467	38597	38139	37839	38209	38579	37950	38091	38237	101.071
	14	38070	38360	38360	38649	38214	37743	37953	37996	38792	38579	38304	37935	100.970
	15	37970	37579	38323	37900	37719	38287	38083	37704	38094	38257	38001	38937	100.509
	16	38172	38911	38204	38473	38089	38837	38115	38100	38537	38442	37871	37854	101.113
	17	38036	38375	38291	38031	38014	37897	38122	37968	37853	38144	38308	38342	100.624
	18	38056	38245	37787	38656	38330	38254	38219	37647	37978	38019	38021	38317	100.657
	19	38283	37530	37759	37915	37941	37874	37937	38043	37824	38607	38109	38096	100.302
	20	37712	38430	38142	37845	38064	38498	38282	37814	37566	38678	38523	37614	100.577
	21	38102	38314	38273	38214	37717	38174	37584	38348	37765	37597	38269	38051	100.410
	22	38207	37901	38085	37166	37671	38171	37791	38054	37942	37637	37800	38571	100.100
	23	38173	37798	37908	38406	37610	37601	37618	38198	38203	38626	37940	37519	100.232

INAF/UNIromaTre		S.V.I.R.CO. Observatory - Pressure Corrected Data – December 2017											20 NM-64	
day	hh	00_05	05_10	10_15	15_20	20_25	25_30	30_35	35_40	40_45	45_50	50_55	55_60	h-norm
11	0	37893	37912	37676	38170	37520	37938	38384	38345	38509	37801	38157	38113	100.400
	1	37951	38803	38120	38199	38519	38381	38563	37386	38074	37836	37810	38068	100.696
	2	37849	38146	38400	38238	38258	38238	38051	38788	37968	38048	37944	38097	100.766
	3	38151	38260	38410	38225	37776	37898	37721	38790	38662	38243	37656	38212	100.761
	4	38422	38365	38056	37985	38134	37965	37731	38383	38453	37905	38314	37539	100.595
	5	37650	37666	38059	37926	38302	37568	38198	38722	37982	38510	38060	37383	100.326
	6	38166	38353	37974	37994	38669	38060	38377	38584	38410	38366	38619	38831	101.289
	7	37571	37774	38616	38272	37749	38393	38136	38654	38189	37912	38644	38145	100.772
	8	38013	37841	38234	38686	38921	38220	38157	38037	38178	38211	37576	38034	100.784
	9	38500	38421	38624	38087	38663	38352	38000	38614	37767	38386	38694	37943	101.211
	10	38314	38265	38447	38266	38238	38767	38403	38119	38124	38064	38287	38525	101.160
	11	38176	38445	38891	38389	37847	38513	38295	38333	38550	38631	38501	38571	101.451
	12	38159	38555	38085	38440	38700	38421	38204	38104	38305	38505	38375	38089	101.187
	13	38035	38118	38535	38123	38385	38577	38029	37855	38617	37795	37627	38117	100.719
	14	38369	38440	38532	38027	38039	38574	38335	38199	38620	38438	38178	38428	101.239
	15	38492	38082	38053	38190	38106	38139	38235	38112	38095	38167	38551	38720	100.967
	16	38115	38312	38062	38506	38071	37998	38264	38404	38167	38546	38441	38524	101.070
	17	38703	38481	38587	38077	38492	37922	37848	38408	38241	38493	38324	37600	101.019
	18	38652	38157	37935	37843	38728	38102	38518	38042	37573	38377	38411	38531	100.951
	19	38550	38159	37741	38006	37484	38294	37822	38309	38552	38274	38315	37667	100.577
	20	38147	38854	38549	38679	38404	38652	37821	38127	37936	38208	38090	37621	101.000
	21	38497	38971	38112	37765	37845	38618	37317	38636	38484	38383	38116	38192	100.966
	22	37870	37994	37935	38085	38285	38123	38407	38460	37985	37908	37866	38245	100.576
	23	37979	38297	37967	37888	37951	38125	38091	38286	38158	38052	38683	38129	100.673
12	0	37231	38467	38267	38412	38338	38312	38535	38265	38750	38375	38639	37984	101.114
	1	38214	38254	38240	38161	38688	37675	38439	38349	38379	38324	38062	38310	101.001
	2	37965	38016	37954	38356	38244	38113	38410	37999	38128	38209	37513	38376	100.602
	3	37922	38422	38460	38056	37976	37855	38476	38456	38338	38335	38074	38345	100.917
	4	37694	37840	38095	37708	38217	38309	38209	37682	37831	37656	37861	38652	100.266
	5	38439	38463	38781	38228	38390	38147	38141	38757	38435	38503	38435	38518	101.472
	6	38772	38860	38676	38169	38653	38272	38406	38542	38703	38131	38127	38062	101.503
	7	38365	38655	38169	37768	37965	38866	38781	38318	38607	38405	38023	38289	101.246
	8	38848	38263	38458	38471	38851	38344	39333	37616	38819	38329	38123	38723	101.679
	9	38051	38344	38256	38566	38156	38031	38729	38732	38470	38035	38663	37929	101.192
	10	38945	38359	38789	37994	38017	37761	38561	38193	38059	38375	37889	37734	100.909
	11	38739	38843	38483	38301	37719	38253	38815	38363	37853	38244	38007	38672	101.264
	12	38239	38061	38174	38529	38121	38131	38309	38409	38358	38406	38147	38511	101.067
	13	38795	38102	38712	38382	38140	38250	38142	38639	38036	37934	38372	38405	101.180
	14	38105	38231	38364	38300	37924	38346	38186	38189	38243	38171	37880	38360	100.826
	15	38357	38346	38240	37865	37945	37853	38170	38641	38023	37948	38787	38413	100.890
	16	38096	38642	38435	37961	37720	38730	38304	38051	38287	38340	38101	38238	100.960
	17	37763	38225	37940	37795	38628	37962	38273	37991	37949	38565	38356	38277	100.699
	18	38608	37817	38515	38184	38229	38309	37929	38731	38124	38125	38144	38424	101.011
	19	38199	37652	37979	37986	38310	38428	38247	38343	37974	38353	38700	38089	100.817
	20	38650	37596	37943	38537	38473	38065	38235	37945	38022	38458	38217	38254	100.847
	21	38027	37837	38548	38152	38009	37398	37980	37958	38276	37438	38151	37810	100.229
	22	37826	38529	38182	38289	37593	37849	38094	37799	38206	38118	38370	37905	100.487
	23	38152	37848	37934	37936	38681	37285	37694	37915	37946	38748	37817	37880	100.284

INAF/UNIRomaTre				S.V.I.R.CO. Observatory - Pressure Corrected Data – December 2017										20 NM-64	
day	hh	00_05	05_10	10_15	15_20	20_25	25_30	30_35	35_40	40_45	45_50	50_55	55_60	h-norm	
13	0	37880	38246	38000	37700	38033	37636	37838	37717	37977	37953	37356	37844	99.916	
	1	37620	37729	38009	37749	38027	37067	37768	38286	37574	37554	37743	37718	99.626	
	2	38056	37990	38057	37620	38238	37467	37933	37923	37581	37553	37974	37683	99.897	
	3	37799	37612	37957	37967	37752	37923	37745	38020	37835	37740	38528	37731	100.014	
	4	38038	38118	37999	37831	37616	37874	37664	38313	37832	37400	38106	38159	100.089	
	5	37989	38340	38509	38369	38391	38564	38252	37972	38460	38137	38405	38287	101.129	
	6	37535	37803	37938	37861	37802	37697	37970	37852	37598	38036	38229	37829	99.913	
	7	38033	37964	37597	38395	38451	37956	37727	37971						
	8														
	9								38574	37951	38544	37628	38001		
	10	38304	38368	37928	37835	38369	38481	37996	37963	37714	37848	38740	37939	100.647	
	11	38111	38163	38571	38714	38045	38095	37700	38273	38062	38765	38463	38222	101.021	
	12	38307	38523	38352	38448	38071	38298	38110	38042	37839	38488	38413	37941	100.943	
	13	38475	38312	37916	38201	38202	38431	38035	38238	38248	38520	38300	38388	101.038	
	14	38557	37633	38424	38362	37849	38266	38409	38235	37655	38001	38499	37512	100.629	
	15	38741	38166	38048	38604	38104	37766	38705	38230	38391	37751	38081	38001	100.890	
	16	38387	38556	38445	38171	38194	38016	38450	37884	38356	37974	38040	37849	100.831	
	17	37385	38079	38185	37909	37839	38277	37630	37684	37608	38511	38383	38121	100.234	
	18	38266	37588	37725	38297	37617	37884	38383	38033	37856	37546	37992	38154	100.175	
	19	37850	38045	37752	38368	37626	38284	37870	38303	37403	37561	37906	37765	100.041	
	20	38016	38109	37841	37952	37588	37466	37688	37805	38154	37698	37478	37710	99.771	
	21	37834	38161	38402	38100	38009	37964	38048	38072	38106	37716	37821	38317	100.441	
	22	38370	37407	38031	38378	38233	37382	38012	37781	37783	37883	37637	38581	100.205	
	23	38235	37910	37907	37772	38286	37948	38218	38450	38198	38133	37823	38069	100.529	
14	0	37884	37655	38141	38020	37738	37539	37855	37419	37667	37315	37412	37225	99.405	
	1	37646	38418	37646	37910	38021	37912	38351	37637	38386	38434	38224	38712	100.605	
	2	37522	37671	38171	38073	37945	38102	38337	38506	37999	37752	38141	38355	100.447	
	3	38089	38249	37981	38052	38280	37578	38139	37971	38252	37882	37253	37721	100.198	
	4	38591	38015	38235	38396	37931	38113	38681	38547	38986	37874	38470	37711	101.101	
	5	38270	38193	38526	37685	38215	37928	38346	37684	38019	38439	37899	38143	100.616	
	6	37616	38348	38166	38107	37834	38253	39177	38549	37866	37676	37526	38001	100.566	
	7	37997	37929	38550	37957	38132	37831	38106	38004	38071	38070	37913	38562	100.567	
	8	37910	37969	38185	38130	38362	38117	38166	38202	39052	38069	38574	37591	100.832	
	9	38298	37484	38228	37831	37908	37428	37991	38567	38154	37851	38472	38129	100.395	
	10	38191	38071	38526	38374	37661	38720	38551	38350	37871	38017	38106	38056	100.869	
	11	38350	37451	38386	38085	37911	37851	38156	38238	38334	37881	38150	38489	100.603	
	12	38803	38162	38233	38147	37787	37977	37758	38523	38263	37405	37565	37711	100.392	
	13	37595	38158	38245	38343	38034	37944	38260	38046	38048	37924	37791	38462	100.507	
	14	38309	38126	38227	37798	37592	38040	37458	38489	37917	38251	38071	38116	100.407	
	15	38478	38190	37348	37602	37964	38009	37706	38005	37831	37538	38336	38764	100.269	
	16	38523	37947	38044	37879	37741	37487	37706	37739	38118	37909	38232	37463	100.054	
	17	38074	38741	38151	38209	37746	37982	37927	38396	37658	37904	37571	37804	100.356	
	18	38321	38023	37988	37925	38024	37978	38389	37724	38061	37756	38078	38104	100.402	
	19	38337	38129	37834	37877	37351	37575	38074	37484	37684	37981	37763	37353	99.757	
	20	38242	38529	38144	38056	37564	37739	38066	37538	37653	37388	37478	37464	99.848	
	21	37897	37910	37749	37718	37868	37819	38110	37465	38356	37817	38160	37545	99.971	
	22	37857	38356	38486	37958	37340	38196	37805	37978	38091	37684	37612	37422	100.052	
	23	38178	38245	38460	37864	37937	38132	37528	37947	38002	37734	37768	38087	100.294	

INAF/UNIRomaTre		S.V.I.R.CO. Observatory - Pressure Corrected Data – December 2017											20 NM-64	
day	hh	00_05	05_10	10_15	15_20	20_25	25_30	30_35	35_40	40_45	45_50	50_55	55_60	h-norm
15	0	37999	37763	37981	37989	37984	38053	38071	37478	38412	38494	38197	37465	100.287
	1	37929	37741	37951	38407	37880	38188	37706	38459	38002	38102	38632	37667	100.466
	2	38403	38034	38084	37423	38381	38098	38027	38520	37994	38098	37976	38389	100.634
	3	38245	38401	38181	38134	38387	38640	37566	38533	37871	37909	37569	37929	100.619
	4	38005	38278	37991	37995	37760	38527	37754	37790	37725	38770	38474	37921	100.538
	5	38249	37757	37825	37820	38288	38123	37776	38313	38224	38196	37994	38600	100.577
	6	38372	38957	37936	38550	37923	37980	38277	37948	37780	37978	38672	37412	100.712
	7	38544	37369	38374	38046	38181	38463	38062	38279	38436	37546	37690	38176	100.576
	8	38458	38540	38417	37943	38010	37920	38394	38117	38038	38024	38779	38279	100.962
	9	37851	37688	38407	37379	37939	38102	38481	38330	38106	38164	38232	38295	100.535
	10	38003	37663	38051	38012	37768	38235	38204	38615	38531	38264	38163	38519	100.769
	11	38031	37781	38612	38044	38150	37911	37904	38825	37932	38139	38102	38042	100.645
	12	38033	37884	38222	38151	37551	38103	37603	38132	37841	38533	38046	38486	100.449
	13	37897	38481	38517	38295	37615	38145	38026	38288	38245	37812	38590	38351	100.818
	14	38188	38320	38035	38328	38215	38127	38124	37785	38237	38488	38314	37788	100.749
	15	42641	39920	38405	38011	37645	37962	38466	38058	38410	38227	38009	38048	102.035
	16	37753	38292	38355	38288	38331	37853	38018	38479	37924	38006	38053	38253	100.673
	17	38090	37531	38131	37928	37791	37618	38330	37483	37871	37837	37473	38105	99.921
	18	37755	38299	38166	37732	38071	38508	38411	38189	37977	38661	37798	37704	100.600
	19	37851	37806	37897	37950	38132	37610	38019	37925	38481	38271	37753	37953	100.242
	20	37982	38253	38555	38522	38201	38208	37971	37692	37982	38339	38192	37969	100.731
	21	37891	38391	38011	38298	38061	38690	38192	37820	37932	38000	38362	38398	100.770
	22	38193	38297	37900	37977	38571	37914	37910	38652	37977	38084	38424	38461	100.839
	23	38220	37706	38241	38336	37661	38084	38334	38430	37926	37556	38612	38286	100.626
16	0	37406	38817	38183	38151	38233	38457	37771	37868	38101	37865	38295	38458	100.686
	1	37738	38587	38264	38204	38074	38013	37985	38574	38717	38506	38363	38216	101.033
	2	38386	38085	37793	37966	37997	37805	37499	38030	37965	38329	38699	38517	100.555
	3	37875	37820	38271	38080	37973	37991	38191	38199	37867	38104	38370	38458	100.584
	4	38284	37850	38168	38020	38786	38355	38084	37973	38595	38004	38455	38544	101.006
	5	38116	38166	37794	37929	38139	38928	38367	38566	38430	37531	38385	37844	100.803
	6	38160	39008	38483	38032	37999	38790	38087	38322	38239	38064	37828	38628	101.121
	7	38579	38113	38603	38445	38070	38265	38468	38225	38294	37868	38328	38058	101.050
	8	38115	38431	38378	38248	38106	38665	38705	38399	37742	37614	38695	38414	101.093
	9	38614	38665	38246	38524	38701	38694	38279	37807	38495	38144	38428	38471	101.435
	10	38429	38217	38221	38682	38938	38461	38174	38425	38055	38280	38403	38300	101.329
	11	38529	38254	38333	38206	37946	38488	38862	38520	38016	38374	38036	38043	101.113
	12	38219	37687	38481	38174	38510	38332	38684	38208	38515	38455	37924	38279	101.083
	13	38326	38323	37652	38019	38471	38317	38125	38400	38489	38836	38764	38119	101.165
	14	38394	38092	38763	38600	38283	38252	38199	38032	38817	38209	38281	39220	101.452
	15	37721	38551	38684	37850	38220	37979	38178	38753	38423	38635	38735	38448	101.239
	16	37531	38002	38178	38116	38546	38087	38510	38160	38643	38487	38188	38331	100.931
	17	38520	38922	38228	38227	38233	37954	38318	38516	38683	38324	38330	38093	101.276
	18	38672	38255	38552	38053	37977	38850	37713	37826	37811	38250	38440	37978	100.844
	19	37871	38514	38447	38243	38492	38277	38478	38723	37904	38470	38583	38141	101.231
	20	38475	38012	38698	38140	38042	38372	38287	38615	38715	38171	38324	38267	101.226
	21	37915	37735	38317	38503	37543	37707	38379	38435	37947	38110	38355	38589	100.657
	22	38127	38101	37897	38311	38151	37946	38707	38545	38157	37643	38023	38612	100.808
	23	37911	38302	38441	38213	38321	38043	38196	38321	38250	37743	37818	38181	100.703

INAF/UNIRomaTre				S.V.I.R.CO. Observatory - Pressure Corrected Data – December 2017									20 NM-64	
day	hh	00_05	05_10	10_15	15_20	20_25	25_30	30_35	35_40	40_45	45_50	50_55	55_60	h-norm
17	0	37965	38728	37870	38630	37985	37811	37923	38370	38587	37822	38631	38072	100.853
	1	37858	38021	37957	38287	38479	38367	38552	38084	38084	38165	37927	38060	100.725
	2	38081	38199	38131	38613	38157	38259	38293	38489	38231	38358	37718	38469	100.980
	3	38394	38671	38071	38300	38120	38123	38339	37990	38479	37909	38064	38344	100.937
	4	38774	38128	38236	38230	38650	38295	38804	38100	38196	38626	38389	38408	101.384
	5	37781	38011	38145	38181	38118	37881	38027	38480	38173	38829	38027	38489	100.791
	6	38499	38252	38826	38353	38137	38673	38909	38022	38405	38526	38579	37833	101.423
	7	38228	38010	38263	38500	38647	38274	37986	38008	38355	38021	38137	38621	100.991
	8	38367	38181	37477	38088	38582	37971	38346	38562	38796	38341	38168	38541	101.072
	9	38645	38825	38337	38335	37924	38688	38272	37904	37727	38925	38484	38485	101.322
	10	38751	38364	38440	38759	37834	38117	38392	38218	38215	37925	37787	38576	101.063
	11	38203	38422	38076	38798	38706	38295	38610	37883	38443	38010	38455	38215	101.225
	12	38492	38618	37871	38288	38365	38170	38505	38448	38246	37984	38120	37989	101.001
	13	38155	38500	38238	38439	38113	38618	38651	37689	38698	38155	38480	38981	101.357
	14	37870	38517	38240	38778	38350	38572	37827	39216	38608	38620	38350	38850	101.595
	15	38497	38456	38104	38797	38295	38532	39047	39030	38262	38779	37809	38538	101.672
	16	38363	38245	38253	38509	38356	38219	38331	38951	38202	38099	38432	38419	101.283
	17	37781	38549	38226	38396	38539	38972	38585	37672	37928	38869	38473	38539	101.316
	18	38196	38152	38597	38419	38269	38589	38430	38931	38022	38501	38930	38436	101.524
	19	38297	37892	38117	38641	38826	38183	38638	38668	38848	38681	38339	38960	101.659
	20	38211	38226	38308	38505	37972	38205	37945	38891	38680	38602	38625	38271	101.297
	21	38330	38960	38779	38004	38470	38527	38345	38107	38241	38464	38770	39060	101.653
	22	38763	38370	39118	38569	38713	38142	38889	38816	37934	38555	38511	37601	101.637
	23	38608	38596	37949	38456	37616	38131	38315	38976	38099	37993	38386	38212	101.054
18	0	38279	38204	38252	39011	38276	38046	38340	38256	38296	38476	38586	38551	101.329
	1	38878	38706	38199	37946	38314	38855	38349	38287	38232	38644	38224	38041	101.349
	2	38353	37942	38710	38636	37994	38399	38321	38704	38873	38183	38479	38502	101.441
	3	37906	37877	38238	38366	38110	38234	38253	38656	38355	38467	38480	38399	101.055
	4	37558	37929	38563	38350	37852	38191	38235	38654	38609	38358	38157	38678	101.009
	5	38421	38969	38743	38836	38395	38444	38629	37758	38821	38515	38416	38621	101.765
	6	38914	39052	38943	38676	38603	38664	38581	38596	38591	38348	37420	38913	101.927
	7	38232	38693	38733	38610	38942	38725	38195	38303	38964	38612	38777	38494	101.921
	8	38734	38297	39219	38980	38756	38615	38123	38992	38295	37486	38862	38300	101.785
	9	38586	38137	39175	38199	38581	38464	38167	38427	38615	38159	38637	38667	101.599
	10	39081	38718	38384	38441	38243	38627	38375	38395	38676	38533	38605	38192	101.699
	11	38489	38267	38415	38568	38674	38262	38537	38315	37792	38966	38612	38882	101.592
	12	38607	38557	38701	38557	38804	38341	38028	38209	38376	37805	38246	38959	101.462
	13	38651	38783	39256	38832	38214	37883	38465	38766	37896	38062	38055	38009	101.392
	14	38624	38169	38109	38236	38339	38347	38041	38005	37867	38441	38401	38399	100.975
	15	37886	38089	38264	38175	38765	38265	38985	38566	38054	38599	38433	38675	101.366
	16	38095	38348	38747	38189	38614	38560	38702	38214	38009	38122	38481	38014	101.221
	17	38095	38023	38121	38880	38824	37936	37839	38017	38712	38108	38156	38498	101.026
	18	38821	38514	38714	38763	38071	37841	38302	38452	38385	37964	37999	38162	101.198
	19	38616	38465	37841	38861	38223	38219	38523	38299	38243	38278	37957	37998	101.095
	20	38541	38015	38395	38203	38228	37947	38497	37982	38376	38224	37908	38490	100.937
	21	38067	38778	38918	38521	38435	37873	37932	38729	38153	38054	38322	38318	101.222
	22	38092	38020	38139	37840	38108	38627	38330	38575	38204	38466	37845	38230	100.865
	23	37914	38182	38024	38404	38016	37975	38257	38351	38352	37969	38063	38038	100.660

INAF/UNIRomaTre		S.V.I.R.CO. Observatory - Pressure Corrected Data – December 2017											20 NM-64	
day	hh	00_05	05_10	10_15	15_20	20_25	25_30	30_35	35_40	40_45	45_50	50_55	55_60	h-norm
19	0	38313	38036	38181	38759	38474	38570	37821	38390	38675	38451	38716	38205	101.335
	1	38647	38197	38423	38598	38802	38653	38286	38083	38402	38481	38013	38714	101.486
	2	38710	38298	37922	38495	38350	38351	38518	38525	38331	38273	38346	38852	101.414
	3	38441	38390	38448	38101	38247	38829	38729	38376	38228	38011	37927	38270	101.200
	4	38539	38705	38534	38462	38474	38315	38173	38129	38694	38338	38542	38484	101.506
	5	38351	38079	38096	38038	38454	37969	38349	38823	38367	37962	38511	38236	101.032
	6	38437	38253	38417	38763	39016	38950	38187	38966	38316	38601	38575	38471	101.849
	7	38185	38095	38429	39046	38666	38689	38616	38636	38472	38312	37503	37959	101.334
	8	38844	38073	38605	38776	38522	38347	38564	38716	39046	38249	38390	38340	101.744
	9	38228	38391	37849	38674	38429	38187	38453	38198	38103	38916	38738	38737	101.398
	10	38421	38503	38278	39043	38304	38466	37946	38773	39008	38681	38257	38033	101.577
	11	38271	38185	38832	38545	38302	38497	38446	37950	38206	39070	38440	38361	101.443
	12	38373	38266	38003	37816	38018	38458	38529	38079	38524	38509	38638	38683	101.178
	13	38206	38169	38387	38620	38340	38365	38000	38361	38117	37746	38576	38379	101.039
	14	38599	37956	38139	38132	38471	37520	39357	38352	37819	38396	38362	37756	100.949
	15	37980	38555	39055	38198	38343	38387	38377	38042	38389	38554	37923	38505	101.268
	16	38166	38537	38295	38422	38338	38426	38288	37554	38203	37800	38009	38178	100.808
	17	38563	38137	38493	38831	38471	38248	38870	38472	38678	37867	38714	38455	101.596
	18	38121	38727	38284	38141	38888	38070	38571	38610	38130	38150	37887	37972	101.101
	19	38407	38236	38626	38434	38167	38492	38018	38175	37909	38531	38878	38229	101.223
	20	38884	38244	38987	38682	38613	38453	38401	38430	38260	38199	38950	38934	101.868
	21	38449	38907	38347	38253	38649	38295	39208	38557	38315	38294	37889	38344	101.531
	22	38165	38088	37820	37900	38439	38558	38174	38521	38351	39098	38264	38289	101.126
	23	38717	38877	38088	38319	38307	38550	38156	37973	38825	38695	38693	38159	101.499
20	0	38337	38102	38196	38911	38499	38571	38406	38158	38494	38324	38804	38066	101.392
	1	38128	38037	38460	37805	37981	38383	38704	37505	38681	38762	38288	38874	101.114
	2	38921	38333	37873	38847	38328	37929	38157	37749	38188	38087	38600	38530	101.099
	3	37818	38907	38207	38426	38669	38388	38078	38290	38749	38281	38685	38457	101.410
	4	38188	38232	38110	38371	38817	38643	38343	38763	39207	38551	38059	38177	101.522
	5	38032	38612	38386	38904	38285	38422	39063	38655	38319	38486	37993	38584	101.583
	6	37975	39007	38430	38475	38833	38422	38282	38310	38524	38679	38880	38372	101.681
	7	38993	38127	39476	38756	39299	38316	38749	38032	38362	38121	38129	38904	101.918
	8	38803	38693	38065	38471	38608	38554	38575	38018	38514	38418	38283	38623	101.558
	9	38939	38454	38514	37911	38979	38848	38732	38965	38023	38580	39024	37948	101.842
	10	38083	38666	38688	38584	38485	38450	38550	38876	38370	38710	38459	39167	101.880
	11	38514	38215	38241	38823	38461	38424	38326	39320	38371	38527	38497	38351	101.655
	12	38026	38169	38466	37617	38907	38621	38436	38680	38587	38593	38287	38792	101.461
	13	38455	38042	39011	38310	38370	38724	38319	38712	38953	38344	38806	37725	101.590
	14	38967	37981	38377	38250	38761	38228	38397	38620	39001	38678	38970	38546	101.810
	15	38472	38255	38543	38436	39068	38274	38341	38352	38511	38344	39078	38203	101.613
	16	38093	38725	38428	38179	37937	37974	39172	38325	38673	38839	38643	37929	101.402
	17	38374	38022	38002	38304	38268	38537	38323	38678	38373	37706	37946	38501	100.988
	18	38153	38467	38583	38587	38143	38040	38210	38491	38192	38205	38555	38271	101.177
	19	38076	38338	38365	39034	38847	38695	38373	38629	38566	37602	38488	38557	101.545
	20	37754	38639	38622	38314	38301	38301	38021	38069	38834	38594	38710	38569	101.360
	21	38380	38750	38597	37998	38597	38542	38338	38421	38559	38126	37992	38760	101.433
	22	38722	38512	38631	38021	38240	38048	38013	38576	38780	38830	38418	38585	101.503
	23	38617	38553	38186	39045	38251	38504	38199	38412	38480	38564	39040	38488	101.715

INAF/UNIRomaTre				S.V.I.R.CO. Observatory - Pressure Corrected Data – December 2017										20 NM-64
day	hh	00_05	05_10	10_15	15_20	20_25	25_30	30_35	35_40	40_45	45_50	50_55	55_60	h-norm
21	0	37511	38399	39220	37861	38625	37849	38862	38641	38498	38218	38323	38515	101.312
	1	37843	38731	37619	38028	39084	38403	38698	38247	38867	38487	38443	38594	101.430
	2	38071	38252	38489	38176	38312	38460	38493	38172	39001	38198	38487	38363	101.304
	3	38466	38505	38173	38617	39015	38442	38724	38556	38348	38955	37945	38142	101.616
	4	38993	38438	38565	38511	38845	38255	38770	38564	38612	38317	38961	39235	102.095
	5	38253	38131	38094	38260	37935	37991	38126	37782	38699	38515	38851	38943	101.107
	6	38508	38730	38509	38723	38517	38798	38573	39033	38202	38997	38603	39229	102.173
	7	38397	38403	38675	38280	38014	38448	38499	38422	38455	38076	38860	38389	101.402
	8	38458	38207	38471	38683	38270	38327	38495	38551	37913	38346	38009	38264	101.199
	9	38135	39490	38371	38862	38977	38299	38308	38533	38265	38268	39035	37889	101.735
	10	39009	38502	38033	38500	39201	38705	38494	38414	38878	38111	38549	38338	101.801
	11	38212	38986	38409	38537	38763	38396	38354	38617	38463	38065	38420	38515	101.582
	12	38766	39262	38444	38131	38936	38769	39132	38628	39206	38345	39105	38363	102.319
	13	38740	38650	38548	38964	38601	38270	38615	38862	37985	38530	39025	38610	101.948
	14	38766	39291	38010	38939	38231	37875	38519	38564	38162	38535	39045	38603	101.759
	15	38168	38830	38199	38317	38530	38766	38520	37835	38430	37825	38175	38391	101.197
	16	38581	38693	38441	38766	37902	38444	38314	38415	38706	38583	38677	38444	101.632
	17	38848	38489	38452	38924	38583	38695	38708	38904	38283	38189	38771	38238	101.879
	18	37897	38422	38022	38123	38573	37955	37763	38657	38709	37571	38826	38036	100.882
	19	38244	37962	38250	38753	37868	38562	38590	38171	38465	38294	39082	38143	101.285
	20	38230	38585	37948	37876	37977	38134	38564	38322	38518	38642	38242	38059	101.002
	21	38208	38020	38896	39123	38751	38407	38848	37433	38029	39024	38663	38048	101.519
	22	38687	38358	38403	38142	38086	38510	38618	38378	38227	38380	38827	38123	101.362
	23	38656	37819	37961	38007	38783	38773	38461	38216	38465	38585	38874	38616	101.468
22	0	37894	38178	38541	38248	38563	38230	37954	37769	38062	38341	38434	38441	100.894
	1	37931	38063	38284	37625	38048	38063	38999	38399	38609	38545	38944	38282	101.155
	2	38721	38259	38496	38455	38616	38348	38104	38413	38586	38550	38991	38267	101.597
	3	38192	39005	38304	38683	37899	38238	38262	38598	38252	38166	38206	38533	101.275
	4	38606	38880	38616	38627	39277	39008	37772	37957	37975	38820	38907	38548	101.859
	5	38338	38915	38942	38550	38362	38900	38559	38347	38692	37950	38657	38768	101.855
	6	38226	37991	38233	38845	38698	38294	38711	38372	38056	38666	38267	38488	101.386
	7	38744	38857	39543	38644	38996	38705	38130	37979	38832	38418	38502	38451	102.036
	8	38582	38774	38663	39002	38833	38914	38460	38561	38657	38672	38383	38858	102.159
	9	39007	38668	38370	39254	38732	38500	38445	38773	38472	38065	39205	38183	102.008
	10	38423	39039	38968	38748	38779	38529	38728	38700	38479	38220	38583	38559	102.026
	11	38505	38761	38622	38658	37909	38618	38179	38026	37941	38416	38646	38138	101.292
	12	38467	38642	38729	38853	38748	38806	38603	37951	38916	38561	38901	38131	101.928
	13	38969	38820	38532	38823	38765	38839	39074	37946	38373	38593	37816	38634	101.900
	14	38481	38225	38282	38114	37908	37887	38667	38386	37969	38265	38519	38666	101.061
	15	38417	38351	38080	38402	39060	38767	39179	38780	38838	38135	38409	37781	101.684
	16	38774	38552	39138	38158	39301	37970	38520	38217	38543	38166	38462	38227	101.647
	17	38117	38633	38792	38522	38795	38357	38760	38403	38803	38358	38438	38533	101.752
	18	38485	38375	39019	38285	38350	38638	38726	38773	38885	38657	38303	38548	101.869
	19	37851	37754	38659	38163	38430	38589	38665	38503	38258	37970	38634	38368	101.166
	20	38224	38478	38106	38923	38557	38740	38400	38589	39090	38419	38558	38039	101.667
	21	38023	38452	38436	38723	38703	38652	38266	38123	38918	38232	38745	38438	101.577
	22	38005	38774	38866	39448	38606	38484	38503	38442	38827	38590	38405	38373	101.931
	23	38539	38508	38647	38549	38330	38384	38585	38000	37778	38908	38450	38334	101.423

INAF/UNIromaTre		S.V.I.R.CO. Observatory - Pressure Corrected Data – December 2017										20 NM-64		
day	hh	00_05	05_10	10_15	15_20	20_25	25_30	30_35	35_40	40_45	45_50	50_55	55_60	h-norm
23	0	38528	38203	39498	38543	38633	38257	38959	38868	39129	38367	38598	38677	102.139
	1	38434	38546	38334	38485	38354	38110	38658	38792	38537	38296	38806	38347	101.574
	2	39221	38372	38531	38505	38294	38634	38362	38426	38663	38198	38207	38519	101.625
	3	38533	38238	37885	38085	38539	37908	38612	38569	38250	38392	38421	38600	101.207
	4	39338	38672	37712	38117	37982	38547	38524	38592	38266	38526	38844	38415	101.538
	5	38662	39117	38534	39332	38362	38731	39070	38470	38667	38470	39080	38026	102.196
	6	38921	38826	38669	38231	38305	38696	38910	38173	38877	38565	38925	38505	101.992
	7	39039	38783	38710	38816	38590	38710	38664	38717	38452	38365	37758	38721	101.932
	8	37947	38307	38427	39010	38920	37948	38456	38695	38625	38640	38358	38805	101.670
	9	38782	38033	38002	38471	38734	38993	38930	39080	38601	39102	38923	38763	102.171
	10	38429	38283	38898	37963	39131	38775	38000	38895	38401	38655	38292	38701	101.733
	11	38140	38716	39253	38372	38706	38716	38752	39142	38851	38626	38840	38360	102.185
	12	38011	38899	38746	38643	38710	39063	39163	38252	38649	38614	38628	38832	102.126
	13	38954	37980	38212	38493	38578	39097	38605	39216	38173	38899	38681	38392	101.922
	14	38515	38223	38117	38646	38851	38610	39272	38140	38511	38842	39102	38452	101.922
	15	38350	37747	38574	38104	38169	39009	38643	38920	38269	38333	39062	38001	101.460
	16	39281	38010	38357	38680	38357	38535	38303	38853	38805	38434	38313	38878	101.817
	17	38208	38659	38189	38904	38692	38071	38599	38429	38813	38242	38291	38547	101.562
	18	38507	38193	38426	38465	38642	38995	38299	38271	37634	38716	38435	38541	101.447
	19	38354	37653	38203	38382	38344	37964	38939	38631	38915	38805	38497	38397	101.439
	20	38021	38308	38065	37816	38405	38472	38282	39144	38200	37496	38249	37746	100.805
	21	38968	38570	38469	38250	38694	38305	38906	38739	38225	38305	37707	38668	101.597
	22	38895	38477	38137	38297	39145	38538	38516	38692	38615	38856	38020	38573	101.808
	23	38325	38123	37581	38671	38141	38414	38279	38323	38707	38054	37986	37939	100.879
24	0	38209	38381	38318	38310	38608	38156	38550	38103	37970	38271	38154	38105	101.013
	1	38335	38351	38070	38212	38218	38808	38565	38115	38310	38442	38356	38316	101.221
	2	38947	37410	38670	37646	38540	38491	37981	38315	38667	38576	38312	38046	101.112
	3	38394	38357	38256	37634	37737	37873	39180	37815	38608	38692	39044	38228	101.160
	4	37993	38877	38162	38471	38360	38575	38511	38282	38189	37856	38241	38468	101.197
	5	38278	38755	38361	37959	38564	37833	38308	38117	38211	37913	38349	37941	100.890
	6	38096	38569	38131	38132	38278	38244	38448	38522	38677	38050	38178	37958	101.042
	7	38256	38200	38126	38338	38483	38578	38051	38443	38416	38309	38458	38068	101.140
	8	38711	38586	38742	39039	37679	38459	39106	38227	38053	38677	37760	38150	101.462
	9	38514	38035	38667	38748	38667	37748	38930	38794	39017	38140	38323	38519	101.662
	10	38595	38374	37638	37764	38532	38412	38027	38558	38196	38549	38307	38880	101.163
	11	38278	38632	38837	38348	37660	39106	38939	38607	38384	38116	38550	38577	101.647
	12	38522	38791	37682	38542	39004	38767	38716	38540	38291	38710	38439	38441	101.738
	13	38697	39129	38802	38832	38646	39429	38548	38539	38507	38939	38505	38216	102.253
	14	38635	38739	38598	38268	38679	38884	39016	38446	38582	38687	38802	38697	102.087
	15	38027	38237	38156	37920	38077	38153	38454	38519	38311	38405	38931	37819	100.982
	16	38499	38140	38334	38442	38398	38219	38241	38426	38536	38734	37930	38283	101.240
	17	38325	38167	38192	38877	38150	38789	38018	37966	38639	38517	38341	38227	101.246
	18	38333	37982	37941	38453	38486	38386	37810	38182	38320	37651	38289	38629	100.862
	19	38641	38648	38107	38244	38319	38610	38068	38374	38010	38229	38197	38428	101.172
	20	38104	38122	38201	38275	38016	38733	38354	38220	38694	38342	38546	38203	101.158
	21	38435	38281	38411	38456	38314	38454	38299	38310	38187	37835	38398	38356	101.142
	22	38193	38662	38267	37910	38667	37966	37870	38445	37793	39386	38464	38181	101.157
	23	38142	38769	38401	38644	38736	38586	38564	38660	38094	38561	39308	38135	101.772

INAF/UNIRomaTre				S.V.I.R.CO. Observatory - Pressure Corrected Data – December 2017										20 NM-64	
day	hh	00_05	05_10	10_15	15_20	20_25	25_30	30_35	35_40	40_45	45_50	50_55	55_60	h-norm	
25	0	37729	37843	38132	38043	37617	38187	38364	37659	38026	38663	37949	38477	100.471	
	1	37882	38059	37638	38249	38417	38337	38549	37864	38422	38592	38511	38554	100.996	
	2	37873	38345	38155	38031	38045	38201	38435	38602	38030	38345	38625	38122	100.938	
	3	38504	38137	38953	38230	38227	38337	38526	38487	38767	38418	38540	37881	101.422	
	4	37314	38515	38166	38342	38547	38311	38649	38627	38442	38346	37109	38165	100.877	
	5	37859	38423	37796	38312	38185	38530	37976	38187	38399	38768	38504	37848	100.933	
	6	38111	38423	38112	38279	39200	38601	38251	38687	38881	38074	38268	38130	101.424	
	7	38098	38635	38205	38161	38392	38094	38281	38346	39411	38187	37980	38336	101.228	
	8	38851	38639	38205	38647	37765	38508	38047	38591	38720	37759	37716	38587	101.208	
	9	38314	38755	38345	38538	38204	38434								
	10		38589	38112	38783	38471	38220	38793	38502	38629	39141	38438	38068	101.707	
	11	38503	38544	38510	38307	38683	38464	38470	37894	38361	38289	38188	38437	101.342	
	12	38485	38580	38196	38489	38366	38354	38661	38861	38103	38846	38356	39012	101.708	
	13	38714	38526	38127	38234	37865	38714	38417	38973	38020	38232	38859	38424	101.443	
	14	38047	38894	37788	37874	38368	38694	38562	38600	38460	39270	38771	38849	101.679	
	15	38280	38671	38304	39048	38505	38282	38039	38344	38447	38328	38392	38797	101.516	
	16	38273	38609	38387	37603	38704	38397	38191	38391	38899	37660	37937	39072	101.227	
	17	37974	38649	38235	38250	38329	37840	38781	38866	37675	38923	38469	38218	101.246	
	18	38630	38420	38591	38169	38626	38735	38532	38507	38392	38659	38416	38770	101.738	
	19	38282	38264	38376	38186	38529	38074	38481	38428	37535	38757	38145	37420	100.864	
	20	38523	37876	38310	38004	38049	38289	38626	38518	38302	38685	38825	38205	101.247	
	21	38580	38271	38046	38272	38594	38722	39031	38831	38597	39304	38126	38288	101.785	
	22	38740	38231	38534	38830	38494	38714	38795	38905	37699	38893	38433	38615	101.835	
	23	38120	38484	38531	38551	39216	38861	38018	38471	38416	39109	38852	38976	101.993	
26	0	38486	38437	38020	38346	38862	38208	38579	38707	38504	38211	38294	37819	101.301	
	1	38724	38356	38980	38485	38652	38338	38441	38339	39230	38461	38333	38234	101.766	
	2	38198	38690	38403	38427	38119	38636	38442	38278	38376	38526	38687	38594	101.503	
	3	38141	38750	38140	38386	38777	38888	38465	37898	38344	38584	38393	38537	101.487	
	4	38225	38428	38371	37953	38192	38769	38624	38148	38263	38576	38231	37929	101.136	
	5	38087	37874	38476	38807	38545	38594	37970	38147	38881	37866	38199	38423	101.172	
	6	38494	38909	38665	38958	38490	38498	38567	38586	38234	38729	38009	38111	101.695	
	7	37674	38213	38610	38303	38249	38686	38383	38575	38378	38370	38595	37979	101.204	
	8	38153	38259	38389	38403	38385	38946	38388	38407	38081	38610	38526	38792	101.495	
	9	38432	38223	38013	38783	38700	38413	38246	38673	37811	38200	38702	38712	101.400	
	10	38461	37925	38534	38131	38135	38535	37887	38530	38763	38607	38131	38188	101.163	
	11	37882	38604	37807	38432	38767	38762	38472	38600	38202	38615	38066	38473	101.351	
	12	38252	38168	38082	38770	38429	38468	38448	39245	38246	38363	38081	38344	101.398	
	13	38410	38721	38237	38006	38204	38167	38101	38098	38507	38084	38552	37416	100.870	
	14	38975	38600	38310	38886	38328	38792	38070	38463	38080	38103	38095	38081	101.371	
	15	38511	37971	37990	38156	38085	38463	38250	37656	37855	38017	38372	38277	100.672	
	16	38381	38047	38281	38032	38156	38352	38584	38582	38740	38112	38717	38460	101.298	
	17	37704	38651	38330	37726	38341	38315	38374	38185	39134	38328	38302	38693	101.218	
	18	38253	38918	39017	37829	37650	37786	38092	37556	37731	37978	38424	38270	100.651	
	19	38104	38177	38720	38386	38255	38226	38744	38072	38552	39038	37866	38055	101.243	
	20	38560	38402	37644	38214	38411	37996	38171	38479	38073	38056	38266	38433	100.916	
	21	38671	38906	37557	38130	38470	38759	38666	38074	38236	38436	38568	38169	101.341	
	22	38520	38427	38421	38156	38195	38445	38273	38631	38378	37848	37918	38012	101.029	
	23	38097	37964	38407	38654	38822	38150	38087	38542	38929	38366	38453	38067	101.319	

INAF/UNIRomaTre		S.V.I.R.CO. Observatory - Pressure Corrected Data – December 2017											20 NM-64	
day	hh	00_05	05_10	10_15	15_20	20_25	25_30	30_35	35_40	40_45	45_50	50_55	55_60	h-norm
27	0	38053	38103	38405	38654	38074	38582	38634	38807	38730	38273	37856	38864	101.411
	1	38684	38576	38496	38387	38267	38505	37997	38568	38541	38656	39021	38500	101.684
	2	38201	38331	38658	37941	38435	38243	37967	38683	38478	38306	38400	38897	101.319
	3	38279	38604	38218	37857	38362	38437	37882	38180	37855	38337	37979	38413	100.849
	4	38174	38175	37916	37784	38168	37640	38324	38449	37950	38583	37948	38189	100.607
	5	38097	38402	38474	38435	38179	38178	38303	38341	38437	38325	38105	38061	101.054
	6	38798	37953	38447	37877	39296	37769	38327	38094	38422	38012	38041	38219	101.036
	7	38142	38044	37816	38636	37924	38540	38588	38243	38459	38441	38594	38528	101.192
	8	37864	38348	38394	38301	37635	37878	38162	38183	38041	38513	38403	38266	100.758
	9	37905	37880	38689	38190	38553	38503	38238	38457	38842	38490	38114	38521	101.285
	10	38384	38215	38079	38359	38093	38222	37921	38234	38359	38025	38188	38571	100.903
	11	37956	38236	38875	38927	38366	37838	37904	38365	38392	37760	38268	38594	101.086
	12	38515	38363	37644	37629	38261	38445	38135	38218	37703	38344	38078	37865	100.584
	13	38412	38596	38066	37668	37624	38197	38822	37979	37913	38554	38068	38501	100.848
	14	38115	38562	37871	37848	38587	37729	38159	38522	38618	38071	38081	38290	100.860
	15	37956	37747	37638	37909	38359	38063	38134	37918	37874	37929	38314	38133	100.315
	16	38751	37747	38262	38228	38144	37928	38482	38376	38400	37882	37906	37970	100.777
	17	38318	38334	38096	38233	38403	37778	38470	38542	38323	37422	38215	38991	101.008
	18	37601	38378	37994	38369	38277	37517	38087	37881	38036	37677	38151	38205	100.358
	19	37948	38439	38344	37911	38293	38335	37774	37822	37846	38222	38108	38066	100.564
	20	37894	38143	37725	37880	37762	37588	37906	38584	37867	37829	37810	37929	100.081
	21	38359	38032	37989	37983	38271	37650	37685	37838	38161	37817	37851	37815	100.199
	22	37872	38237	37908	37940	37544	37793	38392	37814	38423	38104	38217	37900	100.352
	23	37644	38426	38145	37834	38471	38253	38115	38229	38142	38006	37709	37287	100.377
28	0	37891	37837	37550	38327	38311	38247	38108	38029	38525	38201	38141	37878	100.548
	1	38006	38222	37856	38325	38396	38492	37728	38195	37916	38768	37895	38659	100.861
	2	38407	37885	38100	38205	38447	37903	38524	38152	37713	37856	38010	38388	100.670
	3	38234	38040	37787	37569	37781	37756	38431	38268	37888	37927	38132	38394	100.366
	4	38387	38567	37643	38528	37941	37937	37990	37756	37890	38354	38043	38074	100.565
	5	38177	38665	37968	38274	38471	37856	38158	38523	37916	38125	38232	38500	100.950
	6	38423	38132	38344	38126	37957	38005	38411	37931	38594	37931	38535	37952	100.835
	7	38152	38499	38017	38442	37954	37994	38124	38510	38442	38203	38162	37983	100.867
	8	38196	38288	37919	38654	37993	37237	38592	37788	37967	38407	38246	38326	100.675
	9	38405	38321	38196	37772	38267	38380	38570	37766	37880	37962	38073	38325	100.742
	10	38221	37845	38016	37853	38111	38679	38769	37741	38023	38132	38153	38481	100.765
	11	38560	38317	37943	38389	38339	37800	38626	38535	38321	37793	38107	37845	100.888
	12	38471	38549	38332	38150	38228	38149	38403	38312	38058	38065	38290	38017	100.985
	13	37945	38339	38513	38171	37622	38750	38377	38122	38205	38686	38370	38557	101.124
	14	37838	37914	37915	37329	38085	38317	38104	38189	37848	37885	38573	37970	100.312
	15	38188	38294	38334	38207	37757	38339	38231	38300	38087	37910	38109	38134	100.736
	16	38335	37974	38069	37843	37830	38541	38040	38586	38020	38514	38306	38047	100.783
	17	37875	37894	38158	37875	38325	38164	37785	38114	38403	37941	37739	37667	100.308
	18	38545	38368	37593	38361	38232	37832	37799	37705	37702	37592	37823	38081	100.241
	19	38386	38194	38047	38058	38332	38079	38148	38214	37697	37759	38287	38193	100.627
	20	37964	38104	38574	37953	38213	37983	37776	38150	37555	38068	38679	37896	100.522
	21	38197	38407	38098	37715	37391	37565	37804	38119	38359	38159	38363	38153	100.392
	22	37605	38051	38177	38160	38068	37485	38258	37542	38072	37778	38076	38677	100.309
	23	37863	37432	38292	37538	37864	37610	38178	37872	37780	38097	38032	37580	99.910

INAF/UNIRomaTre				S.V.I.R.CO. Observatory - Pressure Corrected Data – December 2017										20 NM-64
day	hh	00_05	05_10	10_15	15_20	20_25	25_30	30_35	35_40	40_45	45_50	50_55	55_60	h-norm
29	0	38048	37832	37649	37444	38298	38107	37646	38057	38248	37969	38409	38200	100.309
	1	37691	38083	38080	37687	38103	37989	37810	38248	38383	38032	38047	38386	100.438
	2	37901	37643	38119	38206	37919	38027	37897	37814	38171	38217	38729	38542	100.581
	3	38511	38432	38097	37820	38151	37928	38102	38099	38269	38129	37848	37532	100.522
	4	38082	38151	38156	38081	37941	38082	37788	38193	38087	37914	37779	37819	100.337
	5	38035	38342	38856	38439	38223	38241	38347	37958	38101	38055	37767	38439	100.938
	6	38576	39164	38478	38173	38450	37435	37721	37757	38186	38200	38318	38630	101.000
	7	38667	38908	38306	38549	37834	38224	37716	37925	38056	38370	38522	38783	101.170
	8	37962	38319	37830	38388	38639	38489	38028	38307	37256	38258	38409	38145	100.767
	9	38391	38700	38218	37891	37882	38193	37749	38252	37749	37800	37947	38533	100.607
	10	38221	37822	38535	37645	37890	38227	38058	38284	38394	38746	37950	37975	100.704
	11	38337	38218	38316	37682	38186	37766	37539	37904	37651	38120	37631	37959	100.169
	12	37886	37991	37852	38185	38031	37808	37998	37700	37854	38049	38206	38002	100.224
	13	38004	38000	37285	37841	38138	38184	38075	37254	38157	37703	37491	37755	99.856
	14	37616	38455	38000	37556	37720	38179	38040	38104	37541	38403	38190	37744	100.220
	15	38041	37716	37978	38208	38082	38147	38196	37675	38470	37603	38227	38266	100.454
	16	38429	38285	37921	38174	38243	37937	38024	38554	37298	38069	37569	37929	100.415
	17	37755	37998	38229	38096	37645	37679	38164	38352	37384	38130	37955	38316	100.254
	18	38254	37844	38083	38066	37994	38528	38258	38370	37531	38140	38007	37754	100.503
	19	37781	37854	38485	38189	38255	37457	37990	38008	37889	37729	38043	38010	100.252
	20	37896	38217	37768	38261	37735	38361	38106	37737	38341	38088	38217	38220	100.529
	21	37857	38074	38155	37578	37790	38191	37918	37939	37948	38084	38134	37709	100.183
	22	38216	37792	38016	38697	37913	38118	37778	38204	37509	37748	38402	37852	100.374
	23	37539	37925	38253	37644	37865	37933	37760	37623	38197	38032	37933	38142	100.066
30	0	38370	37921	37984	38121	38078	37904	37542	37830	37366	38023	37716	37910	100.037
	1	37463	38130	37861	38254	37663	38016	37784	37919	38186	37762	38143	37711	100.077
	2	37815	38000	37948	38035	37271	38192	37853	38231	37666	37856	37878	37626	99.962
	3	37835	38377	37991	37934	38110	37723	38340	38594	38212	37665	38817	37885	100.647
	4	38206	37541	37509	38180	37970	37893	37902	38315	37686	37680	37888	37941	100.036
	5	37759	37392	37557	38016	38203	37756	37601	38072	38032	38253	38655	37742	100.108
	6	37987	37978	37918	38332	37500	37909	37781	38141	37922	37793	37852	37645	100.047
	7	37854	38426	37818	37351	38173	38611	38117	38226	37881	38032	37926	37971	100.405
	8	38714	38730	38089	37577	38181	38153	38506	37689	37648	38153	38282	37636	100.619
	9	38251	37572	37595	38365	37700	37707	37815	38459	38094	37283	38046	38092	100.095
	10	37946	37792	37792	38212	38050	37847	38295	38107	38529	38000	38111	37968	100.463
	11	37643	37991	37348	38024	38062	37776	37835	37999	37299	38010	37043	37835	99.630
	12	37798	37717	37387	38171	37864	37800	38472	37982	37745	38075	37464	37997	99.984
	13	37684	37962	37632	37524	37925	38198	37665	37421	37834	37587	37850	37711	99.659
	14	37584	38001	37716	37805	37609	38108	38150	38089	37849	37706	38075	37862	100.002
	15	37666	38207	38174	38049	38013	37611	38033	38105	37636	37407	38161	38147	100.146
	16	37534	37832	37711	37791	38165	37609	37963	37955	37743	37647	38309	37997	99.936
	17	37388	38596	37922	37828	38116	38346	38188	37901	37845	37626	38231	37726	100.257
	18	37733	38434	38827	38582	37756	37890	37626	38170	38211	37348	37976	37618	100.359
	19	38058	37737	38451	37610	37904	38390	37613	38695	37594	37741	38027	37975	100.275
	20	38307	37803	37644	38086	37889	38028	37888	38162	37674	37875	38110	37741	100.146
	21	38630	38207	38153	37829	38464	37577	38332	38471	37787	37970	37908	37450	100.492
	22	37767	38265	37986	37989	37814	37454	37756	37772	38054	37410	38191	37889	99.957
	23	37949	37387	38433	38251	37868	37906	38058	38347	37406	37908	38038	37927	100.205

INAF/UNIRomaTre				S.V.I.R.CO. Observatory - Pressure Corrected Data – December 2017								20 NM-64		
day	hh	00_05	05_10	10_15	15_20	20_25	25_30	30_35	35_40	40_45	45_50	50_55	55_60	h-norm
31	0	37622	38009	37904	37788	37446	37899	37826	38016	37609	37553	37878	37780	99.723
	1	38447	37564	38255	38347	37877	37791	38054	37730	37810	37625	37547	37936	100.097
	2	38010	38082	38400	38066	38128	37910	37743	38228	37857	37949	38040	38630	100.550
	3	37754	37564	37673	37712	37579	37684	37945	38129	38026	37851	37855	37357	99.688
	4	37295	37494	37490	37872	38017	38060	37998	38229	37960	37695	37312	38340	99.827
	5	37757	37594	37399	37932	37722	37794	37357	37826	37646	38290	37974	38298	99.789
	6	38378	38063	38105	38074	38126	37669	38180	37043	37329	38173	37933	38142	100.147
	7	38067	37805	37799	37800	37387	37481	37712	37858	38139	38015	37833	38220	99.905
	8	37678	37762	37832	37913	38041	37727	38030	37366	38202	37867	37547	38049	99.883
	9	37609	37521	38422	37867	37134	39070	37842	38366	37536	37587	37800	37535	99.943
	10	38035	37580	38074	37747	37866	37980	38205	37897	38024	37820	37939	37337	99.991
	11	38108	37828	38128	37614	37631	37492	37377	38142	37610	38042	37942	38117	99.887
	12	37768	38004	37410	37580	38118	38147	37984	38158	37646	37505	38218	37381	99.862
	13	37700	38096	37597	37384	37375	37102	37355	38012	37621	37078	37400	37713	99.095
	14	38154	37747	37728	37998	37316	38081	37624	37630	38201	37709	38182	37507	99.853
	15	37369	38264	37946	37768	37476	37941	37833	38361	37661	38620	37865	37734	100.064
	16	38299	38009	37868	38000	37863	37863	37963	37740	37802	37904	37741	37988	100.109
	17	37620	37908	37269	37498	37504	37532	37881	37987	37441	37891	37644	37116	99.284
	18	38003	37401	37704	37637	37706	38102	37364	38201	37534	37766	37712	37810	99.647
	19	38078	37681	37599	37759	37835	37263	37364	37727	37195	37522	37480	37734	99.272
	20	37813	37568	37004	37536	37778	37647	37421	37692	37749	37823	37567	38076	99.369
	21	38029	37135	37702	37916	37791	37434	37968	37472	37724	37443	37350	37902	99.411
	22	38026	37700	38267	37627	37448	38087	37752	38271	38195	37967	38001	37585	100.084
	23	38018	37730	37523	37892	37900	37761	37876	37431	38337	38035	38139	38090	100.041

S.V.I.R.CO. Observatory - Pressure in hectoPascal – December 2017

day	hh	00_05	05_10	10_15	15_20	20_25	25_30	30_35	35_40	40_45	45_50	50_55	55_60	average
1	0	1006.77	1006.77	1006.75	1006.72	1006.68	1006.62	1006.61	1006.64	1006.69	1006.74	1006.81	1006.88	1006.72
	1	1006.93	1006.97	1007.02	1007.04	1007.05	1007.05	1007.04	1007.00	1007.01	1007.08	1007.09	1007.06	1007.02
	2	1007.06	1007.10	1007.08	1007.03	1007.01	1006.97	1006.89	1006.84	1006.81	1006.75	1006.74	1006.77	1006.92
	3	1006.79	1006.79	1006.76	1006.76	1006.76	1006.77	1006.78	1006.79	1006.76	1006.76	1006.80	1006.85	1006.78
	4	1006.87	1006.80	1006.71	1006.70	1006.77	1006.86	1006.95	1006.99	1007.00	1007.02	1007.01	1007.04	1006.89
	5	1007.12	1007.21	1007.48	1007.68	1007.51	1007.22	1007.09	1007.05	1007.03	1007.06	1007.10	1007.12	1007.22
	6	1007.11	1007.16	1007.29	1007.42	1007.55	1007.60	1007.51	1007.43	1007.44	1007.49	1007.51	1007.54	1007.42
	7	1007.52	1007.49	1007.54	1007.58	1007.59	1007.61	1007.66	1007.68	1007.66	1007.66	1007.68	1007.70	1007.61
	8	1007.73	1007.71	1007.72	1007.79	1007.83	1007.82	1007.77	1007.78	1007.82	1007.80	1007.81	1007.83	1007.78
	9	1007.82	1007.79	1007.78	1007.78	1007.74	1007.72	1007.75	1007.71	1007.62	1007.59	1007.61	1007.61	1007.71
	10	1007.51	1007.40	1007.38	1007.37	1007.31	1007.27	1007.24	1007.15	1007.05	1007.01	1006.99	1006.98	1007.22
	11	1006.97	1006.90	1006.84	1006.79	1006.76	1006.78	1006.80	1006.78	1006.77	1006.81	1006.84	1006.86	1006.82
	12	1006.86	1006.84	1006.86	1006.87	1006.83	1006.82	1006.80	1006.75	1006.71	1006.69	1006.67	1006.65	1006.78
	13	1006.67	1006.68	1006.66	1006.64	1006.58	1006.51	1006.52	1006.53	1006.49	1006.43	1006.41	1006.40	1006.54
	14	1006.39	1006.37	1006.34	1006.31	1006.34	1006.38	1006.42	1006.43	1006.42	1006.46	1006.55	1006.65	1006.42
	15	1006.73	1006.84	1006.93	1006.97	1007.02	1007.06	1007.11	1007.16	1007.17	1007.21	1007.26	1007.26	1007.06
	16	1007.26	1007.26	1007.27	1007.30	1007.33	1007.37	1007.42	1007.43	1007.39	1007.41	1007.45	1007.46	1007.36
	17	1007.51	1007.59	1007.67	1007.72	1007.80	1007.88	1007.92	1007.98	1008.03	1008.04	1008.04	1008.04	1007.85
	18	1008.05	1008.10	1008.18	1008.27	1008.35	1008.43	1008.49	1008.49	1008.50	1008.54	1008.57	1008.55	1008.37
	19	1008.54	1008.58	1008.61	1008.58	1008.57	1008.58	1008.56	1008.55	1008.56	1008.54	1008.58	1008.63	1008.57
	20	1008.61	1008.63	1008.66	1008.71	1008.75	1008.75	1008.76	1008.79	1008.82	1008.83	1008.84	1008.83	1008.75
	21	1008.78	1008.72	1008.72	1008.75	1008.77	1008.78	1008.80	1008.82	1008.82	1008.82	1008.84	1008.84	1008.79
	22	1008.82	1008.83	1008.79	1008.74	1008.71	1008.68	1008.67	1008.65	1008.63	1008.63	1008.60	1008.55	1008.69
	23	1008.53	1008.52	1008.41	1008.27	1008.22	1008.23	1008.21	1008.18	1008.19	1008.23	1008.22	1008.18	1008.28
2	0	1008.11	1008.12	1008.08	1008.03	1008.03	1008.04	1008.04	1008.05	1008.08	1008.10	1008.12	1008.15	1008.08
	1	1008.14	1008.15	1008.19	1008.18	1008.16	1008.15	1008.17	1008.17	1008.13	1008.04	1007.94	1007.88	1008.11
	2	1007.79	1007.66	1007.57	1007.53	1007.43	1007.33	1007.26	1007.22	1007.17	1007.07	1007.01	1006.97	1007.33
	3	1006.95	1007.03	1007.14	1007.17	1007.14	1007.10	1007.07	1007.02	1007.00	1007.01	1006.99	1006.94	1007.04
	4	1006.89	1006.86	1006.84	1006.79	1006.77	1006.79	1006.79	1006.76	1006.75	1006.79	1006.84	1006.90	1006.81
	5	1006.93	1006.91	1006.87	1006.89	1006.94	1006.95	1006.92	1006.90	1006.92	1006.89	1006.86	1006.83	1006.90
	6	1006.79	1006.80	1006.80	1006.80	1006.82	1006.82	1006.84	1006.87	1006.87	1006.88	1006.90	1006.90	1006.84
	7	1006.93	1006.96	1006.97	1006.97	1006.97	1006.92	1006.85	1006.83	1006.91	1006.98	1007.02	1007.05	1006.94
	8	1007.06	1007.07	1007.09	1007.12	1007.15	1007.18	1007.22	1007.26	1007.33	1007.43	1007.47	1007.42	1007.23
	9	1007.38	1007.39	1007.40	1007.42	1007.39	1007.32	1007.29	1007.35	1007.43	1007.44	1007.44	1007.41	1007.39
	10	1007.37	1007.36	1007.36	1007.30	1007.25	1007.26	1007.25	1007.20	1007.12	1007.03	1006.89	1006.74	1007.18
	11	1006.57	1006.46	1006.43	1006.42	1006.40	1006.34	1006.28	1006.20	1006.16	1006.16	1006.12	1006.05	1006.30
	12	1005.97	1005.95	1005.99	1006.03	1006.03	1006.02	1005.97	1005.88	1005.86	1005.86	1005.85	1005.84	1005.94
	13	1005.84	1005.81	1005.75	1005.70	1005.67	1005.67	1005.71	1005.73	1005.75	1005.78	1005.81	1005.82	1005.75
	14	1005.84	1005.87	1005.95	1006.01	1006.04	1006.02	1006.00	1006.02	1006.10	1006.15	1006.13	1006.16	1006.02
	15	1006.20	1006.21	1006.26	1006.28	1006.23	1006.24	1006.28	1006.29	1006.29	1006.32	1006.36	1006.39	1006.28
	16	1006.42	1006.40	1006.40	1006.37	1006.37	1006.43	1006.48	1006.48	1006.47	1006.47	1006.50	1006.52	1006.44
	17	1006.52	1006.53	1006.55	1006.56	1006.59	1006.64	1006.72	1006.78	1006.81	1006.82	1006.86	1006.92	1006.69
	18	1006.98	1007.02	1007.07	1007.11	1007.09	1007.11	1007.18	1007.21	1007.25	1007.33	1007.39	1007.44	1007.18
	19	1007.49	1007.50	1007.49	1007.53	1007.59	1007.62	1007.63	1007.63	1007.64	1007.64	1007.65	1007.66	1007.59
	20	1007.68	1007.72	1007.76	1007.79	1007.81	1007.82	1007.83	1007.86	1007.93	1008.01	1008.06	1008.13	1007.86
	21	1008.22	1008.27	1008.27	1008.29	1008.33	1008.41	1008.50	1008.56	1008.57	1008.58	1008.64	1008.71	1008.44
	22	1008.75	1008.79	1008.83	1008.85	1008.86	1008.92	1008.98	1008.98	1008.96	1008.94	1008.93	1008.96	1008.89
	23	1009.00	1009.04	1009.06	1009.10	1009.15	1009.19	1009.21	1009.26	1009.32	1009.36	1009.38	1009.41	1009.21

S.V.I.R.CO. Observatory - Pressure in hectoPascal – December 2017

day	hh	00_05	05_10	10_15	15_20	20_25	25_30	30_35	35_40	40_45	45_50	50_55	55_60	average
3	0	1009.41	1009.42	1009.41	1009.41	1009.43	1009.45	1009.47	1009.51	1009.56	1009.62	1009.66	1009.71	1009.51
	1	1009.77	1009.82	1009.87	1009.90	1009.92	1009.95	1009.98	1010.02	1010.11	1010.20	1010.27	1010.34	1010.01
	2	1010.41	1010.48	1010.53	1010.59	1010.63	1010.64	1010.66	1010.70	1010.78	1010.86	1010.92	1010.98	1010.68
	3	1011.03	1011.06	1011.06	1011.08	1011.10	1011.10	1011.07	1011.07	1011.10	1011.14	1011.22	1011.31	1011.11
	4	1011.39	1011.45	1011.50	1011.56	1011.64	1011.72	1011.78	1011.82	1011.89	1011.96	1012.03	1012.14	1011.74
	5	1012.25	1012.31	1012.38	1012.47	1012.55	1012.63	1012.68	1012.76	1012.85	1012.91	1012.95	1012.99	1012.64
	6	1013.06	1013.13	1013.13	1013.14	1013.19	1013.22	1013.27	1013.33	1013.40	1013.48	1013.55	1013.60	1013.29
	7	1013.62	1013.67	1013.75	1013.81	1013.87	1013.91	1013.94	1013.99	1014.05	1014.11	1014.17	1014.21	1013.92
	8	1014.31	1014.38	1014.38	1014.46	1014.59	1014.67	1014.72	1014.71	1014.71	1014.79	1014.94	1015.06	1014.64
	9	1015.15	1015.22	1015.25	1015.29	1015.34	1015.37	1015.43	1015.46	1015.43	1015.44	1015.49	1015.53	1015.36
	10	1015.58	1015.64	1015.64	1015.65	1015.65	1015.63	1015.61	1015.50	1015.35	1015.27	1015.25	1015.26	1015.50
	11	1015.23	1015.22	1015.25	1015.24	1015.25	1015.29	1015.29	1015.27	1015.23	1015.21	1015.24	1015.23	1015.24
	12	1015.21	1015.20	1015.18	1015.17	1015.13	1015.09	1015.06	1015.07	1015.08	1015.10	1015.13	1015.15	1015.13
	13	1015.14	1015.14	1015.16	1015.21	1015.30	1015.37	1015.42	1015.49	1015.52	1015.54	1015.56	1015.57	1015.37
	14	1015.61	1015.66	1015.71	1015.74	1015.75	1015.79	1015.85	1015.90	1015.97	1016.03	1016.07	1016.13	1015.85
	15	1016.20	1016.29	1016.35	1016.38	1016.40	1016.45	1016.48	1016.44	1016.45	1016.50	1016.57	1016.66	1016.43
	16	1016.74	1016.83	1016.91	1016.97	1017.04	1017.09	1017.12	1017.13	1017.13	1017.17	1017.21	1017.21	1017.04
	17	1017.22	1017.24	1017.27	1017.36	1017.47	1017.54	1017.56	1017.60	1017.66	1017.69	1017.72	1017.76	1017.50
	18	1017.84	1017.92	1018.01	1018.11	1018.13	1018.08	1018.06	1018.08	1018.07	1018.04	1018.04	1018.04	1018.03
	19	1018.05	1018.10	1018.14	1018.16	1018.18	1018.22	1018.27	1018.32	1018.39	1018.45	1018.47	1018.50	1018.27
	20	1018.57	1018.63	1018.68	1018.70	1018.71	1018.72	1018.75	1018.75	1018.77	1018.79	1018.82	1018.87	1018.73
	21	1018.93	1018.97	1019.02	1019.02	1019.00	1019.02	1019.09	1019.18	1019.25	1019.28	1019.29	1019.28	1019.11
	22	1019.30	1019.28	1019.27	1019.33	1019.38	1019.41	1019.46	1019.49	1019.47	1019.46	1019.47	1019.48	1019.40
	23	1019.47	1019.47	1019.50	1019.53	1019.57	1019.60	1019.59	1019.60	1019.60	1019.61	1019.60	1019.59	1019.56
4	0	1019.67	1019.68	1019.72	1019.76	1019.80	1019.83	1019.88	1019.93	1019.94	1019.91	1019.90	1019.95	1019.84
	1	1020.03	1020.12	1020.19	1020.23	1020.25	1020.26	1020.25	1020.27	1020.31	1020.37	1020.41	1020.41	1020.25
	2	1020.38	1020.34	1020.30	1020.26	1020.24	1020.26	1020.28	1020.27	1020.26	1020.26	1020.26	1020.23	1020.28
	3	1020.22	1020.24	1020.25	1020.24	1020.26	1020.31	1020.34	1020.36	1020.38	1020.37	1020.38	1020.40	1020.31
	4	1020.39	1020.41	1020.44	1020.44	1020.44	1020.47	1020.53	1020.58	1020.62	1020.65	1020.69	1020.70	1020.53
	5	1020.73	1020.78	1020.81	1020.84	1020.88	1020.94	1020.97	1021.01	1021.06	1021.11	1021.15	1021.21	1020.95
	6	1021.26	1021.30	1021.36	1021.42	1021.47	1021.51	1021.55	1021.64	1021.77	1021.93	1022.05	1022.15	1021.61
	7	1022.22	1022.27	1022.32	1022.38	1022.47	1022.56	1022.65	1022.73	1022.78	1022.81	1022.84	1022.91	1022.58
	8	1023.02	1023.14	1023.22	1023.28	1023.34	1023.37	1023.40	1023.46	1023.53	1023.61	1023.68	1023.77	1023.40
	9	1023.83	1023.89	1023.93	1023.97	1024.04	1024.12	1024.17	1024.16	1024.12	1024.12	1024.16	1024.15	1024.05
	10	1024.13	1024.12	1024.11	1024.09	1024.08	1024.05	1024.03	1024.02	1024.02	1024.06	1024.07	1024.04	1024.07
	11	1024.03	1024.01	1023.96	1023.92	1023.88	1023.84	1023.82	1023.79	1023.78	1023.80	1023.82	1023.82	1023.87
	12	1023.80	1023.78	1023.79	1023.81	1023.80	1023.81	1023.83	1023.83	1023.81	1023.78	1023.78	1023.77	1023.80
	13	1023.79	1023.84	1023.87	1023.88	1023.85	1023.82	1023.82	1023.84	1023.86	1023.88	1023.92	1023.99	1023.86
	14	1024.03	1024.05	1024.08	1024.11	1024.15	1024.19	1024.25	1024.31	1024.34	1024.37	1024.38	1024.42	1024.22
	15	1024.45	1024.47	1024.50	1024.52	1024.55	1024.58	1024.62	1024.69	1024.78	1024.85	1024.92	1025.01	1024.66
	16	1025.09	1025.12	1025.12	1025.11	1025.10	1025.11	1025.12	1025.15	1025.22	1025.33	1025.41	1025.49	1025.19
	17	1025.55	1025.56	1025.55	1025.58	1025.64	1025.73	1025.82	1025.89	1025.96	1026.03	1026.06	1026.06	1025.78
	18	1026.09	1026.16	1026.23	1026.31	1026.40	1026.51	1026.61	1026.70	1026.76	1026.77	1026.74	1026.69	1026.49
	19	1026.72	1026.78	1026.80	1026.81	1026.83	1026.88	1026.93	1026.99	1027.07	1027.09	1027.14	1027.20	1026.94
	20	1027.24	1027.29	1027.32	1027.39	1027.49	1027.55	1027.57	1027.62	1027.68	1027.74	1027.80	1027.84	1027.54
	21	1027.85	1027.87	1027.92	1027.96	1027.98	1028.01	1028.02	1028.06	1028.12	1028.16	1028.16	1028.19	1028.02
	22	1028.26	1028.29	1028.29	1028.31	1028.33	1028.35	1028.34	1028.32	1028.37	1028.47	1028.54	1028.59	1028.37
	23	1028.65	1028.71	1028.74	1028.72	1028.66	1028.65	1028.69	1028.74	1028.75	1028.74	1028.76	1028.81	1028.72

S.V.I.R.CO. Observatory - Pressure in hectoPascal – December 2017

day	hh	00_05	05_10	10_15	15_20	20_25	25_30	30_35	35_40	40_45	45_50	50_55	55_60	average
5	0	1028.80	1028.82	1028.88	1028.94	1028.96	1029.00	1029.04	1029.04	1028.99	1028.94	1028.94	1028.96	1028.95
	1	1028.97	1029.05	1029.09	1029.12	1029.21	1029.26	1029.26	1029.29	1029.30	1029.33	1029.41	1029.44	1029.23
	2	1029.45	1029.46	1029.41	1029.33	1029.30	1029.35	1029.34	1029.29	1029.29	1029.28	1029.26	1029.28	1029.33
	3	1029.32	1029.33	1029.38	1029.44	1029.48	1029.52	1029.52	1029.50	1029.48	1029.48	1029.45	1029.44	1029.44
	4	1029.43	1029.44	1029.50	1029.56	1029.63	1029.69	1029.73	1029.77	1029.82	1029.85	1029.86	1029.89	1029.68
	5	1029.92	1029.95	1030.00	1030.06	1030.12	1030.16	1030.19	1030.21	1030.25	1030.33	1030.40	1030.46	1030.17
	6	1030.57	1030.67	1030.74	1030.82	1030.87	1030.92	1030.97	1031.01	1031.07	1031.15	1031.22	1031.27	1030.94
	7	1031.29	1031.30	1031.34	1031.39	1031.41	1031.42	1031.44	1031.47	1031.50	1031.52	1031.54	1031.59	1031.43
	8	1031.66	1031.70	1031.71	1031.78	1031.85	1031.84	1031.81	1031.80	1031.82	1031.85	1031.92	1031.95	1031.81
	9	1031.97	1031.99	1031.95	1031.92	1031.93	1031.93	1031.94	1031.97	1031.98	1032.00	1032.03	1032.08	1031.97
	10	1032.10	1032.03	1031.96	1031.89	1031.81	1031.74	1031.71	1031.69	1031.63	1031.58	1031.55	1031.55	1031.77
	11	1031.52	1031.47	1031.44	1031.42	1031.39	1031.36	1031.37	1031.36	1031.33	1031.32	1031.30	1031.30	1031.38
	12	1031.27	1031.21	1031.20	1031.23	1031.26	1031.27	1031.27	1031.27	1031.29	1031.28	1031.23	1031.21	1031.25
	13	1031.20	1031.18	1031.16	1031.13	1031.13	1031.14	1031.16	1031.18	1031.21	1031.25	1031.29	1031.32	1031.19
	14	1031.34	1031.38	1031.43	1031.46	1031.49	1031.55	1031.56	1031.54	1031.54	1031.55	1031.59	1031.64	1031.50
	15	1031.71	1031.79	1031.83	1031.85	1031.89	1031.96	1032.01	1032.03	1032.07	1032.11	1032.15	1032.20	1031.96
	16	1032.23	1032.25	1032.30	1032.34	1032.35	1032.37	1032.41	1032.44	1032.47	1032.52	1032.58	1032.66	1032.41
	17	1032.70	1032.74	1032.79	1032.82	1032.87	1032.93	1033.00	1033.04	1033.05	1033.04	1033.06	1033.09	1032.92
	18	1033.14	1033.19	1033.20	1033.20	1033.19	1033.17	1033.17	1033.22	1033.27	1033.30	1033.31	1033.28	1033.22
	19	1033.27	1033.30	1033.33	1033.40	1033.47	1033.49	1033.52	1033.52	1033.53	1033.59	1033.64	1033.67	1033.48
	20	1033.68	1033.69	1033.73	1033.77	1033.82	1033.83	1033.83	1033.87	1033.90	1033.90	1033.92	1033.95	1033.82
	21	1034.00	1034.06	1034.07	1034.04	1034.01	1033.99	1034.02	1034.05	1034.05	1034.07	1034.09	1034.08	1034.04
	22													1034.08
	23		1034.32	1034.36	1034.40	1034.39	1034.38	1034.37	1034.36	1034.35	1034.35	1034.35	1034.37	1034.36
6	0	1034.35	1034.35	1034.33	1034.33	1034.33	1034.31	1034.32	1034.34	1034.34	1034.35	1034.39	1034.41	1034.34
	1	1034.43	1034.45	1034.49	1034.52	1034.51	1034.50	1034.48	1034.48	1034.49	1034.49	1034.48	1034.47	1034.48
	2	1034.46	1034.45	1034.45	1034.45	1034.45	1034.43	1034.40	1034.39	1034.34	1034.28	1034.24	1034.23	1034.38
	3	1034.25	1034.25	1034.26	1034.28	1034.26	1034.25	1034.26	1034.26	1034.28	1034.28	1034.28	1034.29	1034.26
	4	1034.26	1034.26	1034.29	1034.31	1034.33	1034.34	1034.35	1034.36	1034.36	1034.34	1034.34	1034.37	1034.32
	5	1034.41	1034.42	1034.41	1034.39	1034.42	1034.45	1034.46	1034.47	1034.47	1034.45	1034.44	1034.46	1034.43
	6	1034.50	1034.52	1034.53	1034.57	1034.60	1034.62	1034.63	1034.64	1034.68	1034.71	1034.73	1034.78	1034.62
	7	1034.83	1034.82	1034.80	1034.76	1034.74	1034.76	1034.78	1034.78	1034.76	1034.76	1034.75	1034.78	1034.78
	8	1034.83	1034.84	1034.85	1034.91	1034.94	1034.96	1034.96	1034.95	1034.99	1035.06	1035.11	1035.14	1034.96
	9	1035.17	1035.20	1035.23	1035.23	1035.26	1035.30	1035.32	1035.33	1035.35	1035.34	1035.31	1035.29	1035.28
	10	1035.25	1035.20	1035.13	1035.09	1035.05	1034.99	1034.94	1034.89	1034.83	1034.79	1034.77	1034.71	1034.97
	11	1034.65	1034.60	1034.51	1034.44	1034.40	1034.34	1034.26	1034.19	1034.12	1034.05	1033.98	1033.89	1034.28
	12	1033.84	1033.81	1033.76	1033.70	1033.63	1033.56	1033.51	1033.49	1033.44	1033.37	1033.33	1033.31	1033.56
	13	1033.27	1033.24	1033.23	1033.20	1033.15	1033.13	1033.11	1033.08	1033.05	1033.02	1033.01	1033.04	1033.13
	14	1033.08	1033.11	1033.10	1033.10	1033.11	1033.10	1033.05	1033.00	1032.96	1032.93	1032.93	1032.91	1033.03
	15	1032.87	1032.85	1032.84	1032.85	1032.85	1032.86	1032.88	1032.90	1032.90	1032.87	1032.85	1032.88	1032.86
	16	1032.89	1032.89	1032.91	1032.91	1032.91	1032.95	1032.97	1032.97	1032.98	1032.99	1033.01	1033.02	1032.95
	17	1033.02	1033.02	1033.04	1033.09	1033.14	1033.18	1033.21	1033.23	1033.26	1033.31	1033.33	1033.32	1033.18
	18	1033.31	1033.33	1033.30	1033.27	1033.26	1033.26	1033.28	1033.30	1033.30	1033.27	1033.26	1033.27	1033.28
	19	1033.29	1033.31	1033.35	1033.39	1033.41	1033.41	1033.38	1033.37	1033.37	1033.37	1033.39	1033.40	1033.37
	20	1033.41	1033.41	1033.40	1033.40	1033.40	1033.38	1033.37	1033.36	1033.35	1033.34	1033.34	1033.33	1033.37
	21	1033.36	1033.38	1033.39	1033.38	1033.35	1033.34	1033.34	1033.35	1033.39	1033.41	1033.41	1033.42	1033.37
	22	1033.46	1033.48	1033.51	1033.54	1033.54	1033.52	1033.52	1033.54	1033.55	1033.53	1033.51	1033.49	1033.51
	23	1033.46	1033.41	1033.37	1033.31	1033.25	1033.21	1033.21	1033.23	1033.23	1033.24	1033.22	1033.19	1033.28

S.V.I.R.CO. Observatory - Pressure in hectoPascal – December 2017

day	hh	00_05	05_10	10_15	15_20	20_25	25_30	30_35	35_40	40_45	45_50	50_55	55_60	average
7	0	1033.10	1033.10	1033.08	1033.04	1033.01	1032.98	1032.94	1032.93	1032.92	1032.91	1032.91	1032.89	1032.98
	1	1032.85	1032.83	1032.85	1032.88	1032.88	1032.87	1032.84	1032.82	1032.82	1032.80	1032.78	1032.77	1032.83
	2	1032.79	1032.79	1032.76	1032.70	1032.65	1032.60	1032.54	1032.50	1032.46	1032.45	1032.43	1032.44	1032.59
	3	1032.44	1032.37	1032.33	1032.32	1032.29	1032.21	1032.16	1032.18	1032.19	1032.18	1032.17	1032.15	1032.25
	4	1032.14	1032.12	1032.10	1032.09	1032.08	1032.06	1032.06	1032.05	1032.05	1032.05	1032.04	1032.02	1032.07
	5	1032.01	1031.99	1031.93	1031.90	1031.92	1031.94	1031.96	1031.97	1031.94	1031.92	1031.91	1031.93	1031.94
	6	1031.99	1032.02	1032.05	1032.09	1032.11	1032.12	1032.10	1032.09	1032.12	1032.13	1032.15	1032.16	1032.09
	7	1032.13	1032.11	1032.11	1032.15	1032.20	1032.25	1032.29	1032.28	1032.27	1032.25	1032.23	1032.21	1032.20
	8	1032.19	1032.21	1032.23	1032.24	1032.26	1032.27	1032.30	1032.35	1032.37	1032.37	1032.38	1032.38	1032.29
	9	1032.39	1032.41	1032.42	1032.39	1032.37	1032.35	1032.36	1032.37	1032.34	1032.31	1032.28	1032.25	1032.35
	10	1032.20	1032.14	1032.08	1032.02	1031.98	1031.97	1031.95	1031.90	1031.84	1031.77	1031.70	1031.65	1031.93
	11	1031.61	1031.55	1031.48	1031.41	1031.33	1031.27	1031.24	1031.19	1031.11	1031.04	1031.02	1030.98	1031.27
	12	1030.94	1030.92	1030.87	1030.81	1030.79	1030.73	1030.65	1030.60	1030.56	1030.53	1030.50	1030.47	1030.70
	13	1030.44	1030.41	1030.39	1030.36	1030.32	1030.29	1030.27	1030.25	1030.22	1030.18	1030.15	1030.13	1030.28
	14	1030.12	1030.10	1030.11	1030.10	1030.09	1030.07	1030.05	1030.03	1030.02	1030.00	1029.97	1029.96	1030.05
	15	1029.97	1029.96	1029.94	1029.93	1029.92	1029.91	1029.90	1029.89	1029.89	1029.87	1029.84	1029.81	1029.90
	16	1029.79	1029.78	1029.80	1029.78	1029.74	1029.77	1029.78	1029.78	1029.80	1029.83	1029.85	1029.84	1029.79
	17	1029.83	1029.82	1029.81	1029.78	1029.74	1029.73	1029.73	1029.71	1029.68	1029.66	1029.65	1029.65	1029.73
	18	1029.67	1029.68	1029.68	1029.70	1029.72	1029.71	1029.69	1029.65	1029.63	1029.65	1029.65	1029.62	1029.67
	19	1029.61	1029.60	1029.56	1029.53	1029.51	1029.49	1029.48	1029.48	1029.48	1029.47	1029.47	1029.47	1029.51
	20	1029.43	1029.40	1029.37	1029.32	1029.30	1029.31	1029.28	1029.22	1029.18	1029.15	1029.11	1029.09	1029.26
	21	1029.06	1029.03	1029.02	1029.00	1029.00	1029.02	1028.99	1028.94	1028.91	1028.94	1028.98	1028.96	1028.99
	22	1028.93	1028.91	1028.91	1028.90	1028.88	1028.85	1028.82	1028.78	1028.75	1028.72	1028.68	1028.65	1028.81
	23	1028.61	1028.57	1028.54	1028.51	1028.44	1028.34	1028.26	1028.18	1028.10	1027.97	1027.86	1027.84	1028.27
8	0	1027.82	1027.78	1027.73	1027.71	1027.69	1027.67	1027.63	1027.57	1027.50	1027.44	1027.39	1027.29	1027.59
	1	1027.22	1027.21	1027.18	1027.13	1027.05	1026.95	1026.85	1026.75	1026.68	1026.67	1026.67	1026.58	1026.91
	2	1026.43	1026.37	1026.35	1026.28	1026.25	1026.23	1026.17	1026.08	1026.00	1025.99	1025.97	1025.86	1026.16
	3	1025.76	1025.72	1025.67	1025.61	1025.56	1025.54	1025.53	1025.52	1025.49	1025.40	1025.30	1025.24	1025.52
	4	1025.19	1025.13	1025.06	1024.99	1024.90	1024.83	1024.80	1024.75	1024.70	1024.68	1024.61	1024.54	1024.85
	5	1024.49	1024.42	1024.40	1024.42	1024.48	1024.54	1024.57	1024.59	1024.51	1024.42	1024.35	1024.35	1024.46
	6	1024.34	1024.28	1024.27	1024.26	1024.27	1024.25	1024.21	1024.20	1024.19	1024.17	1024.17	1024.17	1024.23
	7	1024.15	1024.15	1024.13	1024.09	1024.08	1024.10	1024.12	1024.07	1023.99	1023.97	1023.98	1023.99	1024.07
	8	1024.01	1023.99	1023.92	1023.85	1023.81	1023.76	1023.66	1023.55	1023.50	1023.42	1023.35	1023.34	1023.68
	9	1023.28	1023.18	1023.07	1022.97	1022.87	1022.78	1022.71	1022.68	1022.68	1022.66	1022.66	1022.60	1022.84
	10	1022.51	1022.47	1022.42	1022.35	1022.27	1022.21	1022.15	1022.04	1021.93	1021.82	1021.72	1021.65	1022.13
	11	1021.57	1021.45	1021.30	1021.20	1021.13	1021.01	1020.89	1020.82	1020.71	1020.52	1020.38	1020.29	1020.94
	12	1020.20	1020.07	1019.88	1019.75	1019.67	1019.59	1019.52	1019.46	1019.40	1019.33	1019.25	1019.14	1019.60
	13	1019.03	1018.96	1018.91	1018.83	1018.73	1018.69	1018.64	1018.57	1018.52	1018.47	1018.46	1018.45	1018.69
	14	1018.41	1018.38	1018.37	1018.31	1018.26	1018.23	1018.18	1018.12	1018.09	1018.07	1018.05	1018.03	1018.21
	15	1018.01	1017.96	1017.91	1017.89	1017.83	1017.75	1017.64	1017.51	1017.40	1017.34	1017.28	1017.20	1017.64
	16	1017.17	1017.14	1017.06	1017.02	1017.01	1016.95	1016.88	1016.79	1016.75	1016.72	1016.61	1016.51	1016.88
	17	1016.40	1016.35	1016.35	1016.32	1016.29	1016.26	1016.20	1016.13	1016.05	1015.96	1015.85	1015.76	1016.16
	18	1015.68	1015.58	1015.53	1015.51	1015.44	1015.37	1015.32	1015.32	1015.34	1015.31	1015.21	1015.11	1015.39
	19	1014.98	1014.83	1014.74	1014.67	1014.63	1014.58	1014.57	1014.55	1014.38	1014.20	1014.12	1014.10	1014.53
	20	1014.05	1013.97	1013.89	1013.76	1013.69	1013.63	1013.51	1013.43	1013.42	1013.45	1013.41	1013.31	1013.63
	21	1013.21	1013.10	1013.04	1013.00	1012.93	1012.83	1012.73	1012.67	1012.67	1012.69	1012.60	1012.48	1012.83
	22	1012.39	1012.31	1012.26	1012.27	1012.27	1012.17	1012.09	1012.05	1011.98	1011.91	1011.88	1011.79	1012.11
	23	1011.68	1011.59	1011.53	1011.53	1011.54	1011.53	1011.40	1011.23	1011.11	1011.01	1010.95	1010.84	1011.33

S.V.I.R.CO. Observatory - Pressure in hectoPascal – December 2017

day	hh	00_05	05_10	10_15	15_20	20_25	25_30	30_35	35_40	40_45	45_50	50_55	55_60	average
9	0	1010.64	1010.59	1010.59	1010.64	1010.53	1010.38	1010.34	1010.34	1010.27	1010.13	1009.98	1009.93	1010.35
	1	1009.92	1009.88	1009.86	1009.89	1009.89	1009.83	1009.80	1009.85	1009.87	1009.86	1009.88	1009.90	1009.87
	2	1009.88	1009.82	1009.75	1009.65	1009.52	1009.38	1009.27	1009.24	1009.19	1009.12	1009.13	1009.07	1009.42
	3	1008.98	1008.93	1008.89	1008.79	1008.68	1008.61	1008.47	1008.39	1008.37	1008.33	1008.32	1008.32	1008.59
	4	1008.27	1008.23	1008.16	1008.10	1008.07	1007.99	1007.89	1007.81	1007.78	1007.72	1007.65	1007.65	1007.94
	5	1007.61	1007.50	1007.45	1007.47	1007.51	1007.54	1007.46	1007.38	1007.38	1007.37	1007.41	1007.45	1007.46
	6	1007.49	1007.49	1007.40	1007.30	1007.34	1007.46	1007.48	1007.51	1007.57	1007.62	1007.67	1007.74	1007.50
	7	1007.74	1007.71	1007.69	1007.67	1007.71	1007.70	1007.67	1007.66	1007.68	1007.70	1007.71	1007.73	1007.69
	8	1007.77	1007.81	1007.78	1007.81	1007.94	1008.05	1008.08	1008.01	1007.97	1007.90	1007.89	1008.03	1007.92
	9	1008.09	1008.09	1008.03	1007.97	1007.98	1008.01	1007.98	1007.85	1007.71	1007.72	1007.73	1007.69	1007.90
	10	1007.66	1007.63	1007.66	1007.70	1007.74	1007.74	1007.72	1007.76	1007.82	1007.90	1008.10	1008.27	1007.81
	11	1008.26	1008.44	1008.57	1008.38	1008.23	1008.16	1008.18	1008.26	1008.32	1008.32	1008.35	1008.29	1008.31
	12	1008.22	1008.22	1008.23	1008.33	1008.40	1008.42	1008.41	1008.39	1008.41	1008.47	1008.55	1008.59	1008.39
	13	1008.59	1008.61	1008.67	1008.72	1008.74	1008.71	1008.71	1008.75	1008.81	1008.88	1008.98	1009.07	1008.77
	14	1009.17	1009.24	1009.31	1009.40	1009.53	1009.63	1009.69	1009.81	1009.92	1010.01	1010.13	1010.23	1009.67
	15	1010.34	1010.46	1010.60	1010.73	1010.82	1010.90	1011.04	1011.15	1011.18	1011.25	1011.33	1011.42	1010.93
	16	1011.51	1011.56	1011.62	1011.73	1011.87	1011.95	1012.01	1012.06	1012.06	1012.10	1012.19	1012.28	1011.91
	17	1012.37	1012.48	1012.64	1012.78	1012.89	1013.01	1013.16	1013.31	1013.43	1013.51	1013.59	1013.69	1013.07
	18	1013.78	1013.87	1013.90	1013.90	1013.97	1014.10	1014.22	1014.35	1014.47	1014.57	1014.66	1014.76	1014.21
	19	1014.85	1014.92	1014.95	1014.97	1015.02	1015.10	1015.18	1015.24	1015.32	1015.41	1015.51	1015.56	1015.17
	20	1015.60	1015.70	1015.82	1015.89	1015.95	1016.00	1016.02	1016.01	1016.01	1016.05	1016.17	1016.29	1015.96
	21	1016.39	1016.49	1016.55	1016.55	1016.58	1016.62	1016.67	1016.74	1016.78	1016.81	1016.82	1016.81	1016.65
	22	1016.86	1016.94	1017.01	1017.08	1017.13	1017.21	1017.30	1017.35	1017.34	1017.36	1017.42	1017.45	1017.20
	23	1017.53	1017.66	1017.71	1017.67	1017.63	1017.68	1017.64	1017.52	1017.52	1017.56	1017.55	1017.52	1017.60
10	0	1017.49	1017.44	1017.40	1017.53	1017.69	1017.71	1017.69	1017.69	1017.71	1017.78	1017.87	1017.96	1017.67
	1	1017.96	1017.87	1017.82	1017.85	1017.92	1017.98	1017.99	1017.99	1018.06	1018.11	1018.06	1018.05	1017.97
	2	1018.00	1017.93	1017.90	1017.81	1017.74	1017.70	1017.70	1017.78	1017.81	1017.81	1017.86	1017.86	1017.82
	3	1017.78	1017.71	1017.69	1017.62	1017.50	1017.45	1017.47	1017.56	1017.63	1017.61	1017.59	1017.69	1017.61
	4	1017.80	1017.82	1017.84	1017.85	1017.85	1017.82	1017.84	1017.88	1017.85	1017.84	1017.83	1017.78	1017.83
	5	1017.67	1017.55	1017.51	1017.48	1017.43	1017.46	1017.54	1017.62	1017.69	1017.78	1017.81	1017.81	1017.61
	6	1017.80	1017.76	1017.71	1017.66	1017.57	1017.47	1017.45	1017.44	1017.46	1017.49	1017.40	1017.33	1017.54
	7	1017.46	1017.62	1017.64	1017.63	1017.62	1017.63	1017.65	1017.70	1017.79	1017.80	1017.74	1017.74	1017.67
	8	1017.84	1017.94	1018.01	1018.04	1018.06	1018.08	1018.13	1018.15	1018.14	1018.21	1018.31	1018.37	1018.10
	9	1018.39	1018.42	1018.46	1018.44	1018.34	1018.28	1018.19	1018.01	1017.89	1017.82	1017.76	1017.74	1018.14
	10	1017.65	1017.57	1017.51	1017.43	1017.36	1017.24	1017.20	1017.15	1017.05	1016.94	1016.79	1016.68	1017.21
	11	1016.64	1016.65	1016.66	1016.68	1016.69	1016.71	1016.73	1016.60	1016.40	1016.17	1015.97	1015.89	1016.48
	12	1015.84	1015.84	1015.86	1015.86	1015.77	1015.60	1015.41	1015.28	1015.19	1015.14	1015.08	1015.03	1015.49
	13	1015.07	1015.18	1015.35	1015.41	1015.39	1015.35	1015.36	1015.34	1015.13	1014.84	1014.66	1014.63	1015.14
	14	1014.62	1014.62	1014.58	1014.58	1014.62	1014.60	1014.46	1014.31	1014.22	1014.12	1014.06	1014.00	1014.40
	15	1013.86	1013.74	1013.71	1013.63	1013.49	1013.38	1013.31	1013.24	1013.16	1013.15	1013.16	1013.12	1013.41
	16	1013.14	1013.22	1013.26	1013.27	1013.26	1013.25	1013.20	1013.18	1013.16	1013.08	1013.05	1013.03	1013.17
	17	1012.98	1012.90	1012.86	1012.84	1012.82	1012.80	1012.80	1012.72	1012.64	1012.65	1012.69	1012.63	1012.78
	18	1012.59	1012.65	1012.62	1012.58	1012.58	1012.57	1012.51	1012.48	1012.45	1012.41	1012.38	1012.34	1012.51
	19	1012.29	1012.26	1012.20	1012.10	1012.04	1012.06	1012.03	1011.93	1011.87	1011.86	1011.79	1011.70	1012.01
	20	1011.71	1011.77	1011.76	1011.72	1011.70	1011.69	1011.64	1011.56	1011.47	1011.34	1011.29	1011.26	1011.57
	21	1011.19	1011.15	1011.11	1011.04	1010.96	1010.89	1010.88	1010.86	1010.80	1010.70	1010.64	1010.66	1010.91
	22	1010.67	1010.70	1010.75	1010.67	1010.52	1010.46	1010.44	1010.33	1010.21	1010.16	1010.09	1010.04	1010.42
	23	1010.02	1009.97	1009.89	1009.80	1009.75	1009.68	1009.59	1009.58	1009.56	1009.50	1009.52	1009.48	1009.69

S.V.I.R.CO. Observatory - Pressure in hectoPascal – December 2017

day	hh	00_05	05_10	10_15	15_20	20_25	25_30	30_35	35_40	40_45	45_50	50_55	55_60	average
11	0	1009.45	1009.41	1009.31	1009.25	1009.18	1009.09	1008.97	1008.82	1008.80	1008.76	1008.72	1008.74	1009.02
	1	1008.77	1008.78	1008.80	1008.80	1008.77	1008.73	1008.71	1008.66	1008.55	1008.44	1008.42	1008.42	1008.65
	2	1008.34	1008.30	1008.25	1008.16	1008.09	1008.01	1007.87	1007.70	1007.67	1007.67	1007.65	1007.63	1007.94
	3	1007.61	1007.58	1007.51	1007.41	1007.35	1007.33	1007.26	1007.20	1007.20	1007.22	1007.20	1007.14	1007.33
	4	1007.11	1007.16	1007.18	1007.17	1007.18	1007.21	1007.22	1007.19	1007.12	1007.09	1007.08	1007.01	1007.14
	5	1006.91	1006.82	1006.78	1006.76	1006.81	1006.86	1006.94	1007.02	1007.01	1007.04	1007.08	1007.06	1006.92
	6	1007.04	1007.00	1006.95	1006.95	1006.93	1006.86	1006.83	1006.87	1006.88	1006.90	1007.00	1007.02	1006.93
	7	1007.02	1007.05	1007.06	1007.07	1007.06	1007.08	1007.07	1007.06	1007.01	1007.01	1007.06	1007.11	1007.05
	8	1007.17	1007.26	1007.29	1007.21	1007.21	1007.24	1007.30	1007.41	1007.45	1007.47	1007.42	1007.43	1007.32
	9	1007.59	1007.62	1007.53	1007.45	1007.46	1007.51	1007.53	1007.53	1007.47	1007.38	1007.32	1007.31	1007.47
	10	1007.30	1007.26	1007.24	1007.19	1007.16	1007.15	1007.08	1006.90	1006.73	1006.69	1006.72	1006.69	1007.01
	11	1006.56	1006.54	1006.55	1006.51	1006.50	1006.46	1006.42	1006.41	1006.38	1006.28	1006.27	1006.31	1006.43
	12	1006.24	1006.18	1006.22	1006.23	1006.14	1006.08	1006.15	1006.18	1006.20	1006.18	1006.09	1006.01	1006.16
	13	1005.99	1006.05	1006.03	1005.99	1005.95	1005.90	1005.93	1005.90	1005.90	1006.01	1006.04	1006.04	1005.98
	14	1006.11	1006.12	1006.13	1006.11	1006.12	1006.14	1006.05	1006.06	1006.13	1006.18	1006.20	1006.18	1006.13
	15	1006.13	1006.13	1006.21	1006.24	1006.22	1006.24	1006.30	1006.28	1006.22	1006.16	1006.09	1006.07	1006.19
	16	1006.07	1006.04	1005.95	1005.96	1006.09	1006.15	1006.15	1006.13	1006.05	1006.04	1006.12	1006.25	1006.08
	17	1006.37	1006.42	1006.41	1006.52	1006.60	1006.60	1006.62	1006.58	1006.62	1006.72	1006.78	1006.83	1006.59
	18	1006.87	1006.89	1006.95	1006.97	1006.97	1006.98	1006.96	1007.02	1007.14	1007.13	1007.11	1007.11	1007.01
	19	1007.04	1007.01	1007.03	1007.03	1007.10	1007.22	1007.30	1007.35	1007.45	1007.52	1007.52	1007.46	1007.25
	20	1007.45	1007.51	1007.51	1007.52	1007.52	1007.53	1007.56	1007.60	1007.62	1007.64	1007.61	1007.59	1007.55
	21	1007.61	1007.65	1007.69	1007.72	1007.73	1007.77	1007.83	1007.87	1007.86	1007.81	1007.85	1007.95	1007.78
	22	1008.05	1008.03	1007.99	1008.11	1008.26	1008.33	1008.31	1008.29	1008.33	1008.38	1008.41	1008.45	1008.24
	23	1008.46	1008.46	1008.49	1008.53	1008.50	1008.48	1008.54	1008.49	1008.42	1008.43	1008.41	1008.42	1008.47
12	0	1008.37	1008.46	1008.64	1008.70	1008.65	1008.59	1008.60	1008.64	1008.66	1008.75	1008.80	1008.78	1008.65
	1	1008.71	1008.71	1008.80	1008.81	1008.76	1008.78	1008.80	1008.80	1008.84	1008.93	1008.96	1008.99	1008.82
	2	1009.08	1009.12	1009.08	1008.94	1008.82	1008.74	1008.58	1008.46	1008.38	1008.31	1008.31	1008.31	1008.68
	3	1008.24	1008.22	1008.29	1008.37	1008.45	1008.55	1008.64	1008.75	1008.83	1008.82	1008.85	1008.90	1008.57
	4	1008.93	1008.99	1009.08	1009.09	1009.09	1009.17	1009.25	1009.30	1009.29	1009.35	1009.52	1009.63	1009.22
	5	1009.70	1009.75	1009.74	1009.70	1009.74	1009.88	1009.97	1009.98	1009.94	1009.90	1009.91	1009.95	1009.84
	6	1010.04	1010.18	1010.24	1010.23	1010.31	1010.39	1010.44	1010.57	1010.64	1010.69	1010.79	1010.85	1010.44
	7	1010.89	1010.99	1011.06	1011.12	1011.17	1011.21	1011.19	1011.20	1011.30	1011.34	1011.35	1011.40	1011.18
	8	1011.51	1011.64	1011.73	1011.81	1011.86	1011.91	1011.95	1011.97	1012.01	1012.04	1012.07	1012.07	1011.88
	9	1012.07	1012.06	1012.04	1012.05	1012.08	1012.07	1012.05	1012.10	1012.19	1012.24	1012.26	1012.27	1012.12
	10	1012.25	1012.23	1012.24	1012.24	1012.21	1012.17	1012.15	1012.11	1012.06	1012.06	1012.08	1012.07	1012.15
	11	1012.09	1012.10	1012.12	1012.17	1012.13	1012.03	1011.99	1011.94	1011.90	1011.95	1011.98	1011.99	1012.03
	12	1011.97	1011.96	1011.92	1011.88	1011.84	1011.80	1011.78	1011.77	1011.81	1011.87	1011.90	1011.89	1011.86
	13	1011.92	1011.96	1011.95	1011.94	1011.95	1011.94	1011.95	1012.02	1012.09	1012.17	1012.20	1012.25	1012.03
	14	1012.31	1012.29	1012.29	1012.32	1012.36	1012.41	1012.43	1012.44	1012.49	1012.56	1012.58	1012.62	1012.42
	15	1012.68	1012.72	1012.78	1012.84	1012.83	1012.75	1012.71	1012.71	1012.70	1012.69	1012.68	1012.70	1012.73
	16	1012.74	1012.87	1013.01	1013.08	1013.14	1013.23	1013.29	1013.31	1013.27	1013.23	1013.22	1013.24	1013.13
	17	1013.27	1013.30	1013.35	1013.39	1013.39	1013.40	1013.48	1013.55	1013.58	1013.61	1013.60	1013.61	1013.46
	18	1013.66	1013.75	1013.85	1013.88	1013.90	1013.89	1013.86	1013.92	1014.01	1014.05	1014.12	1014.16	1013.92
	19	1014.21	1014.26	1014.28	1014.31	1014.28	1014.26	1014.24	1014.21	1014.18	1014.17	1014.23	1014.27	1014.24
	20	1014.27	1014.28	1014.30	1014.35	1014.42	1014.45	1014.39	1014.31	1014.33	1014.48	1014.59	1014.65	1014.40
	21	1014.74	1014.80	1014.97	1015.13	1015.18	1015.27	1015.42	1015.46	1015.40	1015.39	1015.36	1015.41	1015.21
	22	1015.55	1015.56	1015.55	1015.60	1015.62	1015.68	1015.77	1015.81	1015.76	1015.71	1015.67	1015.65	1015.66
	23	1015.72	1015.79	1015.84	1015.93	1016.05	1016.08	1016.00	1015.93	1015.89	1015.91	1015.91	1015.91	1015.91

S.V.I.R.CO. Observatory - Pressure in hectoPascal – December 2017

day	hh	00_05	05_10	10_15	15_20	20_25	25_30	30_35	35_40	40_45	45_50	50_55	55_60	average
13	0	1016.15	1016.15	1016.05	1015.99	1016.06	1016.10	1016.03	1015.85	1015.81	1015.95	1016.03	1016.02	1016.01
	1	1016.08	1016.22	1016.24	1016.25	1016.35	1016.50	1016.60	1016.61	1016.63	1016.63	1016.63	1016.65	1016.45
	2	1016.66	1016.69	1016.70	1016.68	1016.67	1016.66	1016.67	1016.67	1016.65	1016.63	1016.63	1016.64	1016.66
	3	1016.64	1016.61	1016.56	1016.56	1016.58	1016.55	1016.52	1016.52	1016.54	1016.54	1016.53	1016.50	1016.55
	4	1016.47	1016.46	1016.48	1016.56	1016.59	1016.57	1016.65	1016.79	1016.89	1016.89	1016.85	1016.89	1016.67
	5	1016.96	1016.97	1016.93	1016.92	1016.93	1016.94	1017.04	1017.14	1017.18	1017.16	1017.14	1017.17	1017.04
	6	1017.20	1017.18	1017.21	1017.32	1017.33	1017.34	1017.37	1017.36	1017.36	1017.38	1017.43	1017.48	1017.33
	7	1017.49	1017.51	1017.56	1017.61	1017.62	1017.60	1017.57	1017.57					1017.57
	8													
	9								1018.08	1018.14	1018.13	1018.08	1018.13	1018.10
	10	1018.15	1018.07	1018.01	1017.98	1017.91	1017.85	1017.87	1017.86	1017.80	1017.75	1017.71	1017.61	1017.88
	11	1017.46	1017.38	1017.36	1017.38	1017.37	1017.32	1017.23	1017.16	1017.16	1017.14	1017.12	1017.08	1017.26
	12	1017.05	1017.06	1017.02	1016.90	1016.79	1016.74	1016.74	1016.76	1016.79	1016.82	1016.81	1016.78	1016.85
	13	1016.77	1016.75	1016.73	1016.73	1016.73	1016.76	1016.78	1016.75	1016.71	1016.74	1016.78	1016.80	1016.75
	14	1016.88	1016.89	1016.85	1016.90	1016.95	1016.97	1016.99	1017.05	1017.14	1017.17	1017.17	1017.20	1017.01
	15	1017.21	1017.19	1017.18	1017.21	1017.24	1017.28	1017.27	1017.27	1017.32	1017.30	1017.27	1017.25	1017.25
	16	1017.23	1017.19	1017.21	1017.29	1017.34	1017.34	1017.30	1017.28	1017.31	1017.34	1017.35	1017.35	1017.29
	17	1017.36	1017.38	1017.42	1017.42	1017.39	1017.41	1017.44	1017.49	1017.52	1017.53	1017.53	1017.50	1017.45
	18	1017.45	1017.45	1017.52	1017.60	1017.64	1017.64	1017.65	1017.65	1017.66	1017.65	1017.61	1017.54	1017.59
	19	1017.52	1017.61	1017.71	1017.79	1017.83	1017.83	1017.83	1017.82	1017.79	1017.75	1017.73	1017.76	1017.75
	20	1017.74	1017.69	1017.68	1017.70	1017.73	1017.75	1017.75	1017.71	1017.66	1017.66	1017.67	1017.67	1017.70
	21	1017.70	1017.77	1017.80	1017.78	1017.80	1017.79	1017.74	1017.75	1017.76	1017.73	1017.69	1017.64	1017.74
	22	1017.60	1017.60	1017.60	1017.59	1017.68	1017.75	1017.77	1017.78	1017.74	1017.76	1017.79	1017.75	1017.70
	23	1017.77	1017.78	1017.73	1017.70	1017.64	1017.53	1017.43	1017.34	1017.27	1017.23	1017.17	1017.10	1017.47
14	0	1017.24	1017.26	1017.26	1017.20	1017.09	1016.98	1016.97	1017.04	1017.02	1016.97	1016.89	1016.78	1017.05
	1	1016.74	1016.75	1016.78	1016.86	1016.80	1016.71	1016.70	1016.75	1016.83	1016.81	1016.85	1016.90	1016.79
	2	1016.83	1016.72	1016.73	1016.72	1016.64	1016.59	1016.53	1016.61	1016.80	1016.70	1016.46	1016.48	1016.65
	3	1016.43	1016.16	1016.06	1016.05	1015.96	1015.96	1015.98	1015.94	1015.78	1015.72	1015.72	1015.71	1015.95
	4	1015.79	1015.79	1015.79	1015.77	1015.75	1015.77	1015.78	1015.86	1015.82	1015.69	1015.58	1015.43	1015.73
	5	1015.41	1015.40	1015.36	1015.37	1015.40	1015.42	1015.46	1015.45	1015.41	1015.42	1015.47	1015.60	1015.43
	6	1015.59	1015.47	1015.49	1015.51	1015.54	1015.66	1015.68	1015.64	1015.58	1015.46	1015.32	1015.27	1015.52
	7	1015.33	1015.39	1015.41	1015.45	1015.48	1015.45	1015.35	1015.28	1015.29	1015.17	1015.01	1015.06	1015.30
	8	1015.16	1015.18	1015.17	1015.16	1015.21	1015.19	1015.14	1015.20	1015.22	1015.25	1015.34	1015.41	1015.22
	9	1015.44	1015.48	1015.49	1015.45	1015.51	1015.55	1015.54	1015.55	1015.57	1015.57	1015.47	1015.39	1015.50
	10	1015.35	1015.29	1015.20	1015.18	1015.16	1015.07	1015.02	1014.97	1014.93	1014.89	1014.84	1014.77	1015.05
	11	1014.66	1014.56	1014.45	1014.45	1014.49	1014.38	1014.21	1014.09	1013.98	1013.87	1013.83	1013.79	1014.23
	12	1013.73	1013.72	1013.68	1013.63	1013.55	1013.42	1013.33	1013.26	1013.18	1013.08	1013.02	1013.03	1013.38
	13	1013.06	1013.05	1013.03	1013.01	1012.89	1012.79	1012.82	1012.90	1012.95	1012.98	1013.02	1013.04	1012.96
	14	1013.08	1013.09	1013.04	1013.01	1012.97	1012.92	1012.89	1012.83	1012.72	1012.63	1012.61	1012.59	1012.86
	15	1012.52	1012.48	1012.51	1012.58	1012.59	1012.57	1012.58	1012.67	1012.75	1012.72	1012.68	1012.67	1012.61
	16	1012.65	1012.57	1012.51	1012.50	1012.52	1012.61	1012.66	1012.63	1012.59	1012.54	1012.48	1012.48	1012.56
	17	1012.43	1012.40	1012.45	1012.47	1012.46	1012.47	1012.53	1012.52	1012.48	1012.44	1012.38	1012.33	1012.44
	18	1012.36	1012.43	1012.41	1012.37	1012.32	1012.26	1012.27	1012.30	1012.30	1012.35	1012.33	1012.27	1012.33
	19	1012.26	1012.29	1012.29	1012.22	1012.16	1012.12	1012.08	1012.05	1012.07	1012.08	1012.02	1011.98	1012.13
	20	1011.95	1011.95	1011.96	1011.90	1011.81	1011.74	1011.67	1011.59	1011.57	1011.56	1011.60	1011.62	1011.74
	21	1011.57	1011.50	1011.47	1011.43	1011.38	1011.35	1011.30	1011.24	1011.16	1011.11	1011.07	1011.04	1011.30
	22	1011.03	1010.97	1010.89	1010.88	1010.91	1010.90	1010.87	1010.88	1010.85	1010.76	1010.64	1010.57	1010.84
	23	1010.53	1010.48	1010.41	1010.33	1010.23	1010.13	1010.05	1009.96	1009.90	1009.84	1009.78	1009.73	1010.11

S.V.I.R.CO. Observatory - Pressure in hectoPascal – December 2017

day	hh	00_05	05_10	10_15	15_20	20_25	25_30	30_35	35_40	40_45	45_50	50_55	55_60	average
15	0	1009.66	1009.64	1009.60	1009.51	1009.42	1009.34	1009.26	1009.21	1009.22	1009.27	1009.28	1009.27	1009.38
	1	1009.25	1009.22	1009.22	1009.20	1009.14	1009.06	1009.01	1008.99	1008.96	1008.85	1008.78	1008.82	1009.04
	2	1008.82	1008.78	1008.74	1008.73	1008.73	1008.68	1008.64	1008.58	1008.48	1008.38	1008.33	1008.28	1008.60
	3	1008.26	1008.25	1008.21	1008.14	1008.09	1008.03	1007.98	1007.86	1007.71	1007.71	1007.69	1007.63	1007.96
	4	1007.58	1007.53	1007.46	1007.40	1007.37	1007.36	1007.34	1007.29	1007.23	1007.20	1007.16	1007.12	1007.33
	5	1007.13	1007.09	1007.05	1007.03	1006.98	1006.99	1006.98	1006.89	1006.78	1006.71	1006.69	1006.68	1006.91
	6	1006.67	1006.65	1006.65	1006.64	1006.57	1006.49	1006.42	1006.33	1006.25	1006.15	1006.00	1005.93	1006.39
	7	1005.92	1005.91	1005.91	1005.89	1005.84	1005.80	1005.80	1005.84	1005.88	1005.84	1005.76	1005.71	1005.84
	8	1005.71	1005.69	1005.67	1005.68	1005.68	1005.63	1005.58	1005.57	1005.60	1005.62	1005.56	1005.48	1005.62
	9	1005.44	1005.42	1005.34	1005.28	1005.26	1005.22	1005.14	1005.09	1005.01	1004.90	1004.83	1004.74	1005.14
	10	1004.59	1004.47	1004.33	1004.15	1003.99	1003.83	1003.67	1003.52	1003.35	1003.18	1003.05	1002.95	1003.76
	11	1002.84	1002.73	1002.62	1002.50	1002.32	1002.14	1002.00	1001.93	1001.82	1001.67	1001.53	1001.38	1002.12
	12	1001.24	1001.14	1001.02	1000.86	1000.70	1000.58	1000.50	1000.44	1000.37	1000.32	1000.26	1000.18	1000.63
	13	1000.12	1000.06	1000.02	999.96	999.87	999.78	999.72	999.65	999.56	999.48	999.45	999.47	999.76
	14	999.38	999.21	999.12	999.07	998.96	998.91	998.90	998.88	998.90	998.90	998.88	998.82	998.99
	15	998.76	998.70	998.63	998.61	998.60	998.60	998.65	998.61	998.54	998.45	998.36	998.33	998.57
	16	998.34	998.27	998.20	998.12	998.04	998.08	998.15	998.11	998.04	998.03	998.00	997.92	998.11
	17	997.79	997.70	997.77	997.84	997.88	998.00	998.03	997.98	998.01	998.09	998.19	998.30	997.96
	18	998.38	998.37	998.29	998.26	998.31	998.32	998.34	998.48	998.55	998.58	998.65	998.64	998.43
	19	998.60	998.68	998.74	998.73	998.72	998.75	998.78	998.88	999.05	999.13	999.11	999.02	998.85
	20	998.99	999.03	999.05	999.03	998.98	998.97	998.95	998.88	998.99	999.18	999.26	999.40	999.06
	21	999.49	999.44	999.42	999.51	999.61	999.65	999.75	999.86	999.97	1000.01	1000.00	999.99	999.72
	22	1000.10	1000.25	1000.27	1000.24	1000.25	1000.36	1000.45	1000.48	1000.53	1000.58	1000.58	1000.54	1000.38
	23	1000.59	1000.79	1000.99	1001.17	1001.33	1001.32	1001.27	1001.38	1001.48	1001.47	1001.53	1001.58	1001.24
16	0	1001.55	1001.55	1001.59	1001.68	1001.81	1001.97	1002.11	1002.19	1002.24	1002.29	1002.29	1002.37	1001.99
	1	1002.49	1002.53	1002.53	1002.56	1002.61	1002.67	1002.67	1002.69	1002.73	1002.69	1002.76	1002.89	1002.65
	2	1002.88	1002.87	1002.85	1002.81	1002.86	1002.93	1003.00	1003.13	1003.21	1003.17	1003.12	1003.09	1002.99
	3	1003.12	1003.17	1003.13	1003.06	1003.06	1003.09	1003.05	1003.01	1002.98	1002.97	1002.97	1002.94	1003.04
	4	1002.93	1002.95	1002.96	1003.02	1003.12	1003.20	1003.26	1003.24	1003.20	1003.17	1003.18	1003.29	1003.12
	5	1003.38	1003.39	1003.43	1003.51	1003.50	1003.47	1003.46	1003.48	1003.51	1003.49	1003.49	1003.48	1003.46
	6	1003.44	1003.41	1003.42	1003.46	1003.52	1003.53	1003.49	1003.47	1003.52	1003.58	1003.56	1003.53	1003.49
	7	1003.57	1003.62	1003.69	1003.75	1003.75	1003.72	1003.76	1003.79	1003.76	1003.82	1003.92	1003.99	1003.76
	8	1004.06	1004.13	1004.22	1004.31	1004.36	1004.39	1004.43	1004.51	1004.59	1004.62	1004.68	1004.75	1004.42
	9	1004.77	1004.78	1004.77	1004.76	1004.81	1004.82	1004.79	1004.80	1004.76	1004.68	1004.66	1004.67	1004.75
	10	1004.70	1004.74	1004.79	1004.84	1004.86	1004.85	1004.87	1004.86	1004.86	1004.86	1004.89	1004.90	1004.83
	11	1004.85	1004.80	1004.77	1004.77	1004.81	1004.84	1004.86	1004.89	1004.89	1004.89	1004.86	1004.81	1004.84
	12	1004.82	1004.82	1004.78	1004.72	1004.67	1004.70	1004.74	1004.74	1004.73	1004.65	1004.58	1004.64	1004.71
	13	1004.67	1004.66	1004.69	1004.68	1004.67	1004.68	1004.68	1004.70	1004.74	1004.73	1004.68	1004.73	1004.69
	14	1004.78	1004.78	1004.82	1004.86	1004.91	1004.98	1005.00	1005.03	1005.06	1005.07	1005.09	1005.04	1004.95
	15	1005.06	1005.19	1005.25	1005.26	1005.22	1005.16	1005.17	1005.25	1005.25	1005.28	1005.29	1005.20	1005.21
	16	1005.19	1005.21	1005.14	1005.09	1005.17	1005.31	1005.47	1005.62	1005.67	1005.67	1005.72	1005.78	1005.42
	17	1005.80	1005.84	1005.91	1005.98	1006.04	1006.09	1006.17	1006.25	1006.33	1006.34	1006.33	1006.28	1006.11
	18	1006.25	1006.30	1006.35	1006.43	1006.55	1006.69	1006.81	1006.94	1006.96	1006.84	1006.81	1006.81	1006.64
	19	1006.78	1006.76	1006.80	1006.92	1007.04	1007.12	1007.17	1007.17	1007.13	1007.14	1007.16	1007.20	1007.03
	20	1007.27	1007.35	1007.44	1007.42	1007.35	1007.40	1007.49	1007.57	1007.65	1007.69	1007.67	1007.71	1007.50
	21	1007.84	1007.95	1008.05	1008.15	1008.31	1008.48	1008.58	1008.71	1008.86	1008.95	1008.97	1008.95	1008.48
	22	1008.94	1008.99	1009.05	1009.03	1008.99	1008.97	1008.98	1009.05	1009.13	1009.19	1009.19	1009.19	1009.06
	23	1009.26	1009.30	1009.33	1009.38	1009.37	1009.34	1009.31	1009.29	1009.25	1009.19	1009.21	1009.29	1009.29

S.V.I.R.CO. Observatory - Pressure in hectoPascal – December 2017

day	hh	00_05	05_10	10_15	15_20	20_25	25_30	30_35	35_40	40_45	45_50	50_55	55_60	average
17	0	1009.42	1009.47	1009.52	1009.59	1009.69	1009.67	1009.64	1009.63	1009.58	1009.60	1009.70	1009.79	1009.61
	1	1009.85	1009.94	1010.00	1009.99	1010.00	1010.03	1010.04	1010.10	1010.17	1010.25	1010.30	1010.27	1010.08
	2	1010.28	1010.34	1010.35	1010.31	1010.26	1010.23	1010.28	1010.33	1010.35	1010.33	1010.31	1010.37	1010.31
	3	1010.47	1010.52	1010.54	1010.53	1010.50	1010.47	1010.49	1010.54	1010.60	1010.62	1010.67	1010.77	1010.56
	4	1010.87	1010.95	1010.97	1010.99	1011.04	1011.12	1011.20	1011.26	1011.32	1011.37	1011.39	1011.39	1011.15
	5	1011.36	1011.35	1011.39	1011.45	1011.48	1011.51	1011.52	1011.54	1011.61	1011.71	1011.79	1011.84	1011.54
	6	1011.88	1011.91	1011.92	1011.94	1011.97	1012.03	1012.08	1012.08	1012.10	1012.13	1012.18	1012.21	1012.03
	7	1012.24	1012.26	1012.33	1012.45	1012.54	1012.56	1012.56	1012.56	1012.56	1012.54	1012.51	1012.52	1012.47
	8	1012.57	1012.64	1012.69	1012.71	1012.76	1012.81	1012.83	1012.87	1012.98	1013.12	1013.24	1013.29	1012.87
	9	1013.30	1013.32	1013.38	1013.41	1013.37	1013.34	1013.36	1013.41	1013.44	1013.46	1013.46	1013.47	1013.39
	10	1013.46	1013.48	1013.49	1013.41	1013.34	1013.32	1013.27	1013.24	1013.23	1013.22	1013.20	1013.19	1013.32
	11	1013.22	1013.23	1013.21	1013.18	1013.14	1013.14	1013.17	1013.14	1013.12	1013.15	1013.16	1013.19	1013.17
	12	1013.19	1013.16	1013.13	1013.12	1013.10	1013.06	1013.04	1013.06	1013.07	1013.05	1013.06	1013.11	1013.09
	13	1013.16	1013.18	1013.20	1013.26	1013.31	1013.31	1013.32	1013.34	1013.38	1013.43	1013.45	1013.47	1013.31
	14	1013.52	1013.55	1013.59	1013.64	1013.69	1013.79	1013.90	1013.96	1013.96	1013.97	1014.00	1014.09	1013.80
	15	1014.20	1014.28	1014.36	1014.43	1014.46	1014.49	1014.55	1014.64	1014.72	1014.83	1014.93	1015.01	1014.57
	16	1015.10	1015.16	1015.23	1015.29	1015.38	1015.46	1015.49	1015.58	1015.71	1015.79	1015.82	1015.89	1015.49
	17	1016.02	1016.10	1016.15	1016.24	1016.30	1016.35	1016.43	1016.52	1016.57	1016.63	1016.68	1016.73	1016.39
	18	1016.79	1016.82	1016.87	1016.91	1016.98	1017.07	1017.11	1017.13	1017.17	1017.22	1017.24	1017.25	1017.04
	19	1017.29	1017.35	1017.40	1017.46	1017.52	1017.57	1017.65	1017.72	1017.80	1017.85	1017.88	1017.94	1017.62
	20	1018.00	1018.05	1018.08	1018.10	1018.18	1018.25	1018.28	1018.31	1018.36	1018.38	1018.43	1018.50	1018.24
	21	1018.56	1018.64	1018.72	1018.74	1018.77	1018.82	1018.86	1018.89	1018.91	1018.94	1019.01	1019.09	1018.83
	22	1019.14	1019.15	1019.18	1019.21	1019.23	1019.26	1019.29	1019.33	1019.37	1019.40	1019.44	1019.45	1019.29
	23	1019.44	1019.39	1019.38	1019.39	1019.42	1019.46	1019.47	1019.45	1019.38	1019.35	1019.41	1019.48	1019.42
18	0	1019.57	1019.57	1019.59	1019.62	1019.64	1019.67	1019.68	1019.69	1019.72	1019.75	1019.76	1019.79	1019.67
	1	1019.80	1019.80	1019.84	1019.90	1019.95	1019.99	1020.04	1020.05	1020.04	1020.05	1020.01	1019.97	1019.95
	2	1019.97	1020.01	1020.02	1019.98	1019.96	1019.90	1019.85	1019.83	1019.82	1019.82	1019.80	1019.80	1019.89
	3	1019.83	1019.84	1019.86	1019.86	1019.83	1019.81	1019.84	1019.90	1019.94	1019.99	1020.04	1020.06	1019.90
	4	1020.10	1020.16	1020.19	1020.20	1020.24	1020.29	1020.34	1020.37	1020.40	1020.39	1020.37	1020.38	1020.28
	5	1020.39	1020.45	1020.54	1020.56	1020.61	1020.67	1020.72	1020.78	1020.83	1020.86	1020.89	1020.97	1020.69
	6	1021.05	1021.12	1021.20	1021.25	1021.31	1021.37	1021.43	1021.44	1021.46	1021.53	1021.57	1021.57	1021.36
	7	1021.55	1021.56	1021.63	1021.70	1021.71	1021.68	1021.65	1021.65	1021.67	1021.70	1021.75	1021.83	1021.67
	8	1021.91	1021.95	1021.97	1021.97	1021.95	1021.96	1022.00	1022.02	1022.03	1022.07	1022.14	1022.17	1022.01
	9	1022.13	1022.09	1022.05	1022.00	1021.95	1021.92	1021.92	1021.95	1021.96	1021.93	1021.92	1021.91	1021.97
	10	1021.86	1021.81	1021.79	1021.76	1021.75	1021.76	1021.71	1021.67	1021.62	1021.57	1021.56	1021.52	1021.70
	11	1021.49	1021.47	1021.42	1021.34	1021.25	1021.17	1021.10	1021.04	1020.99	1020.96	1020.94	1020.89	1021.17
	12	1020.84	1020.77	1020.70	1020.65	1020.64	1020.65	1020.62	1020.56	1020.50	1020.43	1020.38	1020.38	1020.59
	13	1020.36	1020.29	1020.28	1020.31	1020.30	1020.27	1020.27	1020.26	1020.28	1020.34	1020.39	1020.42	1020.31
	14	1020.42	1020.41	1020.43	1020.46	1020.44	1020.43	1020.46	1020.49	1020.50	1020.50	1020.51	1020.51	1020.46
	15	1020.49	1020.48	1020.49	1020.52	1020.54	1020.53	1020.55	1020.56	1020.55	1020.57	1020.59	1020.61	1020.54
	16	1020.62	1020.64	1020.67	1020.73	1020.78	1020.82	1020.87	1020.91	1020.91	1020.93	1020.97	1021.01	1020.82
	17	1021.03	1021.05	1021.09	1021.16	1021.24	1021.29	1021.34	1021.35	1021.39	1021.45	1021.51	1021.56	1021.29
	18	1021.59	1021.62	1021.68	1021.74	1021.80	1021.88	1021.97	1022.04	1022.12	1022.18	1022.23	1022.31	1021.93
	19	1022.37	1022.42	1022.50	1022.58	1022.66	1022.73	1022.80	1022.86	1022.90	1022.91	1022.94	1023.01	1022.72
	20	1023.03	1023.04	1023.06	1023.08	1023.09	1023.11	1023.15	1023.20	1023.23	1023.24	1023.26	1023.29	1023.15
	21	1023.32	1023.33	1023.36	1023.40	1023.41	1023.42	1023.47	1023.56	1023.64	1023.68	1023.69	1023.72	1023.50
	22	1023.78	1023.85	1023.88	1023.88	1023.89	1023.92	1023.97	1024.02	1024.04	1024.02	1024.02	1024.05	1023.94
	23	1024.07	1024.08	1024.11	1024.12	1024.12	1024.14	1024.15	1024.17	1024.18	1024.16	1024.13	1024.12	1024.13

S.V.I.R.CO. Observatory - Pressure in hectoPascal – December 2017

day	hh	00_05	05_10	10_15	15_20	20_25	25_30	30_35	35_40	40_45	45_50	50_55	55_60	average
19	0	1024.07	1024.07	1024.08	1024.12	1024.18	1024.20	1024.23	1024.28	1024.35	1024.42	1024.50	1024.54	1024.26
	1	1024.57	1024.64	1024.73	1024.80	1024.82	1024.80	1024.80	1024.84	1024.86	1024.87	1024.87	1024.86	1024.79
	2	1024.85	1024.85	1024.86	1024.88	1024.92	1024.92	1024.92	1024.99	1025.01	1025.01	1025.03	1025.04	1024.94
	3	1025.09	1025.15	1025.20	1025.24	1025.24	1025.25	1025.25	1025.22	1025.21	1025.24	1025.30	1025.37	1025.23
	4	1025.46	1025.57	1025.65	1025.71	1025.80	1025.83	1025.89	1025.98	1026.03	1026.09	1026.14	1026.17	1025.86
	5	1026.22	1026.26	1026.28	1026.31	1026.35	1026.44	1026.51	1026.51	1026.49	1026.54	1026.61	1026.68	1026.43
	6	1026.75	1026.78	1026.80	1026.87	1026.93	1026.98	1027.04	1027.08	1027.10	1027.15	1027.22	1027.30	1027.00
	7	1027.38	1027.42	1027.48	1027.54	1027.60	1027.69	1027.76	1027.79	1027.81	1027.85	1027.89	1027.94	1027.68
	8	1027.97	1027.98	1028.01	1028.05	1028.04	1028.03	1028.03	1028.04	1028.08	1028.13	1028.19	1028.26	1028.07
	9	1028.31	1028.32	1028.34	1028.39	1028.42	1028.45	1028.51	1028.54	1028.57	1028.61	1028.63	1028.63	1028.47
	10	1028.64	1028.65	1028.62	1028.57	1028.51	1028.47	1028.49	1028.51	1028.49	1028.46	1028.46	1028.48	1028.53
	11	1028.47	1028.40	1028.39	1028.38	1028.33	1028.29	1028.23	1028.16	1028.14	1028.09	1028.03	1027.99	1028.24
	12	1027.95	1027.89	1027.80	1027.70	1027.60	1027.55	1027.52	1027.49	1027.46	1027.44	1027.42	1027.37	1027.60
	13	1027.37	1027.40	1027.41	1027.39	1027.36	1027.37	1027.41	1027.44	1027.46	1027.48	1027.48	1027.47	1027.42
	14	1027.48	1027.50	1027.50	1027.52	1027.51	1027.48	1027.47	1027.49	1027.54	1027.57	1027.57	1027.56	1027.51
	15	1027.55	1027.57	1027.61	1027.64	1027.63	1027.62	1027.67	1027.74	1027.76	1027.74	1027.72	1027.72	1027.66
	16	1027.73	1027.72	1027.70	1027.71	1027.74	1027.77	1027.81	1027.83	1027.83	1027.81	1027.83	1027.86	1027.78
	17	1027.90	1027.97	1028.02	1028.05	1028.06	1028.08	1028.15	1028.24	1028.32	1028.37	1028.37	1028.39	1028.16
	18	1028.38	1028.34	1028.30	1028.32	1028.38	1028.44	1028.52	1028.58	1028.58	1028.57	1028.57	1028.55	1028.46
	19	1028.51	1028.51	1028.60	1028.69	1028.72	1028.74	1028.81	1028.88	1028.87	1028.84	1028.85	1028.87	1028.74
	20	1028.87	1028.88	1028.87	1028.85	1028.85	1028.85	1028.78	1028.68	1028.64	1028.63	1028.61	1028.64	1028.76
	21	1028.66	1028.66	1028.67	1028.74	1028.85	1028.90	1028.84	1028.77	1028.76	1028.73	1028.67	1028.66	1028.74
	22	1028.67	1028.73	1028.80	1028.84	1028.88	1028.94	1028.96	1028.97	1028.94	1028.90	1028.91	1028.88	1028.87
	23	1028.89	1028.89	1028.81	1028.73	1028.69	1028.70	1028.68	1028.64	1028.66	1028.73	1028.72	1028.65	1028.73
20	0	1028.67	1028.69	1028.70	1028.68	1028.68	1028.69	1028.67	1028.69	1028.70	1028.67	1028.71	1028.77	1028.69
	1	1028.75	1028.71	1028.66	1028.52	1028.37	1028.33	1028.38	1028.38	1028.38	1028.38	1028.40	1028.46	1028.47
	2	1028.46	1028.40	1028.30	1028.23	1028.17	1028.08	1028.08	1028.14	1028.16	1028.12	1028.08	1028.03	1028.19
	3	1027.97	1027.95	1027.93	1027.90	1027.87	1027.84	1027.79	1027.77	1027.83	1027.82	1027.80	1027.84	1027.86
	4	1027.86	1027.85	1027.82	1027.78	1027.78	1027.81	1027.84	1027.84	1027.84	1027.85	1027.84	1027.82	1027.83
	5	1027.83	1027.87	1027.87	1027.85	1027.84	1027.84	1027.85	1027.86	1027.84	1027.82	1027.85	1027.89	1027.85
	6	1027.91	1027.94	1027.95	1027.95	1027.93	1027.92	1027.95	1027.97	1027.96	1027.95	1027.93	1027.91	1027.94
	7	1027.93	1027.97	1028.03	1028.11	1028.17	1028.21	1028.21	1028.21	1028.25	1028.29	1028.32	1028.36	1028.17
	8	1028.41	1028.42	1028.38	1028.40	1028.49	1028.54	1028.58	1028.59	1028.61	1028.63	1028.64	1028.67	1028.53
	9	1028.74	1028.77	1028.78	1028.79	1028.80	1028.83	1028.82	1028.79	1028.74	1028.68	1028.67	1028.67	1028.76
	10	1028.62	1028.53	1028.49	1028.48	1028.46	1028.41	1028.36	1028.34	1028.33	1028.27	1028.19	1028.11	1028.38
	11	1028.05	1028.00	1027.93	1027.85	1027.81	1027.80	1027.78	1027.75	1027.73	1027.72	1027.69	1027.62	1027.81
	12	1027.55	1027.49	1027.41	1027.33	1027.28	1027.23	1027.17	1027.11	1027.06	1027.04	1027.04	1027.02	1027.22
	13	1026.99	1026.97	1026.95	1026.95	1026.97	1026.94	1026.90	1026.89	1026.86	1026.83	1026.82	1026.84	1026.91
	14	1026.83	1026.82	1026.82	1026.81	1026.82	1026.86	1026.90	1026.93	1026.96	1027.02	1027.05	1027.07	1026.91
	15	1027.09	1027.09	1027.06	1027.04	1027.04	1027.03	1027.03	1027.03	1027.03	1027.04	1027.07	1027.10	1027.05
	16	1027.12	1027.11	1027.10	1027.10	1027.08	1027.05	1027.04	1027.05	1027.04	1027.07	1027.10	1027.10	1027.08
	17	1027.07	1027.06	1027.07	1027.10	1027.18	1027.25	1027.34	1027.40	1027.44	1027.50	1027.50	1027.50	1027.28
	18	1027.51	1027.50	1027.51	1027.56	1027.60	1027.64	1027.73	1027.80	1027.79	1027.75	1027.74	1027.74	1027.65
	19	1027.74	1027.74	1027.75	1027.79	1027.85	1027.92	1027.91	1027.89	1027.91	1027.92	1027.96	1028.00	1027.86
	20	1028.03	1028.05	1028.07	1028.12	1028.20	1028.24	1028.26	1028.27	1028.27	1028.31	1028.36	1028.43	1028.21
	21	1028.49	1028.51	1028.53	1028.60	1028.70	1028.75	1028.76	1028.77	1028.77	1028.78	1028.75	1028.71	1028.68
	22	1028.78	1028.90	1028.96	1028.99	1029.04	1029.05	1029.05	1029.09	1029.13	1029.10	1029.06	1029.08	1029.02
	23	1029.12	1029.09	1029.05	1029.00	1028.95	1028.95	1028.97	1029.00	1028.99	1028.96	1028.94	1028.94	1029.00

S.V.I.R.CO. Observatory - Pressure in hectoPascal – December 2017

day	hh	00_05	05_10	10_15	15_20	20_25	25_30	30_35	35_40	40_45	45_50	50_55	55_60	average
21	0	1029.06	1029.08	1029.10	1029.08	1029.06	1029.04	1028.96	1028.91	1028.89	1028.83	1028.75	1028.70	1028.95
	1	1028.67	1028.65	1028.64	1028.67	1028.68	1028.66	1028.65	1028.64	1028.64	1028.63	1028.60	1028.56	1028.64
	2	1028.58	1028.61	1028.60	1028.58	1028.58	1028.53	1028.49	1028.48	1028.50	1028.54	1028.55	1028.51	1028.54
	3	1028.47	1028.45	1028.40	1028.35	1028.30	1028.25	1028.24	1028.25	1028.20	1028.17	1028.19	1028.16	1028.28
	4	1028.10	1028.03	1027.95	1027.92	1027.89	1027.85	1027.86	1027.90	1027.95	1027.96	1027.98	1028.02	1027.95
	5	1028.06	1028.07	1028.06	1028.04	1028.06	1028.10	1028.10	1028.09	1028.15	1028.23	1028.25	1028.25	1028.12
	6	1028.24	1028.22	1028.16	1028.15	1028.19	1028.22	1028.27	1028.33	1028.34	1028.32	1028.34	1028.42	1028.27
	7	1028.47	1028.49	1028.57	1028.63	1028.66	1028.70	1028.72	1028.73	1028.77	1028.85	1028.91	1028.95	1028.70
	8	1029.00	1029.00	1029.00	1029.02	1029.07	1029.11	1029.13	1029.13	1029.06	1029.01	1028.99	1029.04	1029.04
	9	1029.12	1029.12	1029.06	1029.05	1029.05	1029.00	1028.99	1028.98	1028.96	1028.97	1029.01	1029.06	1029.03
	10	1029.12	1029.20	1029.30	1029.37	1029.36	1029.32	1029.26	1029.22	1029.19	1029.16	1029.08	1028.98	1029.21
	11	1028.93	1028.91	1028.86	1028.78	1028.72	1028.68	1028.61	1028.52	1028.42	1028.34	1028.30	1028.23	1028.61
	12	1028.10	1028.00	1027.96	1027.94	1027.89	1027.82	1027.73	1027.67	1027.67	1027.64	1027.59	1027.53	1027.79
	13	1027.46	1027.42	1027.42	1027.40	1027.36	1027.31	1027.29	1027.24	1027.18	1027.14	1027.09	1027.02	1027.27
	14	1026.97	1026.98	1027.02	1027.06	1027.12	1027.15	1027.14	1027.14	1027.16	1027.20	1027.24	1027.24	1027.12
	15	1027.27	1027.29	1027.30	1027.36	1027.35	1027.34	1027.40	1027.43	1027.40	1027.35	1027.30	1027.26	1027.34
	16	1027.25	1027.28	1027.32	1027.30	1027.29	1027.33	1027.39	1027.47	1027.46	1027.42	1027.43	1027.45	1027.36
	17	1027.48	1027.45	1027.44	1027.47	1027.51	1027.54	1027.59	1027.64	1027.70	1027.78	1027.78	1027.79	1027.60
	18	1027.83	1027.88	1027.92	1027.96	1027.98	1027.97	1027.97	1027.99	1028.02	1028.02	1028.03	1028.06	1027.97
	19	1028.07	1028.04	1027.96	1027.88	1027.85	1027.81	1027.79	1027.84	1027.83	1027.79	1027.75	1027.65	1027.85
	20	1027.59	1027.56	1027.51	1027.50	1027.49	1027.48	1027.44	1027.42	1027.43	1027.43	1027.46	1027.54	1027.49
	21	1027.59	1027.65	1027.70	1027.70	1027.71	1027.70	1027.65	1027.58	1027.52	1027.46	1027.47	1027.50	1027.60
	22	1027.51	1027.47	1027.39	1027.30	1027.22	1027.15	1027.09	1027.04	1027.02	1027.00	1026.90	1026.80	1027.16
	23	1026.77	1026.72	1026.70	1026.62	1026.53	1026.49	1026.42	1026.35	1026.27	1026.21	1026.20	1026.12	1026.45
22	0	1025.98	1025.95	1025.88	1025.79	1025.71	1025.64	1025.53	1025.51	1025.47	1025.43	1025.40	1025.34	1025.62
	1	1025.36	1025.39	1025.38	1025.34	1025.34	1025.35	1025.38	1025.35	1025.30	1025.27	1025.22	1025.21	1025.32
	2	1025.22	1025.16	1025.09	1025.02	1024.95	1024.91	1024.87	1024.78	1024.72	1024.67	1024.65	1024.69	1024.89
	3	1024.70	1024.66	1024.62	1024.58	1024.52	1024.50	1024.42	1024.35	1024.30	1024.19	1024.05	1023.90	1024.40
	4	1023.80	1023.83	1023.92	1023.96	1023.99	1023.98	1023.96	1024.03	1024.05	1024.06	1024.14	1024.16	1023.99
	5	1024.17	1024.21	1024.18	1024.21	1024.26	1024.23	1024.29	1024.28	1024.20	1024.17	1024.20	1024.24	1024.22
	6	1024.20	1024.24	1024.27	1024.24	1024.27	1024.33	1024.36	1024.38	1024.36	1024.31	1024.32	1024.35	1024.30
	7	1024.40	1024.36	1024.39	1024.40	1024.34	1024.29	1024.30	1024.40	1024.43	1024.42	1024.45	1024.42	1024.38
	8	1024.37	1024.38	1024.38	1024.45	1024.48	1024.45	1024.50	1024.54	1024.57	1024.58	1024.58	1024.61	1024.49
	9	1024.59	1024.61	1024.70	1024.72	1024.68	1024.65	1024.61	1024.50	1024.42	1024.39	1024.33	1024.25	1024.54
	10	1024.19	1024.13	1024.08	1024.04	1024.03	1024.09	1024.13	1024.07	1023.99	1023.97	1023.92	1023.83	1024.04
	11	1023.80	1023.76	1023.66	1023.54	1023.51	1023.52	1023.53	1023.49	1023.42	1023.34	1023.25	1023.17	1023.50
	12	1023.12	1023.12	1023.07	1023.00	1022.98	1022.95	1022.81	1022.63	1022.46	1022.33	1022.29	1022.23	1022.75
	13	1022.09	1021.99	1021.93	1021.92	1021.87	1021.82	1021.76	1021.70	1021.71	1021.67	1021.66	1021.66	1021.81
	14	1021.62	1021.60	1021.61	1021.59	1021.56	1021.52	1021.50	1021.51	1021.54	1021.59	1021.64	1021.70	1021.58
	15	1021.75	1021.83	1021.88	1021.86	1021.87	1021.91	1021.94	1021.96	1021.97	1022.04	1022.13	1022.15	1021.94
	16	1022.10	1022.01	1021.95	1022.01	1022.11	1022.16	1022.21	1022.23	1022.22	1022.28	1022.41	1022.51	1022.18
	17	1022.55	1022.55	1022.53	1022.51	1022.54	1022.59	1022.62	1022.64	1022.65	1022.71	1022.81	1022.83	1022.63
	18	1022.82	1022.90	1023.00	1023.02	1022.97	1022.98	1022.94	1022.91	1022.96	1022.97	1023.00	1023.05	1022.96
	19	1023.12	1023.13	1023.10	1023.14	1023.15	1023.12	1023.16	1023.17	1023.16	1023.16	1023.13	1023.12	1023.14
	20	1023.12	1023.12	1023.17	1023.22	1023.29	1023.40	1023.45	1023.49	1023.51	1023.52	1023.54	1023.50	1023.36
	21	1023.48	1023.52	1023.58	1023.66	1023.71	1023.73	1023.73	1023.78	1023.85	1023.89	1023.91	1023.92	1023.73
	22	1024.00	1024.10	1024.11	1024.09	1024.05	1024.05	1024.04	1024.06	1024.09	1024.11	1024.17	1024.13	1024.08
	23	1024.09	1024.06	1024.00	1024.00	1023.97	1023.84	1023.85	1023.90	1023.94	1023.94	1023.88	1023.90	1023.94

S.V.I.R.CO. Observatory - Pressure in hectoPascal – December 2017

day	hh	00_05	05_10	10_15	15_20	20_25	25_30	30_35	35_40	40_45	45_50	50_55	55_60	average
23	0	1023.92	1023.87	1023.75	1023.73	1023.86	1023.99	1024.00	1024.03	1024.06	1024.07	1024.14	1024.15	1023.96
	1	1024.15	1024.20	1024.28	1024.30	1024.27	1024.27	1024.28	1024.29	1024.29	1024.34	1024.38	1024.37	1024.28
	2	1024.39	1024.42	1024.43	1024.42	1024.38	1024.36	1024.34	1024.37	1024.47	1024.56	1024.59	1024.59	1024.44
	3	1024.56	1024.54	1024.55	1024.55	1024.63	1024.72	1024.73	1024.70	1024.67	1024.66	1024.68	1024.73	1024.64
	4	1024.78	1024.87	1024.95	1025.01	1025.00	1024.95	1024.94	1024.99	1025.02	1025.03	1025.05	1025.16	1024.98
	5	1025.33	1025.44	1025.52	1025.61	1025.72	1025.75	1025.72	1025.74	1025.81	1025.87	1025.88	1025.89	1025.69
	6	1025.92	1025.94	1025.94	1025.98	1026.05	1026.12	1026.25	1026.31	1026.33	1026.39	1026.43	1026.42	1026.17
	7	1026.39	1026.40	1026.47	1026.57	1026.61	1026.63	1026.71	1026.74	1026.72	1026.74	1026.83	1026.97	1026.65
	8	1027.08	1027.11	1027.18	1027.32	1027.45	1027.55	1027.63	1027.63	1027.58	1027.63	1027.73	1027.78	1027.47
	9	1027.91	1028.09	1028.19	1028.15	1028.07	1028.01	1027.99	1028.00	1028.04	1028.08	1028.05	1028.05	1028.05
	10	1028.08	1028.04	1028.00	1027.95	1027.89	1027.88	1027.88	1027.86	1027.89	1027.94	1027.99	1027.99	1027.95
	11	1027.93	1027.87	1027.84	1027.74	1027.54	1027.45	1027.42	1027.31	1027.20	1027.08	1026.99	1027.06	1027.45
	12	1027.11	1027.12	1027.14	1027.10	1027.05	1027.02	1027.01	1026.99	1026.95	1026.91	1026.87	1026.88	1027.01
	13	1026.87	1026.82	1026.76	1026.79	1026.86	1026.81	1026.79	1026.83	1026.86	1026.87	1026.90	1026.92	1026.84
	14	1026.96	1027.01	1026.99	1026.94	1026.95	1027.02	1027.08	1027.12	1027.20	1027.25	1027.29	1027.36	1027.09
	15	1027.44	1027.52	1027.56	1027.63	1027.70	1027.74	1027.77	1027.79	1027.78	1027.76	1027.76	1027.75	1027.68
	16	1027.69	1027.62	1027.64	1027.70	1027.72	1027.75	1027.78	1027.79	1027.82	1027.84	1027.86	1027.88	1027.76
	17	1027.93	1028.04	1028.16	1028.23	1028.25	1028.23	1028.24	1028.33	1028.44	1028.53	1028.59	1028.60	1028.30
	18	1028.62	1028.65	1028.71	1028.77	1028.83	1028.90	1028.96	1029.03	1029.09	1029.10	1029.12	1029.13	1028.91
	19	1029.12	1029.12	1029.12	1029.14	1029.13	1029.04	1028.99	1029.00	1028.99	1029.01	1029.06	1029.11	1029.07
	20	1029.17	1029.21	1029.29	1029.39	1029.44	1029.48	1029.50	1029.49	1029.49	1029.49	1029.46	1029.43	1029.40
	21	1029.44	1029.46	1029.51	1029.59	1029.66	1029.71	1029.72	1029.70	1029.72	1029.71	1029.68	1029.73	1029.63
	22	1029.85	1029.88	1029.86	1029.81	1029.75	1029.72	1029.73	1029.74	1029.75	1029.75	1029.73	1029.72	1029.77
	23	1029.66	1029.59	1029.59	1029.57	1029.57	1029.60	1029.57	1029.52	1029.49	1029.46	1029.42	1029.42	1029.54
24	0	1029.48	1029.48	1029.50	1029.52	1029.55	1029.59	1029.64	1029.69	1029.71	1029.67	1029.62	1029.66	1029.60
	1	1029.65	1029.63	1029.65	1029.71	1029.73	1029.70	1029.74	1029.82	1029.78	1029.71	1029.69	1029.67	1029.70
	2	1029.66	1029.60	1029.53	1029.49	1029.47	1029.46	1029.45	1029.41	1029.35	1029.31	1029.27	1029.22	1029.43
	3	1029.19	1029.13	1029.06	1029.05	1029.09	1029.13	1029.12	1029.08	1029.04	1029.01	1029.00	1028.99	1029.07
	4	1028.97	1028.93	1028.92	1028.92	1028.89	1028.88	1028.89	1028.90	1028.93	1028.98	1029.04	1029.12	1028.94
	5	1029.14	1029.16	1029.19	1029.19	1029.18	1029.19	1029.25	1029.27	1029.23	1029.19	1029.19	1029.21	1029.20
	6	1029.23	1029.24	1029.23	1029.24	1029.27	1029.31	1029.34	1029.36	1029.38	1029.36	1029.32	1029.32	1029.30
	7	1029.36	1029.41	1029.43	1029.41	1029.35	1029.36	1029.41	1029.41	1029.40	1029.38	1029.38	1029.39	1029.39
	8	1029.42	1029.47	1029.50	1029.49	1029.48	1029.56	1029.61	1029.64	1029.68	1029.68	1029.70	1029.74	1029.58
	9	1029.76	1029.78	1029.82	1029.86	1029.90	1029.96	1030.02	1030.03	1030.00	1029.96	1029.91	1029.87	1029.90
	10	1029.85	1029.80	1029.72	1029.67	1029.61	1029.55	1029.49	1029.41	1029.35	1029.29	1029.25	1029.20	1029.51
	11	1029.14	1029.13	1029.12	1029.06	1029.02	1028.97	1028.91	1028.87	1028.85	1028.79	1028.70	1028.63	1028.93
	12	1028.55	1028.49	1028.45	1028.41	1028.39	1028.36	1028.30	1028.24	1028.20	1028.19	1028.16	1028.12	1028.32
	13	1028.10	1028.05	1028.02	1028.01	1027.99	1027.98	1027.97	1027.98	1027.99	1027.98	1027.98	1027.96	1028.00
	14	1027.95	1027.96	1027.94	1027.90	1027.86	1027.82	1027.80	1027.80	1027.80	1027.81	1027.81	1027.80	1027.85
	15	1027.81	1027.83	1027.82	1027.79	1027.78	1027.77	1027.75	1027.73	1027.72	1027.73	1027.74	1027.75	1027.77
	16	1027.79	1027.81	1027.81	1027.83	1027.83	1027.80	1027.76	1027.73	1027.71	1027.69	1027.66	1027.66	1027.75
	17	1027.69	1027.74	1027.79	1027.84	1027.89	1027.89	1027.86	1027.84	1027.84	1027.90	1027.96	1028.00	1027.85
	18	1028.02	1028.03	1028.04	1028.04	1028.08	1028.17	1028.24	1028.26	1028.27	1028.24	1028.24	1028.23	1028.15
	19	1028.19	1028.17	1028.20	1028.24	1028.26	1028.28	1028.26	1028.21	1028.22	1028.27	1028.28	1028.24	1028.23
	20	1028.23	1028.25	1028.29	1028.31	1028.33	1028.36	1028.39	1028.41	1028.43	1028.48	1028.51	1028.51	1028.37
	21	1028.48	1028.46	1028.48	1028.52	1028.54	1028.55	1028.57	1028.57	1028.58	1028.64	1028.69	1028.70	1028.56
	22	1028.69	1028.69	1028.71	1028.75	1028.79	1028.83	1028.81	1028.78	1028.78	1028.82	1028.85	1028.86	1028.78
	23	1028.89	1028.87	1028.83	1028.79	1028.75	1028.75	1028.71	1028.64	1028.58	1028.48	1028.41	1028.39	1028.67

S.V.I.R.CO. Observatory - Pressure in hectoPascal – December 2017

day	hh	00_05	05_10	10_15	15_20	20_25	25_30	30_35	35_40	40_45	45_50	50_55	55_60	average
25	0	1028.36	1028.36	1028.33	1028.30	1028.29	1028.28	1028.30	1028.36	1028.41	1028.44	1028.46	1028.47	1028.36
	1	1028.47	1028.49	1028.50	1028.47	1028.46	1028.46	1028.44	1028.44	1028.48	1028.47	1028.47	1028.54	1028.47
	2	1028.61	1028.62	1028.63	1028.64	1028.61	1028.55	1028.48	1028.42	1028.38	1028.32	1028.30	1028.34	1028.49
	3	1028.36	1028.35	1028.33	1028.27	1028.26	1028.29	1028.27	1028.25	1028.27	1028.29	1028.32	1028.33	1028.30
	4	1028.31	1028.31	1028.33	1028.35	1028.39	1028.40	1028.39	1028.39	1028.38	1028.36	1028.35	1028.37	1028.36
	5	1028.42	1028.48	1028.49	1028.45	1028.45	1028.45	1028.43	1028.41	1028.39	1028.36	1028.36	1028.38	1028.42
	6	1028.38	1028.35	1028.34	1028.33	1028.35	1028.38	1028.39	1028.44	1028.48	1028.50	1028.54	1028.58	1028.42
	7	1028.59	1028.59	1028.61	1028.66	1028.66	1028.66	1028.68	1028.71	1028.75	1028.80	1028.84	1028.88	1028.70
	8	1028.92	1028.94	1028.95	1028.97	1029.02	1029.05	1029.09	1029.11	1029.12	1029.13	1029.14	1029.18	1029.05
	9	1029.19	1029.16	1029.13	1029.12	1029.08	1029.08							1029.12
	10		1028.60	1028.60	1028.59	1028.53	1028.45	1028.37	1028.31	1028.23	1028.14	1028.07	1028.01	1028.36
	11	1027.93	1027.87	1027.83	1027.75	1027.67	1027.57	1027.47	1027.39	1027.31	1027.21	1027.13	1027.05	1027.51
	12	1026.97	1026.91	1026.82	1026.74	1026.66	1026.57	1026.49	1026.44	1026.39	1026.34	1026.28	1026.21	1026.57
	13	1026.15	1026.12	1026.10	1026.08	1026.04	1025.98	1025.96	1025.94	1025.91	1025.90	1025.89	1025.86	1025.99
	14	1025.84	1025.82	1025.79	1025.78	1025.74	1025.70	1025.67	1025.64	1025.62	1025.59	1025.57	1025.57	1025.69
	15	1025.58	1025.57	1025.58	1025.56	1025.50	1025.46	1025.43	1025.40	1025.36	1025.34	1025.33	1025.33	1025.45
	16	1025.34	1025.34	1025.35	1025.35	1025.36	1025.39	1025.41	1025.45	1025.46	1025.48	1025.51	1025.52	1025.41
	17	1025.52	1025.53	1025.53	1025.51	1025.51	1025.52	1025.52	1025.55	1025.58	1025.59	1025.61	1025.60	1025.55
	18	1025.59	1025.60	1025.61	1025.62	1025.61	1025.60	1025.60	1025.59	1025.58	1025.53	1025.50	1025.52	1025.58
	19	1025.54	1025.56	1025.56	1025.52	1025.46	1025.43	1025.41	1025.38	1025.34	1025.27	1025.20	1025.16	1025.40
	20	1025.11	1025.07	1025.02	1025.00	1025.00	1024.98	1024.99	1025.00	1024.99	1024.96	1024.94	1024.92	1025.00
	21	1024.90	1024.87	1024.82	1024.79	1024.79	1024.77	1024.76	1024.76	1024.72	1024.70	1024.66	1024.60	1024.76
	22	1024.59	1024.56	1024.48	1024.43	1024.38	1024.33	1024.30	1024.25	1024.18	1024.13	1024.11	1024.08	1024.32
	23	1024.06	1024.05	1024.02	1023.97	1023.93	1023.89	1023.84	1023.79	1023.75	1023.70	1023.65	1023.62	1023.85
26	0	1023.56	1023.54	1023.51	1023.49	1023.48	1023.47	1023.46	1023.44	1023.42	1023.44	1023.46	1023.46	1023.47
	1	1023.46	1023.45	1023.43	1023.39	1023.36	1023.34	1023.31	1023.30	1023.29	1023.26	1023.24	1023.24	1023.34
	2	1023.23	1023.17	1023.09	1023.01	1023.01	1023.01	1022.95	1022.87	1022.78	1022.73	1022.67	1022.65	1022.93
	3	1022.68	1022.66	1022.64	1022.61	1022.56	1022.48	1022.38	1022.30	1022.25	1022.17	1022.07	1021.99	1022.40
	4	1021.93	1021.87	1021.82	1021.77	1021.72	1021.68	1021.63	1021.56	1021.50	1021.49	1021.50	1021.47	1021.66
	5	1021.41	1021.35	1021.28	1021.26	1021.25	1021.23	1021.22	1021.23	1021.25	1021.23	1021.22	1021.20	1021.26
	6	1021.18	1021.19	1021.17	1021.13	1021.13	1021.16	1021.17	1021.16	1021.15	1021.13	1021.12	1021.09	1021.15
	7	1021.04	1020.99	1020.97	1020.96	1020.88	1020.77	1020.73	1020.76	1020.79	1020.80	1020.79	1020.80	1020.85
	8	1020.84	1020.87	1020.87	1020.84	1020.78	1020.73	1020.71	1020.70	1020.69	1020.69	1020.66	1020.64	1020.75
	9	1020.63	1020.58	1020.52	1020.49	1020.46	1020.40	1020.30	1020.20	1020.08	1019.96	1019.91	1019.86	1020.28
	10	1019.81	1019.78	1019.72	1019.62	1019.52	1019.45	1019.39	1019.31	1019.22	1019.12	1019.02	1018.95	1019.41
	11	1018.89	1018.79	1018.64	1018.54	1018.48	1018.38	1018.26	1018.18	1018.12	1018.04	1017.93	1017.82	1018.34
	12	1017.71	1017.60	1017.47	1017.31	1017.15	1017.02	1016.94	1016.92	1016.90	1016.86	1016.79	1016.71	1017.11
	13	1016.64	1016.55	1016.51	1016.51	1016.46	1016.40	1016.35	1016.26	1016.22	1016.25	1016.23	1016.18	1016.38
	14	1016.13	1016.10	1016.07	1016.03	1015.98	1015.88	1015.72	1015.63	1015.56	1015.49	1015.46	1015.45	1015.79
	15	1015.42	1015.39	1015.38	1015.42	1015.46	1015.43	1015.42	1015.46	1015.46	1015.44	1015.44	1015.48	1015.43
	16	1015.52	1015.48	1015.42	1015.38	1015.34	1015.29	1015.30	1015.33	1015.30	1015.25	1015.21	1015.19	1015.33
	17	1015.13	1015.05	1015.01	1014.97	1014.98	1015.04	1015.02	1014.98	1014.95	1014.93	1014.95	1014.97	1015.00
	18	1015.04	1015.07	1015.01	1014.89	1014.80	1014.77	1014.82	1014.84	1014.76	1014.63	1014.51	1014.40	1014.79
	19	1014.28	1014.25	1014.15	1014.02	1014.00	1014.04	1014.12	1014.12	1014.02	1013.95	1013.89	1013.79	1014.05
	20	1013.71	1013.70	1013.68	1013.65	1013.61	1013.53	1013.45	1013.41	1013.35	1013.29	1013.23	1013.16	1013.48
	21	1013.09	1013.05	1013.03	1013.02	1013.03	1013.00	1012.92	1012.81	1012.73	1012.63	1012.48	1012.36	1012.84
	22	1012.30	1012.22	1012.16	1012.12	1012.04	1011.91	1011.80	1011.73	1011.69	1011.65	1011.61	1011.54	1011.89
	23	1011.40	1011.21	1011.01	1010.87	1010.86	1010.95	1011.02	1011.21	1011.33	1011.16	1011.03	1010.95	1011.08

S.V.I.R.CO. Observatory - Pressure in hectoPascal – December 2017

day	hh	00_05	05_10	10_15	15_20	20_25	25_30	30_35	35_40	40_45	45_50	50_55	55_60	average
27	0	1010.74	1010.70	1010.58	1010.46	1010.33	1010.23	1010.16	1010.06	1009.88	1009.68	1009.62	1009.56	1010.14
	1	1009.42	1009.24	1009.13	1009.09	1009.02	1008.90	1008.83	1008.76	1008.66	1008.61	1008.60	1008.55	1008.90
	2	1008.43	1008.36	1008.28	1008.20	1008.08	1007.88	1007.74	1007.68	1007.58	1007.45	1007.40	1007.34	1007.87
	3	1007.20	1007.06	1006.94	1006.84	1006.74	1006.69	1006.60	1006.43	1006.27	1006.17	1006.11	1006.02	1006.59
	4	1005.93	1005.86	1005.76	1005.71	1005.72	1005.64	1005.50	1005.42	1005.38	1005.34	1005.30	1005.25	1005.57
	5	1005.20	1005.07	1004.94	1004.86	1004.81	1004.81	1004.77	1004.69	1004.62	1004.56	1004.53	1004.48	1004.78
	6	1004.41	1004.33	1004.22	1004.11	1004.04	1004.03	1004.03	1003.98	1003.84	1003.71	1003.68	1003.59	1004.00
	7	1003.48	1003.40	1003.26	1003.14	1003.05	1002.99	1002.89	1002.78	1002.69	1002.55	1002.41	1002.27	1002.91
	8	1002.10	1001.99	1002.02	1002.07	1001.99	1001.98	1001.94	1001.84	1001.84	1001.83	1001.81	1001.76	1001.93
	9	1001.65	1001.55	1001.57	1001.58	1001.48	1001.40	1001.30	1001.20	1001.12	1000.97	1000.80	1000.66	1001.27
	10	1000.57	1000.47	1000.38	1000.37	1000.33	1000.14	1000.03	1000.12	1000.06	999.82	999.70	999.63	1000.13
	11	999.56	999.49	999.30	999.04	998.83	998.73	998.59	998.48	998.47	998.36	998.18	998.16	998.76
	12	998.17	998.02	997.75	997.48	997.26	997.12	997.03	996.86	996.71	996.57	996.40	996.28	997.13
	13	996.18	996.01	995.94	995.85	995.89	995.99	995.94	995.89	995.74	995.55	995.33	995.19	995.79
	14	995.13	995.08	995.03	994.84	994.77	994.87	994.86	994.79	994.71	994.66	994.63	994.57	994.83
	15	994.43	994.36	994.39	994.32	994.15	994.05	993.98	993.85	993.71	993.58	993.41	993.27	993.96
	16	993.14	992.96	992.78	992.56	992.31	992.06	991.88	991.78	991.67	991.59	991.44	991.35	992.13
	17	991.37	991.66	991.93	991.84	991.72	991.63	991.60	991.61	991.65	991.72	991.84	991.96	991.71
	18	992.07	992.15	992.24	992.32	992.31	992.36	992.43	992.49	992.54	992.56	992.57	992.60	992.38
	19	992.61	992.51	992.46	992.43	992.37	992.36	992.42	992.47	992.49	992.53	992.57	992.58	992.48
	20	992.57	992.54	992.57	992.65	992.71	992.76	992.79	992.79	992.74	992.66	992.66	992.70	992.68
	21	992.75	992.76	992.76	992.81	992.82	992.83	992.83	992.83	992.87	992.85	992.81	992.81	992.81
	22	992.79	992.76	992.79	992.81	992.83	992.80	992.70	992.67	992.69	992.69	992.68	992.63	992.74
	23	992.50	992.50	992.58	992.58	992.60	992.68	992.63	992.49	992.43	992.42	992.38	992.29	992.51
28	0	992.12	992.09	992.11	992.13	992.07	992.06	992.07	992.01	992.01	992.02	991.96	991.91	992.04
	1	991.89	991.93	991.96	991.92	991.82	991.82	992.04	992.23	992.22	992.15	992.14	992.04	992.01
	2	991.96	991.93	991.84	991.80	991.78	991.73	991.67	991.57	991.45	991.29	991.14	991.03	991.60
	3	991.08	991.12	990.93	990.73	990.64	990.64	990.57	990.45	990.38	990.36	990.40	990.43	990.64
	4	990.41	990.36	990.48	990.74	990.88	990.93	990.86	990.64	990.45	990.32	990.23	990.19	990.54
	5	990.21	990.14	989.98	989.85	989.61	989.43	989.35	989.29	989.23	989.16	989.04	989.01	989.52
	6	989.04	989.06	989.07	989.00	988.96	988.97	988.97	988.96	988.94	988.92	989.01	989.17	989.00
	7	989.30	989.46	989.58	989.70	990.06	990.35	990.51	990.57	990.48	990.41	990.35	990.34	990.09
	8	990.41	990.53	990.46	990.45	990.64	990.81	990.94	991.06	991.11	991.17	991.13	991.10	990.82
	9	991.13	991.15	991.27	991.37	991.37	991.33	991.32	991.35	991.31	991.19	991.14	991.16	991.26
	10	991.10	991.01	990.99	991.01	991.15	991.30	991.27	991.25	991.32	991.40	991.61	991.74	991.26
	11	991.71	991.73	991.78	991.93	992.11	992.22	992.22	992.21	992.27	992.39	992.54	992.62	992.14
	12	992.63	992.66	992.58	992.40	992.29	992.26	992.28	992.30	992.42	992.51	992.52	992.60	992.45
	13	992.70	992.74	992.66	992.61	992.62	992.68	992.71	992.79	992.94	992.97	993.02	993.12	992.79
	14	993.31	993.49	993.60	993.65	993.66	993.73	993.77	993.82	993.85	993.86	993.88	993.87	993.70
	15	993.88	993.98	994.06	994.09	994.16	994.18	994.21	994.30	994.38	994.39	994.40	994.49	994.21
	16	994.67	994.81	994.82	994.82	994.91	995.00	995.02	995.10	995.08	995.20	995.41	995.49	995.03
	17	995.70	995.74	995.60	995.60	995.55	995.45	995.50	995.61	995.74	995.92	996.12	996.26	995.73
	18	996.37	996.46	996.50	996.57	996.63	996.71	996.87	997.03	997.20	997.30	997.31	997.17	996.84
	19	997.04	996.87	996.80	996.94	997.01	996.95	996.94	997.12	997.32	997.45	997.46	997.35	997.10
	20	997.32	997.43	997.57	997.73	997.87	997.98	998.11	998.23	998.29	998.34	998.44	998.56	997.99
	21	998.65	998.70	998.80	998.86	998.90	998.96	999.02	999.12	999.25	999.31	999.30	999.36	999.02
	22	999.40	999.39	999.41	999.49	999.49	999.44	999.43	999.45	999.51	999.60	999.70	999.78	999.51
	23	999.81	999.85	999.91	999.93	999.89	999.88	999.91	999.95	1000.00	999.99	1000.03	1000.13	999.94

S.V.I.R.CO. Observatory - Pressure in hectoPascal – December 2017

day	hh	00_05	05_10	10_15	15_20	20_25	25_30	30_35	35_40	40_45	45_50	50_55	55_60	average
29	0	1000.19	1000.19	1000.21	1000.29	1000.39	1000.49	1000.56	1000.58	1000.63	1000.71	1000.81	1000.87	1000.50
	1	1000.91	1000.96	1001.09	1001.22	1001.29	1001.36	1001.43	1001.55	1001.66	1001.77	1001.90	1001.99	1001.42
	2	1002.03	1002.06	1002.06	1002.07	1002.10	1002.11	1002.05	1002.02	1002.08	1002.11	1002.10	1002.08	1002.07
	3	1002.07	1002.09	1002.16	1002.30	1002.43	1002.45	1002.46	1002.52	1002.62	1002.74	1002.84	1002.91	1002.46
	4	1002.96	1003.04	1003.13	1003.21	1003.26	1003.29	1003.34	1003.42	1003.49	1003.52	1003.59	1003.75	1003.33
	5	1003.94	1004.08	1004.16	1004.23	1004.32	1004.46	1004.61	1004.75	1004.85	1004.97	1005.13	1005.28	1004.56
	6	1005.32	1005.30	1005.42	1005.56	1005.61	1005.64	1005.65	1005.72	1005.79	1005.80	1005.84	1005.88	1005.62
	7	1005.91	1006.00	1006.09	1006.16	1006.27	1006.37	1006.45	1006.50	1006.55	1006.66	1006.75	1006.81	1006.38
	8	1006.94	1007.13	1007.26	1007.35	1007.44	1007.51	1007.60	1007.68	1007.74	1007.83	1007.91	1008.00	1007.53
	9	1008.07	1008.07	1008.09	1008.13	1008.13	1008.07	1008.04	1008.03	1008.04	1008.12	1008.19	1008.23	1008.10
	10	1008.25	1008.28	1008.34	1008.40	1008.42	1008.38	1008.34	1008.33	1008.34	1008.39	1008.46	1008.48	1008.37
	11	1008.53	1008.61	1008.60	1008.58	1008.60	1008.71	1008.79	1008.93	1009.07	1009.10	1009.14	1009.21	1008.82
	12	1009.24	1009.22	1009.18	1009.12	1009.07	1009.02	1008.98	1008.95	1008.85	1008.80	1008.86	1008.96	1009.02
	13	1009.04	1009.10	1009.16	1009.29	1009.47	1009.64	1009.76	1009.81	1009.84	1009.87	1009.91	1009.96	1009.57
	14	1010.00	1010.06	1010.12	1010.23	1010.36	1010.42	1010.46	1010.55	1010.64	1010.73	1010.84	1010.95	1010.44
	15	1011.04	1011.07	1011.11	1011.21	1011.31	1011.40	1011.51	1011.61	1011.73	1011.84	1011.93	1012.04	1011.48
	16	1012.19	1012.30	1012.35	1012.42	1012.49	1012.53	1012.55	1012.58	1012.63	1012.68	1012.80	1012.96	1012.54
	17	1013.04	1013.11	1013.20	1013.28	1013.33	1013.42	1013.50	1013.51	1013.47	1013.49	1013.53	1013.53	1013.36
	18	1013.57	1013.61	1013.62	1013.60	1013.60	1013.63	1013.66	1013.69	1013.76	1013.80	1013.80	1013.78	1013.67
	19	1013.77	1013.81	1013.85	1013.90	1013.96	1014.03	1014.13	1014.16	1014.10	1014.16	1014.29	1014.36	1014.04
	20	1014.40	1014.36	1014.23	1014.17	1014.22	1014.24	1014.25	1014.31	1014.36	1014.30	1014.24	1014.29	1014.28
	21	1014.37	1014.44	1014.51	1014.53	1014.47	1014.49	1014.64	1014.72	1014.63	1014.48	1014.40	1014.40	1014.50
	22	1014.55	1014.75	1014.97	1015.10	1015.05	1015.04	1015.05	1015.05	1015.10	1015.10	1015.09	1015.14	1015.00
	23	1015.17	1015.14	1015.12	1015.14	1015.07	1014.89	1014.87	1015.02	1015.10	1015.11	1015.05	1014.97	1015.05
30	0	1014.89	1014.73	1014.53	1014.58	1014.58	1014.43	1014.35	1014.38	1014.39	1014.41	1014.50	1014.53	1014.51
	1	1014.53	1014.58	1014.58	1014.50	1014.50	1014.62	1014.68	1014.64	1014.51	1014.36	1014.35	1014.36	1014.52
	2	1014.44	1014.63	1014.75	1014.65	1014.47	1014.30	1014.27	1014.45	1014.55	1014.52	1014.53	1014.59	1014.51
	3	1014.64	1014.61	1014.52	1014.50	1014.50	1014.57	1014.55	1014.45	1014.42	1014.43	1014.51	1014.59	1014.52
	4	1014.67	1014.78	1014.82	1014.88	1014.95	1014.90	1014.81	1014.76	1014.82	1014.88	1014.84	1014.80	1014.82
	5	1014.74	1014.77	1014.77	1014.73	1014.69	1014.61	1014.70	1014.83	1014.87	1014.84	1014.79	1014.72	1014.75
	6	1014.62	1014.63	1014.68	1014.79	1014.91	1014.96	1015.06	1015.20	1015.32	1015.43	1015.45	1015.50	1015.04
	7	1015.70	1015.80	1015.80	1015.85	1015.95	1016.06	1016.10	1016.03	1016.04	1016.09	1016.17	1016.18	1015.98
	8	1016.13	1016.15	1016.19	1016.20	1016.22	1016.27	1016.26	1016.26	1016.27	1016.19	1016.09	1016.14	1016.20
	9	1016.32	1016.38	1016.39	1016.40	1016.43	1016.45	1016.50	1016.55	1016.48	1016.36	1016.30	1016.32	1016.40
	10	1016.28	1016.26	1016.30	1016.22	1016.12	1016.03	1015.94	1015.94	1015.91	1015.85	1015.80	1015.81	1016.04
	11	1015.89	1015.90	1015.80	1015.75	1015.73	1015.64	1015.51	1015.49	1015.53	1015.46	1015.39	1015.39	1015.62
	12	1015.33	1015.22	1015.11	1015.04	1015.02	1015.06	1015.12	1015.23	1015.28	1015.15	1015.13	1015.17	1015.15
	13	1015.13	1015.12	1015.13	1015.24	1015.37	1015.42	1015.38	1015.36	1015.42	1015.44	1015.33	1015.27	1015.30
	14	1015.31	1015.34	1015.45	1015.51	1015.52	1015.55	1015.59	1015.68	1015.68	1015.61	1015.66	1015.73	1015.55
	15	1015.70	1015.65	1015.60	1015.60	1015.63	1015.61	1015.58	1015.70	1015.86	1015.91	1015.91	1015.89	1015.72
	16	1015.79	1015.85	1015.95	1015.97	1016.12	1016.32	1016.43	1016.44	1016.51	1016.46	1016.38	1016.44	1016.22
	17	1016.52	1016.67	1016.79	1016.79	1016.84	1016.88	1016.88	1016.95	1017.06	1017.19	1017.32	1017.45	1016.94
	18	1017.47	1017.48	1017.68	1017.76	1017.68	1017.95	1018.12	1017.92	1017.80	1017.91	1018.07	1018.13	1017.83
	19	1018.10	1018.01	1018.06	1018.14	1018.20	1018.31	1018.43	1018.49	1018.44	1018.47	1018.55	1018.59	1018.31
	20	1018.60	1018.59	1018.59	1018.57	1018.51	1018.43	1018.42	1018.41	1018.46	1018.54	1018.54	1018.51	1018.51
	21	1018.49	1018.46	1018.50	1018.60	1018.66	1018.66	1018.73	1018.89	1019.01	1019.18	1019.27	1019.20	1018.80
	22	1019.06	1019.00	1019.04	1019.01	1019.03	1019.13	1019.10	1019.08	1019.09	1019.09	1019.16	1019.24	1019.08
	23	1019.34	1019.41	1019.47	1019.55	1019.60	1019.67	1019.67	1019.63	1019.65	1019.63	1019.56	1019.46	1019.55

S.V.I.R.CO. Observatory - Pressure in hectoPascal – December 2017

day	hh	00_05	05_10	10_15	15_20	20_25	25_30	30_35	35_40	40_45	45_50	50_55	55_60	average
31	0	1019.40	1019.37	1019.25	1019.18	1019.14	1019.07	1019.04	1018.95	1018.82	1018.69	1018.87	1019.15	1019.06
	1	1019.24	1019.31	1019.36	1019.47	1019.52	1019.56	1019.58	1019.53	1019.51	1019.54	1019.57	1019.58	1019.48
	2	1019.49	1019.44	1019.46	1019.38	1019.29	1019.32	1019.33	1019.30	1019.28	1019.30	1019.32	1019.32	1019.35
	3	1019.29	1019.22	1019.23	1019.30	1019.28	1019.31	1019.33	1019.29	1019.31	1019.38	1019.43	1019.46	1019.32
	4	1019.47	1019.45	1019.47	1019.50	1019.52	1019.52	1019.61	1019.67	1019.67	1019.72	1019.74	1019.72	1019.58
	5	1019.75	1019.87	1019.95	1020.01	1020.11	1020.18	1020.24	1020.30	1020.36	1020.42	1020.45	1020.45	1020.17
	6	1020.47	1020.46	1020.46	1020.50	1020.54	1020.57	1020.62	1020.66	1020.72	1020.71	1020.67	1020.72	1020.59
	7	1020.76	1020.80	1020.86	1020.82	1020.77	1020.84	1020.94	1021.00	1021.03	1021.06	1021.11	1021.09	1020.92
	8	1021.06	1021.09	1021.19	1021.29	1021.28	1021.28	1021.32	1021.36	1021.39	1021.40	1021.47	1021.51	1021.30
	9	1021.46	1021.41	1021.40	1021.36	1021.39	1021.46	1021.47	1021.44	1021.34	1021.25	1021.19	1021.17	1021.36
	10	1021.17	1021.14	1021.12	1021.11	1021.07	1021.01	1021.00	1020.98	1020.89	1020.77	1020.69	1020.62	1020.96
	11	1020.63	1020.68	1020.67	1020.61	1020.55	1020.47	1020.44	1020.43	1020.43	1020.42	1020.41	1020.42	1020.51
	12	1020.37	1020.32	1020.36	1020.35	1020.26	1020.17	1020.08	1020.05	1020.03	1019.98	1019.91	1019.84	1020.14
	13	1019.74	1019.69	1019.72	1019.73	1019.73	1019.76	1019.74	1019.70	1019.69	1019.67	1019.62	1019.59	1019.70
	14	1019.55	1019.51	1019.52	1019.53	1019.55	1019.52	1019.49	1019.56	1019.60	1019.65	1019.65	1019.50	1019.55
	15	1019.38	1019.40	1019.45	1019.43	1019.38	1019.35	1019.31	1019.32	1019.35	1019.32	1019.35	1019.42	1019.37
	16	1019.45	1019.45	1019.40	1019.37	1019.38	1019.42	1019.48	1019.53	1019.52	1019.46	1019.45	1019.41	1019.44
	17	1019.44	1019.51	1019.53	1019.55	1019.57	1019.55	1019.57	1019.61	1019.66	1019.69	1019.73	1019.77	1019.60
	18	1019.79	1019.79	1019.76	1019.79	1019.81	1019.76	1019.69	1019.68	1019.68	1019.75	1019.79	1019.75	1019.75
	19	1019.79	1019.79	1019.81	1019.84	1019.76	1019.72	1019.73	1019.68	1019.66	1019.64	1019.56	1019.50	1019.70
	20	1019.48	1019.53	1019.59	1019.57	1019.51	1019.38	1019.25	1019.26	1019.32	1019.35	1019.36	1019.38	1019.41
	21	1019.48	1019.51	1019.50	1019.54	1019.56	1019.55	1019.58	1019.61	1019.59	1019.54	1019.51	1019.49	1019.54
	22	1019.51	1019.54	1019.49	1019.46	1019.44	1019.42	1019.37	1019.30	1019.26	1019.29	1019.38	1019.39	1019.40
	23	1019.32	1019.28	1019.27	1019.21	1019.16	1019.16	1019.15	1019.08	1019.03	1018.94	1018.85	1018.70	1019.09

