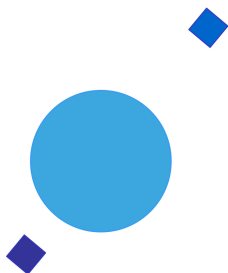


INAF



ISTITUTO NAZIONALE DI ASTROFISICA
NATIONAL INSTITUTE FOR ASTROPHYSICS

SVIRCO Prompt Report: August 2017

Francesco Re

INAF/IAPS-2017-12

September 2017

ISTITUTO DI ASTROFISICA E PLANETOLOGIA SPAZIALI

AREA DI RICERCA ROMA - TOR VERGATA

Via del Fosso del Cavaliere, 100 - 00133 Roma (ITALIA)

SVIRCO Prompt Report: August 2017

Francesco Re

*IAPS - INAF, Area di Ricerca Roma - Tor Vergata
Via del Fosso del Cavaliere, 100 - 00133 Roma, Italy,*

Abstract

The pressure corrected intensity of the nucleonic component, produced by primary cosmic rays and recorded in August 2017 by the Neutron Monitor of SVIRCO-Rome (present geographic position: 41.86° N - 12.47° E; altitude about s.l.), is reported in prompt form together with the barometric pressure data.

SVIRCO OBSERVATORY

During the 1st International Geophysics Year (1957) an international network of “ground-based detectors” for continuous cosmic ray measurements was world-wide established.

The cosmic ray station of Rome joined this network with the purpose to study the time variations of primary cosmic rays (**Studio Variazioni Intensità Raggi Cosmici: S.V.I.R.CO**) and their modulation in the heliosphere.

From July 1957 to April 1997, the SVIRCO Station (now Observatory) performed uninterrupted measurements at the Physics Department “G. Marconi” of “La Sapienza” University of Rome (41.90° N, 12.52° E, altitude about 60 m a.s.l.)

In May 1997 the neutron monitor was moved to the Physics Department “E. Amaldi” of “Roma Tre” University. Since then it has been continuously running at the new location (41.86° N, 12.47° E, altitude about 0 m a.s.l.).

The SVIRCO Observatory (INAF/IAPS-UNIRomaTre collaboration) is housed in a reserved building provided with a double air-conditioning system. The inner temperature is permanently restrained in a range of 23°-26° C, meanwhile the relative humidity is kept below 57%. Either the environmental parameters are continuously checked and recorded by digital sensors.

On January 1, 2005 three counters were added to the detector. This upgrade, from 17 to 20 NM-64, made the SVIRCO neutron monitor still consist of 5 sections but modified its geometry. Actually the new arrangement has been composed of three 3-counter, one 5-counter and one 6-counter units. The enhancement improved not only the overall counting rate of 15.6 % (January 2005) but, as a result, also the statistical quality of the recorded data.

On July 3, 2017 six counters experienced failure and were removed from the detector until 24 July. On 25 July 2017 a number of 2 counters was added to the detector up to a total of 16 counters. The new arrangement has been composed of three 3-counter, one 5-counter and one 2-counter units. The overall counting rate has decreased of about 20% (July 2017) with a lower statistical quality of the recorded data.

Each of the 16 BF₃ proportional counters (BP-28 type) is equipped with a smart amplifier/discriminator circuit complete with a spectrum stabilizer. This new electronic unit, developed in our laboratory, holds firmly the pulse height spectrum of the amplifier output (within a range of more than 150 volts around the operating voltage), providing the counter with a great immunity against high voltage variations.

Anyway, systematic and exhaustive tests of the counters are regularly performed. The output pulses of the amplifiers, discriminated by the threshold gates, are collected and stored into a multi-channel analyzer. The analysis of the height distribution (spectrum) of the amplifier pulses coinciding with the discriminator ones, is essential to verify the long term efficiency of each counter together with the amplifier gain and the discriminator threshold level.

As well as the amplifier/discriminator circuits, a large part of the electronic instrumentation operating in the Observatory was designed and realized in our laboratory together with the software for data acquisition and pre-elaboration.

In order to improve the reliability of the recorded data and to prevent measurement breakdowns, two independent systems perform contemporary the data acquisition. Each system is remotely controlled by a dedicated computer and is timed by a high stability quartz clock and/or a GPS receiver. One equipment runs according to a timing of 1 minute and fulfils the acquisition of the 16 counters separately. The other one records the individual 5-minute counting rate of each detector section in addition to the rates of the overall multiplicity, sorted into separated counting channels (from 1 to greater than 8).

A special care is devoted to the atmospheric pressure measurements; thus they are carried out by means of not less than three barometers at the same time. These instruments (achieving a resolution up to 0.01 hPa), are constantly checked out each other for the best measuring accuracy and reliability. Furthermore, the devices in use are equipped with different types of transducer such as vibrating cylinder, force balance and quartz, therefore, throughout their different behaviours, it is possible to point out the occurrence of any long-term drift and eventually to re-calibrate the instruments themselves.

DATA PRESENTATION

In a preliminary step, the intensity data, of the secondary nucleonic component of cosmic rays, detected at SVIRCO Observatory, were corrected for pressure variations at a reference level of 1009.25 hPa with an attenuation coefficient of 0.70% / hPa.

The five-minutes counting rates, of the examined month, are reported in tabular form together with the hourly normalized data, which provide a continuous data set for long-term analysis.

The normalization was evaluated as percentage of the counting rate average of January-February 1997, when the Monitor operated at the previous location of "La Sapienza" University. The reference counting rate level (100%), computed for such period, is equal to 554946 counts/hour.

The atmospheric pressure data (in hectoPascal) are also collected in a monthly table which presents the five-minutes averages and the hourly ones.

The hourly averages of the normalized intensity and pressure, plotted in monthly graphs, are reported too.

CONDITIONS FOR SVIRCO DATA USE

You are welcome to use neutron monitor data of SVIRCO, IAPS/INAF-UNIRomaTre collaboration, under the following conditions:

-You agree to acknowledge our financial supports in any published use of the data.

Example: "SVIRCO NM is supported by the INAF - UNIRomaTre collaboration"

-You are kindly requested to send a copy of any published work derived from our data to:

Dr. Monica Laurenza
Head of SVIRCO Observatory & TPL
Istituto di Astrofisica e Planetologia Spaziali - Area di Ricerca Tor Vergata
Via del Fosso del Cavaliere, 100 00133 Roma - Italy,

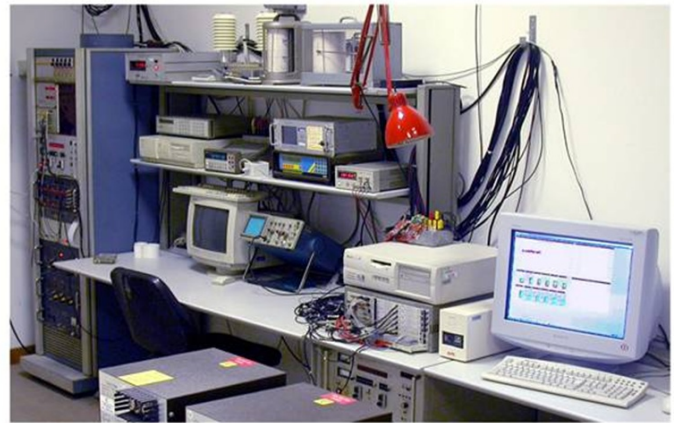
monica.laurenza@iaps.inaf.it



S.V.I.R.CO. Observatory

Rome

Italy



INAF/UNIRomaTre		S.V.I.R.CO. Observatory - Pressure Corrected Data – August 2017											20 NM-64	
day	hh	00_05	05_10	10_15	15_20	20_25	25_30	30_35	35_40	40_45	45_50	50_55	55_60	h-norm
1	0	37915	37564	37727	37359	37596	37889	37663	37942	38231	37713	37523	37850	82.086
	1	38301	37650	37343	37757	38013	38134	37694	38187	37668	37394	38138	38175	82.354
	2	37680	38006	37283	37579	37770	38044	37973	37752	37967	37785	37719	37706	82.138
	3	37946	37787	38135	37724	37837	37540	37303	37650	37924	37863	37898	37553	82.119
	4	37895	37684	37954	37929	37810	37742	37877	38106	37671	37815	37360	37720	82.192
	5	37766	37256	37945	38088	37673	37673	37810	38182	37334	38004	38102	37832	82.210
	6	37842	37553	37543	37625	36890	37641	37737	37699	37981	37589	37927	37607	81.843
	7	37451	37845	37565	37648	37976	37674	37483	37747	37957	37919	36987	37627	81.887
	8	37866	38072	37421	37917	37546	37110	37590	38035	37508	37234	37334	37652	81.779
	9	37690	38099	37481	37733	38025	37489	37219	37222	37197	37368	37662	37431	81.658
	10	37366	37732	37270	37329	37582	37531	37409	37299	37433	37041	36979	37210	81.217
	11	37860	37818	37442	36908	37548	37225	37036	37030	37170	37964	36747	37801	81.284
	12	38089	37764	37382	37235	37659	37833	37112	37134	37834	37080	37943	37633	81.673
	13	37367	37600	37380	37855	37453	37350	37321	37054	37885	37166	37204	37636	81.414
	14	37363	36900	37316	37498	38050	37109	37735	37797	37730	37486	37415	37990	81.617
	15	37939	37585	37248	37428	37489	37912	37982	37626	37795	37138	37309	37446	81.709
	16	37394	37287	37229	37140	37642	37800	37246	37583	37012	36995	36667	37106	81.021
	17	37651	37514	36809	37701	37249	37664	37212	37531	37534	37570	37610	37559	81.474
	18	37432	38175	37446	37616	37501	37906	37773	37595	37485	37382	37594	37103	81.730
	19	37568	37151	36938	37732	37326	37865	37338	37559	37147	37347	37587	37483	81.373
	20	37047	37372	37091	37217	36973	37800	38076	37745	37353	37114	38240	37632	81.485
	21	37013	37120	37521	37488	37848	36945	37382	38011	37833	37361	37190	37050	81.322
	22	37917	38151	37506	37371	37365	36851	37551	37459	38001	37922	37611	37393	81.745
	23	37417	37460	38030	37466	37267	37641	36999	37178	37240	36747	37540	37877	81.340
2	0	37733	37106	37601	37085	37508	37086	37550	37455	37580	37368	37075	37244	81.251
	1	37447	37511	37472	37108	38041	36785	37065	37191	38317	37091	37257	37135	81.260
	2	37648	37332	36944	37240	37227	37427	37394	36809	37511	37504	37743	37300	81.198
	3	37503	37367	37445	37675	37650	37903	37735	37658	37308	37331	37603	37687	81.703
	4	37629	37142	37392	37275	37479	37692	37146	37400	37538	37175	37711	37309	81.345
	5	37175	36882	37795	37666	37499	37052	37423	37980	37861	37343	37687	37491	81.520
	6	37654	37964	37448	38077	37782	37464	37806	37779	37195	37630	37864	37728	81.980
	7	37419	37841	37905	37934	37667	37683	37770	37383	38016	38368	37934	38187	82.290
	8	38068	37956	37691	37323	37848	37819	38000	37517	37861	37493	38020	37648	82.134
	9	37668	38376	37322	37519	37671	37662	38180	37474	37767	37626	37163	38059	81.997
	10	37506	37287	37711	37873	37300	37798	37708	37221	37036	38139	37350	37779	81.675
	11	37309	37103	37538	37614	37557	37372	37195	37352	37741	37708	37761	37391	81.481
	12	37569	38336	37515	37210	37783	37130	37730	37446	37383	38034	37481	37553	81.759
	13	37466	37598	37857	37360	37552	37332	37629	37748	37408	38024	37218	37273	81.631
	14	37485	37754	37218	37205	37442	37911	37564	37399	36852	37701	37166	37953	81.483
	15	37814	37120	37501	37401	37226	37061	37579	37566	37967	37600	37309	37569	81.495
	16	36889	37591	37352	37286	37407	37736	37493	37045	37261	37746	37236	37253	81.237
	17	37934	37582	37157	37209	37523	37624	37789	37368	37597	37032	37789	37572	81.578
	18	37152	37390	37357	37392	37319	37635	36817	37338	37070	37561	37543	37217	81.146
	19	36743	38000	37326	36885	37425	37175	37150	37672	37346	37752	37339	37100	81.168
	20	37355	37512	37817	37286	37310	37791	37502	37520	37510	37629	36993	37708	81.534
	21	37560	37520	37287	37587	37258	37744	37518	37623	36986	37568	37716	37483	81.519
	22	37541	37691	37695	37598	37189	37547	37438	37464	37827	38143	37704	37492	81.787
	23	37731	37677	37309	37200	37320	37426	37330	38001	37102	38022	36857	37698	81.487

INAF/UNIRomaTre		S.V.I.R.CO. Observatory - Pressure Corrected Data – August 2017										20 NM-64		
day	hh	00_05	05_10	10_15	15_20	20_25	25_30	30_35	35_40	40_45	45_50	50_55	55_60	h-norm
3	0	37657	37514	37263	37352	37835	37472	37713	37413	37090	37518	37831	37973	81.659
	1	37306	38010	37527	38054	37864	37286	37790	38019	37975	36979	37969	36846	81.841
	2	37605	37152	37666	37827	37802	38038	38100	37549	38138	37429	38052	36945	81.964
	3	37503	37735	37187	37791	37690	37958	37935	37329	37514	37664	37872	37711	81.888
	4	37948	38190	37690	37610	37231	37447	37627	38109	37974	38032	37726	37515	82.108
	5	37747	37842	37600	38542	37893	37762	38026	37301	38088	37667	37814	37487	82.230
	6	37710	37692	37574	37756	37885	37310	37188	37583	37941	38275	37725	37961	82.018
	7	38256	37301	37457	37919	37495	37466	37529	37611	37922	37760	37293	37791	81.873
	8	37479	37738	37712	37851	37604	37965	38004	37607	37833	37544	37813	37675	82.058
	9	37488	37393	37641	37734	37479	38007	38105	37893	37523	37910	37768	37632	82.013
	10	37833	37503	37670	38256	37820	38039	37151	38296	37464	37819	37653	37661	82.120
	11	37755	37357	37837	38144	37324	38127	37200	37928	37474	37750	38275	37592	82.047
	12	37816	37759	37363	37257	37804	37698	37389	38156	37524	37199	37404	37480	81.700
	13	37339	37413	37423	37864	37789	37699	37780	37235	37918	37699	37419	37621	81.764
	14	37677	37700	37719	37614	37298	37309	37672	38122	37928	37758	37457	37757	81.911
	15	37397	37257	37741	37667	37379	37907	37464	37356	37559	37830	37577	37843	81.724
	16	37495	37710	37879	37310	38012	37313	37104	37435	37503	37227	37219	37811	81.550
	17	37848	37311	37322	37584	37148	37515	37850	37959	37817	37558	37530	37306	81.682
	18	37560	38156	38060	37407	38137	37366	37757	37848	37363	37287	37490	37631	81.920
	19	37478	37251	37428	37260	37489	37569	37510	37078	37697	37268	37718	36912	81.304
	20	37502	37491	37997	37163	37917	37313	37541	37319	37554	37568	37153	37768	81.598
	21	38126	37554	37689	38224	37067	37532	37413	37626	37715	37292	37583	37577	81.799
	22	37369	37569	37438	37712	38045	37704	38408	37583	37494	37818	37217	37519	81.886
	23	37894	37641	37362	37573	37432	37416	36595	37768	37866	37202	37781	37407	81.535
4	0	37670	38019	37819	37815	37485	37418	37963	37683	37361	37420	37525	37988	81.937
	1	37475	37193	38242	38041	37478	36872	37736	37278	37331	37911	37281	37682	81.641
	2	37366	38110	38368	37734	37572	37399	37264	37530	37813	38061	37274	37390	81.887
	3	37928	37111	37500	37492	37138	38009	37193	37187	38142	37860	37512	37838	81.711
	4	37336	37785	37315	37583	37435	37769	37818	37276	37006	37510	37515	37036	81.435
	5	37232	37641	37443	37451	37275	37442	37679	37233	37937	37178	37766	37684	81.539
	6	37619	37456	37934	37764	37787	37650	37642	37903	37659	38025	36989	38117	82.008
	7	37507	38084	37453	37311	38024	37816	37868	37395	37528	37495	37631	37876	81.907
	8	37843	37569	37789	37491	37279	38355	38042	37572	37999	38111	37713	37938	82.217
	9	37531	37545	38405	37393	36998	37754	37574	37685	37798	38089	37268	37614	81.846
	10	37494	37545	37345	37612	37439	37944	37876	37745	37508	38031	37470	38126	81.933
	11	37964	38056	37920	38474	37758	37624	38168	38148	37601	37483	38272	38269	82.586
	12	37501	38323	37775	37860	38312	38070	37431	37575	37698	37910	37402	38513	82.339
	13	37460	38100	37932	37827	37974	37916	38088	37966	37930	37636	37645	38120	82.379
	14	37700	38100	37735	37204	37797	38037	38100	38008	37694	38243	37637	38178	82.350
	15	37650	38387	37385	37788	37889	37699	37505	37935	37750	38244	38037	38091	82.337
	16	37493	37908	37420	38012	37656	37532	37960	37598	37742	37522	37558	38377	82.050
	17	37743	37944	37781	37681	37775	37857	38013	37183	37501	37300	37588	37265	81.842
	18	37322	37930	37365	37993	37302	37676	37454	37383	37398	37594	37611	37793	81.695
	19	37033	36829	37492	37340	37909	37841	37728	37039	37688	37256	37639	37861	81.483
	20	37518	37546	37061	37047	37564	37243	37491	37803	37730	37871	37645	37534	81.556
	21	37962	38363	37464	37433	37274	36872	37340	37469	37210	37330	37185	37598	81.456
	22	37024	37995	37909	37338	37495	37165	37698	37102	37548	37002	37747	37881	81.529
	23	38213	37570	37522	37620	37841	38004	37976	37694	37579	37797	37482	37638	82.078

INAF/UNIRomaTre		S.V.I.R.CO. Observatory - Pressure Corrected Data – August 2017											20 NM-64	
day	hh	00_05	05_10	10_15	15_20	20_25	25_30	30_35	35_40	40_45	45_50	50_55	55_60	h-norm
5	0	37765	37699	37439	37613	37752	37459	37633	37035	37586	37459	37908	37385	81.678
	1	38392	38180	37351	38395	37576	37845	37836	37620	37405	37834	37362	37212	82.092
	2	38173	37073	38242	37789	37026	37460	37226	37773	37684	37302	36842	37497	81.562
	3	37562	38006	37586	37739	38045	38074	37629	37323	37477	37256	37365	37847	81.892
	4	37808	37879	37161	37785	37738	37488	37839	37623	37708	37563	37914	37724	81.950
	5	37635	37601	38065	37468	37894	37617	37603	37935	37403	37068	37674	37492	81.810
	6	37283	38095	38029	37808	37475	37999	37599	37433	37752	37552	37955	37913	82.070
	7	37305	37831	37180	37700	37707	37632	38130	38081	37516	37682	38036	37710	82.001
	8	38026	36891	37878	37963	37788	38188	37330	37933	37134	37859	37867	37252	81.928
	9	37651	38071	36865	37499	37862	38227	37539	37797	37783	37941	37394	37564	81.944
	10	38175	37512	37703	37389	38004	37940	37801	38254	37631	38045	37576	37792	82.239
	11	38125	37947	37744	37516	38030	37506	37869	37754	37881	37547	37589	37829	82.151
	12	37688	37783	37729	37990	37869	37914	37436	37858	38349	37802	37735	37968	82.293
	13	37979	37917	37632	37562	37493	38161	38391	37751	37674	38201	37601	38039	82.344
	14	38333	37402	37679	37921	37491	37411	37725	37842	37567	37016	37574	37904	81.884
	15	38057	37466	37601	37441	37847	37841	37754	38485	37535	37317	37118	37794	81.955
	16	37668	37824	38305	36930	37020	37760	37396	37050	37832	37779	37926	38023	81.820
	17	37905	37736	37651	37421	38177	37872	38188	37666	37480	37513	37832	38102	82.189
	18	37984	37662	37477	37869	37692	37490	37493	38062	36671	38086	37559	37471	81.821
	19	37717	37288	37976	38362	38415	37517	37523	37440	37597	38060	37450	37764	82.110
	20	37200	37230	37531	37605	37566	37698	38222	37607	37602	37362	37743	37622	81.726
	21	37509	37728	37299	38077	37588	37849	37719	37757	37295	37104	37367	37455	81.682
	22	37715	37421	37802	37026	37752	37462	37336	37677	37792	37818	37417	37381	81.655
	23	37484	37200	37796	37980	38091	37815	37782	37540	37529	37529	37299	37553	81.836
6	0	38072	37585	37153	38321	37963	38119	37539	37929	37483	37363	37896	37991	82.162
	1	37372	37435	37808	37500	37864	37397	37642	37703	37833	37235	37545	37425	81.684
	2	37391	37056	38066	37653	37121	37454	37695	36903	37681	37946	37634	38060	81.666
	3	37747	37586	37353	37583	37435	37719	37513	37707	37581	37828	37351	37674	81.742
	4	37466	37705	37515	37525	37531	37781	37450	37735	38099	38080	38392	37744	82.094
	5	37528	37459	37903	37439	37895	38119	38467	37459	37823	37708	37427	37481	82.037
	6	37585	38009	37984	37694	37981	37395	38074	38264	37787	37068	37755	37975	82.194
	7	37598	38018	37350	37701	37290	37056	38044	37805	37998	37406	37810	37508	81.834
	8	37804	38501	38589	37694	37686	38117	37780	38189	37641	37611	37695	38209	82.546
	9	37860	38391	37725	37970	37955	38103	38262	37975	37885	38165	37719	37408	82.528
	10	37887	37943	38277	38205	38532	38155	38125	38307	37700	37733	37975	38029	82.791
	11	38111	38090	37879	37952	37568	38555	38161	37947	38149	37890	37315	38041	82.572
	12	37830	37597	37667	37740	37706	37422	38266	37927	37622	37808	37781	37596	82.083
	13	37974	38039	38238	38123	37831	38308	38052	38036	37912	38240	37962	37518	82.676
	14	37532	37817	38145	37933	37475	37597	37864	37796	37663	37546	37726	37740	82.060
	15	37630	37521	38120	37941	37151	38108	37536	36951	37463	37492	38211	37585	81.856
	16	38054	37873	38080	37260	37501	37308	37964	37174	37689	37804	38008	38005	82.039
	17	37676	38272	37931	37629	37085	37848	37860	37477	37764	38003	37861	37476	82.068
	18	37879	37445	38591	37526	37773	37103	38069	37937	37764	37338	37615	37912	82.081
	19	38277	37809	38082	37915	37470	38283	37532	37134	37869	37481	37690	37407	82.082
	20	37122	38319	37594	37375	37551	38153	38391	36992	38303	37844	37491	38145	82.141
	21	38340	37670	37931	38205	37534	37312	37445	37641	37537	38024	37892	37490	82.094
	22	38033	38013	37446	37457	36791	37539	37462	37448	38233	38507	37485	37700	81.930
	23	38178	37830	37654	37645	36887	37469	36959	38097	37822	37435	37566	37207	81.682

INAF/UNIRomaTre		S.V.I.R.CO. Observatory - Pressure Corrected Data – August 2017											20 NM-64	
day	hh	00_05	05_10	10_15	15_20	20_25	25_30	30_35	35_40	40_45	45_50	50_55	55_60	h-norm
7	0	37781	37926	37622	37747	38260	37470	37932	37932	37559	37971	37853	37933	82.267
	1	37308	37578	38094	37885	38283	37752	38187	36963	38090	37582	37579	37974	82.140
	2	37830	37549	38350	37926	37633	37798	37100	38127	37586	37735	37606	37511	82.045
	3	37860	38001	38108	37786	37952	37236	38080	37607	38073	37574	37759	37663	82.216
	4	38455	38060	37424	37888	37443	37893	38043	38082	37887	37652	37353	37641	82.239
	5	37314	37084	38007	37329	37581	38191	37799	37492	37617	38258	37526	37740	81.898
	6	38353	37808	37906	37999	38136	37999	37841	37897	38016	37803	38214	37607	82.557
	7	37893	37396	37481	37748	37781	38006	37935	37971	38045	37974	37668	37981	82.249
	8	38165	37705	37799	37374	37885	37066	38227	37581	37071	38121	38267	37756	82.093
	9	37949	37748	38283	38056	37724	38314	38066	38148	37741	37522	38002	37575	82.476
	10	37695	38143	37427	37730	38111	37271	38187	38095	37701	38173	38121	38171	82.421
	11	37901	37905	38069	37451	37952	37899	38175	37805	37867	37505	37620	37764	82.256
	12	37946	38032	38018	37959	38142	37611	38280	37794	37331	37937	37727	37673	82.353
	13	37607	37981	38325	38054	38326	38096	37775	37871	38080	38076	38003	37826	82.637
	14	37968	37546	37924	38145	37931	37684	38224	37637	37833	38080	37687	38051	82.400
	15	37525	37880	38122	37618	37672	37678	37909	38225	37632	37603	38505	38190	82.372
	16	37683	37924	38368	37914	38343	38615	37885	38430	37782	38032	37539	38288	82.779
	17	37870	37902	38012	38010	38001	37806	38533	37805	37852	38021	38181	37971	82.627
	18	37901	38280	37834	38245	37739	38028	37750	37598	37805	37982	38096	38038	82.506
	19	38111	38306	37876	37815	37880	37464	38188	37732	37697	38007	38253	37807	82.477
	20	37772	38226	38499	38393	38162	37804	37794	38190	37989	38086	37666	38200	82.775
	21	38473	38067	38059	38528	37975	38035	37641	38097	37815	37910	38045	38314	82.807
	22	37855	38450	37196	37786	38140	38231	38327	37729	38177	38428	37936	37322	82.557
	23	37514	38011	38328	37722	37950	37748	38123	38191	38238	37602	38411	37975	82.600
8	0	37991	37964	38174	38146	38234	37468	37746	37820	37810	38249	38199	38222	82.638
	1	37925	37794	37234	38057	37547	38176	38300	37960	37890	38241	38469	37686	82.503
	2	37933	38019	37648	38066	37930	37906	37972	37699	37314	38234	37925	37479	82.294
	3	37686	37779	37733	37527	38268	37811	37290	38001	38328	38007	37924	38207	82.373
	4	38505	37473	37496	38021	37524	38253	37671	38303	37941	37086	37631	38166	82.284
	5	37620	37671	38282	37495	38228	37975	38352	38084	37920	37570	37922	37908	82.457
	6	37819	38084	38432	37657	37578	38298	37630	37763	37775	37993	37512	38019	82.373
	7	37844	37703	37386	37823	37310	37872	38438	38227	38509	38138	37644	36959	82.245
	8	37981	37854	37657	38356	37602	37996	38054	37600	37364	37931	38098	37724	82.310
	9	37429	37605	37859	37434	37777	38040	37584	37968	37648	37945	37681	37536	82.000
	10	38117	37788	37724	37937	38662	37683	37739	37950	37975	38399	37539	37884	82.524
	11	37705	38113	37948	38074	37438	37596	37911	37660	37579	38030	38972	37466	82.360
	12	37348	38048	37871	37901	37780	37830	38011	37906	38000	37928	37580	37806	82.273
	13	37825	37729	37941	38698	37734	38019	37824	37577	37207	37515	37455	37784	82.146
	14	38139	37736	37178	38005	37184	37815	37647	37631	38173	38206	37801	38081	82.198
	15	38099	37546	37726	37674	38018	37815	38057	37774	37945	37497	37787	38229	82.302
	16	37591	37662	37371	37939	37949	37999	38046	38258	38227	37892	37467	37959	82.336
	17	37515	37721	38139	38541	38111	37988	37591	37534	37621	37507	37925	38252	82.351
	18	37937	37816	38179	37685	37870	37796	37644	37889	38385	38146	38494	38349	82.668
	19	38371	37725	38316	38173	37680	38027	38064	38190	37416	37874	38052	37936	82.602
	20	38150	37722	37881	37917	37968	37927	37548	37918	38260	37787	37134	37766	82.267
	21	37832	37745	38324	38124	37813	38124	37988	38053	37938	37433	37894	37784	82.462
	22	38395	38267	37840	38296	38132	38111	37393	37991	38457	38099	37895	37206	82.649
	23	38347	38031	37948	37681	37821	37668	38200	37455	38085	38057	37641	37640	82.375

INAF/UNIRomaTre		S.V.I.R.CO. Observatory - Pressure Corrected Data – August 2017											20 NM-64	
day	hh	00_05	05_10	10_15	15_20	20_25	25_30	30_35	35_40	40_45	45_50	50_55	55_60	h-norm
9	0	38586	37670	37667	37660	38222	37800	38307	37423	37905	37473	38154	38268	82.476
	1	38117	37902	37424	37823	37811	37967	37673	38014	37743	37909	37926	38117	82.348
	2	37837	37943	38545	38219	37454	38581	37886	38201	37908	38172	37626	38115	82.722
	3	37651	38145	38457	37510	38370	38137	37705	38301	38250	38536	37762	37717	82.732
	4	37998	37973	37962	38465	37988	37826	37754	37527	37988	37731	37581	38273	82.464
	5	37776	37762	38328	37920	37896	37946	38067	37823	37644	37569	37520	38428	82.395
	6	37828	37850	38200	37610	37974	38030	37383	37931	38073	38222	38152	38331	82.559
	7	38163	38354	38325	37600	37385	38272	38037	37788	38161	38265	38196	37493	82.641
	8	37835	36936	38132	38203	37743	38201	38221	38063	37732	37986	37416	38021	82.360
	9	38099	37109	37926	38426	37994	37577	37435	37729	38055	38319	38429	37710	82.418
	10	38177	38359	38233	37770	37771	38250	37790	38136	37857	38178	37748	37881	82.660
	11	38632	37755	38163	37590	37905	37818	38061	37796	37941	38131	37568	38080	82.532
	12	37992	38543	38254	38390	38580	37758	37976	37931	37981	38105	37636	38102	82.860
	13	38016	38178	38534	37896	37883	38319	38023	38520	38675	37980	38331	38349	83.124
	14	37779	38859	37861	38147	38539	38321	38052	38266	37689	37985	38191	38017	82.943
	15	37382	38415	38021	38259	37850	38253	38068	38074	38489	37843	38273	37875	82.779
	16	38329	37738	38097	38833	37845	38185	37479	38156	38017	37880	38078	37744	82.702
	17	37785	38168	37477	38001	37794	38036	38175	37854	37734	37877	38329	37637	82.428
	18	37974	37829	38057	37964	37854	37625	37707	37902	37865	38250	37715	37872	82.383
	19	38538	37605	38040	38340	38045	38463	37743	37431	37998	38125	37808	38527	82.754
	20	38132	37685	37999	37991	37841	38253	37886	38040	38382	38369	37596	37780	82.625
	21	38282	37991	37850	38406	37819	37705	37837	37475	38136	37984	37744	38369	82.561
	22	37923	37609	38062	37823	37947	38370	37973	37589	37951	38078	37478	37867	82.393
	23	37896	37913	37756	37815	38136	37935	37960	38094	38378	37896	37881	37830	82.541
10	0	38383	37524	37921	37792	37886	38305	37778	37747	37874	37796	37714	38032	82.407
	1	38163	38418	37780	38370	38009	38596	37648	38100	38295	37615	38347	37912	82.861
	2	38443	38121	37988	38277	38105	38284	38124	37505	38168	38025	37975	37548	82.736
	3	38038	37671	37978	37475	38028	37976	37860	37591	38006	37593	38012	37459	82.215
	4	37989	38148	37542	38786	37988	37777	37726	37868	38516	37937	37896	38420	82.741
	5	38088	38316	37977	38162	37904	37714	38249	37706	37649	38199	38360	37994	82.692
	6	38103	37904	37625	38524	38097	37912	37732	38239	38170	37729	37896	38262	82.669
	7	38236	38489	37965	38316	37934	37898	38533	38101	37665	38030	38091	37595	82.788
	8	37796	37766	37739	37755	38415	38220	37822	38058	38104	37411	37697	38265	82.461
	9	38016	37831	38229	38968	38014	38184	38403	38967	38248	37682	37737	37690	82.991
	10	38521	37891	38172	38216	38146	37906	37942	38344	37528	38307	37923	38371	82.864
	11	38103	38248	38456	37898	38334	37378	38573	38080	37904	37613	38475	37707	82.773
	12	37865	38083	38374	38193	38441	37770	38011	38522	38606	38060	38085	37970	82.992
	13	38981	37517	38067	38258	37830	38597	38208	37616	38382	38112	37929	38500	82.996
	14	38299	38170	37948	38390	37793	38115	37880	38329	38280	38092	38167	37834	82.869
	15	38142	38215	37894	37982	38509	38217	38106	38330	37516	38314	38229	37825	82.866
	16	37889	38086	38177	37895	37664	38264	37905	38563	38058	37962	37867	38322	82.752
	17	38282	38047	37569	38572	38084	38104	38228	38056	37620	38559	37884	38484	82.903
	18	38231	38093	38238	38288	38263	37893	37891	37762	37793	37916	38624	37212	82.671
	19	38413	38624	38648	38561	37707	37787	38034	38372	38174	37644	38500	38444	83.161
	20	38535	37986	37806	37776	38181	38238	38012	37834	37976	37621	37903	38174	82.641
	21	37896	37774	37911	37855	37469	38198	38190	38086	37897	38024	38439	38019	82.590
	22	37854	38371	38372	38280	38234	38360	38030	37713	37468	38046	38102	38078	82.798
	23	38311	38658	37835	38048	38782	37988	37885	38180	37983	38462	37672	38320	83.018

		S.V.I.R.CO. Observatory - Pressure Corrected Data – August 2017											20 NM-64	
		INAF/UNIRomaTre												
day	hh	00_05	05_10	10_15	15_20	20_25	25_30	30_35	35_40	40_45	45_50	50_55	55_60	h-norm
11	0	38138	37939	38414	38068	38509	38369	38132	38178	38633	38437	38465	38388	83.295
	1	38244	38394	37849	37806	37363	38224	37972	38224	37803	37295	37727	38052	82.444
	2	38365	38162	38333	38642	37994	37550	38552	38064	37737	38258	37726	38035	82.890
	3	38039	37932	37847	38078	38033	37483	38442	38422	38214	37997	37673	37921	82.648
	4	38047	38288	38293	38291	38037	37929	38564	38492	38598	38323	38227	38113	83.214
	5	37879	38458	38036	37991	38261	37976	38322	37963	37917	38215	37826	38000	82.787
	6	38099	37733	37856	37865	38526	37641	37915	38271	37814	38022	38548	38431	82.765
	7	38578	38235	38242	38313	37814	38268	38012	38070	38833	38530	38788	38804	83.447
	8	38314	38027	38383	37956	38841	38239	38127	38258	38421	37957	38212	38482	83.217
	9	38722	38102	38426	38113	37856	38633	38350	38699	38116	38672	38636	38887	83.578
	10	38591	38052	38699	38737	38540	38189	38789	38618	38104	38652	38329	38163	83.624
	11	38095	38995	39197	38461	38128	38169	38194	38233	38194	38293	38550	38346	83.514
	12	38778	38298	37935	38202	38269	39123	38456	37966	38243	38307	38280	38753	83.469
	13	38173	37902	38617	38247	38575	38080	37949	38730	38344	38575	37974	38340	83.269
	14	38214	38582	38319	38520	38460	38652	38444	38498	38402	37458	38032	38455	83.365
	15	37950	38169	38724	38362	37608	38392	39011	37536	38051	38095	38707	38576	83.210
	16	38415	38680	38080	37872	38154	37828	38024	38044	38597	38494	37852	38361	83.069
	17	37709	38128	38177	38282	38197	38063	38462	38029	38382	37993	38401	37494	82.872
	18	37804	37937	38150	37820	37800	37791	37774	38311	37961	38199	38360	38333	82.677
	19	37961	38807	38514	37703	38783	37984	38307	37205	37795	38096	38135	38491	82.957
	20	38351	37824	37935	38404	38064	37769	37856	38372	37843	38537	37886	38281	82.837
	21	37606	38057	37673	38061	38430	38192	37815	38415	37711	37802	38255	38404	82.710
	22	37549	37838	37551	37332	38104	37468	38222	38033	37754	37614	37487	38117	82.103
	23	38063	38374	37980	37962	38372	38291	37797	37903	37828	37573	37411	38136	82.577
12	0	38373	37939	38274	38360	38036	38309	38061	38271	38092	38122	37605	37761	82.846
	1	38233	38222	38096	38335	38493	37948	38191	38047	37338	38133	38110	37912	82.825
	2	37775	37801	38263	38382	37836	37393	38474	37750	38021	37510	37848	38152	82.490
	3	37767	37703	38723	37498	38538	38518	37636	38083	37853	38344	37915	38232	82.780
	4	37977	38071	37478	37892	37947	37913	38155	38072	37990	38293	37791	37923	82.543
	5	38087	38414	38039	38116	38164	37860	38305	38111	38396	38608	38248	38510	83.152
	6	38054	38034	38059	38025	38489	38734	37799	37975	38091	38308	38955	38100	83.109
	7	38032	37926	39010	38354	38417	38505	38111	38252	37864	38000	38474	38151	83.195
	8	38361	38531	38134	38932	38085	38223	38093	38641	38218	38102	38023	38653	83.357
	9	38605	38599	38709	38254	37806	38286	38543	38386	38396	37904	38241	38796	83.454
	10	38393	38683	38202	38586	38163	37858	39147	38805	38679	38427	38046	38589	83.645
	11	38189	38279	38642	38242	38222	38045	38789	38202	38993	38179	38244	38099	83.381
	12	38109	38167	38471	38041	38240	38382	38188	38633	38011	38353	38207	38340	83.203
	13	38889	38471	38463	37912	38386	38026	38200	37795	38067	37935	38452	37965	83.098
	14	38721	38093	38042	38435	38151	38055	37880	38263	38333	38367	38037	38396	83.136
	15	38218	38045	38810	38216	38514	38242	38663	38118	37902	38037	37579	38033	83.065
	16	37822	38675	38063	37838	37867	38432	37335	37795	37607	38266	37595	37827	82.475
	17	37836	38544	38338	37988	38085	38128	38358	38638	38130	37859	38239	38391	83.093
	18	37953	37664	38190	37387	37580	37865	38186	38528	38343	38015	38379	38489	82.738
	19	38075	37810	37574	37666	38251	38157	37556	38341	38646	37428	37897	37919	82.510
	20	38007	38317	38788	37832	38616	38225	37830	37904	37708	38309	38125	38219	82.975
	21	37754	37805	38156	37359	37878	38319	38067	37975	38119	38232	37583	37951	82.488
	22	38232	38494	38040	38231	38646	38196	37564	38449	37772	37948	38950	38020	83.094
	23	38184	38007	38707	38147	38240	38297	38213	37809	38128	38106	38362	37781	82.993

INAF/UNIRomaTre		S.V.I.R.CO. Observatory - Pressure Corrected Data – August 2017											20 NM-64	
day	hh	00_05	05_10	10_15	15_20	20_25	25_30	30_35	35_40	40_45	45_50	50_55	55_60	h-norm
13	0	38343	37492	37512	38321	37364	38200	37865	37639	37927	38278	38098	37981	82.456
	1	38249	38221	38121	38216	37690	38057	37970	37383	37729	37875	37569	37526	82.381
	2	37841	38067	37853	38233	37718	37552	37390	38102	38389	38657	37502	38282	82.559
	3	37476	38002	37325	37966	37934	37702	38296	37941	38055	38364	37785	37932	82.412
	4	37893	37615	37894	37709	38141	38072	38081	38069	37645	38273	37910	38158	82.536
	5	37814	38039	38135	38434	38356	37863	37875	37672	37553	37500	37830	38389	82.536
	6	37899	37420	37637	37725	38536	37781	38066	37811	37820	37862	37976	38309	82.424
	7	38010	37947	38716	37886	37419	37707	37751	38482	37978	38743	38982	37812	82.894
	8	37901	38353	37604	38471	38439	38215	38309	38108	38487	38034	38071	37752	82.950
	9	38342	37993	37881	38098	37864	38018	38634	38245	37924	38086	38545	38497	83.019
	10	38306	38575	37594	37983	37972	38200	38430	38996	38213	38653	38059	38516	83.268
	11	38725	38166	38319	38170	38327	38078	37957	38132	38283	38133	38538	37923	83.132
	12	37902	38243	38081	38709	37987	38847	38176	38434	38123	38074	38204	37611	83.067
	13	38292	38418	38216	38054	38305	38283	38275	38077	37991	37925	37867	38279	82.992
	14	37991	38029	38541	38245	37810	38032	37887	38109	38481	38492	38329	38261	83.033
	15	38100	37662	37832	38277	38155	37749	38051	37933	38530	38557	37736	38064	82.751
	16	37994	38236	37887	37474	37891	38125	37596	38307	38389	38074	38237	38352	82.736
	17	37517	38330	37667	37921	37636	37725	37832	38123	37969	37716	38262	38745	82.532
	18	37436	38374	38131	37843	38188	38160	37841	37777	37317	38205	38259	37904	82.531
	19	37492	37829	38006	38004	37656	37824	37909	37833	37650	38074	38228	37386	82.252
	20	38021	37801	37849	37665	38089	37812	37728	38168	37728	37359	37687	37730	82.206
	21	37535	37561	37798	37697	37672	37939	37719	38094	37513	37550	37865	38039	82.087
	22	37848	37776	38156	38277	37358	38054	37957	38291	37453	38071	37416	38415	82.465
	23	37463	37838	37657	37964	37720	37404	36982	37819	38160	38043	37509	38436	82.089
14	0	37529	37742	38035	37610	37498	38067	37720	37800	37840	38080	37780	37487	82.124
	1	38038	37071	37514	37536	37703	37690	37776	37878	37928	37411	37594	37724	81.884
	2	37898	37353	38140	38327	37849	37561	37601	38143	37488	38041	37936	37821	82.300
	3	38252	37759	38222	38209	37688	38323	37855	38437	38351	38322	38441	38078	82.985
	4	38328	38167	38046	37641	38109	38150	37393	38096	38506	37740	38310	38094	82.739
	5	38070	37987	37577	38212	38002	37963	37443	38257	38045	38434	38260	37741	82.632
	6	38057	38478	37885	37638	37592	37633	37667	37111	37787	38630	38000	37776	82.317
	7	37817	38373	38303	38506	38266	38273	38371	37714	37444	37783	37606	37797	82.680
	8	37866	37392	38443	38109	37948	38037	37582	37787	37769	38524	38016	38628	82.652
	9	37845	38246	38600	37991	38611	37610	37753	37988	38467	37741	38356	37935	82.841
	10	38303	38308	38037	38044	37797	37750	38211	37770	38612	38351	37931	38424	82.912
	11	38110	37942	38476	37911	38373	38599	38468	38537	38144	38391	38284	37728	83.171
	12	38075	38082	38327	38397	38315	37921	38349	37856	37741	38229	38525	38369	83.030
	13	37469	38478	38016	37972	38368	38252	38384	38744	38007	38290	37869	39121	83.172
	14	38849	38001	37990	38684	38585	37972	37920	38336	38512	38551	37903	37516	83.145
	15	38233	38267	37994	37989	38054	37960	37902	37869	37653	37719	38737	38122	82.724
	16	38145	37711	37753	37731	38427	38037	38074	37666	38526	38595	38585	38158	82.889
	17	38002	37712	38099	38038	38061	38312	37365	37921	38059	38067	37999	37606	82.496
	18	37749	38159	37762	37939	37987	37862	37598	37760	37808	37800	37699	38126	82.317
	19	38088	37377	37735	38036	38051	38183	37522	37821	37396	37635	37864	37747	82.172
	20	37925	37565	37836	37773	37664	37743	37681	37646	37675	37043	37943	37145	81.844
	21	38166	38171	37640	37631	37770	37367	38383	38084	38024	38129	38347	37900	82.563
	22	37133	37638	37887	37728	38100	37706	38370	37563	37584	37384	37555	37689	81.970
	23	37556	37427	37666	37917	37771	37683	37955	37871	37544	37894	37947	38058	82.143

INAF/UNIRomaTre		S.V.I.R.CO. Observatory - Pressure Corrected Data – August 2017											20 NM-64	
day	hh	00_05	05_10	10_15	15_20	20_25	25_30	30_35	35_40	40_45	45_50	50_55	55_60	h-norm
15	0	37902	37888	37239	38094	37636	37745	37791	37382	37722	37601	37390	37930	81.967
	1	37701	38021	37922	37397	37892	37963	37151	37680	37617	38173	37910	37447	82.067
	2	38197	37680	37661	38090	38070	37013	37865	37956	38478	37851	38004	37771	82.387
	3	37685	37334	37649	37640	38062	37878	37284	37802	37495	38146	37837	37646	81.992
	4	38259	37757	37251	37578	38223	37882	38035	37516	37194	37638	38199	37576	82.110
	5	37384	37540	37559	37829	37958	37875	37472	38052	37856	38140	38341	37886	82.251
	6	37328	37769	37766	37860	37710	38384	37412	37362	38076	37730	38389	37738	82.185
	7	37634	37642	37732	37926	37904	37901	37880	37712	37838	38350	37381	37926	82.240
	8	38211	38297	37854	38407	37922	37928	38041	37190	37577	38041	38097	37905	82.538
	9	37898	38098	37439	37770	37850	37746	37670	38013	37867	38273	38004	37936	82.374
	10	37623	38113	38274	38174	38304	37431	37865	37550	37824	37228	37650	37877	82.255
	11	38009	37788	37877	37718	37276	37427	37770	37792	38250	38794	37623	37675	82.271
	12	38070	37555	38048	38207	37628	37669	37455	38027	37718	37824	37627	37434	82.137
	13	38052	38077	37558	37558	38448	38081	38115	37769	38127	38053	37397	38372	82.562
	14	37756	38109	38054	37901	37604	38207	37836	37698	38259	37580	37939	37591	82.368
	15	38194	38400	38044	37180	37623	37919	37635	38100	38154	37555	37857	37773	82.350
	16	37477	38096	37941	38329	37673	37766	37869	37133	37913	37411	37413	37532	82.009
	17	37645	37971	37416	37570	38510	37312	37386	37788	38148	37842	37863	37795	82.135
	18	37762	37645	37880	38027	38078	37505	37389	38044	37871	37372	38032	37750	82.155
	19	37785	37858	38097	38898	37704	37627	38288	37654	37723	38226	37976	37699	82.549
	20	38036	38032	37554	37872	37803	37955	37911	37699	36960	37879	38189	37487	82.158
	21	37154	37511	38724	37654	38495	38228	37425	37570	38022	37728	37608	37621	82.224
	22	37740	37740	37480	37732	37383	37320	37978	37686	37396	37129	38028	37872	81.815
	23	37173	37897	37741	37516	37674	37741	37467	37723	37427	37537	37298	37806	81.728
16	0	37654	38184	37846	37541	37599	37962	38239	37775	37847	38107	38101	38076	82.437
	1	38205	37954	37519	37598	37564	37896	37874	37794	38217	38032	37654	37945	82.317
	2	37954	37660	37694	38266	37963	37236	38300	37885	38118	38934	37989	38020	82.637
	3	38067	37963	38429	37249	37837	38006	38109	37998	37757	38099	37740	37885	82.478
	4	38006	37713	37519	38165	38063	38118	38252	38124	38055	37775	37590	38059	82.532
	5	37668	38108	37956	37287	37324	38393	38103	38011	37683	38186	37798	38015	82.368
	6	37816	37914	38176	37395	37876	37350	38169	37855	37818	38388	37193	38082	82.277
	7	37343	37552	37451	38041	37947	37442	37966	37388	37905	37866	37999	38082	82.087
	8	38024	38078	38810	37904	38672	38425	38044	38459	38145	38127	37824	37235	82.950
	9	37887	38120	37703	38236	37761	37866	38046	37711	37878	37947	38278	37383	82.419
	10	37720	37595	37307	37989	38090	37709	38155	37725	38224	38176	38271	38113	82.466
	11	37772	38102	37879	37583	38345	37830	37638	37432	38708	38283	38051	37857	82.540
	12	37927	38255	37855	37572	37995	38384	37217	37924	38332	37890	37781	38237	82.519
	13	38372	37918	37958	37933	37768	38369	38194	38115	37829	37689	38288	37953	82.704
	14	37764	38432	37997	37790	38111	38040	38167	38268	37797	38345	38112	38103	82.801
	15	38435	38230	37969	38401	37370	37651	37799	37999	38125	37695	37875	38141	82.577
	16	37893	37938	38363	37971	38122	38196	38426	37936	38112	37816	37945	38129	82.787
	17	38305	37321	38151	38088	38647	37715	37553	37604	38556	38248	38230	38079	82.724
	18	38095	37343	37955	38374	37975	38124	38415	37760	37252	38412	37801	38086	82.560
	19	38065	37601	38115	38157	37617	38484	37935	37704	38191	38147	37901	38147	82.645
	20	38003	37991	38421	37851	38150	37808	37967	37864	37873	37807	38069	38158	82.627
	21	38215	38201	38695	38234	37906	38037	38114	38146	37796	37403	38445	38019	82.853
	22	38274	38322	37719	38304	37941	37598	38036	38124	37598	38104	37944	37963	82.620
	23	37944	38365	37831	37867	38283	38190	38310	37640	37535	37924	37833	38006	82.584

INAF/UNIRomaTre			S.V.I.R.CO. Observatory - Pressure Corrected Data – August 2017										20 NM-64	
day	hh	00_05	05_10	10_15	15_20	20_25	25_30	30_35	35_40	40_45	45_50	50_55	55_60	h-norm
17	0	38059	38009	38264	37890	38049	37473	37998	37566	37951	37993	38169	38244	82.574
	1	38021	37752	37802	37837	38013	37569	38459	37690	38318	37585	38143	37594	82.413
	2	37771	38202	37460	38690	38098	38161	38040	37745	37316	37505	38432	37856	82.503
	3	37731	38081	37613	38077	38574	37763	37705	37717	37867	37633	38002	38226	82.451
	4	37491	38190	38513	37515	38056	37459	38020	37752	37587	37882	37942	38040	82.352
	5	37954	37691	37318	37915	37787	37735	38012	37977	37836	38393	38035	37983	82.386
	6	38077	37742	37639	37655	38250	38016	38189	38367	37799	38127	37806	38008	82.574
	7	37769	37794	37544	37725	37422	38311	37800	37816	38355	37949	37485	38170	82.297
	8	37930	38465	38010	37709	37742	38775	38371	38045	38038	38507	38435	37903	82.983
	9	38338	38239	38399	37882	38689	38139	38315	38620	38504	38079	38373	38109	83.302
	10	38624	38078	38232	38241	38458	37858	38501	38496	38493	37803	38676	38705	83.388
	11	38582	38322	38439	38324	38410	38916	38031	38266	38235	38259	38576	38794	83.568
	12	37959	38941	37846	38353	37820	38442	38417	38281	38956	38208	38432	37998	83.296
	13	37619	38693	38752	38384	38303	38670	38777	38430	38330	38645	37954	38704	83.587
	14	38503	38147	38686	37944	37879	38156	38571	38007	38621	38571	38330	38557	83.353
	15	39973	38046	37788	38023	37339	38865	38579	38149	37821	37796	38215	37938	83.093
	16	37878	38550	37822	37929	37925	38059	38622	38201	37702	37585	37407	37728	82.526
	17	37743	37969	38014	37868	37799	37396	37577	38289	37861	37673	37814	38111	82.292
	18	37874	37693	37274	37842	38207	38118	38107	37313	37941	37748	37712	37887	82.220
	19	38237	38017	37701	37452	37629	37679	38209	37741	37476	38065	37595	37888	82.215
	20	37453	37929	37470	37274	37498	37578	37735	37711	38019	37261	37448	37764	81.753
	21	37658	37733	37042	37564	37816	37441	38008	37686	38108	37612	37777	37900	81.971
	22	37871	38043	38205	37829	37681	38169	37854	37200	38149	37368	37629	37024	82.094
	23	37473	37757	38051	37411	37313	37925	37719	37377	37489	37794	37071	37722	81.746
18	0	37819	37932	37244	37205	37006	37395	37854	37874	37954	37666	37629	37935	81.820
	1	37378	37655	37549	37828	37523	37681	38047	37740	37606	37159	37550	37478	81.763
	2	37687	37750	37006	37888	37398	37441	38154	38159	38310	37007	37978	37326	81.928
	3	38194	37461	38263	37900	37527	38439	37457	37575	37626	38435	37586	37338	82.235
	4	37934	37666	37945	38032	37983	37794	38167	38028	37346	38065	37662	38128	82.407
	5	37441	37705	38374	37988	38009	38001	37802	38395	37522	37848	37414	38364	82.428
	6	37518	37992	38284	38132	38164	38107	37569	38512	38345	38012	38202	38360	82.850
	7	37871	37778	37885	38018	38108	38101	38056	39153	37813	38532	38272	38124	82.944
	8	37718	38077	37988	38025	38170	38434	37425	38163	38701	37750	38013	38023	82.722
	9	38345	38059	38234	37972	38116	37981	38088	37868	37632	37754	37962	38304	82.691
	10	37680	37848	37717	37743	37520	38323	38040	37645	38175	37636	37978	37590	82.253
	11	38301	37828	37871	38082	37882	37808	37714	38165	38212	38141	37860	37944	82.599
	12	37544	38427	37883	37841	37758	37915	37874	37948	37966	37985	38018	37986	82.479
	13	37608	37911	37356	37998	38118	37736	38413	38603	37344	38387	37614	38132	82.492
	14	37530	38446	38839	38014	37780	37708	38259	37832	38135	38001	37802	37897	82.678
	15	38382	37538	37966	38155	38248	38264	37766	37557	37580	38532	38031	38325	82.696
	16	37170	37808	37580	37243	37223	37400	37616	37653	37636	37592	37349	37742	81.549
	17	37612	37485	38398	37305	37462	37463	38224	37755	37646	37719	37151	37906	81.932
	18	37563	37647	38068	37545	37986	37936	37373	37935	37522	37588	37504	37660	81.968
	19	38022	37893	37963	38231	37634	37786	37844	37687	38182	37836	37380	37734	82.306
	20	38612	37477	37748	37781	37607	37809	38356	38156	37777	37628	37478	37347	82.231
	21	37689	37915	37733	37985	38021	37677	37448	38029	37815	37553	37401	37784	82.099
	22	37849	37430	37817	37453	37257	37959	37500	37588	37691	37396	37742	37561	81.772
	23	37632	38185	37306	37776	37515	38282	37595	37713	37678	37840	37968	37883	82.158

		S.V.I.R.CO. Observatory - Pressure Corrected Data – August 2017												20 NM-64
		INAF/UNIRomaTre												
day	hh	00_05	05_10	10_15	15_20	20_25	25_30	30_35	35_40	40_45	45_50	50_55	55_60	h-norm
19	0	36701	37441	37380	37753	37816	37458	37288	37374	37606	37435	37685	37592	81.458
	1	36903	37277	37945	37634	37254	37457	36878	37753	38002	37578	37280	37561	81.460
	2	37558	37589	37127	37214	37617	37783	37522	37640	37580	37650	37655	37578	81.639
	3	37038	38025	37616	37455	37297	37421	37560	37562	38110	37394	37699	37507	81.670
	4	37193	37428	37112	37462	37431	37805	37821	37280	37314	38043	37445	37407	81.499
	5	37467	37796	37231	38228	37474	37871	38263	37314	37543	37706	37938	37252	81.924
	6	37671	37669	37739	37497	37767	37744	37806	38188	37881	37673	37727	37273	82.023
	7	37331	37487	37548	38067	37808	37598	37789	37925	37903	37698	37463	37100	81.858
	8	37942	37564	37286	37655	38197	37456	37852	37211	38308	38029	37194	37921	82.020
	9	38030	37816	37178	37550	37719	37713	37919	38090	37122	37643	37564	37514	81.883
	10	37400	37456	38036	37973	37277	37959	38065	37317	37587	37921	37552	37652	81.944
	11	37301	37838	38013	38019	37813	37716	37933	38084	37739	38418	37573	37928	82.339
	12	37676	37789	37677	37490	38013	37470	37760	37674	37307	37858	37277	38480	81.994
	13	37647	37945	38328	37705	37677	37109	37423	38038	37513	37943	38397	37659	82.160
	14	37663	37785	37904	38314	37976	37685	37693	37692	37902	37631	37715	37745	82.218
	15	37854	37735	38116	37589	37473	37935	38139	37325	37656	37092	37240	37415	81.831
	16	37577	37844	37337	37437	37145	37992	37762	37474	37452	37584	38190	37932	81.859
	17	37353	37699	37988	37530	37668	37910	37688	37461	37376	37711	37290	37867	81.826
	18	37285	37473	37350	37399	37362	37673	37245	37840	37509	37100	37766	37252	81.411
	19	37390	37324	37515	37352	37711	37386	37534	37197	37495	37417	37049	37361	81.316
	20	37526	37389	36980	37556	37438	37955	36655	37955	37377	37868	37660	37370	81.497
	21	36918	37439	37426	37889	37201	37412	37023	37091	37433	37192	37164	37250	81.082
	22	37023	37165	36808	37086	37415	36844	37033	37078	37696	37545	37378	37423	80.911
	23	37310	37752	37658	36931	37089	36890	37066	37193	37112	37192	37384	37682	81.049
20	0	36936	37461	37216	36765	37286	37032	36609	37412	37416	38119	37068	37161	80.901
	1	37450	37392	37207	37791	37567	37199	37614	36950	37133	37918	37542	37614	81.433
	2	37279	37128	37889	37696	37397	37823	37830	37087	37540	36663	37408	37165	81.348
	3	37670	37180	37845	37340	37492	37607	37489	37647	37562	36858	37581	37423	81.491
	4	36940	37849	37711	37144	37792	37826	37908	37778	37303	37940	37258	37798	81.773
	5	37470	37371	37249	37406	37369	37538	37582	37682	37401	37704	37459	37237	81.450
	6	37505	38188	37696	37602	37637	37892	37892	37981	37521	38035	37829	37325	82.108
	7	37874	37998	37974	37561	37669	37889	37706	37491	37742	36954	37563	37806	81.950
	8	38378	36989	37703	37777	38011	37570	37656	37887	37440	37142	37479	38129	81.938
	9	37819	37670	37638	37280	37633	37317	36933	37812	37982	37777	37183	37297	81.608
	10	37746	37263	37821	38103	38117	37651	37169	37157	37198	37748	37758	37626	81.792
	11	37571	37805	37712	38207	37247	37669	37118	37811	37904	38033	37753	38042	82.067
	12	37952	37990	37603	37319	37659	37480	37467	37613	37397	37327	38002	38090	81.891
	13	37666	37878	37544	37942	37532	37791	37352	37228	38302	37626	37211	37479	81.828
	14	37655	37132	37542	37776	37249	36976	37682	37547	37791	37071	37462	37825	81.493
	15	37740	37397	37613	36851	37492	37636	37446	37420	36936	37827	36858	37522	81.317
	16	37207	37787	37387	37493	36601	37627	37768	37060	37385	37319	37648	37620	81.348
	17	37387	38022	37238	37743	37890	37943	37728	37580	37566	37322	36741	37660	81.695
	18	38082	37636	38761	37710	37562	37273	36949	37549	37458	37659	37767	38192	82.017
	19	37363	37512	37644	37497	37652	37367	37071	37369	37265	37469	37617	37107	81.354
	20	37412	36949	37335	36588	37239	37693	37728	37130	37255	37686	37830	37446	81.236
	21	37502	37728	37896	37938	37259	36707	37735	37503	37291	37035	37593	37353	81.463
	22	37378	37482	37293	37416	37823	37504	37713	37726	37716	37687	37288	37201	81.587
	23	37852	37729	37975	36768	37564	37593	37453	37767	38030	37363	37473	37355	81.714

INAF/UNIRomaTre		S.V.I.R.CO. Observatory - Pressure Corrected Data – August 2017											20 NM-64	
day	hh	00_05	05_10	10_15	15_20	20_25	25_30	30_35	35_40	40_45	45_50	50_55	55_60	h-norm
21	0	37736	36964	37273	37567	37301	37954	37494	37718	37877	38335	37573	37744	81.825
	1	37861	37396	37191	37429	37866	37388	37553	37206	37250	37393	36991	37530	81.375
	2	37579	37670	37175	37354	37651	37860	36762	37570	37432	37395	36996	36989	81.263
	3	37614	37632	38085	37265	37512	37109	37696	37668	37681	37432	37245	37270	81.584
	4	37507	37184	37114	37240	37861	37248	37910	38025	37455	37256	37550	37821	81.577
	5	37856	37345	37490	37314	37580	37413	37465	37419	37362	37486	37790	37851	81.614
	6	36993	37694	37584	37649	37819	37913	37398	37792	37304	37858	37291	37580	81.705
	7	37691	37724	37315	37721	37406	37826	37747	37572	37870	38055	37786	37780	81.998
	8	37723	37747	37817	37661	37719	37472	38057	37214	38047	38324	37771	37583	82.115
	9	37640	37770	37498	37605	37442	37267	37712	37161	37105	37213	37612	37536	81.467
	10	37530	37415	37965	37886	37602	37082	37707	37388	37406	37690	37793	36908	81.614
	11	37715	37495	38033	36877	37955	37480	37243	37972	37893	37748	37534	37214	81.756
	12	37387	37636	37219	37308	37632	37553	37447	37379	37796	37251	37771	38388	81.686
	13	36948	37183	37214	37343	37152	37453	37904	37953	38080	37598	37552	37688	81.559
	14	37893	37087	37617	37386	36769	37233	37513	37215	37907	37462	37472	37772	81.424
	15	37799	37586	37555	37875	37603	37247	37850	37073	37957	37275	37561	37773	81.755
	16	37432	37483	37650	37694	37728	37432	37675	37519	37375	37254	37780	37422	81.627
	17	37357	37788	37253	37068	37728	37624	37845	37633	37519	37146	37198	37192	81.429
	18	37067	38102	37820	37278	37347	37636	37321	37316	37954	37422	37777	37611	81.664
	19	37316	37534	37211	37872	37818	37561	37208	37132	38160	37978	37778	37221	81.689
	20	37370	37862	37279	38033	37825	37748	37628	37327	37569	37813	37780	37541	81.868
	21	37982	37846	37840	37730	37598	37598	37309	37655	38226	37584	37834	37287	81.998
	22	38026	37490	37335	37651	37927	37050	37817	37818	37934	37404	37575	37560	81.834
	23	37350	37571	37303	37776	37752	37362	37223	37596	37709	37645	37661	37544	81.636
22	0	37503	37763	37728	37754	38321	37694	38478	38020	37326	37918	37772	37751	82.281
	1	37974	37859	37989	38016	37221	37601	37913	37560	38051	38356	37570	37746	82.245
	2	37681	37456	37606	37404	37654	37545	37631	37562	37372	37988	37833	38040	81.867
	3	36904	37096	38143	37325	37747	37732	37922	37710	36995	37611	37538	37765	81.635
	4	38455	38101	38024	37899	38161	38142	37624	37349	37399	37753	37451	37796	82.300
	5	37534	37783	37350	37184	37237	37627	37043	37023	37045	37695	37728	37364	81.295
	6	37763	37761	37691	37857	37295	37196	37729	37895	37368	37616	37826	37767	81.866
	7	37339	37712	37783	37990	37932	37356	38005	37396	37930	37531	37936	37762	82.031
	8	37043	37930	38314	37980	37953	37560	37358	37866	37995	37700	37971	37468	82.115
	9	37773	37735	38023	37749	37931	38013	37699	37978	37845	37978	37585	37615	82.257
	10	37783	38080	37571	37516	37849	36945	38269	37871	37653	37619	36967	37471	81.835
	11	37680	36996	37887	37844	37693	37463	37663	37864	37937	37643	37762	37706	81.934
	12	37331	37507	37590	37723	37629	37952	37382	38160	37151	37745	37805	37307	81.779
	13	37601	37794	37462	37955	37326	37652	37634	37436	37682	37494	37880	37886	81.873
	14	37403	37297	38184	37164	37542	37548	38253	37470	37787	37741	37496	37230	81.748
	15	37597	38051	37795	37846	37310	37666	37454	38412	37432	37568	37640	37438	81.947
	16	37553	37842	37792	37086	37131	37185	37538	37507	37612	38042	37258	37479	81.551
	17	37378	37806	37441	38087	37418	37589	38182	37571	37760	37918	37443	37148	81.862
	18	37579	37191	37006	37622	37683	37321	38175	37042	37068	37542	37360	37332	81.351
	19	37636	37559	37604	37594	37725	37481	38221	37716	37966	37664	37776	38131	82.103
	20	37936	37999	37395	37654	37816	38249	37594	37818	37602	37212	38121	37907	82.145
	21	37274	37548	37192	37741	37894	37462	37473	37742	37775	37912	37331	37732	81.741
	22	37617	37781	37462	37521	37936	37884	38116	37534	37951	37417	38081	37961	82.137
	23	37935	38303	37845	37680	38492	37344	37705	37625	37814	37787	37504	38094	82.295

		S.V.I.R.CO. Observatory - Pressure Corrected Data – August 2017											20 NM-64	
		INAF/UNIRomaTre												
day	hh	00_05	05_10	10_15	15_20	20_25	25_30	30_35	35_40	40_45	45_50	50_55	55_60	h-norm
23	0	37613	37220	37329	37394	37412	38285	37768	37491	38104	38029	38060	37705	81.981
	1	38129	37593	37641	37806	37615	37365	37977	37418	38086	37890	37890	37551	82.083
	2	37892	38335	37601	37376	37866	37921	37192	37697	37806	38038	37708	38121	82.190
	3	37497	37185	37288	37609	37869	37843	37647	37798	37638	37594	37673	37684	81.786
	4	37705	37356	37690	37988	37434	37575	38137	37547	37274	38054	38412	37216	81.979
	5	37386	38273	37488	37687	38328	37391	37610	37509	37696	38171	38062	37243	82.062
	6	38695	38283	38161	37889	37807	37916	37772	37792	37734	37893	37658	37418	82.456
	7	38107	37929	38085	37808	38109	37580	37905	38483	37560	37497	37488	37658	82.309
	8	37847	37740	38479	38000	38085	37405	37992	38042	37284	38046	37518	37683	82.293
	9	37922	37131	37703	37696	38320	37754	38112	37903	37622	37724	37388	37544	82.057
	10	37543	37547	37591	37741	37633	37972	37770	37673	37578	38239	37629	37296	81.947
	11	37712	37977	37941	37310	37839	37491	37785	37272	36880	37834	37662	37322	81.732
	12	37429	38099	38077	37559	38357	38130	37667	38102	37945	37261	37562	37950	82.296
	13	37547	37407	37723	37528	37846	38077	37533	37105	37900	37904	38067	37337	81.904
	14	37511	37509	38132	38050	37994	37444	37501	38272	38015	37402	37461	37707	82.089
	15	37697	37790	37746	37976	37380	37624	37029	37703	37279	37386	37377	37680	81.667
	16	37351	38369	38062	37462	37796	37344	37497	37629	37650	38268	37393	37995	82.057
	17	37477	37913	37489	37745	37689	37630	38342	38022	37732	37437	37150	38522	82.117
	18	37661	37894	37602	37557	37288	36939	37906	38115	37670	38100	38083	38007	82.058
	19	38259	37675	37196	37367	38235	37771	37999	37712	37649	37714	38801	37674	82.281
	20	37552	37230	37629	37591	37631	37610	37604	37554	37944	37525	38218	37190	81.778
	21	38106	37843	37156	37607	37735	37327	37389	37640	37646	37604	37634	37455	81.753
	22	38426	37616	37649	37384	37740	36758	37944	37931	37940	37709	37818	37480	81.980
	23	37657	38504	37522	37222	37295	36871	37517	38148	37991	37806	37621	37720	81.886
24	0	37997	37793	37745	37531	37770	37354	37477	38066	37599	37706	37613	37814	81.991
	1	37665	37633	37588	37874	37459	37706	37286	37948	37343	37775	37447	37690	81.803
	2	37098	37731	37940	38152	37604	37795	37434	38192	37382	37671	37786	37939	82.040
	3	37452	38447	37731	37904	37607	37681	37452	37387	37866	37545	38297	38300	82.211
	4	37743	37317	37820	37913	37550	38093	37233	38162	38365	37466	38155	37622	82.170
	5	37852	37710	37241	37902	37892	37296	37872	38113	37449	38143	37756	37889	82.111
	6	38364	38412	38049	37703	37959	37862	37819	37660	37569	37184	37816	37688	82.287
	7	37397	37652	37680	38152	37371	37974	37318	36764	37631	37088	37594	37268	81.527
	8	38155	37609	38143	37803	37333	37723	37370	37725	37848	37927	37425	38003	82.102
	9	37537	37935	37804	37291	37720	37944	37584	37764	38177	37383	37952	37868	82.083
	10	37082	36914	37216	37243	37657	38027	37925	37245	37748	38124	38174	37432	81.689
	11	37620	37385	37750	37892	37824	37887	37971	38141	38314	37481	37506	37638	82.164
	12	37675	38050	38118	38307	37900	38488	37539	38122	38048	37490	37463	37748	82.443
	13	37680	38105	37826	37976	37976	37711	37846	37607	37679	37875	37364	37283	82.077
	14	37646	37827	38109	37354	37846	38001	37603	37770	37498	37221	37844	37353	81.922
	15	37673	37860	37364	37617	37402	37395	38459	37695	37687	37549	37537	37476	81.857
	16	37934	37946	37490	37806	37562	37789	37716	37939	37207	37621	37766	37690	81.993
	17	38364	37331	37481	37714	37640	38152	37858	37990	37687	37879	37735	37466	82.144
	18	38078	38093	37539	37529	37260	37558	37739	37512	37458	37619	37533	37145	81.739
	19	37515	37753	37305	37684	37268	37534	37295	37010	37242	37222	37580	37413	81.333
	20	37660	37453	36955	37462	37747	37056	37318	37585	37324	37919	37787	37517	81.507
	21	37799	37315	37464	37569	37900	37429	38015	37775	38040	37567	37053	37350	81.778
	22	37688	38020	37654	37781	37842	38100	37587	37596	37548	37301	37598	38076	82.052
	23	37804	37532	38115	37756	37649	37738	37233	37774	38085	37455	37732	37723	82.017

INAF/UNIRomaTre		S.V.I.R.CO. Observatory - Pressure Corrected Data – August 2017											20 NM-64	
day	hh	00_05	05_10	10_15	15_20	20_25	25_30	30_35	35_40	40_45	45_50	50_55	55_60	h-norm
25	0	37723	37836	37522	37614	37729	37680	37173	37938	37353	37633	37279	37827	81.783
	1	37693	37716	38088	37373	37206	37135	38005	37421	37981	37485	37644	37717	81.812
	2	37912	37762	37816	38373	37487	37117	38076	37574	37825	37971	37310	37839	82.101
	3	37689	37310	37821	37638	38056	37676	37772	37857	37955	38154	38007	37899	82.241
	4	37734	38304	37710	37497	37902	37545	37253	37728	37464	37549	37249	38262	81.945
	5	37619	37786	38269	37796	38055	37370	37414	38022	37490	37273	37800	37649	82.007
	6	37350	37761	37962	37926	37732	37679	37732	37864	37618	37366	37451	37818	81.956
	7	37249	37685	37416	37297	37703	37145	37686	37753	37730	38050	38035	37721	81.813
	8	38136	37911	37838	37962	38300	37736	38107	38029	38163	38038	37867	37996	82.649
	9	37842	38267	37668	38197	37879	37746	37606	37638	38118	37441	37082	37793	82.140
	10	37565	37657	37361	37922	37823	37737	37790	38445	37962	37576	38348	37887	82.285
	11	37813	38020	37550	37392	37857	38123	37737	37651	37344	37433	38015	37912	82.062
	12	38042	38129	38065	37783	37794	37910	37483	37883	37845	37653	37338	38062	82.269
	13	37402	38270	37105	37443	37734	37434	37558	37269	37923	37981	38455	37553	81.932
	14	38021	37224	38150	37803	37727	38246	37459	38097	37843	37640	38081	37939	82.313
	15	37457	38017	37596	37681	36628	38158	37680	37885	37688	37942	38252	37966	82.081
	16	37773	37963	37603	37637	37723	37868	37255	37347	38135	37892	37537	38130	82.065
	17	37951	38054	38416	37603	37558	37868	37576	38085	37690	38496	37118	37882	82.325
	18	37632	37401	37679	37515	37533	38061	37449	37787	37889	37765	37469	37364	81.826
	19	37946	37533	37477	37585	38510	37770	37767	37461	37761	38051	37845	37981	82.214
	20	37761	37674	37797	37854	37649	37753	37489	37665	37696	37152	37059	38462	81.910
	21	37728	37146	37944	37781	37520	37204	37604	37798	37901	37636	37989	38169	81.985
	22	37523	37719	37615	37416	37707	37474	38130	37515	37631	37662	37892	38110	81.980
	23	38132	37842	38150	37755	37857	37199	37765	37565	37533	37605	37729	37344	81.995
26	0	37554	37240	37727	37269	38169	37547	37614	37792	37415	37913	37493	37994	81.856
	1	37910	37684	37959	37950	37677	38315	37424	37302	37416	38076	37344	38152	82.128
	2	37840	38110	37497	37599	37947	37781	37644	37356	37906	37662	37814	37857	82.092
	3	38346	37686	37564	37413	37801	37973	37512	37605	37917	38097	37426	37700	82.097
	4	37135	37584	37756	37859	38123	37410	38012	37746	38083	37440	37372	37703	81.949
	5	37795	37808	38684	37598	37540	37566	37941	37784	37832	37725	37815	37828	82.256
	6	37411	37625	37796	38246	38066	37754	37487	38180	37251	37260	38244	38180	82.181
	7	37922	37850	37834	38057	37681	37571	37906	37433	37772	37754	37943	38252	82.267
	8	37659	38410	38105	37540	38422	38153	37966	37019	37906	38240	37893	37660	82.447
	9	37737	37943	38070	38623	37747	37835	37691	38096	37659	37703	37667	37812	82.377
	10	37711	37584	38232	38204	38102	37214	38235	37887	37877	37702	37521	38114	82.341
	11	38078	37744	37832	37798	38104	37773	38270	37857	37566	37808	37888	37503	82.311
	12	37573	37955	37707	37425	38237	37265	37994	37767	37879	37872	37715	37822	82.128
	13	38228	37662	37436	38338	37812	37918	37785	38149	37407	37491	38013	38130	82.338
	14	37868	37874	38108	37427	37805	38201	38325	37620	38220	37853	38071	37789	82.482
	15	38058	38068	38311	38283	37781	38450	38290	37856	38498	38231	38084	37605	82.908
	16	38411	38240	38087	37958	38272	38378	38118	37847	37909	37479	38025	37966	82.759
	17	38103	37891	37558	37268	37927	37862	38418	38366	38497	37712	38130	37550	82.503
	18	38371	37473	38517	38143	37647	37894	37458	37856	37359	37898	37535	37068	82.131
	19	37935	37519	37229	37984	38023	38174	37633	37763	37339	38034	37911	37922	82.174
	20	37606	38049	37870	38004	37603	38157	37605	37793	38051	37938	37945	37369	82.269
	21	37895	37601	37462	37421	37802	37649	38069	38327	37853	37607	37987	37938	82.201
	22	38189	38034	37755	37750	38078	38458	37769	38096	38166	38081	37601	37724	82.579
	23	38743	38010	37459	37998	38234	37750	38129	37653	37946	37821	37687	37790	82.492

INAF/UNIRomaTre		S.V.I.R.CO. Observatory - Pressure Corrected Data – August 2017											20 NM-64	
day	hh	00_05	05_10	10_15	15_20	20_25	25_30	30_35	35_40	40_45	45_50	50_55	55_60	h-norm
27	0	37725	38206	38149	37518	37645	37139	37598	37534	37501	37963	38019	37799	82.050
	1	38176	37612	38163	38030	37900	37781	37290	38090	37902	37363	38317	37756	82.340
	2	38364	37776	37833	37190	37541	38240	37313	38213	37750	38252	37994	38171	82.387
	3	37404	38382	37131	38071	37878	37917	37744	37784	37840	37594	37536	38102	82.159
	4	38326	37695	37943	38028	37928	37947	38059	37925	38139	37920	38363	37915	82.668
	5	37328	37717	37987	38459	37669	37999	37758	38333	37552	37803	37700	37736	82.279
	6	38280	37838	37721	37973	37947	37851	38055	38468	37621	38209	37963	37428	82.517
	7	37990	38179	37744	37979	38152	37993	37822	37420	38422	37621	37990	38201	82.545
	8	37537	37849	38006	37601	38111	38448	38043	38438	37962	38167	38701	38011	82.792
	9	37734	38367	38168	37793	37931	38087	38047	37546	37505	37503	38010	37669	82.336
	10	38268	38085	37754	37462	37732	37911	38033	38022	38020	38353	38353	37750	82.587
	11	38186	38276	38561	37786	37753	37644	38145	37880	37676	38053	38273	37710	82.623
	12	38078	37446	38331	37754	38024	38109	37876	37408	37828	38031	37970	38117	82.448
	13	38603	38062	37434	37937	38045	38083	37732	37813	37523	37662	37824	37678	82.342
	14	38112	38381	38134	37796	37692	37441	37737	37444	38222	38143	37382	38032	82.365
	15	37489	37466	37632	38261	37331	38047	37429	37939	38106	37831	37461	37810	82.054
	16	37915	37449	37595	37803	38039	38048	37671	38434	38625	37895	37997	37228	82.398
	17	38614	37568	37384	37234	37845	37722	38226	37589	37560	38359	38289	38326	82.401
	18	37904	37953	37556	38065	37961	38007	37881	37279	37732	37612	37800	38006	82.227
	19	38301	37983	38212	37327	38267	38205	38199	38193	37824	37755	38481	37775	82.728
	20	37523	37937	38178	37682	38171	38280	37083	37587	37900	38603	38185	37920	82.461
	21	37799	37693	37816	38222	37962	37793	38513	37966	38135	37957	37731	37731	82.510
	22	37704	38249	37206	38362	38041	38394	38509	37808	38526	38439	38429	37852	82.908
	23	38323	37921	37985	37998	37714	37911	38567	37886	37741	38314	38190	38073	82.747
28	0	37701	37740	38340	38509	38461	37593	38075	38375	38082	38443	38095	38592	82.998
	1	37969	38462	38515	38490	38363	38483	38386	37479	37924	37829	37739	38352	82.994
	2	38405	38051	37109	37974	38411	37652	37377	38441	38250	38286	37836	38151	82.623
	3	38569	37893	38212	37400	37864	37827	38129	38275	38195	38425	38335	37936	82.826
	4	38177	37738	37556	38091	37732	37715	37921	38080	37958	37934	37712	38014	82.385
	5	37859	38462	38008	37778	37993	38033	38378	38115	37707	38661	37745	38246	82.812
	6	38341	37995	38085	38042	38504	38214	37752	38656	37972	38518	38368	38434	83.156
	7	37494	38422	37882	38064	37576	37809	37908	38226	38417	38231	37487	37821	82.514
	8	38254	38039	38492	38343	37572	38002	37768	38654	38164	38350	38150	37500	82.867
	9	38259	38647	38020	38110	37798	38155	38659	37835	37898	38246	37734	37718	82.829
	10	38418	37515	38054	38205	38196	38255	37674	37949	38312	38634	38283	38285	82.956
	11	37379	38158	38497	37740	37970	38452	37209	37998	38179	37866	38376	38045	82.610
	12	37807	38143	38429	38202	38388	38181	37721	38130	37692	37606	38099	37770	82.664
	13	38052	38060	37858	37622	37977	38662	37791	38647	37999	37911	38039	38322	82.804
	14	37785	37700	38098	37922	37798	37735	38277	37954	37895	37922	38145	38396	82.566
	15	38017	37697	37794	38325	38048	38154	38378	37767	37801	37699	37993	37769	82.532
	16	38084	37390	37426	38082	38380	37451	38393	37350	38463	38246	37977	37633	82.430
	17	37820	38117	37880	37390	37577	37733	37845	38036	37766	37710	37490	37406	82.049
	18	38009	38115	38041	38076	37857	37984	38059	37920	37888	37630	38299	37096	82.448
	19	38164	37426	37608	37649	37883	38170	37525	37739	38235	37878	38065	37312	82.209
	20	37719	38304	38057	37095	37751	37829	37771	37582	37966	37793	38357	38155	82.340
	21	37877	37977	37646	38222	37890	37938	38169	38117	37707	37075	38120	37975	82.400
	22	38159	38430	38276	37543	38054	38123	38218	37588	37243	38311	37974	37723	82.569
	23	37917	37742	37758	37737	37876	37951	37558	37949	38085	37501	37696	37606	82.159

INAF/UNIRomaTre		S.V.I.R.CO. Observatory - Pressure Corrected Data – August 2017											20 NM-64	
day	hh	00_05	05_10	10_15	15_20	20_25	25_30	30_35	35_40	40_45	45_50	50_55	55_60	h-norm
29	0	38284	37599	38193	37700	38058	38448	37807	37873	37985	38059	37783	38355	82.662
	1	38395	37829	38206	37829	37947	37796	38454	38036	38410	38555	38426	37921	82.961
	2	38068	37883	38087	38109	38042	38427	38292	37504	38335	37871	38490	38001	82.835
	3	38140	38056	38473	37508	38510	37924	38016	37959	37384	38162	38031	37874	82.641
	4	38042	37587	37985	38149	37950	37906	37702	37853	38244	37610	37581	37845	82.354
	5	37759	37948	37930	38253	37825	38013	38539	37921	37383	38165	38335	38375	82.715
	6	38316	37773	37391	38608	38012	38341	37997	38394	38522	38518	37932	38913	83.126
	7	38003	37855	37857	37831	38196	37770	38509	38359	38250	38337	38273	37686	82.801
	8	37846	38445	38432	38188	38675	37829	37782	38507	38170	37987	38153	37960	82.991
	9	37491	38203	38215	37816	37562	37368	37684	37956	38504	38104	37555	38977	82.532
	10	37896	38302	37679	37959	38470	38060	38334	37769	38210	38196	38059	37946	82.793
	11	38023	38220	38154	37998	38219	38274	38692	37868	38181	38252	38093	38229	83.033
	12	38198	37991	38879	37960	37728	38723	37842	38235	38102	38162	38159	38162	83.022
	13	37894	38099	37675	37736	38009	38383	38183	37804	37807	37908	37866	37993	82.517
	14	37751	37586	38114	37955	37590	37770	38675	38115	38010	38009	38019	38241	82.604
	15	38247	37831	38329	38265	37941	37736	38189	38084	38037	38157	37699	38223	82.767
	16	37637	38061	37979	38377	38649	38091	38283	37763	38111	37773	37874	37759	82.698
	17	37701	38425	37979	38121	38578	38077	37654	38338	38111	38123	38086	38298	82.904
	18	38034	38453	38291	37379	38100	37972	37572	37585	37929	38464	37818	37621	82.493
	19	38029	38280	38469	37894	38380	37816	37985	38323	38129	37933	38214	38306	82.953
	20	38545	37966	38810	37518	38050	38390	38279	38481	37899	38650	37584	38232	83.069
	21	38166	38301	38622	38631	38135	38032	38837	38822	37623	37813	38270	38417	83.299
	22	38493	38027	38112	38109	38312	38460	38022	38227	37871	37721	38442	37903	82.942
	23	37914	38381	38263	38002	37865	38006	37440	37810	38059	38375	37730	38261	82.653
30	0	37928	37956	38047	37689	38067	38068	38277	38006	38119	38386	38779	37609	82.803
	1	37846	38109	37669	37641	38218	38082	37761	38389	38384	38270	37868	38060	82.688
	2	37990	37912	38483	38258	38159	38369	37897	38121	38076	37571	38158	37986	82.811
	3	38129	37926	37807	37959	38218	38498	37804	38400	38281	38358	37943	37389	82.763
	4	37563	38063	38005	37805	37988	37831	38092	37523	37773	37531	38278	38492	82.442
	5	38195	38198	38200	39011	38059	38149	37927	37948	38052	37884	38083	38442	83.024
	6	37893	38120	38189	37937	38003	38299	38357	37978	37869	38432	38169	37907	82.842
	7	37728	38085	37535	37918	37924	37945	38147	38036	38317	38245	38250	37963	82.651
	8	38193	38412	37679	37575	37572	38280	38116	38323	38294	38423	38089	37980	82.803
	9	37977	37967	38147	38476	37843	38137	37876	37961	38150	37914	38292	38297	82.822
	10	37733	37234	38396	38258	38033	38211	38127	38274	38015	38094	37730	37991	82.651
	11	38359	38169	38411	38294	38306	38382	38368	37959	38453	38209	38638	37846	83.249
	12	38580	38115	37617	37772	38418	38237	38317	38636	38239	38535	38050	37848	83.062
	13	38090	37645	37837	38185	37916	38519	37912	38172	37762	38082	38451	37975	82.733
	14	37859	38015	38087	38333	37899	38505	37614	38003	37538	37879	37835	38020	82.559
	15	37842	38078	37853	37999	38024	37777	38200	37889	38262	38215	37909	37941	82.632
	16	38184	37997	37652	38199	38222	38045	37971	38195	37903	37901	38296	38324	82.795
	17	38413	37561	38266	38406	38139	38298	38055	38188	37940	38443	38219	38010	82.985
	18	38246	38224	38033	37863	37920	38194	37961	37373	37631	38541	38264	37330	82.558
	19	37721	37907	37552	38286	37690	38096	37790	37912	38215	37768	38103	37897	82.441
	20	37733	38823	37634	38281	37984	37820	38160	38393	37994	37482	37762	37694	82.590
	21	37955	38117	37825	38040	37744	37734	38174	37481	38085	38667	38037	38075	82.622
	22	37711	37441	37519	37578	37433	37694	37420	37495	37937	38322	38104	38145	82.053
	23	37992	37373	37985	37473	37704	38445	38076	38011	38004	37939	38049	37983	82.459

INAF/UNIRomaTre		S.V.I.R.CO. Observatory - Pressure Corrected Data – August 2017										20 NM-64		
day	hh	00_05	05_10	10_15	15_20	20_25	25_30	30_35	35_40	40_45	45_50	50_55	55_60	h-norm
31	0	37774	37433	38238	37735	37876	38082	37512	37867	37862	38080	38189	38251	82.433
	1	38259	38454	38472	37814	38319	37875	38564	37630	37936	38359	37780	38228	82.940
	2	37727	37871	38356	37642	38273	38037	37789	38467	37866	37953	38212	37735	82.621
	3	37640	38158	38116	38074	37866	37774	37917	38146	38381	38289	38303	37935	82.742
	4	37623	38143	37637	38113	38048	37910	37624	38376	38067	37492	37694	37991	82.402
	5	37797	37975	37865	38117	38505	38073	37318	38177	37708	38183	37518	37924	82.482
	6	37969	37424	38092	38268	37482	37816	37736	37895	37761	37168	37913	37536	82.101
	7	37044	38612	37949	38380	37727	37775	37908	37415	38325	37432	37829	37563	82.264
	8	37682	38072	38124	38298	38219	37951	38035	37393	38034	38010	37678	38030	82.548
	9	37634	38370	38337	37727	38075	37963	38269	37706	37930	38308	37455	38448	82.674
	10	38125	37803	38011	37532	38329	38462	38471	38036	38091	38421	38363	37966	82.925
	11	37912	38472	37890	37909	38561	38324	38630	37962	38059	38538	38190	38146	83.103
	12	38427	38064	38096	38466	37857	38169	38136	38548	38483	38185	38140	38157	83.128
	13	38274	38113	37934	38376	38293	37982	38430	37862	38197	38366	38280	38265	83.063
	14	38193	37953	37953	38274	37721	38302	38074	38348	38887	38078	38072	37702	82.916
	15	38331	38101	38301	38480	37723	38243	38704	38187	38200	38021	38136	38351	83.137
	16	38092	37984	38462	38016	38212	38448	38281	38090	38351	38507	38141	37808	83.067
	17	38309	38049	38504	38079	37998	38082	38544	37835	37776	38192	37772	38359	82.905
	18	37850	37957	37803	38079	38641	38516	38012	38180	38308	38157	37681	38252	82.894
	19	37502	38116	38621	38876	37825	37868	38367	38438	38149	38037	37856	37631	82.867
	20	38264	37980	38243	37846	37973	37848	38414	37774	38410	38175	38252	37586	82.772
	21	38141	38126	38521	38084	37359	37827	38119	38247	38079	37930	38083	38505	82.819
	22	38231	38000	37864	37917	37959	38257	38659	38184	37800	38703	38026	38217	82.963
	23	38459	38240	38333	38297	37442	38784	38412	38170	37809	38580	37837	38443	83.143

S.V.I.R.CO. Observatory - Pressure in hectoPascal – August 2017

day	hh	00_05	05_10	10_15	15_20	20_25	25_30	30_35	35_40	40_45	45_50	50_55	55_60	average
1	0	1015.45	1015.47	1015.49	1015.52	1015.55	1015.55	1015.53	1015.52	1015.50	1015.48	1015.47	1015.48	1015.50
	1	1015.49	1015.48	1015.46	1015.45	1015.43	1015.41	1015.41	1015.42	1015.43	1015.42	1015.39	1015.37	1015.43
	2	1015.39	1015.44	1015.47	1015.49	1015.50	1015.47	1015.44	1015.43	1015.41	1015.40	1015.38	1015.37	1015.43
	3	1015.37	1015.36	1015.38	1015.44	1015.51	1015.54	1015.51	1015.48	1015.49	1015.53	1015.59	1015.63	1015.48
	4	1015.65	1015.69	1015.72	1015.74	1015.77	1015.79	1015.78	1015.78	1015.80	1015.83	1015.85	1015.86	1015.77
	5	1015.92	1015.97	1016.00	1016.03	1016.04	1016.04	1016.05	1016.10	1016.19	1016.26	1016.32	1016.37	1016.11
	6	1016.41	1016.47	1016.55	1016.58	1016.59	1016.60	1016.61	1016.62	1016.65	1016.68	1016.73	1016.79	1016.60
	7	1016.84	1016.86	1016.87	1016.87	1016.83	1016.81	1016.80	1016.80	1016.80	1016.82	1016.84	1016.87	1016.83
	8	1016.90	1016.92	1016.93	1016.93	1016.88	1016.83	1016.81	1016.78	1016.74	1016.70	1016.68	1016.68	1016.81
	9	1016.67	1016.62	1016.59	1016.59	1016.58	1016.58	1016.60	1016.61	1016.59	1016.52	1016.44	1016.36	1016.56
	10	1016.31	1016.31	1016.27	1016.21	1016.18	1016.18	1016.20	1016.18	1016.13	1016.07	1016.04	1016.00	1016.17
	11	1015.96	1015.92	1015.88	1015.84	1015.81	1015.77	1015.73	1015.71	1015.68	1015.64	1015.58	1015.54	1015.75
	12	1015.52	1015.51	1015.53	1015.53	1015.47	1015.46	1015.46	1015.42	1015.38	1015.33	1015.28	1015.25	1015.43
	13	1015.23	1015.21	1015.16	1015.11	1015.08	1015.09	1015.10	1015.07	1015.02	1015.02	1015.05	1015.07	1015.10
	14	1015.10	1015.12	1015.12	1015.10	1015.10	1015.08	1015.05	1015.01	1014.99	1015.05	1015.10	1015.07	1015.07
	15	1015.03	1014.99	1014.98	1014.95	1014.86	1014.77	1014.72	1014.71	1014.72	1014.75	1014.81	1014.90	1014.85
	16	1014.94	1014.93	1014.94	1014.96	1014.97	1015.02	1015.09	1015.14	1015.19	1015.25	1015.27	1015.27	1015.08
	17	1015.28	1015.28	1015.29	1015.39	1015.50	1015.53	1015.52	1015.54	1015.59	1015.65	1015.72	1015.77	1015.50
	18	1015.80	1015.84	1015.90	1015.99	1016.11	1016.25	1016.38	1016.47	1016.53	1016.58	1016.62	1016.64	1016.26
	19	1016.64	1016.74	1016.86	1016.91	1017.01	1017.13	1017.22	1017.25	1017.26	1017.29	1017.36	1017.41	1017.09
	20	1017.40	1017.39	1017.41	1017.44	1017.44	1017.45	1017.45	1017.44	1017.44	1017.41	1017.39	1017.37	1017.42
	21	1017.39	1017.40	1017.35	1017.35	1017.39	1017.42	1017.43	1017.44	1017.45	1017.43	1017.42	1017.45	1017.41
	22	1017.49	1017.53	1017.54	1017.51	1017.48	1017.46	1017.47	1017.48	1017.45	1017.43	1017.41	1017.39	1017.47
	23	1017.40	1017.40	1017.36	1017.26	1017.19	1017.16	1017.17	1017.21	1017.25	1017.22	1017.18	1017.18	1017.25
2	0	1017.19	1017.18	1017.13	1017.06	1016.98	1016.98	1017.02	1017.02	1017.01	1017.01	1017.02	1017.02	1017.04
	1	1016.95	1016.87	1016.80	1016.74	1016.64	1016.59	1016.61	1016.57	1016.57	1016.59	1016.54	1016.52	1016.66
	2	1016.51	1016.51	1016.51	1016.48	1016.47	1016.51	1016.54	1016.56	1016.59	1016.64	1016.67	1016.63	1016.55
	3	1016.60	1016.64	1016.70	1016.69	1016.64	1016.60	1016.64	1016.71	1016.70	1016.66	1016.66	1016.70	1016.66
	4	1016.76	1016.75	1016.74	1016.73	1016.75	1016.80	1016.76	1016.73	1016.73	1016.71	1016.71	1016.74	1016.74
	5	1016.79	1016.84	1016.87	1016.86	1016.86	1016.89	1016.90	1016.93	1016.96	1016.91	1016.86	1016.87	1016.88
	6	1016.93	1016.95	1016.91	1016.94	1016.98	1017.01	1017.03	1017.01	1017.03	1017.08	1017.13	1017.17	1017.01
	7	1017.20	1017.20	1017.20	1017.23	1017.26	1017.28	1017.29	1017.31	1017.34	1017.39	1017.47	1017.55	1017.31
	8	1017.62	1017.68	1017.68	1017.65	1017.63	1017.60	1017.56	1017.54	1017.56	1017.57	1017.52	1017.47	1017.59
	9	1017.43	1017.38	1017.36	1017.34	1017.32	1017.28	1017.24	1017.21	1017.16	1017.11	1017.07	1017.03	1017.24
	10	1017.01	1017.02	1016.99	1016.92	1016.87	1016.84	1016.82	1016.77	1016.70	1016.65	1016.62	1016.57	1016.81
	11	1016.50	1016.43	1016.41	1016.46	1016.48	1016.42	1016.34	1016.30	1016.26	1016.22	1016.18	1016.13	1016.34
	12	1016.13	1016.13	1016.08	1016.04	1016.02	1016.01	1015.98	1015.98	1015.98	1015.94	1015.91	1015.91	1016.01
	13	1015.85	1015.80	1015.79	1015.77	1015.74	1015.70	1015.64	1015.57	1015.55	1015.55	1015.54	1015.55	1015.67
	14	1015.57	1015.52	1015.46	1015.45	1015.44	1015.44	1015.43	1015.44	1015.46	1015.47	1015.46	1015.48	1015.47
	15	1015.51	1015.49	1015.43	1015.40	1015.41	1015.42	1015.45	1015.44	1015.45	1015.49	1015.49	1015.49	1015.45
	16	1015.48	1015.49	1015.54	1015.56	1015.55	1015.57	1015.60	1015.64	1015.71	1015.76	1015.77	1015.80	1015.62
	17	1015.84	1015.86	1015.83	1015.79	1015.75	1015.70	1015.69	1015.72	1015.75	1015.75	1015.73	1015.74	1015.76
	18	1015.77	1015.80	1015.84	1015.85	1015.85	1015.86	1015.85	1015.84	1015.86	1015.90	1015.91	1015.90	1015.85
	19	1015.89	1015.89	1015.92	1015.96	1015.98	1016.02	1016.13	1016.24	1016.32	1016.38	1016.45	1016.50	1016.14
	20	1016.51	1016.51	1016.51	1016.53	1016.54	1016.53	1016.51	1016.54	1016.58	1016.56	1016.58	1016.62	1016.54
	21	1016.65	1016.66	1016.66	1016.68	1016.63	1016.55	1016.57	1016.61	1016.59	1016.56	1016.57	1016.56	1016.61
	22	1016.54	1016.55	1016.57	1016.56	1016.52	1016.48	1016.47	1016.45	1016.39	1016.31	1016.28	1016.31	1016.45
	23	1016.30	1016.30	1016.34	1016.36	1016.34	1016.30	1016.30	1016.25	1016.19	1016.13	1016.09	1016.06	1016.24

S.V.I.R.CO. Observatory - Pressure in hectoPascal – August 2017

day	hh	00_05	05_10	10_15	15_20	20_25	25_30	30_35	35_40	40_45	45_50	50_55	55_60	average
3	0	1016.02	1016.04	1016.04	1015.98	1015.94	1015.96	1015.96	1015.93	1015.90	1015.85	1015.81	1015.79	1015.93
	1	1015.76	1015.73	1015.69	1015.62	1015.58	1015.52	1015.45	1015.41	1015.40	1015.39	1015.34	1015.28	1015.51
	2	1015.23	1015.17	1015.10	1015.04	1014.99	1014.93	1014.89	1014.89	1014.92	1014.95	1014.99	1015.01	1015.01
	3	1015.04	1015.05	1015.06	1015.10	1015.15	1015.18	1015.17	1015.17	1015.20	1015.21	1015.21	1015.23	1015.15
	4	1015.22	1015.19	1015.15	1015.13	1015.15	1015.18	1015.19	1015.20	1015.20	1015.19	1015.17	1015.16	1015.18
	5	1015.17	1015.18	1015.17	1015.18	1015.21	1015.23	1015.28	1015.38	1015.44	1015.46	1015.51	1015.53	1015.31
	6	1015.55	1015.56	1015.55	1015.56	1015.58	1015.58	1015.59	1015.58	1015.59	1015.63	1015.64	1015.63	1015.58
	7	1015.60	1015.58	1015.58	1015.55	1015.52	1015.53	1015.57	1015.65	1015.72	1015.74	1015.71	1015.70	1015.62
	8	1015.70	1015.69	1015.67	1015.65	1015.62	1015.60	1015.55	1015.51	1015.54	1015.55	1015.50	1015.45	1015.59
	9	1015.42	1015.37	1015.36	1015.36	1015.34	1015.33	1015.30	1015.25	1015.19	1015.16	1015.13	1015.09	1015.27
	10	1015.06	1015.04	1015.00	1014.97	1014.94	1014.90	1014.88	1014.85	1014.81	1014.77	1014.74	1014.73	1014.89
	11	1014.73	1014.72	1014.72	1014.71	1014.67	1014.64	1014.59	1014.56	1014.53	1014.43	1014.34	1014.31	1014.58
	12	1014.29	1014.27	1014.26	1014.21	1014.17	1014.12	1014.04	1014.01	1014.01	1014.03	1014.02	1013.96	1014.11
	13	1013.93	1013.98	1013.94	1013.85	1013.80	1013.77	1013.68	1013.61	1013.58	1013.53	1013.49	1013.43	1013.71
	14	1013.37	1013.30	1013.26	1013.21	1013.14	1013.10	1013.08	1013.07	1013.04	1012.98	1012.96	1012.97	1013.12
	15	1012.97	1012.94	1012.87	1012.79	1012.74	1012.72	1012.68	1012.58	1012.49	1012.47	1012.48	1012.48	1012.68
	16	1012.48	1012.48	1012.50	1012.52	1012.50	1012.49	1012.47	1012.45	1012.43	1012.43	1012.44	1012.48	1012.47
	17	1012.50	1012.52	1012.56	1012.59	1012.60	1012.64	1012.66	1012.69	1012.73	1012.76	1012.77	1012.78	1012.65
	18	1012.77	1012.74	1012.72	1012.73	1012.74	1012.73	1012.74	1012.77	1012.80	1012.82	1012.89	1013.04	1012.79
	19	1013.16	1013.20	1013.21	1013.23	1013.28	1013.35	1013.40	1013.44	1013.45	1013.42	1013.49	1013.60	1013.35
	20	1013.65	1013.64	1013.61	1013.57	1013.58	1013.59	1013.60	1013.62	1013.65	1013.66	1013.65	1013.64	1013.62
	21	1013.63	1013.65	1013.65	1013.65	1013.64	1013.60	1013.58	1013.57	1013.59	1013.59	1013.56	1013.54	1013.60
	22	1013.49	1013.47	1013.44	1013.43	1013.48	1013.51	1013.53	1013.52	1013.46	1013.44	1013.42	1013.36	1013.46
	23	1013.30	1013.27	1013.27	1013.25	1013.22	1013.20	1013.20	1013.21	1013.15	1013.09	1013.06	1013.05	1013.19
4	0	1012.99	1012.99	1013.01	1013.00	1012.95	1012.93	1012.90	1012.85	1012.83	1012.82	1012.79	1012.76	1012.90
	1	1012.72	1012.66	1012.60	1012.57	1012.57	1012.56	1012.54	1012.55	1012.56	1012.55	1012.52	1012.49	1012.57
	2	1012.46	1012.45	1012.46	1012.46	1012.42	1012.39	1012.42	1012.46	1012.45	1012.42	1012.42	1012.43	1012.43
	3	1012.42	1012.38	1012.38	1012.39	1012.41	1012.41	1012.38	1012.36	1012.34	1012.31	1012.31	1012.35	1012.37
	4	1012.38	1012.38	1012.38	1012.39	1012.41	1012.47	1012.54	1012.58	1012.61	1012.62	1012.64	1012.68	1012.50
	5	1012.73	1012.73	1012.71	1012.74	1012.78	1012.79	1012.79	1012.81	1012.84	1012.88	1012.93	1012.97	1012.81
	6	1012.99	1013.04	1013.06	1013.04	1013.05	1013.07	1013.08	1013.10	1013.11	1013.13	1013.18	1013.21	1013.09
	7	1013.23	1013.24	1013.22	1013.19	1013.17	1013.16	1013.16	1013.16	1013.16	1013.15	1013.12	1013.11	1013.17
	8	1013.10	1013.08	1013.09	1013.13	1013.15	1013.14	1013.12	1013.09	1013.07	1013.07	1013.04	1013.00	1013.09
	9	1012.97	1012.95	1012.94	1012.95	1012.93	1012.88	1012.86	1012.85	1012.82	1012.79	1012.79	1012.78	1012.87
	10	1012.75	1012.71	1012.69	1012.69	1012.70	1012.71	1012.72	1012.73	1012.73	1012.73	1012.74	1012.74	1012.72
	11	1012.71	1012.67	1012.62	1012.55	1012.51	1012.47	1012.40	1012.32	1012.26	1012.20	1012.10	1011.97	1012.40
	12	1011.92	1011.91	1011.88	1011.85	1011.83	1011.80	1011.81	1011.85	1011.89	1011.89	1011.85	1011.82	1011.86
	13	1011.80	1011.80	1011.78	1011.76	1011.74	1011.72	1011.71	1011.71	1011.69	1011.66	1011.61	1011.60	1011.71
	14	1011.59	1011.57	1011.53	1011.48	1011.46	1011.44	1011.41	1011.37	1011.34	1011.30	1011.27	1011.25	1011.42
	15	1011.21	1011.20	1011.20	1011.19	1011.19	1011.16	1011.12	1011.10	1011.09	1011.08	1011.06	1011.04	1011.13
	16	1011.03	1011.03	1011.03	1011.04	1011.04	1011.03	1011.04	1011.05	1011.06	1011.07	1011.09	1011.12	1011.05
	17	1011.14	1011.13	1011.13	1011.13	1011.18	1011.22	1011.24	1011.24	1011.26	1011.30	1011.36	1011.40	1011.23
	18	1011.43	1011.46	1011.48	1011.47	1011.47	1011.46	1011.47	1011.51	1011.56	1011.61	1011.64	1011.67	1011.52
	19	1011.72	1011.76	1011.81	1011.85	1011.88	1011.93	1012.01	1012.06	1012.09	1012.11	1012.13	1012.16	1011.96
	20	1012.18	1012.17	1012.15	1012.09	1012.08	1012.14	1012.19	1012.21	1012.21	1012.20	1012.20	1012.20	1012.17
	21	1012.24	1012.25	1012.21	1012.17	1012.14	1012.13	1012.12	1012.11	1012.09	1012.08	1012.04	1012.02	1012.13
	22	1012.04	1012.05	1012.04	1012.04	1012.05	1012.04	1012.01	1011.99	1011.98	1011.96	1011.96	1012.01	1012.01
	23	1012.03	1012.03	1012.04	1012.02	1011.97	1011.93	1011.90	1011.88	1011.87	1011.84	1011.81	1011.78	1011.92

S.V.I.R.CO. Observatory - Pressure in hectoPascal – August 2017

day	hh	00_05	05_10	10_15	15_20	20_25	25_30	30_35	35_40	40_45	45_50	50_55	55_60	average
5	0	1011.72	1011.70	1011.68	1011.69	1011.71	1011.72	1011.68	1011.65	1011.62	1011.60	1011.61	1011.59	1011.66
	1	1011.59	1011.64	1011.66	1011.64	1011.62	1011.60	1011.57	1011.56	1011.55	1011.52	1011.54	1011.55	1011.59
	2	1011.50	1011.45	1011.45	1011.47	1011.46	1011.45	1011.45	1011.44	1011.45	1011.47	1011.46	1011.44	1011.45
	3	1011.41	1011.40	1011.39	1011.35	1011.36	1011.39	1011.40	1011.39	1011.40	1011.41	1011.40	1011.38	1011.39
	4	1011.38	1011.42	1011.47	1011.53	1011.54	1011.56	1011.58	1011.57	1011.58	1011.61	1011.63	1011.64	1011.54
	5	1011.69	1011.76	1011.82	1011.91	1011.94	1011.93	1011.96	1011.94	1011.93	1011.94	1011.92	1011.92	1011.89
	6	1011.90	1011.89	1011.91	1011.92	1011.94	1011.95	1011.94	1011.93	1011.94	1011.96	1011.98	1011.97	1011.93
	7	1011.95	1011.93	1011.94	1011.94	1011.93	1011.91	1011.91	1011.92	1011.94	1011.95	1011.94	1011.94	1011.93
	8	1011.94	1011.96	1012.00	1012.01	1012.00	1011.97	1011.93	1011.90	1011.88	1011.85	1011.84	1011.82	1011.92
	9	1011.79	1011.76	1011.74	1011.72	1011.67	1011.62	1011.60	1011.61	1011.60	1011.54	1011.55	1011.58	1011.65
	10	1011.58	1011.57	1011.56	1011.53	1011.47	1011.42	1011.40	1011.38	1011.37	1011.36	1011.35	1011.36	1011.44
	11	1011.32	1011.26	1011.22	1011.20	1011.19	1011.12	1011.08	1011.06	1011.05	1011.01	1010.94	1010.89	1011.11
	12	1010.85	1010.83	1010.78	1010.73	1010.73	1010.71	1010.66	1010.65	1010.64	1010.59	1010.57	1010.57	1010.69
	13	1010.54	1010.46	1010.41	1010.37	1010.34	1010.31	1010.27	1010.17	1010.11	1010.08	1010.06	1010.04	1010.26
	14	1010.01	1009.95	1009.90	1009.86	1009.83	1009.83	1009.84	1009.87	1009.89	1009.90	1009.92	1009.91	1009.89
	15	1009.88	1009.89	1009.91	1009.91	1009.89	1009.86	1009.84	1009.83	1009.85	1009.86	1009.86	1009.84	1009.87
	16	1009.82	1009.80	1009.76	1009.72	1009.72	1009.75	1009.74	1009.72	1009.75	1009.82	1009.84	1009.87	1009.77
	17	1009.92	1009.96	1009.98	1009.99	1009.99	1009.98	1010.00	1010.04	1010.06	1010.11	1010.17	1010.20	1010.03
	18	1010.25	1010.29	1010.32	1010.39	1010.44	1010.44	1010.45	1010.51	1010.55	1010.56	1010.55	1010.56	1010.44
	19	1010.58	1010.60	1010.64	1010.69	1010.73	1010.78	1010.84	1010.91	1010.97	1011.00	1011.02	1011.06	1010.82
	20	1011.11	1011.15	1011.18	1011.19	1011.20	1011.24	1011.26	1011.24	1011.22	1011.19	1011.18	1011.18	1011.19
	21	1011.17	1011.20	1011.22	1011.21	1011.20	1011.19	1011.16	1011.15	1011.17	1011.17	1011.17	1011.20	1011.18
	22	1011.22	1011.22	1011.21	1011.19	1011.17	1011.15	1011.09	1011.08	1011.09	1011.08	1011.05	1011.03	1011.13
	23	1011.04	1011.04	1011.03	1011.04	1011.04	1011.03	1011.02	1010.98	1010.94	1010.90	1010.87	1010.84	1010.98
6	0	1010.81	1010.81	1010.78	1010.72	1010.71	1010.72	1010.71	1010.65	1010.61	1010.61	1010.64	1010.66	1010.70
	1	1010.65	1010.66	1010.69	1010.71	1010.71	1010.67	1010.60	1010.56	1010.56	1010.55	1010.54	1010.54	1010.62
	2	1010.53	1010.52	1010.52	1010.53	1010.54	1010.54	1010.53	1010.51	1010.48	1010.45	1010.45	1010.46	1010.50
	3	1010.46	1010.46	1010.46	1010.45	1010.46	1010.51	1010.57	1010.62	1010.64	1010.62	1010.61	1010.61	1010.54
	4	1010.62	1010.65	1010.65	1010.65	1010.64	1010.63	1010.64	1010.65	1010.65	1010.65	1010.69	1010.72	1010.65
	5	1010.74	1010.79	1010.82	1010.87	1010.91	1010.91	1010.93	1010.94	1010.94	1010.97	1011.01	1011.03	1010.90
	6	1011.08	1011.15	1011.17	1011.18	1011.19	1011.20	1011.20	1011.19	1011.19	1011.19	1011.22	1011.25	1011.18
	7	1011.24	1011.26	1011.26	1011.25	1011.27	1011.26	1011.24	1011.26	1011.26	1011.24	1011.24	1011.21	1011.25
	8	1011.18	1011.17	1011.16	1011.18	1011.23	1011.25	1011.28	1011.33	1011.37	1011.41	1011.46	1011.44	1011.28
	9	1011.39	1011.36	1011.34	1011.31	1011.29	1011.27	1011.22	1011.17	1011.14	1011.09	1011.05	1011.02	1011.22
	10	1010.99	1010.94	1010.86	1010.82	1010.79	1010.78	1010.78	1010.78	1010.74	1010.68	1010.64	1010.61	1010.78
	11	1010.62	1010.65	1010.69	1010.70	1010.66	1010.62	1010.58	1010.53	1010.53	1010.51	1010.43	1010.39	1010.57
	12	1010.36	1010.35	1010.39	1010.40	1010.42	1010.45	1010.48	1010.46	1010.41	1010.39	1010.36	1010.31	1010.40
	13	1010.25	1010.23	1010.26	1010.28	1010.28	1010.30	1010.32	1010.30	1010.25	1010.27	1010.28	1010.24	1010.27
	14	1010.22	1010.19	1010.21	1010.21	1010.15	1010.08	1010.03	1010.04	1010.10	1010.16	1010.15	1010.13	1010.14
	15	1010.13	1010.10	1010.01	1009.98	1009.95	1009.92	1009.93	1009.92	1009.88	1009.80	1009.71	1009.65	1009.91
	16	1009.61	1009.57	1009.52	1009.48	1009.52	1009.55	1009.53	1009.54	1009.55	1009.53	1009.51	1009.50	1009.53
	17	1009.47	1009.45	1009.41	1009.36	1009.35	1009.36	1009.40	1009.47	1009.53	1009.57	1009.60	1009.54	1009.46
	18	1009.51	1009.58	1009.63	1009.66	1009.76	1009.88	1009.93	1010.00	1010.07	1010.05	1010.11	1010.25	1009.87
	19	1010.37	1010.47	1010.55	1010.64	1010.75	1010.81	1010.80	1010.82	1010.85	1010.87	1010.94	1010.94	1010.73
	20	1010.89	1010.90	1010.96	1011.05	1011.10	1011.12	1011.10	1011.05	1011.07	1011.14	1011.18	1011.24	1011.06
	21	1011.29	1011.28	1011.27	1011.27	1011.23	1011.19	1011.20	1011.25	1011.32	1011.36	1011.36	1011.33	1011.28
	22	1011.35	1011.39	1011.40	1011.36	1011.34	1011.33	1011.30	1011.29	1011.30	1011.27	1011.20	1011.17	1011.31
	23	1011.17	1011.20	1011.22	1011.23	1011.20	1011.14	1011.08	1011.06	1011.05	1011.04	1011.04	1011.06	1011.12

S.V.I.R.CO. Observatory - Pressure in hectoPascal – August 2017

day	hh	00_05	05_10	10_15	15_20	20_25	25_30	30_35	35_40	40_45	45_50	50_55	55_60	average
7	0	1011.05	1011.06	1011.06	1011.04	1010.99	1010.95	1010.93	1010.93	1010.94	1010.93	1010.98	1011.01	1010.98
	1	1010.98	1010.97	1010.93	1010.91	1010.92	1010.90	1010.90	1010.94	1010.96	1010.95	1010.90	1010.86	1010.93
	2	1010.85	1010.82	1010.83	1010.87	1010.91	1010.92	1010.92	1010.94	1010.96	1010.95	1010.92	1010.91	1010.90
	3	1010.93	1010.96	1010.95	1010.92	1010.89	1010.86	1010.84	1010.85	1010.89	1010.92	1010.93	1010.95	1010.91
	4	1011.00	1011.07	1011.12	1011.15	1011.19	1011.21	1011.20	1011.19	1011.18	1011.18	1011.20	1011.21	1011.16
	5	1011.20	1011.21	1011.22	1011.18	1011.18	1011.22	1011.27	1011.30	1011.31	1011.32	1011.35	1011.36	1011.26
	6	1011.37	1011.42	1011.45	1011.45	1011.47	1011.49	1011.51	1011.53	1011.56	1011.60	1011.61	1011.62	1011.50
	7	1011.63	1011.63	1011.65	1011.66	1011.67	1011.67	1011.67	1011.69	1011.74	1011.78	1011.82	1011.85	1011.70
	8	1011.85	1011.84	1011.85	1011.86	1011.87	1011.85	1011.81	1011.76	1011.71	1011.68	1011.66	1011.65	1011.78
	9	1011.65	1011.66	1011.68	1011.71	1011.72	1011.72	1011.71	1011.71	1011.71	1011.69	1011.66	1011.62	1011.68
	10	1011.57	1011.54	1011.52	1011.51	1011.49	1011.47	1011.47	1011.47	1011.48	1011.50	1011.49	1011.53	1011.50
	11	1011.58	1011.60	1011.60	1011.61	1011.62	1011.61	1011.62	1011.64	1011.65	1011.62	1011.60	1011.56	1011.61
	12	1011.52	1011.50	1011.49	1011.46	1011.42	1011.37	1011.33	1011.29	1011.27	1011.26	1011.23	1011.22	1011.36
	13	1011.20	1011.16	1011.12	1011.13	1011.16	1011.17	1011.14	1011.12	1011.11	1011.09	1011.09	1011.07	1011.13
	14	1011.07	1011.08	1011.09	1011.09	1011.08	1011.07	1011.04	1011.04	1011.06	1011.07	1011.08	1011.08	1011.07
	15	1011.08	1011.04	1011.04	1011.05	1011.02	1011.01	1011.00	1011.01	1011.02	1011.03	1010.99	1010.95	1011.02
	16	1010.95	1010.94	1010.94	1010.94	1010.96	1010.99	1011.02	1011.05	1011.09	1011.12	1011.13	1011.17	1011.02
	17	1011.20	1011.20	1011.20	1011.19	1011.19	1011.22	1011.25	1011.26	1011.28	1011.31	1011.34	1011.39	1011.25
	18	1011.43	1011.44	1011.44	1011.46	1011.51	1011.56	1011.63	1011.71	1011.76	1011.77	1011.78	1011.79	1011.60
	19	1011.84	1011.92	1011.99	1012.03	1012.08	1012.17	1012.24	1012.29	1012.32	1012.33	1012.33	1012.35	1012.15
	20	1012.41	1012.46	1012.49	1012.51	1012.53	1012.53	1012.53	1012.56	1012.61	1012.63	1012.63	1012.63	1012.54
	21	1012.62	1012.59	1012.56	1012.56	1012.59	1012.63	1012.65	1012.67	1012.69	1012.70	1012.70	1012.71	1012.64
	22	1012.72	1012.72	1012.71	1012.69	1012.68	1012.63	1012.61	1012.63	1012.62	1012.57	1012.56	1012.60	1012.64
	23	1012.59	1012.54	1012.54	1012.57	1012.58	1012.55	1012.50	1012.48	1012.51	1012.54	1012.54	1012.52	1012.53
8	0	1012.46	1012.44	1012.42	1012.43	1012.41	1012.42	1012.46	1012.51	1012.55	1012.55	1012.51	1012.48	1012.47
	1	1012.44	1012.41	1012.42	1012.40	1012.37	1012.39	1012.39	1012.38	1012.39	1012.40	1012.41	1012.39	1012.40
	2	1012.40	1012.41	1012.40	1012.40	1012.39	1012.37	1012.35	1012.32	1012.30	1012.30	1012.33	1012.34	1012.36
	3	1012.35	1012.36	1012.34	1012.29	1012.27	1012.32	1012.36	1012.38	1012.42	1012.41	1012.36	1012.35	1012.35
	4	1012.36	1012.40	1012.45	1012.46	1012.44	1012.41	1012.41	1012.44	1012.47	1012.48	1012.49	1012.50	1012.44
	5	1012.53	1012.57	1012.59	1012.60	1012.58	1012.59	1012.63	1012.66	1012.70	1012.73	1012.74	1012.77	1012.64
	6	1012.82	1012.85	1012.85	1012.83	1012.84	1012.88	1012.88	1012.84	1012.81	1012.82	1012.86	1012.84	1012.84
	7	1012.80	1012.81	1012.85	1012.87	1012.87	1012.86	1012.87	1012.89	1012.87	1012.86	1012.89	1012.94	1012.86
	8	1013.00	1013.03	1013.02	1013.02	1013.01	1012.98	1013.01	1013.04	1013.04	1013.05	1013.02	1012.96	1013.01
	9	1012.93	1012.90	1012.89	1012.91	1012.89	1012.88	1012.90	1012.92	1012.91	1012.87	1012.88	1012.91	1012.90
	10	1012.90	1012.86	1012.85	1012.80	1012.71	1012.69	1012.71	1012.69	1012.67	1012.65	1012.57	1012.48	1012.71
	11	1012.42	1012.38	1012.38	1012.35	1012.30	1012.28	1012.24	1012.21	1012.22	1012.22	1012.23	1012.21	1012.29
	12	1012.23	1012.21	1012.16	1012.20	1012.24	1012.28	1012.27	1012.22	1012.23	1012.22	1012.18	1012.15	1012.21
	13	1012.10	1012.09	1012.04	1012.01	1011.99	1011.95	1011.95	1011.94	1011.92	1011.89	1011.82	1011.79	1011.96
	14	1011.83	1011.84	1011.81	1011.78	1011.76	1011.76	1011.78	1011.79	1011.80	1011.81	1011.86	1011.88	1011.81
	15	1011.87	1011.90	1011.92	1011.92	1011.91	1011.91	1011.90	1011.87	1011.90	1011.94	1011.92	1011.90	1011.90
	16	1011.87	1011.83	1011.81	1011.80	1011.80	1011.80	1011.78	1011.78	1011.78	1011.78	1011.79	1011.80	1011.80
	17	1011.82	1011.86	1011.90	1011.88	1011.84	1011.83	1011.87	1011.93	1011.99	1012.06	1012.10	1012.10	1011.93
	18	1012.10	1012.15	1012.21	1012.23	1012.24	1012.23	1012.23	1012.27	1012.29	1012.31	1012.32	1012.35	1012.24
	19	1012.39	1012.46	1012.57	1012.61	1012.60	1012.60	1012.62	1012.67	1012.69	1012.68	1012.69	1012.76	1012.61
	20	1012.83	1012.84	1012.78	1012.72	1012.72	1012.76	1012.76	1012.73	1012.70	1012.70	1012.71	1012.73	1012.75
	21	1012.75	1012.73	1012.71	1012.73	1012.76	1012.73	1012.68	1012.66	1012.61	1012.52	1012.48	1012.49	1012.65
	22	1012.48	1012.46	1012.47	1012.49	1012.49	1012.53	1012.56	1012.58	1012.60	1012.60	1012.60	1012.63	1012.54
	23	1012.65	1012.65	1012.65	1012.64	1012.63	1012.63	1012.63	1012.60	1012.55	1012.48	1012.49	1012.57	1012.60

S.V.I.R.CO. Observatory - Pressure in hectoPascal – August 2017

day	hh	00_05	05_10	10_15	15_20	20_25	25_30	30_35	35_40	40_45	45_50	50_55	55_60	average
9	0	1012.58	1012.56	1012.55	1012.56	1012.56	1012.55	1012.53	1012.52	1012.52	1012.51	1012.50	1012.50	1012.53
	1	1012.51	1012.51	1012.52	1012.56	1012.59	1012.64	1012.69	1012.66	1012.57	1012.54	1012.64	1012.74	1012.60
	2	1012.73	1012.74	1012.77	1012.70	1012.68	1012.75	1012.88	1012.98	1012.92	1012.87	1012.90	1012.85	1012.81
	3	1012.80	1012.77	1012.71	1012.66	1012.62	1012.59	1012.54	1012.51	1012.51	1012.51	1012.45	1012.39	1012.59
	4	1012.41	1012.39	1012.35	1012.36	1012.37	1012.38	1012.38	1012.37	1012.37	1012.41	1012.42	1012.41	1012.38
	5	1012.42	1012.41	1012.38	1012.39	1012.41	1012.45	1012.52	1012.56	1012.58	1012.61	1012.62	1012.64	1012.50
	6	1012.70	1012.74	1012.75	1012.76	1012.78	1012.80	1012.80	1012.74	1012.69	1012.68	1012.64	1012.59	1012.72
	7	1012.61	1012.67	1012.72	1012.73	1012.73	1012.75	1012.75	1012.74	1012.72	1012.72	1012.73	1012.75	1012.72
	8	1012.72	1012.69	1012.72	1012.76	1012.76	1012.75	1012.75	1012.73	1012.72	1012.71	1012.73	1012.77	1012.73
	9	1012.79	1012.85	1012.87	1012.86	1012.86	1012.79	1012.72	1012.67	1012.66	1012.66	1012.65	1012.64	1012.75
	10	1012.62	1012.61	1012.56	1012.55	1012.56	1012.59	1012.59	1012.51	1012.46	1012.43	1012.43	1012.43	1012.53
	11	1012.41	1012.38	1012.38	1012.41	1012.41	1012.39	1012.42	1012.46	1012.43	1012.41	1012.45	1012.49	1012.42
	12	1012.50	1012.50	1012.57	1012.58	1012.52	1012.51	1012.48	1012.47	1012.46	1012.47	1012.43	1012.38	1012.49
	13	1012.36	1012.36	1012.35	1012.37	1012.40	1012.39	1012.35	1012.34	1012.34	1012.34	1012.32	1012.31	1012.35
	14	1012.32	1012.31	1012.24	1012.20	1012.26	1012.32	1012.31	1012.23	1012.17	1012.17	1012.18	1012.17	1012.24
	15	1012.17	1012.14	1012.11	1012.09	1012.08	1012.14	1012.17	1012.16	1012.15	1012.13	1012.10	1012.06	1012.12
	16	1011.97	1011.85	1011.71	1011.50	1011.29	1011.12	1010.94	1010.82	1010.83	1010.93	1010.99	1010.99	1011.24
	17	1010.99	1011.06	1011.13	1011.08	1011.14	1011.29	1011.31	1011.21	1011.22	1011.26	1011.17	1011.16	1011.16
	18	1011.21	1011.27	1011.37	1011.44	1011.44	1011.38	1011.39	1011.43	1011.45	1011.44	1011.49	1011.59	1011.41
	19	1011.65	1011.73	1011.84	1011.89	1012.01	1012.16	1012.26	1012.39	1012.49	1012.54	1012.62	1012.67	1012.19
	20	1012.68	1012.70	1012.72	1012.77	1012.82	1012.87	1012.92	1012.92	1012.89	1012.88	1012.91	1012.94	1012.83
	21	1012.98	1013.00	1013.05	1013.10	1013.05	1013.01	1013.00	1013.03	1013.05	1013.09	1013.16	1013.19	1013.06
	22	1013.21	1013.27	1013.31	1013.26	1013.19	1013.19	1013.28	1013.35	1013.36	1013.33	1013.32	1013.31	1013.28
	23	1013.34	1013.41	1013.44	1013.43	1013.43	1013.41	1013.27	1013.16	1013.18	1013.23	1013.25	1013.33	1013.32
10	0	1013.47	1013.49	1013.55	1013.65	1013.73	1013.72	1013.64	1013.56	1013.45	1013.28	1013.04	1012.77	1013.44
	1	1012.53	1012.34	1012.17	1012.04	1012.03	1012.09	1012.17	1012.33	1012.57	1012.63	1012.42	1012.20	1012.29
	2	1012.01	1011.84	1011.76	1011.77	1011.89	1012.07	1012.19	1012.17	1012.13	1012.13	1012.09	1012.06	1012.01
	3	1012.06	1012.06	1012.03	1012.01	1012.02	1011.98	1011.93	1011.87	1011.79	1011.80	1011.89	1011.95	1011.95
	4	1011.99	1011.98	1011.96	1011.96	1012.03	1012.15	1012.23	1012.23	1012.21	1012.22	1012.26	1012.31	1012.12
	5	1012.29	1012.19	1012.06	1011.99	1012.06	1012.11	1012.05	1012.00	1011.98	1011.98	1012.01	1012.01	1012.06
	6	1012.04	1012.06	1012.04	1012.05	1012.05	1012.05	1012.06	1012.09	1012.10	1012.13	1012.14	1012.14	1012.08
	7	1012.15	1012.18	1012.21	1012.19	1012.13	1012.07	1012.01	1011.95	1011.88	1011.80	1011.76	1011.77	1012.01
	8	1011.80	1011.80	1011.78	1011.76	1011.76	1011.71	1011.59	1011.52	1011.58	1011.65	1011.62	1011.50	1011.67
	9	1011.44	1011.47	1011.48	1011.43	1011.43	1011.46	1011.48	1011.47	1011.47	1011.48	1011.46	1011.44	1011.46
	10	1011.39	1011.39	1011.42	1011.54	1011.66	1011.72	1011.78	1011.72	1011.71	1011.92	1012.17	1012.39	1011.73
	11	1012.65	1012.89	1013.05	1013.12	1013.13	1013.13	1013.11	1013.07	1012.95	1012.85	1012.82	1012.82	1012.96
	12	1012.84	1012.85	1012.82	1012.80	1012.73	1012.59	1012.54	1012.50	1012.47	1012.41	1012.28	1012.07	1012.57
	13	1011.82	1011.51	1011.10	1010.68	1010.51	1010.62	1010.87	1011.08	1011.10	1010.96	1010.62	1010.04	1010.91
	14	1009.77	1009.70	1009.47	1009.40	1009.26	1009.12	1009.14	1009.14	1009.18	1009.22	1009.43	1009.91	1009.39
	15	1010.28	1010.48	1010.75	1011.01	1011.12	1011.13	1011.17	1011.21	1011.20	1011.15	1011.14	1011.14	1010.98
	16	1011.15	1011.13	1011.09	1011.10	1011.11	1011.08	1011.02	1010.98	1010.99	1011.01	1010.99	1011.03	1011.05
	17	1011.07	1011.10	1011.13	1011.17	1011.24	1011.24	1011.25	1011.32	1011.36	1011.35	1011.36	1011.41	1011.25
	18	1011.37	1011.31	1011.32	1011.36	1011.38	1011.40	1011.43	1011.48	1011.48	1011.45	1011.51	1011.67	1011.43
	19	1011.79	1011.85	1011.90	1011.96	1012.08	1012.15	1012.12	1012.13	1012.15	1012.15	1012.19	1012.17	1012.05
	20	1012.13	1012.13	1012.15	1012.19	1012.14	1012.12	1012.19	1012.25	1012.25	1012.22	1012.21	1012.23	1012.18
	21	1012.26	1012.30	1012.35	1012.37	1012.38	1012.39	1012.40	1012.43	1012.49	1012.55	1012.61	1012.61	1012.43
	22	1012.56	1012.54	1012.55	1012.55	1012.53	1012.50	1012.49	1012.49	1012.46	1012.44	1012.42	1012.40	1012.49
	23	1012.40	1012.32	1012.26	1012.25	1012.25	1012.26	1012.25	1012.29	1012.32	1012.31	1012.30	1012.28	1012.29

S.V.I.R.CO. Observatory - Pressure in hectoPascal – August 2017

day	hh	00_05	05_10	10_15	15_20	20_25	25_30	30_35	35_40	40_45	45_50	50_55	55_60	average
11	0	1012.32	1012.30	1012.21	1012.14	1012.11	1012.08	1012.11	1012.17	1012.19	1012.14	1012.13	1012.19	1012.16
	1	1012.22	1012.25	1012.27	1012.30	1012.33	1012.34	1012.35	1012.38	1012.41	1012.46	1012.47	1012.42	1012.35
	2	1012.41	1012.34	1012.25	1012.18	1012.09	1012.03	1012.00	1011.97	1011.96	1011.97	1011.96	1012.01	1012.09
	3	1012.03	1012.01	1012.03	1012.06	1012.08	1012.12	1012.20	1012.24	1012.22	1012.18	1012.15	1012.16	1012.12
	4	1012.17	1012.23	1012.33	1012.40	1012.44	1012.50	1012.54	1012.54	1012.55	1012.59	1012.62	1012.65	1012.46
	5	1012.70	1012.72	1012.71	1012.73	1012.82	1012.91	1012.97	1013.01	1013.03	1013.07	1013.12	1013.15	1012.91
	6	1013.14	1013.08	1013.04	1013.03	1013.01	1013.00	1013.03	1013.05	1013.07	1013.08	1013.09	1013.11	1013.06
	7	1013.16	1013.19	1013.21	1013.25	1013.27	1013.27	1013.28	1013.26	1013.31	1013.37	1013.41	1013.47	1013.28
	8	1013.48	1013.49	1013.47	1013.41	1013.34	1013.32	1013.40	1013.50	1013.57	1013.61	1013.64	1013.69	1013.49
	9	1013.70	1013.69	1013.71	1013.73	1013.74	1013.75	1013.77	1013.76	1013.78	1013.82	1013.84	1013.85	1013.76
	10	1013.86	1013.89	1013.92	1013.98	1014.06	1014.06	1013.98	1013.96	1013.97	1014.01	1014.08	1014.12	1013.99
	11	1014.13	1014.09	1014.08	1014.11	1014.06	1014.02	1014.08	1014.11	1014.12	1014.14	1014.09	1014.03	1014.09
	12	1014.02	1014.00	1014.04	1014.07	1014.05	1014.11	1014.13	1014.04	1014.03	1014.07	1014.13	1014.19	1014.07
	13	1014.19	1014.15	1014.11	1014.12	1014.11	1014.08	1014.17	1014.22	1014.17	1014.15	1014.22	1014.31	1014.16
	14	1014.27	1014.25	1014.31	1014.33	1014.26	1014.20	1014.24	1014.32	1014.31	1014.23	1014.17	1014.16	1014.25
	15	1014.25	1014.29	1014.32	1014.36	1014.33	1014.20	1014.23	1014.37	1014.40	1014.33	1014.25	1014.23	1014.29
	16	1014.21	1014.19	1014.15	1014.11	1014.20	1014.30	1014.29	1014.25	1014.27	1014.35	1014.35	1014.28	1014.24
	17	1014.24	1014.26	1014.32	1014.33	1014.28	1014.25	1014.23	1014.20	1014.16	1014.22	1014.27	1014.25	1014.25
	18	1014.17	1014.16	1014.18	1014.19	1014.19	1014.16	1014.09	1014.13	1014.25	1014.33	1014.39	1014.40	1014.22
	19	1014.45	1014.51	1014.50	1014.49	1014.57	1014.65	1014.66	1014.65	1014.64	1014.68	1014.75	1014.76	1014.61
	20	1014.78	1014.79	1014.78	1014.75	1014.76	1014.78	1014.76	1014.78	1014.79	1014.78	1014.75	1014.71	1014.77
	21	1014.64	1014.54	1014.50	1014.55	1014.57	1014.50	1014.48	1014.48	1014.48	1014.47	1014.42	1014.40	1014.50
	22	1014.38	1014.37	1014.35	1014.34	1014.36	1014.35	1014.34	1014.37	1014.33	1014.27	1014.26	1014.25	1014.33
	23	1014.32	1014.40	1014.36	1014.22	1014.12	1014.05	1013.94	1013.84	1013.75	1013.72	1013.69	1013.55	1014.00
12	0	1013.43	1013.39	1013.33	1013.23	1013.17	1013.27	1013.27	1013.21	1013.11	1013.07	1013.14	1012.99	1013.21
	1	1012.95	1013.02	1012.97	1012.95	1012.96	1012.96	1012.87	1012.79	1012.74	1012.73	1012.68	1012.59	1012.85
	2	1012.57	1012.63	1012.68	1012.66	1012.61	1012.56	1012.51	1012.40	1012.34	1012.30	1012.31	1012.34	1012.49
	3	1012.35	1012.42	1012.41	1012.26	1012.18	1012.18	1012.16	1012.19	1012.25	1012.25	1012.21	1012.18	1012.25
	4	1012.14	1012.15	1012.18	1012.20	1012.22	1012.24	1012.23	1012.11	1012.03	1012.02	1012.05	1012.13	1012.14
	5	1012.17	1012.21	1012.22	1012.20	1012.23	1012.24	1012.18	1012.14	1012.14	1012.17	1012.20	1012.19	1012.19
	6	1012.20	1012.24	1012.26	1012.24	1012.30	1012.37	1012.39	1012.36	1012.38	1012.54	1012.55	1012.45	1012.35
	7	1012.42	1012.49	1012.52	1012.44	1012.45	1012.55	1012.72	1012.83	1012.91	1013.00	1012.97	1012.95	1012.68
	8	1013.04	1013.10	1013.08	1013.10	1013.16	1013.22	1013.23	1013.24	1013.28	1013.34	1013.43	1013.48	1013.22
	9	1013.49	1013.51	1013.53	1013.57	1013.55	1013.49	1013.49	1013.48	1013.40	1013.37	1013.36	1013.36	1013.47
	10	1013.32	1013.25	1013.22	1013.19	1013.19	1013.28	1013.40	1013.43	1013.46	1013.48	1013.48	1013.47	1013.35
	11	1013.44	1013.43	1013.44	1013.44	1013.45	1013.44	1013.37	1013.29	1013.25	1013.21	1013.14	1013.06	1013.33
	12	1013.02	1013.01	1013.03	1013.00	1012.94	1012.97	1012.97	1012.95	1012.92	1012.94	1012.93	1012.89	1012.96
	13	1012.91	1012.92	1012.93	1012.94	1012.87	1012.79	1012.75	1012.73	1012.67	1012.60	1012.58	1012.56	1012.77
	14	1012.51	1012.42	1012.38	1012.36	1012.33	1012.36	1012.43	1012.41	1012.33	1012.34	1012.33	1012.26	1012.37
	15	1012.28	1012.36	1012.35	1012.35	1012.43	1012.48	1012.49	1012.52	1012.51	1012.52	1012.53	1012.54	1012.44
	16	1012.56	1012.53	1012.50	1012.50	1012.53	1012.58	1012.65	1012.69	1012.71	1012.80	1012.86	1012.85	1012.65
	17	1012.84	1012.88	1012.92	1012.91	1012.93	1013.02	1013.11	1013.16	1013.18	1013.20	1013.20	1013.19	1013.04
	18	1013.21	1013.24	1013.33	1013.40	1013.43	1013.46	1013.47	1013.51	1013.59	1013.64	1013.69	1013.75	1013.47
	19	1013.82	1013.88	1013.92	1014.00	1014.06	1014.09	1014.13	1014.16	1014.22	1014.27	1014.32	1014.37	1014.10
	20	1014.39	1014.38	1014.36	1014.35	1014.38	1014.43	1014.46	1014.47	1014.47	1014.51	1014.56	1014.60	1014.44
	21	1014.61	1014.60	1014.60	1014.60	1014.60	1014.58	1014.57	1014.58	1014.61	1014.65	1014.67	1014.68	1014.61
	22	1014.69	1014.66	1014.59	1014.53	1014.49	1014.47	1014.48	1014.49	1014.52	1014.59	1014.65	1014.63	1014.56
	23	1014.58	1014.58	1014.60	1014.60	1014.64	1014.66	1014.69	1014.78	1014.84	1014.84	1014.78	1014.75	1014.69

S.V.I.R.CO. Observatory - Pressure in hectoPascal – August 2017

day	hh	00_05	05_10	10_15	15_20	20_25	25_30	30_35	35_40	40_45	45_50	50_55	55_60	average
13	0	1014.75	1014.76	1014.75	1014.75	1014.74	1014.76	1014.79	1014.76	1014.71	1014.70	1014.73	1014.76	1014.74
	1	1014.79	1014.80	1014.78	1014.74	1014.72	1014.69	1014.72	1014.74	1014.67	1014.59	1014.57	1014.57	1014.70
	2	1014.58	1014.61	1014.63	1014.65	1014.71	1014.75	1014.76	1014.78	1014.81	1014.84	1014.87	1014.87	1014.74
	3	1014.81	1014.76	1014.71	1014.66	1014.70	1014.80	1014.85	1014.84	1014.84	1014.87	1014.92	1014.93	1014.81
	4	1014.90	1014.87	1014.82	1014.79	1014.81	1014.83	1014.82	1014.89	1014.98	1014.96	1014.88	1014.88	1014.87
	5	1014.99	1015.17	1015.30	1015.36	1015.42	1015.49	1015.54	1015.56	1015.55	1015.50	1015.53	1015.55	1015.41
	6	1015.55	1015.60	1015.63	1015.68	1015.74	1015.78	1015.83	1015.85	1015.85	1015.85	1015.84	1015.83	1015.75
	7	1015.81	1015.77	1015.75	1015.78	1015.79	1015.77	1015.74	1015.74	1015.73	1015.70	1015.65	1015.62	1015.74
	8	1015.60	1015.61	1015.62	1015.66	1015.69	1015.68	1015.68	1015.71	1015.68	1015.67	1015.69	1015.67	1015.66
	9	1015.68	1015.67	1015.60	1015.55	1015.50	1015.45	1015.45	1015.44	1015.41	1015.43	1015.47	1015.48	1015.51
	10	1015.43	1015.38	1015.34	1015.24	1015.16	1015.07	1015.00	1014.94	1014.85	1014.82	1014.82	1014.78	1015.07
	11	1014.74	1014.71	1014.70	1014.73	1014.73	1014.69	1014.67	1014.66	1014.64	1014.59	1014.51	1014.54	1014.66
	12	1014.58	1014.53	1014.43	1014.34	1014.31	1014.31	1014.24	1014.20	1014.24	1014.25	1014.23	1014.18	1014.32
	13	1014.13	1014.10	1014.08	1014.02	1013.99	1014.02	1013.99	1013.91	1013.82	1013.76	1013.82	1013.85	1013.96
	14	1013.86	1013.88	1013.91	1013.88	1013.80	1013.78	1013.74	1013.72	1013.80	1013.84	1013.81	1013.79	1013.81
	15	1013.80	1013.82	1013.80	1013.81	1013.81	1013.72	1013.66	1013.68	1013.71	1013.70	1013.71	1013.74	1013.75
	16	1013.71	1013.73	1013.78	1013.78	1013.79	1013.86	1013.89	1013.88	1013.88	1013.90	1013.93	1013.97	1013.84
	17	1014.06	1014.12	1014.16	1014.18	1014.20	1014.22	1014.23	1014.28	1014.32	1014.34	1014.37	1014.43	1014.24
	18	1014.50	1014.56	1014.62	1014.67	1014.72	1014.77	1014.82	1014.85	1014.88	1014.94	1014.98	1015.02	1014.77
	19	1015.07	1015.13	1015.17	1015.20	1015.22	1015.23	1015.23	1015.26	1015.28	1015.27	1015.30	1015.35	1015.22
	20	1015.34	1015.34	1015.36	1015.38	1015.40	1015.42	1015.42	1015.42	1015.46	1015.52	1015.58	1015.62	1015.44
	21	1015.64	1015.62	1015.60	1015.62	1015.64	1015.66	1015.70	1015.73	1015.71	1015.69	1015.70	1015.72	1015.67
	22	1015.75	1015.80	1015.85	1015.87	1015.88	1015.90	1015.93	1015.96	1016.00	1016.04	1016.06	1016.07	1015.92
	23	1016.08	1016.07	1016.06	1016.03	1015.98	1015.98	1015.97	1015.92	1015.90	1015.90	1015.90	1015.92	1015.97
14	0	1015.93	1015.95	1015.95	1015.92	1015.90	1015.87	1015.86	1015.89	1015.92	1015.96	1015.97	1015.97	1015.92
	1	1015.96	1015.95	1015.96	1015.96	1015.96	1015.95	1015.96	1015.99	1016.02	1016.04	1016.02	1016.00	1015.98
	2	1015.98	1015.94	1015.91	1015.90	1015.92	1015.94	1015.97	1016.00	1016.02	1016.05	1016.09	1016.09	1015.98
	3	1016.09	1016.09	1016.06	1016.05	1016.06	1016.08	1016.10	1016.12	1016.15	1016.20	1016.25	1016.27	1016.12
	4	1016.30	1016.32	1016.34	1016.40	1016.46	1016.50	1016.54	1016.57	1016.61	1016.66	1016.70	1016.72	1016.51
	5	1016.71	1016.72	1016.76	1016.81	1016.85	1016.90	1016.93	1016.94	1016.93	1016.93	1016.95	1016.98	1016.87
	6	1017.02	1017.05	1017.09	1017.11	1017.14	1017.21	1017.30	1017.32	1017.32	1017.34	1017.36	1017.40	1017.22
	7	1017.43	1017.45	1017.47	1017.47	1017.49	1017.51	1017.56	1017.60	1017.62	1017.66	1017.72	1017.76	1017.56
	8	1017.78	1017.79	1017.79	1017.77	1017.77	1017.78	1017.79	1017.80	1017.81	1017.82	1017.82	1017.81	1017.79
	9	1017.78	1017.77	1017.78	1017.81	1017.82	1017.81	1017.79	1017.76	1017.72	1017.75	1017.78	1017.76	1017.78
	10	1017.74	1017.76	1017.78	1017.77	1017.72	1017.70	1017.68	1017.65	1017.63	1017.61	1017.58	1017.52	1017.68
	11	1017.46	1017.42	1017.40	1017.39	1017.37	1017.31	1017.25	1017.27	1017.27	1017.20	1017.12	1017.05	1017.29
	12	1017.05	1017.03	1017.00	1016.99	1016.96	1016.94	1016.89	1016.82	1016.78	1016.75	1016.72	1016.69	1016.88
	13	1016.67	1016.66	1016.67	1016.66	1016.64	1016.60	1016.55	1016.55	1016.55	1016.55	1016.55	1016.55	1016.60
	14	1016.59	1016.65	1016.69	1016.68	1016.67	1016.66	1016.66	1016.68	1016.71	1016.74	1016.76	1016.77	1016.69
	15	1016.81	1016.86	1016.86	1016.88	1016.93	1016.93	1016.91	1016.91	1016.93	1016.94	1016.96	1016.99	1016.91
	16	1016.99	1016.99	1016.99	1016.98	1016.98	1017.02	1017.04	1017.02	1017.00	1017.02	1017.06	1017.08	1017.01
	17	1017.09	1017.11	1017.14	1017.15	1017.15	1017.14	1017.12	1017.10	1017.11	1017.10	1017.12	1017.15	1017.12
	18	1017.17	1017.20	1017.22	1017.25	1017.31	1017.40	1017.48	1017.54	1017.56	1017.57	1017.59	1017.64	1017.41
	19	1017.69	1017.73	1017.80	1017.86	1017.87	1017.89	1017.92	1017.93	1017.97	1018.03	1018.05	1018.09	1017.90
	20	1018.12	1018.13	1018.11	1018.07	1018.06	1018.08	1018.12	1018.15	1018.14	1018.17	1018.23	1018.27	1018.13
	21	1018.31	1018.33	1018.33	1018.30	1018.26	1018.27	1018.28	1018.28	1018.25	1018.25	1018.27	1018.27	1018.28
	22	1018.27	1018.28	1018.30	1018.30	1018.30	1018.30	1018.31	1018.32	1018.32	1018.33	1018.33	1018.32	1018.30
	23	1018.30	1018.25	1018.23	1018.25	1018.26	1018.21	1018.15	1018.12	1018.09	1018.08	1018.08	1018.06	1018.17

S.V.I.R.CO. Observatory - Pressure in hectoPascal – August 2017

day	hh	00_05	05_10	10_15	15_20	20_25	25_30	30_35	35_40	40_45	45_50	50_55	55_60	average
15	0	1018.03	1018.02	1017.98	1017.96	1017.99	1018.04	1018.06	1018.04	1018.04	1018.06	1018.07	1018.06	1018.03
	1	1018.08	1018.08	1018.07	1018.05	1018.04	1018.02	1018.01	1018.00	1018.00	1018.01	1018.02	1018.04	1018.03
	2	1018.06	1018.08	1018.09	1018.06	1018.03	1018.01	1017.97	1017.96	1017.96	1017.96	1017.98	1018.02	1018.01
	3	1018.06	1018.02	1017.96	1017.93	1017.88	1017.86	1017.91	1017.98	1018.02	1018.03	1018.03	1018.03	1017.97
	4	1018.06	1018.09	1018.11	1018.10	1018.08	1018.08	1018.05	1018.06	1018.13	1018.20	1018.27	1018.37	1018.13
	5	1018.45	1018.48	1018.51	1018.56	1018.61	1018.66	1018.71	1018.76	1018.83	1018.85	1018.84	1018.86	1018.67
	6	1018.89	1018.90	1018.89	1018.88	1018.88	1018.88	1018.89	1018.90	1018.89	1018.88	1018.86	1018.83	1018.88
	7	1018.84	1018.91	1018.97	1018.97	1018.93	1018.92	1018.92	1018.93	1019.00	1019.04	1019.06	1019.05	1018.96
	8	1019.04	1019.04	1019.02	1019.01	1019.00	1018.98	1018.96	1018.98	1019.03	1019.04	1018.97	1018.85	1018.99
	9	1018.74	1018.65	1018.58	1018.54	1018.52	1018.49	1018.41	1018.33	1018.30	1018.27	1018.26	1018.24	1018.44
	10	1018.19	1018.11	1018.03	1017.98	1017.91	1017.86	1017.85	1017.83	1017.78	1017.73	1017.68	1017.62	1017.88
	11	1017.56	1017.52	1017.50	1017.50	1017.51	1017.52	1017.57	1017.58	1017.55	1017.56	1017.58	1017.62	1017.54
	12	1017.67	1017.68	1017.66	1017.66	1017.68	1017.67	1017.67	1017.66	1017.66	1017.62	1017.51	1017.42	1017.63
	13	1017.40	1017.37	1017.33	1017.29	1017.26	1017.23	1017.20	1017.17	1017.12	1017.08	1017.04	1017.01	1017.21
	14	1017.04	1017.06	1017.05	1017.03	1017.02	1017.03	1016.98	1016.94	1016.91	1016.85	1016.81	1016.77	1016.95
	15	1016.74	1016.72	1016.69	1016.69	1016.69	1016.66	1016.62	1016.59	1016.55	1016.51	1016.50	1016.50	1016.62
	16	1016.50	1016.53	1016.54	1016.50	1016.48	1016.48	1016.47	1016.47	1016.44	1016.41	1016.37	1016.35	1016.46
	17	1016.34	1016.30	1016.26	1016.25	1016.23	1016.19	1016.15	1016.12	1016.13	1016.17	1016.21	1016.27	1016.22
	18	1016.30	1016.30	1016.27	1016.23	1016.19	1016.16	1016.16	1016.18	1016.20	1016.22	1016.25	1016.30	1016.23
	19	1016.35	1016.39	1016.42	1016.46	1016.52	1016.59	1016.66	1016.69	1016.71	1016.74	1016.75	1016.74	1016.58
	20	1016.74	1016.77	1016.79	1016.80	1016.78	1016.71	1016.63	1016.58	1016.61	1016.67	1016.72	1016.78	1016.71
	21	1016.79	1016.79	1016.79	1016.81	1016.84	1016.87	1016.86	1016.85	1016.85	1016.85	1016.84	1016.77	1016.82
	22	1016.70	1016.70	1016.75	1016.79	1016.78	1016.78	1016.80	1016.81	1016.79	1016.78	1016.79	1016.80	1016.77
	23	1016.79	1016.77	1016.74	1016.73	1016.73	1016.74	1016.74	1016.71	1016.67	1016.61	1016.58	1016.55	1016.69
16	0	1016.49	1016.47	1016.42	1016.38	1016.36	1016.34	1016.32	1016.31	1016.31	1016.30	1016.27	1016.22	1016.34
	1	1016.19	1016.23	1016.26	1016.28	1016.35	1016.37	1016.33	1016.34	1016.39	1016.41	1016.41	1016.40	1016.33
	2	1016.35	1016.31	1016.28	1016.22	1016.19	1016.22	1016.23	1016.21	1016.18	1016.13	1016.13	1016.13	1016.21
	3	1016.11	1016.11	1016.13	1016.15	1016.15	1016.11	1016.07	1016.04	1016.04	1016.07	1016.10	1016.13	1016.10
	4	1016.15	1016.16	1016.18	1016.20	1016.21	1016.22	1016.25	1016.28	1016.34	1016.39	1016.41	1016.43	1016.27
	5	1016.46	1016.50	1016.56	1016.62	1016.64	1016.62	1016.60	1016.61	1016.64	1016.67	1016.72	1016.78	1016.62
	6	1016.83	1016.84	1016.83	1016.83	1016.77	1016.74	1016.81	1016.89	1016.91	1016.88	1016.82	1016.80	1016.83
	7	1016.79	1016.78	1016.76	1016.72	1016.68	1016.69	1016.72	1016.76	1016.80	1016.78	1016.72	1016.68	1016.74
	8	1016.66	1016.66	1016.68	1016.68	1016.68	1016.70	1016.69	1016.67	1016.68	1016.69	1016.66	1016.62	1016.67
	9	1016.58	1016.54	1016.52	1016.50	1016.50	1016.46	1016.38	1016.31	1016.22	1016.13	1016.07	1016.06	1016.35
	10	1016.02	1015.95	1015.89	1015.81	1015.76	1015.74	1015.73	1015.72	1015.71	1015.69	1015.65	1015.65	1015.77
	11	1015.66	1015.65	1015.59	1015.54	1015.50	1015.45	1015.39	1015.32	1015.30	1015.31	1015.30	1015.27	1015.44
	12	1015.22	1015.16	1015.11	1015.06	1015.01	1014.94	1014.86	1014.82	1014.83	1014.81	1014.79	1014.78	1014.95
	13	1014.74	1014.68	1014.63	1014.58	1014.50	1014.42	1014.35	1014.29	1014.22	1014.16	1014.12	1014.10	1014.40
	14	1014.09	1014.08	1014.04	1014.00	1014.00	1014.00	1013.98	1013.97	1013.98	1013.98	1013.96	1013.93	1014.00
	15	1013.90	1013.86	1013.81	1013.77	1013.73	1013.70	1013.68	1013.65	1013.62	1013.56	1013.50	1013.45	1013.68
	16	1013.45	1013.46	1013.47	1013.47	1013.46	1013.43	1013.40	1013.38	1013.34	1013.35	1013.37	1013.37	1013.41
	17	1013.37	1013.39	1013.37	1013.37	1013.42	1013.48	1013.53	1013.56	1013.58	1013.58	1013.59	1013.61	1013.48
	18	1013.63	1013.67	1013.72	1013.78	1013.84	1013.89	1013.94	1013.96	1013.99	1014.04	1014.12	1014.22	1013.90
	19	1014.33	1014.46	1014.60	1014.64	1014.60	1014.62	1014.66	1014.69	1014.69	1014.68	1014.73	1014.80	1014.62
	20	1014.80	1014.76	1014.69	1014.66	1014.65	1014.65	1014.67	1014.71	1014.74	1014.73	1014.66	1014.60	1014.69
	21	1014.58	1014.53	1014.44	1014.38	1014.40	1014.42	1014.44	1014.44	1014.41	1014.34	1014.32	1014.35	1014.42
	22	1014.38	1014.40	1014.43	1014.49	1014.53	1014.57	1014.61	1014.59	1014.53	1014.44	1014.34	1014.26	1014.46
	23	1014.15	1014.06	1014.03	1014.05	1014.06	1014.02	1013.97	1013.94	1013.89	1013.84	1013.81	1013.80	1013.97

S.V.I.R.CO. Observatory - Pressure in hectoPascal – August 2017

day	hh	00_05	05_10	10_15	15_20	20_25	25_30	30_35	35_40	40_45	45_50	50_55	55_60	average
17	0	1013.80	1013.81	1013.84	1013.87	1013.84	1013.81	1013.81	1013.81	1013.82	1013.83	1013.83	1013.84	1013.82
	1	1013.85	1013.85	1013.85	1013.86	1013.90	1013.94	1013.95	1013.89	1013.81	1013.77	1013.77	1013.76	1013.85
	2	1013.77	1013.76	1013.76	1013.81	1013.83	1013.84	1013.89	1013.98	1014.04	1014.05	1014.04	1014.01	1013.90
	3	1014.01	1014.00	1013.99	1013.99	1013.95	1013.93	1013.99	1014.03	1014.01	1013.99	1014.02	1014.08	1014.00
	4	1014.12	1014.10	1014.07	1014.05	1014.06	1014.07	1014.08	1014.13	1014.17	1014.19	1014.22	1014.28	1014.13
	5	1014.34	1014.41	1014.49	1014.55	1014.57	1014.61	1014.68	1014.70	1014.68	1014.67	1014.69	1014.73	1014.59
	6	1014.73	1014.72	1014.72	1014.74	1014.79	1014.81	1014.80	1014.80	1014.82	1014.80	1014.76	1014.74	1014.77
	7	1014.74	1014.76	1014.80	1014.85	1014.89	1014.90	1014.90	1014.88	1014.87	1014.87	1014.89	1014.92	1014.85
	8	1014.96	1014.97	1014.95	1014.91	1014.92	1014.97	1015.01	1015.04	1015.05	1015.05	1015.02	1014.97	1014.98
	9	1014.93	1014.91	1014.88	1014.82	1014.76	1014.73	1014.69	1014.62	1014.54	1014.46	1014.44	1014.46	1014.68
	10	1014.48	1014.46	1014.41	1014.41	1014.41	1014.41	1014.41	1014.39	1014.38	1014.40	1014.37	1014.32	1014.40
	11	1014.33	1014.32	1014.30	1014.25	1014.23	1014.22	1014.20	1014.19	1014.19	1014.17	1014.15	1014.15	1014.22
	12	1014.13	1014.12	1014.09	1014.01	1013.95	1013.92	1013.87	1013.82	1013.80	1013.78	1013.77	1013.73	1013.91
	13	1013.70	1013.67	1013.62	1013.55	1013.52	1013.50	1013.48	1013.45	1013.43	1013.41	1013.41	1013.36	1013.51
	14	1013.30	1013.28	1013.26	1013.25	1013.28	1013.28	1013.25	1013.22	1013.21	1013.21	1013.20	1013.20	1013.24
	15	1013.23	1013.29	1013.32	1013.32	1013.30	1013.31	1013.36	1013.37	1013.37	1013.39	1013.38	1013.35	1013.33
	16	1013.35	1013.40	1013.45	1013.47	1013.45	1013.45	1013.48	1013.48	1013.47	1013.49	1013.56	1013.60	1013.47
	17	1013.62	1013.66	1013.67	1013.67	1013.68	1013.71	1013.74	1013.74	1013.76	1013.79	1013.81	1013.84	1013.72
	18	1013.88	1013.94	1014.00	1014.04	1014.09	1014.14	1014.22	1014.31	1014.37	1014.39	1014.41	1014.44	1014.18
	19	1014.47	1014.50	1014.52	1014.52	1014.49	1014.48	1014.52	1014.56	1014.54	1014.53	1014.59	1014.68	1014.53
	20	1014.73	1014.72	1014.71	1014.72	1014.74	1014.77	1014.77	1014.80	1014.82	1014.83	1014.83	1014.80	1014.77
	21	1014.79	1014.80	1014.78	1014.75	1014.76	1014.80	1014.82	1014.82	1014.81	1014.82	1014.85	1014.88	1014.81
	22	1014.93	1014.99	1015.01	1015.01	1015.00	1015.00	1014.99	1014.99	1015.00	1015.00	1015.00	1015.00	1014.99
	23	1015.00	1015.01	1014.98	1014.96	1014.99	1014.98	1014.95	1014.95	1014.94	1014.92	1014.94	1014.96	1014.96
18	0	1014.97	1014.97	1014.96	1014.97	1014.97	1014.94	1014.91	1014.90	1014.93	1014.94	1014.92	1014.86	1014.93
	1	1014.76	1014.66	1014.62	1014.61	1014.64	1014.68	1014.69	1014.67	1014.64	1014.59	1014.58	1014.58	1014.64
	2	1014.55	1014.51	1014.48	1014.45	1014.44	1014.44	1014.43	1014.45	1014.47	1014.45	1014.43	1014.44	1014.46
	3	1014.47	1014.48	1014.45	1014.45	1014.45	1014.45	1014.46	1014.48	1014.51	1014.55	1014.60	1014.64	1014.50
	4	1014.70	1014.75	1014.78	1014.79	1014.77	1014.76	1014.79	1014.82	1014.83	1014.88	1014.93	1014.96	1014.81
	5	1015.00	1015.05	1015.10	1015.14	1015.18	1015.23	1015.26	1015.30	1015.35	1015.36	1015.37	1015.41	1015.23
	6	1015.41	1015.43	1015.47	1015.48	1015.49	1015.51	1015.53	1015.54	1015.58	1015.62	1015.63	1015.63	1015.52
	7	1015.64	1015.65	1015.66	1015.68	1015.71	1015.72	1015.75	1015.78	1015.82	1015.85	1015.85	1015.85	1015.74
	8	1015.86	1015.87	1015.89	1015.91	1015.90	1015.87	1015.86	1015.84	1015.81	1015.82	1015.82	1015.82	1015.85
	9	1015.81	1015.80	1015.79	1015.79	1015.78	1015.74	1015.71	1015.67	1015.61	1015.56	1015.51	1015.46	1015.68
	10	1015.43	1015.40	1015.34	1015.28	1015.26	1015.22	1015.18	1015.14	1015.06	1014.99	1014.94	1014.89	1015.18
	11	1014.87	1014.85	1014.81	1014.79	1014.74	1014.69	1014.69	1014.71	1014.69	1014.66	1014.65	1014.66	1014.73
	12	1014.68	1014.68	1014.66	1014.66	1014.66	1014.67	1014.67	1014.63	1014.58	1014.58	1014.58	1014.58	1014.63
	13	1014.56	1014.53	1014.51	1014.51	1014.49	1014.46	1014.43	1014.37	1014.31	1014.30	1014.27	1014.23	1014.41
	14	1014.23	1014.17	1014.09	1014.06	1014.04	1014.00	1013.93	1013.88	1013.89	1013.93	1013.92	1013.89	1014.00
	15	1013.89	1013.94	1014.00	1014.05	1014.09	1014.11	1014.10	1014.05	1013.98	1013.91	1013.85	1013.79	1013.98
	16	1013.76	1013.75	1013.75	1013.72	1013.68	1013.65	1013.65	1013.63	1013.61	1013.60	1013.61	1013.62	1013.67
	17	1013.59	1013.58	1013.60	1013.64	1013.69	1013.73	1013.76	1013.82	1013.88	1013.92	1013.96	1013.97	1013.76
	18	1013.96	1013.96	1013.99	1014.05	1014.07	1014.08	1014.10	1014.15	1014.20	1014.21	1014.21	1014.25	1014.10
	19	1014.33	1014.39	1014.38	1014.33	1014.35	1014.37	1014.36	1014.35	1014.34	1014.33	1014.33	1014.33	1014.35
	20	1014.36	1014.38	1014.39	1014.39	1014.40	1014.42	1014.45	1014.48	1014.50	1014.52	1014.54	1014.56	1014.45
	21	1014.56	1014.55	1014.53	1014.50	1014.48	1014.47	1014.47	1014.47	1014.48	1014.51	1014.57	1014.64	1014.52
	22	1014.69	1014.68	1014.65	1014.65	1014.65	1014.64	1014.63	1014.61	1014.56	1014.55	1014.52	1014.46	1014.60
	23	1014.42	1014.39	1014.36	1014.34	1014.33	1014.33	1014.32	1014.29	1014.24	1014.19	1014.16	1014.15	1014.29

S.V.I.R.CO. Observatory - Pressure in hectoPascal – August 2017

day	hh	00_05	05_10	10_15	15_20	20_25	25_30	30_35	35_40	40_45	45_50	50_55	55_60	average
19	0	1014.14	1014.12	1014.09	1014.05	1014.02	1013.99	1014.01	1014.03	1014.00	1013.94	1013.83	1013.75	1013.99
	1	1013.72	1013.69	1013.68	1013.68	1013.64	1013.59	1013.55	1013.54	1013.55	1013.50	1013.47	1013.44	1013.59
	2	1013.39	1013.35	1013.31	1013.33	1013.38	1013.42	1013.45	1013.43	1013.39	1013.35	1013.29	1013.23	1013.36
	3	1013.21	1013.21	1013.18	1013.15	1013.18	1013.22	1013.24	1013.25	1013.30	1013.35	1013.38	1013.43	1013.25
	4	1013.49	1013.52	1013.57	1013.61	1013.61	1013.62	1013.68	1013.74	1013.76	1013.74	1013.74	1013.80	1013.66
	5	1013.87	1013.90	1013.91	1013.93	1013.93	1013.95	1013.99	1014.03	1014.12	1014.19	1014.20	1014.19	1014.02
	6	1014.21	1014.24	1014.27	1014.30	1014.30	1014.33	1014.37	1014.40	1014.42	1014.38	1014.31	1014.23	1014.31
	7	1014.22	1014.26	1014.30	1014.34	1014.42	1014.53	1014.62	1014.70	1014.78	1014.79	1014.76	1014.77	1014.54
	8	1014.77	1014.71	1014.68	1014.74	1014.79	1014.78	1014.74	1014.75	1014.74	1014.70	1014.69	1014.65	1014.73
	9	1014.67	1014.68	1014.63	1014.54	1014.47	1014.45	1014.41	1014.31	1014.25	1014.22	1014.16	1014.13	1014.41
	10	1014.13	1014.10	1014.07	1014.06	1014.01	1013.93	1013.90	1013.89	1013.85	1013.79	1013.72	1013.67	1013.92
	11	1013.59	1013.51	1013.47	1013.42	1013.42	1013.40	1013.37	1013.35	1013.33	1013.33	1013.37	1013.39	1013.41
	12	1013.37	1013.37	1013.37	1013.36	1013.36	1013.37	1013.41	1013.44	1013.41	1013.39	1013.38	1013.37	1013.38
	13	1013.37	1013.41	1013.46	1013.48	1013.53	1013.56	1013.54	1013.53	1013.49	1013.44	1013.41	1013.38	1013.46
	14	1013.36	1013.31	1013.26	1013.21	1013.18	1013.13	1013.12	1013.15	1013.17	1013.16	1013.16	1013.20	1013.20
	15	1013.18	1013.16	1013.20	1013.23	1013.18	1013.10	1013.10	1013.09	1013.06	1013.06	1013.08	1013.08	1013.12
	16	1013.03	1012.95	1012.90	1012.89	1012.87	1012.85	1012.87	1012.87	1012.83	1012.82	1012.86	1012.90	1012.88
	17	1012.92	1012.95	1012.99	1013.05	1013.02	1012.97	1013.02	1013.06	1012.97	1012.91	1012.95	1013.04	1012.98
	18	1013.09	1013.10	1013.18	1013.29	1013.31	1013.28	1013.29	1013.29	1013.32	1013.41	1013.51	1013.52	1013.30
	19	1013.49	1013.56	1013.58	1013.55	1013.54	1013.52	1013.57	1013.70	1013.74	1013.72	1013.69	1013.66	1013.61
	20	1013.66	1013.69	1013.70	1013.66	1013.56	1013.49	1013.48	1013.53	1013.56	1013.55	1013.54	1013.50	1013.57
	21	1013.50	1013.56	1013.51	1013.43	1013.40	1013.38	1013.39	1013.41	1013.38	1013.33	1013.34	1013.35	1013.41
	22	1013.35	1013.34	1013.35	1013.35	1013.31	1013.29	1013.27	1013.20	1013.17	1013.14	1013.09	1013.07	1013.24
	23	1013.03	1012.95	1012.87	1012.75	1012.69	1012.67	1012.64	1012.66	1012.70	1012.69	1012.68	1012.73	1012.75
20	0	1012.77	1012.74	1012.67	1012.59	1012.50	1012.39	1012.30	1012.24	1012.22	1012.21	1012.21	1012.22	1012.40
	1	1012.23	1012.24	1012.24	1012.21	1012.17	1012.13	1012.08	1012.07	1012.11	1012.15	1012.19	1012.23	1012.17
	2	1012.24	1012.25	1012.19	1012.12	1012.07	1012.02	1011.97	1011.93	1011.91	1011.91	1011.95	1011.96	1012.04
	3	1011.90	1011.86	1011.83	1011.81	1011.81	1011.82	1011.83	1011.89	1011.92	1011.91	1011.91	1011.93	1011.87
	4	1011.96	1011.96	1011.98	1012.00	1012.02	1012.11	1012.19	1012.20	1012.18	1012.19	1012.24	1012.27	1012.11
	5	1012.31	1012.32	1012.32	1012.34	1012.35	1012.37	1012.38	1012.34	1012.32	1012.34	1012.38	1012.43	1012.35
	6	1012.44	1012.47	1012.51	1012.50	1012.48	1012.47	1012.47	1012.42	1012.35	1012.32	1012.31	1012.34	1012.42
	7	1012.37	1012.37	1012.40	1012.42	1012.44	1012.42	1012.39	1012.43	1012.45	1012.45	1012.47	1012.46	1012.42
	8	1012.46	1012.50	1012.53	1012.54	1012.58	1012.57	1012.55	1012.57	1012.58	1012.58	1012.58	1012.56	1012.55
	9	1012.55	1012.56	1012.60	1012.60	1012.58	1012.58	1012.56	1012.56	1012.54	1012.50	1012.42	1012.35	1012.53
	10	1012.35	1012.34	1012.28	1012.19	1012.13	1012.10	1012.05	1011.97	1011.93	1011.93	1011.89	1011.81	1012.08
	11	1011.76	1011.76	1011.75	1011.70	1011.65	1011.59	1011.54	1011.51	1011.48	1011.43	1011.37	1011.35	1011.57
	12	1011.35	1011.34	1011.34	1011.34	1011.32	1011.33	1011.36	1011.34	1011.29	1011.25	1011.20	1011.15	1011.30
	13	1011.15	1011.19	1011.27	1011.28	1011.22	1011.17	1011.15	1011.14	1011.11	1011.12	1011.12	1011.10	1011.17
	14	1011.07	1011.09	1011.14	1011.19	1011.19	1011.23	1011.29	1011.32	1011.36	1011.40	1011.46	1011.49	1011.27
	15	1011.47	1011.40	1011.30	1011.25	1011.26	1011.31	1011.32	1011.30	1011.27	1011.26	1011.32	1011.38	1011.32
	16	1011.38	1011.34	1011.29	1011.27	1011.31	1011.31	1011.27	1011.28	1011.32	1011.34	1011.32	1011.29	1011.31
	17	1011.29	1011.31	1011.34	1011.37	1011.39	1011.43	1011.47	1011.44	1011.43	1011.43	1011.42	1011.44	1011.39
	18	1011.50	1011.50	1011.49	1011.51	1011.57	1011.67	1011.75	1011.79	1011.79	1011.82	1011.88	1011.91	1011.68
	19	1011.94	1011.96	1012.04	1012.14	1012.18	1012.19	1012.19	1012.19	1012.19	1012.19	1012.21	1012.25	1012.14
	20	1012.28	1012.31	1012.34	1012.37	1012.40	1012.42	1012.43	1012.45	1012.46	1012.47	1012.47	1012.49	1012.41
	21	1012.51	1012.51	1012.53	1012.53	1012.52	1012.52	1012.54	1012.55	1012.56	1012.60	1012.62	1012.60	1012.55
	22	1012.58	1012.59	1012.61	1012.65	1012.68	1012.67	1012.69	1012.74	1012.78	1012.78	1012.79	1012.81	1012.69
	23	1012.83	1012.83	1012.83	1012.84	1012.82	1012.78	1012.75	1012.78	1012.80	1012.84	1012.87	1012.85	1012.81

S.V.I.R.CO. Observatory - Pressure in hectoPascal – August 2017

day	hh	00_05	05_10	10_15	15_20	20_25	25_30	30_35	35_40	40_45	45_50	50_55	55_60	average
21	0	1012.85	1012.84	1012.85	1012.87	1012.88	1012.86	1012.87	1012.86	1012.84	1012.83	1012.82	1012.81	1012.85
	1	1012.78	1012.73	1012.69	1012.70	1012.72	1012.74	1012.74	1012.75	1012.76	1012.76	1012.75	1012.73	1012.73
	2	1012.72	1012.72	1012.71	1012.69	1012.69	1012.70	1012.69	1012.69	1012.67	1012.65	1012.65	1012.66	1012.68
	3	1012.66	1012.65	1012.66	1012.66	1012.66	1012.69	1012.70	1012.71	1012.72	1012.75	1012.78	1012.80	1012.70
	4	1012.80	1012.78	1012.79	1012.84	1012.90	1012.95	1012.97	1012.98	1012.99	1013.02	1013.04	1013.10	1012.93
	5	1013.15	1013.20	1013.25	1013.24	1013.24	1013.27	1013.35	1013.41	1013.43	1013.47	1013.53	1013.56	1013.34
	6	1013.59	1013.67	1013.72	1013.77	1013.83	1013.84	1013.84	1013.85	1013.84	1013.82	1013.79	1013.79	1013.78
	7	1013.82	1013.82	1013.84	1013.85	1013.87	1013.90	1013.91	1013.91	1013.91	1013.94	1013.98	1014.00	1013.89
	8	1013.98	1013.95	1013.94	1013.94	1013.96	1013.97	1013.95	1013.93	1013.91	1013.87	1013.81	1013.76	1013.91
	9	1013.70	1013.65	1013.59	1013.53	1013.46	1013.42	1013.35	1013.29	1013.27	1013.25	1013.20	1013.15	1013.40
	10	1013.12	1013.12	1013.10	1013.07	1013.05	1012.98	1012.94	1012.97	1012.96	1012.87	1012.84	1012.86	1012.99
	11	1012.85	1012.83	1012.81	1012.78	1012.75	1012.70	1012.65	1012.62	1012.59	1012.55	1012.51	1012.50	1012.68
	12	1012.50	1012.47	1012.44	1012.39	1012.34	1012.35	1012.30	1012.23	1012.19	1012.13	1012.13	1012.11	1012.30
	13	1012.07	1011.99	1011.95	1011.94	1011.87	1011.85	1011.86	1011.82	1011.76	1011.71	1011.65	1011.62	1011.84
	14	1011.63	1011.58	1011.51	1011.48	1011.41	1011.36	1011.34	1011.33	1011.34	1011.30	1011.26	1011.25	1011.40
	15	1011.20	1011.16	1011.12	1011.06	1011.03	1011.02	1011.04	1011.05	1011.03	1011.01	1011.02	1011.06	1011.06
	16	1011.07	1011.03	1011.05	1011.07	1011.04	1011.03	1011.03	1011.06	1011.09	1011.13	1011.16	1011.19	1011.08
	17	1011.21	1011.23	1011.28	1011.35	1011.39	1011.42	1011.49	1011.57	1011.64	1011.73	1011.81	1011.87	1011.50
	18	1011.93	1012.03	1012.12	1012.16	1012.19	1012.24	1012.28	1012.34	1012.40	1012.44	1012.50	1012.57	1012.26
	19	1012.62	1012.67	1012.73	1012.79	1012.85	1012.93	1012.99	1012.98	1012.94	1012.95	1012.97	1013.00	1012.87
	20	1013.02	1013.06	1013.11	1013.12	1013.15	1013.21	1013.22	1013.21	1013.23	1013.26	1013.29	1013.32	1013.18
	21	1013.36	1013.39	1013.40	1013.42	1013.46	1013.50	1013.54	1013.56	1013.58	1013.57	1013.54	1013.57	1013.49
	22	1013.64	1013.68	1013.72	1013.74	1013.73	1013.73	1013.75	1013.79	1013.88	1013.98	1014.08	1014.14	1013.82
	23	1014.13	1014.11	1014.11	1014.14	1014.17	1014.18	1014.16	1014.16	1014.20	1014.23	1014.21	1014.20	1014.16
22	0	1014.24	1014.25	1014.27	1014.33	1014.40	1014.46	1014.52	1014.55	1014.56	1014.56	1014.56	1014.56	1014.44
	1	1014.54	1014.53	1014.55	1014.54	1014.55	1014.62	1014.66	1014.70	1014.75	1014.76	1014.78	1014.81	1014.65
	2	1014.84	1014.86	1014.87	1014.90	1014.94	1015.00	1015.05	1015.06	1015.09	1015.14	1015.14	1015.14	1015.00
	3	1015.18	1015.23	1015.25	1015.27	1015.29	1015.31	1015.36	1015.43	1015.49	1015.53	1015.57	1015.60	1015.37
	4	1015.64	1015.68	1015.71	1015.75	1015.79	1015.80	1015.82	1015.89	1015.96	1015.99	1016.00	1016.03	1015.83
	5	1016.07	1016.10	1016.13	1016.14	1016.14	1016.15	1016.16	1016.21	1016.25	1016.29	1016.29	1016.27	1016.18
	6	1016.23	1016.22	1016.23	1016.26	1016.32	1016.35	1016.34	1016.33	1016.32	1016.31	1016.31	1016.32	1016.29
	7	1016.33	1016.35	1016.38	1016.41	1016.43	1016.44	1016.43	1016.43	1016.42	1016.42	1016.44	1016.46	1016.41
	8	1016.45	1016.42	1016.40	1016.37	1016.35	1016.33	1016.32	1016.34	1016.35	1016.35	1016.38	1016.38	1016.37
	9	1016.34	1016.32	1016.30	1016.25	1016.23	1016.22	1016.18	1016.17	1016.18	1016.13	1016.07	1016.02	1016.20
	10	1015.98	1015.96	1015.89	1015.80	1015.76	1015.74	1015.76	1015.76	1015.69	1015.64	1015.62	1015.59	1015.76
	11	1015.55	1015.53	1015.47	1015.38	1015.32	1015.28	1015.25	1015.18	1015.14	1015.13	1015.11	1015.06	1015.28
	12	1015.02	1015.01	1014.97	1014.88	1014.80	1014.77	1014.73	1014.69	1014.64	1014.61	1014.60	1014.60	1014.78
	13	1014.62	1014.56	1014.48	1014.46	1014.44	1014.42	1014.39	1014.34	1014.33	1014.33	1014.34	1014.32	1014.42
	14	1014.30	1014.29	1014.23	1014.21	1014.23	1014.22	1014.18	1014.16	1014.14	1014.12	1014.10	1014.11	1014.19
	15	1014.09	1014.08	1014.09	1014.05	1014.02	1013.96	1013.94	1013.96	1013.97	1013.98	1013.94	1013.84	1013.99
	16	1013.76	1013.76	1013.77	1013.75	1013.77	1013.78	1013.78	1013.78	1013.79	1013.82	1013.86	1013.91	1013.79
	17	1013.88	1013.82	1013.81	1013.79	1013.80	1013.82	1013.84	1013.83	1013.80	1013.78	1013.78	1013.79	1013.81
	18	1013.82	1013.84	1013.84	1013.87	1013.90	1013.94	1013.97	1013.98	1014.00	1014.04	1014.09	1014.14	1013.95
	19	1014.20	1014.26	1014.31	1014.35	1014.38	1014.40	1014.41	1014.42	1014.43	1014.42	1014.41	1014.42	1014.37
	20	1014.43	1014.43	1014.42	1014.42	1014.45	1014.48	1014.51	1014.53	1014.50	1014.48	1014.46	1014.44	1014.46
	21	1014.44	1014.45	1014.48	1014.52	1014.55	1014.56	1014.56	1014.52	1014.49	1014.50	1014.50	1014.52	1014.51
	22	1014.56	1014.55	1014.56	1014.59	1014.59	1014.59	1014.60	1014.64	1014.68	1014.71	1014.70	1014.68	1014.62
	23	1014.66	1014.64	1014.64	1014.64	1014.65	1014.67	1014.66	1014.63	1014.64	1014.65	1014.64	1014.64	1014.64

S.V.I.R.CO. Observatory - Pressure in hectoPascal – August 2017

day	hh	00_05	05_10	10_15	15_20	20_25	25_30	30_35	35_40	40_45	45_50	50_55	55_60	average
23	0	1014.66	1014.67	1014.65	1014.62	1014.61	1014.57	1014.54	1014.55	1014.56	1014.55	1014.55	1014.54	1014.58
	1	1014.53	1014.55	1014.57	1014.61	1014.63	1014.63	1014.59	1014.55	1014.53	1014.49	1014.45	1014.43	1014.54
	2	1014.42	1014.41	1014.42	1014.43	1014.44	1014.45	1014.48	1014.51	1014.49	1014.46	1014.47	1014.50	1014.46
	3	1014.54	1014.57	1014.61	1014.65	1014.69	1014.75	1014.79	1014.81	1014.84	1014.87	1014.89	1014.93	1014.74
	4	1014.97	1015.03	1015.11	1015.18	1015.21	1015.23	1015.27	1015.32	1015.40	1015.43	1015.44	1015.46	1015.25
	5	1015.47	1015.50	1015.54	1015.54	1015.55	1015.61	1015.64	1015.66	1015.69	1015.75	1015.77	1015.76	1015.62
	6	1015.75	1015.78	1015.83	1015.87	1015.88	1015.89	1015.90	1015.90	1015.92	1015.96	1016.03	1016.07	1015.90
	7	1016.10	1016.14	1016.17	1016.20	1016.22	1016.25	1016.25	1016.25	1016.25	1016.25	1016.26	1016.27	1016.21
	8	1016.27	1016.26	1016.27	1016.29	1016.29	1016.30	1016.34	1016.37	1016.36	1016.34	1016.33	1016.32	1016.31
	9	1016.31	1016.30	1016.28	1016.25	1016.23	1016.23	1016.24	1016.24	1016.25	1016.24	1016.24	1016.23	1016.25
	10	1016.19	1016.16	1016.13	1016.10	1016.09	1016.06	1016.01	1015.96	1015.96	1015.96	1015.92	1015.88	1016.03
	11	1015.83	1015.81	1015.79	1015.74	1015.72	1015.71	1015.71	1015.71	1015.69	1015.66	1015.64	1015.62	1015.72
	12	1015.59	1015.56	1015.55	1015.57	1015.54	1015.52	1015.50	1015.49	1015.45	1015.43	1015.42	1015.39	1015.50
	13	1015.32	1015.27	1015.28	1015.29	1015.27	1015.24	1015.23	1015.23	1015.24	1015.25	1015.24	1015.24	1015.26
	14	1015.27	1015.30	1015.29	1015.29	1015.32	1015.33	1015.31	1015.30	1015.32	1015.33	1015.35	1015.34	1015.31
	15	1015.30	1015.30	1015.33	1015.37	1015.36	1015.34	1015.38	1015.44	1015.46	1015.43	1015.39	1015.39	1015.37
	16	1015.41	1015.39	1015.38	1015.40	1015.44	1015.47	1015.45	1015.40	1015.36	1015.33	1015.29	1015.28	1015.38
	17	1015.30	1015.33	1015.38	1015.44	1015.47	1015.48	1015.49	1015.50	1015.55	1015.58	1015.60	1015.65	1015.48
	18	1015.72	1015.77	1015.81	1015.84	1015.85	1015.88	1015.93	1015.97	1015.99	1016.03	1016.09	1016.16	1015.92
	19	1016.24	1016.29	1016.35	1016.40	1016.42	1016.46	1016.48	1016.47	1016.47	1016.48	1016.49	1016.53	1016.42
	20	1016.54	1016.56	1016.60	1016.61	1016.60	1016.64	1016.70	1016.75	1016.79	1016.80	1016.83	1016.89	1016.69
	21	1016.93	1016.93	1016.92	1016.95	1017.00	1017.01	1017.01	1017.00	1016.98	1016.98	1016.98	1016.98	1016.97
	22	1016.98	1016.95	1016.95	1016.99	1017.02	1017.06	1017.11	1017.14	1017.14	1017.10	1017.07	1017.07	1017.05
	23	1017.06	1017.03	1017.03	1017.06	1017.05	1017.05	1017.05	1017.04	1017.01	1016.99	1017.01	1017.02	1017.03
24	0	1016.99	1016.98	1016.96	1016.95	1016.93	1016.91	1016.90	1016.89	1016.84	1016.81	1016.82	1016.82	1016.89
	1	1016.81	1016.81	1016.80	1016.81	1016.83	1016.85	1016.86	1016.85	1016.83	1016.83	1016.83	1016.83	1016.83
	2	1016.82	1016.78	1016.74	1016.74	1016.74	1016.71	1016.70	1016.69	1016.66	1016.64	1016.63	1016.61	1016.70
	3	1016.60	1016.62	1016.66	1016.68	1016.67	1016.67	1016.68	1016.72	1016.78	1016.80	1016.81	1016.82	1016.71
	4	1016.83	1016.85	1016.88	1016.91	1016.94	1016.96	1016.98	1017.02	1017.07	1017.14	1017.23	1017.29	1017.01
	5	1017.36	1017.43	1017.50	1017.55	1017.55	1017.54	1017.56	1017.59	1017.64	1017.70	1017.76	1017.82	1017.58
	6	1017.85	1017.87	1017.91	1017.96	1018.01	1018.04	1018.08	1018.12	1018.18	1018.26	1018.31	1018.35	1018.08
	7	1018.38	1018.38	1018.36	1018.37	1018.40	1018.43	1018.45	1018.49	1018.54	1018.59	1018.60	1018.62	1018.47
	8	1018.67	1018.70	1018.70	1018.71	1018.71	1018.69	1018.69	1018.70	1018.72	1018.73	1018.73	1018.74	1018.70
	9	1018.75	1018.76	1018.75	1018.75	1018.76	1018.76	1018.77	1018.76	1018.75	1018.74	1018.71	1018.67	1018.74
	10	1018.65	1018.62	1018.59	1018.57	1018.56	1018.55	1018.52	1018.49	1018.46	1018.43	1018.42	1018.39	1018.52
	11	1018.34	1018.29	1018.26	1018.24	1018.22	1018.22	1018.21	1018.21	1018.22	1018.25	1018.27	1018.24	1018.25
	12	1018.22	1018.23	1018.25	1018.20	1018.15	1018.12	1018.07	1018.06	1018.06	1018.00	1017.94	1017.93	1018.10
	13	1017.96	1017.96	1017.95	1017.95	1017.95	1017.95	1017.94	1017.92	1017.91	1017.89	1017.89	1017.90	1017.93
	14	1017.91	1017.91	1017.89	1017.89	1017.90	1017.89	1017.87	1017.86	1017.87	1017.87	1017.81	1017.76	1017.87
	15	1017.73	1017.71	1017.72	1017.76	1017.79	1017.80	1017.81	1017.81	1017.82	1017.86	1017.90	1017.91	1017.80
	16	1017.91	1017.92	1017.92	1017.91	1017.87	1017.85	1017.89	1017.97	1018.02	1018.02	1018.00	1018.00	1017.94
	17	1018.01	1018.05	1018.09	1018.13	1018.13	1018.13	1018.19	1018.25	1018.27	1018.27	1018.29	1018.32	1018.17
	18	1018.34	1018.35	1018.39	1018.44	1018.47	1018.51	1018.55	1018.58	1018.61	1018.66	1018.74	1018.85	1018.54
	19	1018.91	1018.92	1018.93	1018.95	1018.99	1019.07	1019.18	1019.28	1019.35	1019.39	1019.41	1019.43	1019.15
	20	1019.47	1019.50	1019.52	1019.57	1019.59	1019.58	1019.60	1019.59	1019.58	1019.59	1019.58	1019.58	1019.56
	21	1019.55	1019.50	1019.50	1019.49	1019.48	1019.45	1019.39	1019.37	1019.36	1019.36	1019.36	1019.35	1019.43
	22	1019.33	1019.33	1019.32	1019.27	1019.22	1019.18	1019.15	1019.10	1019.08	1019.08	1019.07	1019.09	1019.18
	23	1019.12	1019.14	1019.16	1019.14	1019.14	1019.15	1019.15	1019.13	1019.09	1019.05	1019.05	1019.05	1019.11

S.V.I.R.CO. Observatory - Pressure in hectoPascal – August 2017

day	hh	00_05	05_10	10_15	15_20	20_25	25_30	30_35	35_40	40_45	45_50	50_55	55_60	average
25	0	1019.05	1019.04	1019.02	1019.05	1019.08	1019.05	1019.04	1019.06	1019.07	1019.08	1019.08	1019.08	1019.06
	1	1019.06	1019.03	1018.98	1018.94	1018.92	1018.89	1018.87	1018.84	1018.86	1018.88	1018.92	1018.91	1018.92
	2	1018.84	1018.80	1018.80	1018.80	1018.81	1018.82	1018.81	1018.77	1018.75	1018.74	1018.74	1018.76	1018.78
	3	1018.76	1018.74	1018.74	1018.77	1018.78	1018.75	1018.75	1018.75	1018.76	1018.78	1018.79	1018.79	1018.76
	4	1018.81	1018.86	1018.92	1019.01	1019.08	1019.15	1019.22	1019.28	1019.29	1019.25	1019.21	1019.19	1019.10
	5	1019.19	1019.21	1019.21	1019.21	1019.26	1019.30	1019.31	1019.33	1019.35	1019.34	1019.35	1019.38	1019.28
	6	1019.43	1019.44	1019.43	1019.42	1019.41	1019.46	1019.50	1019.51	1019.51	1019.53	1019.57	1019.62	1019.48
	7	1019.62	1019.64	1019.68	1019.68	1019.67	1019.68	1019.69	1019.70	1019.69	1019.68	1019.67	1019.66	1019.67
	8	1019.64	1019.60	1019.57	1019.55	1019.53	1019.51	1019.49	1019.48	1019.50	1019.52	1019.52	1019.52	1019.53
	9	1019.51	1019.49	1019.46	1019.43	1019.40	1019.39	1019.38	1019.38	1019.37	1019.33	1019.27	1019.24	1019.38
	10	1019.19	1019.13	1019.10	1019.08	1019.07	1019.03	1018.98	1018.99	1018.99	1018.98	1018.99	1018.99	1019.04
	11	1018.95	1018.88	1018.88	1018.89	1018.87	1018.87	1018.86	1018.86	1018.87	1018.85	1018.82	1018.80	1018.87
	12	1018.76	1018.73	1018.69	1018.67	1018.67	1018.63	1018.55	1018.53	1018.50	1018.46	1018.48	1018.52	1018.60
	13	1018.52	1018.50	1018.45	1018.43	1018.41	1018.36	1018.34	1018.30	1018.27	1018.29	1018.27	1018.24	1018.36
	14	1018.24	1018.25	1018.25	1018.22	1018.18	1018.13	1018.09	1018.05	1018.01	1018.01	1017.99	1017.97	1018.11
	15	1017.96	1017.95	1017.96	1017.96	1017.96	1017.96	1017.96	1017.93	1017.87	1017.82	1017.79	1017.75	1017.90
	16	1017.71	1017.66	1017.62	1017.59	1017.60	1017.62	1017.63	1017.62	1017.59	1017.55	1017.49	1017.45	1017.59
	17	1017.46	1017.49	1017.53	1017.58	1017.61	1017.62	1017.64	1017.68	1017.71	1017.75	1017.80	1017.84	1017.64
	18	1017.90	1017.95	1017.99	1018.06	1018.13	1018.19	1018.25	1018.32	1018.39	1018.40	1018.41	1018.46	1018.20
	19	1018.48	1018.49	1018.52	1018.57	1018.60	1018.58	1018.53	1018.50	1018.51	1018.52	1018.54	1018.57	1018.53
	20	1018.59	1018.58	1018.56	1018.58	1018.57	1018.52	1018.49	1018.47	1018.46	1018.46	1018.43	1018.38	1018.50
	21	1018.34	1018.32	1018.27	1018.26	1018.32	1018.38	1018.40	1018.41	1018.43	1018.44	1018.40	1018.40	1018.36
	22	1018.41	1018.39	1018.36	1018.37	1018.38	1018.35	1018.29	1018.26	1018.26	1018.25	1018.24	1018.22	1018.31
	23	1018.22	1018.21	1018.17	1018.08	1017.98	1017.91	1017.84	1017.76	1017.72	1017.75	1017.82	1017.85	1017.94
26	0	1017.80	1017.78	1017.73	1017.73	1017.72	1017.69	1017.67	1017.62	1017.59	1017.59	1017.61	1017.62	1017.67
	1	1017.58	1017.57	1017.57	1017.53	1017.50	1017.51	1017.55	1017.53	1017.48	1017.45	1017.44	1017.42	1017.51
	2	1017.40	1017.42	1017.38	1017.33	1017.32	1017.33	1017.34	1017.33	1017.29	1017.24	1017.18	1017.10	1017.30
	3	1017.03	1016.97	1016.95	1016.94	1016.93	1016.94	1016.95	1016.95	1016.93	1016.89	1016.87	1016.87	1016.93
	4	1016.88	1016.91	1016.96	1017.03	1017.11	1017.13	1017.13	1017.16	1017.16	1017.16	1017.19	1017.20	1017.08
	5	1017.23	1017.28	1017.31	1017.32	1017.34	1017.36	1017.38	1017.39	1017.41	1017.44	1017.46	1017.47	1017.36
	6	1017.50	1017.51	1017.47	1017.45	1017.45	1017.43	1017.42	1017.44	1017.49	1017.53	1017.56	1017.60	1017.49
	7	1017.63	1017.64	1017.66	1017.70	1017.72	1017.70	1017.65	1017.62	1017.62	1017.63	1017.67	1017.67	1017.66
	8	1017.68	1017.71	1017.72	1017.71	1017.67	1017.62	1017.59	1017.58	1017.53	1017.47	1017.44	1017.44	1017.59
	9	1017.45	1017.43	1017.39	1017.36	1017.33	1017.30	1017.27	1017.25	1017.23	1017.20	1017.14	1017.09	1017.28
	10	1017.07	1017.03	1016.96	1016.94	1016.91	1016.86	1016.82	1016.78	1016.74	1016.71	1016.67	1016.60	1016.84
	11	1016.54	1016.51	1016.49	1016.48	1016.48	1016.46	1016.43	1016.42	1016.40	1016.36	1016.34	1016.36	1016.44
	12	1016.34	1016.32	1016.29	1016.26	1016.23	1016.17	1016.11	1016.08	1016.07	1016.04	1016.00	1015.97	1016.15
	13	1015.92	1015.84	1015.78	1015.75	1015.74	1015.70	1015.63	1015.59	1015.55	1015.51	1015.51	1015.48	1015.66
	14	1015.43	1015.42	1015.39	1015.38	1015.39	1015.35	1015.31	1015.32	1015.34	1015.34	1015.33	1015.33	1015.36
	15	1015.32	1015.32	1015.33	1015.31	1015.26	1015.23	1015.18	1015.11	1015.10	1015.11	1015.11	1015.11	1015.21
	16	1015.12	1015.11	1015.08	1015.10	1015.11	1015.08	1015.08	1015.08	1015.08	1015.06	1015.00	1014.94	1015.07
	17	1014.94	1014.97	1014.97	1014.97	1014.99	1015.02	1015.03	1015.03	1015.04	1015.07	1015.08	1015.10	1015.02
	18	1015.13	1015.16	1015.21	1015.25	1015.31	1015.37	1015.42	1015.47	1015.52	1015.59	1015.64	1015.65	1015.39
	19	1015.65	1015.66	1015.67	1015.67	1015.66	1015.64	1015.65	1015.71	1015.77	1015.78	1015.79	1015.80	1015.70
	20	1015.79	1015.80	1015.84	1015.83	1015.82	1015.85	1015.86	1015.86	1015.89	1015.90	1015.88	1015.88	1015.85
	21	1015.89	1015.89	1015.88	1015.88	1015.90	1015.91	1015.92	1015.90	1015.89	1015.87	1015.84	1015.82	1015.88
	22	1015.82	1015.82	1015.80	1015.78	1015.75	1015.73	1015.73	1015.74	1015.77	1015.80	1015.81	1015.80	1015.78
	23	1015.77	1015.77	1015.79	1015.77	1015.75	1015.74	1015.71	1015.69	1015.69	1015.65	1015.62	1015.61	1015.71

S.V.I.R.CO. Observatory - Pressure in hectoPascal – August 2017

day	hh	00_05	05_10	10_15	15_20	20_25	25_30	30_35	35_40	40_45	45_50	50_55	55_60	average
27	0	1015.60	1015.57	1015.51	1015.49	1015.50	1015.48	1015.48	1015.47	1015.43	1015.40	1015.41	1015.45	1015.47
	1	1015.49	1015.49	1015.44	1015.41	1015.40	1015.34	1015.30	1015.29	1015.29	1015.30	1015.28	1015.25	1015.35
	2	1015.22	1015.16	1015.14	1015.15	1015.14	1015.11	1015.07	1015.04	1014.99	1014.92	1014.89	1014.89	1015.06
	3	1014.90	1014.90	1014.89	1014.90	1014.92	1014.91	1014.92	1014.92	1014.89	1014.91	1014.96	1015.02	1014.92
	4	1015.04	1015.05	1015.09	1015.09	1015.07	1015.06	1015.09	1015.14	1015.16	1015.16	1015.18	1015.22	1015.11
	5	1015.24	1015.26	1015.25	1015.26	1015.27	1015.26	1015.25	1015.26	1015.26	1015.27	1015.27	1015.29	1015.26
	6	1015.33	1015.36	1015.35	1015.36	1015.38	1015.37	1015.35	1015.37	1015.41	1015.46	1015.52	1015.55	1015.40
	7	1015.54	1015.54	1015.52	1015.46	1015.44	1015.43	1015.42	1015.40	1015.36	1015.33	1015.30	1015.31	1015.42
	8	1015.33	1015.32	1015.32	1015.33	1015.33	1015.30	1015.27	1015.22	1015.16	1015.11	1015.08	1015.07	1015.23
	9	1015.04	1015.00	1014.99	1014.99	1014.96	1014.92	1014.89	1014.84	1014.77	1014.72	1014.71	1014.72	1014.88
	10	1014.70	1014.64	1014.61	1014.60	1014.60	1014.61	1014.60	1014.60	1014.59	1014.56	1014.52	1014.47	1014.59
	11	1014.44	1014.42	1014.40	1014.37	1014.33	1014.27	1014.20	1014.14	1014.11	1014.09	1014.06	1014.05	1014.24
	12	1013.99	1013.87	1013.78	1013.74	1013.67	1013.60	1013.62	1013.64	1013.63	1013.62	1013.62	1013.59	1013.70
	13	1013.52	1013.46	1013.39	1013.34	1013.36	1013.39	1013.38	1013.38	1013.33	1013.31	1013.30	1013.30	1013.37
	14	1013.30	1013.27	1013.23	1013.20	1013.19	1013.18	1013.17	1013.19	1013.18	1013.11	1013.07	1013.04	1013.18
	15	1013.01	1012.96	1012.93	1012.90	1012.83	1012.79	1012.78	1012.77	1012.74	1012.71	1012.66	1012.63	1012.81
	16	1012.56	1012.50	1012.47	1012.45	1012.41	1012.37	1012.37	1012.40	1012.42	1012.45	1012.45	1012.44	1012.44
	17	1012.42	1012.41	1012.41	1012.42	1012.45	1012.49	1012.50	1012.49	1012.46	1012.42	1012.43	1012.45	1012.44
	18	1012.44	1012.43	1012.44	1012.51	1012.66	1012.75	1012.74	1012.75	1012.84	1012.93	1012.98	1012.98	1012.70
	19	1012.97	1013.01	1013.06	1013.09	1013.11	1013.15	1013.21	1013.22	1013.23	1013.20	1013.18	1013.27	1013.14
	20	1013.33	1013.34	1013.36	1013.35	1013.37	1013.39	1013.38	1013.38	1013.40	1013.45	1013.46	1013.43	1013.39
	21	1013.44	1013.47	1013.47	1013.45	1013.44	1013.38	1013.34	1013.37	1013.43	1013.46	1013.46	1013.46	1013.43
	22	1013.47	1013.51	1013.58	1013.66	1013.77	1013.86	1013.86	1013.83	1013.77	1013.72	1013.68	1013.64	1013.69
	23	1013.59	1013.55	1013.52	1013.53	1013.55	1013.52	1013.47	1013.46	1013.46	1013.44	1013.44	1013.47	1013.50
28	0	1013.50	1013.49	1013.50	1013.52	1013.53	1013.56	1013.55	1013.52	1013.50	1013.50	1013.47	1013.44	1013.51
	1	1013.42	1013.38	1013.35	1013.33	1013.32	1013.27	1013.21	1013.20	1013.18	1013.13	1013.10	1013.09	1013.25
	2	1013.09	1013.07	1013.05	1013.02	1012.96	1012.92	1012.89	1012.84	1012.78	1012.72	1012.69	1012.68	1012.89
	3	1012.67	1012.67	1012.68	1012.67	1012.64	1012.58	1012.52	1012.49	1012.50	1012.52	1012.52	1012.52	1012.58
	4	1012.55	1012.59	1012.60	1012.61	1012.64	1012.66	1012.66	1012.68	1012.72	1012.79	1012.88	1012.97	1012.69
	5	1013.01	1013.04	1013.11	1013.17	1013.20	1013.24	1013.30	1013.35	1013.41	1013.47	1013.51	1013.54	1013.28
	6	1013.58	1013.64	1013.71	1013.78	1013.81	1013.80	1013.77	1013.76	1013.75	1013.74	1013.76	1013.78	1013.74
	7	1013.81	1013.85	1013.84	1013.82	1013.81	1013.79	1013.78	1013.77	1013.75	1013.75	1013.75	1013.72	1013.79
	8	1013.72	1013.73	1013.72	1013.71	1013.72	1013.74	1013.72	1013.67	1013.65	1013.66	1013.68	1013.68	1013.70
	9	1013.66	1013.65	1013.62	1013.61	1013.60	1013.54	1013.50	1013.46	1013.39	1013.34	1013.31	1013.25	1013.49
	10	1013.22	1013.22	1013.20	1013.15	1013.12	1013.07	1013.05	1013.08	1013.05	1012.99	1012.94	1012.87	1013.08
	11	1012.74	1012.63	1012.56	1012.48	1012.42	1012.39	1012.36	1012.33	1012.25	1012.14	1012.07	1012.01	1012.36
	12	1011.96	1011.88	1011.81	1011.76	1011.69	1011.64	1011.63	1011.64	1011.64	1011.58	1011.49	1011.39	1011.67
	13	1011.35	1011.34	1011.34	1011.33	1011.29	1011.24	1011.20	1011.18	1011.15	1011.12	1011.11	1011.07	1011.22
	14	1010.99	1010.90	1010.80	1010.74	1010.73	1010.68	1010.63	1010.63	1010.60	1010.55	1010.52	1010.51	1010.69
	15	1010.53	1010.50	1010.49	1010.47	1010.42	1010.40	1010.41	1010.38	1010.32	1010.28	1010.29	1010.28	1010.39
	16	1010.21	1010.14	1010.08	1010.05	1010.04	1010.02	1010.01	1010.02	1010.01	1009.99	1010.00	1010.03	1010.05
	17	1010.05	1010.07	1010.09	1010.10	1010.12	1010.18	1010.22	1010.26	1010.27	1010.28	1010.37	1010.47	1010.20
	18	1010.54	1010.56	1010.58	1010.64	1010.65	1010.63	1010.65	1010.70	1010.77	1010.82	1010.87	1010.95	1010.69
	19	1011.01	1011.05	1011.09	1011.09	1011.05	1011.07	1011.16	1011.28	1011.35	1011.30	1011.28	1011.31	1011.17
	20	1011.28	1011.19	1011.14	1011.14	1011.17	1011.23	1011.24	1011.22	1011.21	1011.21	1011.24	1011.28	1011.21
	21	1011.34	1011.37	1011.35	1011.34	1011.35	1011.34	1011.29	1011.25	1011.23	1011.26	1011.30	1011.29	1011.31
	22	1011.29	1011.28	1011.24	1011.26	1011.32	1011.35	1011.36	1011.36	1011.36	1011.33	1011.28	1011.25	1011.30
	23	1011.22	1011.17	1011.16	1011.19	1011.26	1011.35	1011.44	1011.65	1011.82	1011.76	1011.69	1011.70	1011.45

S.V.I.R.CO. Observatory - Pressure in hectoPascal – August 2017

day	hh	00_05	05_10	10_15	15_20	20_25	25_30	30_35	35_40	40_45	45_50	50_55	55_60	average
29	0	1011.53	1011.52	1011.57	1011.71	1011.75	1011.73	1011.73	1011.67	1011.63	1011.64	1011.56	1011.49	1011.63
	1	1011.49	1011.54	1011.58	1011.54	1011.49	1011.49	1011.52	1011.48	1011.40	1011.33	1011.34	1011.43	1011.47
	2	1011.52	1011.55	1011.48	1011.37	1011.35	1011.31	1011.26	1011.35	1011.34	1011.24	1011.35	1011.54	1011.39
	3	1011.53	1011.36	1011.33	1011.48	1011.62	1011.71	1011.79	1011.92	1011.98	1011.88	1011.73	1011.63	1011.66
	4	1011.58	1011.59	1011.63	1011.67	1011.73	1011.83	1011.91	1011.90	1011.92	1011.95	1011.95	1011.99	1011.80
	5	1012.05	1012.07	1012.08	1012.10	1012.14	1012.12	1012.07	1012.08	1012.09	1012.08	1012.10	1012.18	1012.09
	6	1012.26	1012.29	1012.28	1012.25	1012.23	1012.24	1012.25	1012.25	1012.27	1012.29	1012.28	1012.24	1012.26
	7	1012.20	1012.18	1012.19	1012.20	1012.23	1012.24	1012.26	1012.31	1012.36	1012.38	1012.37	1012.35	1012.27
	8	1012.34	1012.32	1012.31	1012.32	1012.34	1012.35	1012.37	1012.40	1012.40	1012.41	1012.42	1012.42	1012.36
	9	1012.43	1012.41	1012.38	1012.34	1012.31	1012.27	1012.23	1012.21	1012.20	1012.16	1012.09	1012.03	1012.25
	10	1011.99	1011.94	1011.90	1011.88	1011.85	1011.80	1011.76	1011.70	1011.64	1011.58	1011.53	1011.48	1011.75
	11	1011.43	1011.41	1011.39	1011.37	1011.40	1011.42	1011.39	1011.34	1011.30	1011.30	1011.31	1011.33	1011.36
	12	1011.36	1011.35	1011.33	1011.31	1011.27	1011.28	1011.24	1011.20	1011.15	1011.11	1011.10	1011.11	1011.23
	13	1011.13	1011.14	1011.15	1011.15	1011.11	1011.07	1011.08	1011.06	1011.03	1010.96	1010.91	1010.90	1011.05
	14	1010.82	1010.73	1010.70	1010.68	1010.63	1010.59	1010.54	1010.52	1010.50	1010.50	1010.50	1010.46	1010.60
	15	1010.45	1010.47	1010.49	1010.51	1010.55	1010.57	1010.57	1010.55	1010.60	1010.64	1010.62	1010.58	1010.55
	16	1010.54	1010.54	1010.54	1010.52	1010.48	1010.43	1010.39	1010.37	1010.35	1010.37	1010.41	1010.47	1010.45
	17	1010.52	1010.58	1010.61	1010.62	1010.63	1010.60	1010.61	1010.67	1010.73	1010.74	1010.75	1010.79	1010.65
	18	1010.82	1010.84	1010.84	1010.87	1010.96	1011.08	1011.18	1011.27	1011.34	1011.45	1011.54	1011.56	1011.14
	19	1011.57	1011.63	1011.69	1011.67	1011.70	1011.76	1011.82	1011.91	1011.94	1011.97	1012.03	1012.07	1011.81
	20	1012.09	1012.06	1012.01	1011.98	1011.95	1011.93	1011.93	1011.96	1012.00	1012.02	1012.04	1012.06	1012.00
	21	1012.08	1012.09	1012.11	1012.14	1012.20	1012.27	1012.34	1012.40	1012.46	1012.52	1012.55	1012.56	1012.31
	22	1012.58	1012.60	1012.61	1012.60	1012.59	1012.61	1012.66	1012.73	1012.82	1012.91	1012.96	1012.98	1012.72
	23	1012.98	1012.96	1012.98	1013.04	1013.11	1013.14	1013.13	1013.13	1013.14	1013.17	1013.18	1013.17	1013.09
30	0	1013.15	1013.14	1013.14	1013.14	1013.17	1013.18	1013.15	1013.14	1013.14	1013.14	1013.15	1013.15	1013.15
	1	1013.19	1013.25	1013.26	1013.27	1013.24	1013.19	1013.18	1013.19	1013.21	1013.24	1013.28	1013.26	1013.23
	2	1013.23	1013.25	1013.27	1013.27	1013.29	1013.30	1013.27	1013.22	1013.21	1013.20	1013.21	1013.22	1013.24
	3	1013.21	1013.22	1013.28	1013.31	1013.28	1013.25	1013.23	1013.19	1013.17	1013.15	1013.13	1013.17	1013.21
	4	1013.21	1013.27	1013.37	1013.43	1013.46	1013.49	1013.54	1013.61	1013.70	1013.80	1013.89	1013.92	1013.55
	5	1013.93	1013.98	1014.02	1014.08	1014.11	1014.14	1014.20	1014.24	1014.28	1014.31	1014.32	1014.35	1014.16
	6	1014.35	1014.34	1014.37	1014.36	1014.33	1014.35	1014.38	1014.39	1014.41	1014.46	1014.53	1014.56	1014.40
	7	1014.59	1014.60	1014.60	1014.64	1014.62	1014.58	1014.60	1014.61	1014.62	1014.66	1014.68	1014.65	1014.62
	8	1014.66	1014.70	1014.72	1014.72	1014.74	1014.79	1014.80	1014.79	1014.80	1014.82	1014.81	1014.79	1014.76
	9	1014.78	1014.78	1014.80	1014.78	1014.71	1014.64	1014.64	1014.64	1014.61	1014.58	1014.56	1014.54	1014.67
	10	1014.53	1014.52	1014.52	1014.51	1014.48	1014.45	1014.41	1014.38	1014.42	1014.44	1014.44	1014.44	1014.46
	11	1014.46	1014.49	1014.46	1014.45	1014.46	1014.43	1014.42	1014.40	1014.39	1014.37	1014.34	1014.33	1014.41
	12	1014.28	1014.21	1014.16	1014.12	1014.06	1014.01	1013.96	1013.91	1013.86	1013.81	1013.77	1013.71	1013.99
	13	1013.65	1013.60	1013.55	1013.50	1013.50	1013.48	1013.44	1013.41	1013.38	1013.35	1013.30	1013.25	1013.45
	14	1013.20	1013.17	1013.13	1013.09	1013.08	1013.08	1013.09	1013.09	1013.08	1013.08	1013.07	1013.07	1013.10
	15	1013.06	1013.02	1012.99	1012.99	1013.01	1013.01	1013.02	1013.04	1013.06	1013.07	1013.08	1013.12	1013.04
	16	1013.19	1013.22	1013.24	1013.28	1013.33	1013.36	1013.39	1013.42	1013.45	1013.48	1013.49	1013.48	1013.36
	17	1013.51	1013.56	1013.61	1013.63	1013.64	1013.69	1013.75	1013.82	1013.90	1013.96	1014.02	1014.05	1013.76
	18	1014.08	1014.11	1014.17	1014.23	1014.29	1014.35	1014.37	1014.42	1014.49	1014.56	1014.61	1014.65	1014.36
	19	1014.72	1014.79	1014.87	1014.93	1014.96	1014.92	1014.86	1014.85	1014.86	1014.90	1014.94	1014.95	1014.88
	20	1014.92	1014.87	1014.82	1014.79	1014.81	1014.82	1014.81	1014.82	1014.85	1014.88	1014.91	1014.93	1014.85
	21	1014.97	1015.00	1014.99	1014.98	1015.00	1015.04	1015.05	1015.07	1015.07	1015.03	1014.97	1014.92	1015.01
	22	1014.88	1014.84	1014.82	1014.81	1014.81	1014.81	1014.84	1014.89	1014.91	1014.91	1014.91	1014.91	1014.86
	23	1014.88	1014.82	1014.81	1014.84	1014.85	1014.86	1014.88	1014.87	1014.81	1014.72	1014.66	1014.65	1014.80

S.V.I.R.CO. Observatory - Pressure in hectoPascal – August 2017

day	hh	00_05	05_10	10_15	15_20	20_25	25_30	30_35	35_40	40_45	45_50	50_55	55_60	average
31	0	1014.64	1014.65	1014.63	1014.61	1014.64	1014.67	1014.67	1014.64	1014.58	1014.54	1014.49	1014.45	1014.60
	1	1014.44	1014.39	1014.34	1014.32	1014.31	1014.32	1014.34	1014.33	1014.35	1014.35	1014.31	1014.32	1014.34
	2	1014.35	1014.38	1014.41	1014.42	1014.41	1014.38	1014.35	1014.36	1014.36	1014.34	1014.34	1014.38	1014.37
	3	1014.45	1014.49	1014.52	1014.56	1014.60	1014.64	1014.67	1014.71	1014.78	1014.86	1014.95	1014.98	1014.68
	4	1014.94	1014.94	1014.99	1014.98	1014.93	1014.96	1014.98	1014.99	1015.04	1015.11	1015.21	1015.27	1015.03
	5	1015.28	1015.29	1015.30	1015.35	1015.43	1015.54	1015.65	1015.73	1015.78	1015.83	1015.93	1016.04	1015.59
	6	1016.13	1016.21	1016.28	1016.31	1016.32	1016.35	1016.40	1016.45	1016.46	1016.48	1016.52	1016.52	1016.37
	7	1016.53	1016.53	1016.53	1016.53	1016.53	1016.55	1016.58	1016.58	1016.60	1016.65	1016.72	1016.79	1016.59
	8	1016.84	1016.88	1016.91	1016.93	1016.95	1017.02	1017.06	1017.02	1016.97	1016.96	1016.98	1016.96	1016.95
	9	1016.90	1016.89	1016.92	1016.97	1017.01	1017.02	1017.02	1017.01	1016.98	1016.93	1016.90	1016.86	1016.95
	10	1016.80	1016.74	1016.69	1016.63	1016.58	1016.52	1016.48	1016.46	1016.43	1016.41	1016.39	1016.32	1016.53
	11	1016.23	1016.17	1016.11	1016.06	1015.99	1015.93	1015.90	1015.87	1015.80	1015.71	1015.62	1015.54	1015.91
	12	1015.49	1015.50	1015.51	1015.48	1015.43	1015.35	1015.26	1015.21	1015.20	1015.17	1015.12	1015.11	1015.32
	13	1015.12	1015.10	1015.05	1014.99	1014.95	1014.92	1014.88	1014.86	1014.83	1014.80	1014.75	1014.69	1014.91
	14	1014.66	1014.65	1014.65	1014.65	1014.64	1014.64	1014.64	1014.65	1014.69	1014.73	1014.79	1014.84	1014.68
	15	1014.86	1014.86	1014.87	1014.95	1015.08	1015.12	1015.13	1015.14	1015.15	1015.22	1015.30	1015.33	1015.08
	16	1015.33	1015.40	1015.47	1015.52	1015.55	1015.53	1015.57	1015.60	1015.56	1015.52	1015.52	1015.56	1015.51
	17	1015.60	1015.60	1015.59	1015.60	1015.65	1015.69	1015.70	1015.70	1015.72	1015.75	1015.82	1015.90	1015.69
	18	1015.96	1016.01	1016.06	1016.11	1016.13	1016.14	1016.14	1016.14	1016.14	1016.13	1016.11	1016.09	1016.09
	19	1016.07	1016.05	1016.02	1016.03	1016.02	1015.99	1016.01	1016.04	1016.06	1016.07	1016.06	1016.04	1016.04
	20	1016.06	1016.09	1016.14	1016.14	1016.11	1016.11	1016.11	1016.03	1015.94	1015.88	1015.82	1015.75	1016.01
	21	1015.75	1015.78	1015.77	1015.74	1015.68	1015.63	1015.59	1015.52	1015.44	1015.39	1015.34	1015.28	1015.57
	22	1015.23	1015.18	1015.14	1015.07	1015.03	1015.01	1015.00	1015.01	1015.02	1015.01	1014.97	1014.90	1015.04
	23	1014.80	1014.72	1014.75	1014.85	1014.96	1015.08	1015.13	1015.12	1015.13	1015.21	1015.24	1015.16	1015.01

