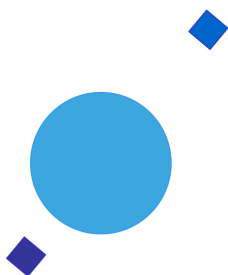


**INAF**



**ISTITUTO NAZIONALE DI ASTROFISICA**  
**NATIONAL INSTITUTE FOR ASTROPHYSICS**

***SVIRCO Prompt Report: July 2017***

Francesco Re

INAF/IAPS-2017-11

August 2017

**ISTITUTO DI ASTROFISICA E PLANETOLOGIA SPAZIALI**

**AREA DI RICERCA ROMA - TOR VERGATA**

**Via del Fosso del Cavaliere, 100 - 00133 Roma (ITALIA)**



## **SVIRCO Prompt Report: July 2017**

**Francesco Re**

*IAPS - INAF, Area di Ricerca Roma - Tor Vergata  
Via del Fosso del Cavaliere, 100 - 00133 Roma, Italy,*

### **Abstract**

*The pressure corrected intensity of the nucleonic component, produced by primary cosmic rays and recorded in July 2017 by the Neutron Monitor of SVIRCO-Rome (present geographic position:  $41.86^\circ$  N -  $12.47^\circ$  E; altitude about s.l. ), is reported in prompt form together with the barometric pressure data.*



## SVIRCO OBSERVATORY

During the 1<sup>st</sup> International Geophysics Year (1957) an international network of “ground-based detectors” for continuous cosmic ray measurements was world-wide established.

The cosmic ray station of Rome joined this network with the purpose to study the time variations of primary cosmic rays (**Studio Variazioni Intensità Raggi Cosmici: S.V.I.R.CO**) and their modulation in the heliosphere.

From July 1957 to April 1997, the SVIRCO Station (now Observatory) performed uninterrupted measurements at the Physics Department “G. Marconi” of “La Sapienza” University of Rome (41.90° N, 12.52° E, altitude about 60 m a.s.l.)

In May 1997 the neutron monitor was moved to the Physics Department “E. Amaldi” of “Roma Tre” University. Since then it has been continuously running at the new location (41.86° N, 12.47° E, altitude about 0 m a.s.l.).

The SVIRCO Observatory (INAF/IAPS-UNIRomaTre collaboration) is housed in a reserved building provided with a double air-conditioning system. The inner temperature is permanently restrained in a range of 23°-26° C, meanwhile the relative humidity is kept below 57%. Either the environmental parameters are continuously checked and recorded by digital sensors.

On January 1, 2005 three counters were added to the detector. This upgrade, from 17 to 20 NM-64, made the SVIRCO neutron monitor still consist of 5 sections but modified its geometry. Actually the new arrangement has been composed of three 3-counter, one 5-counter and one 6-counter units. The enhancement improved not only the overall counting rate of 15.6 % (January 2005) but, as a result, also the statistical quality of the recorded data.

On July 3, 2017 six counters experienced failure and were removed from the detector until 24 July. On 25 July 2017 a number of 2 counters was added to the detector up to a total of 16 counters. The new arrangement has been composed of three 3-counter, one 5-counter and one 2-counter units. The overall counting rate has decreased of about 20% (July 2017) with a lower statistical quality of the recorded data.

Each of the 16 BF<sub>3</sub> proportional counters (BP-28 type) is equipped with a smart amplifier/discriminator circuit complete with a spectrum stabilizer. This new electronic unit, developed in our laboratory, holds firmly the pulse height spectrum of the amplifier output (within a range of more than 150 volts around the operating voltage), providing the counter with a great immunity against high voltage variations.

Anyway, systematic and exhaustive tests of the counters are regularly performed. The output pulses of the amplifiers, discriminated by the threshold gates, are collected and stored into a multi-channel analyzer. The analysis of the height distribution (spectrum) of the amplifier pulses coinciding with the discriminator ones, is essential to verify the long term efficiency of each counter together with the amplifier gain and the discriminator threshold level.

As well as the amplifier/discriminator circuits, a large part of the electronic instrumentation operating in the Observatory was designed and realized in our laboratory together with the software for data acquisition and pre-elaboration.

In order to improve the reliability of the recorded data and to prevent measurement breakdowns, two independent systems perform contemporary the data acquisition. Each system is remotely controlled by a dedicated computer and is timed by a high stability quartz clock and/or a GPS receiver. One equipment runs according to a timing of 1 minute and fulfils the acquisition of the 16 counters separately. The other one records the individual 5-minute counting rate of each detector section in addition to the rates of the overall multiplicity, sorted into separated counting channels (from 1 to greater than 8).

A special care is devoted to the atmospheric pressure measurements; thus they are carried out by means of not less than three barometers at the same time. These instruments (achieving a resolution up to 0.01 hPa), are constantly checked out each other for the best measuring accuracy and reliability. Furthermore, the devices in use are equipped with different types of transducer such as vibrating cylinder, force balance and quartz, therefore, throughout their different behaviours, it is possible to point out the occurrence of any long-term drift and eventually to re-calibrate the instruments themselves.

## DATA PRESENTATION

In a preliminary step, the intensity data, of the secondary nucleonic component of cosmic rays, detected at SVIRCO Observatory, were corrected for pressure variations at a reference level of 1009.25 hPa with an attenuation coefficient of 0.70% / hPa.

The five-minutes counting rates, of the examined month, are reported in tabular form together with the hourly normalized data, which provide a continuous data set for long-term analysis.

The normalization was evaluated as percentage of the counting rate average of January-February 1997, when the Monitor operated at the previous location of "La Sapienza" University. The reference counting rate level (100%), computed for such period, is equal to 554946 counts/hour.

The atmospheric pressure data (in hectoPascal) are also collected in a monthly table which presents the five-minutes averages and the hourly ones.

The hourly averages of the normalized intensity and pressure, plotted in monthly graphs, are reported too.

## CONDITIONS FOR SVIRCO DATA USE

You are welcome to use neutron monitor data of SVIRCO, IAPS/INAF-UNIRomaTre collaboration, under the following conditions:

*-You agree to acknowledge our financial supports in any published use of the data.*

*Example: "SVIRCO NM is supported by the INAF - UNIRomaTre collaboration"*

*-You are kindly requested to send a copy of any published work derived from our data to:*

Dr. Monica Laurenza  
Head of SVIRCO Observatory & TPL  
Istituto di Astrofisica e Planetologia Spaziali - Area di Ricerca Tor Vergata  
Via del Fosso del Cavaliere, 100 00133 Roma - Italy,

[monica.laurenza@iaps.inaf.it](mailto:monica.laurenza@iaps.inaf.it)

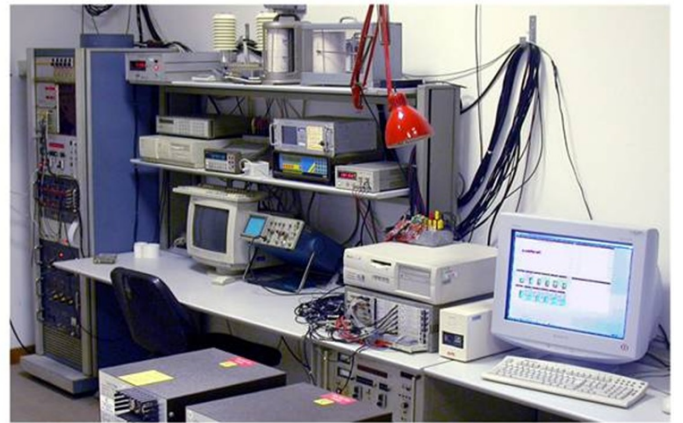




# S.V.I.R.CO. Observatory

Rome

Italy







INAF/UNIRomaTre		S.V.I.R.CO. Observatory - Pressure Corrected Data – July 2017										20 NM-64		
day	hh	00_05	05_10	10_15	15_20	20_25	25_30	30_35	35_40	40_45	45_50	50_55	55_60	h-norm
1	0	45881	46085	45829	46444	46940	45942	46485	46702	46927	46388	46503	46892	100.936
	1	46133	46338	46400	46664	46927	45768	45971	45955	46965	46201	46620	46861	100.901
	2	46592	46891	46612	46140	46084	45780	46448	46280	46386	45875	46577	45750	100.651
	3	46397	46546	46921	45993	46543	46400	46716	46883	46078	46701	45937	46582	101.063
	4	46630	46600	46646	46547	47070	46925	46870	46095	46475	46986	46154	46931	101.468
	5	47262	46860	46755	46566	46531	46582	46661	46293	47020	46018	46610	46683	101.452
	6	46567	47205	46104	47165	46961	46878	47392	47197	46518	46318	46842	46475	101.774
	7	46170	46588	46605	46163	47194	46274	46384	46306	46895	46339	46029	46258	100.973
	8	46000	46869	46411	46603	46259	46373	46840	45962	46624	46258	46921	46527	101.054
	9	45682	46738	46003	46133	46049	46618	46551	46537	46321	46805	46253	46092	100.715
	10	46599	46651	45446	46528	45499	46759	46535	46604	46420	46233	46200	45983	100.657
	11	46193	46946	46543	46196	46688	47156	45684	46263	46323	46864	46645	47076	101.222
	12	46518	46693	47105	46749	46037	46263	46497	46681	46575	46445	46695	46191	101.199
	13	46197	46076	46928	46518	45859	46651	45968	46792	46375	46445	46469	46176	100.837
	14	46214	46546	46259	45835	46573	46588	46463	45956	46594	46669	46721	46270	100.880
	15	45949	46827	46116	46887	46467	46718	46562	46428	46255	45932	46720	46358	100.976
	16	45945	46305	46284	46965	46341	46640	46247	46363	46369	47066	46294	46392	100.975
	17	46536	46870	46240	46907	46022	46773	46021	46416	46126	46549	46572	46318	101.000
	18	46810	45796	46291	46130	46495	46466	46510	46724	46586	46123	46546	46585	100.948
	19	46206	46889	45981	46434	46938	46327	46251	46730	46432	46123	46408	46372	100.953
	20	46269	46196	46286	45682	46230	46293	46629	45831	46116	46179	45730	46653	100.410
	21	46480	46314	46498	45757	45414	46405	46360	45806	45846	46480	46381	46306	100.401
	22	46530	46497	45946	46726	46266	46255	45890	45322	46551	46142	46482	46533	100.599
	23	46690	46139	45819	46159	46786	46437	46162	46517	46128	46540	46955	45746	100.769
2	0	46238	45690	46283	45923	46468	46318	46076	46167	46997	45888	46635	46674	122.175
	1	46020	46407	46529	46885	46462	46425	46037	46425	46272	46423	46337	46308	122.437
	2	46175	46365	46965	46699	46784	46426	46233	46994	46833	46694	46429	46585	123.020
	3	46694	46063	46738	46662	46112	46431	46958	46043	47034	46323	46611	47293	122.971
	4	46440	47049	46651	47381	46437	46760	46535	47088	46875	46524	47223	47047	123.642
	5	47234	46406	47407	46693	46887	46553	47156	46583	46677	47150	46000	47033	123.591
	6	46563	46482	46808	46324	46842	47097	47010	46722	46699	46972	46653	46882	123.432
	7	46630	46412	46704	46444	46875	46515	46565	46939	46945	46741	47068	46988	123.382
	8	47167	46504	47164	46798	46688	46827	46206	46789	46687	46454	46784	46281	123.277
	9	46633	46780	46239	46918	46476	47493	46504	47211	46835	46694	46687	46942	123.511
	10	46676	46984	47172	47267	46789	47082	46933	46098	46472	46567	46273	46343	123.344
	11	46842	46764	46435	46694	46520	47019	46700	46442	46868	47092	46404	46736	123.314
	12	46655	46407	46583	46513	46481	47395	46755	46786	47259	47002	46886	46622	123.496
	13	46227	47093	46709	47308	45861	47199	47300	46716	47070	47214	47084	46652	123.735
	14	46427	46780	46639	47003	46825	45893	46614	47097	46865	46647	46496	46897	123.240
	15	47358	46140	46540	46637	46596	46683	46546	46863	46573	46724	47006	46152	123.160
	16	46688	46978	46878	46533	47006	46888	46561	46829	46828	46154	47041	46581	123.412
	17	46845	46598	46653	46542	46911	46544	46574	46856	46665	46988	46427	47113	123.357
	18	46439	47024	46269	46141	46347	46932	46695	46320	46287	46801	46879	46466	122.892
	19	46158	45998	46456	46401	46795	46317	45956	46427	46754	46818	46039	46369	122.427
	20	46447	47162	46764	46747	45839	46402	46285	46416	46870	46440	46601	46433	122.849
	21	46244	46120	46573	46583	46690	46718	46173	46167	46456	46618	46968	46898	122.806
	22	46376	46877	46535	46297	46111	46730	46455	46476	46417	46293	46384	45956	122.520
	23	45789	46966	46455	46237	46859	46891	46091	46564	46458	45727	46450	46381	122.511

INAF/UNIRomaTre		S.V.I.R.CO. Observatory - Pressure Corrected Data – July 2017										20 NM-64		
day	hh	00_05	05_10	10_15	15_20	20_25	25_30	30_35	35_40	40_45	45_50	50_55	55_60	h-norm
3	0	46936	46174	46961	46981	46362	46234	46491	46824	46716	46625	46972	46337	100.913
	1	46501	46487	46551	46452	46044	46646	46482	46808	47002	46634	47673	46744	100.913
	2	46805	46461	46519	46540	46959	46712	46399	46844	46819	46499	46749	46515	100.913
	3													
	4													
	5													
	6													
	7													
	8													
	9													
	10													
	11													
	12													
	13	35627	34896	35904	35847	35806	35320	35643	35525	35227	35703	35337	35552	72.499
	14	35485	35594	35599	35649	35719	35592	35785	35375	35432	35354	35767	35707	72.666
	15	35638	35423	35554	35801	35773	35814	35595	34993	35686	34746	35623	35880	72.517
	16	35288	35728	35564	35036	35783	36085	35970	35859	35276	36042	35144	35962	72.732
	17	35521	35544	35506	35381	35913	35511	35911	35889	35503	35377	36025	35580	72.801
	18	35363	35721	35765	35612	36479	35878	35498	35530	36006	35809	35639	35395	72.851
	19	35271	35264	36329			37158	34926	35410	35831	35546	35526	36538	72.573
	20		35347	35619	35702		35555	35042	35415	37121	35827	35414	35622	72.524
	21	35522	35219	35367	35734	35789	35511	35863	35644	35746	35835	35455	35497	72.528
	22	35239	35615	35909	35527	35635	35509	35491	35641	36236	35350		37930	72.695
	23							36522	35625	36030	35972	35855	35783	72.913
4	0	36116	35345	38547			35997	36320	35762	35759	35944	35870	35623	72.959
	1	36063	35441	35744	35242	35615	36091	35504	35737	35334	35095	35942	35753	72.605
	2	35841	36246	38493	35139	35879	36220	35695	35598	36187	35623	35899	35987	72.846
	3	35858	35730	35753	35862	34998	35311	35347	35783	35735	35614	35302	36036	72.548
	4	35940	35534	35739	36369	35669	35732	36048	35971	36044	35410	35900	36204	72.994
	5	36028				36073	35615	38545	37633	36718	37710	36551	36827	73.025
	6	35977	36122	37200	36795	36593	36512	36833	36293	36338	36169	36063	39297	72.985
	7	37495	38573	37595	36700	36289	35504	36151	35943	35310	35942	35623	35715	73.099
	8	36201	36194	35530	35814	35685	35786	35987	37370	36969	37328	37926	36005	73.055
	9	35366	36185	29425		35061	36061	36080		34954	35559	35706	35647	76.941
	10	39703	35929	39697	36149	34002	35491	33781	33730	34378	34569	34048	32916	71.786
	11	34829	33294	33692	33810	32935	33827	33797	33418	33357	33845	33390	33722	72.878
	12	32953	33528	33449	33329	33437	33281	33092	33426	33327	33333	33167	32940	72.323
	13	33389	33720	33684	34009	33852	33447	33979	32903	32993	33190	33242	33501	72.547
	14	33474	33429	33598	33248	33481	33314	33484	33708	33536	33468	32748	34082	72.740
	15	33482	33970	33120	33155	33712	32909	32986	33805	33791	33423	33369	33525	72.683
	16	33705	33555	33557	33632	33598	33404	33602	33274	33561	33410	32602	32832	72.589
	17	33323	33987	33226	33478	33076	33294	33294	32889	33834	33643	33421	33203	72.578
	18	33539	34097	33199	33273	33248	32416	33976	33414	33445	33442	33236	33154	72.537
	19	33205	33176	33588	33587	33313	33283	33830	32956	33602	33469	33793	33460	72.686
	20	33163	33929	33617	33543	33641	33321	33676	33854	33398	33483	33565	33352	72.915
	21	33311	33576	33068	33493	33920	33607	33576	33145	33785	33284	33208	33729	72.765
	22	33320	33427	33225	33343	33895	33012	33363	33991	33260	33638	33589	32741	72.602
	23	33153	32979	33898	33414	33660	33559	33330	33352	33519	33329	33657	33529	72.709

INAF/UNIRomaTre		S.V.I.R.CO. Observatory - Pressure Corrected Data – July 2017											20 NM-64	
day	hh	00_05	05_10	10_15	15_20	20_25	25_30	30_35	35_40	40_45	45_50	50_55	55_60	h-norm
5	0	33956	33543	33545	33738	32851	33649	33275	33051	33249	33840	33694	34045	72.900
	1	33421	33360	33832	33197	33982	32969	33598	32801	34199	33403	33528	33743	72.827
	2	33725	33424	33164	33330	33601	33630	33845	33713	33567	33545	33584	33603	72.955
	3	33608	33436	33339	33603	33965	33673	33590	33706	33898	33605	34152	33352	73.172
	4	33386	34071	33323	33801	33456	33886	33936	33413	33809	33687	34055	33726	73.285
	5	33661	33366	33876	33351	33508	33692	32987	33741	33565	33619	33735	33948	
	6	33358	33571	33787	33996	33431	33329	33276	33798	33440	33198	33483	34033	72.952
	7	33530	33211	33819	33417	33396	33640	34225	33568	33388	33327	33348	33441	72.881
	8	33819	33820	33652	33584	33398	33551	33759	33593	33438	33710	33453	33702	73.091
	9	33633	33443	33307	33969	33929	34060	33286	33422	33330	33853	33107	33363	72.950
	10	34370	33654	33522	33427	33782	34010	33569	34097	33342	33693	33507	34093	73.379
	11	33479	33829	33819	33092	33413	33256	33447	33287	34112	33708	33317	33427	72.855
	12	33711	33806	33728	33464	33206	33638	34018	33171	33696	33397	33448	33900	73.036
	13	33767	33770	34038	33685	33862	33732	33366	33189	32956	33112	33266	33317	72.832
	14	33431	33328	33181	33577	33111	33352	33550	33851	32976	33187	33200	33252	72.458
	15	33467	33499	33530	33740	33851	33323	33528	33619	33296	33338	33082	33283	72.739
	16	33876	33065	33964	33267	33334	33939	33234	33397	33394	33554	33764	32845	72.755
	17	33140	33454	33192	33549	33213	33009	33403	33584	33694	33269	33539	33656	72.586
	18	33758	33335	33489	33293	33170	33254	33591	33227	33440	33485	33664	33536	72.684
	19	33280	33352	33495	33842	33336	33324	33256	33804	33161	33455	33308	33436	72.647
	20	33217	33258	33342	32987	33420	33512	33193	33254	33218	33531	33140	33093	72.308
	21	33053	33522	33268	33787	33465	33183	33511	33756	33666	33348	34304	33329	72.856
	22	33078	33547	33674	33568	34086	33930	33444	33847	33355	33474	33929	33224	73.031
	23	33957	33695	33367	33421	33401	33356	33688	33407	33402	33428	33452	33585	72.850
6	0	33312	33033	33345	33850	33598	33297	33161	33426	33493	33053	33639	33103	72.515
	1	33286	33275	33260	33287	33502	33377	33627	33171	33647	33787	33271	33278	72.600
	2	33751	33305	33088	33812	33369	33754	33984	34081	33966	33890	33839	33828	73.308
	3	33482	33229	33166	33394	33572	33797	33119	33537	33602	33369	33691	33866	72.791
	4	33599	33156	33602	33668	33282	33773	33683	33282	33561	34236	33431	33363	
	5	33348	33572	33540	33355	33479	33712	34028	33421	33452	33482	33831	33902	73.028
	6	33661	33442	33774	33645	33645	33393	33937	33857	33320	33563	33667	33796	
	7	33916	33565	33769	32885	33800	33359	33500	33546	33651	33718	34081	33299	73.022
	8	34212	33704	33754	33681	33863	34130	34326	34639	34275	33410	33747	33590	
	9	33478	33614	34135	33353	34130	33852	34154	34007	33891	34237	33601	33365	
	10	33925	33798	33448	33714	33148	33760	33885	33414	33370	33638	33482	33721	73.058
	11	33242	33345	33634	33495	33465	33371	33308	33695	33039	33595	33323	33854	72.637
	12	34400	34258	33737	34406	33653	33587	34712	34140	33832	33647	33766	33370	73.190
	13	33580	34001	33228	33496	33357	33685	33343	33426	33083	33816	38536	35834	72.851
	14	34137	33810	33724	33815	37337	35762	36429	34746	33790	33325	34167	33588	72.685
	15	33582	33884	34044	33791	33585	33986	33466	33882	33287	33545	33884	33609	72.748
	16	33735	33817	33586	33650	34598	33534	33954	34063	33804	34037	33522	33632	73.011
	17	33900	33817	34022	33605	33501	33681	33163	33857	33122	33513	34188	33696	72.680
	18	34248	33537	34389	33721	34014	33346	33511	34031	33838	33629	33714	34102	73.053
	19	33576	34491	33785	33977	33782	33780	34131	33773	33049	33357	33778	33364	72.822
	20	33439	33645	33032	34106	33846	33892	34468	33724	33389	33794	33843	33914	72.873
	21	33699	33739	33706	33478	33823	33888	33936	34305	34099	34329	33788	33922	73.160
	22	33470	33834	33630	33623	33834	34300	34147	33839	33999	33946	33738	34089	73.114
	23	34031	33827	33819	33800	34014	33741	33980	34124	33968	33969	34223	33170	73.154

INAF/UNIRomaTre				S.V.I.R.CO. Observatory - Pressure Corrected Data – July 2017									20 NM-64	
day	hh	00_05	05_10	10_15	15_20	20_25	25_30	30_35	35_40	40_45	45_50	50_55	55_60	h-norm
7	0	33602	33628	33920	34163	33639	34053	33572	34214	34228	34064	33687	33859	73.149
	1	33680	33643	33965	33564	33755	33256	34059	33961	33694	34338	34089	33902	72.993
	2	33796	33944	34341	33549	33860	33895	33738	33717	34525	33897	33979	33777	73.204
	3	33587	34241	33967	34201	33609	34001	33936	34253	33810	34140	34471	33997	73.422
	4	33694	34110	33707	33918	34173	34193	33860	33837	34019	33373	33776	34038	73.146
	5	33489	33863	34591	33699	33688	33528	34003	33883	33908	33752	34253	33572	73.068
	6	33830	34169	33611	33728	34446	34097	33683	34000	34006	34089	34326	33648	73.319
	7	34049	34146	34329	34118	33864	33288	33872	34227	33712	33811	33876	33988	73.251
	8	34187	33966	32960	33401	33298	33176	33586	34354	33462	34154	33697	33684	
	9	33631	33569	33468	33760	33973	33592	32898	34145	34197	34050	33658	34282	
	10	34046	33455	34269	33790	33658	33694	33586	33897	40954	33547	33466	33983	74.694
	11	33274	33871	33720	33892	33474	33295	33562	33669	33338	33292	33442	32814	
	12	34251	33645	34625	33947	34287	34402	34130	34000	34178	33571	34121	34481	72.897
	13	34534	33618	34369	34000	33839	34213	34654	34306	34331	34608	34085	34259	73.010
	14	34283	34289	34125	34281	34162	34237	33972	34379	34269	33945	33983	33991	72.871
	15	34299	34259	34088	33584	34270	34734	33810	33819	34346	33878	34485	34045	72.806
	16	33870	34195	34620	33931	33974	33878	34212	34327	34507	33991	33470	34067	72.700
	17	34245	33998	34998	33831	34100	34303	33728	34063	34307	34245	34316	34268	72.919
	18	33666	34353	33945	34065	34312	34427	34341	34456	34329	34138	34284	34477	73.032
	19	34799	33386	34145	33800	34182	34112	34148	33696	34062	34457	34287	34443	72.809
	20	34045	33609	34496	33855	33673	34037	34538	34471	34033	34177	34295	34010	72.735
	21	34414	33975	34053	34224	34235	34565	34492	34303	33666	33975	34110	33916	72.883
	22	35019	34303	34497	34522	33786	33752	34034	34084	33727	34789	34233	33722	72.972
	23	34298	33627	34364	34427	34327	34099	34084	34089	34203	34592	33888	33819	72.864
8	0	33854	34106	34123	34056	33380	34178	33853	34835	34011	33958	34833	34058	72.749
	1	34434	34114	33533	34015	33646	33961	34473	33726	34429	34099	33854	34071	72.579
	2	34533	34318	34247	33913	34409	34342	34147	34287	34447	33507	34515	34542	73.088
	3	34485	34120	34371	34601	33818	34266	34582	34443	33929	33910	34192	34311	73.093
	4	34004	34472	34575	34772	34594	34138	34228	34126	34367	34210	34480	34299	73.286
	5	34174	33976	34323	34425	34017	34394	34423	33766	34002	34402	34369	34637	73.048
	6	34015	34268	34381	34414	34317	33826	34118	34392	34303	34462	34023	34309	73.001
	7	34228	34886	34612	33939	34356	33810	35101	34225	34409	35003	34446	34258	73.441
	8	34269	34178	34182	35045	33952	34774	34364	34330	34325	33929	34330	34200	73.199
	9	34822	34015	34408	34851	34482	34114	34552	34602	34116	34247	34809	34387	73.480
	10	34467	34433	34434	34352	34251	34448	34791	34381	34195	34495	34786	33931	73.432
	11	34284	34128	34591	34217	34596	34482	34202	34863	33969	34892	33961	34225	73.320
	12	34420	33995	34697	34522	34734	34871	34458	34258	34537	34559	34643	34475	73.634
	13	34138	33994	34275	34377	34267	34499	34471	34481	34106	34196	34111	34281	73.111
	14	34160	34269	34268	33760	34122	34047	34923	34593	34900	34017	34027	33501	72.993
	15	34422	34149	34093	34266	34474	34212	34155	34329	34059	34164	34227	34095	73.014
	16	34662	34035	34390	33994	34691	34176	33914	33621	34177	34135	34582	34706	73.104
	17	34196	33810	34077	33653	34400	33689	34229	34115	33878	34210	34321	34015	72.646
	18	34009	34420	33501	34038	34004	33783	35111	34610	34324	33703	34040	34792	72.952
	19	34529	33904	34116	33674	34134	34022	34367	33840	34045	34428	34031	34427	72.809
	20	33841	34684	34667	34233	34281	34277	33933	35023	34112	33645	34048	33862	72.990
	21	34171	34207	34335	34421	34139	34022	33955	33805	34587	34516	34239	33885	72.962
	22	33836	33816	34003	33862	34084	34223	33804	33548	34139	34207	34171	34360	72.533
	23	34438	33960	34064	34096	34095	34243	33960	34224	34262	34593	33863	33586	72.775

INAF/UNIRomaTre		S.V.I.R.CO. Observatory - Pressure Corrected Data – July 2017										20 NM-64		
day	hh	00_05	05_10	10_15	15_20	20_25	25_30	30_35	35_40	40_45	45_50	50_55	55_60	h-norm
9	0	33806	33978	33749	33864	34025	34090	34497	33787	34307	34191	34058	34050	72.611
	1	34440	34350	33729	33486	34681	34035	34310	33969	33940	34042	33989	34588	72.827
	2	34716	34140	34048	34179	34220	34234	34418	34306	33775	33742	34479	34441	73.007
	3	34278	33918	34003	34659	33935	34484	33887	34263	34087	34499	34390	34319	73.019
	4	34184	34416	34343	33725	34354	34497	34360	34147	34331	34083	34337	34103	73.022
	5	34371	34653	34570	34430	33949	34348	34328	33772	34595	33949	34426	34462	73.248
	6	33963	33839	34812	34430	34534	34773	34313	34742	34662	34565	34313	34494	73.475
	7	34176	34406	34254	34472	34523	34188	34640	34262	34737	34144	34187	34375	73.319
	8	34373	34092	33729	34300	34016	34686	34204	34197	34285	34680	34557	34187	73.101
	9	34566	34842	34158	33945	34021	34174	34779	34071	34490	34355	34432	34443	73.267
	10	34771	34257	34578	34604	34420	34539	34539	34694	34909	34225	34659	34473	73.721
	11	34636	34622	34224	34302	34659	34014	34674	34842	34725	34312	34639	34546	73.634
	12	34333	34056	34487	34349	34655	34267	34637	34222	34505	34532	34966	34242	73.434
	13	34166	34301	34237	34534	34121	34203	34545	33989	34272	34571	34281	34703	73.194
	14	34782	34049	33805	34313	34359	34303	34344	34295	34428	33648	33812	34021	72.900
	15	34242	33824	34500	34104	34106	34285	33837	34032	34152	33608	34317	33739	72.648
	16	34365	33632	34168	34118	33822	34330	34676	33864	34449	34530	34541	34107	73.006
	17	34112	34551	33851	34469	34298	33849	34182	33906	34258	33748	34209	34458	72.812
	18	34590	33824	34321	33934	34269	34350	34414	34232	33796	33857	34719	33895	72.929
	19	34012	34174	34049	34044	34571	34389	34334	34226	34488	34504	34426	34020	73.100
	20	34785	34620	33799	34187	34517	34629	34327	34044	34475	34124	34116	33660	73.116
	21	34253	34488	34388	34355	34051	34595	34330	34724	34052	33750	34207	33988	73.139
	22	34059	34339	33629	34030	34041	33784	34362	34845	34473	34504	33631	33988	72.819
	23	34021	34441	33943	34401	33742	34115	34702	34215	33896	34274	33690	34369	72.834
10	0	34261	34185	34528	34414	33994	34172	34839	34352	34417	34721	34428	33887	73.276
	1	34461	34306	34366	34522	34178	34562	34231	34430	34630	33848	34391	34406	73.288
	2	33752	34512	34461	34461	34401	34194	34566	33606	33715	34367	34469	34271	73.006
	3	34600	34218	34023	34145	34747	34475	34636	35075	35161	34222	33994	34960	73.645
	4	34344	34421	34072	34322	34476	34484	34853	34428	34329	34321	33981	34565	73.319
	5	34514	34223	34227	34500	34628	34075	34004	34379	34372	34695	34907	34515	73.411
	6	34578	34386	34681	34238	34213	34488	34407	34538	34590	34341	34308	34373	73.422
	7	35046	34564	34125	34616	34386	34370	34668	34360	34394	34377	34484	34181	73.516
	8	34666	34060	34216	34796	34256	34878	34814	34748	34506	34243	34936	34367	73.718
	9	33716	33232	33781	34154	33441	33538	33864	33540	33521	33734	33333	33385	73.015
	10	33915	33795	33944	33886	34162	33790	33443	34062	33546	33573	33890	33603	73.502
	11	33535	33721	33506	34024	33771	33655	33632	33782	33609	33220	33512	33943	73.194
	12	33920	33629	33580	33837	33710	33842	33680	33948	33848	34066	34089	33715	73.549
	13	33420	33906	33686	33459	33691	33202	33477	33943	33870	33743	34125	33405	73.197
	14	34097	33261	33173	33931	33691	33623	33310	33844	33574	33777	33595	33632	73.121
	15	33187	33755	33441	33776	33933	33512	33499	33743	32926	33690	33575	33657	72.974
	16	33924	33092	33808	33562	33040	34086	33502	33817	33600	33559	32755	33522	72.896
	17	33272	33658	33600	33828	33822	33291	33344	33642	33528	33467	33537	33983	73.024
	18	33470	33812	33715	33220	33545	33566	33537	33889	33608	33716	33780	33298	73.057
	19	33267	33457	33386	33943	33810	33010	33358	33423	33248	33712	33516	33286	72.743
	20	33315	33338	33535	33094	33480	32877	33079	33819	33539	33556	33292	32974	72.467
	21	33796	33421	33926	33250	32893	32493	33135	33309	32994	33274	33304	32418	72.162
	22	32876	33378	33236	33008	33381	33204	33083	33480	33181	32841	33266	33289	72.164
	23	33189	33266	32662	33293	33754	33415	33220	33345	33066	33219	33062	33705	72.340

INAF/UNIRomaTre		S.V.I.R.CO. Observatory - Pressure Corrected Data – July 2017											20 NM-64	
day	hh	00_05	05_10	10_15	15_20	20_25	25_30	30_35	35_40	40_45	45_50	50_55	55_60	h-norm
11	0	33141	33303	32872	33203	33537	33656	33124	32868	32991	33612	32829	33007	72.147
	1	33425	34012	33836	32891	32899	33358	33507	33219	32761	33081	33309	33554	72.458
	2	33662	33288	33761	33477	33455	33396	34105	33014	33326	33496	33349	33316	72.784
	3	33668	33378	33615	33586	33172	33700	33259	33511	33146	34150	33067	33001	72.713
	4	33240	33686	33489	33118	33682	33425	33235	33603	33110	34003	33431	33985	72.849
	5	33669	33878	33494	33114	32987	33793	33421	33685	33647	33511	33099	33805	72.867
	6	33822	33480	33306	34050	33566	33186	33371	33579	33458	33932	33644	33373	72.987
	7	33677	33820	33310	33627	33585	33077	32606	33924	33468	33747	33471	33419	72.799
	8	33902	33513	33707	33949	33784	33131	33206	34052	33749	33553	33150	33457	72.978
	9	33356	33527	33210	33152	33623	33350	33667	33658	33399	33988	33919	33128	72.816
	10	34084	33689	33635	33559	33787	33223	33393	32610	33633	33535	33330	34193	72.941
	11	33483	33551	33765	33120	33338	33428	33216	33478	33324	33578	33394	33288	72.628
	12	34034	33608	33796	33784	33733	33577	33866	33750	33618	33488	33572	33636	73.266
	13	33455	33779	33775	33351	33315	33251	33461	33940	34001	34004	33916	33226	73.085
	14	33084	33233	33583	33336	33467	32935	33615	33140	33457	33998	33197	33536	72.563
	15	33646	33816	33588	33234	33003	33726	33467	33728	33552	33514	33510	33518	72.873
	16	33248	33491	33809	33100	33419	33588	33784	33961	33767	33350	33602	33618	72.952
	17	33255	33961	33731	33400	33658	33094	33316	33635	33419	33436	33344	33398	72.756
	18	33741	33768	33306	33774	33838	34308	33483	33136	33468	33632	33370	33601	73.076
	19	33465	33793	33512	33896	33521	33382	33555	33794	32886	33686	33365	34182	73.008
	20	33438	33630	33577	34075	33492	33792	33883	33789	33280	33778	33270	33670	73.121
	21	33699	33224	33588	33606	33459	33268	34021	33222	33725	33796	33046	33143	72.783
	22	33702	33416	33659	33883	33322	33602	33253	33567	33468	33989	33629	33615	73.020
	23	33016	34083	33032	33084	33723	32852	33226	33800	33968	33002	33450	33209	72.536
12	0	33544	33285	33230	33834	33685	33343	33539	33475	33143	32957	33455	33351	72.608
	1	33197	33431	33657	33617	34034	33220	33312	33336	33365	33132	33316	33412	72.646
	2	33734	33424	33802	33389	33308	33532	34118	33585	33680	33564	33393	33386	72.986
	3	33947	32918	33509	33543	33921	33419	33356	33599	33549	33909	33693	34178	73.099
	4	33258	33033	33523	33356	33217	34025	33365	33252	33739	33533	33270	33551	72.663
	5	33659	33406	33649	33315	33574	33393	33353	33849	33761	33655	33844	33544	73.002
	6	34193	33381	33080	33874	33570	33572	33778	33218	33907	33330	33835	34016	73.140
	7	33486	33521	33684	33926	33174	33604	33611	33355	33412	33457	33110	33073	72.715
	8	33535	33193	33491	33598	33529	33423	33386	33585	33039	33517	33774	33763	72.790
	9	33480	33552	33578	33368	33834	33888	33744	33237	33427	33717	33837	33971	73.118
	10	33323	33860	33480	33486	33564	34059	33357	33699	33892	33403	33332	33517	72.998
	11	33565	33961	34185	33237	33745	33425	33719	34116	33569	33838	33648	33582	73.289
	12	33282	33695	34046	33667	33586	33587	33694	33783	33367	33107	33381	33534	72.952
	13	34090	33536	34300	33820	33494	34134	33770	33321	33801	33594	34036	33468	73.429
	14	33391	33505	34319	34230	33232	33894	33590	33976	33667	33546	33363	33950	73.303
	15	33970	33685	33068	32983	33570	33589	33260	33884	33279	33236	33098	33599	72.678
	16	33616	33716	33893	33179	33754	33866	33976	33755	34001	33433	33861	33353	73.254
	17	33696	33341	33323	33140	33129	33320	33671	33788	33628	33517	33824	33659	72.827
	18	33593	33960	33554	33543	34029	33885	33673	34021	33944	33719	33696	33490	73.382
	19	33930	33925	33870	33316	33792	33662	33502	33544	33474	33577	33723	33385	73.128
	20	33048	33534	33341	33861	33682	33720	33520	33176	33949	33537	33962	33798	73.023
	21	33443	33076	33506	33548	33664	34385	33281	33057	33349	33554	33673	32862	72.711
	22	33571	33710	33342	33537	34238	33535	33684	33579	33881	33420	33137	33636	73.049
	23	33405	33504	33190	33449	33619	33737	33246	33774	33328	33248	34031	33619	72.848

INAF/UNIRomaTre		S.V.I.R.CO. Observatory - Pressure Corrected Data – July 2017											20 NM-64	
day	hh	00_05	05_10	10_15	15_20	20_25	25_30	30_35	35_40	40_45	45_50	50_55	55_60	h-norm
13	0	33453	33490	33453	33492	33411	33428	33391	33465	33881	33467	33653	34039	72.929
	1	33642	33779	33499	33721	33782	33570	33416	33331	33965	33355	33514	33828	73.073
	2	33574	34018	33294	33639	33359	33647	33308	33126	33295	33668	33193	33171	72.692
	3	33455	33772	33670	33741	33349	33308	33216	33426	34237	33487	33229	33962	72.973
	4	33888	33757	33512	33934	33472	33555	33372	33508	33668	33557	33505	33672	73.072
	5	33208	33609	33537	33545	33339	33620	33357	33763	33422	33693	34087	33495	72.943
	6	33981	33626	33640	33340	33913	33598	33496	33860	33323	34011	33252	33397	73.079
	7	33577	34089	33294	33013	33461	33585	34531	33830	33843	34352	33875	33845	73.416
	8	33763	34055	33454	34265	33802	33503	33049	33889	34020	33733	33640	33826	73.362
	9	33479	33856	33921	33723	33716	33389	33755	33416	33293	33507	34206	33843	73.200
	10	33759	33871	33600	33971	33917	33766	33575	33562	33505	33794	33522	33955	73.325
	11	33769	33723	33254	33716	33752	33742	34075	33819	33747	33481	33710	33345	73.207
	12	34146	33668	33620	33816	33645	33750	34023	33318	33941	33975	33814	34185	73.526
	13	34166	33802	34076	33563	34215	34177	33220	33875	33513	33944	33704	33980	73.588
	14	33901	34560	33502	33895	34245	34565	34235	33746	33614	33888	34255	33188	73.833
	15	34326	34075	33866	33832	33590	34034	33731	33570	33978	33839	33724	33495	73.554
	16	33641	33819	33724	33517	33558	33539	33737	34068	33991	34018	33754	33622	73.361
	17	33950	33885	34011	34258	33848	33835	33849	33584	33343	33867	33206	33883	73.459
	18	33624	33695	34049	33578	33395	33698	33666	33150	34013	33849	33725	33986	73.259
	19	33681	34067	34057	33679	33876	33529	33880	33510	33089	33349	33884	33334	73.172
	20	33724	33907	33243	33893	33126	34259	33809	34386	33487	33119	33403	33454	73.149
	21	33916	33330	34020	33804	34109	33609	33723	33420	34143	33536	33902	33779	73.415
	22	34090	33530	34222	33504	33842	33345	33580	33746	33712	33535	33666	34010	73.325
	23	33605	34058	34205	33268	34016	33707	33773	33368	33660	33378	33443	33620	73.200
14	0	33540	33840	33711	33374	33674	33794	33142	33792	33126	34231	33762	33261	73.041
	1	33846	33512	33324	33733	33836	33155	33778	33560	33589	33666	33458	33864	73.058
	2	33888	33703	33439	33598	33921	33833	33401	33589	33643	33436	33501	33600	73.102
	3	33477	33598	33611	33419	34005	33439	33589	33877	33419	33415	33767	34107	73.131
	4	34033	33637	33615	33609	33660	33490	33624	33902	33530	33563	33586	33890	73.209
	5	33489	33722	33802	33519	33882	33886	33634	33602	34038	33802	33944	33612	73.352
	6	33176	33687	33407	33444	33465	33336	33726	33428	33646	33689	33681	33754	72.899
	7	33605	33654	34106	33875	33520	34086	33736	33485	33125	33776	33752	33394	73.204
	8	33923	33597	34237	33785	33024	33356	33378	33609	34124	33981	33877	33943	73.334
	9	33430	33632	33239	33875	33289	33904	33718	33310	33745	33287	33124	34075	72.933
	10	33428	33679	33650	33757	33778	33901	33391	33744	33533	33624	33870	33879	73.226
	11	33782	33515	33915	33503	33593	33864	33691	33969	33536	33678	33613	33783	73.262
	12	34257	33854	33768	33702	33896	34188	33192	33801	34383	33334	33977	33654	73.547
	13	33699	33763	33840	34435	33507	34345	34243	34000	34086	34130	34262	33915	73.950
	14	34079	34183	33950	33642	33637	33628	33609	33242	33738	33813	33561	34096	73.396
	15	33582	33832	34131	33704	33682	33946	33838	33913	34013	33500	34151	34023	73.603
	16	33500	33810	33575	33277	33804	34342	34045	34277	33863	34094	33631	33875	73.561
	17	33449	33988	34271	33740	34076	34204	33469	34358	33812	33801	33190	33582	73.533
	18	33144	33872	33300	34142	34258	34171	33812	33402	33581	34148	34268	33655	73.501
	19	33857	34004	33501	33484	33684	33922	33859	33880	33768	33388	33595	33198	73.207
	20	34072	34077	33363	34192	34222	33349	33767	33705	33402	33261	33741	33640	73.327
	21	34017	33338	33650	33629	33050	33365	33562	33845	33582	32800	33528	33457	72.787
	22	33521	33413	33090	32878	33565	33512	33471	33163	33562	34158	33784	33422	72.737
	23	33110	33265	33556	33248	33812	33679	33133	33831	33375	33726	33389	33613	72.772



INAF/UNIRomaTre		S.V.I.R.CO. Observatory - Pressure Corrected Data – July 2017											20 NM-64	
day	hh	00_05	05_10	10_15	15_20	20_25	25_30	30_35	35_40	40_45	45_50	50_55	55_60	h-norm
15	0	33486	33080	33531	33818	33834	33327	33389	33806	33211	33363	33639	33204	72.761
	1	33768	33685	33443	33453	33741	33217	33147	33483	33896	33503	33370	33607	72.876
	2	33648	33402	33894	33760	33405	33438	33866	33462	33940	33338	33741	33921	73.150
	3	33605	34186	33215	33884	33483	33397	34250	34047	33557	33779	33819	33868	73.381
	4	34061	33649	33332	33455	33384	33616	33664	33658	33532	33770	33724	33779	73.115
	5	33632	34206	33588	33917	33860	33586	33420	33907	33722	34088	33762	34073	73.502
	6	33584	33476	34771	33731	33824	33840	34196	34078	33545	33832	34089	34268	73.771
	7	34394	34157	33654	33753	34092	33781	33627	33802	33679	33986	34015	33564	73.637
	8	33409	33734	33641	34052	34198	33511	33663	33968	33175	33564	33947	33425	73.235
	9	33203	33623	33437	33870	34105	34115	33669	34024	33886	33970	33653	34028	73.470
	10	33748	33716	33521	34262	33497	33666	34048	33794	33745	33852	33860	33739	73.444
	11	33732	34217	33958	33643	33769	33519	33807	33908	33544	34135	33616	33644	73.454
	12	33760	33845	33863	34071	34012	33892	33560	33426	33996	34116	34389	33412	73.606
	13	33428	33860	33833	33859	34282	34090	34499	33989	33841	33584	34307	33535	73.747
	14	34044	33419	33697	33914	34097	33594	34082	34088	33787	33978	33902	34246	73.698
	15	33933	33840	33909	34142	33693	34109	34548	34056	33783	33823	33633	34382	73.882
	16	34084	34085	33833	34074	33968	34160	34086	33280	33793	33186	34537	33656	73.680
	17	34188	33857	34013	34186	33424	34033	33553	34157	33646	33769	34100	33741	73.665
	18	34179	34289	33892	34257	33698	33999	34005	33431	33867	34081	34031	33565	73.781
	19	33904	33964	33647	33649	33615	33891	33611	33742	33909	33838	34018	33915	73.490
	20	33552	34263	34525	33114	34265	33468	33796	34117	33953	33750	34128	34264	73.762
	21	33683	34112	34204	33935	34040	33684	33696	33766	33848	33701	33810	33500	73.540
	22	33345	34150	33331	33630	33575	33620	34010	33755	33975	33485	33833	33815	73.278
	23	33543	34050	33978	33825	33730	33777	33601	34358	33822	34071	33878	34235	73.701
16	0	33791	33798	33824	33588	33459	34084	33414	34263	33434	33534	33595	33846	73.298
	1	34069	33917	33781	33631	34145	34140	33918	34006	33529	33758	33587	34219	73.672
	2	33949	33520	33509	33898	34332	33702	33632	33944	33832	33896	34033	33779	73.550
	3	33877	33817	33929	34037	33795	33772	34180	34165	33693	33924	33685	33748	73.658
	4	33971	34344	34645	33821	34125	33271	33516	33655	33826	33654	34585	33820	73.771
	5	33883	33832	33514	34350	34045	33613	33844	34148	33587	33931	33713	33589	73.556
	6	33883	33707	33962	33872	33477	33229	33346	33851	33892	33107	33832	33604	73.143
	7	33767	33453	33681	33176	33254	33498	33300	33559	33351	33754	33503	33542	72.793
	8	33981	33540	34460	33953	33512	33471	33229	33533	33558	33974	33500	33490	73.223
	9	33987	33805	33356	33528	34326	33230	33396	33479	33273	33297	33300	33765	72.957
	10	33353	33994	34082	33503	33521	33877	33916	33229	33342	33720	33428	33597	73.107
	11	33424	33083	33463	33174	33779	34000	33825	34074	33914	34055	33985	33584	73.250
	12	33740	33903	33772	33661	34065	34266	33693	33524	33806	33732	33246	33917	73.426
	13	33993	33675	33521	33311	33331	34006	33427	33679	33620	33527	34216	33577	73.163
	14	33863	33549	33415	33271	33728	33937	33628	33920	33144	33471	33122	33693	72.956
	15	33966	33260	33093	33553	33553	33391	33590	33791	33708	34019	33972	33489	73.073
	16	33393	33297	33541	33930	33109	33722	33578	33078	33934	33350	33312	33073	72.696
	17	33208	33762	33202	32841	32500	33126	32717	33013	33179	32843	33381	33290	71.928
	18	32882	32881	32496	33149	32738	32699	32671	32625	32427	32774	32806	33111	71.238
	19	32626	32919	32586	32817	32703	32824	33273	32889	33022	32804	32700	33121	71.421
	20	33317	32943	33032	32780	32715	33216	33540	33197	32907	33393	33291	33127	72.000
	21	33244	32542	33057	33232	33202	33115	33469	33370	32663	33127	32762	33164	71.908
	22	32483	32986	32498	32837	32740	32801	32508	32523	32447	33343	32931	32185	71.064
	23	32408	32314	32601	32836	32664	33023	33121	33089	32984	32794	32704	32402	71.184

INAF/UNIRomaTre		S.V.I.R.CO. Observatory - Pressure Corrected Data – July 2017											20 NM-64	
day	hh	00_05	05_10	10_15	15_20	20_25	25_30	30_35	35_40	40_45	45_50	50_55	55_60	h-norm
17	0	33307	32857	32522	33136	32888	32608	32603	32864	32937	32339	32560	32993	71.307
	1	33057	32662	32655	32717	33080	33201	32340	32594	32558	32575	32749	32802	71.194
	2	32591	33314	32785	32820	32871	33022	32872	32972	32592	32559	32530	32762	71.323
	3	33173	32536	32962	32992	33573	33231	33027	32504	33109	32587	32512	33121	71.622
	4	32922	33211	32445	32977	33531	32269	32744	32970	32932	33349	33286	33044	71.686
	5	32967	33713	33382	32292	32498	33510	32859	33147	33281	32656	33068	33508	71.905
	6	33262						33192	33145	33795	33074	33004	33349	
	7	33651				33196	33048	33646				33320	33318	
	8	32954	32982	33463	33533	33271	33311	33170	33738	33009	33248	33398	33609	72.429
	9	33899	33312	33728	33041	33245	33155	33445	33679	33866	33242	33450	33799	72.804
	10	33758	33601	33592	33945	33836	33905	33199	33392	33408	33792	33426	33604	73.093
	11	33306	33660	33523	33354	33712	33559	33211	33531	33190	33734	32898	33330	72.650
	12	33528	33589	33924	33231	33396	33635	32980	34036	33441	33077	33888	33007	72.781
	13	33301	33568	33625	33401	33633	34259	33870	33581	33499	33121	33165	33201	72.870
	14	33412	34045	33886	33517	33594	33223	33564	33821	33653	33814	33431	33600	73.110
	15	33632	33741	33615	33478	33757	33855	33596	33736	34226	33491	33850	33363	73.250
	16	34464	33733	33749	34112	34043	33646	33542	33846	33018	33201	33511	33296	73.217
	17	33360	33533	33640	34106	33520	33605	33588	33594	33385	33636	33986	33619	73.109
	18	33716	33615	33284	33649	33417	33454	33342	33380	33748	33333	33460	33805	72.862
	19	33018	33520	33751	34126	32933	33459	33046	33372	33397	33182	34053	33184	72.651
	20	32873	32687	33355	33584	33697	33578	33233	33233	33236	33364	33335	32864	72.289
	21	33351	33626	33544	33482	33795	33282	33044	33039	33218	33028	33250	32969	72.398
	22	33030	32891	32983	32888	32744	33552	32644	33058	32795	32929	33036	33481	71.743
	23	32811	32804	33068	32850	33039	33140	32757	33230	32866	33384	32952	32968	71.716
18	0	32916	33673	33230	32909	33149	32936	33456	33057	32817	32944	32621	32447	71.772
	1	33297	32582	33038	32992	32573	33294	33355	32706	32834	33318	32525	33557	71.754
	2	32659	32906	32847	32990	33233	32532	33045	33109	33490	32942	33373	33152	71.794
	3	33333	33834	33403	32927	32812	32901	32929	33321	33102	33424	33316	33313	72.217
	4	33271	33147	33701	33535	32815	33194	33095	33024	33230	33718	33389	32893	72.291
	5	33136	33252	32882	32750	33177	33111	33559	33753	33055	33306	33128	33229	72.169
	6	33206	32818	33475	33306	33063	33904	33778	33261	33059	33944	33292	33917	72.656
	7	33399	33519	33328	33496	33752	33566	33565	33638	33243	33606	33387	33567	72.844
	8	33253	33608	33274	33746	33232	34230	33310	34178	33605	33984	33833	33497	73.148
	9	33512	33813	33350	34064	33481	33428	33361	33552	33517	33631	34121	33712	73.108
	10	33592	33725	33685	33465	33778	33703	33322	33658	33285	33587	33522	33676	73.010
	11	34009	34109	33553	33704	34297	33578	33649	33686	33451	33337	33833	33191	73.261
	12	33430	33825	33850	33166	33606	33813	33514	33612	33033	33809	33047	33792	72.917
	13	33286	33997	33873	33972	33752	33253	33841	33751	33890	33678	34030	33732	73.381
	14	33952	33633	33549	34415	33813	33837	33579	33265	33332	33358	32809	33590	73.030
	15	34155	33373	33730	33439	33584	33613	33554	33350	33800	33709	33869	33231	73.080
	16	33312	33029	33688	33229	33086	33448	33324	33131	33788	33968	33699	33665	72.710
	17	33884	32922	33838	33911	33591	32917	33303	33357	33047	33971	33405	33280	72.723
	18	33423	33344	33186	33518	32988	33355	32843	33488	32922	33633	33506	33671	72.440
	19	32621	32989	33393	33483	33185	33001	33959	32978	33127	33008	33177	33451	72.165
	20	33593	33433	33063	33400	33591	33363	33551	33050	33616	33114	32909	33170	72.436
	21	33103	33254	33031	33226	33323	33217	32752	32983	32279	33188	33714	33716	72.061
	22	33528	33447	33202	33166	33186	32884	32574	33525	33509	33126	33361	33163	72.222
	23	33661	32806	32927	32991	32757	33787	33532	33198	33566	33096	33240	33465	72.286

INAF/UNIRomaTre				S.V.I.R.CO. Observatory - Pressure Corrected Data – July 2017									20 NM-64	
day	hh	00_05	05_10	10_15	15_20	20_25	25_30	30_35	35_40	40_45	45_50	50_55	55_60	h-norm
19	0	33367	33654	33369	32869	33173	33422	33129	33525	33278	33393	33114	33466	72.418
	1	33063	33036	33619	33217	33488	33510	33262	33593	33276	33589	33282	33210	72.489
	2	33658	33230	33444	33469	33229	32831	33253	33236	33348	33222	33925	33459	72.519
	3	33787	33973	33307	33201	33810	33455	33204	33290	34045	34018	33959	33111	73.036
	4	33671	33573	33682	33501	33641	33713	33446	33064	33840	33735	33119	33414	72.901
	5	33909	33606	33358	34012	33654	34003	33054	33449	33515	33587	33962	33753	73.168
	6	33625	33500	33360	33753	33672	33390	33173	33514	33701	33440	33566	33229	72.817
	7	33311	33436	33589	33549	33887	33360	33797	34150	34085	33746	33838	34202	73.364
	8	33422	33500	33966	33686	33820	33611	33668	34085	33973	33788	34374	33759	73.489
	9	33634	33526	33596	33830	33686	33972	33620	33994	33508	33555	33752	33441	73.231
	10	33751	33656	33305	33493	33826	33772	34113	33313	33386	34046	34129	34011	73.355
	11	33407	33461	34052	33801	33501	33678	33346	33825	33862	34000	33695	33645	73.260
	12	34058	33735	33375	33796	33640	33951	33999	33663	33538	34144	33565	33668	73.416
	13	33815	33806	33970	33927	34366	33284	34030	33771	33633	33978	33679	33533	73.535
	14	33620	33954	33425	33372	33667	33325	33343	33444	33854	33969	33748	33215	73.018
	15	33608	33599	33839	33838	33510	34250	33245	33374	33806	33828	33505	33924	73.269
	16	33749	33901	33400	33540	33461	33568	33707	33733	33713	33517	33402	34052	73.164
	17	34242	33416	33819	33266	33819	34058	33361	33119	33263	34275	33777	33659	73.224
	18	33285	33501	33509	33455	34083	33192	33554	33003	33434	34082	33114	32754	72.661
	19	33251	33560	33750	33103	33826	33410	33301	33427	33488	33716	33912	33842	72.955
	20	33263	33454	33307	33495	33417	33723	33489	33138	33744	32964	33634	33147	72.626
	21	33164	33300	32969	33462	33400	33095	33411	33603	33432	33774	33576	33927	72.688
	22	33272	33644	33715	33347	32767	33802	33241	33621	33302	32993	33942	33062	72.614
	23	33363	33648	32976	32908	33664	32966	33562	32763	33289	33223	33437	33620	72.380
20	0	33389	33428	33157	32812	33637	33773	33214	33250	33195	33010	33466	33247	72.408
	1	33014	33161	33447	33369	34007	33679	33576	33544	33771	33588	33170	33392	72.797
	2	33701	33393	33672	33366	33174	32887	33307	33621	33579	33900	33887	34185	72.970
	3	33536	33358	33650	33472	33591	33543	33327	34347	34007	33932	33539	33500	73.174
	4	33885	33874	33842	33710	33849	33624	33758	33677	33471	32933	33920	33363	73.194
	5	33664	34075	33937	34079	33838	33093	33459	33341	33251	33840	34029	33479	73.226
	6	33867	33978	33541	34024	33589	33958	33937	33848	33799	33684	33715	33503	73.472
	7	33954	33264	33599	33099	33733	33518	33480	33496	33881	33746	33725	33718	73.068
	8	34062	33488	33278	34153	33887	33650	34015	33486	33490	33332	33826	34106	73.350
	9	33940	33852	33691	33254	34003	33990	34280	33914	33370	33675	33716	33403	73.408
	10	34025	33875	33970	33729	33689	33354	33764	33203	34456	33921	34384	34144	73.571
	11	33670	33799	33589	34248	33730	33954	33684	33759	33611	33692	33069	33654	73.232
	12	34188	33802	33884	33908	33711	34070	33563	34172	33665	33777	34009	33839	73.679
	13	34139	33529	33892	33685	33781	33210	33710	34161	33532	33610	33898	33303	73.292
	14	33906	33739	33742	33645	33457	33779	33846	33288	33889	33647	33519	34099	73.311
	15	33754	34073	33364	33642	33583	34058	33582	33670	33840	33602	33792	33571	73.307
	16	33933	33906	33613	33362	34024	33687	33252	33582	33400	33226	33647	33322	73.021
	17	33309	33557	33704	33794	33149	33925	33458	33295	33892	33686	33294	33501	72.950
	18	33914	33305	33217	33681	33267	33807	33017	33557	33049	33682	33087	33287	72.644
	19	33646	33221	32533	33940	33356	33386	33353	33308	34032	33197	33219	33957	72.694
	20	33630	33611	33193	33545	33614	33660	33373	33729	33104	33617	33024	33613	72.796
	21	33064	33378	33731	33454	33552	33719	33732	33927	33243	33080	34030	33263	72.879
	22	33704	33428	33645	34119	33464	34067	32936	33972	33278	34186	33741	32982	73.124
	23	33141	33182	33257	33915	33125	33337	34379	33460	33065	32935	32986	33531	72.542

INAF/UNIRomaTre		S.V.I.R.CO. Observatory - Pressure Corrected Data – July 2017										20 NM-64		
day	hh	00_05	05_10	10_15	15_20	20_25	25_30	30_35	35_40	40_45	45_50	50_55	55_60	h-norm
21	0	33550	32999	33603	33683	33856	33977	33481	33449	33390	33217	33529	33043	72.807
	1	33450	33797	33711	33694	33779	33531	33555	33450	33933	33809	33558	33544	73.176
	2	33055	33375	33829	33591	33636	33809	33991	33726	33522	33645	32781	33921	73.008
	3	33422	33756	33349	33311	33616	34263	33206	33877	33829	33179	33377	34145	73.089
	4	33561	33382	33519	33559	33282	33724	33735	33193	33622	33247	33543	33395	72.805
	5	33630	33099	33649	33324	33200	33571	34006	33436	33466	33250	33939	32936	72.759
	6	34281	33624	33733	33210	33364	33962	33547	33757	33372	33511	33820	33914	73.228
	7	33645	33856	33551	33233	34319	33705	33488	33643	33336	34096	33678	33997	73.248
	8	33369	34067	33511	33535	33865	33703	33893	33590	33404	33378	33371	33696	73.098
	9	33299	33522	33535	33943	33978	34024	33822	33909	33499	33002	33579	33517	73.143
	10	33627	33725	33650	33497	33464	33863	34166	33478	33580	33626	33974	33320	73.205
	11	34428	34084	33807	33393	34193	33714	33837	33529	33612	34366	34220	33835	73.758
	12	33358	33911	33651	33591	33641	34165	34030	33690	33638	34159	33683	34205	73.523
	13	33905	33788	33711	33576	34049	33556	33738	33381	33776	34045	34057	33421	73.334
	14	33733	33543	33849	33458	33448	33330	34133	33348	34018	33602	33730	33598	73.147
	15	33441	33026	33391	33690	33651	33740	33171	34073	33811	33501	33482	33711	72.947
	16	33552	33579	33088	33563	33648	33969	33137	33851	33534	33965	32956	34037	72.982
	17	33593	33522	33948	33460	33623	33700	33124	33443	33565	33899	33090	33429	72.894
	18	33443	33678	33852	33355	33558	33730	33531	33566	34023	33308	33406	33290	72.954
	19	33688	32943	33737	33793	33808	33413	33804	33654	33722	33332	33350	33430	72.944
	20	33304	33383	33246	33534	33396	33098	33192	33510	33186	33680	33844	33750	72.663
	21	34076	32799	33166	33449	33560	33821	34141	33598	34011	33673	33066	33562	72.989
	22	33393	33832	33152	33825	33661	33972	33346	33733	33791	33557	33417	33380	73.014
	23	33477	33597	33357	33892	33727	34100	33043	33032	33547	33355	33558	33596	72.875
22	0	33191	33563	33594	33179	33324	33752	33447	33194	33025	33548	33685	33674	72.682
	1	33644	34111	33566	33560	33720	33829	33716	32974	33294	33021	33749	33755	72.994
	2	33322	33632	33204	34063	33682	33354	32617	33297	33014	33459	32987	33354	72.461
	3	33479	33172	32954	32809	33113	33810	33851	32933	33794	32848	33145	33313	72.322
	4	33269	33724	33166	33282	33500	33730	33006	33678	33407	33703	33268	33660	72.716
	5	32646	33557	33410	33291	33127	33051	33825	33709	32854	33856	33096	33216	72.399
	6	33369	33675	33618	33265	33726	33535	33075	33026	33318	33283	33299	33011	72.500
	7	33242	33319	33224	33817	32806	33382	33489	33247	33420	34040	33500	33802	72.698
	8	32854	33120	33086	33328	33666	33450	34099	33190	33637	33400	33604	33294	72.594
	9	33107	33301	33161	33230	33148	33022	33236	33556	33690	33855	33640	33528	72.549
	10	34433	33144	33529	33815	33886	33702	33697	33382	33652	33366	33950	33983	73.284
	11	33729	33422	33565	33324	33505	32866	33420	33166	33650	33940	33679	33507	72.782
	12	33753	34249	33275	33659	34042	33650	33623	33417	33129	33401	34215	33313	73.135
	13	33232	33453	32668	33611	33610	33522	33711	33418	33430	33684	33590	33493	72.717
	14	33325	33765	33339	33095	33042	33385	33543	33700	33297	32791	33412	33826	72.554
	15	33276	33211	33034	33950	32866	33397	33339	33189	33627	33509	33186	33137	72.407
	16	33821	33539	33397	33074	33188	32842	33444	33178	33686	33572	33380	33740	72.613
	17	33663	33500	33366	32613	33225	33058	33513	33074	33181	33134	33143	33847	72.332
	18	32385	33496	33314	33520	32876	33164	33242	33476	33981	33172	32855	33417	72.258
	19	33045	33063	33448	33291	33335	33525	33294	33389	32858	33295	33077	33299	72.262
	20	32999	33497	33293	33328	33073	33641	33211	33024	33370	33367	32804	32905	72.188
	21	32976	33324	32626	33742	33572	32940	33591	33290	33195	33195	33153	33365	72.271
	22	33698	33326	33079	33102	32806	33440	33141	32814	33591	32961	33214	33029	72.131
	23	33037	33327	33165	32686	33599	33000	33247	33269	33434	33494	33130	33539	72.263

INAF/UNIRomaTre				S.V.I.R.CO. Observatory - Pressure Corrected Data – July 2017									20 NM-64	
day	hh	00_05	05_10	10_15	15_20	20_25	25_30	30_35	35_40	40_45	45_50	50_55	55_60	h-norm
23	0	32614	33231	33194	32755	33380	33540	33202	33332	33033	33370	32912	33449	72.099
	1	32911	33392	33162	33035	33244	32996	33522	33309	32393	32817	32984	33472	71.957
	2	32868	32864	33179	33168	32991	33329	32824	33162	33309	33404	32569	33421	71.932
	3	33412	32883	33149	33449	33339	33257	32930	33069	33122	32964	33097	33227	72.078
	4	33527	33022	33787	33575	33485	33197	33249	33316	33575	33197	33438	33424	72.603
	5	33262	32963	32895	33558	33379	32580	32984	33084	33323	33368	33360	33155	72.083
	6	33158	33051	33319	33656	32699	33174	33491	33034	33514	33393	32949	33097	72.194
	7	32785	33373	33039	33307	33609	33152	33327	33535	33415	33187	33430	33371	72.374
	8	33692	33328	33143	33796	33100	33289	33882	34049	33184	33277	33018	33276	72.647
	9	33484	33231	33545	33284	33785	33224	33227	33675	33778	33312	33212	33303	72.650
	10	33486	33480	33871	33663	33789	33364	33501	33607	33670	33432	33224	33298	72.891
	11	33782	33598	33275	32873	33288	33968	33279	33569	33805	33451	33540	32965	72.710
	12	33413	33715	33375	33838	33286	33957	33728	33069	33310	32923	33341	33273	72.678
	13	33521	33106	32901	33850	33240	33659	33142	32998	33617	33628	32980	33426	72.470
	14	33133	33238	33071	33048	33674	33207	33416	33133	33347	33149	33198	33661	72.324
	15	33316	32835	33080	32959	33204	33488	32753	33200	33000	33179	33463	33089	72.015
	16	32940	33524	33285	33315	33445	33074	33877	33191	33664	33647	33378	33442	72.600
	17	33305	33235	33135	33185	33160	33225	33432	33103	32686	33208	33228	33004	72.076
	18	33146	32826	32701	32707	32881	33096	33189	33618	32894	33396	32469	32830	71.686
	19	32887	32941	32844	32882	33204	33109	33503	33378	33468	32676	33292	32849	71.919
	20	33221	34011	33068	33372	32281	32935	33283	32620	32731	33087	32847	32856	71.789
	21	32892	33199	33103	33506	33133	33088	32793	33293	33257	33361	33131	33543	72.150
	22	33295	33460	33680	33346	33533	33319	33084	33309	33023	33625	33178	33188	72.463
	23	33310	32986	33234	33410	33378	33058	33101	32564	32424	32961	32765	32814	71.731
24	0	33471	32781	33561	33049	33359	32493	33171	32848	33196	32788	32792	33487	71.913
	1	33197	32949	33208	33234	33085	32972	33229	33258	32701	33433	33690	33559	72.189
	2	33069	33067	33374	32613	32904	33093	33414	33281	33309	33137	32973	33636	72.070
	3	33269	33011	33585	33673	33280	33086	32934	33012	33133	33070	33421	33521	72.277
	4	33012	32945	33417	32915	33138	33774	33459	33333	33169	33185	33393	33602	72.340
	5	33433	32984	33132	33098	33543	33188	32958	32739	32965	33198	33144	33146	72.011
	6	33454	33250	33537	33275	32579	33327	33606	33321	33421	32836	33299	33696	72.387
	7	33416	32877	33545	33809	33515	33099	33056	33460	33132	32992	33121	32918	72.282
	8	33169	33646	33425	33762	33358	33426	33574	33106	33567	33359	32786	33120	72.484
	9	33168	33773	33576	33138	33209	33400	33181	33306	33964	33427	33043	33300	72.545
	10	33277	33875	33432	32392	33354	37098	38034	38188	38288	37965	38166	37751	72.483
	11	37932	38195	37635		37797	37340	37685	38056	37566	37382	40469	38156	72.221
	12	37619	38122	37893	37584	37898	37774	35820	35590	35690	35998	36601	37880	72.328
	13	37876	37153	37962	37776	37992	37555	37530	37964	37389	37858		38004	72.021
	14	38052	35491	33184	33376	34826	38200	37687	37602	37681	38364	37162	38290	72.325
	15	37559	37799			37484	37405	38000	37921	37936	37842	37974	38139	72.373
	16	37914	37339		38224	37482	37879	37585	37160	37772	37071	37664	37381	71.866
	17	37719	37631	37786	37511	37627	37548	37694	37113	37596	37188	37655	37410	71.771
	18	37598	37852	37597	37660	37670	37677	37765	37838	38016	37133	37672	38037	72.049
	19	37714	37805	37596	37667	37961	38008	37994	37700	37944	38130	37645	37649	72.397
	20	37841	37543	37956	37910	37251	38215	37162	37924	37366	37045	37721	37576	72.071
	21	37600	37848	37784	38451	37814	37238	37749	37585	37125	37171	37785	37718	72.038
	22	38037	37566	37719	37322	38227	37556	37448	37309	37412	38263	37836	37547	72.064
	23	37659	37465	37954	37251	37829	37672	37926	37524	37931	37397	37973	37428	72.091

		S.V.I.R.CO. Observatory - Pressure Corrected Data – July 2017											20 NM-64			
		INAF/UNIRomaTre														
day	hh	00_05	05_10	10_15	15_20	20_25	25_30	30_35	35_40	40_45	45_50	50_55	55_60	h-norm		
25	0	37663	37035	38041	37452	37797	37298	37535	37848	38337	37714	37793	37481	81.901		
	1	37506	37360	37747	37720	38046	37603	37593	38191	37414	37637	38247	37806	82.067		
	2	37958	37810	38237	37658	38003	37909	38554	37859	37774	37835	38170	37955	82.583		
	3	37805	37819	37888	37552	37635	37984	37716	37630	37975	37806	37731	37906	82.171		
	4	37342	37756	37289	37757	37669	37884	37997	38357	38347	37498	37913	37785	82.197		
	5	38128	37838	38030	37780	37527	37613	37578	37574	37649	38070	37959	37313	82.100		
	6	38268	37748	37649	38115	37978	37769	38357	37522	38026	38051	38009	37712	82.489		
	7	37805	37927	37725	37228	37780	37515	37882	38365	37499	38174	38243	37856	82.271		
	8	37822	37805	37968	37810	37845	38039	37988	37492	37832	37916	38293	37946	82.408		
	9	37999	37845	37682	37607	37629	38324	37857	38091	37472	38153	38244	37777	82.395		
	10	37651	38300	37698	37784	38311	37848	37673	37705	37567	37960	37601	38118	82.310		
	11	37555	37629	37794	37489	38020	38003	37706	37552	37757	37813	38035	37928	82.141		
	12	37962	37805	37919	38018	37182	38113	37552	38046	37861	37678	37826	37059	82.095		
	13	37486	38258	37336	37256	37549	37760	37893	37683	37244	37457	38049	37817	81.870		
	14	37910	37753	36881	37846	37722	37759	38013	37625	37708	37722	37819	37656	81.984		
	15	38029	37967	38272	38186	37542	37578	37282	37584	37902	37852	38118	37317	82.204		
	16	38020	37942	37707	38065	37911	37255	38021	37661	37461	38067	37508	38005	82.203		
	17	37740	37950	38242	37887	38095	37509	37777	37880	37706	37693	37907	37375	82.229		
	18	37789	37710	37457	37591	38048	37725	37255	38037	37476	38329	38105	37701	82.130		
	19	37982	38039	37736	38363	38005	38476	37984	38050	37812	37925	38187	38461	82.818		
	20	37912	37528	37418	37801	37794	37799	37919	37724	37888	37624	38025	38022	82.173		
	21	37082	38127	37870	37805	37846	38331	38306	37985	37871	36969	37322	37966	82.177		
	22	38121	37735	38233	38173	37820	38313	37485	38419	37771	37991	37889	37826	82.593		
	23	37666	37575	37647	38154	38034	38352	38495	37782	38046	37915	38143	37839	82.570		
26	0	37604	37905	38289	37460	38445	38181	37878	38046	38141	38006	37559	37548	82.462		
	1	37948	38002	37748	37617	38497	38624	38049	37786	37962	38227	37897	38010	82.700		
	2	37614	37557	37677	37900	37254	37456	37691	38210	37722	37852	38223	37827	82.087		
	3	38606	38053	38084	37503	37805	38297	37647	37994	37947	37851	37417	37733	82.441		
	4	37552	37969	37638	38133	37608	37515	38565	38125	37863	37423	37765	37611	82.229		
	5	37854	38376	38051	37846	38291	37845	38115	37547	37797	38086	37509	38128	82.533		
	6	38305	38210	37801	37590	37783	37917	38627	38330	37713	38328	37626	38280	82.726		
	7	37646	38479	37959	37723	37893	38503	38051	37915	37779	38163	37953	38118	82.667		
	8	38329	38018	38608	37549	38082	38024	38472	38151	37681	38522	38579	37699	82.944		
	9	38149	37737	38054	38622	37706	37787	37800	37945	37621	37429	37898	37349	82.289		
	10	38147	37583	37701	37469	37703	38096	37753	37764	38206	37998	38326	38361	82.472		
	11	37587	38181	37522	38060	38008	37918	37811	38463	37942	37736	37345	37771	82.334		
	12	38125	37978	37922	37719	37611	37676	38241	38256	37985	37573	37693	38328	82.472		
	13	37881	37541	37858	37849	37570	38359	38058	37773	38122	37947	38117	37832	82.436		
	14	37987	37436	38032	37818	37999	38109	37754	37517	37662	37855	38030	37443	82.206		
	15	38073	37539	38098	38638	37898	38163	37928	37758	37757	37678	38185	38217	82.622		
	16	37755	37621	37894	37907	38172	37894	37860	38235	37918	38091	38411	37699	82.536		
	17	37384	38466	38263	38569	38126	37899	38137	38269	37577	38098	37465	38360	82.745		
	18	38063	37688	37483	37827	37886	37988	37777	37868	38185	38346	38231	37997	82.514		
	19	38069	37880	37582	37802	37669	37597	38299	38102	37840	38099	37738	38016	82.397		
	20	38086	37637	37905	38084	37731	37797	38074	37376	37684	38012	37587	38280	82.317		
	21	38049	37552	38035	38111	37864	37438	37627	37890	37654	37861	37782	37951	82.238		
	22	38304	38416	37723	37361	37757	37995	37399	37517	38416	37882	38413	38147	82.512		
	23	38246	37888	37771	38416	37612	37967	37993	38229	37579	37634	37834	38101	82.501		

		S.V.I.R.CO. Observatory - Pressure Corrected Data – July 2017											20 NM-64	
	INAF/UNIRomaTre													
day	hh	00_05	05_10	10_15	15_20	20_25	25_30	30_35	35_40	40_45	45_50	50_55	55_60	h-norm
27	0	37852	37716	37297	38195	38012	37868	37799	37671	37472	37989	38764	37884	82.367
	1	38265	37614	37432	37881	38204	38062	38310	37609	37550	37807	38119	37695	82.371
	2	37617	37472	37430	38134	37715	38270	37783	37720	37667	38145	37823	38004	82.231
	3	38198	37790	37862	37461	37891	37569	37794	38307	37651	38050	37674	37849	82.289
	4	37774	37623	37835	37976	38286	38046	38053	38277	37863	38043	37695	37243	82.401
	5	38000	37558	37956	37440	37708	38553	38079	37832	37801	37662	37911	37949	82.352
	6	37901	37333	38331	38015	37540	38320	37676	38240	37933	37649	37842	37531	82.328
	7	37570	38056	37544	38596	37732	37753	38103	37771	38012	38141	37628	37851	82.408
	8	37903	38224	37718	37659	38415	37710	37914	37309	37514	38255	38182	37783	82.377
	9	38156	37872	38342	38284	38172	37256	37878	37501	38100	38161	37680	38541	82.623
	10	37826	37881	37820	38138	38123	37789	37748	37745	37937	37977	37902	38451	82.513
	11	37618	37487	38315	37925	37816	38165	37614	37866	37726	38050	38198	38275	82.463
	12	37578	37975	37698	37716	37854	37985	37729	37312	37894	37970	37989	37805	82.182
	13	37530	37796	37376	38047	38213	38422	38037	38205	37417	37781	37508	37555	82.251
	14	38650	38115	37588	37900	37652	37798	37300	37590	38135	37966	38293	37766	82.408
	15	37586	37756	37484	38230	38010	37892	37225	37942	37631	37611	37626	37755	82.044
	16	37890	37500	37723	37654	37442	37563	37999	37928	37495	37311	37643	37418	81.830
	17	37410	37671	38130	37743	38249	37825	37200	38802	37739	37965	37836	38175	82.406
	18	37755	38305	37803	37699	38090	37559	37960	37497	37912	37175	38233	38065	82.281
	19	37812	37822	37479	37420	37622	37734	37945	37895	38099	37867	37228	38384	82.145
	20	37851	37753	37697	38013	37850	37752	37586	37569	37391	37823	37593	37691	82.012
	21	38331	38005	37582	38431	38074	38036	37814	37758	38402	37555	38297	37718	82.634
	22	38112	38224	37842	38349	37998	38198	37733	37660	38261	38267	37255	37775	82.575
	23	37445	38191	38017	38143	38307	37732	38384	37582	37842	37702	38404	37989	82.586
28	0	37488	37713	37774	37834	37860	37678	38494	37673	38278	37968	38026	38216	100.100
	1	37607	37422	38055	37168	37357	37823	37727	37312	37603	37968	38531	37442	99.443
	2	37622	37516	37768	37833	37501	38031	38435	38285	38092	37879	38138	37833	100.085
	3	37995	37979	38084	38018	38354	37688	37217	37941	38310	37643	37809	38174	100.146
	4	38315	37801	37927	37447	37826	38061	37830	37684	38009	37173	37869	38140	99.898
	5	37495	37688	38206	38253	37958	37148	38107	38263	37785	38002	37678	37800	99.964
	6	37775	38372	37524	38048	37901	37328	37817	37304	37592	37389	37471	37653	99.479
	7	37576	37844	37858	37845	37867	37496	38175	37846	38032	37702	38069	37741	99.891
	8	37751	38162	37377	37446	37894	37696	37070	37905	37865	37940	37396	37659	99.475
	9	38071	37329	37815	37362	37975	37711	37993	37756	37606	37229	37935	37149	99.425
	10	38094	37818	37364	37872	37853	37807	37493	38240	37732	38101	38232	37416	99.885
	11	37641	37899	37500	37530	37893	37374	37273	37853	37980	37650	37374	37863	99.403
	12	37846	37544	37521	37911	37698	37375	37073	37616	38104	37147	37692	37543	99.235
	13	38125	37135	38081	38233	37470	37171	38069	37590	37817	37107	37693	37591	99.458
	14	37524	37712	37519	38524	37477	37613	38283	37676	37587	38083	37774	37503	99.721
	15	37861	37976	38041	38042	37823	38533	38072	38066	38578	37860	37989	38468	100.608
	16	37771	37608	37736	38207	38223	37391	37590	38078	37818	37829	37834	37831	99.861
	17	37934	37543	37817	38126	37884	37777	37310	38083	37502	38128	37609	37589	99.727
	18	37783	37451	37623	37574	38326	37408	38230	37987	37678	37490	37582	37545	99.589
	19	38114	38363	37913	37557	37564	37839	37968	38081	38075	37941	38101	37802	100.170
	20	38070	38107	38147	37421	37864	37786	37903	38111	38057	38516	38128	38261	100.402
	21	38366	38292	37569	38137	38055	37568	38192	38480	38631	37526	37565	37907	100.383
	22	38342	37745	37906	37876	38142	38455	38031	37677	38176	37625	37940	37602	100.214
	23	38305	38155	37412	38611	37703	37955	38513	37967	37191	38365	37797	37633	100.234



		S.V.I.R.CO. Observatory - Pressure Corrected Data – July 2017											20 NM-64			
		INAF/UNIRomaTre														
day	hh	00_05	05_10	10_15	15_20	20_25	25_30	30_35	35_40	40_45	45_50	50_55	55_60	h-norm		
29	0	37176	37875	37762	37716	38209	37679	37883	37447	37823	38048	37918	37425	82.082		
	1	38362	38034	38153	38221	37862	38069	37597	37632	37868	38075	38422	37896	82.668		
	2	37846	37959	37635	37817	37947	37865	38097	38144	38526	37774	38316	37937	82.609		
	3	37609	37545	37158	38085	37589	37677	37876	37565	37436	38096	37518	37897	81.918		
	4	38044	37882	38182	37264	37015	37643	38055	37700	38144	37709	37450	37759	82.062		
	5	37459	37565	37437	37434	38026	37522	37369	37517	37144	38815	37547	37745	81.833		
	6	37332	37750	37927	38112	38027	37964	37602	38141	37967	36916	37567	37647	82.081		
	7	37828	37155	38009	37278	37611	37955	37174	37002	37485	37158	37623	37930	81.584		
	8	37564	38184	37796	37358	37593	37276	38084	37643	38059	37782	37472	37511	81.967		
	9	37589	37322	37476	37431	37225	37244	37908	37628	36898	37072	37944	37716	81.447		
	10	37340	37180	37514	37675	37962	37602	37116	37385	37729	37652	37564	37599	81.604		
	11	37354	38399	37675	37635	37967	37744	37841	37988	37320	37485	37365	37721	81.998		
	12	37599	37611	38083	37662	38013	37734	37792	38185	38176	37568	37591	37688	82.218		
	13	37673	38044	37581	37386	38117	37725	37654	37632	38049	37329	37831	37883	82.073		
	14	38095	37685	37272	37380	37710	38339	37960	37896	37162	37428	37977	37462	81.975		
	15	38356	38251	37830	37948	38244	38089	38039	38412	37938	37586	37692	37254	82.568		
	16	37470	37747	38797	37420	38074	38114	37593	37641	37896	37468	37937	37918	82.285		
	17	37393	37901	38273	37886	37548	38933	38407	38192	38117	37462	38516	37703	82.694		
	18	37849	37912	37898	37947	37903	37961	38085	37366	37785	37683	37371	38053	82.237		
	19	37805	38284	37392	37504	37615	37623	38178	37633	37519	37934	38224	37674	82.160		
	20	38368	37885	37880	38245	37572	37761	37522	38353	37618	37560	38165	38386	82.510		
	21	38092	38427	37988	37794	38222	38191	38103	37753	37982	38059	37800	37866	82.684		
	22	38017	38215	38468	38056	37472	38226	37931	38099	37998	38124	38000	37753	82.699		
	23	37381	37749	38106	37845	38407	38049	38151	38368	37725	38827	37418	37674	82.580		
30	0	37830	37960	37833	37851	38363	38022	37898	37565	37752	37826	38111	37551	82.369		
	1	38054	37676	38044	38128	37796	38150	38347	37811	37931	38051	37428	37927	82.515		
	2	37498	37988	38111	38017	37784	37718	38250	37849	38121	37683	38019	37579	82.383		
	3	37907	38054	37650	37711	37728	37930	37708	37341	37735	37757	37382	37821	82.040		
	4	37743	37702	37745	38313	37429	37812	38347	37706	37185	38452	37492	38351	82.322		
	5	37359	37744	37518	37919	37869	37984	37521	37395	37304	37765	37623	37291	81.781		
	6	37759	37566	37221	38190	37378	37423	37353	37737	37370	37212	37230	38010	81.628		
	7	37704	37743	37778	37382	37606	37573	37682	38176	38080	37924	37417	37871	82.078		
	8	37364	37781	37668	37648	38136	37917	37832	37542	37908	37791	38182	37812	82.195		
	9	37577	37793	38008	37966	38046	37229	38034	37616	37946	37599	38192	37603	82.200		
	10	37630	37609	37919	37075	38031	37816	37275	37743	37438	37738	37755	37404	81.806		
	11	38057	37955	37488	37917	37887	38029	38017	37544	37279	37605	38312	37775	82.246		
	12	37636	37747	37856	38000	37277	37417	37751	37701	37490	37599	37545	37866	81.888		
	13	38162	37921	38127	37762	37565	37294	37544	38191	38107	37762	38265	37317	82.274		
	14	37684	37901	38283	37791	38209	37367	37973	37883	37668	38502	38174	37781	82.492		
	15	38262	37914	38244	37896	38012	37665	38126	37909	37674	37666	37541	37834	82.406		
	16	37512	38344	37786	38092	37958	37982	37421	38192	37630	37882	38055	38123	82.448		
	17	37401	37786	37925	38005	37279	37767	38196	38235	37319	37825	37533	38311	82.195		
	18	38211	37418	37480	37802	37614	37284	37832	37830	37656	37836	38081	37620	82.029		
	19	38019	38034	38065	38395	37506	38190	38122	38465	38670	37981	38573	37528	82.914		
	20	37800	37787	37875	37950	38260	38372	38102	37824	37399	38136	37697	37536	82.405		
	21	38063	37639	38100	38277	37812	38164	37457	37487	37501	37750	39176	38066	82.542		
	22	38433	37818	37888	37692	38156	38821	37674	37759	38065	38047	37336	38000	82.577		
	23	37697	37203	37850	37793	37274	38277	37664	38021	37996	37719	37979	38174	82.208		

INAF/UNIRomaTre		S.V.I.R.CO. Observatory - Pressure Corrected Data – July 2017										20 NM-64		
day	hh	00_05	05_10	10_15	15_20	20_25	25_30	30_35	35_40	40_45	45_50	50_55	55_60	h-norm
31	0	37787	37583	38349	37892	37978	37971	38243	38006	38309	37484	37864	37831	82.503
	1	37964	37885	38212	37820	37631	37335	37640	37299	37916	37343	37880	37921	82.062
	2	37892	37819	37935	37767	38251	37966	37800	37430	37922	37352	38000	38208	82.333
	3	37847	37597	37848	37745	37902	38205	37576	38342	37809	37717	37974	37789	82.335
	4	37811	37524	37337	37819	37462	37570	37835	37365	37424	37561	38013	37575	81.781
	5	37694	37322	37440	37330	37709	37583	38020	37717	37920	37609	37788	37299	81.806
	6	37967	37384	38029	37342	37451	37672	37403	37763	37878	37997	37909	37510	81.964
	7	37819	37514	37891	37485	37502	37593	37523	37153	37438	37903	37331	37669	81.695
	8	37725	37765	38006	37433	37440	37178	37799	37432	37468	37340	37770	37969	81.787
	9	37530	37485	37508	37932	37504	37317	37406	37780	37710	37294	37535	37421	81.623
	10	38022	37505	37894	37617	37400	37622	37759	38135	37685	37177	37659	38187	82.029
	11	38184	37561	38233	37502	37505	37655	37456	37508	37483	37767	38094	37563	82.001
	12	37417	37019	37703	37780	37838	37424	38062	37878	37687	37643	37925	37170	81.827
	13	38030	37628	37383	38377	37885	37798	37864	37907	37922	38017	37856	37738	82.345
	14	37484	37217	37826	36699	37415	37989	37338	37506	37851	37292	37799	37809	81.587
	15	37677	37304	37775	37510	37649	37619	37489	37589	37090	37759	37619	37305	81.616
	16	37490	37259	37510	37736	37477	37780	37532	37381	37700	38049	37214	38192	81.785
	17	37638	38471	38079	38268	37646	37847	38102	37621	37849	37993	37579	37991	82.468
	18	37936	37630	37324	38043	37625	38382	37596	37558	37730	37987	37689	37793	82.143
	19	38193	37983	38261	38105	38127	37534	37684	38083	37171	37825	38239	38258	82.536
	20	37523	38309	37499	38139	37695	37628	37485	37848	37580	37764	38154	37958	82.196
	21	36997	38150	37890	37977	37553	37746	37500	38153	37922	37506	37836	38263	82.179
	22	37603	37840	37950	38139	37719	37714	37467	37638	37646	37855	37938	37778	82.142
	23	37504	38002	37830	37751	38423	37841	37924	37645	37630	37510	37958	37505	82.185

S.V.I.R.CO. Observatory - Pressure in hectoPascal – July 2017

day	hh	00_05	05_10	10_15	15_20	20_25	25_30	30_35	35_40	40_45	45_50	50_55	55_60	average
1	0	1013.18	1013.69	1014.12	1013.62	1012.43	1012.38	1012.99	1012.71	1012.77	1012.91	1012.69	1012.47	1012.99
	1	1012.28	1012.56	1013.17	1012.84	1011.99	1012.06	1012.89	1013.77	1014.14	1013.83	1013.34	1012.85	1012.97
	2	1012.12	1011.97	1012.71	1012.97	1012.63	1012.07	1011.77	1012.35	1013.16	1013.23	1013.02	1012.90	1012.57
	3	1012.84	1012.54	1012.31	1012.73	1013.13	1012.72	1012.37	1013.04	1013.03	1012.64	1012.81	1012.75	1012.74
	4	1012.61	1012.55	1012.66	1012.77	1012.67	1012.61	1012.66	1012.86	1012.99	1012.82	1012.63	1012.56	1012.70
	5	1012.54	1012.28	1012.12	1012.35	1012.75	1013.03	1012.58	1012.49	1013.05	1013.07	1012.71	1012.62	1012.63
	6	1012.92	1012.93	1012.89	1012.93	1012.97	1013.50	1013.71	1013.59	1013.47	1013.26	1013.26	1013.30	1013.23
	7	1013.28	1013.37	1013.58	1013.77	1013.83	1013.64	1013.47	1013.48	1013.49	1013.58	1013.68	1013.56	1013.56
	8	1013.52	1013.63	1013.65	1013.67	1013.53	1013.59	1013.82	1013.66	1013.67	1013.81	1013.69	1013.59	1013.65
	9	1013.62	1013.54	1013.53	1013.58	1013.58	1013.62	1013.60	1013.65	1013.75	1013.84	1013.89	1013.84	1013.67
	10	1013.81	1013.78	1013.76	1013.72	1013.70	1013.73	1013.74	1013.70	1013.71	1013.70	1013.63	1013.60	1013.71
	11	1013.55	1013.52	1013.51	1013.52	1013.55	1013.50	1013.40	1013.32	1013.25	1013.20	1013.19	1013.19	1013.39
	12	1013.18	1013.15	1013.09	1013.01	1012.93	1012.90	1012.90	1012.83	1012.76	1012.74	1012.75	1012.74	1012.91
	13	1012.70	1012.67	1012.68	1012.68	1012.63	1012.58	1012.56	1012.51	1012.49	1012.45	1012.43	1012.44	1012.57
	14	1012.43	1012.42	1012.38	1012.37	1012.37	1012.36	1012.32	1012.27	1012.22	1012.23	1012.23	1012.23	1012.32
	15	1012.28	1012.31	1012.29	1012.21	1012.14	1012.13	1012.09	1012.05	1012.05	1012.06	1012.10	1012.15	1012.15
	16	1012.17	1012.18	1012.21	1012.20	1012.16	1012.17	1012.19	1012.20	1012.25	1012.26	1012.24	1012.26	1012.20
	17	1012.29	1012.31	1012.32	1012.30	1012.31	1012.33	1012.28	1012.24	1012.22	1012.24	1012.28	1012.31	1012.28
	18	1012.32	1012.31	1012.29	1012.27	1012.23	1012.20	1012.21	1012.24	1012.26	1012.28	1012.32	1012.35	1012.27
	19	1012.38	1012.43	1012.47	1012.51	1012.58	1012.66	1012.71	1012.76	1012.82	1012.82	1012.81	1012.83	1012.65
	20	1012.79	1012.76	1012.75	1012.75	1012.77	1012.77	1012.77	1012.80	1012.83	1012.83	1012.87	1012.90	1012.80
	21	1012.91	1012.93	1012.93	1012.89	1012.88	1012.90	1012.92	1012.92	1012.91	1012.91	1012.89	1012.88	1012.90
	22	1012.90	1012.93	1012.94	1012.94	1012.91	1012.88	1012.83	1012.78	1012.78	1012.78	1012.79	1012.79	1012.85
	23	1012.80	1012.80	1012.80	1012.80	1012.81	1012.81	1012.81	1012.83	1012.83	1012.81	1012.79	1012.79	1012.80
2	0	1012.79	1012.78	1012.74	1012.74	1012.74	1012.72	1012.70	1012.67	1012.64	1012.63	1012.63	1012.62	1012.69
	1	1012.56	1012.49	1012.43	1012.36	1012.35	1012.36	1012.33	1012.26	1012.20	1012.16	1012.09	1012.03	1012.30
	2	1012.06	1012.08	1012.04	1012.01	1011.99	1011.95	1011.92	1011.91	1011.89	1011.84	1011.80	1011.78	1011.94
	3	1011.77	1011.77	1011.75	1011.74	1011.74	1011.75	1011.77	1011.81	1011.82	1011.82	1011.86	1011.92	1011.79
	4	1011.96	1011.99	1012.02	1012.07	1012.11	1012.13	1012.16	1012.17	1012.17	1012.22	1012.27	1012.32	1012.13
	5	1012.36	1012.36	1012.39	1012.43	1012.43	1012.44	1012.47	1012.47	1012.47	1012.51	1012.56	1012.62	1012.46
	6	1012.63	1012.60	1012.59	1012.58	1012.57	1012.57	1012.55	1012.55	1012.57	1012.59	1012.59	1012.57	1012.58
	7	1012.52	1012.48	1012.46	1012.45	1012.45	1012.45	1012.44	1012.46	1012.45	1012.42	1012.42	1012.42	1012.45
	8	1012.41	1012.38	1012.37	1012.34	1012.32	1012.31	1012.28	1012.25	1012.25	1012.26	1012.24	1012.20	1012.30
	9	1012.18	1012.19	1012.16	1012.12	1012.11	1012.07	1012.00	1011.98	1011.96	1011.87	1011.78	1011.72	1012.01
	10	1011.69	1011.73	1011.77	1011.72	1011.63	1011.62	1011.63	1011.60	1011.59	1011.60	1011.57	1011.54	1011.64
	11	1011.54	1011.58	1011.60	1011.65	1011.71	1011.68	1011.67	1011.69	1011.65	1011.62	1011.63	1011.62	1011.63
	12	1011.62	1011.64	1011.65	1011.69	1011.71	1011.68	1011.65	1011.68	1011.67	1011.63	1011.61	1011.58	1011.65
	13	1011.59	1011.56	1011.54	1011.57	1011.59	1011.58	1011.51	1011.47	1011.49	1011.50	1011.47	1011.46	1011.52
	14	1011.45	1011.48	1011.51	1011.57	1011.58	1011.59	1011.65	1011.64	1011.61	1011.60	1011.57	1011.52	1011.56
	15	1011.47	1011.41	1011.36	1011.35	1011.32	1011.30	1011.26	1011.20	1011.15	1011.09	1011.08	1011.07	1011.25
	16	1011.01	1011.00	1011.06	1011.12	1011.14	1011.12	1011.08	1011.07	1011.13	1011.17	1011.16	1011.18	1011.10
	17	1011.18	1011.20	1011.27	1011.31	1011.32	1011.34	1011.37	1011.40	1011.40	1011.43	1011.48	1011.53	1011.35
	18	1011.58	1011.63	1011.69	1011.76	1011.83	1011.88	1011.93	1012.00	1012.06	1012.10	1012.15	1012.23	1011.90
	19	1012.32	1012.43	1012.55	1012.66	1012.77	1012.85	1012.94	1013.03	1013.09	1013.19	1013.29	1013.36	1012.87
	20	1013.41	1013.45	1013.50	1013.54	1013.57	1013.59	1013.61	1013.60	1013.57	1013.58	1013.60	1013.59	1013.55
	21	1013.58	1013.61	1013.64	1013.64	1013.65	1013.67	1013.68	1013.66	1013.63	1013.62	1013.65	1013.72	1013.64
	22	1013.76	1013.78	1013.81	1013.84	1013.87	1013.90	1013.94	1014.01	1014.05	1014.05	1014.07	1014.09	1013.93
	23	1014.09	1014.08	1014.10	1014.16	1014.20	1014.20	1014.19	1014.18	1014.21	1014.25	1014.28	1014.26	1014.18

S.V.I.R.CO. Observatory - Pressure in hectoPascal – July 2017

day	hh	00_05	05_10	10_15	15_20	20_25	25_30	30_35	35_40	40_45	45_50	50_55	55_60	average
3	0	1014.24	1014.26	1014.29	1014.29	1014.26	1014.28	1014.28	1014.22	1014.20	1014.24	1014.32	1014.38	1014.27
	1	1014.37	1014.33	1014.30	1014.28	1014.24	1014.21	1014.25	1014.33	1014.41	1014.46	1014.47	1014.45	1014.34
	2	1014.38	1014.31	1014.27	1014.27	1014.28	1014.32	1014.41	1014.44	1014.39	1014.40	1014.43	1014.45	1014.36
	3													
	4													
	5													
	6													
	7													
	8													
	9	1015.90	1015.89	1015.91	1015.97	1016.00	1015.96	1015.95	1015.96	1015.92	1015.85	1015.82	1015.82	1015.91
	10	1015.78	1015.75	1015.78	1015.80	1015.80	1015.80	1015.79	1015.73	1015.68	1015.68	1015.65	1015.63	1015.74
	11	1015.59	1015.51	1015.46	1015.42	1015.38	1015.31	1015.25	1015.24	1015.22	1015.19	1015.17	1015.12	1015.32
	12	1015.11	1015.11	1015.08	1015.07	1015.06	1015.01	1014.95	1014.94	1014.91	1014.89	1014.90	1014.90	1014.99
	13	1014.90	1014.93	1014.97	1014.99	1015.04	1015.05	1015.05	1015.12	1015.18	1015.21	1015.20	1015.15	1015.06
	14	1015.09	1015.06	1015.04	1015.03	1015.06	1015.10	1015.08	1015.06	1015.08	1015.06	1015.05	1015.02	1015.06
	15	1014.99	1015.00	1014.99	1014.93	1014.86	1014.82	1014.82	1014.78	1014.72	1014.70	1014.64	1014.58	1014.82
	16	1014.58	1014.56	1014.52	1014.53	1014.53	1014.45	1014.41	1014.42	1014.41	1014.40	1014.38	1014.33	1014.46
	17	1014.31	1014.32	1014.33	1014.33	1014.34	1014.35	1014.38	1014.41	1014.40	1014.44	1014.50	1014.55	1014.39
	18	1014.59	1014.65	1014.71	1014.76	1014.82	1014.87	1014.93	1014.97	1015.00	1015.05	1015.08	1015.10	1014.87
	19	1015.15	1015.20	1015.25	1015.30	1015.36	1015.43	1015.49	1015.54	1015.60	1015.67	1015.76	1015.83	1015.46
	20	1015.88	1015.92	1015.96	1016.00	1016.04	1016.09	1016.13	1016.16	1016.18	1016.21	1016.24	1016.27	1016.09
	21	1016.33	1016.38	1016.43	1016.47	1016.48	1016.50	1016.52	1016.53	1016.56	1016.58	1016.57	1016.57	1016.49
	22	1016.59	1016.62	1016.66	1016.69	1016.70	1016.71	1016.72	1016.73	1016.75	1016.79	1016.84	1016.86	1016.72
	23	1016.83	1016.80	1016.78	1016.76	1016.74	1016.73	1016.75	1016.79	1016.81	1016.79	1016.78	1016.79	1016.78
4	0	1016.77	1016.77	1016.76	1016.75	1016.72	1016.68	1016.66	1016.66	1016.65	1016.63	1016.63	1016.66	1016.69
	1	1016.69	1016.69	1016.68	1016.69	1016.71	1016.72	1016.73	1016.73	1016.72	1016.69	1016.67	1016.67	1016.70
	2	1016.69	1016.70	1016.72	1016.70	1016.67	1016.64	1016.65	1016.68	1016.72	1016.74	1016.75	1016.76	1016.70
	3	1016.80	1016.83	1016.88	1016.94	1016.99	1017.06	1017.12	1017.17	1017.23	1017.30	1017.36	1017.42	1017.09
	4	1017.46	1017.49	1017.50	1017.52	1017.56	1017.60	1017.64	1017.67	1017.71	1017.76	1017.81	1017.84	1017.63
	5	1017.85	1017.88	1017.94	1017.99	1018.03	1018.07	1018.09	1018.10	1018.14	1018.19	1018.24	1018.28	1018.07
	6	1018.33	1018.40	1018.44	1018.44	1018.45	1018.46	1018.47	1018.48	1018.49	1018.50	1018.50	1018.51	1018.45
	7	1018.51	1018.51	1018.53	1018.53	1018.51	1018.48	1018.47	1018.45	1018.43	1018.44	1018.45	1018.43	1018.48
	8	1018.41	1018.39	1018.37	1018.36	1018.35	1018.37	1018.37	1018.36	1018.37	1018.36	1018.33	1018.31	1018.36
	9	1018.31	1018.31	1018.28	1018.26	1018.24	1018.24	1018.23	1018.19	1018.20	1018.23	1018.22	1018.20	1018.24
	10	1018.20	1018.18	1018.14	1018.12	1018.09	1018.09	1018.10	1018.06	1018.01	1017.97	1017.97	1017.99	1018.07
	11	1017.99	1017.97	1017.94	1017.95	1017.93	1017.89	1017.85	1017.82	1017.78	1017.78	1017.79	1017.76	1017.87
	12	1017.73	1017.70	1017.68	1017.66	1017.63	1017.59	1017.60	1017.62	1017.61	1017.59	1017.60	1017.63	1017.63
	13	1017.65	1017.70	1017.73	1017.67	1017.63	1017.62	1017.63	1017.65	1017.63	1017.61	1017.61	1017.63	1017.64
	14	1017.65	1017.64	1017.59	1017.54	1017.54	1017.51	1017.46	1017.47	1017.46	1017.44	1017.44	1017.40	1017.51
	15	1017.32	1017.24	1017.22	1017.23	1017.22	1017.22	1017.23	1017.21	1017.19	1017.20	1017.20	1017.19	1017.22
	16	1017.19	1017.18	1017.19	1017.19	1017.18	1017.17	1017.11	1017.06	1017.07	1017.10	1017.12	1017.11	1017.14
	17	1017.09	1017.08	1017.08	1017.08	1017.07	1017.06	1017.06	1017.09	1017.11	1017.10	1017.10	1017.12	1017.08
	18	1017.11	1017.10	1017.10	1017.10	1017.13	1017.14	1017.17	1017.25	1017.30	1017.28	1017.26	1017.27	1017.18
	19	1017.31	1017.37	1017.41	1017.45	1017.50	1017.56	1017.63	1017.70	1017.74	1017.76	1017.79	1017.86	1017.59
	20	1017.95	1018.00	1018.03	1018.08	1018.13	1018.18	1018.24	1018.27	1018.28	1018.28	1018.26	1018.26	1018.16
	21	1018.27	1018.27	1018.28	1018.32	1018.37	1018.40	1018.40	1018.38	1018.38	1018.38	1018.38	1018.37	1018.35
	22	1018.36	1018.36	1018.36	1018.36	1018.35	1018.31	1018.27	1018.22	1018.19	1018.17	1018.14	1018.11	1018.26
	23	1018.09	1018.08	1018.05	1018.03	1017.99	1017.97	1017.94	1017.90	1017.89	1017.89	1017.89	1017.88	1017.96

S.V.I.R.CO. Observatory - Pressure in hectoPascal – July 2017

day	hh	00_05	05_10	10_15	15_20	20_25	25_30	30_35	35_40	40_45	45_50	50_55	55_60	average
5	0	1017.89	1017.90	1017.91	1017.91	1017.89	1017.85	1017.84	1017.84	1017.82	1017.81	1017.77	1017.73	1017.84
	1	1017.69	1017.66	1017.64	1017.64	1017.64	1017.62	1017.59	1017.58	1017.58	1017.57	1017.56	1017.53	1017.61
	2	1017.50	1017.48	1017.45	1017.44	1017.42	1017.41	1017.42	1017.45	1017.46	1017.45	1017.44	1017.43	1017.44
	3	1017.41	1017.39	1017.39	1017.38	1017.39	1017.41	1017.42	1017.42	1017.42	1017.44	1017.47	1017.49	1017.42
	4	1017.50	1017.53	1017.55	1017.55	1017.57	1017.60	1017.63	1017.66	1017.67	1017.65	1017.64	1017.64	1017.60
	5	1017.63	1017.64	1017.64	1017.67	1017.70	1017.72	1017.74	1017.79	1017.86	1017.90	1017.90	1017.90	1017.76
	6	1017.92	1017.93	1017.94	1017.97	1017.96	1017.94	1017.94	1017.94	1017.96	1017.97	1017.96	1017.95	1017.95
	7	1017.93	1017.93	1017.94	1017.95	1017.95	1017.95	1017.95	1017.96	1017.96	1017.97	1017.97	1017.96	1017.95
	8	1017.94	1017.90	1017.86	1017.85	1017.82	1017.80	1017.78	1017.75	1017.72	1017.70	1017.69	1017.67	1017.79
	9	1017.65	1017.61	1017.57	1017.54	1017.51	1017.48	1017.43	1017.38	1017.35	1017.32	1017.30	1017.26	1017.45
	10	1017.23	1017.20	1017.17	1017.13	1017.07	1017.05	1017.06	1017.06	1017.04	1017.00	1016.97	1016.95	1017.07
	11	1016.94	1016.95	1016.95	1016.91	1016.84	1016.80	1016.81	1016.80	1016.77	1016.71	1016.66	1016.63	1016.81
	12	1016.59	1016.54	1016.52	1016.52	1016.50	1016.45	1016.42	1016.39	1016.34	1016.32	1016.32	1016.32	1016.43
	13	1016.33	1016.34	1016.32	1016.30	1016.29	1016.27	1016.28	1016.29	1016.28	1016.27	1016.26	1016.25	1016.29
	14	1016.24	1016.25	1016.25	1016.24	1016.22	1016.22	1016.21	1016.20	1016.18	1016.14	1016.11	1016.06	1016.19
	15	1016.04	1016.04	1016.04	1016.04	1015.98	1015.91	1015.89	1015.88	1015.89	1015.89	1015.87	1015.88	1015.94
	16	1015.90	1015.89	1015.88	1015.90	1015.92	1015.95	1015.98	1016.01	1016.04	1016.05	1016.05	1016.07	1015.97
	17	1016.07	1016.07	1016.07	1016.07	1016.07	1016.05	1016.03	1016.04	1016.07	1016.09	1016.12	1016.17	1016.08
	18	1016.20	1016.24	1016.27	1016.28	1016.29	1016.29	1016.30	1016.31	1016.33	1016.34	1016.39	1016.47	1016.31
	19	1016.54	1016.63	1016.70	1016.74	1016.78	1016.82	1016.85	1016.89	1016.94	1016.98	1017.03	1017.08	1016.83
	20	1017.13	1017.17	1017.22	1017.28	1017.33	1017.36	1017.40	1017.43	1017.46	1017.48	1017.49	1017.51	1017.35
	21	1017.57	1017.58	1017.58	1017.63	1017.65	1017.63	1017.62	1017.63	1017.61	1017.61	1017.62	1017.62	1017.61
	22	1017.63	1017.64	1017.64	1017.64	1017.59	1017.56	1017.56	1017.57	1017.59	1017.60	1017.60	1017.58	1017.60
	23	1017.58	1017.60	1017.60	1017.60	1017.61	1017.60	1017.57	1017.54	1017.52	1017.50	1017.46	1017.44	1017.55
6	0	1017.45	1017.44	1017.41	1017.40	1017.41	1017.43	1017.44	1017.44	1017.46	1017.48	1017.49	1017.51	1017.44
	1	1017.52	1017.52	1017.50	1017.48	1017.50	1017.50	1017.49	1017.48	1017.48	1017.49	1017.50	1017.49	1017.49
	2	1017.47	1017.47	1017.45	1017.42	1017.38	1017.35	1017.34	1017.30	1017.31	1017.34	1017.35	1017.35	1017.38
	3	1017.36	1017.37	1017.37	1017.40	1017.43	1017.49	1017.53	1017.55	1017.56	1017.56	1017.58	1017.60	1017.48
	4	1017.59	1017.56	1017.56	1017.57	1017.55	1017.52	1017.50	1017.51	1017.57	1017.64	1017.74	1017.85	1017.59
	5	1017.93	1017.98	1018.02	1018.05	1018.08	1018.12	1018.15	1018.19	1018.24	1018.27	1018.31	1018.34	1018.14
	6	1018.36	1018.38	1018.38	1018.38	1018.38	1018.39	1018.40	1018.42	1018.45	1018.48	1018.52	1018.52	1018.42
	7	1018.53	1018.54	1018.54	1018.55	1018.54	1018.52	1018.49	1018.46	1018.45	1018.42	1018.37	1018.36	1018.48
	8	1018.39	1018.45	1018.48	1018.44	1018.40	1018.36	1018.33	1018.35	1018.38	1018.38	1018.36	1018.33	1018.38
	9	1018.30	1018.29	1018.29	1018.27	1018.22	1018.17	1018.14	1018.15	1018.11	1018.05	1017.96	1017.86	1018.15
	10	1017.81	1017.76	1017.72	1017.72	1017.75	1017.74	1017.73	1017.71	1017.66	1017.62	1017.64	1017.62	1017.70
	11	1017.56	1017.55	1017.52	1017.47	1017.47	1017.48	1017.48	1017.51	1017.51	1017.49	1017.45	1017.46	1017.49
	12	1017.44	1017.38	1017.37	1017.38	1017.37	1017.36	1017.33	1017.33	1017.32	1017.30	1017.27	1017.20	1017.34
	13	1017.15	1017.14	1017.14	1017.11	1017.10	1017.10	1017.09	1017.08	1017.06	1017.03	1017.03	1017.04	1017.09
	14	1017.05	1017.05	1017.04	1017.03	1017.01	1017.00	1016.97	1016.95	1016.97	1016.96	1016.95	1016.96	1016.99
	15	1016.93	1016.87	1016.84	1016.79	1016.77	1016.77	1016.71	1016.69	1016.71	1016.73	1016.74	1016.73	1016.77
	16	1016.73	1016.72	1016.73	1016.73	1016.73	1016.73	1016.72	1016.74	1016.76	1016.76	1016.77	1016.79	1016.74
	17	1016.81	1016.81	1016.79	1016.76	1016.77	1016.77	1016.76	1016.76	1016.77	1016.77	1016.78	1016.79	1016.78
	18	1016.81	1016.83	1016.87	1016.90	1016.93	1016.96	1016.95	1016.91	1016.90	1016.91	1016.91	1016.90	1016.90
	19	1016.91	1016.94	1016.99	1017.04	1017.11	1017.19	1017.25	1017.30	1017.37	1017.42	1017.45	1017.49	1017.20
	20	1017.54	1017.61	1017.66	1017.72	1017.79	1017.85	1017.90	1017.94	1017.97	1018.02	1018.04	1018.03	1017.84
	21	1018.02	1018.05	1018.09	1018.07	1018.05	1018.05	1018.08	1018.11	1018.14	1018.16	1018.17	1018.15	1018.09
	22	1018.13	1018.14	1018.18	1018.19	1018.19	1018.18	1018.16	1018.12	1018.07	1018.07	1018.09	1018.09	1018.13
	23	1018.12	1018.16	1018.17	1018.18	1018.18	1018.20	1018.22	1018.24	1018.26	1018.22	1018.17	1018.12	1018.18

S.V.I.R.CO. Observatory - Pressure in hectoPascal – July 2017

day	hh	00_05	05_10	10_15	15_20	20_25	25_30	30_35	35_40	40_45	45_50	50_55	55_60	average
7	0	1018.10	1018.12	1018.14	1018.14	1018.13	1018.12	1018.11	1018.08	1018.05	1018.03	1018.01	1017.98	1018.08
	1	1017.94	1017.92	1017.89	1017.85	1017.85	1017.85	1017.83	1017.82	1017.82	1017.80	1017.78	1017.75	1017.84
	2	1017.71	1017.66	1017.64	1017.65	1017.67	1017.68	1017.69	1017.69	1017.70	1017.69	1017.68	1017.67	1017.67
	3	1017.68	1017.71	1017.76	1017.81	1017.82	1017.81	1017.81	1017.80	1017.81	1017.82	1017.83	1017.84	1017.79
	4	1017.82	1017.78	1017.78	1017.78	1017.73	1017.68	1017.67	1017.66	1017.62	1017.62	1017.67	1017.70	1017.71
	5	1017.71	1017.72	1017.75	1017.79	1017.84	1017.88	1017.91	1017.94	1017.96	1017.97	1017.98	1017.98	1017.87
	6	1017.99	1017.98	1017.96	1017.96	1018.03	1018.13	1018.18	1018.21	1018.24	1018.27	1018.33	1018.35	1018.13
	7	1018.33	1018.29	1018.25	1018.22	1018.18	1018.13	1018.08	1018.05	1018.03	1018.00	1017.96	1017.94	1018.12
	8	1017.93	1017.93	1017.95	1017.93	1017.89	1017.87	1017.85	1017.82	1017.78	1017.74	1017.74	1017.73	1017.84
	9	1017.68	1017.65	1017.62	1017.60	1017.61	1017.61	1017.59	1017.57	1017.57	1017.57	1017.57	1017.57	1017.60
	10	1017.56	1017.52	1017.51	1017.50	1017.48	1017.50	1017.54	1017.55	1017.55	1017.55	1017.52	1017.47	1017.52
	11	1017.43	1017.40	1017.34	1017.26	1017.19	1017.15	1017.12	1017.08	1017.06	1017.05	1017.06	1017.08	1017.18
	12	1017.08	1017.07	1017.06	1017.05	1017.01	1016.97	1016.93	1016.92	1016.91	1016.89	1016.85	1016.81	1016.96
	13	1016.81	1016.82	1016.78	1016.74	1016.68	1016.62	1016.57	1016.52	1016.45	1016.38	1016.34	1016.32	1016.58
	14	1016.29	1016.27	1016.25	1016.20	1016.18	1016.19	1016.18	1016.12	1016.06	1016.02	1015.96	1015.90	1016.13
	15	1015.88	1015.84	1015.78	1015.73	1015.67	1015.60	1015.54	1015.49	1015.46	1015.43	1015.39	1015.38	1015.60
	16	1015.39	1015.40	1015.39	1015.39	1015.39	1015.38	1015.38	1015.38	1015.39	1015.42	1015.42	1015.43	1015.40
	17	1015.48	1015.49	1015.48	1015.49	1015.48	1015.46	1015.45	1015.46	1015.47	1015.48	1015.47	1015.49	1015.47
	18	1015.55	1015.58	1015.58	1015.60	1015.63	1015.63	1015.62	1015.62	1015.65	1015.73	1015.77	1015.83	1015.65
	19	1015.91	1015.96	1016.02	1016.07	1016.13	1016.19	1016.21	1016.25	1016.29	1016.32	1016.35	1016.39	1016.17
	20	1016.44	1016.51	1016.57	1016.57	1016.56	1016.58	1016.61	1016.64	1016.70	1016.77	1016.78	1016.78	1016.62
	21	1016.80	1016.81	1016.83	1016.84	1016.80	1016.72	1016.68	1016.68	1016.66	1016.59	1016.54	1016.52	1016.70
	22	1016.51	1016.51	1016.48	1016.46	1016.41	1016.36	1016.31	1016.25	1016.21	1016.17	1016.13	1016.10	1016.32
	23	1016.09	1016.09	1016.06	1016.02	1015.99	1015.96	1015.90	1015.83	1015.83	1015.88	1015.87	1015.80	1015.94
8	0	1015.72	1015.73	1015.75	1015.78	1015.80	1015.81	1015.81	1015.84	1015.86	1015.81	1015.75	1015.70	1015.78
	1	1015.70	1015.72	1015.69	1015.65	1015.64	1015.60	1015.56	1015.53	1015.55	1015.52	1015.46	1015.40	1015.58
	2	1015.33	1015.26	1015.22	1015.22	1015.20	1015.14	1015.11	1015.13	1015.14	1015.18	1015.25	1015.28	1015.20
	3	1015.26	1015.26	1015.26	1015.26	1015.26	1015.26	1015.27	1015.30	1015.33	1015.30	1015.25	1015.23	1015.27
	4	1015.21	1015.25	1015.33	1015.37	1015.32	1015.33	1015.36	1015.33	1015.33	1015.37	1015.41	1015.48	1015.34
	5	1015.53	1015.49	1015.45	1015.49	1015.53	1015.53	1015.52	1015.53	1015.55	1015.61	1015.65	1015.63	1015.54
	6	1015.61	1015.62	1015.65	1015.70	1015.73	1015.74	1015.73	1015.74	1015.76	1015.77	1015.77	1015.74	1015.71
	7	1015.71	1015.71	1015.74	1015.77	1015.77	1015.76	1015.77	1015.79	1015.77	1015.72	1015.66	1015.62	1015.73
	8	1015.58	1015.55	1015.52	1015.50	1015.52	1015.55	1015.58	1015.61	1015.64	1015.64	1015.61	1015.59	1015.57
	9	1015.57	1015.56	1015.55	1015.52	1015.51	1015.45	1015.41	1015.40	1015.37	1015.35	1015.35	1015.33	1015.45
	10	1015.31	1015.30	1015.26	1015.23	1015.20	1015.15	1015.10	1015.09	1015.09	1015.08	1015.04	1014.99	1015.15
	11	1014.94	1014.90	1014.88	1014.84	1014.81	1014.81	1014.77	1014.76	1014.75	1014.75	1014.76	1014.74	1014.81
	12	1014.73	1014.73	1014.71	1014.68	1014.65	1014.66	1014.67	1014.70	1014.70	1014.66	1014.66	1014.70	1014.69
	13	1014.72	1014.73	1014.73	1014.72	1014.70	1014.67	1014.64	1014.64	1014.63	1014.62	1014.61	1014.58	1014.66
	14	1014.55	1014.53	1014.53	1014.53	1014.52	1014.47	1014.45	1014.46	1014.44	1014.39	1014.34	1014.35	1014.46
	15	1014.35	1014.33	1014.36	1014.35	1014.31	1014.29	1014.31	1014.31	1014.30	1014.31	1014.31	1014.32	1014.32
	16	1014.31	1014.29	1014.26	1014.25	1014.22	1014.19	1014.17	1014.16	1014.15	1014.14	1014.15	1014.15	1014.20
	17	1014.14	1014.13	1014.12	1014.12	1014.13	1014.14	1014.15	1014.15	1014.15	1014.15	1014.14	1014.16	1014.14
	18	1014.18	1014.17	1014.18	1014.21	1014.29	1014.36	1014.37	1014.35	1014.33	1014.33	1014.35	1014.34	1014.29
	19	1014.36	1014.39	1014.41	1014.47	1014.53	1014.58	1014.64	1014.69	1014.72	1014.72	1014.71	1014.71	1014.58
	20	1014.74	1014.79	1014.85	1014.90	1014.93	1014.96	1015.00	1015.03	1015.09	1015.15	1015.13	1015.09	1014.97
	21	1015.08	1015.10	1015.11	1015.12	1015.16	1015.20	1015.22	1015.29	1015.34	1015.30	1015.28	1015.28	1015.20
	22	1015.25	1015.21	1015.16	1015.14	1015.15	1015.17	1015.11	1015.04	1015.03	1015.01	1014.99	1015.00	1015.10
	23	1014.98	1014.94	1014.89	1014.85	1014.85	1014.86	1014.85	1014.82	1014.76	1014.67	1014.61	1014.54	1014.80

S.V.I.R.CO. Observatory - Pressure in hectoPascal – July 2017

day	hh	00_05	05_10	10_15	15_20	20_25	25_30	30_35	35_40	40_45	45_50	50_55	55_60	average
9	0	1014.37	1014.35	1014.31	1014.27	1014.25	1014.26	1014.27	1014.25	1014.17	1014.12	1014.08	1014.05	1014.22
	1	1013.99	1013.92	1013.91	1013.93	1013.96	1013.98	1013.97	1013.97	1013.93	1013.88	1013.88	1013.88	1013.93
	2	1013.85	1013.82	1013.78	1013.72	1013.68	1013.65	1013.60	1013.56	1013.58	1013.62	1013.64	1013.65	1013.68
	3	1013.66	1013.62	1013.50	1013.40	1013.43	1013.53	1013.62	1013.68	1013.64	1013.59	1013.70	1013.75	1013.59
	4	1013.74	1013.85	1013.93	1013.90	1013.81	1013.71	1013.62	1013.54	1013.54	1013.58	1013.56	1013.53	1013.69
	5	1013.62	1013.80	1013.97	1014.08	1014.10	1014.13	1014.26	1014.40	1014.42	1014.45	1014.49	1014.51	1014.18
	6	1014.55	1014.56	1014.59	1014.60	1014.60	1014.64	1014.72	1014.77	1014.83	1014.86	1014.89	1014.99	1014.71
	7	1015.01	1014.97	1014.99	1014.99	1014.98	1015.02	1015.04	1015.07	1015.09	1015.10	1015.06	1015.02	1015.03
	8	1015.05	1015.05	1015.02	1015.01	1015.00	1015.01	1015.04	1015.06	1015.03	1014.99	1014.95	1014.88	1015.01
	9	1014.82	1014.80	1014.76	1014.74	1014.75	1014.74	1014.71	1014.66	1014.63	1014.63	1014.56	1014.48	1014.69
	10	1014.46	1014.44	1014.39	1014.33	1014.25	1014.23	1014.23	1014.19	1014.18	1014.22	1014.17	1014.13	1014.27
	11	1014.12	1014.06	1014.00	1013.98	1013.96	1013.90	1013.85	1013.82	1013.80	1013.80	1013.79	1013.70	1013.90
	12	1013.63	1013.59	1013.54	1013.53	1013.56	1013.57	1013.57	1013.60	1013.62	1013.60	1013.61	1013.64	1013.59
	13	1013.67	1013.67	1013.66	1013.65	1013.61	1013.56	1013.53	1013.49	1013.46	1013.42	1013.33	1013.24	1013.52
	14	1013.23	1013.22	1013.19	1013.20	1013.18	1013.16	1013.16	1013.13	1013.13	1013.13	1013.13	1013.14	1013.16
	15	1013.08	1012.96	1012.87	1012.80	1012.77	1012.74	1012.76	1012.76	1012.70	1012.70	1012.71	1012.69	1012.79
	16	1012.65	1012.58	1012.55	1012.56	1012.56	1012.55	1012.50	1012.44	1012.32	1012.19	1012.15	1012.17	1012.43
	17	1012.15	1012.15	1012.30	1012.44	1012.37	1012.20	1012.14	1012.23	1012.33	1012.34	1012.38	1012.48	1012.29
	18	1012.52	1012.57	1012.72	1012.91	1013.02	1013.06	1013.07	1013.08	1013.10	1013.10	1013.14	1013.18	1012.95
	19	1013.15	1013.18	1013.26	1013.33	1013.38	1013.39	1013.38	1013.31	1013.25	1013.27	1013.25	1013.14	1013.27
	20	1013.07	1013.07	1013.07	1013.11	1013.11	1013.07	1013.09	1013.11	1013.15	1013.23	1013.28	1013.36	1013.14
	21	1013.38	1013.38	1013.39	1013.34	1013.31	1013.31	1013.32	1013.37	1013.40	1013.39	1013.36	1013.35	1013.36
	22	1013.35	1013.31	1013.27	1013.18	1013.14	1013.18	1013.19	1013.19	1013.19	1013.19	1013.19	1013.18	1013.21
	23	1013.14	1013.10	1013.12	1013.14	1013.09	1013.06	1013.07	1013.01	1012.96	1012.96	1012.92	1012.97	1013.04
10	0	1013.07	1013.10	1013.12	1013.11	1013.07	1013.00	1012.96	1012.94	1012.95	1012.98	1013.00	1013.01	1013.02
	1	1013.01	1012.96	1012.91	1012.88	1012.81	1012.79	1012.78	1012.71	1012.69	1012.72	1012.72	1012.69	1012.80
	2	1012.66	1012.67	1012.71	1012.71	1012.67	1012.62	1012.59	1012.60	1012.59	1012.53	1012.49	1012.47	1012.61
	3	1012.48	1012.46	1012.42	1012.37	1012.37	1012.38	1012.37	1012.37	1012.35	1012.31	1012.30	1012.28	1012.37
	4	1012.26	1012.29	1012.32	1012.34	1012.35	1012.34	1012.34	1012.36	1012.37	1012.38	1012.33	1012.25	1012.33
	5	1012.21	1012.23	1012.29	1012.32	1012.34	1012.38	1012.42	1012.50	1012.55	1012.53	1012.52	1012.55	1012.40
	6	1012.56	1012.57	1012.60	1012.63	1012.66	1012.65	1012.61	1012.60	1012.61	1012.59	1012.58	1012.60	1012.60
	7	1012.59	1012.58	1012.63	1012.67	1012.65	1012.63	1012.59	1012.59	1012.64	1012.70	1012.76	1012.78	1012.65
	8	1012.79	1012.79	1012.76	1012.74	1012.75	1012.78	1012.77	1012.79	1012.81	1012.78	1012.77	1012.74	1012.77
	9	1012.72	1012.71	1012.69	1012.71	1012.77	1012.79	1012.78	1012.80	1012.81	1012.75	1012.75	1012.75	1012.75
	10	1012.74	1012.75	1012.73	1012.75	1012.79	1012.73	1012.69	1012.75	1012.78	1012.77	1012.76	1012.76	1012.75
	11	1012.74	1012.74	1012.74	1012.72	1012.74	1012.72	1012.71	1012.74	1012.75	1012.75	1012.77	1012.77	1012.74
	12	1012.80	1012.83	1012.84	1012.84	1012.83	1012.82	1012.83	1012.79	1012.76	1012.77	1012.78	1012.76	1012.80
	13	1012.73	1012.70	1012.68	1012.67	1012.66	1012.67	1012.66	1012.64	1012.64	1012.62	1012.63	1012.62	1012.66
	14	1012.56	1012.53	1012.54	1012.55	1012.53	1012.50	1012.47	1012.44	1012.42	1012.46	1012.47	1012.45	1012.49
	15	1012.43	1012.41	1012.38	1012.32	1012.30	1012.29	1012.28	1012.23	1012.18	1012.22	1012.25	1012.25	1012.29
	16	1012.26	1012.28	1012.29	1012.28	1012.28	1012.25	1012.24	1012.24	1012.23	1012.23	1012.19	1012.16	1012.24
	17	1012.13	1012.13	1012.18	1012.24	1012.26	1012.26	1012.27	1012.28	1012.31	1012.36	1012.39	1012.42	1012.27
	18	1012.46	1012.48	1012.46	1012.44	1012.43	1012.47	1012.57	1012.63	1012.65	1012.68	1012.69	1012.69	1012.55
	19	1012.73	1012.80	1012.89	1012.99	1013.08	1013.17	1013.30	1013.40	1013.44	1013.49	1013.58	1013.65	1013.21
	20	1013.73	1013.83	1013.88	1013.89	1013.91	1013.89	1013.92	1013.99	1014.07	1014.15	1014.17	1014.18	1013.96
	21	1014.20	1014.23	1014.27	1014.30	1014.32	1014.39	1014.43	1014.42	1014.40	1014.40	1014.44	1014.47	1014.35
	22	1014.47	1014.45	1014.42	1014.42	1014.37	1014.32	1014.34	1014.35	1014.36	1014.37	1014.37	1014.38	1014.38
	23	1014.39	1014.41	1014.45	1014.48	1014.55	1014.61	1014.62	1014.62	1014.62	1014.61	1014.61	1014.60	1014.55



S.V.I.R.CO. Observatory - Pressure in hectoPascal – July 2017

day	hh	00_05	05_10	10_15	15_20	20_25	25_30	30_35	35_40	40_45	45_50	50_55	55_60	average
11	0	1014.54	1014.53	1014.50	1014.45	1014.42	1014.40	1014.38	1014.39	1014.43	1014.47	1014.50	1014.50	1014.45
	1	1014.52	1014.50	1014.41	1014.40	1014.39	1014.36	1014.33	1014.30	1014.29	1014.24	1014.15	1014.14	1014.33
	2	1014.11	1014.06	1014.05	1014.07	1014.11	1014.08	1014.02	1013.99	1014.00	1014.02	1014.10	1014.18	1014.07
	3	1014.18	1014.18	1014.22	1014.27	1014.32	1014.36	1014.38	1014.35	1014.39	1014.47	1014.49	1014.48	1014.34
	4	1014.48	1014.52	1014.52	1014.49	1014.51	1014.52	1014.50	1014.52	1014.54	1014.55	1014.59	1014.65	1014.53
	5	1014.67	1014.68	1014.72	1014.74	1014.73	1014.76	1014.77	1014.78	1014.84	1014.88	1014.90	1014.94	1014.78
	6	1014.97	1014.97	1014.99	1015.01	1015.03	1015.10	1015.13	1015.13	1015.15	1015.17	1015.19	1015.19	1015.08
	7	1015.19	1015.18	1015.18	1015.20	1015.20	1015.17	1015.11	1015.09	1015.10	1015.14	1015.20	1015.25	1015.17
	8	1015.26	1015.29	1015.32	1015.33	1015.34	1015.36	1015.36	1015.37	1015.37	1015.38	1015.39	1015.41	1015.35
	9	1015.43	1015.40	1015.38	1015.40	1015.41	1015.40	1015.37	1015.33	1015.34	1015.41	1015.42	1015.39	1015.39
	10	1015.37	1015.33	1015.28	1015.22	1015.17	1015.12	1015.09	1015.08	1015.01	1014.94	1014.91	1014.87	1015.12
	11	1014.85	1014.88	1014.90	1014.90	1014.86	1014.84	1014.82	1014.79	1014.75	1014.73	1014.74	1014.69	1014.81
	12	1014.63	1014.63	1014.59	1014.54	1014.50	1014.46	1014.45	1014.44	1014.45	1014.43	1014.39	1014.35	1014.49
	13	1014.33	1014.35	1014.33	1014.29	1014.27	1014.26	1014.23	1014.19	1014.19	1014.20	1014.22	1014.28	1014.26
	14	1014.34	1014.36	1014.39	1014.45	1014.47	1014.46	1014.40	1014.36	1014.34	1014.31	1014.29	1014.28	1014.37
	15	1014.31	1014.33	1014.33	1014.36	1014.35	1014.30	1014.25	1014.22	1014.17	1014.10	1014.08	1014.07	1014.24
	16	1014.07	1014.09	1014.08	1014.05	1014.00	1013.97	1013.93	1013.85	1013.86	1013.88	1013.86	1013.84	1013.95
	17	1013.83	1013.85	1013.88	1013.88	1013.83	1013.80	1013.78	1013.78	1013.82	1013.90	1013.95	1013.96	1013.85
	18	1013.96	1013.99	1014.05	1014.06	1014.07	1014.09	1014.05	1014.03	1014.03	1014.03	1013.97	1013.90	1014.02
	19	1013.89	1013.92	1014.00	1014.10	1014.26	1014.42	1014.58	1014.67	1014.70	1014.74	1014.84	1014.95	1014.42
	20	1014.97	1014.99	1015.03	1015.07	1015.07	1015.06	1015.09	1015.09	1015.05	1015.00	1014.97	1014.99	1015.03
	21	1015.02	1015.04	1015.04	1015.11	1015.20	1015.18	1015.15	1015.12	1015.09	1015.08	1015.08	1015.09	1015.10
	22	1015.08	1015.01	1014.98	1014.96	1014.88	1014.83	1014.80	1014.81	1014.88	1014.93	1014.99	1014.97	1014.92
	23	1014.90	1014.84	1014.79	1014.79	1014.81	1014.78	1014.73	1014.70	1014.71	1014.75	1014.71	1014.66	1014.76
12	0	1014.58	1014.54	1014.48	1014.49	1014.52	1014.48	1014.43	1014.42	1014.42	1014.42	1014.42	1014.42	1014.46
	1	1014.43	1014.41	1014.31	1014.23	1014.24	1014.26	1014.21	1014.13	1014.08	1014.06	1014.05	1014.02	1014.20
	2	1013.98	1013.98	1014.00	1014.05	1014.10	1014.13	1014.12	1014.09	1014.10	1014.14	1014.16	1014.13	1014.08
	3	1014.09	1014.07	1014.03	1014.00	1014.03	1014.05	1014.04	1014.06	1014.07	1014.06	1014.07	1014.11	1014.06
	4	1014.15	1014.17	1014.18	1014.18	1014.11	1014.03	1014.04	1014.08	1014.09	1014.09	1014.12	1014.17	1014.11
	5	1014.19	1014.21	1014.23	1014.22	1014.22	1014.20	1014.16	1014.16	1014.18	1014.17	1014.14	1014.14	1014.18
	6	1014.13	1014.06	1014.01	1014.00	1013.98	1013.95	1013.90	1013.85	1013.84	1013.84	1013.84	1013.82	1013.93
	7	1013.76	1013.69	1013.63	1013.61	1013.61	1013.60	1013.59	1013.59	1013.62	1013.63	1013.65	1013.67	1013.64
	8	1013.66	1013.65	1013.69	1013.71	1013.68	1013.66	1013.64	1013.61	1013.61	1013.63	1013.67	1013.71	1013.66
	9	1013.73	1013.73	1013.75	1013.78	1013.79	1013.80	1013.80	1013.80	1013.81	1013.82	1013.80	1013.80	1013.78
	10	1013.81	1013.81	1013.78	1013.71	1013.69	1013.69	1013.65	1013.61	1013.60	1013.58	1013.54	1013.49	1013.66
	11	1013.43	1013.37	1013.31	1013.26	1013.24	1013.23	1013.21	1013.20	1013.19	1013.11	1013.04	1013.07	1013.22
	12	1013.06	1013.02	1013.03	1013.04	1013.04	1013.00	1012.93	1012.92	1012.89	1012.88	1012.87	1012.82	1012.96
	13	1012.79	1012.78	1012.76	1012.73	1012.69	1012.67	1012.65	1012.61	1012.60	1012.59	1012.56	1012.54	1012.66
	14	1012.51	1012.48	1012.46	1012.47	1012.49	1012.48	1012.45	1012.39	1012.34	1012.30	1012.26	1012.24	1012.40
	15	1012.19	1012.11	1012.05	1012.03	1012.06	1012.09	1012.13	1012.18	1012.21	1012.20	1012.18	1012.14	1012.13
	16	1012.12	1012.11	1012.13	1012.17	1012.19	1012.19	1012.18	1012.19	1012.20	1012.21	1012.25	1012.26	1012.18
	17	1012.24	1012.21	1012.18	1012.14	1012.09	1012.08	1012.14	1012.16	1012.13	1012.13	1012.18	1012.22	1012.16
	18	1012.24	1012.28	1012.29	1012.29	1012.31	1012.35	1012.36	1012.37	1012.39	1012.39	1012.42	1012.46	1012.34
	19	1012.46	1012.44	1012.42	1012.41	1012.44	1012.45	1012.42	1012.42	1012.43	1012.43	1012.45	1012.44	1012.43
	20	1012.45	1012.47	1012.47	1012.47	1012.45	1012.43	1012.45	1012.47	1012.45	1012.44	1012.42	1012.42	1012.45
	21	1012.43	1012.43	1012.44	1012.44	1012.46	1012.48	1012.52	1012.57	1012.55	1012.51	1012.54	1012.57	1012.49
	22	1012.54	1012.52	1012.57	1012.61	1012.63	1012.60	1012.54	1012.49	1012.47	1012.46	1012.43	1012.38	1012.52
	23	1012.35	1012.34	1012.35	1012.37	1012.35	1012.33	1012.29	1012.23	1012.20	1012.21	1012.24	1012.22	1012.29

S.V.I.R.CO. Observatory - Pressure in hectoPascal – July 2017

day	hh	00_05	05_10	10_15	15_20	20_25	25_30	30_35	35_40	40_45	45_50	50_55	55_60	average
13	0	1012.12	1012.11	1012.08	1012.07	1012.07	1012.06	1012.03	1012.00	1011.95	1011.88	1011.84	1011.84	1012.00
	1	1011.80	1011.73	1011.71	1011.70	1011.66	1011.58	1011.53	1011.51	1011.53	1011.57	1011.60	1011.59	1011.62
	2	1011.59	1011.58	1011.57	1011.57	1011.59	1011.60	1011.59	1011.55	1011.53	1011.56	1011.57	1011.57	1011.57
	3	1011.56	1011.57	1011.61	1011.66	1011.68	1011.67	1011.67	1011.70	1011.73	1011.74	1011.73	1011.73	1011.67
	4	1011.76	1011.77	1011.76	1011.78	1011.81	1011.82	1011.82	1011.83	1011.82	1011.78	1011.73	1011.67	1011.78
	5	1011.64	1011.66	1011.70	1011.73	1011.76	1011.79	1011.80	1011.79	1011.81	1011.84	1011.87	1011.91	1011.77
	6	1011.94	1011.95	1011.96	1011.99	1012.00	1012.00	1012.00	1011.99	1011.96	1011.94	1011.92	1011.88	1011.96
	7	1011.82	1011.75	1011.70	1011.67	1011.63	1011.60	1011.60	1011.60	1011.57	1011.53	1011.49	1011.45	1011.62
	8	1011.40	1011.35	1011.30	1011.25	1011.23	1011.20	1011.17	1011.12	1011.08	1011.06	1011.05	1011.03	1011.18
	9	1011.01	1010.98	1010.96	1010.93	1010.90	1010.89	1010.85	1010.79	1010.74	1010.70	1010.67	1010.63	1010.84
	10	1010.61	1010.62	1010.62	1010.61	1010.60	1010.60	1010.60	1010.55	1010.48	1010.42	1010.33	1010.29	1010.53
	11	1010.27	1010.20	1010.18	1010.17	1010.11	1010.07	1010.03	1010.01	1010.01	1009.99	1009.98	1009.96	1010.08
	12	1009.95	1009.97	1009.98	1009.96	1009.96	1009.98	1009.98	1009.98	1009.98	1009.95	1009.91	1009.90	1009.96
	13	1009.91	1009.90	1009.87	1009.82	1009.82	1009.79	1009.73	1009.70	1009.69	1009.69	1009.65	1009.59	1009.76
	14	1009.55	1009.50	1009.43	1009.40	1009.40	1009.40	1009.40	1009.36	1009.31	1009.29	1009.27	1009.29	1009.38
	15	1009.28	1009.23	1009.19	1009.13	1009.08	1009.06	1009.04	1009.04	1009.03	1008.99	1008.97	1008.97	1009.08
	16	1008.96	1008.95	1008.97	1008.98	1008.90	1008.82	1008.82	1008.82	1008.84	1008.82	1008.80	1008.79	1008.87
	17	1008.79	1008.81	1008.84	1008.87	1008.86	1008.85	1008.83	1008.80	1008.84	1008.90	1008.93	1008.97	1008.85
	18	1009.01	1009.02	1009.00	1008.99	1009.02	1009.03	1009.02	1009.04	1009.05	1009.04	1009.06	1009.11	1009.03
	19	1009.13	1009.16	1009.20	1009.25	1009.28	1009.29	1009.34	1009.38	1009.42	1009.46	1009.48	1009.53	1009.32
	20	1009.57	1009.58	1009.61	1009.65	1009.67	1009.71	1009.76	1009.78	1009.75	1009.77	1009.82	1009.83	1009.70
	21	1009.79	1009.77	1009.76	1009.74	1009.71	1009.72	1009.78	1009.81	1009.81	1009.79	1009.77	1009.72	1009.76
	22	1009.67	1009.68	1009.72	1009.78	1009.81	1009.83	1009.85	1009.87	1009.94	1009.96	1009.92	1009.89	1009.83
	23	1009.83	1009.83	1009.86	1009.85	1009.87	1009.84	1009.78	1009.76	1009.72	1009.67	1009.61	1009.55	1009.76
14	0	1009.55	1009.51	1009.47	1009.44	1009.40	1009.35	1009.26	1009.18	1009.15	1009.13	1009.09	1009.04	1009.28
	1	1008.98	1008.92	1008.88	1008.84	1008.81	1008.80	1008.78	1008.78	1008.78	1008.77	1008.77	1008.76	1008.82
	2	1008.74	1008.71	1008.69	1008.69	1008.71	1008.72	1008.74	1008.78	1008.80	1008.81	1008.83	1008.87	1008.75
	3	1008.90	1008.90	1008.92	1008.95	1008.98	1008.99	1008.99	1009.03	1009.08	1009.10	1009.11	1009.07	1009.00
	4	1009.01	1008.98	1008.98	1008.99	1009.00	1009.00	1009.01	1009.01	1009.00	1009.01	1009.02	1009.04	1009.00
	5	1009.03	1009.01	1009.01	1009.03	1009.05	1009.07	1009.10	1009.09	1009.08	1009.09	1009.14	1009.18	1009.07
	6	1009.19	1009.20	1009.20	1009.23	1009.27	1009.28	1009.24	1009.20	1009.19	1009.21	1009.21	1009.18	1009.21
	7	1009.15	1009.10	1009.07	1009.06	1009.04	1009.03	1009.07	1009.15	1009.19	1009.15	1009.13	1009.14	1009.10
	8	1009.14	1009.11	1009.07	1009.02	1009.01	1009.06	1009.07	1009.08	1009.10	1009.09	1009.07	1009.05	1009.07
	9	1009.04	1009.05	1009.08	1009.10	1009.08	1009.06	1009.07	1009.08	1009.06	1009.02	1008.97	1008.94	1009.04
	10	1008.94	1008.95	1008.95	1008.94	1008.95	1008.96	1008.96	1008.97	1008.97	1008.93	1008.87	1008.83	1008.93
	11	1008.84	1008.80	1008.77	1008.80	1008.80	1008.76	1008.75	1008.70	1008.64	1008.56	1008.46	1008.29	1008.68
	12	1008.07	1007.96	1007.98	1008.03	1007.93	1007.74	1007.71	1007.74	1007.69	1007.56	1007.48	1007.53	1007.78
	13	1007.68	1007.83	1007.86	1007.82	1007.79	1007.74	1007.64	1007.58	1007.56	1007.54	1007.51	1007.47	1007.67
	14	1007.41	1007.47	1007.57	1007.57	1007.59	1007.63	1007.64	1007.63	1007.60	1007.54	1007.52	1007.56	1007.56
	15	1007.61	1007.62	1007.75	1007.87	1007.82	1007.72	1007.60	1007.50	1007.46	1007.51	1007.59	1007.59	1007.63
	16	1007.51	1007.44	1007.41	1007.44	1007.50	1007.52	1007.52	1007.54	1007.58	1007.60	1007.56	1007.55	1007.51
	17	1007.59	1007.61	1007.59	1007.56	1007.60	1007.60	1007.59	1007.63	1007.66	1007.70	1007.75	1007.77	1007.63
	18	1007.81	1007.91	1008.01	1008.05	1008.08	1008.13	1008.12	1008.06	1008.07	1008.16	1008.24	1008.30	1008.08
	19	1008.35	1008.43	1008.49	1008.50	1008.51	1008.54	1008.57	1008.58	1008.57	1008.60	1008.68	1008.73	1008.54
	20	1008.80	1008.86	1008.88	1008.88	1008.93	1008.95	1008.94	1008.98	1009.00	1009.00	1009.00	1009.04	1008.94
	21	1009.07	1009.07	1009.08	1009.12	1009.17	1009.19	1009.18	1009.19	1009.22	1009.25	1009.24	1009.20	1009.16
	22	1009.21	1009.27	1009.30	1009.29	1009.27	1009.30	1009.34	1009.35	1009.35	1009.33	1009.35	1009.43	1009.31
	23	1009.47	1009.45	1009.45	1009.46	1009.43	1009.42	1009.40	1009.38	1009.40	1009.41	1009.38	1009.35	1009.41

S.V.I.R.CO. Observatory - Pressure in hectoPascal – July 2017

day	hh	00_05	05_10	10_15	15_20	20_25	25_30	30_35	35_40	40_45	45_50	50_55	55_60	average
15	0	1009.32	1009.30	1009.26	1009.24	1009.23	1009.20	1009.16	1009.11	1009.08	1009.09	1009.08	1009.05	1009.17
	1	1009.03	1009.02	1009.01	1009.01	1009.00	1008.98	1008.94	1008.88	1008.86	1008.84	1008.82	1008.81	1008.93
	2	1008.82	1008.83	1008.85	1008.87	1008.89	1008.90	1008.94	1008.96	1008.96	1008.94	1008.92	1008.92	1008.90
	3	1008.93	1008.94	1008.97	1008.97	1008.97	1008.98	1009.00	1009.03	1009.03	1009.04	1009.08	1009.12	1009.00
	4	1009.13	1009.16	1009.22	1009.27	1009.31	1009.32	1009.31	1009.29	1009.26	1009.25	1009.27	1009.29	1009.26
	5	1009.30	1009.32	1009.33	1009.32	1009.34	1009.36	1009.38	1009.41	1009.43	1009.45	1009.47	1009.48	1009.38
	6	1009.48	1009.49	1009.50	1009.51	1009.52	1009.55	1009.57	1009.58	1009.57	1009.56	1009.54	1009.54	1009.53
	7	1009.56	1009.58	1009.57	1009.56	1009.56	1009.55	1009.54	1009.52	1009.50	1009.49	1009.48	1009.48	1009.53
	8	1009.46	1009.44	1009.43	1009.43	1009.45	1009.47	1009.48	1009.50	1009.53	1009.57	1009.58	1009.57	1009.49
	9	1009.57	1009.56	1009.58	1009.59	1009.57	1009.57	1009.59	1009.61	1009.62	1009.59	1009.56	1009.54	1009.58
	10	1009.50	1009.45	1009.43	1009.43	1009.45	1009.45	1009.41	1009.44	1009.44	1009.43	1009.42	1009.42	1009.44
	11	1009.43	1009.41	1009.37	1009.35	1009.33	1009.33	1009.32	1009.29	1009.27	1009.27	1009.24	1009.18	1009.31
	12	1009.17	1009.15	1009.10	1009.09	1009.09	1009.09	1009.08	1009.02	1008.98	1008.98	1009.00	1008.96	1009.06
	13	1008.90	1008.87	1008.84	1008.83	1008.80	1008.75	1008.71	1008.70	1008.75	1008.76	1008.74	1008.72	1008.78
	14	1008.68	1008.65	1008.60	1008.59	1008.57	1008.55	1008.55	1008.49	1008.44	1008.40	1008.33	1008.32	1008.51
	15	1008.34	1008.32	1008.32	1008.30	1008.25	1008.20	1008.17	1008.15	1008.17	1008.17	1008.12	1008.06	1008.21
	16	1008.01	1008.02	1008.04	1008.10	1008.11	1008.08	1008.06	1008.01	1007.96	1007.90	1007.88	1007.88	1008.00
	17	1007.87	1007.89	1007.92	1007.94	1007.99	1008.01	1007.99	1007.99	1008.05	1008.11	1008.12	1008.11	1008.00
	18	1008.08	1008.04	1008.04	1008.03	1008.02	1008.03	1008.10	1008.19	1008.27	1008.38	1008.46	1008.51	1008.18
	19	1008.55	1008.60	1008.77	1009.04	1009.23	1009.38	1009.60	1009.86	1010.05	1010.18	1010.26	1010.29	1009.48
	20	1010.38	1010.48	1010.52	1010.53	1010.58	1010.66	1010.73	1010.80	1010.92	1011.05	1011.10	1011.12	1010.74
	21	1011.15	1011.21	1011.30	1011.32	1011.25	1011.20	1011.25	1011.33	1011.38	1011.44	1011.52	1011.54	1011.32
	22	1011.48	1011.45	1011.51	1011.57	1011.60	1011.62	1011.68	1011.72	1011.70	1011.69	1011.70	1011.71	1011.62
	23	1011.72	1011.72	1011.71	1011.71	1011.74	1011.77	1011.75	1011.73	1011.74	1011.76	1011.76	1011.77	1011.74
16	0	1011.78	1011.77	1011.79	1011.83	1011.80	1011.77	1011.82	1011.88	1011.87	1011.86	1011.86	1011.84	1011.82
	1	1011.84	1011.84	1011.87	1011.92	1011.94	1011.92	1011.93	1011.96	1012.01	1012.07	1012.08	1012.08	1011.95
	2	1012.06	1012.02	1012.01	1012.06	1012.13	1012.18	1012.23	1012.26	1012.26	1012.31	1012.42	1012.47	1012.20
	3	1012.49	1012.50	1012.50	1012.48	1012.45	1012.48	1012.52	1012.50	1012.49	1012.52	1012.50	1012.47	1012.49
	4	1012.46	1012.48	1012.54	1012.60	1012.63	1012.66	1012.70	1012.72	1012.75	1012.81	1012.84	1012.90	1012.67
	5	1012.95	1012.95	1013.00	1013.06	1013.07	1013.11	1013.18	1013.20	1013.22	1013.24	1013.28	1013.32	1013.13
	6	1013.34	1013.38	1013.46	1013.51	1013.54	1013.58	1013.60	1013.60	1013.60	1013.64	1013.69	1013.69	1013.55
	7	1013.64	1013.62	1013.62	1013.62	1013.60	1013.59	1013.58	1013.54	1013.53	1013.54	1013.52	1013.51	1013.57
	8	1013.50	1013.46	1013.43	1013.42	1013.43	1013.43	1013.41	1013.39	1013.32	1013.29	1013.29	1013.25	1013.38
	9	1013.22	1013.19	1013.16	1013.14	1013.17	1013.19	1013.20	1013.20	1013.20	1013.21	1013.14	1013.10	1013.17
	10	1013.10	1013.07	1013.10	1013.08	1013.07	1013.10	1013.05	1013.01	1013.01	1012.96	1012.85	1012.74	1013.01
	11	1012.70	1012.69	1012.65	1012.64	1012.68	1012.67	1012.62	1012.59	1012.56	1012.51	1012.47	1012.46	1012.60
	12	1012.43	1012.34	1012.26	1012.31	1012.38	1012.41	1012.41	1012.38	1012.41	1012.40	1012.33	1012.27	1012.36
	13	1012.25	1012.29	1012.37	1012.43	1012.48	1012.52	1012.54	1012.56	1012.62	1012.61	1012.58	1012.61	1012.49
	14	1012.56	1012.53	1012.53	1012.53	1012.60	1012.62	1012.61	1012.59	1012.60	1012.64	1012.63	1012.62	1012.59
	15	1012.65	1012.65	1012.64	1012.64	1012.68	1012.73	1012.58	1012.65	1012.86	1012.83	1012.81	1012.85	1012.71
	16	1012.87	1012.86	1012.85	1012.85	1012.84	1012.83	1012.83	1012.84	1012.86	1012.87	1012.88	1012.91	1012.86
	17	1012.96	1013.05	1013.11	1013.15	1013.23	1013.32	1013.37	1013.45	1013.55	1013.61	1013.66	1013.76	1013.35
	18	1013.82	1013.86	1013.90	1013.95	1014.05	1014.15	1014.26	1014.33	1014.37	1014.44	1014.53	1014.64	1014.19
	19	1014.74	1014.84	1014.93	1015.03	1015.13	1015.20	1015.29	1015.39	1015.47	1015.52	1015.57	1015.63	1015.23
	20	1015.66	1015.72	1015.74	1015.74	1015.77	1015.81	1015.86	1015.91	1015.93	1015.94	1015.96	1015.93	1015.83
	21	1015.93	1015.98	1016.08	1016.20	1016.25	1016.24	1016.23	1016.25	1016.33	1016.43	1016.49	1016.50	1016.24
	22	1016.51	1016.50	1016.48	1016.54	1016.62	1016.66	1016.66	1016.68	1016.67	1016.63	1016.63	1016.68	1016.60
	23	1016.69	1016.64	1016.66	1016.67	1016.66	1016.61	1016.58	1016.58	1016.58	1016.63	1016.65	1016.61	1016.63

S.V.I.R.CO. Observatory - Pressure in hectoPascal – July 2017

day	hh	00_05	05_10	10_15	15_20	20_25	25_30	30_35	35_40	40_45	45_50	50_55	55_60	average
17	0	1016.52	1016.53	1016.54	1016.56	1016.58	1016.59	1016.57	1016.52	1016.47	1016.43	1016.38	1016.35	1016.50
	1	1016.40	1016.46	1016.48	1016.47	1016.45	1016.43	1016.39	1016.35	1016.33	1016.36	1016.38	1016.34	1016.40
	2	1016.29	1016.24	1016.22	1016.23	1016.23	1016.29	1016.37	1016.39	1016.43	1016.47	1016.48	1016.49	1016.34
	3	1016.49	1016.46	1016.44	1016.43	1016.45	1016.47	1016.49	1016.51	1016.53	1016.55	1016.54	1016.54	1016.49
	4	1016.54	1016.56	1016.57	1016.60	1016.63	1016.68	1016.68	1016.66	1016.68	1016.70	1016.70	1016.71	1016.64
	5	1016.74	1016.73	1016.71	1016.73	1016.76	1016.76	1016.82	1016.88	1016.86	1016.85	1016.90	1016.98	1016.81
	6	1017.01						1016.98	1017.01	1017.03	1017.06	1017.13	1017.16	1017.04
	7	1017.14				1017.00	1016.91	1016.85				1016.90	1016.89	1016.95
	8	1016.86	1016.80	1016.79	1016.81	1016.78	1016.72	1016.70	1016.66	1016.60	1016.59	1016.55	1016.51	1016.70
	9	1016.45	1016.41	1016.43	1016.42	1016.39	1016.32	1016.26	1016.23	1016.17	1016.15	1016.14	1016.11	1016.29
	10	1016.07	1016.07	1016.03	1015.93	1015.87	1015.81	1015.79	1015.81	1015.74	1015.64	1015.59	1015.55	1015.82
	11	1015.53	1015.52	1015.47	1015.37	1015.34	1015.36	1015.30	1015.24	1015.21	1015.17	1015.11	1015.05	1015.30
	12	1014.96	1014.91	1014.92	1014.89	1014.84	1014.84	1014.88	1014.86	1014.76	1014.67	1014.59	1014.55	1014.80
	13	1014.47	1014.33	1014.31	1014.32	1014.30	1014.27	1014.25	1014.25	1014.21	1014.14	1014.07	1014.00	1014.24
	14	1013.97	1013.94	1013.92	1013.98	1013.91	1013.96	1014.09	1014.08	1014.07	1014.10	1014.19	1014.29	1014.04
	15	1014.34	1014.40	1014.44	1014.43	1014.43	1014.45	1014.49	1014.47	1014.48	1014.53	1014.56	1014.56	1014.46
	16	1014.57	1014.59	1014.61	1014.66	1014.67	1014.62	1014.57	1014.54	1014.55	1014.58	1014.57	1014.59	1014.59
	17	1014.64	1014.67	1014.64	1014.63	1014.66	1014.66	1014.64	1014.66	1014.75	1014.80	1014.83	1014.86	1014.70
	18	1014.87	1014.88	1014.89	1014.90	1014.88	1014.86	1014.87	1014.90	1014.96	1015.06	1015.16	1015.25	1014.96
	19	1015.32	1015.37	1015.42	1015.46	1015.54	1015.64	1015.67	1015.72	1015.78	1015.80	1015.86	1015.95	1015.62
	20	1016.01	1016.02	1016.05	1016.09	1016.12	1016.15	1016.20	1016.29	1016.35	1016.36	1016.37	1016.43	1016.20
	21	1016.49	1016.54	1016.59	1016.64	1016.67	1016.69	1016.71	1016.73	1016.73	1016.73	1016.73	1016.75	1016.66
	22	1016.78	1016.82	1016.85	1016.90	1016.91	1016.90	1016.89	1016.90	1016.91	1016.89	1016.90	1016.91	1016.88
	23	1016.88	1016.90	1016.95	1016.96	1016.96	1016.94	1016.92	1016.92	1016.89	1016.90	1016.95	1016.97	1016.93
18	0	1016.97	1016.96	1016.96	1016.99	1017.02	1017.06	1017.07	1017.08	1017.14	1017.19	1017.21	1017.23	1017.08
	1	1017.25	1017.27	1017.27	1017.26	1017.23	1017.19	1017.18	1017.16	1017.12	1017.11	1017.11	1017.10	1017.19
	2	1017.10	1017.11	1017.13	1017.16	1017.16	1017.14	1017.12	1017.08	1017.04	1017.04	1017.08	1017.13	1017.10
	3	1017.18	1017.20	1017.21	1017.25	1017.30	1017.32	1017.31	1017.31	1017.32	1017.34	1017.38	1017.41	1017.29
	4	1017.46	1017.47	1017.49	1017.55	1017.55	1017.54	1017.57	1017.58	1017.60	1017.65	1017.69	1017.70	1017.57
	5	1017.70	1017.70	1017.70	1017.68	1017.69	1017.73	1017.74	1017.75	1017.76	1017.79	1017.85	1017.87	1017.74
	6	1017.86	1017.84	1017.83	1017.84	1017.84	1017.85	1017.86	1017.83	1017.78	1017.75	1017.73	1017.73	1017.81
	7	1017.74	1017.75	1017.75	1017.74	1017.75	1017.72	1017.67	1017.62	1017.61	1017.62	1017.59	1017.55	1017.67
	8	1017.52	1017.50	1017.47	1017.45	1017.47	1017.48	1017.44	1017.40	1017.35	1017.34	1017.33	1017.29	1017.42
	9	1017.27	1017.24	1017.21	1017.19	1017.18	1017.18	1017.21	1017.26	1017.29	1017.32	1017.34	1017.31	1017.25
	10	1017.29	1017.27	1017.28	1017.29	1017.32	1017.36	1017.36	1017.35	1017.34	1017.32	1017.26	1017.24	1017.30
	11	1017.27	1017.29	1017.31	1017.27	1017.23	1017.23	1017.22	1017.20	1017.19	1017.20	1017.19	1017.20	1017.23
	12	1017.19	1017.16	1017.13	1017.10	1017.08	1017.06	1017.05	1017.02	1017.02	1017.05	1017.04	1017.02	1017.07
	13	1017.02	1017.04	1017.05	1017.02	1017.03	1017.02	1016.96	1016.98	1017.03	1017.03	1017.00	1016.99	1017.01
	14	1016.94	1016.88	1016.88	1016.89	1016.84	1016.81	1016.83	1016.84	1016.86	1016.83	1016.78	1016.74	1016.84
	15	1016.68	1016.67	1016.67	1016.64	1016.63	1016.62	1016.59	1016.57	1016.56	1016.58	1016.59	1016.56	1016.61
	16	1016.54	1016.55	1016.58	1016.59	1016.61	1016.63	1016.64	1016.67	1016.69	1016.69	1016.71	1016.75	1016.64
	17	1016.78	1016.77	1016.77	1016.81	1016.84	1016.84	1016.87	1016.92	1016.95	1016.97	1016.99	1017.00	1016.87
	18	1017.02	1017.04	1017.05	1017.07	1017.10	1017.14	1017.16	1017.16	1017.18	1017.20	1017.20	1017.22	1017.13
	19	1017.25	1017.29	1017.35	1017.41	1017.50	1017.57	1017.64	1017.70	1017.75	1017.79	1017.83	1017.87	1017.58
	20	1017.88	1017.93	1017.98	1018.01	1018.01	1017.99	1017.98	1017.97	1017.98	1017.97	1017.96	1017.98	1017.97
	21	1018.02	1018.03	1018.03	1018.04	1018.05	1018.05	1018.06	1018.05	1018.04	1018.06	1018.08	1018.09	1018.05
	22	1018.11	1018.12	1018.12	1018.10	1018.05	1017.99	1017.93	1017.91	1017.93	1017.93	1017.89	1017.86	1017.99
	23	1017.81	1017.74	1017.71	1017.71	1017.71	1017.72	1017.71	1017.69	1017.68	1017.66	1017.64	1017.61	1017.70

S.V.I.R.CO. Observatory - Pressure in hectoPascal – July 2017

day	hh	00_05	05_10	10_15	15_20	20_25	25_30	30_35	35_40	40_45	45_50	50_55	55_60	average
19	0	1017.55	1017.56	1017.56	1017.55	1017.54	1017.52	1017.49	1017.46	1017.44	1017.44	1017.42	1017.39	1017.49
	1	1017.34	1017.27	1017.18	1017.13	1017.12	1017.12	1017.15	1017.16	1017.16	1017.19	1017.23	1017.24	1017.19
	2	1017.21	1017.19	1017.20	1017.22	1017.23	1017.25	1017.24	1017.26	1017.33	1017.38	1017.40	1017.45	1017.28
	3	1017.49	1017.52	1017.57	1017.61	1017.63	1017.61	1017.58	1017.59	1017.60	1017.62	1017.64	1017.64	1017.59
	4	1017.63	1017.62	1017.63	1017.67	1017.68	1017.67	1017.66	1017.66	1017.67	1017.68	1017.72	1017.75	1017.67
	5	1017.74	1017.71	1017.70	1017.68	1017.65	1017.64	1017.67	1017.68	1017.69	1017.72	1017.74	1017.71	1017.69
	6	1017.70	1017.71	1017.70	1017.71	1017.72	1017.74	1017.77	1017.77	1017.76	1017.73	1017.68	1017.64	1017.72
	7	1017.63	1017.62	1017.60	1017.56	1017.56	1017.57	1017.58	1017.59	1017.59	1017.59	1017.57	1017.54	1017.58
	8	1017.56	1017.58	1017.58	1017.60	1017.63	1017.64	1017.62	1017.59	1017.56	1017.54	1017.55	1017.55	1017.58
	9	1017.52	1017.46	1017.40	1017.36	1017.33	1017.29	1017.23	1017.16	1017.11	1017.09	1017.03	1017.01	1017.25
	10	1017.02	1017.02	1017.01	1017.00	1017.03	1017.07	1017.04	1016.96	1016.95	1016.93	1016.88	1016.87	1016.98
	11	1016.82	1016.78	1016.78	1016.79	1016.81	1016.80	1016.78	1016.80	1016.82	1016.83	1016.83	1016.89	1016.81
	12	1016.94	1016.96	1016.95	1016.95	1016.91	1016.84	1016.82	1016.83	1016.79	1016.77	1016.77	1016.76	1016.86
	13	1016.76	1016.72	1016.66	1016.61	1016.55	1016.56	1016.60	1016.57	1016.57	1016.56	1016.54	1016.54	1016.60
	14	1016.51	1016.50	1016.49	1016.49	1016.49	1016.46	1016.41	1016.34	1016.34	1016.34	1016.30	1016.22	1016.41
	15	1016.15	1016.11	1016.10	1016.10	1016.09	1016.07	1016.03	1015.95	1015.87	1015.88	1015.93	1015.97	1016.02
	16	1015.99	1015.97	1015.93	1015.90	1015.88	1015.84	1015.85	1015.88	1015.88	1015.85	1015.80	1015.76	1015.87
	17	1015.73	1015.73	1015.75	1015.80	1015.84	1015.83	1015.81	1015.80	1015.79	1015.78	1015.80	1015.83	1015.79
	18	1015.84	1015.82	1015.81	1015.85	1015.89	1015.94	1015.96	1015.93	1015.94	1016.02	1016.10	1016.13	1015.93
	19	1016.15	1016.17	1016.17	1016.19	1016.23	1016.29	1016.32	1016.32	1016.35	1016.38	1016.37	1016.34	1016.27
	20	1016.29	1016.25	1016.30	1016.34	1016.32	1016.28	1016.27	1016.29	1016.28	1016.27	1016.30	1016.29	1016.29
	21	1016.22	1016.18	1016.15	1016.11	1016.06	1016.06	1016.07	1016.04	1015.98	1015.92	1015.88	1015.85	1016.04
	22	1015.83	1015.81	1015.80	1015.79	1015.77	1015.72	1015.65	1015.58	1015.51	1015.48	1015.48	1015.42	1015.65
	23	1015.32	1015.25	1015.18	1015.11	1015.05	1015.00	1014.97	1014.93	1014.91	1014.85	1014.75	1014.68	1015.00
20	0	1014.58	1014.57	1014.57	1014.60	1014.62	1014.58	1014.55	1014.52	1014.51	1014.52	1014.51	1014.51	1014.55
	1	1014.53	1014.54	1014.52	1014.54	1014.56	1014.54	1014.54	1014.58	1014.58	1014.50	1014.40	1014.29	1014.51
	2	1014.23	1014.25	1014.24	1014.26	1014.33	1014.34	1014.32	1014.33	1014.38	1014.42	1014.45	1014.53	1014.34
	3	1014.59	1014.63	1014.68	1014.72	1014.74	1014.75	1014.76	1014.77	1014.78	1014.82	1014.87	1014.88	1014.75
	4	1014.84	1014.79	1014.79	1014.85	1014.91	1014.92	1014.92	1014.93	1014.94	1014.90	1014.90	1014.92	1014.88
	5	1014.92	1014.94	1014.97	1015.00	1014.99	1014.97	1014.97	1014.96	1014.93	1014.91	1014.88	1014.84	1014.94
	6	1014.81	1014.79	1014.79	1014.81	1014.82	1014.80	1014.75	1014.73	1014.74	1014.74	1014.69	1014.67	1014.76
	7	1014.69	1014.67	1014.64	1014.63	1014.59	1014.51	1014.44	1014.38	1014.34	1014.29	1014.25	1014.22	1014.47
	8	1014.23	1014.25	1014.24	1014.22	1014.19	1014.15	1014.12	1014.11	1014.13	1014.16	1014.19	1014.20	1014.18
	9	1014.19	1014.17	1014.15	1014.14	1014.11	1014.06	1014.01	1014.00	1013.97	1013.95	1013.95	1013.98	1014.05
	10	1014.03	1014.01	1013.97	1013.96	1013.96	1014.03	1014.06	1014.01	1014.02	1014.03	1013.93	1013.83	1013.98
	11	1013.79	1013.77	1013.76	1013.75	1013.74	1013.69	1013.63	1013.60	1013.54	1013.49	1013.47	1013.46	1013.64
	12	1013.41	1013.35	1013.30	1013.27	1013.22	1013.18	1013.12	1013.04	1012.98	1012.89	1012.83	1012.81	1013.12
	13	1012.78	1012.75	1012.73	1012.68	1012.61	1012.53	1012.48	1012.44	1012.42	1012.44	1012.45	1012.44	1012.56
	14	1012.44	1012.43	1012.40	1012.38	1012.36	1012.34	1012.32	1012.33	1012.33	1012.30	1012.32	1012.31	1012.35
	15	1012.27	1012.28	1012.27	1012.23	1012.20	1012.18	1012.19	1012.18	1012.12	1012.06	1012.05	1012.02	1012.17
	16	1011.95	1011.92	1011.93	1011.95	1011.95	1011.95	1011.96	1011.93	1011.94	1011.98	1011.99	1012.00	1011.95
	17	1012.03	1012.09	1012.15	1012.18	1012.22	1012.26	1012.32	1012.36	1012.38	1012.42	1012.45	1012.46	1012.27
	18	1012.48	1012.50	1012.51	1012.53	1012.55	1012.59	1012.58	1012.57	1012.58	1012.58	1012.57	1012.59	1012.55
	19	1012.60	1012.57	1012.56	1012.59	1012.63	1012.67	1012.70	1012.73	1012.76	1012.78	1012.79	1012.79	1012.68
	20	1012.79	1012.80	1012.81	1012.82	1012.85	1012.88	1012.88	1012.86	1012.87	1012.87	1012.83	1012.81	1012.84
	21	1012.83	1012.85	1012.83	1012.78	1012.76	1012.73	1012.70	1012.70	1012.71	1012.72	1012.71	1012.67	1012.75
	22	1012.63	1012.63	1012.64	1012.65	1012.65	1012.65	1012.63	1012.59	1012.56	1012.54	1012.57	1012.60	1012.61
	23	1012.63	1012.63	1012.60	1012.57	1012.56	1012.59	1012.62	1012.63	1012.61	1012.58	1012.58	1012.59	1012.60

S.V.I.R.CO. Observatory - Pressure in hectoPascal – July 2017

day	hh	00_05	05_10	10_15	15_20	20_25	25_30	30_35	35_40	40_45	45_50	50_55	55_60	average
21	0	1012.58	1012.59	1012.59	1012.58	1012.58	1012.57	1012.55	1012.54	1012.55	1012.56	1012.58	1012.60	1012.57
	1	1012.59	1012.59	1012.57	1012.54	1012.55	1012.54	1012.56	1012.55	1012.51	1012.51	1012.48	1012.47	1012.54
	2	1012.48	1012.49	1012.46	1012.41	1012.38	1012.38	1012.37	1012.37	1012.37	1012.38	1012.40	1012.42	1012.41
	3	1012.43	1012.41	1012.42	1012.43	1012.43	1012.44	1012.42	1012.41	1012.42	1012.44	1012.45	1012.46	1012.43
	4	1012.45	1012.43	1012.45	1012.49	1012.53	1012.58	1012.63	1012.63	1012.63	1012.64	1012.68	1012.71	1012.57
	5	1012.70	1012.71	1012.74	1012.80	1012.84	1012.85	1012.86	1012.88	1012.92	1013.01	1013.06	1013.07	1012.87
	6	1013.11	1013.16	1013.19	1013.19	1013.19	1013.20	1013.23	1013.29	1013.31	1013.29	1013.29	1013.30	1013.23
	7	1013.34	1013.40	1013.42	1013.42	1013.44	1013.46	1013.46	1013.42	1013.38	1013.37	1013.39	1013.43	1013.41
	8	1013.48	1013.47	1013.42	1013.39	1013.35	1013.28	1013.25	1013.23	1013.19	1013.16	1013.13	1013.12	1013.29
	9	1013.09	1013.03	1013.00	1012.90	1012.83	1012.85	1012.87	1012.89	1012.89	1012.91	1012.97	1013.01	1012.93
	10	1013.04	1013.02	1013.01	1013.01	1013.00	1013.00	1012.98	1012.97	1012.97	1012.95	1012.90	1012.87	1012.97
	11	1012.83	1012.76	1012.72	1012.70	1012.66	1012.63	1012.63	1012.58	1012.50	1012.48	1012.47	1012.49	1012.62
	12	1012.50	1012.46	1012.49	1012.49	1012.40	1012.33	1012.32	1012.31	1012.30	1012.26	1012.19	1012.15	1012.35
	13	1012.09	1012.03	1012.00	1011.99	1012.01	1012.04	1011.99	1011.94	1011.93	1011.91	1011.87	1011.85	1011.97
	14	1011.84	1011.77	1011.68	1011.66	1011.66	1011.64	1011.64	1011.67	1011.71	1011.71	1011.70	1011.70	1011.70
	15	1011.68	1011.64	1011.64	1011.66	1011.66	1011.65	1011.65	1011.64	1011.61	1011.59	1011.59	1011.57	1011.63
	16	1011.59	1011.62	1011.60	1011.59	1011.61	1011.59	1011.55	1011.52	1011.47	1011.44	1011.38	1011.32	1011.52
	17	1011.33	1011.33	1011.33	1011.37	1011.41	1011.48	1011.54	1011.56	1011.51	1011.42	1011.39	1011.45	1011.42
	18	1011.51	1011.52	1011.52	1011.53	1011.53	1011.52	1011.50	1011.47	1011.47	1011.50	1011.53	1011.55	1011.51
	19	1011.56	1011.59	1011.64	1011.70	1011.77	1011.78	1011.79	1011.85	1011.88	1011.91	1011.99	1012.07	1011.79
	20	1012.14	1012.22	1012.29	1012.34	1012.36	1012.31	1012.27	1012.28	1012.29	1012.31	1012.31	1012.30	1012.28
	21	1012.30	1012.30	1012.29	1012.32	1012.32	1012.30	1012.31	1012.31	1012.32	1012.32	1012.30	1012.28	1012.30
	22	1012.26	1012.26	1012.23	1012.23	1012.27	1012.29	1012.28	1012.27	1012.30	1012.35	1012.41	1012.47	1012.30
	23	1012.49	1012.48	1012.50	1012.51	1012.46	1012.40	1012.34	1012.29	1012.26	1012.27	1012.31	1012.30	1012.38
22	0	1012.31	1012.33	1012.42	1012.53	1012.58	1012.57	1012.58	1012.72	1012.92	1012.97	1012.94	1012.98	1012.67
	1	1013.07	1013.18	1013.22	1013.19	1013.26	1013.33	1013.33	1013.33	1013.29	1013.26	1013.25	1013.19	1013.24
	2	1013.14	1013.11	1013.08	1013.06	1013.01	1012.97	1012.93	1012.90	1012.88	1012.85	1012.80	1012.75	1012.96
	3	1012.67	1012.63	1012.70	1012.74	1012.77	1012.82	1012.86	1012.88	1012.88	1012.87	1012.87	1012.84	1012.79
	4	1012.83	1012.84	1012.82	1012.84	1012.85	1012.82	1012.80	1012.78	1012.76	1012.75	1012.78	1012.79	1012.80
	5	1012.75	1012.74	1012.77	1012.79	1012.79	1012.77	1012.75	1012.78	1012.80	1012.79	1012.79	1012.77	1012.77
	6	1012.77	1012.81	1012.83	1012.85	1012.89	1012.91	1012.92	1012.93	1012.95	1012.97	1013.00	1013.04	1012.90
	7	1013.11	1013.13	1013.16	1013.24	1013.27	1013.27	1013.29	1013.31	1013.30	1013.27	1013.29	1013.35	1013.24
	8	1013.43	1013.51	1013.59	1013.70	1013.78	1013.82	1013.82	1013.82	1013.83	1013.83	1013.91	1013.95	1013.75
	9	1013.95	1013.98	1014.00	1013.99	1013.99	1013.98	1013.97	1013.97	1013.92	1013.88	1013.89	1013.89	1013.95
	10	1013.88	1013.89	1013.94	1013.93	1013.88	1013.89	1013.91	1013.93	1013.89	1013.91	1013.97	1013.98	1013.91
	11	1013.96	1013.93	1013.92	1013.95	1013.97	1013.98	1014.01	1013.98	1013.97	1014.02	1014.05	1014.07	1013.98
	12	1014.06	1014.06	1014.09	1014.06	1014.01	1014.06	1014.08	1014.04	1014.00	1013.97	1013.92	1013.90	1014.02
	13	1013.91	1013.88	1013.88	1013.85	1013.80	1013.78	1013.75	1013.73	1013.74	1013.72	1013.72	1013.74	1013.79
	14	1013.73	1013.76	1013.75	1013.67	1013.62	1013.55	1013.52	1013.48	1013.43	1013.43	1013.40	1013.36	1013.56
	15	1013.34	1013.33	1013.32	1013.32	1013.35	1013.38	1013.39	1013.37	1013.30	1013.24	1013.22	1013.23	1013.31
	16	1013.25	1013.28	1013.29	1013.31	1013.36	1013.38	1013.36	1013.32	1013.29	1013.29	1013.26	1013.26	1013.30
	17	1013.28	1013.29	1013.29	1013.32	1013.39	1013.42	1013.43	1013.45	1013.47	1013.44	1013.39	1013.41	1013.38
	18	1013.41	1013.40	1013.42	1013.42	1013.44	1013.48	1013.51	1013.49	1013.50	1013.52	1013.53	1013.55	1013.47
	19	1013.59	1013.62	1013.68	1013.81	1013.86	1013.84	1013.86	1013.92	1013.99	1014.05	1014.13	1014.20	1013.88
	20	1014.20	1014.20	1014.22	1014.23	1014.25	1014.24	1014.26	1014.31	1014.32	1014.40	1014.48	1014.51	1014.30
	21	1014.59	1014.66	1014.65	1014.63	1014.61	1014.62	1014.69	1014.74	1014.73	1014.78	1014.87	1014.93	1014.71
	22	1014.97	1015.03	1015.13	1015.23	1015.26	1015.29	1015.31	1015.34	1015.40	1015.43	1015.44	1015.46	1015.27
	23	1015.45	1015.39	1015.37	1015.37	1015.35	1015.33	1015.36	1015.41	1015.49	1015.53	1015.49	1015.49	1015.42

S.V.I.R.CO. Observatory - Pressure in hectoPascal – July 2017

day	hh	00_05	05_10	10_15	15_20	20_25	25_30	30_35	35_40	40_45	45_50	50_55	55_60	average
23	0	1015.56	1015.56	1015.58	1015.63	1015.66	1015.68	1015.71	1015.73	1015.75	1015.76	1015.72	1015.69	1015.67
	1	1015.63	1015.58	1015.58	1015.57	1015.57	1015.54	1015.51	1015.49	1015.46	1015.40	1015.31	1015.25	1015.49
	2	1015.21	1015.19	1015.16	1015.11	1015.07	1015.00	1014.93	1014.86	1014.82	1014.78	1014.72	1014.72	1014.96
	3	1014.73	1014.69	1014.62	1014.57	1014.55	1014.51	1014.48	1014.46	1014.42	1014.36	1014.31	1014.29	1014.50
	4	1014.29	1014.30	1014.29	1014.27	1014.28	1014.34	1014.38	1014.40	1014.40	1014.38	1014.39	1014.42	1014.34
	5	1014.44	1014.45	1014.47	1014.51	1014.54	1014.54	1014.54	1014.57	1014.61	1014.67	1014.73	1014.74	1014.56
	6	1014.75	1014.78	1014.82	1014.84	1014.84	1014.87	1014.89	1014.89	1014.90	1014.87	1014.84	1014.85	1014.84
	7	1014.89	1014.92	1014.91	1014.90	1014.90	1014.91	1014.90	1014.90	1014.92	1014.92	1014.94	1014.95	1014.91
	8	1014.95	1014.95	1014.96	1014.99	1015.00	1015.00	1015.05	1015.09	1015.09	1015.04	1015.00	1014.95	1015.00
	9	1014.90	1014.89	1014.85	1014.80	1014.81	1014.86	1014.83	1014.79	1014.78	1014.79	1014.85	1014.93	1014.84
	10	1014.96	1014.97	1015.04	1015.09	1015.09	1015.10	1015.11	1015.12	1015.12	1015.17	1015.22	1015.18	1015.09
	11	1015.11	1015.08	1015.08	1015.05	1015.00	1014.93	1014.87	1014.82	1014.81	1014.81	1014.79	1014.77	1014.92
	12	1014.73	1014.69	1014.70	1014.68	1014.63	1014.62	1014.61	1014.59	1014.56	1014.50	1014.42	1014.35	1014.59
	13	1014.31	1014.30	1014.27	1014.21	1014.17	1014.10	1013.97	1013.83	1013.74	1013.70	1013.67	1013.63	1013.99
	14	1013.61	1013.58	1013.57	1013.56	1013.50	1013.44	1013.46	1013.48	1013.43	1013.37	1013.32	1013.27	1013.46
	15	1013.29	1013.30	1013.30	1013.31	1013.30	1013.28	1013.26	1013.24	1013.22	1013.19	1013.17	1013.20	1013.25
	16	1013.22	1013.26	1013.34	1013.38	1013.36	1013.36	1013.36	1013.33	1013.29	1013.26	1013.25	1013.22	1013.30
	17	1013.16	1013.12	1013.13	1013.13	1013.06	1013.03	1013.00	1012.95	1012.92	1012.92	1012.96	1012.97	1013.03
	18	1013.00	1013.04	1013.03	1013.01	1012.97	1012.96	1012.97	1012.96	1013.02	1013.06	1013.05	1013.01	1013.01
	19	1012.90	1012.78	1012.67	1012.57	1012.50	1012.49	1012.47	1012.46	1012.54	1012.56	1012.53	1012.51	1012.58
	20	1012.40	1012.28	1012.31	1012.56	1012.85	1012.93	1012.97	1013.04	1013.03	1013.06	1013.13	1013.17	1012.81
	21	1013.24	1013.28	1013.17	1013.05	1013.08	1013.11	1012.99	1012.84	1012.77	1012.74	1012.76	1012.81	1012.98
	22	1012.85	1012.90	1013.00	1013.07	1013.03	1012.95	1012.82	1012.78	1012.83	1012.81	1012.79	1012.74	1012.88
	23	1012.74	1012.84	1012.81	1012.68	1012.63	1012.58	1012.45	1012.34	1012.13	1011.85	1011.57	1011.34	1012.33
24	0	1011.37	1011.24	1011.06	1011.08	1011.15	1011.22	1011.35	1011.49	1011.67	1011.71	1011.64	1011.70	1011.39
	1	1011.77	1011.79	1011.81	1011.88	1011.99	1012.03	1011.95	1011.85	1011.82	1011.77	1011.66	1011.57	1011.82
	2	1011.56	1011.47	1011.35	1011.26	1011.29	1011.40	1011.34	1011.25	1011.24	1011.11	1010.93	1010.82	1011.25
	3	1010.68	1010.57	1010.60	1010.68	1010.68	1010.67	1010.76	1010.79	1010.53	1010.21	1010.07	1009.99	1010.52
	4	1009.91	1009.84	1009.80	1009.67	1009.55	1009.65	1009.59	1009.31	1008.99	1008.76	1008.75	1008.79	1009.38
	5	1008.84	1008.79	1008.57	1008.34	1008.16	1008.08	1008.07	1008.03	1008.06	1008.13	1008.11	1007.99	1008.26
	6	1007.86	1007.79	1007.67	1007.52	1007.41	1007.32	1007.20	1007.08	1007.00	1007.03	1007.07	1007.12	1007.34
	7	1007.19	1007.25	1007.36	1007.48	1007.57	1007.70	1007.85	1007.97	1008.01	1008.05	1008.09	1008.07	1007.71
	8	1008.09	1008.26	1008.42	1008.54	1008.69	1008.81	1008.84	1008.85	1008.94	1008.99	1008.93	1008.86	1008.68
	9	1008.77	1008.67	1008.55	1008.47	1008.34	1008.14	1008.01	1007.99	1008.13	1008.17	1008.14	1008.14	1008.29
	10	1008.12	1008.09	1008.07	1008.07	1008.03	1008.01	1008.03	1008.01	1007.98	1007.96	1007.97	1007.90	1008.02
	11	1007.79	1007.78	1007.79	1007.74	1007.66	1007.57	1007.46	1007.33	1007.27	1007.24	1007.17	1007.04	1007.48
	12	1006.87	1006.76	1006.68	1006.62	1006.58	1006.52	1006.56	1006.58	1006.55	1006.52	1006.50	1006.52	1006.60
	13	1006.43	1006.32	1006.31	1006.31	1006.27	1006.21	1006.15	1006.09	1006.06	1006.06	1006.05	1005.95	1006.18
	14	1005.87	1005.82	1005.73	1005.67	1005.62	1005.51	1005.41	1005.39	1005.43	1005.43	1005.42	1005.37	1005.55
	15	1005.33	1005.32	1005.30	1005.27	1005.23	1005.19	1005.16	1005.19	1005.18	1005.08	1005.03	1005.03	1005.19
	16	1004.98	1004.94	1004.97	1005.02	1005.04	1005.07	1005.06	1005.03	1005.03	1005.06	1005.07	1005.02	1005.02
	17	1005.05	1005.05	1005.01	1005.04	1005.07	1005.03	1005.00	1005.04	1005.07	1005.10	1005.11	1004.99	1005.04
	18	1004.89	1004.86	1004.92	1005.05	1005.09	1005.15	1005.30	1005.47	1005.48	1005.30	1005.21	1005.34	1005.17
	19	1005.52	1005.60	1005.62	1005.63	1005.68	1005.74	1005.84	1005.91	1005.91	1005.91	1005.92	1005.94	1005.77
	20	1006.00	1006.02	1005.99	1006.04	1006.10	1006.04	1005.94	1005.83	1005.71	1005.64	1005.58	1005.58	1005.87
	21	1005.56	1005.54	1005.63	1005.76	1005.86	1005.90	1005.91	1005.88	1005.84	1005.79	1005.71	1005.64	1005.75
	22	1005.63	1005.66	1005.65	1005.66	1005.69	1005.66	1005.62	1005.57	1005.48	1005.35	1005.28	1005.29	1005.54
	23	1005.31	1005.27	1005.17	1005.08	1005.03	1005.02	1005.03	1005.01	1005.01	1005.01	1004.99	1004.94	1005.07



S.V.I.R.CO. Observatory - Pressure in hectoPascal – July 2017

day	hh	00_05	05_10	10_15	15_20	20_25	25_30	30_35	35_40	40_45	45_50	50_55	55_60	average
25	0	1004.84	1004.81	1004.77	1004.70	1004.61	1004.56	1004.54	1004.51	1004.46	1004.41	1004.38	1004.37	1004.57
	1	1004.35	1004.31	1004.24	1004.21	1004.24	1004.24	1004.21	1004.17	1004.15	1004.12	1004.09	1004.06	1004.20
	2	1004.02	1004.00	1004.01	1003.98	1003.93	1003.90	1003.87	1003.82	1003.76	1003.73	1003.76	1003.79	1003.88
	3	1003.80	1003.78	1003.75	1003.72	1003.67	1003.64	1003.65	1003.69	1003.72	1003.70	1003.63	1003.60	1003.69
	4	1003.61	1003.62	1003.63	1003.66	1003.65	1003.66	1003.73	1003.78	1003.81	1003.81	1003.77	1003.76	1003.71
	5	1003.79	1003.82	1003.78	1003.71	1003.70	1003.69	1003.63	1003.62	1003.65	1003.68	1003.69	1003.69	1003.70
	6	1003.70	1003.73	1003.76	1003.74	1003.73	1003.74	1003.74	1003.75	1003.73	1003.68	1003.66	1003.67	1003.72
	7	1003.69	1003.75	1003.79	1003.77	1003.74	1003.72	1003.66	1003.59	1003.59	1003.60	1003.60	1003.63	1003.68
	8	1003.65	1003.66	1003.65	1003.64	1003.66	1003.67	1003.66	1003.64	1003.61	1003.57	1003.54	1003.61	1003.63
	9	1003.63	1003.59	1003.59	1003.60	1003.57	1003.55	1003.56	1003.54	1003.45	1003.37	1003.28	1003.19	1003.49
	10	1003.11	1003.06	1003.03	1002.99	1003.00	1002.98	1002.97	1002.95	1002.90	1002.86	1002.81	1002.74	1002.95
	11	1002.67	1002.66	1002.63	1002.56	1002.51	1002.41	1002.30	1002.26	1002.20	1002.13	1002.28	1002.53	1002.43
	12	1002.73	1002.93	1003.03	1003.19	1003.33	1003.37	1003.39	1003.48	1003.58	1003.61	1003.66	1003.75	1003.33
	13	1003.87	1004.13	1004.29	1004.28	1004.30	1004.25	1004.17	1004.07	1003.98	1003.94	1003.92	1003.85	1004.09
	14	1003.76	1003.68	1003.58	1003.41	1003.23	1003.15	1003.06	1002.97	1002.92	1002.90	1002.91	1002.91	1003.21
	15	1002.87	1002.82	1002.78	1002.74	1002.69	1002.68	1002.72	1002.74	1002.72	1002.71	1002.74	1002.78	1002.75
	16	1002.80	1002.80	1002.81	1002.83	1002.82	1002.80	1002.77	1002.71	1002.64	1002.58	1002.56	1002.53	1002.72
	17	1002.50	1002.57	1002.67	1002.73	1002.80	1002.86	1002.93	1003.07	1003.21	1003.30	1003.50	1003.70	1002.98
	18	1003.78	1003.84	1003.91	1003.94	1003.99	1004.05	1004.09	1004.13	1004.13	1004.11	1004.13	1004.10	1004.01
	19	1004.03	1004.03	1004.05	1004.05	1004.05	1004.08	1004.15	1004.18	1004.16	1004.18	1004.19	1004.17	1004.11
	20	1004.21	1004.22	1004.20	1004.19	1004.13	1004.07	1004.05	1004.04	1004.04	1004.07	1004.09	1004.08	1004.11
	21	1004.06	1004.04	1004.01	1004.02	1004.07	1004.11	1004.16	1004.23	1004.27	1004.29	1004.31	1004.34	1004.16
	22	1004.38	1004.45	1004.51	1004.57	1004.66	1004.66	1004.64	1004.66	1004.66	1004.65	1004.67	1004.72	1004.60
	23	1004.78	1004.80	1004.82	1004.83	1004.81	1004.81	1004.80	1004.78	1004.79	1004.80	1004.79	1004.77	1004.80
26	0	1004.76	1004.77	1004.79	1004.81	1004.79	1004.75	1004.66	1004.60	1004.63	1004.67	1004.67	1004.66	1004.71
	1	1004.67	1004.66	1004.65	1004.67	1004.70	1004.70	1004.69	1004.68	1004.65	1004.63	1004.63	1004.61	1004.66
	2	1004.58	1004.55	1004.53	1004.53	1004.54	1004.57	1004.62	1004.64	1004.62	1004.60	1004.58	1004.58	1004.58
	3	1004.60	1004.59	1004.60	1004.64	1004.64	1004.60	1004.56	1004.52	1004.49	1004.45	1004.42	1004.41	1004.54
	4	1004.42	1004.42	1004.45	1004.49	1004.48	1004.46	1004.48	1004.54	1004.61	1004.63	1004.57	1004.53	1004.50
	5	1004.57	1004.61	1004.62	1004.65	1004.69	1004.72	1004.75	1004.73	1004.72	1004.75	1004.77	1004.80	1004.70
	6	1004.85	1004.89	1004.92	1004.93	1004.93	1004.92	1004.93	1004.91	1004.88	1004.90	1004.92	1004.94	1004.91
	7	1004.96	1004.99	1005.01	1005.03	1005.05	1005.04	1005.02	1005.02	1005.02	1005.01	1005.02	1005.06	1005.02
	8	1005.08	1005.08	1005.07	1005.07	1005.07	1005.07	1005.07	1005.07	1005.06	1005.04	1005.00	1004.94	1005.05
	9	1004.92	1004.90	1004.89	1004.87	1004.86	1004.83	1004.81	1004.81	1004.83	1004.84	1004.81	1004.75	1004.84
	10	1004.73	1004.72	1004.69	1004.69	1004.70	1004.65	1004.59	1004.56	1004.51	1004.50	1004.46	1004.41	1004.60
	11	1004.40	1004.35	1004.27	1004.26	1004.28	1004.27	1004.23	1004.10	1003.99	1003.98	1004.03	1004.11	1004.19
	12	1004.17	1004.20	1004.14	1004.13	1004.16	1004.12	1004.10	1004.12	1004.23	1004.39	1004.51	1004.61	1004.24
	13	1004.71	1004.78	1004.81	1004.85	1004.89	1004.83	1004.72	1004.71	1004.74	1004.78	1004.87	1005.04	1004.81
	14	1005.22	1005.35	1005.43	1005.50	1005.49	1005.43	1005.37	1005.28	1005.28	1005.35	1005.42	1005.45	1005.38
	15	1005.36	1005.37	1005.53	1005.69	1005.73	1005.74	1005.85	1006.02	1006.09	1006.05	1005.86	1005.76	1005.75
	16	1005.86	1005.87	1005.79	1005.69	1005.59	1005.50	1005.44	1005.39	1005.29	1005.21	1005.14	1005.05	1005.48
	17	1005.04	1005.05	1005.09	1005.22	1005.31	1005.37	1005.46	1005.59	1005.70	1005.71	1005.68	1005.71	1005.41
	18	1005.80	1005.90	1006.01	1006.09	1006.06	1006.07	1006.16	1006.21	1006.26	1006.28	1006.29	1006.33	1006.12
	19	1006.38	1006.44	1006.50	1006.59	1006.65	1006.67	1006.73	1006.76	1006.81	1006.90	1006.95	1006.99	1006.70
	20	1007.07	1007.12	1007.17	1007.25	1007.33	1007.43	1007.55	1007.60	1007.64	1007.72	1007.72	1007.69	1007.44
	21	1007.71	1007.82	1007.88	1007.87	1007.91	1007.95	1007.95	1007.97	1008.02	1008.09	1008.16	1008.20	1007.96
	22	1008.22	1008.23	1008.20	1008.19	1008.14	1008.07	1008.03	1008.02	1008.05	1008.05	1008.07	1008.12	1008.11
	23	1008.12	1008.11	1008.12	1008.12	1008.12	1008.11	1008.10	1008.09	1008.11	1008.13	1008.17	1008.21	1008.12

S.V.I.R.CO. Observatory - Pressure in hectoPascal – July 2017

day	hh	00_05	05_10	10_15	15_20	20_25	25_30	30_35	35_40	40_45	45_50	50_55	55_60	average
27	0	1008.20	1008.18	1008.17	1008.22	1008.28	1008.30	1008.30	1008.35	1008.38	1008.35	1008.27	1008.21	1008.27
	1	1008.19	1008.13	1008.08	1008.09	1008.15	1008.25	1008.28	1008.26	1008.26	1008.30	1008.31	1008.32	1008.22
	2	1008.37	1008.38	1008.37	1008.37	1008.36	1008.36	1008.36	1008.34	1008.33	1008.37	1008.43	1008.48	1008.37
	3	1008.50	1008.46	1008.39	1008.34	1008.35	1008.41	1008.47	1008.53	1008.57	1008.58	1008.58	1008.61	1008.48
	4	1008.62	1008.62	1008.63	1008.67	1008.71	1008.75	1008.81	1008.87	1008.89	1008.89	1008.89	1008.92	1008.77
	5	1008.99	1009.09	1009.16	1009.18	1009.17	1009.19	1009.25	1009.30	1009.33	1009.37	1009.41	1009.44	1009.24
	6	1009.48	1009.53	1009.56	1009.57	1009.60	1009.63	1009.66	1009.70	1009.76	1009.78	1009.79	1009.79	1009.65
	7	1009.79	1009.80	1009.80	1009.80	1009.83	1009.87	1009.87	1009.83	1009.79	1009.75	1009.70	1009.67	1009.79
	8	1009.64	1009.64	1009.66	1009.67	1009.68	1009.67	1009.65	1009.63	1009.61	1009.61	1009.64	1009.68	1009.65
	9	1009.73	1009.75	1009.75	1009.72	1009.67	1009.66	1009.66	1009.64	1009.59	1009.56	1009.56	1009.55	1009.65
	10	1009.54	1009.56	1009.63	1009.70	1009.68	1009.67	1009.66	1009.61	1009.58	1009.62	1009.64	1009.59	1009.62
	11	1009.59	1009.59	1009.57	1009.57	1009.58	1009.57	1009.57	1009.62	1009.62	1009.59	1009.58	1009.57	1009.58
	12	1009.59	1009.61	1009.63	1009.62	1009.57	1009.50	1009.48	1009.49	1009.46	1009.40	1009.36	1009.31	1009.50
	13	1009.29	1009.31	1009.31	1009.32	1009.30	1009.30	1009.28	1009.27	1009.32	1009.33	1009.32	1009.39	1009.31
	14	1009.44	1009.42	1009.44	1009.44	1009.41	1009.40	1009.37	1009.33	1009.35	1009.39	1009.41	1009.43	1009.40
	15	1009.43	1009.43	1009.42	1009.40	1009.40	1009.37	1009.35	1009.37	1009.33	1009.26	1009.20	1009.16	1009.34
	16	1009.14	1009.14	1009.19	1009.27	1009.34	1009.38	1009.44	1009.47	1009.46	1009.49	1009.53	1009.55	1009.36
	17	1009.56	1009.60	1009.63	1009.64	1009.66	1009.69	1009.72	1009.74	1009.78	1009.80	1009.81	1009.84	1009.70
	18	1009.84	1009.87	1009.95	1009.97	1010.01	1010.05	1010.09	1010.12	1010.13	1010.16	1010.20	1010.25	1010.05
	19	1010.33	1010.40	1010.48	1010.56	1010.64	1010.72	1010.83	1010.91	1010.95	1010.99	1011.07	1011.15	1010.75
	20	1011.20	1011.25	1011.31	1011.39	1011.47	1011.52	1011.58	1011.67	1011.73	1011.75	1011.80	1011.87	1011.54
	21	1011.90	1011.94	1011.96	1011.97	1011.97	1011.94	1011.91	1011.93	1011.97	1011.97	1011.92	1011.89	1011.94
	22	1011.92	1011.96	1012.01	1012.04	1012.06	1012.09	1012.10	1012.14	1012.13	1012.12	1012.15	1012.15	1012.07
	23	1012.13	1012.14	1012.17	1012.23	1012.23	1012.22	1012.21	1012.19	1012.17	1012.14	1012.13	1012.15	1012.17
28	0	1012.14	1012.14	1012.18	1012.22	1012.20	1012.17	1012.16	1012.15	1012.08	1012.03	1011.98	1011.96	1012.11
	1	1011.97	1011.97	1011.93	1011.89	1011.91	1011.94	1011.93	1011.86	1011.80	1011.80	1011.81	1011.77	1011.88
	2	1011.76	1011.78	1011.77	1011.79	1011.84	1011.88	1011.91	1011.92	1011.92	1011.92	1011.94	1011.94	1011.86
	3	1011.94	1011.95	1012.00	1012.06	1012.10	1012.13	1012.16	1012.16	1012.16	1012.19	1012.20	1012.23	1012.10
	4	1012.26	1012.28	1012.30	1012.30	1012.30	1012.30	1012.32	1012.34	1012.34	1012.30	1012.27	1012.25	1012.29
	5	1012.25	1012.28	1012.31	1012.29	1012.30	1012.33	1012.32	1012.29	1012.30	1012.35	1012.40	1012.47	1012.32
	6	1012.57	1012.66	1012.75	1012.79	1012.82	1012.86	1012.93	1013.01	1013.05	1013.06	1013.06	1013.08	1012.88
	7	1013.14	1013.15	1013.12	1013.11	1013.08	1013.07	1013.12	1013.15	1013.16	1013.15	1013.18	1013.22	1013.14
	8	1013.22	1013.22	1013.25	1013.31	1013.37	1013.40	1013.41	1013.42	1013.46	1013.51	1013.56	1013.58	1013.39
	9	1013.58	1013.62	1013.62	1013.58	1013.56	1013.54	1013.55	1013.55	1013.53	1013.55	1013.61	1013.68	1013.58
	10	1013.66	1013.63	1013.63	1013.64	1013.65	1013.67	1013.69	1013.71	1013.70	1013.69	1013.72	1013.79	1013.68
	11	1013.86	1013.86	1013.84	1013.83	1013.84	1013.83	1013.80	1013.80	1013.82	1013.78	1013.79	1013.80	1013.82
	12	1013.78	1013.77	1013.72	1013.67	1013.65	1013.63	1013.62	1013.61	1013.62	1013.63	1013.62	1013.61	1013.66
	13	1013.62	1013.66	1013.69	1013.68	1013.68	1013.72	1013.72	1013.71	1013.71	1013.71	1013.71	1013.67	1013.69
	14	1013.65	1013.66	1013.67	1013.69	1013.67	1013.64	1013.64	1013.64	1013.62	1013.58	1013.58	1013.57	1013.63
	15	1013.56	1013.57	1013.58	1013.58	1013.57	1013.57	1013.54	1013.52	1013.51	1013.52	1013.54	1013.52	1013.55
	16	1013.49	1013.46	1013.44	1013.43	1013.41	1013.42	1013.43	1013.45	1013.48	1013.48	1013.46	1013.45	1013.45
	17	1013.45	1013.49	1013.55	1013.63	1013.69	1013.71	1013.74	1013.78	1013.80	1013.83	1013.86	1013.94	1013.70
	18	1014.01	1014.04	1014.07	1014.08	1014.11	1014.16	1014.21	1014.27	1014.32	1014.35	1014.39	1014.44	1014.20
	19	1014.52	1014.59	1014.62	1014.61	1014.63	1014.69	1014.75	1014.78	1014.84	1014.88	1014.90	1014.91	1014.72
	20	1014.94	1014.96	1014.95	1014.96	1014.98	1015.00	1015.05	1015.09	1015.08	1015.09	1015.12	1015.15	1015.03
	21	1015.19	1015.22	1015.25	1015.27	1015.31	1015.36	1015.36	1015.34	1015.36	1015.36	1015.35	1015.34	1015.31
	22	1015.33	1015.36	1015.42	1015.46	1015.48	1015.48	1015.50	1015.50	1015.49	1015.50	1015.51	1015.49	1015.46
	23	1015.47	1015.45	1015.45	1015.40	1015.36	1015.37	1015.35	1015.33	1015.32	1015.30	1015.32	1015.33	1015.37

S.V.I.R.CO. Observatory - Pressure in hectoPascal – July 2017

day	hh	00_05	05_10	10_15	15_20	20_25	25_30	30_35	35_40	40_45	45_50	50_55	55_60	average
29	0	1015.30	1015.30	1015.31	1015.29	1015.26	1015.23	1015.21	1015.22	1015.22	1015.21	1015.19	1015.18	1015.24
	1	1015.17	1015.15	1015.17	1015.19	1015.17	1015.17	1015.16	1015.13	1015.12	1015.11	1015.09	1015.07	1015.14
	2	1015.07	1015.07	1015.06	1015.08	1015.10	1015.11	1015.12	1015.14	1015.16	1015.16	1015.16	1015.18	1015.12
	3	1015.20	1015.20	1015.19	1015.19	1015.17	1015.18	1015.23	1015.27	1015.30	1015.31	1015.33	1015.35	1015.24
	4	1015.35	1015.37	1015.40	1015.44	1015.49	1015.53	1015.55	1015.55	1015.57	1015.58	1015.59	1015.61	1015.50
	5	1015.63	1015.67	1015.74	1015.81	1015.87	1015.91	1015.92	1015.93	1015.94	1015.96	1016.00	1016.04	1015.87
	6	1016.06	1016.10	1016.13	1016.16	1016.15	1016.15	1016.17	1016.19	1016.20	1016.24	1016.28	1016.30	1016.18
	7	1016.31	1016.31	1016.32	1016.34	1016.33	1016.32	1016.34	1016.37	1016.37	1016.36	1016.37	1016.38	1016.34
	8	1016.39	1016.39	1016.39	1016.40	1016.42	1016.45	1016.45	1016.41	1016.39	1016.38	1016.40	1016.43	1016.41
	9	1016.40	1016.39	1016.41	1016.44	1016.46	1016.45	1016.42	1016.39	1016.41	1016.44	1016.43	1016.41	1016.42
	10	1016.42	1016.41	1016.36	1016.33	1016.34	1016.37	1016.40	1016.39	1016.34	1016.32	1016.35	1016.32	1016.36
	11	1016.27	1016.25	1016.25	1016.26	1016.24	1016.23	1016.20	1016.20	1016.22	1016.21	1016.19	1016.19	1016.22
	12	1016.20	1016.17	1016.17	1016.20	1016.18	1016.12	1016.06	1016.04	1016.04	1016.04	1016.05	1016.06	1016.11
	13	1016.04	1016.02	1016.01	1016.03	1016.06	1016.08	1016.09	1016.09	1016.08	1016.09	1016.09	1016.08	1016.06
	14	1016.09	1016.09	1016.11	1016.13	1016.14	1016.14	1016.10	1016.05	1016.01	1016.03	1016.04	1016.04	1016.08
	15	1016.05	1016.05	1016.04	1016.01	1015.98	1015.95	1015.88	1015.83	1015.82	1015.83	1015.84	1015.80	1015.92
	16	1015.79	1015.77	1015.74	1015.72	1015.70	1015.69	1015.70	1015.72	1015.74	1015.74	1015.77	1015.78	1015.74
	17	1015.77	1015.80	1015.78	1015.74	1015.73	1015.70	1015.69	1015.71	1015.70	1015.72	1015.75	1015.76	1015.73
	18	1015.76	1015.76	1015.78	1015.81	1015.84	1015.86	1015.86	1015.83	1015.83	1015.88	1015.93	1016.01	1015.84
	19	1016.11	1016.17	1016.21	1016.24	1016.26	1016.25	1016.25	1016.25	1016.26	1016.28	1016.26	1016.25	1016.23
	20	1016.25	1016.25	1016.27	1016.30	1016.30	1016.30	1016.31	1016.27	1016.23	1016.25	1016.28	1016.28	1016.27
	21	1016.28	1016.31	1016.36	1016.38	1016.41	1016.45	1016.48	1016.51	1016.54	1016.51	1016.49	1016.50	1016.43
	22	1016.51	1016.50	1016.51	1016.54	1016.52	1016.51	1016.54	1016.54	1016.52	1016.52	1016.53	1016.51	1016.52
	23	1016.45	1016.41	1016.41	1016.42	1016.40	1016.35	1016.30	1016.25	1016.20	1016.20	1016.19	1016.17	1016.31
30	0	1016.08	1016.06	1016.01	1016.00	1016.00	1015.98	1015.98	1015.95	1015.87	1015.79	1015.76	1015.74	1015.93
	1	1015.70	1015.70	1015.66	1015.63	1015.60	1015.55	1015.55	1015.53	1015.51	1015.53	1015.55	1015.54	1015.59
	2	1015.54	1015.53	1015.52	1015.52	1015.51	1015.58	1015.65	1015.60	1015.52	1015.48	1015.45	1015.45	1015.53
	3	1015.46	1015.43	1015.40	1015.35	1015.30	1015.31	1015.35	1015.41	1015.48	1015.53	1015.53	1015.53	1015.42
	4	1015.55	1015.56	1015.52	1015.54	1015.59	1015.62	1015.62	1015.61	1015.62	1015.63	1015.63	1015.64	1015.59
	5	1015.60	1015.56	1015.53	1015.51	1015.52	1015.56	1015.58	1015.58	1015.55	1015.56	1015.57	1015.58	1015.56
	6	1015.61	1015.64	1015.64	1015.66	1015.72	1015.73	1015.74	1015.77	1015.77	1015.76	1015.75	1015.73	1015.71
	7	1015.72	1015.71	1015.69	1015.69	1015.71	1015.70	1015.72	1015.73	1015.72	1015.72	1015.71	1015.68	1015.71
	8	1015.66	1015.66	1015.67	1015.67	1015.66	1015.66	1015.65	1015.62	1015.62	1015.66	1015.67	1015.66	1015.65
	9	1015.64	1015.62	1015.61	1015.61	1015.59	1015.55	1015.51	1015.47	1015.41	1015.36	1015.32	1015.30	1015.50
	10	1015.32	1015.32	1015.27	1015.23	1015.22	1015.20	1015.16	1015.12	1015.11	1015.14	1015.12	1015.10	1015.19
	11	1015.08	1015.05	1015.02	1014.99	1014.95	1014.94	1014.97	1014.99	1014.98	1014.95	1014.91	1014.88	1014.97
	12	1014.83	1014.78	1014.76	1014.75	1014.77	1014.75	1014.71	1014.68	1014.67	1014.65	1014.64	1014.64	1014.72
	13	1014.62	1014.65	1014.64	1014.64	1014.64	1014.59	1014.56	1014.53	1014.53	1014.52	1014.50	1014.48	1014.57
	14	1014.46	1014.42	1014.37	1014.35	1014.33	1014.32	1014.34	1014.35	1014.36	1014.38	1014.39	1014.39	1014.37
	15	1014.37	1014.35	1014.34	1014.36	1014.37	1014.35	1014.33	1014.33	1014.30	1014.27	1014.27	1014.24	1014.32
	16	1014.20	1014.17	1014.18	1014.20	1014.20	1014.21	1014.25	1014.26	1014.25	1014.23	1014.22	1014.24	1014.21
	17	1014.25	1014.26	1014.27	1014.26	1014.26	1014.26	1014.28	1014.31	1014.33	1014.36	1014.40	1014.44	1014.30
	18	1014.45	1014.43	1014.43	1014.47	1014.51	1014.52	1014.55	1014.62	1014.71	1014.80	1014.86	1014.89	1014.60
	19	1014.94	1015.04	1015.11	1015.18	1015.21	1015.23	1015.29	1015.32	1015.35	1015.35	1015.34	1015.37	1015.22
	20	1015.41	1015.40	1015.38	1015.39	1015.42	1015.48	1015.53	1015.54	1015.56	1015.58	1015.58	1015.52	1015.48
	21	1015.50	1015.52	1015.52	1015.52	1015.50	1015.49	1015.50	1015.49	1015.43	1015.38	1015.37	1015.35	1015.46
	22	1015.40	1015.44	1015.51	1015.60	1015.65	1015.71	1015.77	1015.81	1015.82	1015.79	1015.80	1015.77	1015.67
	23	1015.70	1015.65	1015.64	1015.66	1015.64	1015.60	1015.57	1015.54	1015.52	1015.54	1015.58	1015.60	1015.60

**S.V.I.R.CO. Observatory - Pressure in hectoPascal – July 2017**

day	hh	00_05	05_10	10_15	15_20	20_25	25_30	30_35	35_40	40_45	45_50	50_55	55_60	average
31	0	1015.64	1015.58	1015.51	1015.52	1015.57	1015.59	1015.55	1015.48	1015.44	1015.44	1015.42	1015.37	1015.50
	1	1015.32	1015.26	1015.24	1015.21	1015.17	1015.15	1015.16	1015.17	1015.14	1015.10	1015.08	1015.04	1015.17
	2	1015.01	1014.97	1014.94	1014.93	1014.91	1014.90	1014.90	1014.92	1014.93	1014.90	1014.91	1014.95	1014.93
	3	1014.96	1014.96	1014.96	1015.01	1015.09	1015.13	1015.12	1015.10	1015.09	1015.14	1015.16	1015.17	1015.07
	4	1015.22	1015.24	1015.24	1015.25	1015.28	1015.29	1015.27	1015.23	1015.21	1015.22	1015.23	1015.23	1015.24
	5	1015.21	1015.18	1015.19	1015.21	1015.23	1015.26	1015.30	1015.34	1015.39	1015.44	1015.49	1015.53	1015.31
	6	1015.57	1015.62	1015.65	1015.66	1015.68	1015.72	1015.77	1015.79	1015.79	1015.80	1015.83	1015.82	1015.72
	7	1015.80	1015.80	1015.80	1015.81	1015.83	1015.86	1015.87	1015.90	1015.91	1015.88	1015.86	1015.83	1015.84
	8	1015.80	1015.80	1015.80	1015.81	1015.79	1015.75	1015.73	1015.72	1015.70	1015.65	1015.62	1015.62	1015.73
	9	1015.62	1015.61	1015.57	1015.52	1015.48	1015.44	1015.39	1015.34	1015.31	1015.28	1015.24	1015.20	1015.41
	10	1015.15	1015.12	1015.10	1015.07	1015.04	1015.01	1014.98	1014.95	1014.94	1014.94	1014.92	1014.87	1015.01
	11	1014.82	1014.78	1014.77	1014.75	1014.73	1014.70	1014.70	1014.66	1014.60	1014.58	1014.56	1014.55	1014.68
	12	1014.55	1014.53	1014.49	1014.47	1014.45	1014.42	1014.40	1014.37	1014.35	1014.34	1014.31	1014.28	1014.41
	13	1014.24	1014.21	1014.22	1014.26	1014.28	1014.30	1014.32	1014.32	1014.34	1014.35	1014.36	1014.39	1014.30
	14	1014.41	1014.42	1014.41	1014.38	1014.38	1014.40	1014.40	1014.41	1014.42	1014.43	1014.42	1014.42	1014.41
	15	1014.43	1014.47	1014.49	1014.47	1014.44	1014.41	1014.39	1014.37	1014.37	1014.39	1014.41	1014.40	1014.42
	16	1014.43	1014.50	1014.51	1014.54	1014.58	1014.59	1014.59	1014.61	1014.64	1014.66	1014.69	1014.69	1014.58
	17	1014.68	1014.69	1014.74	1014.78	1014.79	1014.76	1014.74	1014.73	1014.69	1014.69	1014.73	1014.80	1014.73
	18	1014.86	1014.89	1014.91	1014.95	1014.99	1015.01	1015.07	1015.13	1015.15	1015.17	1015.23	1015.27	1015.05
	19	1015.28	1015.28	1015.26	1015.30	1015.39	1015.43	1015.45	1015.46	1015.48	1015.55	1015.61	1015.64	1015.43
	20	1015.67	1015.72	1015.74	1015.75	1015.77	1015.79	1015.81	1015.83	1015.85	1015.83	1015.84	1015.85	1015.79
	21	1015.82	1015.79	1015.75	1015.73	1015.75	1015.76	1015.78	1015.80	1015.76	1015.73	1015.75	1015.78	1015.76
	22	1015.78	1015.76	1015.74	1015.71	1015.66	1015.64	1015.62	1015.59	1015.62	1015.66	1015.66	1015.65	1015.67
	23	1015.64	1015.62	1015.61	1015.58	1015.56	1015.53	1015.49	1015.46	1015.44	1015.42	1015.42	1015.44	1015.51

