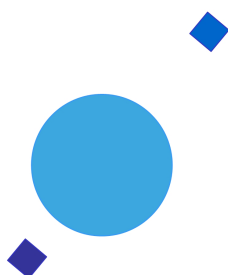


INAF



ISTITUTO NAZIONALE DI ASTROFISICA
NATIONAL INSTITUTE FOR ASTROPHYSICS

SVIRCO Prompt Report: June 2017

Francesco Re

INAF/IAPS-2017-10

July 2017

ISTITUTO DI ASTROFISICA E PLANETOLOGIA SPAZIALI

AREA DI RICERCA ROMA - TOR VERGATA

Via del Fosso del Cavaliere, 100 - 00133 Roma (ITALIA)

SVIRCO Prompt Report: June 2017

Francesco Re

*IAPS - INAF, Area di Ricerca Roma - Tor Vergata
Via del Fosso del Cavaliere, 100 - 00133 Roma, Italy,*

Abstract

The pressure corrected intensity of the nucleonic component, produced by primary cosmic rays and recorded in June 2017 by the Neutron Monitor of SVIRCO-Rome (present geographic position: 41.86° N - 12.47° E; altitude about s.l.), is reported in prompt form together with the barometric pressure data.

SVIRCO OBSERVATORY

During the 1st International Geophysics Year (1957) an international network of “ground-based detectors” for continuous cosmic ray measurements was world-wide established.

The cosmic ray station of Rome joined this network with the purpose to study the time variations of primary cosmic rays (**Studio Variazioni Intensità Raggi Cosmici: S.V.I.R.CO**) and their modulation in the heliosphere.

From July 1957 to April 1997, the SVIRCO Station (now Observatory) performed uninterrupted measurements at the Physics Department “G. Marconi” of “La Sapienza” University of Rome (41.90° N, 12.52° E, altitude about 60 m a.s.l.)

In May 1997 the neutron monitor was moved to the Physics Department “E. Amaldi” of “Roma Tre” University. Since then it has been continuously running at the new location (41.86° N, 12.47° E, altitude about 0 m a.s.l.).

The SVIRCO Observatory (INAF/IAPS-UNIRomaTre collaboration) is housed in a reserved building provided with a double air-conditioning system. The inner temperature is permanently restrained in a range of 23°-26° C, meanwhile the relative humidity is kept below 57%. Either the environmental parameters are continuously checked and recorded by digital sensors.

On January 1, 2005 three counters were added to the detector. This upgrade, from 17 to 20 NM-64, made the SVIRCO neutron monitor still consist of 5 sections but modified its geometry. Actually the new arrangement has been composed of three 3-counter, one 5-counter and one 6-counter units. The enhancement improved not only the overall counting rate of 15.6 % (January 2005) but, as a result, also the statistical quality of the recorded data.

Each of the 16 BF₃ proportional counters (BP-28 type) is equipped with a smart amplifier/discriminator circuit complete with a spectrum stabilizer. This new electronic unit, developed in our laboratory, holds firmly the pulse height spectrum of the amplifier output (within a range of more than 150 volts around the operating voltage), providing the counter with a great immunity against high voltage variations.

Anyway, systematic and exhaustive tests of the counters are regularly performed. The output pulses of the amplifiers, discriminated by the threshold gates, are collected and stored into a multi-channel analyzer. The analysis of the height distribution (spectrum) of the amplifier pulses coinciding with the discriminator ones, is essential to verify the long term efficiency of each counter together with the amplifier gain and the discriminator threshold level.

As well as the amplifier/discriminator circuits, a large part of the electronic instrumentation operating in the Observatory was designed and realized in our laboratory together with the software for data acquisition and pre-elaboration.

In order to improve the reliability of the recorded data and to prevent measurement breakdowns, two independent systems perform contemporary the data acquisition. Each system is remotely controlled by a dedicated computer and is timed by a high stability quartz clock and/or a GPS receiver. One equipment runs according to a timing of 1 minute and fulfils the acquisition of the 16 counters separately. The other one records the individual 5-minute counting rate of each detector section in addition to the rates of the overall multiplicity, sorted into separated counting channels (from 1 to greater than 8).

A special care is devoted to the atmospheric pressure measurements; thus they are carried out by means of not less than three barometers at the same time. These instruments (achieving a resolution up to 0.01 hPa), are constantly checked out each other for the best measuring accuracy and reliability. Furthermore, the devices in use are equipped with different types of transducer such as vibrating cylinder, force balance and quartz, therefore, throughout their different behaviours, it is possible to point out the occurrence of any long-term drift and eventually to re-calibrate the instruments themselves.

DATA PRESENTATION

In a preliminary step, the intensity data, of the secondary nucleonic component of cosmic rays, detected at SVIRCO Observatory, were corrected for pressure variations at a reference level of 1009.25 hPa with an attenuation coefficient of 0.70% / hPa.

The five-minutes counting rates, of the examined month, are reported in tabular form together with the hourly normalized data, which provide a continuous data set for long-term analysis.

The normalization was evaluated as percentage of the counting rate average of January-February 1997, when the Monitor operated at the previous location of "La Sapienza" University. The reference counting rate level (100%), computed for such period, is equal to 554946 counts/hour.

The atmospheric pressure data (in hectoPascal) are also collected in a monthly table which presents the five-minutes averages and the hourly ones.

The hourly averages of the normalized intensity and pressure, plotted in monthly graphs, are reported too.

CONDITIONS FOR SVIRCO DATA USE

You are welcome to use neutron monitor data of SVIRCO, IAPS/INAF-UNIRomaTre collaboration, under the following conditions:

-You agree to acknowledge our financial supports in any published use of the data.

Example: "SVIRCO NM is supported by the INAF - UNIRomaTre collaboration"

-You are kindly requested to send a copy of any published work derived from our data to:

Dr. Monica Laurenza
Head of SVIRCO Observatory & TPL
Istituto di Astrofisica e Planetologia Spaziali - Area di Ricerca Tor Vergata
Via del Fosso del Cavaliere, 100 00133 Roma - Italy,

monica.laurenza@iaps.inaf.it



S.V.I.R.CO. Observatory

Rome

Italy



INAF/UNIRomaTre		S.V.I.R.CO. Observatory - Pressure Corrected Data – June 2017										20 NM-64		
day	hh	00_05	05_10	10_15	15_20	20_25	25_30	30_35	35_40	40_45	45_50	50_55	55_60	h-norm
1	0	46259	46233	46712	46023	46580	45854	45718	45863	46084	46282	45806	46174	100.318
	1	45986	45909	45864	46216	46109	46979	46719	46978	46485	45839	46647	45990	100.704
	2	46036	46014	45796	45582	46543	46498	46287	46270	46254	46328	46647	46439	100.519
	3	45933	46114	46664	46049	45351	46407	45935	45945	46540	46016	46962	46689	100.502
	4	46668	46319	46967	46379	46486	45833	46200	46945	46460	46214	46530	47155	101.146
	5	45896	46479	46285	46214	45626	45918	46500	47185	46276	46232	46252	46436	100.628
	6	46304	46469	46272	45518	46592	46473	46321	46807	46251	46684	45965	46555	100.794
	7	46125	46302	46047	46320	46552	46472	46348	46210	46984	46681	46885	47141	101.130
	8	46647	46249	46728	45974	45786	46088	46270	46394	46731	46123	46408	46752	100.782
	9	46395	46554	46681	46375	45745	46820	46814	46164	46540	46663	46812	46639	101.154
	10	46548	46719	46077	46515	46785	46967	46255	46303	45784	46529	46420	46397	100.991
	11	46279	46102	46334	46143	46112	46072	46350	46460	46695	46805	46488	45649	100.663
	12	46117	47039	46101	46073	46904	46425	46158	47021	46873	46402	46137	46441	101.061
	13	46357	46636	46608	46618	45505	46706	46199	46121	46159	46086	46975	46578	100.854
	14	46158	46418	46196	45640	46995	46018	46435	46425	46047	46104	46736	45955	100.597
	15	46312	46188	46253	46145	46482	46170	46511	45507	46807	46643	46611	46543	100.786
	16	46599	46554	46268	45945	45904	46231	46553	45881	46223	46510	46748	46205	100.687
	17	46351	46388	46937	46712	46036	45925	46432	46348	46418	45638	46314	46802	100.810
	18	45890	45735	46371	46191	45958	46249	45980	46548	46859	45763	46326	45506	100.279
	19	46148	45791	46624	46452	46085	46397	46277	46325	46356	46229	46021	46526	100.616
	20	46459	45953	46275	46199	46730	46471	46558	46302	46133	45422	45895	46005	100.465
	21	46343	46104	46457	46344	46588	46221	46300	46458	46168	46686	45600	46748	100.758
	22	46149	45962	46517	46448	46701	46064	46185	46284	46449	45481	46748	46251	100.617
	23	46624	46498	46874	45786	46390	47078	46421	46356	46517	46527	46581	46565	101.157
2	0	46894	46011	46432	46014	46484	46184	46139	46395	46656	45962	46414	46588	100.784
	1	46174	46929	46497	46338	46253	46658	46307	46992	46701	46094	46174	45685	100.900
	2	46429	46676	45907	46117	46205	45882	46593	46209	46865	46409	46532	46500	100.814
	3	46263	45803	46010	45904	45807	46374	45843	46714	46422	46395	45814	46502	100.366
	4	46450	46190	45879	46434	46049	46753	45973	45701	46758	47043	45812	46104	100.601
	5	46092	46865	46224	46324	46366	46436	46565	46510	46764	46485	46491	46375	101.026
	6	46334	45524	46116	46743	45661	46151	46196	46876	46300	46689	47100	46449	100.780
	7	46074	46526	46065	46225	46727	46506	46826	46209	46646	46485	46314	46452	100.946
	8	46534	46126	46272	46756	45970	46457	46547	46480	46385	46283	47156	46760	101.068
	9	46830	47252	46480	45934	46640	47106	46490	46533	46826	46401	46395	46562	101.380
	10	47256	46476	46453	46746	46022	46296	47242	46663	46354	46649	46793	46464	101.374
	11	46118	45796	46430	46445	46386	46445	46790	46961	46168	46533	47632	46584	101.170
	12	46742	46516	46667	46238	46557	46115	46427	46879	46584	46506	47586	46409	101.340
	13	46912	46979	46491	47182	47179	46858	46528	46475	45921	46891	46693	46197	101.536
	14	46344	46789	46293	46265	46410	46184	46269	46842	46381	47098	46435	46455	101.075
	15	46588	46243	46392	46245	46739	46085	47629	45817	46510	46270	46622	45866	100.937
	16	46923	46873	46041	46630	46805	46498	46423	46398	46431	46064	45980	45881	100.926
	17	46262	46140	46535	45949	46695	46879	47141	46560	46659	46038	46856	46071	101.078
	18	46168	46041	45925	46530	45877	46259	46811	46530	47126	46446	46488	46458	100.874
	19	46461	46583	46257	46154	45826	45802	46260	46494	46333	46471	46493	46570	100.701
	20	46926	46306	46321	46366	45906	46065	46552	46354	46264	46380	46157	46209	100.720
	21	46776	46017	46537	46401	45614	46135	45905	45676	47174	45914	46136	46495	100.534
	22	45641	46404	46303	46105	45861	45593	46661	45953	46167	46365	46936	46133	100.415
	23	46801	47240	46186	46611	46266	46524	46334	46232	46641	46807	46448	45956	101.126

		S.V.I.R.CO. Observatory - Pressure Corrected Data – June 2017											20 NM-64	
day	hh	00_05	05_10	10_15	15_20	20_25	25_30	30_35	35_40	40_45	45_50	50_55	55_60	h-norm
3	0	45844	46652	46370	47017	46385	46105	47143	46441	45766	46153	46512	46211	100.858
	1	46811	46267	46637	45993	46722	45954	46521	46252	46102	45981	46276	46630	100.781
	2	46549	46307	46178	46295	46609	46263	46617	46030	46482	47167	46051	46846	101.008
	3	46455	46516	46525	46597	46002	46002	47135	46413	46438	46166	45494	46551	100.808
	4	46573	46546	46787	46982	47021	46659	46393	46501	46699	46143	46071	46445	101.266
	5	47001	46245	46920	46459	46403	46457	46498	46505	46701	46706	46426	46491	101.265
	6	46172	46125	46756	47026	46752	46453	47017	45902	46882	46439	46053	46570	101.144
	7	46173	46259	46428	46707	46503	46501	46221	46574	47031	46554	46150	46645	101.072
	8	46667	46355	45646	46666	46747	46904	46212	46365	46418	47393	46491	46803	101.238
	9	47054	46580	46605	46369	46556	46806	46258	46209	46562	46408	46213	46232	101.091
	10	47008	46190	46416	45674	45876	46183	46099	46724	46243	46896	46511	46314	100.779
	11	46020	45838	46601	46231	46608	45429	46890	46692	45806	46251	46477	46002	100.545
	12	46241	46078	46328	46553	46249	46747	45930	46233	46579	46520	46412	46212	100.770
	13	46779	46626	46653	46168	46738	46387	46234	46175	46983	46441	46864	46853	101.281
	14	46762	46467	46985	46726	46379	46722	45878	46322	46993	46224	45723	46824	101.118
	15	46520	47009	46857	46362	46705	46915	46323	46615	47595	46573	46749	47038	101.708
	16	46718	47189	46979	46880	46550	47131	46030	46993	47090	46471	46288	46809	101.685
	17	46282	46092	46075	47066	46276	47235	46588	46416	46257	46551	46215	46531	101.042
	18	46353	46663	46287	46610	46451	46915	46499	46617	46064	46482	46634	46604	101.150
	19	46647	46309	45842	46138	46558	46368	46011	46131	46800	46085	46279	46926	100.772
	20	45962	46509	45800	46469	46327	46014	46058	46305	45688	46315	46641	46189	100.443
	21	46482	46427	46285	46447	46291	45855	46746	46570	46229	45965	46047	46459	100.719
	22	45862	46639	46208	46422	46535	46178	46604	46662	46602	46229	46674	46542	100.965
	23	46236	45928	46810	46435	46558	46865	46380	46520	45887	46163	46544	46290	100.867
4	0	46042	46947	46062	46767	46390	46676	46149	46260	46761	46897	46300	46598	101.092
	1	46483	46375	46378	46308	46667	46687	46128	46008	46972	46676	45907	46145	100.888
	2	46533	47206	46276	46379	46049	46402	46161	46276	46197	46201	45852	46048	100.678
	3	46629	46844	46938	46464	46722	46313	46240	45347	45688	47010	46315	45976	100.843
	4	46338	46132	46834	46056	46667	46028	46743	46592	46828	45970	46094	46406	100.880
	5	46546	46845	46427	46713	46530	46240	46575	46365	46620	47263	46326	47077	101.394
	6	46530	46519	47109	46629	46138	46006	46712	46129	46306	46555	46194	46590	101.012
	7	46932	46185	46181	47122	46059	46901	46331	46434	46246	46676	46116	46540	101.067
	8	46575	46144	46687	46503	46838	47176	46286	46315	46445	46838	46198	46595	101.226
	9	46424	46680	46900	47002	46271	46060	46677	46702	47263	46422	46663	46410	101.384
	10	46537	46239	47026	46726	46665	46409	45935	46396	46977	46700	46614	46741	101.292
	11	46462	46168	46735	46651	46606	46161	46674	46490	47084	46926	46613	47550	101.502
	12	46728	47009	46051	46481	46761	47010	46877	46575	46326	46349	46842	46672	101.422
	13	46465	46668	46424	46551	46598	46430	46460	47137	46655	46056	46517	46951	101.283
	14	46050	45743	46654	46418	46663	46370	46558	46328	46166	46248	46913	46309	100.832
	15	47082	47210	46248	46977	46663	46776	46593	46412	45852	46250	46297	46599	101.291
	16	46334	46311	46809	46699	45999	46725	46947	46155	46720	46741	46284	46056	101.078
	17	47133	46671	46088	46935	46318	45845	46500	47020	46598	46388	46580	46733	101.264
	18	46342	46037	46337	46504	46133	46459	46478	46421	46110	46327	46429	46829	100.828
	19	46902	46253	46488	46465	46572	45822	46626	46353	46271	46685	46972	46798	101.155
	20	46310	46143	45768	47357	46879	47344	46990	45944	46349	46527	46610	47163	101.368
	21	46893	46553	46820	46491	46389	46369	46627	46061	46954	46178	45853	46526	101.066
	22	46451	46630	46602	46798	46714	46428	46739	46621	46697	46783	46975	47205	101.596
	23	46646	46239	46554	46380	46611	46620	46132	46552	45927	46562	46498	46388	100.956

		S.V.I.R.CO. Observatory - Pressure Corrected Data – June 2017											20 NM-64		
		INAF/UNIRomaTre													
day	hh	00_05	05_10	10_15	15_20	20_25	25_30	30_35	35_40	40_45	45_50	50_55	55_60	h-norm	
5	0	47047	47007	46259	46107	46077	46303	46537	46756	46796	45967	46270	46921	101.123	
	1	46100	46675	46169	46938	46673	46440	46356	45985	46931	46608	46852	46186	101.102	
	2	46649	47183	46572	46401	46503	46568	46722	46650	47305	46479	47162	47321	101.755	
	3	46184	47013	46708	47049	46424	46571	47177	47016	46243	46877	46930	47246	101.740	
	4	46363	46382	46800	46954	46303	46838	47638	46602	47229	46913	46718	46287	101.666	
	5	46619	46192	47172	46667	46756	46395	46322	46439	46433	46682	46692	45986	101.182	
	6	46886	46772	46408	46615	46956	46766	45855	46844	46180	46336	46525	47044	101.333	
	7	46117	46950	47025	46891	46108	47205	46111	47196	46308	46551	46347	46916	101.430	
	8	46927	45886	46787	46646	47068	46564	46418	46317	47214	46882	46649	46734	101.497	
	9	47039	46375	46334	46667	46780	46464	46518	46933	46733	47192	46793	46996	101.629	
	10	47058	46671	46733	46782	46934	46823	46807	46919	46230	47357	46541	46639	101.751	
	11	46755	46609	46428	46744	46970	46842	46337	46571	46652	46609	46571	46139	101.340	
	12	46555	46893	46706	46985	47128	46745	46717	46327	46274	46585	46544	45764	101.339	
	13	46800	46741	46903	46235	46251	46558	46880	46784	46063	46825	46141	46617	101.262	
	14	46696	46639	47189	46662	47045	46666	46628	46622	46572	46698	46245	46237	101.462	
	15	46597	46658	46849	46656	46336	46651	46802	46320	46758	46844	46427	46476	101.367	
	16	46709	46231	46999	46343	46397	46296	46119	46520	46421	46992	46730	46766	101.213	
	17	46945	46234	46912	45931	46629	46761	46002	46624	45926	46800	46261	46447	101.022	
	18	46675	46610	47066	46942	47571	46898	46494	46529	46760	46271	46670	46257	101.615	
	19	46937	46743	46730	46284	46646	47187	46689	46948	45513	46597	46734	46359	101.366	
	20	46591	46680	47077	46509	46643	46626	46663	46734	46587	46876	46205	46150	101.360	
	21	46598	46928	46717	46323	46527	46940	46088	46407	46628	46795	46928	46724	101.408	
	22	46930	46200	46286	47135	46515	46250	46706	46850	46704	46677	46799	46896	101.470	
	23	46621	46368	46453	46623	46074	46082	46174	46909	46648	47285	46100	46412	101.072	
6	0	46364	46544	46458	46502	46310	47124	46321	46563	47221	46824	46313	46974	101.390	
	1	46809	46630	46496	46016	46782	47172	46751	46305	46397	46390	46984	47104	101.450	
	2	46212	47011	46269	45401	46966	46316	46258	46563	46846	46133	46271	46483	100.888	
	3	46235	46213	46764	46701	46487	46880	46262	46931	46473	45945	46196	46177	100.985	
	4	46420	46577	46126	46986	46819	46911	46068	46422	46222	46227	46605	46355	101.070	
	5	45990	46531	46116	46442	45864	46543	46423	46525	46419	46508	46437	46589	100.825	
	6	46288	46272	45754	46617	46620	46623	46696	47152	46384	46146	46176	46474	100.973	
	7	46320	46819	47214	46088	46072	46695	46543	45927	46136	46587	46170	46699	100.985	
	8	45895	46733	46415	46871	46606	45831	46332	46749	46100	46889	46384	46312	100.957	
	9	46750	46768	46609	46456	47039	46758	46817	46636	46556	46345	47014	46668	101.555	
	10	45974	46552	46803	47522	46059	46361	46653	46289	46333	46238	46724	46657	101.147	
	11	47037	46732	46859	46985	46357	46453	47097	45680	46447	46620	46305	46783	101.363	
	12	46918	46090	46362	46758	46195	46746	46306	45724	46586	46158	46216	46960	100.940	
	13	46821	46346	46299	46641	46260	46022	46687	46244	46639	46184	46286	46378	100.901	
	14	46404	46165	46231	46365	46162	46515	46448	46665	46730	46437	46273	46262	100.874	
	15	46577	46018	46624	46428	46542	46554	46926	46777	46781	46387	46499	46355	101.202	
	16	46806	46260	46142	46334	46293	46313	46570	46577	45758	46663	46876	46400	100.935	
	17	46131	46124	46356	46774	46412	46824	46386	46292	46837	46894	46443	46476	101.108	
	18	45937	46566	46836	46571	45786	46543	46189	46052	45986	47061	46718	46338	100.861	
	19	46373	46590	46743	46038	46529	46574	45904	46340	46632	46462	46358	46982	101.032	
	20	46626	45742	46151	46359	46347	46446	46367	45810	46375	46782	46255	45971	100.616	
	21	45840	46556	46230	46650	46364	46902	45994	46168	46000	46080	46257	46527	100.677	
	22	45995	46481	46909	46629	46481	46275	46699	46094	46400	46978	46829	46141	101.101	
	23	46364	47004	46228	46082	46609	46713	46676	46986	46519	46222	46142	46451	101.117	

		S.V.I.R.CO. Observatory - Pressure Corrected Data – June 2017											20 NM-64	
		INAF/UNIRomaTre												
day	hh	00_05	05_10	10_15	15_20	20_25	25_30	30_35	35_40	40_45	45_50	50_55	55_60	h-norm
7	0	46682	46258	46756	46737	46204	46534	45995	46986	46280	46448	46079	46679	101.055
	1	47209	46541	46244	46346	46288	46382	46192	46099	46908	46426	45849	46591	100.950
	2	46218	46379	46578	46761	46729	46220	46482	46699	46817	46013	46273	46549	101.066
	3	46914	46631	46336	46062	46789	46178	46398	46131	46469	46185	46509	46821	101.013
	4	46647	46443	45934	46840	46601	46670	46860	46693	46346	46593	46715	46025	101.184
	5	46352	46234	46046	46443	46618	46697	46619	46211	46456	45930	46662	46802	100.949
	6	46034	46498	46722	46522	45944	46340	46878	46513	46245	47039	46468	46964	101.148
	7	46690	46974	46166	46804	46682	46467	46463	46748	46215	46287	46900	46344	101.251
	8	46895	47712	46172	46971	46940	46410	46757	46213	46172	46668	45811	46866	101.405
	9	46018	46401	46848	46197	47058	46172	46568	46886	46649	46848	46468	46568	101.241
	10	46747	46170	46534	46624	46424	47005	47340	46021	46442	46727	46494	46459	101.297
	11	47143	46852	46645	46368	47106	46519	46631	46405	46016	46319	46851	47104	101.472
	12	46859	46475	46832	47172	47375	46454	46910	46594	46328	46509	46845	46985	101.722
	13	46397	47128	47037	46930	46643	47306	46319	46333	45948	46904	47238	46948	101.685
	14	45877	46902	46572	46424	46609	46563	45531	46412	46258	46587	47173	46812	101.067
	15	46697	46518	46480	47092	46645	46792	46573	46709	46331	46635	46572	46204	101.344
	16	46463	46073	46877	46402	45871	47373	45990	46542	46435	47085	46497	46092	101.063
	17	46279	46533	46571	46695	46690	46156	46587	46317	46692	46900	46413	46276	101.137
	18	46754	46720	46499	46763	46463	46364	46638	46408	46242	46638	46816	46784	101.315
	19	46474	46681	46390	45622	46712	46140	46546	46615	46570	46323	45884	46454	100.830
	20	46987	46462	46689	45668	45920	46525	46839	46693	46294	46106	46292	45880	100.820
	21	46741	46460	45867	46891	46004	46630	46621	46296	46426	46464	46996	46504	101.099
	22	46476	46535	47272	46332	46388	45949	46751	47116	45895	46306	46493	46861	101.185
	23	46700	47070	46657	47234	46685	46746	46976	47240	46925	46505	47218	46478	101.921
8	0	46594	46322	46766	46790	46631	46432	47032	46371	46636	47431	46678	47013	101.604
	1	46189	46531	46055	46257	46819	47082	47058	46788	46608	46342	46855	46508	101.315
	2	46841	46129	46895	47196	47131	46510	46766	46753	46887	46621	46738	47006	101.747
	3	46479	46787	46678	47476	46876	47154	46528	46765	46487	46831	47011	45798	101.638
	4	46164	46128	46815	47471	47028	46476	46947	46940	46397	46916	46572	46749	101.589
	5	46763	46703	46298	46540	46793	46729	47904	46595	46788	47280	46614	46566	101.765
	6	47337	46358	47063	46514	46299	46706	47024	46985	46929	46933	47327	46771	101.887
	7	46840	46829	46726	46985	46833	46516	47179	46306	46350	46012	46675	46146	101.371
	8	47100	46495	46853	46702	46574	46669	46811	46584	46537	46755	46564	46671	101.537
	9	46376	46620	46700	46658	47476	47235	46718	47146	47078	46526	46842	47177	101.942
	10	46419	46952	45939	47039	46971	46732	45967	46520	47496	46099	47086	47275	101.570
	11	46693	46541	46603	47226	46346	47233	46943	46162	46422	47070	46625	46801	101.600
	12	47153	46875	47011	46899	46932	46505	46724	46637	46408	46731	46186	47183	101.706
	13	46395	46810	46675	46242	46465	46383	47022	46313	46670	46692	46573	45970	101.156
	14	46239	46772	47009	46150	46629	46525	46470	46299	46079	45946	46055	46213	100.824
	15	46144	47118	46092	46995	46766	46906	46454	46611	46143	46380	46837	46807	101.345
	16	46705	46379	46701	47275	46239	46705	46636	46150	46202	46747	46554	46239	101.214
	17	46529	46494	45576	46366	46545	46885	46241	46465	46895	46860	46105	46002	100.930
	18	46757	46711	46719	46392	46668	46704	46119	45784	46355	46445	46460	46402	101.030
	19	46664	46254	46243	46245	46481	47324	47124	46475	46238	46797	46405	46764	101.301
	20	46086	46363	46382	46428	46327	46379	47087	46861	46399	46750	46722	46809	101.225
	21	46747	46394	46941	46689	46475	46976	46516	46888	45693	46397	46538	46648	101.281
	22	46678	46480	46808	46255	46713	45895	46503	46607	46007	46828	46586	46631	101.116
	23	46692	46483	47042	46924	46687	47059	46616	46878	46443	46364	46199	46734	101.502

		S.V.I.R.CO. Observatory - Pressure Corrected Data – June 2017											20 NM-64		
		INAF/UNIRomaTre													
day	hh	00_05	05_10	10_15	15_20	20_25	25_30	30_35	35_40	40_45	45_50	50_55	55_60	h-norm	
9	0	46010	46550	46293	46376	46224	46527	46783	46494	46562	47042	46332	46781	101.110	
	1	46225	45837	47080	46387	46973	46272	46679	46447	46509	46764	46475	46580	101.159	
	2	46032	46385	46592	46451	46396	45731	46039	46603	46140	46169	46467	46814	100.722	
	3	46698	46637	47337	46618	46106	46415	46913	46607	46642	46587	47213	46139	101.464	
	4	46929	46643	46454	46510	47007	46765	46431	46561	46728	46490	47001	46980	101.570	
	5	46898	46477	46052	46515	47037	47013	46991	46999	46444	46469	46742	46550	101.514	
	6	46431	46282	46950	46821	46595	46302	46783	46399	47184	47088	46672	46898	101.553	
	7	45921	46782	46677	46268	46550	46280	46852	46736	46782	46335	45973	46275	101.015	
	8	46886	46904	46734	46418	46627	46334	46712	46074	45974	46098	46020	46547	100.996	
	9	46607	46200	46862	47179	46490	47487	46893	47391	46222	46547	47007	47007	101.822	
	10	46810	46899	46966	46393	46834	46934	46003	47154	46926	46337	46999	47141	101.733	
	11	46274	46526	46643	45972	46180	46747	47036	46172	46740	46840	46520	46928	101.222	
	12	47198	47314	46786	47114	46496	46573	46256	46962	47303	46408	46577	46833	101.810	
	13	46472	47119	46265	46839	46688	46582	46481	46633	46913	46628	46384	46978	101.477	
	14	46353	46348	46986	46344	46836	47434	46421	46514	47151	46802	46633	46911	101.613	
	15	46199	46532	46247	47107	46900	46317	46645	46814	46591	46963	46561	45961	101.269	
	16	46974	47543	46236	46875	46553	46026	46798	46393	46539	46532	46567	46508	101.397	
	17	46557	46617	46559	46550	46983	46703	46791	46470	45975	47045	46154	46675	101.313	
	18	46473	47122	46284	46681	46788	46941	46867	46415	46297	46323	46180	46072	101.198	
	19	47087	46952	46487	46408	46356	46783	46636	46137	46316	46577	46714	47008	101.383	
	20	46359	47091	47161	46202	46569	46067	46905	46420	46116	46058	46645	46313	101.101	
	21	46399	46317	46544	46575	47092	46725	47063	46574	46749	47170	46516	46971	101.606	
	22	46879	46563	45837	46379	46616	46214	46810	46109	47032	47128	47357	46316	101.342	
	23	46259	47141	46566	46495	46274	46595	46786	46322	46365	46870	46433	46662	101.257	
10	0	46864	46746	46870	46529	46651	46998	46542	46289	46424	46517	46435	45762	101.233	
	1	46540	46405	46840	46502	46355	46477	46197	46628	46475	47053	46329	46447	101.162	
	2	46629	47130	46885	47228	46202	46934	46445	47015	46224	46530	46539	46705	101.564	
	3	46205	47178	46865	46734	46919	46605	46472	46978	46444	46851	46468	46956	101.602	
	4	47031	47085	46625	46440	46395	46685	46751	46805	47081	46928	47037	47059	101.828	
	5	46315	46763	46625	46542	46934	46677	46974	47011	47072	46460	47091	46558	101.665	
	6	46316	46686	46476	46764	46515	46778	46271	46867	46764	47288	46386	46545	101.417	
	7	45996	47407	46370	46925	47031	46333	46375	46660	46840	46571	46914	46581	101.480	
	8	46433	47248	47613	46279	46770	46739	46834	46331	46973	46351	46575	47109	101.707	
	9	47115	46371	45964	46363	46422	46417	46862	46224	46499	46570	46620	47042	101.203	
	10	46819	46297	46910	46369	47541	46638	46738	46750	46774	47351	47117	46672	101.838	
	11	46717	46092	46319	46700	46919	46183	45819	46671	46706	46689	47168	46631	101.229	
	12	46788	46775	46885	47070	46770	47361	46723	46290	46140	46234	47025	47085	101.687	
	13	47175	46837	46930	46901	46924	46704	46040	47006	45830	46617	47194	46588	101.615	
	14	46494	47061	46585	47336	46234	47376	46753	46338	46509	46395	46893	46373	101.543	
	15	46710	46816	46845	47074	47105	47518	46481	46535	47206	46456	46842	46770	101.907	
	16	46908	46342	46291	47169	46211	46765	46559	46475	47515	47199	47055	45841	101.540	
	17	47135	46660	46784	46261	46851	46591	46317	46887	47156	47123	46560	46939	101.709	
	18	46377	46891	46513	46590	46779	47241	46942	46538	46818	47080	46288	46453	101.573	
	19	47310	46760	46657	46950	46347	46954	46679	46531	46668	45956	46945	46711	101.565	
	20	46198	46391	46755	47266	46989	46625	47042	46171	46747	46307	46840	46391	101.430	
	21	46802	46761	46834	46184	47301	46808	46389	46003	46300	47045	47231	46361	101.483	
	22	46507	46030	46748	46705	46343	46305	47041	46776	46960	46352	46283	47079	101.322	
	23	46220	46719	46458	46513	46653	46835	47452	46820	46305	46508	46492	46610	101.405	

		S.V.I.R.CO. Observatory - Pressure Corrected Data – June 2017											20 NM-64	
day	hh	00_05	05_10	10_15	15_20	20_25	25_30	30_35	35_40	40_45	45_50	50_55	55_60	h-norm
11	0	47132	46282	47198	46450	46746	47173	46886	47049	46345	46897	47109	46774	101.849
	1	46307	45972	47138	46827	46290	46343	47030	46628	46695	46097	46801	46616	101.253
	2	46556	46445	46444	46826	46878	46634	46324	46726	47490	46646	47240	46330	101.578
	3	46738	47129	46490	47398	46035	46804	46346	47097	46886	47159	47457	46810	101.905
	4	46780	46601	46026	47118	46809	47433	47141	46938	47332	46848	46805	46850	101.966
	5	46864	46619	46324	47221	46548	47271	46666	46567	46464	46983	46928	46660	101.682
	6	46226	46629	46596	46708	47164	46716	46691	46286	47123	46614	47059	46971	101.622
	7	46948	46451	46866	46813	46270	46759	46972	46679	46768	46762	47063	46906	101.708
	8	46840	46660	46790	46787	46380	47140	47398	46950	46752	47194	47166	46239	101.896
	9	46590	46365	47288	46603	46701	46667	47018	46654	46764	47077	46519	47146	101.732
	10	46924	46449	46892	47000	46846	46707	47021	46832	46589	46782	46637	46058	101.613
	11	46684	47401	46829	46774	46585	46853	46745	46177	47010	47146	47025	46433	101.781
	12	46720	46746	47143	46468	46776	47054	46884	46729	46024	46852	46599	46663	101.599
	13	46572	46695	46184	47092	46298	46598	46904	46662	46283	46244	47118	46464	101.320
	14	46791	45794	46552	46370	46790	46892	46873	46602	47459	46605	46673	46758	101.509
	15	47253	46520	47550	46945	46574	46926	46811	46834	46635	46396	46092	47177	101.791
	16	46904	46952	46330	46856	46214	46827	46858	47265	47072	47043	47265	46658	101.886
	17	46908	47251	46858	47801	46401	46850	46553	46763	46723	47586	46421	46812	102.010
	18	47396	46808	47776	47309	47030	47256	47078	46551	46839	47132	47290	47273	102.520
	19	47012	46769	46940	46823	47180	46533	46715	46690	46747	46331	46911	47777	101.920
	20	46985	46591	46638	47029	47446	46412	46324	46833	46510	47033	47032	46430	101.709
	21	46826	46767	47254	46866	47006	47587	46737	46669	46942	46978	47238	46923	102.167
	22	46693	46874	46329	47163	46627	46787	46170	46767	46292	47042	46469	47265	101.567
	23	46523	46611	47297	46494	47212	46754	46806	46281	47221	46694	46486	46948	101.720
12	0	46895	46948	46302	46612	46758	46965	47295	47052	46380	47301	46315	46835	101.782
	1	46726	47469	46932	47036	47178	46393	47081	47530	46190	47395	46235	46673	101.994
	2	46489	46315	46664	47142	46630	47097	46558	47331	46512	46692	46945	47681	101.852
	3	47087	47247	47166	46700	46713	46736	47009	46455	47522	46468	46849	47033	102.021
	4	46522	47316	47257	46498	46323	47137	46650	46924	47112	46793	47282	46517	101.902
	5	46619	46554	46983	46576	46794	46999	47375	46656	47222	47010	46896	47248	102.011
	6	46594	46624	47040	47765	47052	47018	46823	47219	46383	46965	47349	46785	102.136
	7	46659	47307	46208	47059	47243	46616	46920	46546	47307	46743	46933	46625	101.872
	8	46971	46779	47186	47107	47953	47242	46885	47205	46758	46906	46936	46741	102.326
	9	46955	47229	47086	47703	47279	46822	47594	46506	47168	46947	47179	46477	102.376
	10	47206	46939	47557	47503	47116	47658	46956	47075	46576	47275	47161	47541	102.669
	11	47669	47198	47349	47604	46933	46474	47067	46833	47495	47047	47053	46827	102.485
	12	47370	46459	46064	46807	47115	46924	46487	47298	46392	46957	46974	47210	101.853
	13	47169	46596	47109	46956	47458	46638	46501	46592	47190	46672	47822	47313	102.208
	14	46940	46880	46984	46319	47100	47615	46285	47187	47418	47076	47347	46628	102.165
	15	46419	46409	47283	46976	46554	46896	46317	47000	46482	46857	46057	46552	101.444
	16	46155	46195	46548	46498	46272	46511	46139	46567	46519	46288	46955	46508	100.965
	17	46042	46780	47216	46758	46021	46564	46900	46731	46713	46623	46351	46359	101.309
	18	47077	46939	46494	47163	47094	46512	46315	47089	46767	46581	46556	46623	101.700
	19	46888	46320	47305	45988	46879	46737	47176	46781	46643	46809	46603	46765	101.642
	20	46597	46763	46156	46165	46911	46292	46580	46490	46606	46580	46367	46092	101.045
	21	47042	46513	45824	46381	46938	46660	46968	46045	46949	46722	46771	46814	101.412
	22	46708	46684	46517	46942	47114	46137	46290	46682	46405	46148	46928	46760	101.356
	23	46189	46314	46545	47221	46726	46471	46527	46217	46801	46503	46893	46595	101.299

		S.V.I.R.CO. Observatory - Pressure Corrected Data – June 2017											20 NM-64		
		INAF/UNIRomaTre													
day	hh	00_05	05_10	10_15	15_20	20_25	25_30	30_35	35_40	40_45	45_50	50_55	55_60	h-norm	
13	0	47004	47027	46640	46904	46560	46781	46161	46975	46251	46744	47185	46541	101.614	
	1	47035	46626	46747	46564	47051	46658	46897	46556	46415	46610	46373	46667	101.516	
	2	46526	46689	46708	46801	46895	46676	47188	46642	46416	46501	46930	47044	101.664	
	3	47081	47109	46726	46785	46668	46846	46174	47006	46394	46634	46133	46745	101.535	
	4	46938	46467	47061	47121	47046	46347	46455	46779	46722	47178	46852	46755	101.792	
	5	46846	46793	47012	47088	47020	46028	47258	46709	46807	47043	46623	46817	101.850	
	6	46742	46604	46311	46905	46540	45896	46545	47424	46634	46857	46895	46886	101.523	
	7	46033	46549	46554	46733	46817	46251	47084	47071	47262	47101	46887	47239	101.766	
	8	47667	46569	46685	47221	46629	46488	46368	46661	46180	46726	47043	46716	101.653	
	9	46633	46529	46844	46910	46526	47317	46804	46802	46508	46879	47256	46438	101.742	
	10	46387	47074	46900	46270	46857	46881	47428	46857	46554	47013	46997	46879	101.860	
	11	46585	46262	46847	46406	46682	46774	46185	46335	46405	46549	46562	46908	101.208	
	12	47070	46785	46369	46387	46652	47224	47143	46808	46801	47057	46700	46884	101.820	
	13	46762	47126	46402	46793	46291	46465	46806	46444	46984	46288	47101	47102	101.582	
	14	46733	46799	46636	46615	46436	46100	46736	46725	46652	46624	46751	46679	101.387	
	15	46720	46486	46000	46525	47308	47248	47002	46555	46323	46744	46260	47115	101.532	
	16	46655	46465	47280	46870	45921	46605	46229	46619	46226	46183	46649	46379	101.132	
	17	45987	46415	46542	46666	46902	46678	46864	46222	46759	47041	46215	46563	101.272	
	18	46427	46448	46176	46789	47212	46140	46700	46183	46947	47028	46824	46825	101.425	
	19	46255	46564	47082	46488	46242	46494	46593	46429	46248	46996	46801	47403	101.406	
	20	47326	46163	46617	46823	46076	46301	46488	46412	46507	47100	46382	46717	101.283	
	21	46656	46112	46655	46691	46418	47130	46857	47309	46717	46688	45254	46517	101.300	
	22	47018	46586	46734	46546	46913	46365	46920	47759	46356	46751	46023	46489	101.563	
	23	46558	46892	45724	46657	46019	46628	45913	45923	46916	46304	47297	46307	100.961	
14	0	46676	46437	45671	46759	46305	46031	46592	46290	46031	46644	46895	46048	100.820	
	1	46155	46559	46778	46661	46716	46230	46455	46962	46087	46592	46925	46075	101.153	
	2	47264	46425	47026	46914	46761	46453	46949	46497	46407	46093	46742	46359	101.460	
	3	47497	46194	46521	46660	46471	47162	46438	46729	46937	46068	46255	46604	101.396	
	4	46841	46642	46364	47989	46502	46409	47532	46536	46829	47103	46228	46815	101.804	
	5	47273	47372	46523	46777	46460	46807	46612	47159	46719	46728	46849	46630	101.826	
	6	46757	46701	46726	47111	46746	46288	46859	46962	46661	46645	46927	47169	101.761	
	7	46817	46804	46944	47298	47149	46861	46996	46445	46978	46727	47020	46657	101.969	
	8	46413	47065	47169	47176	46599	46883	46756	46197	47037	47153	46610	46814	101.819	
	9	47219	46296	47202	46414	46817	46639	46763	47369	46849	46939	47048	46944	101.933	
	10	46874	46976	47094	46578	46280	47531	46259	47162	47194	47128	47067	46884	102.028	
	11	45928	47520	46690	47205	47204	46836	47192	47082	47203	47140	47289	46801	102.221	
	12	46681	46808	46453	46961	46833	46759	47006	46933	46565	46912	46681	47151	101.796	
	13	46308	47395	46877	46654	46622	47154	46271	46798	46720	46860	46382	46611	101.598	
	14	46782	46816	47310	47020	46992	47095	46852	46501	47117	47041	46865	46597	102.021	
	15	47317	46776	46402	46879	47170	46694	46848	46967	46557	46715	47164	47101	101.949	
	16	46410	47220	46741	46010	47116	47128	46840	46465	46105	45806	46375	46580	101.262	
	17	47028	45985	46722	46494	46497	46559	46648	46800	46740	46865	46340	46834	101.392	
	18	46173	46841	46583	46430	46700	46593	46534	45735	46577	47177	46378	46005	101.068	
	19	46721	46387	46873	46987	46761	46287	46671	46533	46150	47202	46653	47391	101.591	
	20	46640	46454	46771	46741	46310	46498	46777	46635	47055	46841	47385	47352	101.744	
	21	46801	47055	46885	46585	46408	47007	46835	46796	46824	46618	46654	46151	101.592	
	22	46645	47061	46608	46794	46743	46944	46852	46774	46917	46606	46766	46475	101.694	
	23	46905	46761	46617	46705	47396	46096	46448	46299	45536	46374	47584	46623	101.361	

		S.V.I.R.CO. Observatory - Pressure Corrected Data – June 2017											20 NM-64	
day	hh	00_05	05_10	10_15	15_20	20_25	25_30	30_35	35_40	40_45	45_50	50_55	55_60	h-norm
15	0	47061	46839	47386	46821	46648	46891	46460	46658	47170	46668	46372	46541	101.751
	1	46716	46805	46537	46325	46749	46621	46802	46272	46825	46118	46547	46282	101.226
	2	46678	46717	46229	46010	46969	47101	46988	46165	47104	46606	46833	46559	101.472
	3	46498	46399	47223	46737	46808	45734	46497	47027	47380	47255	46642	46612	101.627
	4	46732	46484	46968	46260	46478	46384	46801	46488	47411	46978	46740	46733	101.563
	5	46646	47026	46424	46635	46861	46783	46806	46783	46781	46597	47390	47179	101.826
	6	46720	46951	46736	47017	46924	46489	46867	47426	47102	46909	46703	47370	102.062
	7	46824	47110	46630	45954	46987	46982	47241	46622	46809	47023	46821	46822	101.811
	8	47577	47204	46518	47140	47155	46443	47323	46853	47021	47449	46624	46430	102.157
	9	46735	47474	46302	46529	46723	47233	47202	46573	47424	47406	47399	46778	102.165
	10	47082	47204	46918	47129	47293	46366	46909	47120	46936	46853	46601	46692	102.042
	11	47051	46752	46997	46937	46927	46894	47298	47510	46808	47526	47182	47026	102.370
	12	47506	46403	46731	46895	47125	46664	47335	47163	47150	47085	46359	47321	102.157
	13	47275	47039	46852	46784	46649	47101	45993	46640	47667	46511	46960	46683	101.870
	14	47269	46377	46972	46840	47185	47229	46465	46711	46656	47139	46792	46462	101.860
	15	46860	47185	47151	46743	46458	46746	46851	46681	47166	46301	46994	46849	101.839
	16	46569	46845	46840	46523	46561	46587	46881	46624	46965	46954	46927	46220	101.570
	17	46659	47169	46728	46664	47068	46935	46609	46659	46744	47134	47025	46389	101.803
	18	46468	47166	47001	46515	46766	46658	46528	46918	46093	46506	46511	46939	101.493
	19	46688	46146	46229	46553	47038	47415	46438	47224	46411	46817	46421	46655	101.487
	20	46323	46508	46368	46002	46295	46241	46468	46645	46722	46993	46947	46905	101.193
	21	46003	46492	46898	46804	46772	47275	46708	46380	46640	46297	46459	47267	101.479
	22	46469	46742	46727	46617	46808	47196	46451	47167	46715	46075	46518	46550	101.486
	23	46780	46561	47053	47145	46447	46366	46515	46954	46882	46687	47083	46993	101.746
16	0	46538	46753	46367	46919	46574	46669	47098	46848	46786	46868	46849	47007	101.711
	1	46230	46525	47139	46801	47138	47107	46703	46907	46881	46620	47485	46026	101.763
	2	46838	46790	46128	46577	46989	47346	46849	46034	47126	46507	46893	47186	101.709
	3	47270	46651	47031	46812	46866	46097	46582	46845	46457	46754	46432	46859	101.599
	4	46673	46748	46778	47051	46527	46775	47464	46629	46083	46709	47093	46590	101.683
	5	46811	46215	46696	46911	46841	45788	46374	46811	46817	47172	47163	46672	101.529
	6	46930	46812	46954	46319	46842	46412	46937	47527	45984	46413	46779	46557	101.564
	7	46864	47421	46970	46527	46624	46491	46970	46680	46745	47074	46328	47489	101.876
	8	47370	46092	46182	46906	46488	47025	46777	47052	47107	47383	47612	46849	101.995
	9	47288	47179	47064	47161	47339	47165	47181	46673	46980	46570	47180	46922	102.332
	10	47579	46910	47181	46805	46854	46657	47779	47040	47210	46548	47419	47599	102.492
	11	47112	47031	47770	46876	47163	47189	46706	47295	46542	47308	46464	46893	102.268
	12	46631	46948	46464	47111	47455	46642	47152	46717	47197	47402	47547	46879	102.231
	13	47046	47089	46836	47209	47197	46766	47166	47047	46932	47018	46864	47409	102.309
	14	46315	46646	47242	47058	47471	47348	47226	46785	47467	46785	47198	47152	102.330
	15	47038	47264	47063	47329	47216	46989	47893	46744	47054	47647	47737	47188	102.778
	16	46853	47929	46827	47391	47388	46548	47295	47346	46575	47211	46811	46713	102.366
	17	47226	47124	47494	46727	47145	46947	46957	47026	47020	46370	46231	47092	102.089
	18	46818	47267	47381	46731	47267	46705	47261	46648	46626	46335	46879	47324	102.068
	19	47620	46816	46145	47148	46765	47030	46853	46556	47759	46919	46623	46820	102.033
	20	47506	47333	46455	46676	47110	46891	47428	46277	47502	47047	46492	46758	102.110
	21	46590	46607	46743	47232	46463	46864	46635	47339	46476	46967	46793	46621	101.721
	22	46398	46522	46665	46878	46839	46764	46556	46331	46432	46645	46919	47257	101.517
	23	46973	46507	47006	46685	46700	46400	46660	46970	47136	47077	46777	46891	101.803

INAF/UNIRomaTre		S.V.I.R.CO. Observatory - Pressure Corrected Data – June 2017										20 NM-64		
day	hh	00_05	05_10	10_15	15_20	20_25	25_30	30_35	35_40	40_45	45_50	50_55	55_60	h-norm
17	0	47093	46550	46397	46611	46751	47023	46886	46633	46597	47000	47169	46314	101.666
	1	46506	46552	46739	46638	47351	47094	47129	46386	46613	46950	46986	47128	101.856
	2	46904	46509	46734	46087	46762	47111	45954	46334	46631	46731	46150	46821	101.250
	3	46979	47344	46933	46733	46517	46560	46508	46537	46593	46400	46692	46752	101.579
	4	46512	46634	46851	46601	47110	46187	46369	46343	46838	46970	46480	46453	101.362
	5	46290	46320	46222	46651	46485	46563	46981	46459	45659	46435	47085	46920	101.130
	6	46264	46534	46669	46234	47005	47284	46686	46477	46298	46506	46345	46659	101.291
	7	46587	46679	46442	46922	47243	46202	45971	46793	46205	46731	46596	46307	101.240
	8	46101	46476	47019	46297	46338	47159	46255	45873	46682	46829	46480	46908	101.193
	9	47013	46755	46996	47228	47051	47203	47107	46841	46554	46930	46366	46758	101.987
	10	47143	46742	46912	47598	46551	46973	46540	46632	46784	46911	46679	47191	101.961
	11	46999	47020	46806	46398	47362	46926	46820	46479	46994	46647	46923	46943	101.900
	12	47087	46888	46948	47062	47125	46658	46371	46654	46504	47148	46871	46874	101.877
	13	46703	47137	46711	46644	46769	46172	46799	47041	46579	47278	46898	46800	101.758
	14	46674	46922	47073	47155	47016	46873	47267	46886	46876	47234	46845	46976	102.168
	15	46981	47195	47203	46359	46522	47147	46960	47305	47294	47087	46799	46549	102.096
	16	46635	47006	46884	46770	46460	46392	46733	46478	46954	46241	46654	46569	101.440
	17	46845	46349	46844	46802	46839	46960	46158	46259	46757	46814	47057	46694	101.549
	18	46526	46490	46787	46516	46600	47016	46899	46412	46794	46809	46653	46753	101.526
	19	46182	46639	45796	47054	46226	46571	46635	46212	47084	46285	47504	46311	101.207
	20	46870	46690	47120	46884	46946	46936	46292	46464	46669	46631	46778	46893	101.693
	21	46536	46299	46437	46640	46748	46398	46223	46339	46719	46652	46957	46444	101.189
	22	46861	46267	46574	46414	46348	46315	47602	46473	46963	46729	46813	47047	101.553
	23	46669	46437	46573	46920	46518	46084	46180	46390	46700	46744	46830	46845	101.279
18	0	46455	46002	46456	46353	47093	46653	46520	46818	46567	46178	47192	46847	101.321
	1	46293	46465	46858	46421	46104	46809	47263	46895	47016	47215	46692	46463	101.570
	2	46457	46291	47586	47100	46272	46941	46837	46737	47200	46401	46731	46678	101.703
	3	46736	46507	46651	46351	46955	46996	46749	46104	46869	47321	46618	46868	101.611
	4	47107	46965	46710	46483	46898	46955	46315	46909	46736	47217	46474	46634	101.734
	5	46320	46572	46712	47062	46512	46367	46214	46976	47191	46804	46826	46266	101.447
	6	46698	46975	46466	46147	46805	47081	46716	47015	47169	47346	46881	46512	101.808
	7	46720	46463	47342	46436	46389	46661	46438	46738	46201	46940	46698	46962	101.477
	8	47123	47315	46975	47220	46470	46512	47404	46939	46268	46651	46985	47319	102.056
	9	46792	46926	46987	47130	46802	47575	47303	47469	46962	46199	47055	46705	102.187
	10	46974	46960	47216	46930	46556	47098	47096	46909	47019	47201	46521	47173	102.142
	11	46782	47130	47203	47134	47153	47894	47324	46778	47261	47281	47230	47026	102.603
	12	46666	47119	46666	46629	47890	47302	47268	47630	46922	47067	47431	47541	102.591
	13	47432	46784	47494	46994	47586	46640	46830	47355	47109	47167	46875	46682	102.377
	14	47141	47314	47378	47010	47102	46791	47152	46998	47748	46501	47285	46978	102.458
	15	47202	46606	46880	46671	46834	46223	46886	46366	46806	47407	46543	46910	101.722
	16	46456	47403	46668	47254	47463	47106	46624	46280	46981	46422	47451	46021	101.866
	17	46966	46796	47101	46998	46863	47129	46808	47416	46849	47095	46935	46401	102.088
	18	46670	47381	46985	46311	46093	46920	46878	46781	47040	47314	46509	46882	101.799
	19	46587	46475	46733	46639	47404	47041	46821	46666	46882	46313	46849	46322	101.613
	20	46728	46722	46507	46286	47270	46783	47078	46581	46825	46174	46942	46735	101.594
	21	46775	46413	46974	46911	47061	47075	46507	46720	46639	46974	47179	47245	101.928
	22	47326	47237	46234	46656	46885	47020	46714	46791	46986	46030	47090	46865	101.812
	23	46870	46811	47454	45991	47241	46975	47499	46579	47420	46786	46725	46626	102.019

		S.V.I.R.CO. Observatory - Pressure Corrected Data – June 2017											20 NM-64	
		INAF/UNIRomaTre												
day	hh	00_05	05_10	10_15	15_20	20_25	25_30	30_35	35_40	40_45	45_50	50_55	55_60	h-norm
19	0	46442	47220	46938	46696	46286	46839	46796	46596	46633	46951	46993	46723	101.678
	1	46400	46941	47515	47193	46216	46432	47296	46911	46480	46428	46803	46523	101.686
	2	46704	46848	46679	46354	47211	47038	46658	46772	46951	46548	46969	46831	101.763
	3	46734	46557	46516	46398	47208	46570	46381	46880	47027	45685	46680	46767	101.372
	4	45815	46539	46212	46829	47153	47070	45786	46990	46657	46548	47235	46965	101.443
	5	46818	46869	46161	46844	46418	46602	46906	46248	47244	46645	46873	46689	101.537
	6	46424	47423	47044	46152	46128	46581	46630	46969	46384	46044	46967	46909	101.418
	7	46768	47156	46957	46445	45953	47251	47028	46682	46729	46420	46465	47278	101.685
	8	46689	46991	46273	47329	46886	46839	47005	46710	46897	46798	46387	46699	101.752
	9	47150	47134	47167	46923	46928	46864	46350	47186	47153	46977	46956	46595	102.093
	10	47179	47622	46914	46870	46139	47349	47291	47114	46559	46557	46930	47121	102.140
	11	47505	47279	47433	47087	46800	47046	46853	47157	46951	46729	47132	47447	102.462
	12	47457	47342	47371	46927	46911	47870	46886	46436	47039	46424	47856	46693	102.424
	13	46406	47072	46573	47339	47107	47263	47169	46394	46487	47018	46905	46763	101.932
	14	47571	46989	47445	47041	47211	46807	47264	46633	46930	47195	46245	46983	102.262
	15	47242	46792	46927	46532	46693	46829	46620	47356	47365	47352	46537	46862	102.043
	16	46661	47095	46880	46545	47294	46990	46967	46948	46959	46523	46835	46777	101.928
	17	47079	47309	46557	46648	47573	47079	46889	46970	46291	47010	46826	46647	102.002
	18	46720	46603	46538	46588	46516	46332	46738	46791	45968	46375	47720	46432	101.357
	19	47317	46430	46790	46859	46980	47474	47100	47654	46882	46744	46175	46693	102.042
	20	46528	46869	46483	46338	46845	46794	46714	47013	46304	47004	46710	46732	101.540
	21	46717	47117	46305	46665	46723	46764	46810	46901	46568	47032	46730	46980	101.718
	22	46768	46719	46320	46535	46810	46370	46362	46502	46761	46681	46855	46742	101.376
	23	46806	47123	46624	47129	46636	46902	46835	46700	47397	46654	46498	46337	101.777
20	0	46871	47085	46860	46545	46358	46460	46930	46766	47437	46293	47330	47526	101.925
	1	46819	46919	47200	46516	46796	46376	46910	46385	46567	46204	46496	46908	101.497
	2	46942	46827	47094	46884	46713	46594	47130	46496	46849	46983	46257	46934	101.789
	3	47347	46637	46627	46708	46604	46932	46382	47223	46505	46569	46983	46676	101.696
	4	46527	46551	46603	47336	46586	46523	46970	46384	46502	46641	47267	47230	101.683
	5	46697	46972	46299	46905	46421	46517	46482	47845	47343	47020	47072	46140	101.790
	6	47064	46592	47000	46934	47118	47038	46427	46737	46939	46718	46597	46544	101.790
	7	47085	47408	47690	46932	46770	46716	46603	47634	47381	46623	47153	47203	102.422
	8	47086	47058	46941	46553	46956	46932	47037	46822	47263	46582	46526	47218	102.019
	9	47094	46568	46851	47621	46905	46391	46695	47255	47029	47773	46982	46739	102.187
	10	46931	46894	47291	46183	46802	47338	46597	46832	47268	46384	46456	46911	101.822
	11	47084	46765	46954	46455	46649	46831	46770	47508	47679	47187	47756	47702	102.448
	12	46499	47213	47374	46305	46441	47600	46853	46986	47579	46800	47052	46778	102.111
	13	47591	47505	47082	47334	46357	46752	46661	46773	47621	46991	47123	47168	102.378
	14	46422	46981	46869	47055	46478	46888	46362	46712	47572	46414	47166	46387	101.716
	15	47376	47465	46962	46815	47008	47079	47786	46786	47043	47619	47132	46685	102.523
	16	46728	47408	47134	46824	46617	47357	46936	46952	46728	46342	47571	46663	102.071
	17	46628	46726	47271	47160	46797	46211	47070	46687	46805	46464	47192	46699	101.790
	18	47369	46385	47316	46730	46258	47051	46616	46633	46668	46660	46712	46685	101.676
	19	47147	46484	47015	47020	46832	46453	46854	46028	46009	46944	46095	47046	101.467
	20	46530	46529	46441	46636	46412	47040	46756	46269	47107	46889	46522	47045	101.512
	21	46329	46509	46807	47313	46976	47164	45929	46848	46253	46376	46498	46798	101.443
	22	46690	46844	46691	46440	46470	46943	46641	46269	45948	46620	46635	46528	101.248
	23	46668	46688	46653	46568	47146	45749	46245	46794	47423	47340	46819	46640	101.613

		S.V.I.R.CO. Observatory - Pressure Corrected Data – June 2017											20 NM-64		
		INAF/UNIRomaTre													
day	hh	00_05	05_10	10_15	15_20	20_25	25_30	30_35	35_40	40_45	45_50	50_55	55_60	h-norm	
21	0	46555	47251	46415	46694	46663	46733	46526	46203	46106	46312	46616	46837	101.281	
	1	46503	47049	46474	46151	46655	46874	46587	46267	46882	46407	47003	46153	101.300	
	2	46615	46354	47204	46045	46918	46890	46850	46545	46080	46918	47079	46469	101.474	
	3	46745	46634	46390	46105	47035	46477	46225	46765	46909	47074	46879	46346	101.404	
	4	46593	46745	46647	46586	46889	46360	46612	46818	46313	46470	46250	46088	101.185	
	5	46375	47019	47246	46207	46625	46872	46151	46634	46884	46117	46507	47063	101.426	
	6	46940	47008	46545	46760	46892	47286	46346	46412	46650	47118	46628	47185	101.801	
	7	47119	46738	46997	46504	47450	46499	46812	46827	46876	46854	47018	46703	101.914	
	8	47251	47127	47007	46940	46506	46774	47459	46498	46538	46130	46419	47732	101.912	
	9	46829	46692	47487	47532	47069	47255	47501	47221	46180	46703	46643	46347	102.107	
	10	47110	46609	46885	46771	46993	47088	46685	46322	46315	46935	47249	47505	101.927	
	11	46846	46994	46852	47069	46757	46457	46934	47250	47126	46555	47427	47567	102.175	
	12	47114	47333	46532	46541	46998	46406	46953	46986	47278	46980	46741	46773	101.958	
	13	47232	46887	46867	46923	46825	46804	46552	47053	47231	46972	46733	47327	102.097	
	14	46929	47253	47033	46558	46867	46179	47480	46379	46551	46704	46776	46214	101.647	
	15	46697	46928	46865	46583	46173	47004	47107	46433	46173	46905	47145	46882	101.642	
	16	46914	46440	46557	45819	46248	46455	46736	46605	46811	46122	46637	46784	101.141	
	17	46277	46891	46751	46684	46981	46543	46658	46413	46875	46488	46245	47148	101.472	
	18	46658	45898	46730	46508	46980	47320	46185	46668	46955	47502	46858	47088	101.724	
	19	47144	47346	46528	47385	47207	47017	46121	47339	46386	45942	47235	46676	101.903	
	20	47180	46818	46583	46499	46580	46426	46640	46673	46728	47572	46930	47272	101.825	
	21	46291	46342	47174	46895	46415	47248	46841	46862	46685	46697	47082	46282	101.627	
	22	47045	46664	47157	46508	46150	46757	46465	47210	45853	47147	47131	46467	101.580	
	23	46535	47494	46863	46664	46620	46346	47362	46908	46380	47205	47413	46133	101.828	
22	0	46143	46743	46531	46910	46700	46704	46189	46116	47040	46699	46261	47368	101.369	
	1	47425	47077	46337	46481	47530	46804	46704	46754	47018	46860	46555	46792	101.903	
	2	46851	46413	46959	46048	46781	47288	47291	46825	46915	46558	46637	46009	101.584	
	3	46732	46438	46722	46427	47025	46899	46564	46627	46074	46266	46735	46638	101.326	
	4	47161	46695	46718	46540	46099	46362	46793	46608	46588	46313	46838	46764	101.386	
	5	46682	46776	47093	46955	46659	46241	46926	46787	46812	46714	47022	47125	101.804	
	6	47219	47217	46640	46686	46412	46358	47118	46265	46771	46722	46955	46970	101.721	
	7	46832	47112	47608	47469	47587	46450	47447	46746	47010	46923	47153	46657	102.385	
	8	47495	46790	46512	46631	47117	46918	46885	47455	47081	47196	46409	47366	102.179	
	9	46477	46881	46823	46910	47070	46979	46546	46605	46936	47227	46682	46987	101.865	
	10	46797	46964	46961	46630	46613	46711	46631	46820	47379	46496	47146	47118	101.891	
	11	46901	47209	46876	46945	46961	46710	47110	47134	47228	46804	46609	47178	102.144	
	12	46808	47125	46840	47374	46545	46773	47292	46347	46596	46663	46625	46863	101.815	
	13	46224	46571	46750	46932	47013	46488	46774	46881	46894	46959	46840	46829	101.689	
	14	46559	46829	47379	46994	47290	46840	46940	46492	46903	47189	47087	46753	102.070	
	15	47307	47290	46930	46793	46557	47325	46822	46992	46553	46667	46981	46296	101.935	
	16	47141	46941	46886	46891	46918	47037	46552	46961	46381	46525	46703	46545	101.748	
	17	46571	47312	46899	47414	46978	46444	47028	46519	46204	46175	46516	46676	101.613	
	18	46482	46537	47367	46787	46963	46451	46932	46861	46316	46499	46497	46351	101.488	
	19	47006	46486	46728	46493	46677	46485	46614	46716	46764	46072	46386	46424	101.272	
	20	46958	45994	46306	46405	46669	46452	46114	46172	46281	46445	46554	46721	100.950	
	21	47144	46357	46291	46031	46989	47086	46374	46700	46963	46288	46283	46439	101.289	
	22	47118	46276	46926	46273	46536	46623	46275	46037	45678	46862	47095	46666	101.184	
	23	46074	46282	46745	46028	45822	46577	45885	46176	47136	46820	46432	46985	100.930	

		S.V.I.R.CO. Observatory - Pressure Corrected Data – June 2017											20 NM-64	
day	hh	00_05	05_10	10_15	15_20	20_25	25_30	30_35	35_40	40_45	45_50	50_55	55_60	h-norm
23	0	46622	46806	46255	47042	46179	46445	46544	46441	46815	46843	46039	46100	101.139
	1	46368	45942	46176	46335	46575	46707	46772	46133	46348	46364	46861	46505	100.952
	2	46250	46344	46876	46615	46568	46877	45990	47161	46742	47494	45870	45965	101.254
	3	46585	46773	46239	46431	46690	47102	46712	46466	46138	46494	46173	46052	101.092
	4	46994	46190	45789	46747	46712	46163	46995	46538	47105	46500	46715	46509	101.291
	5	46773	46632	46285	46778	46299	46385	46801	46661	46601	47093	46944	47123	101.548
	6	46412	47199	46105	45876	46476	46701	46326	46977	46258	46300	46440	46858	101.105
	7	47113	46666	46464	46603	47227	46231	46796	47084	46491	46437	46182	46952	101.525
	8	46765	47217	46565	46065	46350	46158	46747	47311	46337	46782	46953	46677	101.467
	9	46439	46928	46831	46651	46688	46726	46928	46213	46026	46831	46644	46243	101.325
	10	46818	46595	47328	46379	47084	46356	46701	46945	46725	46225	46705	46123	101.477
	11	46377	46566	46505	46250	47161	47367	46674	47312	47284	46505	47108	47128	101.886
	12	46605	46886	47078	46535	47156	47378	46909	46800	46120	46656	46518	46959	101.770
	13	46940	46645	46461	47030	46276	47422	47269	47152	47074	47144	47373	46426	102.062
	14	47427	46909	46305	46973	47036	47313	46443	46408	46830	47200	46911	47079	101.993
	15	46478	47380	46456	46932	47137	46807	46418	46064	47104	46946	46963	46767	101.743
	16	47460	47659	46059	47169	45661	46940	46639	47621	46243	46805	46622	47004	101.821
	17	46369	46618	46511	46804	46680	46792	46548	46948	46182	46965	45909	47006	101.359
	18	46104	45987	47081	46088	46801	46133	46700	47013	47430	46576	46207	46482	101.227
	19	46928	46195	46425	46739	46598	46926	46606	46149	46319	46722	46357	46591	101.218
	20	46066	46813	46893	46801	46958	46366	46461	45998	46926	46683	46676	46285	101.285
	21	46583	46380	46125	46072	46304	46363	46945	46311	46074	46892	46637	46745	101.015
	22	46654	46858	46556	46016	46010	46601	46274	46198	45893	46352	46173	46293	100.733
	23	46225	46849	46173	47090	46537	46617	46227	46797	46063	46289	46182	45804	100.910
24	0	45781	46679	46593	46324	45782	46146	46341	46318	46326	45327	46086	46000	100.336
	1	46169	46870	46728	46257	46310	46730	46488	46146	46469	45850	46303	47098	101.012
	2	46150	46436	46477	45839	46061	46369	46354	46271	46548	46908	46706	46979	100.954
	3	46768	46830	46765	46661	46510	46157	46522	46713	46347	47032	46811	46477	101.406
	4	46371	47432	47260	46563	46087	46615	46773	46425	46600	46459	46583	46456	101.412
	5	46755	46274	46452	46018	46083	46347	46300	46380	46278	47086	46652	46706	100.996
	6	46839	47180	46835	46603	47069	46991	46830	46547	46877	46394	46629	46798	101.769
	7	46725	47083	46389	46884	47011	46073	46430	46736	46893	46696	46952	47341	101.700
	8	46242	47033	46927	47398	46942	46129	46562	47142	46670	47004	47027	46768	101.814
	9	46562	46684	47083	46244	46721	46292	46412	46548	45853	46384	46472	47678	101.287
	10	46815	47190	47196	46405	46955	46513	47201	47016	46603	47253	46276	46810	101.885
	11	47167	46504	46890	46389	46740	46827	46556	46436	47160	46771	46749	46240	101.557
	12	46422	46878	47034	46480	46860	47234	46805	46263	46859	46530	46427	46692	101.568
	13	46727	46511	46670	47173	46322	46364	46789	47058	46848	47297	46981	46161	101.644
	14	46657	46905	46835	46529	46622	46928	46200	46770	47002	46432	46472	46970	101.538
	15	46957	46736	47203	46277	45912	46683	46109	46853	47006	46412	46368	46823	101.360
	16	46527	46900	46189	46948	46765	46991	46130	47373	46549	46828	46168	46317	101.423
	17	46833	45941	46389	46543	46730	46898	47058	46617	46980	45885	46490	46635	101.298
	18	47221	46160	47274	46590	46152	46514	46525	46301	46605	46061	46137	46621	101.147
	19	45468	46391	46692	47063	46739	46585	46320	46384	46160	45950	46249	46486	100.843
	20	45846	46216	46109	46162	46004	45947	46452	46712	46757	46425	46436	45846	100.558
	21	46380	46455	46012	46766	46429	46382	45849	45970	46571	46129	45782	46429	100.602
	22	46867	46844	46405	46120	45868	46371	45643	45836	46021	46269	46241	46069	100.493
	23	45808	46434	46705	46381	46851	46203	46498	46286	46478	47204	46682	46587	101.139

		S.V.I.R.CO. Observatory - Pressure Corrected Data – June 2017											20 NM-64		
		INAF/UNIRomaTre													
day	hh	00_05	05_10	10_15	15_20	20_25	25_30	30_35	35_40	40_45	45_50	50_55	55_60	h-norm	
25	0	46341	46359	46210	46117	46502	46175	46031	45708	46136	46468	46309	46225	100.496	
	1	45898	46099	46264	46135	45882	46728	45760	46907	46475	45976	46269	46070	100.477	
	2	46372	46394	45897	46459	46831	46203	46314	46485	46420	46291	46170	46331	100.785	
	3	46004	46397	45991	45762	46703	46926	46244	45368	46503	46285	45327	46608	100.414	
	4	46471	46273	45882	45517	45536	45949	46971	46570	45779	46070	46125	46155	100.266	
	5	46124	46384	46566	46328	45841	46098	46303	46433	46321	46407	46738	46702	100.799	
	6	46250	45633	47129	47006	46520	46799	46425	46600	46317	46223	46657	46234	101.080	
	7	46369	46169	46826	46489	46142	46471	46443	46627	46960	46672	45551	46194	100.921	
	8	46734	46297	46367	46179	47216	47055	46299	46417	45953	47357	46667	46652	101.334	
	9	46329	46376	46759	46579	46508	46102	46363	46908	46517	46900	46523	47375	101.342	
	10	46366	46455	47031	47143	46478	46583	46875	46313	46002	46564	47017	46584	101.373	
	11	46664	46620	46645	46880	46353	46589	47010	46380	46834	46380	47115	46625	101.497	
	12	47055	46754	46475	47164	46488	46499	46458	46837	46332	46304	46174	46054	101.225	
	13	45965	46604	46320	46119	46418	46317	46585	46477	46030	46777	46237	46661	100.848	
	14	46449	46873	46600	46308	46523	46130	46171	46611	46392	46311	46182	46048	100.863	
	15	46239	46053	46591	46802	45992	46314	46743	46892	45969	46355	46318	45991	100.801	
	16	46346	46118	46570	46141	47060	46942	45913	45995	46562	45881	46466	46073	100.767	
	17	46124	46440	46631	46437	46388	46160	46353	46509	46558	46284	45866	46375	100.777	
	18	45886	46184	45988	46554	46677	46208	45745	46490	46210	46356	46453	46177	100.561	
	19	46300	45842	46485	46241	46457	46337	46299	46129	46421	45920	46312	45703	100.474	
	20	46042	46017	46508	46045	46139	45661	46160	45727	46424	46056	45852	46397	100.217	
	21	46434	46052	46615	45788	46332	45904	46438	45603	46663	46607	45388	46025	100.365	
	22	46461	45887	46189	45838	46301	46021	45642	46025	45396	45725	46053	46382	100.016	
	23	45967	45459	45692	46519	46413	45791	45835	45746	46285	46176	46210	46059	100.058	
26	0	45804	46693	46021	45495	46276	45920	46484	46228	46249	46076	46034	45881	100.238	
	1	45841	45899	46392	45966	46502	45481	45464	46192	46210	45970	45495	45559	99.844	
	2	46307	46108	45615	45949	46203	46461	46625	45432	45308	46051	46572	46528	100.240	
	3	45385	46270	46619	46151	45870	46152	45963	45884	46312	46169	46850	45602	100.252	
	4	45799	46307	46638	46651	46410	45788	45727	46310	45755	46428	46133	46063	100.394	
	5	46331	46357	46413	46472	46383	46614	46377	46245	45820	46121	46036	45966	100.598	
	6	46412	45726	46526	46283	45830	46315	46722	46478	46640	46567	46111	46431	100.763	
	7	46184	46239	46361	46642	46113	46220	46431	46229	46188	45972	46785	46450	100.721	
	8	47307	46041	46272	46404	46132	45937	46007	46867	46913	46445	46995	47031	101.181	
	9	46050	46526	46101	46975	46550	46374	46384	46776	46083	46243	45998	46317	100.824	
	10	46355	46708	46503	46573	46596	45966	46504	46912	46659	46088	46428	46241	101.033	
	11	46557	45737	46619	46169	46252	46254	46413	46130	46571	46248	45848	46009	100.539	
	12	46799	45966	46019	46382	46616	46007	45967	46556	46700	45567	46092	46201	100.551	
	13	46091	46511	46202	45966	46372	46686	46347	46561	46289	46009	45763	46641	100.653	
	14	46498	46892	46176	45967	46371	46099	46255	46564	46174	46488	46297	45849	100.688	
	15	46986	46224	46431	46304	46266	45800	45948	46060	46609	45806	46325	46027	100.535	
	16	46165	45978	45454	45871	45708	46340	46280	45823	46566	45437	46283	45840	99.984	
	17	45302	46401	46648	46515	45669	46000	46614	46197	45949	45864	45880	46124	100.241	
	18	46298	46500	45685	46098	45964	46388	46062	46031	45959	45580	45647	45351	99.951	
	19	45867	45994	46486	46218	45706	45941	46774	46239	45921	46858	46097	45482	100.318	
	20	46076	46118	45282	45979	46431	46235	45978	45851	45982	46016	46138	45446	99.945	
	21	45679	45947	46226	45883	45313	45347	46136	45698	46172	45661	45960	46204	99.709	
	22	46082	45954	45936	45691	45497	46139	46098	45708	45511	45988	46542	46023	99.880	
	23	46174	46817	45879	45777	45916	45958	46017	45535	45923	46137	45557	45659	99.913	

		S.V.I.R.CO. Observatory - Pressure Corrected Data – June 2017											20 NM-64		
	INAF/UNIRomaTre														
day	hh	00_05	05_10	10_15	15_20	20_25	25_30	30_35	35_40	40_45	45_50	50_55	55_60	h-norm	
27	0	46109	45976	45822	46067	45950	46021	46100	46408	46127	46166	45343	46395	100.076	
	1	45316	45788	45806	45337	45966	45549	45645	46089	45920	46191	45336	46288	99.528	
	2	46227	46093	45972	46108	46301	46258	45457	46345	46190	45818	45536	45921	100.071	
	3	46193	46028	46102	46485	45997	46147	46124	46069	46179	46172	46687	45916	100.411	
	4	46179	46148	46252	46113	45962	46588	45852	46209	46000	45960	46641	45774	100.334	
	5	46510	46145	46436	46029	45799	46465	46320	46660	46377	46052	46332	45738	100.549	
	6	46632	46316	45714	45754	46788	46557	46499	46563	46146	46428	46530	46625	100.855	
	7	46675	47027	46165	46470	46436	46411	46692	46022	46617	47125	46751	46733	101.322	
	8	46179	46538	46398	46401	46855	46942	46411	46426	46545	46014	46629	45617	100.928	
	9	47009	46530	46585	46106	45846	46394	45715	46233	46126	46677	46099	46178	100.664	
	10	46438	46085	47327	46333	45826	46188	45772	46298	45887	46602	46048	46467	100.623	
	11	45825	46229	46187	46743	46304	46245	46207	46290	46649	46137	46552	46483	100.729	
	12	45761	46932	45996	45830	46485	46836	45891	45653	46126	46536	46038	46739	100.542	
	13	46565	46635	46306	45845	45729	45351	46577	45886	46155	46296	45964	46114	100.288	
	14	46549	46150	46171	46382	45742	47083	46161	45865	46311	46324	46323	46056	100.595	
	15	45974	46394	46181	45794	46124	45622	45538	46126	45508	45904	46275	45869	99.905	
	16	45977	45460	45594	45740	45365	45197	46144	45562	45970	46233	46060	45871	99.518	
	17	45784	45871	45895	45973	46239	45833	46529	45834	46099	46017	46067	46054	100.065	
	18	45697	46203	46132	45763	45938	45788	45846	46507	45758	46342	46034	46536	100.129	
	19	45744	45772	45908	45763	46406	46050	46177	45833	45816	45757	45904	46152	99.900	
	20	46801	46094	46040	46361	46470	46148	45997	46108	46237	45511	45851	46198	100.360	
	21	45937	46064	45692	45692	46152	45768	46355	46024	47052	45345	45893	46270	100.074	
	22	46471	46517	46453	46348	46032	45309	46342	45712	46266	46162	46490	45474	100.316	
	23	45871	46114	45954	45704	45239	45503	45933	46159	45702	46677	45608	46155	99.780	
28	0	46192	46192	46193	47007	46178	46031	46098	45816	45937	46176	46500	45782	100.405	
	1	46223	45950	46659	45931	46269	46480	46057	45946	46741	46143	45947	45509	100.366	
	2	46439	46723	46068	46477	45564	45734	46283	45989	45731	46321	46324	46216	100.369	
	3	46324	46060	46736	46686	45998	45886	46697	45878	46242	45941	45663	46351	100.477	
	4	45702	45833	45628	46155	45260	46201	45342	45765	46297	45986	45949	45821	99.657	
	5	46306	45253	46421	46370	46080	46036	46497	46148	46249	46100	46011	46588	100.403	
	6	46279	47047	46447	45538	45802	45557	46154	46321	46555	46345	45843	46051	100.383	
	7	46331	46002	46303	46108	46370	46285	46831	45724	46522	46182	46440	45800	100.559	
	8	46450	45880	46255	45919	46724	46221	45755	46571	46824	46882	46694	46289	100.840	
	9	46728	46250	46636	46075	46310	46712	46295	46300	45660	46259	46463	46066	100.712	
	10	46402	46258	46634	46684	45991	45885	46509	46398	46799	45527	46224	45932	100.618	
	11	46773	45887	46638	46263	46345	45944	46380	45954	46676	46598	46205	46373	100.763	
	12	46282	45646	45864	46853	45928	45743	45759	45992	46591	45671	45559	46194	100.045	
	13	46357	45730	46357	45794	45865	45806	46213	46137	45682	46481	45773	46871	100.224	
	14	46041	46592	46560	46002	45763	45942	45999	45808	46201	46319	46317	45904	100.293	
	15	46979	46009	46310	46921	46303	46007	46243	45466	46121	46420	46258	46166	100.610	
	16	45987	46490	46780	46724	46279	46219	46041	46411	46030	46064	46436	46003	100.658	
	17	45996	46126	46690	46010	46205	46356	46082	45917	46036	45832	46733	45914	100.374	
	18	46410	46343	46310	46143	45757	46021	46208	46071	46678	45968	46222	46009	100.418	
	19	46651	46561	46046	46765	46588	45777	45670	45815	45681	45767	45525	46231	100.226	
	20	46007	46285	46397	46227	45422	46792	46284	46676	45948	46599	46730	46631	100.754	
	21	46074	46255	46410	46084	45775	46031	46406	46793	46098	45959	46590	45604	100.407	
	22	46276	46172	46086	46086	46083	46116	46079	45757	45501	46375	46321	46126	100.208	
	23	46345	45777	46253	46128	46600	46240	46474	46200	46245	45954	46153	46386	100.530	

INAF/UNIRomaTre				S.V.I.R.CO. Observatory - Pressure Corrected Data – June 2017								20 NM-64		
day	hh	00_05	05_10	10_15	15_20	20_25	25_30	30_35	35_40	40_45	45_50	50_55	55_60	h-norm
29	0	46142	46134	46033	46073	46346	46853	46234	46238	46337	45268	46374	46018	100.394
	1	46396	46207	47034	45863	45946	45857	45517	46028	45600	46385	46454	46567	100.367
	2	46347	46917	46296	45815	45577	46491	46420	46764	45485	45732	46334	45845	100.397
	3	46224	46202	45908	46579	45955	46255	46302	45777	46171	46253	46249	46597	100.478
	4	46486	46496	46635	45497	46274	46672	46166	46648	46310	46441	46742	46470	100.907
	5	46335	45983	46096	46538	46566	46527	46649	46480	45983	46553	46463	46327	100.846
	6	45753	46559	46784	46158	46776	46282	46136	47046	46093	46494	46388	46715	100.969
	7	46790	46506	46486	46427	46399	46320	46202	47069	46213	46203	46083	46769	101.021
	8	46416	46228	46160	46485	46439	46835	46886	46290	46547	46008	46336	45876	100.847
	9	46490	46132	46716	46146	46438	46285	46674	46030	46632	46698	46600	46696	101.033
	10	46573	46700	46415	46131	46220	46392	46411	46624	46475	46177	46039	46670	100.905
	11	45550	46548	46202	46222	46576	45889	46250	45803	46237	46279	46079	45991	100.325
	12	46382	46719	45817	46328	46540	46445	46389	45836	46167	46575	46307	46320	100.724
	13	46226	46441	46063	45985	46193	46116	46818	46050	46251	46301	46012	45913	100.459
	14	46127	45710	46687	45680	45882	47287	46404	46126	46457	46009	46326	46427	100.596
	15	46035	45663	46396	45473	46327	46038	45896	45705	46152	46027	46275	45910	100.011
	16	45802	45921	46154	46835	45914	45731	45559	46181	46221	46001	46189	45563	100.043
	17	45620	45796	45989	46019	46092	45841	45471	46053	46886	46269	46487	45760	100.082
	18	46416	46463	46038	46182	45877	46507	46214	45824	46222	46263	46206	45747	100.385
	19	45898	45989	45947	46412	45989	46269	46604	46599	46181	46134	46378	46196	100.500
	20	45829	46207	46202	45902	46269	45451	45986	46756	46385	46360	45944	45766	100.222
	21	46506	46021	45895	46619	46432	46660	46233	46033	46462	45664	46408	46784	100.704
	22	46245	46854	46038	46664	46271	46265	46869	46229	45808	46104	45808	46236	100.645
	23	46085	46005	46210	45440	45637	46261	45162	46122	46222	45762	46021	46899	99.999
30	0	45893	46152	46005	46655	45870	46189	46295	46684	46664	46792	46254	46506	122.309
	1	45862	46471	46501	46477	46916	45677	47156	45618	46547	46551	46462	46089	122.392
	2	46506	46274	46998	46353	46362	46449	46557	46296	46127	45759	46089	46652	122.413
	3	46235	45947	46239	46374	46403	46604	46276	46380	46420	46123	46652	45670	122.171
	4	46809	46079	46477	47133	46704	46048	46096	47023	46851	46293	46349	46237	122.782
	5	46348	46926	46898	46652	46203	46636	46344	46292	45948	46439	45964	46904	122.661
	6	47389	46371	46568	46378	46452	46282	46295	46615	46609	46412	46690	46379	122.857
	7	46151	46089	46506	46587	46318	46425	46449	46680	46799	46282	46638	45946	122.511
	8	46531	46385	46403	46660	46152	46119	47389	46173	46567	46853	46149	46232	122.675
	9	46168	45848	46784	46250	46267	46372	46219	45674	46155	46286	45551	46464	121.888
	10	46143	45951	47124	46679	46338	46078	46824	46630	45821	46323	46598	45991	122.430
	11	46742	46380	46189	46236	46180	45885	46128	46659	46154	46760	46679	46471	122.421
	12	46248	46540	46691	46544	45873	46399	46549	45713	46966	46310	46197	45417	122.199
	13	46332	46423	46372	46394	46609	46047	46073	46293	46145	45895	46250	46188	122.105
	14	45803	46302	46611	46132	45839	46327	45862	45723	46248	46490	46178	46872	121.966
	15	46263	46398	46136	46159	46548	45733	46090	46450	46191	46993	45646	45072	121.811
	16	46093	46324	46257	46378	46510	46021	45854	46157	46359	45535	46150	46131	121.830
	17	45518	45537	46401	46269	45996	46045	46210	46569	46599	45842	46654	46027	121.808
	18	46057	46119	46298	46038	45959	46778	46204	46267	45580	45850	46104	46398	121.804
	19	46778	45992	46225	46283	46697	47077	46871	45968	45975	46578	46082	46319	122.506
	20	46516	46328	46678	46215	45447	46222	45637	45991	46167	45897	46130	46020	121.715
	21	47103	46104	45636	46537	46415	45942	46544	46592	46420	46209	45405	46423	122.173
	22	46085	46098	46197	46125	46170	46553	46201	46118	46240	45922	45816	46061	121.789
	23	46618	47198	46327	46575	45957	45988	46258	46272	46490	46028	46610	46346	122.468

S.V.I.R.CO. Observatory - Pressure in hectoPascal – June 2017

day	hh	00_05	05_10	10_15	15_20	20_25	25_30	30_35	35_40	40_45	45_50	50_55	55_60	average
1	0	1020.09	1020.11	1020.16	1020.16	1020.12	1020.11	1020.12	1020.14	1020.12	1020.06	1020.06	1020.06	1020.11
	1	1020.05	1020.04	1020.04	1020.03	1020.03	1020.02	1019.98	1019.98	1019.99	1019.99	1019.99	1019.99	1020.01
	2	1020.00	1019.97	1019.93	1019.93	1019.94	1019.93	1019.91	1019.89	1019.88	1019.87	1019.89	1019.92	1019.92
	3	1019.92	1019.88	1019.85	1019.84	1019.85	1019.82	1019.79	1019.79	1019.76	1019.77	1019.80	1019.82	1019.82
	4	1019.86	1019.88	1019.88	1019.90	1019.93	1019.94	1019.94	1019.95	1019.95	1019.99	1020.06	1020.06	1019.94
	5	1020.04	1020.01	1020.01	1020.09	1020.14	1020.17	1020.20	1020.19	1020.18	1020.18	1020.17	1020.17	1020.13
	6	1020.20	1020.24	1020.27	1020.31	1020.32	1020.29	1020.25	1020.25	1020.27	1020.27	1020.29	1020.27	1020.27
	7	1020.25	1020.23	1020.24	1020.25	1020.23	1020.22	1020.17	1020.11	1020.07	1020.06	1020.06	1020.05	1020.16
	8	1020.06	1020.06	1020.04	1020.01	1020.00	1020.00	1019.99	1019.98	1019.95	1019.94	1019.95	1019.98	1019.99
	9	1020.01	1020.04	1020.06	1020.05	1020.04	1020.03	1020.01	1020.00	1019.96	1019.94	1019.94	1019.90	1020.00
	10	1019.89	1019.88	1019.86	1019.85	1019.85	1019.88	1019.91	1019.93	1019.96	1019.96	1019.96	1019.95	1019.91
	11	1019.92	1019.91	1019.89	1019.87	1019.84	1019.81	1019.81	1019.78	1019.74	1019.72	1019.70	1019.67	1019.80
	12	1019.62	1019.58	1019.57	1019.58	1019.59	1019.61	1019.61	1019.59	1019.56	1019.54	1019.51	1019.46	1019.57
	13	1019.40	1019.36	1019.34	1019.34	1019.32	1019.28	1019.27	1019.26	1019.25	1019.19	1019.12	1019.09	1019.27
	14	1019.05	1019.02	1019.00	1018.97	1018.92	1018.88	1018.84	1018.81	1018.77	1018.71	1018.72	1018.75	1018.87
	15	1018.73	1018.71	1018.74	1018.77	1018.76	1018.72	1018.68	1018.65	1018.61	1018.56	1018.56	1018.58	1018.67
	16	1018.59	1018.62	1018.66	1018.68	1018.69	1018.71	1018.71	1018.72	1018.72	1018.71	1018.72	1018.73	1018.69
	17	1018.72	1018.73	1018.74	1018.74	1018.77	1018.79	1018.80	1018.84	1018.86	1018.86	1018.87	1018.89	1018.80
	18	1018.91	1018.93	1018.94	1018.95	1018.96	1018.96	1018.96	1018.96	1018.96	1018.95	1018.94	1018.95	1018.94
	19	1018.95	1018.94	1018.93	1018.96	1019.02	1019.06	1019.12	1019.20	1019.26	1019.33	1019.39	1019.42	1019.13
	20	1019.45	1019.44	1019.44	1019.47	1019.49	1019.48	1019.49	1019.49	1019.47	1019.43	1019.43	1019.44	1019.46
	21	1019.45	1019.48	1019.47	1019.46	1019.45	1019.44	1019.45	1019.48	1019.48	1019.45	1019.45	1019.48	1019.46
	22	1019.52	1019.54	1019.53	1019.51	1019.50	1019.49	1019.50	1019.50	1019.48	1019.44	1019.41	1019.40	1019.48
	23	1019.39	1019.37	1019.30	1019.22	1019.17	1019.11	1019.03	1019.00	1019.00	1018.96	1018.90	1018.85	1019.11
2	0	1018.84	1018.82	1018.80	1018.80	1018.80	1018.76	1018.69	1018.69	1018.70	1018.67	1018.65	1018.66	1018.73
	1	1018.66	1018.62	1018.57	1018.54	1018.51	1018.48	1018.45	1018.42	1018.41	1018.38	1018.33	1018.34	1018.47
	2	1018.36	1018.34	1018.30	1018.29	1018.30	1018.29	1018.28	1018.28	1018.26	1018.27	1018.29	1018.29	1018.29
	3	1018.28	1018.27	1018.25	1018.22	1018.25	1018.29	1018.26	1018.26	1018.28	1018.26	1018.27	1018.29	1018.26
	4	1018.30	1018.32	1018.34	1018.35	1018.34	1018.38	1018.44	1018.45	1018.39	1018.35	1018.37	1018.41	1018.37
	5	1018.44	1018.43	1018.42	1018.47	1018.53	1018.58	1018.62	1018.65	1018.67	1018.67	1018.65	1018.66	1018.56
	6	1018.66	1018.67	1018.68	1018.71	1018.70	1018.66	1018.67	1018.69	1018.66	1018.64	1018.62	1018.62	1018.66
	7	1018.65	1018.66	1018.66	1018.66	1018.66	1018.60	1018.57	1018.57	1018.51	1018.44	1018.40	1018.37	1018.56
	8	1018.39	1018.45	1018.44	1018.39	1018.36	1018.35	1018.33	1018.32	1018.33	1018.31	1018.27	1018.27	1018.35
	9	1018.25	1018.24	1018.26	1018.25	1018.19	1018.12	1018.09	1018.09	1018.08	1018.05	1018.03	1017.99	1018.13
	10	1017.93	1017.92	1017.91	1017.90	1017.89	1017.89	1017.89	1017.87	1017.84	1017.83	1017.85	1017.85	1017.88
	11	1017.86	1017.88	1017.84	1017.82	1017.80	1017.76	1017.71	1017.65	1017.59	1017.54	1017.50	1017.43	1017.70
	12	1017.40	1017.39	1017.36	1017.31	1017.25	1017.19	1017.11	1017.07	1017.04	1017.00	1017.01	1017.06	1017.18
	13	1017.08	1017.09	1017.08	1017.03	1017.02	1017.04	1017.03	1017.03	1017.02	1016.98	1016.96	1016.92	1017.02
	14	1016.89	1016.86	1016.83	1016.81	1016.83	1016.82	1016.79	1016.77	1016.74	1016.71	1016.68	1016.68	1016.78
	15	1016.67	1016.64	1016.61	1016.58	1016.55	1016.48	1016.41	1016.36	1016.30	1016.27	1016.25	1016.19	1016.44
	16	1016.08	1015.99	1015.95	1015.92	1015.88	1015.84	1015.83	1015.85	1015.86	1015.86	1015.86	1015.84	1015.89
	17	1015.85	1015.90	1015.95	1015.99	1015.99	1016.01	1016.04	1016.06	1016.11	1016.17	1016.20	1016.24	1016.04
	18	1016.28	1016.31	1016.34	1016.36	1016.39	1016.40	1016.38	1016.36	1016.32	1016.29	1016.29	1016.30	1016.33
	19	1016.31	1016.33	1016.36	1016.40	1016.46	1016.51	1016.56	1016.60	1016.59	1016.60	1016.63	1016.64	1016.50
	20	1016.64	1016.61	1016.56	1016.53	1016.54	1016.55	1016.52	1016.50	1016.48	1016.45	1016.41	1016.37	1016.51
	21	1016.34	1016.30	1016.28	1016.28	1016.29	1016.31	1016.34	1016.35	1016.30	1016.27	1016.28	1016.28	1016.30
	22	1016.27	1016.29	1016.34	1016.34	1016.30	1016.25	1016.24	1016.26	1016.24	1016.17	1016.12	1016.14	1016.25
	23	1016.16	1016.15	1016.14	1016.12	1016.13	1016.11	1016.08	1016.05	1016.02	1015.98	1015.94	1015.91	1016.06

S.V.I.R.CO. Observatory - Pressure in hectoPascal – June 2017

day	hh	00_05	05_10	10_15	15_20	20_25	25_30	30_35	35_40	40_45	45_50	50_55	55_60	average
3	0	1015.92	1015.89	1015.83	1015.76	1015.72	1015.69	1015.67	1015.66	1015.68	1015.68	1015.66	1015.66	1015.72
	1	1015.64	1015.58	1015.53	1015.54	1015.56	1015.55	1015.52	1015.50	1015.49	1015.47	1015.44	1015.47	1015.52
	2	1015.51	1015.51	1015.46	1015.44	1015.47	1015.53	1015.56	1015.52	1015.47	1015.52	1015.59	1015.56	1015.51
	3	1015.51	1015.51	1015.57	1015.63	1015.66	1015.70	1015.71	1015.74	1015.78	1015.78	1015.74	1015.78	1015.67
	4	1015.81	1015.79	1015.76	1015.69	1015.65	1015.66	1015.61	1015.62	1015.72	1015.78	1015.81	1015.84	1015.73
	5	1015.87	1015.87	1015.85	1015.85	1015.84	1015.84	1015.84	1015.80	1015.79	1015.80	1015.78	1015.75	1015.82
	6	1015.80	1015.88	1015.89	1015.85	1015.85	1015.89	1015.92	1015.91	1015.89	1015.88	1015.89	1015.87	1015.88
	7	1015.84	1015.88	1015.91	1015.90	1015.89	1015.85	1015.79	1015.78	1015.77	1015.72	1015.70	1015.71	1015.81
	8	1015.68	1015.62	1015.60	1015.58	1015.54	1015.51	1015.47	1015.43	1015.40	1015.35	1015.30	1015.30	1015.48
	9	1015.30	1015.32	1015.33	1015.31	1015.28	1015.21	1015.19	1015.24	1015.23	1015.21	1015.22	1015.18	1015.25
	10	1015.10	1015.05	1014.97	1014.90	1014.85	1014.83	1014.86	1014.90	1014.86	1014.79	1014.72	1014.66	1014.87
	11	1014.65	1014.66	1014.68	1014.66	1014.64	1014.62	1014.58	1014.54	1014.53	1014.53	1014.49	1014.46	1014.58
	12	1014.43	1014.38	1014.32	1014.31	1014.30	1014.27	1014.24	1014.18	1014.13	1014.08	1014.03	1014.02	1014.22
	13	1014.02	1014.02	1014.04	1014.08	1014.11	1014.08	1014.06	1014.00	1013.91	1013.87	1013.80	1013.74	1013.98
	14	1013.71	1013.69	1013.67	1013.63	1013.61	1013.59	1013.53	1013.47	1013.47	1013.48	1013.49	1013.52	1013.57
	15	1013.51	1013.46	1013.43	1013.46	1013.47	1013.45	1013.41	1013.32	1013.24	1013.19	1013.17	1013.14	1013.35
	16	1013.10	1013.07	1013.05	1013.03	1013.03	1013.05	1013.07	1013.13	1013.17	1013.23	1013.27	1013.29	1013.12
	17	1013.31	1013.33	1013.37	1013.41	1013.45	1013.52	1013.56	1013.57	1013.62	1013.70	1013.74	1013.76	1013.53
	18	1013.79	1013.79	1013.77	1013.78	1013.80	1013.86	1013.92	1013.96	1014.04	1014.09	1014.11	1014.15	1013.92
	19	1014.15	1014.16	1014.22	1014.27	1014.29	1014.31	1014.30	1014.25	1014.27	1014.30	1014.29	1014.31	1014.26
	20	1014.34	1014.33	1014.32	1014.34	1014.38	1014.40	1014.41	1014.44	1014.45	1014.50	1014.58	1014.59	1014.42
	21	1014.57	1014.56	1014.57	1014.56	1014.52	1014.46	1014.39	1014.33	1014.27	1014.22	1014.22	1014.24	1014.41
	22	1014.25	1014.32	1014.36	1014.35	1014.35	1014.33	1014.34	1014.36	1014.33	1014.30	1014.30	1014.34	1014.32
	23	1014.35	1014.39	1014.43	1014.42	1014.39	1014.31	1014.25	1014.21	1014.20	1014.22	1014.22	1014.17	1014.29
4	0	1014.07	1014.09	1014.10	1014.11	1014.09	1014.08	1014.15	1014.20	1014.15	1014.09	1014.10	1014.13	1014.11
	1	1014.12	1014.14	1014.18	1014.16	1014.12	1014.15	1014.18	1014.19	1014.23	1014.27	1014.33	1014.33	1014.20
	2	1014.28	1014.25	1014.28	1014.35	1014.32	1014.26	1014.25	1014.12	1013.88	1013.70	1013.61	1013.61	1014.07
	3	1013.75	1013.87	1013.90	1013.94	1013.94	1013.92	1013.85	1013.74	1013.71	1013.74	1013.73	1013.74	1013.82
	4	1013.80	1013.84	1013.84	1013.86	1013.93	1014.03	1014.10	1014.14	1014.17	1014.20	1014.20	1014.17	1014.02
	5	1014.13	1014.03	1013.98	1014.07	1014.17	1014.24	1014.25	1014.21	1014.16	1014.14	1014.12	1014.04	1014.13
	6	1014.01	1014.04	1014.08	1014.13	1014.18	1014.22	1014.22	1014.21	1014.25	1014.28	1014.29	1014.26	1014.18
	7	1014.23	1014.23	1014.25	1014.27	1014.25	1014.26	1014.26	1014.20	1014.16	1014.11	1014.01	1013.92	1014.18
	8	1013.90	1013.91	1013.89	1013.90	1013.91	1013.90	1013.90	1013.96	1014.04	1014.04	1014.04	1014.09	1013.95
	9	1014.10	1014.09	1014.04	1014.00	1014.01	1014.00	1013.96	1013.94	1013.95	1013.97	1013.98	1013.96	1014.00
	10	1013.91	1013.85	1013.79	1013.76	1013.70	1013.61	1013.58	1013.54	1013.49	1013.46	1013.45	1013.46	1013.63
	11	1013.42	1013.37	1013.34	1013.34	1013.33	1013.29	1013.28	1013.29	1013.28	1013.27	1013.25	1013.26	1013.31
	12	1013.23	1013.21	1013.23	1013.23	1013.20	1013.15	1013.09	1013.04	1013.00	1012.98	1012.95	1012.87	1013.10
	13	1012.80	1012.73	1012.67	1012.65	1012.61	1012.56	1012.50	1012.44	1012.44	1012.39	1012.33	1012.34	1012.54
	14	1012.34	1012.30	1012.28	1012.24	1012.24	1012.25	1012.23	1012.22	1012.19	1012.16	1012.10	1012.06	1012.22
	15	1012.09	1012.07	1012.03	1012.02	1011.99	1011.96	1011.93	1011.91	1011.88	1011.82	1011.77	1011.76	1011.93
	16	1011.76	1011.75	1011.75	1011.76	1011.73	1011.71	1011.71	1011.71	1011.73	1011.76	1011.83	1011.88	1011.75
	17	1011.90	1011.92	1011.95	1011.98	1012.03	1012.08	1012.12	1012.15	1012.17	1012.21	1012.24	1012.24	1012.08
	18	1012.29	1012.33	1012.31	1012.29	1012.31	1012.37	1012.43	1012.47	1012.52	1012.59	1012.69	1012.78	1012.45
	19	1012.85	1012.87	1012.87	1012.89	1012.94	1013.00	1013.07	1013.12	1013.09	1013.03	1013.06	1013.13	1012.99
	20	1013.14	1013.10	1013.09	1013.08	1013.09	1013.13	1013.12	1013.09	1013.04	1012.99	1012.99	1012.99	1013.07
	21	1012.95	1012.94	1012.91	1012.85	1012.82	1012.82	1012.82	1012.85	1012.88	1012.89	1012.90	1012.92	1012.88
	22	1012.91	1012.86	1012.78	1012.72	1012.71	1012.68	1012.63	1012.55	1012.50	1012.55	1012.57	1012.52	1012.66
	23	1012.47	1012.48	1012.47	1012.41	1012.33	1012.27	1012.24	1012.28	1012.27	1012.28	1012.33	1012.34	1012.35

S.V.I.R.CO. Observatory - Pressure in hectoPascal – June 2017

day	hh	00_05	05_10	10_15	15_20	20_25	25_30	30_35	35_40	40_45	45_50	50_55	55_60	average
5	0	1012.29	1012.36	1012.38	1012.32	1012.26	1012.20	1012.17	1012.15	1012.09	1011.98	1011.94	1011.94	1012.17
	1	1011.86	1011.75	1011.72	1011.74	1011.77	1011.81	1011.86	1011.85	1011.81	1011.85	1011.88	1011.87	1011.81
	2	1011.79	1011.71	1011.71	1011.72	1011.69	1011.67	1011.64	1011.64	1011.65	1011.61	1011.59	1011.61	1011.67
	3	1011.61	1011.60	1011.57	1011.55	1011.57	1011.58	1011.60	1011.64	1011.64	1011.65	1011.69	1011.69	1011.61
	4	1011.66	1011.66	1011.66	1011.67	1011.70	1011.78	1011.86	1011.87	1011.82	1011.76	1011.69	1011.65	1011.73
	5	1011.64	1011.64	1011.62	1011.63	1011.65	1011.64	1011.60	1011.55	1011.53	1011.52	1011.52	1011.60	1011.59
	6	1011.71	1011.73	1011.71	1011.69	1011.67	1011.68	1011.70	1011.70	1011.73	1011.74	1011.72	1011.72	1011.71
	7	1011.69	1011.62	1011.57	1011.54	1011.50	1011.47	1011.45	1011.44	1011.46	1011.46	1011.46	1011.49	1011.51
	8	1011.52	1011.54	1011.53	1011.50	1011.49	1011.50	1011.49	1011.46	1011.41	1011.35	1011.32	1011.30	1011.45
	9	1011.31	1011.29	1011.23	1011.19	1011.20	1011.22	1011.26	1011.29	1011.36	1011.43	1011.45	1011.45	1011.31
	10	1011.46	1011.45	1011.46	1011.45	1011.39	1011.36	1011.37	1011.34	1011.28	1011.32	1011.40	1011.42	1011.39
	11	1011.34	1011.26	1011.27	1011.27	1011.28	1011.29	1011.27	1011.21	1011.18	1011.14	1011.08	1011.03	1011.22
	12	1010.97	1010.95	1010.91	1010.86	1010.87	1010.87	1010.88	1010.89	1010.92	1010.91	1010.91	1010.90	1010.90
	13	1010.82	1010.77	1010.74	1010.73	1010.75	1010.73	1010.67	1010.59	1010.51	1010.47	1010.47	1010.45	1010.64
	14	1010.41	1010.39	1010.38	1010.37	1010.31	1010.23	1010.17	1010.12	1010.09	1010.08	1010.08	1010.08	1010.22
	15	1010.08	1010.08	1010.08	1010.07	1010.08	1010.06	1010.03	1010.00	1009.95	1009.91	1009.86	1009.83	1010.00
	16	1009.77	1009.72	1009.74	1009.79	1009.83	1009.89	1009.97	1009.99	1009.97	1009.93	1009.90	1009.92	1009.87
	17	1009.94	1009.92	1009.87	1009.88	1009.93	1009.93	1009.88	1009.79	1009.71	1009.65	1009.60	1009.52	1009.80
	18	1009.45	1009.41	1009.39	1009.41	1009.41	1009.37	1009.33	1009.31	1009.31	1009.29	1009.25	1009.24	1009.35
	19	1009.27	1009.35	1009.44	1009.48	1009.49	1009.49	1009.53	1009.58	1009.61	1009.58	1009.57	1009.65	1009.50
	20	1009.75	1009.81	1009.85	1009.90	1009.91	1009.89	1009.85	1009.79	1009.77	1009.79	1009.83	1009.84	1009.83
	21	1009.83	1009.83	1009.86	1009.91	1009.95	1009.96	1009.93	1009.89	1009.86	1009.85	1009.83	1009.76	1009.87
	22	1009.71	1009.69	1009.64	1009.63	1009.64	1009.66	1009.70	1009.74	1009.79	1009.83	1009.86	1009.88	1009.73
	23	1009.84	1009.80	1009.82	1009.82	1009.76	1009.73	1009.73	1009.71	1009.68	1009.66	1009.63	1009.57	1009.73
6	0	1009.51	1009.51	1009.49	1009.44	1009.41	1009.39	1009.35	1009.32	1009.38	1009.45	1009.45	1009.45	1009.42
	1	1009.46	1009.41	1009.33	1009.27	1009.23	1009.20	1009.13	1009.08	1009.09	1009.10	1009.08	1009.08	1009.20
	2	1009.07	1009.04	1009.06	1009.07	1009.03	1008.99	1008.94	1008.86	1008.75	1008.67	1008.67	1008.65	1008.90
	3	1008.62	1008.61	1008.65	1008.67	1008.66	1008.67	1008.67	1008.74	1008.86	1008.96	1009.02	1009.06	1008.76
	4	1009.07	1009.06	1009.05	1009.09	1009.13	1009.13	1009.12	1009.07	1009.04	1009.06	1009.08	1009.11	1009.08
	5	1009.13	1009.16	1009.21	1009.26	1009.36	1009.45	1009.48	1009.48	1009.50	1009.52	1009.55	1009.59	1009.39
	6	1009.62	1009.63	1009.64	1009.64	1009.65	1009.69	1009.73	1009.78	1009.82	1009.83	1009.83	1009.85	1009.73
	7	1009.87	1009.89	1009.90	1009.93	1009.98	1010.01	1010.00	1009.96	1009.96	1009.95	1009.97	1009.99	1009.95
	8	1009.96	1009.97	1010.01	1010.08	1010.10	1010.10	1010.16	1010.20	1010.25	1010.26	1010.26	1010.28	1010.13
	9	1010.30	1010.32	1010.36	1010.39	1010.41	1010.42	1010.41	1010.44	1010.48	1010.45	1010.40	1010.39	1010.39
	10	1010.39	1010.37	1010.34	1010.29	1010.25	1010.22	1010.22	1010.21	1010.16	1010.15	1010.16	1010.17	1010.24
	11	1010.19	1010.24	1010.23	1010.19	1010.17	1010.13	1010.10	1010.13	1010.14	1010.15	1010.17	1010.18	1010.17
	12	1010.20	1010.16	1010.10	1010.08	1010.11	1010.10	1010.08	1010.08	1010.07	1010.06	1010.02	1010.02	1010.09
	13	1009.96	1009.89	1009.90	1009.87	1009.87	1009.88	1009.86	1009.82	1009.77	1009.76	1009.77	1009.77	1009.84
	14	1009.79	1009.83	1009.88	1009.92	1009.91	1009.92	1009.96	1009.98	1010.02	1010.05	1010.04	1010.07	1009.94
	15	1010.08	1010.06	1010.07	1010.08	1010.09	1010.10	1010.10	1010.10	1010.12	1010.14	1010.15	1010.14	1010.10
	16	1010.13	1010.15	1010.19	1010.20	1010.16	1010.16	1010.15	1010.14	1010.16	1010.19	1010.25	1010.31	1010.18
	17	1010.35	1010.36	1010.39	1010.40	1010.41	1010.46	1010.54	1010.60	1010.63	1010.65	1010.63	1010.60	1010.50
	18	1010.62	1010.66	1010.69	1010.65	1010.59	1010.62	1010.65	1010.67	1010.71	1010.76	1010.79	1010.80	1010.68
	19	1010.82	1010.86	1010.90	1010.94	1011.02	1011.09	1011.18	1011.28	1011.33	1011.34	1011.33	1011.35	1011.12
	20	1011.38	1011.41	1011.48	1011.56	1011.61	1011.67	1011.71	1011.75	1011.76	1011.73	1011.74	1011.77	1011.63
	21	1011.78	1011.79	1011.82	1011.86	1011.89	1011.94	1012.00	1012.04	1012.05	1012.05	1012.03	1012.01	1011.94
	22	1012.04	1012.06	1012.09	1012.14	1012.12	1012.08	1012.10	1012.12	1012.09	1012.08	1012.16	1012.24	1012.11
	23	1012.23	1012.22	1012.22	1012.21	1012.20	1012.18	1012.16	1012.11	1012.08	1012.05	1011.96	1011.90	1012.12

S.V.I.R.CO. Observatory - Pressure in hectoPascal – June 2017

day	hh	00_05	05_10	10_15	15_20	20_25	25_30	30_35	35_40	40_45	45_50	50_55	55_60	average
7	0	1011.86	1011.87	1011.90	1011.97	1012.02	1012.03	1012.01	1011.98	1011.97	1011.99	1011.98	1011.98	1011.97
	1	1012.01	1011.99	1011.96	1011.96	1011.97	1011.94	1011.92	1011.92	1011.90	1011.89	1011.87	1011.83	1011.93
	2	1011.81	1011.81	1011.82	1011.82	1011.82	1011.82	1011.84	1011.91	1011.93	1011.90	1011.89	1011.89	1011.85
	3	1011.89	1011.86	1011.86	1011.90	1011.97	1012.07	1012.12	1012.14	1012.15	1012.12	1012.11	1012.13	1012.02
	4	1012.19	1012.26	1012.26	1012.25	1012.27	1012.26	1012.25	1012.27	1012.27	1012.28	1012.34	1012.42	1012.28
	5	1012.45	1012.43	1012.45	1012.51	1012.54	1012.57	1012.58	1012.58	1012.61	1012.63	1012.65	1012.67	1012.55
	6	1012.67	1012.65	1012.64	1012.66	1012.71	1012.79	1012.81	1012.79	1012.78	1012.80	1012.84	1012.88	1012.75
	7	1012.95	1013.01	1013.05	1013.08	1013.09	1013.09	1013.08	1013.07	1013.10	1013.10	1013.06	1013.06	1013.06
	8	1013.05	1013.03	1013.00	1013.00	1013.00	1013.01	1013.03	1013.03	1013.03	1013.01	1013.00	1013.02	1013.02
	9	1013.03	1013.01	1013.03	1013.02	1013.01	1013.03	1012.99	1012.99	1013.02	1012.97	1012.93	1012.99	1013.00
	10	1013.00	1012.96	1012.95	1012.97	1012.96	1012.88	1012.87	1012.88	1012.85	1012.75	1012.67	1012.62	1012.86
	11	1012.55	1012.48	1012.41	1012.40	1012.38	1012.30	1012.24	1012.23	1012.26	1012.25	1012.22	1012.22	1012.33
	12	1012.25	1012.23	1012.20	1012.21	1012.23	1012.26	1012.25	1012.22	1012.22	1012.21	1012.14	1012.07	1012.20
	13	1012.05	1012.04	1012.01	1012.00	1011.96	1011.93	1011.94	1011.92	1011.92	1011.92	1011.94	1012.02	1011.97
	14	1012.05	1012.04	1012.06	1012.10	1012.11	1012.09	1012.05	1012.00	1012.03	1012.10	1012.15	1012.17	1012.08
	15	1012.16	1012.14	1012.12	1012.09	1012.06	1012.04	1012.00	1011.98	1011.97	1011.97	1011.99	1012.02	1012.04
	16	1012.07	1012.03	1011.93	1011.97	1012.03	1012.04	1012.12	1012.18	1012.17	1012.16	1012.20	1012.21	1012.09
	17	1012.22	1012.31	1012.40	1012.40	1012.42	1012.41	1012.42	1012.47	1012.49	1012.50	1012.54	1012.56	1012.43
	18	1012.55	1012.57	1012.59	1012.64	1012.70	1012.74	1012.79	1012.81	1012.84	1012.89	1012.93	1012.96	1012.75
	19	1012.98	1013.05	1013.14	1013.24	1013.37	1013.41	1013.43	1013.51	1013.63	1013.76	1013.87	1013.94	1013.44
	20	1013.99	1014.03	1014.06	1014.10	1014.14	1014.16	1014.14	1014.13	1014.15	1014.14	1014.14	1014.15	1014.11
	21	1014.15	1014.15	1014.14	1014.11	1014.08	1014.10	1014.10	1014.12	1014.17	1014.19	1014.17	1014.16	1014.13
	22	1014.17	1014.19	1014.23	1014.23	1014.28	1014.36	1014.44	1014.51	1014.52	1014.54	1014.60	1014.65	1014.39
	23	1014.63	1014.65	1014.69	1014.71	1014.68	1014.68	1014.71	1014.73	1014.72	1014.67	1014.63	1014.65	1014.68
8	0	1014.75	1014.75	1014.74	1014.72	1014.71	1014.70	1014.66	1014.64	1014.63	1014.58	1014.60	1014.64	1014.67
	1	1014.66	1014.69	1014.69	1014.71	1014.74	1014.75	1014.77	1014.81	1014.83	1014.84	1014.85	1014.81	1014.76
	2	1014.78	1014.76	1014.75	1014.78	1014.81	1014.78	1014.74	1014.73	1014.73	1014.71	1014.72	1014.74	1014.75
	3	1014.75	1014.77	1014.79	1014.81	1014.85	1014.88	1014.90	1014.93	1014.97	1015.00	1015.01	1015.03	1014.89
	4	1015.06	1015.11	1015.11	1015.11	1015.16	1015.19	1015.20	1015.21	1015.24	1015.26	1015.33	1015.42	1015.20
	5	1015.50	1015.54	1015.58	1015.65	1015.72	1015.78	1015.82	1015.85	1015.89	1015.96	1016.00	1016.05	1015.77
	6	1016.10	1016.12	1016.09	1016.08	1016.10	1016.09	1016.10	1016.14	1016.20	1016.21	1016.19	1016.23	1016.14
	7	1016.28	1016.28	1016.22	1016.21	1016.26	1016.28	1016.32	1016.35	1016.35	1016.35	1016.35	1016.37	1016.30
	8	1016.40	1016.41	1016.41	1016.40	1016.40	1016.40	1016.41	1016.43	1016.41	1016.40	1016.40	1016.40	1016.40
	9	1016.40	1016.41	1016.43	1016.43	1016.45	1016.49	1016.48	1016.47	1016.46	1016.44	1016.48	1016.50	1016.45
	10	1016.50	1016.49	1016.45	1016.40	1016.36	1016.33	1016.31	1016.26	1016.23	1016.19	1016.16	1016.16	1016.32
	11	1016.15	1016.07	1016.00	1015.98	1015.95	1015.91	1015.92	1015.93	1015.93	1015.92	1015.91	1015.90	1015.96
	12	1015.89	1015.87	1015.84	1015.82	1015.82	1015.80	1015.76	1015.75	1015.72	1015.69	1015.68	1015.66	1015.77
	13	1015.62	1015.58	1015.55	1015.53	1015.54	1015.55	1015.52	1015.53	1015.53	1015.50	1015.46	1015.40	1015.52
	14	1015.39	1015.36	1015.32	1015.31	1015.28	1015.21	1015.11	1015.06	1015.06	1015.00	1014.95	1014.96	1015.17
	15	1014.94	1014.89	1014.87	1014.87	1014.90	1014.88	1014.87	1014.84	1014.77	1014.77	1014.80	1014.83	1014.85
	16	1014.84	1014.83	1014.83	1014.80	1014.81	1014.84	1014.82	1014.83	1014.86	1014.87	1014.89	1014.94	1014.84
	17	1015.00	1015.02	1015.02	1015.01	1015.02	1015.01	1015.01	1015.03	1015.04	1015.06	1015.11	1015.14	1015.04
	18	1015.16	1015.18	1015.20	1015.25	1015.27	1015.25	1015.25	1015.24	1015.27	1015.29	1015.30	1015.32	1015.25
	19	1015.35	1015.41	1015.44	1015.48	1015.53	1015.58	1015.64	1015.70	1015.75	1015.79	1015.84	1015.85	1015.61
	20	1015.83	1015.84	1015.90	1015.95	1015.96	1015.96	1015.94	1015.89	1015.86	1015.87	1015.88	1015.86	1015.89
	21	1015.83	1015.78	1015.72	1015.69	1015.67	1015.67	1015.64	1015.59	1015.55	1015.53	1015.54	1015.53	1015.64
	22	1015.49	1015.49	1015.51	1015.51	1015.50	1015.49	1015.47	1015.47	1015.48	1015.47	1015.43	1015.41	1015.48
	23	1015.41	1015.37	1015.33	1015.29	1015.23	1015.16	1015.11	1015.08	1015.06	1015.04	1015.01	1014.99	1015.17

S.V.I.R.CO. Observatory - Pressure in hectoPascal – June 2017

day	hh	00_05	05_10	10_15	15_20	20_25	25_30	30_35	35_40	40_45	45_50	50_55	55_60	average
9	0	1014.97	1015.00	1015.01	1014.98	1014.93	1014.87	1014.82	1014.80	1014.78	1014.76	1014.75	1014.75	1014.86
	1	1014.74	1014.69	1014.65	1014.63	1014.58	1014.53	1014.50	1014.49	1014.52	1014.54	1014.55	1014.52	1014.58
	2	1014.49	1014.56	1014.59	1014.57	1014.62	1014.72	1014.77	1014.81	1014.83	1014.82	1014.78	1014.76	1014.69
	3	1014.82	1014.85	1014.86	1014.89	1014.92	1014.94	1015.00	1015.02	1015.03	1015.08	1015.09	1015.08	1014.96
	4	1015.14	1015.22	1015.25	1015.23	1015.22	1015.28	1015.34	1015.39	1015.39	1015.36	1015.36	1015.36	1015.29
	5	1015.37	1015.39	1015.43	1015.47	1015.47	1015.46	1015.46	1015.45	1015.45	1015.43	1015.43	1015.45	1015.44
	6	1015.44	1015.46	1015.49	1015.48	1015.49	1015.49	1015.49	1015.47	1015.44	1015.47	1015.47	1015.46	1015.47
	7	1015.48	1015.46	1015.46	1015.48	1015.45	1015.39	1015.35	1015.32	1015.30	1015.27	1015.25	1015.25	1015.37
	8	1015.20	1015.16	1015.15	1015.11	1015.08	1015.11	1015.15	1015.17	1015.19	1015.18	1015.17	1015.15	1015.15
	9	1015.11	1015.08	1015.10	1015.08	1015.04	1015.03	1014.97	1014.93	1014.95	1014.99	1015.00	1014.97	1015.02
	10	1014.94	1014.92	1014.94	1014.97	1014.95	1014.90	1014.89	1014.88	1014.88	1014.86	1014.85	1014.84	1014.90
	11	1014.86	1014.86	1014.78	1014.69	1014.60	1014.55	1014.55	1014.51	1014.47	1014.46	1014.49	1014.47	1014.60
	12	1014.44	1014.42	1014.39	1014.41	1014.39	1014.34	1014.32	1014.29	1014.23	1014.21	1014.22	1014.18	1014.32
	13	1014.15	1014.14	1014.12	1014.14	1014.18	1014.17	1014.12	1014.11	1014.14	1014.16	1014.14	1014.09	1014.14
	14	1014.04	1014.03	1014.02	1014.01	1014.03	1014.06	1014.03	1014.03	1014.08	1014.09	1014.08	1014.07	1014.04
	15	1014.08	1014.08	1014.03	1013.98	1013.94	1013.87	1013.83	1013.84	1013.85	1013.85	1013.79	1013.72	1013.90
	16	1013.73	1013.73	1013.74	1013.77	1013.80	1013.83	1013.85	1013.85	1013.82	1013.83	1013.84	1013.88	1013.80
	17	1013.94	1013.93	1013.91	1013.92	1013.98	1014.04	1014.05	1014.08	1014.09	1014.07	1014.10	1014.14	1014.02
	18	1014.19	1014.24	1014.28	1014.29	1014.27	1014.26	1014.32	1014.39	1014.41	1014.40	1014.40	1014.42	1014.32
	19	1014.45	1014.51	1014.58	1014.63	1014.69	1014.79	1014.88	1014.95	1014.99	1015.02	1015.06	1015.10	1014.80
	20	1015.15	1015.19	1015.18	1015.18	1015.19	1015.15	1015.13	1015.15	1015.17	1015.19	1015.17	1015.14	1015.16
	21	1015.15	1015.18	1015.18	1015.14	1015.13	1015.12	1015.11	1015.11	1015.13	1015.15	1015.12	1015.11	1015.13
	22	1015.12	1015.11	1015.08	1015.05	1015.01	1014.99	1015.00	1015.02	1015.04	1014.99	1014.86	1014.79	1015.00
	23	1014.78	1014.74	1014.73	1014.74	1014.73	1014.69	1014.64	1014.62	1014.62	1014.64	1014.67	1014.71	1014.69
10	0	1014.72	1014.68	1014.61	1014.62	1014.67	1014.72	1014.75	1014.81	1014.84	1014.84	1014.87	1014.95	1014.76
	1	1015.00	1014.97	1014.93	1014.92	1014.88	1014.84	1014.81	1014.79	1014.80	1014.85	1014.90	1014.91	1014.88
	2	1014.89	1014.87	1014.85	1014.85	1014.83	1014.78	1014.74	1014.74	1014.73	1014.72	1014.71	1014.71	1014.78
	3	1014.71	1014.70	1014.69	1014.74	1014.79	1014.79	1014.79	1014.78	1014.77	1014.81	1014.81	1014.84	1014.77
	4	1014.91	1014.95	1014.98	1014.98	1014.97	1015.00	1015.04	1015.02	1015.00	1015.04	1015.06	1015.06	1015.00
	5	1015.11	1015.18	1015.23	1015.27	1015.25	1015.30	1015.41	1015.46	1015.48	1015.53	1015.57	1015.64	1015.37
	6	1015.70	1015.71	1015.74	1015.79	1015.83	1015.86	1015.88	1015.94	1016.01	1016.04	1016.04	1016.02	1015.88
	7	1016.00	1016.02	1016.06	1016.09	1016.12	1016.17	1016.20	1016.18	1016.18	1016.19	1016.18	1016.19	1016.13
	8	1016.19	1016.21	1016.23	1016.23	1016.22	1016.19	1016.23	1016.26	1016.20	1016.16	1016.17	1016.23	1016.21
	9	1016.28	1016.26	1016.23	1016.26	1016.32	1016.33	1016.31	1016.32	1016.33	1016.29	1016.25	1016.22	1016.28
	10	1016.18	1016.16	1016.14	1016.09	1016.05	1016.01	1016.00	1016.00	1016.01	1016.01	1016.00	1015.99	1016.05
	11	1015.93	1015.88	1015.87	1015.85	1015.81	1015.77	1015.71	1015.66	1015.64	1015.62	1015.62	1015.57	1015.74
	12	1015.51	1015.47	1015.42	1015.41	1015.42	1015.44	1015.44	1015.42	1015.44	1015.44	1015.40	1015.36	1015.43
	13	1015.35	1015.31	1015.27	1015.31	1015.32	1015.28	1015.26	1015.22	1015.19	1015.21	1015.19	1015.15	1015.25
	14	1015.09	1015.07	1015.08	1015.08	1015.09	1015.08	1015.08	1015.09	1015.07	1015.04	1015.03	1015.00	1015.06
	15	1014.98	1014.99	1014.98	1015.01	1015.01	1015.00	1015.01	1014.99	1014.97	1014.97	1014.97	1014.94	1014.98
	16	1014.89	1014.84	1014.81	1014.83	1014.89	1014.93	1014.93	1014.96	1014.99	1015.01	1015.02	1015.00	1014.92
	17	1015.01	1015.05	1015.08	1015.11	1015.16	1015.19	1015.18	1015.17	1015.17	1015.16	1015.19	1015.24	1015.14
	18	1015.27	1015.28	1015.27	1015.22	1015.16	1015.17	1015.21	1015.22	1015.22	1015.22	1015.22	1015.25	1015.23
	19	1015.29	1015.33	1015.36	1015.40	1015.44	1015.44	1015.46	1015.52	1015.56	1015.55	1015.54	1015.56	1015.45
	20	1015.56	1015.54	1015.57	1015.60	1015.61	1015.62	1015.65	1015.67	1015.67	1015.70	1015.73	1015.77	1015.64
	21	1015.81	1015.84	1015.87	1015.87	1015.86	1015.86	1015.86	1015.86	1015.84	1015.85	1015.87	1015.87	1015.85
	22	1015.87	1015.85	1015.80	1015.77	1015.75	1015.73	1015.71	1015.70	1015.68	1015.65	1015.63	1015.63	1015.73
	23	1015.63	1015.62	1015.59	1015.56	1015.54	1015.49	1015.46	1015.48	1015.50	1015.48	1015.43	1015.41	1015.51

S.V.I.R.CO. Observatory - Pressure in hectoPascal – June 2017

day	hh	00_05	05_10	10_15	15_20	20_25	25_30	30_35	35_40	40_45	45_50	50_55	55_60	average
11	0	1015.41	1015.40	1015.36	1015.34	1015.35	1015.38	1015.39	1015.38	1015.40	1015.43	1015.44	1015.43	1015.39
	1	1015.44	1015.41	1015.37	1015.37	1015.36	1015.33	1015.29	1015.24	1015.19	1015.15	1015.13	1015.14	1015.28
	2	1015.15	1015.13	1015.09	1015.08	1015.08	1015.07	1015.04	1015.03	1015.04	1015.04	1015.01	1015.00	1015.06
	3	1015.00	1015.02	1015.07	1015.11	1015.12	1015.14	1015.21	1015.24	1015.23	1015.21	1015.16	1015.13	1015.14
	4	1015.13	1015.13	1015.09	1015.08	1015.09	1015.09	1015.12	1015.14	1015.13	1015.18	1015.24	1015.25	1015.14
	5	1015.26	1015.28	1015.30	1015.33	1015.35	1015.33	1015.33	1015.31	1015.28	1015.31	1015.36	1015.44	1015.32
	6	1015.48	1015.50	1015.53	1015.55	1015.57	1015.61	1015.63	1015.64	1015.64	1015.65	1015.67	1015.65	1015.59
	7	1015.65	1015.66	1015.65	1015.62	1015.59	1015.55	1015.53	1015.53	1015.51	1015.49	1015.49	1015.49	1015.56
	8	1015.48	1015.44	1015.39	1015.38	1015.38	1015.37	1015.36	1015.33	1015.30	1015.28	1015.29	1015.30	1015.36
	9	1015.25	1015.20	1015.19	1015.20	1015.18	1015.14	1015.13	1015.10	1015.05	1015.02	1015.00	1014.98	1015.12
	10	1014.94	1014.88	1014.84	1014.82	1014.79	1014.78	1014.79	1014.78	1014.74	1014.69	1014.69	1014.64	1014.78
	11	1014.55	1014.52	1014.52	1014.51	1014.50	1014.50	1014.48	1014.49	1014.50	1014.44	1014.36	1014.35	1014.48
	12	1014.34	1014.33	1014.34	1014.30	1014.26	1014.29	1014.31	1014.31	1014.27	1014.21	1014.16	1014.14	1014.27
	13	1014.14	1014.17	1014.19	1014.18	1014.19	1014.19	1014.18	1014.13	1014.08	1014.06	1014.04	1014.03	1014.13
	14	1014.02	1014.01	1013.99	1014.00	1013.99	1013.95	1013.89	1013.85	1013.85	1013.83	1013.79	1013.76	1013.91
	15	1013.76	1013.73	1013.69	1013.67	1013.67	1013.68	1013.67	1013.65	1013.64	1013.63	1013.62	1013.59	1013.66
	16	1013.58	1013.57	1013.52	1013.49	1013.48	1013.47	1013.44	1013.45	1013.49	1013.47	1013.42	1013.39	1013.48
	17	1013.34	1013.32	1013.34	1013.36	1013.39	1013.38	1013.35	1013.40	1013.43	1013.40	1013.42	1013.52	1013.39
	18	1013.51	1013.44	1013.41	1013.37	1013.33	1013.33	1013.32	1013.32	1013.35	1013.36	1013.34	1013.32	1013.37
	19	1013.34	1013.35	1013.34	1013.36	1013.35	1013.32	1013.38	1013.43	1013.44	1013.53	1013.57	1013.57	1013.41
	20	1013.64	1013.66	1013.68	1013.74	1013.78	1013.84	1013.86	1013.83	1013.86	1013.88	1013.87	1013.90	1013.79
	21	1013.94	1013.95	1013.95	1014.00	1014.08	1014.15	1014.17	1014.22	1014.29	1014.37	1014.44	1014.46	1014.17
	22	1014.48	1014.50	1014.51	1014.56	1014.57	1014.55	1014.57	1014.58	1014.56	1014.57	1014.59	1014.58	1014.55
	23	1014.60	1014.61	1014.62	1014.64	1014.64	1014.64	1014.61	1014.59	1014.61	1014.61	1014.61	1014.60	1014.61
12	0	1014.59	1014.63	1014.65	1014.62	1014.62	1014.65	1014.67	1014.69	1014.70	1014.69	1014.69	1014.73	1014.66
	1	1014.74	1014.73	1014.74	1014.74	1014.73	1014.74	1014.72	1014.69	1014.69	1014.69	1014.70	1014.71	1014.72
	2	1014.72	1014.76	1014.81	1014.87	1014.90	1014.89	1014.90	1014.91	1014.92	1014.93	1014.94	1014.90	1014.87
	3	1014.86	1014.84	1014.82	1014.82	1014.86	1014.90	1014.97	1015.06	1015.11	1015.17	1015.25	1015.27	1014.99
	4	1015.27	1015.27	1015.28	1015.32	1015.36	1015.43	1015.50	1015.54	1015.57	1015.59	1015.61	1015.67	1015.45
	5	1015.73	1015.75	1015.75	1015.79	1015.85	1015.90	1015.93	1015.91	1015.91	1015.93	1015.97	1016.02	1015.87
	6	1016.04	1016.03	1016.02	1016.00	1015.96	1015.96	1015.97	1015.96	1015.94	1015.92	1015.91	1015.92	1015.97
	7	1015.95	1016.01	1016.04	1016.02	1016.00	1016.01	1016.01	1015.99	1015.94	1015.92	1015.89	1015.84	1015.97
	8	1015.81	1015.80	1015.80	1015.75	1015.71	1015.68	1015.61	1015.60	1015.64	1015.65	1015.64	1015.65	1015.69
	9	1015.67	1015.71	1015.75	1015.78	1015.86	1015.93	1015.99	1015.99	1015.97	1015.93	1015.87	1015.87	1015.86
	10	1015.92	1015.94	1015.94	1015.93	1015.90	1015.93	1015.96	1015.94	1015.92	1015.88	1015.82	1015.76	1015.90
	11	1015.71	1015.71	1015.72	1015.70	1015.63	1015.57	1015.53	1015.49	1015.50	1015.50	1015.49	1015.47	1015.58
	12	1015.44	1015.43	1015.43	1015.41	1015.42	1015.41	1015.35	1015.31	1015.25	1015.23	1015.22	1015.17	1015.34
	13	1015.14	1015.14	1015.15	1015.19	1015.20	1015.18	1015.17	1015.13	1015.11	1015.09	1015.01	1014.95	1015.12
	14	1014.92	1014.90	1014.83	1014.80	1014.81	1014.79	1014.76	1014.72	1014.73	1014.73	1014.74	1014.76	1014.79
	15	1014.76	1014.73	1014.67	1014.62	1014.60	1014.60	1014.57	1014.53	1014.47	1014.41	1014.38	1014.34	1014.55
	16	1014.33	1014.35	1014.36	1014.36	1014.37	1014.31	1014.28	1014.29	1014.30	1014.32	1014.33	1014.33	1014.32
	17	1014.30	1014.24	1014.21	1014.24	1014.26	1014.28	1014.32	1014.38	1014.42	1014.43	1014.45	1014.48	1014.33
	18	1014.48	1014.51	1014.54	1014.56	1014.57	1014.63	1014.69	1014.74	1014.77	1014.78	1014.80	1014.84	1014.66
	19	1014.92	1015.00	1015.02	1015.00	1015.02	1015.10	1015.13	1015.17	1015.22	1015.25	1015.26	1015.25	1015.11
	20	1015.24	1015.27	1015.30	1015.33	1015.34	1015.33	1015.35	1015.36	1015.37	1015.35	1015.34	1015.33	1015.32
	21	1015.33	1015.34	1015.34	1015.35	1015.33	1015.31	1015.29	1015.28	1015.30	1015.31	1015.30	1015.27	1015.31
	22	1015.26	1015.25	1015.22	1015.21	1015.17	1015.14	1015.13	1015.09	1015.07	1015.05	1015.01	1015.01	1015.13
	23	1015.01	1015.01	1015.02	1015.02	1015.03	1015.05	1015.03	1015.00	1014.97	1014.92	1014.87	1014.85	1014.98

S.V.I.R.CO. Observatory - Pressure in hectoPascal – June 2017

day	hh	00_05	05_10	10_15	15_20	20_25	25_30	30_35	35_40	40_45	45_50	50_55	55_60	average
13	0	1014.83	1014.81	1014.77	1014.75	1014.71	1014.66	1014.60	1014.55	1014.53	1014.51	1014.50	1014.46	1014.63
	1	1014.39	1014.34	1014.36	1014.37	1014.34	1014.31	1014.28	1014.25	1014.23	1014.20	1014.17	1014.15	1014.28
	2	1014.13	1014.12	1014.15	1014.18	1014.18	1014.21	1014.22	1014.23	1014.27	1014.31	1014.35	1014.38	1014.23
	3	1014.40	1014.39	1014.36	1014.35	1014.34	1014.35	1014.35	1014.36	1014.39	1014.40	1014.42	1014.45	1014.38
	4	1014.50	1014.52	1014.47	1014.43	1014.42	1014.41	1014.39	1014.40	1014.41	1014.41	1014.40	1014.39	1014.43
	5	1014.44	1014.50	1014.51	1014.52	1014.53	1014.54	1014.59	1014.63	1014.64	1014.70	1014.75	1014.77	1014.59
	6	1014.79	1014.82	1014.84	1014.88	1014.91	1014.94	1014.99	1015.03	1015.07	1015.08	1015.10	1015.14	1014.96
	7	1015.14	1015.13	1015.14	1015.15	1015.12	1015.11	1015.11	1015.10	1015.08	1015.06	1015.08	1015.07	1015.10
	8	1015.04	1015.03	1015.03	1015.05	1015.05	1015.07	1015.08	1015.09	1015.08	1015.06	1015.08	1015.10	1015.06
	9	1015.10	1015.10	1015.07	1015.05	1015.06	1015.02	1014.98	1014.98	1014.97	1014.96	1014.93	1014.91	1015.01
	10	1014.92	1014.92	1014.93	1014.97	1015.02	1015.03	1015.01	1015.02	1015.05	1015.05	1015.03	1015.02	1014.99
	11	1015.01	1015.01	1015.02	1015.01	1014.99	1014.99	1014.97	1014.95	1014.97	1015.00	1014.94	1014.89	1014.98
	12	1014.84	1014.80	1014.80	1014.79	1014.77	1014.77	1014.75	1014.71	1014.72	1014.71	1014.66	1014.62	1014.74
	13	1014.57	1014.51	1014.48	1014.47	1014.46	1014.45	1014.45	1014.45	1014.45	1014.42	1014.37	1014.31	1014.45
	14	1014.26	1014.27	1014.31	1014.31	1014.30	1014.32	1014.30	1014.23	1014.20	1014.21	1014.22	1014.22	1014.26
	15	1014.22	1014.20	1014.20	1014.22	1014.24	1014.25	1014.22	1014.19	1014.17	1014.13	1014.11	1014.13	1014.19
	16	1014.14	1014.13	1014.09	1014.07	1014.08	1014.12	1014.14	1014.13	1014.13	1014.12	1014.09	1014.06	1014.11
	17	1014.03	1013.98	1013.92	1013.89	1013.89	1013.90	1013.90	1013.89	1013.89	1013.90	1013.90	1013.89	1013.91
	18	1013.89	1013.89	1013.88	1013.89	1013.92	1013.93	1013.93	1013.93	1013.99	1014.08	1014.12	1014.16	1013.96
	19	1014.22	1014.28	1014.34	1014.43	1014.53	1014.64	1014.69	1014.69	1014.71	1014.71	1014.72	1014.75	1014.56
	20	1014.80	1014.87	1014.89	1014.88	1014.89	1014.91	1014.91	1014.90	1014.90	1014.90	1014.90	1014.91	1014.89
	21	1014.94	1014.97	1014.97	1014.99	1015.01	1015.06	1015.08	1015.06	1015.07	1015.11	1015.12	1015.16	1015.04
	22	1015.19	1015.18	1015.18	1015.18	1015.19	1015.20	1015.18	1015.16	1015.14	1015.11	1015.11	1015.17	1015.16
	23	1015.19	1015.16	1015.12	1015.11	1015.10	1015.08	1015.09	1015.03	1015.01	1015.08	1015.06	1015.02	1015.08
14	0	1014.97	1014.94	1014.86	1014.88	1014.95	1014.94	1014.97	1014.94	1014.81	1014.75	1014.69	1014.64	1014.85
	1	1014.62	1014.58	1014.55	1014.51	1014.52	1014.53	1014.45	1014.42	1014.37	1014.27	1014.18	1014.08	1014.42
	2	1014.01	1014.01	1013.98	1013.92	1013.87	1013.87	1013.87	1013.82	1013.76	1013.75	1013.71	1013.68	1013.85
	3	1013.66	1013.61	1013.64	1013.68	1013.67	1013.67	1013.70	1013.74	1013.77	1013.80	1013.80	1013.83	1013.71
	4	1013.86	1013.88	1013.95	1014.05	1014.12	1014.12	1014.14	1014.19	1014.23	1014.25	1014.23	1014.25	1014.10
	5	1014.32	1014.37	1014.41	1014.42	1014.44	1014.45	1014.46	1014.48	1014.47	1014.43	1014.45	1014.51	1014.43
	6	1014.55	1014.60	1014.65	1014.68	1014.77	1014.87	1014.90	1014.86	1014.83	1014.85	1014.91	1014.95	1014.78
	7	1014.96	1014.95	1014.93	1014.90	1014.86	1014.84	1014.81	1014.74	1014.75	1014.84	1014.91	1014.95	1014.87
	8	1014.93	1014.92	1014.92	1014.91	1014.93	1014.94	1014.93	1014.97	1015.03	1015.03	1015.03	1015.01	1014.96
	9	1015.04	1015.05	1015.02	1015.03	1015.02	1014.99	1014.95	1014.93	1014.90	1014.89	1014.90	1014.90	1014.97
	10	1014.88	1014.87	1014.88	1014.86	1014.84	1014.82	1014.78	1014.74	1014.71	1014.70	1014.71	1014.69	1014.79
	11	1014.65	1014.66	1014.63	1014.56	1014.52	1014.48	1014.42	1014.37	1014.33	1014.33	1014.28	1014.24	1014.45
	12	1014.29	1014.33	1014.32	1014.26	1014.21	1014.18	1014.17	1014.17	1014.15	1014.14	1014.10	1014.05	1014.19
	13	1014.00	1013.94	1013.94	1013.92	1013.88	1013.87	1013.85	1013.85	1013.87	1013.85	1013.84	1013.88	1013.89
	14	1013.90	1013.88	1013.87	1013.84	1013.78	1013.75	1013.70	1013.64	1013.60	1013.59	1013.55	1013.52	1013.72
	15	1013.49	1013.44	1013.40	1013.34	1013.32	1013.31	1013.31	1013.30	1013.27	1013.28	1013.27	1013.27	1013.33
	16	1013.29	1013.35	1013.36	1013.39	1013.44	1013.41	1013.41	1013.43	1013.43	1013.43	1013.41	1013.34	1013.39
	17	1013.30	1013.28	1013.24	1013.20	1013.18	1013.18	1013.17	1013.20	1013.23	1013.24	1013.24	1013.24	1013.22
	18	1013.29	1013.35	1013.38	1013.42	1013.43	1013.41	1013.42	1013.47	1013.49	1013.47	1013.51	1013.60	1013.44
	19	1013.65	1013.67	1013.67	1013.67	1013.68	1013.74	1013.84	1013.86	1013.86	1013.89	1013.85	1013.80	1013.76
	20	1013.84	1013.91	1013.93	1013.93	1013.91	1013.88	1013.88	1013.89	1014.01	1014.14	1014.19	1014.22	1013.98
	21	1014.24	1014.32	1014.47	1014.60	1014.63	1014.62	1014.66	1014.70	1014.69	1014.67	1014.52	1014.38	1014.54
	22	1014.43	1014.47	1014.41	1014.44	1014.48	1014.46	1014.46	1014.51	1014.53	1014.50	1014.45	1014.42	1014.46
	23	1014.31	1014.18	1014.22	1014.23	1014.26	1014.30	1014.27	1014.23	1014.17	1014.20	1014.29	1014.36	1014.25

S.V.I.R.CO. Observatory - Pressure in hectoPascal – June 2017

day	hh	00_05	05_10	10_15	15_20	20_25	25_30	30_35	35_40	40_45	45_50	50_55	55_60	average
15	0	1014.37	1014.42	1014.45	1014.37	1014.31	1014.33	1014.31	1014.25	1014.14	1014.06	1014.04	1013.98	1014.24
	1	1013.98	1013.94	1013.81	1013.76	1013.80	1013.82	1013.80	1013.79	1013.78	1013.76	1013.75	1013.73	1013.81
	2	1013.74	1013.76	1013.75	1013.78	1013.81	1013.80	1013.80	1013.81	1013.84	1013.87	1013.90	1013.94	1013.81
	3	1013.95	1013.90	1013.86	1013.86	1013.88	1013.92	1013.94	1013.95	1013.96	1013.99	1014.07	1014.14	1013.95
	4	1014.16	1014.22	1014.28	1014.30	1014.33	1014.39	1014.43	1014.43	1014.40	1014.37	1014.37	1014.38	1014.34
	5	1014.40	1014.42	1014.42	1014.43	1014.46	1014.47	1014.51	1014.54	1014.50	1014.51	1014.55	1014.57	1014.48
	6	1014.60	1014.61	1014.65	1014.65	1014.59	1014.56	1014.57	1014.60	1014.62	1014.64	1014.64	1014.65	1014.61
	7	1014.69	1014.74	1014.74	1014.70	1014.65	1014.64	1014.67	1014.71	1014.71	1014.67	1014.65	1014.66	1014.68
	8	1014.68	1014.71	1014.71	1014.71	1014.72	1014.74	1014.73	1014.69	1014.66	1014.67	1014.65	1014.63	1014.69
	9	1014.61	1014.59	1014.56	1014.52	1014.51	1014.52	1014.55	1014.59	1014.62	1014.63	1014.64	1014.62	1014.58
	10	1014.59	1014.59	1014.57	1014.55	1014.54	1014.56	1014.54	1014.46	1014.40	1014.43	1014.49	1014.51	1014.52
	11	1014.53	1014.57	1014.56	1014.53	1014.53	1014.53	1014.49	1014.48	1014.49	1014.49	1014.46	1014.42	1014.50
	12	1014.40	1014.39	1014.38	1014.37	1014.38	1014.36	1014.42	1014.46	1014.45	1014.48	1014.48	1014.44	1014.41
	13	1014.42	1014.43	1014.40	1014.35	1014.35	1014.37	1014.34	1014.29	1014.26	1014.24	1014.22	1014.17	1014.32
	14	1014.09	1014.05	1014.04	1014.01	1013.99	1013.94	1013.91	1013.90	1013.86	1013.82	1013.80	1013.77	1013.93
	15	1013.76	1013.74	1013.70	1013.72	1013.73	1013.69	1013.67	1013.65	1013.65	1013.66	1013.66	1013.66	1013.69
	16	1013.66	1013.68	1013.70	1013.67	1013.66	1013.65	1013.60	1013.57	1013.54	1013.54	1013.55	1013.53	1013.61
	17	1013.52	1013.54	1013.54	1013.47	1013.39	1013.36	1013.37	1013.43	1013.56	1013.71	1013.82	1013.90	1013.55
	18	1013.92	1013.97	1014.03	1014.06	1014.07	1014.06	1014.07	1014.09	1014.10	1014.13	1014.15	1014.16	1014.07
	19	1014.12	1014.04	1014.04	1014.12	1014.21	1014.25	1014.34	1014.46	1014.54	1014.61	1014.64	1014.62	1014.33
	20	1014.62	1014.65	1014.70	1014.72	1014.73	1014.79	1014.81	1014.85	1014.92	1014.96	1014.94	1014.88	1014.79
	21	1014.82	1014.79	1014.79	1014.82	1014.82	1014.83	1014.85	1014.86	1014.86	1014.83	1014.82	1014.81	1014.82
	22	1014.82	1014.79	1014.75	1014.73	1014.71	1014.69	1014.70	1014.76	1014.77	1014.72	1014.71	1014.71	1014.74
	23	1014.69	1014.65	1014.57	1014.50	1014.49	1014.50	1014.48	1014.46	1014.46	1014.43	1014.41	1014.42	1014.50
16	0	1014.45	1014.51	1014.53	1014.51	1014.47	1014.44	1014.45	1014.42	1014.39	1014.35	1014.36	1014.43	1014.44
	1	1014.46	1014.48	1014.48	1014.50	1014.54	1014.54	1014.51	1014.47	1014.43	1014.42	1014.43	1014.45	1014.47
	2	1014.47	1014.46	1014.41	1014.38	1014.41	1014.44	1014.46	1014.48	1014.47	1014.47	1014.51	1014.44	1014.45
	3	1014.38	1014.42	1014.41	1014.37	1014.38	1014.37	1014.33	1014.31	1014.27	1014.19	1014.16	1014.20	1014.31
	4	1014.26	1014.33	1014.36	1014.37	1014.39	1014.42	1014.43	1014.41	1014.39	1014.37	1014.41	1014.45	1014.38
	5	1014.46	1014.45	1014.43	1014.45	1014.49	1014.51	1014.52	1014.53	1014.51	1014.46	1014.46	1014.55	1014.48
	6	1014.57	1014.56	1014.55	1014.51	1014.46	1014.45	1014.47	1014.53	1014.54	1014.48	1014.49	1014.54	1014.51
	7	1014.56	1014.55	1014.57	1014.58	1014.56	1014.53	1014.47	1014.41	1014.36	1014.32	1014.32	1014.32	1014.46
	8	1014.30	1014.29	1014.31	1014.34	1014.36	1014.36	1014.33	1014.28	1014.23	1014.22	1014.25	1014.26	1014.29
	9	1014.24	1014.23	1014.22	1014.20	1014.18	1014.15	1014.11	1014.07	1014.06	1014.07	1014.07	1014.04	1014.14
	10	1014.00	1013.94	1013.89	1013.84	1013.80	1013.74	1013.64	1013.52	1013.44	1013.40	1013.36	1013.28	1013.65
	11	1013.24	1013.21	1013.15	1013.08	1013.02	1012.97	1012.91	1012.83	1012.78	1012.74	1012.73	1012.76	1012.95
	12	1012.77	1012.74	1012.73	1012.77	1012.75	1012.74	1012.74	1012.72	1012.72	1012.72	1012.72	1012.75	1012.74
	13	1012.79	1012.79	1012.77	1012.75	1012.72	1012.68	1012.62	1012.60	1012.66	1012.70	1012.70	1012.68	1012.70
	14	1012.68	1012.66	1012.64	1012.67	1012.68	1012.65	1012.59	1012.55	1012.54	1012.52	1012.47	1012.39	1012.58
	15	1012.33	1012.27	1012.22	1012.16	1012.09	1012.05	1012.01	1011.93	1011.85	1011.82	1011.79	1011.73	1012.02
	16	1011.67	1011.63	1011.65	1011.70	1011.72	1011.76	1011.84	1011.87	1011.91	1011.95	1011.98	1011.99	1011.80
	17	1012.00	1012.00	1012.01	1012.06	1012.09	1012.11	1012.14	1012.20	1012.27	1012.28	1012.26	1012.24	1012.14
	18	1012.25	1012.28	1012.31	1012.39	1012.46	1012.50	1012.51	1012.48	1012.54	1012.78	1012.97	1012.98	1012.53
	19	1012.91	1012.87	1012.89	1012.85	1012.71	1012.71	1012.79	1012.86	1012.93	1012.93	1012.87	1012.85	1012.84
	20	1012.88	1012.91	1012.89	1012.82	1012.70	1012.66	1012.70	1012.72	1012.77	1012.82	1012.82	1012.82	1012.79
	21	1012.80	1012.76	1012.80	1012.92	1013.01	1013.08	1013.13	1013.15	1013.12	1013.05	1012.99	1012.99	1012.98
	22	1013.00	1013.04	1013.10	1013.15	1013.22	1013.34	1013.43	1013.46	1013.49	1013.48	1013.47	1013.37	1013.29
	23	1013.22	1013.15	1013.10	1013.03	1012.92	1012.88	1012.86	1012.84	1012.81	1012.76	1012.75	1012.75	1012.92

S.V.I.R.CO. Observatory - Pressure in hectoPascal – June 2017

day	hh	00_05	05_10	10_15	15_20	20_25	25_30	30_35	35_40	40_45	45_50	50_55	55_60	average
17	0	1012.74	1012.74	1012.75	1012.77	1012.76	1012.75	1012.74	1012.75	1012.76	1012.77	1012.82	1012.84	1012.76
	1	1012.86	1012.88	1012.85	1012.79	1012.72	1012.65	1012.60	1012.55	1012.53	1012.53	1012.51	1012.48	1012.66
	2	1012.45	1012.43	1012.40	1012.39	1012.36	1012.36	1012.39	1012.36	1012.36	1012.36	1012.36	1012.38	1012.38
	3	1012.40	1012.42	1012.44	1012.46	1012.45	1012.43	1012.39	1012.39	1012.40	1012.41	1012.39	1012.36	1012.41
	4	1012.31	1012.25	1012.19	1012.18	1012.17	1012.16	1012.15	1012.17	1012.18	1012.18	1012.18	1012.19	1012.19
	5	1012.19	1012.19	1012.17	1012.14	1012.13	1012.12	1012.12	1012.15	1012.17	1012.17	1012.16	1012.12	1012.15
	6	1012.11	1012.13	1012.10	1012.08	1012.10	1012.11	1012.09	1012.05	1012.00	1011.98	1011.95	1011.92	1012.05
	7	1011.88	1011.85	1011.84	1011.82	1011.77	1011.73	1011.71	1011.70	1011.68	1011.64	1011.63	1011.65	1011.74
	8	1011.64	1011.57	1011.49	1011.43	1011.40	1011.39	1011.39	1011.37	1011.36	1011.35	1011.30	1011.28	1011.41
	9	1011.26	1011.24	1011.24	1011.23	1011.22	1011.19	1011.14	1011.10	1011.09	1011.10	1011.11	1011.10	1011.17
	10	1011.07	1011.05	1011.01	1010.94	1010.87	1010.83	1010.83	1010.87	1010.87	1010.82	1010.79	1010.78	1010.89
	11	1010.75	1010.69	1010.66	1010.64	1010.63	1010.62	1010.61	1010.58	1010.52	1010.45	1010.43	1010.40	1010.58
	12	1010.31	1010.26	1010.23	1010.21	1010.21	1010.17	1010.12	1010.13	1010.16	1010.19	1010.21	1010.12	1010.19
	13	1010.06	1010.10	1010.12	1010.13	1010.14	1010.16	1010.08	1009.99	1009.93	1009.82	1009.77	1009.74	1010.00
	14	1009.73	1009.72	1009.66	1009.60	1009.61	1009.60	1009.61	1009.64	1009.64	1009.60	1009.51	1009.42	1009.61
	15	1009.38	1009.36	1009.35	1009.37	1009.41	1009.46	1009.50	1009.60	1009.63	1009.58	1009.62	1009.56	1009.48
	16	1009.51	1009.58	1009.63	1009.65	1009.62	1009.66	1009.69	1009.77	1009.85	1009.88	1009.97	1010.05	1009.74
	17	1010.10	1010.09	1010.06	1010.06	1010.02	1009.99	1009.96	1009.93	1009.98	1010.06	1010.10	1010.10	1010.03
	18	1010.14	1010.27	1010.38	1010.45	1010.58	1010.71	1010.79	1010.84	1010.90	1010.94	1010.99	1011.05	1010.67
	19	1011.10	1011.14	1011.16	1011.23	1011.33	1011.43	1011.50	1011.57	1011.63	1011.64	1011.67	1011.72	1011.42
	20	1011.75	1011.79	1011.86	1011.89	1011.92	1011.95	1011.95	1011.94	1011.95	1012.02	1012.06	1012.07	1011.93
	21	1012.10	1012.16	1012.24	1012.30	1012.38	1012.53	1012.65	1012.66	1012.63	1012.65	1012.67	1012.64	1012.46
	22	1012.60	1012.60	1012.60	1012.61	1012.66	1012.68	1012.67	1012.70	1012.72	1012.73	1012.73	1012.73	1012.67
	23	1012.73	1012.74	1012.78	1012.87	1012.90	1012.89	1012.87	1012.85	1012.86	1012.84	1012.85	1012.86	1012.83
18	0	1012.86	1012.89	1012.90	1012.86	1012.84	1012.81	1012.75	1012.72	1012.70	1012.70	1012.73	1012.74	1012.79
	1	1012.77	1012.80	1012.81	1012.85	1012.92	1012.94	1012.89	1012.83	1012.82	1012.77	1012.71	1012.73	1012.82
	2	1012.77	1012.80	1012.81	1012.83	1012.87	1012.94	1013.03	1013.10	1013.13	1013.11	1013.05	1013.04	1012.95
	3	1013.06	1013.05	1013.02	1013.02	1013.14	1013.29	1013.39	1013.46	1013.50	1013.62	1013.81	1013.88	1013.35
	4	1013.88	1013.92	1013.96	1014.00	1014.03	1014.02	1013.99	1014.00	1014.01	1014.03	1014.10	1014.14	1014.00
	5	1014.16	1014.21	1014.32	1014.44	1014.53	1014.60	1014.64	1014.71	1014.77	1014.79	1014.83	1014.86	1014.57
	6	1014.88	1014.90	1014.97	1015.01	1014.99	1015.00	1015.03	1015.02	1015.02	1015.05	1015.12	1015.17	1015.01
	7	1015.17	1015.18	1015.19	1015.23	1015.31	1015.34	1015.33	1015.32	1015.31	1015.30	1015.30	1015.31	1015.27
	8	1015.29	1015.30	1015.38	1015.36	1015.33	1015.37	1015.38	1015.43	1015.48	1015.47	1015.47	1015.47	1015.39
	9	1015.46	1015.48	1015.48	1015.47	1015.49	1015.46	1015.42	1015.36	1015.34	1015.37	1015.37	1015.38	1015.42
	10	1015.44	1015.40	1015.38	1015.37	1015.28	1015.28	1015.30	1015.34	1015.32	1015.27	1015.23	1015.22	1015.32
	11	1015.20	1015.18	1015.15	1015.13	1015.13	1015.07	1015.01	1014.97	1014.95	1014.95	1014.92	1014.87	1015.04
	12	1014.85	1014.83	1014.78	1014.73	1014.68	1014.63	1014.62	1014.74	1014.80	1014.74	1014.71	1014.73	1014.74
	13	1014.74	1014.76	1014.77	1014.77	1014.77	1014.77	1014.81	1014.82	1014.77	1014.73	1014.72	1014.74	1014.76
	14	1014.74	1014.76	1014.77	1014.82	1014.91	1014.91	1014.93	1014.97	1014.94	1014.88	1014.83	1014.85	1014.86
	15	1014.93	1014.89	1014.80	1014.77	1014.76	1014.76	1014.76	1014.72	1014.61	1014.57	1014.63	1014.70	1014.74
	16	1014.78	1014.81	1014.85	1014.93	1014.96	1014.95	1014.97	1015.04	1015.08	1015.06	1015.08	1015.14	1014.97
	17	1015.13	1015.12	1015.16	1015.16	1015.13	1015.15	1015.19	1015.20	1015.22	1015.27	1015.29	1015.28	1015.19
	18	1015.31	1015.31	1015.28	1015.29	1015.36	1015.43	1015.50	1015.55	1015.61	1015.68	1015.74	1015.83	1015.49
	19	1015.89	1015.90	1015.92	1015.98	1016.08	1016.15	1016.25	1016.39	1016.50	1016.60	1016.69	1016.79	1016.26
	20	1016.90	1017.01	1017.07	1017.10	1017.14	1017.17	1017.20	1017.23	1017.26	1017.31	1017.36	1017.38	1017.18
	21	1017.40	1017.46	1017.56	1017.66	1017.69	1017.70	1017.72	1017.75	1017.80	1017.82	1017.86	1017.90	1017.69
	22	1017.92	1017.94	1017.96	1018.01	1018.13	1018.25	1018.32	1018.36	1018.37	1018.38	1018.40	1018.43	1018.20
	23	1018.47	1018.46	1018.40	1018.39	1018.40	1018.40	1018.41	1018.40	1018.36	1018.35	1018.32	1018.28	1018.39

S.V.I.R.CO. Observatory - Pressure in hectoPascal – June 2017

day	hh	00_05	05_10	10_15	15_20	20_25	25_30	30_35	35_40	40_45	45_50	50_55	55_60	average
19	0	1018.27	1018.31	1018.32	1018.27	1018.22	1018.18	1018.12	1018.06	1018.04	1018.04	1018.07	1018.12	1018.16
	1	1018.14	1018.14	1018.17	1018.19	1018.20	1018.21	1018.18	1018.14	1018.13	1018.10	1018.07	1018.13	1018.15
	2	1018.16	1018.18	1018.25	1018.30	1018.28	1018.24	1018.22	1018.17	1018.10	1018.11	1018.16	1018.19	1018.19
	3	1018.25	1018.30	1018.30	1018.33	1018.37	1018.37	1018.35	1018.31	1018.30	1018.34	1018.38	1018.39	1018.33
	4	1018.34	1018.31	1018.32	1018.35	1018.36	1018.40	1018.45	1018.48	1018.51	1018.53	1018.55	1018.54	1018.43
	5	1018.54	1018.57	1018.62	1018.69	1018.76	1018.83	1018.88	1018.89	1018.90	1018.90	1018.91	1018.93	1018.78
	6	1018.94	1018.92	1018.91	1018.93	1018.95	1019.00	1019.05	1019.04	1019.02	1019.06	1019.10	1019.12	1019.00
	7	1019.14	1019.18	1019.20	1019.17	1019.14	1019.11	1019.09	1019.04	1018.99	1018.96	1018.94	1018.90	1019.07
	8	1018.87	1018.84	1018.84	1018.83	1018.82	1018.80	1018.79	1018.77	1018.75	1018.74	1018.73	1018.70	1018.79
	9	1018.68	1018.69	1018.73	1018.73	1018.72	1018.72	1018.71	1018.69	1018.65	1018.64	1018.64	1018.61	1018.68
	10	1018.60	1018.59	1018.54	1018.51	1018.49	1018.47	1018.46	1018.44	1018.40	1018.36	1018.33	1018.30	1018.46
	11	1018.27	1018.23	1018.18	1018.13	1018.03	1017.97	1017.93	1017.89	1017.84	1017.81	1017.81	1017.87	1017.99
	12	1017.90	1017.84	1017.80	1017.80	1017.82	1017.80	1017.81	1017.83	1017.85	1017.89	1017.88	1017.87	1017.84
	13	1017.83	1017.79	1017.79	1017.80	1017.80	1017.82	1017.83	1017.83	1017.85	1017.85	1017.83	1017.85	1017.82
	14	1017.89	1017.93	1017.96	1017.96	1017.92	1017.86	1017.86	1017.88	1017.88	1017.91	1017.93	1017.94	1017.91
	15	1017.95	1017.94	1017.93	1017.93	1017.93	1017.89	1017.84	1017.82	1017.78	1017.77	1017.84	1017.90	1017.87
	16	1017.90	1017.89	1017.89	1017.90	1017.92	1017.90	1017.89	1017.93	1018.00	1018.06	1018.07	1018.03	1017.95
	17	1018.01	1018.03	1018.04	1018.02	1018.02	1018.07	1018.11	1018.10	1018.10	1018.15	1018.24	1018.31	1018.10
	18	1018.34	1018.34	1018.34	1018.36	1018.40	1018.43	1018.43	1018.43	1018.42	1018.43	1018.43	1018.44	1018.40
	19	1018.50	1018.60	1018.69	1018.77	1018.84	1018.91	1018.95	1018.97	1019.03	1019.10	1019.13	1019.14	1018.88
	20	1019.16	1019.16	1019.16	1019.17	1019.18	1019.22	1019.27	1019.30	1019.33	1019.37	1019.43	1019.49	1019.27
	21	1019.51	1019.49	1019.47	1019.45	1019.43	1019.43	1019.44	1019.45	1019.45	1019.46	1019.49	1019.50	1019.46
	22	1019.47	1019.45	1019.45	1019.42	1019.40	1019.40	1019.35	1019.28	1019.25	1019.24	1019.21	1019.16	1019.34
	23	1019.13	1019.15	1019.16	1019.13	1019.13	1019.13	1019.09	1019.07	1019.04	1019.02	1019.04	1019.04	1019.09
20	0	1019.03	1019.03	1019.03	1019.02	1019.00	1018.99	1018.98	1018.97	1018.96	1018.97	1018.96	1018.97	1018.99
	1	1018.94	1018.85	1018.80	1018.76	1018.74	1018.73	1018.73	1018.72	1018.72	1018.72	1018.70	1018.69	1018.76
	2	1018.69	1018.70	1018.70	1018.71	1018.71	1018.71	1018.71	1018.70	1018.70	1018.72	1018.72	1018.70	1018.71
	3	1018.69	1018.71	1018.74	1018.76	1018.77	1018.79	1018.81	1018.83	1018.86	1018.86	1018.85	1018.86	1018.79
	4	1018.86	1018.87	1018.87	1018.85	1018.85	1018.85	1018.88	1018.92	1018.95	1018.98	1019.03	1019.08	1018.91
	5	1019.12	1019.18	1019.22	1019.20	1019.20	1019.23	1019.25	1019.26	1019.26	1019.29	1019.32	1019.32	1019.24
	6	1019.33	1019.33	1019.33	1019.36	1019.36	1019.35	1019.38	1019.44	1019.44	1019.42	1019.44	1019.44	1019.38
	7	1019.42	1019.43	1019.40	1019.38	1019.41	1019.41	1019.36	1019.33	1019.31	1019.26	1019.21	1019.16	1019.34
	8	1019.13	1019.11	1019.08	1019.04	1019.00	1018.96	1018.95	1018.95	1018.92	1018.90	1018.89	1018.88	1018.98
	9	1018.90	1018.92	1018.94	1018.94	1018.91	1018.87	1018.82	1018.80	1018.80	1018.78	1018.78	1018.79	1018.85
	10	1018.82	1018.87	1018.88	1018.86	1018.82	1018.76	1018.72	1018.65	1018.61	1018.55	1018.51	1018.50	1018.71
	11	1018.44	1018.41	1018.37	1018.31	1018.29	1018.26	1018.23	1018.21	1018.18	1018.17	1018.16	1018.12	1018.26
	12	1018.09	1018.06	1018.06	1018.05	1018.01	1018.01	1018.00	1017.98	1017.98	1017.97	1017.96	1017.93	1018.00
	13	1017.92	1017.98	1018.02	1018.01	1017.98	1017.92	1017.90	1017.88	1017.85	1017.80	1017.75	1017.73	1017.89
	14	1017.72	1017.71	1017.66	1017.58	1017.50	1017.46	1017.47	1017.47	1017.44	1017.43	1017.43	1017.45	1017.52
	15	1017.43	1017.38	1017.39	1017.36	1017.27	1017.23	1017.20	1017.18	1017.19	1017.17	1017.17	1017.16	1017.26
	16	1017.13	1017.11	1017.08	1017.07	1017.05	1017.02	1017.02	1017.04	1017.06	1017.08	1017.06	1017.03	1017.06
	17	1017.02	1016.99	1016.98	1017.00	1017.02	1017.03	1017.01	1017.00	1017.01	1017.00	1017.00	1017.01	1017.00
	18	1017.02	1017.05	1017.05	1017.04	1017.05	1017.08	1017.11	1017.10	1017.11	1017.15	1017.18	1017.22	1017.09
	19	1017.28	1017.32	1017.33	1017.34	1017.38	1017.42	1017.48	1017.55	1017.59	1017.63	1017.66	1017.65	1017.47
	20	1017.63	1017.62	1017.61	1017.59	1017.62	1017.66	1017.67	1017.67	1017.67	1017.62	1017.57	1017.55	1017.62
	21	1017.53	1017.50	1017.47	1017.46	1017.50	1017.52	1017.50	1017.46	1017.46	1017.48	1017.46	1017.47	1017.48
	22	1017.50	1017.48	1017.44	1017.38	1017.34	1017.30	1017.28	1017.28	1017.27	1017.25	1017.23	1017.23	1017.33
	23	1017.24	1017.23	1017.22	1017.22	1017.24	1017.24	1017.20	1017.20	1017.22	1017.22	1017.21	1017.18	1017.22

S.V.I.R.CO. Observatory - Pressure in hectoPascal – June 2017

day	hh	00_05	05_10	10_15	15_20	20_25	25_30	30_35	35_40	40_45	45_50	50_55	55_60	average
21	0	1017.18	1017.18	1017.17	1017.15	1017.16	1017.14	1017.09	1017.07	1017.07	1017.12	1017.17	1017.17	1017.14
	1	1017.15	1017.11	1017.06	1017.04	1017.00	1016.96	1016.92	1016.88	1016.86	1016.82	1016.74	1016.66	1016.93
	2	1016.59	1016.50	1016.46	1016.45	1016.45	1016.46	1016.47	1016.47	1016.40	1016.32	1016.30	1016.27	1016.43
	3	1016.24	1016.26	1016.28	1016.34	1016.42	1016.49	1016.49	1016.47	1016.49	1016.48	1016.43	1016.41	1016.40
	4	1016.42	1016.44	1016.43	1016.43	1016.43	1016.42	1016.42	1016.40	1016.40	1016.43	1016.47	1016.49	1016.43
	5	1016.50	1016.47	1016.43	1016.40	1016.42	1016.47	1016.49	1016.48	1016.48	1016.48	1016.48	1016.48	1016.46
	6	1016.49	1016.50	1016.50	1016.48	1016.44	1016.39	1016.34	1016.32	1016.31	1016.29	1016.27	1016.27	1016.38
	7	1016.26	1016.22	1016.21	1016.21	1016.22	1016.26	1016.29	1016.30	1016.32	1016.29	1016.24	1016.21	1016.25
	8	1016.19	1016.19	1016.18	1016.17	1016.19	1016.17	1016.12	1016.10	1016.09	1016.06	1016.05	1016.02	1016.12
	9	1015.99	1015.95	1015.95	1015.96	1015.98	1016.01	1016.02	1016.03	1016.02	1016.02	1016.03	1016.05	1016.00
	10	1016.08	1016.08	1016.06	1016.07	1016.10	1016.14	1016.16	1016.14	1016.15	1016.18	1016.15	1016.10	1016.11
	11	1016.04	1015.98	1015.96	1015.95	1015.93	1015.91	1015.89	1015.83	1015.81	1015.82	1015.77	1015.75	1015.88
	12	1015.71	1015.67	1015.65	1015.62	1015.61	1015.59	1015.60	1015.57	1015.54	1015.52	1015.49	1015.46	1015.58
	13	1015.40	1015.33	1015.30	1015.28	1015.30	1015.30	1015.30	1015.30	1015.24	1015.18	1015.15	1015.12	1015.26
	14	1015.05	1014.99	1014.98	1014.96	1014.95	1014.95	1014.92	1014.89	1014.88	1014.87	1014.83	1014.83	1014.92
	15	1014.85	1014.82	1014.79	1014.75	1014.74	1014.77	1014.83	1014.83	1014.83	1014.85	1014.82	1014.78	1014.80
	16	1014.75	1014.73	1014.70	1014.70	1014.74	1014.77	1014.81	1014.85	1014.88	1014.90	1014.92	1014.92	1014.80
	17	1014.96	1014.96	1014.92	1014.93	1014.95	1014.95	1014.98	1015.00	1014.98	1015.00	1015.06	1015.11	1014.98
	18	1015.17	1015.21	1015.20	1015.19	1015.20	1015.22	1015.23	1015.24	1015.25	1015.27	1015.31	1015.37	1015.24
	19	1015.42	1015.46	1015.51	1015.58	1015.67	1015.76	1015.87	1016.01	1016.11	1016.16	1016.20	1016.26	1015.83
	20	1016.32	1016.40	1016.49	1016.52	1016.51	1016.49	1016.50	1016.54	1016.55	1016.55	1016.55	1016.54	1016.50
	21	1016.53	1016.52	1016.53	1016.54	1016.59	1016.62	1016.60	1016.54	1016.48	1016.48	1016.50	1016.50	1016.53
	22	1016.52	1016.51	1016.51	1016.52	1016.55	1016.60	1016.64	1016.67	1016.67	1016.67	1016.65	1016.62	1016.59
	23	1016.57	1016.51	1016.48	1016.51	1016.54	1016.50	1016.46	1016.42	1016.41	1016.40	1016.36	1016.33	1016.45
22	0	1016.36	1016.37	1016.33	1016.27	1016.20	1016.12	1016.08	1016.15	1016.25	1016.30	1016.34	1016.38	1016.25
	1	1016.36	1016.26	1016.15	1016.08	1016.05	1016.04	1016.05	1016.08	1016.08	1016.08	1016.11	1016.16	1016.12
	2	1016.18	1016.16	1016.13	1016.13	1016.10	1016.04	1016.05	1016.07	1016.06	1016.06	1016.04	1016.01	1016.08
	3	1016.04	1016.11	1016.14	1016.14	1016.14	1016.17	1016.20	1016.24	1016.31	1016.39	1016.44	1016.46	1016.23
	4	1016.49	1016.54	1016.61	1016.65	1016.65	1016.68	1016.68	1016.66	1016.67	1016.66	1016.66	1016.66	1016.63
	5	1016.66	1016.69	1016.73	1016.76	1016.79	1016.86	1016.93	1016.89	1016.84	1016.83	1016.83	1016.86	1016.80
	6	1016.89	1016.91	1016.92	1016.90	1016.90	1016.93	1016.93	1016.94	1016.97	1017.01	1017.05	1017.06	1016.95
	7	1017.09	1017.11	1017.11	1017.10	1017.11	1017.12	1017.10	1017.09	1017.09	1017.08	1017.07	1017.07	1017.09
	8	1017.08	1017.09	1017.08	1017.06	1017.03	1017.00	1016.96	1016.93	1016.92	1016.91	1016.93	1016.92	1016.99
	9	1016.88	1016.85	1016.84	1016.81	1016.79	1016.77	1016.70	1016.62	1016.60	1016.59	1016.57	1016.57	1016.71
	10	1016.60	1016.59	1016.55	1016.54	1016.55	1016.56	1016.57	1016.60	1016.64	1016.64	1016.63	1016.61	1016.59
	11	1016.59	1016.60	1016.61	1016.60	1016.58	1016.59	1016.56	1016.53	1016.53	1016.55	1016.57	1016.54	1016.57
	12	1016.50	1016.47	1016.41	1016.34	1016.31	1016.30	1016.28	1016.25	1016.24	1016.22	1016.20	1016.19	1016.31
	13	1016.16	1016.13	1016.10	1016.08	1016.07	1016.07	1016.11	1016.15	1016.15	1016.13	1016.15	1016.21	1016.12
	14	1016.25	1016.28	1016.29	1016.30	1016.27	1016.21	1016.17	1016.11	1016.12	1016.16	1016.17	1016.17	1016.21
	15	1016.23	1016.27	1016.26	1016.26	1016.25	1016.28	1016.32	1016.29	1016.27	1016.26	1016.29	1016.32	1016.27
	16	1016.36	1016.39	1016.39	1016.43	1016.48	1016.49	1016.52	1016.55	1016.55	1016.54	1016.50	1016.47	1016.47
	17	1016.45	1016.50	1016.62	1016.71	1016.73	1016.68	1016.63	1016.65	1016.68	1016.69	1016.64	1016.55	1016.62
	18	1016.53	1016.57	1016.63	1016.73	1016.78	1016.83	1016.91	1016.99	1017.06	1017.11	1017.13	1017.17	1016.87
	19	1017.20	1017.20	1017.19	1017.22	1017.26	1017.29	1017.30	1017.35	1017.43	1017.49	1017.54	1017.59	1017.34
	20	1017.64	1017.71	1017.75	1017.73	1017.73	1017.78	1017.82	1017.80	1017.74	1017.69	1017.67	1017.69	1017.73
	21	1017.75	1017.81	1017.84	1017.82	1017.80	1017.80	1017.83	1017.82	1017.78	1017.76	1017.75	1017.74	1017.79
	22	1017.74	1017.76	1017.83	1017.91	1017.94	1017.91	1017.95	1018.07	1018.15	1018.16	1018.15	1018.14	1017.97
	23	1018.12	1018.07	1018.06	1018.08	1018.03	1017.97	1017.90	1017.84	1017.86	1017.83	1017.78	1017.82	1017.94

S.V.I.R.CO. Observatory - Pressure in hectoPascal – June 2017

day	hh	00_05	05_10	10_15	15_20	20_25	25_30	30_35	35_40	40_45	45_50	50_55	55_60	average
23	0	1017.84	1017.82	1017.79	1017.80	1017.79	1017.76	1017.77	1017.78	1017.75	1017.71	1017.68	1017.67	1017.76
	1	1017.68	1017.68	1017.65	1017.61	1017.60	1017.65	1017.65	1017.61	1017.59	1017.57	1017.50	1017.45	1017.60
	2	1017.45	1017.41	1017.39	1017.37	1017.35	1017.36	1017.33	1017.29	1017.27	1017.27	1017.29	1017.29	1017.34
	3	1017.31	1017.33	1017.35	1017.35	1017.34	1017.30	1017.31	1017.36	1017.40	1017.42	1017.41	1017.39	1017.35
	4	1017.39	1017.43	1017.50	1017.58	1017.63	1017.64	1017.65	1017.72	1017.76	1017.76	1017.74	1017.76	1017.63
	5	1017.85	1017.91	1017.92	1017.93	1017.96	1018.00	1018.00	1018.00	1018.01	1018.02	1018.02	1018.01	1017.97
	6	1017.98	1017.95	1017.95	1017.97	1017.98	1018.02	1018.08	1018.12	1018.13	1018.10	1018.07	1018.11	1018.04
	7	1018.21	1018.27	1018.31	1018.34	1018.39	1018.44	1018.44	1018.44	1018.46	1018.49	1018.52	1018.53	1018.40
	8	1018.51	1018.49	1018.49	1018.46	1018.45	1018.45	1018.46	1018.52	1018.57	1018.60	1018.60	1018.60	1018.51
	9	1018.66	1018.72	1018.71	1018.69	1018.67	1018.65	1018.68	1018.72	1018.70	1018.68	1018.70	1018.71	1018.69
	10	1018.71	1018.68	1018.67	1018.64	1018.57	1018.53	1018.45	1018.38	1018.39	1018.36	1018.26	1018.21	1018.48
	11	1018.20	1018.16	1018.07	1018.01	1018.00	1017.98	1017.94	1017.91	1017.89	1017.88	1017.87	1017.83	1017.98
	12	1017.79	1017.74	1017.65	1017.58	1017.50	1017.43	1017.42	1017.38	1017.31	1017.23	1017.20	1017.19	1017.45
	13	1017.16	1017.13	1017.15	1017.15	1017.10	1017.09	1017.07	1017.07	1017.06	1017.01	1017.00	1017.01	1017.08
	14	1017.01	1017.00	1017.00	1016.97	1016.91	1016.85	1016.80	1016.73	1016.70	1016.70	1016.69	1016.65	1016.83
	15	1016.59	1016.58	1016.58	1016.53	1016.48	1016.47	1016.43	1016.35	1016.28	1016.25	1016.24	1016.25	1016.42
	16	1016.25	1016.28	1016.36	1016.45	1016.53	1016.58	1016.63	1016.67	1016.67	1016.65	1016.61	1016.62	1016.52
	17	1016.61	1016.56	1016.56	1016.52	1016.46	1016.45	1016.48	1016.51	1016.52	1016.50	1016.52	1016.59	1016.52
	18	1016.67	1016.70	1016.69	1016.68	1016.67	1016.69	1016.75	1016.81	1016.82	1016.82	1016.86	1016.92	1016.76
	19	1017.00	1017.05	1017.07	1017.10	1017.15	1017.22	1017.27	1017.33	1017.37	1017.40	1017.45	1017.49	1017.24
	20	1017.57	1017.65	1017.63	1017.61	1017.64	1017.68	1017.71	1017.69	1017.64	1017.61	1017.59	1017.56	1017.63
	21	1017.59	1017.62	1017.59	1017.59	1017.58	1017.57	1017.57	1017.57	1017.59	1017.57	1017.53	1017.54	1017.57
	22	1017.58	1017.59	1017.54	1017.51	1017.49	1017.45	1017.36	1017.29	1017.23	1017.14	1017.11	1017.12	1017.37
	23	1017.14	1017.14	1017.11	1017.07	1017.03	1016.98	1016.95	1016.89	1016.80	1016.75	1016.71	1016.65	1016.93
24	0	1016.61	1016.62	1016.65	1016.63	1016.58	1016.50	1016.42	1016.42	1016.44	1016.41	1016.38	1016.44	1016.50
	1	1016.48	1016.43	1016.42	1016.42	1016.39	1016.42	1016.49	1016.50	1016.53	1016.53	1016.53	1016.58	1016.48
	2	1016.61	1016.65	1016.71	1016.73	1016.70	1016.74	1016.82	1016.86	1016.87	1016.87	1016.87	1016.86	1016.77
	3	1016.86	1016.86	1016.85	1016.86	1016.85	1016.83	1016.85	1016.89	1016.90	1016.86	1016.83	1016.88	1016.86
	4	1016.91	1016.89	1016.88	1016.88	1016.88	1016.88	1016.88	1016.88	1016.90	1016.92	1016.94	1016.91	1016.89
	5	1016.89	1016.93	1016.96	1016.96	1016.96	1016.96	1016.95	1016.97	1017.01	1017.03	1016.99	1016.96	1016.96
	6	1016.95	1016.96	1016.97	1016.97	1016.98	1017.00	1017.05	1017.09	1017.07	1017.04	1017.05	1017.05	1017.01
	7	1017.02	1016.99	1016.96	1016.93	1016.90	1016.90	1016.86	1016.80	1016.76	1016.74	1016.72	1016.71	1016.85
	8	1016.70	1016.64	1016.61	1016.63	1016.62	1016.58	1016.55	1016.56	1016.56	1016.52	1016.46	1016.41	1016.57
	9	1016.39	1016.38	1016.38	1016.38	1016.36	1016.34	1016.32	1016.32	1016.31	1016.26	1016.21	1016.18	1016.32
	10	1016.14	1016.10	1016.05	1016.04	1016.05	1016.05	1016.07	1016.08	1016.03	1016.00	1015.96	1015.90	1016.04
	11	1015.87	1015.86	1015.82	1015.79	1015.78	1015.76	1015.73	1015.71	1015.69	1015.65	1015.61	1015.56	1015.73
	12	1015.51	1015.50	1015.46	1015.40	1015.38	1015.37	1015.34	1015.34	1015.34	1015.36	1015.36	1015.34	1015.39
	13	1015.35	1015.33	1015.31	1015.28	1015.26	1015.23	1015.19	1015.19	1015.18	1015.15	1015.14	1015.15	1015.23
	14	1015.14	1015.13	1015.14	1015.16	1015.19	1015.20	1015.21	1015.20	1015.21	1015.22	1015.18	1015.11	1015.17
	15	1015.04	1015.00	1014.99	1015.03	1015.06	1015.06	1015.02	1014.97	1014.93	1014.90	1014.92	1014.98	1014.99
	16	1014.96	1014.96	1015.01	1015.04	1015.02	1014.98	1014.96	1014.97	1015.00	1014.99	1014.95	1014.89	1014.98
	17	1014.85	1014.82	1014.83	1014.85	1014.88	1014.89	1014.87	1014.86	1014.85	1014.84	1014.88	1014.94	1014.86
	18	1014.95	1014.99	1015.05	1015.09	1015.12	1015.15	1015.18	1015.20	1015.17	1015.13	1015.14	1015.19	1015.11
	19	1015.23	1015.28	1015.34	1015.39	1015.42	1015.46	1015.48	1015.49	1015.54	1015.63	1015.72	1015.74	1015.48
	20	1015.73	1015.78	1015.83	1015.84	1015.83	1015.85	1015.86	1015.85	1015.86	1015.87	1015.84	1015.80	1015.83
	21	1015.80	1015.80	1015.79	1015.79	1015.79	1015.77	1015.74	1015.73	1015.77	1015.83	1015.83	1015.85	1015.79
	22	1015.94	1015.97	1015.97	1016.00	1016.00	1016.00	1015.95	1015.90	1015.85	1015.78	1015.76	1015.74	1015.90
	23	1015.71	1015.71	1015.67	1015.61	1015.57	1015.57	1015.55	1015.51	1015.49	1015.47	1015.47	1015.44	1015.56

S.V.I.R.CO. Observatory - Pressure in hectoPascal – June 2017

day	hh	00_05	05_10	10_15	15_20	20_25	25_30	30_35	35_40	40_45	45_50	50_55	55_60	average
25	0	1015.32	1015.31	1015.30	1015.31	1015.30	1015.29	1015.30	1015.27	1015.20	1015.17	1015.16	1015.12	1015.25
	1	1015.08	1015.06	1015.05	1015.07	1015.06	1015.04	1015.04	1015.01	1014.96	1014.93	1014.94	1014.93	1015.01
	2	1014.90	1014.84	1014.78	1014.75	1014.75	1014.73	1014.72	1014.74	1014.76	1014.81	1014.86	1014.87	1014.79
	3	1014.86	1014.82	1014.82	1014.85	1014.83	1014.78	1014.73	1014.72	1014.73	1014.70	1014.66	1014.64	1014.76
	4	1014.66	1014.69	1014.67	1014.63	1014.63	1014.62	1014.57	1014.55	1014.58	1014.58	1014.59	1014.62	1014.61
	5	1014.62	1014.62	1014.60	1014.57	1014.54	1014.50	1014.46	1014.45	1014.42	1014.37	1014.37	1014.38	1014.49
	6	1014.36	1014.35	1014.33	1014.27	1014.21	1014.17	1014.17	1014.20	1014.22	1014.22	1014.21	1014.22	1014.24
	7	1014.19	1014.11	1014.10	1014.08	1014.00	1014.02	1014.10	1014.12	1014.13	1014.13	1014.15	1014.16	1014.10
	8	1014.13	1014.09	1014.05	1014.05	1014.06	1014.04	1014.07	1014.14	1014.15	1014.14	1014.15	1014.17	1014.10
	9	1014.22	1014.27	1014.27	1014.29	1014.33	1014.32	1014.33	1014.32	1014.29	1014.23	1014.18	1014.19	1014.27
	10	1014.15	1014.13	1014.22	1014.21	1014.11	1014.08	1014.09	1014.01	1013.88	1013.83	1013.80	1013.77	1014.02
	11	1013.76	1013.72	1013.73	1013.76	1013.72	1013.69	1013.71	1013.74	1013.74	1013.74	1013.69	1013.61	1013.72
	12	1013.60	1013.62	1013.62	1013.62	1013.60	1013.57	1013.54	1013.50	1013.47	1013.41	1013.42	1013.47	1013.53
	13	1013.48	1013.45	1013.40	1013.35	1013.32	1013.29	1013.26	1013.25	1013.17	1013.03	1012.95	1012.90	1013.23
	14	1012.84	1012.82	1012.80	1012.76	1012.69	1012.71	1012.71	1012.62	1012.60	1012.64	1012.65	1012.62	1012.70
	15	1012.57	1012.57	1012.52	1012.45	1012.44	1012.43	1012.39	1012.35	1012.24	1012.17	1012.15	1012.15	1012.37
	16	1012.18	1012.17	1012.11	1012.11	1012.11	1012.10	1012.13	1012.23	1012.31	1012.32	1012.33	1012.31	1012.20
	17	1012.25	1012.18	1012.21	1012.24	1012.21	1012.23	1012.29	1012.33	1012.36	1012.33	1012.34	1012.39	1012.28
	18	1012.40	1012.40	1012.40	1012.38	1012.35	1012.29	1012.28	1012.34	1012.36	1012.37	1012.38	1012.38	1012.36
	19	1012.38	1012.39	1012.45	1012.55	1012.65	1012.72	1012.73	1012.74	1012.79	1012.86	1012.96	1013.01	1012.68
	20	1013.01	1012.97	1012.96	1013.02	1013.06	1013.04	1013.00	1012.93	1012.86	1012.83	1012.84	1012.84	1012.94
	21	1012.83	1012.85	1012.91	1012.96	1012.99	1012.97	1012.94	1012.89	1012.81	1012.76	1012.76	1012.77	1012.87
	22	1012.75	1012.72	1012.74	1012.79	1012.80	1012.79	1012.79	1012.77	1012.76	1012.79	1012.82	1012.83	1012.78
	23	1012.84	1012.86	1012.85	1012.81	1012.76	1012.74	1012.72	1012.70	1012.72	1012.73	1012.74	1012.75	1012.76
26	0	1012.65	1012.62	1012.60	1012.58	1012.56	1012.57	1012.57	1012.57	1012.54	1012.51	1012.48	1012.48	1012.55
	1	1012.51	1012.50	1012.48	1012.49	1012.50	1012.51	1012.52	1012.49	1012.45	1012.44	1012.42	1012.40	1012.47
	2	1012.37	1012.36	1012.32	1012.28	1012.27	1012.25	1012.19	1012.13	1012.12	1012.12	1012.09	1012.08	1012.21
	3	1012.04	1012.04	1012.04	1011.98	1011.93	1011.92	1011.94	1011.91	1011.88	1011.88	1011.88	1011.89	1011.94
	4	1011.90	1011.90	1011.88	1011.92	1012.03	1012.09	1012.09	1012.07	1012.05	1012.08	1012.09	1012.06	1012.01
	5	1012.07	1012.12	1012.16	1012.19	1012.23	1012.25	1012.24	1012.24	1012.26	1012.27	1012.29	1012.30	1012.22
	6	1012.29	1012.28	1012.29	1012.30	1012.29	1012.27	1012.27	1012.30	1012.33	1012.32	1012.30	1012.31	1012.29
	7	1012.31	1012.26	1012.22	1012.21	1012.18	1012.17	1012.16	1012.13	1012.10	1012.06	1012.08	1012.09	1012.16
	8	1012.06	1012.05	1012.04	1012.04	1012.05	1012.05	1012.04	1012.02	1011.98	1011.95	1011.95	1011.96	1012.01
	9	1011.99	1012.01	1012.02	1012.04	1012.05	1012.04	1012.04	1012.06	1012.06	1012.05	1012.05	1012.06	1012.04
	10	1012.08	1012.07	1012.03	1012.03	1012.04	1012.04	1012.07	1012.07	1012.04	1012.04	1012.02	1011.98	1012.04
	11	1011.95	1011.93	1011.92	1011.91	1011.92	1011.89	1011.85	1011.82	1011.80	1011.75	1011.71	1011.67	1011.84
	12	1011.63	1011.60	1011.54	1011.50	1011.47	1011.44	1011.44	1011.44	1011.42	1011.37	1011.33	1011.32	1011.46
	13	1011.29	1011.27	1011.26	1011.22	1011.19	1011.16	1011.14	1011.15	1011.15	1011.16	1011.15	1011.11	1011.19
	14	1011.08	1011.07	1011.08	1011.06	1011.03	1011.00	1010.95	1010.91	1010.86	1010.83	1010.83	1010.82	1010.96
	15	1010.77	1010.70	1010.68	1010.70	1010.67	1010.64	1010.66	1010.69	1010.70	1010.72	1010.70	1010.65	1010.69
	16	1010.64	1010.66	1010.63	1010.64	1010.70	1010.78	1010.87	1010.90	1010.88	1010.89	1010.91	1010.89	1010.78
	17	1010.88	1010.93	1010.98	1010.97	1010.92	1010.88	1010.84	1010.80	1010.82	1010.87	1010.89	1010.83	1010.88
	18	1010.77	1010.80	1010.78	1010.68	1010.64	1010.64	1010.60	1010.54	1010.53	1010.52	1010.54	1010.72	1010.65
	19	1010.85	1010.86	1010.82	1010.84	1010.94	1010.98	1010.99	1011.00	1011.05	1011.19	1011.28	1011.32	1011.01
	20	1011.40	1011.50	1011.59	1011.70	1011.78	1011.74	1011.67	1011.65	1011.71	1011.72	1011.66	1011.56	1011.64
	21	1011.46	1011.41	1011.43	1011.47	1011.56	1011.63	1011.56	1011.46	1011.45	1011.44	1011.36	1011.30	1011.46
	22	1011.26	1011.21	1011.16	1011.12	1011.18	1011.25	1011.22	1011.20	1011.22	1011.10	1010.93	1010.92	1011.15
	23	1010.95	1010.94	1010.98	1011.29	1011.73	1011.73	1011.38	1011.23	1011.24	1011.15	1011.40	1011.75	1011.31

S.V.I.R.CO. Observatory - Pressure in hectoPascal – June 2017

day	hh	00_05	05_10	10_15	15_20	20_25	25_30	30_35	35_40	40_45	45_50	50_55	55_60	average
27	0	1011.63	1011.50	1011.12	1010.71	1010.44	1010.16	1009.91	1009.62	1009.37	1009.27	1009.26	1009.24	1010.12
	1	1009.18	1009.18	1009.21	1009.21	1009.21	1009.12	1009.05	1009.09	1009.13	1009.13	1009.18	1009.28	1009.16
	2	1009.40	1009.45	1009.32	1009.15	1009.04	1008.97	1008.99	1008.87	1008.57	1008.34	1008.30	1008.45	1008.90
	3	1008.64	1008.84	1009.04	1009.11	1009.12	1009.24	1009.30	1009.19	1009.19	1009.26	1009.27	1009.27	1009.12
	4	1009.19	1009.09	1009.10	1009.17	1009.26	1009.28	1009.26	1009.34	1009.41	1009.41	1009.38	1009.33	1009.26
	5	1009.28	1009.27	1009.30	1009.34	1009.34	1009.39	1009.44	1009.41	1009.37	1009.35	1009.35	1009.31	1009.34
	6	1009.26	1009.18	1009.11	1009.11	1009.09	1009.06	1009.00	1008.92	1008.87	1008.78	1008.64	1008.53	1008.96
	7	1008.47	1008.42	1008.40	1008.39	1008.35	1008.30	1008.25	1008.20	1008.20	1008.18	1008.19	1008.19	1008.29
	8	1008.20	1008.20	1008.14	1008.09	1008.05	1007.95	1007.87	1007.83	1007.74	1007.62	1007.57	1007.56	1007.90
	9	1007.52	1007.48	1007.46	1007.45	1007.41	1007.39	1007.40	1007.41	1007.39	1007.38	1007.43	1007.43	1007.43
	10	1007.41	1007.41	1007.44	1007.48	1007.47	1007.49	1007.55	1007.49	1007.47	1007.55	1007.73	1007.95	1007.53
	11	1008.02	1007.95	1007.85	1007.83	1007.79	1007.76	1007.73	1007.71	1007.75	1007.73	1007.70	1007.70	1007.79
	12	1007.67	1007.65	1007.57	1007.54	1007.61	1007.60	1007.55	1007.51	1007.57	1007.59	1007.51	1007.48	1007.57
	13	1007.49	1007.53	1007.52	1007.50	1007.44	1007.43	1007.44	1007.41	1007.45	1007.49	1007.50	1007.44	1007.47
	14	1007.35	1007.31	1007.28	1007.29	1007.33	1007.33	1007.31	1007.28	1007.23	1007.21	1007.14	1007.05	1007.26
	15	1007.01	1007.00	1007.01	1006.97	1006.98	1007.01	1007.00	1006.96	1006.93	1006.94	1006.93	1006.89	1006.97
	16	1006.83	1006.81	1006.83	1006.83	1006.79	1006.82	1006.89	1006.92	1006.90	1006.89	1006.91	1006.96	1006.86
	17	1007.00	1007.02	1007.10	1007.19	1007.28	1007.37	1007.44	1007.46	1007.46	1007.48	1007.51	1007.50	1007.31
	18	1007.47	1007.44	1007.44	1007.46	1007.48	1007.50	1007.47	1007.47	1007.53	1007.57	1007.62	1007.68	1007.51
	19	1007.71	1007.76	1007.79	1007.80	1007.83	1007.86	1007.88	1007.92	1007.99	1008.06	1008.11	1008.11	1007.90
	20	1008.10	1008.12	1008.17	1008.18	1008.15	1008.16	1008.19	1008.16	1008.16	1008.25	1008.35	1008.26	1008.18
	21	1008.06	1008.06	1008.13	1008.10	1008.11	1008.22	1008.28	1008.27	1008.23	1008.10	1007.83	1007.80	1008.10
	22	1007.87	1007.74	1007.82	1007.98	1007.99	1007.93	1007.90	1007.95	1007.91	1007.81	1007.66	1007.70	1007.85
	23	1007.86	1007.84	1007.87	1007.92	1007.86	1007.79	1007.80	1007.86	1007.85	1007.84	1007.90	1007.91	1007.86
28	0	1007.99	1007.96	1007.87	1007.79	1007.76	1007.77	1007.76	1007.81	1007.94	1007.94	1007.63	1007.45	1007.80
	1	1007.63	1007.76	1007.78	1007.83	1007.89	1007.99	1008.10	1008.03	1007.97	1007.99	1007.94	1007.90	1007.90
	2	1007.96	1007.95	1007.88	1007.83	1007.73	1007.58	1007.35	1007.21	1007.11	1006.98	1006.93	1006.90	1007.45
	3	1006.90	1006.94	1006.99	1007.08	1007.14	1007.19	1007.20	1007.11	1006.98	1006.87	1006.80	1006.77	1007.00
	4	1006.77	1006.78	1006.72	1006.65	1006.65	1006.58	1006.60	1006.72	1006.76	1006.80	1006.87	1006.87	1006.73
	5	1006.91	1007.00	1007.02	1006.92	1006.91	1006.92	1006.80	1006.78	1006.91	1006.94	1007.00	1007.14	1006.93
	6	1007.19	1007.22	1007.31	1007.43	1007.55	1007.77	1007.97	1008.02	1008.04	1008.07	1008.20	1008.42	1007.76
	7	1008.36	1008.23	1008.15	1007.85	1007.38	1006.93	1006.17	1005.40	1005.31	1005.58	1005.81	1005.94	1006.76
	8	1005.99	1005.92	1005.90	1005.89	1005.87	1005.73	1005.40	1005.25	1005.46	1005.52	1005.27	1004.86	1005.58
	9	1004.69	1004.95	1005.69	1006.71	1007.07	1006.55	1006.11	1006.01	1006.21	1006.61	1006.60	1006.50	1006.14
	10	1006.38	1006.27	1006.37	1006.47	1006.51	1006.67	1006.65	1006.37	1006.07	1005.94	1005.92	1005.90	1006.29
	11	1007.07	1007.47	1006.69	1006.62	1006.60	1006.36	1006.01	1005.87	1005.81	1005.69	1005.47	1005.21	1006.24
	12	1005.02	1004.88	1004.80	1004.83	1004.85	1004.82	1004.75	1004.69	1004.65	1004.68	1004.70	1004.68	1004.78
	13	1004.71	1004.66	1004.65	1004.83	1005.02	1005.14	1005.16	1005.08	1005.08	1005.09	1004.85	1004.44	1004.89
	14	1004.18	1004.06	1003.96	1003.91	1003.82	1003.75	1003.72	1003.69	1003.60	1003.43	1003.24	1003.06	1003.70
	15	1002.92	1002.76	1002.63	1002.48	1002.31	1002.16	1002.01	1001.87	1001.75	1001.79	1001.88	1001.83	1002.20
	16	1001.86	1001.80	1001.56	1001.47	1001.44	1001.43	1001.47	1001.44	1001.49	1001.75	1002.02	1002.15	1001.65
	17	1002.16	1002.12	1002.07	1002.05	1002.10	1002.09	1002.07	1002.15	1002.25	1002.30	1002.29	1002.32	1002.16
	18	1002.35	1002.32	1002.36	1002.44	1002.48	1002.53	1002.58	1002.63	1002.67	1002.63	1002.62	1002.73	1002.53
	19	1002.77	1002.67	1002.64	1002.65	1002.66	1002.72	1002.75	1002.75	1002.84	1002.93	1002.92	1002.92	1002.77
	20	1002.99	1003.11	1003.19	1003.20	1003.20	1003.26	1003.32	1003.34	1003.35	1003.34	1003.39	1003.44	1003.26
	21	1003.44	1003.44	1003.41	1003.38	1003.41	1003.46	1003.49	1003.50	1003.52	1003.53	1003.49	1003.47	1003.46
	22	1003.47	1003.54	1003.63	1003.66	1003.74	1003.81	1003.85	1003.86	1003.91	1004.02	1004.09	1004.14	1003.81
	23	1004.16	1004.11	1004.06	1004.03	1003.97	1003.87	1003.88	1003.98	1004.00	1003.97	1003.93	1003.90	1003.99

S.V.I.R.CO. Observatory - Pressure in hectoPascal – June 2017

day	hh	00_05	05_10	10_15	15_20	20_25	25_30	30_35	35_40	40_45	45_50	50_55	55_60	average
29	0	1003.89	1003.90	1003.85	1003.80	1003.75	1003.62	1003.46	1003.41	1003.45	1003.47	1003.48	1003.45	1003.61
	1	1003.43	1003.47	1003.53	1003.56	1003.61	1003.69	1003.71	1003.69	1003.67	1003.63	1003.64	1003.72	1003.61
	2	1003.75	1003.82	1003.86	1003.83	1003.84	1003.93	1004.01	1004.03	1004.04	1004.03	1004.07	1004.14	1003.94
	3	1004.24	1004.38	1004.52	1004.62	1004.63	1004.63	1004.66	1004.68	1004.64	1004.63	1004.70	1004.73	1004.59
	4	1004.72	1004.75	1004.79	1004.84	1004.90	1004.96	1005.08	1005.13	1005.10	1005.12	1005.18	1005.30	1004.99
	5	1005.45	1005.54	1005.56	1005.57	1005.56	1005.62	1005.73	1005.81	1005.84	1005.88	1006.00	1006.09	1005.72
	6	1006.16	1006.26	1006.32	1006.36	1006.42	1006.50	1006.53	1006.55	1006.61	1006.67	1006.67	1006.65	1006.47
	7	1006.67	1006.64	1006.61	1006.61	1006.65	1006.71	1006.77	1006.86	1006.89	1006.92	1006.98	1006.97	1006.77
	8	1007.00	1007.09	1007.19	1007.28	1007.32	1007.35	1007.42	1007.50	1007.53	1007.51	1007.55	1007.59	1007.36
	9	1007.60	1007.62	1007.68	1007.76	1007.77	1007.76	1007.80	1007.86	1007.94	1007.99	1008.00	1008.05	1007.82
	10	1008.10	1008.12	1008.07	1008.02	1008.02	1007.97	1007.93	1007.95	1007.92	1007.88	1007.92	1008.00	1007.99
	11	1008.06	1008.11	1008.15	1008.18	1008.23	1008.25	1008.23	1008.26	1008.32	1008.26	1008.23	1008.26	1008.21
	12	1008.30	1008.30	1008.31	1008.35	1008.39	1008.41	1008.39	1008.40	1008.38	1008.35	1008.35	1008.33	1008.35
	13	1008.34	1008.30	1008.24	1008.24	1008.24	1008.22	1008.18	1008.20	1008.24	1008.21	1008.17	1008.17	1008.23
	14	1008.22	1008.22	1008.14	1008.10	1008.11	1008.19	1008.25	1008.22	1008.17	1008.16	1008.16	1008.14	1008.17
	15	1008.15	1008.20	1008.19	1008.16	1008.13	1008.07	1008.03	1008.02	1008.02	1008.00	1007.97	1007.98	1008.07
	16	1008.01	1008.04	1008.06	1008.05	1008.02	1008.04	1008.03	1007.99	1007.96	1007.95	1007.98	1008.01	1008.01
	17	1008.00	1007.99	1007.98	1007.98	1007.96	1007.95	1007.97	1007.99	1008.02	1008.05	1008.08	1008.10	1008.00
	18	1008.16	1008.22	1008.25	1008.27	1008.28	1008.32	1008.37	1008.39	1008.42	1008.46	1008.47	1008.49	1008.34
	19	1008.50	1008.50	1008.50	1008.49	1008.50	1008.51	1008.53	1008.51	1008.51	1008.61	1008.78	1008.96	1008.57
	20	1009.06	1009.09	1009.10	1009.13	1009.16	1009.19	1009.18	1009.12	1009.11	1009.10	1009.08	1009.08	1009.11
	21	1009.09	1009.07	1009.02	1009.00	1009.01	1009.01	1008.98	1008.98	1009.04	1009.11	1009.12	1009.11	1009.04
	22	1009.08	1009.08	1009.12	1009.14	1009.19	1009.21	1009.16	1009.16	1009.18	1009.20	1009.25	1009.33	1009.17
	23	1009.42	1009.49	1009.53	1009.54	1009.56	1009.60	1009.58	1009.54	1009.54	1009.57	1009.60	1009.59	1009.54
30	0	1009.51	1009.51	1009.52	1009.51	1009.47	1009.47	1009.45	1009.42	1009.42	1009.38	1009.33	1009.30	1009.44
	1	1009.35	1009.35	1009.32	1009.37	1009.33	1009.34	1009.39	1009.40	1009.37	1009.35	1009.38	1009.37	1009.36
	2	1009.36	1009.33	1009.31	1009.29	1009.23	1009.19	1009.18	1009.18	1009.18	1009.22	1009.22	1009.23	1009.24
	3	1009.24	1009.21	1009.22	1009.20	1009.14	1009.11	1009.12	1009.10	1009.13	1009.17	1009.17	1009.16	1009.16
	4	1009.16	1009.19	1009.24	1009.29	1009.33	1009.40	1009.49	1009.57	1009.62	1009.63	1009.65	1009.68	1009.44
	5	1009.65	1009.58	1009.49	1009.44	1009.39	1009.36	1009.39	1009.35	1009.31	1009.40	1009.61	1009.88	1009.48
	6	1010.04	1010.06	1010.17	1010.24	1010.22	1010.22	1010.26	1010.35	1010.45	1010.41	1010.39	1010.52	1010.28
	7	1010.57	1010.59	1010.73	1010.82	1010.83	1010.88	1010.96	1010.98	1011.01	1011.00	1010.95	1010.87	1010.85
	8	1010.77	1010.70	1010.63	1010.52	1010.41	1010.37	1010.40	1010.48	1010.54	1010.52	1010.53	1010.57	1010.53
	9	1010.59	1010.60	1010.59	1010.72	1010.83	1010.78	1010.68	1010.53	1010.45	1010.45	1010.39	1010.29	1010.57
	10	1010.20	1010.23	1010.33	1010.48	1010.55	1010.56	1010.59	1010.64	1010.70	1010.79	1010.82	1010.82	1010.56
	11	1010.86	1010.71	1010.53	1010.39	1010.22	1010.27	1010.46	1010.48	1010.51	1010.61	1010.58	1010.43	1010.50
	12	1010.27	1010.30	1010.40	1010.35	1010.39	1010.43	1010.36	1010.43	1010.56	1010.68	1010.90	1011.02	1010.51
	13	1011.00	1010.88	1010.56	1010.29	1010.39	1010.56	1010.61	1010.82	1011.08	1011.12	1011.00	1011.06	1010.78
	14	1011.18	1011.22	1011.21	1011.26	1011.33	1011.33	1011.34	1011.44	1011.53	1011.27	1010.81	1010.64	1011.21
	15	1010.54	1010.64	1010.83	1010.94	1011.23	1011.44	1011.26	1011.05	1011.07	1011.01	1011.14	1011.41	1011.04
	16	1011.30	1010.88	1011.21	1011.43	1011.24	1011.42	1011.50	1011.28	1011.34	1011.62	1011.41	1011.04	1011.30
	17	1011.28	1011.91	1011.94	1011.31	1011.25	1011.53	1011.25	1010.95	1011.08	1011.31	1011.18	1011.06	1011.33
	18	1011.19	1011.38	1011.34	1010.81	1010.28	1010.45	1010.86	1010.99	1011.06	1010.60	1010.61	1011.11	1010.89
	19	1011.10	1011.14	1011.30	1011.38	1011.41	1011.64	1011.85	1011.76	1011.66	1011.57	1011.42	1011.34	1011.46
	20	1011.26	1011.15	1011.26	1011.39	1011.21	1011.04	1011.27	1011.30	1011.09	1011.07	1011.10	1011.13	1011.19
	21	1011.16	1011.14	1011.30	1011.32	1011.23	1011.33	1011.47	1011.30	1011.34	1011.53	1011.30	1011.41	1011.32
	22	1012.22	1013.09	1012.95	1012.79	1012.87	1012.72	1012.77	1012.71	1012.70	1012.77	1012.95	1013.10	1012.80
	23	1012.86	1012.66	1012.59	1012.44	1012.65	1013.04	1013.49	1013.63	1013.38	1013.00	1012.52	1012.75	1012.92

