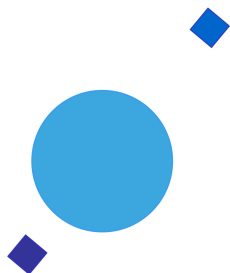


**INAF**



**ISTITUTO NAZIONALE DI ASTROFISICA**  
NATIONAL INSTITUTE FOR ASTROPHYSICS

**SVIRCO Prompt Report: April 2017**

Francesco Re

INAF/IAPS-2017-08

May 2017

**ISTITUTO DI ASTROFISICA E PLANETOLOGIA SPAZIALI**

**AREA DI RICERCA ROMA - TOR VERGATA**

**Via del Fosso del Cavaliere, 100 - 00133 Roma (ITALIA)**



## **SVIRCO Prompt Report: April 2017**

**Francesco Re**

*IAPS - INAF, Area di Ricerca Roma - Tor Vergata  
Via del Fosso del Cavaliere, 100 - 00133 Roma, Italy,*

### **Abstract**

*The pressure corrected intensity of the nucleonic component, produced by primary cosmic rays and recorded in April 2017 by the Neutron Monitor of SVIRCO-Rome (present geographic position:  $41.86^\circ$  N -  $12.47^\circ$  E; altitude about s.l. ), is reported in prompt form together with the barometric pressure data.*



## SVIRCO OBSERVATORY

During the 1<sup>st</sup> International Geophysics Year (1957) an international network of “ground-based detectors” for continuous cosmic ray measurements was world-wide established.

The cosmic ray station of Rome joined this network with the purpose to study the time variations of primary cosmic rays (**Studio Variazioni Intensità Raggi Cosmici: S.V.I.R.CO**) and their modulation in the heliosphere.

From July 1957 to April 1997, the SVIRCO Station (now Observatory) performed uninterrupted measurements at the Physics Department “G. Marconi” of “La Sapienza” University of Rome (41.90° N, 12.52° E, altitude about 60 m a.s.l.)

In May 1997 the neutron monitor was moved to the Physics Department “E. Amaldi” of “Roma Tre” University. Since then it has been continuously running at the new location (41.86° N, 12.47° E, altitude about 0 m a.s.l.).

The SVIRCO Observatory (INAF/IAPS-UNIRomaTre collaboration) is housed in a reserved building provided with a double air-conditioning system. The inner temperature is permanently restrained in a range of 23°-26° C, meanwhile the relative humidity is kept below 57%. Either the environmental parameters are continuously checked and recorded by digital sensors.

On January 1, 2005 three counters were added to the detector. This upgrade, from 17 to 20 NM-64, made the SVIRCO neutron monitor still consist of 5 sections but modified its geometry. Actually the new arrangement has been composed of three 3-counter, one 5-counter and one 6-counter units. The enhancement improved not only the overall counting rate of 15.6 % (January 2005) but, as a result, also the statistical quality of the recorded data.

Each of the 20 BF<sub>3</sub> proportional counters (BP-28 type) is equipped with a smart amplifier/discriminator circuit complete with a spectrum stabilizer. This new electronic unit, developed in our laboratory, holds firmly the pulse height spectrum of the amplifier output (within a range of more than 150 volts around the operating voltage), providing the counter with a great immunity against high voltage variations.

Anyway, systematic and exhaustive tests of the counters are regularly performed. The output pulses of the amplifiers, discriminated by the threshold gates, are collected and stored into a multi-channel analyzer. The analysis of the height distribution (spectrum) of the amplifier pulses coinciding with the discriminator ones, is essential to verify the long term efficiency of each counter together with the amplifier gain and the discriminator threshold level.

As well as the amplifier/discriminator circuits, a large part of the electronic instrumentation operating in the Observatory was designed and realized in our laboratory together with the software for data acquisition and pre-elaboration.

In order to improve the reliability of the recorded data and to prevent measurement breakdowns, two independent systems perform contemporary the data acquisition. Each system is remotely controlled by a dedicated computer and is timed by a high stability quartz clock and/or a GPS receiver. One equipment runs according to a timing of 1 minute and fulfils the acquisition of the 20 counters separately. The other one records the individual 5-minute counting rate of each detector section in addition to the rates of the overall multiplicity, sorted into separated counting channels ( from 1 to greater than 8 ).

A special care is devoted to the atmospheric pressure measurements, thus they are carried out by means of not less than three barometers at the same time. These instruments (achieving a resolution up to 0.01 hPa), are constantly checked out each other for the best measuring accuracy and reliability. Furthermore the devices in use are equipped with different types of transducer such as vibrating cylinder, force balance and quartz, therefore, throughout their different behaviours, it is possible to point out the occurrence of any long-term drift and eventually to re-calibrate the instruments themselves.

## DATA PRESENTATION

In a preliminary step, the intensity data, of the secondary nucleonic component of cosmic ray, detected at SVIRCO Observatory, were corrected for pressure variations at a reference level of 1009.25 hPa with an attenuation coefficient of 0.70% / hPa.

The five-minutes counting rates, of the examined month, are reported in tabular form together with the hourly normalized data, which provide a continuous data set for long-term analysis.

The normalization was evaluated as percentage of the counting rate average of January-February 1997, when the Monitor operated at the previous location of "La Sapienza" University. The reference counting rate level (100%), computed for such period, is equal to 554946 counts/hour.

The atmospheric pressure data (in hectoPascal) are also collected in a monthly table which presents the five-minutes averages and the hourly ones.

The hourly averages of the normalized intensity and pressure, plotted in monthly graphs, are reported too.

## CONDITIONS FOR SVIRCO DATA USE

You are welcome to use neutron monitor data of SVIRCO, IAPS/INAF-UNIRomaTre collaboration, under the following conditions:

*-You agree to acknowledge our financial supports in any published use of the data.*

*Example: "SVIRCO NM is supported by the INAF - UNIRomaTre collaboration"*

*-You are kindly requested to send a copy of any published work derived from our data to:*

Dr. Monica Laurenza  
Head of SVIRCO Observatory & TPL  
Istituto di Astrofisica e Planetologia Spaziali - Area di Ricerca Tor Vergata  
Via del Fosso del Cavaliere, 100 00133 Roma - Italy,

[monica.laurenza@iaps.inaf.it](mailto:monica.laurenza@iaps.inaf.it)



# S.V.I.R.CO. Observatory

Rome

Italy







		S.V.I.R.CO. Observatory - Pressure Corrected Data – April 2017											20 NM-64	
		INAF/UNIRomaTre												
day	hh	00_05	05_10	10_15	15_20	20_25	25_30	30_35	35_40	40_45	45_50	50_55	55_60	h-norm
1	0	47538	47072	46799	46931	46767	46380	46389	47092	47055	46909	46536	46804	101.885
	1	46580	47128	47391	46749	47081	46713	45962	46924	47667	46111	46588	46920	101.808
	2	46893	46968	47187	46629	45700	46912	47545	46927	46373	47244	46506	46653	101.759
	3	47208	46655	46536	47334	46387	46979	46775	47113	47500	47737	47056	47239	102.299
	4	46426	46444	47095	46993	46761	47139	46837	45830	46829	47065	46597	46663	101.603
	5	46650	46723	46846	46604	46996	46667	46613	46760	46539	47302	47261	47124	101.858
	6	47536	47571	47128	46946	47621	46684	47101	47369	46686	47432	46441	46821	102.447
	7	46949	47602	46870	46774	46580	46593	47253	46970	46895	47114	46241	46656	101.932
	8	46585	46864	46503	46835	46497	47287	47061	46794	47024	46887	46890	46427	101.779
	9	47261	46757	46145	46040	46504	46255	46764	46946	47119	46632	46272	46632	101.358
	10	46618	46385	46595	47042	47049	46952	47038	46498	45866	46656	46755	46400	101.453
	11	46768	46689	47291	47131	46703	46738	47030	46880	47397	46458	46422	46601	101.862
	12	47051	47442	47118	47171	47266	46864	47514	46843	46821	47121	46361	47395	102.380
	13	47363	46880	46905	47550	46286	47495	46830	46871	46613	46713	46804	47236	102.122
	14	47052	46766	47263	47737	47014	46912	47034	46897	47410	47184	47066	47412	102.521
	15	47680	47014	46986	47302	47354	46897	47366	47017	46937	47132	46673	46878	102.429
	16	46660	47310	46718	47078	47276	47328	46999	46076	47223	46795	46882	47131	102.110
	17	46617	46736	46815	46376	47296	46605	47002	47189	46269	47421	46401	47386	101.863
	18	46617	46945	46602	47550	47101	47101	46418	46300	46631	46898	47007	47237	101.916
	19	46956	47303	46221	46596	46644	46941	47071	46704	46865	46914	46725	47548	101.931
	20	47345	46654	47287	46858	46387	46611	46660	47489	47078	47209	47240	46980	102.169
	21	46877	46892	46979	47269	46447	47004	47084	47024	47239	46848	46768	46161	101.950
	22	46772	47062	47099	46620	46743	46668	46613	46115	46307	46782	46243	46716	101.433
	23	46992	46865	46379	46415	47464	45905	46278	46560	46612	47422	46957	46086	101.468
2	0	46524	46480	46877	46290	47053	47062	46793	46939	46732	46678	46495	47042	101.648
	1	47076	47040	46571	47350	46903	46326	47011	46332	46468	46128	46702	46649	101.580
	2	46685	46958	47339	46453	47324	47242	47037	46422	47609	46933	46915	47131	102.214
	3	46936	46492	46664	46717	46447	46434	47618	47302	46620	47018	46631	47462	101.904
	4	47102	47038	47075	46805	47152	47140	46635	47026	46397	46158	46603	46604	101.795
	5	47794	47047	47691	46660	47107	46554	46772	46096	47250	47550	46954	46740	102.244
	6	46745	46691	46906	46703	46215	46759	46558	46747	46405	46970	46228	46577	101.391
	7	46559	46541	46717	46722	46821	46367	46746	46657	46583	46821	46947	46712	101.515
	8	47331	46053	47168	46735	46901	46249	46747	46240	47037	46870	46618	46903	101.635
	9	47337	46639	46457	46131	46856	46965	46650	46840	47066	46394	46793	46794	101.647
	10	47079	47140	46607	46739	46059	46565	46662	46493	46895	47020	46892	46760	101.645
	11	46583	46585	46767	46780	46341	46269	47093	47433	46567	46620	46181	47563	101.621
	12	46943	46382	46338	46943	46613	46691	46774	46699	46785	46676	46973	46490	101.536
	13	46385	47120	47072	46683	47251	46701	47070	47134	46733	46924	46137	46666	101.819
	14	46705	46578	46632	47012	46290	46519	46600	46890	46366	46933	46428	46717	101.420
	15	46996	46874	46099	47020	46838	46958	47096	46711	46940	46763	46950	46731	101.838
	16	46762	47414	47109	46356	46707	46196	47014	46640	46219	47299	46288	46142	101.506
	17	46826	47117	46987	47261	46315	46923	46341	46629	47483	46501	46389	46207	101.657
	18	46514	46382	47101	46927	46753	46430	46722	46878	47532	46927	47134	46769	101.855
	19	46955	47202	46971	46844	46582	47040	47167	47255	47039	46574	46612	46909	102.051
	20	46631	46917	46710	46943	46659	46662	46576	46504	46675	46160	46538	46674	101.416
	21	46323	46920	46426	46900	46593	46510	46395	46653	45956	47200	46995	46430	101.353
	22	46430	46757	45640	46515	46746	46639	47033	46871	46340	46204	46479	46271	101.104
	23	46263	46792	46586	46626	46333	46177	46538	46840	47131	47076	46845	46523	101.431

		S.V.I.R.CO. Observatory - Pressure Corrected Data – April 2017											20 NM-64		
	INAF/UNIRomaTre														
day	hh	00_05	05_10	10_15	15_20	20_25	25_30	30_35	35_40	40_45	45_50	50_55	55_60	h-norm	
3	0	47203	46898	46670	46754	46810	46544	46654	46037	46313	46314	46091	45807	101.130	
	1	46109	46571	46012	46098	46397	46229	46426	46836	46282	46840	46956	46549	100.992	
	2	46727	46671	46608	46840	46101	46839	46789	46437	46746	47094	46380	46519	101.435	
	3	46857	46147	46449	46315	45862	46072	46885	46702	46623	46084	46899	47076	101.113	
	4	46856	46696	46823	46080	46544	46231	46138	46470	46618	46283	47148	46390	101.168	
	5	46042	46808	46818	47033	47155	46964	47765	46465	46624	46152	46455	46434	101.610	
	6	47406	46215	46222	46685	46461	46697	46711	47053	46467	46470	46332	47133	101.453	
	7	45832	46056	47180	46546	46906	46578	47326	46569	46960	46382	47109	46261	101.427	
	8	46441	46570	46401	47484	46464	45728	46385	46137	46897	46647	47169	46253	101.222	
	9	46361	46265	46733	46688	46401	46349	46780	46408	47236	46343	46710	46623	101.280	
	10	46525	46444	45912	47335	46954	46274	46846	46963	46992	47079	46347	46956	101.593	
	11	47039	46975	46269	47107	47448	46552	46640	47218	46492	47347	46957	46842	102.003	
	12	46660	46386	46492	46769	46357	46411	46139	46646	46075	46422	46290	46082	100.887	
	13	46355	46897	46743	47286	46806	46880	46806	46770	46856	47018	46595	46833	101.814	
	14	46705	46800	46746	46756	46766	46572	46251	47148	46269	46594	46827	46805	101.523	
	15	46584	46883	46651	46740	46701	47079	46587	46608	46412	47064	46322	46364	101.479	
	16	47184	47154	46695	46715	47043	46556	47307	46478	46509	46242	46422	46573	101.639	
	17	47044	47261	47106	47091	47105	47259	46743	46540	47099	47209	47011	46977	102.286	
	18	47380	46703	46777	46832	46227	46688	46961	46760	46848	46491	46552	47126	101.724	
	19	46678	46412	47125	46687	47085	47229	46944	46748	46511	46600	46431	46066	101.574	
	20	46534	46577	46962	47178	46495	46848	47072	46840	47056	46933	47015	46544	101.852	
	21	46696	47019	46320	46878	46229	47172	46827	46840	47037	46755	47147	46703	101.774	
	22	47044	46593	46618	46294	46496	47333	47142	46866	46787	46074	46669	46880	101.624	
	23	46252	46534	46907	46508	46990	46701	46720	46633	46733	46588	47039	47204	101.626	
4	0	46379	46729	46172	46762	46809	47137	46428	46052	46499	46305	46472	46445	101.147	
	1	47010	46808	45876	46684	46590	47216	47216	46768	46774	46510	46574	46673	101.606	
	2	46296	46522	46573	47175	46732	47030	46371	46598	46693	46883	46494	47042	101.554	
	3	46216	46392	46531	46598	46087	46733	46129	47495	46143	46333	46686	46638	101.114	
	4	46360	46592	46208	46605	46978	47372	46427	46927	46304	46784	46272	46700	101.395	
	5	47002	47456	46996	47086	46637	46786	46594	47064	46840	47211	47436	47498	102.315	
	6	47506	47418	47038	46820	47014	46714	47307	47020	47178	47408	47073	46546	102.393	
	7	47181	47027	47578	47177	47100	46984	47337	47406	46814	47034	46971	46497	102.405	
	8	46728	46737	47116	47429	47018	47114	46568	46856	46616	46620	47703	46470	102.019	
	9	46786	46468	47301	46975	46538	46889	47279	46820	46806	46190	46531	47320	101.825	
	10	46860	47186	46597	46853	46808	46750	46977	46745	47523	46794	46967	47344	102.097	
	11	46832	46876	46747	45995	46954	47047	46669	46581	46935	46760	46659	46392	101.561	
	12	46369	46907	45975	46939	46533	46946	46587	47196	46232	46341	46474	46355	101.272	
	13	46110	46357	46862	46275	46590	46273	46025	46592	46488	45799	45251	46665	100.626	
	14	46518	46594	46765	46141	46128	46661	46821	46639	45539	46208	46113	45926	100.765	
	15	46225	46358	46478	47107	46550	46423	45758	45885	46623	46519	46533	46315	100.896	
	16	46340	46672	46544	46328	45975	46487	46386	46245	45953	46345	46178	46108	100.677	
	17	46548	46101	46128	46459	46645	46576	45772	46419	46025	46329	46129	45762	100.554	
	18	46595	45801	46421	46439	46569	45887	45981	46312	46278	46106	45956	46549	100.555	
	19	45842	46383	46430	45977	46142	46079	46134	46201	46820	45936	46118	46477	100.491	
	20	46133	46561	46213	46183	45971	45968	46393	46507	47057	46240	46255	46280	100.712	
	21	46556	45959	45906	46213	46310	46189	46273	46260	46529	46237	46481	47468	100.824	
	22	46566	46128	46330	46817	46345	46127	45889	46380	46269	46492	46763	46569	100.877	
	23	45830	46225	46568	45785	46557	46413	46048	46417	46858	46333	46236	46457	100.706	

		S.V.I.R.CO. Observatory - Pressure Corrected Data – April 2017											20 NM-64	
INAF/UNIRomaTre		00_05	05_10	10_15	15_20	20_25	25_30	30_35	35_40	40_45	45_50	50_55	55_60	h-norm
day	hh													
5	0	46997	46554	46725	46087	46149	46358	46592	46088	46129	46302	46308	46093	100.823
	1	46330	46764	45553	46251	46105	46176	46312	45940	45814	45931	45427	46362	100.205
	2	46774	46124	46255	46991	45889	46699	45981	46592	46240	45955	46726	46903	100.960
	3	45602	46235	46061	45991	46561	46093	45857	46023	46784	46484	46381	46534	100.502
	4	46282	45945	45547	45892	46593	45833	46437	46354	46274	46449	46184	45771	100.313
	5	46669	46516	45404	46591	46013	46450	45833	45947	47036	46543	46336	46725	100.766
	6	46409	46637	46470	46364	45879	46539	46325	46559	46417	46338	46055	46238	100.797
	7	46281	46661	46675	46313	46028	46098	46507	46247	46231	45923	46073	46486	100.669
	8	46378	46382	46308	46306	46392	46231	46130	46293	46702	46434	46540	46297	100.826
	9	46521	46754	46236	46201	45822	46559	45940	46503	46022	45650	45978	46057	100.437
	10	46332	46025	46176	46236	46052	46488	45834	46086	46151	46006	46352	46449	100.427
	11	46658	46309	46015	46243	45751	45713	46430	46001	46246	46380	46294	45680	100.342
	12	45304	45807	46275	45743	45643	46054	46545	46188	45819	46639	46263	46578	100.186
	13	46124	45940	45443	45546	45856	45415	46038	46719	46527	45830	45893	45616	99.839
	14	46120	46199	46358	46527	46006	46924	46265	46064	46305	45641	46065	46060	100.489
	15	46527	46107	46203	46145	46325	46044	45913	46311	46054	45979	45988	46098	100.337
	16	45946	46237	46120	46114	46538	45959	46479	45964	46458	45785	45837	46368	100.357
	17	46357	45973	46133	46092	45331	46201	46418	46050	46278	45176	45788	45681	99.936
	18	45551	45364	46317	46315	46111	45956	46111	46114	45705	46045	45514	45796	99.831
	19	45748	45422	46036	46082	45977	45956	46297	45673	45821	45997	46214	45318	99.766
	20	45842	45801	45762	45463	46011	46485	45362	46204	45959	45780	45907	45896	99.753
	21	46373	45680	46470	45878	46584	46548	46559	46147	46531	45800	45876	45805	100.438
	22	45942	46064	46547	45719	46062	45896	46213	46255	45342	46397	46317	45856	100.141
	23	46512	45393	46647	45989	46535	46322	45784	45890	46112	46214	46100	46467	100.386
6	0	46288	46310	46620	45788	46237	46317	46015	46643	45872	46319	45756	46404	100.488
	1	46232	46174	45590	46170	46067	46382	46906	45754	46000	46148	46278	46132	100.363
	2	46814	46399	46679	45928	45728	45993	46784	46680	46006	45960	46307	46492	100.713
	3	46619	46080	46424	46486	45975	46551	46283	46707	46190	46847	46118	46142	100.832
	4	45900	46210	46913	46602	46896	46915	46236	45684	45869	46652	46011	46730	100.867
	5	46108	46674	46431	46654	46833	46423	46843	47364	46482	45926	46339	46285	101.183
	6	46374	46749	46299	46671	45754	46369	46487	46407	45862	46506	46559	46072	100.775
	7	46818	46332	46594	46204	45739	46280	46266	46860	46470	46655	46629	46753	101.045
	8	46292	47000	47118	46705	46448	45999	46498	46798	46550	46836	46189	46095	101.213
	9	46060	46414	46268	45925	46799	45681	47049	46267	46663	46175	46129	45724	100.602
	10	46359	46771	46287	46059	46184	46736	46071	47067	47033	46560	46679	46047	101.091
	11	46250	46913	46535	46545	46188	46307	46026	46761	46687	46772	46042	46877	101.100
	12	46470	46917	46594	45995	46083	46216	46732	46829	46293	46752	46626	46898	101.191
	13	46215	46193	46404	46390	46114	45739	46080	47085	46270	46145	46681	46992	100.812
	14	46825	46307	46435	46412	46644	46430	46794	46811	46244	47023	46614	46284	101.266
	15	46493	46359	46282	47016	46356	46550	46592	46560	46298	46725	46838	46387	101.200
	16	46503	46065	45986	46492	46232	46123	46448	45958	46386	45948	46203	46416	100.530
	17	46440	46689	46507	46239	45848	46179	45703	46291	46293	46760	46538	46804	100.808
	18	45480	46676	46358	45750	46324	46794	46543	46503	46361	46650	45994	46042	100.660
	19	46188	46828	45726	46497	46442	46841	46721	46251	45835	46640	46754	45718	100.835
	20	46114	46456	45531	46187	46118	46332	46881	45877	46329	46247	46480	46775	100.633
	21	46231	46199	45546	46725	46389	45946	45626	45738	46738	45718	46249	46219	100.270
	22	45850	46136	46275	46499	46325	45957	46759	46474	46059	46171	46084	46825	100.648
	23	46292	46550	46052	46385	46449	45964	46563	46333	46586	45911	46397	46057	100.671

		S.V.I.R.CO. Observatory - Pressure Corrected Data – April 2017											20 NM-64	
		INAF/UNIRomaTre												
day	hh	00_05	05_10	10_15	15_20	20_25	25_30	30_35	35_40	40_45	45_50	50_55	55_60	h-norm
7	0	46127	46368	46372	47092	46527	46411	46309	46592	46672	46173	46862	46193	101.061
	1	45969	46848	46950	46594	47033	46554	46688	46287	46500	45899	46070	46503	101.098
	2	46756	46721	46444	46412	46689	46675	46589	46426	46821	46131	46449	46349	101.201
	3	46315	46447	46968	46568	47033	46509	46487	46667	46880	46831	46269	46295	101.347
	4	46598	46589	46317	46803	47112	46308	46030	46734	46501	46309	47007	46072	101.187
	5	46651	46901	46103	46948	46496	46240	46870	46121	46669	46526	46315	46575	101.193
	6	46779	46410	46010	46720	45571	46800	46818	47299	45874	46325	46507	46226	100.998
	7	46542	46063	46047	46385	45743	46598	46351	46630	46745	46261	46525	46374	100.803
	8	46589	46824	46583	46343	46637	46655	45903	46525	46782	46357	46063	46192	101.018
	9	47206	46643	47202	45524	45953	46409	46484	46154	46450	46596	46686	46466	101.076
	10	46368	46474	46556	46259	46943	46708	46753	46374	46583	46538	46574	46279	101.192
	11	46081	46149	46511	46419	46611	47258	46713	46864	46798	46624	46214	47005	101.344
	12	46943	46589	46179	46716	46622	45720	46443	45738	47042	46340	46836	46633	101.082
	13	46215	46639	45828	47081	46664	46690	46055	46225	46055	46338	46246	47164	100.973
	14	46616	45909	46399	46094	46601	46658	46224	46478	46204	46016	46172	46610	100.752
	15	46011	46618	46692	47422	46216	46424	46826	46288	46243	46579	46096	46722	101.142
	16	46700	46673	45922	46797	46560	45862	46689	46312	46229	46328	46138	46960	100.967
	17	46746	47121	46447	46937	46312	46695	46871	45939	46460	46301	46214	46219	101.166
	18	46642	46542	46832	46473	46572	46119	46656	46738	46830	46218	46194	45728	101.036
	19	46381	46367	46333	46081	46302	46834	46574	45872	46334	46707	46943	46512	100.979
	20	46513	46068	46637	46399	46838	46768	47015	46049	46367	46551	45998	46517	101.067
	21	46404	46949	45911	45985	46730	46150	46083	46702	46056	46931	45856	46795	100.855
	22	46624	47231	46304	46819	47018	45842	46724	46228	47054	45670	46502	46976	101.297
	23	46514	47416	46993	46378	46571	46866	46375	46812	46411	46335	46196	46693	101.400
8	0	46600	46859	46277	46914	46761	46987	46752	47058	46370	46682	46171	46524	101.471
	1	46933	46578	46408	46559	46417	47111	46642	46064	46763	46550	46851	46848	101.430
	2	46866	46973	46962	46757	46316	47111	47082	47028	46900	46240	47239	46651	101.865
	3	46882	46550	46425	46439	46921	47073	47232	47227	46556	46801	46614	47276	101.842
	4	45830	46863	46903	46998	46433	46804	46752	47056	46673	46171	46671	46078	101.341
	5	46369	46338	46526	46465	46565	46389	46420	46646	46592	46846	46621	46337	101.138
	6	46453	46777	45813	46668	46662	47274	46427	46438	46360	46695	46930	46574	101.312
	7	47095	46629	46475	47313	46638	46790	46466	47066	46883	47284	47178	46561	101.911
	8	46595	47092	46516	46728	46708	46752	46804	46293	46467	46500	47246	46732	101.558
	9	46776	46813	46937	46506	47038	46447	46636	47095	46147	46836	47290	46271	101.624
	10	46385	46705	46884	46367	47306	46651	46769	46471	46603	47155	46790	46933	101.665
	11	46720	46855	45565	46432	46706	46272	46381	46748	45863	46334	47042	46551	101.021
	12	47163	46761	46540	46461	46334	46594	46357	46502	46164	46597	46115	46655	101.162
	13	46543	46650	46477	46631	46671	46662	46758	47156	47353	46489	46116	46826	101.540
	14	46810	46825	46662	46401	46515	46359	47384	45973	46711	46877	46692	46732	101.469
	15	47094	46557	46428	46695	46777	45796	46713	46583	46646	46265	46735	45844	101.141
	16	45828	46677	46503	46780	46668	45948	46060	46077	46595	46343	46484	46233	100.791
	17	46891	46139	46188	46405	46055	46384	45854	46282	45754	46756	46290	46698	100.700
	18	45804	47261	46579	46753	46935	46571	46529	45768	46203	46602	46325	46506	101.088
	19	46462	46068	46810	46676	46379	46703	45929	46543	46348	46754	46594	45978	100.981
	20	46501	46261	45923	46669	46521	46272	45743	46595	46105	46070	46910	45858	100.652
	21	46119	47003	46233	46305	46764	46193	46336	46104	46847	47002	46269	46369	101.035
	22	46900	46568	46809	47008	46835	45884	45774	47571	46376	45868	47169	46723	101.387
	23	46773	46244	46665	46772	46380	47153	46172	46867	46601	46120	46325	46470	101.216

		S.V.I.R.CO. Observatory - Pressure Corrected Data – April 2017											20 NM-64				
		INAF/UNIRomaTre															
day	hh	00_05	05_10	10_15	15_20	20_25	25_30	30_35	35_40	40_45	45_50	50_55	55_60	h-norm			
9	0	46355	47053	46687	46083	46577	46621	46628	46579	46683	46417	46442	46713	101.265			
	1	46611	45834	46556	46259	46856	46811	46174	47111	46172	46547	46522	47518	101.293			
	2	46757	47223	46996	46961	46457	46969	46180	46418	46720	46547	46689	46450	101.546			
	3	46106	46624	46910	46257	47209	46393	46438	46602	46281	46519	46623	46629	101.225			
	4	46516	46867	46062	47166	46685	47043	47019	46342	46448	46006	46747	47114	101.483			
	5	46675	46732	47110	46444	46690	46786	47314	46125	46676	46173	46522	46989	101.523			
	6	46575	45910	46292	46752	47330	47108	46105	46237	47255	46521	47462	46592	101.505			
	7	45984	46599	47604	46374	47327	47353	46988	46823	46476	46580	45865	46484	101.563			
	8	46658	45973	46692	46719	46829	46921	46837	47046	46700	46897	46354	46542	101.510			
	9	46839	46396	46370	46478	46503	46238	47028	45858	46969	45837	46566	46654	101.070			
	10	47396	46327	45908	46662	47036	47041	46430	46489	46985	46213	47187	47309	101.658			
	11	47199	46920	46612	46516	46532	46759	46323	46702	47002	46209	46940	46393	101.499			
	12	46907	45902	47041	46445	46261	46814	46695	46487	46719	45899	46856	46180	101.155			
	13	46730	46038	46257	46533	46603	46431	46736	47304	46343	46347	46502	46784	101.228			
	14	45994	46250	47276	46742	45963	46389	46673	46193	46336	46039	46513	47042	101.011			
	15	46926	46397	46387	47276	46619	46659	46736	46343	46840	46080	46464	46221	101.289			
	16	46308	45949	46203	46139	46150	46095	46421	46029	46519	46024	46665	45985	100.481			
	17	46808	46279	46251	46661	46309	45865	46814	46511	46472	46125	46634	45460	100.790			
	18	46292	46376	46560	46507	46847	45598	46973	46113	46562	46775	46071	46314	100.934			
	19	46266	46462	46981	46630	46713	46260	46868	46310	46260	46596	46781	45846	101.113			
	20	46858	46299	46193	46425	46439	47069	46517	46407	46758	46373	46220	46817	101.185			
	21	45594	46535	46253	46261	46720	46760	46349	46464	47029	46024	46387	46351	100.887			
	22	46153	46490	46994	46261	46690	45880	46469	46666	46656	46009	46648	46169	100.952			
	23	46579	46579	46361	46369	46613	46588	46923	46106	46724	46195	46265	46255	101.037			
10	0	46598	46517	45920	46141	46570	46094	46795	46852	46550	46445	46839	46234	101.031			
	1	46479	46097	46331	46230	46545	46415	46679	46750	47207	46563	46342	46344	101.114			
	2	47020	47029	46435	47065	46470	46631	46640	45734	46640	46796	46798	46537	101.443			
	3	46639	46592	47066	46399	46755	46645	46858	46421	46742	46193	46447	45829	101.223			
	4	46343	46912	46619	46506	46955	46923	46607	46789	46950	46141	47106	46826	101.602			
	5	47073	46212	47370	46696	46657	46400	47000	46183	46330	47082	46642	46405	101.489			
	6	46553	46358	46165	46507	47202	47194	46396	46583	47007	46048	46854	46677	101.398			
	7	46096	46064	46495	45960	45931	46470	46802	46724	46824	46793	47060	47655	101.276			
	8	46577	46701	46678	46437	46571	46387	46334	46682	46839	46434	46798	46424	101.274			
	9	46507	46849	46644	46913	46360	46064	46135	46412	46832	46605	46770	46714	101.264			
	10	46255	46339	47171	45934	46084	47076	46632	46302	46886	46061	46188	46893	101.085			
	11	46645	46087	46076	46592	46472	45951	46002	46921	46719	46412	46247	46312	100.834			
	12	46059	45985	46144	46230	46503	46411	46525	46391	46480	46300	46387	46583	100.755			
	13	45884	45940	46797	46473	45983	46530	46598	46549	46423	46421	45866	46871	100.816			
	14	45775	46514	45885	46765	45994	46193	46144	45845	46095	46229	46681	46489	100.503			
	15	46056	45249	45796	46750	45747	46504	46678	45697	46068	46328	45907	46193	100.207			
	16	46203	46366	45805	46757	46352	45566	46407	47071	46799	46576	47254	45805	100.929			
	17	46130	45915	46791	46709	46121	46177	46488	46297	46141	45625	47081	45669	100.600			
	18	46286	46703	46031	46614	46436	46628	45905	46454	45740	46595	45448	46534	100.642			
	19	46431	47329	46416	46197	46438	47057	45595	46419	46442	46522	47369	46505	101.248			
	20	46272	46456	46381	46396	46095	45925	46439	46878	46341	45993	46307	46450	100.743			
	21	46939	46434	46454	46414	46244	46474	47449	47188	46589	46209	46673	46286	101.363			
	22	46077	46468	46261	45770	47263	46221	46298	46649	47259	46398	46835	46266	101.075			
	23	46664	47180	46241	45899	46330	46858	46864	46298	45977	46850	46216	46701	101.132			

		S.V.I.R.CO. Observatory - Pressure Corrected Data – April 2017											20 NM-64	
		INAF/UNIRomaTre												
day	hh	00_05	05_10	10_15	15_20	20_25	25_30	30_35	35_40	40_45	45_50	50_55	55_60	h-norm
11	0	46954	46620	46498	46423	46839	47204	46607	46599	46614	46299	46391	46637	101.417
	1	46255	46358	46258	46071	46776	45898	46659	46898	46525	46781	46182	46614	100.986
	2	46007	46171	46007	46790	46501	46848	46586	47231	46335	46891	46566	46287	101.158
	3	46790	45821	46319	46272	45773	46625	46090	45711	46190	46256	46147	46353	100.456
	4	46711	46833	46478	46848	46944	46937	46301	46741	45817	46364	46397	47004	101.367
	5	45876	46685	46851	46057	46608	46411	46738	46780	46106	46144	46597	46150	100.937
	6	46236	46376	47402	46390	46310	46935	46483	46643	46999	46712	46187	47049	101.430
	7	46906	46137	46229	46655	46787	46702	46758	46473	46933	46789	46680	46637	101.423
	8	46839	47227	46236	46688	46520	47189	47401	46195	46535	46751	46645	46685	101.645
	9	46922	46541	46327	46074	47061	46693	46655	47327	46796	46939	46855	46553	101.614
	10	46675	47041	46618	46751	47357	46171	46549	46647	46662	47172	46872	46533	101.670
	11	46228	47087	46973	46502	46553	45998	46713	46511	46120	46371	46692	46676	101.194
	12	46074	46719	45811	46929	46388	46699	46940	46329	46763	46849	46612	46521	101.233
	13	45911	47119	46042	46093	46827	46011	46493	45983	46564	46739	46225	46670	100.878
	14	46514	46153	46838	46473	46000	46543	46893	46773	46614	46575	46542	46892	101.264
	15	46806	46179	46239	45797	46274	46624	46178	46273	47255	47301	46197	46533	101.055
	16	46221	46596	46543	46701	46461	46739	47452	45834	47175	47007	46788	46225	101.433
	17	46384	46027	46561	46216	46625	46371	47032	46962	46530	46167	46994	45925	101.081
	18	46351	46508	46489	46871	46770	46784	46536	46417	47310	46406	46597	46709	101.434
	19	46367	46073	46636	46773	46227	46320	46956	46603	46462	47005	46348	46648	101.193
	20	46742	46273	47070	46176	46458	46028	46459	46689	45901	46865	46205	46558	101.013
	21	46251	46691	46108	46430	46009	46637	47440	47116	46792	45663	46539	46787	101.202
	22	46149	46446	46826	46424	46271	46076	46078	46338	46391	46629	46906	46630	100.966
	23	46278	46674	46378	46569	46469	46739	47450	46624	46683	45707	46238	46691	101.208
12	0	46421	46406	46350	45970	46993	46484	46574	46518	46834	47014	46579	46976	101.317
	1	46457	46648	47214	46796	46986	46576	45969	46632	46413	46240	46220	47030	101.332
	2	47222	47271	46393	47008	45926	46660	46810	46424	46949	46978	45948	46931	101.574
	3	46776	47365	46512	47009	46746	46586	46241	46524	46679	46890	47088	46710	101.684
	4	46603	46501	46763	46896	46826	46819	46369	46885	46799	46613	45990	46421	101.387
	5	46955	47108	47043	47131	47489	47081	46654	47436	46793	47046	46858	46548	102.230
	6	46534	47113	46842	46424	46545	47246	47379	45792	46915	46980	46209	47209	101.695
	7	46899	47041	46369	46835	47031	46048	46836	46699	46783	46605	47028	47115	101.714
	8	47271	47096	46726	46677	47154	47286	47318	47518	46574	47334	46283	47264	102.296
	9	46747	46802	47206	46555	47008	46648	47040	46542	46568	47422	46444	46676	101.781
	10	47144	46648	47222	47356	47233	47484	46505	47151	47022	46908	46986	46928	102.311
	11	46789	46301	46893	46416	46267	47549	45987	46519	46401	47105	46629	47046	101.462
	12	46506	47072	46772	46743	47120	46916	46704	46924	46696	46794	47219	46776	101.886
	13	46647	46799	46569	46627	46389	46685	46898	46638	47276	47140	47291	46792	101.798
	14	46724	47193	46833	47128	47027	47202	46948	46748	46598	46431	46519	46747	101.860
	15	47295	46345	47152	47298	47366	47302	46729	47231	46810	46341	46602	46921	102.094
	16	46540	47129	46443	47330	46997	46705	47194	46993	47171	46948	46998	46974	102.100
	17	47024	46215	46271	47646	46261	47042	47098	46810	46746	46961	47287	46823	101.875
	18	46086	46393	46428	47158	46366	46799	46997	47039	46959	46955	46629	46735	101.578
	19	46894	46310	45973	47010	46945	46653	46462	47325	46875	46290	46529	47039	101.535
	20	47006	46970	47050	46148	46325	46076	46375	47213	46706	46838	47262	46514	101.568
	21	46569	46941	46710	46570	47118	46330	46570	46855	46694	46728	47456	47079	101.774
	22	47155	46512	46192	46877	46955	47068	46734	46872	46724	46363	46981	46395	101.630
	23	46265	46714	47885	47454	47188	46443	46772	46637	46842	47183	47216	47214	102.171

		S.V.I.R.CO. Observatory - Pressure Corrected Data – April 2017											20 NM-64		
		INAF/UNIRomaTre													
day	hh	00_05	05_10	10_15	15_20	20_25	25_30	30_35	35_40	40_45	45_50	50_55	55_60	h-norm	
13	0	47003	47022	47136	46301	46681	46378	46759	46520	46798	46990	46510	46864	101.649	
	1	46407	46900	46405	46579	46244	46819	46951	46767	47397	46792	46759	47218	101.705	
	2	46724	47517	46779	46702	46778	47290	46536	46431	47566	47025	47191	46604	102.050	
	3	47415	46553	46587	46939	46713	47528	46691	47225	46208	46691	46992	46928	101.928	
	4	46996	46781	47600	46872	47139	46727	45917	46528	47307	46766	47232	46953	101.990	
	5	46565	46538	46466	46922	46941	47445	46863	46323	46719	46828	46435	46972	101.664	
	6	47435	46741	47020	46311	46806	46594	46972	47140	46723	46449	47819	46864	102.001	
	7	46668	46725	46679	46766	46817	46945	46711	47188	46088	46417	46451	46430	101.459	
	8	46771	47045	46322	46613	47062	46803	46553	47075	46599	47125	46374	46976	101.719	
	9	46453	46564	46943	46811	46367	46667	47602	47025	46540	46730	46916	47334	101.834	
	10	47124	47333	46468	46929	46964	46669	46835	47154	46934	47045	46685	46792	102.011	
	11	46394	46917	47227	46150	47656	46976	46895	46873	46819	47375	46941	47579	102.169	
	12	47272	46600	46995	46261	46989	46697	46365	46439	46318	46926	46820	47170	101.634	
	13	46446	47125	46802	47398	47476	47037	46578	46906	46505	46381	46567	47387	101.952	
	14	47048	47246	46844	46797	46792	46941	46893	47134	46945	46724	46907	47229	102.114	
	15	46557	46971	46869	47001	47386	46878	46540	46737	46632	46802	47148	46852	101.910	
	16	46724	46958	46904	46992	47123	46838	46235	46985	46886	46516	47169	46663	101.841	
	17	46841	47263	46909	46761	47192	46927	46999	46681	47652	46279	47107	47084	102.150	
	18	46877	46923	47014	46551	46916	47017	46453	46947	47304	47297	47272	47274	102.176	
	19	47193	46661	47135	46617	46935	46926	47097	47214	47034	47183	46492	47020	102.116	
	20	46553	46525	47248	46646	46958	46758	46532	46680	46881	46663	46815	47650	101.826	
	21	46825	46537	46429	46457	47585	47377	46369	46720	46996	46812	47373	47227	101.971	
	22	46539	46666	46722	46967	46531	46282	46667	46414	47200	46824	46244	46464	101.393	
	23	46603	46983	47023	46590	46715	46925	47171	46024	47105	46580	46613	46845	101.693	
14	0	46657	47082	46673	47555	46614	47644	47238	46652	46567	46685	47071	47600	102.206	
	1	46958	46270	46288	46712	46929	46804	46755	46583	47856	46398	46933	47037	101.756	
	2	46858	47084	46981	46812	46833	46757	47350	46801	46697	46905	46968	46822	102.000	
	3	46310	47565	46551	46646	47263	47019	47137	47050	46727	46705	46892	46620	101.930	
	4	46944	46546	46762	46862	47242	46731	47257	47206	46960	46870	46854	47145	102.092	
	5	46597	47104	47015	47095	46969	47069	46867	46555	46988	46375	46699	46878	101.881	
	6	46545	47199	46893	46853	47022	46894	46409	46560	46771	46930	46292	46623	101.659	
	7	47262	47438	47320	46796	46975	47446	47498	46405	47031	47088	46727	47336	102.444	
	8	46938	46697	46950	47066	47415	47083	46329	47501	47230	47161	47456	46978	102.350	
	9	46782	47014	46111	47262	46585	46618	47550	46832	46749	46598	46511	46962	101.765	
	10	46905	46576	46913	46877	47446	47208	46385	46950	46938	46475	46725	46459	101.816	
	11	47023	46754	47140	46963	46492	46761	46238	46570	46760	46994	46570	46425	101.605	
	12	47210	47374	46661	47223	46911	46760	46861	47631	46541	46542	47027	46306	102.032	
	13	47062	47070	46946	46277	47224	46755	46795	46896	47123	47497	46854	47009	102.116	
	14	46861	47149	46885	46724	46671	47743	46810	46710	46285	47013	46516	47032	101.914	
	15	47099	46547	46279	46574	46781	46255	46223	46573	47285	47376	47026	46695	101.609	
	16	47361	46901	46832	47154	47079	46561	46845	46876	46966	46691	46985	46514	101.981	
	17	46412	47469	46819	46932	47081	47136	46764	46765	46699	46955	47392	46739	102.053	
	18	46537	46261	46899	47364	46865	46837	46853	46665	46812	46856	47035	46949	101.830	
	19	46920	47280	46712	46858	46786	46340	47004	46849	46443	46576	46913	46756	101.741	
	20	47414	46953	46880	47077	47418	46675	46371	47366	47190	46524	46888	47544	102.259	
	21	46229	46600	46952	46676	46848	46372	47325	47097	46843	46494	46786	46724	101.651	
	22	46564	46750	47367	46097	46171	47081	46391	47118	47253	47267	47144	47341	101.941	
	23	46379	47406	46692	47525	47079	47607	46748	46675	46212	47129	46669	46361	101.930	

		S.V.I.R.CO. Observatory - Pressure Corrected Data – April 2017											20 NM-64	
day	hh	00_05	05_10	10_15	15_20	20_25	25_30	30_35	35_40	40_45	45_50	50_55	55_60	h-norm
15	0	47650	47550	47032	46696	46866	46380	46454	46533	46844	46936	46690	47097	101.973
	1	46646	46948	46142	47320	46534	47186	46445	46563	46446	46825	46219	46347	101.411
	2	46610	46993	46942	47120	46729	47204	47553	46704	47336	46883	46910	46899	102.183
	3	46807	47119	46978	47181	46700	46928	46899	46543	46459	46880	46972	46946	101.917
	4	47531	46225	47165	46829	46797	46351	46577	46904	46581	47110	47089	47006	101.872
	5	47400	47174	46850	46835	46518	47100	47120	46864	46955	47238	46870	46444	102.091
	6	46737	46922	46915	47405	46380	47432	46863	47188	47274	47263	46578	46442	102.096
	7	47112	46799	46485	47342	46769	46807	47499	46657	47651	47628	46595	47121	102.289
	8	46446	46880	46709	47474	47189	47087	47235	47306	46895	46994	46689	47447	102.268
	9	47224	46713	47072	47225	47177	46779	47101	47186	46833	46809	47078	46982	102.237
	10	46694	46984	46623	46368	47202	46962	46776	46823	47254	46759	47373	46918	101.976
	11	46859	46812	47030	46799	47180	47089	46621	47068	47371	47399	46970	46850	102.214
	12	46613	47287	47162	46716	46943	46742	47276	46855	46470	46585	47077	46846	101.946
	13	47059	46807	47106	46709	46983	47109	46485	46862	47060	46765	46387	46728	101.853
	14	46582	46667	46993	46877	47319	46538	46762	46960	47221	46849	47091	46989	101.996
	15	47315	46378	47231	46946	47214	47336	46964	46959	47366	47570	47480	46511	102.435
	16	46627	47740	46864	47027	47117	46546	47517	46603	46938	46596	47269	46501	102.086
	17	47517	46950	47450	46607	46576	47148	46774	46763	47095	47064	47433	47480	102.360
	18	47016	47366	47483	46948	47353	47687	46853	46772	46745	46677	46608	46760	102.253
	19	47033	47503	46947	47373	46431	47209	46840	46644	46419	47336	46641	46675	102.033
	20	46680	47297	46676	46849	46957	47028	46817	47119	46552	46484	46567	46366	101.732
	21	46476	46687	47071	47144	46452	47122	46666	46586	46893	47204	47440	46833	101.946
	22	46428	47022	47097	46949	46694	47372	47480	46800	46764	46182	46380	46499	101.782
	23	46435	46754	47051	46344	47811	46697	46688	46989	46629	46878	46854	46809	101.832
16	0	46408	47132	47163	47272	47008	47126	46875	46745	46831	46823	47181	46571	102.040
	1	46846	46485	46573	46961	46757	46200	47229	46957	46196	46522	47004	46774	101.571
	2	46649	46930	47192	47708	46401	46667	46980	47168	46687	46518	47027	46957	102.002
	3	46613	47016	47145	47529	46783	46605	47400	47225	47406	46333	46705	47328	102.221
	4	46624	47002	46654	46931	46849	47718	47430	46782	46940	47159	46422	46930	102.104
	5	46445	47406	47190	47131	46650	47147	46990	47231	46729	46445	47006	47196	102.127
	6	46765	46745	46699	46822	46595	47020	47350	47265	47326	47733	46806	47273	102.277
	7	47222	47589	46954	46650	46341	47237	47453	47011	47534	47173	47055	47224	102.466
	8	47553	47599	47134	47484	47390	47183	47133	47560	47156	47875	47020	47196	102.981
	9	47228	47396	47541	46953	47222	46923	46890	47225	47200	46548	46900	46779	102.350
	10	47009	47474	47517	47036	47301	47137	47335	46902	47523	47181	46386	47265	102.579
	11	46910	47225	46692	47301	47424	46793	47250	46800	47096	47001	46754	47368	102.316
	12	46545	47561	47123	47244	46623	47027	47138	46999	46992	47400	46725	46572	102.195
	13	47357	47331	47667	46779	47246	47768	47149	47380	46888	47241	47467	47261	102.846
	14	47246	46695	46966	47066	47544	47004	47177	47403	47254	47255	46832	46856	102.440
	15	47342	47068	47053	47282	47317	46806	46852	47091	46459	46366	47013	46937	102.130
	16	47209	46580	46817	46681	46869	47169	47227	47187	46807	47009	47481	47158	102.240
	17	46816	47019	47438	46684	46919	46238	46780	46595	47516	46723	46609	46396	101.794
	18	47093	47157	46589	47273	46554	46951	46815	46988	47606	46924	46721	47370	102.212
	19	46790	47144	46501	46331	47044	46759	46870	46866	46535	47243	47146	47347	101.946
	20	46823	46905	47481	47229	46702	46965	46947	47157	46928	47319	46649	46827	102.193
	21	47009	47775	46992	46578	47380	46859	46813	47040	46547	46967	47078	46968	102.206
	22	47278	47177	46711	46712	47133	46408	47441	46680	46761	46746	46860	46964	102.000
	23	46033	46623	47169	47218	46970	46887	46821	46363	46567	46570	47040	46786	101.669



INAF/UNIRomaTre				S.V.I.R.CO. Observatory - Pressure Corrected Data – April 2017								20 NM-64		
day	hh	00_05	05_10	10_15	15_20	20_25	25_30	30_35	35_40	40_45	45_50	50_55	55_60	h-norm
17	0	47379	46920	46924	46978	46983	47174	47409	46738	46720	46254	46707	46600	101.982
	1	46745	46920	46667	46738	46589	46944	47363	46820	47462	46536	46782	47169	101.976
	2	47506	46159	47128	46267	47164	47161	47241	46859	46955	46629	47895	46629	102.131
	3	47338	47512	47243	46767	47170	46914	46950	46832	46847	46530	46752	47079	102.193
	4	46646	47057	46853	47559	47623	46991	46864	47281	46962	47480	47082	46340	102.339
	5	46989	47003	47124	47057	47195	47316	47027	47120	47194	47137	47097	46962	102.426
	6	46611	47279	46973	47079	47148	46841	47004	47639	46779	46494	46601	46887	102.084
	7	47124	46538	47290	47021	47713	47912	47063	46835	46850	46917	46927	47046	102.429
	8	47670	47237	47171	47238	47375	47744	47675	47535	47479	47129	47524	47006	103.072
	9	47174	47162	46838	46963	47186	48064	46937	47616	47114	47555	47458	47065	102.772
	10	47055	47031	47919	46965	47479	46321	47574	47222	46822	46839	47189	47371	102.528
	11	47117	46678	47136	47220	47133	47342	47458	47025	46818	47861	46888	47658	102.628
	12	47420	46892	47491	46949	47275	46945	47330	47205	47630	47210	46465	46703	102.479
	13	46616	47288	47080	47298	47863	47276	47060	47609	47649	46968	46925	47328	102.741
	14	47380	46778	47561	47110	47032	47271	46933	46916	47250	47265	46864	47065	102.463
	15	46949	47361	47433	47215	47268	46970	46995	46893	46829	46839	46497	46924	102.236
	16	47554	46932	46858	46751	47630	46680	47242	46822	47114	46458	46874	46972	102.185
	17	47289	46887	47239	46679	47162	47092	47439	46753	47782	46744	47584	47084	102.519
	18	47186	47083	46961	47264	47252	47499	46672	47097	47139	46559	47271	46647	102.319
	19	46605	47433	46959	47527	46697	47479	47727	47387	47483	47534	46953	47292	102.762
	20	46770	46573	46742	47058	46541	47039	46871	46854	47084	46854	47582	47100	102.036
	21	46917	47021	46506	47095	46888	47029	47117	46598	47158	46980	47026	47202	102.121
	22	46836	47128	47126	47670	47218	47633	47310	47269	46702	46841	47213	47221	102.598
	23	47038	46971	48138	47027	47318	46622	47334	47236	46799	47387	47136	46701	102.514
18	0	46623	47138	46889	46876	46778	47249	47138	47431	46694	47129	47179	47170	102.252
	1	47003	47263	46693	46743	46999	47022	46715	47231	47556	46770	47030	46818	102.176
	2	46624	46692	46715	46721	47006	47025	47544	47573	46983	46418	47122	46635	102.034
	3	47225	47041	47581	47196	46780	46727	47182	47128	47618	47132	46710	47017	102.447
	4	46752	47446	46922	47212	46575	47023	47354	46969	47439	47281	47370	46699	102.393
	5	46836	47236	46951	46968	47656	47061	47903	47619	46947	46954	46864	47695	102.692
	6	47380	47410	46701	46932	47018	47162	47259	47064	47405	46896	47135	47467	102.536
	7	47620	47249	48141	46717	46923	47336	47414	47278	47218	46971	47855	47165	102.909
	8	46886	46924	47394	47665	47424	47255	47662	47371	46806	47185	46997	47090	102.687
	9	46680	47397	47144	47239	46605	47224	47045	47311	47006	46382	46573	47678	102.257
	10	47239	47478	47372	46955	47076	47046	47370	47795	47479	47091	47669	46963	102.845
	11	47383	47075	47174	47669	47475	47664	47169	47263	47218	46824	46936	47195	102.756
	12	47179	47165	47041	46733	46836	46872	47060	47327	47273	46795	47354	46550	102.239
	13	47039	47293	47024	46719	46691	47285	46751	47204	47443	46559	47350	47457	102.353
	14	46727	47211	47258	46439	47076	47352	46931	46848	46619	47307	46665	47115	102.123
	15	47433	47052	47408	47019	47356	47165	47279	47079	46825	47156	46497	47030	102.440
	16	47314	47727	47143	47304	47001	47583	46989	46774	46979	47154	46257	46950	102.417
	17	47061	47320	46800	47305	47147	46566	47191	46560	47156	47591	47182	47167	102.394
	18	46979	47432	47154	46731	47294	47176	46597	47139	47354	46946	47187	47196	102.420
	19	46833	46503	46826	46877	46637	47262	46725	46959	46406	46624	47119	46548	101.719
	20	47852	47269	46975	47910	47097	47654	46945	47130	47541	47343	47296	46889	102.912
	21	47000	46675	47166	47530	47370	47217	46766	47421	47462	46657	47890	47477	102.681
	22	47019	47375	47143	47363	47222	46662	47167	47607	47691	46474	47420	46835	102.563
	23	47360	47079	47093	46564	47017	47271	47937	47481	47014	46952	47045	46771	102.492

		S.V.I.R.CO. Observatory - Pressure Corrected Data – April 2017											20 NM-64	
day	hh	00_05	05_10	10_15	15_20	20_25	25_30	30_35	35_40	40_45	45_50	50_55	55_60	h-norm
19	0	46863	46637	46876	47218	47326	46371	47099	46554	46628	46449	47107	46744	101.824
	1	46772	46643	47651	47686	46830	46613	47151	46803	47060	47270	46570	47534	102.310
	2	47439	47408	46583	47866	47471	47143	47043	46570	48004	47222	46856	46470	102.581
	3	47015	47014	46713	47419	47359	47243	47324	47500	46984	48193	47306	47346	102.824
	4	47374	47277	47315	47268	47295	47416	47401	47259	47087	47633	47644	47519	103.018
	5	47257	47553	48587	47516	47399	47375	47363	47266	47419	47312	46611	46807	103.015
	6	47809	47667	47134	47212	46549	47101	47322	47717	47436	47058	48054	47574	103.044
	7	47402	46701	46938	47359	47046	47052	47062	47464	47098	48283	47460	47822	102.872
	8	47824	47058	47483	47248	47474	47656	47432	47958	47012	47598	47576	47433	103.248
	9	47394	47831	47568	47392	47410	47042	47518	47604	48116	47299	47215	47484	103.269
	10	46881	47316	47470	47111	47227	47384	47707	47832	46969	47236	46875	47261	102.797
	11	47497	47685	46832	47848	46824	48254	47732	47323	47601	47413	47589	46798	103.183
	12	47074	47115	47094	47090	47664	47031	47406	47954	47307	47516	47025	46984	102.796
	13	47558	47055	48431	47171	47394	47097	47391	47611	46875	47605	47704	47586	103.197
	14	47208	47482	47802	47170	47971	47316	47758	47118	47432	47287	47700	47131	103.179
	15	46428	47687	47024	47098	47053	46676	47074	47046	46971	47076	47357	47510	102.386
	16	47006	46168	47342	47040	46536	47415	46334	46632	46913	46683	46906	46513	101.750
	17	46588	47571	47375	46880	47254	47054	47144	47583	46989	46543	47118	46988	102.402
	18	46442	47430	47488	46958	48556	46833	47341	47124	47002	45926	46758	47167	102.392
	19	47302	47012	47354	46689	46794	47412	46891	47092	46897	47011	47141	46470	102.217
	20	46817	47281	47104	47058	46860	46975	46708	47547	45612	47056	46434	46947	101.915
	21	47165	46604	46688	47169	47353	47271	46944	46120	47286	46669	47025	46769	102.035
	22	47039	46614	46311	46771	46275	46740	46797	46906	46728	46892	47056	46815	101.651
	23	46806	46770	46563	46584	46919	46299	47365	46357	46369	46610	46426	46062	101.322
20	0	47203	47203	46571	46617	46634	46014	46576	46397	46629	47079	46562	47339	101.633
	1	46828	46987	46645	46790	47551	47350	46873	47271	46789	46601	46610	46337	101.957
	2	46459	46733	47195	46281	47389	46758	47071	46791	46928	46495	46450	46596	101.688
	3	46537	46982	47901	46316	46618	47068	47175	47178	47121	46411	47130	46773	102.062
	4	46752	46798	47401	46513	47081	46630	47341	47614	46712	46736	46899	47309	102.166
	5	46932	46907	46846	46361	46856	47089	46786	47461	46721	47377	47544	46977	102.179
	6	48094	47706	47400	47191	46921	46930	47654	46784	46748	47626	46466	47412	102.737
	7	47079	46063	47261	47253	47126	47183	47603	46896	46748	46574	47316	47163	102.253
	8	47287	47473	46878	46940	47337	47073	47382	46935	47714	47311	46871	47754	102.740
	9	46763	47879	47270	47124	47174	47490	47664	47246	47123	46916	47302	47241	102.783
	10	47775	47759	47570	47487	47381	47308	47494	46768	47248	47200	47710	46842	103.028
	11	47341	47198	48504	47874	47214	47506	47581	47049	47488	47764	47698	47312	103.388
	12	47415	47172	47919	47403	46931	47642	47875	46930	47068	47725	47145	47352	103.034
	13	47238	47410	47547	46794	47048	47621	47550	47224	47111	46949	47553	47834	102.907
	14	47431	47115	47362	46882	47738	47082	47443	47249	47786	47597	47514	47517	103.059
	15	46889	47807	47115	47058	46802	46916	47260	47246	46905	47272	47235	47629	102.591
	16	46786	47279	46933	46735	47268	47204	47591	46869	47422	47488	47492	46589	102.505
	17	46748	47280	47345	47318	46965	47094	46860	47256	47488	47514	46063	46683	102.317
	18	46811	47267	46840	47418	46610	47202	47871	46565	47216	46806	46931	47710	102.431
	19	47715	46833	47418	47113	47344	46843	47022	47435	46877	46795	47032	46832	102.433
	20	47252	47143	46529	47391	47000	46994	47127	46962	46127	46656	47121	46879	102.056
	21	46956	47273	46935	46514	46437	47094	46319	46722	47212	46649	46982	46966	101.853
	22	46644	47317	46722	47051	46618	46870	47285	46850	46462	47353	46889	46617	101.965
	23	46151	46890	47160	46752	46446	47122	47022	46452	46840	46864	46453	46921	101.674

		S.V.I.R.CO. Observatory - Pressure Corrected Data – April 2017											20 NM-64		
		INAF/UNIRomaTre													
day	hh	00_05	05_10	10_15	15_20	20_25	25_30	30_35	35_40	40_45	45_50	50_55	55_60	h-norm	
21	0	46417	45964	46843	46446	47098	47310	46540	46905	47064	46712	47038	47058	101.734	
	1	46715	46620	46874	46906	47133	46336	46988	46809	47734	47264	46857	47077	102.081	
	2	46862	46979	47212	47042	47252	46513	46704	47339	46513	46340	46803	46616	101.874	
	3	46484	46737	47517	46768	46785	47232	46632	47322	46494	46910	46331	46564	101.802	
	4	46609	46528	46649	47061	46503	46753	46914	46771	47217	47046	46900	46280	101.703	
	5	46293	47349	46910	46143	46575	46947	46806	47136	46754	46353	46723	47055	101.669	
	6	46975	46757	46615	47064	46534	46616	46389	47830	46711	46537	46862	46762	101.779	
	7	46756	47480	46849	46830	47108	47013	47075	47032	47189	46616	47192	47037	102.237	
	8	46832	47253	47312	47375	47417	47848	46894	47787	46553	46974	46807	47049	102.585	
	9	47709	46857	47477	47514	47646	47698	47198	46853	46898	47068	47243	47508	102.870	
	10	46803	47796	47252	47308	47599	47238	46837	47466	46816	47510	47960	46961	102.847	
	11	47723	47496	47059	47458	47053	47663	46913	47358	47381	47468	47730	47139	103.010	
	12	47514	47236	47433	47187	46676	46846	46984	47028	46714	47119	46399	47563	102.331	
	13	47099	46914	47611	47161	47571	47561	47062	47267	47109	47876	47648	46797	102.871	
	14	47523	46087	47499	47396	47811	47223	46430	46992	47859	46940	47573	46870	102.604	
	15	47329	46948	46931	47362	46936	45806	46610	47588	46417	47205	47109	46964	102.061	
	16	47560	46872	46767	46529	46629	46384	46927	46883	46973	46694	46355	47248	101.810	
	17	46773	46571	47179	46463	47071	46879	47416	46827	46973	47006	47329	46607	102.041	
	18	46791	46600	46904	47151	47010	46963	46373	46804	47455	47044	47378	47169	102.140	
	19	46441	47141	46291	46572	47249	46757	47133	46849	46808	47080	46649	47272	101.886	
	20	46628	46751	47284	46485	47091	46769	46820	47491	46712	46930	47093	47506	102.125	
	21	46645	46908	46249	46391	46163	46725	47056	46551	47043	46720	46268	47304	101.485	
	22	46689	46029	47075	46749	46727	46613	46535	46333	46346	46568	45965	46420	101.127	
	23	46258	46530	46623	46395	46618	46165	46399	46388	46567	46888	46118	46655	101.046	
22	0	46274	46991	46779	45880	46628	46475	46056	45984	46788	46043	46810	46944	101.052	
	1	47003	45878	46330	46946	46780	46853	46943	46372	46312	46621	46380	46684	101.317	
	2	46475	46164	46163	46861	47012	47048	46736	46596	46844	47033	46268	47056	101.527	
	3	46475	46789	46948	46737	45918	46612	46522	46816	46844	46551	46971	46177	101.364	
	4	46267	46411	46600	46622	46453	46796	46590	46032	45717	46879	46515	46603	101.024	
	5	46961	47297	45676	46486	47057	46956	46274	46629	46839	46600	46922	45944	101.415	
	6	46046	46541	46769	46100	46660	46262	46168	45615	46772	46289	46438	46521	100.788	
	7	45891	46214	45863	46580	46497	46777	46517	46324	45979	46924	46425	46430	100.832	
	8	46347	46501	47428	46225	46389	47265	46599	46642	46281	47243	46589	46670	101.512	
	9	46951	46564	46412	46967	46986	47063	46777	46846	46422	46340	46633	46560	101.574	
	10	46844	46473	46643	46412	46399	46482	47119	46033	46732	46576	46689	46494	101.280	
	11	45847	46515	47068	46644	46166	46138	47125	46261	45785	46610	46706	46467	100.997	
	12	46859	46463	46468	46517	46507	46865	46250	45795	46139	46439	46548	47112	101.111	
	13	46785	46840	46968	46621	46422	46596	46916	46477	47328	46642	46583	47368	101.760	
	14	47221	46874	46917	46833	46826	47119	47332	46343	46497	46116	46126	47287	101.750	
	15	46578	46570	47030	46536	46377	46468	46749	46421	46600	47013	46940	47185	101.565	
	16	46709	46595	46551	46546	47305	46466	46801	47050	46645	46872	47047	45835	101.556	
	17	46345	46526	46790	45991	46485	46074	46493	46459	46852	46526	46536	46670	101.072	
	18	46503	46824	46831	46813	45827	46652	46685	46391	46512	46125	47089	46285	101.215	
	19	46549	46645	46543	46607	46840	47087	46561	46691	46234	45999	47057	46660	101.384	
	20	45984	45347	46313	46591	46774	46871	46216	46180	46674	46561	46864	45932	100.811	
	21	47022	47355	46456	45869	46425	46348	46717	45969	46578	47028	46225	46532	101.213	
	22	46479	46404	46026	46419	46359	45903	46383	46220	45995	46273	46042	45991	100.482	
	23	46789	46329	46212	46622	46262	46856	46283	45852	46415	46361	46539	46046	100.858	

		S.V.I.R.CO. Observatory - Pressure Corrected Data – April 2017											20 NM-64	
		INAF/UNIRomaTre												
day	hh	00_05	05_10	10_15	15_20	20_25	25_30	30_35	35_40	40_45	45_50	50_55	55_60	h-norm
23	0	46249	46485	46780	46811	46235	47058	46471	46297	46122	46939	45911	46477	101.078
	1	46710	46052	46696	45988	46731	46767	47255	46538	46621	46123	46204	46190	101.095
	2	46925	46361	46253	46405	46602	46681	45824	46542	46595	46682	46769	45838	101.022
	3	46200	45752	46418	45825	46251	46538	45977	46140	46553	46631	45854	45839	100.389
	4	46309	46589	46775	46705	46142	46821	46175	47051	46169	46034	46057	46804	101.050
	5	45956	46110	45859	46350	46362	46376	46579	46020	46726	46640	45691	46528	100.609
	6	46668	46250	46356	46326	45752	46995	46385	46225	46111	46649	46175	45684	100.678
	7	46206	46426	46114	46449	46928	46679	46241	46496	47004	47020	46622	46434	101.229
	8	46806	46635	46446	46626	46747	45834	45731	47210	46112	46437	47015	46900	101.208
	9	46772	46505	47237	46708	46555	45930	47005	46447	46203	46199	45950	46472	101.114
	10	46477	46154	46155	46105	46419	46163	46249	46189	46801	46102	45503	46309	100.506
	11	46083	46802	46516	46624	46636	46164	46384	45736	46392	47132	46295	45679	100.835
	12	46445	46721	46316	46572	46711	46118	46399	46127	46823	46602	46403	47064	101.172
	13	46433	46271	46274	46268	46944	46779	46869	47054	46608	46595	46783	47033	101.464
	14	46717	46016	45866	46945	46466	46256	46258	46575	46646	46033	46410	46307	100.845
	15	46543	46726	46233	46267	46742	46449	46514	46491	46458	46754	46513	46686	101.186
	16	46052	46430	46760	47056	46454	46621	46835	47147	46369	46821	46590	46883	101.483
	17	46966	46483	46684	46534	46110	46596	46239	46532	46442	45993	46676	46276	101.033
	18	46634	47035	46351	46325	46393	46364	46688	46786	47256	45897	45933	46873	101.215
	19	46373	46641	46043	46401	46193	46200	46277	46460	46015	46520	45894	46831	100.728
	20	46633	46628	45800	46260	46794	46551	46555	46707	46280	46742	46121	46181	100.982
	21	46331	46531	46264	46760	46290	46421	46238	45843	45505	46121	46793	46659	100.711
	22	46194	45891	45987	46140	46111	46569	47033	46057	46728	46304	46091	46435	100.672
	23	46114	45943	46801	46581	46676	45888	46462	46615	46380	46379	46592	46473	100.919
24	0	46213	46414	46848	46134	46217	47613	46281	45989	46546	46398	46708	46591	101.107
	1	46454	46419	46234	45789	46107	46387	46969	45864	46652	46511	46250	46393	100.760
	2	46934	46148	46636	45977	46118	46598	46334	45464	46520	46089	46119	46925	100.730
	3	46489	45838	46669	46063	46200	47311	46860	46424	46391	46145	46752	46193	100.997
	4	46081	45877	46279	46415	45636	46615	46160	46321	46510	46245	46748	45754	100.509
	5	46621	45732	46328	46559	46620	47012	46676	46888	46117	46975	46192	46443	101.147
	6	45804	46334	46200	46453	46469	46405	45843	46951	46384	46125	46512	46582	100.766
	7	46491	46097	46819	46423	46408	46360	46491	46964	46369	46050	45753	46571	100.899
	8	46915	46359	46602	45794	46427	46358	46265	46144	46293	45933	46462	45624	100.605
	9	46315	46258	46685	46164	46670	45922	46255	46071	46529	46428	46386	46349	100.761
	10	46793	45986	46470	46398	45681	46746	46173	46630	46439	46298	46063	46741	100.831
	11	47118	46724	46722	46514	46010	46857	46197	46783	46012	46046	45906	46238	100.959
	12	46291	46910	46294	45829	47041	46536	46089	46800	46293	46719	46026	46620	101.018
	13	46223	45705	46759	46383	46460	46314	46516	46759	46249	46384	46042	45997	100.717
	14	46592	46752	46310	46241	46195	46783	47074	46615	46263	46332	46692	46311	101.146
	15	45977	46176	45980	46660	46571	45915	46352	46057	46155	46329	47189	46182	100.672
	16	46087	46547	46993	45748	46033	46417	46209	46607	46158	46419	46541	46550	100.811
	17	46831	47216	45852	46435	46334	46505	47200	46350	46976	46441	45908	47289	101.360
	18	46546	46543	46875	46608	46499	46599	45871	46737	45696	46285	46005	46605	100.913
	19	46268	46241	46605	47085	46224	46325	47100	46809	46089	46151	46784	46356	101.124
	20	47056	46071	46708	46274	46055	47191	46062	46662	46183	46008	46264	46561	100.954
	21	47094	46384	46466	46455	46659	46588	46630	46387	46628	46585	46490	46943	101.355
	22	46006	46424	47025	45975	46258	46657	46229	46223	46518	46499	46688	46914	101.012
	23	46874	46809	45862	46314	45910	46456	46481	46478	46193	46800	46708	46476	101.001

INAF/UNIRomaTre		S.V.I.R.CO. Observatory - Pressure Corrected Data – April 2017										20 NM-64		
day	hh	00_05	05_10	10_15	15_20	20_25	25_30	30_35	35_40	40_45	45_50	50_55	55_60	h-norm
25	0	45876	46364	45721	47084	46384	46683	47212	46298	46357	46763	46519	46844	101.130
	1	46841	46904	46366	46474	45955	46192	46697	46326	46362	46446	46563	46359	101.024
	2	46507	47051	46939	46192	46985	46358	46468	46253	46149	46677	46591	46882	101.308
	3	46526	46431	45804	46629	46478	46102	46752	46203	46652	46398	46457	46631	100.948
	4	46686	46717	45770	46566	46593	46219	45873	46254	46392	46515	46253	46633	100.841
	5	46606	46304	46194	46985	46228	46663	46731	45756	45990	46354	45646	46907	100.822
	6	46466	46281	46404	46966	46221	46353	46765	46563	46709	46780	46609	46424	101.216
	7	45728	46246	46886	46272	45831	46294	46447	45976	46351	45963	45680	46469	100.419
	8	46043	46281	46581	46400	46854	46385	46118	46576	45945	46437	46867	46463	100.927
	9	46584	46534	46449	45680	46668	46366	46508	46358	46202	46305	46184	46807	100.872
	10	45478	46736	46537	46923	45982	46470	46209	46372	46193	46300	46086	46501	100.716
	11	46655	46154	46404	46433	46504	46477	46253	46168	46506	46680	47129	47059	101.195
	12	46950	46322	46711	46147	47206	47061	46701	45861	46223	46580	47202	46381	101.361
	13	46452	46651	46806	46673	46168	46307	46467	46893	46759	46593	46323	45926	101.121
	14	46457	46148	46208	46479	45947	46282	46028	46161	46659	46207	46288	46723	100.680
	15	46666	46961	46420	46571	46669	46926	46576	46454	46122	45903	46622	46474	101.183
	16	46301	45841	46009	46459	46420	46272	46654	46769	46262	46411	46601	46906	100.919
	17	46853	46755	46456	46366	46691	46681	46480	46387	46322	47128	46620	46351	101.315
	18	46485	46439	46904	46646	46584	46015	46980	46044	46531	46539	46840	46364	101.185
	19	46706	46373	46187	45745	46621	46954	46780	46698	46840	46215	45855	46286	100.984
	20	46516	46254	47172	46205	46020	46718	45934	46802	46565	46506	46415	46312	101.012
	21	46498	46336	46486	46197	46525	46529	46637	46517	46146	46472	46349	47140	101.087
	22	46161	46759	46545	45811	46367	47025	45939	46410	46458	46534	46421	46768	100.972
	23	47159	46153	46182	46552	46876	45789	46748	46735	46691	46207	46385	46210	101.061
26	0	46602	46063	46304	46357	46606	45958	46407	45977	47177	46730	46518	46527	100.965
	1	46554	46525	46818	46569	46715	45965	46062	46712	46334	45897	46430	46677	100.983
	2	46521	46371	46755	46623	45926	46350	45733	46288	46592	46502	46468	45926	100.765
	3	46888	46130	46725	46276	46482	46246	46400	46297	45915	46775	46020	46234	100.825
	4	46465	46770	46953	46568	46159	46580	46445	46374	46771	46382	46395	46491	101.181
	5	45897	46328	46565	47130	46631	46069	46706	46416	45597	46553	46762	46061	100.885
	6	46648	47062	46675	46836	46070	46349	46668	45988	46776	46984	46178	46346	101.223
	7	47038	46654	46197	46234	46559	46481	46971	46204	46677	46146	46308	46671	101.143
	8	46670	46111	47094	46760	45962	46736	46237	46279	46050	46268	45919	46391	100.842
	9	45862	46260	46054	46257	46044	46501	46890	46414	46507	46252	46020	46606	100.695
	10	46691	46489	46222	47137	46614	46491	46473	46602	46331	46707	46572	46155	101.205
	11	46942	46262	46963	46323	46308	47047	46588	46216	46375	46583	46504	45893	101.118
	12	46443	46614	46504	46543	45538	46790	46479	46424	46545	46860	46450	46737	101.104
	13	46628	46057	46369	46093	46325	46766	46266	46738	46305	46428	46806	46505	100.988
	14	47157	46514	46767	46628	46200	46112	46524	46755	46348	46860	46348	46222	101.196
	15	46006	46464	46757	46756	46331	46468	46834	46059	47093	46597	46868	45970	101.154
	16	46329	46324	46391	46098	46647	46284	46874	46709	45884	46560	46050	46328	100.842
	17	47478	45983	46432	45700	46131	46498	47246	46427	45783	46652	46467	46985	101.078
	18	46063	46334	45961	46184	46119	46579	46782	46447	46317	46756	46663	46726	100.923
	19	46801	46390	46488	46268	46662	46277	46389	46845	46807	46580	47027	46620	101.327
	20	46902	46566	46131	47191	45699	45720	47704	45843	46431	46384	46218	46236	100.941
	21	46156	45950	46390	46362	47254	46327	46469	46635	46633	46566	46281	46525	101.036
	22	46713	46169	46224	45766	46027	46667	46529	46510	46477	46803	46416	46499	100.899
	23	46852	46034	46965	46499	46112	46529	46603	46217	46001	46575	46642	47164	101.153

		S.V.I.R.CO. Observatory - Pressure Corrected Data – April 2017											20 NM-64	
day	hh	00_05	05_10	10_15	15_20	20_25	25_30	30_35	35_40	40_45	45_50	50_55	55_60	h-norm
27	0	46632	46249	46507	45810	47259	46885	46566	46384	46233	47059	47390	46328	101.347
	1	46464	46520	46823	46762	46055	46944	46622	46613	46391	46330	47147	46819	101.387
	2	46018	45788	46368	46562	46451	46366	46562	46459	46561	46629	46251	46428	100.835
	3	46403	45903	46867	46424	46165	46174	46494	46807	46253	46138	46907	46281	100.903
	4	46882	46630	46365	46507	46334	46486	46462	46043	46337	46493	45971	46689	100.973
	5	46768	46680	45802	45586	46395	46151	46110	47006	46927	46582	46107	46413	100.852
	6	46771	46253	45734	46395	46364	45786	46713	46111	46570	46718	46734	46625	100.896
	7	45463	46113	46409	46266	46353	47302	46625	46480	45593	46212	45926	45733	100.479
	8	46353	46865	46371	46616	46006	46887	46010	46253	46451	46591	46527	46253	100.969
	9	45853	46885	45871	46531	46629	46448	46371	46701	45937	46640	47137	46159	100.966
	10	46347	46147	46156	46628	46224	45931	46218	46144	46347	46127	46359	47003	100.688
	11	46431	46537	46435	46607	46472	46319	46431	46303	46423	46734	47019	45919	101.050
	12	46832	46227	46361	45460	46687	46370	46272	46930	45997	46757	46410	45986	100.808
	13	46378	45953	45849	47085	46681	45866	45885	46704	46343	46872	46989	46089	100.881
	14	45750	46238	46601	46465	46396	46517	45782	47076	46398	45817	46542	45917	100.665
	15	46312	46392	46680	46336	45877	46138	46399	46499	46565	46469	46553	46250	100.840
	16	46903	45828	46627	46145	46291	46180	46481	47292	45799	45723	46415	47001	100.881
	17	46939	46229	46260	46098	46513	46347	46219	46158	45384	46491	46603	46363	100.683
	18	46252	46233	46304	46229	46043	46469	46429	46224	45783	47125	46046	45960	100.591
	19	46856	46934	46442	46056	46595	46352	46533	46152	45618	47019	47249	46309	101.138
	20	46433	46099	45879	46683	45999	46643	46416	47464	46458	46357	46149	45866	100.837
	21	46498	45629	45538	46298	46509	45942	46388	46011	46371	46641	46698	46619	100.601
	22	46684	46720	47160	46937	46354	46748	46038	46718	46218	46683	45734	46835	101.268
	23	45849	45913	46514	46115	46360	45723	46050	46288	45579	46717	46354	46539	100.393
28	0	46236	46336	45755	46762	46388	46201	46052	46131	45951	46114	46617	46259	100.530
	1	46057	46606	46146	46691	46844	46005	46315	46121	45739	45655	46600	46465	100.619
	2	46047	46113	45750	46646	46284	46016	46765	46485	46211	46707	46515	45781	100.632
	3	45744	46287	46165	46050	46006	46156	45555	45669	46211	46511	46075	47060	100.300
	4	46107	45950	46591	46451	46393	46953	46523	45604	46035	46664	45203	46180	100.511
	5	46405	45875	46548	45837	46676	46185	46054	46406	46505	46572	46441	45909	100.649
	6	46548	46798	46348	45835	46473	46113	46409	45856	46478	47265	45875	46725	100.886
	7	46243	46625	46146	46466	46651	45881	46472	46167	46489	46771	46329	46257	100.845
	8	46491	47245	46432	46293	46045	46919	46021	45955	46064	46425	46386	46735	100.939
	9	46339	46036	46211	46002	46107	46004	46780	46084	46689	45573	46205	45915	100.383
	10	46494	46692	46093	45902	46189	45913	47049	46170	46224	45890	47258	46470	100.818
	11	46215	46526	46374	46118	46147	46026	46408	45968	46866	46398	46838	46676	100.857
	12	46545	46348	46010	45980	45954	46638	45724	46417	46383	46500	45501	46014	100.395
	13	46006	46129	46571	45857	46619	46455	46340	46366	46034	45874	46438	45951	100.509
	14	46942	46116	45920	46398	46423	46802	46899	46362	46561	46605	46410	45738	100.968
	15	46403	46546	46358	46410	46180	46667	46614	46142	46514	45473	46831	46247	100.825
	16	46850	46374	46278	46251	46276	46063	46938	46095	46245	46271	46637	46284	100.857
	17	46156	46251	46382	46349	46524	46209	46050	46048	46155	46648	46279	46687	100.708
	18	46926	46436	47147	46731	46981	45736	46699	46559	46332	46391	46512	46638	101.316
	19	46225	46647	46375	46314	46905	46250	47044	46568	46266	46101	46694	46965	101.182
	20	46838	46170	46586	46867	46340	46062	46802	46527	46566	46862	46451	46793	101.275
	21	46641	46643	46437	46720	46221	46366	47112	45907	45863	46584	47211	46537	101.161
	22	46556	46673	46816	45812	46922	46891	46158	46611	46698	46632	46723	46833	101.358
	23	46749	46667	46395	46491	47182	46371	46360	46404	46472	46926	46637	46135	101.261

		S.V.I.R.CO. Observatory - Pressure Corrected Data – April 2017											20 NM-64	
		INAF/UNIRomaTre												
day	hh	00_05	05_10	10_15	15_20	20_25	25_30	30_35	35_40	40_45	45_50	50_55	55_60	h-norm
29	0	46732	47109	46716	46506	46111	46768	47008	46584	46590	46441	46780	47013	101.544
	1	46764	46859	46451	46269	45983	46026	46354	46561	46860	46179	46824	46005	100.961
	2	46149	46564	46846	46817	47161	46330	46228	46591	46610	46386	46128	46231	101.125
	3	46265	47196	46804	46060	46889	46289	46670	46441	46456	47082	46963	46431	101.397
	4	46279	46109	47212	46331	46556	47055	46654	46932	46401	46425	46476	46905	101.359
	5	46272	45523	46901	46083	46872	46915	46376	46568	46738	46521	46444	46484	101.062
	6	45987	46156	46450	46691	46385	46810	46505	46265	46465	46755	46751	46415	101.052
	7	46223	46776	46665	46867	46379	46530	46613	46614	47081	45929	46197	45889	101.074
	8	46392	46046	46572	46889	47129	46730	46984	47107	46621	47060	47004	45869	101.553
	9	46296	46235	46219	46421	47191	46945	46404	47004	46549	45987	46506	46760	101.211
	10	46728	46418	46426	45965	46342	45856	46271	46701	46441	46266	46140	46657	100.793
	11	46004	46656	46837	46708	46120	46781	46011	46099	46191	46861	46077	46651	100.936
	12	46635	46470	46162	46289	46914	46883	46450	46656	46670	46524	46317	46372	101.179
	13	46551	46319	46742	46523	46551	46224	46515	46326	45952	46555	46801	46459	101.030
	14	46058	46124	46354	46184	46936	46575	46443	46353	46885	46910	46503	47017	101.180
	15	46504	46019	46634	46547	46791	46429	46723	46433	46030	47237	46627	46441	101.192
	16	45809	46366	46844	46208	46897	46523	47387	46558	46600	46959	46078	46326	101.218
	17	47310	46450	46502	46504	47145	46494	47010	46731	46545	46250	46228	46530	101.426
	18	46704	46713	46161	46296	46826	46598	46515	46290	46891	46531	46512	46295	101.178
	19	46563	46692	46161	46812	46845	46911	47523	47268	47111	46705	45989	46617	101.696
	20	46606	46353	46626	46101	46318	46628	47336	47463	46581	47639	46582	46723	101.653
	21	46534	45963	46999	46778	46997	46881	46745	46668	46798	46937	47221	46164	101.604
	22	46716	46856	46856	46998	46941	46788	46235	47054	46717	47122	46816	46303	101.734
	23	47075	46768	47126	46874	47151	46927	46655	47246	47406	46661	46226	46907	102.028
30	0	46931	47071	46841	47169	46619	46464	46267	47217	46829	47399	46869	47342	102.027
	1	47208	46880	46542	46728	47076	46115	46314	46620	46857	46713	46703	46999	101.617
	2	46565	47140	46546	46693	47093	46198	46419	47120	47097	46898	46787	46798	101.725
	3	46689	46759	46523	46547	46129	46682	47010	46641	46531	46388	46613	46691	101.336
	4	46493	46297	46811	46795	46337	47118	46611	45982	46145	46593	47078	46471	101.250
	5	46435	46532	47086	46760	47073	46360	46810	46538	46786	47019	46530	46478	101.553
	6	47078	46215	46973	46607	46691	46582	47377	46798	45562	46001	47089	46413	101.368
	7	46524	46016	45728	46594	46397	46553	47229	46577	46584	46668	46489	46643	101.118
	8	46659	46132	46645	46848	46875	46662	46645	46491	46549	45806	45709	46738	101.074
	9	46213	46469	46722	46703	46748	46378	46356	46282	46819	47505	46240	46084	101.212
	10	46471	46568	45806	46125	46205	46531	46446	46563	46237	46461	46541	47150	100.956
	11	46313	46329	46399	46645	46337	46572	46457	46807	46501	46602	45882	46263	100.956
	12	46257	46096	46814	46480	46331	46890	46994	46491	46904	46274	46352	46344	101.159
	13	46470	46540	46576	46844	46589	46523	46074	46814	46691	46657	46256	46270	101.172
	14	46059	46908	46921	46424	46272	45655	46263	46747	46913	46559	46479	46471	101.058
	15	47195	46842	46775	47087	46944	46761	45922	46582	46364	46661	46763	46190	101.496
	16	46761	47300	46739	46957	46951	47386	46807	46043	46653	46497	46587	46357	101.668
	17	46110	45968	46808	45941	47205	46496	46444	47191	46187	46257	47524	47032	101.328
	18	47060	47257	46260	46280	46546	46781	47421	46683	46095	46626	46644	47323	101.657
	19	46867	46353	46775	47229	46983	46444	46822	46286	46523	46627	46492	47198	101.588
	20	47038	46452	46431	46276	46910	47299	46750	46647	46129	46377	46446	46260	101.301
	21	46251	47146	46797	46841	46734	46777	46508	47192	46271	46744	47226	46651	101.686
	22	45932	46324	46429	46071	46662	47026	45756	46505	46505	46844	45515	46406	100.751
	23	47012	46357	46209	46349	46768	46471	45951	46729	45849	46678	46159	45814	100.818

**S.V.I.R.CO. Observatory - Pressure in hectoPascal – April 2017**

day	hh	00_05	05_10	10_15	15_20	20_25	25_30	30_35	35_40	40_45	45_50	50_55	55_60	average
1	0	1019.33	1019.32	1019.27	1019.22	1019.17	1019.14	1019.10	1019.05	1019.01	1018.95	1018.89	1018.83	1019.09
	1	1018.76	1018.71	1018.66	1018.63	1018.60	1018.55	1018.50	1018.48	1018.43	1018.37	1018.33	1018.30	1018.52
	2	1018.25	1018.19	1018.14	1018.13	1018.12	1018.11	1018.10	1018.06	1018.03	1018.02	1018.04	1018.04	1018.10
	3	1018.04	1018.04	1018.04	1018.04	1018.00	1017.99	1017.99	1017.95	1017.90	1017.88	1017.87	1017.85	1017.96
	4	1017.83	1017.85	1017.86	1017.84	1017.85	1017.80	1017.72	1017.69	1017.70	1017.67	1017.64	1017.61	1017.75
	5	1017.57	1017.57	1017.59	1017.59	1017.59	1017.59	1017.59	1017.58	1017.59	1017.59	1017.59	1017.63	1017.59
	6	1017.69	1017.73	1017.74	1017.73	1017.69	1017.64	1017.62	1017.60	1017.55	1017.53	1017.55	1017.54	1017.63
	7	1017.51	1017.50	1017.53	1017.50	1017.45	1017.46	1017.47	1017.45	1017.41	1017.40	1017.39	1017.36	1017.45
	8	1017.34	1017.32	1017.28	1017.26	1017.26	1017.25	1017.24	1017.23	1017.19	1017.16	1017.17	1017.18	1017.24
	9	1017.14	1017.09	1017.06	1017.06	1017.06	1017.04	1017.01	1016.99	1016.97	1016.93	1016.86	1016.80	1017.00
	10	1016.76	1016.72	1016.69	1016.64	1016.56	1016.49	1016.43	1016.36	1016.29	1016.23	1016.18	1016.12	1016.45
	11	1016.06	1016.01	1015.96	1015.85	1015.79	1015.77	1015.67	1015.60	1015.58	1015.52	1015.44	1015.38	1015.72
	12	1015.29	1015.21	1015.15	1015.09	1015.06	1015.01	1014.93	1014.85	1014.75	1014.68	1014.61	1014.54	1014.93
	13	1014.50	1014.45	1014.40	1014.35	1014.28	1014.21	1014.17	1014.11	1013.98	1013.88	1013.78	1013.68	1014.15
	14	1013.59	1013.53	1013.48	1013.42	1013.38	1013.32	1013.28	1013.24	1013.18	1013.11	1013.07	1013.03	1013.30
	15	1012.94	1012.85	1012.82	1012.82	1012.76	1012.71	1012.70	1012.67	1012.61	1012.58	1012.59	1012.59	1012.72
	16	1012.55	1012.50	1012.47	1012.45	1012.43	1012.43	1012.43	1012.42	1012.39	1012.33	1012.29	1012.27	1012.41
	17	1012.26	1012.25	1012.24	1012.24	1012.24	1012.25	1012.25	1012.23	1012.22	1012.22	1012.22	1012.24	1012.24
	18	1012.26	1012.29	1012.34	1012.39	1012.46	1012.52	1012.56	1012.57	1012.58	1012.62	1012.64	1012.62	1012.48
	19	1012.61	1012.60	1012.61	1012.60	1012.59	1012.59	1012.58	1012.56	1012.52	1012.45	1012.34	1012.29	1012.53
	20	1012.30	1012.28	1012.28	1012.28	1012.24	1012.21	1012.20	1012.21	1012.17	1012.10	1012.07	1012.06	1012.20
	21	1012.05	1012.04	1012.02	1012.04	1012.05	1012.07	1012.09	1012.13	1012.16	1012.18	1012.19	1012.14	1012.09
	22	1012.11	1012.15	1012.23	1012.27	1012.27	1012.29	1012.31	1012.32	1012.34	1012.39	1012.40	1012.37	1012.28
	23	1012.34	1012.30	1012.25	1012.20	1012.13	1012.04	1011.97	1011.89	1011.80	1011.64	1011.46	1011.43	1011.95
2	0	1011.53	1011.55	1011.59	1011.56	1011.50	1011.41	1011.27	1011.19	1011.11	1011.01	1010.94	1010.88	1011.28
	1	1010.86	1010.85	1010.77	1010.68	1010.61	1010.58	1010.54	1010.53	1010.55	1010.53	1010.49	1010.48	1010.62
	2	1010.50	1010.50	1010.50	1010.50	1010.51	1010.51	1010.47	1010.44	1010.43	1010.40	1010.34	1010.29	1010.45
	3	1010.25	1010.22	1010.13	1010.04	1010.02	1010.01	1010.00	1009.99	1009.96	1009.92	1009.87	1009.83	1010.02
	4	1009.81	1009.83	1009.85	1009.85	1009.84	1009.83	1009.85	1009.88	1009.89	1009.87	1009.85	1009.88	1009.85
	5	1009.96	1009.98	1009.98	1009.99	1010.01	1010.04	1010.03	1009.99	1009.98	1009.98	1009.94	1009.90	1009.98
	6	1009.88	1009.87	1009.88	1009.91	1009.95	1010.05	1010.14	1010.20	1010.29	1010.42	1010.52	1010.70	1010.15
	7	1010.92	1011.15	1011.25	1011.24	1011.20	1011.17	1011.28	1011.44	1011.59	1011.66	1011.83	1011.77	1011.37
	8	1011.39	1011.33	1011.45	1011.49	1011.57	1011.66	1011.69	1011.69	1011.67	1011.63	1011.57	1011.54	1011.56
	9	1011.53	1011.54	1011.58	1011.64	1011.71	1011.76	1011.76	1011.72	1011.67	1011.60	1011.55	1011.49	1011.63
	10	1011.43	1011.43	1011.51	1011.79	1012.08	1012.13	1012.08	1012.13	1012.23	1012.18	1011.94	1011.79	1011.89
	11	1011.71	1011.56	1011.44	1011.48	1011.78	1012.10	1012.18	1012.13	1012.10	1012.08	1012.08	1012.09	1011.89
	12	1012.04	1011.94	1011.84	1011.76	1011.68	1011.58	1011.46	1011.38	1011.37	1011.34	1011.32	1011.33	1011.58
	13	1011.35	1011.40	1011.44	1011.40	1011.30	1011.20	1011.15	1011.13	1011.08	1011.05	1010.96	1010.88	1011.19
	14	1010.87	1010.89	1010.90	1010.85	1010.78	1010.80	1010.80	1010.76	1010.76	1010.80	1010.89	1011.00	1010.84
	15	1011.27	1011.42	1011.54	1011.74	1011.75	1011.68	1011.57	1011.45	1011.44	1011.49	1011.50	1011.51	1011.53
	16	1011.48	1011.40	1011.33	1011.33	1011.38	1011.43	1011.45	1011.45	1011.44	1011.42	1011.37	1011.29	1011.39
	17	1011.24	1011.20	1011.15	1011.12	1011.14	1011.14	1011.09	1011.04	1011.02	1011.02	1011.02	1011.02	1011.10
	18	1011.06	1011.16	1011.19	1011.24	1011.36	1011.40	1011.42	1011.50	1011.54	1011.58	1011.66	1011.69	1011.40
	19	1011.73	1011.77	1011.81	1011.86	1011.90	1011.93	1011.94	1011.96	1011.96	1011.94	1011.93	1011.93	1011.89
	20	1011.99	1012.05	1012.07	1012.07	1012.07	1012.08	1012.07	1012.07	1012.12	1012.11	1011.98	1011.87	1012.04
	21	1011.82	1011.84	1011.86	1011.84	1011.84	1011.83	1011.79	1011.77	1011.76	1011.70	1011.67	1011.68	1011.78
	22	1011.71	1011.72	1011.69	1011.60	1011.50	1011.51	1011.57	1011.54	1011.50	1011.55	1011.61	1011.60	1011.59
	23	1011.54	1011.51	1011.47	1011.41	1011.38	1011.40	1011.39	1011.35	1011.34	1011.33	1011.30	1011.25	1011.39



S.V.I.R.CO. Observatory - Pressure in hectoPascal – April 2017

day	hh	00_05	05_10	10_15	15_20	20_25	25_30	30_35	35_40	40_45	45_50	50_55	55_60	average
3	0	1011.31	1011.25	1011.14	1011.12	1011.16	1011.19	1011.21	1011.22	1011.16	1011.10	1011.07	1011.01	1011.15
	1	1010.91	1010.90	1010.95	1010.97	1010.95	1010.90	1010.82	1010.75	1010.72	1010.70	1010.71	1010.77	1010.84
	2	1010.82	1010.86	1010.82	1010.85	1010.98	1010.97	1010.85	1010.76	1010.78	1010.86	1010.84	1010.74	1010.84
	3	1010.66	1010.62	1010.61	1010.67	1010.77	1010.73	1010.68	1010.65	1010.53	1010.48	1010.45	1010.43	1010.60
	4	1010.44	1010.44	1010.49	1010.60	1010.66	1010.63	1010.59	1010.62	1010.64	1010.63	1010.62	1010.62	1010.58
	5	1010.67	1010.69	1010.69	1010.73	1010.80	1010.86	1010.90	1010.88	1010.90	1010.98	1011.04	1011.07	1010.85
	6	1011.10	1011.17	1011.35	1011.40	1011.34	1011.41	1011.51	1011.50	1011.51	1011.55	1011.57	1011.59	1011.42
	7	1011.50	1011.40	1011.43	1011.54	1011.71	1011.76	1011.78	1011.83	1011.90	1012.07	1012.11	1012.07	1011.76
	8	1012.06	1012.08	1012.13	1012.16	1012.26	1012.29	1012.27	1012.35	1012.43	1012.41	1012.38	1012.33	1012.26
	9	1012.29	1012.24	1012.21	1012.19	1012.16	1012.12	1012.07	1012.05	1012.03	1011.98	1011.95	1011.87	1012.09
	10	1011.82	1011.79	1011.78	1011.77	1011.73	1011.80	1011.90	1011.91	1011.97	1012.05	1012.12	1012.14	1011.89
	11	1012.14	1012.23	1012.22	1012.16	1012.18	1012.18	1012.23	1012.28	1012.28	1012.24	1012.17	1012.20	1012.21
	12	1012.23	1012.14	1012.06	1012.10	1012.15	1012.16	1012.17	1012.13	1012.00	1011.91	1011.85	1011.80	1012.06
	13	1011.76	1011.77	1011.77	1011.72	1011.74	1011.78	1011.71	1011.60	1011.55	1011.55	1011.56	1011.58	1011.67
	14	1011.59	1011.54	1011.53	1011.56	1011.59	1011.59	1011.57	1011.64	1011.72	1011.72	1011.68	1011.68	1011.61
	15	1011.72	1011.79	1011.89	1011.98	1012.01	1012.02	1012.01	1011.98	1011.97	1012.03	1012.10	1012.11	1011.97
	16	1012.06	1012.03	1012.03	1012.06	1012.09	1012.13	1012.18	1012.21	1012.21	1012.20	1012.22	1012.25	1012.14
	17	1012.28	1012.32	1012.35	1012.33	1012.28	1012.25	1012.27	1012.30	1012.36	1012.41	1012.43	1012.42	1012.33
	18	1012.50	1012.65	1012.75	1012.82	1012.92	1012.98	1013.00	1013.04	1013.12	1013.23	1013.29	1013.31	1012.96
	19	1013.36	1013.43	1013.53	1013.61	1013.66	1013.69	1013.73	1013.76	1013.83	1013.91	1013.93	1013.95	1013.70
	20	1013.96	1013.97	1014.01	1014.07	1014.13	1014.20	1014.25	1014.27	1014.29	1014.36	1014.42	1014.41	1014.19
	21	1014.40	1014.43	1014.45	1014.45	1014.43	1014.43	1014.42	1014.39	1014.39	1014.42	1014.48	1014.48	1014.43
	22	1014.48	1014.46	1014.41	1014.40	1014.39	1014.35	1014.30	1014.28	1014.26	1014.27	1014.28	1014.26	1014.34
	23	1014.27	1014.28	1014.28	1014.33	1014.38	1014.41	1014.44	1014.46	1014.48	1014.45	1014.37	1014.27	1014.37
4	0	1014.12	1014.12	1014.06	1014.00	1013.98	1013.94	1013.92	1013.94	1013.92	1013.86	1013.80	1013.75	1013.94
	1	1013.74	1013.76	1013.75	1013.69	1013.66	1013.65	1013.65	1013.60	1013.53	1013.51	1013.51	1013.53	1013.63
	2	1013.55	1013.51	1013.54	1013.59	1013.59	1013.62	1013.62	1013.59	1013.56	1013.58	1013.62	1013.65	1013.58
	3	1013.68	1013.65	1013.60	1013.59	1013.57	1013.56	1013.57	1013.56	1013.52	1013.53	1013.54	1013.49	1013.57
	4	1013.46	1013.47	1013.53	1013.58	1013.58	1013.62	1013.70	1013.71	1013.67	1013.65	1013.73	1013.84	1013.63
	5	1013.88	1013.91	1013.95	1013.94	1013.96	1014.01	1014.05	1014.10	1014.08	1014.07	1014.16	1014.25	1014.03
	6	1014.28	1014.29	1014.33	1014.33	1014.29	1014.29	1014.33	1014.37	1014.41	1014.42	1014.41	1014.41	1014.35
	7	1014.42	1014.46	1014.46	1014.44	1014.43	1014.45	1014.52	1014.54	1014.57	1014.64	1014.67	1014.68	1014.52
	8	1014.69	1014.68	1014.70	1014.73	1014.75	1014.72	1014.67	1014.60	1014.53	1014.48	1014.46	1014.47	1014.62
	9	1014.48	1014.49	1014.47	1014.46	1014.45	1014.42	1014.37	1014.36	1014.35	1014.31	1014.27	1014.25	1014.39
	10	1014.20	1014.15	1014.09	1014.02	1013.98	1013.93	1013.86	1013.82	1013.80	1013.78	1013.74	1013.66	1013.92
	11	1013.58	1013.52	1013.51	1013.51	1013.48	1013.45	1013.46	1013.47	1013.48	1013.48	1013.46	1013.43	1013.48
	12	1013.45	1013.49	1013.48	1013.43	1013.39	1013.33	1013.27	1013.21	1013.16	1013.14	1013.14	1013.12	1013.30
	13	1013.10	1013.07	1013.01	1012.97	1012.96	1012.93	1012.90	1012.87	1012.84	1012.80	1012.78	1012.78	1012.92
	14	1012.77	1012.75	1012.74	1012.75	1012.74	1012.74	1012.76	1012.73	1012.72	1012.73	1012.79	1012.91	1012.76
	15	1013.01	1013.10	1013.22	1013.35	1013.41	1013.40	1013.44	1013.65	1013.82	1013.85	1013.83	1013.73	1013.48
	16	1013.68	1013.88	1014.25	1014.57	1014.77	1014.94	1015.14	1015.28	1015.41	1015.46	1015.37	1015.41	1014.84
	17	1015.25	1014.87	1014.60	1014.43	1014.37	1014.28	1014.20	1014.09	1013.99	1013.97	1013.96	1013.97	1014.33
	18	1014.09	1014.19	1014.19	1014.21	1014.20	1014.14	1014.20	1014.33	1014.42	1014.50	1014.58	1014.65	1014.31
	19	1014.74	1014.81	1014.86	1014.90	1014.96	1014.90	1014.78	1014.73	1014.71	1014.74	1014.73	1014.62	1014.79
	20	1014.48	1014.40	1014.31	1014.19	1014.11	1014.07	1014.04	1014.04	1014.08	1014.11	1014.12	1014.23	1014.18
	21	1014.41	1014.52	1014.55	1014.60	1014.68	1014.72	1014.69	1014.65	1014.68	1014.74	1014.82	1014.88	1014.66
	22	1014.89	1014.89	1014.90	1014.86	1014.82	1014.79	1014.69	1014.64	1014.65	1014.66	1014.67	1014.68	1014.76
	23	1014.70	1014.74	1014.74	1014.69	1014.67	1014.64	1014.61	1014.62	1014.61	1014.56	1014.51	1014.49	1014.63

S.V.I.R.CO. Observatory - Pressure in hectoPascal – April 2017

day	hh	00_05	05_10	10_15	15_20	20_25	25_30	30_35	35_40	40_45	45_50	50_55	55_60	average
5	0	1014.46	1014.44	1014.42	1014.44	1014.44	1014.44	1014.43	1014.41	1014.41	1014.40	1014.38	1014.33	1014.41
	1	1014.23	1014.19	1014.19	1014.14	1014.11	1014.10	1014.11	1014.08	1014.04	1014.05	1014.02	1013.97	1014.10
	2	1013.94	1013.91	1013.90	1013.91	1013.92	1013.90	1013.88	1013.89	1013.92	1013.96	1014.01	1014.05	1013.93
	3	1014.02	1014.03	1014.07	1014.07	1014.08	1014.10	1014.11	1014.08	1014.06	1014.06	1014.10	1014.15	1014.08
	4	1014.21	1014.25	1014.27	1014.28	1014.27	1014.26	1014.24	1014.24	1014.28	1014.31	1014.35	1014.42	1014.28
	5	1014.47	1014.48	1014.47	1014.49	1014.50	1014.50	1014.52	1014.52	1014.52	1014.53	1014.57	1014.61	1014.51
	6	1014.66	1014.69	1014.69	1014.72	1014.73	1014.71	1014.69	1014.68	1014.69	1014.67	1014.63	1014.58	1014.68
	7	1014.56	1014.58	1014.59	1014.59	1014.61	1014.63	1014.68	1014.71	1014.72	1014.77	1014.81	1014.84	1014.67
	8	1014.86	1014.87	1014.90	1014.92	1014.93	1014.92	1014.89	1014.88	1014.89	1014.93	1014.97	1014.99	1014.91
	9	1015.01	1015.02	1015.03	1015.02	1014.97	1014.93	1014.92	1014.92	1014.95	1014.99	1015.04	1015.09	1014.99
	10	1015.13	1015.12	1015.07	1015.03	1015.01	1015.00	1014.98	1014.95	1014.93	1014.90	1014.87	1014.88	1014.99
	11	1014.89	1014.87	1014.83	1014.79	1014.78	1014.73	1014.66	1014.62	1014.58	1014.54	1014.53	1014.53	1014.69
	12	1014.52	1014.50	1014.54	1014.59	1014.57	1014.53	1014.51	1014.49	1014.51	1014.51	1014.47	1014.45	1014.51
	13	1014.42	1014.40	1014.37	1014.33	1014.27	1014.18	1014.12	1014.09	1014.07	1014.02	1013.99	1013.97	1014.18
	14	1013.93	1013.95	1013.99	1014.04	1014.06	1014.02	1013.99	1014.01	1014.05	1014.08	1014.08	1014.03	1014.02
	15	1013.97	1013.95	1013.96	1013.97	1013.99	1014.01	1014.02	1014.01	1014.01	1014.07	1014.13	1014.18	1014.02
	16	1014.22	1014.23	1014.22	1014.20	1014.20	1014.23	1014.27	1014.31	1014.37	1014.43	1014.50	1014.57	1014.31
	17	1014.66	1014.76	1014.81	1014.81	1014.80	1014.82	1014.85	1014.87	1014.90	1014.94	1014.96	1014.99	1014.85
	18	1015.00	1015.04	1015.09	1015.11	1015.16	1015.23	1015.29	1015.36	1015.42	1015.41	1015.41	1015.48	1015.25
	19	1015.52	1015.58	1015.67	1015.72	1015.75	1015.78	1015.83	1015.88	1015.88	1015.88	1015.87	1015.85	1015.77
	20	1015.82	1015.79	1015.76	1015.78	1015.82	1015.83	1015.82	1015.80	1015.76	1015.72	1015.69	1015.69	1015.77
	21	1015.71	1015.70	1015.69	1015.67	1015.65	1015.64	1015.61	1015.56	1015.52	1015.52	1015.53	1015.54	1015.61
	22	1015.54	1015.53	1015.51	1015.50	1015.49	1015.46	1015.44	1015.44	1015.43	1015.40	1015.38	1015.37	1015.46
	23	1015.37	1015.36	1015.33	1015.30	1015.28	1015.26	1015.24	1015.22	1015.19	1015.19	1015.19	1015.16	1015.25
6	0	1015.06	1015.03	1014.96	1014.90	1014.84	1014.80	1014.76	1014.71	1014.67	1014.64	1014.60	1014.55	1014.78
	1	1014.50	1014.42	1014.34	1014.31	1014.28	1014.23	1014.15	1014.08	1014.04	1014.05	1014.10	1014.16	1014.22
	2	1014.22	1014.25	1014.22	1014.17	1014.09	1013.98	1013.87	1013.81	1013.77	1013.69	1013.64	1013.67	1013.95
	3	1013.68	1013.64	1013.62	1013.62	1013.57	1013.54	1013.60	1013.64	1013.63	1013.69	1013.76	1013.84	1013.65
	4	1013.89	1013.89	1013.86	1013.85	1013.87	1013.86	1013.87	1013.92	1013.95	1013.94	1013.94	1013.96	1013.90
	5	1013.99	1014.01	1014.03	1014.08	1014.18	1014.23	1014.21	1014.22	1014.25	1014.26	1014.29	1014.31	1014.17
	6	1014.30	1014.27	1014.26	1014.26	1014.27	1014.28	1014.26	1014.27	1014.32	1014.39	1014.45	1014.49	1014.32
	7	1014.52	1014.55	1014.59	1014.61	1014.61	1014.62	1014.61	1014.61	1014.63	1014.62	1014.64	1014.67	1014.60
	8	1014.69	1014.72	1014.77	1014.81	1014.85	1014.91	1014.94	1014.93	1014.94	1014.95	1014.95	1014.95	1014.86
	9	1014.97	1014.97	1014.97	1014.97	1014.97	1014.95	1014.94	1014.93	1014.90	1014.87	1014.86	1014.83	1014.92
	10	1014.80	1014.79	1014.77	1014.74	1014.71	1014.65	1014.58	1014.55	1014.51	1014.46	1014.41	1014.38	1014.61
	11	1014.33	1014.24	1014.16	1014.09	1014.01	1013.96	1013.89	1013.80	1013.77	1013.74	1013.65	1013.56	1013.93
	12	1013.54	1013.49	1013.42	1013.38	1013.33	1013.27	1013.21	1013.13	1013.06	1013.02	1012.98	1012.99	1013.23
	13	1012.98	1012.88	1012.83	1012.85	1012.82	1012.71	1012.56	1012.50	1012.61	1012.73	1012.74	1012.75	1012.74
	14	1012.74	1012.66	1012.64	1012.70	1012.72	1012.72	1012.74	1012.73	1012.72	1012.75	1012.78	1012.81	1012.72
	15	1012.85	1012.88	1012.90	1012.88	1012.84	1012.84	1012.84	1012.84	1012.85	1012.87	1012.84	1012.78	1012.85
	16	1012.76	1012.80	1012.84	1012.88	1012.90	1012.88	1012.90	1012.94	1013.00	1013.10	1013.26	1013.41	1012.97
	17	1013.48	1013.52	1013.56	1013.69	1013.79	1013.82	1013.92	1014.04	1014.11	1014.15	1014.20	1014.25	1013.88
	18	1014.29	1014.27	1014.22	1014.23	1014.34	1014.44	1014.47	1014.47	1014.48	1014.45	1014.44	1014.46	1014.38
	19	1014.46	1014.48	1014.51	1014.49	1014.48	1014.49	1014.47	1014.46	1014.49	1014.54	1014.61	1014.68	1014.51
	20	1014.75	1014.81	1014.84	1014.88	1014.92	1014.97	1015.03	1015.08	1015.12	1015.13	1015.11	1015.12	1014.98
	21	1015.14	1015.17	1015.22	1015.25	1015.28	1015.29	1015.27	1015.26	1015.32	1015.40	1015.46	1015.49	1015.29
	22	1015.48	1015.46	1015.47	1015.49	1015.50	1015.52	1015.55	1015.60	1015.68	1015.73	1015.76	1015.78	1015.58
	23	1015.82	1015.84	1015.85	1015.88	1015.91	1015.94	1015.94	1015.94	1015.95	1015.97	1015.95	1015.93	1015.91

S.V.I.R.CO. Observatory - Pressure in hectoPascal – April 2017

day	hh	00_05	05_10	10_15	15_20	20_25	25_30	30_35	35_40	40_45	45_50	50_55	55_60	average
7	0	1015.92	1015.92	1015.90	1015.86	1015.83	1015.83	1015.84	1015.84	1015.86	1015.90	1015.93	1015.93	1015.88
	1	1015.95	1016.01	1016.04	1016.04	1016.10	1016.11	1016.04	1016.00	1016.01	1016.03	1016.04	1016.05	1016.03
	2	1016.05	1016.07	1016.09	1016.09	1016.07	1016.03	1016.02	1016.04	1016.03	1016.03	1016.04	1016.06	1016.05
	3	1016.08	1016.10	1016.12	1016.15	1016.19	1016.20	1016.19	1016.20	1016.21	1016.22	1016.23	1016.25	1016.18
	4	1016.24	1016.22	1016.19	1016.20	1016.24	1016.29	1016.31	1016.34	1016.40	1016.49	1016.56	1016.57	1016.33
	5	1016.54	1016.53	1016.53	1016.54	1016.58	1016.63	1016.69	1016.75	1016.82	1016.90	1016.96	1016.98	1016.70
	6	1016.99	1017.03	1017.06	1017.07	1017.08	1017.06	1017.05	1017.07	1017.07	1017.06	1017.07	1017.11	1017.06
	7	1017.14	1017.16	1017.21	1017.24	1017.25	1017.28	1017.30	1017.28	1017.28	1017.32	1017.38	1017.44	1017.27
	8	1017.45	1017.42	1017.40	1017.41	1017.43	1017.46	1017.49	1017.51	1017.52	1017.52	1017.49	1017.43	1017.46
	9	1017.39	1017.39	1017.38	1017.40	1017.41	1017.42	1017.42	1017.41	1017.41	1017.44	1017.49	1017.53	1017.42
	10	1017.55	1017.55	1017.54	1017.54	1017.53	1017.52	1017.50	1017.44	1017.40	1017.36	1017.34	1017.31	1017.46
	11	1017.25	1017.23	1017.21	1017.15	1017.13	1017.13	1017.15	1017.16	1017.12	1017.10	1017.11	1017.10	1017.15
	12	1017.11	1017.09	1017.03	1016.96	1016.93	1016.92	1016.90	1016.87	1016.86	1016.84	1016.81	1016.77	1016.92
	13	1016.72	1016.69	1016.63	1016.53	1016.51	1016.53	1016.48	1016.42	1016.42	1016.38	1016.29	1016.27	1016.49
	14	1016.27	1016.22	1016.15	1016.11	1016.16	1016.20	1016.22	1016.20	1016.16	1016.13	1016.13	1016.15	1016.17
	15	1016.18	1016.21	1016.18	1016.13	1016.13	1016.13	1016.11	1016.10	1016.09	1016.09	1016.09	1016.08	1016.12
	16	1016.07	1016.09	1016.13	1016.18	1016.19	1016.21	1016.23	1016.27	1016.34	1016.38	1016.41	1016.45	1016.24
	17	1016.47	1016.49	1016.52	1016.54	1016.56	1016.64	1016.73	1016.78	1016.82	1016.89	1016.94	1016.99	1016.70
	18	1017.03	1017.04	1017.09	1017.16	1017.23	1017.34	1017.43	1017.52	1017.60	1017.68	1017.77	1017.84	1017.39
	19	1017.89	1017.94	1017.97	1017.98	1018.00	1018.04	1018.09	1018.12	1018.17	1018.20	1018.21	1018.26	1018.07
	20	1018.33	1018.37	1018.41	1018.47	1018.51	1018.55	1018.62	1018.67	1018.67	1018.64	1018.65	1018.67	1018.54
	21	1018.65	1018.62	1018.64	1018.67	1018.67	1018.69	1018.71	1018.71	1018.73	1018.76	1018.77	1018.77	1018.70
	22	1018.77	1018.79	1018.80	1018.81	1018.83	1018.83	1018.81	1018.80	1018.81	1018.86	1018.92	1018.96	1018.83
	23	1018.99	1019.00	1019.01	1019.03	1019.03	1019.02	1019.02	1019.05	1019.07	1019.06	1019.03	1019.01	1019.02
8	0	1019.02	1019.03	1019.02	1019.03	1019.06	1019.03	1019.00	1018.98	1018.97	1018.98	1018.99	1019.02	1019.01
	1	1019.06	1019.09	1019.12	1019.13	1019.12	1019.14	1019.15	1019.15	1019.19	1019.20	1019.17	1019.16	1019.14
	2	1019.15	1019.15	1019.15	1019.14	1019.14	1019.11	1019.09	1019.09	1019.12	1019.17	1019.21	1019.21	1019.14
	3	1019.20	1019.20	1019.18	1019.15	1019.15	1019.19	1019.25	1019.30	1019.35	1019.34	1019.30	1019.29	1019.24
	4	1019.33	1019.40	1019.46	1019.49	1019.50	1019.52	1019.59	1019.66	1019.71	1019.75	1019.80	1019.83	1019.58
	5	1019.87	1019.94	1020.02	1020.10	1020.14	1020.16	1020.22	1020.29	1020.32	1020.34	1020.38	1020.40	1020.18
	6	1020.39	1020.39	1020.42	1020.42	1020.40	1020.42	1020.48	1020.55	1020.61	1020.64	1020.66	1020.70	1020.50
	7	1020.70	1020.70	1020.73	1020.77	1020.83	1020.86	1020.87	1020.88	1020.95	1021.01	1021.05	1021.09	1020.87
	8	1021.10	1021.09	1021.09	1021.07	1021.08	1021.11	1021.14	1021.14	1021.14	1021.14	1021.13	1021.12	1021.11
	9	1021.12	1021.13	1021.15	1021.16	1021.16	1021.14	1021.12	1021.13	1021.16	1021.14	1021.10	1021.07	1021.13
	10	1021.05	1021.07	1021.08	1021.06	1021.01	1020.97	1020.93	1020.88	1020.82	1020.75	1020.66	1020.57	1020.90
	11	1020.48	1020.40	1020.35	1020.33	1020.31	1020.27	1020.20	1020.14	1020.10	1020.09	1020.05	1020.03	1020.23
	12	1020.02	1020.01	1020.03	1020.02	1019.99	1019.96	1019.93	1019.88	1019.83	1019.77	1019.71	1019.69	1019.90
	13	1019.67	1019.64	1019.57	1019.51	1019.47	1019.44	1019.44	1019.44	1019.42	1019.37	1019.35	1019.32	1019.47
	14	1019.27	1019.25	1019.21	1019.17	1019.16	1019.14	1019.13	1019.14	1019.13	1019.12	1019.11	1019.10	1019.16
	15	1019.09	1019.09	1019.05	1019.02	1019.01	1019.02	1019.01	1019.00	1019.03	1019.11	1019.17	1019.17	1019.06
	16	1019.19	1019.23	1019.25	1019.28	1019.30	1019.29	1019.31	1019.33	1019.34	1019.35	1019.36	1019.38	1019.30
	17	1019.42	1019.45	1019.47	1019.48	1019.49	1019.55	1019.64	1019.70	1019.73	1019.80	1019.89	1019.98	1019.63
	18	1020.02	1020.06	1020.15	1020.25	1020.31	1020.36	1020.43	1020.48	1020.52	1020.55	1020.63	1020.72	1020.37
	19	1020.79	1020.88	1020.96	1021.01	1021.07	1021.13	1021.19	1021.24	1021.27	1021.32	1021.36	1021.41	1021.13
	20	1021.48	1021.54	1021.58	1021.59	1021.61	1021.61	1021.63	1021.67	1021.70	1021.73	1021.76	1021.78	1021.64
	21	1021.81	1021.85	1021.86	1021.88	1021.88	1021.87	1021.88	1021.90	1021.94	1021.98	1022.01	1022.01	1021.90
	22	1022.00	1021.99	1021.99	1022.03	1022.07	1022.07	1022.07	1022.08	1022.10	1022.12	1022.15	1022.19	1022.07
	23	1022.21	1022.17	1022.08	1022.04	1022.05	1022.04	1022.01	1022.00	1021.99	1021.99	1021.98	1021.95	1022.04

S.V.I.R.CO. Observatory - Pressure in hectoPascal – April 2017

day	hh	00_05	05_10	10_15	15_20	20_25	25_30	30_35	35_40	40_45	45_50	50_55	55_60	average
9	0	1021.90	1021.90	1021.88	1021.84	1021.78	1021.75	1021.73	1021.72	1021.70	1021.69	1021.70	1021.73	1021.77
	1	1021.75	1021.74	1021.75	1021.77	1021.80	1021.83	1021.85	1021.84	1021.84	1021.89	1021.91	1021.92	1021.82
	2	1021.93	1021.92	1021.86	1021.82	1021.78	1021.68	1021.60	1021.56	1021.55	1021.52	1021.49	1021.49	1021.68
	3	1021.50	1021.49	1021.46	1021.46	1021.48	1021.51	1021.55	1021.59	1021.57	1021.53	1021.55	1021.64	1021.53
	4	1021.69	1021.70	1021.74	1021.78	1021.81	1021.87	1021.93	1022.00	1022.09	1022.18	1022.23	1022.25	1021.94
	5	1022.28	1022.32	1022.37	1022.41	1022.46	1022.52	1022.59	1022.68	1022.76	1022.80	1022.82	1022.87	1022.57
	6	1022.92	1022.94	1022.96	1023.02	1023.07	1023.10	1023.13	1023.13	1023.15	1023.19	1023.21	1023.21	1023.08
	7	1023.20	1023.20	1023.20	1023.22	1023.23	1023.24	1023.27	1023.31	1023.33	1023.34	1023.38	1023.45	1023.28
	8	1023.51	1023.55	1023.58	1023.60	1023.60	1023.61	1023.62	1023.62	1023.61	1023.60	1023.60	1023.60	1023.59
	9	1023.59	1023.59	1023.58	1023.54	1023.51	1023.51	1023.50	1023.46	1023.42	1023.36	1023.33	1023.30	1023.47
	10	1023.21	1023.14	1023.10	1023.05	1022.98	1022.93	1022.91	1022.86	1022.79	1022.75	1022.71	1022.64	1022.92
	11	1022.58	1022.53	1022.49	1022.47	1022.45	1022.44	1022.41	1022.40	1022.38	1022.30	1022.22	1022.19	1022.40
	12	1022.19	1022.19	1022.16	1022.15	1022.15	1022.14	1022.11	1022.07	1022.05	1022.01	1021.93	1021.87	1022.08
	13	1021.81	1021.73	1021.67	1021.64	1021.62	1021.56	1021.50	1021.47	1021.43	1021.37	1021.31	1021.24	1021.53
	14	1021.19	1021.14	1021.09	1021.05	1021.02	1021.00	1021.00	1021.03	1021.00	1020.99	1020.98	1020.94	1021.03
	15	1020.91	1020.89	1020.86	1020.82	1020.80	1020.79	1020.80	1020.79	1020.78	1020.81	1020.83	1020.85	1020.83
	16	1020.85	1020.84	1020.86	1020.86	1020.86	1020.89	1020.93	1020.96	1021.00	1021.04	1021.08	1021.09	1020.94
	17	1021.12	1021.13	1021.14	1021.17	1021.19	1021.19	1021.17	1021.17	1021.19	1021.19	1021.22	1021.25	1021.17
	18	1021.27	1021.29	1021.32	1021.36	1021.40	1021.41	1021.42	1021.46	1021.50	1021.52	1021.53	1021.54	1021.42
	19	1021.56	1021.59	1021.61	1021.61	1021.59	1021.61	1021.67	1021.73	1021.78	1021.80	1021.80	1021.81	1021.68
	20	1021.84	1021.86	1021.87	1021.88	1021.89	1021.88	1021.86	1021.83	1021.80	1021.79	1021.79	1021.78	1021.84
	21	1021.74	1021.72	1021.72	1021.75	1021.75	1021.74	1021.75	1021.77	1021.79	1021.82	1021.83	1021.82	1021.76
	22	1021.82	1021.81	1021.82	1021.85	1021.86	1021.82	1021.78	1021.78	1021.79	1021.78	1021.76	1021.73	1021.80
	23	1021.72	1021.72	1021.72	1021.74	1021.79	1021.81	1021.80	1021.81	1021.83	1021.81	1021.79	1021.76	1021.77
10	0	1021.74	1021.73	1021.70	1021.68	1021.62	1021.57	1021.54	1021.52	1021.49	1021.44	1021.38	1021.36	1021.55
	1	1021.34	1021.34	1021.32	1021.28	1021.24	1021.21	1021.19	1021.17	1021.14	1021.10	1021.05	1021.03	1021.20
	2	1020.97	1020.90	1020.87	1020.84	1020.81	1020.81	1020.80	1020.78	1020.77	1020.75	1020.72	1020.72	1020.81
	3	1020.73	1020.75	1020.78	1020.79	1020.79	1020.78	1020.77	1020.76	1020.75	1020.73	1020.71	1020.67	1020.75
	4	1020.65	1020.67	1020.70	1020.72	1020.74	1020.74	1020.73	1020.73	1020.72	1020.73	1020.77	1020.81	1020.72
	5	1020.83	1020.85	1020.88	1020.91	1020.95	1021.00	1021.01	1021.00	1020.98	1020.99	1021.01	1021.01	1020.95
	6	1021.00	1020.97	1020.94	1020.93	1020.93	1020.94	1020.95	1020.99	1021.03	1021.02	1020.99	1020.98	1020.97
	7	1021.00	1021.03	1021.06	1021.08	1021.13	1021.15	1021.13	1021.13	1021.13	1021.14	1021.16	1021.18	1021.11
	8	1021.21	1021.22	1021.22	1021.21	1021.22	1021.23	1021.20	1021.20	1021.21	1021.20	1021.19	1021.14	1021.20
	9	1021.09	1021.08	1021.05	1021.01	1021.01	1021.03	1021.02	1021.00	1020.99	1020.93	1020.87	1020.83	1020.99
	10	1020.78	1020.74	1020.70	1020.66	1020.62	1020.58	1020.54	1020.49	1020.43	1020.38	1020.34	1020.28	1020.54
	11	1020.22	1020.16	1020.13	1020.12	1020.12	1020.11	1020.10	1020.07	1020.05	1020.03	1020.02	1020.02	1020.09
	12	1020.01	1019.98	1019.94	1019.90	1019.85	1019.80	1019.78	1019.77	1019.74	1019.69	1019.62	1019.56	1019.80
	13	1019.53	1019.50	1019.46	1019.42	1019.40	1019.37	1019.31	1019.26	1019.20	1019.16	1019.14	1019.10	1019.32
	14	1019.05	1018.99	1018.93	1018.87	1018.80	1018.76	1018.70	1018.64	1018.62	1018.60	1018.58	1018.55	1018.76
	15	1018.50	1018.47	1018.48	1018.50	1018.50	1018.50	1018.51	1018.54	1018.57	1018.58	1018.56	1018.56	1018.52
	16	1018.59	1018.60	1018.58	1018.55	1018.52	1018.50	1018.49	1018.50	1018.52	1018.52	1018.54	1018.58	1018.54
	17	1018.59	1018.59	1018.59	1018.57	1018.53	1018.51	1018.51	1018.58	1018.63	1018.62	1018.60	1018.59	1018.57
	18	1018.61	1018.65	1018.72	1018.80	1018.85	1018.88	1018.89	1018.90	1018.94	1018.97	1018.97	1018.98	1018.84
	19	1019.00	1019.06	1019.15	1019.17	1019.18	1019.21	1019.23	1019.26	1019.26	1019.24	1019.24	1019.26	1019.19
	20	1019.27	1019.27	1019.27	1019.25	1019.22	1019.22	1019.25	1019.28	1019.28	1019.23	1019.21	1019.19	1019.24
	21	1019.14	1019.14	1019.13	1019.08	1019.01	1019.00	1019.03	1019.05	1019.02	1018.97	1018.98	1019.01	1019.05
	22	1018.99	1018.98	1018.97	1018.97	1018.99	1018.94	1018.88	1018.88	1018.88	1018.86	1018.86	1018.82	1018.92
	23	1018.79	1018.77	1018.71	1018.67	1018.65	1018.63	1018.59	1018.52	1018.48	1018.48	1018.46	1018.41	1018.59

S.V.I.R.CO. Observatory - Pressure in hectoPascal – April 2017

day	hh	00_05	05_10	10_15	15_20	20_25	25_30	30_35	35_40	40_45	45_50	50_55	55_60	average
11	0	1018.37	1018.36	1018.35	1018.31	1018.25	1018.19	1018.16	1018.13	1018.11	1018.09	1018.05	1017.99	1018.19
	1	1017.96	1017.95	1017.93	1017.91	1017.89	1017.84	1017.76	1017.71	1017.68	1017.65	1017.63	1017.62	1017.79
	2	1017.58	1017.53	1017.48	1017.45	1017.44	1017.43	1017.41	1017.37	1017.35	1017.34	1017.31	1017.27	1017.41
	3	1017.22	1017.17	1017.14	1017.12	1017.08	1017.07	1017.08	1017.09	1017.10	1017.11	1017.13	1017.11	1017.12
	4	1017.08	1017.06	1017.04	1017.04	1017.08	1017.12	1017.15	1017.17	1017.19	1017.21	1017.25	1017.26	1017.14
	5	1017.27	1017.29	1017.28	1017.28	1017.31	1017.36	1017.39	1017.42	1017.46	1017.51	1017.54	1017.53	1017.38
	6	1017.54	1017.54	1017.54	1017.52	1017.50	1017.50	1017.51	1017.52	1017.54	1017.57	1017.58	1017.59	1017.54
	7	1017.61	1017.62	1017.61	1017.59	1017.60	1017.63	1017.64	1017.65	1017.63	1017.61	1017.60	1017.56	1017.61
	8	1017.53	1017.52	1017.54	1017.56	1017.56	1017.57	1017.57	1017.57	1017.54	1017.49	1017.46	1017.42	1017.53
	9	1017.40	1017.37	1017.36	1017.36	1017.34	1017.31	1017.29	1017.28	1017.27	1017.26	1017.23	1017.21	1017.30
	10	1017.19	1017.15	1017.08	1017.04	1017.02	1017.01	1016.97	1016.91	1016.86	1016.81	1016.76	1016.69	1016.96
	11	1016.63	1016.58	1016.52	1016.43	1016.33	1016.27	1016.24	1016.20	1016.16	1016.13	1016.11	1016.10	1016.31
	12	1016.08	1016.07	1016.05	1016.04	1016.02	1016.01	1015.97	1015.93	1015.88	1015.82	1015.77	1015.72	1015.94
	13	1015.67	1015.63	1015.59	1015.56	1015.53	1015.50	1015.47	1015.44	1015.40	1015.36	1015.32	1015.31	1015.48
	14	1015.31	1015.29	1015.28	1015.25	1015.20	1015.17	1015.13	1015.11	1015.10	1015.08	1015.07	1015.06	1015.17
	15	1015.05	1015.01	1014.97	1014.96	1014.95	1014.97	1014.98	1014.98	1014.99	1015.01	1015.04	1015.08	1015.00
	16	1015.11	1015.14	1015.17	1015.18	1015.18	1015.20	1015.21	1015.24	1015.26	1015.25	1015.25	1015.25	1015.20
	17	1015.26	1015.29	1015.29	1015.26	1015.23	1015.22	1015.20	1015.21	1015.26	1015.33	1015.37	1015.36	1015.27
	18	1015.35	1015.42	1015.52	1015.60	1015.68	1015.75	1015.83	1015.91	1015.98	1016.07	1016.18	1016.26	1015.79
	19	1016.34	1016.41	1016.46	1016.52	1016.59	1016.65	1016.73	1016.84	1016.93	1016.94	1016.93	1016.95	1016.69
	20	1016.98	1016.96	1016.95	1016.96	1016.95	1016.92	1016.92	1016.91	1016.89	1016.90	1016.95	1016.96	1016.93
	21	1016.99	1017.05	1017.07	1017.06	1017.03	1017.01	1017.01	1016.99	1016.97	1016.94	1016.87	1016.79	1016.98
	22	1016.74	1016.81	1016.91	1016.91	1016.86	1016.84	1016.88	1016.90	1016.90	1016.92	1016.96	1017.02	1016.89
	23	1017.01	1016.96	1016.96	1017.00	1017.01	1016.97	1016.92	1016.91	1016.89	1016.84	1016.82	1016.85	1016.93
12	0	1016.96	1016.93	1016.91	1016.92	1016.89	1016.87	1016.85	1016.82	1016.79	1016.74	1016.71	1016.71	1016.84
	1	1016.70	1016.70	1016.67	1016.66	1016.65	1016.67	1016.71	1016.71	1016.68	1016.64	1016.61	1016.57	1016.66
	2	1016.57	1016.61	1016.59	1016.51	1016.45	1016.45	1016.46	1016.47	1016.46	1016.43	1016.38	1016.34	1016.48
	3	1016.32	1016.35	1016.39	1016.40	1016.38	1016.35	1016.28	1016.21	1016.17	1016.16	1016.21	1016.30	1016.29
	4	1016.35	1016.41	1016.46	1016.50	1016.52	1016.52	1016.49	1016.48	1016.53	1016.61	1016.70	1016.79	1016.53
	5	1016.88	1016.95	1016.99	1017.04	1017.08	1017.10	1017.09	1017.05	1017.06	1017.12	1017.19	1017.25	1017.07
	6	1017.34	1017.41	1017.44	1017.45	1017.41	1017.36	1017.35	1017.36	1017.40	1017.41	1017.41	1017.40	1017.39
	7	1017.38	1017.34	1017.30	1017.29	1017.27	1017.25	1017.23	1017.21	1017.24	1017.29	1017.34	1017.37	1017.29
	8	1017.39	1017.42	1017.46	1017.51	1017.55	1017.58	1017.62	1017.68	1017.72	1017.76	1017.80	1017.85	1017.61
	9	1017.86	1017.83	1017.81	1017.81	1017.79	1017.73	1017.71	1017.71	1017.68	1017.63	1017.60	1017.56	1017.73
	10	1017.51	1017.47	1017.46	1017.44	1017.42	1017.38	1017.32	1017.26	1017.21	1017.19	1017.18	1017.18	1017.33
	11	1017.16	1017.14	1017.13	1017.11	1017.05	1017.01	1017.00	1016.97	1016.92	1016.89	1016.85	1016.81	1017.00
	12	1016.76	1016.68	1016.60	1016.53	1016.46	1016.40	1016.37	1016.34	1016.33	1016.30	1016.28	1016.25	1016.44
	13	1016.19	1016.09	1016.00	1015.93	1015.85	1015.77	1015.71	1015.67	1015.61	1015.55	1015.53	1015.54	1015.79
	14	1015.55	1015.55	1015.52	1015.50	1015.47	1015.42	1015.37	1015.33	1015.30	1015.26	1015.23	1015.21	1015.39
	15	1015.19	1015.18	1015.14	1015.12	1015.15	1015.19	1015.20	1015.18	1015.14	1015.11	1015.11	1015.15	1015.15
	16	1015.18	1015.20	1015.18	1015.13	1015.10	1015.10	1015.13	1015.19	1015.23	1015.24	1015.26	1015.26	1015.18
	17	1015.26	1015.29	1015.30	1015.31	1015.32	1015.30	1015.30	1015.36	1015.38	1015.41	1015.46	1015.51	1015.35
	18	1015.54	1015.52	1015.50	1015.50	1015.53	1015.59	1015.65	1015.67	1015.69	1015.72	1015.76	1015.83	1015.63
	19	1015.92	1016.00	1016.07	1016.11	1016.13	1016.14	1016.16	1016.17	1016.17	1016.15	1016.12	1016.10	1016.10
	20	1016.09	1016.10	1016.12	1016.16	1016.18	1016.16	1016.13	1016.11	1016.13	1016.14	1016.13	1016.13	1016.13
	21	1016.15	1016.18	1016.19	1016.17	1016.14	1016.10	1016.09	1016.10	1016.10	1016.11	1016.09	1016.06	1016.12
	22	1016.05	1016.04	1016.03	1016.03	1016.03	1016.02	1016.01	1015.98	1015.93	1015.90	1015.90	1015.91	1015.98
	23	1015.92	1015.90	1015.86	1015.83	1015.81	1015.79	1015.74	1015.71	1015.69	1015.65	1015.58	1015.53	1015.75

S.V.I.R.CO. Observatory - Pressure in hectoPascal – April 2017

day	hh	00_05	05_10	10_15	15_20	20_25	25_30	30_35	35_40	40_45	45_50	50_55	55_60	average
13	0	1015.48	1015.47	1015.45	1015.40	1015.37	1015.35	1015.31	1015.24	1015.20	1015.17	1015.14	1015.14	1015.30
	1	1015.16	1015.18	1015.19	1015.19	1015.16	1015.14	1015.11	1015.09	1015.07	1015.05	1015.02	1014.98	1015.11
	2	1014.92	1014.87	1014.85	1014.84	1014.83	1014.83	1014.82	1014.78	1014.74	1014.70	1014.66	1014.63	1014.79
	3	1014.58	1014.54	1014.50	1014.47	1014.44	1014.42	1014.42	1014.43	1014.45	1014.48	1014.47	1014.44	1014.47
	4	1014.45	1014.44	1014.43	1014.43	1014.42	1014.43	1014.42	1014.41	1014.45	1014.47	1014.49	1014.49	1014.44
	5	1014.51	1014.55	1014.62	1014.69	1014.71	1014.71	1014.73	1014.75	1014.75	1014.72	1014.70	1014.70	1014.68
	6	1014.70	1014.72	1014.73	1014.72	1014.70	1014.71	1014.75	1014.79	1014.81	1014.80	1014.77	1014.75	1014.74
	7	1014.73	1014.75	1014.79	1014.81	1014.81	1014.80	1014.81	1014.85	1014.88	1014.87	1014.83	1014.79	1014.81
	8	1014.78	1014.77	1014.76	1014.71	1014.66	1014.66	1014.67	1014.67	1014.67	1014.67	1014.68	1014.72	1014.70
	9	1014.75	1014.77	1014.75	1014.71	1014.67	1014.63	1014.62	1014.62	1014.59	1014.55	1014.53	1014.52	1014.64
	10	1014.50	1014.47	1014.45	1014.43	1014.40	1014.39	1014.39	1014.37	1014.35	1014.32	1014.29	1014.27	1014.38
	11	1014.24	1014.21	1014.20	1014.20	1014.20	1014.19	1014.20	1014.21	1014.20	1014.21	1014.20	1014.15	1014.20
	12	1014.12	1014.11	1014.09	1014.06	1014.03	1014.02	1013.99	1013.94	1013.89	1013.85	1013.85	1013.83	1013.98
	13	1013.81	1013.79	1013.75	1013.69	1013.63	1013.58	1013.53	1013.48	1013.44	1013.44	1013.41	1013.33	1013.57
	14	1013.27	1013.22	1013.15	1013.11	1013.08	1013.07	1013.08	1013.09	1013.07	1013.02	1013.00	1013.00	1013.10
	15	1013.02	1013.03	1013.03	1013.03	1013.03	1013.03	1013.02	1012.99	1012.97	1012.97	1013.00	1013.04	1013.01
	16	1013.05	1013.06	1013.03	1012.98	1012.94	1012.91	1012.91	1012.94	1012.96	1012.96	1012.96	1012.98	1012.97
	17	1013.00	1012.99	1012.98	1012.97	1012.98	1013.00	1013.00	1013.00	1013.02	1013.07	1013.09	1013.10	1013.02
	18	1013.15	1013.22	1013.28	1013.33	1013.40	1013.45	1013.51	1013.60	1013.69	1013.75	1013.79	1013.83	1013.50
	19	1013.86	1013.87	1013.86	1013.85	1013.86	1013.87	1013.88	1013.89	1013.92	1013.95	1013.98	1014.01	1013.90
	20	1014.03	1014.03	1014.04	1014.05	1014.05	1014.06	1014.06	1014.08	1014.12	1014.16	1014.16	1014.16	1014.08
	21	1014.15	1014.15	1014.15	1014.18	1014.19	1014.18	1014.17	1014.18	1014.23	1014.27	1014.28	1014.28	1014.20
	22	1014.28	1014.28	1014.30	1014.32	1014.35	1014.38	1014.40	1014.42	1014.46	1014.51	1014.54	1014.56	1014.40
	23	1014.58	1014.57	1014.55	1014.51	1014.48	1014.46	1014.45	1014.45	1014.44	1014.43	1014.41	1014.40	1014.48
14	0	1014.18	1014.15	1014.07	1014.02	1014.02	1014.01	1013.97	1013.94	1013.94	1013.92	1013.90	1013.87	1013.99
	1	1013.84	1013.82	1013.81	1013.81	1013.81	1013.78	1013.75	1013.73	1013.71	1013.70	1013.67	1013.64	1013.75
	2	1013.63	1013.62	1013.62	1013.61	1013.61	1013.60	1013.59	1013.58	1013.54	1013.52	1013.52	1013.52	1013.58
	3	1013.49	1013.49	1013.51	1013.51	1013.48	1013.46	1013.47	1013.49	1013.48	1013.47	1013.48	1013.50	1013.48
	4	1013.54	1013.59	1013.65	1013.70	1013.73	1013.74	1013.74	1013.71	1013.72	1013.76	1013.77	1013.78	1013.70
	5	1013.81	1013.84	1013.85	1013.88	1013.93	1013.99	1014.03	1014.06	1014.09	1014.14	1014.18	1014.19	1014.00
	6	1014.19	1014.19	1014.21	1014.21	1014.22	1014.24	1014.25	1014.23	1014.21	1014.19	1014.17	1014.17	1014.21
	7	1014.20	1014.23	1014.25	1014.26	1014.27	1014.28	1014.28	1014.30	1014.34	1014.39	1014.43	1014.45	1014.30
	8	1014.47	1014.46	1014.48	1014.51	1014.53	1014.53	1014.51	1014.51	1014.51	1014.49	1014.53	1014.59	1014.51
	9	1014.60	1014.58	1014.51	1014.45	1014.44	1014.41	1014.38	1014.34	1014.27	1014.22	1014.18	1014.20	1014.38
	10	1014.21	1014.19	1014.17	1014.16	1014.16	1014.16	1014.17	1014.19	1014.19	1014.13	1014.07	1014.02	1014.15
	11	1013.97	1013.97	1013.98	1013.98	1013.99	1013.99	1013.97	1013.95	1013.96	1013.98	1013.95	1013.98	1013.97
	12	1014.01	1014.00	1014.00	1013.95	1013.85	1013.86	1013.95	1013.97	1013.95	1013.89	1013.83	1013.83	1013.92
	13	1013.81	1013.74	1013.71	1013.68	1013.64	1013.63	1013.59	1013.55	1013.49	1013.44	1013.46	1013.43	1013.59
	14	1013.38	1013.41	1013.39	1013.37	1013.37	1013.34	1013.32	1013.30	1013.29	1013.28	1013.27	1013.28	1013.33
	15	1013.29	1013.30	1013.30	1013.32	1013.36	1013.39	1013.38	1013.35	1013.36	1013.35	1013.35	1013.35	1013.34
	16	1013.34	1013.35	1013.36	1013.37	1013.39	1013.44	1013.49	1013.52	1013.55	1013.56	1013.57	1013.58	1013.46
	17	1013.59	1013.60	1013.63	1013.66	1013.68	1013.69	1013.72	1013.75	1013.77	1013.80	1013.81	1013.80	1013.71
	18	1013.81	1013.85	1013.88	1013.88	1013.87	1013.88	1013.93	1013.98	1014.02	1014.06	1014.10	1014.16	1013.95
	19	1014.23	1014.28	1014.32	1014.32	1014.32	1014.35	1014.39	1014.42	1014.45	1014.44	1014.43	1014.42	1014.36
	20	1014.44	1014.45	1014.45	1014.45	1014.45	1014.43	1014.42	1014.42	1014.39	1014.35	1014.32	1014.30	1014.40
	21	1014.30	1014.29	1014.29	1014.30	1014.29	1014.29	1014.29	1014.29	1014.31	1014.32	1014.32	1014.32	1014.30
	22	1014.34	1014.37	1014.39	1014.40	1014.41	1014.40	1014.38	1014.36	1014.36	1014.37	1014.37	1014.37	1014.37
	23	1014.35	1014.32	1014.32	1014.33	1014.33	1014.33	1014.33	1014.33	1014.34	1014.33	1014.28	1014.26	1014.32

S.V.I.R.CO. Observatory - Pressure in hectoPascal – April 2017

day	hh	00_05	05_10	10_15	15_20	20_25	25_30	30_35	35_40	40_45	45_50	50_55	55_60	average
15	0	1014.21	1014.22	1014.25	1014.24	1014.19	1014.16	1014.16	1014.18	1014.15	1014.12	1014.09	1014.07	1014.17
	1	1014.05	1014.03	1014.03	1014.03	1014.03	1014.03	1014.01	1013.99	1013.98	1013.97	1013.95	1013.93	1014.00
	2	1013.88	1013.82	1013.79	1013.73	1013.67	1013.64	1013.64	1013.63	1013.61	1013.61	1013.60	1013.56	1013.68
	3	1013.53	1013.54	1013.55	1013.54	1013.55	1013.56	1013.56	1013.58	1013.57	1013.57	1013.60	1013.61	1013.56
	4	1013.60	1013.61	1013.59	1013.57	1013.63	1013.72	1013.81	1013.89	1013.92	1013.92	1013.95	1013.95	1013.76
	5	1013.96	1013.99	1014.01	1014.00	1013.98	1013.99	1014.02	1014.02	1014.05	1014.09	1014.14	1014.16	1014.03
	6	1014.14	1014.14	1014.15	1014.16	1014.16	1014.15	1014.18	1014.22	1014.20	1014.17	1014.16	1014.19	1014.17
	7	1014.24	1014.27	1014.26	1014.28	1014.30	1014.29	1014.29	1014.28	1014.31	1014.36	1014.37	1014.33	1014.30
	8	1014.30	1014.29	1014.28	1014.27	1014.29	1014.26	1014.21	1014.14	1014.12	1014.17	1014.22	1014.22	1014.23
	9	1014.21	1014.23	1014.25	1014.27	1014.28	1014.21	1014.15	1014.15	1014.18	1014.20	1014.17	1014.13	1014.20
	10	1014.07	1014.04	1014.01	1013.93	1013.86	1013.79	1013.72	1013.68	1013.61	1013.54	1013.47	1013.37	1013.75
	11	1013.28	1013.20	1013.18	1013.16	1013.10	1013.04	1012.96	1012.89	1012.87	1012.86	1012.81	1012.78	1013.01
	12	1012.81	1012.80	1012.77	1012.69	1012.60	1012.58	1012.52	1012.42	1012.37	1012.35	1012.32	1012.33	1012.54
	13	1012.33	1012.28	1012.25	1012.26	1012.25	1012.23	1012.23	1012.23	1012.21	1012.15	1012.05	1011.97	1012.20
	14	1011.90	1011.85	1011.85	1011.87	1011.85	1011.83	1011.83	1011.81	1011.83	1011.84	1011.87	1011.90	1011.85
	15	1011.90	1011.87	1011.83	1011.80	1011.78	1011.78	1011.76	1011.71	1011.68	1011.68	1011.66	1011.62	1011.75
	16	1011.60	1011.58	1011.58	1011.58	1011.54	1011.51	1011.49	1011.49	1011.49	1011.50	1011.51	1011.46	1011.53
	17	1011.43	1011.44	1011.41	1011.41	1011.44	1011.45	1011.49	1011.52	1011.54	1011.57	1011.58	1011.60	1011.49
	18	1011.64	1011.65	1011.64	1011.65	1011.64	1011.64	1011.64	1011.61	1011.59	1011.60	1011.60	1011.63	1011.62
	19	1011.72	1011.79	1011.83	1011.92	1012.00	1012.01	1012.00	1012.03	1012.06	1012.05	1012.02	1012.03	1011.95
	20	1012.04	1012.00	1011.97	1011.97	1012.02	1012.08	1012.09	1012.08	1012.06	1012.07	1012.07	1012.08	1012.04
	21	1012.11	1012.13	1012.15	1012.12	1012.06	1012.02	1012.03	1012.04	1012.01	1011.99	1012.00	1012.01	1012.05
	22	1012.02	1012.00	1011.98	1011.96	1011.96	1011.95	1011.87	1011.79	1011.74	1011.73	1011.75	1011.77	1011.87
	23	1011.79	1011.80	1011.78	1011.79	1011.77	1011.66	1011.54	1011.49	1011.51	1011.50	1011.42	1011.38	1011.62
16	0	1011.39	1011.37	1011.28	1011.21	1011.21	1011.14	1011.05	1011.06	1011.07	1011.05	1011.00	1010.96	1011.14
	1	1010.93	1010.91	1010.90	1010.91	1010.88	1010.78	1010.71	1010.62	1010.52	1010.53	1010.55	1010.53	1010.73
	2	1010.48	1010.42	1010.39	1010.39	1010.37	1010.32	1010.29	1010.28	1010.29	1010.27	1010.22	1010.19	1010.32
	3	1010.16	1010.13	1010.12	1010.13	1010.12	1010.13	1010.16	1010.21	1010.27	1010.32	1010.35	1010.37	1010.20
	4	1010.38	1010.39	1010.41	1010.42	1010.45	1010.48	1010.53	1010.55	1010.57	1010.56	1010.56	1010.60	1010.49
	5	1010.63	1010.64	1010.66	1010.72	1010.77	1010.77	1010.79	1010.81	1010.85	1010.88	1010.90	1010.95	1010.78
	6	1011.03	1011.06	1011.07	1011.11	1011.16	1011.19	1011.20	1011.22	1011.22	1011.20	1011.15	1011.12	1011.14
	7	1011.09	1011.07	1011.08	1011.11	1011.12	1011.11	1011.12	1011.16	1011.15	1011.10	1011.08	1011.07	1011.10
	8	1011.08	1011.10	1011.10	1011.15	1011.17	1011.13	1011.10	1011.13	1011.17	1011.20	1011.22	1011.23	1011.15
	9	1011.26	1011.37	1011.44	1011.45	1011.46	1011.45	1011.38	1011.32	1011.30	1011.29	1011.25	1011.19	1011.35
	10	1011.15	1011.09	1011.00	1010.96	1010.96	1010.96	1010.91	1010.86	1010.81	1010.75	1010.67	1010.61	1010.89
	11	1010.57	1010.52	1010.49	1010.47	1010.39	1010.31	1010.29	1010.27	1010.22	1010.17	1010.16	1010.16	1010.33
	12	1010.13	1010.07	1009.99	1009.93	1009.88	1009.79	1009.73	1009.74	1009.75	1009.71	1009.64	1009.57	1009.83
	13	1009.52	1009.44	1009.36	1009.34	1009.30	1009.19	1009.10	1009.07	1009.00	1008.92	1008.88	1008.89	1009.17
	14	1008.88	1008.84	1008.78	1008.72	1008.72	1008.72	1008.67	1008.60	1008.57	1008.60	1008.62	1008.57	1008.69
	15	1008.50	1008.52	1008.56	1008.53	1008.52	1008.54	1008.62	1008.68	1008.63	1008.59	1008.59	1008.57	1008.57
	16	1008.55	1008.55	1008.57	1008.61	1008.61	1008.58	1008.61	1008.67	1008.69	1008.70	1008.74	1008.79	1008.64
	17	1008.81	1008.79	1008.76	1008.74	1008.73	1008.75	1008.79	1008.84	1008.88	1008.89	1008.91	1008.96	1008.82
	18	1009.02	1009.09	1009.22	1009.32	1009.39	1009.44	1009.48	1009.55	1009.60	1009.66	1009.75	1009.83	1009.44
	19	1009.93	1010.00	1010.03	1010.09	1010.15	1010.17	1010.17	1010.22	1010.29	1010.30	1010.31	1010.34	1010.16
	20	1010.34	1010.34	1010.38	1010.38	1010.37	1010.37	1010.38	1010.34	1010.29	1010.25	1010.27	1010.32	1010.33
	21	1010.35	1010.38	1010.42	1010.45	1010.47	1010.48	1010.52	1010.57	1010.57	1010.59	1010.65	1010.69	1010.51
	22	1010.65	1010.62	1010.61	1010.55	1010.48	1010.46	1010.44	1010.39	1010.36	1010.35	1010.33	1010.34	1010.46
	23	1010.42	1010.53	1010.62	1010.74	1010.79	1010.69	1010.55	1010.44	1010.42	1010.46	1010.45	1010.38	1010.54

S.V.I.R.CO. Observatory - Pressure in hectoPascal – April 2017

day	hh	00_05	05_10	10_15	15_20	20_25	25_30	30_35	35_40	40_45	45_50	50_55	55_60	average
17	0	1010.37	1010.36	1010.34	1010.32	1010.33	1010.36	1010.34	1010.29	1010.24	1010.20	1010.17	1010.18	1010.29
	1	1010.22	1010.20	1010.14	1010.08	1010.05	1010.06	1010.08	1010.08	1010.05	1010.04	1010.03	1010.01	1010.09
	2	1010.03	1010.00	1009.98	1010.05	1010.12	1010.05	1010.02	1010.05	1009.97	1009.96	1009.96	1009.93	1010.01
	3	1009.85	1009.77	1009.78	1009.80	1009.83	1009.85	1009.83	1009.84	1009.92	1009.99	1010.03	1010.04	1009.88
	4	1010.04	1010.07	1010.12	1010.19	1010.20	1010.11	1010.09	1010.14	1010.18	1010.22	1010.24	1010.28	1010.15
	5	1010.38	1010.49	1010.58	1010.65	1010.67	1010.67	1010.65	1010.60	1010.55	1010.53	1010.56	1010.64	1010.58
	6	1010.71	1010.71	1010.70	1010.69	1010.71	1010.76	1010.83	1010.88	1010.88	1010.91	1010.93	1010.90	1010.80
	7	1010.92	1010.98	1011.05	1011.10	1011.14	1011.16	1011.16	1011.18	1011.13	1011.06	1011.03	1011.02	1011.07
	8	1010.95	1010.92	1010.97	1011.02	1011.03	1011.02	1011.05	1011.09	1011.10	1011.12	1011.12	1011.08	1011.04
	9	1011.04	1010.97	1010.88	1010.83	1010.83	1010.82	1010.78	1010.72	1010.70	1010.69	1010.70	1010.74	1010.81
	10	1010.77	1010.79	1010.78	1010.77	1010.74	1010.72	1010.69	1010.63	1010.61	1010.60	1010.62	1010.62	1010.69
	11	1010.59	1010.57	1010.52	1010.47	1010.42	1010.35	1010.31	1010.31	1010.29	1010.25	1010.23	1010.18	1010.37
	12	1010.16	1010.15	1010.13	1010.11	1010.06	1010.03	1010.01	1010.00	1009.95	1009.92	1009.95	1009.91	1010.03
	13	1009.86	1009.82	1009.77	1009.76	1009.77	1009.79	1009.80	1009.79	1009.79	1009.80	1009.79	1009.76	1009.79
	14	1009.74	1009.74	1009.77	1009.80	1009.81	1009.83	1009.87	1009.88	1009.89	1009.91	1009.91	1009.91	1009.84
	15	1009.95	1009.98	1009.96	1009.97	1010.01	1010.02	1010.00	1010.00	1010.02	1010.05	1010.08	1010.09	1010.01
	16	1010.11	1010.15	1010.17	1010.18	1010.19	1010.21	1010.23	1010.24	1010.24	1010.24	1010.22	1010.18	1010.19
	17	1010.13	1010.10	1010.10	1010.11	1010.11	1010.11	1010.13	1010.15	1010.16	1010.19	1010.23	1010.27	1010.15
	18	1010.31	1010.33	1010.36	1010.39	1010.45	1010.49	1010.52	1010.56	1010.59	1010.64	1010.69	1010.73	1010.50
	19	1010.78	1010.84	1010.88	1010.91	1010.97	1011.04	1011.09	1011.13	1011.18	1011.18	1011.17	1011.18	1011.03
	20	1011.20	1011.18	1011.17	1011.18	1011.18	1011.18	1011.23	1011.27	1011.26	1011.27	1011.29	1011.31	1011.22
	21	1011.34	1011.34	1011.35	1011.38	1011.40	1011.46	1011.54	1011.60	1011.64	1011.65	1011.64	1011.62	1011.50
	22	1011.62	1011.61	1011.60	1011.59	1011.57	1011.57	1011.54	1011.51	1011.49	1011.51	1011.56	1011.58	1011.56
	23	1011.58	1011.56	1011.56	1011.58	1011.57	1011.52	1011.49	1011.44	1011.38	1011.35	1011.32	1011.30	1011.47
18	0	1011.24	1011.21	1011.16	1011.15	1011.13	1011.08	1011.02	1010.99	1010.96	1010.90	1010.87	1010.87	1011.04
	1	1010.86	1010.85	1010.84	1010.80	1010.81	1010.85	1010.87	1010.87	1010.85	1010.79	1010.72	1010.66	1010.81
	2	1010.59	1010.49	1010.44	1010.46	1010.50	1010.52	1010.54	1010.53	1010.52	1010.52	1010.51	1010.47	1010.51
	3	1010.43	1010.36	1010.28	1010.28	1010.27	1010.23	1010.20	1010.19	1010.18	1010.14	1010.08	1010.07	1010.22
	4	1010.06	1010.03	1009.99	1009.96	1009.95	1009.93	1009.93	1009.95	1009.95	1009.89	1009.83	1009.80	1009.94
	5	1009.79	1009.76	1009.68	1009.64	1009.69	1009.71	1009.68	1009.67	1009.67	1009.66	1009.66	1009.69	1009.69
	6	1009.71	1009.71	1009.69	1009.66	1009.61	1009.56	1009.52	1009.48	1009.42	1009.33	1009.27	1009.21	1009.51
	7	1009.13	1009.07	1009.02	1009.03	1009.05	1009.00	1008.93	1008.88	1008.85	1008.83	1008.82	1008.78	1008.95
	8	1008.75	1008.78	1008.84	1008.88	1008.84	1008.81	1008.78	1008.74	1008.75	1008.78	1008.82	1008.89	1008.80
	9	1008.98	1009.00	1008.99	1009.01	1008.99	1008.93	1008.90	1008.86	1008.78	1008.70	1008.62	1008.56	1008.86
	10	1008.46	1008.34	1008.29	1008.26	1008.18	1008.09	1008.02	1007.95	1007.90	1007.83	1007.78	1007.71	1008.07
	11	1007.61	1007.51	1007.39	1007.28	1007.26	1007.26	1007.20	1007.12	1007.05	1006.99	1006.94	1006.89	1007.21
	12	1006.87	1006.86	1006.87	1006.89	1006.84	1006.80	1006.81	1006.75	1006.65	1006.54	1006.45	1006.36	1006.72
	13	1006.32	1006.32	1006.25	1006.18	1006.16	1006.12	1006.04	1005.93	1005.86	1005.84	1005.81	1005.81	1006.05
	14	1005.79	1005.72	1005.65	1005.59	1005.54	1005.49	1005.43	1005.35	1005.37	1005.42	1005.36	1005.28	1005.50
	15	1005.24	1005.20	1005.19	1005.10	1004.95	1004.81	1004.77	1004.81	1004.81	1004.75	1004.69	1004.66	1004.91
	16	1004.67	1004.66	1004.62	1004.61	1004.63	1004.64	1004.60	1004.53	1004.45	1004.45	1004.52	1004.54	1004.57
	17	1004.52	1004.57	1004.61	1004.56	1004.52	1004.46	1004.45	1004.47	1004.46	1004.46	1004.42	1004.43	1004.49
	18	1004.77	1005.09	1005.25	1005.38	1005.35	1005.34	1005.42	1005.53	1005.68	1005.77	1005.82	1005.97	1005.44
	19	1006.11	1006.21	1006.33	1006.37	1006.32	1006.29	1006.32	1006.41	1006.49	1006.58	1006.72	1006.83	1006.41
	20	1006.88	1006.93	1007.03	1007.14	1007.22	1007.23	1007.27	1007.35	1007.37	1007.37	1007.37	1007.37	1007.21
	21	1007.40	1007.47	1007.55	1007.63	1007.66	1007.70	1007.75	1007.66	1007.55	1007.59	1007.73	1007.71	1007.61
	22	1007.70	1007.73	1007.66	1007.64	1007.69	1007.76	1007.91	1008.07	1008.09	1008.04	1008.02	1007.99	1007.86
	23	1007.99	1008.01	1008.02	1007.98	1007.91	1007.93	1007.93	1007.87	1007.87	1007.89	1007.87	1007.82	1007.92



S.V.I.R.CO. Observatory - Pressure in hectoPascal – April 2017

day	hh	00_05	05_10	10_15	15_20	20_25	25_30	30_35	35_40	40_45	45_50	50_55	55_60	average
19	0	1007.86	1007.93	1008.02	1008.07	1008.06	1007.99	1007.89	1007.92	1008.02	1008.08	1008.12	1008.07	1008.01
	1	1008.04	1008.10	1008.21	1008.31	1008.37	1008.43	1008.47	1008.50	1008.49	1008.44	1008.42	1008.45	1008.35
	2	1008.56	1008.64	1008.71	1008.73	1008.62	1008.50	1008.56	1008.64	1008.67	1008.74	1008.81	1008.85	1008.67
	3	1008.87	1008.87	1008.83	1008.83	1008.83	1008.87	1008.96	1009.04	1009.11	1009.11	1009.06	1009.06	1008.95
	4	1009.08	1009.12	1009.18	1009.25	1009.33	1009.42	1009.50	1009.52	1009.55	1009.65	1009.72	1009.76	1009.42
	5	1009.88	1009.99	1010.07	1010.09	1010.07	1010.09	1010.11	1010.18	1010.31	1010.35	1010.40	1010.44	1010.16
	6	1010.45	1010.54	1010.55	1010.51	1010.52	1010.51	1010.51	1010.54	1010.58	1010.56	1010.55	1010.60	1010.53
	7	1010.63	1010.64	1010.63	1010.62	1010.65	1010.67	1010.73	1010.78	1010.81	1010.87	1010.89	1010.86	1010.73
	8	1010.86	1010.93	1010.99	1010.99	1011.00	1011.06	1011.08	1011.08	1011.16	1011.19	1011.21	1011.30	1011.07
	9	1011.34	1011.34	1011.37	1011.42	1011.48	1011.53	1011.53	1011.54	1011.58	1011.57	1011.53	1011.55	1011.48
	10	1011.60	1011.62	1011.60	1011.59	1011.66	1011.74	1011.73	1011.71	1011.71	1011.69	1011.67	1011.67	1011.66
	11	1011.68	1011.69	1011.67	1011.63	1011.64	1011.66	1011.74	1011.80	1011.78	1011.76	1011.77	1011.81	1011.72
	12	1011.88	1011.91	1011.88	1011.96	1012.06	1012.09	1012.11	1012.10	1012.15	1012.20	1012.19	1012.16	1012.05
	13	1012.14	1012.19	1012.22	1012.20	1012.17	1012.23	1012.28	1012.27	1012.33	1012.37	1012.36	1012.38	1012.26
	14	1012.41	1012.43	1012.50	1012.57	1012.58	1012.58	1012.65	1012.73	1012.78	1012.77	1012.78	1012.83	1012.63
	15	1012.94	1013.08	1013.13	1013.23	1013.37	1013.45	1013.44	1013.41	1013.47	1013.54	1013.61	1013.63	1013.36
	16	1013.67	1013.76	1013.81	1013.87	1013.97	1014.03	1014.05	1014.07	1014.14	1014.20	1014.25	1014.31	1014.01
	17	1014.38	1014.47	1014.60	1014.71	1014.74	1014.79	1014.88	1014.95	1015.01	1015.08	1015.15	1015.23	1014.83
	18	1015.31	1015.40	1015.48	1015.58	1015.70	1015.81	1015.92	1016.02	1016.13	1016.24	1016.35	1016.44	1015.86
	19	1016.53	1016.64	1016.72	1016.78	1016.88	1016.99	1017.14	1017.27	1017.32	1017.35	1017.39	1017.44	1017.04
	20	1017.47	1017.49	1017.57	1017.65	1017.73	1017.79	1017.85	1017.91	1017.97	1018.00	1018.02	1018.06	1017.79
	21	1018.11	1018.15	1018.18	1018.25	1018.32	1018.33	1018.34	1018.36	1018.38	1018.41	1018.46	1018.49	1018.31
	22	1018.53	1018.57	1018.59	1018.63	1018.65	1018.63	1018.64	1018.68	1018.69	1018.67	1018.68	1018.70	1018.64
	23	1018.70	1018.72	1018.74	1018.74	1018.72	1018.69	1018.68	1018.70	1018.74	1018.76	1018.72	1018.68	1018.71
20	0	1018.64	1018.64	1018.64	1018.65	1018.67	1018.70	1018.75	1018.79	1018.85	1018.92	1018.94	1018.93	1018.76
	1	1018.97	1019.03	1019.03	1019.05	1019.11	1019.15	1019.14	1019.14	1019.21	1019.26	1019.28	1019.27	1019.13
	2	1019.25	1019.23	1019.20	1019.23	1019.27	1019.28	1019.28	1019.31	1019.34	1019.33	1019.29	1019.31	1019.27
	3	1019.36	1019.37	1019.39	1019.40	1019.41	1019.44	1019.50	1019.58	1019.60	1019.60	1019.63	1019.65	1019.49
	4	1019.69	1019.76	1019.83	1019.91	1020.00	1020.01	1020.04	1020.11	1020.16	1020.23	1020.30	1020.33	1020.03
	5	1020.34	1020.29	1020.27	1020.31	1020.37	1020.45	1020.52	1020.53	1020.55	1020.57	1020.59	1020.61	1020.45
	6	1020.61	1020.62	1020.64	1020.70	1020.73	1020.73	1020.72	1020.71	1020.73	1020.77	1020.77	1020.78	1020.71
	7	1020.82	1020.83	1020.81	1020.79	1020.76	1020.74	1020.70	1020.72	1020.77	1020.80	1020.85	1020.84	1020.78
	8	1020.79	1020.76	1020.77	1020.76	1020.71	1020.73	1020.78	1020.81	1020.84	1020.83	1020.81	1020.83	1020.78
	9	1020.81	1020.81	1020.84	1020.86	1020.84	1020.78	1020.75	1020.73	1020.69	1020.62	1020.61	1020.65	1020.75
	10	1020.60	1020.58	1020.63	1020.58	1020.55	1020.53	1020.47	1020.40	1020.38	1020.40	1020.34	1020.23	1020.47
	11	1020.17	1020.19	1020.19	1020.15	1020.14	1020.18	1020.18	1020.13	1020.09	1020.14	1020.11	1020.05	1020.14
	12	1020.07	1020.05	1020.06	1020.06	1020.04	1020.07	1020.09	1020.03	1020.03	1019.99	1019.93	1019.91	1020.02
	13	1019.82	1019.76	1019.72	1019.68	1019.64	1019.58	1019.56	1019.55	1019.50	1019.53	1019.64	1019.64	1019.63
	14	1019.59	1019.55	1019.55	1019.56	1019.48	1019.51	1019.66	1019.66	1019.69	1019.80	1019.88	1019.92	1019.65
	15	1019.94	1019.95	1019.97	1020.06	1020.14	1020.19	1020.22	1020.21	1020.19	1020.25	1020.40	1020.55	1020.17
	16	1020.62	1020.67	1020.74	1020.79	1020.83	1020.87	1020.92	1020.97	1021.00	1021.07	1021.15	1021.21	1020.90
	17	1021.33	1021.43	1021.49	1021.58	1021.66	1021.76	1021.84	1021.92	1021.99	1022.10	1022.22	1022.31	1021.80
	18	1022.40	1022.48	1022.55	1022.64	1022.76	1022.82	1022.85	1022.92	1023.03	1023.12	1023.17	1023.22	1022.83
	19	1023.30	1023.37	1023.47	1023.55	1023.58	1023.61	1023.65	1023.69	1023.74	1023.76	1023.78	1023.84	1023.61
	20	1023.91	1023.95	1023.97	1023.99	1024.02	1024.03	1024.03	1024.00	1023.99	1024.02	1024.08	1024.16	1024.01
	21	1024.19	1024.21	1024.23	1024.23	1024.20	1024.20	1024.24	1024.25	1024.26	1024.27	1024.27	1024.25	1024.23
	22	1024.25	1024.27	1024.32	1024.38	1024.41	1024.47	1024.51	1024.54	1024.58	1024.62	1024.66	1024.72	1024.48
	23	1024.76	1024.80	1024.84	1024.82	1024.77	1024.76	1024.76	1024.72	1024.72	1024.79	1024.86	1024.90	1024.79

S.V.I.R.CO. Observatory - Pressure in hectoPascal – April 2017

day	hh	00_05	05_10	10_15	15_20	20_25	25_30	30_35	35_40	40_45	45_50	50_55	55_60	average
21	0	1024.99	1025.01	1025.03	1025.05	1025.06	1025.06	1025.06	1025.05	1025.03	1025.04	1025.08	1025.08	1025.05
	1	1025.02	1024.97	1024.96	1024.95	1024.93	1024.92	1024.90	1024.86	1024.83	1024.82	1024.84	1024.86	1024.90
	2	1024.89	1024.94	1025.00	1025.06	1025.12	1025.12	1025.09	1025.08	1025.08	1025.07	1025.08	1025.09	1025.05
	3	1025.06	1025.05	1025.05	1025.04	1025.03	1025.03	1025.07	1025.13	1025.16	1025.14	1025.14	1025.17	1025.09
	4	1025.21	1025.30	1025.40	1025.43	1025.43	1025.44	1025.46	1025.50	1025.53	1025.55	1025.62	1025.71	1025.46
	5	1025.79	1025.86	1025.92	1025.98	1026.03	1026.07	1026.09	1026.10	1026.17	1026.22	1026.18	1026.13	1026.04
	6	1026.12	1026.14	1026.19	1026.22	1026.25	1026.30	1026.29	1026.29	1026.31	1026.33	1026.36	1026.37	1026.26
	7	1026.35	1026.32	1026.29	1026.26	1026.25	1026.24	1026.22	1026.26	1026.33	1026.30	1026.27	1026.31	1026.28
	8	1026.34	1026.32	1026.29	1026.28	1026.30	1026.31	1026.25	1026.20	1026.17	1026.15	1026.16	1026.14	1026.24
	9	1026.10	1026.04	1026.01	1026.02	1026.01	1025.96	1025.91	1025.89	1025.89	1025.82	1025.74	1025.76	1025.93
	10	1025.77	1025.82	1025.84	1025.77	1025.73	1025.66	1025.56	1025.57	1025.57	1025.53	1025.50	1025.46	1025.65
	11	1025.43	1025.39	1025.35	1025.27	1025.16	1025.12	1025.11	1025.07	1025.01	1024.93	1024.88	1024.85	1025.13
	12	1024.80	1024.80	1024.79	1024.72	1024.66	1024.63	1024.61	1024.58	1024.54	1024.45	1024.39	1024.41	1024.61
	13	1024.39	1024.26	1024.12	1024.10	1024.10	1024.07	1024.04	1023.95	1023.88	1023.85	1023.83	1023.74	1024.03
	14	1023.66	1023.66	1023.62	1023.57	1023.56	1023.52	1023.49	1023.49	1023.47	1023.46	1023.51	1023.55	1023.54
	15	1023.57	1023.52	1023.50	1023.54	1023.52	1023.51	1023.50	1023.45	1023.42	1023.40	1023.37	1023.37	1023.47
	16	1023.37	1023.36	1023.37	1023.46	1023.49	1023.45	1023.42	1023.46	1023.50	1023.52	1023.53	1023.53	1023.45
	17	1023.53	1023.52	1023.55	1023.59	1023.63	1023.65	1023.67	1023.73	1023.77	1023.77	1023.77	1023.80	1023.66
	18	1023.85	1023.91	1023.93	1023.94	1023.98	1024.01	1024.03	1024.06	1024.09	1024.15	1024.22	1024.26	1024.03
	19	1024.28	1024.31	1024.36	1024.41	1024.47	1024.53	1024.59	1024.64	1024.65	1024.67	1024.71	1024.78	1024.53
	20	1024.85	1024.92	1024.98	1025.03	1025.04	1025.01	1025.00	1025.00	1025.01	1025.03	1025.05	1025.05	1025.00
	21	1025.04	1025.03	1025.03	1025.02	1024.97	1024.91	1024.87	1024.86	1024.86	1024.86	1024.84	1024.81	1024.92
	22	1024.80	1024.83	1024.86	1024.88	1024.88	1024.88	1024.88	1024.87	1024.84	1024.81	1024.80	1024.80	1024.84
	23	1024.81	1024.83	1024.84	1024.86	1024.82	1024.73	1024.66	1024.63	1024.60	1024.56	1024.52	1024.49	1024.69
22	0	1024.48	1024.50	1024.50	1024.47	1024.44	1024.42	1024.39	1024.38	1024.35	1024.35	1024.35	1024.32	1024.41
	1	1024.30	1024.25	1024.21	1024.19	1024.19	1024.21	1024.22	1024.20	1024.19	1024.18	1024.19	1024.17	1024.21
	2	1024.14	1024.14	1024.14	1024.10	1024.09	1024.10	1024.13	1024.17	1024.15	1024.05	1023.98	1023.95	1024.09
	3	1023.94	1023.98	1024.03	1024.03	1024.03	1024.05	1024.05	1024.00	1023.95	1023.90	1023.86	1023.84	1023.97
	4	1023.81	1023.84	1023.91	1023.95	1023.94	1023.90	1023.88	1023.90	1023.92	1023.95	1024.03	1024.09	1023.93
	5	1024.10	1024.11	1024.14	1024.14	1024.16	1024.19	1024.17	1024.14	1024.14	1024.15	1024.15	1024.18	1024.15
	6	1024.22	1024.24	1024.26	1024.29	1024.30	1024.31	1024.33	1024.33	1024.34	1024.36	1024.37	1024.35	1024.31
	7	1024.29	1024.26	1024.24	1024.19	1024.14	1024.12	1024.10	1024.09	1024.08	1024.06	1024.02	1024.00	1024.13
	8	1023.99	1023.98	1023.97	1023.92	1023.84	1023.81	1023.81	1023.80	1023.78	1023.75	1023.71	1023.65	1023.83
	9	1023.60	1023.56	1023.54	1023.48	1023.40	1023.37	1023.34	1023.31	1023.30	1023.25	1023.20	1023.14	1023.37
	10	1023.07	1023.01	1022.96	1022.89	1022.82	1022.73	1022.63	1022.53	1022.46	1022.35	1022.22	1022.13	1022.65
	11	1022.02	1021.92	1021.88	1021.82	1021.69	1021.60	1021.55	1021.48	1021.42	1021.38	1021.34	1021.27	1021.61
	12	1021.21	1021.16	1021.11	1021.06	1021.03	1020.99	1020.90	1020.84	1020.79	1020.72	1020.65	1020.62	1020.92
	13	1020.58	1020.52	1020.45	1020.34	1020.26	1020.23	1020.19	1020.13	1020.06	1019.98	1019.93	1019.89	1020.21
	14	1019.84	1019.76	1019.70	1019.64	1019.62	1019.59	1019.52	1019.49	1019.43	1019.38	1019.35	1019.29	1019.55
	15	1019.25	1019.23	1019.19	1019.19	1019.23	1019.24	1019.22	1019.20	1019.19	1019.17	1019.18	1019.21	1019.21
	16	1019.19	1019.17	1019.17	1019.15	1019.15	1019.14	1019.15	1019.15	1019.13	1019.07	1019.05	1019.07	1019.13
	17	1019.06	1019.06	1019.05	1019.03	1019.00	1018.95	1018.92	1018.92	1018.91	1018.89	1018.89	1018.91	1018.96
	18	1018.92	1018.92	1018.94	1018.95	1018.95	1018.95	1018.99	1019.04	1019.08	1019.14	1019.21	1019.27	1019.03
	19	1019.33	1019.36	1019.41	1019.47	1019.53	1019.59	1019.63	1019.63	1019.65	1019.65	1019.63	1019.60	1019.54
	20	1019.61	1019.63	1019.63	1019.62	1019.62	1019.62	1019.59	1019.55	1019.51	1019.46	1019.44	1019.44	1019.56
	21	1019.43	1019.40	1019.37	1019.38	1019.41	1019.40	1019.38	1019.36	1019.32	1019.28	1019.25	1019.24	1019.35
	22	1019.28	1019.34	1019.40	1019.42	1019.44	1019.49	1019.54	1019.57	1019.61	1019.60	1019.55	1019.53	1019.48
	23	1019.54	1019.58	1019.61	1019.62	1019.60	1019.58	1019.53	1019.50	1019.48	1019.44	1019.43	1019.40	1019.52

S.V.I.R.CO. Observatory - Pressure in hectoPascal – April 2017

day	hh	00_05	05_10	10_15	15_20	20_25	25_30	30_35	35_40	40_45	45_50	50_55	55_60	average
23	0	1019.36	1019.33	1019.25	1019.18	1019.12	1019.05	1018.99	1018.91	1018.87	1018.85	1018.84	1018.84	1019.03
	1	1018.80	1018.78	1018.79	1018.82	1018.83	1018.81	1018.77	1018.73	1018.69	1018.64	1018.59	1018.58	1018.73
	2	1018.58	1018.55	1018.48	1018.39	1018.34	1018.29	1018.27	1018.32	1018.38	1018.39	1018.33	1018.28	1018.38
	3	1018.25	1018.21	1018.20	1018.14	1018.08	1018.08	1018.12	1018.13	1018.12	1018.13	1018.13	1018.15	1018.14
	4	1018.16	1018.17	1018.18	1018.20	1018.23	1018.26	1018.24	1018.21	1018.22	1018.23	1018.27	1018.34	1018.22
	5	1018.42	1018.50	1018.55	1018.61	1018.68	1018.73	1018.79	1018.82	1018.82	1018.82	1018.82	1018.83	1018.70
	6	1018.84	1018.87	1018.90	1018.94	1018.95	1018.95	1018.99	1018.99	1018.93	1018.88	1018.87	1018.87	1018.91
	7	1018.86	1018.85	1018.84	1018.85	1018.85	1018.84	1018.84	1018.83	1018.82	1018.80	1018.79	1018.81	1018.83
	8	1018.83	1018.83	1018.81	1018.81	1018.82	1018.84	1018.85	1018.83	1018.80	1018.78	1018.75	1018.73	1018.80
	9	1018.70	1018.70	1018.75	1018.76	1018.75	1018.77	1018.79	1018.78	1018.75	1018.74	1018.73	1018.69	1018.74
	10	1018.68	1018.67	1018.67	1018.65	1018.60	1018.60	1018.60	1018.61	1018.62	1018.61	1018.60	1018.59	1018.62
	11	1018.51	1018.53	1018.53	1018.44	1018.44	1018.47	1018.49	1018.50	1018.51	1018.49	1018.44	1018.45	1018.48
	12	1018.41	1018.38	1018.38	1018.38	1018.41	1018.42	1018.40	1018.42	1018.43	1018.44	1018.45	1018.38	1018.41
	13	1018.38	1018.40	1018.38	1018.33	1018.28	1018.23	1018.18	1018.16	1018.13	1018.15	1018.14	1018.09	1018.23
	14	1018.10	1018.07	1018.04	1018.05	1018.02	1017.99	1018.03	1018.06	1018.05	1018.03	1018.04	1018.05	1018.04
	15	1018.06	1018.10	1018.15	1018.19	1018.21	1018.23	1018.23	1018.23	1018.22	1018.22	1018.23	1018.24	1018.19
	16	1018.25	1018.27	1018.27	1018.26	1018.24	1018.23	1018.20	1018.18	1018.21	1018.23	1018.24	1018.25	1018.23
	17	1018.28	1018.33	1018.36	1018.39	1018.43	1018.45	1018.47	1018.48	1018.50	1018.53	1018.57	1018.62	1018.45
	18	1018.67	1018.72	1018.78	1018.83	1018.88	1018.92	1018.96	1019.00	1019.03	1019.07	1019.11	1019.14	1018.92
	19	1019.18	1019.25	1019.29	1019.33	1019.39	1019.44	1019.48	1019.52	1019.57	1019.60	1019.63	1019.63	1019.44
	20	1019.65	1019.70	1019.74	1019.76	1019.78	1019.80	1019.81	1019.81	1019.82	1019.82	1019.80	1019.78	1019.77
	21	1019.78	1019.80	1019.84	1019.88	1019.89	1019.89	1019.93	1019.94	1019.93	1019.93	1019.91	1019.90	1019.88
	22	1019.89	1019.89	1019.92	1019.96	1019.97	1019.95	1019.95	1019.97	1019.98	1020.00	1020.01	1020.00	1019.95
	23	1019.98	1019.95	1019.94	1019.92	1019.92	1019.91	1019.89	1019.86	1019.83	1019.80	1019.76	1019.72	1019.87
24	0	1019.68	1019.67	1019.65	1019.64	1019.63	1019.62	1019.63	1019.62	1019.58	1019.56	1019.55	1019.52	1019.61
	1	1019.50	1019.49	1019.48	1019.47	1019.45	1019.46	1019.46	1019.47	1019.48	1019.51	1019.53	1019.54	1019.48
	2	1019.55	1019.55	1019.53	1019.52	1019.52	1019.51	1019.49	1019.49	1019.50	1019.50	1019.49	1019.49	1019.51
	3	1019.47	1019.45	1019.43	1019.38	1019.34	1019.33	1019.33	1019.34	1019.34	1019.34	1019.36	1019.39	1019.37
	4	1019.41	1019.41	1019.42	1019.44	1019.46	1019.50	1019.52	1019.52	1019.54	1019.58	1019.64	1019.69	1019.51
	5	1019.75	1019.79	1019.81	1019.82	1019.84	1019.86	1019.88	1019.94	1019.99	1020.01	1020.02	1020.03	1019.89
	6	1020.05	1020.09	1020.14	1020.16	1020.14	1020.14	1020.14	1020.13	1020.11	1020.11	1020.11	1020.09	1020.12
	7	1020.08	1020.06	1020.06	1020.07	1020.05	1020.04	1020.04	1020.04	1020.03	1020.05	1020.06	1020.06	1020.05
	8	1020.05	1020.07	1020.05	1020.02	1020.01	1020.00	1019.98	1019.94	1019.90	1019.88	1019.89	1019.89	1019.97
	9	1019.90	1019.92	1019.94	1019.93	1019.90	1019.85	1019.85	1019.88	1019.86	1019.85	1019.85	1019.84	1019.88
	10	1019.81	1019.81	1019.81	1019.76	1019.70	1019.67	1019.66	1019.64	1019.58	1019.55	1019.52	1019.49	1019.66
	11	1019.46	1019.44	1019.46	1019.42	1019.35	1019.32	1019.27	1019.22	1019.19	1019.16	1019.13	1019.13	1019.29
	12	1019.13	1019.09	1019.04	1019.02	1019.00	1018.96	1018.93	1018.91	1018.93	1018.93	1018.87	1018.85	1018.97
	13	1018.82	1018.77	1018.72	1018.68	1018.66	1018.60	1018.57	1018.56	1018.53	1018.49	1018.45	1018.41	1018.60
	14	1018.37	1018.34	1018.29	1018.24	1018.23	1018.21	1018.15	1018.12	1018.11	1018.10	1018.06	1018.03	1018.19
	15	1018.02	1018.01	1017.96	1017.93	1017.95	1017.92	1017.86	1017.84	1017.81	1017.79	1017.79	1017.80	1017.89
	16	1017.80	1017.78	1017.78	1017.77	1017.76	1017.77	1017.75	1017.73	1017.72	1017.71	1017.69	1017.69	1017.74
	17	1017.67	1017.65	1017.63	1017.63	1017.64	1017.65	1017.63	1017.63	1017.63	1017.61	1017.60	1017.61	1017.63
	18	1017.64	1017.70	1017.74	1017.77	1017.79	1017.84	1017.89	1017.90	1017.90	1017.92	1017.97	1018.05	1017.84
	19	1018.10	1018.11	1018.15	1018.19	1018.22	1018.27	1018.30	1018.29	1018.27	1018.26	1018.24	1018.24	1018.22
	20	1018.26	1018.28	1018.27	1018.25	1018.23	1018.22	1018.22	1018.23	1018.23	1018.21	1018.18	1018.15	1018.22
	21	1018.12	1018.09	1018.08	1018.08	1018.09	1018.10	1018.10	1018.10	1018.09	1018.06	1018.03	1018.01	1018.08
	22	1018.01	1017.99	1017.97	1017.98	1017.97	1017.95	1017.94	1017.92	1017.92	1017.92	1017.92	1017.89	1017.95
	23	1017.87	1017.86	1017.86	1017.84	1017.81	1017.76	1017.70	1017.66	1017.63	1017.61	1017.59	1017.56	1017.73

S.V.I.R.CO. Observatory - Pressure in hectoPascal – April 2017

day	hh	00_05	05_10	10_15	15_20	20_25	25_30	30_35	35_40	40_45	45_50	50_55	55_60	average
25	0	1017.50	1017.47	1017.42	1017.38	1017.34	1017.28	1017.22	1017.17	1017.16	1017.14	1017.10	1017.06	1017.26
	1	1017.02	1016.99	1016.96	1016.93	1016.89	1016.84	1016.81	1016.77	1016.72	1016.68	1016.69	1016.71	1016.83
	2	1016.71	1016.70	1016.71	1016.71	1016.69	1016.67	1016.65	1016.61	1016.58	1016.55	1016.51	1016.50	1016.63
	3	1016.51	1016.47	1016.39	1016.31	1016.26	1016.24	1016.23	1016.22	1016.22	1016.24	1016.26	1016.25	1016.30
	4	1016.26	1016.29	1016.28	1016.31	1016.36	1016.37	1016.37	1016.38	1016.39	1016.38	1016.38	1016.38	1016.34
	5	1016.40	1016.44	1016.46	1016.43	1016.43	1016.48	1016.52	1016.57	1016.61	1016.63	1016.62	1016.61	1016.51
	6	1016.65	1016.69	1016.75	1016.79	1016.80	1016.79	1016.79	1016.82	1016.84	1016.87	1016.89	1016.91	1016.80
	7	1016.94	1016.98	1017.00	1016.99	1016.97	1016.96	1016.98	1016.99	1017.01	1017.02	1017.02	1017.05	1016.99
	8	1017.07	1017.05	1017.00	1016.96	1016.93	1016.92	1016.91	1016.89	1016.86	1016.88	1016.91	1016.90	1016.94
	9	1016.91	1016.92	1016.89	1016.86	1016.85	1016.83	1016.81	1016.77	1016.74	1016.70	1016.62	1016.56	1016.79
	10	1016.55	1016.54	1016.51	1016.47	1016.42	1016.37	1016.31	1016.29	1016.26	1016.20	1016.19	1016.17	1016.35
	11	1016.10	1016.04	1016.00	1015.96	1015.92	1015.87	1015.86	1015.82	1015.77	1015.72	1015.69	1015.67	1015.87
	12	1015.65	1015.62	1015.56	1015.56	1015.54	1015.48	1015.47	1015.45	1015.41	1015.38	1015.34	1015.25	1015.47
	13	1015.18	1015.15	1015.15	1015.09	1015.01	1014.96	1014.91	1014.84	1014.78	1014.78	1014.78	1014.71	1014.94
	14	1014.68	1014.69	1014.65	1014.59	1014.52	1014.46	1014.45	1014.44	1014.44	1014.42	1014.42	1014.45	1014.52
	15	1014.46	1014.45	1014.41	1014.36	1014.31	1014.28	1014.25	1014.23	1014.22	1014.22	1014.23	1014.22	1014.30
	16	1014.17	1014.12	1014.10	1014.08	1014.06	1014.05	1014.08	1014.11	1014.11	1014.09	1014.07	1014.06	1014.09
	17	1014.02	1014.01	1014.01	1013.99	1013.97	1013.94	1013.92	1013.92	1013.91	1013.88	1013.88	1013.91	1013.94
	18	1013.91	1013.89	1013.89	1013.89	1013.89	1013.92	1014.00	1014.08	1014.11	1014.14	1014.20	1014.27	1014.01
	19	1014.27	1014.23	1014.23	1014.24	1014.26	1014.30	1014.34	1014.37	1014.39	1014.42	1014.46	1014.51	1014.33
	20	1014.58	1014.63	1014.65	1014.64	1014.62	1014.59	1014.61	1014.63	1014.63	1014.64	1014.62	1014.59	1014.62
	21	1014.52	1014.44	1014.39	1014.33	1014.25	1014.20	1014.18	1014.13	1014.07	1014.03	1014.00	1014.01	1014.21
	22	1014.02	1014.02	1014.03	1014.03	1014.02	1013.98	1013.91	1013.90	1013.89	1013.87	1013.87	1013.89	1013.95
	23	1013.88	1013.81	1013.70	1013.64	1013.62	1013.64	1013.64	1013.60	1013.56	1013.49	1013.44	1013.41	1013.62
26	0	1013.28	1013.21	1013.09	1013.00	1012.92	1012.85	1012.81	1012.78	1012.72	1012.67	1012.61	1012.55	1012.85
	1	1012.50	1012.45	1012.40	1012.39	1012.40	1012.42	1012.44	1012.42	1012.39	1012.37	1012.34	1012.32	1012.40
	2	1012.31	1012.29	1012.24	1012.21	1012.17	1012.13	1012.11	1012.09	1012.09	1012.12	1012.08	1011.98	1012.15
	3	1011.93	1011.98	1012.06	1012.09	1012.00	1011.74	1011.59	1011.68	1011.79	1011.80	1011.86	1011.89	1011.87
	4	1011.88	1011.91	1011.94	1011.98	1012.01	1011.99	1011.95	1011.92	1011.82	1011.75	1011.79	1011.84	1011.90
	5	1011.83	1011.84	1011.85	1011.77	1011.74	1011.79	1011.84	1011.92	1012.07	1012.22	1012.26	1012.21	1011.94
	6	1012.13	1012.15	1012.25	1012.30	1012.27	1012.19	1012.16	1012.11	1012.06	1012.04	1012.04	1012.05	1012.14
	7	1012.08	1012.15	1012.22	1012.24	1012.27	1012.28	1012.25	1012.21	1012.13	1012.03	1012.00	1011.95	1012.15
	8	1011.89	1011.92	1011.94	1011.91	1012.00	1012.00	1012.00	1012.10	1012.11	1012.16	1012.25	1012.25	1012.04
	9	1012.23	1012.23	1012.25	1012.31	1012.32	1012.25	1012.19	1012.17	1012.20	1012.30	1012.34	1012.32	1012.26
	10	1012.33	1012.37	1012.33	1012.16	1012.00	1011.93	1011.91	1011.90	1011.88	1011.75	1011.65	1011.55	1011.98
	11	1011.44	1011.41	1011.48	1011.48	1011.49	1011.55	1011.57	1011.62	1011.51	1011.40	1011.38	1011.40	1011.48
	12	1011.41	1011.37	1011.38	1011.37	1011.37	1011.38	1011.39	1011.44	1011.47	1011.47	1011.49	1011.44	1011.41
	13	1011.38	1011.41	1011.37	1011.30	1011.29	1011.31	1011.33	1011.38	1011.36	1011.24	1011.18	1011.22	1011.31
	14	1011.17	1011.06	1011.00	1010.92	1010.84	1010.82	1010.81	1010.75	1010.71	1010.73	1010.71	1010.69	1010.85
	15	1010.65	1010.60	1010.60	1010.63	1010.62	1010.58	1010.56	1010.59	1010.64	1010.60	1010.57	1010.57	1010.60
	16	1010.59	1010.60	1010.53	1010.53	1010.60	1010.60	1010.65	1010.67	1010.68	1010.71	1010.69	1010.71	1010.63
	17	1010.73	1010.80	1010.84	1010.80	1010.79	1010.80	1010.80	1010.83	1010.87	1010.90	1010.92	1010.99	1010.84
	18	1011.08	1011.13	1011.17	1011.20	1011.22	1011.33	1011.39	1011.36	1011.43	1011.43	1011.40	1011.37	1011.29
	19	1011.35	1011.46	1011.58	1011.68	1011.83	1011.93	1011.93	1011.89	1011.81	1011.74	1011.73	1011.70	1011.72
	20	1011.63	1011.54	1011.42	1011.34	1011.27	1011.27	1011.32	1011.37	1011.40	1011.41	1011.50	1011.55	1011.42
	21	1011.56	1011.55	1011.53	1011.53	1011.56	1011.55	1011.49	1011.44	1011.37	1011.29	1011.25	1011.19	1011.44
	22	1011.18	1011.19	1011.14	1011.16	1011.22	1011.19	1011.20	1011.24	1011.29	1011.33	1011.29	1011.30	1011.22
	23	1011.26	1011.18	1011.14	1011.11	1011.07	1011.05	1011.09	1011.12	1011.04	1010.91	1010.77	1010.73	1011.04

S.V.I.R.CO. Observatory - Pressure in hectoPascal – April 2017

day	hh	00_05	05_10	10_15	15_20	20_25	25_30	30_35	35_40	40_45	45_50	50_55	55_60	average
27	0	1010.77	1010.71	1010.64	1010.57	1010.50	1010.53	1010.54	1010.51	1010.48	1010.41	1010.44	1010.46	1010.53
	1	1010.35	1010.15	1009.97	1009.81	1009.67	1009.72	1009.81	1009.85	1009.91	1009.90	1009.88	1009.86	1009.90
	2	1009.81	1009.75	1009.74	1009.78	1009.81	1009.80	1009.75	1009.74	1009.72	1009.71	1009.72	1009.65	1009.75
	3	1009.63	1009.67	1009.67	1009.70	1009.70	1009.73	1009.82	1009.86	1009.85	1009.93	1009.98	1009.94	1009.79
	4	1009.93	1010.02	1010.17	1010.33	1010.48	1010.60	1010.72	1010.70	1010.67	1010.69	1010.60	1010.45	1010.44
	5	1010.45	1010.55	1010.61	1010.57	1010.48	1010.47	1010.41	1010.19	1009.92	1009.75	1009.77	1010.07	1010.27
	6	1010.49	1010.76	1010.87	1010.85	1010.79	1010.72	1010.71	1010.69	1010.58	1010.48	1010.53	1010.60	1010.67
	7	1010.50	1010.54	1010.65	1010.64	1010.60	1010.57	1010.63	1010.62	1010.49	1010.41	1010.43	1010.71	1010.56
	8	1011.16	1011.52	1011.66	1011.66	1011.50	1011.21	1011.07	1011.13	1011.21	1011.18	1011.23	1011.23	1011.31
	9	1011.12	1011.08	1011.02	1010.93	1010.86	1010.80	1010.75	1010.74	1010.75	1010.92	1011.05	1011.06	1010.92
	10	1011.17	1011.31	1011.27	1011.10	1011.04	1010.89	1010.62	1010.51	1010.52	1010.65	1010.87	1011.04	1010.91
	11	1011.15	1011.20	1011.10	1011.01	1011.03	1010.99	1010.93	1010.88	1010.88	1010.87	1010.84	1010.82	1010.97
	12	1010.83	1010.80	1010.75	1010.65	1010.54	1010.40	1010.25	1010.20	1010.12	1010.07	1010.15	1010.18	1010.41
	13	1010.08	1009.98	1009.91	1009.88	1009.75	1009.65	1009.64	1009.57	1009.48	1009.44	1009.49	1009.62	1009.71
	14	1009.91	1010.15	1010.09	1009.79	1009.61	1009.58	1009.48	1009.64	1009.90	1010.03	1010.22	1010.09	1009.87
	15	1009.94	1010.00	1009.99	1010.08	1010.18	1010.21	1010.15	1010.05	1010.01	1009.99	1009.97	1009.87	1010.04
	16	1009.78	1009.78	1009.80	1009.77	1009.63	1009.50	1009.47	1009.56	1009.97	1010.55	1010.60	1009.90	1009.86
	17	1009.43	1009.37	1009.25	1009.25	1009.26	1009.21	1009.19	1009.25	1009.33	1009.35	1009.29	1009.26	1009.28
	18	1009.26	1009.32	1009.39	1009.37	1009.51	1009.71	1009.87	1010.01	1009.98	1009.88	1009.86	1009.88	1009.67
	19	1009.82	1009.72	1009.60	1009.30	1009.08	1009.04	1009.05	1009.23	1009.37	1009.37	1009.40	1009.47	1009.37
	20	1009.48	1009.47	1009.34	1009.26	1009.34	1009.54	1009.83	1009.99	1010.14	1010.52	1011.09	1010.56	1009.88
	21	1009.96	1010.23	1010.38	1010.55	1010.64	1010.83	1010.99	1010.82	1010.50	1010.12	1009.89	1009.56	1010.37
	22	1009.14	1009.07	1009.16	1009.21	1009.17	1009.28	1009.25	1009.09	1008.94	1008.86	1009.08	1009.27	1009.12
	23	1009.19	1009.04	1008.99	1008.93	1008.91	1008.92	1008.85	1008.97	1009.09	1009.15	1009.20	1009.16	1009.03
28	0	1009.27	1009.18	1009.11	1009.14	1009.15	1009.16	1009.04	1008.85	1008.79	1008.77	1008.75	1008.72	1008.98
	1	1008.68	1008.66	1008.50	1008.31	1008.17	1008.21	1008.37	1008.57	1008.69	1008.55	1008.33	1008.16	1008.43
	2	1008.13	1008.18	1008.22	1008.17	1008.06	1008.09	1008.08	1008.01	1007.90	1007.72	1007.64	1007.64	1007.98
	3	1007.61	1007.61	1007.66	1007.83	1008.09	1008.16	1008.20	1008.37	1008.45	1008.55	1008.80	1008.89	1008.18
	4	1008.96	1009.22	1009.16	1008.95	1009.11	1009.35	1009.32	1009.33	1009.55	1009.63	1009.55	1009.56	1009.31
	5	1009.58	1009.49	1009.49	1009.56	1009.52	1009.52	1009.58	1009.61	1009.61	1009.63	1009.66	1009.72	1009.58
	6	1009.80	1009.77	1009.77	1009.83	1009.82	1009.82	1009.84	1010.02	1010.36	1010.52	1010.59	1010.59	1010.06
	7	1010.41	1010.47	1010.68	1010.60	1010.58	1010.67	1010.65	1010.52	1010.43	1010.52	1010.59	1010.61	1010.56
	8	1010.71	1010.76	1010.69	1010.66	1010.71	1010.91	1011.04	1011.03	1011.08	1011.10	1011.11	1011.18	1010.91
	9	1011.24	1011.28	1011.32	1011.39	1011.47	1011.37	1011.26	1011.30	1011.45	1011.61	1011.77	1011.88	1011.44
	10	1011.85	1011.77	1011.90	1012.00	1011.94	1011.97	1011.99	1012.04	1012.15	1012.03	1011.79	1011.77	1011.93
	11	1011.87	1011.85	1011.82	1011.88	1012.00	1012.01	1011.90	1011.83	1011.86	1011.77	1011.59	1011.59	1011.83
	12	1011.60	1011.65	1011.80	1011.93	1011.97	1011.88	1011.83	1011.86	1011.88	1011.80	1011.64	1011.72	1011.79
	13	1011.88	1011.85	1011.43	1010.94	1011.14	1011.41	1011.50	1011.58	1011.56	1011.60	1011.71	1011.68	1011.52
	14	1011.44	1011.21	1010.95	1010.86	1011.00	1011.05	1010.97	1011.13	1011.27	1011.31	1011.34	1011.20	1011.14
	15	1011.10	1011.16	1011.43	1011.78	1012.07	1012.13	1011.90	1011.48	1011.25	1011.36	1011.51	1011.49	1011.55
	16	1011.50	1011.51	1011.43	1011.35	1011.27	1011.24	1011.31	1011.49	1011.52	1011.44	1011.32	1011.17	1011.38
	17	1011.02	1010.88	1010.84	1010.90	1011.06	1011.31	1011.51	1011.57	1011.52	1011.35	1011.28	1011.41	1011.22
	18	1011.52	1011.67	1011.70	1011.51	1011.53	1011.83	1012.23	1012.39	1012.42	1012.51	1012.31	1012.32	1011.99
	19	1012.47	1012.32	1012.08	1011.95	1011.98	1011.82	1011.82	1012.20	1012.37	1012.46	1012.65	1012.70	1012.23
	20	1012.62	1012.58	1012.70	1012.74	1012.60	1012.37	1012.26	1012.33	1012.35	1012.26	1012.19	1012.20	1012.43
	21	1012.24	1012.24	1012.24	1012.20	1012.14	1012.11	1012.12	1012.11	1012.07	1012.09	1012.14	1012.17	1012.15
	22	1012.23	1012.24	1012.24	1012.23	1012.19	1012.13	1012.04	1011.96	1011.97	1012.02	1012.02	1011.98	1012.10
	23	1011.91	1011.88	1011.86	1011.81	1011.74	1011.72	1011.75	1011.76	1011.75	1011.74	1011.72	1011.71	1011.78

S.V.I.R.CO. Observatory - Pressure in hectoPascal – April 2017

day	hh	00_05	05_10	10_15	15_20	20_25	25_30	30_35	35_40	40_45	45_50	50_55	55_60	average
29	0	1011.67	1011.64	1011.62	1011.63	1011.64	1011.63	1011.61	1011.59	1011.58	1011.62	1011.66	1011.69	1011.63
	1	1011.74	1011.72	1011.68	1011.69	1011.65	1011.63	1011.67	1011.71	1011.72	1011.69	1011.64	1011.66	1011.68
	2	1011.66	1011.59	1011.52	1011.50	1011.49	1011.50	1011.50	1011.46	1011.42	1011.39	1011.34	1011.32	1011.47
	3	1011.33	1011.35	1011.36	1011.32	1011.31	1011.40	1011.51	1011.56	1011.57	1011.62	1011.69	1011.78	1011.48
	4	1011.84	1011.85	1011.83	1011.85	1011.88	1011.91	1011.96	1012.00	1012.03	1012.04	1012.01	1011.98	1011.93
	5	1012.04	1012.09	1012.13	1012.22	1012.26	1012.23	1012.24	1012.26	1012.25	1012.28	1012.32	1012.38	1012.22
	6	1012.43	1012.41	1012.37	1012.33	1012.30	1012.32	1012.32	1012.24	1012.17	1012.15	1012.14	1012.14	1012.27
	7	1012.11	1012.09	1012.12	1012.15	1012.15	1012.18	1012.21	1012.22	1012.21	1012.21	1012.22	1012.22	1012.17
	8	1012.19	1012.23	1012.28	1012.28	1012.26	1012.23	1012.19	1012.16	1012.11	1012.08	1012.07	1012.03	1012.17
	9	1011.99	1011.99	1011.97	1011.94	1011.92	1011.92	1011.95	1011.94	1011.92	1011.92	1011.85	1011.79	1011.92
	10	1011.75	1011.71	1011.67	1011.63	1011.60	1011.57	1011.57	1011.58	1011.56	1011.55	1011.54	1011.47	1011.60
	11	1011.43	1011.41	1011.40	1011.41	1011.38	1011.32	1011.23	1011.16	1011.10	1011.04	1011.03	1011.02	1011.24
	12	1010.97	1010.93	1010.88	1010.84	1010.83	1010.80	1010.77	1010.75	1010.70	1010.66	1010.61	1010.56	1010.77
	13	1010.52	1010.52	1010.52	1010.47	1010.37	1010.32	1010.29	1010.23	1010.20	1010.16	1010.15	1010.12	1010.32
	14	1010.06	1010.01	1009.98	1009.92	1009.85	1009.82	1009.82	1009.79	1009.73	1009.68	1009.69	1009.70	1009.84
	15	1009.67	1009.62	1009.60	1009.58	1009.56	1009.56	1009.57	1009.63	1009.66	1009.64	1009.64	1009.66	1009.61
	16	1009.66	1009.64	1009.66	1009.68	1009.67	1009.63	1009.61	1009.62	1009.65	1009.68	1009.68	1009.67	1009.65
	17	1009.68	1009.72	1009.78	1009.88	1009.97	1010.04	1010.11	1010.18	1010.23	1010.28	1010.37	1010.43	1010.05
	18	1010.44	1010.46	1010.50	1010.55	1010.59	1010.64	1010.69	1010.75	1010.82	1010.90	1010.93	1010.98	1010.69
	19	1011.06	1011.11	1011.16	1011.23	1011.30	1011.35	1011.39	1011.42	1011.43	1011.43	1011.42	1011.44	1011.31
	20	1011.50	1011.54	1011.53	1011.54	1011.59	1011.63	1011.65	1011.67	1011.71	1011.74	1011.77	1011.83	1011.64
	21	1011.88	1011.91	1011.93	1011.94	1011.95	1011.97	1011.99	1012.04	1012.09	1012.11	1012.14	1012.18	1012.01
	22	1012.25	1012.30	1012.30	1012.30	1012.31	1012.31	1012.31	1012.31	1012.31	1012.30	1012.30	1012.30	1012.30
	23	1012.28	1012.28	1012.28	1012.36	1012.42	1012.39	1012.34	1012.31	1012.30	1012.30	1012.31	1012.33	1012.32
30	0	1012.34	1012.33	1012.32	1012.32	1012.33	1012.32	1012.31	1012.31	1012.34	1012.37	1012.37	1012.38	1012.34
	1	1012.41	1012.44	1012.47	1012.47	1012.47	1012.51	1012.55	1012.58	1012.62	1012.65	1012.68	1012.71	1012.54
	2	1012.73	1012.76	1012.76	1012.74	1012.74	1012.73	1012.72	1012.70	1012.66	1012.62	1012.59	1012.56	1012.69
	3	1012.54	1012.54	1012.50	1012.48	1012.49	1012.49	1012.52	1012.58	1012.62	1012.62	1012.62	1012.64	1012.55
	4	1012.66	1012.66	1012.63	1012.65	1012.69	1012.73	1012.77	1012.79	1012.82	1012.88	1012.92	1012.94	1012.76
	5	1012.96	1012.97	1013.00	1013.04	1013.06	1013.04	1013.04	1013.02	1013.00	1012.99	1013.00	1013.03	1013.01
	6	1013.04	1013.01	1012.97	1012.98	1012.99	1012.97	1012.95	1012.94	1012.92	1012.92	1012.89	1012.86	1012.95
	7	1012.85	1012.84	1012.83	1012.85	1012.84	1012.82	1012.78	1012.76	1012.75	1012.73	1012.68	1012.65	1012.78
	8	1012.64	1012.59	1012.56	1012.56	1012.55	1012.55	1012.56	1012.56	1012.55	1012.53	1012.52	1012.50	1012.55
	9	1012.46	1012.43	1012.42	1012.40	1012.38	1012.37	1012.40	1012.42	1012.44	1012.47	1012.51	1012.54	1012.43
	10	1012.53	1012.55	1012.60	1012.60	1012.56	1012.53	1012.49	1012.44	1012.38	1012.34	1012.31	1012.26	1012.46
	11	1012.20	1012.16	1012.15	1012.12	1012.09	1012.06	1012.02	1011.96	1011.93	1011.93	1011.91	1011.89	1012.03
	12	1011.90	1011.91	1011.89	1011.90	1011.88	1011.81	1011.76	1011.74	1011.73	1011.70	1011.69	1011.67	1011.80
	13	1011.62	1011.61	1011.60	1011.55	1011.51	1011.47	1011.43	1011.39	1011.36	1011.35	1011.33	1011.31	1011.46
	14	1011.32	1011.31	1011.29	1011.29	1011.29	1011.29	1011.26	1011.19	1011.14	1011.11	1011.11	1011.12	1011.22
	15	1011.13	1011.14	1011.12	1011.11	1011.11	1011.11	1011.08	1011.09	1011.13	1011.17	1011.21	1011.22	1011.13
	16	1011.23	1011.27	1011.29	1011.30	1011.32	1011.28	1011.28	1011.33	1011.40	1011.45	1011.48	1011.49	1011.34
	17	1011.48	1011.48	1011.47	1011.46	1011.47	1011.51	1011.57	1011.61	1011.62	1011.62	1011.64	1011.69	1011.55
	18	1011.74	1011.78	1011.82	1011.85	1011.91	1011.98	1012.00	1012.02	1012.06	1012.13	1012.18	1012.26	1011.98
	19	1012.30	1012.29	1012.30	1012.35	1012.41	1012.45	1012.48	1012.50	1012.50	1012.51	1012.50	1012.50	1012.42
	20	1012.48	1012.47	1012.50	1012.56	1012.62	1012.62	1012.60	1012.54	1012.49	1012.53	1012.61	1012.64	1012.55
	21	1012.61	1012.59	1012.62	1012.69	1012.71	1012.75	1012.80	1012.83	1012.83	1012.87	1012.90	1012.90	1012.76
	22	1012.89	1012.87	1012.88	1012.91	1012.96	1013.01	1013.02	1013.05	1013.11	1013.17	1013.20	1013.22	1013.02
	23	1013.25	1013.26	1013.28	1013.33	1013.38	1013.42	1013.40	1013.36	1013.31	1013.26	1013.25	1013.26	1013.31

