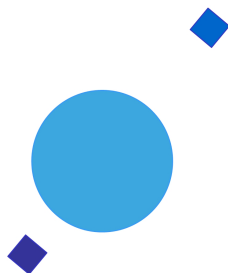


INAF



ISTITUTO NAZIONALE DI ASTROFISICA
NATIONAL INSTITUTE FOR ASTROPHYSICS

SVIRCO Prompt Report: August 2016

Fabrizio Signoretto and Francesco Re

INAF/IAPS-2016-18

September 2016

ISTITUTO DI ASTROFISICA E PLANETOLOGIA SPAZIALI

AREA DI RICERCA ROMA - TOR VERGATA

Via del Fosso del Cavaliere, 100 - 00133 Roma (ITALIA)

SVIRCO Prompt Report: August 2016

Fabrizio Signoretti and Francesco Re

*IAPS - INAF, Area di Ricerca Roma - Tor Vergata
Via del Fosso del Cavaliere, 100 - 00133 Roma, Italy,*

Abstract

The pressure corrected intensity of the nucleonic component, produced by primary cosmic rays and recorded in August 2016 by the Neutron Monitor of SVIRCO-Rome (present geographic position: 41.86° N - 12.47° E; altitude about s.l.), is reported in prompt form together with the barometric pressure data.

SVIRCO OBSERVATORY

During the 1st International Geophysics Year (1957) an international network of “ground-based detectors” for continuous cosmic ray measurements was world-wide established.

The cosmic ray station of Rome joined this network with the purpose to study the time variations of primary cosmic rays (**Studio Variazioni Intensità Raggi Cosmici: S.V.I.R.CO**) and their modulation in the heliosphere.

From July 1957 to April 1997, the SVIRCO Station (now Observatory) performed uninterrupted measurements at the Physics Department “G. Marconi” of “La Sapienza” University of Rome (41.90° N, 12.52° E, altitude about 60 m a.s.l.)

In May 1997 the neutron monitor was moved to the Physics Department “E. Amaldi” of “Roma Tre” University. Since then it has been continuously running at the new location (41.86° N, 12.47° E, altitude about 0 m a.s.l.).

The SVIRCO Observatory (INAF/IAPS-UNIRomaTre collaboration) is housed in a reserved building provided with a double air-conditioning system. The inner temperature is permanently restrained in a range of 23°-26° C, meanwhile the relative humidity is kept below 57%. Either the environmental parameters are continuously checked and recorded by digital sensors.

On January 1, 2005 three counters were added to the detector. This upgrade, from 17 to 20 NM-64, made the SVIRCO neutron monitor still consist of 5 sections but modified its geometry. Actually the new arrangement has been composed of three 3-counter, one 5-counter and one 6-counter units. The enhancement improved not only the overall counting rate of 15.6 % (January 2005) but, as a result, also the statistical quality of the recorded data.

Each of the 20 BF₃ proportional counters (BP-28 type) is equipped with a smart amplifier/discriminator circuit complete with a spectrum stabilizer. This new electronic unit, developed in our laboratory, holds firmly the pulse height spectrum of the amplifier output (within a range of more than 150 volts around the operating voltage), providing the counter with a great immunity against high voltage variations.

Anyway, systematic and exhaustive tests of the counters are regularly performed. The output pulses of the amplifiers, discriminated by the threshold gates, are collected and stored into a multi-channel analyzer. The analysis of the height distribution (spectrum) of the amplifier pulses coinciding with the discriminator ones, is essential to verify the long term efficiency of each counter together with the amplifier gain and the discriminator threshold level.

As well as the amplifier/discriminator circuits, a large part of the electronic instrumentation operating in the Observatory was designed and realized in our laboratory together with the software for data acquisition and pre-elaboration.

In order to improve the reliability of the recorded data and to prevent measurement breakdowns, two independent systems perform contemporary the data acquisition. Each system is remotely controlled by a dedicated computer and is timed by a high stability quartz clock and/or a GPS receiver. One equipment runs according to a timing of 1 minute and fulfils the acquisition of the 20 counters separately. The other one records the individual 5-minute counting rate of each detector section in addition to the rates of the overall multiplicity, sorted into separated counting channels (from 1 to greater than 8).

A special care is devoted to the atmospheric pressure measurements, thus they are carried out by means of not less than three barometers at the same time. These instruments (achieving a resolution up to 0.01 hPa), are constantly checked out each other for the best measuring accuracy and reliability. Furthermore the devices in use are equipped with different types of transducer such as vibrating cylinder, force balance and quartz, therefore, throughout their different behaviours, it is possible to point out the occurrence of any long-term drift and eventually to re-calibrate the instruments themselves.

DATA PRESENTATION

In a preliminary step, the intensity data, of the secondary nucleonic component of cosmic ray, detected at SVIRCO Observatory, were corrected for pressure variations at a reference level of 1009.25 hPa with an attenuation coefficient of 0.70% / hPa.

The five-minutes counting rates, of the examined month, are reported in tabular form together with the hourly normalized data, which provide a continuous data set for long-term analysis.

The normalization was evaluated as percentage of the counting rate average of January-February 1997, when the Monitor operated at the previous location of "La Sapienza" University. The reference counting rate level (100%), computed for such period, is equal to 554946 counts/hour.

The atmospheric pressure data (in hectoPascal) are also collected in a monthly table which presents the five-minutes averages and the hourly ones.

The hourly averages of the normalized intensity and pressure, plotted in monthly graphs, are reported too.

CONDITIONS FOR SVIRCO DATA USE

You are welcome to use neutron monitor data of SVIRCO, IAPS/INAF-UNIRomaTre collaboration, under the following conditions:

-You agree to acknowledge our financial supports in any published use of the data.

Example: "SVIRCO NM is supported by the INAF - UNIRomaTre collaboration"

-You are kindly requested to send a copy of any published work derived from our data to:

Dr. Monica Laurenza
Head of SVIRCO Observatory & TPL
Istituto di Astrofisica e Planetologia Spaziali - Area di Ricerca Tor Vergata
Via del Fosso del Cavaliere, 100 00133 Roma - Italy,

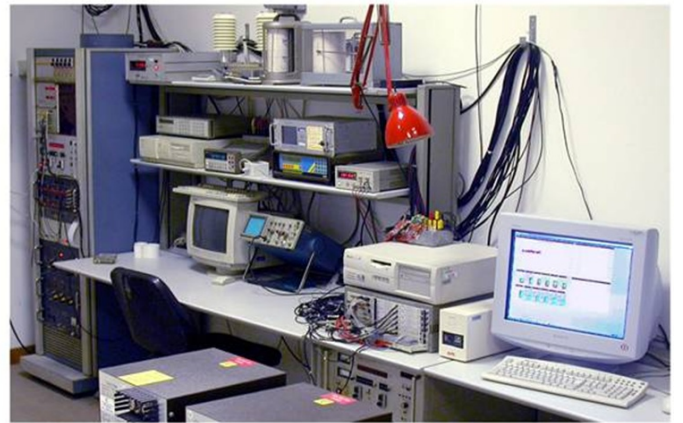
monica.laurenza@iaps.inaf.it



S.V.I.R.CO. Observatory

Rome

Italy



INAF/UNIRomaTre S.V.I.R.CO. Observatory - Pressure Corrected Data - August 2016													20 NM-64	
day	hh	00_05	05_10	10_15	15_20	20_25	25_30	30_35	35_40	40_45	45_50	50_55	55_60	h-norm
1	0	46231	46636	46051	46596	45593	45330	45537	46290	46475	46316	46143	46665	100.367
	1	46031	45846	46659	46356	46336	46404	45871	45862	46358	45966	46395	46190	100.442
	2	46057	46133	46516	46193	46299	45656	45807	45638	46581	46170	46190	46049	100.264
	3	45839	46140	45533	46218	46548	46500	46505	46063	46452	46177	46359	45519	100.365
	4	45877	45954	46527	45919	46253	46051	45700	46000	46453	46253	45956	46024	100.206
	5	45831	45915	46071	45956	45957	46518	46028	46140	46146	45602	45670	46410	100.074
	6	45320	46236	46716	45890	46182	46173	45780	45707	46289	46283	46431	46491	100.302
	7	46339	46932	46143	46718	45852	46284	46868	46265	46300	46322	46037	46610	100.877
	8	46329	46496	46581	46686	46303	45693	46115	46346	46596	47031	46509	47003	101.061
	9	46758	46385	46358	46978	46276	46448	47100	46558	46426	46179	46753	46467	101.242
	10	46733	45886	46821	46585	46347	46621	47516	46861	46896	46080	46383	46762	101.388
	11	46424	45961	46316	46850	46133	46222	46343	46227	46421	46177	46222	46268	100.676
	12	46122	46538	46435	46347	46330	46881	46286	46160	45883	46885	46842	46719	101.014
	13	46702	46611	46910	47291	46757	46529	46172	46001	46167	45694	46237	47069	101.143
	14	46624	46735	46357	46322	46303	46234	46228	46147	46373	46416	46255	46070	100.767
	15	46820	46173	45938	47002	46013	46350	47252	46337	45872	46116	46446	46130	100.836
	16	46552	46774	46311	46331	46205	46770	46628	47061	45601	46905	46468	46018	101.049
	17	46077	46500	46442	46236	46153	46221	45191	46302	45937	45882	46286	46370	100.320
	18	46774	45836	46833	46398	46358	46088	46645	46195	45982	46124	46431	45894	100.676
	19	45861	46173	46966	46153	46157	46231	46286	46360	46328	46434	46137	45959	100.582
	20	45629	46504	46769	46519	46150	46015	46353	46766	46104	46246	47118	45943	100.776
	21	46144	45863	45919	45863	46817	46335	46582	45660	46769	45726	45637	46552	100.369
	22	46314	46629	45905	46416	45913	46741	46411	45750	46895	46380	45982	46173	100.666
	23	46185	46231	46809	46457	45979	46744	46252	46926	46394	46730	46464	46013	100.969
2	0	46335	46741	46835	46915	46413	46278	45991	45638	46385	46213	46231	46286	100.801
	1	46485	46264	46290	46002	45909	46286	46597	47146	45985	46630	46089	46610	100.808
	2	46996	46355	46808	46871	46574	46171	46071	46348	46152	46909	46515	46613	101.187
	3	46801	46625	46782	46971	46329	45786	46669	45960	47057	46206	46688	46523	101.190
	4	46407	46885	46607	46291	46162	46271	46363	46709	47073	46212	46651	45594	100.978
	5	47281	46341	46665	46535	46266	46344	46339	45794	47347	45985	45998	46520	101.012
	6	46513	45867	46610	46791	46710	46098	46385	46353	46279	47094	46866	46721	101.170
	7	46300	46333	46465	46419	46400	46980	46825	46748	46065	46555	46606	46797	101.207
	8	46608	46904	46346	45964	46682	46417	47010	46713	47001	46221	46701	47182	101.434
	9	46351	46417	46266	46661	46524	46151	45939	46675	46611	46994	45886	46187	100.875
	10	47041	46532	46668	45917	46675	46509	46488	46289	46107	46553	46517	46566	101.093
	11	45743	46537	46460	46508	47036	46204	46422	46304	46899	45892	46245	46241	100.844
	12	46498	46116	46073	46227	46386	46744	46386	46620	46314	46126	46338	46402	100.797
	13	45793	46130	46720	46473	45927	46018	46873	45803	46649	46044	45994	46014	100.472
	14	46352	46460	46645	46647	46218	46124	45961	46517	46003	46088	45319	45594	100.379
	15	46336	46076	46021	46025	45766	46442	45752	45602	46263	45913	45906	46156	100.077
	16	46654	45909	45562	46394	46009	45941	46223	45675	45451	45911	46022	46156	100.013
	17	45602	46282	45842	46032	46304	46633	46231	45763	46125	46474	46243	46300	100.362
	18	45948	45636	45240	45572	46234	46557	45569	45703	45888	46494	45992	45541	99.736
	19	45824	45916	46453	45972	46253	46417	45605	45956	46077	45956	46349	45918	100.156
	20	46117	45975	45967	45651	45968	46159	45207	45554	46009	47005	45821	46011	99.929
	21	46353	46458	46304	46120	45932	46428	45932	46146	46306	46110	46134	46640	100.549
	22	46108	46144	45680	45857	45947	45727	45493	46053	46495	46547	45903	46464	100.106
	23	46737	46221	45370	45996	45983	46365	46252	45878	46181	45539	46416	46062	100.211

INAF/UNIRomaTre		S.V.I.R.CO. Observatory - Pressure Corrected Data – August 2016											20 NM-64	
day	hh	00_05	05_10	10_15	15_20	20_25	25_30	30_35	35_40	40_45	45_50	50_55	55_60	h-norm
3	0	46381	46571	45639	46705	46011	45749	45769	46097	46024	46425	45996	45708	100.224
	1	46036	45863	45795	45694	45615	45244	45849	45858	45614	45600	46110	45966	99.531
	2	46386	45315	46377	46924	45646	45752	46383	46313	45347	46180	45998	45528	100.057
	3	46061	45808	45937	46150	45985	45988	46147	46348	46212	46034	46172	46046	100.191
	4	46097	45941	46164	45838	45703	46345	46188	46181	46524	45884	46225	45740	100.180
	5	47011	45838	45889	46059	45684	46128	45655	46005	46197	46301	46236	45813	100.178
	6	45883	45702	45628	46587	46515	45798	45785	45973	45934	45791	45987	46879	100.114
	7	45641	46023	45696	46011	46274	46003	45621	45845	46283	45755	45900	46333	99.919
	8	46014	45776	46181	46112	45656	46093	46040	46224	46212	45660	46139	46350	100.113
	9	45939	45639	45946	46373	46230	46066	45765	46083	46141	46156	46628	45578	100.129
	10	46598	46482	45680	46327	46077	45831	46010	46048	45891	45952	46211	46110	100.251
	11	45895	46872	46814	46801	46733	46450	45625	46832	46486	46636	46111	46110	101.003
	12	45722	46165	46191	45951	46614	46469	46698	46643	46110	46407	45836	46509	100.631
	13	46517	46996	46001	46311	46365	46589	45812	46099	45828	46576	45635	46141	100.550
	14	46357	46170	45876	46143	46773	45643	46058	46153	45603	45849	45957	45911	100.119
	15	46422	45912	46742	46249	46763	46048	45986	46842	45828	45912	46439	46317	100.657
	16	46459	45731	45667	45549	46719	45994	46138	46434	46017	45872	46438	46648	100.332
	17	46033	46443	45877	45789	46099	45980	45528	45703	45560	45159	45715	45642	99.583
	18	45435	45608	45412	45945	45989	45398	45213	45485	44859	46044	45464	45404	98.990
	19	46030	45491	45265	45540	45756	45225	45791	45373	45317	44762	45428	45504	98.849
	20	45744	45643	45773	45259	45008	45540	45579	45686	45655	45816	45486	45471	99.063
	21	45879	46462	45951	45709	45799	45234	44821	45107	45618	45445	45375	45963	99.190
	22	45569	46172	45486	45703	45917	44895	45501	45513	45249	45784	45244	45714	99.079
	23	46264	45842	45670	45641	45306	45443	45352	46124	45156	45723	45329	45507	99.189
4	0	45704	45532	45214	45420	45149	45536	45503	45470	45850	45431	45344	45218	98.827
	1	45247	45684	45923	45491	45106	45036	45531	45592	45311	46002	45624	45499	98.951
	2	45608	45780	46012	45615	46343	45892	45082	46105	45268	45331	45271	45237	99.223
	3	46139	44941	45212	45975	45524	45740	45876	44721	45674	45976	45869	45177	99.092
	4	45631	45315	45433	45425	45539	45588	45587	45309	46276	45040	46193	46118	99.206
	5	45317	45627	46078	45994	45446	46581	46269	45986	46053	45539	45689	45729	99.724
	6	46021	45471	45815	45483	45147	45761	45586	46124	45929	45809	45840	45268	99.351
	7	46640	45843	45659	45874	45758	45536	45858	46192	45714	45684	45150	45560	99.571
	8	46101	45557	45361	45740	46532	46489	45920	45771	45786	45967	45901	45725	99.822
	9	45435	46147	46033	45724	46046	45590	45954	46139	46447	46067	46227	45539	99.912
	10	45608	46266	45489	45700	45983	46349	46192	45684	46178	46110	46058	45973	99.956
	11	46177	45493	46058	45888	45615	45727	46108	46242	45448	45686	46410	45807	99.787
	12	46235	45166	45766	46144	46272	45991	45687	46841	46061	45461	46669	46028	100.088
	13	46266	46236	45582	46017	45263	46170	45868	46112	45493	45608	45910	46293	99.816
	14	46212	45642	46377	45954	46015	46317	46022	45985	46206	46352	45907	46230	100.251
	15	46450	46537	46420	46590	46255	46113	46593	46158	46134	46185	45980	46238	100.692
	16	45731	45514	45788	46356	45909	46663	46242	46360	46535	46095	46163	45889	100.256
	17	46486	46337	45809	46197	46058	46586	45964	46462	46011	46241	46107	45864	100.415
	18	46126	46115	46331	46190	45881	46401	46021	46210	45676	46638	46267	45297	100.240
	19	45778	46736	45966	45884	46431	45099	45985	45172	45503	45567	45775	46147	99.676
	20	46121	45973	45988	46026	46186	45967	45464	45786	45624	45138	45386	45918	99.591
	21	46098	45801	46006	45358	45439	45869	45566	46349	45711	45394	45815	45513	99.472
	22	45618	46184	46409	45779	46317	45562	45416	45591	45486	45352	45704	46149	99.589
	23	45547	45687	46297	46026	45236	45883	45644	45927	45518	45874	45576	45615	99.456

INAF/UNIRomaTre			S.V.I.R.CO. Observatory - Pressure Corrected Data – August 2016										20 NM-64	
day	hh	00_05	05_10	10_15	15_20	20_25	25_30	30_35	35_40	40_45	45_50	50_55	55_60	h-norm
5	0	45687	45453	45796	46057	45950	45487	46426	45792	46148	45963	45802	46000	99.771
	1	45630	45949	45603	46058	44914	45690	45909	45808	45754	45745	45598	46048	99.433
	2	46084	45578	45743	45618	46387	45610	46458	45846	45767	45996	45936	46138	99.878
	3	45431	46239	45124	45826	45602	45190	46041	45386	45624	46119	45470	45733	99.266
	4	45671	46089	46177	45811	45932	45951	45416	45447	45886	46082	45785	45361	99.597
	5	45611	46187	46165	46917	45865	45755	46251	45712	45539	45939	45241	45958	99.874
	6	45983	45987	45836	46481	45824	45222	45791	46123	46692	45945	46447	45944	100.080
	7	45920	45083	45572	46398	45928	46130	46058	46339	45899	46220	45949	46392	100.010
	8	45978	45748	46353	46214	45748	46099	46328	46233	46499	46037	46284	45999	100.306
	9	47132	46368	45397	46460	46236	45761	46571	45976	46210	45532	46047	46135	100.361
	10	46638	46657	46168	46341	47157	46465	46597	46016	46012	46280	46470	46271	100.949
	11	46197	46108	46016	45542	46835	46632	47079	45997	46281	46064	45974	46270	100.573
	12	46160	45924	46369	45683	46274	46055	46088	46226	46481	46273	46262	46736	100.489
	13	46140	46060	46548	45961	46389	46405	45936	46312	45884	45976	46056	46200	100.369
	14	46199	45836	46459	45820	46369	46750	46349	46340	46179	46653	46424	45682	100.585
	15	46520	46002	46084	45798	45908	45593	45974	46221	46427	46086	45993	46083	100.155
	16	46036	46213	45988	46310	46035	46057	46350	46650	45640	46855	45900	46508	100.491
	17	46307	46082	45567	45937	45577	46235	46032	45930	45807	46233	45782	45610	99.867
	18	46216	45605	45536	45309	46081	45736	45944	46378	45595	45532	45681	45701	99.544
	19	45952	46121	45580	46163	45501	45660	45408	46050	46190	45542	46021	45986	99.700
	20	45808	45793	46320	46321	45745	46285	45723	45880	45954	45344	45776	46180	99.872
	21	46415	46222	45067	46053	45671	46021	46102	45766	46397	46315	45457	45217	99.795
	22	46825	45944	45861	46115	46480	45501	46272	46102	45385	46182	46452	45079	100.066
	23	45608	46124	46046	45910	45925	46643	46869	45835	45390	46328	45825	45597	100.049
6	0	46293	45926	45487	45970	45943	45533	46426	45500	45748	45176	46174	45594	99.628
	1	45869	45882	45764	45916	45191	45349	45720	46041	46344	46600	45798	45638	99.688
	2	46380	45953	45994	45829	45849	45225	45794	46150	46219	45418	45981	45610	99.741
	3	45535	46590	46012	46012	45422	46415	45695	45633	45931	45610	45906	45693	99.750
	4	45481	45575	46782	45933	45642	45764	46418	45397	45492	45995	46183	46799	99.933
	5	45964	46390	46500	45781	45776	46316	45747	45916	46233	45584	46045	46362	100.141
	6	46318	45842	45430	46088	45819	46066	46335	45913	45968	45517	45726	45724	99.803
	7	45468	46129	45587	46489	45594	46142	45860	45858	45903	46121	45864	45671	99.792
	8	45605	46708	46408	46548	45887	45870	47121	45702	45915	46273	46338	46232	100.503
	9	46186	46471	46728	45848	45786	46315	46495	45858	46327	46005	46172	45875	100.405
	10	46194	46347	46193	46952	46205	46118	46119	46489	45955	46127	45769	46600	100.586
	11	46136	45975	46409	46339	46513	46422	46122	46480	45717	46777	46764	46087	100.708
	12	46112	46600	46008	46510	45740	46178	46131	46061	45959	46286	45931	45737	100.257
	13	46728	46566	46503	46106	46624	45942	46164	46486	46569	46226	46089	45901	100.738
	14	46146	45787	46222	46039	46278	45846	45813	45787	45589	46103	46438	46033	100.045
	15	46956	45475	46781	46236	45831	45558	45872	46446	46063	45637	46194	45936	100.209
	16	45800	45694	46046	46559	46429	46642	46295	46054	46043	46205	46053	46517	100.453
	17	46254	46400	45537	45730	46229	46480	46499	46163	46143	46342	46103	45710	100.319
	18	45631	46377	45382	45436	45512	45907	45946	46309	46338	45665	45839	45801	99.694
	19	46751	45695	45352	45617	46259	45559	46007	45621	46144	46182	45258	45505	99.659
	20	45923	46202	46086	45501	46202	45847	45765	45699	45421	45679	45854	46238	99.744
	21	46336	45565	45579	44962	45958	45987	46210	45632	45983	46081	46112	45974	99.736
	22	45216	45982	46043	46078	45844	46333	45831	45654	46166	45642	45770	46125	99.792
	23	45491	45544	45406	45822	46507	45968	45681	45742	46133	45521	45323	46084	99.527

INAF/UNIRomaTre		S.V.I.R.CO. Observatory - Pressure Corrected Data – August 2016												20 NM-64
day	hh	00_05	05_10	10_15	15_20	20_25	25_30	30_35	35_40	40_45	45_50	50_55	55_60	h-norm
7	0	46047	45782	45794	45553	46071	45714	46127	45625	45800	46068	45105	45827	99.578
	1	45480	45557	45438	45663	45895	45759	45708	45340	45836	45601	46180	46239	99.431
	2	45760	45211	45751	45447	45245	45477	45579	45643	45880	45679	45639	45277	99.050
	3	46010	45994	44776	46478	45663	45695	45089	45312	45784	45749	46198	45782	99.401
	4	46406	46342	45341	45869	46235	46076	45375	45595	46468	45624	46003	45588	99.835
	5	45948	46078	45536	45683	45658	45862	45600	45869	46927	46108	45772	45676	99.797
	6	45577	46036	46106	45572	45982	46590	45964	46076	46183	45749	46207	45919	100.023
	7	45926	46282	45717	45772	45536	46359	45721	45557	45934	45734	46316	46396	99.894
	8	45889	46084	46137	46476	46513	45687	45942	46580	45610	46011	46222	45947	100.229
	9	45908	45937	46139	46279	45460	45593	46163	46521	46003	45448	46012	46102	99.951
	10	45517	45826	46054	46514	45968	46228	46072	45969	45671	46068	46508	45945	100.092
	11	46065	46105	46071	45333	46189	45648	45625	46030	46237	45672	45563	46358	99.830
	12	45769	45379	46171	45953	45618	45586	46021	45536	45754	45519	45734	45930	99.481
	13	46353	46095	45829	45847	45478	46224	46444	46326	45486	45920	46084	45099	99.882
	14	46032	45968	46500	45890	45578	45443	45905	45949	45744	46343	45490	45909	99.804
	15	46394	46040	45484	46339	45803	45652	45968	45685	45382	45092	45250	45777	99.462
	16	45786	46082	45399	46035	46121	46044	45829	45700	45900	45834	45849	45119	99.613
	17	46499	45828	45504	46086	46218	45798	45601	45633	45790	46138	46256	45978	99.909
	18	45952	45535	46432	46496	46173	45299	45461	46379	45858	45448	45640	45809	99.756
	19	45988	46435	45963	46016	45770	45422	45821	45144	45845	45936	45770	46185	99.722
	20	45864	45355	45464	45211	45774	46153	45592	45831	46284	45421	46199	45378	99.401
	21	46181	45699	45687	46030	45954	45923	46379	45548	45363	46052	46036	45696	99.767
	22	45543	45858	45529	45390	45022	45868	45952	44930	46066	45702	45364	45658	99.103
	23	45655	45872	46018	45586	45760	45946	45981	45614	45904	45965	45680	46427	99.742
8	0	46495	45105	45739	45757	45581	45277	46277	45455	45745	45724	46573	46012	99.613
	1	45569	45104	45992	46225	45812	45831	45421	45296	45303	46073	46277	45699	99.414
	2	45722	45669	45741	45482	46147	46090	46043	46434	45658	46397	45828	46074	99.901
	3	45595	46224	46099	45875	45577	46139	46454	46006	45742	46221	46129	46364	100.107
	4	45617	46095	45895	45907	45538	46173	45863	46121	46379	45440	45812	45612	99.749
	5	45925	46341	45821	46247	45343	45920	46150	45764	46054	45950	46227	46123	100.005
	6	46450	46133	45614	45844	45600	45616	46382	45976	45806	46075	45939	45939	99.916
	7	46205	46140	45617	46165	45990	45729	46416	46224	46040	46020	45368	45276	99.884
	8	45390	46110	46403	45252	46033	45519	46240	46377	45887	45635	45919	45667	99.746
	9	45773	45975	46283	46195	45200	45896	45980	45639	45905	45915	45911	45857	99.764
	10	46092	44998	45554	45963	46113	45606	45660	46094	45472	46158	46033	46422	99.698
	11	45922	45776	45501	45564	46184	45719	45675	45555	45746	45602	45683	45905	99.456
	12	46034	45897	45863	45954	45948	45950	45035	45810	45805	45787	45797	45789	99.608
	13	46434	45442	45674	45975	46114	45546	46365	45671	45974	46327	45995	45791	99.905
	14	46014	46081	45750	45231	46338	46024	45736	46333	45535	45940	45767	46516	99.897
	15	46285	45430	46300	46229	46045	46084	46291	45812	45367	45460	45860	46040	99.886
	16	45788	46548	46138	46098	46109	45326	46016	45615	46477	45912	45597	45578	99.885
	17	45921	45615	45946	45996	45855	45482	45474	45934	45846	46006	45579	45890	99.585
	18	46368	45810	46650	45180	45695	46256	45702	46198	46058	46138	46019	45918	100.029
	19	45974	45447	45682	46096	45969	45686	45728	46151	46220	45448	45932	46189	99.762
	20	45689	46621	45814	45586	46036	45418	46403	45114	45940	45728	46069	46226	99.785
	21	46198	46207	46357	45805	45646	45850	46308	45837	45932	46466	46120	46307	100.217
	22	45739	45604	46542	46645	46200	46337	46043	45885	45771	46002	45897	46267	100.199
	23	45986	46418	45623	46279	45600	45900	45618	45559	45654	45312	46061	46191	99.704

INAF/UNIRomaTre			S.V.I.R.CO. Observatory - Pressure Corrected Data - August 2016										20 NM-64	
day	hh	00_05	05_10	10_15	15_20	20_25	25_30	30_35	35_40	40_45	45_50	50_55	55_60	h-norm
9	0	46658	45983	45495	45576	45923	45854	46298	45618	45674	45917	45912	45936	99.819
	1	45970	45962	45655	46023	45217	45674	45716	45105	46116	45661	45873	45688	99.425
	2	45778	45672	45768	45696	45886	45823	45968	45337	45682	45458	46067	45538	99.427
	3	45612	46193	45800	45412	46115	45567	45706	45656	45880	45176	45408	45858	99.375
	4	45562	45212	45957	45959	45580	45080	46046	45482	45766	45996	45826	46005	99.391
	5	45859	46546	45563	45796	45801	46329	45879	45499	46190	46149	45548	45554	99.797
	6	46279	46145	45735	45935	44761	46375	45437	45364	46266	45591	46117	45187	99.522
	7	45660	45678	45852	45384	45990	45917	45898	45645	45940	45826	45717	46178	99.611
	8	46163	45186	45634	45672	46471	45932	44962	45915	45960	45706	46034	45637	99.536
	9	45473	45832	45460	45404	45933	46033	45353	45703	46308	45788	45604	46279	99.518
	10	46169	45940	45437	45760	46524	45873	46396	46626	45810	45883	46164	45832	100.105
	11	45712	46195	46355	45657	46195	46321	45667	45455	45744	45594	45420	45831	99.694
	12	45706	45789	45866	46179	45853	45235	46026	45899	45746	45672	46139	45938	99.677
	13	46628	46678	46022	46304	45494	45911	46214	45587	46380	45836	45872	45749	100.152
	14	45851	45540	45292	46078	46056	45509	45455	45463	46458	45788	46145	45186	99.454
	15	46078	45180	45997	46212	45028	45707	45958	45660	45543	45610	45953	45740	99.426
	16	46090	45619	46234	45730	45894	45840	45989	45314	45155	44964	45457	45113	99.197
	17	45891	45916	45653	45908	45478	46194	46095	45740	45940	45942	46329	45819	99.831
	18	45630	45255	45296	45384	45351	45320	45629	44768	45867	45593	46054	45437	98.868
	19	45741	45488	45566	45637	45228	45980	46063	45187	45451	45351	45275	46153	99.146
	20	45416	46019	45783	45914	45140	46079	46336	45650	45863	45204	45360	45383	99.332
	21	45737	45956	46032	45962	45590	45588	46060	45526	45817	45192	45801	45441	99.433
	22	45150	46331	45339	45704	45976	45699	45822	46125	46457	45476	45712	45430	99.527
	23	45437	45606	45956	45597	46188	45517	45572	45272	45709	46165	45579	45493	99.322
10	0	46022	45742	45287	46434	45619	45506	45258	45505	46107	45732	45783	45528	99.397
	1	45822	45614	45533	45777	45298	46098	45938	45829	45805	45777	45553	45721	99.444
	2	45356	45706	45780	45790	45140	45463	45869	45372	45999	45309	46013	45693	99.213
	3	46012	45879	45866	45721	45531	45181	45932	45598	45761	46044	45113	46199	99.457
	4	46098	45668	45853	46178	45760	45247	45574	46179	45760	45208	46401	45969	99.649
	5	45963	45937	46152	46206	45477	46215	45789	46786	45772	46205	45473	45299	99.899
	6	46051	46149	45871	45757	44926	46496	45754	45774	45970	46209	45276	46283	99.761
	7	45119	45805	46208	46042	45686	45648	45531	45795	46078	45479	45706	45794	99.467
	8	45758	45387	45574	46127	45665	45460	46222	45705	45504	46118	45562	45874	99.479
	9	45574	45999	46084	45842	45374	45543	46193	46058	45589	45856	45827	46117	99.678
	10	45717	46299	46068	46060	45277	45200	45897	46300	46761	45921	45710	45799	99.851
	11	45912	45956	45746	45688	45754	46126	45867	45734	46202	45510	46278	46133	99.832
	12	45523	46094	45867	45781	45324	45815	45611	45846	44864	45338	45895	45905	99.281
	13	46192	45189	45203	45882	45876	45378	45813	45664	45713	45670	45504	45663	99.259
	14	45660	45423	46524	45898	45734	45676	45989	45424	45724	45932	45512	45631	99.509
	15	45722	46107	46030	46168	45259	45326	45503	46181	45945	45793	46338	45723	99.685
	16	45584	46084	45250	45722	45848	45699	45548	45759	44925	45410	45475	45527	99.093
	17	45333	45779	45553	45792	45459	46139	46140	45425	45507	45100	45660	45024	99.109
	18	45681	46073	45459	45976	45248	45417	45851	45430	45621	45384	45163	45544	99.097
	19	45624	45054	45688	45694	45693	46297	45186	45532	45510	45697	46162	45942	99.320
	20	45631	45337	46027	46163	45170	46033	45758	45283	45546	45650	45364	45695	99.243
	21	45586	45647	45599	45883	46154	45456	46313	45247	45756	46577	45432	45594	99.531
	22	45398	45518	45529	46076	45774	46122	46101	45960	45378	45572	46141	46155	99.618
	23	46079	45883	45768	45777	46211	45447	45833	45333	45233	46335	45569	46169	99.602

INAF/UNIRomaTre		S.V.I.R.CO. Observatory - Pressure Corrected Data – August 2016											20 NM-64	
day	hh	00_05	05_10	10_15	15_20	20_25	25_30	30_35	35_40	40_45	45_50	50_55	55_60	h-norm
11	0	45738	45526	46440	46457	45934	45712	46168	46120	45850	45615	45378	45799	99.796
	1	45554	45892	46022	45687	46125	45648	46090	46293	45897	45980	45448	46135	99.807
	2	45769	45937	45268	45689	45819	45485	45972	46169	45749	45827	45010	45778	99.391
	3	45614	45971	46320	45712	45680	45614	45057	46443	45444	46314	45741	45411	99.545
	4	45355	46370	46135	45781	45515	45430	45453	45566	46606	45240	45099	45733	99.358
	5	45563	45518	45705	45712	46081	46042	46076	45726	46290	46349	45804	45436	99.723
	6	46274	45363	45668	46412	45656	45669	45788	45959	46383	45532	46283	44992	99.664
	7	45553	45665	45269	45747	46329	45740	45529	45880	45829	46281	45900	45557	99.537
	8	45421	45433	45357	45411	45030	46587	46123	46006	45744	45949	45529	45433	99.309
	9	45867	45736	45741	45498	45564	46214	45584	45778	45618	45615	45143	46392	99.441
	10	45652	45593	45499	46047	45527	45451	45481	46415	46076	45454	46051	46123	99.554
	11	46252	45451	45495	46275	45393	45832	45503	45392	45427	45403	45896	45943	99.353
	12	45864	45083	45781	46405	45877	45848	45633	45359	45389	45786	45780	45556	99.371
	13	45154	45547	45424	45671	44793	46009	45886	45778	45648	45806	45289	45154	98.972
	14	45319	45593	45772	45140	45634	46159	45763	45420	45685	46336	45937	45811	99.409
	15	45435	45299	45461	45950	46158	45512	46188	45750	45722	45614	45964	45889	99.476
	16	45985	45555	46076	45180	45902	45648	45491	45593	45523	45175	45270	45592	99.123
	17	45390	45452	46562	45284	45555	46380	45408	46043	45844	46102	45632	46261	99.652
	18	46029	45536	46111	45703	46224	45863	45605	46402	45562	45671	45798	46020	99.763
	19	45918	45385	46030	45618	45939	46171	45135	45702	45818	45193	46171	45874	99.478
	20	46199	46121	45791	45666	45487	45722	45983	45691	46401	46367	45577	45475	99.755
	21	45644	45660	45616	45777	46397	46126	45765	46141	45855	45373	45652	45808	99.634
	22	45741	46272	45437	46061	45974	45986	45421	46120	45842	45675	46036	45296	99.642
	23	45607	45465	45925	45756	45898	45785	45611	45501	46093	45077	45642	45451	99.271
12	0	45843	46079	45947	46532	45634	45777	45738	45576	45462	45805	46240	45297	99.657
	1	45842	45378	45710	45627	45564	45894	45940	45913	45746	45822	46690	46320	99.749
	2	46195	46334	45675	45859	46737	45587	46240	45724	45790	45433	45715	46614	100.013
	3	46011	46395	45347	45417	46221	45996	45432	46135	45554	45796	45949	45983	99.711
	4	46335	45802	46351	46268	46174	45956	45974	46114	45695	46259	45671	45980	100.135
	5	45532	45247	46529	45745	45784	45716	45889	46710	46004	46319	45595	46248	99.907
	6	45760	45866	46432	45937	46472	46281	46013	45215	45148	46029	45903	45872	99.836
	7	45556	46469	46222	45505	46244	46027	46153	46199	45831	45027	45571	46275	99.863
	8	46675	45491	46084	45735	46168	45904	45693	45818	45929	45867	46139	45766	99.898
	9	45730	46029	46196	45924	46131	45895	46583	46112	45647	46093	46396	46721	100.294
	10	45282	45969	45877	46029	45622	46086	45673	46896	45713	46054	45762	46534	99.939
	11	45687	45540	45875	46184	45871	45987	45951	46535	45342	46064	45805	45860	99.795
	12	45991	46577	45853	45825	45385	46293	45961	45697	45700	45959	45849	45589	99.790
	13	46224	45700	45783	45950	45686	45925	45676	46250	45570	45796	45935	45699	99.703
	14	46200	46041	46165	45461	46196	45818	46106	45988	46614	46211	45734	45522	100.040
	15	45526	45477	45842	46246	45480	46112	46122	45828	45664	45787	45702	45158	99.477
	16	45678	45974	45830	45724	45148	46187	45960	46146	46056	45909	45847	46172	99.782
	17	45800	46002	46110	45550	46263	46161	45924	46102	46672	46236	46430	46227	100.297
	18	45428	45756	45846	45640	46132	45547	45892	46051	46462	46411	46306	45719	99.883
	19	46340	46222	45845	46522	46582	45911	45936	46191	46178	46362	45841	45430	100.277
	20	46058	46211	46433	46505	46343	46212	46342	46080	46201	45700	45992	46129	100.430
	21	46028	45870	45958	45835	45961	45914	45947	45614	45659	46482	46716	46172	100.059
	22	46215	46467	45683	45618	46490	46141	46402	46083	46017	45936	46243	45637	100.199
	23	46619	46477	45851	46126	46013	46088	46416	45843	45957	46250	45645	45617	100.194

INAF/UNIRomaTre S.V.I.R.CO. Observatory - Pressure Corrected Data - August 2016													20 NM-64	
day	hh	00_05	05_10	10_15	15_20	20_25	25_30	30_35	35_40	40_45	45_50	50_55	55_60	h-norm
13	0	45763	46337	46186	46240	46921	46352	45478	46103	45627	46360	46141	46075	100.316
	1	45941	46076	46065	46969	46143	46641	46311	46398	46001	45670	45885	45984	100.408
	2	46223	46287	46122	46024	46266	46053	45904	46168	45965	45442	45547	46475	100.117
	3	46386	46061	45633	46212	45539	45607	45888	45692	45891	46098	46021	45807	99.819
	4	46305	45970	45545	46145	46300	46279	46434	46131	46325	46075	46067	45333	100.195
	5	46041	45758	46406	46304	45995	45982	46704	45604	46523	45549	45405	46715	100.209
	6	45881	46613	45850	46672	45272	46065	45987	46242	45944	45957	45513	46078	100.043
	7	46255	45906	46263	46387	46536	46090	46140	46206	46627	46074	45840	46507	100.543
	8	46023	46079	46504	46560	46067	45955	45955	46137	46476	46110	45672	46335	100.370
	9	45677	46232	46390	46443	46435	46025	46564	46003	46285	45685	45815	45811	100.278
	10	45870	45809	45672	45916	46454	46025	46123	46595	46142	45548	45597	47036	100.173
	11	46179	45689	46016	45696	45361	46286	45936	46431	45569	45339	45937	45883	99.726
	12	46303	46011	45857	45881	46005	45874	46716	45938	45827	45937	45784	46694	100.180
	13	46108	47179	45577	46704	46332	45814	46655	45774	45863	46033	45505	46011	100.312
	14	45863	46371	45402	46600	46356	45513	45832	46229	46215	46215	46722	45592	100.195
	15	45927	45754	45948	45315	45970	45949	46170	46360	45371	46102	46227	45973	99.861
	16	46005	46210	45499	45764	46863	46689	46207	46406	45971	45839	46100	45811	100.277
	17	45963	46151	46253	45892	46130	46125	45859	46149	46458	46326	45965	45831	100.230
	18	45889	45448	46173	46645	46163	46160	45964	46288	45695	46131	46060	45852	100.115
	19	45401	45387	46488	46560	46555	46195	46453	46248	46893	45669	46286	46249	100.462
	20	46356	45931	45608	46594	46483	46485	46689	46427	46367	46525	46249	46387	100.773
	21	45600	46601	46289	46106	46067	46687	46843	46241	46086	46247	45905	45933	100.502
	22	46209	46367	45800	45947	46291	46148	46489	46551	46407	46762	46620	46374	100.749
	23	46201	46577	46444	46042	46503	46407	46182	46580	46259	46200	46865	45727	100.753
14	0	46158	46353	46706	46748	45899	46274	46577	46296	46485	46073	46904	46849	100.994
	1	45614	46312	45189	46121	46099	45550	46360	46519	46201	45831	46075	45735	99.959
	2	45730	46658	45664	45778	46276	45758	46487	46695	46202	46124	46567	45888	100.361
	3	46358	45976	45973	46567	46615	46480	46587	46404	45714	45940	46039	45752	100.466
	4	46217	46478	46304	46801	45837	46780	46073	46496	45774	46411	46200	45679	100.583
	5	46213	46336	46806	46480	46102	45586	46719	45498	45769	46160	45897	46546	100.413
	6	45677	46364	45728	45906	46306	46415	46024	46009	45737	46015	46464	46006	100.149
	7	46697	46386	46822	46146	45746	46871	46142	45909	46337	46269	46336	46332	100.754
	8	46304	46066	46637	45797	46093	45749	45847	46217	46323	45890	46224	46142	100.264
	9	45774	45803	45765	46326	46613	46127	46026	46209	45835	46709	46269	46266	100.342
	10	45832	46875	46551	46116	46039	45745	45762	45555	46555	45963	45806	45983	100.172
	11	46988	46069	46033	46850	45919	46457	45563	45940	46207	45878	46442	46257	100.502
	12	46710	45857	45860	46466	46289	46110	46706	45739	45657	45711	46561	46085	100.347
	13	46524	45685	46320	46596	45705	46180	46339	45365	46483	46070	45730	47094	100.409
	14	45675	46584	46382	46429	45730	46375	46203	46305	46082	46255	46115	45400	100.308
	15	45828	46047	45783	46095	45817	45914	46526	45610	45561	45944	46074	46584	99.991
	16	46076	46390	45812	46248	45161	45783	45989	46421	46191	45938	46528	45985	100.125
	17	46059	46140	45923	46477	46467	46047	46453	45975	46922	46586	46249	46062	100.639
	18	46052	46111	46129	46843	45844	46713	46791	46102	46907	46644	45970	46308	100.830
	19	46083	46146	46727	47093	47196	46043	46489	46170	46494	45963	46444	46686	101.033
	20	46824	46157	46601	46730	46544	46331	45896	46482	46238	45827	46175	46671	100.841
	21	45748	46612	45877	46552	46122	46122	46097	45485	46530	46477	46518	46549	100.518
	22	46864	46009	46747	46378	46614	46212	46662	46022	46484	46143	46624	45673	100.833
	23	46769	46342	46424	46183	46032	46732	46409	45738	46261	46313	46289	46531	100.759

INAF/UNIRomaTre		S.V.I.R.CO. Observatory - Pressure Corrected Data – August 2016											20 NM-64	
day	hh	00_05	05_10	10_15	15_20	20_25	25_30	30_35	35_40	40_45	45_50	50_55	55_60	h-norm
15	0	46597	46467	46640	46174	46400	46186	46216	46423	46899	47017	46059	46939	101.119
	1	46472	46078	46206	46076	46623	45723	46316	46791	46067	46239	46187	46819	100.682
	2	46323	46361	47067	46726	46319	46287	46478	46555	45914	46377	46682	46410	101.027
	3	45991	46763	46395	47179	47078	46510	46381	46368	46040	46405	46103	46040	100.982
	4	46510	46492	46451	46498	46133	45010	46419	45935	45654	46500	46928	45649	100.426
	5	46190	45764	45618	46400	46728	46128	46140	45619	46243	46208	46233	46164	100.290
	6	46378	45419	45972	46102	46443	46217	46332	46231	45984	45727	45888	45816	100.123
	7	46453	46088	46655	46675	46615	45658	46272	46262	46760	46532	46549	45439	100.747
	8	46403	46918	46196	46017	46128	45905	45896	45827	46480	46561	45570	46312	100.431
	9	46367	45301	46633	46547	46664	46258	45895	46604	46274	46956	46135	45921	100.675
	10	46425	46274	45991	46249	46001	45892	46071	45966	45973	46154	46535	45516	100.220
	11	46585	46095	45660	46065	46268	46305	46541	46854	45702	46261	45812	46143	100.445
	12	46580	46514	46912	46632	46576	46655	46682	45893	46348	46878	46858	46157	101.242
	13	46212	45911	46078	46487	45470	46166	45590	46343	46589	45972	46790	46174	100.353
	14	46695	45701	46057	46075	45634	45639	45740	45875	46076	46450	46674	46066	100.154
	15	46097	46287	46434	46546	46660	46324	46023	45751	45572	46615	46437	46864	100.684
	16	45976	45386	46610	45951	46732	45701	46237	46122	46109	46462	46668	46906	100.549
	17	46317	45942	46036	46440	46622	46549	46080	45975	46251	45536	45978	46558	100.444
	18	46227	45654	46294	46209	46482	46942	45280	46380	45915	46135	46302	46165	100.390
	19	45919	46620	46160	46929	45945	46739	46234	46660	46555	46144	46312	46275	100.844
	20	46488	46863	46531	45559	46644	46203	46274	45785	46249	45931	45921	46204	100.511
	21	46333	46452	46238	46688	46226	45904	46129	46402	46579	46285	46423	46736	100.826
	22	46593	46201	46028	46669	46698	46293	46809	46367	46887	46141	46485	46860	101.123
	23	47281	46671	46021	46650	45994	46567	46836	45737	46680	46125	46313	46198	100.949
16	0	46453	46247	45461	46583	46857	46353	46380	46245	46506	46486	46202	45811	100.672
	1	46615	46649	46494	46221	46072	46650	47216	46400	45930	46459	46047	46640	101.007
	2	46676	45993	45602	45700	46437	46942	46503	46139	45740	46120	45883	46253	100.390
	3	46514	46039	45750	46107	46506	46585	46303	46413	46696	46291	45970	46168	100.636
	4	46542	46605	46098	46615	45955	45951	46212	46800	46265	46032	46123	45750	100.564
	5	46433	46251	45928	45997	46652	46325	45846	45998	45932	45109	45936	46097	100.121
	6	46224	46121	45557	45896	46612	46187	46096	45874	46770	46042	46281	46301	100.386
	7	46464	46210	45788	46376	45949	45934	45787	46353	46241	46043	46524	46012	100.335
	8	46877	46423	45669	46355	46170	46065	45610	45961	45523	46445	45700	46163	100.205
	9	46302	46770	46530	46456	47090	45651	46218	46385	46060	46244	46787	46379	100.913
	10	46498	46136	46084	46705	45906	46558	46459	46165	46093	46438	46570	46497	100.775
	11	45863	46212	45974	45669	46107	46532	46238	46113	46218	45486	46476	46240	100.235
	12	46527	46614	47032	46052	45998	46575	46532	45852	45961	45780	46361	46104	100.644
	13	45876	46616	46649	45825	46391	46981	46144	46233	46681	46148	46638	46766	100.927
	14	46862	46603	46353	46532	46627	46021	47020	46115	46389	46311	45854	46414	100.954
	15	46669	45946	45955	46702	45749	46022	46929	46691	45785	46349	46051	45989	100.545
	16	46168	45906	46345	46306	46304	46072	46100	46142	46721	46204	46675	46295	100.617
	17	46139	45509	45917	46239	45909	45414	46496	45982	45987	45878	45417	45830	99.798
	18	46138	45812	46009	45703	45951	45443	46068	45996	46397	45972	46341	46160	100.028
	19	46044	45762	46266	45962	45903	46139	46227	45748	46581	45228	45763	46392	100.033
	20	46500	46099	46529	46537	46415	46670	46097	46239	46479	45545	46072	45447	100.506
	21	46018	46275	46224	45506	46395	46551	45983	46462	46062	46695	46467	46447	100.590
	22	46794	45578	46152	45959	46252	45933	46937	46747	46439	46034	46660	45831	100.632
	23	46296	46417	46154	46128	46246	46331	46217	46398	46181	46117	46517	45757	100.530

INAF/UNIRomaTre			S.V.I.R.CO. Observatory - Pressure Corrected Data - August 2016										20 NM-64	
day	hh	00_05	05_10	10_15	15_20	20_25	25_30	30_35	35_40	40_45	45_50	50_55	55_60	h-norm
17	0	45848	45572	45368	46499	46728	45790	46238	46271	46763	46522	46499	45442	100.302
	1	46212	45909	46435	45866	46367	46642	46044	46166	46180	46691	46340	46541	100.645
	2	46205	46866	46551	45985	46251	46302	45799	46398	46115	46143	46375	45850	100.545
	3	45843	45918	45985	46069	46678	46030	46760	45819	45529	46382	46755	46035	100.357
	4	45992	45913	46042	45620	46027	46022	46657	45790	45995	46348	46055	46736	100.247
	5	46161	46675	46669	46170	45971	46413	46293	45877	46438	46057	46182	46613	100.668
	6	46153	46225	46343	46722	46739	46423	46725	46107	46660	45998	46736	45835	100.876
	7	46926	46474	46120	46548	46259	46753	46270	45985	45819	46286	46864	46276	100.861
	8	46146	45879	46098	46320	46843	46160	46400	46082	46002	46266	46775	46598	100.677
	9	46860	45981	46641	46703	46016	46242	46343	46099	47277	46784	45893	46160	100.936
	10	46116	46559	46710	46812	46277	46762	46401	46904	46057	46100	46435	46326	101.019
	11	46854	46802	46786	46354	46980	46402	46674	46711	46124	46905	46096	46350	101.306
	12	47038	46516	46657	46440	46642	46406	46561	46965	46098	46777	45884	46698	101.241
	13	46604	46102	46217	46334	46623	46282	45836	46595	46439	46509	45975	45916	100.652
	14	45826	46263	46069	46767	46204	46712	46592	45705	46770	46488	45816	46009	100.614
	15	46291	46623	46270	46038	46319	46635	46565	46626	46256	46237	45990	45821	100.696
	16	45513	46355	46618	46369	45865	46861	46009	45446	46213	46694	46022	46396	100.458
	17	45844	46525	46267	46397	46871	46284	46033	45682	46051	46204	45827	45759	100.347
	18	45855	45515	45916	46247	45668	46387	45620	46519	46218	45911	45868	46599	100.088
	19	46203	45927	46578	46057	46130	45998	46251	46389	45749	45368	46390	45978	100.215
	20	45670	45820	46035	46178	45822	45874	45993	46021	45856	45862	46103	45729	99.842
	21	45644	45956	46265	46216	46413	46142	45580	46268	46216	45364	45667	45613	99.911
	22	46927	45943	46326	45698	45384	46036	46238	45703	45632	45565	45967	45656	99.863
	23	45628	46107	46437	46257	46139	45378	45483	46080	45428	45914	46450	45929	99.891
18	0	45973	45609	46020	45901	45748	45504	45989	46290	45704	45832	46022	46013	99.774
	1	46321	45470	45224	46384	45946	46288	45528	45835	46377	45599	45669	46054	99.794
	2	45433	45918	45681	46360	45863	45621	45830	45739	45804	45773	45685	46207	99.652
	3	45833	45856	45088	46056	45977	45382	46277	46394	45718	45989	45700	46178	99.749
	4	45456	46154	46244	45942	45393	45744	45457	46035	45736	45951	45670	45468	99.532
	5	44859	46173	45871	45734	46006	46010	46201	46067	46045	45691	45501	45896	99.678
	6	45821	45623	45287	45976	45969	45453	45809	45985	45535	46271	46275	46760	99.806
	7	46196	46627	46604	46303	46396	46505	46058	46414	46485	46126	46472	46289	100.841
	8	45994	46207	46645	46581	46772	46517	46739	46304	47014	46610	46931	46845	101.327
	9	46724	46430	46759	45673	46732	46803	46509	46474	46661	47224	46610	46656	101.345
	10	46114	46401	46651	46865	46776	47033	46077	46784	45989	46536	46527	47050	101.263
	11	47148	46168	46747	46685	47451	46876	47082	46883	46669	46693	46447	46057	101.644
	12	46767	46093	47082	46712	46783	46613	46565	46862	46720	46623	46425	46123	101.365
	13	46178	46436	46273	46310	46200	46721	46434	46487	46392	46387	46706	46429	100.928
	14	46714	46081	46480	47153	46391	46341	46871	46827	46516	46081	45938	46213	101.046
	15	46030	46268	46751	45467	46188	46495	46380	46060	46263	46682	46539	45744	100.550
	16	46002	45801	45455	45691	46201	46480	46673	45428	46064	45995	46668	45983	100.110
	17	46103	46616	46345	45903	46136	45773	46468	45386	46316	46167	45777	46081	100.225
	18	46444	45543	45226	46153	46484	46279	45671	46054	46241	46041	46306	45680	100.053
	19	46555	46348	46383	45622	46169	45595	46472	46231	45886	45985	45572	45807	100.144
	20	45632	46127	45602	45844	45482	45921	45576	45659	45951	45409	46219	45928	99.550
	21	46079	45674	45824	45896	45785	46454	45794	45574	46006	46266	46045	46203	99.958
	22	45836	46083	46048	46027	45776	45551	45415	46106	46126	46243	45215	45818	99.712
	23	45570	45354	45359	45986	45271	46260	45503	45701	45779	45743	46331	45980	99.457

INAF/UNIRomaTre		S.V.I.R.CO. Observatory - Pressure Corrected Data – August 2016											20 NM-64	
day	hh	00_05	05_10	10_15	15_20	20_25	25_30	30_35	35_40	40_45	45_50	50_55	55_60	h-norm
19	0	45443	44843	45762	45770	45728	45721	45372	45526	44900	45724	45081	45746	98.872
	1	45944	45239	45566	45448	45616	45524	45602	45447	45445	46104	45492	45656	99.139
	2	45334	45877	45642	45871	45767	46070	45553	45431	45228	45862	45196	45603	99.203
	3	46226	46395	45562	46483	45582	45415	45231	46463	45285	45619	45404	45868	99.583
	4	45657	45805	45403	46058	45530	45586	46101	45853	45588	46242	46085	46308	99.707
	5	45477	45488	45433	46041	45954	46080	46155	45914	45403	45828	45610	45348	99.438
	6	45905	46230	45894	45770	46408	45673	45417	45587	46016	46261	45884	45862	99.832
	7	44974	45554	45939	45648	45841	45755	46066	45793	46422	45735	45783	45977	99.574
	8	46107	45495	45877	45824	45721	46160	45768	45880	45714	45675	45929	45563	99.616
	9	45737	46308	45896	45692	46440	45870	45988	45993	45915	46136	46174	46168	100.087
	10	46636	45581	45461	46308	45645	46545	45860	46207	45729	46325	46117	45843	100.077
	11	45643	46229	46231	46686	45762	46475	46121	46011	46328	46381	46340	46193	100.465
	12	46830	45668	46434	46227	46285	45714	46371	46465	46119	46647	46537	46515	100.721
	13	46085	45877	45872	46222	46476	45594	46439	46047	45990	46199	46120	46471	100.283
	14	46118	45621	46091	46082	45919	46227	46208	45955	45967	46401	45672	46426	100.155
	15	46393	45960	45562	46767	46341	46150	45449	46459	45869	45807	46103	46601	100.295
	16	46246	45931	45657	45810	46101	46496	46753	46294	46375	45984	46325	46224	100.428
	17	45674	46059	45570	46340	45966	46676	46249	46392	46331	45581	46446	46004	100.263
	18	45716	46036	46052	46257	46215	45604	45549	45716	46045	46487	46078	46079	100.000
	19	46503	46355	44998	46507	45985	46268	46257	45964	45930	45869	45745	45231	99.960
	20	46630	45565	45225	46009	46024	45560	45644	45935	46938	45745	46338	45203	99.816
	21	45658	46444	45923	46126	45975	45854	45628	45077	45843	45691	45661	45962	99.640
	22	45324	45816	46147	45379	45106	44936	45771	45408	46108	45320	44880	45788	98.940
	23	45418	45113	44850	45564	45827	45353	46509	46098	45290	46174	45956	44799	99.116
20	0	45729	45892	44697	45718	45585	45830	45523	45097	46282	45550	44848	45428	98.971
	1	45386	45632	45951	45230	45853	45378	45664	44977	45679	45674	45603	46013	99.131
	2	45509	45493	45379	45690	44987	44839	45175	45326	45278	46117	45721	45610	98.785
	3	45708	45493	45039	45174	45677	45494	45538	45983	45236	45546	45523	46098	99.035
	4	45621	45291	46078	45872	45944	45206	45471	45928	45406	45578	45492	45488	99.192
	5	45784	45672	45288	45275	45498	45513	45351	45824	46042	46067	45068	45739	99.146
	6	45423	45946	45796	45983	45778	46111	45427	45654	45785	45458	45737	45275	99.373
	7	45953	45810	45392	45715	45705	45997	46038	45872	45482	45670	45759	45904	99.540
	8	46125	45664	46404	45828	45649	45999	46014	45586	45943	46246	45970	45610	99.856
	9	46295	45982	46078	46023	45778	45859	45710	46354	45918	45996	46062	46077	100.054
	10	46365	45710	46226	46250	46400	46039	46117	45963	45983	45625	46256	46085	100.215
	11	45699	45446	46549	46064	46310	46073	45952	45805	45666	45690	46147	45974	99.917
	12	45740	45448	45913	45798	45808	46188	45318	45831	45942	46205	46307	45897	99.740
	13	46203	45425	45443	45480	46124	46060	45671	45839	45512	45514	45330	46117	99.436
	14	46054	45225	45778	45792	46191	45032	46152	45850	45869	46035	45627	45488	99.504
	15	45410	46340	45680	45959	45518	45356	45891	45340	45712	45695	46172	45697	99.445
	16	45369	46162	45646	45743	45758	45865	45933	45584	45686	45659	45849	45199	99.388
	17	45186	45619	45787	45363	45183	44835	45923	45452	45211	46097	45521	45640	98.910
	18	45160	45038	45433	45544	45398	45093	45156	45517	45137	45959	45299	45347	98.595
	19	45932	45511	45378	45138	46623	45456	44888	45410	45936	46051	44527	44935	98.905
	20	45260	44848	45508	45512	45519	45354	44936	44914	45630	44768	44800	45450	98.308
	21	45249	45065	45413	45142	45644	45467	45600	46010	45533	44957	45154	45395	98.695
	22	45227	45686	45474	45171	45082	44878	45877	44987	45025	45320	45144	45029	98.381
	23	45067	45258	45349	45937	45740	45353	45375	45568	45856	45287	45246	45449	98.850

INAF/UNIRomaTre		S.V.I.R.CO. Observatory - Pressure Corrected Data - August 2016											20 NM-64	
day	hh	00_05	05_10	10_15	15_20	20_25	25_30	30_35	35_40	40_45	45_50	50_55	55_60	h-norm
21	0	45285	45240	46094	45285	45896	45485	45354	45236	46102	45688	44710	45042	98.840
	1	45707	45504	45707	45877	45162	45539	45156	45865	45460	45196	45536	45513	98.983
	2	45346	45412	45227	45211	45095	45458	45162	45567	45844	44980	45361	45547	98.619
	3	45653	45004	45057	45528	45169	45189	44923	45733	45108	44969	45573	45864	98.539
	4	44763	45541	45259	45141	45427	45884	45526	45145	45384	45436	45967	46273	98.897
	5	45096	45413	45688	45680	45407	45498	45613	44908	45921	45366	45760	45980	99.003
	6	45440	45096	45580	45577	45742	46469	45290	45356	45917	45074	45391	45562	99.032
	7	45178	45411	45781	45927	44959	45898	45703	45891	45716	45486	45516	45488	99.116
	8	45875	45356	45319	44984	45236	45507	45222	45807	45545	45612	45427	45658	98.861
	9	46399	45903	46158	45737	45813	45650	45532	45286	45190	47042	45327	45777	99.634
	10	45792	45421	45656	45781	45984	46199	45276	45225	45144	44975	45701	45935	99.140
	11	46105	46301	45925	45536	45094	45687	45870	45701	46193	45054	45932	45333	99.438
	12	45998	45959	45513	45603	45770	45942	45550	45102	46007	46067	45464	45701	99.428
	13	46062	44933	45293	44956	45612	45697	45680	46228	45875	45292	45437	45989	99.134
	14	45899	45858	45739	46104	45563	45985	45129	45424	46336	46277	45539	44811	99.426
	15	45643	45660	45891	45633	45550	45559	45523	45402	45009	46169	45943	45277	99.171
	16	46190	45640	45837	45443	45648	45277	45304	44987	45792	45562	45728	45478	99.103
	17	45365	45616	45549	45398	45494	45410	45436	44686	45626	45826	45591	45533	98.857
	18	46213	45506	45614	45604	45199	45617	45252	45198	45270	45204	45563	44860	98.781
	19	45737	45357	44902	45404	45326	45344	44844	45551	45900	45260	45598	44876	98.598
	20	45321	45678	45533	45598	45228	45655	45227	44379	45674	45486	45341	45981	98.780
	21	45909	44858	45121	45513	45096	45500	45625	45202	45544	45590	45225	44605	98.542
	22	44913	45415	45268	45401	45376	45268	45792	45817	45590	45894	45857	45779	99.010
	23	45174	46584	45253	45676	45560	45588	45815	45580	45108	45888	45328	45251	99.089
22	0	45465	45844	45587	45986	45298	45360	45773	45752	45058	45735	45658	45686	99.161
	1	45414	46432	45375	45624	45636	45595	45665	45247	46183	45691	45363	45495	99.255
	2	45341	45798	45344	46450	45884	45442	45715	45213	45266	45708	46086	44764	99.126
	3	45523	45624	46013	45753	45658	45575	45208	45638	45547	45099	45846	45476	99.117
	4	45625	45714	45093	45617	45869	45323	45841	46039	45227	45371	45394	45214	99.003
	5	45629	45480	46089	45691	45881	45044	45597	46487	45131	45927	45639	45415	99.307
	6	45344	45041	46025	44932	45576	45817	45860	45550	45862	46003	45326	46051	99.194
	7	46174	45858	45688	45896	46302	45481	45227	45590	46082	46042	45532	45821	99.612
	8	45436	45417	45745	45570	46473	45993	46084	46137	45693	45271	46356	46112	99.719
	9	45260	46121	45572	45865	46048	46285	46185	45548	46079	45520	45802	45802	99.684
	10	45566	46053	46032	45561	45959	45474	45439	46122	45657	46509	45854	46304	99.764
	11	45635	46275	46097	46044	45950	46014	45799	46074	46220	45710	45711	45827	99.914
	12	45852	45814	45383	45885	45901	46204	46262	45708	46241	46371	46144	45867	99.964
	13	46374	45715	46505	46087	45910	46640	45598	46104	45671	45886	46011	45379	100.008
	14	45565	45962	45792	46075	45974	45352	46228	45403	45558	45871	46154	46052	99.665
	15	46055	46170	45738	46053	45896	45977	45166	45731	45652	45301	46221	45558	99.581
	16	46564	45667	46069	45241	45825	45871	46078	45900	46015	46082	45726	45099	99.693
	17	45792	45997	46073	45589	45867	45319	45746	45464	45671	45862	45922	45606	99.470
	18	46013	45297	45636	45951	46197	45638	45998	45515	45147	45838	45815	45245	99.359
	19	45113	45380	45270	45508	46106	45903	46083	45838	45816	45930	45452	45573	99.300
	20	45911	46095	45741	45720	46020	45775	45308	45320	46601	45234	45500	45330	99.406
	21	45205	45996	45232	45312	45306	45769	45511	45364	45756	45796	45613	45554	99.018
	22	45230	46029	45253	45637	45551	45918	45613	45852	45489	46002	45698	45610	99.284
	23	45681	45822	45994	46441	45847	45446	46198	46080	46028	45794	45402	45569	99.722

INAF/UNIRomaTre		S.V.I.R.CO. Observatory - Pressure Corrected Data – August 2016											20 NM-64	
day	hh	00_05	05_10	10_15	15_20	20_25	25_30	30_35	35_40	40_45	45_50	50_55	55_60	h-norm
23	0	46549	45911	45799	45510	45961	45837	45341	45928	45948	45833	45675	46028	99.726
	1	45329	46110	46533	45836	45585	45385	45810	45586	46123	45692	45872	45772	99.601
	2	45909	45578	45956	45261	45651	46002	45943	45988	45681	45397	46018	45813	99.522
	3	46209	45772	46290	45826	45924	46010	46373	45592	46064	45611	46092	46249	100.032
	4	45588	45912	45301	45985	46584	46128	45874	45503	46164	45123	46106	45375	99.603
	5	45925	45763	45447	45660	45352	45410	46188	46171	46049	45914	45645	46011	99.584
	6	46389	45698	45100	46042	45659	45807	46001	45385	45617	45753	46420	45503	99.554
	7	45952	45969	45510	45938	45724	46084	45916	45913	45152	45813	45860	45957	99.629
	8	45891	46262	46356	46338	46006	45850	45610	46070	46371	46186	45636	46177	100.167
	9	46033	46159	45659	46376	46222	45797	46141	46583	45638	45570	46111	46004	100.083
	10	45961	45573	46465	46129	45426	45368	45204	45731	46040	46088	45961	46262	99.706
	11	46767	46688	46169	46671	46671	46465	46739	45748	45789	45544	45956	45792	100.573
	12	45977	46266	46421	46006	46887	46719	46388	46497	45682	46102	46018	46832	100.718
	13	46572	46068	46046	46068	45915	46886	46888	46702	46955	46736	46500	46398	101.070
	14	46323	46398	47021	46833	46521	47200	46531	46445	46149	46335	46700	46551	101.300
	15	47035	46642	46900	46456	46490	46687	46427	46313	46747	46366	46132	46030	101.158
	16	46653	47211	46720	46943	46713	46834	47006	46281	46285	46936	46484	47013	101.676
	17	46770	46515	46940	46688	46588	46665	46078	46418	46312	46702	45539	46773	101.116
	18	46631	46397	46285	46701	46535	46982	47011	46495	46966	45932	46471	47475	101.458
	19	46871	46815	46748	46770	46689	46544	46646	46510	47022	46786	46469	47062	101.649
	20	46856	46456	46611	46920	46614	46506	46667	46745	46448	47031	46890	46885	101.594
	21	47838	46356	46168	47081	47183	46265	46899	46165	46256	46249	45989	46889	101.360
	22	46670	46724	46620	46125	46524	46662	46352	46401	46383	45636	46351	45988	100.834
	23	45867	45800	46076	46407	46452	46135	46559	46306	45784	46253	45822	46564	100.397
24	0	45684	45613	45628	45759	46456	45581	46101	46135	45790	45956	45990	46067	99.802
	1	46011	45865	45980	46124	45562	45655	45676	46220	46657	46147	46183	46404	100.118
	2	45755	46252	46206	45989	45843	45873	45901	45910	45734	45943	45512	45672	99.775
	3	45352	45600	46431	46284	45344	45684	45700	46528	46188	46083	46282	45656	99.873
	4	45575	46044	45961	46527	45520	45895	45756	45702	46222	45435	46354	45613	99.777
	5	45982	45989	46014	45337	45506	46091	45560	46261	45848	45881	45886	46141	99.758
	6	45705	45583	46354	46125	46881	46546	46043	45969	45686	46287	45894	46503	100.316
	7	46321	46485	46136	45943	46127	46315	45753	45256	45721	46570	45837	46054	100.124
	8	46261	46028	46554	46065	46281	45986	45723	45657	46157	45762	45678	46085	100.073
	9	46287	46011	45762	46040	45990	45910	46298	46262	45869	45930	46421	45816	100.138
	10	46076	46001	45762	45622	46997	45935	46571	45189	46419	46103	45374	46553	100.139
	11	46551	45663	46921	45997	46377	46477	46117	46601	46035	46341	45825	45901	100.539
	12	46605	45794	46522	46888	46217	46522	46530	45873	46453	46285	45892	46393	100.750
	13	46244	46092	46452	46317	46393	45601	46767	45925	46524	45921	45259	46707	100.429
	14	46122	45771	45870	46290	45750	45804	46022	45874	45294	46108	45648	45748	99.723
	15	45825	46251	46212	45972	45837	46540	46069	45679	45743	45890	46051	46403	100.116
	16	45983	46401	45568	45863	45914	46158	45863	45827	45903	46244	45995	45875	99.957
	17	46208	45871	45853	46105	47153	45866	45762	45954	45466	45996	45793	46217	100.074
	18	45526	45987	45898	46150	45573	45865	45382	46480	45777	46350	45227	46073	99.720
	19	45327	45723	45246	45597	45713	45280	45591	45944	45746	46316	45859	45734	99.319
	20	46719	46085	46218	46482	45893	46021	45931	45857	46059	46764	45669	45524	100.252
	21	46160	45857	45658	45545	45666	45733	45625	45889	45811	46060	46199	45495	99.613
	22	45756	46464	45496	46007	45925	46254	45829	45823	46323	45045	46315	45250	99.756
	23	45892	46277	45838	46052	45570	46088	46330	46049	46146	45722	46448	45978	100.101

INAF/UNIRomaTre			S.V.I.R.CO. Observatory - Pressure Corrected Data - August 2016										20 NM-64	
day	hh	00_05	05_10	10_15	15_20	20_25	25_30	30_35	35_40	40_45	45_50	50_55	55_60	h-norm
25	0	45919	45896	45505	46128	46346	46579	45062	45801	45653	45717	45748	46212	99.770
	1	46136	47187	46091	46171	46265	45514	46048	46421	45784	45348	45653	46119	100.164
	2	46046	46519	45517	46452	46055	46014	46399	45676	46626	45931	45535	45930	100.157
	3	45581	46126	46095	45834	46189	45893	46331	45596	46386	45895	46633	46262	100.179
	4	46362	45893	46704	46054	45782	45914	46621	46199	45978	45357	45836	46232	100.200
	5	45714	46104	46148	46285	45668	45898	45710	46868	46318	46622	45824	45791	100.202
	6	45782	46046	46136	46288	46060	45751	46303	45995	46639	46474	46173	45752	100.284
	7	46763	45808	46168	46402	46244	45962	45597	46187	45783	45893	45437	45981	100.071
	8	46024	46175	45909	46247	46153	46455	46131	46943	46488	46073	46322	46699	100.686
	9	46491	46185	46538	46546	45901	45846	46562	46078	46302	46388	46203	45899	100.563
	10	45852	46311	46002	46563	46019	45799	46185	45912	45740	46414	46202	46072	100.224
	11	46535	46427	46616	46244	45963	46704	45516	46566	46280	46256	46168	46075	100.637
	12	45930	46480	45981	45845	46061	46676	46045	46119	46528	46623	46391	46539	100.614
	13	46551	45881	45932	45684	45990	46150	45768	45963	45911	46441	45794	45144	99.887
	14	45091	46750	45995	46419	46466	46348	45902	46383	46270	45368	46033	45998	100.215
	15	45903	46386	45953	45402	46129	46025	46034	45706	46026	46275	45566	45984	99.919
	16	45986	45983	46502	45551	46986	45907	45907	46280	45962	45608	45890	46248	100.177
	17	45775	45660	45936	46527	46161	45877	45820	46210	46295	45903	46548	45749	100.114
	18	46001	45651	45964	45828	45688	45439	46082	45062	46050	45693	46139	45853	99.568
	19	45618	45975	46215	45917	46505	46044	45975	46639	45807	45878	46065	46012	100.148
	20	45961	45742	46528	45818	45910	45896	46316	46307	45798	46247	46310	45864	100.156
	21	46390	45905	45394	46023	45514	46193	45447	45886	46761	45469	46524	46230	99.982
	22	45718	45924	46173	45146	45973	46021	46626	46505	46459	46084	45110	46064	99.995
	23	45662	46508	46543	46155	46107	45691	46220	46551	46521	46114	45729	46047	100.365
26	0	45754	46087	45682	46290	45712	46034	46389	46368	46654	46098	45933	45979	100.207
	1	46479	46380	46424	46051	45924	46634	46104	46620	45363	45644	45550	45792	100.205
	2	46125	45861	46323	45461	45969	45590	46231	46047	46581	46662	46783	45836	100.296
	3	45768	45704	46466	46125	46033	45858	46063	46641	45782	45918	45938	46178	100.116
	4	46579	45611	45604	45907	46916	46341	46454	46244	46650	46544	45590	45563	100.393
	5	46462	46551	46281	45911	46122	46646	46502	46164	45630	46452	46083	45657	100.476
	6	46224	45767	46061	45754	45989	46309	46329	45793	45720	46160	45741	47090	100.200
	7	46245	46339	45641	45682	46061	45980	46502	46142	46356	46832	45803	46404	100.390
	8	46624	46076	46070	46528	47029	46405	46367	46046	45964	46549	45845	45682	100.607
	9	46542	46081	45999	46083	46266	46525	45811	46167	46419	46200	46413	46371	100.552
	10	46088	46699	46263	46121	45996	46441	46287	45676	46121	46346	46353	46307	100.519
	11	45900	46489	46071	46137	46333	46328	45865	45806	46430	45744	46071	46510	100.335
	12	46206	45808	46299	45948	46055	45275	46253	45665	45592	46475	46763	45652	100.029
	13	45989	46031	46268	46193	45466	46345	46453	46091	45798	45661	46010	46000	100.086
	14	46056	46601	46419	45701	45799	46022	45960	45860	45771	46278	45951	46042	100.113
	15	45919	46215	46337	45290	45600	46063	47171	46126	45857	46186	46424	46515	100.339
	16	46360	45908	45723	46590	46291	45893	46344	46023	46291	46430	46338	46342	100.489
	17	45429	45694	46956	46012	46657	45892	46057	46064	46311	45911	45877	45504	100.096
	18	45796	46211	46464	46162	46269	46182	45494	46451	46236	46480	46015	45685	100.292
	19	46723	45963	45718	46759	45950	45647	45706	46777	46315	45324	46003	45933	100.179
	20	45576	46451	45612	46412	46130	46239	46179	45976	45978	46026	45933	46255	100.170
	21	45858	46641	46119	45742	46047	45967	46315	45719	45384	45996	46389	45900	100.044
	22	45615	45999	46441	46131	46245	46335	45528	46601	46047	46177	46285	46140	100.310
	23	46141	45972	45862	45917	45736	45906	46195	46445	46070	46290	45444	45652	99.963

INAF/UNIRomaTre		S.V.I.R.CO. Observatory - Pressure Corrected Data – August 2016											20 NM-64	
day	hh	00_05	05_10	10_15	15_20	20_25	25_30	30_35	35_40	40_45	45_50	50_55	55_60	h-norm
27	0	46569	45827	46005	45989	46110	45852	45998	46559	45947	46286	45909	45874	100.201
	1	46619	46211	46038	46342	46396	45991	45903	45667	45719	46029	46443	46185	100.310
	2	45935	45555	46396	46044	46542	45614	46159	45725	45467	45705	46866	46205	100.069
	3	46267	46111	45794	45786	45900	46092	46080	46054	46109	45677	45766	46304	100.019
	4	46431	45866	45862	46049	46329	46545	46829	46692	46311	46753	46125	46704	100.845
	5	46276	46377	45944	45676	46376	46822	45589	46398	46816	46543	46346	46075	100.617
	6	46368	45763	45796	46247	46496	46513	46548	46530	46041	46000	45749	46399	100.474
	7	46206	46755	46458	45822	45678	46179	46095	46215	46358	46044	46428	47165	100.647
	8	46627	46763	46115	45946	46048	46222	46190	46455	46162	46169	46564	46417	100.697
	9	46222	46020	46044	45613	46409	46229	46085	46494	46149	46066	46664	46365	100.458
	10	46829	46235	46232	45816	46499	46849	46236	46873	46578	46138	46158	47200	101.053
	11	46370	46136	46674	46278	45908	47064	46381	46742	46818	46982	46741	46465	101.219
	12	46361	46276	45992	46396	46162	46813	45314	46226	46541	46149	46173	46046	100.474
	13	46014	45672	46245	46529	45806	46228	46067	46184	46327	46690	46813	46338	100.558
	14	46661	46327	46012	46615	46153	46338	46702	46037	46163	46149	46348	46438	100.745
	15	45703	45687	46702	46236	46298	46389	46259	46889	46211	46205	46417	46284	100.625
	16	46077	46293	46019	46472	46457	46263	45993	46088	45826	45890	46301	46201	100.371
	17	46705	46488	46361	46589	45871	46058	46224	46288	45775	45937	46211	46210	100.523
	18	46356	46685	46353	46147	46504	46188	46560	46305	46390	46406	45803	47057	100.892
	19	46316	46088	46587	46325	45956	46245	46833	46710	46506	46321	46359	45915	100.784
	20	46183	46275	46698	46399	46217	46472	45787	45707	45884	45977	46187	46066	100.366
	21	46190	46365	46186	46641	45613	45722	45926	46005	46038	46657	46062	46178	100.317
	22	46262	46146	46489	46267	45711	46249	46264	46609	46199	45834	46526	46050	100.502
	23	46133	45682	46108	45907	45806	45884	46328	46203	46118	45724	46352	45928	100.062
28	0	45980	46305	46148	45958	46098	46190	46401	46194	46186	46181	46391	45610	100.326
	1	45618	45478	45779	46460	46548	46004	45862	45896	45868	46236	46518	45561	99.999
	2	46250	45552	46758	46015	46070	46020	46036	46684	46264	45935	46046	46456	100.408
	3	45998	46031	46587	46279	46476	46515	46472	46515	46715	46086	46316	46202	100.789
	4	46312	46329	46315	46629	45956	46312	46184	46621	46047	46187	46665	46503	100.766
	5	45881	46523	46166	46288	46612	46003	45815	46062	46746	46397	46020	46362	100.551
	6	46137	46005	46409	45859	47049	46562	46449	46265	46333	46539	46322	46158	100.771
	7	46379	45808	45558	46475	46745	46351	46379	46362	46169	46064	46642	46512	100.654
	8	46047	47397	46537	45938	46198	46617	46385	46455	46578	46058	45732	45840	100.715
	9	46266	46802	46302	46386	46802	46419	46429	46185	46892	46181	46490	46716	101.094
	10	46483	46926	46410	45742	46221	46337	45417	46900	47293	46446	46366	46456	100.936
	11	46771	46555	45875	46820	46883	46271	45965	46320	46385	46619	46420	46298	100.969
	12	46742	46410	46931	46570	46454	47152	46681	46426	46293	46154	46716	46499	101.304
	13	46200	46868	46381	46421	46735	46912	46711	46339	46677	46073	46195	46376	101.097
	14	46483	46483	46696	46851	46455	46235	46549	46032	46428	46718	45983	46476	101.007
	15	46703	46478	46642	46249	46202	46357	47196	46570	46683	46471	46932	46605	101.315
	16	46338	45745	46628	46333	46255	46462	45872	46262	46311	45977	46509	46384	100.588
	17	46854	45933	46134	46347	45914	46555	45692	46055	46125	46603	46080	46177	100.478
	18	46593	46301	46312	46310	46318	45995	47103	46236	46101	45963	47029	46073	100.816
	19	46361	46065	46512	46698	46572	45893	46125	45960	46820	45670	46760	45780	100.613
	20	46232	46414	46024	46040	46284	46397	46158	46007	46564	45934	45809	46083	100.383
	21	46447	46889	45475	45773	46447	45885	46177	45978	46458	46816	46711	46466	100.668
	22	46321	46816	46147	46476	45493	46086	46199	46208	46577	45689	46707	45505	100.433
	23	45789	45954	45817	45780	46182	46436	46139	46334	46200	45785	46108	46160	100.155

		S.V.I.R.CO. Observatory - Pressure Corrected Data – August 2016											20 NM-64	
		INAF/UNIRomaTre												
day	hh	00_05	05_10	10_15	15_20	20_25	25_30	30_35	35_40	40_45	45_50	50_55	55_60	h-norm
29	0	46454	45933	46511	45974	46595	46115	46819	46211	45885	45768	46944	45624	100.538
	1	45950	46410	46057	46452	46688	45687	46131	46288	47285	46149	46091	46046	100.616
	2	45789	46025	46276	46384	46143	46539	46625	45930	47071	46781	45829	46652	100.764
	3	46463	45781	46240	46351	46249	46372	46331	46250	46379	46370	46280	45886	100.565
	4	46417	46220	45881	46270	46850	46545	45981	45811	46151	46342	46831	46310	100.684
	5	45780	46311	46828	45875	46441	46173	46479	46162	46858	46519	46623	46711	100.893
	6	46775	46270	46031	46426	46901	47033	46797	46173	46546	46900	46612	46016	101.204
	7	46323	46503	45977	46672	46512	45826	46604	46636	46915	46500	46887	46247	101.046
	8	46244	46299	46874	46367	46870	46698	46683	46452	47108	47164	45795	47135	101.424
	9	46218	46292	45939	46321	46312	46914	46444	46018	46485	46316	46728	46708	100.881
	10	46566	46506	45643	46221	46297	46440	46702	46629	46132	46060	46741	46438	100.823
	11	46872	46645	46204	45731	46071	46192	46402	46137	46161	45882	46698	46926	100.741
	12	47180	46578	46451	46323	46445	46276	46770	46192	46189	45591	46130	46462	100.861
	13	46749	46704	46572	46192	46420	46400	46965	46716	46216	46894	46817	46883	101.394
	14	46622	46553	46432	47018	46575	46451	46900	47211	46574	46583	46351	46495	101.437
	15	46348	46792	45567	46019	46140	46661	45964	46379	46452	46269	45773	46853	100.613
	16	46497	46261	46058	46820	46065	46367	46638	45813	46302	45995	46669	46806	100.808
	17	45934	46545	46030	46024	46946	46873	46206	46049	46253	46049	46712	46037	100.693
	18	46112	45782	46559	46126	46544	45986	46461	46590	45835	46130	46434	46713	100.623
	19	45651	45998	46596	45882	46192	45890	46112	46387	46265	46032	46468	46523	100.392
	20	46566	46184	46986	45875	46553	46631	46800	46785	46428	46490	46728	46767	101.261
	21	45676	46688	46469	46931	46028	45931	45903	45656	46462	46069	46491	46470	100.533
	22	46090	45613	46590	46518	46384	46143	46230	46504	45902	45324	46760	46621	100.516
	23	45973	45918	46880	46607	46232	46231	46356	47000	46469	46206	45946	46124	100.744
30	0	46469	45768	46212	46896	45826	46548	46157	46074	46297	46165	46337	46409	100.599
	1	46356	46372	46591	46233	46620	46397	46184	46621	45842	45907	46185	46484	100.717
	2	46081	46297	46576	45990	46238	45835	46195	46076	46430	46438	45572	45920	100.329
	3	46139	46548	45931	45757	46707	46488	46514	46430	46872	45871	46656	46081	100.754
	4	46350	46492	46508	46064	46360	46488	46101	46524	46751	46702	46478	46030	100.908
	5	46037	46271	46306	46629	46236	46613	46206	46480	46643	46584	46065	46554	100.868
	6	46346	46256	46297	46153	46314	46348	45715	46564	47082	46761	46120	46166	100.777
	7	46622	46321	46388	46843	46106	46671	45924	46343	45995	46311	46633	46832	100.935
	8	46675	46212	46197	46905	45917	46778	46134	46271	46776	46366	46285	46181	100.881
	9	46184	45780	46605	46318	46077	46748	46829	45971	46698	46440	46439	45854	100.745
	10	46401	46300	46768	46561	46727	46751	46284	45965	46568	45870	46134	45951	100.806
	11	45829	45838	45971	46620	46226	46737	46423	47020	47100	46212	46607	46515	100.955
	12	46686	46504	46613	46180	46257	45803	46268	46321	46858	46410	46846	47049	101.081
	13	46383	46720	46406	46131	46186	45548	46456	45801	47174	46648	46690	46656	100.900
	14	46387	46467	47010	46725	46724	46706	46637	46433	46558	46514	46738	46878	101.440
	15	45765	46296	47079	46505	46778	46157	46706	47009	45758	46339	46899	46281	101.040
	16	46416	46061	46433	46838	46379	45864	46306	46524	46338	46223	46416	46637	100.834
	17	46782	47239	46205	46965	46595	46182	45504	46381	46625	46589	47014	46721	101.263
	18	46029	46041	46109	46100	46428	46248	45710	45986	46344	46465	46417	46676	100.492
	19	46305	46637	46118	45678	45838	46499	46016	45921	45501	46351	46106	46117	100.228
	20	45959	46207	46688	46631	46753	46525	45988	45884	46275	46097	46576	46418	100.755
	21	46787	45908	46443	46362	46383	46529	46291	45868	46702	46235	46423	45800	100.706
	22	45978	46489	46425	46544	46998	46549	46741	46195	46162	45828	46146	45757	100.721
	23	45977	46347	46907	46442	46296	45629	46477	46308	46077	45829	45879	46512	100.516

INAF/UNIRomaTre		S.V.I.R.CO. Observatory - Pressure Corrected Data – August 2016											20 NM-64	
day	hh	00_05	05_10	10_15	15_20	20_25	25_30	30_35	35_40	40_45	45_50	50_55	55_60	h-norm
31	0	45832	46274	46480	46541	46487	46192	46631	46690	46555	46323	46356	46361	100.881
	1	46210	46132	46237	46558	46623	46940	46318	46130	45975	46683	46213	46052	100.768
	2	46391	45932	45955	46727	46041	46885	46075	46187	46682	45397	46381	46442	100.591
	3	46590	45797	46108	46102	46340	46991	46119	46079	46279	46955	46925	46631	100.921
	4	46672	46405	46040	46114	45806	45651	46165	46254	46415	46124	45877	45509	100.218
	5	46376	46084	45409	45433	46006	45696	45944	46474	46365	46499	46834	45821	100.201
	6	46119	46723	45559	46102	45951	46132	45462	46013	46165	46716	45959	46015	100.196
	7	46385	46223	46716	45981	46576	47041	46241	46334	46459	45845	46504	45621	100.742
	8	45921	46758	46195	46829	46126	46067	45824	46532	46450	46113	46012	46321	100.601
	9	45910	47011	46446	46163	46247	46314	46497	45817	46558	45803	46138	46076	100.571
	10	46186	46702	46555	45727	46429	46655	46055	46346	45968	45695	46160	45833	100.449
	11	46017	46137	45790	46025	46365	46395	45716	45716	46987	46068	46161	46238	100.324
	12	45637	46161	46436	46120	45204	46191	46153	46173	45569	46038	45912	46681	100.080
	13	45842	45676	45994	45889	45530	45616	45623	46135	46212	45878	45596	45965	99.660
	14	45556	45581	46190	45130	45757	45976	45914	46262	45682	46143	45750	46149	99.685
	15	46001	45811	45238	45427	45740	46352	45977	45847	46231	45212	46068	45689	99.594
	16	45674	46125	46052	45336	45742	45950	45839	45659	46264	45697	45545	45618	99.577
	17	45475	45614	45795	45477	45255	46137	45564	45813	46294	45855	46035	45169	99.393
	18	46194	45730	45234	45491	45516	45560	45160	45989	45558	46205	46547	45466	99.423
	19	45068	45759	46300	45792	46029	46537	45985	45923	45707	46199	45739	45910	99.840
	20	46463	45585	45710	45988	45391	45709	45365	46045	45619	46026	46004	45870	99.627
	21	45407	45705	45924	45702	46252	45961	45719	45707	45975	46112	46143	45807	99.743
	22	46252	45488	46080	46044	45582	45621	45557	46007	45668	45828	46283	46066	99.754
	23	46060	45443	46135	45536	46473	46557	46038	46156	46097	46093	45627	45863	100.044

S.V.I.R.CO. Observatory - Pressure in hectoPascal – August 2016

day	hh	00_05	05_10	10_15	15_20	20_25	25_30	30_35	35_40	40_45	45_50	50_55	55_60	average
1	0	1011.63	1011.66	1011.64	1011.63	1011.67	1011.71	1011.69	1011.56	1011.51	1011.52	1011.42	1011.34	1011.58
	1	1011.36	1011.48	1011.60	1011.58	1011.55	1011.54	1011.49	1011.43	1011.33	1011.31	1011.35	1011.38	1011.45
	2	1011.31	1011.20	1011.13	1011.04	1010.99	1010.98	1010.91	1010.86	1010.80	1010.66	1010.56	1010.56	1010.92
	3	1010.54	1010.53	1010.62	1010.71	1010.76	1010.83	1010.85	1010.86	1010.75	1010.55	1010.37	1010.23	1010.63
	4	1010.28	1010.27	1010.20	1010.25	1010.26	1010.16	1010.20	1010.35	1010.35	1010.29	1010.24	1010.23	1010.25
	5	1010.32	1010.40	1010.41	1010.37	1010.34	1010.42	1010.53	1010.56	1010.58	1010.62	1010.70	1010.84	1010.51
	6	1010.94	1010.99	1011.06	1011.11	1011.13	1011.17	1011.14	1011.04	1010.93	1010.91	1010.93	1010.96	1011.02
	7	1010.96	1010.92	1010.92	1010.88	1010.86	1010.95	1011.03	1011.08	1011.15	1011.25	1011.31	1011.30	1011.05
	8	1011.24	1011.23	1011.21	1011.16	1011.13	1011.16	1011.21	1011.23	1011.25	1011.28	1011.30	1011.29	1011.22
	9	1011.25	1011.23	1011.21	1011.21	1011.27	1011.30	1011.34	1011.39	1011.39	1011.41	1011.39	1011.36	1011.31
	10	1011.36	1011.35	1011.32	1011.28	1011.27	1011.27	1011.28	1011.29	1011.27	1011.26	1011.22	1011.20	1011.28
	11	1011.19	1011.20	1011.20	1011.19	1011.20	1011.16	1011.10	1011.05	1011.03	1011.02	1011.07	1011.12	1011.13
	12	1011.14	1011.17	1011.23	1011.27	1011.28	1011.29	1011.24	1011.19	1011.21	1011.24	1011.26	1011.26	1011.23
	13	1011.24	1011.24	1011.22	1011.21	1011.16	1011.08	1011.07	1011.04	1010.99	1011.00	1011.02	1011.03	1011.11
	14	1011.00	1011.03	1011.05	1011.03	1011.04	1011.04	1011.06	1011.09	1011.10	1011.07	1011.08	1011.13	1011.06
	15	1011.16	1011.17	1011.16	1011.13	1011.11	1011.03	1011.00	1011.05	1011.08	1011.12	1011.10	1011.07	1011.10
	16	1011.06	1011.02	1010.97	1010.94	1010.92	1010.92	1010.95	1010.97	1010.96	1010.96	1010.95	1010.94	1010.96
	17	1010.93	1010.96	1010.97	1010.99	1011.04	1011.13	1011.17	1011.19	1011.29	1011.37	1011.39	1011.43	1011.15
	18	1011.49	1011.48	1011.48	1011.55	1011.65	1011.76	1011.87	1011.96	1012.00	1012.03	1012.06	1012.14	1011.79
	19	1012.26	1012.34	1012.36	1012.34	1012.29	1012.26	1012.28	1012.28	1012.34	1012.42	1012.45	1012.47	1012.34
	20	1012.46	1012.48	1012.57	1012.65	1012.65	1012.67	1012.77	1012.87	1012.92	1012.91	1012.88	1012.90	1012.72
	21	1012.98	1013.00	1012.98	1013.00	1013.00	1012.97	1012.94	1012.88	1012.82	1012.83	1012.84	1012.81	1012.92
	22	1012.81	1012.80	1012.78	1012.74	1012.71	1012.73	1012.76	1012.74	1012.73	1012.69	1012.67	1012.69	1012.73
	23	1012.69	1012.68	1012.66	1012.68	1012.69	1012.68	1012.68	1012.70	1012.77	1012.79	1012.83	1012.86	1012.72
2	0	1012.87	1012.86	1012.83	1012.83	1012.83	1012.82	1012.82	1012.81	1012.80	1012.84	1012.87	1012.88	1012.83
	1	1012.89	1012.87	1012.86	1012.89	1012.89	1012.88	1012.89	1012.84	1012.80	1012.83	1012.87	1012.90	1012.87
	2	1012.92	1012.93	1012.94	1012.94	1012.94	1012.90	1012.85	1012.82	1012.81	1012.84	1012.89	1012.91	1012.89
	3	1012.92	1012.94	1012.95	1013.00	1013.04	1013.05	1013.08	1013.14	1013.23	1013.30	1013.33	1013.36	1013.11
	4	1013.41	1013.49	1013.58	1013.66	1013.71	1013.76	1013.82	1013.83	1013.84	1013.86	1013.88	1013.93	1013.73
	5	1013.97	1013.97	1013.98	1014.00	1014.00	1014.01	1014.06	1014.14	1014.17	1014.18	1014.19	1014.21	1014.07
	6	1014.22	1014.20	1014.20	1014.21	1014.22	1014.18	1014.17	1014.20	1014.20	1014.19	1014.19	1014.19	1014.19
	7	1014.20	1014.20	1014.20	1014.18	1014.19	1014.19	1014.16	1014.14	1014.14	1014.12	1014.09	1014.07	1014.15
	8	1014.06	1014.05	1014.05	1014.05	1014.07	1014.11	1014.15	1014.16	1014.16	1014.18	1014.22	1014.24	1014.12
	9	1014.23	1014.21	1014.19	1014.16	1014.12	1014.09	1014.07	1014.05	1014.01	1013.98	1013.97	1013.94	1014.08
	10	1013.90	1013.89	1013.87	1013.84	1013.79	1013.76	1013.76	1013.75	1013.73	1013.70	1013.69	1013.65	1013.77
	11	1013.62	1013.62	1013.61	1013.60	1013.57	1013.52	1013.46	1013.44	1013.44	1013.44	1013.48	1013.47	1013.52
	12	1013.44	1013.47	1013.46	1013.40	1013.38	1013.37	1013.35	1013.34	1013.35	1013.34	1013.29	1013.27	1013.37
	13	1013.26	1013.22	1013.17	1013.14	1013.10	1013.07	1013.07	1013.07	1013.02	1013.02	1013.02	1012.96	1013.09
	14	1012.89	1012.91	1012.94	1012.95	1012.95	1012.95	1012.89	1012.77	1012.67	1012.58	1012.51	1012.48	1012.79
	15	1012.46	1012.51	1012.53	1012.51	1012.50	1012.47	1012.46	1012.44	1012.43	1012.42	1012.40	1012.35	1012.45
	16	1012.28	1012.25	1012.25	1012.26	1012.27	1012.28	1012.30	1012.28	1012.25	1012.25	1012.25	1012.22	1012.26
	17	1012.21	1012.23	1012.23	1012.22	1012.24	1012.24	1012.23	1012.24	1012.25	1012.29	1012.33	1012.35	1012.25
	18	1012.37	1012.38	1012.39	1012.41	1012.43	1012.48	1012.53	1012.56	1012.60	1012.67	1012.76	1012.86	1012.53
	19	1012.94	1013.00	1013.08	1013.15	1013.22	1013.28	1013.32	1013.32	1013.31	1013.35	1013.39	1013.43	1013.23
	20	1013.44	1013.41	1013.39	1013.40	1013.42	1013.41	1013.39	1013.38	1013.36	1013.35	1013.38	1013.40	1013.39
	21	1013.40	1013.44	1013.51	1013.54	1013.57	1013.60	1013.63	1013.66	1013.67	1013.67	1013.65	1013.65	1013.58
	22	1013.67	1013.68	1013.68	1013.69	1013.71	1013.73	1013.74	1013.75	1013.75	1013.75	1013.77	1013.78	1013.72
	23	1013.79	1013.79	1013.78	1013.77	1013.76	1013.73	1013.70	1013.69	1013.67	1013.63	1013.60	1013.59	1013.70

S.V.I.R.CO. Observatory - Pressure in hectoPascal – August 2016

day	hh	00_05	05_10	10_15	15_20	20_25	25_30	30_35	35_40	40_45	45_50	50_55	55_60	average
3	0	1013.55	1013.54	1013.52	1013.54	1013.56	1013.54	1013.54	1013.57	1013.53	1013.47	1013.45	1013.45	1013.52
	1	1013.44	1013.45	1013.46	1013.47	1013.45	1013.41	1013.37	1013.34	1013.31	1013.30	1013.29	1013.26	1013.38
	2	1013.25	1013.28	1013.29	1013.29	1013.32	1013.33	1013.34	1013.34	1013.35	1013.38	1013.39	1013.37	1013.32
	3	1013.33	1013.31	1013.33	1013.35	1013.35	1013.36	1013.37	1013.39	1013.41	1013.44	1013.45	1013.47	1013.38
	4	1013.54	1013.56	1013.55	1013.56	1013.59	1013.63	1013.66	1013.64	1013.61	1013.64	1013.68	1013.68	1013.61
	5	1013.65	1013.63	1013.63	1013.64	1013.66	1013.70	1013.73	1013.73	1013.72	1013.72	1013.74	1013.78	1013.69
	6	1013.83	1013.88	1013.91	1013.90	1013.90	1013.92	1013.95	1013.95	1013.93	1013.90	1013.87	1013.85	1013.90
	7	1013.88	1013.95	1013.99	1014.01	1014.02	1014.05	1014.05	1014.04	1014.02	1013.98	1013.95	1013.92	1013.99
	8	1013.89	1013.85	1013.83	1013.81	1013.77	1013.75	1013.74	1013.71	1013.70	1013.72	1013.70	1013.68	1013.76
	9	1013.69	1013.68	1013.64	1013.59	1013.53	1013.47	1013.43	1013.40	1013.35	1013.30	1013.27	1013.23	1013.46
	10	1013.21	1013.20	1013.20	1013.20	1013.15	1013.09	1013.07	1013.06	1013.02	1012.96	1012.87	1012.78	1013.06
	11	1012.75	1012.76	1012.74	1012.70	1012.68	1012.66	1012.61	1012.57	1012.58	1012.57	1012.56	1012.52	1012.64
	12	1012.49	1012.50	1012.49	1012.47	1012.47	1012.46	1012.44	1012.43	1012.43	1012.40	1012.40	1012.40	1012.45
	13	1012.36	1012.29	1012.25	1012.26	1012.24	1012.20	1012.20	1012.17	1012.15	1012.16	1012.12	1012.05	1012.20
	14	1012.02	1012.01	1011.95	1011.93	1011.92	1011.89	1011.85	1011.83	1011.86	1011.87	1011.82	1011.81	1011.90
	15	1011.78	1011.75	1011.73	1011.69	1011.64	1011.63	1011.63	1011.57	1011.55	1011.56	1011.55	1011.55	1011.63
	16	1011.55	1011.56	1011.55	1011.53	1011.54	1011.53	1011.53	1011.57	1011.57	1011.53	1011.52	1011.54	1011.54
	17	1011.52	1011.53	1011.54	1011.52	1011.54	1011.55	1011.53	1011.54	1011.54	1011.52	1011.51	1011.51	1011.53
	18	1011.56	1011.62	1011.65	1011.69	1011.73	1011.76	1011.82	1011.88	1011.93	1011.97	1012.00	1012.07	1011.80
	19	1012.18	1012.25	1012.28	1012.34	1012.41	1012.44	1012.45	1012.46	1012.47	1012.50	1012.53	1012.55	1012.40
	20	1012.56	1012.60	1012.62	1012.65	1012.66	1012.66	1012.69	1012.73	1012.73	1012.72	1012.72	1012.70	1012.67
	21	1012.73	1012.76	1012.76	1012.77	1012.80	1012.83	1012.82	1012.78	1012.78	1012.78	1012.79	1012.80	1012.78
	22	1012.82	1012.84	1012.85	1012.85	1012.88	1012.92	1012.96	1012.96	1012.97	1012.98	1012.96	1012.92	1012.91
	23	1012.87	1012.84	1012.81	1012.82	1012.83	1012.81	1012.78	1012.76	1012.74	1012.72	1012.71	1012.69	1012.78
4	0	1012.66	1012.67	1012.67	1012.64	1012.62	1012.62	1012.61	1012.60	1012.57	1012.54	1012.53	1012.52	1012.60
	1	1012.51	1012.50	1012.48	1012.44	1012.39	1012.33	1012.28	1012.28	1012.29	1012.28	1012.28	1012.31	1012.36
	2	1012.33	1012.32	1012.31	1012.32	1012.33	1012.32	1012.31	1012.32	1012.35	1012.39	1012.39	1012.38	1012.34
	3	1012.36	1012.35	1012.37	1012.36	1012.35	1012.36	1012.37	1012.37	1012.34	1012.33	1012.31	1012.32	1012.35
	4	1012.37	1012.40	1012.45	1012.49	1012.50	1012.52	1012.55	1012.58	1012.59	1012.60	1012.62	1012.64	1012.52
	5	1012.67	1012.68	1012.68	1012.70	1012.75	1012.78	1012.76	1012.74	1012.73	1012.72	1012.74	1012.77	1012.72
	6	1012.79	1012.80	1012.82	1012.84	1012.84	1012.87	1012.90	1012.92	1012.95	1012.96	1012.96	1012.97	1012.88
	7	1012.96	1012.94	1012.94	1012.94	1012.93	1012.91	1012.89	1012.87	1012.85	1012.82	1012.79	1012.76	1012.88
	8	1012.72	1012.68	1012.68	1012.68	1012.69	1012.71	1012.73	1012.74	1012.76	1012.75	1012.70	1012.66	1012.71
	9	1012.65	1012.64	1012.60	1012.56	1012.55	1012.53	1012.48	1012.42	1012.36	1012.36	1012.38	1012.37	1012.49
	10	1012.33	1012.28	1012.24	1012.23	1012.22	1012.22	1012.21	1012.18	1012.16	1012.14	1012.14	1012.13	1012.20
	11	1012.13	1012.16	1012.14	1012.12	1012.16	1012.19	1012.20	1012.20	1012.18	1012.16	1012.12	1012.09	1012.15
	12	1012.09	1012.09	1012.09	1012.09	1012.11	1012.09	1012.06	1012.04	1012.02	1011.99	1011.98	1011.98	1012.05
	13	1011.96	1011.96	1011.96	1011.95	1011.95	1011.95	1011.93	1011.93	1011.93	1011.88	1011.84	1011.82	1011.92
	14	1011.79	1011.76	1011.77	1011.78	1011.78	1011.80	1011.84	1011.85	1011.81	1011.79	1011.76	1011.72	1011.79
	15	1011.71	1011.70	1011.68	1011.67	1011.64	1011.61	1011.59	1011.56	1011.55	1011.55	1011.55	1011.53	1011.61
	16	1011.50	1011.49	1011.49	1011.48	1011.48	1011.49	1011.48	1011.43	1011.44	1011.46	1011.45	1011.45	1011.47
	17	1011.45	1011.46	1011.49	1011.53	1011.57	1011.60	1011.62	1011.62	1011.61	1011.63	1011.66	1011.69	1011.57
	18	1011.72	1011.71	1011.75	1011.79	1011.78	1011.81	1011.90	1011.98	1012.03	1012.07	1012.12	1012.15	1011.90
	19	1012.19	1012.25	1012.30	1012.30	1012.31	1012.37	1012.39	1012.40	1012.45	1012.49	1012.50	1012.48	1012.37
	20	1012.49	1012.54	1012.56	1012.55	1012.54	1012.52	1012.52	1012.53	1012.54	1012.52	1012.50	1012.47	1012.52
	21	1012.45	1012.45	1012.45	1012.44	1012.41	1012.38	1012.36	1012.31	1012.30	1012.30	1012.27	1012.25	1012.36
	22	1012.23	1012.21	1012.18	1012.13	1012.09	1012.09	1012.08	1012.08	1012.07	1012.00	1011.96	1011.95	1012.09
	23	1011.91	1011.87	1011.87	1011.85	1011.80	1011.75	1011.74	1011.76	1011.79	1011.79	1011.75	1011.71	1011.80

S.V.I.R.CO. Observatory - Pressure in hectoPascal – August 2016

day	hh	00_05	05_10	10_15	15_20	20_25	25_30	30_35	35_40	40_45	45_50	50_55	55_60	average
5	0	1011.71	1011.74	1011.77	1011.79	1011.80	1011.79	1011.76	1011.72	1011.72	1011.75	1011.75	1011.77	1011.76
	1	1011.76	1011.67	1011.61	1011.57	1011.52	1011.50	1011.45	1011.42	1011.41	1011.38	1011.37	1011.35	1011.50
	2	1011.30	1011.27	1011.28	1011.30	1011.33	1011.34	1011.30	1011.22	1011.17	1011.12	1011.06	1011.03	1011.23
	3	1011.03	1011.03	1011.02	1011.00	1011.00	1011.01	1011.04	1011.08	1011.07	1011.03	1011.00	1011.00	1011.02
	4	1011.06	1011.10	1011.09	1011.08	1011.11	1011.17	1011.24	1011.28	1011.25	1011.23	1011.22	1011.20	1011.17
	5	1011.15	1011.12	1011.14	1011.18	1011.19	1011.19	1011.22	1011.25	1011.28	1011.32	1011.36	1011.38	1011.23
	6	1011.40	1011.44	1011.48	1011.49	1011.57	1011.66	1011.69	1011.74	1011.80	1011.82	1011.83	1011.85	1011.64
	7	1011.87	1011.86	1011.86	1011.93	1011.96	1011.92	1011.92	1011.90	1011.83	1011.82	1011.80	1011.78	1011.87
	8	1011.83	1011.90	1011.95	1011.96	1012.00	1012.01	1012.03	1012.05	1012.05	1012.04	1012.05	1012.08	1011.99
	9	1012.15	1012.18	1012.18	1012.18	1012.22	1012.23	1012.24	1012.30	1012.36	1012.38	1012.36	1012.35	1012.26
	10	1012.35	1012.32	1012.23	1012.16	1012.10	1012.07	1012.10	1012.10	1012.12	1012.16	1012.18	1012.17	1012.17
	11	1012.13	1012.10	1012.07	1012.06	1012.02	1011.93	1011.92	1011.95	1011.98	1011.97	1011.78	1011.85	1011.98
	12	1012.01	1012.01	1011.93	1011.76	1011.61	1011.53	1011.50	1011.43	1011.34	1011.35	1011.41	1011.40	1011.60
	13	1011.32	1011.16	1011.04	1010.89	1010.77	1010.73	1010.65	1010.63	1010.65	1010.62	1010.52	1010.47	1010.78
	14	1010.40	1010.18	1009.99	1009.94	1009.96	1010.11	1010.40	1010.71	1010.87	1010.99	1011.10	1011.06	1010.47
	15	1011.08	1011.08	1011.11	1011.23	1011.23	1011.16	1011.12	1011.13	1011.11	1011.12	1011.08	1011.08	1011.12
	16	1011.18	1011.29	1011.38	1011.34	1011.31	1011.34	1011.31	1011.23	1011.12	1011.05	1011.01	1010.95	1011.21
	17	1010.96	1010.95	1010.89	1010.81	1010.86	1010.98	1011.08	1011.11	1011.04	1010.95	1010.93	1010.93	1010.95
	18	1010.89	1010.91	1011.01	1011.10	1011.10	1011.10	1011.12	1011.08	1011.10	1011.10	1011.09	1011.18	1011.06
	19	1011.21	1011.23	1011.31	1011.33	1011.29	1011.31	1011.38	1011.42	1011.44	1011.45	1011.42	1011.41	1011.35
	20	1011.42	1011.41	1011.37	1011.41	1011.48	1011.45	1011.38	1011.39	1011.43	1011.46	1011.51	1011.54	1011.44
	21	1011.48	1011.38	1011.36	1011.36	1011.34	1011.36	1011.36	1011.32	1011.30	1011.26	1011.21	1011.16	1011.32
	22	1011.18	1011.21	1011.11	1010.99	1010.93	1010.87	1010.82	1010.82	1010.86	1010.88	1011.00	1011.07	1010.98
	23	1011.02	1010.95	1010.93	1010.95	1010.96	1010.96	1010.94	1010.97	1011.03	1011.05	1011.06	1011.05	1010.99
6	0	1010.94	1010.90	1010.89	1010.95	1010.99	1011.04	1011.07	1011.09	1011.11	1011.09	1011.08	1011.07	1011.02
	1	1011.07	1011.08	1011.09	1011.09	1011.04	1010.97	1010.89	1010.85	1010.85	1010.89	1010.95	1010.95	1010.98
	2	1010.96	1010.96	1010.93	1010.92	1010.92	1010.93	1010.93	1010.91	1010.87	1010.83	1010.79	1010.74	1010.89
	3	1010.69	1010.71	1010.76	1010.76	1010.72	1010.73	1010.78	1010.87	1010.95	1011.02	1011.06	1011.06	1010.84
	4	1011.06	1011.07	1011.08	1011.08	1011.09	1011.06	1010.99	1010.93	1010.94	1010.96	1010.95	1011.01	1011.02
	5	1011.12	1011.12	1011.08	1011.08	1011.07	1011.08	1011.10	1011.09	1011.10	1011.13	1011.15	1011.13	1011.10
	6	1011.15	1011.24	1011.38	1011.50	1011.55	1011.59	1011.61	1011.62	1011.64	1011.69	1011.74	1011.73	1011.53
	7	1011.73	1011.76	1011.78	1011.71	1011.64	1011.61	1011.55	1011.48	1011.40	1011.35	1011.34	1011.34	1011.56
	8	1011.36	1011.41	1011.46	1011.51	1011.54	1011.55	1011.59	1011.63	1011.66	1011.70	1011.74	1011.76	1011.57
	9	1011.78	1011.81	1011.85	1011.83	1011.86	1011.92	1011.88	1011.83	1011.80	1011.75	1011.70	1011.63	1011.80
	10	1011.55	1011.46	1011.39	1011.29	1011.17	1011.19	1011.25	1011.27	1011.28	1011.28	1011.24	1011.17	1011.29
	11	1011.12	1011.09	1011.05	1010.99	1010.97	1010.94	1010.82	1010.80	1010.88	1010.94	1010.99	1011.03	1010.97
	12	1011.04	1011.05	1011.03	1011.08	1011.08	1010.96	1010.91	1010.85	1010.79	1010.83	1010.89	1010.88	1010.95
	13	1010.88	1010.94	1011.00	1011.02	1011.00	1010.92	1010.86	1010.82	1010.80	1010.77	1010.72	1010.73	1010.87
	14	1010.74	1010.72	1010.72	1010.78	1010.93	1011.03	1011.15	1011.29	1011.37	1011.39	1011.39	1011.36	1011.07
	15	1011.33	1011.33	1011.32	1011.33	1011.37	1011.40	1011.46	1011.54	1011.55	1011.52	1011.55	1011.54	1011.44
	16	1011.52	1011.54	1011.56	1011.58	1011.58	1011.61	1011.64	1011.68	1011.71	1011.80	1011.93	1012.01	1011.68
	17	1012.08	1012.19	1012.30	1012.36	1012.42	1012.53	1012.71	1012.85	1012.91	1012.99	1013.01	1013.00	1012.61
	18	1013.04	1013.13	1013.20	1013.27	1013.32	1013.36	1013.48	1013.59	1013.61	1013.54	1013.50	1013.64	1013.39
	19	1013.80	1013.86	1013.85	1013.87	1014.01	1014.11	1014.19	1014.37	1014.52	1014.54	1014.47	1014.43	1014.17
	20	1014.44	1014.47	1014.47	1014.52	1014.60	1014.63	1014.73	1014.75	1014.69	1014.75	1014.81	1014.91	1014.65
	21	1015.05	1015.11	1015.12	1015.08	1015.14	1015.26	1015.30	1015.32	1015.38	1015.36	1015.19	1015.12	1015.20
	22	1015.16	1015.18	1015.21	1015.28	1015.37	1015.36	1015.36	1015.46	1015.52	1015.52	1015.49	1015.49	1015.36
	23	1015.50	1015.51	1015.53	1015.56	1015.58	1015.56	1015.54	1015.60	1015.65	1015.66	1015.63	1015.56	1015.57

S.V.I.R.CO. Observatory - Pressure in hectoPascal – August 2016

day	hh	00_05	05_10	10_15	15_20	20_25	25_30	30_35	35_40	40_45	45_50	50_55	55_60	average
7	0	1015.51	1015.53	1015.54	1015.50	1015.42	1015.35	1015.34	1015.37	1015.39	1015.41	1015.47	1015.48	1015.44
	1	1015.44	1015.45	1015.47	1015.45	1015.43	1015.43	1015.40	1015.32	1015.31	1015.32	1015.31	1015.30	1015.38
	2	1015.27	1015.21	1015.17	1015.10	1015.02	1015.03	1015.09	1015.13	1015.15	1015.21	1015.31	1015.39	1015.17
	3	1015.43	1015.44	1015.42	1015.42	1015.45	1015.49	1015.49	1015.47	1015.47	1015.49	1015.49	1015.47	1015.46
	4	1015.46	1015.49	1015.49	1015.48	1015.48	1015.50	1015.53	1015.50	1015.46	1015.46	1015.47	1015.45	1015.48
	5	1015.40	1015.35	1015.28	1015.25	1015.27	1015.29	1015.35	1015.41	1015.49	1015.60	1015.70	1015.72	1015.42
	6	1015.71	1015.74	1015.79	1015.79	1015.73	1015.67	1015.64	1015.60	1015.58	1015.59	1015.62	1015.63	1015.67
	7	1015.62	1015.59	1015.56	1015.53	1015.51	1015.51	1015.47	1015.45	1015.45	1015.41	1015.34	1015.30	1015.48
	8	1015.28	1015.24	1015.27	1015.29	1015.24	1015.27	1015.28	1015.32	1015.35	1015.33	1015.34	1015.36	1015.30
	9	1015.34	1015.30	1015.28	1015.29	1015.31	1015.30	1015.22	1015.14	1015.11	1015.07	1015.01	1014.97	1015.19
	10	1014.93	1014.89	1014.88	1014.86	1014.84	1014.84	1014.84	1014.81	1014.76	1014.73	1014.71	1014.71	1014.81
	11	1014.72	1014.69	1014.61	1014.58	1014.59	1014.59	1014.45	1014.39	1014.39	1014.34	1014.32	1014.28	1014.49
	12	1014.25	1014.30	1014.34	1014.34	1014.33	1014.33	1014.33	1014.30	1014.27	1014.28	1014.27	1014.24	1014.30
	13	1014.20	1014.17	1014.12	1014.08	1014.02	1013.96	1013.97	1013.96	1013.88	1013.85	1013.85	1013.80	1013.99
	14	1013.78	1013.78	1013.76	1013.73	1013.69	1013.68	1013.74	1013.81	1013.82	1013.79	1013.80	1013.82	1013.76
	15	1013.82	1013.81	1013.75	1013.74	1013.78	1013.79	1013.78	1013.76	1013.78	1013.81	1013.86	1013.92	1013.80
	16	1013.98	1014.07	1014.13	1014.15	1014.19	1014.24	1014.28	1014.36	1014.47	1014.55	1014.63	1014.69	1014.31
	17	1014.75	1014.83	1014.89	1014.92	1014.97	1015.03	1015.06	1015.10	1015.13	1015.18	1015.25	1015.33	1015.03
	18	1015.38	1015.41	1015.44	1015.48	1015.51	1015.56	1015.61	1015.63	1015.67	1015.76	1015.87	1015.98	1015.61
	19	1016.08	1016.16	1016.23	1016.33	1016.45	1016.54	1016.57	1016.56	1016.58	1016.64	1016.68	1016.72	1016.46
	20	1016.77	1016.76	1016.74	1016.71	1016.66	1016.66	1016.71	1016.77	1016.77	1016.77	1016.80	1016.80	1016.74
	21	1016.81	1016.82	1016.81	1016.80	1016.82	1016.86	1016.87	1016.87	1016.89	1016.90	1016.88	1016.91	1016.85
	22	1016.96	1016.95	1016.91	1016.87	1016.84	1016.82	1016.82	1016.85	1016.88	1016.89	1016.89	1016.89	1016.88
	23	1016.88	1016.86	1016.89	1016.93	1016.94	1016.96	1016.97	1016.95	1016.96	1017.02	1017.02	1016.98	1016.95
8	0	1016.93	1016.91	1016.84	1016.77	1016.71	1016.68	1016.62	1016.55	1016.53	1016.53	1016.52	1016.51	1016.66
	1	1016.54	1016.57	1016.55	1016.49	1016.41	1016.37	1016.37	1016.38	1016.40	1016.41	1016.39	1016.39	1016.44
	2	1016.36	1016.29	1016.26	1016.20	1016.08	1016.00	1015.99	1016.00	1016.03	1016.08	1016.10	1016.08	1016.12
	3	1016.06	1016.09	1016.16	1016.25	1016.27	1016.25	1016.25	1016.26	1016.29	1016.31	1016.35	1016.40	1016.24
	4	1016.43	1016.44	1016.44	1016.45	1016.44	1016.42	1016.41	1016.39	1016.38	1016.37	1016.41	1016.48	1016.42
	5	1016.50	1016.49	1016.47	1016.52	1016.56	1016.55	1016.55	1016.56	1016.58	1016.58	1016.56	1016.56	1016.54
	6	1016.60	1016.59	1016.58	1016.58	1016.57	1016.56	1016.52	1016.50	1016.49	1016.48	1016.48	1016.51	1016.54
	7	1016.52	1016.52	1016.53	1016.50	1016.44	1016.42	1016.43	1016.45	1016.47	1016.47	1016.47	1016.45	1016.47
	8	1016.41	1016.39	1016.39	1016.40	1016.41	1016.38	1016.37	1016.37	1016.35	1016.35	1016.35	1016.35	1016.38
	9	1016.36	1016.33	1016.31	1016.30	1016.27	1016.25	1016.25	1016.23	1016.18	1016.11	1016.03	1015.96	1016.21
	10	1015.91	1015.86	1015.83	1015.80	1015.78	1015.77	1015.71	1015.66	1015.64	1015.63	1015.60	1015.57	1015.73
	11	1015.58	1015.58	1015.57	1015.54	1015.48	1015.43	1015.39	1015.38	1015.39	1015.39	1015.42	1015.43	1015.46
	12	1015.44	1015.47	1015.46	1015.45	1015.46	1015.44	1015.38	1015.36	1015.34	1015.32	1015.32	1015.36	1015.40
	13	1015.35	1015.35	1015.36	1015.35	1015.36	1015.35	1015.33	1015.28	1015.22	1015.18	1015.12	1015.10	1015.28
	14	1015.08	1015.03	1015.01	1014.98	1014.96	1014.95	1014.96	1014.94	1014.89	1014.85	1014.83	1014.80	1014.94
	15	1014.76	1014.75	1014.74	1014.72	1014.69	1014.65	1014.65	1014.65	1014.65	1014.68	1014.67	1014.65	1014.69
	16	1014.64	1014.64	1014.63	1014.57	1014.54	1014.52	1014.51	1014.52	1014.49	1014.44	1014.40	1014.40	1014.52
	17	1014.44	1014.45	1014.48	1014.51	1014.52	1014.52	1014.53	1014.54	1014.56	1014.57	1014.57	1014.57	1014.52
	18	1014.57	1014.58	1014.61	1014.65	1014.70	1014.74	1014.76	1014.78	1014.83	1014.89	1014.94	1014.98	1014.75
	19	1015.02	1015.07	1015.09	1015.11	1015.14	1015.13	1015.13	1015.15	1015.17	1015.20	1015.22	1015.21	1015.13
	20	1015.21	1015.19	1015.14	1015.11	1015.09	1015.08	1015.06	1015.04	1015.05	1015.07	1015.09	1015.13	1015.10
	21	1015.14	1015.13	1015.11	1015.08	1015.07	1015.06	1015.03	1015.02	1015.02	1015.03	1015.06	1015.09	1015.07
	22	1015.10	1015.07	1015.04	1015.04	1015.05	1015.05	1015.04	1015.04	1015.01	1014.98	1014.98	1014.96	1015.03
	23	1014.96	1014.95	1014.90	1014.87	1014.86	1014.86	1014.85	1014.83	1014.80	1014.77	1014.71	1014.66	1014.83

S.V.I.R.CO. Observatory - Pressure in hectoPascal – August 2016

day	hh	00_05	05_10	10_15	15_20	20_25	25_30	30_35	35_40	40_45	45_50	50_55	55_60	average
9	0	1014.66	1014.66	1014.66	1014.66	1014.64	1014.62	1014.61	1014.59	1014.57	1014.55	1014.54	1014.55	1014.60
	1	1014.56	1014.53	1014.51	1014.53	1014.54	1014.51	1014.48	1014.45	1014.40	1014.34	1014.29	1014.26	1014.45
	2	1014.22	1014.18	1014.15	1014.12	1014.10	1014.10	1014.10	1014.10	1014.08	1014.06	1014.05	1014.05	1014.11
	3	1014.05	1014.06	1014.03	1013.98	1013.91	1013.85	1013.83	1013.83	1013.82	1013.82	1013.83	1013.85	1013.90
	4	1013.86	1013.87	1013.87	1013.88	1013.89	1013.91	1013.92	1013.94	1013.95	1013.99	1014.04	1014.05	1013.93
	5	1014.05	1014.03	1014.03	1014.05	1014.06	1014.06	1014.05	1014.02	1014.02	1014.02	1014.01	1014.03	1014.03
	6	1014.07	1014.10	1014.15	1014.16	1014.14	1014.14	1014.15	1014.15	1014.16	1014.18	1014.18	1014.15	1014.14
	7	1014.11	1014.10	1014.09	1014.05	1014.04	1014.04	1014.04	1014.06	1014.08	1014.11	1014.12	1014.11	1014.08
	8	1014.09	1014.08	1014.06	1014.05	1014.02	1013.99	1013.96	1013.93	1013.91	1013.89	1013.85	1013.81	1013.97
	9	1013.78	1013.74	1013.67	1013.59	1013.51	1013.43	1013.37	1013.30	1013.23	1013.18	1013.15	1013.11	1013.42
	10	1013.09	1013.08	1013.05	1013.00	1012.95	1012.90	1012.84	1012.76	1012.74	1012.77	1012.79	1012.74	1012.89
	11	1012.72	1012.69	1012.65	1012.64	1012.63	1012.61	1012.58	1012.52	1012.50	1012.51	1012.51	1012.48	1012.58
	12	1012.44	1012.45	1012.46	1012.45	1012.42	1012.38	1012.39	1012.41	1012.38	1012.34	1012.33	1012.27	1012.39
	13	1012.20	1012.19	1012.15	1012.08	1012.03	1012.00	1011.96	1011.91	1011.87	1011.83	1011.78	1011.78	1011.98
	14	1011.75	1011.70	1011.65	1011.60	1011.56	1011.57	1011.56	1011.52	1011.52	1011.52	1011.49	1011.48	1011.57
	15	1011.47	1011.46	1011.44	1011.45	1011.43	1011.39	1011.38	1011.40	1011.42	1011.44	1011.46	1011.46	1011.43
	16	1011.45	1011.40	1011.36	1011.34	1011.34	1011.33	1011.32	1011.34	1011.35	1011.35	1011.37	1011.41	1011.36
	17	1011.43	1011.44	1011.48	1011.51	1011.53	1011.55	1011.59	1011.62	1011.61	1011.62	1011.65	1011.68	1011.56
	18	1011.69	1011.73	1011.76	1011.78	1011.81	1011.84	1011.88	1011.93	1011.96	1011.99	1012.03	1012.08	1011.87
	19	1012.14	1012.21	1012.23	1012.23	1012.26	1012.28	1012.28	1012.29	1012.28	1012.26	1012.24	1012.24	1012.24
	20	1012.24	1012.21	1012.17	1012.17	1012.17	1012.20	1012.27	1012.33	1012.36	1012.34	1012.32	1012.33	1012.26
	21	1012.32	1012.30	1012.31	1012.32	1012.30	1012.30	1012.30	1012.33	1012.34	1012.34	1012.36	1012.35	1012.32
	22	1012.30	1012.26	1012.25	1012.28	1012.30	1012.29	1012.26	1012.25	1012.24	1012.20	1012.17	1012.15	1012.24
	23	1012.14	1012.16	1012.20	1012.20	1012.19	1012.20	1012.18	1012.14	1012.07	1012.03	1012.01	1012.00	1012.12
10	0	1011.96	1011.95	1011.93	1011.91	1011.88	1011.88	1011.87	1011.81	1011.78	1011.79	1011.76	1011.69	1011.84
	1	1011.66	1011.64	1011.64	1011.64	1011.61	1011.57	1011.54	1011.49	1011.41	1011.36	1011.32	1011.31	1011.51
	2	1011.31	1011.29	1011.24	1011.21	1011.20	1011.17	1011.14	1011.10	1011.04	1010.97	1010.92	1010.90	1011.12
	3	1010.89	1010.88	1010.91	1010.93	1010.90	1010.88	1010.89	1010.92	1010.96	1010.96	1010.96	1010.97	1010.92
	4	1010.97	1010.98	1010.99	1010.96	1010.92	1010.93	1010.97	1011.00	1011.02	1011.03	1011.03	1011.04	1010.98
	5	1011.08	1011.13	1011.17	1011.21	1011.24	1011.27	1011.27	1011.28	1011.28	1011.27	1011.26	1011.26	1011.22
	6	1011.26	1011.28	1011.30	1011.29	1011.30	1011.35	1011.41	1011.44	1011.45	1011.44	1011.41	1011.38	1011.36
	7	1011.36	1011.35	1011.37	1011.42	1011.45	1011.46	1011.48	1011.51	1011.50	1011.44	1011.39	1011.35	1011.42
	8	1011.30	1011.25	1011.20	1011.15	1011.13	1011.16	1011.16	1011.13	1011.14	1011.22	1011.29	1011.31	1011.20
	9	1011.36	1011.35	1011.33	1011.31	1011.24	1011.23	1011.29	1011.35	1011.40	1011.38	1011.32	1011.34	1011.32
	10	1011.33	1011.28	1011.28	1011.26	1011.19	1011.17	1011.16	1011.15	1011.11	1011.08	1011.08	1011.08	1011.18
	11	1011.11	1011.12	1011.04	1010.98	1011.00	1011.02	1011.07	1011.06	1011.01	1010.96	1010.93	1010.92	1011.02
	12	1010.91	1010.89	1010.85	1010.80	1010.79	1010.75	1010.68	1010.62	1010.58	1010.55	1010.52	1010.49	1010.70
	13	1010.44	1010.40	1010.41	1010.45	1010.46	1010.48	1010.49	1010.46	1010.43	1010.42	1010.40	1010.40	1010.43
	14	1010.42	1010.37	1010.35	1010.44	1010.49	1010.44	1010.41	1010.44	1010.40	1010.32	1010.33	1010.33	1010.39
	15	1010.33	1010.37	1010.35	1010.34	1010.36	1010.35	1010.34	1010.35	1010.43	1010.46	1010.43	1010.46	1010.38
	16	1010.50	1010.55	1010.56	1010.52	1010.53	1010.57	1010.54	1010.51	1010.52	1010.49	1010.50	1010.57	1010.53
	17	1010.60	1010.60	1010.65	1010.71	1010.77	1010.84	1010.88	1010.98	1011.08	1011.11	1011.12	1011.16	1010.87
	18	1011.25	1011.30	1011.31	1011.38	1011.45	1011.53	1011.65	1011.77	1011.89	1011.94	1011.89	1011.84	1011.60
	19	1011.83	1011.87	1011.91	1011.96	1012.02	1012.06	1012.09	1012.12	1012.21	1012.32	1012.37	1012.41	1012.09
	20	1012.43	1012.41	1012.42	1012.43	1012.46	1012.54	1012.54	1012.53	1012.52	1012.49	1012.46	1012.47	1012.47
	21	1012.48	1012.39	1012.27	1012.26	1012.37	1012.49	1012.52	1012.45	1012.41	1012.42	1012.42	1012.41	1012.40
	22	1012.41	1012.46	1012.56	1012.58	1012.53	1012.50	1012.46	1012.44	1012.47	1012.50	1012.52	1012.50	1012.49
	23	1012.46	1012.45	1012.48	1012.47	1012.42	1012.37	1012.33	1012.36	1012.40	1012.40	1012.33	1012.26	1012.39

S.V.I.R.CO. Observatory - Pressure in hectoPascal – August 2016

day	hh	00_05	05_10	10_15	15_20	20_25	25_30	30_35	35_40	40_45	45_50	50_55	55_60	average
11	0	1012.22	1012.20	1012.15	1012.14	1012.13	1012.08	1012.04	1011.98	1011.90	1011.90	1011.96	1011.97	1012.05
	1	1011.93	1011.94	1011.96	1011.97	1012.00	1012.07	1012.14	1012.17	1012.18	1012.18	1012.18	1012.19	1012.07
	2	1012.26	1012.30	1012.29	1012.29	1012.35	1012.42	1012.44	1012.39	1012.35	1012.44	1012.51	1012.48	1012.37
	3	1012.44	1012.41	1012.38	1012.40	1012.39	1012.35	1012.30	1012.29	1012.29	1012.27	1012.30	1012.38	1012.35
	4	1012.43	1012.47	1012.54	1012.61	1012.71	1012.83	1012.87	1012.87	1012.92	1012.98	1013.02	1013.04	1012.77
	5	1013.06	1013.04	1013.02	1013.01	1013.01	1013.01	1013.02	1013.05	1013.11	1013.14	1013.17	1013.21	1013.07
	6	1013.22	1013.27	1013.32	1013.33	1013.41	1013.52	1013.57	1013.59	1013.53	1013.48	1013.44	1013.40	1013.42
	7	1013.35	1013.31	1013.30	1013.25	1013.23	1013.26	1013.27	1013.28	1013.28	1013.31	1013.31	1013.30	1013.28
	8	1013.32	1013.33	1013.31	1013.32	1013.39	1013.46	1013.46	1013.41	1013.40	1013.36	1013.34	1013.33	1013.37
	9	1013.27	1013.21	1013.23	1013.27	1013.25	1013.23	1013.28	1013.34	1013.36	1013.38	1013.42	1013.40	1013.30
	10	1013.37	1013.38	1013.37	1013.35	1013.27	1013.16	1013.12	1013.12	1013.09	1013.10	1013.14	1013.14	1013.21
	11	1013.12	1013.09	1013.04	1013.00	1012.97	1012.93	1012.93	1012.94	1012.95	1012.97	1012.94	1012.90	1012.98
	12	1012.87	1012.84	1012.81	1012.80	1012.82	1012.79	1012.79	1012.80	1012.77	1012.76	1012.71	1012.65	1012.78
	13	1012.64	1012.59	1012.52	1012.56	1012.60	1012.53	1012.46	1012.48	1012.45	1012.40	1012.42	1012.41	1012.50
	14	1012.38	1012.38	1012.39	1012.37	1012.28	1012.26	1012.30	1012.35	1012.38	1012.37	1012.37	1012.39	1012.35
	15	1012.43	1012.48	1012.57	1012.66	1012.70	1012.70	1012.70	1012.74	1012.78	1012.80	1012.80	1012.79	1012.68
	16	1012.80	1012.84	1012.86	1012.88	1012.90	1012.94	1012.96	1012.96	1013.03	1013.13	1013.20	1013.28	1012.98
	17	1013.35	1013.42	1013.48	1013.54	1013.61	1013.65	1013.64	1013.66	1013.71	1013.78	1013.89	1013.98	1013.64
	18	1014.06	1014.14	1014.16	1014.21	1014.28	1014.35	1014.42	1014.51	1014.61	1014.69	1014.80	1014.91	1014.43
	19	1014.98	1015.10	1015.20	1015.21	1015.27	1015.38	1015.47	1015.54	1015.61	1015.65	1015.70	1015.79	1015.41
	20	1015.85	1015.90	1015.95	1015.99	1016.02	1016.03	1016.06	1016.13	1016.19	1016.24	1016.27	1016.28	1016.07
	21	1016.35	1016.40	1016.39	1016.40	1016.43	1016.47	1016.50	1016.49	1016.48	1016.49	1016.47	1016.50	1016.45
	22	1016.55	1016.57	1016.56	1016.53	1016.49	1016.46	1016.47	1016.49	1016.47	1016.48	1016.52	1016.54	1016.51
	23	1016.56	1016.58	1016.57	1016.57	1016.58	1016.59	1016.61	1016.66	1016.70	1016.72	1016.74	1016.77	1016.63
12	0	1016.77	1016.75	1016.74	1016.75	1016.78	1016.80	1016.81	1016.83	1016.87	1016.92	1016.96	1016.95	1016.83
	1	1016.90	1016.87	1016.82	1016.76	1016.69	1016.64	1016.65	1016.66	1016.67	1016.71	1016.75	1016.78	1016.74
	2	1016.79	1016.79	1016.81	1016.82	1016.83	1016.80	1016.76	1016.80	1016.84	1016.88	1016.93	1016.97	1016.83
	3	1017.00	1017.01	1017.07	1017.19	1017.29	1017.38	1017.41	1017.39	1017.42	1017.45	1017.47	1017.51	1017.30
	4	1017.55	1017.60	1017.66	1017.70	1017.74	1017.75	1017.78	1017.82	1017.87	1017.94	1017.96	1017.96	1017.77
	5	1018.02	1018.10	1018.15	1018.22	1018.35	1018.43	1018.44	1018.44	1018.47	1018.55	1018.66	1018.66	1018.37
	6	1018.64	1018.70	1018.80	1018.86	1018.89	1018.96	1019.03	1019.04	1019.10	1019.21	1019.29	1019.32	1018.99
	7	1019.31	1019.28	1019.28	1019.32	1019.35	1019.34	1019.36	1019.41	1019.46	1019.47	1019.42	1019.41	1019.36
	8	1019.42	1019.44	1019.48	1019.53	1019.58	1019.66	1019.67	1019.59	1019.57	1019.58	1019.59	1019.56	1019.55
	9	1019.55	1019.58	1019.56	1019.55	1019.53	1019.50	1019.50	1019.50	1019.49	1019.48	1019.45	1019.43	1019.51
	10	1019.39	1019.36	1019.37	1019.38	1019.35	1019.32	1019.34	1019.34	1019.30	1019.29	1019.25	1019.18	1019.32
	11	1019.15	1019.12	1019.13	1019.13	1019.05	1019.05	1019.07	1018.99	1018.90	1018.89	1018.91	1018.92	1019.02
	12	1018.89	1018.85	1018.83	1018.81	1018.77	1018.70	1018.63	1018.61	1018.58	1018.53	1018.52	1018.50	1018.68
	13	1018.42	1018.38	1018.34	1018.30	1018.31	1018.29	1018.24	1018.24	1018.24	1018.18	1018.15	1018.15	1018.27
	14	1018.12	1018.15	1018.07	1017.93	1017.94	1017.99	1018.02	1017.99	1017.92	1017.85	1017.82	1017.82	1017.97
	15	1017.80	1017.78	1017.73	1017.63	1017.59	1017.61	1017.64	1017.65	1017.64	1017.62	1017.66	1017.71	1017.67
	16	1017.71	1017.68	1017.66	1017.66	1017.65	1017.65	1017.63	1017.62	1017.67	1017.71	1017.71	1017.73	1017.67
	17	1017.76	1017.80	1017.84	1017.88	1017.92	1017.96	1018.02	1018.04	1018.06	1018.13	1018.20	1018.23	1017.98
	18	1018.23	1018.26	1018.31	1018.36	1018.40	1018.44	1018.52	1018.61	1018.66	1018.70	1018.74	1018.81	1018.50
	19	1018.91	1019.01	1019.14	1019.24	1019.30	1019.31	1019.32	1019.35	1019.34	1019.31	1019.29	1019.28	1019.23
	20	1019.30	1019.34	1019.37	1019.42	1019.45	1019.45	1019.48	1019.54	1019.61	1019.69	1019.73	1019.76	1019.51
	21	1019.78	1019.79	1019.79	1019.85	1019.94	1019.99	1020.06	1020.13	1020.17	1020.18	1020.17	1020.16	1020.00
	22	1020.12	1020.10	1020.11	1020.15	1020.17	1020.16	1020.17	1020.18	1020.18	1020.16	1020.14	1020.14	1020.15
	23	1020.14	1020.13	1020.13	1020.18	1020.27	1020.33	1020.38	1020.38	1020.33	1020.30	1020.30	1020.31	1020.26

S.V.I.R.CO. Observatory - Pressure in hectoPascal – August 2016

day	hh	00_05	05_10	10_15	15_20	20_25	25_30	30_35	35_40	40_45	45_50	50_55	55_60	average
13	0	1020.36	1020.37	1020.40	1020.40	1020.34	1020.31	1020.32	1020.28	1020.24	1020.27	1020.30	1020.29	1020.32
	1	1020.31	1020.33	1020.36	1020.42	1020.44	1020.44	1020.42	1020.42	1020.43	1020.41	1020.41	1020.41	1020.40
	2	1020.42	1020.45	1020.44	1020.40	1020.38	1020.36	1020.33	1020.35	1020.39	1020.41	1020.40	1020.39	1020.39
	3	1020.42	1020.42	1020.40	1020.38	1020.37	1020.38	1020.42	1020.45	1020.43	1020.40	1020.39	1020.43	1020.40
	4	1020.50	1020.54	1020.56	1020.58	1020.59	1020.62	1020.67	1020.70	1020.73	1020.76	1020.77	1020.78	1020.65
	5	1020.79	1020.79	1020.78	1020.80	1020.85	1020.88	1020.90	1020.92	1020.94	1020.98	1021.01	1021.03	1020.89
	6	1021.04	1021.02	1021.01	1021.03	1021.07	1021.10	1021.13	1021.15	1021.17	1021.17	1021.18	1021.21	1021.10
	7	1021.22	1021.22	1021.21	1021.19	1021.18	1021.18	1021.17	1021.14	1021.13	1021.13	1021.11	1021.09	1021.16
	8	1021.11	1021.15	1021.15	1021.12	1021.14	1021.17	1021.17	1021.16	1021.13	1021.11	1021.06	1021.03	1021.12
	9	1021.01	1020.98	1020.97	1020.96	1020.94	1020.91	1020.90	1020.88	1020.84	1020.80	1020.76	1020.75	1020.89
	10	1020.73	1020.68	1020.62	1020.57	1020.53	1020.51	1020.51	1020.50	1020.43	1020.33	1020.28	1020.29	1020.50
	11	1020.31	1020.30	1020.24	1020.19	1020.15	1020.14	1020.13	1020.16	1020.16	1020.12	1020.13	1020.13	1020.18
	12	1020.13	1020.13	1020.15	1020.19	1020.21	1020.24	1020.24	1020.20	1020.19	1020.20	1020.19	1020.14	1020.18
	13	1020.13	1020.17	1020.15	1020.10	1020.05	1020.02	1020.02	1020.03	1020.00	1019.99	1019.99	1019.99	1020.05
	14	1020.00	1020.04	1020.04	1020.01	1019.99	1019.95	1019.94	1019.93	1019.92	1019.96	1019.99	1019.96	1019.98
	15	1019.93	1019.96	1020.00	1019.97	1019.90	1019.87	1019.88	1019.87	1019.88	1019.91	1019.89	1019.87	1019.91
	16	1019.87	1019.87	1019.91	1019.89	1019.86	1019.92	1020.00	1020.01	1020.00	1020.03	1020.10	1020.14	1019.97
	17	1020.18	1020.23	1020.21	1020.19	1020.23	1020.25	1020.26	1020.25	1020.24	1020.27	1020.29	1020.27	1020.24
	18	1020.25	1020.26	1020.26	1020.25	1020.26	1020.32	1020.38	1020.42	1020.42	1020.43	1020.45	1020.47	1020.35
	19	1020.52	1020.54	1020.57	1020.62	1020.67	1020.70	1020.73	1020.73	1020.71	1020.71	1020.71	1020.73	1020.66
	20	1020.76	1020.75	1020.73	1020.73	1020.75	1020.79	1020.82	1020.85	1020.86	1020.85	1020.83	1020.82	1020.79
	21	1020.84	1020.85	1020.82	1020.79	1020.77	1020.75	1020.73	1020.71	1020.70	1020.69	1020.67	1020.66	1020.75
	22	1020.64	1020.63	1020.58	1020.53	1020.49	1020.45	1020.44	1020.43	1020.42	1020.41	1020.41	1020.38	1020.48
	23	1020.38	1020.41	1020.40	1020.39	1020.41	1020.42	1020.42	1020.42	1020.39	1020.38	1020.36	1020.35	1020.39
14	0	1020.38	1020.38	1020.37	1020.37	1020.38	1020.37	1020.34	1020.34	1020.36	1020.35	1020.32	1020.28	1020.35
	1	1020.27	1020.26	1020.22	1020.17	1020.13	1020.10	1020.07	1020.06	1020.05	1020.00	1019.96	1019.94	1020.10
	2	1019.92	1019.93	1019.92	1019.90	1019.91	1019.91	1019.90	1019.91	1019.92	1019.91	1019.91	1019.91	1019.91
	3	1019.90	1019.88	1019.87	1019.88	1019.86	1019.84	1019.84	1019.84	1019.87	1019.94	1019.98	1019.99	1019.89
	4	1020.00	1020.00	1020.03	1020.07	1020.09	1020.10	1020.12	1020.16	1020.23	1020.26	1020.28	1020.30	1020.13
	5	1020.32	1020.33	1020.38	1020.44	1020.44	1020.42	1020.41	1020.41	1020.42	1020.42	1020.41	1020.41	1020.40
	6	1020.43	1020.45	1020.46	1020.47	1020.51	1020.54	1020.57	1020.59	1020.59	1020.58	1020.59	1020.62	1020.53
	7	1020.64	1020.65	1020.66	1020.68	1020.68	1020.65	1020.60	1020.58	1020.57	1020.56	1020.53	1020.49	1020.61
	8	1020.47	1020.47	1020.49	1020.54	1020.58	1020.59	1020.59	1020.60	1020.59	1020.59	1020.59	1020.57	1020.55
	9	1020.53	1020.49	1020.47	1020.47	1020.45	1020.45	1020.44	1020.41	1020.39	1020.38	1020.36	1020.35	1020.43
	10	1020.34	1020.33	1020.33	1020.32	1020.28	1020.27	1020.29	1020.32	1020.31	1020.25	1020.23	1020.21	1020.29
	11	1020.18	1020.17	1020.16	1020.15	1020.11	1020.04	1020.01	1019.97	1019.93	1019.91	1019.89	1019.89	1020.03
	12	1019.89	1019.88	1019.86	1019.83	1019.82	1019.80	1019.78	1019.75	1019.73	1019.69	1019.66	1019.65	1019.78
	13	1019.65	1019.65	1019.65	1019.64	1019.61	1019.61	1019.61	1019.59	1019.59	1019.57	1019.55	1019.58	1019.61
	14	1019.65	1019.67	1019.67	1019.65	1019.65	1019.65	1019.62	1019.60	1019.58	1019.55	1019.51	1019.49	1019.61
	15	1019.49	1019.47	1019.45	1019.42	1019.39	1019.39	1019.39	1019.38	1019.36	1019.35	1019.35	1019.37	1019.40
	16	1019.36	1019.33	1019.30	1019.26	1019.25	1019.25	1019.25	1019.30	1019.35	1019.36	1019.36	1019.34	1019.31
	17	1019.34	1019.36	1019.38	1019.40	1019.44	1019.47	1019.46	1019.48	1019.52	1019.57	1019.63	1019.65	1019.47
	18	1019.68	1019.73	1019.76	1019.77	1019.77	1019.80	1019.81	1019.81	1019.83	1019.88	1019.93	1019.94	1019.81
	19	1019.95	1019.98	1020.01	1020.04	1020.09	1020.16	1020.20	1020.22	1020.22	1020.21	1020.20	1020.18	1020.12
	20	1020.17	1020.18	1020.18	1020.18	1020.17	1020.15	1020.14	1020.15	1020.13	1020.09	1020.07	1020.03	1020.13
	21	1020.01	1020.02	1020.01	1020.00	1020.00	1020.00	1019.99	1020.00	1020.00	1019.97	1019.93	1019.92	1019.99
	22	1019.93	1019.92	1019.90	1019.89	1019.89	1019.91	1019.91	1019.89	1019.89	1019.87	1019.82	1019.78	1019.88
	23	1019.74	1019.72	1019.70	1019.66	1019.62	1019.59	1019.56	1019.54	1019.53	1019.53	1019.52	1019.50	1019.60

S.V.I.R.CO. Observatory - Pressure in hectoPascal – August 2016

day	hh	00_05	05_10	10_15	15_20	20_25	25_30	30_35	35_40	40_45	45_50	50_55	55_60	average
15	0	1019.54	1019.54	1019.54	1019.56	1019.56	1019.53	1019.49	1019.47	1019.45	1019.41	1019.37	1019.34	1019.48
	1	1019.32	1019.30	1019.26	1019.26	1019.26	1019.23	1019.20	1019.18	1019.16	1019.13	1019.10	1019.10	1019.21
	2	1019.09	1019.08	1019.04	1018.98	1018.95	1018.95	1018.94	1018.92	1018.89	1018.86	1018.85	1018.83	1018.95
	3	1018.83	1018.83	1018.85	1018.86	1018.85	1018.84	1018.84	1018.87	1018.88	1018.82	1018.74	1018.71	1018.82
	4	1018.71	1018.72	1018.73	1018.74	1018.77	1018.77	1018.76	1018.75	1018.74	1018.75	1018.78	1018.83	1018.75
	5	1018.85	1018.85	1018.86	1018.87	1018.86	1018.85	1018.86	1018.87	1018.88	1018.87	1018.85	1018.83	1018.86
	6	1018.83	1018.84	1018.83	1018.84	1018.87	1018.90	1018.92	1018.97	1019.04	1019.07	1019.07	1019.05	1018.93
	7	1019.03	1019.03	1019.03	1019.02	1019.00	1018.99	1018.97	1018.94	1018.92	1018.91	1018.90	1018.87	1018.97
	8	1018.84	1018.82	1018.80	1018.77	1018.75	1018.76	1018.76	1018.75	1018.72	1018.67	1018.61	1018.56	1018.73
	9	1018.50	1018.44	1018.40	1018.37	1018.33	1018.30	1018.23	1018.15	1018.08	1018.05	1018.05	1018.04	1018.24
	10	1018.02	1017.98	1017.96	1017.97	1017.99	1018.02	1018.01	1017.98	1017.97	1017.97	1017.97	1017.97	1017.98
	11	1017.99	1017.99	1017.96	1017.93	1017.90	1017.88	1017.86	1017.81	1017.79	1017.78	1017.77	1017.74	1017.86
	12	1017.68	1017.64	1017.63	1017.61	1017.57	1017.52	1017.51	1017.52	1017.52	1017.52	1017.53	1017.52	1017.56
	13	1017.53	1017.51	1017.47	1017.43	1017.39	1017.35	1017.34	1017.34	1017.32	1017.31	1017.29	1017.28	1017.38
	14	1017.29	1017.29	1017.28	1017.27	1017.28	1017.26	1017.24	1017.24	1017.20	1017.18	1017.16	1017.11	1017.23
	15	1017.07	1017.04	1017.00	1016.99	1017.02	1017.02	1016.97	1016.95	1016.95	1016.91	1016.88	1016.90	1016.97
	16	1016.89	1016.86	1016.86	1016.85	1016.82	1016.82	1016.82	1016.79	1016.78	1016.80	1016.78	1016.77	1016.82
	17	1016.77	1016.75	1016.72	1016.70	1016.67	1016.64	1016.66	1016.69	1016.73	1016.77	1016.77	1016.77	1016.72
	18	1016.79	1016.81	1016.83	1016.86	1016.89	1016.91	1016.93	1016.97	1017.00	1016.99	1016.99	1016.99	1016.91
	19	1016.98	1016.99	1017.04	1017.10	1017.16	1017.16	1017.14	1017.15	1017.15	1017.15	1017.18	1017.20	1017.11
	20	1017.20	1017.19	1017.17	1017.17	1017.16	1017.17	1017.23	1017.25	1017.25	1017.28	1017.31	1017.34	1017.22
	21	1017.38	1017.42	1017.44	1017.49	1017.54	1017.56	1017.57	1017.56	1017.55	1017.52	1017.49	1017.48	1017.50
	22	1017.49	1017.53	1017.55	1017.53	1017.52	1017.55	1017.54	1017.48	1017.45	1017.44	1017.42	1017.40	1017.49
	23	1017.36	1017.34	1017.33	1017.28	1017.21	1017.15	1017.10	1017.10	1017.14	1017.16	1017.15	1017.12	1017.20
16	0	1017.06	1017.01	1016.93	1016.88	1016.81	1016.75	1016.71	1016.71	1016.74	1016.71	1016.68	1016.67	1016.79
	1	1016.65	1016.63	1016.60	1016.57	1016.57	1016.53	1016.46	1016.44	1016.45	1016.46	1016.46	1016.44	1016.52
	2	1016.42	1016.39	1016.35	1016.29	1016.23	1016.17	1016.11	1015.99	1015.86	1015.80	1015.78	1015.76	1016.09
	3	1015.79	1015.88	1015.92	1015.89	1015.86	1015.88	1015.92	1015.93	1015.93	1015.94	1015.92	1015.89	1015.89
	4	1015.88	1015.88	1015.90	1015.91	1015.91	1015.93	1015.93	1015.90	1015.93	1016.02	1016.07	1016.09	1015.94
	5	1016.12	1016.18	1016.22	1016.24	1016.22	1016.18	1016.16	1016.17	1016.20	1016.18	1016.14	1016.12	1016.17
	6	1016.13	1016.13	1016.11	1016.05	1016.03	1016.01	1015.99	1015.98	1016.00	1016.02	1016.04	1016.07	1016.04
	7	1016.06	1016.02	1015.98	1015.95	1015.92	1015.91	1015.91	1015.88	1015.82	1015.76	1015.69	1015.66	1015.88
	8	1015.65	1015.61	1015.54	1015.53	1015.60	1015.70	1015.75	1015.73	1015.70	1015.64	1015.60	1015.61	1015.64
	9	1015.59	1015.58	1015.65	1015.68	1015.60	1015.51	1015.46	1015.39	1015.32	1015.25	1015.19	1015.18	1015.45
	10	1015.23	1015.24	1015.20	1015.16	1015.10	1015.06	1015.04	1015.07	1015.04	1014.98	1014.97	1014.97	1015.08
	11	1014.94	1014.92	1014.93	1014.88	1014.82	1014.79	1014.78	1014.78	1014.75	1014.73	1014.74	1014.75	1014.82
	12	1014.74	1014.69	1014.66	1014.65	1014.61	1014.57	1014.56	1014.58	1014.56	1014.55	1014.55	1014.52	1014.60
	13	1014.46	1014.44	1014.44	1014.40	1014.35	1014.32	1014.29	1014.25	1014.19	1014.18	1014.19	1014.17	1014.30
	14	1014.11	1014.05	1013.98	1013.89	1013.90	1013.97	1013.93	1013.91	1013.96	1013.94	1013.87	1013.78	1013.94
	15	1013.74	1013.71	1013.67	1013.65	1013.61	1013.59	1013.59	1013.59	1013.59	1013.58	1013.52	1013.46	1013.61
	16	1013.44	1013.42	1013.35	1013.26	1013.19	1013.11	1013.10	1013.13	1013.14	1013.20	1013.29	1013.38	1013.25
	17	1013.44	1013.47	1013.49	1013.53	1013.59	1013.66	1013.69	1013.69	1013.71	1013.72	1013.76	1013.80	1013.63
	18	1013.82	1013.84	1013.87	1013.92	1013.92	1013.91	1013.93	1013.99	1014.08	1014.11	1014.13	1014.15	1013.97
	19	1014.14	1014.20	1014.25	1014.27	1014.25	1014.21	1014.23	1014.25	1014.27	1014.28	1014.27	1014.23	1014.24
	20	1014.21	1014.25	1014.23	1014.16	1014.14	1014.13	1014.08	1014.04	1014.05	1014.04	1014.00	1013.99	1014.11
	21	1014.00	1013.99	1013.96	1013.95	1013.95	1013.95	1013.95	1013.93	1013.88	1013.82	1013.79	1013.76	1013.91
	22	1013.75	1013.75	1013.74	1013.72	1013.70	1013.67	1013.65	1013.60	1013.57	1013.60	1013.56	1013.48	1013.65
	23	1013.42	1013.38	1013.36	1013.31	1013.23	1013.18	1013.14	1013.10	1013.09	1013.09	1013.02	1012.96	1013.19

S.V.I.R.CO. Observatory - Pressure in hectoPascal – August 2016

day	hh	00_05	05_10	10_15	15_20	20_25	25_30	30_35	35_40	40_45	45_50	50_55	55_60	average
17	0	1012.79	1012.76	1012.73	1012.68	1012.57	1012.51	1012.51	1012.45	1012.39	1012.37	1012.30	1012.19	1012.51
	1	1012.14	1012.09	1012.01	1012.02	1012.05	1012.05	1012.03	1012.00	1011.98	1011.98	1012.00	1011.99	1012.03
	2	1011.96	1011.96	1011.93	1011.85	1011.76	1011.76	1011.81	1011.90	1012.06	1012.12	1012.05	1011.97	1011.92
	3	1011.91	1011.86	1011.85	1011.89	1011.91	1011.89	1011.85	1011.81	1011.76	1011.72	1011.71	1011.78	1011.83
	4	1011.84	1011.81	1011.80	1011.79	1011.76	1011.74	1011.75	1011.75	1011.78	1011.87	1011.91	1011.90	1011.81
	5	1011.89	1011.87	1011.85	1011.85	1011.87	1011.85	1011.82	1011.83	1011.83	1011.79	1011.73	1011.68	1011.82
	6	1011.67	1011.71	1011.76	1011.80	1011.79	1011.82	1011.87	1011.88	1011.89	1011.95	1012.03	1012.05	1011.85
	7	1012.05	1012.07	1012.05	1011.95	1011.88	1011.89	1011.94	1012.01	1012.06	1012.09	1012.11	1012.12	1012.02
	8	1012.13	1012.12	1012.14	1012.22	1012.29	1012.30	1012.28	1012.28	1012.28	1012.28	1012.27	1012.26	1012.24
	9	1012.25	1012.25	1012.27	1012.30	1012.29	1012.27	1012.26	1012.27	1012.28	1012.27	1012.23	1012.20	1012.26
	10	1012.19	1012.17	1012.17	1012.17	1012.12	1012.08	1012.06	1012.04	1011.98	1011.89	1011.85	1011.83	1012.04
	11	1011.80	1011.76	1011.71	1011.67	1011.65	1011.63	1011.59	1011.58	1011.55	1011.52	1011.50	1011.50	1011.62
	12	1011.49	1011.48	1011.50	1011.49	1011.49	1011.51	1011.52	1011.48	1011.41	1011.37	1011.34	1011.29	1011.45
	13	1011.22	1011.17	1011.15	1011.10	1011.06	1011.00	1010.94	1010.88	1010.80	1010.77	1010.77	1010.75	1010.96
	14	1010.69	1010.63	1010.59	1010.57	1010.54	1010.49	1010.46	1010.43	1010.42	1010.45	1010.43	1010.41	1010.51
	15	1010.44	1010.47	1010.53	1010.59	1010.62	1010.66	1010.69	1010.69	1010.67	1010.68	1010.69	1010.70	1010.62
	16	1010.72	1010.70	1010.67	1010.65	1010.62	1010.58	1010.53	1010.51	1010.51	1010.50	1010.48	1010.48	1010.58
	17	1010.52	1010.57	1010.61	1010.67	1010.76	1010.82	1010.83	1010.84	1010.85	1010.86	1010.85	1010.86	1010.75
	18	1010.90	1010.95	1010.97	1010.96	1010.98	1011.05	1011.09	1011.14	1011.21	1011.27	1011.32	1011.39	1011.10
	19	1011.42	1011.41	1011.45	1011.50	1011.51	1011.51	1011.54	1011.59	1011.62	1011.57	1011.53	1011.57	1011.52
	20	1011.63	1011.62	1011.62	1011.66	1011.69	1011.69	1011.68	1011.71	1011.73	1011.72	1011.68	1011.68	1011.67
	21	1011.74	1011.76	1011.74	1011.71	1011.69	1011.70	1011.73	1011.75	1011.74	1011.69	1011.65	1011.64	1011.71
	22	1011.65	1011.65	1011.61	1011.52	1011.46	1011.44	1011.40	1011.41	1011.44	1011.42	1011.41	1011.42	1011.49
	23	1011.40	1011.34	1011.26	1011.21	1011.19	1011.22	1011.26	1011.23	1011.15	1011.09	1011.05	1011.01	1011.20
18	0	1010.89	1010.89	1010.88	1010.86	1010.82	1010.75	1010.75	1010.78	1010.75	1010.74	1010.70	1010.61	1010.78
	1	1010.56	1010.58	1010.54	1010.51	1010.49	1010.43	1010.42	1010.37	1010.27	1010.23	1010.26	1010.30	1010.41
	2	1010.31	1010.34	1010.36	1010.34	1010.30	1010.23	1010.19	1010.16	1010.11	1010.05	1009.99	1009.96	1010.19
	3	1009.95	1009.99	1010.01	1009.99	1009.96	1009.89	1009.83	1009.85	1009.84	1009.81	1009.82	1009.84	1009.90
	4	1009.87	1009.92	1009.95	1009.95	1009.96	1009.99	1010.00	1009.99	1009.93	1009.88	1009.88	1009.88	1009.93
	5	1009.86	1009.85	1009.88	1009.96	1010.02	1010.03	1009.97	1009.90	1009.89	1009.92	1009.89	1009.90	1009.92
	6	1010.01	1010.08	1010.13	1010.18	1010.19	1010.21	1010.22	1010.21	1010.25	1010.28	1010.26	1010.24	1010.19
	7	1010.24	1010.26	1010.28	1010.32	1010.36	1010.38	1010.40	1010.38	1010.35	1010.36	1010.37	1010.34	1010.34
	8	1010.30	1010.30	1010.32	1010.34	1010.37	1010.39	1010.39	1010.38	1010.37	1010.33	1010.33	1010.34	1010.34
	9	1010.34	1010.34	1010.33	1010.33	1010.34	1010.34	1010.33	1010.35	1010.40	1010.42	1010.43	1010.44	1010.36
	10	1010.48	1010.50	1010.43	1010.34	1010.32	1010.33	1010.27	1010.19	1010.16	1010.14	1010.11	1010.05	1010.27
	11	1010.01	1009.99	1009.98	1010.01	1010.01	1010.01	1009.99	1009.97	1009.93	1009.88	1009.86	1009.87	1009.96
	12	1009.89	1009.85	1009.84	1009.84	1009.78	1009.69	1009.61	1009.63	1009.65	1009.63	1009.64	1009.57	1009.72
	13	1009.53	1009.52	1009.48	1009.44	1009.41	1009.38	1009.36	1009.37	1009.35	1009.34	1009.36	1009.37	1009.41
	14	1009.36	1009.32	1009.28	1009.26	1009.19	1009.13	1009.16	1009.27	1009.33	1009.29	1009.31	1009.39	1009.27
	15	1009.41	1009.43	1009.50	1009.56	1009.59	1009.58	1009.56	1009.63	1009.70	1009.66	1009.56	1009.45	1009.55
	16	1009.38	1009.41	1009.46	1009.51	1009.60	1009.65	1009.66	1009.69	1009.73	1009.74	1009.74	1009.76	1009.61
	17	1009.82	1009.89	1009.89	1009.86	1009.83	1009.83	1009.83	1009.87	1009.95	1010.02	1010.09	1010.19	1009.92
	18	1010.32	1010.43	1010.51	1010.54	1010.57	1010.59	1010.61	1010.64	1010.63	1010.63	1010.67	1010.70	1010.57
	19	1010.72	1010.74	1010.72	1010.71	1010.72	1010.75	1010.87	1011.00	1011.06	1011.09	1011.13	1011.20	1010.89
	20	1011.25	1011.25	1011.25	1011.22	1011.16	1011.17	1011.17	1011.18	1011.17	1011.16	1011.15	1011.16	1011.19
	21	1011.22	1011.26	1011.28	1011.35	1011.38	1011.38	1011.35	1011.29	1011.25	1011.27	1011.31	1011.26	1011.30
	22	1011.19	1011.17	1011.13	1011.09	1011.16	1011.25	1011.24	1011.24	1011.34	1011.42	1011.44	1011.42	1011.26
	23	1011.41	1011.40	1011.38	1011.34	1011.30	1011.31	1011.36	1011.37	1011.36	1011.31	1011.28	1011.29	1011.34

S.V.I.R.CO. Observatory - Pressure in hectoPascal – August 2016

day	hh	00_05	05_10	10_15	15_20	20_25	25_30	30_35	35_40	40_45	45_50	50_55	55_60	average
19	0	1011.26	1011.26	1011.25	1011.27	1011.30	1011.28	1011.23	1011.17	1011.12	1011.13	1011.18	1011.20	1011.22
	1	1011.21	1011.23	1011.20	1011.15	1011.11	1011.07	1011.06	1011.05	1011.05	1011.05	1011.00	1010.98	1011.09
	2	1010.95	1010.88	1010.84	1010.86	1010.91	1010.94	1010.91	1010.84	1010.81	1010.77	1010.71	1010.68	1010.84
	3	1010.67	1010.70	1010.71	1010.69	1010.68	1010.70	1010.75	1010.81	1010.83	1010.80	1010.79	1010.82	1010.74
	4	1010.85	1010.87	1010.88	1010.94	1011.03	1011.11	1011.13	1011.12	1011.11	1011.13	1011.15	1011.15	1011.04
	5	1011.15	1011.18	1011.23	1011.26	1011.31	1011.35	1011.40	1011.47	1011.55	1011.61	1011.66	1011.70	1011.40
	6	1011.69	1011.69	1011.72	1011.72	1011.74	1011.76	1011.76	1011.75	1011.75	1011.79	1011.82	1011.81	1011.75
	7	1011.81	1011.84	1011.86	1011.91	1011.94	1011.96	1012.04	1012.11	1012.13	1012.12	1012.11	1012.11	1011.99
	8	1012.13	1012.20	1012.24	1012.27	1012.30	1012.33	1012.35	1012.35	1012.37	1012.38	1012.34	1012.35	1012.30
	9	1012.35	1012.31	1012.30	1012.30	1012.28	1012.25	1012.24	1012.22	1012.23	1012.22	1012.18	1012.16	1012.25
	10	1012.13	1012.08	1012.06	1012.00	1011.96	1011.97	1011.97	1011.94	1011.91	1011.89	1011.85	1011.82	1011.96
	11	1011.80	1011.78	1011.76	1011.72	1011.72	1011.76	1011.73	1011.71	1011.71	1011.72	1011.72	1011.70	1011.73
	12	1011.69	1011.68	1011.66	1011.68	1011.74	1011.73	1011.72	1011.73	1011.73	1011.69	1011.67	1011.69	1011.70
	13	1011.68	1011.64	1011.65	1011.70	1011.67	1011.61	1011.55	1011.50	1011.48	1011.44	1011.38	1011.34	1011.55
	14	1011.31	1011.31	1011.32	1011.33	1011.36	1011.40	1011.40	1011.37	1011.32	1011.28	1011.28	1011.32	1011.33
	15	1011.38	1011.42	1011.45	1011.44	1011.44	1011.44	1011.44	1011.46	1011.45	1011.48	1011.52	1011.49	1011.45
	16	1011.46	1011.46	1011.46	1011.43	1011.39	1011.38	1011.36	1011.32	1011.32	1011.34	1011.39	1011.45	1011.39
	17	1011.51	1011.60	1011.66	1011.72	1011.79	1011.84	1011.88	1011.88	1011.88	1011.92	1011.98	1012.00	1011.80
	18	1012.03	1012.04	1012.09	1012.22	1012.34	1012.41	1012.46	1012.54	1012.61	1012.61	1012.58	1012.62	1012.38
	19	1012.69	1012.74	1012.79	1012.83	1012.87	1012.92	1012.95	1012.96	1012.95	1012.95	1012.98	1013.01	1012.89
	20	1013.02	1013.06	1013.09	1013.10	1013.12	1013.14	1013.21	1013.29	1013.37	1013.47	1013.55	1013.58	1013.25
	21	1013.58	1013.56	1013.51	1013.50	1013.54	1013.58	1013.62	1013.67	1013.71	1013.72	1013.69	1013.66	1013.61
	22	1013.63	1013.62	1013.63	1013.61	1013.66	1013.74	1013.77	1013.77	1013.76	1013.78	1013.83	1013.89	1013.72
	23	1013.96	1013.98	1013.96	1013.97	1013.95	1013.89	1013.82	1013.76	1013.72	1013.65	1013.55	1013.54	1013.81
20	0	1013.51	1013.51	1013.47	1013.41	1013.35	1013.31	1013.32	1013.34	1013.34	1013.34	1013.30	1013.28	1013.36
	1	1013.31	1013.34	1013.34	1013.30	1013.29	1013.28	1013.28	1013.28	1013.29	1013.31	1013.31	1013.31	1013.30
	2	1013.31	1013.32	1013.32	1013.29	1013.28	1013.30	1013.29	1013.28	1013.29	1013.28	1013.26	1013.24	1013.29
	3	1013.22	1013.26	1013.25	1013.16	1013.12	1013.16	1013.20	1013.21	1013.22	1013.26	1013.32	1013.38	1013.23
	4	1013.43	1013.46	1013.48	1013.51	1013.57	1013.65	1013.67	1013.65	1013.66	1013.72	1013.77	1013.79	1013.61
	5	1013.78	1013.79	1013.81	1013.84	1013.86	1013.87	1013.88	1013.91	1013.94	1013.96	1013.97	1014.00	1013.88
	6	1014.01	1014.00	1013.98	1013.95	1013.96	1014.00	1014.02	1014.02	1014.01	1014.02	1014.02	1014.03	1014.00
	7	1014.05	1014.06	1014.04	1014.02	1013.99	1013.96	1013.96	1013.93	1013.87	1013.88	1013.90	1013.90	1013.96
	8	1013.91	1013.92	1013.94	1013.95	1013.94	1013.94	1013.95	1013.97	1013.99	1014.00	1013.98	1013.95	1013.95
	9	1013.93	1013.92	1013.89	1013.85	1013.83	1013.82	1013.84	1013.85	1013.81	1013.77	1013.75	1013.76	1013.83
	10	1013.79	1013.81	1013.81	1013.82	1013.80	1013.77	1013.76	1013.76	1013.79	1013.80	1013.84	1013.85	1013.80
	11	1013.81	1013.76	1013.72	1013.72	1013.72	1013.72	1013.76	1013.78	1013.83	1013.91	1013.95	1013.99	1013.80
	12	1014.03	1014.06	1014.06	1014.05	1014.05	1014.04	1014.04	1014.03	1014.02	1014.03	1014.03	1014.01	1014.03
	13	1013.99	1013.95	1013.91	1013.90	1013.88	1013.84	1013.82	1013.79	1013.74	1013.71	1013.72	1013.73	1013.83
	14	1013.72	1013.71	1013.73	1013.74	1013.73	1013.72	1013.71	1013.70	1013.69	1013.70	1013.68	1013.66	1013.71
	15	1013.68	1013.68	1013.68	1013.65	1013.63	1013.64	1013.63	1013.62	1013.62	1013.63	1013.61	1013.57	1013.63
	16	1013.55	1013.51	1013.48	1013.49	1013.51	1013.49	1013.44	1013.35	1013.28	1013.26	1013.28	1013.30	1013.41
	17	1013.33	1013.36	1013.37	1013.40	1013.45	1013.49	1013.51	1013.52	1013.54	1013.57	1013.60	1013.62	1013.48
	18	1013.60	1013.61	1013.65	1013.68	1013.70	1013.78	1013.85	1013.88	1013.96	1014.04	1014.08	1014.10	1013.83
	19	1014.15	1014.22	1014.26	1014.29	1014.33	1014.38	1014.38	1014.43	1014.52	1014.55	1014.59	1014.63	1014.39
	20	1014.64	1014.65	1014.67	1014.68	1014.67	1014.64	1014.60	1014.60	1014.60	1014.56	1014.53	1014.49	1014.61
	21	1014.44	1014.45	1014.50	1014.53	1014.54	1014.54	1014.54	1014.55	1014.55	1014.54	1014.54	1014.54	1014.52
	22	1014.54	1014.51	1014.50	1014.49	1014.47	1014.48	1014.49	1014.47	1014.42	1014.37	1014.37	1014.40	1014.46
	23	1014.39	1014.37	1014.40	1014.42	1014.42	1014.41	1014.38	1014.34	1014.30	1014.27	1014.24	1014.22	1014.34

S.V.I.R.CO. Observatory - Pressure in hectoPascal – August 2016

day	hh	00_05	05_10	10_15	15_20	20_25	25_30	30_35	35_40	40_45	45_50	50_55	55_60	average
21	0	1014.26	1014.28	1014.30	1014.33	1014.39	1014.40	1014.38	1014.34	1014.32	1014.36	1014.38	1014.41	1014.35
	1	1014.42	1014.40	1014.38	1014.40	1014.40	1014.38	1014.38	1014.39	1014.42	1014.47	1014.50	1014.46	1014.41
	2	1014.42	1014.40	1014.31	1014.26	1014.28	1014.25	1014.23	1014.24	1014.23	1014.21	1014.21	1014.17	1014.27
	3	1014.12	1014.09	1014.10	1014.11	1014.12	1014.09	1014.03	1013.98	1013.96	1014.01	1014.03	1014.03	1014.05
	4	1014.08	1014.19	1014.28	1014.30	1014.32	1014.39	1014.40	1014.34	1014.31	1014.31	1014.32	1014.34	1014.30
	5	1014.35	1014.37	1014.45	1014.53	1014.52	1014.54	1014.64	1014.71	1014.73	1014.68	1014.65	1014.65	1014.57
	6	1014.65	1014.65	1014.60	1014.56	1014.56	1014.53	1014.51	1014.52	1014.52	1014.51	1014.53	1014.55	1014.56
	7	1014.51	1014.46	1014.45	1014.49	1014.48	1014.46	1014.47	1014.47	1014.48	1014.47	1014.47	1014.48	1014.47
	8	1014.49	1014.45	1014.40	1014.36	1014.34	1014.37	1014.42	1014.44	1014.43	1014.38	1014.32	1014.26	1014.39
	9	1014.22	1014.25	1014.30	1014.28	1014.23	1014.17	1014.13	1014.13	1014.16	1014.19	1014.20	1014.15	1014.20
	10	1014.10	1014.10	1014.09	1014.06	1014.05	1014.01	1014.00	1013.97	1013.91	1013.87	1013.81	1013.80	1013.98
	11	1013.82	1013.82	1013.77	1013.72	1013.69	1013.67	1013.70	1013.72	1013.74	1013.76	1013.73	1013.73	1013.74
	12	1013.74	1013.72	1013.71	1013.73	1013.74	1013.73	1013.73	1013.71	1013.67	1013.67	1013.72	1013.72	1013.71
	13	1013.68	1013.67	1013.70	1013.68	1013.60	1013.54	1013.49	1013.46	1013.42	1013.34	1013.31	1013.33	1013.52
	14	1013.34	1013.34	1013.32	1013.30	1013.28	1013.25	1013.24	1013.23	1013.22	1013.23	1013.27	1013.31	1013.28
	15	1013.31	1013.30	1013.31	1013.31	1013.27	1013.24	1013.22	1013.23	1013.22	1013.22	1013.22	1013.22	1013.25
	16	1013.22	1013.17	1013.14	1013.16	1013.16	1013.16	1013.15	1013.12	1013.10	1013.12	1013.19	1013.24	1013.16
	17	1013.24	1013.29	1013.37	1013.38	1013.36	1013.38	1013.43	1013.44	1013.45	1013.49	1013.53	1013.58	1013.41
	18	1013.61	1013.62	1013.64	1013.64	1013.63	1013.65	1013.70	1013.76	1013.82	1013.91	1014.00	1014.06	1013.75
	19	1014.09	1014.10	1014.10	1014.08	1014.06	1014.02	1014.04	1014.09	1014.11	1014.12	1014.07	1014.01	1014.07
	20	1013.98	1013.97	1013.90	1013.85	1013.85	1013.86	1013.88	1013.91	1013.92	1013.95	1014.01	1014.04	1013.93
	21	1014.04	1014.09	1014.10	1014.07	1014.09	1014.12	1014.06	1014.00	1013.94	1013.85	1013.84	1013.87	1014.00
	22	1013.90	1013.95	1014.01	1014.07	1014.16	1014.21	1014.23	1014.24	1014.24	1014.29	1014.30	1014.25	1014.15
	23	1014.24	1014.21	1014.19	1014.25	1014.31	1014.30	1014.27	1014.28	1014.26	1014.24	1014.27	1014.32	1014.26
22	0	1014.37	1014.36	1014.33	1014.35	1014.37	1014.37	1014.36	1014.36	1014.40	1014.44	1014.46	1014.45	1014.38
	1	1014.47	1014.54	1014.58	1014.55	1014.49	1014.42	1014.32	1014.21	1014.16	1014.14	1014.15	1014.17	1014.35
	2	1014.18	1014.18	1014.19	1014.18	1014.13	1014.04	1013.99	1013.97	1013.97	1014.00	1013.98	1013.95	1014.06
	3	1013.97	1013.99	1013.98	1013.94	1013.94	1014.00	1014.02	1013.97	1013.98	1014.03	1014.07	1014.05	1013.99
	4	1014.03	1014.05	1014.05	1014.04	1014.11	1014.28	1014.41	1014.58	1014.77	1014.86	1014.90	1014.96	1014.42
	5	1015.02	1015.04	1015.06	1015.08	1015.12	1015.11	1015.08	1015.10	1015.12	1015.14	1015.18	1015.26	1015.11
	6	1015.30	1015.27	1015.25	1015.25	1015.28	1015.28	1015.25	1015.26	1015.29	1015.34	1015.38	1015.39	1015.29
	7	1015.42	1015.44	1015.47	1015.46	1015.43	1015.41	1015.43	1015.49	1015.52	1015.53	1015.53	1015.52	1015.47
	8	1015.53	1015.53	1015.51	1015.52	1015.57	1015.60	1015.63	1015.63	1015.61	1015.63	1015.63	1015.58	1015.58
	9	1015.53	1015.48	1015.46	1015.43	1015.45	1015.47	1015.45	1015.39	1015.32	1015.33	1015.33	1015.27	1015.41
	10	1015.18	1015.17	1015.17	1015.13	1015.11	1015.09	1015.08	1015.06	1015.04	1015.04	1015.04	1015.01	1015.09
	11	1014.97	1014.96	1014.95	1014.92	1014.88	1014.86	1014.80	1014.75	1014.72	1014.72	1014.75	1014.73	1014.83
	12	1014.64	1014.59	1014.57	1014.55	1014.54	1014.54	1014.50	1014.45	1014.43	1014.42	1014.42	1014.40	1014.50
	13	1014.36	1014.34	1014.29	1014.28	1014.34	1014.35	1014.33	1014.33	1014.30	1014.26	1014.23	1014.23	1014.30
	14	1014.26	1014.24	1014.23	1014.24	1014.25	1014.28	1014.23	1014.18	1014.21	1014.25	1014.26	1014.26	1014.24
	15	1014.27	1014.28	1014.32	1014.36	1014.39	1014.42	1014.44	1014.46	1014.47	1014.51	1014.56	1014.63	1014.42
	16	1014.69	1014.71	1014.74	1014.81	1014.88	1014.90	1014.86	1014.86	1014.83	1014.78	1014.77	1014.76	1014.80
	17	1014.75	1014.77	1014.88	1014.96	1014.98	1014.99	1015.03	1015.06	1015.05	1015.06	1015.06	1015.08	1014.97
	18	1015.11	1015.12	1015.17	1015.21	1015.20	1015.21	1015.29	1015.38	1015.47	1015.58	1015.67	1015.78	1015.35
	19	1015.90	1015.98	1016.06	1016.18	1016.31	1016.37	1016.37	1016.43	1016.49	1016.55	1016.64	1016.69	1016.33
	20	1016.72	1016.80	1016.88	1016.92	1016.96	1017.02	1017.05	1017.09	1017.13	1017.15	1017.19	1017.22	1017.01
	21	1017.26	1017.32	1017.38	1017.43	1017.48	1017.53	1017.59	1017.63	1017.66	1017.72	1017.78	1017.86	1017.55
	22	1017.94	1017.95	1017.91	1017.92	1017.95	1017.97	1017.98	1017.99	1017.99	1017.96	1017.94	1017.93	1017.95
	23	1017.92	1017.90	1017.87	1017.84	1017.81	1017.82	1017.81	1017.74	1017.65	1017.61	1017.65	1017.67	1017.77

S.V.I.R.CO. Observatory - Pressure in hectoPascal – August 2016

day	hh	00_05	05_10	10_15	15_20	20_25	25_30	30_35	35_40	40_45	45_50	50_55	55_60	average
23	0	1017.65	1017.65	1017.63	1017.62	1017.64	1017.71	1017.79	1017.80	1017.76	1017.67	1017.57	1017.55	1017.67
	1	1017.52	1017.47	1017.47	1017.48	1017.49	1017.49	1017.46	1017.46	1017.45	1017.36	1017.33	1017.31	1017.44
	2	1017.28	1017.23	1017.13	1017.07	1017.10	1017.14	1017.05	1017.03	1017.06	1017.03	1017.02	1017.04	1017.10
	3	1017.09	1017.11	1017.11	1017.12	1017.16	1017.23	1017.27	1017.28	1017.23	1017.24	1017.25	1017.18	1017.19
	4	1017.13	1017.09	1016.99	1016.99	1017.04	1017.04	1017.00	1017.06	1017.25	1017.37	1017.43	1017.49	1017.15
	5	1017.56	1017.55	1017.59	1017.66	1017.62	1017.57	1017.52	1017.53	1017.61	1017.72	1017.84	1017.89	1017.64
	6	1017.88	1017.84	1017.80	1017.76	1017.75	1017.82	1017.83	1017.69	1017.59	1017.62	1017.65	1017.66	1017.74
	7	1017.71	1017.76	1017.75	1017.76	1017.79	1017.79	1017.83	1017.85	1017.83	1017.84	1017.92	1018.02	1017.82
	8	1018.08	1018.08	1018.07	1018.08	1018.14	1018.19	1018.20	1018.21	1018.15	1018.07	1018.05	1017.98	1018.11
	9	1017.93	1017.92	1017.85	1017.77	1017.72	1017.69	1017.64	1017.63	1017.62	1017.61	1017.61	1017.57	1017.71
	10	1017.54	1017.52	1017.46	1017.37	1017.25	1017.14	1017.09	1017.08	1017.09	1017.01	1016.91	1016.90	1017.19
	11	1016.89	1016.91	1016.90	1016.86	1016.79	1016.77	1016.77	1016.71	1016.64	1016.56	1016.50	1016.48	1016.73
	12	1016.40	1016.29	1016.25	1016.26	1016.20	1016.07	1016.02	1016.00	1015.97	1015.94	1015.84	1015.71	1016.08
	13	1015.65	1015.67	1015.64	1015.58	1015.52	1015.46	1015.43	1015.44	1015.41	1015.32	1015.23	1015.21	1015.46
	14	1015.20	1015.21	1015.17	1015.07	1014.98	1014.95	1014.91	1014.84	1014.79	1014.72	1014.73	1014.75	1014.94
	15	1014.77	1014.84	1014.83	1014.78	1014.72	1014.69	1014.69	1014.69	1014.65	1014.66	1014.71	1014.71	1014.72
	16	1014.71	1014.73	1014.76	1014.77	1014.77	1014.76	1014.74	1014.72	1014.70	1014.69	1014.70	1014.73	1014.73
	17	1014.75	1014.80	1014.86	1014.88	1014.93	1014.97	1015.02	1015.11	1015.17	1015.18	1015.23	1015.30	1015.01
	18	1015.35	1015.40	1015.50	1015.63	1015.73	1015.78	1015.84	1015.93	1016.02	1016.10	1016.18	1016.29	1015.81
	19	1016.37	1016.43	1016.48	1016.51	1016.59	1016.69	1016.75	1016.78	1016.83	1016.85	1016.85	1016.86	1016.66
	20	1016.84	1016.84	1016.87	1016.91	1016.97	1017.00	1017.01	1017.05	1017.11	1017.18	1017.24	1017.25	1017.02
	21	1017.26	1017.25	1017.23	1017.21	1017.23	1017.23	1017.17	1017.12	1017.11	1017.05	1017.00	1017.01	1017.15
	22	1017.05	1017.12	1017.15	1017.13	1017.12	1017.09	1017.04	1017.03	1017.04	1017.08	1017.11	1017.13	1017.09
	23	1017.21	1017.27	1017.20	1017.12	1017.09	1017.06	1017.00	1016.97	1016.92	1016.87	1016.87	1016.85	1017.03
24	0	1016.80	1016.81	1016.83	1016.81	1016.75	1016.71	1016.66	1016.57	1016.51	1016.50	1016.51	1016.49	1016.65
	1	1016.48	1016.45	1016.41	1016.40	1016.39	1016.35	1016.28	1016.21	1016.17	1016.15	1016.13	1016.07	1016.29
	2	1015.97	1015.89	1015.84	1015.79	1015.72	1015.65	1015.58	1015.57	1015.58	1015.58	1015.60	1015.61	1015.70
	3	1015.59	1015.52	1015.50	1015.60	1015.67	1015.72	1015.80	1015.87	1015.92	1015.92	1015.88	1015.86	1015.73
	4	1015.87	1015.89	1015.93	1015.93	1015.89	1015.92	1015.88	1015.84	1015.83	1015.82	1015.91	1015.99	1015.89
	5	1016.09	1016.21	1016.22	1016.21	1016.24	1016.27	1016.25	1016.27	1016.36	1016.40	1016.38	1016.36	1016.27
	6	1016.34	1016.35	1016.33	1016.37	1016.47	1016.47	1016.48	1016.54	1016.58	1016.58	1016.60	1016.60	1016.47
	7	1016.56	1016.54	1016.54	1016.53	1016.54	1016.60	1016.62	1016.62	1016.62	1016.58	1016.49	1016.45	1016.56
	8	1016.47	1016.46	1016.43	1016.45	1016.50	1016.46	1016.40	1016.42	1016.47	1016.49	1016.49	1016.48	1016.46
	9	1016.45	1016.44	1016.45	1016.47	1016.48	1016.46	1016.39	1016.34	1016.33	1016.29	1016.25	1016.23	1016.38
	10	1016.19	1016.12	1016.03	1015.98	1015.92	1015.81	1015.77	1015.74	1015.69	1015.65	1015.60	1015.56	1015.84
	11	1015.55	1015.55	1015.53	1015.52	1015.50	1015.48	1015.47	1015.45	1015.44	1015.45	1015.44	1015.38	1015.48
	12	1015.33	1015.31	1015.27	1015.21	1015.20	1015.17	1015.13	1015.10	1015.02	1014.92	1014.83	1014.81	1015.11
	13	1014.83	1014.87	1014.89	1014.89	1014.90	1014.90	1014.90	1014.90	1014.92	1014.99	1014.97	1014.91	1014.90
	14	1014.90	1014.88	1014.86	1014.87	1014.88	1014.95	1015.04	1015.07	1015.08	1015.05	1015.05	1015.10	1014.97
	15	1015.11	1015.11	1015.12	1015.15	1015.18	1015.23	1015.22	1015.21	1015.21	1015.18	1015.13	1015.13	1015.16
	16	1015.12	1015.06	1015.02	1015.00	1014.97	1014.95	1014.94	1014.92	1014.93	1014.96	1014.99	1015.01	1014.99
	17	1015.01	1015.03	1015.07	1015.11	1015.13	1015.11	1015.08	1015.06	1015.06	1015.09	1015.11	1015.13	1015.08
	18	1015.15	1015.16	1015.18	1015.18	1015.20	1015.24	1015.26	1015.27	1015.29	1015.32	1015.36	1015.40	1015.25
	19	1015.38	1015.35	1015.32	1015.31	1015.35	1015.40	1015.42	1015.42	1015.39	1015.37	1015.35	1015.35	1015.36
	20	1015.39	1015.40	1015.39	1015.40	1015.42	1015.46	1015.51	1015.54	1015.55	1015.53	1015.54	1015.54	1015.47
	21	1015.54	1015.54	1015.54	1015.54	1015.53	1015.51	1015.50	1015.51	1015.49	1015.45	1015.46	1015.48	1015.50
	22	1015.48	1015.48	1015.49	1015.52	1015.55	1015.60	1015.65	1015.69	1015.72	1015.71	1015.69	1015.67	1015.60
	23	1015.65	1015.61	1015.58	1015.56	1015.52	1015.48	1015.42	1015.39	1015.40	1015.38	1015.36	1015.36	1015.47

S.V.I.R.CO. Observatory - Pressure in hectoPascal – August 2016

day	hh	00_05	05_10	10_15	15_20	20_25	25_30	30_35	35_40	40_45	45_50	50_55	55_60	average
25	0	1015.37	1015.40	1015.45	1015.44	1015.40	1015.41	1015.40	1015.36	1015.32	1015.26	1015.20	1015.15	1015.34
	1	1015.14	1015.17	1015.19	1015.18	1015.18	1015.18	1015.16	1015.18	1015.21	1015.18	1015.13	1015.09	1015.16
	2	1015.05	1015.00	1014.96	1014.96	1014.98	1015.02	1015.02	1015.00	1015.01	1015.05	1015.08	1015.05	1015.01
	3	1015.00	1014.98	1014.98	1014.98	1014.95	1014.93	1014.94	1014.95	1014.98	1014.97	1014.94	1014.92	1014.96
	4	1014.90	1014.87	1014.87	1014.92	1014.94	1014.97	1015.00	1015.01	1015.04	1015.05	1015.05	1015.08	1014.97
	5	1015.12	1015.14	1015.14	1015.15	1015.14	1015.14	1015.14	1015.15	1015.15	1015.13	1015.11	1015.10	1015.13
	6	1015.11	1015.12	1015.14	1015.16	1015.16	1015.17	1015.17	1015.15	1015.15	1015.15	1015.16	1015.18	1015.15
	7	1015.21	1015.22	1015.24	1015.25	1015.25	1015.25	1015.28	1015.30	1015.27	1015.26	1015.27	1015.27	1015.25
	8	1015.28	1015.29	1015.31	1015.32	1015.32	1015.29	1015.25	1015.25	1015.23	1015.20	1015.20	1015.17	1015.26
	9	1015.14	1015.10	1015.06	1015.05	1015.02	1014.98	1014.94	1014.89	1014.85	1014.82	1014.80	1014.76	1014.95
	10	1014.71	1014.68	1014.66	1014.59	1014.55	1014.54	1014.52	1014.47	1014.42	1014.36	1014.31	1014.29	1014.51
	11	1014.25	1014.21	1014.18	1014.15	1014.15	1014.17	1014.17	1014.16	1014.14	1014.16	1014.17	1014.14	1014.17
	12	1014.08	1014.02	1013.98	1013.91	1013.84	1013.83	1013.82	1013.80	1013.75	1013.70	1013.65	1013.63	1013.83
	13	1013.63	1013.60	1013.57	1013.53	1013.52	1013.51	1013.47	1013.47	1013.44	1013.42	1013.43	1013.42	1013.50
	14	1013.42	1013.42	1013.44	1013.45	1013.47	1013.48	1013.47	1013.43	1013.40	1013.38	1013.34	1013.32	1013.42
	15	1013.35	1013.38	1013.38	1013.39	1013.41	1013.41	1013.40	1013.41	1013.44	1013.48	1013.52	1013.54	1013.42
	16	1013.54	1013.53	1013.51	1013.50	1013.51	1013.52	1013.52	1013.53	1013.53	1013.52	1013.53	1013.56	1013.52
	17	1013.59	1013.65	1013.68	1013.69	1013.70	1013.72	1013.73	1013.76	1013.80	1013.83	1013.88	1013.93	1013.74
	18	1013.98	1014.01	1014.09	1014.18	1014.23	1014.26	1014.29	1014.34	1014.39	1014.44	1014.50	1014.55	1014.27
	19	1014.59	1014.64	1014.64	1014.65	1014.67	1014.66	1014.64	1014.64	1014.63	1014.63	1014.63	1014.62	1014.63
	20	1014.63	1014.62	1014.61	1014.63	1014.66	1014.68	1014.70	1014.73	1014.80	1014.84	1014.87	1014.91	1014.72
	21	1014.89	1014.87	1014.87	1014.85	1014.85	1014.86	1014.87	1014.88	1014.88	1014.91	1014.92	1014.91	1014.88
	22	1014.91	1014.93	1014.96	1014.97	1014.99	1015.01	1015.01	1015.02	1015.04	1015.04	1015.06	1015.08	1015.00
	23	1015.06	1015.03	1015.01	1015.00	1014.98	1014.95	1014.95	1014.94	1014.91	1014.88	1014.84	1014.80	1014.94
26	0	1014.79	1014.79	1014.79	1014.78	1014.76	1014.76	1014.76	1014.76	1014.75	1014.70	1014.67	1014.68	1014.74
	1	1014.69	1014.70	1014.74	1014.78	1014.80	1014.81	1014.81	1014.80	1014.80	1014.84	1014.87	1014.88	1014.79
	2	1014.88	1014.90	1014.94	1014.95	1014.94	1014.96	1014.98	1014.99	1015.00	1015.03	1015.05	1015.05	1014.97
	3	1015.06	1015.09	1015.10	1015.07	1015.08	1015.12	1015.14	1015.15	1015.17	1015.21	1015.27	1015.30	1015.14
	4	1015.28	1015.26	1015.27	1015.30	1015.36	1015.42	1015.48	1015.54	1015.57	1015.59	1015.62	1015.63	1015.44
	5	1015.66	1015.71	1015.78	1015.84	1015.84	1015.84	1015.85	1015.84	1015.84	1015.86	1015.88	1015.93	1015.82
	6	1015.96	1015.98	1015.98	1015.97	1015.98	1016.03	1016.09	1016.16	1016.22	1016.25	1016.26	1016.27	1016.09
	7	1016.29	1016.29	1016.27	1016.27	1016.27	1016.28	1016.30	1016.33	1016.37	1016.41	1016.42	1016.42	1016.32
	8	1016.45	1016.48	1016.50	1016.51	1016.53	1016.56	1016.57	1016.55	1016.53	1016.51	1016.52	1016.53	1016.52
	9	1016.56	1016.56	1016.54	1016.50	1016.45	1016.41	1016.38	1016.37	1016.37	1016.31	1016.26	1016.22	1016.41
	10	1016.19	1016.17	1016.12	1016.07	1016.04	1016.02	1016.00	1015.99	1015.97	1015.95	1015.97	1015.99	1016.04
	11	1016.00	1015.97	1015.94	1015.95	1015.98	1015.99	1015.99	1015.97	1015.95	1015.94	1015.88	1015.84	1015.95
	12	1015.84	1015.84	1015.84	1015.82	1015.83	1015.81	1015.76	1015.72	1015.72	1015.70	1015.66	1015.65	1015.76
	13	1015.62	1015.59	1015.61	1015.61	1015.56	1015.53	1015.51	1015.52	1015.52	1015.45	1015.43	1015.45	1015.53
	14	1015.45	1015.45	1015.43	1015.41	1015.42	1015.43	1015.40	1015.38	1015.37	1015.35	1015.34	1015.33	1015.40
	15	1015.31	1015.29	1015.28	1015.30	1015.35	1015.40	1015.40	1015.37	1015.31	1015.26	1015.22	1015.18	1015.30
	16	1015.19	1015.21	1015.22	1015.22	1015.23	1015.26	1015.27	1015.27	1015.30	1015.34	1015.38	1015.42	1015.27
	17	1015.47	1015.52	1015.54	1015.53	1015.52	1015.55	1015.61	1015.66	1015.71	1015.77	1015.83	1015.87	1015.63
	18	1015.90	1015.92	1015.93	1015.93	1015.97	1016.03	1016.11	1016.21	1016.29	1016.33	1016.36	1016.38	1016.11
	19	1016.40	1016.46	1016.55	1016.64	1016.71	1016.75	1016.77	1016.79	1016.80	1016.80	1016.81	1016.82	1016.69
	20	1016.83	1016.83	1016.84	1016.90	1016.98	1017.02	1017.03	1017.06	1017.10	1017.15	1017.19	1017.20	1017.01
	21	1017.22	1017.22	1017.21	1017.22	1017.21	1017.19	1017.19	1017.18	1017.19	1017.22	1017.22	1017.25	1017.21
	22	1017.28	1017.29	1017.29	1017.28	1017.27	1017.25	1017.24	1017.26	1017.28	1017.29	1017.26	1017.24	1017.27
	23	1017.24	1017.24	1017.26	1017.27	1017.23	1017.20	1017.21	1017.23	1017.22	1017.21	1017.24	1017.23	1017.23

S.V.I.R.CO. Observatory - Pressure in hectoPascal – August 2016

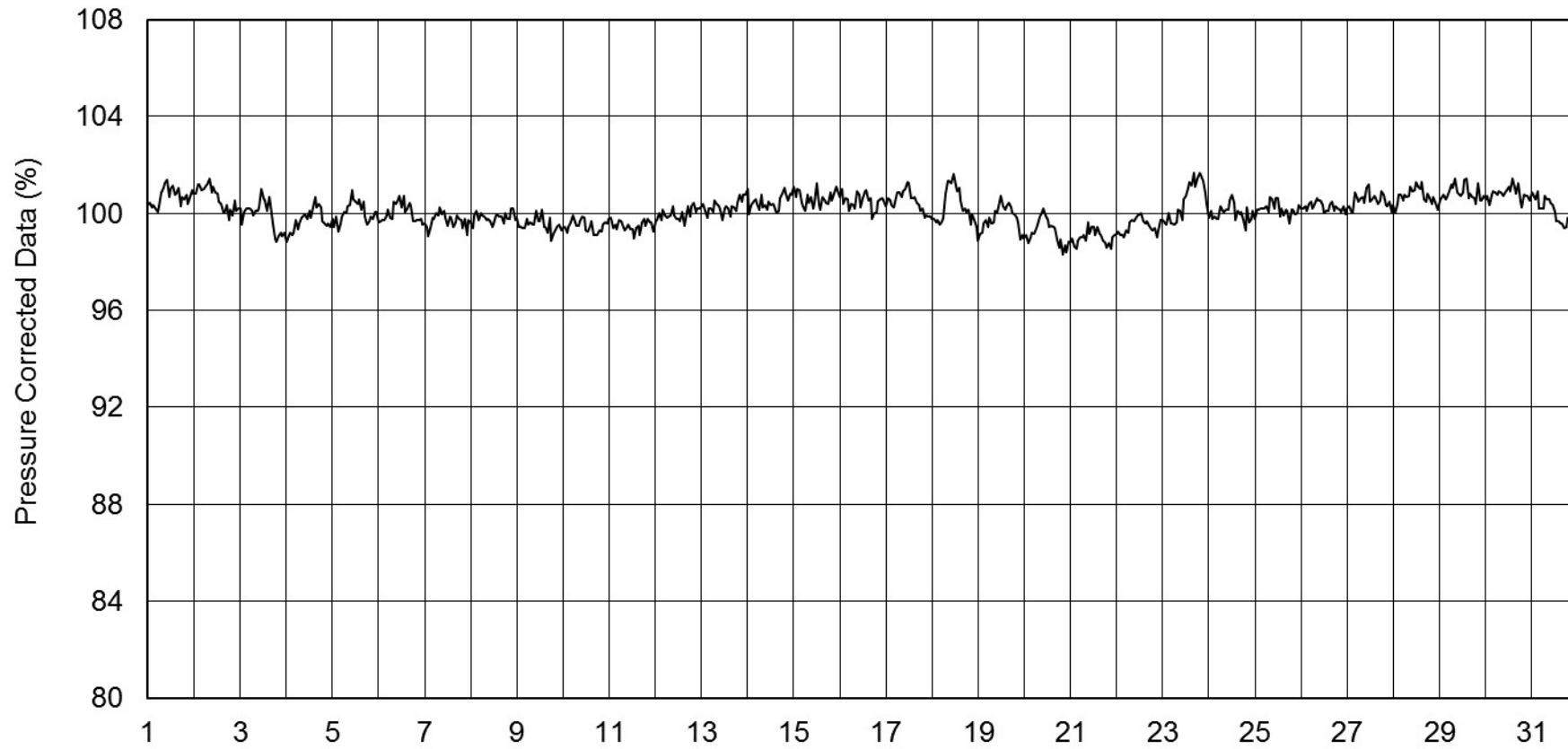
day	hh	00_05	05_10	10_15	15_20	20_25	25_30	30_35	35_40	40_45	45_50	50_55	55_60	average
27	0	1017.19	1017.22	1017.25	1017.26	1017.28	1017.30	1017.32	1017.32	1017.30	1017.30	1017.34	1017.40	1017.29
	1	1017.44	1017.46	1017.45	1017.44	1017.44	1017.47	1017.49	1017.51	1017.54	1017.55	1017.55	1017.54	1017.49
	2	1017.52	1017.53	1017.57	1017.63	1017.66	1017.65	1017.63	1017.63	1017.62	1017.60	1017.58	1017.57	1017.60
	3	1017.57	1017.54	1017.51	1017.49	1017.45	1017.42	1017.41	1017.40	1017.37	1017.38	1017.39	1017.39	1017.44
	4	1017.39	1017.41	1017.43	1017.45	1017.50	1017.54	1017.57	1017.60	1017.64	1017.69	1017.75	1017.80	1017.56
	5	1017.86	1017.91	1017.95	1018.01	1018.07	1018.07	1018.07	1018.10	1018.11	1018.09	1018.11	1018.16	1018.04
	6	1018.21	1018.25	1018.28	1018.33	1018.37	1018.39	1018.40	1018.41	1018.42	1018.42	1018.44	1018.47	1018.36
	7	1018.50	1018.51	1018.52	1018.53	1018.55	1018.55	1018.55	1018.59	1018.64	1018.66	1018.66	1018.66	1018.57
	8	1018.68	1018.70	1018.71	1018.72	1018.74	1018.75	1018.75	1018.77	1018.79	1018.78	1018.75	1018.72	1018.74
	9	1018.71	1018.68	1018.66	1018.65	1018.63	1018.60	1018.55	1018.50	1018.45	1018.43	1018.40	1018.36	1018.55
	10	1018.35	1018.32	1018.28	1018.25	1018.22	1018.18	1018.13	1018.09	1018.07	1018.02	1017.95	1017.86	1018.14
	11	1017.79	1017.75	1017.74	1017.73	1017.70	1017.70	1017.72	1017.72	1017.73	1017.74	1017.75	1017.75	1017.73
	12	1017.73	1017.69	1017.67	1017.64	1017.60	1017.58	1017.60	1017.60	1017.56	1017.56	1017.54	1017.47	1017.60
	13	1017.44	1017.43	1017.43	1017.43	1017.42	1017.41	1017.37	1017.34	1017.33	1017.27	1017.23	1017.20	1017.36
	14	1017.18	1017.16	1017.14	1017.14	1017.15	1017.16	1017.18	1017.18	1017.18	1017.17	1017.16	1017.15	1017.16
	15	1017.16	1017.18	1017.18	1017.21	1017.24	1017.26	1017.25	1017.23	1017.23	1017.24	1017.28	1017.29	1017.23
	16	1017.27	1017.25	1017.26	1017.25	1017.24	1017.23	1017.24	1017.27	1017.28	1017.28	1017.28	1017.26	1017.26
	17	1017.25	1017.27	1017.27	1017.25	1017.26	1017.25	1017.24	1017.24	1017.22	1017.23	1017.26	1017.29	1017.25
	18	1017.32	1017.32	1017.34	1017.39	1017.45	1017.52	1017.59	1017.65	1017.72	1017.77	1017.81	1017.84	1017.56
	19	1017.88	1017.93	1018.00	1018.04	1018.05	1018.06	1018.07	1018.08	1018.11	1018.13	1018.15	1018.16	1018.05
	20	1018.16	1018.18	1018.21	1018.24	1018.27	1018.30	1018.32	1018.34	1018.36	1018.38	1018.37	1018.36	1018.29
	21	1018.38	1018.40	1018.40	1018.39	1018.38	1018.35	1018.32	1018.34	1018.37	1018.38	1018.35	1018.31	1018.36
	22	1018.31	1018.31	1018.32	1018.32	1018.32	1018.30	1018.28	1018.26	1018.28	1018.30	1018.30	1018.28	1018.30
	23	1018.24	1018.23	1018.23	1018.20	1018.15	1018.13	1018.12	1018.09	1018.09	1018.09	1018.09	1018.10	1018.14
28	0	1018.09	1018.08	1018.05	1018.06	1018.06	1018.05	1018.05	1018.03	1018.01	1017.99	1017.98	1017.97	1018.03
	1	1017.96	1017.95	1017.96	1017.97	1017.94	1017.90	1017.86	1017.83	1017.88	1017.93	1017.95	1017.95	1017.92
	2	1017.91	1017.85	1017.84	1017.84	1017.81	1017.79	1017.77	1017.77	1017.79	1017.79	1017.80	1017.82	1017.81
	3	1017.82	1017.79	1017.77	1017.77	1017.75	1017.74	1017.74	1017.74	1017.74	1017.73	1017.72	1017.69	1017.75
	4	1017.67	1017.69	1017.75	1017.77	1017.75	1017.77	1017.80	1017.81	1017.84	1017.88	1017.88	1017.90	1017.79
	5	1017.92	1017.90	1017.91	1017.93	1017.91	1017.93	1017.98	1018.02	1018.03	1018.07	1018.12	1018.16	1017.99
	6	1018.22	1018.24	1018.24	1018.25	1018.27	1018.28	1018.29	1018.32	1018.36	1018.41	1018.43	1018.45	1018.31
	7	1018.47	1018.49	1018.51	1018.54	1018.58	1018.62	1018.64	1018.65	1018.65	1018.65	1018.66	1018.65	1018.59
	8	1018.67	1018.68	1018.66	1018.63	1018.61	1018.58	1018.56	1018.54	1018.53	1018.50	1018.48	1018.49	1018.58
	9	1018.49	1018.46	1018.43	1018.43	1018.43	1018.40	1018.36	1018.33	1018.31	1018.32	1018.32	1018.26	1018.38
	10	1018.20	1018.16	1018.11	1018.05	1018.02	1018.01	1017.96	1017.95	1017.95	1017.92	1017.91	1017.89	1018.01
	11	1017.88	1017.87	1017.83	1017.83	1017.86	1017.84	1017.85	1017.86	1017.83	1017.80	1017.78	1017.76	1017.83
	12	1017.72	1017.68	1017.65	1017.62	1017.59	1017.55	1017.50	1017.44	1017.42	1017.41	1017.38	1017.37	1017.53
	13	1017.36	1017.36	1017.36	1017.32	1017.31	1017.30	1017.27	1017.23	1017.17	1017.13	1017.11	1017.12	1017.25
	14	1017.12	1017.12	1017.13	1017.12	1017.10	1017.11	1017.10	1017.07	1017.02	1016.97	1016.95	1016.94	1017.06
	15	1016.92	1016.91	1016.90	1016.89	1016.87	1016.83	1016.82	1016.84	1016.83	1016.79	1016.75	1016.72	1016.84
	16	1016.71	1016.70	1016.69	1016.69	1016.68	1016.67	1016.67	1016.67	1016.69	1016.70	1016.68	1016.69	1016.68
	17	1016.71	1016.69	1016.66	1016.64	1016.63	1016.66	1016.70	1016.71	1016.73	1016.78	1016.82	1016.86	1016.71
	18	1016.91	1016.95	1017.02	1017.08	1017.10	1017.15	1017.21	1017.27	1017.35	1017.41	1017.47	1017.52	1017.20
	19	1017.56	1017.60	1017.64	1017.65	1017.66	1017.66	1017.65	1017.67	1017.70	1017.72	1017.71	1017.70	1017.66
	20	1017.72	1017.76	1017.77	1017.78	1017.82	1017.84	1017.85	1017.85	1017.86	1017.92	1017.96	1017.98	1017.84
	21	1017.99	1017.98	1017.94	1017.91	1017.89	1017.86	1017.85	1017.82	1017.80	1017.79	1017.76	1017.72	1017.86
	22	1017.70	1017.72	1017.75	1017.75	1017.73	1017.73	1017.72	1017.71	1017.74	1017.75	1017.75	1017.74	1017.73
	23	1017.70	1017.65	1017.62	1017.60	1017.57	1017.53	1017.50	1017.45	1017.39	1017.35	1017.34	1017.33	1017.50

S.V.I.R.CO. Observatory - Pressure in hectoPascal – August 2016

day	hh	00_05	05_10	10_15	15_20	20_25	25_30	30_35	35_40	40_45	45_50	50_55	55_60	average
29	0	1017.29	1017.25	1017.18	1017.12	1017.08	1017.06	1017.05	1017.03	1017.04	1017.03	1016.98	1016.95	1017.08
	1	1016.94	1016.90	1016.85	1016.83	1016.81	1016.81	1016.82	1016.81	1016.77	1016.71	1016.69	1016.68	1016.80
	2	1016.64	1016.55	1016.48	1016.43	1016.40	1016.42	1016.42	1016.39	1016.34	1016.32	1016.30	1016.25	1016.41
	3	1016.22	1016.22	1016.21	1016.23	1016.27	1016.29	1016.26	1016.21	1016.18	1016.19	1016.20	1016.22	1016.22
	4	1016.24	1016.24	1016.27	1016.30	1016.31	1016.31	1016.32	1016.34	1016.39	1016.43	1016.44	1016.46	1016.33
	5	1016.48	1016.49	1016.50	1016.51	1016.54	1016.52	1016.49	1016.49	1016.49	1016.52	1016.55	1016.56	1016.51
	6	1016.56	1016.56	1016.54	1016.56	1016.66	1016.74	1016.76	1016.78	1016.83	1016.85	1016.84	1016.85	1016.71
	7	1016.89	1016.89	1016.86	1016.83	1016.82	1016.82	1016.81	1016.81	1016.80	1016.75	1016.74	1016.75	1016.81
	8	1016.74	1016.72	1016.70	1016.70	1016.66	1016.65	1016.67	1016.64	1016.58	1016.53	1016.49	1016.47	1016.63
	9	1016.43	1016.40	1016.38	1016.36	1016.33	1016.28	1016.22	1016.20	1016.19	1016.15	1016.13	1016.10	1016.26
	10	1016.05	1015.99	1015.95	1015.92	1015.90	1015.82	1015.73	1015.66	1015.61	1015.62	1015.65	1015.65	1015.79
	11	1015.64	1015.65	1015.64	1015.63	1015.62	1015.57	1015.54	1015.50	1015.44	1015.39	1015.33	1015.29	1015.52
	12	1015.27	1015.25	1015.24	1015.23	1015.19	1015.15	1015.10	1015.05	1015.01	1015.00	1014.96	1014.89	1015.11
	13	1014.85	1014.80	1014.81	1014.83	1014.79	1014.76	1014.74	1014.71	1014.68	1014.65	1014.61	1014.59	1014.73
	14	1014.58	1014.56	1014.54	1014.49	1014.47	1014.47	1014.48	1014.48	1014.47	1014.46	1014.45	1014.42	1014.49
	15	1014.38	1014.37	1014.37	1014.39	1014.41	1014.42	1014.44	1014.44	1014.44	1014.42	1014.36	1014.34	1014.40
	16	1014.33	1014.30	1014.28	1014.24	1014.21	1014.18	1014.12	1014.07	1014.04	1014.02	1014.00	1013.97	1014.14
	17	1013.93	1013.87	1013.84	1013.89	1013.93	1013.96	1014.00	1014.03	1014.05	1014.09	1014.13	1014.15	1013.99
	18	1014.19	1014.26	1014.33	1014.40	1014.47	1014.54	1014.63	1014.71	1014.75	1014.80	1014.84	1014.86	1014.56
	19	1014.89	1014.94	1014.98	1015.03	1015.09	1015.15	1015.19	1015.21	1015.25	1015.30	1015.33	1015.34	1015.14
	20	1015.37	1015.42	1015.44	1015.46	1015.49	1015.51	1015.51	1015.53	1015.56	1015.59	1015.61	1015.64	1015.51
	21	1015.66	1015.68	1015.72	1015.72	1015.71	1015.70	1015.68	1015.66	1015.66	1015.68	1015.69	1015.69	1015.69
	22	1015.68	1015.66	1015.64	1015.64	1015.65	1015.65	1015.66	1015.66	1015.68	1015.70	1015.71	1015.70	1015.67
	23	1015.70	1015.73	1015.73	1015.72	1015.73	1015.69	1015.66	1015.61	1015.56	1015.52	1015.46	1015.39	1015.62
30	0	1015.36	1015.36	1015.34	1015.33	1015.34	1015.35	1015.33	1015.30	1015.22	1015.13	1015.08	1015.05	1015.26
	1	1015.01	1014.97	1014.94	1014.92	1014.90	1014.88	1014.87	1014.84	1014.81	1014.78	1014.77	1014.80	1014.87
	2	1014.81	1014.77	1014.76	1014.78	1014.78	1014.75	1014.71	1014.69	1014.70	1014.69	1014.71	1014.76	1014.74
	3	1014.79	1014.80	1014.79	1014.77	1014.72	1014.68	1014.67	1014.63	1014.62	1014.64	1014.66	1014.61	1014.70
	4	1014.51	1014.47	1014.49	1014.53	1014.61	1014.68	1014.74	1014.79	1014.85	1014.89	1014.91	1014.94	1014.70
	5	1014.99	1015.07	1015.15	1015.18	1015.22	1015.29	1015.36	1015.40	1015.42	1015.43	1015.44	1015.46	1015.28
	6	1015.50	1015.51	1015.54	1015.61	1015.66	1015.67	1015.68	1015.75	1015.83	1015.84	1015.87	1015.95	1015.70
	7	1016.03	1016.10	1016.15	1016.16	1016.18	1016.24	1016.30	1016.33	1016.39	1016.43	1016.42	1016.45	1016.26
	8	1016.51	1016.58	1016.60	1016.64	1016.71	1016.73	1016.73	1016.73	1016.76	1016.76	1016.74	1016.74	1016.68
	9	1016.75	1016.77	1016.78	1016.74	1016.68	1016.61	1016.53	1016.48	1016.42	1016.37	1016.37	1016.35	1016.57
	10	1016.32	1016.33	1016.35	1016.29	1016.19	1016.13	1016.12	1016.10	1016.09	1016.07	1016.04	1016.03	1016.17
	11	1016.01	1016.00	1015.99	1015.96	1015.94	1015.90	1015.83	1015.80	1015.79	1015.76	1015.72	1015.70	1015.86
	12	1015.68	1015.63	1015.58	1015.57	1015.55	1015.47	1015.39	1015.36	1015.31	1015.28	1015.27	1015.25	1015.44
	13	1015.26	1015.24	1015.23	1015.19	1015.13	1015.16	1015.16	1015.17	1015.16	1015.14	1015.18	1015.17	1015.18
	14	1015.14	1015.16	1015.17	1015.12	1015.06	1015.00	1015.01	1015.03	1014.96	1014.92	1014.88	1014.83	1015.02
	15	1014.79	1014.73	1014.74	1014.77	1014.74	1014.75	1014.78	1014.78	1014.77	1014.77	1014.80	1014.81	1014.77
	16	1014.81	1014.81	1014.80	1014.83	1014.89	1014.97	1015.05	1015.08	1015.09	1015.12	1015.17	1015.24	1014.99
	17	1015.30	1015.39	1015.48	1015.54	1015.62	1015.70	1015.74	1015.74	1015.75	1015.80	1015.82	1015.82	1015.64
	18	1015.81	1015.82	1015.87	1015.97	1016.11	1016.30	1016.52	1016.73	1016.86	1016.94	1016.98	1016.97	1016.40
	19	1017.00	1017.11	1017.27	1017.45	1017.58	1017.66	1017.64	1017.68	1017.79	1017.83	1017.79	1017.69	1017.54
	20	1017.50	1017.28	1017.10	1016.99	1016.98	1016.86	1016.57	1016.34	1016.38	1016.61	1016.76	1016.79	1016.85
	21	1016.86	1016.88	1016.87	1016.91	1016.98	1016.97	1016.89	1016.82	1016.76	1016.65	1016.55	1016.47	1016.80
	22	1016.41	1016.39	1016.36	1016.30	1016.31	1016.29	1016.23	1016.20	1016.13	1016.10	1016.11	1016.08	1016.24
	23	1016.04	1016.05	1016.10	1016.18	1016.25	1016.27	1016.29	1016.29	1016.26	1016.20	1016.10	1016.04	1016.17

S.V.I.R.CO. Observatory - Pressure in hectoPascal – August 2016

day	hh	00_05	05_10	10_15	15_20	20_25	25_30	30_35	35_40	40_45	45_50	50_55	55_60	average
31	0	1016.11	1016.05	1015.98	1016.00	1016.03	1015.96	1015.93	1015.95	1015.92	1015.85	1015.79	1015.77	1015.94
	1	1015.76	1015.74	1015.74	1015.73	1015.71	1015.69	1015.70	1015.74	1015.74	1015.73	1015.70	1015.66	1015.72
	2	1015.64	1015.67	1015.71	1015.74	1015.75	1015.74	1015.73	1015.72	1015.70	1015.67	1015.67	1015.70	1015.70
	3	1015.77	1015.87	1015.93	1015.88	1015.80	1015.84	1015.90	1015.94	1015.97	1015.92	1015.90	1015.89	1015.88
	4	1015.89	1015.97	1016.04	1016.14	1016.26	1016.34	1016.43	1016.51	1016.59	1016.63	1016.65	1016.68	1016.34
	5	1016.73	1016.70	1016.67	1016.68	1016.66	1016.64	1016.66	1016.74	1016.82	1016.85	1016.87	1016.90	1016.74
	6	1016.94	1016.98	1016.97	1016.96	1016.98	1017.02	1017.00	1017.01	1017.09	1017.16	1017.20	1017.21	1017.04
	7	1017.21	1017.23	1017.25	1017.24	1017.21	1017.21	1017.22	1017.22	1017.21	1017.24	1017.25	1017.20	1017.22
	8	1017.15	1017.09	1017.05	1017.08	1017.16	1017.24	1017.34	1017.40	1017.41	1017.35	1017.37	1017.60	1017.27
	9	1017.84	1018.19	1018.65	1018.93	1019.06	1019.13	1018.97	1018.72	1018.66	1018.71	1018.65	1018.56	1018.67
	10	1018.57	1018.61	1018.65	1018.67	1018.63	1018.63	1018.69	1018.77	1018.79	1018.70	1018.65	1018.63	1018.66
	11	1018.61	1018.58	1018.53	1018.47	1018.40	1018.29	1018.13	1017.97	1017.89	1017.87	1017.80	1017.67	1018.18
	12	1017.62	1017.57	1017.53	1017.54	1017.56	1017.56	1017.54	1017.54	1017.54	1017.55	1017.52	1017.47	1017.54
	13	1017.50	1017.54	1017.54	1017.51	1017.45	1017.39	1017.34	1017.29	1017.23	1017.15	1017.06	1017.02	1017.33
	14	1017.00	1016.98	1016.97	1016.95	1016.97	1016.96	1016.90	1016.86	1016.86	1016.82	1016.75	1016.68	1016.89
	15	1016.61	1016.54	1016.49	1016.46	1016.42	1016.39	1016.40	1016.42	1016.47	1016.54	1016.59	1016.65	1016.50
	16	1016.74	1016.80	1016.83	1016.80	1016.72	1016.65	1016.63	1016.66	1016.67	1016.71	1016.76	1016.76	1016.73
	17	1016.74	1016.72	1016.72	1016.75	1016.75	1016.74	1016.76	1016.78	1016.77	1016.78	1016.81	1016.84	1016.76
	18	1016.85	1016.85	1016.85	1016.83	1016.84	1016.88	1016.91	1016.93	1016.94	1016.95	1016.96	1017.01	1016.90
	19	1017.06	1017.07	1017.11	1017.14	1017.16	1017.19	1017.22	1017.22	1017.21	1017.19	1017.21	1017.21	1017.16
	20	1017.19	1017.19	1017.18	1017.19	1017.24	1017.25	1017.23	1017.24	1017.26	1017.31	1017.34	1017.35	1017.25
	21	1017.36	1017.37	1017.36	1017.36	1017.36	1017.31	1017.28	1017.31	1017.32	1017.28	1017.25	1017.22	1017.31
	22	1017.19	1017.18	1017.22	1017.27	1017.31	1017.37	1017.43	1017.48	1017.48	1017.45	1017.45	1017.47	1017.36
	23	1017.48	1017.51	1017.52	1017.53	1017.55	1017.55	1017.55	1017.52	1017.47	1017.42	1017.39	1017.36	1017.48



S.V.I.R.CO. Observatory - Pressure in hectoPascal

August 2016

